



## The Zippo Lighter Collectors' Guide

Dear Zippo Lighter Enthusiast,

One night in 1933 above a garage in Bradford, Pennsylvania, George Blaisdell pushed the first insert into the first case of what would be the first Zippo lighter. That was nearly 350 million Zippo lighters ago. Mr. Blaisdell would be amazed to know that today there are thousands of Zippo lighter collectors all over the world, communicating through newsletters and faxes, e-mail and web pages, as well as getting together at shows and conventions and at the Zippo/Case International Swap Meet.

He would be dumbfounded to learn that for many, collecting Zippo lighters has become a hobby, and for some, it has even become a business. In light of the ever-growing international interest in the Zippo windproof lighter, let this little book be a word of introduction to the novice lighter collector. This is a place to start. It is not meant to be a complete guide to Zippo lighter identification or collecting, just a place to enter the conversation.

But also let this be a word of caution. Collecting Zippo lighters is a lot of fun. Try to keep it that way. Zippo Manufacturing Company

makes no claim as to how much a single lighter, however old or in whatever condition, is worth. The collectibles market is extremely volatile and any given piece is worth only whatever someone else wants to pay to begin or complete a collection. Yes, there are Zippo lighters that have brought quite a bit of money to the finder. But collecting Zippo lighters, I believe, is about fun, about history, about people.



What is beyond price is the joy of a genuine collector who finds a rare 1933 or a beautiful metallique or a powerful World War II or a Vietnam-era Zippo lighter. Every Zippo lighter tells a story and some of those stories – and some of these Zippo lighters – are priceless.

Sincerely,

Michael A. Schuler  
President and CEO  
Zippo Manufacturing Company



The Zippo/Case Visitors Center houses one of the country's most unusual and special collections of Americana. The Visitors Center contains the Zippo/Case Museum, the Zippo/Case Store and the Zippo Repair Clinic, where the legendary

Zippo/Case Museum that visitors come from around the world.

The Zippo/Case Visitors Center is located at 1932 Zippo Drive, Bradford, PA 16701.

Here is another lighter museum you may want to visit:

# Spark Your Interest.

The museum displays the history of the Zippo windproof lighter, both the product and the people who have made this an icon of American cultural history.



Hours are Monday through Saturday, 9 a.m. - 5 p.m. Sunday hours are seasonal. Closed major holidays.

**National Lighter Museum**  
107 South 2nd Street,  
Guthrie, OK 73044  
405/282-3025  
www.natlitrmus.com

*Note: Most of the Zippo windproof lighters shown in this guide are historical; many are extremely rare. Since we no longer produce these models, they are not available for purchase from Zippo Manufacturing Company.*

The visitors' information line is (888) GGB-1932. Or visit our website at [www.zippo.com](http://www.zippo.com)

The Zippo/Case Visitors Center is one of a handful of repositories whose mission is to preserve and display the history of portable flame-making devices commonly called "lighters."

Like Zippo, W. R. Case & Sons Cutlery, which was acquired by Zippo in 1993, produces a legendary product which has become one of the most collectible items in the world.

*"Build your product with integrity... stand behind it 100% and success will follow."*

*- George G. Blaisdell  
Founder, Zippo Manufacturing Company*



Zippo guarantee is carried out (see page 31 for information on sending your lighter in for repair). But it's for the



The most important information you want to glean from your Zippo lighter is: what style it is, what condition it is in and how old it is.



# How to "Read" Your Zippo Lighter.

Here's what you need to know to figure that out.

Style can be two things: it can be determined by the model, in that it may be a hand-held – and within that it can be a regular size or a slim model – or it can be a table model, like the Barcroft or the Lady Bradford; or style can also refer to the decorative elements that distinguish lighters or groups of lighters.

For example, does it have diagonal cuts or is it 1/4" taller than the regular models, marks of some early Zippo lighters? Does it wear a metallique? Is it a Town & Country? This book will help you determine that. Condition means everything in lighter collecting (with the possible

exception of sentiment).

Now what does "condition" mean? To some collectors, it means that the lighter is as pristine as the day it was made. "Never lit means mint" to some



Lady Bradford



Barcroft





aficionados. But here's a rule of thumb: "Mint" generally means that the lighter is in superb condition. The chrome is in top shape. The lighter has all original parts. It has never been repaired.

If painted or enameled, the colors are not chipped or scratched. The cam spring is strong. It opens with that distinctive Zippo lighter "click" and closes with that solid,

reassuring "thunk." Many collectors use a rating scale from "Mint" to "Excellent" to "Fine" to

"Good" to "Fair" to "Poor," depending on these variables of condition. And finally, does the Zippo windproof lighter still have its original packaging? These original boxes add considerably to the



collectibility of the lighter. We've included that code on the next pages.



collectibility of the lighter.

Dating a Zippo lighter is fun and easy. Because Mr.

Blaisdell offered a lifetime guarantee on his lighters, he had the bottom of each Zippo lighter made since the

dream and a way to precisely date most Zippo lighters. We've included that code on the next pages.



Most lighters before 1957 are identified by style and model, patent or patent-pending mark, and the logo of "Zippo" engraved on the bottom. (Note: World War II Zippo lighters with the black crackle finish, distributed only to the PXs for the men and women in the service to buy, were stamped with this patent number: 203695.)



### LIGHTER IDENTIFICATION CODES

YEAR	REGULAR		SLIM	
	LEFT	RIGHT	LEFT	RIGHT
1933	Patent Pending			
1937	Patent 2032695			
1942-1946	Black Crackle, Patent 203695 (This number was stamped in error, it should have been Patent 2032695)			
c.1949-c.1957	Patent 2517191 with patent pending			
<p>Zippo records indicate an overlap of bottom stamp configurations from 1949-1957. Also, some lighters produced between 1955-57 were date coded, however, specifics remain unclear. The date coding was fully in effect by 1959.</p>				
c.1951-c.1957	Patent 2517191			
1957			....	....
1958	Patent 2517191		....	....
	....	....	....	...
1959	....	...	...	...
1960	...	...	...	..
1961	...	..	..	..
1962	..	..	..	.
1963	..	.	.	.
1964	.	.	.	
1965	.			
1966				
1967				
1968				
1969				
1970				
1971				
1972				
1973				
1974				

YEAR	REGULAR		SLIM	
	LEFT	RIGHT	LEFT	RIGHT
1975				
1976				
1977				
1978				
1979				
1980				
1981				
1982				
1983				
1984				
1985				
1986				

Effective 7-1-86 the above system was replaced by year/lot code. Year is noted with roman numeral/letter designates lot month (A=Jan., B=Feb., etc.)

YEAR	REGULAR & SLIM	
	REGULAR	SLIM
1986	G to L	II
1987	A to L	III
1988	A to L	IV
1989	A to L	V
1990	A to L	VI
1991	A to L	VII
1992	A to L	VIII
1993	A to L	IX
1994	A to L	X
1995	A to L	XI
1996	A to L	XII
1997	A to L	XIII
1998	A to L	XIV
1999	A to L	XV
2000	A to L	XVI

Visit [zippo.com](http://zippo.com) to see the date codes for the 21st century, starting with the year 2001.

No single issue inflames the collector or inspires such heated debate as the curious questions surrounding the dates for when George G. Blaisdell produced the

first Zippo windproof lighter. We now know when that first lighter was produced, and the news is sure to shock some Zippo collectors and historians. While Mr. Blaisdell clearly developed the idea and began the initial work on the Zippo Manufacturing Company in 1932, new evidence unearthed in the Zippo archive, discovered while researching materials for the opening of the Zippo/Case Museum in the spring of 1997,

has answered the long-debated question.

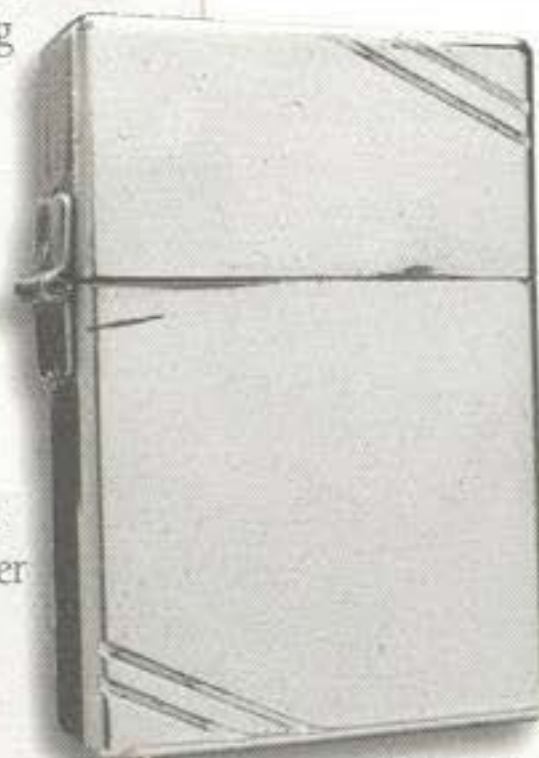
It was in 1933 – not 1932, as long believed – that George Blaisdell first started to produce the Zippo windproof lighter – the one both with and without diagonal cuts on the corner. This lighter is  $2\frac{7}{16}$ " tall – a quarter inch taller than the current Zippo lighter – and continued to be

produced until late 1933. The hinge – with three barrels – was hand-soldered on the outside of the case. The bottom of the lighter reads "Zippo" and "Pat. Pending." Mr. Blaisdell applied for the Zippo lighter patent in 1934 after experimenting throughout 1933.

How do we know this?

Some of the newly available correspondence between Mr. Blaisdell and the Austrian lighter company from whom he acquired the rights for the proto-Zippo, clearly show that he was still making contacts in 1933 and

# The First Zippo Lighter.



could not have been producing lighters any earlier. One letter, for example, dated January 9, 1933, states: "We received your letter of December 15 and have received

the sample lighter ... It is quite likely that we will go into this business on a rather large scale." Other letters have clearly confirmed this.

What is important is that the people of Zippo continue to offer the truth, as best we can and as quickly as we know it. That's a pledge that, like George Blaisdell's guarantee, our customers and our collectors can count on every time.

The company now estimates that there were approximately 1,500 tall Zippo

lighters made. That 1933 Zippo lighter sold for \$1.95.

Very few 1933 Zippo lighters remain, however—less than a hundred. They were made at arguably the darkest, toughest time for Americans—right in the middle of the Great Depression. There were probably very few people in 1933 who purchased their lighters for \$1.95 and secured them away in a drawer, having the foresight that the lighter would be highly collectible in a half-century. These lighters for the most part were used a great deal.

As recently as the early 1980's, if a tall Zippo lighter was sent to the Zippo plant for repairs—and many of these might have been, as they were all hand-soldered and had a tendency to crack—Zippo generally replaced the old lighter with a new one.

The customer was happy and Zippo threw out the old lighter!

One curiosity gets even "curiouser." In 1988 Zippo Manufacturing Company reissued a replica of the famous original 1932 Zippo lighter, what was then thought to be the initial year of production. So that 1988 "1932 Zippo lighter replica" just got a lot more collectible, like the pennies with the mistaken mint marks or the stamps with the botched images. Then in 1997, just before the facts of the 1933 lighter were discovered, Zippo again reproduced the original 1932 Zippo lighter for R.J. Reynolds and for the collectors' group On The Lighter Side (OTLS). All of these now "false replicas" are extremely collectible and, let's say, among the more limited runs in Zippo's inventory.



# ZIPPO

No. 200

\$1.95

WINDPROOF

Nationally known and accepted as the lighter for outdoor use. Your best friend on a long cross country. Two-tone chrome case.

Early Zippo lighters are those produced in 1933 and 1934, when the three-barrel hinge plate was soldered to the outside of the case and then the whole case chrome-plated. These outer-hinged Zippo windproof lighters remain the most collectible

lighters in the world. But there are other elements to look for. Early Zippo lighters can include the tall and the regular-size lighter.



Zippo debuted with an order of 500 Kendall Oil lighters the same year. Throughout Zippo's

Outside Hinge

# The 1930's.

## The Early Years: What to Look For.

In 1933, Mr. Blaisdell produced the 2 $\frac{1}{16}$ " tall Zippo lighter, but he shortened it by a quarter inch by the end of the year. This mid-1933-34 model also has the three-barrel outside hinge.

Trademarks & Logos – The first ad specialty Zippo was for Iowa Insurance Co. in 1935. The first logo on a



history, businesses and fraternal and military organizations have honored and highlighted their group by putting their logo, their image, their initials or their mark on a Zippo windproof lighter. From 1935 to the early 1940's, this was often done with metalliques and later with less exacting surface treatments. In any case, these customer trademark Zippo lighters have proven to be among the most desirable collectibles of all lighters and represent some

Inside Hinge





of the most important leaders of the industrial and corporate world.

**1936** –

The hinge for the Zippo lid is placed on the inside of the lighter case with a four-barrel

hinge, one that stayed in use until 1942.

**1937** – The gold-filled Zippo lighter is introduced.



**1938** –

The Zippo lighter with the brass case and rounded



corners weighing in at 2.05 oz. makes its debut. It is the now-classic Zippo design.

**1939** – Zippo's first table lighter – the Barcroft – is produced. These first table lighters are 4.5 inches high and can hold four times the fuel of a conventional Zippo lighter. Their first list price is \$7.50. This model is produced for

only two years. The second Barcroft is produced from 1947-49, the third model from 1949-54 and the fourth model from 1954-79.



**W**hat is “metallique?” From 1935 until 1940, Zippo decorated lighters with special appliqués called “metalliques.” These metalliques are metal lace, hand-crafted slices of chrome-plated brass, razor-thin at five one-thousandth of an inch. Metallique production peaked in the late 1930's, but this surface treatment was largely brushed aside by the epic Zippo production for World War II. During that time other less exacting “line-etching” techniques replaced the labor-intensive metalliques. Throughout the mid to late 1930's and early 1940's, customers could send in any lighter and have any available metallique – including metallique initials – applied to their lighter, thus making exact dating of some metalliques difficult. Some of the most famous and familiar metalliques include the Kendall, the two views of the Reveler, the Scotty dog, and the 1939 World's Fair.





*"It's the only lighter I've got that will light at all times."*

*- General Dwight D. Eisenhower.*

World War II – From 1943 until the end of World War II, all of Zippo Manufacturing Company's production was shipped to the PXs for the soldiers



scratching in names, places,

steel and then coated with a thick black paint that baked to a black crackle finish. Many soldiers customized their Zippo lighters,

# The 1940's.

in combat around the world. Because brass and chrome were in short supply, Zippo windproof lighters were made with a porous

images, and messages of all kinds that suggest their hopes, dreams, fears and longings. These kinds of images are often considered a form of "trench art." Specifically, trench art, a term from World War I, refers to items made from the rubble of war on the field of battle, in the trench. Pieces of trench art are extremely valuable and historically important. Many collectors, however, have extended the concept of "trench art" to include the changes to and

inscriptions put on heretofore existing items, including lighters. Some collectors would not consider this genuine trench art but would certainly consider these additions and embellishments interesting.

These Zippo lighters, personalized and customized by soldiers during war, have become extremely collectible and are important pieces of social history. Sometimes this form of trench art was hand-engraved by the soldier; other times engravers at the war site made modifications. This is more often the case with the Vietnam Zippo lighters (see page 25).

**1942** – The one millionth Zippo windproof lighter is produced.

**1943** – The three-barrel hinge is introduced. This hinge was soldered to the inside of the case.

**1947** – The epic production of lighters for World War II causes Zippo to reach the 10 millionth lighter mark.

**1949** – The Lady Bradford is introduced.

This table lighter is initially produced with and without a base in 1949 and then later in the year the model without a base is eliminated.

The Lady Bradford with the base is produced until 1954.



**ZIPPO**  
Windproof  
**LIGHTER**



**ZIPPO**  
MANUFACTURING CO.  
BRADFORD, PA. U. S. A.



## Thirst Hell in 5-Day Prisoner in Wreck

*Editor's Note: This is the one wounded while he was in the air. The air was so thick that he had to jump out of the plane. He was in the air for 5 days after he had crashed.*



*"If I were to tell you how much these Zippos are coveted at the front and the gratitude and delight with which the boys receive them, you would probably accuse me of exaggeration. There is truly nothing the average soldier would rather have."*

*- World War II correspondent*

*Ernie Pyle*

*Oct 29, 1944*

Town & Country – Town & Country Zippo lighters were first offered to the public in 1949 but have come to represent the confidence and the exuberance of the post-war

colored painted surfaces expressed an American enthusiasm that has rarely been matched by Zippo artisans. Town & Country represents the best of

# The 1950's

1950's. Town & Country may be the most luminous and one of the most desirable collectors' series in the history of the company. Among the most elaborate and labor-intensive of all Zippo lighters, these deeply engraved and multi-

Zippo's surface treatment and lighter design.

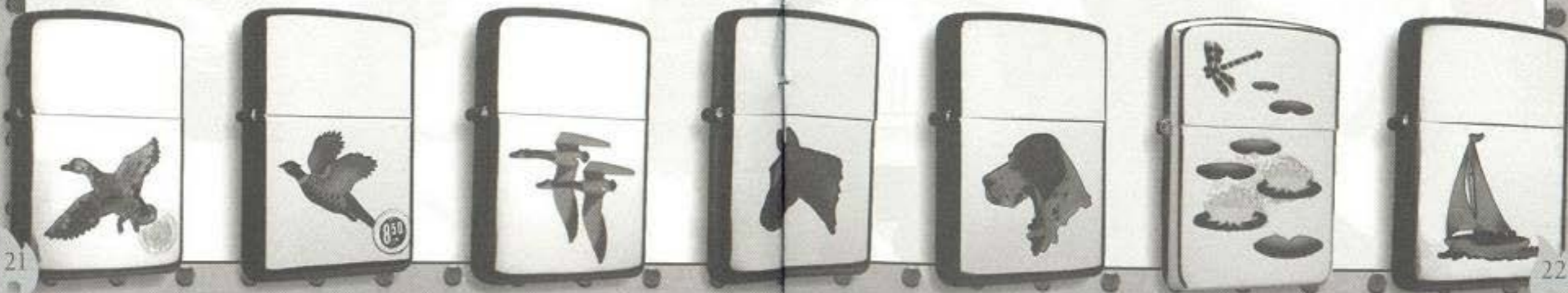
Town & Country employed a "paint-on-paint" process – sometimes up to 14 different colors for a single lighter – to achieve its rich texture. The colors

were air-brushed on the lighter one at a time, after the surface was engraved at four one-thousandth of an inch deep.

The classic series was illustrated with eight icons: the mallard, the pheasant, the geese, the trout, the horse, the English setter, the lily pond and the sloop or sailboat. Individual clients and organizations used this engraved and "paint-on-paint" process for their logos and military or fraternal insignias. The lighters were produced throughout the 1950's. In its first year, a Town & Country was a moderately expensive gift at \$7.50. Even though Zippo commonly

used the process until 1964, the Town & Country series officially came to an end in the 1960's. The 1969 moon landing lighter was the last Town & Country lighter produced.

Mint Town & Countries are extremely desirable for collectors not only because they are among the most beautiful lighters in the world, but also because they are very rare. Many people carried their lighters along with coins and keys in pockets and purses and, as a result, few Town & Country lighters, despite their electro-baked finish, have survived the subsequent decades without some chipping or scratching of their exquisitely



painted surface.

Throughout the 1960's, Zippo continued to produce lighters similar to the classic 1950's Town & Country series. But these were not as deeply engraved, nor did they often have the number of air-brushed colors. Town & Country Zippo lighters represent a unique time and a unique product in American industrial history – and a classic phase of Zippo production.

Other Zippo windproof lighters to spark your interest:

**1950-57** – Full leather Zippo lighters.

These are not to be confused with the leather wraps, which are produced from 1952-60 and have leather only



### IMPORTANT

Due to conditions caused by the War, we have had to convert from brass to steel in the manufacture of our lighter. Further, we cannot use nickel or chrome for the

We have had to convert from brass to steel in the manufacture of our lighter. Further, we cannot use nickel or chrome for the

This lighter is made of steel, but we have our lighters designed to last.

ZIPPO



around the middle of the lighter.

### 1950's

– Although Zippo patent 2517191 was issued in Aug. 1950, the bottom stamp of many lighters produced in the 1950's displayed this number with "Pat. Pending" until 1958.

**1951** – The Korean War. From 1951 through 1954 Zippo makes its lighters out of steel.

### 1955-57

– Zippo begins to date code with dashes and slashes (see chart on page 9).

**1956** – The slim Zippo lighter is introduced. These lighters bring an elegance and sophistication to the traditional, more masculine Zippo

lighter design. To make the slim, Zippo makes a number of modifications to the lighter, including a cut in the chimney, a wheel guard placed on the spring to reduce heat, and by the second year of production, moving the wick 1/32 of an inch away from the flint wheel. These first slim Zippo lighters have flat bottoms.

**1958** – "Pat. Pending" is removed from bottom stamp.



ZIPPO MFG. CO. BRADFORD, PA.  
ZIPPO  
PAT. 2517191 MADE IN U.S.A.

BRADFORD, PA.  
ZIPPO  
PAT. 2517191

*Bottoms Up: Take a Look – The bottom of your Zippo lighter can tell you a lot about your lighter. Lighters produced from 1933*

*through 1945 generally have either a flat bottom or one that is pushed out. In 1946, however, for the most part, Zippo lighters had what collectors often call a "canned bottom," looking very much like the edge of a tin can, neither bulged nor flat like earlier models.*



1960 - Zippo reaches the 100 millionth lighter mark; the Moderne and Corinthian table models are introduced.

Vietnam Zippo wind-proof lighters (1965 to early 1970's) - Probably no other Zippo

inventory is more fascinating to some than the many lighters designed and produced for the men and women in the military. During World War II and the Korean War, and then throughout Vietnam and up to the Gulf War, Zippo Manufacturing Company has memorialized the war efforts of American



forces and, in some cases, American allies as well.

# The 1960's

These lighters make up an entire sub-class of Zippo collecting. The lighters associated with the Vietnam War, particularly the form of trench art done during the war by Vietnamese engravers and the soldiers themselves, are extremely valuable both as collectibles and as pieces of American social history (see trench art, page 19). These Vietnam lighters, however, because of the potential to fabricate after-the-fact forged trench art, should be approached by the novice collector with



extreme caution and skepticism.

Don't lose your Zippo. Lifetime friends are rare.



1969 - The Moon Landing Zippo is released and proves to be a prize for collectors.



1970's – The Zodiac Zippo lighters are introduced.



1976 – The Bicentennial lighter is released.

1978 – Walt Disney Zippo lighters

1979 – The Handilite, a pedestal base that makes a pocket lighter a table lighter, is introduced.

1982 – The 50th Anniversary Lighter



1984 – Zippo lighters with a "matte finish" are introduced in black, to be followed by blue, burgundy, green and gray.

1986 – Camouflage Zippo lighters are introduced.

1987 – The first Elvis Zippo lighter makes the scene.



1988 – The 200 millionth lighter is produced.

1989 – The Zippo lighter honoring the 100th anniversary of the W.R. Case & Sons Cutlery Company is produced.

1990 – The Presidents' Series

1991 – The Civil War Series



1993 – Zippo acquires Case Cutlery. Case, also located in Bradford, PA, manufactures some of the best and most collectible knives in the world.

1993 – Zippo's sponsorship of the Zippo U.S. Vintage Grand Prix of Watkins Glen is memorialized in the Zippo Motorsports Collection.



1996 – Zippo produces the 300 millionth lighter.



1995-96 –

Zippo: A Remembrance, Volumes I and II commemorate famous people and events of World War II.

1997 – The Lady Barbara was introduced as part of the 65th Anniversary accessories collection and added to



the Zippo line in 1998.

1997 – The Zippo/Case Visitors Center Zippo lighter



# The Collectibles of the Year:

Since 1992, Zippo has produced special Collectible of the Year lighters in commemorative tins, available for a limited time and highly prized by lighter collectors.

1992 – The first Collectible of the Year commemorates Zippo's 60th Anniversary.

1993 – The Varga Look. This classic 1930's design recalls Zippo's first national advertisement in 1937.



1994 – The D-Day Commemorative Zippo salutes the 50th anniversary of "the greatest day" with a black crackle surface and antique brass emblem patterned after sleeve patches worn by the Allied troops.



1995 – One of Zippo's most complex and beautiful surface designs, Mysteries of the Forest™, introduces a new Technographics™ imprinting process. The four lighters – when put



together – make up a large canvas, a kind of puzzle.

1996 – Zippo Salutes Pinup Girls. As American as a Betty Grable movie, these pinup girls nod back to Zippo's early national advertisements.



1997 – Zippo's 65th Anniversary Commemorative



lighter bears an antique pewter emblem in the art-deco style, recalling the era of Zippo's founding.

1998 – The 1998 collectible commemorates the 1947 Zippo Car, with an antiqued pewter emblem on a classic brushed chrome finish.



In the unlikely event that your Zippo lighter needs to be fixed, here is the Zippo repair policy. *Please note that the finish of the lighter is not guaranteed.*



To preserve the collectibility of your vintage windproof Zippo lighter, your original insert will be returned to you in the same condition as received.

# It Works Or We Fix It Free™

The case of the lighter will be repaired as much as possible and a new insert (the inside lighting mechanism) will be fitted into the lighter case.

We suggest you send your lighter(s) via insured mail. Your lighter will be returned at our expense. For safety, please remove the flint from the lighter and allow the fuel to evaporate for two to three days before mailing.

Mail to:  
Zippo Repair Clinic  
1932 Zippo Drive  
Bradford, PA 16701



## FYI: Counterfeit Lighters

As interest in collecting Zippo lighters has increased, so has the manufacture of counterfeit Zippo lighters. Zippo is taking aggressive measures to confront this problem.

How to send them in.



Please be aware that many counterfeit lighters look very much like the real thing. This is especially true of lighters which depict the designs and sentiments of the Vietnam War era.

Lighter collectors clubs are a good source of information to learn more about the differences between real Zippo lighters and counterfeit lighters.



People all over the world share an interest in lighters in general and the Zippo windproof lighter in particular. Collecting lighters is a window into history and a way to meet fascinating people who share your interests. Here are some of the organizations:

**On the Lighter Side (OTLS)**  
International Lighter Collectors  
P.O. Box 1733  
Quitman, TX 75783-1733  
USA  
Attn.: Judith Sanders  
Tel: 903-763-2795  
Fax: 903-763-4953

**Pocket Lighter Preservation Guild (PLPG)**  
380 Brookes Dr. Suite 209A  
Hazelwood, MO 63042  
USA  
Attn: Ronald Eyerluss  
Tel: 314-731-2411  
Fax: 314-731-2903

**Lighter Club of Great Britain**  
Oliver House  
243 Selhurst Road  
London SE25 6XP  
England  
Attn: Richard Ball  
Tel: 44-181-653-4548  
Fax: 44-181-768-0046

**Funke und Flamme (FUF)**  
International Lighter  
Collectors' Club  
Postfach 121  
CH-9413 Obereggen  
Switzerland  
Attn.: Rolf Muller  
Tel./Fax: 41-71-891-1322

**The Lighter's Academy**  
Chino Pozzi  
Mail Boxes Etc.  
n. 221 - Via Oriolin 10  
31100 Treviso  
Italy  
Tel: 39-422-579961  
Fax: 39-422-579890

# The Lighter Clubs.

**Lighter Club of Japan**  
3-39-2 Nakano  
Nakano-Ku  
Tokyo, Japan  
Attn.: Kazuo Tsuboi  
Tel: 81-3-5385-5801  
Fax: 81-3-5385-5804

**Zippo Club Italia**  
Int. 295  
Via Ciro Menotti 2/A  
20129 Milano  
Italy

**Sendenhorster Zippo-Club**  
"Flames"  
Germany  
Attn: Brian Sobal  
Tel: 49-2526-3868

**Zippo-Club Iron Flame**  
Lindenstrasse 40  
47551 Bedburg-Hau  
Germany  
Attn: Andre Lousee  
Fax: 49-2821-40767

**Zippo Club Deutschland**  
Saalburgstrasse 3  
Berlin, Germany  
Tel: 49-30-6066055

**Spark International (TM)**  
P.O. Box 41  
CH-5412 Gebenstorf  
Switzerland  
Tel./Fax: 41-56-223-52-65

**Zippo Collectors Club**  
American Original Magazine  
P.O. Box 115  
3730 ZN Maartensdyk  
The Netherlands  
Tel: 31-346-213690  
Fax: 31-346-213584

This information was current  
as of November 1998.



\$2.00



**zippo**

33 Barbour Street, Bradford, Pennsylvania 16701 USA

Printed in U.S.A. COLL 5/99

[www.zippo.com](http://www.zippo.com)