

# GEDSI *forum* 2026

# PROTECT

Protecting *every child* today



# What is **PROTECT**?

**PROTECT** is World Vision's new streamlined, evidence-based approach to prevent and respond to children affected by violence.

*The PROTECT model replaces World Vision's Child Protection & Advocacy (CP&A) Project Model and the Child Protection Minimum Requirements, and builds on the foundation of CP Core.*



# Why **PROTECT**?

**PROTECT** is based on years of evidence-building and learning, and the four packages within this new model are:

- *multi-sectoral*
- *optimized to leverage a range of funding sources*
- *includes the integration of prayer and staff care, and*
- *ultimately are more effective in reducing the prevalence of priority issues.*





# PROTECT includes:

- *Background research on the root causes of child marriage.*
- *Practical step-by-step guidance to design your programme to prevent and respond to child marriage.*
- *A set of recommended evidence-based interventions across sectors to prevent and respond to child marriage.*
- *Monitoring and evaluation guidance aligned with OIOS and L1/L2 indicators.*
- *Guidance on how to adapt your programmes for humanitarian and fragile contexts.*



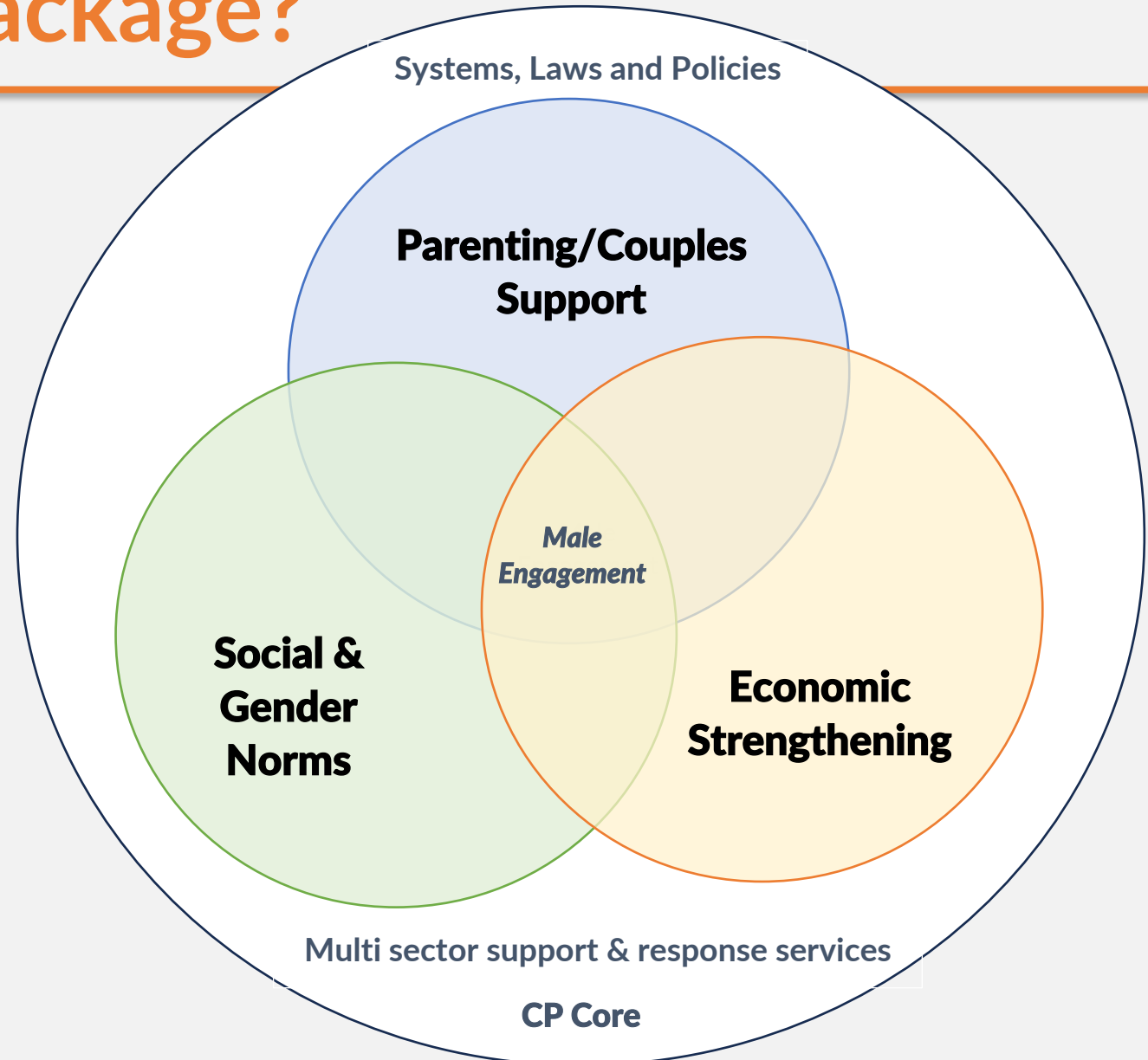


**PROTECT** child marriage  
*aims to prevent and respond  
to child marriage by  
addressing its root causes,  
empowering girls,  
and fostering  
supportive environments  
for their rights and well-being.*

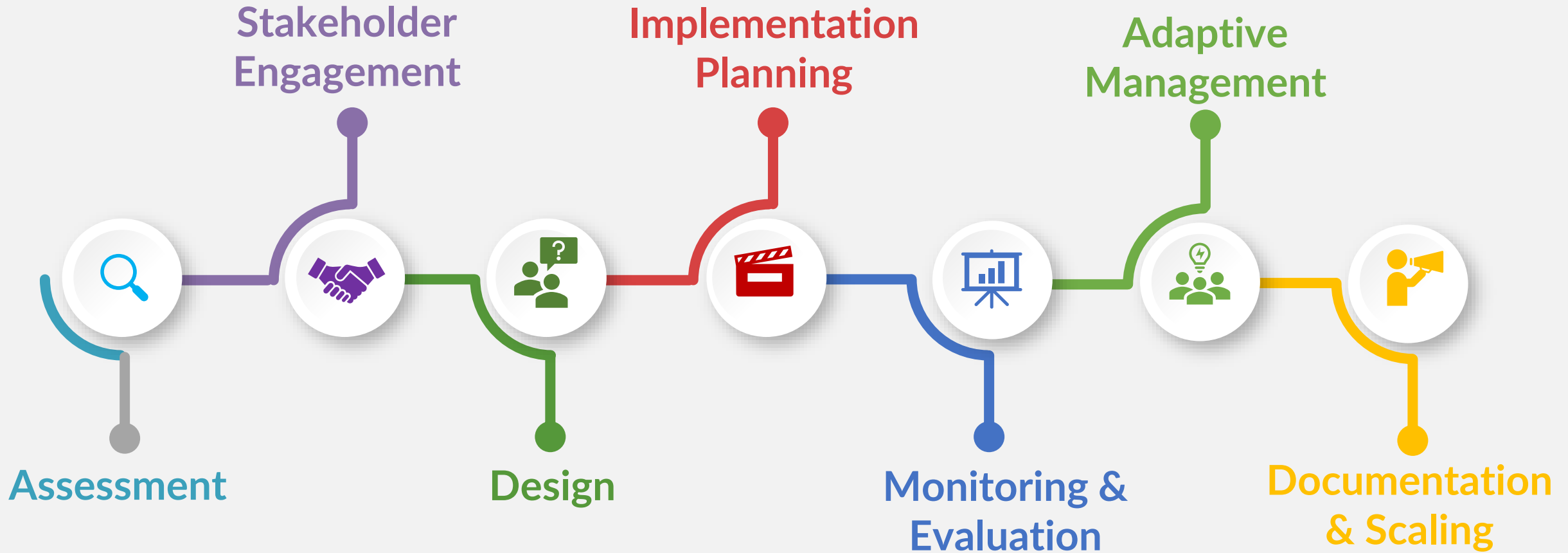
# What is an **Optimal Package**?

An optimal package is:

- *A combination of evidence-informed interventions*
- *aligned with identified root causes and entry point*
- *adapted to local realities*
- *low-cost and scalable given limited resources*
- *feasible for the existing workforce to deliver.*



# PROTECT Programme Cycle



# Who is most affected?

## Primary Prevention Triangle:

PRIMARY

SECONDARY

### Universal Prevention

Addresses root causes among the population or sub-population.

**Target group:**

### Targeted Prevention

Addresses specific threats and/or vulnerabilities of boys and girls in the home, caregivers & HH being at risk of harm

**Target group:**

### Intensive Prevention

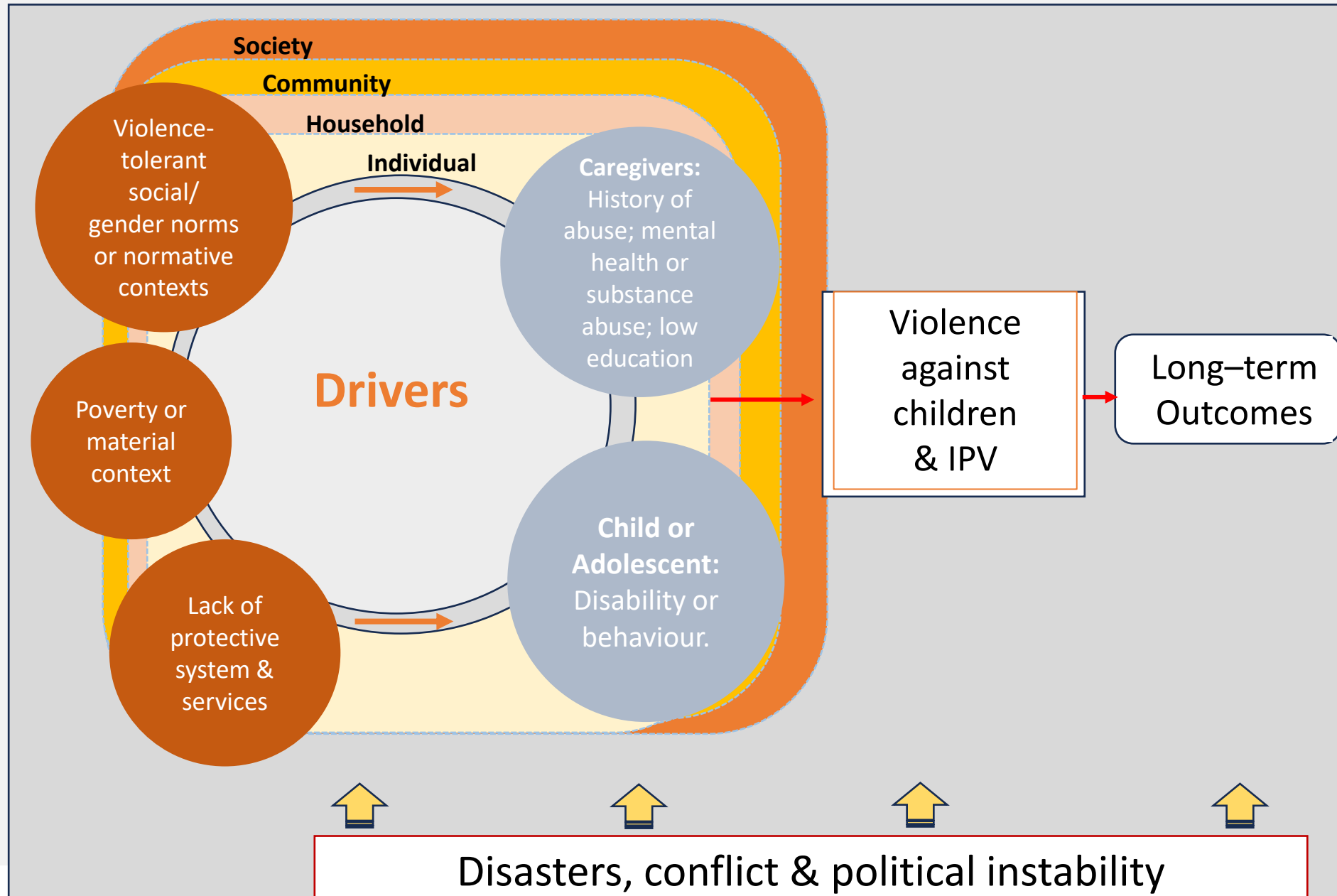
Reduces the long-term impact of harm

**Target group:**

### Responsive & Remedial Action

Aims to stop ongoing harm by immediate action through referrals and non-specialized support & strategies to prevent & recover from ongoing or past harm.

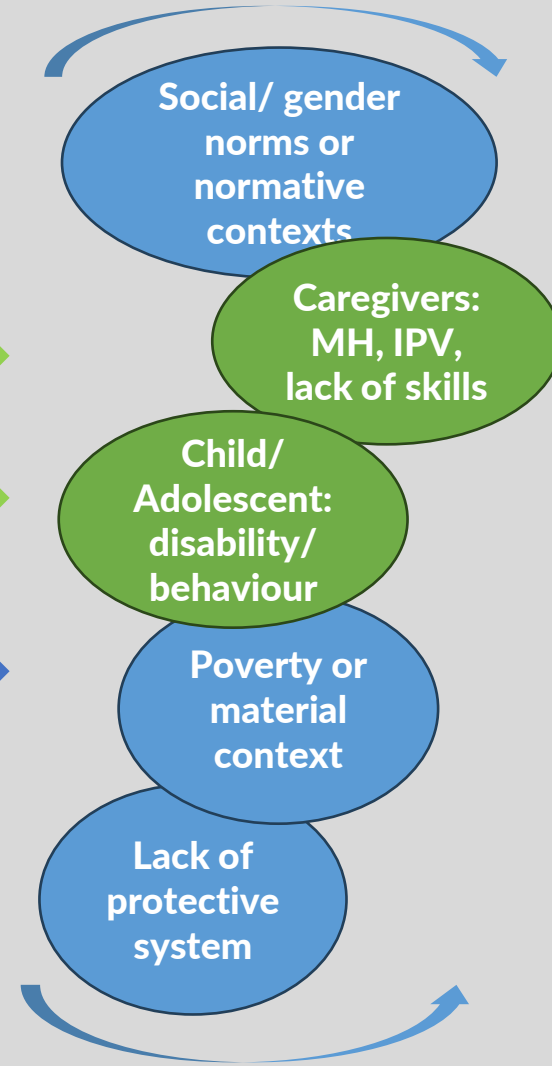
# Root causes/drivers of violence in the home



# Violence in the home Intervention Strategies

## Intervention Strategies with WV and partners

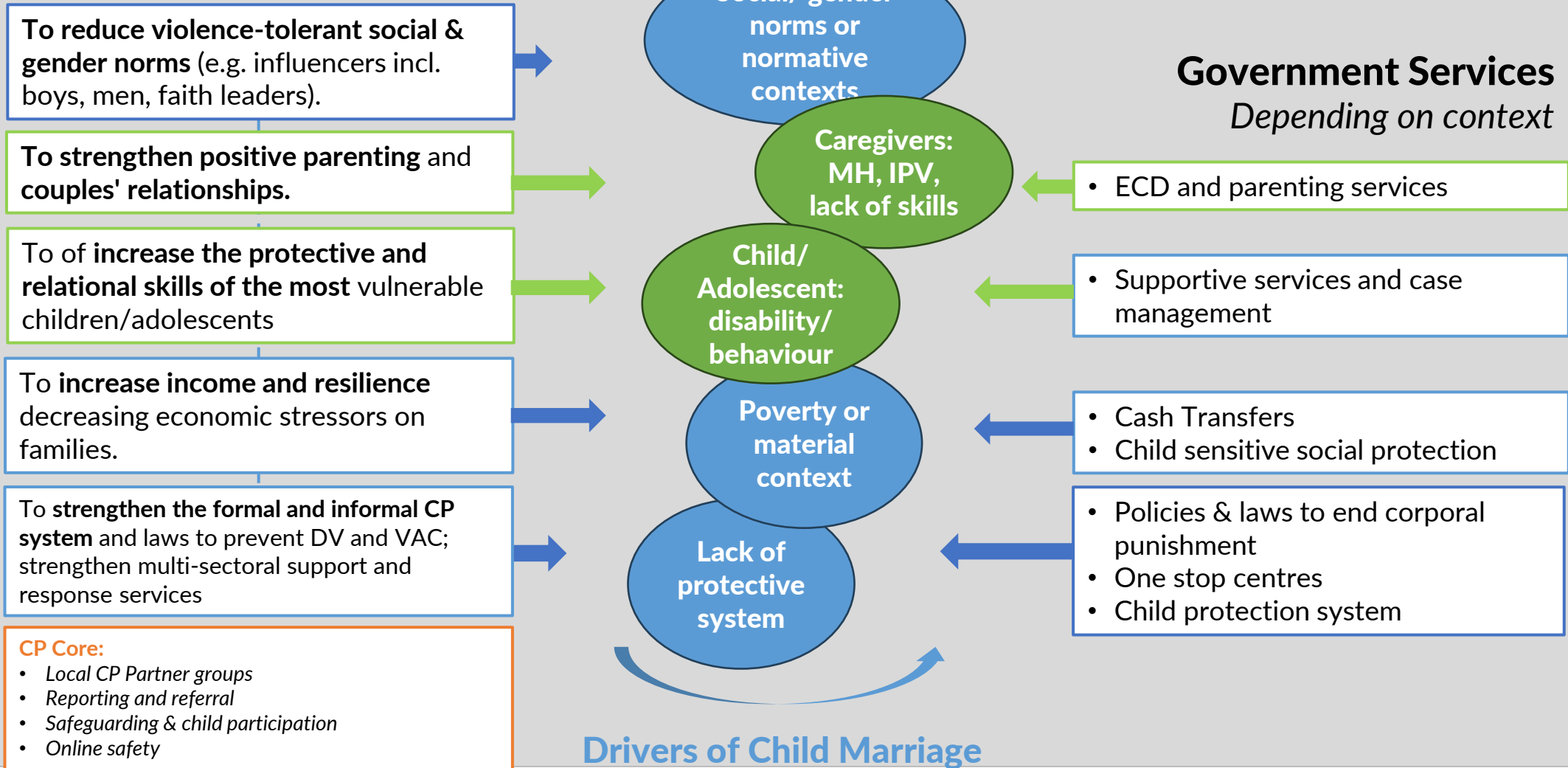
- To reduce violence-tolerant social & gender norms (e.g. influencers incl. boys, men, faith leaders).
  - To strengthen positive parenting and couples' relationships.
  - To increase the protective and relational skills of the most vulnerable children/adolescents
  - To increase income and resilience decreasing economic stressors on families.
  - To strengthen the formal and informal CP system and laws to prevent DV and VAC; strengthen multi-sectoral support and response services
- CP Core:**
- Local CP Partner groups
  - Reporting and referral
  - Safeguarding & child participation
  - Online safety



Drivers of ViH

# Violence in the home Intervention Strategies

## Intervention Strategies with WV and partners



# PROTECT Intervention Strategies



## PROTECT: Ending *Child Marriage* Today



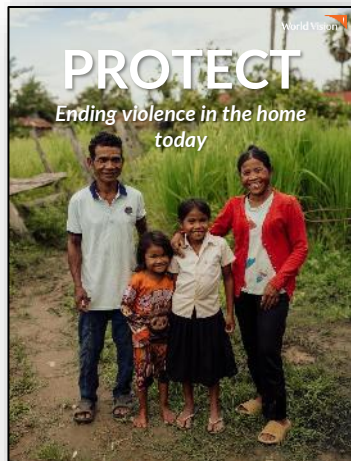
1. Protective System, Legal Policies & Enforcement
2. Education Access and Retention
3. Community Mobilisation & Social and Gender Norms Change
4. Family Economic Support
5. Sexual Reproductive Health & Social and Economic Empowerment

## PROTECT: Ending *Child Labour* Today



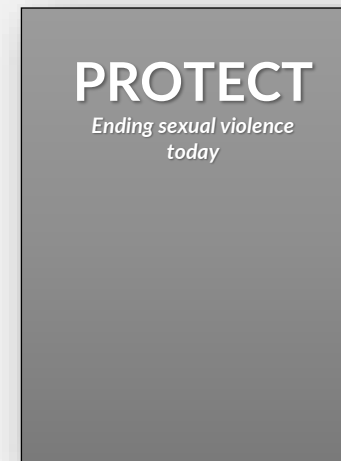
1. Protective Systems, Laws, Enforcement & Response
2. Safe and Decent Economic Opportunities
3. Life skills, child rights awareness and pathways to decent work of vulnerable children and adolescents
4. Quality Education access, reintegration and retention of vulnerable children and adolescents

## PROTECT: Ending *Violence in the Home* Today



1. Parenting and Couples support
2. Child and Adolescent Protective and Relational skills
3. Gender Sensitive Family Economic Strengthening
4. Community Mobilisation & Social and Gender Norms Change
5. Protective System, Legal Policies & Response

## PROTECT: Ending *Sexual Violence* Today



1. Strengthen Protective Systems, CSA & online Laws & Enforcement including child friendly response & support services
2. Safe environments
3. Parent & caregiver/family support
4. Rights, Norms and Behaviour Change
5. Empowerment and lifeskills targeting SRH, economic empowerment and digital safety

# PROTECT Intervention Strategies and a Socioecological Frame



To increase the protective and relational skills of vulnerable children/adolescents

**Child/adolescent empowerment and skills**

To strengthen positive parenting and couples' relationships.

To increase income and resilience decreasing economic stressors on families.

**Family/parent support**

To reduce violence-tolerant social & gender norms

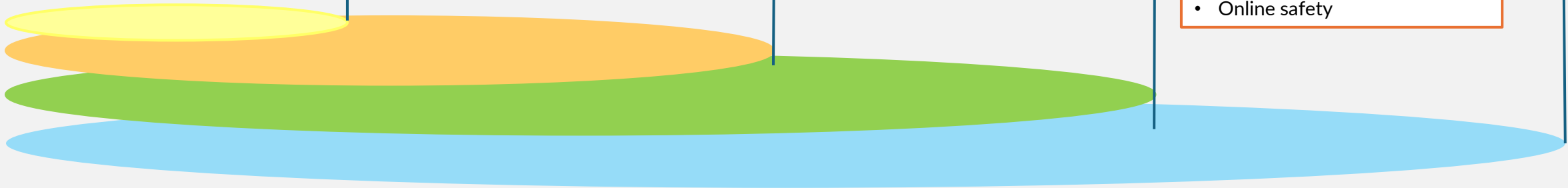
**Social and gender norms**

To strengthen the formal and informal CP system and laws to prevent DV and VAC; strengthen multi-sectoral support and response services

**Protective laws and system**

**CP Core:**

- Local CP Partner groups
- R&R
- Safeguarding & child participation
- Online safety





Q&A





Thank you!