

PUSHCORP, INC.

P.O. Box 181915 - Dallas, TX 75218 - Tel 972.840.0208 - Fax 972.840.1046

Configuring a PushCorp FCU Flex with EIP

Required PushCorp Components:

FCU Flex
PAR04288 – FCU Flex EIP Module

Required Software:

HMS AnyBus Ethernet IP Tool

Download: https://www.anybus.com/docs/librariesprovider7/default-document-library/software/hms-ipconfigtool.zip?sfvrsn=ff5b9ad6_60

PushCorp AFD Windows

Download: <http://www.pushcorp.com/pages/software/afddashboard.msi>

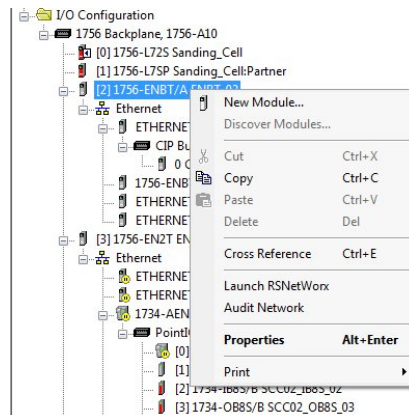
Instructions:

1. Use HMS Anybus Ethernet IP Tool to set the IP address on the FCU Flex EIP Module.
2. Once the IP has been set, reboot the FCU Flex by cycling power.
3. Open the AFD Dashboard software and navigate to the IO screen by way of the settings icon.
4. Verify that the IP address shown here matches the IP address entered in HMS Config Tool.
5. The FCU is now ready to communicate with the scanner of your choice.

Configuring your adapter to communicate with the FCU Flex

Allen Bradley PLC

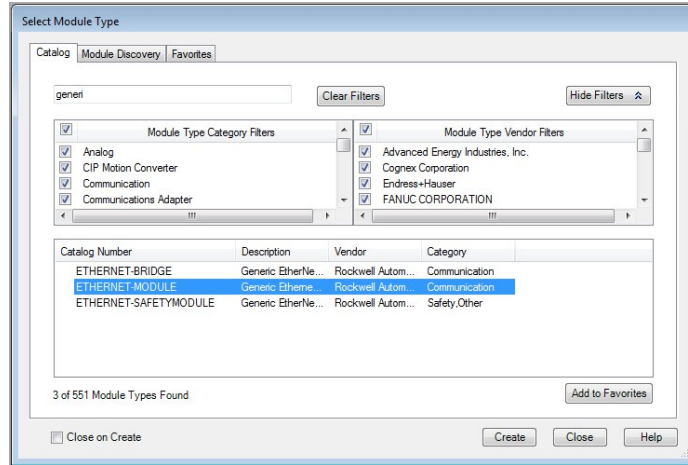
1. Right click on the PLC Ethernet card in the IO Tree
2. Select “New Module”



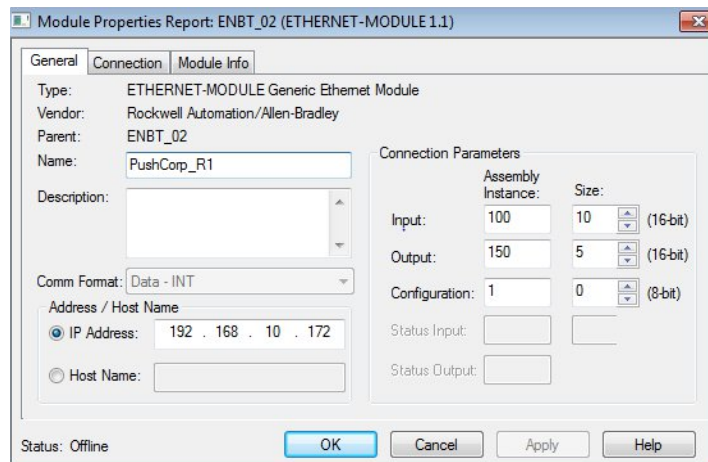
PUSHCORP, INC.

P.O. Box 181915 - Dallas, TX 75218 - Tel 972.840.0208 - Fax 972.840.1046

3. From the "Select Module Type" pop up window Search for and Select "Generic Ethernet Module"



4. Press Create, then the new module window will appear and you can enter the Name of the Module, IP address, and the connection parameters as shown in the screen shot. Note: Configuration = 1, 0 (8-bit)



Note: Input and Output should be set to 16-bit

Fanuc Robot

1. Setup the EIP interface on the FANUC robot, this will be done on "Rack 89".
2. The FCU will be setup as scanner
3. The FANUC robot does not use the standard Maj and Min revisions which would be found in the EDS file, replace the settings for Maj and Min revisions shown below with 0.

PUSHCORP, INC.

P.O. Box 181915 - Dallas, TX 75218 - Tel 972.840.0208 - Fax 972.840.1046

```
I/O EtherNet/IP
Scanner config(Read-only) : 1/1
Description : FCU FLEX
Name/IP address : 192.168.1.11
Vendor Id : 1444
Device Type : 43
Product code : 55
Input size ( words): 10
Output size ( words): 5
RPI (ms) : 25
Assembly instance(input) : 100
Assembly instance(output) : 150
Configuration instance : 1
```

```
I/O EtherNet/IP
Advanced config(Read-only) :
General
I/O Data Type : 16-BIT WORDS
Timeout Multiplier :4
Reconnect : FALSE
Major Revision : 0
Minor Revision : 0
Alarm Severity : STOP
Quick Connect : FALSE
Originator To Target
RPI : 25
Target To Originator
Transport Type : UNICAST
RPI : 25
Connection Type
Type :
Q=>T Format : Run/Idle Header
T=>Q Format : Modeless
Configuration String Status
Size(bytes) : 0
```

4. Once the settings have been you can set the device to true and finish your standard Fanuc interface configuration.

Note: If there is an active PING but the connection continues to stay “Pending”, the “Configuration Instance” may be incorrect.

EIP Configuration Parameters

```
VendCode = 1444;
ProdType = 43;
ProdCode = 55;
MajRev = 1;
MinRev = 1;
Producing Connection (Input): 100
Consuming Connection (Output): 150
Input Scanner Size: 10 Words
Input Offset: 0
Output Scanner Size: 5 Words
Output Offset: 0
```