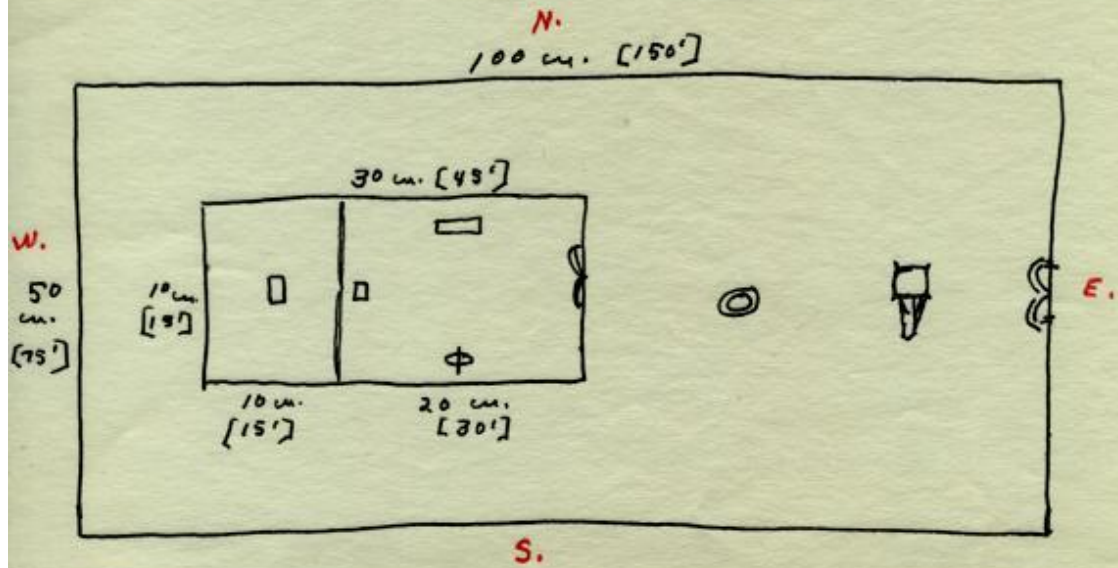


Exodus 25th.

SUBJECT: The Tabernacle
High Priest
Day 7 atonement

07/52
GP

THE TABERNACLE

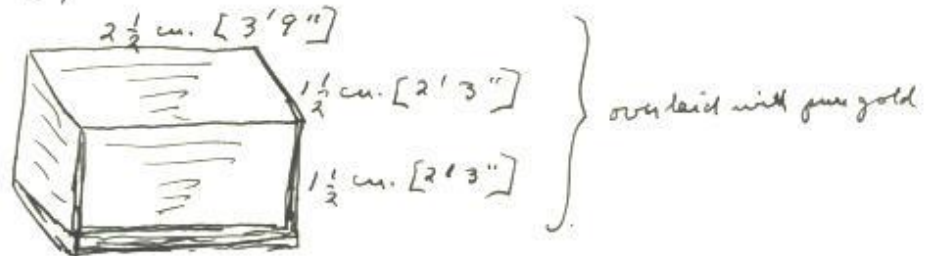


Heb. 8:5 = Ex. 25:40
 39:42,43 [33-43]

% Baptism - the pattern given to John the Baptist
 - when finally, fully done, a burial, resurrection.

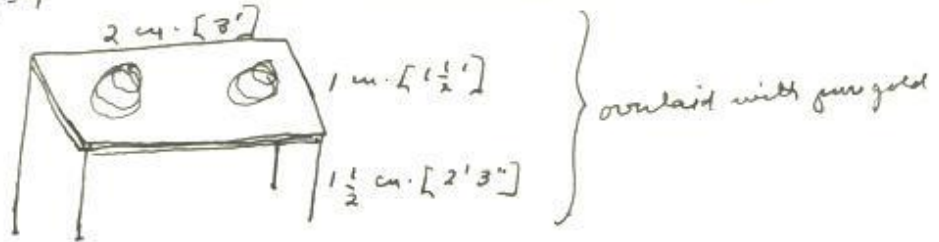
THE FURNITURE

1. The ark of the testimony (covenant)
 So called because of the 2 tables of stone in it.
 Ex. 25: 10-40; 30: 1-10; 37: 1-16.



The lid - $2\frac{1}{2} \times 1\frac{1}{2}$ - of pure gold
 - 2 cherubim of beaten gold

2. The table of shewbread
 Ex. 25: 5-9



12 cakes, re-served each week. In 2 piles, 6 to a pile.

3. Lampstand

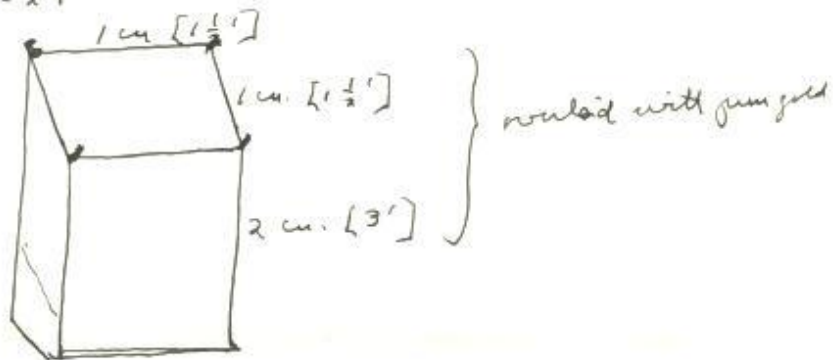
Ex. 25: 32-35

most ornamental. Pure gold. 3 curved branches on each side, all elegantly wrought with cups of almond blossoms, knobs, etc.
A talent of gold [all a man could carry = 1 talent]



4. Incense altar.

Ex. 37: 25-29



5. The veil

Ex. 26: 31/6.

Five twisted lines of blue, scarlet, purple, of cunning work interwoven with gold.

SYMBOLISM:

1. The ark - God meets with his people on the ground of atonement
 2. The Shewbread - gratitude for the support of life
- the bread of heaven, Christ
 3. Lampstand - the lamp of the Holy Spirit [oil]
- gives the light of the world
- the people of the mt 5: 14-16
 4. Incense altar - prayer Rev. 5: 8, 9: 2
 5. The veil - the curtain between us and God.
-

THE HIGH PRIEST

Ex. 28: 2 "robes of glory and beauty"

"mitre" - head dress
- golden plate on front, "Holiness to the Lord."
cf. Ex. 14: 20, 21

"Robe of the Ephod" - sleeveless tunic, blue
- fringed with "a bell and a pomegranate..." Ex. 28: 22-25
cf. the chapel windows
on the right, resurrection. (arch?)

"Ephod" - the 4 colors of the sanctuary, gold, blue, scarlet, purple

"Breastplate" - 4 squares, a span. Ex. 28: 15, 16
- 4 rows of jewels, 3 to a row
- names of tribes engraved on each jewel
- Urim and Thummim Ex. 28: 30 "signs and wonders about."
magical stones in a little pocket attached.

DAY OF ATONEMENT

All his robes "of glory and beauty" cast aside.
Dressed usually in linen: mitre
breast
robe

Lev. 16: 3-34

MEANING: Heb. 9: 7-14