



# DevCare Internal Network Architecture

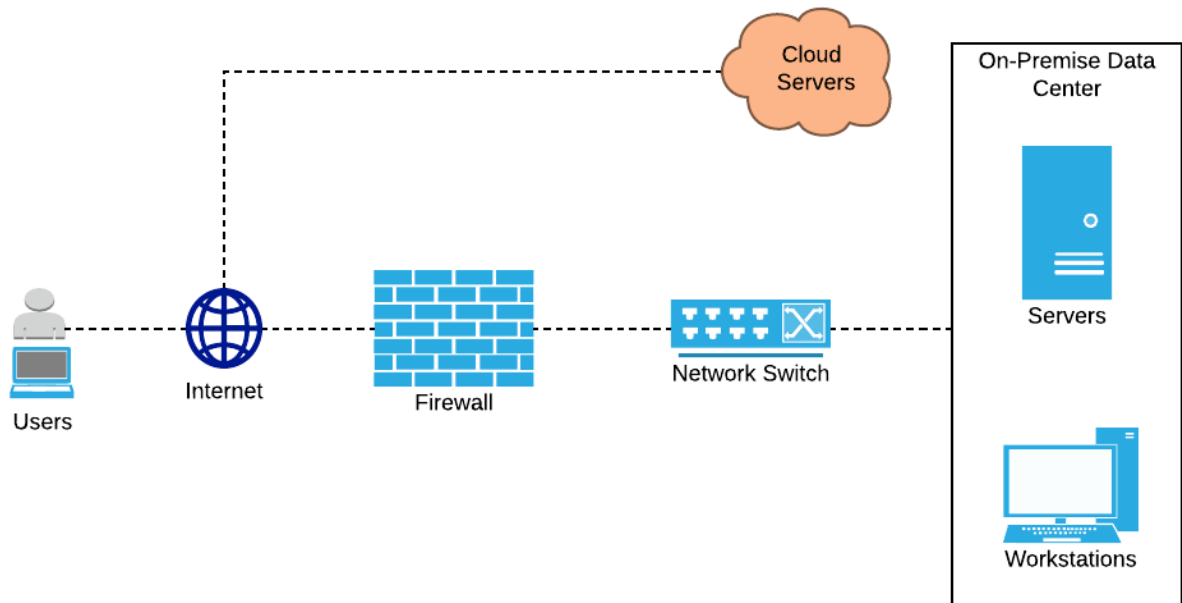
**Version 1.08**

Last Update: 07/17/2018

## Contents

Internal Network Architecture .....	3
Backup Process .....	4

## Internal Network Architecture

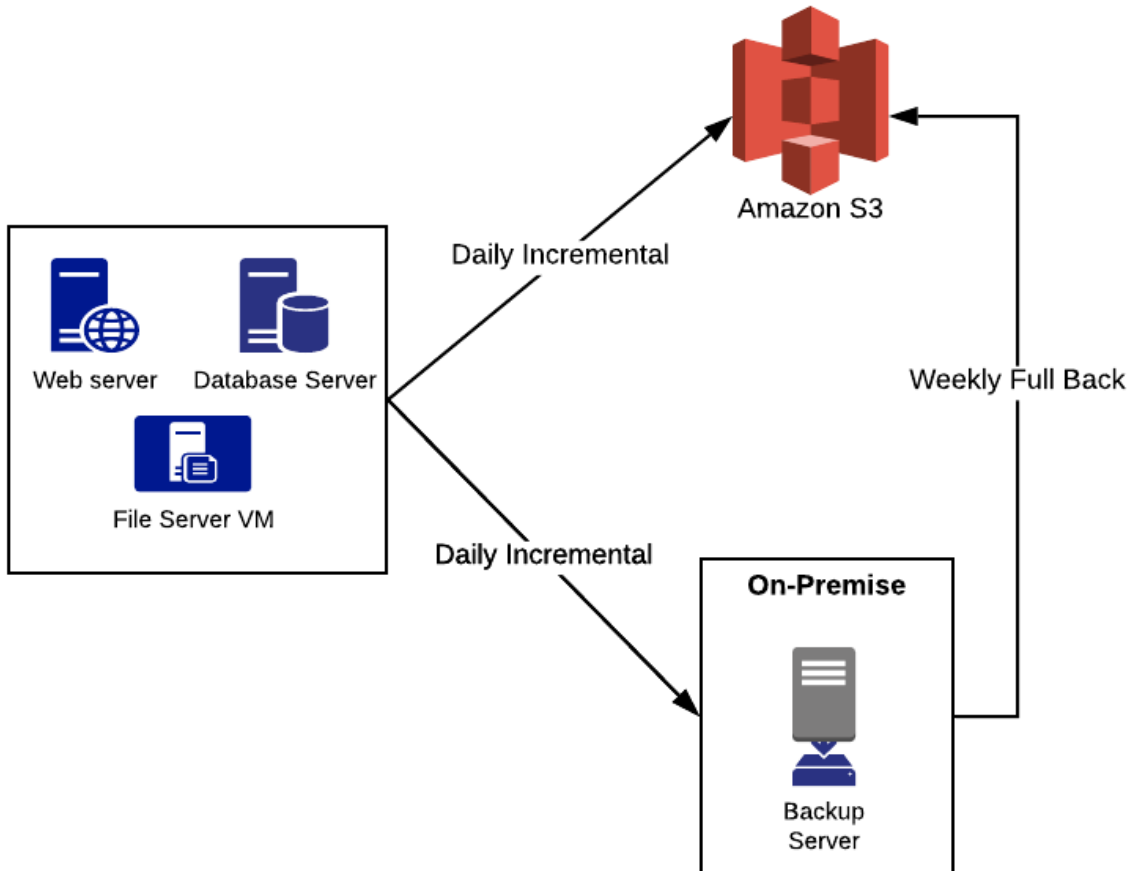


Firewall – WatchGaurd

Servers – Active Directory, TFS, BitDefender (AntiVirus Management Server), DB Servers, Web Servers, Backup Servers.

- **99.9% uptime SLA dedicated leased line for Internet.**
- **Users connect to Servers on the Internet however need to go through the Firewall before reaching the servers.**
- **Users connect to workstations from VPN going through Firewall where the VPN is configured.**
- **Cloud Servers (internal use and public data hosting servers) is accessible via Internet however strict IAM policies are enforced to obtain access.**

# Backup Process



- **Daily incremental backup of all servers to on-premise backup server.**
- **Daily incremental backup of all servers to Amazon S3.**
- **Weekly Full back to Amazon S3.**