

**1998-99 Washburn University
Ichabods and Lady Blues
Basketball Media Guide**



*Takin' it to
the next level*

Proud Member of the



TABLE OF CONTENTS

Media Information.....	3
A Look At Washburn University.....	4
Athletics At Washburn-University.....	6
Athletic Staff and Phone Directory.....	7
About Lee Arena.....	8
Washburn University Ichabods.....	9
Ichabod Head Coach.....	10
Ichabod Assistant Coaches.....	11
Ichabod Player Profiles.....	12
1997-98 Ichabod Statistics.....	15
Ichabod Record Book.....	16
Ichabod Individual Record Book.....	17
Ichabod Yearly Leaders.....	18
NAIA National Championship Team.....	19
Ichabod Honor Roll.....	19
Ichabod Yearly Summary.....	20
All-Time Ichabod Scores.....	21
All-Time Record vs. Opponents.....	25
Ichabods In National Playoffs.....	25
1997-98 MIAA Standings and Honors.....	26
1998-99 MIAA Opponents.....	27
Washburn University Lady Blues.....	29
Lady Blues Head Coach.....	30
Lady Blues Assistant Coaches.....	31
Lady Blues Player Profiles.....	32
1997-98 Lady Blues Statistics.....	35
Lady Blues Yearly Summary.....	35
Lady Blues Record book.....	36
Lady Blues Individual Record book.....	37
Lady Blues Yearly Leaders.....	38
Revisiting the 1992-93 Lady Blues.....	39
Lady Blues Honor Roll.....	39
All-Time Lady Blues Scores.....	40
Lady Blues Record vs. Opponents.....	43
Lady Blues In National Playoffs.....	43
1997-98 MIAA Standings and Honors.....	44
1998-99 MIAA Opponents.....	45
About the MIAA.....	IBC

WASHBURN QUICK FACTS

Location: Topeka, Kansas
Enrollment: 6,500
Founded: 1865
Nickname: Ichabods (men), Lady Blues (women)
Colors: Yale Blue, White
Arena: Lee Arena
Surface: Hardwood
Capacity: 4,298
Athletic Affiliation: NCAA Division II, Mid-America Intercollegiate Athletics Association
President: Dr. Jerry Farley
Athletic Director: Loren Ferré

.....

Men's Head Coach: Bob Chipman
Alma Mater: Kansas State, 1973
Record At Washburn: 441-156 (19 seasons)
Overall Record: same
Office Phone: x1134
Best Time To Call: 1 to 2 p.m.
Assistant Coaches: Ron McHenry (Washburn, 1984), Kerry Dickerson (Washburn, 1993)
All-Time Record Since 1905-06: 1,225-920-4
Ichabod 1997-98 Record: 19-9
Ichabod 1997-98 MIAA Record: 11-5, 4th
Letterwinners Returning/Lost: 5/5
Starters Returning/Lost: 3/2

.....

Women's Head Coach: Patty Dick
Alma Mater: Washburn, 1971
Record At Washburn: 402-196 (21 seasons)
Overall Record: same
Office Phone: x1764
Best Time To Call: Mornings
Assistant Coaches: Susan Decker, (Tabor, 1992) Terry Curry, (Geneva, 1983), Joy McGilton (Washburn, 1976)
All-Time Record Since 1969-70: 452-252
Lady Blues 1997-98 Record: 13-14
Lady Blues 1997-98 MIAA Record: 7-9, T-7th
Letterwinners Returning/Lost: 6/3
Starters Returning/Lost: 4/1

.....

Sports Information Director: Gene Cassell (Northwest Missouri State University, 1997)
Office Phone: 785.231.1010, x1791
Office Fax: 785.231.1010
Home Phone: 785.331.2133
email: zzcass@washburn.edu

CREDITS

The 1998-99 abbreviated Washburn University Ichabod and Lady Blues Media Guide was designed and paginated by Sports Information Director Gene Cassell. Cover design was also by Cassell. Team photos and mugs were taken by Melissa Rabe. Other photos courtesy of University Relations. Post-production work was done by Graphic Arts of Topeka and was printed by T.K. Printing of Topeka. Information is updated as if media guide was distributed at start of season.

MEDIA INFORMATION & OUTLETS

The 1998-99 Washburn University Men and Women's Basketball Media Guide is intended to provide information for writers, broadcasters, sports editors, sports information personnel and fans who follow the Ichabods. Additional information is available in the Washburn Sports Information Office and through weekly releases available to personnel from accredited media outlets covering the Ichabods.

Washburn University is in Topeka, Kan., at the intersection of 21st Street and Washburn Avenue. Lee Arena is located in the Petro Allied Health Center at the east edge of the Washburn campus. Parking for the facility is adjacent to Washburn Avenue.

The Washburn University Sports Information Office is located in room No. 352 in Whiting Fieldhouse. Office hours are from 8 a.m.-5 p.m., Monday through Friday. Phone: 785.231.1010 x1791; Fax: 785.231.1091. You may also reach the SID, Gene Cassell by e-mail at zzcass@washburn.edu

Media Credentials are available to personnel from accredited media outlets by contacting Cassell at least three days before the game date. Credentials are available 45 minutes prior to tip-off at the Will Call window at the northeast corner of Lee Arena. All media seating is in the Lee Arena pressbox overlooking the floor and can be accessed on the second level. All media seating is reserved on a game-by-game basis. **PASSES ARE REQUIRED FOR ACCESS.**

Radio Stations wishing to broadcast from Lee Arena should make broadcast requests through the Sports Information Office. One courtesy line will be made available to the official station of each visiting team. Additional stations wishing to broadcast must install their own line. KDVV-100.3 FM is the official broadcast station of the Washburn Ichabods. The Lady Blues are broadcast on KTOP-1490 AM.

Telephones for writers from which to file are available in the Washburn Athletics Office located on the second floor of the Petro Center.

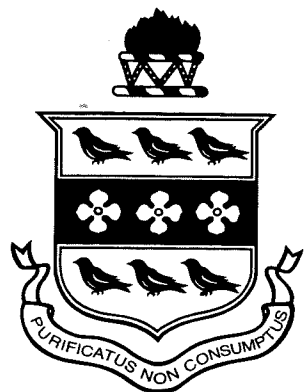
Media Services include a game program and line-ups plus statistics and game notes for each team. Halftime stats are provided as well as individual and team stats and a play-by-play summary. Statistics are kept on the Statcrew computer system by MRR Systems. Refreshments are available before each game in the Lee Arena pressbox.

Postgame Interviews with Coach Bob Chipman and Coach Patty Dick are available to media personnel after their brief meeting with their teams immediately following their game. Players will be brought, by request, to either the Athletics Office or Lee Arena pressbox.

COVERING WASHBURN

Topeka Capital-Journal (daily) 616 Jefferson, Topeka, KS 66607 WU Beat Writer: Ken Corbitt	785.295.1188 1.800.777.7171 295.1123
Kansas City Star (daily) 1729 Grand Ave., Kansas City, MO 64108 Small College Beat Writer: David Boyce	816.234.4355
Salina Journal (daily) P.O. Box 779, Salina, KS 67401	785.827.6363
Wichita Eagle-Beacon (daily) 825 East Douglas, Wichita, KS 67201 Small College Beat Writer: Adam Knapp	800.825.6397
Washburn Review (weekly) 1700 College, Topeka, KS 66621 Sports Editor: Lindsey Wagner	785.233.3211
KMAJ (1440 AM) / KTOP (1490 AM) 5301 SW 7th St., Topeka, KS 66606 Sports Director: Mike Manns	785.272.1196
KMAJ (107.7 FM) / KDVV (100.3 FM) 5315 SW 7th St., Topeka, KS 66606 Sports Director: Mike Manns	785.272.1196
KTPK (106.9 FM) 3003 SW Van Buren, Topeka, KS 66611 Sports Director: Rick Douglas	785.297.1069
KWIC (99.3 FM) 800 SW Jackson, Topeka, KS 66611 Program Director: Steve Janis	785.232.0993
WIBW (580 AM / 97.3 FM) P.O. Box 119, Topeka, KS 66601 Sports Department: Greg Sharpe & Eric Peterson	785.297.9797
KSNT (Channel 27 • NBC) P.O. Box 2700, Topeka, KS 66601 Sports Director: Taylor Wilson	785.582.5100
KTKA (Channel 49 • ABC) P.O. Box 2229, Topeka, KS 66601 Sports Director: Mark Holyoak	785.233.6397 800.844.5852
WIBW (Channel 13 • CBS) P.O. Box 119, Topeka, KS 66601 Sports Director: Greg Sharpe	785.272.7030

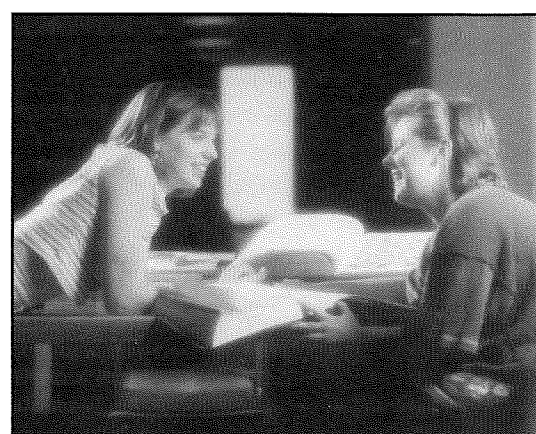
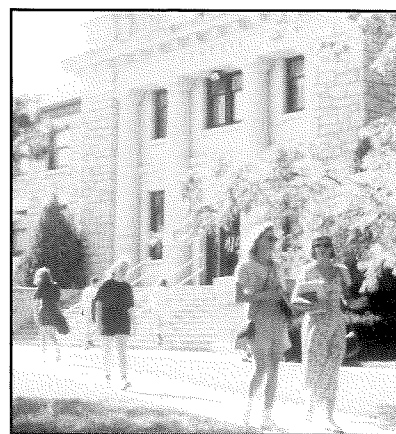
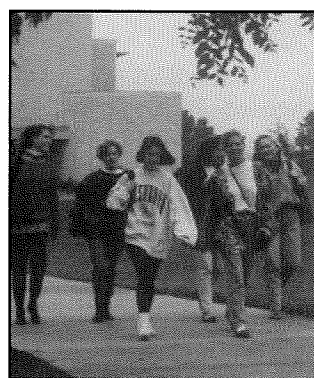
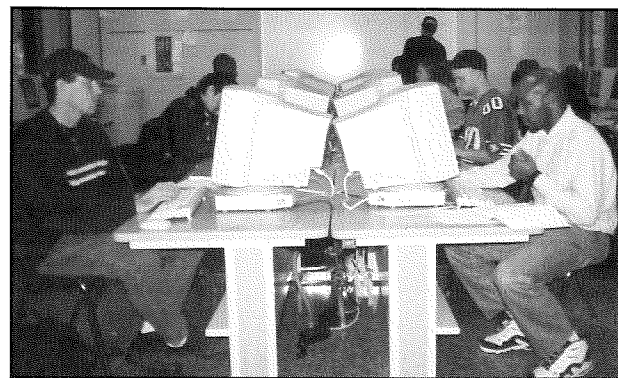
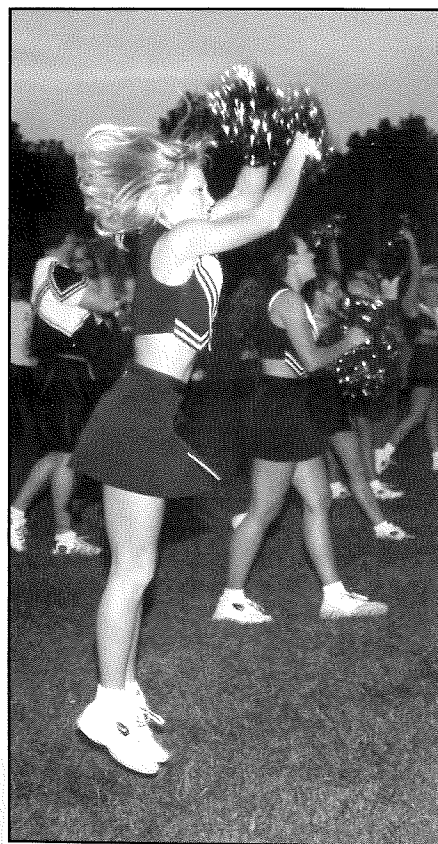
A LOOK AT WASHBURN UNIVERSITY



Washburn University, founded in 1865, is one of the oldest and largest universities in Kansas.

As an urban and regional institution, Washburn serves the educational needs of Topeka, Shawnee County and the state of Kansas.

The University's success is measured in part by the achievements of its graduates who include a Nobel Prize winner in medicine, members of the U.S. Congress, members of the Kansas State Legislature, numerous judges who have graduated from the law school as well as many leaders in business, education, communications and service.



A LOOK AT WASHBURN UNIVERSITY

Washburn is committed to providing a quality education that will enable its students to embrace the responsibility of an ever-changing world.

Students may choose from more than 70 degree programs within the College of Arts and Sciences, School of Business, School of Law, School of Nursing or the School of Applied Studies.

Washburn prides itself on having a quality and experienced faculty. More than two-thirds of the Washburn general faculty hold a doctorate or the highest degree available in their discipline. Professors, not graduate assistants, teach in the classrooms at all academic levels.

Students enjoy modern classrooms and educational facilities.

In 1966 a tornado devastated the campus. Since then, more than \$43 million have been spent to construct new buildings and laboratories, and to purchase new equipment and library holdings.

The results are evident on a walking tour of our beautiful campus. Easily accessible classrooms and other facilities such as the state-of-the-art Petro Allied Health Center give the campus a unique compactness that few universities have.

ACADEMIC MAJORS

COLLEGE OF ARTS AND SCIENCES

Anthropology, BA
 Art, BA/BFA
 Biology, BA/BS
 Business Education, BEd
 Chemistry, BA/BS
 Computer Information Science, AA/BA/BS
 Early Childhood Ed., AA/BA
 Economics, BA
 Education, BEd/MEd
 English, BA
 French, BA
 General Science, BS
 General Studies, BGS
 German, BA
 History, BA
 Humanities, Creative and Performing

Arts, AA
 Mass Media Studies, BA
 Mathematics, BA/BS
 Medical Technology, BS
 Music, BA/BM
 Natural Science and Mathematics, AA
 Philosophy, BA
 Physical Education, BA/BEd
 Physics, BA/BS
 Political Science, BA
 Psychology, BA/MA
 Public Administration, BPA
 Religious Studies, BA
 Sociology, BA
 Spanish, BA
 Speech Communication, BA
 Theatre, BA
SCHOOL OF BUSINESS
 Business Administration, BBA/MBA
 Accounting, BBA

Economics, BBA
 Finance, BBA
 Management, BBA
 Marketing, BBA
 General Business, BBA
SCHOOL OF NURSING
 Nursing, BSN
 School Nurse Certification
SCHOOL OF APPLIED SCIENCE
 Corrections, BSCJ
 Law Enforcement, BSCJ
 Human Services, C/AAS/BAS
 Social Work, BSW/MSW
 Technology Administration, BAS
PRE-PROFESSIONAL
 Dentistry, Engineering, Law, Medicine,
 Optometry, Pharmacy, Physical
 Therapy, Seminary, Veterinary Medicine
SCHOOL OF LAW
 Law, JD

DR. JERRY FARLEY UNIVERSITY PRESIDENT



Dr. Jerry B. Farley enters his first year as the President of Washburn University after a long association with the University of Oklahoma in Norman.

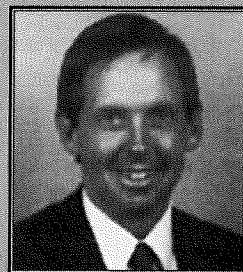
Farley previously held the position of Vice President for Community Relations and Economic Development at OU and V.P. for Administrative Affairs at the Norman and Health Sciences Center campuses.

Prior to that, he held the position of Vice President for Business and Finance at Oklahoma State University and previously served as the Associate Vice President for Administrative Affairs and Controller at the University of Oklahoma, Norman campus.

He earned his B.B.A. in accounting and finance and his M.B.A and Ph.D. in higher education administration from OU. Dr. Farley is a licensed certified public accountant and a member of the Oklahoma Society and American Institute of CPAs. He is a past president of the Southern Association of College and University Business Officers (SACUBO), and is actively engaged in state and national associations of the College and University Business Officers. He is a member of the NACUBO Board of Directors and currently serves as chairman.

Dr. Farley has been on the Board of Directors of the American Red Cross, the American Cancer Society, Oklahoma Teachers' Retirement System, the Norman Chamber of Commerce and the Norman Economic Development Coalition.

LOREN FERRÉ ATHLETIC DIRECTOR



Loren Ferré became the director of Washburn's athletics in February of 1996 after six years at Black Hills State University in Spearfish, S.D.

Ferré is a dynamic leader who has implemented many internal changes within the athletic department since arriving on campus. Increasing scholarships and departmental fund-raising are at the top of his list.

In his short time at Washburn, Ferré has been instrumental in the establishment of a strong Ichabod Club support team and the raising of funds for athletic scholarships. In addition, he created a position for a full-time marketing and promotions director who will help bring in new private dollars for scholarships and more excitement at all Washburn athletic contests.

While at BHSU, Ferré was also director of the Donald E. Young Sports Fitness Center, a 172,000 square foot, \$10.2 million facility. During his Black Hills tenure, the athletics department nearly tripled its outside revenue, including large increases in ticket sales and scholarship funding. All 10 varsity teams won a conference title in his final three years.

Prior to joining the staff at Black Hills State, Ferré spent 17 years at the University of North Texas. He was the director of the Coliseum (1987-90) and prior to that was the associate and assistant director since 1980. He also held the post of event coordinator (1978-80).

Ferré is a 1971 graduate of Texas Christian University, earning a bachelor of arts degree. He earned a master's in journalism from North Texas in 1982. He is currently completing course requirements for a doctorate of education in sports administration from the University of Northern Colorado.

Ferré and his wife, Sarah, have two daughters, Caitlin and Hope.

A WINNING TRADITION 1997-98 SEASON

FOOTBALL • 3-8 / 2-7 MIAA (8th)

- Records: Career tackles, 349 (Tony Scollieri); Consecutive games forcing a turnover, 4 (Chris Swirles)
- All-MIAA 2nd Team: Tony Scollieri (Grandview, Mo.), Willie Sapp (Portal, Ga.), Chris Swirles (Sarasota, Fla.)
- All-MIAA Honorable Mention: Andy Rucker (Manhattan), Aaron Battle (Princeton, Texas), Keith Newbery (Pittsburg), Aaron Doonan (Holsington), Jason Marshall (Gainesville, Texas), Brian Fuemmeler (Kansas City, Mo.)
- MIAA Commissioner's Academic Honor Roll: Gabe Clements (Fl. Scott), Will Kerns (Osage City), Darren Heer (Fl. Riley), Dan Smith (Mulvane), Barry Galbraith (Derby), Brian Fuemmeler (Kansas City), Ryan Bradbury (Eureka), Colin Cathey (Topeka), Aaron Doonan (Holsington), Keith Newbery (Pittsburg), Bymer O'Hara (Olathe), Brent Stones (Sabetha)
- GTE/CoSIDA Academic All-District 1st Team: Gabe Clements (Fl. Scott), Darren Heer (Fort Riley)
- GTE/CoSIDA Academic All-District 2nd Team: Aaron Doonan (Holsington), Brian Fuemmeler (Kansas City)
- GTE/CoSIDA Academic All-District 3rd Team: Brent Stones (Sabetha), Dan Smith (Mulvane), Ryan Bradbury (Eureka)
- Budweiser Offensive MVP: Willie Sapp (Portal, Ga.)
- Budweiser Defensive MVP: Tony Scollieri (Grandview, Mo.)
- Team GPA: 2.72
- >Team over a 3.0 GPA: 29 >over 3.5 GPA: 12 >4.0 GPA: 6

VOLLEYBALL • 18-15 / 10-6 MIAA (4th)

- Second winning season since 1989
- Highest MIAA finish in history (4th)
- All-MIAA 2nd Team: Kate Thomsen (Racine, Wisc.)
- All-MIAA Honorable Mention: Jammie James (Rawlins, Wyo.), Kari Tomlin (Scottsdale, Ariz.), Robin Rusink (Manhattan)
- MIAA Academic Commissioner's List: Jammie James (Rawlins, Wyo.), Robin Rusink (Manhattan), Kate Thomsen (Racine, Wisc.), Kristy Wolfe (McLouth), Melissa Zlatnik (Delia)
- GTE/CoSIDA Academic All-District 3rd Team: Robin Rusink (Manhattan)
- Mercantile Bank MVP: Kate Thomsen (Racine, Wisc.)
- Team GPA: 3.29
- >Team over a 3.0 GPA: 10 >over 3.5 GPA: 8 >4.0 GPA: 1

MEN'S BASKETBALL • 19-9 / 11-5 MIAA (4th)

- Kansas four-year college leading 21st straight winning season
- Ranked as high as ninth in the NCAA Division II poll
- Records: Second in points by a freshman, 326 (Eric Carter); Second in career three-point field goals, 208 (Randy Staats)
- NABC All-District 1st Team: Randy Staats (Wichita, Kan.)
- CoSIDA All-Region 2nd Team: Randy Staats (Wichita, Kan.)
- All-MIAA 1st Team: Randy Staats (Wichita, Kan.)
- All-MIAA Honorable Mention: Eric Carter (Overbrook)
- Bauersfeld MVP: Randy Staats (Wichita, Kan.)
- Team GPA: 2.72
- >Team over a 3.0 GPA: 7 >over 3.5 GPA: 2 >4.0 GPA: 0

WOMEN'S BASKETBALL • 13-14 / 7-9 MIAA (7th)

- WBCA Academic Honor Roll • Champions
- NCAA Division II Free Throw Percentage • Champions
- Records: Third in career points, 1,813 (Nikki Oiberding); Consecutive free throws made, 37 (Nikki Oiberding); Consecutive free throws game/individual, 12-of-12 (Misty Caryl); Consecutive free throws game/team, 22
- CoSIDA All-South Central Region 1st Team: Nikki Oiberding (Topeka)
- All-MIAA 1st Team: Nikki Oiberding (Topeka)
- All-MIAA Honorable Mention: Becky Bridson (Olathe)
- All-MIAA Academic Commissioner's List: Shelby Angel (Nacogdoches, Texas), Misty Caryl (Topeka), Kristen Pierce (Topeka), Nikki Oiberding (Topeka), Tiffany Lohse (Hanover)
- GTE/CoSIDA Academic All-District 2nd Team: Nikki Oiberding (Topeka)
- Security Benefit MVP: Nikki Oiberding (Topeka)
- Team GPA: 3.55
- >Team over a 3.0 GPA: 8 >over 3.5 GPA: 5 >4.0 GPA: 2

THE ICHABOD CLUB

The Ichabod Club is a booster club that works together to promote Washburn University Athletics and provides financial support to its athletic programs.

Membership in the Ichabod Club has played a major role in supporting the annual scholarship drive, and making a difference in the lives of Washburn's student-athletes for the past 20 years.

Washburn Athletics depends upon the annual contributions to the Ichabod Club Scholarship Fund to continue offering scholarship aid to our student-athletes.

Be a member of the Ichabod Club and join the camaraderie of those who contribute and enjoy all Ichabod Club activities including tailgate cookouts near Moore Bowl before every home football game, a golf tournament, super bowl party, season tickets and promotions and other special events.

For more information on joining the Ichabod Club, call Washburn Athletics at 785.231.1135.

BASEBALL • 22-20 / 12-12 MIAA (6th)

- Advanced to the MIAA Baseball Championship Final Four at CMSU
- Travis Stockam - Hit most home runs by an Ichabod since Falley Field opened (11); Set school records for triples in season (6) and career (7); ranks second on the career batting average chart (.411)
- All-MIAA 1st Team: Travis Stockam (Joplin, Mo.)
- All-MIAA 2nd Team: Jason Immekus (Carthage, Mo.), Stan Schroeder (Topeka)
- All-MIAA Honorable Mention: Aaron Sanderholm (Arkansas City)
- MIAA Commissioner's Academic Honor Roll: Josh Clark (Topeka), Harley Douglas (Yates Center), Josh Haas (Topeka), Todd Olson (Auburn), Ryan Peters (Topeka), Travis Paul Smith (Wahoo, Neb.), Stockam (Joplin, Mo.)
- Falley MVP: Travis Stockam (Joplin, Mo.)
- Team GPA: 2.87
- >Team over a 3.0 GPA: 13 >over 3.5 GPA: 5 >4.0 GPA: 1

SOFTBALL • 27-14 / 10-6 MIAA (4th)

- The Lady Blues were ranked in every NCAA Division II poll throughout the season except the final. Ranked as high as 15th
- All-MIAA 1st Team: Torrie Beauchamp (Clay Center), Kathy Mohler (Silver Lake)
- All-MIAA 2nd Team: Shelley Cole (Overbrook), Marcy Scott (Topeka), Joy Marie Soerries (Tulsa, Okla.)
- All-MIAA Honorable Mention: Stacie Carpenter (Clay Center), Amy Heiman (Olathe), Carrie Kabertine (Topeka)
- MIAA Commissioner's Academic Honor Roll: Torrie Beauchamp (Clay Center), Haley Ford (Olathe), Joy Marie Soerries (Tulsa, Okla.), Lindsey Wagner (WaKeeney)
- GTE/CoSIDA Academic All-District 2nd Team: Torrie Beauchamp (Clay Center)
- Commerce Bank MVP: Joy Marie Soerries (Tulsa, Okla.)
- Team GPA: 3.09
- >Team over a 3.0 GPA: 9 >over 3.5 GPA: 6 >4.0 GPA: 0

WOMEN'S TENNIS • 13-4 / 5-1 MIAA (3rd)

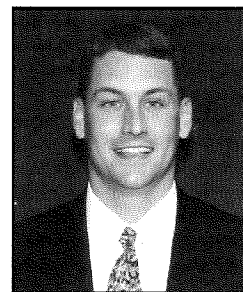
- Finished third in the MIAA championships then advanced and hosted the NCAA Midwest Regionals
- MIAA Tennis Champions: Marissa Moment (Wichita) • #2 SGLs
- MIAA Commissioner's Academic Honor Roll: Danielle Carter (Topeka), Anna Nunn (Lenexa), Kilra Peugh-Schartz (Dodge City), Kelly Springer (Independence)
- NationsBank MVP: Marissa Moment (Wichita)
- Team GPA: 3.33
- >Team over a 3.0 GPA: 6 >over 3.5 GPA: 3 >4.0 GPA: 2

MEN'S TENNIS • 13-8 / 4-1 MIAA (2nd)

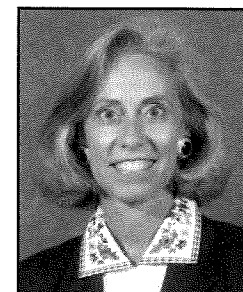
- Advanced to the NCAA Midwest Regionals in Abilene, Texas
- Finished second in the MIAA championships in Topeka
- MIAA Tennis Champions: Jarrod Eyer (Overland Park) / Chad Krug (Garden City)
- #2 DBLs
- MIAA Commissioner's Academic Honor Roll: Jarrod Eyer (Overland Park), Ryan Gertsch (Cheyenne, Wyo.)
- UMB Bank MVP: Jarrod Eyer (Overland Park)
- Team GPA: 3.09
- >Team over a 3.0 GPA: 5 >over 3.5 GPA: 2 >4.0 GPA: 0

MEN'S GOLF • 2nd in the MIAA

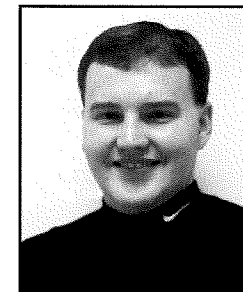
- Second place is the best ever finish in the conference
- Advanced to first ever NCAA West Regional
- Final ranking of 25th in NCAA Division II
- Phil Frost (Topeka) places fifth at the MIAA Tournament
- All-MIAA 1st Team: Phil Frost (Topeka), J.T. Symons (Lawrence)
- All-District 5 1st Team: Phil Frost (Topeka), J.T. Symons (Lawrence)
- MIAA Commissioner's Academic Honor Roll: Justin Jaquinot (Topeka)
- Ferrell Construction MVP: Phil Frost (Topeka)
- Team GPA: 2.64
- >Team over a 3.0 GPA: 2 >over 3.5 GPA: 1 >4.0 GPA: 0



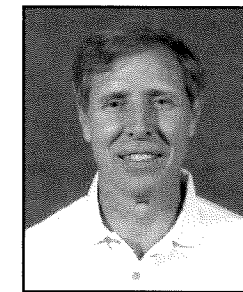
JORDAN CANFIELD
ASSOCIATE ATHLETIC DIRECTOR



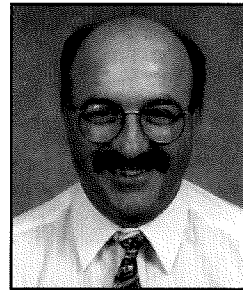
JANET DEGGINGER
ASSISTANT ATHLETIC DIRECTOR



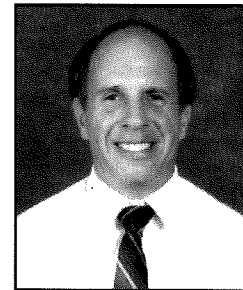
GENE CASSELL
SPORTS INFORMATION DIRECTOR



LARRY BLUMBERG
FACULTY ATHLETICS REP



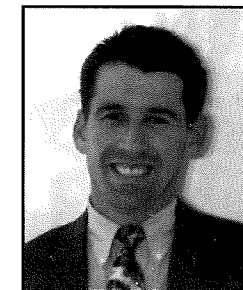
STEVE ICE
HEAD ATHLETIC TRAINER



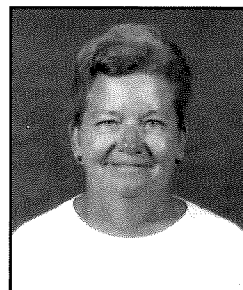
RON WESSEL
EQUIPMENT MANAGER



GILL HERRERA
FACILITIES MANAGER



RON SIMON
MARKETING AND PROMOTIONS



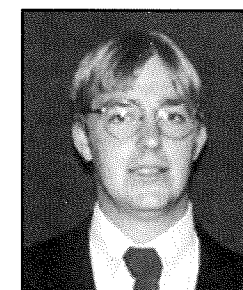
RITA COX
TICKET MANAGER



JANE KELLY
ATHLETIC SECRETARY



SUSAN FOREMSKY
ATHLETIC SECRETARY



BRAD NOLLER
STUDENT ASSISTANT SID

ATHLETICS ADMINISTRATION PHONE DIRECTORY

Director of Athletics	Loren Ferré (Texas Christian '71)	x-1794
Associate Athletic Director	Jordan Canfield (Washburn '96)	x-1334
Assistant Director of Athletics	Janet Degginger (Washburn '67)	x-1790
Sports Information Director	Gene Cassell (Northwest Missouri State '97)	x-1791
Student Assistant Sports Information Director	Brad Noller	x-1791
Faculty Athletics Representative	Larry Blumberg (Sterling '65)	x-1493
Director of Marketing and Promotions	Ron Simon (Kansas '85)	x-1336
Academic Adviser	Andy Williams (Missouri Western '86)	x-1795
Athletics Trainer	Steve Ice (St. Mary of the Plains '77)	x-1753
Equipment Manager	Ron Wessel	x-1761, 1338
Ticket Manager	Rita Cox	231.1092
Athletics Secretary / Spirit Squads Advisor	Jane Kelly	x-1339

785.231.1010 PLUS EXTENSION

ATHLETICS COACHING STAFF

Football

Head Coach	Tony DeMeo (Iona '71)	x-1134
Defensive Coordinator	Andy Williams (Mo. Western '86)	x-1795
Assistant Coach	Todd Rundle (UMass '90)	x-1798
Assistant Coach	B.D. Kennedy (Bethany '87)	x-1705
Assistant Coach	Dale Perine (Utah State '86)	x-1335
Assistant Coach	Mike Schartz (St. Mary of the Plains '89)	x-1335
Graduate Assistants	Mike Mogenson (Baker '94), Troy Biladeau (Fort Hays State '96), Danny Ackerman (Benedictine '94)	

Volleyball

Head Coach	Allison Jones (William Woods '89)	x-1756
------------	-----------------------------------	--------

Baseball

Head Coach	Steve Anson (Kansas State '76)	x-1793
Assistant Coach	Terry Griffith (Emporia State '97)	x-????

Golf

Head Coach	Ron McHenry (Washburn '84)	x-1796
------------	----------------------------	--------

Basketball (Men's)

Head Coach	Bob Chipman (Kansas State '73)	x-1355
Assistant Coach	Ron McHenry (Washburn '84)	x-1796
Assistant Coach	Kerry Dickerson (Washburn '93)	x-1333

Basketball (Women's)

Head Coach	Patty Dick (Washburn '71)	x-1764
Assistant Coach	Susan Decker (Tabor College '92)	x-1462
Assistant Coach	Terry Curry (Kansas '83)	
Assistant Coach	Joy McGilton (Washburn '76)	
Assistant Coach	Nikki Oiberding	
Assistant Coach	Misty Caryl	

Softball

Head Coach	Kim Newbern (Kansas '94)	x-1797
------------	--------------------------	--------

Tennis

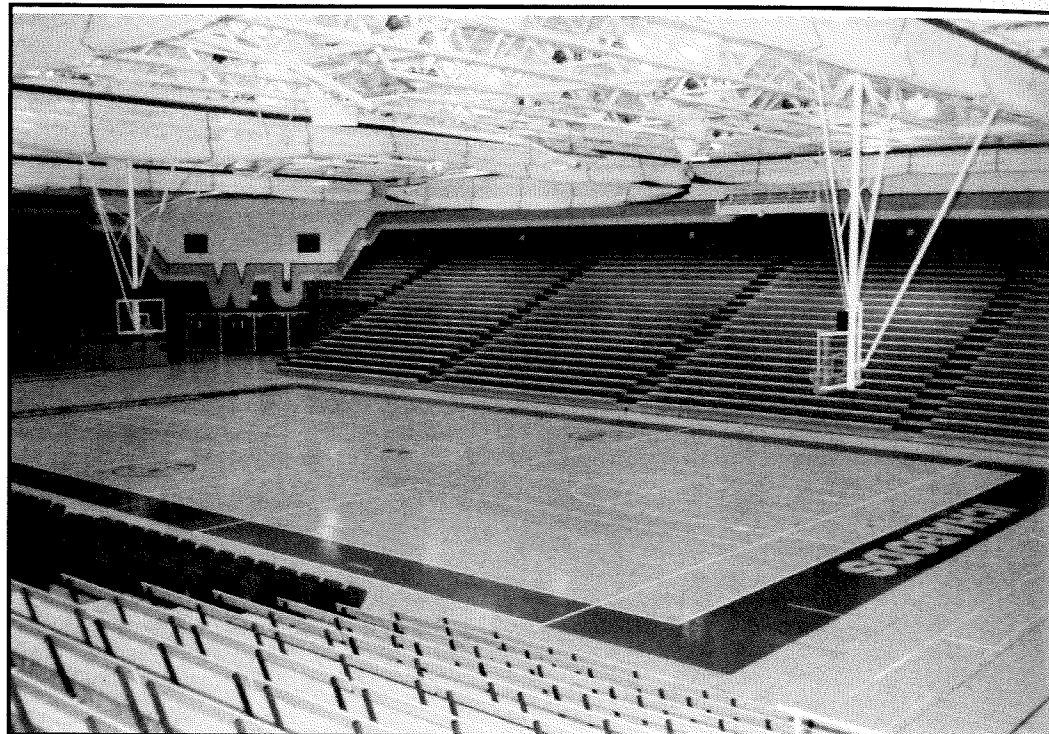
Head Coach	Peg Marmet (Kansas State '61)	x-1757
------------	-------------------------------	--------

LEE ARENA

HOME OF THE ICHABODS & LADY BLUES

Lee Arena has served as the home of Washburn basketball since the 1984-85 basketball season. The arena has a capacity of 4,298, twice that of Whiting Fieldhouse which housed the home court prior to 1984.

Lee Arena has provided an outstanding homecourt advantage for both the Ichabods and Lady Blues. Since the Ichabods christened Lee Arena with a 77-72 win over Briar Cliff College on Nov. 17, 1984, the Ichabods have an overall home record of 186-31 (.867). The Lady Blues won its home debut over Friends University 89-65 Nov. 20, 1984. The women have a home record of 160-30 (.842).



The recent success of the Washburn basketball teams combined with an outstanding facility in Lee Arena has led the NCAA to select Washburn as a host site for postseason competition. Washburn hosted the men's South Central regional in 1992, 1994 and 1997, in addition to a first round game regional game in 1995. The Ichabods are 3-4 in NCAA postseason play in Lee Arena.

The arena was built as part of the \$8.4 million Kelsey H. and Edna B. Petro Allied Health Center, the largest building on campus covering more than 126,000 square feet. Lee Arena is named after former Washburn baseball coach and player Bob Lee and his wife, Sallee, to recognize their donation.

ICHABODS AT HOME

- Dedicated Nov. 17, 1984
- Capacity 4,298
- Seasons 15th
- First Ichbod Win - Washburn 77, Briar Cliff 72 (Nov. 17, 1984)
- Washburn's all-time record in Lee Arena 186-31 (.856)
- Longest Winning Streak - 28 (11/19/93 - 2/8/95)
- Ichabods Year-by-Year Records: 1984-85 (15-3), 1985-86 (15-2), 1986-87 (18-0), 1987-88 (17-2), 1988-89 (11-3) 1989-90 (14-4), 1990-91 (9-5), 1991-92 (18-2), 1992-93 (14-2), 1993-94 (19-0), 1994-95 (13-2), 1995-96 (9-4), 1996-97 (14-2), 1997-98 (12-0)

MOST POINTS

Team: 134, Central Oklahoma vs. Stonehill, 12/29/90
WU Team: 116, vs. Nebraska-Kearney, 2/14/87
Individual: 44, James Morris of Central Oklahoma vs. Stonehill, 12/29/90
Ichabod: 40, Dan Buie vs. Emporia State, 2/14/96

MOST REBOUNDS

Team: 65, Central Oklahoma vs. Stonehill, 2/29/90
WU Team: 61, vs. Nebraska-Kearney, 2/14/87
Individual: 24, Jon Cronin of Stonehill vs. Fort Hays State, 12/27/90
Ichabod: 20, Andy Berlin vs. NE Missouri State, 3/1/95

MOST THREE-POINT FIELD GOALS

Team: 14, Stonehill vs. Central Oklahoma, 12/29/90; Central Oklahoma vs. Stonehill, 12/29/90; Washburn vs. Panhandle State, 12/14/91; Washburn vs. Central Oklahoma, 3/14/92; Central Oklahoma vs. Washburn, 3/14/92; Washburn vs. Pittsburg State, 2/18/95
Individual: 9, Shawn Williams of Central Okla. vs. Stonehill, 12/29/90; Maurice Lamar vs. Central Oklahoma, 3/14/92

LADY BLUES AT HOME

- Dedicated Nov. 17, 1984
- Capacity 4,298
- Seasons 15th
- First Lady Blues Win - WU 89, Friends 65 (11/20/84)
- Washburn's all-time record in Lee Arena - 160-30 (.842)
- Longest Winning Streak - 44 games (12/1/90-3/20/93)
- Year-by-Year Records: 1984-85 (15-3), 1985-86 (15-2), 1986-87 (18-0), 1987-88 (17-2), 1988-89 (11-3) 1989-90 (14-4), 1990-91 (9-5), 1991-92 (18-2), 1992-93 (14-2), 1993-94 (19-0), 1994-95 (13-2), 1995-96 (9-4), 1996-97 (9-5), 1997-98 (10-3)

MOST POINTS

Team: 100, Washburn vs. Grand View, 12/3/88
Individual: 35, Brenda Shaffer-Dahl vs., 11/25/89 vs. NEMSU

MOST REBOUNDS

Team: 58, Washburn vs. Benedictine, 2/6/89
Individual: 18, Brenda Shaffer vs. Missouri Western, 1/21/89
 Brenda Shaffer-Dahl vs. Cent. Missouri St., 1/17/90
 Amy Renyer vs. Northwest Missouri State, 1/8/92

MOST THREE-POINT FIELD GOALS

Team: 14, Missouri-St. Louis vs. Washburn, 2/28/94
WU Team: 7, vs. Wayne State, 2/20/88
 vs. Northeast Missouri State, 2/30/93
 vs. Pittsburg State, 2/15/94

Individual:

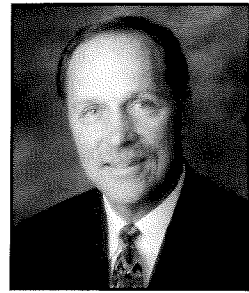
7, Susan Theroff, Northeast Missouri State, 2/20/89
 Susan Theroff, Northeast Missouri State, 2/2/91
 Rhonda Matzke vs. Northeast Missouri St., 1/30/93

1998-99 WASHBURN UNIVERSITY ICHABODS



5 B.J. ROSS	G	5-11	190	SO	Manhattan, Kan. / Manhattan High
12 SHANNON KRUGER	G	5-10	170	FR	Silver Lake, Kan./ Silver Lake High
20 KELDRICK BROOKS	G	5-11	180	SR	Wichita, Kan./ Cleveland St.
21 MARK KRUEGER	G	6-3	195	SR	Topeka, Kan. / Shawnee Heights High
22 LARRY FARMER	F	6-6	200	JR	Topeka, Kan. / Highland Park High
23 SAM WILLIS	G	6-1	180	SR	Minneapolis, Minn./ Univ. Texas-Pan America
24 LONNIE ALEXANDER	F	6-6	220	SR	Lufkin, Texas/ Univ. of Missouri-Kansas City
32 DAVID BYERS	G	6-3	190	JR	Marysville, Kan. / Dodge City CC
33 ERIC CARTER	F	6-8	220	SO	Overbrook, Kan. / Santa Fe Trail High
40 MELVIN WARE	F	6-4	200	SO	Topeka, Kan. / Topeka West High
42 MATTHEW HUNDLEY	G	6-2	170	FR	Bern, Kan./ Bern H.S.
44 ALAN KORDICH	G	5-10	170	FR	San Pedro, Calif./ San Pedro High
45 TORRIUS FISHER	F	6-6	190	SR	Texas City, Texas/Missouri Southern
52 EWAN AUGUSTE	C	6-8	220	SO	Castries, St. Lucia/St. Mary's College Prep

ICHABOD HEAD COACH



BOB CHIPMAN
HEAD BASKETBALL COACH

Bob Chipman

Season-by-Season Records

1979-80	20-8
1980-81	21-8
1981-82	*22-9
1982-83	18-12
1983-84	24-9
1984-85	26-9
1985-86	24-8
1986-87	#*35-4
1987-88	27-4
1988-89	*24-9
1989-90	*20-12
1990-91	16-13
1991-92	**27-5
1992-93	**27-5
1993-94	**29-4
1994-95	**22-8
1995-96	16-11
1997-98	**24-9

* NAIA National
Tournament
NAIA National
Champions (1986-87)
** NCAA Division II
National Tournament



Bob Chipman, the all-time winningest coach in Washburn University's basketball history, enters his 20th season at the helm of the Ichabod basketball program in 1997-98.

Chipman won his 400th game of his career last season against ninth-ranked Florida Southern in the USAir Division II Tipoff Classic in Virginia. He coached the 500th game of his long and storied career in 1994-95. The head Ichabod enters the '98-99 season with a career record of 441-156 (.739). The 400-win club is rather exclusive in NCAA Division II: Only 21 active coaches at that level enter the season with 400 or more wins. Chipman enters the season ranked 21st by victories and sixth by winning percentage among active NCAA Division II coaches.

Chipman has guided his teams to 15, 20-win seasons, including seven in a row from 1983-84 to 1989-90, and four in a row from 1991-92 to 1994-95. Chipman-coached teams have made nine national tournament appearances, five in the NCAA and four in the NAIA. His teams average 24.0 wins a year. Coach Chipman has never seen a losing season.

Chipman joined the Washburn staff in 1976 as an assistant to longtime head coach Glenn Cafer. He served as assistant coach for three seasons, in addition to being an associate professor of physical education, softball and men's tennis coach, and facilities coordinator. Chipman was promoted to the head coaching position in April 1979 when Cafer was appointed director of athletics.

Chipman enjoyed a banner season in 1986-87, capping a 35-4 campaign with an NAIA national championship

crown. A 90-59 win over Marymount that season gave him career victory No. 173, making him the winningest coach in Washburn history. Chipman was well-recognized for his accomplishments, garnering conference, district, area and national coach of the year honors.

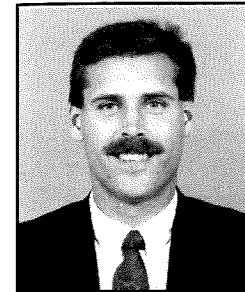
In addition to the coaching awards obtained after the 1986-87 season, Chipman was named MIAA coach of the year in both 1992 and 1993. He was named Kodak district coach of the year by the National Association of Basketball Coaches (NABC) in 1993 and the men's four-year coach of the year by the Kansas Basketball Coaches Association (KBCA) in 1994.

His success at the collegiate level has brought Chipman the opportunity to coach on an international level as well. He served a second stint as an assistant coach for the U. S. entry in the Pan American Games during the summer of 1991, earning a bronze medal. In 1983, he was an assistant to the team that won the gold medal. He helped coach the U.S. entry in the World University Games to a gold medal in 1989. In 1985, he was an assistant coach for the Amateur Basketball Association/USA Jones Cup Team that won a silver medal.

Chipman holds both bachelor's and master's degrees from Kansas State University. The 1973 graduate earned two letters as a guard while playing for Wildcat coaching legend Jack Hartman. He played his first two seasons of college ball at Flint Community J.C., in his hometown of Flint, Mich.

The 47-year-old Chipman and his wife, Carol, live in Topeka with their children, Kelsey and Bobby.

ICHABOD ASSISTANT COACHES



RON MCHENRY
ASSISTANT BASKETBALL COACH

Ron McHenry

Ron McHenry is entering his 10th season as a member of the Ichabods coaching staff in 1998-99. In addition to his basketball duties, McHenry is gearing up for his seventh year as the head coach of the Washburn men's golf team.

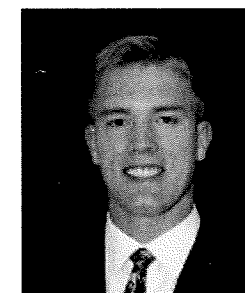
McHenry has had a diverse coaching career. He began his career as a graduate assistant to Bob Chipman during the 1984-85 season. He then went on to Perry High School in 1986 where he served as assistant boys coach. McHenry moved up the coaching ranks quickly in 1988 when he assumed an assistant's position with the Topeka Sizzlers of the Continental Basketball Association. McHenry

eventually became the Sizzlers' interim head coach before joining the Washburn staff for the 1989-90 campaign.

McHenry played for Washburn after stints at Coffeyville Community College and the University of Kansas.

He started for the Ichabods during the 1983-84 season. He graduated from Washburn with a bachelor's in communications and went on to earn a master's in sports administration from Wichita State University in 1987.

McHenry, who will be 37 on Jan. 21, and his wife, Mischa, live in Topeka with their children, Danielle, Samantha and Ronnie.



KERRY DICKERSON
ASSISTANT BASKETBALL COACH

Kerry Dickerson

Kerry Dickerson begins his second season on the Ichabod coaching staff after serving as a graduate assistant at Central Missouri State two seasons ago. Dickerson is in charge of the Ichabods recruiting efforts, team travel and assists in the on-floor coaching duties at Washburn. He also works with the scheduling of the games.

A native of Blue Springs, Mo., Dickerson was a two-year starter for the Ichabods at point guard and played on the team from 1988-93. He started 38 of 116 games for Washburn and his team leadership on two MIAA championship and NCAA Division II tournament teams was a mark of success.

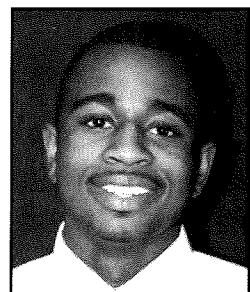
After a stint coaching at Topeka

Seaman High, Dickerson accepted the graduate assistant position at Central Missouri State under current UMKC coach Bob Sunvold. He remained on the staff under coach Don Doucette and helped the Mules to a NCAA Division II tournament appearance during the 1996-97 season.

During his prep days, Dickerson was a two-sport standout at Blue Springs High. He was an all-conference selection in both basketball and golf.

Kerry's brother, Mike, was a guard for Washburn from 1986-90 and the two were teammates on the 1988-89 Ichabod team that went 24-9 and qualified for the NAIA national tournament.

PLAYER PROFILES



#5 B.J. ROSS

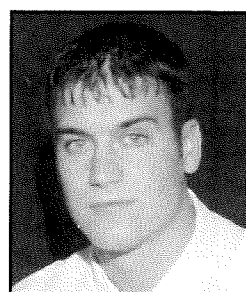
5-11 • 190 • Guard • Sophomore
Manhattan, Kan./Manhattan High

At Washburn: Played in 11 games as a freshman scoring 12 points on five of 14 shooting and picked up eight rebounds.

Background: Prep standout at Manhattan High...Named all-league after leading the Indians to the state tournament...Averaged 10-plus points and eight assists a game for Manhattan

Personal: Born on Dec. 28, 1978...Son of Stan and Darlene Ross.

B.J. Ross #5



#21 MARK KRUEGER

6-3 • 195 • Guard • Senior
Topeka, Kan./Shawnee Heights

At Washburn: As a junior last season, started seven games averaging 9.1 per contest hitting on 25 of his 65 three-point attempts. As a sophomore during the 1996-97 season, appeared in 33 games and started two for the MIAA champion Ichabods...Averaged 4.3 points and 3.3 rebounds per game...Shot 35.5 percent from the field and 27.1 percent from behind the three-point arc...Nailed 16 treys...Scored a career-high 19 points

and grabbed six rebounds in a 69-60 overtime loss to second-ranked Northern Kentucky 11/10/96. As a redshirt freshman in 1995-96: Appeared in 26 games and made eight starts. Averaged 5.0 points and 2.3 rebounds a game in 16.7 minutes of action. Shot 42 percent from the floor and 28 percent from behind the three-point arc.
Background: Played prep ball at Shawnee Heights High...Averaged nearly 20 points a game as a senior in garnering second team all-state and first team all-6A, city and league honors...Finished second in the city and conference in scoring as a senior...Was a wide receiver in football... Signed with Washburn during the early period.
Personal: Born on April 2, 1977...Son of Jerry and Pat Krueger... A business major.

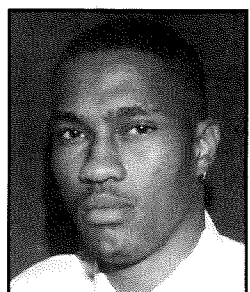
Mark Krueger #21

ROSS'S CAREER WASHBURN STATS (11 GAMES)

POINTS-AVG:	12-1.1	ASSISTS:	8
FG-FGA-%:	5-14-.357	STEALS:	2
3PTFG-FGA-%:	1-2-.500	TURNOVERS:	2
REBOUNDS-AVG:	8-0.7	PERSONAL FOULS:	4

KRUEGER'S CAREER WASHBURN STATS (87 GAMES)

POINTS-AVG:	528-6.1	ASSISTS:	105
FG-FGA-%:	173-399-.434	STEALS:	69
3PTFG-FGA-%:	60-193-.310	TURNOVERS:	68
REBOUNDS-AVG:	229-2.6	PERSONAL FOULS:	157



#22 LARRY FARMER

6-6 • 200 • Forward • Junior
Topeka, Kan./Highland Park High

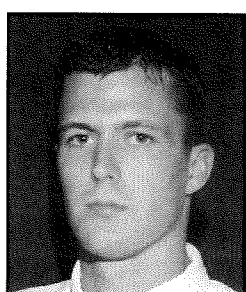
At Washburn: As a sophomore last season, started 21 of 28 games averaging 7.3 points and 4.6 rebounds per game. As a freshman in 1996-97: Started 11 of 16 games for the Ichabods as a true freshman in 1996-97...Averaged 9.8 points and 5.7 rebounds a game in 25.0 minutes of action...Had a career-high 22 points and 10 rebounds against

ninth-ranked Florida Southern 11/9/97.

Background: Heralded freshman from Class 5A state runner-up Highland Park High...Averaged 12.0 points and 10.0 rebounds a game as a senior for head coach Mike Brinsko...Named second team all-state and all-city... Selected first team all-Centennial League...Scored 21 points and grabbed 11 rebounds in Class 5A state championship game...Also a prep standout in football and track.

Personal: Born on June 3, 1978...Son of Larry and Sharita Farmer. Undecided on a major.

Larry Farmer



#32 DAVID BYERS

6-3 • 190 • Guard • Junior
Marysville, Kan./Dodge City CC

At Washburn: In his first year in an Ichabod uniform, played in 14 games scoring 21 points and 16 rebounds.

Background: A sophomore transfer from Dodge City Community College...Played one season at DCCC...Averaged 18.5 points and 8.5 rebounds as a senior at Marysville High...Named all-Class 4A for the Bulldogs...Will play both the point and off-guard for the Ichabods.

Personal: Born on March 31, 1977...Son of David and Kate Byers.

David Byers #32

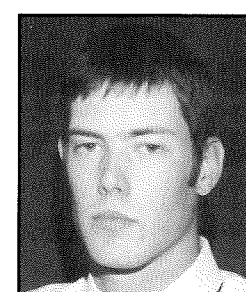
FARMER'S CAREER WASHBURN STATS (44 GAMES)

POINTS-AVG:	359-8.2	ASSISTS:	74
FG-FGA-%:	152-300-.501	STEALS:	48
3PTFG-FGA-%:	0-5-.000	TURNOVERS:	82
REBOUNDS-AVG:	221-5.1	PERSONAL FOULS:	99

BYERS' CAREER WASHBURN STATS (14 GAMES)

POINTS-AVG:	21-1.5	ASSISTS:	15
FG-FGA-%:	8-20-.400	STEALS:	4
3PTFG-FGA-%:	2-9-.222	TURNOVERS:	5
REBOUNDS-AVG:	16-1.1	PERSONAL FOULS:	7

PLAYER PROFILES



#33 ERIC CARTER

6-8 • 220 • Forward • Sophomore
Overbrook, Kan./Santa Fe Trail

At Washburn: As a freshman, earned all-MIAA honorable mention...Finished second on the team in scoring with 11.6 points per game and rebounding with 5.3...Connected on 20 of 42 three point attempts starting all 28 games.

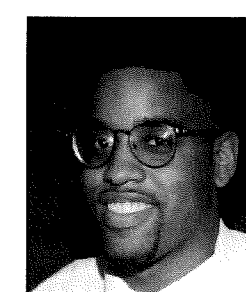
Background: Led Santa Fe Trail High to the Class 4A state championship and an undefeated record as a senior...Averaged 19 points and 12 rebounds a game for the Chargers... Named all-State and all-Class 4A as a senior...Can play either forward position or center.

Personal: Born on July 22, 1978...Son of Richard and Joan Carter.

Eric Carter

CARTER'S CAREER WASHBURN STATS (28 GAMES)

POINTS-AVG:	326-11.6	ASSISTS:	41
FG-FGA-%:	118-248-.476	STEALS:	13
3PTFG-FGA-%:	20-42-.476	TURNOVERS:	54
REBOUNDS-AVG:	147-5.3	PERSONAL FOULS:	85



#40 MELVIN WARE

6-4 • 200 • Forward • Sophomore
Topeka, Kan./Topeka West High

At Washburn: As a freshman last season, played in 17 games scoring 29 points and grabbing 22 rebounds.

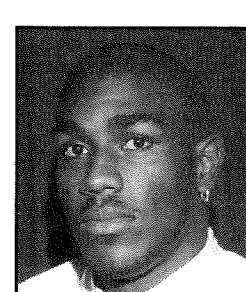
Background: Ware played his prep basketball at Topeka West High...Named second team all-city as a senior in basketball...Also a second team all-city pick in football for the Chargers...Hard worker who makes plays.

Personal: Born on September 14, 1978...Son of Delores and Richard Adams.

Melvin Ware

WARE'S CAREER WASHBURN STATS (17 GAMES)

POINTS-AVG:	29-1.7	ASSISTS:	3
FG-FGA-%:	12-32-.375	STEALS:	7
3PTFG-FGA-%:	3-8-.375	TURNOVERS:	5
REBOUNDS-AVG:	22-1.3	PERSONAL FOULS:	10



#52 EWAN AUGUSTE

6-8 • 220 • Center • Sophomore
Castries, St. Lucia/St. Mary's Prep

At Washburn: As a freshman last season, led the team in rebounding with 7.5 per game and third in scoring with 10.1 per game.

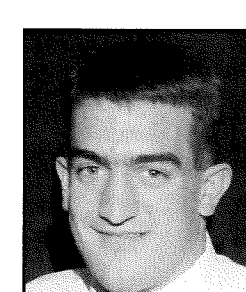
Background: Mid-semester addition for the Ichabods from the West Indies...Averaged 12.0 points and 10.0 rebounds a game for St. Mary's College Prep in St. Lucia.

Personal: Born on July 1, 1976...Son of Veronica Auguste...Last name pronounced O-Geese. Computer Information Sciences major at Washburn.

Ewan Auguste

AUGUSTE CAREER WASHBURN STATS (28 GAMES)

POINTS-AVG:	284-10.1	ASSISTS:	34
FG-FGA-%:	113-221-.511	STEALS:	22
3PTFG-FGA-%:	0-0-0	TURNOVERS:	45
REBOUNDS-AVG:	210-7.5	PERSONAL FOULS:	98



#12 SHANNON KRUGER

5-10 • 170 • Guard • Freshman
Silver Lake, Kan./Silver Lake High

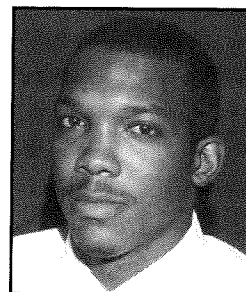
Background: A three-sport star at Silver Lake High School...averaged 19 points, five rebounds, five steals and five assists for the Eagles...Class 3A all-state selection

for state champs as quarterback...Threw state-record 92 career touchdowns...Second in all-time career yardage...All-state pitcher in 1997 and shortstop in 1998 for state championship teams.

Personal: Born on Sept. 8, 1979...Son of Mike and Shelly Krueger...Planning on a business major at Washburn.

Shannon Kruger

PLAYER PROFILES



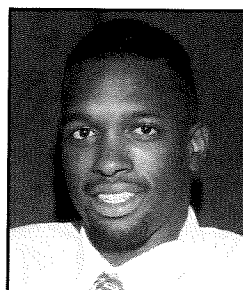
#20 KELDRICK BROOKS

5-11 • 180 • Guard • Senior
Wichita, Kan./Cleveland State

Background: Team leader in steals while at Cleveland State, second in assists...In high school at Wichita West, four-year letterman in basketball...First-team all-city junior and season campaigns, second team all-state...Nominated for McDonald's All-American senior season.

Personal: Born Sept. 26, 1975...Son of Yvonne Brooks...majoring in Sociology.

Kelchul #20 Brooks



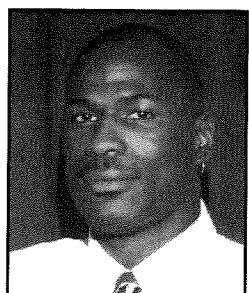
#23 SAM WILLIS

6-1 • 180 • Guard • Senior
Minneapolis, Minn./Texas-Pan America University

Background: At North Dakota School of Science, averaged 15 points, six assists per game, named first team all-conference...Averaged 18 points, eight assists per game and named first team once again...Named defensive MVP...In high school, led city of Chicago in assists with 12.5, same season averaged 17.8 points per game.

Personal: Born Jan. 22, 1975...Son of Shrif and Charlinitta Willis...Majoring in electronic mass media.

Sam Willis #23



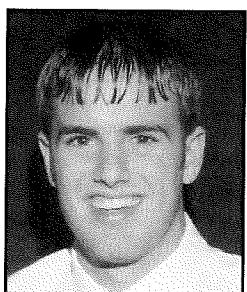
#24 LONNIE ALEXANDER

6-6 • 220 • Forward • Senior
Lufkin, Texas/Missouri-Kansas City

Background: Averaged 16 points and eight rebounds during 1997-98 season at Division I University of Missouri-Kansas City...Led the nation in field goal percentage as a sophomore at San Jacinto Junior College...Named to the all-conference squads both seasons at San Jacinto.

Personal: Born Dec. 30, 1973...Son of Elijah and Rosie Lee Polk...Criminal justice major at Washburn.

Lonnie Alexander #24



#42 MATTHEW HUNDLEY

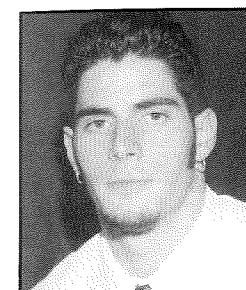
6-2 • 170 • Guard • Freshman
Bern, Kan./Bern High

Background: A three-sport star in high school...Named second team all-state in basketball...Was named first team all-Twin Valley League pick in basketball...Also named to first team conference in football as a running back...State champ in 100m, 200m dashes and a member of the 4x100m relay teams...School finished as state team champs.

Personal: Born Oct. 16, 1979...Son of John and Margaret Hundley...Majoring in criminal justice.

Matthew J. Hundley

PLAYER PROFILES



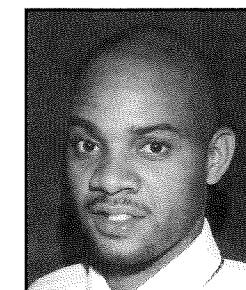
#44 ALAN KORDICH

5-10 • 170 • Guard • Freshman
San Pedro, Calif./San Pedro High

Background: In 1998, named Class 3A City Player of the Year in San Pedro after averaging 26.3 points per game and 6.8 assists... Also won Class 3A city championship in tennis.

Personal: Born May 17, 1980...Son of Jack and Ines Kordich...an honor roll student in high school is majoring in business.

Alan Kordich



#45 TORRIUS FISHER

6-6 • 190 • Forward • Senior
Texas City, Texas/Missouri Southern

Background: Averaged 13 points and 9.2 rebounds a game as a junior at Missouri Southern.

Personal: Born Dec. 28, 1974...son of Connie Beals...Majoring in Communications.

Torrius Fisher #45

1997-98 STATISTICS

19-9 OVERALL, 11-5 MIAA
12-0 HOME, 4-9 AWAY, 3-0 NEUTRAL

Name	G-GS	MIN-MPG	FG-FGA	FG%	FT-FTA	FT%	OFF-DEF	AVG	PF-D	A	TO	BLK	ST	PTS	AVG
Randy Staats	28-28	927-33.1	130-329	.395	61-74	.824	15-100	4.1	65-1	106	67	3	39	402	14.4
Eric Carter	28-28	650-23.2	118-248	.476	70-95	.737	46-101	5.3	85-4	41	54	7	13	326	11.6
Ewan Auguste	28-21	597-21.3	113-221	.511	58-107	.542	95-115	7.5	98-7	34	45	24	22	284	10.1
Mark Krueger	28-7	568-20.3	82-160	.513	67-94	.713	28-32	2.1	46-0	32	17	1	24	256	9.1
Frank Boswell	27-26	653-24.2	82-170	.482	83-111	.748	19-65	3.1	60-2	70	78	1	35	250	9.3
Larry Farmer	28-21	608-21.7	81-175	.463	41-73	.562	57-73	4.6	67-2	40	47	18	24	203	7.3
Ted Schuler	28-6	559-20	52-96	.542	31-47	.660	45-94	5.0	75-3	52	43	14	23	135	4.8
Cam Lindsey	19-1	341-17.9	20-61	.328	18-31	.581	12-42	2.8	42-2	40	38	0	19	67	3.5
Rainer Hofmann	25-1	190-7.6	26-54	.481	12-20	.600	24-16	1.6	26-0	10	16	0	3	64	2.6
Joe Myers	24-1	236-9.8	23-68	.338	10-17	.588	7-31	1.6	28-0	17	27	3	13	59	2.5
Melvin Ware	17-0	108-6.4	12-32	.375	2-8	.250	8-14	1.3	10-0	3	5	1	7	29	1.7
David Byers	14-0	80-5.7	8-20	.400	3-15	.200	2-14	1.1	7-0	15	5	2	4	21	1.5
B.J. Ross	11-0	45-4.1	5-14	.357	1-5	.200	3-5	0.7	4-0	8	2	0	2	12	1.1
Justin Steinbrock	10-0	29-2.9	2-9	.222	2-2	1.00	2-3	0.5	7-0	2	7	0	6	7	0.7
Shawn Lemon	1-0	4-4.0	1-2	.500	0-0	.000	0-0	0.0	0-0	0	1	0	0	2	2.0
Dennis Clark	5-0	6-1.2	1-1	1.00	0-4	.000	0-4	0.2	0-0	1	0	1	0	2	0.4
TEAM							44-39	2.96			6				
WASHBURN	28	5600	756-1660	.455	469-703	.653	407-745	41.1	620-2147	1458	75	234	2119	75.7	
OPPONENTS	28	5600	628-1518	.414	477-745	.640	295-629	33.0	619	311	475	74	227	1903	68.0

SCORE BY PERIODS	1ST	2ND	OT1	OT2	OT3	OT4	TOTAL
OPPONENTS	884	1019					1903
WASHBURN	945	1174					2119

ICHABODS

ICHABOD RECORD BOOK

INDIVIDUAL RECORDS

- Most Games Played**
Season: 39, James Davenport, 1986-87; Keith Downing, 1986-87; Rob Reilly, 1986-87; Greg Wilson, 1986-87
Career: 137, Keith Downing, 1983-87
- Most Points Scored**
Game: 45, Dan Buie vs. UM-Rolla, 2/27/96 (17 FGs, 10 FTs)
Season: 833, Gary Carrier, 1983-84
Career: 2,626, Gary Carrier, 1981-85
- Best Scoring Average**
Season: 25.2, Gary Carrier, 1983-84
Career: 20.3, Gary Carrier, 1981-85
- Most Field Goals Made**
Game: 18, Gary Carrier vs. Neb.-Kearney, 1/13/84 (24 att.)
Season: 321, Gary Carrier, 1984-85
Career: 1,046, Gary Carrier, 1981-85 (1,817 att.)
- Most Field Goals Attempted**
Game: 31, Bob Godwin vs. Fort Hays St., 1955 (9 made)
Season: 557, Gary Carrier, 1984-85
Career: 1,817, Gary Carrier, 1981-85 (1,046 made)
- Best Field Goal Percentage**
Season (min. 200 att.): .669, Tom Meier, 1985-86 (276 made, 412 att.)
Career (min. 400 att.): .644, Tom Meier, 1983-87 (856 made, 1,330 att.)
- Most Three-Point Field Goals Made**
Game: 11*, Randy Staats vs. Central Missouri State, 2/8/97 (20 att.)
Season: 113, Maurice Lamar, 1991-92 (255 att.)
Career: 212, Todd Alexander, 1990-93 (490 att.)
- Most Three-Point Field Goal Attempts**
Game: 20, Maurice Lamar vs. Central Oklahoma, 3/14/92 (9 made)
Season: 255, Maurice Lamar, 1991-92 (113 made)
Career: 490, Todd Alexander, 1990-93 (212 made)
- Best Three-Point Field Goal Percentage (1.0 made/g)**
Season: .524, Mike Dickerson, 1987-88 (55/105)
Career: .433, Todd Alexander, 1990-93 (212/490)
- Most Free Throws Made**
Game: 19, Jerry Milner vs. Ottawa, 1959 (25 att.)
Season: 249, Dan Buie, 1996-97 (371 att.)
Career: 534, Gary Carrier, 1981-85 (726 att.)
- Most Free Throws Attempted**
Game: 25, Jerry Milner vs. Ottawa, 1959 (19 made)
Season: 371, Dan Buie, 1996-97 (249 made)
Career: 726, Gary Carrier, 1981-85 (534 made)
- Best Free Throw Percentage (min. 200 att.)**
Career: .900, Mike Dickerson, 1986-90 (199/221)
- Most Consecutive Free Throws Made**
Career: 35, Ron Berkholtz, 1968
- Most Rebounds**
Game: 23, Joe Luebcke vs. Emporia State, 1974
Season: 388, Tom Meier, 1986-87
Career: 1,167, Gary Carrier, 1981-85
- Best Rebound Average**
Season: 11.5, Gregg Gibb, 1963-64; Clarence Tyson, 1993-94
Career: 9.09, Tom Meier, '83-87 (1,155 in 127 gm)
- Most Assists**
Game: 17, Jordan Canfield vs. Missouri-St. Louis, 1995
Season: 266*, Jordan Canfield, 1996-97
Career: 756*, Jordan Canfield, 1992-97
- Best Assist Average**
Season: 8.1, Jordan Canfield, 1994-95 & 1996-97
Career: 6.0, Jordan Canfield, 1992-97
- Most Steals**
Game: 9*, Larry Farmer vs. Friends (Kan.), 11/22/96
- Most Personal Fouls**
Season: 105, Andy Berlin, 1993-94
Career: 342, Greg Wilson, 1985-89
- Most Games Fouled Out**
Season: 10, John Duma, 1976-77
Career: 20, John Duma, 1974-78
- Most Points, Two Players**
Game: 67, Ron Berkholtz (35) & Frank Dexter (32) vs. Kenyon, 1968
Dan Buie (45) & Juwan Robinson (22) vs. UMR, 1996
*MIAA Record

TEAM RECORDS

- Most Points Scored**
Game: 126, vs. Kansas Newman, 3/3/84
Season: 3,235, 1986-87
- Best Scoring Average**
Season: 89.5, 1994-95 (2,684 points in 30 games)
- Fewest Points Scored**
Game: 34, vs. Southwestern, 1951
Season: 937, 1961-62 (16 games)
- Most Points Allowed**
Game: 132, Central Oklahoma, 3/14/92
Season: 2,691, 1986-87 (39 games)
- Fewest Points Allowed**
Game: 38, Southwestern, 1951; Emporia State, 1952
Season: 1,006, 1961-62 (16 games)
- Most Field Goals Made**
Game: 54, vs. Kansas Newman, 3/3/84 (81 att.)
Season: 1,257, 1986-87 (2,387 att.)
- Most Field Goals Attempted**
Game: 93, vs. Peru State, 1964 (43 made)
Season: 2,387, 1986-87 (1,257 made)
- Best Field Goal Percentage**
Game: .711, vs. Missouri Southern, 1980 (37/52)
Season: .539, 1984-85 (1,108 made, 2,054 att.)
- Most Three-Point Field Goals Made**
Game: 15 vs. Central Missouri State, 2/8/97
Season: 271, 1996-97 (703 att.)
- Most Three Point Field Goals Attempted**
Game: 37, vs. Central Oklahoma, 3/14/92 (14 made)
Season: 703, 1996-97 (271 made)
- Best Three Point Field Goal Percentage**
Game (min. nine att.): .777, vs. Benedictine, 11/27/88 (7/9)
Season: .472, 1987-88 (127 made, 269 att.)
- Most Free Throws Made**
Game: 47, vs. Fort Hays State, 1969 (54 att.)
Season: 726, 1968-69 (951 att.)
- Most Free Throws Attempted**
Game: 59, vs. Nebraska-Kearney, Feb. 14, 1987 (44 made)
Season: 951, 1968-69 (726 made)
- Best Free Throw Percentage**
Game (min. 15 att.): 1.000, vs. Fort Hays State, Feb. 22, 1985 (16 made, 16 att.)
Season: .763, 1968-69 (726 made, 951 att.)
- Most Rebounds**
Game: 64, vs. Missouri-Kansas City, 1975
Season: 1,418, 1986-87
- Best Rebound Average**
Season: 44.1, 1973-74
- Most Assists**
Game: 33, vs. Pittsburg State, Feb. 14, 1986
Season: 691, 1986-87
- Best Assists Average**
Season: 18.8, 1985-86
- Most Personal Fouls**
Game: 40, vs. Missouri Southern, Feb. 27, 1993
Season: 726, 1991-92
- Most Players Fouled Out**
Season: 26, 1976-77
- Miscellaneous**
Most Games: 39, 1986-87 (35-4)
Most Wins: 35, 1986-87 (35-4)
Most Losses: 21, 1976-77 (6-21)
Fewest Wins: 5, 1961-62 (5-11); 1965-66 (5-20)
Fewest Losses: 4, 1986-87 (35-4); 1987-88 (27-4); 1993-94 (29-4)
Best Winning Percentage: .897, 1986-87 (35-4)
Most Consecutive Wins: 25, 1986-87 (35-4)
Most Consecutive Losses: 12, 1976-77 (6-21)
Most Consecutive Home Wins: 34, 1966-67

ICHABOD INDIVIDUAL RECORD BOOK

CAREER SCORING

	G	AVG	PTS
1. Gary Carrier • 1981-85	129	20.3	2,626
as a senior in '84-85	35	23.5	824
as a junior in '83-84	33	25.2	833
as a sophomore in '82-83	30	19.6	589
as a freshman in '81-82	31	12.3	380
2. Tom Meier • 1983-87	127	16.4	2,082
as a senior in '86-87	37	18.2	675
as a junior in '85-86	32	19.8	634
as a sophomore in '84-85	35	14.0	490
as a freshman in '83-84	23	12.3	283
3. Harold Brown • 1970-74	102	16.2	1,651
4. Dan Buie • 1995-97	60	24.7	1,484
5. Ron Berkholtz • 1965-69	101	13.3	1,344
6. Greg Wilson • 1985-89	135	9.8	1,321
7. Jemi Johnson • 1992-95	93	13.1	1,215
8. Mike Dickerson • 1986-90	114	9.9	1,130
9. Todd Alexander • 1990-93	93	11.8	1,099
10. Tom Carlson • 1954-59	82	13.2	1,080
11. Ron Ford • 1962-66	86	12.3	1,055
12. Leonard Conkleton • 1971-75	98	10.3	1,011
Dave Hull • 1975-78	74	13.7	1,011
14. Charles Brehm • 1951-54	80	12.6	1,004
15. Jeff Markray • 1988-90	65	15.4	1,002
16. Bill Yeadsley • 1950-54	85	11.6	989
17. Clarence Tyson • 1992-94	65	15.1	982
18. Gerald Spohn • 1942-47	86	11.2	962
19. Doyle Callahan • 1987-90	90	10.5	948
20. Ricardo Bonner • 1976-80	52	17.9	932
21. John Johnson • 1966-70	81	11.2	909
22. Dennis Brady • 1983-85	68	13.1	889
23. Bill Quick • 1958-62	70	12.7	886
Nile Nelson • 1951-58	89	11.0	886
24. Ed Hanson • 1948-52	80	13.9	881
25. Maurice Lamar • 89-90; 91-92	64	13.7	875

SINGLE-SEASON SCORING

	G	AVG	PTS
1. Gary Carrier • 1983-84	33	25.2	833
2. Gary Carrier • 1984-85	35	23.5	824
3. Dan Buie • 1996-97	33	24.4	805
4. Dan Buie • 1995-96	27	25.2	679
5. Tom Meier • 1986-87	37	18.2	675
6. Clarence Tyson • 1993-94	33	20.1	663
7. Tom Meier • 1985-86	32	19.8	634
8. Gary Carrier • 1982-83	30	19.6	589
9. Dave Hull • 1976-77	27	21.0	566
10. Ricardo Bonner • 1979-80	29	19.8	554
11. Jeff Markray • 1988-89	33	16.4	543
12. Ron Berkholtz • 1968-69	29	17.8	515
13. Dennis Brady • 1983-84	33	15.3	504
14. Frank Dexter • 1968-69	30	16.5	496
15. Tom Meier • 1984-85	35	14.0	490
16. Harold Brown • 1973-74	29	16.6	482
17. Marvin Singleton • 1990-91	29	16.6	481
18. Calvin Sprew • 1986-87	38	12.6	480
19. Harold Brown • 1972-73	24	19.8	475
20. Rich Hamilton • 1987-88	31	15.1	468
20. Tony Arrington • 1993-94	29	16.0	464

SINGLE-GAMESCORING

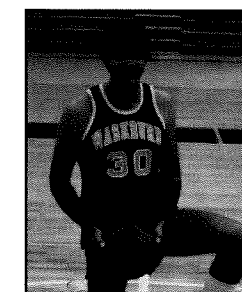
1. Dan Buie, vs. UM-Rolla • 1996	45
2. Gary Carrier, vs. Kansas Newman • 1984	42
Harold Brown, vs. Nebraska-Omaha • 1973	40
Gary Carrier, vs. Nebraska-Kearney • 1984	40
Dan Buie, vs. Missouri Southern • 1996	40
Dan Buie, vs. Emporia State • 1996	40

7. Randy Staats vs. Central Missouri State • 1997 37
Dan Buie vs. Northwest Missouri State • 1997 37
Jerry Milner, vs. Ottawa • 1959 37
Gary Carrier, vs. Missouri Southern • 1984 37
Gary Carrier, vs. Nebraska-Kearney • 1985 36
Maurice Lamar vs. Central Oklahoma • 1992 36

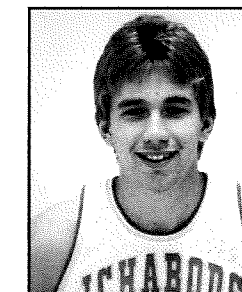
CAREER REBOUNDING

	G	AVG	REB
1. Gary Carrier • 1981-85	129	9.1	1,167
2. Tom Meier • 1983-87	127	9.1	1,155
3. Leonard Conkleton • 1971-75	98	6.5	638
4. Andy Berlin • 1990-95	116	5.3	618
5. Greg Wilson • 1985-89	135	4.2	569
6. Clarence Tyson • 1992-94	65	8.7	563
7. Doyle Callahan • 1987-90	90	6.2	560
8. Harold Brown • 1970-74	102	5.4	550
9. Dave Nelson • 1979-83	117	4.2	495
10. Jeff Markray • 1988-90	65	7.6	491
11. Dan Buie • 1996-97	60	8.2	490
12. Lonnie Hiebert • 1989-93	123	3.9	484
13. Rich Hamilton • 1986-88	62	7.6	474
14. Dave Hull • 1975-79	74	6.3	467
Ron Berkholtz • 1965-69	101	4.6	467
16. Ricardo Bonner • 1976-80	52	8.4	436

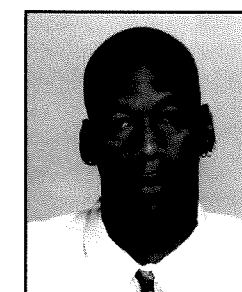
ICHABOD ALL-AMERICANS



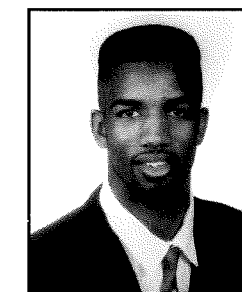
GARY CARRIER
NAIA



TOM MEIER
NAIA



CLARENCE TYSON
NCAA



DAN BUIE
NCAA

ICHABOD YEARLY LEADERS

SCORING

Year	Name	G	Pts.	Avg.
1997-98	Randy Staats	28	402	14.4
1996-97	Dan Buie	33	805	24.4
1995-96	Dan Buie	27	679	25.2
1994-95	Jemi Johnson	29	547	18.9
1993-94	Clarence Tyson	33	663	20.1
1992-93	Malcolm Daniels	32	444	13.9
1991-92	Maurice Lamar	32	458	14.3
1990-91	Marvin Singleton	29	481	16.6
1989-90	Jeff Markray	32	459	14.3
1988-89	Jeff Markray	30	486	16.2
1987-88	Rich Hamilton	31	468	15.1
1986-87	Tom Meier	37	675	18.2
1985-86	Tom Meier	32	634	19.8
1984-85	Gary Carrier	35	824	23.5
1983-84	Gary Carrier	33	833	25.2
1982-83	Gary Carrier	30	589	19.6
1981-82	Gary Carrier	31	380	12.3

REBOUNDS

Year	Name	G	Reb.	Avg.
1997-98	Ewan Auguste	28	210	7.5
1996-97	Dan Buie	33	304	9.2
1995-96	Dan Buie	27	186	6.9
1994-95	Andy Berlin	30	295	9.8
1993-94	Clarence Tyson	33	379	11.5
1992-93	Malcolm Daniels	32	218	6.8
1991-92	Reggie Hulbert	32	178	5.6
1990-91	Marvin Singleton	29	196	6.8
1989-90	Jeff Markray	32	264	8.3
1988-89	Doyle Callahan	30	230	7.6
1987-88	Rich Hamilton	31	291	9.4
1986-87	Tom Meier	37	388	10.5
1985-86	Tom Meier	32	287	9.0
1984-85	Gary Carrier	32	316	9.0
1983-84	Gary Carrier	33	295	8.9
1982-83	Gary Carrier	30	327	10.9
1981-82	Gary Carrier	31	229	7.4

ASSISTS

Year	Name	G	Asst.	Avg.
1997-98	Randy Staats	28	106	3.8
1996-97	Jordan Canfield	33	266	8.1
1995-96	Juwan Robinson	27	120	4.4
1994-95	Jordan Canfield	30	242	8.1
1993-94	Jordan Canfield	33	183	5.6
1992-93	Kerry Dickerson	32	97	3.0
1991-92	Reggie Hulbert	32	98	3.1
1990-91	Todd Alexander	29	83	2.9
1989-90	Mike Dickerson	32	93	2.9
1988-89	Romy Anderson	30	74	2.4
1987-88	Bobby Sumler	22	76	3.5
1986-87	Bobby Sumler	37	128	3.5
1985-86	Rob Reilly	32	104	3.3
1984-85	Dennis Brady	35	140	4.0
1983-84	Dennis Brady	33	114	3.4
1982-83	Tim Triggs	30	152	5.1
1981-82	Kyle Unruh	31	147	4.7

STEALS

Year	Name	G	Stls.	Avg.
1997-98	Randy Staats	28	39	1.4
1996-97	Jordan Canfield	33	63	2.4
1995-96	Dan Buie	27	32	1.2
1994-95	Jordan Canfield	30	33	1.1
1993-94	Clarence Tyson	33	44	1.3
1992-93	Kevin Smith	32	60	1.8
1991-92	Reggie Hulbert	32	49	1.5
1990-91	Reggie Hulbert	29	55	1.9
1989-90	Mike Dickerson	32	46	1.4
1988-89	Romy Anderson	30	56	1.9
1987-88	Bobby Sumler	22	49	2.2
1986-87	Bobby Sumler	37	73	2.0
1985-86	Rob Reilly	32	61	1.9
1984-85	Dennis Brady	35	62	1.8

FREE THROWS

Year	Name	FTM-FTA	FT%
1997-98	Randy Staats	81-210	.824
1996-97	Randy Staats	28-30	.933
1995-96	Josh Harbert	42-49	.857
1994-95	Andy Berlin	118-141	.837
1993-94	Brian Henson	52-61	.853
1992-93	Todd Alexander	38-50	.760
1991-92	Maurice Lamar	51-60	.850
1990-91	Todd Stanfield	92-107	.860
1989-90	Mike Dickerson	83-92	.902
1988-89	Mike Dickerson	69-75	.920
1987-88	Mike Dickerson	34-40	.850
1986-87	Keith Downing	42-50	.840
1985-86	Greg Wilson	79-111	.712
1984-85	Barry Ford	67-89	.753
1983-84	Ron McHenry	25-32	.781
1982-83	Tim Triggs	64-80	.800
1981-82	Kevin Unruh	58/74	.784
1980-81	Kevin Unruh	83/103	.806
1979-80	Chris Urban	41/55	.745
1978-79	Jeff Stromgren	64/77	.831
1977-78	Dave Hull	60/77	.779

FIELD GOALS

Year	Name	FG-FGA	FG%
1997-98	Ewan Auguste	113-221	.511
1996-97	Dan Buie	272-510	.533
1995-96	Dan Buie	242-441	.549
1994-95	Andy Berlin	159-262	.607
1993-94	Clarence Tyson	282-437	.645
1992-93	Clarence Tyson	143-249	.574
1991-92	Reggie Hulbert	104-177	.588
1990-91	Reggie Hulbert	115-221	.520
1989-90	Lance Sparks	83-155	.535
1988-89	Jeff Markray	179-287	.623
1987-88	Rich Hamilton	184-294	.626
1986-87	Tom Meier	264-418	.632
1985-86	Tom Meier	276-412	.670
1984-85	Tom Meier	201-325	.618
1983-84	Gary Carrier	311-535	.581
1982-83	Gary Carrier	246-414	.594
1981-82	Kevin Weems	95-167	.569
1980-81	Rodney Trunnel	129-233	.554
1979-80	Kevin Unruh	56-95	.589
1978-79	Ed Parker	161-301	.535
1977-78	Bill Hull	78-147	.531



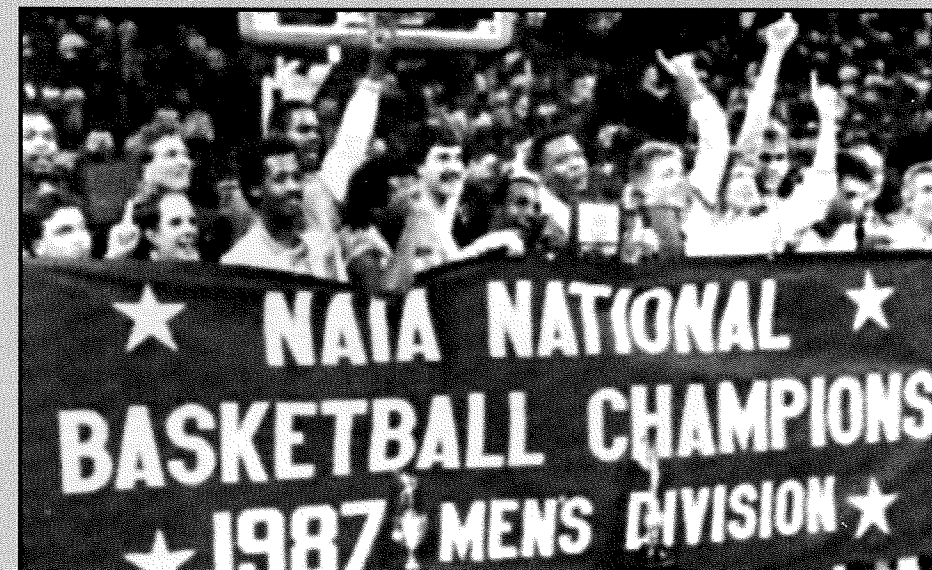
NAIA CHAMPIONS & HONOR ROLL

ICHABODS WIN 1986-87 NAIA NATIONAL CHAMPIONSHIP

The Ichabods thrilled their fans during the 1986-87 season when they won the NAIA national championship. Washburn capped the 35-4 campaign with a 79-77 victory over West Virginia State University in a championship game televised by ESPN.

Two Ichabods earned individual honors for their performances during the 1987 tournament. Tom Meier was the tournament's leading rebounder en route to earning most valuable player honors. The Topekan pulled down 67 rebounds in five games to average 13.4 boards a game. Bobby Sumler was the recipient of the Charles Stevenson Hustle Award.

During a long association with the NAIA which ended after the 1989-90 season, Washburn advanced to 11 national championship tournaments in Kansas City. Washburn holds the distinction of having made more NAIA national tournament appearances than any other institution in Kansas. The Ichabods own a 12-11 NAIA national tournament record, having earned



berths in 1938, 1945, 1946, 1952, 1968, 1969, 1974, 1982, 1987, 1989 and 1990.

Four coaches led the Ichabods to NAIA national tournaments. Bob Chipman's teams made four appearances (1982, 1987, 1989, 1990) to rank him first in tournament appearances.

Glenn Cafer (1968, 1969, 1974) and Dee Errickson (1938, 1945, 1946) each made three trips while Marion McDonald took the Ichabods to Kansas City in 1952. Chipman posted the best record among Washburn coaches at the tournament with a record of 7-3. Cafer was 3-3, Errickson 2-4 and McDonald 0-1.

ICHABOD HONOR ROLL

CoSIDA NCAA D-II All-America	1985-86 Tom Meier, F, HM	1995-96 Dan Buie, F, 1stMVP	1986-87 Tom Meier
1995-96 Dan Buie, F, 2nd	1984-85 Gary Carrier, F, 1st	1994-95 Jemi Johnson, F, 1st	1985-86 Tom Meier
	1983-84 Gary Carrier, F, 1st	1993-94 Clarence Tyson, F, 1st	1984-85 Gary CarrierMVP
	1982-83 Gary Carrier, F, HM	1992-93 Malcom Daniels, F, 1stMVP	1983-84 Gary CarrierMVP
	1967-68 Ron Berkholtz, HM		1982-83 Gary Carrier
All-So. Central Region			1981-82 Gary Carrier
1997-98 Randy Staats, G, 2nd			1979-80 Ricardo Bonner
1995-96 Dan Buie, F, 2nd			1978-79 Jeff Stromgren
NABC Division II All-America	NAIA District 10		All-Great Plains
1996-97 Dan Buie, F, 1st	1987-88 Rich Hamilton	1991-92 Maurice Lamar, G, 1st	1975-76 Pat Murphy
1995-96 Dan Buie, F, 2nd	1986-87 Tom MeierMVP	1990-91 Marvin Singleton, F, 2nd	1974-75 Len Conkleton
1993-94 Clarence Tyson, F, 1st	1985-86 Tom Meier		1973-74 Harold Brown
	1984-85 Gary CarrierMVP		All-RMAC
	1983-84 Gary CarrierMVP		1971-72 Tom Frazier
NABC Division II All-Region	1982-83 Gary Carrier		1970-71 Kevin Sweeney
1997-98 Randy Staats, G, 2nd	1981-82 Gary Carrier		
1996-97 Dan Buie, F, 1st	1978-79 Jeff Stromgren		
1995-96 Dan Buie, F, 1st	1968-69 Frank Dexter		
1993-94 Clarence Tyson, F, 1st	1967-68 Ron Berkholtz		
Division II Bulletin All-America			
1997-98 Randy Staats, G, HM			
1996-97 Dan Buie, F, 1st			
NAIA All-America	All-MIAA	All-MIAA Academic	All-CIC
1987-88 Rich Hamilton, HM	1997-98 Randy Staats, G, 1st	1996-97 Kyle Jones, F	1967-68 Ron Berkholtz
1986-87 Tom Meier, F, 1st	Eric Carter, F, HM	1990-91 Lance Sparks, G/F	Dave Lopes
	1996-97 Dan Buie, F, 1st - MVP		1966-67 Denny Payne
	Jordan Canfield, G, 1st		1965-66 Ron Ford
	Randy Staats, G, 2nd		1964-65 Ken Hendrix
			1961-62 Bill Quick

ICHABOD YEARLY SUMMARY

WASHBURN COACHING RECORDS BY YEAR	Year	WU Coach	Record	PCT	CONF	PCT	CONF. CHAMP	WU PTS	OPP PTS
COACH • YRS	1905-06	Unknown	8-7-1	.531	.	.	.	450-28.1	314-19.6
Unknown • '05-21	1906-07	Unknown	9-5	.643	.	.	.	N/A	N/A
Dwight Ream • '21-22	1907-08	Unknown	No Record						
Mike Vosburg • '22-23	1908-09	Unknown	6-5	.545	.	.	.	309-28.1	330-30
A.L. Lonborg • '23-27	1909-10	Unknown	4-0	1.000	.	.	.	150-37.5	77-19.3
Roy Wynne • '27-30	1910-11	Unknown	1-3-1	.300	.	.	.	97-19.4	194-38.8
George Gardner • '30-33	1911-12	Unknown	11-3	.786	.	.	.	442-31.6	326-23.3
Elmer Holm • '33-36	1912-13	Unknown	3-13	.188	.	.	.	473-29.6	495-30.9
Dee Erickson • '36-46	1913-14	Unknown	6-8	.429	.	.	.	486-34.7	470-33.6
Adrian Miller • '46-51	1914-15	Unknown	5-6	.455	.	.	.	345-31.4	382-34.7
Marion McDonald • '51-60	1915-16	Unknown	1-8-1	.150	.	.	.	222-22.2	365-36.5
Dick Godlove • '60	1916-17	Unknown	5-11	.313	.	.	.	371-23.2	582-36.4
Norm Short • '60-66	1917-18	Unknown	2-9	.182	.	.	.	247-22.5	400-36.4
Gordon Stauffer • '66-67	1918-19	Unknown	10-5	.667	.	.	.	439-29.3	417-27.8
Glenn Cafer • '67-79	1919-20	Unknown	12-4	.750	.	.	.	514-32.1	421-26.3
Bob Chipman • '79-pr.	1920-21	Unknown	8-7	.533	.	.	.	381-25.4	354-23.6
*Godlove took over for McDonald with three games left in the 1960 season when McDonald was sidelined with health problems.	1921-22	Dwight Ream	10-8	.556	(T8)	.	.	352-19.6	348-19.3
	1922-23	Mike Vosburg	6-7	.462	(10)	.	.	335-25.8	299-23.0
	1923-24	A.C. Lonborg	12-4	.750	(3)	.	.	499-31.2	325-20.3
	1924-25	A.C. Lonborg	15-0	1.000	(T1)	.	.	527-35.1	334-22.3
	1925-26	A.C. Lonborg	10-1-1	.875	(T1)	.	.	392-32.7	324-27.0
	1926-27	A.C. Lonborg	12-7	.632	(6)	.	.	606-31.9	533-28.1
	1927-28	Roy Wynne	9-4	.692	(4)	.	.	469-36.1	419-32.2
	1928-29	Roy Wynne	12-5	.706	(1)	.	.	490-28.9	422-24.8
	1929-30	Roy Wynne	8-11	.421	(5)	.	.	516-27.2	619-32.6
	1930-31	George Gardner	4-11	.267	(T4)	.	.	351-23.4	416-27.7
	1931-32	George Gardner	7-11	.389	(5)	.	.	512-28.4	571-31.7
	1932-33	George Gardner	8-6	.571	(4)	.	.	478-34.1	496-35.4
	1933-34	Elmer Holm	7-8	4.67	(T4)	.	.	572-38.1	650-43.3
	1934-35	Elmer Holm	7-13	.350	(T5)	.	.	572-28.6	650-32.5
	1935-36	Elmer Holm	7-14	.333	(4)	.	.	657-31.3	726-34.6
	1936-37	Dee Erickson	4-17	.193	(7)	.	.	538-25.6	741-35.3
	1937-38	Dee Erickson	8-12	.400	(6)	.	.	711-35.6	787-39.4
	1938-39	Dee Erickson	4-17	.190	(8)	.	.	630-30.0	783-37.3
	1939-40	Dee Erickson	8-8	.500	(4)	.	.	574-35.9	611-38.2
	1940-41	Dee Erickson	7-12	.369	(T4)	.	.	586-30.8	689-36.3
	1941-42	Dee Erickson	4-13	.235	(6)	.	.	521-30.6	676-39.8
	1942-43	Dee Erickson	6-16	.273	(6)	.	.	758-34.5	965-43.9
	1943-44	Dee Erickson	5-10	.333	(6)	.	.	715-47.7	802-53.5
	1944-45	Dee Erickson	8-7	.533	.	.	.	949-63.3	881-58.7
	1945-46	Dee Erickson	10-7	.588	.	.	.	762-44.8	722-42.5
	1946-47	Adrian Miller	8-10	.444	(T2)	.	.	815-45.3	834-46.3
	1947-48	Adrian Miller	15-9	.625	(2)	.	.	1290-53.8	1177-49.0
	1948-49	Adrian Miller	12-7	.632	(3)	.	.	1091-57.4	964-50.7
	1949-50	Adrian Miller	13-10	.565	(5)	.	.	1239-53.9	1168-50.8
	1950-51	Adrian Miller	16-9	.640	(1)	.	.	1471-58.8	1404-56.2
	1951-52	Marion McDonald	17-9	.654	(1)	.	.	1918-73.8	1805-69.4
	1952-53	Marion McDonald	13-8	.619	(T3)	.	.	1635-77.9	1482-70.6
	1953-54	Marion McDonald	15-6	.714	(T2)	.	.	1601-76.2	1382-65.8
	1954-55	Marion McDonald	11-9	.550	(T4)	.	.	1557-77.9	1569-78.5
	1955-56	Marion McDonald	14-6	.700	6-4 (2)	.600		1562-78.1	1427-71.4
	1956-57	Marion McDonald	9-10	.474	5-5 (T3)	.500		1344-70.7	1325-69.7
	1957-58	Marion McDonald	12-9	.571	6-4 (3)	.600		1516-72.2	1462-69.6
	1958-59	Marion McDonald	9-9	.500	(4)	.	.	1137-63.2	1160-64.4
	1959-60	McDonald/Dick Godlove	8-10	.444	(4)	.	.	1233-68.5	1271-70.6
	1960-61	Norm Short	9-10	.474	5-5 (T3)	.500		1169-61.5	1214-63.9
	1961-62	Norm Short	5-11	.313	4-6 (T4)	.400		937-58.6	1006-62.9
	1962-63	Norm Short	6-13	.316	4-6 (T4)	.400		1124-59.2	1319-69.4
	1963-64	Cafer	10-10	.500	2-6 (5)	.250		1705-85.3	1708-85.4
	1964-65	Cafer	10-11	.476	4-4 (T2)	.500		1586-75.5	1553-74.0
	1965-66	Norm Short	5-20	.200	2-6 (5)	.250		1853-74.1	1973-79.0
	1966-67	Gordon Stauffer	15-6	.714	6-2 (T1)	.750		1562-74.4	1415-67.4
	1967-68	Glenn Cafer	18-8	.692	8-0 (1)	1.000		1715-66.0	1750-67.3
	1968-69	Glenn Cafer	20-10	.667	.	.		2278-76.0	2114-70.5
	1969-70	Glenn Cafer	14-11	.560	.	.		1727-69.1	1712-68.5
	1970-71	Glenn Cafer	13-12	.520	5-7 (T5)	.417		2090-83.6	1849-74.0
	1971-72	Glenn Cafer	13-12	.520	6-6 (4)	.500		1810-72.4	1776-71.0
	1972-73	Glenn Cafer	11-14	.440	6-6 (4)	.500		1745-69.8	1785-71.4
	1973-74	Glenn Cafer	17-12	.586	7-3 (1)	.700		2115-72.9	1903-65.6
	1974-75	Glenn Cafer	12-13	.480	2-8 (6)	.250		1678-67.1	1642-65.7
	1975-76	Glenn Cafer	8-17	.320	2-10 (7)	.200		1664-66.6	1777-71.1
	1976-77	Glenn Cafer	6-21	.222	.	.		1877-69.5	2007-74.3
	1977-78	Glenn Cafer	19-9	.679	9-5 (2)	.643		2156-77.0	2017-72.0
	1978-79	Glenn Cafer	21-6	.778	10-4 (1)	.714		2050-75.9	1824-67.6
	1979-80	Bob Chipman	20-8	.714	10-4 (2)	.714		2107-75.3	1886-67.4
	1980-81	Bob Chipman	21-8	.724	9-5 (4)	.643		1978-68.2	1812-62.5
	1981-82	Bob Chipman	22-9	.710	8-6 (3)	.571		2184-70.5	1939-62.5
	1982-83	Bob Chipman	18-12	.600	8-6 (T3)	.571		2108-70.3	2001-66.7
	1983-84	Bob Chipman	24-9	.727	9-5 (T2)	.643		2517-76.3	2229-67.5
	1984-85	Bob Chipman	26-9	.743	10-4 (2)	.714		2517-76.3	2229-67.5
	1985-86	Bob Chipman	24-8	.750	9-5 (4)	.643		2359-73.7	2095-65.5
	1986-87	Bob Chipman	35-4	.897	13-1 (1)	.929		3155-80.9	2691-69.0
	1987-88	Bob Chipman	27-4	.871	14-0 (1)	1.000		2646-85.4	2206-71.2
	1988-89	Bob Chipman	24-9	.727	9-5 (2)	.643		2693-81.6	2387-72.3
	1989-90	Bob Chipman	20-12	.625	7-9 (3)	.538		2367-74.0	2273-71.0
	1990-91	Bob Chipman	16-13	.551	9-7 (6)	.463		2284-78.8	2221-76.6
	1991-92	Bob Chipman	27-5	.844	12-4 (1)	.750		2819-88.1	2341-73.2
	1992-93	Bob Chipman	27-5	.844	13-3 (1)	.813		2651-82.8	2187-68.3
	1993-94	Bob Chipman	29-4	.879	15-1 (1)	.938		2841-86.1	2482-75.2
	1994-95	Bob Chipman	22-8	.733	13-3 (T1)	.813		2684-89.5	2319-77.3
	1995-96	Bob Chipman	16-11	.593	9-7 (T3)	.563		2150-79.6	2092-77.5
	1996-97	Bob Chipman	24-9	.727	15-3 (1)	.833		2606-79.0	2394-72.5
	1997-98	Bob Chipman	19-9	.679	11-5 (4)	.687		2119-75.7	1903-68.0
	92 SEASONS		1,225-920-4	.571					

ALL-TIME ICHABOD SCORES

1905-06: 8-7-1 Coach • Unknown 30 R.R.Y.M.C.A. 17 0 Wichita State 0 19 Kansas 22 37 Fairmount 10 43 Friends 8 16 Chillico Indians 22 24 Newton AC 53 38 Kansas State 22 32 Kansas State 8 29 Kansas State 32 30 Fort Riley 32 66 Fairmount 9 12 Kansas 39 32 St. John's 22 25 Kansas State 18 17 Baker 43 450 POINTS 314	1906-07: 9-5 Coach • Unknown 1907-08: No Record Coach • Unknown 1908-09: 7-4 Coach • Unknown 25 Nebraska 26 21 Ottawa 25 17 Kansas 19 15 Kansas 39 42 Kansas State 38 39 Kansas State 24 31 Newton 30 48 Wichita State 45 45 Friends 21 26 Southwest 20 27 Newton 43 309 POINTS 330	1909-10: 4-0 Coach • Unknown 27 Topeka High School 21 45 Ottawa 18 32 Baker 16 46 Ottawa 22 150 POINTS 77	1910-11: 1-3-1 Coach • Unknown 32 YMCA 38 16 RRYMCA 68 27 Wichita State 27 20 Baker 60 2 Denver 1 97 POINTS 194	1911-12: 11-3 Coach • Unknown 60 Campbell 18 43 Midland 31 24 Haskell 28 15 Baker 52 23 Ottawa 20 21 Wentworth 19 22 William Jewell 15 22 William Jewell 15 23 Kansas State 26 45 Baker 36 60 YMCA 16 33 St. Mary's 21 32 Kansas State 23 41 Ottawa 21 442 POINTS 326	1912-13: 3-13 Coach • Unknown 52 Central Missouri 36 17 Missouri 26 16 William Jewell 20 30 Kansas 32 58 Campbell 12 18 Kansas State 30 27 Kansas State 38 25 Kansas State 29 28 College of Emporia 33 54 Midland 22 28 College of Emporia 53 30 Kansas State 41 26 Kansas State 38 32 Kansas State 33 14 Kansas 27 18 William Jewell 25 473 POINTS 495	1913-14: 6-8 Coach • Unknown 81 Campbell 19 25 Kansas State 44 41 Kansas 40 39 Kansas State 43 19 College of Emporia 38	1914-15: 5-6 Coach • Unknown 48 Bethany 30 23 Kansas State 26 23 Baker 47 28 Kansas 53 33 Southwestern 24 21 Baker 40 33 Ottawa 30 48 Kansas State 28 35 College of Emporia 43 16 St. Mary's 35 37 Ottawa 26 345 POINTS 382	1915-16: 1-8-1 Coach • Unknown 13 Bethany 16 10 Kansas 38 10 Kansas State 66 25 Kansas Normals 36 51 Kansas Wesleyan 51 24 Bethany 41 25 McPherson 31 22 Kansas Wesleyan 35 17 Ottawa 33 25 YMCA 18 222 POINTS 365	1916-17: 5-11 Coach • Unknown 46 Friends 24 26 McPherson 19 20 Midland 17 16 Kansas State 46 20 Kansas Wesleyan 38 34 Midland 19 21 Ottawa 57 9 Kansas 55 3 Kansas State 76 3 Cooper 31 39 Salina 31 15 Bethany 25 23 McPherson 30 16 Salina 38 18 St. Mary's 45 26 St. Mary's 31 371 POINTS 582	1917-18: 2-9 Coach • Unknown 32 Ottawa 42 33 Kansas Wesleyan 22 12 College of Emporia 32 13 St. Mary's 29 24 Kansas Wesleyan 32 11 Baker 42 28 Bethany 37 24 Bethel 49 33 Midland 31 24 College of Emporia 37 23 Baker 47 21 St. Mary 23 247 POINTS 400	1918-19: 10-5 Coach • Unknown 32 Haskell 24 20 Kansas State 36 39 Bethany 34 30 College of Emporia 27 18 Baker 30 34 College of Emporia 26 18 Kansas State 31 36 Emporia State 31 31 Fort Hays State 26 26 Baker 29 40 St. Mary's 33 34 Kansas Wesleyan 18 32 College of Emporia 14 37 Halstead AC 2 17 Southwestern 22 20 Emporia State 26 44 Los Angeles AC* 21 25 KCAC* 20 499 POINTS 325	1919-20: 12-4 Coach • Unknown 25 College of Emporia 14 40 Kansas 50 29 Fort Hays State 12 22 St. Mary's 19 26 Baker 22 34 St. Phillips AC* 11 31 Southwestern 26	1920-21: 8-7 Coach • Unknown 46 McPherson 21 30 Wichita State 43 29 Southwestern 26 40 Ottawa 25 26 St. Mary's 31 23 Friends 17 19 Kansas State 26 31 College of Emporia 18 20 Southwestern 32 30 Wichita State 43 28 College of Emporia 24 31 Pittsburg State 27 28 Wichita State 21 381 POINTS 354	1921-22: 10-8 Coach • Dwight Ream 19 Ottawa 32 17 College of Emporia 28 30 Baker 19 28 St. Mary's 17 20 Kansas Wesleyan 23 19 Fort Hays State 14 23 Fort Hays State 15 20 Kansas State 28 26 St. Mary's 8 23 Southwestern 17 27 Kansas Wesleyan 18 23 Kansas 24 23 Baker 33 27 Benedictine 21 27 KCAC 51 352 POINTS 348	1922-23: 6-7 Coach • Mike Vosburg 16 College of Emporia 36 35 Benedictine 12 12 McPherson 14 23 Pittsburg State 25 25 Ottawa 9 23 Kansas State 26 16 Southwestern 33 40 College of Emporia 33 40 Jackson 34 24 Baker 25 42 College of Emporia 17 29 Baker 14 44 Hale
--	--	---	--	---	---	---	--	--	--	---	--	--	---	--	--

1997-98 MIAA STANDINGS & HONORS

Team	Conference			Overall			Pts	Opp
	W	L	Pct	W	L	Pct		
Missouri Western	13	3	.813	23	7	.767	77.4	64.4
Northwest Missouri	13	3	.813	23	7	.767	75.8	65.8
Pittsburg State	12	4	.750	24	6	.800	79.4	65.8
WASHBURN	11	5	.688	19	9	.679	75.7	68.0
Truman State	8	8	.500	14	13	.519	66.1	67.1
Central Missouri	8	8	.500	14	13	.519	82.0	76.6
Missouri-Rolla	7	9	.438	12	15	.444	71.2	72.0
Southwest Baptist	6	10	.375	13	14	.481	65.9	62.7
Missouri Southern	6	10	.375	13	13	.500	77.2	73.5
Emporia State	3	13	.187	6	20	.231	62.6	73.5
Lincoln	1	15	.063	4	22	.154	67.1	82.5

1997-98 All-MIAA Men's Basketball Team

MVP

Shawn Harrington, G, NWMSU

Coach of the Year

Steve Tappmeyer, NWMSU

Freshman of the Year

Scott Holly, G, UMR

First Team

Oscar Gonzalez*, G, Jr, PSU

Antonio Rivers, F, Sr, CMSU

Randy Staats, G, Sr, WU

Shawn Harrington, G, Sr,
NWMSU

Nick Jenkins, G, Jr, MWSC

Cory Parker, F, So, TSU

*unanimous choice

Second Team

Brian Burleson, F, Sr, NWMSU

Mark Deveaux, G, Sr, SBU

Doug Gillispie, F, Jr, PSU

Jesse James, G, Jr, MWSC

Matt Olsen, C, Jr, MSSC

Matt Redd, F, Jr, NWMSU

Honorable Mention

Sebastien King, Jr, ESU

Ian Pinder, Sr, SBU

Ryan Pippett, Sr, UMR

Eric Carter, Fr, WU

Javier Velazquez, So, PSU

LeVant Williams, Jr, NWMSU

Scott Holly, Fr, UMR

Jimmy O'Donnell, Sr, TSU

Mario Phillips, Sr, MSSC

T.J. Roberts, Sr, PSU

Corey Shelby, Sr, PSU



1997-98 Men's Basketball Award Winners

1997-98 NABC/Chevy Trucks

NCAA Division II All-South

Central Team

First Team

Randy Staats, G, WU

Oscar Gonzalez, G, PSU

Antonio Rivers, F, CMSU

Second Team

Cory Parker, F, TSU

Shawn Harrington, G, NWMSU

1997-98 Daktronics/NCAA

Division II All-South

Central Team

First Team

Oscar Gonzalez, G, PSU

Antonio Rivers, F, CMSU

Shawn Harrington, G, NWMSU

Second Team

Randy Staats, G, WU

Cory Parker, F, TSU

1997-98 Division II Bulletin

All-America Team

Fourth Team

Shawn Harrington, G, NWMSU

Honorable Mention

Randy Staats, G, WU

Antonio Rivers, F, CMSU

Oscar Gonzalez, G, PSU

All-Freshman Team

Scott Holly, G, UMR

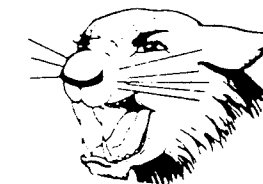
1998-99 MIAA OPPONENTS

Southwest Baptist University

January 2, 1999 - Home

Location: Bolivar, Mo.
Enrollment: 5,300
Nickname: Bearcats
Colors: Purple/White
Athletic Director: Stephanie Miller
SID: Chris Johnson
Phone: 417.326.1799
Fax: 417.326.1799
Email: n/a
Head Coach: Lynn Nance (Washington, 1965)

Record at SBU: 24-28 (2 years)
Career Record: 293-216 (18 years)
Assistant Coaches: Bill Lowery, Ron Nunnally
1997-98 Record: 13-14, (6-10, 8th MIAA)
Letterwinners Returning: 9
Letterwinners Lost: 5
Starters Returning: 2
Starters Lost: 3



Pittsburg State University

January 6, 1999 - Away
January 30, 1999 - Home

Location: Pittsburg, Kan.
Enrollment: 6,377
Nickname: Gorillas
Colors: Crimson/Gold
Athletic Director: Chuck Broyles
SID: Dan Wilkes
Phone: 316.235.4147
Fax: 316.235.4149
Email: dwilkes@pittstate.edu
Head Coach: Gene Iba (Tulsa, 1963)

Record at PSU: 62-28 (3 years)
Career Record: 288-230 (18 years)
Assistant Coaches: Swede Trenkle, Ryan Lindsey
1997-98 Record: 24-6, (12-4, 3rd MIAA)
Letterwinners Returning: 4
Letterwinners Lost: 5
Starters Returning: 2
Starters Lost: 3

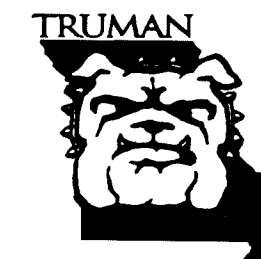


Truman State University

January 9, 1999 - Away
February 1, 1999 - Home

Location: Kirksville, Mo.
Enrollment: 6,300
Nickname: Bulldogs
Colors: Purple/White
Athletic Director: Walter Ryle
SID: Melissa Ware
Phone: 660.785.4127
Fax: 660.785.7475
Email: mware@truman.edu
Head Coach: Jack Schrader (Arizona State, 1975)

Record at TSU: 31-49 (3 years)
Career Record: 31-49 (3 years)
Assistant Coach: John Sloop
1997-98 Record: 13-14 (8-8, T-5th MIAA)
Letterwinners Returning: 7
Letterwinners Lost: 4
Starters Returning: 4
Starters Lost: 1



Missouri Western State College

January 11, 1999 - Home
February 3, 1999 - Away

Location: St. Joseph, Mo.
Enrollment: 5,158
Nickname: Griffons
Colors: Black/Gold
Athletic Director: TBA
SID: Pat Madden
Phone: 816.271.4257
Fax: 816.271.4544
Email: madden@griffon.mwsc.edu
Head Coach: Tom Smith (Valparaiso, 1967)

Record at MWSC: 214-87 (10 years)
Career Record: 384-268 (23 years)
Assistant Coaches: Mike Nicholson, Josh Keister
1997-98 Record: 23-7 (13-3, T1st MIAA)
Letterwinners Returning: 4
Letterwinners Lost: 7
Starters Returning: 2
Starters Lost: 3



University of Missouri-Rolla

January 13, 1999 - Home
February 13, 1999 - Away

Location: Rolla, Mo.
Enrollment: 5,000
Nickname: Miners
Colors: Silver/Gold
Athletic Director: Mark Mullin
SID: John Kean
Phone: 573.341.4140
Fax: 573.341.4880
Email: jkean@umr.edu
Head Coach: Dale Martin (Central Missouri, 1976)

Record at UMR: 150-142 (10 years)
Career Record: 150-142 (10 years)
Assistant Coaches: Michael McClain, Don Morris
1997-98 Record: 12-15 (7-9, 7th MIAA)
Letterwinners Returning: 7
Letterwinners Lost: 2
Starters Returning: 4
Starters Lost: 1



1998-99 MIAA OPPONENTS

Missouri Southern State College

January 16, 1999 - Away

Location: Joplin, Mo.
Enrollment: 5,300
Nickname: Lions
Colors: Green/Gold
Men's Athletic Director: Jim Frazier
SID: Joe Moore
Phone: 417.625.9359
Fax: 417.625.9397
Email: j-moore@mail.mssc.edu
Head Coach: Robert Corn (Missouri Southern, 1978)

Record at MSSC: 122-124 (9 years)
Career Record: 122-124 (9 years)
Assistant Coach: Chris Lowery
1997-98 Record: 13-13, (6-10, 9th MIAA)
Letterwinners Returning: 8
Letterwinners Lost: 4
Starters Returning: 4
Starters Lost: 1



Northwest Missouri State University

January 20, 1999 - Home
 February 17, 1999 - Away

Location: Maryville, Mo.
Enrollment: 6,200
Nickname: Bearcats
Colors: Green/White
Athletic Director: Dr. Jim Redd
SID: Andy Seeley
Phone: 660.562.1118
Fax: 660.562.2528
Email: nwsid@mail.nwmissouri.edu
Head Coach: Steve Tappmeyer (Southeast Mo., 1979)

Record at NWMSU: 161-116 (10 years)
Career Record: 161-116 (10 years)
Assistant Coach: Chris Johnson
1997-98 Record: 23-7, (13-3, T1st MIAA)
Letterwinners Returning: 7
Letterwinners Lost: 5
Starters Returning: 3
Starters Lost: 2



Lincoln University

January 23, 1999 - Away

Location: Jefferson City, Mo.
Enrollment: 3,400
Nickname: Blue Tigers
Colors: Navy Blue/White
Athletic Director: Theresa Ferguson
SID: Walt Klein
Phone: 573.681.5343
Fax: 573.681.5324
Email: wklein@mail.ultraweb.net
Head Coach: Bill Pope (Kansas, 1988)

Record at LU: 4-22 (1 year)
Career Record: 4-22 (1 year)
Assistant Coach: Lamont Frazier
1997-98 Record: 4-22 (1-15, 10th MIAA)
Letterwinners Returning: 7
Letterwinners Lost: 5
Starters Returning: 2
Starters Lost: 3



Emporia State University

January 27, 1999 - Away
 February 20, 1999 - Home

Location: Emporia, Kan.
Enrollment: 5,320
Nickname: Hornets
Colors: Black/Old Gold
Athletic Director: Dr. Bill Quayle
SID: J.D. Campbell
Phone: 316.341.5454
Fax: 316.341.5589
Email: campbelljesumail@emporia.edu
Head Coach: Mac Comstock (Hillsdale, 1976)

Record at ESU: 1st year
Career Record: 1st year
Assistant Coaches: Ty Baumgardner, Stefan Gates, David Fernandez
1997-98 Record: 6-20 (3-13, 10th MIAA)
Letterwinners Returning: 2
Letterwinners Lost: 11
Starters Returning: 1
Starters Lost: 4

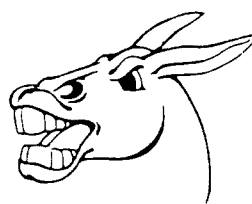


Central Missouri State University

February 6, 1999 - Home

Location: Warrensburg, Mo.
Enrollment: 11,500
Nickname: Mules
Colors: Cardinal/Black
Athletic Director: Jerry Hughes
SID: Bill Turnage
Phone: 660.543.4312
Fax: 660.543.8034
Email: turnage@cmsu1.cmsu.edu
Head Coach: Don Doucette (Mass-Boston, 1976)

Record at CMSU: 35-21 (2 years)
Career Record: 219-232 (16 years)
Assistant Coaches: Bill Walker, Mike Romps, Jeff Lauffer, Sam Cody
1997-98 Record: 14-13 (8-8, T5th MIAA)
Letterwinners Returning: 7
Letterwinners Lost: 4
Starters Returning: 2
Starters Lost: 3



1998-99 WASHBURN UNIVERSITY LADY BLUES



14 KRISTEN PIERCE	G	5-8	JR	Topeka, Kan./Topeka West High
15 LISA HOELTING	G	5-6	JR	Olpe, Kan./Butler County CC
20 TIFFANY LOHSE	F	5-10	SR	Hanover, Kan./Hanover High
21 BECKY BRIDSON	G	6-0	SR	Olathe, Kan./Johnson County CC
22 JENNIFER BUTCHER	F	5-10	SO	Olathe, Kan./Wichita State University
23 CYNTHIA MATHEWS	G	5-5	FR	Manteca, Calif./East Union High
25 JODI RAUSCH	F	6-0	SO	Garden Plain, Kan./Garden Plain High
30 KEYA DOWNING	F	5-11	JR	Topeka, Kan./Coffeyville CC
34 KELLY ANTHOLZ	C	6-1	SO	McDonald, Kan./Cheylin High
35 SARAH HURT	G	5-6	JR	Kingman, Kan./Seward County CC
42 JACQUE GANGEL	G	5-10	FR	Leawood, Kan./St. Thomas Aquinas High
44 BETH LENHERR	F	5-10	FR	St. Mary's, Kan./St. Mary's High

*transfer at end of first semester

LADY BLUES HEAD COACH



PATTY DICK
HEAD BASKETBALL COACH

Season-by-Season Records

1977-78	7-13
1978-79	6-15
1979-80	11-15
1980-81	11-14
1981-82	12-14
1982-83	21-8
1983-84	25-6
1984-85	16-13
1985-86	12-17
1986-87	24-7
1987-88	30-2
1988-89	*29-4
1989-90	23-7
1990-91	**23-7
1991-92	**27-5
1992-93	**31-1
1993-94	**22-8
1994-95	**24-7
1995-96	16-11
1996-97	19-8
1997-98	13-14

* NAIA National Tournament
** NCAA Division II National Tournament



Now entering her 22nd season at the helm of the Lady Blues basketball program, Patty Dick has led the program to four NCAA Division II national tournament appearances in the last six seasons. She began her affiliation with Washburn as an actual Lady Blue, playing on the first two teams in Washburn history while a student at the University. After getting her coaching start in the high school ranks, Dick returned to Washburn in 1977 and has been the mentor of the Lady Blues program ever since.

Dick enters the season with an overall career record of 402-196 (.672), making her the winningest coach in team history when ranked by both victories and winning percentage. She attained her 400th coaching victory against Central Missouri State University on Feb. 8 50-49. Dick has had eleven 20-win, five 25-win and two 30-win seasons while averaging 19.5 wins a season during her career. Dick has taken past five of her last eight teams to the NCAA Division II national tournament, including appearances in the quarterfinals in both 1992 and 1993.

It was during her 16th season – 1992-93 that Dick and her squad attained numerous team and personal milestones in what eventually became – win-by-win – the best season in team history.

During that season, Dick guided her Lady Blues to a 31-1 campaign, complete with a sweep of MIAA regular and postseason titles, and a No. 1 national ranking. Washburn made its third consecutive appearance in the NCAA Division II national tournament, winning a second straight South Central regional title before being eliminated in the quarterfinals, 78-77 in overtime, by Michigan Tech. That loss snapped the Lady Blues' school record win streak at 31 games. That record was just one of nine team single-season records set by a Lady Blues squad which also rewrote three MIAA records, and matched a fourth.

The 1992-93 season also was one of personal accomplishments for Dick. A win at Missouri-Rolla on Feb. 6, 1993, earned Dick her seventh consecutive 20-win season, and her ninth overall. She used another road win – this time on Feb. 17, 1993, at Northeast Missouri State – to celebrate another coaching milestone: her 300th career win.

Dick was well-rewarded for her accomplishments, picking up a trio of coach of the year honors. She was named by her peers in the conference as MIAA coach of the year, and was honored for the second straight year as Converse District 6 coach of the year as selected by the Women's Basketball Coaches Association (WBCA). In addition, she was honored for the fourth time in her career as Kansas coach of the year for women's four-year programs by the Kansas Basketball Coaches Association (KBCA).

Her coaching and administrative experiences have led to appointments on NCAA and state committees. Dick concluded her final year as chair of the NCAA South Central Advisory Committee in 1995-96. The advisory committees are responsible for providing recommendations to the Division II Women's Basketball Committee for selection of teams for the national tournament.

Dick was appointed by former Kansas Governor Joan Finney to a four-year term on the All-Sports Hall of Fame Board of Trustees which selects individuals for induction into the state's Hall of Fame.

Dick, who coached her 500th career game on Jan. 16, 1995, has been recognized by her peers for her coaching abilities in the form of honors at the state, conference and district level. She has earned MIAA coach of the year honors, and has twice been named Converse/WBCA District 6 coach of the year. In addition, she has earned KBCA coach of the year honors four times. She was also named NAIA District 10 coach of the year and Central States Intercollegiate Conference coach of the year when the Lady Blues were members of the NAIA.

Patty has deep ties to Washburn as she received her bachelor of education degree from the university in 1971. She was a member of the first intercollegiate team Washburn put on the court in 1970, and finished her collegiate playing career during 1971. After graduating from Washburn, she went on to the University of Kansas where she received her master of science degree in 1975.

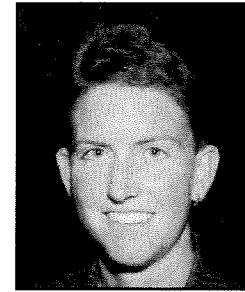
Her early career saw her coach volleyball, basketball, tennis, track and gymnastics at Washburn Rural High School in Topeka. She also served as physical education department dean for USD 437.

She returned to Washburn in 1977 as coach of both the basketball and softball teams, holding the dual coaching role for seven years. She also has served as the assistant to the athletics director, NCAA compliance officer, drug education coordinator and work-study facilities coordinator. She also logged two summers as activities coordinator for Washburn's National Youth Sports Program.

This fall, Patty was honored by Washburn University by being named an Alumni Fellow, a distinguished alumni of the university. She was also inducted into the Highland Park High School Hall of Fame this past year.

Perhaps the crowning moment this past year was her leadership and organization of the Billie Jean Moore Endowed Scholarship award dinner. The first-class banquet in honor of the former WU grad and Olympic coach, attracted such notable names as Jackie Joyner-Kersey, Pat Summitt and Sue Gunter.

LADY BLUES ASSISTANT HEAD COACHES



SUSAN DECKER
ASSISTANT BASKETBALL COACH

Susan Decker begins her first year as the Lady Blues top assistant. Decker spent the past two years as an assistant coach at Barton County Community College. In her two years at Barton County they compiled a record of 43-19.

Before going to Barton County, Decker was a graduate assistant coach at Emporia State for two seasons. During the 1994-95 season, she served as a graduate assistant at ESU under head coach Val Schierling, as the Hornets compiled an 11-15 record. A year later, she served under coach Cindy Stein and the Hornets compiled a 12-14 record. Decker also gained experi-

ence as an assistant girls basketball coach at Hillsboro Middle School from 1992-94.

Decker spent her playing career at Tabor College, where she garnered many honors. While at Tabor, Decker was an NAIA first team All-American, three-time District 10 Player of the Year, a two time KCAC Player of the Year, and was named KCAC player of the year in her first season.

She also helped her team to two undefeated conference records and led the Bluejays to the national tournament in one season. She was also a three year letter winner on the Bluejays softball team.



TERRY CURRY
ASSISTANT BASKETBALL COACH

Terry Curry is a new addition to the women's basketball program this year. She is an assistant coach and the team Sport Psychologist. She has coached volleyball, basketball, softball and soccer at the high school and college levels both in the United States and Canada. Her soccer team placed third in the nation when she coached at Houghton College in New York.

She has been awarded with Coach of the Year honors, published an exercise program for senior citi-

zens and developed a personality test implemented with athletes.

Curry received a Masters of Science in Education focusing on Sport Psychology at the University of Kansas. Her thesis topic was "Effects of Coaching on Spousal Relationships". She also received a Masters of Social Work degree from Washburn University. Besides coaching and sport psychology duties, she maintains a private practice, providing sport psychology and general therapy.



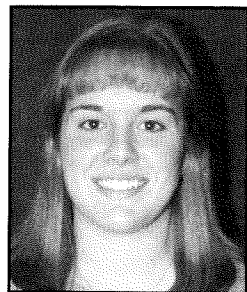
JOY MCGILTON
ASSISTANT BASKETBALL COACH

Former Washburn University basketball product Joy McGilton returns to the Lady Blues program as an assistant coach this season. McGilton was a Washburn graduate in 1976 with a Physical Education major and was a four year letter winner in basketball, softball and played

field hockey for two years.

McGilton was an assistant basketball coach for the Lady Blues during the 1976-77 season. She is also a former assistant basketball coach at Topeka High School and is currently a teacher and head softball coach at Topeka High.

PLAYER PROFILES



#14 KRISTEN PIERCE

5-8 • Guard • Junior
Topeka, Kan./Topeka West High

At Washburn: As a freshman in 1996-97: Appeared in 25 games for the Lady Blues as a freshman...Averaged 1.7 points and 1.1 rebounds a game...Scored a career-high ten points against Pittsburg State...Grabbed a career-best five rebounds versus MidAmerica Nazarene 12/13/96.

Kristen Pierce

Background: Averaged 17 points and five rebounds as a senior at Topeka West High...Selected first team all-Class 6A and third team all-state as a senior...Named to the all-city and all-I-70 League team...Selected to the KBCA all-star team and all-state academic squad...Named first team all-city in softball as a sophomore...A Garvey Scholarship and Kansas Honor Scholar winner.

Personal: Born on Dec. 23, 1977...Daughter of Mark and Linda Pierce...General Science and Physical Therapy Major at Washburn.

PIERCE'S CAREER WASHBURN STATS (52 GAMES)

POINTS-AVG:	174-3.5	ASSISTS:	29
FG-FGA-%:	68-165-.412	STEALS:	21
3PTFG-FGA-%:	14-34-.411	TURNOVERS:	49
REBOUNDS-AVG:	96-1.9	PERSONAL FOULS:	44



#15 LISA HOELTING

5-6 • Guard • Junior
Olpe, Kan./Butler County CC

At Washburn: Started 15 games last season averaging 8.3 points and 2.5 rebounds per game before suffering season-ending knee injury.

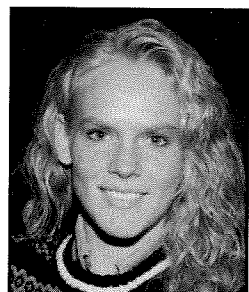
Lisa Hoelting

Background: A transfer from Butler County CC...Started 28 games at point guard for the Lady Grizzlies...Averaged 8.9 points and 5.1 assists per game...Hit 38 percent from behind the three-point arc...Shot 44 percent from the field...Played her prep ball at Olpe High...Named all-Lyon County League three times...A two-time all-Class 1A selection.

Personal: Born on July 27, 1978...Daughter of Galen and Vicki Hoelting...Undecided on a major.

HOELTING'S CAREER WASHBURN STATS (15 GAMES)

POINTS-AVG:	124-8.3	ASSISTS:	52
FG-FGA-%:	35-93-.376	STEALS:	40
3PTFG-FGA-%:	14-35-.400	TURNOVERS:	46
REBOUNDS-AVG:	38-2.5	PERSONAL FOULS:	40



#20 TIFFANY LOHSE

5-10 • Forward • Senior
Hanover, Kan./Hanover High

At Washburn: As a junior, averaged 10.1 points per game while dishing out team-leading 90 assists...averaged 5.9 rebounds...scored a career high 24 points against Texas Women's University last season...As a sophomore in 1996-97: Started in 21 of 22 games...Broke a bone in her foot during the CMSU game and sat out the next five contests, returning to action against Southwest Baptist 1/4/97...Named to

Tiffany Lohse

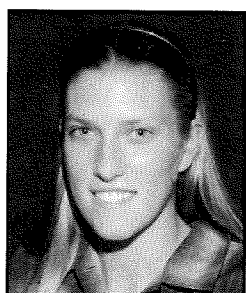
the MIAA all-academic team and to the Athletic Director's Honor Roll. As a freshman in 1995-96: Named the MIAA Freshman of the Year after averaging 9.9 points and 3.5 rebounds a game.

Background: Participated in basketball, volleyball, cross country and track at Hanover High...Finished her career as Hanover's all-time leading scorer with 1,430 points averaging 15.9 points per game...A three-time all-league pick who earned second team all-Class 1A accolades as a senior...Named the player of the year by both the Manhattan Mercury and Salina Journal

Personal: Born on Sept. 10, 1976...Daughter of Robert and Barb Lohse...Majoring in Physical Education.

LOHSE'S CAREER WASHBURN STATS (74 GAMES)

POINTS-AVG:	739-9.9	ASSISTS:	198
FG-FGA-%:	305-546-.559	STEALS:	124
3PTFG-FGA-%:	2-24-.083	TURNOVERS:	199
REBOUNDS-AVG:	334-4.5	PERSONAL FOULS:	157



#21 BECKY BRIDSON

5-10 • Guard • Senior
Olathe, Kan./Johnson County CC

At Washburn: Second leading scorer on last year's squad with 12.8 points and fifth in rebounds with 3.1 per game...Scored a career-high 28 points in season-ending loss to Missouri Western...named Honorable Mention All-Conference.

Becky Bridson

Background: Averaged 11.0 points a game for the Lady Cavaliers at Johnson County...Played her freshman season at the United States Air Force Academy...Led USAF in scoring (12.3 ppg), steals (40), three-point field goal percentage (.402) and free throw percentage (.818).

Personal: Born on Feb. 21, 1977...Daughter of Jim Bridson and Susie Nighingale.

BRIDSON'S CAREER WASHBURN STATS (27 GAMES)

POINTS-AVG:	346-12.8	ASSISTS:	53
FG-FGA-%:	138-292-.473	STEALS:	22
3PTFG-FGA-%:	25-82-.305	TURNOVERS:	52
REBOUNDS-AVG:	85-3.1	PERSONAL FOULS:	58

PLAYER PROFILES



#25 JODI RAUSCH

6-0 • Forward • Sophomore
Garden Plain, Kan./Garden Plain High

At Washburn: Played in 10 games, starting eight, last season before injuring knee...averaged 8.3 points and 4.7 rebounds per game...scored a career-high 24 points against Abilene Christian last season.

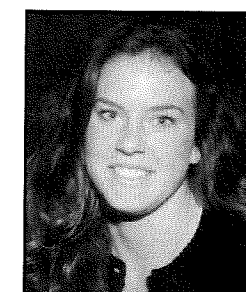
Jodi Rausch

Background: Named first team all-Class 2A as a junior and senior at Garden Plain High...Named the Class 2A Player of the Year as a senior after averaging 23.5 points and 8.0 rebounds a game for the 17-1 Owls...Shot an amazing 66 percent from the field...Averaged 18 points and nine rebounds a game as a junior...All-league and honorable mention all-state performer in volleyball...Placed in three events at the state track meet...A Kansas Honor Scholar.

Personal: Born on Sept. 4, 1978...Daughter of Michael and Nancy Rausch...Biology major at Washburn.

RAUSCH'S CAREER WASHBURN STATS (10 GAMES)

POINTS-AVG:	89-8.9	ASSISTS:	13
FG-FGA-%:	38-82-.463	STEALS:	21
3PTFG-FGA-%:	0-2-.000	TURNOVERS:	25
REBOUNDS-AVG:	47-4.7	PERSONAL FOULS:	27



#34 KELLY ANTHOLZ

6-1 • Center • Sophomore
McDonald, Kan./Chelin, High

At Washburn: Started in 13 of 27 games as a freshman averaging 5.0 points and 3.9 rebounds a game...scored a career-high 14 points against Missouri-Rolla.

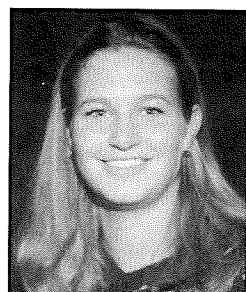
Kelly Antholz

Background: Was a three-sport standout at Chelvin High...Averaged 19.2 points and 11.6 rebounds a game as a senior in basketball...Was a two-time honorable mention all-state performer...Named all-league and all-area in volleyball...Selected as a Wendy's Kansas High School Heisman of the Year award winner.

Personal: Born on Jan. 18, 1979...Daughter of Herman and Barbara Antholz...English Education major.

ANTHOLZ'S CAREER WASHBURN STATS (27 GAMES)

POINTS-AVG:	135-5.0	ASSISTS:	12
FG-FGA-%:	56-109-.514	STEALS:	7
3PTFG-FGA-%:	0-0-.000	TURNOVERS:	35
REBOUNDS-AVG:	104-3.9	PERSONAL FOULS:	45



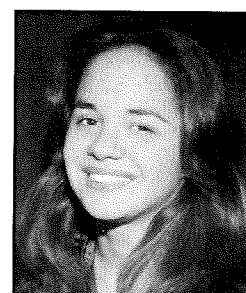
#22 JENNIFER BUTCHER

6-0 • Forward • Sophomore
Olathe, Kan./Wichita State

Background: A transfer from Wichita State who will provide both depth and strength to the forward position...Averaged 15.5 points and 6.9 rebounds a game at Olathe North High School...

Jennifer Butcher

Personal: Born June 27, 1979...Daughter of Michael and Rhonda Butcher...Majoring in Elementary Education at Washburn.



#23 CYNTHIA MATHEWS

5-5 • Guard • Freshman
Mateca, Cal./East Union High

Background: Averaged 14 points a game at East Union High shooting 46.7 percent from three-point range...Also averaged five assists and three steals being named

Cynthia Mathews

Valley Oak League MVP for the 1997-98 season.

Personal: Born March 23, 1980...Daughter of Ronald and Virginia Mathews...Majoring in Sports Psychology at Washburn.

PLAYER PROFILES

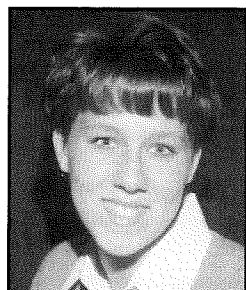


#30 KEYA DOWNING

5-11 • Forward • Junior
Topeka, Kan./Coffeyville CC

Background: Named Honorable Mention All-Conference at Coffeyville after averaging 13 points and six rebounds per game during the 1991-92 season...Named to the 1st Team All-City and a four-year letterman at Highland Park High after senior prep season...Named 2nd Team All-State and All-City during junior campaign.

Personal: Born July 19, 1973...Daughter of Rochelle Logan...Majoring in Speech at Washburn.

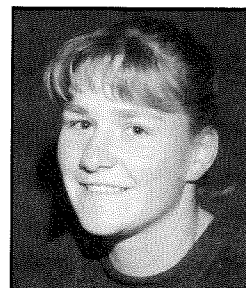


#44 BETH LENHERR

5-11 • Post • Freshman
St. Marys, Kan./St. Marys High

Background: Named All-League Academic all four years at St. Marys High School...Named to the All-League volleyball and basketball squads all four years...Played in the Kansas Basketball Coaches Association All-Star game in 1998.

Personal: Born July 16, 1980...Daughter of Larry and Mary Lenherr...Undecided on major



#35 SARAH HURT

5-6 • Guard • Junior
Kingman, Kan./Seward County High

Background: Named All-League guard freshman through senior seasons in high school at Kingman High...Named All-State and league MVP junior and senior campaigns...Southwest Kansas Player of the Year senior season.

Personal: Born November 10, 1977...Daughter of Dennis and Anita Hurt...Majoring in Physical Education at Washburn.

MAKING THE GRADES

The 1997-98 Lady Blues Basketball squad was successful on the court as well as in the classroom finishing second in the Women's Basketball Coaches Association Top 25 Division II Academic Team. The Lady Blues finished with an overall grade point average of 3.541 trailing only Regis University (Colo.) who finished with a 3.565 GPA. This was the second year in a row the Lady Blues finished with the top two GPAs in the country as the 1996-97 squad led the nation with a 3.608 GPA.

1997-98 STATISTICS

13-14 OVERALL, 7-9 MIAA
10-3 HOME, 3-11 AWAY, 0-0 NEUTRAL

Name	G-GS	MIN-MPG	FG-FGA	FG%	FT-FTA	FT%	OFF-DEF	AVG	PF-D	A	TO	BLK	ST	PTS	AVG
Nikki Olberding	27-27	927-34.3	170-376	.452	141-161	.876	48-150	7.3	86-2	68	76	16	43	498	18.4
Becky Bridson	27-17	871-32.3	138-292	.473	45-51	.882	38-122	5.9	58-1	53	52	5	22	346	12.8
Tiffany Lohse	27-27	879-32.6	110-260	.423	52-70	.743	38-122	5.9	66-1	90	98	10	61	272	10.1
Misty Caryl	27-24	892-33.0	43-118	.364	61-80	.763	48-48	2.8	57-0	90	69	3	36	158	5.9
Kelly Antholz	27-13	416-15.4	56-109	.514	23-32	.719	39-65	3.9	45-1	12	35	4	7	135	5.0
Kristen Pierce	27-4	438-16.2	53-112	.471	16-24	.667	27-41	2.5	30-0	17	30	1	13	131	4.9
Lisa Hoelting	15-15	416-27.7	35-93	.376	40-51	.784	13-25	2.5	40-1	52	46	1	40	124	8.3
Jodi Rausch	10-8	219-21.9	38-82	.463	13-21	.619	17-30	4.7	27-1	13	25	7	21	89	8.9
Shelby Angel	27-0	310-11.5	14-42	.333	14-25	.560	8-26	1.3	23-0	15	33	0	6	48	1.8
Becky Hanish	5-0	23-4.6	1-2	.500	3-4	.750	1-2	0.6	1-0	1	0	0	0	5	1.0
Angie Dalinghaus	1-0	9-9.0	0-0	.000	1-2	.500	0-1	1.0	0-0	0	1	0	0	1	1.0
TEAM							35-41	2.81			5				
WASHBURN	27	5400	658-1486	.443	409-521	.785	273-617	33.0	433-7411	470	47	249	1807	66.9	
OPPONENTS	27	5400	670-1520	.441	345-490	.704	319-622	34.9	494	402	514	66	251	1809	67.0

SCORE BY PERIODS	1ST	2ND	OT1	OT2	OT3	OT4	TOTAL
OPPONENTS	834	975					1809
WASHBURN	876	931					1807

LADY BLUES YEARLY SUMMARY

Year	WU Coach	Record	PCT	CONF	PCT	CONF. CHAMP	WU PTS	OPP PTS
1969-70	Jan Nuzman	0-5	.000	.	.	.	124-24.8	202-40.4
1970-71	Belinda McPherson	3-7	.300	.	.	.	295-29.5	377-37.7
1971-72	Belinda McPherson	4-9	.308	.	.	.	425-32.7	593-45.6
1972-73	Belinda McPherson	9-4	.692	.	.	.	605-46.5	457-35.2
1973-74	Belinda McPherson	2-10	.167	.	.	.	346-28.8	629-52.4
1974-75	Belinda McPherson	9-9	.500	.	.	.	976-54.2	926-51.4
1975-76	Carl Little	14-4	.778	.	.	.	1049-58.3	932-51.8
1976-77	Carl Little	9-13	.409	6-8 (5)	.429	Wayne State	1225-55.7	1370-62.3
1977-78	Patty Dick	7-13	.350	2-12 (8)	.143	Fort Hays State	1077-53.9	1180-59.0
1978-79	Patty Dick	6-15	.286	3-11 (T6)	.214	Emporia State	1204-57.3	1319-62.8
1979-80	Patty Dick	11-15	.423	5-9 (T6)	.357	ESU, FHSU	1650-63.5	1682-64.7
1980-81	Patty Dick	11-14	.440	4-10 (T6)	.286	Emporia State	1551-62.0	1618-64.7
1981-82	Patty Dick	12-13	.480	3-11 (T7)	.214	ESU, MWSC	1510-60.4	1508-60.3
1982-83	Patty Dick	21-8	.724	9-5 (T3)	.643	Missouri Western	2072-71.4	1778-61.3
1983-84	Patty Dick	25-6	.806	9-5 (1)	.643	WASHBURN	2292-73.9	1799-58.0
1984-85	Patty Dick	16-12	.571	6-8 (4)	.429	MSSC, ESU, MWSC	1984-70.9	1887-67.4
1985-86	Patty Dick	12-17	.414	6-8 (T6)	.429	FHSU, KSC, MSSC	1877-64.7	2080-71.7
1986-87	Patty Dick	24-7	.774	11-3 (1)	.786	WASHBURN	2313-74.6	1862-60.1
1987-88	Patty Dick	30-2	.938	13-1 (1)	.929	WASHBURN	2431-76.0	1825-57.0
1988-89	Patty Dick	29-4	.879	15-1 (1)	.938	WASHBURN	2436-73.8	2010-60.9
1989-90	Patty Dick	23-7	.767	14-2 (T1)	.438	WU, CMSU (N) /SEMSU (S)	2346-78.2	1941-64.7
1990-91	Patty Dick	23-7	.551	12-4 (3)	.750	Central Missouri	2241-74.7	1932-64.4
1991-92	Patty Dick	27-5	.844	13-3 (2)	.813	Pittsburg State	2340-73.1	1939-60.6
1992-93	Patty Dick	31-1	.969	16-0 (1)	1.000	WASHBURN	2449-76.5	1846-57.7
1993-94	Patty Dick	22-8	.733	13-3 (T2)	.813	Missouri Western	2259-75.3	1881-62.7
1994-95	Patty Dick	24-7	.774	13-3 (T2)	.813	Missouri Western	2254-72.7	1939-62.5
1995-96	Patty Dick	16-11	.593	11-5 (T3)	.563	CMSU, PSU, UMR	2150-79.6	2092-77.5
1996-97	Patty Dick	19-8	.704	12-6 (3)	.667	Missouri Western	1871-69.3	1739-64.4
1997-98	Patty Dick	13-14	.481	7-9 (T7)	.438	Emporia State	1807-66.9	1809-67.0
29 SEASONS		452-252	.648	203-127	.615	SIX CONFERENCE TITLES		



LADY BLUES RECORD BOOK

INDIVIDUAL RECORDS

- Most Games Played**
 Season: 33, Seven players, 1988-89
 Career: 126, Brenda Shaffer-Dahl, 1986-90
- Most Points Scored**
 Game: 38, Laura Mueller vs. Missouri-St. Louis, 2/23/91 (18FGs, 2FTs)
 Season: 714, Brenda Shaffer-Dahl, 1989-90
 Career: 2,613, Brenda Shaffer-Dahl, 1986-90
- Best Scoring Average**
 Season: 23.9, Brenda Shaffer-Dahl, 1989-90
 Career: 20.7, Brenda Shaffer-Dahl, 1986-90
- Most Field Goals Made**
 Game: 18, Brenda Shaffer-Dahl vs. Friends, 2/27/90 (26 att.)
 Laura Mueller vs. UMSL, 2/23/91 (23 att.)
 Season: 291, Kelly Jennings, 1987-88 (501 att.)
 Career: 1,061, Brenda Shaffer-Dahl, 1986-90 (2,034 att.)
- Most Field Goals Attempted**
 Game: 29, Brenda Shaffer-Dahl vs. PSU, 1/20/90 (14 made)
 Brenda Shaffer-Dahl vs. NEMSU, 2/21/90 (25 made)
 Season: 560, Brenda Shaffer, 1988-89 (282 made)
 Career: 2,034, Brenda Shaffer-Dahl, 1986-90 (1,061 made)
- Best Field Goal Percentage**
 Season (min. 200 att.): .611, Beth Fisher, 1990-91 (127 of 208)
 Career (min. 400 att.): .585, Kelly Jennings, 1986-88 (477 of 815)
- Most Three-Point Field Goals Made**
 Game: 7, Brenda Shaffer vs. ESU, 2/16/88 (8 att.)
 Rhonda Matzke vs. NEMSU, 1/30/93 (12 att.)
 Season: 51, Brenda Shaffer-Dahl, 1989-90 (123 att.)
 Career: 110, Brenda Shaffer-Dahl, 1986-90 (271 att.)
- Most Three-Point Field Goals Attempted**
 Game: 12, Rhonda Matzke vs. NEMSU, 1/30/93 (7 made)
 Season: 123, Brenda Shaffer-Dahl, 1989-90 (51 made)
 Career: 271, Brenda Shaffer-Dahl, 1986-90 (110 made)
- Best Three-Point Field Goal Percentage Season (min. one made per total games):**
 .528, Brenda Shaffer-Dahl, 1987-88 (51 of 123)
 Career (min. 0.5 made per total games):
 .380, Brenda Shaffer-Dahl, 1986-1990 (78 of 205)
- Most Free Throws Made**
 Game: 15, Shelley Foster vs. PSU, 2/18/95 (16 att.)
 Season: 154, Shelley Foster, 1994-95 (195 att.)
 Career: 485, Shelley Foster, 1991-95 (598 att.)
- Most Free Throws Attempted**
 Game: 16, Latisha Yarnell vs. Benedictine, 1/13/86 (12 made)
 Shelley Foster vs. PSU, 2/18/95 (15 made)
 Season: 195, Shelley Foster, 1994-95 (154 made)
 Career: 598, Shelley Foster, 1991-95 (485 made)
- Best Free Throw Percentage (min. 200 att.)**
 Career: .820, Rhonda Matzke, 1992-94 (201 of 245)
- Most Rebounds**
 Game: 23, Brenda Shaffer, vs. ESU, 2/16/88
 Season: 329, Kelly Jennings, 1987-88
 Career: 1,096, Brenda Shaffer-Dahl, 1986-90
- Best Rebound Average**
 Season: 10.7, Sue Knoebber, 1975-76
 Career: 10.6, Terri Lasswell, 1976-78
- Most Assists**
 Game: 15, Latisha Yarnell vs. Rockhurst, 11/29/86
 Season: 178, Latisha Yarnell, 1986-87
 Career: 527, Latisha Yarnell, 1984-88
- Best Assist Average**
 Season: 5.7, Latisha Yarnell, 1986-87
 Career: 4.4, Latisha Yarnell, 1984-88
- Most Personal Fouls**
 Season: 123, Laura Mueller, 1988-89
 Career: 427, Laura Mueller, 1988-92
- Most Games Fouled Out**
 Season: 8, Marty Decker, 1976-77
 Career: 23, Laura Mueller, 1988-92
- Most Points, Two Players**
 Game: 61, Laura Mueller (38) & Beth Fisher (23) vs. UMSL, 2/23/91

TEAM RECORDS

- Most Points Scored**
 Game: 120, vs. Missouri-St. Louis, Feb. 23, 1991
 Season: 2,449, 1992-93 (32 games)
- Best Scoring Average**
 Season: 78.2, 1988-89 (2,346 points, 30 games)
- Fewest Points Scored**
 Game: 29, vs. Marymount, 1976
 Season (min. 15 games): 976, 1974-75 (18 games)
- Most Points Allowed**
 Game: 99, vs. Fort Hays State, 1983
 Season (min. 15 games): 2,071, 1985-86 (29 games)
- Fewest Points Allowed**
 Game: 26, vs. St. John's, 1/25/83 vs. Baker, 11/20/93
 Season (min. 15 games): 926, 1974-75 (18 games)
- Most Field Goals Made**
 Game: 52, vs. Missouri-St. Louis, 2/23/91 (77 att.)
 Season: 979, 1987-88, (1,994 att.)
- Most Field Goals Attempted**
 Game: 88, vs. Benedictine, 1977, (27 made)
 Season: 1,994, 1987-88 (979 made)
- Best Field Goal Percentage**
 Game: .675, vs. Missouri-St. Louis, 2/23/91 (52-72)
 Season: .519, 1988-89 (861 made, 1,659 att.)
- Most Three-Point Field Goals Made**
 Game: 8, vs. MSSC, 3/2/95 (12 att.) vs. NWMSU, 2/25/95 (13 att.)
 Season: 72, 1989-90 (187 att.)
- Most Three-Point Field Goals Attempted**
 Game: 16, vs. NE Missouri State, 1/30/93 (7 made)
 Season: 233, 1988-1989 (208 att.)
- Best Three-Point Field Goal Percentage**
 Game (min. nine att.): .700, vs. Wayne State, 2/20/88 (7 of 10)
 Season: .393, 1987-88 (53 made, 135 att.)
- Most Free Throws Made**
 Game: 32, vs. NW Missouri State, 2/26/94 (45 att.)
 Season: 526, 1992-93 (718 att.)
- Most Free Throws Attempted**
 Game: 45, vs. NW Missouri State, 2/26/94, (32 made)
 Season: 728, 1991-92 (494 made)
- Best Free Throw Percentage**
 Game (min. 15 att.): .933, vs. MSSC, 3/2/94 (14-15)
 Season: .773, 1992-93 (526-718)
- Most Rebounds**
 Game: 68, vs. Bethel, 1982
 Season: 1,341, 1992-93
- Best Rebound Average**
 Season: 43.3, 1982-83
- Most Assists**
 Game: 32, vs. Friends, Nov. 22, 1991
 Season: 564, 1990-91
- Best Assist Average**
 Season: 18.8, 1990-91
- Most Personal Fouls**
 Game: 33, vs. Panhandle State, 1976
 Season: 558, 1988-89; 1994-95
- Most Players Fouled Out**
 Season: 28, 1976-77
- Miscellaneous**
 Most Games: 33, 1988-89 (29-4)
 Most Wins: 31, 1992-93 (31-1)
 Most Losses: 17, 1985-86 (12-17)
 Fewest Wins: 5, 1978-79 (5-15)
 Fewest Losses: 1, 1992-93 (31-1)
 Best Winning Percentage: .969
 1992-93 (31-1)
 Most Consecutive Wins: 31, 1992-93
 Most Consecutive Losses: 6, 77-78
 (7-13), 81-82 (23-14)
 Most Consecutive Home Wins: 44,
 (Streak began on 12/1/90, and ended with a loss on 3/20/93)

LADY BLUES INDIVIDUAL RECORD BOOK

CAREER SCORING

- BRENDA SHAFFER-DAHL • 1986-90 . . . 2,613
- SHELLEY FOSTER • 1991-95 . . . 2,144
- NIKKI OLBERDING • 1994-98 . . . 1,811
- LAURA MUELLER • 1988-92 . . . 1,761
- LATISHA YARNELL • 1984-88 . . . 1,558
- JOY BENTON • 1981-85 . . . 1,356
- AMY RENYER • 1989-93 . . . 1,310
- PAM WATKINS • 1977-81 . . . 1,139
- CHAUNA AGOSTO • 1991-95 . . . 1,111
- KELLY JENNINGS • 1986-88 . . . 1,090
- LORI ROENBAUGH • 1980-83 . . . 1,067
- CAROLYN WEMPE • 1985-89 . . . 1,029
- BRENDA SOLDANI • 1974-77 . . . 1,007
- CAROLYN ZLATNIK • 1974-77 . . . 957
- RHONDA MATZKE • 1992-94 . . . 956
- SUSIE WICKHAM • 1982-84 . . . 939
- BETH FISHER • 1990-94 . . . 863
- JANNICA BEAM • 1989-93 . . . 723
- JANELLE JOHNSON • 1981-85 . . . 710
- EMILY SHOPPER • 1995-97 . . . 693
- STACY WEWE • 1995-97 . . . 683
- AMY BYBEE • 1987-90 . . . 658
- DALENE LIBY • 1982-86 . . . 638
- RINA HEMBROUGH • 1988-1991 . . . 572
- JENNIFER HAMMAN • 1989-91 . . . 531

CAREER REBOUNDING

- BRENDA SHAFFER-DAHL • 1986-90 . . . 1,106
- AMY RENYER • 1989-93 . . . 923
- PAM WATKINS • 1977-81 . . . 812
- JOY BENTON • 1981-85 . . . 806
- SHELLEY FOSTER • 1991-95 . . . 736
- LATISHA YARNELL • 1984-88 . . . 715
- BRENDA SOLDANI • 1980-85 . . . 637
- NIKKI OLBERDING • 1994-98 . . . 630
- LAURA MUELLER • 1988-92 . . . 554
- BETH FISHER • 1990-94 . . . 508
- KELLY JENNINGS • 1986-88 . . . 507
- JANNICA BEAM • 1989-93 . . . 506
- SUSIE WICKHAM • 1982-84 . . . 491
- CAROLYN ZLATNIK • 1974-77 . . . 452
- LORI ROENBAUGH • 1980-83 . . . 432
- TERRI LASSWELL • 1976-78 . . . 377

SINGLE SEASON SCORING

	G	AVG	PTS
1. BRENDA SHAFFER-DAHL • 1989-90 . . .	30	23.9	718
2. BRENDA SHAFFER • 1988-89 . . .	33	21.4	706
3. KELLY JENNINGS • 1987-88 . . .	32	21.0	673
4. BRENDA SHAFFER • 1986-87 . . .	31	19.3	597
5. BRENDA SHAFFER • 1987-88 . . .	32	18.5	592
6. SHELLEY FOSTER • 1994-95 . . .	31	19.0	589
7. SHELLEY FOSTER • 1992-93 . . .	32	16.7	534
8. SHELLEY FOSTER • 1993-94 . . .	30	17.4	521
9. SUSIE WICKHAM • 1983-84 . . .	31	16.7	518
10. SHELLEY FOSTER • 1991-92 . . .	32	15.6	500
11. NIKKI OLBERDING • 1997-98 . . .	27	18.4	498
12. LAURA MUELLER • 1988-89 . . .	33	15.0	496
13. NIKKI OLBERDING • 1996-97 . . .	27	17.8	480
RHONDA MATZKE • 1992-93 . . .	32	15.0	480
15. RHONDA MATZKE • 1993-94 . . .	27	17.6	476
16. LATISHA YARNELL • 1987-88 . . .	32	14.6	466
17. NIKKI OLBERDING • 1995-96 . . .	27	16.9	456
18. LAURA MUELLER • 1990-91 . . .	28	16.1	450
19. SUSIE WICKHAM • 1982-83 . . .	29	14.5	421
20. KELLY JENNINGS • 1986-87 . . .	21	19.9	417

SINGLE GAME SCORING

- LAURA MUELLER VS. UM-ST. LOUIS • 1991 . . . 38
- BRENDA SHAFFER VS. EMPORIA STATE • 1988 . . . 37
- BRENDA SHAFFER-DAHL VS. NE MISSOURI ST. • 1990 . . . 35
- LAURA MUELLER VS. WILLIAM JEWELL • 1990 . . . 35
- NIKKI OLBERDING VS. PITTSBURG STATE • 1996 . . . 34
- LORI ROENBAUGH VS. DOANE • 1981 . . . 34
- LORI ROENBAUGH VS. NEB-KEARNEY • 1983 . . . 34
- BRENDA SHAFFER VS. ABILENE CHRISTIAN • 1989 . . . 34
- NIKKI OLBERDING VS. TARLETON • 1997 . . . 33
- BRENDA SHAFFER-DAHL VS. WILLIAM JEWELL • 1989 . . . 33
- BRENDA SHAFFER-DAHL VS. NE MISSOURI ST. • 1990 . . . 33
- BRENDA SHAFFER-DAHL VS. FRIENDS • 1990 . . . 33
- SHELLEY FOSTER VS. CENTRAL MISSOURI ST. • 1995 . . . 33
- NIKKI OLBERDING VS. MO. WESTERN • 1997 . . . 32
- NIKKI OLBERDING VS. MO. SOUTHERN • 1996 . . . 32
- TERRI LASSWELL VS. WAYNE STATE • 1978 . . . 32
- BRENDA SHAFFER-DAHL VS. UM-ST. LOUIS • 1990 . . . 32
- BETH FISHER VS. MISSOURI WESTERN • 1991 . . . 32
- JANELLE JOHNSON VS. FRIENDS • 1984 . . . 31
- BRENDA SHAFFER VS. COLORADO MINES • 1986 . . . 31
- BRENDA SHAFFER VS. PITTSBURG STATE • 1987 . . . 31
- BRENDA SHAFFER VS. MISSOURI SOUTHERN • 1989 . . . 31

LADY BLUES ALL-AMERICANS



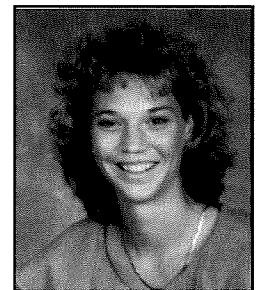
SUZIE WICKHAM



KELLY JENNINGS



BRENDA
SCHAFFER-DAHL



SHELLEY FOSTER

LADY BLUES YEARLY STATISTICAL LEADERS

SCORING

Year	Name	G	Pts.	Avg.
1997-98	Nikki Olberding	27	498	18.4
1996-97	Nikki Olberding	27	480	17.8
1995-96	Nikki Olberding	27	456	16.9
1994-95	Shelley Foster	31	589	19.0
1993-94	Shelley Foster	30	521	17.4
1992-93	Shelley Foster	32	534	16.7
1991-92	Shelley Foster	32	500	15.6
1990-91	Laura Mueller	28	450	16.1
1989-90	Brenda Shaffer-Dahl	30	718	23.9
1988-89	Brenda Shaffer	31	660	21.3
1987-88	Kelly Jennings	32	673	21.0
1986-87	Brenda Shaffer	31	597	19.3
1985-86	Latisha Yarnell	29	399	13.8
1984-85	Joy Benton	29	379	13.1
1983-84	Susie Wickham	31	518	16.7
1982-83	Susie Wickham	29	421	14.5

REBOUNDS

Year	Name	G	Reb.	Avg.
1997-98	Nikki Olberding	27	198	7.3
1996-97	Emily Shopper	27	184	6.8
1995-96	Emily Shopper	27	180	6.7
1994-95	Shelley Foster	31	242	7.8
1993-94	Shelley Foster	30	164	5.5
1992-93	Amy Renyer	32	250	7.8
1991-92	Amy Renyer	32	253	7.9
1990-91	Amy Renyer	30	212	7.1
1989-90	Brenda Shaffer-Dahl	30	281	9.4
1988-89	Brenda Shaffer	31	293	9.4
1987-88	Kelly Jennings	32	329	10.3
1986-87	Brenda Shaffer	31	259	8.4
1985-86	Latisha Yarnell	29	188	6.5
1984-85	Joy Benton	29	205	7.1
1983-84	Joy Benton	31	210	6.7
1982-83	Susie Wickham	29	282	9.7

FREE THROWS

Year	Name	FTM-FTA	FT%
1997-98	Nikki Olberding	141-161	.876
1996-97	Nikki Olberding	97-119	.815
1995-96	Stacy Neal	31-37	.838
1994-95	Stacy Neal	57-68	.838
1993-94	Rhonda Matzke	96-114	.842
1992-93	Amy Renyer	70-83	.843
1991-92	Shelley Foster	118-143	.825
1990-91	Amy Renyer	70-90	.778
1989-90	Brenda Shaffer-Dahl	103-124	.831
1988-89	Brenda Shaffer	107-125	.856
1987-88	Latisha Yarnell	104-127	.819
1986-87	Brenda Shaffer	97-129	.752
1985-86	Latisha Yarnell	105-135	.778
1984-85	Sharon Lord	36-45	.800
1983-84	Sharon Lord	33-43	.767
1982-83	Susie Wickham	91-133	.684

FIELD GOALS

Year	Name	FGM-FGA	FG%
1997-98	Becky Bridson	138-292	.473
1996-97	Emily Shopper	145-267	.543
1995-96	Tiffany Lohse	101-193	.523
1994-95	Shelley Foster	211-402	.525
1993-94	Shelley Foster	198-345	.574
1992-93	Shelley Foster	214-371	.577
1991-92	Beth Fisher	110-197	.558
1990-91	Beth Fisher	127-208	.611
1989-90	Laura Mueller	171-318	.538
1988-89	Laura Mueller	212-382	.555
1987-88	Kelly Jennings	191-501	.581
1986-87	Kelly Jennings	186-314	.592
1985-86	Marilee Baumchen	85-199	.427
1984-85	Joy Benton	163-286	.570
1983-84	Joy Benton	163-260	.627
1982-83	Joy Benton	134-243	.551

ASSISTS

Year	Name	G	Asst.	Avg.
1997-98	Tiffany Lohse	27	90	3.3
	Misty Caryl	27	90	3.3
1996-97	Nikki Olberding	27	86	3.2
1995-96	Misty Caryl	27	88	3.3
1994-95	Chauna Agosto	27	126	4.7
1993-94	Chauna Agosto	27	126	4.7
1992-93	Chauna Agosto	32	116	3.6
1991-92	Chauna Agosto	32	120	3.8
1990-91	Rina Hembrough	29	122	4.1
1989-90	Brenda Shaffer-Dahl	30	141	4.7
1988-89	Brenda Shaffer	31	119	3.8
1987-88	Latisha Yarnell	32	178	5.6
1986-87	Latisha Yarnell	31	176	5.7
1985-86	Laisha Yarnell	29	104	3.6
1984-85	Dalene Liby	29	85	2.9
1983-84	Brenda Soldani	31	98	3.2
1982-83	Brenda Roenbaugh	29	107	3.7
1981-82	Brenda Soldani	26	100	3.8

STEALS

Year	Name	G	Stls.	Avg.
1997-98	Tiffany Lohse	27	61	2.3
1996-97	Stacy Wewe	27	63	2.3
1995-96	Stacy Wewe	27	43	1.6
1994-95	Chauna Agosto	27	66	2.4
1993-94	Rhonda Matzke	27	67	2.5
1992-93	Amy Renyer	32	64	2.0
1991-92	Chauna Agosto	32	80	2.5
1990-91	Jennifer Hamman	30	61	2.0
1989-90	Brenda Shaffer-Dahl	30	62	2.1
1988-89	Brenda Shaffer	31	103	3.3
1987-88	Latisha Yarnell	32	95	3.0
1986-87	Latisha Yarnell	31	85	2.7
1985-86	Latisha Yarnell	29	64	2.2

LADY BLUES HONOR ROLL

1992-93 LADY BLUES GO 31-1 IN BEST SEASON EVER

The 1992-93 season was full of "first-ever" achievements for Head Coach Patty Dick and her Lady Blues as the team enjoyed its best season in history.

The Lady Blues' first-ever undefeated regular season (26-0) was highlighted by the team's first-ever No. 1 national ranking. That distinction came on Feb. 9, 1993, and the Lady Blues held onto the No. 1 spot for the remainder of the season.

Washburn won its first-ever MIAA regular season championship while claiming a postseason tournament crown for good measure. The Lady Blues won their second straight NCAA South Central regional title to advance to the quarterfinals of the national tournament. It was in the quarterfinals that the Lady Blues suffered their only defeat of the season, losing, 78-77, in overtime to Michigan Tech, ending Washburn's season at 31-1.

The team set nine single-season Washburn team records, including wins (31), fewest losses (1), winning



percentage (.969) and consecutive wins (31).

The squad also set team records for points scored (2,449), rebounds (1,341), free throws made (526) and free throw percentage (.773).

The Lady Blues also set or tied four MIAA records en route to a sweep of league titles.

LADY BLUES HONOR ROLL

- CoSIDA NCAA D-II All-America**
 1994-95 Shelley Foster, F, 3rd
All-So. Central Region
 1997-98 Nikki Olberding, F, 1st
 1994-95 Shelley Foster, F, HM
Dan Hansen Basketball Gazette All-America
 1993-94 Rhonda Matzke, G, HM
Women's D-II Bulletin All-America
 1997-98 Nikki Olberding, F, HM
 1993-94 Shelley Foster, F, HM
WBCA All-America
 1992-93 Shelley Foster, F, 1st
NAIA All-America
 1990-91 Brenda Shaffer-Dahl, F, 1st
 1987-88 Kelly Jennings, C, 3rd
 1986-87 Latisha Yarnell, G, HM
 1983-84 Sue Wickham, F, 2nd
GTE/CoSIDA Academic All-America
 1997-98 Nikki Olberding, 2nd
 1993-94 Rhonda Matzke, 2nd
 1992-93 Jannica Bean, 2nd
 1991-92 Beth Fisher, 2nd

- GTE/CoSIDA Academic All-District**
 1996-97 Stacy Wewe, 3rd
 1993-94 Rhonda Matzke, 1st
 1992-93 Jannica Bean, 1st
 1991-92 Beth Fisher, 1st
Kansas NCAA Woman of the Year
 1994-95 Shelley Foster, F
 1993-94 Rhonda Matzke, G
All-MIAA
 1997-98 Nikki Olberding, F, 1st
 1997-98 Becky Bridson, G, HM
 1996-97 Nikki Olberding, F, 1st
 1995-96 Nikki Olberding, F, 1st
 1994-95 Shelley Foster, F, 1st
 1993-94 Rhonda Matzke, G, 1st
 Shelley Foster, F, 2nd
 1992-93 Rhonda Matzke, G, 1st
 1991-92 Shelley Foster, F, 1st
 1990-91 Laura Mueller, C, 2nd
 1990-91 Laura Mueller, C, 2nd

- All-MIAA Freshmen**
 1992-93 Elena Rettiger, C
 1991-92 Chauna Agosto, G
 Shelley Foster, F
 1990-91 Beth Fisher, F
All-MIAA Academic
 1997-98 Nikki Olberding, F
 1996-97 Nikki Olberding, F
 Stacy Wewe, G
 Emily Shopper, F
 Tiffany Lohse, F
 1994-95 Elena Rettiger, C
 Julie Cunningham, F
 Angie Poell, F
 1993-94 Beth Fisher, F
 Shelley Foster, F
 Rhonda Matzke, G
 Rhonda Matzke, G
 Shelley Foster, F
 Lisa Kranz, C
 1992-93 Jannica Bean, F
 Beth Fisher, F
 Lisa Kranz, C
 Shelley Foster, F
 Rhonda Matzke, G
 1991-92 Jannica Bean, F
 Beth Fisher, F
 Laura Mueller, C

- MIAA Most Valuable Player**
 1992-93 Shelley Foster, F
MIAA Newcomer of the Year
 1995-96 Tiffany Lohse, F
 1994-95 Nikki Olberding, F
 1992-93 Rhonda Matzke, G
 1991-92 Shelley Foster, F
All-CSIC
 1989-90 Brenda Shaffer-Dahl, F, 1st
 1988-89 Brenda Shaffer-Dahl, F, 1st
 1987-88 Kelly Jennings, C, 1st
 Brenda Shaffer-Dahl, F, 1st
 Latisha Yarnell, G, 1st
 1986-87 Kelly Jennings, C, 1st
 Brenda Shaffer-Dahl, F, 1st
 1985-86 Latisha Yarnell, G, 1st
 1984-85 Joy Benton, F, 1st
CSIC Player of the Year
 1987-88 Brenda Shaffer-Dahl, F
CSIC Freshman of the Year
 1986-87 Brenda Shaffer-Dahl, F
 1984-85 Latisha Yarnell, G
CSIC Newcomer of the Year
 1986-87 Kelly Jennings, C

1997-98 MIAA STANDINGS & HONORS

Team	Conference			Overall			Pts	Opp
	W	L	Pct	W	L	Pct		
Emporia State (3)	16	0	1.000	33	1	.971	90.0	63.2
Missouri Western	12	4	.750	24	9	.727	76.5	67.2
Southwest Baptist	10	6	.625	18	11	.621	77.4	69.3
Pittsburg State	10	6	.625	18	11	.621	72.9	67.2
Central Missouri	9	7	.563	19	10	.655	69.8	62.3
Northwest Missouri	9	7	.563	18	9	.667	72.8	69.0
WASHBURN	7	9	.438	13	14	.481	66.9	67.0
Truman State	7	9	.438	13	14	.481	72.0	68.6
Lincoln	4	12	.250	5	21	.192	58.4	77.5
Missouri-Rolla	2	14	.125	8	18	.308	63.4	68.6
Missouri Southern	2	14	.125	4	22	.154	64.0	79.2

1997-98 ALL-MIAA WOMEN'S BASKETBALL TEAM

MVP

Aneta Kausaite, G, Sr, ESU

Coach of the Year

Cindy Stein, ESU

Freshman of the Year

Annie Heithoff, G, MWSC

First Team

Nikki Olberding, F, Sr, WU

Lashonda Albert, F, Sr, CMSU

Leslie Dudley, G, So, PSU

Aneta Kausaite, G, Sr, ESU

Jurgita Kausaite, F, Jr, ESU

Second Team

Pam Cummings, G, Sr, NWMSU

Any Eagan, G, Jr, TSU

Shari Grady, F, So, SBU

Becky Reichard, G, Jr, MWSC

Denise Sump, C, So, NWMSU

Honorable Mention

Annie Coy, Sr, NWMSU

Sara Elgin, Jr, MWSC

Megan Reid, Jr, PSU

Donease Smith, Sr, CMSU

Andrea Sykes, Jr, LU

Nicole Dinkins, Sr, ESU

Kim Glenn, Jr, SBU

Lakiya Miller, Jr, MWSC

Kry Sterward, So, PSU

Becky Bridson, Jr, WU

Jessica Burkholder, Sr, CMSU

Michelle Mikkelsen, Sr, SBU

Jaime Miller, FR, SBU

Mei Oikawa, So, SBU

Shanna Spann, Sr, ESU

1997-98 WOMEN'S BASKETBALL AWARD WINNERS

1997-98 WBCA/Kodak Division II

All-America Team

All-America

Aneta Kausaite, G, ESU

Honorable Mention

Lashonda Albert, F, CMSU

Leslie Dudley, G, PSU

Jurgita Kausaite, F, ESU

1997-98 Women's Division II

Bulletin All-America Team

First Team

Aneta Kausaite, G, ESU

Third Team

Lashonda Albert, F, CMSU

Honorable Mention

Nikki Olberding, F, WU

Leslie Dudley, G, PSU

Jurgita Kausaite, F, ESU

All-Freshman Team

Annie Heithoff, G, MWSC

1997-98 Daktronics/Division II

SID's All-South Central

Region Team

First Team

Nikki Olberding, F, WU

Lashonda Albert, F, CMSU

Aneta Kausaite, G, ESU

Jurgita Kausaite, F, ESU

Second Team

Annie Coy, F, NWMSU

Leslie Dudley, G, PSU

Becky Reichard, G, MWSC

Denise Sump, C, NWMSU

1997-98 Daktronics/Division II

SID's All-America Team

Second Team

Lashonda Albert, F, CMSU

Third Team

Aneta Kausaite, G, ESU

Honorable Mention

Jurgita Kausaite, F, ESU

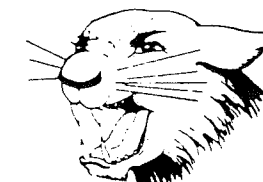
1998-99 MIAA OPPONENTS

Southwest Baptist University

January 2, 1999 - Home

Location: Bolivar, Mo.
Enrollment: 5,300
Nickname: Bearcats
Colors: Purple/White
Athletic Director: Stephanie Miller
SID: Chris Johnson
Phone: 417.326.1799
Fax: 417.326.1799
Email: n/a
Head Coach: Jim Middleton (Southwest Missouri, 1985)
Record at SBU: 74-38

(4 years)
Career Record: 74-38
(4 years)
Assistant Coaches: Charity Shira, Duane Trogdon, Jan Robins, Bobby Blankenship
1997-98 Record: 18-11, (10-6, 3rd MIAA)
Letterwinners Returning: 5
Letterwinners Lost: 6
Starters Returning: 3
Starters Lost: 2



Pittsburg State University

January 6, 1999 - Away
January 30, 1999 - Home

Location: Pittsburg, Kan.
Enrollment: 6,377
Nickname: Gorillas
Colors: Crimson/Gold
Athletic Director: Chuck Broyles
SID: Dan Wilkes
Phone: 316.235.4147
Fax: 316.235.4149
Email: dwilkes@pittstate.edu
Head Coach: Steve High (Northern Iowa, 1974)

Record at PSU: 163-90
(9 years)
Career Record: 163-90
(9 years)
Assistant Coaches: Corey Williams, Erin Jones
1997-98 Record: 18-11, (10-6, T-4th MIAA)
Letterwinners Returning: 7
Letterwinners Lost: 3
Starters Returning: 4
Starters Lost: 1

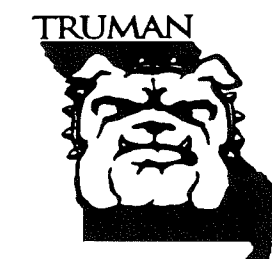


Truman State University

January 9, 1999 - Away
February 1, 1999 - Home

Location: Kirksville, Mo.
Enrollment: 6,300
Nickname: Bulldogs
Colors: Purple/White
Athletic Director: Walter Ryle
SID: Melissa Ware
Phone: 660.785.4127
Fax: 660.785.7475
Email: mware@truman.edu
Head Coach: Karin Nichols (Bradley, 1990)

Record at TSU: 32-46
(3 years)
Career Record: 32-46
(3 years)
Assistant Coach: Carol Russell
1997-98 Record: 13-14
(7-9, T-7th MIAA)
Letterwinners Returning: 8
Letterwinners Lost: 2
Starters Returning: 4
Starters Lost: 1

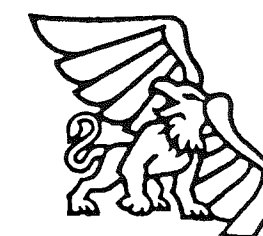


Missouri Western State College

January 11, 1999 - Home
February 3, 1999 - Away

Location: St. Joseph, Mo.
Enrollment: 5,158
Nickname: Griffons
Colors: Black/Gold
Athletic Director: TBA
SID: Pat Madden
Phone: 816.271.4257
Fax: 816.271.4544
Email: madden@griffon.mwsc.edu
Head Coach: Dave Slifer
Record at MWSC: 64-28

(3 years)
Career Record: 242-58
(9 years)
Assistant Coaches: Terri Schrishuhn, Josh Keister
1997-98 Record: 24-9
(12-4, 2nd MIAA)
Letterwinners Returning: ?
Letterwinners Lost: ?
Starters Returning: 5
Starters Lost: 0



University of Missouri-Rolla

January 13, 1999 - Home
February 13, 1999 - Away

Location: Rolla, Mo.
Enrollment: 5,000
Nickname: Miners
Colors: Silver/Gold
Athletic Director: Mark Mullin
SID: John Kean
Phone: 573.341.4140
Fax: 573.341.4880
Email: jkean@umr.edu
Head Coach: Linda Roberts (Illinois, 1976)

Record at UMR: 97-91
(7 years)
Career Record: 255-217
(19 years)
Assistant Coach: Anita Keck
1997-98 Record: 8-18
(2-14, T10th MIAA)
Letterwinners Returning: 7
Letterwinners Lost: 5
Starters Returning: 4
Starters Lost: 1



1998-99 WASHBURN UNIVERSITY ICHABODS AND LADY BLUES BASKETBALL SCHEDULE

ICHABODS

LADY BLUES

DATE	OPPONENT	PLACE	TIME
DISNEY DIVISION II TIP-OFF CLASSIC • Orlando, Fla.			
WASHBURN, Montana State-Billings, St. Michaels (Vt.), Queens (NC)			
Florida Southern, Kentucky Wesleyan, Augustana (SD), Presbyterian (SC)			
Fri., Nov. 13	vs. Montana State University - Billings		11:00a
Sat., Nov. 14	vs. St. Michaels (Vt.) or Queens (NC)		5:00 or noon
Sun., Nov. 15	Championship / Consolation		TBA
Wed., Nov. 18	at Kansas State University	Manhattan, Kan.	8:00
Fri., Nov. 20	FRIENDS (Kan.) UNIVERSITY	TOPEKA	7:00
Tues., Nov. 24	DRURY (Mo.) COLLEGE	TOPEKA	7:00
Thur., Nov. 26	BENEDICTINE (Kan.) COLLEGE	TOPEKA	7:00
Sat., Nov. 28	at Fort Hays (Kan.) State University	Hays, Kan.	7:00
Wed., Dec. 9	BAKER (Kan.) UNIVERSITY	TOPEKA	7:00
Fri., Dec. 11	WILLIAM JEWELL (Mo.) COLLEGE	TOPEKA	7:00
MOLTEN HIGH DESERT CLASSIC • Las Vegas, Nev.			
Sat., Dec. 19	University of Central Oklahoma		
Sun., Dec. 20	Seattle Pacific (Wash.) University		
Sat., Jan. 2	SOUTHWEST BAPTIST UNIVERSITY*	TOPEKA	7:30
Wed., Jan. 6	at Pittsburg State University*	Pittsburg, Kan.	7:45
Sat., Jan. 9	at Truman State University*	Kirkville, Mo.	8:00
Mon., Jan. 11	MISSOURI WESTERN STATE COLLEGE*	TOPEKA	7:30
Wed., Jan. 13	UNIVERSITY OF MISSOURI-ROLLA*	TOPEKA	7:30
Sat., Jan. 16	at Missouri Southern State College*	Joplin, Mo.	8:00
Wed., Jan. 20	NORTHWEST MISSOURI STATE UNIVERSITY*	TOPEKA	7:30
Sat., Jan. 23	at Lincoln University*	Jefferson City, Mo.	3:30
Wed., Jan. 27	at Emporia State University*	Emporia, Kan.	7:30
Sat., Jan. 30	PITTSBURG STATE UNIVERSITY*	TOPEKA	7:30
Mon., Feb. 1	TRUMAN STATE UNIVERSITY*	TOPEKA	7:30
Wed., Feb. 3	at Missouri Western State College*	St. Joseph, Mo.	7:30
Sat., Feb. 6	CENTRAL MISSOURI STATE UNIVERSITY*	TOPEKA	7:30
Wed., Feb. 10	Rockhurst (Mo.) College	TOPEKA	7:00
Sat., Feb. 13	at University of Missouri-Rolla*	Rolla, Mo.	7:45
Wed., Feb. 17	at Northwest Missouri State University*	Maryville, Mo.	7:30
Sat., Feb. 20	EMPORIA STATE UNIVERSITY*	TOPEKA	7:30
Feb. 22-27	MIAA Men's Basketball Championship Tournament		
Mar. 4-7	NCAA Division II South Central Regional		
Mar. 17-20	NCAA Division II Elite Eight		

DATE	OPPONENT	PLACE	TIME
Mon., Nov. 16	UNIVERSITY OF NEBRASKA-KEARNEY	TOPEKA	7:00
Sat., Nov. 21	BETHANY (Kan.) COLLEGE	TOPEKA	7:00
LADY BLUES / RAMADA INN CLASSIC • Topeka, Kan.			
• WASHBURN, Truman (Mo.) State, Fort Hays (Kan.) State, South Aussie Sport Institute •			
Fri., Nov. 27	Truman (Mo.) State vs. Fort Hays (Kan.) State		5:00
	WASHBURN vs. South Aussie Sport Institute		7:00
Sat., Nov. 28	Truman (Mo.) State vs. South Aussie Sport Institute		5:00
	WASHBURN vs. Fort Hays (Kan.) State		7:00
Tues., Dec. 1	ROCKHURST (Mo.) COLLEGE	TOPEKA	7:00
VALDOSTA STATE TOURNAMENT • Valdosta, Ga.			
Fri., Dec. 4	vs. Fort Valley (Ga.) State University		5:00
Sat., Dec. 5	at Valdosta (Ga.) State University		7:00
Sat., Dec. 19	CONCORDIA (Neb.) COLLEGE	TOPEKA	7:00
Mon., Dec. 28	at Florida Southern College	Lakeland, Fla.	6:00
Tues., Dec. 29	at Rollins (Fla.) College	Winter Park, Fla.	6:00
Sat., Jan. 2	SOUTHWEST BAPTIST UNIVERSITY*	TOPEKA	5:30
Wed., Jan. 6	at Pittsburg State University*	Pittsburg, Kan.	5:45
Sat., Jan. 9	at Truman State University*	Kirkville, Mo.	6:00
Mon., Jan. 11	MISSOURI WESTERN STATE COLLEGE*	TOPEKA	5:30
Wed., Jan. 13	UNIVERSITY OF MISSOURI-ROLLA*	TOPEKA	5:30
Sat., Jan. 16	at Missouri Southern State College*	Joplin, Mo.	6:00
Wed., Jan. 20	NORTHWEST MISSOURI STATE UNIVERSITY*	TOPEKA	5:30
Sat., Jan. 23	at Lincoln University*	Jefferson City, Mo.	1:30
Wed., Jan. 27	at Emporia State University*	Emporia, Kan.	5:30
Sat., Jan. 30	PITTSBURG STATE UNIVERSITY*	TOPEKA	5:30
Mon., Feb. 1	TRUMAN STATE UNIVERSITY*	TOPEKA	5:30
Wed., Feb. 3	at Missouri Western State College*	St. Joseph, Mo.	5:30
Sat., Feb. 6	CENTRAL MISSOURI STATE UNIVERSITY*	TOPEKA	5:30
Tues., Feb. 9	at Rockhurst (Mo.) College	Kansas City, Mo.	7:00
Sat., Feb. 13	at University of Missouri-Rolla*	Rolla, Mo.	5:45
Wed., Feb. 17	at Northwest Missouri State University*	Maryville, Mo.	5:30
Sat., Feb. 20	EMPORIA STATE UNIVERSITY*	TOPEKA	5:30
Feb. 22-27	MIAA Women's Basketball Championship Tournament		
Mar. 4-7	NCAA Division II South Central Regional		
Mar. 17-20	NCAA Division II Elite Eight		

Home Games (Blue, CAPS) played at Lee Arena (4,298 cap.)

*Mid-America Intercollegiate Athletics Association game

All times are Central Standard Time