

# WASHBURN UNIVERSITY



**"BRING ON THE BODS"**

<sup>80</sup>  
**1985 FOOTBALL  
MEDIA GUIDE**

## 1986 Washburn University Football Season Outlook

The 1986 edition of the Washburn University Ichabods appears to be the quickest and strongest ever. Approximately 30 junior college transfers have been added to a core of 38 returning lettermen. This combination of experience should provide the Ichabods with a key ingredient for success in '86. Washburn will be severely tested in their season opener against the University of South Dakota in the 10,000 seat DakotaDome located in Vermillion, South Dakota. Last year the Coyotes finished fourth in the nation in NCAA Division II.

Washburn's key loss has to be their all-time leading rusher, Dino DeLisa, who compiled 2,794 yards on a record 665 carries. A host of running backs will be vying to fill DeLisa's shoes. The Bods offense will also feel the absence of tight end Steve Tacca, who led the team in receiving with 34 receptions for 401 yards. Topeka senior Mike McGreevy has been moved from fullback to tight end to help fill Tacca's void. Sophomore Chris Bleue, from Ontario, Canada, will also help to fill the tight end role.

The quarterbacking duties see the return of senior Jim Bernard, who was one of three quarterbacks to lead Washburn to its first ever CSIC football championship in 1983. Battling Barnard for the starting nod will be junior college transfer Kyle Kingston from Butte College in California, where he passed for over 3,000 yards in two seasons. Whoever throws the ball for the Bods will have an abundance of receivers from which to choose. Returning seniors Aaron Walker and Mike Welch, along with junior Troy Slusser, make for a great group of wide receivers. The trio will also be joined by junior transfer Zach Morris from Pearl River Junior College in Mississippi. Washburn's offensive muscle up front will be provided by returning senior linemen Jim Collins, Lloyd Hanson and Jerry Nall. Those seniors will be rejoined by classmate Alex Mikaelian, who set out last season with a shoulder injury, after being named to the All-CSIC second team as a center in 1984.

The Ichabods defense will be loaded with the experience of nine returning starters. Heading that bunch are Washburn's three leading tacklers from a year ago; outside linebacker Eugene Battle, free safety Mark Brinker, and defensive back Brian McGovern. The Bod's "sack attack" line of Honorable Mention All-American Charles Braden, Jim Butler, Mik Shanks and Eric Otting returns after combining for well over half of Washburn's school record 35 quarterback sacks last season. Rounding out the defensive returning starters are inside linebackers, Kevin Williams and Kevin Keefe, who were sixth and seventh respectively on the team in tackles last year. Williams, Keefe and Battle will be in stiff competition for starting linebacker positions with junior college transfers Shawn Rose, Wade Dennis, Phillip Pearman, Troy Stedman, Darrin Chapman and Fred Collins. Washburn feels the strength of their defense will lie in their linebacking corps of both inside and outside linebackers. This year's senior oriented squad should provide some keen competition at every position on both sides of the ball.



### LARRY ELLIOTT - Head Coach

Larry Elliott enters his seventh full season as head coach of the Washburn University Ichabods. Elliott was head mentor for the Ichabods from 1974 to 1978, and then took the helm once again at the midway point of the 1984 season, following the resignation of head coach George Tardiff. In six and a half seasons at the helm, Elliott has compiled a 35-31-1 record, which ranks him third on Washburn's All-Time Winningest Coach's list behind number two, Ernie Bearg (47-30-5), and the all-time leader Dick Godlove (68-42-4).

Larry Elliott's name is very familiar to the Washburn "family" and the entire greater Topeka community. Elliott is a 1959 Washburn University graduate, and was an All-CIC selection in both football and basketball. In fact he still ranks fifth on the Ichabod's career passing list. Elliott is going on his 20th year of service to Washburn University. Larry is still ranked as the Ichabod's winningest baseball coach, having led them to a 188-174 (51.6%) record from 1967-79. Before coming to Washburn in 1966, Elliott was head football, basketball and baseball coach at Silver Lake High School in Silver Lake, Kansas.

This year Elliott handed the offensive coordinator duties over to assistant coach Bill Danenhauer, thus allowing him to oversee the entire football program. Elliott, a LaJunta, Colorado native who went to high school in Ulysses, Kansas, currently lives in Topeka with his wife Arlene.

### BILL DANENHAUER - Offensive Coordinator



Bill switches his coaching duties to the other side of the ball in this his second year at Washburn University. Last year Danenhauer coached the defensive line, as this season he will take over the offensive coordinator position. The move was made to relieve head coach Larry Elliott of those duties. The offensive coordinator position is not foreign to Danenhauer, who served in the same capacity at St. Cloud State University (Minnesota) in 1984.

At St. Cloud State, Danenhauer's squad finished second in the North Central Conference in total offense, setting a school record with 4,092 total offensive yards. Bill played collegiate football and also wrestled at the University of Nebraska in Omaha, where he graduated in 1981. Danenhauer played a brief stint in the NFL for the Pittsburgh Steelers in 1981, and then for the Baltimore Colts during the 1982 and '83 seasons. Bill and his wife Brenda has a son, Aaron, age two.

### DENNIS CARYL - Defensive Coordinator



Dennis has compiled 22 years of coaching experience, half of that at the collegiate level. Caryl, in his second year with the Ichabods, came to Washburn from Lincoln University (Okla.) where he was the offensive coordinator. Coach Caryl has gathered a vast variety of coaching experience from practically every level of football. As a high school head coach, he was twice named "coach of the year" in the state of Iowa. Dennis is the offensive coordinator for three years at Northwestern College (Iowa), including 1974 when the Red Raiders won the NAIA Division II National Championship. He was head coach at Upper Iowa University from 1976-78, which, at the time, was a member of the NAIA Division I. Caryl even has two years of coaching experience at the NCAA Division I-AA level, when he served as offensive line coach at Tennessee Tech University in 1980 and '81.

Dennis is a 1964 graduate of Northwestern College in Iowa, and has a master's degree from Northwest Missouri State University in Maryville, Missouri. Coach Caryl, a Sioux Rapids, Iowa native, and his wife Betty have three children, Arrow age 14, Beau age 12, and a daughter Misty age 10.



## **STEVE WALTER - Outside Linebackers, Special Teams & Recruiting Coordinator**

Steve enters his second season as Washburn's outside linebacker coach and special teams coordinator. Along with his coaching duties, Steve also serves as the football recruiting coordinator.

Coach Walter joined the Washburn staff after a two year stint at Friends University in Wichita, Kansas where he served as defensive coordinator and was responsible for coaching the defensive secondary. While at Friends, the defense ranked fourth in the nation in pass defense during both the 1983 and 1984 seasons, and ranked in the top ten nationally in total defense in 1984. Prior to his stint at Friends, Steve served as a graduate assistant for three years at the University of Kansas, highlighted by their 1981 appearance in the Hall of Fame Bowl. He also was on the staff at his alma mater, Bethany College (Ks.), when they posted back-to-back conference championships and NAIA Division II playoff berths in 1978 and 1979.

The Hoisington, Kansas native received his bachelor's degree from Bethany and his master's degree from the University of Kansas. Steve is married to the former Millie Wolff from Westwood, Kansas.

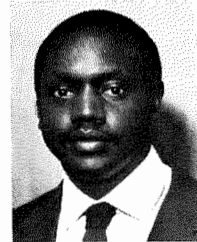


## **BRIAN KRAMER - Defensive Line and Strength and Conditioning Coordinator**

Brian serves the Washburn University athletic department as strength and conditioning coordinator for all varsity athletic teams. Kramer graduated from the University of Nebraska in Lincoln with a degree in exercise science, with an emphasis on strength coaching. While at Nebraska, Kramer served as an assistant strength coach for three years. Upon graduating from Nebraska in 1984, he went on to serve as an assistant strength coach at Texas A & M, while working on a masters degree in exercise physiology. In the spring of 1985 Kramer left Texas A & M to become the strength and conditioning coordinator at Washburn. Coach Kramer is a professional member of the National Strength and Conditioning Association, while also serving the state office of the NSCA as state director for Exercise Technique. Brian is a certified Strength and Conditioning Specialist through the professional organization of NSCA. He is on a national advisory board for strength training for special olympics in addition to being the Kansas State Director for Strength Training for special olympics.

Brian, a native of Cedar Rapids, Iowa, is married to his high school sweetheart, the former Joan Lessly, and they have two boys, two year old Justin, and one year old Blake.

## **TRAVIS BOULWARE - Defensive Secondary**



Travis begins his second year as defensive secondary coach for the Ichabods. Boulware came to Washburn from East Carolina University in Greenville, North Carolina, where he coached the defensive secondary for the Pirates. Prior to that, Travis served two years as a graduate assistant coach of the defensive secondary at Tennessee Tech University, where he was a starting defensive back in both years that he played for the NCAA Division I-AA Golden Eagles. Boulware played his first two years of

collegiate football at Chowan Junior College in Murfreesboro, North Carolina.

Coach Boulware, a native of High Point, North Carolina, is a 1982 graduate of Tennessee Tech University, where he received his Bachelor of Science degree in Physical Education. He went on to earn his Master's degree at Tennessee Tech in Health and Physical Education in 1984.



## **CHARLIE DIEKER - Offensive Line**

Charlie begins his fourth season as offensive line coach for the Ichabods. Dieker definitely has his coaching expertise in the offensive line, as the former collegiate offensive lineman has coached the offensive line in each of his ten years of college coaching. Charlie came to Washburn in 1983, after a one year stint at Panhandle State University in Oklahoma. Prior to that, Dieker coached three years at St. Mary of the Plains College in Dodge City, Kansas. He began his coaching career at Pleasant Hill High School in Pleasant Hill, Missouri, coaching football, wrestling and track.

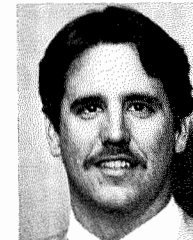
Coach Dieker, a 1977 graduate of Northwest Missouri State University in Maryville, Missouri, was a co-captain of the Bearcats and an All-Conference selection in the Missouri Intercollegiate Athletic Association. Charlie, a native of Shelbina, Missouri, and his wife Susan have a one year old daughter, Annie.



## **JIM STEELE - Offensive Backs**

Jim enters his first year with the Ichabod football program. The 23 year old Steele comes from Wayne State College in Wayne, Nebraska, where he served as a senior assistant coach for the Wildcats during the 1984 and '85 seasons. Jim played noseguard for Wayne State in 1982 and up until the midway point of the 1983 season when he suffered a knee injury that ended his playing career. He went on to earn his Bachelor of Science degree in Health and Physical Education, with a minor in Recreation, in May of 1986 from Wayne State.

Coach Steele, an Omaha, Nebraska native, was married this past August. His wife's name is Sandi, and she will be transferring from Wayne State to Washburn to continue working on her degree in psychology.



## **MARK ELLIOTT - Quarterbacks**

Mark enters his second year on the Washburn University coaching staff. Elliott, a 1984 Washburn graduate, returned to the Ichabod's football program after coaching football and track on the junior high level in St. Mary's, Kansas. Mark was a four year letterman at Washburn, rotating in as one of three quarterbacks in the Ichabod's 1983 CSIC championship season. The south-paw quarterback is ranked third on Washburn's all-time career passing list, and still holds the single season school record for the

best pass completion percentage, connecting on 80 of 133 passes in 1980 for a sparkling 60.2%.

Though Elliott was an all-state quarterback at Silver Lake High School in Silver Lake, Kansas in 1976, his college football career was put on hold for a three year period. Mark played firstbase three seasons in the Los Angeles Dodger's minor league system, before being released in the spring of 1980.

Elliott, a Silver Lake, Kansas native, received his bachelor's degree in physical education from Washburn in 1984, and has begun work on a master's degree in education administration. Mark, the son of head coach Larry Elliott, is married to the former Mary Fike of Carbondale, Kansas, who is a 1986 Washburn University graduate.

## University of South Dakota

Sept. 6  
1:30 p.m.

Game 1

Dakota Dome  
Vermillion, South Dakota

LOCATION: Vermillion, South Dakota  
ENROLLMENT: 6,000  
NATIONAL AFFILIATION: NCAA Div. II  
CONFERENCE: North Central  
NICKNAME: Coyote  
COLORS: Red & White  
STADIUM (Capacity): Dakota Dome (10,000)  
ATHLETIC DIRECTOR: Jack Doyle  
HEAD COACH (Alma Mater & Yr.): Dave Triplett (Iowa '72)  
RECORD AT USD: 46-33, 7 years  
CAREER RECORD: 46-33



Dave Triplett

ASSISTANT COACHES: Bob Entzion, John Fritsch, Dan Leikvold,  
John Mumford & Dave Cheesebrough

SPORTS INFORMATION DIRECTOR: Mike Mahon

SID OFFICE PHONE: (605) 677-5927

SID HOME PHONE: (605) 624-6570

PRESS BOX PHONE: (605) 677-5761

1985 RECORD: 10-3

CONFERENCE RECORD & FINISH: 7-2 (second)

SERIES RECORD: First meeting ever

RETURNING STARTERS: 7 Offense 6 Defense

PLAYERS TO WATCH: QB Scott Jones, TB Tony Higgins, DB Todd Salat,  
OC Jerry Gilinsky & OG Tim McFarland



The Coyotes

### 1985 Results (10-3)

Kearney State (Neb) ..... 20-3 W  
South Dakota State ..... 33-18 W  
at North Dakota ..... 45-3 W  
North Dakota State ..... 38-14 W  
at Augustana (SD) ..... 42-24 W  
Morningside (Ia) ..... 40-38 W  
at South Dakota State ..... 12-24 L  
Mankato State (Minn) ..... 35-14 W  
at St. Cloud State (Minn) ..... 24-40 L  
Northern Colorado ..... 49-6 W  
at Nebraska-Omaha ..... 20-17 W  
\*Central State (Ohio) ..... 13-10 W  
(20T)  
\*North Dakota State ..... 7-16 L  
\*NCAA Div. II Playoff Games

### 1986 Schedule

Sept. 6 Washburn University ... 1:30 pm  
Sept. 13 at So. Dakota St. .... 2:00 pm  
Sept. 20 North Dakota ..... 1:30 pm  
Sept. 27 at No. Dakota St. .... 7:30 pm  
Oct. 4 Augustana (SD) ..... 2:00 pm  
Oct. 11 at Morningside (Ia) ..... 2:00 pm  
Oct. 18 So. Dakota St. .... 1:30 pm  
Oct. 25 at Mankato St. (Minn) .. 1:30 pm  
Nov. 1 St. Cloud St. (Minn) ..... 1:30 pm  
Nov. 8 at Northern Colorado ... 2:00 pm  
Nov. 15 Nebraska-Omaha ..... 1:00 pm

## Northwest Missouri State University

Sept. 13  
7:30 p.m.

Game 2

Moore Bowl  
Topeka, Kansas

LOCATION: Maryville, Missouri  
ENROLLMENT: 5,000  
NATIONAL AFFILIATION: NCAA Div. II  
CONFERENCE: Missouri Intercollegiate Athletic Association  
NICKNAME: Bearcats  
COLORS: Green & White  
STADIUM (Capacity): Rickenbrode (7,500)  
ATHLETIC DIRECTOR: Dick Flanagan  
HEAD COACH (Alma Mater & Yr.): Vern Thomsen (Peru State (Neb) '61)  
RECORD AT NWMSU: 19-14-1, 3 years  
CAREER RECORD: 19-14-1



Vern Thomsen

ASSISTANT COACHES: Bob Green, Bob Lade, Bob Reece & Nelson Richter

SPORTS INFORMATION DIRECTOR: Larry Cain

SID OFFICE PHONE: (816) 562-1118

SID HOME PHONE: (816) 582-7554

PRESS BOX PHONE: (816) 652-1581, 1582

1985 RECORD: 4-6-1

CONFERENCE RECORD & FINISH: 2-3 (fourth)

SERIES RECORD: NWMSU leads 4-1

RETURNING STARTERS: 3 Offense 8 Defense

PLAYERS TO WATCH: FB Johnny Faulkner, PK Peter Rameh, OT Everett  
Jackson, DL Junior Mao, TB Alton Long & QB Dennis Bene



The Bearcats

### 1985 Results (4-6-1)

at Washburn U. (Ks) ..... 24-38 L  
Central St. of Ok ..... 27-33 L  
at Missouri Western ..... 24-18 W  
Central Arkansas ..... 31-17 W  
Lincoln Univ. (Mo.) ..... 31-14 W  
Central Missouri St. .... 18-10 W  
at Abilene Christian (Tx) ..... 24-24 T  
at Southeast Missouri St. .... 21-28 L  
Northeast Missouri St. .... 24-35 L  
at Missouri-Rolla ..... 6-44 L  
at Northern Iowa ..... 0-49 L

### 1986 Schedule

Sept. 6 U. of No. Dakota ..... 1:30 pm  
Sept. 13 at Washburn University 7:30 pm  
Sept. 20 Missouri Western St. ... 1:30 pm  
Sept. 27 at Wisconsin-Stevens Pt. 1:00 pm  
Oct. 4 at NE Missouri St. .... 1:30 pm  
Oct. 11 U. of Missouri-Rolla .... 1:30 pm  
Oct. 18 at Central Missouri St. .. 1:30 pm  
Oct. 25 SE Missouri State ..... 1:30 pm  
Nov. 1 at Western Illinois U. ... 1:00 pm  
Nov. 8 at Lincoln Univ. (Mo) ... 1:30 pm  
Nov. 15 at Illinois St. U ..... 1:30 pm

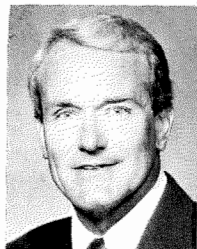
## Central Missouri State University

Sept. 20  
7:30 p.m.

Game 3

Moore Bowl  
Topeka, Kansas

LOCATION: Warrensburg, Missouri  
ENROLLMENT: 9,000  
NATIONAL AFFILIATION: NCAA Div. II  
CONFERENCE: Missouri Intercollegiate Athletic Association  
NICKNAME: Mules  
COLORS: Cardinal & Black  
STADIUM (Capacity): Vernon Kennedy Field (12,000)  
ATHLETIC DIRECTOR: Jerry Hughes  
HEAD COACH (Alma Mater & Yr.): Terry Noland (Southwest Missouri State '71)



Terry Noland

RECORD AT CMSU: 14-18, 3 years  
CAREER RECORD: 14-18  
ASSISTANT COACHES: Roy Wittke, Craig Wederquist, Mike Foster, Dave Ness & Tom Svehla

**SPORTS INFORMATION DIRECTOR: Bill Turnage**

**SID OFFICE PHONE: (816) 429-4312**

**SID HOME PHONE: (816) 747-5031**

PRESS BOX PHONE: (816) 429-4080

1985 RECORD: 3-7

CONFERENCE RECORD & FINISH: 2-3 (Tie for third)

SERIES RECORD: WU leads 9-5-2

RETURNING STARTERS: 7 Offense 8 Defense

PLAYERS TO WATCH: QOL John Ragsdale, K Steve Huff, LB Lanny Curnes, LB Mario Graham, NG David McKnight & FS Doug Dahman



The Mules

### 1985 Results (3-7)

at Nebraska-Omaha ..... 6-34 L  
Northeastern Oklahoma ..... 10-14 L  
**Washburn University** ..... 3-31 L  
Henderson State (Ark) ..... 3- 2 W  
at Northwest Mo. St. .... 10-18 L  
at Missouri-Rolla ..... 9-14 L  
at Northeast Mo. St. .... 6-49 L  
Southeast Missouri St. .... 25-14 W  
at Southwest Mo. St. .... 3-37 L  
Lincoln University (Mo) ..... 29- 3 W

### 1986 Schedule

Aug. 30 at Missouri West. St. ... 7:00 pm  
Sept. 6 Nebraska-Omaha ..... 7:30 pm  
Sept. 13 at Northeastern  
Oklahoma ..... 7:30 pm  
Sept. 20 at **Washburn U.** ..... 7:30 pm  
Sept. 27 at Henderson  
State (Ark) ..... 2:00 pm  
Oct. 4 Missouri-Rolla ..... 2:00 pm  
Oct. 11 at Southeast  
Missouri State ..... 1:30 pm  
Oct. 18 Northwest Missouri State 1:30 pm  
Oct. 25 Northeast Missouri State 1:30 pm  
Nov. 1 at Lincoln U. (Mo) ..... 1:30 pm  
Nov. 8 Southwest Missouri  
State ..... 1:30 pm

## Missouri Southern State College

Sept. 27  
7:30 p.m.

Game 4

Fred G. Hughes Stadium  
Joplin, Missouri

LOCATION: Joplin, Missouri  
ENROLLMENT: 4,500  
NATIONAL AFFILIATION: NAIA Div. I  
CONFERENCE: Central States Intercollegiate Conference  
NICKNAME: Lions  
COLORS: Green & Gold  
STADIUM (Capacity): Fred G. Hughes Stadium (7,000)  
ATHLETIC DIRECTOR: Jim Frazier  
HEAD COACH (Alma Mater & Yr.): Rod Giesselmann (Concordia College-Nebraska '71)



Rod Giesselmann

RECORD AT MSSC: First Year  
CAREER RECORD: First Year

ASSISTANT COACHES: Al Cade, Chuck Carrender, Dave Evans and Tom Junk

**SPORTS INFORMATION DIRECTOR: Dennis Slusher**

**SID OFFICE PHONE: (417) 625-9359**

**SID HOME PHONE: (417) 781-8319**

PRESS BOX PHONE: (417) 625-9359

1985 RECORD: 6-4

CONFERENCE RECORD & FINISH: 4-3 (Third)

SERIES RECORD: MSSC leads 9-6-1

RETURNING STARTERS: 8 Offense 6 Defense

PLAYERS TO WATCH: TB-Greg Dageforde, QB-Ray Hamilton, DT-Troy Ketchum, DT-Gordon Hale, QB-Mark McCray & WR-Greg Garton



The Lions

### 1985 Results (6-4)

Arkansas Tech ..... 21- 0 W  
Northwestern OK St. .... 40- 3 W  
at Southwestern Oklahoma  
State ..... 7-34 L  
at **Washburn University** ..... 6-19 L  
at Pittsburg St. U. (Ks) ..... 3-30 L  
Emporia St. U. (Ks) ..... 34-26 W  
at Kearney St. (Neb) ..... 24-20 W  
Missouri Western ..... 23- 0 W  
Fort Hays State U. (Ks) ..... 22-20 W  
a Wayne State (Neb) ..... 17-27 L

### 1986 Schedule

Sept. 13 Southwestern Okla. ... 7:30 pm  
Sept. 20 at Arkansas Tech ..... 7:00 pm  
Sept. 27 **Washburn U.** ..... 7:30 pm  
Oct. 4 Pittsburg St. U. (Ks) ..... 7:30 pm  
Oct. 11 at Emporia St. U. (Ks) .. 1:30 pm  
Oct. 18 Kearney St. (Neb) ..... 2:30 pm  
Oct. 25 at Missouri Western ..... 1:30 pm  
Nov. 1 at Fort Hays State  
U. (Ks) ..... 1:30 pm  
Nov. 8 Wayne State (Neb) ..... 1:30 pm

## Emporia State University

Oct. 4  
2:35 p.m.

Game 5

Welch Stadium  
Emporia, Kansas

LOCATION: Emporia, Kansas  
ENROLLMENT: 5,400  
NATIONAL AFFILIATION: NAIA Div. I  
CONFERENCE: Central States Intelligence Conference  
NICKNAME: Hornets  
COLORS: Black & Gold  
STADIUM (Capacity): Welch Stadium (7,000)  
ATHLETIC DIRECTOR: Dr. Bill Quayle  
HEAD COACH (Alma Mater & Yr.): Larry Kramer (Nebraska '65)  
RECORD AT ESU: 11-19, 3 years  
CAREER RECORD: 64-79-5

ASSISTANT COACHES: Randy Matthews, Richard McClure, Fredell Moore,  
Rick Remsberg & Dean Taylor

**SPORTS INFORMATION DIRECTOR: Ron Dinkel**

**SID OFFICE PHONE: (316) 343-1200 ext. 5454**

**SID HOME PHONE: (316) 343-3482**

PRESS BOX PHONE: (316) 343-2631

1985 RECORD: 6-4-0

CONFERENCE RECORD & FINISH: 3-4 (Tie for fourth)

SERIES RECORD: WU leads 40-38-5

RETURNING STARTERS: 10 Offense 8 Defense

PLAYERS TO WATCH: RB David Tryon, LB Dennis Ford, TE Michael Myers,

QB Randy Becnel, RB Gene Rowe & OL Bruce Walter



Larry Kramer



The Hornets

### 1985 Results (6-4)

at Western St. (Colo) ..... 35- 0 W  
Southwestern College (Ks) ..... 6- 0 W  
Baker University (Ks) ..... 25- 7 W  
Pittsburg State U. (Ks) ..... 41- 9 W  
at **Washburn U.** ..... 18-25 L  
at Missouri Southern ..... 26-34 L  
Missouri Western ..... 8-10 L  
Kearney State (Neb) ..... 17-14 W  
at Wayne State (Neb) ..... 26-24 W  
at Ft. Hays St. (Ks) ..... 26-35 L

### 1986 Schedule

Sept. 6 Western State (Colo) ... 7:30 pm  
Sept. 13 at Southwestern (Ks) .. 7:30 pm  
Sept. 20 at Baker  
University (Ks) ..... 7:30 pm  
Sept. 27 at Pittsburg State  
University (Ks) ..... 7:30 pm  
Oct. 4 **Washburn University** ..... 2:35 pm  
Oct. 11 Missouri Southern ..... 2:35 pm  
Oct. 18 at Missouri Western ..... 1:30 pm  
Oct. 25 at Kearney St. (Neb) ... 1:30 pm  
Nov. 1 Wayne State (Neb) ..... 2:00 pm  
Nov. 8 Ft. Hays State (Ks) ..... 1:30 pm

## Pittsburg State University

Oct. 11  
2:00 p.m.

Game 6

Moore Bowl  
Topeka, Kansas

LOCATION: Pittsburg, Kansas  
ENROLLMENT: 5,350  
NATIONAL AFFILIATION: NAIA Div. I  
CONFERENCE: Central State Intercollegiate Conference  
NICKNAME: Gorillas  
COLORS: Crimson & Gold  
STADIUM (Capacity): Brandenburg Stadium (5,600)  
ATHLETIC DIRECTOR: David Suenram  
HEAD COACH (Alma Mater & Yr.): Dennis Franchione  
(Pittsburg State '73)  
RECORD AT PSU: 8-1, 1 year  
CAREER RECORD: 22-6-2, 3 years

ASSISTANT COACHES: Frank Crespino, Lynn Meredith, Bill Samuels and  
Jerry Kill

**SPORTS INFORMATION DIRECTOR: Wayne Davenport**

**SID OFFICE PHONE: (316) 231-7000 ext. 4125**

**SID HOME PHONE: NA**

PRESS BOX PHONE: None

1985 RECORD: 8-2

CONFERENCE RECORD & FINISH: 6-1 (First)

SERIES RECORD: PSU leads 37-16-1

RETURNING STARTERS: 5 Offense 9 Defense

PLAYERS TO WATCH: QB Gene Stegeman, FB Bruce Stancell, TB Monte  
Weathers, LB Steve David, LB Bernard Brown & LB Lee Meyers



Dennis Franchione



### 1985 Results (8-2)

at Arkansas Tech Univ. .... 24-13 W  
Missouri-Rolla ..... 14-13 W  
at Emporia State (Ks) ..... 9-41 L  
Missouri Southern ..... 30- 3 W  
**Washburn University** ..... 35-18 W  
at Ft. Hays State (Ks) ..... 54-46 W  
Wayne State (Neb) ..... 50-29 W  
Kearney State (Neb) ..... 21- 7 W  
at Missouri Western ..... 40-15 W  
\*at Central Arkansas ..... 22-32 L

\*NAIA Div. I Playoffs

### 1986 Schedule

Sept. 13 Arkansas Tech U. .... 7:00 pm  
Sept. 20 at Missouri-Rolla ..... 7:30 pm  
Sept. 27 Emporia State (Ks) .... 1:30 pm  
Oct. 4 at Missouri Southern ..... 7:30 pm  
Oct. 11 at **Washburn Univ.** ..... 2:00 pm  
Oct. 18 Ft. Hays State U. (Ks) .. 1:30 pm  
Oct. 25 at Wayne State (Neb) .. 1:30 pm  
Nov. 1 at Kearney St. (Neb) ..... 1:30 pm  
Nov. 8 Missouri Western ..... 1:30 pm  
Nov. 15 Langston U. (Okla) .... 1:30 pm

## Wayne State College

Oct. 18  
1:30 p.m.

Game 7

Memorial Stadium  
Wayne, Nebraska

LOCATION: Wayne, Nebraska  
ENROLLMENT: 2,820  
NATIONAL AFFILIATION: NAIA Div. I  
CONFERENCE: Central States Intercollegiate Conference  
NICKNAME: Wildcats  
COLORS: Black & Gold  
STADIUM (Capacity): Memorial Stadium (3,500)  
ATHLETIC DIRECTOR: Ron Jones  
HEAD COACH (Alma Mater & Yr.): Pete Chapman (Nebraska '71)



Pete Chapman

RECORD AT WSC: 13-18, 3 years  
CAREER RECORD: 25-26, 5 years  
ASSISTANT COACHES: Mike Breske, Dennis Danielson, Shann McKeever,  
Steve Besch, Randy Ogren & Carl Calvert

**SPORTS INFORMATION DIRECTOR: Jean Berger**

**SID OFFICE PHONE: (402) 375-2200 ext. 326**

**SID HOME PHONE: (402) 375-5289**

PRESS BOX PHONE: (402) 375-2215

1985 RECORD: 4-6

CONFERENCE RECORD & FINISH: 3-4 (Tie for fourth)

SERIES RECORD: WU leads 6-5-0

RETURNING STARTERS: 4 Offense 6 Defense

PLAYERS TO WATCH: DB Lamont Lewis, P-WR Darin Blackburn, DT Randy Hupp, OL Mike Anderson, LB Greg Cavill & RB Todd Buchanan



Wildcats

### 1985 Results (4-6)

at Morningside (Ia) ..... 10-34 L  
at Chadron State (Neb) ..... 12-16 L  
Midland Lutheran (Neb)..... 37-13 W  
at Kearney St. (Neb) ..... 7-35 L  
Missouri Western ..... 14- 8 W  
Ft. Hays State (Ks) ..... 21-26 L  
at **Washburn Univ.** ..... 18-17 W  
at Pittsburg St. U. (Ks)..... 29-50 L  
Emporia St. U. (Ks) ..... 24-26 L  
Missouri Southern ..... 27-17 W

### 1986 Schedule

Sept. 6 Morningside (Ia) ..... 7:30 pm  
Sept. 13 Augustana (SD) ..... 7:30 pm  
Sept. 20 at Southwest  
State U. (Minn) ..... 1:30 pm  
Sept. 27 Kearney St. (Neb) ..... 1:30 pm  
Oct. 4 at Missouri West. .... 1:30 pm  
Oct. 11 at Ft. Hays  
State U. (Ks) ..... 2:00 pm  
Oct. 18 **Washburn Univ.** ..... 1:30 pm  
Oct. 25 Pittsburg St. U. (Ks) ... 1:30 pm  
Nov. 1 at Emporia St. U. (Ks) ... 1:30 pm  
Nov. 8 at Missouri  
Southern ..... 1:30 pm  
Nov. 15 at Minnesota-  
Morris ..... 5:00 pm

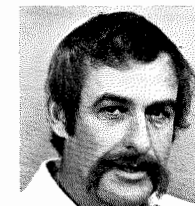
## Fort Hays State University

Oct. 25  
2:35 p.m.

Game 8

Lewis Field Stadium  
Hays, Kansas

LOCATION: Hays, Kansas  
ENROLLMENT: 5,400  
NATIONAL AFFILIATION: NAIA Div. I  
CONFERENCE: Central State Intercollegiate Conference  
NICKNAME: Tigers  
COLORS: Black & Gold  
STADIUM (Capacity): Lewis Field Stadium (7,000)  
ATHLETIC DIRECTOR: Robert Van Poppel  
HEAD COACH (Alma Mater & Yr.): John Vincent (Fort Hays State '71)



John Vincent

RECORD AT FHSU: 7-2-1, 1 year  
CAREER RECORD: 7-2-1, 1 year  
ASSISTANT COACHES: Mike DeBord, Jeff Briggs, Pat Poore, Keith Butler,  
Rick Hammans, Wayne Petterson, Carl Smith & Tom McCord

**SPORTS INFORMATION DIRECTOR: Kim Kimbro**

**SID OFFICE PHONE: (913) 628-5903**

**SID HOME PHONE: (913) 625-8485**

PRESS BOX PHONE: (913) 628-5316

1985 RECORD: 7-2-1

CONFERENCE RECORD & FINISH: 5-2 (Second)

SERIES RECORD: WU leads 31-17-3

RETURNING STARTERS: 5 Offense 7 Defense

PLAYERS TO WATCH: SB Eric Busenbark, SE Randy Knox, DE Paul Nelson,  
LB Randy Jordan, OG Rick Wheeler & FS Kelly Barnard



Tigers

### 1985 Results (7-2-1)

at Lincoln U. (Mo) ..... 35- 3 W  
at Adams State (Colo) ..... 34-24 W  
Panhandle St. (Okla)..... 19-19 T  
Missouri Western ..... 17- 7 W  
Kearney State (Neb) ..... 35-28 W  
at Wayne St. (Neb) ..... 26-21 W  
Pittsburg St. U. (Ks) ..... 46-54 L  
at **Washburn Univ.** ..... 30- 0 W  
at Missouri Southern ..... 20-22 L  
Emporia State U. (Ks)..... 35-26 W

### 1986 Schedule

Sept. 6 Lincoln U. (Mo) ..... 7:30 pm  
Sept. 13 Northwestern  
Oklahoma St ..... 7:30 pm  
Sept. 20 Black Hills  
State (SD)..... 2:30 pm  
Sept. 27 at Missouri West. .... 7:00 pm  
Oct. 4 at Kearney  
State (Neb)..... 1:30 pm  
Oct. 11 Wayne St. (Neb) ..... 2:00 pm  
Oct. 18 at Pittsburg  
State U. (Ks) ..... 2:00 pm  
Oct. 25 **Washburn Univ.** ..... 2:35 pm  
Nov. 1 Missouri Southern ..... 1:30 pm  
Nov. 8 at Emporia  
State U. (Ks) ..... 1:30 pm

## Missouri Western State College

Nov. 1  
1:30 p.m.

Game 9

Moore Bowl  
Topeka, Kansas

LOCATION: St. Joseph, Missouri  
ENROLLMENT: 4,200  
NATIONAL AFFILIATION: NAIA Div. I  
CONFERENCE: Central State Intercollegiate Conference  
NICKNAME: Griffons  
COLORS: Black & Gold  
STADIUM (Capacity): Spratt Memorial Stadium (6,000)  
ATHLETIC DIRECTOR: Ed Harris  
HEAD COACH (Alma Mater & Yr.): Dennis Darnell (Southwest Missouri State '69)



Dennis Darnell

RECORD AT MWSC: First Year  
CAREER RECORD: First Year  
ASSISTANT COACHES: Don Malson, Greg Lang, Dave Hedrick and Mike Buckler

SPORTS INFORMATION DIRECTOR: Paul Sweetgall

SID OFFICE PHONE: (816) 271-4257

SID HOME PHONE: (816) 364-6013

PRESS BOX PHONE: (816) 271-4257

1985 RECORD: 3-7

CONFERENCE RECORD & FINISH: 2-5 (Tie for Seventh)

SERIES RECORD: MWSC leads 7-5-2

RETURNING STARTERS: 7 Offense 8 Defense

PLAYERS TO WATCH: WR Eric Hoskins, DB Jewell Stephenson, RB Thurman Hoskins & OG Chris Wright



Griffons

### 1985 Results (3-7)

Missouri-Rolla ..... 24-15 W  
Northeast Missouri St. .... 30-31 L  
Northwest Missouri St. .... 18-24 L  
at Ft. Hays St. U (Ks) ..... 7-17 L  
at Wayne State (Neb) ..... 8-14 L  
Kearney State (Neb) ..... 17-20 L  
at Emporia St. U. (Ks) ..... 10- 8 W  
at Missouri Southern ..... 0-23 L  
**Washburn University** ..... 13-10 W  
Pittsburg St. U. (Ks) ..... 15-40 L

### 1986 Schedule

Aug. 30 Central Mo. St. .... 7:00 pm  
Sept. 6 at Missouri-Rolla ..... 1:30 pm  
Sept. 13 at Northwest Missouri  
State ..... 7:30 pm  
Sept. 20 at Northwest Missouri  
State ..... 1:30 pm  
Sept. 27 Fort Hays State  
U. (Ks) ..... 7:00 pm  
Oct. 4 Wayne State (Neb) ..... 1:30 pm  
Oct. 11 at Kearney  
State (Neb) ..... 1:30 pm  
Oct. 18 Emporia State U. (Ks) .. 1:30 pm  
Oct. 25 Missouri Southern ..... 1:30 pm  
Nov. 1 at **Washburn Univ.** ..... 1:30 pm  
Nov. 8 at Pittsburg  
State U. (Ks) ..... 1:30 pm

## Kearney State College

Nov. 8  
1:30 p.m.

Game 10

Moore Bowl  
Topeka, Kansas

LOCATION: Kearney, Nebraska  
ENROLLMENT: 8,900  
NATIONAL AFFILIATION: NAIA Div. I  
CONFERENCE: Central States Intercollegiate Conference  
NICKNAME: Antelopes  
COLORS: Royal Blue & Old Gold  
STADIUM (Capacity): Foster Field (6,500)  
ATHLETIC DIRECTOR: Allen H. Zikmund  
HEAD COACH (Alma Mater & Yr.): L. Claire Boroff (Kearney State '59)



Claire Boroff

RECORD AT KSC: 93-40-3, 13 years  
CAREER RECORD: 93-40-3, 13 years  
ASSISTANT COACHES: Terry Renner, Tom Sneckenberg, Darrel Morris and Russ Martin

SPORTS INFORMATION DIRECTOR: Don Briggs

SID OFFICE PHONE: (308) 234-8337

SID HOME PHONE: (308) 237-7113

PRESS BOX PHONE: (308) 234-8334

1985 RECORD: 3-6

CONFERENCE RECORD & FINISH: 3-4 (Tie for fourth)

SERIES RECORD: KSC leads 14-3-0

RETURNING STARTERS: 4 Offense 4 Defense

PLAYERS TO WATCH: DT Scott Cooper, SE Ted Murray & TB Kevin Trosper



Antelopes

### 1985 Results (3-6)

at U. of So. Dakota ..... 3-20 L  
Nebraska-Omaha ..... 6-10 L  
Wayne State (Neb) ..... 35- 7 W  
at Ft. Hays St. U. (Ks) ..... 28-35 L  
at Missouri Western ..... 20-17 W  
Missouri Southern ..... 20-24 L  
at Emporia St. U. (Ks) ..... 14-17 L  
at Pittsburg St. U. (Ks) ..... 7-21 L  
**Washburn University** ..... 21-16 W

### 1986 Schedule

Sept. 13 at Nebraska-Omaha ... 7:30 pm  
Sept. 20 at Moorhead  
State (Minn) ..... 7:30 pm  
Sept. 27 at Wayne St. (Ne) ..... 1:30 pm  
Oct. 4 Ft. Hays St. U (Ks) ..... 1:30 pm  
Oct. 11 Missouri Western ..... 1:30 pm  
Oct. 18 at Missouri Southern ... 1:30 pm  
Oct. 25 Emporia St. U. (Ks) .... 1:30 pm  
Nov. 1 Pittsburg St. U. (Ks) .... 1:30 pm  
Nov. 8 at **Washburn Univ.** ..... 1:30 pm

## 1986 Washburn University Pre-Season Football Roster

NAME	HT.	WT.	POS.	CLASS	HOMETOWN
Mark Bailey	6-4	225	TE	SO	Tribune, Kansas
Eugene Battle	5-11	201	OLB	SR	Jamestown, New York
Jeff Barbee	5-10	192	RB	JR	Lawrence, Kansas
Tim Beasley	6-0	195	QB	JR	Centralia, Missouri
Tim Bender	6-1	192	TE	SO	Republic, Missouri
Jim Bernard	6-0	196	QB	SR	Batavia, New York
Pete Blin	6-0	236	DL	SR	Bayonne, New Jersey
Chris Bleue	6-5	225	TE	SO	Weston, Ontario, Canada
Charles Braden	6-4	250	DL	SR	Avenal, New Jersey
Mark Brinker	6-1	198	FS	SR	Seneca, Kansas
Galen Brown	5-9	180	DB	JR	Belle Vernon, Pennsylvania
Mike Brown	5-6	185	RB	FR	Tampa, Florida
Anthony Bryan	5-10	181	DB	SO	St. Louis, Missouri
Mike Burget	6-0	197	RB	SO	Topeka, Kansas
Jim Butler	6-4	240	DL	JR	Sioux City, Iowa
Darrin Chapman	6-1	212	OLB	JR	Phoenix, Arizona
Neils Chapman	6-5	260	OL	JR	U.S. Virgin Islands
Fred Collins	6-0	212	OLB	JR	Los Angeles, California
Jim Collins	6-1	258	OL	SR	Topeka, Kansas
Kevin Covington	5-9	170	DB	JR	Phoenix, Arizona
Randy Craven	5-9	198	RB	SR	Denver, Colorado
Dechram Croker	6-0	185	DB	JR	Immokalee, Florida
Gilbert Crouse	5-11	206	OLB	FR	Everest, Kansas
Gene Cullinae	6-3	238	C	SO	Omaha, Nebraska
Wade Dennis	6-2	216	OLB	SO	Magnet, Nebraska
John Devine	6-6	238	OL	SR	Point Pleasant, New Jersey
Chad Domann	6-1	185	RB	FR	Winchester, Kansas
Gerald Douglas	5-10	241	DL	JR	St. Louis, Missouri
Stewart Ensign	6-2	230	DL	SO	Miltonvale, Kansas
Jim Fay	6-0	225	ILB	SO	Topeka, Kansas
Pete Flannigan	6-1	177	WR	SR	East Brunswick, New Jersey
Mike Gibson	6-4	255	OL	JR	Springfield, Missouri
Ronnie Giles	5-10	170	DB	JR	Chicago, Illinois
Hammond Gipson	5-11	182	DB	JR	Memphis, Tennessee
Barry Griffiths	6-2	203	QB	JR	Lakeside, California
Troy Griggs	5-11	200	OLB	FR	Wichita, Kansas
Lloyd Hanson	6-4	270	OL	SR	Pleasant Hill, Missouri
J.C. Haselby	5-9	173	OLB	SR	St. Louis, Missouri
Shannon Haydock	5-10	175	DB	JR	Fredonia, Kansas
Jeff Hersh	6-1	180	DB	FR	Fredonia, Kansas
Scott Holloman	5-11	202	RB	SO	Topeka, Kansas
Scott Howlett	6-1	180	LB	FR	Bayonne, New Jersey
Nick Hulsing	6-0	175	WR-P	FR	Silver Lake, Kansas
Vernon Haysaw	6-3	230	DL	SR	Denver, Colorado
Terry Ingram	6-1	183	WR	JR	Fort Pierce, Florida
Joe Jackson	6-2	210	OLB	JR	Gulfport, Mississippi
Vai Johnson	5-9	195	RB	JR	Henrietta, New York
Gary Jones	5-6	155	WR	JR	Gulfport, Mississippi
Kevin Keefe	6-2	236	ILB	SR	Brookfield, Connecticut
Pat Kelly	6-1	190	OLB	FR	BenLomond, California

## 1986 Washburn University Pre-Season Football Roster

NAME	HT.	WT.	POS.	CLASS	HOMETOWN
J.D. Kinimaka	6-1	220	ILB	JR	Manhattan Beads, California
Kyle Kingston	6-2	168	QB	JR	Sacramento, California
Nick Kresic	6-1	193	K	SR	St. Joseph, Missouri
Thad Lickhart	6-0	210	LB	SO	Atchison, Kansas
Shane McCall	5-10	193	FS	JR	Stockton, Kansas
Tony McDonald	5-10	197	OLB	JR	Manhattan, Kansas
Brian McGovern	5-9	180	DB	SR	Elizabeth, New Jersey
Mike McGreevy	5-11	212	TE	SR	Topeka, Kansas
Bruce Mellen	6-5	210	OLB	SO	Fredonia, Kansas
Alex Mikaelian	6-3	264	C	SR	Albuquerque, New Mexico
Zachery Morris	5-11	170	WR	JR	Angie, Louisiana
Dave Murphy	6-0	187	WR	JR	Novato, California
Troy Myers	6-1	217	DL	FR	Topeka, Kansas
Jerry Nall	6-2	270	OL	SR	Clayton, Illinois
David Oland	6-2	205	DL	FR	Bayonne, New Jersey
Eric Otting	6-5	248	DL	SO	Basehor, Kansas
Phillip Pearman	6-0	239	ILB	JR	Chicago, Illinois
John Perkins	5-10	190	RB	JR	Richmond, California
Clay Phillips	5-9	168	FS	SO	Westmoreland, Tennessee
Ed Poindexter	5-10	180	DB	JR	Moss Point, Mississippi
Lorenza Rayford	5-7	195	RB	JR	Angie, Louisiana
Darrin Rohr	6-1	204	RB	SR	Neodesha, Kansas
Shawn Rose	6-2	220	ILB	JR	Keokuk, Iowa
Ken Schmanke	6-1	195	RB	JR	Alma, Kansas
Mik Shanks	6-5	270	DL	SR	Minneapolis, Kansas
Bret Shaw	6-3	235	OL	JR	Topeka, Kansas
Steve Sheehan	6-4	280	OL	SO	Pleasant Hill, Missouri
James Shorter	5-11	190	RB	JR	Los Angeles, California
Troy Slusser	6-0	180	WR	JR	Topeka, Kansas
Scott Starbuck	6-0	185	OLB	JR	Tecumseh, Kansas
Troy Stedman	6-4	216	OLB	SO	Cedar Falls, Iowa
Bruce Stindt	6-1	235	DL	JR	Belleville, Kansas
Kevin Stous	5-10	170	DB	FR	Topeka, Kansas
Ron Suggs	6-2	170	WR	JR	Hazelcrest, Illinois
Kyler Tarwater	6-0	155	QB	FR	Mansfield, Texas
Harold Tillman	6-3	210	TE	JR	Wiggins, Mississippi
Andy Tsaffaras	6-2	200	TE	SR	Kenneth City, Florida
Mike VanSickle	5-10	165	WR	SR	Boone, Iowa
Aaron Walker	6-1	183	WR	SR	Neosho, Missouri
Dashiell Wandix	5-9	165	WR	FR	St. Louis, Missouri
Israel Warren	5-11	180	WR	JR	Jacksonville, Florida
Mike Welch	5-9	160	WR	SR	Topeka, Kansas
Curtis Williams	6-1	225	DE	JR	Aberdeen, Mississippi
Earl Williams	6-4	230	DL	SO	Chicago, Illinois
Kevin Williams	6-1	210	ILB	SR	Topeka, Kansas
Les Williams	5-10	175	RB	FR	St. Louis, Missouri
John Zimmers	6-2	257	OL	SO	Deerfield, Illinois

## 1985 ICHABOD HONOREES

### FIRST TEAM ALL-CSIC:

Charlie Braden - Defensive End (Jr.)  
Nick Kressic - Kicker (Jr.)

### SECOND TEAM ALL-CSIC:

Eugene Battle - Linebacker (Jr.)  
Mark Brinker - Defensive Back (Jr.)  
Dino DeLisa - Running Back (Sr.)  
Mik Shanks - Defensive Line (Jr.)  
Steve Tacca - Tight End (Sr.)

### HONORABLE MENTION ALL-CSIC:

Neils Chapman - Offensive Line (Jr.)  
Jim Collins - Offensive Line (Jr.)  
Vernon Hysaw - Defensive Line (Jr.)  
Mike McCartney - Quarterback (So.)  
Brian McGovern - Defensive Back (Jr.)  
Aaron Walker - Wide Receiver (Jr.)  
Mike Welch - Wide Receiver (Jr.)

### NAIA ALL-DISTRICT 10:

Charlie Braden - Defensive End (Jr.)

### HONORABLE MENTION ALL-AMERICA:

Charlie Braden - Defensive End (Jr.)

\***STEVE TACCA** signed as a free agent with the New York Jets of the NFL

## ICHABOD RECORDS BROKEN IN 1985

### TEAM RECORDS BROKEN . . .

LONGEST KICKOFF RETURN . . . Ed Vacek, 98 yards for a touchdown vs Central Missouri State (previous record = 97 yds by Bill Baker vs St. Benedictine, 1951)

TIED . . . LONGEST FIELD GOAL . . . 52 yards by Charlie Goodknight vs Emporia State (tied previous record of 52 yards set by Russ Hill vs Northern Colorado, 1972)

MOST QUARTERBACK SACKS BY A TEAM IN A SINGLE GAME . . . 7 vs NW Missouri State (previous record = 6 vs Fort Hays State, 1984)

MOST QUARTERBACK SACKS BY A TEAM IN A SEASON . . . 35 in 1985 (previous record = 30 in 1983)

### INDIVIDUAL RECORDS BROKEN . . .

MOST CARRIES IN A SINGLE GAME . . . 42 by Dino DeLisa vs Emporia State (previous record = 37 by Dino DeLisa vs Missouri Southern, 1983)

TIED . . . MOST FIELD GOALS IN A SEASON . . . 9 by Nick Kresic in 1985 (previous record = 9 by Mike Cassin, 1978 and by Kevin Cummings, 1979)

MOST YARDS IN A CAREER . . . 2,794 by Dino DeLisa 1983-85 (665 carries) (previous record = 1,927 by Leroy Harmon, 1945-49)

MOST CARRIES IN A CAREER . . . 665 by Dino DeLisa, 1983-85 (2,794 yards) (previous record = 472 by Kevin McCormick, 1969-71)

MOST SACKS BY A PLAYER IN A SINGLE GAME . . . 4 by Jim Butler vs Wayne State (previous record = 3 by Dan Remboldt vs Pittsburg State and Fort Hays State, 1984)

## 1985 Central States Intercollegiate Conference Standings

	CSIC W-L-T	CSIC PTS-OPP	OVERALL W-L-T	OVERALL PTS-OPP
*Pittsburg State	6-1-0	239-159	8-2-0	277-185
Fort Hays State	5-2-0	209-158	7-2-1	297-206
Missouri Southern	4-3-0	129-142	6-4-0	197-179
Emporia State	3-4-0	162-151	6-4-0	228-158
Wayne State	3-4-0	140-179	4-6-0	199-242
Kearney State	3-4-0	145-137	3-6-0	154-176
<b>Washburn</b>	<b>2-5-0</b>	<b>105-141</b>	<b>4-7-0</b>	<b>198-266</b>
Missouri Western	2-5-0	70-132	3-7-0	142-202

\*Pittsburg State lost to Central Arkansas 32-33 in the first round of the NAIA Div. I Playoffs

## CSIC Football Champions

- 1976 - Fort Hays State, Kearney State, Missouri Southern
- 1977 - Kearney State
- 1978 - Kearney State, Pittsburg State
- 1979 - Kearney State, Pittsburg State
- 1980 - Kearney State
- 1981 - Pittsburg State
- 1982 - Kearney State, Pittsburg State
- 1983 - **Washburn University**
- 1984 - Kearney State
- 1985 - Pittsburg State



# 1985 Washburn Ichabod Football Statistics

Won 4 Lost 7 Tied 0 Home 3-2 Away 1-5 CSIC 2-5

	OPP	WU		OPP	WU
TOTAL FIRST DOWNS	177	175	TIMES FUMBLED	23	24
Rushing	79	91	Lost	14	24
Passing	76	72	PENALTIES	81	88
Penalty	22	12	Yards	669	746
TOTAL OFFENSIVE YDS	3570	3157	SCORING		
Avg. per game	324.5	287	WU	45	56
Total plays	686	798	OPP	55	98
			4	48	198
			TOTAL	266	

RUSHING	GP	TC	YDS	YPC	GA	TD	LG
DeLisa	9	215	888	4.1	98.7	7	44
Vacek	10	96	300	3.1	30	3	25
McGreevy	6	31	130	4.2	21.7	0	19
Schmanke	3	30	90	3	30	0	24
Beasley	11	13	43	3.3	3.9	0	10
Bernard	2	6	40	6.7	20	0	17
Craven	11	17	40	2.3	3.6	0	9
Burget	3	6	26	4.3	8.6	0	8
Welch	11	3	22	2.4	2	0	16
Rohr	10	1	15	15	1.5	0	15
Van Sickle	11	1	10	10	.909	0	10
Mengarelli	1	2	10	5	10	0	9
Brinker	11	1	5	5	.454	0	5
Small	8	1	5	5	.625	0	5
Tsaffaras	3	8	1	.125	.333	0	18
McCartney	11	56	-44	-.786	-.4	0	9
WU	11	487	1581	3.2	143.7	10	44
OPP	11	385	1515	3.9	137.7	18	54

PASSING	GP	PC-PA-I	PCT	YDS	TD	LG
McCartney	11	119-245-20	.486	1369	9	45
Beasley	11	8-32-3	.250	123	0	27
Tsaffaras	3	5-27-1	.185	69	0	35
Rohr	10	1-4-0	.250	15	0	15
Bernard	2	0-2-0	.000	00	0	00
Flannigan	11	0-1-0	.000	00	0	00
WU	11	133-311-24	.428	1576	9	45
OPP	11	144-301-19	.478	2055	10	77

RECEIVING	GP	PC	YDS	YPC	GA	TD	LG
Tacca	11	34	401	11.8	36.5	1	37
Slusser	11	15	248	16.5	22.5	2	34
Walker	11	20	243	12.1	22.1	1	45
Welch	11	21	241	11.5	21.9	2	27
Bleue	8	8	149	18.6	18.6	2	35
Rohr	10	10	140	14	14	1	45
DeLisa	9	8	53	6.6	5.9	0	12
Van Sickle	11	3	46	15.3	4.2	0	20
Flannigan	11	3	25	8.3	2.3	0	10
Hickman	11	1	16	16	1.4	0	16
McGreevy	6	2	14	7	2.3	0	16
Burget	3	1	8	8	2.7	0	8
Finney	2	1	6	6	3	0	6
Bell	5	1	6	6	1.2	0	6
Vacek	10	3	8	2.7	800	0	5
McCartney	11	2	-28	-14	-2.5	0	0
WU	11	1333	1576	11.8	143.3	9	45
OPP	11	141	2055	14.6	186.8	10	77

1985 RESULTS			
NW Missouri St	38-24	Pittsburg St	18-35
Morningside	17-47	Wayne St	17-18
Cent. Mo St	31-3	Ft. Hays St	0-30
Missouri SO	19-6	Missouri W	10-13
Emporia St	25-18	Kearney St	16-21
		Sam Houston St	7-51

PUNTING	GP	NO	YDS	AVG	GA	BL	LG
Beasley	11	70	2608	37.2	237.1	0	74
WU	11	70	2608	37.2	237.1	0	74
OPP	11	62	2148	34.6	195.3	3	58

RETURNS	GP	KO	PUNT	INT	TD
Vacek		1016-328			1
Slusser		1113-303	8-26		1
Burget		35-50			
Gambrell		82-41			
Bryan		21-14	7-75		
Craven		111-12			
Hickman		11		2-33	
McGreevy		61-11			
Walker		111-10			
Phillips		11	2-10		1
Williams		9		2-0	
Harris		9		1-0	
Brinker		11		3-14	1
Haydock		11	1-20	4-38	
Battle		11		3-9	
McGovern		9		3-12	
Welch		11		12-69	
Rohr		102-21			
Blin		9	1-7		
Caldwell		10		1-5	
WU		1142-790	31-207	19-111	4
OPP		1129-305	38-303	24-363	4

SCORING	GP	TD	E-1	E-2	S	FG-A	TP
Kresic	11		18-20			9-13	45
DeLisa	9	7					42
Vacek	10	4		0-1			24
Slusser	11	3					18
Welch	11	2					12
Bleue	8	2					12
Battle	11	1					6
Phillips	11	1					6
A Walker	11	1					6
Rohr	10	1					6
Tacca	11	1		0-1			6
Brinker	11	1					6
Goodknight	11					1-2	3
McGreevy	6			1-1			2
Flannigan	11			1-1			2
Team	11				1		2
WU	11	24	18-20	2-4	1	10-15	198
OPP	11	33	23-25	6-8	0	11-14	266

### FIELD GOALS (MISSED)

FRESIC  
25, 32, (37), 33, 32, 32, (42), (37), 26, 39, (27), 34, 24  
Goodknight  
52, (53)

# 1985 Washburn Ichabod Football Defense 4-7

NAME	1st HIT/ SOLO	ASSISTS	FORQB LOSSACKS	FUM REC	INT	PASS BR UP	BLK KICK
Brinker	44	33	2	1	3(1)	11	
Battle	35	40	92	(1)	3	6	
McGovern	39	22	3	1	3	11	
Hickman	39	19	52	1	2	3	
Shanks	38	15	65	1			
Williams	14	34	51		2	3	
Keefe	27	18	5				1
Caldwell	22	22	2		1		
Harris	24	14	1		1	3	
Braden	19	18	64	2			
Haydock	25	5	1	1	4	3	1
Blin	16	7	5	1			1
Otting	17	6	33				2
Gambrell	10	7					2
Jim Butler	3	12	57	1			1
Haselby	7	7	32	1			
Hysaw	4	10	32				8
Stindt	7	7	32				1
Fay	6	5	1				
Phillips	8	3	1	1			(1)
Denham	3	7	12				
Douglas	6	2	1	1			
Small	3	4					
Pippins	4	3					2
Rogers	2	4					
O'Donnell	2	2					
John Butler	3	1					
Mellen	2	2	11				
Johnson		3					
Austin		2					
Podzielnny		1					
Nall	1						
Vacek	1						
Goodnight	1	1					
Welch	1						
DeLisa	1						
Tacca	1						

\* ( ) Touchdowns

**Washburn University Yardage Club  
Career Rushing (1500 Yard Club)**

PLAYER	YEARS	ATT	YARDS	AVG
1. Dino DeLisa	1983-85	665	2,794	4.2
2. Leroy Harmon	1945-49		1,927	
3. Art Fletcher	1946-49		1,698	
4. Bill Baker	1951-53	299	1,670	5.59
5. Kevin McCormick	1969-71	472	1,581	3.35

**Season Rushing (700 Yard Club)**

1. Dino DeLisa	1983	262	1,185	4.5
2. Art Fletcher	1948	180	979	5.43
3. Dino DeLisa	1985	215	888	4.1
4. Kevin McCormick	1971	172	862	5
5. Gary Yager	1974	184	748	4.1
6. Dino DeLisa	1984	188	721	3.8
7. Art Fletcher	1949		719	

**Career Passing (1500 Yard Club)**

PLAYER	YEARS	ATT	COMP	YARDS
1. Mike Atkins	1977-80	866	442	5437
2. Mike Grogan	1974-77	596	292	3761
3. Mark Elliott	1980-83	418	182	2604
4. Leroy Harmon	1945-49			1997
5. Larry Elliott	1956-58	297	131	1934
6. Dale Bennett	1967-70	319	116	1662
7. Elmer McAfferty	1950-52	222	93	1533
8. Dean Ferrell	1965-68	334	148	1525

**Season Passing (1000 Yard Club)**

1. Mike Atkins	1980	345	183	2106
2. Mike Atkins	1979	248	130	1678
3. Mark Elliott	1981	246	90	1388
4. Mike Atkins	1978	237	112	1374
5. Mike McCartney	1985	245	119	1369
6. Mike Grogan	1977	163	74	1202
7. Mike Grogan	1974	177	91	1098
8. Mark Elliott	1983	133	80	1074
9. Leroy Harmon	1949	159	72	1001

**Career Receiving (1000 Yards Club)**

PLAYER	YEARS	CATCHES	YARDS
1. Ron Hamilton	1979-80	134	1919
2. Mike Keeley	1975-78	104	1638
3. Alan Dressman	1969-71	49	1228
4. Irv McCoy	1967-68	94	1037

**Season Receiving (500 Yard Club)**

1. Ron Hamilton	1980	84	1128
2. Ron Hamilton	1979	50	791
3. Steve Hardesty	1983	39	606
4. Mike Keeley	1978	36	591
5. Alan Dressman	1970	19	553
6. Mike Keeley	1977	30	538
7. Rick Benke	1974	42	523

**Washburn University Football  
Team Records**

(\*includes results of non-intercollegiate game or games)  
(\*\*includes Boot Hill Bowl victory, 1974)

**SINGLE GAME RECORDS**

POINTS SCORED . . . 79 vs St. Mary of the Plains 1978 (WU 79-3), 80\* vs Fort Riley 1900 (WU 80-0)  
BIGGEST MARGIN OF VICTORY . . . 76 vs St. Mary of the Plains 1978, (WU 79-3), 80\* vs Fort Riley 1900 (WU 80-0)  
MOST POINTS ALLOWED . . . 77 by Mississippi Valley State 1984 (MSVS 77-WU 15)  
MOST COMBINED POINTS . . . 98 with Northern Colorado 1969 (NC 70-WU 28)  
MOST FIRST DOWNS . . . 28 vs Arkansas Tech University 1980  
MOST YARDS RUSHING . . . 382 vs Fort Hays State 1960  
MOST YARDS TOTAL OFFENSE . . . 681 vs Rockhurst 1949  
MOST PASSES ATTEMPTED . . . 64 vs Emporia State 1980  
BEST PUNTING AVERAGE . . . 49.8 vs Missouri Western (6 for 299 yards) 1974  
MOST PUNTS . . . 10 vs Missouri Southern 1980, vs Wayne State 1981, vs Missouri Western 1982  
FEWEST RUSHING YARDS ALLOWED . . . -10 vs Fort Hays State 1984  
FEWEST PASSING YARDS ALLOWED . . . 0 vs Southern Colorado 1973, vs NE Missouri St. 1963, vs Emporia State 1947, vs Wichita State 1946  
FEWEST TOTAL OFFENSE YARDS ALLOWED . . . -3 vs St. Mary of the Plains 1978  
MOST INTERCEPTIONS . . . 6 vs Missouri Western 1974, vs Fort Hays State 1975, vs Missouri Western 1983  
LONGEST RUN FROM SCRIMMAGE . . . 94 yards by Melvin Myricks vs Kearney State 1965  
LONGEST PASS PLAY . . . 92 yards Mark Elliott to Jeff Mitchell vs Missouri Valley 1981  
LONGEST PUNT RETURN . . . 90 yards by Clarence Taylor vs Emporia State 1975  
LONGEST KICKOFF RETURN . . . 98 yards by Ed Vacek vs Central Missouri St. 1985  
LONGEST INTERCEPTION RETURN . . . 91 yards by Meryl Garey vs Peru State 1948  
LONGEST FIELD GOAL . . . 52 yards by Russ Hill vs Northern Colorado 1972, Charles Goodknight vs Emporia State 1985

**SEASON RECORDS**

MOST WINS . . . 8 1983, 1974\*\*, 1964, 1953\*, 1931\*, 1907\*  
MOST LOSSES . . . 10 1937\*  
MOST SHUTDOWNS . . . 7 1906, 10\* 1906  
MOST TIMES SHUTOUT . . . 6 1928, 1942, 7\* 1917  
MOST POINTS SCORED . . . 268 in 1977  
HIGHEST SCORING AVERAGE . . . 27.6 in 1949  
MOST POINTS ALLOWED . . . 333 in 1984  
MOST FIRST DOWNS . . . 194 in 1980  
MOST YARDS RUSHING . . . 2,081 in 1964  
BEST RUSHING AVERAGE . . . 211.2 in 1948  
MOST YARDS TOTAL OFFENSE . . . 3,687 in 1983  
BEST TOTAL OFFENSE AVERAGE . . . 368.7 in 1983

MOST PASSES ATTEMPTED . . . 509 in 1980  
 BEST PUNTING AVERAGE . . . 39.5 in 1980 (69 punts for 2,726 yards)  
 MOST PUNTS . . . 80 in 1972  
 FEWEST RUSHING YARDS ALLOWED . . . 78 in 1964  
 FEWEST PASSING YARDS ALLOWED . . . 493 in 1963  
 FEWEST TOTAL OFFENSE YARDS ALLOWED . . . 1,614 in 1973  
 MOST INTERCEPTIONS . . . 22 in 1983  
 FEWEST PASSING YARDS AVERAGE ALLOWED . . . 87.4 in 1964  
 FEWEST RUSHING YARDS AVERAGE ALLOWED . . . 54.8 in 1963

#### STREAKS

MOST CONSECUTIVE WINS . . . 14 from 1930-31  
 MOST CONSECUTIVE LOSSES . . . 14 from 1936-37

### Washburn University Football Individual Records

#### SINGLE GAME

##### RUSHING

MOST YARDS . . . 241 by Kevin McCormick vs Missouri Valley 1971  
 MOST CARRIES . . . 42 by Dino DeLisa vs Emporia State 1985

##### PASSING

MOST YARDS . . . 418 by Mike Atkins vs Missouri Western 1979  
 MOST COMPLETIONS . . . 34 by Mike Atkins vs Wayne State 1980  
 BEST COMPLETION PERCENTAGE . . . 90% by Jerry Raushelbach vs Missouri Valley 1980 (9 of 10)  
 MOST TOUCHDOWN PASSES . . . 4 by LKeroy Harmon vs Northern Illinois 1949, 4 by Mike Atkins vs Benedictine 1980  
 MOST ATTEMPTS . . . 63 by Mike Atkins vs Wayne State 1980

##### RECEIVING

MOST RECEPTIONS . . . 13 by Ron Hamilton vs Wayne State 1980

##### TOTAL OFFENSE

MOST YARDS . . . 445 by Mike Atkins vs Missouri Western 1979

##### SCORING

MOST POINTS . . . 30 by Art Fletcher vs St. Benedict's 1948  
 MOST TOUCHDOWNS . . . 5 by Art Fletcher vs St. Benedict's 1948  
 MOST PATs . . . 10 by Mike Cassin vs St. Mary of the Plains 1978 10 of 11  
 MOST FIELD GOALS . . . 4 by Mike Cassin vs Missouri Valley 1978 4 of 4

##### PUNTING

MOST PUNTS . . . 10 by Kevin Cummings vs Missouri Southern 1980, Aron Fass vs Wayne State 1981, and Randy Davey vs Missouri Western 1982  
 BEST AVERAGE . . . 49.8 by Brent Cripps vs Missouri Western 1974 6 for 299 yards  
 LONGEST PUNT . . . 87 yards by Randy Davey vs Missouri Western 1982

#### SEASON RECORDS

##### RUSHING

MOST YARDS . . . 1,185 by Dino DeLisa 1983  
 MOST CARRIES . . . 262 by Dino DeLisa 1983

##### PASSING

MOST YARDS . . . 2,106 by Mike Atkins 1980  
 MOST COMPLETIONS . . . 183 by Mike Atkins 1980  
 BEST COMPLETION PERCENTAGE . . . 60.2% by Mark Elliott 1980 (80 of 133)  
 TOUCHDOWN PASSES . . . 13 by Mike Atkins 1980  
 MOST ATTEMPTS . . . 345 by Mike Atkins 1980

##### RECEIVING

MOST RECEPTIONS . . . 84 by Ron Hamilton 1980

##### TOTAL OFFENSE

MOST YARDS . . . 1,905 by Mike Atkins 1980

##### SCORING

MOST POINTS . . . 84 by Bill Baker 1953, 84 by Dino DeLisa 1983  
 MOST TOUCHDOWNS . . . 14 by Bill Baker 1953, 14 by Dino DeLisa 1983  
 MOST PATs . . . 33 by Mike Cassin 1977 (33 of 34)  
 MOST FIELD GOALS . . . 9 by Mike Cassin 1978, 9 by Kevin Cummins 1979, 9 by Nick Kresic 1985

##### PUNTING

MOST PUNTS . . . 80 by Roy Keck 1952  
 BEST AVERAGE . . . (at least 20 punts) 42 yards by Brent Cripps 1977 46 punts for 1,934 yards  
 MOST YARDS . . . 2,982 by Randy Davey 1982

### Washburn University Football Individual Records, Cont.

#### CAREER RECORDS

##### RUSHING

MOST YARDS . . . 2,794 by Dino DeLisa 1983-85 (665 carries)  
 MOST CARRIES . . . 665 by Dino DeLisa 1983-85 (2,794 yards)

##### PASSING

MOST YARDS . . . 5,437 by Mike Atkins 1977-80  
 MOST COMPLETIONS . . . 442 by Mike Atkins 1977-80  
 TOUCHDOWN PASSES . . . 35 by Mike Grogan 1974-77  
 MOST ATTEMPTS . . . 866 by Mike Atkins 1977-80

##### RECEIVING

MOST RECEPTIONS . . . 134 by Ron Hamilton 1979-80 (1,919 yards)

##### TOTAL OFFENSE

MOST YARDS . . . 5,063 by Mike Atkins 1977-80

##### SCORING

MOST POINTS . . . 253 by Leroy Harmon 1945-49  
 MOST TOUCHDOWNS . . . 39 by Leroy Harmon 1945-49  
 MOST PATs . . . 90 by Mike Cassin 1974-78 (90 of 98)  
 MOST FIELD GOALS . . . 20 by Mike Cassin 1974-78 (20 of 49)

##### PUNTING

MOST PUNTS . . . 196 by Brent Cripps 1974-77 (7,884 yards)  
 BEST AVERAGE . . . 40.2 by Brent Cripps 1974-77 (196 for 7,884 yards)  
 MOST YARDS . . . 7,884 by Brent Cripps 1974-77

#### QUARTERBACK SACK RECORDS

MOST SACKS BY A PLAYER IN A SINGLE GAME . . .

4 by Jim Butler vs Wayne State 1985

MOST SACKS BY TEAM IN A SINGLE GAME . . .

7 vs NW Missouri State 1985

MOST SACKS BY TEAM IN A SEASON . . .

35 in 1985

MOST SACKS BY A PLAYER IN A SEASON . . .

12 by Dan Remboldt 1984

MOST SACKS BY A PLAYER IN A CAREER . . .

20 by Dan Remboldt 1983-84

## Washburn University Football Year By Year

Year	W-L-T	PTS/OPP	Coach
1891	1-4-0	46/146	
1892	0-2-0	0/80	
1893	1-0-0	18/0	
1894	3-1-0	66/30	W.M. Gaines
1895	No Intercollegiate Games Played		
1896	6-1-1	126/50	W. Griffith
1897	7-2-0	88/24	Paul Coldren
1898	7-2-0	117/23	Paul Coldren
1899	2-5-2	34/75	William Melford
1900	6-2-0	194/11	Ben G. Owen
1901	3-2-5	47/46	Lawrence Banks
1902	2-6-0	23/220	H. Ward Page
1903	7-0-1	168/0	A.R. Kennedy
1904	7-2-0	191/35	Dr. John Outland
1905	7-3-0	137/83	Dr. John Outland
1906	8-1-3	147/11	Dr. Garfield Weede
1907	8-0-0	124/11	Dr. Garfield Weede
1908	3-4-1	53/73	Dr. Garfield Weede
1909	3-3-0	78/110	Dr. Robert Stewart
1910	3-4-0	87/95	Dr. Robert Stewart
1911	3-4-1	65/67	William Lloyd Driver
1912	4-3-0	119/52	William Lloyd Driver
1913	3-2-2	95/42	Glen C. "Grip" Gray
1914	4-2-0	100/60	Glen C. "Grip" Gray
1915	1-6-1	33/127	Glen C. "Grip" Gray
1916	3-6-0	47/161	A.R. Kennedy
1917	2-6-2	45/102	A.R. Kennedy
1918	4-1-0	90/35	Ernest E. Bearg
1919	7-1-1	212/40	Ernest E. Bearg
1920	4-2-0	54/42	Dwight T. Ream
1921	3-5-1	54/98	Dwight T. Ream
1922	1-7-0	37/184	G.D. Vosburg
1923	0-7-2	21/117	George J. Woodward
1924	3-5-0	60/99	George J. Woodward
1925	2-4-1	15/63	George J. Woodward
1926	3-4-1	49/97	George J. Woodward
1927	1-7-0	21/127	Roy Wynne
1928	2-7-0	33/147	Roy Wynne
1929	5-6-0	100/108	Ernest E. Bearg
1930	6-2-0	176/85	Ernest E. Bearg
1931	8-2-0	108/54	Ernest E. Bearg
1932	6-3-1	124/67	Ernest E. Bearg
1933	5-5-1	76/54	Ernest E. Bearg
1934	2-5-1	37/67	Ernest E. Bearg
1935	4-6-0	108/104	Ernest E. Bearg
1936	2-6-1	53/148	Elmer "Gus" Holm
1937	0-10-0	39/209	Elmer "Gus" Holm
1938	6-3-0	160/160	Elmer "Gus" Holm
1939	6-4-0	145/128	Elmer "Gus" Holm
1940	4-6-0	134/198	Elmer "Gus" Holm
1941	4-2-2	133/48	Elmer "Gus" Holm
1942	1-7-0	27/151	Bob Raugh

## Washburn University Football Year By Year Continued . . .

Year	W-L-T	PTS/OPP	Coach
1943	2-4-2	52/113	Bob Raugh
1944	1-6-0	24/220	Dee Erickson
1945	4-2-0	79/53	Lew Lane
1946	6-2-1	138/86	Dick Godlove
1947	7-1-0	159/56	Dick Godlove
1948	3-5-1	176/117	Dick Godlove
1949	7-2-0	248/137	Dick Godlove
1950	3-4-1	82/120	Dick Godlove
1951	6-3-0	196/150	Dick Godlove
1952	4-5-0	143/163	Dick Godlove
1953	8-1-0	230/46	Dick Godlove
1954	6-2-0	120/99	Dick Godlove
1955	6-2-1	185/111	Dick Godlove
1956	3-6-0	134/164	Dick Godlove
1957	5-4-0	194/148	Dick Godlove
1958	4-5-0	131/124	Dick Godlove
1959	3-6-0	90/156	Ralph Brown
1960	3-6-0	120/173	Ralph Brown
1961	4-5-0	115/194	Ralph Brown
1962	4-5-0	125/207	Ellis Rainsberger
1963	3-6-0	182/108	Ellis Rainsberger
1964	8-1-0	182/53	Ellis Rainsberger
1965	2-6-1	88/217	Ed Linta
1966	2-7-0	87/163	Ed Linta
1967	0-9-0	53/302	Bill Schaaake
1968	2-7-0	80/240	Bill Schaaake
1969	5-5-0	169/234	Harold "Bud" Elliott
1970	5-3-0	186/161	Harold "Bud" Elliott
1971	5-5-0	175/151	Bob Noblitt
1972	3-7-0	140/176	Bob Noblitt
1973	3-6-1	111/155	Bob Noblitt
1974	8-3-0	235/169	Larry Elliott
1975	5-5-0	225/152	Larry Elliott
1976	6-4-0	200/213	Larry Elliott
1977	6-3-1	268/229	Larry Elliott
1978	4-6-0	208/222	Larry Elliott
1979	4-6-0	163/193	Garland "Gary" Hampton
1980	2-8-0	166/321	Garland "Gary" Hampton
1981	3-7-0	92/215	Glenn Jagodzinske
1982	1-9-0	96/248	Glenn Jagodzinske
1983	8-2-0	226/132	George Tardiff
1984	0-5-0		George Tardiff
1984	2-3-0	134/333	Larry Elliott
1985	4-7-0	198/266	Larry Elliott
Total	371-394-43	10,719/11,713	
TOTAL WINNING PERCENTAGE = .486			



## Washburn University Coaches' Career Records

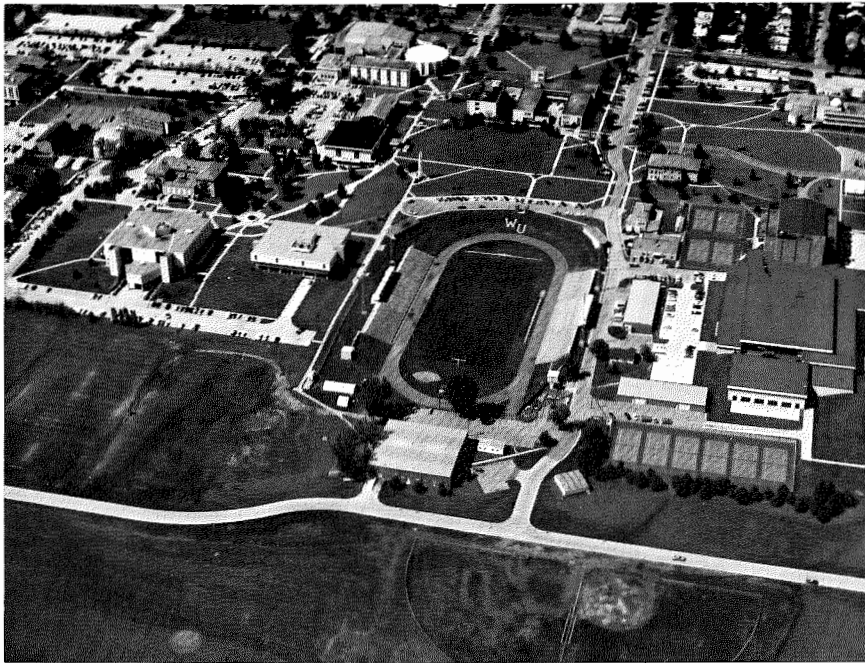
1894	W.M. Grimes	3-1-0
1896	W. Griffith	6-1-1
1897-98	Paul Coldren	12-2-1
1899	Wm. Melford	2-5-2
1900	Ben Owen	6-2-0
1901	L. Banks	3-2-5
1902	H.W. Page	2-6-0
1903	A.R. Kennedy	7-1-0
1904-05	Dr. Outland	14-5-0
1906-08	G.W. Weede	19-5-4
1909-10	R.B. Stewart	6-7-0
1911-12	W.L. Driver	7-7-1
1913-15	G.L. Gray	8-10-3
1916-17	A.R. Kennedy	5-12-2
1918-19	E. Bearg	11-2-1
1920-21	D. Ream	7-7-1
1922	M. Vosburg	1-7-0
1923-26	G. Woodward	8-20-4
1927-28	R. Wynne	8-10-0
1929-35	E. Bearg	36-28-4
1936-41	E.W. Holm	21-31-3
1942-43	B. Raugh	3-11-2
1944	C.D. Erickson	1-6-0
1945	L. Lane	4-2-0
1946-58	R. Godlove	68-42-4
1959-61	R. Brown	10-17-0
1962-64	E. Rainsberger	15-12-0
1965-66	E. Linta	4-13-1
1967-68	B. Schaaake	2-16-0
1969-70	B. Elliott	10-8-2
1971-73	B. Noblitt	11-18-1
1974-78	L. Elliott	29-21-1
1979-80	G. Hampton	6-14-0
1981-82	G. Jagodzinske	4-16-0
1983-½1984	G. Tardiff	8-7-0
½1984-85	L. Elliott	6-10-0

## Washburn University's Football Coaches Ranked By Wins

1. Richard "Dick" Godlove (1946-58)	68-42-4
2. Ernest "Ernie" Bearg (1918-19, 1929-35)	47-30-5
3. Larry Elliott (1974-78, ½1984-1985)	35-31-1
4. Elmer "Gus" Holms (1936-41)	21-31-3
5. Dr. Garfield Weede (1906-08)	19-5-4
6. Ellis Rainsberger (1962-64)	15-12-0
7. Dr. John Outland (1904-05)	14-5-0
8. Paul Coldren (1897-98)	12-2-1
9. A.R. Kennedy (1903, 1916-17)	12-13-2
10. Bob Noblitt (1971-73)	11-18-1
11. Ralph Brown (1959-61)	10-17-0
12. Bud Elliott (1969-70)	10-8-2
13. G. "Crip" Gray (1913-15)	8-10-3
14. George Tardiff (1983-½84)	8-7-0
15. George J. Woodward (1923-26)	8-20-4
16. Ray Wynne (1927-28)	8-10-0
17. William Driver (1911-12)	7-7-1
18. Dwight Ream (1920-21)	7-7-1
19. W. Griffith (1896)	6-1-1
20. Garland "Gary" Hampton (1979-80)	6-14-0
21. Ben Owen (1900)	6-2-0
22. Dr. Robert Stewart (1909-10)	6-7-0
23. Glenn Jagodzinske (1981-82)	4-16-0
24. Lew Lane (1945)	4-2-0
25. Ed Linta (1965-66)	4-13-1
26. Lawrence Banks (1901)	3-2-5
27. W. M. Grimes (1894)	3-1-0
28. Bob Raugh (1942-43)	3-11-2
29. William Meldord (1899)	2-5-2
30. H. Ward Page (1902)	2-6-0
31. Bill Schaaake (1967-68)	2-16-0
32. Charles "Dee" Erickson (1944)	1-6-0
33. G.D. Vosburg (1922)	1-7-0

## Player's Pronunciation Guide

Chris Bleue (Blue)	Phillip Pearman (Pier-man)
Stewart Ensign (In-Zine)	Ken Schmanke (Schman-key)
J.C. Haselby (Has-el-bee)	Mik Shanks (Mike)
Vernon Haysaw (Hi-saw)	Troy Slusser (Slusher)
Kevin Keefe (Keef)	Bruce Stindt (Stint)
J.D. Kinimaka (Kena-mocka)	Andy Tsaffaras (Sa-far-us)



## Washburn University

Washburn University, founded in 1865, is one of the oldest and largest universities in Kansas. As an urban and regional institution, Washburn serves many of the educational needs of Topeka, Shawnee County and the state of Kansas.

Washburn traditionally has provided quality education. Students may choose from more than 70 degreed programs within the College of Arts and Sciences, School of Business, School of Law, School of Nursing or the School of Applied and Continuing Education. Students also enjoy new and modern classrooms and educational facilities.

The university's success is measured in part by the achievements of its graduates, who include a Nobel Prize winner in medicine, members of the U.S. Congress, members of the Kansas State Legislature, numerous judges who have graduated from the Law School, as well as many leaders in business, education, communications and service.

Washburn prides itself on having qualified and experienced faculty. Professors, not student graduate assistants, teach in the classrooms at all academic levels. Washburn professors also care about their students by sharing their successes and providing guidance and help outside the classroom.

Washburn also serves as the cultural center for the capital city metropolitan area. Attractions include performances by the Topeka Civic Symphony and Washburn's Music Department, exhibits in the Mulvane Art Center and stage productions in the University Theatre.

## Washburn University Quick Facts

NAME: Washburn University  
 LOCATION: 17th & College, Topeka, Kansas 66621  
 FOUNDED: 1865  
 ENROLLMENT: 6,800  
 NATIONAL AFFILIATION: NAIA Division I, District 10  
 CONFERENCE: Central States Intercollegiate Conference  
 NICKNAME: Ichabods (Men), Lady Blues (Women)  
 COLORS: Blue, White & Gold  
 FACILITIES: Moore Bowl (7,200), Petro Center-Lee Arena (4,300) and Whiting Fieldhouse (2,500)  
 PRESIDENT: Dr. John L. Green, Jr.  
 ATHLETIC DIRECTOR: Jerry Robertson  
 ASSISTANT ATHLETIC DIRECTOR: Steve Anson  
 HEAD FOOTBALL COACH: Larry Elliott  
 ASSISTANT FOOTBALL COACHES: Dennis Caryl, Bill Danenhauer, Charlie Dieker, Steve Walter, Travis Boulware, Brian Kramer, Jim Steele and Mark Elliott  
 HEAD VOLLEYBALL COACH: Linda Moley  
 ASSISTANT VOLLEYBALL COACH: Terri Lasswell  
 HEAD MEN & WOMEN'S TENNIS COACH: Peg Marmet  
 HEAD MEN'S BASKETBALL COACH: Bob Chipman  
 ASSISTANT MEN'S BASKETBALL COACHES: Andy Carrier & Doug Hutchinson  
 HEAD WOMEN'S BASKETBALL COACH: Pat Dick  
 ASSISTANT WOMEN'S BASKETBALL COACH: Terri Lasswell  
 HEAD MEN'S BASEBALL COACH: Steve Anson  
 HEAD MEN'S GOLF COACH: Glenn Cafer  
 HEAD WOMEN'S SOFTBALL COACH: Linda Moley  
 ASSISTANT WOMEN'S SOFTBALL COACH: Terri Lasswell  
 SPORTS INFORMATION DIRECTOR: Chuck Cordt  
 HEAD ATHLETIC TRAINER: Steve Ice  
 HEAD EQUIPMENT MANAGER: Ron Wessel  
 STRENGTH AND CONDITIONING COACH: Brian Kramer  
 ACADEMIC ADVISOR: Andy Carrier  
 FACILITIES COORDINATOR: Anna Baird  
 ADMINISTRATIVE ASSISTANT-FUND RAISING: Trella Schulteis  
 ATHLETIC SECRETARIES: Linda Allen & Sally Geelan  
 ATHLETIC DEPARTMENT PHONE: (913) 295-6334





### JERRY ROBERTSON - Athletic Director

The driving force behind Washburn University athletics is Director of Athletics, Jerry Robertson. The former Winchester, Kansas resident graduated from Washburn in 1965 with a Bachelor's of Education Degree after concluding a much-heralded baseball career for the Ichabods. Robertson pitched the Ichabods to the conference baseball championship (CIC) and a national ranking in 1964. Upon graduation, Robertson was drafted by the St. Louis Cardinals and spent the next four years in the Cardinal's system. The following two seasons, Jerry played for the Montreal Expos, Detroit Tigers, and New York Mets, in 1972, Robertson returned to Topeka to assume the position of Executive Director of the Topeka YMCA. For 12 years Jerry was instrumental in raising 90% of the "Y's" operating budget of \$900,000, while expanding facilities to two new locations.

Jerry, a 1982 inductee into Washburn's Athletic Hall of Fame, and his wife Carol, have two sons, Jeff age 20, and Jason age 17.

### STEVE ANSON - Assistant Athletic Director



Steve enters his second year as Assistant Athletic Director at Washburn University. He came to Washburn from Wayne State College in Wayne, Nebraska, where he served as head baseball and assistant basketball coach for one year. When he first came to Washburn in 1979, Steve served as assistant basketball and head baseball coach for the Ichabods. In August of 1985 he stepped down from his basketball coaching duties to become assistant athletic director. Anson is still the Ichabods head baseball coach, having compiled a 154-128-1 (54.7%) record in seven years. Last year's squad set a school record for wins in a season with a 36-20 mark.

Anson, a Princeton, Indiana native, graduated Cum Laude from Kansas State University in 1976 with a Bachelor's degree in Physical Education. He then went on to earn his Master's in Education from Kansas State in 1978. Steve was a four year letterman in baseball at Kansas State, winning the Big Eight batting title with a .439 average in 1974. That same year he was selected to the All-Big Eight first team. Steve is married, and his wife's name is Beth.

### CHUCK CORDT - Sports Information Director

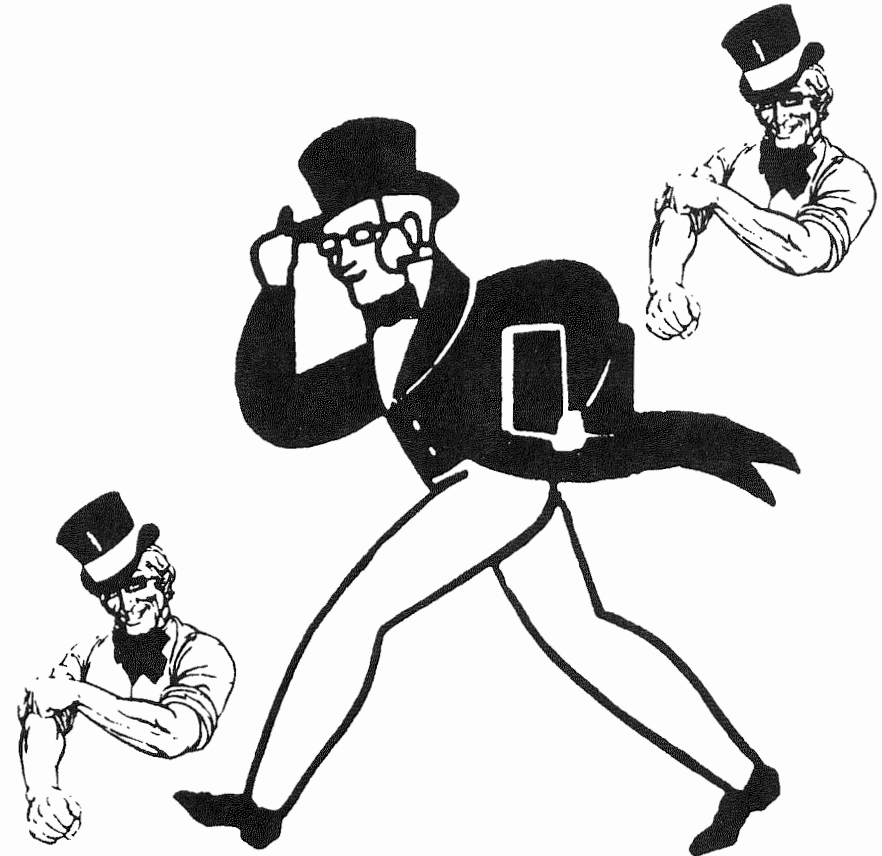


Chuck enters his third year as Sports Information Director at Washburn University. He served Washburn as a "student" Sports Information Director from April of 1979 until he graduated in May of 1981. When the S.I.D. position was opened as a full-time job at the end of 1985, Chuck was asked to return and resumed the position. Chuck compiled more than five years of radio and television sports broadcasting experience prior to his return to Washburn.

Chuck, a Leavenworth, Kansas native, is a 1981 graduate of Washburn University with a Bachelor's degree in Communication Arts. He is married to the former Cindi Yingling of Topeka, who has a daughter, Adell, age four.

### What's An Ichabod?

The name Ichabod was derived from the first name of Ichabod Washburn, an early benefactor of the University. Until 1938 there was not a graphic representation or any particular characteristics associated with Mr. Ichabod. During the 1937-38 school year, the editors of KAW, the university yearbook, decided that such items were important to the University and began to accept suggestions for a design of Mr. Ichabod. The adopted design was drawn by Bradbury Thompson (BA'34).



The following explanatory material accomplished Ichabod's first representation in the Washburn Kaw: "He has courage and enthusiasm as shown by his brisk walk. He is democratic and courteous, for he tips his hat as he passes. Sincere in his search for truth and knowledge, he studiously carries a book under his arm. His friendly smile makes you like him. He is neatly dressed and he fits well into his generation . . . but he adopts himself with equal ease to any change or any age."

### 1986 Composite Schedule

DATE	UNIVERSITY OF SOUTH DAKOTA	NORTHWEST MISSOURI ST.	CENTRAL MISSOURI ST.	MISSOURI SOUTHERN	EMPORIA STATE U.	PITTSBURG STATE U.	WAYNE STATE	FORT HAYS STATE U.	MISSOURI WESTERN	KEARNEY STATE
Aug. 30			at Missouri Western (N)						Central Missouri St. (N)	
Sept. 6	Washburn University	U. of North Dakota	Nebraska Omaha (N)		Western State (Colo) (N)		Morningside (Ia) (N)	Lincoln U. (Mo) (N)	at Missouri Rolla	
Sept. 13	at South Dakota St.	at Washburn University (N)	at North-eastern Oklahoma (N)	at South-western Oklahoma (N)	at South-western (Ks) (N)	Arkansas Tech U. (N)	Augustana (SD) (N)	North-western Okla. (N)	at Northeast Missouri St. (N)	at Nebraska Omaha (N)
Sept. 20	North Dakota	Missouri Western	at Washburn University (N)	at Arkansas Tech. U. (N)	at Baker University (N)	at Missouri Rolla (N)	at Southwest State (Minn)	Black Hills State (SD)	at Northwest Missouri St.	at Moorhead State (Minn) (N)
Sept. 27	at North Dakota St. (N)	at Wisconsin Stevens Point	at Henderson State (Ark)	Washburn University (N)	at Pittsburg State U. (N)	Emporia State	Kearney State	at Missouri Western (N)	Fort Hays State U. (N)	at Wayne State
Oct. 4	Augustana (SD)	at NE Missouri State U.	Missouri Rolla	Pittsburg State U. (N)	Washburn University	at Missouri Southern (N)	at Missouri Western	at Kearney State	Wayne State	Fort Hays State U.
Oct. 11	at Morningside College (Ia)	U. of Missouri Rolla	at Southwest Missouri St.	at Emporia State U.	Missouri Southern	at Washburn University	at Fort Hays State U.	Wayne State	at Kearney State	Missouri Western
Oct. 18	So. Dakota State	at Central Missouri St.	Northwest Missouri St.	Kearney State	at Missouri Western	Fort Hays State U.	Washburn University	at Pittsburg State U.	Emporia State U.	at Missouri Southern
Oct. 25	at Mankato State (Minn)	Southeast Missouri St.	Northeast Missouri St.	at Missouri Western	at Kearney State	at Wayne State	Pittsburg State U.	Washburn University	Missouri Southern	Emporia State U.
Nov. 1	St. Cloud State (Minn)	at Western Illinois U.	at Lincoln U. (Mo)	at Fort Hays State U.	Wayne State	at Kearney State	at Emporia State U.	Missouri Southern	at Washburn University	Pittsburg State U.
Nov. 8	at Northern Colorado	at Lincoln U. (Mo)	Southwest Missouri St.	Wayne State	Fort Hays State U.	Missouri Western	at Missouri Southern	at Emporia State U.	at Pittsburg State U.	at Washburn University
Nov. 15	Nebraska-Omaha	at Illinois State U.				Langston U. (Okla)	at Minnesota Morris (N)			