

De Lisa

WASHBURN

1984 FOOTBALL MEDIA GUIDE

UNIVERSITY

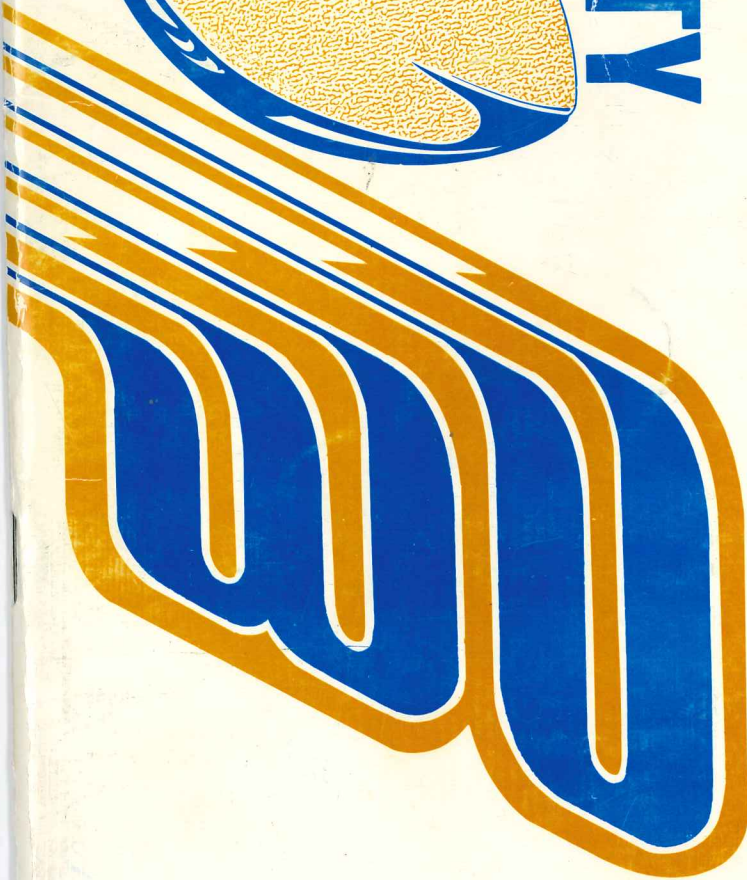
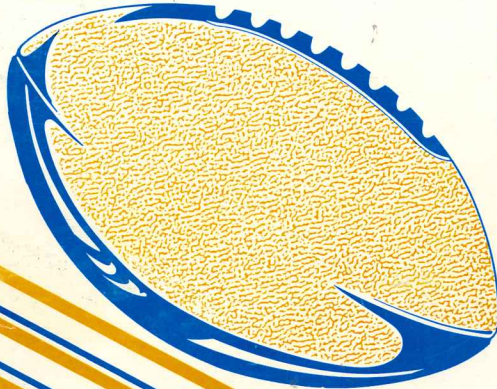


Table of Contents

Ticket Information and Media Outlets	1
1984 Varsity and Junior Varsity Schedules	2
1983 Game Results	2
Washburn Facts	3
Washburn University Today	4
Athletic Director and Assistant Athletic Director	5
Head Football Coach George Tardiff	6
Offensive and Defensive Coordinators	7
Coaching Staff	8
1984 Football Preview	11
1984 Ichabod Roster	14
Opponents' Facts and Outlooks	16
1984 Returning Lettermen	26
1983 Final Statistics	32
Washburn Team Records	34
Washburn Individual Records	34
Washburn Yardage Club	36
Washburn Football Year by Year	37
Washburn Coaches' Career Records	38
Washburn NAIA Hall of Famers and All-Americans	39
Pronunciation Guide...Players' Names	39
Composite Schedule	40
What is An Ichabod?	Inside Back Cover
CSIC Map & Champions	Back Cover



Cover Designed by Bev Torbert of University Relations

TICKET INFORMATION (913) 295-6334

Admission prices for five home football games in Moore Bowl for the 1984 season are as follows:

Season Ticket	\$25.00
Family Season Ticket (two adults & two students)	\$40.00
Reserved Seat	\$5.00
General Admission	\$3.50
Student/Senior Citizens	\$2.00
Faculty/Staff Season	\$10.00

Passes for the working press, radio and television representatives and opponents' publicity personnel are available from Pam Leptich, Sports Information Director, one week in advance.

WASHBURN UNIVERSITY MEDIA OUTLETS

NEWSPAPERS...

Steve Thompson...Topeka Capital-Journal
616 Jefferson, Topeka, 66607 (913) 295-1188

Bill Mackey...Wichita Eagle-Beacon
825 East Douglas, Wichita, 67201 ... (316) 268-6270

Steve Richardson...Kansas City Star
1729 Grand Ave., Kansas City, MO 64108(816) 234-4355

Associated Press
KC STAR Bldg., Kansas City, MO 64108(816) 421-4846

United Press International, Kansas City Bureau,
4720 Oak Street, Kansas City, MO 64112(816) 756-1881

Washburn Review, School Newspaper
Student Publications, Washburn University
Topeka, 66621 (913) 233-3211

RADIO...

Dave Phillips, WREN
1001 Fillmore, Topeka, 66604 (913) 232-0505

Ron Paradis, WIBW
5600 SW 6th, Topeka, 66606 (913) 272-3456

Jerry Schemmel or Don Neer, KTOP (The Voice of the Ichabods)
715 Harrison, Topeka, 66603 (913) 234-3031

Mike Manns and Chuck Cordt, KSKX
5315 West 7th, Topeka, 66604 (913) 272-9440

TELEVISION...

Ron Paradis and Pat Krueger, WIBW, Channel 13
5600 SW 6th, Topeka, 66606 (913) 272-3456

Duke Frye and Phil Serrault, Channel 27
Box 2700, Topeka, 66601 (913) 582-4000

KLDH, Channel 49
101 SE Monroe, Topeka, Kansas 66603(913) 234-3393

Bob Fidler, Channel 11
301 N. Wanamaker, Topeka, 66606 .. (913) 272-8181

1984 VARSITY FOOTBALL SCHEDULE

Sept. 8	N.W. Missouri State	Maryville, Mo.	1:30
Sept. 15	MISSISSIPPI VALLEY	TOPEKA	1:30
	(Community Day)		
Sept. 22	MISSOURI VALLEY	TOPEKA	1:30
	(Parent's Day)		
Sept. 29	Emporia State	Emporia, Ks.	1:30
Oct. 6	PITTSBURG STATE	TOPEKA	1:30
	(Homecoming)		
Oct. 13	Wayne State	Wayne, Ne.	2:00
Oct. 20	Fort Hays State	Hays, Ks.	1:30
Oct. 27	MISSOURI WESTERN	TOPEKA	1:30
	(Band Day)		
Nov. 3	KEARNEY STATE	TOPEKA	1:30
	(American Heritage Day)		
Nov. 10	Missouri Southern	Joplin, Mo.	1:30

1984 JUNIOR VARSITY SCHEDULE

Sept. 10	KANSAS WESLEYAN	TOPEKA	6:00
Sept. 17	Southwestern	Winfield, Ks.	4:00
Sept. 24	KANSAS UNIVERSITY	TOPEKA	6:00
Oct. 1	Emporia State	Emporia, Ks.	6:00
Oct. 15	Benedictine	Atchison, Ks.	6:00
Oct. 22	EMPORIA STATE	TOPEKA	6:00

1983 WASHBURN GAME RESULTS

WU	OPP
17 Morningside College	7
35 Benedictine College	28
20 Missouri Valley	21
41 Emporia State	7
21 Pittsburg State	29
13 Wayne State	6
24 Fort Hays State	3
24 Missouri Western	21
7 Kearney State	0
24 Missouri Southern	10

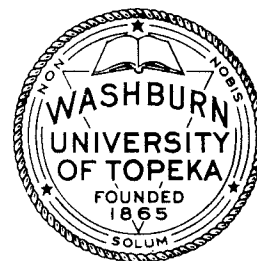
The 1983 Washburn University football media guide was designed and edited by Pam Leptich, Sports Information Director for the University. While intended primarily as an aid to the news media, this pamphlet is also directed to the general public and officials of all interested universities and colleges. For press passes, additional copies of this brochure, statistics, pictures or any other information concerning Washburn athletics, contact:

Pam Leptich
Sports Information Director
Washburn University
Topeka, KS 66621
Phone: (913) 295-6334 (Office)
(913) 288-0409 (Home)



WASHBURN UNIVERSITY FACTS

NAME: Washburn University of Topeka
LOCATION: 17th and College, Topeka, KS 66621
FOUNDED: 1865
ENROLLMENT: 6,757
NICKNAME: Ichabods
COLORS: Blue, Gold and White
FACILITIES: Moore Bowl (7,200), Petro Center-Lee Arena (4300)
CONFERENCE: Central States Intercollegiate Conference (CSIC)
NATIONAL AFFILIATION: National Association of Intercollegiate Athletics
Division 1, District 10
PRESIDENT: Dr. John L. Green
ATHLETIC DIRECTOR: Jerry Robertson (Washburn '65)
ASSISTANT ATHLETIC DIRECTOR: Frank Diskin (Pittsburg State '66)
ATHLETIC PHONE: (913) 295-6334
HEAD COACH: George Tardiff (Benedictine '59)
Record At Washburn...8-2 Career Record...23-17 (4 years)
OFFENSIVE COORDINATOR: Larry Elliott
DEFENSIVE COORDINATOR: Keith Hertling
OFFENSIVE LINE COACH: Charlie Dieker
DEFENSIVE LINE COACH: Mike McGraw
RECEIVER COACH: Dave DiMaggio
SECONDARY COACH: Rance Olison
DEFENSIVE END COACH: Bill Bachman
LINEBACKER COACH: Keith Hertling
STRENGTH COACH: Mike Rutherford
RECRUITING COORDINATOR: Mike McGraw
SPORTS INFORMATION DIRECTOR: Pam Leptich
Phone... (913) 295-6334 Office
(913) 288-0409 Home
HEAD TRAINER: Steve Ice
HEAD EQUIPMENT MANAGER: Ron Wessel
FACULTY ATHLETIC REPRESENTATIVE: Ross Johnson
LETTERMEN RETURNING: 32
LETTERMEN LOST: 18
1983 RECORD: 8-2
1983 CONFERENCE RECORD: 6-1 CSIC Championship
BASIC OFFENSE: Multiple
BASIC DEFENSE: 50 Gap Control
RETURNING OFFENSIVE STARTERS: 8
Dino DeLisa, 5'10", 193 lbs., RB, Sr.
Pete Flanningan, 6'0", 191 lbs., WR, So.
Curt Georgeson, 6'4", 240 lbs., OG, Sr.
Tracy Hunnaccutt, 6'1", 255 lbs., OG, Sr.
Alex Mikaelian, 6'1", 241 lbs., OG, Jr.
Jerry Nall, 6'1", 265 lbs., OT, So.
Bret Schwarz, 6'4", 235 lbs., TE, Sr.
Steve Tacca, 6'4", 228 lbs., TE, Jr.
RETURNING DEFENSIVE STARTERS: 9
Bill Guidetti, 6'0", 223 lbs., LB, So.
Tony McDonald, 6'1", 192 lbs., SS, So.
Steve Podzielny, 6'1", 250 lbs., DT, Jr.
Dan Remboldt, 6'3", 232 lbs., DE, Sr.
Mark Remboldt, 6'2", 220 lbs., DT, Sr.
Tim Schlegel, 5'10", 208 lbs., LB, Sr.
Paul Silovsky, 6'2", 211 lbs., DE, Sr.
Mark Small, 5'9", 190 lbs., CB, So.
Larry Turner, 6'1", 271 lbs., NG, So.



WASHBURN UNIVERSITY

Washburn University, America's only municipal university, enrolls approximately 6,700 students from the Topeka area, 50 states and 26 foreign countries and continues to be the fastest growing university in Kansas with each of the last eight semesters posting record registrations. Washburn's enrollments continued to soar in 1983-84. For the first time in the history of the university, more than 7,000 students registered during the fall semester. This is a strong indication that more and more students and their parents are recognizing that Washburn offers one of the best opportunities for a quality education in the Midwest.

The principal mission of Washburn University is to provide an environment in which a student may obtain a sound education within an urban setting. It is understood that this mission includes providing quality education both on campus and at other community sites through the traditional arts and sciences; professional electives; career-oriented programs at the master's, bachelor's, associate, and certificate level, professional programs in business and law, and continuing education of both credit and non-credit natures.

Washburn's varied academic programs, designed to meet the needs of all its students, include a College of Arts and Sciences comprised of major choices including creative and performing arts, humanities, natural or social sciences, education and home economics, and health, physical education, recreation, and dance. Washburn offers professional programs through the School of Business, School of Nursing, School of Applied and Continuing Education, and the School of Law. An excellent graduate program offers Master's Degrees in Business Administration and Accounting, Education, Clinical Psychology and Law.

Washburn, in national competition, won Ford Motor Company's Council for the Advancement and Support of Education "Grand Award" for 1984 for the most improved university in the country. The Council also named Washburn for an "Exceptional Achievement Award" in the competition for fundraising efforts. In winning the "Grand Award" for the most improved university, Washburn was selected over Drake University, Wesleyan University (Middleton, Ct.), and Northwestern University's College of Business Administration (Boston, Mass.). Washburn is extremely proud of its President, Dr. John L. Green, who received the "Kansas Public Administrator of the Year" Award from the Kansas Chapter of the American Society of Public Administration.

Washburn University strives to be a center for cultural life, a community for scholars, a patron of the arts, and a source of special knowledge and skill for the benefit of the community.

Washburn University is proud of the Ichabod athletes and coaches and is dedicated to providing them with the means to develop successful, wholesome, safe, and visible athletic programs. Washburn University strives to maintain the delicate balance between academic excellence and athletic success. And this allows Washburn's student-athletes to come out winners in both the classroom and on the playing field.

ATHLETIC DIRECTOR, JERRY ROBERTSON

The driving force behind Washburn University athletics is Director of Athletics, Jerry Robertson. The former Winchester, Kansas resident graduated from Washburn in 1965 with a Bachelor's of Education Degree after concluding a much-heralded baseball career for the Ichabods. Robertson pitched the Ichabods to the conference baseball championship (CIC) and a national ranking in 1964. Upon graduation, Robertson was drafted by the Saint Louis Cardinals and spent the next four years in the Red Birds' system. The following two seasons, Jerry played for the Montreal Expos, Detroit Tigers, and New York Mets. In 1972, Robertson returned to Topeka to assume the position of Executive Director of the Topeka YMCA. For 12 years Jerry was instrumental in raising 90% of the "Y's" operating budget of \$900,000, while expanding facilities to two new locations.

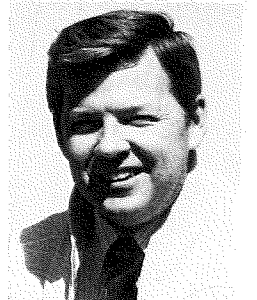
Robertson was inducted into Washburn's Sports Hall of Fame in 1982 and has, since that time, worked to provide the kind of success oriented atmosphere that will enable many more young men and women the opportunities to experience that kind of excellence.



ASSISTANT ATHLETIC DIRECTOR, FRANK DISKIN

Frank Diskin is the coach's coach. After graduating from Pittsburgh State in 1966 with a degree in education, Frank coached football, basketball, and track at Linwood, Kansas High School and then spent two years at St. Mary of the Plains High School coaching those three sports plus baseball. Upon moving to St. Mary of the Plains College, Frank took over the head basketball position, winning the KCAC championship in 1972. Following a year at Baxter Springs High School as athletic director and coach of football, basketball and track, Frank received his Master's Degree from the University of Missouri in 1974. Back at St. Mary of the Plains, Frank spent the next five years coaching football, basketball, serving as athletic director and was the man who started, coordinated, and coached the women's program at the college. He also served as Dean of Students while at St. Mary's.

Frank came to Washburn in 1983 and immediately made his impact. Highly skilled as an administrator, Frank tackled the athletic budget and brought accountability to the program. His friendly personality and excellent knowledge of athletics, along with a constant "open door" policy, has given all Washburn coaches and athletes someone who is always available for inspiration, advice, and encouragement.



HEAD FOOTBALL COACH, GEORGE TARDIFF

George Tardiff came to Washburn University in 1983 and immediately turned the Ihabod football program around. His 1983 Ihabods won the CSIC Championship, were ranked as high as 9th the nation, and Coach Tardiff was honored as CSIC and District 10 Coach of the Year.



George graduated from Benedictine College in 1959 where he was an All-Conference tackle on the 1958 NAIA Play-off team that was undefeated in 10 games. He was selected for professional tryouts with the Buffalo Bills. He received his Master's Degree from Kansas State University in 1966.

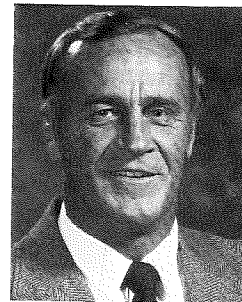
Tardiff's coaching career includes stops at Lincoln High School in Jersey City, New Jersey (George's birthplace), a time coaching the Army All-Star Team at Fort Riley, Kansas where he was also an athletic director, a Boot Hill Bowl victory while at Benedictine College, and three conference coach of the year honors received while coaching at East Brunswick High School in New Jersey. He was assistant coach at St. Mary of The Plains from 1966-69. His four year collegiate record stands at 23 wins and 17 losses.

George Tardiff is a recruiter, a rebuildier, a winner. His ultimate goal in recruiting is to bring four-year athletes to Washburn who will not only contribute to the football program but will leave the university with a degree as well. Athletic success through academic excellence is the philosophy Coach Tardiff impresses upon his student-athletes.

Washburn's President, Dr. John L. Green, said upon Tardiff's hiring, "I'm confident that Coach Tardiff and his staff will develop an outstanding football program at Washburn. I think his record clearly shows that Coach Tardiff is a man with high character and with the know-how to recruit excellent football talent." Dr. Green knew then and all Washburn fans know now that Coach George Tardiff is, indeed, an excellent coach, a man of high ideals, and a clear model of what hard work and dedication are all about.

OFFENSIVE COORDINATOR, LARRY ELLIOTT

Coach Elliott graduated from Washburn in 1959 following record setting performances in both football and basketball. He was selected to All-CIC teams in both sports and still owns top slots in Washburn's Yardage Club statistics.

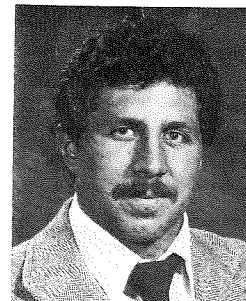


Following his graduation, Larry coached all sports at Silver Lake High School, sending two baseball teams to the state tournament. Larry came back to Washburn in 1966 after completing his Master's Degree at Kansas University to coach baseball and assist in football. He became Washburn's head football coach in 1974 and under his guidance over the next four years, Washburn played in two bowl games and met a school record of eight wins in a season during the 1974 season. His baseball teams compiled two second place league finishes and one championship during his years as head baseball coach.

Accepting the offensive coordinator duties in 1983, Larry put together an offensive unit that broke the Washburn school record for most total yards in a season and established the multiple-T offensive system that will plague Washburn defensive opponents for years to come.

DEFENSIVE COORDINATOR, KEITH HERTLING

An All-American for three years and an Academic All-American his senior year, Keith Hertling made his mark on Benedictine football, still holding over 15 school records including a career rushing mark of 4,000 yards. Hertling graduated from Benedictine in 1978 with a Bachelor of Special Education Degree. Following pro try-outs with Montreal of the Canadian Football League and with the Kansas City Chiefs, Keith taught and coached at Atchison High School while serving as strength coach at Benedictine. In 1981 Keith became strength coach and coach of defensive backs at William Patterson College in New Jersey. While working on his Masters Degree in Counseling at Kansas University, Keith served the Jayhawks as a graduate assistant in football and counseling.



In 1982, Coach Hertling returned to Atchison High School as a counselor and assistant football coach as defensive coordinator. Just as he was to become head football coach at Atchison High School, Keith was called to Washburn by Coach Tardiff in 1983 to be the Ihabod defensive coordinator. Washburn's "BLUE THUNDER" defense is all that it is due to Coach Hertling's dedication, experience, and enthusiasm. "No hit, no play" coaches Keith and his defense certainly reflects his philosophy.

Coach Hertling is the sponsor of the Fellowship of Christian Athletes on the Washburn campus.

RECEIVER COACH, DAVE DiMAGGIO

Following an excellent career as an offensive and defensive lineman at Western Connecticut State University, Dave played semi-pro football for the Westchester Sea Hawks and for the Yonkers Packers. Skilled in baseball as well, Coach DiMaggio played first base for semi-pro baseball several seasons.

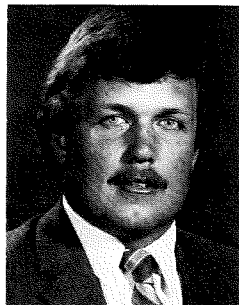
Dave came to Washburn in 1983 as receiver coach and immediately developed a core of receivers who could not only catch the ball but could run with it as well. Dave feels that catching the ball is the most important skill a receiver should develop and his methods of instruction support that philosophy. Dave is completing his degree at Washburn in History Education.



OFFENSIVE LINE COACH, CHARLIE DIEKER

During his four years at offensive and defensive tackle at South Shelby High School in Shelbina, Missouri, Charlie, who was selected to the All-State team his senior year, helped his team to a 38-1-1 record. Moving on to NW Missouri State, Charlie lettered in both football and golf, was co-captain of the Bearcats and made the All-Conference team. He received his BS Degree in Education in 1977 and completed his Master's Degree in 1978.

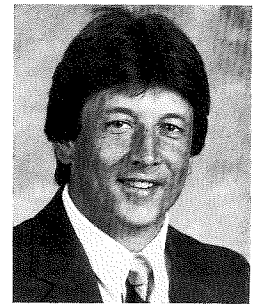
Coach Dieker began his coaching career at Pleasant Hill High School (Missouri), coaching football, wrestling and track. In 1979 Charlie went to St. Mary of the Plains to coach football and golf for three years before accepting a position at national power Panhandle State as offensive line and special team coach, Physical Education instructor and Intramural Director. Charlie came to Washburn in 1982 as offensive line coach and immediately made his impact. His offensive linemen are the spirit leaders of Washburn's "White Lightning" offense.



DEFENSIVE LINE COACH AND RECRUITING COORDINATOR, MIKE McGRAW

Athlete of the Year at Bonner Springs High School in 1969, Mike, at wide receiver and defensive back, was selected to the All-Conference and All-State teams in football and was an All-State ½ miler in track. Mike then played one year at St. Mary of the Plains where he lettered as a freshman at defensive back. Completing his college career at Pittsburg State, Mike lettered all three years and was selected to the All-District 10 Teams in 1970, 71, and 72. Receiving his Bachelor's in 1973, Mike completed his Master's in 1978 following a time at the Washington Redskin's free agent camp. After a couple of years at Columbus (Kansas) High School, Coach McGraw became defensive coordinator at Hayden High School in Topeka, Kansas where he taught biology. In 1978, as head football coach at Hayden, Mike took his team to a Centennial League Co-Championship.

From 1979-81, Coach McGraw served Washburn as defensive secondary and strength coach before being called to Sam Houston State in the same capacities in addition to being honored as Associate Texas State Director of the National Strength Coach Association. Mike then became athletic director for Club Corporation of America out of Dallas Texas before returning to Washburn this year.

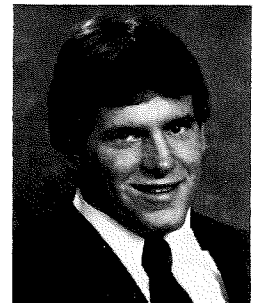


DEFENSIVE END COACH, BILL BACHMAN

Bill graduated from West Chester State College in Pennsylvania in 1982 with a Bachelor's Degree in Physical Education. Bill played four years for the West Chester State Rams at outside linebacker.

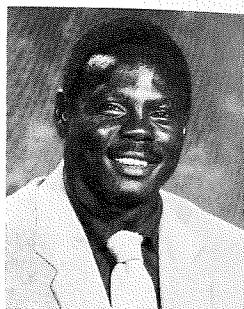
Pursuing a graduate degree in elementary administration at Washburn, Bill is a skilled weight lifter who serves as an excellent example to all IChabod football players of what education and dedication in athletics can lead to.

Washburn opponents will be running away from his defensive ends as Bill has developed a core of defenders who are not only strong and quick but intelligent as well. "Smelling out the ball" and stopping the play will be a well known trademark of the IChabod defense as long as Coach Bachman is in charge of the defensive ends.



SECONDARY COACH, RANCE OLISON

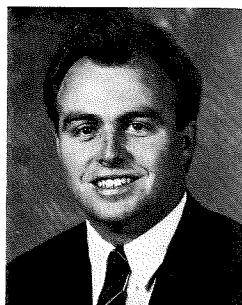
A native of El Dorado, Arkansas, Rance received All-Conference honors at San Diego State before launching a six-year professional career. Rance was drafted by the Hawaii franchise of the World Football League in 1975 and then played safety three years for the San Francisco 49er's. After playing a season for the Kansas City Chiefs, Rance concluded his professional career with the Winnipeg organization of the Canadian Football League.



Due to Coach Olison's guidance, Washburn had one of the most respected secondaries in the conference in 1983. Rance will have a lot of rebuilding ahead of him for 1984 but his experience and enthusiasm have won him the respect of the Washburn players. The Ichabod secondary is a genuine reflection of Rance's talents.

STRENGTH AND CONDITIONING COACH, MIKE RUTHERFORD

Athletic success through academic excellence is a proven philosophy and never more evident than in the career of Mike Rutherford. Mike graduated from Baker University with a degree in Biology and Physical Education in 1982 after a football career at strong safety that resulted in him being named Defensive Player of the Week five times. Mike served as assistant strength coach at Kansas University from 1982-83 and was conditioning consultant for the United States Olympic LUGE Team.



Coach Rutherford came to Washburn in 1983 as linebacker and strength coach and immediately developed a strength and conditioning program for all Washburn athletes that is based on the most up-to-date information available. Mike completes his Master's Degree in Exercise Physiology from Kansas University this year and, in bringing his knowledge to Washburn, has assured all Washburn athletes of a strength and conditioning program that will enhance their natural abilities and keep them free of nagging injuries.

1984 ICHABOD FOOTBALL PREVIEW

Pride and confidence from last year's CSIC championship have given the Washburn Ichabods the winning attitude that winning traditions are built upon. Coach Tardiff has made some position changes in the effort to develop more depth, has recruited many talented transfers and freshmen, and has 17 starters returning from the 1983 championship squad. In spite of the team's overall youth, there is experience at most positions although the center, quarterback, and defensive secondary personnel are still questionmarks for the Ichabod head coach.

Returning from the offense that broke Washburn's school record for total yards last year is All-CSIC and District 10 running back Dino DeLisa. DeLisa, Honorable Mention NAIA All-American, led the Ichabods in rushing, total offense and scoring in 1983. He broke three school records and was ranked as high as 6th in the nation in rushing and 7th in scoring. Air Force Academy transfer Mark Kissick and Coffeyville Community College transfer Doug Cobler will add depth to Washburn's 1984 run-oriented offense.

Although Washburn's receivers are inexperienced, they have plenty of speed and the fullback and tight end positions are manned by strong, steady, and quick performers. The offensive line does have experience and leadership, leaving the quarterback and center positions as the only big concerns on Washburn's side of the ball.

Defensively, the secondary will need to be reconstructed. But Dan Remboldt, All-CSIC and District 10 defensive end, returns along with All-CSIC linebacker Tim Schlegel. In fact, the linebacker core is Washburn's strongest ever and with Tony McDonald at strong safety, it will be hard to run against the Ichabods.

OFFENSE

Center: It won't be easy to replace Brad Steinle but Coach Tardiff hopes either 6'1", 212 pound Joe Stringer or 6'1", 250 pound Marc Milner or Alex Mikaelian (6'1", 241 lbs.) will be able to do the job. Stringer has the most experience at center but the choice is still a difficult and important one for Coach Tardiff. John Butler (6'1", 245 lbs.) freshman will be given a good look at center as well.

Tackles: Starter Jerry Nall (6'1", 265 lbs.) returns as does Mark McCullough (6'2", 265 lbs.). They will be tested by newcomers John Devine, 6'5½", 235 pound transfer from Hudson Valley Community College in Troy, New York, Michael Gibson (6'4", 235 lbs.) and Larry Schmieder (6'2", 260 lbs.).

Guards: Starters Tracy Hunnacutt (6'1", 255 lbs.), CSIC 2nd teamer last year, and Curt Georgeson (6'4", 240 lbs.) return this year and will be supported well by letterman Lloyd Hanson (6'3", 250 lbs.) and sophomore Jim Collins (6'0", 245 lbs.). Hunnacutt, a tri-captain for 1984, will provide the leadership the aggressive Ichabod line will need to protect the quarterback or to open holes for Washburn's excellent backs.

Tight End: Washburn fans will be glad to see veterans Bret Schwarz (6'4", 230 lbs.) and Steve Tacca (6'4", 228 lbs.) back for another year. Tacca, a possible pro prospect, had

a superior spring and Schwarz, who caught 12 passes for 114 yards last season, comes back as strong as ever. Eldon Wenstrand (6'5", 231 lbs.), switched from defensive tackle, will also be working at tight end.

Wide Receiver: Great speed describes Ichabods wide receivers. Part-time starter Pete Flannigan (6'0", 191 lbs.) returns along with speedsters Franklin Redd (6'0", 175 lbs.) and starter James Gambrell (5'11", 167 lbs.). Adding to this talented crew are lettermen Bill Wiley (5'7", 173 lbs.) and Bob Searcy (5'9", 140 lbs.) and highly praised freshman recruit Troy Slusser (5'11", 180 lbs.) All-City, All-League, All-6A, All-State, and Shrine Bowler from Topeka High School. Ed Hight, Mike Vansickle, Aaron Walker, John Cook, Greg Buller, and John Maher complete the wide receiver core.

Running Back: All-CSIC and District 10 running back Dino DeLisa returns as a true NAIA All-American candidate. DeLisa (5'10", 193 lbs.) made NAIA Honorable Mention All-American last season and not only has an excellent chance of breaking into the first team All-American honors in 1984 but will undoubtedly break many school records as well. Mark Kissick (5'10½", 188 lbs.), Air Force Academy transfer, and Coffeyville Community College transfer Doug Cobler (5'9", 195 lbs.) will give opponents some long defensive afternoons. Dan Wiley completes the running back lineup.

Fullback: University of Georgia transfer Ken Chanley, returning lettermen Mike McGreevy, and Chris Merriman, and sophomore speedster Eduardo Quinones will all be in the running for one of the most competitive positions on this year's squad. McGreevy has excellent hands and quickness, Quinones is a strong runner with speed, and Merriman has demonstrated outstanding blocking ability and tough inside running. Chanley has run effectively against top opponents and will challenge for a start as well.

Quarterback: Coach Tardiff will choose between several talented athletes for the quarterback assignment. Eric Daniels (6'0", 170 lbs.) and Mike McCartney (6'0", 189 lbs.) return with experience but will be challenged for playing time by Temple University transfer Pat Barbato (6'0", 190 lbs.). Barbato, a throwing quarterback, was All-Conference, All-County, and All-State at Woodbridge, New Jersey High School. Freshmen Dana Ortiz, Ken Schmanke, Ed Vacek, and Tim Beasley will challenge the upperclassmen as well.

DEFENSE

Noseguard: Larry Turner (6'1", 271 lbs.) and Peter Blin (6'0", 222 lbs.) will be the top candidates for the noseguard position this fall. Freshman Richard Blume (6'2", 225 lbs.) will get a good look from the coaches as well. Blume led his Vianney High School (Missouri) team in tackles and was a First Team All-Independent selection. Sheldon Lane (5'10", 230 lbs.), a freshman from Topeka and Gerald Douglas (5'10", 220 lbs.), will also be at noseguard for the Ichabods.

Tackles: Mark Remboldt (6'2", 220 lbs.), who had 30 unassisted and 8 assisted tackles last year along with 7 quarterback sacks and 2 interceptions, is back along with

6'1", 250 pound Steve Podzielnny. Coach Tardiff is extremely confident in his defensive line and lists Charles Braden (6'4", 249 lbs.), Mik Shanks (6'4", 260 lbs.), and Joe Witham (6'5", 237 lbs.) as excellent candidates as well.

Defensive Ends: Tri-captains Dan Remboldt (6'3", 232 lbs.) and Paul Silovsky (6'2", 215 lbs.) can handle anyone running their way. Remboldt had 29 unassisted and 12 assisted tackles last year including 8 quarterback sacks and 4 tackles for loss. Silovsky had 29 unassisted and 19 assisted tackles including 3 behind the line in 1983. Silovsky made CSIC Honorable Mention last year and Remboldt made the All-CSIC and District 10 First Team lists. Scott Holloman (5'11", 202 lbs.), switched from fullback to defensive end, could earn a starting spot as well. Other names to watch for are Mike Barbato, Mike Mnich, Bruce Stindt, Bret Shaw, Kansas All-Stater Stewart Ensign, Vernon Hysaw and Mike Shepherd.

Linebackers: Tim Schlegel (5'10", 208 lbs.) is back and back strong. Schlegel, All-CSIC last year, led all Ichabod defenders in 1983 with 68 unassisted and 30 assisted tackles. Joining Tim will be returning starter Bill Guidetti (6'0", 223 lbs.) who, in only 5 games, had 24 unassisted and 21 assisted tackles for Washburn last year while leading the team in causing 4 opponent turnovers. Contributing to Coach Tardiff's strongest and deepest position will be Charles Bennett, Randall Craven, and Kansas State University transfer Myron Converse. Other names to watch for are Mike Benard, Doug Wiley, and freshmen Mike Conner and Howard "Buzz" Luper.

Secondary: Tony McDonald (6'1", 192 lbs.) has nailed down the strong safety spot. McDonald, in only 5 games, had 23 unassisted and 13 assisted tackles last year including 2 fumble recoveries. Supporting McDonald will be J. C. Haselby (5'7", 178 lbs.), Brad Fischer (5'11", 184 lbs.), and Mark Small (5'9", 190 lbs.). At free safety, Eugene Battle (5'9", 184 lbs.), Tom Burgess (5'11", 184 lbs.), Steve Johnson (6'1", 170 lbs.), and Bruce Zeil (6'4", 185 lbs.) will be working hard for the top spot. Jeff Green (6'0", 192 lbs.) will be a challenger for the top cornerback assignment. Coach Tardiff is very excited about two newcomers for the secondary and looks for them to have a lot of playing time. Leonard "Tort" Downing (5'9", 185 lbs.), a Cowley County Community College transfer and Glendale Community College transfer Quince Pippins (5'10", 170 lbs.), both with 4.5 speed, will be counted on to strengthen Washburn's secondary. Other cornerback candidates are Todd Molter, Torye Harris, Brent Redmond, Matt Merrell, All-Stater Shannon Haydock, and Tom Gettler.

Specialty Positions: Place kicking duties will be handled by Clay Smith (5'7", 163 lbs.), Honorable Mention All-CSIC place kicker Nick Kresic (5'11", 188 lbs.), and Charles Goodknight (5'9", 205 lbs.). Kresic went 21 for 22 on extra points last year and made 6 of 7 field goals. Randy Davey (5'9", 180 lbs.), who punted for 1583 yards last year for a 33 yard per punt average, will assume the early punting responsibilities but may be challenged by Tim Swietek and a couple of freshmen including Centralia High School's Tim Beasley and Topeka High School's Dana Ortiz.



1984 ALPHABETICAL FOOTBALL ROSTER

NAME	HT.	WT.	POS.	CLA-SS	HOMETOWN
Mike Barbato	5'11"	208	DE	Jr.	Woodbridge, NJ
Pat Barbato	6'0"	189	QB	Jr.	Woodbridge, NJ
Eugene Battle	5'9"	184	FS	So.	Jamestown, NY
Tim Beasley	6'0"	180	QB	Fr.	Centralia, MO
Mike Benard	6'1"	220	LB	So.	Chanute, KS
Charles Bennett	6'1"	233	LB	Jr.	E. Brunswick, NJ
Peter Blin	6'0"	222	NG	So.	Bayonne, NJ
Rick Blume	6'2"	225	NG	Fr.	St. Louis, MO
*Charles Braden	6'4"	249	DT	So.	Avenel, NJ
Greg Buller	5'8"	145	WR	So.	Topeka, KS
*Tom Burgess	5'11"	184	FS	Jr.	Wamego, KS
John Butler	6'0"	240	C	Fr.	Kansas City, MO
Ken Chanley	6'0"	200	FB	Sr.	Old Bridge, NJ
Doug Cobler	5'9"	185	RB	So.	Topeka, KS
Jim Collins	6'0"	245	OG	So.	Topeka, KS
Mike Connor	6'1"	180	LB	Fr.	Blue Springs, MO
Myron Converse	5'10"	205	LB	So.	Manhattan, KS
John Cook	6'1"	184	WR	Jr.	Salina, KS
*Randall Craven	5'9"	215	LB	So.	Denver, CO
*Eric Daniels	6'0"	170	QB	Jr.	Perry, KS
*Randy Davey	5'9"	180	P	Jr.	Topeka, KS
Dino DeLisa	5'10"	193	RB	Sr.	Point Pleasant, NJ
John Devine	6'6"	240	OT	So.	Ulster Park, NY
Gerald Douglas	5'10"	220	NG	Fr.	St. Louis, MO
Leonard Downing	5'9"	185	CB	Jr.	Atchison, KS
Stewart Ensign	6'3"	210	DE	Fr.	Miltonvale, KS
Brad Fischer	5'7"	168	SS	Jr.	Overbrook, KS
*Pete Flannigan	6'0"	191	WR	So.	E. Brunswick, NJ
*James Gambrell	5'11"	167	WR	Jr.	Tampa, FL
*Curt Georgeson	6'4"	240	OG	Sr.	Lawrence, KS
Tom Gettler	5'9"	181	CB	So.	Ft. Scott, KS
Michael Gibson	6'4"	235	OT	Fr.	Springfield, MO
*Charles Goodnight	5'9"	205	PK	So.	Independence, KS
Jeff Green	6'0"	192	CB	So.	Kansas City, MO
*Bill Guidetti	6'0"	223	LB	So.	Long Branch, NJ
*Lloyd Hanson	6'3"	250	OG	So.	Pleasant Hill, MO
*Torye Harris	5'6"	154	CB	Jr.	Buffalo, NY
*J.C. Haselby	5'7"	178	SS	So.	St. Louis, MO
Shannon Haydock	5'9"	160	CB	Fr.	Fredonia, KS
*Ed Hight	5'9"	163	WR	Jr.	Roeland Park, KS
*Scott Hollomon	5'11"	202	DE	So.	Topeka, KS
Scott Holsapple	6'0"	180	SS	Fr.	Blockton, IA
*Tracy Hunnaccutt	6'1"	255	OG	Sr.	Smith Center, KS
Vernon Hysaw	6'3"	220	DE	So.	Denver, CO
Steve Johnson	6'1"	170	FS	Fr.	Topeka, KS
Mark Kissick	5'8"	188	RB	So.	Overland Park, KS

*Nick Kresic	5'11"	188	PK	So.	St. Joseph, MO
Sheldon Lane	5'10"	230	NG	Fr.	Topeka, KS
Howard Luper	6'1"	215	LB	Fr.	Tulsa, OK
John Maher	5'10"	175	WR	Fr.	Overland Park, KS
Shane McCall	5'9"	183	SS	So.	Stockton, KS
Mike McCartney	6'0"	189	QB	So.	Boulder, CO
Mark McCullough	6'2"	265	OT	So.	Topeka, KS
*Tony McDonald	5'11"	192	SS	So.	Manhattan, KS
*Mike McGreevy	5'11"	211	FB	So.	Topeka, KS
Gary Menke	5'11"	220	C	Fr.	Topeka, KS
Matt Merrill	5'10"	157	CB	So.	Shawnee, KS
*Chris Merriman	5'11"	191	FB	So.	Wichita, KS
*Alex Mikaelian	6'1"	241	C	Jr.	Albuquerque, NM
*Marc Milner	6'1"	250	C	Jr.	Topeka, KS
Mike Mnich	5'9"	194	DE	So.	Olathe, KS
Todd Molter	5'8"	157	CB	So.	Topeka, KS
*Jerry Nall	6'1"	265	OT	So.	Clayton, IL
Dana Ortiz	6'1"	185	QB	Fr.	Topeka, KS
Quince Pippens	5'9"	173	CB	Jr.	Arlington, TX
*Steve Podzielny	6'1"	250	DT	Jr.	Grand Prairie, TX
Eduardo Quinones	5'11"	215	FB	So.	Bayonne, NJ
*Franklin Redd	6'0"	175	WR	So.	N. Tonawanda, NY
Brent Redmond	5'9"	180	CB	Jr.	Topeka, KS
**Dan Remboldt	6'3"	232	DE	Sr.	Topeka, KS
*Mark Remboldt	6'2"	220	DT	Sr.	Topeka, KS
Trent Rogers	5'9"	175	SS	Fr.	Macon, MO
*Tim Schlegel	5'10"	208	LB	Sr.	Upper Falls, MD
Ken Schmanke	6'0"	175	QB	Fr.	Alma, KS
Larry Schmieder	6'2"	280	OT	Fr.	Edison, NJ
*Bret Schwarz	6'4"	235	TE	Sr.	Beatrice, NE
*Bob Searcy	5'9"	150	WR	Sr.	Topeka, KS
Mik Shanks	6'4"	260	DT	So.	Minneapolis, KS
Bret Shaw	6'3"	210	DE	Fr.	Topeka, KS
Mike Shepherd	6'2"	210	DE	Fr.	Burlingame, KS
*Paul Silovsky	6'2"	215	DE	Sr.	Topeka, KS
Troy Slusser	5'11"	180	WR	Fr.	Topeka, KS
*Mark Small	5'9"	190	SS	So.	Denver, CO
*Clay Smith	5'7"	163	P-K	Sr.	Monett, MO
Scott Starbuck	5'11"	160	DE	Fr.	Tecumseh, KS
Bruce Stindt	6'2"	217	DE	Fr.	Belleville, KS
*Joe Stringer	6'1"	212	C	Jr.	Topeka, KS
Tim Swietek	5'11"	161	P	Jr.	Topeka, KS
Steve Tacca	6'4"	228	TE	Jr.	Colonia, NJ
*Larry Turner	6'1"	271	NG	So.	Carbondale, KS
Ed Vacek	5'11"	180	QB	Fr.	Omaha, NE
Mike VanSickle	5'9"	167	WR	Jr.	Boone, IA
Aaron Walker	6'0"	182	WR	So.	Neosho, MO
Eldon Wenstrand	6'5"	231	TE	Sr.	Shawnee Mission, KS
*Bill Wiley	5'7"	173	WR	Sr.	Independence, KS
Dan Wiley	5'6"	160	RB	Fr.	Basehor, KS
Joe Witham	6'5"	237	DT	Fr.	Valley Center, KS
Bruce Zeil	6'4"	185	FS	So.	Parkville, MO

* Number of Letters Earned
• Tri-Captain



GAME #1...NW MISSOURI STATE
September 8, 1:30 p.m., Maryville, Missouri

Location: Maryville, Missouri
Athletic Director: Dick Flanagan
Head Coach: Vern Thomsen
Assistant Coaches: Bob Lade, Bruce Cowdrey, Bob Reece, Bob Green
Sports Information Director: Larry Cain
Stadium: Rickenbrode (7,500, grass)
Nickname: Bearcats
Colors: Green and White
Enrollment: 5,243
Conference: MIAA
National Affiliation: NCAA DIV. II
Lettermen Returning: 37
Lettermen Lost: 13
1983 Record: 5-6-0
1983 Conference Record and Finish: 2-3-0 (4th)

OUTLOOK:

Second year coach Vern Thomsen returns 19 starters from a team that, although only 5-6-0, established 31 school offensive records. The architects of those records...quarterback Brian Quinn and receivers Bryan Shaw, Steve Hansley, Keith Nelson, and Dan Anderson, all return in 1984.

Quinn (163 of 288, 15 TDs, 2,070 passing yards, 2,256 yards total offense) had one of the finest statistical seasons of any quarterback in Bearcat history, finishing 16th in NCAA Div. II in total offense and 17th in passing. Hansley (14th in NCAA Div. II in receiving with 5.5 catches per game) and Anderson (26th with 4.8 receptions per game) ranked high nationally in receiving.

The 'Cat running game lacked punch last season, but junior college transfers Marcus Chester and Robert Wilson should solve that problem. In the line, three-year starters Marty Combs (center) and Mike Cawthon (tackle) anchor a strong veteran crew.

Defensively, the Bearcats were vastly improved over 1982 but still allowed 331 yards per game overall. The improvement will continue this year with ten starters returning from '83. Linebackers Steve Savard (team-leading 89 tackles) and Brad Sullivan (85 tackles), defensive back Mike Rivers (MIAA-high 10 interceptions, 0.9 per game that ranked him 6th in NCAA DIV. II), and veteran linemen Brian Murphy, Tony Coleman, and Jim Strand will all improve with age.

Redshirts expected to contribute this year include offensive lineman Larry Beashore, defensive lineman Tony Floyd, quarterback Mark Thomsen (JC All-American at Ellsworth in 1982), lineman Chad Reece, and fullback Brent Orme.



Vern Thomsen

GAME #2...MISSISSIPPI VALLEY
September 15, 1:30 p.m., Topeka (Community Day)

Location: Itta Bena, Mississippi
Athletic Director: Dr. Joe Curtis
Head Coach: Archie Cooley, Jr.
Assistant Coaches: Johnny Thomas, Richard West, James Norwood, Willie Fulton, Gloster Richardson
Sports Information Director: Chuck Prophet
Stadium: Magnolia (10,000)
Nickname: Delta Devils
Colors: Green and White
Enrollment: 2,500
Conference: Southwestern Athletic Conference
National Affiliation: NCAA 1-AA
Lettermen Returning: 40
Lettermen Lost: 8
1983 Record: 7-2-1

OUTLOOK:

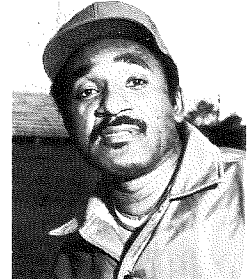
With 40 lettermen, including 16 starters and 4 All-Americans returning, goals are very high and things look good for Coach Archie "Gunslinger" Cooley, Jr. and his Red Devils. The 1984 team hopes will rest on the frame of 6'2½", 190 pound flame thrower Willie Totten. Totten passed for 2,566 yards in 9 games, connecting on 174 of 279 attempts for 29 touchdowns and only 9 interceptions in 1983. "All-World" receiver Jerry Rice has rewritten the 1-AA SWAC and MVSU football record books, catching 102 passes for 1450 yards and 14 touchdowns last year and he is back along with a pair of 228 pounders who, together, carried the ball for 850 yards and a pair of halfbacks who gained 495 yards between them.

Two All-Americans return to the offensive line that averages 283 pounds across the front. Allowing only 6 quarterback sacks last year, the "Tons of Fun" group have shown they can protect the passer.

Defensively, Valley will field a young, but experienced team. Lloyd Mumphrey, 6'3", 240 pound nose guard, is the team leader with his 4.7 speed allowing him to make tackles all over the field. Great pass rusher Rod Miller is back along with two-year starter Robert Sanders. MVSU linebackers average 228 pounds and SWAC Freshman of the Year, Clarence Trotter, is back at safety.

Coach Cooley signed 25 recruits, 17 of which are linemen that average 6'3", 270 pounds. The special teams are loaded with returning veterans.

Coach Cooley on his Delta Devils, "I don't foresee any problems moving the ball. Our defense had some problems last year because we kept them on the field so much due to our quick scoring offense. This year we want a more balanced, ball control offense and we feel we have a much better overall defensive team based on what we did in the spring."



Archie Cooley, Jr.

GAME #3...MISSOURI VALLEY
September 22, 1:30 p.m., Topeka (Parent's Day)

Location: Marshall, Missouri
Athletic Director: Kenneth Gibler
Head Coach: Kenneth Gibler
Assistant Coaches: Reed Keyner, Bob Thompson, Jeff Steinte
Sports Information Director: Darla Arni-Bublitz
Stadium: Gregg-Mitchell Field (3,200)
Nickname: Vikings
Colors: Purple and Orange
Enrollment: 450
Conference: Heart of America Athletic
National Affiliation: NAIA District 16, Division II
Lettermen Returning: 28
Lettermen Lost: Not available
1983 Record: 7-2-1
1983 Conference Record and Finish: 5-1-1, Tie for 2nd

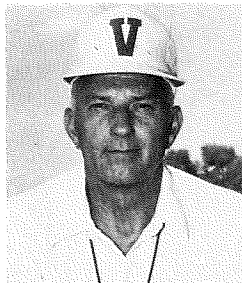
OUTLOOK:

Our 1984 football schedule includes the most difficult non-conference schedule we've had in years. NCAA Division II power Missouri-Rolla and NAIA Division I powers Wasburn University and Evangel College are our first three opponents and if we can have any success at all in those games, we would expect to be a pretty good football team.

Our weakness on paper would have to be our defense with the loss of 8 starters, including two 2nd Team All-Americans and several 3 and 4 year starters. We return both tackles and our quick cornerback along with exceptional punter Bill Babylon. We return capable players defensively, the question being how quickly they mature as a group.

We expect to have good offensive experience and ability. The big question is at quarterback. We will have good competition at that position between senior Roger Williams and junior Bob Ramsey, both very capable. We return all of our other backs with seniors Wayne Stallings and Tony Walker leading the way at the fullback and running back positions and junior Steve Cowan at slot-back. David McGehee (6'4", 190 lbs.) returns at split end and both senior Bill Babylon (6'4", 210 lbs.) and sophomore Jerry Winkler (6'3", 195 lbs.) are very capable at tight-end. The interior offensive line has the most size ever and the most experience for some time. It could be Matt Knehans (6'4", 250 lbs.) at center, Jeff Daniels (6'4", 280 lbs.) and Jimmy Anderson (6'2", 265 lbs.) at the tackles and Joe McNerney (6'0", 230 lbs.) and Kevin Wells (5'11", 205 lbs.) at the guards. Mike Brinkley returns for his fourth year as our kicker and probable defensive nose guard.

We will have several new starters, but if we mature early enough to compete well in our non-conference games, we could develop into a very good football team.



Kenneth Gibler

GAME #4...EMPORIA STATE
September 29, 1:30 p.m., Emporia, Kansas

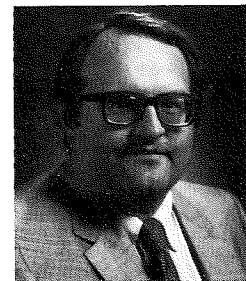
Location: Emporia, Kansas
Athletic Director: Dr. Bill Quayle
Head Coach: Larry Kramer
Assistant Coaches: Randy Matthews
Sports Information Director: Ron Dinkel
Stadium: Welch (7,000)
Nickname: Hornets
Colors: Black and Gold
Enrollment: 5,800
Conference: Central States Intercollegiate
National Affiliation: NAIA, Division I
Lettermen Returning: 28
Lettermen Lost: 12
1983 Record: 2-8
1983 Conference Record and Finish: 1-6, Tie for 7th

OUTLOOK:

Coach Larry Kramer begins his second season at Emporia State and will be trying to improve on last year's 2-8 showing and 1-6 finish in the CSIC race that put the Hornets in a seventh-place tie.

The defense, which allowed 32 points per game last fall, should be improved with seven starters and a number of key back-up players returning in 1984. Linebacker Scott Diebold is the top returning player after ranking third on the tackle charts last season.

Despite concern about the offensive line, most of the other areas appear to have experienced personnel. David Tyron is back at tailback after gaining 80 yards per game, scoring eight touchdowns, and earning second-team All-CSIC honors his freshman campaign. Part-time starter Brian Nunez and Bob Lee should battle for the quarterback spot while the receiver corps has the top six receivers back. Seven starters are also back on offense.



Larry Kramer

GAME #5...PITTSBURG STATE
October 6, 1:30 p.m., Topeka (Homecoming)

Location: Pittsburg, Kansas
Athletic Director: Dave Suenram
Head Coach: Mike Mayerske
Assistant Coaches: Bill Samuels, Frank Crespino, Mike Buckler, Brian Byers
Sports Information Director: Wayne Davenport
Stadium: Brandenburg Stadium (6,400)
Nickname: Gorillas
Colors: Crimson and Gold
Enrollment: 5,500
Conference: Central States Intercollegiate
National Affiliation: NAIA District 10
Lettermen Returning: Not Available
Lettermen Lost: Not Available
1983 Record: 6-4
1983 Conference Record and Finish: 4-3, Tie for 3rd

OUTLOOK:

The Gorillas have a new head coach. Mike Mayerske, after serving as offensive coordinator last year, will take over a Pittsburg State team that, with a host of promising recruits, hopes to better its disappointing 6-4 record of last season.

Some key high school and junior college acquisitions will give added dimension to an already talented returning squad. Defensive problems still remain a question at the left guard and right tackle spots, but other areas filled last year by freshman and sophomores will be considerably stronger. All-Conference from Colgan High School, quarterback Mike Gallagher has signed with the Gorillas as has teammate defensive back Kevin Decker who earned All-League honors with the Panthers last year. Helping out at quarterback and in the punting duties will be All-Sun County, Honorable Mention All-State, All-Metro, and Kansas Shrine Bowler Gene Stegeman. Mike Hoover will help out at the tackle spot.

Teddy Harre, All-Conference and All-District defensive and running back, is another freshman Coach Mayerske will have to count on as well as Conference, District and State First-Teamer Glen Burton, Appleton City, tackle. Helping the Gorillas on defense will be recruit Perry Stouffer, a four-year football and track letterman.

Offensively, the Gorillas have a potent attack strengthened by the addition of some speedsters in the backfield and some talented hands at the receiving positions. The Gorillas quarterback returns and should prove to be among the top passers in the conference as he did last year.



Mike Mayerske

GAME #6...WAYNE STATE
October 13, 2:00 p.m., Wayne, Nebraska

Location: Wayne, Nebraska
Athletic Director: Ron Jones
Head Coach: Pete Chapman
Assistant Coaches: Mike Breske, Dennis Danielson, Rich Bisaccia, Mike Warren
Sports Information Director: Steve Jones
Stadium: Memorial Stadium (3,500)
Nickname: Wildcats
Colors: Black and Gold
Enrollment: 2,500
Conference: Central States Intercollegiate
National Affiliation: NAIA
Lettermen Returning: 25
Lettermen Lost: 20
1983 Record: 1-9-0
1983 Conference Record and Finish: 1-6, Tie for 7th

OUTLOOK:

Fifteen semester transfers and plenty of hard work should improve upon Wayne State's 1-9 football record in 1983. Second-year Coach Pete Chapman has rebuilt the Wildcats via transfers, strong high school recruiting and off-season conditioning.

The Wildcats should be strong at quarterback, wide receiver, tight end, and defensive back with depth and skill. The defensive line needs more depth, while the offensive line should be the most improved area. The offensive line is filled with returning starters and talented transfers and averages 233 pounds across the front. Recruiting went well at the running back position, bringing in top fullback Carl Calvert. JUCO flanker transfer Matt Hoffman led spring game receivers and split end Sonny Jones is back.

Returning only 5 defensive starters, the Wildcats have a lot of rebuilding to do. Transfers and red-shirts have bolstered the secondary and made it faster. In fact, overall team speed will be much better.



Pete Chapman

GAME #7...FORT HAYS STATE
October 20, 1:30 p.m., Hays, Kansas

Location: Hays, Kansas
Athletic Director: Tom Stromgren
Head Coach: Bobby Thompson
Assistant Coaches: John Vincent, Mike DeBord
Sports Information Director: Cheryl Kvasnicka
Stadium: Lewis Field (7,000)
Nickname: Tigers
Colors: Black and Gold
Conference: Central States Intercollegiate
National Affiliation: NAIA Division I
Lettermen Returning: 19
Lettermen Lost: 12
1983 Record: 8-3
1983 Conference Record and Finish: 4-3 Tie for 3rd

OUTLOOK:

Fort Hays State University went "8-3 in '83" and in the process rewrote the Tiger football record book. The Tigers eight win season was only the second in the schools' history, dating back to 1935 when they posted an 8-2 mark.

With seven starters returning on both offense and defense, the Tigers biggest adjustment in '84 lies in FHSU's recent coaching change. Former Athletic Director and Head Football Coach (1979-80) Bobby Thompson has returned to Hays to replace Jim Gilstrap. During his previous two year stint at FHSU, Thompson posted a 9-10-2 record.

After a brilliant sophomore year in which he earned All-CSIC, All-District 10 and NAIA Honorable Mention All-American honors, Robert Long returns at quarterback to guide the Tigers offensive attack. In 1983, Long broke nearly every FHSU individual passing record and was consistently in the NAIA's top five passing statistical ranking.

The Tigers key man on defense is senior linebacker Chris Honas. Honas also received All-CSIC, All-District 10 and NAIA Honorable Mention All-American honors in '83.



Bobby Thompson

GAME #8...MISSOURI WESTERN
October 27, 1:30 p.m., Topeka (Band Day)

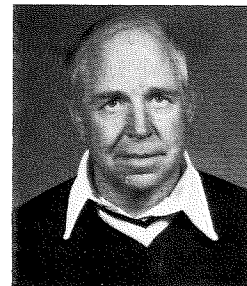
Location: St. Joseph, Missouri
Athletic Director: Charlie Burri
Head Coach: Rob Hicklin
Assistant Coaches: Dave Hedrick, Howard McCauley, Don Malson, Fran Schwenk, Gary Vogel
Sports Information Director: Paul Sweetgall
Stadium: Spratt Memorial (6,000)
Nickname: Griffons
Colors: Black and Gold
Enrollment: 4,300
Conference: Central States Intercollegiate
National Affiliation: NAIA Division I
Lettermen Returning: 34
Lettermen Lost: 15
1983 Record: 5-6
1983 Conference Record and Finish: 3-4, Sixth

OUTLOOK:

A number of newcomers will be battling for starting spots as the Griffons return from a 5-6 season. Although 34 lettermen remain on the squad, only three offensive and six defensive starters return. An 11-game schedule features the seven CSIC opponents along with Northwest Missouri State, University of Missouri-Rolla, William Jewell College and the addition of powerful Texas A&I.

The Griffons should show a more diversified offense this season, even though quarterback Joe Holder, who threw for 1865 yards last season, has graduated. Fort Scott (KS) JUCO transfer Bruce Humphrey has the edge as Holder's replacement. Jeff Holland, the NAIA's national leader in kickoff returns, heads a backfield that included Eastern Illinois transfer Melvin Ware and sophomore Mark Hartman in spring drills. Five of the team's top seven receivers from 1983 will also be back.

Defensive tackle Vince Thomson, who has drawn the attention of pro scouts, is the only starter returning on a line that graduated All-Americans Tim Boender and Steve Marlay. Linebacker Stuart Standeven returns after being the team's leading tackler last season, and four starters return in the defensive backfield.



Rob Hicklin

GAME #9...KEARNEY STATE
November 3, 1:30 p.m., Topeka (American Heritage Day)

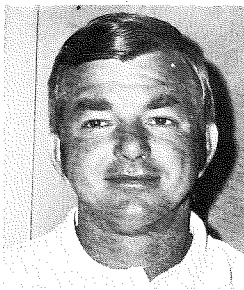
Location: Kearney, Nebraska
Athletic Director: Allen H. Zikmund
Head Coach: Claire Boroff
Assistant Coaches: Terry Renner, Brett Bauer, Dale Pash, Tom Sneckenberg, Don Pierson
Sports Information Director: Donald K. Briggs
Stadium: Foster Field (6,500)
Nickname: Antelopes
Colors: Blue and Gold
Enrollment: 8,000
Conference: Central States Intercollegiate
National Affiliation: NAIA
Lettermen Returning: 41
Lettermen Lost: 17
1983 Record: 5-5
1983 Conference Record and Finish: 4-3, Tie for 3rd

OUTLOOK:

A total of 70 men (41 lettermen) lead the Kearney State football team to what they and the coaches hope will be a better season than last year's 5-5 mark. Although there is experience at every position, there are several spots where a lack of depth concerns the coaches.

With seven starters back, this should be a promising year for the offense. The split end position is one of considerable concern, changes will be made to shore up the center spot, the backs seem to have depth, and there are tight ends galore. All-American Burt Muehling could set KSC receiving marks with a good year. Roger Suelter, who gained 1,020 yards last fall, leads the backs with junior signal caller Brett Kuhn returning.

Inexperience is the key word describing defense. Only four starters are back, yet nearly every spot has a man who saw action last fall. End Jon Gustafson and tackle Scott Moats return in the line and backs Rod Falter and Brett Lind are back. In between, coaches will be forced to go with new faces. For the most part, the coaches were very pleased with spring ball progress and feel that the defense will be up to Antelope standards as the fall season opens.



Claire Boroff

GAME #10...MISSOURI SOUTHERN
November 10, 1:30 p.m., Joplin, Missouri

Location: Joplin, Missouri
Athletic Director: Jim Frazier
Assistant Coaches: Rod Giesselman, Frank Crossen, Wes Rodgers, Dan Schible, Dave Evans, Warren Turner
Sports Information Director: Carl Cromer
Stadium: Fred Hughes Stadium (7,500, Astro-turf)
Nickname: Lions
Colors: Green and Gold
Enrollment: 4,500
Conference: Central States Intercollegiate
National Affiliation: NAIA
Lettermen Returning: 28
Lettermen Lost: 12
1983 Record: 8-2
1983 Conference Record and Finish: 5-2, Second

OUTLOOK:

The 1984 version of Missouri Southern football returns 28 lettermen and 10 starters from last year's 8-2 ballclub. By virtue of a well developed winter and spring program, Southern is stronger and faster in every position. In addition to the strength and speed, Southern will have the leadership of fifteen seniors.

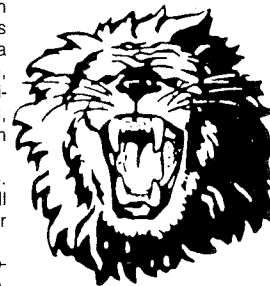
The defense will be the vanguard in 1984. Known as the "Black Shirts", the defense will provide a rebuilt secondary, a solid linebacker corps, and a veteran defensive line.

All-District defensive tackle Doug Strub-burg, a 6'1", 225 pound junior, and Rob Nolle, a 6'2", 230 pound senior will anchor the line at tackle position. Other names to watch for in the Southern defense are Rick Skaggs, noseguard Mark Kennedy, linebackers Michael Toney, Kevin Ziegler, and Jerry Jones. Inside linebackers Jerry Powell and Steve Forbis return along with sophomore letterman Don Stone. The secondary has several veterans and transfers battling for the starting spots including featured returning starter Tim Jones at the weak corner.

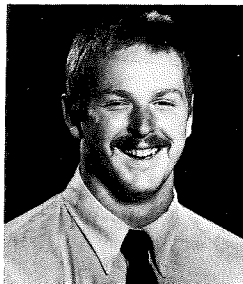
Offensively, five returning starters and 16 lettermen will form a nucleus around which the Lions can build. All-CSIC tailback Harold Noirfalise will return for his senior year and transfer Keith Chambers will get the call at fullback. Senior quarterback Rich Williams will again be at the helm with Jeff Kilbane in a supporting role. The offensive line will be quick and untested. Senior John Wenninghoff will be back at center and two sophomores look to be filling the guard spots. The receivers will be Kelly Young at split end and Darrin McClure at tight end. Senior Dan Cleary will be looked at to fill the flanker position.

The kicking game is strong and proven. Senior Terry Dobbs returns to his placekicking duties and junior Marty Nagel will be the punter again for the Lions.

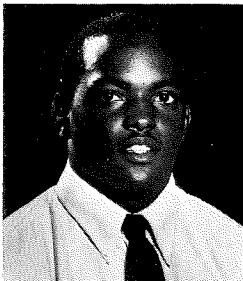
If the offense jells early and the defense can keep healthy, Southern will be expected to be in the running for the CSIC crown.



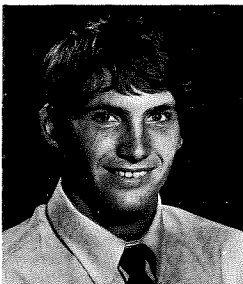
RETURNING ICHABOD LETTERMEN



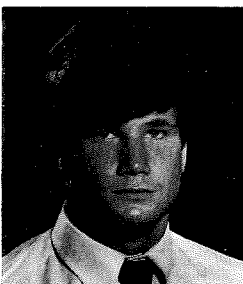
Charles Braden: 6'4", 249 lbs. Sophomore Defensive Tackle, Avenel, N.J. Excepted to play a lot in 1984, Charles has the strength and quickness to be a great defensive lineman.



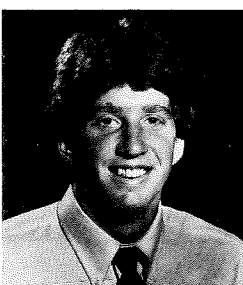
Randall Craven: 5'9", 215 lbs. Sophomore Linebacker, Denver, CO. Moved from fullback to linebacker for 1984, Randall will fill the gaps for the Ichabods. Recording the strongest squat on the team, Randall will be a tough obstacle for opposing runners.



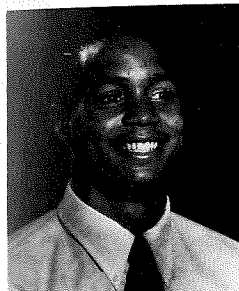
Randy Davey: 5'9", 180 lbs. Junior Punter, Topeka, KS. Recovering to his top form in 1984, Randy will be counted upon heavily this year. In 1983 Randy punted 48 times for 1583 yards. He holds the school records for most punts and longest punt in a single game and most yards punted in a season.



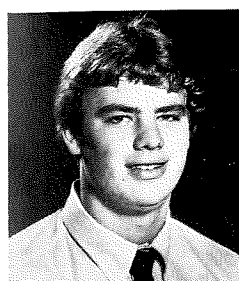
Dino DeLisa: 5'10", 193 lbs. Senior Running Back, Pt. Pleasant, NJ. Dino is Washburn's top All-American candidate. Back strong as ever, he rushed for a school record 1185 yards last season on another record 262 carries. He also holds the school record for most carries in a single game. Dino needs only 743 yards to become Washburn's all-time leading career rusher.



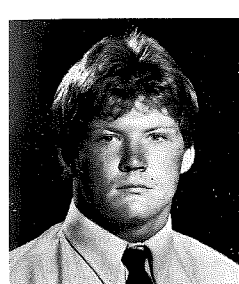
Peter Flannigan: 6'0", 191 lbs. Sophomore Wide Receiver, East Brunswick, NJ. A part-time starter as a freshman, Peter caught 10 passes for 69 yards last season and is being counted on heavily as a top Ichabod receiver in 1984. Coach Tardiff says Peter has "two of the best hands on the team".



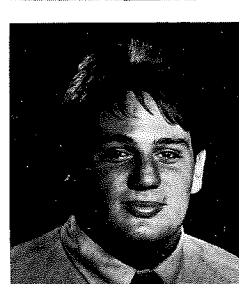
James Gambrell: 5'11", 167 lbs. Junior Wide Receiver, Tampa, FL. James, a former quarterback, caught 9 passes for 96 yards last year and should be one of the top receivers back for 1984. He is Washburn's deep threat and can run well with the ball once he has it.



Curt Georgeson: 6'4", 240 lbs. Senior Offensive Guard, Lawrence, KS. A returning starter, Curt is a versatile player who can fill both offensive guard and tackle positions. Strong and experienced, Curt had his best year last season and should be even better this year.



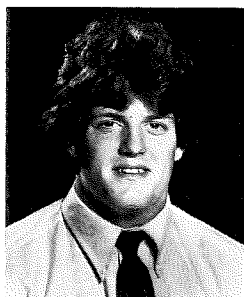
Charles Goodknight: 5'9", 205 lbs. Sophomore Kicker, Independence, KS. Charles had a good freshman year and returns in 1984 with a very strong leg. A promising kick-off man, he also will give the Ichabods the luxury of a long field goal threat.



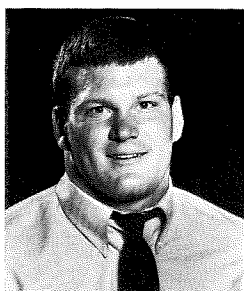
William Guidetti: 6'0", 223 lbs. Sophomore Linebacker, Long Branch, NJ. "Guido" started 5 games last year and is expected by the defensive coaches to be a defensive team leader. William had 24 unassisted and 21 assisted tackles last year and caused 4 opponent turnovers in only 5 games.



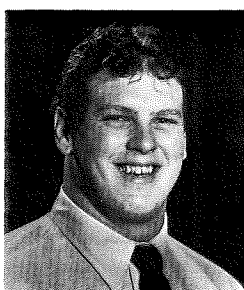
Lloyd Hanson: 6'3", 250 lbs. Sophomore Offensive Guard, Pleasant Hill, MO. A back-up offensive lineman as a freshman, Lloyd could be a starter in 1984. He has good size, speed, quickness, and intelligence.



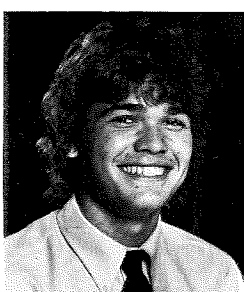
J. C. Haselby: 5'7", 178 lbs. Sophomore Strong Safety, St. Louis, MO. J. C. has been a power lifter in the off-season and returns stronger and quicker than ever in 1984. He worked very hard in spring practice and the coaches, impressed with his desire, would like to have his experience on the field.



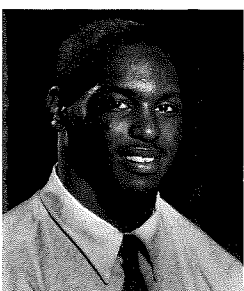
Scott Holloman: 5'11", 202 lbs. Sophomore Defensive End, Topeka, KS. "Mr. Weight Room" has been moved from fullback to defensive end for this season. A great hitter with keen intensity, Scott could earn a start.



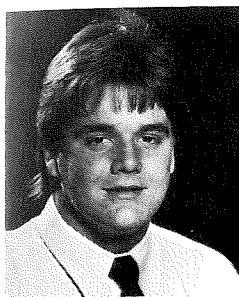
Tracy Hunnacutt: 6'1", 255 lbs. Senior Offensive Guard, Smith Center, KS. Selected by his teammates as a tri-captain, Tracy is a true team leader. All-CSIC 2nd Team last year, Tracy will again dominate opponents on the line, making the job of the Icabod backs a little easier.



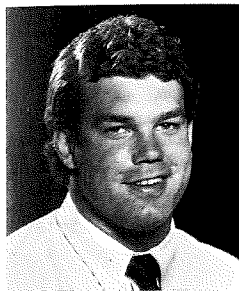
Nick Kresic: 5'11", 188 lbs. Sophomore Kicker, St. Joseph, MO. Selected last year as an All-CSIC Honorable Mention kicker, Nick has the best accuracy among the Icabod kickers. He was 6 for 7 in field goals last year and shows tremendous poise under pressure.



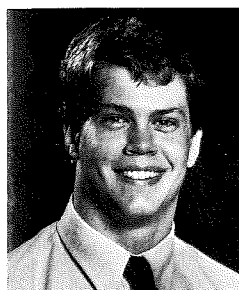
Tony McDonald: 6'1", 192 lbs. Sophomore Strong Safety, Manhattan, KS. Tony started as a freshman in 1983 and had 23 unassisted and 13 assisted tackles in 5 games. He is a complete defensive player with 4.5 speed who can blitz and play man. A very smart, intense, and strong player.



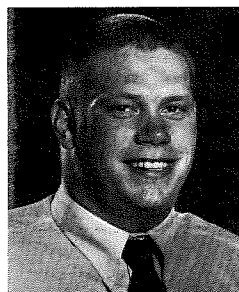
Mike McGreevy: 5'11", 211 lbs. Sophomore Fullback, Topeka, KS. With good size and speed, Mike is a smart ball player who returns with valuable playing experience from last year. He will be a top competitor for the fullback spot.



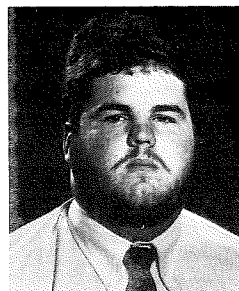
Chris Merriman: 5'11", 191 lbs. Sophomore Fullback, Wichita, KS. Moved from defensive end to the fullback slot for this year, Chris is a strong blocker and a good inside runner. A definite fullback candidate, Chris is a versatile athlete.



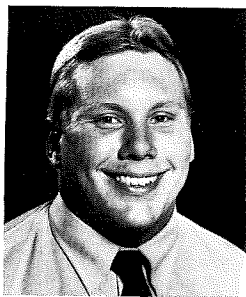
Alex Mikaelian: 6'1", 241 lbs. Junior Offensive Guard, Albuquerque, NM. Alex, a starter last year, may also play some center for the Icabods. An extremely spirited and talented player, Alex keeps the offensive linemen "pumped" and confident.



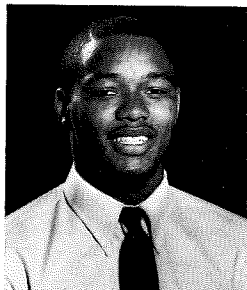
Marc Milner: 6'1", 250 lbs. Junior Center, Topeka, KS. Among the top candidates for center, Marc is strong and versatile. Moved from defensive tackle to center for 1984, Marc is just the kind of athlete Coach Tardiff needs over the ball.



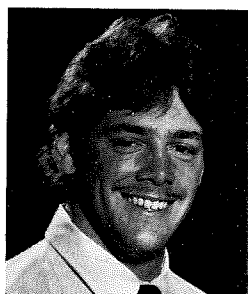
Jerry Nall: 6'1", 265 lbs. Sophomore Offensive Tackle, Clayton, IL. Solid as a freshman, 1983 starter Jerry Nall should start at offensive tackle in 1984. Jerry had a good spring and showed the determination to repeat his excellent work of last year.



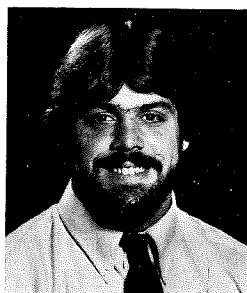
Steve Podzielnny: 6'1", 250 lbs. Junior Defensive Tackle, Grand Prairie, TX. Steve is a very strong and is expected to experience a lot of playing time this season. A part-time starter last year, Steve just may be full-time in 1984. Credited with 14 tackles last year, "Pod" should be among the leaders this season.



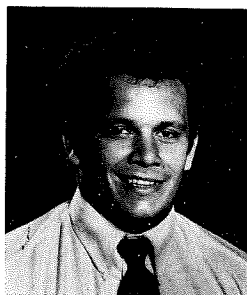
Franklin Redd: 6'0", 175 lbs. Sophomore Wide Receiver, N. Tonawanda, NY. Moved from quarterback to wide receiver last season, Franklin caught 5 passes in 7 games for 195 yards. The fastest man on the squad with 4.4 speed, Franklin is a deep threat for the Ichabods and, with more experience, should be outstanding.



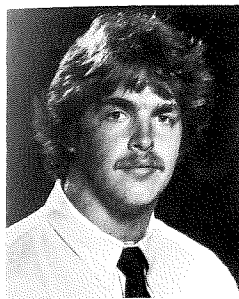
Dan Remboldt: 6'3", 232 lbs. Senior Defensive End, Topeka, KS. All-CSIC and District 10 from 1983, Dan is a true All-American candidate for 1984. He led the team in quarterback sacks last year and had 29 unassisted and 12 assisted tackles. A tri-captain, Dan is the top returning defensive player.



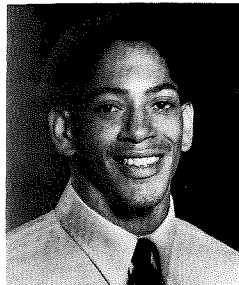
Mark Remboldt: 6'2", 220 lbs. Senior Defensive Tackle, Topeka, KS. Mark had 30 unassisted tackles and 8 assisted tackles last season as a starter and recorded 7 quarterback sacks. A team leader, Mark attacks with "bolt force" according to the coaches and should be a definite plus for the Ichabods again in 1984.



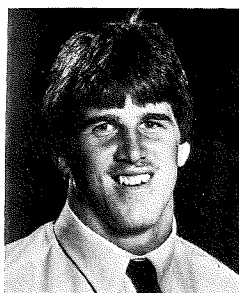
Tim Schlegel: 5'10", 208 lbs. Senior Linebacker, Upper Falls, MD. All-CSIC last year, Tim has an uncanny ability to locate the football. He has excellent technique and was Washburn's tackling leader in 1983 with 68 unassisted and 30 assisted tackles.



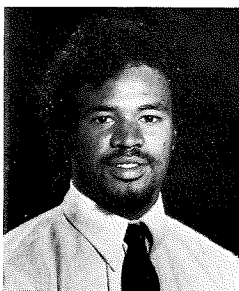
Bret Schwarz: 6'4", 235 lbs. Senior Tight End, Beatrice, NE. A starter last year, Bret caught 12 passes for 114 yards and is one of the top prospects this year for the "short game" receiver. Bret has a great attitude and superior hustle and is credited by the coaches as a solid blocker.



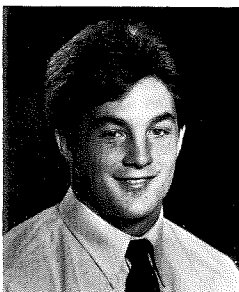
Bob Searcy: 5'9", 140 lbs. Senior Wide Receiver, Topeka, KS. A possible starter this season, Bob has fine speed and deceptive moves. The experience he gained last year will aid him greatly as he works to get open for the Ichabod quarterbacks.



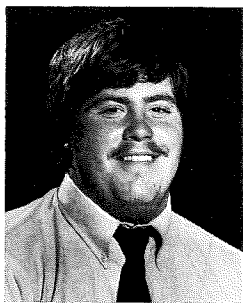
Paul Silovsky: 6'2", 215 lbs. Senior Defensive End, Topeka, KS. Mr. "All Everything", Paul was Honorable Mention All-CSIC last year and should be an All-American candidate this season. Credited with 29 unassisted and 19 assisted tackles last year, Paul will send opponents in another direction.



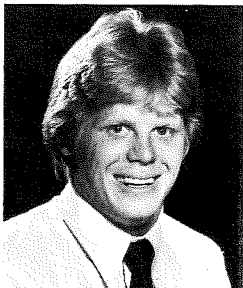
Mark Small: 5'9", 190 lbs. Sophomore Strong Safety, Denver, CO. Switched from running back, Mark is expected to see a lot of action in Washburn's secondary this fall. He knows what offensive backs try to do and should be well qualified to stop them at his new position.



Clay Smith: 5'7", 163 lbs. Senior Place Kicker, Monett, MO. An outstanding kickoff man, Clay is another deep field goal threat for the Ichabods. Clay is looked to by the coaches for leadership and poise in pressure situations.



Larry Turner: 6'1", 271 lbs. Sophomore Nose Guard, Carbondale, KS. A proven starter in 1983, Larry's quick feet will cause many problems for opponents on the other side of "his" line. He protects the line well and does not give ground. Opponents will have to double team Larry if they hope to move him off the line of scrimmage.



Bill Wiley: 5'7", 173 lbs. Senior Wide Receiver, Independence, KS. Bill has been nicknamed "Mister Hustle" and returns as Washburn's top kickoff and punt returner. Bill returned 19 punts for 136 yards and 6 kickoffs for 120 yards last year.



1983 WASHBURN UNIVERSITY FOOTBALL STATISTICS
10 GAMES: 8-2 Overall, 5-0 Home, 3-2 Away,
2-1 Non Conference, 6-1 CSIC—CSIC CHAMPIONS!

PLAYER	RUSHING					
	GP	TC	YDS	YPC	GA	TD
DeLisa	10	262	1,185	4.5	118.5	14
Bernard	10	100	497	5.0	49.7	4
Small	10	38	129	3.4	12.9	—
Leiker	8	34	66	1.9	8.3	3
McGreevy	8	13	62	4.8	7.8	—
Hardesty	10	5	35	7.0	3.5	—
Craven	7	8	23	2.9	3.3	—
Quinones	2	3	11	3.7	5.5	—
Fischer	1	7	10	1.4	10.0	—
Holloman	2	2	7	3.5	3.5	—
Gambrell	8	1	2	2.0	.3	—
Wiley	10	1	2	2.0	.2	—
Daniels	1	1	1	1.0	1.0	—
Frankmore	1	1	0	—	—	—
Elliott	10	29	-62	—	—	—
WU	10	518	1,978	3.8	197.8	21
OPP	10	382	919	2.4	91.9	11

PLAYER	PASSING						
	GP	PC-PA	PCT	HI	YDS	GA	TD
Elliott	10	80-133	.602	5	1,074	107.4	5
Leiker	8	21-32	.656	1	324	40.5	—
Bernard	10	30-53	.566	4	311	31.1	2
Daniels	1	0-2	.000	—	—	—	—
Davey, RA	10	0-1	.000	—	—	—	—
WU	10	131-221	.593	10	1,709	170.9	7
OPP	10	127-283	.449	22	1,612	161.2	7

PLAYER	RETURNS			INTER NO/YD/A
	GP	PUNTS NO/YD/A	KICKOFFS NO/YD/A	
Wiley	10	19/136/7.2	6/120/20	—
Poynter	10	10/78/7.8	5/128/25.6	7/148/21.1
Gambrell	8	—	2/50/25	—
Redd	7	—	2/37/18.5	—
Canady	10	2/37/18.5	3/72/24.0	8/74/8.2
Rosenstengle	5	2/13/6.5	1/15/15	—
M. Remboldt	0	—	—	2/3/1.5
Beard	5	—	—	2/21/10.5
Munson	10	—	—	1/0/0
Hysaw	2	—	—	1/5/5
Silovsky	10	—	—	1/9/9
WU	10	33/261/7.9	19/421/22.2	22/251/11.4
OPP	10	16/47/2.9	34/594/17.5	10/83/8.3

PLAYER	TOTAL OFFENSE					
	GP	PLAYS	RUSH	PASS	TOTAL	AVG
DeLisa	10	262	1,185	—	1,185	118.5
Elliott	10	109	-62	1,074	1,012	101.1
Bernard	10	130	497	311	808	80.8
Leiker	8	61	66	324	390	48.8
WU	10	738	1,978	1,709	3687	368.7
OPP	10	648	919	1612	2531	253.1

PLAYER	PASS RECEIVING					
	GP	PC	YDS	YPC	GA	TD
Hardesty	10	39	606	15.5	60.6	1
DeLisa	10	25	267	10.7	26.7	1
Schwarz	10	12	114	9.5	11.4	—
Pulliam	9	11	144	13.1	16.0	2
Flanningan	10	10	69	6.9	6.9	—
Gambrell	9	9	96	10.7	12.0	1
Redd	7	5	195	39.0	27.9	1
Tacca	5	5	29	5.8	5.8	—
Searcy	6	4	35	8.8	5.8	—
Bernard	10	3	39	13.0	3.9	—
Davey, RI	10	2	19	9.5	1.9	—
McGreevy	8	2	14	7.0	1.8	1
Elliott	10	1	51	51.0	5.1	—
Craven	7	1	28	28.0	4.0	—
Wiley	10	1	4	4.0	.4	—
Small	10	1	-1	—	—	—
WU	10	131	1,709	13.0	170.9	7
OPP	10	127	1,612	12.7	161.2	7

PLAYER	PUNTING			
	GP	NO	YDS	AVG
Davey, RA	10	48	1583	33.0
Beard	10	3	83	27.7
DeLisa	10	1	1	1.0
WU	10	52	1667	32.1
OPP	10	66	2302	34.9

WU	TOTALS		OPP
	738	648	
1978	Rushing Yards	919	
1709	Passing Yards	1612	
3687/368.7	Total YDS/AVG	2531/253.1	
184	First Downs	128	
26/13	Fumbles/Lost	15/11	
77/621	Penalties/Yards	10/492	

PLAYER	SCORING						
	GP	EP-A	EP-2	FG-A	TD	TOT	AVG
DeLisa	10	—	—	—	14	84	8.4
Kresic	8	21-22	0-0	6-7	—	39	4.9
Bernard	10	—	—	—	4	24	2.4
Leiker	8	—	0-2	—	3	18	2.3
Pulliam	9	—	—	—	2	12	1.3
Hardesty	10	—	2-2	—	1	10	1.0
Goodknight	6	2-3	—	2-10	—	8	1.3
Redd	7	—	—	—	1	6	.9
McGreevy	8	—	—	—	1	6	.8
Gambrell	8	—	—	—	1	6	.8
Poynter	10	—	—	—	1	6	.6
Silovsky	10	—	—	—	1	6	.6
Smith	10	1-1	—	0-2	—	1	.1
WU	10	24-26	2-4	8-19	29	226	22.6
OPP	10	12-14	3-4	2-5	18	132	13.2

WASHBUR UNIVERSITY FOOTBALL TEAM RECORDS

(* includes results of non-intercollegiate game or games)

(** includes Boot Hill Bowl victory)

GAME RECORDS

POINTS SCORED...79 vs St. Mary of the Plains 1978 (Wu 79-3), 80* vs Fort Riley 1900 (WU 80-0)
BIGGEST MARGIN OF VICTORY...76 vs St. Mary of the Plains 1978 (WU 79-3), 80* vs Fort Riley 1900 (WU 80-0)
MOST POINTS ALLOWED...72 by Bethany 1902 (WU 0, Bethany 72)
MOST COMBINED POINTS...98 with Northern Colorado 1969 (N. Colo. 70, WU 28)
MOST FIRST DOWNS...28 vs Arkansas Tech University 1980
MOST YARDS RUSHING...382 vs Fort Hays State 1960
MOST YARDS TOTAL OFFENSE...681 vs Rockhurst 1949
PASSES ATTEMPTED...64 vs Emporia State University 1980
BEST PUNTING AVERAGE...49.8 vs Missouri Western (6 for 299 yds.) 1974
MOST PUNTS...10 vs Missouri Southern State College 1980, vs Wayne State College 1981, vs Missouri Western State College 1982
FEWEST RUSHING YARDS ALLOWED...14 vs St. Mary of the Plains 1978
FEWEST PASSING YARDS ALLOWED...0 vs Southern Colorado 1973, vs Northeast Missouri 1963, vs Emporia State 1947, vs Wichita 1946
FEWEST TOTAL OFFENSE YARDS ALLOWED...3 vs St. Mary of the Plains 1978
MOST INTERCEPTIONS...6 vs Missouri Western 1974, vs Fort Hays State 1975, vs Missouri Western 1983
LONGEST RUN FROM SCRIMMAGE...94 yards by Melvin Myricks vs Kearney State 1965
LONGEST PASS PLAY...92 yards Mark Elliott to Jeff Mitchell vs Missouri Valley 1981
LONGEST PUNT RETURN...90 yards by Clarence Taylor vs Emporia State 1975
LONGEST KICKOFF RETURN...97 yards by Bill Baker vs St. Benedictine 1951
LONGEST INTERCEPTION RETURN...91 yards by Meryl Garey vs Peru State 1948
LONGEST FIELD GOAL...52 yards by Russ Hill vs Northern Colorado 1972

SEASON RECORDS

MOST WINS...8, 1983, 1974**, 1964, 1953*, 1931*, 1907*
MOST LOSSES...10*, 1937
MOST SHUTOUTS...7, 1906, 10*, 1906
MOST TIMES SHUTOUT...6, 1928 and 1942, 7*, 1917
MOST POINTS SCORED...268 in 1977
HIGHEST SCORING AVERAGE...27.6 in 1949
MOST POINTS ALLOWED...321 in 1980
MOST FIRST DOWNS...194 in 1980
MOST YARDS RUSHING...2,081 in 1964
BEST RUSHING AVERAGE...211.2 in 1948
MOST YARDS TOTAL OFFENSE...3,687 in 1983
BEST TOTAL OFFENSE AVERAGE...368.7 in 1983
MOST PASSES ATTEMPTED...509 in 1980
BEST PUNTING AVERAGE...39.5 in 1980 (69 punts for 2,726 yards)
MOST PUNTS...80 in 1952
FEWEST RUSHING YARDS ALLOWED...78 in 1964
FEWEST PASSING YARDS ALLOWED...493 in 1963
FEWEST TOTAL OFFENSE YARDS ALLOWED...1,614 in 1973
MOST INTERCEPTIONS...22 in 1983
FEWEST PASSING YARDS AVERAGE ALLOWED...87.4 in 1964
FEWEST RUSHING YARDS AVERAGE ALLOWED...54.8 in 1963 (NAIA RECORD)

STREAKS

MOST CONSECUTIVE WINS...14 from 1930-31
MOST CONSECUTIVE LOSSES...14 from 1936-37

WASHBURN FOOTBALL INDIVIDUAL RECORDS SINGLE GAME RECORDS

RUSHING

MOST YARDS...241 by Kevin McCormick vs Missouri Valley 1971
MOST CARRIES...37 by Dino DeLisa vs Missouri Southern 1983

PASSING

MOST YARDS...418 by Mike Atkins vs Missouri Western 1979
MOST COMPLETIONS...34 by Mike Atkins vs Wayne State 1980
BEST COMPLETION PERCENTAGE...90% by Jerry Raushelbach vs Missouri Valley 1980 (9 of 10)
MOST TOUCHDOWN PASSES...4 by Leroy Harmon vs Northern Illinois 1949, 4 by Mike Atkins vs Benedictine 1980
MOST ATTEMPTS...63 by Mike Atkins vs Wayne State 1980

RECEIVING

MOST RECEPTIONS...13 by Ron Hamilton vs Wayne State 1980

TOTAL OFFENSE

MOST YARDS...445 by Mike Atkins vs Missouri Western 1979

SCORING

MOST POINTS...30 by Art Fletcher vs. St. Benedict's 1948
MOST TOUCHDOWNS...5 by Art Fletcher vs St. Benedict's 1948
MOST PATs...10 by Mike Cassin vs St. Mary of the Plains 1978, 10/11
MOST FIELD GOALS...4 by Mike Cassin vs Missouri Valley 1978, 4/4

PUNTING

MOST PUNTS...10 by Kevin Cummings vs Missouri Southern 1980, Aron Fass vs Wayne State 1981, and Randy Davey vs Missouri Western 1982
BEST AVERAGE...49.8 by Brent Cripps vs Missouri Western 1974, 6 for 299 yards
LONGEST PUNT...87 yards by Randy Davey vs Missouri Western 1982

SEASON RECORDS

RUSHING

MOST YARDS...1,185 by Dino DeLisa 1983
MOST CARRIES...262 by Dino DeLisa 1983

PASSING

MOST YARDS...2,106 by Mike Atkins 1980
MOST COMPLETIONS...183 by Mike Atkins 1980
BEST COMPLETION PERCENTAGE...60.2% by Mark Elliott 1980 (80/133)
TOUCHDOWN PASSES...13 by Mike Atkins 1980
MOST ATTEMPTS...354 by Mike Atkins 1980

RECEIVING

MOST RECEPTIONS...84 by Ron Hamilton 1980

TOTAL OFFENSE

MOST YARDS...1,905 by Mike Atkins 1980

SCORING

MOST POINTS...84 by Bill Baker 1953, 84 by Dino DeLisa 1983
MOST TOUCHDOWNS...14 by Bill Baker 1953, 14 by Dino DeLisa 1983
MOST PATs...33 by Mike Cassin 1977 (33/34)
MOST FIELD GOALS...9 by Mike Cassin 1978, 9 by Kevin Cummings 1979

PUNTING

MOST PUNTS...80 by Roy Keck 1952
BEST AVERAGE...(at least 20 punts) 42 yards by Brent Cripps 1977, 46 punts for 1934 yards
MOST YARDS...2,982 by Randy Davey 1982

CAREER RECORDS

RUSHING

MOST YARDS...1,927 by Leroy Hamilton 1945-49
MOST CARRIES...472 by Kevin McCormick 1969-71, 1,581 yards

PASSING

MOST YARDS...5,437 by Mike Atkins 1977-80
MOST COMPLETIONS...442 by Mike Atkins 1977-80
TOUCHDOWN PASSES...35 by Mike Grogan 1974-77
MOST ATTEMPTS...866 by Mike Atkins 1977-80

RECEIVING

MOST RECEPTIONS...134 by Ron Hamilton 1979-80, 1919 yards

TOTAL OFFENSE

MOST YARDS...5,063 by Mike Atkins 1977-80

SCORING

MOST POINTS...253 by Leroy Harmon 1945-49
MOST TOUCHDOWNS...39 by Leroy Harmon 1945-49
MOST PATs...90 by Mike Cassin 1974-78 (att. 98)
MOST FIELD GOALS...20 by Mike Cassin 1975-78 (att. 49)

PUNTING

MOST PUNTS...196 by Brent Cripps 1974-77 (7,884 yds.)
BEST AVERAGE...40.2 by Brent Cripps 1974-77 (196 for 7,884 yds.)
MOST YARDS...7,884 by Brent Cripps 1974-77

WASHBURN YARDAGE CLUB

PLAYER	CAREER RUSHING (1500 YARD CLUB)			
	YEARS	ATT	YARDS	AVG.
Leroy Harmon	45-49		1927	
Art Fletcher	46-49		1698	
Bill Baker	51-53	299	1670	5.59
Kevin McCormick	69-71	472	1581	3.35

SEASON RUSHING (700 YARD CLUB)

Dino DeLisa	1983	262	1185	4.5
Art Fletcher	1948	180	979	5.43
Kevin McCormick	1971	172	862	5.00
Gary Yager	1974	184	748	4.10
Art Fletcher	1949		719	

CAREER PASSING (1500 YARD CLUB)

PLAYER	YEARS	ATT	COMP	YARDS	
				YARDS	AVG.
Mike Atkins	77-80	866	442	5437	
Mike Grogan	74-77	596	292	3761	
Mark Elliott	80-83	418	182	2604	
Leroy Harmon	45-49			1997	
Larry Elliott	56-58	297	131	1934	
Dale Bennett	67-70	319	116	1662	
Elmer McAfferty	50-52	222	93	1533	
Dean Ferrell	65-68	334	148	1525	

SEASON PASSING (1000 YARD CLUB)

Mike Atkins	1980	345	183	2106
Mike Atkins	1979	248	130	1678
Mark Elliott	1981	246	90	1388
Mike Atkins	1978	237	112	1374
Mike Grogan	1977	163	74	1202
Mike Grogan	1974	177	91	1098
Mark Elliott	1983	133	80	1074
Leroy Harmon	1949	159	72	1001



CAREER RECEIVING (1000 YARD CLUB)

PLAYER	YEARS	CATCHES	YARDS	
			YARDS	AVG.
Ron Hamilton	79-80	134	1919	
Mike Keeley	75-78	104	1638	
Alan Dressman	69-71	49	1228	
Irv McCoy	67-68	94	1037	

SEASON RECEIVING (500 YARD CLUB)

Ron Hamilton	1980	84	1128
Ron Hamilton	1979	50	791
Steve Hardesty	1983	39	606
Mike Keeley	1978	36	591
Alan Dressman	1970	19	553
Mike Keeley	1977	30	538
Rick Benke	1974	42	523

WASHBURN FOOTBALL: YEAR BY YEAR

Year	W-L-T	Pct.	Pts.-Opp.	Coach
1891	1-4-0	.200	46-146	
1892	0-2-0	.000	0-80	
1893	1-0-0	1.000	18-0	
1894	3-1-0	.750	66-30	W. M. Gaines
1895	No intercollegiate games played			
1896	6-1-1	.857	126-50	W. Griffith
1897	7-2-0	.778	88-24	Paul Coldren
1898	7-2-0	.917	117-23	Paul Coldren
1899	2-5-2	.286	34-75	William Melford
1900	6-2-0	.750	194-11	Ben G. Owen
1901	3-2-5	.600	47-46	Lawrence Banks
1902	2-6-0	.250	23-220	H. Ward Page
1903	7-0-1	1.000	168-0	A. R. Kennedy
1904	7-2-0	.778	191-35	Dr. John Outland
1905	7-3-0	.700	137-83	Dr. John Outland
1906	8-1-3	.889	147-11	Dr. Garfield Weede
1907	8-0-0	1.000	124-11	Dr. Garfield Weede
1908	3-4-1	.429	53-73	Dr. Garfield Weede
1909	3-3-0	.500	78-110	Dr. Robert Stewart
1910	3-4-0	.429	87-95	Dr. Robert Stewart
1911	3-4-1	.428	65-67	William Lloyd Driver
1912	4-3-0	.571	119-52	William Lloyd Driver
1913	3-2-2	.600	95-42	Glen C. "Grip" Gray
1914	4-2-0	.667	100-60	Glen C. "Grip" Gray
1915	1-6-1	.143	33-127	Glen C. "Grip" Gray
1916	3-6-0	.333	47-161	A. R. Kennedy
1917	2-6-2	.250	45-102	A. R. Kennedy
1918	4-1-0	.800	90-35	Ernest E. Bearg
1919	7-1-1	.875	212-40	Ernest E. Bearg
1920	4-2-0	.667	54-42	Dwight T. Ream
1921	3-5-1	.375	54-98	Dwight T. Ream
1922	1-7-0	.125	37-184	G. D. Vosburg
1923	0-7-2	.000	21-117	George J. Woodward
1924	3-5-0	.375	60-99	George J. Woodward
1925	2-4-1	.333	15-63	George J. Woodward
1926	3-4-1	.429	49-97	George J. Woodward
1927	1-7-0	.125	21-127	Roy Wynne
1928	2-7-0	.222	33-147	Roy Wynne
1929	5-6-0	.455	100-108	Ernest E. Bearg
1930	6-2-0	.750	176-85	Ernest E. Bearg
1931	8-2-0	.800	108-54	Ernest E. Bearg
1932	6-3-1	.667	124-67	Ernest E. Bearg
1933	5-5-1	.500	76-54	Ernest E. Bearg
1934	2-5-1	.286	37-67	Ernest E. Bearg
1935	4-6-0	.400	108-104	Ernest E. Bearg
1936	2-6-1	.250	53-148	Elmer "Gus" Holm
1937	0-10-0	.000	39-209	Elmer "Gus" Holm
1938	6-3-0	.667	160-160	Elmer "Gus" Holm
1939	6-4-0	.600	145-128	Elmer "Gus" Holm
1940	4-6-0	.400	134-198	Elmer "Gus" Holm
1941	4-2-2	.667	133-48	Elmer "Gus" Holm
1942	1-7-0	.125	27-151	Bob Raugh
1943	2-4-2	.333	52-113	Bob Raugh
1944	1-6-0	.143	24-220	Dee Erickson
1945	4-2-0	.667	79-53	Lew Lane
1946	6-2-1	.750	138-86	Dick Godlove
1947	7-1-0	.875	159-56	Dick Godlove
1948	3-5-1	.375	176-117	Dick Godlove
1949	7-2-0	.778	248-137	Dick Godlove
1950	3-4-1	.429	82-120	Dick Godlove
1951	6-3-0	.667	196-150	Dick Godlove
1952	4-5-0	.444	143-163	Dick Godlove
1953	8-1-0	.889	230-46	Dick Godlove
1954	6-2-0	.750	120-99	Dick Godlove
1955	6-2-1	.750	185-111	Dick Godlove
1956	3-6-0	.333	134-164	Dick Godlove
1957	5-4-0	.556	194-148	Dick Godlove
1958	4-5-0	.444	131-124	Dick Godlove
1959	3-6-0	.333	90-156	Ralph Brown
1960	3-6-0	.333	120-173	Ralph Brown
1961	4-5-0	.444	115-194	Ralph Brown
1962	4-5-0	.444	125-207	Ellis Rainsberger
1963	3-6-0	.333	182-108	Ellis Rainsberger
1964	8-1-0	.889	182-53	Ellis Rainsberger
1965	2-6-1	.250	88-217	Ed Linta
1966	2-7-0	.286	87-163	Ed Linta
1967	0-9-0	.000	53-302	Bill Schaake
1968	2-7-0	.286	80-240	Bill Schaake
1969	5-5-0	.500	169-234	Harold "Bud" Elliott

1970	5-3-2	.625	186-161	Harold "Bud" Elliott
1971	5-5-0	.500	175-151	Bob Noblitt
1972	3-7-0	.300	140-176	Bob Noblitt
1973	3-6-1	.333	111-155	Bob Noblitt
1974	8-3-0	.727	235-169	Larry Elliott
1975	5-5-0	.500	225-152	Larry Elliott
1976	6-4-0	.600	200-213	Larry Elliott
1977	6-3-1	.667	268-229	Larry Elliott
1978	4-6-0	.400	208-222	Larry Elliott
1979	4-6-0	.400	163-193	Garland "Gary" Hampton
1980	2-8-0	.250	166-321	Garland "Gary" Hampton
1981	3-7-0	.300	92-215	Glenn Jagodzinske
1982	1-9-0	.100	96-248	Glenn Jagodzinske
1983	8-2-0	.800	226-132	George Tardiff
Total	365-379-43	.490	10387-11114	



Washburn Coaches' Career Records

1894	W. M. Grimes	(3-1-0)	1923-26	G. Woodward	(8-20-4)
1896	W. Griffith	(6-1-1)	1927-28	Roy Wynne	(8-10-0)
1897-98	Paul Coldren	(12-2-1)	1929-35	Er. Bearg	(36-28-4)
1899	Wm. Melford	(2-5-2)	1936-41	E. W. Holm	(21-31-3)
1900	Ben Owen	(6-2-0)	1942-43	Rob Raugh	(3-11-2)
1901	L. Banks	(3-2-5)	1944	C. D. Erickson	(1-6-0)
1902	H. W. Page	(2-6-0)	1945	Lew Lane	(4-2-0)
1903	A. R. Kennedy	(7-1-0)	1946-58	R. Godlove	(68-42-4)
1904-05	Jn. Outland	(14-5-0)	1959-61	Ralph Brown	(10-17-0)
1906-08	G. W. Weede	(19-5-4)	1962-64	E. Rainsberger	(15-12-0)
1909-10	R. B. Stewart	(6-7-0)	1965-66	Ed Linta	(4-13-1)
1911-12	W. L. Driver	(7-7-1)	1967-68	Bill Shaake	(2-16-0)
1913-15	G. L. Gray	(8-10-3)	1969-70	"Bud" Elliott	(10-8-2)
1916-17	A. R. Kennedy	(5-12-2)	1971-73	Bob Noblitt	(11-18-1)
1918-19	Er. Bearg	(11-2-1)	1974-78	Larry Elliott	(29-21-1)
1920-21	Dwight Ream	(7-7-1)	1979-80	Gary Hampton	(6-14-0)
1922	Mike Vosburg	(1-7-0)	1981-82	Glenn Jagodzinske	(4-16-0)
			1983	George Tardiff	(8-2-0)

NAIA Hall of Fame and All-Americans

Bill McDonald	Golf All-American '63, '64, '65
Marion McDonald	Baseball Hall of Fame '63
Dan Myers	Baseball Hall of Fame '63
Dick Godlove	Track Hall of Fame '64
Bob Noblitt	Football All-American '64
Robert Hardy	Football All-American '64
Harold Noll	Track All-American '65
Robert Denson	Track Hall of Fame '66
David Lopes	Baseball All-American '67
Dan Frickey	Golf All-American '74
Kyle Launchbaugh	Golf All-American '74
Ron Hamilton	Football All-American '80
Gary Carrier	Basketball All-American '84
Alicia Mitchell	Gymnastics All-American '84
Laura Klamm	Softball All-American '84

Ichabods

1984 Football Pronunciation Guide

BENARD, Michael	Bur-Nard
BLIN, Peter	Blen
BULLER, Greg	Bull-er
GEORGESON, Curt	Jeorg-e-son
GUIDETTI, William	Guid-Tee
HUNNACUTT, Tracy	Hun-E-cut
HYSAW, Vernon	High-Saw
KRESIC, Nick	Cres-Sick
McCULLOUGH, Mark	Ma-Call-lah
MERRELL, Matt	More-Rail
MERRIMAN, Chris	Mare-E-um
MIKAELIAN, Alex	Mek-E-lian
MNICH, Michael	Men-Niche
NALL, Jerry	Null
PODZIELNY, Steve	Pod-Zell-Ney
QUINONES, Eduardo	Quin-noes
SCHLEGEL, Tim	Sch-LAY-Gel
SCHMIEDER, Larry	Schmeeder
SILOVSKY, Paul	Sul-Loss-Ski
SWIETEK, Tim	Swee-Tek
TACCA, Steve	Talk-Ca
ZEIL, Bruce	Zile

1984

What's An Ichabod?

The name Ichabod was derived from the first name of Ichabod Washburn, an early benefactor of the University. Until 1938 there was not a graphic representation or any particular characteristics associated with Mr. Ichabod. During the 1937-38 school year, the editors of the KAW, the university yearbook, decided that such items were important to the University and began to accept suggestions for a design of Mr. Ichabod. The adopted design was drawn by Bradbury Thompson (BA'34).



The following explanatory material accomplished Ichabod's first representation in the Washburn Kaw: "He has courage and enthusiasm as shown by his brisk walk. He is democratic and courteous, for he tips his hat as he passes. Sincere in his search for truth and knowledge, he studiously carries a book under his arm. His friendly smile makes you like him. He is neatly dressed and he fits well into his generation...but he adopts himself with equal ease to any change or any age."

	NW Missouri St.	Mississippi Valley	Missouri Valley	Emporia State	Pittsburg State	Wayne State	Fort Hays State	Missouri Western	Keeney State	Missouri So.
Sept. 1		at Kentucky State				at Morningside		at U of Missouri at Rolla		
Sept. 8	Washburn	open	U of Missouri at Rolla	at Southwestern	Arkansas Tech.	Chardon St.	Lincoln Univ.	William Jewell	at U of Neb at Omaha	
Sept. 15	at Grand Valley State	at Washburn	Evangel	NW Oklahoma	at U of Missouri-Rolla	Hastings	at Langston	open	Moohead St.	Southwestern Oklahoma
Sept. 22	Missouri Western	at Jackson St.	at Washburn	at Baker	open	at Midland Lutheran	Parasdale	at NW Missouri State	open	at Northwestern Oklahoma
Sept. 29	at Central Arkansas	at Southern U.	at Carver Stockton	Washburn	at Missouri Southern	at Missouri Western	at Kearney	Wayne	Fort Hays St.	Pittsburg St.
Oct. 6	at Lincoln U.	open	William Jewell	Missouri Southern	at Washburn	at Fort Hays State	Wayne	at Kearney	Missouri Western	at Emporia
Oct. 13	at Central Missouri State	at Gambling	at Baker	at Missouri Western	Fort Hays St.	Washburn	at Pittsburg	Emporia St.	at Missouri Southern	Keeney St.
Oct. 20	at Central State of Oklahoma	at Texas Southern	at Graceland	at Kearney	at Wayne	Pittsburg St.	Washburn	Missouri Southern	Emporia St.	at Missouri Western
Oct. 27	SE Missouri State	Prairie View	Central Methodist	Wayne State	at Kearney	at Emporia	Missouri Southern	at Washburn	Pittsburg St.	at Fort Hays State
Nov. 3	at NE Missouri St.	Aaron St.	at Tanco	Fort Hays State	Missouri Western	at Missouri Southern	at Emporia	at Pittsburg St.	at Washburn	Wayne
Nov. 10	U of Missouri at Rolla	Atacama St.	Midamerica Westerv.	at Pittsburg St.	Emporia	Keeney	at Missouri Western	Fort Hays St.	at Wayne	Washburn
Nov. 17	at N. Iowa	Langston						at Texas A&M		

CENTRAL STATES INTERCOLLEGIATE CONFERENCE



CSIC CONFERENCE CHAMPIONS:

- 1976 — Kearney State College
- 1977 — Kearney State College
- *1978 — Kearney State College
- 1979 — Kearney State College & Pittsburg State University
- 1980 — Kearney State College
- 1981 — Pittsburg State University
- 1982 — Kearney State College & Pittsburg State University
- 1983 — Washburn University

*Pittsburg State University tied for the conference championship in 1978, but had to forfeit 6 wins that season due to an ineligible player.