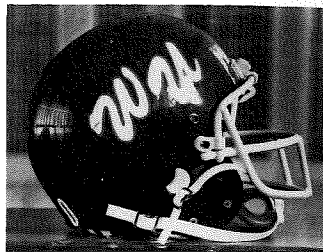


WASHBURN UNIVERSITY



**1981
FOOTBALL
MEDIA GUIDE**



The 1981 Washburn University Football Media Guide was designed and prepared by Steve Rothrock, Sports Information Director. While intended primarily as an aid to the news media, it is also directed to the general public and officials of opponent schools. For press passes, additional copies of this brochure, statistics, pictures or any other information concerning Washburn athletics, contact:

Steve Rothrock
 Sports Information Director
 Washburn University
 Topeka, Kansas 66621
 Phone: (913) 295-6334 Ex. 336 (Office)
 (913) 235-5409 (Home)

1981 Schedule

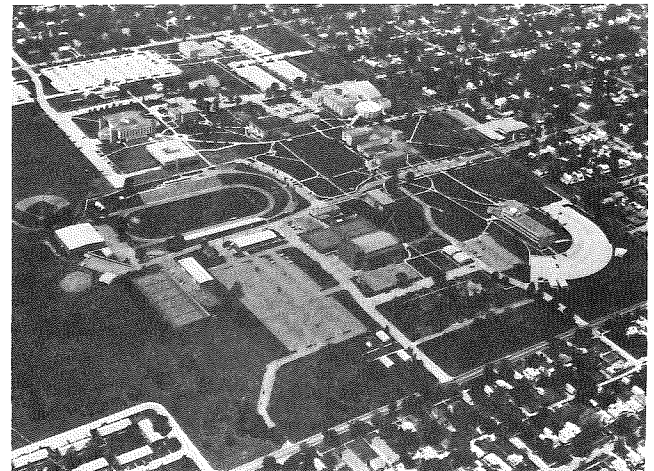
Sept. 5	Benedictine College	Atchison, KS	7:30
Sept. 12	ARKANSAS TECH UNIV.	TOPEKA	7:30
	Parents Day		
Sept. 19	Missouri Valley	Marshall, MO	7:30
Sept. 26	Open Date		
Oct. 3	MISSOURI SO. ST. COLLEGE	TOPEKA	7:30
Oct. 10	EMPORIA STATE UNIVERSITY	TOPEKA	1:30
	Homecoming		
Oct. 17	Pittsburg State University	Pittsburg, KS	7:30
Oct. 24	WAYNE STATE COLLEGE	TOPEKA	7:30
Oct. 31	FORT HAYS ST. UNIVERSITY	TOPEKA	7:30
Nov. 7	Missouri W. St. Co.	St. Joseph, MO	1:30
Nov. 14	Kearney State College	Kearney, NE	1:30

1981 Results

Washburn	Opponent
29	Benedictine College 27
20	Arkansas Tech 41
7	Missouri Valley 26
7	Emporia State 45
38	Pittsburg State 36
18	Wayne State 24
17	Fort Hays 28
14	Missouri Western 45
7	Kearney State 14
9	Missouri Southern 35

Table of Contents

'81 Schedule and '80 Results	inside front cover
Table of contents and about the cover	1
WASHBURN UNIVERSITY FACTS	2
WASHBURN UNIVERSITY	2
Allied Health Center	5
Media Outlets and Ticket Information	6
President Dr. John L. Green, Jr.	7
Athletic Director, Glenn Cafer and CSIC	8
Head Coach, Glenn Jagodzinske	9
Assistant Coaches, Terry Szucs, Mike McGraw, Bill Kennedy, Don Patterson, and Charles Cleaver ...	9
Student Assistants, Steve Guilfoyle, Federico Llaverias, and Andy O'Neill	11
1981 Ichabod Preview	12
1981 Ichabod Roster	12
1981 Ichabod Opponents	14
1980 WASHBURN UNIVERSITY FOOTBALL STATISTICS	19
1980 CSIC Football Standings	20
WASHBURN Coaches Career Records	21
Washburn Football Team Records	21
Washburn Football Individual Records	22
Washburn Yardage Club	23
Washburn Football Records Set or Tied in 1980	24
Washburn Football Year by Year	25
Washburn Volleyball	26
Volleyball Schedule	27
What's An Ichabod	inside back cover
1981 Composite Football Schedule ..	outside back cover

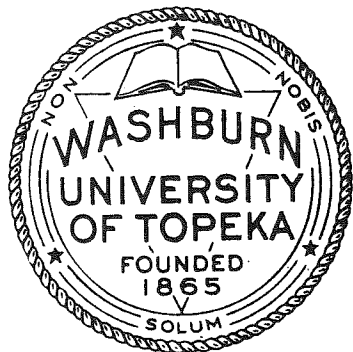


About The Cover

Pictured on the cover are Washburn's captains for the 1981 season. Back Row Left to Right: Bob Leonard, David Pitsch, and Mike Perry; Front Row Left to Right: Harold Woods, and Mike Chiaverini.

WASHBURN UNIVERSITY FACTS

Name: Washburn University of Topeka
Location: 17th and College, Topeka, Kansas 66621
Founded: 1865
Enrollment: 6,000
Nickname: Ichabods
Colors: Blue and White
Facilities: Moore Bowl (7,200) and Whiting Field House (2,500)
Conference: Central States Intercollegiate Conference
National Affiliation: NAIA
President: Dr. John L. Green, Jr.
Athletic Director: Glenn Cafer
Head Coach: Glenn Jagodzinski
Defensive Coordinator: Mike McGraw
Offensive Line Coach: Terry Szucs
Defensive Line Coach: Don Patterson
Defensive End Coach: Bill Kennedy
Receiver Coach: Charles Cleaver
Sports Information Director: Steve Rothrock
(913) 295-6334 Ext. 336



Washburn University

Washburn University of Topeka, America's only municipal university, enrolls approximately 6,000 students from the Topeka area, 50 states and 26 foreign countries. It was founded in 1865 as Lincoln College. The college's name was changed to Washburn in November 1868 in recognition of a timely \$25,000 gift from Deacon Ichabod Washburn of Worcester, Massachusetts.

Despite plagues, droughts and financial woes, Washburn expanded through the late years of the 19th Century and early 20th Century, building dormitories, a gymnasium, and library, and establishing a School of Fine Arts, a School of Law, and a School of Medicine.

Sound management brought Washburn through the drought and depression years in relatively good financial shape, and the school built the Mulvane Art Museum, Benton Residence Hall, and Whiting Field House. Even so, resources were greatly depleted, and the school's Board of Trustees thought it best that Washburn transfer its assets to the city of Topeka. By a vote of four to one, Topeka voters established a municipal university in April, 1941.

In January, 1952, the Board of Regents of the University changed the school's name for the first time to Washburn University of Topeka. Kansas state aid, began in 1961 based on student credit hours, was increased in 1965.

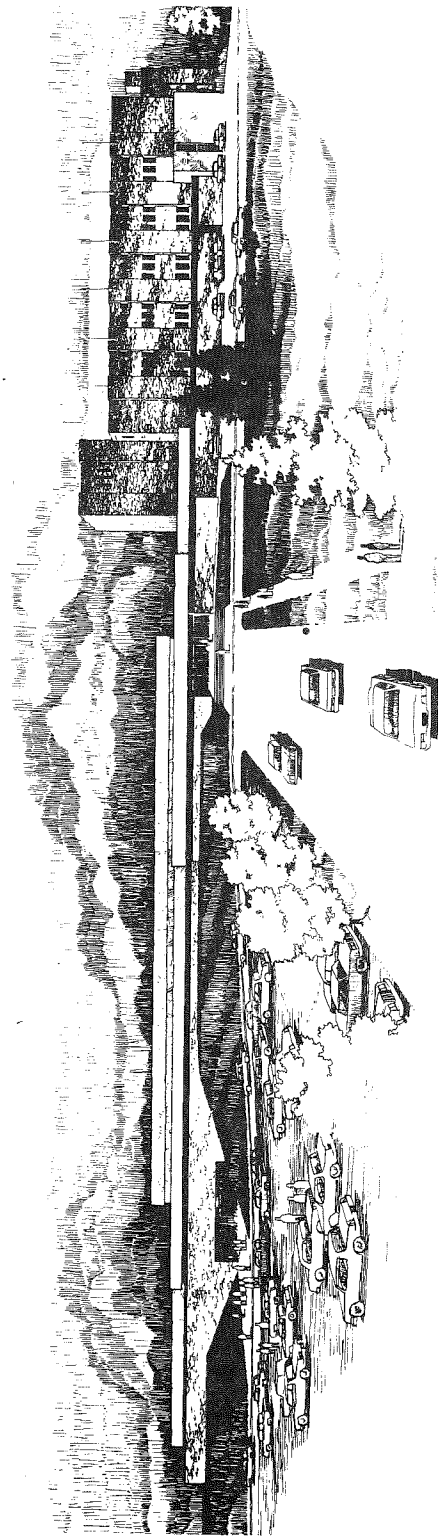
On June 8, 1966, a tornado swept through the campus and completely destroyed eight buildings and extensively damaged sixteen others. But, recovery began immediately and by 1971 most buildings and laboratory facilities had either been replaced or enlarged, and construction had been completed on a new \$3.5 million fine arts center, a \$1.5 million law school building, and a \$2.5 million learning resources center.

A \$750,000 School of Law addition was completed in the fall of 1977, and in May of 1978 the University dedicated the \$2.5 million Mabee Library, located west of Moore Bowl. Construction is slated to begin soon on a \$5.8 million allied health center which will provide space for new programs. The project will complete the restoration of the campus from the 1966 tornado.

Washburn's varied academic program designed to meet the needs of all its students, includes: a college of Liberal Arts and Sciences, which is comprised of education, science, social science and humanities, nursing and criminal justice areas; a School of Business offering majors in finance, management, marketing, economics, accounting, computer science and general business which will also soon be offering a Master of Business Administration degree; a School of Law, providing a three-year professional program for approximately 600 students; a graduate school, awarding a master's in elementary education or elementary school administration; and Master of Arts degree in Clinical Psychology; a continuing education program offering regular college courses during the day and evening, study discussion groups, seminars and television courses.

Washburn's KTWU, Channel 11, the first educational television station in the state, and the Washburn Review, the weekly student newspaper, give students practical experience in communication arts.

The 400 full-time and 100 part-time staff, faculty and administrators, along with the 605 students employed by Washburn University strive to make their school a "center for cultural life, a community for scholars, a patron of the arts, and source of special knowledge and skill for the benefit of the community."



ALLIED HEALTH CENTER
WASHBURN UNIVERSITY TOPEKA, KANSAS

KNIGHT RENNELE & EATON ARCHITECTS

THE ALLIED HEALTH CENTER

The Washburn University Board of Regents has approved a \$5.8 million addition to Whiting Fieldhouse, which is to become the school's Allied Health Center.

The Allied Health Center is to house a great portion of the Athletic Department, the WU Gerontology Institute, the Nursing Department, plus the Health, Physical Education and Recreation Department.

The building will be at the southeast quadrant of the campus, just east of Moore Bowl, the college football stadium, and consist of a lower level about 18 feet below the floor level of Whiting Fieldhouse, and a second story that would match the floor level of the fieldhouse, which will be used for the college basketball and other indoor athletic events.

The building will consist of a 98,594 square foot addition housing a basketball court with 4,800 seats on moveable bleachers. With the bleachers furled, there will be an area about four times the size of a basketball court for non-spectator activities. The first floor of the facility (the Whiting-level story) will house the Gerontology Institute, the health and nursing offices and classroom areas. The lower floor will have four locker rooms, the multipurpose area which can be converted to a basketball stadium, and gym class related storage areas. The lower level will also house a swimming pool and more locker rooms, with about 24,000 square feet of area.

Media Outlets

Topeka Capital-Journal Sports Editor-Bob Hentzen WU writer-Steve Thompson	(913) 295-1188
KTOP AM-FM Merle Blair-"The Voice of the Ichabods" Mark Stubbs	(913) 234-3031
WIBW Radio-Television Ron Paradis Steve Physioc	(913) 272-3456
KTSB Television Duke Frye Graig Bolerjack	(913) 582-4000
WREN AM Ron Bramledge	(913) 232-0505
KSKX Mike Manns	(913) 272-2033
KTWU Television Dr. Dale Anderson	(913) 272-8181
Washburn Review Student Newspaper	(913) 233-3211
Associated Press (Kansas City, Mo.)	(816) 421-4844
United Press International (Mission, Ks.)	(913) 677-1212

Ticket Information (913) 295-6334

Admission prices for home football games in Moore Bowl

Season Ticket	\$15.00
Family Season Ticket (Gen. Adm. for 4)	\$30.00
Reserved Seat	\$ 4.00
General Admission	\$ 3.00
Students and Senior Citizens	\$ 1.50
Senior Citizens Non-Reserve Season	\$ 4.50

Passes for the working press, radio and television representatives, and opponent publicity personnel are available from Steve Rothrock, Sports Information Director, one week in advance.

President Dr. John L. Green, Jr.

Dr. Green will occupy a strategic position in the life of Washburn University as it plans for the 1980's. An experienced and accomplished administrator, and an effective planner, Dr. Green will be responding to the educational demands of the coming decade in the areas of teaching, research, and service.



Prior to his presidential appointment, Dr. Green served as Senior Vice President for the University of Houston System. In addition, he has served as Executive Vice President for the University of Miami, Vice President for Rensselaer Polytechnic Institute in Troy, New York, and Vice President for the University of Georgia. He has also held administrative posts in higher education in California, Michigan and Virginia during the past 25 years.

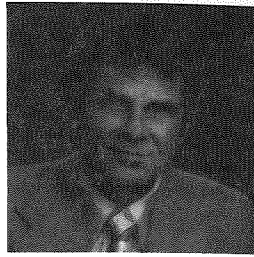
Dr. Green earned his bachelor's degree in accounting and economics from Mississippi State University after serving two years in the Army during the Korean War. His master's degree was earned from Wayne State University in educational research and his Ph.D. degree in management science and organizational communication from Rensselaer Polytechnic Institute.

Dr. Green is a member of two scholastic fraternities, Phi Delta Kappa and Beta Alpha Psi, and a member of the Pi Kappa Alpha social fraternity. He has authored or co-authored five books and has lectured extensively around the country on topics pertaining to higher education. He is listed in Who's Who in the Southeast and the East, Who's Who in Finance and Industry, and Who's Who in American College and University Administration.

He is an avid sports enthusiast—plays golf and tennis as often as his busy schedule permits and jogs every morning to stay physically fit. Dr. Green would like to see the athletic programs at Washburn University become major spectator sports in Topeka. At the University of Miami, Dr. Green was responsible for the intercollegiate athletic program which was in desperate need of rebuilding. He turned the football program around within three years; and last year, the Miami Hurricanes went to the Peach Bowl and won. Dr. Green predicts that the Miami Hurricanes will be in the top 10 in the country this fall.

Athletic Director Glenn Cafer

Glenn Cafer will be serving his third year as Washburn University's Athletic Director. Before moving into his position as Athletic Director, Cafer was head coach of the Icabod basketball team from 1967-79. Cafer also had eight years of coaching experience prior to his transfer to Washburn.



Cafer began his 20-year coaching career at Washington (Missouri) High School. He was head coach at Moorhead State College (Minnesota) during the 1961-62 season. He also was head coach at Mehlville High School in St. Louis, Missouri and an assistant at Drake University and the University of Missouri. His overall coaching mark is 338-187 (.644).

Cafer's Icabod basketball teams have: played in the NAIA National Tournament three times; won three District 10 championships (in five attempts); and won three conference titles. Cafer's overall record at Washburn is 172-145 (.543).

A native of Wright City, Missouri, Cafer attended Moberly Junior College and received his Bachelor's degree from Northeast Missouri State in 1953 and his Master's in 1956. He served in the Marine Corps from 1953 to 1955.

Cafer also served as Washburn's golf coach. He was named the 1974 NAIA District 10 Golf Coach of the Year after the Icabods won the district title and placed fourth in the national championship tournament. The 1975 squad repeated as District 10 champions.

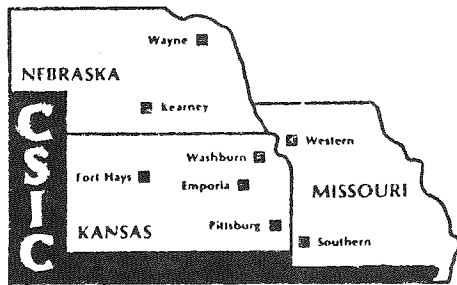
The Central States Intercollegiate Conference

Emporia State University
Fort Hays State University
Kearney State College
Missouri Southern
State College

CSIC Commissioner:
Dr. Norris A. Patterson
415 Kingsley
Liberty, Missouri 64068
(816) 781-7346

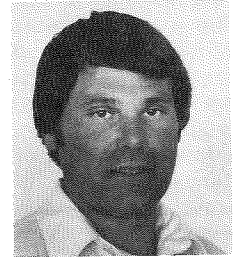
Missouri Western
State College
Pittsburg State University
Washburn University
Wayne State College

CSIC Information Director:
Paul Sweetgall
4525 Downs Drive
St. Joseph Missouri 64507
(816) 271-4257



**Head Coach and Offensive Coordinator
Glenn Jagodzinske**

Glenn Jagodzinske begins his first year as the head football coach at Washburn. He is the 32nd of a prestigious group of leaders including the famous John Outland, the victorious "Ernie" Bearg and Dick Godlove, with winningest of all Washburn football coaches.



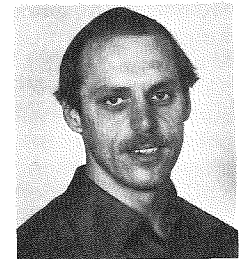
Prior to coming to Washburn Glenn was head coach at Hubbard High School in Hubbard, Iowa from 1969 to 1971. In 1971 he took the head coaching job at Sheldon High School in Sheldon, Iowa where he coached through 1975. In 1975 Glenn got his first college coaching job at Huron College in Huron, South Dakota. He was the head man there from 1975 to 1978. In 1978 Glenn decided to take over the job at Westmar College in LeMars, Iowa. In the three years at Westmar, Jagodzinske compiled a record of 22 wins and only 8 losses after taking over a program that had been 3-16 during the two previous seasons. His overall college coaching record stands at 32-25-1.

Jagodzinske is from Welcome, Minnesota where in 1965 he graduated from Welcome High School. He then received his Bachelor of Arts Degree in 1969 from Westmar College (Iowa) and received his Masters of Arts Degree in 1973 from the University of Northern Iowa (Cedar Falls, Ia.) His major area was physical education.

Glenn and his wife Brenda have two children, Dana 13, and Scott 7.

Offensive Line Coach Terry Szucs

Terry Szucs is in his first year as offensive line coach at Washburn University. Szucs received his BS in 1975 at Lock Haven State College, Lock Haven, Pennsylvania while playing four successful years as offensive guard. In 1977 he served as graduate assistant at South Dakota State and earned a masters degree in physical



education. Last year Szucs was in charge of the offensive line at Wayne State College, Wayne, Nebraska. Prior to this he was offensive coach at Westmar College, LeMars, Iowa under head coach Glenn Jagodzinske. Szucs, a native of Hopatcong, New Jersey will also head the men's and women's track programs at Washburn.

Defensive Coordinator Coach Mike McGraw

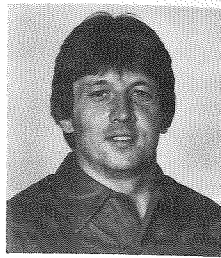
Mike McGraw is in his third year at Washburn University. The past two seasons he has coached the defensive secondary, and also coordinated the strength and conditions programs.

Mike is from Bonner Springs, Kansas where in 1969 he graduated from Bonner Springs High School. Coach McGraw

continued his education and football career at Pittsburg State University. As a three-year letterman, he was chosen to the NAIA District 10 team in 1970 and 1971. Mike received his BS in physical education in 1974 and his MS in physical education in 1979 from Pittsburg State.

In 1974, Mike began teaching and coaching at Columbus (KS) High School. While at Columbus, Mike was the defensive coordinator. In 1976 Mike moved northward to Hayden High School, in Topeka. He was the Wildcat defensive coordinator for two seasons and then became the head coach in 1978, compiling a 6-3 record.

Mike's wife, JoDee teaches 4th grade at Tecumseh South Elementary School. They have a 1 year old daughter, Jolie.



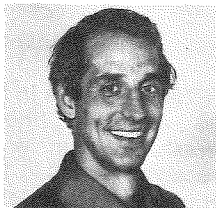
Part Time Assistants

Defensive End and Linebacker Coach Bill Kennedy

Defensive end and linebacker coach Bill Kennedy is a graduate of Topeka West High School. From West, he went on to attend Kansas State University in Manhattan (KS). While at Kansas State, he was a four year starter as a defensive end. After obtaining his BS degree in physical education, he became an assistant coach for the KSU freshman football team.

Kennedy then taught and coached at Seven Dolers Grade School in Manhattan (KS) during the 1971-72 school year. In the fall of 1972 he returned to his high school alma mater where he taught and also coached the sophomore football team for one year. The following seven years were spent in sales and administration.

Kennedy is single and lives in Topeka. He is presently working on his master's degree in elementary school administration at Washburn.

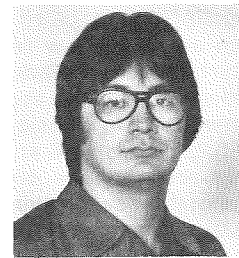


Defensive Line Coach Don Patterson

Defensive line coach Don Patterson is a graduate of Bethany College in Linsborg, Kansas. Don also coached one year at Bethany, the same year they participated in the NAIA Div II playoffs. Don also has two years of high school coaching experience. One year as an assistant coach at Moundridge, Kansas and one year as head football coach at St. Paul High School, St. Paul, Kansas where his team went 7-3 and made the playoffs.

Don is originally from Wellington, Kansas and has two brothers and one sister along with his parents, Mr. and Mrs. John M. Patterson. Don is also married to the former Cinda Kinast of Haven, Kansas.

Don has been involved in football since seventh grade and has wanted to coach college football since he was a freshman in high school.



Receiver Coach Charles Cleaver

Receiver coach Charles Cleaver, a native of Little Rock, Arkansas, is a graduate of the University of Arkansas at Pine Bluff. While at Pine Bluff Charles played football in the position of defensive back. After finishing his playing career, Charles stayed on 1 year as a student coach and a dorm supervisor.

While at Washburn Charles will be working on his masters in the field of psychology. Charles has also done graduate work at East Texas State.

Student Assistants

Steve Guilfoyle a native of Ellsworth, Kansas will be assisting with Don Patterson, working with the defensive line. Steve a two year letterman, played football for Washburn from 1976-79. Steve will also be working on his Law Degree here at Washburn as he enters into his second year.

Federico Llaverias a native of Newark, New Jersey will be coaching with Terry Szucs, he will be working with the offensive line. Federico, an offensive guard, played for Washburn from 1976-79. He was also a 4 year letterman for Washburn.

Andy O'Neill a native of Topeka, Kansas will be assisting in the defensive secondary with defensive coordinator Mike McGraw. Andy played for Washburn from 1977-80. In 1979 Andy was first team strong safety in the CSIC.

1981 Ichabod Preview

Washburn University football is looking forward to the 1981 season under new Head Coach Glenn Jagodzinske. Jagodzinske brings an almost all new coaching staff along with about 50 new recruits. The Ichabods also have 54 returnees coming back this season. Gone is last year's run-and-shoot offense; the Veer has replaced it. The defense will move from a basic 5-2 read, to a multiple 5-2 look that features movement and varied alignments up front and in the secondary. In order for the Ichabods to have a successful season they must combine the new coaching staff, the new recruits, and the veterans into a single working unit.

OFFENSE:

QB: Gone this year, via graduation, is record-setting passer Mike Atkins. Senior co-captain Mike Perry brings option experience to the QB position. Also challenging will be sophomores Mark Elliott and John Pulliam, and freshman transfer Keith Stroud. It should be an interesting contest for the starting honors.

RB: Senior co-captain Mike Chiaverini, junior Mike Moore and sophomore transfer Greg Whited will staff the fullback area, while senior Gary Martin and juniors Ron Davis and Wes Warrick lend depth to the tailback position.

O. LINE: The offensive line appears to be a team strength. Senior co-captain Dave Pitsch, junior Russ Thogmartin and sophomore John Jelovic return at tackle. Juniors Fred Palenske and sophomore Joe Hayes will fill the guard spots, while Jay Clark returns as the veteran at center.

RECEIVERS: Steve Nehf and Steve Pokrywka, both seniors will provide power at tight end and senior co-captain Harold Woods and sophomore Jeff Mitchell lead a potentially excellent group of wide receivers.

DEFENSE:

D. LINE: Senior co-captain Bob Leonard should be a stand-out at nose guard. Junior Roger McVay brings experience to the defensive tackle spot. Defensive tackle is an area of concern, and several young players will make notable contributions here.

LB: Returning lettermen juniors John Lasley and Matt Cahill and juco transfer Tom Luedke lead what should be a strong corps of linebackers.

DE: Several returnees will compete for the defensive end positions. Juniors Ben Short and Luke Schmilie, senior Allen Powell and sophomore transfer Mark Lutz will provide a solid nucleus of candidates.

DB: The secondary features talented youth, and there should be good competition for starting berths. Senior Keith Brown and juniors Dave Silva and Aron Fass lead the group that also includes sophomores Paul Silovsky, Rick Tucker, Willie Konrade and freshman transfer R. D. Helt.

1981 Washburn Alphabetical Football Roster

NAME	POS.	HT.	WT.	CLASS	HOMETOWN
Den Beebe	OC	6'1"	200	Fr.	Kansas City, KS
Mark Beffort	WR	5'10½"	154	So.	Topeka, KS
Mike Bertrand	OG	6'	227	So.	Spring Hill, KS
Ken Boyd	NG	6'1"	215	Fr.	Lawrence, KS
Darrin Brady	DB	5'10"	185	Fr.	Osawatomie, KS
Keith Brown	DB	5'10"	185	Sr.	Wichita, KS

Brian Bullock	DT	6'3"	235	Fr.	Lathrop, MO
Fred Burns	RB	5'10"	202	Jr.	Kirkwood, MO
Matt Cahill	LB	5'10"	196	Jr.	Kansas City, KS
Mike Chiaverini	RB	5'9"	170	Sr.	Kansas City, KS
Jaime Clark	DE	6'3"	185	Fr.	Kansas City, Kansas
Jay Clark	OC	5'11"	208	Sr.	Wamego, KS
John Cook	LB	6'2"	170	Fr.	Salina, KS
David Coufal	DT	6'2"	195	Fr.	Topeka, KS
Larry Cox	LB	6'1"	175	Fr.	Topeka, KS
Rick Davey	WR	6'	183	So.	Topeka, KS
Ron Davis	RB	6'	176	Jr.	Independence, KS
Mark Elliott	QB	6'1"	175	So.	Silver Lake, KS
Tony Essman	LB	6'	195	Fr.	Grantville, KS
Mike Evans	RB	5'9"	187	Jr.	Marysville, KS
Aron Fass	DB	6'2"	192	Jr.	Topeka, KS
Derrick Ford	DT	6'1"	240	Fr.	Oakland, MI
John Gasper	OT	6'3"	225	Fr.	N. Miami Beach, FL
Jeff George	RB	5'9"	150	Fr.	Brandon, FL
Curt Georgeson	DT	6'3"	212	So.	Lawrence, KS
Troy Grindol	WR	5'10"	170	Fr.	Topeka, KS
Joe Hayes	OG	6'2"	216	So.	Miami, FL
R. D. Helt	DB	5'11"	174	Fr.	Topeka, KS
Claude Hinkle	RB	5'11"	175	Fr.	Paola, KS
Russ Intravartola	DB	5'8"	168	Jr.	Palatine, IL
John Jelovic	OT	6'2"	233	So.	St. Louis, MO
Doug Jones	LB	6'1"	185	Fr.	Osawatomie, KS
Rod Kemp	DB	6'½"	185	Fr.	Denver, CO
Willie Konrade	DB	6'1"	175	So.	Topeka, KS
John Lasley	LB	6'	212	Jr.	Harlingen, TX
Dan Lawson	TE	6'3"	205	Fr.	Topeka, KS
Bob Leonard	NG	6'	209	Sr.	Denver, CO
Dennis LoDolce	OG	6'1"	215	Fr.	Stamford, CT
Clarence Logan	DB	5'10"	186	Sr.	Kansas City, KS
Tom Luedke	LB	6'2"	212	Jr.	Olathe, KS
Mark Lutz	DE	6'3"	217	So.	Topeka, KS
Jeff Meacham	NG	5'11"	195	Fr.	Topeka, KS
John McGivern	DE	6'	203	Sr.	Topeka, KS
Ed McLean	OT	6'6"	260	Fr.	Homestead, FL
Phil McNabb	LB	6'2"	180	Fr.	House Springs, MO
Roger McVay	DT	6'3"	225	Jr.	Topeka, KS
Gary Martin	RB	5'10"	160	Sr.	Youngstown, OH
Bill Middendorf	DT	6'1"	212	Jr.	Topeka, KS
Jeff Mitchell	WR	6'	168	So.	Oklahoma City, OK
Michael Moore	RB	5'11"	205	Jr.	Tampa, FL
Evan Morris	LB	5'10"	180	Fr.	Ukiah, CA
John Morse	WR	5'9"	160	Fr.	Omaha, NE
Steve Nehf	TE	6'4"	215	Sr.	Longmont, CO
John Owen	DE	6'2"	195	Fr.	Topeka, KS
Fred Palenske	OG	6'2"	218	Jr.	Topeka, KS
Mike Perry	QB	5'10"	205	Sr.	Topeka, KS
Kyle Pierce	DB	5'10"	170	Fr.	Topeka, KS
David Pitsch	OT	6'2"	224	Sr.	Crow Agency, MT
Steve Pokrywka	TE	6'2"	205	Sr.	Kansas City, KS
Allan Powell	DE	6'2"	196	Jr.	Chandler, AZ
Eric Prothe	DB	6'	170	Fr.	Paola, KS
John Pulliam	QB	5'11"	181	So.	Windsor, KS
Dennis Reedy	OG	6'	220	Fr.	Topeka, KS
Mark Remboldt	DT	6'3"	215	Fr.	Wakarusa, KS
Mike Roy	WR	6'5"	208	Sr.	Phillipsburg, KS
John Runte	OG	5'9"	180	Fr.	Frederick, OK
Shawn Saia	DB	5'11"	165	Jr.	Silver Lake, KS
Jim Sardo	OT	6'4"	240	Fr.	Festus, MO
Ralph Saucier	DT	6'2"	235	Fr.	Miami, FL
Luke Schmilie	DE	6'2"	201	Jr.	Kansas City, MO
Brett Shields	QB	6'	165	Fr.	Paola, KS
Ben Short	DE	5'11"	210	Jr.	Oxford, KS
Paul Silovsky	DB	6'3"	208	So.	Topeka, KS
Dave Silva	DB	5'11"	180	Jr.	Harlingen, TX
Brian Smith	LB	5'11"	170	Fr.	Alta Vista, KS
Stuart Smith	DE	6'	200	So.	Rossville, KS
Jay Steinbock	QB	6'1½"	173	Fr.	Topeka, KS
Marc Stratton	K	6'3"	179	So.	Topeka, KS
Keith Stroud	QB	6'	182	So.	Jacksonville, FL
Forrest Swyden	LB	6'	200	Sr.	Kansas City, MO
Jeff Taylor	DB	6'10"	165	Fr.	Topeka, KS
Russ Thogmartin	OT	6'4"	243	Jr.	Bonner Springs, KS
Craig Thompson	NG	5'7"	183	Fr.	Syracuse, KS
Rick Tucker	DB	6'	170	So.	Topeka, KS
Jason Vaughn	WR	6'	165	Fr.	Hillsboro, MO
Marcus Vaughn	RB	5'9"	190	Fr.	Fulton, MO
Wes Warrick	RB	5'10"	159	Jr.	St. Louis, MO
Greg Whited	RB	6'3"	210	So.	Hamilton, OH
Harold Woods	WR	5'8"	168	Sr.	Wichita, KS
Jay Jay Yaws	LB	6'2"	210	Fr.	Sand Springs, OK

Game #1 Benedictine College
September 5 - 7:30 P.M. Atchison, Kansas

Location: Atchison, Kansas
Athletic Director: Larry Wilcox
Head Coach: Larry Wilcox
Assts: Charlie Gartenmayer, Dennis Murphy, Jeff Ryan, Matt Fenley, John Dolan
SID: Matt Fenley, (913) 367-5340 EXT. 506 or 549
Stadium: Amelia Earhart Stadium (4000)
Nickname: Ravens
Colors: Blac, Red & White
Enrollment: 1,000
Conference: Independent
National Affiliation: NAIA
Lettermen Returning: 20
1980 Record: 3-7
Series: WU leads 14-12 score: WU 29-BU 27

Outlook:

Hopes are high in the Benedictine College football camp that this will be the year that the Ravens get back on the victory trail. Third year head coach Larry Wilcox will be without record setting quarterback Jerry Rellihan, but his replacement Terry Torline, a 6-3, 215 lb. junior, has all the earmarks of being another great Raven signal caller. Benedictine, who was extremely young last year on offense, will return all but four starters, including fullback, Bill Riddick, 6-2, 225 lb. junior, and Tom Bachkora, 6-4, 180 lb. wide receiver. The holes to fill in the defense will be right in the middle with the graduation of both starting linebackers and the starting noseguard. It is hoped that those vacancies can be filled by junior Paul Krus, 6-3, 235 lb. and sophomore Joe DeWald 6-2, 210 lb. In an overview, Benedictine looks to have a much improved team over 1980, offensively, the team is more mature, and defensively, depth may be the important ingredient.

Game #2: Arkansas Tech University
September 12 - 7:30 P.M. Topeka, Kansas

Location: Russellville, Arkansas
Athletic Director: Don Sevier
Head Coach: Harold Steelman
Assts: Phil Collins, Bill Buckner, Charles L. Wade, Melvern Watson
SID: Jim Stages (501) 968-0242
Stadium: Buerkle Field (5447)
Nickname: Wonder Boys
Colors: Kelly Green & New Gold
Enrollment: 3171
Conference: Arkansas Intercollegiate
National Affiliation: NAIA
Lettermen Returning: 29
1980 Record: 6-4 **Conference Record:** 4-2 (3rd)
Series: ATU leads 2-0 score: ATU 41-WU 20

Outlook:

With 10 starters returning on offense, including the Arkansas Intercollegiate Conference's passing and total offense leader, ex-Marine Jim Goodman, and two of the league's top receivers, Mark Millwood and Dave Schauer, Arkansas Tech's Wonder Boys promise to have another explosive offense in Harold Steelman's second year at the helm. If the Tech defense, too porous for comfort last fall, can make a better stand with six returning starters and a host of promising newcomers, the Wonder Boys could very well improve on their 6-4 record and third place finish. The running game should be stronger with All-AIC Greg Jefferson and his sophomore cohort, Stacy Johnson, in the forefront. Also, look for more solid support from two brawney fullbacks-Carlton Moragne and Mark Gould. Clearing the right-of-way will be All-League tackle Darryl Collier, 6-0 and 255, and two strong tightends seniors to be Derrick Nelson and Greg Simpkins. Defensive hopes lie in the leadership and abilities of five seniors-All AIC end Tony Faison, linebackers David Hoskins and Phillip Shelby, and Frank Williams and Steve Temple in the secondary. Sophomore Clifford

Ransom and Ray Whatley figure prominently at tackle and end, respectively. Ditto 245-lb. junior Henry Hawkins on the nose. The acquisition of several top-drawer junior college imports at midterm, a fruitful recruiting season with emphasis on size and mobility, and a rewarding spring session are definite assets for the Wonder Boys.

Game #3 Missouri Valley College
September 19 - 7:30 P.M. Marshall, Missouri

Location: Marshall, Missouri
Athletic Director: Ken Gibler
Head Coach: Ken Gibler
Assts: Grover Redford, Reed Kepner, Bob Thompson, Mark Dykema
SID: Pam Sibert (816) 886-6924 Ext. 164
Stadium: Gregg-Mitchell Field (3200)
Nickname: Vikings
Colors: Purple and Orange
Enrollment: 400
Conference: Heart of America Athletic Conference
National Affiliation: NAIA
Lettermen Returning: 26
1980 Record: 7-4-0
Series: WU leads 6-5 1980 score MU 26 WU 7

Outlook:

Missouri Valley graduated Rex Sawyer, an exceptional running back, Mike Doolan, linebacker and Mike Smith, defense back all of which will be very difficult to replace. Missouri Valley had an exceptional Freshman class of which several were able to receive alot of playing time. To be stronger and more competitive they must find the right combination at running back and full-back.

Game #4: Missouri Southern State College
October 3 - 7:30 P.M. Topeka, Kansas

Location: Joplin, Missouri
Athletic Director: Jim Frazier
Head Coach: Jim Frazier
Assts: John Salavantis, Warren Turner, and Rod Gisselmann
SID: Ron Robson (417) 624-8100 Ext. 317
Stadium: Fred Hughes Stadium (7,500)
Nickname: Lions
Colors: Green and Gold
Enrollment: 3,800
Conference: Central States Intercollegiate Conference
National Affiliation: NAIA
Lettermen Returning: 29
1980 Record: 6-3-1 **Conference Record:** 4-3
Series: MS leads 7-3-1 1980 Score MS 34 WU 9

Outlook:

Missouri Southern State College begins its eleventh year under the guidance of Head Coach Jim Frazier. Another exciting year is anticipated with 29 returning lettermen and the addition of NCAA Division I Wichita State to the 1981 schedule. The defense will return two senior Honorable All-American defensive tackles in Kelly Saxton and Tom Fisher. Fisher was also an All CSIC selection. This combination is considered by most to offer the best duo in the history of Lion Football, in the interior. Senior, Stan Gardner, was withheld from spring drills. His availability will have a major input in the defensive ability of coordinator Rod Giesselmann to continue a multiple philosophy. The secondary was the question during spring drills. Senior Steve Stallard and returning rookie of the year Alan Dunaway with the addition of Senior Dave Dageforde (moved from linebacker), transfer John Lindsey, and letterman Glenn Baker put smiles on the fans faces during the annual spring game. The Lion offensive punch should offer balance. Junior Ron Harris, heads the list of impressive young tailbacks. Senior quarterback Kevin Ahlgren is expected to carry a major part of the load with quality assistance from Senior tight end Jeff Schweitzer and Senior flanker John Henderson. The greatest improvement may well be in the offensive line. Offensive coordinator John Salavantis builds around senior Jackie Campbell and returning starters Billy Jack Smith, Joel Tupper, Dud Robertson, and Pete Sellen.

Game #5 Emporia State University
October 10 - 1:30 P.M. Topeka, Kansas

Location: Emporia, Kansas
Athletic Director: Dr. William Quayle
Head Coach: Bob Seaman
Assts: John Bowles
SID: Ron Dinkel (316) 343-1200 Ext. 354, 455
Stadium: Welch Stadium (7000)
Nickname: Hornets
Colors: Black and Gold
Enrollment: 6100
Conference: Central States Intercollegiate Conference
National Affiliation: NAIA
Lettermen Returning: 23
1980 Record: 2-8 **Conference Record:** 1-6
Series: ESU leads 37-36-6 1980 score: ESU 45 WU 7

Outlook:

The Hornets finished the 1980 season with a 2-8 record. They ended the season with six straight losses in the CSIC action and posted a 1-6 loop record. Defensively, the Hornets return four starters-linebackers Bart Kuhlmann and Bob Higgins, and defensive backs Dywane Canady and Woody Cotman. Kuhlmann, who could be in line for all-America honors at the end of the 1981 campaign, finished 1980 with 108 tackles, including 57 unassisted stops. Offensively, E-State returns three of its top four rushers from a year ago. Sophomore Kurt Ream rushed for 72.3 yards per game after being inserted into the fullback slot following a rash of injuries to other backs. Junior Pat Cisper picked up 50.0 yards per game before being sidelined with an injury in the fourth game of the season. Sophomore Mike Armstrong was picking up 36.8 yards per game before an injury sidelined him in game six. With only eight seniors on the pre-season roster, third-year coach Bob Seaman will be using several transfers and a number of outstanding freshman recruits in the lineup.

Game #6 Pittsburg State University
October 17 - 2:00 P.M. Pittsburg, Kansas

Location: Pittsburg, Kansas
Athletic Director: Dr. Bill Dickey
Head Coach: Ron Randleman
SID: Wayne Davenport (316) 231-7000 Ext. 292
Stadium: Brandenburg (7,500)
Nickname: Gorillas
Colors: Crimson and Gold
Enrollment: 5,500
Conference: Central States Intercollegiate Conference
National Affiliation: NAIA
Lettermen Returning: 30
1980 Record: 7-4 **Conference Record:** 5-2
Series: PS leads 31-17-1 1980 score: WU 38 PS 36

Outlook:

Pittsburg State will be coming off a very successful 1980 campaign in which they finished the season with an 7-4 mark and made an appearance in the (MOILA SHRINE CLASSIC). Pittsburg will be returning 30 lettermen which will include seven offensive starters, and nine defensive starters. In the defensive lineup they will be returning Ron Freeman a 6-2 215 lb. senior at middle guard, Frank McLaurin a 6-0 185 lb. senior at defensive end, Mark Kilgore a 6-3 210 lb. junior at one linebacker, and at the other linebacker Jeff Cooper a 6-2 210 lb. senior. In the offensive lineup they will be returning Stan Patton a 6-0 195 lb. senior at fullback, and Gene Wayenburg a 6-2 180 lb. senior at wide receiver.

Game #7 Wayne State College
October 24 - 7:30 P.M. Topeka, Kansas

Location: Wayne, Nebraska
Athletic Director: Dr. John Merriman
Head Coach: Del Stoltenberg
Assts: Ralph Barclay and Blaine Gorney
SID: (402) 375-4550
Stadium: Memorial Stadium (3,500)
Nickname: Wildcats
Colors: Black and Gold
Enrollment: 2,400
Conference: Central States Intercollegiate Conference
National Affiliation: NAIA
Lettermen Returning: 33
1980 Record: 4-5 **Conference Record:** 3-4
Series: Tied 3-3 1980 Score: WS 24 WU 18

Outlook:

Wayne State will have returning Kelly Neustrom at quarterback in the 1981. He led the squad in passng last season completing 44 passes in 88 attempts for 727 yards and eight touchdowns. Pat Maxwell returns as the Wildcats all purpose man as he returned punts and kickoffs for the Wayne State team. Defensively the Wildcats return ten starters back from last season, and they should once again will be tough to score on. Linebackers are the strength of this unit as they return Scudder, Gilbert and Dennis at the position.

Game #8: Fort Hays State University
October 31 - 7:30 P.M. Topeka, Kansas

Location: Hays, Kansas
Athletic Director: To be announced
Head Coach: Jim Gilstrap
Assts: Dennis Bean, Brian Naber
SID: To be announced (913) 628-5903
Stadium: Lewis Field Stadium (7,000)
Nickname: Tigers
Colors: Black and Gold
Enrollment: 5,500
Conference: Central States Intercollegiate Conference
National Affiliation: NAIA
Lettermen Returning: 30
1980 Record: 4-4-2 **Conference Record:** 3-2-2 (4th)
Series: WU leads 29-14-3 1980 Score: FHS 28 WU 17

Outlook:

When the Fort Hays State University football squad takes to the field in late August, Tiger fans can expect a comtable blend of something old and something new. The 1981 edition of Tiger Football will be led by new Head Coach Jim Gilstrap. Gilstrap replaces Bobby Thompson as the Tigers head mentor, after having served as an assistant coach to Thompson in 1980. A solid core of returning lettermen are expected to lead the Tigers in 1981 as they try and improve on their 4-4-2 mark from a year ago. Topping the list, are six FHSU standouts, all of which received CSIC honors in 1980: Phil Brethower, TE; Mike Morris, OT; Stan Johnson, G; Brad Webb, DB; Jeff Briggs, RB; and Rick Mondt, QB.

Game #9 Missouri Western State College
November 7 - 1:30 P.M. St. Joseph, Missouri

Location: St. Joseph, Missouri
Athletic Director: Charlie Burri
Head Coach: Rob Hicklin
Assts: Howard McCauley, Greg Lang, Don Malson, Fran Schwenk
SID: Paul Sweetgall (816) 271-4257
Stadium: Spratt Memorial Stadium (6,000)
Nickname: Griffons
Colors: Black and Gold
Enrollment: 4,000
Conference: Central States Intercollegiate Conference
National Affiliation: NAIA
Lettermen Returning: 39
198 Record: 5-3-2 **Conference Record:** 3-3-1 (5th)
Series Record: WU leads 4-3-2 1980 Score: MW 45 WU 14

Outlook:

The Griffons hope to improve upon last season's 5-3-2 record with a squad that includes 39 returning lettermen. Only five lettermen were lost to graduation. Heading the list of returnees is two-year honorable mention All-American receiver Tim Hoskins, who hold MWSC career records for scoring (212), pass reception yardage (2029) and touchdown receptions (32). He will be joined in the flats by speedy receiver Marc Lewis, who caught passes for 541 yards last season and also led the club in both punt return and kickoff return yardage. The man in charge of getting the ball into the hands of Hoskins and Lewis is junior quarterback Greg Feters. Feters threw for 1534 yards last year, his first full year of action. The backfield is led by senior Rodney Stephenson, the first Griffon to rush for over 2000 yards in a career (2125). A replacement needs to be found for Stephenson's running mate, Mike Taggart, who led the team with 941 yards rushing last season. The offensive line will have to replace first team All-American Bill Stevens and All-Conference guard Doug Miller. Defense has been a problem area in the past, but an experienced crew may make a name for themselves this year. The linebackers, each of whom has started for the past two years, are led by middle linebacker Robert Newhart, a junior who led the team in tackles in each of this two seasons. Senior Kevin O'Connell and junior Tom Early are the other two experienced starters. The defensive backfield will feature senior Darren Mankin, who is always near the top of the team's tackle charts, and senior Rickey Benton, who led the CSIC in interceptions last year with six. A young group of linemen will battle for spots which opened due to the graduation of tackle Roger Roberts and end Tim Pepple.

Game #10 Kearney State College
November 14 - 1:30 P.M. Kearney, Nebraska

Location: Kearney, Nebraska
Athletic Director: Allen H. Zikmund
Head Coach: Claire Boroff
Assts: Terry Renner, Guy B. Murray, and Glenn Critchley
SID: Don Briggs (308) 236-4192
Stadium: Foster Field (6,500)
Nickname: Antelopes
Colors: Royal Blue and Light Old Gold
Enrollment: 7,000
Conference: Central States Intercollegiate Conference
National Affiliation: NAIA
Lettermen Returning: 36
1980 Record: 9-2-1 **Conference Record:** 6-0-1 (1st)
Series: KS leads 10-2-1 1980 Score: KS 14 WU 14

Outlook:

Gone are more than 2 dozen lettermen and with 8 seniors coming back, underclassmen are going to have to come through. Only four of the eight seniors have earned three letters. Three who were juniors and six who were sophomores are no longer on the roster after spring drills have been completed. Men to watch include Luke VanMatre, tailback who gained 800 yards last fall; Jeff Stenslokken, All-American choice last fall; Mark Pilkington, kicker who lead the team in scoring as a freshman, and Scot Schug, punter who averaged 37.5 yards on 70 punts. Joining the lettermen are a dozen "red-shirts", two dozen up from last year's freshmen team, and a dozen transfers who were on campus for spring drills.

1980 WASHBURN UNIVERSITY ICHABODS
10 Games: 2-8 Overall, 2-3 Home, 0-5 Away,
1-2 Non-League, 1-6 CSIC

Player	RUSHING					
	GP	TC	YDS	GA	TD	YPC
Greig	6	41	144	24.0	0	3.5
Moore	9	40	131	14.6	1	3.3
Lombardo	3	37	124	41.3	0	3.4
Gilbet	10	18	74	7.4	0	4.1
Chiaverini	10	16	67	6.7	1	4.2
Pryor	10	11	50	5.0	0	4.5
O'Neill	10	4	49	4.9	1	12.3
Davis	7	6	31	4.4	0	5.2
Perry	8	11	23	2.9	0	2.1
Elliott	5	5	-9	-1.8	0	-1.8
Cummings	10	1	-39	-3.9	0	-39.0
Rauschelbach	6	27	-69	-11.5	1	-2.6
Atkins	9	63	-201	-22.3	1	-3.2
WU	10	280	375	37.5	5	1.3
OPP	10	529	2468	246.8	32	4.7

PLAYER	PASSING						
	GP	PA-PC	PCT	HI	TD	YDS	GA
Atkins	9						
Atkins	9	345-183	.53	20	13	2106	234.0
Rauschel	6	127-62	.49	8	2	676	112.7
Elliott	5	37-12	.32	3	1	142	28.4
WU	10	509-257	.51	31	16	2924	292.4
OPP	10	229-99	.42	11	9	1594	159.4

PLAYER	PASS RECEIVING					
	GP	PC	YDS	YPC	GA	TD
Hamilton	10	84	1128	13.4	112.8	5
Chiaverini	10	24	275	11.5	27.5	2
Pryor	10	29	264	9.1	26.4	2
Gilbert	10	28	212	7.8	21.2	1
Martinek	10	12	182	15.2	18.2	2
Perry	8	16	178	11.1	22.3	1
Greig	6	14	155	11.1	25.8	0
Mitchell	7	10	126	12.6	18.0	1
Woods	9	9	100	11.1	11.1	0
Pokrywka	3	8	99	12.4	33.0	2
Davis	7	11	93	8.5	13.3	0
Lombardo	3	9	74	8.2	24.7	0
Moore	9	3	38	12.7	4.2	0
WU	10	257	2924	11.4	292.4	16
OPP	10	99	1594	16.1	159.4	9

PLAYER	TOTAL OFFENSE					
	GP	PLAYS	RUSH	PASS	TOTAL	GA
Atkins	9	408	-201	2106	1905	211.7
WU	10	793	375	2924	3299	329.9
OPP	10	758	2468	1594	4062	406.2

PLAYER	PUNTING			
	GP	NO	YDS	AVG
Cummings	10	66	2627	39.8
Perry	8	3	99	33.0
WU	10	69	2726	39.5
OPP	10	67	2317	34.6

PLAYER	RETURNS			
	GP	PUNTS NO/YDS/AVG	KICKOFFS NO/YDS/AVG	INTER. NO/YDS/AVG
Chiaverini	10		19/306/16.1	
O'Neill	10	4/22/5.5	11/187/17.0	
Hamilton	10	13/125/9.6		
Davis	7		9/135/15.0	
Weissbeck J	10			4/112/28.0
Woods	9	12/67/5.6	8/111/13.9	
Lasley	9			1/44/44.0
Mitchell	7		2/34/17.0	
Anguiano	10			1/55/55.0
Conwell	8			1/31/31.0
Henderson	4			2/13/6.5
Sprouse	10			1/9/9.0
Brewer	10		1/0/0.0	
Brown	1		1/0/0.0	
Lee	4		1/0/0.0	
Medill	8			1/0/0.0
Schoo	1	3/-1/-33		
WU	10	32/213/6.7	52/728/14.0	11/264/24.0
OPP	10	23/76/3.3	29/502/17.3	31/248/8.0

PLAYER	GP	SCORING					S TOTAL
		TD	XP-A	XP2	FG-A		
Hamilton	10	5		1			32
Cummings	10	0	14-19		4-13		26
Chiaverini	10	3					18
Martinek	10	2					12
Pokrywka	3	2					12
Pryor	10	2					12
Atkins	9	1					6
Gilbert	10	1					6
Mitchell	7	1					6
Moore	9	1					6
Moore	9	1					6
O'Neill	10	1					6
Perry	8	1					6
Rauschelbach	6	1					6
Weissbeck J	10	1					6
Stratton	3		1-1		1-1		4
Alvarez	9					1	2
WU	10	22	15-20	1	5-14	1	166
OPP	10	45	32-36	5	3-8		321

TOTALS

WU	OPP	
793	Total Plays	758
375	Rushing	2468
2924	Passing	1594
3299/329.9	Total Yds/Avg	4062/406.2
194	First Downs	190
27/18	Fumbles (No/Lost)	35/19
90/1024	Penalties (No/Yds)	86/928

WASHBURN IN 1980

WU 29 Benedictine College 27, WU 20 Arkansas Tech 41, WU 7 Missouri Valley 26, WU 7 Emporia State 45, WU 38 Pittsburg State 36, WU 18 Wayne State 24, WU 17 Fort Hays 28, WU 14 Missouri Western 45, WU 7 Kearney 14, WU 9 Missouri Southern 34

CSIC Football Standings

	Conference			Over All		
	W	L	T	W	L	T
Kearney State College	6	0	1	9	2	1
Pittsburg State University	5	2	0	7	4	0
Fort Hays State College	3	2	2	4	4	2
Missouri Southern State College	4	3	0	6	3	1
Missouri Western State College	3	3	1	5	3	2
Wayne State College	3	4	0	4	5	0
Emporia State University	1	6	0	2	8	0
WASHBURN UNIVERSITY	1	6	0	2	8	0

Washburn Coaches' Career Records

1894	W. M. Gaines	(3-1-0)	1923-26	G. Woodward	(8-20-4)
1896	W. Griffith	(6-1-1)	1927-28	Roy Wynne	(8-10-0)
1897-98	Paul Coldren	(12-2-1)	1929-35	Er. Bearg	(36-28-4)
1899	Wm. Melford	(2-5-2)	1936-41	E. W. Holm	(21-31-3)
1900	Ben Owen	(6-2-0)	1942-43	Rob Raugh	(3-11-2)
1901	L. Banks	(3-2-5)	1944	C. D. Erickson	(1-6-0)
1902	H. W. Page	(2-6-0)	1945	Law Lane	(4-2-0)
1903	A. R. Kennedy	(7-1-0)	1946-58	R. Godlove	(68-42-4)
1904-05	Jn. Outland	(14-5-0)	1959-61	Ralph Brown	(10-17-0)
1906-08	G. W. Weede	(19-5-4)	1962-64	E. Rainsberger	(15-12-0)
1909-10	R. B. Stewart	(6-7-0)	1965-66	Ed Linta	(4-13-1)
1911-12	W. L. Driver	(7-7-1)	1967-68	Bill Shaake	(2-16-0)
1913-15	G. L. Gray	(8-10-3)	1969-70	"Bud" Elliott	(10-8-2)
1918-19	Er. Bearg	(11-2-1)			
1916-17	A. R. Kennedy	(5-12-2)	1971-73	Bob Noblitt	(11-18-1)
1918-19	Er. Bearg	(11-2-1)	1974-78	Larry Elliott	(29-21-1)
1920-21	Dwight Ream	(7-7-1)	1979	Gary Hampton	(4-6-0)
1922	Mike Vosburg	(1-7-0)	1980	Gary Hampton	(2-8-0)

WASHBURN FOOTBALL TEAM RECORDS

(*includes results of non-intercollegiate game or games)

(**includes Boot Hill Bowl victory)

Most Wins, Season: 8, 1974**, 1964, 1907*, 1931*, 1953*

Most Losses, Season: 10*, 1937

Most Consecutive Wins: 14, 1930-31

Most Consecutive Losses: 14, 1936-37

Most Shutout, Season: 7, 1906; 10*, 1906

Most Consecutive Shutouts: 3, 1906 and 1919; 7*, 1917

Most Times Shutout, Season: 6, 1928 and 1942; 7*, 1917

Most Points Scored, Game: 79, 1978 vs. St. Mary's of the Plains (WU79-3); 80*, 1900 vs. Fort Riley (WU 80-0)

Most Points Scored, Season: 268, 1977

Highest Scoring Average, Season: 27.6, 1949

Widest Margin of Victory: 76, 1978, WU 79 St. Mary's of the Plains 3; 80*, 1900 WU 80 Fort Riley 0

Most Opponents Points, Game: 72 by Bethany, 1969 (Bethany 72 WU 0)

Most Opponents Points, Season: 321, 1980

Most Combined Points, Game: 98, 1969 (Northern Colorado 70 WU 28)

Most First Downs, Game: 28 vs. Arkansas Tech University (9-13-80)

Season: 194, 1980

Most Yards Rushing, Game: 382 vs. Fort Hays State (1960)

Season: 2081, 1964

Best Rushing Average, Season: 211.2 (1948)

Most Yards Passing, Game: 418 vs. Missouri Western (10-27-79)

Season: 2924 (1980)

Best Passing Average, Season: 292.4 (1980)

Most Yards Total Offense, Game: 681 vs. Rockhurst (1949)

Season: 3299 (1980)

Best Total Offense Average, Season: 350.1 (1949)

Most Passes Attempted, Game: 64 vs. Emporia State University (9-27-80)

Season: 509 (1980)

Most Passes Completed, Game: 34 vs. Wayne State College (10-11-80)

Season: 257 (1980)

Best Punting Average, Game: 49.8 vs. Missouri Western (9-21-74, 6 for 299 yds.)

Season: 39.5 (1980, 69 punts)

Most Punts, Game: 10 vs. Missouri Southern State College (12-8-80)

Season: 78 (1967)

Fewest Rushing Yards Allowed, Game: -14 vs. St. Mary's of the Plains (9-9-78)

Season: 78 (1964)

Fewest Passing Yards Allowed, Game: 0 vs. Southern Colorado (10-6-73); 0 vs. Northeast Missouri (9-22-63); 0 vs. Emporia State (10-4-47); 0 vs. Wichita (11-1-46)

Season: 493 (1963)

Fewest Total Offense Yards Allowed, Game: -3 vs. St. Mary's of the Plains (9-9-78)

Season: 1614 (1973)

Most Interceptions, Game: 6 vs. Missouri Western (9-21-74), vs. Fort Hays (10-25-75)

Season: 17 (1977)

Fewest Passing Yards Average Allowed, Season: 87.4 (1964)

Fewest Rushing Yards Average Allowed, Season: 54.8 (1963)

*An NAIA National Record

LONGEST SCORING PLAYS

Run From Scrimmage: 94 yards by Melvin Myricks vs. Kearney State (11-18-65)
Pass Plays: 83 yards, Jon Bakalar to Alan Dressman vs. St. Mary's of the Plains (9-19-70)
Punt Return: 90 yards by Clarence Taylor vs. Emporia State (10-4-75)
Kickoff Return: 97 yards by Bill Baker vs. St. Benedictine (10-21-51)
Interception Return: 91 yards by Meryl Garey vs. Peru State (9-17-48)
Longest Field Goal: 52 yards by Russ Hill vs. Northern Colorado (10-28-72)

WASHBURN FOOTBALL INDIVIDUAL RECORDS

PASSING

Most Yards, Game: 418 by Mike Atkins vs. Missouri Western (10-27-79)
Season: 2106 by Mike Atkins (1980)
Career: 5437 by Mike Atkins (1977-80)
Most Completions, Game: 34 by Mike Atkins vs. Wayne State College (10-11-80)
Season: 183 by Mike Atkins (1980)
Career: 442 by Mike Atkins (1977-80)
Best Cpl. Pct., Game: .900 by Jerry Rauschelbach vs. Missouri Valley (9-20-80, 9 of 10)
Season: (30 attempts) .530 by Mike Atkins (1980)
Touchdown Passes, Game: 4 by Leroy Harmon vs. No. Illinois (9-23-49); 4 by Mike Atkins vs. Benedictine College (9-6-80)
Season: 13 by Mike Atkins (1980)
Career: 35 by Mike Grogan (1974-77)
Most Attempts, Game: 63 by Mike Atkins vs. Wayne State College (10-11-80)
Season: 345 by Mike Atkins (1980)
Career: 866 by Mike Atkins (1977-80, cpl. 442 for 5437 yds.)

TOTAL OFFENSE

Most Yards, Game: 445 by Mike Atkins vs. Missouri Western (10-27-79)
Season: 1905 by Mike Atkins (1980)
Career: 5063 by Mike Atkins (1977-80)

RECEIVING

Most Receptions, Game: 13 by Ron Hamilton vs. Wayne State College (10-11-80)
Season: 84 by Ron Hamilton (1980)
Career: 134 by Ron Hamilton (1979-80, 1919 yds.)
Most Yards, Game: 212 by Ron Hamilton vs. Pittsburg State U. (10-4-80)
Season: 1128 by Ron Hamilton (1980)
Career: 1919 by Ron Hamilton (1979-80)

RUSHING

Most Yards, Game: 241 by Kevin McCormick at Missouri Valley (9-11-71)
Season: 979 at Art Fletcher (1948)
Career: 1972 by Art Fletcher (1945-49)
Most Carries, Game: 31 by Mark Samich vs. Baker University (9-22-79)
Season: 212 by Kevin McCormick (1970, 690 yds.)
Career: 472 by Kevin McCormick (1969-71, 1581 yds.)

SCORING

Most Points, Game: 30 by Art Fletcher vs. St. Benedict's (1948)
Season: 84 by Bill Baker (1953)
Career: 253 by Leroy Harmon (1945-49)
Most TD's, Game: 5 by Art Fletcher vs. St. Benedict's (1948)
Season: 14 by Bill Baker (1953)
Career: 39 by Leroy Harmon (1945-49)
Most PAT's, Game: 10 by Mike Cassin vs. St. Mary's of the Plains (9-9-78, 10 of 11)
Season: 33 by Mike Cassin (1977, attempted 34)
Career: 90 by Mike Cassin (1975-78, attempted 98)
Most Field Goals, Game: 4 by Mike Cassin vs. Missouri Valley (9-19-78, 4 of 4)
Season: 9 by Mike Cassin (1978); 9 by Kevin Cummings (1979)
Career: 20 by Mike Cassin (1975-78, attempted 49)

PUNTING

Most Punts, Game: 10 by Kevin Cummings vs. Missouri Southern State College (12-8-80)
Season: 80 by Roy Keck (1952)
Career: 196 by Brent Cripps (1974-77, 7884 yds.)
Best Average, Game: 49.8 by Brent Cripps vs. Missouri Western (1974, 6 for 299 yds.)
Season: (at least 20 punts) 42.0 by Brent Cripps (1977, 46 for 1934 yds.)
Career: 40.2 by Brent Cripps (1974-77, 196 for 7884 yds.)
Longest Punt: 70 by Brent Cripps vs. Missouri Western (9-21-74); 83* by Leroy Harmon vs. Olathe Naval Base (9-28-45)

WASHBURN YARDAGE CLUB

Career Rushing (1500 yard club)

Player	Years	Att	Yards
Leroy Harmon	45-49		1927
Art Fletcher	46-49		1698
Bill Baker	51-53	299	1670
Kevin McCormick	69-71	472	1581

Season Rushing (700 yard club)

Player	Year	Att	Yards	Avg.
Art Fletcher	1948	180	979	5.43
Kevin McCormick	1971	172	862	5.00
Gary Yager	1975	184	748	4.10
Art Fletcher	1949		719	

Career Passing (1500 yard club)

Player	Years	Att	Comp	Yards
Mike Atkins	77-80	866	442	5437
Mike Grogan	74-77	596	292	3761
Leroy Harmon	45-49			1997
Larry Elliott	56-58	297	131	1934
Dale Bennett	67-70	319	116	1662
Elmer McAfferty	50-52	222	93	1533
Dean Ferrell	65-68	334	148	1525

Season Passing (1000 yard club)

Player	Year	Att	Comp	Yards
Mike Atkins	1980	345	183	2106
Mike Atkins	1979	248	130	1678
Mike Atkins	1978	237	112	1374
Mike Grogan	1977	163	74	1202
Mike Grogan	1975	177	91	1098
Leroy Harmon	1949	159	72	1001

Career Receiving (1000 yard club)

Player	Years	Catches	Yards
Ron Hamilton	79-80	134	1919
Mike Keeley	75-78	104	1638
Alan Dressman	69-71	49	1228
Irv McCoy	67-68	94	1037

Season Receiving (500 yard club)

Player	Year	Catches	Yards
Ron Hamilton	1980	84	1128
Ron Hamilton	1979	50	791
Mike Keeley	1978	36	591
Alan Dressman	1970	19	553
Mike Keeley	1977	30	538
Rick Benke	1975	42	523

1980 WASHBURN UNIVERSITY FOOTBALL RECORDS SET OR TIED

INDIVIDUAL

- Most Yards Passing, Season:** 2,106 by Mike Atkins (1980)
- Most Yards Passing, Career:** 5,437 by Mike Atkins (1977-80)
- Most Pass Completions, Game:** 34 by Mike Atkins vs. Wayne State College (10-11-80)
- Most Pass Completions, Season:** 183 by Mike Atkins (1980)
- Most Pass Completions, Career:** 442 by Mike Atkins (1977-80)
- Best Cpl. Pct., Game:** .900 by Jerry Rauschelbach vs. Missouri Valley (9-20-80, 9 of 10)
- Best Cpl. Pct., Season:** .530 by Mike Atkins (1980)
- Touchdown Passes, Game:** TIED with 4 by Mike Atkins vs. Benedictine College (9-6-80)
- Most Touchdown Passes, Season:** 13 by Mike Atkins (1980)
- Most Pass Attempts, Game:** 63 by Mike Atkins vs. Wayne State College (10-11-80)
- Most Pass Attempts, Season:** 345 by Mike Atkins (1980)
- Most Pass Attempts, Career:** 866 by Mike Atkins (1977-80, cpl. 442 for 5,437 yds.)
- Most Total Offense Yards, Season:** 1,905 by Mike Atkins (1980)
- Most Total Offense Yards, Career:** 5,063 by Mike Atkins (1977-80)
- Most Receptions, Game:** 13 by Ron Hamilton vs. Wayne State College (10-11-80)
- Most Receptions, Season:** 84 by Ron Hamilton (1979-80)
- Most Yards Receiving, Game:** 212 by Ron Hamilton vs. Pittsburg State U. (10-4-80)
- Most Yards Receiving, Season:** 1,128 by Ron Hamilton (1980)
- Most Yards Receiving, Career:** 1,919 by Ron Hamilton (1979-80)

TEAM

- Most First Downs, Game:** 28 vs. Arkansas Tech University (9-13-80)
- Most First Downs, Season:** 194 (1980)
- Most Opponents Points, Season:** 321 (1980)
- Most Yards Passing, Season:** 2,924 (1980)
- Best Passing Average, Season:** 292.4 (1980)
- Most Yards Offense, Season:** 3,299 (1980)
- Most Passes Attempted, Game:** 64 vs. Emporia State University (9-27-80)
- Most Passes Attempted, Season:** 509 (1980)
- Most Passes Completed, Game:** 34 vs. Wayne State College (10-11-80)
- Most Passes Completed, Season:** 257 (1980)
- Best Punting Average, Season:** 39.5 (1980, 69 punts)
- Most Punts, Game:** 10 vs. Missouri Southern State College (12-8-80)

Washburn Football: Year by Year

Year	W-L-T	Pct	Pts-Opp	Coach
1891	1-4-0	.200	46-146	
1892	0-2-0	.000	0-80	
1893	1-0-0	1.000	18-0	
1894	3-1-0	.750	66-30	W. M. Gaines
1895	No intercollegiate games played			
1896	6-1-1	.813	126-50	W. Griffith
1897	7-2-0	.778	88-24	Paul Coldren
1898	7-2-0	.917	117-23	Paul Coldren
1899	2-5-2	.333	34-75	William Melford
1900	6-2-0	.750	194-11	Ben G. Owen
1901	3-2-5	.450	47-46	Lawrence Banks
1902	2-6-0	.250	23-220	H. Ward Page
1903	7-0-1	.875	168-0	A. R. Kennedy
1904	7-2-0	.778	191-35	Dr. John Outland
1905	7-3-0	.700	137-83	Dr. John Outland
1906	8-1-3	.792	147-11	Dr. Garfield Weede
1907	8-0-0	1.000	124-11	Dr. Garfield Weede
1908	3-4-1	.438	53-73	Dr. Garfield Weede
1909	3-3-0	.500	78-110	Dr. Robert Stewart
1910	3-4-0	.429	87-95	Dr. Robert Stewart
1911	3-4-1	.438	65-67	William Lloyd Driver
1912	4-3-0	.571	119-52	William Lloyd Driver
1913	3-2-2	.571	95-42	Glen C. "Grip" Gray
1914	4-2-0	.667	100-60	Glen C. "Grip" Gray
1915	1-6-1	.188	33-127	Glen C. "Grip" Gray
1916	3-6-0	.333	47-161	A. R. Kennedy
1917	2-6-2	.300	45-102	A. R. Kennedy
1918	4-1-0	.800	90-35	Ernest E. Bearg
1919	7-1-1	.833	212-40	Ernest E. Bearg
1920	4-2-0	.667	54-42	Dwight T. Ream
1921	3-5-1	.438	54-98	Dwight T. Ream
1922	1-7-0	.125	37-184	G. D. Vosburg
1923	0-7-2	.111	21-117	George J. Woodward
1924	3-5-0	.375	60-99	George J. Woodward
1925	2-4-1	.357	15-63	George J. Woodward
1926	3-4-1	.438	49-97	George J. Woodward
1927	1-7-0	.125	21-127	Roy Wynne
1928	2-7-0	.222	33-147	Roy Wynne
1929	5-6-0	.455	100-108	Ernest E. Bearg
1930	6-2-0	.750	176-85	Ernest E. Bearg
1931	8-2-0	.800	108-54	Ernest E. Bearg
1932	6-3-1	.650	124-67	Ernest E. Bearg
1933	5-5-1	.500	76-54	Ernest E. Bearg
1934	2-5-1	.313	37-67	Ernest E. Bearg
1935	4-6-0	.400	108-104	Ernest E. Bearg
1936	2-6-1	.278	53-148	Elmer "Gus" Holm
1937	0-10-0	.000	39-209	Elmer "Gus" Holm
1938	6-3-0	.667	160-160	Elmer "Gus" Holm
1939	6-4-0	.600	145-128	Elmer "Gus" Holm
1940	4-6-0	.400	134-198	Elmer "Gus" Holm
1941	4-2-2	.625	133-48	Elmer "Gus" Holm
1942	1-7-0	.125	27-151	Bob Raugh
1943	2-4-2	.375	52-113	Bob Raugh
1944	1-6-0	.143	24-220	Dee Erickson
1945	4-2-0	.667	79-53	Lew Lane
1946	6-2-1	.722	138-86	Dick Godlove
1947	7-1-0	.875	159-56	Dick Godlove
1948	3-5-1	.389	176-117	Dick Godlove
1949	7-2-0	.778	248-137	Dick Godlove
1950	3-4-1	.438	82-120	Dick Godlove
1951	6-3-0	.667	196-150	Dick Godlove
1952	4-5-0	.444	143-163	Dick Godlove
1953	8-1-0	.889	230-46	Dick Godlove
1954	6-2-0	.750	120-99	Dick Godlove
1955	6-2-1	.722	185-111	Dick Godlove
1956	3-6-0	.333	134-164	Dick Godlove
1957	5-4-0	.556	194-148	Dick Godlove
1958	4-5-0	.444	131-124	Dick Godlove
1959	3-6-0	.333	90-156	Ralph Brown
1960	3-6-0	.333	120-173	Ralph Brown
1961	4-5-0	.444	115-194	Ralph Brown
1962	4-5-0	.444	125-207	Ellis Rainsberger
1963	3-6-0	.333	182-108	Ellis Rainsberger
1964	8-1-0	.889	182-53	Ellis Rainsberger
1965	2-6-1	.278	88-217	Ed Linta
1966	2-7-0	.286	87-163	Ed Linta
1967	0-9-0	.000	53-302	Bill Schaake
1968	2-7-0	.286	80-240	Bill Schaake
1969	5-5-0	.500	169-234	Harold "Bud" Elliott
1970	5-3-2	.600	186-161	Harold "Bud" Elliott
1971	5-5-0	.500	175-151	Bob Noblitt
1972	3-7-0	.300	140-176	Bob Noblitt
1973	3-6-1	.333	111-155	Bob Noblitt
1974	8-3-0	.727	235-169	Larry Elliott
1975	5-5-0	.500	225-152	Larry Elliott
1976	6-4-0	.600	200-213	Larry Elliott
1977	6-3-1	.650	268-229	Larry Elliott
1978	4-6-0	.400	208-222	Larry Elliott
1979	4-6-0	.400	163-193	Garland "Gary" Hampton
1980	2-8-0	.250	166-321	Garland "Gary" Hampton
Total	353-361-43	.494	9973-10519	

**WASHBURN VOLLEYBALL
1981**

The Washburn Lady Blues will have eight players returning from the 1980 squad which posted an 11-20 record. Coach Jan Nuzman is optimistic about the 1981 season. "It is great to have some personnel with experience. The past two years we've had very little experience or height - this year we'll be improved in both. That has to be a real step forward toward a successful season. All of the young women returning have great attitudes and fine potential. We also have some new people who should give our team a real boost. I'm truly looking forward to the season."

Those returning:

KELLY GARRETSON, 5'7" Topeka Sophomore Major in Music - started may matches as a Freshman. Kelly's versatility will help the squad this year.

NOELA FAGAN, 5'8" Junior from Burlingame. Major: Physical Education. Transferred to Washburn last year from Neosho Junior College. Noela was hampered by knee injuries but still achieved the most spikes for the Lady Blues in 1980, and hopes to do likewise this year.

ANNETTE KNIPP, 5'10" Sophomore from Topeka. Major: Liberal Arts. Started in most matches the last half of the season and was named Most Improved Player of the 1980 season after leading her team in blocks. Annette's enthusiasm for the game and skill at the net will be counted on.

NANCY OLSON, 5'9" Senior from Altoona. Major in Business. Came to the Washburn squad last year from Allen County Community College and shared a starting position, concentrating on front row play. She should be strong on both offense and defense at the net.

MICHELLE SASEK, 5'3" Sophomore from Topeka majoring in Physical Education. Played as a setter and defensive specialist last year and should render expertise as a setter from the experience.

DEBE TAYLOR, 5'6" Senior from Harveyville. Major in Physical Education. Debe suffered a shoulder injury early in the season but re-joined the team in late October to log effective playing time. Debe's experience and maturity will help the team.

SONYA VICKERS, 5'6" Sophomore from Bonner Springs. Major in Physical Education. Started as a setter last year and was voted by her teammates as Most Inspirational Player of the year. Sonya will be counted on for leadership and versatile play.

Newcomers to the 1981 squad include:

TINA BOLDRA BAYLESS, 5'9" Freshman from Valley Falls.

MELISSA ELLIOTT, 5'7" Freshman from Silver Lake.

SHARON LORD, 5'9" Freshman from Shawnee Heights.

TERRI SHIPLEY, 5'8" Junior from Platte Junior College, Nebraska.

MONICA SCHULTZ, 5'8" Freshman from Washburn Rural.

PAM HARPSTER, 5'6" Freshman from Valley Center.

MARY WOELLHOF, 5'7" Freshman from Clay Center.

**WASHBURN UNIVERSITY
Women's Intercollegiate Volleyball
1981 Schedule**

Sat. Sept. 5	Alumni	Home	5:30 PM 6:30
Sat. Sept. 12	The Saints Invitational St. Mary of the Plains St. Marys of Omaha Colorado College Panhandle State U. Kansas Newman	Dodge City	9:30 AM
Tues. Sept. 15	Kansas Wesleyan Benedictine	Home	6:30 PM 8:30
Thurs. Sept. 17	Bethel Kansas State U.	Newton	6:00 PM 7:15
Sat. Sept. 19	Friends University Kansas Newman	Wichita	1:00 PM 2:00
Tues. Sept. 22	Baker University	Baldwin	6:30 PM
*Fri. Sept. 25	Missouri Southern	Hays	7:30 PM
*Sat. Sept. 26	Ft. Hays Missouri Western		10:00 AM 11:30 AM
Tues. Sept. 29	Benedictine William Jewell	Atchison	6:30 PM 7:30
*Fri. Oct. 2	Wayne State	Home	7:30 PM
*Sat. Oct. 3 (Parents Day)	Ft. Hays Pittsburg	Home	10:00 AM 11:30 AM
*Tues. Oct. 6	Emporia State Kansas Newman	Emporia	6:00 PM 7:30
Fri. Oct. 9	St. Mary of the Plains	Home	2:00 PM
*Fri. Oct. 16	Kearney	Wayne Neb.	7:30 PM
*Sat. Oct. 17	Missouri Southern Wayne State	Wayne Neb.	9:00 AM 10:30 AM
Tues. Oct. 20	Nebraska Wesleyan Univ of Nebraska-Omaha	Lincoln Neb.	5:00 PM 6:00 PM
*Tues. Oct. 27	Emporia State Marymount	Home	6:00 PM 8:15
*Fri. Oct. 30	Missouri Western	Pittsburg	6:00 PM
*Sat. Oct. 31	Pittsburg State Kearney	Pittsburg	10:00 AM 11:30 AM

*C.S.I.C. Conference Matches

All Home Matches are played at Whiting Field House
Head Coach: Janet Nuzman

What's An Ichabod?

The name Ichabod was derived from the first name of Ichabod Washburn, an early benefactor of the University. Until 1938 there was not a graphic representation or any particular characteristics associated with Mr. Ichabod. During the 1937-38 school year, the editors of KAW, the university yearbook, decided that such items were important to the University and began to accept suggestions for a design of Mr. Ichabod. The adopted design was drawn by Bradbury Thompson (BA '34).



The following explanatory material accomplished Ichabod's first representation in the Washburn Kaw: "He has courage and enthusiasm as shown by his brisk walk. He is democratic and courteous, for he tips his hat as he passes. Sincere in his search for truth and knowledge, he studiously carries a book under his arm. His friendly smile makes you like him. He is neatly dressed and he fits well into his generation...but he adopts himself with equal ease to any change or any age."

	Benedictine College	Arkansas Tech U.	Missouri Valley	Missouri So. State	Emporia State U.	Pittsburg State U.	Wayne State	Ft. Hays State U.	Missouri Western St.	Kearney State
Sept. 5	WASHBURN T	Univ. of Arkansas at Little Rock	Culver Stockton College at Culver	Wichita State at Wichita		Northwest Missouri State at Maryville		Langston University at Hays	Evangel at Evangel	Moorhead State at Moorhead
Sept. 12	Missouri Western at St. Joseph	WASHBURN H	University of Mo. at Rolla	Central Missouri State Univ. at Joplin	Northwestern Oklahoma State at Alva	Lincoln Univ. at Jefferson City	Chadron at Chadron	St. Mary's at St. Mary's	Benedictine at Missouri Western	Augustana at Kearney
Sept. 19	William Jewell at Atchison	Northeastern Oklahoma St. at Russellville	WASHBURN T	Evangel College at Springfield	Central Missouri State at Emporia	University of Mo. at Pittsburg	Midland at Wayne	Ft. Lewis at Ft. Lewis	Northwest Missouri State at Mo. Western	
Sept. 26	Hastings College at Atchison	Central Missouri State at Warrensburg	Mid-America Nazarene at Mid-America	Northwestern Oklahoma St. at Joplin	Northwest Missouri State at Emporia		Yankton at Yankton	Panhandle at Hays		
Oct. 3	Peru State at Atchison	Tarkio College at Missouri Valley	WASHBURN H	WASHBURN H	Pittsburg State at Emporia	Emporia State University at Emporia	Kearney at Kearney	Missouri Western at Hays	Ft. Hays State at Hays	Wayne State at Kearney
Oct. 10		Ottawa Univ. at Ottawa	Pittsburg State University at Pittsburg	Pittsburg State at Pittsburg	WASHBURN H	Missouri Southern at Pittsburg	Missouri Western at Wayne	Kearney State at Hays	Wayne State at Missouri Western	Ft. Hays State at Hays
Oct. 17	Panhandle State at Panhandle	Henderson State University at Russellville	Central Methodist at Mo. Valley	Emporia State at Joplin	Missouri Southern State at Emporia	WASHBURN H	Ft. Hays at Wayne	Wayne State at Wayne	Kearney State at Missouri Western	Missouri Western at Mo. Western
Oct. 24	Bethany College at Bethany	Univ. of Arkansas at Monticello	Baker University at Missouri Valley	Kearney State at Kearney Missouri	Missouri Western State at Emporia	Ft. Hays State at Hays	WASHBURN H	Pittsburg State at Hays	Emporia State at Emporia	Missouri Southern at Kearney
Oct. 31	Mid-America Nazarene at Atchison	William Jewell College at William Jewell	William Jewell College at William Jewell	Western State College at Joplin	Kearney State at Emporia	Wayne State College at Pittsburg	Pittsburg at Pittsburg	WASHBURN H	Missouri Southern at Joplin	Emporia State at Emporia
Nov. 7	Dana College at Atchison	Ouachita Baptist University at Arkadelphia	Graceland College at Missouri Valley	Ft. Hays State at Joplin	Wayne State at Wayne	Kearney State at Kearney	Emporia-at Wayne	Missouri Southern at Joplin	WASHBURN T	Pittsburg State at Pittsburg
Nov. 14	Concordia College at Atchison	Southern Arkansas Univ. at Russellville		Wayne State at Wayne	Ft. Hays State at Hays	Missouri Western College at St. Joseph	Missouri Southern at Wayne	Emporia State at Hays	Pittsburg State at Missouri Western	WASHBURN T