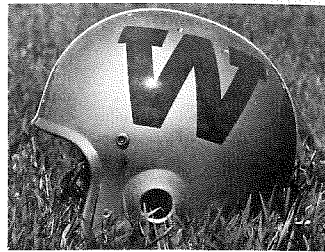


WASHBURN UNIVERSITY



1980
FOOTBALL
MEDIA GUIDE



The 1980 Washburn University Football Media Guide was designed and prepared by Chuck Cordt, Sports Information Director. While intended primarily as an aid to the news media, it is also directed to the general public and officials of opponent schools. For press passes, additional copies of this brochure, statistics, pictures or any other information concerning Washburn athletics, contact:

Chuck Cordt
 Sports Information Director
 Washburn University
 Topeka, Kansas 66621
 Phone: (913) 295-6334 Ex. 336 (Office)
 (913) 296-9144 (Home)

1980 Schedule

Sept. 6	BENEDICTINE COLLEGE	TOPEKA	7:30
Sept. 13	Arkansas Tech Univ.	Russellville, AR	7:30
Sept. 20	MISSOURI VALLEY	TOPEKA	7:30
Sept. 27	Emporia State University	Emporia, KS	7:30
Oct. 4	PITTSBURG STATE UNIV.	TOPEKA	7:30
Oct. 11	Wayne State College	Wayne, NE	1:30
Oct. 18	Fort Hays State University	Hays, KS	1:30
Oct. 25	MISSOURI WESTERN STATE	TOPEKA	2:00
Nov. 1	KEARNEY STATE COLLEGE	TOPEKA	2:00
Nov. 8	Missouri Southern State	Joplin, MO	7:30

1979 Results

WASHBURN	OPPONENT
42	St. Mary's of the Plains 0
13	Missouri Valley 18
23	Baker University 17
11	Emporia State University 17
12	Pittsburg State University 46
6	Wayne State College 7
6	Fort Hays State University 20
23	Missouri Western State College 21
7	Kearney State College 28
20	Missouri Southern State College 19

Table of Contents

'80 Schedule and '79 Results	Inside Cover
Table of Contents and About The Cover	1
Washburn University Facts	2
Washburn University	3
Media Outlets and Ticket Information	4
Athletic Director, Glenn Cafer and CSIC	5
Head Coach, Gary Hampton and Coaches' Records	6
Assistant Coaches, Mike McGraw and Scott Swofford	7
Graduate Assistant Coaches, Greg Gorman, Bill Kennedy, & Pat Luck	8
1980 Ichabod Preview	9
1980 Ichabod Roster	10
1980 Freshman Roster and Pronunciation Guide	11
Ichabods To Watch In 1980	12
1980 Ichabod Opponents	13-17
1979 Washburn University Football Statistics	18
1979 CSIC Football Standings and 1979 Ichabod All-Star	19
Washburn Football Team Records	20
Washburn Football Individual Records	21
Washburn Yardage Club	22
Washburn Football Records Set or Tied in 1979 ..	23
Washburn Football Year By Year	24
1980 Composite Football Schedule	Inside Cover
What's An Ichabod?	Back Cover



About The Cover

Pictured on the cover are Washburn's enthusiastic assistant football coaches. According to head coach Gary Hampton, these men have inspired, led and developed the players immensely in the past year. Their expertise and dynamic leadership are primary reasons why Washburn University looks forward to '80!

WASHBURN UNIVERSITY FACTS

Name: Washburn University of Topeka
Location: 17th and College, Topeka, Kansas 66621
Founded: 1865
Enrollment: 5600
Nickname: Ichabods
Colors: Blue and White
Facilities: Moore Bowl (7,200) and Whiting Field House (2,500)
Conference: Central States Intercollegiate Conference
National Affiliation: NAIA
President: Dr. John W. Henderson
Athletic Director: Glenn Cafer
Head Football Coach: Gary Hampton
Secondary Coach: Mike McGraw
Defensive Line Coach: Scott Swofford
Offensive Line Coach: Greg Gorman
Receiver and Back Coach: Bill Kennedy
Linebacker and End Coach: Pat Luck
Sports Information Director: Chuck Cordt (913) 295-6334 Ext. 336



Washburn University

Washburn University of Topeka, America's only municipal university, enrolls approximately 5,600 students from the Topeka area, 50 states and 26 foreign countries, was founded in 1865 as Lincoln College. The college's name was changed to Washburn in November 1868 in recognition of a timely \$25,000 gift from Deacon Ichabod Washburn of Worcester, Massachusetts.

Despite plagues, droughts and financial woes, Washburn expanded through the late years of the 19th Century and early 20th Century, building dormitories, a

gymnasium, and library, and establishing a School of Fine Arts, a School of Law, and a School of Medicine.

Sound management brought Washburn through the drought and depression years in relatively good financial shape, and the school built the Mulvane Art Museum, Benton Residence Hall, and Whiting Field House. Even so, resources were greatly depleted, and the school's Board of Trustees thought it best that Washburn transfer its assets to the city of Topeka. By a vote of four to one, Topeka voters established a municipal university in April, 1941.

In January, 1952, the Board of Regents of the University changed the school's name for the first time to Washburn University of Topeka. Kansas state aid, began in 1961 based on student credit hours, was increased in 1965.

On June 8, 1966, a tornado swept through the campus and completely destroyed eight buildings and extensively damaged sixteen others. But recovery began immediately and by 1971 most buildings and laboratory facilities had either been replaced or enlarged, and construction had been completed on a new \$3.5 million fine arts center, a \$1.5 million law school building, and a \$2.5 million learning resources center.

A \$750,000 School of Law addition was completed in the fall of 1977, and in May of 1978 the University dedicated the \$2.5 million Mabee Library, located west of Moore Bowl. A fund drive is in progress for a \$5. million allied health center which will provide space for new programs. The project would complete the restoration of the campus from the 1966 tornado.

Washburn President John W. Henderson has stated that the new health center would include classrooms, faculty offices, a therapeutic swimming area, multipurpose laboratories and basketball courts, a gymnastics area, specialized laboratories for handicapped therapy, a dance studio and a fitness center containing electrocardiograph, treadmill and biofeedback machines.

Washburn's varied program, designed to meet the needs of all its students, includes: a college of Liberal Arts and Sciences, which comprises education, science, social science and humanities, nursing and criminal justice; a School of Business offering majors in finance, management, marketing, economics, accounting, computer science and general business; a School of Law, providing a three-year professional program for approximately 600 students; a graduate school, awarding a master's in elementary education or elementary school administration; a continuing education program offering regular college courses during the day and evening, study discussion groups, seminars and television courses.

Washburn's KTWU, Channel 11, the first educational television station in the state, and the Washburn Review, the weekly student newspaper, give students practical experience in communication arts.

The 400 full-time and 100 part-time staff, faculty and administrators, along with the 250 students employed by Washburn University strive to make their school a "center for cultural life, a community for scholars, a patron of the arts, and source of special knowledge and skill for the benefit of the community."

Media Outlets

Topeka Capital-Journal Sports Editor-Bob Hentzen WU writer-Steve Thompson	(913) 295-1188
KTOP AM-FM Merle Blair-"The Voice of the Ichabods"	(913) 234-3031
WIBW Radio-Television Ron Paradis Steve Physioc	(913) 272-3456
KTSB Television Duke Frye Don Clouston	(913) 582-4000
WREN AM Ron Bramledge	(913) 232-0505
KEWI AM Mike Manns	(913) 272-2033
KTWU Television Dr. Dale Anderson	(913) 272-8181
Washburn Review Student Newspaper	(913) 233-3211
Associated Press (Kansas City, Mo.)	(816) 421-4844
United Press International (Mission, Ks.)	(913) 677-1212

Ticket Information (913) 295-6334

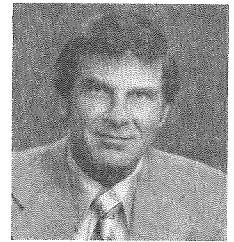
Admission prices for home football games in Moore Bowl

Season Ticket	\$15.00
Family Season Ticket (Gen. Adm. for 4)	\$30.00
Reserved Seat	\$ 4.00
General Admission	\$ 3.00
Students and Senior Citizens	\$ 1.50
Senior Citizens Non-Reserve Season	\$ 4.50

Passes for the working press, radio and television representatives, and opponent publicity personnel are available from Chuck Cordt, Sports Information Director, one week in advance.

Athletic Director Glenn Cafer

Glenn Cafer will be serving in his second year as Washburn University's Athletic Director. Before moving into his position as Athletic Director, Cafer was head coach of the Ichabod basketball team from 1967-79. Cafer also had eight years of coaching experience prior to his transfer to Washburn.



Cafer began his 20-year coaching career at Washington (Missouri) High School. He was head coach at Moorhead State College (Minnesota) during the 1961-62 season. He also was head coach at Mehlville High School in St. Louis, Missouri and assistant at Drake University and the University of Missouri. His overall coaching mark is 338-187 (.644).

Cafer's Ichabod basketball teams have: played in the NAIA National Tournament three times; won three District 10 championships (in five attempts); and won three conference titles. Cafer's overall record at Washburn is 172-145 (.543).

A native of Wright City, Missouri, Cafer attended Moberly Junior College and received his Bachelor's degree from Northeast Missouri State in 1953 and his Master's in 1956. He served in the Marine Corps from 1953 to 1955.

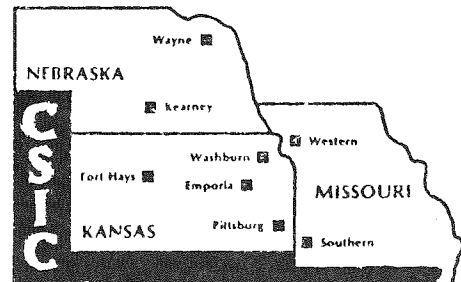
Cafer also served as Washburn's golf coach. He was named the 1974 NAIA District 10 Golf Coach of the Year after the Ichabods won the district title and placed fourth in the national championship tournament. The 1975 squad repeated as District 10 champions.

The Central States Intercollegiate Conference

Emporia State University	Missouri Western State College
Fort Hays State University	Pittsburg State University
Kearney State College	Washburn University
Missouri Southern State College	Wayne State College

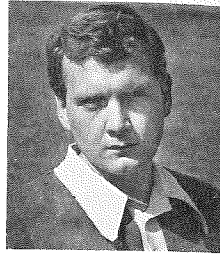
CSIC Commissioner:
Dr. Norris A. Patterson
415 Kingsley
Liberty, Missouri 64068
(816) 781-7346

CSIC Information Director:
Paul Sweetgall
4525 Downs Drive
St. Joseph, Missouri 64507
(816) 271-4257



Head Coach Garland "Gary" Hampton

Gary Hampton, 32, begins his second year as the football coach at Washburn. He is the 31st of a prestigious group of leaders including the famous John Outland, the victorious Ernie Bearg and Dick Godlove, the winningest of all Washburn football coaches.

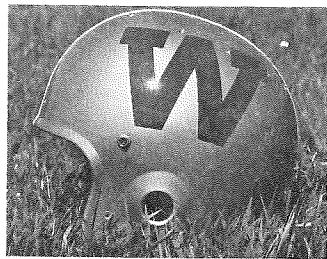


Prior to coming to Washburn, Gary was an assistant football coach at Idaho State University, Pocatello, Idaho. At ISU, he coached the offensive line in 1975, defensive ends in 1976 and the defensive backfield in 1977 and 1978. He had the privilege of coaching nine All-Big Sky Conference football players during his stay. In the spring of 1977, Gary was named golf coach to a new program. The program grew and developed over three years to compile a 49-19 record.

Gary was born February 20, 1948 in Denver, Colorado and graduated from Longmont (CO) high school in 1966. Kansas Wesleyan University, Salina, Kansas presented him a BA in history in 1970. He earned an M.Ed. from Wichita State University in 1975 and an Educational Specialist degree in Athletic Administration in 1977 from Idaho State University.

He was honored by selection as an Outstanding Young Man in America for his work with young people in 1978.

Washburn University is a great place to be for Gary, his wife Sharon, and daughters Anita Jean, 3, and Marcy born July 20, 1980.



Washburn Coaches' Career Records

1894	W. M. Gaines	(3-1-0)	1923-26	G. Woodward	(8-20-4)
1896	W. Griffith	(6-1-1)	1927-28	Roy Wynne	(8-10-0)
1897-98	Paul Coldren	(12-2-1)	1929-35	Er. Bearg	(36-28-4)
1899	Wm. Melford	(2-5-2)	1936-41	E. W. Holm	(21-31-3)
1900	Ben Owen	(6-2-0)	1942-43	Rob Raugh	(3-11-2)
1901	L. Banks	(3-2-5)	1944	C. D. Erickson	(1-6-0)
1902	H. W. Page	(2-6-0)	1945	Lew Lane	(4-2-0)
1903	A. R. Kennedy	(7-1-0)	1946-58	R. Godlove	(68-42-4)
1904-05	Jn. Outland	(14-5-0)	1959-61	Ralph Brown	(10-17-0)
1906-08	G. W. Weede	(19-5-4)	1962-64	E. Rainsberger	(15-12-0)
1909-10	R. B. Stewart	(6-7-0)	1965-66	Ed Linta	(4-13-1)
1911-12	W. L. Driver	(7-7-1)	1967-68	Bill Shaake	(2-16-0)
1913-15	G. L. Gray	(8-10-3)	1969-70	"Bud" Elliott	(10-8-2)
1916-17	A. R. Kennedy	(5-12-2)	1971-73	Bob Noblitt	(11-18-1)
1918-19	Er. Bearg	(11-2-1)	1974-78	Larry Elliott	(29-21-1)
1920-21	Dwight Ream	(7-7-1)	1979	Gary Hampton	(4-6-0)
1922	Mike Vosburg	(1-7-0)			

Secondary-Strength Coach Mike McGraw

Secondary-strength coach Mike McGraw-29-born 6-6-51, graduated from Bonner Springs (KS) high school in 1969, where he was an All-East Kansas League receiver, defensive back and the 880 yd. run track champion. He was chosen as the 1969 Bonner Springs High Athlete of the Year.



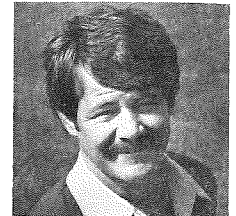
Mike continued his education and football career at Pittsburg (KS) State College. As a three-year letterman, he was chosen to the NAIA District 10 team in 1970 and 1971. Mike received his BS in education in 1974 and MS in physical education in 1979 from Pittsburg State.

In 1974, Mike began teaching and coaching at Columbus (KS) high school. While at Columbus, Mike was the defensive coordinator. Hayden High School, in Topeka called Mike northward in 1976. He was the Wildcat defensive coordinator for two seasons and then became the head football coach in 1978, compiling a 6-3 record.

Mike's wife, JoDee teaches fourth grade in District No. 450, Shawnee Heights. They are the proud parents of a daughter, Jolie Elizabeth born May 6, 1980.

Defensive Line Coach Scott Swofford

Defensive line coach Scott Swofford, 30, born 10-11-49. Scott graduated from Cleveland (St. Louis, MO) high school in 1968. He then graduated from Central Methodist College, Fayette, Mo., with a BA in education in 1972. He was a four year starter at linebacker for the Eagles and was selected to the NAIA District 16 team in 1970 and 1971. In 1971, Scott was a team captain and the Most Valuable Player.



Fayette (MO) high school hired Scott as the head football coach in 1972. He left in 1973 and moved to Wentzville (MO) high school as the defensive coordinator for three seasons. Central Missouri State University lured Scott to Warrensburg, MO as a linebacker coach in 1976. While at CMSU, Scott earned his M.Ed. in athletic training in 1977. Central Methodist recalled this alumnus in 1977 to coach the offensive line and coordinate the defense. Scott remained at Central through 1978.

Scott's wife, Lisa works for the J.C. Penney Co. in Topeka. Their daughter, Sonni O., was born May 23, 1979.



Graduate Assistant Coaches: Pat Luck, Bill Kennedy, and Greg Gorman

Offensive Line Coach Greg Gorman

Offensive line coach Greg Gorman-28-born 10-25-51. Greg graduated from Howard (KS) high school in 1969. He attended Fort Scott Junior College where he played defensive tackle. Greg transferred to the College of Emporia and graduated from Baker University with a BA in physical education in 1975. In 1975-76 Greg was the football and track coach at Centralia (KS) high school. He then returned to Baker University as the defensive coordinator of the Wildcats. Greg is in his second year on the staff at Washburn, coaching the offensive linemen. He will complete his M.Ed. in elementary administration in December.

Greg's parents are Mr. and Mrs. George Gorman, Howard, KS.

Receiver and Back Coach Bill Kennedy

Receiver and back coach Bill Kennedy-33-is a graduate of Topeka West High School. From West, he attended Kansas State University in Manhattan (KS). While at Kansas State, he was a four year starter as a defensive end. After obtaining his BS degree in physical education, he became an assistant coach on the KSU freshman football team.

Kennedy then taught and coached at Seven Dolors Grade School in Manhattan (KS) during the 1971-72 school year. In the fall of 1972 he returned to his high school alma mater where he taught and also coached the sophomore football team for one year. The following seven years were spent in sales and administration with such companies as Chrysler, Xerox, Topeka Homebuilders Assoc., and M.G.I. Strength and Fitness Systems.

Kennedy is single and lives in Topeka. He is presently working on his master's degree in educational administration at Washburn.

Linebacker and End Coach Pat Luck

Linebacker and end coach Pat Luck-27-born 6-25-53. Pat graduated from Cleveland (St. Louis, MO) High School in 1972. He went to college at Central Missouri State University where he earned the B.P.E. degree in physical education in 1977. While at CMSU, he was a linebacker and tackle and was selected team captain and to the All-Missouri Intercollegiate Athletic Association team in 1976. Pat stayed on to work toward his M.S. and was a graduate assistant football coach, also. Last year, Pat headed south to Rio Hondo, Texas to coach and teach. While at Rio Hondo, Pat coached the defensive front people and conducted the off-season strength program. Pat is single, but is going to be married November 29.

1980 Ichabod Preview

Washburn University football is looking forward to the 1980 season. Thirty-eight lettermen return with eighteen starters among them. The defense returns intact and seven offensive starters are also back for the Ichabods. Having been together for a year, having developed a strong feeling of team unity and morale and knowing where they must improve should provide fans with an exciting team to watch.

An improved schedule will present ten challenging weekly tests. A developing Benedictine College team, a fast and wide-open Arkansas Tech, and an always well-prepared Missouri Valley squad provide the non-conference opposition. The CSIC will be the most competitive conference in Mid-America in 1980. Washburn will have to play well for 60 minutes each Saturday to have a successful season.

THE PLAYERS:

DEFENSIVE LINE: Ten players return across the front of the defense for 1980. The experience of all four ends, led by All Conference player Paul Hinton, Alex Sias, Steve Schmitt and James Lee should show improved play on the perimeter. Young linemen, James Mann, Roger McVay, Mateo Alvarez and Bill Middledorf will flank senior Rick Weissbeck at the nose guard.

LINEBACKERS: A strong defense must have strong linebacker play. Five returners who shared playing time in 1979 are Chuck Sprouse, Bob Leonard, John Lasley, Matt Cahill and Luke Schmille. This group must come up with the big plays in 1980.

SECONDARY: Another group that loses no one from 1979 is the defensive backfield. All-CSIC strong safety Andy O'Neill, Jim Weissbeck, Doug Conwell, David Silva and Chad Reininger will be involved in a stern challenge from John Anguiano, Aron Fass, Ric Medill and Keith Brown for starting positions. This group progressed greatly in 1979, but must close down the airways versus the forward pass.

OFFENSIVE LINE: The only area hit by graduation in 1979 was the offensive line for the Ichabods. Center Rich Augustine and tackle David Pitsch are the starters back for 1980. Guards Kent Price, Fred Palenske and Derek Brewer along with tackles Russ Thogmartin, John Jelovic and Joe Meyer must develop quickly and well. Newcomers to watch will be Kent Nelson, Doug Tauscher, Curt Georgeson and Joe Hayes.

RECEIVERS: Talented split end Ron Hamilton who led the CSIC in receiving in 1979 and steady tight end Steve Pokrywka head a receiving corps which was last year's leading pass offense in the CSIC. Ron Martinek, Harold Woods, and Mark Boyd will provide depth and competition among the pass catchers.

RUNNING BACKS: The entire stable of backs from 1979's conclusion return in 1980. Versatile Millage Gilbert, elusive Ron Davis and strong running Mike Moore will be joined by transfer Mike Lombardo, Brady Pryor, Mike Chiaverini, and Mike Perry. This group should help improve the strength of the ground attack.

QUARTERBACK: The #1 Passer in the CSIC returns for Washburn in 1980. Mike Atkins who set eight school records and tied one in 1979 was also the CSIC leader with 1678 yards passing with a completion percentage of 53%. Redshirt Rick Stadler returns but will be challenged by Jerry Rauschelbach and Mark Elliott for the backup spot.

KICKING GAME: The performance in this phase of play must be errorless for the Ichabods in 1980. Sophomore standout Kevin Cummings returns to handle all phases of kicking. Kevin tied the Washburn school record with nine field goals last year. James Lee, Steve Schmitt, Andy O'Neill, Ron Hamilton, Harold Woods, and David Silva will be people to watch on the coverage and return teams.

1980 Ichabod Roster

NAME	POSITION	HT.	WT.	CLASS
Alvarez, Mateo	DT	6-1	230	So.
Anguiano, John	DB	5-9	180	Jr.
Atkins, Mike	QB	6-2	185	Sr.
Augustine, Rich	C	6-1	225	Sr.
Boyd, Mark	SE	6-1	175	Fr.
Brewer, Derek	OG	6-2	220	So.
Brown, Keith	DB	6-0	190	Jr.
Cahill, Matt	LB	6-0	210	So.
Chamberlain, Scott	OG	5-10	185	So.
Chiaverini, Mike	HB	5-9	185	Jr.
Clark, Jay	C	5-11	208	Jr.
Conwell, Doug	DB	5-10	185	Sr.
Cummings, Kevin	K-P	6-0	180	So.
Davis, Ron	HB	6-1	180	So.
Fass, Aron	DB	6-2	185	So.
Flatt, Tim	DE	5-10	185	So.
Gilbert, Millage	HB	6-1	185	Sr.
Hamilton, Ron	SE	5-10	175	Sr.
Henderson, Vic	DB	5-10	175	Jr.
Hinton, Paul	DE	6-0	207	Sr.
Lasley, John	LB	6-2	210	So.
Lee, James	DE	6-1	195	Sr.
Leonard, Bob	LB	6-1	216	Jr.
Logan, Clarence	DB	6-0	185	Jr.
Lombardo, Mike	FB	6-2	218	Jr.
Mann, James	DT	6-6	230	Jr.
Martinek, Ron	SE-TE	6-2	195	Jr.
McGivern, John	DB	6-0	205	Jr.
McVay, Roger	DT	6-3	240	So.
Medill, Ric	DB	6-0	155	Sr.
Mendoza, Ken	DB	5-10	175	So.
Middendorf, Bill	DT	6-2	225	So.
Moore, Michael	HB	5-11	202	So.
O'Neill, Andy	DB	5-11	190	Sr.
Palenske, Fred	OG	6-2	228	So.
Perry, Mike	HB-FB	5-10	205	Jr.
Pitsch, David	OT	6-3	235	Sr.
Pokrywka, Steve	TE	6-3	212	Jr.
Powell, Allan	DE	6-2	195	Jr.
Price, Kent	OG	6-2	217	So.
Pryor, Brady	HB	5-9	185	So.
Reininger, Chad	DB	5-11	178	So.
Roy, Mike	DB	6-5	208	Jr.
Saia, Shawn	DB	5-11	165	So.
Schmille, Luke	LB	6-2	208	Jr.
Schmitt, Steve	DE	6-1	198	Sr.
Short, Ben	NG	6-0	225	So.
Sias, Alex	DE	6-3	208	Sr.
Silva, David	DB	5-11	175	So.
Sprouse, Chuck	LB	6-0	208	So.
Stadler, Rick	QB	6-3	195	So.
Swyden, Forrest	LB	6-0	203	Jr.
Thogmartin, Russell	OT	6-4	235	So.
Weissbeck, Jim	DB	6-1	190	Sr.
Weissbeck, Rick	NG	6-2	250	Sr.
Woods, Harold	SE	5-9	165	Jr.

1980 Freshmen Roster

NAME	POSITION	HT.	WT.	HOMETOWN
Arrington, Than	HB	6-1	180	Junction City, Ks.
Blackmon, Howard	DT	6-3	235	Topeka, Ks.
Craig, Jeff	C	6-0	210	Topeka, Ks.
Crider, Scott	DT	6-3	240	Topeka, Ks.
Dobbels, Dave	TE	6-2	190	Richton Park, Ill.
Elliott, Mark	QB	6-1	170	Silver Lake, Ks.
Georgeson, Curt	OT	6-3	225	Lawrence, Ks.
Goodwin, Steve	DB	5-10	185	Kansas City, Ks.
Greco, Frank	DT	6-2	220	Topeka, Ks.
Greig, Alan	HB	6-1	190	Union, Mo.
Hayes, Joe	C	6-2	225	Miami, Fl.
Hilderbrandt, Rick	DT	6-2	220	Topeka, Ks.
Jelovic, John	OT	6-2	235	St. Louis, Mo.
Mitchell, Jeff	SE	6-1	170	Oklahoma City, Ok.
Meyer, Joe	OT	6-3	230	Gardner, Ks.
Nelson, Kent	OG	6-2	218	Hurst, Tx.
Pulliam, John	DB	6-0	190	Bainhart, Mo.
Rahmeier, Dave	NG	6-1	230	Topeka, Ks.
Rauschelbach, Jerry	QB	6-2	180	Kansas City, Mo.
Rolle, Dan	DE	6-4	200	Cardondale, Ks.
Schoo, Steve	SE-KR	5-11	180	O'Fallon, Mo.
Tauscher, Doug	C	6-4	210	Arkansas City, Ks.



Ichabod Pronunciation Guide

ANGUIANO	ANG-GWEE-ON-O
CHIAVERINI	SHIV-ER-REE-NE
PALENSKE	PAH-LEN-SKI
PITSCH	PICH
POKRYWA	PO-CRIF-KA
REININGER	RYE-NING-GER
SAIA	SIGH-A
SCHMILLE	SCHMEEL-LEE
SIAS	SEE-US
STADLER	STADD-LER
SWYDEN	SWI-DEN
WEISSBECK, RICK & JIM	WISE-BECK
CRIDER	CRY-DER
DOBBELS	DOB-BELLS
GEORGESON	JOR-GA-SON
GRECO	GREK-KO
GREG	GREG
JELOVIC	JELL-O-VIC
RAHMEIER	RAY-MYER
RAUSCHELBACH	RAH-SHELL-BOCK
SCHOO	SHOE
TAUSCHER	TAH-SURE

ICHABODS TO WATCH IN 1980



Mike Atkins

-Washburn season passing leader



Ron Hamilton

-1979 CSIC pass receiving leader



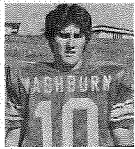
Andy O'Neill

-1979 CSIC strong safety



Jim Weissbeck

-2nd Leading 1979 CSIC pass interceptor



Kevin Cummings

-1979 Most accurate kicker in CSIC



Paul Hinton

-1979 2nd Team CSIC Defensive End



Rick Weissbeck

-CSIC Shot Put Recorder Holder



Chuck Sprouse

-Hard-Hitting Linebacker Trio



Bob Leonard



John Lasley

Game #1: Benedictine College
September 6 - 7:30 P.M. Topeka, Kansas

Location: Atchison, Kansas
Athletic Director: Larry Wilcox
Head Coach:
Head Coach: Larry Wilcox (2nd year, 2-8)
Assts: Charlie Gartenmayer, Jeff Ryan, Dennis Murphy
SID: Steve Pickman (913) 367-5340 Ext. 506
Stadium: Amelia Earhart Stadium (3,000)
Nickname: Ravens
Colors: Black, Red & White
Enrollment: 1,000
Conference: Independent
National Affiliation: NAIA
Lettermen Returning: 30 **Lettermen Lost:** 7
1979 Record: 2-8
Series: WU leads 13-12 WU did not play Benedictine in 1979

Outlook:

The Benedictine Ravens, who brought in forty new freshmen, should be vastly improved over last year's 2-8 season. The Ravens should be solid on offense this year led by 5'9", 177 lbs. Jerry Rellihan at quarterback. The senior starter did not run much last year, but he is not afraid to throw the ball. Rellihan will be backed by 6'2", 183 lbs. sophomore Terry Torline, who is known for his bullet passes. Other nuclei for this 1980 ball club include 5'9", 160 lbs. running back and defensive back senior Dan Dayton. The Ravens have also recruited three men from the 1979 Maur Hill 4A state championship team. These players are Mike Weber, a 5'9", 170 lb. running back, Bill O'Boyle, a 5'11", 225 lb. center and Joe DeWald a 5'11", 195 lb. linebacker. All three of these players were starters for Maur Hill last year.

Game #2: Arkansas Tech University
September 13 - 7:30 P.M. Russellville, Arkansas

Location: Russellville, Arkansas
Athletic Director: Don Sevier
Head Coach: Harold Steelman (1st year)
Assts: Phil Collins, Bill Buckner, Charles L. Wade, and Melvern Watson
SID: Jim Stages (501) 968-0242
Stadium: Buerkle Field (5,447)
Nickname: Wonder Boys
Colors: Kelly Green & New Gold
Enrollment: 2,998
Conference: Arkansas Intercollegiate
National Affiliation: NAIA
Lettermen Returning: 26 **Lettermen Lost:** 12
1979 Record: 3-6-1 **Conference Record:** 3-2-1 (3rd)
Series: ATU leads 1-0 WU did not play ATU in 1979

Outlook:

Tradition-bound Arkansas Tech faces a new decade of football with a new coach, Harold Steelman, and renewed hopes of an orderly return to the high plateau it occupied in the late 1960's and early 70's. The Tech seniors are: OFFENSE — guard Kenny Bell, Danville; tackle John Utley, Hot Springs, and quarterback Doug Stephens, Cypress, Tex.; DEFENSE - All-AIC noseguard Houston Townsend, Eudora, cornerback Irvin Phillips, Sarasota, Fla., and strong safety Lew Thompson, Pearsall, Tex., and NAIA All-American kicker Kelly Davis, Russellville. The Wonder Boys will continue to operate out of their familiar "bread and butter" alignments, the I and split back formations on offense and a five-man front defensively.

Game #3: Missouri Valley College
September 20 - 7:30 P.M. Topeka, Kansas

Location: Marshall, Missouri
Athletic Director: Kenneth Gibler
Head Coach: Kenneth Gibler (13th year, 90-27-6)
Assts: Grover Redford, Bob Thompson, Reed Kepner, and Mark Dykema
SID: Tom Frazier (816) 886-6924
Stadium: Gregg-Mitchell (3,200)
Nickname: Vikings
Colors: Purple and Orange
Enrollment: 400
Conference: Heart of America Athletic Conference
National Affiliation: NAIA
Lettermen Returning: 27 **Lettermen Lost:** 13
1979 Record: 6-2-1 **Conference Record:** 4-2 (3rd-Tied)
Series: WU leads 6-4 **1979 score:** MV 18-WU 13

Outlook:

The 1980 "Vikings" will have more experience over-all and particularly in the offensive and defensive line and at the skill position on offense. We must improve our offensive effort, particularly the passing game. Trent Mitchell, Tom Stinson, and Kenny Howard are all capable passers and one must come to the front early. Our running game should be improved with our top four rushers returning. Rex Sawyer at running back, Duane Miller-F.B., Faauuga To'oto'o-F.B., and Doug Nichols-R.B. Bob Fitzpatrick returns at slot-back and is a quality runner and receiver. Overall we will be more physical, more experienced with about the same team speed.

Game #4: Emporia State University
September 27 - 7:30 P.M. Emporia, Kansas

Location: Emporia, Kansas
Athletic Director: Dr. William Quayle
Head Coach: Bob Seaman (2nd year, 4-6)
Assts: Mark Farse and John Bowles
SID: Ron Dinkel (316) 343-1200 Ext. 354, 455
Stadium: Welch Stadium (7,000)
Nickname: Hornets

Colors: Black and Gold
Enrollment: 5,500
Conference: Central States Intercollegiate Conference
National Affiliation: NAIA
Lettermen Returning: 27 **Lettermen Lost:** 11
1979 Record: 4-6 **Conference Record:** 2-5 (7th)
Series: Tied at 36-36-6 **1979 Score:** ESU 17-WU 11

Outlook:

The Hornets will be trying to bounce back from a 4-6 record of a year ago during the 1980 campaign, but it won't be easy because of a number of holes that will need to be filled. One of the biggest vacancies to fill will be that left by halfback Greg Zickefoose who accounted for nearly 110 yards of total offense per game in 1979. Heading the list of returnees for the 1980 campaign are offensive tackle Dale Peterson and nose guard Bill Rush. Peterson was a mainstay on the Hornet offensive line as the offense averaged 235.5 yards rushing per game. Rush was the Hornet's second leading defender with 68 unassisted stops and 31 assists.

Game #5: Pittsburg State University
October 4 - 7:30 P.M. Topeka, Kansas

Location: Pittsburg, Kansas
Athletic Director: Bill Dickey
Head Coach: Ron Randleman (5th year, 19-19-2)
Assts: Bill Samuels, and Bruce Polen
SID: Wayne Davenport (316) 231-7000 Ext. 307
Stadium: Brandenburg (7,500)
Nickname: Gorillas
Colors: Crimson and Gold
Enrollment: 5,200
Conference: Central States Intercollegiate Conference
National Affiliation: NAIA
Lettermen Returning: 36 **Lettermen Lost:** 11
1979 Record: 8-3 **Conference Record:** 6-1 (1st-Tie)
Series: PS leads 31-16-1 **1979 score:** PS 46-WU 12

Outlook:

The 1980 Pittsburg State University football team should have another great season. The Gorillas, CSIC co-champion the last two seasons, are returning 36 lettermen who will be led by tri-captains Richard Overton, senior running back from Boonville, Mo.; Jeff Cooper, junior linebacker from Bolivar, Mo.; and Steven Krull, senior wide receiver from Girard, Ks. The Gorillas have had the number one CSIC offensive unit for the last two years, averaging 380 yards per game last season and more than 400 in 1978. With the loss of quarterback Mark Hittner, the offense will rely more on a running attack.

Game #6: Wayne State College
October 11 - 1:30 P.M. Wayne, Nebraska

Location: Wayne, Nebraska
Athletic Director: Dr. John Merriman
Head Coach: Del Stoltenberg (12th year, 52-51-5)
Assts: Ralph Barclay and Blaine Gorney
SID: Kevin Weiberg (402) 375-4550
Stadium: Memorial Stadium (3,500)
Nickname: Wildcats
Colors: Black and Gold
Enrollment: 2,400
Conference: Central States Intercollegiate Conference
National Affiliation: NAIA
Lettermen Returning: 28 **Lettermen Lost:** 15
1979 Record: 4-5-1 **Conference Record:** 3-4 (Tie for 3rd)
Series: WU leads 3-2 **1979 Score:** WS 7-WU 6

Outlook:

Wayne State football coach Del Stoltenberg hopes to pump some life into his offense in 1980. In 1979 the Wildcats sputtered on offense averaging only a little over 10 points per game and 248 yards total offense. Starting quarterback Rick Lade is the Wildcat's career passing leader, but the starting quarterback job is up for grabs after the Tekamah product's mediocre 1979 season. Either junior Kelly Neustrom or sophomore Mike Warren would take over the starting job. Defensively for Wayne State Tony Scudder and Steve Dennis should be team leaders, as last year the two top performers had ninety-two and ninety-one tackles, respectively.

Game #7: Fort Hays State University
October 18 - 1:30 P.M. Hays, Kansas

Location: Hays, Kansas
Athletic Director: Bobby Thompson
Head Coach: Bobby Thompson (2nd year, 5-6)
Assts: Dennis Bean, Brian Naber, Terry Pasby, Jerry Simmons, Dave Meter, Dave Thom, Mark Goodheart
SID: To Be Named (913) 628-4381
Stadium: Lewis Field (7,000)
Nickname: Tigers
Colors: Black and Gold
Enrollment: 5,300
Conference: Central States Intercollegiate Conference
National Affiliation: NAIA
Lettermen Returning: 30 **Lettermen Lost:** 9
1979 Record: 5-6 **Conference Record:** 3-4 (3rd-Tie)
Series: WU leads 29-13-3 **1979 Score:** FHS 20-WU 6

Outlook:

Junior Hartig, senior, Honorable Mention All-American (NAIA), will lead the Tigers onto the gridiron in 1980 with hopes of improving on last year's 5-6 showing. The major task of the FHSU coaching staff will be to replace quarterback Hoskin Hogan, it appears that junior Rick Mondt and sophomore Mike Moore have the inside track. The Tigers will also have to find some depth at the running back positions as only sophomore tailback Jeff Briggs returns to the backfield. The defensive line will be of some concern as the entire front four has graduated, but with Hartig to anchor the line backing corp, the Tiger defense should be sound. The entire defensive secondary returns intact and should be strong point for the Black and Gold.

Game #8: Missouri Western College
October 25 - 2:00 P.M. Topeka, Kansas

Location: St. Joseph, Missouri
Athletic Director: Charlie Burri
Head Coach: Rob Hicklin (7th year, 35-26-2)
Assts: Jay Adcox and Howard McCauley
SID: Paul Sweetgall (816) 271-4257
Stadium: Spratt Memorial (6,000)
Nickname: Griffons
Colors: Black and Gold
Enrollment: 4,000
Conference: Central States Intercollegiate Conference
National Affiliation: NAIA
Lettermen Returning: 34 **Lettermen Lost:** 18
1979 Record: 7-4 **Conference Record:** 3-4 (3rd-Tie)
Series: WU leads 4-2-2 **1979 Score:** WU 23-MW 21

Outlook:

The Griffons won the first six games of their 1979 schedule, then dropped four straight after an injury sidelined quarterback Mike Solomon. Coaching staff is very optimistic due to the number of returnees at skill positions. The key will be finding a replacement for graduated quarterback Solomon, but two 1978 lettermen return at the position after sitting out the 1979 season. Offense will be led by Honorable Mention All-American slot back Tim Hoskins and running back Rodney Stephenson, both of whom set a number of Griffon records last year. Defensive is solid and has depth, there are no major holes to fill. Strength on defense will be linebackers Robert Newhart and Kevin O'Connell who performed extremely well as freshmen in 1979.

Game #9: Kearney State College
November 1 - 2:00 P.M. Topeka, Kansas

Location: Kearney, Nebraska
Athletic Director: Allen H. Zikmund
Head Coach: Claire Boroff (8th year, 60-15-2)
Assts: Terry Renner, Guy B. Murray, and Glenn Critchley
SID: Don Briggs (308) 236-4192
Stadium: Foster Field (6,500)
Nickname: Antelopes
Colors: Royal Blue and Light Old Gold
Enrollment: 6,850
Conference: Central States Intercollegiate Conference
National Affiliation: NAIA
Lettermen Returning: 39 **Lettermen Lost:** 25
1979 Record: 8-2 **Conference Record:** 6-1 (Tie for 1st)
Series: KS leads 9-2-1 **1979 Score:** KS 28-WU 7

Outlook:

It will be hard to equal last year's 8-2 record and fifth place in the final NAIA Division I rankings, but if past years are any indication, the Antelopes won't give up without a valiant try. Top returning starters include Dean Carstens, QB, Dan Boomhower, TB, and Mark Lundeen, SB. Between the three, they averaged over 125 yards rushing and 120 yards passing last fall. A dozen "red-shirts" and about 30 up from last year's freshmen team are being counted on to fill those gaps left by the non-returnees. Coach Claire Boroff is one of the nation's winningest coaches and with the returnees should keep his percentage close to where it is as the season begins.

Game #10: Missouri Southern State College
November 8 - 7:30 P.M. Joplin, Missouri

Location: Joplin, Missouri
Athletic Director: Jim Frazier
Head Coach: Jim Frazier (10th year, 57-34-2)
Assts: John Salavantis, Warren Turner, and Rod Gisselmann
SID: Ron Robson (417) 624-8100 Ext. 317
Stadium: Fred Hughes Stadium (7,500)
Nickname: Lions
Colors: Green and Gold
Enrollment: 3,800
Conference: Central States Intercollegiate Conference
National Affiliation: NAIA
Lettermen Returning: 31 **Lettermen Lost:** 12
1979 Record: 5-6 **Conference Record:** 3-4 (3rd-Tie)
Series: MS Leads 6-3-1 **1979 Score:** WU 20-MS 19

Outlook:

A sound kicking game, an attacking defense, and a ball-control offense is planned for 1980. The I-formation is the offense with "no turnovers" the motto. Offensive coordinator John Salavantis finished spring ball with quarterbacks Kevin Ahlgren (5-10, 180 pounds) and Joe Mehrer (6-1, 210 pounds) in a tight race for the starting role. The receiver corps is led by junior tight end Jeff Schweitzer (6-4, 215 pounds). The defensive secondary looks solid with senior pro cornerback prospects Darrell Scott (6-2, 190 pounds) and Ozzie Harrell (5-11, 180 pounds). The defensive front is expected to mold around transfer players Kelly Saxton (Hutchinson Junior College, 6-4, 230 pounds) and Tom Fisher (Southwest Missouri State University, 6-1, 235 pounds), and seniors Pete Sullivan (6-0, 220 pounds) and Dave Nevill (6-0, 210 pounds).

1979 Washburn University Statistics
10 Games: 4-6 Overall, 2-3 Home, 2-3 Away,
2-1 Non-League, 2-5 CSIC

Passing

Player	GP	PA-PC	PCT	HI	TD	YDS	GA
Atkins	10	248-130	.52	15	11	1678	167.8
Perry	9	12-6	.50	1	1	63	7.0
WU	10	260-136	.52	16	12	1741	174.1
OPP	10	157-75	.48	13	10	1169	116.9

Pass Receiving

Player	GP	PC	YDS	YPC	GA	TD
Hamilton	10	50	791	15.8	79.1	6
Gilbert	10	18	251	13.9	25.1	1
Silver	10	14	197	14.1	19.7	3
Rodden	7	15	188	12.5	26.9	0
Rodden	7	15	188	12.5	26.9	0
Hmielewski	9	16	140	8.8	15.6	1
Samich	6	7	71	10.1	11.8	0
Pokrywka	10	9	45	5.0	4.5	1
Davis	9	3	24	8.0	2.7	0
Beal	5	1	15	15.0	3.0	0
Moore	3	2	7	3.5	2.3	0
WU	10	136	1741	12.8	174.1	12
OPP	10	75	1169	15.6	116.9	10

Rushing

Player	GP	TC	YDS	GA	TD	YPC
Samich	6	93	338	56.3	0	3.6
Gilbert	10	80	248	24.8	3	3.1
Rodden	7	77	241	34.4	2	3.1
Hmielewski	9	51	176	19.6	2	3.5
Davis	9	35	145	16.1	1	4.1
Perry	9	18	76	8.4	0	4.2
Clark	2	9	43	21.5	0	4.8
O'Neill	10	4	47	4.7	0	11.8
Moore	3	5	30	10.0	0	6.0
Loomis	7	1	17	2.4	0	17.0
Pryor	4	4	4	1.0	0	1.0
Atkins	10	62	-81	-8.1	0	-1.3
WU	10	432	1280	128.0	8	3.0
OPP	10	550	2070	207.0	16	3.8

Total Offense

Player	Plays	Rush	Pass	Total	GA
Atkins	310	-81	1678	1597	159.7
Samich	93	338	0	338	56.3
WU	692	1280	1741	3021	302.1
OPP	707	2070	1169	3239	323.9

Scoring

Player	GP	TD	XP-A	XP2	FG-A	S	Total
Cummings	10	-	12-14	-	9-14	-	39
Hamilton	10	6	-	-	-	-	36
Gilbert	10	4	-	-	-	-	24
Hmielewski	9	3	-	-	-	-	18
Silver	10	3	-	-	-	-	18
Rodden	7	2	-	-	-	-	12
Davis	9	1	-	-	-	-	6
Pokrywka	10	1	-	-	-	-	6
Hinton	10	-	-	-	-	1	2
Moore	3	-	-	1	-	-	2
WU	10	20	12-14	1-6	9-14	1	163
OPP	10	26	15-22	2-4	5-14	1	193

Returns

Player	GP	PUNTS		KICKOFFS		INTER.	
		No/Yds/Avg	No/Yds/Avg	No/Yds/Avg	No/Yds/Avg		
Beal	5	14/117/8.4	11/301/27.4	-	-	-	-
Davis	9	11/87/7.9	12/241/20.1	-	-	-	-
Hamilton	10	1/0/0.0	2/46/23.0	-	-	-	-
Gilbert	10	2/13/6.5	-	-	-	-	-
Weissbeck	10	-	-	-	-	5/83/16.6	-
O'Neill	10	2/44/22/0	3/55/18.3	-	-	4/106/26.5	-
Henderson	10	-	-	-	-	1/26/26.0	-
Rodden	7	-	-	1/17/17.0	-	-	-
Conwell	10	-	-	-	-	3/4/1.3	-
Loomis	7	-	-	1/0/0.0	-	-	-
Lasley	8	-	-	-	-	1/16/16.0	-
Pryor	4	-	-	2/34/17.0	-	-	-
Thogmartin	4	-	-	1/0/0.0	-	-	-
Moore	3	-	-	1/15/15.0	-	-	-
WU	10	30/262/8.7	34/709/20.9	-	-	14/235/16.8	-
OPP	10	16/157/9.8	20/345/17.3	-	-	16/173/10.8	-

Punting

Player	GP	NO	YDS	AVG
Perry	9	46	1748	38.0
Cummings	10	6	252	42.0
WU	10	55	1980	36.0
OPP	10	47	1561	33.2

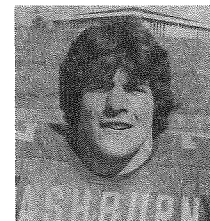
Team Totals

WU	OPP
692	Total Plays 707
1280	Rushing 2070
1741	Passing 1169
3021/302.1	Total Yds/Avg 3239/323.9
166	First Downs 172
31/16	Fumbles (No/Lost) 30/23
104/1026	Penalties (No/Yds) 68/683

CSIC Football Standings

	Conference			Over All		
Kearney State College	6	1	0	8	1	0
Pittsburg State University	6	1	0	7	3	0
Missouri Western State College	3	4	0	6	4	0
Missouri Southern State College	3	4	0	5	5	0
Wayne State College	3	4	0	4	5	1
Fort Hays State College	3	4	0	4	6	0
Emporia State University	2	5	0	4	6	0
Washburn University	2	5	0	4	6	0

1979 Ichabod All-Star



John Price

All-CSIC Offensive Lineman
All-District 10 Offensive Lineman
1979 Ichabod Honorary Captain

Washburn Football Team Records

(*includes results of non-intercollegiate game or games)
(**includes Boot Hill Bowl victory)

Most wins, Season: 8, 1974**, 1964, 1907*, 1931*, 1953*
Most Losses, Season: 10*, 1937
Most Consecutive Wins: 14, 1930-31
Most Consecutive Losses: 14, 1936-37
Most Shutout, Season: 7, 1906; 10*, 1906
Most Consecutive Shutouts: 3, 1906 and 1919; 7*, 1917
Most Times Shutout, Season: 6, 1928 and 1942; 7*, 1917
Most Points Scored, Game: 79, 1978 vs St. Mary's of the Plains (WU 79-3); 80*, 1900 vs. Fort Riley (WU 80-0)
Most Points Scored, Season: 268, 1977
Highest Scoring Average, Season: 27.6, 1949
Widest Margin of Victory: 76, 1978, WU 79 St. Mary's of the Plains 3; 80*, 1900, WU 80 Fort Riley 0
Most Opponent Points, Game: 72 by Bethany, 1969 (Bethany 72 WU 0)
Most Opponent Points, Season: 240, 1968
Most Combined Points, Game: 98, 1969 (Northern Colorado 70 WU 28)
Most First Downs, Game: 27 vs. Missouri Western (10/27/79)
Season: 166, 1979
Most Yards Rushing, Game: 382 vs. Fort Hays (1960)
Season: 2081 (1964)
Best Rushing Average, Season: 211.2 (1948)
Most Yards Passing, Game: 418 vs. Missouri Western (10/27/79)
Season: 1741 (1979)
Best Passing Average, Season: 174.1 (1979)
Most Yards Offense Average, Game: 681 vs. Rockhurst (1949)
Season: 3151 (1949)
Best Total Offense Average, Season: 350.1 (1949)
Most Passes Attempted, Game: 43 (all by Mike Atkins) vs. Missouri Western (10/27/79) and vs. Missouri Southern (11/10/79)
Season: 273 (1978)
Most Passes Completed, Game: 27 vs. Emporia State (11/9/68)
Season: 136 (1979)
Best Punting Average, Game: 49.8 vs. Missouri Western (9/21/74, 6 for 299 yds.)
Season: 39.0 (1969, 78 punts)
Most Punts, Game: 9 vs. Northeast Missouri (1962)
Season: 78 (1967)
Fewest Rushing Yards allowed, Game: -14 vs. St. Mary's of the Plains (9/9/78)
Season: 78 (1964)
Fewest Passing Yards Allowed, Game: 0 vs. Southern Colorado 10/6/73; 0 vs. Northeast Missouri (9/22/63); 0 vs. Emporia State (10/4/47); 0 vs. Wichita (11/1/48)
Season: 493 (1963)
Fewest Total Offense Yards Allowed, Game: -3 vs. St. Mary's of the Plains (9/9/78)
Season: 1614 (1973)
Most Interceptions, Game: 6 vs. Missouri Western (9/21/74), vs. Fort Hays (10/25/75)
Season: 17 (1977)
Fewest Passing Yards Average Allowed, Season: 87.4 (1964)
Fewest Rushing Yards Average Allowed, Season: 54.8 (1963)

Longest Scoring Plays

Run from Scrimmage: 94 yards by Melvin Myricks vs. Kearney St. (11/18/65)
Pass Play: 83 yards, Jon Bakalar to Alan Dressman vs. St. Mary's of the Plains (9/19/70)
Punt Return: 90 yards by Clarence Taylor vs. Emporia State (10/4/75)
Kickoff Return: 97 yards by Bill Baker vs. St. Benedicts (10/21/51)
Interception Return: 91 yards by Meryl Garey vs. Peru State (9/17/48)
Longest Field Goal: 52 yards by Russ Hill at Northern Colorado (10/28/72)

Washburn Individual Records

Passing

Most Yards, Game: 418 by Mike Atkins vs. Missouri Western (10/27/79)
Season: 1678 by Mike Atkins (1979)
Career: 3761 by Mike Grogan (1974-77)
Most Completions, Game: 27 by Dean Ferrell vs. Emporia St. (11/9/68)
Season: 130 by Mike Atkins (1979)
Career: 292 by Mike Grogan (1974-77)
Best Cpl. Pct., Game: .889 by Larry Elliott vs. Ft. Hays (11/3/56, 8 of 9)
Touchdown (30 attempts): .525 by Mike Atkins (1979)
Touchdown Passes, Game: 4 by Leroy Harmon vs. No. Illinois (9/23/49)
Season: 11 by Leroy Harmon (1949) and Mike Atkins (1979)
Career: 35 by Mike Grogan (1974-77)
Most Attempts, Game: 43 by Mike Atkins vs. Missouri Western (10/27/79) and vs. Missouri Southern (11/10/79)
Season: 248 by Mike Atkins (1979)
Career: 596 by Mike Grogan (1974-77, cpl. 292 for 3761 yds.)

Total Offense

Most Yards, Game: 445 by Mike Atkins vs. Missouri Western (10/27/79)
Season: 1597 by Mike Atkins (1979)
Career: 3924 by Leroy Harmon (1945-49)

Receiving

Most Receptions, Game: 11 by Irv McCoy vs. Kearney St. (9/14/68) and by Ron Hamilton vs. Missouri Western (10/27/79)
Season: 50 by Ron Hamilton (1979)
Career: 104 by Mike Keeley (1975-78, 1637 yards)
Most Yards, Game: 187 by Ron Hamilton vs. Missouri Western (10/27/79)
Season: 791 by Ron Hamilton (1979)
Career: 1638 by Mike Keeley (1975-78)

Rushing

Most Yards, Game: 241 by Kevin McCormick at Missouri Valley (9/11/71)
Season: 979 by Art Fletcher (1948)
Career: 1972 by Leroy Harmon (1945-49)
Most Carries, Game: 31 by Mark Samich vs. Baker University (9/22/79)
Season: 212 by Kevin McCormick (1970, 690 yards)
Career: 472 by Kevin McCormick (1969-71, 1581 yards)

Scoring

Most Points, Game: 30 by Art Fletcher vs. St. Benedict's (1948)
Season: 84 by Bill Baker (1953)
Career: 253 by Leroy Harmon (1945-49)
Most TD's, Game: 5 by Art Fletcher vs. St. Benedict's (1948)
Season: 14 by Bill Baker (1953)
Career: 39 by Leroy Harmon (1945-49)
Most PAT's, Game: 10 by Mike Cassin vs. St. Mary's of the Plains (9/9/78, 10 of 11)
Season: 33 by Mike Cassin (1977, attempted 34)
Career: 90 by Mike Cassin (1975-78, attempted 98)
Most Field Goals, Game: 4 by Mike Cassin vs. Missouri Valley (9/19/78, 4 of 4)
Season: 9 by Mike Cassin (1978) and Kevin Cummings (1979)
Career: 20 by Mike Cassin (1975-78, attempted 49)

Punting

Most Punts, Season: 80 by Roy Keck (1952)
Career: 196 by Brent Cripps (1974-77, 7884 yards)
Best Average, Game: 49.8 by Brent Cripps vs. Missouri Western (1974, 6 for 299 yards)
Season (at least 20 punts): 42.0 by Brent Cripps (1977, 46 for 1934)
Career: 40.2 by Brent Cripps (1974-77, 196 for 7884 yards)
Longest Punt: 70 by Brent Cripps vs. Missouri Western (9/21/74)
* 83 by Leroy Harmon vs. Olathe Naval Base (9/28/45)

Washburn Yardage Club

Career Rushing (1500 yard club)

Player	Years	Att	Yards
Leroy Harmon	45-49	---	1927
Art Fletcher	46-49	---	1698
Bill Baker	51-53	299	1670
Kevin McCormick	69-71	472	1581

Season Rushing (700 yard club)

Player	Year	Att	Yards	Avg.
Art Fletcher	1948	180	979	5.43
Kevin McCormick	1971	172	862	5.00
Gary Yager	1975	184	748	4.10
Art Fletcher	1949	---	719	---

Career Passing (1500 yard club)

Player	Years	Att	Comp	Yards
Mike Grogan	74-77	596	292	3761
Mike Atkins	77-79	521	259	3331
Leroy Harmon	45-49	---	---	1997
Larry Elliott	56-58	297	131	1934
Dale Bennett	67-70	319	116	1662
Elmer McAfferty	50-52	222	93	1533
Dean Ferrell	65-68	334	148	1525

Season Passing (1000 yard club)

Player	Year	Att	Comp	Yards
Mike Atkins	1979	248	130	1678
Mike Atkins	1978	237	112	1374
Mike Grogan	1977	163	74	1202
Mike Grogan	1975	177	91	1098
Leroy Harmon	1949	159	72	1001

Career Receiving (1000 yard club)

Player	Years	Catches	Yards
Mike Keeley	75-78	104	1638
Alan Dressman	69-71	49	1228
Irv McCoy	67-68	94	1037

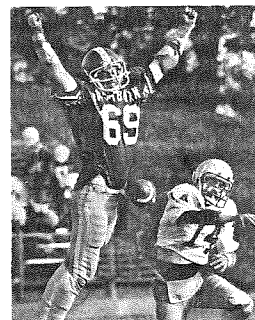
Season Receiving (500 yard club)

Player	Year	Catches	Yards
Ron Hamilton	1979	50	791
Mike Keeley	1978	36	591
Alan Dressman	1970	19	553
Mike Keeley	1977	30	538
Rick Benke	1975	42	523

Washburn Records Set or Tied in 1979

Team

Most First Downs, Game: 27 vs. Missouri Western (10/27/79)
Most First Downs, Season: 166 (1979)
Most Yards Passing, Game: 418 vs. Missouri Western (10/27/79)
Most Yards Passing, Season: 1741 (1979)
Best Passing Avg., Season: 174.1 (1979)
Most Passes Attempted, Game: 43 (All by Mike Atkins) vs. Missouri Western (10/27/79) and vs. Missouri Southern (11/10/79)
Most Passes Completed, Season: 136 (1979)



Individual

Most Carries, Game: 31 by Mark Samich vs. Baker University (9/22/79)
Most Yards Passing, Game: 418 by Mike Atkins vs. Missouri Western (10/27/79)
Most Yards Passing, Season: 1678 by Mike Atkins (1979)
Most Completions, Season: 130 by Mike Atkins (1979)
Best Completion Percentage, Season: .525 by Mike Atkins (1979)
Most Passing Attempts, Game: 43 by Mike Atkins vs. Missouri Western (10/27/79) and vs. Missouri Southern (11/10/79)
Most Passing Attempts, Season: 248 by Mike Atkins (1979)
Most Yards Total Offense, Game: 445 by Mike Atkins vs. Missouri Western (10/27/79)
Most Yards Total Offense, Season: 1597 by Mike Atkins (1979)
Most Touchdown Passes, Season: TIED with 11 by Mike Atkins (1979)
Most Receptions, Game: TIED with 11 by Ron Hamilton vs. Missouri Western (10/27/79)
Most Receptions, Season: 50 by Ron Hamilton (1979)
Most Yards Receiving, Game: 187 by Ron Hamilton vs. Missouri Western (10/27/79)
Most Yards Receiving, Season: 791 by Ron Hamilton (1979)
Most Field Goals, Season: TIED with 9 by Kevin Cummings (1979)

What's An Ichabod?

The name Ichabod is derived from the first name of Ichabod Washburn, an early benefactor of the University. Until 1938 there was not a graphic representation or any particular characteristics associated with Mr. Ichabod. During the 1937-38 school year, the editors of KAW, the university yearbook, decided that such items were important to the University and began to accept suggestions for a design of Mr. Ichabod. The adopted design was drawn by Bradbury Thompson (BA'34).



The following explanatory material accomplished Ichabod's first representation in the Washburn Kaw: "He has courage and enthusiasm as shown by his brisk walk. He is democratic and courteous, for he tips his hat as he passes. Sincere in his search for truth and knowledge, he studiously carries a book under his arm. His friendly smile makes you like him. He is neatly dressed and he fits well into his generation...but he adopts himself with equal ease to any change or any age."