

WASHBURN
FOOTBALL 1975



1975 Schedule

Date	Time	Opponent/Site	Series Record	1974 Score
Sept. 13	7:30 p.m.	William Jewell Topeka	6-5-0	21-13
Sept. 20	7:30 p.m.	Missouri Western St. Joseph	2-0-1	37-0
Sept. 27	7:30 p.m.	Missouri Valley Marshall	2-3-0	7-41
Oct. 4	7:30 p.m.	Emporia State* Topeka	32-35-6	36-15
Oct. 11	2:00 p.m.	Benedictine (Home- coming) Topeka	13-11-0	24-12
Oct. 18	1:30 p.m.	Southern Colorado* Pueblo	4-6-0	19-14
Oct. 25	7:30 p.m.	Fort Hays* Topeka	26-11-3	14-7
Nov. 1	2:00 p.m.	Missouri Southern Joplin	2-2-1	35-17
Nov. 8	2:00 p.m.	Northern Colorado* Topeka	1-7-0	7-28
Nov. 15	7:30 p.m.	Pittsburg State* Pittsburg	14-29-1	14-15

+ MST *GPAC Games

1974 Results

WU		Opp
21	at William Jewell	13
37	Missouri Western	0
7	Missouri Valley	41
36	at Emporia State	15
24	at Benedictine	12
19	Southern Colo.	14
14	at Ft. Hays	7
35	Missouri Southern	17
7	at Northern Colo.	28
14	Pittsburg State	15
	Boot Hill Bowl	
21	Millikin U. (III.)	7

The 1975 Washburn University Football Brochure was prepared by Steve Pigg, Assistant Director of Informational Services. For additional copies of this brochure, press passes, statistics, pictures or other information concerning Washburn athletics, contact:

Steve Pigg
Ass't. Director, Informational Services
Washburn University
Topeka, Kansas 66621
Phone: (913) 235-5341 x116 (office)
(913) 233-9480 (home)

Table of Contents

1975 Schedule, 1974 Results	
Foreword	inside cover
Table of Contents	1
Capsule Facts	
Phone Directory	
Pressbox Services	2
President Henderson	
Athletic Director Ed Head	3
Head Coach Larry Elliott	
WU Coaches' Career Records	4
Assistant Coaches	5
1974 Season Review	6
1975 Season Preview	7-8
Ichabod Lettermen Profiles	9-13
1975 Ichabod Roster	14-15
1974 WU Statistics	16
WU Yardage Clubs	17
Individual Records	18
Team Records	19
WU Football: Year-by-Year	20
1975 Opponents	21-25
Ichabod Club	
Athletic Hall of Fame & All-Americans	26
Great Plains Athletic Conference	27
Washburn University History	28
What's an Ichabod?	inside cover
Composite Schedule	back cover



Washburn Capsule Facts

Name: Washburn University of Topeka
Location: 17th and College Ave.
Topeka, Kansas 66621
University Telephone: (913) 235-5341
Founded: 1865
Enrollment: 5200
Nickname: Ichabods
Colors: Yale Blue and White
Facilities: Moore Bowl (7200)
Whiting Fieldhouse (2500)
Memberships: Great Plains Athletic Conference (GPAC)
National Assn. of Intercollegiate Athletics (NAIA)
President: Dr. John W. Henderson
Vice-President for University Relations: Gerry Barker
Athletic Director: Ed Head
Director of Informational Services: Dwight Deay
Sports Information Director: Steve Pigg
Head Football Coach: Larry Elliott
Line Coach: Dennis Bean
Defensive Secondary Coach: Clay Johnson
Graduate Assistants: Ed Scarlett, Bill Skepnek, Carl Little
Basketball Coach: Glenn Cafer
Tennis Coach: George Parker
Track Coach: Clifford Aitch
Baseball Coach: Larry Elliott
Golf Coach: Glenn Cafer
Faculty Athletic Representative: Dr. Ernest Bader
Regents' Athletic Committee Chairman: Frank Rice
Team Physician: James W. Kelley, M.D.
Equipment Manager: Harold Wilcox
Student Trainers: Dennis Holcomb, Don Christian

Washburn Phone Directory

University Telephone (913) 235-5341
(WU Ext.) Home Phone
Gerry Barker VP-Univ. Relations (113) 233-8827
Ed Head Athletic Director (323) 478-4963
Larry Elliott Head Coach (326) 528-4296
Steve Pigg SID (116) 233-9480
Dennis Bean Ass't Coach (326) 272-2957
Clay Johnson Ass't. Coach (326) 272-4067
Dwight Deay Dir. of Info. (116) 273-2372

Press Information

Press Box Reservations

Requests for press box space should be made through the University Relations Office at least one week before the scheduled game.

Game Press Services

The University Relations staff will provide programs, flip cards, play-by-play, halftime and final individual and team statistics, and a final scoring summary.

The staff will phone beeper reports to radio and TV stations on request. Game stories and complete statistics will be filed to newspapers on request.

With advance notice, halftime interviews with Washburn officials can be arranged.

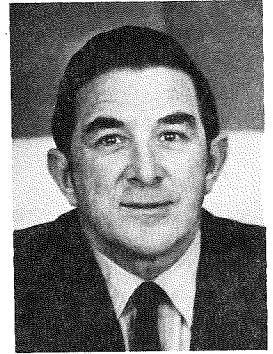
Refreshments will be available to press personnel.

President Henderson

Dr. John W. Henderson is in his tenth year as President of Washburn. A native of Pennsylvania, he graduated from Juniata College, Huntingdon, Penn. in 1949. While at Juniata, Henderson lettered in three sports: football, baseball and basketball. In 1949, he received the Stanford Mickel Award for outstanding athlete of the year at Juniata.

Henderson's athletic career extends from 1944 when he was a halfback with the University of Georgia pre-flight team to 1950 when he was assistant football and baseball coach at McPherson College, Indiana. Henderson is also a registered football and basketball official in Pennsylvania.

Henderson and his wife Myrtle have two children.



Athletic Director Ed Head

Edward C. Head begins his second season at the helm of Washburn's athletic program. He came to Washburn in July, 1974 following eight years as an assistant athletic director at Kansas State University where he was instrumental in fund-raising campaigns which financed KSU's football and track stadiums and their synthetic surfaces. He is a member of the National Association of College Directors of Athletics and the National Basketball Coaches' Association.

Head, a 1952 graduate of K-State, was a three-year letterman in basketball and started at forward for two years including 1951 when the Wildcats won the Big Seven and were runners-up in the NCAA national finals. He also lettered in track and received the high point award in intramural sports.

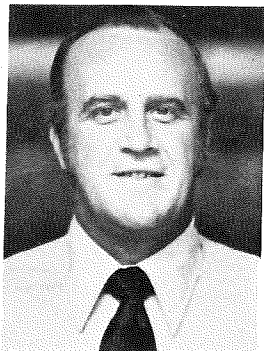
Head received his master's degree in physical education at KSU in 1954. He was freshman basketball coach in 1951-53 and field secretary for the alumni association in 1953-54.

Upon discharge from the U.S. Air Force in 1956, Head entered private business in Newton, Kansas where he remained until returning to athletics and K-State in 1966.

Head is married to the former Meredith Hanna of Newton. They have five children.



Head Coach Larry Elliott



Larry Elliott directed the 1974 Ichabods to an 8-3 record and Washburn's first trip to a post-season bowl in his initial season as head football coach. A 1959 Washburn graduate, Elliott had returned to his alma mater in 1967 to become head baseball and assistant football coach after receiving his M.A. from Kansas University in 1966. After logging seven years as an Ichabod assistant under three former coaches, he was named to the head position in February, 1974.

Elliott is a former All-CIC performer for Washburn in both football and basketball. With 1,934 yards, he is the second leading career passer in the Ichabod record books. Elliott also claims the best single game pass completion percentage with 8 of 9 for 111 yards.

A native of Ulysses, Kansas, Elliott gained three years all-conference recognition in football and two years in basketball at Ulysses High School. He was a basketball all-stater his senior year in 1953 after leading his team in scoring his junior and senior seasons with 19.7 and 21.4 points per game averages.

Between 1959 and 1966 Elliott coached all sports at Silver Lake, sending two baseball teams to the state tournament. As the Ichabod baseball coach, he has compiled a 133-96 record while winning the CIC championship in 1967 and placing second in the RMAC in 1972.

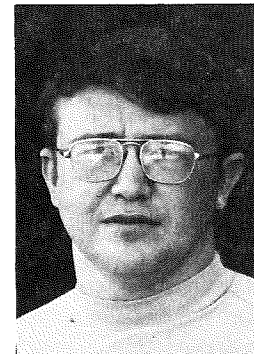
Elliott believes that athletics are an important part of the educational process fostering both physical and mental health by providing the student-athlete with exercise and with relaxation preventing academic fatigue.

Elliott and his wife, the former Jayne Bronson, (BA'58), have two children.

Washburn Coaches' Career Records

1894	W. M. Gaines	(3-1-0)	1922	Mike Vosburg	(1-7-0)
1896	W. Griffith	(6-1-1)	1923-26	G. Woodward	(8-20-4)
1897-98	Paul Coldren	(12-2-1)	1927-28	Roy Wynne	(3-14-0)
1899	Wm. Melford	(2-5-2)	1929-35	Er. Bearg	(36-29-3)
1900	Ben Owen	(6-2-0)	1936-41	E. W. Holm	(22-31-3)
1901	L. Banks	(3-2-5)	1942-43	Rob. Raugh	(3-11-2)
1902	H. W. Page	(2-6-0)	1944	C. D. Erickson	(1-6-0)
1903	A. R. Kennedy	(7-0-1)	1945	Lew Lane	(4-2-0)
1904-05	Jn. Outland	(14-5-0)	1946-58	R. Godlove	(68-42-4)
1906-08	G. W. Weede	(19-5-4)	1959-61	Ralph Brown	(10-17-0)
1909-10	R. B. Stewart	(6-7-0)	1962-64	E. Rainsberger	(15-12-0)
1911-12	W. L. Driver	(7-7-1)	1965-66	Ed Linta	(4-13-1)
1913-15	G. L. Gray	(8-10-3)	1967-68	Bill Shaake	(2-16-0)
1916-17	A. R. Kennedy	(5-12-2)	1969-70	"Bud" Elliott	(10-8-2)
1918-19	Er. Bearg	(11-2-1)	1971-73	Bob Noblitt	(11-18-1)
1920-21	Dwight Ream	(7-7-1)	1974-	Larry Elliott	(8-3-0)

Line Coach Dennis Bean



Dennis Bean begins his second season at Washburn after a two year stint as offensive line coach for Missouri Western. He graduated from Fort Hays in 1969 after winning NAIA All-District 10 and All-America honorable mention honors as a middle guard.

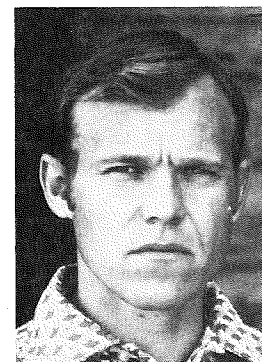
Bean graduated from Phillipsburg, Kansas High School in 1963 where he gained all-area recognition and helped his school to a 33-game winning streak and two state titles. He played football at Bethany College one season before transferring to Fort Hays.

Bean acquired his master's and education specialist degrees at Central Missouri State where he was a graduate assistant football coach for two seasons. He coached at St. Mary of the Plains in 1971 before moving to Missouri Western. At St. Mary's, Bean coached Don McGlenn, Washburn's all-conference defensive end, McGlenn transferred to Washburn in '72.

Bean is married to the former Sandy Schmitt.

Defensive Secondary Coach

Clay Johnson



Clay Johnson is in his sixth season as an assistant football coach at Washburn. Besides coaching the defensive secondary, Johnson instructs physical education and performs some functions of an athletic business manager.

Johnson is a 1966 graduate of Ottawa University where he was the Braves' trainer for four years. In 1967, he was head football coach at Winfield Junior High School in Winfield, Kansas before traveling east to become the defensive coordinator at Robert E. Fitch High School in Groton, Connecticut for three years. He came to Washburn in 1970.

He and his wife Carol have two children.

1974 Review

An 8-3 record, Washburn's best in ten years, and a 21-7 victory in the Boot Hill Bowl, Washburn's first post-season bowl appearance in its 83 years of football, made 1974 a year to remember for Larry Elliott in his first season as Ichabod head coach.

Washburn finished third in the GPAC with a 3-2 record but looked like the second place team going into the final play of the final regular season game. That play was a GPAC record 56 yard field goal by Pittsburg State's Mike Matthews that gave the Gorillas a come-from-behind 15-14 victory and the second place league finish while relegating Washburn to third. Northern Colorado won the title with a 5-0 mark.

The Ichabods, noted for a staunch defense and a suspect offense in recent years, combined an experienced offensive line with a young backfield led by freshman quarterback Mike Grogan to average 21.4 points and break or tie four GPAC records. Senior guard Cooper Johnson was named to both the GPAC's all-star and all-academic teams while Grogan was voted outstanding offensive performer in the Boot Hill victory. Juniors Gary Yager and Ray Gerstenkorn paced Washburn on the ground with Yager gaining over 90 yards in three of the first six games before being slowed by an injury and Gerstenkorn topping the century mark once. Gerstenkorn led Washburn scoring with ten touchdowns after missing the opening game with illness. The offense graduated three starters and two reserves, losing, besides Johnson, starting center Wayne Walker and tackle Ed Cowen and reserve quarterback Ed Clark and split end Kurt Eichelberg.

The traditionally strong defense was led by NAIA All-America honorable mention linebacker John Poke and All-GPAC end Don McGlenn, 1974's co-captains and the only starters graduated from the defense. Other standouts were junior defensive tackle Jim Hastings, another all-conference selection, sophomore anchor linebacker Stan Hatcher and junior middle linebacker Robert Warren who combined for 174 unassisted tackles during the regular season. Juniors Mike Morgan and George Steen led the defensive secondary that tied a Washburn season record with 21 interceptions.

Freshman fullback Brent Cripps was the first Ichabod to break into Washburn's record books in 1974 with a 70 yard punt and a 49.8 yard punting average in the second game of the season. Senior quarterback Ed Clark surpassed the 1000 yard mark in career passing with 1036 yards while Mike Grogan's 740 yards during the regular season rated fifth in Washburn's season passing charts. Junior tight end John Hodnefield moved to fourth place in the career receiving records with 675 yards after a 1974 effort of 27 catches for 328 yards and junior split end Rick Benke captured fourth in season receiving with 27 catches for 350 yards during the regular season.

Forty-one Ichabods received letters including seven seniors, 17 juniors, four sophomores and thirteen freshmen.

1975 Preview

Rebuilding the offensive line and finding depth at defensive tackle are two tasks that must be accomplished before Washburn can hope to improve on 1974's 7-3 regular season record and Boot Hill Bowl championship. Several factors, including the number of returnees at skilled positions and the overall depth, make the future appear bright if the problem areas can be corrected early.

Only 11 lettermen are gone from 1974 and only seven of those were starters while 30 award winners return including the entire starting offensive backfield and all starting receivers. Only an end, a tackle, a linebacker and a safety must be replaced in the defensive starting lineup while a record number of returnees and recruits give Elliott a wide range of talent to choose from and eliminates the lack of depth that has plagued past Washburn teams.

Sophomore Mike Grogan, the recipient of the "Outstanding Offensive Player" award in the Boot Hill Bowl, returns to his starting quarterback role after passing for 820 yards and 10 touchdowns last year. Transfer Phillip Duncan and freshman Mike Sheahon, an all-stater who led Salina Sacred Heart to the class 2A state championship and a 12-0 record, are the top candidates to push Grogan.

Both fullbacks, senior Ray Gerstenkorn and sophomore Brent Cripps, return. Gerstenkorn led scoring in 1974 with ten touchdowns while Cripps doubled as a record-setting punter with a 39.0 yard average. Kansas State transfer Mark Samarri and freshman Doug French provide excellent depth. Both John Gruss and Clarence Taylor, who shared starting duties at fourback, return as do runningbacks Gary Yager, last season's leading rusher, and Dan Wagner. Wagner is scheduled for a switch to fourback while Taylor may see action at runningback. The depth chart at runningback counts ten players with newcomers John Mellor and freshman Steve Haynes the top threats to challenge for the starting slot. Haynes, at 5-6, 138 lbs., led the East in the Kansas Shrine Bowl game with 92 yards rushing and their only TD.

Washburn's top three receivers, split end Rick Benke, tight end John Hodnefield and fourback Taylor, return. Hodnefield, a fourth year starter, has 675 career yards receiving while Benke led receivers last year with 32 catches for 400 yards. A freshman who could help early is split end Mike Keeley, a prep All-American.

The offensive line is the major rebuilding area for 1975 with the entire strong side lost to graduation. Guard Bob Bivens and tackle Rick Smith provide experience on the quick side while Elliott plans to move defensive lineman Bob Behrens (6-4, 235 lbs.) to bolster the strong side. Behrens missed the 1974 season with a stomach infection and his ability to recover and adapt to the offensive line could be a key to a successful season. Senior Monte Stone is also earmarked for a key role in the front line along with sophomore Pete O'Sullivan. Sophomores Preston Cage and Kent Hamilton will vie with freshman all-stater Kent Groff for the starting center role.

cont.

Replacing last year's co-captains Don McGlinn and John Poke at end and linebacker and finding depth at defensive tackle are the main tasks if the Ichabods are to field their traditionally strong defense. All-conference tackle Jim Hastings and linebacker Robert Warren, both seniors, are expected to assume the leadership roles of McGlinn and Poke with lettermen and part-time starters Bill Jarvis and Hank Kramer moving to their playing positions. Russ Huston, a 245 lb. senior starter at defensive tackle, has been lost with a severe infection eliminating what would have been a strong pair of tackles and leaving only Hastings and end Kerry Spiker returning to starting roles in the front line. Sophomore letterman Tom DeGroot will push Spiker and Jarvis for a starting end spot. Junior Stan Hatcher, a third year starter, joins Kramer and Warren at linebacker along with sophomore letterman Steve Davidson while the Ichabod secondary, a weakness in 1974, has returning starters Mike Morgan, George Steen and Fred Thomas plus part-time starter Greg Maher. Several newcomers will join letterman Ronnie Hicks to provide depth in the defensive backfield.

Sophomore Gary Kraus, last year's third leading scorer with 31 points, returns to his place kicking and kickoff chores.

Riding the enthusiasm generated by last year's Boot Hill Bowl championship, the Ichabods combine a winning attitude with experience and depth. If the trouble area in the offensive line can be eliminated, Washburn could challenge for the 1975 GPAC title.



Ticket Information

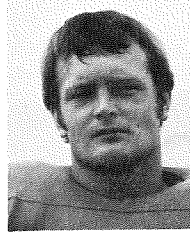
Admission prices for home football games in Moore Bowl.

Family Season Ticket	\$20.00
Season Ticket	15.00
Reserved Seat	3.00
General Admission	2.50
Students	1.00
Under 12	.75

Passes for the working press, radio and television representatives, and opponent publicity personnel are available from the University Relations Office one week in advance.

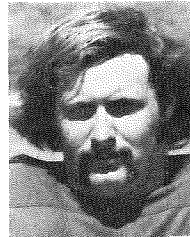
Lettermen Profiles

Bob Behrens



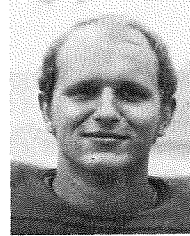
Sr., T, 6-3, 257 lbs., Topeka -- All-GPAC def. tackle in 1973 -- missed '74 season with stomach infection -- will move to offensive tackle this season -- "needs to stay free of injury for Washburn to contend for league title" -- a legitimate pro-prospect.

Rick Benke



Sr., SE, 5-10, 188 lbs., Stamford, Conn. -- Caught 32 passes for 400 yards in 10 games as a transfer last year -- his 350 yards during the regular season rates fourth in Washburn season receiving records -- "should be one of the better receivers in the conference this year" -- "a deep threat".

Bob Bivens



Sr., OG, 5-11, 212 lbs., Atchison -- Third year starter at offensive guard -- "must be a leader if offense is to repeat success of 1974" -- one of only three returning starting offensive linemen.

Brent Cripps



So., FB, 6-1, 234 lbs., Olathe -- Averaged 39.0 yards per punt as a freshman -- set records against Mo. Western with 70 yard punt and 49.8 yard average for game -- averaged 3.9 yards for 67 carries -- started one game at fullback -- was among top ten NAIA punters for most of season.

Steve Davidson



So., LB, 6-0, 212 lbs., Independence, Mo. -- Sophomore linebacker who made his mark on specialty teams as a freshman -- "should push for a starting spot" -- "determination is his greatest asset".

Tom DeGroot



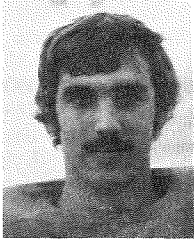
So., DE, 6-3, 210 lbs., Bonner Springs -- One of 13 returning sophomore lettermen -- will compete with Kerry Spiker for starting end spot -- "a great pass rusher".

Lettermen Profiles



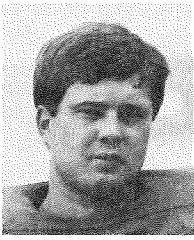
Ray Gerstenkorn

Sr., FB, 6-1, 201 lbs., Topeka (Hayden) -- WU's second leading rusher last year with 455 yards and 3.7 yd./carry average -- led Ichabods in scoring with 60 points -- has rushed 239 times for 834 yards and 11 TD's in his three-year career -- "determined runner with great balance".



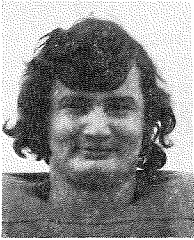
Mike Grogan

So., QB, 6-0, 191 lbs., Kansas City (Turner) -- "Probably best freshman quarterback Washburn ever had" -- "inspires team confidence" -- Washburn's 1974 "Rookie of the Year" and "Outstanding Offensive Performer" in Boot Hill Bowl -- completed 48% of passes for 820 yards and 10 TD's -- 740 yards passing during regular season rates fifth in WU records.



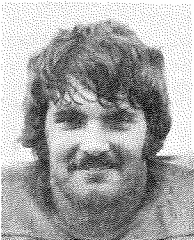
John Gruss

Sr., 4B, 5-9, 180 lbs., Kansas City (Shawnee St. Joe) -- Shared starting time at fourback with Clarence Taylor last season -- caught six passes for 67 yards and two touchdowns -- two-year letterman -- "a steady player who makes the most of his ability".



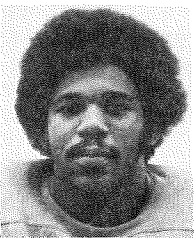
Jim Hastings

Sr., DT, 5-11, 210 lbs., Seminole, Okla. -- Only returning 1974 All-GPAC selection -- led WU in sacks with 14 and fumble recoveries with 4 -- opened Boot Hill Bowl scoring with 34 yard fumble return -- "probably the fastest defensive tackle in the conference".



Kent Hamilton

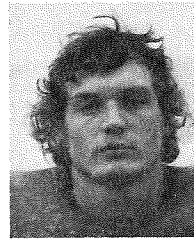
So., OC, 6-1, 242 lbs., Silver Lake -- Part-time starter last year -- relief pitcher who had WU's top era of 1.93 last season -- older brother C. J. started at center for Washburn in 1971 and 1972.



Stan Hatcher

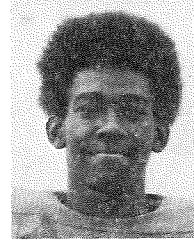
Jr., LB, 6-2, 195 lbs., Ft. Worth, Texas -- Third leading tackler behind Poke and McGlenn last year -- fixture at anchor linebacker starting for third year -- in final regular season game, he intercepted Pittsburg pass on WU 47 and was tackled on PS 30 by player from Pittsburg bench but was awarded 53 yard TD.

Lettermen Profiles



Cory Heiniger

Jr., RB, 5-7, 169 lbs., Powhattan -- Leading rusher in 1973 with 54.0 yard game average -- reserve runningback last year -- played six games with 2.6 yard/carry average on nine carries.



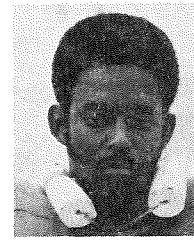
Ronnie Hicks

So., DB, 6-0, 164 lbs., Kansas City (Wyandotte) -- Started early at defensive back -- "has great quickness and likes to hit" -- came from Wyandotte with teammate Fred Thomas.



John Hodnefield

Sr., TE, 6-2, 200 lbs., Kansas City (Mission East) -- UPI's All-GPAC in 1973 -- Washburn's fourth leading career receiver with 675 yards on 44 catches -- led receivers in TD's with 5 last year, 8 for career -- "a good blocker" -- "expected to be one of top tight ends in area".



Bill Jarvis

Jr., DE, 6-3, 190 lbs., Topeka (Highland Park) -- Started occasionally at defensive tackle last year but will return to accustomed end spot -- "great pass rusher with excellent quickness" -- pre-med major whose practice time is shortened by science labs.



Hank Kramer

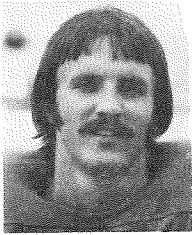
Jr., LB, 5-9, 185 lbs., DeSoto -- Outstanding specialty team member in 1974 -- part-time starter at quick linebacker -- returned blocked punt for touchdown against Emporia -- tied for lead in knocked down passes with 3.



Gary Kraus

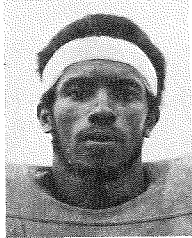
So., K, 6-0, 170 lbs., Alma -- Handled all Washburn's kicking chores last season -- kicked 25 of 31 pat's and 2 of 14 field goals -- "a good kicker who should have a better year".

Lettermen Profiles



Greg Maher

So., DB, 6-0, 184 lbs., Kansas City (Bishop Meige) -- Part-time starter at safety -- intercepted 3 passes last season including one which was turning point in William Jewell game -- has ability to play quarterback if needed -- "a talented player who will improve with experience".



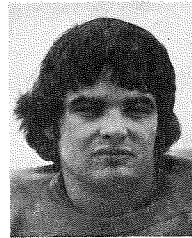
Mike Morgan

Sr., DB, 6-1, 190 lbs., Dallas, Texas (Lincoln) -- Pro-prospect -- fourth year starter, three at safety after one at split end -- led in interceptions last year with four -- 4.65 speed -- "could be one of top players in conference".



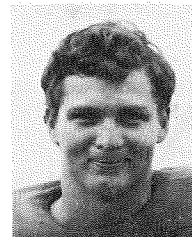
Pete O'Sullivan

So., OG, 6-2, 190 lbs., Shawnee (St. Joe) -- Occasional starter last year -- should start or hold top reserve spot in '75 -- "lacks size but is a strong fundamentalist".



Rick Smith

Sr., OT, 6-2, 220 lbs., Burlington -- Split starting time with graduated Pete Van Allan last season -- transferred as a center -- "needs a good season to strengthen the offensive line hit hard by graduation".



Kerry Spiker

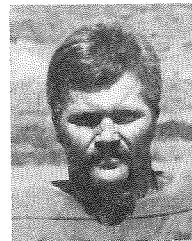
Sr., DE, 6-0, 207 lbs., Syracuse -- one of two returning regular starters on defensive line -- "good quickness" -- had 28 tackles and three sacks in '74 -- "excels against the run".



George Steen

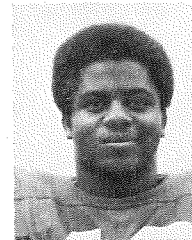
Sr., DB, 5-9, 16 lbs., Kansas City (Wyandotte) -- Third year starting defensive back -- three interceptions returned for 72 yards -- triple and long jumper during track season -- "speed and anticipation compensates for height deficiency" -- "should be one of the top defensive backs in the area".

Lettermen Profiles



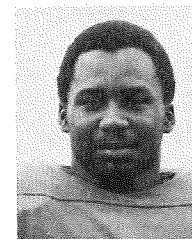
Monte Stone

Sr., OG, 5-10, 221 lbs., Dodge City -- Started occasionally last year -- transferred from Dodge City Juco as a junior -- "great body strength" -- "good blocker on power plays".



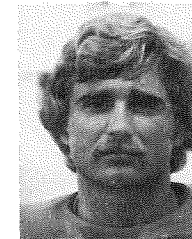
Clarence Taylor

So., 4B-RB, 5-9, 170 lbs., Kansas City (Harmon) -- Half-time starter at fourback -- return specialist with 21 yard kickoff and 5.3 yard punt return average -- had eight receptions for 116 yards and two TD's -- "excellent acceleration" -- "one of fastest lchabods" -- might move to runningback.



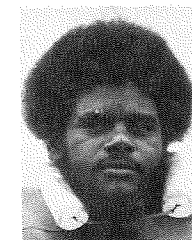
Fred Thomas

So., DB, 6-0, 217 lbs., Kansas City (Wyandotte) -- Starting cornerback last half of season -- pass interception was turning point in Missouri Southern game -- pole vaulter during track season -- "great potential" -- two brothers in pros.



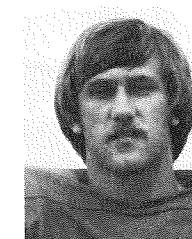
Dan Wagner

Jr., RB-4B, 6-0, 190 lbs. Paxico -- Part-time starter at runningback -- fourth leading rusher with 195 yards -- will concentrate on fourback but could play either runningback or split end -- "best hands on squad" -- "strong runner".



Robert Warren

Sr., LB, 6-0, 227 lbs., Dallas, Texas (Lincoln) -- Pro-prospect -- had 54 tackles, 5 sacks and one blocked kick last season -- fourth year starter -- has started at both offensive and defensive tackle -- "one of the hardest hitters on the squad" -- "one of the top area linebackers".



Gary Yager

Sr., RB, 6-0, 178 lbs., Kansas City (Mission East) -- Leading rusher in '74 with 496 yards and 3.5 yard/carry average -- has 549 career yards rushing (two seasons) -- was slowed by rib injury in last half of season -- "a great open field runner with deceptive speed".

1975 Icabod Roster

Name	Pos.	Ht.	Wt.	Class	Hometown (Previous School)
Jim Beagle	LB	6'2"	204	Fr.	Kansas City (Turner)
Bob Behrens*	OT	6'3"	257	Sr.	Topeka (Wichita State)
Travis Benton	DT	6'3"	198	Fr.	Del Rio, Texas
Ricke Benke*	SE	5'10"	188	Sr.	Stamford, Conn.
Bob Bivens**	OG	5'11"	212	Sr.	Atchison
Bob Breen (S)	OT	6'1"	221	So.	Atchison
Joe Budenbender	DT	6'0"	263	Fr.	Shawnee, Kansas
Preston Cage (S)	C	6'1"	192	So.	Kansas City (Sumner)
Mike Cassin	OT	6'3"	204	Fr.	Chanute
John Cork (S)	TE	6'1"	184	So.	Colby
Roy Craig	OG	6'1"	200	Fr.	St. Louis, Mo. (Mehlville)
Brent Cripps*	FB	6'1"	234	So.	Olathe
Doug Curless	OT	6'1"	193	Fr.	Kansas City (Mission South)
Artie Dahlstrom	LB	6'1"	190	Fr.	Topeka (Seaman)
Steve Davidson*	LB	6'0"	212	So.	Independence, Mo. (Wm. Christman)
Tom DeGroot*	DE	6'3"	210	So.	Bonner Springs
Phil Duncan (T)	QB	6'3"	201	Jr.	Topeka (Pratt Juco)
Fred Edmon	TE	6'1"	186	So.	Ft. Worth, Texas
Allen Edwards	DT	6'3"	200	Fr.	Topeka
Don Flood	RB	5'10"	180	Fr.	Meriden (Jefferson West)
Doug French	FB	6'0"	191	Fr.	Abilene
Fred Garcia	OG	5'9"	225	Fr.	Harlingen, Texas
Ray Gerstenkorn***	FB	6'1"	201	Sr.	Topeka (Hayden)
Nathaniel Gordon	DB	5'11"	155	Fr.	Kansas City (Sumner)
Denis Graham	OT	6'3"	229	Fr.	Meriden (Jefferson West)
Kent Groff	C	6'2"	202	Fr.	Seneca (Nemaha Valley)
Mike Grogan*	QB	6'0"	191	So.	Kansas City (Turner)
Pat Grogan	DB	5'10"	167	Fr.	Kansas City (Turner)
John Gruss**	4B	5'9"	180	Sr.	Kansas City (Shawnee, St. Joseph)
Bob Hainline (S)	OT	6'0"	215	So.	Silver Lake
Kent Hamilton*	C	6'1"	242	So.	Silver Lake
Walter Handley	OG	6'0"	172	Fr.	St. Louis, Mo. (Soldan)
David Haskins	RB	6'0"	181	Fr.	Osage City
Jim Hastings	DT	5'11"	210	Sr.	Seminole, Okla. (Haskell Juco)
Stan Hatcher**	LB	6'2"	195	Jr.	Ft. Worth, Texas
Steve Haynes	RB	5'6"	150	Fr.	Kansas City (Harmon)
Cory Heiniger*	RB	5'7"	169	Jr.	Powhattan
Kevin Hicks (S)	DB	5'9"	190	So.	Shawnee (St. Joseph)
Ronnie Hicks*	DB	6'0"	164	So.	Kansas City (Wyandotte)
John Hodnefield***	TE	6'2"	200	Sr.	Shawnee Mission (East)
Ray Ibarra	DB	5'7"	160	So.	Junction City
Bill Jarvis**	DE	6'3"	190	Jr.	Topeka (Highland Park)
Mike Keeley	SE	6'0"	162	Fr.	Larned
Hank Kramer**	LB	5'9"	185	Jr.	DeSoto
Gary Kraus*	Kicker	6'0"	170	So.	Alma
Robert Ladner	DB	6'3"	166	Fr.	Topeka (West)
Kevin Luebbers	LB	5'10"	185	Fr.	St. Louis, Mo.
Tim Lutz	RB	6'0"	152	Fr.	Shawnee (St. Joseph)
Carlos Lyday	DB	5'10"	168	Jr.	Wichita (Haskell Juco)
Greg Maher*	DB	6'0"	184	So.	Kansas City (Bishop Meige)
Ed Majewski	OG	5'10"	247	Fr.	Shawnee (St. Joseph)
Scott McCarter	DB	5'10"	183	So.	Topeka (West)
Mike Medill	DB	6'1"	198	Fr.	Leavenworth (Immaculata)
John Mellor	RB	5'9"	195	Sr.	Topeka
Michael Morgan***	DB	6'1"	190	Sr.	Dallas, Texas (Lincoln)
Woody Nichols (S)	DB	6'2"	175	So.	DeSoto
Pete O'Sullivan*	OG	6'2"	190	So.	Shawnee (St. Joseph)
Herbert Perry	DB	5'9"	169	Fr.	Kansas City (Sumner)
Scott Remington	Kicker	5'10"	163	Fr.	St. Joseph, Mo. (Central)
Rick Sabel	SE	6'1"	178	Sr.	Topeka (Shawnee Mission South)
Mark Samarri (T)	FB	5'0"	200	So.	Manhattan
Kyle Schartz	DB	6'0"	163	Fr.	Great Bend
Mayo Schmidt	RB	6'0"	170	Fr.	Hays (Thomas Moore)
Mike Sheahon	QB	5'10"	166	Fr.	Salina
Gary Sims (S)	DB	5'10"	173	So.	Quenemo
Charles Simpson	DT	6'1"	208	Fr.	Topeka
Rick Smith*	OT	6'2"	220	Sr.	Burlington
Kerry Spiker*	DT	6'0"	207	Sr.	Syracuse
George Steen**	DB	5'9"	165	Sr.	Kansas City (Wyandotte)
Monte Stone*	OG	5'10"	221	Sr.	Dodge City (Dodge City Juco)
Clarence Taylor*	RB	5'9"	170	So.	Kansas City (Harmon)
Fred Thomas*	DB	6'0"	217	So.	Kansas City (Wyandotte)
Mark Thorne	DE	5'10"	175	Fr.	Leavenworth (Immaculata)
Dan Wagner*	4B	6'0"	190	Jr.	Paxico
Richard Wagner	LB	6'2"	183	Fr.	Paxico
Robert Warren***	LB	6'0"	227	Sr.	Dallas, Texas (Lincoln)
Paul Weixelman	DB	5'11"	171	So.	Meriden (Jefferson West)
Gary Yager**	RB	6'0"	178	Sr.	Kansas City, Mo. (Mission East)

*Letters Earned

(S) - 1974 Squad Member

(T) - Transfer

1974 Washburn Football Statistics

Regular Season -- Ten Games (7-3-0)

WU	TEAM TOTALS	OPP
668	Total Plays	715
1582	Rushing Ydgs.	1693
1008	Passing Ydgs.	1213
2590	Total Ydgs.	2906
408	Return Ydgs.	312
140	First Downs	162
26/18	Fumbles/Lost	29/15
70/640	Penalties/Yds.	77/706

PASSING					SCORING							
Player	PA-PC	Pct.	HI	TD	Yds.	GA	Player	TD	XP-A	XP2	FG-A	TOT*
Grogan	138-67	.486	8	9	740	74.0	Gerstenkorn	9	-	-	-	54
Clark	47-14	.298	6	2	209	26.1	Kraus	-	24-29	-	2-12	30
Cripps	1-1	1.000	0	1	59	5.9	Hodnefield	4	-	1	-	26
WU	186-82	.441	14	12	1008	100.8	Yager	3	-	-	-	18
OPP	215-88	.409	21	7	1213	121.3	Benke	3	-	-	-	18

RUSHING					TOTAL OFFENSE					
Player	TC	Yds.	GA	Avg.	Player	Plays	Rush	Pass	Tot.	GA
Yager	119	439	48.8	3.7	Grogan	.220	82	740	822	82.2
Gerstenkorn	104	406	45.1	3.9	WU	.668	1582	1008	2590	259.0
Cripps	63	256	25.6	4.1	OPP	.715	1693	1213	2906	290.6
Wagner	64	186	26.6	2.9	*Includes one safety					
Clark	33	148	18.5	4.5	SCORING BY QUARTERS					
Grogan	82	82	8.2	1.0	WU	.35	71	51	57	214
Heiniger	8	25	5.0	1.9	OPP	.34	30	28	70	162
Coleman	6	34	11.3	5.7	RETURNS					
Taylor	2	6	0.6	3.0	Player	Punt	KO	Intc.		
WU	481	1582	158.2	3.3	Speer	5-10	1-6	-	3-72	
OPP	500	1693	169.3	3.4	Morgan	1-0	-	-	3-0	

PASS RECEIVING					SCORING BY QUARTERS					
Player	PC	Yds.	GA	TD	WU <th>Opp. <th>1st</th> <th>2nd</th> <th>3rd</th> <th>4th</th> </th>	Opp. <th>1st</th> <th>2nd</th> <th>3rd</th> <th>4th</th>	1st	2nd	3rd	4th
Benke	27	350	38.9	3	WU	Opp.	19-104	28-587	-	-
Hodnefield	25	298	29.8	4	Miffleton	-	1-20	-	4-38	-
Taylor	8	116	11.7	2	Benke	-	6-19	-	-	-
Eichelberg	5	80	8.0	1	Gruss	-	1-0	2-22	-	-
Gruss	6	67	6.7	2	Steen	-	-	-	3-72	-
Wagner	4	34	7.7	-	Maher	-	-	-	3-0	-
Yager	4	40	2.0	-	Hatcher	-	-	-	3-66	-
Cripps	1	9	0.9	-	Kepler	-	-	-	-	-
Verser	1	8	8.0	-	Kramer	-	0-26	-	-	-
WU	.82	1008	100.8	12	Morgan	-	1-0	-	3-1	-
OPP	.88	1213	121.3	7	Kepler	-	1-19	-	3-13	-

PUNTING				RETURNS			
Player	No.	Yds.	Avg.	Player	Punt	KO	Intc.
Cripps	56	2231	39.8	Speer	5-10	1-6	-
Stone	1	31	31.0	Morgan	1-0	-	3-1
WU	60*	2262	37.7	Kepler	1-19	-	3-13
OPP	64	2022	31.6	Kramer	0-26	-	-
*Includes 3 blocked punts				Thomas	-	-	1-3
				Poke	-	-	1-17
				WU	34-198	34-656	21-210
				OPP	28-185	40-527	14-127

1974 GPAC Results

Final Team Standing	League Games					All Games				
	W	L	Pct.	Pts.	Opp.	W	L	Pct.	Pts.	Opp.
Northern Colorado	5	0	1.000	152	50	8	1	.889	297	118
Kansas State-Pittsburg	4	1	.800	80	75	4	7	.364	130	203
Washburn	3	2	.600	90	79	8	3	.727	235	169
Southern Colorado	1	4	.200	111	139	3	6	.333	176	214
Emporia State	1	4	.200	88	154	2	7	.222	128	256
Fort Hays State	1	4	.200	55	79	1	9	.100	116	183
*Kearney State	-	-	-	-	-	7	2	.778	188	79

*Ineligible for conference ranking until 1976.

Washburn Yardage Clubs

Career Rushing (1,000 Yard Club)

Player	Years	Att	Yards
Leroy Harmon	45-49	-	1927
Art Fletcher	46-49	-	1698
Bill Baker	51-53	299	1670
Kevin McCormick	69-71	472	1581
Don Luttrell	54, 55, 57	255	1413
Mickey Romano	64-66	299	1312
Steve Alston	66-69	412	1188
Clarence Cain	50, 51, 53	250	1169
Cleveland Jones	55-58	254	1121
Frank Pickens	62-64	224	1026
Jerry Batchelder	55-58	258	1010

Career Passing (1,000 Yard Club)

Player	Years	Att	Comp	Yards
Leroy Harmon	45-49	-	-	1997
Larry Elliott	56-58	297	131	1934
Dale Bennett	67-70	319	116	1662
Elmer McAfferty	50-52	222	93	1533
Dean Ferrell	65-68	334	148	1525
Chuck Nelson	52-55	182	80	1188
Jon Bakalar	70-71	168	63	1060
Ed Clark	71-74	216	78	1036

Career Receiving (500 Yard Club)

Player	Years	Catches	Yards
Alan Dressman	69-71	49	1228
Irv McCoy	67, 68, 70, 71	94	1037
Don Luttrell	54, 55, 57	40	713
John Hodnefield	72-74	44	675
Jeff Hill	65-69	54	658
Pete Roscetti	63-64	26	579
Bill Baker	51-53	25	551
Paul Fink	50-52	20	547

Season Rushing (500 Yard Club)

Player	Year	Att	Yards	Avg
Art Fletcher	1948	180	979	5.43
Kevin McCormick	1971	172	862	5.00
Art Fletcher	1949	-	719	-
Kevin McCormick	1970	212	690	3.25
Bill Baker	1953	106	638	6.01
Bill Baker	1951	99	628	6.02
Mickey Romano	1966	144	610	4.23
Cleveland Jones	1955	104	544	5.23
Bruce Backus	1959	102	540	5.03
Bob Ogle	1960	117	533	4.55
Leroy Harmon	1948	137	532	3.89
Leroy Harmon	1949	104	531	5.11
Jeff Roether	1972	91	513	5.64
Don Luttrell	1955	91	501	5.06

Season Passing (700 Yard Club)

Player	Years	Att	Comp	Yards
Leroy Harmon	1949	159	72	1001
Dale Bennett	1969	171	64	904
Dean Ferrell	1968	169	76	793
Larry Elliott	1956	99	50	758
Mike Grogan	1974	138	67	740
Dean Ferrell	1967	163	72	732
Bill Harper	1963	108	45	718

Season Receiving (300 Yard Club)

Player	Years	Catches	Yards
Alan Dressman	1970	19	553
Jeff Hill	1967	34	368
Alan Dressman	1971	19	351
Rick Benke	1974	27	350
Bill Baker	1951	11	341
Alan Dressman	1969	11	324
Dave Gilliland	1958	17	320
John Hodnefield	1973	14	310
Irv McCoy	1968	35	305

Washburn Individual Records

Rushing

Most Yards, Game: 241 by Kevin McCormick at Mo. Valley, (9/11/71)
Season: 979 by Art Fletcher, (1948)
Career: 1927 by Leroy Harmon, (1945-49)
Most Carries, Game: 28 by Dale Isaacs vs. St. Benedict's, (11/21/41)
Season: 212 by Kevin McCormick, (1970) [690 yds]
Career: 472 by Kevin McCormick, (1969-71) [1581 yds]

Passing

Most Yards, Game: 285 by Dean Ferrell vs. Emporia St., (11/9/68)
Season: 1001 by Leroy Harmon, (1949)
Career: 1997 by Leroy Harmon, (1945-49)
Most Completions, Game: 27 by Dean Ferrell vs. Emporia St., (11/9/68)
Season: 76 by Dean Ferrell, (1968) [793 yds]
Career: 148 by Dean Ferrell, (1965-68) [1525 yds]
Best Cpl. Pct., Game: .889 by Larry Elliott vs. Ft. Hays, (11/3/56) [8 of 9]
Season (30 att): .516 by Ed Clark, (1971) [16 of 31 for 232 yds]
Touchdown Passes, Game: 4 by Leroy Harmon vs. No. Illinois, (9/23/49)
Season: 11 by Leroy Harmon, (1949)
Most Attempted, Game: 37 by Dean Ferrell vs. Emporia St., (11/9/68)
Season: 171 by Dale Bennett, (1969) [cpl. 64 for 904 yds]
Career: 334 by Dean Ferrell, (1965-68) [cpl. 148 for 1525 yds]

Total Offense

Most Yards, Game: 241 by Kevin McCormick at Mo. Valley, (9/11/71)
Season: 1532 by Leroy Harmon, (1949)
Career: 3924 by Leroy Harmon, (1945-49)

Receiving

Most Receptions, Game: 11 by Irv McCoy vs. Kearney St., (9/14/68)
Season: 35 by Irv McCoy, (1968) [305 yds]
Career: 94 by Irv McCoy, (1967, 68, 70, 71) [1037 yds]
Most Yards, Game: 159 by Bill Baker vs. Beloit, Wis., (1951) [3 catches]
Season: 553 by Alan Dressman, (1970) [19 catches]
Career: 1228 by Alan Dressman, (1969-71) [49 catches]

Tandem Offense

Most Yards, Game: 206 by Bill Baker vs. Beloit, Wis., (1951) [47 rush, 159 rec.]
Season: 990 by Art Fletcher, (1948)
Career: 2221 by Bill Baker, (1951-53)

Scoring

Most Points, Game: 30 by Art Fletcher vs. St. Benedict's, (1948)
Season: 84 by Bill Baker, (1953)
Career: 168 by Bill Baker, (1951-53)
Most TD's, Game: 5 by Art Fletcher vs. St. Benedict's, (1948)
Season: 14 by Bill Baker, (1953)
Career: 28 by Bill Baker, (1951-53)
Most Pat's, Game: 6 by Leroy Harmon, (10/29/49)
Season: 21 by Russ Hill, (1971) [att. 23]
Career: 58 by Russ Hill, (1970-72) [att. 66]
Most Consecutive Pat's: 14 by Russ Hill, (1971)
Most Field Goals, Game: 2 by Russ Hill vs. Mo. Valley, (1972)
Season: 7 by Russ Hill, (1972) [att. 17]
Career: 11 by Russ Hill, (1970-72) [att. 30]

Punting

Most Punts, Season: 80 by Roy Keck, (1952)
Career: 191 by Jeff Hill, (1966, 67, 69) [7229 yds]
Best Average, Game: 49.8 by Brent Cripps vs. Mo. Western (1974) [6 for 299 yds.]
Season: 42.3 by Jack Clanton (1963) [3 for 127 yds]
Career: 37.8 by Jeff Hill (1966, 67, 69) [191 for 7229 yds]
Longest Punt: 70 yards by Brent Cripps vs. Mo. Western (9/21/74)
 *83 yards by Leroy Harmon vs. Olathe Naval Base, (9/28/45)

Washburn Team Records

Most Wins, Season: 8, 1974**, 1964, 1906*, 1907*, 1931*, 1953*

Most Losses, Season: 10*, 1937

Most Consecutive Wins: 14, 1930-31

Most Consecutive Losses: 14, 1936-37

Most Shutouts, Season: 7, 1906

10*, 1906

Most Consecutive Shutouts: 3, 1906 & 1919

7*, 1906

Most Times Shutout, Season: 6, 1928 & 1942

7*, 1917

Most Points Scored, Game: 60, 1949, Rockhurst College 0

80*, 1900, Fort Riley 0

Most Points Scored, Season: 248, 1949

Highest Scoring Average, Season: 27.6, 1949

Widest Margin of Victory: 60, 1949, WU 60-Rockhurst 0

80*, 1900, WU 80-Fort Riley 0

Most Opponent Points, Game: 72 by Bethany, WU 0, 1902

70 by Northern Colorado, WU 28, 1969

Most Opponent Points, Season: 240, 1968

Most Combined Points, Game: 98, WU 28-N. Colo. 70, 1969

Most First Downs, Game: 23 vs. Peru State, (11/8/64)

Season: 146, (1963)

Most Yards Rushing, Game: 382 vs. Fort Hays, (1960)

Season: 2081, (1964)

Best Rushing Average, Season: 211.2, (1948)

Most Yards Passing, Game: 268 vs. St. Benedict's, (1960) [15 of 23]

Season: 1276, (1949)

Best Passing Average, Season: 141.8, (1949)

Most Yards Total Offense, Game: 681 vs. Rockhurst, (1949)

Season: 3151, (1949)

Best Total Offense Average, Season: 350.1, (1949)

Most Passes Attempted, Game: 37 vs. Emporia State, (11/9/68)

Season: 215, (1969)

Most Passes Completed, Game: 27 vs. Emporia State, (11/9/68)

Season: 87, (1967)

Best Punting Average, Game: 49.8 vs. Mo. Western (9/21/74) [6 for 299 yds.]

Season: 39.0, (1969), [78 punts]

Most Punts, Game: 9 vs. NE Missouri, (1962)

Season: 78, (1967)

Fewest Rushing Yards Allowed, Game: 1 vs. Warrensburg, (9/8/45)

Season: 787, (1964)

Fewest Passing Yards Allowed, Game: 0 vs. So. Colo., (10/6/73)

0 vs. NE Missouri, (9/22/63)

0 vs. Emporia St., (10/4/47)

0 vs. Wichita, (11/1/46)

Season: 493, (1963)

Fewest Total Offense Yards Allowed, Game: 82 vs. So. Colo., (10/20/63)

13 vs. Olathe Naval Base, (10/23/53)

Season: 1614, (1963)

Most Interceptions, Game: 6 vs. Mo. Western (9/21/74)

Season: 21, (1974, 1964)

Fewest Passing Yards Average Allowed, Season: 87.4, (1964)

Fewest Rushing Yards Average Allowed, Season: 54.8, (1963)

(* contains results of non-intercollegiate games)

(**includes Boot Hill Bowl victory)

Longest Scoring Plays

Run from Scrimmage: 94 yards by Melvin Myricks vs. Kearney St., 11/18/65

Pass Play: 83 yards, Jon Bakalar to Allan Dressman vs. St. Mary of Plains, 9/19/70

Punt Return: 87 yards by Morley Fraser vs. Iowa Wesleyan, 10/12/46

Kickoff Return: 97 yards by Bill Baker vs. St. Benedict's, 10/20/51

Interception Return: 91 yards by Meryl Garey vs. Peru State, 9/17/48

Longest Field Goal: 52 yards by Russ Hill at Northern Colorado, 10/28/72

Washburn Football: Year-by-Year

Year	W-L-T	Pct	Pts-Opp	Coach
1891	1-4-0	.200	46-146	
1892	0-2-0	.000	0-80	
1893	1-0-0	1.000	18-0	
1894	3-1-0	.750	66-30	W. M. Gaines
1895	No intercollegiate games played			
1896	6-1-1	.813	126-50	W. Griffith
1897	7-2-0	.778	88-24	Paul Coldren
1898	5-0-1	.917	117-23	Paul Coldren
1899	2-5-2	.333	34-75	William Melford
1900	6-2-0	.750	194-11	Ben G. Owen
1901	3-2-5	.450	47-46	Lawrence Banks
1902	2-6-0	.250	23-220	H. Ward Page
1903	7-0-1	.875	168-0	A. R. Kennedy
1904	7-2-0	.778	191-35	Dr. John Outland
1905	7-3-0	.700	137-83	Dr. John Outland
1906	8-1-3	.792	147-11	Dr. Garfield Weede
1907	8-0-0	1.000	124-11	Dr. Garfield Weede
1908	3-4-1	.438	53-73	Dr. Garfield Weede
1909	3-3-0	.500	78-110	Dr. Robert Stewart
1910	3-4-0	.429	87-95	Dr. Robert Stewart
1911	3-4-1	.438	65-67	William Lloyd Driver
1912	4-3-0	.571	119-52	William Lloyd Driver
1913	3-2-2	.571	95-42	Glen C. "Grip" Gray
1914	4-2-0	.667	100-60	Glen C. "Grip" Gray
1915	1-6-1	.188	33-127	Glen C. "Grip" Gray
1916	3-6-0	.333	47-161	A. R. Kennedy
1917	2-6-2	.300	45-102	A. R. Kennedy
1918	4-1-0	.800	90-35	Ernest E. Bearg
1919	7-1-1	.833	212-40	Ernest E. Bearg
1920	4-2-0	.667	54-42	Dwight T. Ream
1921	3-5-1	.438	54-98	Dwight T. Ream
1922	1-7-0	.125	37-184	G. D. Vosburg
1923	0-7-2	.111	21-117	George J. Woodward
1924	3-5-0	.375	60-99	George J. Woodward
1925	2-4-1	.357	15-63	George J. Woodward
1926	3-4-1	.438	49-97	George J. Woodward
1927	1-7-0	.125	21-127	Roy Wynne
1928	2-7-0	.222	33-147	Roy Wynne
1929	5-6-0	.455	100-108	Ernest E. Bearg
1930	6-2-0	.750	176-85	Ernest E. Bearg
1931	8-2-0	.800	108-54	Ernest E. Bearg
1932	6-3-1	.650	124-67	Ernest E. Bearg
1933	5-5-1	.500	76-54	Ernest E. Bearg
1934	2-5-1	.313	37-67	Ernest E. Bearg
1935	4-6-0	.400	108-104	Ernest E. Bearg
1936	2-6-1	.278	53-148	Ernest E. Bearg
1937	0-10-0	.000	39-209	Elmer "Gus" Holm
1938	6-3-0	.667	160-160	Elmer "Gus" Holm
1939	6-4-0	.600	145-128	Elmer "Gus" Holm
1940	4-6-0	.400	134-198	Elmer "Gus" Holm
1941	4-2-2	.625	133-48	Elmer "Gus" Holm
1942	1-7-0	.125	27-151	Bob Raugh
1943	2-4-2	.375	52-113	Bob Raugh
1944	1-6-0	.143	24-220	Dee Erickson
1945	4-2-0	.667	79-53	Lew Lane
1946	6-2-1	.722	138-86	Dick Godlove
1947	7-1-0	.875	159-56	Dick Godlove
1948	3-5-1	.389	176-117	Dick Godlove
1949	7-2-0	.778	248-137	Dick Godlove
1950	3-4-1	.438	82-120	Dick Godlove
1951	6-3-0	.667	196-150	Dick Godlove
1952	4-5-0	.444	143-163	Dick Godlove
1953	8-1-0	.889	230-46	Dick Godlove
1954	6-2-0	.750	120-99	Dick Godlove
1955	6-2-1	.722	185-111	Dick Godlove
1956	3-6-0	.333	134-164	Dick Godlove
1957	5-4-0	.556	194-148	Dick Godlove
1958	4-5-0	.444	131-124	Dick Godlove
1959	3-6-0	.333	90-156	Ralph Brown
1960	3-6-0	.333	120-173	Ralph Brown
1961	4-5-0	.444	115-194	Ralph Brown
1962	4-5-0	.444	125-207	Ellis Rainsberger
1963	3-6-0	.333	182-108	Ellis Rainsberger
1964	8-1-0	.889	182-53	Ellis Rainsberger
1965	2-6-1	.278	88-217	Ed Linta
1966	2-7-0	.286	87-163	Ed Linta
1967	0-9-0	.000	53-302	Bill Schaaeke
1968	2-7-0	.286	80-240	Bill Schaaeke
1969	5-5-0	.500	169-234	Harold "Bud" Elliott
1970	5-3-2	.600	186-161	Harold "Bud" Elliott
1971	5-5-0	.500	175-151	Bob Noblitt
1972	3-7-0	.300	140-176	Bob Noblitt
1973	3-6-1	.333	111-155	Bob Noblitt
1974	8-3-0	.727	235-169	Larry Elliott
Total	326-329-42	.498	8743-9189	

1975 Opponents

Game #1: William Jewell College

Sept. 13 -- 7:30 p.m. Topeka
PARENTS' NIGHT

Location: Liberty, Missouri 64068
Athletic Director: Larry Hamilton (816/781-3806 x 247)
Head Coach: James A. Nelson (8th yr., 53-23-0)
Phone: 816/781-3806 x 248
Ass'ts: Larry Hamilton, Vic Bonuchi, Dewitt Phillips, Bill Kelso
SID: Rich Stonum (816/264-3427)
Stadium: Greene Memorial, on campus (7500)
Nickname: Fighting Cardinals
Colors: Cardinal Red and Black
Enrollment: 1365
Member of: NAIA, HOAC
Lettermen Returning: 29
1974 Record: 6-4
Series: WU leads 6-5-0

Lost: 17
1974 HOAC Record: 4-2 (3rd)
1974 Score: WU 21 WJ 13

Outlook:

Replacing seven defensive and three of four offensive backfield starters presents a difficult problem to coach Jim Nelson in 1975. A strong-armed quarterback must be found if the Cardinals are to capitalize on a trio of talented receivers in tight end Mark Schuyler, split end Bob Cochran and wide receiver Doug Seals who combined for 13 TD receptions last season. Pass protection is available with a veteran front line led by All-HOAC center Steve Taylor. Major candidates for the signal calling position are Jim Hall, a senior who threw for 361 yards and six TD's as a reserve in '74, and Gary Patton, a junior who transferred from Northwest Missouri a year ago. Several players are vying for the running slots with tri-captain Bill Day owning the inside track.

Defensively the Cardinals have only four returning starters in linemen Jeff Davis and Mike Mallet, both sophomores, senior linebacker Dal Overton and senior back Bill Lewis. Lewis led Jewell in interceptions in '74 with five. Reserves and young players must adjust to unaccustomed starting roles rapidly in the remaining seven positions if the Cardinals are to contend for the Heart of America Conference title in 1975.

Game #2: Missouri Western State College

Sept. 20 -- 7:30 p.m. St. Joseph

Location: St. Joseph, Missouri 64507
Athletic Director: Charlie Burri (816/233-7192 x 482)
Head Coach: Rob Hicklin (2nd yr., 3-7)
Phone: 816/233-7192 x 473
Ass'ts: Jim Grechus, Steve Loney, Don Cummings, Jay Adcox
SID: Jerry Myers (816/233-7192 x 480, home-279-5721)
Stadium: Noyes Field, Noyes and Messanie (5,000)
Nickname: Griffons
Colors: Black, Gold and White
Enrollment: 4,000
Member of: NAIA, Independent
Lettermen Returning: 24
1974 Record: 3-7
Series: WU leads 2-0-1

Lost: 18
1974 Score: WU 37 MW 0

Outlook:

The loss of 18 lettermen dims the prospect of improving on 1974's 3-7 record for second year coach Rob Hicklin but the Griffons do have 24 lettermen and several transfers with impressive credentials to keep the outlook bright.

Topping the returnees are senior quarterback Bob Heimbaugh and junior runningback George Blakley but the remaining offensive backfield slots must be filled by newcomers. Kansas University transfer Jay Randall, who set freshman rushing records for the Jayhawks, and Missouri University transfer Myke "Bubba" Hopkins, a 220 lb. fullback with 4.7 speed, should make strong bids for the open slots. The offensive line appears reliable although a few changes are necessary to fill two spots vacated by graduation. Letterman Ron Obee, a 6-4, 244 lb. tackle, lends experience to the line with 6-6, 230 lb. red shirt Mark Storey providing a strong replacement for one of the vacated slots. Top receivers should be two-year letterman Alan Johnson and MU transfer Walter Wilson, a wide receiver with 4.5 speed.

Four starters return to the defensive line with 6-4, 245 lb. tackle Kinney Redding the apparent leader. Only an end was lost from 1974 but three lettermen were waiting in the wings. Linebacker is a major question mark with transfers expected to fill two positions while one safety must be replaced in the secondary.

1975 Opponents

Game #3: Missouri Valley College

Sept. 27 -- 7:30 p.m. Marshall

Location: Marshall, Missouri 65340

Athletic Director: Ken Gibler (816/886-6924 x 17)

Head Coach: Ken Gibler (7 yrs., 50-18-4)

Phone: 816/886-6924 x 17

Ass'ts: Grover Redford, Bob Thompson, Dennis Reilly

SID: Sue Beckman (816/886-6924)

Stadium: Gregg-Mitchell, on campus (3,200)

Nickname: Vicksings

Colors: Purple and Orange

Enrollment: 600

Member of: HOAC, NAIA Div. II

Lettermen Returning: 24

Lost: 16

1974 Record: 10-1-1 (includes win in NAIA playoff and loss in national champ. game)

1974 HOAC Record: 5-0-1 (1st)

Series: MV leads 3-2

1974 Score: WU 7 MV 41

Outlook:

Twenty-four lettermen return from 1974's NAIA Division II national runners-up with 16 of those back from the offense that averaged 27.4 points per game during the regular season. Only eight lettermen return to the defense with the entire starting secondary graduated.

Senior quarterback Craig Conklin returns to lead the offense along with starting fullback David Pitt and 5-8, 175 lb. halfback Greg Farris, who rushed for 2,246 yards during the past two seasons. Also back is last year's leading receiver, split end Frank Arizmedi, who caught seven passes for 91 yards in the national championship game. Returning starters at guard, Doug McAnelly, 6-2, 230 lbs., and Gene Smith, 5-9, 230 lbs., are expected to team with a selection of sophomore tackles led by 6-7, 275 lb. Danny Jack in the offensive line.

Stan McKinney, a 205 lb. senior, and Gary Sowell, a 185 lb. junior, make linebacker one of the Vikings' defensive strengths in 1975 with 6-3, 230 lb. junior Chip Newell bolstering the tackle slot along with 215 lb. junior Greg Prudom. The starting secondary will be all new with junior letterman Tom Cavallaro the top-rated returnee.

Game #4: Emporia Kansas State College

Oct. 4 -- 7:30 p.m. Topeka

Location: Emporia, Kansas 66801

Athletic Director: Bill Tidwell (316/343-1200 x 354)

Head Coach: Dave Hoover (2nd yr., 2-7)

Phone: 316/343-1200 x 355

Ass'ts: Ken Graber, Jerry Welch

SID: Bob Ecklund (316/343-1200 x 455, home-342-1216)

Stadium: Welch, on campus (9,000)

Nickname: Hornets

Colors: Black and Gold

Enrollment: 5,500

Member of: GPAC, NAIA

Lettermen Returning: 18

Lost: 12

1974 Record: 2-7

1974 GPAC Record: 1-4 (T 4th)

Series: EKSC leads 35-32-6

1974 Score: WU 36 EKSC 15

Outlook:

With several talented lettermen and a number of quality recruits, Emporia State should improve on last year's 2-7 record and 1-4 GPAC finish.

Five offensive starters must be replaced by second year coach Dave Hoover and most of those vacancies are in the line where only two starters return. Hoover has a proven backfield to build around, however, with quarterback Bob Ginavan, fullback Greg Ptacek and tailback Gary D'Aires returning. The presence of a new quarterback, Steve Hamilton, may allow Ginavan to be switched to halfback. Experience is also available at receiver with split end Bruce Manchion and tight end Robbie Vannaman back in their starting roles.

Defense should be the Hornet strength with nine starters returning. Top returnees include senior linebacker Terry King, 240 lb. senior tackle Monte McCormack and senior safety Curt Nether. The return of end Gary Lohmeyer who missed 1974 with an injury will give the defensive line added depth and leadership.

If a new offensive front line can adjust rapidly, the Hornets have the talented backfield and solid defense necessary to push for the conference crown.

1975 Opponents

Game #5: Benedictine College

Oct. 11 -- 2:00 p.m. Topeka

HOME COMING

Location: Atchison, Kansas 66002

Athletic Director: Tom Colwell (913/367-5340 x 250)

Head Coach: George Tardiff (2nd yr., 0-9)

Phone: Ofc.-913/367-6110 x 222 Home-367-7259

Ass'ts: Darryl Jones, Larry Wilcox, Charlie Gartenmayer

SID: Gene Regan (913/367-5340 x 207, home-367-7061)

Stadium: Amelia Earhart Stadium, 15th & Atchison St. (3,000)

Nickname: Ravens

Colors: Red, White and Black

Enrollment: 1,050

Member of: NAIA, Independent

Lettermen Returning: 18

Lost: 7

1974 Record: 0-9 (Actual 3-6 -- 3 games forfeited for ineligible player)

Series: WU leads 13-11-0

1974 Score: WU 24 BC 12

Outlook:

Coach George Tardiff anticipates a realistic shot at a winning season in Benedictine's second year since the reinstatement of varsity football. The Ravens won three of their final four games in 1974 but had to forfeit the victories when a player was discovered to be ineligible.

Only three players must be replaced from the defensive unit that finished third in the NAIA's national statistics in 1974 allowing only 160 yards a game. Topping the returnees are last season's leading tacklers, linebackers George Caine and Jim Kassly. Leading the secondary that allowed only 63.1 yards per game through the air last season is the squad's only senior starter Matt Filipovich.

Improving the offense was Tardiff's major concern during recruiting and Kansas University transfer Garrett Donaldson is expected to help at runningback. Returning at quarterback is sophomore standout Rob Winkler who passed for more than 1,000 yards his freshman season along with his favorite targets, split end Bob Tumberger who grabbed 31 passes in 1974 and tight end Bob Brandt who caught 25. The front line seemed improved in spring practice and, if the Ravens can reduce the errors that cost Benedictine in early 1974, Tardiff may achieve that hoped-for winning season.

Game #6: University of Southern Colorado

Oct. 18 -- 1:30 p.m. MST Pueblo

Location: Pueblo, Colorado 81001

Athletic Director: Harry Simmons (303/549-2219)

Head Coach: Mike Friedman (2nd yr., 3-6)

Phone: 303/549-2711

Ass'ts: Dr. Don Stutters, Chuck Haering, Joe LaFleur

SID: Doug Thornton (561-9348 home) [student-acting]

Stadium: Pueblo Public School Stadium (13,500)

Nickname: Indians

Colors: Red and Blue

Enrollment: 6,000

Member of: GPAC, NAIA, NCAA Col. Div.

Lettermen Returning: 22

Lost: 8

1974 Record: 3-6

1974 GPAC Record: 1-4 (T 4th)

Series: USC leads 6-4

1974 Score: WU 19 USC 14

Outlook:

The youth and inexperience that slowed Southern Colorado last season has become an asset for 1975. With only eight lettermen gone Coach Mike Friedman has few holes to plug in his starting lineups.

Linebacking should be solid in 1975 with senior Norm Fleischauer, who averaged almost 20 tackles a game last season, anchoring the middle. The defensive line, however, is rated as potentially the strongest area with the experience and depth of six returnees who logged extensive playing time last year. The secondary lost two outstanding players but returns two capable starters in Rich Yonker and Doug Mason.

Offensively, the Indians boast the number two and four receivers in the GPAC in split end Clyde Kenebrew and tight end Tom Guinane. Kenebrew set a number of records last year including nine touchdown receptions for the season and three in one game. Also back are the three quarterbacks, Royal Hurst, Greg Johnson and Bob Blaser, who shared playing time last fall. Running back Ray Brown, the team's leading rusher last year, also returns. The line, however, returning only two lettermen, is the critical spot for the 1975 Indian season.

If Friedman can rebuild the offensive line rapidly and find replacements for graduated defensive backs Glen Printers and Alan Webster, the Indians should have a successful season in their first year of university status.

1975 Opponents

Game #7: Fort Hays State College

Oct. 25 -- 7:30 p.m. Topeka

Location: Hays, Kansas 67601
Athletic Director: Cade Suran (913/628-4263)
Head Coach: Bill Giles (4th yr., 7-21-1)
Phone: 913/628-4263
Ass'ts: Jerry Cullen, Barry Allen, Ed McNeil
SID: Lon Pishny (913/628-4263, home-628-2446)
Stadium: Lewis Field, on campus (7,000)
Nickname: Tigers
Colors: Black and Gold
Enrollment: 4,800
Member of: GPAC, NAIA
Lettermen Returning: 24
1974 Record: 1-9
Series: WU leads 26-11-3

Lost: 17
1974 GPAC Record: 1-4 (T 4th)
1974 Score: WU 14 FH 7

Outlook:

A potent offensive backfield lends excitement to the Tiger outlook for 1975. With fullback Craig Horchem, elusive tailback Blane Johnson and proven quarterback Greg Custer, the Tigers have great ability in the backfield. A pair of fine receivers in two-time All-GPAC split end Ron Hawley and promising tight end Greg Steen provides a decided aerial threat. The major obstacle to Coach Giles' improving on last year's disappointing 1-9 record is the graduation of much of the interior offensive line. However, veterans Scott Soukup, an All-GPAC choice a year ago, and Steve Thompson provide a good duo to build around.

The line and linebacking corps return nearly intact with the secondary the only questionable spot on defense. All-conference tackle Dave Thom and middle linebacker Chris Cullen lead an experienced defensive front wall but safety Bruce Van Petten is the only proven defensive back to return. Newcomers and reserves will have to come through in the backfield to give the Tigers a balanced defense.

With the experience gained last year by the youthful offensive backfield and the proven ability of the defensive line, Fort Hays should be a better team than in 1974.

Game #8: Missouri Southern State College

Nov. 1 -- 2:00 p.m. Joplin

Location: Joplin, Missouri 64801
Athletic Director: Max Oldham (417/624-8100)
Head Coach: James L. Frazier (5th yr., 26-15)
Phone: 417/624-8100 (home-417-781-2565)
Ass'ts: Anthony Calwhite, Don Gaddis, Ed Wuch
SID: Ron Robson (417/624-8100, home-623-6004)
Stadium: Lion Stadium, on campus (7,000)
Nickname: Lions
Colors: Green and Gold
Enrollment: 3,289
Member of: NAIA, Independent
Lettermen Returning: 38
1974 Record: 6-3
Series: Tied at 2-2-1

Lost: 7
1974 Score: WU 35 MS 17

Outlook:

Thirty-eight lettermen including 15 seniors give fifth year coach Jim Frazier reason to expect success in the new, synthetic-turfed Lion stadium to be unveiled this fall. The Lions have talent and depth at every position with the offensive backfield especially impressive.

Talented running backs Robert Davis, who paced the Lions with 929 yards and 12 touchdowns in 1974, and running mate Lydell Williams, who rushed for 831 yards last season, are backed up by senior John Carter and combine with an excellent running quarterback in Skip Hale to give Southern explosive rushing potential. Opening holes will be a line that weighs in at an average of 236 lbs. with the left guard the only new starter in the offense. Tight end returns 6-4, 225 lb. junior Ken Howard with 6-6, 235 lb. transfer Terry Joyce providing competition while starters Kerry Anders and Randy Brittan return at split end.

Senior linebackers Ken Davis and Randy Hocker will be joined by junior Dean Collins for an improved linebacker picture. Starting defensive end Mike Keith and tackles Roger Green, 6-4, 240 lbs., and Roy Jones, 6-2, 235 lbs., will welcome sophomore Kenric Conway at the other end position. The secondary should be reliable with returning starters Tom Warren and Ken Frank at halfbacks and Tom Cox, Jim Stong and Chris Caywer at safety.

Transfer Terry Joyce promises an improvement in the Lions' punting after averaging 43.8 yards in junior college.

24

1975 Opponents

Game #9: University of Northern Colorado

Nov. 8 -- 2:00 p.m. Topeka

Location: Greeley, Colorado 80639
Athletic Director: Joe Lindahl (303/351-2566)
Head Coach: Bob Blasi (10th yr., 60-21-2)
Phone: 303/351-2067
Ass'ts: Jerry McMillen, Buck Rollins, Frank Bauer
SID: Gary Morgan (301/351-2331, home-353-2458)
Stadium: Jackson Field, 6th Ave. and 19th Street (7,500)
Nickname: Bears, Bruins
Colors: Navy Blue and Gold
Enrollment: 11,900
Member of: GPAC, NCAA Col. Div.
Lettermen Returning: 27
1974 Record: 8-1-0
Series: UNC leads 7-1-0
1974 GPAC Record: 5-0 (1st)
1974 Score: WU 7 UNC 28

Outlook:

Northern Colorado, which has never finished below second in the GPAC standings, is again the league's pre-season favorite. Although the Bears lost twelve lettermen, they have 27 back from the team that won the 1974 conference title with a perfect 5-0 record and finished the season with an 8-1 mark.

Replacing All-America quarterback Gerry Dattilio from the squad that finished second in total offense in the NCAA College Division with 446 yards per game is coach Bob Blasi's major obstacle to a tenth successful season. Last year's number two quarterback Kevin Davis is the likely choice. The Bears lost only one offensive lineman and return three all-conference picks in tight end Dwight Bryan, tackle Bob Bliss and guard Mike Berens. Two All-GPAC runningbacks provide proven performance in 1,000-plus-yard rusher Chuck Taibi and fullback Gary Ecker. Experience is available in the wide receiver role with both Mike Mitchell and Mike Dunafon back but depth could be a problem there as with fullback.

Graduation hit the bear defense hardest with two all-league linebackers and two cornerbacks gone. Transfers and sophomores will be expected to fill those gaps. Only all-league defensive end Mark Wortman was lost from the front line and All-GPAC tackle Dave Stalls is back to lead the other returning starters.

If transfers and sophomores can fill the defensive gaps left by graduation and a suitable substitute can be found for Dattilio, the Bears should again make a strong bid for the GPAC title.

Game #10: Kansas State College of Pittsburg

Nov. 15 -- 7:30 p.m. Pittsburg

Location: Pittsburg, Kansas 66762
Athletic Director: Carnie Smith (316/231-7000 x 295)
Head Coach: Tom Lester (10th yr., 44-24-3)
Phone: 316/231-7000
Ass'ts: Bill Samuels, Joe Murphy
SID: to be filled (316/231-7000 x 292)
Stadium: Brandenburg, on campus (10,000)
Nickname: Gorillas
Colors: Crimson and Gold
Enrollment: 5,100
Member of: GPAC, NAIA
Lettermen Returning:
IGNORE LINE ABOVE

Lettermen Returning: 20
1974 Record: 4-7
Series: KSC leads 29-14-1

1974 GPAC Record: 4-1 (2nd)
1974 Score: WU 14 KSC 15

Outlook:

Twenty lettermen return from the 1974 Gorilla squad that won four of its final six games to finish second in the GPAC with a 4-1 conference mark. The Gorillas edged Washburn 15-14 in the season finale on a last play 56-yard GPAC record field goal to brighten a 4-7 season record.

Ninth year coach Tom Lester looks forward to a potent ground game with leading rusher Jack Crumbliss and explosive Bruce Cato returning to the backfield. Crumbliss finished strong rushing for 114 yards in 22 carries against Washburn while Cato, a 5'5" return specialist who returned two kickoffs for 93 yard TD's last season, ran for 127 yards on only 13 carries. Two S.M.U. transfers, 200 lb. halfback Rex Garner and 220 lb. fullback John Holland, buttress Pittsburg's running game. Quarterback Steve Hamilton is a proven aerial threat with wide receiver Pat Lamb and tight ends Randy Fruits and Bob Dinsmore his favorite targets. The offensive line must be rebuilt after losing three starters by graduation.

All-GPAC linebacker Tim Anchors leads the defense that returns intact the line and linebacking crews that started in the Washburn victory. Only Steve Foster, however, returns to the defensive secondary since Steve Pazzie has been moved to linebacker.

If the Gorillas can fill the gaps in the offensive line and defensive secondary, they should again finish near the top in the GPAC standings.

25

The Ichabod Club

The Ichabod Club assists the Washburn athletic program by providing funds for athletic scholarships. To be eligible for these scholarships, the student athletes must maintain the high academic as well as the high athletic standards of the university.

The Ichabod Club also supports the total athletic program through involvement in athlete job placement, athletic banquets, homecoming and commencement activities, the Hall of Fame and the sale of season tickets. The club heeds the philosophy that Washburn's image is reflected by its athletic teams and that the academic excellence of the university should also be carried into athletics.

Weekly noon luncheon meetings are held on Mondays throughout the football and basketball seasons. The luncheon program consists of coaches' and players' comments, game films and discussion. The meetings are open to the public and guests are welcome.

Ichabod Club Officers

President	H. C. "Buzz" Evans
V-President	Dean Parker
Secretary	John Corkhill

Washburn Athletic Hall of Fame

Dr. Marvin "Mal" Stevens (1970)	Walter "Kayo" Emmot (1971)
Charles "Dee" Erickson (1970)	Dick Godlove (1971)
Warren "Waddy" Shaw (1970)	Arthur A. Fletcher (1972)
Clarence "Curly" Edwinton (1970)	Leroy Harmon (1972)
Arthur "Dutch" Lonborg (1971)	Ernest E. Bearg (1973)
Clarence "Kid" Breithaupt (1971)	Elmer "Gus" Holm (1973)
Arthur "Art" Brewster (1971)	Charles "Chuck" Nelson (1973)
Gerald "Jerry" Spohn (1971)	Dan Emrich (1974)
Lambert "Butch" Lowe (1971)	Tom Carlson (1974)
Orson "Shorty" McLaughlin (1971)	

NAIA Hall of Fame and All-Americans

Bill McDonald	Golf All-American '63, '64, '65
Marion McDonald	Baseball Hall of Fame '63
Dan Myers	Baseball All-American '63
Dick Godlove	Track Hall of Fame '64
Bob Noblitt	Football All-American '64
Robert Hardy	Football All-American '64
Harold Noll	Track All-American '65
Robert Denson	Track Hall of Fame '66
David Lopes	Baseball All-American '67
Dan Frickey	Golf All-American '74
Kyle Launchbaugh	Golf All-American '74

THE G.P.A.C.

The Great Plains Athletic Conference was founded in 1972 when the seven members of the Plains Division of the Rocky Mountain Athletic Conference were converted into a conference, principally because of travel complications in the 14-member RMAC's five-state area.

Simultaneously, the Mountain Division was given conference status and retained the RMAC name. As allied entities in the Mountain and Plains Intercollegiate Athletic Association, both the GPAC and RMAC are regulated by the MPIAA; however, each has autonomy in setting its own limitations on financial aid, scheduling and travel squads. Women's intercollegiate competition is expected to become a part of the MPIAA program in 1975-76.

Following the 1972-73 academic year, the University of Nebraska-Omaha dropped its conference affiliation. Kearney State College, Nebraska, was admitted to the conference on July 1, 1974 and became eligible for championships in spring sports in 1975. Kearney will not be eligible for the football championship until 1976. Northern Colorado will resign its GPAC membership effective June 30, 1976.

The seven GPAC members are Fort Hays State College, Kansas State College of Pittsburg, Emporia Kansas State College, Kearney (Nebraska) State College, Southern Colorado State College, the University of Northern Colorado, and Washburn University of Topeka.

MPIAA COMMISSIONER:

Harry B. Kinseley
1423 S. Garfield Street
Denver, Colorado 80210
(303) 757-8789

GPAC INFORMATION DIRECTOR:

Lon E. Pishny
Fort Hays State College
Hays, Kansas 67601
(913) 268-4263

1974 All-GPAC Football Team

Name, School	Pos.	Ht.	Wt.	Class
Offense				
Dwight Bryan, No. Colorado	E	6-2	205	Jr.
Ron Hawley, Ft. Hays*	E	6-2	185	Jr.
Bob Bliss, No. Colorado	T	6-3	250	Jr.
Scott Soukup, Ft. Hays	T	6-3	228	Jr.
Cooper Johnson, Washburn	G	6-3	215	Sr.
Mike Berens, No. Colorado	G	6-2	215	Jr.
Dirk Wedd, Emporia State*	C	6-1	220	Sr.
Gerry Dattilio, No. Colorado*	QB	6-1	200	Sr.
Chuck Taibi, No. Colorado	RB	6-0	180	Jr.
Doug Floyd, Emporia State	RB	6-1	185	Sr.
Gary Eckker, No. Colorado	FB	5-10	213	Jr.
Defense				
Don McGlinn, Washburn	E	6-1	200	Sr.
Mark Wortman, No. Colorado*	E	6-3	215	Sr.
Jim Hastings, Washburn	L	5-11	200	Jr.
Dave Stalls, No. Colorado	L	6-4	230	So.
Dave Thom, Ft. Hays	L	6-3	225	So.
Gary Wedhelm, No. Colorado	LB	6-0	220	Sr.
Tim Anchors, KSC-Pittsburg	LB	6-3	212	Jr.
Norm Fleishasur, So. Colorado	LB	6-3	195	Jr.
Steve Simpson, Ft. Hays	DB	6-0	195	Sr.
Phil Pettay, Emporia State	DB	6-0	180	Sr.
Glen Printers, So. Colorado*	DB	6-2	195	Sr.
Mike Williams, No. Colorado*	SP	5-10	175	Jr.

*- Repeaters



Washburn University

Washburn University of Topeka, one of only two American municipal universities, is a moderate sized institution of 5,100 students. The University includes a School of Liberal Arts, a School of Business, a nationally famous School of Law and a graduate program in elementary education.

Founded in 1865 as a Congregational Institution named Lincoln College, the school's name was changed to Washburn College in 1868 in recognition of a gift from Ichabod Washburn, a prominent eastern industrialist.

In 1874, the first building was erected on the present 160 acre campus. Three more buildings were added before 1900. In 1903 the School of Law was organized. In 1941, with a physical plant of twelve buildings, Washburn began operation as a municipal university under a board of regents.

On June 6, 1966, the face of the University was drastically altered. At 7:30 p.m., a tornado swept the campus destroying nine buildings and causing extensive damage to fourteen others. The loss was estimated at ten million dollars. The loss of 600 trees and extensive landscaping was inestimable.

Washburn began rebuilding immediately. Since 1966, a \$3.5 million Fine Arts Center, a \$1.5 million Law School and a \$2.5 million Learning Resources Building have been dedicated.

Currently, a \$4.5 million fund drive is in operation to provide resources for a new library and a health, physical education and recreation complex.

Approximately forty per cent of Washburn's fulltime faculty of 170 hold doctorates. The average class size at Washburn is 25.

Washburn awards over 600 scholarships and grants each year and extends over 400 student loans. Approximately 85 per cent of the student body work part time.

The University has a comprehensive intercultural relations program housed in the International Center. Washburn offers a semester in Copenhagen program with fifteen hours credit transferable to the Washburn transcript. The University also sponsors a supervised teaching program in Torreon, Mexico, a cooperative program for study in France and an exchange program with the Netherlands.

Washburn operates Kansas' first educational television station. The station, KTWU Channel 11, is a maximum power facility servicing 31 counties in northeast Kansas.

The University offers a continuing education program involving approximately 2000 students and an extensive workshop program and summer session.

Washburn sponsors five national and two local fraternities, five national sororities, an independent students' association, and numerous special and departmental clubs. Student activities include a weekly newspaper, a literary magazine, the yearbook, Symphonette, band, University Choir, Washburn Belles, Washburn Players, debate, student council, Angel Flight, Air Force ROTC and Washburn singers.

Washburn participates in varsity athletic programs in basketball, football, golf, track, cross country, tennis and baseball as a member of the Great Plains Athletic Conference (GPAC) and has a club program in crew rowing and intercollegiate competition in the KIAAW in women's athletics. Intramural sports also form an important segment of student life on the campus.

What's an Ichabod?

The name Ichabod is derived from the first name of Ichabod Washburn, an early benefactor of the university. Until 1938 there were no particular characteristics associated with Mr. Ichabod and there was no graphic representation of him. During the 1937-38 school year, the editors of *Kaw*, the university yearbook, decided that such items were important to the university and began to accept suggestions for a design of Mr. Ichabod. The adopted design was drawn by Bradbury Thompson, (BA'34).



The following explanatory material accompanied Ichabod's first representation in the *Washburn Kaw*: "He has courage and enthusiasm as shown by his brisk walk. He is democratic and courteous, for he tips his hat as he passes. Sincere in his search for truth and knowledge, he studiously carries a book under his arm. His friendly smile makes you like him. He is neatly dressed and he fits well into his generation . . . but he adapts himself with equal ease to any change or any age."

1975 COMPOSITE SCHEDULE OF WASHBURN OPPONENTS

Sept. 6	Wm. Jewell	Mo. Western	Mo. Valley	Emporia St.	Benedictine	So. Colo.	Fort Hays	Mo. Southern	No. Colo.	KSC-Pittsburg
Sept. 13	at Washburn	Harding	at Rolla	at Mo. Southern	at Hastings	at Western St.	at N.W. Olla.	at Emporia St.		at NW Mo.
Sept. 20	NW Missouri	at Washburn	at Concordia	at Cameron	at Clilver-Stocketon	at Adams St.	at Kearney St.	at U.M.-Rolla	at Western St.	at SW Mo.
Sept. 27	Hastings	at NE Mo.	at Washburn	at Gen. Mo.	at Baker	at E. New Mexico	at Mo. Southern	at Fort Hays	at Colo. Mines	at U.M.-Rolla
Oct. 4	at Mo. Western	at Wm. Jewell	at Tarkio	at Washburn	at Peru St.	at No. Colo.	at E. New Mexico	at SW Mo.	at So. Colo.	at Kearney St.
Oct. 11	at Tarkio	at Io. Wesleyan	at Ottowa	at Pittsburg St.	at Washburn	at No. Colo.	at No. Colo.	at Ark. Tech.	at Fort Hays	at Emporia St.
Oct. 18	Ottowa	Benedictine	at Cen. Meth.	at No. Colo.	at Mo. Western	at Washburn	at Pittsburg St.	at Lincoln	at Emporia St.	at Fort Hays
Oct. 25	at Cen. Meth.	at SE Mo.	at Baker	at So. Colo.	at Tarkio	at Emporia St.	at Washburn	at Pittsburg St.	at UN-Omaha	at Mo. Southern
Nov. 1	Mo. Valley	at Kearney St.	at Wm. Jewell	at Fort Hays	at Tabor	at Cameron	at Emporia St.	at Washburn	at Pittsburg St.	at No. Colo.
Nov. 8	at Baker	at Mo. Southern	at Groceland		at Neb. Wesleyan	at Pittsburg St.	at Panhandle St.	at Mo. Western	at Washburn	at So. Colo.
Nov. 15	at Groceland	at Cen. Mo.		at Kearney St.		at Fort Hays	at So. Colo.	at Doane	at E. New Mexico	at Washburn