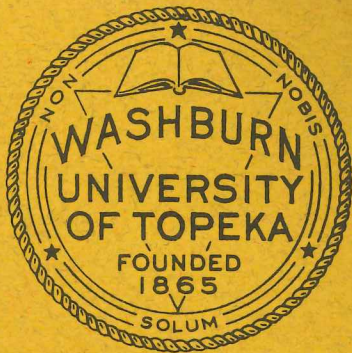


WASHBURN FOOTBALL

1973





The 1973 Washburn University Football Brochure was prepared by Steve Pigg, Assistant Director of Informational Services. While intended primarily as an aid to the news media, it is also directed to the general public and officials of opponent schools. For press passes, additional copies of this brochure, statistics, pictures or any other information concerning Washburn athletics, contact:

Steve Pigg
 Ass't. Director, Informational Services
 Washburn University
 Topeka, Kansas 66621
 Phone: (913) 235-5341 x 116 (office)
 (913) 233-9480 (home)

Media Outlets

Topeka Capital-Journal	913-357-4421
Sports Editor—Bob Hentzen	
WU Writer—Pete Goering	
KTOP AM-FM	913-234-3444
Merle Blair—"The Voice of the Ichabods"	
Jack Porteous	
WIBW Radio-Television	913-272-3456
Fred White	
Ron Paradis	
KTSB Television	913-582-4000
Dave Hill	
WREN AM	913-232-0505
Steve Southerland	
KTWU Television	913-272-8181
Dr. Dale Anderson	
KEWI AM-KSWT FM	913-272-2122
Mike Manns	
Washburn Review	
Student Newspaper	913-233-3211
Topeka Pictorial-Times	913-233-9633
Topeka Ebony Times	913-357-7376
Associated Press (Topeka)	913-234-5654
Elon Torrence	
United Press International	
(Kansas City)	316-471-2070
Charlie Smith	

Table of Contents

Foreword	
Media Outlets	Inside cover
Table of Contents	1
Washburn Facts	2
Washburn University	3
Press Information	
1973 Washburn Pom Pon Girls	4
The Ichabod Club	
Ticket Information	5
The M.P.I.A.A.	6
President John Henderson	
Athletic Coordinator Pete Martin	
Faculty Athletic Representative Dr. Ernie Bader	7
Head Coach Bob Noblitt	8
Assistant Coaches	9
1973 Preview	10-11
1973 Ichabod Rosters	12-15
All-GPAC Returnees	16
1973 Opponents	17-21
1972 Washburn Results	22-23
Washburn Records	24-25
Washburn Yardage Clubs	26
Athletic Hall of Fame and All-Americans	27
Washburn Football: Year by Year	28
What's an Ichabod?	inside cover
Composite Schedules	back cover

Cover art from Washburn football posters of early 1900's by Albert T. Reid.

Washburn Facts

Name: Washburn University of Topeka
Location: 17th and College Ave.
 Topeka, Kansas 66621
University Telephone: (913) 235-5341
Founded: 1865
Enrollment: 5200
Nickname: Ichabods
Colors: Yale Blue and White
Facilities: Whiting Field House (2500)
 Moore Bowl (7200)
Membership: Great Plains Athletic Conference (GPAC)
 National Assn. of Intercollegiate Athletics (NAIA)
President: Dr. John W. Henderson
Athletic Coordinator: Col. "Pete" Martin (interim)
Head Football Coach: Bob Noblitt
Defensive Coordinator: Dave Noblitt
Offensive Backfield Coach: Larry Elliott
Defensive Secondary Coach: Clay Johnson
Line Coach: Rodger Tiesing
Graduate Assistants: Bob Baer, Gary Elliott
Basketball Coach: Glenn Cafer
Tennis Coach: George Parker
Track Coach: Galen Mote
Baseball Coach: Larry Elliott
Golf Coach: Glenn Cafer
Faculty Athletic Representative: Dr. Ernest Bader
Team Physician: James W. Kelley, M.D.
Equipment Manager: Harold Wilcox
Student Trainer: Jere Finson



Washburn University

Washburn University of Topeka, America's only municipal university, is a moderate sized institution of 5,300 students. The University includes a liberal arts school, a school of business, a graduate program in elementary education and a nationally famous school of law.

Founded in 1865 as a Congregational Institution named Lincoln College, the school's name was changed to Washburn College in 1868 in recognition of a gift from Ichabod Washburn, a prominent eastern industrialist.

In 1874, the first building was erected on the present 160 acre campus. Three more buildings were added before 1900. In 1903 the School of Law was organized. In 1941, with a physical plant of twelve buildings, Washburn began operation as a municipal university under a board of regents.

On June 6, 1966, the face of the University was drastically altered. At 7:30 p.m., a tornado swept the campus destroying nine buildings and causing extensive damage to fourteen others. The loss was estimated at ten million dollars. The loss of 600 trees and extensive landscaping was inestimable.

Washburn began rebuilding immediately. Since 1966, a \$3.5 million Fine Arts Center, a \$1.5 million Law School and a \$2.5 million Learning Resources Building have been dedicated.

Currently, a \$4.5 million fund drive is in operation to provide resources for a new library and a health, physical education and recreation complex.

Approximately forty per cent of Washburn's fulltime faculty of 170 hold doctorates. The average class size at Washburn is 25.

Washburn awards over 600 scholarships and grants each year and extends over 400 student loans. Approximately 85 per cent of the student body work part time.

The University has a comprehensive intercultural relations program housed in the International Center. Washburn offers a semester in Copenhagen program with fifteen hours credit transferable to the Washburn transcript. The University also sponsors a supervised teaching program in Torreon, Mexico, a cooperative program for study in France and an exchange program with the Netherlands.

Washburn operates Kansas' first educational television station. The station, KTWU Channel 11, is a maximum power facility servicing 31 counties in northeast Kansas.

The University offers a continuing education program involving approximately 700 students and an extensive workshop program and summer session.

Washburn sponsors five national and two local fraternities, five national sororities, an independent students' association, and numerous special and departmental clubs. Student activities include a weekly newspaper, a literary magazine, the yearbook, Symphonette, band, University Choir, Washburn Belles, Washburn Players, debate, student council, Angel Flight, Air Force ROTC and Washburn singers.

Washburn participates in varsity athletic programs in basketball, football, golf, track, cross country, tennis and baseball as a member of the Great Plains Athletic Conference (GPAC) and has a club program in crew rowing and intercollegiate competition in the KIAAW in women's athletics. Intramural sports also form an important segment of student life on the campus.

Press Information

Press Facilities

Washburn's press box provides space for two fieldphone booths, four broadcasting areas, one clock booth and one scouting booth. There are also large areas for sports writers and photographers. The press box has two restrooms, heating and cooling.

Press Box Reservations

Requests for press box space should be made through the University Relations Office at least one week before the scheduled game.

Game Press Services

The University Relations staff will provide programs, flip cards, halftime and final individual and team statistics, and a final scoring summary.

The staff will phone beeper reports to radio and TV stations on request. Game stories and complete statistics will be filed to newspapers on request.

With advance notice, halftime interviews with Washburn officials can be arranged.

Coffee, Coke and apples will be available to press personnel.



Washburn Pom Pon Girls

Top: Denise Glick, Annabelle Heath
Middle: Janice Phillips, Vicki Burbach, Janet Phillips
Bottom: Debbie Barth, Wendy Wiltfang, Jackie Fash

The Ichabod Club

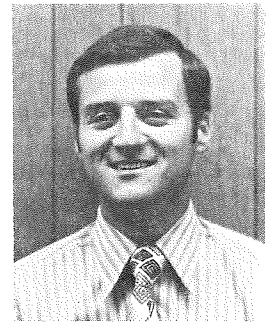
The Ichabod Club assists the Washburn athletic program by providing funds for athletic scholarships. To be eligible for these scholarships, the student athletes must maintain the high academic as well as the high athletic standards of the university.

The Ichabod Club also supports the total athletic program through involvement in athlete job placement, athletic banquets, homecoming and commencement activities, the Hall of Fame and the sale of season tickets. The club heeds the philosophy that Washburn's image is reflected by its athletic teams and that the academic excellence of the university should also be carried into athletics.

Weekly noon luncheon meetings are held on Mondays throughout the football and basketball seasons. The luncheon program consists of coaches' and players' comments, game films and discussion. The meetings are open to the public and guests are welcome.

Ichabod Club Officers

President	Ron Berkholtz
V-President	Bill Lewis
Secretary	Eldon Dannenhauer



Ichabod Club President Ron Berkholtz

Ticket Information

Admission prices for home football games in Moore Bowl.

Season Ticket	\$15.00
Reserved Seat	3.00
General Admission	2.50
Students	1.00
Under 12	.75

Passes for the working press, radio and television representatives, and opponent publicity personnel are available from the University Relations Office one week in advance.

The M.P.I.A.A.

The fourteen school Mountain and Plains Intercollegiate Athletic Association was born on May 15, 1972 when the presidents of the fifteen school Rocky Mountain Athletic Conference voted to convert into two allied conferences. The split into the MPIAA became effective in September, 1972.

The RMAC Mountain Division retained the league name while the Plains Division became the Great Plains Athletic Conference (GPAC Six). The University of Nebraska-Omaha dropped its GPAC affiliation after the 1972-73 academic year.

Conference competition is held in nine sports: football, cross-country, basketball, wrestling, swimming, baseball, track and field, tennis and golf. Championships are decided in each sport; however, there are no championship playoffs between the two conferences.

Determined to operate their athletic programs on a sound financial basis, MPIAA members have limited individual athletic grants-in-aid to tuition, fees, one meal a day during the season, and course-related books and instructional supplies. In addition, a student-athlete may work for his room and board. Association rules also limit the number of athletic grants which a member institution may award in each sport.

GPAC Institutions:

Fort Hays State
Kansas State - Pittsburg
Kansas State Teachers
Northern Colorado
Southern Colorado
Washburn

RMAC Institutions:

Adams State
Colorado Mines
Fort Lewis
Regis
Southern Utah
Western New Mexico
Western State
Westminster

MPIAA Commissioner:

Harry B. Kniseley
1423 S. Garfield Street
Denver, Colo. 80210
(303) 757-8789

MPIAA Information Director:

Tim Simmons
Southern Colorado State College
Pueblo, Colo. 81001
(303) 549-2219



President Henderson



Dr. John W. Henderson is in his eighth year as President of Washburn. A native of Pennsylvania, he graduated from Juniata College, Huntingdon, Penn. in 1949. While at Juniata, Henderson lettered in three sports: football, baseball and basketball. In 1949, he received the Stanford Mickel Award for outstanding athlete of the year at Juniata.

Henderson's athletic career extends from 1944 when he was a halfback with the University of Georgia pre-flight team to 1950 when he was assistant football and baseball coach at McPherson College, Indiana. Henderson is also a registered football and basketball official in Pennsylvania.

Henderson and his wife Myrtle have two children.

Athletic Coordinator Col. "Pete" Martin



Col. "Pete" Martin became Washburn's interim athletic coordinator on August 6, 1973 following the resignation of athletic director Mike Sarkesian. The unofficial number one IChabod fan, Martin accepted the official top booster post following retirement from 31 years of active duty with the Air Force on July 31, 1973.

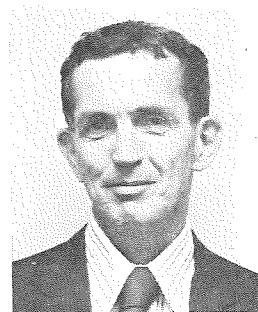
Martin first came to the University as Commander of Washburn's AFROTC division in 1969.

He holds a B.A. from the University of Nebraska-Omaha and an M.Ed. from Washburn.

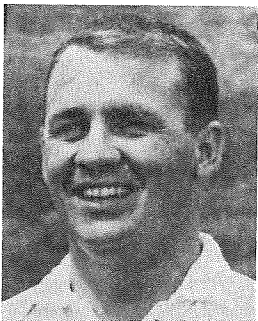
Martin and his wife Peggy have three children.

Faculty Athletic Representative

Ernest Bader



Head Coach Bob Noblitt



Head football coach Bob Noblitt begins his third season as Washburn's head mentor with an 8-12-0 career record. Noblitt became Washburn's 29th head coach on January 1, 1971 after two seasons as first assistant in charge of both the offensive and defensive lines.

Noblitt was an All-CIC and NAAIA All-American guard at Washburn in 1964. In 1965, he began coaching at Claflin High School, Claflin, Kansas. In 1966-67, he was an assistant coach at Southern Illinois University where he finished work for his master's degree in health education. The head coach at Southern Illinois at the time was Noblitt's former coach at Washburn, Ellis Rainsberger.

Noblitt moved from Southern Illinois to Yankton College, Yankton, South Dakota where he was wrestling and defensive line coach from 1967 to 1969.

He began his football career at Kansas State University under Doug Weaver, but after starting all the games in his sophomore season, did not feel that he was part of the program and dropped out of school for a year and a half. It was Rainsberger who urged him to return to school—Washburn this time—and to football.

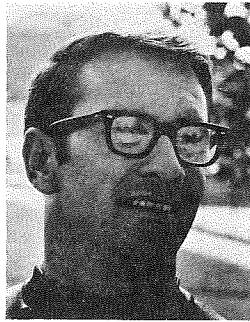
Noblitt sees three particular groups benefiting from the football program at Washburn. "First, I believe the program builds character and leadership in the students who participate. Second, the games provide the students and alumni a place to come together whereby they can achieve unity. And third, the program is a benefit to the university in general, for it is one of the most publicized areas of the university."

Washburn Coaches' Career Records

1894	W.M. Gaines	(3-1-0)	1922	Mike Vosburg	(1-7-0)
1896	W. Griffith	(6-1-1)	1923-26	G. Woodward	(8-20-4)
1897-98	Paul Coldren	(12-2-1)	1927-28	Roy Wynne	(8-10-0)
1899	Wm. Melford	(2-5-2)	1929-35	Er. Bearg	(36-28-4)
1900	Ben Owen	(6-2-0)	1936-41	E.W. Holm	(21-31-3)
1901	L. Banks	(3-2-5)	1942-43	Rob. Raugh	(3-11-2)
1902	H.W. Page	(2-6-0)	1944	C.D. Erickson	(1-6-0)
1903	A.R. Kennedy	(7-1-0)	1945	Lew Lane	(4-2-0)
1904-05	Jn. Outland	(14-5-0)	1946-58	R. Godlove	(68-42-4)
1906-08	G.W. Weede	(19-5-4)	1959-61	Ralph Brown	(10-17-0)
1909-10	R.B. Stewart	(6-7-0)	1962-64	E. Rainsberger	(15-12-0)
1911-12	W.L. Driver	(7-7-1)	1965-66	Ed Linta	(4-13-1)
1913-15	G.L. Gray	(8-10-3)	1967-68	Bill Shaake	(2-16-0)
1916-17	A.R. Kennedy	(5-12-2)	1969-70	"Bud" Elliott	(10-8-2)
1918-19	Er. Bearg	(11-2-1)	1971-	Bob Noblitt	(8-12-0)
1920-21	Dwight Ream	(7-7-1)			

Assistant Coaches

Defensive Coordinator—Dave Noblitt



With Bob's ascension to head coach, the Ichabods inherited Dave Noblitt giving Washburn a double threat—two brothers on the same coaching staff.

Dave holds a B.A. and M.A. from KSU where he was a second team All-Big Eight defensive guard in 1959. After graduation he was all-sports coach at Cullison High, Cullison, Kansas for two years. From '65 to '69 he was head football and wrestling coach at Manhattan Junior High and for two years he was assistant football and head wrestling coach at Raytown South High in Kansas City, Missouri.

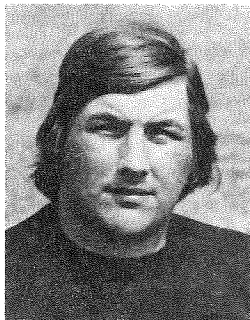
Backfield Coach—Larry Elliott



Elliott, a former All-CIC performer at Washburn in both football and basketball, is in his seventh year on the coaching staff. He is a 1959 Washburn graduate and received his M.A. from KU in 1966.

With 1,934 yards, he is the second leading career passer in the Ichabod record books. Elliott also boasts the best completion average for one game with 8 of 9 for 111 yards. From '59 to '66, Elliott coached all sports at Silver Lake, sending two baseball teams to the state tournament. As the Ichabod baseball coach, Elliott led his 1967 team to the CIC Championship and claimed 2nd in the RMAC in '72. His 1973 Ichabods compiled a 16-7 record.

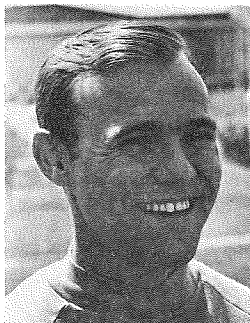
Line Coach—Rodger Tiesing



A three time All-CIC, all-district and all-area defensive end, Tiesing returns to his alma mater after playing five years in the Continental Pro Football League. Rodger played for Washburn from 1963 to 1966 and, along with coach Bob Noblitt, helped furnish Washburn its best record since 1953 with an 8-1-0 mark in 1964.

Tiesing was an All-Continental League defensive tackle for Omaha in 1970 and started at the same position for the National Champion Norfolk Neptunes in 1971. Considered too short by NFL and AFL scouts, Rodger looks forward to a successful coaching career.

Defensive Secondary Coach—Clay Johnson



Johnson will be in his fourth year with Washburn. He is a 1966 graduate of Ottawa University where he was the all-sports trainer for the Braves for four years.

He was head football coach at Winfield Junior High School, Winfield, Kansas, for one year before traveling east to become the defensive coordinator at Robert E. Fitch High School in Groton, Connecticut for three years.

Clay and his wife Carol have one daughter.

1973 Preview

Nine starters return to the familiar pro-set and the newly installed wishbone formations. The backfield will be enhanced by four starters with quarterback Ed Clark (682 yards total offense), fullback Ray Gerstenkorn (147 yards rushing in 4 games), running back Terry Underwood (466 yards) and All-GPAC running back Jeff Roether (513 yards rushing, 226 yards receiving) providing the experience. Gerstenkorn, who was instrumental in Washburn's first three victories in 1972, returns to the Ihabod lineup after missing the last six games of 1972 with a shoulder separation. Gerstenkorn's presence could allow Roether, the only freshman to receive all-conference status in 1972, to be moved to a running back slot. Top freshmen candidates for running back include Jim Pringle and Mark Boots, both members of the Kansas High School All-Star team, Theopolious Thompson, a 9.8 sprinter, and Steve Coover, who is also a punter. John Stauffer, a sophomore with four years eligibility, and sophomore Paul Garrett, who started once last season, will push Clark for the quarterback spot.

Twenty-eight lettermen return to the 1973 Ihabod roster that includes 17 starters and four 1972 Great Plains Athletic Conference All-Star selections. With that experienced foundation, head coach Bob Noblitt optimistically anticipates the challenge of the rugged 1973 schedule.

An experienced corps of receivers return to Washburn's 1973 lineup. Mike Morgan will start again at split end after leading the Ihabods with 20 passes for 240 yards in '72. Sophomore letterman John Hodnefield returns at tight end with junior letterman Kurt Eichelberg adding depth. Fullback Roether (226 yards) should continue to be a reliable target.

Bryce Cripps, a three-year letterman at guard, heads an offensive line formed of four returning starters. Guard Ed Cowan will team with Robert Warren and Steve Ramsey, converted defensive tackles, and center Wayne Walker, returning from a shoulder operation, to complete the front wall. Freshmen Mark Hanault, a 205 lb. All-Centennial League and All-Topeka performer, and

Dan Lawrence, a 210 lb. standout from El Dorado, should be factors at the center position. Joseph Bailey, a 210 lb. tackle from Dallas, Texas is a prime candidate to build at any weakness that might develop.

The defensive line should be Washburn's strength in 1973. Seven starters return with All-GPAC linebacker Tony Chiaverini and all-league end Don McGlenn anchoring the squad. Chiaverini has been the Blues' top defensive point-man the past two seasons and will be calling signals for the Ihabod defenders for the second year. Dan Gay, who was Washburn's second defensive point-man in '72 as a linebacker will team with Don McGlenn at the end positions while 250 lb. transfer Bob Beherens will join 215 lb. starter Jack Halula at the tackles. Chiaverini will lead a solid linebacking squad featuring Gary Lindsay, who was second leading point-man until suffering a knee injury in the sixth game, 210 lb. letterman Thomas Marshall and 165 lb. John Poke, who started in 1971 but missed last season with eligibility problems. Freshmen Tim Foster, an All-West Central Kansas League selection and Tim Bolz, a 200 lb. Class 2A all-stater, will give the Ihabods good depth at linebacker.

The Ihabod defensive secondary shapes up as the major question mark for 1973. Although talent is available, experience is lacking. Sophomore Mark Kepler returns to his starting role at safety and Eric Bevis who started some last season will be at quick-side linebacker with transfers Ed Bradney and Ed Jordan pushing for the slot. Bradney will also handle Ihabod punting chores. Larry Miffleton, who played some at tailback last season, was impressive in spring scrimmage and is tabbed to fill a halfback spot along with juco transfer Bill Gordon. Donnie Boone and Larry Michael figure as the top freshmen candidates to step in the secondary.

Coach Noblitt will look to Russ Hill, three year letterman in the place kicking slot to give added scoring punch. Hill led Washburn scoring last season with 40 points including a 52 yard Washburn record field goal and 19 of 21 extra point attempts. Russ was the All-GPAC specialist in 1972.

It's a steep climb from Washburn's 6th place 1972 GPAC finish, but with a little luck and few injuries, the Ihabods could make impressive progress in '73.

1973

Ichabod Roster

Name	Pos.	Ht.	Wt.	Class	Hometown
Behrens, Bob	T	6' 4"	245	Jr.	Topeka, Kansas
Bevis, Eric **	LB	5' 11"	185	Jr.	Wichita, Kansas
Bivens, Bob	T	6' 0"	225	So.	Atchison, Kansas
Canzanella, Joe	DB	5' 8"	170	So.	Newington, Connecticut
Chiaverini, Tony ***	LB	5' 8"	185	Sr.	Shawnee, Kansas
Clark, Ed **	QB	6' 2"	185	Jr.	Topeka, Kansas
Conner, Ron	E	5' 11"	180	So.	Topeka, Kansas
Cowen, Ed **	T	6' 2"	215	Jr.	Topeka, Kansas
Cripps, Bryce ***	G	6' 0"	205	Sr.	Topeka, Kansas
Eichelberg, Kurt *	E	6' 1"	185	Jr.	Uncasville, Connecticut
Garrett, Paul *	QB	5' 10"	175	So.	Dallas, Texas
Gay, Dan *	E	6' 1"	215	Jr.	Topeka, Kansas
Gerstenkorn, Ray *	FB	5' 11"	190	So.	Topeka, Kansas
Gordon, Bill	RB	5' 11"	180	So.	Topeka, Kansas
Gruss, John	DB	5' 8"	175	So.	Kansas City, Kansas
Halula, Jack *	T	6' 0"	215	So.	Kansas City, Kansas
Hill, Russ ***	K	6' 2"	190	Sr.	Topeka, Kansas
Hodnefield, John *	E	6' 2"	195	So.	Kansas City, Kansas
Huston, Russ	T	6' 3"	215	So.	Topeka, Kansas
Jarvis, Bill	E	6' 3"	195	So. #	Topeka, Kansas
Johnson, Cooper	T	6' 3"	205	Jr.	Topeka, Kansas
Jordan, Ed	LB	6' 1"	185	Jr. #	Ft. Worth, Texas
Junk, Mike	T	6' 2"	190	So. #	Leavenworth, Kansas
Kepler, Mark *	S	6' 0"	180	So.	Kansas City, Kansas
Lane, Rob *	E	6' 2"	185	Jr.	DeSoto, Kansas
Lindsay, Gary *	LB	6' 2"	215	Sr.	Topeka, Kansas
Marshall, Thomas *	T	6' 2"	210	So.	Dallas, Texas
McGlenn, Don *	E	6' 1"	200	Jr.	Leavenworth, Kansas
Miffleton, Larry	DB	5' 9"	165	So.	Baldwin, Kansas
Miller, Craig	E	6' 0"	190	So.	Centralia, Kansas
Mitchell, Bob	T	6' 2"	200	So.	Wichita, Kansas
Morgan, Michael *	E	6' 2"	190	So.	Dallas, Texas
Poke, John *	LB	5' 9"	175	Jr.	Kansas City, Kansas
Ramsey, Steve ***	T	5' 11"	210	Sr.	Kansas City, Kansas
Roether, Jeff *	FB	5' 11"	195	So.	Topeka, Kansas
Stauffer, John	QB	6' 0"	175	So. #	Topeka, Kansas
Steen, George	DB	5' 8"	170	So.	Kansas City, Kansas
Walker, Wayne *	C	6' 0"	210	Jr.	Wichita, Kansas
Waltz, John	E	6' 2"	190	Sr. #	Topeka, Kansas
Warren, Robert *	T	5' 11"	215	So.	Dallas, Texas
Wright, Brad	QB	5' 11"	180	So.	Topeka, Kansas
Yager, Gary *	RB	5' 11"	180	So.	Kansas City, Missouri

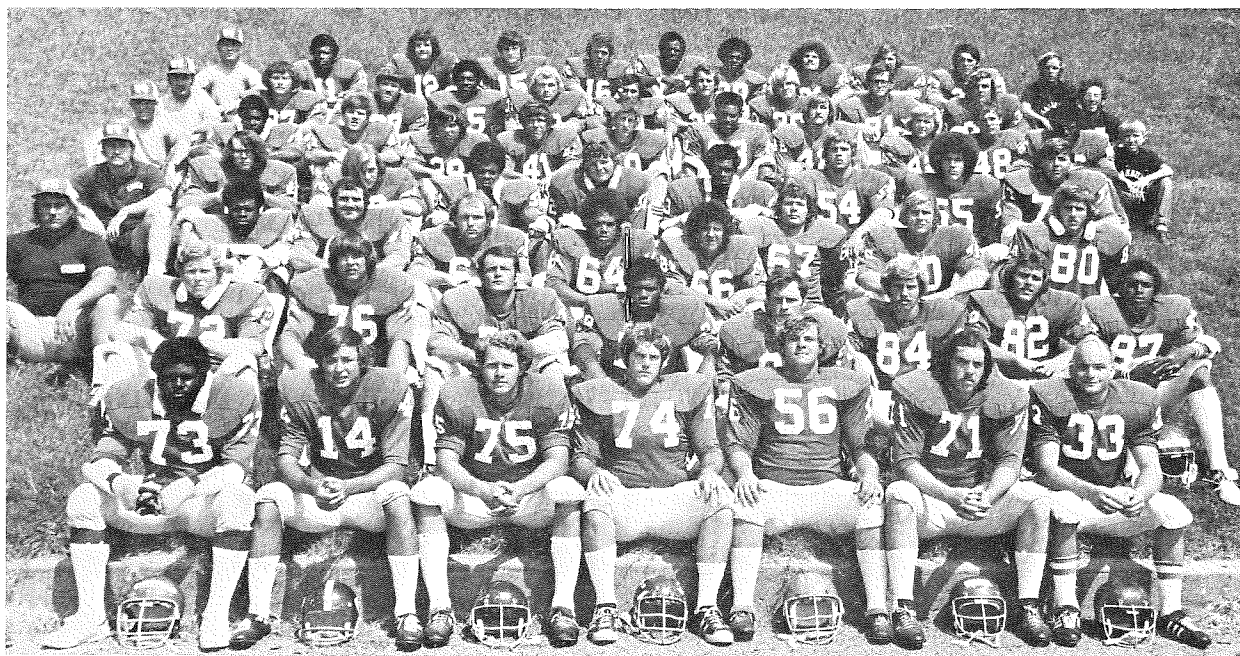
* Letters Earned

4 years eligibility

1973 Ihabod

Freshman Roster

Name	Pos.	Ht.	Wt.	Class	Hometown
Alexander, Chauncey	LB	6' 1"	185	Fr.	Ft. Worth, Texas
Bailey, Joseph	T	5' 10"	205	Fr.	Dallas, Texas
Beals, Bob	RB	5' 9"	165	Fr.	Cedar Rapids, Iowa
Bolz, Tim	LB	6' 0"	200	Fr.	Valley Falls, Kansas
Boone, Donnie	DB	5' 11"	165	Fr.	Ft. Worth, Texas
Boots, Mark	RB	6' 0"	185	Fr.	Garnett, Kansas
Coover, Steve	RB	5' 9"	170	Fr.	Shawnee, Kansas
Foster, Tim	LB	6' 1"	190	Fr.	Great Bend, Kansas
Hatcher, Stanley	LB	6' 2"	195	Fr.	Ft. Worth, Texas
Heiniger, Cory	RB	5' 9"	160	Fr.	Powhattan, Kansas
Henault, Mark	C	6' 2"	205	Fr.	Topeka, Kansas
Kramer, Hank	LB	5' 11"	175	Fr.	Olathe, Kansas
Lawrence, Dan	C	6' 3"	210	Fr.	El Dorado, Kansas
Meikel, Larry	DB	6' 1"	175	Fr.	Kansas City, Kansas
Nickels, Woody	DB	6' 2"	185	Fr.	DeSoto, Kansas
Pringle, Jim	RB	5' 11"	200	Fr.	Arkansas City, Kansas
Reed, Dwayne	DB	5' 11"	170	Fr.	Ft. Worth, Texas
Thompson, Theopolious	RB	5' 11"	185	Fr.	Ft. Worth, Texas
Wahl, Bill	DB	5' 9"	170	Fr.	McFarland, Kansas



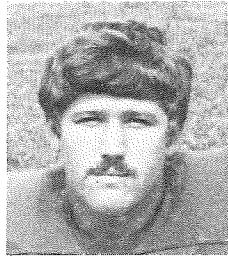
1973 Washburn Ihabods

1972 All-GPAC Returnees



Don McGlinn

No. 81, 6'1", 200 lbs., Jr., Leavenworth, Kansas—Tough defensive end who gives 100% all the time—Most consistent Ichabod pressuring opponent quarterbacks on both the pass and the run—Fifth leading defensive point-man in 1972 with 35 tackles, 18 assists, 1 fumble recovery and 2 fumbles forced—Received game awards for Hustler twice and Bell Ringer twice last season.



Jeff Roether

No. 31-37, 5'10", 195 lbs., So., Topeka, Kansas—Only freshman elected to the 1972 GPAC All-Star Football Team (Also only freshman elected to GPAC All-Star Baseball Team last season)—Rushed for 137, 108, and 148 yards in three consecutive games after being moved to fullback last season—Led the Ichabods in tandem offense with 739 yards, 513 rushing and 226 receiving—Ranked third in GPAC all-purpose with 758 yards and fourth in GPAC tandem offense.



Tony Chiaverini

No. 30-33, 5'8", 185 lbs., Sr., Shawnee, Kansas—Top defensive point-man in 1971 and 72—Starting at middle linebacker for fourth year—Second year as Washburn's defensive signal caller—Received "Daddy Buzzard" (top defender) award for four games in 1972—Had 58 tackles, 27 assists, 2 interceptions and 3 fumble recoveries in '72.



Russ Hill

No. 14-40, 6'2", 180 lbs., Sr., Topeka, Kansas—Pro prospect as a place kicker—Led Washburn scoring in 1972 with 40 points—Career total of 91 points (58 of 66 Pat's, 11 of 30 field goals)—Holds Washburn records with a 52 yard field goal and 14 consecutive Pat's.

1972 GPAC All-Star Football Team

O
f
f
e
n
s
e

- Ends— John Woodworth, Fort Hays State, 6-3, 190, Sen., Halstead, Kan.*
Alan Spencer, KS-Pittsburg, 6-3, 202, Sen., Webb City, Mo.
- Tackles— Bill Cinelli, KS Teachers, 5-10, 195, Soph., Rochester, N.Y.
Dennis Merkel, Northern Colorado, 6-4, 217, Sen., Bellvue, Neb.
- Guards— Henry Huber, Southern Colorado, 6-3, 222, Sen., Scottsbluff, Neb.
Mike Giancaspro, Nebraska-Omaha, 6-0, 235, Jun., North Bergen, N.J.
- Center— Rick Heise, KS Teachers, 6-0, 205, Sen., El Dorado, Kan.
- Quarterback— Mike White, KS Teachers, 6-0, 175, Soph., Hutchinson, Kan.
- Running backs— Charles McWhorter, Nebraska-Omaha, 5-8, 160, Sen., Omaha, Neb.*
Abe Welcher, KS Teachers, 5-11, 175, Soph., Youngstown, Ohio
Jeff Roether, Washburn, 5-10, 195, Fresh, Topeka, Kan.
- Kicker— Russ Hill, Washburn, 6-2, 175, Jun., Topeka, Kan.

D
e
f
e
n
s
e

- Ends— John Lohmeyer, KS Teachers, 6-5, 225, Sen., Emporia, Kan.*
Don McGlinn, Washburn, 6-1, 200, Soph., Leavenworth, Kan.
- Tackles— Darrel Vaughn, Northern Colorado, 6-4, 244, Sen., Pueblo, Colo.
Bill Kozel, Nebraska-Omaha, 6-1, 240, Sen., Omaha, Neb.*
- Linebackers— Collon Kennedy, Southern Colorado, 5-9, 203, Sen., Security, Colo.*
Tom Shoemaker, Northern Colorado, 5-11, 203, Sen., Milwaukee, Wis.
Bob Clements, KS Teachers, 6-1, 210, Jun., Humboldt, Kan.
- Backs— Tony Chiaverini, Washburn, 5-8, 185, Jun., Shawnee, Kan.
Bobby Joe Simmons, Southern Colorado, 5-10, 166, Sen., Abbott, Tex.
Gene Petrey, Washburn, 6-3, 195, Sen., Kansas City, Kan.
Bill Townsley, KS-Pittsburg, 6-1, 178, Jun., Derby, Kan.

* repeaters

Game #1: Missouri Valley College Sept. 8—7:30 p.m. Marshall

Location: Marshall, Missouri
Athletic Director: Ken Gibler (816-886-3646)
Head Coach: Ken Gibler (5 yrs., 31-16-3)
Assts: Grover Redford, Reed Kepner
Nickname: Vikings
Colors: Purple and Orange
Enrollment: 750
Member of: Heart of America Collegiate Conf., NAIA
SID: Tom Dunlap (816-886-2165)
Returning Lettermen: 23
1972 Record: 8-2-0
Series: WU leads 2-1

1972 Score: WU 26-MV 7 (WU forfeited on ineligible player violation)

Outlook:

Nine starters graduated from Coach Gibler's successful 1972 squad putting some new faces in key positions. How quickly the newcomers blend with veterans may be the thermometer for 1973 Viking success on the gridiron.

The defensive line appears solid with seniors Louis Serrone, 205 lb. end, Paul Achtyl, 265 lb. tackle, and Jim Morris, 248 lb. tackle providing a solid base. Ronnie Brooks, 208 lbs., should have competition at the nose guard from 330 lb. Herman Arbuthnot. The linebacker corps will miss Mike Wojcik but should be reputable with lettermen Stan McKinney and Dennis Riley returning. The Viking defensive secondary returns intact with Stan Jones and Vic Epps at the corners, Greg Tinnen at safety and standout Russ Moulton at monster.

Quarterback Steve Traxler and fullback Kevin Hamill will provide experience in the backfield but filling gaps left by NAIA All-American Honorable Mentions Dewey Buck, running back, and Jim Roskelley, slot back, and outstanding running back Tony Chandler will be a difficult task. Doug Hunt, 180 lb. junior, should take over the slot back spot with several sophomores competing for the running back positions. Brian Schmidt, tight end, and Doug Chandler, wide receiver, will give the Vikings able receivers. The front line should be strong with 228 lb. Roman Jaworowicz at center, Bob Wilson, 202 lbs., and Ken Nienhaus, 205 lbs., at guards and 242 lb. David Long at one tackle.

Game #2: Missouri Western College Sept. 15—8:00 p.m. St. Joseph

Location: St. Joseph, Missouri
Athletic Director: Charles Burri
Head Coach: Harold Cagle (3 yrs., 6-22-0)
Assts: Tom Cross, Dennis Bean, Don Deaton
Nickname: Golden Griffons
Colors: Black and Gold
Enrollment: 3000
Member of: Independent, NAIA
SID: to be named (816-233-7192)
Returning Lettermen: 32
1972 Record: 3-7-0
Series: WU leads 1-0

1972 Score: WU 58-MW 3

Outlook:

With 32 lettermen returning, the Missouri Western Griffons should field the best team in their four years of collegiate competition. Ten starters return to the Griffon wishbone including leading rusher Mark Whitacre who gained 710 yards out of the fullback slot in 1972. Coach Cagle has several running backs to choose from with sophomore Marc Hutchens, 328 yards in 1972, likely to garner one of the starting roles. Sophomore quarterbacks Dennis Johns and Bob Heimbaugh will be pressed by transfer Wayne Trotter for the top signal caller spot. NAIA All-District 16 end Zack Workman, 35 catches for 516 yards, will give Griffon quarterbacks a reliable target. With a year's experience at every position in the front wall, Missouri Western should exhibit improved offensive consistency.

Defensively, Missouri Western will look to All-District 16 tackle Merrill Masters, 195 lbs., for leadership up front with returning starters Glynn Browning, Rick Ragsdale and Chris Faros anchoring the linebacker squad. Four year veteran Dave Hedrick and two year letterman Joe Vigliaturo will add experience to the defensive secondary.

Game #3: William Jewell College Sept. 22—7:30 p.m. Topeka PARENTS' NIGHT

Location: Liberty, Missouri
Athletic Director: Larry Hamilton
Head Coach: James A. Nelson (6 yrs., 36-18-0)
Assts: Larry Hamilton, Steve Thomson, Vic Bonuchi
Nickname: Fighting Cardinals
Colors: Cardinal Red and Black
Enrollment: 1200
Member of: Heart of America Athletic Conference, NAIA, NCAA
SID: To be announced (816-781-3806, x 247)
Returning Lettermen: 32
1972 Record: 6-5-0
Series: WU leads 5-4-0

1972 Score: WU 10-WJ 0

Outlook:

Thirty-two returning lettermen could provide the 1973 edition of William Jewell football with the winning margin, however, seven NAIA District 16 and Heart of America Athletic Conference award winners must be replaced if the Cardinals are to field their traditionally potent squad.

Head Coach James Nelson regards a strong defense and three returning quarterbacks, junior Mike Thebeau and sophomores Steve Burton and Jim Hall, as the primary reasons for Cardinal optimism. Co-captains John Strada, an all-district and all-conference tight end and defensive lineman, and Dan Cox, an all-district and all-league defensive end, will give Nelson's squad experienced leadership. Other Cardinals promising productive seasons are senior fullback Linzy Teegarden and wingbacks Terry McCrory and Danny Bullock.

Game #4: University of Nebraska-Omaha Sept. 29—7:30 p.m. Topeka

Location: Omaha, Nebraska
Athletic Director: Clyde Biggers
Head Coach: Al Caniglia (13 yrs., 67-53-4)
Assts: Bill Danenhauer, Carl Meyers, Mike Palmisano, Tom Dineen, Al Bream
Nickname: Mavericks
Colors: Red and Black
Enrollment: 13,400
Member of: Independent, NCAA
SID: Fred Gerardi (402-554-2305)
Returning Lettermen: 30
1972 Record: 8-2-0 **1972 GPAC Record:** 4-2-0 (Tie 2nd)
Series: Tied 13-13-1 **1972 Score:** WU 14-UNO 40

Outlook:

Replacing Charlie McWhorter, the GPAC's Most Valuable Player in 1972 with 984 yards and 15 TD's, and fullback Bill Walker, 476 yards and 7 TD's, will be the now independent Mavericks' biggest task. At quarterback, senior Bob Bangston has the inside track but Angelo Intile could regain the post if he recovers from a shoulder injury. Senior Saul Ravenell, 155 yards, is heir apparent at running back while transfer Joe Sinnkule is getting the nod at fullback. UNO boasts good size and excellent reserve strength in the offensive wall with guards Mike Giancaspro, a 235 lb. all-league selection, and 210 lb. two-year starter Ken Fish providing a solid base. Two-year starter Jim Jostes will be at tight end with Art Anderson, 14 catches for 239 yards, at wide receiver. Frank Golwitzer, a two-year letterman at slotback who punted for a 40 yard average last year, will also handle the place kicking duties this season.

Seven starters return for UNO on defense, but major changes are expected in the front four. Larry Michael will move from tackle to left end with Ted Sledge moving to left tackle. The right side remains intact with Tom Shawhan at end and John Welton at tackle. Top defensive point-man Ray Brust returns at linebacker along with two-year starter Scott Mitchell. Three of four starters return in the secondary with twins Willie Bob Johnson and all-conference Tex Johnson at the corners. Tom Zimmerman returns at free safety with reserve Ben LaFollette filling in at strong safety.

Game #5: Southern Colorado State College Oct. 6—7:30 p.m. Pueblo

Location: Pueblo, Colorado
Athletic Director: Harry Simmons
Head Coach: Joe Prater (10 yrs., 49-46-2)
Assts: Chuck Haering, Pat Pine, Gary Richardson, Dr. Don Stutters
Nickname: Indians
Colors: Red and Blue
Enrollment: 7,000
Member of: Great Plains Athletic Conference, NCAA, NAIA
SID: Tim Simmons (303-549-2219)
Returning Lettermen: 24
1972 Record: 6-4-0 **1972 GPAC Record:** 3-3-0 (Tie 4th)
Series: SCSC leads 5-3-0 **1972 Score:** WU 0-SCSC 13

Outlook:

Southern Colorado could be a surprise team with 24 lettermen returning, however, depth has always been a problem for Coach Prater and 1973 will be no different as SCSC must hope for no key injuries to darken its outlook.

The offense should be improved with quarterback Jim Nelson and the top three rushers Wayne Harris, Andy Sabo and Benny Williams back. Dan Connors, who caught 45 passes last season, and Keith Wilhite are good receivers. Center Tim Nauslar, and tackles Dan Barnes and Mike Reppa anchor the line.

The Indians lost all-leaguers in linebacker Collon Kennedy and safety Bobby Joe Simmons, but do have experienced defenders in linebacker Mike Waters, linemen Paul Cassidy and Kirk Brynjulson, safety Chuck Schnorr, and cornerbacks Alan Webster and Ron Robinson. Del Bishop is the GPAC's top returning kicker and Webster is among the league's top return specialists.

Game #6: Fort Hays State College Oct. 13—7:30 p.m. Topeka

Location: Hays, Kansas
Athletic Director: Cade Suran
Head Coach: Bill Giles (1 yr., 1-8-1)
Assts: Barry Allen, Jerry Cullen, Ed McNeil
Nickname: Tigers
Colors: Black and Gold
Enrollment: 4,800
Member of: Great Plains Athletic Conference, NAIA
SID: Lon Pishny (913-628-4206)
Lettermen Returning: 21
1972 Record: 1-8-1 **1972 GPAC Record:** 1-5-0 (Tie 6th)
Series: WU leads 24-11-3 **1972 Score:** WU 31-FHS 29

Outlook:

Second-year coach Bill Giles feels the Tigers will be the school's best team in the last five years, and expects his squad to contend for top honors. The team's major strength is in the offensive backfield.

Bruce Hawley, who led the league in passing and total offense with a 134 yard average in '72, returns at quarterback. Steve Crosby, the league's most punishing back, ranked third in GPAC rushing with 895 yards. The workhorse tailback led the league in rushing until moving to linebacker at the end of the season. The Tigers plan to open up the offense this year with increased emphasis on the passing attack.

The offensive line and defensive secondary are the Tigers' weak links. The linebacking is strong with senior middle linebacker J.D. Armstrong back and the addition of three top newcomers.

Game #7: Missouri Southern College

Oct. 20—2:00 p.m. Joplin

Location: Joplin, Missouri
Athletic Director: Max Oldham
Head Coach: Jim Frazier (2 yrs., 16-6-0)
Assts: Ed Wuch, Tony Calwhite, Charles Wade
Nickname: Lions
Colors: Green and Gold
Enrollment: 3000
Member of: Independent, NAIA
SID: Ron Robson (417-624-8100, x 210)
Lettermen Returning: 21
1972 Record: 12-0-0 NAIA Division II Champions
Series: Mo. Southern leads 2-0-1 1972: WU 3-MS 14

Outlook:

Twenty-one lettermen and 14 starters from the 1972 NAIA Division II Champions should bolster Coach Frazier's hopes for the 1973 season. Demonstrating the Lions' emphasis on speed will be All-American Honorable Mention running back Terry Starks who gained 769 yards in the 1972 regular season and sophomore fullback Lydell Williams who led Lion scoring with nine touchdowns. Junior Bernie Buskin and sophomore Kerry Anders are proven wide receivers. With spring ball standout Ken Howard at tight end, the Lion aerial attack could gain prominence. Punter Steve Hamilton should share quarterbacking duties with sophomore Roger Walton. The offensive line returns experience at every position with the exception of 6'5", 250 lb. Bill Ruble who backed up graduated All-American tackle Terron Jackson in 1972.

Replacing three defensive backs lost by graduation will be the major rebuilding task in 1973. Returning is 1972's interception leader John Busalacki who will be joined by reserve Melvin Wilson. With All-American Honorable Mention linebacker Barry Korner moved to strong safety and transfer Tom Warren, the Lions will field a reliable secondary. A solid linebacking corps will feature senior Doug Eford and converted tackle John Watson. The defensive wall has experience in returning ends Larry Cameron and John Howard and junior tackle Ron Barnes.

Game #8: University of Northern Colorado

Oct. 27—2:00 p.m. Topeka
HOMECOMING

Location: Greeley, Colorado
Athletic Director: Joe Lindahl
Head Coach: Bob Blasi (7 yrs., 45-18-2)
Assts: Jerry McMillen, Buck Rollins
Nickname: Bears
Colors: Navy and Gold
Enrollment: 10,600
Member of: Great Plains Athletic Conference, NCAA
SID: Gary Morgan (303-351-2067)
Returning Lettermen: 26
1972 Record: 6-3-0 1972 GPAC Record: 4-2-0 (Tie 2nd)
Series: UNC leads 5-1-0 1972 Score: WU 10-UNC 14

Outlook:

Replacing half the down linemen on both offense and defense is the biggest objective for Coach Bob Blasi. The Bear offensive backfield that led the league in rushing with 217 yards per game in 1972 returns intact. Roger Melvin, Bryan Brunswick and Gary Widhelm are the key running backs in Blasi's wishbone attack. Quarterbacks Rocky Whitworth and Jerry Dattilio, who shared starting duties last season, also return.

Only three offensive starters and a part-time defensive regular return on the front walls. Offensive vets are Tim Wall, Mike Berens and Bud Jenkins. Mark Wortman is the only defensive lineman back, but Blasi does have three starters returning in the secondary. Cornerbacks Ron Wyatt and Jamie Woodruff return with safety Mike Pierce and letterman Dan Miller to give the Bears solidity in that area. Mike Cassidy returns at linebacker, but Widhelm along with transfer Gary Weibert could be moved over to challenge him.

The Bears' hopes for another successful season lie largely in the development of the sophomores and transfers who will have to fill the vacancies left by graduation. If they develop quickly and blend with the 11 returning starters, UNC could again be a threat in the GPAC title race.

Game #9: Kansas State College-Pittsburg

Nov. 3—2:00 p.m. Pittsburg

Location: Pittsburg, Kansas
Athletic Director: Carnie Smith (316-231-7000, x 295)
Head Coach: Tom Lester (5 yrs., 37-20-3)
Assts: Joe Murphy, Bill Samuels
Nickname: Gorillas
Colors: Crimson and Gold
Enrollment: 5200
Member of: Great Plains Athletic Conference, NAIA
SID: Tim Donovan (316-231-7000, x 317)
Returning Lettermen: 27
1972 Record: 5-5-0 1972 GPAC Record: 3-3-0 (Tie 4th)
Series: KSC leads 27-14-1 1972 Score: WU 7-KSC 21

Outlook:

Coach Tom Lester has 27 lettermen returning after a disappointing season in 1972. Defensive back Bill Townsley is the top returnee after earning All-GPAC honors in '72. The Gorillas figure to improve due to experience and depth.

The 1973 schedule is the toughest in the school's history, but Lester figures to be solid both ways. The offensive line is experienced, and Chuck Smith, the GPAC's number two passer with 889 yards, returns to guide the offense. End Mike Powell and running backs Larry Gilliland and Robin Gifford are other standouts.

The return of Townsley, tackles Gail Arnett and Gary Slaughter, and linebackers Ken Manley and Merle Clark will help Lester solve some of the defensive problems that plagued the Gorillas late in the 1972 season.

Game #10: Kansas State Teachers College

Nov. 10—7:30 p.m. Topeka

Location: Emporia, Kansas
Athletic Director: Dr. Bill Tidwell
Head Coach: Harold "Bud" Elliott (2 yrs., 10-9-1)
Assts: Cal Reimer, Hank Hettwer
Nickname: Hornets
Colors: Black and Gold
Enrollment: 6000
Member of: Great Plains Athletic Conference, NAIA
SID: Bob Ecklund (316-343-1200, x 455)
Returning Lettermen: 31
1972 Record: 7-3-0 1972 GPAC Record: 5-1-0 (1st)
Series: KSTC leads 35-30-6 1972 Score: WU 7-KSTC 41

Outlook:

Bud Elliott, the GPAC's Coach-of-the-Year in 1972, has another solid team with 31 lettermen and four All-GPAC picks back. The offensive backfield returns intact, and in addition has a couple of good transfers, especially fullback Otis Pelham, to bolster the running of Abe Welcher, 954 yards in '72, Doug Floyd, 445 yards, and Greg Ptacek, 230 yards. All-GPAC quarterback Mike White returns with 858 yards passing to his credit in 1972. Welcher and tackle Bill Cinelli are the other all-leaguers back on the Hornet offense. The major offensive loss was at center but transfer Dirk Wedd from KU appears to be a more than adequate replacement.

The Hornet defensive unit which led the GPAC in all statistical departments last season is expected to be tougher, and is led by linebackers Bob Clements, All-GPAC, and Mike Denimarck. Biggest defensive loss was end John Lohmeyer, an NAIA All-American who has signed with the Kansas City Chiefs. The linebacking and secondary corps return intact from last season.

Experience should be the key to Hornet success. Most notable pessimistic note is lack of depth in the defensive line. In all, the Hornets add up as the team to beat in the 1973 GPAC title race.

1972 WASHBURN RESULTS

Season Record: 3-7-0

Washburn	26	Missouri Valley	7 (forfeit)
Washburn	58	Missouri Western	3
Washburn	10	William Jewell	0
Washburn	14	University Neb.-Omaha	40
Washburn	0	Southern Colorado State	13
Washburn	31	Fort Hays State	29
Washburn	3	Missouri Southern	14
Washburn	10	Northern Colorado	14
Washburn	7	Pittsburg State	21
Washburn	7	Emporia State	41

Team Statistics

Washburn	Opposition
667	Total Plays 683
1770	Rushing Yardage 1525
633	Passing Yardage 1289
2403	Total Yards 2814
517	Return 338
128	First Downs 134
88	By Rushing 80
26	By Passing 46
14	By Penalty 8
43	Fumbles 33
26	Fumbles Lost 21
604	Yards Penalized 651
63	Number Penalties 66

Scoring by Quarters

	1st	2nd	3rd	4th	Total
WU	28	30	47	61	166
OPP	47	53	43	39	182

Scoring

Player	G	TD	Pat-A	FG-A	TP
HILL	10	—	19-21	7-17	40
UNDERWOOD	10	6	—	—	36
ROETHER	9	5	—	—	30
GARRETT	10	2	—	—	12
CLARK	10	2	—	—	12
MORGAN	10	2	—	—	12
HODNEFIELD	8	1	—	—	6
Anderson	9	1	—	—	6
YAGER	9	1	—	—	6
Petty	10	1	—	—	6
WU	10	21	19-21	7-17	166
OPP	10	25	18-24	4-12	182

Rushing

Player	G	TC	Yds	GA	TD	Avg
ROETHER	9	91	513	57.0	4	5.6
UNDERWOOD	10	125	466	46.6	6	3.6
CLARK	10	117	251	25.1	2	2.1
GERSTENKORN	4	35	147	36.8	0	4.2
Anderson	9	49	157	17.5	1	3.2
GARRETT	10	54	113	11.3	2	2.1
YAGER	9	11	53	5.3	1	4.8
MORGAN	10	15	28	2.8	0	1.8
WU	10	517	1770	177.0	17	3.4
OPP	10	501	1525	152.5	15	3.0

Passing

Player	G	PA-PC	Pct	HI	TDS	Yds	GA
CLARK	10	101-36	.356	13	1	431	43.1
GARRETT	10	38-15	.394	3	2	165	16.5
YAGER	8	1-1	1.000	0	0	14	
ROETHER	9	3-0	1.000	0	0	0	
WU	10	150-54	.360	16	3	633	63.3
OPP	10	183-79	.431	15	10	1289	128.9

Total Offense

Player	G	Rush	Pass	Tot	GA	TDR
CLARK	10	251	431	682	68.2	3
WU	10	1770	633	2403	240.3	21
OPP	10	1525	1289	2814	281.4	24

Pass Receiving

Player	G	PC	Yds	GA	TD
ROETHER	9	16	226	25.1	1
MORGAN	10	20	240	24.0	1
HODNEFIELD	8	3	37		1
EICHELBERG	9	3	29		0
MIFFLETON	6	1	5		0
Williams	10	5	31		0
WILLIS	6	2	23		0
UNDERWOOD	9	2	7		0
WU	10	54	633	63.3	3
OPP	10	79	1289	128.9	10

Tandem Offense

Player	G	Rush	Rec	Tot	GA
ROETHER	9	513	226	739	82.1

Interceptions

Player	G	No	Yds	TD
KEPLER	10	4	59	0
Petty	10	3	78	1
Elliott	10	3	6	0
CHIAVERINI	9	2	39	0
GAY	9	1	3	0
BEVIS, E.	10	1	0	0
Van Allan	10	1	45	0
WU	10	15	227	1
OPP	10	16	208	0

Punting

Player	G	No	Yds	Avg
Bowen	10	50	1835	36.7
WU	10	50	1835	36.7
OPP	10	64	2239	35.6

Punt Returns

Player	G	No	Yds	Avg	TD
Bowen	10	20	134	6.7	0
MORGAN	10	8	83	11.0	0
Elliott	10	1	1	1.0	0
KEPLER	10	1	0	0.0	0
WU	10	30	218	7.3	0
OPP	10	32	72	2.1	0

Kickoff Returns

Player	G	No	Yds	Avg	TD
Bowen	10	9	124	13.8	0
Petty	10	4	53	13.2	0
Van Allan	10	3	24	8.0	0
MORGAN	10	1	22	22.0	0
WILLIS	9	1	17	17.0	0
CHIAVERINI	9	3	15	5.0	0
MIFFLETON	7	1	16	16.0	0
UNDERWOOD	10	3	56	25.0	0
ROETHER	9	1	19	19.0	0
WU	10	31	364	11.8	0
OPP	10	34	666	19.6	0

1972 GPAC Results

Final Team Standings	Final			League Games			All Games					
	W	L	T	W	L	T	W	L	T			
KS Teachers	5	1	0	.833	136	57	7	3	0	.700	193	91
Nebraska-Omaha	4	2	0	.667	88	54	8	2	0	.800	247	114
Northern Colorado	4	2	0	.667	82	48	6	3	0	.667	144	84
Southern Colorado	3	3	0	.500	85	53	6	4	0	.600	209	149
KS-Pittsburg	3	3	0	.500	80	98	5	5	0	.500	156	177
Washburn	1	5	0	.167	69	158	3	7	0	.300	166	182
Fort Hays State	1	5	0	.167	103	175	1	8	1	.150	167	297

(Capitals indicate returnees)

Washburn Individual Records

Rushing

Most Yards, Game: 241 by Kevin McCormick at Mo. Valley, (9/11/71)
Season: 979 by Art Fletcher, (1948)
Career: 1927 by Leroy Harmon, (1945-49)
Most Carries, Game: 28 by Dale Isaacs vs. St. Benedict's, (11/21/41)
Season: 212 by Kevin McCormick, (1970) [690 yds]
Career: 472 by Kevin McCormick, (1969-71) [1581 yds]

Passing

Most Yards, Game: 285 by Dean Ferrell vs. Emporia St., (11/9/68)
Season: 1001 by Leroy Harmon, (1949)
Career: 1997 by Leroy Harmon, (1945-49)
Most Completions, Game: 27 by Dean Ferrell vs. Emporia St., (11/9/68)
Season: 76 by Dean Ferrell, (1968) [793 yds]
Career: 148 by Dean Ferrell, (1965-68) [1525 yds]
Best Cpl. Pct., Game: .889 by Larry Elliott vs. Ft. Hays, (11/3/56) [8 of 9]
Season (30 att): .516 by Ed Clark, (1971) [16 of 31 for 232 yds]
Touchdown Passes, Game: 4 by Leroy Harmon vs. No. Illinois, (9/23/49)
Season: 11 by Leroy Harmon, (1949)
Most Attempted, Game: 37 by Dean Ferrell vs. Emporia St., (11/9/68)
Season: 171 by Dale Bennett, (1969) [cpl. 64 for 904 yds]
Career: 334 by Dean Ferrell, (1965-68) [cpl. 148 for 1525 yds]

Total Offense

Most Yards, Game: 241 by Kevin McCormick at Mo. Valley, (9/11/71)
Season: 1532 by Leroy Harmon, (1949)
Career: 3924 by Leroy Harmon, (1945-49)

Receiving

Most Receptions, Game: 11 by Irv McCoy vs. Kearney St., (9/14/68)
Season: 35 by Irv McCoy, (1968) [305 yds]
Career: 94 by Irv McCoy, (1967, 68, 70, 71) [1037 yds]
Most Yards, Game: 159 by Bill Baker vs. Beloit, Wis., (1951) [3 catches]
Season: 553 by Alan Dressman, (1970) [19 catches]
Career: 1228 by Alan Dressman, (1969-71) [49 catches]

Tandem Offense

Most Yards, Game: 206 by Bill Baker vs. Beloit, Wis., (1951) [47 rush, 159 rec.]
Season: 990 by Art Fletcher, (1948)
Career: 2221 by Bill Baker, (1951-53)

Scoring

Most Points, Game: 30 by Art Fletcher vs. St. Benedict's, (1948)
Season: 84 by Bill Baker, (1953)
Career: 168 by Bill Baker, (1951-53)
Most TD's, Game: 5 by Art Fletcher vs. St. Benedict's, (1948)
Season: 14 by Bill Baker, (1953)
Career: 28 by Bill Baker, (1951-53)
Most Pat's, Game: 6 by Leroy Harmon, (10/29/49)
Season: 21 by Russ Hill, (1971) [att. 23]
Career: 58 by Russ Hill, (1970-72) [att. 66]
Most Consecutive Pat's: 14 by Russ Hill, (1971)
Most Field Goals, Game: 2 by Russ Hill vs. Mo. Valley, (1972)
Season: 7 by Russ Hill, (1972) [att. 17]
Career: 11 by Russ Hill, (1970-72) [att. 30]

Punting

Most Punts, Season: 80 by Roy Keck, (1952)
Career: 191 by Jeff Hill, (1966, 67, 69) [7229 yds]
Best Average, Game: 47.9 by Charles Nelson vs. SW Mo., (1953)
Season: 42.3 by Jack Clanton (1963) [3 for 127 yds]
Career: 37.8 by Jeff Hill (1966, 67, 69) [191 for 7229 yds]
Longest Punt: 65 yards by Earl Herman vs. Warrensburg Teachers, (9/8/45)
 *83 yards by Leroy Harmon vs. Olathe Naval Base, (9/28/45)

Washburn Team Records

Most Wins, Season: 8, 1964, 1906*, 1907*, 1931*, 1953*
Most Losses, Season: 10*, 1937
Most Consecutive Wins: 14, 1930-31
Most Consecutive Losses: 14, 1936-37
Most Shutouts, Season: 7, 1906
 10*, 1906
Most Consecutive Shutouts: 3, 1906 & 1919
 7*, 1906
Most Times Shutout, Season: 6, 1928 & 1942
 7*, 1917
Most Points Scored, Game: 60, 1949, Rockhurst College 0
 80*, 1900, Fort Riley 0
Most Points Scored, Season: 248, 1949
Highest Scoring Average, Season: 27.6, 1949
Widest Margin of Victory: 60, 1949, WU 60-Rockhurst 0
 80*, 1900, WU 80-Fort Riley 0
Most Opponent Points, Game: 72 by Bethany, WU 0, 1902
 70 by Northern Colorado, WU 28, 1969
Most Opponent Points, Season: 240, 1968
Most Combined Points, Game: 98, WU 28-N. Colo. 70, 1969
Most First Downs, Game: 23 vs. Peru State, (11/8/64)
Season: 146, (1963)
Most Yards Rushing, Game: 382 vs. Fort Hays, (1960)
Season: 2081, (1964)
Best Rushing Average, Season: 211.2, (1948)
Most Yards Passing, Game: 268 vs. St. Benedict's, (1960) [15 of 23]
Season: 1276, (1949)
Best Passing Average, Season: 141.8, (1949)
Most Yards Total Offense, Game: 681 vs. Rockhurst, (1949)
Season: 3151, (1949)
Best Total Offense Average, Season: 350.1, (1949)
Most Passes Attempted, Game: 37 vs. Emporia State, (11/9/68)
Season: 215, (1969)
Most Passes Completed, Game: 27 vs. Emporia State, (11/9/68)
Season: 87, (1967)
Best Punting Average, Game: 45.5 vs. Central Missouri, (1963) [2 punts]
Season: 39.0, (1969), [78 punts]
Most Punts, Game: 9 vs. NE Missouri, (1962)
Season: 78, (1967)
Fewest Rushing Yards Allowed, Game: 1 vs. Warrensburg, (9/8/45)
Season: 787, (1964)
Fewest Passing Yards Allowed, Game: 0 vs. NE Missouri, (9/22/63)
 0 vs. Emporia St., (10/4/47)
 0 vs. Wichita, (11/1/46)
Season: 493, (1963)
Fewest Total Offense Yards Allowed, Game: 82 vs. So. Colo., (10/20/63)
 13 vs. Olathe Naval Base, (10/23/53)
Season: 1614, (1963)
Most Interceptions, Game: 5 vs. Pittsburg State, (10/24/64)
Season: 21, (1964)
Fewest Passing Yards Average Allowed, Season: 87.4, (1964)
Fewest Rushing Yards Average Allowed, Season: 54.8, (1963)

(* contains results of non-intercollegiate games)

Longest Scoring Plays

Run from Scrimmage: 94 yards by Melvin Myricks vs. Kearney St., 11/18/65
Pass Play: 83 yards, Jon Bakalar to Allan Dressman vs. St. Mary of Plains, 9/19/70
Punt Return: 87 yards by Morley Fraser vs. Iowa Wesleyan, 10/12/46
Kickoff Return: 97 yards by Bill Baker vs. St. Benedict's, 10/20/51
Interception Return: 91 yards by Meryl Garey vs. Peru State, 9/17/48
Longest Field Goal: 52 yards by Russ Hill at Northern Colorado, 10/28/72

Washburn Yardage Clubs

Career Rushing (1,000 Yard Club)

Player	Years	Att	Yards
Leroy Harmon	45-49	—	1927
Art Fletcher	46-49	—	1698
Bill Baker	51-53	299	1670
Kevin McCormick	69-71	472	1581
Don Luttrell	54, 55, 57	255	1413
Mickey Romano	64-66	299	1312
Steve Alston	66-69	412	1188
Clarence Cain	50, 51, 53	250	1169
Cleveland Jones	55-58	254	1121
Frank Pickens	62-64	224	1026
Jerry Batchelder	55-58	258	1010

Career Passing (1,000 Yard Club)

Player	Years	Att	Comp	Yards
Leroy Harmon	45-49	—	—	1997
Larry Elliott	56-58	297	131	1934
Dale Bennett	67-70	319	116	1662
Elmer McAfferty	50-52	222	93	1533
Dean Ferrell	65-68	334	148	1525
Chuck Nelson	52-55	182	80	1188
Jon Bakalar	70-71	168	63	1060

Career Receiving (500 Yard Club)

Player	Years	Catches	Yards
Alan Dressman	69-71	49	1228
Irv McCoy	67, 68, 70, 71	94	1037
Don Luttrell	54, 55, 57	40	713
Jeff Hill	65-69	54	658
Pete Roscetti	63-64	26	579
Bill Baker	51-53	25	551
Paul Fink	50-52	20	547

Season Rushing (500 Yard Club)

Player	Year	Att	Yards	Avg
Art Fletcher	1948	180	979	5.43
Kevin McCormick	1971	172	862	5.00
Art Fletcher	1949	—	719	—
Kevin McCormick	1970	212	690	3.25
Bill Baker	1953	106	638	6.01
Bill Baker	1951	99	628	6.02
Mickey Romano	1966	144	610	4.23
Cleveland Jones	1955	104	544	5.23
Bruce Backus	1959	102	540	5.03
Bob Ogle	1960	117	533	4.55
Leroy Harmon	1948	137	532	3.89
Leroy Harmon	1949	104	531	5.11
Jeff Roether	1972	91	513	5.64
Don Luttrell	1955	91	501	5.06

Season Passing (700 Yard Club)

Player	Years	Att	Comp	Yards
Leroy Harmon	1949	159	72	1001
Dale Bennett	1969	171	64	904
Dean Ferrell	1968	169	76	793
Larry Elliott	1956	99	50	758
Dean Ferrell	1967	163	72	732
Bill Harper	1963	108	45	718

Season Receiving (300 Yard Club)

Player	Years	Catches	Yards
Alan Dressman	1970	19	553
Jeff Hill	1967	34	368
Alan Dressman	1971	19	351
Bill Baker	1951	11	341
Alan Dressman	1969	11	324
Dave Gilliland	1958	17	320
Irv McCoy	1968	35	305

Washburn Athletic Hall of Fame

Washburn's Athletic Hall of Fame was established in the Fall of 1970 with the induction of four members. It is designed to honor those individuals who have gained recognition and fame for themselves and the university as a result of their endeavors and accomplishments while a student-athlete, coach or director of athletics.

The candidate must be one who has distinguished himself as an athlete, coach or director of athletics at Washburn and who, unless deceased, will be present to accept the award personally and who, if an athlete, has completed his athletic competition ten years prior to selection.

Inducted at Homecoming 1970 were the first four members of the Hall of Fame, Dr. Marvin "Mal" Stevens, of New York City; Charles "Dee" Erickson, of Topeka; Warren "Waddy" Shaw, of Topeka; and Clarence "Curly" Edwinson, of Austin, Texas. Stevens lettered in five sports just after World War II and then transferred to Yale University where he was chosen on the 1923 All-American team. Erickson captained Ichabod basketball teams in the early twenties and later served Washburn as a coach and athletic director. Shaw captained the powerhouse football teams of the Ernie Bearg era in the late twenties and early thirties, while Edwinson rewrote the record books in the early thirties as a halfback and track star.

In January, 1971 the five members of the 1925 National AAU Basketball Champions and their coach, Arthur C. "Dutch" Lonborg, of Lawrence, became the second group of inductees. Members of the 1925 team were Clarence "Kid" Breithaupt, of Oklahoma City; Arthur "Art" Brewster, of Leawood, one of three All-Americans on the team; Gerald "Jerry" Spohn, of Kearney, Nebr., an All-American center; Lambert "Butch" Lowe, of Waterloo, Iowa, the third All-American on the team; and Orson "Shorty" McLaughlin, of Topeka a four-year letterman for the Ichabods.

Inducted at Homecoming 1971 were outstanding Washburn quarterback and Kansas High School coach Walter "Kayo" Emmot, and the winningest football coach in Washburn's history, Dick Godlove.

The outstanding Washburn football duo of the 1946-50 era, Art Fletcher and Leroy Harmon, were inducted at Homecoming 1972. Fletcher is Washburn's leading career rusher with 1698 yards while Harmon is ninth with 1063 yards and the leading passer with 1997 yards.

NAIA Hall of Fame and All-Americans

Bill McDonald	Golf All-American '63, '64 and '65
Marion McDonald	Baseball Hall of Fame '63
Dan Myers	Baseball All-American '63
Dick Godlove	Track Hall of Fame '64
Bob Noblitt	Football All-American '64
Bob Hardy	Football All-American '64
Harold Noll	Track All-American '65
Robert Denson	Track Hall of Fame '66
David Lopes	Baseball All-American '67

COMPOSITE SCHEDULE OF 1973 WASHBURN OPPONENTS

Sept. 8	Washburn at Marshall	C-Skin at (1st) St. Jo. St. Jo.	NW Missouri at Liberty	Jackson St. at Omaha	Earl Lewis at Dodge	Mo. Southern at Joplin	Mo. Southern at Joplin	No. Colorado at Pueblo	Colorado Mines at Hays	Gen. Mo. at Joplin	Ark. Tech. at (17th) Joplin	So. Colorado at Pueblo	K.S.C. at Pittsburg	Attorney Tech. at Russville
Sept. 15	La. Wesleyan at M. Pleasant	Washburn at St. Joseph	Simpson at Liberty	Angelo Tru. St. at Omaha	Western St. at Garrison	NE Oklahoma at Alva	Keeney St. at Hays	Capit. Gravel at Joplin	Col. of Emporia at Gould	Col. of Emporia at Joplin	Col. of Emporia at Joplin	Western St. at Greeley	SW Missouri at Pittsburg	Gen. Missouri at Warrensburg
Sept. 22	Colver Stockton at Conan	Graveland at Linnott	Washburn at Topoka	Merimgrade at Spartan City	Adams St. at Pueblo	Keeney St. at Hays	Col. of Emporia at Joplin	Western St. at Greeley	Western St. at Greeley	Col. of Emporia at Joplin	Col. of Emporia at Joplin	Western St. at Greeley	SW Missouri at Springfield	Gen. Missouri at Warrensburg
Sept. 29	Tarkio at Marshall	Doane at Crite	Col. of Emporia at Liberty	Washburn at Topoka	E. New Mexico at Pecos	No. Colorado at Greeley	Missouri-Relle at Relle	Fi. Hays at Greeley	Fi. Hays at Greeley	Missouri-Relle at Relle	Missouri-Relle at Relle	Fi. Hays at Greeley	K.S.T.C. at Pittsburg	Gen. Missouri at Warrensburg
Oct. 6	Ohio at Marshall	NE Missouri at Kirksville	Tarkio at Tarkio	E. New Mexico at Pecos	Washburn at Pueblo	K.S.C. at Hays	K.S.C. at Hays	Washburn at Hays	K.S.C. at Hays	Missouri-Relle at Relle	Missouri-Relle at Relle	Fi. Hays at Greeley	K.S.T.C. at Pittsburg	Gen. Missouri at Warrensburg
Oct. 13	Gen. Methodist at Fayette	La. Wesleyan at St. Joseph	Ohio at Liberty	No. Colorado at Omaha	K.S.T.C. at Emporia	Washburn at Topoka	K.S.C. at Hays	Washburn at Hays	UN-Omaha at Omaha	Col. of Emporia at Joplin	Col. of Emporia at Joplin	UN-Omaha at Omaha	Mo. Southern at Pittsburg	So. Colorado at Emporia
Oct. 20	Baker at Marshall	Benedictine at St. Joseph	Gen. Methodist at Fayette	West. Carolina at Omaha	UN-Omaha at Pueblo	K.S.T.C. at Hays	K.S.T.C. at Hays	Washburn at Hays	K.S.T.C. at Hays	Washburn at Hays	Washburn at Hays	Washburn at Hays	No. Colorado at Greeley	Fi. Hays at Hays
Oct. 27	Wm. Jewell at Liberty	Keeney St. at Keeney	Mo. Valley at Liberty	So. Colorado at Pueblo	K.S.C. at Pittsburg	So. Colorado at Hays	K.S.T.C. at Emporia	Washburn at Topoka	E. New Mexico at Greeley	Washburn at Topoka	Washburn at Topoka	Washburn at Topoka	So. Colorado at Pittsburg	Mo. Southern at Emporia
Nov. 3	Graveland at Marshall	Mo. Southern at St. Joseph	Baker at Baldwin	K.S.T.C. at Emporia	Fi. Hays at Hays	So. Colorado at Hays	Mo. Western at St. Joseph	E. New Mexico at Greeley	Washburn at Greeley	Washburn at Greeley	Washburn at Greeley	Washburn at Greeley	So. Colorado at Pittsburg	Mo. Southern at Emporia
Nov. 10	Col. of Emporia at Emporia	Graveland at Liberty	Wm. Jewell at Liberty	Wm. Milwaukee at (17th) Omaha	No. Colorado at Pueblo	Colo. Mines at Hays	Gen. Mo. at Joplin	So. Colorado at Pueblo	E. New Mexico at Pecos	E. New Mexico at Pecos	E. New Mexico at Pecos	E. New Mexico at Pecos	UN-Omaha at Emporia	Washburn at Topoka