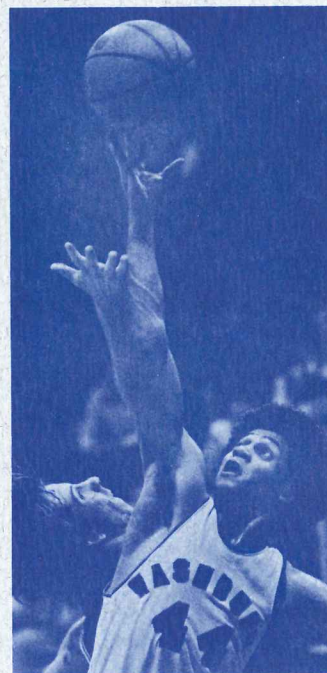


**WASHBURN
UNIVERSITY**

"ICHABODS"

BASKETBALL



1973-74

PRESS GUIDE



The 1973 Washburn University Football Brochure was prepared by Steve Pigg, Assistant Director of Informational Services. While intended primarily as an aid to the news media, it is also directed to the general public and officials of opponent schools. For press passes, additional copies of this brochure, statistics, pictures or any other information concerning Washburn athletics, contact:

Steve Pigg
 Ass't. Director, Informational Services
 Washburn University
 Topeka, Kansas 66621
 Phone: (913) 235-5341 x 116 (office)
 (913) 233-9480 (home)

Media Outlets

Topeka Capital-Journal	913-357-4421
Sports Editor—Bob Hentzen	
WU Writer—Pete Goering	
KTOP AM-FM	913-234-3444
Merle Blair—"The Voice of the Ichabods"	
Jack Porteous	
WIBW Radio-Television	913-272-3456
Fred White	
Ron Paradis	
KTSB Television	913-582-4000
Dave Hill	
WREN AM	913-232-0505
Steve Southerland	
KTWU Television	913-272-8181
Dr. Dale Anderson	
KEWI AM-KSWT FM	913-272-2122
Mike Manns	
Washburn Review	
Student Newspaper	913-233-3211
Topeka Pictorial-Times	913-233-9633
Topeka Ebony Times	913-357-7376
Associated Press (Topeka)	913-234-5654
Elon Torrence	
United Press International (Kansas City)	316-471-2070
Charlie Smith	

Table of Contents

Foreword	
Media Outlets	inside cover
Table of Contents	1
Washburn Facts	2
Washburn University	3
The M.P.I.A.A.	4
The Ichabod Club	
Ticket Information	5
Athletic Hall of Fame	6
President John Henderson	
Athletic Coordinator Pete Martin	
Faculty Representative Ernest Bader	7
Head Coach Glenn Cafer	
Assistant Coach Galen Mote	8
1973-74 Preview	9
Player Profiles	10-11
Ichabod Roster	12-13
Player Profiles	14-15
Opponents	16-19
1972-73 Results	20
Washburn Individual Records	21
Washburn Team Records	22
Washburn National Tournament History	23
WU Basketball: Year-by-Year	24
What's An Ichabod?	inside back cover
1973-74 Basketball Schedule	back cover

Washburn Facts

Name: Washburn University of Topeka
Location: 17th and College Ave.
Topeka, Kansas 66621
University Telephone: (913) 235-5341
Founded: 1865
Enrollment: 5200
Nickname: Ichabods
Colors: Yale Blue and White
Facilities: Whiting Field House (2500)
Moore Bowl (7200)
Membership: Great Plains Athletic Conference (GPAC)
National Assn. of Intercollegiate Athletics (NAIA)
President: Dr. John W. Henderson
Athletic Coordinator: Pete Martin (interim)
Head Basketball Coach: Glenn Cafer
Assistant Coach: Galen Mote
Football Coach: Bob Noblitt
Assistant Coaches: Dave Noblitt
Larry Elliott
Clay Johnson
Rodger Tiesing
Track Coach: Galen Mote
Baseball Coach: Larry Elliott
Golf Coach: Glenn Cafer
Tennis Coach: George Parker
Faculty Athletic Representative: Dr. Ernest Bader
Regents' Athletic Chairman: James M. MacNish, Jr.
Team Physician: James W. Kelley, M.D.
Equipment Manager: Bob Crim
Student Trainer: Jere Finson



2

Washburn University

Washburn University of Topeka, America's only municipal university, is a moderate sized institute of 5,300 students. The University includes a liberal arts school, a school of business, a graduate program in elementary education and a nationally famous school of law.

Founded in 1865 as a Congregational Institution named Lincoln College, the school's name was changed to Washburn College in 1868 in recognition of a gift from Ichabod Washburn, a prominent eastern industrialist.

In 1874, the first building was erected on the present 160 acre campus. Three more buildings were added before 1900. In 1903 the School of Law was organized. In 1941, with a physical plant of twelve buildings, Washburn began operation as a municipal university under a board of regents.

On June 6, 1966, the face of the University was drastically altered. At 7:30 p.m., a tornado swept the campus destroying nine buildings and causing extensive damage to fourteen others. The loss was estimated at ten million dollars. The loss of 600 trees and extensive landscaping was inestimable.

Washburn began rebuilding immediately. Since 1966, a \$3.5 million Fine Arts Center, a \$1.5 million Law School and a \$2.5 million Learning Resources Building have been dedicated.

Currently, a \$4.5 million fund drive is in operation to provide resources for a new library and a health, physical education and recreation complex.

Approximately forty per cent of Washburn's fulltime faculty of 170 hold doctorates. The average class size at Washburn is 25.

Washburn awards over 600 scholarships and grants each year and extends over 400 student loans. Approximately 85 per cent of the student body work part time.

The University has a comprehensive intercultural relations program housed in the International Center. Washburn offers a semester in Copenhagen program with fifteen hours credit transferable to the Washburn transcript. The University also sponsors a supervised teaching program in Torreon, Mexico, a cooperative program for study in France and an exchange program with the Netherlands.

Washburn operates Kansas' first educational television station. The station, KTWU Channel 11, is a maximum power facility servicing 31 counties in northeast Kansas.

The University offers a continuing education program involving approximately 700 students and an extensive workshop program and summer session.

Washburn sponsors five national and two local fraternities, five national sororities, an independent students' association, and numerous special and departmental clubs. Student activities include a weekly newspaper, a literary magazine, the yearbook, Symphonette, band, University Choir, Washburn Belles, Washburn Players, debate, student council, Angel Flight, Air Force ROTC and Washburn singers.

Washburn participates in varsity athletic programs in basketball, football, golf, track, cross country, tennis and baseball as a member of the Great Plains Athletic Conference (GPAC) and has a club program in crew rowing and intercollegiate competition in the KIAAW in women's athletics. Intramural sports also form an important segment of student life on the campus.

3

The M.P.I.A.A.

The fourteen school Mountain and Plains Intercollegiate Athletic Association was born on May 15, 1972 when the presidents of the fifteen school Rocky Mountain Athletic Conference voted to convert into two allied conferences. The split into the MPIAA became effective in September, 1972.

The RMAC Mountain Division retained the league name while the Plains Division became the Great Plains Athletic Conference (GPAC Six). The University of Nebraska-Omaha dropped its GPAC affiliation after the 1972-73 academic year.

Conference competition is held in nine sports: football, cross-country, basketball, wrestling, swimming, baseball, track and field, tennis and golf. Championships are decided in each sport; however, there are no championship playoffs between the two conferences.

Determined to operate their athletic programs on a sound financial basis, MPIAA members have limited individual athletic grants-in-aid to tuition, fees, one meal a day during the season, and course-related books and instructional supplies. In addition, a student-athlete may work for his room and board. Association rules also limit the number of athletic grants which a member institution may award in each sport.

GPAC Institutions:

Fort Hays State
Kansas State - Pittsburg
Kansas State Teachers
Northern Colorado
Southern Colorado
Washburn

RMAC Institutions:

Adams State
Colorado Mines
Fort Lewis
Regis
Southern Utah
Western New Mexico
Western State
Westminster

MPIAA Commissioner:

Harry B. Kniseley
1423 S. Garfield Street
Denver, Colo. 80210
(303) 757-8789

MPIAA Information Director:

Tim Simmons
Southern Colorado State College
Pueblo, Colo. 81001
(303) 549-2219



The Ichabod Club

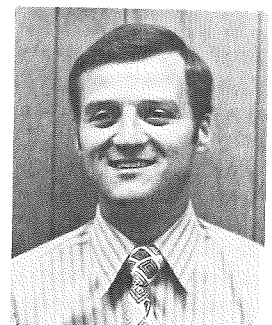
The Ichabod Club assists the Washburn athletic program by providing funds for athletic scholarships. To be eligible for these scholarships, the student athletes must maintain the high academic as well as the high athletic standards of the university.

The Ichabod Club also supports the total athletic program through involvement in athlete job placement, athletic banquets, homecoming and commencement activities, the Hall of Fame and the sale of season tickets. The club heeds the philosophy that Washburn's image is reflected by its athletic teams and that the academic excellence of the university should also be carried into athletics.

Weekly noon luncheon meetings are held on Mondays throughout the football and basketball seasons. The luncheon program consists of coaches' and players' comments, game films and discussion. The meetings are open to the public and guests are welcome.

Ichabod Club Officers

President	Ron Berkholtz
V-President	Bill Lewis
Secretary	Eldon Dannenhauer



Ichabod Club President Ron Berkholtz

Ticket Information

Admission prices for home basketball games in Whit-ing Fieldhouse.

Season Ticket	\$25.00
Reserved Seat	3.00
General Admission	2.00
Students	1.00
Under 12	.75

Passes for the working press, radio and television representatives, and opponent publicity personnel are available from the University Relations Office one week in advance.

Washburn Athletic Hall of Fame

Washburn's Athletic Hall of Fame was established in the Fall of 1970 with the induction of four members. It is designed to honor those individuals who have gained recognition and fame for themselves and the university as a result of their endeavors and accomplishments while a student-athlete, coach or director of athletics.

The candidate must be one who has distinguished himself as an athlete, coach or director of athletics at Washburn and who, unless deceased, will be present to accept the award personally and who, if an athlete, has completed his athletic competition ten years prior to selection.

Inducted at Homecoming 1970 were the first four members of the Hall of Fame, Dr. Marvin "Mal" Stevens, of New York City; Charles "Dee" Erickson, of Topeka; Warren "Waddy" Shaw, of Topeka; and Clarence "Curly" Edwinson, of Austin, Texas. Stevens lettered in five sports just after World War II and then transferred to Yale University where he was chosen on the 1923 All-American team. Erickson captained Ichabod basketball teams in the early twenties and later served Washburn as a coach and athletic director. Shaw captained the powerhouse football teams of the Ernie Bearg era in the late twenties and early thirties, while Edwinson rewrote the record books in the early thirties as a halfback and track star.

In January, 1971 the five members of the 1925 National AAU Basketball Champions and their coach, Arthur C. "Dutch" Lonborg, of Lawrence, became the second group of inductees. Members of the 1925 team were Clarence "Kid" Breithaupt, of Oklahoma City; Arthur "Art" Brewster, of Leawood, one of three All-Americans on the team; Gerald "Jerry" Spohn, of Kearney, Nebr., an All-American center; Lambert "Butch" Lowe, of Waterloo, Iowa, the third All-American on the team; and Orson "Shorty" McLaughlin, of Topeka a four-year letterman for the Ichabods.

Inducted at Homecoming 1971 were outstanding Washburn quarterback and Kansas High School coach Walter "Kayo" Emmot, and the winningest football coach in Washburn's history, Dick Godlove.

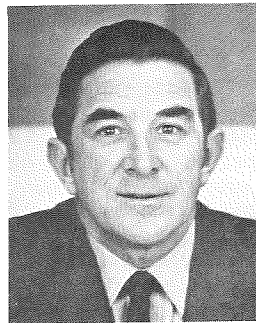
The outstanding Washburn football duo of the 1946-50 era, Art Fletcher and Leroy Harmon, were inducted at Homecoming 1972. Fletcher is Washburn's leading career rusher with 1698 yards while Harmon is ninth with 1063 yards and the leading passer with 1997 yards.

At Homecoming 1973, former football coaches Ernest E. Bearg and "Gus" Holm were inducted into the Hall of Fame along with four-sport letterman "Chuck" Nelson.

NAIA Hall of Fame and All-Americans

Bill McDonald	Golf All-American '63, '64 and '65
Marion McDonald	Baseball Hall of Fame '63
Dan Myers	Baseball All-American '63
Dick Godlove	Track Hall of Fame '64
Bob Noblitt	Football All-American '64
Bob Hardy	Football All-American '64
Harold Noll	Track All-American '65
Robert Denson	Track Hall of Fame '66
David Lopes	Baseball All-American '67

President Henderson

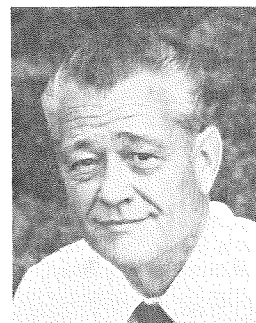


Dr. John W. Henderson is in his eighth year as President of Washburn. A native of Pennsylvania, he graduated from Juniata College, Huntingdon, Penn. in 1949. While at Juniata, Henderson lettered in three sports: football, baseball and basketball. In 1949, he received the Stanford Mickel Award for outstanding athlete of the year at Juniata.

Henderson's athletic career extends from 1944 when he was a halfback with the University of Georgia pre-flight team to 1950 when he was assistant football and baseball coach at McPherson College, Indiana. Henderson is also a registered football and basketball official in Pennsylvania.

Henderson and his wife Myrtle have two children.

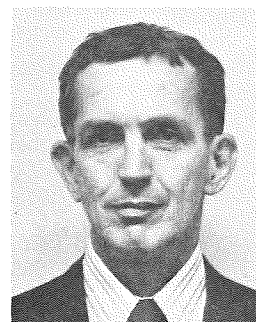
Athletic Coordinator Pete Martin



Col. "Pete" Martin became Washburn's interim athletic coordinator on August 6, 1973 following the resignation of athletic director Mike Sarkesian. The unofficial number one Ichabod fan, Martin accepted the official top booster post following retirement from 31 years of active duty with the Air Force on July 31, 1973.

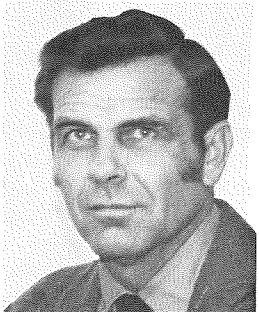
Martin first came to the University as Commander of Washburn's AFROTC division in 1969. He holds a B.A. from the University of Nebraska-Omaha and a M.Ed. from Washburn.

Martin and his wife Peggy have three children.



Faculty Athletic Representative Dr. Ernest Bader

Head Coach Glenn Cafer



Glenn Cafer, Washburn's fourth winningest basketball coach, begins his seventh year with five winning seasons and a 89-67 record behind him. In his first two seasons at Washburn, Cafer guided the Ichabods to the District 10 crown and a spot in the NAIA Championships in Kansas City. His 67-68 squad posted a 18-8 mark and captured the last CIC title. His 68-69 team finished 20-10 while making it to the NAIA

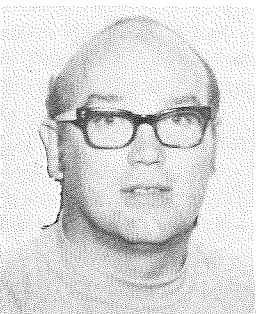
quarterfinals after upsetting top seeded Fairmont State.

Cafer moved into the head coaching job after serving as assistant coach at the University of Missouri for the 1966-67 season. A veteran of 16 years coaching experience, he began in 1956 at Washington, Mo. He coached there until taking the head job at Moorhead, Minn. for the 1961-62 season. He has also served as head coach at Mehlville High School in St. Louis and was assistant coach at Drake University for three years before going to Missouri. His overall record as a head basketball coach now stands at 255 wins and 109 losses.

The Wright City, Mo. native attended Moberly Junior College from 1949 to 1951 and received his bachelor's degree from Northeast Missouri State in 1953. He received his Master's from Northeast Missouri in 1956. From 1953 to 1955, he served with the United States Marine Corps.

Cafer and his wife Iris have three children.

Assistant Galen Mote



As head cross country coach, head track coach and assistant basketball coach, Galen Mote stands as the only triple threat member of the Ichabod coaching staff. A 1961 Washburn graduate, Mote was a three year letterman in basketball under former coach Marion McDonald.

Besides assisting with the varsity, Mote is also responsible for the junior varsity.

After graduation from Silver Lake High School, Mote played two years of professional baseball in the Los Angeles Dodger farm system. Following graduation from Washburn, he served three years in the Army Security Agency.

He was coach of all sports at Netawaka from 1964 to 1966, head coach in track and basketball at Ellis from 1966 to 1969 and basketball coach at Pratt in 1969-70.

Coach Mote is married to the former Nancy Ruth Pfeifer. The Motes have one child.

1973-74 Preview

Coach Glenn Cafer approaches his seventh season at Washburn with guarded optimism.

Four starters return from the team that finished strong in 1973 winning five of its last six conference contests to compile a 6-6, fourth place GPAC finish and an 11-14 overall record. Five transfers also figure prominently in the Ichabod outlook. How rapidly they coordinate with returnees will determine how good the 1973-74 Ichabods can be.

All-GPAC and NAIA Honorable Mention guard Harold Brown returns to boost Ichabod optimism. Brown, who led the team with a 19.8 Washburn record season scoring average and who averaged 31 points in the last four games of 1973, is, according to Cafer, "one of the best ever at Washburn and in the conference as well" and looms as a definite contender for national post-season honors.

Greg Ruder and Leonard Conkleton, a pair of 6-3 forwards who averaged just under 10 points per game and senior guard Spencer Thomas return from starting roles last season. Mit Winter, a part-time starter at forward and center the past two seasons, and Tony Dosien, a sophomore forward who averaged 25.1 points for the JV last season, round out the returning corps of lettermen. Sophomore guards Lynn Littleton, Bruce Cowdin and Mike Morgan are the other returning squad members.

Blending five talented transfers into the Ichabod attack looms as Cafer's major task in the early season. The new Ichabods add needed height and rebounding strength with 6-8 center Joe Luebcke and 6-7 forward-center Jon McCoy. Luebcke averaged 15 points and 9.6 rebounds for Butler County Juco last season and could provide the size Washburn has lacked at the pivot in the past. McCoy transfers from West Texas State where he started at forward. His outside touch and ability to score around the basket should boost Washburn's offensive strength.

Three transfer guards will add depth in the back court. Bob Love, who started at the first part of the '71-'72 season for Montana State before being stopped by injury, Allen Joy, a Kansas State University JV product, and Bill Nicks, a service veteran, give Cafer a wide choice at the guard slots.

Overall, the Ichabods have more height than in the past and team speed should again be excellent. Defense and board play are the question marks as the Ichabods should be offensively potent with 70 per cent of last year's points per game returning to be bolstered by the transfers.

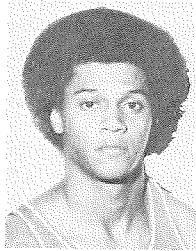
The rugged 1973-74 schedule is highlighted by a balanced Great Plains Athletic Conference Championship race. Any of the six clubs are capable of garnering the title and the Ichabods should be in the thick of contention.

Eight of Washburn's first ten contests, including the first three conference matchups, are on the road. How the Ichabods fare in this critical part of the early season could be the key to post-season honors. The Blues must do a better job in this part of their schedule than they did a year ago. "We felt we would improve throughout the season last year," said Cafer, "and we did. We feel the same way about this club basically because of the transfers whom we expect to make a major contribution."

Washburn appears to have the ingredients to contend for conference and district honors. Depth, speed, quickness, size, shooting, boardplay and experience are all present. If the Ichabods become tough defensively and a "team" quickly, it could be the year of the Ichabod on the basketball court.

Player Profiles

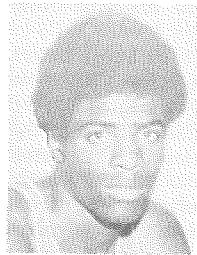
Harold Brown*** Sr G 6-2 175 lbs Kansas City, Kansas



Undoubtedly the premier offensive performer in Washburn history . . . does it all, tough inside, excellent touch outside to 25 feet . . . holds WU records for most points (40) and most field goals (16) in one game, most field goals (208) and attempts (419) and best scoring average (19.8) in a season, and most career field goals (494), attempts (1076) and scoring average (16.1) . . . possesses great jumping ability, tremendous speed and quickness . . . candidate for national honors depending on success of the team and his physical strength throughout the year .

	G	FG/A	FG%	FT/A	FT%	REB	PTS	AVG	HG
70-71	24	140/339	.410	65/103	.631	167	345	14.4	22
71-72	25	146/318	.460	57/80	.713	137	349	13.4	26
72-73	24	208/419	.498	59/77	.767	127	475	19.8	40
Career	73	494/1076	.458	181/260	.696	431	1169	16.1	40

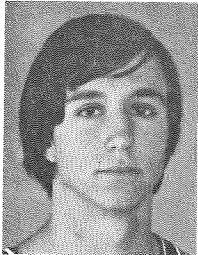
Leonard Conkleton** Jr F 6-3 195 lbs Dallas, Texas



Leading rebounder last year . . . good shooter but selection could be better at times . . . defensive play must continue to improve . . . hard worker who loves to play basketball - the first on the practice court and the last to leave it regularly . . . his improvement should be visible throughout this season as last.

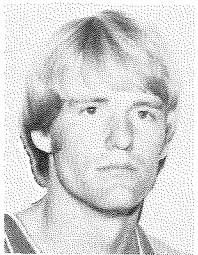
	G	FG/A	FG%	FT/A	FT%	REB	PTS	AVG	HG
71-72	21	45/107	.420	18/31	.581	73	108	5.2	11
72-73	23	95/255	.372	34/53	.642	195	224	9.8	20
Career	44	140/362	.387	52/84	.619	268	332	7.5	20

Bruce Cowdin So G 5-10 160 Topeka, Kansas



Returns to squad after completion of cross country . . . quick, a good hustler who really loves to play . . . lack of high school experience has hampered him . . . will be slated for guard duty on the JV squad.

Tony Dosien* So F 6-4 180 lbs Halstead, Kansas



Fine shooter with excellent attitude . . . can score both inside and out . . . needs to improve defense and board play . . . can only improve as he gains experience . . . coming off great season of freshman ball . . . led JV with 25.1 ppg last season . . . will be an Ichabod of the future as well as fight for playing time with the best this year.

	G	FG/A	FG%	FT/A	FT%	REB	PTS	AVG	HG
72-73	14	20/51	.392	4/6	.666	27	44	3.1	10

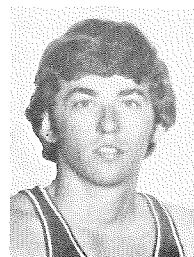
Player Profiles

Allen Joy (T) Jr G 6-2 165 lbs Belleville, Kansas



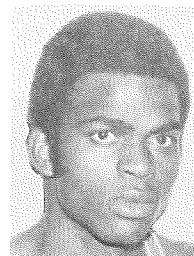
Tough performer with excellent attitude . . . really wants to play basketball . . . good defensively and can score . . . this Kansas State University transfer should be a good one.

Lynn Littleton (S) So G 5-11 145 lbs Valley Falls, Kansas



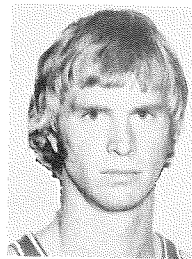
One of Washburn's quickest performers -- hands are those of a pickpocket . . . outstanding improvement is evident in all areas of play this year . . . this returning squadman could make his presence felt at a guard position . . . much improved attitude - really wants to play this year and appears ready to do so after a mediocre freshman year.

Bob Love (T) Sr G 6-2 165 lbs Wichita, Kansas



This former all-stater from Wichita North High is a heady performer and an excellent defensive prospect who can shut off an opponent . . . fine ball handler and shooter . . . has the ability to see the floor and hit the open man . . . played two years at Hutchinson Juco with Ichabods Thomas and McCoy . . . started first five games of '71-'72 season at Montana State before being stopped by injury . . . has been out of competition for two years . . . should play if conditioning can be regained.

Joe Luebcke (T) Jr C 6-8 200 lbs Marysville, Kansas

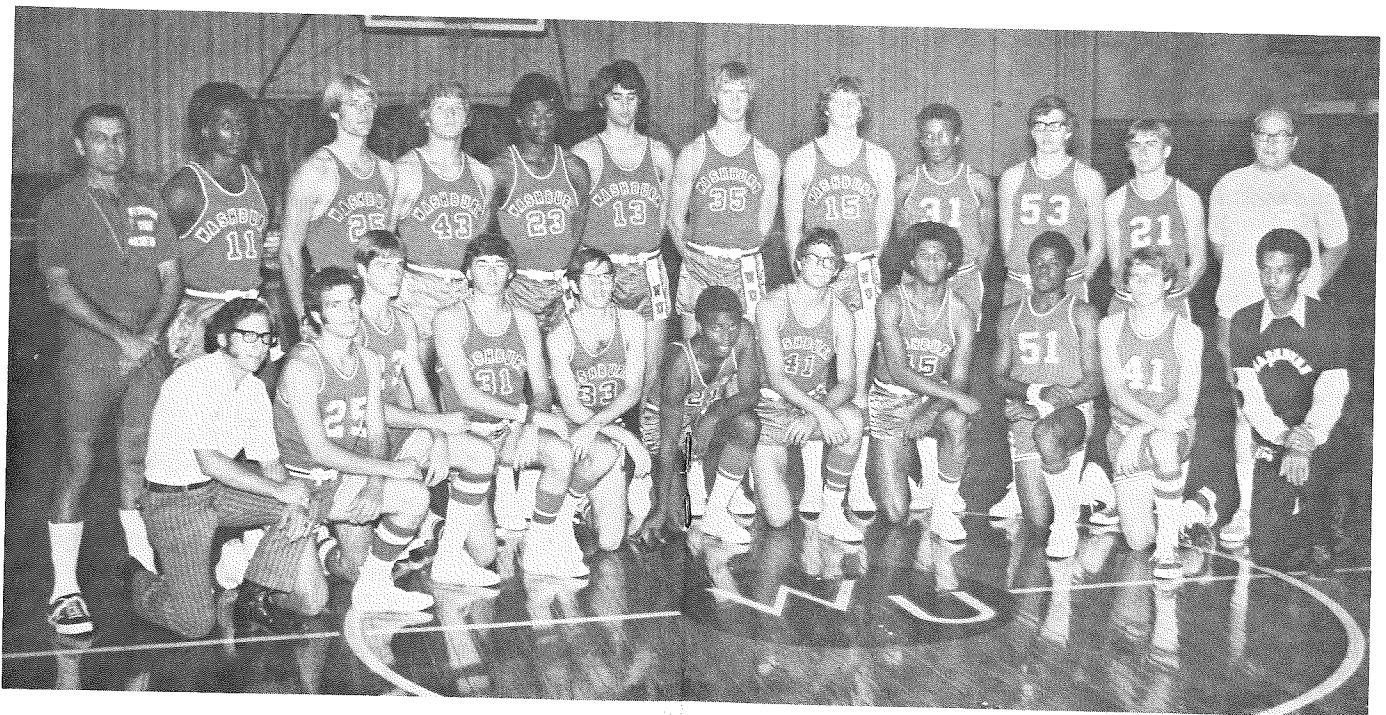


This transfer averaged 15 points and 9.6 rebounds for Butler Co. Juco in '72-'73 . . . unanimous selection to the All-Kansas Jayhawk Junior College Team and the All-Region Six Team last season . . . selected to the Butler Co. Classic All-Tourney Team past two seasons . . . a tough 6-8 center who can really help a ball club . . . physically strong . . . can run . . . has the ability and the shot to move out of the pivot and still be effective . . . will strengthen Ichabod inside play tremendously.

1973-74 Washburn ^{NAIA} Basketball Roster

	Pos.	Ht.	Wt.	Class	Major	Hometown (Previous School)
Steve Bond	G	5-7	145	Fr.	Undecided	Overbrook (Sante Fe Trail H.S.)
Harold Brown***	G	6-2	175	Sr.	Accounting	Kansas City (Wyandotte H.S.)
Keith Brugat	G	5-9	155	Fr.	Undecided	Topeka (Washburn Rural H.S.)
Cedric Collins	G	5-11	165	Fr.	Phys. Ed.	Dallas, Texas (Lincoln H.S.)
Leonard Conkleton**	F	6-3	195	Jr.	Social Work	Dallas, Texas (Lincoln H.S.)
Bruce Cowdin (S)	G	5-10	160	So.	Undecided	Topeka (Highland Park H.S.)
Robert Crowe	G	5-11	155	Fr.	Pol. Science	Salina (Central H.S.)
Tony Dosien*	F	6-4	180	So.	Pol. Science	Halstead
Allen Joy (T)	G	6-2	165	Jr.	Bus. Adm.	Belleville (K.S.U.)
Kyle Larson	F	6-2	180	Fr.	Bus. Adm.	Pretty Prairie
Lynn Littleton (S)	G	5-11	145	So.	Pre-Med.	Valley Falls
Bob Love (T)	G	6-2	165	Sr.	Recreation	Wichita (Montana State U.)
Joe Luebcke (T)	C	6-8	200	Jr.	Business	Marysville (Butler Co. Juco)
Jon McCoy (T)	F	6-7	205	Sr.	Bus. Adm.	Marysville (West Texas State)
Mike McGee	G	6-1	170	Fr.	Accounting	Burlington
Mike Morgan (S)	G	6-2	185	So.	Business	Dallas, Texas (Lincoln H.S.)
Greg Ruder**	F	6-3	200	Sr.	Recreation	Gladstone, Mo. (Oak Park H.S.)
Spencer Thomas*	G	6-2	180	Sr.	Corrections	Kansas City (Wyandotte H.S.)
Mit Winter**	F-C	6-6	190	Sr.	Pol. Science	Lawrence

* - Number of Years Lettered
 (T) - Transfer
 (S) - 1972-73 squad member



Player Profiles

Mit Winter** Sr G 6-6 190 lbs Lawrence, Kansas



An excellent rebounder with outstanding aggressiveness . . . has a more than adequate medium range jump shot . . . excellent determination with a never-say-die attitude . . . came on strong and helped tremendously in the late stages of last season . . . can swing from forward to center and will play both . . . tough physically . . . part-time starter past two seasons.

	G	FG/A	FG%	FT/A	FT%	REB	PTS	AVG	HG
71-72	25	57/128	.445	56/86	.652	116	171	6.9	18
72-73	23	33/62	.533	23/40	.575	74	89	3.9	14
Career	53	97/202	.480	82/129	.690	198	277	5.2	18

Freshmen

Steve Bond Fr G 5-7 145 lbs Overbrook, Kansas

An All-Jayhawk Conference selection his senior year at Sante Fe Trail High . . . although small, could contribute to Ichabod basketball soon . . . good shooter.

Keith Burgat Fr G 5-9 155 lbs Topeka, Kansas

Averaged 10 points in senior season at Washburn Rural High . . . good quickness . . . fine shooter . . . excellent attitude.

Cedric Collins Fr G 5-11 165 lbs Dallas, Texas

A talented back court candidate from Lincoln High in Dallas . . . good shooter . . . needs improvement on defense.

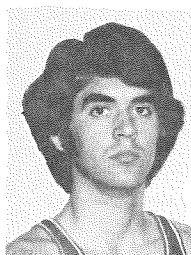
Mike McGee Fr G 6-1 170 lbs Burlington, Kansas

Son of basketball coach Jay McGee at Burlington High . . . a strong performer with an excellent attitude . . . good prospect for the future.



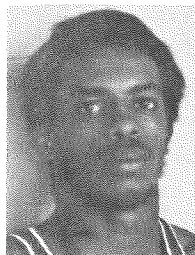
Player Profiles

Jon McCoy (T) Sr F 6-7 205 lbs Marysville, Kansas



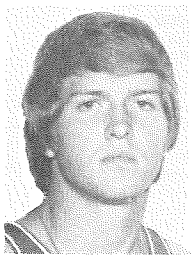
Good big man who can play either center or forward . . . good around the basket, but can move outside and hit with consistency . . . played at Hutchinson Juco with Thomas and Love . . . started at forward for the Missouri Valley Conference's West Texas State two years ago . . . if toughness and conditioning return, should be an exceptional performer this season.

Michael Morgan So G-F 6-2 185 lbs Dallas, Texas



Joined squad late after chores as a defensive back on the football team . . . good leaper . . . shooting must improve along with defense . . . probably slated for JV action again this year.

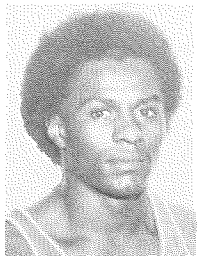
Greg Ruder** Sr F 6-3 200 lbs Gladstone, Missouri



Outstanding shooter who became a tough all-around performer last year . . . has speed, strength, quickness and excellent endurance . . . one of the better defensive players around . . . can score with the best . . . should have an outstanding senior season.

	G	FG/A	FG%	FT/A	FT%	REB	PTS	AVG	HG
71-72	13	28/68	.412	7/14	.500	33	63	4.8	24
72-73	23	105/247	.425	18/29	.621	114	228	9.9	26
Career	39	136/318	.428	25/43	.528	147	297	7.6	26

Spencer Thomas* Sr G 6-2 180 lbs Kansas City, Kansas



Returning starter at guard . . . will probably perform as a swing man playing a forward position much of the time this season . . . extremely quick and strong . . . mentally tough . . . a good board man, third leading rebounder last year . . . assigned opponents' best outside threat on most occasions because of his defensive abilities . . . will punish himself physically to excell.

	G	FG/A	FG%	FT/A	FT%	REB	PTS	AVG	HG
72-73	24	60/168	.357	51/77	.663	120	171	7.1	18
Career	26	60/170	.323	51/77	.663	120	171	6.7	18

Opponents

Baker University

Nov. 27 -- 7:30 p.m., Topeka
Location: Baldwin City, Kansas
Athletic Director: James Irick
Head Coach: Charles Mansfield (7 yrs., 65-95)
Assistant: David Sears
SID: Grady Batten (913-594-6451, x 521)
Nickname: Wildcats
Colors: Orange and Black
Enrollment: 740
Conference: HOAC
Affiliation: NAIA
1972-73 Record: 14-12 Conference Record: 7-2
Series: WU leads 27-12 71-72 Score: Did not meet
Lettermen Returning: 4 Lettermen Lost: 6
Top Returnees: Doug Struby, 6-4 sr. fd.
Harold Glinton, 6-0 sr. gd.

Univ. of Missouri -- St. Louis

Nov. 30 -- 7:30 p.m., St. Louis
Location: St. Louis, Missouri 63121
Athletic Director: Chuck Smith
Head Coach: Chuck Smith (101-62)
Assistants: Dan Wall, Cozel Walker, Larry Berres
SID: Kevin Byrne (314-453-5121)
Nickname: Rivermen
Colors: Red and Gold
Enrollment: 11,155
Conference: Independent
Affiliation: NCAA Col. Div.
1972-73 Record: 10-13 (1st losing season in school's history)
Series: First Meeting
Lettermen Returning: 5 Lettermen Lost: 5
Top Returnees: Kevin Brennan, 6-5 sr. fd. (12.5 ppg, 6.6 rpg)
Kevin Barthule, 6-2 sr. gd. (12.2 ppg)
Rick Schmidt, 6-7 sr. cen. (7.4 ppg, 5.5 rpg)
Mike Lewis, 6-4 sr. fd. (4.4 ppg, 5.0 rpg)

Northeast Missouri State University

Dec. 1 -- 7:30 p.m., Kirksville
Location: Kirksville, Missouri 63501
Athletic Director: James Dougherty
Head Coach: Willard Sims (2 yrs., 25-24)
Assistant: Ben Pitney
SID: William H. Cable (816-665-5121 x 7215)
Nickname: Bulldogs
Colors: Purple and White
Enrollment: 5,400
Conference: MIAA
Affiliation: NCAA
1972-73 Record: 12-13 Conference: 4-8 (5th)
Series: NEM leads 1-0 72-73 Score: Did not meet
Lettermen Returning: 7 Lettermen Lost: 5
Top Returnees: Lee Smith, 6-6 sr. cen. (9.2 ppg, 8.0 rpg)
Jim Blaydes, 6-0 jr. gd. (8.2 ppg)
Mark Seip, 6-7 sr. fd. (7.2 ppg, 3.8 rpg)
Bob Brown, 6-5 sr. fd. (7.0 ppg, 4.5 rpg)

Ottawa University

Dec. 4 -- 7:30 p.m., Ottawa
Location: Ottawa, Kansas
Athletic Director: Bill Frear
Head Coach: Bill Frear (18 yrs.)
SID: Jack Patty (913-242-5200 x 322)
Nickname: Braves
Colors: Yellow and Black
Enrollment: 750
Conference: HOAC
Affiliation: NAIA
1972-73 Record: 9-19 Conference Record: 7-7
Series: WU leads 39-15 72-73 Score: WU 99 OU 68
Lettermen Returning: 6 Lettermen Lost: 4
Top Returnees: Bob Lusk, 5-10 jr. gd.
Al Johnson, 6-0 sr. fd.

Fort Hays State College

Dec. 8 -- 7:30 p.m., Hays
Feb. 16 -- 7:30 p.m., Topeka
Location: Hays, Kansas 67601
Athletic Director: Cade Suran
Head Coach: Chuck Brehm (8 yrs., 77-82)
Assistant: Bud Moeckel
SID: Lon Pishny (913-628-4263)
Nickname: Tigers
Colors: Black and Gold
Enrollment: 4,800
Conference: GPAC
Affiliation: NAIA
1972-73 Record: 9-15 Conference Record: 3-9 (7th)
Series: WU leads 45-31 72-73 Scores: WU 59 FHS 63
WU 70 FHS 66
Lettermen Returning: 8 Lettermen Lost: 2
Top Returnees: Greg Standish, 6-5 jr. fd. (10.3 ppg, 5.8 rpg)
Doug Thurman, 6-7 sr. cen. (9.5 ppg, 8.1 rpg)
Ron Crowell, 6-5 jr. fd. (8.2 ppg, 6.3 rpg)

Central Missouri State University

Dec. 10 -- 7:30 p.m., Topeka
Location: Warrensburg, Missouri
Athletic Director: Dr. Floyd Walker
Head Coach: Jim Kampen (2nd yr., 12-14)
Assistant: Ron Heinrichs
SID: Dean H. Vogelaar (816-747-5693)
Nickname: Mules
Colors: Red and Black
Enrollment: 10,000
Conference: MIAA
Affiliation: NCAA
1972-73 Record: 12-14 Conference Record: 4-8 (5th)
Series: CMS leads 20-15 72-73 Score: WU 85 CMS 89
Lettermen Returning: 6 Lettermen Lost: 5
Top Returnees: Deon Kayhill, 6-4 sr. fd. (16.6 ppg, 10.0 rpg)
Craig Shour, 7-0 sr. cen. (6.6 ppg, 6.6 rpg)

UN-Omaha Holiday Tournament

Dec. 27-28 -- Omaha

University of Nebraska-Omaha (Information Below)

Jackson State College
Location: Jackson, Mississippi 39217
Athletic Director: Tellis B. Ellis, Jr.
Head Coach: Paul Covington (6 yrs., 141-28)
SID: Obra Hackett (601-948-8533 x 331)
Nickname: Tigers
Colors: Blue and White
Enrollment: 5200
Conference: Southwestern Athletic Conference
Affiliation: NCAA, NAIA
Series: First Meeting 1972-73 Record: 21-7

Arkansas State University
Location: Jonesboro, Arkansas
Athletic Director: Don Floyd
Head Coach: John Rose (4 yrs., 49-49)
Assistant: Bobby Reese
SID: Andy Morris (501-972-2077)
Nickname: Indians
Colors: Scarlet and Black
Enrollment: 6600
Conference: Southland
Affiliation: NCAA
1972-73 Record: 7-17
Series: First Meeting

Southern Colorado State College

Jan. 4 -- 8:00 p.m. MST, Pueblo
Feb. 1 -- 7:30 p.m., Topeka
Location: Pueblo, Colorado 81001
Athletic Director: Harry Simmons
Head Coach: Harry Simmons (10 yrs., 174-86)
Assistant: Don McIntosh
SID: Tim Simmons (303-549-2219)
Nickname: Indians
Colors: Red and Blue
Enrollment: 7,515
Conference: GPAC
Affiliation: NAIA, NCAA Col. Div.
1972-73 Record: 19-9 Conference Record: 10-2 (1st)
Series: SCSC leads 5-3 72-73 Scores: WU 61 SCSC 75
WU 60 SCSC 74
Lettermen Returning: 7 Lettermen Lost: 5
Top Returnees: Charles Cox, 6-1 sr. gd. (12.2 ppg)
Tom Peterson, 6-7 sr. fd. (16.1 ppg)

1972-73 Results

WU 76	Friends	55	WU 77	NW Missouri	59
WU 55	Oklahoma U.	79	WU 56	Benedictine	59
WU 99	Ottawa U.	68	WU 81	SW Baptist	91
WU 65	NW Missouri	64	WU 54	Drury	87
WU 59	Fort Hays	63	WU 83	Sacred Heart	82
WU 85	Ken. Mo.	89	WU 60	So. Colo.	74
WU 85	Kearney	88	WU 77	No. Colo.	72
WU 60	Phillips	79	WU 78	KSTC	54
WU 61	So. Colo.	75	WU 63	KSC-Pitt.	59
WU 76	No. Colo.	71	WU 65	UN-Omaha	75
WU 65	KSTC	67	WU 70	Fort Hays	66
WU 68	KSC-Pitt.	78	WU 83	UN-Omaha	76
WU 44	Benedictine	55			

Name	G	FG/FGA	FG%	FT/FTA	FT%	REB	PF	TP	GAHG
Brown	24	208/419	.498	59/77	.767	127	80	475	19.8 40
Dodd	25	125/221	.566	39/52	.751	115	43	289	11.5 32
Ruder	23	105/247	.425	18/29	.621	114	57	228	9.9 26
Conkleton	23	95/255	.372	34/53	.642	195	53	224	9.8 20
Thomas	24	60/168	.357	51/77	.663	120	84	171	7.1 18
Ostmeyer	23	42/94	.447	26/40	.651	50	46	110	4.8 15
Winter	23	33/62	.533	23/40	.575	74	56	89	3.9 14
Morgan	2	4/12	.333	0/3	.000	2	0	8	4.0 8
Dosien	14	20/51	.392	4/6	.666	27	13	44	3.1 10
Todd	25	28/54	.519	16/18	.890	34	36	72	2.9 10
Snell	9	7/11	.636	2/2	1.000	5	2	16	1.8 6
Carver	2	1/5	.200	1/1	1.000	2	0	3	1.5 3
Wempe	10	4/13	.308	4/9	.444	11	3	12	1.2 5
Washburn	25	733/1683	.435	279/406	.688	943	484	1745	69.9 99
Opponents	25	725/1767	.413	335/524	.640	939	467	1785	71.4 91

1972-73 GPAC Standings

	Final League			All Game		
	W-L	PF	PA	W-L	PF	PA
So. Colo.	10-2	947	817	19- 7	2004	1833
KSC-Pittsburg	7-5	903	871	12-14	1905	1904
UN-Omaha	7-5	967	940	16- 9	2118	1931
Washburn	6-6	825	830	11-14	1745	1785
No. Colo.	5-7	934	945	12-12	1995	1911
K.S.T.C.	4-8	878	979	10-15	1840	1962
Fort Hays	3-9	816	888	9-15	1697	1833

1973 All-GPAC Teams

First Team:

Cal Tatum, So. Colo., 6-2 sr. gd., Muskegon, Mich.
 Cal Forrest, UN-Omaha, 6-4 jr. fd., Omaha, Nebr.
 Cal Kinzer, KSC-Pitt., 6-4 so. fd., Nashville, Tenn.
 Dennis Supple, K.S.T.C., 6-5 jr. fd., Overbrook, Kans.
 Harold Brown, Washburn, 6-1 jr. gd., Kansas City, Kans.

Second Team:

Barton Snow, Ft. Hays, 6-3 so. fd., Denver, Colo.
 Charles Cox, So. Colo., 6-1 jr. gd., Indianapolis, Ind.
 Tom Peterson, So. Colo., 6-7 jr. fd., Chicago, Ill.
 Bob Eaks, No. Colo., 6-0 so. gd., Colorado Springs, Colo.
 Gene Dodd, Washburn, 6-5 jr. cen., Hill City, Kans.

Individual Records

Single Game

Most Points: 40 by Harold Brown vs. UN-Omaha, 2/21/73 in Topeka (16-8)
 37 by Jerry Milner vs. Ottawa, 12/5/59 in Topeka (9-19)
 36 by Jerry Milner vs. Illinois Normal, 1959 in Ottawa (13-10)
 35 by Ron Berkholtz vs. Kenyon, 1968 in Quincy, Ill. (15-5)

Most Field Goals:
 16 by Harold Brown vs. UN-Omaha in Topeka, 2/21/73, attempted 27
 16 by Harold Brown vs. UN-Omaha in Omaha, 2/13/73, attempted 30
 15 by Ron Berkholtz vs. Kenyon in Quincy, 1968, attempted 25

Most Field Goals Attempted:
 31 by Bob Godwin vs. Fort Hays in Hays, 1955, made 9
 30 by Harold Brown vs. UN-Omaha in Omaha, 2/13/73, made 16

Field Goal Percentage:
 100% by Gene Dodd vs. Southern Colorado in Pueblo, 2/3/73, made 9 of 9
 100% by Bob Godwin vs. St. Benedict's in Atchison, 1955, 9 of 9

Free Throws:
 19 by Jerry Milner vs. Ottawa in Topeka, 1959, attempted 25

Free Throws Attempted:
 25 by Jerry Milner vs. Ottawa in Topeka, 1959, made 19

Free Throw Percentage:
 100% by John Johnson vs. Fort Hays in Topeka, 14 of 14

Consecutive Free Throws:
 35 by Ron Berkholtz, 1968

Best Two-Man Performance:
 67 points by Ron Berkholtz (35) and Frank Dexter (32) vs. Kenyon in Quincy, 1968.

Season

Most Points: 515 by Ron Berkholtz in 1968-69 (155-205)

Most Field Goals:
 208 by Harold Brown 1972-73 (att. 419 for .498)

Most Field Goal Attempts:
 419 by Harold Brown, 1972-73 (made 208)

Most Free Throws:
 205 by Ron Berkholtz, 1968-69 (att. 247 for .830)

Most Free Throw Attempts:
 247 by Ron Berkholtz, 1968-69 (made 205)

Best Scoring Avg.:
 19.8 by Harold Brown, 1972-73 (24 games)

Most Rebounds:
 205 by Joe Craig, 1968-69

Career

Most Points: 1344 by Ron Berkholtz, 1965-69 (101 games)

Most Field Goals:
 494 by Harold Brown, 1970-73 (att. 1076)

Most Field Goal Attempts:
 1076 by Harold Brown, 1970-73 (made 494)

Most Free Throws:
 474 by Ron Berkholtz, 1965-69 (att. 606)

Most Free Throw Attempts:
 606 by Ron Berkholtz, 1965-69 (made 474)

Best Scoring Avg.:
 16.1 by Harold Brown, 1970-73 (73 games)

Washburn Leading Career Scorers

Player	Years Played	Games	Points
Ron Berkholtz	1965-1969	101	1344
Harold Brown	1970-1973	73	1169
Tom Carlson	1945-1949	82	1080
Ron Ford	1962-1966	86	1055
Charles Brehm	1951-1954	80	1004
Bill Yeardsley	1950-1954	85	989
Gerald Spohn	1924-1927	86	962
John Johnson	1966-1970	81	909
Bill Quick	1958-1962	70	889
Niles Nelson	51-53, 56-58	89	886
Ed Hanson	1948-1952	80	881
Tom Frazier	1969-1972	60	827
Frank Dexter	1967-1969	52	808
Greg Gibb	1961-1965	78	781
John Darr	1955-1958	60	778
Kevin Sweeney	1967-1971	72	741

Team Records (Since 1950)

Single Game

- Best Offense:** 112 points vs. Peru State, Neb. in Topeka, 1964
Lowest Offense: 34 points vs. Southwestern in Topeka, 1951
Best Defense: 38 points by Emporia State in Topeka, 1952 and by Southwestern in Topeka, 1951
Poorest Defense: 107 points by Rockhurst in Topeka, 1966
Widest Winning Margin: 36 points - WU 80, Ottawa 44 in Ottawa, 1969
Widest Losing Margin: 35 points - Hamline 103, WU 68 in Kansas City, 1951
Largest Aggregate Score: 207 points - WU 112 points, Peru State 95 in Topeka, 1964
Smallest Aggregate Score: 72 points - WU 34, Southwestern 38 in Topeka, 1951
Field Goal Attempts: 93 - WU vs. Peru in Topeka, 1964, made 43
Field Goals Made: 44 - WU v. Southwestern in Hutchinson, 1953, attempted 78
Free Throws Attempted: 54 - WU vs. Fort Hays in Topeka, 1954, made 30; vs. Fort Hays in Topeka, 1969, made 47
Free Throws Made: 47 - WU vs. Fort Hays in Topeka, 1969, attempted 54

Season

- Most Victories:** 20, 1968-69, 20-10 record
Most Losses: 19, 1965-66, 6-19 record
Fewest Victories: 4, 1930-31, 4-12 record
 4, 1936-37, 4-17
 4, 1938-39, 4-17
Fewest Losses: 4, 1924-25, 19-4 record
 4, 1925-26, 15-4 record

WASHBURN CAREER COACHING RECORDS

Coach	Seasons	W-L
A. L. "Dutch" Lonborg	1923-27	68-21
Roy Wynne	1927-30	35-23
George Gardner	1930-33	25-31
Elmer "Gus" Holm	1933-36	21-37
Dee Erickson	1936-46	81-134
Ad Miller	1946-51	64-46
Marion McDonald	1951-60	108-77
Dick Godlove*	1960	3-3
Norm Short	1960-66	49-73
Gordon Stauffer	1966-67	18-6
Glenn Cafer	1967-	78-53

*Godlove took over the team following a heart attack which sidelined McDonald.

National Tournament History

NAIA Tournament History

- 1938:** Coach Dee Erickson (3-2)
 WU 37 Winona, Minn. 36
 WU 53 Marshall, Ky. 51
 WU 44 Jordan College, Mich. 21
 WU 24 Warrensburg Teachers, Mo. 44 (semifinals)
 WU 24 Murry State, Ky. 33 (playoff for third)
- 1945:** Coach Dee Erickson (0-1)
 WU 49 Southern Illinois Normal 64
- 1946:** Coach Dee Erickson (0-1)
 WU 36 Augsburg College, Minn. 64
- 1952:** Coach Marion McDonald
 WU 80 Lawrence Tech, Mich. 97
- 1968:** Coach Glenn Cafer (0-1)
 WU 71 Dickinson State, N. Dakota 76
- 1969:** Coach Glenn Cafer (2-1)
 WU 90 Western Mont. 68
 WU 74 Fairmont State, W. Va. 72
 WU 88 Elizabeth City, M. C. 90 (quarterfinals)

Washburn NAIA Tourney Bests

Single Game:

- Most Points Scored:** 28 by John Johnson, '69 vs. Western Mont.
Most Field Goals: 13 of 19 attempts by John Johnson, '69 vs. Western Mont.
Most Free Throws: 10 of 13 attempts by Ron Berkholtz, '69 vs. Elizabeth City

Tournament:

- Most Points Scored:** 68 by Ron Berkholtz, 1969 (3 games)
Most Field Goals: 28 by John Johnson, 1969 (3 games)
Most Free Throws: 82 by Ron Berkholtz, 1969 (3 games)
Most Career Points: 82 by Ron Berkholtz, 1968-69 (4 games)
Best Team Offense: 90 points vs. Western Mont., 1969
Best Team Defense: 21 points by Jordan College, 1938

Pre-NAIA Tournament Record

Year	Tournament	Record
1921-22	AAU	2-1
1923-24	AAU	2-1
1924-25	AAU	5-0	1st
1925-26	AAU	1-1
1926-27	AAU	4-2	4th
1927-28	AAU	1-1
1935-36	District Olympic Elimination Meet	0-1



Year By Year Records

Year	Coach	Conf.	W-L	Con. Pl.
1921-22	Ream	Kansas	11-11	8th-T
1922-23	Vosburg	Kansas	8-10	10th
1923-24	Lonborg	Kansas	18-5	3rd
1924-25	Lonborg	Kansas	19-4	1st-T
1925-26	Lonborg	Kansas	15-4	1st-T
1926-27	Lonborg	Kansas	16-8	6th
1927-28	Wayne	CIC	12-6	4th
1928-29	Wayne	CIC	14-5	1st
1929-30	Wayne	CIC	9-12	5th
1930-31	Gardner	CIC	4-12	4th-T
1931-32	Gardner	CIC	7-13	5th
1932-33	Gardner	CIC	14-6	4th
1933-34	Holm	CIC	7-9	4th-T
1934-35	Holm	MVC	7-13	5th-T
1935-36	Holm	MVC	7-15	4th
1936-37	Erickson	MVC	4-17	7th
1937-38	Erickson	MVC	10-13	6th
1938-39	Erickson	MVC	4-17	8th
1939-40	Erickson	MVC	10-10	4th
1940-41	Erickson	MVC	8-15	6th
1941-42	Erickson	MVC	7-15	6th
1942-43	Erickson	MVC	6-16	6th
1943-44	Erickson	None (War)	7-13
1944-45	Erickson	None (War)	12-9
1945-46	Erickson	CIC	13-9	1st
1946-47	Miller	CIC	8-11	2nd-T
1947-48	Miller	CIC	15-9	2nd
1948-49	Miller	CIC	12-7	3rd
1949-50	Miller	CIC	13-10	5th
1950-51	Miller	CIC	16-9	1st
1951-52	McDonald	CIC	17-10	1st
1952-53	McDonald	CIC	15-8	3rd
1953-54	McDonald	CIC	15-7	2nd
1954-55	McDonald	CIC	11-9	4th-T
1955-56	McDonald	CIC	14-6	2nd
1956-57	McDonald	CIC	10-10	3rd
1957-58	McDonald	CIC	13-10	3rd
1958-59	McDonald	CIC	9-9	4th
1959-60	McDonald	CIC	7-11	5th
	Godlove			
1960-61	Short	CIC	9-10	3rd-T
1961-62	Short	CIC	6-10	4th-T
1962-63	Short	CIC	6-13	4th-T
1963-64	Short	CIC	10-11	5th
1964-65	Short	CIC	12-10	2nd-T
1965-66	Short	CIC	6-19	5th
1966-67	Stauffer	CIC	18-6	1st-T
1967-68	Cafer	CIC	18-8	1st
1968-69	Cafer	Independent	20-10
1969-70	Cafer	RMAC	14-11
1970-71	Cafer	RMAC	13-12	5th-T
1971-72	Cafer	RMAC	13-12	4th-T
1972-73	Cafer	GPAC	11-14	4th

What's an Ichabod?

The name Ichabod is derived from the first name of Ichabod Washburn, an early benefactor of the university. Until 1938 there were no particular characteristics associated with Mr. Ichabod and there was no graphic representation of him. During the 1937-38 school year, the editors of Kaw, the university yearbook, decided that such items were important to the university and began to accept suggestions for a design of Mr. Ichabod. The adopted design was drawn by Bradbury Thompson, (BA '34).



The following explanatory material accompanied Ichabod's first representation in the Washburn Kaw: "He has courage and enthusiasm as shown by his brisk walk. He is democratic and courteous, for he tips his hat as he passes. Sincere in his search for truth and knowledge, he studiously carries a book under his arm. His friendly smile makes you like him. He is neatly dressed and he fits well into his generation . . . but he adapts himself with equal ease to any change or any age."

"ICHABODS"

1972-73 Basketball Schedule

Nov. 27	Baker	Topeka
Nov. 30	U.M.-St. Louis	St. Louis, Mo.
Dec. 1	N. E. Missouri	Kirksville, Mo.
Dec. 4	Ottawa	Ottawa
Dec. 8	Fort Hays*	Hays
Dec. 10	Central Missouri	Topeka
Dec. 27	UN-Omaha Holiday Tournament	Omaha, Nebr.
Jan. 4	So. Colorado*	Pueblo, Colo.
Jan. 5	No. Colorado*	Greeley, Colo.
Jan. 9	Emporia State*	Topeka
Jan. 12	Pittsburg State*	Topeka
Jan. 15	Benedictine	Atchison
Jan. 19	N. W. Missouri	Topeka
Jan. 22	Sterling	Topeka
Jan. 28	Wm. Jewell	Liberty, Mo.
Feb. 1	So. Colorado*	Topeka
Feb. 2	No. Colorado*	Topeka
Feb. 6	Emporia State*	Emporia
Feb. 9	Pittsburg State*	Pittsburg
Feb. 13	UN-Omaha	Topeka
Feb. 16	Fort Hays*	Topeka
Feb. 20	UN-Omaha	Omaha, Nebr.
Feb. 23	Benedictine	Topeka
Feb. 26	N. W. Missouri	Maryville, Mo.

Home Games -- Whiting Fieldhouse -- 7:30 p.m.

*Denotes GPAC Games



Cover: All-GPAC guard Harold Brown returns to lead the Ichabods.

Photo courtesy of Topeka Capital-Journal.