

# WASHBURN

UNIVERSITY OF TOPEKA



1963-64

# BASKETBALL STAFF



**NORMAN SHORT**  
Head Coach



**DALE NEELLY**  
Assistant Coach



**JERRY WILLIAMS**  
6-5 ... 180 ... Senior  
Team Captain

## TABLE OF CONTENTS

Tickets, Press Accommodations .....	1
Washburn University Information ..	2
University Officials, News Outlets	3
Washburn and CIC .....	4
Richard Godlove, Athletic Dir. ...	5
Norman Short, Head Coach .....	6
Dale Neelly and Athletic Coaches .	7
1963-64 Schedule; 1962-63 Results.	8
Outlook .....	9
Outlook .....	10
Roster .....	11
Roster .....	12
Washburn Year-by-Year Record ....	13
Player Sketches .....	14
Player Sketches .....	15
Opponents for 1963-64 .....	16
Opponents for 1963-64 .....	17
Opponents for 1963-64 .....	18
Opponents for 1963-64 .....	19
Opponents for 1963-64 .....	20
Past CIC Champions .....	21
Coaches' Information .....	22
1962-63 Individual Statistics ...	23

## FOREWORD

This brochure has been prepared by the sports information staff of Washburn University to provide information for newsmen, publicity directors, and TV and radio broadcasters.

Much of the information was assembled prior to the opening of the 1963-64 season and therefore is subject to change due to injuries, dropouts, and other unforeseen reasons.

Visitors are cordially invited to the Washburn campus. They are welcome to use the facilities and records in the sports information office.

Press facilities will be available at Whiting Field House for all home games. They should be reserved through the public relations office at least one week prior to the scheduled game.

Persons desiring additional information (pictures, press tickets, radio booths, etc.) are asked to address their requests to:

Ken Klein  
Sports Information Director  
Washburn University  
Topeka, Kansas 66621

Telephone:  
CE 5-5341 (ext. 27) or  
CE 5-1998 (nights and  
weekends)

For further ticket information, call or write the Athletic Office. Telephone: CE 5-5341 (ext. 61) or CE 5-5402.

## WASHBURN UNIVERSITY OF TOPEKA

1865 Lincoln College  
1868 Renamed Washburn College  
1941 Became Washburn Municipal U.  
1952 Renamed Washburn University  
of Topeka

Washburn University is located in Topeka, the capital of Kansas, at 17th and College. Metropolitan Topeka, with a population of 141,000, is served by four railroads, Santa Fe, Union Pacific, Rock Island and Missouri Pacific; one airline, Central; and numerous bus lines and major highways, including the Kansas Turnpike and Interstate 70.

The University encompasses 160 acres located in the heart of Topeka. The campus includes seventeen buildings, two fraternity and four sorority houses, and women's and men's residence halls. Three fraternities have houses near the campus.

The campus also includes an athletic stadium (Moore Bowl) and a field house (Whiting) in addition to a ninehole golf course, tennis courts, practice football fields, baseball diamond, and housing for married students.

Schools to be found in the college program are Liberal Arts, Fine Arts, Law, Education, Business, USAF Reserve Officer Training Corps, Evening College and Summer School.

Enrollment: (based on fall, 1963, enrollment figures) 3558 (2021 men and 1537 women)

Colors: Yale Blue with White  
Field House: Whiting (3100)  
Nickname: Ichabods

## PRESS ACCOMMODATIONS

Tickets for the working press, including radio and TV, are available from Ken Klein, sports information director.

The press row is on the WEST side of Whiting Field House, and the radio booths and tables are to be found at the end of the press row. Space is limited; therefore, it must be reserved a week in advance of any game.

Whiting Field House is located on the southeast section of the campus. It is a native stone structure, seating 3100, and was built in 1926-28. Parking facilities are available EAST of the Field House.

### UNIVERSITY OFFICIALS

Dr. Harold E. Sponberg	President
Dr. A. F. Engelbert	Dean of College
John Howe	Dean of Law School
A. T. Matthews	Acting Dean of Students
Richard Vogel	Treasurer
Richard M. Godlove	Athletic Director
Dr. Ernest Bader	CIC Faculty Rep.
Jerry Hutchison	Acting Director of Public Relations

### NEWS OUTLETS

Topeka Capital-Journal	CE 5-5957
Bob Hurt, Sports Editor	
Bill Mohr, WU Correspondent	
AP	Elon Torrence CE 4-5654
UPI	Joe Galloway CE 3-2222
WIBW	Dev Nelson CR 2-3456
WREN	Bob Fromme CE 2-0505
KEWI	Bob Russell CE 3-1336
KTOP	Merle Blair FL 7-1490

GAME BROADCASTS: WIBW, 580 KC,  
Topeka (Dev Nelson)

WASHBURN TELEPHONES	CE 5-5341
Public Relations	ext. 27 or 28
Athletic Office	ext. 61 or CE 5-5402

## WASHBURN AND THE CIC

Washburn University is a member of the Central Intercollegiate Conference of Kansas with Pittsburg State, Emporia State and Ft. Hays State, three Kansas teachers colleges; and Omaha University of Omaha, Nebraska.

The original CIC broke away from the old Kansas Conference comprised of every college in the state except Kansas University and Kansas State University in 1928. Charter members at the time were Washburn, Emporia State, Pittsburg State, Fort Hays State and the College of Emporia.

Washburn left the CIC in 1934 for a four-year membership in the Missouri Valley conference. When the College of Emporia joined the Kansas Conference of denominational schools, Washburn returned to the CIC in 1940.

Since the early thirties, the CIC has remained with its present membership, including Omaha who joined in 1959, and excluding St. Benedict's, withdrawing, '62. Washburn fields teams in football, cross country, basketball, track, tennis, golf and baseball.

Washburn won the national AAU Basketball championship in 1925. Dutch Longborg's crew was the only collegiate team ever to win the national AAU tourney.

Washburn CIC championships in basketball have been won in 1929 under Roy Wynne, in 1946 under Dee Erickson, in 1951 under Ad Miller, and in 1956 under Marion McDonald.

RICHARD M. LOVE  
Director of Athletics

Dick Godlove, a lieutenant commander in the Navy's Pre-Flight program during World War II, came to Washburn in 1946. He has been guiding the destiny of the University's athletic department since that time.

After graduating from the State University of Iowa ('27) Godlove established impressive records coaching at Eureka and Leavenworth high schools in Kansas.

One of the outstanding small college coaches in Kansas before entering the service, he established all-time records at Ottawa University where his teams posted championships in football, basketball and track from 1936 to 1942.

At Washburn, Godlove's teams established a respectable 68-42-4 record in 13 years with shared CIC crowns in '49, '53, '54. Four other occasions show his squads finishing second.

Spreading his success to track and field, he developed two national NAIA champions in high jumper Art Carder, '54, and two-time javelin champion Bob Denson in '59 and '60. A number of other Ichabods have finished high in national competition.

In 1955, after a three-year hitch on the football advisory committee, Godlove served as president of the NAIA Football Coaches Association.

He and his wife, Marie, have two married children and four grandchildren. His hobby is gardening.

Ass. FB + Basketball  
JAN WAIR - Basketball  
COM 55  
COM 56  
COM 57  
NORMAN SHORT  
Head Basketball Coach

C. of 5  
13-6  
15-6  
27-12

Norman Short heads into the 1963-64 roundball season with a determined effort to improve last year's record. This is his fourth year at the helm of the Ichabods.

After a 9-10 year in his rookie season at WU, followed by a 6-10 verdict in 1961-62, and a 6-13 record in the 1962-63 season, the youthful mentor will be trying to post his first winning season at the Topeka school.

Short came to Washburn in the fall of 1960 from the College of Emporia where in a two year span, 1958-60, he posted a 28-12 record. Norm moved up to replace the ailing Marion McDonald who had been basketball coach at WU since 1952.

A native of Kansas City, Short has an AB degree from William Jewell College and a ~~master's~~ degree from Washington University of St. Louis. He began his coaching career at Sullivan High School in Missouri, from there moving to St. Charles High School.

He began his collegiate coaching career at his alma mater, William Jewell, in 1955 where he remained three years before migrating to Emporia and then on to Washburn.

Short, besides his regular head coaching chores, coaches the linemen for Coach Ellis Rainsberger during the grid year. He also teaches physical education courses during the school year. In the Spring he is also golf coach. Last year he guided his golfers to second place in the NAIA.

DALE NEELLY  
Assistant Coach

Assisting head coach Short for the second year in a row will be Dale Neelly, a retired Air Force officer. Neelly played varsity basketball at Wichita University.

Coach Neelly will handle the Junior Varsity and assist Short with the Varsity. This will be his second year of basketball tutoring after breaking into the mentor ranks by helping Ellis Rainsberger as center coach in football.

THE COACHING AND ATHLETIC STAFF

Athletic Director: Richard Godlove  
(Iowa, '27)  
Head Basketball Coach: Norman Short  
(Wm. Jewell, '49)  
Asst. Basketball Coach: Dale Neelly  
(Wichita U.)  
Head Football Coach: Ellis Rainsberger  
(Kansas St. U., '57)  
Football Assistants: Norman Short  
Ralph Smith  
John Hartung  
Dale Neelly  
Marion McDonald  
(Ft. Hays St., '37)

Golf Coach: Short  
Track Coach: Godlove  
Baseball Coach: McDonald  
Cross Country Coach: Godlove  
Tennis Coach: George Parker  
(Washburn, '34)  
Swimming Coach: Paul Humann  
Director of Public Relations:  
Jerry Hutchison, Acting Dir.  
Sports Information Director:  
Ken Klein

"ICHA" 1963-64 SCHEDULE

Nov. 30	Rockhurst College	Topeka
Dec. 3	NW Missouri St.	Maryville
Dec. 5	St. Benedict's	Atchison
Dec. 7	SW Missouri St.	Springfield
Dec. 12	Central Mo. St.	Warrensburg
Dec. 14	Ft. Hays St.	Topeka
Dec. 19	St. Benedict's	Topeka
Jan. 4	Central Mo. St.	Topeka
Jan. 7	St. Benedict's	Topeka
Jan. 11	Omaha University	Omaha
Jan. 14	Peru (Nebr.) St.	Topeka
Jan. 17	Nebr. Wesleyan Univ.	Topeka
Jan. 18	Rockhurst College	Kansas City
Jan. 23	Emporia State	Topeka
Jan. 25	NW Missouri St.	Topeka
Feb. 1	Pittsburg St.	Pittsburg
Feb. 4	St. Benedict's	Atchison
Feb. 8	Ft. Hays State	Hays
Feb. 15	Omaha University	Topeka
Feb. 22	Emporia State	Emporia
Feb. 25	Pittsburg State	Topeka

HOME GAMES START AT 7:30

1962-63 RESULTS

WASHBURN	61	..Rockhurst	64
WASHBURN	63	..NW Missouri	83
WASHBURN	63	..Central Mo.	72
WASHBURN	47**	..Ft. Hays St.	76
WASHBURN	45	..SW Missouri	62
WASHBURN	54	..Peru State	60
WASHBURN	72*	..Wayne State	69
WASHBURN	64*	..St. Cloud	58
WASHBURN	68**	..Ft. Hays St.	66
WASHBURN	55**	..St. Benedict's	52
WASHBURN	41**	..Omaha	50
WASHBURN	63	..Rockhurst	79
WASHBURN	59	..Central Mo.	70
WASHBURN	66**	..Pittsburg	59
WASHBURN	53**	..Emporia	68
WASHBURN	63**	..St. Benedict's	56
WASHBURN	69**	..Omaha	82
WASHBURN	62**	..Pittsburg	102
WASHBURN	56**	..Emporia	90

\* Wayne State Holiday Tournament  
\*\* CIC Games 4-6; overall, 6-13.  
Tie for 4th in conference

## OUTLOOK

With the disappointing 1962-63 season in the past, Short looks forward to a much improved 1963-64 roundball campaign as the WU mentor heads into his fourth year at the helm of the Ichabods.

"We will be primarily a young team again this year with only one senior on the squad," said Short. "However, we should have more experience over last year due to the fact that three starters on this year's club, who were freshmen last year, played in almost every game in the '62-'63 season and this should help quite a bit."

The Ichabods have returned six let-terms from last season while losing only two. The gaps were left by Gil Kidd and Don Marriott.

Height will be a keynote of the '63-'64 Blue edition. Three of Short's five starters will be 6-6 and the other two could be 6-3 or over. Nine of the first twelve players stand 6-4 or taller. To go along with that frontline height is a collection of guards that will add strength to the club.

"The key to our success this year," said Short, "lies with our guards." The Blues were weak at the guard spots last season, but the WU mentor has strengthened this position with junior college transfers, Kenny Hendrix, 6-2, from Coffeyville Junior College and Gordon Hibbard, 6-3, from Dodge City Junior College.

The squad also has several outstanding freshmen guards including all-state Denny Douglas, 6-2, from Larned, all-state Otis Shorter, 5-11, from Wichita, Greg Bien, 5-11, from Topeka, (Hayden), and Denny Payne, 6-2, from Topeka, (West).

Commenting on the season, Short said, "We are facing the toughest schedule we've had since I've been here, plus the fact, we play St. Benedict's four times, and they are always good competition."

The four freshmen representatives are progressing at a rapid rate and will undoubtedly see plenty of roundball action on Short's "play-'em" philosophy.

Also back is Lindsey Lindell, a top flight squadman, at 6-5. He has improved a great deal on both offense and defense and can be expected to contribute to the Ichabod success.

Coach Short should not have to worry over the forward spots or the pivot position. These three positions are presently filled by the top three scorers from last year. At center is Greg Gibb, 6-6, who last year averaged 11.4 points per game, while the forwards, Jerry Williams, 6-6, and Ron Ford, 6-7, averaged 13.5 and 7.3 respectively.

SUM UP: Washburn's roundball fortunes will obviously hinge on the experience of Williams, Gibb, and Ford and the now-unknown contributions of transfers and newcomers. Short feels Emporia will be on top of the CIC with Ft. Hays pressing hard and WU, Pitt, and Omaha pushing to compete.

WASHBURN UNIVERSITY ROSTER

NAME	NO.		POS.	HT.	WT.	AGE	YEAR	HOMETOWN
	W	B						
BARTLEY, Neil			G	5-11	150	18	So.	Topeka
BIEN, Greg			G	6-0	150	18	Fr.	Topeka
DOUGLAS, Denny	41	40	F-G	6-3	160	18	Fr.	Larned
FORD, Ron*	33	32	F	6-7	195	19	So.	Salina
GIBB, Greg**	55	54	C	6-6	225	20	Jr.	Kansas City
HARBISON, Gary**	35	34	F	6-4	195	21	Jr.	Kansas City
HENDRIX, Kenny	23	14	G	6-2	165	19	Jr.	Coffeyville
HIBBARD, Gordon	21	12	G	6-3	180	20	Jr.	Dodge City
LILY, Dale			F	6-5	170	20	Jr.	Melvern
LINDELL, Lindsey	43	44	C	6-5	200	19	Fr.	St. George
MILLER, Harvey			F	6-5	180	20	Jr.	Rockford, Ill.
PAYNE, Denny	31	22	G	6-2	155	18	Fr.	Topeka
SHADE, Elmer	51	30	F-G	6-3	180	20	Jr.	Coffeyville
SHIPSTEAD, Sam*	53	52	C	6-5	205	19	So.	Lawrence
SHORTER, Otis			G	5-10	150	20	Fr.	Wichita
SMITH, Don			G	5-11	160	18	Fr.	Goodland
SPARKS, Richard			G	5-10	170	18	Fr.	Tonganoxie
TENPENNY, Dave*	25	20	G	5-10	155	19	So.	Perry
UHRLAUB, Dave			F	6-4	165	19	So.	Topeka
WILLIAMS, Jerry*	45	42	F	6-6	180	20	Sr.	Wichita
WRAY, Kent			F	6-2	160	18	Fr.	Council Grove

\* Denotes number of years as letterman  
 Jerry Abrams - Team Equipment Manager

WASHBURN YEAR-BY-YEAR CORD

LOOP

YEAR	COACH	CON.	W-L	FINISH
1927-28	Wynne	CIC	9-6	4th
1928-29	Wynne	CIC	13-3	1st
1929-30	Wynne	CIC	9-12	5th
1930-31	Gardner	CIC	4-12	4th-T
1931-32	Gardner	CIC	7-13	5th
1932-33	Gardner	CIC	14-6	4th
1933-34	Holm	None	8-8	-
1934-35	Holm	Mo. Valley	7-13	5th-T
1935-36	Holm	Mo. Valley	7-14	4th
1936-37	Erickson	" "	2-18	7th
1937-38	Erickson	" "	10-13	6th
1938-39	Erickson	" "	3-17	8th
1939-40	Erickson	" "	10-10	4th
1940-41	Erickson	" "	8-14	4th-T
1941-42	Erickson	CIC	6-15	6th
1942-43	Erickson	CIC	7-15	6th
1943-44	Erickson	None	7-13	-
1944-45	Erickson	None	12-9	-
1945-46	Erickson	CIC	13-9	1st
1946-47	Miller	CIC	8-11	2nd-T
1947-48	Miller	CIC	15-9	2nd
1948-49	Miller	CIC	12-7	3rd
1949-50	Miller	CIC	13-10	5th
1950-51	Miller	CIC	16-9	1st
1951-52	McDonald	CIC	15-8	1st
1952-53	McDonald	CIC	15-8	3rd-T
1953-54	McDonald	CIC	15-7	2nd-T
1954-55	McDonald	CIC	11-9	4th-T
1955-56	McDonald	CIC	14-6	2nd
1956-57	McDonald	CIC	10-10	3rd-T
1957-58	McDonald	CIC	13-10	3rd
1958-59	McDonald	CIC	9-9	4th
1959-60	McDonald	CIC	4-8 7-11	4th
	Godlove		3-3	
1960-61	Short	CIC	9-10	3rd-T
1961-62	Short	CIC	6-10	4th-T
1962-63	Short	CIC	6-13	4th-T

1st--4 Godlove took over for McDon-  
 2nd--4 ald in late January of 1960  
 3rd--5 when "Mac" suffered a heart  
 4th-11 attack midway through the  
 5th--4 campaign. The Ichabods' re-  
 6th--3 cord was 5-8 at the time,  
 7th--1 giving McDonald 107-75 over-  
 8th--1 all record at WU.

PLAYER THUMBNAIL SKETCHES

GREGG GIBB...6-6, Jr., center, 20, letterman from K.C., Kansas...has mastered an excellent hook shot...improved his rebounding considerably...solid on defense...can be expected to score much more this year from his post position.

GARY HARBISON...6-4, Jr., guard, 20, letterman from K.C., Kansas...can rebound with the best...good jump shooter from baseline...can be a top-flight guard if he improves shooting from outside.

JERRY WILLIAMS...6-6, Sr., forward, 20, letterman from Wichita, Kansas...best shooter on the squad...can rebound well...is a good faker from baseline spot...could be All-CIC material...was leading scorer last year...selected team captain this year.

RON FORD...6-7, So., forward, 19, letterman from Salina...has patented hook shot from free throw line...good rebounder...has improved on defense.

KENNY HENDRIX...6-2, Jr., guard, 19, transfer from Coffeyville Junior College...played on Coffeyville juco national championship team...fine ball handler...good on fast break...works hard on defense...can shoot well...should see a lot of action this year.

1927-28  
 1928-29  
 1929-30  
 1930-31  
 1931-32  
 1932-33  
 1933-34  
 1934-35  
 1935-36  
 1936-37  
 1937-38  
 1938-39  
 1939-40  
 1940-41  
 1941-42  
 1942-43  
 1943-44  
 1944-45  
 1945-46  
 1946-47  
 1947-48  
 1948-49  
 1949-50  
 1950-51  
 1951-52  
 1952-53  
 1953-54  
 1954-55  
 1955-56  
 1956-57  
 1957-58  
 1958-59  
 1959-60  
 1960-61  
 1961-62  
 1962-63

THUMBNAIL SKETCHES CONTINUED

LINDSEY LINDELL...6-5, Fr., center, 19, from St. George...one of the hardest workers on the squad...has improved a great deal both offensively and defensively...top flight returning squadman...needs to become more aggressive on the boards... should contribute much to the Ichabods' success.

DAVE TENPENNY...5-10, So., guard, 19, from Perry...started at guard most of his freshman year gaining valuable experience...should be a lot smoother this year and can be expected to score more...Letterman.

GORDON HIBBARD...6-3, Jr., guard, 20, transfer from Dodge City Junior College...should be a fine scorer and ball handler...moves well all over the court...is excellent rebounder...should play a lot of ball this season.

SAM SHIPSTEAD...6-5, So., center, 19, from Lawrence...has improved a great deal on defense...can be expected to score more from center position...good rebounder...outstanding attitude...works hard on both defense and offense...Letterman.

THE OPPONENTS FOR 1963-64

ROCKHURST COLLEGE AT TOPEKA  
Saturday, November 30, 7:30 P.M.  
Location: Kansas City, Missouri  
Conference: Unaffiliated  
Enrollment: Men, 900  
Nickname: Hawks  
Colors: Blue and White  
Gymnasium: Mason-Halpin (2000)  
Head Coach: Joseph "Buddy" Brehmer  
Athletic Publicity: Michael Kleinman  
1962-63 Record: 27-4

NORTHWEST MISSOURI STATE AT MARYVILLE  
Tuesday, December 3, 7:30 P.M.  
Location: Maryville, Missouri  
Conference: Mo. Intercollegiate AA  
Enrollment: 2495  
Nickname: Bearcats  
Colors: Green and White  
Gymnasium: Lamkin Gymnasium (3000)  
Head Coach: Richard Buckridge  
Athletic Publicity: Everett Brown  
1962-63 Record: 12-13

ST. BENEDICT'S AT ATCHISON  
Thursday, December 5, 7:30 P.M.  
Location: Atchison, Kansas  
Conference: Unaffiliated  
Enrollment: Men, 775  
Nickname: Ravens  
Colors: Black and White  
Gymnasium: St. Benedict's Gym(2000)  
Head Coach: Ralph Nolan  
Athletic Publicity: Bill Wittman  
1962-63 Record: 8-17

SW MISSOURI STATE AT SPRINGFIELD  
Saturday, December 7, 7:30 P.M.  
Location: Springfield, Missouri  
Conference: Missouri IAA  
Enrollment: 3750  
Nickname: Bears  
Colors: Maroon and White  
Gymnasium: Briggs Fieldhouse(4000)  
Head Coach: Edwin Matthews  
Athletic Publicity: Don Payton  
1962-63 Record: 8-15

OPPONENTS FOR 1963-64 CONTINUED

CENTRAL MISSOURI ST. AT WARRENSBURG  
Thursday, December 12, 7:30 P.M.  
Location: Warrensburg, Missouri  
Conference: Mo. IAA  
Enrollment: 4900  
Nickname: Mules  
Colors: Cardinal and Black  
Gymnasium: Garrison Gym (3600)  
Head Coach: Gene Bartow  
Athletic Publicity: Townsend Godsey  
1962-63 Record: 17-6

FORT HAYS STATE COLLEGE AT TOPEKA  
Saturday, December 14, 7:30 P.M.  
Location: Hays, Kansas  
Conference: Central Inter. Conf.  
Enrollment: 3550  
Nickname: Tigers  
Colors: Black and Gold  
Gymnasium: Sheridan Coliseum(3000)  
Head Coach: Cade Suran  
Athletic Publicity: Ted C. Tow  
1962-63 Record: 21-7

The defending CIC and District 10 champions from Hays could be as strong as the 1962-63 "Tigers". The Hays club returned six lettermen and lost six including four starters. Hays finished 7-3 in the CIC and 16-5 for all games played last season.

ST. BENEDICT'S AT TOPEKA  
Thursday, December 19, 7:30 P.M.  
See previous information, page 16.

CENTRAL MISSOURI STATE AT TOPEKA  
Saturday, January 4, 7:30 P.M.  
See information above.

ST. BENEDICT'S AT TOPEKA  
Tuesday, January 7, 7:30 P.M.  
See previous information, page 16.

OPPONENTS FOR 1963-64 CONTINUED

OMAHA UNIVERSITY AT OMAHA  
Saturday, January 11, 8:00 P.M.  
Location: Omaha, Nebraska  
Conference: Central Inter. Conf.  
Enrollment: 4100  
Nickname: Indians  
Colors: Red and Black  
Gymnasium: University (4800)  
Head Coach: Jim Borsheim  
Athletic Publicity: Norman Taylor  
1962-63 Record: 10-11

Despite the return of five lettermen, Coach Borsheim feels the outlook is not good. Omaha will be a young club, with only one senior, Paul Kaster, 6-0. However, two juniors, Larry Villnow, 6-7, and Charles Myers, 6-0, have returned much improved. Myers was considered one of the best rookies in the CIC last year. Omaha must depend on their rookies for support and "they will be definitely be unknown until mid-season."

PERU (NEBRASKA) STATE AT TOPEKA  
Tuesday, January 14, 7:30 P.M.  
Location: Peru, Nebraska  
Conference: NCC  
Enrollment: 725  
Nickname: Bobcats  
Colors: Blue and White  
Gymnasium: Peru Gym (2500)  
Head Coach: Jack McIntire  
Athletic Publicity: Don Carlisle  
1962-63 Record: 14-11

NEBR. WESLEYAN UNIV. AT TOPEKA  
Friday, January 17, 7:30 P.M.  
Location: Lincoln, Nebraska  
Conference: Unaffiliated  
Enrollment: 1168  
Nickname: Plainsmen  
Colors: Yellow and Brown  
(con't)

OPPONENTS FOR 1963-64 CONTINUED

NEBRASKA WESLEYAN continued

Gymnasium: Ira J. Taylor Gym(2800)  
Head Coach: Dr. Irvin L. Peterson  
Athletic Publicity: Darrel Seng  
1962-63 Record: 23-4

ROCKHURST COLLEGE AT KANSAS CITY  
Saturday, January 18, 8:00 P.M.  
Location: Kansas City, Missouri  
See previous information, page 16.

EMPORIA STATE AT TOPEKA  
Thursday, January 23, 7:30 P.M.  
Location: Emporia, Kansas  
Conference: Central Inter. Conf.  
Enrollment: 4900  
Nickname: Hornets  
Colors: Black and Gold  
Gymnasium: Emporia Civic Auditorium  
Head Coach: E. D. "Gus" Fish  
Athletic Publicity: Larry Ensminger  
1962-63 Record: 14-12

"The Hornets cannot help but be a better basketball team this season." Emporia tied Ft. Hays for the CIC Championship last year with Fort Hays winning the playoff. The return of six promising sophomores, all of whom received some varsity experience in 1962 will add considerable strength to the Hornet bench. With the added return of Co-Captains Garry Patterson and Doug Glaysher, the Hornets stand a good chance of copping top honors in the CIC.

NORTHWEST MISSOURI STATE AT TOPEKA  
Saturday, January 25, 7:30 P.M.  
Location: Maryville, Missouri  
See previous information, page 16.

OPPONENTS FOR 1963-64 CONTINUED

PITTSBURG STATE AT PITTSBURG  
Saturday, February 1, 8:00 P.M.  
Location: Pittsburg, Kansas  
Conference: Central Inter. Conf.  
Enrollment: 3900  
Nickname: Gorillas  
Colors: Crimson and Gold  
Gymnasium: Gymnasium (2500)  
Head Coach: Paul Lambert  
Athletic Publicity: Richard Carr  
1962-63 Record: 13-10

The Gorillas returned five lettermen from last year, while at the same time losing five, however, the five returnees were the five starters at the end of the season and were the top five scorers. Paul Lambert will be the first new coach in charge of the Gorillas in 41 years. Returning five starters from a third-place team, Pittsburg's outlook is fairly good.

ST. BENEDICT'S AT ATCHISON  
Tuesday, February 4, 7:30 P.M.  
Location: Atchison, Kansas  
See previous information, page 16.

FORT HAYS STATE AT HAYS  
Saturday, February 8, 8:00 P.M.  
Location: Hays, Kansas  
See previous information, page 17.

OMAHA UNIVERSITY AT TOPEKA  
Saturday, February 15, 7:30 P.M.  
See previous information, page 18.

EMPORIA STATE AT EMPORIA  
Saturday, February 22, 8:00 P.M.  
Location: Emporia, Kansas  
See previous information, page 19.

PITTSBURG STATE AT TOPEKA  
Tuesday, February 25, 7:30 P.M.  
See Previous information above.

CIC BASKETBALL CHAMPIONS

<u>YEAR</u>	<u>TEAM</u>	<u>RECORD</u>
1927-28	Pittsburg	9-3
1928-29	Washburn	10-2
1929-30	Pittsburg	12-0
1930-31	Pittsburg	12-0
1931-32	Pittsburg	11-1
1932-33	Pittsburg	10-2
1933-34	Emporia	7-1
1934-35	Pittsburg	5-3
1935-36	Southwestern	12-4
1936-37	Pittsburg	8-4
1937-38	Southwestern	10-2
1938-39	Southwestern	8-2
1939-40	Pittsburg	6-4
1940-41	Pittsburg	7-1
1941-42	Pittsburg	9-1
1942-43	Southwestern	9-1

The Conference disbanded athletic competition following the 1943 season because of the war. Teams competed in a double round-robin schedule during the 1945-46 season but did not count the standings as official.

1946-47	Emporia	12-2
1947-48	Emporia	11-4
1948-49	Emporia	11-1
1949-50	Fort Hays	10-2
1950-51	Washburn	9-3
1951-52	Washburn	9-1
1952-53	St. Benedict's	7-3
1953-54	St. Benedict's	8-2
1954-55	Southwestern	7-3
1955-56	Pittsburg	9-1
1956-57	Emporia	8-2
1957-58	St. Benedict's	8-2
1958-59	Ft. Hays State	9-1
1959-60	Pittsburg	9-1
1960-61	Emporia	9-1
1961-62	Fort Hays State	8-2
1962-63	Fort Hays State	7-3

INFORMATION FOR COACHES

TRANSPORTATION

AIR

Central Airlines CE 3-9671

RAIL

AT & SF CE 4-0481  
 Rock Island CE 4-0491  
 Union Pacific CE 4-0491

BUS

Continental Trailways CE 3-2301  
 Greyhound Lines CE 3-2301  
 Trailways Bus System CE 3-2301

LODGING

HOTELS

Capitol 105 E. 5th CE 4-0587  
 Jayhawk 700 Jackson CE 3-4111  
 Kansan 832 Kansas CE 4-6611

MOTELS

Ace 24-75 Highway FL 4-9543  
 Holiday Inn North W. Hwy. 24 CE 2-7291  
 Holiday Inn South U.S. 75 AM 6-8880  
 Jayhawk Jr. Highway 24 CE 3-6427  
 Meadow Acres 2950 Topeka FL 7-4494  
 Motel 75 4607 Topeka UN 2-9731  
 Nodaway Highway 24 CE 2-9338

DINING

China Inn 2032 N. Topeka  
 Hill and Dale 2613 West 21st  
 Holiday Inn North 601 W. Hwy. 24  
 Holiday Inn South US 75 Turnpike  
 Keck's Steak House 3120 Huntoon  
 McFarland's 1501 West 21st  
 Red Cedar 2102 N. Topeka  
 Red Dragon 4009 West 21st  
 Robbie's 3035 Topeka

1962-63 BASKETBALL STATS

<u>PLAYER</u>	<u>G</u>	<u>FG-FGA</u>	<u>FT-FTA</u>	<u>TP</u>	<u>AVG.</u>
WILLIAMS	19	97-234	63-97	257	13.5
GIBB*	19	58-145	25-52	141	11.4
FORD*	18	51-107	29-47	131	7.3
SHIPSTEAD*11	22-49	19-29	63	5.7	
HARBISON*	18	15-64	19-29	49	2.7
TENPENNY*	17	17-56	25-28	59	3.5
LINDELL*	4	3-12	1-6	7	1.8

\* Will return in 1964-65

WASHBURN 19 390-1036 288-438 1068 56.2

OPPONENTS 19 480-1178 359-513 1319 69.4

WASHBURN INDIVIDUAL SCORING RECORDS

Most points in one game: 37  
Jerry Milner, 1960, vs. Ottawa

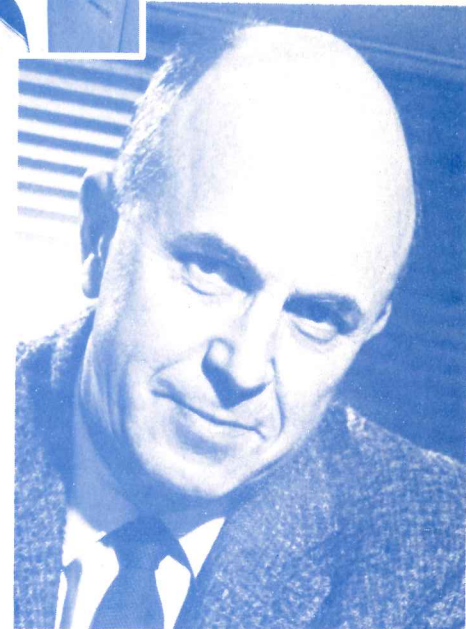
Most field goals in one game: 14  
Bob Godwin, 1954, vs. Ottawa

Most free throws in one game: 19-25  
Jerry Milner, 1960, vs. Ottawa

Most points in Washburn career:  
1080 Tom Carlson, 1946-49



**DR. HAROLD  
E. SPENBERG**  
President



**DICK  
GODLOVE**  
Director  
of  
Athletics



**DR. ERNEST BADER**  
Faculty Representative



**KEN KLEIN**  
Sports  
Information  
Director

# " I C H A B O O D S "

## 1963-64 SCHEDULE

Nov.	30—Rockhurst College	at Topeka
Dec.	3—NW Missouri State	at Maryville
Dec.	5—St. Benedict's	at Atchison
Dec.	7—SW Missouri State	at Springfield
Dec.	12—Central Mo. State	at Warrensburg
Dec.	14—Ft. Hays State	at Topeka
Dec.	19—St. Benedict's	at Topeka
Jan.	4—Central Mo. State	at Topeka
Jan.	7—St. Benedict's	at Topeka
Jan.	11—Omaha University	at Omaha
Jan.	14—Peru (Nebr.) State	at Topeka
Jan.	17—Nebr. Wesleyan Univ.	at Topeka
Jan.	18—Rockhurst College	at Kansas City
Jan.	23—Emporia State	at Topeka
Jan.	25—NW Missouri State	at Topeka
Feb.	1—Pittsburg State	at Pittsburg
Feb.	4—St. Benedict's	at Atchison
Feb.	8—Ft. Hays State	at Hays
Feb.	15—Omaha University	at Topeka
Feb.	22—Emporia State	at Emporia
Feb.	25—Pittsburg State	at Topeka

**Home Games—Whiting Field House—7:30**