



EAGLE CLUB



2025-26 MEMBERSHIP GUIDE

A NOTE FROM CHUCK REY

Winthrop Athletics continues to FLY to new heights, exemplifying the pride and passion of Eagles Nation. Over the past year, Winthrop teams have demonstrated remarkable achievements both on and off the field, earning conference titles, post-season appearances, setting school records, and showcasing the true spirit of Eagles Athletics. From thrilling buzzer-beaters in men's and women's basketball to standout performances in volleyball, softball, baseball, soccer, lacrosse, golf, track & field and cross-country, our student-athletes have consistently shown grit, determination, and sportsmanship. Beyond the scoreboard, Winthrop STUDENT-athletes continue to excel academically, earning our HIGHEST GPA EVER at 3.404 and accolades such as All-Academic Team honors, Big South Christenberry Award, Post Graduate Fellowship Scholarships, and community service recognition, proving that they are champions in the classroom and the community.



GO EAGLES!

A handwritten signature in black ink that reads "Chuck Rey".

Chuck Rey
Athletic Director

This success is made possible through the unwavering support of you, the Eagles Family, our Eagle Club members. Your contributions provide critical funding for scholarships, travel, equipment, and facility enhancements, giving our student-athletes the resources they need to compete at the highest level. As we look ahead, we invite you to continue your commitment—or join us for the first time—as part of the Eagle Club family. Together, we can build on our momentum and ensure that Winthrop Athletics remains a source of pride for our university, alumni, and fans. Now is the time to invest in our legacy. FLY with us and help fuel the future of Eagles excellence!

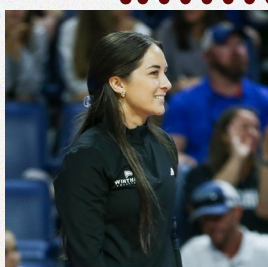
Our Mission

The Eagle Club is the official fundraising arm of Winthrop Athletics. Winthrop Athletics relies on annual contributions by its members to offset the cost of student athlete scholarships, build and maintain first-class facilities, and fund 16 varsity sport programs. We aim to increase overall revenue and membership each year in order to keep up with the rising costs of running a successful athletics program.

Your gift helps recruit, educate and train the highest caliber of student-athletes to help Winthrop be the best on and off the playing field. The college athletics landscape is changing rapidly and now more than ever, your support is needed.

Heather Gearhart

Volleyball Head Coach



"The support of the Eagle Club is imperative for the work that our athletic programs are trying to do for our student-athletes. With the constantly evolving collegiate landscape, it is important to continue to champion athletic departments and staffs like the ones here at Winthrop; where the holistic mission is still central to our purpose as we guide young student-athletes through adulthood. The support has been instrumental in my efforts to continue to improve the experience for the players in our program as they are putting in the work to grow and represent the university at the highest level."

Michael McGuire

Baseball Head Coach

"Winthrop is a special place. We have great people at this institution and in this community as well as avid supporters of our Athletics programs! The support is a big reason I came back to Winthrop to become the Head Baseball Coach. The Eagle Club and our Donors are instrumental in providing opportunities to grow and thrive as a program and an athletics department."

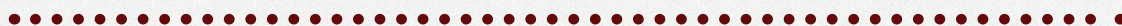




2025-2026 LEVELS & BENEFITS

	Platinum \$10,000	Gold \$5,000	Silver \$2,500	Bronze \$1,500	Garnet \$1,000	Coaches \$500	Eagle \$100
Eagle Insider E-News Letter							
Personal Thank You Note from Student Athlete							
20% Off Winthrop Apparel at Campus Bookstore							
Invitation to Eagle Club Events							
Priority to Purchase Big South Tournament Tickets							
Qualify to Purchase Basketball Season Tickets at Coaches Level							
Single-Game Vouchers to any Home Athletics Event	10	10	8	8	6	4	
Exclusive Eagle Club Donor Gift							
Adidas Premier Gear Item							
Qualify to Purchase Basketball Season Tickets in Garnet Level	10	8	6	4	2		
VIP Eagle Room	10	8	6	4	2		
All Sports Pass	2	2	2				
Qualify to Purchase Courtside Seats							
VIP Event with Athletic Director							
Qualify for Winthrop Athletics Away Game Trip							

IMPORTANT NOTE: One of the meaningful changes for the 2025-26 benefits chart is the discontinuation of *The Landing* pregame hospitality benefit for season ticket holders at the Coaches level and above. This decision was made after thoughtful evaluation of how we can best serve our supporters and enhance the overall gameday experience while taking into account the drastically rising costs of food and food services. We remain committed to providing other opportunities for supporters at these levels to enjoy the gameday experience.



Ways to Support

Membership is based on your total annual giving to athletics and is comprised of gifts to any combination of the following:

Eagle Club Fund

- 100% of all gifts at the Athletic Director's discretion

Operational and facility maintenance support

Sport-Specific Giving

- Gifts directly supporting a specific sport program
- 100% sport-specific operational fund support

Major Gifts

Planned Giving

Pledges to Facility Projects

Capital Project Naming Opportunities (\$25,000 and up)

Endowed Athletic Scholarships (\$25,000 and up)

The largest expense any athletic department incurs is the cost of scholarships for deserving student-athletes. Our long-term goal is to endow as much of this cost as possible. The minimum gift to establish a named endowment is \$25,000, payable over one to five years.

Email Tommy Henry at henryt@winthrop.edu for more information.

WHY GIVE

In this evolving landscape, enhanced financial support from donors becomes crucial. To navigate the impending fiscal pressures and to remain competitive, Winthrop's athletic department must bolster its fundraising efforts. Increased contributions will help offset reduced NCAA distributions and support potential athlete compensation, ensuring the sustainability and success of Winthrop's athletic programs.

The **House v. NCAA** settlement marks a transformative shift in college athletics, introducing direct revenue sharing with student-athletes starting in the 2025-26 academic year. While this development aims to rectify longstanding inequities in athlete compensation, it presents significant financial challenges for mid-major programs like Winthrop.

We must increase our philanthropic aspirations in strategic areas to help us stay competitive in the Big South Conference and in the mid-major landscape. We seek highly motivated individuals to step up and help us raise the standard of Winthrop Athletics as we enter a new era of college athletics. This can include funding for scholarships or essential projects such as:

- New videoboards throughout athletic facilities
- Increased premium seating and group area options
- Enhanced concessions and hospitality spaces
- Playing surface enhancements and turf projects
- Locker room upgrades

24-25 Academics

3.404

Cumulative GPA
(Highest in School History)

81.7%

> 3.0 Cumulative GPA

220

Athletes Named to
Big South Honor Roll

The Student-Athlete Scholarship Cost

\$22,015

Tuition & Fees

+

\$1,200

Books/Supplies

+

\$8,590

Housing/Food

+

\$2,442

Transportation

+

\$4,048

Personal Expenses

\$43,095

Average Annual Investment

COLISEUM & BASEBALL MAP AND PRICING

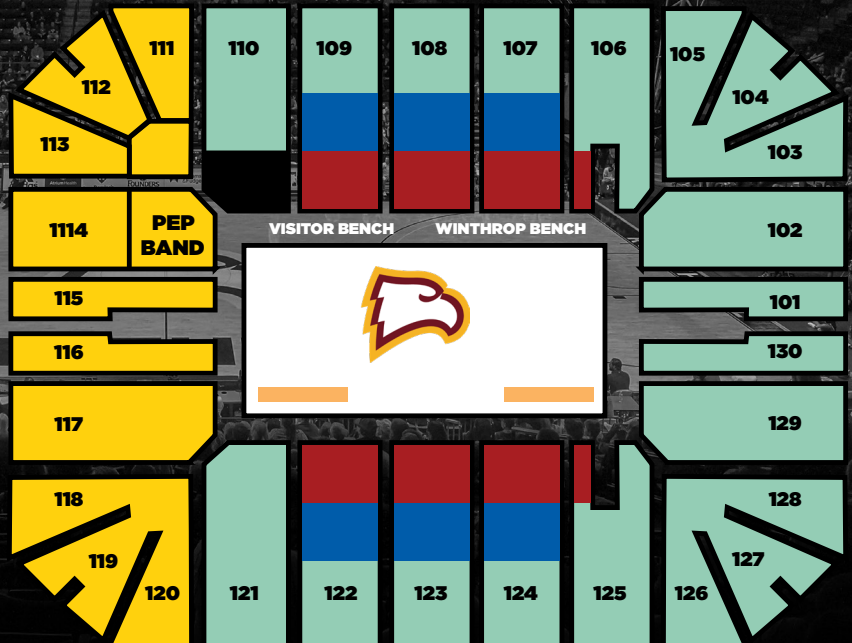
WINTHROP COLISEUM

SEASON TICKETS

- \$149** Reserved Season Ticket
- \$95** Reserved Faculty/Staff
- \$50** Women's Basketball
- \$50** Volleyball

SEATING

- VIP Floor Seats
- Garnet Level (Rows B - F)
- Coaches Level (Rows G - J)
- Reserved Seating
- Student Section



FOUNDERS FIELD

SEASON TICKETS

- \$100** Reserved Season Ticket
- \$75** Baseball GA Season Ticket

SEATING

- Reserved
- GA (General Admission)

Big Stuff's Jr. Eagle Kid's Club, Presented by Empire Pizza

Big Stuff's Jr. Eagle Kids Club presented by Empire Pizza is open to children 7th grade and younger! As a member of Big Stuff's Jr. Eagle Club, you will receive free admission to **all sports**, access to special gameday opportunities, and exclusive prizes! Membership is just \$55.

STUDENT ATHLETE SUCCESS



MEGAN POWELL

Winthrop Softball

2024-2025 Big South Player of the Year

NFCA All-Region 3rd Team

2-Time First Team All-Conference



KELTON TALFORD

Winthrop Men's Basketball

3-Time First Team All-Conference

Career Stats

64.3% FG PCT

12.0 PPG

6.1 RPG



MIA VRATARIC

Winthrop Women's Soccer

Big South Defensive Player of the Week
(Sept. 19th)

24-25 CSC Academic All District Team

Season Stats

73 Saves

.760 Save%



MAKE YOUR GIFT

CHECK BY MAIL

Please make check payable to Winthrop University Foundation and mail them to:

**EAGLE CLUB
WINTHROP COLISEUM
1162 EDEN TERRACE
ROCK HILL, SC 29733**

BY PHONE

Please call 803-323-2345 to make your contribution by phone

MATCHING GIFTS

Match other donors' gifts. Contact the Eagle Club to match gifts

ONLINE

You can make a gift online by heading to **winthropeagles.com/give** and donate to the athletics fund of your choice

RECURRING PAYMENT PLAN

☐ I would like to make a recurring monthly gift of \$_____ per month in perpetuity until I notify you to cancel my membership

COMMUNITY & FAMILY FOUNDATIONS

Sponsor Athletics Initiatives, teams, and NIL

OTHER METHODS

Please contact the Eagle Club for more information on making a donation through a stock transfer, charitable trust, gift and estate planning, or IRA distribution.

ENROLLMENT

NAME: _____

ADDRESS: _____

CITY: _____ ST: _____ ZIP: _____

EMAIL: _____

PHONE: _____

MEMBERSHIP LEVEL

☐ Eagle (\$100) ☐ Silver (\$2,500)

☐ Coaches (\$500) ☐ Gold (\$5,000)

☐ Garnet (\$1,000) ☐ Platinum

☐ Bronze (\$1,500) (10,000+)

☐ Other \$_____

GIFT DESIGNATION:

☐ Eagle Club Scholarship Fund

☐ Specific Sport Excellence Fund

PAYMENT INFO:

☐ CARD

☐ CHECK

☐ CASH

CARD INFO (If Applicable):

Charge my credit card now in the amount of \$_____

Credit Card #: _____

CVV: _____ Exp. Date: _____

Name on Card: _____

Signature: _____

☐ Check this box to waive all Eagle Club benefits and receive a 100% tax-deduction for your contribution.

Estate Plans: Do you have Winthrop in your Estate
☐ Plans or would you like to learn more?

Matching Gift (We will reach out for more information)
☐

Make checks payable to the Winthrop University Foundation. If you need help setting up recurring payments or to make a credit card payment over the phone, call (803) 323-2345.



JOIN TODAY!

- Free admission to ALL Winthrop home games
- Official Jr. Eagle Club Lanyard and Credential
- Birthday Card from Big Stuff
- Kids Club Prize Pack full of goodies
 - Bucket Hat, Foam Finger, Autograph Book, Bracelet, AND MORE!
- Opportunity to serve as a ball kid (based on age and availability)

\$55
Over \$800 Value

Presented By:



*Must be in 7th grade or below