



2015-16 Westminster Women's Basketball Game Notes

WESTMINSTER
BASKETBALL
November 23, 2015

WESTMINSTER
GRIFFINS

Josh Fisher, Sports Information & Events Coordinator // O: 801.832.2890 // C: 801.703.5025 // jfisher@westminstercollege.edu // @joshinutah

GAME CENTRAL



November 24 • 7 p.m.

at Dixie State

0-2, 0-0 PacWest

Burns Arena

St. George, Utah

Series: Westminster leads 3-0

at DSU: Westminster leads 1-0

Last Meeting: Westminster 69-55 (12/4/07 at WC)



November 27 • 2 p.m.

Northwest Nazarene

1-3, 0-0 GNAC

Behnken Field House

Salt Lake City

Series: Northwest Nazarene leads 2-0

at WC: First Meeting

Last Meeting: Northwest Nazarene 71-46 (11/24/00 at NNU)

LIVE VIDEO/STATS: www.WestminsterGriffins.com/live

GRIFFINS AT A GLANCE

OVERALL	1-1
RMAC	0-0
Division / Overall	t-3rd / t-7th
Home	0-0
Road	0-1
Neutral	1-0
Streak	Won 1
Last 10	2-0

The Westminster women's basketball team will play two games this week in their final action before starting Rocky Mountain Athletic Conference play. On Tuesday, the Griffins will travel to St. George, Utah, for a 7 p.m. MT, contest against in-state foe Dixie State. They will then host Northwest Nazarene in the Behnken Field House on Friday at 2 p.m. MT, to kickoff the Westminster Thanksgiving Classic.

Tickets for Friday's game are available for purchase by visiting WestminsterGriffins.com/tickets. Fans that purchase their tickets online can receive \$1 off admission by using the promo code Thanks at checkout.

2015-16 SCHEDULE

Nov 13	at Fort Lewis	L, 46-73
Nov 14	vs Adams State	W, 66-28
Nov 24	at Dixie State	7:00 pm
Nov 27	NORTHWEST NAZARENE	2:00 pm
Dec 5	* COLORADO MESA	5:30 pm
Dec 11	* MSU DENVER	5:30 pm
Dec 12	* UCCS	5:30 pm
Dec 18	* at Colorado Christian	5:00 pm
Dec 19	* at Colorado Mines	5:00 pm
Dec 29	at Weber State (Exhib.)	7:00 pm
Jan 1	* BLACK HILLS STATE	5:30 pm
Jan 2	* SOUTH DAKOTA MINES	5:30 pm
Jan 8	* at UCCS	5:30 pm
Jan 9	* at MSU Denver	5:00 pm
Jan 15	* ADAMS STATE	5:30 pm
Jan 16	* FORT LEWIS	5:30 pm
Jan 22	* at Chadron State	5:30 pm
Jan 23	* at Regis	5:00 pm
Jan 29	* WESTERN STATE COLORADO	5:30 pm
Jan 30	* CSU-PUEBLO	5:30 pm
Feb 5	* at New Mexico Highlands	5:00 pm
Feb 6	* at Western New Mexico	5:30 pm
Feb 12	* at South Dakota Mines	5:30 pm
Feb 13	* at Black Hills State	5:00 pm
Feb 19	* REGIS	5:30 pm
Feb 20	* CHADRON STATE	5:30 pm
Feb 26	* at Colorado Mesa	5:30 pm

All times Mountain Home games in **BOLD CAPS**

*-RMAC Game

3 THINGS

- >Westminster starts the week as the RMAC leader in scoring defense by allowing 50.5 points per game
- >The Griffins are closing in on the 500th game in school history having gone 304-187 (.619) in 491 all-time games
- >Denise Gonzalez leads the RMAC by recording 5.0 assists per game

COVERING THE GRIFFINS

Tuesday's game will feature live video at southernutahlive.com/live for a fee of \$10.95. There will also be live stats available during the game. Griffins TV will carry the home game on Friday with Mike Lageschulte calling the action. Griffins TV is available at portal.stretchinternet.com/Westminster. There will be live stats available in the Griffins TV portal and at sidearmstats.com/westminster/wbball.

FOLLOWING WESTMINSTER WOMEN'S BASKETBALL

Make sure to like Westminster Griffins on Facebook, Twitter, Instagram, and You Tube for the latest news about the Griffins. Game updates are provided on Twitter by following @wc_griffins.

Fans can stay connected with Westminster women's basketball by following @westminster_womens_basketball on Instagram.

ABOUT WESTMINSTER

Westminster enters this week's action with a 1-1 overall record after playing at the Skyhawks Regional Challenge on November 13-14. They are 0-1 in road games on the year with Friday marking the season's home opener. The Griffins have won 16 straight non-conference home games.

The Griffins are 10th in the conference by scoring 56 points per game and they shoot 34.3 percent from the floor. They are making 6.0 threes per game and connecting on 25.5 percent from beyond the arc through two games. The team ranks fifth in the RMAC in assists at 14 per night and they sit sixth with a 0.8 assist-to-turnover ratio.

Westminster College

Location	Salt Lake City, Utah
Metro Population	1,124,197
Founded	1875
Enrollment	3,108
Nickname	Griffins
Colors	Purple (PMS 269) & Gold (PMS 874)
Affiliation	Independent
Conference	Rocky Mountain Athletic Conference
Home Court	Behnken Field House
Capacity	1,200

Administration

President	Steve Morgan
Provost	Dr. Cid Seidelman
Director of Athletics	Shay Wyatt
Associate Athletic Director / Senior Woman Administrator	Dr. Susan Heath
Assistant AD for Compliance & Academic Services	Adam Sanft
Sports Information & Events Coordinator	Josh Fisher
Director of Athletic Marketing & Special Events	Ben Huppi
Faculty Athletics Representative	Dr. Chris Cline

Women's Basketball Staff

Head Coach	Shelley Jarrard
Record at Westminster	104-19 / 4 years
Career Record	Same
Office Phone	801.832.2340
Email	sjarrard@westminstercollege.edu
Assistant Coach	Jenteal Jackson
Year	3rd
Office Phone	801.832.2340
Email	jjackson@westminstercollege.edu
Assistant Coach	Alli Blake
Year	2nd
Office Phone	801.832.2340
Email	ablake@westminstercollege.edu
Athletic Trainer	Sean Kendall
Office Phone	801.832.2367
Email	skendall@westminstercollege.edu

Key Numbers

2014-15 Record	26-3
2014-15 Frontier Conf. Record (Finish)	13-1 (1st)
Players Returning / Lost	3 / 10
Newcomers	12
Started Women's Basketball	1999
Overall Record	303-186 (.620)
Frontier Conference	148-77 (.658)
Frontier Championships (Regular Season)	7
2009, 2010, 2011, 2012, 2013, 2014, 2015	
Frontier Championships (Tournament)	3
2013, 2014, 2015	
NAIA Tournament Appearances (Record)	9 (11-9)
Years	2007, 2008, 2009, 2010, 2011, 2012
	2013, 2014, 2015

Westminster leads the league in scoring defense by holding opponents to 50.5 points per game. The opposition is has shot just 29.5 percent from the field in the first two games and made only 23.5 percent from three. The Griffins grab 42.5 rebounds per game and average 10 steals per night to help them force 12.5 turnovers a contest.

Natalie Parsons leads the team in scoring at 17 points per game and the senior is shooting 52.4 percent from the floor. Denise Gonzalez and Riley Reidhead are scoring 8.0 points per game and Lancee Whetman averages 6.5 per game. Parsons is tops on the squad with 11 rebounds. Gonzalez has a team-best 11 assists and seven steals. Mika Pinner leads the way with three blocked shots.

LOOKING BACK

The Griffins opened the season with a 73-46 loss to Fort Lewis on November 13. They shot just 30.4 percent from the floor in the game and were only 3 of 24 from beyond the arc. Parsons scored a team high 13 points in the loss.

Westminster responded the next day to claim a 66-28 win against Adams State. They tied a school record for fewest points allowed in a game while holding the Grizzlies to 14.8 percent shooting. Parsons scored 21 points and grabbed 210 rebounds for her first double-double of the season. Gonzalez added 13 points, six assists, and four steals.

SCOUTING THE OPPOSITION

• **Dixie State** – The Red Storm enter Tuesday at 0-2 on the season after dropping two games at the GNAC/PacWest Challenge to Alaska Anchorage and Alaska Fairbanks. Leslie Tademy leads the team in scoring at 11 points per game. Tramina Jordan adds 10.5 points per night for a team that scores 62.5 on average.

The Griffins are 3-0 all-time against the Storm and 1-0 in games played in St. George. Westminster took a 69-55 win in the last meeting on December 4, 2007 in the Behnken Field House.

• **Northwest Nazarene** – The Crusaders have opened the season with a 1-3 overall record. They dropped road games at Cal Baltipist and Point Loma over the weekend and have now lost three straight. Four Crusaders' score in double figures with Kate Cryderman leading the way at 15.5 per night. Lexi Tubbs adds 14 points per game and leads the team with nine threes.

Northwest Nazarene leads the all-time series against the Griffins 2-0. Both of the previous two meetings were played in Nampa with NNU taking the last outing, 71-46, on November 24, 2000.

DEFENSE SETS THE TONE

Westminster begins play this week leading the RMAC in scoring defense by allowing just 50.5 points per game. They held Adams State to only 28 points, matching a school record for fewest points allowed, and the Grizzlies only shot 14.8 percent from the field. Last season, the Griffins finished last season allowing just 49.17 points per game to lead the NAIA. They held 24 opponents under 60 points and never allowed a team to shoot above 50 percent in a game.

DEFENSIVE PRESENCE

Mika Pinner is back for her senior season and she gives the Griffins some rim protection. After leading the team with 29 blocked shots last season, Pinner had three blocks in the season's first two games. She currently ranks fifth in the RMAC in blocks at 1.5 per contest. She now has 32 blocks as a Griffin to rank seventh in school history.

IMMEDIATE IMPACT

Natalie Parsons has quickly become the focal point of the Griffin offense in her first season with the team. Parsons led the team in scoring during both games of the opening weekend and she scored 21 points on 6 of 11 shooting in the win over Adams State. She is tied for second in the conference by scoring 17 points per game and she sits fifth in the league by hitting on 54.5 percent from beyond the arc.

GIVE & TAKE

Denise Gonzalez started the first two games at point guard and established herself on both ends of the floor. The freshman tallied 11 assists in the opening two games and she currently leads the RMAC at 5.5 assists per game. Gonzalez also grabbed seven steals and is second in the conference with an average of 3.5 steals per outing. She is second on the team in scoring at 8.0 points per game and is a perfect 11 of 11 at the foul line to lead the RMAC.

OVER AT HALFTIME

With its win over Adams State, Westminster extended its winning streak when leading at halftime to 71 consecutive games. They have also won 76 straight games when grabbing more rebounds than the opposition and 37 straight when shooting at least 50 percent from the field.

HOME COURT ADVANTAGE

The Griffins been stellar at home during their recent success. The team is 37-2 in the Behnken Field House since the start of the 2012-13 season and they enter this season having won eight straight and 37 of the past 38 games played at home.

GRIFFINS PICKED 12TH

Westminster received 73 points and was picked to finish 12th in the RMAC Preseason Coaches' Poll that was released on October 15. The Griffins were chosen to place seventh in the Rocky Division, ahead of only South Dakota Mines. Colorado Mesa was chosen as the favorite to win the league with UCCS, Colorado Christian, and Regis also receiving first-place votes.

ALL RMAC GAMES ON GRIFFINS TV

New this season, fans will be able to watch all Westminster conference games on the Griffins TV Game Central portal. All Griffin conference games will be shown at portal.stretchinternet.com/Westminster and you will have the ability to watch multiple conference games at the same time. You can find all of the RMAC action by visiting RMACsports.tv.

RMAC SHOWCASE ON ALTITUDE

The RMAC Showcase is a monthly 30-minute feature driven television show with stories and highlights from around the Rocky Mountain Athletic Conference. Episodes are shot on location at the 16 campus sites around the RMAC, various conference championships and at the RMAC office in Colorado Springs. Now in its 12th season on the Altitude Sports Network - the most watched regional sports network in the Rockies which is seen in more than 5.1 million homes in across the country - the RMAC Showcase is the longest running program on Altitude, not produced by the network itself. Altitude is available in the Salt Lake City market on Comcast 61, Dish Network 413, and DirecTV 681.

LOOKING AHEAD

The Griffins will turn their attention to RMAC play with the team's first conference game as a member of the league on December 5 in the Behnken Field House against Colorado Mesa. The action will tip at 5:30 p.m. MT with tickets available at WestminsterGriffins.com/tickets.



DIXIE STATE RED STORM

0-2, 0-0 PacWest

Home	0-0
Road	0-2
Neutral	0-0
Streak	Lost 2
Last 10	0-2

LEADERS

Scoring	Tademy, Leslie	11.0
Rebounding	Mann, Taylor	10.0
Assists	Tademy, Lesli	3.5
Steals	Two tied	2.0
Blocks	Jessop, Brianna	2.5

SERIES NOTES**DIXIE STATE**

All-Time		Westminster 3-0	
At Westminster		Westminster 2-0	
At Dixie State		Westminster 1-0	
12/1/06	Westminster	76-74	A
12/18/06	Westminster	82-73	H
12/4/07	Westminster	69-55	H



NORTHWEST NAZARENE CRUSADERS

1-3, 0-0 GNAC

Home	0-0
Road	0-2
Neutral	1-1
Streak	Lost 3
Last 10	1-3

LEADERS

Scoring	Tubbs, Lexi	14.7
Rebounding	Gall, CoCo	6.7
Assists	Simmons, Taylor	4.0
Steals	Simmons, Taylor	2.0
Blocks	Cryderman, Kate	1.5

SERIES NOTES

NORTHWEST NAZARENE

All-Time Northwest Nazarene 2-0

At NNU Northwest Nazarene 2-0

12/4/99 Northwest Nazarene 74-37 A

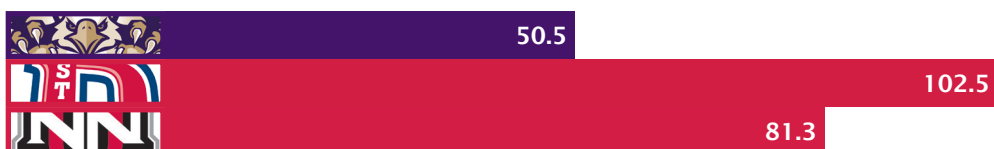
11/24/00 Northwest Nazarene 71-46 A

TALE OF THE TAPE

POINTS PER GAME



OPPONENTS POINTS PER GAME



FIELD GOAL PERCENTAGE



3-POINT FIELD GOAL PERCENTAGE



FREE THROW PERCENTAGE



REBOUNDS PER GAME



ASSISTS PER GAME



STEALS PER GAME



BLOCKS PER GAME





NUMERICAL ROSTER

#	NAME	POS	HT	YR	HOMETOWN / PREVIOUS SCHOOL
1	Jessica Sorensen	F	5-9	Sr.	Downey, Idaho / Big Bend CC
4	Aubrie Vale	G	5-7	Jr.	Burley, Idaho / Big Bend CC (Burley High School)
10	Megan Hall	F	6-0	Jr.	Salt Lake City, Utah / Simmons College (Rowland Hall)
11	Jasmine Boonyakati	G	5-9	Fr.	Herriman, Utah / Providence Hall High School
12	Sicilee Williams	G	5-9	Fr.	Ririe, Idaho / Ririe High School
13	Riley Reidhead	G	5-9	Jr.	Trenton, Idaho / Big Bend CC (West Jefferson High School)
14	Mika Pinner	F	6-1	Sr.	Orem, Utah / Utah Valley
15	Lancee Whetman	F	6-0	Jr.	Sandy, Utah / Juan Diego Catholic High School
20	Natalie Parsons	G	5-9	Sr.	Bountiful, Utah / Rutgers (Woods Cross High School)
21	Sara Weixler	F	5-11	Fr.	Salt Lake City, Utah / Skyline High School
22	KC Gubler	F	5-9	Jr.	La Verkin, Utah / Western Wyoming CC (Hurricane High School)
24	Elsie Carpenter	F	5-10	Fr.	Ulm, Mont. / Cascade High School
25	Denise Gonzalez	G	5-8	Fr.	South Gate, Calif. / Warren High School
30	Whitni Syrett	F	6-0	Jr.	Tropic, Utah / Western Wyoming (Bryce Valley High School)
32	Hillary Weixler	F	5-11	Fr.	Salt Lake City, Utah / Skyline High School

ALPHABETICAL ROSTER

#	NAME	POS	HT	YR	HOMETOWN / PREVIOUS SCHOOL
11	Jasmine Boonyakati	G	5-9	Fr.	Herriman, Utah / Providence Hall High School
24	Elsie Carpenter	F	5-10	Fr.	Ulm, Mont. / Cascade High School
25	Denise Gonzalez	G	5-8	Fr.	South Gate, Calif. / Warren High School
22	KC Gubler	F	5-9	Jr.	La Verkin, Utah / Western Wyoming CC (Hurricane High School)
10	Megan Hall	F	6-0	Jr.	Salt Lake City, Utah / Simmons College (Rowland Hall)
20	Natalie Parsons	G	5-9	Sr.	Bountiful, Utah / Rutgers (Woods Cross High School)
14	Mika Pinner	F	6-1	Sr.	Orem, Utah / Utah Valley
13	Riley Reidhead	G	5-9	Jr.	Trenton, Idaho / Big Bend CC (West Jefferson High School)
1	Jessica Sorensen	F	5-9	Sr.	Downey, Idaho / Big Bend CC
30	Whitni Syrett	F	6-0	Jr.	Tropic, Utah / Western Wyoming (Bryce Valley High School)
4	Aubrie Vale	G	5-7	Jr.	Burley, Idaho / Big Bend CC (Burley High School)
32	Hillary Weixler	F	5-11	Fr.	Salt Lake City, Utah / Skyline High School
21	Sara Weixler	F	5-11	Fr.	Salt Lake City, Utah / Skyline High School
15	Lancee Whetman	F	6-0	Jr.	Sandy, Utah / Juan Diego Catholic High School
12	Sicilee Williams	G	5-9	Fr.	Ririe, Idaho / Ririe High School

HEAD COACH: Shelley Jarrard (5th season)

ASSISTANT COACHES: Jenteal Jackson, Alli Blake, Tia Pappas

TEAM CAPTION

Front Row – Denise Gonzalez, Aubrie Vale, Sicilee Williams, Riley Reidhead, Jasmine Boonyakati, Natalie Parsons

Back Row – KC Gubler, Hillary Weixler, Whitney Syrett, Mika Pinner, Lancee Whetman, Megan Hall, Elsie Carpenter, Sara Weixler, Jessica Sorensen

ROSTER BY CLASS

Seniors (3) – Natalie Parsons, Mika Pinner, Jessica Sorensen

Juniors (6) – KC Gubler, Megan Hall, Riley Reidhead, Whitney Syrett, Aubrie Vale, Lancee Whetman

Freshmen (6) – Jasmine Boonyakati, Elsie Carpenter, Denise Gonzalez, Hillary Weixler, Sara Weixler, Sicilee Williams

ROSTER BY POSITION

Forward (9) – Elsie Carpenter, KC Gubler, Megan Hall, Mika Pinner, Jessica Sorensen, Whitney Syrett, Hillary Weixler, Sara Weixler, Lancee Whetman

Guards (6) – Jasmine Boonyakati, Denise Gonzalez, Natalie Parsons, Riley Reidhead, Aubrie Vale, Sicilee Williams

ROSTER BY HEIGHT

5-foot-7 – Aubrie Vale

5-foot-8 – Denise Gonzalez

5-foot-9 – Jasmine Boonyakati, KC Gubler, Natalie Parsons, Riley Reidhead, Jessica Sorensen, Sicilee Williams

5-foot-10 – Elsie Carpenter

5-foot-11 – Hillary Weixler, Sara Weixler

6-foot-0 – Megan Hall, Whitney Syrett, Lancee Whetman

6-foot-1 – Mika Pinner

ROSTER BY STATE/COUNTRY

California (1) – Denise Gonzalez

Idaho (4) – Riley Reidhead, Jessica Sorensen, Aubrie Vale, Sicilee Williams

Montana (1) – Elsie Carpenter

Utah (9) – Jasmine Boonyakati, KC Gubler, Megan Hall, Natalie Parsons, Mika Pinner, Whitney Syrett, Hillary Weixler, Sara Weixler, Lancee Whetman

2015-16 SCHEDULE & RESULTS

DATE	OPPONENT	SCORE	ATT	GRIFFINS HIGH SCORER	GRIFFINS HIGH REBOUNDER	GRIFFINS HIGH ASSISTS
Nov 13	% at Fort Lewis	L 46-73	989	13 - Natalie Parsons	8 - KC Gubler	5 - Denise Gonzalez
Nov 14	% vs Adams State	W 66-28	88	21 - Natalie Parsons	10 - Natalie Parsons	6 - Denise Gonzalez
Nov 24	at Dixie State	7:00 pm	St. George, Utah (Burns Arena)			
Nov 27	NORTHWEST NAZARENE	2:00 pm	Salt Lake City (Behnken Field House)			
Dec 5	* COLORADO MESA	5:30 pm	Salt Lake City (Behnken Field House)			
Dec 11	* MSU DENVER	5:30 pm	Salt Lake City (Behnken Field House)			
Dec 12	* UC COLORADO SPRINGS	5:30 pm	Salt Lake City (Behnken Field House)			
Dec 18	* at Colorado Christian	5:00 pm	Lakewood, Colo. (CCU Event Center)			
Dec 19	* at Colorado Mines	5:00 pm	Golden, Colo. (Lockridge Arena)			
Jan 1	* BLACK HILLS STATE	5:30 pm	Salt Lake City (Behnken Field House)			
Jan 2	* SOUTH DAKOTA MINES	5:30 pm	Salt Lake City (Behnken Field House)			
Jan 8	* at UC Colorado Springs	5:30 pm	Colorado Springs, Colo. (Gallogly Events Center)			
Jan 9	* at MSU Denver	5:00 pm	Denver (Auraria Event Center)			
Jan 15	* ADAMS STATE	5:30 pm	Salt Lake City (Behnken Field House)			
Jan 16	* FORT LEWIS	5:30 pm	Salt Lake City (Behnken Field House)			
Jan 22	* at Chadron State	5:30 pm	Chadron Neb. (Chicoine Center)			
Jan 23	* at Regis	5:00 pm	Denver (Regis Fieldhouse)			
Jan 29	* WESTERN STATE	5:30 pm	Salt Lake City (Behnken Field House)			
Jan 30	* CSU-PUEBLO	5:30 pm	Salt Lake City (Behnken Field House)			
Feb 5	* at New Mexico Highlands	5:00 pm	Las Vegas, N.M. (John A. Wilson Complex)			
Feb 6	* at Western New Mexico	5:30 pm	Silver City, N.M. (Drag's Court)			
Feb 12	* at South Dakota Mines	5:30 pm	Rapid City, S.D. (King Center)			
Feb 13	* at Black Hills State	5:00 pm	Spearfish, S.D. (Donald E. Young Center)			
Feb 19	* REGIS	5:30 pm	Salt Lake City (Behnken Field House)			
Feb 20	* CHADRON STATE	5:30 pm	Salt Lake City (Behnken Field House)			
Feb 26	* at Colorado Mesa	5:30 pm	Grand Junction, Colo. (Brownson Arena)			

Home games in **BOLD CAPS** | All times Mountain

* - Rocky Mountain Athletic Conference Game | % - Skyhawks Regional Challenge (Durango, Colo.)

BY THE NUMBERS

WIN/LOSS MARGIN	1	2	3	4	5	6	7	8	9	10	11-15	16-29	30+
Wins (1)													1
Losses (1)												1	

LEADS & DEFICITS

Largest Margin of Victory	38 vs Adams State (Nov 14, 2015)	Largest Margin of Defeat	27 vs Fort Lewis (Nov 13, 2015)
Largest Halftime Lead	18 vs Adams State (Nov 14, 2015)	Largest Halftime Deficit	9 vs Fort Lewis (Nov 13, 2015)
Largest Lead at Any Time	40 vs Adams State (Nov 14, 2015)	Largest Deficit at Any Time	34 vs Fort Lewis (Nov 13, 2015)
Largest Deficit Overcome to Win	4 vs Adams State (Nov 14, 2015)	Largest Lead Surrendered in Loss	3 vs Fort Lewis (Nov 13, 2015)
Largest Halftime Deficit Overcome in Win		Largest Halftime Lead Surrendered in Loss	
Longest Winning Streak	1 (Nov 14, 2015 - Present)	Longest Losing Streak	1 (Nov 13, 2015)
		Consecutive Games with a 3-Pointer Made	66 (Last w/out Feb 21, 2013)

GAME-BY-GAME COMPARISON

DATE	OPPONENT	FGM-FGA	PCT	3FG-FGA	PCT	FTM-FTA	PCT	OFF	DEF	TOT	AVG	PF	AST	T/O	BLK	STL	PTS	AVG
Nov 13	Griffins	17-56	.304	3-24	.125	9-16	.563	13	29	42	42.0	13	13	16	0	8	46	46.0
	Fort Lewis	30-71	.423	10-30	.333	3-6	.500	14	28	42	42.0	18	22	9	1	9	73	73.0
Nov 14	Griffins	18-46	.391	9-23	.391	21-25	.840	13	30	43	42.5	11	15	20	5	12	66	56.0
	Adams State	9-61	.148	2-21	.095	8-17	.471	24	17	41	41.5	19	4	16	0	13	28	50.5
Nov 24	Griffins																	
	Dixie State																	
Nov 27	Griffins																	
	Northwest Nazarene																	
Dec 5	Griffins																	
	Colorado Mesa																	
Dec 11	Griffins																	
	MSU Denver																	
Dec 12	Griffins																	
	UCCS																	
Dec 18	Griffins																	
	Colorado Christian																	
Dec 19	Griffins																	
	Colorado Mines																	
Jan 1	Griffins																	
	Black Hills State																	
Jan 2	Griffins																	
	S.D. Mines																	
Jan 8	Griffins																	
	UCCS																	
Jan 9	Griffins																	
	MSU Denver																	
Jan 15	Griffins																	
	Adams State																	
Jan 16	Griffins																	
	Chadron State																	
Jan 22	Griffins																	
	Chadron State																	
Jan 23	Griffins																	
	Regis																	
Jan 29	Griffins																	
	Western State																	
Jan 30	Griffins																	
	CSU-Pueblo																	
Feb 5	Griffins																	
	N.M. Highlands																	
Feb 6	Griffins																	
	Western N.M.																	
Feb 12	Griffins																	
	S.D. Mines																	
Feb 13	Griffins																	
	Black Hills State																	
Feb 19	Griffins																	
	Regis																	
Feb 20	Griffins																	
	Chadron State																	
Feb 26	Griffins																	
	Colorado Mesa																	

MISCELLANEOUS STATISTICS

	2015-16	CAREER
DOUBLE FIGURE SCORING GAMES		
Mika Pinner		8 (7-1)
Natalie Parsons	2 (1-1)	2 (1-1)
Denise Gonzalez	1 (1-0)	1 (1-0)
Jessica Sorensen		1 (1-0)
20+ POINT GAMES		
Natalie Parsons	1 (1-0)	1 (1-0)
10+ REBOUND GAMES		
Natalie Parsons	1 (1-0)	1 (1-0)
Jessica Sorensen		1 (1-0)
5+ ASSIST GAMES		
Denise Gonzalez	2 (1-1)	2 (1-1)
3+ STEAL GAMES		
Denise Gonzalez	2 (1-1)	2 (1-1)
Aubrie Vale	1 (1-0)	1 (1-0)
3+ BLOCKS GAMES		
Mika Pinner	1 (1-0)	4 (4-0)
3+ THREE-POINT FG GAMES		
Natalie Parsons	1 (1-0)	1 (1-0)
Mika Pinner		1 (1-0)
DOUBLE-DOUBLES		
Natalie Parsons	1 (1-0)	1 (1-0)

Record in such game ()

	2015-16	CAREER
SCORING LEADER*		
Mika Pinner		2 (2-0)
Denise Gonzalez	1 (0-1)	1 (0-1)
Natalie Parsons	1 (1-0)	1 (1-0)
REBOUONDING LEADER*		
Mika Pinner		2 (2-0)
Jessica Sorensen		2 (1-1)
KC Gubler	1 (0-1)	1 (0-1)
Natalie Parsons	1 (1-0)	1 (1-0)
ASSIST LEADER*		
Denise Gonzalez	2 (1-1)	2 (1-1)
Mika Pinner		1 (1-0)
STEAL LEADER*		
Denise Gonzalez	2 (1-1)	2 (1-1)
Mika Pinner		2 (2-0)
Lancee Whetman		1 (1-0)
BLOCK SHOT LEADER*		
Mika Pinner	1 (1-0)	17 (16-1)
Jessica Sorensen		2 (2-0)
CONSECUTIVE GAMES WITH 3-PT FG (active streak)		
Natalie Parsons		2
Riley Reidhead		2
Denise Gonzalez		1
Sicilee Williams		1

* Includes ties | Record in such game ()

STREAKS	
Overall	Won 1
Conference	Won 13
Unranked teams anywhere	Won 1
Ranked teams anywhere	Lost 1
Home	Won 8
Home Conference	Won 6
Home non-conference	Won 15
Home unranked non-conference	Won 9
Home ranked teams	Won 4
Home unranked teams	Won 26
Road	Lost 1
Road Conference	Won 15
Road ranked teams	Won 7
Road unranked teams	Lost 1
Neutral	Won 3
Neutral ranked teams	Lost 1
Neutral unranked teams	Won 11

GAMES PLAYED	2015-16	CAREER
Mika Pinner	2 (1-1)	31 (27-4)
Jessica Sorensen	2 (1-1)	31 (27-4)
Lancee Whetman	2 (1-1)	27 (26-1)
Denise Gonzalez	2 (1-1)	2 (1-1)
Natalie Parsons	2 (1-1)	2 (1-1)
Riley Reidhead	2 (1-1)	2 (1-1)
Whitni Syrett	2 (1-1)	2 (1-1)
Aubrie Vale	2 (1-1)	2 (1-1)
Sicilee Williams	2 (1-1)	2 (1-1)
KC Gubler	1 (0-1)	1 (0-1)

GAMES STARTED	CONSECUTIVE	CAREER
Mika Pinner	3 (1-2)	14 (11-3)
Denise Gonzalez	2 (1-1)	2 (1-1)
Natalie Parsons	2 (1-1)	2 (1-1)
Jessica Sorensen	2 (1-1)	2 (1-1)
Aubrie Vale	2 (1-1)	2 (1-1)

Record in such game ()

	OVERALL	STREAK	HOME	STREAK	AWAY	STREAK	NEUTRAL	STREAK
Overall	1-1	Won 1		Won 8	0-1	Lost 1	1-0	Won 1
Conference		Won 13		Won 6		Won 15		
Non-Conference	1-1	Won 1		Won 16	0-1	Lost 1	1-0	Won 1
vs Top 10		Won 3		Won 4		Won 1		Won 1
vs Top 25		Lost 1		Won 4		Won 7		Lost 1
In November	1-1	Won 1		Won 8	0-1	Lost 1	1-0	Won 3
In December		Won 1		Won 11		Lost 1		Won 1
In January		Won 6		Won 3		Won 12		
In February		Won 15		Won 8				Lost 1
In March		Lost 1		Won 6		Lost 1		Lost 1
On Monday		Won 4		Won 2		Won 4		
On Tuesday		Won 1		Won 1		Lost 1		Won 1
On Wednesday		Won 3		Won 3		Lost 2		Won 5
On Thursday		Won 5		Won 2		Won 5		Won 5
On Friday	0-1	Lost 2		Won 6	0-1	Lost 1		Lost 2
On Saturday	1-0	Won 14		Won 26		Won 8	1-0	Won 3
On Sunday		Won 1						Won 1
First 13 Games (1st Half)	1-1	Won 1		Won 3	0-1	Lost 1	1-0	Won 2
Last 13 Games (2nd Half)		Lost 1		Won 22		Won 9		Lost 1
Leading at Halftime	1-0	Won 71		Won 34		Won 36	1-0	Won 17
Tied at Halftime		Won 1		Lost 2		Lost 1		
Trailing at Halftime	0-1	Lost 2		Won 1	0-1	Lost 1		Lost 2
Leading with 5:00	1-0	Won 51		Won 37		Won 39	1-0	Won 8
Tied with 5:00		Won 1				Won 1		
Trailing with 5:00	0-1	Lost 2		Lost 4	0-1	Lost 1		Lost 3
Scoring 80+ Points		Won 5		Won 4		Won 1		Won 9
Scoring 70-79 Points		Won 28		Won 17		Won 12		Won 1
Scoring 60-69 Points	1-0	Won 42		Won 14		Won 24	1-0	Won 10
Scoring < 60 Points	0-1	Lost 2		Won 1	0-1	Lost 1		Lost 1
Allowing 80+ Points		Lost 1		Won 1		Lost 21		Lost 1
Allowing 70-79 Points	0-1	Lost 9		Lost 2	0-1	Lost 3		Lost 4
Allowing 60-69 Points		Lost 1		Won 8		Won 5		Lost 1
Allowing < 60 Points	1-0	Won 14		Won 6		Won 17	1-0	Won 3
Shoot 50% or Better		Won 37		Won 33		Won 16		Won 1
Shoot Below 50%	1-1	Won 1		Won 6	0-1	Lost 1	1-0	Won 1
Opp. Shoot 50% or Better		Lost 3		Lost 1		Lost 1		Lost 4
Opp. Shoot Below 50%	1-1	Won 1		Won 8	0-1	Lost 1	1-0	Won 1
Have More Rebounds	1-0	Won 76		Won 54		Won 32	1-0	Won 12
Have ≤ Rebounds	0-1	Lost 2		Won 3	0-1	Lost 1		Lost 2
Have More Assists	1-0	Won 1		Won 32		Won 37	1-0	Won 1
Have ≤ Assists	0-1	Lost 1		Won 2	0-1	Lost 2		Won 3
Have Fewer Turnovers		Won 37		Won 33		Won 11		Won 9
Have ≥ Turnovers	1-1	Won 1		Lost 1	0-1	Lost 1	1-0	Won 1

THE LAST TIME A TEAM

100 POINTS BY A TEAM

By Griffins	112 vs Northern New Mexico (12/3/09)
By Opponent	101 by Freed-Hardeman (11/21/09)

90-99 POINTS BY A TEAM

By Griffins	90 vs Dickinson State (1/17/13)
By Opponent	92 by The Master's (12/28/13)

SCORED 40 OR LESS POINTS

By Griffins	36 vs Westmont (3/16/13)
By Opponent	28 by Adams State (11/14/15)

40-POINT WIN

By Griffins	89-40 vs Lewis-Clark State (1/31/15)
By Opponent	67-107 vs Azusa Pacific (11/10/05)

30-POINT WIN

By Griffins	66-28 vs Adams State (11/14/15)
By Opponent	47-79 vs Lewis-Clark State (1/6/07)

OVERTIME GAME

Griffins Win	60-56 vs College of Idaho (11/10/12)
Griffins Loss	78-79 vs Lewis-Clark State (3/9/09)

DOUBLE OVERTIME GAME

Griffins Win	67-62 vs MSU-Northern (1/24/15)
Griffins Loss	84-92 vs The Master's (12/28/13)

WON GAME IN FINAL 10 SECONDS

By Griffins	Kelsi Wells FT with :06 seconds 59-58 vs Lewis-Clark State (3/11/14)
By Opponent	Alysha Green Jumper with :03 seconds 63-64 vs Carroll (3/4/11)

MADE 40+ FIELD GOALS

By Griffins	45 vs Northern New Mexico (12/3/09)
By Opponent	40 by Union (TN) (11/19/09)

MADE FEWER THAN 20 FIELD GOALS

By Griffins	18 vs Adams State (11/14/15)
By Opponent	9 by Adams State (11/14/15)

HAD 70-79 FIELD GOAL ATTEMPTS

By Griffins	70 vs The Master's (12/28/13)
By Opponent	71 by Fort Lewis (11/13/15)

HAD 80+ FIELD GOAL ATTEMPTS

By Griffins	81 vs College of Idaho (11/1/08)
By Opponent	Never

SHOT OVER 60 PERCENT FROM THE FIELD

By Griffins	.614 (35-57) vs Lewis-Clark State (1/31/15)
By Opponent	.600 (33-55) by Wiley (3/22/14)

SHOT LESS THAN 30 PERCENT FROM THE FIELD

By Griffins	.196 (9-46) vs Vanguard (10/30/10)
By Opponent	.259 (9-61) by Adams State (11/14/15)

MADE 10+ 3-POINT FIELD GOALS

By Griffins	13 vs Montana Tech (2/28/15)
By Opponent	10 by Fort Lewis (11/13/15)

MADE 15+ 3-POINT FIELD GOALS

By Griffins	16 vs Rocky Mountain (1/14/12)
By Opponent	16 by Whitworth (11/27/10)

MADE ZERO 3-POINT FIELD GOALS

By Griffins	vs Carroll (2/21/13)
By Opponent	by Lewis-Clark State (1/19/12)

SHOT OVER 60 PERCENT ON 3-POINT ATTEMPTS

By Griffins	.667 (14-21) vs Lewis-Clark State (1/31/15)
By Opponent	.696 (16-23) by Whitworth (11/27/10)

MADE 25+ FREE THROWS

By Griffins	26 vs Concordia (CA) (11/14/14)
By Opponent	25 by William Jessup (11/19/10)

SHOT OVER 90 PERCENT ON FREE THROW ATTEMPTS

By Griffins	1.000 (7-7) vs Westmont (3/20/15)
By Opponent	.917 (11-12) by Rocky Mountain (2/1/14)

SHOT 100 PERCENT ON FREE THROW ATTEMPTS

By Griffins	7-7 vs Westmont (3/20/15)
By Opponent	6-6 by Hope International (12/18/14)

HAD 50+ REBOUNDS

By Griffins	52 vs Lewis-Clark State (2/20/14)
By Opponent	50 by Montana Western (1/8/11)

HAD 15+ OFFENSIVE REBOUNDS

By Griffins	15 vs MSU-Northern (2/21/15)
By Opponent	24 by Adams State (11/14/15)

HAD 30+ DEFENSIVE REBOUNDS

By Griffins	30 vs Adams State (11/14/15)
By Opponent	30 by Montana Tech (2/28/15)

HAD 20-29 ASSISTS

By Griffins	24 vs Lewis-Clark State (1/31/15)
By Opponent	22 by Fort Lewis (11/13/15)

HAD 30+ ASSISTS

By Griffins	30 vs Great Falls (1/27/11)
By Opponent	30 by Point Loma Nazarene (11/29/08)

HAD 7+ BLOCKED SHOTS

By Griffins	7 vs Rocky Mountain (2/10/11)
By Opponent	8 by Lewis-Clark State (2/26/15)

HAD 15+ STEALS

By Griffins	15 vs Great Falls (2/13/14)
By Opponent	15 by Campbellsville (12/19/14)

HAD 20+ TURNOVERS

By Griffins	20 vs Adams State (11/14/15)
By Opponent	22 by Great Falls (2/19/15)

HAD 30+ TURNOVERS

By Griffins	36 vs College of Idaho (11/10/07)
By Opponent	33 by William Jessup (12/3/10)

COMMITTED 10 OR FEWER TURNOVERS

By Griffins	10 vs Westmont (3/20/15)
By Opponent	9 by Fort Lewis (11/13/15)

THE LAST TIME AN INDIVIDUAL

20-29 POINTS BY A PLAYER

By Griffin	21, Natalie Parsons vs Adams State (11/14/15)
By Opp.	20, Lauren McCoy Westmont (3/20/15)

30-39 POINTS BY A PLAYER

By Griffin	30, McKenzie Jessop vs MSU-Northern (1/7/10)
By Opp.	31, Jamie Young Great Falls (1/27/11)

40+ POINTS BY A PLAYER

By Griffin	40, Shalee Fackrell vs Lewis-Clark State (1/14/06)
By Opp.	Never

TWO PLAYERS SCORED 20+ POINTS

By Griffins	Tia Pappas (25) & Amy Krommenhoek (20) vs The Master's (11/7/14)
By Opp.	Nicole Ballesterio (25) & Esther Timmermans (22) Vanguard (12/8/12)

10+ FIELD GOALS BY A PLAYER

By Griffin	10, Alli Blake vs Montana Tech (2/22/14)
By Opp.	11, Danisha Shaw Wiley (3/22/14)

15+ FIELD GOALS BY A PLAYER

By Griffin	16, Shalee Fackrell vs Montana Tech (2/25/06)
By Opp.	15, Katherine Sunwall Montana Western (2/16/07)

20-29 FIELD GOAL ATTEMPTS BY A PLAYER

By Griffin	20, Amy Krommenhoek vs Westmont (3/20/15)
By Opp.	20, Ajha Edwards MSU-Northern (1/24/15)

PLAYER SHOT 1.000 WITH 5 FG MADE

By Griffin	6-6, Mika Pinner & 5-5, Jamaica Christensen vs Lewis-Clark State (1/31/15)
By Opp.	5-5, Jacquelyn Marshall The Master's (12/28/13)

PLAYER SHOT .800 WITH 5 FG MADE

By Griffin	.875 (7-8), Amanda Hacking vs Rocky Mountain (1/10/15)
By Opp.	.833 (5-6), Megan Feldman MSU-Northern (1/24/15)

5+ 3-POINT FG BY A PLAYER

By Griffin	5, Natalie Parsons vs Adams State (11/14/15)
By Opp.	5, Brittany Kumm Rocky Mountain (2/1/14)

10+ 3-POINT FG ATTEMPTS BY A PLAYER

By Griffin	15, Amy Krommenhoek vs Westmont (3/20/15)
By Opp.	12, Maya Kennedy Vanguard (12/20/14)

PLAYER SHOT 1.000 WITH 3 3-POINT FG MADE

By Griffin	5-5, Mika Pinner & 4-4, Tia Pappas vs Lewis-Clark State (1/31/15)
By Opp.	3-3, Kelli Rice Lewis-Clark State (2/18/12)

PLAYER SHOT .800 WITH 3 3-POINT FG MADE

By Griffin	.857 (6-7), Alli Winters vs Montana Tech (2/28/15)
By Opp.	.800 (4-5), Katie Estey Carroll (1/8/15)

10+ FREE THROWS MADE BY A PLAYER

By Griffin	13, Alli Blake vs MSU-Northern (1/11/14)
By Opp.	14, Samm Schermele MSU-Northern (1/29/11)

15+ FREE THROWS MADE BY A PLAYER

By Griffin	15, Jordan Eckman vs Rocky Mountain (2/22/07)
By Opp.	Never

10+ FREE THROW ATTEMPTS BY A PLAYER

By Griffin	10, Amy Krommenhoek vs Great Falls (1/23/15)
By Opp.	11, Ajha Edwards MSU-Northern (1/24/15)

15+ FREE THROW ATTEMPTS BY A PLAYER

By Griffin	15, Alli Blake vs MSU-Northern (1/11/14)
By Opp.	15, Alyssa Fierro Lewis-Clark State (2/19/11)

PLAYER SHOT 1.000 WITH 8 FT MADE

By Griffin	8-8, Denise Gonzalez vs Adams State (11/14/15)
By Opp.	14-14, Samm Schermele MSU-Northern (1/29/11)

10+ REBOUNDS BY A PLAYER

By Griffin	10, Natalie Parsons vs Adams State (11/14/15)
By Opp.	10, Lauren McCoy Westmont (3/20/15)

15+ REBOUNDS BY A PLAYER

By Griffin	15, Tia Pappas vs Southern-New Orleans (11/15/12)
By Opp.	16, Ajha Edwards MSU-Northern (1/24/15)

TWO PLAYERS WITH 10+ REBOUNDS

By Griffins	Amanda Hacking (12) & Tia Pappas (23) vs Montana Western (2/14/15)
By Opp.	Esther Timmermans (15) & Alison Drennan (10) Vanguard (12/8/12)

5+ OFFENSIVE REBOUNDS BY A PLAYER

By Griffin	5, Amanda Hacking vs Westmont (3/20/15)
By Opp.	5, Nicole Broyles & Lauren McDONALS Adams State (11/14/15)

10+ DEFENSIVE REBOUNDS BY A PLAYER

By Griffin	11, Amanda Hacking vs Cumberland (3/19/15)
By Opp.	12, Ajha Edwards MSU-Northern (1/24/15)

10+ ASSISTS BY A PLAYER

By Griffin	10, Amy Krommenhoek vs Hope International (11/21/14)
By Opp.	11, Elisha Hensey College of Idaho (11/8/13)

5+ BLOCKED SHOTS BY A PLAYER

By Griffin	5, Olivia Pierce-Eiselein vs George Fox (11/26/10)
By Opp.	5, McKenzie Heaslet Lewis-Clark State (2/26/15)

5+ STEALS BY A PLAYER

By Griffin	5, Amy Krommenhoek vs Montana Tech (2/28/15)
By Opp.	6, LeeAnn Grider Campbellsville (12/19/14)

DOUBLE-DOUBLE BY A PLAYER

By Griffin	21p/10r, Natalie Parsons vs Adams State (11/14/15)
By Opp.	20p/10r, Lauren McCoy Westmont (3/20/15)

TEAM HIGHS & LOWS

		GRIFFINS	OPPONENTS
Points 1st Quarter	High	16 vs Adams State (11/14/15)	14 by Fort Lewis (11/13/15)
	Low	15 vs Fort Lewis (11/13/15)	12 by Adams State (11/14/15)
Points 2nd Quarter	High	18 vs Adams State (11/14/15)	23 by Fort Lewis (11/13/15)
	Low	13 vs Fort Lewis (11/13/15)	4 by Adams State (11/14/15)
Points 1st Half	High	24 vs Adams State (11/14/15)	37 by Fort Lewis (11/13/15)
	Low	28 vs Fort Lewis (11/13/15)	16 by Adams State (11/14/15)
Points 3rd Quarter	High	18 vs Adams State (11/14/15)	27 by Fort Lewis (11/13/15)
	Low	8 vs Fort Lewis (11/13/15)	8 by Adams State (11/14/15)
Points 4th Quarter	High	14 vs Adams State (11/14/15)	9 by Fort Lewis (11/13/15)
	Low	10 vs Fort Lewis (11/13/15)	6 by Adams State (11/14/15)
Points 2nd Half	High	32 vs Adams State (11/14/15)	36 by Fort Lewis (11/13/15)
	Low	18 vs Fort Lewis (11/13/15)	12 by Adams State (11/14/15)
Total Points	High	66 vs Adams State (11/14/15)	73 by Fort Lewis (11/13/15)
	Low	46 vs Fort Lewis (11/13/15)	28 by Adams State (11/14/15)
FG Made	High	18 vs Adams State (11/14/15)	30 by Fort Lewis (11/13/15)
	Low	17 vs Fort Lewis (11/13/15)	9 by Adams State (11/14/15)
FG Attempted	High	56 vs Fort Lewis (11/13/15)	71 by Fort Lewis (11/13/15)
	Low	46 vs Adams State (11/14/15)	61 by Adams State (11/14/15)
FG Percentage	High	.391 vs Adams State (11/14/15)	.423 by Fort Lewis (11/13/15)
	Low	.304 vs Fort Lewis (11/13/15)	.148 vs Adams State (11/14/15)
3-Pt FG Made	High	9 vs Adams State (11/14/15)	10 by Fort Lewis (11/13/15)
	Low	3 vs Fort Lewis (11/13/15)	2 by Adams State (11/14/15)
3-Pt FG Attempted	High	24 vs Fort Lewis (11/13/15)	30 by Fort Lewis (11/13/15)
	Low	23 vs Adams State (11/14/15)	21 by Adams State (11/14/15)
3-Pt FG Percentage	High	.391 vs Adams State (11/14/15)	.333 by Fort Lewis (11/13/15)
	Low	.125 vs Fort Lewis (11/13/15)	.095 by Adams State (11/14/15)
FT Made	High	21 vs Adams State (11/14/15)	8 by Adams State (11/14/15)
	Low	9 vs Fort Lewis (11/13/15)	3 by Fort Lewis (11/13/15)
FT Attempted	High	25 vs Adams State (11/14/15)	17 by Adams State (11/14/15)
	Low	16 vs Fort Lewis (11/13/15)	6 by Fort Lewis (11/13/15)
FT Percentage	High	.840 vs Adams State (11/14/15)	.500 by Fort Lewis (11/13/15)
	Low	.563 vs Fort Lewis (11/13/15)	.471 by Adams State (11/14/15)
Off Rebounds	High	13 (2x) Last vs Adams State (11/14/15)	24 by Adams State (11/14/15)
	Low	13 (2x) Last vs Adams State (11/14/15)	14 by Fort Lewis (11/13/15)
Def Rebounds	High	30 vs Adams State (11/14/15)	28 by Fort Lewis (11/13/15)
	Low	29 vs Fort Lewis (11/13/15)	17 by Adams State (11/14/15)
Total Rebounds	High	43 vs Adams State (11/14/15)	42 by Fort Lewis (11/13/15)
	Low	42 vs Fort Lewis (11/13/15)	41 by Adams State (11/14/15)
Assists	High	15 vs Adams State (11/14/15)	22 by Fort Lewis (11/13/15)
Blocked Shots	High	5 vs Adams State (11/14/15)	1 by Fort Lewis (11/13/15)
Steals	High	12 vs Adams State (11/14/15)	13 by Adams State (11/14/15)
Turnovers	High	20 vs Adams State (11/14/15)	16 by Adams State (11/14/15)
	Low	16 vs Fort Lewis (11/13/15)	9 by Fort Lewis (11/13/15)
Personal Fouls	High	13 vs Fort Lewis (11/13/15)	19 by Adams State (11/14/15)
	Low	11 vs Adams State (11/14/15)	18 by Fort Lewis (11/13/15)

INDIVIDUAL GAME HIGHS

GRIFFINS	2015-16	SCHOOL RECORD
Points	21, Natalie Parsons vs Adams State (Nov 14, 2015)	40, Shalee Fackrell vs Lewis-Clark State January 14, 2006
FG Made	6, Natalie Parsons vs Adams State (Nov 14, 2015)	16, Shalee Fackrell vs Lewis-Clark State January 14, 2006
FG Attempted	11, Natalie Parsons vs Adams State (Nov 14, 2015)	28, Shalee Fackrell vs Lewis-Clark State January 14, 2006
3-Pt FG Made	5, Natalie Parsons vs Adams State (Nov 14, 2015)	8, Nicole Yazzie vs Rocky Mountain February 18, 2010
3-Pt FG Attempted	7, (2x) Last by Natalie Parsons vs Adams State (Nov 14, 2015)	15, Amy Krommenhoek vs Westmont March 20, 2015
FT Made	8, Denise Gonzalez vs Adams State (Nov 14, 2015)	18, Shalee Fackrell vs Reinhardt December 10, 2005
FT Attempted	8, Denise Gonzalez vs Adams State (Nov 14, 2015)	22, Shalee Fackrell vs Reinhardt December 10, 2005
Rebounds	10, Natalie Parsons vs Adams State (Nov 14, 2015)	20, Shelby Ellsworth vs Cal Maritime November 10, 2011
Assists	6, Denise Gonzalez vs Adams State (Nov 14, 2015)	20, Shalee Fackrell vs Eastern Oregon November 26, 2004
Steals	4, Denise Gonzalez vs Adams State (Nov 14, 2015)	17, Amy Jensen vs Northwest December 7, 2001
Blocks	3, Mika Pinner vs Adams State (Nov 14, 2015)	10, McKenzie Jessip vs Montana Western February 11, 2010
Minutes	34, Natalie Parsons vs Adams State (Nov 14, 2015)	8, Olivia Pierce-Eiselein vs Pacific Union November 13, 2010

OPPONENTS	2015-16	OPPONENT RECORD (Since 2007-08)
Points	13, Kylie Santos, Fort Lewis (Nov 13, 2015)	36, Katherine Sunwall, Montana Western February 16, 2007
FG Made	5, Kylie Santos, Fort Lewis (Nov 13, 2015)	15, Katherine Sunwall, Montana Western February 16, 2007
FG Attempted	13, Kylie Santos, Fort Lewis (Nov 13, 2015)	24, Alex Dunn, Carroll March 6, 2010
3-Pt FG Made	3, (2x) Last by Michelle Turner, Fort Lewis (Nov 13, 2015)	9, Tara Deathridge, Freed-Hardeman November 21, 2009
3-Pt FG Attempted	7, Kyle Santos, Fort Lewis (Nov 13, 2015)	15, Tara Deathridge, Freed-Hardeman November 21, 2009
FT Made	2, (4x) Last by Lauren McDonald, Adams State (Nov 14, 2015)	14, Samm Schermele, MSU-Northern January 29, 2011
FT Attempted	6, Karlie Land, Adams State (Nov 14, 2015)	15 (3x), Most recent: Alyssa Fierro, Lewis-Clark State February 19, 2011
Rebounds	9, Lauren McDonald, Adams State (Nov 14, 2014)	16, Denise Hill, College of Idaho November 19, 2007
Assists	6, Michelle Turner, Fort Lewis (Nov 13, 2015)	16, Ajha Edwards, Montana State-Northern January 24, 2015
Steals	3, 92x) Last by Lena Jaycox, Adams State (Nov 14, 2015)	11, Elisha Hensey, College of Idaho November 8, 2013
Blocks	1, Emily Childress, Fort Lewis (Nov 13, 2015)	11, Kayla Hudson, Union (TN) December 1, 2007
Minutes	28, Kylie Santos, Fort Lewis (Nov 13, 2015)	7 (3x), Most recent: Brittaney Niebergall, Lewis-Clark State January 19, 2012
		7, Alyssa Fierro, Lewis-Clark State January 22, 2011
		7, Stacie Baker, MSU-Northern February 16, 2008

2015-16 RMAC WOMEN'S BASKETBALL STANDINGS

ROCKY DIVISION	CONF	CPCT.	OVERALL	PCT.	H	A	N	STRK
Black Hills State	0-0	0.000	2-1	0.667	2-1	0-0	0-0	L1
South Dakota Mines	0-0	0.000	2-1	0.667	2-1	0-0	0-0	L1
Colorado Mesa	0-0	0.000	1-1	0.500	0-0	0-0	1-1	L1
WESTMINSTER	0-0	0.000	1-1	0.500	0-0	0-1	1-0	W1
UCCS	0-0	0.000	2-2	0.500	2-2	0-0	0-0	L1
MSU Denver	0-0	0.000	1-3	0.250	0-0	0-0	1-3	W1
Regis	0-0	0.000	1-3	0.250	1-1	0-2	0-0	L2
Chadron State	0-0	0.000	0-3	0.000	0-2	0-1	0-0	L3
MOUNTAIN DIVISION	CONF	CPCT.	OVERALL	PCT.	H	A	N	STRK
Colorado Christian	0-0	0.000	3-1	0.750	1-0	1-1	1-0	W3
CSU-Pueblo	0-0	0.000	3-1	0.750	1-1	1-0	1-0	W3
Fort Lewis	0-0	0.000	3-1	0.750	2-0	0-1	1-0	L1
New Mexico Highlands	0-0	0.000	2-1	0.667	0-0	1-1	1-0	L1
Western New Mexico	0-0	0.000	2-2	0.500	1-0	1-1	0-1	L1
Western State	0-0	0.000	0-0	0.000	0-0	0-0	0-0	---
Adams State	0-0	0.000	0-2	0.000	0-0	0-0	0-2	L2
Colorado Mines	0-0	0.000	0-2	0.000	0-2	0-0	0-0	L2

RMAC PLAYERS OF THE WEEK

NOVEMBER 16

Offense	Sydney Small - Colorado Mesa
Defense	Erika Musante - Colorado Mesa

NOVEMBER 23

Offense	Hannah Stipanovich - MSU Denver
Defense	Deandra Williams - Western New Mexico

2015-16 COACHES' POLL

November 3, 2015

RK	SCHOOL (1ST)	REC	PTS	LAST
1	Emporia State (12)	29-5	552	
2	Lewis (2)	31-3	493	
3	California Baptist (3)	29-7	487	
4	Nova Southeastern	27-6	478	
5	California (Pa.) (6)	32-4	453	
6	Columbus State (1)	31-2	400	
7	Alaska-Anchorage	29-2	396	
8	Michigan Technological	28-3	379	
9	West Texas A&M	30-3	357	
10	Fort Hays State	30-4	355	
11	Drury	26-4	319	
12	Limestone	34-2	274	
13	Union (Tenn.)	28-4	230	
14	Adelphi	28-4	222	
15	Ashland	25-9	182	
16	Winona State	20-8	179	
17	Queens College	22-8	175	
18	Arkansas Tech	23-7	156	
19	Colorado Mesa	23-6	146	
20	Tampa	17-11	143	
21	West Liberty	24-9	122	
22	Anderson (S.C.)	27-5	113	
23	Lubbock Christian	21-7	85	
24	Wayne State (Neb.)	28-6	83	
25	West Chester	24-6	82	

Others receiving votes: Bloomsburg University of Pennsylvania 63; West Florida 61; Lander 50; Albany State (Ga.) 48; Missouri Western State 48; Harding (Ark.) 45; Stonehill 41; **Colorado - Colorado Springs 41**; Western Washington 39; Franklin Pierce N.H.) 37; Virginia State 34; Benedict College (S.C.) 30; Shaw (N.C.) 30; Bentley (Mass.) 27; Cedarville 25; Wayne State (Mich.) 23; Johnson C Smith 22; Kentucky State 22; Philadelphia 22; Holy Family (Pa.) 21; Central Missouri 17; Cal State Dominguez Hills 14; Gannon 13; Charleston 7; Sioux Falls 7; Texas Woman's University 4; UC - San Diego 4

RMAC teams in Bold Italics

ROCKY MOUNTAIN ATHLETIC CONFERENCE



The Rocky Mountain Athletic Conference is a premier NCAA Division II conference located in the states of Colorado, Nebraska, New Mexico, South Dakota, and Utah. The RMAC currently competes in 23 NCAA Division II sports and has earned 52 NCAA Division II national championships and 44 national runner-ups since 1992. Founded in 1909, the RMAC is the most historic athletic conference headquartered in the western United States and also in Division II.

www.RMACsports.org | @RMAC_SPORTS

RMAC TEAM RANKINGS

CATEGORY	STAT	RANK
Scoring Offense	56.0	10th
Conference Only		
Scoring Defense	50.5	1st
Conference Only		
Scoring Margin	+5.5	5th
Conference Only		
Field Goal %	.343	10th
Conference Only		
Field Goal % Defense	.295	1st
Conference Only		
3-Point FG %	.255	10th
Conference Only		
3-Point FG % Defense	.235	2nd
Conference Only		
Free Throw %	.732	4th
Conference Only		
3-Point FG Made	6.0	t-6th
Conference Only		
Rebound Offense	42.5	3rd
Conference Only		
Rebound Defense	41.5	11th
Conference Only		
Rebound Margin	+1.0	6th
Conference Only		
Offensive Rebounds	13.0	t-7th
Conference Only		
Offensive Rebound %	.366	3rd
Conference Only		
Defensive Rebounds	29.5	2nd
Conference Only		
Defensive Rebound %	.608	14th
Conference Only		
Assists	14.0	5th
Conference Only		
Assist/Turnover Ratio	0.8	6th
Conference Only		
Turnover Margin	-5.50	14th
Conference Only		
Steals	10.0	5th
Conference Only		
Blocks	2.5	t-7th
Conference Only		

RMAC INDIVIDUAL RANKINGS

SCORING	CL	GP	FG	3FG	FT	POINTS	AVG/G
2t. Natalie Parsons-WC	SR	2	11	6	6	34	17.0
FIELD GOAL PCT							
	CL	GP	FG	FGA	PCT		
9. Natalie Parsons-WC	SR	2	11	21		.524	
3-POINT FG PCT							
	CL	GP	3FG	3FGA	PCT		
5. Natalie Parsons-WC	SR	2	6	11		.545	
FREE THROW PCT							
	CL	GP	FT	FTA	PCT		
1. Denise Gonzalez-WC	FR	2	11	11		1.000	
6t. Natalie Parsons-WC	SR	2	6	7		.857	
3-POINT FG MADE							
	CL	GP	3FG	AVG/G			
3t. Natalie Parsons-WC	SR	2	6	3.0			
REBOUNDING							
	CL	GP	OFF	DEF	TOTAL	AVG/G	
OFFENSIVE REBOUNDS							
	CL	GP	NO.	AVG/G			
DEFENSIVE REBOUNDS							
	CL	GP	NO.	AVG/G			
9. Natalie Parsons-WC	SR	2	10	5.0			
ASSISTS							
	CL	GP	NO.	AVG/G			
1. Denise Gonzalez-WC	FR	2	11	5.5			
13t. Natalie Parsons-WC	SR	2	5	2.5			
ASSIST/TURNOVER RATIO							
	CL	GP	ASSISTS	AVG	TO	AVG	RATIO
2. Denise Gonzalez-WC	FR	2	11	5.5	3	1.5	3.7
STEALS							
	CL	GP	NO.	AVG/G			
2. Denise Gonzalez-WC	FR	2	7	3.5			
5t. Aubrie Vale-WC	JR	2	5	2.5			
BLOCKED SHOTS							
	CL	GP	NO.	AVG/G			
5. Mika Pinner-WC	SR	2	3	1.5			
15t. Natalie Parsons-WC	SR	2	1	0.5			
15t. Denise Gonzalez-WC	FR	2	1	0.5			
MINUTES PLAYED							
	CL	GP	MINUTES	AVG/G			
9t. Natalie Parsons-WC	SR	2	65	32.5			

**1 Jessica Sorensen****F****5-9****SR****Downey, Idaho****SEASON HIGH****CATEGORIES****CAREER HIGH**

6 - vs Adams State (11/14/15)

Points

10 - vs The Master's (11/7/14)

5 - vs Adams State (11/14/15)

Rebounds

10 - vs Lewis-Clark State (1/31/15)

2 - vs Adams State (11/14/15)

Assists

2 - (2x) Last vs Adams State (11/14/15)

2 - vs Adams State (11/14/15)

Steals

2 - (3x) Last vs Adams State (11/14/15)

Blocks

2 - (2x) Last vs Lewis-Clark State (1/31/15)

**4 Aubrie Vale****G****5-7****JR****Burley, Idaho****SEASON/CAREER HIGH****CATEGORIES**

3 - vs Fort Lewis (11/13/15)

Points

5 - vs Fort Lewis (11/13/15)

Rebounds

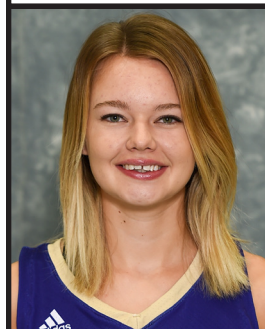
2 - vs Adams State (11/14/15)

Assists

3 - vs Adams State (11/14/15)

Steals

Blocks

**10 Megan Hall****F****6-0****JR****Salt Lake City, Utah****SEASON/CAREER HIGH****CATEGORIES**

Points

Rebounds

Assists

Steals

Blocks

**11 Jasmine Boonyakati****G****5-9****FR****Herriman, Utah****SEASON/CAREER HIGH****CATEGORIES**

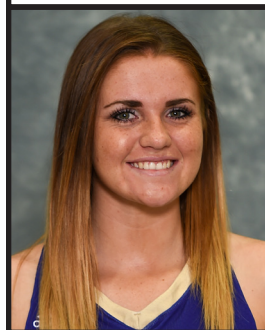
Points

Rebounds

Assists

Steals

Blocks

**12 Sicilee Williams****G****5-9****FR****Ririe, Idaho****SEASON/CAREER HIGH****CATEGORIES**

3 - vs Adams State (11/14/15)

Points

4 - vs Fort Lewis (11/13/15)


Rebounds


1 -vs Fort Lewis (11/13/15)


Assists


Steals


Blocks

	13	Riley Reidhead	G	5-9	JR	Trenton, Idaho
	SEASON/CAREER HIGH			CATEGORIES		
	9 – vs Adams State (11/14/15)			Points		
	5 – vs Fort Lewis (11/13/15)			Rebounds		
	2 – vs Adams State (11/14/15)			Assists		
	1 –vs Fort Lewis (11/13/15)			Steals		
				Blocks		

	14	Mika Pinner	F	6-1	SR	Orem, Utah
	SEASON HIGH			CATEGORIES		CAREER HIGH
	5 - vs Fort Lewis (11/13/15)			Points		17 - vs Lewis-Clark State (1/31/15)
	3 - vs Fort Lewis (11/13/15)			Rebounds		8 - (2x) Last vs Lewis-Clark State (1/31/15)
	1 - vs Fort Lewis (11/13/15)			Assists		3 - vs Montana State-Northern (1/24/15)
	1 - vs Fort Lewis (11/13/15)			Steals		2 - vs Eastern Oregon (11/29/14)
3 - vs Adams State (11/14/15)			Blocks		3 - (4x) Last vs Adams State (11/14/15)	

	15	Lancee Whetman	F	6-0	JR	Sandy, Utah
	SEASON HIGH			CATEGORIES		CAREER HIGH
	7 - vs Adams State (11/14/15)			Points		7 - vs Adams State (11/14/15)
	5 - (2x) Last vs Adams State (11/14/15)			Rebounds		5 - (2x) Last vs Adams State (11/14/15)
	1 - vs Adams State (11/14/15)			Assists		1 - vs Adams State (11/14/15)
				Steals		1 - (2x) Last vs Lewis-Clark State (2/26/15)
				Blocks		

	20	Natalie Parsons	G	5-9	SR	Bountiful, Utah
	SEASON/CAREER HIGH			CATEGORIES		
	21 – vs Adams State (11/14/15)			Points		
	10 – vs Adams State (11/14/15)			Rebounds		
	4 – vs Fort Lewis (11/13/15)			Assists		
	2 – vs Adams State (11/14/15)			Steals		
	1 – vs Adams State (11/14/15)			Blocks		

	21	Sara Weixler	F	5-11	FR	Salt Lake City, Utah
	SEASON/CAREER HIGH			CATEGORIES		
				Points		
				Rebounds		
				Assists		
				Steals		
				Blocks		

**22 KC Gubler****F****5-9****JR****La Verkin, Utah**

SEASON/CAREER HIGH

CATEGORIES

	Points
8 - vs Fort Lewis (11/13/15)	Rebounds
	Assists
	Steals
	Blocks

**24 Elsie Carpenter****F****5-10****FR****Ulm, Mont.**

SEASON/CAREER HIGH

CATEGORIES

	Points
	Rebounds
	Assists
	Steals
	Blocks

**25 Denise Gonzalez****G****5-8****FR****South Gate, Calif.**

SEASON/CAREER HIGH

CATEGORIES

13 - vs Adams State (11/14/15)	Points
4 - vs Fort Lewis (11/13/15)	Rebounds
6 - vs Adams State (11/14/15)	Assists
4 - vs Adams State (11/14/15)	Steals
1 - vs Adams State (11/14/15)	Blocks

**30 Whitney Syrett****F****6-0****JR****Tropic, Utah**

SEASON/CAREER HIGH

CATEGORIES

5 - vs Fort Lewis (11/13/15)	Points
4 - vs Adams State (11/14/15)	Rebounds
1 - vs Adams State (11/14/15)	Assists
1 - (2x) Last vs Adams State (11/14/15)	Steals
	Blocks

**32 Hillary Weixler****F****5-11****FR****Salt Lake City, Utah**

SEASON/CAREER HIGH

CATEGORIES

	Points
	Rebounds
	Assists
	Steals
	Blocks



Shelley Jarrard

Head Coach

5th Season

105-20 Record

Shelley Jarrard became the head coach of the Westminster College women's basketball team prior to the 2011-12 season. During her time with the program, Westminster has compiled a 104-19 overall record and won four-straight Frontier Conference championships.

With Jarrard at the helm, Westminster has appeared in four consecutive NAIA National Championships. They advanced to the quarterfinals in three of the four trips and earned one of the events No. 1 seeds in 2014 and 2015. The Griffins also won three straight Frontier Conference Tournament titles during her tenure.

Jarrard has seen five players named All-American by the NAIA with two others receiving honorable mention honors. She has also coached two Frontier Conference Players of the Year, two Sixth-Players of the year and two Defensive Players of the Year. Jarrard was also been named the Frontier Conference Coach of the Year three times.

Westminster has also had nine players be named Daktronics-NAIA Scholar-Athletes and 25 named Academic All-Frontier Conference during Jarrard's tenure.

Jarrard spent 11 seasons as an assistant coach at the University of Utah from 1993-2004. During that time Utah appeared in seven NCAA Tournaments including its first ever appearance in the Sweet 16. The Utes won eight conference championships and three conference tournament championships. She then spent two seasons as an assistant coach and recruiting coordinator at Kansas State University. During her time at KSU, the team went 48-18 and won the 2006 WNIT championship.

Jarrard came to Westminster from Salt Lake Community College where she served as the lead assistant coach for the Bruins and played a pivotal role in SLCC winning back-to-back conference championships.

During her playing career at Vanderbilt University, Jarrard was a 4-year letter winner for the Commodores. A starter for Vanderbilt's 1993 NCAA Final Four team which ended the season at 30-3, Jarrard was named first-team all-Southeastern Conference and honorable mention All-America. She was also the 1993 NCAA Tournament Midwest Regional MVP. She was selected as a member of the SEC all-academic team. She finished her Vanderbilt Career with 1,003 points, 462 rebounds and 227 assists while making four trips to the Sweet 16 or better at the NCAA Championships.

Jarrard earned a bachelor's degree in human and organizational development from Vanderbilt in 1993. The Gore, Okla., native was named 1989 Gatorade Player of the Year for Oklahoma as a senior at Webbers Falls High School.



SHELLEY JARRARD'S YEARLY RECORDS

Year	School	OVERALL			CONFERENCE			Finish
		W	L	Pct.	W	L	Pct.	
2011-12	Westminster	23	9	.719	13	1	.929	1st
2012-13	Westminster	29	4	.879	14	1	.933	1st
2013-14	Westminster	26	3	.897	16	0	1.000	1st
2014-15	Westminster	26	3	.897	13	1	.929	1st
2015-16	Westminster	1	1	.500	0	0	.000	
TOTALS		104	19	.846	56	3	.949	

2015-16 STATISTICS

##	PLAYER	GP	GS	MIN	AVG	FG	FGA	PCT	3FG	FGA	PCT	FT	FTA	PCT	OFF	DEF	TOT	AVG	PF	FO	A	TO	BLK	STL	PTS	AVG
20	Natalie Parsons	2	2	65	32.5	11	21	.524	6	11	.545	6	7	.857	1	10	11	5.5	3	0	5	8	1	2	34	17.0
25	Denise Gonzalez	2	2	63	31.5	2	16	.125	1	8	.125	11	11	1.000	0	7	7	3.5	3	0	11	3	1	7	16	8.0
13	Riley Reidhead	2	0	37	18.5	5	11	.455	3	8	.375	3	3	1.000	2	7	9	4.5	4	0	2	2	0	1	16	8.0
15	Lancee Whetman	2	0	31	15.5	5	9	.556	0	0	.000	3	8	.375	2	8	10	5.0	3	0	1	6	0	0	13	6.5
01	Jessica Sorensen	2	2	54	27.0	4	7	.571	0	0	.000	2	2	1.000	3	4	7	3.5	3	0	3	1	0	2	10	5.0
14	Mika Pinner	2	2	37	18.5	3	8	.375	1	3	.333	2	2	1.000	2	3	5	2.5	4	0	1	2	3	1	9	4.5
30	Whitni Syrett	2	0	30	15.0	2	5	.400	0	0	.000	2	6	.333	3	4	7	3.5	0	0	1	2	0	2	6	3.0
04	Aubrie Vale	2	2	50	25.0	2	17	.118	0	12	.000	1	2	.500	1	6	7	3.5	2	0	3	5	0	5	5	2.5
12	Sicilee Williams	2	0	26	13.0	1	7	.143	1	5	.200	0	0	.000	5	0	5	2.5	1	0	1	5	0	0	3	1.5
22	KC Gubler	1	0	7	7.0	0	1	.000	0	0	.000	0	0	.000	2	6	8	8.0	1	0	0	2	0	0	0	0.0
Team															5	4	9				0					
TOTAL		2		400		35	102	.343	12	47	.255	30	41	.732	26	59	85	42.5	24	0	28	36	5	20	112	56.0
OPPONENTS		2		400		39	132	.295	12	51	.235	11	23	.478	38	45	83	41.5	37	-	26	25	1	22	101	50.5

TEAM STATISTICS	WC	OPP
SCORING	112	101
Points per game	56.0	50.5
Scoring margin	+5.5	-
FIELD GOALS-ATT	35-102	39-132
Field goal pct	.343	.295
3 POINT FG-ATT	12-47	12-51
3-point FG pct	.255	.235
3-pt FG made per game	6.0	6.0
FREE THROWS-ATT	30-41	11-23
Free throw pct	.732	.478
F-Throws made per game	15.0	5.5
REBOUNDS	85	83
Rebounds per game	42.5	41.5
Rebounding margin	+1.0	-
ASSISTS	28	26
Assists per game	14.0	13.0
TURNOVERS	36	25
Turnovers per game	18.0	12.5
Turnover margin	-5.5	-
Assist/turnover ratio	0.8	1.0
STEALS	20	22
Steals per game	10.0	11.0
BLOCKS	5	1
Blocks per game	2.5	0.5
WINNING STREAK	1	-
Home win streak	0	-
ATTENDANCE	0	1077
Home games-Avg/Game	0-0	1-989
Neutral site-Avg/Game	-	1-88

SCORE BY PERIODS	1ST	2ND	3RD	4TH	TOTAL	Estimated Possessions	130.1
Westminster	31	31	26	24	112	Offensive Rating	86.1
Opponents	26	27	33	15	101	Defensive Rating	77.6

SPECIALITY STATISTICS

	PTS OFF TURNOVERS	2ND CHANCE POINTS	POINTS IN PAINT	FAST BREAK POINTS	BENCH POINTS
GRIFFINS	25	25	28	11	38
Per/Game	12.5	12.5	14.0	5.5	19.0
OPPONENTS	26	22	34	25	42
Per/Game	13.0	11.0	17.0	12.5	21.0