

TENNESSEE STATE UNIVERSITY

WOMEN'S BASKETBALL 2022-23 GAME NOTES

Assistant Director of Communications: Stephen Featherston // sfeathe1@tnstate.edu

GAME
27



TENNESSEE STATE
11-15, 7-9 OVC

Head Coach
Ty Evans
3rd Year

VS



UT MARTIN
11-16, 7-9 OVC

Head Coach
Kevin McMillan
14th Year

Up Next:



SOUTHERN INDIANA
11-16, 5-11 OVC

Head Coach
Rick Stein
24th Year

SCHEDULE // RESULTS

11/7	FISK	W, 85-61
11/11	at Kansas City	L, 80-72
11/14	TREVECCA NAZARENE	W, 84-80
11/16	at UT Chattanooga	L, 60-31
11/21	at Butler	L, 72-55
11/27	OMAHA	W, 74-72
12/3	LIPSCOMB	W, 74-64
12/7	at Southern Illinois	L, 100-72
12/11	STETSON	L, 67-65
12/15	at Baylor	L, 93-27
12/21	WILBERFORCE	W, 105-54
12/29	MOREHEAD STATE*	L, 81-58
12/31	LITTLE ROCK*	L, 64-57
1/5	at SIUE*	L, 76-69
1/7	at LINDENWOOD*	W, 79-74
1/12	UT MARTIN*	W, 71-67
1/14	at Tennessee Tech*	L, 83-76
1/19	EASTERN ILLINOIS*	L, 63-58
1/21	at Little Rock*	L, 42-36
1/26	at SEMO*	L, 77-59
1/28	LINDENWOOD*	W, Forfeit
2/2	at Southern Indiana*	W, 59-55
2/4	at Eastern Illinois*	L, 75-58
2/9	SEMO*	L, 90-86 OT
2/11	TENNESSEE TECH*	W, 81-72
2/16	at Morehead State*	W, 61-49
2/18	SIUE*	W, 87-83
2/23	at UT Martin*	5:30 PM
2/25	SOUTHERN INDIANA*	1:00 PM
3/1	OVC TOURNAMENT	TBA
3/2	OVC TOURNAMENT	TBA
3/3	OVC TOURNAMENT	TBA
3/4	OVC TOURNAMENT	TBA

* — Ohio Valley Conference Contest

SERIES INFORMATION: This will be the 68th all-time matchup between TSU and UTM, as Martin leads the series 30-38. The Lady Tigers defeated the Skyhawks 71-67 in their first matchup of the season on January 12. Erica Hanyes-Overton finished with 16 points while Saniah Parker chipped in 15. TSU has struggled at Martin, as they are just 8-23 when playing in Jackson.

GAME NOTES

15 IN A ROW: Erica Haynes-Overton finished with 19 points against SIUE, which marks her 15th straight game of 10+ points. EHO is averaging 17.2 ppg during this 15-game stretch and has scored 20+ points five times in that span.

STREAKING TO THE END: With Saturday's win over SIUE, the Lady Tigers have put together their longest winning streak of the season at three games in a row. With already 12 wins under his belt this season, head coach Ty Evans can surpass last year's 12 wins and potentially push his team's streak to five games as the regular season ends.

60x60: With eight assists and three steals against SIUE, Erica Haynes-Overton became just the third OVC player to record 60 assists and 60 steals this season. EHO leads the team with 62 steals and ranks second on the squad with 60 assists.

BACK-TO-BACK: With Thursday's win against Morehead, the Lady Tigers, led by head coach Ty Evans have now put together back-to-back double-digit win seasons. TSU finished with 12 wins a year ago and can surpass that with three games left to play. The Tigers' last back-to-back double-digit win season came in 2015-16 / 2016-17.

BLOCK PARTY: TSU finished with a season-high nine blocks in last night's win over Morehead, surpassing their previous season-high of five. Sierra McCullough led the team with three blocks, while Kianni Westbrook and Saniah Parker both finished with two each.

2022-23 TIGERS

No.	Player	Pos	Ht	Yr	Hometown	PPG	RPG	Preseason Notes
0	Ashley Malone	G	5-7	Jr.	Nashville, Tenn.	5.7	0.8	Transfer from Jacksonville University
1	Dream Muhammad	G	5-8	Fr.	Henrico, Va.	2.0	0.5	Played HS at Shinning Star Sports Academy
2	Ever Walker	G	5-6	Jr.	Clarksville, Tenn.	1.0	0.4	Has not made TSU debut yet
3	Eboni Williams	F	6-0	Sr.	Hoover, Ala.	—	—	Scored 855 points in three years at UTC
4	Kianni Westbrook	F	6-3	Sr.	Augusta, Ga.	5.5	4.9	Played in 29 games last season for TSU
5	Shequanna Jackson	F	6-5	Gr.	Brooklyn, N.Y.	0.5	1.5	Transfer from Chowan
10	Saniah Parker	G	5-9	So.	Huntsville, Ala.	9.1	4.3	Avg. 7.3 pts with 19 starts as a Fr.
11	Kennedy Davis	F	6-0	Jr.	White Plains, Md.	1.3	1.5	Played in 29 games last season for TSU
12	Corina Suarez-Tudela	G	5-8	Jr.	Santa Cruz de Tenerife	1.3	0.4	Transfer from Cochise College
13	Gia Adams	G	5-7	So.	Houston, Texas	13.8	1.9	OVC Freshman of the Year (21-22). Avg 12.9 pts
14	Sierra McCullough	F	6-2	Sr.	Opelika, Ala.	6.2	7.0	Played in 21 games with 12 starts
20	Erica Haynes-Overton	G	5-6	Gr.	Nashville, Tenn.	15.3	3.0	Transfer from Kansas
21	Zyion Shannon	G	5-8	Fr.	Smyrna, Tenn.	3.9	1.8	Played HS at Stewarts Creek
23	Shonnybelle Regalado	G	5-8	Gr.	Brooklyn, N.Y.	1.4	0.3	Has played in eight career games for TSU
24	Lyric Cole	F	6-0	So.	Memphis, Tenn.	6.6	6.7	Transfer from Austin Peay
32	Nia Hicks	G	5-6	So.	Suwanee, Ga.	—	—	Played in 21 games last season for TSU

FOLLOW #ROARCity

TV: ESPN+

App: ESPN | Online: espn.com/watch



SOCIAL MEDIA: #PressPlay

- Twitter: @TSUTigersWBB
- Instagram: TSUTigersWBB
- YouTube: /TNStateTigers



THE EVANS EFFECT

Year at Tennessee State:	Third Season
Hometown:	Beloit, Wisc.
High School:	Beloit Memorial HS Beloit, Wisc.
College:	BA, Wisconsin-Whitewater, 1995

ATHLETIC PLAYING BACKGROUND

Beloit Memorial
Beloit, Wisc.

Wisconsin-Whitewater
Whitewater, Wisc.

BASKETBALL COACHING EXPERIENCE

2001-02
Assistant Coach
Saint Louis University // St. Louis, Mo.

2002-2003
Head Coach (Men's)
Ulriken Eagles // Bergen, Norway

2003-05
Assistant Coach
Saint Louis University // St. Louis, Mo.

2005-07
Assistant Coach
Georgetown University // Washington, D.C.

2007-11
Assistant Coach
University of Alabama // Tuscaloosa, Ala.

2011-12
Associate Head Coach
University of Alabama // Tuscaloosa, Ala.

2012-15
Assistant Coach
Auburn University // Auburn, Ala.

2015-20
Associate Head Coach
Auburn University // Auburn, Ala.

2020-Pres.
Head Coach
Tennessee State University // Nashville, Tenn.

HEAD COACH TY EVANS

Ty Evans was named the 12th head coach of the Tennessee State University women's basketball program in August 2020.

"Words can't possibly convey the level of happiness, excitement, and gratitude that I feel as a result of being named the next women's Head Basketball Coach at Tennessee State University," said Evans. "This moment is a culmination of many years of preparation, hard work, sacrifice, disappointment and prayer, and it's a journey that I wouldn't change. Thanks to Dr. Allen, President Glover, and the entire selection committee for entrusting me with this opportunity and to the entire "Big Blue" family, specifically my players, it's time to ... #PressPlay."

Evans took over the reigns at TSU after spending eight years at SEC member Auburn. During his stint with the Tigers, he served as associate head coach from 2015-20 and assistant coach from 2012-2015. Evans helped guide the team to two NCAA Tournament appearances.

Prior to his tenure at Auburn, he served two years at Georgetown before accepting a position at Alabama in 2007.

Evans began his collegiate coaching career at Saint Louis University where he served as an assistant coach during the 2001-02 season. After a season coaching professionally, he returned to SLU for two more seasons.

Evans spent the last decade making a name for himself in the Southeastern Conference (SEC). In his first season with Auburn, he helped lead the Tigers to 19 wins, the most in four years, and an appearance in the Women's NIT quarterfinals. Auburn set a school record with 402 steals during the 2012-13 season while forcing 701 turnovers, a mark that ranks second all-time on The Plains.

In his fourth season, Evans helped to advance the Tigers to the NCAA Tournament for the first time since 2009 and post a 20-13 overall record. Evans helped Auburn to its second consecutive NCAA Tournament appearance and a 17-15 overall record in season five. Two seasons later, Auburn experienced its best season in 10 years, finishing 22-10 and earning their third trip to the NCAA tournament in four years.

At Alabama, Evans coached the post players and helped his players earn All-SEC honors in three of his five seasons. He was also instrumental in coaching the Crimson Tide to a WNIT Sweet 16 appearance in 2011, the team's first post-season trip since 2002.

Also heavily involved in recruiting, Evans brought national attention to Alabama in 2010 and 2011 after securing top-20 recruiting classes both years. Prior to Alabama, Evans served two years at Georgetown. During that stint, he was instrumental in the recruiting and re-building efforts that would eventually turn Georgetown into a perennial NCAA Tournament team.

Evans is a 1995 graduate of the University of Wisconsin-Whitewater where he was an All-American and served as team co-captain for two years. He received a bachelor's degree in secondary education.

EVAN'S COACHING RECORD

Year	School	Position	Record	Postseason
01-02	Saint Louis	Asst. Coach	16-15	
03-04	Saint Louis	Asst. Coach	10-19	
04-05	Saint Louis	Asst. Coach	5-24	
05-06	Georgetown	Asst. Coach	10-17	
06-07	Georgetown	Asst. Coach	13-16	
07-08	Alabama	Asst. Coach	10-22	
08-09	Alabama	Asst. Coach	14-17	
09-10	Alabama	Asst. Coach	13-19	
10-11	Alabama	Asst. Coach	18-15	WNIT Sweet 16
11-12	Alabama	Assoc. Head Coach	12-19	
12-13	Auburn	Asst. Coach	19-15	WNIT Quarterfinal
13-14	Auburn	Asst. Coach	19-15	WNIT Quarterfinal
14-15	Auburn	Asst. Coach	13-18	
15-16	Auburn	Assoc. Head Coach	20-13	NCAA 2nd Round
16-17	Auburn	Assoc. Head Coach	17-15	NCAA 1st Round
17-18	Auburn	Assoc. Head Coach	14-15	
18-19	Auburn	Assoc. Head Coach	22-10	NCAA 1st Round
19-20	Auburn	Assoc. Head Coach	11-18	
20-21	TSU	Head Coach	0-22	
21-22	TSU	Head Coach	12-19	

Asst. Coach (Saint Louis, Georgetown, Alabama, Auburn)	160-212	(.430)
Associate Head Coach (Alabama, Auburn)	96-89	(.518)
Head Coach (TSU)	23-56	(.291)



2022-23 TENNESSEE STATE UNIVERSITY TIGERS

NUMERICAL

#	Name	Pos	Yr.	Ht.	Hometown / Previous School
0	Ashley Malone	G	5-7	Jr.	Nashville, Tenn. / Jacksonville
1	Dream Muhammad	G	5-8	Fr.	Henrico, Va. / Shining Star Sports Academy
2	Ever Walker	G	5-6	Jr.	Clarksville, Tenn. / Bethel University (TN)
3	Eboni Williams	F	6-0	Sr.	Hoover, Ala. / UT Chattanooga
4	Kianni Westbrook	F	6-3	Sr.	Augusta, Ga. / Daytona State
5	Shequana Jackson	F	6-5	Gr.	Brooklyn, N.Y. / Chowan
10	Saniah Parker	G	5-9	So.	Huntsville, Ala. / Mae Jemison
11	Kennedy Davis	F	6-0	Jr.	White Plains, Md. / New Hope Academy
12	Corina Suarez-Tudela	G	5-8	Jr.	Santa Cruz De Tenerife / Cochise College
13	Gia Adams	G	5-7	So.	Houston, Texas / Jersey Village
14	Sierra McCullough	F	6-2	Sr.	Opelika, Ala. / UNC Charlotte
20	Erica Haynes-Overton	G	5-8	Gr.	Nashville, Tenn. / Kansas
21	Zyion Shannon	G	5-8	Fr.	Smyra, Tenn. / Stewarts Creek
23	Shonnyvelle Regalado	G	5-8	R-Sr.	Brooklyn, N.Y. / Panola College
24	Lyric Cole	F	6-0	So.	Memphis, Tenn. – Austin Peay
32	Nia Hicks	G	5-6	So.	Suwanee, Ga. / Peachtree Ridge

ALPHABETICAL

#	Name	Pos	Yr.	Ht.	Hometown / Previous School
13	Gia Adams	G	5-7	So.	Houston, Texas / Jersey Village
24	Lyric Cole	F	6-0	So.	Memphis, Tenn. – Austin Peay
11	Kennedy Davis	F	6-0	Jr.	White Plains, Md. / New Hope Academy
20	Erica Haynes-Overton	G	5-8	Gr.	Nashville, Tenn. / Kansas
32	Nia Hicks	G	5-6	So.	Suwanee, Ga. / Peachtree Ridge
5	Shequana Jackson	F	6-5	Gr.	Brooklyn, N.Y. / Chowan
0	Ashley Malone	G	5-7	Jr.	Nashville, Tenn. / Jacksonville
14	Sierra McCullough	F	6-2	Sr.	Opelika, Ala. / UNC Charlotte
1	Dream Muhammad	G	5-8	Fr.	Henrico, Va. / Shining Star Sports Academy
10	Saniah Parker	G	5-9	So.	Huntsville, Ala. / Mae Jemison
23	Shonnyvelle Regalado	G	5-8	R-Sr.	Brooklyn, N.Y. / Panola College
21	Zyion Shannon	G	5-8	Fr.	Smyra, Tenn. / Stewarts Creek
12	Corina Suarez-Tudela	G	5-8	Jr.	Santa Cruz De Tenerife / Cochise College
2	Ever Walker	G	5-6	Jr.	Clarksville, Tenn. / Bethel University (TN)
4	Kianni Westbrook	F	6-3	Sr.	Augusta, Ga. / Daytona State
3	Eboni Williams	F	6-0	Sr.	Hoover, Ala. / UT Chattanooga

Head Coach - Ty Evans, (Wisc.-Whitewater '95), 3rd Season

Associate Head Coach - Keisha McClinic, (Middle Tenn. St. '04), 3rd Season

Assistant Coach - Jaye Nayerau, (Sam Houston State '02) 3rd Season

Assistant Coach - Ayriell Robinson, (Concordia Irvine '11), 2nd Season

Director of Operations - Ronnie Wilcox, (Kennesaw State '19), 1st Season

PRONUNCIATION GUIDE

Kianni Westbrook

Saniah Parker

Shonnyvelle Regalado

Sierra McCullough

Zyion Shannon

Key-on-eeee

Suh-nye-uh

Sha-NEE-velle

ma-cull-uh

zy-on

BY CLASS

GRADUATE STUDENTS (2)
Haynes-Overton, Jackson

SENIORS (4)
McCullough, Regalado Westbrook, Williams

JUNIORS (4)
Davis, Malone, Suarez-Tudela, Walker

SOPHOMORES (4)
Adams, Cole, Hicks, Parker

FRESHMEN (2)
Muhammad, Shannon

BY POSITION

GUARDS (10)
Adams, Haynes-Overton, Hicks, Malone,
Muhammad, Parker, Regalado, Shannon,
Suarez-Tudela, Walker

FORWARDS (6)
Cole, Davis, Jackson, McCullough, Westbrook,
Williams

BY STATE/COUNTRY

ALABAMA (3)
McCullough, Parker, Williams

GEORGIA (2)
Hicks, Westbrook

MARYLAND (1)
Davis

NEW YORK (2)
Jackson, Regalado

TENNESSEE (5)
Cole, Haynes-Overton, Malone, Shannon
Walker

SPAIN (1)
Suarez-Tudela

TEXAS (1)
Adams

VIRGINIA (1)
Muhammad

QUICK FACTS, NOTES, OVC STANDINGS

UNIVERSITY INFORMATION

Name.....Tennessee State University
 Location.....Nashville, Tenn.
 Founded.....1912
 Enrollment.....9,165
 Nickname.....Tigers
 Colors.....Reflex Blue and White
 Affiliation.....NCAA Division I
 Conference.....Ohio Valley Conference (OVC)
 Home Arena.....Kean Hall (2,500)
 President.....Dr. Glenda Glover
 Director of Athletics.....Dr. Mikki Allen
 Website.....TSUTigers.com

COACHING STAFF

Head Coach.....Ty Evans
 Alma Mater.....Wisc.-Whitewater, 1995
 Career Record.....23-56 (3rd Season)
 Assistant Coaches.....
Keisha McClinic, (Middle Tenn. St. '04)
Jaye Nayreau, (Sam Houston State '02)
Ayriell Robinson, (Concordia Irvine '11)
 DOBO.....Ronnie Wilcox, (Kennesaw St. '19)

2021-22 REVIEW

Overall Record.....12-19
 OVC Record (Finish).....6-12 (8th)

TEAM INFORMATION

Players Returning.....8
 Newcomers.....8

BASKETBALL HISTORY

All-Time Record.....432-732 (since 1986)
 All-Time OVC Record.....196-350
 First Season.....1986 (36th Season in 2022)
 Joined OVC.....1986
 OVC Regular Season Titles.....2 (1993-94, 1994-95)
 OVC Tournament Championships...3 (1994, 1995, 2015)
 OVC Tournament Record.....10-17 (since 1987)
 NCAA Tournament Record.....0-3

MEDIA RELATIONS

W. Basketball Contact:.....Stephen Featherston
 Cell Phone:.....254-747-1218
 Email:.....sfeathe1@tnstate.edu

ABOUT TSU

- TSU is one of two NCAA Division I HBCUs that competes outside of the MEAC or SWAC
- Of the four D-1 schools in Nashville (TSU, Belmont, Lipscomb and Vanderbilt), TSU is the only public university
- Notable alumni include: Oprah Winfrey, Anthony Mason (NBA), Robert Covington (NBA), Dick Barnett (NBA), Richard Dent (NFL), Dominique Rodgers-Comar-tie (NFL), Wilma Rudolph (Olympian), Anthony Levine (NFL)

FORCE IN THE PAINT: Senior forward Sierra McCullough was unstoppable in the paint against TTU on Saturday, as she logged career highs in points (19) and rebounds (15) to finish with a double-double. The UNC Charlotte transfer is averaging 6.7 ppg and 6.0 rebounds per game this season.

100-POINT CLUB GROWS: True Freshman Zyion Shannon finished with two points against TTU to bring her season-scoring total to 101 points. Shannon now joins Erica Haynes-Overtton, Sierra McCullough, Gia, Adams, Saniah Parker, Ashley Malone, Lyric Cole, and Kianni Westbrook as players that have scored 100+ points this season.

SHE'S GOT FIVE ON IT: Erica Haynes-Overtton won her fifth OVC weekly honor on Tuesday, as she was named the OVC Newcomer of the Week for her two-game performance against SEMO and TTU. EHO has earned Newcomer of the Week on four occasions, while she was named Player of the Week one time. The Nashville native averaged 22.5 points per game, 2.0 rebounds, 3.5 assists, and shot 55.2 percent from the floor in two games against SEMO and Tennessee Tech.

FREE BUCKETS: The Lady Tigers knocked down a season-high 23 free throws against TTU on Saturday. EHO was a perfect 7-7 from the line, while Gia Adams hit 5-of-7 attempts.

DOUBLE-DOUBLEx2: Lyric Cole recorded 12 points and 11 rebounds against SEMO to record her second double-double of the season. The sophomore transfer from Austin Peay was a key contributor off the bench as she logged 33 minutes in the OT loss to SEMO.

CAREER NIGHT: Saniah Parker perhaps had her best career game in a TSU uniform last night as she finished with career highs in minutes played, points scored, and field goals made. The sophomore guard from Huntsville, Ala., played almost the entire game, and overtime, as she logged 44 minutes, to go along with a career-high 20 points on seven, made shots including a 3-of-6 mark from behind the arc.

FREE BASKETBALL: Last night's overtime loss to SEMO marked TSU's first overtime game since December 2, 2020. The Tigers fell to Georgia State at home 88-83.

MAKE IT 100: Kianni Westbrook finished with six rebounds last night to become the third Lady Tiger to reach the 100 total rebound mark this season. This marks the first 100-rebound season for the senior. She is averaging 5.2 ppg and 4.6 rebounds per outing.

CLOSING IN ON 100: Kianni Westbrook (96 rebounds) and Saniah Parker (93 rebounds) look to become the third and fourth Lady Tigers to collect



2022-23 OVC STANDINGS

Team	OVC	Pct.	All	Pct.
Little Rock	15-1	.938	18-9	.667
Eastern Illinois	13-3	.812	20-6	.769
Tennessee Tech	11-5	.688	17-9	.654
SEMO	8-8	.500	13-14	.481
Tennessee State	7-9	.438	11-15	.423
UT Martin	7-9	.438	11-16	.407
SIUE	7-9	.438	8-18	.296
Morehead State	6-10	.375	10-17	.370
Southern Indiana	5-11	.312	11-16	.407
Lindenwood	1-15	.062	2-22	.083

OHIO VALLEY ACTION

THURSDAY, FEB. 16

Southern Indiana 50, Little Rock 58
 Eastern Illinois 57, SEMO 62
 Tennessee State 61, Morehead State 49
 Lindenwood 39, Tennessee Tech 71
 SIUE 76, UT Martin 77

SATURDAY, FEB. 18

Lindenwood 62, Morehead State 67
 UT Martin 63, Tennessee Tech 74
 Eastern Illinois 42, Little Rock 46
 SIUE 83, Tennessee State 87
 Southern Indiana 59, SEMO 63

WEDNESDAY, FEB. 22

Morehead at Eastern Illinois 5 p.m.

THURSDAY, FEB. 23

Little Rock at SIUE 4 p.m.
 Tennessee State at UT Martin 5 p.m.
 Tennessee Tech at Southern Indiana 5 p.m.
 SEMO at Lindenwood 5:30 p.m.

SATURDAY, FEB. 25

UT Martin at Morehead 12 p.m.
 Tennessee Tech at EIU 1 p.m.
 SEMO and SIUE 1 p.m.
 Little Rock at Lindenwood 1 p.m.
 Southern Indiana at Tennessee State 1 p.m.

OVC PLAYERS OF THE WEEK

Gia Adams | Nov. 15 | Player of the Week

Erica Haynes-Overtton | Dec. 13 | Newcomer of the Week

Erica Haynes-Overtton | Jan. 3 | Newcomer of the Week

Erica Haynes-Overtton | Jan. 10 | Newcomer of the Week

Erica Haynes-Overtton | Jan. 10 | Player of the Week

Erica Haynes-Overtton | Feb. 14 | Newcomer of the Week

TSU TOP CAREER SCORERS (1,000 PT. CLUB)

1.	Connie Swift	1992-97	2,054
2.	Carolyn Aldridge	1992-95	1,662
3.	Oby Okafor	2005-08; 09-10	1,622
4.	Kendra Appling	2005-09	1,595
5.	Sharon Jarrett	1978-82	1,594
6.	Katrina Pearson	1984-88	1,391
7.	Cari Hassell	1996-99	1,312
8.	Angela Hassell	1998-01	1,268
9.	Veronica Hunter	1983-85	1,260
10.	Jayda Johnson	2013-17	1,239
11.	Chelsea Hudson	2011-15	1,221
12.	Tia Wooten	2014-19	1,220
13.	Taylor Roberts	2017-21	1,217
14.	Tiffany Jackson	2005-09	1,164
15.	I'mani Davis	2013-17	1,133
16.	Ann Thomas	1989-91	1,109
17.	Jasmin Shuler	2009-13	1,033
18.	Schonda Moore	1997-00	1,019
19.	Tamara Washington	1998-01	1,017
20.	Charlotte Radcliff	1986-88	1,000

TOP CAREER REBOUNDERS

1.	Veronica Hunter	(98 games)	1983-86	1,005
2.	Katrina Pearson	(101 games)	1984-88	933
3.	Connie Swift	(112 games)	1992-97	885
4.	Oby Okafor	(85 games)	2005-08; 09-10	826
5.	Ann Thomas	(76 games)	1988-91	789
6.	Chelsea Hudson	(112 games)	2011-15	747
7.	I'mani Davis	(114 games)	2013-17	708
8.	Jaden Wrightsell	(96 games)	2017- 2021	701
9.	Charlotte Radcliff	(89 games)	1984-88	650
10.	LaRissa Thomas	(100 games)	1998-01	615
11.	Jayda Johnson	(114 games)	2013-17	593
12.	Tia Wooten	(109 games)	2014-19	559
13.	Tamara Washington	(98 games)	1998-01	550
14.	Simone Hopes	(110 games)	2009-13	460
15.	Kendra Appling	(116 games)	2005-09	460
16.	Tiffany Jackson	(115 games)	2005-09	459
17.	Odessa Kelly	(86 games)	2000-04	423
18.	Brianna Lawrence	(116 games)	2012-16	422
19.	LaToya Clay	(101 games)	2000-03;04-05	409
20.	Kendra Bailey	(54 games)	2003-05	407

TOP CAREER STEALS

1.	Connie Swift	(112 games)	1992-97	302
2.	Kendra Appling	(116 games)	2005-09	255
3.	Ann Thomas	(70 games)	1988-91	215
4.	Carolyn Aldridge	(86 games)	1993-96	207
5.	Sharon Jarrett	(80 games)	1978-82	198
6.	I'mani Davis	(114 games)	2013-17	192
7.	Kim Graves	(110 games)	1992-96	186
8.	Quanecia Fletcher	(102 games)	2002-06	175
9.	Brianna Lawrence	(116 games)	2012-16	174
10.	Rachel Allen	(116 games)	2011-15	164
11.	LaDona Pierce	(118 games)	2006-10	153
12.	Oby Okafor	(85 games)	2005-09	149
13.	Tiffany Jackson	(115 games)	2005-09	145
14.	LaKisha Clay	(54 games)	2003-05	134
15.	Jayda Johnson	(114 games)	2013-17	143
16.	Crystal Davis	(74 games)	1984-86	133
17.	LaRissa Thomas	(100 games)	1998-02	131

100 boards on the season. The two will look to join Lyric Cole (132 rebounds) and Sierra McCullough (107 rebounds) as they only players with 100 boards for TSU. Westbrook, a senior forward is looking for her first 100 rebound season as she tallied 95 last year, along with Parker who collected 97 a season ago.

BENCH BUCKETS: Despite the loss to EIU on Saturday, the Lady Tigers bench chipped in 25 points, which marks the sixth game in which the TSU bench has contributed 20+ points. Ashley Malone had a solid showing as she led the non-starts with 11 points, followed by Cole (seven), Westbrook (four), and Ever Walker (three).

300 X 300: Lyric Cole finished with a team-high eight rebounds against EIU to bring her career total to 301 career rebounds. The sophomore transfer from Austin Peay now has 300 career points and 300 career rebounds. Cole is averaging 6.0 points per game and 6.6 rebounds this season, as she leads the club team with 132 boards.

EVANS GETS 20: Last night's win against USI marked head coach Ty Evans's 20th career victory.

ADAMS RETURNS: Gia Adams returned to the starting lineup last night after missing the past three games with an ankle sprain. The sophomore guard logged 33 minutes in her return and finished with 10 points, four rebounds and two steals.

SUAREZ-TUDELA STARTS: Head coach Ty Evans mixed in a new face to the starting lineup last night, as Corina Suarez-Tudela got her second start of the season. The transfer guard matched her season high in minutes with 15, while finishing with six points.

10 DOUBLES DOWN: Saniah Parker logged a double-double against SEMO last Thursday, as she finished with 11 points and 10 rebounds. Parker's double-double marks TSU's third of the season, as Lyric Cole and Kianni Westbrook both have logged double-doubles this season.

CENTURY MARK: Sierra McCullough pulled down three rebounds last Thursday to become to the second Lady Tiger to reach 100 rebounds on the season. This marks back-to-back 100 rebound seasons for the senior after she tallied 115 last season.

BOX OUT: The Lady Tigers finished with 31 defensive rebounds in the loss against Little Rock on Saturday. TSU's 31 defensive boards marks just the fourth time they have collected 30+ rebounds on the defensive end in a game this season. TSU had a season-high 35 defensive rebounds against Wilberforce.

HEATING UP: Saniah Parker had her third straight game of scoring in double figures as she finished with 15 points last night against EIU. Parker scored 15 against UTM, followed by 14 against TTU, and now 15 against EIU. The Alabama native has knocked down seven three-pointers in the last three games.

Ty Evans By The Numbers

RECORD BY MONTH...

	20-21	21-22	Total
Nov.	0-1	3-3	3-4
Dec.	0-2	3-3	3-5
Jan.	0-9	5-4	5-9
Feb.	0-10	0-8	0-18
Mar.	0-0	1-1	1-1

RECORD BY VENUE...

	20-21	21-22	Total
Home	0-11	5-8	5-19
Away	0-11	6-10	6-21
Neutral	0-0	1-1	1-1

RECORD BY STATE OPPONENTS...

	20-21	21-22	Total
Ala.	0-2	1-0	1-2
Fla.	0-0	1-0	1-0
Ga.	0-2	1-1	1-3
Ill.	0-4	1-4	1-8
Kan.	0-0	0-2	0-2
Ky.	0-5	2-3	2-8
Mo.	0-2	2-0	2-2
Neb.	0-0	0-1	0-1
Tenn.	0-7	4-8	4-15

SPECIALTY STATS (TSU/Opp)

Game	... PIP	... POT	... 2CP	... FBP	... BP
Fisk	42	34	14	32	29
UMKC	22	15	18	9	11
Trevecca	54	28	21	21	15
UTC	16	4	8	3	5
Butler	24	19	6	2	22
Omaha	34	33	13	25	8
Lipscomb	46	13	7	25	11
SIU	38	21	9	17	33
Stet.	30	19	11	17	10
Baylor	14	4	6	2	18
WU	54	39	23	27	57
MOR	30	18	8	5	15
LR	24	21	4	10	5
SIUE	40	12	10	16	6
LU	46	29	16	18	18
UTM	34	6	7	10	18
TTU	40	15	11	10	26
EIU	28	23	9	7	19
LR	24	2	7	0	8
SEMO	36	17	15	8	13
USI	36	10	10	3	14
EIU	22	9	17	6	25
SEMO	38	29	11	10	17
TTU	50	8	17	10	13
MOR	42	9	10	13	13
SIUE	40	18	4	10	18

SEVEN IN A ROW: Erica Haynes-Overton finished with 14 points against EIU to push her double-digit scoring streak to seven games in a row, all of which have been OVC contests. EHO has finished in double figures 13 times this season. She is averaging 17.9 points per game in those seven games.

SIXTH WOMAN: Ashely Malone had another strong game for the Lady Tigers as she finished in double figures for the second straight game, scoring 13 points off the bench. Malone played a season-high 28 minutes last night, surpassing her previous season high of 19 minutes. The transfer guard from Jacksonville University is averaging 6.3 ppg in her first season with TSU.

100/100 CLUB: Lyric Cole became the first Lady Tiger to record 100+ points and 100+ rebounds this season. Cole finished with eight points in the loss against TTU last Saturday to give her 106 points on the year. The sophomore transfer from Austin Peay has pulled down 119 boards and is tied on the team with 7.0 boards per outing.

WESTBROOK'S DOUBLE-DOUBLE: Kianni Westbrook recorded the second TSU double-double of the season against UTM as she finished with 13 points and a season-high 10 boards. Westbrook has started the last six games and has scored in double figures in three of those games. She is averaging 8.8 ppg and 7.8 rpg in OVC play. Lyric Cole recorded the first double-double of the season against Lipscomb.

THREE BALL: Saniah Parker matched her season-high with three three-pointers last night as he finished 3-of-6 from deep. The sophomore knocked down three wide-open shots as she finished with 15 points in the win against UTM.

OFF THE BENCH: Senior forward Sierra McCullough had a strong return off the bench against UT Martin after missing the past five games. The second-year Tiger finished with eight points and seven boards in 22 minutes of action.

TWICE AS NICE: Erica Haynes-Overton was once again named the OVC Newcomer of the Week this week, while also earning the OVC Player of the Week honors. This marks EHO's third Newcomer of the Week award and her first Player of the Week honor. The Nashville native averaged 25.0 points per game, 5.0 rebounds per game, 4.0 steals, 1.5 assists, and she shot 58.6 percent from the floor in two games this past week.

ONE TWO-PUNCH: The Lady Tigers have two players that fall in the OVC's top five leading scorers, as Erica Haynes-Overton (14.9 ppg) is the third leading scorer in the league, while

Gia Adams (14.5 ppg) is the OVC's fourth-leading scorer. The dynamic duo combined for 41 points against SIUE and 47 against Lindenwood.

FREE POINTS: TSU leads the OVC in free throws made (225), and free throw attempts (317). The Tigers have attempted 33 more free throws than the next-closest team which is SIU who has attempted 284.

30 PIECE: Erica Haynes-Overton logged her second 30+ point performance against SIUE last night as she finished with 30 points. The Nashville native had her most proficient shooting game of the year as she shot 68.8 percent (11-of-16) from the floor and 2-of-3 from deep. Last night was the fifth time she has scored 20+ points this season.

MANY MINUTES: Saniah Parker logged a career-high 39 minutes of playing time against SIUE last night. The sophomore guard surpassed her previous career high of 38 minutes that came against Lipscomb earlier this season. She has logged 30+ minutes in eight games this season.

100 POINT CLUB: Saniah Parker became the third Lady Tiger to reach to 100 point mark this season after she chipped in 10 points against LR. The Alabama has scored 109 points this season to average 8.4 points per game. Parker joins Gia Adams (180 points), and Erica Haynes-Overton (173 points).

STARTING TIME: For the first time this season all TSU starters logged 30+ minutes against Little Rock. Kianni Westbrook and Haynes-Overton both played a season-high 34 minutes, while Gia Adams and Saniah Parker both played 33 minutes, followed by Lyric Cole with 32 minutes.

COLE GETS BIG: Lyric Cole has surpassed forward Sierra McCullough for the team lead in rebounds over the course of the last two games with McCullough out. Cole leads TSU with 85 total boards to average 6.5 boards per outing. The Memphis native pulled down eight rebounds against MOR and six against LR.

WESTBROOK MAGIC: With Sierra McCullough missing the past two games, senior forward Kianni Westbrook has filled in during her absence with two three starts over Wilberforce and Morehead State and LR. She played a season-high 34 minutes against Wilberforce LR. Westbrook finished with 12 points against MOR, while she finished with 14 points against WU. The senior shot 50 percent from the floor against MOR and 62.5 percent against WU.

CENTURY MARK: TSU surpassed the century mark in scoring for the first time in 11 years when they took down Wilberforce 105-54 in their last game before the break. The last 100-point output was on January 2, 2011, as they lost 114-105 to UT Martin.

DROPPING DIMES: TSU finished with a season-high 17 assists in their win against WU. Gia Adams finished with a season high five helpers.

MAKING NOISE IN THE MUSIC CITY: Head coach Ty Evans pushed his career record against Nashville opponents to 5-4 after defeating Lipscomb on Saturday. The Tigers finish the season 3-0 against teams from the 615 after defeating Fisk, Trevecca, and Lipscomb.

A NEW CREW: In addition to returning eight players from last year's team, Evans and his staff have brought in eight new faces, four of whom have D1 playing experience. The Tigers will welcome two high school signees, five four-year transfers, and one junior college transfer to mix in with their solid group of returning players. TSU's four D1 transfers in Ashley Malone (115 pts), Eboni Williams (855 pts), Erica Haynes-Overton (1,056 pts), and Lyric Cole (198 pts) have combined for 2,224 career points. Corina Suarez-Tudela joins the Tigers from the Juco level as she scored 512 points across two seasons at Garden City CC and Cochise College.

HOME GROWN: After having just one player from the state of Tennessee on last year's roster, the Tigers will see five faces from the Volunteer State on this year's team. Both Ashley Malone and Erica Haynes-Overton return to the Music City as transfers. Malone was a two-time All-State and All-County player at Pope John Paul II High School, while Haynes-Overton suited up at East Nashville Magnet as a four-year letter winner and state champion. True freshman Zyion Shannon joins the list of local products as she comes to TSU from Stewarts Creek High School in Smyrna. Lyric Cole joins the Tigers after transferring in from Austin Peay, the sophomore forward who played her high school ball in Memphis at White Station High School.

PROVEN SCORER: Erica Haynes-Overton will begin her sixth year as a college basketball player when she suits up for TSU against the Fisk on Monday. The sixth-year grad transfer joins the Tigers after spending the last two years at Kansas. Only playing in five games for the Jayhawks, Haynes-Overton did much of her scoring and accolade-collecting at East Tennessee State from 2017-2020. The 5-6 guard left ETSU with 1,056 career points over the span of 65 games, for an average of 16.1 points per game.

SIX FOR 6": This season TSU has six players that stand 6'0" or taller. This is the second year in a row that TSU has had six players 6'0" or taller and just the third time since the 2016-2017 season.



2022-23 Tennessee St. Women's Basketball
Overall Team Statistics
All games

Page 1/1
as of Feb 22, 2023

Team Statistics

	TSU	OPP
Scoring	1736	1856
Points per game	66.8	71.4
Scoring margin	-4.6	-
Field goals-att	631-1541	666-1512
Field goal pct	.409	.440
3 point fg-att	96-353	155-473
3-point FG pct	.272	.328
3-pt FG made per game	3.7	6.0
Free throws-att	378-560	369-523
Free throw pct	.675	.706
F-Throws made per game	14.5	14.2
Rebounds	901	992
Rebounds per game	34.7	38.2
Rebounding margin	-3.5	-
Assists	266	434
Assists per game	10.2	16.7
Turnovers	488	522
Turnovers per game	18.8	20.1
Turnover margin	+1.3	-
Assist/turnover ratio	0.5	0.8
Steals	268	207
Steals per game	10.3	8.0
Blocks	75	67
Blocks per game	2.9	2.6
Winning streak	3	-
Home win streak	2	-
Attendance	12102	23482
Home games-Avg/Game	13-931	13-1806
Neutral site-Avg/Game	-	0-0

Score by Periods

Team	1st	2nd	3rd	4th	OT	TOT
Tennessee St.	407	394	456	468	11	1736
Opponents	462	430	476	473	15	1856



2022-23 Tennessee St. Women's Basketball
Team Game-by-Game
All games

Page 1/1
as of Feb 22, 2023

				Total		3-Pointers		Free throws		Rebounds											
Opponent	Date	Score		FG-FGA	PCT	3FG-3FGA	PCT	FT-FTA	PCT	OFF	DEF	TOT	AVG	PF	A	TO	BLK	STL	PTS	AVG	
Fisk	11/07/2022	84-61	W	31-86	.360	7-32	.219	15-24	.625	15	24	39	39.0	32	15	16	3	15	84	84.0	
at Kansas City	11/11/2022	70-82	L	22-71	.310	8-26	.308	18-27	.667	15	20	35	37.0	21	14	14	5	10	70	77.0	
Trevecca Nazarene	11/14/2022	84-80	W	31-72	.431	2-10	.200	20-27	.741	18	22	40	38.0	20	9	16	2	14	84	79.3	
at Chattanooga	11/16/2022	31-60	L	10-43	.233	1-13	.077	10-15	.667	8	26	34	37.0	14	4	25	3	7	31	67.3	
at Butler	11/21/2022	55-72	L	22-56	.393	2-11	.182	9-14	.643	7	17	24	34.4	19	4	19	1	14	55	64.8	
Omaha	11/27/2022	74-72	W	26-62	.419	3-14	.214	19-22	.864	12	17	29	33.5	14	9	18	2	17	74	66.3	
Lipscomb	12/03/2022	74-64	W	26-58	.448	2-11	.182	20-28	.714	10	32	42	34.7	14	8	16	2	7	74	67.4	
at Southern Ill.	12/07/2022	72-100	L	26-64	.406	3-8	.375	17-25	.680	9	19	28	33.9	14	16	20	4	12	72	68.0	
Stetson	12/11/2022	65-67	L	26-48	.542	6-15	.400	7-8	.875	7	23	30	33.4	19	8	27	4	14	65	67.7	
at Baylor	12/15/2022	27-93	L	12-56	.214	1-16	.063	2-6	.333	7	10	17	31.8	19	5	24	2	12	27	63.6	
Wilberforce	12/21/2022	105-54	W	38-69	.551	8-16	.500	21-32	.656	17	35	52	33.6	15	17	24	3	9	105	67.4	
Morehead St.	12/29/2022	58-81	L	21-65	.323	1-14	.071	15-21	.714	17	18	35	33.8	20	14	19	0	12	58	66.6	
Little Rock	12/31/2022	57-64	L	18-45	.400	1-5	.200	20-26	.769	6	15	21	32.8	17	5	20	0	10	57	65.8	
at SIUE	01/05/2023	69-76	L	25-57	.439	3-13	.231	16-23	.696	14	27	41	33.4	28	12	25	2	7	69	66.1	
at Lindenwood	01/07/2023	79-74	W	30-63	.476	4-17	.235	15-18	.833	14	18	32	33.3	22	7	16	2	14	79	66.9	
UT Martin	01/12/2023	71-67	W	27-56	.482	5-14	.357	12-16	.750	10	30	40	33.7	15	17	13	5	4	71	67.2	
at Tennessee Tech	01/14/2023	76-83	L	26-60	.433	2-11	.182	22-31	.710	14	22	36	33.8	27	9	15	1	10	76	67.7	
Eastern Ill.	01/19/2023	58-63	L	24-68	.353	5-17	.294	5-10	.500	13	18	31	33.7	11	12	14	0	11	58	67.2	
at Little Rock	01/21/2023	36-42	L	14-42	.333	0-4	.000	8-11	.727	6	31	37	33.8	19	1	21	4	3	36	65.5	
at Southeast Mo. St.	01/26/2023	59-77	L	22-52	.423	2-6	.333	13-25	.520	12	18	30	33.7	15	11	22	2	15	59	65.2	
at Southern Ind.	02/02/2023	59-55	W	22-50	.440	7-25	.280	8-12	.667	5	23	28	33.4	14	12	17	3	12	59	64.9	
at Eastern Ill.	02/04/2023	58-75	L	18-59	.305	6-12	.500	16-23	.696	13	16	29	33.2	20	5	12	5	7	58	64.6	
Southeast Mo. St.	02/09/2023	86-90	Lot	30-65	.462	8-20	.400	18-34	.529	21	18	39	33.4	26	15	22	5	6	86	65.5	
Tennessee Tech	02/11/2023	81-72	W	28-60	.467	2-4	.500	23-33	.697	21	27	48	34.0	19	11	16	3	6	81	66.2	
at Morehead St.	02/16/2023	61-49	W	25-62	.403	2-10	.200	9-22	.409	17	32	49	34.6	17	12	20	9	10	61	66.0	
SIUE	02/18/2023	87-83	W	31-52	.596	5-9	.556	20-27	.741	5	30	35	34.7	20	14	17	3	10	87	66.8	
Total		1736		631-1541	.409	96-353	.272	378-560	.675	313	588	901	34.7	491	266	488	75	268	1736	66.8	
Opponents		1856		666-1512	.440	155-473	.328	369-523	.706	319	673	992	38.2	490	434	522	67	207	1856	71.4	

Tennessee St. Averages

Games Played	Points/game	FG Pct	3FG Pct	FT Pct	Rebounds/game	Assists/game	Turnovers/game	Assist/Turnover ratio	Steals/game	Blocks/game
26	66.8	40.9	27.2	67.5	34.7	10.2	18.8	0.5	10.3	2.9



2022-23 Tennessee St. Women's Basketball
Season/Career Statistics
All games

Page 1/1
as of Feb 22, 2023

Summary

Player	Season Statistics										Career Statistics									
	GP-GS	MIN/G	FG%	3FG%	FT%	R/G	A/G	STL	BLK	PTS/G	GP-GS	MIN/G	FG%	3FG%	FT%	R/G	A/G	STL	BLK	PTS/G
ADAMS, Gia	23-22	31.0	.368	.315	.775	1.9	2.7	34	3	13.8	54-53	30.7	.345	.277	.767	2.2	2.6	88	6	13.3
COLE, Lyric	24-17	27.5	.596	.000	.556	6.7	0.8	26	12	6.6	54-47	23.9	.615	.000	.483	6.1	0.5	60	37	6.6
DAVIS, Kennedy	26-2	11.8	.333	.000	.500	1.5	0.3	11	2	1.3	74-17	16.7	.329	.000	.688	1.9	0.5	42	14	1.6
HAYNES-OVERTON, Erica	26-25	26.5	.477	.368	.762	3.0	2.3	62	1	15.3	96-89	27.9	.452	.295	.733	4.1	2.4	288	28	15.1
JACKSON, Shequana	11-0	3.2	.400	.000	1.000	1.5	0.0	0	2	0.5	40-6	9.4	.423	.000	.379	3.1	0.1	13	18	2.5
MALONE, Ashley	26-2	12.4	.355	.152	.623	0.8	0.5	18	0	5.7	46-7	14.0	.285	.165	.627	1.2	0.6	32	0	5.7
MCCULLOUGH, Sierra	21-18	25.0	.349	.000	.597	7.0	0.6	22	19	6.2	62-34	17.9	.394	.050	.628	5.0	0.7	44	36	4.4
MUHAMMAD, Dream	6-0	5.6	.500	1.000	.667	0.5	0.2	2	0	2.0	6-0	5.6	.500	1.000	.667	0.5	0.2	2	0	2.0
PARKER, Saniah	26-25	33.3	.416	.277	.805	4.3	2.1	38	15	9.1	54-44	30.6	.425	.307	.740	3.9	1.9	103	30	8.2
REGALADO, Shonneyvelle	9-0	3.7	.462	.000	.500	0.3	0.0	4	0	1.4	17-0	6.6	.290	.000	.500	0.9	0.2	7	0	1.2
SHANNON, Zyion	26-4	13.7	.302	.143	.519	1.8	0.8	28	2	3.9	26-4	13.7	.302	.143	.519	1.8	0.8	28	2	3.9
SUAREZ-TUDELA, Corina	18-2	5.3	.242	.280	.500	0.4	0.1	1	1	1.3	18-2	5.3	.242	.280	.500	0.4	0.1	1	1	1.3
WALKER, Ever	21-0	7.4	.250	.200	1.000	0.4	0.3	4	0	1.0	21-0	7.4	.250	.200	1.000	0.4	0.3	4	0	1.0
WESTBROOK, Kianni	25-13	17.4	.509	1.000	.621	4.9	0.2	18	18	5.5	54-23	15.2	.500	.333	.654	4.0	0.3	33	40	4.7

Scoring

Player	Season Statistics										Career Statistics									
	FG-FGA	FG%	3FG-3FGA	3FG%	FT-FTA	FT%	PTS	PTS/G	FG-FGA	FG%	3FG-3FGA	3FG%	FT-FTA	FT%	PTS	PTS/G	FG-FGA	FG%	3FG-3FGA	3FG%
ADAMS, Gia	107-291	.368	34-108	.315	69-89	.775	317	13.8	240-695	.345	76-274	.277	161-210	.767	717	13.3	240-695	.345	76-274	.277
COLE, Lyric	62-104	.596	0-0	.000	35-63	.556	159	6.6	150-244	.615	0-0	.000	57-118	.483	357	6.6	150-244	.615	0-0	.000
DAVIS, Kennedy	17-51	.333	0-0	.000	1-2	.500	35	1.3	55-167	.329	0-5	.000	11-16	.688	121	1.6	55-167	.329	0-5	.000
HAYNES-OVERTON, Erica	142-298	.477	14-38	.368	99-130	.762	397	15.3	542-1199	.452	54-183	.295	315-430	.733	1453	15.1	542-1199	.452	54-183	.295
JACKSON, Shequana	2-5	.400	0-0	.000	2-2	1.000	6	0.5	44-104	.423	0-1	.000	11-29	.379	99	2.5	44-104	.423	0-1	.000
MALONE, Ashley	50-141	.355	5-33	.152	43-69	.623	148	5.7	82-288	.285	15-91	.165	84-134	.627	263	5.7	82-288	.285	15-91	.165
MCCULLOUGH, Sierra	45-129	.349	0-11	.000	40-67	.597	130	6.2	93-236	.394	1-20	.050	86-137	.628	273	4.4	93-236	.394	1-20	.050
MUHAMMAD, Dream	3-6	.500	2-2	1.000	4-6	.667	12	2.0	3-6	.500	2-2	1.000	4-6	.667	12	2.0	3-6	.500	2-2	1.000
PARKER, Saniah	89-214	.416	26-94	.277	33-41	.805	237	9.1	169-398	.425	46-150	.307	57-77	.740	441	8.2	169-398	.425	46-150	.307
REGALADO, Shonneyvelle	6-13	.462	0-0	.000	1-2	.500	13	1.4	9-31	.290	0-5	.000	2-4	.500	20	1.2	9-31	.290	0-5	.000
SHANNON, Zyion	35-116	.302	3-21	.143	28-54	.519	101	3.9	35-116	.302	3-21	.143	28-54	.519	101	3.9	35-116	.302	3-21	.143
SUAREZ-TUDELA, Corina	8-33	.242	7-25	.280	1-2	.500	24	1.3	8-33	.242	7-25	.280	1-2	.500	24	1.3	8-33	.242	7-25	.280
WALKER, Ever	6-24	.250	4-20	.200	4-4	1.000	20	1.0	6-24	.250	4-20	.200	4-4	1.000	20	1.0	6-24	.250	4-20	.200
WESTBROOK, Kianni	59-116	.509	1-1	1.000	18-29	.621	137	5.5	109-218	.500	1-3	.333	34-52	.654	253	4.7	109-218	.500	1-3	.333

Totals

	Season Statistics								Career Statistics							
Player	O-REB	D-REB	TOTAL	PF	FO	A	TO	A/TO	O-REB	D-REB	TOTAL	PF	FO	A	TO	A/TO
ADAMS, Gia	11	33	44	56	2	62	76	0.8	34	86	120	145	4	143	166	0.9
COLE, Lyric	56	105	161	58	2	19	39	0.5	119	211	330	136	5	27	74	0.4
DAVIS, Kennedy	14	24	38	37	0	8	24	0.3	38	100	138	114	0	39	111	0.4
HAYNES-OVERTON, Erica	17	60	77	54	0	60	80	0.8	112	282	394	260	8	232	302	0.8
JACKSON, Shequana	7	10	17	11	0	0	7	0.0	52	71	123	72	2	3	44	0.1
MALONE, Ashley	5	15	20	40	0	14	26	0.5	13	44	57	82	1	27	53	0.5
MCCULLOUGH, Sierra	48	100	148	68	3	13	34	0.4	103	209	312	165	6	41	77	0.5
MUHAMMAD, Dream	1	2	3	3	0	1	7	0.1	1	2	3	3	0	1	7	0.1
PARKER, Saniah	37	74	111	64	0	55	53	1.0	78	130	208	134	3	103	107	1.0
REGALADO, Shonneyvelle	2	1	3	10	0	0	7	0.0	3	13	16	13	0	3	29	0.1
SHANNON, Zyion	20	26	46	26	0	20	61	0.3	20	26	46	26	0	20	61	0.3
SUAREZ-TUDELA, Corina	2	6	8	2	0	2	5	0.4	2	6	8	2	0	2	5	0.4
WALKER, Ever	4	4	8	12	0	7	11	0.6	4	4	8	12	0	7	11	0.6
WESTBROOK, Kianni	46	76	122	50	0	5	40	0.1	81	136	217	87	0	18	73	0.2



2022-23 Tennessee St. Women's Basketball
Team High/Low Analysis
All games

Page 1/4
as of Feb 22, 2023

Tennessee St. - Game Highs

POINTS	105		Wilberforce (12/21/2022)
	87		SIUE (02/18/2023)
	86		Southeast Mo. St. (02/09/2023)
	84		Trevecca Nazarene (11/14/2022)
	84		Fisk (11/07/2022)
FIELD GOALS MADE	38		Wilberforce (12/21/2022)
	31		SIUE (02/18/2023)
	31		Trevecca Nazarene (11/14/2022)
	31		Fisk (11/07/2022)
FIELD GOAL ATTEMPTS	86		Fisk (11/07/2022)
	72		Trevecca Nazarene (11/14/2022)
FIELD GOAL PERCENTAGE	.596	(31-52)	SIUE (02/18/2023)
	.551	(38-69)	Wilberforce (12/21/2022)
3 PT FG MADE	8		Southeast Mo. St. (02/09/2023)
	8		Wilberforce (12/21/2022)
	8		at Kansas City (11/11/2022)
3 PT FG ATTEMPTS	32		Fisk (11/07/2022)
	26		at Kansas City (11/11/2022)
3 PT FG PERCENTAGE	.556	(5-9)	SIUE (02/18/2023)
	.500	(8-16)	Wilberforce (12/21/2022)
	.500	(6-12)	at Eastern Ill. (02/04/2023)
	.500	(2-4)	Tennessee Tech (02/11/2023)
FREE THROWS MADE	23		Tennessee Tech (02/11/2023)
	22		at Tennessee Tech (01/14/2023)
FREE THROW ATTEMPTS	34		Southeast Mo. St. (02/09/2023)
	33		Tennessee Tech (02/11/2023)
FREE THROW PERCENTAGE	.875	(7-8)	Stetson (12/11/2022)
	.864	(19-22)	Omaha (11/27/2022)
REBOUNDS	52		Wilberforce (12/21/2022)
	49		at Morehead St. (02/16/2023)
ASSISTS	17		UT Martin (01/12/2023)
	17		Wilberforce (12/21/2022)
STEALS	17		Omaha (11/27/2022)
	15		at Southeast Mo. St. (01/26/2023)
	15		Fisk (11/07/2022)
BLOCKED SHOTS	9		at Morehead St. (02/16/2023)
	5		Southeast Mo. St. (02/09/2023)
	5		at Eastern Ill. (02/04/2023)
	5		UT Martin (01/12/2023)
	5		at Kansas City (11/11/2022)
TURNOVERS	27		Stetson (12/11/2022)
	25		at SIUE (01/05/2023)
	25		at Chattanooga (11/16/2022)
FOULS	32		Fisk (11/07/2022)
	28		at SIUE (01/05/2023)



2022-23 Tennessee St. Women's Basketball
Team High/Low Analysis
All games

Page 2/4
as of Feb 22, 2023

Opponent - Game Highs

POINTS	100		at Southern Ill. (12/07/2022)
	93		at Baylor (12/15/2022)
	90		Southeast Mo. St. (02/09/2023)
	83		SIUE (02/18/2023)
	83		at Tennessee Tech (01/14/2023)
FIELD GOALS MADE	41		at Southern Ill. (12/07/2022)
	36		at Baylor (12/15/2022)
FIELD GOAL ATTEMPTS	72		SIUE (02/18/2023)
	65		at Southern Ill. (12/07/2022)
FIELD GOAL PERCENTAGE	.631	(41-65)	at Southern Ill. (12/07/2022)
	.590	(36-61)	at Baylor (12/15/2022)
3 PT FG MADE	12		Morehead St. (12/29/2022)
	11		at Southeast Mo. St. (01/26/2023)
3 PT FG ATTEMPTS	29		Lipscomb (12/03/2022)
	27		SIUE (02/18/2023)
3 PT FG PERCENTAGE	.571	(12-21)	Morehead St. (12/29/2022)
	.467	(7-15)	at Eastern Ill. (02/04/2023)
FREE THROWS MADE	29		Fisk (11/07/2022)
	28		Southeast Mo. St. (02/09/2023)
FREE THROW ATTEMPTS	40		Fisk (11/07/2022)
	34		Southeast Mo. St. (02/09/2023)
	34		at Tennessee Tech (01/14/2023)
FREE THROW PERCENTAGE	.933	(14-15)	Omaha (11/27/2022)
	.857	(18-21)	Tennessee Tech (02/11/2023)
REBOUNDS	58		Fisk (11/07/2022)
	53		at Baylor (12/15/2022)
ASSISTS	33		at Southern Ill. (12/07/2022)
	26		at Baylor (12/15/2022)
STEALS	13		at Baylor (12/15/2022)
	12		at Southeast Mo. St. (01/26/2023)
	12		Stetson (12/11/2022)
	12		at Southern Ill. (12/07/2022)
	12		at Chattanooga (11/16/2022)
BLOCKED SHOTS	8		at Southern Ill. (12/07/2022)
	6		at Eastern Ill. (02/04/2023)
	6		at Kansas City (11/11/2022)
TURNOVERS	40		Fisk (11/07/2022)
	30		Wilberforce (12/21/2022)
FOULS	25		Tennessee Tech (02/11/2023)
	25		Southeast Mo. St. (02/09/2023)
	25		Fisk (11/07/2022)



2022-23 Tennessee St. Women's Basketball
Team High/Low Analysis
All games

Page 3/4
as of Feb 22, 2023

Tennessee St. - Game Lows

POINTS	27		at Baylor (12/15/2022)
	31		at Chattanooga (11/16/2022)
	36		at Little Rock (01/21/2023)
	55		at Butler (11/21/2022)
	57		Little Rock (12/31/2022)
FIELD GOALS MADE	10		at Chattanooga (11/16/2022)
	12		at Baylor (12/15/2022)
FIELD GOAL ATTEMPTS	42		at Little Rock (01/21/2023)
	43		at Chattanooga (11/16/2022)
FIELD GOAL PERCENTAGE	.214	(12-56)	at Baylor (12/15/2022)
	.233	(10-43)	at Chattanooga (11/16/2022)
3 PT FG MADE	0		at Little Rock (01/21/2023)
	1		Little Rock (12/31/2022)
	1		Morehead St. (12/29/2022)
	1		at Baylor (12/15/2022)
	1		at Chattanooga (11/16/2022)
3 PT FG ATTEMPTS	4		Tennessee Tech (02/11/2023)
	4		at Little Rock (01/21/2023)
3 PT FG PERCENTAGE	.000	(0-4)	at Little Rock (01/21/2023)
	.063	(1-16)	at Baylor (12/15/2022)
FREE THROWS MADE	2		at Baylor (12/15/2022)
	5		Eastern Ill. (01/19/2023)
FREE THROW ATTEMPTS	6		at Baylor (12/15/2022)
	8		Stetson (12/11/2022)
FREE THROW PERCENTAGE	.333	(2-6)	at Baylor (12/15/2022)
	.409	(9-22)	at Morehead St. (02/16/2023)
REBOUNDS	17		at Baylor (12/15/2022)
	21		Little Rock (12/31/2022)
ASSISTS	1		at Little Rock (01/21/2023)
	4		at Butler (11/21/2022)
	4		at Chattanooga (11/16/2022)
STEALS	3		at Little Rock (01/21/2023)
	4		UT Martin (01/12/2023)
BLOCKED SHOTS	0		Eastern Ill. (01/19/2023)
	0		Little Rock (12/31/2022)
	0		Morehead St. (12/29/2022)
TURNOVERS	12		at Eastern Ill. (02/04/2023)
	13		UT Martin (01/12/2023)
FOULS	11		Eastern Ill. (01/19/2023)
	14		at Southern Ind. (02/02/2023)
	14		at Southern Ill. (12/07/2022)
	14		Lipscomb (12/03/2022)
	14		Omaha (11/27/2022)
	14		at Chattanooga (11/16/2022)



2022-23 Tennessee St. Women's Basketball
Team High/Low Analysis
All games

Page 4/4
as of Feb 22, 2023

Opponent - Game Lows

POINTS	42		at Little Rock (01/21/2023)
	49		at Morehead St. (02/16/2023)
	54		Wilberforce (12/21/2022)
	55		at Southern Ind. (02/02/2023)
	60		at Chattanooga (11/16/2022)
FIELD GOALS MADE	16		Fisk (11/07/2022)
	17		at Little Rock (01/21/2023)
FIELD GOAL ATTEMPTS	48		at Lindenwood (01/07/2023)
	50		Little Rock (12/31/2022)
FIELD GOAL PERCENTAGE	.283	(17-60)	at Little Rock (01/21/2023)
	.297	(19-64)	Wilberforce (12/21/2022)
3 PT FG MADE	0		Little Rock (12/31/2022)
	0		Fisk (11/07/2022)
3 PT FG ATTEMPTS	3		Little Rock (12/31/2022)
	6		at Little Rock (01/21/2023)
3 PT FG PERCENTAGE	.000	(0-3)	Little Rock (12/31/2022)
	.000	(0-10)	Fisk (11/07/2022)
FREE THROWS MADE	7		at Morehead St. (02/16/2023)
	7		at Little Rock (01/21/2023)
FREE THROW ATTEMPTS	10		Lipscomb (12/03/2022)
	11		at Southern Ind. (02/02/2023)
FREE THROW PERCENTAGE	.478	(11-23)	Stetson (12/11/2022)
	.500	(7-14)	at Morehead St. (02/16/2023)
	.500	(7-14)	at Little Rock (01/21/2023)
REBOUNDS	27		UT Martin (01/12/2023)
	28		at Southeast Mo. St. (01/26/2023)
ASSISTS	4		Wilberforce (12/21/2022)
	8		at Morehead St. (02/16/2023)
STEALS	0		Fisk (11/07/2022)
	5		SIUE (02/18/2023)
	5		at Eastern Ill. (02/04/2023)
	5		UT Martin (01/12/2023)
BLOCKED SHOTS	0		Stetson (12/11/2022)
	1		at Morehead St. (02/16/2023)
	1		at Southeast Mo. St. (01/26/2023)
	1		at Little Rock (01/21/2023)
	1		at SIUE (01/05/2023)
	1		Wilberforce (12/21/2022)
	1		at Baylor (12/15/2022)
	1		Fisk (11/07/2022)
TURNOVERS	9		UT Martin (01/12/2023)
	11		Tennessee Tech (02/11/2023)
FOULS	10		at Baylor (12/15/2022)
	11		at Southern Ind. (02/02/2023)



2022-23 Tennessee St. Women's Basketball Combined Team Statistics All games

Page 1/1
as of Feb 22, 2023

Game Records

Record	Overall	Home	Away	Neutral
ALL GAMES	11-15	8-5	3-10	0-0
CONFERENCE	6-9	3-4	3-5	0-0
NON-CONFERENCE	5-6	5-1	0-5	0-0

Score by Periods

Team	1st	2nd	3rd	4th	OT	TOT
Tennessee St.	407	394	456	468	11	1736
Opponents	462	430	476	473	15	1856

Team Box Score

No. Player	GP-GS	MIN	AVG	Total		3-Point		F-Throw		Rebounds				PF	DQ	A	TO	BLK	STL	PTS	AVG
				FG-FGA	FG%	3FG-3FGA	3FG%	FT-FTA	FT%	OFF	DEF	TOT	AVG								
20 HAYNES-OVERTON, Erica	26-25	688:48	26.5	142-298	.477	14-38	.368	99-130	.762	17	60	77	3.0	54	0	60	80	1	62	397	15.3
13 ADAMS, Gia	23-22	713:38	31.0	107-291	.368	34-108	.315	69-89	.775	11	33	44	1.9	56	2	62	76	3	34	317	13.8
10 PARKER, Saniah	26-25	865:24	33.3	89-214	.416	26-94	.277	33-41	.805	37	74	111	4.3	64	0	55	53	15	38	237	9.1
24 COLE, Lyric	24-17	660:54	27.5	62-104	.596	0-0	.000	35-63	.556	56	105	161	6.7	58	2	19	39	12	26	159	6.6
14 MCCULLOUGH, Sierra	21-18	524:05	25.0	45-129	.349	0-11	.000	40-67	.597	48	100	148	7.0	68	3	13	34	19	22	130	6.2
0 MALONE, Ashley	26-2	322:06	12.4	50-141	.355	5-33	.152	43-69	.623	5	15	20	0.8	40	0	14	26	0	18	148	5.7
4 WESTBROOK, Kianni	25-13	434:31	17.4	59-116	.509	1-1	1.000	18-29	.621	46	76	122	4.9	50	0	5	40	18	18	137	5.5
21 SHANNON, Zyion	26-4	356:26	13.7	35-116	.302	3-21	.143	28-54	.519	20	26	46	1.8	26	0	20	61	2	28	101	3.9
1 MUHAMMAD, Dream	6-0	33:47	5.6	3-6	.500	2-2	1.000	4-6	.667	1	2	3	0.5	3	0	1	7	0	2	12	2.0
23 REGALADO, Shonneyvelle	9-0	33:02	3.7	6-13	.462	0-0	.000	1-2	.500	2	1	3	0.3	10	0	0	7	0	4	13	1.4
11 DAVIS, Kennedy	26-2	305:43	11.8	17-51	.333	0-0	.000	1-2	.500	14	24	38	1.5	37	0	8	24	2	11	35	1.3
12 SUAREZ-TUDELA, Corina	18-2	95:49	5.3	8-33	.242	7-25	.280	1-2	.500	2	6	8	0.4	2	0	2	5	1	1	24	1.3
2 WALKER, Ever	21-0	155:36	7.4	6-24	.250	4-20	.200	4-4	1.000	4	4	8	0.4	12	0	7	11	0	4	20	1.0
5 JACKSON, Shequana	11-0	34:48	3.2	2-5	.400	0-0	.000	2-2	1.000	7	10	17	1.5	11	0	0	7	2	0	6	0.5
Team										43	52	95					18				
Total	26	5225		631-1541	.409	96-353	.272	378-560	.675	313	588	901	34.7	491	7	266	488	75	268	1736	66.8
Opponents	26	5225		666-1512	.440	155-473	.328	369-523	.706	319	673	992	38.2	490	14	434	522	67	207	1856	71.4

Team Statistics

	TSU	OPP
Scoring	1736	1856
Points per game	66.8	71.4
Scoring margin	-4.6	-
Field goals-att	631-1541	666-1512
Field goal pct	.409	.440
3 point fg-att	96-353	155-473
3-point FG pct	.272	.328
3-pt FG made per game	3.7	6.0
Free throws-att	378-560	369-523
Free throw pct	.675	.706
F-Throws made per game	14.5	14.2
Rebounds	901	992
Rebounds per game	34.7	38.2
Rebounding margin	-3.5	-
Assists	266	434
Assists per game	10.2	16.7
Turnovers	488	522
Turnovers per game	18.8	20.1
Turnover margin	+1.3	-
Assist/turnover ratio	0.5	0.8
Steals	268	207
Steals per game	10.3	8.0
Blocks	75	67
Blocks per game	2.9	2.6
Winning streak	3	-
Home win streak	2	-
Attendance	12102	23482
Home games-Avg/Game	13-931	13-1806
Neutral site-Avg/Game	-	0-0

Team Results

Date	Opponent		Score	Att.
11/07/2022	Fisk	W	84-61	3600
11/11/2022	at Kansas City	L	70-82	566
11/14/2022	Trevecca Nazarene	W	84-80	0
11/16/2022	at Chattanooga	L	31-60	1117
11/21/2022	at Butler	L	55-72	513
11/27/2022	Omaha	W	74-72	0
12/03/2022	Lipscomb	W	74-64	248
12/07/2022	at Southern Ill.	L	72-100	4000
12/11/2022	Stetson	L	65-67	338
12/15/2022	at Baylor	L	27-93	8700
12/21/2022	Wilberforce	W	105-54	211
12/29/2022	Morehead St.	L	58-81	414
12/31/2022	Little Rock	L	57-64	590
01/05/2023	at SIUE	L	69-76	175
01/07/2023	at Lindenwood	W	79-74	0
01/12/2023	UT Martin	W	71-67	274
01/14/2023	at Tennessee Tech	L	76-83	1128
01/19/2023	Eastern Ill.	L	58-63	538
01/21/2023	at Little Rock	L	36-42	3446
01/26/2023	at Southeast Mo. St.	L	59-77	350
02/02/2023	at Southern Ind.	W	59-55	1469
02/04/2023	at Eastern Ill.	L	58-75	1143
02/09/2023	Southeast Mo. St.	Lot	86-90	2374
02/11/2023	Tennessee Tech	W	81-72	1779
02/16/2023	at Morehead St.	W	61-49	875
02/18/2023	SIUE	W	87-83	1736

TV/RADIO CHART



ASHLEY MALONE

Junior
Guard
5-7
Nashville, Tenn. /
Jacksonville University



DREAM MUHAMMAD

Freshman
Guard
5-8
Henrico, Va. / Shining Star
Sports Academy



EVER WALKER

Junior
Guard
5-6
Clarksville, Tenn. /
Bethel University (Tenn.)



EBONI WILLIAMS

Senior
Forward
6-0
Hoover, Ala. / UT Chattanooga



KIANNI WESTBROOK

Senior
Forward
6-3
Augusta, Ga. / Daytona State



SHEQUANNA JACKSON

Graduate Student
Forward
6-5
Brooklyn, N.Y. / Chowan



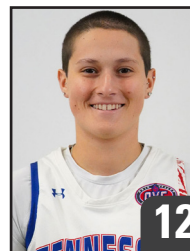
SANIAH PARKER

Sophomore
Guard
5-9
Huntsville, Ala. / Mae Jemison



KENNEDY DAVIS

Junior
Forward
6-0
White Plains, Md. /
New Hope Academy



CORINA SUAREZ-TUDELA

Junior
Guard
5-8
Santa Cruz de Tenerife, Spain /
Cochise College



GIA ADAMS

Sophomore
Guard
5-7
Houston, Texas / Jersey Village



SIERRA McCULLOUGH

Senior
Forward
6-2
Opelika, Ala. / UNC Charlotte



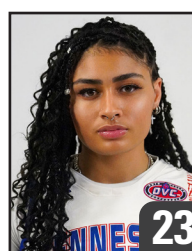
ERICA HAYNES-OVERTON

Graduate Student
Guard
5-6
Nashville, Tenn. / Kansas



ZYION SHANNON

Freshman
Guard
5-8
Smyrna, Tenn. / Stewarts Creek



SHONNYVELLE REGALADO

Redshirt Senior
Guard
5-8
Brooklyn, N.Y. / Panola College



LYRIC COLE

Sophomore
Forward
6-0
Memphis, Tenn. / Austin Peay



TY EVANS

Head Coach
Third Season
(Wisc.-Whitewater '95)



KEISHA McCLINIC

Associate Head Coach
Third Season
(Middle Tenn. St '04)



JAYE NAYREAU

Assistant Coach
Third Season
(Sam Houston State '02)



AYRIELLE ROBINSON

Assistant Coach
Second Season
(Concordia Irvine '11)



RONNIE WILCOX

Director of Operations
First Season Season
(Kennesaw. St. '19)

PRONUNCIATION GUIDE

Shonnyvelle Regalado
Kianni Westbrook
Saniah Parker
Shonnyvelle Regalado
Sierra McCullough
Zyion Shannon

Sha-NEE-velle
Key-on-eeee
Suh-nye-uh
Sha-NEE-velle
ma-cull-uh
zy-on