

# UTEP BASKETBALL

UTEP vs. LA Tech | Thursday, Mar. 7 | 5:00 p.m. MT | Thomas Assembly Center | Ruston, La.



## 2025-26 SCHEDULE

Date	Opponent	Time/Result
Nov. 3	Prairie View A&M	W, 84-60
Nov. 8	Nicholls State	W, 76-61
Nov. 11	WNMU	W, 81-56
Nov. 22	UT Martin	W, 64-60
Nov. 25	Kansas City	W, 75-64
Nov. 29	Denver	W, 69-52
Dec. 3	Texas A&M-CC	W, 62-44
Dec. 6	#8 TCU	L, 40-95
Dec. 13	BYU	L, 46-81
Dec. 18	UC Irvine	L, 72-89
Dec. 29	USW	W, 102-43
Jan. 2	Delaware *	W, 82-71
Jan. 4	Liberty *	L, 66-88
Jan. 8	Middle Tennessee *	L, 43-86
Jan. 10	WKU *	L, 68-59
Jan. 15	Missouri State *	L, 71-64
Jan. 17	FIU *	L, 67-59
Jan. 22	Kennesaw State *	L, 83-52
Jan. 24	Jax State *	L, 73-60
Jan. 31	NM State *	W, 79-69
Feb. 5	LA Tech *	L, 87-48
Feb. 7	Sam Houston *	L, 70-58
Feb. 12	Liberty *	L, 58-48
Feb. 14	Delaware *	W, 79-72
Feb. 21	NM State *	W, 69-58
Feb. 26	Jax State *	W, 66-64
Feb. 28	Kennesaw State *	L, 58-57
Mar. 5	Sam Houston *	L, 71-59
Mar. 5	LA Tech *	5:00 p.m.
Mar. 10-14	CUSA Championships	TBD

**Bold denotes home game**  
\* Conference USA Game  
All Times Mountain

## SERIES HISTORY

The Miners are 12-20 all-time against LA Tech and look to even the season series after an 87-48 setback inside the Don Haskins Center earlier this season.

## ATHLETIC COMMUNICATIONS

STRATEGIC COMMUNICATIONS ASSISTANT

Marcus Neal  
mneal2@miners.utep.edu

OFFICIAL WEBSITE: UTEPMINERS.com

## GAME 29 vs LA TECH



### UTEP Miners (13-15, 5-12 CUSA)

**Head Coach:** Keitha Adams (Southwestern College, 1989)  
**Career Record:** 527-392 (400-355 at DI level) (29th season)  
**Record at UTEP:** 320-262 (19th season)  
**Home:** 10-7 | **Road:** 3-8 | **Neutral:** 0-0 | **Streak:** L2

### Where to Watch



TV Talent:  
Kyle Roberts  
Malcolm Butler  
Madison Kaufman



### LA Tech Lady Techsters (23-5, 16-1 CUSA)

**Head Coach:** Brooke Stoehr  
**Career Record:** 246-190 (10th season)  
**Record at SHSU:** 174-132 (10th season)  
**Home:** 14-1 | **Road:** 9-3 | **Neutral:** 0-1 | **Streak:** W16

## OPENING TIP

### UTEP WOMEN'S BASKETBALL TRAVELS TO LA TECH SATURDAY FOR REGULAR-SEASON FINALE

The UTEP women's basketball team (13-15, 5-12 CUSA) closes out the regular season on the road at LA Tech on Saturday inside the Thomas Assembly Center. Tipoff is set for 5 p.m. MT / 6 p.m. CT in Ruston, Louisiana, as the Miners look to end the regular season on a strong note while keeping their postseason hopes alive.

### SCOUTING LA TECH

LA Tech enters Saturday's matchup at 23-5 overall and 16-1 in Conference USA play. The Lady Techsters have already secured the outright CUSA regular-season title and carry a 16-game winning streak into the contest. LA Tech most recently earned an 88-47 home victory over NM State (Mar. 5). The Lady Techsters are led by head coach Brooke Stoehr, who is in her 10th season at the helm.

LA Tech averages 74.3 points, 36.8 rebounds, and 16.6 assists per game while shooting 44.9 percent from the field, 35.1 percent from three-point range, and 73.7 percent at the free-throw line. Defensively, the Lady Techsters allow 58.8 points per game while holding opponents to 39.2 percent shooting overall and 28.1 percent from beyond the arc. LA Tech also creates consistent pressure on the defensive end, forcing 20.6 turnovers per game while averaging 9.9 steals per contest.

Paris Bradley, the reigning Conference USA Freshman of the Year, leads the Lady Techsters with 14.0 points per game while adding 5.1 rebounds per contest. Jianne Morris contributes 11.9 points per game, while Jordan Marshall provides a strong interior presence with 10.9 points and a team-best 6.8 rebounds per outing. Joy Madison-Key directs the offense and leads LA Tech with 3.5 assists per game.

### MINER NOTABLES

Two Miners are averaging double figures in scoring, led by **Portia Adams** (11.2 ppg) and **Ivane Tensaie** (10.4 ppg). **Mary Moses Amaniyo** and **Ndack Mbengue** are both nearing double-doubles, as Amaniyo leads the team with 8.3 rebounds per game to go along with 8.9 points per contest, while Mbengue adds 9.3 points and 8.1 rebounds per game. Adams and **Delma Zita** share the team lead in assists, averaging 2.5 per game, and **Heaven Samayoa-Mathis** leads the team in steals at 1.5 per outing. Amaniyo tops the squad in field-goal percentage at 52.1 percent, while Adams leads from three-point range (40.0 percent) and at the free-throw line (77.3 percent).

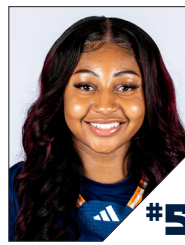
## LAST GAME'S STARTERS



**IVANE TENSAIE**  
GR. | GUARD | 5-7  
10.4 PPG  
1.4 RPG  
0.9 APG  
33.6 FG%  
34.0 3PT%  
72.2 FT%



**DELMA ZITA**  
GR. | GUARD | 5-8  
4.4 PPG  
2.1 RPG  
2.5 APG  
35.8 FG%  
23.8 3PT%  
90.6 FT%



**HEAVEN SAMAYOA-MATHIS**  
SR. | GUARD | 5-7  
6.7 PPG  
3.3 RPG  
2.2 APG  
35.4 FG%  
29.6 3PT%  
78.4 FT%



**PORTIA ADAMS**  
SR. | GUARD | 5-6  
11.2 PPG  
3.0 RPG  
2.5 APG  
38.3 FG%  
40.0 3PT%  
77.3 FT%



**NDACK MBENGUE**  
SR. | FORWARD | 6-3  
9.3 PPG  
8.1 RPG  
1.2 SPG  
49.7 FG%  
N/A 3PT%  
64.3 FT%

# GAME NOTES

## UTEP FALLS AT SAM HOUSTON, 71-59

The UTEP women's basketball team fell 71-59 at Sam Houston on Thursday night, moving to 13-15 overall and 5-12 in Conference USA play. UTEP shot 40.7 percent from the field (22-of-53), including 6-of-15 from three-point range (40.0 percent), and went 9-of-12 at the free-throw line (75.0 percent). The Miners forced 18 turnovers and pulled down 33 rebounds, but Sam Houston converted extra opportunities into a 21-7 advantage in points off turnovers while also holding edges in points in the paint (34-20) and second-chance points (18-8).

The Miners battled throughout a tightly contested opening quarter before Sam Houston used second-chance opportunities late in the frame to take an 18-15 lead into the second. The Bearkats extended the margin early in the second quarter and carried a 34-26 advantage into half-time. UTEP responded out of the break with an 8-0 run late in the third quarter to trim the deficit to three, but Sam Houston answered with a basket at the buzzer to take a 48-43 lead into the fourth. The Miners pulled within one early in the final period, but the Bearkats responded with timely finishes in the paint and capitalized on turnovers down the stretch to secure the 71-59 result.

## POSTSEASON IMPLICATIONS

Saturday's regular-season finale at LA Tech carries major Conference USA implications. The Miners currently hold the final qualifying spot for the conference tournament in 10th place, and a win would secure a berth in the Conference USA Tournament.

## ADAMS ON FIRE

**Portia Adams** continues to provide a steady scoring presence for UTEP in Conference USA play, reaching double figures in 13 of 16 league games. The senior guard recorded 14 points in the Miners' most recent matchup at Sam Houston and earlier delivered a season-high 23 points, including 10 in the fourth quarter, to help secure UTEP's 66-64 victory over Jax State (Feb. 26).

In conference play, Adams leads the Miners with 12.6 points per game while also ranking second on the team in assists (2.3 apg) and leading the squad in three-point percentage (39.5). She adds 3.0 rebounds per contest, continuing to anchor UTEP's backcourt with her scoring, playmaking, and perimeter shooting as the Miners close the regular season.

## TENSAIE FOR THREEE!

**Ivane Tensaie** continues to be a key perimeter threat for UTEP, most recently totaling 14 points in the Miners' matchup at Sam Houston while connecting on multiple three-pointers. The junior guard ranks second in scoring for the Miners at 10.4 points per game and remains one of Conference USA's most consistent threats from beyond the arc.

Tensaie has knocked down 68 three-pointers this season, ranking among the top 85 nationally and third in Conference USA, and recently moved into third place all-time in program history in three-pointers made (186). Her ability to stretch the floor and deliver from long range continues to be a major factor in UTEP's offensive attack as the Miners close the regular season.

## HEAVEN ON THE HEIST

**Heaven Samayoa-Mathis** continues to set the tone on both ends of the floor for the Miners, most recently recording 13 points, three rebounds, and two assists in UTEP's matchup at Sam Houston while shooting 3-of-4 from three-point range. The senior guard remains a steady presence in the backcourt, impacting the game through defensive pressure and timely offensive production.

Samayoa-Mathis leads UTEP in total steals (42) and averages a team-best 1.5 steals per game. She has recorded two or more steals in nearly half of UTEP's games this season, with her ability to apply ball pressure, create transition opportunities, and deliver in key moments continuing to define the Miners' identity down the stretch.

## MBENGUE'S FRONTCOURT IMPACT

**Ndack Mbengue** continues to anchor UTEP's frontcourt, most recently recording 10 rebounds to go with six points in the Miners' matchup at Sam Houston, narrowly missing a double-double. The senior forward previously posted 11 points and 11 rebounds against Kennesaw State (Feb. 28) to secure her ninth double-double of the season and third straight, while also delivering 10 points, 11 rebounds, and three blocks in UTEP's 66-64 victory over Jax State (Feb. 26). Her physical presence, rebounding ability, and rim protection continue to provide stability inside for the Miners.

Mbengue has now secured 10+ rebounds in 14 games this season, including eight in Conference USA play.

## AMANIYO ANCHORS UTEP INSIDE

**Mary Moses Amaniyo** continues to provide a strong interior presence for the Miners, most recently recording 12 points, nine rebounds, and a block against Kennesaw State (Feb. 28), narrowly missing a double-double. The sophomore forward also delivered a standout effort in UTEP's 66-64 victory over Jax State, finishing with 13 points, eight rebounds, and a career-high four steals.

Amaniyo is averaging 9.0 points and a team-best 8.4 rebounds per game while leading UTEP in field-goal percentage at 52.1 percent, bringing consistent energy on the glass and efficiency around the rim.

## DELMA DELIVERS

**Delma Zita** continues to expand her impact for UTEP, most notably knocking down a clutch three-pointer with just under a minute remaining to tie the game in the Miners' 66-64 victory over Jax State (Feb. 26). The senior guard also distributed four assists in UTEP's most recent matchup at Sam Houston, continuing to provide steady playmaking in the backcourt.

Zita's role has grown steadily down the stretch, logging 30 or more minutes in each of the last seven games while averaging 8.0 points, 4.0 assists, and 2.2 steals per contest during that span. Her increased presence on the floor has provided UTEP with added versatility, toughness, and playmaking as the Miners close the regular season.

## WOLDAI'S GROWTH PAYING DIVIDENDS

**Aolani Woldai** continues to make a strong impact off the bench, most recently contributing eight points and three rebounds in UTEP's 66-64 victory over Jax State (Feb. 26). The freshman guard has seen her role expand in recent weeks, averaging 16.5 minutes per game over the last seven contests, while providing consistent energy and production on both ends of the floor. She recently scored a career-high 17 points in just 18 minutes to lead UTEP to a 79-72 road win at Delaware (Feb. 14).



# GAME NOTES

## DOUBLE-DOUBLE DUO

Forwards **Ndack Mbengue** and **Mary Moses Amaniyo** continue to anchor UTEP's frontcourt as one of the nation's most productive interior duos. Both have recorded seven double-doubles this season, consistently providing physicality, rebounding, and second-chance opportunities that define the Miners' interior presence.

Amaniyo ranks fifth in Conference USA in offensive rebounds per game (3.3) and sits 90th nationally and fifth in the league in total rebounds (8.3 per game), while Ndack Mbengue follows closely at 8.1 rebounds per contest and 3.3 offensive boards per game. The duo's consistent production on the glass continues to give UTEP a nightly edge and reinforces the Miners' standing as one of the nation's top rebounding teams.

## NATIONALLY RANKED ON THE GLASS

The Miners continue to establish rebounding as a defining strength, ranking among the nation's leaders in the top 80 nationally in rebounds per game (39.1) and 30th nationally in offensive rebounds per contest (14.7).

UTEP delivered a historic performance on the glass in its win over the University of the Southwest, pulling down a program-record 74 total rebounds, including a program-best 39 offensive boards. The outing marked the second time this season UTEP has rewritten the record book on the offensive glass, after previously setting the program mark with 33 offensive rebounds against Western New Mexico (Nov. 11).

## QUARTER SCORING MILESTONES

UTEP has seen three individual 14-point quarters this season, each delivered by a different Miner and tying for the third-most points scored by a player in a single quarter in program history.

- **Ivane Tensaie**, 3rd quarter at Kansas City (Nov. 25)
- **Mary Moses Amaniyo**, 2nd quarter vs USW (Dec. 29)
- **Ndack Mbengue**, 2nd quarter vs Delaware (Jan. 2)

## EXPLOSIVE FRAMES

UTEP's ability to produce explosive scoring stretches has continued to define its season, most recently erupting for 28 points in the fourth quarter of its 66-64 victory over Jax State. The late surge added to a growing pattern of timely offensive runs, as the Miners also poured in 26 points in the third quarter of their road win at NM State (Feb. 21). UTEP previously closed its victory at Delaware (Feb. 14) with 26 fourth-quarter points, scored 30 in the opening quarter against Nicholls (Nov. 8) tying for the 10th-most points in a quarter in program history and tallied 29 during the third quarter at Kansas City (Nov. 25).

That offensive firepower was on full display earlier this season when UTEP matched a program record with 56 first-half points against USW (Dec. 29), tying the most points scored in a half in school history. The Miners capitalized on transition opportunities and second-chance points to build a commanding 56-22 half-time advantage, showcasing the rhythm and pace that have fueled their highest-scoring stretches.

## STRENGTH IN NUMBERS

UTEP's depth continues to be one of its strongest assets, with the Miners ranking second in Conference USA in bench points per game at 19.8.

The Miners second unit has provided consistent offensive balance and versatility, making the Miners' bench currently one of the most productive in the conference.

## QUARTER FRENZY

**Ivane Tensaie** has joined one of the rarest scoring lists in program history. With her previous 14-point third quarter at Kansas City (Nov. 25) and 13-point fourth quarter vs. FIU last season (Jan. 18, 2025), she is now one of only four players in UTEP history to record multiple quarters with 13+ points.

The exclusive list includes:

- **Sparkle Taylor** - Four times ('16-17)
- **Najala Howell** - Three times ('17-18)
- **Katarina Zec** - Two times ('17-18) ('19-20)

## MILESTONE WATCH

- The win over Jax State (Feb. 26) marked Head Coach **Keitha Adams'** 400th career Division I victory.
- **Ivane Tensaie** has moved into third all-time in program history with 188 career made threes.
- **Portia Adams** recently surpassed the 1,000-career-point milestone vs Sam Houston (Feb. 7), marking a significant achievement in her collegiate career.

## AMANIYO JOINS ELITE COMPANY

**Mary Moses Amaniyo** continued to establish herself as one of the nation's elite rebounders, posting two of the top performances in program history within the first month of the season. She opened the year with a UTEP-record 22 rebounds against PVAMU (Nov. 3) and later grabbed 18 boards in the win over UT Martin (Nov. 22).

Amaniyo is the first Miner since **Kayla Thornton** in 2013-14 to record multiple games with 18 or more rebounds in the same season. Her presence on the glass continues to anchor UTEP's interior play and generate critical extra-possession opportunities.

## GOING BACK-TO-BACK

UTEP earned Conference USA Player of the Week honors in consecutive weeks earlier this season, marking the program's first back-to-back weekly awards since the 2013-14 campaign. **Mary Moses Amaniyo** claimed the honor on Nov. 24, followed by **Ivane Tensaie** on Dec. 1 after her record-setting performance from beyond the arc. The Miners' last pair of consecutive honorees prior to this season came in 2014, when **Kayla Thornton** earned the award on Jan. 27 and Feb. 3.

## SENIOR 5

For the first time since UTEP began tracking lineup records in 1983, the Miners started their first 13 games with an all-senior starting lineup. The veteran group provided experience, leadership, and stability, anchoring UTEP's strong start to the season.

## UP NEXT

UTEP will await the final Conference USA standings to determine its postseason fate following the conclusion of the regular season.

TEAM COMPARISON



UTEP	CATEGORY	LA TECH
13-15	Record	23-5
65.0	Scoring Offense	74.3
68.6	Scoring Defense	58.8
-3.6	Scoring Margin	15.5
.380	Field Goal Pct.	.449
.426	Field Goal Pct. Defense	.392
.290	3-Pt. Field Goal Pct.	.351
.359	3-Pt. Field Goal Pct. Defense	.281
5.4	3-Pt. Field Goal/Game	7.4
.692	Free Throw Pct.	.737
12.5	Free Throw Made/Game	13.3
39.1	Rebound Avg.	36.8
1.8	Rebound Margin	4.3
11.4	Assists Avg.	16.6
16.7	Turnovers Avg.	16.6
8.9	Steals Avg.	9.9
2.1	Blocks Avg.	2.8

2025-26 STANDINGS



TEAM	CONFERENCE	OVERALL
LA Tech	16-1	23-5
FIU	11-6	18-10
Missouri State	11-6	19-11
Sam Houston	10-7	17-11
Liberty	10-7	16-12
Middle TN	10-7	15-14
Jax State	8-9	14-15
Kennesaw State	6-11	13-15
Delaware	6-11	12-17
<b>UTEP</b>	<b>5-12</b>	<b>13-15</b>
NM State	5-11	9-20
WKU	4-13	8-20

UTEP IN THE RANKINGS

TEAM	CATEGORY	STAT	NCAA	C-USA
	Bench Points/G	19.8	114	2
	Rebounds/G	39.1	78	2
	Off Rebounds/G	14.7	30	2

INDIVIDUAL

NAME	CATEGORY	STAT	NCAA	C-USA
M. Moses Amaniyo	REB	231	114	5
M. Moses Amaniyo	REB/G	8.3	90	5
Ndack Mbengue	REB/G	8.1	101	8
Ivane Tensaie	3PTM	68	84	3
Ivane Tensaie	3PTM./G	2.4	62	3

CUSA PLAYER OF THE WEEK:

UTEP'S RECORD WHEN ...

Overall	13-15
Playing at home	10-7
Playing on the road	3-8
Playing on a neutral court	0-0
Playing during the day	5-8
Playing at night	5-7
Playing CUSA foes	5-12
Playing CUSA home games	3-6
Playing CUSA road games	2-6
Playing CUSA neutral games	0-0
Playing non-conference foes	8-3
Playing non-conference home games	7-1
Playing non-conference road games	1-2
Playing non-conference neutral games	0-0
Playing on Mondays	2-0
Playing on Tuesdays	2-0
Playing on Wednesdays	1-0
Playing on Thursdays	1-8
Playing on Fridays	1-0
Playing on Saturdays	6-6
Playing on Sundays	0-1
Playing in November	6-0
Playing in December	2-3
Playing in January	1-7
Playing in February	3-3
Playing in March	0-1
Playing in the Central time zone	1-5
Playing in the Eastern time zone	1-2
Playing in the Mountain time zone	11-8
Playing in the Pacific time zone	0-0
Playing in the Hawaii time zone	0-0
Shooting 50% or better	2-0
Shooting 40% or better	6-3
Shooting less than 40%	5-12
Opponent shoots 50% or better	0-4
Opponent shoots 40% or better	5-10
Opponent shoots less than 40%	8-1
Shooting better than opponent	10-0
Shooting equal or worse than opponent	3-15
Scoring first	6-3
Opponent scores first	7-12
Outrebounding opponents	10-4
Tied or outrebounded	3-11
Ahead at halftime	9-0
Behind at halftime	4-15
Tied at halftime	0-0
Ahead with 5:00 to play	11-0
Behind with 5:00 to play	2-14
Tied with 5:00 to play	0-0
Committing same or less turnovers	10-4
Committing more turnovers	3-11
Having 10 or more steals	7-3
Shooting better than 70% from the line	5-9
Scoring less than 70 points	5-14
Scoring between 70-79 points	4-1
Scoring between 80-89 points	3-0
Scoring between 90-99 points	0-0
Scoring 100 points or more	1-0
Games decided by five points or less	2-1
Games decided by 6-10 points	2-4
Games decided by 11-19 points	5-3
Games decided by 20+ points	4-7
Bench outscores opponent's bench	5-2
Bench is tied or outscored by opponent's	8-13



# 2025-26 UTEP MINERS ROSTER

## NUMERICAL

No.	Name	Pos.	Ht.	Cl.	Hometown / Previous School
1	Aaliyah Davis	G	5-7	Sr.	El Paso, Texas/ Kilgore College
2	Sirviva Legions	G	5-8	Sr.	Brooklyn, N.Y./ Long Island University
3	Ivane Tensaie	G	5-7	Gr.	Roseville, Minn./ Penn State
4	Delma Zita	G	5-8	Gr.	Maputo, Mozambique/ New Mexico JC
5	Heaven Samayo-Mathis	G	5-7	Sr.	Sacramento, Calif./ Salt Lake Community College
8	Brooklyn Terry	G/F	6-0	Fr.	Mansfield, Texas/ Legion Prep HS/ Mansfield Timberview
10	Osadebamwen Igbinedion Omoruyi	F	6-4	So.	Madrid, Spain
11	Portia Adams	G	5-6	Sr.	Cedar Hill, Texas/ Lamar
12	Irene Asensio	G	5-8	So.	Barcelona, Spain/ Sant Adrià Femení
13	Ndack Mbengue	F	6-3	Sr.	Bergamo, Italy/ Cowley College
14	Tatiana Collazo	G	5-8	Jr.	San Jose, Calif./ San Jose City College
15	Abby Priscilla	G	5-11	Jr.	Kampala, Uganda/ Grayson CC
20	Blessing Okhwodiasa	F	6-2	R-Fr.	Madrid, Spain
22	Mary Moses Amaniyo	F	6-1	So.	Arua, Uganda
23	Aolani Woldai	G	5-7	Fr.	Fort Worth, Texas/ Brewer HS

## ALPHBETICAL

No.	Name	Pos.	Ht.	Cl.	Hometown / Previous School
11	Portia Adams	G	5-6	Sr.	Cedar Hill, Texas (Lamar)
22	Mary Moses Amaniyo	F	6-1	So.	Arua, Uganda
12	Irene Asensio	G	5-8	So.	Barcelona, Spain (Sant Adrià Femení)
14	Tatiana Collazo	G	5-8	Jr.	San Jose, Calif. (San Jose City College)
1	Aaliyah Davis	G	5-7	Sr.	El Paso, Texas (Kilgore College)
2	Sirviva Legions	G	5-8	Sr.	Brooklyn, N.Y. (Long Island University)
13	Ndack Mbengue	F	6-3	Sr.	Bergamo, Italy (Cowley College)
20	Blessing Okhwodiasa	F	6-2	R-Fr	Madrid, Spain
10	Osadebamwen Igbinedion Omoruyi	F	6-4	So.	Madrid, Spain
15	Abby Priscilla	G	5-11	Jr.	Kampala, Uganda (Grayson CC)
2	Heaven Samayoa-Mathis	G	5-7	Sr.	Sacramento, Calif. (Salt Lake CC)
3	Ivane Tensaie	G	5-7	Gr.	Roseville, Minn. (Penn State)
8	Brooklyn Terry	G/F	6-0	Fr.	Mansfield, Texas (Legion Prep HS/Mansfield Timberview)
23	Aolani Woldai	G	5-7	Fr.	Fort Worth, Texas/ (Brewer HS)
4	Delma Zita	G	5-8	Gr.	Maputo, Mozambique (New Mexico JC)

## COACHING STAFF

Head Coach: Keitha Adams | Associate Head Coach: Ewa Laskowska | Assistant Coaches: Jareica Hughes, Lulu McKinney

## PRONUNCIATIONS

2	Sirviva Legions	Sir-VIE-vuh
3	Ivane Tensaie	E-vaughn ten-SIGH-ay
4	Delma Zita	Z-ta
5	Heaven Samayoa-Mathis	sahm-ah-YO-ah MATH-iss
10	Osadebamwen Igbinedion Omoruyi	Oh-SAH-deh-BAM-when ig-bin-EH-d-on oh-more-OOG- E
12	Irene Asensio	E-ren-eh AH-sen-c-oh
13	Ndack Mbengue	N-dack (rhymes with Tack) mm-BEN-gweh
20	Blessing Okhwodiasa	oh-koh-DEE-ah-sah
22	Mary Moses Amaniyo	ah-mah-KNEE-oh
23	Aolani Woldai	ay-oh-lah-knee WOHL-dye

Coaches:

Ewa Laskowska

Jareica Hughes

EH-vuh LAH-skove (rhymes with drove)-skuh

JARE-ih-kuh





# UTEP HEAD COACH

## KEITHA ADAMS

Southwestern College '89

19th Season at UTEP  
29th Season as a Coach

Keitha Adams, the winningest coach in UTEP women's basketball history, returned as head coach of the Miners, Vice President and Director of Athletics Jim Senter announced on April 12, 2023.

On November 26, 2024, Adams recorded her 300th win at the helm of the UTEP program. Her record as UTEP's head coach is 319-262, including a 156-65 mark in conference play.

In her first season back in the Borderland, Adams led the team to a 12-19 overall record, including 6-10 in conference play. The Miners made it to the second round of the 2024 Conference USA Tournament, led by all-conference selections Jane Asinde (All-CUSA First Team, All-Defensive Team, Newcomer of the Year), Erin Wilson (All-CUSA Second Team), and Aaliyah Stanton (All-Freshman Team).

On February 15, 2024, Adams earned her 500th career victory with a 73-68 win over WKU. In 28 seasons as a head coach, including five at Independence Community College, she has compiled a record of 514-376.

Adams came back to the Sun City following six seasons as the head coach at Wichita State. In her most recent campaign with the Shockers (2022-23), she orchestrated an 18-win season and appearance in the postseason WNIT. Wichita State upset top-seed USF in the quarterfinals of the American Athletic Conference Championship, 65-53.

In her first stint as the Miners' head coach (2001-17), Adams posted 284 victories over 16 seasons, while leading UTEP to four postseason tournament appearances (two NCAA, two WNIT) and four Conference USA championships (three regular season/one tournament). UTEP posted 28 or more wins four times under Adams - 28-4 (2007-08 season), 29-4 (2011-12), 29-8 (2013-14) and 29-5 (2015-16). The Miners were 16-0 in C-USA play during the 2007-08 season, becoming the first team to complete the league slate unbeaten, and fashioned a 15-1 mark during the 2011-12 campaign. They were 16-2 in C-USA action during the 2015-16 season.

After building the program from the ground up, Adams guided the Miners to 229 victories over her last 11 seasons as head coach, an average of 20.8 per season.

During her initial tenure as head coach at UTEP, Adams coached a total of 13 players to All-Conference honors - Starr Breedlove, Gloria Brown, Jareica Hughes, Natasha Lacy, Kimya Murray, Jenzel Nash, Izabela Piekarska, Anete Steinberga, Sparkle Taylor, Kayla Thornton, Cameasha Turner, Vaida Zagurskyte and Dragana Zoric. Hughes was a two-time C-USA Player of the Year (2008, 2009). Lacy and Thornton were honorable mention All-Americans in 2008 and 2014, respectively, and both went on to play in the WNBA. Thornton currently plays for the New York Liberty.

Adams was named the C-USA Coach of the Year in 2008, 2012 and 2016, and the WBCA Regional Coach of the Year in 2008. She's the lone C-USA women's basketball coach to claim the honor three times.

The historic 2007-08 season produced 28 victories, a school-record 23-game win streak, an undefeated romp through C-USA regular season play, and the school's first-ever NCAA Tournament appearance. The Miners scored a first-round victory over Western Kentucky, 92-60, in the first round of the "Big Dance." Two UTEP players, Lacy and Piekarska, were chosen in the 2008 WNBA Draft by Detroit and Sacramento, respectively.

Four years later, the Miners were back in the NCAA Tournament after setting a school record with 29 wins. After finishing 15-1 during the C-USA regular season, UTEP was crowned champion of the conference tournament after upending Tulane, 69-65, in the title game.

UTEP tied the school record with 29 victories during the 2013-14 season, and won the hearts of El Pasoans by making a march to the WNIT championship game. Then-capacity crowds of 12,222 packed the Don Haskins Center for the Miners' games versus South Dakota State and Rutgers.

The 2015-16 Miners racked up 29 wins once again, and once again drew huge home crowds for their run to the WNIT quarterfinals, including over 9,000 fans in their final game of the season versus Oregon.

Two of Adams' UTEP teams cracked the top-25 poll (2015-16, 2007-08), including being ranked in the final six weeks in 2007-08, while receiving votes in eight campaigns total (2015-16, 2013-14, 2012-13, 2011-12, 2008-09, 2007-08 and 2006-07).

Most importantly, every player that exhausted their eligibility at UTEP under Adams graduated from the University.

Adams was the head coach at Independence CC for five seasons and directed the Lady Pirates to a 127-37 record, including back-to-back Kansas Jayhawk Community College Conference titles in 2000 and 2001. Her teams combined for a 35-1 conference mark over her final two seasons. In 2000-01, she led the Lady Pirates to a 31-2 mark, the conference title and was appointed the KJCCC Eastern Division Coach of the Year.

Adams coached 22 all-KJCCC selections and five NJCAA All-Americans at Independence. Fifteen of her student-athletes went on to play Division I basketball, including two in the SEC, two in the Big 12, one in the ACC, three in the WAC and one in C-USA. Svetlana Volnaya, who played at Virginia, was chosen in the third round of the 2001 WNBA Draft by Detroit.

Adams was an assistant coach at Independence for two seasons (1994-96) prior to being elevated to head coach. Prior to joining the collegiate ranks, Adams coached at Winfield (Kan.) High School and Belle Plaine (Kan.) High School.

A native of Oxford, Kan., Adams graduated with a degree in health, physical education, and recreation from Southwestern College in 1989. Adams was Oxford High School's all-time leading scorer and earned All-State honors as a prep. Her jersey was retired in 1986.

### The Adams File

#### Personal

**Hometown:** Oxford, Kansas

#### Education

**College:** Southwestern College

#### Coaching Experience

**2023-Present: UTEP**

Head Coach

**2017-23: Wichita State**

Head Coach

**2001-17: UTEP**

Head Coach

**1996-01: Independence CC**

Head Coach

**1994-96: Independence CC**

Assistant Coach

#### Career Record:

**Overall: 526-391 (29th year)**

**At UTEP: 319-261 (19th year)**

#### COACH ADAMS VS...

Abilene Christian	1-0
Alabama	0-1
Alabama State	1-0
Alcorn State	7-0
Arizona	1-2
Arizona State	1-1
Arkansas	0-1
Arkansas State	3-1
Belmont	1-0
Boise State	4-6
<b>BYU</b>	<b>0-2</b>
Cal Poly	1-0
Cal-State Bakersfield	1-0
Cal State-Fullerton	1-0
California Baptist	0-1
Charlotte	2-2
Chicago State	2-0
Cincinnati	4-4
Colorado	1-0
Colorado State	0-2
Creighton	0-3
CSUN	1-0
<b>Delaware</b>	<b>2-0</b>
<b>Denver</b>	<b>6-1</b>
East Carolina	9-10
Eastern Illinois	1-0
Eastern Michigan	1-0
Eastern New Mexico	4-0
<b>FIU</b>	<b>6-3</b>
Florida Atlantic	4-2
FGCU	0-2
Fresno State	4-4
Georgia Tech	0-1
Grambling State	4-0
Hampton	1-0
Hawaii	2-6
Houston	12-19
Houston Christian	6-1
Idaho State	3-0
Illinois	0-2
Illinois State	2-0
<b>Jax State</b>	<b>2-3</b>
Kansas	0-4
<b>Kansas City</b>	<b>3-0</b>
Kansas State	2-5
<b>Kennesaw State</b>	<b>0-3</b>
<b>LA Tech</b>	<b>9-16</b>
Lamar	1-1
<b>Liberty</b>	<b>0-6</b>
Long Beach State	0-1
Louisiana	1-1
Loyola Marymount	1-0
LSU	0-1
Marshall	8-6
Memphis	9-7
<b>Middle Tennessee</b>	<b>1-6</b>
Mississippi Valley State	1-0
<b>Missouri State</b>	<b>2-4</b>
Monmouth	0-1
Montana	1-0
Montana State	2-1
Morehead State	1-0
NC State	0-1
Nebraska	0-2
Nevada	4-4
New Mexico	5-5
New Orleans	1-0
<b>Nicholls</b>	<b>1-0</b>
NM Highlands	1-0
<b>NM State</b>	<b>20-13</b>
North Alabama	1-0
North Texas	6-3
Northern Arizona	5-1
Northern Colorado	3-1
Northern Illinois	1-1
Northern Iowa	0-3
Northwestern	0-1
Northwestern State	1-0
Oklahoma	1-1
Oklahoma State	0-2
Old Dominion	2-4
Omaha	0-1
Oral Roberts	2-1
Oregon	0-1
Penn State	0-1
Pittsburgh	0-1
Portland	0-2
<b>Prairie View A&amp;M</b>	<b>5-0</b>
Rice	15-17
Rutgers	0-1
Sacramento State	1-0
Saint Louis	1-0
<b>Sam Houston</b>	<b>7-2</b>
San Jose State	3-5
Savannah State	3-0
SMU	16-23
South Carolina State	1-0
South Dakota	0-4
South Dakota State	1-1
Southeastern Louisiana	1-0
Southern	3-0
Southern Miss	12-6
Southern Utah	1-0
St. Mary's (Texas)	1-0
Stanford	0-1
Tarleton State	1-0
<b>TCU</b>	<b>1-2</b>
Temple	5-7
Tennessee	0-1
Tennessee Tech	0-1
Texas	0-1
Texas A&M	0-2
<b>Texas A&amp;M-Corpus Christi</b>	<b>5-1</b>
Texas A&M-Kingsville	1-0
Texas Southern	4-1
Texas State	8-1
Toledo	2-0
Tulane	17-11
Tulsa	26-13
UAB	9-7
Little Rock	0-1
UAPB	4-0
UC Riverside	1-0
UCSB	0-2
<b>UC Irvine</b>	<b>3-2</b>
UCF	5-11
UConn	0-3
UIC	0-1
ULM	1-0
UNLV	1-1
USF	2-7
<b>USW</b>	<b>1-0</b>
UT Arlington	0-1
UT Dallas	1-0
<b>UT Martin</b>	<b>1-0</b>
UTRGV	4-1
Utah Tech	1-0
UTPB	4-0
UTSA	4-9
Virginia Tech	0-1
Washington	1-0
Washington State	0-1
Weber State	1-0
Western Carolina	1-0
Western Illinois	0-1
<b>WKU</b>	<b>3-6</b>
<b>Western New Mexico</b>	<b>4-0</b>
Wyoming	1-1

2025-26 opponents are in **BOLD**



# CAREER HIGHS

## #1 AALIYAH DAVIS

PTS: \_\_\_\_\_ 6, vs USW (12/29/25)  
 REB: \_\_\_\_\_ 4, vs USW (12/29/25)  
 AST: \_\_\_\_\_ 3, vs USW (12/29/25)  
 STL: \_\_\_\_\_ 2, vs PVAMU (1/18/15)  
 BLK: \_\_\_\_\_  
 FG: \_\_\_\_\_ 3, vs USW (12/29/25)  
 FGA: \_\_\_\_\_ 7, vs USW (12/29/25)  
 3FG: \_\_\_\_\_  
 3FGA: \_\_\_\_\_ 3, vs USW (12/29/25)  
 FT: \_\_\_\_\_ 3, vs NMSU (2/8/25)  
 FTA: \_\_\_\_\_ 6, vs NMSU (2/8/25)  
 MIN: \_\_\_\_\_ 15, vs USW (12/29/25)

## #2 SIRVIVA LEGIONS

PTS: \_\_\_\_\_ \*24, vs NJIT (12/30/24)  
 REB: \_\_\_\_\_ 12, vs FIU (1/17/26)  
 AST: \_\_\_\_\_ \*5, 3x, last vs Wagner (2/6/25)  
 STL: \_\_\_\_\_ \*4, 3x, last vs Wagner (2/6/25)  
 BLK: \_\_\_\_\_ 1, 6x, last vs NMSU (1/31/26)  
 FG: \_\_\_\_\_ \*10, 2x, last vs Wagner (2/6/25)  
 FGA: \_\_\_\_\_ \*26, vs Wagner (2/6/25)  
 3FG: \_\_\_\_\_ \*2, 3x, last vs Nicholls (11/8/25)  
 3FGA: \_\_\_\_\_ \*6, 2x, last vs Wagner (2/6/25)  
 FT: \_\_\_\_\_ \*10, vs Rider (11/12/24)  
 FTA: \_\_\_\_\_ \*12, vs Stonehill (2/8/25)  
 MIN: \_\_\_\_\_ \*52, vs Wagner (2/6/25)

## #3 IVANE TENSAIE

PTS: \_\_\_\_\_ 27, vs UTSA (11/16/24)  
 REB: \_\_\_\_\_ 5, vs UT Martin (11/22/25)  
 AST: \_\_\_\_\_ 4, at FIU (1/18/25)  
 STL: \_\_\_\_\_ 3, at Delaware (2/14/26)  
 BLK: \_\_\_\_\_  
 FG: \_\_\_\_\_ 9, vs UTSA (11/16/24)  
 FGA: \_\_\_\_\_ 19, 2x, last vs UT Martin (11/22/25)  
 3FG: \_\_\_\_\_ 8, vs Denver (11/29/25)  
 3FGA: \_\_\_\_\_ 15, vs Delaware (1/2/26)  
 FT: \_\_\_\_\_ 4, 2x, last vs Sam Houston (3/6/25)  
 FTA: \_\_\_\_\_ 6, vs BYU (12/5/24)  
 MIN: \_\_\_\_\_ 39, vs FIU (1/18/25)

## #4 DELMA ZITA

PTS: \_\_\_\_\_ 16, vs Jax State (2/29/24)  
 REB: \_\_\_\_\_ 6, 4x, last at Middle TN (3/11/25)  
 AST: \_\_\_\_\_ 9, 2x, last at Texas A&M-CC (11/26/24)  
 STL: \_\_\_\_\_ 4, 4x, last vs Denver (11/29/25)  
 BLK: \_\_\_\_\_ 1, 5x, last vs Jax State (2/26/26)  
 FG: \_\_\_\_\_ 7, vs Jax State (2/29/24)  
 FGA: \_\_\_\_\_ 17, vs Texas A&M-Kingsville (11/14/23)  
 3FG: \_\_\_\_\_ 2, 4x, last at NMSU (2/21/26)  
 3FGA: \_\_\_\_\_ 5, vs North Alabama (11/26/23)  
 FT: \_\_\_\_\_ 5, vs FIU (1/18/25)  
 FTA: \_\_\_\_\_ 6, 2x, at Kennesaw State (1/25/25)  
 MIN: \_\_\_\_\_ 39, at Sam Houston (3/6/25)

## #5 HEAVEN SAMAYOA-MATHIS

PTS: \_\_\_\_\_ 17, vs Missouri St (1/15/26)  
 REB: \_\_\_\_\_ \*11, vs Hawaii Pacific (12/12/21)  
 AST: \_\_\_\_\_ 6, at Kansas City (11/25/25)  
 STL: \_\_\_\_\_ 6, vs TAMU-CC (12/3/25)  
 BLK: \_\_\_\_\_ 2, 2x, last vs LA Tech (2/5/26)  
 FG: \_\_\_\_\_ 6, vs Missouri St (1/15/26)  
 FGA: \_\_\_\_\_ 13, 2x, last vs WNMU (11/11/25)  
 3FG: \_\_\_\_\_ 5, vs Missouri St (1/15/26)  
 3FGA: \_\_\_\_\_ \*7, at Holy Names (2/16/22)  
 FT: \_\_\_\_\_ \*6, vs Academy of Art (1/13/22)  
 FTA: \_\_\_\_\_ \*6, 2x, last vs Academy of Art (1/13/22)  
 MIN: \_\_\_\_\_ 37, vs NMSU (1/31/26)

## #8 BROOKLYN TERRY

PTS: \_\_\_\_\_ 13, vs PVAMU (11/3/25)  
 REB: \_\_\_\_\_ 6, vs USW (12/29/25)  
 AST: \_\_\_\_\_ 1, 3x, last vs Missouri St (1/16/26)  
 STL: \_\_\_\_\_ 1, 5x, last at Sam Houston (3/5/26)  
 BLK: \_\_\_\_\_ 2, vs USW (12/29/25)  
 FG: \_\_\_\_\_ 4, vs PVAMU (11/3/25)  
 FGA: \_\_\_\_\_ 9, vs PVAMU (11/3/25)  
 3FG: \_\_\_\_\_ 1, 5x, last at WKU (1/10/26)  
 3FGA: \_\_\_\_\_ 5, vs WNMU (11/11/25)  
 FT: \_\_\_\_\_ 4, vs PVAMU (11/3/25)  
 FTA: \_\_\_\_\_ 4, vs PVAMU (11/3/25)  
 MIN: \_\_\_\_\_ 17, at WKU (1/10/26)

## #10 OSADEBAMWEN IGBINEDION OMORUYI

PTS: \_\_\_\_\_ 7, vs UTSA (11/16/24)  
 REB: \_\_\_\_\_ 9, vs FIU (1/17/26)  
 AST: \_\_\_\_\_ 1, 4x, last vs FIU (1/17/26)  
 STL: \_\_\_\_\_ 2, 2x, last at Delaware (2/14/26)  
 BLK: \_\_\_\_\_ 3, vs FIU (1/17/26)  
 FG: \_\_\_\_\_ 3, 2x, last vs Sam Houston (1/4/25)  
 FGA: \_\_\_\_\_ 7, vs FIU (1/17/26)  
 3FG: \_\_\_\_\_  
 3FGA: \_\_\_\_\_  
 FT: \_\_\_\_\_ 2, vs Sam Houston (2/7/26)  
 FTA: \_\_\_\_\_ 4, vs UTSA (11/16/24)  
 MIN: \_\_\_\_\_ 26, vs FIU (1/17/26)

## #11 PORTIA ADAMS

PTS: \_\_\_\_\_ \*32, vs Houston Christian (2/16/23)  
 REB: \_\_\_\_\_ 9, 2x, last at NMSU (1/11/25)  
 AST: \_\_\_\_\_ 8, 2x, last vs Delaware (1/2/26)  
 STL: \_\_\_\_\_ 5, vs FIU (1/17/26)  
 BLK: \_\_\_\_\_ \*1, vs Loyola (LA) (12/6/22)  
 FG: \_\_\_\_\_ \*11, vs Houston Christian (2/16/23)  
 FGA: \_\_\_\_\_ \*21, vs Southeastern La (3/9/23)  
 3FG: \_\_\_\_\_ \*5, vs Southeastern La (2/23/23)  
 3FGA: \_\_\_\_\_ \*9, at New Orleans (2/25/23)  
 FT: \_\_\_\_\_ 10, vs NMSU (1/31/26)  
 FTA: \_\_\_\_\_ 12, vs Kennesaw State (1/22/26)  
 MIN: \_\_\_\_\_ 37, 2x, last vs FIU (1/17/26)

## #12 IRENE ASENSIO

PTS: \_\_\_\_\_ 13, vs USW (12/29/25)  
 REB: \_\_\_\_\_ 6, vs Liberty (1/16/25)  
 AST: \_\_\_\_\_ 6, at Jax State (1/23/25)  
 STL: \_\_\_\_\_ 5, vs N.M. Highlands (11/23/24)  
 BLK: \_\_\_\_\_ 1, 5x, last at Delaware (2/14/26)  
 FG: \_\_\_\_\_ 4, vs USW (12/29/25)  
 FGA: \_\_\_\_\_ 8, 2x, last vs USW (12/29/25)  
 3FG: \_\_\_\_\_ 3, 2x, last vs USW (12/29/25)  
 3FGA: \_\_\_\_\_ 7, vs USW (12/29/25)  
 FT: \_\_\_\_\_ 3, 2x, last vs NMSU (12/5/24)  
 FTA: \_\_\_\_\_ 4, vs NMSU (12/5/24)  
 MIN: \_\_\_\_\_ 39, at Jax State (1/13/25)

## #13 NDACK MBENGUE

PTS: \_\_\_\_\_ 26, vs Delaware (1/2/26)  
 REB: \_\_\_\_\_ 14, 2x, last at NMSU (2/21/26)  
 AST: \_\_\_\_\_ 2, 3x, last at NMSU (2/21/26)  
 STL: \_\_\_\_\_ 5, vs Missouri St (1/15/26)  
 BLK: \_\_\_\_\_ 4, vs UT Martin (11/22/25)  
 FG: \_\_\_\_\_ 9, vs Delaware (1/2/26)  
 FGA: \_\_\_\_\_ 16, vs Delaware (1/2/26)  
 3FG: \_\_\_\_\_  
 3FGA: \_\_\_\_\_ 1, 2x, last vs Eastern N.M. (12/30/24)  
 FT: \_\_\_\_\_ 8, 3x, last vs Delaware (1/2/26)  
 FTA: \_\_\_\_\_ 12, 2x, last vs Delaware (1/2/26)  
 MIN: \_\_\_\_\_ 38, vs FIU (1/18/25)

## #14 TATIANA COLLAZO

PTS: \_\_\_\_\_ 6, vs PVAMU (11/3/25)  
 REB: \_\_\_\_\_ 1, 6x, last at Middle TN (1/8/26)  
 AST: \_\_\_\_\_ 1, 6x, last at WKU (1/10/26)  
 STL: \_\_\_\_\_ 4, vs USW (12/29/25)  
 BLK: \_\_\_\_\_  
 FG: \_\_\_\_\_ 2, 2x, last at Kansas City (11/25/25)  
 FGA: \_\_\_\_\_ 7, vs PVAMU (11/3/25)  
 3FG: \_\_\_\_\_ 1, 4x, last at WKU (1/10/26)  
 3FGA: \_\_\_\_\_ 5, vs PVAMU (11/3/25)  
 FT: \_\_\_\_\_ 3, vs PVAMU (11/3/25)  
 FTA: \_\_\_\_\_ 4, vs PVAMU (11/3/25)  
 MIN: \_\_\_\_\_ 18, vs WNMU (11/11/25)

## #15 ABBY PRISCILLA

PTS: \_\_\_\_\_ 3, vs USW (12/29/25)  
 REB: \_\_\_\_\_ 6, vs USW (12/29/25)  
 AST: \_\_\_\_\_  
 STL: \_\_\_\_\_  
 BLK: \_\_\_\_\_  
 FG: \_\_\_\_\_ 1, vs USW (12/29/25)  
 FGA: \_\_\_\_\_ 3, vs USW (12/29/25)  
 3FG: \_\_\_\_\_  
 3FGA: \_\_\_\_\_  
 FT: \_\_\_\_\_ 1, vs USW (12/29/25)  
 FTA: \_\_\_\_\_ 2, vs USW (12/29/25)  
 MIN: \_\_\_\_\_ 4, 2x, last vs LA Tech (2/5/26)

## #20 BLESSING OKHWODIASA

PTS: \_\_\_\_\_  
 REB: \_\_\_\_\_  
 AST: \_\_\_\_\_  
 STL: \_\_\_\_\_  
 BLK: \_\_\_\_\_  
 FG: \_\_\_\_\_  
 FGA: \_\_\_\_\_  
 3FG: \_\_\_\_\_  
 3FGA: \_\_\_\_\_  
 FT: \_\_\_\_\_  
 FTA: \_\_\_\_\_  
 MIN: \_\_\_\_\_

## #22 MARY MOSES AMANIYO

PTS: \_\_\_\_\_ 20, vs USW (12/29/25)  
 REB: \_\_\_\_\_ 22, vs PVAMU (11/3/25)  
 AST: \_\_\_\_\_ 2, at Kennesaw State (1/22/26)  
 STL: \_\_\_\_\_ 4, at Liberty (2/12/26)  
 BLK: \_\_\_\_\_ 1, 11x, last vs Kennesaw St (2/28/26)  
 FG: \_\_\_\_\_ 10, vs USW (12/29/25)  
 FGA: \_\_\_\_\_ 14, vs USW (12/29/25)  
 3FG: \_\_\_\_\_ 1, vs Nicholls (11/8/25)  
 3FGA: \_\_\_\_\_ 2, 2x, last at Liberty (2/12/26)  
 FT: \_\_\_\_\_ 7, at Kansas City (11/25/25)  
 FTA: \_\_\_\_\_ 8, 3x, last at Kansas City (11/25/25)  
 MIN: \_\_\_\_\_ 32, 2x, last at Liberty (2/12/26)

## #23 AOLANI WOLDAI

PTS: \_\_\_\_\_ 17, at Delaware (2/14/26)  
 REB: \_\_\_\_\_ 5, vs WNMU (11/11/25)  
 AST: \_\_\_\_\_ 3, vs LA Tech (2/5/26)  
 STL: \_\_\_\_\_ 2, vs LA Tech (2/5/26)  
 BLK: \_\_\_\_\_ 2, vs USW (12/29/25)  
 FG: \_\_\_\_\_ 7, at Delaware (2/14/26)  
 FGA: \_\_\_\_\_ 9, at Delaware (2/14/26)  
 3FG: \_\_\_\_\_ 1, 2x, last at Delaware (2/14/26)  
 3FGA: \_\_\_\_\_ 3, 2x, last vs Sam Houston (2/7/26)  
 FT: \_\_\_\_\_ 5, vs LA Tech (2/5/26)  
 FTA: \_\_\_\_\_ 5, vs LA Tech (2/5/26)  
 MIN: \_\_\_\_\_ 23, vs LA Tech (2/5/26)



# 2025-26 GAME-BY-GAME STATS



## 2025-26 UTEP Women's Basketball Team Game-by-Game All games

Opponent	Date	Score	W	Total		3-Pointers		Free throws		Rebounds				Other Stats						
				FG-FGA	PCT	3FG-3FGA	PCT	FT-FTA	PCT	OFF	DEF	TOT	AVG	PF	A	TO	BLK	STL	PTS	AVG
Prairie View	11/03/2025	84-60	W	31-80	.388	6-27	.222	16-25	.640	24	28	52	52.0	19	14	18	3	11	84	84.0
Nicholls	11/08/2025	76-61	W	26-57	.456	6-21	.286	18-25	.720	8	30	38	45.0	24	14	15	1	8	76	80.0
Western N.M.	11/11/2025	81-56	W	34-93	.366	6-25	.240	7-13	.538	33	31	64	51.3	13	17	15	0	9	81	80.3
UT Martin	11/22/2025	64-60	W	23-70	.329	5-27	.185	13-18	.722	22	32	54	52.0	15	12	14	5	4	64	76.3
at Kansas City	11/25/2025	75-64	W	25-56	.446	8-15	.533	17-25	.680	16	29	45	50.6	17	16	17	1	7	75	76.0
Denver	11/29/2025	69-52	W	25-62	.403	8-18	.444	11-13	.846	12	27	39	48.7	12	14	14	1	13	69	74.8
A&M-Corpus Christi	12/03/2025	62-44	W	22-61	.361	5-16	.313	13-21	.619	12	31	43	47.9	14	12	14	0	16	62	73.0
at TCU	12/06/2025	40-95	L	16-66	.242	1-17	.059	7-9	.778	14	25	39	46.8	19	6	22	1	7	40	68.9
at BYU	12/13/2025	46-81	L	18-60	.300	3-12	.250	7-11	.636	12	17	29	44.8	9	7	19	2	8	46	66.3
UC Irvine	12/18/2025	72-93	L	23-58	.397	6-21	.286	20-27	.741	11	17	28	43.1	25	15	14	0	6	72	66.9
Southwest (NM)	12/29/2025	102-43	W	39-93	.419	10-35	.286	14-25	.560	39	35	74	45.9	11	19	17	6	19	102	70.1
Delaware	01/02/2026	82-71	W	32-64	.500	8-18	.444	10-17	.588	10	23	33	44.8	16	17	15	3	13	82	71.1
Liberty	01/04/2026	66-86	L	20-62	.323	4-19	.211	22-24	.917	17	24	41	44.5	17	8	18	4	4	66	70.7
at Middle Tenn.	01/08/2026	43-86	L	15-57	.263	3-14	.214	10-22	.455	12	19	31	43.6	10	3	14	0	6	43	68.7
at Western Ky.	01/10/2026	59-68	L	20-58	.345	8-25	.320	11-15	.733	14	25	39	43.3	14	9	14	2	5	59	68.1
Missouri St.	01/15/2026	64-71	L	25-58	.431	6-15	.400	8-12	.667	10	20	30	42.4	18	9	19	4	12	64	67.8
FIU	01/17/2026	59-67	L	19-61	.311	6-16	.375	15-22	.682	21	21	42	42.4	26	9	21	3	11	59	67.3
at Kennesaw St.	01/22/2026	52-83	L	16-46	.348	0-7	.000	20-35	.571	7	22	29	41.7	20	4	17	1	9	52	66.4
at Jacksonville St.	01/24/2026	60-73	L	25-59	.424	5-13	.385	5-9	.556	11	24	35	41.3	12	9	14	0	8	60	66.1
New Mexico St.	01/31/2026	79-69	W	24-59	.407	6-19	.316	25-31	.806	14	27	41	41.3	19	15	19	4	12	79	66.8
Louisiana Tech	02/05/2026	48-87	L	16-49	.327	4-20	.200	12-16	.750	11	22	33	40.9	15	7	24	3	4	48	65.9
Sam Houston	02/07/2026	58-70	L	23-59	.390	3-13	.231	9-12	.750	13	25	38	40.8	25	11	24	1	5	58	65.5
at Liberty	02/12/2026	48-58	L	17-53	.321	5-24	.208	9-12	.750	9	16	25	40.1	15	12	13	2	11	48	64.7
at Delaware	02/14/2026	79-72	W	34-65	.523	5-13	.385	6-11	.545	11	19	30	39.7	15	14	14	2	11	79	65.3
at New Mexico St.	02/21/2026	69-58	W	25-54	.463	5-17	.294	14-16	.875	8	31	39	39.6	14	13	13	2	7	69	65.5
Jacksonville St.	02/26/2026	66-64	W	26-69	.377	8-20	.400	6-9	.667	16	21	37	39.5	15	11	9	4	9	66	65.5
Kennesaw St.	02/28/2026	57-58	L	19-53	.358	4-15	.267	15-17	.882	14	19	33	39.3	20	14	20	2	9	57	65.2
at Sam Houston	03/05/2026	59-71	L	22-54	.407	6-15	.400	9-12	.750	10	23	33	39.1	28	8	20	2	6	59	65.0
<b>Total</b>		<b>1819</b>		<b>660-1736</b>	<b>.380</b>	<b>150-517</b>	<b>.290</b>	<b>349-504</b>	<b>.692</b>	<b>411</b>	<b>683</b>	<b>1094</b>	<b>39.1</b>	<b>477</b>	<b>319</b>	<b>467</b>	<b>59</b>	<b>250</b>	<b>1819</b>	<b>65.0</b>
Opponents		1921		695-1630	.426	200-557	.359	331-459	.721	301	744	1045	37.3	494	375	495	87	223	1921	68.6

### UTEP Averages

Games Played	Points/game	FG Pct	3FG Pct	FT Pct	Rebounds/game	Assists/game	Turnovers/game	Assist/Turnover ratio	Steals/game	Blocks/game
28	65.0	38.0	29.0	69.2	39.1	11.4	16.7	0.7	8.9	2.1



# 2025-26 OVERALL STATS



2025-26 UTEP Women's Basketball  
Overall Team Statistics  
All games

Page 1/1  
as of Mar 06, 2026

### Team Statistics

	UTEP	OPP
<b>Scoring</b>	<b>1819</b>	<b>1921</b>
Points per game	65.0	68.6
Scoring margin	-3.6	-
<b>Field goals-att</b>	<b>660-1736</b>	<b>695-1630</b>
Field goal pct	.380	.426
<b>3 point fg-att</b>	<b>150-517</b>	<b>200-557</b>
3-point FG pct	.290	.359
3-pt FG made per game	5.4	7.1
<b>Free throws-att</b>	<b>349-504</b>	<b>331-459</b>
Free throw pct	.692	.721
F-Throws made per game	12.5	11.8
<b>Rebounds</b>	<b>1094</b>	<b>1045</b>
Rebounds per game	39.1	37.3
Rebounding margin	+1.8	-
<b>Assists</b>	<b>319</b>	<b>375</b>
Assists per game	11.4	13.4
<b>Turnovers</b>	<b>467</b>	<b>495</b>
Turnovers per game	16.7	17.7
Turnover margin	+1.0	-
Assist/turnover ratio	0.7	0.8
<b>Steals</b>	<b>250</b>	<b>223</b>
Steals per game	8.9	8.0
<b>Blocks</b>	<b>59</b>	<b>87</b>
Blocks per game	2.1	3.1
<b>Winning streak</b>	<b>0</b>	<b>-</b>
Home win streak	0	-
<b>Attendance</b>	<b>17377</b>	<b>13109</b>
Home games-Avg/Game	17-1022	11-1192
Neutral site-Avg/Game	-	0-0

### Score by Periods

Team	1st	2nd	3rd	4th	OT	TOT
UTEP	432	390	500	485	12	1819
Opponents	475	419	527	492	8	1921



# 2025-26 UTEP GAME HIGHS



2025-26 UTEP Women's Basketball  
Team High/Low Analysis  
All games

## UTEP - Game Highs

<b>POINTS</b>	102		Southwest (NM) (12/29/2025)
	84		Prairie View (11/03/2025)
	82		Delaware (01/02/2026)
	81		Western N.M. (11/11/2025)
	79		at Delaware (02/14/2026)
	79		New Mexico St. (01/31/2026)
<b>FIELD GOALS MADE</b>	39		Southwest (NM) (12/29/2025)
	34		at Delaware (02/14/2026)
	34		Western N.M. (11/11/2025)
<b>FIELD GOAL ATTEMPTS</b>	93		Southwest (NM) (12/29/2025)
	93		Western N.M. (11/11/2025)
<b>FIELD GOAL PERCENTAGE</b>	.523	(34-65)	at Delaware (02/14/2026)
	.500	(32-64)	Delaware (01/02/2026)
<b>3 PT FG MADE</b>	10		Southwest (NM) (12/29/2025)
	8		Jacksonville St. (02/26/2026)
	8		at Western Ky. (01/10/2026)
	8		Delaware (01/02/2026)
	8		Denver (11/29/2025)
	8		at Kansas City (11/25/2025)
<b>3 PT FG ATTEMPTS</b>	35		Southwest (NM) (12/29/2025)
	27		UT Martin (11/22/2025)
	27		Prairie View (11/03/2025)
<b>3 PT FG PERCENTAGE</b>	.533	(8-15)	at Kansas City (11/25/2025)
	.444	(8-18)	Delaware (01/02/2026)
	.444	(8-18)	Denver (11/29/2025)
<b>FREE THROWS MADE</b>	25		New Mexico St. (01/31/2026)
	22		Liberty (01/04/2026)
<b>FREE THROW ATTEMPTS</b>	35		at Kennesaw St. (01/22/2026)
	31		New Mexico St. (01/31/2026)
<b>FREE THROW PERCENTAGE</b>	.917	(22-24)	Liberty (01/04/2026)
	.882	(15-17)	Kennesaw St. (02/28/2026)
<b>REBOUNDS</b>	74		Southwest (NM) (12/29/2025)
	64		Western N.M. (11/11/2025)
<b>ASSISTS</b>	19		Southwest (NM) (12/29/2025)
	17		Delaware (01/02/2026)
	17		Western N.M. (11/11/2025)
<b>STEALS</b>	19		Southwest (NM) (12/29/2025)
	16		A&M-Corpus Christi (12/03/2025)
<b>BLOCKED SHOTS</b>	6		Southwest (NM) (12/29/2025)
	5		UT Martin (11/22/2025)
<b>TURNOVERS</b>	24		Sam Houston (02/07/2026)
	24		Louisiana Tech (02/05/2026)
<b>FOULS</b>	28		at Sam Houston (03/05/2026)
	26		FIU (01/17/2026)



# 2025-26 OPPONENT GAME HIGHS



2025-26 UTEP Women's Basketball  
Team High/Low Analysis  
All games

**Opponent - Game Highs**

<b>POINTS</b>	95		at TCU (12/06/2025)
	93		UC Irvine (12/18/2025)
	87		Louisiana Tech (02/05/2026)
	86		at Middle Tenn. (01/08/2026)
	86		Liberty (01/04/2026)
<b>FIELD GOALS MADE</b>	33		Louisiana Tech (02/05/2026)
	33		at TCU (12/06/2025)
<b>FIELD GOAL ATTEMPTS</b>	69		at Kennesaw St. (01/22/2026)
	68		at Middle Tenn. (01/08/2026)
<b>FIELD GOAL PERCENTAGE</b>	.566	(30-53)	UC Irvine (12/18/2025)
	.532	(33-62)	Louisiana Tech (02/05/2026)
<b>3 PT FG MADE</b>	14		at TCU (12/06/2025)
	13		Louisiana Tech (02/05/2026)
	13		at Middle Tenn. (01/08/2026)
<b>3 PT FG ATTEMPTS</b>	31		at Middle Tenn. (01/08/2026)
	30		at BYU (12/13/2025)
	30		at TCU (12/06/2025)
<b>3 PT FG PERCENTAGE</b>	.619	(13-21)	Louisiana Tech (02/05/2026)
	.563	(9-16)	at Kansas City (11/25/2025)
<b>FREE THROWS MADE</b>	24		UC Irvine (12/18/2025)
	21		FIU (01/17/2026)
<b>FREE THROW ATTEMPTS</b>	37		at Sam Houston (03/05/2026)
	30		FIU (01/17/2026)
<b>FREE THROW PERCENTAGE</b>	1.000	(11-11)	at Middle Tenn. (01/08/2026)
	1.000	(1-1)	Southwest (NM) (12/29/2025)
<b>REBOUNDS</b>	54		at Middle Tenn. (01/08/2026)
	51		at BYU (12/13/2025)
<b>ASSISTS</b>	27		at TCU (12/06/2025)
	22		Louisiana Tech (02/05/2026)
	22		Liberty (01/04/2026)
	22		at BYU (12/13/2025)
<b>STEALS</b>	13		Sam Houston (02/07/2026)
	12		at TCU (12/06/2025)
<b>BLOCKED SHOTS</b>	7		at BYU (12/13/2025)
	6		at TCU (12/06/2025)
	6		Western N.M. (11/11/2025)
	6		Prairie View (11/03/2025)
<b>TURNOVERS</b>	28		Southwest (NM) (12/29/2025)
	27		Prairie View (11/03/2025)
<b>FOULS</b>	28		New Mexico St. (01/31/2026)
	27		FIU (01/17/2026)



# 2025-26 UTEP GAME LOWS



2025-26 UTEP Women's Basketball  
Team High/Low Analysis  
All games

### UTEP - Game Lows

<b>POINTS</b>	40		at TCU (12/06/2025)
	43		at Middle Tenn. (01/08/2026)
	46		at BYU (12/13/2025)
	48		at Liberty (02/12/2026)
	48		Louisiana Tech (02/05/2026)
<b>FIELD GOALS MADE</b>	15		at Middle Tenn. (01/08/2026)
	16		Louisiana Tech (02/05/2026)
	16		at Kennesaw St. (01/22/2026)
	16		at TCU (12/06/2025)
<b>FIELD GOAL ATTEMPTS</b>	46		at Kennesaw St. (01/22/2026)
	49		Louisiana Tech (02/05/2026)
<b>FIELD GOAL PERCENTAGE</b>	.242	(16-66)	at TCU (12/06/2025)
	.263	(15-57)	at Middle Tenn. (01/08/2026)
<b>3 PT FG MADE</b>	0		at Kennesaw St. (01/22/2026)
	1		at TCU (12/06/2025)
<b>3 PT FG ATTEMPTS</b>	7		at Kennesaw St. (01/22/2026)
	12		at BYU (12/13/2025)
<b>3 PT FG PERCENTAGE</b>	.000	(0-7)	at Kennesaw St. (01/22/2026)
	.059	(1-17)	at TCU (12/06/2025)
<b>FREE THROWS MADE</b>	5		at Jacksonville St. (01/24/2026)
	6		Jacksonville St. (02/26/2026)
	6		at Delaware (02/14/2026)
<b>FREE THROW ATTEMPTS</b>	9		Jacksonville St. (02/26/2026)
	9		at Jacksonville St. (01/24/2026)
	9		at TCU (12/06/2025)
<b>FREE THROW PERCENTAGE</b>	.455	(10-22)	at Middle Tenn. (01/08/2026)
	.538	(7-13)	Western N.M. (11/11/2025)
<b>REBOUNDS</b>	25		at Liberty (02/12/2026)
	28		UC Irvine (12/18/2025)
<b>ASSISTS</b>	3		at Middle Tenn. (01/08/2026)
	4		at Kennesaw St. (01/22/2026)
<b>STEALS</b>	4		Louisiana Tech (02/05/2026)
	4		Liberty (01/04/2026)
	4		UT Martin (11/22/2025)
<b>BLOCKED SHOTS</b>	0		at Jacksonville St. (01/24/2026)
	0		at Middle Tenn. (01/08/2026)
	0		UC Irvine (12/18/2025)
	0		A&M-Corpus Christi (12/03/2025)
	0		Western N.M. (11/11/2025)
<b>TURNOVERS</b>	9		Jacksonville St. (02/26/2026)
	13		at New Mexico St. (02/21/2026)
	13		at Liberty (02/12/2026)
<b>FOULS</b>	9		at BYU (12/13/2025)
	10		at Middle Tenn. (01/08/2026)



# 2025-26 OPPONENT GAME LOWS



2025-26 UTEP Women's Basketball  
Team High/Low Analysis  
All games

**UTEP - Game Lows**

<b>POINTS</b>	40		at TCU (12/06/2025)
	43		at Middle Tenn. (01/08/2026)
	46		at BYU (12/13/2025)
	48		at Liberty (02/12/2026)
	48		Louisiana Tech (02/05/2026)
<b>FIELD GOALS MADE</b>	15		at Middle Tenn. (01/08/2026)
	16		Louisiana Tech (02/05/2026)
	16		at Kennesaw St. (01/22/2026)
	16		at TCU (12/06/2025)
<b>FIELD GOAL ATTEMPTS</b>	46		at Kennesaw St. (01/22/2026)
	49		Louisiana Tech (02/05/2026)
<b>FIELD GOAL PERCENTAGE</b>	.242	(16-66)	at TCU (12/06/2025)
	.263	(15-57)	at Middle Tenn. (01/08/2026)
<b>3 PT FG MADE</b>	0		at Kennesaw St. (01/22/2026)
	1		at TCU (12/06/2025)
<b>3 PT FG ATTEMPTS</b>	7		at Kennesaw St. (01/22/2026)
	12		at BYU (12/13/2025)
<b>3 PT FG PERCENTAGE</b>	.000	(0-7)	at Kennesaw St. (01/22/2026)
	.059	(1-17)	at TCU (12/06/2025)
<b>FREE THROWS MADE</b>	5		at Jacksonville St. (01/24/2026)
	6		Jacksonville St. (02/26/2026)
	6		at Delaware (02/14/2026)
<b>FREE THROW ATTEMPTS</b>	9		Jacksonville St. (02/26/2026)
	9		at Jacksonville St. (01/24/2026)
	9		at TCU (12/06/2025)
<b>FREE THROW PERCENTAGE</b>	.455	(10-22)	at Middle Tenn. (01/08/2026)
	.538	(7-13)	Western N.M. (11/11/2025)
<b>REBOUNDS</b>	25		at Liberty (02/12/2026)
	28		UC Irvine (12/18/2025)
<b>ASSISTS</b>	3		at Middle Tenn. (01/08/2026)
	4		at Kennesaw St. (01/22/2026)
<b>STEALS</b>	4		Louisiana Tech (02/05/2026)
	4		Liberty (01/04/2026)
	4		UT Martin (11/22/2025)
<b>BLOCKED SHOTS</b>	0		at Jacksonville St. (01/24/2026)
	0		at Middle Tenn. (01/08/2026)
	0		UC Irvine (12/18/2025)
	0		A&M-Corpus Christi (12/03/2025)
	0		Western N.M. (11/11/2025)
<b>TURNOVERS</b>	9		Jacksonville St. (02/26/2026)
	13		at New Mexico St. (02/21/2026)
	13		at Liberty (02/12/2026)
<b>FOULS</b>	9		at BYU (12/13/2025)
	10		at Middle Tenn. (01/08/2026)



# 2025-26 CATEGORY LEADERS



## 2025-26 UTEP Women's Basketball Category Leaders All games

Page 1/2  
as of Mar 06, 2026

### Points

##	Player	G	Pts	Pts/G
11	Adams, Portia	28	314	11.2
3	Tensaie, Ivane	28	290	10.4
13	Mbengue, Ndack	27	252	9.3
22	Moses Amaniyo, Mary	28	250	8.9
2	Legions, Sirviva	20	195	9.8
5	Samayoa-Mathis, Heaven	28	187	6.7
4	Zita, Delma	27	120	4.4
23	Woldai, Aolani	19	58	3.1
8	Terry, Brooklyn	21	48	2.3
12	Asensio, Irene	26	36	1.4
10	Igbinedion Omoruyi, Osadebamwen	22	30	1.4
14	Collazo, Tatiana	16	22	1.4
1	Davis, Aaliyah	12	14	1.2
15	Priscilla, Abby	2	3	1.5

### Scoring Average

##	Player	G	Pts	Pts/G
11	Adams, Portia	28	314	11.2
3	Tensaie, Ivane	28	290	10.4
2	Legions, Sirviva	20	195	9.8
13	Mbengue, Ndack	27	252	9.3
22	Moses Amaniyo, Mary	28	250	8.9
5	Samayoa-Mathis, Heaven	28	187	6.7
4	Zita, Delma	27	120	4.4
23	Woldai, Aolani	19	58	3.1
8	Terry, Brooklyn	21	48	2.3
15	Priscilla, Abby	2	3	1.5
12	Asensio, Irene	26	36	1.4
14	Collazo, Tatiana	16	22	1.4
10	Igbinedion Omoruyi, Osadebamwen	22	30	1.4
1	Davis, Aaliyah	12	14	1.2

### Field Goal Percentage

##	Player	FG	Att	Pct
22	Moses Amaniyo, Mary	101	194	.521
13	Mbengue, Ndack	90	181	.497
11	Adams, Portia	108	282	.383
2	Legions, Sirviva	76	206	.369
4	Zita, Delma	43	120	.358
5	Samayoa-Mathis, Heaven	67	189	.354
10	Igbinedion Omoruyi, Osadebamwen	13	38	.342
3	Tensaie, Ivane	98	292	.336
15	Priscilla, Abby	1	3	.333
23	Woldai, Aolani	22	70	.314
8	Terry, Brooklyn	19	67	.284
14	Collazo, Tatiana	7	28	.250
1	Davis, Aaliyah	5	20	.250
12	Asensio, Irene	10	46	.217

### Field Goal Attempts

##	Player	G	Att	Att/G
3	Tensaie, Ivane	28	292	10.4
11	Adams, Portia	28	282	10.1
2	Legions, Sirviva	20	206	10.3
22	Moses Amaniyo, Mary	28	194	6.9
5	Samayoa-Mathis, Heaven	28	189	6.8

### Field Goals Made

##	Player	G	Made	Made/G
11	Adams, Portia	28	108	3.9
22	Moses Amaniyo, Mary	28	101	3.6
3	Tensaie, Ivane	28	98	3.5
13	Mbengue, Ndack	27	90	3.3
2	Legions, Sirviva	20	76	3.8

### 3-Point FG Percentage

##	Player	3FG	Att	Pct
11	Adams, Portia	30	75	.400
3	Tensaie, Ivane	68	200	.340
5	Samayoa-Mathis, Heaven	24	81	.296
4	Zita, Delma	5	21	.238
2	Legions, Sirviva	3	13	.231
12	Asensio, Irene	8	37	.216
14	Collazo, Tatiana	4	19	.211
8	Terry, Brooklyn	5	37	.135
22	Moses Amaniyo, Mary	1	10	.100
23	Woldai, Aolani	2	21	.095

### 3-Point FG Attempts

##	Player	G	Att	Att/G
3	Tensaie, Ivane	28	200	7.1
5	Samayoa-Mathis, Heaven	28	81	2.9
11	Adams, Portia	28	75	2.7
8	Terry, Brooklyn	21	37	1.8
12	Asensio, Irene	26	37	1.4

### 3-Point FG Made

##	Player	G	Made	Made/G
3	Tensaie, Ivane	28	68	2.4
11	Adams, Portia	28	30	1.1
5	Samayoa-Mathis, Heaven	28	24	0.9
12	Asensio, Irene	26	8	0.3
4	Zita, Delma	27	5	0.2

### Free Throw Percentage

##	Player	Made	Att	Pct
8	Terry, Brooklyn	5	5	1.000
4	Zita, Delma	29	32	.906
23	Woldai, Aolani	12	14	.857
12	Asensio, Irene	8	10	.800
5	Samayoa-Mathis, Heaven	29	37	.784
11	Adams, Portia	68	88	.773
3	Tensaie, Ivane	26	36	.722
22	Moses Amaniyo, Mary	47	66	.712
13	Mbengue, Ndack	72	112	.643
10	Igbinedion Omoruyi, Osadebamwen	4	7	.571
1	Davis, Aaliyah	4	7	.571
2	Legions, Sirviva	40	76	.526
15	Priscilla, Abby	1	2	.500
14	Collazo, Tatiana	4	12	.333

### Free Throw Attempts

##	Player	G	Att	Att/G
13	Mbengue, Ndack	27	112	4.1
11	Adams, Portia	28	88	3.1
2	Legions, Sirviva	20	76	3.8
22	Moses Amaniyo, Mary	28	66	2.4
5	Samayoa-Mathis, Heaven	28	37	1.3

### Free Throws Made

##	Player	G	Made	Made/G
13	Mbengue, Ndack	27	72	2.7
11	Adams, Portia	28	68	2.4
22	Moses Amaniyo, Mary	28	47	1.7
2	Legions, Sirviva	20	40	2.0
5	Samayoa-Mathis, Heaven	28	29	1.0



# 2025-26 CATEGORY LEADERS



## 2025-26 UTEP Women's Basketball Category Leaders All games

Page 2/2  
as of Mar 06, 2026

### Rebounds

##	Player	G	Reb	Reb/G
22	Moses Amaniyo, Mary	28	231	8.3
13	Mbengue, Ndack	27	218	8.1
2	Legions, Sirviva	20	116	5.8
5	Samayoa-Mathis, Heaven	28	92	3.3
11	Adams, Portia	28	83	3.0

### Assists

##	Player	G	Ast	Ast/G
11	Adams, Portia	28	71	2.5
4	Zita, Delma	27	67	2.5
5	Samayoa-Mathis, Heaven	28	62	2.2
2	Legions, Sirviva	20	29	1.5
3	Tensaie, Ivane	28	25	0.9

### Rebounds Average

##	Player	G	Reb	Reb/G
22	Moses Amaniyo, Mary	28	231	8.3
13	Mbengue, Ndack	27	218	8.1
2	Legions, Sirviva	20	116	5.8
15	Priscilla, Abby	2	7	3.5
5	Samayoa-Mathis, Heaven	28	92	3.3

### Steals

##	Player	G	Stl	Stl/G
5	Samayoa-Mathis, Heaven	28	42	1.5
4	Zita, Delma	27	35	1.3
22	Moses Amaniyo, Mary	28	34	1.2
13	Mbengue, Ndack	27	32	1.2
2	Legions, Sirviva	20	26	1.3

### Offensive Rebounds

##	Player	G	OReb	OReb/G
22	Moses Amaniyo, Mary	28	92	3.3
13	Mbengue, Ndack	27	88	3.3
2	Legions, Sirviva	20	40	2.0
5	Samayoa-Mathis, Heaven	28	30	1.1
11	Adams, Portia	28	25	0.9

### Blocked Shots

##	Player	G	Blk	Blk/G
13	Mbengue, Ndack	27	21	0.8
5	Samayoa-Mathis, Heaven	28	9	0.3
22	Moses Amaniyo, Mary	28	8	0.3
10	Igbinedion Omoruyi, Osadebamwen	22	7	0.3
8	Terry, Brooklyn	21	4	0.2

### Defensive Rebounds

##	Player	G	DReb	DReb/G
22	Moses Amaniyo, Mary	28	139	5.0
13	Mbengue, Ndack	27	130	4.8
2	Legions, Sirviva	20	76	3.8
5	Samayoa-Mathis, Heaven	28	62	2.2
11	Adams, Portia	28	58	2.1

### Minutes

##	Player	G	Min	Min/G
3	Tensaie, Ivane	28	818	29:12
11	Adams, Portia	28	727	25:58
5	Samayoa-Mathis, Heaven	28	715	25:32
13	Mbengue, Ndack	27	687	25:27
22	Moses Amaniyo, Mary	28	615	21:57

### Fouls

##	Player	G	PF	PF/G
13	Mbengue, Ndack	27	80	3.0
11	Adams, Portia	28	62	2.2
22	Moses Amaniyo, Mary	28	62	2.2
5	Samayoa-Mathis, Heaven	28	55	2.0
23	Woldai, Aolani	19	43	2.3

### Turnovers

##	Player	G	TO	TO/G
11	Adams, Portia	28	70	2.5
13	Mbengue, Ndack	27	68	2.5
4	Zita, Delma	27	63	2.3
5	Samayoa-Mathis, Heaven	28	48	1.7
2	Legions, Sirviva	20	47	2.4

### Foul Outs

##	Player	G	FO
22	Moses Amaniyo, Mary	28	4
13	Mbengue, Ndack	27	3
11	Adams, Portia	28	2
2	Legions, Sirviva	20	1
5	Samayoa-Mathis, Heaven	28	1



# TEAM SINGLE-GAME RECORDS

## FIELD GOALS MADE

FG	OPP	DATE
1. 49	Colorado State*	2/9/80
2. 46	vs. Texas Lutheran+	12/4/82
3. 45	UT-Permian Basin+	12/15/06
4. 41	WNMU+	11/17/16
41	UT-Permian Basin+	12/21/05
6. 40	Savannah State	11/22/08
7. 39	<b>USW+</b>	<b>12/29/25</b>
39	Hardin Simmons+	2/16/85
8. 39	Texas State	12/17/10
9. 38	Fresno State*	1/11/03
38	at BYU	1/6/90
38	Eastern New Mexico+	1/13/87

## FIELD GOALS ATTEMPTED

FGA	OPP	DATE
1. 93	<b>USW+</b>	<b>12/29/25</b>
93	<b>WNMU+</b>	<b>11/11/25</b>
93	vs. Texas Lutheran+	12/4/82
3. 87	at New Mexico State*	12/15/79
4. 86	New Mexico State*	12/13/80
5. 85	UT-Dallas+	11/20/04
85	vs. Arizona	11/25/83
85	Eastern New Mexico+	3/1/80
84	at Southern Utah	12/29/88
84	Hardin Simmons+	2/16/85
84	at Eastern New Mexico+	1/28/84

## OTHER GAMES OF 83 OR MORE FIELD GOALS

83	Charlotte*	2/27/16
83	at BYU	1/6/90
83	at New Mexico	11/29/86
83	at Oral Roberts	2/24/86

## FIELD GOAL PERCENTAGE (MIN. 24 MADE)

FG%	OPP	DATE
1. .660 (35-53)	Southern Miss*	2/21/09
2. .636 (28-44)	UCF*	1/24/10
3. .615 (32-52)	at UTPA	2/7/89
4. .612 (41-67)	WNMU+	11/17/16
5. .611 (33-54)	at San Diego	1/7/87
6. .591 (26-44)	Sam Houston	1/27/24
7. .588 (30-51)	TXA&M CC	12/18/02
8. .577 (30-52)	WKU*	3/3/18
.577 (30-52)	Alcorn State	12/20/09
10. .576 (38-66)	Fresno State*	1/11/03

## FIELD GOAL PERCENTAGE DEFENSE

FG% Defense	OPP	DATE
1. .167 (8-48)	UTPB+	12/14/15
2. .184 (9-49)	NM State	11/29/11
3. .196 (10-51)	UT-Dallas+	11/20/04
4. .205 (9-44)	NM State	12/05/12
5. .206 (13-63)	Tulsa	1/31/13
6. .208 (11-53)	vs. Samford	12/21/17
7. .209 (9-49)	UTPA	12/22/96
8. .214 (12-56)	Montana State	12/22/03
9. .216 (16-74)	Alcorn State	12/20/09
10. .222 (12-54)	Fresno State*	2/12/04
.222 (14-61)	Prairie View	3/1/96

## OTHER GAMES OF FG% 23.0 OR WORSE

12. .224 (15-67)	WNMU+	11/17/16
.224 (13-58)	at Colo. State*	2/6/93
14. .226 (14-62)	UTPB+	12/15/06
15. .229 (11-48)	ENMU+	12/8/12
16. .230 (14-61)	at UNM*	3/1/95

## THREE POINTERS MADE

3PM	OPP	DATE
1. 14	UTSA	2/11/23
14	Toledo	11/24/09
14	Savannah State	11/22/08
14	vs. Eastern Illinois	11/20/09
4. 13	at FIU*	2/12/21
13	Tulsa*	1/22/09
13	at Tulane*	1/12/08
7. 12	New Mexico	12/2/15
12	Tulsa*	1/11/14
12	vs. Missouri State	12/4/09
10. 11	vs. North Dakota	11/13/21
11	vs. FAU	3/1/20
11	vs. WIU	12/20/18
11	Idaho State	11/28/15
11	#24 Western Kentucky*	1/22/15
11	Prairie View A&M	12/20/14
11	at Tulane*	2/1/14
11	Northern Arizona	11/22/13
11	Denver	11/26/11
11	Cal State Northridge	12/3/10
11	Idaho State	11/26/10
11	Arizona	11/26/06
11	SMU*	1/8/06
11	at Hawaii*	1/20/05
11	at Tulsa*	2/9/02
11	Louisiana Tech*	1/31/02
11	at SMU*	1/3/02
11	at Southern Utah	1/26/93

## THREE POINTERS ATTEMPTED

3PA	OPP	DATE
1. 35	<b>USW+</b>	<b>12/29/25</b>
2. 34	Southern Miss*	3/1/15
3. 33	at Weber State	11/28/18
4. 32	Idaho State	11/28/15
32	at SMU	11/16/14
32	Toledo	11/24/09
32	vs. SMU*	3/9/08
8. 31	UTSA	2/11/23
31	Louisiana Tech*	1/31/02
10. 30	Louisiana Tech*	2/5/14
30	at Tulsa*	2/9/02
30	at Louisiana Tech*	1/5/02

## THREE POINT PERCENTAGE (MIN. 8 MADE)

3FG%	OPP	DATE
1. .733 (11-15)	at S. Utah	1/26/93
2. .650 (13-20)	at FIU*	2/12/21
3. .647 (11-17)	Southern Miss*	2/21/09
4. .643 (9-14)	UTSA	11/16/24
5. .615 (8-13)	Cal Poly	12/16/03
6. .600 (9-15)	TX Southern	12/13/09
6. .600 (9-15)	vs. SAC St.	12/30/08
8. .588 (10-17)	Southern Miss*	2/16/19
9. .579 (11-19)	vs. WIU	12/20/18
.579 (11-19)	Idaho State	11/26/10
.579 (11-19)	at Tulane*	1/18/09

## FREE THROWS MADE

FTM	OPP	DATE
1. 42	vs. East Carolina	12/17/17
2. 40	East Carolina*	1/6/11
3. 36	Oregon State	12/21/86
4. 35	at NM State	2/15/21
35	Kansas State	11/16/13
6. 34	Bellhaven+	11/27/93
7. 33	Air Force	12/21/21
33	Middle Tennessee*	1/7/16
33	Louisiana Tech*	2/27/15
10. 31	vs. Illinois-Chicago	12/19/96
31	Southeast Louisiana	2/24/90

## FREE THROWS ATTEMPTED

FTA	OPP	DATE
1. 54	East Carolina*	1/6/11
2. 53	Bellhaven+	11/27/93
3. 50	vs. East Carolina	12/17/17
4. 49	Oregon State	12/21/86
5. 48	Air Force	12/21/21
6. 47	Kansas State	11/16/13
47	at UCF	12/18/97
46	at NM State	12/15/21
9. 45	UTPB+	11/8/13
10. 44	vs. McNeese State	12/20/93

## FREE THROW PERCENTAGE (MIN. 10 MADE)

FT%	OPP	DATE
1. 100 (16-16)	at Wyoming	1/14/89
100 (10-10)	New Mexico	2/21/85
100 (10-10)	vs. San Diego	11/23/84
4. .962 (25-26)	San Jose State*	3/6/03
5. .941 (16-17)	UC Irvine	11/13/10
.941 (16-17)	at WNMU+	12/7/87
7. .938 (15-16)	North Texas	11/28/123
8. .929 (13-14)	at Boise State*	2/22/03
.929 (13-14)	at Colo. St.*	2/5/98
10. .923 (12-13)	Sam Houston*	3/6/25
.923 (12-13)	Arkansas State	12/1/18

## OTHER GAMES OF FT 90% OR BETTER

11. .917 (22-24)	<b>vs Liberty</b>	<b>1/4/26</b>
.917 (11-12)	at UAB*	1/29/15
.917 (11-12)	at Toledo	12/21/0
13. .909 (10-11)	NM State*	11/23/04
.909 (20-22)	Boise State*	1/25/03
.909 (10-11)	Creighton	2/15/92

## OFFENSIVE REBOUNDS

ORB	OPP	DATE
1. 39	<b>USW+</b>	<b>12/29/25</b>
2. 33	<b>WNMU+</b>	<b>11/11/25</b>
3. 32	Abilene Christian+	11/30/93
4. 31	Sul Ross State+	12/1/97
5. 29	Houston Baptist	11/19/11
28	Lamar	11/20/98
28	Bellhaven+	11/27/93
28	at Western Michigan	1/3/93
28	at Oral Roberts	1/27/89
28	at Southern Utah	12/29/88

## TOTAL REBOUNDS

RB	OPP	DATE
1. 74	<b>USW+</b>	<b>12/29/25</b>
2. 66	WNMU+ (21/+39)	11/17/16
3. 65	Sul Ross State+ (40/+25)	12/1/97
4. 64	<b>WNMU+ (33/+31)</b>	<b>11/11/25</b>
64	Bellhaven+ (28/+36)	11/27/93

64	UTPA (25/+39)	1/7/89
7. 61	vs. McNeese State (40/+61)	11/24/89
61	New Mexico (NA/NA)	3/3/83
9. 60	Houston Baptist (38/+22)	11/19/11
60	at La-Lafayette (56/+4)	11/27/05
60	Air Force (35/+25)	2/14/98
60	Azusa Pacific+ (45/+15)	11/22/96
60	Abilene Christian+ (37/+23)	11/30/93
60	Alaska (44/+16)	12/16/89
60	at Colorado State* (NA/NA)	1/10/81

## REBOUND MARGIN

MAR	OPP (UTEP RB/OPP RB)	DATE
1. +45	WNMU+ (66/21)	11/17/16
2. +44	<b>USW+ (73-40)</b>	<b>12/29/25</b>
3. +39	UTPA (64-25)	1/7/89
4. +36	Belhaven+ (64-28)	11/27/93
5. +32	Savannah State (50-18)	11/22/08
6. +30	<b>WNMU+ (64-34)</b>	<b>11/11/25</b>
+30	WKU	2/4/23
8. +28	ENMU+ (57-29)	12/2/14
9. +27	Alcorn State (48-21)	11/10/18
+27	Prairie View A&M (58-31)	11/21/99
+27	Texas State Southern (50-23)	1/18/94

## OTHER GAMES OF AT LEAST +26 REBOUND MARGIN

+26	Lamar (54-28)	12/1/11
+26	Texas State (50-24)	12/31/11
+26	UC Irvine (54-28)	11/13/10
+26	Prairie View A&M (58-32)	3/1/96

## PERSONAL FOULS

PF	OPP	DATE
1. 37	at US International+	1/29/89
2. 33	Eastern Arizona+	1/10/79
3. 32	at Utah*	3/12/92
32	Alaska	12/16/89
5. 31	vs. Old Dominion	3/11/16
31	at Rice	12/6/91
31	at Southeast Louisiana	1/13/90
31	at McNeese State	1/3/86
9. 30	at California Baptist	11/18/23
30	North Texas*	2/16/17
30	Texas State	11/30/13
30	at TCU	1/12/97
30	at Oregon	1/3/94
30	at Texas State	2/19/90
30	at Lamar	1/4/86
30	New Mexico State	12/3/85
30	at Hardin Simmons**	2/2/85

## ASSISTS

AST	OPP	DATE
1. 33	Savannah State	11/22/08
2. 31	UT-Permian Basin+	12/15/06
3. 29	Texas State	12/17/10
4. 28	Tulsa*	2/7/10
5. 27	at UCF*	2/24/08
27	at UTPA	2/7/89
7. 26	WNMU+	11/17/16
26	at Tulane*	2/1/14
26	Mississippi Valley St.	12/14/08
26	East Carolina*	2/10/08
26	Arkansas-Pine Bluff	12/20/06
26	Montana State	12/22/03
26	at Portland State	2/28/89

## FEWEST TURNS OVERS COMMITTED

TO	OPP	DATE
1. 0	vs. UTPA	12/3/82
2. 5	Louisiana Tech*	1/30/16
5	East Carolina*	2/10/08
5	vs. UTSA	11/27/81
5. 6	at Weber State	11/28/18
6	Sam Houston State	12/28/12
6	at Wyoming	2/28/91
7. 7	Middle Tennessee	3/13/24
7	FAU*	2/22/21
7	UAB*	2/6/21
7	Old Dominion*	2/25/16
7	New Mexico	12/2/15
7	UT-Permian Basin+	12/15/06
7	Wyoming	1/31/91

## MOST TURNS OVERS COMMITTED

TO	OPP	DATE
1. 41	at Houston*	11/27/01
2. 40	at Houston	12/18/87
3. 37	vs. Grambling State	12/5/98
4. 35	Western New Mexico+	12/8/88
5. 34	at No. 25 Arizona	11/29/04
34	New Mexico	11/19/99
34	at Texas State	2/7/87
34	at New Mexico State	11/24/84
9. 33	LA Tech*	2/17/22
33	at Tulane*	1/30/11
33	at San Diego State	1/25/96
33	at McNeese State	12/18/95
33	at UC-Irvine	12/2/95
33	at New Mexico State	12/2/93

## MOST TURNS OVERS FORCED

TO	OPP	DATE
1. 39	UTSA	1/8/90
2. 38	Christian Brothers+	11/27/94
3. 37	UTPA	12/22/96
4. 36	St. Mary's	11/10/06
36	Southern Utah	2/3/90
6. 34	Kansas State	11/16/13
34	Tulsa*	1/18/97
8. 33	New Orleans	11/7/22
33	Houston Baptist	11/15/15
33	vs. Texas Southern	11/22/12
33	Prairie View A&M	12/12/06

## OTHER GAMES OF AT LEAST 30 TO'S FORCED

11. 32	East Carolina*	2/22/14
32	TXA&M Kingsville+	12/9/89
32	at UTA	2/5/87
14. 31	Portland	12/9/23
31	Weber State	12/5/19
31	UTPB+	12/14/15
31	NM State	11/18/98
31	at UTA	2/17/90
31	Lamar	1/4/89
31	NM State	12/12/

# TEAM SINGLE-GAME RECORDS

93	vs. ECU (W, 93-79, OT)	12/17/17
93	WVNU+ (W, 93-46)	11/17/16
	Hardin-Simmons+ (W, 93-52)	11/29/96
93	vs. ACU+ (W, 93-70)	12/7/79
28	FAU* (W, 92-62)	2/22/21
92	Alcorn St. (W, 92-47)	11/16/19
92	at CSUF (W, 92-91, 2OT)	12/29/17
92	NAU (W, 92-43)	11/22/13
92	vs. WKU (W, 92-60)	3/22/08
92	vs. UMS* (W, 92-79)	3/08/12
92	ENMU+ (W, 92-54)	1/13/87
92	Hardin-Simmons* (W, 92-77)	2/16/85
92	vs. Schreiner College+ (W, 92-67)	1/16/79
37	91 Howard Payne+ (W, 91-78)	1/24/87
38	90 Fresno State* (W, 90-68)	1/11/03

## FEWEST POINTS SCORED (GAME)

PTS	OPP	DATE	
1	28	at Tulsa* (L, 28-64)	1/27/00
2	31	at Rice* (L, 31-84)	2/1/07
31	SMU* (L, 31-66)	1/20/00	
31	at Hawaii* (L, 31-68)	1/7/99	
5	32	at Rice* (L, 32-83)	1/27/06
32	at TXA&MCC (L, 32-69)	12/6/01	
7	35	at Middle Tennessee (L, 35-59)*	3/1/25
35	New Mexico (L, 35-59)	11/30/17	
9	36	Hawaii* (L, 36-65)	2/3/00
10	37	New Mexico (L, 37-87)	11/30/00
37	at Wyoming (L, 37-46)	1/14/77	

## MOST POINTS ALLOWED (GAME)

PTS	OPP	DATE	
1	124	at Texas (L, 48-124)	11/17/78
2	116	at SDSU (L, 59-116)	1/4/84
3	111	at BYU* (L, 59-111)	1/2/82
4	109	at BYU* (L, 58-109)	2/2/79
5	108	at #6 La. Tech* (L, 54-108)	2/27/03
108	at BYU* (L, 87-108)	2/19/81	
7	106	at Colorado* (L, 42-106)	2/10/79
8	105	at SDSU (L, 72-105)	12/10/82
9	104	Colorado State* (W, 115-104)	2/9/80
10	103	at Texas Tech (L, 58-103)	1/4/83

## OTHER GAMES ALLOWED 100+ POINTS

11	102	vs. Ga. Tech (L, 77-102)	12/20/13
12	100	at Houston (L, 52-100)	11/27/01
100	vs. S. Carolina (L, 60-100)	11/28/97	
100	at Colo. St.* (L, 49-100)	1/13/96	
100	at Texas State (L, 77-100)	2/7/87	
100	at Wyoming* (L, 78-100)	1/12/80	

## FEWEST POINTS ALLOWED (GAME)

PTS	OPP	DATE	
1	19	Fort Bliss+ (W, 96-19)	11/10/77
2	20	Beaumont+ (W, 58-20)	1/15/75
20	at Beaumont+ (W, 58-20)	12/13/74	
4	25	Fort Bliss+ (W, 66-25)	1/27/75
5	26	Beaumont+ (W, 67-26)	1/29/75
6	27	NM State (W, 63-27)	11/29/11
7	28	WVNU+ (W, 73-28)	12/9/76
8	29	Sul Ross St.+ (W, 54-29)	11/30/98
9	30	at Sul Ross St.+ (W, 67-30)	1/15/78
10	32	UTPB+ (W, 86-32)	12/14/15
32	at UTSA (W, 54-32)	11/1/93	

## OTHER GAMES FEWER THAN 40 POINTS ALLOWED

12	33	vs. Samford (W, 46-33)	12/21/17
33	UTPA (W, 68-33)	12/22/96	
14	34	FIU* (W, 66-34)	1/2/20
15	35	Tulsa* (W, 50-35)	1/31/13
35	vs. CS Northridge (W, 57-35)	12/12/87	
17	36	UT Dallas+ (W, 75-36)	11/20/04
36	Sull Ross State+ (W, 84-36)	12/30/00	
36	UTPA (W, 58-36)	12/15/90	
20	37	at New Mexico* (W, 52-37)	3/1/95
37	Bellhaven+ (W, 72-37)	11/27/93	
37	UTPA (W, 67-37)	1/7/89	
37	Sul Ross St.+ (W, 67-37)	11/29/87	
24	38	at UTPA (W, 65-38)	2/8/88
38	UCF* (W, 67-38)	1/29/12	
38	Fresno State* (W, 45-38)	2/12/04	
27	39	Kansas State (W, 84-39)	11/16/13
39	Hawaii* (W, 44-39)	1/22/04	
39	Central Arizona+ (W, 47-39)	2/19/77	

## MOST POINTS SCORED (HALF)

PTS	OPP (HALF)	DATE	
1	65	Colorado State* (2nd)	2/9/80
2	58	North Alabama (2nd)	11/26/23
58	FAU* (2nd)	2/22/21	
58	at Tulane* (2nd)	2/1/14	
58	Southern Miss* (2nd)	1/22/14	
58	Savannah State+ (2nd)	11/22/08	
58	at Fort Bliss+ (2nd)	11/28/76	
8	56	USW+ (1st)	12/29/25
56	UTPB+ (1st)	12/15/06	
56	Hardin-Simmons+ (2nd)	11/29/96	
56	ENMU+ (2nd)	1/13/87	

## OTHER GAMES WITH 55+ POINTS SCORED (HALF)

12	55	UTSA* (1st)	1/18/20
55	NM State (2nd)	11/12/13	
55	Southern Miss* (1st)	2/21/09	
55	vs. Texas Lutheran+ (1st)	12/4/82	
55	Sul Ross State+ (2nd)	12/3/76	

## MOST POINTS SCORED (FIRST HALF)

PTS	OPP	DATE	
1	56	USW+ (1st)	12/29/25
2	56	UTPB+	12/15/06
3	55	UTSA*	1/18/20
55	Southern Miss*	2/21/09	
55	vs. Texas Lutheran+	12/4/82	
6	54	Arkansas Pine Bluff	12/20/06
7	52	Tulsa*	1/18/97
52	at Southern Miss*	1/9/20	
51	UTPB+	12/21/05	
10	50	Tulsa*	1/11/14
50	vs. NW State	12/1/02	
50	Oral Roberts	2/15/89	
50	Colorado State*	2/9/80	

## MOST POINTS SCORED (SECOND HALF)

PTS	OPP	DATE	
1	65	Colorado State*	2/9/80
2	58	North Alabama	11/26/23
58	FAU*	2/22/21	
58	at Tulane*	2/1/14	
58	Southern Miss*	1/22/14	
58	Savannah State+	11/22/08	
58	at Fort Bliss+	11/28/76	
7	56	Hardin-Simmons+	11/29/96
56	Eastern New Mexico+	1/13/87	
9	55	NM State	11/12/13
55	Sul Ross State+	12/3/76	

## FEWEST POINTS SCORED (HALF)

PTS	OPP (HALF)	DATE	
1	8	at Rice* (1st)	2/1/07
2	10	at New Mexico* (1st)	2/20/97
3	11	at Fresno State* (1st)	2/6/03
11	at Tulsa* (1st)	1/27/00	
11	vs. FIU (1st)	11/27/98	
11	at Texas Tech (1st)	1/4/96	
7	12	at SMU* (1st)	1/29/04
8	13	Lamar (N)	11/22/23
13	at Rice* (1st)	1/27/06	
13	Fresno State* (1st)	2/12/04	
13	at Kansas (1st)	12/7/03	
13	New Mexico (1st)	11/23/01	
13	Hawaii* (1st)	2/3/00	
13	at San Diego State* (1st)	2/29/92	
13	at Texas State (2nd)	2/19/90	
13	Texas State (2nd)	12/13/89	
13	at Northern Ariz. (1st)	12/13/85	

## FEWEST POINTS SCORED (FIRST HALF)

PTS	OPP	DATE	
1	8	at Rice*	2/1/07
2	10	at New Mexico*	2/20/97
3	11	at Texas Tech	1/4/96
11	vs. Fla. International	11/27/98	
11	at Tulsa*	1/27/00	
11	at Fresno State*	2/6/03	
7	12	at SMU*	1/29/04
8	13	Lamar (N)	11/22/23
13	at Northern Arizona	12/13/85	
13	at San Diego State*	2/29/92	
13	Hawaii*	2/3/00	
13	New Mexico	11/23/01	
13	at Kansas	12/7/03	
13	Fresno State*	2/12/04	
13	at Rice*	1/27/06	

## FEWEST POINTS SCORED (SECOND HALF)

PTS	OPP	DATE	
1	13	New Mexico	11/30/17
13	at Texas State	2/19/90	
13	Texas State	12/13/89	
4	14	at BYU*	1/28/99
5	15	at Middle Tennessee *	3/1/25
15	Marshall*	1/31/19	
15	at San Diego State*	1/22/97	
7	16	SMU*	1/20/00
16	Creighton	2/15/92	
9	17	at Rice*	1/12/19
17	at UCF*	1/15/06	
17	at Tulsa*	1/16/03	
17	at Tulsa*	1/27/00	
17	vs. TCU*	3/1/99	
17	at Hawaii*	1/7/99	
17	at San Diego State*	1/25/96	
17	NM State	12/3/85	

## MOST POINTS SCORED (QUARTER)

PTS	OPP (QTR)	DATE	
1	36	vs. FAU (1)	3/17/20
36	Houston Baptist (1)	11/15/15	
3	32	FAU* (3)	2/22/21
32	UTSA* (2)	1/18/20	
32	WVNU+ (1)	11/17/16	
6	31	North Alabama (4)	11/26/23
31	at UAB (3)	2/17/23	
31	FIU* (3)	2/25/17	
31	Houston Baptist (3)	11/15/15	
10	30	Nicholls (1)	11/8/25
30	at LA Tech* (3)	1/11/20	
30	CSU Bakersfield (4)	11/11/17	
30	Marshall* (2)	1/28/17	

## FEWEST POINTS SCORED (QUARTER)

PTS	OPP (QTR)	DATE	
1	2	Lamar (2)	11/22/23
2	3	UTSA* (2)	3/8/22
3	Arizona (2)	12/7/19	
4	4	at UAB* (1)	2/1/20
4	at Middle Tennessee*	1/19/19	
4	at ODU* (4)	2/17/18	
4	vs. Samford (4)	12/21/17	
4	New Mexico (3)	11/30/17	
9	5	at Middle Tennessee (3) *	3/1/25
5	Colorado State (1)	12/16/24	
5	Marshall* (3)	1/31/19	
5	at Tulsa (1)	12/29/18	
5	at Rice* (2)	1/28/18	
5	at CS Fullerton (4)	12/29/17	
5	at Tulane (2)	12/22/17	
5	vs. LSU (3)	11/24/16	

## MOST POINTS ALLOWED (QUARTER)

PTS	OPP (QTR)	DATE	
1	35	at UTSA* (1)	1/21/17
2	32	vs UCI (3)	12/18/25
32	FIU (2)	3/7/23	
5	30	at LA Tech* (3)	1/11/20
6	29	UAB* (4)	2/2/18
6	29	at BYU (2)	12/13/25
29	Middle Tennessee (3) *	1/18/24	
29	Liberty (4)	2/3/24	
29	at UAB* (1)	3/2/19	
10	28	New Mexico (2)	11/19/19
28	at Middle Tennessee* (4)	2/4/17	
28	at New Mexico (2)	12/11/16	

## FEWEST POINTS ALLOWED (QUARTER)

PTS	OPP (QTR)	DATE	
1	3	Arkansas (1)	11/24/17
3	UTPB+ (2)	12/14/15	
3	vs. Samford (1)	12/21/17	
4	UCR (1)	11/9/19	
4	FAU* (2)	2/23/17	
6	5	ENMU (2) +	12/30/24
5	at San Jose State (4)	11/25/22	
5	UAB* (3)	2/5/21	
5	FIU* (4)	1/2/20	
5	vs. Samford (1)	12/21/17	
5	CSU Bakersfield (1)	11/11/17	
5	WVNU+ (3)	11/17/16	
5	FAU* (3)	2/13/16	
5	UTPB+ (4)	12/14/15	

## LARGEST LEAD AT HALFTIME

PTS	OPP (OUTCOME)	DATE	
1	44	UTPB+ (W, 107-43)	12/15/06
2	34	USW+ (W, 102-42)	12/29/25
34	ENMU+ (W, 87-44)	12/1/08	
34	Sul Ross State+ (W, 84-36)	12/30/00	
34	Ft. Bliss+ (W, 96-19)	11/10/77	
6	33	PVAMU (W, 86-48)	12/20/14
33	Kansas State (W, 84-39)	11/16/13	
8	30	UTPA (W, 77-41)	1/4/88
9	29	UABP (W, 96-67)	12/20/06
10	27	UTSA* (W, 94-54)	1/18/20

## OTHER GAMES WITH 25+ HALFTIME LEAD

11	25	NAU (W, 92-43)	11/22/13
25	ENMU+ (W, 71-34)	12/8/12	
25	at Fort Bliss+ (W, 107-37)	11/28/76	

## LARGEST DEFICIT AT HALFTIME

PTS	OPP	DATE	
1	42	at Rice*	2/1/07
42	vs. Penn State	11/19/83	
3	39	New Mexico	11/23/01
4	37	at La. Tech*	1/5/02
5	35	at Arizona State	11/22/85
6	33	Middle Tennessee*	1/19/19
33	at No. 6 LA Tech*	2/27/03	
8	32	vs. Auburn	12/11/81
9	31	at Colorado State*	2/11/82
10	30	vs. FIU	11/27/98
30	at Houston	12/18/87	

30 at San Diego State 1/4/84

## LARGEST MARGIN OF VICTORY

PTS	OPP (SCORE)	DATE	
1	77	Ft. Bliss+ (96-19)	11/10/77
2	70	at Ft. Bliss+ (107-37)	11/28/76
3	64	UTPB+ (107-43)	12/15/06
4	59	USW+ (102-43)	12/29/25
57	Savannah State+ (103-46)	11/22/08	
6	54	UTPB+ (86-32)	12/14/15
7	49	NAU (92-43)	11/22/13
8	48	Sul Ross State+ (84-36)	12/30/00
9	47	WVNU+ (93-46)	11/17/16
10	46	UTPA (80-34)	1/2/06

# INDIVIDUAL SINGLE-GAME RECORDS

## POINTS

PTS	NAME	OPP	DATE
1. 40	Holly Russ	UTSA	2/19/91
2. 37	Holly Russ	Baylor	12/17/91
3. 36	Kayla Thornton	vs. Belmont	12/21/13
4. 35	Kiana Taylor	South Carolina	11/28/97
35	Holly Russ	San Diego State*	1/19/91
6. 34	Sparkle Taylor	Rice*	2/18/17
34	Sparkle Taylor	North Texas*	2/16/17
34	Amy Pack	San Jose State	12/30/00
34	Lenore Dembs	Hardin-Simmons	2/16/85
34	Be Stoney	BYU*	1/30/80

## OTHER 30+ point games

11. 33	Jareica Hughes	Rice*	3/7/08
33	Amy Pack	San Jose State*	2/5/00
33	Holly Russ	Wichita State	12/1/90
14. 32	Sparkle Taylor	vs. Old Dominion	3/8/17
32	Kayla Thornton	at Memphis*	2/24/13
16. 31	Jenzel Nash	Charlotte*	2/27/16
31	Gloria Estrada	NMSU*	1/29/77
18. 30	Destiny Thurman	North Texas*	3/5/22
30	Tamara Seda	at CS Fullerton	12/29/17
30	Donna Stoney	Henderson	11/21/81

## MOST POINTS SCORED (QUARTER)

PTS (QTR)	NAME	OPP	DATE
1. 18 (3)	Sparkle Taylor	Northern Arizona	11/11/16
2. 16 (1)	Katarina Zec	ODU*	2/8/20
3. 14 (2)	Ndack Mbengue	Delaware*	1/2/26
14 (2)	M. Moses Amaniyo	USW+	12/29/25
14 (3)	Ivane Tensaie	Kansas City	11/25/25
14 (4)	Jazion Jackson	at UTSA*	1/11/23
14 (1)	Zuzanna Puc	Marshall*	1/31/19
14 (4)	Najala Howell	at UTSA*	2/4/18
14 (2)	Cameasha Turner	at WKU*	2/6/16
14 (2)	Lulu McKinney	UNM	12/2/15
10. 13 (4)	Ivane Tensaie	FIU*	1/18/25
13 (2)	Katarina Zec	at CSU Fullerton	12/30/17
13 (1)	Najala Howell	at UC Riverside	12/30/17
13 (4)	Najala Howell	Houston Baptist	12/2/17
13 (3)	Sparkle Taylor	North Texas*	2/16/17
13 (3)	Sparkle Taylor	WKU*	1/26/17
13 (3)	Sparkle Taylor	UTSA*	1/11/17
13 (3)	Jenzel Nash	at La Tech*	2/20/16

## FIELD GOALS MADE

FGM	NAME	OPP	DATE
1. 16	Lenore Dembs	Hardin-Simmons	2/16/85
2. 14	Heidi Walker	PVAMU	11/21/99
14	Kiana Taylor	South Carolina	11/28/97
14	Holly Russ	UT-San Antonio	2/19/91
14	Holly Russ	San Diego State	1/19/91
14	Kris Hudson	Texas Lutheran	12/4/82
14	Donna Stoney	Henderson State	11/21/81
14	Gloria Estrada	NMSU	1/29/77
9. 13	Sparkle Taylor	vs. Old Dominion	3/8/16
13	Kayla Thornton	vs. Belmont	12/21/13
13	Lisa Watson	AK-Anchorage	2/26/89
13	Traci Miller	Arkansas State	12/6/86
13	Carolin Prince	at TXAM Kingsville	12/5/80

## FIELD GOALS ATTEMPTED

FGA	NAME	OPP	DATE
1. 31	Holly Russ	UT-San Antonio	2/19/91
2. 30	Holly Russ	Creighton	2/21/91
3. 29	Jenzel Nash	Charlotte*	2/27/16
29	Holly Russ	Creighton	1/26/91
5. 28	Holly Russ	Utah	2/20/92
28	Holly Russ	Weber State	11/30/91
28	Traci Miller	Arkansas State	12/6/86
28	Lenore Dembs	Hardin-Simmons	2/16/85
27	Holly Russ	San Diego State	2/16/91
27	Holly Russ	San Diego State	1/19/91
27	Holly Russ	Wichita State	12/1/90

## FIELD GOAL PERCENTAGE (MINIMUM 7 MADE)

FG%	NAME	OPP	DATE
1. 100	Michelle Pruitt	at WKU*	2/13/20
100	Ana Valtierra	Fresno State	1/11/03
100	Kiana Taylor	New Mexico	1/24/98
100	Kevia Ford	Wyoming	2/25/95
100	Kevia Ford	Texas Southern	1/18/94
100	Michelle Roper	Wyoming	3/6/93
100	Donetta Yellets	UT-San Antonio	2/5/87
8. 93.3	Donna Stoney	Henderson state	11/21/81
9. 90.0	Erin Wilson	Portland	12/9/23
90.0	Jareica Hughes	Tulane	1/12/08
90.0	Janet Brunson	NMSU	1/13/84

## THREE-POINTERS MADE

3PM	NAME	OPP	DATE
1. 8	Ivane Tensaie	Denver	11/29/25
2. 7	Ivane Tensaie	UTSA	11/16/24
7	Katarina Zec	at NM State	12/20/17
7	Dietra Caldwell	Toledo	11/24/09

7	Sviatlana Trukshanina	Tulsa	1/22/09
7	Holly Russ	UT-San Antonio	2/19/91
7. 6	Mahri Petree	USM*	2/19/22
6	Isis Lopes	at FIU*	2/12/21
6	Lulu McKinney	New Mexico	12/2/15
6	Kelly Willingham	at UAB	1/8/14
6	Kayla Thornton	at Memphis	2/24/13
6	Sviatlana Trukshanina	TX Southern	12/13/09
6	Jareica Hughes	Toledo	11/24/09
6	Dietra Caldwell	UCF*	2/19/09
6	Dietra Caldwell	SSVU	11/22/08
6	Romie DeAnda	San Jose State	3/6/03
6	Kia Dowell	at Kansas	11/24/02
6	Kimya Murray	SMU	3/5/02
6	Amy Billhymmer	Tulsa	1/17/97
6	Jill Lewis	NMSU	12/16/93
6	Laura Walker	NMSU	12/21/92

## THREE-POINTERS ATTEMPTED

3PA	NAME	OPP	DATE
1. 16	Amy Billhymmer	Illinois-Chicago	12/19/96
2. 15	Ivane Tensaie	Delaware*	1/2/26
15	Laura Walker	NMSU	12/21/92
3. 14	Kimya Murray	SMU	3/5/02
4. 13	Ivane Tensaie	UT Martin	11/22/25
13	Kayla Thornton	at Memphis	2/24/13
13	Amy Billhymmer	TCU	1/12/97
13	Amy Billhymmer	BYU	1/29/94
13	Holly Russ	UT-San Antonio	2/19/91
13	Holly Russ	San Diego State	2/16/91
13	Terri Powell	U.S. International	2/14/88

## THREE-POINT PERCENTAGE (MINIMUM 4 MADE)

3FG%	NAME	OPP	DATE
1. 100.0 (5-5)	Najala Howell	at UC Riverside	12/30/17
100.0 (4-4)	Katarina Zec	UC Riverside	11/9/19
100.0 (4-4)	Timika Williams	vs. Missouri State	12/4/09
100.0 (4-4)	Briana Green	at Tulane*	1/18/09
100.0 (4-4)	Shalana Taylor	ULL	12/10/06
100.0 (4-4)	Ana Valtierra	SMU*	1/8/06
100.0 (4-4)	Laura Walker	Baylor	12/2/92
7. 85.7 (6-7)	Sviatlana Trukshanina	Texas Southern	12/13/09
8. 83.3 (5-6)	Destiny Thurman	vs. Kansas	11/27/21
83.3 (5-6)	Jareica Hughes	Tulane*	1/12/08
83.3 (5-6)	Ana Valtierra	Nevada*	2/14/04
83.3 (5-6)	Terri Powell	San Diego State	12/29/87

## FREE THROWS MADE

FTM	NAME	OPP	DATE
1. 17	Gloria Brown	at Southern Miss*	1/26/12
2. 16	Katia Gallegos	at NM State	12/15/21
3. 14	Amy Pack	San Jose State*	1/2/01
14	Holly Russ	UT-Pan American	1/21/91
14	Sonya Howell	Southeast La.	2/24/90
6. 13	Kayla Thornton	East Carolina*	2/22/14
13	Amy Pack	Tulsa*	1/21/01
13	Amy Pack	Nevada*	1/5/01
9. 12	Gloria Brown	East Carolina*	1/6/11
12	Noni Wharemate	San Jose State*	3/6/03
12	Amy Pack	at UTSA	11/24/00
12	Shani Dinwiddie	Rice*	2/15/97
12	Kanequa Chancellor	NMSU	11/26/96
12	Kiana Taylor	BYU*	1/29/94
12	Shenita Waddell	Wyoming*	3/10/93
12	Holly Russ	Baylor	12/17/91
12	Traci Miller	Oregon State	12/21/86
12	Dawn Coy	Oregon State	12/21/86

## FREE THROWS ATTEMPTED

FTA	NAME	OPP	DATE
1. 20	Katia Gallegos	at NM State	12/15/21
2. 19	Gloria Brown	at Southern Miss*	1/26/12
19	Amy Pack	San Jose State*	1/2/01
19	Kiana Taylor	BYU*	1/29/94
5. 18	Marta Dydek	San Jose State*	2/17/05
18	Amy Pack	Nevada*	1/5/01
18	Sonya Howell	Southeast La.	2/24/90
18	Tonie Greene	Okla. City Univ	1/21/84
9. 17	Amy Pack	San Jose State*	1/12/01
17	Marcella Lopez	West Texas State	2/18/85

## FREE THROW PERCENTAGE (MINIMUM 3 MADE)

FT%	NAME	OPP	DATE
1. 100.0 (10-10)	Portia Adams	NM State	1/31/26
100.0 (10-10)	Elina Arike	vs. #25 MT	3/10/23
100.0 (11-11)	Mahri Petree	New Orleans	11/7/22
100.0 (9-9)	Najala Howell	at FIU*	1/5/17
100.0 (10-10)	Najala Howell	vs. East Carolina	12/17/17
100.0 (9-9)	Sparkle Taylor	at FIU*	1/12/17
100.0 (9-9)	Starr Breedlove	TCU	3/24/16
100.0 (10-10)	Cameasha Turner	Marshall*	1/24/15
100.0 (10-10)	Kayla Thornton	vs. Belmont	12/21/13
100.0 (12-12)	Gloria Brown	East Carolina*	1/6/11
100.0(11-11)	Jareica Hughes	vs. Rice	3/7/08
100.0(12-12)	Ingrid Goslin	San Jose State*	3/6/03
100.0 (9-9)	Kim Daniel	UTA	12/30/98
100.0 (9-9)	Cabora Mack	BYU*	2/3/96

## REBOUNDS

RB	NAME	OPP	DATE
1. 22	Mary Moses Amaniyo	Prairie View A&M	11/23/25
20	Kanequa Chancellor	SE Missouri State	11/29/97
20	Kayla Thornton	Tulsa*	1/11/14
4. 19	Gloria Brown	at Southern Miss*	1/26/12
19	Charnette Phelps	UAB*	1/22/06
6. 18	Mary Moses Amaniyo	UT Martin	11/25/25
18	Ariona Gill	at UTSA*	2/20/20
18	Kayla Thornton	Tulane*	2/1/14
18	Chrishauna Parker	vs. UAB	3/14/13
18	Monica Ramirez	Colorado State*	1/15/94
18	Marcella Lopez	West Texas State	2/18/85
18	Tonie Greene	Eastern NM	2/17/83
18	Tonie Greene	Central Arizona	2/12/83

## OTHERS WITH 17 REBOUNDS

14. 17	Tamara Seda	Southern Miss*	1/7/17
17	Tamara Seda	CSUB	12/28/16
17	Anete Steinberga	Tulane*	3/8/13
17	Gloria Brown	Tulane*	2/13/11
17	Dragana Zoric	Houston*	12/4/02
17	Dragana Zoric	Houston*	12/4/02
17	DaTechia Specht	Fort Lewis	11/25/97
17	Kevia Ford	New Mexico*	3/1/95
17	Charsa Palamore	San Diego State*	1/19/91
17	Charsa Palamore	UT-Pan American	12/15/90
17	Charsa Palamore	Loyola Marymount	2/8/90
17	Charsa Palamore	NMSU	11/28/89
17	Vernita Gant	New Mexico	11/29/86

## ASSISTS

AST	NAME	OPP	DATE
1. 13	Jareica Hughes	at SMU*	1/15/10
13	Shalana Taylor	at Illinois State	12/19/04
3. 12	Katia Gallegos	Southern Miss*	2/29/20
12	Shalana Taylor	SMU*	1/27/05
12	Martha Contreras	Southern Colorado	1/31/88
6. 11	Katia Gallegos	vs. FAU	3/11/21
11	Kelli Willingham	CS Northridge	12/3/10
11	Jareica Hughes	Southern Miss*	2/21/09
11	Tiffney Touton	at SMU*	1/3/02
11	Christina Mata	SJSU	2/5/00

## STEALS

STL	NAME	OPP	DATE
1. 10	Sonya Howell	UTSA	2/17/90
2. 8	Cameasha Turner	UAB*	1/10/16
8	Natasha Lacy	vs. Southern Miss	3/8/08
8	Terri Pedregon	Texas Tech	12/7/94
8	Martha Contreras	UTSA	2/5/87
8	Chris Hall	Eastern N.M.	1/13/87
7. 7	Katia Gallegos	Southern Miss*	2/29/20
7	Starr Breedlove	FAU*	2/13/16
7	Chrishauna Parker	Kansas State	11/16/13
7	Jenzel Nash	at Tulane*	1/15/12
7	Natasha Lacy	Houston*	2/14/08
7	Natasha Lacy	vs. Western Kentucky	3/22/08
7	Jareica Hughes	Tulsa*	2/2/08
7	Kimya Murray	Louisiana Tech*	1/31/02
7	Terri Pedregon	Christian Brothers	11/27/94
7	Norma Sierra	UTSA	1/6/89
7	Martha Contreras	Colorado State	1/23/88
7	Kris Hudson	at NMSU	2/19/83

## BLOCKS

BLK	NAME	OPP	DATE
1. 10	Izabela Piekarska	ULL	12/10/06
10	Kim Watts	Auburn	12/11/81
3. 9	Kim Watts	at NM State	12/15/79
4. 8	Gloria Brown	at NM State	11/16/11
5. 7	Fannie Goodwin	UCF*	2/19/09
7	Izabela Piekarska	Tulane*	11/25/05
7. 6	Gloria Brown	Tulane*	2/13/11
6	Gloria Brown	Houston*	1/16/11
6	Izabela Piekarska	SMU*	1/31/08
6	Izabela Piekarska	Memphis*	2/10/07
6	Marta Dydek	at Louisiana Tech*	2/24/05
6	Marta Dydek	Fresno State*	1/15/05
6	Donetta Yellets	SW Texas State	2/7/87
6	Marcella Lopez	West Texas State	2/18/85
6	Kim Watts	Colorado State*	1/30/82
6	Kim Watts	Wyoming*	1/29/82
6	Kim Watts	at Utah*	1/4/82
6	Kim Watts	vs. Marquette	12/12/81
6	Kim Watts	Juarez	12/5/81

## TURNOVERS

TO	NAME	OPP	DATE
1. 15	Holly Russ	Lamar	1/3/91
2. 13	Selina Thomas	West Texas State	2/4/85
3. 11	Kristi Lattin	Grambling State	12/5/98
11	LaShonda Gray	Grambling State	12/5/98
11	Holly Russ	San Diego State*	2/16/91
11	Liz Ruyas	Northern Arizona	3



# 2025-26 BOX SCORES



Official Basketball Box Score - Final  
**UTEP at Kansas City**  
 11/25/25 Sweeney Center, Kansas City  
 2025-26 Women's Basketball

Game Time: 7:00 PM  
 Game Duration: 1:52  
 Attendance: 283

Officials: Doug Knight, Erica Parker, Jeremy McHugh

UTEP - 75

Record: 1-0

NO. Name	Min	FG	3P	FT	Rebounds		Fouls	TP	AS	TO	ST	Blocks			+/-	
					OR	DR						BS	BA	+		
13 Ndack Mbengue	31:00	7-9	0-0	4-4	3	7	10	4	3	18	1	2	1	0	1	-5
2 Sirivva Legions	G 22:44	2-8	0-0	0-2	0	2	2	1	1	4	1	3	0	0	1	-4
3 Ivane Tensale	G 31:48	6-12	5-8	2-3	1	0	1	1	2	19	1	2	0	1	1	9
4 Delma Zita	G 20:08	1-3	0-0	2-2	1	1	2	5	4	2	2	1	0	0	0	-10
11 Portia Adams	G 23:01	1-6	1-2	2-4	0	5	5	2	4	1	0	0	0	0	0	-14
5 Heaven Samayoa-Mathis	25:38	4-7	1-1	0-0	2	1	3	4	0	9	6	1	1	0	0	23
22 Mary Moses Amaniyu	26:10	2-6	0-0	7-8	5	8	13	2	4	11	1	3	1	0	1	15
14 Taliana Collazo	07:09	2-4	1-3	0-2	0	1	1	0	2	5	0	0	0	0	0	2
10 Osadebamwen Igbinedion	00:15	0-0	0-0	0-0	0	0	0	0	0	0	0	0	0	0	0	2
8 Brooklyn Terry	04:17	0-1	0-1	0-0	0	0	0	0	0	0	0	0	0	0	0	-3
12 Irene Asensio	07:50	0-0	0-0	0-0	0	2	2	1	0	0	2	0	0	0	0	12
Team					4	2	6	0	0	0	0	0	0	0	0	
Totals		25-56	8-15	17-25	16	29	45	17	22	75	18	17	7	1	4	11

Major Fouls: NONE

Shooting By Period  
 1st FG% 5-9 55.6%  
 3PT% 1-3 33.3%  
 2nd FG% 5-15 33.3%  
 3PT% 0-2 0.0%  
 FT% 1-1 100%  
 3rd FG% 10-17 58.8%  
 3PT% 5-6 83.3%  
 FT% 4-7 57.1%  
 4th FG% 5-15 33.3%  
 3PT% 2-4 50.0%  
 FT% 7-8 87.5%  
 GM FG% 25-56 44.6%  
 3PT% 8-15 53.3%  
 FT% 17-25 68.0%

Dead Ball Rebounds: 3/0

Kansas City - 64

Record: 0-1

NO. Name	Min	FG	3P	FT	Rebounds		Fouls	TP	AS	TO	ST	Blocks			+/-	
					OR	DR						BS	BA	+		
11 Koby Bannerman	F 19:17	2-5	0-0	0-0	4	2	6	3	1	4	1	2	2	3	0	2
0 Emari Bennett	G 22:37	6-12	4-4	0-0	3	3	1	1	16	0	1	3	0	0	5	
2 Eluani Bennett	G 31:44	3-8	0-0	2-5	3	2	5	4	5	8	1	3	0	0	-13	
23 Alyssa Febres	G 15:59	0-2	0-1	2-2	0	0	0	0	2	3	4	0	0	0	-7	
24 Zaire Harrell	G 36:48	3-7	0-0	1-1	1	6	7	4	6	7	4	0	2	0	1	-6
25 Jamyah Winter	29:49	4-8	4-8	2-3	3	3	3	1	14	0	0	0	0	0	-10	
5 Tierra Trotter	24:01	4-11	1-3	0-0	1	2	3	4	0	9	3	4	0	0	-4	
22 Jumoke Adaramoye	14:50	1-5	0-0	0-0	1	2	3	2	0	2	1	0	0	0	-16	
1 Nikole Thomas	04:55	1-1	0-0	0-0	0	0	0	1	2	0	0	0	0	0	-8	
Team					0	0	0	0	0	0	1	0	0	0	0	
Totals		24-59	9-16	7-12	10	20	30	22	17	64	13	15	7	4	1	-11

Major Fouls: NONE

Shooting By Period  
 1st FG% 8-14 57.1%  
 3PT% 3-3 100.0%  
 2nd FG% 5-14 35.7%  
 3PT% 4-6 66.7%  
 FT% 0-0 0%  
 3rd FG% 4-10 40.0%  
 3PT% 1-2 50.0%  
 FT% 4-7 57.1%  
 4th FG% 7-21 33.3%  
 3PT% 1-5 20.0%  
 FT% 3-5 60%  
 GM FG% 24-59 40.7%  
 3PT% 9-16 56.3%  
 FT% 7-12 58.3%

Dead Ball Rebounds: 1/0

Biggest lead

Miners 13 (4<sup>th</sup> 8:52) Roos 9 (3<sup>rd</sup> 9:50)

Best Scoring Run

9 (3<sup>rd</sup> 2:08) 7 (4<sup>th</sup> 7:14)

Lead Changes

2

Times Tied

5

Time with Lead

15:29 17:17

Points from Turnovers 13 16

Paint 26 24

Second Chance 23 5

Fast Breaks 9 4

Bench 25 27

Period by Period Scoring

1st 2nd 3rd 4th TOT

Miners 16 11 29 19 75

Roos 19 14 13 18 64

Official Basketball Box Score - Final  
**Denver at UTEP**  
 11/25/25 Don Haskins Center, El Paso, Texas  
 2025-26 Women's Basketball

Game Time: 2:00 PM  
 Game Duration: 1:42  
 Attendance: 1,096

Officials: Angelica Sufren, Tucker Furrow, Shandra Twine

Denver - 52

Record: 3-4

NO. Name	Min	FG	3P	FT	Rebounds		Fouls	TP	AS	TO	ST	Blocks			+/-	
					OR	DR						BS	BA	+		
13 Ana Conde	C 18:18	2-3	0-0	0-0	1	3	4	2	4	1	7	1	0	0	-9	
32 Lily Esparza	C 19:29	0-1	0-1	0-0	0	2	2	0	2	0	1	1	0	0	-4	
3 Victoria Baker	G 28:43	1-3	0-2	5-5	0	1	1	3	3	7	1	0	0	0	-12	
10 Coryn Watts	G 38:55	6-22	4-9	3-4	1	4	5	1	2	19	1	3	3	0	1	
12 Laila Monclova	G 33:52	4-15	1-6	0-0	1	6	7	1	1	9	0	3	4	1	0	
11 Karolina Padilla	07:44	0-0	0-0	0-0	0	1	1	0	0	0	1	2	1	0	-20	
1 Laila McLeod	08:54	1-1	1-1	0-0	0	1	1	0	0	3	0	1	0	0	-2	
0 Brooke Murrell	34:13	4-6	0-0	2-2	4	4	8	1	2	10	0	2	0	1	0	
15 Jocelyn Medina	09:52	0-4	0-3	0-0	0	1	1	0	0	0	2	1	0	0	0	
Team					2	3	5	0	0	0	0	1	0	0	0	
Totals		18-55	6-22	10-11	9	26	35	10	12	52	7	21	9	3	1	-17

Major Fouls: NONE

Shooting By Period  
 1st FG% 3-13 23.1%  
 3PT% 3-8 37.5%  
 FT% 0-0 0%  
 2nd FG% 3-18 16.7%  
 3PT% 0-7 0.0%  
 FT% 2-2 100%  
 3rd FG% 6-12 50.0%  
 3PT% 1-3 33.3%  
 FT% 8-9 88.9%  
 4th FG% 6-12 50.0%  
 3PT% 2-4 50.0%  
 FT% 0-0 0%  
 GM FG% 18-55 32.7%  
 3PT% 6-22 27.3%  
 FT% 10-11 90.9%

Dead Ball Rebounds: 2/0

UTEP - 69

Record: 6-0

NO. Name	Min	FG	3P	FT	Rebounds		Fouls	TP	AS	TO	ST	Blocks			+/-
					OR	DR						BS	BA	+	
13 Ndack Mbengue	F 31:52	5-10	0-0	2-2	6	4	10	2	1	12	1	1	2	0	1
2 Sirivva Legions	G 32:06	6-13	0-0	5-6	0	7	7	1	4	17	3	0	1	0	22
3 Ivane Tensale	G 36:27	8-18	8-12	2-2	0	1	1	0	2	26	2	0	1	0	17
4 Delma Zita	G 26:16	1-2	0-0	0-0	0	2	2	0	1	2	6	5	4	0	0
11 Portia Adams	G 11:01	0-3	0-2	0-0	0	1	1	0	0	0	0	0	0	0	-6
5 Heaven Samayoa-Mathis	18:13	0-3	0-2	0-0	0	1	4	5	2	0	0	1	4	2	0
22 Mary Moses Amaniyu	27:32	5-10	0-0	1-1	1	4	5	2	1	11	1	3	3	1	0
10 Osadebamwen Igbinedion	02:37	0-0	0-0	1-2	0	0	0	1	1	1	0	0	0	0	2
12 Irene Asensio	06:53	0-1	0-1	0-0	0	0	0	0	1	0	0	0	0	0	0
14 Taliana Collazo	03:33	0-1	0-0	0-0	0	0	0	0	1	0	0	0	0	0	0
23 Aolani Woldai	03:30	0-1	0-0	0-0	1	0	1	2	0	0	1	0	0	1	-6
Team					3	4	7	0	0	0	0	0	0	0	0
Totals		25-62	8-18	11-13	12	27	39	12	10	89	14	14	13	1	3

Major Fouls: NONE

Shooting By Period  
 1st FG% 7-15 46.7%  
 3PT% 2-4 50.0%  
 FT% 3-4 75%  
 2nd FG% 4-14 28.6%  
 3PT% 1-5 20.0%  
 FT% 2-2 100%  
 3rd FG% 5-18 27.8%  
 3PT% 2-4 50.0%  
 FT% 3-3 100%  
 4th FG% 9-15 60.0%  
 3PT% 3-3 100.0%  
 FT% 3-4 75%  
 GM FG% 25-62 40.3%  
 3PT% 8-18 44.4%  
 FT% 11-13 84.6%

Dead Ball Rebounds: 1/0

Biggest lead

DENVER 0 (1<sup>st</sup> 10:00) UTEP 20 (4<sup>th</sup> 2:55)

Best Scoring Run

10 (3<sup>rd</sup> 0:59) 13 (1<sup>st</sup> 4:15)

Lead Changes

0

Times Tied

6

Time with Lead

00:00 38:35

Points from Turnovers 13 20

Paint 20 26

Second Chance 6 14

Fast Breaks 7 24

Bench 13 12

Period by Period Scoring

1st 2nd 3rd 4th TOT

DENVER 9 8 21 14 52

UTEP 19 11 15 24 69



Official Basketball Box Score - Final  
**A&M-Corpus Christi at UTEP**  
 12/03/25 Don Haskins Center, El Paso, Texas  
 2025-26 Women's Basketball

Game Time: 7:00 PM  
 Game Duration: 1:49  
 Attendance: 923

Officials: Michael Price, Karli Childs, Katrina Cutler

A&M-Corpus Christi - 44

Record: 1-6

NO. Name	Min	FG	3P	FT	Rebounds		Fouls	TP	AS	TO	ST	Blocks			+/-
					OR	DR						BS	BA	+	
13 Rayna Williams	F 11:59	2-3	0-0	0-0											

# 2025-26 BOX SCORES



Official Basketball Box Score - Final  
**UTEP at BYU**  
 131325 Marriott Center, Provo  
 2025-26 Women's Basketball

Game Time: 1:00 PM  
 Game Duration: 1:58  
 Attendance: 1,977

Officials: Melissa Barlow, Chuck Gonzalez, Eric Brewton

UTEP - 46

NO. Name	Min	FG		3P		FT		Rebounds		Fouls		TP	AS	TO	ST	Blocks			+/-
		M.A.	A.A.	M.A.	A.A.	OR	DR	PF	FD	BS	BA					BL			
13 Ndack Mbengue	F 24:47	3-10	0-0	0-0	0-0	3	4	7	2	2	6	0	2	2	0	1	0	0	-21
2 Sirivva Legions	G 27:24	4-8	0-0	5-8	1	3	4	1	5	13	3	0	2	1	0	0	0	0	-22
3 Ivane Tensale	G 27:29	2-7	1-4	0-0	0-0	0	0	0	1	5	0	2	1	0	1	0	1	0	-16
4 Delma Zita	G 15:24	0-3	0-1	0-0	0-1	1	1	1	1	0	0	2	0	0	0	0	0	0	-32
11 Portia Adams	G 25:36	2-11	1-3	1-2	1	1	2	1	0	6	2	1	1	0	1	0	1	0	-18
5 Heaven Samayoa-Mathis	18:40	2-4	0-1	0-0	1	1	2	1	2	4	1	0	0	0	0	0	0	0	-18
22 Mary Moses Amariyo	17:50	2-8	0-0	1-1	2	0	2	1	5	0	2	0	0	0	1	1	0	0	-17
14 Tatiana Collazo	07:15	0-0	0-0	0-0	0-0	0	0	0	1	0	0	0	0	0	0	0	0	0	-1
1 Aaliyah Davis	02:19	0-1	0-0	0-0	0-0	2	2	0	1	0	0	0	0	1	0	0	0	0	-1
12 Irene Asensio	10:12	0-1	0-1	0-0	0-0	2	2	0	1	0	0	1	0	0	0	0	0	0	-4
10 Osadebamwen Igbinedion Omoruyi	10:17	1-2	0-0	0-0	0-0	2	2	0	2	0	0	1	0	1	1	1	1	1	-6
8 Brooklyn Terry	06:51	1-3	1-2	0-0	0-0	0	0	0	0	0	0	3	0	0	0	0	0	0	-3
23 Aolani Woldai	05:56	1-2	0-0	0-0	0-0	1	1	0	2	0	0	0	0	1	0	0	0	0	-1
<b>Totals</b>		18-60	3-12	17-11	12	17	29	9	14	46	7	19	8	2	7	35			

Major Fouls: NONE

BYU - 81

NO. Name	Min	FG		3P		FT		Rebounds		Fouls		TP	AS	TO	ST	Blocks			+/-
		M.A.	A.A.	M.A.	A.A.	OR	DR	PF	FD	BS	BA					BL			
13 Lara Rohkohl	C 18:03	3-4	0-0	1-2	4	4	2	3	7	1	3	1	3	1	2	0	0	0	8
2 Sydney Benally	G 27:55	3-7	2-6	0-0	0	2	2	3	0	8	7	4	0	0	0	0	0	0	30
7 Olivia Hamlin	G 30:12	7-13	4-7	2-2	0	1	1	2	20	11	4	1	1	0	0	0	0	22	
23 Marya Huggins	G 25:25	3-8	1-4	4-4	1	4	5	0	2	11	1	1	1	0	0	0	0	18	
24 Brinkley Cannon	G 25:13	2-8	0-4	0-0	4	4	2	0	4	5	0	4	0	0	0	0	0	18	
3 Boliney Yusuf	14:09	4-7	0-0	0-0	2	7	9	2	1	8	1	1	0	0	2	0	0	17	
20 Braeden Gunlock	22:17	1-2	0-0	0-0	1	2	1	0	2	1	1	0	0	0	0	0	0	20	
14 Kambree Barber	22:02	1-6	0-0	3-4	7	2	1	13	3	2	2	2	2	0	0	0	0	31	
33 Hattie Ogden	07:48	2-2	2-2	0-0	0	0	0	0	1	6	2	0	0	0	0	0	0	10	
30 Mariam Traore	05:29	1-3	0-0	0-0	1	2	3	0	2	0	0	0	0	2	0	2	0	3	
21 Heather Hamson	01:26	0-0	0-0	0-0	0	0	0	0	0	0	0	0	0	2	1	0	0	-2	
<b>Totals</b>		32-66	10-30	17-8	18	33	51	14	9	81	22	18	9	7	2	35			

Major Fouls: NONE

Biggest lead	BYU		Points from Turnovers	Miners	BYU	Period by Period Scoring					
	0 (1 <sup>st</sup> 10:00)	37 (4 <sup>th</sup> 1:28)				1st	2nd	3rd	4th	TOT	
Best Scoring Run	5 (4 <sup>th</sup> 5:24)		11 (3 <sup>rd</sup> 9:12)	Paint	26	42					
Lead Changes	0		Second Chance	6	19	Miners	6	8	19	13	46
Times Tied	0		Fast Breaks	3	10	BYU	13	29	20	19	81
Time with Lead	00:00		Bench	16	31						



Official Basketball Box Score - Final  
**UC Irvine at UTEP**  
 121825 Don Haskins Center, El Paso, Texas  
 2025-26 Women's Basketball

Game Time: 7:00 PM  
 Game Duration: 1:58  
 Attendance: 905

Officials: Brian Hall, Roy Gubeyan, Tiffany Bridges

UC Irvine - 93

NO. Name	Min	FG		3P		FT		Rebounds		Fouls		TP	AS	TO	ST	Blocks			+/-
		M.A.	A.A.	M.A.	A.A.	OR	DR	PF	FD	BS	BA					BL			
14 Summah Hanson	F 14:51	3-6	0-2	3-5	1	5	6	4	3	9	1	2	2	1	0	5	0	0	5
10 Lauryn Madsen	G 33:23	3-6	3-6	0-0	0	2	2	0	0	9	1	0	2	0	0	0	0	0	23
12 Shirrel Nahum	G 26:09	3-4	1-1	4-4	0	1	1	3	4	11	4	1	2	0	0	0	0	0	23
20 Hunter Hernandez	G 34:30	13-18	4-5	6-6	1	5	6	1	6	38	1	3	0	0	0	0	0	0	26
23 Jada Wynn	G 32:17	4-10	1-3	2-2	1	6	7	3	5	11	7	2	0	0	0	0	0	0	20
13 Nohelani Stores	0:23	2-3	0-0	2-2	0	2	2	1	6	0	3	1	2	0	0	0	0	0	-8
1 Ameerah Grant	09:49	0-1	0-0	4-4	2	1	3	4	2	4	1	1	0	0	0	0	0	0	-6
24 Naomy Zonzon-Huyghe	15:19	2-4	0-1	2-4	1	1	2	0	2	6	0	1	0	0	0	0	0	0	-8
22 Reese Noa	04:36	0-1	0-0	1-2	0	2	2	0	1	0	0	0	0	0	0	0	0	0	-2
2 Halay Hernandez	04:17	0-0	0-0	0-0	0	0	0	0	0	0	0	0	0	0	0	0	0	0	-5
21 Despoina Baltzi	04:17	0-0	0-0	0-0	0	0	0	0	2	0	0	0	0	0	0	0	0	0	-5
<b>Totals</b>		30-53	9-18	24-29	8	26	34	22	24	93	15	17	7	3	0	21			

Major Fouls: Wynn (TF) 4<sup>th</sup> 6:06

Dead Ball Rebounds: 2.0

UTEP - 72

NO. Name	Min	FG		3P		FT		Rebounds		Fouls		TP	AS	TO	ST	Blocks			+/-
		M.A.	A.A.	M.A.	A.A.	OR	DR	PF	FD	BS	BA					BL			
13 Ndack Mbengue	F 25:56	6-9	0-0	5-9	4	2	6	4	5	17	0	3	1	0	0	2	0	0	9
2 Sirivva Legions	G 30:39	2-9	0-2	5-8	3	2	5	2	6	9	1	1	2	0	0	0	0	0	-18
3 Ivane Tensale	G 30:27	4-12	3-6	0-0	0	1	1	1	11	1	1	1	1	0	0	0	0	0	-19
4 Delma Zita	G 12:17	1-2	0-0	1-0	1	2	3	2	0	2	5	0	0	0	0	0	0	0	-11
11 Portia Adams	G 28:28	5-9	2-4	6-6	0	1	1	3	7	18	3	1	0	0	0	0	0	0	-17
5 Heaven Samayoa-Mathis	25:10	0-5	0-2	4-4	1	3	4	3	2	4	5	3	1	0	0	0	0	0	-14
14 Tatiana Collazo	04:55	0-2	0-1	0-0	1	0	1	0	0	0	0	0	0	0	0	0	0	0	-4
22 Mary Moses Amariyo	13:56	2-2	0-0	0-0	4	4	5	0	4	0	4	0	0	0	0	0	0	0	-7
10 Osadebamwen Igbinedion Omoruyi	04:51	0-1	0-0	0-0	0	0	0	0	1	0	0	0	0	0	0	0	0	0	-10
12 Irene Asensio	06:22	1-3	1-3	0-0	0	0	0	0	0	3	0	0	0	0	0	0	0	0	-2
8 Brooklyn Terry	05:39	1-3	0-2	0-0	0	1	0	0	0	2	0	0	0	0	0	0	0	0	1
1 Aaliyah Davis	08:33	1-1	0-0	0-0	0	0	0	0	0	1	0	2	0	0	0	0	0	0	1
23 Aolani Woldai	02:47	0-0	0-0	0-0	0	0	0	0	0	0	0	0	0	0	0	0	0	0	0
<b>Totals</b>		23-58	6-21	20-27	11	17	28	25	21	72	15	14	6	0	0	3			

Major Fouls: Legions (TF) 4<sup>th</sup> 6:21

Dead Ball Rebounds: 5.1

Biggest lead	UCI		Points from Turnovers	UCI	UTEP	Period by Period Scoring				
	28 (4 <sup>th</sup> 4:10)	0 (1 <sup>st</sup> 10:00)				1st	2nd	3rd	4th	TOT
Best Scoring Run	6 (1 <sup>st</sup> 0:41)		10 (4 <sup>th</sup> 1:39)	Paint	20	18				
Lead Changes	0		Second Chance	9	8	UCI	21	22	18	93
Times Tied	1		Fast Breaks	17	16	UTEP	15	13	22	72
Time with Lead	38:49		Bench	17	15					



Official Basketball Box Score - Final  
**Southwest (NM) at UTEP**  
 121925 Don Haskins Center, El Paso, Texas  
 2025-26 Women's Basketball

Game Time: 7:00 PM  
 Game Duration: 1:48  
 Attendance: 1,078

Officials: Shandra Twine, Jennifer White, Catelyn Hoses

Southwest (NM) - 43

NO. Name	Min	FG		3P		FT		Rebounds		Fouls		TP	AS	TO	ST	Blocks			+/-
		M.A.	A.A.	M.A.	A.A.	OR	DR	PF	FD	BS	BA					BL			
0 Seniya Wilson	G																		

# 2025-26 BOX SCORES



Official Basketball Box Score - Final  
**Liberty at UTEP**  
 01/04/26 Don Haskins Center, El Paso, Texas  
 2025-26 Women's Basketball

Game Time: 12:00 PM  
 Game Duration: 1:58  
 Attendance: 795

Officials: Amy Kromenhoek, Jess Martinez, Matthew Kreck

Liberty - 86      Record: 8-5 (2-0)

NO. Name	Min	FG	3P	FT	Rebounds	Fouls	TP	AS	TO	ST	Blocks	+/-
		M/A	M/A	M/A	OR DR TOT	PF FD					BS BA	
6 Ily Nwaobi	28:20	5-13	0-2	1-2	3 4 7	3 1	11	0	1	0	1 2	20
21 Elisabeth Aegisdottir	F 30:15	2-8	1-2	3-6	2 4 6	5 4	8	2	5	1	0 1	18
17 Emmly Stout	F 22:59	6-9	0-0	4-6	2 4 6	5 6	16	2	0	2	0 0	25
1 Avery Mills	G 28:55	7-10	6-8	2-2	1 4 5	1 6	22	3	2	1	2 0	17
4 Claudia Acin	G 29:34	7-9	4-5	2-2	1 2 3	3 0	20	7	2	3	0 0	15
3 Jakyia Thompson	25:27	1-6	0-2	0-0	0 5 5	2 0	2	6	0	3	0 1	10
33 Lynn Peters	14:42	1-1	0-0	0-0	1 1 2	4 0	2	0	2	0	0 0	-3
22 Lydie Mwamba	09:48	1-4	0-2	0-0	1 1 2	0 0	2	0	0	0	1 0	-3
24 Emma Leon	09:41	1-4	1-3	0-0	1 1 2	1 0	3	2	1	0	0 0	3
15 Maleah Alexander	00:20	0-0	0-0	0-0	0 0 0	0 0	0	0	0	0	0 0	-2
Team					3 4 0	0 0						
Totals		31-64	12-24	12-18	13 26 39	21 17	86	22	14	10	4 4	20

Major Fouls: NONE

Shooting By Period

1 <sup>st</sup> FG%	8-18	44.4%
3PT%	3-7	42.9%
FT%	3-4	75%
2 <sup>nd</sup> FG%	5-10	50.0%
3PT%	3-6	50.0%
FT%	3-4	75%
3 <sup>rd</sup> FG%	8-15	53.3%
3PT%	4-6	66.7%
FT%	3-6	50%
4 <sup>th</sup> FG%	9-20	45.0%
3PT%	2-5	40.0%
FT%	3-4	75%
GM FG%	31-64	48.4%
3PT%	12-24	50.0%
FT%	12-18	66.7%

Dead Ball Rebounds: 2, 0

UTEP - 66      Record: 9-4 (1-1)

NO. Name	Min	FG	3P	FT	Rebounds	Fouls	TP	AS	TO	ST	Blocks	+/-
		M/A	M/A	M/A	OR DR TOT	PF FD					BS BA	
13 Ndack Mbengue	F 30:48	0-2	0-0	5-6	4 7 11	4 8	5	0	1	1	0 0	-21
2 Sirivva Legions	G 25:05	2-11	0-0	2-2	4 3 7	2 3	6	0	3	1	0 2	-20
3 Ivane Tensaie	G 29:48	2-12	2-11	2-2	0 1 1	2 2	8	1	3	0	0 0	-23
4 Delma Zita	G 18:34	1-2	0-0	0-0	1 0 1	2 0	2	1	3	0	1 1	-14
11 Portia Adams	G 30:19	5-12	0-3	7-8	0 1 1	4 4	17	2	4	0	0 0	-16
12 Irene Asensio	03:42	0-1	0-1	0-0	0 0 0	1 1	0	0	0	0	0 0	-6
5 Heaven Samayoa-Mathis	27:52	4-10	2-4	4-4	1 5 6	1 2	14	4	3	1	0 0	-1
22 Mary Moses Amaniyo	29:42	6-11	0-0	2-2	5 5 10	1 1	14	0	4	0	0 0	0
10 Osadobamwen Igbinedion Omoyul	01:02	0-1	0-0	0-0	0 0 0	0 0	0	0	0	0	0 0	-2
1 Aaliyah Davis	03:08	0-0	0-0	0-0	0 0 0	0 0	0	0	0	0	0 0	0
Team					2 4 4	1 0						
Totals		20-62	4-19	22-24	17 24 41	18 21	86	8	18	4	4	20

Major Fouls: Coach (TF) 4<sup>th</sup> 0:02

Shooting By Period

1 <sup>st</sup> FG%	2-12	16.7%
3PT%	0-5	0.0%
FT%	5-6	83.3%
2 <sup>nd</sup> FG%	7-19	36.8%
3PT%	0-2	0.0%
FT%	7-8	87.5%
3 <sup>rd</sup> FG%	7-15	46.7%
3PT%	3-4	75.0%
FT%	4-4	100%
4 <sup>th</sup> FG%	4-16	25.0%
3PT%	1-8	12.5%
FT%	6-6	100%
GM FG%	20-62	32.3%
3PT%	4-19	21.1%
FT%	22-24	91.7%

Dead Ball Rebounds: 1, 0

	LIB	UTEP
Biggest lead	21 (4 <sup>th</sup> 0:09)	0 (1 <sup>st</sup> 10:00)
Best Scoring Run	9 (1 <sup>st</sup> 6:47)	7 (2 <sup>nd</sup> 6:37)
Lead Changes	0	0
Times Tied	0	0
Time with Lead	39:36	00:00

Points from	LIB	UTEP
Turnovers	17	6
Paint	38	26
Second Chance	11	10
Fast Breaks	9	17
Bench	9	28

Period by Period Scoring	1st	2nd	3rd	4th	TOT
LIB	22	16	25	23	86
UTEP	9	21	21	15	66



Official Basketball Box Score - Final  
**UTEP at Middle Tenn.**  
 01/08/26 Murphy Center, Murfreesboro, Tenn.  
 2025-26 Women's Basketball

Game Time: 6:30 PM  
 Game Duration: 1:44  
 Attendance: 3,072

Officials: Eric Koch, Kyle Galloway, Royce Byrnes

UTEP - 43      Record: 9-5 (1-2)

NO. Name	Min	FG	3P	FT	Rebounds	Fouls	TP	AS	TO	ST	Blocks	+/-
		M/A	M/A	M/A	OR DR TOT	PF FD					BS BA	
13 Ndack Mbengue	F 16:10	0-2	0-0	0-2	1 0 1	3 3	0	0	2	0	0 0	-25
22 Mary Moses Amaniyo	F 24:32	5-8	0-0	4-6	7 3 10	1 3	14	0	1	2	0 0	-21
1 Aaliyah Davis	F 11:03	0-3	0-0	0-0	0 2 2	1 0	0	0	1	0	0 1	-13
5 Heaven Samayoa-Mathis	G 25:34	2-6	0-2	0-0	1 3 4	2 1	4	0	2	2	0 0	-32
11 Portia Adams	G 18:12	0-7	0-2	0-0	0 0 0	1 1	5	0	2	0	0 1	-22
2 Sirivva Legions	16:11	2-5	0-0	1-5	0 1 1	1 3	5	1	1	0	0 0	-29
3 Ivane Tensaie	24:33	1-10	1-3	2-2	0 0 0	0 1	5	0	0	0	0 0	-33
8 Brooklyn Terry	07:11	1-4	1-3	0-0	0 2 2	0 0	3	0	1	0	0 0	-5
4 Delma Zita	11:01	1-4	0-1	1-2	1 2 3	0 2	3	1	1	0	0 0	-5
12 Irene Asensio	18:22	1-3	1-3	0-0	3 3 0	0 0	3	1	2	1	0 0	-10
14 Tatiana Collazo	15:37	0-0	0-0	0-2	0 1 1	0 2	0	0	0	0	0 0	-10
10 Osadobamwen Igbinedion Omoyul	08:09	1-4	0-0	1-2	1 0 1	1 0	3	0	1	0	0 0	-6
23 Aolani Woldai	03:25	1-1	0-0	1-1	0 0 0	1 1	3	0	0	0	0 0	-6
Team					1 2 3	0 0						
Totals		15-57	3-14	10-22	12 19 31	10 18	43	3	14	6	0 4	43

Major Fouls: NONE

Shooting By Period

1 <sup>st</sup> FG%	3-12	25.0%
3PT%	1-2	50.0%
FT%	2-6	33.3%
2 <sup>nd</sup> FG%	3-17	17.6%
3PT%	0-1	0.0%
FT%	3-4	75%
3 <sup>rd</sup> FG%	4-12	33.3%
3PT%	0-1	0.0%
FT%	2-5	40%
4 <sup>th</sup> FG%	5-16	31.3%
3PT%	1-4	25.0%
FT%	3-7	42.9%
GM FG%	15-57	26.3%
3PT%	3-14	21.4%
FT%	10-22	45.5%

Dead Ball Rebounds: 6, 0

Middle Tenn. - 86      Record: 8-7 (3-0)

NO. Name	Min	FG	3P	FT	Rebounds	Fouls	TP	AS	TO	ST	Blocks	+/-
		M/A	M/A	M/A	OR DR TOT	PF FD					BS BA	
3 Aiyana Contreras	G 21:24	5-12	2-3	4-4	1 0 1	2 2	16	2	0	1	0 0	31
10 Kriston Verhulst	G 33:55	6-10	5-9	0-0	1 3 4	0 1	17	1	3	0	1 0	37
12 Blair Baugus	G 30:00	6-8	0-1	3-3	5 6 11	2 3	15	3	2	0	0 0	39
14 Savannah Davis	G 33:19	3-12	3-10	0-0	1 9 10	0 0	9	2	1	2	2 0	39
22 Macie Phifer	G 13:50	1-6	0-1	0-0	2 1 3	4 0	2	0	1	0	0 0	6
42 Stanislava Kabernick	20:25	1-3	1-2	0-0	3 7 10	2 0	3	2	1	1	0 0	29
15 Nicole Dominguez Gureeva	07:43	0-0	0-0	2-2	0 4 2	2 1	2	0	2	0	0 0	1
1 Yu Han Lin	15:46	7-12	2-3	2-2	0 1 1	2 2	18	0	0	0	0 0	11
5 Carsyn Swaney	10:00	0-2	0-1	0-0	2 0 2	2 0	2	0	1	0	0 0	4
11 Emily Monson	05:36	1-2	0-1	0-0	1 1 2	1 0	2	1	1	0	0 0	7
13 Jenna McClendon	04:37	1-1	0-0	0-0	2 2 1	0 0	2	0	1	0	0 0	5
0 Grace Hamby	03:25	0-0	0-0	0-0	1 2 0	1 0	1	0	1	0	0 0	6
Team					1 2 2	0 0						
Totals		31-68	13-31	11-11	18 36 54	18 10	86	13	13	7	4 0	43

Major Fouls: NONE

Shooting By Period

1 <sup>st</sup> FG%	8-20	40.0%
3PT%	5-11	45.5%
FT%	2-2	100%
2 <sup>nd</sup> FG%	8-15	53.3%
3PT%	2-5	40.0%
FT%	3-3	100%
3 <sup>rd</sup> FG%	8-12	66.7%
3PT%	4-4	100%
FT%	4-4	100%
4 <sup>th</sup> FG%	7-21	33.3%
3PT%	2-9	22.2%
FT%	2-2	100%
GM FG%	31-68	45.6%
3PT%	13-31	41.9%
FT%	11-11	100.0%

Dead Ball Rebounds: 0, 0

	UTEP	MTSU
Biggest lead	2 (1 <sup>st</sup> 9:46)	43 (4 <sup>th</sup> 0:19)
Best Scoring Run	5 (2 <sup>nd</sup> 2:58)	16 (1 <sup>st</sup> 1:58)
Lead Changes	1	1
Times Tied	0	4
Time with Lead	01:08	36:15

Points from	UTEP	MTSU
Turnovers	9	21
Paint	22	30
Second Chance	11	19
Fast Breaks	8	4
Bench	25	27

Period by Period Scoring	1st	2nd	3rd	4th	TOT
UTEP	9	10	10	14	43
MTSU	23	21	24	18	86



Official Basketball Box Score - Final  
**UTEP at WKU**  
 01/10/26 E.A. Diddle Arena, Bowling Green, KY  
 2025-26 Women's Basketball

Game Time: 12:00 PM  
 Game Duration: 1:52  
 Attendance: 703

Officials: Angelica Sufren, Natasha Camy, Jamie Broderick

UTEP - 59      Record: 9-6 (1-3)

NO. Name	
----------	--

# 2025-26 BOX SCORES



Official Basketball Box Score - Final  
**FIU at UTEP**  
 01/17/26 Don Haskins Center, El Paso, Texas  
 2025-26 Women's Basketball

Game Time: 12:00 PM  
 Game Duration: 5:17  
 Attendance: 891

Officials: Scott Yarbrough, Neonta Williams, Shandra Twine

FIU - 67 Record: 10-6 (3-2)

NO. Name	Min	FG		3P		FT		Rebounds		Fouls		TP	AS	TO	ST	Blocks		+/-
		M-A	P-A	M-A	P-A	OR	DR	PF	FD	BS	BA							
1 Judit Valero	17:16	4-9	2-4	0-0	2	0	2	5	2	10	0	0	0	0	0	0	0	11
5 Grecia Ferrer Leal	30:46	4-5	0-1	1-2	0	1	1	3	1	9	2	5	1	0	0	0	0	5
10 Paris Atkins	20:10	0-8	0-1	2-2	0	2	2	5	2	2	0	3	0	0	0	0	0	0
21 Adama Badjie Coly	26:10	3-4	1-2	0-0	1	5	6	4	2	7	0	1	1	0	0	0	0	19
23 Rhema Collins	37:53	4-14	0-0	14-19	6	10	16	4	12	22	1	5	3	3	2	7	0	7
3 Riley Burd	11:44	0-0	0-0	0-0	1	1	3	1	0	0	0	0	0	0	1	0	0	-2
15 Fantasia James	13:21	0-1	0-0	2-4	1	3	1	3	2	0	1	1	0	1	0	1	0	-1
0 Denika Lightbourne	21:40	5-7	0-0	1-1	1	2	3	0	2	11	3	4	0	0	0	0	2	
44 Claudia Marina Gonzalez	21:00	1-4	1-3	1-2	1	0	1	2	1	4	2	0	0	0	0	0	0	5
<b>Totals</b>		21-52	4-11	21-30	13	25	38	27	26	67	8	21	6	4	3	8		

Major Fouls: NONE

Shooting By Period

1 <sup>st</sup> FG%	6-14	42.9%
3PT%	0-0	0.0%
FT%	5-6	83.3%
2 <sup>nd</sup> FG%	4-13	30.8%
3PT%	1-3	33.3%
FT%	4-5	80%
3 <sup>rd</sup> FG%	8-13	61.5%
3PT%	3-5	60.0%
FT%	2-6	33.3%
4 <sup>th</sup> FG%	3-12	25.0%
3PT%	0-3	0.0%
FT%	10-13	76.9%
GM FG%	21-52	40.4%
3PT%	4-11	36.4%
FT%	21-30	70.0%

Dead Ball Rebounds: 6.0

UTEP - 59 Record: 9-8 (1-5)

NO. Name	Min	FG		3P		FT		Rebounds		Fouls		TP	AS	TO	ST	Blocks		+/-
		M-A	P-A	M-A	P-A	OR	DR	PF	FD	BS	BA							
22 Mary Moses Amaniyo	12:51	1-4	0-0	1-2	2	1	3	5	4	3	0	1	1	0	0	1	0	-6
2 Sirivva Legions	37:09	6-15	1-2	2-6	5	7	12	4	15	0	5	1	0	1	0	1	-12	
3 Ivane Tensae	32:12	3-10	3-8	3-4	0	1	1	2	3	12	1	0	0	0	0	0	0	19
5 Heaven Samayoa-Mathis	22:24	1-7	0-3	2-2	1	3	4	5	4	4	2	1	0	0	0	0	9	
11 Portia Adams	36:36	7-15	2-2	5-6	1	6	7	4	8	21	2	5	5	0	1	1	-11	
4 Delma Zita	22:08	0-3	0-1	2-2	0	1	1	2	2	1	1	1	0	1	0	0	-11	
12 Irene Asensio	01:54	0-0	0-0	0-0	0	0	0	0	0	0	0	0	0	0	0	0	-4	
10 Osadabamwen Igbiniedon Omoruyi	26:38	1-7	0-0	0-0	7	2	9	5	2	2	1	3	2	3	0	0	-3	
1 Aaliyah Davis	07:37	0-0	0-0	0-0	0	0	0	0	0	0	0	0	0	0	0	0	0	
8 Brooklyn Terry	00:31	0-0	0-0	0-0	0	0	0	0	0	0	0	0	0	0	0	0	1	
<b>Totals</b>		19-61	6-16	15-22	21	21	42	26	27	59	9	21	11	3	4	8		

Major Fouls: NONE

Shooting By Period

1 <sup>st</sup> FG%	6-16	37.5%
3PT%	1-3	33.3%
FT%	3-4	75%
2 <sup>nd</sup> FG%	3-14	21.4%
3PT%	1-2	50.0%
FT%	3-4	75%
3 <sup>rd</sup> FG%	4-10	40.0%
3PT%	1-2	50.0%
FT%	4-6	66.7%
4 <sup>th</sup> FG%	6-21	28.6%
3PT%	3-9	33.3%
FT%	5-8	62.5%
GM FG%	19-61	31.1%
3PT%	6-16	37.5%
FT%	15-22	68.2%

Dead Ball Rebounds: 3.0

	FIU	UTEP
Biggest lead	12 (3 <sup>rd</sup> 0:05)	2 (1 <sup>st</sup> 7:53)
Best Scoring Run	7 (4 <sup>th</sup> 1:42)	5 (1 <sup>st</sup> 4:38)
Lead Changes	12	
Times Tied	8	
Time with Lead	29:50	05:02

Points from	Period by Period Scoring			
	1st	2nd	3rd	4th
Turnovers	15	15	14	67
Paint	32	22		
Second Chance	18	15		
Fast Breaks	11	14		
Bench	17	4		



Official Basketball Box Score - Final  
**UTEP at Kennesaw St.**  
 01/22/26 VyStar Arena, Kennesaw  
 2025-26 Women's Basketball

Game Time: 7:00 PM  
 Game Duration: 1:54  
 Attendance: 441

Officials: Eric Koch, Dawn Marsh, Kelly Johnson

UTEP - 52 Record: 9-9 (1-6)

NO. Name	Min	FG		3P		FT		Rebounds		Fouls		TP	AS	TO	ST	Blocks		+/-
		M-A	P-A	M-A	P-A	OR	DR	PF	FD	BS	BA							
13 Ndack Mbengue	15:53	1-3	0-0	0-0	1	1	2	0	5	1	0	0	0	0	0	0	0	-17
2 Sirivva Legions	19:21	2-5	0-0	1-9	0	3	3	4	6	2	1	4	2	0	0	0	-14	
3 Ivane Tensae	21:42	1-4	0-1	0-2	1	1	2	1	2	0	1	2	0	1	0	1	-20	
5 Heaven Samayoa-Mathis	20:01	1-3	0-1	2-2	0	1	1	2	2	4	0	1	2	0	0	0	-22	
11 Portia Adams	30:48	3-9	0-1	8-12	1	3	4	1	8	14	0	1	1	0	0	0	-21	
22 Mary Moses Amaniyo	29:54	5-9	0-1	3-4	2	7	9	2	3	13	2	1	1	0	1	0	-12	
10 Osadabamwen Igbiniedon Omoruyi	19:03	1-3	0-0	0-0	0	3	3	1	2	0	0	1	0	0	0	0	-13	
4 Delma Zita	20:39	2-6	0-0	4-4	0	1	1	0	2	8	0	0	1	0	0	0	-13	
12 Irene Asensio	08:28	0-2	0-2	2-2	0	0	0	0	1	2	1	0	0	0	0	0	-4	
8 Brooklyn Terry	10:02	0-2	0-1	0-0	0	2	2	0	0	0	0	1	0	0	0	0	-10	
23 Aolani Woldai	04:10	0-0	0-0	0-0	0	0	0	0	2	0	0	0	1	0	0	0	-9	
<b>Totals</b>		16-46	0-7	20-35	7	22	29	20	24	52	4	17	9	1	2	3		

Major Fouls: NONE

Shooting By Period

1 <sup>st</sup> FG%	6-12	50.0%
3PT%	0-1	0.0%
FT%	3-6	50%
2 <sup>nd</sup> FG%	3-9	33.3%
3PT%	0-2	0.0%
FT%	8-11	72.7%
3 <sup>rd</sup> FG%	4-11	36.4%
3PT%	0-2	0.0%
FT%	4-10	40%
4 <sup>th</sup> FG%	3-14	21.4%
3PT%	0-2	0.0%
FT%	5-8	62.5%
GM FG%	16-46	34.8%
3PT%	0-7	0.0%
FT%	20-35	57.1%

Dead Ball Rebounds: 9.1

Kennesaw St. - 83 Record: 9-8 (2-4)

NO. Name	Min	FG		3P		FT		Rebounds		Fouls		TP	AS	TO	ST	Blocks		+/-
		M-A	P-A	M-A	P-A	OR	DR	PF	FD	BS	BA							
2 Trynce Taylor	21:24	8-10	0-0	2-2	1	8	9	3	2	18	2	1	0	0	0	0	0	23
22 Latazia Williamson	21:04	5-9	0-0	0-0	3	2	5	3	1	10	0	0	0	0	0	0	0	15
0 Kalyin Fields	38:43	2-8	1-2	0-0	1	2	3	2	1	5	4	4	1	0	0	0	0	29
12 Kaelyn Flowers	27:07	3-5	0-0	2-3	2	2	4	2	8	1	2	2	0	0	0	0	0	33
21 Kiyarah Berry	20:38	4-9	0-0	5-7	1	2	3	4	6	13	2	0	2	0	0	0	18	
13 Shantia Nichols	32:35	6-14	3-9	3-3	1	2	3	5	2	18	4	2	1	0	1	0	26	
23 Ta'Anna Stovall	28:47	3-10	0-0	3-5	4	7	11	3	6	9	2	4	2	2	2	0	20	
25 Madyson Elliott	05:11	0-0	0-0	0-0	0	0	0	0	0	0	0	0	0	0	0	0	-7	
33 Mame Kane	01:24	0-1	0-0	0-0	1	0	1	0	0	0	0	0	0	0	0	0	-5	
8 Emayah Lewis	03:04	1-3	0-0	0-0	1	2	0	0	2	0	0	0	0	0	0	0	-1	
10 Gabriela Bendeck-Giron	00:03	0-0	0-0	0-0	0	0	0	0	0	0	0	0	0	0	0	0	4	
<b>Totals</b>		32-69	4-11	15-20	16	28	44	24	20	83	15	13	8	2	1	3		

Major Fouls: NONE

Shooting By Period

1 <sup>st</sup> FG%	8-19	42.1%
3PT%	3-4	75.0%
FT%	5-7	71.4%
2 <sup>nd</sup> FG%	6-20	30.0%
3PT%	0-4	0.0%
FT%	0-0	0.0%
3 <sup>rd</sup> FG%	10-18	55.6%
3PT%	0-2	0.0%
FT%	2-2	100%
4 <sup>th</sup> FG%	8-12	66.7%
3PT%	1-1	100.0%
FT%	8-11	72.7%
GM FG%	32-69	46.4%
3PT%	4-11	36.4%
FT%	15-20	75.0%

Dead Ball Rebounds: 3.1

	TEP	KSU
Biggest lead	0 (1 <sup>st</sup> 10:00)	31 (4 <sup>th</sup> 0:00)
Best Scoring Run	6 (3 <sup>rd</sup> 7:30)	10 (4 <sup>th</sup> 9:13)
Lead Changes	0	
Times Tied	0	
Time with Lead	00:00	39:07

Points from	Period by Period Scoring			
	1st	2nd	3rd	4th
Turnovers	8	24		
Paint	28	46		
Second Chance	5	17		

# 2025-26 BOX SCORES



Official Basketball Box Score - Final  
**Louisiana Tech at UTEP**  
 02/07/26 Don Haskins Center, El Paso, Texas  
 2025-26 Women's Basketball

Game Time: 7:00 PM  
 Game Duration: 1:44  
 Attendance: 1,127

Officials: Tiffany Bridges, Tucker Furrow, Carmela Garcia

Louisiana Tech - 87

Record: 16-5 (9-1)

NO. Name	Min	FG		3P		FT		Rebounds		Fouls		TP	AS	TO	ST	Blocks			+/-
		M/A	M/A	M/A	M/A	OR	DR	PF	FD	BS	BA					BB			
15 Jordan Marshall	F 15:32	3-5	0-0	0-0	2-4	6	1	0	6	1	0	1	0	1	0	0	0	0	13
25 Averi Aaron	F 22:03	2-7	0-1	0-0	0	3	3	4	0	4	3	1	1	0	0	0	0	21	
1 Alexia Weaver	G 30:18	4-11	4-6	0-0	0	3	3	1	2	12	6	2	1	0	2	3	35		
22 Janna Morris	G 29:19	7-10	5-7	2-2	0	2	4	2	4	21	0	2	0	0	0	0	27		
23 Paris Bradley	G 25:16	5-10	3-5	1-1	0	1	1	3	14	3	1	2	0	0	0	0	19		
30 Kaleigh Thompson	G 23:53	3-4	1-1	2-2	2	1	3	1	9	0	0	1	0	0	0	0	19		
4 Joy Madison-Key	16:09	5-6	0-0	2-3	0	1	1	2	3	12	3	2	1	0	0	0	6		
18 Isla Airey	12:48	0-3	0-0	1-2	0	2	2	1	1	1	2	0	1	1	1	1	10		
3 Hillary Dawson	09:42	2-3	0-0	1-1	3	4	1	2	4	2	0	0	0	0	0	0	17		
10 Jayden Terry	15:01	2-3	0-1	0-0	0	2	2	0	1	4	1	0	0	1	0	0	28		
Team					2	3	5	0	0	0	2								
Totals		33-62	13-21	8-11	7	24	31	17	15	87	22	10	9	2	3	39			

Major Fouls: NONE

Shooting By Period	
1 <sup>st</sup> FG%	4-15 26.7%
3PT%	2-5 40.0%
FT%	2-2 100%
2 <sup>nd</sup> FG%	9-16 56.3%
3PT%	6-8 75.0%
FT%	0-0 0%
3 <sup>rd</sup> FG%	10-14 71.4%
3PT%	4-4 100.0%
FT%	4-6 66.7%
4 <sup>th</sup> FG%	10-17 58.8%
3PT%	1-4 25.0%
FT%	2-3 66.7%
GM FG%	33-62 53.2%
3PT%	13-21 61.9%
FT%	8-11 72.7%

Dead Ball Rebounds: 3.0

UTEP - 48

Record: 10-11 (2-8)

NO. Name	Min	FG		3P		FT		Rebounds		Fouls		TP	AS	TO	ST	Blocks			+/-
		M/A	M/A	M/A	M/A	OR	DR	PF	FD	BS	BA					BB			
13 Ndack Mbengue	F 23:08	2-3	0-0	0-3	1	3	4	1	4	0	2	0	0	1	0	0	0	26	
3 Ivane Tensae	G 26:26	3-11	3-8	0-0	2	0	2	1	1	9	1	2	1	0	0	0	32		
4 Delma Zita	G 21:03	2-4	0-0	2-2	0	2	2	2	1	6	3	5	0	0	0	0	21		
5 Heaven Samayoa-Mathis	G 19:58	0-2	0-1	0-0	1	3	4	3	2	0	0	0	0	2	0	0	12		
11 Portia Adams	G 23:28	1-4	0-1	2-3	1	2	3	1	4	4	0	6	0	0	0	0	26		
22 Mary Moses Amariyo	24:32	4-9	0-0	3-3	2	7	9	2	2	11	0	2	2	0	0	0	27		
12 Irene Asensio	18:08	1-4	1-4	0-0	0	0	0	2	0	3	0	1	0	0	0	0	9		
23 Aolani Woldai	23:14	1-7	0-3	5-5	2	2	4	3	7	3	5	2	0	0	0	0	20		
8 Brooklyn Terry	13:31	0-3	0-3	0-0	0	1	1	0	0	0	0	0	0	0	0	0	18		
10 Osadebamwen Igbinedion Omoruyi	02:34	2-2	0-0	0-0	0	0	0	0	4	0	0	0	0	0	0	0	2		
15 Abby Priscilla	03:58	0-0	0-0	0-0	1	0	1	0	0	0	0	0	0	0	0	0	2		
Team					1	2	3	0	0	0	1								
Totals		16-49	4-20	12-16	11	22	33	17	48	7	24	4	3	2	3	39			

Major Fouls: NONE

Shooting By Period	
1 <sup>st</sup> FG%	3-10 30.0%
3PT%	1-3 33.3%
FT%	6-6 100%
2 <sup>nd</sup> FG%	3-9 33.3%
3PT%	1-4 25.0%
FT%	2-2 100%
3 <sup>rd</sup> FG%	4-15 26.7%
3PT%	0-3 0.0%
FT%	4-8 50%
4 <sup>th</sup> FG%	6-15 40.0%
3PT%	2-10 20.0%
FT%	0-0 0%
GM FG%	16-49 32.7%
3PT%	4-20 20.0%
FT%	12-16 75.0%

Dead Ball Rebounds: 2.0

	TECH	UTEP
Biggest lead	42 (4 <sup>th</sup> 0:54)	4 (2 <sup>nd</sup> 9:43)
Best Scoring Run	14 (2 <sup>nd</sup> 0:53)	5 (1 <sup>st</sup> 1:08)
Lead Changes	4	2
Times Tied	2	4
Time with Lead	29:01	07:15

Points from	TECH	UTEP
Turnovers	33	8
Paint	36	24
Second Chance	6	4
Fast Breaks	15	13
Bench	30	25

Period by Period Scoring	TECH	UTEP
1st	24	28
2nd	24	23
3rd	28	37
4th	23	87
TOT	13	9
UTEP	13	9
LU	12	14
SHS	12	48

Official Basketball Box Score - Final  
**Sam Houston at UTEP**  
 02/07/26 Don Haskins Center, El Paso, Texas  
 2025-26 Women's Basketball

Game Time: 2:00 PM  
 Game Duration: 2:01  
 Attendance: 1,013

Officials: Timothy Resch, Shandra Twins, Nate Acosta

Sam Houston - 70

Record: 14-7 (7-3)

NO. Name	Min	FG		3P		FT		Rebounds		Fouls		TP	AS	TO	ST	Blocks			+/-
		M/A	M/A	M/A	M/A	OR	DR	PF	FD	BS	BA					BB			
8 Deborah Ogayemi	F 36:47	6-14	0-0	7-8	2	3	5	4	7	19	2	2	5	1	0	0	0	14	
4 Fanta Kone	G 37:55	4-8	1-3	3-9	1	5	6	2	9	12	1	3	1	1	0	0	12		
5 Aysia Ward-Strong	G 24:26	2-4	0-0	1-2	2	4	6	2	1	5	2	2	2	2	1	0	3		
10 Alaisha Brown	G 03:18	1-2	0-0	0-0	0	0	0	2	0	2	0	0	0	0	0	0	0		
23 Aolani Woldai	G 01:18	0-0	0-0	0-0	0	0	0	0	0	0	0	0	0	0	0	0	0		
7 Annika Corcoran	G 32:16	5-11	3-7	1-2	1	2	3	2	14	3	2	1	0	0	0	0	12		
15 Nyla Inmon	30:11	6-9	0-0	2-6	0	7	7	3	12	3	2	3	1	0	0	0	6		
24 Whitney Dunn	17:10	2-4	0-0	2-2	2	2	4	0	3	6	1	4	1	0	0	0	9		
11 Esther Rodellar	10:49	0-1	0-0	0-0	0	1	1	0	0	0	0	1	0	0	0	0	3		
Team					1	2	0	0	0	1									
Totals		25-53	4-10	16-29	9	24	33	15	25	70	12	17	13	3	1	12			

Major Fouls: NONE

Shooting By Period	
1 <sup>st</sup> FG%	9-16 56.3%
3PT%	0-2 0.0%
FT%	1-4 25%
2 <sup>nd</sup> FG%	4-14 28.6%
3PT%	2-6 33.3%
FT%	2-3 66.7%
3 <sup>rd</sup> FG%	7-12 58.3%
3PT%	2-2 100.0%
FT%	9-14 64.3%
4 <sup>th</sup> FG%	5-11 45.5%
3PT%	0-0 0.0%
FT%	4-8 50%
GM FG%	25-53 47.2%
3PT%	4-10 40.0%
FT%	16-29 55.2%

Dead Ball Rebounds: 7.1

UTEP - 58

Record: 10-12 (2-9)

NO. Name	Min	FG		3P		FT		Rebounds		Fouls		TP	AS	TO	ST	Blocks			+/-
		M/A	M/A	M/A	M/A	OR	DR	PF	FD	BS	BA					BB			
13 Ndack Mbengue	F 10:52	0-2	0-0	1-2	1	3	4	2	1	0	4	0	0	0	0	0	0	8	
3 Ivane Tensae	G 28:13	2-7	1-3	1-2	1	1	2	2	1	6	1	0	0	0	0	0	6		
4 Delma Zita	G 34:47	0-1	0-0	2-3	5	3	1	2	4	2	0	0	0	0	0	0	9		
5 Heaven Samayoa-Mathis	G 31:57	1-7	0-1	0-0	1	2	3	3	1	2	3	4	1	0	1	0	18		
11 Portia Adams	G 34:08	5-16	1-3	4-4	4	4	4	3	6	15	2	4	0	0	1	0	5		
22 Mary Moses Amariyo	18:58	3-5	0-0	0-0	1	6	7	3	1	6	0	3	0	1	0	0	5		
23 Aolani Woldai	18:18	3-6	1-3	0-1	1	2	5	1	7	1	2	1	0	1	0	0	6		
12 Irene Asensio	12:18	0-0	0-0	0-0	0	0	0	0	0	0	0	0	0	0	0	0	4		
10 Osadebamwen Igbinedion Omoruyi	03:53	1-2	0-0	2-2	3	4	7	2	1	4	0	2	0	0	0	0	4		
8 Brooklyn Terry	06:42	2-5	0-2	1-1	1	1	2	0	1	5	0	1	1	0	0	0	5		
Team					2	0	2	0	0	0									
Totals		23-59	3-13	9-12	13	25	38	25	15	58	11	24	5	1	3	12			

Major Fouls: NONE

Shooting By Period	
1 <sup>st</sup> FG%	6-12 50.0%
3PT%	2-2 100.0%
FT%	3-4 75%
2 <sup>nd</sup> FG%	5-16 31.3%
3PT%	0-4 0.0%
FT%	3-4 75%
3 <sup>rd</sup> FG%	6-16 37.5%
3PT%	0-4 0.0%
FT%	3-4 75%
4 <sup>th</sup> FG%	6-15 40.0%
3PT%	1-3 33.3%
FT%	0-0 0%
GM FG%	23-59 39.0%
3PT%	

# 2025-26 BOX SCORES



Official Basketball Box Score - Final  
**UTEP at New Mexico St.**  
 02/27/26 Pan American Center, Las Cruces  
 2025-26 Women's Basketball

Game Time: 2:00 PM  
 Game Duration: 1:54  
 Attendance: 712

Officials: Jule Kronmehok, Tucker Furbow, Tillary Bridges

UTEP - 69

Record: 12-13 (4-10)

NO. Name	Min	FG		3P		FT		Rebounds		Fouls		TP	AS	TO	ST	Blocks			+/-
		M/A	M/A	M/A	M/A	OR	DR	OR	DR	PF	FF					BS	BA	BL	
13 Ndack Mbengue	F 35:11	5-10	0-0	3-3	4	10	14	1	5	13	2	1	1	1	1	1	1	13	
3 Ivane Tensae	G 38:10	4-12	1-6	1-1	0	1	1	2	10	0	0	1	0	1	0	1	1	14	
4 Delma Zita	G 32:10	4-10	2-2	4-4	2	4	4	4	14	6	4	2	0	1	1	1	12		
5 Heaven Samayoa-Mathis	G 35:03	4-8	1-5	4-4	0	2	2	1	3	13	3	2	1	1	2	1	19		
11 Portia Adams	G 21:12	6-9	1-4	1-2	0	2	2	3	3	14	1	1	0	0	0	0	5		
22 Mary Moses Amariyo	G 13:25	0-1	0-0	1-2	0	6	6	0	3	1	0	3	1	0	0	0	2		
23 Aolani Woldai	G 12:16	1-3	0-0	0-0	0	1	1	3	0	2	1	0	1	0	0	0	4		
10 Osadebamwen Igbinedion Omoruyi	G 01:50	0-0	0-0	0-0	0	0	0	0	0	0	0	0	0	0	0	0	0	-3	
8 Brooklyn Terry	G 08:53	1-1	0-0	0-0	0	1	1	0	0	2	0	0	0	0	0	0	0	-5	
12 Irene Asensio	G 00:55	0-0	0-0	0-0	0	0	0	0	0	0	0	0	0	0	0	0	0	-3	
14 Tatiana Collazo	G 00:55	0-0	0-0	0-0	0	0	0	0	0	0	0	0	0	0	0	0	0	-3	
Team					2	6	8	0	0	2									
Totals		25-54	5-17	14-16	8	31	39	14	19	69	13	13	7	2	5	11			

Major Fouls: NONE

Dead Ball Rebounds: 1, 0

New Mexico St. - 58

Record: 8-18 (4-10)

NO. Name	Min	FG		3P		FT		Rebounds		Fouls		TP	AS	TO	ST	Blocks			+/-
		M/A	M/A	M/A	M/A	OR	DR	OR	DR	PF	FF					BS	BA	BL	
5 Morane Doesou	F 16:13	1-3	0-0	0-0	2	2	4	2	2	2	1	0	2	0	0	0	0	-16	
24 Lucia Yenes	F 30:28	1-9	0-0	2-2	1	6	7	4	1	4	1	3	0	1	1	1	0	-11	
1 Imani Warren	G 22:50	4-10	2-2	0-0	2	2	3	3	10	0	0	0	2	0	0	0	0	-11	
2 Less Rozing	G 26:45	5-9	0-2	0-0	0	1	1	2	1	10	1	0	1	0	0	0	0	-6	
22 Enma Cristiano	G 30:47	2-6	1-1	0-0	0	3	3	1	3	5	2	0	0	0	0	0	0	-11	
30 Anna Asensio	G 22:56	3-7	1-2	1-2	0	1	1	2	8	2	2	0	0	0	0	0	0	-5	
33 Senoj Jones	G 15:32	1-2	0-0	0-0	2	3	5	2	0	2	0	0	0	0	0	0	0	0	
3 Keira Hudson	G 13:43	3-9	3-6	6-6	1	0	1	2	2	15	1	1	2	0	1	1	1	1	
4 DeAvion Wilson	G 09:39	0-1	0-0	2-4	1	1	2	2	0	1	2	0	0	0	0	0	0	-5	
7 Nikki Stanic	G 03:49	0-3	0-1	0-0	0	0	0	0	0	0	1	0	0	0	0	0	0	3	
16 Marta Guilera	G 03:49	0-0	0-0	0-0	0	0	0	0	0	0	0	0	0	0	0	0	0	3	
27 Lucia Lara	G 03:49	0-1	0-0	0-0	0	1	1	0	0	0	0	0	1	0	0	0	0	3	
Team					4	2	6	0	0	0									
Totals		20-60	7-14	11-14	11	22	33	19	14	58	13	10	5	5	2	11			

Major Fouls: Team (TF) 1 1 1 0 0 0

Dead Ball Rebounds: 1, 0

	UTEP	NMSU
Biggest lead	19 (4 <sup>th</sup> 5:24)	8 (1 <sup>st</sup> 6:54)
Best Scoring Run	9 (3 <sup>rd</sup> 6:29)	6 (4 <sup>th</sup> 0:54)
Lead Changes	8	
Times Tied	3	
Time with Lead	30:54	08:02

Points from	UTEP		NMSU	
	Turnovers	11	5	5
Paint	32		10	
	1st	2nd	3rd	4th
Second Chance	2		5	
	UTEP	11	18	26
Fast Breaks	6		10	
	UTEP	14	14	16
Bench	5		27	
	NMSU	14	14	16

Shooting By Period	UTEP				NMSU			
	1 <sup>st</sup>	2 <sup>nd</sup>	3 <sup>rd</sup>	4 <sup>th</sup>	1 <sup>st</sup>	2 <sup>nd</sup>	3 <sup>rd</sup>	4 <sup>th</sup>
1 <sup>st</sup> FG%	5-16	31.3%	2-8	25.0%	3-10	30.0%	2-6	33.3%
3PT%	2-3	66.7%	1-2	50.0%	1-2	50.0%	1-2	50.0%
2 <sup>nd</sup> FG%	6-16	37.5%	3-8	37.5%	2-6	33.3%	2-5	40.0%
3PT%	2-3	66.7%	1-2	50.0%	1-2	50.0%	1-2	50.0%
3 <sup>rd</sup> FG%	4-12	33.3%	2-6	33.3%	2-6	33.3%	2-5	40.0%
3PT%	0-2	0.0%	0-1	0.0%	0-1	0.0%	0-1	0.0%
4 <sup>th</sup> FG%	5-16	31.3%	3-8	37.5%	2-6	33.3%	2-5	40.0%
3PT%	3-6	50.0%	1-2	50.0%	1-2	50.0%	1-2	50.0%
GM FG%	20-60	33.3%	7-14	50.0%	11-22	49.1%	11-22	49.1%
FT%	11-14	78.6%	6-8	75.0%	11-14	78.6%	6-8	75.0%



Official Basketball Box Score - Final  
**Jacksonville St. at UTEP**  
 02/26/26 Don Haskins Center, El Paso  
 2025-26 Women's Basketball

Game Time: 7:00 PM  
 Game Duration: 1:50  
 Attendance: 1,150

Officials: S. Brian Hal, Michael Price, Corey Malone

Jacksonville St. - 64

Record: 13-15 (7-9)

NO. Name	Min	FG		3P		FT		Rebounds		Fouls		TP	AS	TO	ST	Blocks			+/-
		M/A	M/A	M/A	M/A	OR	DR	OR	DR	PF	FF					BS	BA	BL	
22 Mya Barnes	F 36:52	7-14	5-9	1-2	2	13	15	0	4	20	2	2	2	2	0	0	0	0	
32 Brooklyn McDaniel	F 29:23	8-13	1-2	2-2	0	4	4	2	3	19	1	3	0	1	1	1	1	-2	
1 Eden Sample	G 34:57	2-3	0-0	4-6	0	0	0	1	3	8	0	1	1	1	0	0	0	0	
21 Kyera Thomsbury	G 16:35	0-4	0-3	1-2	1	2	3	2	2	1	4	0	0	0	0	0	0	5	
23 Adriana Jones	G 35:11	2-7	0-1	0-0	1	1	2	2	0	4	0	3	0	0	0	0	0	0	
15 Makala Hobby	G 23:25	4-6	1-3	1-1	1	1	3	4	0	2	10	3	5	0	0	0	0	-8	
14 Mina Djurdjevic	G 13:46	1-3	0-0	0-0	0	3	3	2	0	2	0	0	0	0	0	0	0	-2	
71 Maria Sanchez Ponce	G 18:52	0-3	0-2	0-2	2	1	3	1	1	0	1	0	0	0	0	0	0	-4	
Team					2	2	4	0	0	0									
Totals		24-53	7-20	9-15	9	29	38	10	15	64	11	14	3	2	4	2			

Major Fouls: NONE

Dead Ball Rebounds: 5, 0

UTEP - 66

Record: 13-13 (5-10)

NO. Name	Min	FG		3P		FT		Rebounds		Fouls		TP	AS	TO	ST	Blocks			+/-
		M/A	M/A	M/A	M/A	OR	DR	OR	DR	PF	FF					BS	BA	BL	
13 Ndack Mbengue	F 33:23	5-11	0-0	0-2	6	5	11	3	2	10	3	1	0	3	1	1	1	5	
3 Ivane Tensae	G 32:23	3-6	3-5	1-2	0	0	0	1	10	3	0	2	0	1	1	1	1	1	
4 Delma Zita	G 32:14	2-10	1-3	0-0	2	2	4	0	5	2	1	3	1	0	0	0	0	-5	
5 Heaven Samayoa-Mathis	G 31:18	4-11	1-4	1-1	2	3	5	0	3	10	1	1	3	0	0	0	0	0	
11 Portia Adams	G 35:35	9-22	3-6	2-2	2	2	4	4	3	23	2	2	1	0	0	0	0	0	
22 Mary Moses Amariyo	G 12:01	0-0	0-0	0-0	2	6	8	2	0	0	3	0	0	0	0	0	0	0	
23 Aolani Woldai	G 16:53	3-9	0-2	2-2	1	2	3	1	1	8	0	0	0	0	0	0	0	4	
12 Irene Asensio	G 04:05	0-0	0-0	0-0	0	0	0	0	0	0	0	1	0	0	0	0	0	0	
10 Osadebamwen Igbinedion Omoruyi	G 02:08	0-0	0-0	0-0	1	0	1	0	0	0	0	0	0	0	0	0	0	-4	
Team					0	1	1	0	0	0									
Totals		26-69	8-20	6-9	16	21	37	15	10	66	11	9	9	4	2	2			

Major Fouls: NONE

Dead Ball Rebounds: 1, 0

	JSU	UTEP
Biggest lead	11 (4 <sup>th</sup> 6:10)	6 (2 <sup>nd</sup> 8:20)
Best Scoring Run	9 (4 <sup>th</sup> 7:40)	13 (2 <sup>nd</sup> 8:20)
Lead Changes	5	
Times Tied	3	
Time with Lead	30:10	07:20

Points from	JSU		UTEP	
	Turnovers	14	15	15
Paint	34		28	
	1st	2nd	3rd	4th
Second Chance	6		11	
	JSU	16	14	12
Fast Breaks	10		16	
	JSU			

# 2025-26 SEASON STATS



## 2025-26 UTEP Women's Basketball Combined Team Statistics All games

### Game Records

Record	Overall	Home	Away	Neutral
ALL GAMES	13-15	10-7	3-8	0-0
CONFERENCE	5-12	3-6	2-6	0-0
NON-CONFERENCE	8-3	7-1	1-2	0-0

### Score by Periods

Team	1st	2nd	3rd	4th	OT	TOT
UTEP	432	390	500	485	12	1819
Opponents	475	419	527	492	8	1921

### Team Box Score

No.	Player	Total					3-Point		F-Throw		Rebounds				PF	DQ	A	TO	BLK	STL	PTS	AVG
		GP-GS	MIN	AVG	FG-FGA	FG%	3FG-3FGA	3FG%	FT-FTA	FT%	OFF	DEF	TOT	AVG								
11	ADAMS, Portia	28-27	726:53	26.0	108-282	.383	30-75	.400	68-88	.773	25	58	83	3.0	62	2	71	70	0	21	314	11.2
3	TENSAIE, Ivane	28-27	817:39	29.2	98-292	.336	68-200	.340	26-36	.722	7	33	40	1.4	32	0	25	30	0	21	290	10.4
2	LEGIONS, Sirviva	20-19	527:04	26.4	76-206	.369	3-13	.231	40-76	.526	40	76	116	5.8	34	1	29	47	3	26	195	9.8
13	MBENGUE, Ndack	27-27	687:17	25.5	90-181	.497	0-0	.000	72-112	.643	88	130	218	8.1	80	3	15	68	21	32	252	9.3
22	MOSES AMANIYO, Mary	28-4	614:40	22.0	101-194	.521	1-10	.100	47-66	.712	92	139	231	8.3	62	4	8	47	8	34	250	8.9
5	SAMAYOA-MATHIS, Heaven	28-15	714:51	25.5	67-189	.354	24-81	.296	29-37	.784	30	62	92	3.3	55	1	62	48	9	42	187	6.7
4	ZITA, Delma	27-20	588:18	21.8	43-120	.358	5-21	.238	29-32	.906	18	38	56	2.1	41	0	67	63	2	35	120	4.4
23	WOLDAI, Aolani	19-0	196:03	10.3	22-70	.314	2-21	.095	12-14	.857	16	15	31	1.6	43	1	16	25	2	8	58	3.1
8	TERRY, Brooklyn	21-0	189:25	9.0	19-67	.284	5-37	.135	5-5	1.000	7	20	27	1.3	12	0	3	9	4	5	48	2.3
15	PRISCILLA, Abby	2-0	08:26	4.2	1-3	.333	0-0	.000	1-2	.500	5	2	7	3.5	0	0	0	0	0	0	3	1.5
12	ASENSIO, Irene	26-0	210:24	8.1	10-46	.217	8-37	.216	8-10	.800	3	16	19	0.7	18	0	10	16	3	7	36	1.4
14	COLLAZO, Tatiana	16-0	120:17	7.5	7-28	.250	4-19	.211	4-12	.333	1	5	6	0.4	12	0	6	7	0	8	22	1.4
10	IGBINEDION OMORUYI, Osadebamwen	22-0	146:03	6.6	13-38	.342	0-0	.000	4-7	.571	23	17	40	1.8	18	1	1	12	7	8	30	1.4
1	DAVIS, Aaliyah	12-1	77:40	6.5	5-20	.250	0-3	.000	4-7	.571	3	13	16	1.3	8	0	6	9	0	3	14	1.2
Team											53	59	112				16					
<b>Total</b>		<b>28</b>	<b>5625</b>		<b>660-1736</b>	<b>.380</b>	<b>150-517</b>	<b>.290</b>	<b>349-504</b>	<b>.692</b>	<b>411</b>	<b>683</b>	<b>1094</b>	<b>39.1</b>	<b>477</b>	<b>13</b>	<b>319</b>	<b>467</b>	<b>59</b>	<b>250</b>	<b>1819</b>	<b>65.0</b>
<b>Opponents</b>		<b>28</b>	<b>5625</b>		<b>695-1630</b>	<b>.426</b>	<b>200-557</b>	<b>.359</b>	<b>331-459</b>	<b>.721</b>	<b>301</b>	<b>744</b>	<b>1045</b>	<b>37.3</b>	<b>494</b>	<b>10</b>	<b>375</b>	<b>495</b>	<b>87</b>	<b>223</b>	<b>1921</b>	<b>68.6</b>

### Team Statistics

	UTEP	OPP
<b>Scoring</b>	<b>1819</b>	<b>1921</b>
Points per game	65.0	68.6
Scoring margin	-3.6	-
<b>Field goals-att</b>	<b>660-1736</b>	<b>695-1630</b>
Field goal pct	.380	.426
<b>3 point fg-att</b>	<b>150-517</b>	<b>200-557</b>
3-point FG pct	.290	.359
3-pt FG made per game	5.4	7.1
<b>Free throws-att</b>	<b>349-504</b>	<b>331-459</b>
Free throw pct	.692	.721
F-Throws made per game	12.5	11.8
<b>Rebounds</b>	<b>1094</b>	<b>1045</b>
Rebounds per game	39.1	37.3
Rebounding margin	+1.8	-
<b>Assists</b>	<b>319</b>	<b>375</b>
Assists per game	11.4	13.4
<b>Turnovers</b>	<b>467</b>	<b>495</b>
Turnovers per game	16.7	17.7
Turnover margin	+1.0	-
Assist/turnover ratio	0.7	0.8
<b>Steals</b>	<b>250</b>	<b>223</b>
Steals per game	8.9	8.0
<b>Blocks</b>	<b>59</b>	<b>87</b>
Blocks per game	2.1	3.1
<b>Winning streak</b>	<b>0</b>	<b>-</b>
Home win streak	0	-
<b>Attendance</b>	<b>17377</b>	<b>13109</b>
Home games-Avg/Game	17-1022	11-1192
Neutral site-Avg/Game	-	0-0

### Team Results

Date	Opponent	Score	Att.
11/03/2025	Prairie View	W 84-60	639
11/08/2025	Nicholls	W 76-61	1040
11/11/2025	Western N.M.	W 81-56	1068
11/22/2025	UT Martin	Wot 64-60	941
11/25/2025	at Kansas City	W 75-64	283
11/29/2025	Denver	W 69-52	1096
12/03/2025	A&M-Corpus Christi	W 62-44	923
12/06/2025	at TCU	L 40-95	2846
12/13/2025	at BYU	L 46-81	1977
12/18/2025	UC Irvine	L 72-93	905
12/29/2025	Southwest (NM)	W 102-43	1078
01/02/2026	Delaware	W 82-71	957
01/04/2026	Liberty	L 66-86	795
01/08/2026	at Middle Tenn.	L 43-86	3072
01/10/2026	at Western Ky.	L 59-68	703
01/15/2026	Missouri St.	L 64-71	821
01/17/2026	FIU	L 59-67	881
01/22/2026	at Kennesaw St.	L 52-83	441
01/24/2026	at Jacksonville St.	L 60-73	471
01/31/2026	New Mexico St.	W 79-69	1752
02/05/2026	Louisiana Tech	L 48-87	1127
02/07/2026	Sam Houston	L 58-70	1013
02/12/2026	at Liberty	L 48-58	849
02/14/2026	at Delaware	W 79-72	1377
02/21/2026	at New Mexico St.	W 69-58	712
02/26/2026	Jacksonville St.	W 66-64	1150
02/28/2026	Kennesaw St.	L 57-58	1191
03/05/2026	at Sam Houston	L 59-71	378



# 2025-26 CUSA STATS



## 2025-26 UTEP Women's Basketball Combined Team Statistics In Conference games

### Game Records

Record	Overall	Home	Away	Neutral
ALL GAMES	5-12	3-6	2-6	0-0
CONFERENCE	5-12	3-6	2-6	0-0
NON-CONFERENCE	0-0	0-0	0-0	0-0

### Score by Periods

Team	1st	2nd	3rd	4th	OT	TOT
UTEP	236	240	284	288	0	1048
Opponents	320	253	327	312	0	1212

### Team Box Score

No.	Player	Total					3-Point		F-Throw		Rebounds				Other				PTS	AVG		
		GP-GS	MIN	AVG	FG-FGA	FG%	3FG-3FGA	3FG%	FT-FTA	FT%	OFF	DEF	TOT	AVG	PF	DQ	A	TO			BLK	STL
11	ADAMS, Portia	17-16	466:13	27.4	72-179	.402	17-43	.395	54-68	.794	17	36	53	3.1	49	2	39	52	0	14	215	12.6
3	TENSAIE, Ivane	17-16	536:51	31.6	56-169	.331	39-118	.331	17-23	.739	5	19	24	1.4	24	0	17	18	0	11	168	9.9
13	MBENGUE, Ndack	16-16	428:57	26.8	49-100	.490	0-0	.000	42-67	.627	44	79	123	7.7	49	2	11	46	16	19	140	8.8
2	LEGIONS, Sirviva	9-8	234:36	26.1	32-91	.352	1-2	.500	11-34	.324	20	33	53	5.9	16	0	10	25	3	12	76	8.4
22	MOSES AMANIYO, Mary	17-4	367:06	21.6	56-108	.519	0-6	.000	22-29	.759	41	78	119	7.0	42	3	6	27	5	22	134	7.9
5	SAMAYOA-MATHIS, Heaven	17-15	482:20	28.4	45-122	.369	18-51	.353	20-22	.909	16	40	56	3.3	32	1	34	26	6	24	128	7.5
4	ZITA, Delma	16-9	376:26	23.5	32-81	.395	4-13	.308	18-20	.900	12	18	30	1.9	27	0	38	44	2	23	86	5.4
23	WOLDAI, Aolani	10-0	134:09	13.4	17-49	.347	2-14	.143	10-12	.833	8	9	17	1.7	27	1	10	12	0	6	46	4.6
8	TERRY, Brooklyn	11-0	101:38	9.2	9-29	.310	2-16	.125	1-1	1.000	3	10	13	1.2	6	0	1	7	1	2	21	1.9
10	IGBINEDION OMORUYI, Osadebamwen	13-0	93:53	7.2	7-24	.292	0-0	.000	3-4	.750	16	12	28	2.2	14	1	1	8	4	6	17	1.3
14	COLLAZO, Tatiana	5-0	33:34	6.7	1-4	.250	1-4	.250	1-4	.250	0	1	1	0.2	2	0	1	1	0	1	4	0.8
12	ASENSIO, Irene	15-0	107:52	7.2	2-20	.100	2-16	.125	5-6	.833	2	8	10	0.7	9	0	4	8	2	1	11	0.7
1	DAVIS, Aaliyah	5-1	32:26	6.5	0-4	.000	0-0	.000	2-2	1.000	0	5	5	1.0	2	0	1	3	0	1	2	0.4
15	PRISCILLA, Abby	1-0	03:58	4.0	0-0	.000	0-0	.000	0-0	.000	1	0	1	1.0	0	0	0	0	0	0	0	0.0
Team											23	33	56				11					
<b>Total</b>		<b>17</b>	<b>3400</b>		<b>378-980</b>	<b>.386</b>	<b>86-283</b>	<b>.304</b>	<b>206-292</b>	<b>.705</b>	<b>208</b>	<b>381</b>	<b>589</b>	<b>34.6</b>	<b>299</b>	<b>10</b>	<b>173</b>	<b>288</b>	<b>39</b>	<b>142</b>	<b>1048</b>	<b>61.6</b>
<b>Opponents</b>		<b>17</b>	<b>3400</b>		<b>438-981</b>	<b>.446</b>	<b>124-312</b>	<b>.397</b>	<b>212-295</b>	<b>.719</b>	<b>194</b>	<b>439</b>	<b>633</b>	<b>37.2</b>	<b>297</b>	<b>6</b>	<b>225</b>	<b>279</b>	<b>43</b>	<b>133</b>	<b>1212</b>	<b>71.3</b>

### Team Statistics

	UTEP	OPP
<b>Scoring</b>	<b>1048</b>	<b>1212</b>
Points per game	61.6	71.3
Scoring margin	-9.6	-
<b>Field goals-att</b>	<b>378-980</b>	<b>438-981</b>
Field goal pct	.386	.446
<b>3 point fg-att</b>	<b>86-283</b>	<b>124-312</b>
3-point FG pct	.304	.397
3-pt FG made per game	5.1	7.3
<b>Free throws-att</b>	<b>206-292</b>	<b>212-295</b>
Free throw pct	.705	.719
F-Throws made per game	12.1	12.5
<b>Rebounds</b>	<b>589</b>	<b>633</b>
Rebounds per game	34.6	37.2
Rebounding margin	-2.6	-
<b>Assists</b>	<b>173</b>	<b>225</b>
Assists per game	10.2	13.2
<b>Turnovers</b>	<b>288</b>	<b>279</b>
Turnovers per game	16.9	16.4
Turnover margin	-0.5	-
Assist/turnover ratio	0.6	0.8
<b>Steals</b>	<b>142</b>	<b>133</b>
Steals per game	8.4	7.8
<b>Blocks</b>	<b>39</b>	<b>43</b>
Blocks per game	2.3	2.5
<b>Winning streak</b>	<b>0</b>	<b>-</b>
Home win streak	0	-
<b>Attendance</b>	<b>9687</b>	<b>8003</b>
Home games-Avg/Game	9-1076	8-1000
Neutral site-Avg/Game	-	0-0

### Team Results

Date	Opponent		Score	Att.
01/02/2026	Delaware	W	82-71	957
01/04/2026	Liberty	L	66-86	795
01/08/2026	at Middle Tenn.	L	43-86	3072
01/10/2026	at Western Ky.	L	59-68	703
01/15/2026	Missouri St.	L	64-71	821
01/17/2026	FIU	L	59-67	881
01/22/2026	at Kennesaw St.	L	52-83	441
01/24/2026	at Jacksonville St.	L	60-73	471
01/31/2026	New Mexico St.	W	79-69	1752
02/05/2026	Louisiana Tech	L	48-87	1127
02/07/2026	Sam Houston	L	58-70	1013
02/12/2026	at Liberty	L	48-58	849
02/14/2026	at Delaware	W	79-72	1377
02/21/2026	at New Mexico St.	W	69-58	712
02/26/2026	Jacksonville St.	W	66-64	1150
02/28/2026	Kennesaw St.	L	57-58	1191
03/05/2026	at Sam Houston	L	59-71	378



# 2025-26 RADIO-TV ROSTER

<b>#1</b> <b>AALIYAH DAVIS</b>  G   5-7   SR. EI PASO, TEXAS	<b>#2</b> <b>SIRVIVA LEGIONS</b>  G   5-8   SR. BROOKLYN, N.Y.	<b>#3</b> <b>IVANE TENSAIE</b>  G   5-6   GR. ROSEVILLE, MINN	<b>#4</b> <b>DELMA ZITA</b>  G   5-8   GR. MAPUTO, MOZAMBIQUE	<b>#5</b> <b>HEAVEN SAMAYOA-MATHIS</b>  G   5-17   SR. SACRAMENTO, CALIF.
<b>#8</b> <b>BROOKLYN TERRY</b>  G/F   6-0   FR. MANSFIELD, TEXAS	<b>#10</b> <b>OSADEBAMWEN IGBINEDION OMORUYI</b>  F   6-4   SO. MADRID, SPAIN	<b>#11</b> <b>PORTIA ADAMS</b>  G   5-6   SR. CEDAR HILL, TEXAS	<b>#12</b> <b>IRENE ASENSIO</b>  G   5-8   SO.. BARCELONA, SPAIN	<b>#13</b> <b>NDACK MBENGUE</b>  F   6-3   SR. BERGAMO, ITALY
<b>#14</b> <b>TATIANA COLLAZO</b>  G   5-8   JR. SAN JOSE, CALIF.	<b>#15</b> <b>ABBY PRISCILLA</b>  G   5-11   JR. KAMPALA, UGANDA	<b>#20</b> <b>BLESSIING OKHWODIASA</b>  F   6-2   FR. MADRID, SPAIN.	<b>#22</b> <b>MARY MOSES AMANIYO</b>  F   6-1   SO. ARUA, UGANDA	<b>#23</b> <b>AOLANI WOLDAI</b>  G   5-7   FR. FORT WORTH, TEXAS

## COACHING STAFF



**HEAD COACH**  
KEITHA ADAMS



**ASSOC. HEAD COACH**  
EWA LASKOWSKA



**ASST. COACH**  
JAREIGA HUGHES



**ASST. COACH**  
LULU MCKINNEY



**S&C COACH**  
CHISAN JONES

