



Officials: Scott Yarbrough, Demoya Pugh, Tiffany Bridges

UTEP - 59

Record: 13-15 (5-12)

NO.	Name	F	Min	FG			3P			FT			Rebounds			Fouls		TP	AS	TO	ST	Blocks		+/-
				M-A	M-A	M-A	OR	DR	TOT	PF	FD	OR	DR	TOT	BS	BA								
13	Ndack Mbengue	F	21:18	2-5	0-0	2-2	2	8	10	5	4	6	0	3	2	1	1	0	3	2	1	1	-6	
3	Ivane Tensaie	G	38:19	6-9	2-5	0-0	0	3	3	0	1	14	0	0	0	0	0	0	0	0	0	0	-11	
4	Delma Zita	G	38:46	2-5	0-0	2-2	1	0	1	1	1	6	4	7	1	0	0	0	0	0	0	0	-10	
5	Heaven Samayoa-Mathis	G	25:43	4-9	3-4	2-2	2	1	3	4	4	13	2	1	1	1	0	0	0	0	0	0	-6	
11	Portia Adams	G	25:13	5-11	1-1	3-6	1	2	3	5	5	14	0	4	0	0	0	0	0	0	0	0	-7	
23	Aolani Woldai		10:53	0-5	0-1	0-0	0	0	0	4	1	0	2	2	0	0	0	0	0	0	0	0	-6	
22	Mary Moses Amaniyo		12:53	3-6	0-1	0-0	2	3	5	5	1	6	0	0	0	0	0	0	0	0	0	0	7	
14	Tatiana Collazo		02:24	0-0	0-0	0-0	0	0	0	1	0	0	0	0	0	0	0	0	0	0	0	0	-2	
8	Brooklyn Terry		14:51	0-2	0-2	0-0	1	1	2	2	2	0	0	1	1	0	0	0	0	0	0	0	-10	
10	Osadebamwen Igbinedion Omoruyi		06:23	0-1	0-0	0-0	1	1	2	0	0	0	0	0	1	1	0	0	0	0	0	0	-7	
12	Irene Asensio		03:18	0-1	0-1	0-0	0	0	0	1	0	0	0	0	1	0	0	0	0	0	0	0	-2	
Team							0	4	4	0	0	0	0	0	0	0	0	0	0	0	0	0	-12	
<b>Totals</b>				22-54	6-15	9-12	10	23	33	28	19	59	8	20	6	2	1	12						

Shooting By Period		
1 <sup>st</sup> FG%	6-16	37.5%
3PT%	1-4	25.0%
FT%	2-2	100%
2 <sup>nd</sup> FG%	5-11	45.5%
3PT%	1-3	33.3%
FT%	0-0	0%
3 <sup>rd</sup> FG%	4-11	36.4%
3PT%	2-3	66.7%
FT%	7-10	70%
4 <sup>th</sup> FG%	7-16	43.8%
3PT%	2-5	40.0%
FT%	0-0	0%
GM FG%	22-54	40.7%
3PT%	6-15	40.0%
FT%	9-12	75.0%

Dead Ball Rebounds: 1, 0

Major Fouls: Mbengue (F1) 3<sup>rd</sup> 9:04 Adams (TF) 4<sup>th</sup> 1:45

Sam Houston - 71

Record: 17-11 (10-7)

NO.	Name	F	Min	FG			3P			FT			Rebounds			Fouls		TP	AS	TO	ST	Blocks		+/-
				M-A	M-A	M-A	OR	DR	TOT	PF	FD	OR	DR	TOT	BS	BA								
8	Deborah Ogayemi	F	28:43	3-5	0-0	5-8	3	5	8	5	5	11	1	2	2	0	0	9					9	
15	Nyla Inmon	F	29:26	4-8	0-0	1-6	2	6	8	2	5	9	1	4	2	0	0	-1					-1	
4	Fanta Kone	G	39:12	6-14	0-3	6-8	2	3	5	2	5	18	6	4	1	0	1	12					12	
5	Aysia Ward-Strong	G	16:31	1-2	0-0	1-2	0	3	3	3	1	3	2	1	0	0	0	2					2	
24	Whitney Dunn	G	37:28	4-13	3-7	4-7	4	4	8	2	6	15	3	3	2	1	1	11					11	
7	Annika Corcoran		34:38	4-6	3-4	0-0	3	0	3	3	2	11	4	1	1	0	0	15					15	
11	Esther Rodellar		05:47	0-2	0-1	2-4	1	2	3	0	2	2	0	2	1	0	0	4					4	
23	Bryana Block		02:46	0-0	0-0	0-2	1	0	1	0	1	0	0	0	1	0	0	1					1	
10	Alaisha Brown		05:29	1-2	0-0	0-0	0	0	0	2	0	2	1	0	0	0	0	7					7	
Team							1	1	2	0	0	0	0	1	0	0	0	0	0	0	0	0	0	0
<b>Totals</b>				23-52	6-15	19-37	17	24	41	19	27	71	18	18	10	1	2	12						

Shooting By Period		
1 <sup>st</sup> FG%	6-14	42.9%
3PT%	2-3	66.7%
FT%	4-11	36.4%
2 <sup>nd</sup> FG%	6-15	40.0%
3PT%	1-4	25.0%
FT%	3-6	50%
3 <sup>rd</sup> FG%	5-12	41.7%
3PT%	2-5	40.0%
FT%	2-6	33.3%
4 <sup>th</sup> FG%	6-11	54.5%
3PT%	1-3	33.3%
FT%	10-14	71.4%
GM FG%	23-52	44.2%
3PT%	6-15	40.0%
FT%	19-37	51.4%

Dead Ball Rebounds: 7, 0

Major Fouls: NONE

	UTEP	SHSU
Biggest lead	3 (1 <sup>st</sup> 9:49)	15 (4 <sup>th</sup> 0:40)
Best Scoring Run	8 (3 <sup>rd</sup> 1:50)	6 (2 <sup>nd</sup> 9:47)
Lead Changes	3	
Times Tied	4	
Time with Lead	03:09	34:18

Points from	UTEP	SHSU
Turnovers	7	21
Paint	20	34
Second Chance	8	18
Fast Breaks	1	3
Bench	6	15

	Period by Period Scoring				
	1st	2nd	3rd	4th	TOT
UTEP	15	11	17	16	59
SHSU	18	16	14	23	71



**UTEP at Sam Houston**

03/05/26 Johnson Coliseum, Huntsville, TX  
2025-26 Women's Basketball

**Game Time:** 6:30 PM  
**Game Duration:** 2:07  
**Attendance:** 378

**Officials:** Scott Yarbrough, Demoya Pugh, Tiffany Bridges

**Period 1**

**Period Starters:**

<b>SHSU</b>	4 Kone F	5 Ward-Strong A	8 Ogayemi D	15 Inmon N	24 Dunn W
<b>UTEP</b>	3 Tensaie I	4 Zita D	5 Samayoa-Mathis H	11 Adams P	13 Mbengue N

Game Time	SHSU	Score	Diff	UTEP
10:00	15 INMON N jumpball lost			13 MBENGUE N jumpball won
09:49		<b>0-3</b>	<b>-3</b>	3 TENSAIE I 3pt FG , jump shot made (3)
09:49				4 ZITA D assist (1)
09:21	24 DUNN W turnover bad pass (1)			13 MBENGUE N steal (1)
09:07	8 OGAYEMI D steal (1)			4 ZITA D turnover bad pass (1)
08:50	15 INMON N 2pt FG from turnover in the paint, jump shot missed			
08:47				13 MBENGUE N defensive rebound (1)
08:39				13 MBENGUE N 2pt FG in the paint, jump shot blocked
08:39	24 DUNN W block (1)			
08:34	8 OGAYEMI D defensive rebound (1)			
08:17	24 DUNN W 3pt FG , jump shot made (3)	<b>3-3</b>	<b>0</b>	
08:17	4 KONE F assist (1)			
07:58				11 ADAMS P 2pt FG outside the paint, jump shot missed
07:54	5 WARD-STRONG A defensive rebound (1)			
07:36	15 INMON N 2pt FG in the paint, jump shot missed			
07:34				13 MBENGUE N defensive rebound (2)
07:19		<b>3-5</b>	<b>-2</b>	3 TENSAIE I 2pt FG outside the paint, jump shot made (5)
07:19				5 SAMAYOA-MATHIS H assist (1)
06:59	24 DUNN W 2pt FG outside the paint, jump shot missed			
06:58				defensive rebound (3)
06:58	5 WARD-STRONG A substitution out			
06:58	15 INMON N substitution out			
06:58	7 CORCORAN A substitution in			
06:58	11 RODELLAR E substitution in			
06:51				4 ZITA D 2pt FG in the paint, layup missed
06:49	24 DUNN W defensive rebound (1)			
06:39	8 OGAYEMI D foul drawn (1)			11 ADAMS P foul shooting (1 - 1)
06:39	8 OGAYEMI D free throw 1 - 2 made (1)	<b>4-5</b>	<b>-1</b>	
06:39	8 OGAYEMI D free throw 2 - 2 made (2)	<b>5-5</b>	<b>0</b>	
06:38	8 OGAYEMI D steal (2)			11 ADAMS P turnover bad pass (1)
06:32	11 RODELLAR E turnover travel (1)			
06:32	11 RODELLAR E substitution out			
06:32	5 WARD-STRONG A substitution in			
06:14				13 MBENGUE N 2pt FG from turnover in the paint, layup missed
06:09	4 KONE F defensive rebound (1)			
06:09	4 KONE F turnover lost ball (1)			13 MBENGUE N steal (2)
06:05		<b>5-7</b>	<b>-2</b>	13 MBENGUE N 2pt FG from turnover in the paint, layup made (2)
05:50	8 OGAYEMI D 2pt FG in the paint, layup made (4)	<b>7-7</b>	<b>0</b>	
05:31	5 WARD-STRONG A foul shooting (1 - 1)			11 ADAMS P foul drawn (1)
05:31	5 WARD-STRONG A substitution out			
05:31	24 DUNN W substitution out			
05:31	15 INMON N substitution in			



**UTEP at Sam Houston**

03/05/26 Johnson Coliseum, Huntsville, TX  
2025-26 Women's Basketball

**Game Time:** 6:30 PM  
**Game Duration:** 2:07  
**Attendance:** 378

**Officials:** Scott Yarbrough, Demoya Pugh, Tiffany Bridges

Game Time	SHSU	Score	Diff	UTEP
05:31	23 BLOCK B substitution in			
05:31				4 ZITA D substitution out
05:31				23 WOLDAI A substitution in
05:31		<b>7-8</b>	<b>-1</b>	11 ADAMS P free throw 1 - 2 made (1)
05:31		<b>7-9</b>	<b>-2</b>	11 ADAMS P free throw 2 - 2 made (2)
05:21	15 INMON N 2pt FG in the paint, jump shot made (2)	<b>9-9</b>	<b>0</b>	
05:21	4 KONE F assist (2)			
05:04				23 WOLDAI A 2pt FG in the paint, jump shot missed
05:02	defensive rebound (5)			
04:50	4 KONE F 2pt FG in the paint, layup made (2)	<b>11-9</b>	<b>2</b>	
04:50	4 KONE F foul drawn (1)			5 SAMAYOA-MATHIS H foul shooting (1 - 2)
04:50	Timeout media			
04:50	4 KONE F free throw 1 - 1 missed			
04:47				13 MBENGUE N defensive rebound (3)
04:32				5 SAMAYOA-MATHIS H 2pt FG in the paint, jump shot missed
04:29	15 INMON N defensive rebound (1)			
04:17	8 OGAYEMI D foul drawn (2)			5 SAMAYOA-MATHIS H foul shooting (2 - 3)
04:17				5 SAMAYOA-MATHIS H substitution out
04:17				11 ADAMS P substitution out
04:17				4 ZITA D substitution in
04:17				22 MOSES AMANIYO M substitution in
04:17	8 OGAYEMI D free throw 1 - 2 made (5)	<b>12-9</b>	<b>3</b>	
04:17	8 OGAYEMI D free throw 2 - 2 missed			
04:16				22 MOSES AMANIYO M defensive rebound (1)
03:57		<b>12-11</b>	<b>1</b>	3 TENSAIE I 2pt FG outside the paint, jump shot made (7)
03:45	4 KONE F 2pt FG in the paint, layup blocked			
03:45				13 MBENGUE N block (1)
03:41				22 MOSES AMANIYO M defensive rebound (2)
03:39				3 TENSAIE I 3pt FG , jump shot missed
03:35				4 ZITA D offensive rebound (1)
03:33	15 INMON N foul personal (1 - 2)			23 WOLDAI A foul drawn (1)
03:33	23 BLOCK B substitution out			
03:33	24 DUNN W substitution in			
03:28				22 MOSES AMANIYO M 3pt FG second chance, jump shot missed
03:23	24 DUNN W defensive rebound (2)			
03:18	4 KONE F 2pt FG in the paint, layup made (4)	<b>14-11</b>	<b>3</b>	
02:51				23 WOLDAI A 2pt FG outside the paint, jump shot missed
02:46				22 MOSES AMANIYO M offensive rebound (3)
02:46		<b>14-13</b>	<b>1</b>	22 MOSES AMANIYO M 2pt FG second chance in the paint, tip-in layup made (2)
02:27	24 DUNN W 2pt FG outside the paint, jump shot missed			
02:24				defensive rebound (9)
02:24	15 INMON N substitution out			
02:24	5 WARD-STRONG A substitution in			
02:24				3 TENSAIE I substitution out
02:24				14 COLLAZO T substitution in
02:10	5 WARD-STRONG A foul personal (2 - 3)			22 MOSES AMANIYO M foul drawn (1)
02:10	5 WARD-STRONG A substitution out			
02:10	11 RODELLAR E substitution in			



**UTEP at Sam Houston**

03/05/26 Johnson Coliseum, Huntsville, TX  
2025-26 Women's Basketball

**Game Time:** 6:30 PM  
**Game Duration:** 2:07  
**Attendance:** 378

**Officials:** Scott Yarbrough, Demoya Pugh, Tiffany Bridges

Game Time	SHSU	Score	Diff	UTEP
02:03		<b>14-15</b>	<b>-1</b>	22 MOSES AMANIYO M 2pt FG in the paint, jump shot made (4)
02:03				23 WOLDAI A assist (1)
01:49	4 KONE F foul drawn (2)			23 WOLDAI A foul personal (1 - 4)
01:41	24 DUNN W turnover travel (2)			
01:41	11 RODELLAR E steal (1)			4 ZITA D turnover bad pass (2)
01:41	11 RODELLAR E 2pt FG from turnover in the paint, layup missed			
01:41	4 KONE F offensive rebound (2)			
01:31	24 DUNN W 3pt FG from turnover second chance, jump shot made (6)	<b>17-15</b>	<b>2</b>	
01:31	8 OGAYEMI D assist (1)			
01:15				4 ZITA D turnover travel (3)
01:05	11 RODELLAR E 3pt FG from turnover, jump shot missed			
01:01	11 RODELLAR E offensive rebound (1)			
00:52	4 KONE F turnover (2)			
00:52	4 KONE F substitution out			
00:52	23 BLOCK B substitution in			
00:46	23 BLOCK B steal (1)			23 WOLDAI A turnover bad pass (1)
00:43	24 DUNN W 2pt FG from turnover in the paint, layup missed			
00:42	23 BLOCK B offensive rebound (1)			
00:42	23 BLOCK B foul drawn (1)			22 MOSES AMANIYO M foul personal (1 - 5)
00:42				22 MOSES AMANIYO M substitution out
00:42				23 WOLDAI A substitution out
00:42				3 TENSAIE I substitution in
00:42				8 TERRY B substitution in
00:42	23 BLOCK B free throw fast break 1 - 2 missed			
00:42	offensive dead ball rebound (1)			
00:42	23 BLOCK B free throw fast break 2 - 2 missed			
00:39				8 TERRY B defensive rebound (1)
00:20				8 TERRY B 3pt FG , jump shot missed
00:15	11 RODELLAR E defensive rebound (2)			
00:04	11 RODELLAR E foul drawn (1)			13 MBENGUE N foul personal (1 - 6)
00:04	23 BLOCK B substitution out			
00:04	4 KONE F substitution in			
00:04				13 MBENGUE N substitution out
00:04				22 MOSES AMANIYO M substitution in
00:04	11 RODELLAR E free throw 1 - 2 missed			
00:04	offensive dead ball rebound (2)			
00:04	11 RODELLAR E free throw 2 - 2 missed			
00:04	24 DUNN W offensive rebound (3)			
00:01	24 DUNN W foul drawn (1)			14 COLLAZO T foul shooting (1 - 7)
00:01	11 RODELLAR E substitution out			
00:01	10 BROWN A substitution in			
00:01	24 DUNN W free throw 1 - 2 made (7)	<b>18-15</b>	<b>3</b>	
00:00	24 DUNN W free throw 2 - 2 missed			
00:00				defensive rebound (11)
<b>END OF PERIOD</b>				
<b>SHSU 18-15 UTEP</b>				



**UTEP at Sam Houston**

03/05/26 Johnson Coliseum, Huntsville, TX  
2025-26 Women's Basketball

Game Time: 6:30 PM  
Game Duration: 2:07  
Attendance: 378

Officials: Scott Yarbrough, Demoya Pugh, Tiffany Bridges

**UTEP - 15**

NO.	Name	F/G	Min	FG			Rebounds			Fouls		TP	AS	TO	ST	Blocks		+/-
				M-A	M-A	M-A	OR	DR	TOT	PF	FD					BS	BA	
13	Ndack Mbengue	F	09:55	1-3	0-0	0-0	0	3	3	1	0	2	0	0	2	1	1	-2
3	Ivane Tensaie	G	08:19	3-4	1-2	0-0	0	0	0	0	0	7	0	0	0	0	0	-2
4	Delma Zita	G	08:46	0-1	0-0	0-0	1	0	1	0	0	0	1	3	0	0	-1	
5	Heaven Samayoa-Mathis	G	05:43	0-1	0-0	0-0	0	0	0	2	0	0	1	0	0	0	-2	
11	Portia Adams	G	05:43	0-1	0-0	2-2	0	0	0	1	1	2	0	1	0	0	-2	
23	Aolani Woldai		04:49	0-2	0-0	0-0	0	0	0	1	1	0	1	1	0	0	-2	
22	Mary Moses Amaniyo		03:39	2-3	0-1	0-0	1	2	3	1	1	4	0	0	0	0	-1	
14	Tatiana Collazo		02:24	0-0	0-0	0-0	0	0	0	1	0	0	0	0	0	0	-2	
8	Brooklyn Terry		00:43	0-1	0-1	0-0	0	1	1	0	0	0	0	0	0	0	-1	
Team							0	3	3	0	0	0	0	0	0	0		
<b>Totals</b>				6-16	1-4	2-2	2	9	11	7	3	15	3	5	2	1	1	-3

Shooting By Period		
1st FG%	6-16	37.5%
3PT%	1-4	25.0%
FT%	2-2	100%
GM FG%	6-16	37.5%
3PT%	1-4	25.0%
FT%	2-2	100.0%

Dead Ball Rebounds: 0, 0

Major Fouls: NONE

**Sam Houston - 18**

NO.	Name	F/G	Min	FG			Rebounds			Fouls		TP	AS	TO	ST	Blocks		+/-
				M-A	M-A	M-A	OR	DR	TOT	PF	FD					BS	BA	
8	Deborah Ogayemi	F	10:00	1-1	0-0	3-4	0	1	1	0	2	5	1	0	2	0	0	3
15	Nyla Inmon	F	06:09	1-3	0-0	0-0	0	1	1	1	0	2	0	0	0	0	0	-1
4	Fanta Kone	G	09:12	2-3	0-0	0-1	1	1	2	0	2	4	2	2	0	0	1	3
5	Aysia Ward-Strong	G	04:17	0-0	0-0	0-0	0	1	1	2	0	0	0	0	0	0	0	-2
24	Whitney Dunn	G	08:02	2-5	2-2	1-2	1	2	3	0	1	7	0	2	0	1	0	2
7	Annika Corcoran		06:58	0-0	0-0	0-0	0	0	0	0	0	0	0	0	0	0	0	5
11	Esther Rodellar		02:35	0-2	0-1	0-2	1	1	2	0	1	0	0	1	1	0	0	3
23	Bryana Block		02:46	0-0	0-0	0-2	1	0	1	0	1	0	0	0	1	0	0	1
10	Alaisha Brown		00:01	0-0	0-0	0-0	0	0	0	0	0	0	0	0	0	0	0	1
Team							0	1	1	0	0	0	0	0	0	0		
<b>Totals</b>				6-14	2-3	4-11	4	8	12	3	7	18	3	5	4	1	1	3

Shooting By Period		
1st FG%	6-14	42.9%
3PT%	2-3	66.7%
FT%	4-11	36.4%
GM FG%	6-14	42.9%
3PT%	2-3	66.7%
FT%	4-11	36.4%

Dead Ball Rebounds: 2, 0

Major Fouls: NONE

	UTEP	SHSU
Biggest lead	3 (1 <sup>st</sup> 9:49)	3 (1 <sup>st</sup> 4:17)
Best Scoring Run	4 (1 <sup>st</sup> 2:03)	5 (1 <sup>st</sup> 4:17)
Lead Changes	3	
Times Tied	4	
Time with Lead	03:09	04:18

Points from	UTEP	SHSU
Turnovers	2	3
Paint	6	8
Second Chance	2	4
Fast Breaks	0	0
Bench	4	0

	Period by Period Scoring				
	1st	2nd	3rd	4th	TOT
UTEP	15	11	17	16	59
SHSU	18	16	14	23	71



**UTEP at Sam Houston**

03/05/26 Johnson Coliseum, Huntsville, TX  
2025-26 Women's Basketball

Officials: Scott Yarbrough, Demoya Pugh, Tiffany Bridges

**Period 2**

**Period Starters:**

<b>SHSU</b>	4 Kone F	7 Corcoran A	8 Ogayemi D	10 Brown A	24 Dunn W
<b>UTEP</b>	3 Tensaie I	4 Zita D	8 Terry B	11 Adams P	22 Moses Amaniyo M

Game Time	SHSU	Score	Diff	UTEP
10:00				14 COLLAZO T substitution out
10:00				11 ADAMS P substitution in
09:47	8 OGAYEMI D 2pt FG in the paint, layup made (7)	<b>20-15</b>	<b>5</b>	
09:47	10 BROWN A assist (1)			
09:25	7 CORCORAN A foul drawn (1)			11 ADAMS P foul offensive (2 - 1)
09:25				11 ADAMS P turnover offensive (2)
09:25				11 ADAMS P substitution out
09:25				13 MBENGUE N substitution in
09:11	10 BROWN A 2pt FG from turnover outside the paint, jump shot missed			
09:08	7 CORCORAN A offensive rebound (1)			
08:55	24 DUNN W 3pt FG from turnover second chance, jump shot missed			
08:53				13 MBENGUE N defensive rebound (4)
08:53	10 BROWN A foul personal (1 - 1)			13 MBENGUE N foul drawn (1)
08:53	10 BROWN A substitution out			
08:53	15 INMON N substitution in			
08:46				22 MOSES AMANIYO M 2pt FG in the paint, layup missed
08:44				22 MOSES AMANIYO M offensive rebound (4)
08:43		<b>20-17</b>	<b>3</b>	22 MOSES AMANIYO M 2pt FG second chance in the paint, layup made (6)
08:17	24 DUNN W foul drawn (2)			13 MBENGUE N foul personal (2 - 2)
08:17	7 CORCORAN A substitution out			
08:17	11 RODELLAR E substitution in			
08:17				13 MBENGUE N substitution out
08:17				23 WOLDAI A substitution in
08:16	24 DUNN W foul offensive (1 - 2)			8 TERRY B foul drawn (1)
08:16	24 DUNN W turnover offensive (3)			
08:06		<b>20-19</b>	<b>1</b>	4 ZITA D 2pt FG in the paint, layup made (2)
07:36	4 KONE F 3pt FG , jump shot missed			
07:32	24 DUNN W offensive rebound (4)			
07:29	15 INMON N 2pt FG second chance in the paint, layup made (4)	<b>22-19</b>	<b>3</b>	
07:29	24 DUNN W assist (1)			
07:15		<b>22-21</b>	<b>1</b>	4 ZITA D 2pt FG in the paint, layup made (4)
07:05	4 KONE F 2pt FG in the paint, layup missed			
07:02				22 MOSES AMANIYO M defensive rebound (5)
06:58				23 WOLDAI A 2pt FG outside the paint, jump shot missed
06:54				8 TERRY B offensive rebound (2)
06:41	15 INMON N steal (1)			4 ZITA D turnover bad pass (4)
06:23	24 DUNN W foul drawn (3)			22 MOSES AMANIYO M foul shooting (2 - 3)
06:23	8 OGAYEMI D substitution out			
06:23	10 BROWN A substitution in			
06:23				22 MOSES AMANIYO M substitution out
06:23				10 IGBINEDION OMORUYI O substitution in



**UTEP at Sam Houston**

03/05/26 Johnson Coliseum, Huntsville, TX  
2025-26 Women's Basketball

**Game Time:** 6:30 PM  
**Game Duration:** 2:07  
**Attendance:** 378

**Officials:** Scott Yarbrough, Demoya Pugh, Tiffany Bridges

Game Time	SHSU	Score	Diff	UTEP
06:23	24 DUNN W free throw 1 - 2 made (8)	<b>23-21</b>	<b>2</b>	
06:23	24 DUNN W free throw 2 - 2 missed			
06:21				10 IGBINEDION OMORUYI O defensive rebound (1)
05:57				23 WOLDAI A turnover lost ball (2)
05:57	24 DUNN W substitution out			
05:57	7 CORCORAN A substitution in			
05:39	15 INMON N 2pt FG from turnover in the paint, jump shot missed			
05:35	7 CORCORAN A offensive rebound (2)			
05:25	11 RODELLAR E turnover lost ball (2)			8 TERRY B steal (1)
05:23	10 BROWN A foul personal (2 - 3)			8 TERRY B foul drawn (2)
05:23	11 RODELLAR E substitution out			
05:23	15 INMON N substitution out			
05:23	8 OGAYEMI D substitution in			
05:23	24 DUNN W substitution in			
05:09				23 WOLDAI A 2pt FG from turnover outside the paint, jump shot missed
05:04	8 OGAYEMI D defensive rebound (2)			
04:56	Timeout media			
04:56	10 BROWN A substitution out			
04:56	15 INMON N substitution in			
04:51	4 KONE F 2pt FG outside the paint, jump shot missed			
04:48	7 CORCORAN A offensive rebound (3)			
04:48	7 CORCORAN A 2pt FG second chance in the paint, layup made (2)	<b>25-21</b>	<b>4</b>	
04:32		<b>25-24</b>	<b>1</b>	3 TENSAIE I 3pt FG , jump shot made (10)
04:32				23 WOLDAI A assist (2)
04:18	7 CORCORAN A 3pt FG , jump shot made (5)	<b>28-24</b>	<b>4</b>	
04:18	4 KONE F assist (3)			
04:00				10 IGBINEDION OMORUYI O 2pt FG in the paint, layup missed
03:57				10 IGBINEDION OMORUYI O offensive rebound (2)
03:55	24 DUNN W steal (1)			10 IGBINEDION OMORUYI O turnover bad pass (1)
03:51	4 KONE F 2pt FG fast break from turnover in the paint, layup made (6)	<b>30-24</b>	<b>6</b>	
03:51	24 DUNN W assist (2)			
03:36				4 ZITA D turnover bad pass (5)
03:18	15 INMON N foul drawn (1)			23 WOLDAI A foul shooting (2 - 4)
03:18				23 WOLDAI A substitution out
03:18				12 ASENSIO I substitution in
03:18	15 INMON N free throw 1 - 2 missed			
03:18	offensive dead ball rebound (3)			
03:18	15 INMON N free throw 2 - 2 missed			
03:15				3 TENSAIE I defensive rebound (1)
02:47		<b>30-26</b>	<b>4</b>	3 TENSAIE I 2pt FG outside the paint, jump shot made (12)
02:38	24 DUNN W 3pt FG , jump shot missed			
02:34	24 DUNN W offensive rebound (5)			
02:32	24 DUNN W foul drawn (4)			12 ASENSIO I foul personal (1 - 5)
02:32	24 DUNN W free throw 1 - 2 made (9)	<b>31-26</b>	<b>5</b>	
02:31	24 DUNN W free throw 2 - 2 made (10)	<b>32-26</b>	<b>6</b>	
02:17	15 INMON N foul drawn (2)			8 TERRY B foul offensive (1 - 6)
02:17				8 TERRY B turnover offensive (1)



**UTEP at Sam Houston**

03/05/26 Johnson Coliseum, Huntsville, TX  
2025-26 Women's Basketball

**Officials:** Scott Yarbrough, Demoya Pugh, Tiffany Bridges

Game Time	SHSU	Score	Diff	UTEP
01:44	8 OGAYEMI D 2pt FG from turnover in the paint, jump shot missed			
01:42	8 OGAYEMI D offensive rebound (3)			
01:27	4 KONE F 2pt FG from turnover second chance in the paint, layup missed			
01:24	15 INMON N offensive rebound (2)			
01:22	15 INMON N turnover lost ball (1)			4 ZITA D steal (1)
01:04	15 INMON N steal (2)			12 ASENSIO I turnover lost ball (1)
01:04	Timeout 30 Sec			
01:04	15 INMON N substitution out			
01:04	10 BROWN A substitution in			
00:54	8 OGAYEMI D 2pt FG from turnover in the paint, layup made (9)	<b>34-26</b>	<b>8</b>	
00:54	7 CORCORAN A assist (1)			
00:36				12 ASENSIO I 3pt FG , jump shot missed
00:32	24 DUNN W defensive rebound (6)			
00:09	8 OGAYEMI D turnover lost ball (1)			10 IGBINEDION OMORUYI O steal (1)
00:04				8 TERRY B 3pt FG from turnover, jump shot missed
00:00	8 OGAYEMI D defensive rebound (4)			
<b>END OF PERIOD</b>				
<b>SHSU 34-26 UTEP</b>				



UTEP at Sam Houston

03/05/26 Johnson Coliseum, Huntsville, TX  
2025-26 Women's Basketball

Game Time: 6:30 PM  
Game Duration: 2:07  
Attendance: 378

Officials: Scott Yarbrough, Demoya Pugh, Tiffany Bridges

UTEP - 11

NO.	Name	Min	FG	3P	FT	Rebounds			Fouls		TP	AS	TO	ST	Blocks		+/-
			M-A	M-A	M-A	OR	DR	TOT	PF	FD					BS	BA	
13	Ndack Mbengue	F 01:08	0-0	0-0	0-0	0	1	1	1	1	0	0	0	0	0	0	2
3	Ivane Tensaie	G 10:00	2-2	1-1	0-0	0	1	1	0	0	5	0	0	0	0	0	-5
4	Delma Zita	G 10:00	2-2	0-0	0-0	0	0	0	0	0	4	0	2	1	0	0	-5
5	Heaven Samayoa-Mathis	G 00:00	0-0	0-0	0-0	0	0	0	0	0	0	0	0	0	0	0	0
11	Portia Adams	G 00:35	0-0	0-0	0-0	0	0	0	1	0	0	0	1	0	0	0	-2
8	Brooklyn Terry	10:00	0-1	0-1	0-0	1	0	1	1	2	0	0	1	1	0	0	-5
14	Tatiana Collazo	00:00	0-0	0-0	0-0	0	0	0	0	0	0	0	0	0	0	0	0
22	Mary Moses Amaniyo	03:37	1-2	0-0	0-0	1	1	2	1	0	2	0	0	0	0	0	2
23	Aolani Woldai	04:59	0-2	0-0	0-0	0	0	0	1	0	0	1	1	0	0	0	-3
10	Osadebamwen Igbinedion Omoruyi	06:23	0-1	0-0	0-0	1	1	2	0	0	0	0	1	1	0	0	-7
12	Irene Ansensio	03:18	0-1	0-1	0-0	0	0	0	1	0	0	0	1	0	0	0	-2
Team						0	0	0	0	0	0	0	0	0	0	0	0
<b>Totals</b>			5-11	1-3	0-0	3	4	7	6	3	11	1	7	3	0	0	-5

Shooting By Period		
2 <sup>nd</sup> FG%	5-11	45.5%
3PT%	1-3	33.3%
FT%	0-0	0%
GM FG%	5-11	45.5%
3PT%	1-3	33.3%
FT%	0-0	0.0%

Dead Ball Rebounds: 0, 0

Major Fouls: NONE

Sam Houston - 16

NO.	Name	Min	FG	3P	FT	Rebounds			Fouls		TP	AS	TO	ST	Blocks		+/-
			M-A	M-A	M-A	OR	DR	TOT	PF	FD					BS	BA	
8	Deborah Ogayemi	F 09:00	2-3	0-0	0-0	1	2	3	0	0	4	0	1	0	0	0	4
15	Nyla Inmon	F 07:22	1-2	0-0	0-2	1	0	1	0	2	2	0	1	2	0	0	1
4	Fanta Kone	G 10:00	1-5	0-1	0-0	0	0	0	0	0	2	1	0	0	0	0	5
5	Aysia Ward-Strong	G 00:00	0-0	0-0	0-0	0	0	0	0	0	0	0	0	0	0	0	0
24	Whitney Dunn	G 09:26	0-2	0-2	3-4	2	1	3	1	3	3	2	1	1	0	0	5
11	Esther Rodellar	02:54	0-0	0-0	0-0	0	0	0	0	0	0	0	1	0	0	0	-1
10	Alaisha Brown	03:38	0-1	0-0	0-0	0	0	0	2	0	0	1	0	0	0	0	5
7	Annika Corcoran	07:40	2-2	1-1	0-0	3	0	3	0	1	5	1	0	0	0	0	6
Team						0	0	0	0	0	0	0	0	0	0	0	0
<b>Totals</b>			6-15	1-4	3-6	7	3	10	3	6	16	5	4	3	0	0	5

Shooting By Period		
2 <sup>nd</sup> FG%	6-15	40.0%
3PT%	1-4	25.0%
FT%	3-6	50%
GM FG%	6-15	40.0%
3PT%	1-4	25.0%
FT%	3-6	50.0%

Dead Ball Rebounds: 1, 0

Major Fouls: NONE

	UTEP	SHSU
Biggest lead	0 (1 <sup>st</sup> 10:00)	8 (2 <sup>nd</sup> 0:54)
Best Scoring Run	4 (2 <sup>nd</sup> 8:06)	5 (2 <sup>nd</sup> 3:51)
Lead Changes	0	
Times Tied	0	
Time with Lead	00:00	09:47

Points from	UTEP	SHSU
Turnovers	0	5
Paint	6	10
Second Chance	2	6
Fast Breaks	0	2
Bench	2	5

	Period by Period Scoring				
	1st	2nd	3rd	4th	TOT
UTEP	15	11	17	16	59
SHSU	18	16	14	23	71



**UTEP at Sam Houston**

03/05/26 Johnson Coliseum, Huntsville, TX  
2025-26 Women's Basketball

Game Time: 6:30 PM  
Game Duration: 2:07  
Attendance: 378

Officials: Scott Yarbrough, Demoya Pugh, Tiffany Bridges

**UTEP - 26**

NO.	Name	F/G	Min	FG			Rebounds			Fouls		TP	AS	TO	ST	Blocks		+/-
				M-A	M-A	M-A	OR	DR	TOT	PF	FD					BS	BA	
13	Ndack Mbengue	F	11:03	1-3	0-0	0-0	0	4	4	2	1	2	0	0	2	1	1	0
3	Ivane Tensaie	G	18:19	5-6	2-3	0-0	0	1	1	0	0	12	0	0	0	0	0	-7
4	Delma Zita	G	18:46	2-3	0-0	0-0	1	0	1	0	0	4	1	5	1	0	0	-6
5	Heaven Samayoa-Mathis	G	05:43	0-1	0-0	0-0	0	0	0	2	0	0	1	0	0	0	0	-2
11	Portia Adams	G	06:18	0-1	0-0	2-2	0	0	0	2	1	2	0	2	0	0	0	-4
23	Aolani Woldai		09:48	0-4	0-0	0-0	0	0	0	2	1	0	2	2	0	0	0	-5
22	Mary Moses Amaniyo		07:16	3-5	0-1	0-0	2	3	5	2	1	6	0	0	0	0	0	1
14	Tatiana Collazo		02:24	0-0	0-0	0-0	0	0	0	1	0	0	0	0	0	0	0	-2
8	Brooklyn Terry		10:43	0-2	0-2	0-0	1	1	2	1	2	0	0	1	1	0	0	-6
10	Osadebamwen Igbiniedion Omoruyi		06:23	0-1	0-0	0-0	1	1	2	0	0	0	0	1	1	0	0	-7
12	Irene Ansensio		03:18	0-1	0-1	0-0	0	0	0	1	0	0	0	1	0	0	0	-2
Team							0	3	3	0	0	0	0	0	0	0	0	0
<b>Totals</b>				11-27	2-7	2-2	5	13	18	13	6	26	4	12	5	1	1	-8

Shooting By Period		
1 <sup>st</sup> FG%	6-16	37.5%
3PT%	1-4	25.0%
FT%	2-2	100%
2 <sup>nd</sup> FG%	5-11	45.5%
3PT%	1-3	33.3%
FT%	0-0	0%
GM FG%	11-27	40.7%
3PT%	2-7	28.6%
FT%	2-2	100.0%

Dead Ball Rebounds: 0, 0

Major Fouls: NONE

**Sam Houston - 34**

NO.	Name	F/G	Min	FG			Rebounds			Fouls		TP	AS	TO	ST	Blocks		+/-
				M-A	M-A	M-A	OR	DR	TOT	PF	FD					BS	BA	
8	Deborah Ogayemi	F	19:00	3-4	0-0	3-4	1	3	4	0	2	9	1	1	2	0	0	7
15	Nyla Inmon	F	13:31	2-5	0-0	0-2	1	1	2	1	2	4	0	1	2	0	0	0
4	Fanta Kone	G	19:12	3-8	0-1	0-1	1	1	2	0	2	6	3	2	0	0	1	8
5	Aysia Ward-Strong	G	04:17	0-0	0-0	0-0	0	1	1	2	0	0	0	0	0	0	0	-2
24	Whitney Dunn	G	17:28	2-7	2-4	4-6	3	3	6	1	4	10	2	3	1	1	0	7
7	Annika Corcoran		14:38	2-2	1-1	0-0	3	0	3	0	1	5	1	0	0	0	0	11
11	Esther Rodellar		05:29	0-2	0-1	0-2	1	1	2	0	1	0	0	2	1	0	0	2
23	Bryana Block		02:46	0-0	0-0	0-2	1	0	1	0	1	0	0	0	1	0	0	1
10	Alaisha Brown		03:39	0-1	0-0	0-0	0	0	0	2	0	0	1	0	0	0	0	6
Team							0	1	1	0	0	0	0	0	0	0	0	
<b>Totals</b>				12-29	3-7	7-17	11	11	22	6	13	34	8	9	7	1	1	8

Shooting By Period		
1 <sup>st</sup> FG%	6-14	42.9%
3PT%	2-3	66.7%
FT%	4-11	36.4%
2 <sup>nd</sup> FG%	6-15	40.0%
3PT%	1-4	25.0%
FT%	3-6	50%
GM FG%	12-29	41.4%
3PT%	3-7	42.9%
FT%	7-17	41.2%

Dead Ball Rebounds: 3, 0

Major Fouls: NONE

	UTEP	SHSU
Biggest lead	3 (1 <sup>st</sup> 9:49)	8 (2 <sup>nd</sup> 0:54)
Best Scoring Run	4 (1 <sup>st</sup> 2:03)	6 (2 <sup>nd</sup> 9:47)
Lead Changes	3	
Times Tied	4	
Time with Lead	03:09	14:18

Points from	UTEP	SHSU
Turnovers	2	8
Paint	12	18
Second Chance	4	10
Fast Breaks	0	2
Bench	6	5

	Period by Period Scoring				
	1st	2nd	3rd	4th	TOT
UTEP	15	11	17	16	59
SHSU	18	16	14	23	71



**UTEP at Sam Houston**

03/05/26 Johnson Coliseum, Huntsville, TX  
2025-26 Women's Basketball

**Officials:** Scott Yarbrough, Demoya Pugh, Tiffany Bridges

**Period 3**

**Period Starters:**

<b>SHSU</b>	4 Kone F	7 Corcoran A	8 Ogayemi D	15 Inmon N	24 Dunn W
<b>UTEP</b>	3 Tensaie I	4 Zita D	5 Samayoa-Mathis H	11 Adams P	13 Mbengue N

Game Time	SHSU	Score	Diff	UTEP
10:00	10 BROWN A substitution out			
10:00	15 INMON N substitution in			
10:00				8 TERRY B substitution out
10:00				10 IGBINEDION OMORUYI O substitution out
10:00				12 ASENSIO I substitution out
10:00				5 SAMAYOA-MATHIS H substitution in
10:00				11 ADAMS P substitution in
10:00				13 MBENGUE N substitution in
09:43	8 OGAYEMI D foul shooting (1 - 1)			13 MBENGUE N foul drawn (2)
09:43		<b>34-27</b>	<b>7</b>	13 MBENGUE N free throw 1 - 2 made (3)
09:43		<b>34-28</b>	<b>6</b>	13 MBENGUE N free throw 2 - 2 made (4)
09:15	24 DUNN W 2pt FG in the paint, layup missed			
09:13				13 MBENGUE N defensive rebound (5)
09:08				11 ADAMS P 2pt FG outside the paint, jump shot missed
09:05				13 MBENGUE N offensive rebound (6)
09:05	7 CORCORAN A foul personal (1 - 2)			13 MBENGUE N foul drawn (3)
09:05	Timeout media			
09:04	7 CORCORAN A foul drawn (2)			13 MBENGUE N foul flagrant 1 (3 - 1)
09:04				13 MBENGUE N turnover offensive (1)
09:04	8 OGAYEMI D free throw 1 - 2 made (10)	<b>35-28</b>	<b>7</b>	
09:04	8 OGAYEMI D free throw 2 - 2 missed			
09:04	offensive rebound (23)			
08:50	7 CORCORAN A 3pt FG second chance, jump shot made (8)	<b>38-28</b>	<b>10</b>	
08:50	4 KONE F assist (4)			
08:35				5 SAMAYOA-MATHIS H 3pt FG , jump shot missed
08:30	15 INMON N defensive rebound (3)			
08:20	8 OGAYEMI D foul drawn (3)			13 MBENGUE N foul shooting (4 - 2)
08:20				13 MBENGUE N substitution out
08:20				22 MOSES AMANIYO M substitution in
08:20	8 OGAYEMI D free throw 1 - 2 missed			
08:20	offensive dead ball rebound (4)			
08:20	8 OGAYEMI D free throw 2 - 2 made (11)	<b>39-28</b>	<b>11</b>	
07:58	4 KONE F foul personal (1 - 3)			5 SAMAYOA-MATHIS H foul drawn (1)
07:53		<b>39-31</b>	<b>8</b>	11 ADAMS P 3pt FG , jump shot made (5)
07:30	15 INMON N substitution out			
07:30	5 WARD-STRONG A substitution in			
07:17	turnover shot clock (10)			
07:11				4 ZITA D 2pt FG from turnover in the paint, layup missed
07:09	8 OGAYEMI D defensive rebound (5)			
07:09	8 OGAYEMI D foul drawn (4)			4 ZITA D foul personal (1 - 3)
06:49	4 KONE F turnover travel (3)			
06:35	8 OGAYEMI D foul personal (2 - 4)			11 ADAMS P foul drawn (2)
06:35	5 WARD-STRONG A substitution out			



**UTEP at Sam Houston**

03/05/26 Johnson Coliseum, Huntsville, TX  
2025-26 Women's Basketball

**Officials:** Scott Yarbrough, Demoya Pugh, Tiffany Bridges

Game Time	SHSU	Score	Diff	UTEP
06:35	15 INMON N substitution in			
06:31				22 MOSES AMANIYO M 2pt FG from turnover in the paint, layup missed
06:30	8 OGAYEMI D defensive rebound (6)			
06:29	8 OGAYEMI D foul drawn (5)			22 MOSES AMANIYO M foul personal (3 - 4)
06:18	15 INMON N turnover bad pass (2)			
05:53				11 ADAMS P 2pt FG from turnover in the paint, jump shot missed
05:51	15 INMON N defensive rebound (4)			
05:46	4 KONE F foul offensive (2 - 5)			11 ADAMS P foul drawn (3)
05:46	4 KONE F turnover offensive (4)			
05:28		<b>39-33</b>	<b>6</b>	11 ADAMS P 2pt FG from turnover outside the paint, jump shot made (7)
05:04	15 INMON N foul drawn (3)			22 MOSES AMANIYO M foul personal (4 - 5)
05:04				22 MOSES AMANIYO M substitution out
05:04				13 MBENGUE N substitution in
05:04	15 INMON N free throw 1 - 2 missed			
05:04	offensive dead ball rebound (5)			
05:04	15 INMON N free throw 2 - 2 missed			
05:02				3 TENSAIE I defensive rebound (2)
04:42	15 INMON N foul personal (2 - 6)			11 ADAMS P foul drawn (4)
04:42	Timeout media			
04:42	15 INMON N substitution out			
04:42	5 WARD-STRONG A substitution in			
04:42				11 ADAMS P free throw 1 - 2 missed
04:42				offensive dead ball rebound (1)
04:42				11 ADAMS P free throw 2 - 2 missed
04:42	24 DUNN W defensive rebound (7)			
04:27	5 WARD-STRONG A 2pt FG in the paint, layup missed			
04:25	8 OGAYEMI D offensive rebound (7)			
04:18	7 CORCORAN A 3pt FG second chance, jump shot made (11)	<b>42-33</b>	<b>9</b>	
04:18	4 KONE F assist (5)			
03:56				11 ADAMS P 2pt FG in the paint, layup missed
03:54				13 MBENGUE N offensive rebound (7)
03:53				13 MBENGUE N 2pt FG second chance in the paint, layup missed
03:50	4 KONE F defensive rebound (3)			
03:39	5 WARD-STRONG A 2pt FG in the paint, layup made (2)	<b>44-33</b>	<b>11</b>	
03:39	24 DUNN W assist (3)			
03:18		<b>44-35</b>	<b>9</b>	3 TENSAIE I 2pt FG in the paint, jump shot made (14)
03:18				4 ZITA D assist (2)
02:54	7 CORCORAN A turnover bad pass (1)			
02:54	5 WARD-STRONG A substitution out			
02:54	15 INMON N substitution in			
02:44	8 OGAYEMI D foul personal (3 - 7)			5 SAMAYOA-MATHIS H foul drawn (2)
02:44	8 OGAYEMI D substitution out			
02:44	5 WARD-STRONG A substitution in			
02:44		<b>44-36</b>	<b>8</b>	5 SAMAYOA-MATHIS H free throw 1 - 2 made (1)
02:44		<b>44-37</b>	<b>7</b>	5 SAMAYOA-MATHIS H free throw 2 - 2 made (2)
02:30	24 DUNN W 2pt FG in the paint, layup missed			



**UTEP at Sam Houston**

03/05/26 Johnson Coliseum, Huntsville, TX  
2025-26 Women's Basketball

**Officials:** Scott Yarbrough, Demoya Pugh, Tiffany Bridges

Game Time	SHSU	Score	Diff	UTEP
02:29	24 DUNN W offensive rebound (8)			
02:23	4 KONE F 3pt FG second chance, jump shot missed			
02:18				3 TENSAIE I defensive rebound (3)
02:11		<b>44-40</b>	<b>4</b>	5 SAMAYOA-MATHIS H 3pt FG, jump shot made (5)
02:11				4 ZITA D assist (3)
01:55	15 INMON N turnover lost ball (3)			
01:50	7 CORCORAN A foul shooting (2 - 8)			11 ADAMS P foul drawn (5)
01:50	15 INMON N substitution out			
01:50	10 BROWN A substitution in			
01:50		<b>44-41</b>	<b>3</b>	11 ADAMS P free throw fast break 1 - 2 made (8)
01:50				11 ADAMS P free throw fast break 2 - 2 missed
01:49	4 KONE F defensive rebound (4)			
01:39	24 DUNN W 3pt FG, jump shot blocked			
01:39				5 SAMAYOA-MATHIS H block (1)
01:34				11 ADAMS P defensive rebound (1)
01:32				4 ZITA D turnover lost ball (6)
01:13	10 BROWN A 2pt FG from turnover in the paint, layup made (2)	<b>46-41</b>	<b>5</b>	
01:13	7 CORCORAN A assist (2)			
00:57	5 WARD-STRONG A foul personal (3 - 9)			4 ZITA D foul drawn (1)
00:57	5 WARD-STRONG A substitution out			
00:57	15 INMON N substitution in			
00:57				13 MBENGUE N substitution out
00:57				22 MOSES AMANIYO M substitution in
00:57		<b>46-42</b>	<b>4</b>	4 ZITA D free throw 1 - 2 made (5)
00:57		<b>46-43</b>	<b>3</b>	4 ZITA D free throw 2 - 2 made (6)
00:40	4 KONE F 2pt FG outside the paint, jump shot missed			
00:37				defensive rebound (25)
00:30				4 ZITA D turnover lost ball (7)
00:00	7 CORCORAN A 3pt FG from turnover, jump shot missed			
00:00	4 KONE F offensive rebound (5)			
00:00	4 KONE F 2pt FG from turnover second chance in the paint, tip-in layup made (8)	<b>48-43</b>	<b>5</b>	
<b>END OF PERIOD</b>				
<b>SHSU 48-43 UTEP</b>				



**UTEP at Sam Houston**

03/05/26 Johnson Coliseum, Huntsville, TX  
2025-26 Women's Basketball

Game Time: 6:30 PM  
Game Duration: 2:07  
Attendance: 378

Officials: Scott Yarbrough, Demoya Pugh, Tiffany Bridges

**UTEP - 17**

NO.	Name	F/G	Min	FG	3P	FT	Rebounds			Fouls		TP	AS	TO	ST	Blocks		+/-
				M-A	M-A	M-A	OR	DR	TOT	PF	FD					BS	BA	
13	Ndack Mbengue	F	05:47	0-1	0-0	2-2	2	1	3	2	2	2	0	1	0	0	0	-1
3	Ivane Tensaie	G	10:00	1-1	0-0	0-0	0	2	2	0	0	2	0	0	0	0	0	3
4	Delma Zita	G	10:00	0-1	0-0	2-2	0	0	0	1	1	2	2	2	0	0	0	3
5	Heaven Samayoa-Mathis	G	10:00	1-2	1-2	2-2	0	0	0	0	2	5	0	0	0	1	0	3
11	Portia Adams	G	10:00	2-5	1-1	1-4	0	1	1	0	4	6	0	0	0	0	0	3
8	Brooklyn Terry		00:00	0-0	0-0	0-0	0	0	0	0	0	0	0	0	0	0	0	0
10	Osadebamwen Igbiniedion Omoruyi		00:00	0-0	0-0	0-0	0	0	0	0	0	0	0	0	0	0	0	0
12	Irene Asensio		00:00	0-0	0-0	0-0	0	0	0	0	0	0	0	0	0	0	0	0
22	Mary Moses Amaniyo		04:13	0-1	0-0	0-0	0	0	0	2	0	0	0	0	0	0	0	4
Team							0	1	1	0	0	0	0	0	0	0	0	
<b>Totals</b>				4-11	2-3	7-10	2	5	7	5	9	17	2	3	0	1	0	3

Shooting By Period		
3rd FG%	4-11	36.4%
3PT%	2-3	66.7%
FT%	7-10	70%
GM FG%	4-11	36.4%
3PT%	2-3	66.7%
FT%	7-10	70.0%

Dead Ball Rebounds: 1, 0

Major Fouls: Mbengue (F1) 3<sup>rd</sup> 9:04

**Sam Houston - 14**

NO.	Name	F/G	Min	FG	3P	FT	Rebounds			Fouls		TP	AS	TO	ST	Blocks		+/-
				M-A	M-A	M-A	OR	DR	TOT	PF	FD					BS	BA	
8	Deborah Ogayemi	F	07:16	0-0	0-0	2-4	1	2	3	3	3	2	0	0	0	0	0	1
15	Nyla Inmon	F	06:24	0-0	0-0	0-2	0	2	2	1	1	0	0	2	0	0	0	-7
4	Fanta Kone	G	10:00	1-3	0-1	0-0	1	2	3	2	0	2	2	2	0	0	0	-3
5	Aysia Ward-Strong	G	04:30	1-2	0-0	0-0	0	0	0	1	0	2	0	0	0	0	0	-1
24	Whitney Dunn	G	10:00	0-3	0-1	0-0	1	1	2	0	0	0	1	0	0	0	1	-3
7	Annika Corcoran		10:00	2-3	2-3	0-0	0	0	0	2	1	6	1	1	0	0	0	-3
10	Alaisha Brown		01:50	1-1	0-0	0-0	0	0	0	0	0	2	0	0	0	0	0	1
Team							1	0	1	0	0	0	0	1	0	0	0	
<b>Totals</b>				5-12	2-5	2-6	4	7	11	9	5	14	4	6	0	0	1	-3

Shooting By Period		
3rd FG%	5-12	41.7%
3PT%	2-5	40.0%
FT%	2-6	33.3%
GM FG%	5-12	41.7%
3PT%	2-5	40.0%
FT%	2-6	33.3%

Dead Ball Rebounds: 2, 0

Major Fouls: NONE

	UTEP	SHSU
Biggest lead	0 (1 <sup>st</sup> 10:00)	11 (3 <sup>rd</sup> 8:20)
Best Scoring Run	8 (3 <sup>rd</sup> 1:50)	5 (3 <sup>rd</sup> 8:20)
Lead Changes	0	
Times Tied	0	
Time with Lead	00:00	09:43

Points from	UTEP	SHSU
Turnovers	5	5
Paint	2	6
Second Chance	0	8
Fast Breaks	1	0
Bench	0	8

	Period by Period Scoring				
	1st	2nd	3rd	4th	TOT
UTEP	15	11	17	16	59
SHSU	18	16	14	23	71



**UTEP at Sam Houston**

03/05/26 Johnson Coliseum, Huntsville, TX  
2025-26 Women's Basketball

**Officials:** Scott Yarbrough, Demoya Pugh, Tiffany Bridges

**Period 4**

**Period Starters:**

<b>SHSU</b>	4 Kone F	7 Corcoran A	8 Ogayemi D	15 Inmon N	24 Dunn W
<b>UTEP</b>	3 Tensaie I	4 Zita D	5 Samayoa-Mathis H	11 Adams P	22 Moses Amaniyo M

Game Time	SHSU	Score	Diff	UTEP
10:00	10 BROWN A substitution out			
10:00	8 OGAYEMI D substitution in			
09:49				11 ADAMS P 2pt FG in the paint, layup missed
09:44				11 ADAMS P offensive rebound (2)
09:44		<b>48-45</b>	<b>3</b>	11 ADAMS P 2pt FG second chance in the paint, tip-in layup made (10)
09:19	7 CORCORAN A 2pt FG in the paint, layup missed			
09:16	8 OGAYEMI D offensive rebound (8)			
09:16	8 OGAYEMI D 2pt FG second chance in the paint, layup missed			
09:12				5 SAMAYOA-MATHIS H defensive rebound (1)
08:59				5 SAMAYOA-MATHIS H 2pt FG in the paint, layup missed
08:58				5 SAMAYOA-MATHIS H offensive rebound (2)
08:58	8 OGAYEMI D foul personal (4 - 1)			5 SAMAYOA-MATHIS H foul drawn (3)
08:56	8 OGAYEMI D substitution out			
08:56	5 WARD-STRONG A substitution in			
08:51		<b>48-47</b>	<b>1</b>	11 ADAMS P 2pt FG second chance outside the paint, jump shot made (12)
08:36	24 DUNN W 2pt FG in the paint, layup made (12)	<b>50-47</b>	<b>3</b>	
08:36	7 CORCORAN A assist (3)			
08:36	24 DUNN W foul drawn (5)			22 MOSES AMANIYO M foul shooting (5 - 1)
08:36				22 MOSES AMANIYO M substitution out
08:36				13 MBENGUE N substitution in
08:36	24 DUNN W free throw 1 - 1 missed			
08:35				13 MBENGUE N defensive rebound (8)
08:24				13 MBENGUE N turnover travel (2)
08:05	15 INMON N 2pt FG from turnover in the paint, layup made (6)	<b>52-47</b>	<b>5</b>	
08:05	7 CORCORAN A assist (4)			
07:55	7 CORCORAN A steal (1)			5 SAMAYOA-MATHIS H turnover bad pass (1)
07:41	4 KONE F 3pt FG from turnover, jump shot missed			
07:38				13 MBENGUE N defensive rebound (9)
07:37	24 DUNN W foul personal (2 - 2)			13 MBENGUE N foul drawn (4)
07:15				11 ADAMS P 2pt FG in the paint, jump shot missed
07:11	15 INMON N defensive rebound (5)			
06:56	15 INMON N 2pt FG in the paint, layup made (8)	<b>54-47</b>	<b>7</b>	
06:56	4 KONE F assist (6)			
06:44				Timeout 30 Sec
06:44				Timeout media
06:35	7 CORCORAN A foul personal (3 - 3)			3 TENSAIE I foul drawn (1)
06:29		<b>54-49</b>	<b>5</b>	13 MBENGUE N 2pt FG in the paint, layup made (6)
06:29				5 SAMAYOA-MATHIS H assist (2)
06:12	15 INMON N turnover bad pass (4)			
05:48	24 DUNN W steal (2)			11 ADAMS P turnover bad pass (3)
05:31	24 DUNN W 3pt FG from turnover, jump shot made (15)	<b>57-49</b>	<b>8</b>	
05:31	5 WARD-STRONG A assist (1)			



**UTEP at Sam Houston**

03/05/26 Johnson Coliseum, Huntsville, TX  
2025-26 Women's Basketball

**Game Time:** 6:30 PM  
**Game Duration:** 2:07  
**Attendance:** 378

**Officials:** Scott Yarbrough, Demoya Pugh, Tiffany Bridges

Game Time	SHSU	Score	Diff	UTEP
05:18		<b>57-51</b>	<b>6</b>	5 SAMAYOA-MATHIS H 2pt FG outside the paint, jump shot made (7)
05:02	5 WARD-STRONG A substitution out			
05:02	8 OGAYEMI D substitution in			
04:54	24 DUNN W 3pt FG , jump shot missed			
04:50	15 INMON N offensive rebound (6)			
04:50	15 INMON N foul drawn (4)			5 SAMAYOA-MATHIS H foul personal (3 - 2)
04:39	15 INMON N 2pt FG second chance in the paint, jump shot missed			
04:34				13 MBENGUE N defensive rebound (10)
04:33	4 KONE F steal (1)			13 MBENGUE N turnover bad pass (3)
04:08	4 KONE F 2pt FG from turnover in the paint, layup made (10)	<b>59-51</b>	<b>8</b>	
04:08	15 INMON N assist (1)			
04:08	4 KONE F foul drawn (3)			13 MBENGUE N foul shooting (5 - 3)
04:08	15 INMON N substitution out			
04:08	5 WARD-STRONG A substitution in			
04:08				13 MBENGUE N substitution out
04:08				8 TERRY B substitution in
04:08	4 KONE F free throw 1 - 1 made (11)	<b>60-51</b>	<b>9</b>	
04:03				Timeout 30 Sec
03:56	24 DUNN W foul drawn (6)			11 ADAMS P foul offensive (3 - 4)
03:56				11 ADAMS P turnover offensive (4)
03:39	8 OGAYEMI D foul offensive (5 - 4)			5 SAMAYOA-MATHIS H foul drawn (4)
03:39	8 OGAYEMI D turnover offensive (2)			
03:39	8 OGAYEMI D substitution out			
03:39	15 INMON N substitution in			
03:16				5 SAMAYOA-MATHIS H 2pt FG from turnover in the paint, jump shot missed
03:13	5 WARD-STRONG A defensive rebound (2)			
02:48	15 INMON N foul drawn (5)			8 TERRY B foul shooting (2 - 5)
02:48	15 INMON N free throw 1 - 2 made (9)	<b>61-51</b>	<b>10</b>	
02:48	15 INMON N free throw 2 - 2 missed			
02:48				11 ADAMS P defensive rebound (3)
02:22				5 SAMAYOA-MATHIS H 2pt FG outside the paint, jump shot missed
02:19	5 WARD-STRONG A defensive rebound (3)			
02:00	4 KONE F 2pt FG in the paint, layup made (13)	<b>63-51</b>	<b>12</b>	
02:00	5 WARD-STRONG A assist (2)			
01:48		<b>63-53</b>	<b>10</b>	11 ADAMS P 2pt FG in the paint, jump shot made (14)
01:45				11 ADAMS P foul player technical (4 - 6)
01:45	4 KONE F free throw fast break 1 - 2 missed			
01:45	offensive dead ball rebound (6)			
01:45	4 KONE F free throw fast break 2 - 2 made (14)	<b>64-53</b>	<b>11</b>	
01:35	5 WARD-STRONG A turnover lost ball (1)			5 SAMAYOA-MATHIS H steal (1)
01:26				4 ZITA D 2pt FG from turnover in the paint, jump shot missed
01:23	15 INMON N defensive rebound (7)			
01:05	4 KONE F foul drawn (4)			11 ADAMS P foul personal (5 - 7)
01:05				11 ADAMS P substitution out
01:05				23 WOLDAI A substitution in
01:05	4 KONE F free throw 1 - 2 made (15)	<b>65-53</b>	<b>12</b>	



**UTEP at Sam Houston**

03/05/26 Johnson Coliseum, Huntsville, TX  
2025-26 Women's Basketball

**Officials:** Scott Yarbrough, Demoya Pugh, Tiffany Bridges

Game Time	SHSU	Score	Diff	UTEP
01:05	4 KONE F free throw 2 - 2 made (16)	<b>66-53</b>	<b>13</b>	
00:53				3 TENSAIE I 3pt FG , jump shot missed
00:50				5 SAMAYOA-MATHIS H offensive rebound (3)
00:40	4 KONE F foul drawn (5)			5 SAMAYOA-MATHIS H foul personal (4 - 8)
00:40	4 KONE F free throw 1 - 2 made (17)	<b>67-53</b>	<b>14</b>	
00:40	4 KONE F free throw 2 - 2 made (18)	<b>68-53</b>	<b>15</b>	
00:36		<b>68-56</b>	<b>12</b>	5 SAMAYOA-MATHIS H 3pt FG , jump shot made (10)
00:24		<b>68-59</b>	<b>9</b>	5 SAMAYOA-MATHIS H 3pt FG , jump shot made (13)
00:24				4 ZITA D assist (4)
00:21	Timeout 30 Sec			
00:18	5 WARD-STRONG A foul drawn (1)			23 WOLDAI A foul personal (3 - 9)
00:18	5 WARD-STRONG A free throw 1 - 2 missed			
00:18	offensive dead ball rebound (7)			
00:18	5 WARD-STRONG A free throw 2 - 2 made (3)	<b>69-59</b>	<b>10</b>	
00:18				Timeout 30 Sec
00:18	5 WARD-STRONG A substitution out			
00:18	11 RODELLAR E substitution in			
00:13				3 TENSAIE I 3pt FG , jump shot missed
00:11	11 RODELLAR E defensive rebound (3)			
00:11	11 RODELLAR E foul drawn (2)			23 WOLDAI A foul personal (4 - 10)
00:11	11 RODELLAR E free throw 1 - 2 made (1)	<b>70-59</b>	<b>11</b>	
00:11	11 RODELLAR E free throw 2 - 2 made (2)	<b>71-59</b>	<b>12</b>	
00:05				23 WOLDAI A 3pt FG , jump shot missed
00:01	15 INMON N defensive rebound (8)			
<b>END OF GAME</b>				
<b>SHSU 71-59 UTEP</b>				



UTEP at Sam Houston

03/05/26 Johnson Coliseum, Huntsville, TX  
2025-26 Women's Basketball

Game Time: 6:30 PM  
Game Duration: 2:07  
Attendance: 378

Officials: Scott Yarbrough, Demoya Pugh, Tiffany Bridges

UTEP - 16

NO.	Name	Min	FG			Rebounds			Fouls		TP	AS	TO	ST	Blocks		+/-
			M-A	M-A	M-A	OR	DR	TOT	PF	FD					BS	BA	
13	Ndack Mbengue	F 04:28	1-1	0-0	0-0	0	3	3	1	1	2	0	2	0	0	0	-5
3	Ivane Tensaie	G 10:00	0-2	0-2	0-0	0	0	0	0	1	0	0	0	0	0	0	-7
4	Delma Zita	G 10:00	0-1	0-0	0-0	0	0	0	0	0	1	0	0	0	0	-7	
5	Heaven Samayoa-Mathis	G 10:00	3-6	2-2	0-0	2	1	3	2	2	8	1	1	1	0	0	-7
11	Portia Adams	G 08:55	3-5	0-0	0-0	1	1	2	3	0	6	0	2	0	0	0	-6
22	Mary Moses Amaniyo	01:24	0-0	0-0	0-0	0	0	0	1	0	0	0	0	0	0	0	2
8	Brooklyn Terry	04:08	0-0	0-0	0-0	0	0	0	1	0	0	0	0	0	0	0	-4
23	Aolani Woldai	01:05	0-1	0-1	0-0	0	0	0	2	0	0	0	0	0	0	0	-1
Team						0	0	0	0			0					
<b>Totals</b>			7-16	2-5	0-0	3	5	8	10	4	16	2	5	1	0	0	-7

Shooting By Period		
4 <sup>th</sup> FG%	7-16	43.8%
3PT%	2-5	40.0%
FT%	0-0	0%
GM FG%	7-16	43.8%
3PT%	2-5	40.0%
FT%	0-0	0.0%

Dead Ball Rebounds: 0, 0

Major Fouls: Adams (TF) 4<sup>th</sup> 1:45

Sam Houston - 23

NO.	Name	Min	FG			Rebounds			Fouls		TP	AS	TO	ST	Blocks		+/-
			M-A	M-A	M-A	OR	DR	TOT	PF	FD					BS	BA	
8	Deborah Ogayemi	F 02:27	0-1	0-0	0-0	1	0	1	2	0	0	1	0	0	0	1	
15	Nyla Inmon	F 09:31	2-3	0-0	1-2	1	3	4	0	2	5	1	1	0	0	6	
4	Fanta Kone	G 10:00	2-3	0-1	6-7	0	0	0	0	3	10	1	0	1	0	7	
5	Aysia Ward-Strong	G 07:44	0-0	0-0	1-2	0	2	2	0	1	1	2	1	0	0	5	
24	Whitney Dunn	G 10:00	2-3	1-2	0-1	0	0	0	1	2	5	0	0	1	0	7	
7	Annika Corcoran	10:00	0-1	0-0	0-0	0	0	0	1	0	0	2	0	1	0	7	
10	Alaisha Brown	00:00	0-0	0-0	0-0	0	0	0	0	0	0	0	0	0	0	0	
11	Esther Rodellar	00:18	0-0	0-0	2-2	0	1	1	0	1	2	0	0	0	0	2	
Team						0	0	0	0			0					
<b>Totals</b>			6-11	1-3	10-14	2	6	8	4	9	23	6	3	3	0	0	7

Shooting By Period		
4 <sup>th</sup> FG%	6-11	54.5%
3PT%	1-3	33.3%
FT%	10-14	71.4%
GM FG%	6-11	54.5%
3PT%	1-3	33.3%
FT%	10-14	71.4%

Dead Ball Rebounds: 2, 0

Major Fouls: NONE

	UTEP	SHSU
Biggest lead	0 (1 <sup>st</sup> 10:00)	15 (4 <sup>th</sup> 0:40)
Best Scoring Run	6 (4 <sup>th</sup> 0:24)	6 (4 <sup>th</sup> 6:56)
Lead Changes	0	
Times Tied	0	
Time with Lead	00:00	09:49

Points from	UTEP	SHSU
Turnovers	0	8
Paint	6	10
Second Chance	4	0
Fast Breaks	0	1
Bench	0	2

	Period by Period Scoring				
	1st	2nd	3rd	4th	TOT
UTEP	15	11	17	16	59
SHSU	18	16	14	23	71



**UTEP at Sam Houston**

03/05/26 Johnson Coliseum, Huntsville, TX  
2025-26 Women's Basketball

Game Time: 6:30 PM  
Game Duration: 2:07  
Attendance: 378

Officials: Scott Yarbrough, Demoya Pugh, Tiffany Bridges

**UTEP - 33**

NO.	Name	Min	FG			Rebounds			Fouls		TP	AS	TO	ST	Blocks		+/-
			M-A	M-A	M-A	OR	DR	TOT	PF	FD					BS	BA	
13	Ndack Mbengue	F 10:15	1-2	0-0	2-2	2	4	6	3	3	4	0	3	0	0	0	-6
3	Ivane Tensaie	G 20:00	1-3	0-2	0-0	0	2	2	0	1	2	0	0	0	0	0	-4
4	Delma Zita	G 20:00	0-2	0-0	2-2	0	0	0	1	1	2	3	2	0	0	0	-4
5	Heaven Samayoa-Mathis	G 20:00	4-8	3-4	2-2	2	1	3	2	4	13	1	1	1	1	0	-4
11	Portia Adams	G 18:55	5-10	1-1	1-4	1	2	3	3	4	12	0	2	0	0	0	-3
10	Osadebamwen Igbiniedion Omoruyi	00:00	0-0	0-0	0-0	0	0	0	0	0	0	0	0	0	0	0	0
12	Irene Asensio	00:00	0-0	0-0	0-0	0	0	0	0	0	0	0	0	0	0	0	0
22	Mary Moses Amaniyo	05:37	0-1	0-0	0-0	0	0	0	3	0	0	0	0	0	0	0	6
8	Brooklyn Terry	04:08	0-0	0-0	0-0	0	0	0	1	0	0	0	0	0	0	0	-4
23	Aolani Woldai	01:05	0-1	0-1	0-0	0	0	0	2	0	0	0	0	0	0	0	-1
Team						0	1	1	0	0	0	0	0	0	0	0	
<b>Totals</b>			11-27	4-8	7-10	5	10	15	15	13	33	4	8	1	1	0	-4

Shooting By Period		
3 <sup>rd</sup> FG%	4-11	36.4%
3PT%	2-3	66.7%
FT%	7-10	70%
4 <sup>th</sup> FG%	7-16	43.8%
3PT%	2-5	40.0%
FT%	0-0	0%
GM FG%	11-27	40.7%
3PT%	4-8	50.0%
FT%	7-10	70.0%

Dead Ball Rebounds: 1, 0

Major Fouls: Mbengue (F1) 3<sup>rd</sup> 9:04 Adams (TF) 4<sup>th</sup> 1:45

**Sam Houston - 37**

NO.	Name	Min	FG			Rebounds			Fouls		TP	AS	TO	ST	Blocks		+/-
			M-A	M-A	M-A	OR	DR	TOT	PF	FD					BS	BA	
8	Deborah Ogayemi	F 09:43	0-1	0-0	2-4	2	2	4	5	3	2	0	1	0	0	0	2
15	Nyla Inmon	F 15:55	2-3	0-0	1-4	1	5	6	1	3	5	1	3	0	0	0	-1
4	Fanta Kone	G 20:00	3-6	0-2	6-7	1	2	3	2	3	12	3	2	1	0	0	4
5	Aysia Ward-Strong	G 12:14	1-2	0-0	1-2	0	2	2	1	1	3	2	1	0	0	0	4
24	Whitney Dunn	G 20:00	2-6	1-3	0-1	1	1	2	1	2	5	1	0	1	0	1	4
7	Annika Corcoran	20:00	2-4	2-3	0-0	0	0	0	3	1	6	3	1	1	0	0	4
10	Alaisha Brown	01:50	1-1	0-0	0-0	0	0	0	0	0	2	0	0	0	0	0	1
11	Esther Rodellar	00:18	0-0	0-0	2-2	0	1	1	0	1	2	0	0	0	0	0	2
Team						1	0	1	0	0	0	1	0	0	0	0	
<b>Totals</b>			11-23	3-8	12-20	6	13	19	13	14	37	10	9	3	0	1	4

Shooting By Period		
3 <sup>rd</sup> FG%	5-12	41.7%
3PT%	2-5	40.0%
FT%	2-6	33.3%
4 <sup>th</sup> FG%	6-11	54.5%
3PT%	1-3	33.3%
FT%	10-14	71.4%
GM FG%	11-23	47.8%
3PT%	3-8	37.5%
FT%	12-20	60.0%

Dead Ball Rebounds: 4, 0

Major Fouls: NONE

	UTEP	SHSU
Biggest lead	0 (1 <sup>st</sup> 10:00)	15 (4 <sup>th</sup> 0:40)
Best Scoring Run	8 (3 <sup>rd</sup> 1:50)	6 (4 <sup>th</sup> 6:56)
Lead Changes	0	
Times Tied	0	
Time with Lead	00:00	19:43

Points from	UTEP	SHSU
Turnovers	5	13
Paint	8	16
Second Chance	4	8
Fast Breaks	1	1
Bench	0	10

	Period by Period Scoring				
	1st	2nd	3rd	4th	TOT
UTEP	15	11	17	16	59
SHSU	18	16	14	23	71



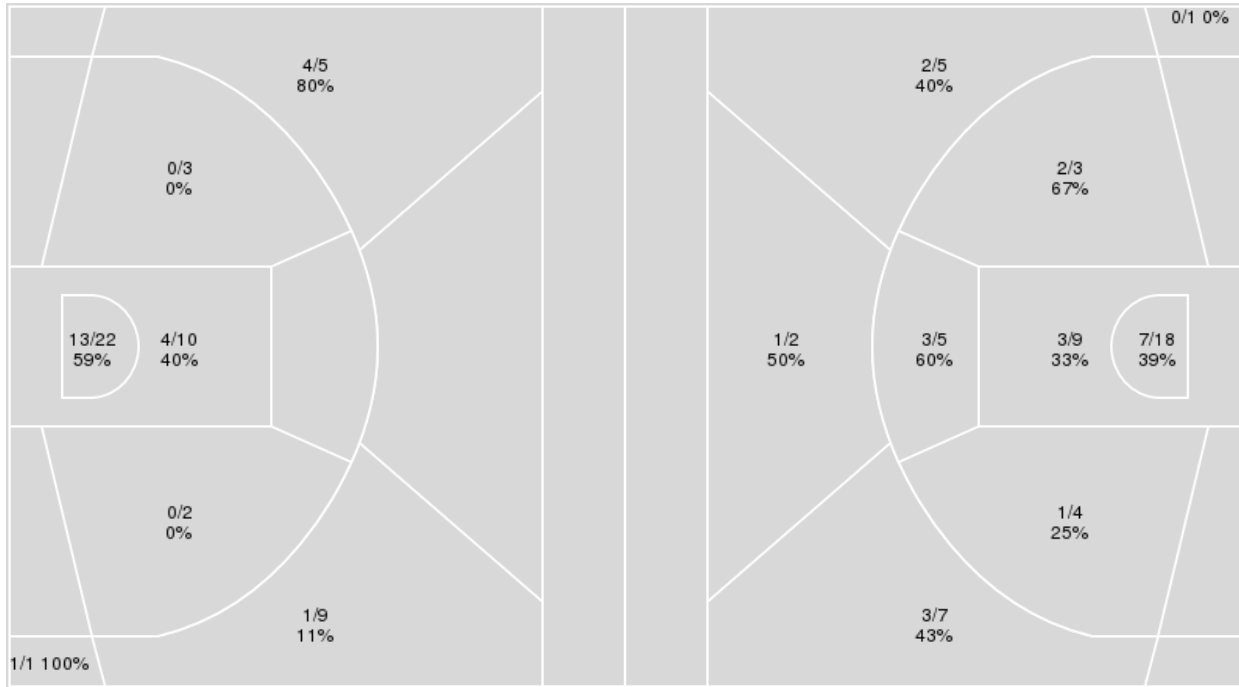
**Officials:** Scott Yarbrough, Demoya Pugh, Tiffany Bridges

Players => All; FG Types => All ; Results => All ;

Players => All; FG Types => All ; Results => All ;

**Sam Houston**

**UTEP**



Sam Houston	M/A	%
Field Goals	23/52	44
2 Points	17/37	46
3 Points	6/15	40
Free Throws	19/37	51

UTEP	M/A	%
Field Goals	22/54	41
2 Points	16/39	41
3 Points	6/15	40
Free Throws	9/12	75



**UTEP at Sam Houston**

03/05/26 Johnson Coliseum, Huntsville, TX

2025-26 Women's Basketball

Officials: Scott Yarbrough, Demoya Pugh, Tiffany Bridges

**UTEP**

No	Name	Mins		Score		Points Diff		Points per Min		Assists		Rebounds		Steals		Turnovers	
		On	Off	On	Off	On	Off	On	Off	On	Off	On	Off	On	Off	On	Off
3	Ivane Tensaie	38:19	01:42	57-68	2-3	-11	-1	1.49	1.18	7	1	33	0	6	0	17	3
4	Delma Zita	38:46	01:14	57-67	2-4	-10	-2	1.47	1.62	8	0	32	1	6	0	20	0
5	Heaven Samayoa-Mathis	25:43	14:17	42-48	17-23	-6	-6	1.63	1.19	6	2	19	14	3	3	10	10
8	Brooklyn Terry	14:51	25:10	19-29	40-42	-10	-2	1.28	1.59	2	6	11	22	4	2	8	12
10	Osadebamwen Igbinedion Omoruyi	06:23	33:37	5-12	54-59	-7	-5	0.78	1.61	1	7	3	30	3	3	5	15
11	Portia Adams	25:13	14:47	36-43	23-28	-7	-5	1.43	1.56	5	3	18	15	3	3	11	9
12	Irene Asensio	03:18	36:42	2-4	57-67	-2	-10	0.61	1.55	0	8	1	32	2	4	2	18
13	Ndack Mbengue	21:18	18:42	31-37	28-34	-6	-6	1.46	1.50	6	2	21	12	2	4	11	9
14	Tatiana Collazo	02:24	37:36	2-4	57-67	-2	-10	0.83	1.52	1	7	2	31	0	6	3	17
22	Mary Moses Amaniyo	12:53	27:07	23-16	36-55	7	-19	1.78	1.33	1	7	14	19	0	6	6	14
23	Aolani Woldai	10:53	29:08	21-27	38-44	-6	-6	1.93	1.30	3	5	11	22	1	5	7	13

**Sam Houston**

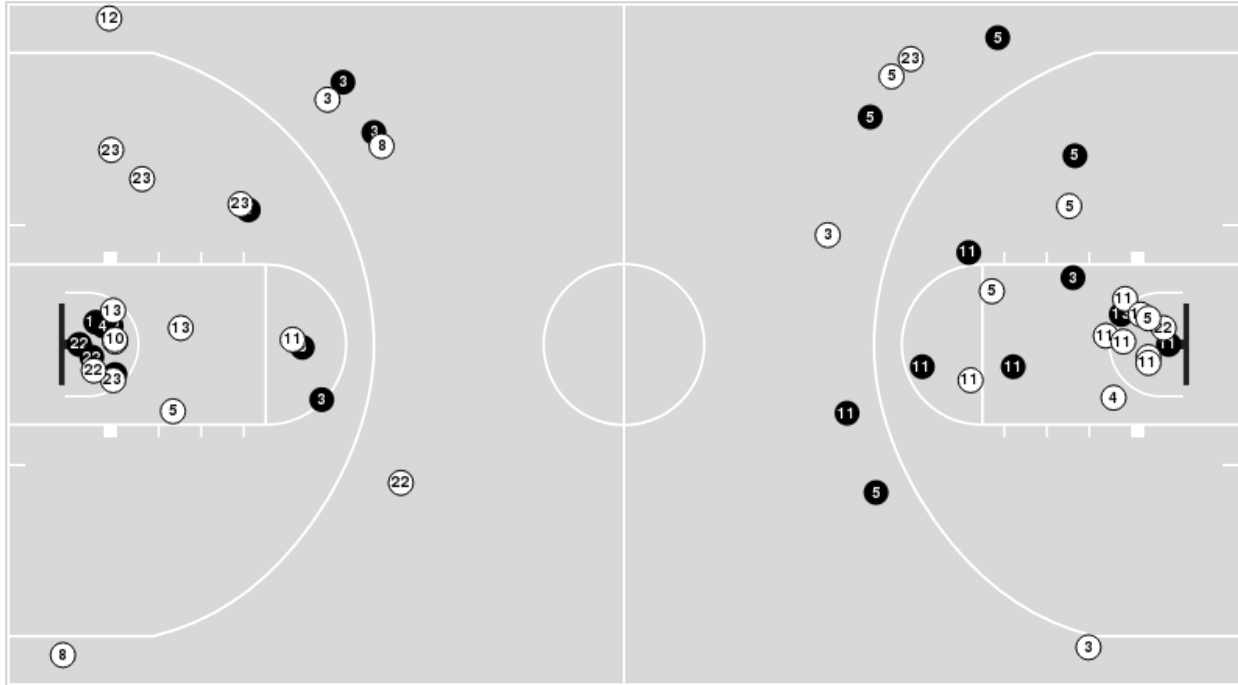
No	Name	Mins		Score		Points Diff		Points per Min		Assists		Rebounds		Steals		Turnovers	
		On	Off	On	Off	On	Off	On	Off	On	Off	On	Off	On	Off	On	Off
4	Fanta Kone	39:12	00:48	71-59	0-0	12	0	1.81	0.00	18	0	39	2	9	1	18	0
5	Aysia Ward-Strong	16:31	23:29	31-29	40-30	2	10	1.88	1.70	9	9	13	28	3	7	9	9
7	Annika Corcoran	34:38	05:22	65-50	6-9	15	-3	1.88	1.12	16	2	38	3	8	2	16	2
8	Deborah Ogayemi	28:43	11:17	46-37	25-22	9	3	1.60	2.22	12	6	31	10	8	2	14	4
10	Alaisha Brown	05:29	34:31	10-3	61-56	7	5	1.82	1.77	3	15	7	34	0	10	2	16
11	Esther Rodellar	05:47	34:13	10-6	61-53	4	8	1.73	1.78	2	16	10	31	4	6	5	13
15	Nyla Inmon	29:26	10:34	51-52	20-7	-1	13	1.73	1.89	12	6	25	16	7	3	9	9
23	Bryana Block	02:46	37:14	5-4	66-55	1	11	1.81	1.77	1	17	4	37	1	9	0	18
24	Whitney Dunn	37:28	02:32	66-55	5-4	11	1	1.76	1.97	17	1	38	3	10	0	17	1



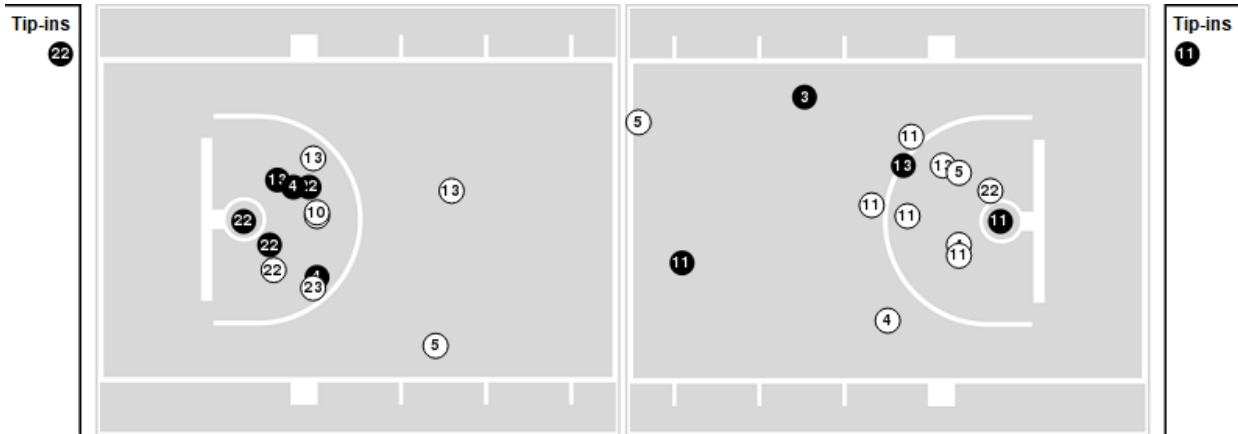
**Officials:** Scott Yarbrough, Demoya Pugh, Tiffany Bridges

Players => All ; FG Types => All ; Results => All ;  
**UTEP**

**All Field Goals**



**Shots in the Paint**



● Made ○ Missed N - Player Number

UTEP	M/A	%
Field Goals	22/54	41
2 Points	16/39	41
3 Points	6/15	40
Free Throws	9/12	75

UTEP	M/A	%
Points in the Paint	20 (10/27)	37
Fast Break Points	1 (1/2)	50
Second Chance Points	8 (4/6)	67
Effective FG%	46	

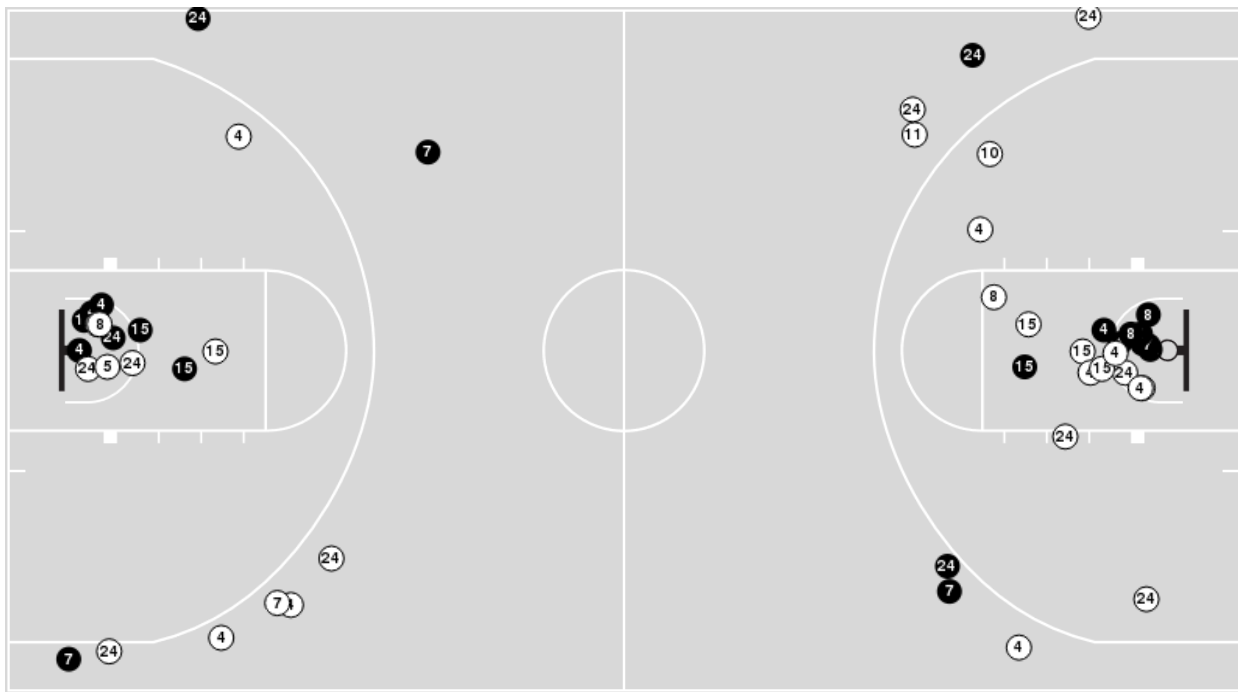


**Officials:** Scott Yarbrough, Demoya Pugh, Tiffany Bridges

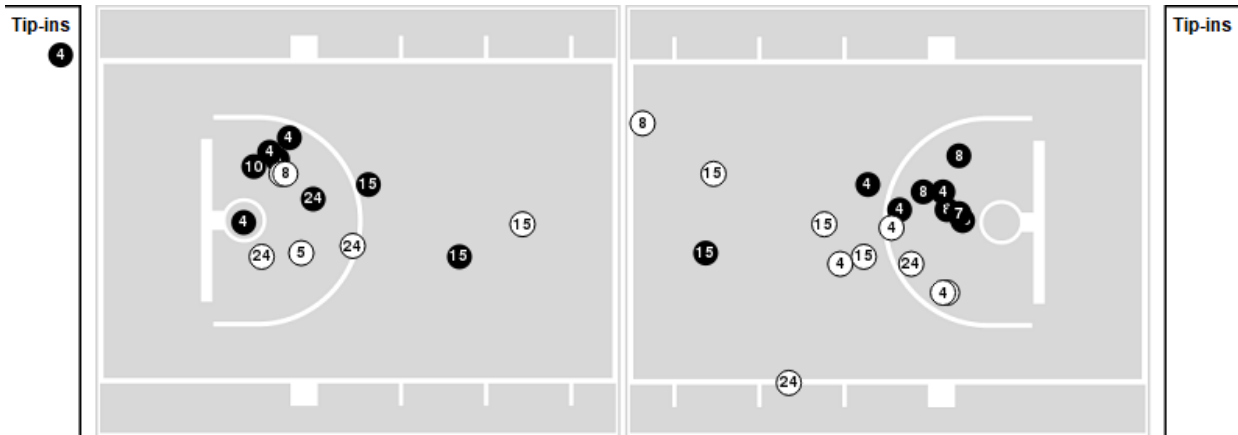
Players => All ; FG Types => All ; Results => All ;

**Sam Houston**

**All Field Goals**



**Shots in the Paint**



● Made    ○ Missed    N - Player Number

Sam Houston	M/A	%
Field Goals	23/52	44
2 Points	17/37	46
3 Points	6/15	40
Free Throws	19/37	51

Sam Houston	M/A	%
Points in the Paint	34 (17/32)	53
Fast Break Points	3 (2/5)	40
Second Chance Points	18 (9/17)	53
Effective FG%	50	



**UTEP at Sam Houston**

03/05/26 Johnson Coliseum, Huntsville, TX  
2025-26 Women's Basketball

Officials: Scott Yarbrough, Demoya Pugh, Tiffany Bridges

**UTEP**

Lineup	Quarter On	Time On	Quarter Off	Time Off	Time on Court	Score	Score Diff	Reb	Stl	Tov	Ast	PPP
3- Tensaie I/ 4- Zita D/ 5- Samayoa-Mathis H/ 11- Adams P/ 13- Mbengue N/	1	10:00	1	05:31	04:29	7-7	0	3	2	2	2	0.7778
3- Tensaie I/ 5- Samayoa-Mathis H/ 11- Adams P/ 13- Mbengue N/ 23- Woldai A/	1	05:31	1	04:17	01:14	2-4	-2	1	0	0	0	0.6944
3- Tensaie I/ 4- Zita D/ 13- Mbengue N/ 22- Moses Amaniyo M/ 23- Woldai A/	1	04:17	1	02:24	01:53	4-3	1	5	0	0	0	1.3333
4- Zita D/ 13- Mbengue N/ 14- Collazo T/ 22- Moses Amaniyo M/ 23- Woldai A/	1	02:24	1	00:42	01:41	2-3	-1	0	0	3	1	0.5000
3- Tensaie I/ 4- Zita D/ 8- Terry B/ 13- Mbengue N/ 14- Collazo T/	1	00:42	1	00:04	00:37	0-0	0	1	0	0	0	0.0000
3- Tensaie I/ 4- Zita D/ 8- Terry B/ 14- Collazo T/ 22- Moses Amaniyo M/	1	00:04	2	10:00	00:04	0-1	-1	1	0	0	0	0.0000
3- Tensaie I/ 4- Zita D/ 8- Terry B/ 11- Adams P/ 22- Moses Amaniyo M/	2	10:00	2	09:25	00:35	0-2	-2	0	0	1	0	0.0000
3- Tensaie I/ 4- Zita D/ 8- Terry B/ 13- Mbengue N/ 22- Moses Amaniyo M/	2	09:25	2	08:17	01:08	2-0	2	2	0	0	0	2.0000
3- Tensaie I/ 4- Zita D/ 8- Terry B/ 22- Moses Amaniyo M/ 23- Woldai A/	2	08:17	2	06:23	01:54	4-2	2	2	0	1	0	1.3333
3- Tensaie I/ 4- Zita D/ 8- Terry B/ 10- Igbinedion Omoruyi O/ 23- Woldai A/	2	06:23	2	03:18	03:05	3-8	-5	2	1	3	1	0.6000
3- Tensaie I/ 4- Zita D/ 8- Terry B/ 10- Igbinedion Omoruyi O/ 12- Asensio I/	2	03:18	3	10:00	03:18	2-4	-2	1	2	2	0	0.4000
3- Tensaie I/ 4- Zita D/ 5- Samayoa-Mathis H/ 11- Adams P/ 13- Mbengue N/	3	10:00	3	08:20	01:40	2-4	-2	2	0	1	0	0.6944
3- Tensaie I/ 4- Zita D/ 5- Samayoa-Mathis H/ 11- Adams P/ 22- Moses Amaniyo M/	3	08:20	3	05:04	03:16	5-1	4	0	0	0	0	1.0000
3- Tensaie I/ 4- Zita D/ 5- Samayoa-Mathis H/ 11- Adams P/ 13- Mbengue N/	3	05:04	3	00:57	04:07	8-7	1	4	0	1	2	1.2048
3- Tensaie I/ 4- Zita D/ 5- Samayoa-Mathis H/ 11- Adams P/ 22- Moses Amaniyo M/	3	00:57	4	08:36	02:21	6-4	2	4	0	1	0	1.5464
3- Tensaie I/ 4- Zita D/ 5- Samayoa-Mathis H/ 11- Adams P/ 13- Mbengue N/	4	08:36	4	04:08	04:28	4-9	-5	3	0	4	1	0.5714
3- Tensaie I/ 4- Zita D/ 5- Samayoa-Mathis H/ 8- Terry B/ 11- Adams P/	4	04:08	4	01:05	03:03	2-5	-3	1	1	1	0	0.4000
3- Tensaie I/ 4- Zita D/ 5- Samayoa-Mathis H/ 8- Terry B/ 23- Woldai A/	4	01:05	4	00:00	01:05	6-7	-1	1	0	0	1	1.5000



**UTEP at Sam Houston**

03/05/26 Johnson Coliseum, Huntsville, TX  
2025-26 Women's Basketball

**Game Time:** 6:30 PM  
**Game Duration:** 2:07  
**Attendance:** 378

**Officials:** Scott Yarbrough, Demoya Pugh, Tiffany Bridges

**Sam Houston**

Lineup	Quarter On	Time On	Quarter Off	Time Off	Time on Court	Score	Score Diff	Reb	Stl	Tov	Ast	PPP
4- Kone F/5- Ward-Strong A/8- Ogayemi D/15- Inmon N/24- Dunn W/	1	10:00	1	06:58	03:02	3-5	-2	2	1	1	1	0.6000
4- Kone F/7- Corcoran A/8- Ogayemi D/11- Rodellar E/24- Dunn W/	1	06:58	1	06:32	00:26	2-0	2	1	1	1	0	1.0638
4- Kone F/5- Ward-Strong A/7- Corcoran A/8- Ogayemi D/24- Dunn W/	1	06:32	1	05:31	01:01	2-2	0	1	0	1	0	1.0000
4- Kone F/7- Corcoran A/8- Ogayemi D/15- Inmon N/23- Block B/	1	05:31	1	03:33	01:58	5-4	1	2	0	0	1	1.1574
4- Kone F/7- Corcoran A/8- Ogayemi D/15- Inmon N/24- Dunn W/	1	03:33	1	02:24	01:09	2-2	0	1	0	0	0	1.0000
4- Kone F/5- Ward-Strong A/7- Corcoran A/8- Ogayemi D/24- Dunn W/	1	02:24	1	02:10	00:14	0-0	0	0	0	0	0	0.0000
4- Kone F/7- Corcoran A/8- Ogayemi D/11- Rodellar E/24- Dunn W/	1	02:10	1	00:52	01:17	3-2	1	2	1	2	1	1.0000
7- Corcoran A/8- Ogayemi D/11- Rodellar E/23- Block B/24- Dunn W/	1	00:52	1	00:04	00:47	0-0	0	2	1	0	0	0.0000
4- Kone F/7- Corcoran A/8- Ogayemi D/11- Rodellar E/24- Dunn W/	1	00:04	1	00:01	00:03	0-0	0	1	0	0	0	0.0000
4- Kone F/7- Corcoran A/8- Ogayemi D/10- Brown A/24- Dunn W/	1	00:01	2	08:53	01:08	3-0	3	1	0	0	1	1.0417
4- Kone F/7- Corcoran A/8- Ogayemi D/15- Inmon N/24- Dunn W/	2	08:53	2	08:17	00:36	0-2	-2	0	0	0	0	0.0000
4- Kone F/8- Ogayemi D/11- Rodellar E/15- Inmon N/24- Dunn W/	2	08:17	2	06:23	01:54	2-4	-2	1	1	1	1	0.6667
4- Kone F/10- Brown A/11- Rodellar E/15- Inmon N/24- Dunn W/	2	06:23	2	05:57	00:26	1-0	1	0	0	0	0	1.1364
4- Kone F/7- Corcoran A/10- Brown A/11- Rodellar E/15- Inmon N/	2	05:57	2	05:23	00:34	0-0	0	1	0	1	0	0.0000
4- Kone F/7- Corcoran A/8- Ogayemi D/10- Brown A/24- Dunn W/	2	05:23	2	04:56	00:27	0-0	0	1	0	0	0	0.0000
4- Kone F/7- Corcoran A/8- Ogayemi D/15- Inmon N/24- Dunn W/	2	04:56	2	01:04	03:52	9-5	4	4	2	1	2	1.5625
4- Kone F/7- Corcoran A/8- Ogayemi D/10- Brown A/24- Dunn W/	2	01:04	3	10:00	01:04	2-0	2	2	0	1	1	1.0000
4- Kone F/7- Corcoran A/8- Ogayemi D/15- Inmon N/24- Dunn W/	3	10:00	3	07:30	02:30	5-5	0	2	0	0	1	1.8116
4- Kone F/5- Ward-Strong A/7- Corcoran A/8- Ogayemi D/24- Dunn W/	3	07:30	3	06:35	00:55	0-0	0	1	0	2	0	0.0000
4- Kone F/7- Corcoran A/8- Ogayemi D/15- Inmon N/24- Dunn W/	3	06:35	3	04:42	01:53	0-2	-2	2	0	2	0	0.0000
4- Kone F/5- Ward-Strong A/7- Corcoran A/8- Ogayemi D/24- Dunn W/	3	04:42	3	02:54	01:48	5-2	3	3	0	1	2	1.6667
4- Kone F/7- Corcoran A/8- Ogayemi D/15- Inmon N/24- Dunn W/	3	02:54	3	02:44	00:10	0-0	0	0	0	0	0	0.0000
4- Kone F/5- Ward-Strong A/7- Corcoran A/15- Inmon N/24- Dunn W/	3	02:44	3	01:50	00:54	0-5	-5	1	0	1	0	0.0000
4- Kone F/5- Ward-Strong A/7- Corcoran A/10- Brown A/24- Dunn W/	3	01:50	3	00:57	00:53	2-1	1	1	0	0	1	1.0000
4- Kone F/7- Corcoran A/10- Brown A/15- Inmon N/24- Dunn W/	3	00:57	4	10:00	00:57	2-2	0	1	0	0	0	1.0000
4- Kone F/7- Corcoran A/8- Ogayemi D/15- Inmon N/24- Dunn W/	4	10:00	4	08:56	01:04	0-2	-2	1	0	0	0	0.0000
4- Kone F/5- Ward-Strong A/7- Corcoran A/15- Inmon N/24- Dunn W/	4	08:56	4	05:02	03:54	9-6	3	1	2	1	4	1.3975
4- Kone F/7- Corcoran A/8- Ogayemi D/15- Inmon N/24- Dunn W/	4	05:02	4	04:08	00:54	2-0	2	1	1	0	1	1.0000
4- Kone F/5- Ward-Strong A/7- Corcoran A/8- Ogayemi D/24- Dunn W/	4	04:08	4	03:39	00:29	1-0	1	0	0	1	0	0.6944
4- Kone F/5- Ward-Strong A/7- Corcoran A/15- Inmon N/24- Dunn W/	4	03:39	4	00:18	03:20	9-8	1	3	0	1	1	1.4062
4- Kone F/7- Corcoran A/11- Rodellar E/15- Inmon N/24- Dunn W/	4	00:18	4	00:00	00:18	2-0	2	2	0	0	0	2.2727



**UTEP at Sam Houston**

03/05/26 Johnson Coliseum, Huntsville, TX  
2025-26 Women's Basketball

Officials: Scott Yarbrough, Demoya Pugh, Tiffany Bridges

**UTEP**

Lineup	Time	Score	Score Diff	Pts/Min	Reb	Stl	Tov	Ast	PPP
3- Tensaie I/ 4- Zita D/ 5- Samayoa-Mathis H/ 11- Adams P/ 13- Mbengue N/	14:44	21-27	-6	1.4253	12	2	8	5	0.8229
3- Tensaie I/ 4- Zita D/ 5- Samayoa-Mathis H/ 11- Adams P/ 22- Moses Amaniyo M/	05:37	11-5	6	1.9585	4	0	1	0	1.2387
3- Tensaie I/ 4- Zita D/ 8- Terry B/ 10- Igbinedion Omoruyi O/ 12- Asensio I/	03:18	2-4	-2	0.6061	1	2	2	0	0.4000
3- Tensaie I/ 4- Zita D/ 8- Terry B/ 10- Igbinedion Omoruyi O/ 23- Woldai A/	03:05	3-8	-5	0.9730	2	1	3	1	0.6000
3- Tensaie I/ 4- Zita D/ 5- Samayoa-Mathis H/ 8- Terry B/ 11- Adams P/	03:03	2-5	-3	0.6557	1	1	1	0	0.4000
3- Tensaie I/ 4- Zita D/ 8- Terry B/ 22- Moses Amaniyo M/ 23- Woldai A/	01:54	4-2	2	2.1053	2	0	1	0	1.3333
3- Tensaie I/ 4- Zita D/ 13- Mbengue N/ 22- Moses Amaniyo M/ 23- Woldai A/	01:53	4-3	1	2.1239	5	0	0	0	1.3333
4- Zita D/ 13- Mbengue N/ 14- Collazo T/ 22- Moses Amaniyo M/ 23- Woldai A/	01:41	2-3	-1	1.1823	0	0	3	1	0.5000
3- Tensaie I/ 5- Samayoa-Mathis H/ 11- Adams P/ 13- Mbengue N/ 23- Woldai A/	01:14	2-4	-2	1.6216	1	0	0	0	0.6944
3- Tensaie I/ 4- Zita D/ 8- Terry B/ 13- Mbengue N/ 22- Moses Amaniyo M/	01:08	2-0	2	1.7647	2	0	0	0	2.0000
3- Tensaie I/ 4- Zita D/ 5- Samayoa-Mathis H/ 8- Terry B/ 23- Woldai A/	01:05	6-7	-1	5.5385	1	0	0	1	1.5000
3- Tensaie I/ 4- Zita D/ 8- Terry B/ 13- Mbengue N/ 14- Collazo T/	00:37	0-0	0	0.0000	1	0	0	0	0.0000
3- Tensaie I/ 4- Zita D/ 8- Terry B/ 11- Adams P/ 22- Moses Amaniyo M/	00:35	0-2	-2	0.0000	0	0	1	0	0.0000
3- Tensaie I/ 4- Zita D/ 8- Terry B/ 14- Collazo T/ 22- Moses Amaniyo M/	00:04	0-1	-1	0.0000	1	0	0	0	0.0000



**UTEP at Sam Houston**

03/05/26 Johnson Coliseum, Huntsville, TX  
2025-26 Women's Basketball

Officials: Scott Yarbrough, Demoya Pugh, Tiffany Bridges

**Sam Houston**

Lineup	Time	Score	Score Diff	Pts/Min	Reb	Stl	Tov	Ast	PPP
4- Kone F/ 7- Corcoran A/ 8- Ogayemi D/ 15- Inmon N/ 24- Dunn W/	12:08	18-18	0	1.4835	11	3	3	4	1.0976
4- Kone F/ 5- Ward-Strong A/ 7- Corcoran A/ 15- Inmon N/ 24- Dunn W/	08:08	18-19	-1	2.2104	5	2	3	5	1.2129
4- Kone F/ 5- Ward-Strong A/ 7- Corcoran A/ 8- Ogayemi D/ 24- Dunn W/	04:27	8-4	4	1.7978	5	0	5	2	0.9479
4- Kone F/ 5- Ward-Strong A/ 8- Ogayemi D/ 15- Inmon N/ 24- Dunn W/	03:02	3-5	-2	0.9890	2	1	1	1	0.6000
4- Kone F/ 7- Corcoran A/ 8- Ogayemi D/ 10- Brown A/ 24- Dunn W/	02:39	5-0	5	1.8821	4	0	1	2	1.0246
4- Kone F/ 7- Corcoran A/ 8- Ogayemi D/ 15- Inmon N/ 23- Block B/	01:58	5-4	1	2.5424	2	0	0	1	1.1574
4- Kone F/ 8- Ogayemi D/ 11- Rodellar E/ 15- Inmon N/ 24- Dunn W/	01:54	2-4	-2	1.0526	1	1	1	1	0.6667
4- Kone F/ 7- Corcoran A/ 8- Ogayemi D/ 11- Rodellar E/ 24- Dunn W/	01:46	5-2	3	2.8116	4	2	3	1	1.0504
4- Kone F/ 7- Corcoran A/ 10- Brown A/ 15- Inmon N/ 24- Dunn W/	00:57	2-2	0	2.1053	1	0	0	0	1.0000
4- Kone F/ 5- Ward-Strong A/ 7- Corcoran A/ 10- Brown A/ 24- Dunn W/	00:53	2-1	1	2.2642	1	0	0	1	1.0000
7- Corcoran A/ 8- Ogayemi D/ 11- Rodellar E/ 23- Block B/ 24- Dunn W/	00:47	0-0	0	0.0000	2	1	0	0	0.0000
4- Kone F/ 7- Corcoran A/ 10- Brown A/ 11- Rodellar E/ 15- Inmon N/	00:34	0-0	0	0.0000	1	0	1	0	0.0000
4- Kone F/ 10- Brown A/ 11- Rodellar E/ 15- Inmon N/ 24- Dunn W/	00:26	1-0	1	2.3077	0	0	0	0	1.1364
4- Kone F/ 7- Corcoran A/ 11- Rodellar E/ 15- Inmon N/ 24- Dunn W/	00:18	2-0	2	6.5217	2	0	0	0	2.2727