



UTEP BASKETBALL

UTEP vs. Kennesaw State | Saturday, Feb. 28 | 2:00 p.m. MT | Don Haskins Center | El Paso, Texas

GAME 27 vs. KENNESAW STATE



UTEP Miners (13-13, 5-10 CUSA)

Head Coach: Keitha Adams (Southwestern College, 1989)
Career Record: 527-390 (400-353 at DI level) (29th season)
Record at UTEP: 320-260 (19th season)
Home: 10-6 | **Road:** 3-7 | **Neutral:** 0-0 | **Streak:** W3

Where to Watch



TV Talent:
Mando Medina
Benjamin Grajeda



Kennesaw State Owls (12-15, 5-11 CUSA)

Head Coach: Octavia Blue
Career Record: 60-87 (5th season)
Record at KSU: Same
Home: 9-6 | **Road:** 3-9 | **Neutral:** 0-0 | **Streak:** L4



OPENING TIP

UTEP HONORS SENIORS IN HOME FINALE SATURDAY VS. KENNESAW STATE

The UTEP women's basketball team (13-13, 5-10 CUSA) wraps up its home schedule Saturday against Kennesaw State at the Don Haskins Center, with tipoff scheduled for 2 p.m. MT. Winners of three straight, the Miners will look to stay hot down the final stretch of Conference USA play. The afternoon will also mark Senior Day, as UTEP honors its graduating seniors prior to tipoff in the final home game of the season.

SCOUTING KENNESAW STATE

Kennesaw State enters Saturday's matchup at 12-15 overall and 5-11 in Conference USA play. The Owls are currently on a four-game losing streak and most recently fell 52-40 at NM State (Feb. 26). Kennesaw State is led by head coach Octavia Blue, who is in her fifth season at the helm.

Kennesaw State currently sits 11th in the Conference USA standings while averaging 62.7 points, 34.4 rebounds, and 12.6 assists per game. The Owls shoot 43.6 percent from the field (top 80 nationally; second in CUSA), along with 30.8 percent from three-point range and 64.5 percent at the free-throw line. Defensively, Kennesaw State allows 61.3 points per game, holding opponents to 38.6 percent shooting from the field and 30.1 percent from beyond the arc. The Owls are among the league's most disruptive defensive teams, averaging 4.2 blocks per game (top 50 nationally; first in CUSA), ranking fifth in Conference USA in steals (9.5 spg), and forcing 19.1 turnovers per game (60th nationally; fourth in CUSA).

Keyarah Berry leads Kennesaw State with a team-high 14.1 points per game, shooting 47.2 percent from the field (third in Conference USA), while also contributing 4.8 rebounds and a team-best 2.1 steals per contest. Trynce Taylor anchors the Owls on the glass, averaging a team-high 6.2 rebounds per game to go along with 9.3 points per outing. Kaylin Fields directs the offense with a team-high 4.4 assists per game and adds 2.0 steals per contest.

MINER NOTABLES

Two Miners are averaging double figures in scoring, led by **Portia Adams** (10.9 ppg) and **Ivane Tensaie** (10.3 ppg). **Mary Moses Amaniyo** and **Ndack Mbengue** are both nearing double-doubles, as Amaniyo leads the team with 8.3 rebounds per game to go along with 8.9 points per contest, while Mbengue adds 9.4 points and 7.9 rebounds per game. Adams also paces the Miners in assists at 2.5 per game, followed by **Delma Zita** at 2.4, and **Heaven Samayoa-Mathis** leads the team in steals at 1.5 per outing. Amaniyo tops the squad in field-goal percentage at 52.0 percent, while Adams leads from three-point range (39.4 percent) and at the free-throw line (77.3 percent).

LAST GAME'S STARTERS



IVANE TENSAIE
GR. | GUARD | 5-7
10.3 PPG
1.4 RPG
0.9 APG
32.5 FG%
34.0 3PT%
72.2 FT%



DELMA ZITA
GR. | GUARD | 5-8
4.5 PPG
2.2 RPG
2.4 APG
36.6 FG%
23.8 3PT%
89.3 FT%



HEAVEN SAMAYOA-MATHIS
SR. | GUARD | 5-7
6.4 PPG
3.3 RPG
2.3 APG
35.8 FG%
27.0 3PT%
74.2 FT%



PORTIA ADAMS
SR. | GUARD | 5-6
10.9 PPG
2.9 RPG
2.5 APG
37.9 FG%
39.4 3PT%
77.3 FT%



NDACK MBENGUE
SR. | FORWARD | 6-3
9.4 PPG
7.9 RPG
1.1 SPG
49.4 FG%
N/A 3PT%
63.9 FT%

2025-26 SCHEDULE

Date	Opponent	Time/Result
Nov. 3	Prairie View A&M	W, 84-60
Nov. 8	Nicholls State	W, 76-61
Nov. 11	WNMU	W, 81-56
Nov. 22	UT Martin	W, 64-60
Nov. 25	Kansas City	W, 75-64
Nov. 29	Denver	W, 69-52
Dec. 3	Texas A&M-CC	W, 62-44
Dec. 6	#8 TCU	L, 40-95
Dec. 13	BYU	L, 46-81
Dec. 18	UC Irvine	L, 72-89
Dec. 29	USW	W, 102-43
Jan. 2	Delaware *	W, 82-71
Jan. 4	Liberty *	L, 66-88
Jan. 8	Middle Tennessee *	L, 43-86
Jan. 10	WKU *	L, 68-59
Jan. 15	Missouri State *	L, 71-64
Jan. 17	FIU *	L, 67-59
Jan. 22	Kennesaw State *	L, 83-52
Jan. 24	Jax State *	L, 73-60
Jan. 31	NM State *	W, 79-69
Feb. 5	LA Tech *	L, 87-48
Feb. 7	Sam Houston *	L, 70-58
Feb. 12	Liberty *	L, 58-48
Feb. 14	Delaware *	W, 79-72
Feb. 21	NM State *	W, 69-58
Feb. 26	Jax State *	W, 66-64
Feb. 28	Kennesaw State *	2:00 p.m.
Mar. 5	Sam Houston *	5:30 p.m.
Mar. 5	LA Tech *	5:00 p.m.
Mar. 10-14	CUSA Championships	TBD

Bold denotes home game
* Conference USA Game
All Times Mountain

SERIES HISTORY

The Miners are 0-4 all-time against Kennesaw State and fell 83-52 in the first meeting between the programs this season in Kennesaw.

ATHLETIC COMMUNICATIONS

STRATEGIC COMMUNICATIONS ASSISTANT

Marcus Neal
mneal2@miners.utep.edu

OFFICIAL WEBSITE: UTEPMINERS.com

GAME NOTES

MINERS STAY HOT, DOWN JAX STATE 66-64

The UTEP women's basketball team earned a 66-64 home victory over Jax State on Thursday night at the Don Haskins Center, improving to 13-13 overall and 5-10 in Conference USA play while securing its third straight win. The Miners connected on eight three-pointers, while forcing 14 turnovers and recording nine steals. UTEP capitalized on transition and second-chance opportunities, posting a 16-10 edge in fast-break points and an 11-6 advantage in second-chance scoring to keep the contest within reach throughout.

UTEP weathered early momentum swings before making its push late, erasing a double-digit fourth-quarter deficit behind defensive pressure and timely perimeter shooting. The Miners strung together key stops down the stretch, forcing consecutive turnovers in the final minute and converting clutch baskets to seize their first lead of the second half in the closing seconds. UTEP closed out the 66-64 result with one final defensive stand, extending its winning streak to three and sending the Don Haskins Center crowd home victorious.

POSTSEASON IMPLICATIONS

With two games remaining in the regular season, Saturday's matchup carries significant implications in the Conference USA standings. The top 10 of 12 teams qualify for the conference tournament, and UTEP has climbed into ninth place following its recent surge, while Kennesaw State currently sits 11th and outside the postseason picture.

A UTEP victory would help the Miners solidify their position inside the tournament field and could potentially move them into eighth place entering the final week of the regular season. Kennesaw State, meanwhile, will look to keep its postseason hopes alive, as a win could lift the Owls back into the Conference USA Tournament race down the stretch.

ADAMS ON FIRE

Portia Adams continues to provide a consistent scoring presence for UTEP in Conference USA play, reaching double figures in 11 of 15 league games while averaging 12.3 points per contest in conference action. The senior guard delivered a season-high 23 points including 10 in the fourth quarter in the Miners' 66-64 victory over Jax State, com-

ing through in key moments to help secure UTEP's third consecutive win.

A dependable two-way contributor, Adams remains central to UTEP's offensive rhythm while also setting the tone defensively. She leads the Miners in scoring (10.9 ppg), assists (2.5 apg), and three-point percentage (39.4), blending efficient perimeter shooting with steady playmaking. Her experience and versatility continue to anchor UTEP's backcourt as the Miners push through the final stretch of conference play.

MBENGUE'S FRONT COURT IMPACT

Ndack Mbengue continues to anchor UTEP's frontcourt, most recently recording 10 points, 11 rebounds, and three blocks in the Miners' 66-64 victory over Jax State. The senior forward notched her eighth double-double of the season, providing a steady interior presence through physical play, rebounding, and rim protection.

Mbengue has now secured double-digit rebounds in 12 games this season, including six in Conference USA play, underscoring her importance in the paint on both ends of the floor. Her consistent production inside remains a key factor in UTEP's frontcourt rotation as the Miners push through the final stretch of conference play.

TENSAIE FOR THREEE!

Ivane Tensaie continues to be a key perimeter threat for UTEP, most recently totaling 10 points, three assists, and two steals in the Miners' 66-64 victory over Jax State while connecting on three three-pointers. The junior guard second in scoring for the Miners at 10.3 points per game and remains one of Conference USA's most consistent threats from beyond the arc.

Tensaie has knocked down 64 three-pointers this season, ranking among the top 100 nationally and third in Conference USA, and recently moved into third place all-time in program history in three-pointers made (184). Her ability to stretch the floor and deliver in key moments continues to be a major factor in UTEP's offensive attack as the Miners close the regular season.

HEAVEN ON THE HEIST

Heaven Samayoa-Mathis continues to set the tone on both ends of the floor for the Miners, most recently recording 10 points, five rebounds, and three steals in UTEP's 66-64 victory over Jax State, including the go-ahead jumper in the final seconds. The

senior guard remains a steady presence in the backcourt, impacting the game through defensive pressure and timely offensive production.

Samayoa-Mathis leads UTEP in total steals (39) and averages a team-best 1.5 steals per game. She has recorded two or more steals in nearly half of UTEP's games this season, with her ability to apply ball pressure, create transition opportunities, and deliver in clutch moments continuing to define the Miners' identity down the stretch.

WOLDAI'S GROWTH PAYING DIVIDENDS

Aolani Woldai continues to make a strong impact off the bench, most recently contributing eight points and three rebounds in UTEP's 66-64 victory over Jax State. The freshman guard has seen her role expand in recent weeks, averaging 17.5 minutes per game over the last six contests, while providing consistent energy and production on both ends of the floor. She recently scored a career-high 17 points in just 18 minutes to lead UTEP to a 79-72 road win at Delaware (Feb. 14).

DELMA DELIVERS

Delma Zita continues to expand her impact for UTEP, most notably knocking down a clutch three-pointer with just under a minute remaining to tie the game in the Miners' 66-64 victory over Jax State. Not typically known for her perimeter shooting, the timely make underscored Zita's confidence and poise in a critical late-game moment.

Zita's role has grown steadily down the stretch, as she has logged 30 or more minutes in each of the last five games while averaging 9.6 points per contest during that span. Her increased presence on the floor has provided UTEP with added versatility, toughness, and playmaking.

AMANIYO ANCHORS UTEP INSIDE

Mary Moses Amaniyo delivered another strong interior effort against Liberty (Feb. 12), finishing with 13 points, eight rebounds, and a career-high four steals. The sophomore forward brought consistent energy on both ends of the floor, impacting the game with her activity on the glass, defensive presence, and efficient scoring around the rim.

Amaniyo averages 8.9 points and a team-best 8.3 rebounds per game, while leading UTEP in field-goal percentage at 52.0 percent.



GAME NOTES

DOUBLE-DOUBLE DUO

Forwards **Ndack Mbengue** and **Mary Moses Amaniyo** continue to anchor UTEP's frontcourt as one of the nation's most productive interior duos. Both have recorded seven double-doubles this season, consistently providing physicality, rebounding, and second-chance opportunities that define the Miners' interior presence.

Amaniyo ranks fifth in Conference USA in offensive rebounds per game (3.3) and sits 85th nationally and sixth in the league in total rebounds (8.3 per game), while Ndack Mbengue follows closely at 7.9 rebounds per contest and 3.3 offensive boards per game. The duo's consistent production on the glass continues to give UTEP a nightly edge and reinforces the Miners' standing as one of the nation's top rebounding teams.

NATIONALLY RANKED ON THE GLASS

The Miners continue to establish rebounding as a defining strength, ranking among the nation's leaders in the top 75 nationally in rebounds per game (39.5) and 27th nationally in offensive rebounds per contest (14.9).

UTEP delivered a historic performance on the glass in its win over the University of the Southwest, pulling down a program-record 74 total rebounds, including a program-best 39 offensive boards. The outing marked the second time this season UTEP has rewritten the record book on the offensive glass, after previously setting the program mark with 33 offensive rebounds against Western New Mexico (Nov. 11).

QUARTER SCORING MILESTONES

UTEP has seen three individual 14-point quarters this season, each delivered by a different Miner and tying for the third-most points scored by a player in a single quarter in program history.

- **Ivane Tensaie**, 3rd quarter at Kansas City (Nov. 25)
- **Mary Moses Amaniyo**, 2nd quarter vs USW (Dec. 29)
- **Ndack Mbengue**, 2nd quarter vs Delaware (Jan. 2)

EXPLOSIVE FRAMES

UTEP's ability to produce explosive scoring stretches has continued to define its season, most recently erupting for 28 points in the fourth quarter of its 66-64 victory over Jax State. The late surge added to a growing pattern of timely offensive runs, as the Miners also poured in 26 points in the third quarter of their road win at NM State (Feb. 21). UTEP previously closed its victory at Delaware (Feb. 14) with 26 fourth-quarter points, scored 30 in the opening quarter against Nicholls (Nov. 8) tying for the 10th-most points in a quarter in program history and tallied 29 during the third quarter at Kansas City (Nov. 25).

That offensive firepower was on full display earlier this season when UTEP matched a program record with 56 first-half points against USW (Dec. 29), tying the most points scored in a half in school history. The Miners capitalized on transition opportunities and second-chance points to build a commanding 56-22 half-time advantage, showcasing the rhythm and pace that have fueled their highest-scoring stretches.

STRENGTH IN NUMBERS

UTEP's depth continues to be one of its strongest assets, with the Miners ranking in the nation's top 100 and second in Conference USA in bench points per game at 20.6.

The Miners second unit has provided consistent offensive balance and versatility, making the Miners' bench currently the most productive in the conference.

QUARTER FRENZY

Ivane Tensaie has joined one of the rarest scoring lists in program history. With her previous 14-point third quarter at Kansas City (Nov. 25) and 13-point fourth quarter vs. FIU last season (Jan. 18, 2025), she is now one of only four players in UTEP history to record multiple quarters with 13+ points.

The exclusive list includes:

- **Sparkle Taylor** - Four times ('16-17)
- **Najala Howell** - Three times ('17-18)
- **Katarina Zec** - Two times ('17-18) ('19-20)

MILESTONE WATCH

- The win over Jax State (Feb. 26) marked Head Coach **Keitha Adams'** 400th career Division I victory.
- **Ivane Tensaie** has moved into third all-time in program history with 184 career made threes.
- **Portia Adams** recently surpassed the 1,000-career-point milestone vs Sam Houston (Feb. 7), marking a significant achievement in her collegiate career.

AMANIYO JOINS ELITE COMPANY

Mary Moses Amaniyo continued to establish herself as one of the nation's elite rebounders, posting two of the top performances in program history within the first month of the season. She opened the year with a UTEP-record 22 rebounds against PVAMU (Nov. 3) and later grabbed 18 boards in the win over UT Martin (Nov. 22).

Amaniyo is the first Miner since **Kayla Thornton** in 2013-14 to record multiple games with 18 or more rebounds in the same season. Her presence on the glass continues to anchor UTEP's interior play and generate critical extra-possession opportunities.

GOING BACK-TO-BACK

UTEP earned Conference USA Player of the Week honors in consecutive weeks earlier this season, marking the program's first back-to-back weekly awards since the 2013-14 campaign. **Mary Moses Amaniyo** claimed the honor on Nov. 24, followed by **Ivane Tensaie** on Dec. 1 after her record-setting performance from beyond the arc. The Miners' last pair of consecutive honorees prior to this season came in 2014, when **Kayla Thornton** earned the award on Jan. 27 and Feb. 3.

SENIOR 5

For the first time since UTEP began tracking lineup records in 1983, the Miners started their first 13 games with an all-senior starting lineup. The veteran group provided experience, leadership, and stability, anchoring UTEP's strong start to the season.

UP NEXT

UTEP will close the regular season with a two-game road trip at Sam Houston (Mar. 5) and LA Tech (Mar. 7)

TEAM COMPARISON



UTEP	CATEGORY	KENNESAW STATE
13-13	Record	12-15
65.5	Scoring Offense	62.7
68.9	Scoring Defense	61.3
-3.4	Scoring Margin	1.4
.380	Field Goal Pct.	.436
.427	Field Goal Pct. Defense	.386
.287	3-Pt. Field Goal Pct.	.308
.360	3-Pt. Field Goal Pct. Defense	.301
5.4	3-Pt. Field Goal/Game	3.9
.684	Free Throw Pct.	.645
12.5	Free Throw Made/Game	11.0
39.5	Rebound Avg.	34.4
2.3	Rebound Margin	1.8
11.4	Assists Avg.	12.6
16.4	Turnovers Avg.	20.0
9.0	Steals Avg.	9.5
2.1	Blocks Avg.	4.2

2025-26 STANDINGS



TEAM	CONFERENCE	OVERALL
LA Tech	14-1	21-5
FIU	10-6	17-10
Missouri State	10-6	18-11
Sam Houston	9-6	16-10
Middle TN	9-6	14-13
Liberty	9-7	15-12
Jax State	7-9	13-15
Delaware	6-10	12-16
UTEP	5-10	13-13
NM State	5-10	9-18
Kennesaw State	5-11	12-15
WKU	4-11	8-18

UTEP IN THE RANKINGS

TEAM	CATEGORY	STAT	NCAA	C-USA
	Bench Points/G	20.6	99	2
	FTA/G	18.3	101	4
	Rebounds/G	39.5	68	1
	Off Rebounds/G	14.9	27	2

INDIVIDUAL

NAME	CATEGORY	STAT	NCAA	C-USA
M. Moses Amaniyo	REB	217	117	7
M. Moses Amaniyo	REB/G	8.3	85	6
Ndack Mbengue	REB/G	7.9	117	8
Ivane Tensaie	3PTM	64	82	3
Ivane Tensaie	3PTM/G	2.4	62	3

CUSA PLAYER OF THE WEEK:

UTEP'S RECORD WHEN ...

Overall	13-13
Playing at home	10-6
Playing on the road	3-7
Playing on a neutral court	0-0
Playing during the day	5-7
Playing at night	5-6
Playing CUSA foes	5-10
Playing CUSA home games	3-5
Playing CUSA road games	2-5
Playing CUSA neutral games	0-0
Playing non-conference foes	8-3
Playing non-conference home games	7-1
Playing non-conference road games	1-2
Playing non-conference neutral games	0-0
Playing on Mondays	2-0
Playing on Tuesdays	2-0
Playing on Wednesdays	1-0
Playing on Thursdays	1-7
Playing on Fridays	1-0
Playing on Saturdays	6-5
Playing on Sundays	0-1
Playing in November	6-0
Playing in December	2-3
Playing in January	1-7
Playing in February	3-2
Playing in March	0-0
Playing in the Central time zone	1-4
Playing in the Eastern time zone	1-2
Playing in the Mountain time zone	11-7
Playing in the Pacific time zone	0-0
Playing in the Hawaii time zone	0-0
Shooting 50% or better	2-0
Shooting 40% or better	6-2
Shooting less than 40%	5-11
Opponent shoots 50% or better	0-4
Opponent shoots 40% or better	5-9
Opponent shoots less than 40%	8-0
Shooting better than opponent	10-0
Shooting equal or worse than opponent	3-13
Scoring first	6-1
Opponent scores first	7-12
Outrebounding opponents	10-4
Tied or outrebounded	3-9
Ahead at halftime	9-0
Behind at halftime	4-13
Tied at halftime	0-0
Ahead with 5:00 to play	11-0
Behind with 5:00 to play	2-13
Tied with 5:00 to play	0-0
Committing same or less turnovers	10-3
Committing more turnovers	3-10
Having 10 or more steals	7-3
Shooting better than 70% from the line	5-7
Scoring less than 70 points	5-12
Scoring between 70-79 points	4-1
Scoring between 80-89 points	3-0
Scoring between 90-99 points	0-0
Scoring 100 points or more	1-0
Games decided by five points or less	2-0
Games decided by 6-10 points	2-4
Games decided by 11-19 points	5-2
Games decided by 20+ points	4-7
Bench outscores opponent's bench	5-2
Bench is tied or outscored by opponent's	8-11



2025-26 UTEP MINERS ROSTER

NUMERICAL

No.	Name	Pos.	Ht.	Cl.	Hometown / Previous School
1	Aaliyah Davis	G	5-7	Sr.	El Paso, Texas/ Kilgore College
2	Sirviva Legions	G	5-8	Sr.	Brooklyn, N.Y./ Long Island University
3	Ivane Tensaie	G	5-7	Gr.	Roseville, Minn./ Penn State
4	Delma Zita	G	5-8	Gr.	Maputo, Mozambique/ New Mexico JC
5	Heaven Samayo-Mathis	G	5-7	Sr.	Sacramento, Calif./ Salt Lake Community College
8	Brooklyn Terry	G/F	6-0	Fr.	Mansfield, Texas/ Legion Prep HS/ Mansfield Timberview
10	Osadebamwen Igbinedion Omoruyi	F	6-4	So.	Madrid, Spain
11	Portia Adams	G	5-6	Sr.	Cedar Hill, Texas/ Lamar
12	Irene Asensio	G	5-8	So.	Barcelona, Spain/ Sant Adrià Femení
13	Ndack Mbengue	F	6-3	Sr.	Bergamo, Italy/ Cowley College
14	Tatiana Collazo	G	5-8	Jr.	San Jose, Calif./ San Jose City College
15	Abby Priscilla	G	5-11	Jr.	Kampala, Uganda/ Grayson CC
20	Blessing Okhwodiasa	F	6-2	R-Fr.	Madrid, Spain
22	Mary Moses Amaniyo	F	6-1	So.	Arua, Uganda
23	Aolani Woldai	G	5-7	Fr.	Fort Worth, Texas/ Brewer HS

ALPHBETICAL

No.	Name	Pos.	Ht.	Cl.	Hometown / Previous School
11	Portia Adams	G	5-6	Sr.	Cedar Hill, Texas (Lamar)
22	Mary Moses Amaniyo	F	6-1	So.	Arua, Uganda
12	Irene Asensio	G	5-8	So.	Barcelona, Spain (Sant Adrià Femení)
14	Tatiana Collazo	G	5-8	Jr.	San Jose, Calif. (San Jose City College)
1	Aaliyah Davis	G	5-7	Sr.	El Paso, Texas (Kilgore College)
2	Sirviva Legions	G	5-8	Sr.	Brooklyn, N.Y. (Long Island University)
13	Ndack Mbengue	F	6-3	Sr.	Bergamo, Italy (Cowley College)
20	Blessing Okhwodiasa	F	6-2	R-Fr	Madrid, Spain
10	Osadebamwen Igbinedion Omoruyi	F	6-4	So.	Madrid, Spain
15	Abby Priscilla	G	5-11	Jr.	Kampala, Uganda (Grayson CC)
2	Heaven Samayoa-Mathis	G	5-7	Sr.	Sacramento, Calif. (Salt Lake CC)
3	Ivane Tensaie	G	5-7	Gr.	Roseville, Minn. (Penn State)
8	Brooklyn Terry	G/F	6-0	Fr.	Mansfield, Texas (Legion Prep HS/Mansfield Timberview)
23	Aolani Woldai	G	5-7	Fr.	Fort Worth, Texas/ (Brewer HS)
4	Delma Zita	G	5-8	Gr.	Maputo, Mozambique (New Mexico JC)

COACHING STAFF

Head Coach: Keitha Adams | Associate Head Coach: Ewa Laskowska | Assistant Coaches: Jareica Hughes, Lulu McKinney

PRONUNCIATIONS

2	Sirviva Legions	Sir-VIE-vuh
3	Ivane Tensaie	E-vaughn ten-SIGH-ay
4	Delma Zita	Z-ta
5	Heaven Samayoa-Mathis	sahm-ah-YO-ah MATH-iss
10	Osadebamwen Igbinedion Omoruyi	Oh-SAH-deh-BAM-when ig-bin-EH-d-on oh-more-OOG- E
12	Irene Asensio	E-ren-eh AH-sen-c-oh
13	Ndack Mbengue	N-dack (rhymes with Tack) mm-BEN-gweh
20	Blessing Okhwodiasa	oh-koh-DEE-ah-sah
22	Mary Moses Amaniyo	ah-mah-KNEE-oh
23	Aolani Woldai	ay-oh-lah-knee WOHL-dye

Coaches:

Ewa Laskowska

Jareica Hughes

EH-vuh LAH-skove (rhymes with drove)-skuh

JARE-ih-kuh





UTEP HEAD COACH

KEITHA ADAMS

Southwestern College '89

19th Season at UTEP
29th Season as a Coach

Keitha Adams, the winningest coach in UTEP women's basketball history, returned as head coach of the Miners, Vice President and Director of Athletics Jim Senter announced on April 12, 2023.

On November 26, 2024, Adams recorded her 300th win at the helm of the UTEP program. Her record as UTEP's head coach is 319-260, including a 156-63 mark in conference play.

In her first season back in the Borderland, Adams led the team to a 12-19 overall record, including 6-10 in conference play. The Miners made it to the second round of the 2024 Conference USA Tournament, led by all-conference selections Jane Asinde (All-CUSA First Team, All-Defensive Team, Newcomer of the Year), Erin Wilson (All-CUSA Second Team), and Aaliyah Stanton (All-Freshman Team).

On February 15, 2024, Adams earned her 500th career victory with a 73-68 win over WKU. In 28 seasons as a head coach, including five at Independence Community College, she has compiled a record of 514-376.

Adams came back to the Sun City following six seasons as the head coach at Wichita State. In her most recent campaign with the Shockers (2022-23), she orchestrated an 18-win season and appearance in the postseason WNIT. Wichita State upset top-seed USF in the quarterfinals of the American Athletic Conference Championship, 65-53.

In her first stint as the Miners' head coach (2001-17), Adams posted 284 victories over 16 seasons, while leading UTEP to four postseason tournament appearances (two NCAA, two WNIT) and four Conference USA championships (three regular season/one tournament). UTEP posted 28 or more wins four times under Adams - 28-4 (2007-08 season), 29-4 (2011-12), 29-8 (2013-14) and 29-5 (2015-16). The Miners were 16-0 in C-USA play during the 2007-08 season, becoming the first team to complete the league slate unbeaten, and fashioned a 15-1 mark during the 2011-12 campaign. They were 16-2 in C-USA action during the 2015-16 season.

After building the program from the ground up, Adams guided the Miners to 229 victories over her last 11 seasons as head coach, an average of 20.8 per season.

During her initial tenure as head coach at UTEP, Adams coached a total of 13 players to All-Conference honors - Starr Breedlove, Gloria Brown, Jareica Hughes, Natasha Lacy, Kimya Murray, Jenzel Nash, Izabela Piekarska, Anete Steinberga, Sparkle Taylor, Kayla Thornton, Cameasha Turner, Vaida Zagurskyte and Dragana Zoric. Hughes was a two-time C-USA Player of the Year (2008, 2009). Lacy and Thornton were honorable mention All-Americans in 2008 and 2014, respectively, and both went on to play in the WNBA. Thornton currently plays for the New York Liberty.

Adams was named the C-USA Coach of the Year in 2008, 2012 and 2016, and the WBCA Regional Coach of the Year in 2008. She's the lone C-USA women's basketball coach to claim the honor three times.

The historic 2007-08 season produced 28 victories, a school-record 23-game win streak, an undefeated romp through C-USA regular season play, and the school's first-ever NCAA Tournament appearance. The Miners scored a first-round victory over Western Kentucky, 92-60, in the first round of the "Big Dance." Two UTEP players, Lacy and Piekarska, were chosen in the 2008 WNBA Draft by Detroit and Sacramento, respectively.

Four years later, the Miners were back in the NCAA Tournament after setting a school record with 29 wins. After finishing 15-1 during the C-USA regular season, UTEP was crowned champion of the conference tournament after upending Tulane, 69-65, in the title game.

UTEP tied the school record with 29 victories during the 2013-14 season, and won the hearts of El Pasoans by making a march to the WNIT championship game. Then-capacity crowds of 12,222 packed the Don Haskins Center for the Miners' games versus South Dakota State and Rutgers.

The 2015-16 Miners racked up 29 wins once again, and once again drew huge home crowds for their run to the WNIT quarterfinals, including over 9,000 fans in their final game of the season versus Oregon.

Two of Adams' UTEP teams cracked the top-25 poll (2015-16, 2007-08), including being ranked in the final six weeks in 2007-08, while receiving votes in eight campaigns total (2015-16, 2013-14, 2012-13, 2011-12, 2008-09, 2007-08 and 2006-07).

Most importantly, every player that exhausted their eligibility at UTEP under Adams graduated from the University.

Adams was the head coach at Independence CC for five seasons and directed the Lady Pirates to a 127-37 record, including back-to-back Kansas Jayhawk Community College Conference titles in 2000 and 2001. Her teams combined for a 35-1 conference mark over her final two seasons. In 2000-01, she led the Lady Pirates to a 31-2 mark, the conference title and was appointed the KJCCC Eastern Division Coach of the Year.

Adams coached 22 all-KJCCC selections and five NJCAA All-Americans at Independence. Fifteen of her student-athletes went on to play Division I basketball, including two in the SEC, two in the Big 12, one in the ACC, three in the WAC and one in C-USA. Svetlana Volnaya, who played at Virginia, was chosen in the third round of the 2001 WNBA Draft by Detroit.

Adams was an assistant coach at Independence for two seasons (1994-96) prior to being elevated to head coach. Prior to joining the collegiate ranks, Adams coached at Winfield (Kan.) High School and Belle Plaine (Kan.) High School.

A native of Oxford, Kan., Adams graduated with a degree in health, physical education, and recreation from Southwestern College in 1989. Adams was Oxford High School's all-time leading scorer and earned All-State honors as a prep. Her jersey was retired in 1986.

The Adams File

Personal

Hometown: Oxford, Kansas

Education

College: Southwestern College

Coaching Experience

2023-Present: UTEP

Head Coach

2017-23: Wichita State

Head Coach

2001-17: UTEP

Head Coach

1996-01: Independence CC

Head Coach

1994-96: Independence CC

Assistant Coach

Career Record:

Overall: 526-390 (29th year)

At UTEP: 319-260 (19th year)

COACH ADAMS VS...

Abilene Christian.....	1-0
Alabama.....	0-1
Alabama State.....	1-0
Alcorn State.....	7-0
Arizona.....	1-2
Arizona State.....	1-1
Arkansas.....	0-1
Arkansas State.....	3-1
Belmont.....	1-0
Boise State.....	4-6
BYU.....	0-2
Cal Poly.....	1-0
Cal-State Bakersfield.....	1-0
Cal State-Fullerton.....	1-0
California Baptist.....	0-1
Charlotte.....	2-2
Chicago State.....	2-0
Cincinnati.....	4-4
Colorado.....	1-0
Colorado State.....	0-2
Creighton.....	0-3
CSUN.....	1-0
Delaware.....	2-0
Denver.....	6-1
East Carolina.....	9-10
Eastern Illinois.....	1-0
Eastern Michigan.....	1-0
Eastern New Mexico.....	4-0
FIU.....	6-3
Florida Atlantic.....	4-2
FGCU.....	0-2
Fresno State.....	4-4
Georgia Tech.....	0-1
Grambling State.....	4-0
Hampton.....	1-0
Hawaii.....	2-6
Houston.....	12-19
Houston Christian.....	6-1
Idaho State.....	3-0
Illinois.....	0-2
Illinois State.....	2-0
Jax State.....	2-3
Kansas.....	0-4
Kansas City.....	3-0
Kansas State.....	2-5
Kennesaw State.....	0-3
LA Tech.....	9-15
Lamar.....	1-1
Liberty.....	0-6
Long Beach State.....	0-1
Louisiana.....	1-1
Loyola Marymount.....	1-0
LSU.....	0-1
Marshall.....	8-6
Memphis.....	9-7
Middle Tennessee.....	1-6
Mississippi Valley State.....	1-0
Missouri State.....	2-4
Monmouth.....	0-1
Montana.....	1-0
Montana State.....	2-1
Morehead State.....	1-0
NC State.....	0-1
Nebraska.....	0-2
Nevada.....	4-4
New Mexico.....	5-5
New Orleans.....	1-0
Nicholls.....	1-0
NM Highlands.....	1-0
NM State.....	20-13
North Alabama.....	1-0
North Texas.....	6-3
Northern Arizona.....	5-1
Northern Colorado.....	3-1
Northern Illinois.....	1-1
Northern Iowa.....	0-3
Northwestern.....	0-1
Northwestern State.....	1-0
Oklahoma.....	1-1
Oklahoma State.....	0-2
Old Dominion.....	2-4
Omaha.....	0-1
Oral Roberts.....	2-1
Oregon.....	0-1
Penn State.....	0-1
Pittsburgh.....	0-1
Portland.....	0-2
Prairie View A&M.....	5-0
Rice.....	15-17
Rutgers.....	0-1
Sacramento State.....	1-0
Saint Louis.....	1-0
Sam Houston.....	7-1
San Jose State.....	3-5
Savannah State.....	3-0
SMU.....	16-23
South Carolina State.....	1-0
South Dakota.....	0-4
South Dakota State.....	1-1
Southeastern Louisiana.....	1-0
Southern.....	3-0
Southern Miss.....	12-6
Southern Utah.....	1-0
St. Mary's (Texas).....	1-0
Stanford.....	0-1
Tarleton State.....	1-0
TCU.....	1-2
Temple.....	5-7
Tennessee.....	0-1
Tennessee Tech.....	0-1
Texas.....	0-1
Texas A&M.....	0-2
Texas A&M-Corpus Christi.....	5-1
Texas A&M-Kingsville.....	1-0
Texas Southern.....	4-1
Texas State.....	8-1
Toledo.....	2-0
Tulane.....	17-11
Tulsa.....	26-13
UAB.....	9-7
Little Rock.....	0-1
UAPB.....	4-0
UC Riverside.....	1-0
UCSB.....	0-2
UC Irvine.....	3-2
UCF.....	5-11
UConn.....	0-3
UIC.....	0-1
ULM.....	1-0
UNLV.....	1-1
USF.....	2-7
USW.....	1-0
UT Arlington.....	0-1
UT Dallas.....	1-0
UT Martin.....	1-0
UTRGV.....	4-1
Utah Tech.....	1-0
UTPB.....	4-0
UTSA.....	4-9
Virginia Tech.....	0-1
Washington.....	1-0
Washington State.....	0-1
Weber State.....	1-0
Western Carolina.....	1-0
Western Illinois.....	0-1
WKU.....	3-6
Western New Mexico.....	4-0
Wyoming.....	1-1

2025-26 opponents are in **BOLD**



CAREER HIGHS

#1 AALIYAH DAVIS

PTS: _____ 6, vs USW (12/29/25)
 REB: _____ 4, vs USW (12/29/25)
 AST: _____ 3, vs USW (12/29/25)
 STL: _____ 2, vs PVAMU (1/18/15)
 BLK: _____
 FG: _____ 3, vs USW (12/29/25)
 FGA: _____ 7, vs USW (12/29/25)
 3FG: _____
 3FGA: _____ 3, vs USW (12/29/25)
 FT: _____ 3, vs NMSU (2/8/25)
 FTA: _____ 6, vs NMSU (2/8/25)
 MIN: _____ 15, vs USW (12/29/25)

#2 SIRVIVA LEGIONS

PTS: _____ *24, vs NJIT (12/30/24)
 REB: _____ 12, vs FIU (1/17/26)
 AST: _____ *5, 3x, last vs Wagner (2/6/25)
 STL: _____ *4, 3x, last vs Wagner (2/6/25)
 BLK: _____ 1, 6x, last vs NMSU (1/31/26)
 FG: _____ *10, 2x, last vs Wagner (2/6/25)
 FGA: _____ *26, vs Wagner (2/6/25)
 3FG: _____ *2, 3x, last vs Nicholls (11/8/25)
 3FGA: _____ *6, 2x, last vs Wagner (2/6/25)
 FT: _____ *10, vs Rider (11/12/24)
 FTA: _____ *12, vs Stonehill (2/8/25)
 MIN: _____ *52, vs Wagner (2/6/25)

#3 IVANE TENSAIE

PTS: _____ 27, vs UTSA (11/16/24)
 REB: _____ 5, vs UT Martin (11/22/25)
 AST: _____ 4, at FIU (1/18/25)
 STL: _____ 3, at Delaware (2/14/26)
 BLK: _____
 FG: _____ 9, vs UTSA (11/16/24)
 FGA: _____ 19, 2x, last vs UT Martin (11/22/25)
 3FG: _____ 8, vs Denver (11/29/25)
 3FGA: _____ 15, vs Delaware (1/2/26)
 FT: _____ 4, 2x, last vs Sam Houston (3/6/25)
 FTA: _____ 6, vs BYU (12/5/24)
 MIN: _____ 39, vs FIU (1/18/25)

#4 DELMA ZITA

PTS: _____ 16, vs Jax State (2/29/24)
 REB: _____ 6, 4x, last at Middle TN (3/11/25)
 AST: _____ 9, 2x, last at Texas A&M-CC (11/26/24)
 STL: _____ 4, 4x, last vs Denver (11/29/25)
 BLK: _____ 1, 4x, last vs Liberty (1/4/26)
 FG: _____ 7, vs Jax State (2/29/24)
 FGA: _____ 17, vs Texas A&M-Kingsville (11/14/23)
 3FG: _____ 2, 4x, last at NMSU (2/21/26)
 3FGA: _____ 5, vs North Alabama (11/26/23)
 FT: _____ 5, vs FIU (1/18/25)
 FTA: _____ 6, 2x, at Kennesaw State (1/25/25)
 MIN: _____ 37, vs Kansas City (11/11/23)

#5 HEAVEN SAMAYOA-MATHIS

PTS: _____ 17, vs Missouri St (1/15/26)
 REB: _____ *11, vs Hawaii Pacific (12/12/21)
 AST: _____ 6, at Kansas City (11/25/25)
 STL: _____ 6, vs TAMU-CC (12/3/25)
 BLK: _____ 2, 2x, last vs LA Tech (2/5/26)
 FG: _____ 6, vs Missouri St (1/15/26)
 FGA: _____ 13, 2x, last vs WNMU (11/11/25)
 3FG: _____ 5, vs Missouri St (1/15/26)
 3FGA: _____ *7, at Holy Names (2/16/22)
 FT: _____ *6, vs Academy of Art (1/13/22)
 FTA: _____ *6, 2x, last vs Academy of Art (1/13/22)
 MIN: _____ 37, vs NMSU (1/31/26)

#8 BROOKLYN TERRY

PTS: _____ 13, vs PVAMU (11/3/25)
 REB: _____ 6, vs USW (12/29/25)
 AST: _____ 1, 3x, last vs Missouri St (1/16/26)
 STL: _____ 1, 4x, last vs Sam Houston (2/7/26)
 BLK: _____ 2, vs USW (12/29/25)
 FG: _____ 4, vs PVAMU (11/3/25)
 FGA: _____ 9, vs PVAMU (11/3/25)
 3FG: _____ 1, 5x, last at WKU (1/10/26)
 3FGA: _____ 5, vs WNMU (11/11/25)
 FT: _____ 4, vs PVAMU (11/3/25)
 FTA: _____ 4, vs PVAMU (11/3/25)
 MIN: _____ 17, at WKU (1/10/26)

#10 OSADEBAMWEN IGBINEDION OMORUYI

PTS: _____ 7, vs UTSA (11/16/24)
 REB: _____ 9, vs FIU (1/17/26)
 AST: _____ 1, 4x, last vs FIU (1/17/26)
 STL: _____ 2, 2x, last at Delaware (2/14/26)
 BLK: _____ 3, vs FIU (1/17/26)
 FG: _____ 3, 2x, last vs Sam Houston (1/4/25)
 FGA: _____ 7, vs FIU (1/17/26)
 3FG: _____
 3FGA: _____
 FT: _____ 2, vs Sam Houston (2/7/26)
 FTA: _____ 4, vs UTSA (11/16/24)
 MIN: _____ 26, vs FIU (1/17/26)

#11 PORTIA ADAMS

PTS: _____ *32, vs Houston Christian (2/16/23)
 REB: _____ 9, 2x, last at NMSU (1/11/25)
 AST: _____ 8, 2x, last vs Delaware (1/2/26)
 STL: _____ 5, vs FIU (1/17/26)
 BLK: _____ *1, vs Loyola (LA) (12/6/22)
 FG: _____ *11, vs Houston Christian (2/16/23)
 FGA: _____ *21, vs Southeastern La (3/9/23)
 3FG: _____ *5, vs Southeastern La (2/23/23)
 3FGA: _____ *9, at New Orleans (2/25/23)
 FT: _____ 10, vs NMSU (1/31/26)
 FTA: _____ 12, vs Kennesaw State (1/22/26)
 MIN: _____ 37, 2x, last vs FIU (1/17/26)

#12 IRENE ASENSIO

PTS: _____ 13, vs USW (12/29/25)
 REB: _____ 6, vs Liberty (1/16/25)
 AST: _____ 6, at Jax State (1/23/25)
 STL: _____ 5, vs N.M. Highlands (11/23/24)
 BLK: _____ 1, 5x, last at Delaware (2/14/26)
 FG: _____ 4, vs USW (12/29/25)
 FGA: _____ 8, 2x, last vs USW (12/29/25)
 3FG: _____ 3, 2x, last vs USW (12/29/25)
 3FGA: _____ 7, vs USW (12/29/25)
 FT: _____ 3, 2x, last vs NMSU (12/5/24)
 FTA: _____ 4, vs NMSU (12/5/24)
 MIN: _____ 39, at Jax State (1/13/25)

#13 NDACK MBENGUE

PTS: _____ 26, vs Delaware (1/2/26)
 REB: _____ 14, 2x, last at NMSU (2/21/26)
 AST: _____ 2, 3x, last at NMSU (2/21/26)
 STL: _____ 5, vs Missouri St (1/15/26)
 BLK: _____ 4, vs UT Martin (11/22/25)
 FG: _____ 9, vs Delaware (1/2/26)
 FGA: _____ 16, vs Delaware (1/2/26)
 3FG: _____
 3FGA: _____ 1, 2x, last vs Eastern N.M. (12/30/24)
 FT: _____ 8, 3x, last vs Delaware (1/2/26)
 FTA: _____ 12, 2x, last vs Delaware (1/2/26)
 MIN: _____ 38, vs FIU (1/18/25)

#14 TATIANA COLLAZO

PTS: _____ 6, vs PVAMU (11/3/25)
 REB: _____ 1, 6x, last at Middle TN (1/8/26)
 AST: _____ 1, 6x, last at WKU (1/10/26)
 STL: _____ 4, vs USW (12/29/25)
 BLK: _____
 FG: _____ 2, 2x, last at Kansas City (11/25/25)
 FGA: _____ 7, vs PVAMU (11/3/25)
 3FG: _____ 1, 4x, last at WKU (1/10/26)
 3FGA: _____ 5, vs PVAMU (11/3/25)
 FT: _____ 3, vs PVAMU (11/3/25)
 FTA: _____ 4, vs PVAMU (11/3/25)
 MIN: _____ 18, vs WNMU (11/11/25)

#15 ABBY PRISCILLA

PTS: _____ 3, vs USW (12/29/25)
 REB: _____ 6, vs USW (12/29/25)
 AST: _____
 STL: _____
 BLK: _____
 FG: _____ 1, vs USW (12/29/25)
 FGA: _____ 3, vs USW (12/29/25)
 3FG: _____
 3FGA: _____
 FT: _____ 1, vs USW (12/29/25)
 FTA: _____ 2, vs USW (12/29/25)
 MIN: _____ 4, 2x, last vs LA Tech (2/5/26)

#20 BLESSING OKHWODIASA

PTS: _____
 REB: _____
 AST: _____
 STL: _____
 BLK: _____
 FG: _____
 FGA: _____
 3FG: _____
 3FGA: _____
 FT: _____
 FTA: _____
 MIN: _____

#22 MARY MOSES AMANIYO

PTS: _____ 20, vs USW (12/29/25)
 REB: _____ 22, vs PVAMU (11/3/25)
 AST: _____ 2, at Kennesaw State (1/22/26)
 STL: _____ 4, at Liberty (2/12/26)
 BLK: _____ 1, 10x, last at Liberty (2/12/26)
 FG: _____ 10, vs USW (12/29/25)
 FGA: _____ 14, vs USW (12/29/25)
 3FG: _____ 1, vs Nicholls (11/8/25)
 3FGA: _____ 2, 2x, last at Liberty (2/12/26)
 FT: _____ 7, at Kansas City (11/25/25)
 FTA: _____ 8, 3x, last at Kansas City (11/25/25)
 MIN: _____ 32, 2x, last at Liberty (2/12/26)

#23 AOLANI WOLDAI

PTS: _____ 17, at Delaware (2/14/26)
 REB: _____ 5, vs WNMU (11/11/25)
 AST: _____ 3, vs LA Tech (2/5/26)
 STL: _____ 2, vs LA Tech (2/5/26)
 BLK: _____ 2, vs USW (12/29/25)
 FG: _____ 7, at Delaware (2/14/26)
 FGA: _____ 9, at Delaware (2/14/26)
 3FG: _____ 1, 2x, last at Delaware (2/14/26)
 3FGA: _____ 3, 2x, last vs Sam Houston (2/7/26)
 FT: _____ 5, vs LA Tech (2/5/26)
 FTA: _____ 5, vs LA Tech (2/5/26)
 MIN: _____ 23, vs LA Tech (2/5/26)



2025-26 GAME-BY-GAME STATS



2025-26 UTEP Women's Basketball
Team Game-by-Game
All games

Opponent	Date	Score	W	Total		3-Pointers		Free throws		Rebounds				PF	A	TO	BLK	STL	PTS	AVG
				FG-FGA	PCT	3FG-3FGA	PCT	FT-FTA	PCT	OFF	DEF	TOT	AVG							
Prairie View	11/03/2025	84-60	W	31-80	.388	6-27	.222	16-25	.640	24	28	52	52.0	19	14	18	3	11	84	84.0
Nicholls	11/08/2025	76-61	W	26-57	.456	6-21	.286	18-25	.720	8	30	38	45.0	24	14	15	1	8	76	80.0
Western N.M.	11/11/2025	81-56	W	34-93	.366	6-25	.240	7-13	.538	33	31	64	51.3	13	17	15	0	9	81	80.3
UT Martin	11/22/2025	64-60	W	23-70	.329	5-27	.185	13-18	.722	22	32	54	52.0	15	12	14	5	4	64	76.3
at Kansas City	11/25/2025	75-64	W	25-56	.446	8-15	.533	17-25	.680	16	29	45	50.6	17	16	17	1	7	75	76.0
Denver	11/29/2025	69-52	W	25-62	.403	8-18	.444	11-13	.846	12	27	39	48.7	12	14	14	1	13	69	74.8
A&M-Corpus Christi	12/03/2025	62-44	W	22-61	.361	5-16	.313	13-21	.619	12	31	43	47.9	14	12	14	0	16	62	73.0
at TCU	12/06/2025	40-95	L	16-66	.242	1-17	.059	7-9	.778	14	25	39	46.8	19	6	22	1	7	40	68.9
at BYU	12/13/2025	46-81	L	18-60	.300	3-12	.250	7-11	.636	12	17	29	44.8	9	7	19	2	8	46	66.3
UC Irvine	12/18/2025	72-93	L	23-58	.397	6-21	.286	20-27	.741	11	17	28	43.1	25	15	14	0	6	72	66.9
Southwest (NM)	12/29/2025	102-43	W	39-93	.419	10-35	.286	14-25	.560	39	35	74	45.9	11	19	17	6	19	102	70.1
Delaware	01/02/2026	82-71	W	32-64	.500	8-18	.444	10-17	.588	10	23	33	44.8	16	17	15	3	13	82	71.1
Liberty	01/04/2026	66-86	L	20-62	.323	4-19	.211	22-24	.917	17	24	41	44.5	17	8	18	4	4	66	70.7
at Middle Tenn.	01/08/2026	43-86	L	15-57	.263	3-14	.214	10-22	.455	12	19	31	43.6	10	3	14	0	6	43	68.7
at Western Ky.	01/10/2026	59-68	L	20-58	.345	8-25	.320	11-15	.733	14	25	39	43.3	14	9	14	2	5	59	68.1
Missouri St.	01/15/2026	64-71	L	25-58	.431	6-15	.400	8-12	.667	10	20	30	42.4	18	9	19	4	12	64	67.8
FIU	01/17/2026	59-67	L	19-61	.311	6-16	.375	15-22	.682	21	21	42	42.4	26	9	21	3	11	59	67.3
at Kennesaw St.	01/22/2026	52-83	L	16-46	.348	0-7	.000	20-35	.571	7	22	29	41.7	20	4	17	1	9	52	66.4
at Jacksonville St.	01/24/2026	60-73	L	25-59	.424	5-13	.385	5-9	.556	11	24	35	41.3	12	9	14	0	8	60	66.1
New Mexico St.	01/31/2026	79-69	W	24-59	.407	6-19	.316	25-31	.806	14	27	41	41.3	19	15	19	4	12	79	66.8
Louisiana Tech	02/05/2026	48-87	L	16-49	.327	4-20	.200	12-16	.750	11	22	33	40.9	15	7	24	3	4	48	65.9
Sam Houston	02/07/2026	58-70	L	23-59	.390	3-13	.231	9-12	.750	13	25	38	40.8	25	11	24	1	5	58	65.5
at Liberty	02/12/2026	48-58	L	17-53	.321	5-24	.208	9-12	.750	9	16	25	40.1	15	12	13	2	11	48	64.7
at Delaware	02/14/2026	79-72	W	34-65	.523	5-13	.385	6-11	.545	11	19	30	39.7	15	14	14	2	11	79	65.3
at New Mexico St.	02/21/2026	69-58	W	25-54	.463	5-17	.294	14-16	.875	8	31	39	39.6	14	13	13	2	7	69	65.5
Jacksonville St.	02/26/2026	66-64	W	26-69	.377	8-20	.400	6-9	.667	16	21	37	39.5	15	11	9	4	9	66	65.5
Total		1703		619-1629	.380	140-487	.287	325-475	.684	387	641	1028	39.5	429	297	427	55	235	1703	65.5
Opponents		1792		652-1527	.427	190-528	.360	298-405	.736	271	698	969	37.3	459	346	456	81	203	1792	68.9

UTEP Averages

Games Played	Points/game	FG Pct	3FG Pct	FT Pct	Rebounds/game	Assists/game	Turnovers/game	Assist/Turnover ratio	Steals/game	Blocks/game
26	65.5	38.0	28.7	68.4	39.5	11.4	16.4	0.7	9.0	2.1



2025-26 OVERALL STATS



2025-26 UTEP Women's Basketball
Overall Team Statistics
All games

Team Statistics

	UTEP	OPP
Scoring	1703	1792
Points per game	65.5	68.9
Scoring margin	-3.4	-
Field goals-att	619-1629	652-1527
Field goal pct	.380	.427
3 point fg-att	140-487	190-528
3-point FG pct	.287	.360
3-pt FG made per game	5.4	7.3
Free throws-att	325-475	298-405
Free throw pct	.684	.736
F-Throws made per game	12.5	11.5
Rebounds	1028	969
Rebounds per game	39.5	37.3
Rebounding margin	+2.3	-
Assists	297	346
Assists per game	11.4	13.3
Turnovers	427	456
Turnovers per game	16.4	17.5
Turnover margin	+1.1	-
Assist/turnover ratio	0.7	0.8
Steals	235	203
Steals per game	9.0	7.8
Blocks	55	81
Blocks per game	2.1	3.1
Winning streak	3	-
Home win streak	1	-
Attendance	16186	12731
Home games-Avg/Game	16-1012	10-1273
Neutral site-Avg/Game	-	0-0

Score by Periods

Team	1st	2nd	3rd	4th	OT	TOT
UTEP	402	368	469	452	12	1703
Opponents	441	392	496	455	8	1792



2025-26 UTEP GAME HIGHS



2025-26 UTEP Women's Basketball
Team High/Low Analysis
All games

UTEP - Game Highs

POINTS	102		Southwest (NM) (12/29/2025)
	84		Prairie View (11/03/2025)
	82		Delaware (01/02/2026)
	81		Western N.M. (11/11/2025)
	79		at Delaware (02/14/2026)
	79		New Mexico St. (01/31/2026)
FIELD GOALS MADE	39		Southwest (NM) (12/29/2025)
	34		at Delaware (02/14/2026)
	34		Western N.M. (11/11/2025)
FIELD GOAL ATTEMPTS	93		Southwest (NM) (12/29/2025)
	93		Western N.M. (11/11/2025)
FIELD GOAL PERCENTAGE	.523	(34-65)	at Delaware (02/14/2026)
	.500	(32-64)	Delaware (01/02/2026)
3 PT FG MADE	10		Southwest (NM) (12/29/2025)
	8		Jacksonville St. (02/26/2026)
	8		at Western Ky. (01/10/2026)
	8		Delaware (01/02/2026)
	8		Denver (11/29/2025)
	8		at Kansas City (11/25/2025)
3 PT FG ATTEMPTS	35		Southwest (NM) (12/29/2025)
	27		UT Martin (11/22/2025)
	27		Prairie View (11/03/2025)
3 PT FG PERCENTAGE	.533	(8-15)	at Kansas City (11/25/2025)
	.444	(8-18)	Delaware (01/02/2026)
	.444	(8-18)	Denver (11/29/2025)
FREE THROWS MADE	25		New Mexico St. (01/31/2026)
	22		Liberty (01/04/2026)
FREE THROW ATTEMPTS	35		at Kennesaw St. (01/22/2026)
	31		New Mexico St. (01/31/2026)
FREE THROW PERCENTAGE	.917	(22-24)	Liberty (01/04/2026)
	.875	(14-16)	at New Mexico St. (02/21/2026)
REBOUNDS	74		Southwest (NM) (12/29/2025)
	64		Western N.M. (11/11/2025)
ASSISTS	19		Southwest (NM) (12/29/2025)
	17		Delaware (01/02/2026)
	17		Western N.M. (11/11/2025)
STEALS	19		Southwest (NM) (12/29/2025)
	16		A&M-Corpus Christi (12/03/2025)
BLOCKED SHOTS	6		Southwest (NM) (12/29/2025)
	5		UT Martin (11/22/2025)
TURNOVERS	24		Sam Houston (02/07/2026)
	24		Louisiana Tech (02/05/2026)
FOULS	26		FIU (01/17/2026)
	25		Sam Houston (02/07/2026)
	25		UC Irvine (12/18/2025)



2025-26 OPPONENT GAME HIGHS



2025-26 UTEP Women's Basketball
Team High/Low Analysis
All games

Opponent - Game Highs

POINTS	95		at TCU (12/06/2025)
	93		UC Irvine (12/18/2025)
	87		Louisiana Tech (02/05/2026)
	86		at Middle Tenn. (01/08/2026)
	86		Liberty (01/04/2026)
FIELD GOALS MADE	33		Louisiana Tech (02/05/2026)
	33		at TCU (12/06/2025)
FIELD GOAL ATTEMPTS	69		at Kennesaw St. (01/22/2026)
	68		at Middle Tenn. (01/08/2026)
FIELD GOAL PERCENTAGE	.566	(30-53)	UC Irvine (12/18/2025)
	.532	(33-62)	Louisiana Tech (02/05/2026)
3 PT FG MADE	14		at TCU (12/06/2025)
	13		Louisiana Tech (02/05/2026)
	13		at Middle Tenn. (01/08/2026)
3 PT FG ATTEMPTS	31		at Middle Tenn. (01/08/2026)
	30		at BYU (12/13/2025)
	30		at TCU (12/06/2025)
3 PT FG PERCENTAGE	.619	(13-21)	Louisiana Tech (02/05/2026)
	.563	(9-16)	at Kansas City (11/25/2025)
FREE THROWS MADE	24		UC Irvine (12/18/2025)
	21		FIU (01/17/2026)
FREE THROW ATTEMPTS	30		FIU (01/17/2026)
	29		Sam Houston (02/07/2026)
	29		UC Irvine (12/18/2025)
FREE THROW PERCENTAGE	1.000	(11-11)	at Middle Tenn. (01/08/2026)
	1.000	(1-1)	Southwest (NM) (12/29/2025)
REBOUNDS	54		at Middle Tenn. (01/08/2026)
	51		at BYU (12/13/2025)
ASSISTS	27		at TCU (12/06/2025)
	22		Louisiana Tech (02/05/2026)
	22		Liberty (01/04/2026)
	22		at BYU (12/13/2025)
STEALS	13		Sam Houston (02/07/2026)
	12		at TCU (12/06/2025)
BLOCKED SHOTS	7		at BYU (12/13/2025)
	6		at TCU (12/06/2025)
	6		Western N.M. (11/11/2025)
	6		Prairie View (11/03/2025)
TURNOVERS	28		Southwest (NM) (12/29/2025)
	27		Prairie View (11/03/2025)
FOULS	28		New Mexico St. (01/31/2026)
	27		FIU (01/17/2026)



2025-26 UTEP GAME LOWS



2025-26 UTEP Women's Basketball
Team High/Low Analysis
All games

UTEP - Game Lows

POINTS	40		at TCU (12/06/2025)
	43		at Middle Tenn. (01/08/2026)
	46		at BYU (12/13/2025)
	48		at Liberty (02/12/2026)
	48		Louisiana Tech (02/05/2026)
FIELD GOALS MADE	15		at Middle Tenn. (01/08/2026)
	16		Louisiana Tech (02/05/2026)
	16		at Kennesaw St. (01/22/2026)
	16		at TCU (12/06/2025)
FIELD GOAL ATTEMPTS	46		at Kennesaw St. (01/22/2026)
	49		Louisiana Tech (02/05/2026)
FIELD GOAL PERCENTAGE	.242	(16-66)	at TCU (12/06/2025)
	.263	(15-57)	at Middle Tenn. (01/08/2026)
3 PT FG MADE	0		at Kennesaw St. (01/22/2026)
	1		at TCU (12/06/2025)
3 PT FG ATTEMPTS	7		at Kennesaw St. (01/22/2026)
	12		at BYU (12/13/2025)
3 PT FG PERCENTAGE	.000	(0-7)	at Kennesaw St. (01/22/2026)
	.059	(1-17)	at TCU (12/06/2025)
FREE THROWS MADE	5		at Jacksonville St. (01/24/2026)
	6		Jacksonville St. (02/26/2026)
	6		at Delaware (02/14/2026)
FREE THROW ATTEMPTS	9		Jacksonville St. (02/26/2026)
	9		at Jacksonville St. (01/24/2026)
	9		at TCU (12/06/2025)
FREE THROW PERCENTAGE	.455	(10-22)	at Middle Tenn. (01/08/2026)
	.538	(7-13)	Western N.M. (11/11/2025)
REBOUNDS	25		at Liberty (02/12/2026)
	28		UC Irvine (12/18/2025)
ASSISTS	3		at Middle Tenn. (01/08/2026)
	4		at Kennesaw St. (01/22/2026)
STEALS	4		Louisiana Tech (02/05/2026)
	4		Liberty (01/04/2026)
	4		UT Martin (11/22/2025)
BLOCKED SHOTS	0		at Jacksonville St. (01/24/2026)
	0		at Middle Tenn. (01/08/2026)
	0		UC Irvine (12/18/2025)
	0		A&M-Corpus Christi (12/03/2025)
	0		Western N.M. (11/11/2025)
TURNOVERS	9		Jacksonville St. (02/26/2026)
	13		at New Mexico St. (02/21/2026)
	13		at Liberty (02/12/2026)
FOULS	9		at BYU (12/13/2025)
	10		at Middle Tenn. (01/08/2026)



2025-26 OPPONENT GAME LOWS



2025-26 UTEP Women's Basketball
Team High/Low Analysis
All games

Opponent - Game Lows

POINTS	43		Southwest (NM) (12/29/2025)
	44		A&M-Corpus Christi (12/03/2025)
	52		Denver (11/29/2025)
	56		Western N.M. (11/11/2025)
	58		at New Mexico St. (02/21/2026)
	58		at Liberty (02/12/2026)
FIELD GOALS MADE	15		A&M-Corpus Christi (12/03/2025)
	18		Southwest (NM) (12/29/2025)
	18		Denver (11/29/2025)
FIELD GOAL ATTEMPTS	48		at Liberty (02/12/2026)
	49		at Delaware (02/14/2026)
FIELD GOAL PERCENTAGE	.283	(15-53)	A&M-Corpus Christi (12/03/2025)
	.290	(18-62)	Southwest (NM) (12/29/2025)
3 PT FG MADE	4		Sam Houston (02/07/2026)
	4		at Kennesaw St. (01/22/2026)
	4		FIU (01/17/2026)
	4		Missouri St. (01/15/2026)
	4		A&M-Corpus Christi (12/03/2025)
	4		UT Martin (11/22/2025)
	4		Nicholls (11/08/2025)
3 PT FG ATTEMPTS	10		Sam Houston (02/07/2026)
	10		Missouri St. (01/15/2026)
3 PT FG PERCENTAGE	.182	(4-22)	A&M-Corpus Christi (12/03/2025)
	.190	(4-21)	Prairie View (11/03/2025)
FREE THROWS MADE	1		Southwest (NM) (12/29/2025)
	6		at Liberty (02/12/2026)
	6		at Western Ky. (01/10/2026)
FREE THROW ATTEMPTS	1		Southwest (NM) (12/29/2025)
	7		at Liberty (02/12/2026)
FREE THROW PERCENTAGE	.552	(16-29)	Sam Houston (02/07/2026)
	.583	(7-12)	at Kansas City (11/25/2025)
REBOUNDS	27		at Delaware (02/14/2026)
	30		Southwest (NM) (12/29/2025)
	30		at Kansas City (11/25/2025)
ASSISTS	7		Denver (11/29/2025)
	7		Prairie View (11/03/2025)
STEALS	3		Jacksonville St. (02/26/2026)
	3		at Delaware (02/14/2026)
BLOCKED SHOTS	0		at Liberty (02/12/2026)
	0		New Mexico St. (01/31/2026)
	0		at Western Ky. (01/10/2026)
TURNOVERS	10		at New Mexico St. (02/21/2026)
	10		Louisiana Tech (02/05/2026)
FOULS	7		at Jacksonville St. (01/24/2026)
	10		Jacksonville St. (02/26/2026)
	10		at Liberty (02/12/2026)
	10		Denver (11/29/2025)



2025-26 CATEGORY LEADERS



2025-26 UTEP Women's Basketball Category Leaders All games

Page 1/2
as of Feb 27, 2026

Points

##	Player	G	Pts	Pts/G
11	Adams, Portia	26	284	10.9
3	Tensaie, Ivane	26	268	10.3
13	Mbengue, Ndack	25	235	9.4
22	Moses Amaniyo, Mary	26	232	8.9
2	Legions, Sirviva	20	195	9.8
5	Samayoa-Mathis, Heaven	26	167	6.4
4	Zita, Delma	25	112	4.5
23	Woldai, Aolani	17	58	3.4
8	Terry, Brooklyn	20	48	2.4
12	Asensio, Irene	24	36	1.5
10	Igbinedion Omoruyi, Osadebamwen	21	30	1.4
14	Collazo, Tatiana	14	21	1.5
1	Davis, Aaliyah	12	14	1.2
15	Priscilla, Abby	2	3	1.5

Scoring Average

##	Player	G	Pts	Pts/G
11	Adams, Portia	26	284	10.9
3	Tensaie, Ivane	26	268	10.3
2	Legions, Sirviva	20	195	9.8
13	Mbengue, Ndack	25	235	9.4
22	Moses Amaniyo, Mary	26	232	8.9
5	Samayoa-Mathis, Heaven	26	167	6.4
4	Zita, Delma	25	112	4.5
23	Woldai, Aolani	17	58	3.4
8	Terry, Brooklyn	20	48	2.4
12	Asensio, Irene	24	36	1.5
15	Priscilla, Abby	2	3	1.5
14	Collazo, Tatiana	14	21	1.5
10	Igbinedion Omoruyi, Osadebamwen	21	30	1.4
1	Davis, Aaliyah	12	14	1.2

Field Goal Percentage

##	Player	FG	Att	Pct
22	Moses Amaniyo, Mary	92	177	.520
13	Mbengue, Ndack	83	168	.494
11	Adams, Portia	99	261	.379
2	Legions, Sirviva	76	206	.369
23	Woldai, Aolani	22	60	.367
4	Zita, Delma	41	112	.366
5	Samayoa-Mathis, Heaven	62	173	.358
10	Igbinedion Omoruyi, Osadebamwen	13	37	.351
15	Priscilla, Abby	1	3	.333
3	Tensaie, Ivane	89	274	.325
8	Terry, Brooklyn	19	65	.292
14	Collazo, Tatiana	7	28	.250
1	Davis, Aaliyah	5	20	.250
12	Asensio, Irene	10	45	.222

Field Goal Attempts

##	Player	G	Att	Att/G
3	Tensaie, Ivane	26	274	10.5
11	Adams, Portia	26	261	10.0
2	Legions, Sirviva	20	206	10.3
22	Moses Amaniyo, Mary	26	177	6.8
5	Samayoa-Mathis, Heaven	26	173	6.7

Field Goals Made

##	Player	G	Made	Made/G
11	Adams, Portia	26	99	3.8
22	Moses Amaniyo, Mary	26	92	3.5
3	Tensaie, Ivane	26	89	3.4
13	Mbengue, Ndack	25	83	3.3
2	Legions, Sirviva	20	76	3.8

3-Point FG Percentage

##	Player	3FG	Att	Pct
11	Adams, Portia	28	71	.394
3	Tensaie, Ivane	64	188	.340
5	Samayoa-Mathis, Heaven	20	74	.270
4	Zita, Delma	5	21	.238
2	Legions, Sirviva	3	13	.231
12	Asensio, Irene	8	36	.222
14	Collazo, Tatiana	4	19	.211
8	Terry, Brooklyn	5	35	.143
22	Moses Amaniyo, Mary	1	9	.111
23	Woldai, Aolani	2	18	.111

3-Point FG Attempts

##	Player	G	Att	Att/G
3	Tensaie, Ivane	26	188	7.2
5	Samayoa-Mathis, Heaven	26	74	2.8
11	Adams, Portia	26	71	2.7
12	Asensio, Irene	24	36	1.5
8	Terry, Brooklyn	20	35	1.8

3-Point FG Made

##	Player	G	Made	Made/G
3	Tensaie, Ivane	26	64	2.5
11	Adams, Portia	26	28	1.1
5	Samayoa-Mathis, Heaven	26	20	0.8
12	Asensio, Irene	24	8	0.3
4	Zita, Delma	25	5	0.2

Free Throw Percentage

##	Player	Made	Att	Pct
8	Terry, Brooklyn	5	5	1.000
4	Zita, Delma	25	28	.893
23	Woldai, Aolani	12	14	.857
12	Asensio, Irene	8	10	.800
11	Adams, Portia	58	75	.773
5	Samayoa-Mathis, Heaven	23	31	.742
3	Tensaie, Ivane	26	36	.722
22	Moses Amaniyo, Mary	47	66	.712
13	Mbengue, Ndack	69	108	.639
10	Igbinedion Omoruyi, Osadebamwen	4	7	.571
1	Davis, Aaliyah	4	7	.571
2	Legions, Sirviva	40	76	.526
15	Priscilla, Abby	1	2	.500
14	Collazo, Tatiana	3	10	.300

Free Throw Attempts

##	Player	G	Att	Att/G
13	Mbengue, Ndack	25	108	4.3
2	Legions, Sirviva	20	76	3.8
11	Adams, Portia	26	75	2.9
22	Moses Amaniyo, Mary	26	66	2.5
3	Tensaie, Ivane	26	36	1.4

Free Throws Made

##	Player	G	Made	Made/G
13	Mbengue, Ndack	25	69	2.8
11	Adams, Portia	26	58	2.2
22	Moses Amaniyo, Mary	26	47	1.8
2	Legions, Sirviva	20	40	2.0
3	Tensaie, Ivane	26	26	1.0



2025-26 CATEGORY LEADERS



2025-26 UTEP Women's Basketball Category Leaders All games

Page 2/2
as of Feb 27, 2026

Rebounds

##	Player	G	Reb	Reb/G
22	Moses Amaniyo, Mary	26	217	8.3
13	Mbengue, Ndack	25	197	7.9
2	Legions, Sirviva	20	116	5.8
5	Samayoa-Mathis, Heaven	26	87	3.3
11	Adams, Portia	26	76	2.9

Rebounds Average

##	Player	G	Reb	Reb/G
22	Moses Amaniyo, Mary	26	217	8.3
13	Mbengue, Ndack	25	197	7.9
2	Legions, Sirviva	20	116	5.8
15	Priscilla, Abby	2	7	3.5
5	Samayoa-Mathis, Heaven	26	87	3.3

Offensive Rebounds

##	Player	G	OReb	OReb/G
22	Moses Amaniyo, Mary	26	85	3.3
13	Mbengue, Ndack	25	82	3.3
2	Legions, Sirviva	20	40	2.0
5	Samayoa-Mathis, Heaven	26	28	1.1
11	Adams, Portia	26	23	0.9

Defensive Rebounds

##	Player	G	DReb	DReb/G
22	Moses Amaniyo, Mary	26	132	5.1
13	Mbengue, Ndack	25	115	4.6
2	Legions, Sirviva	20	76	3.8
5	Samayoa-Mathis, Heaven	26	59	2.3
11	Adams, Portia	26	53	2.0

Fouls

##	Player	G	PF	PF/G
13	Mbengue, Ndack	25	73	2.9
22	Moses Amaniyo, Mary	26	55	2.1
11	Adams, Portia	26	52	2.0
5	Samayoa-Mathis, Heaven	26	50	1.9
4	Zita, Delma	25	37	1.5

Foul Outs

##	Player	G	FO
22	Moses Amaniyo, Mary	26	3
13	Mbengue, Ndack	25	2
2	Legions, Sirviva	20	1
5	Samayoa-Mathis, Heaven	26	1
23	Woldai, Aolani	17	1

Assists

##	Player	G	Ast	Ast/G
11	Adams, Portia	26	66	2.5
4	Zita, Delma	25	60	2.4
5	Samayoa-Mathis, Heaven	26	59	2.3
2	Legions, Sirviva	20	29	1.5
3	Tensaie, Ivane	26	24	0.9

Steals

##	Player	G	Stl	Stl/G
5	Samayoa-Mathis, Heaven	26	39	1.5
22	Moses Amaniyo, Mary	26	33	1.3
4	Zita, Delma	25	32	1.3
13	Mbengue, Ndack	25	28	1.1
2	Legions, Sirviva	20	26	1.3

Blocked Shots

##	Player	G	Blk	Blk/G
13	Mbengue, Ndack	25	19	0.8
5	Samayoa-Mathis, Heaven	26	8	0.3
22	Moses Amaniyo, Mary	26	7	0.3
10	Igbinedion Omoruyi, Osadebamwen	21	7	0.3
8	Terry, Brooklyn	20	4	0.2

Minutes

##	Player	G	Min	Min/G
3	Tensaie, Ivane	26	746	28:41
11	Adams, Portia	26	677	26:01
5	Samayoa-Mathis, Heaven	26	660	25:23
13	Mbengue, Ndack	25	633	25:20
22	Moses Amaniyo, Mary	26	571	21:57

Turnovers

##	Player	G	TO	TO/G
11	Adams, Portia	26	64	2.5
13	Mbengue, Ndack	25	59	2.4
4	Zita, Delma	25	53	2.1
2	Legions, Sirviva	20	47	2.4
5	Samayoa-Mathis, Heaven	26	46	1.8



TEAM SINGLE-GAME RECORDS

FIELD GOALS MADE

FG	OPP	DATE
1. 49	Colorado State*	2/9/80
2. 46	vs. Texas Lutheran+	12/4/82
3. 45	UT-Permian Basin+	12/15/06
4. 41	WNMU+	11/17/16
41	UT-Permian Basin+	12/21/05
6. 40	Savannah State	11/22/08
7. 39	USW+	12/29/25
39	Hardin Simmons+	2/16/85
8. 39	Texas State	12/17/10
9. 38	Fresno State*	1/11/03
38	at BYU	1/6/90
38	Eastern New Mexico+	1/13/87

FIELD GOALS ATTEMPTED

FGA	OPP	DATE
1. 93	USW+	12/29/25
93	WNMU+	11/11/25
93	vs. Texas Lutheran+	12/4/82
3. 87	at New Mexico State*	12/15/79
4. 86	New Mexico State*	12/13/80
5. 85	UT-Dallas+	11/20/04
85	vs. Arizona	11/25/83
85	Eastern New Mexico+	3/1/80
84	at Southern Utah	12/29/88
84	Hardin Simmons+	2/16/85
84	at Eastern New Mexico+	1/28/84

OTHER GAMES OF 83 OR MORE FIELD GOALS

83	Charlotte*	2/27/16
83	at BYU	1/6/90
83	at New Mexico	11/29/86
83	at Oral Roberts	2/24/86

FIELD GOAL PERCENTAGE (MIN. 24 MADE)

FG%	OPP	DATE
1. .660 (35-53)	Southern Miss*	2/21/09
2. .636 (28-44)	UCF*	1/24/10
3. .615 (32-52)	at UTPA	2/7/89
4. .612 (41-67)	WNMU+	11/17/16
5. .611 (33-54)	at San Diego	1/7/87
6. .591 (26-44)	Sam Houston	1/27/24
7. .588 (30-51)	TXA&M CC	12/18/02
8. .577 (30-52)	WKU*	3/3/18
.577 (30-52)	Alcorn State	12/20/09
10. .576 (38-66)	Fresno State*	1/11/03

FIELD GOAL PERCENTAGE DEFENSE

FG% Defense	OPP	DATE
1. .167 (8-48)	UTPB+	12/14/15
2. .184 (9-49)	NM State	11/29/11
3. .196 (10-51)	UT-Dallas+	11/20/04
4. .205 (9-44)	NM State	12/05/12
5. .206 (13-63)	Tulsa	1/31/13
6. .208 (11-53)	vs. Samford	12/21/17
7. .209 (9-49)	UTPA	12/22/96
8. .214 (12-56)	Montana State	12/22/03
9. .216 (16-74)	Alcorn State	12/20/09
10. .222 (12-54)	Fresno State*	2/12/04
.222 (14-61)	Prairie View	3/1/96

OTHER GAMES OF FG% 23.0 OR WORSE

12. .224 (15-67)	WNMU+	11/17/16
.224 (13-58)	at Colo. State*	2/6/93
14. .226 (14-62)	UTPB+	12/15/06
15. .229 (11-48)	ENMU+	12/8/12
16. .230 (14-61)	at UNM*	3/1/95

THREE POINTERS MADE

3PM	OPP	DATE
1. 14	UTSA	2/11/23
14	Toledo	11/24/09
14	Savannah State	11/22/08
14	vs. Eastern Illinois	11/20/09
4. 13	at FIU*	2/12/21
13	Tulsa*	1/22/09
13	at Tulane*	1/12/08
7. 12	New Mexico	12/21/15
12	Tulsa*	1/11/14
12	vs. Missouri State	12/4/09
10. 11	vs. North Dakota	11/13/21
11	vs. FAU	3/1/20
11	vs. WIU	12/20/18
11	Idaho State	11/28/15
11	#24 Western Kentucky*	1/22/15
11	Prairie View A&M	12/20/14
11	at Tulane*	2/11/14
11	Northern Arizona	11/22/13
11	Denver	11/26/11
11	Cal State Northridge	12/3/10
11	Idaho State	11/26/10
11	Arizona	11/26/06
11	SMU*	1/8/06
11	at Hawaii*	1/20/05
11	at Tulsa*	2/9/02
11	Louisiana Tech*	1/31/02
11	at SMU*	1/3/02
11	at Southern Utah	1/26/93

THREE POINTERS ATTEMPTED

3PA	OPP	DATE
1. 35	USW+	12/29/25
2. 34	Southern Miss*	3/1/15
3. 33	at Weber State	11/28/18
4. 32	Idaho State	11/28/15
32	at SMU	11/16/14
32	Toledo	11/24/09
32	vs. SMU*	3/9/08
8. 31	UTSA	2/11/23
31	Louisiana Tech*	1/31/02
10. 30	Louisiana Tech*	2/5/14
30	at Tulsa*	2/9/02
30	at Louisiana Tech*	1/5/02

THREE POINT PERCENTAGE (MIN. 8 MADE)

3FG%	OPP	DATE
1. .733 (11-15)	at S. Utah	1/26/93
2. .650 (13-20)	at FIU*	2/12/21
3. .647 (11-17)	Southern Miss*	2/21/09
4. .643 (9-14)	UTSA	11/16/24
5. .615 (8-13)	Cal Poly	12/16/03
6. .600 (9-15)	TX Southern	12/13/09
6. .600 (9-15)	vs. SAC St.	12/30/08
8. .588 (10-17)	Southern Miss*	2/16/19
9. .579 (11-19)	vs. WIU	12/20/18
.579 (11-19)	Idaho State	11/26/10
.579 (11-19)	at Tulane*	1/18/09

FREE THROWS MADE

FTM	OPP	DATE
1. 42	vs. East Carolina	12/17/17
2. 40	East Carolina*	1/6/11
3. 36	Oregon State	12/21/86
4. 35	at NM State	2/15/21
35	Kansas State	11/16/13
6. 34	Bellhaven+	11/27/93
7. 33	Air Force	12/21/21
33	Middle Tennessee*	1/7/16
33	Louisiana Tech*	2/27/15
10. 31	vs. Illinois-Chicago	12/19/96
31	Southeast Louisiana	2/24/90

FREE THROWS ATTEMPTED

FTA	OPP	DATE
1. 54	East Carolina*	1/6/11
2. 53	Bellhaven+	11/27/93
3. 50	vs. East Carolina	12/17/17
4. 49	Oregon State	12/21/86
5. 48	Air Force	12/21/21
6. 47	Kansas State	11/16/13
47	at UCF	12/18/97
46	at NM State	12/15/21
9. 45	UTPB+	11/8/13
10. 44	vs. McNeese State	12/20/93

FREE THROW PERCENTAGE (MIN. 10 MADE)

FT%	OPP	DATE
1. 100 (16-16)	at Wyoming	1/14/89
100 (10-10)	New Mexico	2/21/85
100 (10-10)	vs. San Diego	11/23/84
4. .962 (25-26)	San Jose State*	3/6/03
5. .941 (16-17)	UC Irvine	11/13/10
.941 (16-17)	at WNMU+	12/7/87
7. .938 (15-16)	North Texas	11/28/123
8. .929 (13-14)	at Boise State*	2/22/03
.929 (13-14)	at Colo. St.*	2/5/98
10. .923 (12-13)	Sam Houston*	3/6/25
.923 (12-13)	Arkansas State	12/1/18

OTHER GAMES OF FT 90% OR BETTER

11. .917 (22-24)	vs Liberty	1/4/26
.917 (11-12)	at UAB*	1/29/15
.917 (11-12)	at Toledo	12/21/0
13. .909 (10-11)	NM State*	11/23/04
.909 (20-22)	Boise State*	1/25/03
.909 (10-11)	Creighton	2/15/92

OFFENSIVE REBOUNDS

ORB	OPP	DATE
1. 39	USW+	12/29/25
2. 33	WNMU+	11/11/25
3. 32	Abilene Christian+	11/30/93
4. 31	Sul Ross State+	12/1/97
5. 29	Houston Baptist	11/19/11
29	Lamar	11/20/98
28	Bellhaven+	11/27/93
28	at Western Michigan	1/3/93
28	at Oral Roberts	1/27/89
28	at Southern Utah	12/29/88

TOTAL REBOUNDS

RB	OPP	DATE
1. 74	USW+	12/29/25
2. 66	WNMU+ (21/+39)	11/17/16
3. 65	Sul Ross State+ (40/+25)	12/1/97
4. 64	WNMU+ (33/+31)	11/11/25
64	Bellhaven+ (28/+36)	11/27/93

64	UTPA (25/+39)	1/7/89
7. 61	vs. McNeese State (40/+61)	11/24/89
61	New Mexico (NA/NA)	3/3/83
9. 60	Houston Baptist (38/+22)	11/19/11
60	at La-Lafayette (56/+4)	11/27/05
60	Air Force (35/+25)	2/14/98
60	Azusa Pacific+ (45/+15)	11/22/96
60	Abilene Christian+ (37/+23)	11/30/93
60	Alaska (44/+16)	12/16/89
60	at Colorado State* (NA/NA)	1/10/81

REBOUND MARGIN

MAR	OPP (UTEP RB/OPP RB)	DATE
1. +45	WNMU+ (66/21)	11/17/16
2. +44	USW+ (73-40)	12/29/25
3. +39	UTPA (64-25)	1/7/89
4. +36	Belhaven+ (64-28)	11/27/93
5. +32	Savannah State (50-18)	11/22/08
6. +30	WNMU+ (64-34)	11/11/25
+30	WKU	2/4/23
8. +28	ENMU+ (57-29)	12/21/14
9. +27	Alcorn State (48-21)	11/10/18
+27	Prairie View A&M (58-31)	11/21/99
+27	Texas State Southern (50-23)	1/18/94

OTHER GAMES OF AT LEAST +26 REBOUND MARGIN

+26	Lamar (54-28)	12/1/11
+26	Texas State (50-24)	12/31/11
+26	UC Irvine (54-28)	11/13/10
+26	Prairie View A&M (58-32)	3/1/96

PERSONAL FOULS

PF	OPP	DATE
1. 37	at US International+	1/29/89
2. 33	Eastern Arizona+	1/10/79
3. 32	at Utah*	3/12/92
32	Alaska	12/16/89
5. 31	vs. Old Dominion	3/11/16
31	at Rice	12/6/91
31	at Southeast Louisiana	1/13/90
31	at McNeese State	1/3/86
9. 30	at California Baptist	11/18/23
30	North Texas*	2/16/17
30	Texas State	11/30/13
30	at TCU	1/12/97
30	at Oregon	1/3/94
30	at Texas State	2/19/90
30	at Lamar	1/4/86
30	New Mexico State	12/3/85
30	at Hardin Simmons**	2/2/85

ASSISTS

AST	OPP	DATE
1. 33	Savannah State	11/22/08
2. 31	UT-Permian Basin+	12/15/06
3. 29	Texas State	12/17/10
4. 28	Tulsa*	2/7/10
5. 27	at UCF*	2/24/08
27	at UTPA	2/7/89
7. 26	WNMU+	11/17/16
26	at Tulane*	2/1/14
26	Mississippi Valley St.	12/14/08
26	East Carolina*	2/10/08
26	Arkansas-Pine Bluff	12/20/06
26	Montana State	12/22/03
26	at Portland State	2/28/89

FEWEST TURNS OVERS COMMITTED

TO	OPP	DATE
1. 0	vs. UTPA	12/3/82
2. 5	Louisiana Tech*	1/30/16
5	East Carolina*	2/10/08
5	vs. UTSA	11/27/81
5. 6	at Weber State	11/28/18
6	Sam Houston State	12/28/12
6	at Wyoming	2/28/91
7. 7	Middle Tennessee	3/13/24
7	FAU*	2/22/21
7	UAB*	2/6/21
7	Old Dominion*	2/25/16
7	New Mexico	12/21/15
7	UT-Permian Basin+	12/15/06
7	Wyoming	1/31/91

MOST TURNS OVERS COMMITTED

TO	OPP	DATE
1. 41	at Houston*	11/27/01
2. 40	at Houston	12/18/87
3. 37	vs. Grambling State	12/5/98
4. 35	Western New Mexico+	12/8/88
5. 34	at No. 25 Arizona	11/29/04
34	New Mexico	11/19/99
34	at Texas State	2/7/87
34	at New Mexico State	11/24/84
9. 33	LA Tech*	2/17/22
33	at Tulane*	1/30/11
33	at San Diego State	1/25/96
33	at McNeese State	12/18/95
33	at UC-Irvine	12/2/95
33	at New Mexico State	12/2/93

MOST TURNS OVERS FORCED

TO	OPP	DATE
1. 39	UTSA	1/8/90
2. 38	Christian Brothers+	11/27/94
3. 37	UTPA	12/22/96
4. 36	St. Mary's	11/10/06
36	Southern Utah	2/3/90
6. 34	Kansas State	11/16/13
34	Tulsa*	1/18/97
8. 33	New Orleans	11/7/22
33	Houston Baptist	11/15/15
33	vs. Texas Southern	11/22/12
33	Prairie View A&M	12/12/06

OTHER GAMES OF AT LEAST 30 TO'S FORCED

11. 32	East Carolina*	2/22/14
32	TXA&M Kingsville+	12/9/89
32	at UTA	2/5/87
14. 31	Portland	12/9/23
31	Weber State	12/5/19
31	UTPB+	12/14/15
31	NM State	11/18/98
31	at UTA	2/17/90
31	Lamar	1/4/89
31	NM State	1

TEAM SINGLE-GAME RECORDS

93	vs. ECU (W, 93-79, OT)	12/17/17
93	WVNU+ (W, 93-46)	11/17/16
	Hardin-Simmons+ (W, 93-52)	11/29/96
93	vs. ACU+ (W, 93-70)	12/7/79
28	FAU* (W, 92-62)	2/22/21
92	Alcorn St. (W, 92-47)	11/16/19
92	at CSUF (W, 92-91, 2OT)	12/29/17
92	NAU (W, 92-43)	11/22/13
92	vs. WKU (W, 92-60)	3/22/08
92	vs. UMS* (W, 92-79)	3/08/12
92	ENMU+ (W, 92-54)	1/13/87
92	Hardin-Simmons* (W, 92-77)	2/16/85
92	vs. Schreiner College+ (W, 92-67)	1/16/79
37	91 Howard Payne+ (W, 91-78)	1/24/87
38	90 Fresno State* (W, 90-68)	1/11/03

FEWEST POINTS SCORED (GAME)

PTS	OPP	DATE
1	28	at Tulsa* (L, 28-64)
2	31	at Rice* (L, 31-84)
3	31	SMU* (L, 31-66)
3	31	at Hawaii* (L, 31-68)
5	32	at Rice* (L, 32-83)
3	32	at TXA&MCC (L, 32-69)
7	35	at Middle Tennessee (L, 35-59)*
35	35	New Mexico (L, 35-59)
9	36	Hawaii* (L, 36-65)
10	37	New Mexico (L, 37-87)
37	37	at Wyoming (L, 37-46)

MOST POINTS ALLOWED (GAME)

PTS	OPP	DATE
1	124	at Texas (L, 48-124)
2	116	at SDSU (L, 59-116)
3	111	at BYU* (L, 59-111)
4	109	at BYU* (L, 58-109)
5	108	at #6 La. Tech* (L, 54-108)
10	108	at BYU* (L, 87-108)
7	106	at Colorado* (L, 42-106)
8	105	at SDSU (L, 72-105)
9	104	Colorado State* (W, 115-104)
10	103	at Texas Tech (L, 58-103)

OTHER GAMES ALLOWED 100+ POINTS

11	102	vs. Ga. Tech (L, 77-102)
12	100	at Houston (L, 52-100)
100	vs. S. Carolina (L, 60-100)	
100	at Colo. St.* (L, 49-100)	
100	at Texas State (L, 77-100)	
100	at Wyoming* (L, 78-100)	

FEWEST POINTS ALLOWED (GAME)

PTS	OPP	DATE
1	19	Fort Bliss+ (W, 96-19)
2	20	Beaumont+ (W, 58-20)
20	20	at Beaumont+ (W, 58-20)
4	25	Fort Bliss+ (W, 66-25)
5	26	Beaumont+ (W, 67-26)
6	27	NM State (W, 63-27)
7	28	WNMU+ (W, 73-28)
8	29	Sul Ross St.+ (W, 54-29)
9	30	at Sul Ross St.+ (W, 67-30)
10	32	UTPB+ (W, 86-32)
32	32	at UTSA (W, 54-32)

OTHER GAMES FEWER THAN 40 POINTS ALLOWED

12	33	vs. Samford (W, 46-33)
33	33	UTPA (W, 68-33)
14	34	FIU* (W, 66-34)
15	35	Tulsa* (W, 50-35)
35	35	vs. CS Northridge (W, 57-35)
17	36	UT Dallas+ (W, 75-36)
36	36	Sull Ross State+ (W, 84-36)
36	36	UTPA (W, 58-36)
20	37	at New Mexico* (W, 52-37)
37	37	Bellhaven+ (W, 72-37)
37	37	UTPA (W, 67-37)
37	37	Sul Ross St.+ (W, 67-37)
24	38	at UTPA (W, 65-38)
38	38	UCF* (W, 67-38)
38	38	Fresno State* (W, 45-38)
27	39	Kansas State (W, 84-39)
39	39	Hawaii* (W, 44-39)
39	39	Central Arizona+ (W, 47-39)

MOST POINTS SCORED (HALF)

PTS	OPP (HALF)	DATE
1	65	Colorado State* (2nd)
2	58	North Alabama (2nd)
58	58	FAU* (2nd)
58	58	at Tulane* (2nd)
58	58	Southern Miss* (2nd)
58	58	Savannah State+ (2nd)
58	58	at Fort Bliss+ (2nd)
8	56	USW+ (1st)
56	56	UTPB+ (1st)
56	56	Hardin-Simmons+ (2nd)
56	56	ENMU+ (2nd)

OTHER GAMES WITH 55+ POINTS SCORED (HALF)

12	55	UTSA* (1st)
55	55	NM State (2nd)
55	55	Southern Miss* (1st)
55	55	vs. Texas Lutheran+ (1st)
55	55	Sul Ross State+ (2nd)

MOST POINTS SCORED (FIRST HALF)

PTS	OPP	DATE
1	56	USW+ 12/29/25
2	56	UTPB+ 12/15/06
2	55	UTSA* 1/18/20
55	55	Southern Miss* 2/21/09
55	55	vs. Texas Lutheran+ 12/4/82
6	54	Arkansas Pine Bluff 12/20/06
7	52	Tulsa* 1/18/97
7	51	at Southern Miss* 1/9/20
51	51	UTPB+ 12/21/05
10.50	50	Tulsa* 1/11/14
50	50	vs. NW State 12/1/02
50	50	Oral Roberts 2/15/89
50	50	Colorado State* 2/9/80

MOST POINTS SCORED (SECOND HALF)

PTS	OPP	DATE
1	65	Colorado State* 2/9/80
2	58	North Alabama 11/26/23
58	58	FAU* 2/22/21
58	58	at Tulane* 2/1/14
58	58	Southern Miss* 1/22/14
58	58	Savannah State+ 11/22/08
58	58	at Fort Bliss+ 11/28/76
7	56	Hardin-Simmons+ 11/29/96
56	56	Eastern New Mexico+ 1/13/87
9	55	NM State 11/12/13
55	55	Sul Ross State+ 12/3/76

FEWEST POINTS SCORED (HALF)

PTS	OPP (HALF)	DATE
1	8	at Rice* (1st) 2/1/07
2	10	at New Mexico* (1st) 2/20/97
3	11	at Fresno State* (1st) 2/6/03
11	11	at Tulsa* (1st) 1/27/00
11	11	vs. FIU (1st) 11/27/98
11	11	at Texas Tech (1st) 1/4/96
7	12	at SMU* (1st) 1/29/04
8	13	Lamar (N) 11/22/23
13	13	at Rice* (1st) 1/27/06
13	13	Fresno State* (1st) 2/12/04
13	13	at Kansas (1st) 12/7/03
13	13	New Mexico (1st) 11/23/01
13	13	Hawaii* (1st) 2/3/00
13	13	at San Diego State* (1st) 2/29/92
13	13	at Texas State (2nd) 2/19/90
13	13	Texas State (2nd) 12/13/89
13	13	at Northern Ariz. (1st) 12/13/85

FEWEST POINTS SCORED (FIRST HALF)

PTS	OPP	DATE
1	8	at Rice* 2/1/07
2	10	at New Mexico* 2/20/97
3	11	at Texas Tech 1/4/96
11	11	vs. Fla. International 11/27/98
11	11	at Tulsa* 1/27/00
11	11	at Fresno State* 2/6/03
7	12	at SMU* 1/29/04
8	13	Lamar (N) 11/22/23
13	13	at Northern Arizona 12/13/85
13	13	at San Diego State* 2/29/92
13	13	Hawaii* 2/3/00
13	13	New Mexico 11/23/01
13	13	at Kansas 2/17/03
13	13	Fresno State* 2/12/04
13	13	at Rice* 1/27/06

FEWEST POINTS SCORED (SECOND HALF)

PTS	OPP	DATE
1	13	New Mexico 11/30/17
13	13	at Texas State 2/19/90
13	13	Texas State 12/13/89
4	14	at BYU* 1/28/99
5	15	at Middle Tennessee * 3/1/25
15	15	Marshall* 1/31/19
15	15	at San Diego State* 1/22/97
7	16	SMU* 1/20/00
16	16	Creighton 2/15/92
9	17	at Rice* 1/12/19
17	17	at UCF* 1/15/06
17	17	at Tulsa* 1/16/03
17	17	at Tulsa* 1/27/00
17	17	vs. TCU* 3/1/99
17	17	at Hawaii* 1/7/99
17	17	at San Diego State* 1/25/96
17	17	NM State 12/3/85

MOST POINTS SCORED (QUARTER)

PTS	OPP (QTR)	DATE
1	36	vs. FAU (1) 3/11/20
3	32	Houston Baptist (1) 11/15/15
3	32	FAU* (3) 2/22/21
32	32	UTSA* (2) 1/18/20
32	32	WNMU+ (1) 11/17/16
6	31	North Alabama (4) 11/26/23
31	31	at UAB (3) 2/17/23
31	31	FIU* (3) 2/25/17
31	31	Houston Baptist (3) 11/15/15
10.30	30	Nicholls (1) 11/8/25
30	30	at LA Tech* (3) 1/11/20
30	30	CSU Bakersfield (4) 11/11/17
30	30	Marshall* (2) 1/28/17

FEWEST POINTS SCORED (QUARTER)

PTS	OPP (QTR)	DATE
1	2	Lamar (2) 11/22/23
2	3	UTSA* (2) 3/8/22
3	3	Arizona (2) 12/7/19
4	4	at UAB* (1) 2/1/20
4	4	Middle Tennessee* 1/19/19
4	4	at ODU* (4) 2/17/18
4	4	vs. Samford (4) 12/21/17
4	4	New Mexico (3) 11/30/17
9	5	at Middle Tennessee (3) * 3/1/25
5	5	Colorado State (1) 12/16/24
5	5	Marshall* (3) 1/31/19
5	5	at Tulsa (1) 12/29/18
5	5	at Rice* (2) 1/28/18
5	5	at CS Fullerton (4) 12/29/17
5	5	at Tulane (2) 12/22/17
5	5	vs. LSU (3) 11/24/16

MOST POINTS ALLOWED (QUARTER)

PTS	OPP (QTR)	DATE
1	35	at UTSA* (1) 1/21/17
2	32	vs UCI (3) 12/18/25
32	32	FIU (2) 3/7/23
3	30	at LA Tech* (3) 11/1/20
5	30	UAB* (4) 2/2/18
6	29	at BYU (2) 12/13/25
29	29	Middle Tennessee (3) * 11/8/24
29	29	Liberty (4) 2/3/24
29	29	at UAB* (1) 3/2/19
10	28	New Mexico (2) 11/9/19
28	28	at Middle Tennessee* (4) 2/4/17
28	28	at New Mexico (2) 12/11/16

FEWEST POINTS ALLOWED (QUARTER)

PTS	OPP (QTR)	DATE
1	3	Arkansas (1) 11/24/17
3	3	UTPB+ (2) 12/14/15
3	3	vs. Samford (1) 12/21/17
4	4	UCR (1) 11/9/19
4	4	FAU* (2) 2/23/17
5	5	ENMU (2) + 12/30/24
5	5	at San Jose State (4) 11/25/22
5	5	UAB* (3) 2/5/21
5	5	FIU* (4) 1/2/20
5	5	vs. Samford (1) 12/21/17
5	5	CSU Bakersfield (1) 11/11/17
5	5	WNMU+ (3) 11/17/16
5	5	FAU* (3) 2/13/16
5	5	UTPB+ (4) 12/14/15

LARGEST LEAD AT HALFTIME

PTS	OPP (OUTCOME)	DATE
1	44	UTPB+ (W, 107-43) 12/15/06
2	34	USW+ (W, 102-42) 12/29/25
34	34	ENMU+ (W, 87-44) 12/1/08
34	34	Sul Ross State+ (W, 84-36) 12/30/00
34	34	Ft. Bliss+ (W, 96-19) 11/10/77
6	33	PVAMU (W, 86-48) 12/20/14
33	33	Kansas State (W, 84-39) 11/16/13
8	30	UTPA (W, 77-41) 1/4/88
9	29	UABP (W, 96-67) 12/20/06
10.27	27	UTSA* (W, 94-54) 1/18/20

OTHER GAMES WITH 25+ HALFTIME LEAD

11	25	NAU (W, 92-43) 11/22/13
25	25	ENMU+ (W, 71-34) 12/8/12
25	25	at Fort Bliss+ (W, 107-37) 11/28/76

LARGEST DEFICIT AT HALFTIME

PTS	OPP	DATE
1	42	at Rice* 2/1/07
42	42	vs. Penn State 11/19/83
3	39	New Mexico 11/23/01
4	37	at La. Tech* 1/5/02
5	35	at Arizona State 11/22/85
6	33	Middle Tennessee* 1/19/19
33	33	at No. 6 LA Tech* 2/27/03
8	32	vs. Auburn 12/11/81
9	31	at Colorado State* 2/11/82
10	30	vs. FIU 11/27/98
30	30	at Houston 12/18/87

30 at San Diego State 1/4/84

LARGEST MARGIN OF VICTORY

PTS	OPP (SCORE)	DATE
1	77	Ft. Bliss+ (96-19) 11/10/77
2	70	at Ft. Bliss+ (107-37) 11/28/76
3	64	UTPB+ (107-43) 12/15/06
4	59	USW+ (102-43) 12/29/25
57	57	Savannah State+ (103-46) 11/22/08
6	54	UTPB+ (86-32) 12/14/15
7	49	NAU (92-43) 11/22/13
8	48	Sul Ross State+ (84-36) 12/30/00
9	47	WNMU+ (93-46) 11/17/16
10	46	UTPA (80-34) 1/2/06

OTHER WINS BY 35+ POINTS

11	45	Alcorn St. (92-47) 11/16/19
45	45	Kansas State (84-39) 11/16/13
45	45	WNMU+ (73-28) 12/9/76
14	44	Houston* (87-43) 1/22/12
15	43	ENMU+ (87-44) 12/1/08
16	42	UTPB+ (103-61) 12/21/05
42	42	Montana State (83-41) 12/22/03
18	41	FIU* (88-47) 2/25/17
41	41	Hardin-Simmons+ (93-52) 11/29/96
41	41	Florida A&M (96-55) 1/4/92
41	41	at Central Arizona+ (89-48) 11/23/8

INDIVIDUAL SINGLE-GAME RECORDS

POINTS

PTS	NAME	OPP	DATE
1. 40	Holly Russ	UTSA	2/19/91
2. 37	Holly Russ	Baylor	12/17/91
3. 36	Kayla Thornton	vs. Belmont	12/21/13
4. 35	Kiana Taylor	South Carolina	11/28/97
35	Holly Russ	San Diego State*	1/19/91
6. 34	Sparkle Taylor	Rice*	2/18/17
34	Sparkle Taylor	North Texas*	2/16/17
34	Amy Pack	San Jose State	12/30/00
34	Lenore Dembs	Hardin-Simmons	2/16/85
34	Be Stoney	BYU*	1/30/80

OTHER 30+ point games

11. 33	Jareica Hughes	Rice*	3/7/08
33	Amy Pack	San Jose State*	2/5/00
33	Holly Russ	Wichita State	12/1/90
14. 32	Sparkle Taylor	vs. Old Dominion	3/8/17
32	Kayla Thornton	at Memphis*	2/24/13
16. 31	Jenzel Nash	Charlotte*	2/27/16
31	Gloria Estrada	NMSU*	1/29/77
18. 30	Destiny Thurman	North Texas*	3/5/22
30	Tamara Seda	at CS Fullerton	12/29/17
30	Donna Stoney	Henderson	11/21/81

MOST POINTS SCORED (QUARTER)

PTS (QTR)	NAME	OPP	DATE
1. 18 (3)	Sparkle Taylor	Northern Arizona	11/11/16
2. 16 (1)	Katarina Zec	ODU*	2/8/20
3. 14 (2)	Ndack Mbengue	Delaware*	1/2/26
14 (2)	M. Moses Amaniyo	USW+	12/29/25
14 (3)	Ivane Tensaie	Kansas City	11/25/25
14 (4)	Jazion Jackson	at UTSA*	1/11/23
14 (1)	Zuzanna Puc	Marshall*	1/31/19
14 (4)	Najala Howell	at UTSA*	2/4/18
14 (2)	Cameasha Turner	at WKU*	2/6/16
14 (2)	Lulu McKinney	UNM	12/2/15
10. 13 (4)	Ivane Tensaie	FIU*	1/18/25
13 (2)	Katarina Zec	at CSU Fullerton	12/30/17
13 (1)	Najala Howell	at UC Riverside	12/30/17
13 (4)	Najala Howell	Houston Baptist	12/2/17
13 (3)	Sparkle Taylor	North Texas*	2/16/17
13 (3)	Sparkle Taylor	WKU*	1/26/17
13 (3)	Sparkle Taylor	UTSA*	1/11/17
13 (3)	Jenzel Nash	at La Tech*	2/20/16

FIELD GOALS MADE

FGM	NAME	OPP	DATE
1. 16	Lenore Dembs	Hardin-Simmons	2/16/85
2. 14	Heidi Walker	PVAMU	11/21/99
14	Kiana Taylor	South Carolina	11/28/97
14	Holly Russ	UT-San Antonio	2/19/91
14	Holly Russ	San Diego State	1/19/91
14	Kris Hudson	Texas Lutheran	12/4/82
14	Donna Stoney	Henderson State	11/21/81
14	Gloria Estrada	NMSU	1/29/77
9. 13	Sparkle Taylor	vs. Old Dominion	3/8/16
13	Kayla Thornton	vs. Belmont	12/21/13
13	Lisa Watson	AK-Anchorage	2/26/89
13	Traci Miller	Arkansas State	12/6/86
13	Carolin Prince	at TXAM Kingsville	12/5/80

FIELD GOALS ATTEMPTED

FGA	NAME	OPP	DATE
1. 31	Holly Russ	UT-San Antonio	2/19/91
2. 30	Holly Russ	Creighton	2/21/91
3. 29	Jenzel Nash	Charlotte*	2/27/16
29	Holly Russ	Creighton	1/26/91
5. 28	Holly Russ	Utah	2/20/92
28	Holly Russ	Weber State	11/30/91
28	Traci Miller	Arkansas State	2/16/86
28	Lenore Dembs	Hardin-Simmons	2/16/85
27	Holly Russ	San Diego State	2/16/91
27	Holly Russ	San Diego State	1/19/91
27	Holly Russ	Wichita State	12/1/90

FIELD GOAL PERCENTAGE (MINIMUM 7 MADE)

FG%	NAME	OPP	DATE
1. 100	Michelle Pruitt	at WKU*	2/13/20
100	Ana Valtierra	Fresno State	1/11/03
100	Kiana Taylor	New Mexico	1/24/98
100	Kevia Ford	Wyoming	2/25/95
100	Kevia Ford	Texas Southern	1/18/94
100	Michelle Roper	Wyoming	3/6/93
100	Donetta Yellets	UT-San Antonio	2/5/87
8. 93.3	Donna Stoney	Henderson state	11/21/81
9. 90.0	Erin Wilson	Portland	12/9/23
90.0	Jareica Hughes	Tulane	1/12/08
90.0	Janet Brunson	NMSU	1/13/84

THREE-POINTERS MADE

3PM	NAME	OPP	DATE
1. 8	Ivane Tensaie	Denver	11/29/25
2. 7	Ivane Tensaie	UTSA	11/16/24
7	Katarina Zec	at NM State	12/20/17
7	Dietra Caldwell	Toledo	11/24/09

7	Sviatlana Trukshanina	Tulsa	1/22/09
7	Holly Russ	UT-San Antonio	2/19/91
7. 6	Mahri Petree	USM*	2/19/22
6	Isis Lopes	at FIU*	2/12/21
6	Lulu McKinney	New Mexico	12/2/15
6	Kelly Willingham	at UAB	1/8/14
6	Kayla Thornton	at Memphis	2/24/13
6	Sviatlana Trukshanina	TX Southern	12/13/09
6	Jareica Hughes	Toledo	11/24/09
6	Dietra Caldwell	UCF*	2/19/09
6	Dietra Caldwell	SSVU	11/22/08
6	Romie DeAnda	San Jose State	3/6/03
6	Kia Dowell	at Kansas	11/24/02
6	Kimya Murray	SMU	3/5/02
6	Amy Billhymmer	Tulsa	1/17/97
6	Jill Lewis	NMSU	12/16/93
6	Laura Walker	NMSU	12/21/92

THREE-POINTERS ATTEMPTED

3PA	NAME	OPP	DATE
1. 16	Amy Billhymmer	Illinois-Chicago	12/19/96
2. 15	Ivane Tensaie	Delaware*	1/2/26
15	Laura Walker	NMSU	12/21/92
3. 14	Kimya Murray	SMU	3/5/02
4. 13	Ivane Tensaie	UT Martin	11/22/25
13	Kayla Thornton	at Memphis	2/24/13
13	Amy Billhymmer	TCU	1/12/97
13	Amy Billhymmer	BYU	1/29/94
13	Holly Russ	UT-San Antonio	2/19/91
13	Holly Russ	San Diego State	2/16/91
13	Terri Powell	U.S. International	2/14/88

THREE-POINT PERCENTAGE (MINIMUM 4 MADE)

3FG%	NAME	OPP	DATE
1. 100.0 (5-5)	Najala Howell	at UC Riverside	12/30/17
100.0 (4-4)	Katarina Zec	UC Riverside	11/9/19
100.0 (4-4)	Timika Williams	vs. Missouri State	12/4/09
100.0 (4-4)	Briana Green	at Tulane*	1/18/09
100.0 (4-4)	Shalana Taylor	ULL	12/10/06
100.0 (4-4)	Ana Valtierra	SMU*	1/8/06
100.0 (4-4)	Laura Walker	Baylor	12/2/92
7. 85.7 (6-7)	Sviatlana Trukshanina	Texas Southern	12/13/09
8. 83.3 (5-6)	Destiny Thurman	vs. Kansas	11/27/21
83.3 (5-6)	Jareica Hughes	Tulane*	1/12/08
83.3 (5-6)	Ana Valtierra	Nevada*	2/14/04
83.3 (5-6)	Terri Powell	San Diego State	12/29/87

FREE THROWS MADE

FTM	NAME	OPP	DATE
1. 17	Gloria Brown	at Southern Miss*	1/26/12
2. 16	Katia Gallegos	at NM State	12/15/21
3. 14	Amy Pack	San Jose State*	1/2/01
14	Holly Russ	UT-Pan American	1/21/91
14	Sonya Howell	Southeast La.	2/24/90
6. 13	Kayla Thornton	East Carolina*	2/22/14
13	Amy Pack	Tulsa*	1/21/01
13	Amy Pack	Nevada*	1/5/01
9. 12	Gloria Brown	East Carolina*	1/6/11
12	Noni Wharemate	San Jose State*	3/6/03
12	Amy Pack	at UTSA	11/24/00
12	Shani Dinwiddie	Rice*	2/15/97
12	Kanequa Chancellor	NMSU	11/26/96
12	Kiana Taylor	BYU*	1/29/94
12	Shenita Waddell	Wyoming*	3/10/93
12	Holly Russ	Baylor	12/17/91
12	Traci Miller	Oregon State	12/21/86
12	Dawn Coy	Oregon State	12/21/86

FREE THROWS ATTEMPTED

FTA	NAME	OPP	DATE
1. 20	Katia Gallegos	at NM State	12/15/21
2. 19	Gloria Brown	at Southern Miss*	1/26/12
19	Amy Pack	San Jose State*	1/2/01
19	Kiana Taylor	BYU*	1/29/94
5. 18	Marta Dydek	San Jose State*	2/17/05
18	Amy Pack	Nevada*	1/5/01
18	Sonya Howell	Southeast La.	2/24/90
18	Tonie Greene	Okla. City Univ	1/21/84
9. 17	Amy Pack	San Jose State*	1/12/01
17	Marcella Lopez	West Texas State	2/18/85

FREE THROW PERCENTAGE (MINIMUM 3 MADE)

FT%	NAME	OPP	DATE
1. 100.0 (10-10)	Portia Adams	NM State	1/31/26
100.0 (10-10)	Elina Arike	vs. #25 MT	3/10/23
100.0 (11-11)	Mahri Petree	New Orleans	11/7/22
100.0 (9-9)	Najala Howell	at FIU*	1/5/17
100.0 (10-10)	Najala Howell	vs. East Carolina	12/17/17
100.0 (9-9)	Sparkle Taylor	at FIU*	1/12/17
100.0 (9-9)	Starr Breedlove	TCU	3/24/16
100.0 (10-10)	Cameasha Turner	Marshall*	1/24/15
100.0 (10-10)	Kayla Thornton	vs. Belmont	12/21/13
100.0 (12-12)	Gloria Brown	East Carolina*	1/6/11
100.0(11-11)	Jareica Hughes	vs. Rice	3/7/08
100.0(12-12)	Ingrid Goslin	San Jose State*	3/6/03
100.0 (9-9)	Kim Daniel	UTA	12/30/98
100.0 (9-9)	Cabora Mack	BYU*	2/3/96

REBOUNDS

RB	NAME	OPP	DATE
1. 22	Mary Moses Amaniyo	Prairie View A&M	11/3/25
20	Kanequa Chancellor	SE Missouri State	11/29/97
20	Kayla Thornton	Tulsa*	1/11/14
4. 19	Gloria Brown	at Southern Miss*	1/26/12
19	Charnette Phelps	UAB*	1/22/06
6. 18	Mary Moses Amaniyo	UT Martin	11/25/25
18	Ariona Gill	at UTSA*	2/20/20
18	Kayla Thornton	Tulane*	2/1/14
18	Chrisauna Parker	vs. UAB	3/14/13
18	Monica Ramirez	Colorado State*	1/15/94
18	Marcella Lopez	West Texas State	2/18/85
18	Tonie Greene	Eastern NM	2/17/83
18	Tonie Greene	Central Arizona	2/12/83

OTHERS WITH 17 REBOUNDS

14. 17	Tamara Seda	Southern Miss*	1/7/17
17	Tamara Seda	CSUB	12/28/16
17	Anete Steinberga	Tulane*	3/8/13
17	Gloria Brown	Tulane*	2/13/11
17	Dragana Zoric	Houston*	12/4/02
17	Dragana Zoric	Houston*	12/4/02
17	DaTechia Specht	Fort Lewis	11/25/97
17	Kevia Ford	New Mexico*	3/1/95
17	Charsa Palamore	San Diego State*	1/19/91
17	Charsa Palamore	UT-Pan American	12/15/90
17	Charsa Palamore	Loyola Marymount	2/8/90
17	Charsa Palamore	NMSU	11/28/89
17	Vernita Gant	New Mexico	11/29/86

ASSISTS

AST	NAME	OPP	DATE
1. 13	Jareica Hughes	at SMU*	1/15/10
13	Shalana Taylor	at Illinois State	12/19/04
3. 12	Katia Gallegos	Southern Miss*	2/29/20
12	Shalana Taylor	SMU*	1/27/05
12	Martha Contreras	Southern Colorado	1/31/88
6. 11	Katia Gallegos	vs. FAU	3/11/21
11	Kelli Willingham	CS Northridge	12/3/10
11	Jareica Hughes	Southern Miss*	2/21/09
11	Tiffney Touton	at SMU*	1/3/02
11	Christina Mata	SJSU	2/5/00

STEALS

STL	NAME	OPP	DATE
1. 10	Sonya Howell	UTSA	2/17/90
2. 8	Cameasha Turner	UAB*	1/10/16
8	Natasha Lacy	vs. Southern Miss	3/8/08
8	Terri Pedregon	Texas Tech	12/7/94
8	Martha Contreras	UTSA	2/5/87
8	Chris Hall	Eastern N.M.	1/13/87
7. 7	Katia Gallegos	Southern Miss*	2/29/20
7	Starr Breedlove	FAU*	2/13/16
7	Chrisauna Parker	Kansas State	11/16/13
7	Jenzel Nash	at Tulane*	1/15/12
7	Natasha Lacy	Houston*	2/14/08
7	Natasha Lacy	vs. Western Kentucky	3/22/08
7	Jareica Hughes	Tulsa*	2/2/08
7	Kimya Murray	Louisiana Tech*	1/31/02
7	Terri Pedregon	Christian Brothers	11/27/94
7	Norma Sierra	UTSA	1/6/89
7	Martha Contreras	Colorado State	1/23/88
7	Kris Hudson	at NMSU	2/19/83

BLOCKS

BLK	NAME	OPP	DATE
1. 10	Izabela Piekarska	ULL	12/10/06
10	Kim Watts	Auburn	12/11/81
3. 9	Kim Watts	at NM State	12/15/79
4. 8	Gloria Brown	at NM State	11/16/11
5. 7	Fannie Goodwin	UCF*	2/19/09
7. 6	Izabela Piekarska	Tulane*	11/25/05
6	Gloria Brown	Tulane*	2/13/11
6	Gloria Brown	Houston*	1/16/11
6	Izabela Piekarska	SMU*	1/31/08
6	Izabela Piekarska	Memphis*	2/10/07
6	Marta Dydek	at Louisiana Tech*	2/24/05
6	Marta Dydek	Fresno State*	1/15/05
6	Donetta Yellets	SW Texas State	2/7/87
6	Marcella Lopez	West Texas State	2/18/85
6	Kim Watts	Colorado State*	1/30/82
6	Kim Watts	Wyoming*	1/29/82
6	Kim Watts	at Utah*	1/4/82
6	Kim Watts	vs. Marquette	12/12/81
6	Kim Watts	Juarez	12/5/81

TURNOVERS

TO	NAME	OPP	DATE
1. 15	Holly Russ	Lamar	1/3/91
2. 13	Selina Thomas	West Texas State	2/4/85
3. 11	Kristi Lattin	Grambling State	12/5/98
11	LaShonda Gray	Grambling State	12/5/98
11	Holly Russ	San Diego State*	2/16/91
11	Liz Ruyas	Northern Arizona	

2025-26 BOX SCORES



Official Basketball Box Score - Final
Prairie View at UTEP
 11/08/25 Don Haskins Center, El Paso
 2025-26 Women's Basketball

Game Time: 12:00 PM
 Game Duration: 1:58
 Attendance: 639

Officials: Jess Martinez, Matthew Krenk, Sydney Crafton

Record: 0-1

NO. Name	Min	FG		3P		FT		Rebounds		Fouls		TP	AS	TO	ST	Blocks			+/-
		M	A	M	A	O	R	O	R	O	D					R	P	FF	
13 Meryn Wamet	F 21:58	2-6	0-0	2-2	2-3	5-5	4-1	6-0	1-1	1-1	0-0	0-1	1-1	1-0	0-0	0-0	0-0	0-0	-21
1 Alana Shields	G 30:44	2-9	1-6	2-2	0-1	1-1	5-2	7-3	5-1	0-1	0-1	0-1	0-1	0-1	0-1	0-1	0-1	-22	
8 Jacques Giron	G 30:49	1-6	0-4	0-0	0-4	4-4	1-1	2-0	6-0	0-0	0-1	0-1	0-1	0-1	0-1	0-1	0-1	-26	
9 Crystal Schultz	G 27:01	9-18	2-8	0-0	0-3	3-4	4-2	2-0	4-2	2-1	0-0	0-1	0-1	0-1	0-1	0-1	0-1	-19	
14 CJ Wilson	G 35:42	4-12	0-2	8-10	2-7	9-9	0-7	16-0	1-1	2-2	0-0	0-1	0-1	0-1	0-1	0-1	0-1	-13	
3 Margan Allen	G 07:24	1-2	1-1	0-0	0-1	1-1	0-1	3-2	3-0	0-0	0-1	0-1	0-1	0-1	0-1	0-1	0-1	-8	
0 Krislyn Biscette	12:58	1-2	0-0	0-0	0-0	0-0	2-0	2-0	1-1	0-0	0-0	0-0	0-0	0-0	0-0	0-0	0-0	-10	
15 Preston Young	11:41	0-0	0-0	0-0	0-5	0-0	0-0	0-0	2-1	1-1	0-0	0-0	0-0	0-0	0-0	0-0	0-0	-10	
24 Laila Robinson	10:14	1-2	0-0	0-0	2-2	4-4	1-2	0-0	2-1	1-1	0-0	0-0	0-0	0-0	0-0	0-0	0-0	-2	
23 Marcakia Celestine	05:29	1-1	0-0	0-0	1-0	1-1	2-0	2-0	2-0	0-0	0-0	0-0	0-0	0-0	0-0	0-0	0-0	5	
Team																			
Totals		22:58	4-21	12-14	8-29	37	22	19	60	7	27	9	6	3	-24				

Major Fouls: Celestine (TF) 4 3 6 35

Shooting By Period	
1 st FG%	7-13 53.8%
3PT%	2-4 50.0%
FT%	0-0 0%
2 nd FG%	4-11 36.4%
3PT%	1-5 20.0%
FT%	4-6 66.7%
3 rd FG%	4-17 23.5%
3PT%	1-8 12.5%
FT%	4-4 100%
4 th FG%	7-17 41.2%
3PT%	0-4 0.0%
FT%	4-4 100%
GM FG%	22-58 37.9%
3PT%	4-21 19.0%
FT%	12-14 85.7%

Dead Ball Rebounds: 2-0



Official Basketball Box Score - Final
Nicholls at UTEP
 11/08/25 Don Haskins Center, El Paso, Texas
 2025-26 Women's Basketball

Game Time: 7:00 PM
 Game Duration: 2:09
 Attendance: 1,040

Officials: Tiffany Bridges, Shandra Twine, Nae Accosta

Record: 1-1

NO. Name	Min	FG		3P		FT		Rebounds		Fouls		TP	AS	TO	ST	Blocks			+/-
		M	A	M	A	O	R	O	R	O	D					R	P	FF	
14 Marie Kenembeni	F 09:04	1-3	0-0	0-2	1-0	1-0	2-2	2-0	0-0	0-0	0-0	0-0	0-0	0-0	0-0	0-0	0-0	0-0	-5
30 Emari Burks	F 15:31	2-3	2-3	0-0	0-0	3-3	4-1	6-1	1-1	2-0	0-0	0-0	0-0	0-0	0-0	0-0	0-0	0-0	-15
1 Jessilyn Jalomo	G 27:02	2-9	0-6	0-0	1-3	4-4	3-3	1-4	3-1	2-0	0-0	0-0	0-0	0-0	0-0	0-0	0-0	0-0	-14
2 Anyra Wilson	G 26:47	1-6	0-3	3-6	0-3	3-3	2-4	5-2	5-1	0-0	0-0	0-0	0-0	0-0	0-0	0-0	0-0	0-0	-14
11 SHDiamond McKnight	G 16:55	2-6	2-4	4-4	0-2	2-2	5-3	10-0	4-0	0-0	0-0	0-0	0-0	0-0	0-0	0-0	0-0	0-0	-19
10 Laryn Scott	G 34:46	2-8	0-2	0-0	3-4	7-7	2-3	4-4	2-0	1-1	1-1	0-1	0-1	0-1	0-1	0-1	0-1	0-1	-9
13 Jasmine Matthews	03:41	2-9	0-0	1-2	2-2	4-4	2-0	5-1	2-1	0-0	0-0	0-0	0-0	0-0	0-0	0-0	0-0	0-0	0
22 Resha Headley	03:08	0-1	0-0	0-0	0-0	0-0	0-0	0-0	0-0	0-0	0-0	0-0	0-0	0-0	0-0	0-0	0-0	0-0	0
24 India McMahon	14:04	2-3	0-0	1-1	0-1	1-2	1-5	2-0	2-0	0-0	0-0	0-0	0-0	0-0	0-0	0-0	0-0	0-0	-6
0 Makayla Charles	19:51	3-5	0-0	3-6	1-4	5-3	3-4	9-1	0-0	0-0	0-0	0-0	0-0	0-0	0-0	0-0	0-0	0-0	-2
7 Sanayia Morris	11:14	2-5	0-0	1-1	2-2	3-3	2-0	3-7	2-0	0-0	0-0	0-0	0-0	0-0	0-0	0-0	0-0	0-0	-2
12 Caroline Adams	07:57	2-2	0-0	0-0	1-1	2-2	1-0	4-0	0-0	0-0	0-0	0-0	0-0	0-0	0-0	0-0	0-0	0-0	2
Team																			
Totals		21:60	4-20	15-24	11-27	38	25	24	61	14	18	8	1	1	-15				

Major Fouls: Coach (TF) 4 3 0 0 1

Shooting By Period	
1 st FG%	5-18 27.8%
3PT%	3-9 33.3%
FT%	0-0 0%
2 nd FG%	6-15 40.0%
3PT%	0-5 0%
FT%	1-6 16.7%
3 rd FG%	4-10 40.0%
3PT%	0-2 0%
FT%	12-16 75%
4 th FG%	6-17 35.3%
3PT%	1-4 25.0%
FT%	2-2 100%
GM FG%	21-60 35.0%
3PT%	4-20 20.0%
FT%	15-24 62.5%

Dead Ball Rebounds: 7-0

Record: 1-0

NO. Name	Min	FG		3P		FT		Rebounds		Fouls		TP	AS	TO	ST	Blocks			+/-	
		M	A	M	A	O	R	O	R	O	D					R	P	FF		FD
13 Ndack Mbengue	F 10:18	2-2	0-0	1-3	2-2	4-2	2-2	5-1	5-1	1-0	0-0	0-0	0-0	0-0	0-0	0-0	0-0	0-0	0-0	5
2 Sirivva Legions	G 24:01	6-9	0-1	0-0	1-5	6-3	1-12	3-0	0-1	0-0	0-0	0-0	0-0	0-0	0-0	0-0	0-0	0-0	0-0	9
3 Ivane Tensaie	G 23:08	3-11	1-8	0-0	0-1	1-0	2-7	0-0	0-0	0-0	0-0	0-0	0-0	0-0	0-0	0-0	0-0	0-0	1	
4 Delma Zita	G 13:11	1-6	0-0	0-0	0-1	1-1	1-2	0-0	1-1	0-0	0-0	0-0	0-0	0-0	0-0	0-0	0-0	0-0	10	
11 Portia Adams	G 20:01	3-10	1-3	1-2	1-0	1-2	2-8	1-1	0-0	0-0	0-0	0-0	0-0	0-0	0-0	0-0	0-0	0-0	3	
22 Mary Moses Amaniyo	27:44	6-11	0-0	4-8	10-12	22-24	16-0	4-1	0-0	0-0	0-0	0-0	0-0	0-0	0-0	0-0	0-0	0-0	28	
5 Heaven Samayoa-Mathis	22:26	5-8	2-4	2-2	1-3	4-4	1-3	14-4	1-1	2-2	0-0	0-0	0-0	0-0	0-0	0-0	0-0	0-0	25	
14 Tatiana Collazo	14:45	1-7	1-5	3-4	0-1	1-3	6-1	0-0	1-0	0-0	0-0	0-0	0-0	0-0	0-0	0-0	0-0	0-0	22	
8 Brooklyn Terry	14:44	4-9	1-3	4-4	1-0	1-2	1-3	0-0	0-0	0-0	0-0	0-0	0-0	0-0	0-0	0-0	0-0	0-0	19	
12 Irene Asensio	09:29	0-2	0-0	0-0	0-0	0-0	1-1	0-0	2-1	1-0	0-0	0-0	0-0	0-0	0-0	0-0	0-0	0-0	1	
1 Aaliyah Davis	08:35	0-2	0-0	1-2	0-2	2-1	1-1	0-0	1-2	0-0	0-0	0-0	0-0	0-0	0-0	0-0	0-0	0-0	-3	
10 Osadebanmen Igbinedion Omoruyi	03:06	0-0	0-0	0-0	0-0	0-0	0-0	0-0	0-0	0-0	0-0	0-0	0-0	0-0	0-0	0-0	0-0	0-0	-3	
23 Aolani Woldai	08:33	0-3	0-1	0-0	3-0	3-2	0-0	1-4	0-0	0-0	0-0	0-0	0-0	0-0	0-0	0-0	0-0	0-0	3	
Team																				
Totals		31:80	6-27	16-25	24-28	52	19	21	84	14	18	11	3	6	-20					

Major Fouls: NONE

Biggest lead	PVAM		UTEP	
	5 (1 st 7:09)	27 (4 th 2:17)	11 (2 nd 0:52)	10 (3 rd 0:50)
Best Scoring Run	11 (2 nd 0:52)		10 (3 rd 0:50)	
Lead Changes	5		5	
Times Tied	2		2	
Time with Lead	05:23		33:47	

Points from Turnovers	PVAM		UTEP	
	17	28	30	38
Paint	16		13	
Second Chance	10		21	
Fast Breaks	10		17	
Bench	9		50	

Period by Period Scoring	UTEP			
	1st	2nd	3rd	4th
Points	16	13	13	18
Rebounds	18	21	25	84

Dead Ball Rebounds: 5-0



Official Basketball Box Score - Final
Western N.M. at UTEP
 11/11/25 Don Haskins Center, El Paso
 2025-26 Women's Basketball

Game Time: 11:00 AM
 Game Duration: 1:52
 Attendance: 1,068

Officials: Trevor Inouye, Carmela Garcia, Andy Heo

Record: 0-0

NO. Name	Min	FG		3P		FT		Rebounds		Fouls		TP	AS	TO	ST	Blocks			+/-	
		M	A	M	A	O	R	O	R	O	D					R	P	FF		FD
31 Ema Rose	F 22:18	4-10	0-0	1-2	1-3	2-1	9-3	0-0	1-1	2-0	0-0	0-0	0-0	0-0	0-0	0-0	0-0	0-0	0-0	-16
3 Cleara Dinwiddie	G 24:35	4-9	1-6	0-0	0-6	6-6	2-0	9-4	0-0	3-1	0-0	0-0	0-0	0-0	0-0	0-0	0-0	0-0	-16	
11 Jordan Sapien	G 32:29	3-11	2-6	5-5	0-2	2-2	2-13	4-2	1-1											

GAME 27: UTEP vs. KENNESAW STATE

2025-26 BOX SCORES



Official Basketball Box Score - Final
UTEP at Kansas City
 11/25/25 Sweeney Center, Kansas City
 2025-26 Women's Basketball

Game Time: 7:00 PM
 Game Duration: 1:52
 Attendance: 283

Officials: Doug Knight, Erica Parker, Jeremy McHugh

UTEP - 75

NO. Name	Min	FG	3P	FT	Rebounds		Fouls	TP	AS	TO	ST	Blocks			+/-	
					OR	DR						BS	BA	+		
13 Ndack Mbengue	31:00	7-9	0-0	4-4	3	7	10	4	3	18	1	2	1	0	1	-5
2 Sirivva Legions	G 22:44	2-8	0-0	0-2	0	2	2	1	1	4	1	3	0	0	1	-4
3 Ivane Tensale	G 31:48	6-12	5-8	2-3	1	0	1	1	2	19	1	2	0	1	1	9
4 Delma Zita	G 20:08	1-3	0-0	2-2	1	1	2	2	5	4	2	2	1	0	0	-10
11 Portia Adams	G 23:01	1-6	1-2	2-4	0	5	5	2	4	1	0	0	0	0	0	-14
5 Heaven Samayoa-Mathis	25:38	4-7	1-1	0-0	2	1	3	4	0	9	6	1	1	0	0	23
22 Mary Moses Amaniyu	26:10	2-6	0-0	7-8	5	8	13	2	4	11	1	3	1	0	1	15
14 Taliana Collazo	07:09	2-4	1-3	0-2	0	1	1	0	2	5	0	0	0	0	0	2
10 Osadebamwen Igbinedion	00:15	0-0	0-0	0-0	0	0	0	0	0	0	0	0	0	0	0	2
8 Brooklyn Terry	04:17	0-1	0-1	0-0	0	0	0	0	0	0	0	0	0	0	0	-3
12 Irene Asensio	07:50	0-0	0-0	0-0	0	2	2	1	0	0	2	0	0	0	0	0
Team					4	2	6	0	0	0	0	0	0	0	0	0
Totals		25-56	8-15	17-25	16	29	45	17	22	75	18	17	7	1	4	11

Major Fouls: NONE

Shooting By Period
 1st FG% 5-9 55.6%
 3PT% 1-3 33.3%
 2nd FG% 5-15 33.3%
 3PT% 0-2 0.0%
 FT% 1-1 100%
 3rd FG% 10-17 58.8%
 3PT% 5-6 83.3%
 FT% 4-7 57.1%
 4th FG% 5-15 33.3%
 3PT% 2-4 50.0%
 FT% 7-8 87.5%
 GM FG% 25-56 44.6%
 3PT% 8-15 53.3%
 FT% 17-25 68.0%

Dead Ball Rebounds: 3/0

Kansas City - 64

NO. Name	Min	FG	3P	FT	Rebounds		Fouls	TP	AS	TO	ST	Blocks			+/-	
					OR	DR						BS	BA	+		
11 Koby Bannerman	F 19:17	2-5	0-0	0-0	4	2	6	3	1	4	1	2	2	3	0	2
0 Emari Bennett	G 22:37	6-12	4-4	0-0	3	3	1	1	16	0	1	3	0	0	5	
2 Elauri Bennett	G 31:44	3-8	0-0	2-5	3	2	5	4	5	8	1	3	0	0	-13	
23 Alyssa Febres	G 15:59	0-2	0-1	2-2	0	0	0	0	2	3	4	0	0	0	-7	
24 Zaire Harrell	G 36:48	3-7	0-0	1-1	1	6	7	4	6	4	0	2	0	1	-6	
25 Jamyah Winter	29:49	4-8	4-8	2-3	0	3	3	1	14	0	0	0	0	0	-10	
5 Tierra Trotter	24:01	4-11	1-3	0-0	1	2	3	0	9	3	4	0	0	0	-4	
22 Jumoke Adaramoye	14:50	1-5	0-0	0-0	1	2	3	2	0	2	1	0	0	0	-16	
1 Nikole Thomas	04:55	1-1	0-0	0-0	0	0	0	1	2	0	0	0	0	0	-8	
Team					0	0	0	0	0	0	1	0	0	0	0	
Totals		24-59	9-16	7-12	10	20	30	22	17	64	13	15	7	4	1	-11

Major Fouls: NONE

Shooting By Period
 1st FG% 8-14 57.1%
 3PT% 3-3 100.0%
 2nd FG% 5-14 35.7%
 3PT% 4-6 66.7%
 FT% 0-0 0%
 3rd FG% 4-10 40.0%
 3PT% 1-2 50.0%
 FT% 4-7 57.1%
 4th FG% 7-21 33.3%
 3PT% 1-5 20.0%
 FT% 3-5 60%
 GM FG% 24-59 40.7%
 3PT% 9-16 56.3%
 FT% 7-12 58.3%

Dead Ball Rebounds: 1/0

Biggest lead

Miners	Roos	Points from Turnovers	Miners	Roos	Period by Period Scoring									
13 (4 th 8:52)	9 (3 rd 9:50)	13	16	1st	2nd	3rd	4th	TOT						
Best Scoring Run	9 (3 rd 2:08)	7 (4 th 7:14)	Paint	26	24	Miners	16	11	29	19	14	13	18	64
Lead Changes	2	Second Chance	23	5	Roos	19	14	13	18	64				
Times Tied	5	Fast Breaks	9	4										
Time with Lead	15:29	17:17	Bench	25	27									

Official Basketball Box Score - Final
Denver at UTEP
 11/25/25 Don Haskins Center, El Paso, Texas
 2025-26 Women's Basketball

Game Time: 2:00 PM
 Game Duration: 1:42
 Attendance: 1,096

Officials: Angelica Sufren, Tucker Furrow, Shandra Twine

Denver - 52

NO. Name	Min	FG	3P	FT	Rebounds		Fouls	TP	AS	TO	ST	Blocks			+/-
					OR	DR						BS	BA	+	
13 Ana Conde	C 18:18	2-3	0-0	0-0	1	3	4	2	4	1	7	1	0	0	-9
32 Lily Esparza	C 19:29	0-1	0-1	0-0	0	2	2	0	2	0	1	1	0	0	-4
3 Victoria Baker	G 28:43	1-3	0-2	5-5	0	1	1	3	3	7	1	0	0	0	-12
10 Coryn Watts	G 38:55	6-22	4-9	3-4	1	4	5	1	2	19	1	3	3	0	1
12 Laila Monclova	G 33:52	4-15	1-6	0-0	1	6	7	1	1	9	0	3	4	1	0
11 Karolina Padilla	07:44	0-0	0-0	0-0	0	1	1	0	0	0	1	2	1	0	-20
1 Laila McLeod	08:54	1-1	1-1	0-0	0	1	1	0	0	3	0	1	0	0	-2
0 Brooke Murrell	34:13	4-6	0-0	2-2	4	4	8	1	2	10	0	2	0	1	0
15 Jocelyn Medina	09:52	0-4	0-3	0-0	0	1	1	0	0	0	2	1	0	0	0
Team					2	3	5	0	0	0	0	1	0	0	0
Totals		18-55	6-22	10-11	9	26	35	10	12	52	7	21	9	3	1

Major Fouls: NONE

Shooting By Period
 1st FG% 3-13 23.1%
 3PT% 3-8 37.5%
 FT% 0-0 0%
 2nd FG% 3-18 16.7%
 3PT% 0-7 0.0%
 FT% 2-2 100%
 3rd FG% 6-12 50.0%
 3PT% 1-3 33.3%
 FT% 8-9 88.9%
 4th FG% 6-12 50.0%
 3PT% 2-4 50.0%
 FT% 0-0 0%
 GM FG% 18-55 32.7%
 3PT% 6-22 27.3%
 FT% 10-11 90.9%

Dead Ball Rebounds: 2/0

UTEP - 69

NO. Name	Min	FG	3P	FT	Rebounds		Fouls	TP	AS	TO	ST	Blocks			+/-
					OR	DR						BS	BA	+	
13 Ndack Mbengue	F 31:52	5-10	0-0	2-2	6	4	10	2	1	12	1	1	2	0	1
2 Sirivva Legions	G 32:06	6-13	0-0	5-6	0	7	7	1	4	17	3	0	1	0	22
3 Ivane Tensale	G 36:27	8-18	8-12	2-2	0	1	1	0	26	2	6	5	4	0	17
4 Delma Zita	G 26:16	1-2	0-0	0-0	0	2	2	0	1	2	6	5	4	0	22
11 Portia Adams	G 11:01	0-3	0-2	0-0	0	1	1	0	0	0	0	0	0	0	-6
5 Heaven Samayoa-Mathis	18:13	0-3	0-2	0-0	0	1	4	5	2	0	0	1	4	2	0
22 Mary Moses Amaniyu	27:32	5-10	0-0	1-1	1	4	5	2	1	11	1	3	3	1	0
10 Osadebamwen Igbinedion	02:37	0-0	0-0	1-2	0	0	0	1	1	1	0	0	0	0	2
12 Irene Asensio	06:53	0-1	0-1	0-0	0	0	0	0	1	0	0	0	0	0	0
14 Taliana Collazo	03:33	0-1	0-0	0-0	0	0	0	0	1	0	0	0	0	0	0
23 Aolani Woldai	03:30	0-1	0-0	0-0	0	1	0	2	0	0	0	1	0	0	-6
Team					3	4	7	0	0	0	0	0	0	0	0
Totals		25-62	8-18	11-13	12	27	39	12	10	89	14	14	13	1	3

Major Fouls: NONE

Shooting By Period
 1st FG% 7-15 46.7%
 3PT% 2-4 50.0%
 FT% 3-6 50.0%
 2nd FG% 4-14 28.6%
 3PT% 1-5 20.0%
 FT% 2-2 100%
 3rd FG% 5-18 27.8%
 3PT% 0-4 0.0%
 FT% 3-3 100%
 4th FG% 9-15 60.0%
 3PT% 3-3 100.0%
 FT% 3-4 75%
 GM FG% 25-62 40.3%
 3PT% 8-18 44.4%
 FT% 11-13 84.6%

Dead Ball Rebounds: 1/0

Biggest lead

DENVER	UTEP	Points from Turnovers	DENVER	UTEP	Period by Period Scoring							
0 (1 st 10:00)	20 (4 th 2:55)	13	20	1st	2nd	3rd	4th	TOT				
Best Scoring Run	10 (3 rd 0:59)	13 (1 st 4:15)	Paint	20	26	DENVER	9	8	11	15	24	69
Lead Changes	0	Second Chance	6	14	UTEP	19	11	15	24	69		
Times Tied	0	Fast Breaks	7	24								
Time with Lead	00:00	38:35	Bench	13	12							



Official Basketball Box Score - Final
A&M-Corpus Christi at UTEP
 12/03/25 Don Haskins Center, El Paso, Texas
 2025-26 Women's Basketball

Game Time: 7:00 PM
 Game Duration: 1:49
 Attendance: 923

Officials: Michael Price, Karl Childs, Katrina Cutler

A&M-Corpus Christi - 44

NO. Name	Min	FG	3P	FT	Rebounds		Fouls	TP	AS	TO	ST	Blocks			+/-
					OR	DR						BS	BA	+	
13 Rayna Williams	F 11:59	2-3	0-0	0-0	0	0	0	3	1	4	1	2	1	0	-6
32 K'Nari Holiday	F 22:52	0-1	0-0	0-0	3	5	8	0	0	1	2	0	1	0	-13
3 Chelsea Wooten	G 30:45	2-17	1-12	0-0	0	4	4	3	1	5	3	2	0	0	-21
4 Marissa Shelton	G 36:08	3-8	2-5	4-4	0	4	2	2	12	0	4	1	0	0	-19
5 Samora Watson	G 32:54	6-16	1-2	4-8	2	2	4	3	6	17	0	3	3	0	-21
11 Asha Walker	26:20	0-3	0-3	0-0	1	2	3	0	1	0	1	2	0		

2025-26 BOX SCORES



Official Basketball Box Score - Final
UTEP at BYU
 131325 Marriott Center, Provo
 2025-26 Women's Basketball

Game Time: 1:00 PM
 Game Duration: 1:56
 Attendance: 1,977

Officials: Melissa Barlow, Chuck Gonzalez, Eric Brewton

UTEP - 46

NO. Name	Min	FG		3P		FT		Rebounds		Fouls		TP	AS	TO	ST	Blocks			+/-
		M-A	M-A	M-A	M-A	OR	DR	PF	FF	BS	BA					BL			
13 Ndack Mbengue	24:47	3-10	0-0	0-0	0-0	3-4	7	2	2	6	0	2	2	0	1	0	0	0	-21
2 Sirivva Legions	G 27:24	4-8	0-0	5-8	1-3	4-4	1-5	13-3	3-2	1-1	0	0	1	0	0	0	0	0	-22
3 Ivane Tensae	G 27:29	2-7	1-4	0-0	0-0	0-0	0-1	5-0	2-1	0-1	0	1	0	1	0	0	0	0	-16
4 Delma Zita	G 15:24	0-3	0-1	0-0	0-1	1-1	1-1	0-0	2-0	0-0	0	1	0	1	0	0	0	0	-32
11 Portia Adams	G 25:36	2-11	1-3	1-2	1-1	2-2	1-1	6-2	1-1	0-1	0	1	0	1	0	0	0	0	-18
5 Heaven Samayoa-Mathis	18:40	2-4	0-1	0-0	1-1	2-2	1-2	4-4	1-0	0-0	0	0	0	0	0	0	0	0	-18
22 Mary Moses Amariyo	17:50	2-8	0-0	1-1	2-0	2-1	1-5	0-2	0-0	0-0	0	1	0	0	0	0	0	0	-17
14 Tatiana Collazo	07:15	0-0	0-0	0-0	0-0	0-0	0-0	1-0	0-0	0-0	0	0	0	0	0	0	0	0	-1
1 Aaliyah Davis	02:19	0-1	0-0	0-0	0-0	0-0	0-0	1-0	0-0	0-0	0	0	0	0	0	0	0	0	-1
12 Irene Asensio	10:12	0-1	0-0	0-0	0-0	0-0	0-0	1-0	0-0	0-0	0	0	0	0	0	0	0	0	-4
10 Osadebamwen Igbinedion Omoruyi	10:17	1-2	0-0	0-0	0-0	2-2	0-0	2-0	0-0	0-0	0	0	0	1	1	1	1	0	-6
8 Brooklyn Terry	06:51	1-3	1-2	0-0	0-0	0-0	0-0	0-0	0-0	0-0	0	0	0	0	0	0	0	0	-3
23 Aolani Woldai	05:56	1-2	0-0	0-0	0-0	1-1	1-0	2-0	0-0	0-0	0	0	0	0	0	0	0	0	-1
Totals		18-60	3-12	7-11	12	17	29	9	14	46	7	19	8	2	7	35			

Record: 7-2

Shooting By Period

1st FG% 2-13 15.4%
 3PT% 0-4 0.0%
 FT% 2-2 100%

2nd FG% 3-16 18.8%
 3PT% 1-3 33.3%
 FT% 1-3 33.3%

3rd FG% 7-19 36.8%
 3PT% 1-2 50.0%
 FT% 4-6 66.7%

4th FG% 6-12 50.0%
 3PT% 1-3 33.3%
 FT% 0-0 0%

GM FG% 18-60 30.0%
 3PT% 3-12 25.0%
 FT% 7-11 63.6%

Dead Ball Rebounds: 1,0

Major Fouls: NONE

BYU - 81

NO. Name	Min	FG		3P		FT		Rebounds		Fouls		TP	AS	TO	ST	Blocks			+/-
		M-A	M-A	M-A	M-A	OR	DR	PF	FF	BS	BA					BL			
13 Lara Rohkohl	C 18:03	3-4	0-0	1-2	4-4	2-3	7	1	3	1	2	0	8	0	0	0	0	0	8
2 Sydney Benally	G 27:55	3-7	2-6	0-0	0-0	2-2	3-0	8	7	4	0	0	0	0	0	0	0	0	30
7 Olivia Hamlin	G 30:12	7-13	4-7	2-2	0-1	1-1	2-20	11	4	1	1	0	0	0	0	0	0	0	18
23 Marya Huggins	G 25:25	3-8	1-4	4-4	1-4	5-0	2-11	11	1	1	0	0	0	0	0	0	0	0	22
24 Brinkley Cannon	G 25:13	2-8	0-4	0-0	4-4	2-0	4-5	0	0	0	0	0	0	0	0	0	0	0	18
3 Boliney Yusuf	14:09	4-7	0-0	0-0	2-7	9-2	1-8	11	1	0	2	0	0	0	0	0	0	0	17
20 Braeden Gunlock	22:17	1-2	0-0	0-0	1-1	2-0	1-1	1	0	0	0	0	0	0	0	0	0	0	20
14 Kambree Barber	22:02	1-6	0-0	3-4	7-7	2-1	13-3	3	2	2	0	0	0	0	0	0	0	0	31
33 Hattie Ogden	07:48	2-2	2-2	0-0	0-0	0-0	1-6	2	0	0	0	0	0	0	0	0	0	0	10
30 Mariam Traore	05:29	1-3	0-0	0-0	1-2	3-0	0-2	0	0	0	0	0	0	0	0	0	0	0	3
21 Heather Hamson	01:26	0-0	0-0	0-0	0-0	0-0	0-0	0-0	0-0	0-0	0	0	0	0	0	0	0	0	-2
Totals		32-66	10-30	7-8	18	33	51	14	9	81	22	18	9	7	2	35			

Record: 11-1

Shooting By Period

1st FG% 5-16 31.3%
 3PT% 1-8 12.5%
 FT% 2-2 100%

2nd FG% 12-17 70.6%
 3PT% 3-6 50.0%
 FT% 2-2 100%

3rd FG% 7-19 36.8%
 3PT% 3-10 30.0%
 FT% 2-4 50.0%

4th FG% 6-14 57.1%
 3PT% 3-6 50.0%
 FT% 0-0 0%

GM FG% 32-66 48.5%
 3PT% 10-30 33.3%
 FT% 7-8 87.5%

Dead Ball Rebounds: 0,0

Major Fouls: NONE

Biggest lead	BYU		Points from Turnovers	Miners	BYU	Period by Period Scoring					
	0 (1 st 10:00)	37 (4 th 1:28)				1st	2nd	3rd	4th	TOT	
Best Scoring Run	5 (4 th 5:24)	11 (3 rd 9:12)	Paint	26	42	6	8	19	13	46	
Lead Changes	0	0	Second Chance	6	19	BYU	13	29	20	19	81
Times Tied	0	0	Fast Breaks	3	10						
Time with Lead	00:00	37:44	Bench	16	31						



Official Basketball Box Score - Final
UC Irvine at UTEP
 121825 Don Hassins Center, El Paso, Texas
 2025-26 Women's Basketball

Game Time: 7:00 PM
 Game Duration: 1:58
 Attendance: 905

Officials: Brian Hall, Roy Gubeyan, Tiffany Bridges

UC Irvine - 93

NO. Name	Min	FG		3P		FT		Rebounds		Fouls		TP	AS	TO	ST	Blocks			+/-
		M-A	M-A	M-A	M-A	OR	DR	PF	FF	BS	BA					BL			
14 Summah Hanson	F 14:51	3-6	0-2	3-5	1-5	6-4	3-9	1	2	2	1	0	5	0	0	0	0	0	5
10 Lauryn Madsen	G 33:23	3-6	3-6	0-0	0-2	2-0	2-6	9	1	0	2	0	0	0	0	0	0	0	23
12 Shirrel Nahum	G 26:09	3-4	1-1	4-4	0-0	1-1	3-4	11	4	1	2	0	0	0	0	0	0	0	23
20 Hunter Hernandez	G 34:30	13-18	4-5	6-6	1-5	6-6	1-6	38	1	3	0	0	0	0	0	0	0	0	26
23 Jada Wynn	G 32:17	4-10	1-3	2-2	1-6	7-3	5-11	7	2	0	0	0	0	0	0	0	0	0	20
13 Nohelani Stores	20:33	2-3	0-0	2-2	0-2	2-1	5-1	6	0	0	3	1	2	0	0	0	0	0	-6
1 Ameerah Grant	09:49	0-1	0-0	4-4	2-1	3-4	2-4	1	1	0	0	0	0	0	0	0	0	0	-8
24 Naomy Zonzon-Huyghe	15:19	2-4	0-1	2-4	1-1	2-0	2-6	0	0	0	0	0	0	0	0	0	0	0	-8
22 Reese Noa	04:36	0-1	0-0	1-2	0-2	2-0	1-1	1	0	0	0	0	0	0	0	0	0	0	-2
2 Halay Hernandez	04:17	0-0	0-0	0-0	0-0	0-0	0-0	0	0	0	0	0	0	0	0	0	0	0	-5
21 Despoina Baltzi	04:17	0-0	0-0	0-0	0-0	0-0	0-0	0	0	0	0	0	0	0	0	0	0	0	-5
Totals		30-53	9-18	24-29	8	26	34	22	24	93	15	17	7	3	0	21			

Record: 11-2

Shooting By Period

1st FG% 8-15 53.3%
 3PT% 2-5 40.0%
 FT% 3-4 75%

2nd FG% 7-13 53.8%
 3PT% 4-7 57.1%
 FT% 4-4 100%

3rd FG% 11-15 73.3%
 3PT% 2-5 40.0%
 FT% 8-8 100%

4th FG% 4-10 40.0%
 3PT% 1-1 100.0%
 FT% 9-13 69.2%

GM FG% 30-53 56.6%
 3PT% 9-18 50.0%
 FT% 24-29 82.8%

Dead Ball Rebounds: 2,0

Major Fouls: Wynn (TF) 4th 6:06

UTEP - 72

NO. Name	Min	FG		3P		FT		Rebounds		Fouls		TP	AS	TO	ST	Blocks			+/-
		M-A	M-A	M-A	M-A	OR	DR	PF	FF	BS	BA					BL			
13 Ndack Mbengue	F 25:56	6-9	0-0	5-9	4-2	6-4	5-17	0	3	1	0	2	0	0	0	0	0	0	-9
2 Sirivva Legions	G 30:39	2-9	0-2	5-8	3-2	5-6	2-6	9	1	2	0	0	0	0	0	0	0	0	-18
3 Ivane Tensae	G 30:27	4-12	3-6	0-0	0-1	1-1	1-11	1	1	1	1	1	1	0	0	0	0	0	-19
4 Delma Zita	G 12:17	1-2	0-0	1-0	1-2	3-2	2-0	2	5	0	0	0	0	0	0	0	0	0	-11
11 Portia Adams	G 28:28	5-9	2-4	6-6	0-1	1-3	7-18	3	1	0	0	0	0	0	0	0	0	0	-17
5 Heaven Samayoa-Mathis	25:10	0-5	0-2	4-4	1-3	4-3	2-4	5	3	1	0	0	0	0	0	0	0	0	-14
14 Tatiana Collazo	04:55	0-2	0-1	0-0	1-0	1-0	0-0	0	0	0	0	0	0	0	0	0	0	0	-4
22 Mary Moses Amariyo	13:56	2-2	0-0	0-0	4-4	5-0	4-0	0	0	0	0	0	0	0	0	0	0	0	-7
10 Osadebamwen Igbinedion Omoruyi	04:51	0-1	0-0	0-0	0-0	0-0	1-0	0	0	0	0	0	0	0	0	0	0	0	-10
12 Irene Asensio	06:22	1-3	1-3	0-0	0-0	0-0	0-0	3	0	0	0	0	0	0	0	0	0	0	-2
8 Brooklyn Terry	05:39	1-3	0-2	0-0	0-1	1-0	0-0	2	0	0	0	0	0	0	0	0	0	0	1
1 Aaliyah Davis	08:33	1-1	0-0	0-0	0-0	0-0	1-0	2	0	0	0	0	0	0	0	0	0	0	1
23 Aolani Woldai	02:47	0-0	0-0	0-0	0-0	0-0	0-0	0	0	0	0	0	0	0	0	0	0	0	1
Totals		23-58																	

GAME 27: UTEP vs. KENNESAW STATE

2025-26 BOX SCORES



Official Basketball Box Score - Final
Liberty at UTEP
 01/04/26 Don Haskins Center, El Paso, Texas
 2025-26 Women's Basketball

Game Time: 12:00 PM
 Game Duration: 1:58
 Attendance: 795

Officials: Amy Krommehook, Jess Martinez, Matthew Kreckel

Liberty - 86 Record: 8-5 (2-0)

NO. Name	Min	FG	3P	FT	Rebounds	Fouls	TP	AS	TO	ST	Blocks	+/-
		M/A	M/A	M/A	OR DR TOT	PF FD					BS BA	
6 Ily Nwaobi	28:20	5-13	0-2	1-2	3 4 7	3 1	11	0	1	0	1 2	20
21 Elisabeth Aegisdottir	F 30:15	2-8	1-2	3-6	2 4 6	5 4	8	2	5	1	0 1	18
17 Emmly Stout	F 22:59	6-9	0-0	4-6	2 4 6	5 6	16	2	1	0	0 0	25
1 Avery Mills	G 28:55	7-10	6-8	2-2	1 4 5	1 6	22	3	2	1	2 0	17
4 Claudia Acin	G 29:34	7-9	4-5	2-2	1 2 3	3 0	20	7	2	3	0 0	15
3 Jakyia Thompson	25:27	1-6	0-2	0-0	0 5 5	2 0	2	6	0	3	0 1	10
33 Lyn Peters	14:42	1-1	0-0	0-0	1 1 2	4 0	2	0	2	0	0 0	-3
22 Lydie Mwamba	09:48	1-4	0-2	0-0	1 1 2	0 0	2	0	0	0	1 0	-3
24 Emma Leon	09:41	1-4	1-3	0-0	1 1 2	1 0	3	2	1	0	0 0	3
15 Maleah Alexander	00:20	0-0	0-0	0-0	0 0 0	0 0	0	0	0	0	0 0	-2
Team					3 4 0	0 0						
Totals		31-64	12-24	12-18	13 26 39	21 17	86	22	14	10	4 4	20

Major Fouls: NONE

Shooting By Period

1 st	2 nd	3 rd	4 th	GM
FG% 8-18 44.4%	FG% 3-7 42.9%	FG% 3-4 75%	FG% 5-10 50.0%	GM FG% 31-64 48.4%
3PT% 1-3 33.3%	3PT% 1-2 50.0%	3PT% 3-6 50.0%	3PT% 12-24 50.0%	GM 3PT% 12-24 50.0%
FT% 3-4 75%	FT% 3-6 50%	FT% 3-6 50%	FT% 12-18 66.7%	GM FT% 12-18 66.7%

Dead Ball Rebounds: 2, 0

UTEP - 66 Record: 9-4 (1-1)

NO. Name	Min	FG	3P	FT	Rebounds	Fouls	TP	AS	TO	ST	Blocks	+/-
		M/A	M/A	M/A	OR DR TOT	PF FD					BS BA	
13 Ndack Mbengue	F 30:48	0-2	0-0	5-6	4 7 11	4 8	5	0	1	1	0 0	-21
2 Sirivva Legions	G 25:05	2-11	0-0	2-2	4 3 7	2 3	6	0	3	1	0 2	-20
3 Ivane Tensaie	G 29:48	2-12	2-11	2-2	0 1 1	2 2	8	1	3	0	0 0	-23
4 Delma Zita	G 18:34	1-2	0-0	0-0	1 0 1	2 0	2	1	3	0	1 1	-14
11 Portia Adams	G 30:19	5-12	0-3	7-8	0 1 1	4 4	17	2	4	0	0 0	-16
12 Irene Asensio	03:42	0-1	0-1	0-0	0 0 0	1 1	0	0	0	0	0 0	-6
5 Heaven Samayoa-Mathis	27:52	4-10	2-4	4-4	1 5 6	1 2	14	4	3	0	1 0	-1
22 Mary Moses Amaniyo	29:42	6-11	0-0	2-2	5 5 10	1 1	14	0	4	0	0 0	0
10 Osadobamwen Igbinedion Omoyul	01:02	0-1	0-0	0-0	0 0 0	0 0	0	0	0	0	0 0	-2
1 Aaliyah Davis	03:08	0-0	0-0	0-0	0 0 0	0 0	0	0	0	0	0 0	0
Team					2 4 4	1 0						
Totals		20-62	4-19	22-24	17 24 41	18 21	66	8	18	4	4 4	-20

Major Fouls: Coach (TF) 4th 0:02

Shooting By Period

1 st	2 nd	3 rd	4 th	GM
FG% 2-12 16.7%	FG% 0-5 0.0%	FG% 5-8 62.5%	FG% 7-19 36.8%	GM FG% 20-62 32.3%
3PT% 0-0 0.0%	3PT% 0-0 0.0%	3PT% 7-18 38.9%	3PT% 4-19 21.1%	GM 3PT% 4-19 21.1%
FT% 4-4 100%	FT% 4-4 100%	FT% 4-4 100%	FT% 22-24 91.7%	GM FT% 22-24 91.7%

Dead Ball Rebounds: 1, 0

LIB	UTEP
Biggest lead	21 (4 th 0:09) 0 (1 st 10:00)
Best Scoring Run	9 (1 st 6:47) 7 (2 nd 6:37)
Lead Changes	0
Times Tied	0
Time with Lead	39:36 00:00

Points from Turnovers	LIB	UTEP
	17	6
Paint	38	26
Second Chance	11	10
Fast Breaks	9	17
Bench	9	28

Period by Period Scoring	1st	2nd	3rd	4th	TOT
LIB	22	16	25	23	86
UTEP	9	21	21	15	66



Official Basketball Box Score - Final
UTEP at Middle Tenn.
 01/08/26 Murphy Center, Murfreesboro, Tenn.
 2025-26 Women's Basketball

Game Time: 6:30 PM
 Game Duration: 1:44
 Attendance: 3,072

Officials: Eric Koch, Kyle Galloway, Royce Byrnes

UTEP - 43 Record: 9-5 (1-2)

NO. Name	Min	FG	3P	FT	Rebounds	Fouls	TP	AS	TO	ST	Blocks	+/-
		M/A	M/A	M/A	OR DR TOT	PF FD					BS BA	
13 Ndack Mbengue	F 16:10	0-2	0-0	0-2	1 0 1	3 3	0	0	2	0	0 0	-25
22 Mary Moses Amaniyo	F 24:32	5-8	0-0	4-6	7 3 10	1 3	14	0	1	2	0 0	-21
1 Aaliyah Davis	F 11:03	0-3	0-0	0-0	0 2 2	1 0	0	0	1	0	0 1	-13
5 Heaven Samayoa-Mathis	G 25:34	2-6	0-2	0-0	1 3 4	2 1	4	0	2	2	0 0	-32
11 Portia Adams	G 18:12	0-7	0-2	0-0	0 0 0	1 1	5	0	2	0	0 1	-22
2 Sirivva Legions	16:11	2-5	0-0	1-5	0 1 1	1 3	5	1	1	0	0 0	-29
3 Ivane Tensaie	24:33	1-10	1-3	2-2	0 0 0	0 0	1	5	0	0	0 0	-33
8 Brooklyn Terry	07:11	1-4	1-3	0-0	0 2 2	0 0	3	0	1	0	0 0	-5
4 Delma Zita	11:01	1-4	0-1	1-2	1 2 3	0 2	3	1	1	0	0 0	-5
12 Irene Asensio	18:22	1-3	1-3	0-0	3 3 0	0 3	1	1	2	1	0 0	-10
14 Tatiana Collazo	15:37	0-0	0-0	0-2	0 1 1	0 2	0	0	0	0 0	0 0	-10
10 Osadobamwen Igbinedion Omoyul	08:09	1-4	0-0	1-2	1 0 1	1 0	1	3	0	0	1 0	-6
23 Aolani Woldai	03:25	1-1	0-0	1-1	0 0 0	1 1	3	0	0	0 0	0 0	-6
Team					1 2 3	0 0						
Totals		15-57	3-14	10-22	12 19 31	10 18	43	3	14	6	0 4	-43

Major Fouls: NONE

Shooting By Period

1 st	2 nd	3 rd	4 th	GM
FG% 3-12 25.0%	FG% 1-2 50.0%	FG% 2-6 33.3%	FG% 3-17 17.6%	GM FG% 15-57 26.3%
3PT% 0-1 0.0%	3PT% 1-2 50.0%	3PT% 2-5 40%	3PT% 3-17 17.6%	GM 3PT% 3-14 21.4%
FT% 1-7 14.3%	FT% 3-4 75%	FT% 2-5 40%	FT% 10-22 45.5%	GM FT% 10-22 45.5%

Dead Ball Rebounds: 6, 0

Middle Tenn. - 86 Record: 8-7 (3-0)

NO. Name	Min	FG	3P	FT	Rebounds	Fouls	TP	AS	TO	ST	Blocks	+/-
		M/A	M/A	M/A	OR DR TOT	PF FD					BS BA	
3 Aiyana Contreras	G 21:24	5-12	2-3	4-4	1 0 1	2 2	16	2	0	1	0 0	31
10 Kriston Verhulst	G 33:55	6-10	5-9	0-0	1 3 4	0 1	17	1	3	0	1 0	37
12 Blair Baugus	G 30:00	6-8	0-1	3-3	5 6 11	2 3	15	3	2	0	0 0	39
14 Savannah Davis	G 33:19	3-12	3-10	0-0	1 9 10	0 0	9	2	1	2	2 0	39
22 Macie Phifer	G 13:50	1-6	0-1	0-0	2 1 3	4 0	2	0	1	0	0 0	6
42 Stanislava Kabernick	20:25	1-3	1-2	0-0	3 7 10	2 0	3	2	1	1	0 0	29
15 Nicole Dominguez Gureeva	07:43	0-0	0-0	2-2	0 4 2	2 1	2	0	2	0	0 0	1
1 Yu Han Lin	15:46	7-12	2-3	2-2	0 1 1	2 2	18	0	0	0	0 0	11
5 Carsyn Swaney	10:00	0-2	0-1	0-0	2 0 2	2 0	2	0	1	0	0 0	4
11 Emily Monson	05:36	1-2	0-1	0-0	1 1 2	1 0	2	1	1	0	0 0	7
13 Jenna McClendon	04:37	1-1	0-0	0-0	0 2 2	1 0	2	0	1	0	0 0	5
0 Grace Hamby	03:25	0-0	0-0	0-0	1 1 2	0 1	0	1	0	0 0	0 0	6
Team					1 2 2	0 0						
Totals		31-68	13-31	11-11	18 36 54	18 10	86	13	13	7	4 0	43

Major Fouls: NONE

Shooting By Period

1 st	2 nd	3 rd	4 th	GM
FG% 8-20 40.0%	FG% 5-11 45.5%	FG% 2-2 100%	FG% 8-15 53.3%	GM FG% 31-68 45.6%
3PT% 1-2 50.0%	3PT% 2-5 40%	3PT% 2-5 40%	3PT% 8-15 53.3%	GM 3PT% 13-31 41.9%
FT% 4-4 100%	FT% 4-4 100%	FT% 4-4 100%	FT% 11-11 100%	GM FT% 11-11 100.0%

Dead Ball Rebounds: 0, 0

UTEP	MTSU
Biggest lead	2 (1 st 9:46) 43 (4 th 0:19)
Best Scoring Run	5 (2 nd 2:58) 16 (1 st 1:58)
Lead Changes	1
Times Tied	0
Time with Lead	01:08 36:15

Points from Turnovers	UTEP	MTSU
	9	21
Paint	22	30
Second Chance	11	19
Fast Breaks	8	4
Bench	25	27

Period by Period Scoring	1st	2nd	3rd	4th	TOT
UTEP	9	10	10	14	43
MTSU	23	21	24	18	86



Official Basketball Box Score - Final
UTEP at WKU
 01/10/26 E.A. Diddle Arena, Bowling Green, KY
 2025-26 Women's Basketball

Game Time: 12:00 PM
 Game Duration: 1:52
 Attendance: 703

Officials: Angelica Sufren, Natasha Camy, Jamie Brodick

UTEP - 59 Record: 9-6 (1-3)

NO. Name	Min	FG	3P	FT	Rebounds	Fouls	TP	AS	TO	ST	Blocks	+/-
		M/A	M/A	M/A	OR DR TOT	PF FD					BS BA	
13 Ndack Mbengue	F 31:42	2-7	0-0	5-8	5 6 11	3 8	9	0	6	0	1 0	-4
2 Sirivva Legions	G 15:02	1-4	0-0	0-0	1 2 3	0 0	2	0	0	0	0 0	-19
3 Ivane Tensaie	G 32:39	5-12	4-9	2-2	0 3 3	0 2	16	3	1	0	0 0	-7
5 Heaven Samayoa-Mathis	G 24:39	2-7	1-5	0-0	1 2 3	1 1	5	0	1	2	0 0	-15
11 Portia Adams	G 26:26	2-10	0-2	3-3	1 0 1	2 3	7	3				

2025-26 BOX SCORES



Official Basketball Box Score - Final
FIU at UTEP
 01/17/26 Don Haskins Center, El Paso, Texas
 2025-26 Women's Basketball

Game Time: 12:00 PM
 Game Duration: 2:17
 Attendance: 891

Officials: Scott Yarbrough, Neonta Williams, Shandra Twine

FIU - 67 Record: 10-6 (3-2)

NO. Name	Min	FG		3P		FT		Rebounds		Fouls		TP	AS	TO	ST	Blocks		+/-
		M	A	M	A	O	D	O	D	O	D					BS	BA	
1 Judit Valero	17:16	4-9	2-4	0-0	2	0	2	5	2	10	0	0	0	0	0	0	0	11
5 Grecia Ferrer Leal	30:46	4-5	0-1	1-2	0	1	1	3	1	9	2	5	1	0	0	0	0	5
10 Paris Atkins	20:10	0-8	0-1	2-2	0	2	2	5	2	2	0	3	0	0	0	0	0	0
21 Adama Badjie Coly	26:10	3-4	1-2	0-0	1	5	6	4	2	7	0	1	1	0	0	0	0	0
23 Rhema Collins	37:53	4-14	0-0	14-19	6	10	16	4	12	22	1	5	3	3	2	7	0	0
3 Riley Burd	11:44	0-0	0-0	0-0	0	1	1	3	1	0	0	0	0	0	0	0	0	-2
15 Fantasia James	13:21	0-1	0-0	2-4	1	2	3	1	3	2	0	1	1	0	1	0	0	-1
0 Denika Lightbourne	21:40	5-7	0-0	1-1	1	2	3	0	2	11	3	4	0	0	0	0	2	
44 Claudia Marina Gonzalez	21:00	1-4	1-3	1-2	1	0	1	2	1	4	2	0	0	0	0	0	0	5
Totals		21-52	4-11	21-30	13	25	38	27	26	67	8	21	6	4	3	8		

Major Fouls: NONE

Shooting By Period

1st FG%	6-14	42.9%
3PT%	0-0	0.0%
FT%	5-6	83.3%
2nd FG%	4-13	30.8%
3PT%	1-3	33.3%
FT%	4-5	80%
3rd FG%	8-13	61.5%
3PT%	3-5	60.0%
FT%	2-6	33.3%
4th FG%	3-12	25.0%
3PT%	0-3	0.0%
FT%	10-13	76.9%
GM FG%	21-52	40.4%
3PT%	4-11	36.4%
FT%	21-30	70.0%

Dead Ball Rebounds: 6.0

UTEP - 59 Record: 9-8 (1-5)

NO. Name	Min	FG		3P		FT		Rebounds		Fouls		TP	AS	TO	ST	Blocks		+/-
		M	A	M	A	O	D	O	D	O	D					BS	BA	
22 Mary Moses Amaniyo	12:51	1-4	0-0	1-2	2	1	3	5	4	3	0	1	1	0	0	1	0	-6
2 Sirivva Legions	37:09	6-15	1-2	2-6	5	7	12	4	15	0	5	1	0	1	0	0	-12	
3 Ivane Tensae	32:12	3-10	3-8	3-4	0	1	1	2	3	12	1	0	0	0	0	0	0	19
5 Heaven Samayoa-Mathis	22:24	1-7	0-3	2-2	1	3	4	5	4	4	2	1	0	0	0	0	9	
11 Portia Adams	36:36	7-15	2-2	5-6	1	6	7	4	8	21	2	5	5	0	1	0	-11	
4 Delma Zita	22:08	0-3	0-1	2-2	0	1	1	2	2	1	1	1	0	1	0	0	-11	
12 Irene Asensio	01:54	0-0	0-0	0-0	0	0	0	0	0	0	0	0	0	0	0	0	-4	
10 Osadabamwen Igbiniedion Omoruyi	26:38	1-7	0-0	0-0	7	2	9	5	2	2	1	3	2	3	0	0	-3	
1 Aaliyah Davis	07:37	0-0	0-0	0-0	0	0	0	0	0	0	0	0	0	0	0	0	0	
8 Brooklyn Terry	00:31	0-0	0-0	0-0	0	0	0	0	0	0	0	0	0	0	0	0	1	
Totals		19-61	6-16	15-22	21	21	42	26	27	59	9	21	11	3	4	8		

Major Fouls: NONE

Shooting By Period

1st FG%	6-16	37.5%
3PT%	1-3	33.3%
FT%	3-4	75%
2nd FG%	3-14	21.4%
3PT%	1-2	50.0%
FT%	3-4	75%
3rd FG%	4-10	40.0%
3PT%	1-2	50.0%
FT%	4-6	66.7%
4th FG%	6-21	28.6%
3PT%	3-9	33.3%
FT%	5-8	62.5%
GM FG%	19-61	31.1%
3PT%	6-16	37.5%
FT%	15-22	68.2%

Dead Ball Rebounds: 3.0

Biggest lead	12 (3 rd 0:05)	2 (1 st 7:53)
Best Scoring Run	7 (4 th 1:42)	5 (1 st 4:38)
Lead Changes	12	
Times Tied	8	
Time with Lead	29:50	05:02

Points from Turnovers	15	15
Paint	32	22
Second Chance	18	15
Fast Breaks	11	14
Bench	17	4

Period by Period Scoring					
1st	2nd	3rd	4th	TOT	
FIU	17	13	21	16	67
UTEP	16	10	13	20	59



Official Basketball Box Score - Final
UTEP at Kennesaw St.
 01/22/26 VyStar Arena, Kennesaw
 2025-26 Women's Basketball

Game Time: 7:00 PM
 Game Duration: 1:54
 Attendance: 441

Officials: Eric Koch, Dawn Marsh, Kelly Johnson

UTEP - 52 Record: 9-9 (1-6)

NO. Name	Min	FG		3P		FT		Rebounds		Fouls		TP	AS	TO	ST	Blocks		+/-
		M	A	M	A	O	D	O	D	O	D					BS	BA	
13 Ndack Mbengue	15:53	1-3	0-0	0-0	1	1	2	0	5	1	0	0	0	0	0	0	0	-17
2 Sirivva Legions	19:21	2-5	0-0	1-9	0	3	3	4	6	2	1	4	2	0	0	0	0	-14
3 Ivane Tensae	21:42	1-4	0-1	0-2	1	1	2	1	1	2	0	2	1	0	1	0	0	-20
5 Heaven Samayoa-Mathis	20:01	1-3	0-1	2-2	0	1	1	2	2	4	0	1	2	0	0	0	0	-22
11 Portia Adams	30:48	3-9	0-1	8-12	1	3	4	1	8	14	0	1	1	0	0	0	0	-21
22 Mary Moses Amaniyo	29:54	5-9	0-1	3-4	2	7	9	2	3	13	2	1	1	0	1	0	-12	
10 Osadabamwen Igbiniedion Omoruyi	19:03	1-3	0-0	0-0	0	3	3	1	2	0	0	1	0	0	0	0	0	-13
4 Delma Zita	20:39	2-6	0-0	4-4	0	1	1	0	2	8	0	0	1	0	0	0	0	-13
12 Irene Asensio	08:28	0-2	0-2	2-2	0	0	0	0	1	2	1	0	0	0	0	0	0	-4
8 Brooklyn Terry	10:02	0-2	0-1	0-0	0	2	2	0	0	0	0	0	1	0	0	0	0	-10
23 Aolani Woldai	04:10	0-0	0-0	0-0	0	0	0	0	0	0	0	0	0	0	0	0	0	-9
Totals		16-46	0-7	20-35	7	22	29	20	24	52	4	17	9	1	2	3		

Major Fouls: NONE

Shooting By Period

1st FG%	6-12	50.0%
3PT%	0-1	0.0%
FT%	3-6	50%
2nd FG%	3-9	33.3%
3PT%	0-2	0.0%
FT%	8-11	72.7%
3rd FG%	4-11	36.4%
3PT%	0-2	0.0%
FT%	4-10	40%
4th FG%	3-14	21.4%
3PT%	0-2	0.0%
FT%	5-8	62.5%
GM FG%	16-46	34.8%
3PT%	0-7	0.0%
FT%	20-35	57.1%

Dead Ball Rebounds: 9.1

Kennesaw St. - 83 Record: 9-8 (2-4)

NO. Name	Min	FG		3P		FT		Rebounds		Fouls		TP	AS	TO	ST	Blocks		+/-
		M	A	M	A	O	D	O	D	O	D					BS	BA	
2 Trynce Taylor	21:24	8-10	0-0	2-2	1	8	9	3	2	18	2	1	0	0	0	0	0	23
22 Latazia Williamson	21:04	5-9	0-0	0-0	3	2	5	3	1	10	0	0	0	0	0	0	0	15
0 Kalyin Fields	38:43	2-8	1-2	0-0	1	2	2	1	5	4	4	1	0	0	0	0	0	29
12 Kaelyn Flowers	27:07	3-5	0-0	2-3	2	2	4	2	8	1	2	2	0	0	0	0	0	33
21 Kiyarah Berry	20:38	4-9	0-0	5-7	1	2	3	4	6	13	2	0	2	0	0	0	0	18
13 Shantia Nichols	32:35	6-14	3-9	3-3	1	2	3	5	2	18	4	2	1	0	1	0	0	26
23 Ta'Anna Stovall	28:47	3-10	0-0	3-5	4	7	11	3	6	9	2	4	2	2	0	0	0	-7
25 Madyson Elliott	05:11	0-0	0-0	0-0	0	0	0	0	0	0	0	0	0	0	0	0	0	-7
33 Mame Kane	01:24	0-1	0-0	0-0	1	0	1	0	0	0	0	0	0	0	0	0	0	-5
8 Emayah Lewis	03:04	1-3	0-0	0-0	1	1	2	0	0	2	0	0	0	0	0	0	0	-1
10 Gabriela Bendeck-Giron	00:03	0-0	0-0	0-0	0	0	0	0	0	0	0	0	0	0	0	0	0	4
Totals		32-69	4-11	15-20	16	28	44	24	20	83	15	13	8	2	1	31		

Major Fouls: NONE

Shooting By Period

1st FG%	8-19	42.1%
3PT%	3-4	75.0%
FT%	5-7	71.4%
2nd FG%	6-20	30.0%
3PT%	0-4	0.0%
FT%	0-0	0.0%
3rd FG%	10-18	55.6%
3PT%	0-2	0.0%
FT%	2-2	100%
4th FG%	8-12	66.7%
3PT%	1-1	100.0%
FT%	8-11	72.7%
GM FG%	32-69	46.4%
3PT%	4-11	36.4%
FT%	15-20	75.0%

Dead Ball Rebounds: 3.1

Biggest lead	0 (1 st 10:00)	31 (4 th 0:00)
Best Scoring Run	6 (3 rd 7:30)	10 (4 th 9:13)
Lead Changes	0	
Times Tied	0	
Time with Lead	00:00	39:07

Points from Turnovers	8	24
Paint	28	46
Second Chance	5	17
Fast Breaks	12	17
Bench	25	29

Period by Period Scoring					
1st	2nd	3rd	4th	TOT	
TEP	15	14	12	11	52</

2025-26 BOX SCORES



Official Basketball Box Score - Final
Louisiana Tech at UTEP
 02/07/26 Don Haskins Center, El Paso, Texas
 2025-26 Women's Basketball

Game Time: 7:00 PM
 Game Duration: 1:44
 Attendance: 1,127

Officials: Tiffany Bridges, Tucker Furlow, Carmela Garcia

Louisiana Tech - 87 Record: 16-5 (9-1)

NO. Name	Min	FG	3P	FT	Rebounds	Fouls	TP	AS	TO	ST	Blocks	++
		M/A	M/A	M/A	OR DR TOT	PF FD					BS BA	
15 Jordan Marshall	F 15:32	3-5	0-0	0-0	2 4 6	1 0 6	1	0	1	0	0	13
25 Averi Aaron	F 22:03	2-7	0-1	0-0	0 3 3	4 0 4	3	1	1	0	0	21
1 Alexia Weaver	G 30:18	4-11	4-6	0-0	0 3 3	1 2 12	6	2	1	0	2	35
22 Janna Morris	G 29:19	7-10	5-7	2-2	0 2 2	1 4 4	2	1	0	0	0	27
23 Paris Bradley	G 25:16	5:10	3-5	1-1	0 1 1	1 1 14	3	1	2	0	0	19
30 Kaleigh Thompson	23:53	3-4	1-1	2-2	2 1 3	1 1 9	0	0	1	0	0	19
4 Joy Madison-Key	16:09	5-6	0-0	2-3	0 1 1	2 3 12	3	2	1	0	0	6
18 Isla Airey	12:48	0-3	0-0	1-2	0 2 2	2 1 1	1	2	0	1	1	10
3 Hillary Dawson	09:42	2-3	0-0	1-1	3 4 1	2 4 2	0	0	0	0	0	17
10 Jayden Terry	15:01	2-3	0-1	0-0	0 2 2	0 1 4	1	0	0	1	0	28
Team					2 3 5	0 0	0	2				
Totals		33-62	13-21	8-11	7 24 31	17 15	87	10	9	2	3	39

Major Fouls: NONE

Shooting By Period

1 st FG%	4-15	26.7%
3PT%	2-5	40.0%
FT%	2-2	100%
2 nd FG%	9-16	56.3%
3PT%	6-8	75.0%
FT%	0-0	0%
3 rd FG%	10-14	71.4%
3PT%	4-4	100.0%
FT%	4-6	66.7%
4 th FG%	10-17	58.8%
3PT%	1-4	25.0%
FT%	2-3	66.7%
GM FG%	33-62	53.2%
3PT%	13-21	61.9%
FT%	8-11	72.7%

Dead Ball Rebounds: 3, 0

Official Basketball Box Score - Final
Sam Houston at UTEP
 02/07/26 Don Haskins Center, El Paso, Texas
 2025-26 Women's Basketball

Game Time: 2:00 PM
 Game Duration: 2:01
 Attendance: 1,013

Officials: Timothy Resch, Shandra Twins, Nate Accata

Sam Houston - 70 Record: 14-7 (7-3)

NO. Name	Min	FG	3P	FT	Rebounds	Fouls	TP	AS	TO	ST	Blocks	++
		M/A	M/A	M/A	OR DR TOT	PF FD					BS BA	
8 Deborah Ogayemi	F 36:47	6-14	0-0	7-8	2 3 5	4 7	19	2	2	5	1	14
4 Fanta Kone	G 37:55	4-8	1-3	3-9	1 5 6	2 9	12	1	3	1	0	12
5 Aysia Ward-Strong	G 24:26	2-4	0-0	1-2	2 4 6	2 1	5	2	2	2	1	0
10 Alaisha Brown	G 03:18	1-2	0-0	0-0	0 0 0	2 0	2	0	0	0	0	0
23 Alysia Block	G 01:18	0-0	0-0	0-0	0 0 0	0 0	0	0	0	0	0	0
7 Annika Corcoran	G 32:16	5-11	3-7	1-2	1 1 2	3 2 14	3	2	1	0	0	12
15 Nyla Inmon	36:01	5-9	0-0	2-6	0 7 7	1 3	12	3	2	3	1	0
24 Whitney Dunn	17:10	2-4	0-0	2-2	2 2 4	0 3	6	1	4	1	0	0
11 Esther Rodellar	10:49	0-1	0-0	0-0	0 1 1	1 0	0	0	1	0	0	0
Team					1 1 2	0 0	0	1				
Totals		25-53	4-10	16-29	9 24 33	15 25	70	12	17	13	3	12

Major Fouls: NONE

Shooting By Period

1 st FG%	9-16	56.3%
3PT%	0-2	0.0%
FT%	1-4	25%
2 nd FG%	4-14	28.6%
3PT%	2-6	33.3%
FT%	2-3	66.7%
3 rd FG%	7-12	58.3%
3PT%	2-2	100.0%
FT%	9-14	64.3%
4 th FG%	5-11	45.5%
3PT%	0-0	0%
FT%	4-8	50%
GM FG%	25-53	47.2%
3PT%	4-10	40.0%
FT%	16-29	55.2%

Dead Ball Rebounds: 7, 1

UTEP - 48 Record: 10-11 (2-8)

NO. Name	Min	FG	3P	FT	Rebounds	Fouls	TP	AS	TO	ST	Blocks	++
		M/A	M/A	M/A	OR DR TOT	PF FD					BS BA	
13 Ndack Mbengue	F 23:08	2-3	0-0	0-3	1 3 4	1 4	0	2	0	1	0	-26
3 Ivane Tensae	G 26:26	3-11	3-8	0-0	2 2 1	1 9	11	2	1	0	0	-32
4 Delma Zita	G 21:03	2-4	0-0	2-2	2 2 2	2 1	6	3	5	0	0	-21
5 Heaven Samayoa-Mathis	G 19:58	0-2	0-1	0-0	1 3 4	3 2	0	0	0	2	0	-12
11 Portia Adams	G 23:28	1-4	0-1	2-3	1 2 3	1 4	4	0	6	0	0	-26
22 Mary Moses Amariyo	24:32	4-9	0-0	3-3	2 7 9	2 2	11	0	2	2	0	-27
12 Irene Asensio	18:08	1-4	1-4	0-0	0 0 0	2 3	7	1	0	0	0	-9
23 Aolani Woldai	23:14	1-7	0-3	5-5	2 2 4	3 0	7	3	5	2	0	-20
8 Brooklyn Terry	13:31	0-3	0-3	0-0	1 1 1	0 0	0	0	0	0	0	-18
10 Osadebamwen Igbinedion Omoruyi	02:34	2-2	0-0	0-0	0 0 0	0 4	0	0	0	0	0	-2
15 Abby Priscilla	03:58	0-0	0-0	0-0	1 0 1	0 0	0	0	0	0	0	-2
Team					1 2 3	0 0	0	1				
Totals		16-49	4-20	12-16	11 22 33	15 17	48	7	24	4	3	-39

Major Fouls: NONE

Shooting By Period

1 st FG%	3-10	30.0%
3PT%	1-3	33.3%
FT%	6-6	100%
2 nd FG%	3-9	33.3%
3PT%	1-4	25.0%
FT%	2-2	100%
3 rd FG%	4-15	26.7%
3PT%	0-3	0.0%
FT%	4-8	50%
4 th FG%	6-15	40.0%
3PT%	2-10	20.0%
FT%	0-0	0%
GM FG%	16-49	32.7%
3PT%	4-20	20.0%
FT%	12-16	75.0%

Dead Ball Rebounds: 2, 0

UTEP - 58 Record: 10-12 (2-9)

NO. Name	Min	FG	3P	FT	Rebounds	Fouls	TP	AS	TO	ST	Blocks	++
		M/A	M/A	M/A	OR DR TOT	PF FD					BS BA	
13 Ndack Mbengue	F 10:52	0-2	0-0	1-2	1 3 4	4 2	1	0	4	0	0	-8
3 Ivane Tensae	G 28:13	2-7	1-3	1-2	1 1 2	2 1	6	1	0	0	0	-6
4 Delma Zita	G 34:47	0-1	0-0	0-0	2 3 5	3 1	12	4	2	0	0	-9
5 Heaven Samayoa-Mathis	G 31:57	1-7	0-1	0-0	1 2 3	3 1	2	3	4	1	0	-18
11 Portia Adams	G 34:08	5-16	1-3	4-4	4 4 4	3 6	15	2	4	0	0	-15
22 Mary Moses Amariyo	18:58	3-5	0-0	0-0	1 6 7	3 1	8	0	3	0	1	-5
23 Aolani Woldai	18:18	3-6	1-3	0-1	1 1 2	5 1	7	1	2	1	0	-6
12 Irene Asensio	12:18	0-0	0-0	0-0	0 0 0	0 0	0	0	0	0	0	-4
10 Osadebamwen Igbinedion Omoruyi	03:53	1-2	0-0	2-2	3 4 7	2 1	4	0	2	0	0	-4
8 Brooklyn Terry	06:42	2-5	0-2	1-1	1 1 2	0 1	5	0	1	1	0	0
Team					2 0 2	0 0	0	0				
Totals		23-59	3-13	9-12	13 25 38	25 15	58	11	24	5	1	-32

Major Fouls: NONE

Shooting By Period

1 st FG%	6-12	50.0%
3PT%	2-4	50.0%
FT%	3-4	75%
2 nd FG%	5-16	31.3%
3PT%	0-4	0%
FT%	3-4	75%
3 rd FG%	6-16	37.5%
3PT%	0-4	0%
FT%	3-4	75%
4 th FG%	6-15	40.0%
3PT%	1-3	33.3%
FT%	0-0	0%
GM FG%	23-59	39.0%
3PT%	3-13	23.1%
FT%	9-12	75.0%

Dead Ball Rebounds: 1, 0

	TECH	UTEP
Biggest lead	42 (4 th 0:54)	4 (2 nd 9:43)
Best Scoring Run	14 (2 nd 0:53)	5 (1 st 1:08)
Lead Changes	4	2
Times Tied	2	4
Time with Lead	29:01	07:15

Points from	TECH	UTEP
Turnovers	3	8
Paint	36	24
Second Chance	6	4
Fast Breaks	15	13
Bench	30	25

Period by Period Scoring	1st	2nd	3rd	4th	TOT
TECH	12	24	28	23	87
UTEP	13	9	12	14	48

	SHSU	UTEP
Biggest lead	14 (4 th 5:20)	2 (1 st 4:39)
Best Scoring Run	7 (4 th 8:32)	5 (1 st 4:39)
Lead Changes	4	4
Times Tied	7	12
Time with Lead	33:35	01:50

Points from	SHSU	UTEP
Turnovers	19	8
Paint	40	34
Second Chance	5	14
Fast Breaks	7	12
Bench	32	22

Period by Period Scoring	1st	2nd	3rd	4th	TOT
SHSU	19	25	14	7	65
UTEP	17	13	15	13	58



Official Basketball Box Score - Final
UTEP at Liberty
 02/12/26 Liberty Arena, Lynchburg, Va.
 2025-26 Women's Basketball

Game Time: 5:00 PM
 Game Duration: 1:42
 Attendance: 849

Officials: Joshua Howell, Cara Segge, Alex Leap

UTEP - 48 Record: 12-11 (6-6)

NO. Name	Min	FG	3P	FT	Rebounds	Fouls	TP	AS	TO	ST	Blocks	++
		M/A	M/A	M/A	OR DR TOT	PF FD					BS BA	
13 Ndack Mbengue	F 32:07	2-5	0-0	5-6	1 3 4	4 5	9	0	1	2	1	-14
22 Mary Moses Amariyo	F 31:28	5-8	0-2	3-4	2 6 8	3 2	13	1	5	4	1	-5
3 Ivane Tensae	G 30:29	3-12	3-11	0-0	2 2 2	1 0	9	2	1	0	0	-16
5 Heaven Samayoa-Mathis	G 33:49	3-10	2-4	1-2	2 1 3	0 2	9	2	1	1	0	-15
11 Portia Adams	G 02:52	0-0	0-0	0-0	1 1 0	0 0	0	0	0	0	0	-12
4 Delma Zita	G 31:28	2-7	0-1	0-0	1 0 1	1 0	4	6</				

2025-26 BOX SCORES



Official Basketball Box Score - Final
UTEP at New Mexico St.
 02/26/26 Pan American Center, Las Cruces
 2025-26 Women's Basketball

Game Time: 2:00 PM
 Game Duration: 1:54
 Attendance: 712

Officials: Julie Kommerhoek, Tucker Furrow, Tillary Bridges

UTEP - 69

Record: 12-13 (4-10)

NO.	Name	Min	FG			Rebounds			Fouls			TP	AS	TO	Blocks			+/-
			M-A	M-A	M-A	OR	DR	TOT	PF	FD	FT				BS	BA	BLK	
13	Ndack Mbengue	F 35:11	5-10	0-0	3-3	4	10	14	1	5	13	2	1	1	1	1	13	
3	Ivane Tensaie	G 38:10	4-12	1-6	1-1	0	1	1	2	1	10	0	0	1	0	1	14	
4	Delma Zita	G 32:10	4-10	2-2	4-4	2	2	4	4	4	14	6	4	2	0	1	12	
5	Heaven Samayoa-Mathis	G 35:03	4-8	1-5	4-4	0	2	2	1	3	13	3	2	1	1	2	19	
11	Portia Adams	G 21:12	6-9	1-4	1-2	0	2	2	3	3	14	1	1	0	0	0	5	
22	Mary Moses Amaniyo	13:25	0-1	0-0	1-2	0	6	6	0	3	1	0	3	1	0	0	2	
23	Aolani Woldai	12:16	1-3	0-0	0-0	0	1	1	3	0	2	1	0	1	0	0	4	
10	Osadebamwen Igbinedion Omoruyi	01:50	0-0	0-0	0-0	0	0	0	0	0	0	0	0	0	0	0	-3	
8	Brooklyn Terry	08:53	1-1	0-0	0-0	0	1	1	0	1	0	2	0	0	0	0	-5	
12	Irene Asensio	00:55	0-0	0-0	0-0	0	0	0	0	0	0	0	0	0	0	0	-3	
14	Tatiana Collazo	00:55	0-0	0-0	0-0	0	0	0	0	0	0	0	0	0	0	0	-3	
Team						2	6	8	0	0	2							
Totals			25-54	5-17	14-16	8	31	39	14	19	69	13	13	7	2	5	11	

Major Fouls: NONE

Dead Ball Rebounds: 1, 0

New Mexico St. - 58

Record: 8-18 (4-10)

NO.	Name	Min	FG			Rebounds			Fouls			TP	AS	TO	Blocks			+/-
			M-A	M-A	M-A	OR	DR	TOT	PF	FD	FT				BS	BA	BLK	
5	Morane Doesou	F 16:13	1-3	0-0	0-0	2	2	4	2	0	2	2	1	0	2	0	-16	
24	Lucia Yenes	F 30:28	1-9	0-0	2-2	1	6	7	4	1	4	1	3	0	1	1	-11	
1	Imani Warren	G 22:30	4-10	2-2	0-0	0	2	2	3	3	10	0	0	0	2	0	-11	
2	Loes Rozing	G 26:45	5-9	0-2	0-0	0	1	1	2	1	10	1	0	1	0	0	-6	
22	Enma Christiano	G 30:47	2-6	1-1	0-0	0	3	3	1	3	5	2	0	0	0	0	-11	
30	Anna Csenyi	G 22:56	3-7	1-2	1-2	0	1	1	1	2	8	2	2	0	0	0	-5	
3	Senoj Jones	15:32	1-2	0-0	0-0	2	3	5	2	0	2	0	0	0	0	0	0	
3	Keira Hudson	13:43	3-9	3-6	6-6	1	0	1	2	2	15	1	1	2	0	1	1	
4	DeAvion Wilson	09:39	0-1	0-0	2-4	1	1	2	2	2	0	1	0	0	0	0	-5	
7	Nikki Stanic	03:49	0-3	0-1	0-0	0	0	0	0	0	0	1	0	0	0	0	3	
16	Marta Guilera	03:49	0-0	0-0	0-0	0	0	0	0	0	0	0	1	0	0	0	3	
27	Lucia Lara	03:49	0-1	0-0	0-0	0	1	1	1	0	0	0	0	1	0	0	3	
Team						4	2	6	0	0	0							
Totals			20-60	7-14	11-14	11	22	33	19	14	58	13	10	5	5	2	-11	

Major Fouls: Team (TF) 1 10:00

Dead Ball Rebounds: 1, 0

	UTEP	NMSU
Biggest lead	19 (4 th 5:24)	3 (1 st 6:54)
Best Scoring Run	9 (3 rd 6:29)	6 (4 th 0:54)
Lead Changes	8	
Times Tied	3	
Time with Lead	30:54	08:02

Points from	UTEP	NMSU
Turnovers	11	5
Paint	32	10
Second Chance	2	5
Fast Breaks	6	10
Bench	5	27

Period by Period Scoring	1st	2nd	3rd	4th	TOT
UTEP	11	18	26	14	69
NMSU	14	14	14	16	58



Official Basketball Box Score - Final
Jacksonville St. at UTEP
 02/26/26 Don Haskins Center, El Paso
 2025-26 Women's Basketball

Game Time: 7:00 PM
 Game Duration: 1:50
 Attendance: 1,150

Officials: S. Brian Hal, Michael Price, Corey Malone

Jacksonville St. - 64

Record: 13-15 (7-9)

NO.	Name	Min	FG			Rebounds			Fouls			TP	AS	TO	Blocks			+/-
			M-A	M-A	M-A	OR	DR	TOT	PF	FD	FT				BS	BA	BLK	
22	Mya Barnes	F 36:52	7-14	5-9	1-2	2	13	15	0	4	20	2	2	2	0	2	0	
32	Brooklyn McDaniel	F 29:23	8-13	1-2	2-2	0	4	4	2	3	19	1	3	0	1	1	-2	
1	Eden Sample	G 34:57	2-3	0-0	4-6	0	0	0	1	3	8	0	1	1	1	0	5	
21	Kyera Thomsbury	G 16:35	0-4	0-3	1-2	1	2	3	2	2	1	4	0	0	0	0	6	
23	Adriana Jones	G 26:11	2-7	0-1	0-0	1	1	2	2	0	4	0	3	0	0	0	5	
15	Makala Hobby	23:25	4-6	1-3	1-1	1	3	4	0	2	10	3	5	0	0	0	-8	
14	Mina Djurdjevic	13:46	1-3	0-0	0-0	0	3	3	2	0	2	0	0	0	0	1	-2	
71	Maria Sanchez Ponce	18:52	0-3	0-2	0-2	2	1	3	1	1	0	1	0	0	0	0	-4	
Team						2	2	4	0	0	0							
Totals			24-53	7-20	9-15	9	29	38	10	15	64	11	14	3	2	4	2	

Major Fouls: NONE

Dead Ball Rebounds: 5, 0

UTEP - 66

Record: 13-13 (5-10)

NO.	Name	Min	FG			Rebounds			Fouls			TP	AS	TO	Blocks			+/-
			M-A	M-A	M-A	OR	DR	TOT	PF	FD	FT				BS	BA	BLK	
13	Ndack Mbengue	F 33:23	5-11	0-0	0-2	6	5	11	3	2	10	3	1	0	3	1	5	
3	Ivane Tensaie	G 32:23	3-6	3-5	1-2	0	0	0	0	1	10	3	0	2	0	1	1	
4	Delma Zita	G 32:14	2-10	1-3	0-0	2	2	4	4	0	5	2	1	3	1	0	-5	
5	Heaven Samayoa-Mathis	G 31:18	4-11	1-4	1-1	2	3	5	0	3	10	1	1	3	0	0	7	
11	Portia Adams	G 35:35	9-22	3-6	2-2	2	2	4	4	3	23	2	2	1	0	0	-3	
22	Mary Moses Amaniyo	12:01	0-0	0-0	0-0	2	6	8	2	0	0	0	3	0	0	0	0	
23	Aolani Woldai	16:53	3-9	0-2	2-2	1	2	3	1	1	8	0	0	0	0	0	4	
12	Irene Asensio	04:05	0-0	0-0	0-0	0	0	0	0	0	0	0	1	0	0	0	5	
10	Osadebamwen Igbinedion Omoruyi	02:08	0-0	0-0	0-0	1	0	1	1	0	0	0	0	0	0	0	-4	
Team						0	1	1	0	0	0							
Totals			26-69	8-20	6-9	16	21	37	15	10	66	11	9	9	4	2	2	

Major Fouls: NONE

Dead Ball Rebounds: 1, 0

	JSU	UTEP
Biggest lead	11 (4 th 6:10)	6 (2 nd 8:20)
Best Scoring Run	9 (4 th 7:40)	13 (2 nd 8:20)
Lead Changes	5	
Times Tied	3	
Time with Lead	30:10	07:20

Points from	JSU	UTEP
Turnovers	14	15
Paint	34	28
Second Chance	6	11
Fast Breaks	10	16
Bench	12	8

Period by Period Scoring	1st	2nd	3rd	4th	TOT
JSU	16	14	12	22	64
UTEP	17	11	10	28	66



2025-26 SEASON STATS



2025-26 UTEP Women's Basketball Combined Team Statistics All games

Game Records

Record	Overall	Home	Away	Neutral
ALL GAMES	13-13	10-6	3-7	0-0
CONFERENCE	5-10	3-5	2-5	0-0
NON-CONFERENCE	8-3	7-1	1-2	0-0

Score by Periods

Team	1st	2nd	3rd	4th	OT	TOT
UTEP	402	368	469	452	12	1703
Opponents	441	392	496	455	8	1792

Team Box Score

No.	Player	Total			3-Point		F-Throw		Rebounds				PF DQ A TO BLK STL				PTS	AVG				
		GP-GS	MIN	AVG	FG-FGA	FG%	3FG-3FGA	3FG%	FT-FTA	FT%	OFF	DEF	TOT	AVG	P	DQ			A	TO	BLK	STL
11	ADAMS, Portia	26-25	676:30	26.0	99-261	.379	28-71	.394	58-75	.773	23	53	76	2.9	52	0	66	64	0	20	284	10.9
3	TENSAIE, Ivane	26-25	745:46	28.7	89-274	.325	64-188	.340	26-36	.722	7	29	36	1.4	29	0	24	28	0	21	268	10.3
2	LEGIONS, Sirviva	20-19	527:04	26.4	76-206	.369	3-13	.231	40-76	.526	40	76	116	5.8	34	1	29	47	3	26	195	9.8
13	MBENGUE, Ndack	25-25	633:14	25.3	83-168	.494	0-0	.000	69-108	.639	82	115	197	7.9	73	2	12	59	19	28	235	9.4
22	MOSES AMANIYO, Mary	26-4	570:40	21.9	92-177	.520	1-9	.111	47-66	.712	85	132	217	8.3	55	3	8	43	7	33	232	8.9
5	SAMAYOA-MATHIS, Heaven	26-13	659:54	25.4	62-173	.358	20-74	.270	23-31	.742	28	59	87	3.3	50	1	59	46	8	39	167	6.4
4	ZITA, Delma	25-18	519:09	20.8	41-112	.366	5-21	.238	25-28	.893	17	38	55	2.2	37	0	60	53	2	32	112	4.5
23	WOLDAI, Aolani	17-0	173:57	10.2	22-60	.367	2-18	.111	12-14	.857	15	15	30	1.8	36	1	13	23	2	8	58	3.4
8	TERRY, Brooklyn	20-0	174:34	8.7	19-65	.292	5-35	.143	5-5	1.000	6	19	25	1.3	10	0	3	8	4	4	48	2.4
12	ASENSIO, Irene	24-0	205:27	8.6	10-45	.222	8-36	.222	8-10	.800	3	16	19	0.8	16	0	10	14	3	7	36	1.5
15	PRISCILLA, Abby	2-0	08:26	4.2	1-3	.333	0-0	.000	1-2	.500	5	2	7	3.5	0	0	0	0	0	0	3	1.5
14	COLLAZO, Tatiana	14-0	112:58	8.1	7-28	.250	4-19	.211	3-10	.300	1	5	6	0.4	11	0	6	6	0	7	21	1.5
10	IGBINEDION OMORUYI, Osadebamwen	21-0	139:41	6.7	13-37	.351	0-0	.000	4-7	.571	22	16	38	1.8	18	1	1	11	7	7	30	1.4
1	DAVIS, Aaliyah	12-1	77:40	6.5	5-20	.250	0-3	.000	4-7	.571	3	13	16	1.3	8	0	6	9	0	3	14	1.2
Team											50	53	103				16					
Total		26	5225		619-1629	.380	140-487	.287	325-475	.684	387	641	1028	39.5	429	9	297	427	55	235	1703	65.5
Opponents		26	5225		652-1527	.427	190-528	.360	298-405	.736	271	698	969	37.3	459	9	346	456	81	203	1792	68.9

Team Statistics

	UTEP	OPP
Scoring	1703	1792
Points per game	65.5	68.9
Scoring margin	-3.4	-
Field goals-att	619-1629	652-1527
Field goal pct	.380	.427
3 point fg-att	140-487	190-528
3-point FG pct	.287	.360
3-pt FG made per game	5.4	7.3
Free throws-att	325-475	298-405
Free throw pct	.684	.736
F-Throws made per game	12.5	11.5
Rebounds	1028	969
Rebounds per game	39.5	37.3
Rebounding margin	+2.3	-
Assists	297	346
Assists per game	11.4	13.3
Turnovers	427	456
Turnovers per game	16.4	17.5
Turnover margin	+1.1	-
Assist/turnover ratio	0.7	0.8
Steals	235	203
Steals per game	9.0	7.8
Blocks	55	81
Blocks per game	2.1	3.1
Winning streak	3	-
Home win streak	1	-
Attendance	16186	12731
Home games-Avg/Game	16-1012	10-1273
Neutral site-Avg/Game	-	0-0

Team Results

Date	Opponent		Score	Att.
11/03/2025	Prairie View	W	84-60	639
11/08/2025	Nicholls	W	76-61	1040
11/11/2025	Western N.M.	W	81-56	1068
11/22/2025	UT Martin	Wot	64-60	941
11/25/2025	at Kansas City	W	75-64	283
11/29/2025	Denver	W	69-52	1096
12/03/2025	A&M-Corpus Christi	W	62-44	923
12/06/2025	at TCU	L	40-95	2846
12/13/2025	at BYU	L	46-81	1977
12/18/2025	UC Irvine	L	72-93	905
12/29/2025	Southwest (NM)	W	102-43	1078
01/02/2026	Delaware	W	82-71	957
01/04/2026	Liberty	L	66-86	795
01/08/2026	at Middle Tenn.	L	43-86	3072
01/10/2026	at Western Ky.	L	59-68	703
01/15/2026	Missouri St.	L	64-71	821
01/17/2026	FIU	L	59-67	881
01/22/2026	at Kennesaw St.	L	52-83	441
01/24/2026	at Jacksonville St.	L	60-73	471
01/31/2026	New Mexico St.	W	79-69	1752
02/05/2026	Louisiana Tech	L	48-87	1127
02/07/2026	Sam Houston	L	58-70	1013
02/12/2026	at Liberty	L	48-58	849
02/14/2026	at Delaware	W	79-72	1377
02/21/2026	at New Mexico St.	W	69-58	712
02/26/2026	Jacksonville St.	W	66-64	1150



2025-26 CUSA STATS



2025-26 UTEP Women's Basketball Combined Team Statistics In Conference games

Game Records

Record	Overall	Home	Away	Neutral
ALL GAMES	5-10	3-5	2-5	0-0
CONFERENCE	5-10	3-5	2-5	0-0
NON-CONFERENCE	0-0	0-0	0-0	0-0

Score by Periods

Team	1st	2nd	3rd	4th	OT	TOT
UTEP	206	218	253	255	0	932
Opponents	286	226	296	275	0	1083

Team Box Score

No.	Player	Total					3-Point		F-Throw		Rebounds				PF	DQ	A	TO	BLK	STL	PTS	AVG
		GP-GS	MIN	AVG	FG-FGA	FG%	3FG-3FGA	3FG%	FT-FTA	FT%	OFF	DEF	TOT	AVG								
11	ADAMS, Portia	15-14	415:51	27.7	63-158	.399	15-39	.385	44-55	.800	15	31	46	3.1	39	0	34	46	0	13	185	12.3
3	TENSAIE, Ivane	15-14	464:59	31.0	47-151	.311	35-106	.330	17-23	.739	5	15	20	1.3	21	0	16	16	0	11	146	9.7
13	MBENGUE, Ndack	14-14	374:54	26.8	42-87	.483	0-0	.000	39-63	.619	38	64	102	7.3	42	1	8	37	14	15	123	8.8
2	LEGIONS, Sirviva	9-8	234:36	26.1	32-91	.352	1-2	.500	11-34	.324	20	33	53	5.9	16	0	10	25	3	12	76	8.4
22	MOSES AMANIYO, Mary	15-4	323:06	21.5	47-91	.516	0-5	.000	22-29	.759	34	71	105	7.0	35	2	6	23	4	21	116	7.7
5	SAMAYOA-MATHIS, Heaven	15-13	427:22	28.5	40-106	.377	14-44	.318	14-16	.875	14	37	51	3.4	27	1	31	24	5	21	108	7.2
23	WOLDAI, Aolani	8-0	112:03	14.0	17-39	.436	2-11	.182	10-12	.833	7	9	16	2.0	20	1	7	10	0	6	46	5.8
4	ZITA, Delma	14-7	307:17	21.9	30-73	.411	4-13	.308	14-16	.875	11	18	29	2.1	23	0	31	34	2	20	78	5.6
8	TERRY, Brooklyn	10-0	86:48	8.7	9-27	.333	2-14	.143	1-1	1.000	2	9	11	1.1	4	0	1	6	1	1	21	2.1
10	IGBINEDION OMORUYI, Osadebamwen	12-0	87:30	7.3	7-23	.304	0-0	.000	3-4	.750	15	11	26	2.2	14	1	1	7	4	5	17	1.4
14	COLLAZO, Tatiana	3-0	26:15	8.7	1-4	.250	1-4	.250	0-2	.000	0	1	1	0.3	1	0	1	0	0	0	3	1.0
12	ASENSIO, Irene	13-0	102:55	7.9	2-19	.105	2-15	.133	5-6	.833	2	8	10	0.8	7	0	4	6	2	1	11	0.8
1	DAVIS, Aaliyah	5-1	32:26	6.5	0-4	.000	0-0	.000	2-2	1.000	0	5	5	1.0	2	0	1	3	0	1	2	0.4
15	PRISCILLA, Abby	1-0	03:58	4.0	0-0	.000	0-0	.000	0-0	.000	1	0	1	1.0	0	0	0	0	0	0	0	0.0
Team											20	27	47				11					
Total		15	3000		337-873	.386	76-253	.300	182-263	.692	184	339	523	34.9	251	6	151	248	35	127	932	62.1
Opponents		15	3000		395-878	.450	114-283	.403	179-241	.743	164	393	557	37.1	262	5	196	240	37	113	1083	72.2

Team Statistics

	UTEP	OPP
Scoring	932	1083
Points per game	62.1	72.2
Scoring margin	-10.1	-
Field goals-att	337-873	395-878
Field goal pct	.386	.450
3 point fg-att	76-253	114-283
3-point FG pct	.300	.403
3-pt FG made per game	5.1	7.6
Free throws-att	182-263	179-241
Free throw pct	.692	.743
F-Throws made per game	12.1	11.9
Rebounds	523	557
Rebounds per game	34.9	37.1
Rebounding margin	-2.3	-
Assists	151	196
Assists per game	10.1	13.1
Turnovers	248	240
Turnovers per game	16.5	16.0
Turnover margin	-0.5	-
Assist/turnover ratio	0.6	0.8
Steals	127	113
Steals per game	8.5	7.5
Blocks	35	37
Blocks per game	2.3	2.5
Winning streak	3	-
Home win streak	1	-
Attendance	8496	7625
Home games-Avg/Game	8-1062	7-1089
Neutral site-Avg/Game	-	0-0

Team Results

Date	Opponent		Score	Att.
01/02/2026	Delaware	W	82-71	957
01/04/2026	Liberty	L	66-86	795
01/08/2026	at Middle Tenn.	L	43-86	3072
01/10/2026	at Western Ky.	L	59-68	703
01/15/2026	Missouri St.	L	64-71	821
01/17/2026	FIU	L	59-67	881
01/22/2026	at Kennesaw St.	L	52-83	441
01/24/2026	at Jacksonville St.	L	60-73	471
01/31/2026	New Mexico St.	W	79-69	1752
02/05/2026	Louisiana Tech	L	48-87	1127
02/07/2026	Sam Houston	L	58-70	1013
02/12/2026	at Liberty	L	48-58	849
02/14/2026	at Delaware	W	79-72	1377
02/21/2026	at New Mexico St.	W	69-58	712
02/26/2026	Jacksonville St.	W	66-64	1150



2025-26 RADIO-TV ROSTER

#1	AALIYAH DAVIS	#2	SIRVIVA LEGIONS	#3	IVANE TENSAIE	#4	DELMA ZITA	#5	HEAVEN SAMAYOA-MATHIS
----	---------------	----	-----------------	----	---------------	----	------------	----	-----------------------



G | 5-7 | SR.
EI PASO, TEXAS



G | 5-8 | SR.
BROOKLYN, N.Y.



G | 5-6 | GR.
ROSEVILLE, MINN



G | 5-8 | GR.
MAPUTO, MOZAMBIQUE



G | 5-17 | SR.
SACRAMENTO, CALIF.

#8 BROOKLYN TERRY



G/F | 6-0 | FR.
MANSFIELD, TEXAS

#10 OSADEBAMWEN IGBINEDION OMORUYI



F | 6-4 | SO.
MADRID, SPAIN

#11 PORTIA ADAMS



G | 5-6 | SR.
CEDAR HILL, TEXAS

#12 IRENE ASENSIO



G | 5-8 | SO..
BARCELONA, SPAIN

#13 NDACK MBENGUE



F | 6-3 | SR.
BERGAMO, ITALY

#14 TATIANA COLLAZO



G | 5-8 | JR.
SAN JOSE, CALIF.

#15 ABBY PRISCILLA



G | 5-11 | JR.
KAMPALA, UGANDA

#20 BLESSIING OKHWODIASA



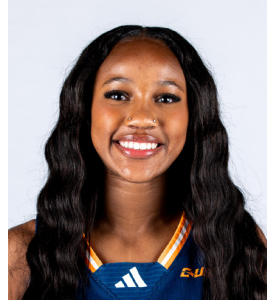
F | 6-2 | FR.
MADRID, SPAIN.

#22 MARY MOSES AMANIYO



F | 6-1 | SO.
ARUA, UGANDA

#23 AOLANI WOLDAI



G | 5-7 | FR.
FORT WORTH, TEXAS

COACHING STAFF



HEAD COACH
KEITHA ADAMS



ASSOC. HEAD COACH
EWA LASKOWSKA



ASST. COACH
JAREIGA HUGHES



ASST. COACH
LULU MCKINNEY



S&C COACH
CHISAN JONES

