

UTEP BASKETBALL

UTEP vs. FIU | Saturday, Jan. 17 | 12:00 p.m. MT | Don Haskins Center | El Paso, Texas



2025-26 SCHEDULE

Date	Opponent	Time/Result
Nov. 3	Prairie View A&M	W, 84-60
Nov. 8	Nicholls State	W, 76-61
Nov. 11	WNMU	W, 81-56
Nov. 22	UT Martin	W, 64-60
Nov. 25	Kansas City	W, 75-64
Nov. 29	Denver	W, 69-52
Dec. 3	Texas A&M-CC	W, 62-44
Dec. 6	#8 TCU	L, 40-95
Dec. 13	BYU	L, 46-81
Dec. 18	UC Irvine	L, 72-89
Dec. 29	USW	W, 102-43
Jan. 2	Delaware *	W, 82-71
Jan. 4	Liberty *	L, 66-88
Jan. 8	Middle Tennessee *	L, 43-86
Jan. 10	WKU *	L, 68-59
Jan. 15	Missouri State *	L, 71-64
Jan. 17	FIU *	12:00 p.m.
Jan. 22	Kennesaw State *	5:00 p.m.
Jan. 24	Jax State *	12:30 p.m.
Jan. 31	NM State *	2:00 p.m.
Feb. 5	LA Tech *	7:00 p.m.
Feb. 7	Sam Houston *	2:00 p.m.
Feb. 12	Liberty *	3:00 p.m.
Feb. 14	Delaware *	11:00 a.m.
Feb. 21	NM State *	4:00 p.m.
Feb. 26	Jax State *	7:00 p.m.
Feb. 28	Kennesaw State *	2:00 p.m.
Mar. 5	Sam Houston *	5:30 p.m.
Mar. 5	LA Tech *	3:00 p.m.
Mar. 10-14	CUSA Championships	TBD

Bold denotes home game
* Conference USA Game
All Times Mountain

SERIES HISTORY

UTEP is 13-7 all-time against FIU. The teams split the season series last season, with each program winning on its home floor.

ATHLETIC COMMUNICATIONS

STRATEGIC COMMUNICATIONS ASSISTANT

Marcus Neal
mneal2@miners.utep.edu

OFFICIAL WEBSITE: UTEPMINERS.com

GAME 17 vs. FIU



UTEP Miners (9-7, 1-4 CUSA)

Head Coach: Keitha Adams (Southwestern College, 1989)
Career Record: 523-384 (396-347 at DI level) (29th season)
Record at UTEP: 316-254 (19th season)
Home: 8-3 | **Road:** 1-4 | **Neutral:** 0-0 | **Streak:** L4



FIU Panthers (9-6, 2-2 CUSA)

Head Coach: Jesyca Burks-Wiley
Career Record: 85-85 (6th season)
Record at MSU: Same
Home: 7-3 | **Road:** 2-3 | **Neutral:** 0-0 | **Streak:** W2

Where to Watch



TV Talent:
Mando Medina
Benjamin Grajeda



OPENING TIP

MINERS HOST FIU IN SATURDAY CUSA CLASH

The UTEP women's basketball team (9-7, 1-4 CUSA) continues its homestand Saturday with a Conference USA matchup against FIU (9-6, 2-2 CUSA) at the Don Haskins Center. Tipoff is set for 12 p.m. MT, as the Miners look to bounce back and defend home court in El Paso. The game will serve as the Miners' "Noche Latina" celebration.

SCOUTING FIU

FIU enters Saturday's matchup at 9-6 overall, 2-2 in Conference USA, and 2-3 on the road, riding a two-game winning streak following an 83-74 victory at New Mexico State (Jan. 15). The Panthers are led by head coach Jesyca Burks-Wiley, now in her sixth season at the helm.

FIU is averaging 76.8 points, 37.8 rebounds, and 15.0 offensive rebounds per game while shooting 42.1 percent from the field, 27.8 percent from three, and 66.3 percent from the free-throw line. The Panthers rank first in CUSA and inside the top 50 nationally in scoring and lead the league in free-throw attempts per game (27.53) while ranking sixth nationally in made free throws (18.27 per game). Defensively, FIU is holding opponents to 43.0 percent shooting overall and 31.5 percent from three, while forcing 25.73 turnovers per game (6th nationally, 2nd in CUSA) and averaging 13.4 steals per contest (11th nationally, 2nd in CUSA).

FIU is led by Rhema Collins, who paces the Panthers with 19.8 points per game (top 25 nationally, 1st in C-USA) and 10.3 rebounds per contest (top 25 nationally, 1st in C-USA), while adding 4.8 offensive rebounds per game (2nd nationally), 1.7 blocks per game (50th nationally, 1st in CUSA), and shooting 50.3 percent from the field. Collins also leads Conference USA with eight double-doubles. Paris Atkins provides a secondary scoring punch with 19.3 points per game (28th nationally, 2nd in CUSA) and ranks third nationally with 4.0 steals per game. Grecia Ferrer Leal directs the offense, averaging a team-high 4.3 assists per game, while also contributing 7.0 points per contest.

MINER NOTABLES

Two Miners are averaging double figures in scoring: **Ivane Tensaie** (11.1) and **Ndack Mbengue** (10.4). Mbengue and **Mary Moses Amaniyo** are each averaging near double-doubles, with Amaniyo leading the team at 9.8 rebounds per game while also contributing 9.2 points, and Mbengue close behind with 8.5 rebounds per game. **Portia Adams** leads the team in assists with 2.9 per game, while **Heaven Samayoa-Mathis** adds 2.3 per game and leads the Miners in steals at 1.7 per game. Amaniyo tops the team in field-goal percentage at 51.7%, Adams leads from three-point range at 35.7%, and **Delma Zita** is the team's best free-throw shooter at 80.0%.

LAST GAME'S STARTERS



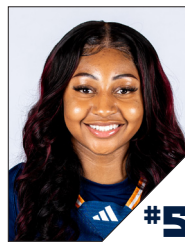
SIRVIVA LEGIONS
SR. | GUARD | 5-8

9.5 PPG
5.3 RPG
1.4 APG
36.6 FG%
18.2 3PT%
61.5 FT%



IVANE TENSAIE
GR. | GUARD | 5-7

11.1 PPG
1.3 RPG
0.8 APG
33.0 FG%
34.4 3PT%
78.9 FT%



HEAVEN SAMAYOA-MATHIS
SR. | GUARD | 5-7

6.6 PPG
3.7 RPG
2.3 APG
38.2 FG%
38.2 3PT%
65.0 FT%



PORTIA ADAMS
SR. | GUARD | 5-6

9.1 PPG
2.4 RPG
2.9 APG
35.3 FG%
35.7 3PT%
78.1 FT%



NDACK MBENGUE
SR. | FORWARD | 6-3

10.4 PPG
8.5 RPG
1.3 SPG
49.1 FG%
N/A 3PT%
65.4 FT%

GAME NOTES

MINERS COME UP SHORT VS. MO STATE, 71-64

UTEP fell 71-64 to Missouri State Thursday night at the Don Haskins Center, moving the Miners to 9-7 overall and 1-4 in Conference USA play. The team battled throughout, showing resilience and competitiveness, but early scoring droughts and timely Missouri State runs created separation. Despite multiple pushes to close the gap, the Miners were unable to fully overcome the early deficit.

Missouri State jumped out to an early lead, scoring from the free-throw line and capitalizing on transition opportunities to open the game. UTEP found its rhythm as the quarter progressed, trimming the margin to 19-11 after the first. The Miners stayed aggressive in the second quarter, forcing turnovers and converting inside, but Missouri State maintained a 31-23 lead at halftime. UTEP came out strong in the third, using defensive pressure to generate scoring chances and pulling within two midway through the period. Missouri State responded with timely baskets, entering the fourth quarter ahead 52-45. The Miners continued to fight in the final period, cutting the deficit to single digits, but Missouri State capitalized at the free-throw line and on fast-break opportunities to secure a 71-64 victory.

CAREER NIGHT FOR HEAVEN

Heaven Samayoa-Mathis made her third start of the season against Missouri State, delivering a career night with 17 points, including a career-best five three-pointers, along with five rebounds and two steals.

The senior guard continues to make her mark with activity and instincts, leading the Miners with 1.7 steals per game. She has recorded two or more steals in nine games this season, including a career-high six steals earlier this year against TAMU-CC (Dec. 3).

MBENGUE SPARKS MINERS' DEFENSE

Ndack Mbengue made a significant impact against Missouri State, contributing 15 points along with a career-high five steals, helping the Miners stay competitive throughout the contest. The senior forward has been a consistent presence on the boards and in the post, providing scoring, rebounding, and defensive intensity for the team.

Mbengue began CUSA play against Delaware (Jan. 2) with a career night, posting 26

points and 14 rebounds to secure her fifth double-double of the season while adding two blocks. She followed that performance with a strong effort against Liberty (Jan. 4), pulling down a team-high 11 rebounds, and has now recorded double-digit rebounds in nine games this season, underscoring her importance to UTEP's frontcourt production.

ADAMS SETS THE PACE

Portia Adams contributed 13 points and five rebounds against Missouri State, continuing to anchor the Miners' backcourt with her steady offensive presence. The senior guard has scored in double figures in multiple games this season, consistently attacking the defense and providing leadership on both ends of the floor.

Adams also leads the team in assists (3.0 per game) and has orchestrated the offense with precision during UTEP's recent stretch, including a career-high eight assists in the conference-opening win over Delaware (Jan. 2) and seven assists against USW (Dec. 29). She continues to lead the Miners in three-point shooting at 36.6 percent, with her combination of scoring efficiency and playmaking serving as a key driver of UTEP's success.

LEGIONS LOCKED IN

Sirviva Legions continued her consistent all-around play with seven rebounds against Missouri State (Jan. 15), marking her 11th game this season with 5 or more boards. The senior guard has been a dependable presence on both ends of the floor, providing physical rebounding from the guard position throughout the season.

Through 16 games, Legions is averaging 9.5 points and 5.3 rebounds per contest.

TENSAIE FOR THREEEEE!

Ivane Tensaie led UTEP against WKU with a team-high 16 points and tied for a team-high three assists, connecting on four three-pointers to keep the Miners competitive throughout the contest. The third-year guard currently leads the team with 11.4 points per game.

Tensaie began CUSA play against Delaware (Jan. 2) with a hot shooting performance, pouring in 20 points and knocking down six three-pointers. Earlier in the season, she delivered one of the best weeks of her UTEP career to claim Conference USA Player of the Week honors, highlighted by a season-high 26 points on 8-for-12

shooting from three against Denver (Nov. 29), which set a UTEP single-game record, and 19 points on 5-for-8 shooting from beyond the arc in a road win at Kansas City (Nov. 25).

DOUBLE-DOUBLE DUO

Forwards **Ndack Mbengue** and **Mary Moses Amaniyo** continue to anchor UTEP's frontcourt as one of the most productive interior duos in the nation. Amaniyo has recorded seven double-doubles this season (26th nationally), while Mbengue follows with five double-doubles. Together, they consistently provide physicality, rebounding, and second-chance opportunities that drive the Miners' interior identity.

Amaniyo ranks 12th nationally in offensive rebounds per game (4.2) and sits 41st in rebounds per game (9.2), while Mbengue is close behind at 27th nationally in offensive rebounds per game (3.8) and 68th nationally in rebounds per game (8.5). The pair's sustained production on the glass continues to give UTEP a nightly advantage and establishes the Miners as one of the nation's strongest rebounding teams.

AMANIYO TOPS THE NATION

As of last week, **Mary Moses Amaniyo** leads all Division I players with at least 250 minutes played this season, averaging 7.8 offensive rebounds per 40 minutes. That mark is on pace to be the best by a CUSA player (min. 20.0 MPG) since UCF's Emma Cannon in 2009-10, who averaged 8.6.

QUARTER SCORING MILESTONES

UTEP has seen three individual 14-point quarters this season, each delivered by a different Miner and tying for the third-most points scored by a player in a single quarter in program history.

- **Ivane Tensaie**, 3rd quarter at Kansas City (Nov. 25)
- **Mary Moses Amaniyo**, 2nd quarter vs USW (Dec. 29)
- **Ndack Mbengue**, 2nd quarter vs Delaware (Jan. 2)



GAME NOTES

HISTORIC REBOUNDED EFFORT

UTEP delivered a historic rebounding performance in the win over University of the Southwest, pulling down a program-record 74 total rebounds and a program-record 39 offensive boards.

The outing marked the second time this season UTEP has rewritten the record book on the offensive glass, after previously setting the program mark with 33 offensive rebounds against Western New Mexico (Nov. 11). Through 16 games, the Miners rank among the nation's elite on the boards, top 50 nationally in rebounds per game (42.4) and top 10 nationally in offensive rebounds per game (16.6), continuing to establish rebounding as a defining strength of this team.

FAST STARTS, HISTORIC RESULTS

UTEP matched a program record with 56 first-half points against USW (Dec 29), tying the most points scored in a half in program history. **Mary Moses Amaniyo** fueled the surge with 14 points in the second quarter. The Miners' early offensive rhythm, pace, and ball movement set the tone, as UTEP capitalized on second-chance opportunities and transition looks to build a commanding 56-22 half-time advantage.

The performance continued a trend of strong opening surges this season. UTEP also posted 30 points in the first quarter against Nicholls (Nov. 8), tying for the 10th-most points in a quarter in program history, and erupted for 29 points in the third quarter at Kansas City (Nov. 25). The Miners' ability to generate early momentum and sustain offensive pressure has been a consistent driver of their success.

STRENGTH IN NUMBERS

UTEP's depth continues to be one of its strongest assets, with the Miners ranking 81st nationally and first in Conference USA in bench points per game at 23.5.

The Miners second unit has provided consistent offensive balance and versatility, making the Miners' bench one of the most productive in the conference.

DEFENSE DEFINES THE MINERS

UTEP opened the year with an impressive defensive run, holding its first seven opponents under 65 points. The streak marked the longest by any Conference USA program to begin a season since Southern Miss accomplished the feat in 2003-04, holding its first 10 opponents below the threshold.

It was also the first time in 29 years that UTEP started a season with seven straight opponents under 65 points. The last occurrence came during the 1996-97 campaign, when the Miners limited 11 consecutive opponents below the mark to open the year.

QUARTER FRENZY

Ivane Tensaie has joined one of the rarest scoring lists in program history. With her previous 14-point third quarter at Kansas City (Nov. 25) and 13-point fourth quarter vs. FIU last season (Jan. 18, 2025), she is now one of only four players in UTEP history to record multiple quarters with 13+ points.

The exclusive list includes:

- **Sparkle Taylor** - Four times ('16-17)
- **Najala Howell** - Three times ('17-18)
- **Katarina Zec** - Two times ('17-18) ('19-20)

AMANIYO JOINS ELITE COMPANY

Mary Moses Amaniyo continued to establish herself as one of the nation's elite rebounders, posting two of the top performances in program history within the first month of the season. She opened the year with a UTEP-record 22 rebounds against PVAMU (Nov. 3) and later grabbed 18 boards in the win over UT Martin (Nov. 22).

Amaniyo is the first Miner since **Kayla Thornton** in 2013-14 to record multiple games with 18 or more rebounds in the same season. Her presence on the glass continues to anchor UTEP's interior play and generate critical extra-possession opportunities.

SENIOR 5

For the first time since UTEP began tracking lineup records in 1983, the Miners started their first 13 games with an all-senior starting lineup. The veteran group provided experience, leadership, and stability, anchoring UTEP's strong start to the season.

GOING BACK-TO-BACK

UTEP earned Conference USA Player of the Week honors in consecutive weeks earlier this season, marking the program's first back-to-back weekly awards since the 2013-14 campaign. **Mary Moses Amaniyo** claimed the honor on Nov. 24, followed by **Ivane Tensaie** on Dec. 1 after her record-setting performance from beyond the arc. The Miners' last pair of consecutive honorees prior to this season came in 2014, when **Kayla Thornton** earned the award on Jan. 27 and Feb. 3.

UP NEXT

UTEP will hit the road for a pair of Conference USA matchups at Kennesaw State (Jan. 22) and Jax State (Jan. 24).

TEAM COMPARISON



UTEP	CATEGORY	FIU
9-7	Record	9-6
67.8	Scoring Offense	76.8
68.2	Scoring Defense	69.2
-0.4	Scoring Margin	7.6
.373	Field Goal Pct.	.421
.416	Field Goal Pct. Defense	.430
.286	3-Pt. Field Goal Pct.	.278
.328	3-Pt. Field Goal Pct. Defense	.315
5.8	3-Pt. Field Goal/Game	5.2
.675	Free Throw Pct.	.663
12.8	Free Throw Made/Game	18.3
42.4	Rebound Avg.	37.8
3.8	Rebound Margin	2.1
12.0	Assists Avg.	11.8
16.2	Turnovers Avg.	19.9
9.3	Steals Avg.	13.4
2.1	Blocks Avg.	2.0

2025-26 STANDINGS



TEAM	CONFERENCE	OVERALL
Sam Houston	4-0	11-4
Missouri State	4-0	12-5
Middle TN	4-1	9-8
LA Tech	3-1	10-5
FIU	2-2	9-6
Liberty	2-2	8-7
Jax State	2-2	8-8
NM State	2-3	6-11
Kennesaw State	1-3	8-7
UTEP	1-4	9-7
WKU	1-4	5-11
Delaware	0-4	6-10

UTEP IN THE RANKINGS

TEAM	CATEGORY	STAT	NCAA	C-USA
Bench Points/G	23.5	81	1	1
Rebounds/G	42.4	31	1	1
Off Rebounds/G	16.6	10	1	1

INDIVIDUAL

NAME	CATEGORY	STAT	NCAA	C-USA
M. Moses Amaniyo	DbI-DbI	7	26	3
M. Moses Amaniyo	REB	147	65	2
M. Moses Amaniyo	REB/G	9.2	41	3
M. Moses Amaniyo	OREB/G	4.2	12	2
Ndack Mbengue	FTA	81	95	4
Ndack Mbengue	REB/G	8.5	68	5
Ndack Mbengue	OREB/G	3.8	27	5

C-USA PLAYER OF THE WEEK:

UTEP'S RECORD WHEN ...

Overall	9-7
Playing at home	8-3
Playing on the road	1-4
Playing on a neutral court	0-0
Playing during the day	3-4
Playing at night	6-3
Playing CUSA foes	1-4
Playing CUSA home games	1-2
Playing CUSA road games	0-2
Playing CUSA neutral games	0-0
Playing non-conference foes	8-3
Playing non-conference home games	7-1
Playing non-conference road games	1-2
Playing non-conference neutral games	0-0
Playing on Mondays	2-0
Playing on Tuesdays	2-0
Playing on Wednesdays	1-0
Playing on Thursdays	0-3
Playing on Fridays	1-0
Playing on Saturdays	3-3
Playing on Sundays	0-1
Playing in November	6-0
Playing in December	2-3
Playing in January	1-4
Playing in February	0-0
Playing in March	0-0
Playing in the Central time zone	1-3
Playing in the Eastern time zone	0-0
Playing in the Mountain time zone	8-4
Playing in the Pacific time zone	0-0
Playing in the Hawaii time zone	0-0
Shooting 50% or better	1-0
Shooting 40% or better	4-1
Shooting less than 40%	4-6
Opponent shoots 50% or better	0-3
Opponent shoots 40% or better	2-4
Opponent shoots less than 40%	7-0
Shooting better than opponent	8-0
Shooting equal or worse than opponent	1-7
Scoring first	5-1
Opponent scores first	4-6
Outrebounding opponents	7-1
Tied or outrebounded	2-6
Ahead at halftime	7-0
Behind at halftime	2-7
Tied at halftime	0-0
Ahead with 5:00 to play	8-0
Behind with 5:00 to play	1-7
Tied with 5:00 to play	0-0
Committing same or less turnovers	7-1
Committing more turnovers	2-6
Having 10 or more steals	5-1
Shooting better than 70% from the line	3-4
Scoring less than 70 points	3-6
Scoring between 70-79 points	2-1
Scoring between 80-89 points	3-0
Scoring between 90-99 points	0-0
Scoring 100 points or more	1-0
Games decided by five points or less	1-0
Games decided by 6-10 points	0-2
Games decided by 11-19 points	4-0
Games decided by 20+ points	4-5
Bench outscored opponent's bench	4-1
Bench is tied or outscored by opponent's	5-6



2025-26 UTEP MINERS ROSTER

NUMERICAL

No.	Name	Pos.	Ht.	Cl.	Hometown / Previous School
1	Aaliyah Davis	G	5-7	Sr.	El Paso, Texas/ Kilgore College
2	Sirviva Legions	G	5-8	Sr.	Brooklyn, N.Y./ Long Island University
3	Ivane Tensaie	G	5-7	Gr.	Roseville, Minn./ Penn State
4	Delma Zita	G	5-8	Gr.	Maputo, Mozambique/ New Mexico JC
5	Heaven Samayo-Mathis	G	5-7	Sr.	Sacramento, Calif./ Salt Lake Community College
8	Brooklyn Terry	G/F	6-0	Fr.	Mansfield, Texas/ Legion Prep HS/ Mansfield Timberview
10	Osadebamwen Igbinedion Omoruyi	F	6-4	So.	Madrid, Spain
11	Portia Adams	G	5-6	Sr.	Cedar Hill, Texas/ Lamar
12	Irene Asensio	G	5-8	So.	Barcelona, Spain/ Sant Adrià Femení
13	Ndack Mbengue	F	6-3	Sr.	Bergamo, Italy/ Cowley College
14	Tatiana Collazo	G	5-8	Jr.	San Jose, Calif./ San Jose City College
15	Abby Priscilla	G	5-11	Jr.	Kampala, Uganda/ Grayson CC
20	Blessing Okhwodiasa	F	6-2	R-Fr.	Madrid, Spain
22	Mary Moses Amaniyo	F	6-1	So.	Arua, Uganda
23	Aolani Woldai	G	5-7	Fr.	Fort Worth, Texas/ Brewer HS

ALPHBETICAL

No.	Name	Pos.	Ht.	Cl.	Hometown / Previous School
11	Portia Adams	G	5-6	Sr.	Cedar Hill, Texas (Lamar)
22	Mary Moses Amaniyo	F	6-1	So.	Arua, Uganda
12	Irene Asensio	G	5-8	So.	Barcelona, Spain (Sant Adrià Femení)
14	Tatiana Collazo	G	5-8	Jr.	San Jose, Calif. (San Jose City College)
1	Aaliyah Davis	G	5-7	Sr.	El Paso, Texas (Kilgore College)
2	Sirviva Legions	G	5-8	Sr.	Brooklyn, N.Y. (Long Island University)
13	Ndack Mbengue	F	6-3	Sr.	Bergamo, Italy (Cowley College)
20	Blessing Okhwodiasa	F	6-2	R-Fr	Madrid, Spain
10	Osadebamwen Igbinedion Omoruyi	F	6-4	So.	Madrid, Spain
15	Abby Priscilla	G	5-11	Jr.	Kampala, Uganda (Grayson CC)
2	Heaven Samayoa-Mathis	G	5-7	Sr.	Sacramento, Calif. (Salt Lake CC)
3	Ivane Tensaie	G	5-7	Gr.	Roseville, Minn. (Penn State)
8	Brooklyn Terry	G/F	6-0	Fr.	Mansfield, Texas (Legion Prep HS/Mansfield Timberview)
23	Aolani Woldai	G	5-7	Fr.	Fort Worth, Texas/ (Brewer HS)
4	Delma Zita	G	5-8	Gr.	Maputo, Mozambique (New Mexico JC)

COACHING STAFF

Head Coach: Keitha Adams | Associate Head Coach: Ewa Laskowska | Assistant Coaches: Jareica Hughes, Lulu McKinney

PRONUNCIATIONS

2	Sirviva Legions	Sir-VIE-vuh
3	Ivane Tensaie	E-vaughn ten-SIGH-ay
4	Delma Zita	Z-ta
5	Heaven Samayoa-Mathis	sahm-ah-YO-ah MATH-iss
10	Osadebamwen Igbinedion Omoruyi	Oh-SAH-deh-BAM-when ig-bin-EH-d-on oh-more-OOG- E
12	Irene Asensio	E-ren-eh AH-sen-c-oh
13	Ndack Mbengue	N-dack (rhymes with Tack) mm-BEN-gweh
20	Blessing Okhwodiasa	oh-koh-DEE-ah-sah
22	Mary Moses Amaniyo	ah-mah-KNEE-oh
23	Aolani Woldai	ay-oh-lah-knee WOHL-dye

Coaches:

Ewa Laskowska

Jareica Hughes

EH-vuh LAH-skove (rhymes with drove)-skuh

JARE-ih-kuh





UTEP HEAD COACH

KEITHA ADAMS

Southwestern College '89

19th Season at UTEP
29th Season as a Coach

Keitha Adams, the winningest coach in UTEP women's basketball history, returned as head coach of the Miners, Vice President and Director of Athletics Jim Senter announced on April 12, 2023.

On November 26, 2024, Adams recorded her 300th win at the helm of the UTEP program. Her record as UTEP's head coach is 316-254, including a 153-57 mark in conference play.

In her first season back in the Borderland, Adams led the team to a 12-19 overall record, including 6-10 in conference play. The Miners made it to the second round of the 2024 Conference USA Tournament, led by all-conference selections Jane Asinde (All-CUSA First Team, All-Defensive Team, Newcomer of the Year), Erin Wilson (All-CUSA Second Team), and Aaliyah Stanton (All-Freshman Team).

On February 15, 2024, Adams earned her 500th career victory with a 73-68 win over WKU. In 28 seasons as a head coach, including five at Independence Community College, she has compiled a record of 514-376.

Adams came back to the Sun City following six seasons as the head coach at Wichita State. In her most recent campaign with the Shockers (2022-23), she orchestrated an 18-win season and appearance in the postseason WNIT. Wichita State upset top-seed USF in the quarterfinals of the American Athletic Conference Championship, 65-53.

In her first stint as the Miners' head coach (2001-17), Adams posted 284 victories over 16 seasons, while leading UTEP to four postseason tournament appearances (two NCAA, two WNIT) and four Conference USA championships (three regular season/one tournament). UTEP posted 28 or more wins four times under Adams - 28-4 (2007-08 season), 29-4 (2011-12), 29-8 (2013-14) and 29-5 (2015-16). The Miners were 16-0 in C-USA play during the 2007-08 season, becoming the first team to complete the league slate unbeaten, and fashioned a 15-1 mark during the 2011-12 campaign. They were 16-2 in C-USA action during the 2015-16 season.

After building the program from the ground up, Adams guided the Miners to 229 victories over her last 11 seasons as head coach, an average of 20.8 per season.

During her initial tenure as head coach at UTEP, Adams coached a total of 13 players to All-Conference honors - Starr Breedlove, Gloria Brown, Jareica Hughes, Natasha Lacy, Kimya Murray, Jenzel Nash, Izabela Piekarska, Anete Steinberga, Sparkle Taylor, Kayla Thornton, Cameasha Turner, Vaida Zagurskyte and Dragana Zoric. Hughes was a two-time C-USA Player of the Year (2008, 2009). Lacy and Thornton were honorable mention All-Americans in 2008 and 2014, respectively, and both went on to play in the WNBA. Thornton currently plays for the New York Liberty.

Adams was named the C-USA Coach of the Year in 2008, 2012 and 2016, and the WBCA Regional Coach of the Year in 2008. She's the lone C-USA women's basketball coach to claim the honor three times.

The historic 2007-08 season produced 28 victories, a school-record 23-game win streak, an undefeated romp through C-USA regular season play, and the school's first-ever NCAA Tournament appearance. The Miners scored a first-round victory over Western Kentucky, 92-60, in the first round of the "Big Dance." Two UTEP players, Lacy and Piekarska, were chosen in the 2008 WNBA Draft by Detroit and Sacramento, respectively.

Four years later, the Miners were back in the NCAA Tournament after setting a school record with 29 wins. After finishing 15-1 during the C-USA regular season, UTEP was crowned champion of the conference tournament after upending Tulane, 69-65, in the title game.

UTEP tied the school record with 29 victories during the 2013-14 season, and won the hearts of El Pasoans by making a march to the WNIT championship game. Then-capacity crowds of 12,222 packed the Don Haskins Center for the Miners' games versus South Dakota State and Rutgers.

The 2015-16 Miners racked up 29 wins once again, and once again drew huge home crowds for their run to the WNIT quarterfinals, including over 9,000 fans in their final game of the season versus Oregon.

Two of Adams' UTEP teams cracked the top-25 poll (2015-16, 2007-08), including being ranked in the final six weeks in 2007-08, while receiving votes in eight campaigns total (2015-16, 2013-14, 2012-13, 2011-12, 2008-09, 2007-08 and 2006-07).

Most importantly, every player that exhausted their eligibility at UTEP under Adams graduated from the University.

Adams was the head coach at Independence CC for five seasons and directed the Lady Pirates to a 127-37 record, including back-to-back Kansas Jayhawk Community College Conference titles in 2000 and 2001. Her teams combined for a 35-1 conference mark over her final two seasons. In 2000-01, she led the Lady Pirates to a 31-2 mark, the conference title and was appointed the KJCCC Eastern Division Coach of the Year.

Adams coached 22 all-KJCCC selections and five NJCAA All-Americans at Independence. Fifteen of her student-athletes went on to play Division I basketball, including two in the SEC, two in the Big 12, one in the ACC, three in the WAC and one in C-USA. Svetlana Volnaya, who played at Virginia, was chosen in the third round of the 2001 WNBA Draft by Detroit.

Adams was an assistant coach at Independence for two seasons (1994-96) prior to being elevated to head coach. Prior to joining the collegiate ranks, Adams coached at Winfield (Kan.) High School and Belle Plaine (Kan.) High School.

A native of Oxford, Kan., Adams graduated with a degree in health, physical education, and recreation from Southwestern College in 1989. Adams was Oxford High School's all-time leading scorer and earned All-State honors as a prep. Her jersey was retired in 1986.

The Adams File

Personal

Hometown: Oxford, Kansas

Education

College: Southwestern College

Coaching Experience

2023-Present: UTEP

Head Coach

2017-23: Wichita State

Head Coach

2001-17: UTEP

Head Coach

1996-01: Independence CC

Head Coach

1994-96: Independence CC

Assistant Coach

Career Record:

Overall: 523-383 (29th year)

At UTEP: 316-253 (19th year)

COACH ADAMS VS...

Abilene Christian	1-0
Alabama	0-1
Alabama State	1-0
Alcorn State	7-0
Arizona	1-2
Arizona State	1-1
Arkansas	0-1
Arkansas State	3-1
Belmont	1-0
Boise State	4-6
BYU	0-2
Cal Poly	1-0
Cal-State Bakersfield	1-0
Cal State-Fullerton	1-0
California Baptist	0-1
Charlotte	2-2
Chicago State	2-0
Cincinnati	4-4
Colorado	1-0
Colorado State	0-2
Creighton	0-3
CSUN	1-0
Delaware	1-0
Denver	6-1
East Carolina	9-10
Eastern Illinois	1-0
Eastern Michigan	1-0
Eastern New Mexico	4-0
FIU	6-2
Florida Atlantic	4-2
FGCU	0-2
Fresno State	4-4
Georgia Tech	0-1
Grambling State	4-0
Hampton	1-0
Hawaii	2-6
Houston	12-19
Houston Christian	6-1
Idaho State	3-0
Illinois	0-2
Illinois State	2-0
Jax State	2-2
Kansas	0-4
Kansas City	3-0
Kansas State	2-5
Kennesaw State	0-2
LA Tech	9-14
Lamar	1-1
Liberty	0-5
Long Beach State	0-1
Louisiana	1-1
Loyola Marymount	1-0
LSU	0-1
Marshall	8-6
Memphis	9-7
Middle Tennessee	1-6
Mississippi Valley State	1-0
Missouri State	2-4
Monmouth	0-1
Montana	1-0
Montana State	2-1
Morehead State	1-0
NC State	0-1
Nebraska	0-2
Nevada	4-4
New Mexico	5-5
New Orleans	1-0
Nicholls	1-0
NM Highlands	1-0
NM State	18-13
North Alabama	1-0
North Texas	6-3
Northern Arizona	5-1
Northern Colorado	3-1
Northern Illinois	1-1
Northern Iowa	0-3
Northwestern	0-1
Northwestern State	1-0
Oklahoma	1-1
Oklahoma State	0-2
Old Dominion	2-4
Omaha	0-1
Oral Roberts	2-1
Oregon	0-1
Penn State	0-1
Pittsburgh	0-1
Portland	0-2
Prairie View A&M	5-0
Rice	15-17
Rutgers	0-1
Sacramento State	1-0
Saint Louis	1-0
Sam Houston	7-0
San Jose State	3-5
Savannah State	3-0
SMU	16-23
South Carolina State	1-0
South Dakota	0-4
South Dakota State	1-1
Southeastern Louisiana	1-0
Southern	3-0
Southern Miss	12-6
Southern Utah	1-0
St. Mary's (Texas)	1-0
Stanford	0-1
Tarleton State	1-0
TCU	1-2
Temple	5-7
Tennessee	0-1
Tennessee Tech	0-1
Texas	0-1
Texas A&M	0-1
Texas A&M-Corpus Christi	5-2
Texas A&M-Kingsville	1-0
Texas Southern	4-1
Texas State	8-1
Toledo	2-0
Tulane	17-11
Tulsa	26-13
UAB	9-7
Little Rock	0-1
UAPB	4-0
UC Riverside	1-0
UCSB	0-2
UC Irvine	3-2
UCF	5-11
UConn	0-3
UIC	0-1
ULM	1-0
UNLV	1-1
USF	2-7
USW	1-0
UT Arlington	0-1
UT Dallas	1-0
UT Martin	1-0
UTRGV	4-1
Utah Tech	1-0
UTPB	4-0
UTSA	4-9
Virginia Tech	0-1
Washington	1-0
Washington State	0-1
Weber State	1-0
Western Carolina	1-0
Western Illinois	0-1
WKU	3-6
Western New Mexico	4-0
Wyoming	1-1

2025-26 opponents are in **BOLD**



CAREER HIGHS

#1 AALIYAH DAVIS

PTS: _____ 6, vs USW (12/29/25)
 REB: _____ 4, vs USW (12/29/25)
 AST: _____ 3, vs USW (12/29/25)
 STL: _____ 2, vs PVAMU (1/18/15)
 BLK: _____
 FG: _____ 3, vs USW (12/29/25)
 FGA: _____ 7, vs USW (12/29/25)
 3FG: _____
 3FGA: _____ 3, vs USW (12/29/25)
 FT: _____ 3, vs NMSU (2/8/25)
 FTA: _____ 6, vs NMSU (2/8/25)
 MIN: _____ 15, vs USW (12/29/25)

#2 SIRVIVA LEGIONS

PTS: _____ *24, vs NJIT (12/30/24)
 REB: _____ *11, vs Wagner (2/6/25)
 AST: _____ *5, 3x, last vs Wagner (2/6/25)
 STL: _____ *4, 3x, last vs Wagner (2/6/25)
 BLK: _____ *1, 5x, last vs Missouri St (1/15/26)
 FG: _____ *10, 2x, last vs Wagner (2/6/25)
 FGA: _____ *26, vs Wagner (2/6/25)
 3FG: _____ *2, 3x, last vs Nicholls (11/8/25)
 3FGA: _____ *6, 2x, last vs Wagner (2/6/25)
 FT: _____ *10, vs Rider (11/12/24)
 FTA: _____ *12, vs Stonehill (2/8/25)
 MIN: _____ *52, vs Wagner (2/6/25)

#3 IVANE TENSAIE

PTS: _____ 27, vs UTSA (11/16/24)
 REB: _____ 5, vs UT Martin (11/22/25)
 AST: _____ 4, at FIU (1/18/25)
 STL: _____ 2, 6x, last vs TAMU-CC (12/3/25)
 BLK: _____
 FG: _____ 9, vs UTSA (11/16/24)
 FGA: _____ 19, 2x, last vs UT Martin (11/22/25)
 3FG: _____ 8, vs Denver (11/29/25)
 3FGA: _____ 15, vs Delaware (1/2/26)
 FT: _____ 4, 2x, last vs Sam Houston (3/26/25)
 FTA: _____ 6, vs BYU (12/5/24)
 MIN: _____ 39, vs FIU (1/18/25)

#4 DELMA ZITA

PTS: _____ 16, vs Jax State (2/29/24)
 REB: _____ 6, 4x, last at Middle TN (3/11/25)
 AST: _____ 9, 2x, last at Texas A&M-CC (11/26/24)
 STL: _____ 4, 4x, last vs Denver (11/29/25)
 BLK: _____ 1, 4x, last vs Liberty (1/4/26)
 FG: _____ 7, vs Jax State (2/29/24)
 FGA: _____ 17, vs Texas A&M-Kingsville (11/14/23)
 3FG: _____ 2, 3x, last vs Eastern N.M. (12/30/24)
 3FGA: _____ 5, vs North Alabama (11/26/23)
 FT: _____ 5, vs FIU (1/18/25)
 FTA: _____ 6, 2x, at Kennesaw State (1/25/25)
 MIN: _____ 37, vs Kansas City (11/11/23)

#5 HEAVEN SAMAYOA-MATHIS

PTS: _____ 17, vs Missouri St (1/15/26)
 REB: _____ *11, vs Hawaii Pacific (12/12/21)
 AST: _____ 6 at Kansas City (11/25/25)
 STL: _____ 6, vs TAMU-CC (12/3/25)
 BLK: _____ 2, vs PVAMU (11/3/25)
 FG: _____ 6, vs Missouri St (1/15/26)
 FGA: _____ 13, 2x, vs WNMU (11/11/25)
 3FG: _____ 5, vs Missouri St (1/15/26)
 3FGA: _____ *7, at Holy Names (2/16/22)
 FT: _____ *6, vs Academy of Art (1/13/22)
 FTA: _____ *6, 2x, last vs Academy of Art (1/13/22)
 MIN: _____ 29, 2x, last vs Liberty (1/4/26)

#8 BROOKLYN TERRY

PTS: _____ 13, vs PVAMU (11/3/25)
 REB: _____ 6, vs USW (12/29/25)
 AST: _____ 1, 3x, last vs Missouri St (1/16/26)
 STL: _____ 1, 3x, last vs USW (12/29/25)
 BLK: _____ 2, vs USW (12/29/25)
 FG: _____ 4, vs PVAMU (11/3/25)
 FGA: _____ 9, vs PVAMU (11/3/25)
 3FG: _____ 1, 5x, last at WKU (1/10/26)
 3FGA: _____ 5, vs WNMU (11/11/25)
 FT: _____ 4, vs PVAMU (11/3/25)
 FTA: _____ 4, vs PVAMU (11/3/25)
 MIN: _____ 17, at WKU (1/10/26)

#10 OSADEBAMWEN IGBINEDION OMORUYI

PTS: _____ 7, vs UTSA (11/16/24)
 REB: _____ 7, at Sam Houston (1/4/25)
 AST: _____ 1, 3x, last at Kennesaw State (1/25/25)
 STL: _____ 1, 5x, last at Middle TN (1/8/26)
 BLK: _____ 1, 6x, last at USW (12/29/25)
 FG: _____ 3, 2x, last vs Sam Houston (1/4/25)
 FGA: _____ 5, 2x, last vs UTSA (11/16/24)
 3FG: _____
 3FGA: _____
 FT: _____ 1, 7x, last at Middle TN (1/8/26)
 FTA: _____ 4, vs UTSA (11/16/24)
 MIN: _____ 17, at Sam Houston (1/4/25)

#11 PORTIA ADAMS

PTS: _____ *32, vs Houston Christian (2/16/23)
 REB: _____ 9, 2x, last at NMSU (1/11/25)
 AST: _____ 8, 2x, last vs Delaware (1/2/26)
 STL: _____ 3, vs Eastern N.M. (12/30/24)
 BLK: _____ *1, vs Loyola (LA) (12/6/22)
 FG: _____ *11, vs Houston Christian (2/16/23)
 FGA: _____ *21, vs Southeastern La (3/9/23)
 3FG: _____ *5, vs Southeastern La (2/23/23)
 3FGA: _____ *9, at New Orleans (2/25/23)
 FT: _____ *8, vs NMSU (3/8/22)
 FTA: _____ *9, vs NMSU (3/8/22)
 MIN: _____ 37, vs Kennesaw State (3/11/24)

#12 IRENE ASENSIO

PTS: _____ 13, vs USW (12/29/25)
 REB: _____ 6, vs Liberty (1/16/25)
 AST: _____ 6, at Jax State (1/23/25)
 STL: _____ 5, vs N.M. Highlands (11/23/24)
 BLK: _____ 1, 3x, last vs USW (12/29/25)
 FG: _____ 4, vs USW (12/29/25)
 FGA: _____ 8, 2x, last vs USW (12/29/25)
 3FG: _____ 3, 2x, last vs USW (12/29/25)
 3FGA: _____ 7, vs USW (12/29/25)
 FT: _____ 3, at BYU (12/5/24)
 FTA: _____ 3, at BYU (12/5/24)
 MIN: _____ 39, at Jax State (1/13/25)

#13 NDACK MBENGUE

PTS: _____ 26, vs Delaware (1/2/26)
 REB: _____ 14, vs Delaware (1/2/26)
 AST: _____ 2, at Kennesaw State (1/25/25)
 STL: _____ 5, vs Missouri St (1/15/26)
 BLK: _____ 4, vs UT Martin (11/22/25)
 FG: _____ 9, vs Delaware (1/2/26)
 FGA: _____ 16, vs Delaware (1/2/26)
 3FG: _____
 3FGA: _____ 1, 2x, last vs Eastern N.M. (12/30/24)
 FT: _____ 8, 3x, last vs Delaware (1/2/26)
 FTA: _____ 12, 2x, last vs Delaware (1/2/26)
 MIN: _____ 38, vs FIU (1/18/25)

#14 TATIANA COLLAZO

PTS: _____ 6, vs PVAMU (11/3/25)
 REB: _____ 1, 6x, last at Middle TN (1/8/26)
 AST: _____ 1, 6x, last at WKU (1/10/26)
 STL: _____ 4, vs USW (12/29/25)
 BLK: _____
 FG: _____ 2, 2x, last at Kansas City (11/25/25)
 FGA: _____ 7, vs PVAMU (11/3/25)
 3FG: _____ 1, 4x, last at WKU (1/10/26)
 3FGA: _____ 5, vs PVAMU (11/3/25)
 FT: _____ 3, vs PVAMU (11/3/25)
 FTA: _____ 4, vs PVAMU (11/3/25)
 MIN: _____ 18, vs WNMU (11/11/25)

#15 ABBY PRISCILLA

PTS: _____ 3, vs USW (12/29/25)
 REB: _____ 6, vs USW (12/29/25)
 AST: _____
 STL: _____
 BLK: _____
 FG: _____ 1, vs USW (12/29/25)
 FGA: _____ 3, vs USW (12/29/25)
 3FG: _____
 3FGA: _____
 FT: _____ 1, vs USW (12/29/25)
 FTA: _____ 2, vs USW (12/29/25)
 MIN: _____ 4, vs USW (12/29/25)

#20 BLESSING OKHWODIASA

PTS: _____
 REB: _____
 AST: _____
 STL: _____
 BLK: _____
 FG: _____
 FGA: _____
 3FG: _____
 3FGA: _____
 FT: _____
 FTA: _____
 MIN: _____

#22 MARY MOSES AMANIYO

PTS: _____ 20, vs USW (12/29/25)
 REB: _____ 22, vs PVAMU (11/3/25)
 AST: _____ 1, 7x, last vs Missouri St (1/15/26)
 STL: _____ 3, vs Denver (11/29/25)
 BLK: _____ 1, 7x, last vs Liberty (1/4/26)
 FG: _____ 10, vs USW (12/29/25)
 FGA: _____ 14, vs USW (12/29/25)
 3FG: _____ 1, vs Nicholls (11/8/25)
 3FGA: _____ 2, at Colorado St (2/16/24)
 FT: _____ 7, at Kansas City (11/25/25)
 FTA: _____ 8, 3x, last at Kansas City (11/25/25)
 MIN: _____ 32, vs UT Martin (11/22/25)

#23 AOLANI WOLDAI

PTS: _____ 4, 2x, last vs USW (12/29/25)
 REB: _____ 5, vs WNMU (11/11/25)
 AST: _____ 2, vs WNMU (11/11/25)
 STL: _____ 1, 2x last at BYU (12/13/25)
 BLK: _____ 2, vs USW (12/29/25)
 FG: _____ 2, vs WNMU (11/11/25)
 FGA: _____ 6, vs WNMU (11/11/25)
 3FG: _____
 3FGA: _____ 2, 2x, last vs USW (12/29/25)
 FT: _____ 2, vs USW (12/29/25)
 FTA: _____ 2, vs USW (12/29/25)
 MIN: _____ 16, vs USW (12/29/25)



2025-26 GAME-BY-GAME STATS



2025-26 UTEP Women's Basketball Team Game-by-Game All games

Page 1/1
as of Jan 16, 2026

Opponent	Date	Score	W	Total		3-Pointers		Free throws		Rebounds				PF	A	TO	BLK	STL	PTS	AVG
				FG-FGA	PCT	3FG-3FGA	PCT	FT-FTA	PCT	OFF	DEF	TOT	AVG							
Prairie View	11/03/2025	84-60	W	31-80	.388	6-27	.222	16-25	.640	24	28	52	52.0	19	14	18	3	11	84	84.0
Nicholls	11/08/2025	76-61	W	26-57	.456	6-21	.286	18-25	.720	8	30	38	45.0	24	14	15	1	8	76	80.0
Western N.M.	11/11/2025	81-56	W	34-93	.366	6-25	.240	7-13	.538	33	31	64	51.3	13	17	15	0	9	81	80.3
UT Martin	11/22/2025	64-60	Wot	23-70	.329	5-27	.185	13-18	.722	22	32	54	52.0	15	12	14	5	4	64	76.3
at Kansas City	11/25/2025	75-64	W	25-56	.446	8-15	.533	17-25	.680	16	29	45	50.6	17	16	17	1	7	75	76.0
Denver	11/29/2025	69-52	W	25-62	.403	8-18	.444	11-13	.846	12	27	39	48.7	12	14	14	1	13	69	74.8
A&M-Corpus Christi	12/03/2025	62-44	W	22-61	.361	5-16	.313	13-21	.619	12	31	43	47.9	14	12	14	0	16	62	73.0
at TCU	12/06/2025	40-95	L	16-66	.242	1-17	.059	7-9	.778	14	25	39	46.8	19	6	22	1	7	40	68.9
at BYU	12/13/2025	46-81	L	18-60	.300	3-12	.250	7-11	.636	12	17	29	44.8	9	7	19	2	8	46	66.3
UC Irvine	12/18/2025	72-93	L	23-58	.397	6-21	.286	20-27	.741	11	17	28	43.1	25	15	14	0	6	72	66.9
Southwest (NM)	12/29/2025	102-43	W	39-93	.419	10-35	.286	14-25	.560	39	35	74	45.9	11	19	17	6	19	102	70.1
Delaware	01/02/2026	82-71	W	32-64	.500	8-18	.444	10-17	.588	10	23	33	44.8	16	17	15	3	13	82	71.1
Liberty	01/04/2026	66-86	L	20-62	.323	4-19	.211	22-24	.917	17	24	41	44.5	17	8	18	4	4	66	70.7
at Middle Tenn.	01/08/2026	43-86	L	15-57	.263	3-14	.214	10-22	.455	12	19	31	43.6	10	3	14	0	6	43	68.7
at Western Ky.	01/10/2026	59-68	L	20-58	.345	8-25	.320	11-15	.733	14	25	39	43.3	14	9	14	2	5	59	68.1
Missouri St.	01/15/2026	64-71	L	25-58	.431	6-15	.400	8-12	.667	10	20	30	42.4	18	9	19	4	12	64	67.8
Total		1085		394-1055	.373	93-325	.286	204-302	.675	266	413	679	42.4	253	192	259	33	148	1085	67.8
Opponents		1091		400-962	.416	118-360	.328	173-233	.742	172	447	619	38.7	288	222	294	57	136	1091	68.2

UTEP Averages

Games Played	Points/game	FG Pct	3FG Pct	FT Pct	Rebounds/game	Assists/game	Turnovers/game	Assist/Turnover ratio	Steals/game	Blocks/game
16	67.8	37.3	28.6	67.5	42.4	12.0	16.2	0.7	9.3	2.1



2025-26 OVERALL STATS



2025-26 UTEP Women's Basketball
Overall Team Statistics
All games

Team Statistics

	UTEP	OPP
Scoring	1085	1091
Points per game	67.8	68.2
Scoring margin	-0.4	-
Field goals-att	394-1055	400-962
Field goal pct	.373	.416
3 point fg-att	93-325	118-360
3-point FG pct	.286	.328
3-pt FG made per game	5.8	7.4
Free throws-att	204-302	173-233
Free throw pct	.675	.742
F-Throws made per game	12.8	10.8
Rebounds	679	619
Rebounds per game	42.4	38.7
Rebounding margin	+3.8	-
Assists	192	222
Assists per game	12.0	13.9
Turnovers	259	294
Turnovers per game	16.2	18.4
Turnover margin	+2.2	-
Assist/turnover ratio	0.7	0.8
Steals	148	136
Steals per game	9.3	8.5
Blocks	33	57
Blocks per game	2.1	3.6
Winning streak	0	-
Home win streak	0	-
Attendance	10263	8881
Home games-Avg/Game	11-933	5-1776
Neutral site-Avg/Game	-	0-0

Score by Periods

Team	1st	2nd	3rd	4th	OT	TOT
UTEP	254	231	311	277	12	1085
Opponents	261	247	304	271	8	1091



2025-26 UTEP GAME HIGHS



2025-26 UTEP Women's Basketball
Team High/Low Analysis
All games

UTEP - Game Highs

POINTS	102		Southwest (NM) (12/29/2025)
	84		Prairie View (11/03/2025)
	82		Delaware (01/02/2026)
	81		Western N.M. (11/11/2025)
	76		Nicholls (11/08/2025)
FIELD GOALS MADE	39		Southwest (NM) (12/29/2025)
	34		Western N.M. (11/11/2025)
FIELD GOAL ATTEMPTS	93		Southwest (NM) (12/29/2025)
	93		Western N.M. (11/11/2025)
FIELD GOAL PERCENTAGE	.500	(32-64)	Delaware (01/02/2026)
	.456	(26-57)	Nicholls (11/08/2025)
3 PT FG MADE	10		Southwest (NM) (12/29/2025)
	8		at Western Ky. (01/10/2026)
	8		Delaware (01/02/2026)
	8		Denver (11/29/2025)
	8		at Kansas City (11/25/2025)
3 PT FG ATTEMPTS	35		Southwest (NM) (12/29/2025)
	27		UT Martin (11/22/2025)
	27		Prairie View (11/03/2025)
3 PT FG PERCENTAGE	.533	(8-15)	at Kansas City (11/25/2025)
	.444	(8-18)	Delaware (01/02/2026)
	.444	(8-18)	Denver (11/29/2025)
FREE THROWS MADE	22		Liberty (01/04/2026)
	20		UC Irvine (12/18/2025)
FREE THROW ATTEMPTS	27		UC Irvine (12/18/2025)
	25		Southwest (NM) (12/29/2025)
	25		at Kansas City (11/25/2025)
	25		Nicholls (11/08/2025)
	25		Prairie View (11/03/2025)
FREE THROW PERCENTAGE	.917	(22-24)	Liberty (01/04/2026)
	.846	(11-13)	Denver (11/29/2025)
REBOUNDS	74		Southwest (NM) (12/29/2025)
	64		Western N.M. (11/11/2025)
ASSISTS	19		Southwest (NM) (12/29/2025)
	17		Delaware (01/02/2026)
	17		Western N.M. (11/11/2025)
STEALS	19		Southwest (NM) (12/29/2025)
	16		A&M-Corpus Christi (12/03/2025)
BLOCKED SHOTS	6		Southwest (NM) (12/29/2025)
	5		UT Martin (11/22/2025)
TURNOVERS	22		at TCU (12/06/2025)
	19		Missouri St. (01/15/2026)
	19		at BYU (12/13/2025)
FOULS	25		UC Irvine (12/18/2025)
	24		Nicholls (11/08/2025)



2025-26 OPPONENT GAME HIGHS



2025-26 UTEP Women's Basketball
Team High/Low Analysis
All games

Opponent - Game Highs

POINTS	95		at TCU (12/06/2025)
	93		UC Irvine (12/18/2025)
	86		at Middle Tenn. (01/08/2026)
	86		Liberty (01/04/2026)
	81		at BYU (12/13/2025)
FIELD GOALS MADE	33		at TCU (12/06/2025)
	32		at BYU (12/13/2025)
FIELD GOAL ATTEMPTS	68		at Middle Tenn. (01/08/2026)
	66		at BYU (12/13/2025)
FIELD GOAL PERCENTAGE	.566	(30-53)	UC Irvine (12/18/2025)
	.516	(33-64)	at TCU (12/06/2025)
3 PT FG MADE	14		at TCU (12/06/2025)
	13		at Middle Tenn. (01/08/2026)
3 PT FG ATTEMPTS	31		at Middle Tenn. (01/08/2026)
	30		at BYU (12/13/2025)
	30		at TCU (12/06/2025)
3 PT FG PERCENTAGE	.563	(9-16)	at Kansas City (11/25/2025)
	.500	(12-24)	Liberty (01/04/2026)
	.500	(9-18)	UC Irvine (12/18/2025)
FREE THROWS MADE	24		UC Irvine (12/18/2025)
	15		at TCU (12/06/2025)
	15		Nicholls (11/08/2025)
FREE THROW ATTEMPTS	29		UC Irvine (12/18/2025)
	24		Nicholls (11/08/2025)
FREE THROW PERCENTAGE	1.000	(11-11)	at Middle Tenn. (01/08/2026)
	1.000	(1-1)	Southwest (NM) (12/29/2025)
REBOUNDS	54		at Middle Tenn. (01/08/2026)
	51		at BYU (12/13/2025)
ASSISTS	27		at TCU (12/06/2025)
	22		Liberty (01/04/2026)
	22		at BYU (12/13/2025)
STEALS	12		at TCU (12/06/2025)
	11		Delaware (01/02/2026)
BLOCKED SHOTS	7		at BYU (12/13/2025)
	6		at TCU (12/06/2025)
	6		Western N.M. (11/11/2025)
	6		Prairie View (11/03/2025)
TURNOVERS	28		Southwest (NM) (12/29/2025)
	27		Prairie View (11/03/2025)
FOULS	25		Nicholls (11/08/2025)
	22		UC Irvine (12/18/2025)
	22		at Kansas City (11/25/2025)
	22		Prairie View (11/03/2025)



2025-26 UTEP GAME LOWS



2025-26 UTEP Women's Basketball
Team High/Low Analysis
All games

UTEP - Game Lows

POINTS	40		at TCU (12/06/2025)
	43		at Middle Tenn. (01/08/2026)
	46		at BYU (12/13/2025)
	59		at Western Ky. (01/10/2026)
	62		A&M-Corpus Christi (12/03/2025)
FIELD GOALS MADE	15		at Middle Tenn. (01/08/2026)
	16		at TCU (12/06/2025)
FIELD GOAL ATTEMPTS	56		at Kansas City (11/25/2025)
	57		at Middle Tenn. (01/08/2026)
	57		Nicholls (11/08/2025)
FIELD GOAL PERCENTAGE	.242	(16-66)	at TCU (12/06/2025)
	.263	(15-57)	at Middle Tenn. (01/08/2026)
3 PT FG MADE	1		at TCU (12/06/2025)
	3		at Middle Tenn. (01/08/2026)
	3		at BYU (12/13/2025)
3 PT FG ATTEMPTS	12		at BYU (12/13/2025)
	14		at Middle Tenn. (01/08/2026)
3 PT FG PERCENTAGE	.059	(1-17)	at TCU (12/06/2025)
	.185	(5-27)	UT Martin (11/22/2025)
FREE THROWS MADE	7		at BYU (12/13/2025)
	7		at TCU (12/06/2025)
	7		Western N.M. (11/11/2025)
FREE THROW ATTEMPTS	9		at TCU (12/06/2025)
	11		at BYU (12/13/2025)
FREE THROW PERCENTAGE	.455	(10-22)	at Middle Tenn. (01/08/2026)
	.538	(7-13)	Western N.M. (11/11/2025)
REBOUNDS	28		UC Irvine (12/18/2025)
	29		at BYU (12/13/2025)
ASSISTS	3		at Middle Tenn. (01/08/2026)
	6		at TCU (12/06/2025)
STEALS	4		Liberty (01/04/2026)
	4		UT Martin (11/22/2025)
BLOCKED SHOTS	0		at Middle Tenn. (01/08/2026)
	0		UC Irvine (12/18/2025)
	0		A&M-Corpus Christi (12/03/2025)
	0		Western N.M. (11/11/2025)
TURNOVERS	14		at Western Ky. (01/10/2026)
	14		at Middle Tenn. (01/08/2026)
	14		UC Irvine (12/18/2025)
	14		A&M-Corpus Christi (12/03/2025)
	14		Denver (11/29/2025)
	14		UT Martin (11/22/2025)
FOULS	9		at BYU (12/13/2025)
	10		at Middle Tenn. (01/08/2026)



2025-26 OPPONENT GAME LOWS



2025-26 UTEP Women's Basketball
Team High/Low Analysis
All games

Opponent - Game Lows

POINTS	43		Southwest (NM) (12/29/2025)
	44		A&M-Corpus Christi (12/03/2025)
	52		Denver (11/29/2025)
	56		Western N.M. (11/11/2025)
	60		UT Martin (11/22/2025)
	60		Prairie View (11/03/2025)
FIELD GOALS MADE	15		A&M-Corpus Christi (12/03/2025)
	18		Southwest (NM) (12/29/2025)
	18		Denver (11/29/2025)
FIELD GOAL ATTEMPTS	53		UC Irvine (12/18/2025)
	53		A&M-Corpus Christi (12/03/2025)
FIELD GOAL PERCENTAGE	.283	(15-53)	A&M-Corpus Christi (12/03/2025)
	.290	(18-62)	Southwest (NM) (12/29/2025)
3 PT FG MADE	4		Missouri St. (01/15/2026)
	4		A&M-Corpus Christi (12/03/2025)
	4		UT Martin (11/22/2025)
	4		Nicholls (11/08/2025)
	4		Prairie View (11/03/2025)
3 PT FG ATTEMPTS	10		Missouri St. (01/15/2026)
	16		at Kansas City (11/25/2025)
3 PT FG PERCENTAGE	.182	(4-22)	A&M-Corpus Christi (12/03/2025)
	.190	(4-21)	Prairie View (11/03/2025)
FREE THROWS MADE	1		Southwest (NM) (12/29/2025)
	6		at Western Ky. (01/10/2026)
FREE THROW ATTEMPTS	1		Southwest (NM) (12/29/2025)
	8		at BYU (12/13/2025)
FREE THROW PERCENTAGE	.583	(7-12)	at Kansas City (11/25/2025)
	.625	(15-24)	Nicholls (11/08/2025)
	.625	(10-16)	A&M-Corpus Christi (12/03/2025)
	.625	(10-16)	Western N.M. (11/11/2025)
REBOUNDS	30		Southwest (NM) (12/29/2025)
	30		at Kansas City (11/25/2025)
ASSISTS	7		Denver (11/29/2025)
	7		Prairie View (11/03/2025)
STEALS	6		Western N.M. (11/11/2025)
	7		at Middle Tenn. (01/08/2026)
	7		UC Irvine (12/18/2025)
	7		A&M-Corpus Christi (12/03/2025)
	7		at Kansas City (11/25/2025)
BLOCKED SHOTS	0		at Western Ky. (01/10/2026)
	1		UT Martin (11/22/2025)
	1		Nicholls (11/08/2025)
TURNOVERS	12		at Western Ky. (01/10/2026)
	13		at Middle Tenn. (01/08/2026)
	13		UT Martin (11/22/2025)
FOULS	10		Denver (11/29/2025)
	12		at TCU (12/06/2025)



2025-26 CATEGORY LEADERS



2025-26 UTEP Women's Basketball Category Leaders All games

Page 1/2
as of Jan 16, 2026

Points

##	Player	G	Pts	Pts/G
3	Tensaie, Ivane	16	178	11.1
13	Mbengue, Ndack	16	167	10.4
22	Moses Amaniyo, Mary	16	157	9.8
2	Legions, Sirviva	16	152	9.5
11	Adams, Portia	16	146	9.1
5	Samayoa-Mathis, Heaven	16	105	6.6
4	Zita, Delma	16	48	3.0
8	Terry, Brooklyn	13	35	2.7
12	Asensio, Irene	15	28	1.9
14	Collazo, Tatiana	13	21	1.6
10	Igbinedion Omoruyi, Osadebamwen	12	16	1.3
23	Woldai, Aolani	10	15	1.5
1	Davis, Aaliyah	11	14	1.3
15	Priscilla, Abby	1	3	3.0

Scoring Average

##	Player	G	Pts	Pts/G
3	Tensaie, Ivane	16	178	11.1
13	Mbengue, Ndack	16	167	10.4
22	Moses Amaniyo, Mary	16	157	9.8
2	Legions, Sirviva	16	152	9.5
11	Adams, Portia	16	146	9.1
5	Samayoa-Mathis, Heaven	16	105	6.6
4	Zita, Delma	16	48	3.0
15	Priscilla, Abby	1	3	3.0
8	Terry, Brooklyn	13	35	2.7
12	Asensio, Irene	15	28	1.9
14	Collazo, Tatiana	13	21	1.6
23	Woldai, Aolani	10	15	1.5
10	Igbinedion Omoruyi, Osadebamwen	12	16	1.3
1	Davis, Aaliyah	11	14	1.3

Field Goal Percentage

##	Player	FG	Att	Pct
22	Moses Amaniyo, Mary	61	118	.517
13	Mbengue, Ndack	57	116	.491
5	Samayoa-Mathis, Heaven	39	102	.382
10	Igbinedion Omoruyi, Osadebamwen	7	19	.368
2	Legions, Sirviva	59	161	.366
11	Adams, Portia	53	150	.353
15	Priscilla, Abby	1	3	.333
3	Tensaie, Ivane	60	182	.330
4	Zita, Delma	17	52	.327
23	Woldai, Aolani	6	22	.273
8	Terry, Brooklyn	13	48	.271
12	Asensio, Irene	9	34	.265
14	Collazo, Tatiana	7	28	.250
1	Davis, Aaliyah	5	20	.250

Field Goal Attempts

##	Player	G	Att	Att/G
3	Tensaie, Ivane	16	182	11.4
2	Legions, Sirviva	16	161	10.1
11	Adams, Portia	16	150	9.4
22	Moses Amaniyo, Mary	16	118	7.4
13	Mbengue, Ndack	16	116	7.3

Field Goals Made

##	Player	G	Made	Made/G
22	Moses Amaniyo, Mary	16	61	3.8
3	Tensaie, Ivane	16	60	3.8
2	Legions, Sirviva	16	59	3.7
13	Mbengue, Ndack	16	57	3.6
11	Adams, Portia	16	53	3.3

3-Point FG Percentage

##	Player	3FG	Att	Pct
11	Adams, Portia	15	42	.357
3	Tensaie, Ivane	43	125	.344
5	Samayoa-Mathis, Heaven	14	47	.298
12	Asensio, Irene	7	26	.269
14	Collazo, Tatiana	4	19	.211
8	Terry, Brooklyn	5	27	.185
2	Legions, Sirviva	2	11	.182
22	Moses Amaniyo, Mary	1	6	.167
4	Zita, Delma	2	12	.167

3-Point FG Attempts

##	Player	G	Att	Att/G
3	Tensaie, Ivane	16	125	7.8
5	Samayoa-Mathis, Heaven	16	47	2.9
11	Adams, Portia	16	42	2.6
8	Terry, Brooklyn	13	27	2.1
12	Asensio, Irene	15	26	1.7

3-Point FG Made

##	Player	G	Made	Made/G
3	Tensaie, Ivane	16	43	2.7
11	Adams, Portia	16	15	0.9
5	Samayoa-Mathis, Heaven	16	14	0.9
12	Asensio, Irene	15	7	0.5
8	Terry, Brooklyn	13	5	0.4

Free Throw Percentage

##	Player	Made	Att	Pct
8	Terry, Brooklyn	4	4	1.000
23	Woldai, Aolani	3	3	1.000
4	Zita, Delma	12	15	.800
3	Tensaie, Ivane	15	19	.789
11	Adams, Portia	25	32	.781
12	Asensio, Irene	3	4	.750
22	Moses Amaniyo, Mary	34	48	.708
13	Mbengue, Ndack	53	81	.654
5	Samayoa-Mathis, Heaven	13	20	.650
2	Legions, Sirviva	32	52	.615
1	Davis, Aaliyah	4	7	.571
15	Priscilla, Abby	1	2	.500
10	Igbinedion Omoruyi, Osadebamwen	2	5	.400
14	Collazo, Tatiana	3	10	.300

Free Throw Attempts

##	Player	G	Att	Att/G
13	Mbengue, Ndack	16	81	5.1
2	Legions, Sirviva	16	52	3.3
22	Moses Amaniyo, Mary	16	48	3.0
11	Adams, Portia	16	32	2.0
5	Samayoa-Mathis, Heaven	16	20	1.3

Free Throws Made

##	Player	G	Made	Made/G
13	Mbengue, Ndack	16	53	3.3
22	Moses Amaniyo, Mary	16	34	2.1
2	Legions, Sirviva	16	32	2.0
11	Adams, Portia	16	25	1.6
3	Tensaie, Ivane	16	15	0.9



2025-26 CATEGORY LEADERS



2025-26 UTEP Women's Basketball Category Leaders All games

Page 2/2
as of Jan 16, 2026

Rebounds

##	Player	G	Reb	Reb/G
22	Moses Amaniyo, Mary	16	147	9.2
13	Mbengue, Ndack	16	136	8.5
2	Legions, Sirviva	16	85	5.3
5	Samayoa-Mathis, Heaven	16	59	3.7
11	Adams, Portia	16	38	2.4

Rebounds Average

##	Player	G	Reb	Reb/G
22	Moses Amaniyo, Mary	16	147	9.2
13	Mbengue, Ndack	16	136	8.5
15	Priscilla, Abby	1	6	6.0
2	Legions, Sirviva	16	85	5.3
5	Samayoa-Mathis, Heaven	16	59	3.7

Offensive Rebounds

##	Player	G	OReb	OReb/G
22	Moses Amaniyo, Mary	16	67	4.2
13	Mbengue, Ndack	16	61	3.8
2	Legions, Sirviva	16	28	1.8
5	Samayoa-Mathis, Heaven	16	20	1.3
11	Adams, Portia	16	12	0.8

Defensive Rebounds

##	Player	G	DReb	DReb/G
22	Moses Amaniyo, Mary	16	80	5.0
13	Mbengue, Ndack	16	75	4.7
2	Legions, Sirviva	16	57	3.6
5	Samayoa-Mathis, Heaven	16	39	2.4
11	Adams, Portia	16	26	1.6

Fouls

##	Player	G	PF	PF/G
13	Mbengue, Ndack	16	49	3.1
22	Moses Amaniyo, Mary	16	31	1.9
5	Samayoa-Mathis, Heaven	16	31	1.9
11	Adams, Portia	16	27	1.7
2	Legions, Sirviva	16	25	1.6

Foul Outs

##	Player	G	FO
22	Moses Amaniyo, Mary	16	2
13	Mbengue, Ndack	16	1
2	Legions, Sirviva	16	1

Assists

##	Player	G	Ast	Ast/G
11	Adams, Portia	16	46	2.9
5	Samayoa-Mathis, Heaven	16	37	2.3
4	Zita, Delma	16	35	2.2
2	Legions, Sirviva	16	23	1.4
3	Tensaie, Ivane	16	13	0.8

Steals

##	Player	G	Stl	Stl/G
5	Samayoa-Mathis, Heaven	16	27	1.7
13	Mbengue, Ndack	16	20	1.3
2	Legions, Sirviva	16	19	1.2
22	Moses Amaniyo, Mary	16	18	1.1
4	Zita, Delma	16	18	1.1

Blocked Shots

##	Player	G	Blk	Blk/G
13	Mbengue, Ndack	16	11	0.7
5	Samayoa-Mathis, Heaven	16	5	0.3
22	Moses Amaniyo, Mary	16	4	0.3
8	Terry, Brooklyn	13	4	0.3
10	Igbinedion Omoruyi, Osadebamwen	12	3	0.3

Minutes

##	Player	G	Min	Min/G
3	Tensaie, Ivane	16	436	27:17
2	Legions, Sirviva	16	407	25:28
13	Mbengue, Ndack	16	403	25:13
11	Adams, Portia	16	393	24:35
5	Samayoa-Mathis, Heaven	16	367	22:57

Turnovers

##	Player	G	TO	TO/G
13	Mbengue, Ndack	16	37	2.3
11	Adams, Portia	16	35	2.2
2	Legions, Sirviva	16	32	2.0
4	Zita, Delma	16	30	1.9
5	Samayoa-Mathis, Heaven	16	29	1.8



TEAM SINGLE-GAME RECORDS

FIELD GOALS MADE

FG	OPP	DATE
1. 49	Colorado State*	2/9/80
2. 46	vs. Texas Lutheran+	12/4/82
3. 45	UT-Permian Basin+	12/15/06
4. 41	WNMU+	11/17/16
41	UT-Permian Basin+	12/21/05
6. 40	Savannah State	11/22/08
7. 39	USW+	12/29/25
39	Hardin Simmons+	2/16/85
8. 39	Texas State	12/17/10
9. 38	Fresno State*	1/11/03
38	at BYU	1/6/90
38	Eastern New Mexico+	1/13/87

FIELD GOALS ATTEMPTED

FGA	OPP	DATE
1. 93	USW+	12/29/25
93	WNMU+	11/11/25
93	vs. Texas Lutheran+	12/4/82
3. 87	at New Mexico State*	12/15/79
4. 86	New Mexico State*	12/13/80
5. 85	UT-Dallas+	11/20/04
85	vs. Arizona	11/25/83
85	Eastern New Mexico+	3/1/80
84	at Southern Utah	12/29/88
84	Hardin Simmons+	2/16/85
84	at Eastern New Mexico+	1/28/84

OTHER GAMES OF 83 OR MORE FIELD GOALS

83	Charlotte*	2/27/16
83	at BYU	1/6/90
83	at New Mexico	11/29/86
83	at Oral Roberts	2/24/86

FIELD GOAL PERCENTAGE (MIN. 24 MADE)

FG%	OPP	DATE
1. .660 (35-53)	Southern Miss*	2/21/09
2. .636 (28-44)	UCF*	1/24/10
3. .615 (32-52)	at UTPA	2/7/89
4. .612 (41-67)	WNMU+	11/17/16
5. .611 (33-54)	at San Diego	1/7/87
6. .591 (26-44)	Sam Houston	1/27/24
7. .588 (30-51)	TXA&M CC	12/18/02
8. .577 (30-52)	WKU*	3/3/18
.577 (30-52)	Alcorn State	12/20/09
10. .576 (38-66)	Fresno State*	1/11/03

FIELD GOAL PERCENTAGE DEFENSE

FG% Defense	OPP	DATE
1. .167 (8-48)	UTPB+	12/14/15
2. .184 (9-49)	NM State	11/29/11
3. .196 (10-51)	UT-Dallas+	11/20/04
4. .205 (9-44)	NM State	12/05/12
5. .206 (13-63)	Tulsa	1/31/13
6. .208 (11-53)	vs. Samford	12/21/17
7. .209 (9-49)	UTPA	12/22/96
8. .214 (12-56)	Montana State	12/22/03
9. .216 (16-74)	Alcorn State	12/20/09
10. .222 (12-54)	Fresno State*	2/12/04
.222 (12-54)	Prairie View	3/1/96

OTHER GAMES OF FG% 23.0 OR WORSE

12. .224 (15-67)	WNMU+	11/17/16
.224 (13-58)	at Colo. State*	2/6/93
14. .226 (14-62)	UTPB+	12/15/06
15. .229 (11-48)	ENMU+	12/8/12
16. .230 (14-61)	at UNM*	3/1/95

THREE POINTERS MADE

3PM	OPP	DATE
1. 14	UTSA	2/11/23
14	Toledo	11/24/09
14	Savannah State	11/22/08
14	vs. Eastern Illinois	11/20/09
4. 13	at FIU*	2/12/21
13	Tulsa*	1/22/09
13	at Tulane*	1/12/08
7. 12	New Mexico	12/2/15
12	Tulsa*	1/11/14
12	vs. Missouri State	12/4/09
10. 11	vs. North Dakota	11/13/21
11	vs. FAU	3/1/20
11	vs. WIU	12/20/18
11	Idaho State	11/28/15
11	#24 Western Kentucky*	1/22/15
11	Prairie View A&M	12/20/14
11	at Tulane*	2/1/14
11	Northern Arizona	11/22/13
11	Denver	11/26/11
11	Cal State Northridge	12/3/10
11	Idaho State	11/26/10
11	Arizona	11/26/06
11	SMU*	1/8/06
11	at Hawaii*	1/20/05
11	at Tulsa*	2/9/02
11	Louisiana Tech*	1/31/02
11	at SMU*	1/3/02
11	at Southern Utah	1/26/93

THREE POINTERS ATTEMPTED

3PA	OPP	DATE
1. 35	USW+	12/29/25
2. 34	Southern Miss*	3/1/15
3. 33	at Weber State	11/28/18
4. 32	Idaho State	11/28/15
32	at SMU	11/16/14
32	Toledo	11/24/09
8. 31	vs. SMU*	3/9/08
31	UTSA	2/11/23
31	Louisiana Tech*	1/31/02
10. 30	at #8 TCU	12/6/25
30	Louisiana Tech*	2/5/14
30	at Tulsa*	2/9/02
30	at Louisiana Tech*	1/5/02

THREE POINT PERCENTAGE (MIN. 8 MADE)

3FG%	OPP	DATE
1. .733 (11-15)	at S. Utah	1/26/93
2. .650 (13-20)	at FIU*	2/12/21
3. .647 (11-17)	Southern Miss*	2/21/09
4. .643 (9-14)	UTSA	11/16/24
5. .615 (8-13)	Cal Poly	12/16/03
6. .600 (9-15)	TX Southern	12/13/09
6. .600 (9-15)	vs. SAC St.	12/30/08
8. .588 (10-17)	Southern Miss*	2/16/19
9. .579 (11-19)	vs. WIU	12/20/18
.579 (11-19)	Idaho State	11/26/10
.579 (11-19)	at Tulane*	1/18/09

FREE THROWS MADE

FTM	OPP	DATE
1. 42	vs. East Carolina	12/17/17
2. 40	East Carolina*	1/6/11
3. 36	Oregon State	12/21/86
4. 35	at NM State	2/15/21
35	Kansas State	11/16/13
6. 34	Bellhaven+	11/27/93
7. 33	Air Force	12/21/21
33	Middle Tennessee*	1/7/16
33	Louisiana Tech*	2/27/15
10. 31	vs. Illinois-Chicago	12/19/96
31	Southeast Louisiana	2/24/90

FREE THROWS ATTEMPTED

FTA	OPP	DATE
1. 54	East Carolina*	1/6/11
2. 53	Bellhaven+	11/27/93
3. 50	vs. East Carolina	12/17/17
4. 49	Oregon State	12/21/86
5. 48	Air Force	12/21/21
6. 47	Kansas State	11/16/13
47	at UCF 12/18/97	
8. 46	at NM State	12/15/21
9. 45	UTPB+ 11/8/13	
10. 44	vs. McNeese State	12/20/93

FREE THROW PERCENTAGE (MIN. 10 MADE)

FT%	OPP	DATE
1. 100 (16-16)	at Wyoming	1/14/89
100 (10-10)	New Mexico	2/21/85
100 (10-10)	vs. San Diego	11/23/84
4. .962 (25-26)	San Jose State*	3/6/03
5. .941 (16-17)	UC Irvine	11/13/10
5. .941 (16-17)	at WNMU+	12/7/87
7. .938 (15-16)	North Texas	1/28/123
8. .929 (13-14)	at Boise State*	2/22/03
8. .929 (13-14)	at Colo. St.*	2/5/98
10. .923 (12-13)	Sam Houston *	3/6/25
.923 (12-13)	Arkansas State	12/1/18

OTHER GAMES OF FT 90% OR BETTER

11. .917 (11-12)	at UAB*	1/29/15
.917 (11-12)	at Toledo	12/21/0
13. .909 (10-11)	NM State*	11/23/04
.909 (20-22)	Boise State*	1/25/03
.909 (10-11)	Creighton	2/15/92

OFFENSIVE REBOUNDS

ORB	OPP	DATE
1. 39	USW+	12/29/25
2. 33	WNMU+	11/11/25
3. 32	Abilene Christian+	11/30/93
4. 31	Sul Ross State+	12/1/97
5. 29	Houston Baptist	11/19/11
29	Lamar	11/20/98
28	Bellhaven+	11/27/93
28	at Western Michigan	1/3/93
28	at Oral Roberts	1/27/89
28	at Southern Utah	12/29/88

TOTAL REBOUNDS

RB	OPP	DATE
1. 74	USW+	12/29/25
2. 66	WNMU+ (21/+39)	11/17/16
3. 65	Sul Ross State+ (40/+25)	12/1/97
4. 64	WNMU+ (33/+31)	11/11/25
64	Bellhaven+ (28/+36)	11/27/93

64	UTPA (25/+39)	1/7/89
7. 61	vs. McNeese State (40/+61)	11/24/89
61	New Mexico (NA/NA)	3/3/83
9. 60	Houston Baptist (38/+22)	11/19/11
60	at La-Lafayette (56/+4)	11/27/05
60	Air Force (35/+25)	2/14/98
60	Azusa Pacific+ (45/+15)	11/22/96
60	Abilene Christian+ (37/+23)	11/30/93
60	Alaska (44/+16)	12/16/89
60	at Colorado State* (NA/NA)	1/10/81

REBOUND MARGIN

MAR	OPP (UTEP RB/OPP RB)	DATE
1. +45	WNMU+ (66/21)	11/17/16
2. +44	USW+ (73-40)	12/29/25
3. +39	UTPA (64-25)	1/7/89
4. +36	Bellhaven+ (64-28)	11/27/93
5. +32	Savannah State (50-18)	11/22/08
6. +30	WNMU+ (64-34)	11/11/25
+30	WKU	2/4/23
8. +28	ENMU+ (57-29)	12/2/14
9. +27	Alcorn State (48-21)	11/10/18
+27	Prairie View A&M (58-31)	11/21/99
+27	Texas of Southern (50-23)	1/18/94

OTHER GAMES OF AT LEAST +26 REBOUND MARGIN

+26	Lamar (54-28)	12/1/11
+26	Texas State (50-24)	12/31/11
+26	UC Irvine (54-28)	11/13/10
+26	Prairie View A&M (58-32)	3/1/96

PERSONAL FOULS

PF	OPP	DATE
1. 37	at US International+	1/29/89
2. 33	Eastern Arizona+	1/10/79
3. 32	at Utah*	3/12/92
32	Alaska	12/16/89
5. 31	vs. Old Dominion	3/11/16
31	at Rice	12/6/91
31	at Southeast Louisiana	1/13/90
31	at McNeese State	1/3/86
9. 30	at California Baptist	11/18/23
30	North Texas*	2/16/17
30	Texas State	11/30/13
30	at TCU	1/12/97
30	at Oregon	1/3/94
30	at Texas State	2/19/90
30	at Lamar	1/4/86
30	New Mexico State	12/3/85
30	at Hardin Simmons**	2/2/85

ASSISTS

AST	OPP	DATE
1. 33	Savannah State	11/22/08
2. 31	UT-Permian Basin+	12/15/06
3. 29	Texas State	12/17/10
4. 28	Tulsa*	2/7/10
5. 27	at UCF*	2/24/08
27	at UTPA	2/7/89
7. 26	WNMU+	11/17/16
26	at Tulane*	2/1/14
26	Mississippi Valley St.	12/14/08
26	East Carolina*	2/10/08
26	Arkansas-Pine Bluff	12/20/06
26	Montana State	12/22/03
26	at Portland State	2/28/89

FEWEST TURNS OVERS COMMITTED

TO	OPP	DATE
1. 0	vs. UTPA	12/3/82
2. 5	Louisiana Tech*	1/30/16
5	East Carolina*	2/10/08
5	vs. UTPA	11/27/81
5. 6	at Weber State	11/28/18
6	Sam Houston State	12/28/12
6	at Wyoming	2/28/91
7. 7	Middle Tennessee	3/13/24
7	FAU*	2/22/21
7	UAB*	2/6/21
7	Old Dominion*	2/25/16
7	New Mexico	12/2/15
7	UT-Permian Basin+	12/15/06
7	Wyoming	1/31/91

MOST TURNS OVERS COMMITTED

TO	OPP	DATE
1. 41	at Houston*	11/27/01
2. 40	at Houston	12/18/87
3. 37	vs. Grambling State	12/5/98
4. 35	Western New Mexico+	12/8/88
5. 34	at No. 25 Arizona	11/29/04
34	New Mexico	11/19/99
34	at Texas State	2/7/87
34	at New Mexico State	11/24/84
9. 33	LA Tech*	2/17/22
33	at Tulane*	1/30/11
33	at San Diego State	1/25/96
33	at McNeese State	12/18/95
33	at UC-Irvine	12/2/95
33	at New Mexico State	12/2/93

MOST TURNS OVERS FORCED

TO	OPP	DATE
1. 39	UTSA	1/8/90
2. 38	Christian Brothers+	11/27/94
3. 37	UTPA	12/22/96
4. 36	St. Mary's	11/10/06
36	Southern Utah	2/3/90
6. 34	Kansas State	11/16/13
34	Tulsa*	1/18/97
8. 33	New Orleans	11/7/22
33	Houston Baptist	11/15/15
33	vs. Texas Southern	11/22/12
33	Prairie View A&M	12/12/06

OTHER GAMES OF AT LEAST 30 TO'S FORCED

11. 32	East Carolina*	2/22/14
32	TXA&M Kingsville+	12/9/89
32	at UTPA	2/5/87
14. 31	Portland	12/9/23
31	Weber State	12/5/19
31	UTPB+	12/14/15
31	NM State	11/18/98
31	at UTPA	2/17/90
31	Lamar	1/4/89
31	NM State	

TEAM SINGLE-GAME RECORDS

93	vs. ECU (W, 93-79, OT)	12/17/17
93	WVNU+ (W, 93-46)	11/17/16
93	Hardin-Simmons+ (W, 93-52)	11/29/96
93	vs. ACU+ (W, 93-70)	12/7/79
28	FAU* (W, 92-62)	2/22/21
92	Alcorn St. (W, 92-47)	11/16/19
92	at CSUF (W, 92-91, 2OT)	12/29/17
92	NAU (W, 92-43)	11/22/13
92	vs. WKU (W, 92-60)	3/22/08
92	vs. USM* (W, 92-79)	3/08/12
92	ENMU+ (W, 92-54)	1/13/87
92	Hardin-Simmons* (W, 92-77)	2/16/85
92	vs. Schreiner College+ (W, 92-67)	11/16/79
37	91 Howard Payne+ (W, 91-78)	1/24/87
38	90 Fresno State* (W, 90-68)	1/11/03

FEWEST POINTS SCORED (GAME)

PTS	OPP	DATE	
1	28	at Tulsa* (L, 28-64)	1/27/00
2	31	at Rice* (L, 31-84)	2/1/07
3	31	SMU* (L, 31-66)	1/20/00
31	at Hawaii* (L, 31-68)	1/7/99	
5	32	at Rice* (L, 32-83)	1/27/06
32	at TXA&MCC (L, 32-69)	12/6/01	
7	35	at Middle Tennessee (L, 35-59)*	3/1/25
35	New Mexico (L, 35-59)	11/30/17	
9	36	Hawaii* (L, 36-65)	2/3/00
10	37	New Mexico (L, 37-87)	11/30/00
37	at Wyoming (L, 37-46)	1/14/77	

MOST POINTS ALLOWED (GAME)

PTS	OPP	DATE	
1	124	at Texas (L, 48-124)	11/17/78
2	116	at SDSU (L, 59-116)	1/4/84
3	111	at BYU* (L, 59-111)	1/2/82
4	109	at BYU* (L, 58-109)	2/2/79
5	108	at #6 La. Tech* (L, 54-108)	2/27/03
108	at BYU* (L, 87-108)	2/19/81	
7	106	at Colorado* (L, 42-106)	2/10/79
8	105	at SDSU (L, 72-105)	12/10/82
9	104	Colorado State* (W, 115-104)	2/9/80
10	103	at Texas Tech (L, 58-103)	1/4/83

OTHER GAMES ALLOWED 100+ POINTS

11	102	vs. Ga. Tech (L, 77-102)	12/20/13
12	100	at Houston (L, 52-100)	11/27/01
100	vs. S. Carolina (L, 60-100)	11/28/97	
100	at Colo. St.* (L, 49-100)	1/13/96	
100	at Texas State (L, 77-100)	2/7/87	
100	at Wyoming* (L, 78-100)	1/12/80	

FEWEST POINTS ALLOWED (GAME)

PTS	OPP	DATE	
1	19	Fort Bliss+ (W, 96-19)	11/10/77
2	20	Beaumont+ (W, 58-20)	1/15/75
20	at Beaumont+ (W, 58-20)	12/13/74	
4	25	Fort Bliss+ (W, 66-25)	1/27/75
5	26	Beaumont+ (W, 67-26)	1/29/75
6	27	NM State (W, 63-27)	11/29/11
7	28	WVNU+ (W, 73-28)	12/9/76
8	29	Sul Ross St.+ (W, 54-29)	11/30/98
9	30	at Sul Ross St.+ (W, 67-30)	1/15/78
10	32	UTPB+ (W, 86-32)	12/14/15
32	at UTA (W, 54-32)	1/11/93	

OTHER GAMES FEWER THAN 40 POINTS ALLOWED

12	33	vs. Samford (W, 46-33)	12/21/17
33	UTPA (W, 68-33)	12/22/96	
14	34	FIU* (W, 66-34)	1/2/20
15	35	Tulsa* (W, 50-35)	1/31/13
35	vs. CS Northridge (W, 57-35)	12/12/87	
17	36	UT Dallas+ (W, 75-36)	11/20/04
36	Sull Ross State+ (W, 84-36)	12/30/00	
36	UTPA (W, 58-36)	12/15/90	
20	37	at New Mexico* (W, 52-37)	3/1/95
37	Bellhaven+ (W, 72-37)	11/27/93	
37	UTPA (W, 67-37)	1/7/89	
37	Sul Ross St.+ (W, 67-37)	11/29/87	
24	38	at UTPA (W, 65-38)	2/8/88
38	UCF* (W, 67-38)	1/29/12	
38	Fresno State* (W, 45-38)	2/12/04	
27	39	Kansas State (W, 84-39)	11/16/13
39	Hawaii* (W, 44-39)	1/22/04	
39	Central Arizona+ (W, 47-39)	2/19/77	

MOST POINTS SCORED (HALF)

PTS	OPP (HALF)	DATE	
1	65	Colorado State* (2nd)	2/9/80
2	58	North Alabama (2nd)	11/26/23
58	FAU* (2nd)	2/22/21	
58	at Tulane* (2nd)	2/1/14	
58	Southern Miss* (2nd)	1/22/14	
58	Savannah State+ (2nd)	11/22/08	
58	at Fort Bliss+ (2nd)	11/28/76	
8	56	USW+ (1st)	12/29/25
56	UTPB+ (1st)	12/15/06	
56	Hardin-Simmons+ (2nd)	11/29/96	
56	ENMU+ (2nd)	1/13/87	

OTHER GAMES WITH 55+ POINTS SCORED (HALF)

12	55	UTSA* (1st)	1/18/20
----	----	-------------	---------

55	NM State (2nd)	11/12/13
55	Southern Miss* (1st)	2/21/09
55	vs. Texas Lutheran+ (1st)	12/4/82
55	Sul Ross State+ (2nd)	12/3/76

MOST POINTS SCORED (FIRST HALF)

PTS	OPP	DATE	
1	56	USW+	12/29/25
2	56	UTPB+	12/15/06
3	55	UTSA*	1/18/20
55	Southern Miss*	2/21/09	
55	vs. Texas Lutheran+	12/4/82	
6	54	Arkansas Pine Bluff	12/20/06
7	52	Tulsa*	1/18/97
8	51	at Southern Miss*	1/9/20
51	UTPB+	12/21/05	
10	50	Tulsa*	1/11/14
50	vs. NW State	12/1/02	
50	Oral Roberts	2/15/89	
50	Colorado State*	2/9/80	

MOST POINTS SCORED (SECOND HALF)

PTS	OPP	DATE	
1	65	Colorado State*	2/9/80
2	58	North Alabama	11/26/23
58	FAU*	2/22/21	
58	at Tulane*	2/1/14	
58	Southern Miss*	1/22/14	
58	Savannah State+	11/22/08	
58	at Fort Bliss+	11/28/76	
7	56	Hardin-Simmons+	11/29/96
56	Eastern New Mexico+	1/13/87	
9	55	NM State	11/12/13
55	Sul Ross State+	12/3/76	

FEWEST POINTS SCORED (HALF)

PTS	OPP (HALF)	DATE	
1	8	at Rice* (1st)	2/1/07
2	10	at New Mexico* (1st)	2/20/97
3	11	at Fresno State* (1st)	2/6/03
11	at Tulsa* (1st)	1/27/00	
11	vs. FIU (1st)	11/27/98	
11	at Texas Tech (1st)	1/4/96	
7	12	at SMU* (1st)	1/29/04
8	13	Lamar (N)	11/22/23
13	at Rice* (1st)	1/27/06	
13	Fresno State* (1st)	2/12/04	
13	at Kansas (1st)	12/7/03	
13	New Mexico (1st)	11/23/01	
13	Hawaii* (1st)	2/3/00	
13	at San Diego State* (1st)	2/29/92	
13	at Texas State (2nd)	2/19/90	
13	Texas State (2nd)	12/13/89	
13	at Northern Ariz. (1st)	12/13/85	

FEWEST POINTS SCORED (FIRST HALF)

PTS	OPP	DATE	
1	8	at Rice*	2/1/07
2	10	at New Mexico*	2/20/97
3	11	at Texas Tech	1/4/96
11	vs. Fla. International	11/27/98	
11	at Tulsa*	1/27/00	
11	at Fresno State*	2/6/03	
7	12	at SMU*	1/29/04
8	13	Lamar (N)	11/22/23
13	at Northern Arizona	12/13/85	
13	at San Diego State*	2/29/92	
13	Hawaii*	2/3/00	
13	New Mexico	11/23/01	
13	at Kansas	12/7/03	
13	Fresno State*	2/12/04	
13	at Rice*	1/27/06	

FEWEST POINTS SCORED (SECOND HALF)

PTS	OPP	DATE	
1	13	New Mexico	11/30/17
13	at Texas State	2/19/90	
13	Texas State	12/13/89	
4	14	at BYU*	1/28/99
5	15	at Middle Tennessee *	3/1/25
15	Marshall*	1/31/19	
15	at San Diego State*	1/22/97	
7	16	SMU*	1/20/00
16	Creighton	2/15/92	
9	17	at Rice*	1/12/19
17	at UCF*	1/15/06	
17	at Tulsa*	1/16/03	
17	at Tulsa*	1/27/00	
17	vs. TCU*	3/1/99	
17	at Hawaii*	1/7/99	
17	at San Diego State*	1/25/96	
17	NM State	12/3/85	

MOST POINTS SCORED (QUARTER)

PTS	OPP (QTR)	DATE	
1	36	vs. FAU (1)	3/11/20
36	Houston Baptist (1)	11/15/15	
3	32	FAU* (3)	2/22/21
32	UTSA* (2)	1/18/20	

32	WVNU+ (1)	11/17/16	
6	31	North Alabama (4)	11/26/23
31	at UAB (3)	2/17/23	
31	FIU* (3)	2/25/17	
31	Houston Baptist (3)	11/15/15	
10	30	Nicholls (1)	11/8/25
30	at LA Tech* (3)	1/11/20	
30	CSU Bakersfield (4)	11/11/17	
30	Marshall* (2)	1/28/17	

FEWEST POINTS SCORED (QUARTER)

PTS	OPP (QTR)	DATE	
1	2	Lamar (2)	11/22/23
2	3	UTSA* (2)	3/8/22
3	Arizona (2)	12/7/19	
4	4	at UAB* (1)	2/1/20
4	4	Middle Tennessee*	1/19/19
4	4	at ODU* (4)	2/17/18
4	4	vs. Samford (3)	12/21/17
4	4	New Mexico (3)	11/30/17
9	5	at Middle Tennessee (3) *	3/1/25
5	5	Colorado State (1)	12/16/24
5	5	Marshall* (3)	1/31/19
5	5	at Tulsa (1)	12/29/18
5	5	at Rice* (2)	1/28/18
5	5	at CS Fullerton (4)	12/29/17
5	5	at Tulane (2)	12/22/17
5	5	vs. LSU (3)	11/24/16

MOST POINTS ALLOWED (QUARTER)

PTS	OPP (QTR)	DATE	
1	35	at UTS* (1)	1/21/17
2	32	vs UCI (3)	12/18/25
32	FIU (2)	3/7/23	
32	at LA Tech* (3)	1/11/20	
5	30	UAB* (4)	2/2/18
6	29	at BYU (2)	12/13/25
29	Middle Tennessee (3) *	1/18/24	
29	Liberty (4)	2/3/24	
29	at UAB* (1)	3/2/19	
10	28	New Mexico (2)	11/19/19
28	at Middle Tennessee* (4)	2/4/17	
28	at New Mexico (2)	12/11/16	

FEWEST POINTS ALLOWED (QUARTER)

PTS	OPP (QTR)	DATE	
1	3	Arkansas (1)	11/24/17
3	3	UTPB+ (2)	12/14/15
3	4	vs. Samford (1)	12/21/17
4	4	UCR (1)	11/9/19
4	4	FAU* (2)	2/23/17
6	5	ENMU (2) +	12/30/24
5	5	at San Jose State (4)	11/25/22
5	5	UAB* (3)	2/5/21
5	5	FIU* (4)	1/2/20
5	5	vs. Samford (1)	12/21/17
5	5	CSU Bakersfield (1)	11/11/17
5	5	WVNU+ (3)	11/17/16
5	5	FAU* (3)	2/13/16
5	5	UTPB+ (4)	12/14/15

LARGEST LEAD AT HALFTIME

PTS	OPP (OUTCOME)	DATE	
1	44	UTPB+ (W, 107-43)	12/15/06
2	34	USW+ (W, 102-42)	12/29/25
34	ENMU+ (W, 87-44)	12/1/08	
34	Sul Ross State+ (W, 84-36)	12/30/00	
34	Ft. Bliss+ (W, 96-19)	11/10/77	
6	33	PVAMU (W, 86-48)	12/20/14
33	Kansas State (W, 84-39)	11/16/13	
8	30	UTPA (W, 77-41)	1/4/88
9	29	UAPB (W, 96-27)	12/20/06
10	27	UTSA* (W, 94-54)	1/18/20

OTHER GAMES WITH 25+ HALFTIME LEAD

11	25	NAU (W, 92-43)	11/22/13
25	ENMU+ (W, 71-34)	12/8/12	
25	at Fort Bliss+ (W, 107-37)	11/28/76	

LARGEST DEFICIT AT HALFTIME

PTS	OPP	DATE	
1	42	at Rice*	2/1/07
42	vs. Penn State	11/19/83	
3	39	New Mexico	11/23/01
4	37	at La. Tech*	1/5/02
5	35	at Arizona State	11/22/85
6	33	Middle Tennessee*	1/19/19
33	at No. 6 LA Tech*	2/27/03	
8	32	vs. Auburn	12/11/81
9	31	at Colorado State*	2/11/82
10	30	vs. FIU	11/27/98
30	at Houston	12/18/87	
30	at San Diego State	1/4/84	

LARGEST MARGIN OF VICTORY

PTS	OPP (SCORE)	DATE	
1	77	Ft. Bliss+ (96-19)	11/10/77
2	70	at Ft. Bliss+ (107-37)	11/28/76
3	64	UTPB+ (107-43)	12/15/06
4	59	USW+ (102-43)	12/29/25
57	Savannah State+ (103-46)	11/22/08	
6	54	UTPB+ (86-32)	12/14/15
7	49	NAU (9	

INDIVIDUAL SINGLE-GAME RECORDS

POINTS

PTS	NAME	OPP	DATE
1. 40	Holly Russ	UTSA	2/19/91
2. 37	Holly Russ	Baylor	12/17/91
3. 36	Kayla Thornton	vs. Belmont	12/21/13
4. 35	Kiana Taylor	South Carolina	11/28/97
35	Holly Russ	San Diego State*	1/19/91
6. 34	Sparkle Taylor	Rice*	2/18/17
34	Sparkle Taylor	North Texas*	2/16/17
34	Amy Pack	Sul Ross State	12/30/00
34	Lenore Dembs	Hardin-Simmons	2/16/85
34	Be Stoney	BYU*	1/30/80

OTHER 30+ point games

11. 33	Jareica Hughes	Rice*	3/7/08
33	Amy Pack	San Jose State*	2/5/00
33	Holly Russ	Wichita State	12/1/90
14. 32	Sparkle Taylor	vs. Old Dominion	3/8/17
32	Kayla Thornton	at Memphis*	2/24/13
16. 31	Jenzel Nash	Charlotte*	2/27/16
31	Gloria Estrada	NMSU*	1/29/77
18. 30	Destiny Thurman	North Texas*	3/5/22
30	Tamara Seda	at CS Fullerton	12/29/17
30	Donna Stoney	Henderson	11/21/81

MOST POINTS SCORED (QUARTER)

PTS (QTR)	NAME	OPP	DATE
1. 18 (3)	Sparkle Taylor	Northern Arizona	11/11/16
2. 16 (1)	Katarina Zec	ODU*	2/8/20
3. 14 (2)	Ndack Mbengue	Delaware*	1/2/26
14 (2)	M. Moses Amaniyo	USW+	12/29/25
14 (3)	Ivane Tensaie	Kansas City	11/25/25
14 (4)	Jazon Jackson	at UTSA*	1/11/23
14 (1)	Zuzanna Puc	Marshall*	1/31/19
14 (4)	Najala Howell	at UTSA*	2/4/18
14 (2)	Cameasha Turner	at WKU*	2/6/16
14 (2)	Lulu McKinney	UNM	12/2/15
10. 13 (4)	Ivane Tensaie	FIU*	1/18/25
13 (2)	Katarina Zec	at CSU Fullerton	12/30/17
13 (1)	Najala Howell	at UC Riverside	12/30/17
13 (4)	Najala Howell	Houston Baptist	12/2/17
13 (3)	Sparkle Taylor	North Texas*	2/16/17
13 (3)	Sparkle Taylor	WKU*	1/26/17
13 (3)	Sparkle Taylor	UTSA*	1/11/17
13 (3)	Jenzel Nash	at La Tech*	2/20/16

FIELD GOALS MADE

FGM	NAME	OPP	DATE
1. 16	Lenore Dembs	Hardin-Simmons	2/16/85
2. 14	Heidi Walker	PVAMU	11/21/99
14	Kiana Taylor	South Carolina	11/28/97
14	Holly Russ	UT-San Antonio	2/19/91
14	Holly Russ	San Diego State	1/19/91
14	Kris Hudson	Texas Lutheran	12/4/82
14	Donna Stoney	Henderson State	11/21/81
14	Gloria Estrada	NMSU	1/29/77
9. 13	Sparkle Taylor	vs. Old Dominion	3/8/16
13	Kayla Thornton	vs. Belmont	12/21/13
13	Lisa Watson	AK-Anchorage	2/26/89
13	Traci Miller	Arkansas State	12/6/86
13	Carolyn Prince	at TXAM Kingsville	12/5/80

FIELD GOALS ATTEMPTED

FGA	NAME	OPP	DATE
1. 31	Holly Russ	UT-San Antonio	2/19/91
2. 30	Holly Russ	Creighton	2/21/91
3. 29	Jenzel Nash	Charlotte*	2/27/16
29	Holly Russ	Creighton	1/26/91
5. 28	Holly Russ	Utah	2/20/92
28	Holly Russ	Weber State	11/30/91
28	Traci Miller	Arkansas State	12/6/86
28	Lenore Dembs	Hardin-Simmons	2/16/85
9. 27	Holly Russ	San Diego State	2/16/91
27	Holly Russ	San Diego State	1/19/91
27	Holly Russ	Wichita State	12/1/90

FIELD GOAL PERCENTAGE (MINIMUM 7 MADE)

FG%	NAME	OPP	DATE
1. 100	Michelle Pruitt	at WKU*	2/13/20
100	Ana Valtierra	Fresno State	1/11/03
100	Kiana Taylor	New Mexico	1/24/98
100	Kevia Ford	Wyoming	2/25/95
100	Kevia Ford	Texas Southern	1/18/94
100	Michelle Roper	Wyoming	3/6/93
100	Donetta Yellets	UT-San Antonio	2/5/87
8. 93.3	Donna Stoney	Henderson state	11/21/81
9. 90.0	Erin Wilson	Portland	12/9/23
90.0	Jareica Hughes	Tulane	1/12/08
90.0	Janet Brunson	NMSU	1/13/84

THREE-POINTERS MADE

3PM	NAME	OPP	DATE
1. 8	Ivane Tensaie	Denver	11/29/25
2. 7	Ivane Tensaie	UTSA	11/16/24
7	Katarina Zec	at NM State	12/20/17
7	Dietra Caldwell	Toledo	11/24/09

7	Svatlana Trukshanina	Tulsa	1/22/09
7	Holly Russ	UT-San Antonio	2/19/91
7. 6	Mahri Petree	USM*	2/19/22
6	Isis Lopes	at FIU*	2/12/21
6	Lulu McKinney	New Mexico	12/2/15
6	Kelli Willingham	at UAB	1/8/14
6	Kayla Thornton	at Memphis	2/24/13
6	Svatlana Trukshanina	TX Southern	12/13/09
6	Rice*	Toledo	11/24/09
6	Dietra Caldwell	UCF*	2/19/09
6	Dietra Caldwell	SSVU	11/22/08
6	Romie DeAnda	San Jose State	3/6/03
6	Kia Dowell	at Kansas	11/24/02
6	Kimya Murray	SMU	3/5/02
6	Amy Billhmyer	Tulsa	1/17/97
6	Jill Lewis	NMSU	12/16/93
6	Laura Walker	NMSU	12/21/92

THREE-POINTERS ATTEMPTED

3PA	NAME	OPP	DATE
1. 16	Amy Billhmyer	Illinois-Chicago	12/19/96
2. 15	Ivane Tensaie	Delaware*	1/2/26
15	Laura Walker	NMSU	12/21/92
3. 14	Kimya Murray	SMU	3/5/02
4. 13	Ivane Tensaie	UT Martin	11/22/25
13	Kayla Thornton	at Memphis	2/24/13
13	Amy Billhmyer	TCU	1/12/97
13	Amy Billhmyer	BYU	1/29/94
13	Holly Russ	UT-San Antonio	2/19/91
13	Holly Russ	San Diego State	2/16/91
13	Terri Powell	U.S. International	2/14/88

THREE-POINT PERCENTAGE (MINIMUM 4 MADE)

3FG%	NAME	OPP	DATE
1. 100.0 (5-5)	Najala Howell	at UC Riverside	12/30/17
100.0 (4-4)	Katarina Zec	UC Riverside	11/9/19
100.0 (4-4)	Timika Williams	vs. Missouri State	12/4/09
100.0 (4-4)	Briana Green	at Tulane*	1/18/09
100.0 (4-4)	Shalana Taylor	ULL	12/10/06
100.0 (4-4)	Ana Valtierra	SMU*	1/8/06
100.0 (4-4)	Laura Walker	Baylor	12/2/92
7. 85.7 (6-7)	Svatlana Trukshanina	Texas Southern	12/13/09
8. 83.3 (5-6)	Destiny Thurman	vs. Kansas	11/27/21
83.3 (5-6)	Jareica Hughes	Tulane*	1/12/08
83.3 (5-6)	Ana Valtierra	Nevada*	2/14/04
83.3 (5-6)	Terri Powell	San Diego State	12/29/87

FREE THROWS MADE

FTM	NAME	OPP	DATE
1. 17	Gloria Brown	at Southern Miss*	1/26/12
2. 16	Katia Gallegos	at NM State	12/15/21
3. 14	Amy Pack	San Jose State*	1/2/01
14	Holly Russ	UT-Pan American	1/21/91
14	Sonya Howell	Southeast La.	2/24/90
6. 13	Kayla Thornton	East Carolina*	2/22/14
13	Amy Pack	Tulsa*	1/21/01
13	Amy Pack	Nevada*	1/5/01
9. 12	Gloria Brown	East Carolina*	1/6/11
12	Noni Wharemate	San Jose State*	3/6/03
12	Amy Pack	at UTSA	11/24/00
12	Shani Dinwiddie	Rice*	2/15/97
12	Kanequa Chancellor	NMSU	11/26/96
12	Kiana Taylor	BYU*	1/29/94
12	Shenita Waddell	Wyoming*	3/10/93
12	Holly Russ	Baylor	12/17/91
12	Traci Miller	Oregon State	12/21/86
12	Dawn Coy	Oregon State	12/21/86

FREE THROWS ATTEMPTED

FTA	NAME	OPP	DATE
1. 20	Katia Gallegos	at NM State	12/15/21
2. 19	Gloria Brown	at Southern Miss*	1/26/12
19	Amy Pack	San Jose State*	1/2/01
19	Kiana Taylor	BYU*	1/29/94
5. 18	Marta Dydek	San Jose State*	2/17/05
18	Amy Pack	Nevada*	1/5/01
18	Sonya Howell	Southeast La.	2/24/90
9. 17	Tonie Greene	Okla. City Univ	1/21/84
17	Amy Pack	San Jose State*	1/12/01
17	Marcella Lopez	West Texas State	2/18/85

FREE THROW PERCENTAGE (MINIMUM 3 MADE)

FT%	NAME	OPP	DATE
1. 100.0 (10-10)	Elina Arike	vs. #25 MT	3/10/23
100.0 (11-11)	Mahri Petree	New Orleans	11/7/22
100.0 (9-9)	Najala Howell	at FIU*	1/5/17
100.0 (10-10)	Najala Howell	vs. East Carolina	12/17/17
100.0 (9-9)	Sparkle Taylor	at FIU*	1/12/17
100.0 (9-9)	Starr Breedlove	TCU	3/24/16
100.0 (10-10)	Cameasha Turner	Marshall*	1/24/15
100.0 (10-10)	Kayla Thornton	vs. Belmont	12/21/13
100.0 (12-12)	Gloria Brown	East Carolina*	1/6/11
100.0 (11-11)	Jareica Hughes	vs. Rice	3/7/08
100.0 (12-12)	Ingrid Goslin	San Jose State*	3/6/03
100.0 (9-9)	Kim Daniel	UTA	12/30/98
100.0 (9-9)	Cabora Mack	BYU*	2/3/96

REBOUNDS

RB	NAME	OPP	DATE
1. 22	Mary Moses Amaniyo	Prairie View A&M	11/25/25
20	Kanequa Chancellor	SE Missouri State	11/29/97
20	Kayla Thornton	Tulsa*	1/11/14
4. 19	Gloria Brown	at Southern Miss*	1/26/12
19	Charnette Phelps	UAB*	1/22/06
6. 18	Mary Moses Amaniyo	UT Martin	11/25/25
18	Ariona Gill	at UTSA*	2/20/20
18	Kayla Thornton	Tulane*	2/1/14
18	Chrishauna Parker	vs. UAB	3/14/13
18	Monica Ramirez	Colorado State*	1/15/94
18	Marcella Lopez	West Texas State	2/18/85
18	Tonie Greene	Eastern NM	2/17/83
18	Tonie Greene	Central Arizona	2/12/83

OTHERS WITH 17 REBOUNDS

14. 17	Tamara Seda	Southern Miss*	1/7/17
17	Tamara Seda	CSUB	12/28/16
17	Anete Steinberga	Tulane*	3/8/13
17	Gloria Brown	Tulane*	2/13/11
17	Dragana Zoric	Houston*	12/4/02
17	Dragana Zoric	Houston*	12/4/02
17	DaTechia Specht	Fort Lewis	1/125/97
17	Kevia Ford	New Mexico*	3/1/95
17	Charsa Palamore	San Diego State*	1/19/91
17	Charsa Palamore	UT-Pan American	12/15/90
17	Charsa Palamore	Loyola Marymount	2/8/90
17	Charsa Palamore	NMSU	11/28/89
17	Vernita Gant	New Mexico	11/29/86

ASSISTS

AST	NAME	OPP	DATE
1. 13	Jareica Hughes	at SMU*	1/15/10
13	Shalana Taylor	at Illinois State	12/19/04
3. 12	Katia Gallegos	Southern Miss*	2/29/20
12	Shalana Taylor	SMU*	1/27/05
12	Martha Contreras	Southern Colorado	1/31/88
6. 11	Katia Gallegos	vs. FAU	3/11/21
11	Kelli Willingham	CS Northridge	12/3/10
11	Jareica Hughes	Southern Miss*	2/21/09
11	Tiffany Touton	at SMU*	1/3/02
11	Christina Mata	SJSU	2/5/00

STEALS

STL	NAME	OPP	DATE
1. 10	Sonya Howell	UTSA	2/17/90
2. 8	Cameasha Turner	UAB*	1/10/16
8	Natasha Lacy	vs. Southern Miss	3/8/08
8	Terri Pedregon	Texas Tech	12/7/94
8	Martha Contreras	UTSA	2/5/87
8	Chris Hall	Eastern N.M.	1/13/87
7. 7	Katia Gallegos	Southern Miss*	2/29/20
7	Starr Breedlove	FAU*	2/13/16
7	Chrishauna Parker	Kansas State	11/16/13
7	Jenzel Nash	at Tulane*	1/15/12
7	Natasha Lacy	Houston*	2/14/08
7	Natasha Lacy	vs. Western Kentucky	3/22/08
7	Jareica Hughes	Tulsa*	2/2/08
7	Kimya Murray	Louisiana Tech*	1/31/02
7	Terri Pedregon	Christian Brothers	11/27/94
7	Norma Sierra	UTSA	1/6/89
7	Martha Contreras	Colorado State	1/23/88
7	Kris Hudson	at NMSU	2/19/83

BLOCKS

BLK	NAME	OPP	DATE
1. 10	Izabela Piekarska	ULL	12/10/06
10	Kim Watts	Auburn	12/11/81
3. 9	Kim Watts	at NM State	12/15/79
4. 8	Gloria Brown	at NM State	11/16/11
5. 7	Fannie Goodwin	UCF*	2/19/09
7	Izabela Piekarska	Tulane*	11/25/05
7. 6	Gloria Brown	Tulane*	2/13/11
6	Gloria Brown	Houston*	1/16/11
6	Izabela Piekarska	SMU*	1/31/08
6	Izabela Piekarska	Memphis*	2/10/07
6	Marta Dydek	at Louisiana Tech*	2/24/05
6	Marta Dydek	Fresno State*	1/15/05
6	Donetta Yellets	SW Texas State	2/7/87
6	Marcella Lopez	West Texas State	2/18/85
6	Kim Watts	Colorado State*	1/30/82
6	Kim Watts	Wyoming*	1/29/82
6	Kim Watts	at Utah*	1/4/82
6	Kim Watts	vs. Marquette	12/12/81
6	Kim Watts	Juarez	12/5/81

TURNOVERS

TO	NAME	OPP	DATE
1. 15	Holly Russ	Lamar	1/3/91
2. 13	Selina Thomas	West Texas State	2/4/85
3. 11	Kristi Lattin	Grambling State	12/5/98
11	LaShonda Gray	Grambling State	12/5/98
11	Holly Russ	San Diego State*	12/6/91
11	Liz Rayas	Northern Arizona	3/4/86
7. 10	Amy Pack	SMU*	1/19/01

2025-26 BOX SCORES



Official Basketball Box Score - Final
Prairie View at UTEP
 11/08/25 Don Haskins Center, El Paso
 2025-26 Women's Basketball

Game Time: 12:00 PM
 Game Duration: 1:58
 Attendance: 639

Officials: Jess Martinez, Matthew Krenk, Sydney Crafton

Prairie View - 60

NO. Name	Min	FG	3P	FT	Rebounds	Fouls	TP	AS	TO	ST	Blocks	++
		M/A	M/A	M/A	OR DR TOT	PF FD					BS BA	
13 Mary Wamet	F 21:58	2-6	0-0	2-2	2 3 5	4 1 6	0	1	1	1	0	-21
1 Alana Shields	G 30:44	2-9	1-6	2-2	0 1 1	5 2 7	3	5	1	0	1	-22
8 Jacques Giron	G 36:49	1-6	0-4	0-0	4 4 4	4 1 2	0	6	0	0	1	-26
10 Crystal Schultz	G 27:01	9-18	2-8	0-0	0 3 3	4 4 20	2	4	2	1	0	-19
14 CJ Wilson	G 35:42	4-12	0-2	8-10	2 7 9	0 7 16	0	1	2	2	0	-13
3 Margan Allen	G 07:24	1-2	1-1	0-0	0 1 1	0 1 3	2	3	0	0	1	-8
0 Krislyn Biscette	12:58	1-2	0-0	0-0	0 0 0	2 0 2	0	1	1	0	0	-10
15 Preston Young	11:41	0-0	0-0	0-0	0 5 5	0 2 0	0	2	1	1	0	-10
24 Laila Robinson	10:14	1-2	0-0	0-0	2 2 4	1 1 2	0	2	1	1	0	-2
23 Marcakia Celestine	05:29	1-1	0-0	0-0	1 0 1	2 0 2	0	2	0	0	0	5
Team					1 3 4	0 0 0						
Totals		22-58	4-21	12-14	8 29 37	22 19	60	7	27	9	6	3 -24

Record: 0-1

Major Fouls: Celestine (TF) 4 3 6 35

Shooting By Period

1st FG% 7-13 53.8%

3PT% 2-4 50.0%

FT% 0-0 0%

2nd FG% 4-11 36.4%

3PT% 1-5 20.0%

FT% 4-6 66.7%

3rd FG% 4-17 23.5%

3PT% 1-8 12.5%

FT% 4-4 100%

4th FG% 7-17 41.2%

3PT% 0-4 0.0%

FT% 4-4 100%

GM FG% 22-58 37.9%

3PT% 4-21 19.0%

FT% 12-14 85.7%



Official Basketball Box Score - Final
Nicholls at UTEP
 11/08/25 Don Haskins Center, El Paso, Texas
 2025-26 Women's Basketball

Game Time: 7:00 PM
 Game Duration: 2:09
 Attendance: 1,040

Officials: Tiffany Bridges, Shandra Twine, Nate Accosta

Nicholls - 61

NO. Name	Min	FG	3P	FT	Rebounds	Fouls	TP	AS	TO	ST	Blocks	++
		M/A	M/A	M/A	OR DR TOT	PF FD					BS BA	
14 Marie Kenembeni	F 09:04	1-3	0-0	0-2	1 0 1	0 2 2	2	0	0	0	0	-5
30 Emari Burks	F 15:31	2-3	2-3	0-0	0 3 3	4 1 6	1	1	2	0	0	-15
1 Jesslynn Jalomo	G 27:02	2-9	0-6	0-0	1 3 4	3 1 4	3	1	2	0	0	-14
2 Anyra Wilson	G 26:47	1-6	0-3	3-6	0 3 3	2 4 5	2	5	1	0	0	-8
11 SHDiamond McKnight	G 16:55	2-6	2-4	4-4	0 2 2	5 3 10	0	4	0	0	0	-19
10 Laryn Scott	34:46	2-8	0-2	0-0	3 4 7	2 3 4	4	2	0	1	1	-9
13 Jasmine Matthews	13:41	2-9	0-0	1-2	4 2 4	2 2 5	1	2	1	0	0	0
22 Resse Headley	03:08	0-1	0-1	0-0	0 0 0	0 0 0	0	0	1	0	0	0
24 India McMahon	14:04	2-3	0-0	1-1	0 1 1	2 1 5	0	2	0	0	0	-6
0 Makayla Charles	19:51	3-5	0-0	3-6	1 4 5	3 4 9	1	0	0	0	0	-2
7 Sanayia Morris	11:14	2-5	0-1	3-3	1 2 5	0 3 7	2	0	0	1	0	7
12 Caroline Adams	07:57	2-2	0-0	0-0	1 1 2	1 0 4	0	0	0	0	0	2
Team					1 3 4	1 0 0						
Totals		21-60	4-20	15-24	11 27 38	25 24	61	14	18	8	1	1 -15

Record: 1-1

Major Fouls: Coach (TF) 4 3 0 0 1

Shooting By Period

1st FG% 5-18 27.8%

3PT% 3-9 33.3%

FT% 0-0 0%

2nd FG% 6-15 40.0%

3PT% 0-5 0.0%

FT% 1-6 16.7%

UTEP - 84

NO. Name	Min	FG	3P	FT	Rebounds	Fouls	TP	AS	TO	ST	Blocks	++
		M/A	M/A	M/A	OR DR TOT	PF FD					BS BA	
13 Ndack Mbengue	F 10:18	2-2	0-0	1-3	2 2 4	2 2 5	1	5	1	1	0	5
2 Sirivva Legions	G 24:01	6-9	0-1	0-0	1 5 6	3 1 12	3	0	1	0	0	9
3 Ivane Tensaie	G 23:08	3-11	1-8	0-0	0 1 1	0 2 7	0	0	1	0	0	10
4 Delma Zita	G 13:11	1-6	0-0	0-0	0 1 1	1 1 2	0	1	1	0	2	1
11 Portia Adams	G 20:01	3-10	1-3	1-2	1 0 1	2 2 8	4	1	0	0	1	3
22 Mary Moses Amaniyo	27:44	6-11	0-0	4-8	10 12 22	2 4 16	0	4	1	0	1	28
5 Heaven Samayoa-Mathis	22:26	5-8	2-4	2-2	1 3 4	1 3 14	4	1	2	2	2	25
14 Tatiana Collazo	14:45	1-7	1-5	3-4	0 1 1	1 3 6	1	0	1	0	0	22
8 Brooklyn Terry	14:44	4-9	1-3	4-4	1 0 1	2 1 13	0	0	0	0	0	19
12 Irene Asensio	09:29	0-2	0-0	0-0	0 0 0	1 1 0	2	1	1	0	0	1
1 Aaliyah Davis	08:35	0-2	0-0	1-2	0 2 2	1 1 1	0	1	2	0	1	-3
10 Osadebanwen Igbinedion Omoruyi	03:06	0-0	0-0	0-0	0 0 0	0 0 0	0	0	0	0	0	-3
23 Aolani Woldai	08:33	0-3	0-1	0-0	3 0 3	2 0 0	1	4	0	0	0	3
Team					5 1 6	0 0 0						
Totals		31-80	6-27	16-25	24 28 52	19 21	84	14	18	11	3	6 -20

Record: 1-0

Major Fouls: NONE

Shooting By Period

1st FG% 6-19 31.6%

3PT% 2-6 33.3%

FT% 2-5 40%

2nd FG% 7-22 31.8%

3PT% 2-10 20.0%

FT% 2-2 100%

UTEP - 76

NO. Name	Min	FG	3P	FT	Rebounds	Fouls	TP	AS	TO	ST	Blocks	++
		M/A	M/A	M/A	OR DR TOT	PF FD					BS BA	
13 Ndack Mbengue	F 21:21	4-7	0-0	4-4	2 4 6	4 3 12	1	2	1	0	0	15
2 Sirivva Legions	G 27:09	3-8	2-4	3-4	0 1 1	5 2 11	1	4	1	0	0	4
3 Ivane Tensaie	G 21:18	1-7	1-7	2-4	0 1 1	4 3 5	1	4	1	0	0	21
4 Delma Zita	G 24:18	2-6	0-2	2-2	0 3 3	1 2 6	2	3	0	0	0	-2
11 Portia Adams	G 32:58	6-13	1-4	3-4	0 6 6	1 6 16	4	1	2	0	0	16
5 Heaven Samayoa-Mathis	19:47	1-5	1-3	2-2	0 1 1	1 2 5	3	1	2	0	1	6
22 Mary Moses Amaniyo	19:13	6-8	1-1	3-3	2 6 8	2 2 14	0	2	1	0	0	15
8 Brooklyn Terry	05:01	0-0	0-0	0-0	0 1 0	0 0 0	0	1	0	1	1	8
14 Tatiana Collazo	07:45	1-1	0-0	0-0	0 1 1	1 2 1	0	0	0	0	0	-3
23 Aolani Woldai	03:15	1-1	0-0	0-0	1 0 1	1 2 1	2	0	0	0	0	6
12 Irene Asensio	10:42	0-0	0-0	1-2	0 1 1	1 2 1	0	1	0	0	0	-4
10 Osadebanwen Igbinedion Omoruyi	05:09	1-1	0-0	0-0	1 1 2	2 0 2	0	1	0	0	0	3
1 Aaliyah Davis	02:04	0-0	0-0	0-0	0 1 1	0 0 0	0	0	0	0	0	-4
Team					2 3 5	0 0 0						
Totals		26-57	6-21	18-25	8 30 38	24 24	76	14	15	8	1	1 -15

Record: 2-0

Major Fouls: NONE

Shooting By Period

1st FG% 11-14 78.6%

3PT% 3-4 75.0%

FT% 5-6 83.3%

2nd FG% 6-12 50.0%

3PT% 1-4 25.0%

FT% 2-3 66.7%

Biggest lead	PVAM	UTEP
5 (1st 7:09)	27 (4th 2:17)	
Best Scoring Run	11 (2nd 0:52)	10 (3rd 0:50)
Lead Changes	5	
Times Tied	2	
Time with Lead	05:23	33:47

Points from Turnovers	NichSt	UTEP
	12	17
Paint	30	38
Second Chance	10	21
Fast Breaks	10	17
Bench	9	50

Period by Period Scoring	1st	2nd	3rd	4th	TOT
NichSt	16	13	13	18	60
UTEP	20	18	21	25	84



Official Basketball Box Score - Final
Western N.M. at UTEP
 11/11/25 Don Haskins Center, El Paso
 2025-26 Women's Basketball

Game Time: 11:00 AM
 Game Duration: 1:52
 Attendance: 1,068

Officials: Trevor Inouye, Carmela Garcia, Andy Heo

Western N.M. - 56

NO. Name	Min	FG	3P	FT	Rebounds	Fouls	TP	AS	TO	ST	Blocks	++
		M/A	M/A	M/A	OR DR TOT	PF FD					BS BA	
31 Ema Rose	F 22:18	4-10	0-0	1-2	1 3 4	2 1 9	3	0	1	2	0	-16
3 Cleara Dinwiddie	G 24:35	4-9	1-6	0-0	0 6 6	2 0 9	0	3	1	0	0	-16
11 Jordan Sapien	G 32:29	3-11	2-6	5-5	0 2 2	2 13 4	2	1	0	0	0	-25
12 Natalie Magalhães	G 25:59	2-8	1-3	1-2	0 3 3	2 1 6	1	4	2	1	0	-15
21 Brelee Nichols												

2025-26 BOX SCORES



Official Basketball Box Score - Final
UTEP at Kansas City
 11/25/25 Sweeney Center, Kansas City
 2025-26 Women's Basketball

Game Time: 7:00 PM
 Game Duration: 1:52
 Attendance: 283

Officials: Doug Knight, Erica Parker, Jeremy McHugh

UTEP - 75

NO. Name	Min	FG	3P	FT	Rebounds		Fouls	TP	AS	TO	ST	Blocks			+/-	
					OR	DR						BS	BA	+		
13 Ndack Mbengue	31:00	7-9	0-0	4-4	3	7	10	4	3	18	1	2	1	0	1	-5
2 Sirivva Legions	G 22:44	2-8	0-0	0-2	0	2	2	1	1	4	1	3	0	0	1	-4
3 Ivane Tensale	G 31:48	6-12	5-8	2-3	1	0	1	1	2	19	1	2	0	1	9	
4 Delma Zita	G 20:08	1-3	0-0	2-2	1	1	2	2	5	4	2	2	1	0	0	-10
11 Portia Adams	G 23:01	1-6	1-2	2-4	0	5	5	2	4	1	0	0	0	0	0	-14
5 Heaven Samayoa-Mathis	25:38	4-7	1-1	0-0	2	1	3	4	0	9	6	1	1	0	23	
22 Mary Moses Amaniyu	26:10	2-6	0-0	7-8	5	8	13	2	4	11	1	3	1	0	1	15
14 Taliana Collazo	07:09	2-4	1-3	0-2	0	1	1	0	2	5	0	0	0	0	2	
10 Osadebamwen Igbinedion	00:15	0-0	0-0	0-0	0	0	0	0	0	0	0	0	0	0	0	2
8 Brooklyn Terry	04:17	0-1	0-1	0-0	0	0	0	0	0	0	0	0	0	0	0	-3
12 Irene Asensio	07:50	0-0	0-0	0-0	0	2	2	1	0	0	2	0	0	0	0	12
Team					4	2	6	0	0	0	0	0	0	0	0	
Totals		25-56	8-15	17-25	16	29	45	17	22	75	18	17	7	1	4	11

Major Fouls: NONE

Deads Ball Rebounds: 3/0

Kansas City - 64

NO. Name	Min	FG	3P	FT	Rebounds		Fouls	TP	AS	TO	ST	Blocks			+/-	
					OR	DR						BS	BA	+		
11 Koby Bannerman	F 19:17	2-5	0-0	0-0	4	2	6	3	1	4	1	2	2	3	0	2
0 Emari Bennett	G 22:37	6-12	4-4	0-0	3	3	1	1	16	0	1	3	0	0	5	
2 Eluani Bennett	G 31:44	3-8	0-0	2-5	3	2	5	4	5	8	1	3	0	0	-13	
23 Alyssa Febres	G 15:59	0-2	0-1	2-2	0	0	0	0	2	3	4	0	0	0	-7	
24 Zaire Harrell	G 36:48	3-7	0-0	1-1	1	6	7	4	6	7	4	0	2	0	1	-6
25 Jamyah Winter	29:49	4-8	4-8	2-3	0	3	3	1	14	0	0	0	0	0	-10	
5 Tierra Trotter	24:01	4-11	1-3	0-0	1	2	3	4	0	9	3	4	0	0	-4	
22 Jumoke Adaramoye	14:50	1-5	0-0	0-0	1	2	3	2	0	2	1	0	0	0	-16	
1 Nikole Thomas	04:55	1-1	0-0	0-0	0	0	0	1	2	0	0	0	0	0	-8	
Team					0	0	0	0	0	0	0	0	0	0	0	
Totals		24-59	9-16	7-12	10	20	30	22	17	64	13	15	7	4	1	-11

Major Fouls: NONE

Deads Ball Rebounds: 1/0

Biggest lead	Miners		Roos		Points from Turnovers	Miners	Roos	Period by Period Scoring			
	13 (4 th 8:52)	9 (3 rd 9:50)	8 (3 rd 9:50)	7 (4 th 7:14)				1st	2nd	3rd	4th
Best Scoring Run	9 (3 rd 2:08)		7 (4 th 7:14)		Paint	26		24			
Lead Changes	2		2		Second Chance	23		5			
Times Tied	5		5		Fast Breaks	9		4			
Time with Lead	15:29		17:17		Bench	25		27			

Official Basketball Box Score - Final
Denver at UTEP
 11/25/25 Don Haskins Center, El Paso, Texas
 2025-26 Women's Basketball

Game Time: 2:00 PM
 Game Duration: 1:42
 Attendance: 1,096

Officials: Angelica Sufren, Tucker Furrow, Shandra Twine

Denver - 52

NO. Name	Min	FG	3P	FT	Rebounds		Fouls	TP	AS	TO	ST	Blocks			+/-	
					OR	DR						BS	BA	+		
13 Ana Conde	C 18:18	2-3	0-0	0-0	1	3	4	2	4	1	7	1	0	0	-9	
32 Lily Esparza	C 19:29	0-1	0-1	0-0	0	2	2	0	2	0	1	1	0	0	-4	
3 Victoria Baker	G 28:43	1-3	0-2	5-5	0	1	1	3	3	7	1	0	0	0	-12	
10 Coryn Watts	G 38:55	6-22	4-9	3-4	1	4	5	1	2	19	1	3	3	0	1	
12 Laila Monclova	G 33:52	4-15	1-6	0-0	1	6	7	1	1	9	0	3	4	1	0	
11 Karolina Padilla	07:44	0-0	0-0	0-0	0	1	1	0	0	0	0	0	0	0	-20	
1 Laila McLeod	08:54	1-1	1-1	0-0	0	1	1	0	0	3	0	1	0	0	-2	
0 Brooke Murrell	34:13	4-6	0-0	2-2	4	4	8	1	2	10	0	2	0	1	0	
15 Jocelyn Medina	09:52	0-4	0-3	0-0	0	1	1	0	0	2	1	0	0	0	0	
Team					2	3	5	0	0	0	0	0	0	0	0	
Totals		18-55	6-22	10-11	9	26	35	10	12	52	7	21	9	3	1	-17

Major Fouls: NONE

Deads Ball Rebounds: 2/0

UTEP - 69

NO. Name	Min	FG	3P	FT	Rebounds		Fouls	TP	AS	TO	ST	Blocks			+/-	
					OR	DR						BS	BA	+		
13 Ndack Mbengue	F 31:52	5-10	0-0	2-2	6	4	10	2	1	12	1	1	2	0	1	14
2 Sirivva Legions	G 32:06	6-13	0-0	5-6	0	7	7	1	4	17	3	0	1	0	22	
3 Ivane Tensale	G 32:67	8-18	8-12	2-2	0	1	1	0	2	26	2	0	1	0	1	17
4 Delma Zita	G 26:16	1-2	0-0	0-0	0	2	2	0	1	2	6	5	4	0	0	22
11 Portia Adams	G 11:01	0-3	0-2	0-0	0	1	1	0	0	0	0	0	0	0	0	-6
5 Heaven Samayoa-Mathis	18:13	0-3	0-2	0-0	0	1	4	5	2	0	0	1	4	2	0	0
22 Mary Moses Amaniyu	27:32	5-10	0-0	1-1	1	4	5	2	1	11	1	3	3	1	0	2
10 Osadebamwen Igbinedion	02:37	0-0	0-0	1-2	0	0	0	1	1	1	0	0	0	0	0	
12 Irene Asensio	06:53	0-1	0-1	0-0	0	0	0	0	1	0	0	0	0	0	0	
14 Taliana Collazo	03:33	0-1	0-0	0-0	0	0	0	0	1	0	0	0	0	0	0	
23 Aolani Woldai	03:30	0-1	0-0	0-0	1	0	1	0	2	0	0	1	0	0	0	
Team					3	4	7	0	0	0	0	0	0	0	0	
Totals		25-62	8-18	11-13	12	27	39	12	10	89	14	14	13	1	3	17

Major Fouls: NONE

Deads Ball Rebounds: 1/0

Biggest lead	DENVER		UTEP		Points from Turnovers	DENVER	UTEP	Period by Period Scoring			
	0 (1 st 10:00)	20 (4 th 2:55)	10 (3 rd 0:59)	13 (1 st 4:15)				1st	2nd	3rd	4th
Best Scoring Run	10 (3 rd 0:59)		13 (1 st 4:15)		Paint	20		26			
Lead Changes	0		6		Second Chance	6		14			
Times Tied	0		7		Fast Breaks	13		12			
Time with Lead	00:00		38:35		Bench	19		11			



Official Basketball Box Score - Final
A&M-Corpus Christi at UTEP
 12/03/25 Don Haskins Center, El Paso, Texas
 2025-26 Women's Basketball

Game Time: 7:00 PM
 Game Duration: 1:49
 Attendance: 923

Officials: Michael Price, Karli Childs, Katrina Cutler

A&M-Corpus Christi - 44

NO. Name	Min	FG	3P	FT	Rebounds		Fouls	TP	AS	TO	ST	Blocks			+/-	
					OR	DR						BS	BA	+		
13 Rayna Williams	F 11:59	2-3	0-0	0-0	0	0	0	3	1	4	1	2	1	0	0	-6
32 K'Nari Holiday	F 22:52	0-1	0-0	0-0	3	5	8	0	0	1	2	0	1	0	-13	
3 Chelsea Wooten	G 30:45	2-17	1-12	0-0	0	4	4	3	1	5	3	2	0	0	-21	
4 Marissa Shelton	G 36:08	3-8	2-5	4-4	0	4	4	2	2	12	0	4	1	0	-19	
5 Samora Watson	G 32:54	6-16	1-2	4-8	2	2	4	3	6	17	0	3	3	0	-21	
11 Asha Walker	26:20	0-3	0-3	0-0	1	2	3	0	1	0	1	2	0	0	0	
9 Trinity Stocum	10:35	0-0	0-0	1-2	5	5	5	0	1	2	3	0	0	0	0	
14 Bruna Anguera	17:52	1-1	0-0	0-0	2	3	5	1	0	2	1	2	0	1	-10	
20 Torie Sevier	10:35	1-4	0-0	1-2	1	3	4	0	1	3	0	1	0	1	-4	
Team					1	3	4	0	0	0	0	0	0	0	0	
Totals		15-53	4-22	10-16	10	31	41	18	14	44	9	21	7	3	0	

Major Fouls: Wooten (F) 1st 9:30

Deads Ball Rebounds: 3/0

UTEP - 62

NO. Name	Min	FG	3P	FT	Rebounds		Fouls	TP	AS	TO	ST	Blocks			+/-
					OR	DR						BS	BA	+	
13 Ndack Mbengue	F 26:46	4-6	0-0	1-2	2	6	8	3	3	9	0	0	1	0	19
2 Sirivva Legions	G 30:39	5-14	0-0	4-4	4	4	8								

2025-26 BOX SCORES



Official Basketball Box Score - Final
Liberty at UTEP
 01/04/26 Don Haskins Center, El Paso, Texas
 2025-26 Women's Basketball

Game Time: 12:00 PM
 Game Duration: 1:58
 Attendance: 795

Officials: Amy Kromenhoek, Jess Martinez, Matthew Kreck

Liberty - 86 Record: 8-5 (2-0)

NO. Name	Min	FG	3P	FT	Rebounds	Fouls	TP	AS	TO	ST	Blocks	+/-
		M/A	M/A	M/A	OR DR TOT	PF FD					BS BA	
6 Ily Nwaobi	28:20	5-13	0-2	1-2	3 4 7	3 1	11	0	1	0	1 2	20
21 Elisabeth Aegisdottir	F 30:15	2-8	1-2	3-6	2 4 6	5 4	8	2	5	1	0 1	18
17 Emmly Stout	F 22:59	6-9	0-0	4-6	2 4 6	5 6	16	2	0	2	0 0	25
1 Avery Mills	G 28:55	7-10	6-8	2-2	1 4 5	1 6	22	3	2	1	2 0	17
4 Claudia Acin	G 29:34	7-9	4-5	2-2	1 2 3	0 0	20	7	2	3	0 0	15
3 Jakyia Thompson	25:27	1-6	0-2	0-0	0 5 5	2 0	2	6	0	3	0 1	10
33 Lyn Peters	14:42	1-1	0-0	0-0	1 1 2	4 0	2	0	2	0	0 0	-3
22 Lydie Mwamba	09:48	1-4	0-2	0-0	1 1 2	0 0	2	0	0	0	1 0	-3
24 Emma Leon	09:41	1-4	1-3	0-0	1 1 2	1 0	3	2	1	0	0 0	3
15 Maleah Alexander	00:20	0-0	0-0	0-0	0 0 0	0 0	0	0	0	0	0 0	-2
Team					3 4 0	0 0						
Totals		31-64	12-24	12-18	13 26 39	21 17	86	22	14	10	4 4	20

Major Fouls: NONE

Shooting By Period

1 st FG%	8-18	44.4%
3PT%	3-7	42.9%
FT%	3-4	75%
2 nd FG%	5-10	50.0%
3PT%	3-6	50.0%
FT%	3-4	75%
3 rd FG%	9-15	60.0%
3PT%	4-6	66.7%
FT%	3-6	50%
4 th FG%	9-20	45.0%
3PT%	2-5	40.0%
FT%	3-4	75%
GM FG%	31-64	48.4%
3PT%	12-24	50.0%
FT%	12-18	66.7%

Dead Ball Rebounds: 2, 0

UTEP - 66 Record: 9-4 (1-1)

NO. Name	Min	FG	3P	FT	Rebounds	Fouls	TP	AS	TO	ST	Blocks	+/-
		M/A	M/A	M/A	OR DR TOT	PF FD					BS BA	
13 Ndack Mbengue	F 30:48	0-2	0-0	5-6	4 7 11	4 8	5	0	1	1	0 0	-21
2 Sirivva Legions	G 25:05	2-11	0-0	2-2	4 3 7	2 3	6	0	3	1	0 2	-20
3 Ivane Tensaie	G 29:48	2-12	2-11	2-2	0 1 1	2 2	8	1	3	0	0 0	-23
4 Delma Zita	G 18:34	1-2	0-0	0-0	1 0 1	2 0	2	1	3	0	1 1	-14
11 Portia Adams	G 30:19	5-12	0-3	7-8	0 1 1	4 4	17	2	4	0	0 0	-16
12 Irene Asensio	03:42	0-1	0-1	0-0	0 0 0	1 1	0	0	0	0	0 0	-6
5 Heaven Samayoa-Mathis	27:52	4-10	2-4	4-4	1 5 6	1 2	14	4	3	0	1 0	-1
22 Mary Moses Amaniyo	29:42	6-11	0-0	2-2	5 5 10	1 1	14	0	4	0	0 0	0
10 Osadobamwen Igbinedion Omoyul	01:02	0-1	0-0	0-0	0 0 0	0 0	0	0	0	0	0 0	-2
1 Aaliyah Davis	03:08	0-0	0-0	0-0	0 0 0	0 0	0	0	0	0	0 0	0
Team					2 4 4	1 0						
Totals		20-62	4-19	22-24	17 24 41	18 21	66	8	18	4	4 4	-20

Major Fouls: Coach (TF) 4th 0:02

Shooting By Period

1 st FG%	2-12	16.7%
3PT%	0-5	0.0%
FT%	5-6	83.3%
2 nd FG%	7-19	36.8%
3PT%	0-2	0.0%
FT%	7-8	87.5%
3 rd FG%	7-15	46.7%
3PT%	3-4	75.0%
FT%	4-4	100%
4 th FG%	4-16	25.0%
3PT%	1-8	12.5%
FT%	6-6	100%
GM FG%	20-62	32.3%
3PT%	4-19	21.1%
FT%	22-24	91.7%

Dead Ball Rebounds: 1, 0

	LIB	UTEP
Biggest lead	21 (4 th 0:09)	0 (1 st 10:00)
Best Scoring Run	9 (1 st 6:47)	7 (2 nd 6:37)
Lead Changes	0	0
Times Tied	0	0
Time with Lead	39:36	00:00

Points from	LIB	UTEP
Turnovers	17	6
Paint	38	26
Second Chance	11	10
Fast Breaks	9	17
Bench	9	28

Period by Period Scoring	1st	2nd	3rd	4th	TOT
LIB	22	16	25	23	86
UTEP	9	21	21	15	66



Official Basketball Box Score - Final
UTEP at Middle Tenn.
 01/08/26 Murphy Center, Murfreesboro, Tenn.
 2025-26 Women's Basketball

Game Time: 6:30 PM
 Game Duration: 1:44
 Attendance: 3,072

Officials: Eric Koch, Kyle Galloway, Royce Byrnes

UTEP - 43 Record: 9-5 (1-2)

NO. Name	Min	FG	3P	FT	Rebounds	Fouls	TP	AS	TO	ST	Blocks	+/-
		M/A	M/A	M/A	OR DR TOT	PF FD					BS BA	
13 Ndack Mbengue	F 16:10	0-2	0-0	0-2	1 0 1	3 3	0	0	2	0	0 0	-25
22 Mary Moses Amaniyo	F 24:32	5-8	0-0	4-6	7 3 10	1 3	14	0	1	2	0 0	-21
1 Aaliyah Davis	F 11:03	0-3	0-0	0-0	0 2 2	1 0	0	0	1	0	0 1	-13
5 Heaven Samayoa-Mathis	G 25:34	2-6	0-2	0-0	1 3 4	2 1	4	0	2	2	0 0	-32
11 Portia Adams	G 18:12	0-7	0-2	0-0	0 0 0	1 1	5	0	2	0	0 1	-22
2 Sirivva Legions	16:11	2-5	0-0	1-5	0 1 1	1 3	5	1	1	0	0 0	-29
3 Ivane Tensaie	24:33	1-10	1-3	2-2	0 0 0	0 0	1	5	0	0	0 0	-33
8 Brooklyn Terry	07:11	1-4	1-3	0-0	0 2 2	0 0	3	0	1	0	0 0	-5
4 Delma Zita	11:01	1-4	0-1	1-2	1 2 3	0 2	3	1	1	0	0 0	-5
12 Irene Asensio	18:22	1-3	1-3	0-0	3 3 0	0 3	3	1	2	1	0 0	-10
14 Tatiana Collazo	15:37	0-0	0-0	0-2	0 1 1	0 2	0	0	0	0	0 0	-6
10 Osadobamwen Igbinedion Omoyul	08:09	1-4	0-0	1-2	1 0 1	1 0	3	0	1	0	0 0	-6
23 Aolani Woldai	03:25	1-1	0-0	1-1	0 0 0	1 1	3	0	0	0	0 0	-6
Team					1 2 3	0 0						
Totals		15-57	3-14	10-22	12 19 31	10 18	43	3	14	6	0 4	-43

Major Fouls: NONE

Shooting By Period

1 st FG%	3-12	25.0%
3PT%	1-2	50.0%
FT%	2-6	33.3%
2 nd FG%	3-17	17.6%
3PT%	0-1	0.0%
FT%	3-4	75%
3 rd FG%	4-12	33.3%
3PT%	2-5	40.0%
FT%	2-5	40%
4 th FG%	5-16	31.3%
3PT%	1-4	25.0%
FT%	3-7	42.9%
GM FG%	15-57	26.3%
3PT%	3-14	21.4%
FT%	10-22	45.5%

Dead Ball Rebounds: 6, 0

Middle Tenn. - 86 Record: 8-7 (3-0)

NO. Name	Min	FG	3P	FT	Rebounds	Fouls	TP	AS	TO	ST	Blocks	+/-
		M/A	M/A	M/A	OR DR TOT	PF FD					BS BA	
3 Aiyana Contreras	G 21:24	5-12	2-3	4-4	1 0 1	2 2	16	2	0	1	0 0	31
10 Kriston Verhulst	G 33:55	6-10	5-9	0-0	1 3 4	0 1	17	1	3	0	1 0	37
12 Blair Baugus	G 30:00	6-8	0-1	3-3	5 6 11	2 3	15	3	2	0	0 0	39
14 Savannah Davis	G 33:19	3-12	3-10	0-0	1 9 10	0 0	9	2	1	2	2 0	39
22 Macie Phifer	G 13:50	1-6	0-1	0-0	2 1 3	4 0	2	0	1	0	0 1	6
42 Stanislava Kabernick	20:25	1-3	1-2	0-0	3 7 10	2 0	3	2	1	1	0 0	29
15 Nicole Dominguez Gureeva	07:43	0-0	0-0	2-2	0 4 2	2 1	2	0	2	0	0 0	1
1 Yu Han Lin	15:46	7-12	2-3	2-2	0 1 1	2 2	18	0	0	0	0 0	11
5 Carsyn Swaney	10:00	0-2	0-1	0-0	2 0 2	2 0	2	0	1	0	0 0	4
11 Emily Monson	05:36	1-2	0-1	0-0	1 1 2	1 0	2	1	1	0	0 0	7
13 Jenna McClendon	04:37	1-1	0-0	0-0	0 2 2	1 0	2	0	1	0	0 0	5
0 Grace Hamby	03:25	0-0	0-0	0-0	1 2 0	1 0	1	0	1	0	0 0	6
Team					1 2 2	0 0						
Totals		31-68	13-31	11-11	18 36 54	18 10	86	13	13	7	4 0	43

Major Fouls: NONE

Shooting By Period

1 st FG%	8-20	40.0%
3PT%	5-11	45.5%
FT%	2-2	100%
2 nd FG%	8-15	53.3%
3PT%	2-5	40.0%
FT%	3-3	100%
3 rd FG%	8-12	66.7%
3PT%	4-4	100%
FT%	4-4	100%
4 th FG%	7-21	33.3%
3PT%	2-9	22.2%
FT%	2-2	100%
GM FG%	31-68	45.6%
3PT%	13-31	41.9%
FT%	11-11	100.0%

Dead Ball Rebounds: 0, 0

	UTEP	MTSU
Biggest lead	2 (1 st 9:46)	43 (4 th 0:19)
Best Scoring Run	5 (2 nd 2:58)	16 (1 st 1:58)
Lead Changes	1	1
Times Tied	0	4
Time with Lead	01:08	36:15

Points from	UTEP	MTSU
Turnovers	9	21
Paint	22	30
Second Chance	11	19
Fast Breaks	8	4
Bench	25	27

Period by Period Scoring	1st	2nd	3rd	4th	TOT
UTEP	9	10	10	14	43
MTSU	23	21	24	18	86



Official Basketball Box Score - Final
UTEP at WKU
 01/10/26 E.A. Diddle Arena, Bowling Green, KY
 2025-26 Women's Basketball

Game Time: 12:00 PM
 Game Duration: 1:52
 Attendance: 703

Officials: Angelica Siffren, Natasha Camy, Jamie Brodick

UTEP - 59 Record: 9-6 (1-3)

NO. Name

2025-26 SEASON STATS



2025-26 UTEP Women's Basketball Combined Team Statistics All games

Page 1/1
as of Jan 16, 2026

Game Records

Record	Overall	Home	Away	Neutral
ALL GAMES	9-7	8-3	1-4	0-0
CONFERENCE	1-4	1-2	0-2	0-0
NON-CONFERENCE	8-3	7-1	1-2	0-0

Score by Periods

Team	1st	2nd	3rd	4th	OT	TOT
UTEP	254	231	311	277	12	1085
Opponents	261	247	304	271	8	1091

Team Box Score

No.	Player	Total			3-Point			F-Throw		Rebounds				PF DQ A TO BLK STL PTS AVG								
		GP-GS	MIN	AVG	FG-FGA	FG%	3FG-3FGA	3FG%	FT-FTA	FT%	OFF	DEF	TOT	AVG	PF	DQ	A	TO	BLK	STL	PTS	AVG
3	TENSAIE, Ivane	16-15	436:27	27.3	60-182	.330	43-125	.344	15-19	.789	2	18	20	1.3	13	0	13	18	0	13	178	11.1
13	MBENGUE, Ndack	16-16	403:27	25.2	57-116	.491	0-0	.000	53-81	.654	61	75	136	8.5	49	1	5	37	11	20	167	10.4
22	MOSES AMANIYO, Mary	16-1	357:59	22.4	61-118	.517	1-6	.167	34-48	.708	67	80	147	9.2	31	2	4	23	4	18	157	9.8
2	LEGIONS, Sirviva	16-15	407:23	25.5	59-161	.366	2-11	.182	32-52	.615	28	57	85	5.3	25	1	23	32	2	19	152	9.5
11	ADAMS, Portia	16-16	393:17	24.6	53-150	.353	15-42	.357	25-32	.781	12	26	38	2.4	27	0	46	35	0	8	146	9.1
5	SAMAYOA-MATHIS, Heaven	16-3	367:10	22.9	39-102	.382	14-47	.298	13-20	.650	20	39	59	3.7	31	0	37	29	5	27	105	6.6
4	ZITA, Delma	16-13	282:54	17.7	17-52	.327	2-12	.167	12-15	.800	10	24	34	2.1	20	0	35	30	1	18	48	3.0
15	PRISCILLA, Abby	1-0	04:28	4.5	1-3	.333	0-0	.000	1-2	.500	4	2	6	6.0	0	0	0	0	0	3	3	3.0
8	TERRY, Brooklyn	13-0	120:53	9.3	13-48	.271	5-27	.185	4-4	1.000	5	14	19	1.5	7	0	3	5	4	3	35	2.7
12	ASENSIO, Irene	15-0	142:13	9.5	9-34	.265	7-26	.269	3-4	.750	1	12	13	0.9	11	0	8	11	1	7	28	1.9
14	COLLAZO, Tatiana	13-0	112:03	8.6	7-28	.250	4-19	.211	3-10	.300	1	5	6	0.5	11	0	6	6	0	7	21	1.6
23	WOLDAI, Aolani	10-0	65:19	6.5	6-22	.273	0-7	.000	3-3	1.000	8	6	14	1.4	17	0	6	13	2	2	15	1.5
10	IGBINEDION OMORUYI, Osadebamwen	12-0	61:25	5.1	7-19	.368	0-0	.000	2-5	.400	8	5	13	1.1	4	0	0	4	3	3	16	1.3
1	DAVIS, Aaliyah	11-1	70:03	6.4	5-20	.250	0-3	.000	4-7	.571	3	13	16	1.5	7	0	6	9	0	3	14	1.3
Team											36	37	73				7					
Total		16	3225		394-1055	.373	93-325	.286	204-302	.675	266	413	679	42.4	253	4	192	259	33	148	1085	67.8
Opponents		16	3225		400-962	.416	118-360	.328	173-233	.742	172	447	619	38.7	288	5	222	294	57	136	1091	68.2

Team Statistics

	UTEP	OPP
Scoring	1085	1091
Points per game	67.8	68.2
Scoring margin	-0.4	-
Field goals-att	394-1055	400-962
Field goal pct	.373	.416
3 point fg-att	93-325	118-360
3-point FG pct	.286	.328
3-pt FG made per game	5.8	7.4
Free throws-att	204-302	173-233
Free throw pct	.675	.742
F-Throws made per game	12.8	10.8
Rebounds	679	619
Rebounds per game	42.4	38.7
Rebounding margin	+3.8	-
Assists	192	222
Assists per game	12.0	13.9
Turnovers	259	294
Turnovers per game	16.2	18.4
Turnover margin	+2.2	-
Assist/turnover ratio	0.7	0.8
Steals	148	136
Steals per game	9.3	8.5
Blocks	33	57
Blocks per game	2.1	3.6
Winning streak	0	-
Home win streak	0	-
Attendance	10263	8881
Home games-Avg/Game	11-933	5-1776
Neutral site-Avg/Game	-	0-0

Team Results

Date	Opponent	Score	Att.
11/03/2025	Prairie View	W 84-60	639
11/08/2025	Nicholls	W 76-61	1040
11/11/2025	Western N.M.	W 81-56	1068
11/22/2025	UT Martin	Wot 64-60	941
11/25/2025	at Kansas City	W 75-64	283
11/29/2025	Denver	W 69-52	1096
12/03/2025	A&M-Corpus Christi	W 62-44	923
12/06/2025	at TCU	L 40-95	2846
12/13/2025	at BYU	L 46-81	1977
12/18/2025	UC Irvine	L 72-93	905
12/29/2025	Southwest (NM)	W 102-43	1078
01/02/2026	Delaware	W 82-71	957
01/04/2026	Liberty	L 66-86	795
01/08/2026	at Middle Tenn.	L 43-86	3072
01/10/2026	at Western Ky.	L 59-68	703
01/15/2026	Missouri St.	L 64-71	821



2025-26 CUSA STATS



2025-26 UTEP Women's Basketball Combined Team Statistics In Conference games

Game Records

Record	Overall	Home	Away	Neutral
ALL GAMES	1-4	1-2	0-2	0-0
CONFERENCE	1-4	1-2	0-2	0-0
NON-CONFERENCE	0-0	0-0	0-0	0-0

Score by Periods

Team	1st	2nd	3rd	4th	OT	TOT
UTEP	58	81	95	80	0	314
Opponents	106	81	104	91	0	382

Team Box Score

No.	Player	Total			3-Point		F-Throw		Rebounds				PF DQ A TO BLK STL PTS AVG									
		GP-GS	MIN	AVG	FG-FGA	FG%	3FG-3FGA	3FG%	FT-FTA	FT%	OFF	DEF	TOT	AVG	PF	DQ	A	TO	BLK	STL	PTS	AVG
3	TENSAIE, Ivane	5-4	155:39	31.1	18-59	.305	14-43	.326	6-6	1.000	0	4	4	0.8	5	0	5	6	0	3	56	11.2
13	MBENGUE, Ndack	5-5	145:07	29.0	16-35	.457	0-0	.000	23-36	.639	17	24	41	8.2	18	0	1	15	6	7	55	11.0
11	ADAMS, Portia	5-5	132:38	26.5	17-47	.362	2-10	.200	11-12	.917	4	4	8	1.6	14	0	14	17	0	1	47	9.4
5	SAMAYOA-MATHIS, Heaven	5-3	134:39	26.9	17-35	.486	8-17	.471	4-5	.800	6	17	23	4.6	8	0	9	7	2	9	46	9.2
22	MOSES AMANIYO, Mary	5-1	110:24	22.1	16-32	.500	0-2	.000	9-11	.818	16	19	35	7.0	11	1	2	3	1	6	41	8.2
2	LEGIONS, Sirviva	5-4	114:55	23.0	15-46	.326	0-0	.000	3-10	.300	8	14	22	4.4	7	0	4	10	2	5	33	6.6
23	WOLDAL, Aolani	1-0	03:25	3.4	1-1	1.000	0-0	.000	1-1	1.000	0	0	0	0.0	1	0	0	0	0	0	3	3.0
4	ZITA, Delma	5-2	71:02	14.2	6-13	.462	1-4	.250	1-3	.333	4	4	8	1.6	6	0	6	11	1	6	14	2.8
8	TERRY, Brooklyn	3-0	33:06	11.0	3-10	.300	2-6	.333	0-0	.000	1	4	5	1.7	1	0	1	3	1	0	8	2.7
14	COLLAZO, Tatiana	2-0	25:20	12.7	1-4	.250	1-4	.250	0-2	.000	0	1	1	0.5	1	0	1	0	0	0	3	1.5
10	IGBINEDION OMORUYI, Osadebamwen	3-0	09:15	3.1	1-5	.200	0-0	.000	1-2	.500	1	0	1	0.3	0	0	0	0	0	1	3	1.0
12	ASENSIO, Irene	4-0	39:41	9.9	1-8	.125	1-5	.200	0-0	.000	0	4	4	1.0	2	0	2	3	0	1	3	0.8
1	DAVIS, Aaliyah	4-1	24:49	6.2	0-4	.000	0-0	.000	2-2	1.000	0	5	5	1.3	1	0	1	3	0	1	2	0.5
Team											6	11	17					2				
Total		5	1000		112-299	.375	29-91	.319	61-90	.678	63	111	174	34.8	75	1	46	80	13	40	314	62.8
Opponents		5	1000		143-313	.457	42-115	.365	54-69	.783	65	142	207	41.4	91	1	72	78	13	46	382	76.4

Team Statistics

	UTEP	OPP
Scoring	314	382
Points per game	62.8	76.4
Scoring margin	-13.6	-
Field goals-att	112-299	143-313
Field goal pct	.375	.457
3 point fg-att	29-91	42-115
3-point FG pct	.319	.365
3-pt FG made per game	5.8	8.4
Free throws-att	61-90	54-69
Free throw pct	.678	.783
F-Throws made per game	12.2	10.8
Rebounds	174	207
Rebounds per game	34.8	41.4
Rebounding margin	-6.6	-
Assists	46	72
Assists per game	9.2	14.4
Turnovers	80	78
Turnovers per game	16.0	15.6
Turnover margin	-0.4	-
Assist/turnover ratio	0.6	0.9
Steals	40	46
Steals per game	8.0	9.2
Blocks	13	13
Blocks per game	2.6	2.6
Winning streak	0	-
Home win streak	0	-
Attendance	2573	3775
Home games-Avg/Game	3-858	2-1888
Neutral site-Avg/Game	-	0-0

Team Results

Date	Opponent	Score	Att.
01/02/2026	Delaware	W 82-71	957
01/04/2026	Liberty	L 66-86	795
01/08/2026	at Middle Tenn.	L 43-86	3072
01/10/2026	at Western Ky.	L 59-68	703
01/15/2026	Missouri St.	L 64-71	821



2025-26 RADIO-TV ROSTER

<p>#1 AALIYAH DAVIS</p>  <p>G 5-7 SR. EI PASO, TEXAS</p>	<p>#2 SIRVIVA LEGIONS</p>  <p>G 5-8 SR. BROOKLYN, N.Y.</p>	<p>#3 IVANE TENSAIE</p>  <p>G 5-6 GR. ROSEVILLE, MINN</p>	<p>#4 DELMA ZITA</p>  <p>G 5-8 GR. MAPUTO, MOZAMBIQUE</p>	<p>#5 HEAVEN SAMAYOA-MATHIS</p>  <p>G 5-17 SR. SACRAMENTO, CALIF.</p>
<p>#8 BROOKLYN TERRY</p>  <p>G/F 6-0 FR. MANSFIELD, TEXAS</p>	<p>#10 OSADEBAMWEN IGBINEDION OMORUYI</p>  <p>F 6-4 SO. MADRID, SPAIN</p>	<p>#11 PORTIA ADAMS</p>  <p>G 5-6 SR. CEDAR HILL, TEXAS</p>	<p>#12 IRENE ASENSIO</p>  <p>G 5-8 SO.. BARCELONA, SPAIN</p>	<p>#13 NDACK MBENGUE</p>  <p>F 6-3 SR. BERGAMO, ITALY</p>
<p>#14 TATIANA COLLAZO</p>  <p>G 5-8 JR. SAN JOSE, CALIF.</p>	<p>#15 ABBY PRISCILLA</p>  <p>G 5-11 JR. KAMPALA, UGANDA</p>	<p>#20 BLESSIING OKHWODIASA</p>  <p>F 6-2 FR. MADRID, SPAIN.</p>	<p>#22 MARY MOSES AMANIYO</p>  <p>F 6-1 SO. ARUA, UGANDA</p>	<p>#23 AOLANI WOLDAI</p>  <p>G 5-7 FR. FORT WORTH, TEXAS</p>

COACHING STAFF



HEAD COACH
KEITHA ADAMS



ASSOC. HEAD COACH
EWA LASKOWSKA



ASST. COACH
JAREIGA HUGHES



ASST. COACH
LULU MCKINNEY



S&C COACH
CHISAN JONES

