



UTEP at Kennesaw St.

03/11/25 Propst Arena at the Von Braun Center, Huntsville  
2024-25 Women's Basketball

Game Time: 2:00 PM  
Game Duration: 1:53  
Attendance: 780

Officials: Felicia Grinter, Brian Hall, Jamie Broderick

UTEP - 63

Record: 11-19

NO.	Name	Min	FG			3P			FT			Rebounds			Fouls		TP	AS	TO	ST	Blocks		+/-
			M-A	M-A	M-A	OR	DR	TOT	PF	FD	BS	BA											
13	Ndack Mbengue	F 25:14	3-4	0-0	3-4	2	6	8	5	4	9	1	1	1	0	0	0	0	0	0	0	5	
23	Luisa Vydrova	F 23:42	1-3	0-1	0-0	3	0	3	5	1	2	2	2	2	0	0	0	0	0	0	0	-16	
3	Ivane Tensaie	G 27:50	3-9	2-7	0-0	0	1	1	2	0	8	0	3	0	0	0	0	0	0	0	0	-3	
5	Delma Zita	G 17:36	1-3	0-1	0-0	0	1	1	1	1	2	2	5	0	0	0	0	0	0	0	0	-7	
11	Portia Adams	G 36:59	9-14	2-5	4-5	0	7	7	1	7	24	2	5	2	0	0	0	0	0	0	0	-8	
12	Irene Asensio	21:53	1-2	1-2	0-0	0	3	3	5	0	3	0	1	0	0	0	0	0	0	0	0	-2	
2	Heaven Samayoa-Mathis	18:55	2-5	1-3	0-0	1	1	2	2	0	5	2	0	2	0	0	0	0	0	0	0	-2	
8	Dunja Zecevic	25:15	5-13	0-2	0-0	1	4	5	2	0	10	0	0	1	0	1	0	1	0	1	0	-6	
25	Osadebamwen Igbinedion Omoruyi	02:36	0-0	0-0	0-0	0	0	0	0	0	0	0	0	0	0	0	0	0	0	0	0	-1	
Team						0	4	4			0		0										
<b>Totals</b>			25-53	6-21	7-9	7	27	34	23	13	63	9	17	5	0	1							-8

Technical Fouls::NONE

Shooting By Period		
1st FG%	5-12	41.7%
3PT%	2-8	25.0%
FT%	2-3	66.7%
2nd FG%	10-15	66.7%
3PT%	3-7	42.9%
FT%	0-0	0%
3rd FG%	4-12	33.3%
3PT%	0-1	0.0%
FT%	3-4	75%
4th FG%	6-14	42.9%
3PT%	1-5	20.0%
FT%	2-2	100%
GM FG%	25-53	47.2%
3PT%	6-21	28.6%
FT%	7-9	77.8%

Dead Ball Rebounds: 1, 1

Kennesaw St. - 71

Record: 13-17

NO.	Name	Min	FG			3P			FT			Rebounds			Fouls		TP	AS	TO	ST	Blocks		+/-
			M-A	M-A	M-A	OR	DR	TOT	PF	FD	BS	BA											
4	Keiara Griffin	F 36:50	5-12	2-6	3-7	3	1	4	2	5	15	3	2	0	0	0	2				0	0	2
24	Prencis Harden	F 35:29	2-4	0-0	9-12	2	10	12	2	6	13	2	0	3	1	0	7				1	0	7
0	Kailyn Fields	G 15:56	1-4	1-4	0-0	0	1	1	0	0	3	1	1	1	0	0	-2				0	0	-2
1	Carly Hooks	G 37:32	2-10	0-5	2-4	2	2	4	0	5	6	6	3	6	0	0	13				0	0	13
21	Keyarah Berry	G 29:28	8-13	3-6	5-6	0	2	2	4	4	24	1	0	1	0	0	8				0	0	8
3	Lee Lee Willis	26:28	3-8	1-3	0-2	1	3	4	3	2	7	0	0	0	0	0	9				0	0	9
45	Taylor Cullinan	07:50	0-1	0-1	0-0	0	0	0	0	0	0	0	0	0	0	0	7				0	0	7
12	Sophia Rueppell	02:28	0-1	0-1	0-0	0	0	0	1	0	0	0	0	0	0	0	-5				0	0	-5
15	Morgan Dillard	07:59	1-2	0-0	1-2	2	0	2	1	1	3	1	0	1	0	0	1				0	0	1
Team						0	3	3			0		2										
<b>Totals</b>			22-55	7-26	20-33	10	22	32	13	23	71	14	8	12	1	0	8						

Technical Fouls::NONE

Shooting By Period		
1st FG%	7-19	36.8%
3PT%	2-10	20.0%
FT%	0-0	0%
2nd FG%	7-13	53.8%
3PT%	3-6	50.0%
FT%	1-1	100%
3rd FG%	4-13	30.8%
3PT%	1-7	14.3%
FT%	11-16	68.8%
4th FG%	4-10	40.0%
3PT%	1-3	33.3%
FT%	8-16	50%
GM FG%	22-55	40.0%
3PT%	7-26	26.9%
FT%	20-33	60.6%

Dead Ball Rebounds: 8, 0

	UTEP	KSU
Biggest lead	6 (2 <sup>nd</sup> 2:22)	9 (4 <sup>th</sup> 1:19)
Best Scoring Run	8 (2 <sup>nd</sup> 9:45)	6 (1 <sup>st</sup> 2:46)
Lead Changes	6	
Times Tied	7	
Time with Lead	09:48	27:24

Points from	UTEP	KSU
Turnovers	7	18
Paint	32	28
Second Chance	10	14
Fast Breaks	2	11
Bench	18	10

Period by Period Scoring					
	1st	2nd	3rd	4th	TOT
UTEP	14	23	11	15	63
KSU	16	18	20	17	71



**Period 1**

**Quarter Starters:**

<b>KSU</b>	0 Fields K	1 Hooks C	4 Griffin K	21 Berry K	24 Harden P
<b>UTEP</b>	3 Tensaie I	5 Zita D	11 Adams P	13 Mbengue N	23 Vydrova L

Game Time	KSU	Score	Diff	UTEP
10:00	24 HARDEN P jumpball won			13 MBENGUE N jumpball lost
09:46	4 GRIFFIN K 3pt FG , jump shot missed			
09:42				defensive rebound (1)
09:31	24 HARDEN P steal (1)			5 ZITA D turnover lost ball (1)
09:24	21 BERRY K 2pt FG fast break from turnover in the paint, layup made (2)	<b>2-0</b>	<b>2</b>	
09:24	1 HOOKS C assist (1)			
09:11				11 ADAMS P 2pt FG in the paint, layup missed
09:07				13 MBENGUE N offensive rebound (1)
09:06		<b>2-2</b>	<b>0</b>	13 MBENGUE N 2pt FG second chance in the paint, layup made (2)
08:48	21 BERRY K 2pt FG in the paint, jump shot missed			
08:44	4 GRIFFIN K offensive rebound (1)			
08:43	4 GRIFFIN K 2pt FG second chance in the paint, layup made (2)	<b>4-2</b>	<b>2</b>	
08:33				3 TENSAIE I 3pt FG , jump shot missed
08:26	0 FIELDS K defensive rebound (1)			
08:23	24 HARDEN P 2pt FG outside the paint, jump shot missed			
08:18				11 ADAMS P defensive rebound (1)
08:10	1 HOOKS C foul drawn (1)			23 VYDROVA L foul offensive (1 - 1)
08:10				23 VYDROVA L turnover offensive (1)
07:58	21 BERRY K 3pt FG from turnover, jump shot made (5)	<b>7-2</b>	<b>5</b>	
07:58	4 GRIFFIN K assist (1)			
07:38		<b>7-5</b>	<b>2</b>	11 ADAMS P 3pt FG , jump shot made (3)
07:22	21 BERRY K 3pt FG , jump shot missed			
07:19				11 ADAMS P defensive rebound (2)
07:13	24 HARDEN P foul shooting (1 - 1)			11 ADAMS P foul drawn (1)
07:13				5 ZITA D substitution out
07:13				12 ASENSIO I substitution in
07:13		<b>7-6</b>	<b>1</b>	11 ADAMS P free throw 1 - 2 made (4)
07:13		<b>7-7</b>	<b>0</b>	11 ADAMS P free throw 2 - 2 made (5)
07:03	1 HOOKS C 3pt FG , jump shot missed			
06:59				defensive rebound (5)
06:46				11 ADAMS P 3pt FG , jump shot missed
06:42	defensive rebound (3)			
06:35	0 FIELDS K 3pt FG , jump shot made (3)	<b>10-7</b>	<b>3</b>	
06:35	21 BERRY K assist (1)			
06:20	1 HOOKS C foul drawn (2)			13 MBENGUE N foul personal (1 - 2)
06:07	0 FIELDS K 3pt FG , jump shot missed			
06:03				11 ADAMS P defensive rebound (3)
05:53		<b>10-9</b>	<b>1</b>	13 MBENGUE N 2pt FG in the paint, hook shot made (4)
05:53				11 ADAMS P assist (1)
05:20	turnover shot clock (1)			
05:20	0 FIELDS K substitution out			
05:20	24 HARDEN P substitution out			



Official Basketball Play by Play - 1st Period  
**UTEP at Kennesaw St.**  
 03/11/25 Propst Arena at the Von Braun Center, Huntsville  
 2024-25 Women's Basketball

**Game Time:** 2:00 PM  
**Game Duration:** 1:53  
**Attendance:** 780

**Officials:** Felicia Grinter, Brian Hall, Jamie Broderick

Game Time	KSU	Score	Diff	UTEP
05:20	3 WILLIS L substitution in			
05:20	45 CULLINAN T substitution in			
05:07				3 TENSAIE I 3pt FG from turnover, jump shot missed
05:01	3 WILLIS L defensive rebound (1)			
05:00	3 WILLIS L foul drawn (1)			12 ASENSIO I foul personal (1 - 3)
05:00				11 ADAMS P substitution out
05:00				5 ZITA D substitution in
04:39	4 GRIFFIN K 2pt FG in the paint, layup made (4)	<b>12-9</b>	<b>3</b>	
04:39	1 HOOKS C assist (2)			
04:28	1 HOOKS C steal (1)			5 ZITA D turnover bad pass (2)
04:08	45 CULLINAN T 3pt FG from turnover, jump shot missed			
04:03				13 MBENGUE N defensive rebound (2)
03:45	3 WILLIS L foul personal (1 - 2)			5 ZITA D foul drawn (1)
03:45	4 GRIFFIN K substitution out			
03:45	24 HARDEN P substitution in			
03:45				3 TENSAIE I substitution out
03:45				11 ADAMS P substitution in
03:40	21 BERRY K steal (1)			5 ZITA D turnover bad pass (3)
03:32	21 BERRY K 2pt FG from turnover in the paint, layup missed			
03:29	24 HARDEN P offensive rebound (1)			
03:18	1 HOOKS C 2pt FG from turnover second chance in the paint, jump shot made (2)	<b>14-9</b>	<b>5</b>	
02:53				23 VYDROVA L 3pt FG , jump shot missed
02:48	3 WILLIS L defensive rebound (2)			
02:46	3 WILLIS L 2pt FG fast break in the paint, floating jump shot made (2)	<b>16-9</b>	<b>7</b>	
02:28				11 ADAMS P turnover lost ball (1)
02:28	1 HOOKS C substitution out			
02:28	45 CULLINAN T substitution out			
02:28	4 GRIFFIN K substitution in			
02:28	12 RUEPPELL S substitution in			
02:28				5 ZITA D substitution out
02:28				23 VYDROVA L substitution out
02:28				2 SAMAYOA-MATHIS H substitution in
02:28				8 ZECEVIC D substitution in
02:08	3 WILLIS L 3pt FG from turnover, jump shot missed			
02:05				12 ASENSIO I defensive rebound (1)
01:57	4 GRIFFIN K foul personal (1 - 3)			13 MBENGUE N foul drawn (1)
01:54		<b>16-11</b>	<b>5</b>	11 ADAMS P 2pt FG in the paint, layup made (7)
01:54	12 RUEPPELL S foul shooting (1 - 4)			11 ADAMS P foul drawn (2)
01:54				11 ADAMS P free throw 1 - 1 missed
01:54	24 HARDEN P defensive rebound (2)			
01:42	4 GRIFFIN K 2pt FG in the paint, layup missed			
01:39				13 MBENGUE N defensive rebound (3)
01:29		<b>16-14</b>	<b>2</b>	12 ASENSIO I 3pt FG , jump shot made (3)
01:03	4 GRIFFIN K 3pt FG , jump shot missed			
00:57				12 ASENSIO I defensive rebound (2)
00:54				12 ASENSIO I 3pt FG , jump shot missed
00:50	24 HARDEN P defensive rebound (3)			
00:29	12 RUEPPELL S 3pt FG , jump shot missed			



Official Basketball Play by Play - 1st Period  
**UTEP at Kennesaw St.**  
03/11/25 Propst Arena at the Von Braun Center, Huntsville  
2024-25 Women's Basketball

**Game Time:** 2:00 PM  
**Game Duration:** 1:53  
**Attendance:** 780

**Officials:** Felicia Grinter, Brian Hall, Jamie Broderick

Game Time	KSU	Score	Diff	UTEP
00:24				11 ADAMS P defensive rebound (4)
00:01				8 ZECEVIC D 3pt FG , jump shot blocked
00:01	24 HARDEN P block (1)			
00:00	defensive rebound (9)			
<b>END OF PERIOD</b>				
<b>KSU 16-14 UTEP</b>				



UTEP at Kennesaw St.

03/11/25 Propst Arena at the Von Braun Center, Huntsville  
2024-25 Women's Basketball

Game Time: 2:00 PM  
Game Duration: 1:53  
Attendance: 780

Officials: Felicia Grinter, Brian Hall, Jamie Broderick

UTEP - 14

NO.	Name	Min	FG			Rebounds			Fouls		TP	AS	TO	ST	Blocks		+/-
			M-A	3P	FT	OR	DR	TOT	PF	FD					BS	BA	
13	Ndack Mbengue	F 10:00	2-2	0-0	0-0	1	2	3	1	1	4	0	0	0	0	0	-2
23	Luisa Vydrova	F 07:32	0-1	0-1	0-0	0	0	0	1	0	0	0	1	0	0	-7	
3	Ivane Tensaie	G 06:15	0-2	0-2	0-0	0	0	0	0	0	0	0	0	0	0	-3	
5	Delma Zita	G 05:19	0-0	0-0	0-0	0	0	0	0	1	0	0	3	0	0	-8	
11	Portia Adams	G 08:45	2-4	1-2	2-3	0	4	4	0	2	7	1	1	0	0	0	
12	Irene Asensio	07:13	1-2	1-2	0-0	0	2	2	1	0	3	0	0	0	0	0	
2	Heaven Samayoa-Mathis	02:28	0-0	0-0	0-0	0	0	0	0	0	0	0	0	0	0	5	
8	Dunja Zecevic	02:28	0-1	0-1	0-0	0	0	0	0	0	0	0	0	0	1	5	
Team						0	2	2			0		0				
<b>Totals</b>			5-12	2-8	2-3	1	10	11	3	4	14	1	5	0	0	1	-2

Shooting By Period		
1st FG%	5-12	41.7%
3PT%	2-8	25.0%
FT%	2-3	66.7%
GM FG%	5-12	41.7%
3PT%	2-8	25.0%
FT%	2-3	66.7%

Dead Ball Rebounds: 0, 0

Technical Fouls::NONE

Kennesaw St. - 16

NO.	Name	Min	FG			Rebounds			Fouls		TP	AS	TO	ST	Blocks		+/-
			M-A	3P	FT	OR	DR	TOT	PF	FD					BS	BA	
4	Keiara Griffin	F 08:43	2-5	0-2	0-0	1	0	1	1	0	4	1	0	0	0	-2	
24	Prencis Harden	F 08:25	0-1	0-0	0-0	1	2	3	1	0	0	0	0	1	1	0	
0	Kailyn Fields	G 04:40	1-2	1-2	0-0	0	1	1	0	0	3	0	0	0	0	1	
1	Carly Hooks	G 07:32	1-2	0-1	0-0	0	0	0	0	2	2	2	0	1	0	7	
21	Keyarah Berry	G 10:00	2-5	1-2	0-0	0	0	0	0	0	5	1	0	1	0	2	
3	Lee Lee Willis	05:20	1-2	0-1	0-0	0	2	2	1	1	2	0	0	0	0	1	
45	Taylor Cullinan	02:52	0-1	0-1	0-0	0	0	0	0	0	0	0	0	0	0	6	
12	Sophia Rueppell	02:28	0-1	0-1	0-0	0	0	0	1	0	0	0	0	0	0	-5	
Team						0	2	2			0		1				
<b>Totals</b>			7-19	2-10	0-0	2	7	9	4	3	16	4	1	3	1	0	2

Shooting By Period		
1st FG%	7-19	36.8%
3PT%	2-10	20.0%
FT%	0-0	0%
GM FG%	7-19	36.8%
3PT%	2-10	20.0%
FT%	0-0	0.0%

Dead Ball Rebounds: 0, 0

Technical Fouls::NONE

	UTEP	KSU
Biggest lead	0 (1st 10:00)	7 (1st 2:46)
Best Scoring Run	5(1st 7:13)	6(1st 2:46)
Lead Changes	0	
Times Tied	2	
Time with Lead	00:00	08:23

Points from	UTEP	KSU
Turnovers	0	7
Paint	6	10
Second Chance	2	4
Fast Breaks	0	4
Bench	3	2

	Period by Period Scoring				
	1st	2nd	3rd	4th	TOT
UTEP	14	23	11	15	63
KSU	16	18	20	17	71



**Period 2**

**Quarter Starters:**

<b>KSU</b>	0 Fields K	1 Hooks C	4 Griffin K	21 Berry K	24 Harden P
<b>UTEP</b>	2 Samayoa-Mathis H	8 Zecevic D	11 Adams P	12 Asensio I	23 Vydrova L

Game Time	KSU	Score	Diff	UTEP
10:00	3 WILLIS L substitution out			
10:00	12 RUEPPELL S substitution out			
10:00	0 FIELDS K substitution in			
10:00	1 HOOKS C substitution in			
10:00				13 MBENGUE N substitution out
10:00				23 VYDROVA L substitution in
09:45		<b>16-17</b>	<b>-1</b>	2 SAMAYOA-MATHIS H 3pt FG , jump shot made (3)
09:23	1 HOOKS C 2pt FG outside the paint, jump shot missed			
09:19	24 HARDEN P offensive rebound (4)			
09:10	21 BERRY K 3pt FG second chance, jump shot made (8)	<b>19-17</b>	<b>2</b>	
09:10	4 GRIFFIN K assist (2)			
08:47		<b>19-19</b>	<b>0</b>	8 ZECEVIC D 2pt FG in the paint, layup made (2)
08:39	1 HOOKS C 2pt FG fast break in the paint, layup made (4)	<b>21-19</b>	<b>2</b>	
08:18		<b>21-21</b>	<b>0</b>	8 ZECEVIC D 2pt FG in the paint, jump shot made (4)
08:12	21 BERRY K 3pt FG , jump shot missed			
08:07				2 SAMAYOA-MATHIS H defensive rebound (1)
08:02		<b>21-23</b>	<b>-2</b>	8 ZECEVIC D 2pt FG in the paint, layup made (6)
08:02				2 SAMAYOA-MATHIS H assist (1)
07:30	1 HOOKS C 3pt FG , jump shot missed			
07:26	1 HOOKS C offensive rebound (1)			
07:23	21 BERRY K 2pt FG second chance in the paint, jump shot made (10)	<b>23-23</b>	<b>0</b>	
07:23	24 HARDEN P assist (1)			
06:52				2 SAMAYOA-MATHIS H 3pt FG , jump shot missed
06:47				2 SAMAYOA-MATHIS H offensive rebound (2)
06:46		<b>23-25</b>	<b>-2</b>	2 SAMAYOA-MATHIS H 2pt FG second chance in the paint, layup made (5)
06:25	4 GRIFFIN K 2pt FG in the paint, jump shot made (6)	<b>25-25</b>	<b>0</b>	
06:25	4 GRIFFIN K foul drawn (1)			23 VYDROVA L foul shooting (2 - 1)
06:25	24 HARDEN P substitution out			
06:25	45 CULLINAN T substitution in			
06:25				11 ADAMS P substitution out
06:25				12 ASENSIO I substitution out
06:25				23 VYDROVA L substitution out
06:25				3 TENSAIE I substitution in
06:25				5 ZITA D substitution in
06:25				13 MBENGUE N substitution in
06:25	4 GRIFFIN K free throw 1 - 1 made (7)	<b>26-25</b>	<b>1</b>	
06:00		<b>26-28</b>	<b>-2</b>	3 TENSAIE I 3pt FG , jump shot made (3)
05:43	jump ball situation			
05:43	0 FIELDS K substitution out			
05:43	24 HARDEN P substitution in			
05:40	3 WILLIS L substitution in			
05:40	4 GRIFFIN K substitution out			



Official Basketball Play by Play - 2nd Period  
**UTEP at Kennesaw St.**  
 03/11/25 Propst Arena at the Von Braun Center, Huntsville  
 2024-25 Women's Basketball

**Game Time:** 2:00 PM  
**Game Duration:** 1:53  
**Attendance:** 780

**Officials:** Felicia Grinter, Brian Hall, Jamie Broderick

Game Time	KSU	Score	Diff	UTEP
05:32	turnover shot clock (2)			
05:31	21 BERRY K substitution out			
05:31	15 DILLARD M substitution in			
05:23	1 HOOKS C steal (2)			5 ZITA D turnover bad pass (4)
05:17	1 HOOKS C 2pt FG from turnover in the paint, layup missed			
05:13	15 DILLARD M offensive rebound (1)			
05:00	1 HOOKS C turnover bad pass (1)			8 ZECEVIC D steal (1)
04:42				8 ZECEVIC D 2pt FG from turnover in the paint, layup missed
04:41				13 MBENGUE N offensive rebound (4)
04:39	jump ball situation			
04:39	45 CULLINAN T substitution out			
04:39	4 GRIFFIN K substitution in			
04:39				2 SAMAYOA-MATHIS H substitution out
04:39				11 ADAMS P substitution in
04:31		<b>26-30</b>	<b>-4</b>	5 ZITA D 2pt FG second chance outside the paint, jump shot made (2)
04:31				13 MBENGUE N assist (1)
04:07	1 HOOKS C turnover lost ball (2)			11 ADAMS P steal (1)
03:53				3 TENSAIE I 3pt FG from turnover, jump shot missed
03:47	3 WILLIS L defensive rebound (3)			
03:44	15 DILLARD M 2pt FG in the paint, layup made (2)	<b>28-30</b>	<b>-2</b>	
03:44	4 GRIFFIN K assist (3)			
03:15				8 ZECEVIC D 3pt FG , jump shot missed
03:09	24 HARDEN P defensive rebound (5)			
02:57	3 WILLIS L 2pt FG in the paint, layup missed			
02:57				5 ZITA D defensive rebound (1)
02:57		<b>28-32</b>	<b>-4</b>	3 TENSAIE I 2pt FG outside the paint, jump shot made (5)
02:36	4 GRIFFIN K turnover bad pass (1)			
02:36	3 WILLIS L substitution out			
02:36	45 CULLINAN T substitution in			
02:36				13 MBENGUE N substitution out
02:36				25 IGBINEDION OMORUYI O substitution in
02:30	24 HARDEN P substitution out			
02:30	0 FIELDS K substitution in			
02:22		<b>28-34</b>	<b>-6</b>	11 ADAMS P 2pt FG from turnover in the paint, layup made (9)
02:21	Timeout 30 Sec			
02:04	4 GRIFFIN K 3pt FG , jump shot made (10)	<b>31-34</b>	<b>-3</b>	
02:04	0 FIELDS K assist (1)			
01:46				5 ZITA D turnover lost ball (5)
01:46	15 DILLARD M substitution out			
01:46	21 BERRY K substitution in			
01:46				5 ZITA D substitution out
01:46				12 ASENSIO I substitution in
01:36	4 GRIFFIN K turnover lost ball (2)			11 ADAMS P steal (2)
01:09		<b>31-37</b>	<b>-6</b>	11 ADAMS P 3pt FG from turnover, jump shot made (12)
00:49	4 GRIFFIN K 3pt FG , jump shot made (13)	<b>34-37</b>	<b>-3</b>	
00:49	1 HOOKS C assist (3)			
00:35				Timeout 30 Sec
00:15	45 CULLINAN T substitution out			



Official Basketball Play by Play - 2nd Period  
**UTEP at Kennesaw St.**  
 03/11/25 Propst Arena at the Von Braun Center, Huntsville  
 2024-25 Women's Basketball

**Game Time:** 2:00 PM  
**Game Duration:** 1:53  
**Attendance:** 780

**Officials:** Felicia Grinter, Brian Hall, Jamie Broderick

Game Time	KSU	Score	Diff	UTEP
00:15	24 HARDEN P substitution in			
00:15				11 ADAMS P 3pt FG , jump shot missed
00:07	24 HARDEN P defensive rebound (6)			
00:00	4 GRIFFIN K 3pt FG , jump shot missed			
00:00				defensive dead ball rebound (1)
<b>END OF PERIOD</b>				
<b>KSU 34-37 UTEP</b>				



UTEP at Kennesaw St.

03/11/25 Propst Arena at the Von Braun Center, Huntsville  
2024-25 Women's Basketball

Game Time: 2:00 PM  
Game Duration: 1:53  
Attendance: 780

Officials: Felicia Grinter, Brian Hall, Jamie Broderick

UTEP - 23

NO.	Name	F	Min	FG			Rebounds			Fouls		TP	AS	TO	ST	Blocks		+/-
				M-A	M-A	M-A	OR	DR	TOT	PF	FD					BS	BA	
13	Ndack Mbengue	F	03:49	0-0	0-0	0-0	1	0	1	0	0	0	1	0	0	0	0	4
23	Luisa Vydrova	F	03:35	0-0	0-0	0-0	0	0	0	1	0	0	0	0	0	0	0	2
3	Ivane Tensaie	G	06:25	2-3	1-2	0-0	0	0	0	0	0	5	0	0	0	0	0	3
5	Delma Zita	G	04:39	1-1	0-0	0-0	0	1	1	0	0	2	0	2	0	0	0	3
11	Portia Adams	G	08:14	2-3	1-2	0-0	0	0	0	0	0	5	0	0	2	0	0	3
2	Heaven Samayoa-Mathis		05:21	2-3	1-2	0-0	1	1	2	0	0	5	1	0	0	0	0	4
8	Dunja Zecevic		10:00	3-5	0-1	0-0	0	0	0	0	0	6	0	0	1	0	0	5
25	Osadebamwen Igbinedion Omoruyi		02:36	0-0	0-0	0-0	0	0	0	0	0	0	0	0	0	0	0	-1
12	Irene Asensio		05:21	0-0	0-0	0-0	0	0	0	0	0	0	0	0	0	0	0	2
Team							0	0	0			0		0				
<b>Totals</b>				10-15	3-7	0-0	2	2	4	1	0	23	2	2	3	0	0	5

Shooting By Period		
2 <sup>nd</sup> FG%	10-15	66.7%
3PT%	3-7	42.9%
FT%	0-0	0%
GM FG%	10-15	66.7%
3PT%	3-7	42.9%
FT%	0-0	0.0%

Dead Ball Rebounds: 0, 1

Technical Fouls: NONE

Kennesaw St. - 18

NO.	Name	F	Min	FG			Rebounds			Fouls		TP	AS	TO	ST	Blocks		+/-
				M-A	M-A	M-A	OR	DR	TOT	PF	FD					BS	BA	
4	Keiara Griffin	F	08:59	3-4	2-3	1-1	0	0	0	0	1	9	2	2	0	0	0	-5
24	Prencis Harden	F	07:04	0-0	0-0	0-0	1	2	3	0	0	0	1	0	0	0	0	-4
0	Kailyn Fields	G	06:47	0-0	0-0	0-0	0	0	0	0	0	0	1	0	0	0	0	-3
1	Carly Hooks	G	10:00	1-4	0-1	0-0	1	0	1	0	0	2	1	2	1	0	0	-5
21	Keyarah Berry	G	06:15	2-3	1-2	0-0	0	0	0	0	0	5	0	0	0	0	0	-4
12	Sophia Rueppell		00:00	0-0	0-0	0-0	0	0	0	0	0	0	0	0	0	0	0	0
45	Taylor Cullinan		04:06	0-0	0-0	0-0	0	0	0	0	0	0	0	0	0	0	0	-1
3	Lee Lee Willis		03:04	0-1	0-0	0-0	0	1	1	0	0	0	0	0	0	0	0	-2
15	Morgan Dillard		03:45	1-1	0-0	0-0	1	0	1	0	0	2	0	0	0	0	0	-1
Team							0	0	0			0		1				
<b>Totals</b>				7-13	3-6	1-1	3	3	6	0	1	18	5	5	1	0	0	-5

Shooting By Period		
2 <sup>nd</sup> FG%	7-13	53.8%
3PT%	3-6	50.0%
FT%	1-1	100%
GM FG%	7-13	53.8%
3PT%	3-6	50.0%
FT%	1-1	100.0%

Dead Ball Rebounds: 0, 0

Technical Fouls: NONE

	UTEP	KSU
Biggest lead	6 (2 <sup>nd</sup> 2:22)	2 (2 <sup>nd</sup> 9:10)
Best Scoring Run	5 (2 <sup>nd</sup> 4:31)	3 (2 <sup>nd</sup> 9:10)
Lead Changes	5	
Times Tied	4	
Time with Lead	07:35	01:09

	UTEP	KSU
Points from	UTEP	KSU
Turnovers	5	0
Paint	10	8
Second Chance	4	5
Fast Breaks	0	2
Bench	11	2

	Period by Period Scoring				
	1st	2nd	3rd	4th	TOT
UTEP	14	23	11	15	63
KSU	16	18	20	17	71



UTEP at Kennesaw St.

03/11/25 Propst Arena at the Von Braun Center, Huntsville  
2024-25 Women's Basketball

Game Time: 2:00 PM  
Game Duration: 1:53  
Attendance: 780

Officials: Felicia Grinter, Brian Hall, Jamie Broderick

UTEP - 37

NO.	Name	F	Min	FG	3P	FT	Rebounds			Fouls		TP	AS	TO	ST	Blocks		+/-
				M-A	M-A	M-A	OR	DR	TOT	PF	FD					BS	BA	
13	Ndack Mbengue	F	13:49	2-2	0-0	0-0	2	2	4	1	1	4	1	0	0	0	0	2
23	Luisa Vydrova	F	11:07	0-1	0-1	0-0	0	0	0	2	0	0	0	1	0	0	0	-5
3	Ivane Tensaie	G	12:40	2-5	1-4	0-0	0	0	0	0	0	5	0	0	0	0	0	
5	Delma Zita	G	09:58	1-1	0-0	0-0	0	1	1	0	1	2	0	5	0	0	-5	
11	Portia Adams	G	16:59	4-7	2-4	2-3	0	4	4	0	2	12	1	1	2	0	3	
12	Irene Asensio		12:34	1-2	1-2	0-0	0	2	2	1	0	3	0	0	0	0	2	
2	Heaven Samayoa-Mathis		07:49	2-3	1-2	0-0	1	1	2	0	0	5	1	0	0	0	9	
8	Dunja Zecevic		12:28	3-6	0-2	0-0	0	0	0	0	0	6	0	0	1	0	10	
25	Osadebamwen Igbinedion Omoruyi		02:36	0-0	0-0	0-0	0	0	0	0	0	0	0	0	0	0	-1	
Team							0	2	2			0		0				
<b>Totals</b>				15-27	5-15	2-3	3	12	15	4	4	37	3	7	3	0	1	3

Shooting By Period		
1st FG%	5-12	41.7%
3PT%	2-8	25.0%
FT%	2-3	66.7%
2nd FG%	10-15	66.7%
3PT%	3-7	42.9%
FT%	0-0	0%
GM FG%	15-27	55.6%
3PT%	5-15	33.3%
FT%	2-3	66.7%

Dead Ball Rebounds: 0, 1

Technical Fouls: NONE

Kennesaw St. - 34

NO.	Name	F	Min	FG	3P	FT	Rebounds			Fouls		TP	AS	TO	ST	Blocks		+/-
				M-A	M-A	M-A	OR	DR	TOT	PF	FD					BS	BA	
4	Keiara Griffin	F	17:42	5-9	2-5	1-1	1	0	1	1	1	13	3	2	0	0	0	-7
24	Prencis Harden	F	15:29	0-1	0-0	0-0	2	4	6	1	0	0	1	0	1	1	0	-4
0	Kailyn Fields	G	11:27	1-2	1-2	0-0	0	1	1	0	0	3	1	0	0	0	0	-2
1	Carly Hooks	G	17:32	2-6	0-2	0-0	1	0	1	0	2	4	3	2	2	0	0	2
21	Keyarah Berry	G	16:15	4-8	2-4	0-0	0	0	0	0	0	10	1	0	1	0	0	-2
3	Lee Lee Willis		08:24	1-3	0-1	0-0	0	3	3	1	1	2	0	0	0	0	0	-1
45	Taylor Cullinan		06:58	0-1	0-1	0-0	0	0	0	0	0	0	0	0	0	0	0	5
12	Sophia Rueppell		02:28	0-1	0-1	0-0	0	0	0	1	0	0	0	0	0	0	0	-5
15	Morgan Dillard		03:45	1-1	0-0	0-0	1	0	1	0	0	2	0	0	0	0	0	-1
Team							0	2	2			0		2				
<b>Totals</b>				14-32	5-16	1-1	5	10	15	4	4	34	9	6	4	1	0	-3

Shooting By Period		
1st FG%	7-19	36.8%
3PT%	2-10	20.0%
FT%	0-0	0%
2nd FG%	7-13	53.8%
3PT%	3-6	50.0%
FT%	1-1	100%
GM FG%	14-32	43.8%
3PT%	5-16	31.3%
FT%	1-1	100.0%

Dead Ball Rebounds: 0, 0

Technical Fouls: NONE

	UTEP	KSU
Biggest lead	6 (2 <sup>nd</sup> 2:22)	7 (1 <sup>st</sup> 2:46)
Best Scoring Run	8 (2 <sup>nd</sup> 9:45)	6 (1 <sup>st</sup> 2:46)
Lead Changes	5	
Times Tied	6	
Time with Lead	07:35	09:47

Points from	UTEP	KSU
Turnovers	5	7
Paint	16	18
Second Chance	6	9
Fast Breaks	0	6
Bench	14	4

	Period by Period Scoring				
	1st	2nd	3rd	4th	TOT
UTEP	14	23	11	15	63
KSU	16	18	20	17	71



**Period 3**

**Quarter Starters:**

<b>KSU</b>	0 Fields K	1 Hooks C	4 Griffin K	21 Berry K	24 Harden P
<b>UTEP</b>	2 Samayoa-Mathis H	3 Tensaie I	11 Adams P	13 Mbengue N	23 Vydrova L

Game Time	KSU	Score	Diff	UTEP
10:00				8 ZECEVIC D substitution out
10:00				12 ASENSIO I substitution out
10:00				25 IGBINEDION OMORUYI O substitution out
10:00				2 SAMAYOA-MATHIS H substitution in
10:00				13 MBENGUE N substitution in
10:00				23 VYDROVA L substitution in
09:50	1 HOOKS C 3pt FG , jump shot missed			
09:47				13 MBENGUE N defensive rebound (5)
09:36	1 HOOKS C steal (3)			3 TENSAIE I turnover bad pass (1)
09:30	21 BERRY K 2pt FG fast break from turnover in the paint, layup made (12)	<b>36-37</b>	<b>-1</b>	
09:30	1 HOOKS C assist (4)			
09:09				13 MBENGUE N 2pt FG in the paint, layup missed
09:05	24 HARDEN P defensive rebound (7)			
08:56	0 FIELDS K turnover lost ball (1)			2 SAMAYOA-MATHIS H steal (1)
08:40		<b>36-39</b>	<b>-3</b>	11 ADAMS P 2pt FG from turnover in the paint, jump shot made (14)
08:10	24 HARDEN P 2pt FG outside the paint, jump shot missed			
08:08	4 GRIFFIN K offensive rebound (2)			
08:08	4 GRIFFIN K foul drawn (2)			13 MBENGUE N foul shooting (2 - 1)
08:08				13 MBENGUE N substitution out
08:08				8 ZECEVIC D substitution in
08:08	4 GRIFFIN K free throw 1 - 2 missed			
08:08	offensive dead ball rebound (1)			
08:08	4 GRIFFIN K free throw 2 - 2 made (14)	<b>37-39</b>	<b>-2</b>	
08:04	1 HOOKS C steal (4)			11 ADAMS P turnover lost ball (2)
08:04	0 FIELDS K substitution out			
08:04	3 WILLIS L substitution in			
07:47	24 HARDEN P 2pt FG from turnover in the paint, layup made (2)	<b>39-39</b>	<b>0</b>	
07:40	1 HOOKS C steal (5)			3 TENSAIE I turnover bad pass (2)
07:37	1 HOOKS C foul drawn (3)			3 TENSAIE I foul shooting (1 - 2)
07:37				3 TENSAIE I substitution out
07:37				5 ZITA D substitution in
07:37	1 HOOKS C free throw fast break 1 - 2 made (5)	<b>40-39</b>	<b>1</b>	
07:37	1 HOOKS C free throw fast break 2 - 2 missed			
07:35	3 WILLIS L offensive rebound (4)			
07:29	24 HARDEN P foul drawn (1)			23 VYDROVA L foul shooting (3 - 3)
07:29	4 GRIFFIN K substitution out			
07:29	45 CULLINAN T substitution in			
07:29				23 VYDROVA L substitution out
07:29				13 MBENGUE N substitution in
07:29	24 HARDEN P free throw 1 - 2 made (3)	<b>41-39</b>	<b>2</b>	
07:29	24 HARDEN P free throw 2 - 2 made (4)	<b>42-39</b>	<b>3</b>	
07:18				2 SAMAYOA-MATHIS H 2pt FG in the paint, layup missed



Official Basketball Play by Play - 3rd Period  
**UTEP at Kennesaw St.**  
 03/11/25 Propst Arena at the Von Braun Center, Huntsville  
 2024-25 Women's Basketball

**Game Time:** 2:00 PM  
**Game Duration:** 1:53  
**Attendance:** 780

**Officials:** Felicia Grinter, Brian Hall, Jamie Broderick

Game Time	KSU	Score	Diff	UTEP
07:14	24 HARDEN P defensive rebound (8)			
07:05	1 HOOKS C 3pt FG , jump shot missed			
07:00				13 MBENGUE N defensive rebound (6)
06:37	21 BERRY K foul personal (1 - 1)			11 ADAMS P foul drawn (3)
06:37	45 CULLINAN T substitution out			
06:37	4 GRIFFIN K substitution in			
06:35		<b>42-41</b>	<b>1</b>	8 ZECEVIC D 2pt FG in the paint, layup made (8)
06:35				5 ZITA D assist (1)
06:15	21 BERRY K 3pt FG , jump shot missed			
06:12				11 ADAMS P defensive rebound (5)
06:07				5 ZITA D 2pt FG in the paint, layup missed
06:04				8 ZECEVIC D offensive rebound (1)
06:03				8 ZECEVIC D 2pt FG second chance in the paint, layup missed
06:01	21 BERRY K defensive rebound (1)			
06:01	21 BERRY K foul drawn (1)			13 MBENGUE N foul personal (3 - 4)
06:01				5 ZITA D substitution out
06:01				13 MBENGUE N substitution out
06:01				12 ASENSIO I substitution in
06:01				23 VYDROVA L substitution in
05:51	24 HARDEN P foul drawn (2)			12 ASENSIO I foul personal (2 - 5)
05:51	24 HARDEN P free throw 1 - 2 made (5)	<b>43-41</b>	<b>2</b>	
05:51	24 HARDEN P free throw 2 - 2 made (6)	<b>44-41</b>	<b>3</b>	
05:47				12 ASENSIO I turnover bad pass (1)
05:41	24 HARDEN P foul drawn (3)			12 ASENSIO I foul personal (3 - 6)
05:41	24 HARDEN P free throw 1 - 2 made (7)	<b>45-41</b>	<b>4</b>	
05:41	24 HARDEN P free throw 2 - 2 made (8)	<b>46-41</b>	<b>5</b>	
05:39	21 BERRY K foul personal (2 - 2)			11 ADAMS P foul drawn (4)
05:21	24 HARDEN P steal (2)			11 ADAMS P turnover bad pass (3)
05:00	24 HARDEN P foul drawn (4)			2 SAMAYOA-MATHIS H foul shooting (1 - 7)
05:00	Timeout media			
05:00				2 SAMAYOA-MATHIS H substitution out
05:00				5 ZITA D substitution in
05:00	24 HARDEN P free throw 1 - 2 missed			
05:00	offensive dead ball rebound (2)			
05:00	24 HARDEN P free throw 2 - 2 made (9)	<b>47-41</b>	<b>6</b>	
04:52		<b>47-43</b>	<b>4</b>	8 ZECEVIC D 2pt FG fast break in the paint, layup made (10)
04:52				23 VYDROVA L assist (1)
04:33	21 BERRY K 2pt FG in the paint, floating jump shot made (14)	<b>49-43</b>	<b>6</b>	
04:20	3 WILLIS L foul personal (2 - 3)			23 VYDROVA L foul drawn (1)
04:07		<b>49-45</b>	<b>4</b>	11 ADAMS P 2pt FG in the paint, layup made (16)
03:51	4 GRIFFIN K 2pt FG in the paint, jump shot missed			
03:46				8 ZECEVIC D defensive rebound (2)
03:46	jump ball situation			
03:36				8 ZECEVIC D 2pt FG in the paint, floating jump shot missed
03:31				23 VYDROVA L offensive rebound (1)
03:30				23 VYDROVA L 2pt FG second chance in the paint, layup missed
03:28	24 HARDEN P defensive rebound (9)			
03:28	21 BERRY K foul drawn (2)			8 ZECEVIC D foul shooting (1 - 8)



Official Basketball Play by Play - 3rd Period  
**UTEP at Kennesaw St.**  
 03/11/25 Propst Arena at the Von Braun Center, Huntsville  
 2024-25 Women's Basketball

**Game Time:** 2:00 PM  
**Game Duration:** 1:53  
**Attendance:** 780

**Officials:** Felicia Grinter, Brian Hall, Jamie Broderick

Game Time	KSU	Score	Diff	UTEP
03:28	21 BERRY K free throw fast break 1 - 2 made (15)	<b>50-45</b>	<b>5</b>	
03:28	21 BERRY K free throw fast break 2 - 2 missed			
03:28				11 ADAMS P defensive rebound (6)
03:09				5 ZITA D 3pt FG , jump shot missed
03:05	24 HARDEN P defensive rebound (10)			
03:00	21 BERRY K 3pt FG , jump shot made (18)	<b>53-45</b>	<b>8</b>	
03:00	1 HOOKS C assist (5)			
02:47				Timeout 30 Sec
02:47	Timeout media			
02:47				8 ZECEVIC D substitution out
02:47				23 VYDROVA L substitution out
02:47				3 TENSAIE I substitution in
02:47				13 MBENGUE N substitution in
02:33	21 BERRY K foul shooting (3 - 4)			13 MBENGUE N foul drawn (2)
02:33				13 MBENGUE N free throw 1 - 2 missed
02:33				offensive dead ball rebound (2)
02:33		<b>53-46</b>	<b>7</b>	13 MBENGUE N free throw 2 - 2 made (5)
02:33	21 BERRY K substitution out			
02:33	0 FIELDS K substitution in			
02:11	3 WILLIS L 2pt FG in the paint, floating jump shot missed			
02:08				13 MBENGUE N defensive rebound (7)
01:50	24 HARDEN P foul shooting (2 - 5)			13 MBENGUE N foul drawn (3)
01:50		<b>53-47</b>	<b>6</b>	13 MBENGUE N free throw 1 - 2 made (6)
01:50		<b>53-48</b>	<b>5</b>	13 MBENGUE N free throw 2 - 2 made (7)
01:28	0 FIELDS K 3pt FG , jump shot missed			
01:23	1 HOOKS C offensive rebound (2)			
01:10				12 ASENSIO I substitution out
01:10				8 ZECEVIC D substitution in
01:10	3 WILLIS L 3pt FG second chance, jump shot missed			
01:03				8 ZECEVIC D defensive rebound (3)
00:52	0 FIELDS K steal (1)			13 MBENGUE N turnover lost ball (1)
00:33	24 HARDEN P foul drawn (5)			5 ZITA D foul personal (1 - 9)
00:33				5 ZITA D substitution out
00:33				2 SAMAYOA-MATHIS H substitution in
00:33	24 HARDEN P free throw 1 - 2 made (10)	<b>54-48</b>	<b>6</b>	
00:33	24 HARDEN P free throw 2 - 2 missed			
00:32				3 TENSAIE I defensive rebound (1)
00:09				8 ZECEVIC D 2pt FG in the paint, layup missed
00:04	24 HARDEN P defensive rebound (11)			
00:00	0 FIELDS K 3pt FG , jump shot missed			
00:00				defensive rebound (26)
<b>END OF PERIOD</b>				
<b>KSU 54-48 UTEP</b>				



**UTEP at Kennesaw St.**

03/11/25 Propst Arena at the Von Braun Center, Huntsville  
2024-25 Women's Basketball

Game Time: 2:00 PM  
Game Duration: 1:53  
Attendance: 780

Officials: Felicia Grinter, Brian Hall, Jamie Broderick

**UTEP - 11**

NO.	Name	F	Min	FG			Rebounds			Fouls		TP	AS	TO	ST	Blocks		+/-
				M-A	3P	FT	OR	DR	TOT	PF	FD					BS	BA	
13	Ndack Mbengue	F	06:07	0-1	0-0	3-4	0	3	3	2	2	3	0	1	0	0	0	2
23	Luisa Vydrova	F	05:45	0-1	0-0	0-0	1	0	1	1	1	0	1	0	0	0	0	-11
3	Ivane Tensaie	G	05:10	0-0	0-0	0-0	0	1	1	1	0	0	0	2	0	0	0	-1
5	Delma Zita	G	06:02	0-2	0-1	0-0	0	0	0	1	0	0	1	0	0	0	0	-1
11	Portia Adams	G	10:00	2-2	0-0	0-0	0	2	2	0	2	4	0	2	0	0	0	-9
25	Osadebamwen Igbinedion Omoruyi		00:00	0-0	0-0	0-0	0	0	0	0	0	0	0	0	0	0	0	0
2	Heaven Samayoa-Mathis		05:34	0-1	0-0	0-0	0	0	0	1	0	0	0	0	1	0	0	-9
8	Dunja Zecevic		06:31	2-5	0-0	0-0	1	2	3	1	0	4	0	0	0	0	0	-12
12	Irene Asensio		04:51	0-0	0-0	0-0	0	0	0	2	0	0	0	1	0	0	0	-4
Team							0	1	1			0		0				
<b>Totals</b>				4-12	0-1	3-4	2	9	11	9	5	11	2	6	1	0	0	-9

Shooting By Period		
3rd FG%	4-12	33.3%
3PT%	0-1	0.0%
FT%	3-4	75%
GM FG%	4-12	33.3%
3PT%	0-1	0.0%
FT%	3-4	75.0%

Dead Ball Rebounds: 1, 0

Technical Fouls: NONE

**Kennesaw St. - 20**

NO.	Name	F	Min	FG			Rebounds			Fouls		TP	AS	TO	ST	Blocks		+/-
				M-A	3P	FT	OR	DR	TOT	PF	FD					BS	BA	
4	Keiara Griffin	F	09:08	0-1	0-0	1-2	1	0	1	0	1	1	0	0	0	0	0	7
24	Prencis Harden	F	10:00	1-2	0-0	8-10	0	5	5	1	5	10	0	0	1	0	0	9
0	Kailyn Fields	G	04:29	0-2	0-2	0-0	0	0	0	0	0	0	0	1	1	0	0	0
1	Carly Hooks	G	10:00	0-2	0-2	1-2	1	0	1	0	1	1	2	0	3	0	0	9
21	Keyarah Berry	G	07:27	3-4	1-2	1-2	0	1	1	3	2	8	0	0	0	0	0	10
3	Lee Lee Willis		08:04	0-2	0-1	0-0	1	0	1	1	0	0	0	0	0	0	0	8
45	Taylor Cullinan		00:52	0-0	0-0	0-0	0	0	0	0	0	0	0	0	0	0	0	2
Team							0	0	0			0		0				
<b>Totals</b>				4-13	1-7	11-16	3	6	9	5	9	20	2	1	5	0	0	9

Shooting By Period		
3rd FG%	4-13	30.8%
3PT%	1-7	14.3%
FT%	11-16	68.8%
GM FG%	4-13	30.8%
3PT%	1-7	14.3%
FT%	11-16	68.8%

Dead Ball Rebounds: 2, 0

Technical Fouls: NONE

	UTEP	KSU
<b>Biggest lead</b>	3 (3 <sup>rd</sup> 9:50)	8 (3 <sup>rd</sup> 3:00)
<b>Best Scoring Run</b>	3 (3 <sup>rd</sup> 1:50)	6 (3 <sup>rd</sup> 7:29)
<b>Lead Changes</b>	1	
<b>Times Tied</b>	1	
<b>Time with Lead</b>	02:03	07:37

	UTEP	KSU
<b>Points from</b>		
<b>Turnovers</b>	2	9
<b>Paint</b>	8	6
<b>Second Chance</b>	0	3
<b>Fast Breaks</b>	2	4
<b>Bench</b>	4	0

Period by Period Scoring					
	1st	2nd	3rd	4th	TOT
<b>UTEP</b>	14	23	11	15	63
<b>KSU</b>	16	18	20	17	71



**Period 4**

**Quarter Starters:**

<b>KSU</b>	1 Hooks C	3 Willis L	4 Griffin K	21 Berry K	24 Harden P
<b>UTEP</b>	2 Samayoa-Mathis H	3 Tensaie I	8 Zecevic D	11 Adams P	13 Mbengue N

Game Time	KSU	Score	Diff	UTEP
10:00	0 FIELDS K substitution out			
10:00	21 BERRY K substitution in			
09:46	21 BERRY K 2pt FG in the paint, layup made (20)	<b>56-48</b>	<b>8</b>	
09:22		<b>56-50</b>	<b>6</b>	11 ADAMS P 2pt FG in the paint, layup made (18)
09:22				2 SAMAYOA-MATHIS H assist (2)
08:53	21 BERRY K foul drawn (3)			13 MBENGUE N foul shooting (4 - 1)
08:53				13 MBENGUE N substitution out
08:53				23 VYDROVA L substitution in
08:53	21 BERRY K free throw 1 - 2 made (21)	<b>57-50</b>	<b>7</b>	
08:53	21 BERRY K free throw 2 - 2 made (22)	<b>58-50</b>	<b>8</b>	
08:32	3 WILLIS L foul personal (3 - 1)			11 ADAMS P foul drawn (5)
08:28		<b>58-52</b>	<b>6</b>	11 ADAMS P 2pt FG outside the paint, jump shot made (20)
07:58	4 GRIFFIN K 3pt FG , jump shot missed			
07:53				8 ZECEVIC D defensive rebound (4)
07:45	21 BERRY K foul personal (4 - 2)			11 ADAMS P foul drawn (6)
07:45	21 BERRY K substitution out			
07:45	15 DILLARD M substitution in			
07:29				8 ZECEVIC D 2pt FG in the paint, layup missed
07:26	4 GRIFFIN K defensive rebound (3)			
07:09	4 GRIFFIN K foul drawn (3)			8 ZECEVIC D foul shooting (2 - 2)
07:09	4 GRIFFIN K free throw 1 - 2 missed			
07:09	offensive dead ball rebound (3)			
07:09	4 GRIFFIN K free throw 2 - 2 missed			
07:07				11 ADAMS P defensive rebound (7)
06:46				8 ZECEVIC D 2pt FG in the paint, jump shot missed
06:42	1 HOOKS C defensive rebound (3)			
06:21	4 GRIFFIN K 2pt FG outside the paint, jump shot missed			
06:15	15 DILLARD M offensive rebound (2)			
06:06	3 WILLIS L 2pt FG second chance in the paint, jump shot missed			
06:03	4 GRIFFIN K offensive rebound (4)			
05:57	3 WILLIS L 2pt FG second chance in the paint, jump shot made (4)	<b>60-52</b>	<b>8</b>	
05:57	24 HARDEN P assist (2)			
05:47				Timeout 60 Sec
05:47				Timeout media
05:47				2 SAMAYOA-MATHIS H substitution out
05:47				8 ZECEVIC D substitution out
05:47				12 ASENSIO I substitution in
05:47				13 MBENGUE N substitution in
05:37	4 GRIFFIN K foul personal (2 - 3)			13 MBENGUE N foul drawn (4)
05:34	15 DILLARD M foul shooting (1 - 4)			11 ADAMS P foul drawn (7)
05:34		<b>60-53</b>	<b>7</b>	11 ADAMS P free throw 1 - 2 made (21)
05:34		<b>60-54</b>	<b>6</b>	11 ADAMS P free throw 2 - 2 made (22)



Official Basketball Play by Play - 4th Period  
**UTEP at Kennesaw St.**  
 03/11/25 Propst Arena at the Von Braun Center, Huntsville  
 2024-25 Women's Basketball

**Game Time:** 2:00 PM  
**Game Duration:** 1:53  
**Attendance:** 780

**Officials:** Felicia Grinter, Brian Hall, Jamie Broderick

Game Time	KSU	Score	Diff	UTEP
05:17	24 HARDEN P 2pt FG outside the paint, jump shot made (12)	<b>62-54</b>	<b>8</b>	
05:17	1 HOOKS C assist (6)			
04:57		<b>62-56</b>	<b>6</b>	13 MBENGUE N 2pt FG in the paint, layup made (9)
04:57				11 ADAMS P assist (2)
04:29	15 DILLARD M 2pt FG in the paint, jump shot missed			
04:25				13 MBENGUE N defensive rebound (8)
04:21				11 ADAMS P 2pt FG in the paint, layup missed
04:17				23 VYDROVA L offensive rebound (2)
04:15		<b>62-58</b>	<b>4</b>	11 ADAMS P 2pt FG second chance in the paint, layup made (24)
04:15				23 VYDROVA L assist (2)
03:51	3 WILLIS L 3pt FG , jump shot made (7)	<b>65-58</b>	<b>7</b>	
03:51	15 DILLARD M assist (1)			
03:35	15 DILLARD M steal (1)			23 VYDROVA L turnover bad pass (2)
03:31	15 DILLARD M foul drawn (1)			23 VYDROVA L foul shooting (4 - 3)
03:31	15 DILLARD M free throw fast break 1 - 2 missed			
03:31	offensive dead ball rebound (4)			
03:31	15 DILLARD M free throw fast break 2 - 2 made (3)	<b>66-58</b>	<b>8</b>	
03:31	15 DILLARD M substitution out			
03:31	21 BERRY K substitution in			
03:13	24 HARDEN P steal (3)			3 TENSAIE I turnover bad pass (3)
02:53	4 GRIFFIN K foul drawn (4)			12 ASENSIO I foul personal (4 - 4)
02:45	1 HOOKS C 3pt FG from turnover, jump shot missed			
02:40				12 ASENSIO I defensive rebound (3)
02:27				3 TENSAIE I 2pt FG outside the paint, jump shot missed
02:23				23 VYDROVA L offensive rebound (3)
02:22		<b>66-60</b>	<b>6</b>	23 VYDROVA L 2pt FG second chance in the paint, layup made (2)
02:03	4 GRIFFIN K foul drawn (5)			23 VYDROVA L foul personal (5 - 5)
02:03				23 VYDROVA L substitution out
02:03				8 ZECEVIC D substitution in
02:03	4 GRIFFIN K free throw 1 - 2 missed			
02:03	offensive dead ball rebound (5)			
02:03	4 GRIFFIN K free throw 2 - 2 made (15)	<b>67-60</b>	<b>7</b>	
01:53				3 TENSAIE I 3pt FG , jump shot missed
01:49	24 HARDEN P defensive rebound (12)			
01:36	24 HARDEN P foul drawn (6)			13 MBENGUE N foul shooting (5 - 6)
01:36				13 MBENGUE N substitution out
01:36				5 ZITA D substitution in
01:36	24 HARDEN P free throw 1 - 2 missed			
01:36	offensive dead ball rebound (6)			
01:36	24 HARDEN P free throw 2 - 2 made (13)	<b>68-60</b>	<b>8</b>	
01:23	1 HOOKS C foul drawn (4)			11 ADAMS P foul offensive (1 - 7)
01:23				11 ADAMS P turnover offensive (4)
01:19	1 HOOKS C foul drawn (5)			12 ASENSIO I foul personal (5 - 8)
01:19				12 ASENSIO I substitution out
01:19				2 SAMAYOA-MATHIS H substitution in
01:19	1 HOOKS C free throw 1 - 2 missed			
01:19	offensive dead ball rebound (7)			
01:19	1 HOOKS C free throw 2 - 2 made (6)	<b>69-60</b>	<b>9</b>	



Official Basketball Play by Play - 4th Period  
**UTEP at Kennesaw St.**  
 03/11/25 Propst Arena at the Von Braun Center, Huntsville  
 2024-25 Women's Basketball

**Game Time:** 2:00 PM  
**Game Duration:** 1:53  
**Attendance:** 780

**Officials:** Felicia Grinter, Brian Hall, Jamie Broderick

Game Time	KSU	Score	Diff	UTEP
01:11		<b>69-63</b>	<b>6</b>	3 TENSAIE I 3pt FG , jump shot made (8)
01:11				5 ZITA D assist (2)
00:56	3 WILLIS L foul drawn (2)			3 TENSAIE I foul personal (2 - 9)
00:56	3 WILLIS L free throw 1 - 2 missed			
00:56	offensive dead ball rebound (8)			
00:56	3 WILLIS L free throw 2 - 2 missed			
00:54				8 ZECEVIC D defensive rebound (5)
00:45				11 ADAMS P 3pt FG , jump shot missed
00:41	1 HOOKS C defensive rebound (4)			
00:40	jump ball situation			
00:40	1 HOOKS C turnover lost ball (3)			2 SAMAYOA-MATHIS H steal (2)
00:40				Timeout 30 Sec
00:38				3 TENSAIE I 3pt FG from turnover, jump shot missed
00:35	21 BERRY K defensive rebound (2)			
00:34	21 BERRY K foul drawn (4)			2 SAMAYOA-MATHIS H foul personal (2 - 10)
00:34	21 BERRY K free throw 1 - 2 made (23)	<b>70-63</b>	<b>7</b>	
00:34	21 BERRY K free throw 2 - 2 made (24)	<b>71-63</b>	<b>8</b>	
00:31	1 HOOKS C steal (6)			11 ADAMS P turnover bad pass (5)
00:05	1 HOOKS C 2pt FG from turnover in the paint, layup missed			
00:01				defensive rebound (34)
00:00				2 SAMAYOA-MATHIS H 3pt FG , jump shot missed
00:00	defensive rebound (32)			
<b>END OF GAME</b>				
<b>KSU 71-63 UTEP</b>				



**UTEP at Kennesaw St.**

03/11/25 Propst Arena at the Von Braun Center, Huntsville  
2024-25 Women's Basketball

Game Time: 2:00 PM  
Game Duration: 1:53  
Attendance: 780

Officials: Felicia Grinter, Brian Hall, Jamie Broderick

**UTEP - 15**

NO.	Name	F	Min	FG			Rebounds			Fouls		TP	AS	TO	ST	Blocks		+/-
				M-A	M-A	M-A	OR	DR	TOT	PF	FD					BS	BA	
13	Ndack Mbengue	F	05:18	1-1	0-0	0-0	0	1	1	2	1	2	0	0	0	0	0	1
23	Luisa Vydrova	F	06:50	1-1	0-0	0-0	2	0	2	2	0	2	1	1	0	0	0	0
3	Ivane Tensaie	G	10:00	1-4	1-3	0-0	0	0	0	1	0	3	0	1	0	0	0	-2
5	Delma Zita	G	01:36	0-0	0-0	0-0	0	0	0	0	0	0	1	0	0	0	0	-1
11	Portia Adams	G	10:00	3-5	0-1	2-2	0	1	1	1	3	8	1	2	0	0	0	-2
12	Irene Asensio		04:28	0-0	0-0	0-0	0	1	1	2	0	0	0	0	0	0	0	0
8	Dunja Zecevic		06:16	0-2	0-0	0-0	0	2	2	1	0	0	0	0	0	0	0	-4
2	Heaven Samayoa-Mathis		05:32	0-1	0-1	0-0	0	0	0	1	0	0	1	0	1	0	0	-2
Team							0	1	1			0						
<b>Totals</b>				6-14	1-5	2-2	2	6	8	10	4	15	4	4	1	0	0	-2

Shooting By Period		
4 <sup>th</sup> FG%	6-14	42.9%
3PT%	1-5	20.0%
FT%	2-2	100%
GM FG%	6-14	42.9%
3PT%	1-5	20.0%
FT%	2-2	100.0%

Dead Ball Rebounds: 0, 0

Technical Fouls::NONE

**Kennesaw St. - 17**

NO.	Name	F	Min	FG			Rebounds			Fouls		TP	AS	TO	ST	Blocks		+/-
				M-A	M-A	M-A	OR	DR	TOT	PF	FD					BS	BA	
4	Keiara Griffin	F	10:00	0-2	0-1	1-4	1	1	2	1	3	1	0	0	0	0	0	2
24	Prencis Harden	F	10:00	1-1	0-0	1-2	0	1	1	0	1	3	1	0	1	0	0	2
0	Kailyn Fields	G	00:00	0-0	0-0	0-0	0	0	0	0	0	0	0	0	0	0	0	0
1	Carly Hooks	G	10:00	0-2	0-1	1-2	0	2	2	0	2	1	1	1	1	0	0	2
21	Keyarah Berry	G	05:46	1-1	0-0	4-4	0	1	1	1	2	6	0	0	0	0	0	0
3	Lee Lee Willis		10:00	2-3	1-1	0-2	0	0	0	1	1	5	0	0	0	0	0	2
15	Morgan Dillard		04:14	0-1	0-0	1-2	1	0	1	1	1	1	1	0	1	0	0	2
Team							0	1	1			0						
<b>Totals</b>				4-10	1-3	8-16	2	6	8	4	10	17	3	1	3	0	0	2

Shooting By Period		
4 <sup>th</sup> FG%	4-10	40.0%
3PT%	1-3	33.3%
FT%	8-16	50%
GM FG%	4-10	40.0%
3PT%	1-3	33.3%
FT%	8-16	50.0%

Dead Ball Rebounds: 6, 0

Technical Fouls::NONE

	UTEP	KSU
Biggest lead	0 (1 <sup>st</sup> 10:00)	9 (4 <sup>th</sup> 1:19)
Best Scoring Run	4(4 <sup>th</sup> 4:15)	4(4 <sup>th</sup> 3:31)
Lead Changes	0	
Times Tied	0	
Time with Lead	00:00	09:46

Points from	UTEP	KSU
Turnovers	0	2
Paint	8	4
Second Chance	4	2
Fast Breaks	0	1
Bench	0	6

	Period by Period Scoring				
	1st	2nd	3rd	4th	TOT
UTEP	14	23	11	15	63
KSU	16	18	20	17	71



Officials: Felicia Grinter, Brian Hall, Jamie Broderick

UTEP - 26

NO.	Name	F	Min	FG			Rebounds			Fouls		TP	AS	TO	ST	Blocks		+/-
				M-A	M-A	M-A	OR	DR	TOT	PF	FD					BS	BA	
13	Ndack Mbengue	F	11:25	1-2	0-0	3-4	0	4	4	4	3	5	0	1	0	0	0	3
23	Luisa Vydrova	F	12:35	1-2	0-0	0-0	3	0	3	3	1	2	2	1	0	0	0	-11
3	Ivane Tensaie	G	15:10	1-4	1-3	0-0	0	1	1	2	0	3	0	3	0	0	0	-3
5	Delma Zita	G	07:38	0-2	0-1	0-0	0	0	0	1	0	0	2	0	0	0	0	-2
11	Portia Adams	G	20:00	5-7	0-1	2-2	0	3	3	1	5	12	1	4	0	0	0	-11
25	Osadebamwen Igbinedion Omoruyi		00:00	0-0	0-0	0-0	0	0	0	0	0	0	0	0	0	0	0	0
2	Heaven Samayoa-Mathis		11:06	0-2	0-1	0-0	0	0	0	2	0	0	1	0	2	0	0	-11
8	Dunja Zecevic		12:47	2-7	0-0	0-0	1	4	5	2	0	4	0	0	0	0	0	-16
12	Irene Asensio		09:19	0-0	0-0	0-0	0	1	1	4	0	0	0	1	0	0	0	-4
Team							0	2	2			0		0				
<b>Totals</b>				10-26	1-6	5-6	4	15	19	19	9	26	6	10	2	0	0	-11

Shooting By Period		
3 <sup>rd</sup> FG%	4-12	33.3%
3PT%	0-1	0.0%
FT%	3-4	75%
4 <sup>th</sup> FG%	6-14	42.9%
3PT%	1-5	20.0%
FT%	2-2	100%
GM FG%	10-26	38.5%
3PT%	1-6	16.7%
FT%	5-6	83.3%

Dead Ball Rebounds: 1, 0

Technical Fouls: NONE

Kennesaw St. - 37

NO.	Name	F	Min	FG			Rebounds			Fouls		TP	AS	TO	ST	Blocks		+/-
				M-A	M-A	M-A	OR	DR	TOT	PF	FD					BS	BA	
4	Keiara Griffin	F	19:08	0-3	0-1	2-6	2	1	3	1	4	2	0	0	0	0	0	9
24	Prencis Harden	F	20:00	2-3	0-0	9-12	0	6	6	1	6	13	1	0	2	0	0	11
0	Kailyn Fields	G	04:29	0-2	0-2	0-0	0	0	0	0	0	0	0	1	1	0	0	0
1	Carly Hooks	G	20:00	0-4	0-3	2-4	1	2	3	0	3	2	3	1	4	0	0	11
21	Keyarah Berry	G	13:13	4-5	1-2	5-6	0	2	2	4	4	14	0	0	0	0	0	10
3	Lee Lee Willis		18:04	2-5	1-2	0-2	1	0	1	2	1	5	0	0	0	0	0	10
45	Taylor Cullinan		00:52	0-0	0-0	0-0	0	0	0	0	0	0	0	0	0	0	0	2
15	Morgan Dillard		04:14	0-1	0-0	1-2	1	0	1	1	1	1	1	0	1	0	0	2
Team							0	1	1			0		0				
<b>Totals</b>				8-23	2-10	19-32	5	12	17	9	19	37	5	2	8	0	0	11

Shooting By Period		
3 <sup>rd</sup> FG%	4-13	30.8%
3PT%	1-7	14.3%
FT%	11-16	68.8%
4 <sup>th</sup> FG%	4-10	40.0%
3PT%	1-3	33.3%
FT%	8-16	50%
GM FG%	8-23	34.8%
3PT%	2-10	20.0%
FT%	19-32	59.4%

Dead Ball Rebounds: 8, 0

Technical Fouls: NONE

	UTEP	KSU
Biggest lead	3 (3 <sup>rd</sup> 9:50)	9 (4 <sup>th</sup> 1:19)
Best Scoring Run	4 (4 <sup>th</sup> 4:15)	6 (3 <sup>rd</sup> 7:29)
Lead Changes	1	
Times Tied	1	
Time with Lead	02:03	17:37

	UTEP	KSU
Points from		
Turnovers	2	11
Paint	16	10
Second Chance	4	5
Fast Breaks	2	5
Bench	4	6

	Period by Period Scoring				
	1st	2nd	3rd	4th	TOT
UTEP	14	23	11	15	63
KSU	16	18	20	17	71



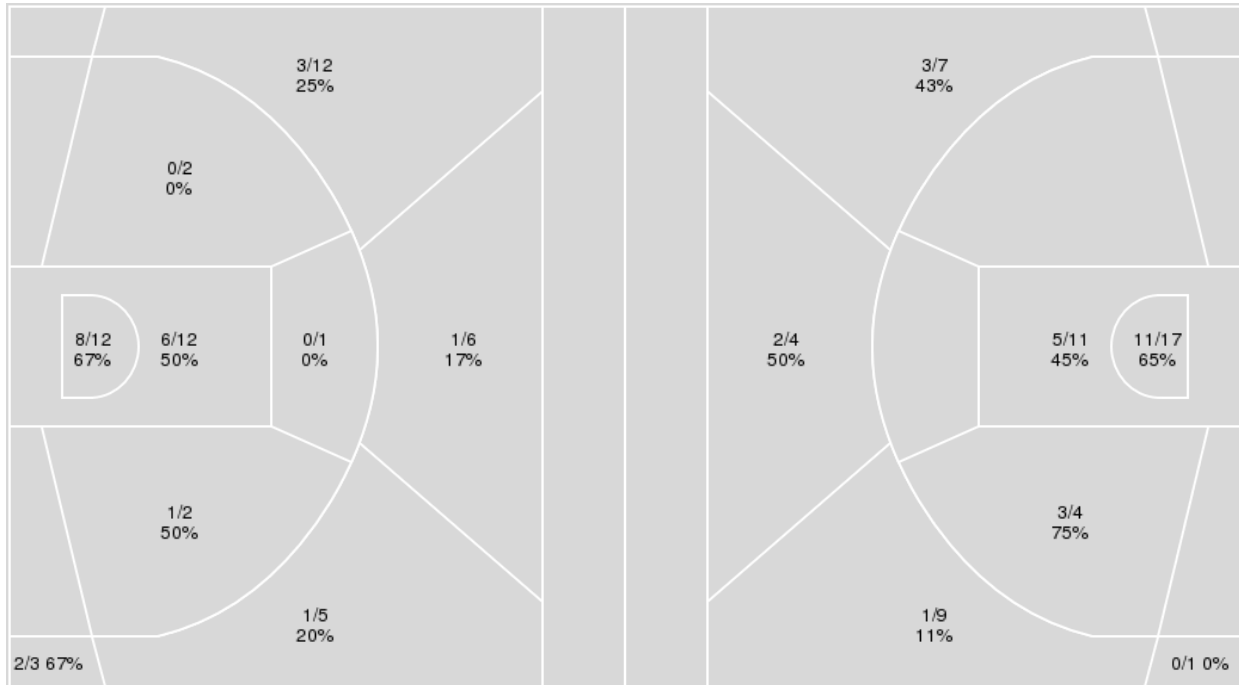
**Officials:** Felicia Grinter, Brian Hall, Jamie Broderick

{ Players => All; } FG Types => All; Results => All;

{ Players => All; } FG Types => All; Results => All;

**Kennesaw St.**

**UTEP**



Kennesaw St.	M/A	%
Field Goals	22/55	40
2 Points	15/29	52
3 Points	7/26	27
Free Throws	20/33	61

UTEP	M/A	%
Field Goals	25/53	47
2 Points	19/32	59
3 Points	6/21	29
Free Throws	7/9	78



**UTEP at Kennesaw St.**

03/11/25 Propst Arena at the Von Braun Center, Huntsville  
2024-25 Women's Basketball

Officials: Felicia Grinter, Brian Hall, Jamie Broderick

**UTEP**

No	Name	Mins		Score		Points Diff		Points per Min		Assists		Rebounds		Steals		Turnovers	
		On	Off	On	Off	On	Off	On	Off	On	Off	On	Off	On	Off	On	Off
2	Heaven Samayoa-Mathis	18:55	21:05	30 - 32	33 - 39	-2	-6	1.59	1.56	4	5	17	17	3	2	7	10
3	Ivane Tensaie	27:50	12:10	41 - 44	22 - 27	-3	-5	1.47	1.81	6	3	22	12	5	0	13	4
5	Delma Zita	17:36	22:24	26 - 33	37 - 38	-7	-1	1.48	1.65	4	5	17	17	3	2	10	7
8	Dunja Zecevic	25:15	14:45	41 - 47	22 - 24	-6	-2	1.62	1.49	6	3	21	13	4	1	9	8
11	Portia Adams	36:59	03:01	60 - 68	3 - 3	-8	0	1.62	0.99	9	0	32	2	4	1	15	2
12	Irene Asensio	21:53	18:07	38 - 40	25 - 31	-2	-6	1.74	1.38	5	4	17	17	1	4	8	9
13	Ndack Mbengue	25:14	14:46	38 - 33	25 - 38	5	-13	1.51	1.69	6	3	25	9	3	2	10	7
23	Luisa Vydrova	23:42	16:18	36 - 52	27 - 19	-16	8	1.52	1.66	5	4	19	15	1	4	12	5
25	Osadebamwen Igbinedion Omoruyi	02:36	37:24	5 - 6	58 - 65	-1	-7	1.92	1.55	0	9	0	34	1	4	1	16

**Kennesaw St.**

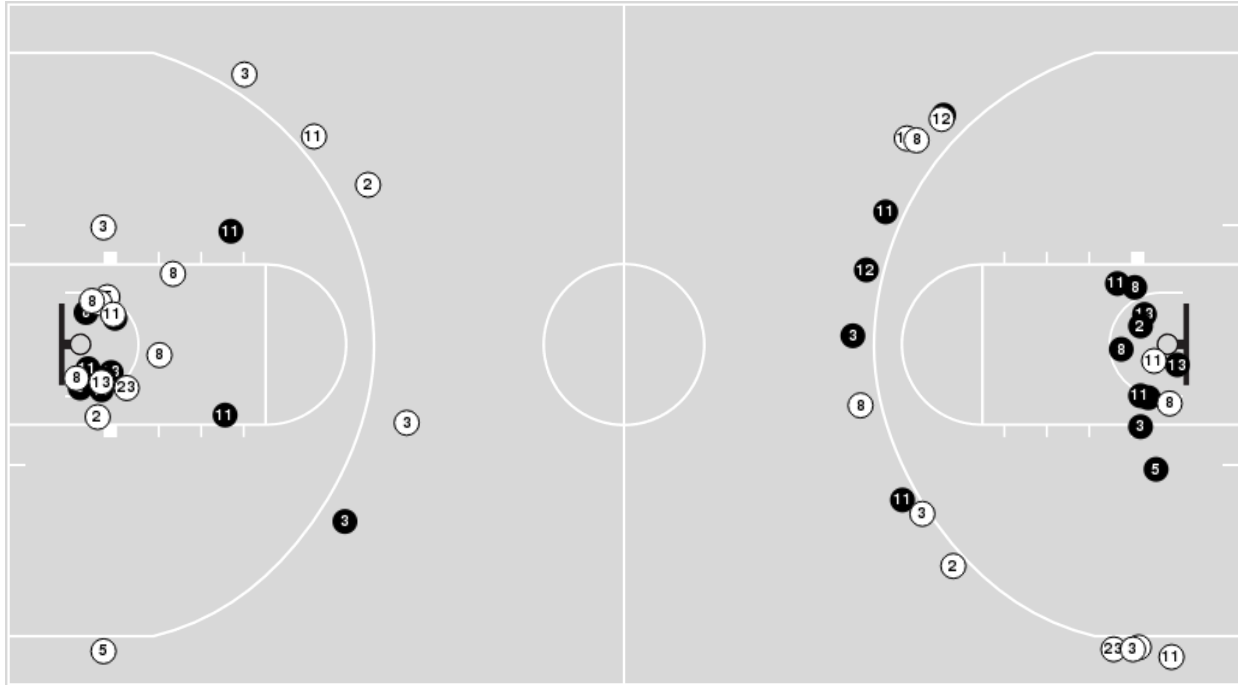
No	Name	Mins		Score		Points Diff		Points per Min		Assists		Rebounds		Steals		Turnovers	
		On	Off	On	Off	On	Off	On	Off	On	Off	On	Off	On	Off	On	Off
0	Kailyn Fields	15:56	24:04	30 - 32	41 - 31	-2	10	1.88	1.70	8	6	10	22	4	8	3	5
1	Carly Hooks	37:32	02:28	71 - 58	0 - 5	13	-5	1.89	0.00	14	0	29	3	12	0	8	0
3	Lee Lee Willis	26:28	13:32	42 - 33	29 - 30	9	-1	1.59	2.14	6	8	24	8	9	3	5	3
4	Keiara Griffin	36:50	03:10	65 - 63	6 - 0	2	6	1.76	1.89	14	0	28	4	10	2	6	2
12	Sophia Rueppell	02:28	37:32	0 - 5	71 - 58	-5	13	0.00	1.89	0	14	3	29	0	12	0	8
15	Morgan Dillard	07:59	32:01	13 - 12	58 - 51	1	7	1.63	1.81	5	9	7	25	2	10	3	5
21	Keyarah Berry	29:28	10:32	57 - 49	14 - 14	8	0	1.93	1.33	9	5	23	9	9	3	5	3
24	Prencis Harden	35:29	04:31	62 - 55	9 - 8	7	1	1.75	1.99	11	3	31	1	11	1	7	1
45	Taylor Cullinan	07:50	32:10	15 - 8	56 - 55	7	1	1.91	1.74	3	11	5	27	3	9	3	5



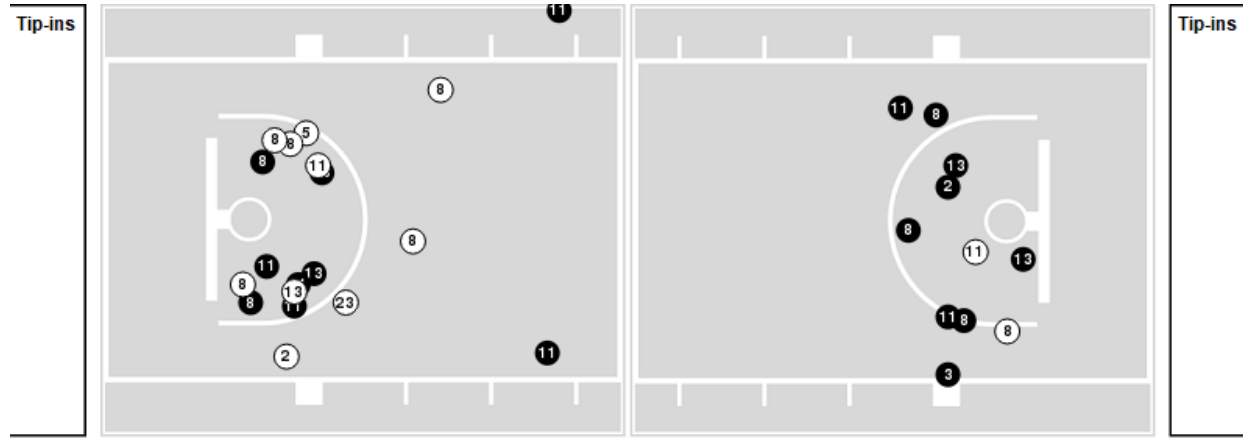
**Officials:** Felicia Grinter, Brian Hall, Jamie Broderick

Players => AllFG Types=>AllResults=>All  
**UTEP**

**All Field Goals**



**Blow Up Chart**



● Made    ○ Missed    N - Player Number

UTEP	M/A	%
Field Goals	25/53	47
2 Points	19/32	59
3 Points	6/21	29
Free Throws	7/9	78

UTEP	M/A	%
Points in the Paint	32 (16 / 28)	57
Fast Break Points	2 (1/1)	100
Second Chance Points	10 (5/7)	71
Effective FG%	53	

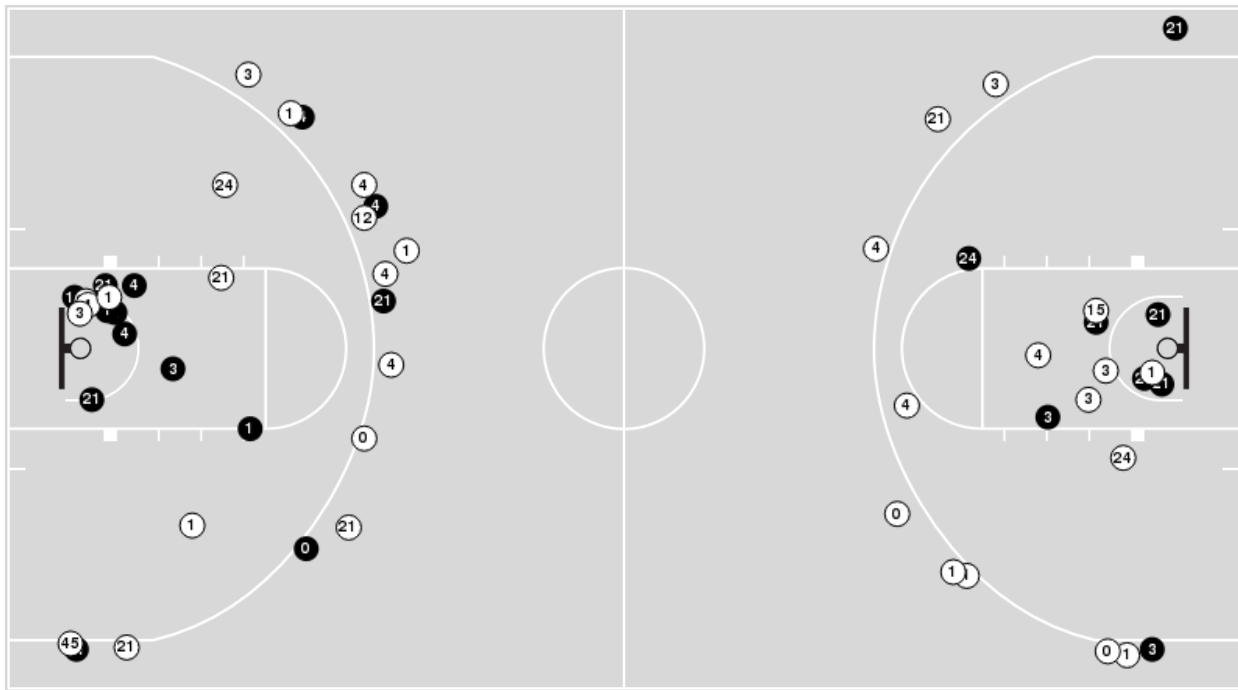


**Officials:** Felicia Grinter, Brian Hall, Jamie Broderick

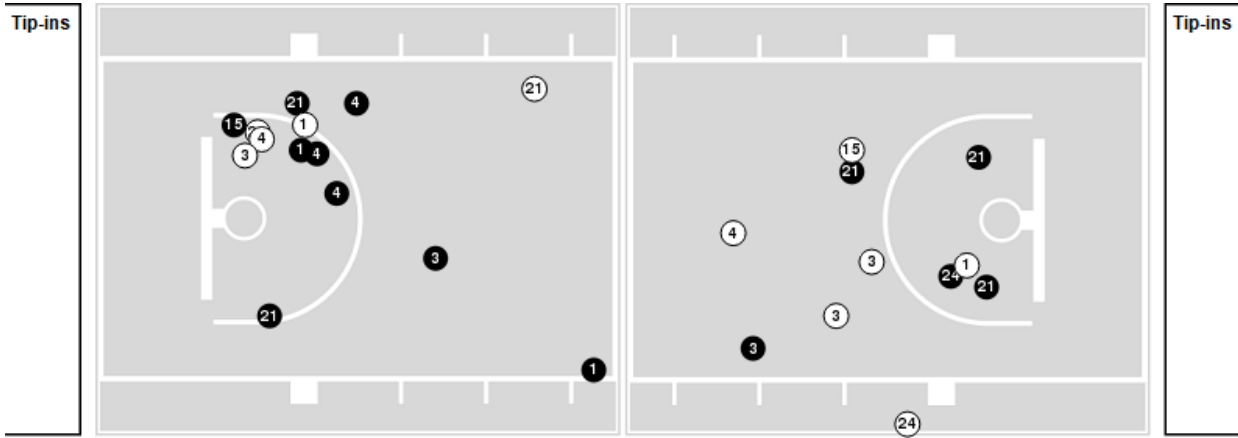
Players => AllFG Types=>AllResults=>All

**Kennesaw St.**

**All Field Goals**



**Blow Up Chart**



● Made    ○ Missed    N - Player Number

Kennesaw St.	M/A	%
Field Goals	22/55	40
2 Points	15/29	52
3 Points	7/26	27
Free Throws	20/33	61

Kennesaw St.	M/A	%
Points in the Paint	28 (14 / 24)	58
Fast Break Points	11 (7/10)	70
Second Chance Points	14 (8/11)	73
Effective FG%	46	



Official Basketball Rotations Summary - Final  
**UTEP at Kennesaw St.**  
 03/11/25 Propst Arena at the Von Braun Center, Huntsville  
 2024-25 Women's Basketball

Game Time: 2:00 PM  
 Game Duration: 1:53  
 Attendance: 780

Officials: Felicia Grinter, Brian Hall, Jamie Broderick

**UTEP**

Lineup	Quarter On	Time On	Quarter Off	Time Off	Time on Court	Score	Score Diff	Reb	Stl	Tov	Ass	PPP
3- Tensaie I/ 5- Zita D/ 11- Adams P/ 13- Mbengue N/ 23- Vydrova L/	1	10:00	1	07:13	02:47	5-7	-2	4	0	2	0	1.0000
3- Tensaie I/ 11- Adams P/ 12- Asensio I/ 13- Mbengue N/ 23- Vydrova L/	1	07:13	1	05:00	02:13	4-3	1	2	0	0	1	1.0309
3- Tensaie I/ 5- Zita D/ 12- Asensio I/ 13- Mbengue N/ 23- Vydrova L/	1	05:00	1	03:45	01:15	0-2	-2	1	0	1	0	0.0000
5- Zita D/ 11- Adams P/ 12- Asensio I/ 13- Mbengue N/ 23- Vydrova L/	1	03:45	1	02:28	01:17	0-4	-4	0	0	2	0	0.0000
2- Samayoa-Mathis H/ 8- Zecevic D/ 11- Adams P/ 12- Asensio I/ 13- Mbengue N/	1	02:28	2	10:00	02:28	5-0	5	4	0	0	0	1.1261
2- Samayoa-Mathis H/ 8- Zecevic D/ 11- Adams P/ 12- Asensio I/ 23- Vydrova L/	2	10:00	2	06:25	03:35	11-9	2	2	0	0	1	2.2000
2- Samayoa-Mathis H/ 3- Tensaie I/ 5- Zita D/ 8- Zecevic D/ 13- Mbengue N/	2	06:25	2	04:39	01:46	3-1	2	1	1	1	0	1.5000
3- Tensaie I/ 5- Zita D/ 8- Zecevic D/ 11- Adams P/ 13- Mbengue N/	2	04:39	2	02:36	02:03	4-2	2	1	1	0	1	1.0000
3- Tensaie I/ 5- Zita D/ 8- Zecevic D/ 11- Adams P/ 25- Igbinedion Omoruyi O/	2	02:36	2	01:46	00:50	2-3	-1	0	0	1	0	1.0000
3- Tensaie I/ 8- Zecevic D/ 11- Adams P/ 12- Asensio I/ 25- Igbinedion Omoruyi O/	2	01:46	3	10:00	01:46	3-3	0	0	1	0	0	1.5000
2- Samayoa-Mathis H/ 3- Tensaie I/ 11- Adams P/ 13- Mbengue N/ 23- Vydrova L/	3	10:00	3	08:08	01:52	2-2	0	1	1	1	0	0.6667
2- Samayoa-Mathis H/ 3- Tensaie I/ 8- Zecevic D/ 11- Adams P/ 23- Vydrova L/	3	08:08	3	07:37	00:31	0-3	-3	0	0	2	0	0.0000
2- Samayoa-Mathis H/ 5- Zita D/ 8- Zecevic D/ 11- Adams P/ 23- Vydrova L/	3	07:37	3	07:29	00:08	0-1	-1	0	0	0	0	0.0000
2- Samayoa-Mathis H/ 5- Zita D/ 8- Zecevic D/ 11- Adams P/ 13- Mbengue N/	3	07:29	3	06:01	01:28	2-2	0	3	0	0	1	0.6667
2- Samayoa-Mathis H/ 8- Zecevic D/ 11- Adams P/ 12- Asensio I/ 23- Vydrova L/	3	06:01	3	05:00	01:01	0-4	-4	0	0	2	0	0.0000
5- Zita D/ 8- Zecevic D/ 11- Adams P/ 12- Asensio I/ 23- Vydrova L/	3	05:00	3	02:47	02:13	4-7	-3	3	0	0	1	1.0000
3- Tensaie I/ 5- Zita D/ 11- Adams P/ 12- Asensio I/ 13- Mbengue N/	3	02:47	3	01:10	01:37	3-0	3	1	0	0	0	1.7045
3- Tensaie I/ 5- Zita D/ 8- Zecevic D/ 11- Adams P/ 13- Mbengue N/	3	01:10	3	00:33	00:36	0-0	0	1	0	1	0	0.0000
2- Samayoa-Mathis H/ 3- Tensaie I/ 8- Zecevic D/ 11- Adams P/ 13- Mbengue N/	3	00:33	4	08:53	01:40	2-3	-1	2	0	0	1	1.0000
2- Samayoa-Mathis H/ 3- Tensaie I/ 8- Zecevic D/ 11- Adams P/ 23- Vydrova L/	4	08:53	4	05:47	03:06	2-4	-2	2	0	0	0	0.6667
3- Tensaie I/ 11- Adams P/ 12- Asensio I/ 13- Mbengue N/ 23- Vydrova L/	4	05:47	4	02:03	03:44	8-6	2	4	0	2	2	1.3605
3- Tensaie I/ 8- Zecevic D/ 11- Adams P/ 12- Asensio I/ 13- Mbengue N/	4	02:03	4	01:36	00:27	0-1	-1	0	0	0	0	0.0000
3- Tensaie I/ 5- Zita D/ 8- Zecevic D/ 11- Adams P/ 12- Asensio I/	4	01:36	4	01:19	00:17	0-1	-1	0	0	1	0	0.0000
2- Samayoa-Mathis H/ 3- Tensaie I/ 5- Zita D/ 8- Zecevic D/ 11- Adams P/	4	01:19	4	00:00	01:19	3-3	0	2	1	1	1	0.6000



Official Basketball Rotations Summary - Final  
**UTEP at Kennesaw St.**  
 03/11/25 Propst Arena at the Von Braun Center, Huntsville  
 2024-25 Women's Basketball

**Game Time:** 2:00 PM  
**Game Duration:** 1:53  
**Attendance:** 780

**Officials:** Felicia Grinter, Brian Hall, Jamie Broderick

**Kennesaw St.**

Lineup	Quarter On	Time On	Quarter Off	Time Off	Time on Court	Score	Score Diff	Reb	Stl	Tov	Ass	PPP
0- Fields K/ 1- Hooks C/ 4- Griffin K/ 21- Berry K/ 24- Harden P/	1	10:00	1	05:20	04:40	10-9	1	3	1	1	3	1.0000
1- Hooks C/ 3- Willis L/ 4- Griffin K/ 21- Berry K/ 45- Cullinan T/	1	05:20	1	03:45	01:35	2-0	2	1	1	0	1	1.0000
1- Hooks C/ 3- Willis L/ 21- Berry K/ 24- Harden P/ 45- Cullinan T/	1	03:45	1	02:28	01:17	4-0	4	2	1	0	0	2.0000
3- Willis L/ 4- Griffin K/ 12- Rueppell S/ 21- Berry K/ 24- Harden P/	1	02:28	2	10:00	02:28	0-5	-5	3	0	0	0	0.0000
0- Fields K/ 1- Hooks C/ 4- Griffin K/ 21- Berry K/ 24- Harden P/	2	10:00	2	06:25	03:35	9-11	-2	2	0	0	2	1.8000
0- Fields K/ 1- Hooks C/ 4- Griffin K/ 21- Berry K/ 45- Cullinan T/	2	06:25	2	05:43	00:42	1-3	-2	0	0	0	0	2.2727
1- Hooks C/ 4- Griffin K/ 21- Berry K/ 24- Harden P/ 45- Cullinan T/	2	05:43	2	05:40	00:03	0-0	0	0	0	0	0	0.0000
1- Hooks C/ 3- Willis L/ 21- Berry K/ 24- Harden P/ 45- Cullinan T/	2	05:40	2	05:31	00:09	0-0	0	0	0	1	0	0.0000
1- Hooks C/ 3- Willis L/ 15- Dillard M/ 24- Harden P/ 45- Cullinan T/	2	05:31	2	04:39	00:52	0-0	0	1	1	1	0	0.0000
1- Hooks C/ 3- Willis L/ 4- Griffin K/ 15- Dillard M/ 24- Harden P/	2	04:39	2	02:36	02:03	2-4	-2	2	0	2	1	0.5000
1- Hooks C/ 4- Griffin K/ 15- Dillard M/ 24- Harden P/ 45- Cullinan T/	2	02:36	2	02:30	00:06	0-0	0	0	0	0	0	0.0000
0- Fields K/ 1- Hooks C/ 4- Griffin K/ 15- Dillard M/ 45- Cullinan T/	2	02:30	2	01:46	00:44	3-2	1	0	0	0	1	3.0000
0- Fields K/ 1- Hooks C/ 4- Griffin K/ 21- Berry K/ 45- Cullinan T/	2	01:46	2	00:15	01:30	3-3	0	0	0	1	1	1.5000
0- Fields K/ 1- Hooks C/ 4- Griffin K/ 21- Berry K/ 24- Harden P/	2	00:15	3	08:04	02:11	3-2	1	3	2	1	1	0.6148
1- Hooks C/ 3- Willis L/ 4- Griffin K/ 21- Berry K/ 24- Harden P/	3	08:04	3	07:29	00:35	3-0	3	1	1	0	0	3.4091
1- Hooks C/ 3- Willis L/ 21- Berry K/ 24- Harden P/ 45- Cullinan T/	3	07:29	3	06:37	00:52	2-0	2	1	0	0	0	1.0638
1- Hooks C/ 3- Willis L/ 4- Griffin K/ 21- Berry K/ 24- Harden P/	3	06:37	3	02:33	04:04	11-7	4	3	1	0	1	1.4628
0- Fields K/ 1- Hooks C/ 3- Willis L/ 4- Griffin K/ 24- Harden P/	3	02:33	4	10:00	02:33	1-2	-1	2	1	0	0	0.2577
1- Hooks C/ 3- Willis L/ 4- Griffin K/ 21- Berry K/ 24- Harden P/	4	10:00	4	07:45	02:15	4-4	0	0	0	0	0	1.3889
1- Hooks C/ 3- Willis L/ 4- Griffin K/ 15- Dillard M/ 24- Harden P/	4	07:45	4	03:31	04:14	8-6	2	4	1	0	3	1.3889
1- Hooks C/ 3- Willis L/ 4- Griffin K/ 21- Berry K/ 24- Harden P/	4	03:31	4	00:00	03:31	5-5	0	4	2	1	0	0.6757



**UTEP at Kennesaw St.**

03/11/25 Propst Arena at the Von Braun Center, Huntsville  
2024-25 Women's Basketball

**Game Time:** 2:00 PM  
**Game Duration:** 1:53  
**Attendance:** 780

**Officials:** Felicia Grinter, Brian Hall, Jamie Broderick

**UTEP**

Lineup	Time	Score	Score Diff	Pts/Min	Reb	Stl	Tov	Ass	PPP
3- Tensaie I/ 11- Adams P/ 12- Asensio I/ 13- Mbengue N/ 23- Vydrova L/	05:57	12-9	3	2.0168	6	0	2	3	1.2295
2- Samayoa-Mathis H/ 8- Zecevic D/ 11- Adams P/ 12- Asensio I/ 23- Vydrova L/	04:36	11-13	-2	2.3913	2	0	2	1	1.5714
2- Samayoa-Mathis H/ 3- Tensaie I/ 8- Zecevic D/ 11- Adams P/ 23- Vydrova L/	03:37	2-7	-5	0.5530	2	0	2	0	0.4000
3- Tensaie I/ 5- Zita D/ 11- Adams P/ 13- Mbengue N/ 23- Vydrova L/	02:47	5-7	-2	1.7964	4	0	2	0	1.0000
3- Tensaie I/ 5- Zita D/ 8- Zecevic D/ 11- Adams P/ 13- Mbengue N/	02:39	4-2	2	1.5075	2	1	1	1	0.8000
2- Samayoa-Mathis H/ 8- Zecevic D/ 11- Adams P/ 12- Asensio I/ 13- Mbengue N/	02:28	5-0	5	2.0270	4	0	0	0	1.1261
5- Zita D/ 8- Zecevic D/ 11- Adams P/ 12- Asensio I/ 23- Vydrova L/	02:13	4-7	-3	1.8045	3	0	0	1	1.0000
2- Samayoa-Mathis H/ 3- Tensaie I/ 11- Adams P/ 13- Mbengue N/ 23- Vydrova L/	01:52	2-2	0	1.0714	1	1	1	0	0.6667
2- Samayoa-Mathis H/ 3- Tensaie I/ 5- Zita D/ 8- Zecevic D/ 13- Mbengue N/	01:46	3-1	2	1.6981	1	1	1	0	1.5000
3- Tensaie I/ 8- Zecevic D/ 11- Adams P/ 12- Asensio I/ 25- Igbinedion Omoruyi O/	01:46	3-3	0	1.6981	0	1	0	0	1.5000
2- Samayoa-Mathis H/ 3- Tensaie I/ 8- Zecevic D/ 11- Adams P/ 13- Mbengue N/	01:40	2-3	-1	1.1905	2	0	0	1	1.0000
3- Tensaie I/ 5- Zita D/ 11- Adams P/ 12- Asensio I/ 13- Mbengue N/	01:37	3-0	3	1.8557	1	0	0	0	1.7045
2- Samayoa-Mathis H/ 5- Zita D/ 8- Zecevic D/ 11- Adams P/ 13- Mbengue N/	01:28	2-2	0	1.3636	3	0	0	1	0.6667
2- Samayoa-Mathis H/ 3- Tensaie I/ 5- Zita D/ 8- Zecevic D/ 11- Adams P/	01:19	3-3	0	2.2785	2	1	1	1	0.6000
5- Zita D/ 11- Adams P/ 12- Asensio I/ 13- Mbengue N/ 23- Vydrova L/	01:17	0-4	-4	0.0000	0	0	2	0	0.0000
3- Tensaie I/ 5- Zita D/ 12- Asensio I/ 13- Mbengue N/ 23- Vydrova L/	01:15	0-2	-2	0.0000	1	0	1	0	0.0000
3- Tensaie I/ 5- Zita D/ 8- Zecevic D/ 11- Adams P/ 25- Igbinedion Omoruyi O/	00:50	2-3	-1	2.4000	0	0	1	0	1.0000
3- Tensaie I/ 8- Zecevic D/ 11- Adams P/ 12- Asensio I/ 13- Mbengue N/	00:27	0-1	-1	0.0000	0	0	0	0	0.0000
3- Tensaie I/ 5- Zita D/ 8- Zecevic D/ 11- Adams P/ 12- Asensio I/	00:17	0-1	-1	0.0000	0	0	1	0	0.0000
2- Samayoa-Mathis H/ 5- Zita D/ 8- Zecevic D/ 11- Adams P/ 23- Vydrova L/	00:08	0-1	-1	0.0000	0	0	0	0	0.0000



**UTEP at Kennesaw St.**

03/11/25 Propst Arena at the Von Braun Center, Huntsville  
2024-25 Women's Basketball

**Game Time:** 2:00 PM  
**Game Duration:** 1:53  
**Attendance:** 780

**Officials:** Felicia Grinter, Brian Hall, Jamie Broderick

**Kennesaw St.**

Lineup	Time	Score	Score Diff	Pts/Min	Reb	Stl	Tov	Ass	PPP
0- Fields K/ 1- Hooks C/ 4- Griffin K/ 21- Berry K/ 24- Harden P/	10:26	22-22	0	2.1066	8	3	2	6	1.1066
1- Hooks C/ 3- Willis L/ 4- Griffin K/ 21- Berry K/ 24- Harden P/	10:25	23-16	7	2.2080	8	4	1	1	1.2313
1- Hooks C/ 3- Willis L/ 4- Griffin K/ 15- Dillard M/ 24- Harden P/	06:17	10-10	0	1.5915	6	1	2	4	1.0246
0- Fields K/ 1- Hooks C/ 3- Willis L/ 4- Griffin K/ 24- Harden P/	02:33	1-2	-1	0.3922	2	1	0	0	0.2577
3- Willis L/ 4- Griffin K/ 12- Rueppell S/ 21- Berry K/ 24- Harden P/	02:28	0-5	-5	0.0000	3	0	0	0	0.0000
1- Hooks C/ 3- Willis L/ 21- Berry K/ 24- Harden P/ 45- Cullinan T/	02:18	6-0	6	2.6087	3	1	1	0	1.2295
0- Fields K/ 1- Hooks C/ 4- Griffin K/ 21- Berry K/ 45- Cullinan T/	02:12	4-6	-2	1.8127	0	0	1	1	1.6393
1- Hooks C/ 3- Willis L/ 4- Griffin K/ 21- Berry K/ 45- Cullinan T/	01:35	2-0	2	1.2632	1	1	0	1	1.0000
1- Hooks C/ 3- Willis L/ 15- Dillard M/ 24- Harden P/ 45- Cullinan T/	00:52	0-0	0	0.0000	1	1	1	0	0.0000
0- Fields K/ 1- Hooks C/ 4- Griffin K/ 15- Dillard M/ 45- Cullinan T/	00:44	3-2	1	4.0909	0	0	0	1	3.0000
1- Hooks C/ 4- Griffin K/ 15- Dillard M/ 24- Harden P/ 45- Cullinan T/	00:06	0-0	0	0.0000	0	0	0	0	0.0000
1- Hooks C/ 4- Griffin K/ 21- Berry K/ 24- Harden P/ 45- Cullinan T/	00:03	0-0	0	0.0000	0	0	0	0	0.0000