



Officials: Owen Shortt, Ron Groover, Lucas Santos

UTEP - 73

Record: 17-9 (7-6)

| NO.           | Name              | Min     | FG    | 3P   | FT    | Rebounds |    |     | Fouls |    | TP | AS | TO | ST | Blocks |    | +/- |
|---------------|-------------------|---------|-------|------|-------|----------|----|-----|-------|----|----|----|----|----|--------|----|-----|
|               |                   |         | M-A   | M-A  | M-A   | OR       | DR | TOT | PF    | FD |    |    |    |    | BS     | BA |     |
| 23            | Otis Frazier III  | F 22:45 | 1-5   | 1-3  | 0-0   | 1        | 1  | 2   | 1     | 0  | 3  | 1  | 2  | 4  | 0      | 1  | -25 |
| 34            | Kevin Kalu        | F 19:31 | 2-7   | 0-0  | 1-2   | 3        | 2  | 5   | 3     | 1  | 5  | 1  | 1  | 0  | 0      | 3  | -18 |
| 4             | Corey Camper Jr.  | G 32:37 | 5-10  | 0-1  | 0-2   | 1        | 4  | 5   | 4     | 3  | 10 | 2  | 2  | 1  | 0      | 1  | -4  |
| 5             | David Terrell Jr. | G 36:29 | 6-9   | 0-1  | 4-7   | 1        | 2  | 3   | 2     | 4  | 16 | 4  | 4  | 2  | 0      | 1  | -13 |
| 13            | Devon Barnes      | G 19:37 | 1-5   | 0-3  | 0-1   | 0        | 1  | 1   | 4     | 1  | 2  | 1  | 0  | 0  | 0      | 0  | -23 |
| 12            | Ahamad Bynum      | 22:14   | 5-10  | 3-7  | 11-12 | 0        | 2  | 2   | 0     | 6  | 24 | 1  | 0  | 0  | 0      | 0  | 18  |
| 33            | Elijah Jones      | 16:58   | 2-5   | 0-0  | 0-0   | 1        | 3  | 4   | 0     | 0  | 4  | 0  | 0  | 0  | 1      | 1  | 3   |
| 32            | Derick Hamilton   | 02:30   | 0-0   | 0-0  | 0-0   | 0        | 0  | 0   | 0     | 0  | 0  | 0  | 0  | 0  | 0      | 0  | 4   |
| 3             | Baylor Hebb       | 05:15   | 1-1   | 0-0  | 0-0   | 0        | 2  | 2   | 0     | 0  | 2  | 0  | 0  | 0  | 0      | 0  | -3  |
| 11            | Trey Horton       | 16:49   | 3-7   | 1-5  | 0-0   | 2        | 1  | 3   | 3     | 0  | 7  | 1  | 0  | 0  | 0      | 0  | 11  |
| 1             | KJ Thomas         | 04:41   | 0-0   | 0-0  | 0-0   | 0        | 0  | 0   | 1     | 0  | 0  | 0  | 0  | 0  | 0      | 0  | 0   |
| 15            | Antwon Holmes     | 00:34   | 0-0   | 0-0  | 0-0   | 0        | 0  | 0   | 0     | 0  | 0  | 0  | 0  | 0  | 0      | 0  | 0   |
| Team          |                   |         |       |      |       | 1        | 2  | 3   |       |    | 0  |    | 2  |    |        |    |     |
| <b>Totals</b> |                   |         | 26-59 | 5-20 | 16-24 | 10       | 20 | 30  | 18    | 15 | 73 | 11 | 11 | 7  | 1      | 7  | -10 |

| Shooting By Period  |       |       |
|---------------------|-------|-------|
| 1 <sup>st</sup> FG% | 14-29 | 48.3% |
| 3PT%                | 2-10  | 20.0% |
| FT%                 | 3-7   | 42.9% |
| 2 <sup>nd</sup> FG% | 12-30 | 40.0% |
| 3PT%                | 3-10  | 30.0% |
| FT%                 | 13-17 | 76.5% |
| GM FG%              | 26-59 | 44.1% |
| 3PT%                | 5-20  | 25.0% |
| FT%                 | 16-24 | 66.7% |

Dead Ball Rebounds: 6, 1

Technical Fouls::NONE

Kennesaw St. - 83

Record: 16-11 (8-6)

| NO.           | Name             | Min     | FG    | 3P    | FT    | Rebounds |    |     | Fouls |    | TP | AS | TO | ST | Blocks |    | +/- |
|---------------|------------------|---------|-------|-------|-------|----------|----|-----|-------|----|----|----|----|----|--------|----|-----|
|               |                  |         | M-A   | M-A   | M-A   | OR       | DR | TOT | PF    | FD |    |    |    |    | BS     | BA |     |
| 13            | Braedan Lue      | F 30:43 | 7-11  | 4-7   | 0-1   | 1        | 5  | 6   | 1     | 1  | 18 | 1  | 1  | 1  | 3      | 0  | 16  |
| 25            | Rongie Gordon    | F 25:47 | 3-5   | 0-2   | 1-2   | 2        | 5  | 7   | 3     | 1  | 7  | 3  | 4  | 0  | 2      | 0  | 7   |
| 5             | Simeon Cottle    | G 35:34 | 4-11  | 1-6   | 3-3   | 0        | 0  | 0   | 5     | 5  | 12 | 6  | 2  | 0  | 0      | 0  | 6   |
| 10            | Jamil Miller     | G 19:27 | 5-7   | 0-2   | 0-1   | 0        | 6  | 6   | 2     | 1  | 10 | 0  | 1  | 0  | 2      | 0  | 3   |
| 14            | Adrian Wooley    | G 38:11 | 5-12  | 4-7   | 7-7   | 2        | 3  | 5   | 1     | 4  | 21 | 7  | 4  | 1  | 0      | 1  | 12  |
| 11            | Delaney Heard    | 20:33   | 0-0   | 0-0   | 0-0   | 1        | 1  | 2   | 1     | 1  | 0  | 2  | 1  | 1  | 0      | 0  | 7   |
| 6             | Frankqon Sherman | 23:30   | 2-4   | 1-2   | 8-10  | 1        | 3  | 4   | 1     | 5  | 13 | 0  | 0  | 2  | 0      | 0  | -3  |
| 1             | Ricardo Wright   | 06:15   | 1-3   | 0-1   | 0-0   | 0        | 0  | 0   | 1     | 0  | 2  | 1  | 0  | 0  | 0      | 0  | 2   |
| Team          |                  |         |       |       |       | 0        | 2  | 2   |       |    | 0  |    | 1  |    |        |    |     |
| <b>Totals</b> |                  |         | 27-53 | 10-27 | 19-24 | 7        | 25 | 32  | 15    | 18 | 83 | 20 | 14 | 5  | 7      | 1  | 10  |

| Shooting By Period  |       |       |
|---------------------|-------|-------|
| 1 <sup>st</sup> FG% | 18-35 | 51.4% |
| 3PT%                | 7-19  | 36.8% |
| FT%                 | 4-5   | 80%   |
| 2 <sup>nd</sup> FG% | 9-18  | 50.0% |
| 3PT%                | 3-8   | 37.5% |
| FT%                 | 15-19 | 78.9% |
| GM FG%              | 27-53 | 50.9% |
| 3PT%                | 10-27 | 37.0% |
| FT%                 | 19-24 | 79.2% |

Dead Ball Rebounds: 3, 0

Technical Fouls::NONE

|                  | UTEP                      | KSU                        |
|------------------|---------------------------|----------------------------|
| Biggest lead     | 0 (1 <sup>st</sup> 20:00) | 19 (2 <sup>nd</sup> 16:44) |
| Best Scoring Run | 7(1 <sup>st</sup> 5:46)   | 9(1 <sup>st</sup> 3:46)    |
| Lead Changes     | 0                         |                            |
| Times Tied       | 0                         |                            |
| Time with Lead   | 00:00                     | 39:05                      |

| Points from   | UTEP | KSU |
|---------------|------|-----|
| Turnovers     | 12   | 14  |
| Paint         | 38   | 32  |
| Second Chance | 7    | 7   |
| Fast Breaks   | 12   | 5   |
| Bench         | 37   | 15  |

|      | Period by Period Scoring |     |     |
|------|--------------------------|-----|-----|
|      | 1st                      | 2nd | TOT |
| UTEP | 33                       | 40  | 73  |
| KSU  | 47                       | 36  | 83  |



**UTEP at Kennesaw St.**

02/20/25 KSU Convocation Center, Kennesaw  
2024-25 Men's Basketball

**Game Time:** 7:00 PM  
**Game Duration:** 2:01  
**Attendance:** 2,025

**Officials:** Owen Shortt, Ron Groover, Lucas Santos

**Period 1**

**Quarter Starters:**

|             |                |                 |             |                  |             |
|-------------|----------------|-----------------|-------------|------------------|-------------|
| <b>KSU</b>  | 5 Cottle S     | 10 Miller J     | 13 Lue B    | 14 Wooley A      | 25 Gordon R |
| <b>UTEP</b> | 4 Camper Jr. C | 5 Terrell Jr. D | 13 Barnes D | 23 Frazier III O | 34 Kalu K   |

| Game Time | KSU   | Score       | Diff      | UTEP  |
|-----------|---|-------------|-----------|---|
| 20:00     | 25 GORDON R jumpball lost                                       |             |           | 34 KALU K jumpball won  |
| 19:32     | 13 LUE B steal (1)  |             |           | 34 KALU K turnover lost ball (1)  |
| 19:05     | 13 LUE B 3pt FG from turnover, jump shot made (3)               | <b>3-0</b>  | <b>3</b>  |   |
| 19:05     | 14 WOOLEY A assist (1)  |             |           |   |
| 18:46     |   |             |           | 13 BARNES D 3pt FG , jump shot missed                                     |
| 18:43     | 10 MILLER J defensive rebound (1)                               |             |           |   |
| 18:30     | 5 COTTLE S 3pt FG , jump shot made (3)                          | <b>6-0</b>  | <b>6</b>  |   |
| 18:30     | 14 WOOLEY A assist (2)  |             |           |   |
| 18:04     |   |             |           | 13 BARNES D 3pt FG , jump shot missed                                     |
| 18:01     | 25 GORDON R defensive rebound (1)                               |             |           |   |
| 17:52     | 10 MILLER J 2pt FG in the paint, dunk, made (2)                 | <b>8-0</b>  | <b>8</b>  |   |
| 17:52     | 25 GORDON R assist (1)  |             |           |   |
| 17:52     |   |             |           | Timeout 30 Sec  |
| 17:39     |   | <b>8-2</b>  | <b>6</b>  | 5 TERRELL JR. D 2pt FG in the paint, driving layup made (2)               |
| 17:23     | 14 WOOLEY A turnover bad pass (1)                               |             |           | 4 CAMPER JR. C steal (1)  |
| 17:18     |   | <b>8-4</b>  | <b>4</b>  | 34 KALU K 2pt FG fast break from turnover in the paint, alleyoop made (2) |
| 17:18     |   |             |           | 4 CAMPER JR. C assist (1)   |
| 17:06     | 5 COTTLE S 2pt FG outside the paint, pull up jump shot made (5) | <b>10-4</b> | <b>6</b>  |   |
| 17:06     | 25 GORDON R assist (2)  |             |           |   |
| 16:50     |   |             |           | 34 KALU K 2pt FG in the paint, layup blocked                              |
| 16:50     | 25 GORDON R block (1)   |             |           |   |
| 16:46     | 10 MILLER J defensive rebound (2)                               |             |           |   |
| 16:42     | 10 MILLER J 2pt FG fast break in the paint, alleyoop made (4)   | <b>12-4</b> | <b>8</b>  |   |
| 16:42     | 5 COTTLE S assist (1)   |             |           |   |
| 16:31     |   |             |           | 5 TERRELL JR. D turnover out of bounds (1)                                |
| 16:31     | 10 MILLER J substitution out                                    |             |           |   |
| 16:31     | 11 HEARD D substitution in                                      |             |           |   |
| 16:31     |   |             |           | 13 BARNES D substitution out  |
| 16:31     |   |             |           | 34 KALU K substitution out  |
| 16:31     |   |             |           | 12 BYNUM A substitution in  |
| 16:31     |   |             |           | 33 JONES E substitution in  |
| 16:16     | 13 LUE B 3pt FG from turnover, jump shot made (6)               | <b>15-4</b> | <b>11</b> |   |
| 16:16     | 14 WOOLEY A assist (3)  |             |           |   |
| 15:49     |   | <b>15-6</b> | <b>9</b>  | 4 CAMPER JR. C 2pt FG in the paint, turnaround jump shot made (2)         |
| 15:36     | 25 GORDON R 2pt FG in the paint, hook shot made (2)             | <b>17-6</b> | <b>11</b> |   |
| 15:36     | Timeout media   |             |           |   |
| 15:16     |   | <b>17-8</b> | <b>9</b>  | 4 CAMPER JR. C 2pt FG in the paint, layup made (4)                        |
| 14:53     | 5 COTTLE S 3pt FG , jump shot missed                            |             |           |   |
| 14:51     | 13 LUE B offensive rebound (1)                                  |             |           |   |
| 14:47     | 13 LUE B turnover lost ball (1)                                 |             |           | 23 FRAZIER III O steal (1)  |
| 14:43     | 11 HEARD D foul shooting (1 - 1)                                |             |           | 5 TERRELL JR. D foul drawn (1)  |



**UTEP at Kennesaw St.**

02/20/25 KSU Convocation Center, Kennesaw  
2024-25 Men's Basketball

**Game Time:** 7:00 PM  
**Game Duration:** 2:01  
**Attendance:** 2,025

**Officials:** Owen Shortt, Ron Groover, Lucas Santos

| Game Time | KSU   | Score | Diff | UTEP  |
|-----------|---|-------|------|---|
| 14:43     |   |       |      | 5 TERRELL JR. D free throw fast break 1 - 2 missed                            |
| 14:43     |   |       |      | offensive dead ball rebound (1)   |
| 14:43     |   |       |      | 23 FRAZIER III O substitution out   |
| 14:43     |   |       |      | 32 HAMILTON D substitution in   |
| 14:43     |   | 17-9  | 8    | 5 TERRELL JR. D free throw fast break 2 - 2 made (3)                          |
| 14:31     | 25 GORDON R turnover bad pass (1)                 |       |      |   |
| 14:31     | 13 LUE B substitution out                         |       |      |   |
| 14:31     | 6 SHERMAN F substitution in                       |       |      |   |
| 14:25     |   | 17-11 | 6    | 12 BYNUM A 2pt FG from turnover outside the paint, pull up jump shot made (2) |
| 14:25     |   |       |      | 5 TERRELL JR. D assist (1)  |
| 14:08     | 14 WOOLEY A 2pt FG in the paint, layup blocked    |       |      |   |
| 14:08     |   |       |      | 33 JONES E block (1)  |
| 14:04     |   |       |      | 4 CAMPER JR. C defensive rebound (1)  |
| 13:57     |   |       |      | 33 JONES E 2pt FG outside the paint, turnaround jump shot missed              |
| 13:53     | 25 GORDON R defensive rebound (2)                 |       |      |   |
| 13:46     | 14 WOOLEY A 3pt FG , jump shot made (3)           | 20-11 | 9    |   |
| 13:46     | 25 GORDON R assist (3)                            |       |      |   |
| 13:20     |   | 20-14 | 6    | 12 BYNUM A 3pt FG , jump shot made (5)  |
| 13:20     |   |       |      | 5 TERRELL JR. D assist (2)  |
| 12:49     | 14 WOOLEY A 3pt FG , jump shot made (6)           | 23-14 | 9    |   |
| 12:49     | 11 HEARD D assist (1)                             |       |      |   |
| 12:38     |   | 23-16 | 7    | 5 TERRELL JR. D 2pt FG in the paint, driving layup made (5)                   |
| 12:25     | 25 GORDON R 3pt FG , jump shot missed             |       |      |   |
| 12:22     |   |       |      | 4 CAMPER JR. C defensive rebound (2)  |
| 12:15     |   | 23-18 | 5    | 4 CAMPER JR. C 2pt FG in the paint, floating jump shot made (6)               |
| 12:13     | Timeout 30 Sec                                    |       |      |   |
| 12:13     |   |       |      | Timeout media   |
| 12:13     | 5 COTTLE S substitution out                       |       |      |   |
| 12:13     | 25 GORDON R substitution out                      |       |      |   |
| 12:13     | 1 WRIGHT R substitution in                        |       |      |   |
| 12:13     | 13 LUE B substitution in                          |       |      |   |
| 12:13     |   |       |      | 4 CAMPER JR. C substitution out   |
| 12:13     |   |       |      | 12 BYNUM A substitution out   |
| 12:13     |   |       |      | 32 HAMILTON D substitution out  |
| 12:13     |   |       |      | 33 JONES E substitution out   |
| 12:13     |   |       |      | 3 HEBB B substitution in  |
| 12:13     |   |       |      | 13 BARNES D substitution in   |
| 12:13     |   |       |      | 23 FRAZIER III O substitution in  |
| 12:13     |   |       |      | 34 KALU K substitution in   |
| 11:44     | 6 SHERMAN F 2pt FG in the paint, layup missed     |       |      |   |
| 11:40     |   |       |      | 3 HEBB B defensive rebound (1)  |
| 11:37     |   |       |      | 23 FRAZIER III O 3pt FG , jump shot missed                                    |
| 11:34     | 13 LUE B defensive rebound (2)                    |       |      |   |
| 11:13     | 6 SHERMAN F 3pt FG , jump shot made (3)           | 26-18 | 8    |   |
| 11:13     | 1 WRIGHT R assist (1)                             |       |      |   |
| 10:56     |   |       |      | 5 TERRELL JR. D turnover bad pass (2)   |
| 10:47     | 1 WRIGHT R 3pt FG from turnover, jump shot missed |       |      |   |



**UTEP at Kennesaw St.**

02/20/25 KSU Convocation Center, Kennesaw  
2024-25 Men's Basketball

**Game Time:** 7:00 PM  
**Game Duration:** 2:01  
**Attendance:** 2,025

**Officials:** Owen Shortt, Ron Groover, Lucas Santos

| Game Time | KSU  | Score        | Diff      | UTEP   |
|-----------|--|--------------|-----------|--|
| 10:44     | 6 SHERMAN F offensive rebound (1)                                |              |           |  |
| 10:40     | 14 WOOLEY A 3pt FG from turnover second chance, jump shot missed |              |           |  |
| 10:38     |  |              |           | 34 KALU K defensive rebound (1)                                |
| 10:23     |  |              |           | 5 TERRELL JR. D 2pt FG in the paint, floating jump shot missed |
| 10:20     | 13 LUE B defensive rebound (3)                                   |              |           |  |
| 10:13     | 1 WRIGHT R 2pt FG in the paint, driving layup made (2)           | <b>28-18</b> | <b>10</b> |  |
| 10:13     | 13 LUE B assist (1)  |              |           |  |
| 09:49     | 11 HEARD D steal (1)   |              |           | 23 FRAZIER III O turnover lost ball (1)                        |
| 09:49     |  |              |           | 5 TERRELL JR. D substitution out                               |
| 09:49     |  |              |           | 23 FRAZIER III O substitution out                              |
| 09:49     |  |              |           | 34 KALU K substitution out                                     |
| 09:49     |  |              |           | 4 CAMPER JR. C substitution in                                 |
| 09:49     |  |              |           | 12 BYNUM A substitution in                                     |
| 09:49     |  |              |           | 33 JONES E substitution in                                     |
| 09:42     | 13 LUE B 3pt FG from turnover, jump shot made (9)                | <b>31-18</b> | <b>13</b> |  |
| 09:42     | 14 WOOLEY A assist (4)   |              |           |  |
| 09:22     |  | <b>31-20</b> | <b>11</b> | 3 HEBB B 2pt FG in the paint, driving layup made (2)           |
| 09:03     | 1 WRIGHT R 2pt FG in the paint, floating jump shot missed        |              |           |  |
| 09:00     |  |              |           | 3 HEBB B defensive rebound (2)                                 |
| 08:48     | 14 WOOLEY A foul shooting (1 - 2)                                |              |           | 12 BYNUM A foul drawn (1)                                      |
| 08:47     |  | <b>31-21</b> | <b>10</b> | 12 BYNUM A free throw 1 - 3 made (6)                           |
| 08:47     |  |              |           | 12 BYNUM A free throw 2 - 3 missed                             |
| 08:47     |  |              |           | offensive dead ball rebound (2)                                |
| 08:47     | 11 HEARD D substitution out                                      |              |           |  |
| 08:47     | 14 WOOLEY A substitution out                                     |              |           |  |
| 08:47     | 5 COTTLE S substitution in                                       |              |           |  |
| 08:47     | 10 MILLER J substitution in                                      |              |           |  |
| 08:47     |  | <b>31-22</b> | <b>9</b>  | 12 BYNUM A free throw 3 - 3 made (7)                           |
| 08:27     | 13 LUE B 2pt FG in the paint, driving layup made (11)            | <b>33-22</b> | <b>11</b> |  |
| 08:27     | 5 COTTLE S assist (2)  |              |           |  |
| 08:14     |  |              |           | 33 JONES E 2pt FG in the paint, layup blocked                  |
| 08:14     | 10 MILLER J block (1)  |              |           |  |
| 08:09     |  |              |           | 33 JONES E offensive rebound (1)                               |
| 08:08     |  | <b>33-24</b> | <b>9</b>  | 33 JONES E 2pt FG second chance in the paint, layup made (2)   |
| 08:05     | 6 SHERMAN F 3pt FG , jump shot missed                            |              |           |  |
| 08:03     |  |              |           | defensive rebound (7)  |
| 08:03     |  |              |           | 13 BARNES D substitution out                                   |
| 08:03     |  |              |           | 11 HORTON T substitution in                                    |
| 07:47     |  |              |           | 11 HORTON T 3pt FG , jump shot missed                          |
| 07:44     | 10 MILLER J defensive rebound (3)                                |              |           |  |
| 07:28     | 5 COTTLE S 2pt FG in the paint, floating jump shot made (7)      | <b>35-24</b> | <b>11</b> |  |
| 07:17     |  | <b>35-27</b> | <b>8</b>  | 12 BYNUM A 3pt FG , jump shot made (10)                        |
| 07:17     |  |              |           | 4 CAMPER JR. C assist (2)                                      |
| 07:02     | 10 MILLER J 3pt FG , jump shot missed                            |              |           |  |
| 06:59     |  |              |           | 4 CAMPER JR. C defensive rebound (3)                           |
| 06:58     | 1 WRIGHT R foul personal (1 - 3)                                 |              |           | 4 CAMPER JR. C foul drawn (1)                                  |
| 06:58     | Timeout media  |              |           |  |
| 06:58     | 1 WRIGHT R substitution out                                      |              |           |  |



**UTEP at Kennesaw St.**

02/20/25 KSU Convocation Center, Kennesaw  
2024-25 Men's Basketball

Officials: Owen Shortt, Ron Groover, Lucas Santos

| Game Time | KSU  | Score        | Diff      | UTEP   |
|-----------|--|--------------|-----------|--|
| 06:58     | 6 SHERMAN F substitution out   |              |           |  |
| 06:58     | 14 WOOLEY A substitution in  |              |           |  |
| 06:58     | 25 GORDON R substitution in  |              |           |  |
| 06:58     |  |              |           | 3 HEBB B substitution out  |
| 06:58     |  |              |           | 33 JONES E substitution out  |
| 06:58     |  |              |           | 5 TERRELL JR. D substitution in                                      |
| 06:58     |  |              |           | 34 KALU K substitution in  |
| 06:42     |  |              |           | 4 CAMPER JR. C 2pt FG in the paint, driving layup missed             |
| 06:40     |  |              |           | offensive rebound (9)  |
| 06:31     |  |              |           | 12 BYNUM A 3pt FG second chance, jump shot missed                    |
| 06:26     |  |              |           | 4 CAMPER JR. C offensive rebound (4)                                 |
| 06:19     |  |              |           | 4 CAMPER JR. C 2pt FG second chance in the paint, layup blocked      |
| 06:19     | 10 MILLER J block (2)  |              |           |  |
| 06:13     |  |              |           | 11 HORTON T offensive rebound (1)                                    |
| 06:13     |  | <b>35-29</b> | <b>6</b>  | 11 HORTON T 2pt FG second chance in the paint, tip-in layup made (2) |
| 06:04     | 13 LUE B 3pt FG , jump shot missed   |              |           |  |
| 06:02     |  |              |           | defensive dead ball rebound (3)                                      |
| 06:02     | 25 GORDON R foul loose ball (1 - 4)  |              |           | 4 CAMPER JR. C foul drawn (2)  |
| 06:02     | 13 LUE B substitution out  |              |           |  |
| 06:02     | 6 SHERMAN F substitution in  |              |           |  |
| 05:46     |  | <b>35-31</b> | <b>4</b>  | 4 CAMPER JR. C 2pt FG in the paint, layup made (8)                   |
| 05:46     |  |              |           | 11 HORTON T assist (1)   |
| 05:26     | 10 MILLER J 2pt FG in the paint, driving layup made (6)                          | <b>37-31</b> | <b>6</b>  |  |
| 05:26     | 14 WOOLEY A assist (5)   |              |           |  |
| 05:26     | 10 MILLER J foul drawn (1)   |              |           | 11 HORTON T foul shooting (1 - 1)                                    |
| 05:26     | 6 SHERMAN F substitution out   |              |           |  |
| 05:26     | 13 LUE B substitution in   |              |           |  |
| 05:26     | 10 MILLER J free throw 1 - 1 missed  |              |           |  |
| 05:25     |  |              |           | 11 HORTON T defensive rebound (2)                                    |
| 05:14     |  |              |           | 11 HORTON T 3pt FG , jump shot missed                                |
| 05:11     | defensive rebound (10)   |              |           |  |
| 05:00     | 14 WOOLEY A foul drawn (1)   |              |           | 34 KALU K foul shooting (1 - 2)                                      |
| 04:59     | 14 WOOLEY A free throw 1 - 3 made (7)  | <b>38-31</b> | <b>7</b>  |  |
| 04:59     | 14 WOOLEY A free throw 2 - 3 made (8)  | <b>39-31</b> | <b>8</b>  |  |
| 04:59     |  |              |           | 11 HORTON T substitution out   |
| 04:59     |  |              |           | 12 BYNUM A substitution out  |
| 04:59     |  |              |           | 34 KALU K substitution out   |
| 04:59     |  |              |           | 13 BARNES D substitution in  |
| 04:59     |  |              |           | 23 FRAZIER III O substitution in                                     |
| 04:59     |  |              |           | 33 JONES E substitution in   |
| 04:59     | 14 WOOLEY A free throw 3 - 3 made (9)  | <b>40-31</b> | <b>9</b>  |  |
| 04:43     | 14 WOOLEY A steal (1)  |              |           | 5 TERRELL JR. D turnover lost ball (3)                               |
| 04:37     | 10 MILLER J 2pt FG fast break from turnover in the paint, driving layup made (8) | <b>42-31</b> | <b>11</b> |  |
| 04:37     | 5 COTTLE S assist (3)  |              |           |  |
| 04:25     |  |              |           | 33 JONES E 2pt FG outside the paint, jump shot missed                |
| 04:22     | 13 LUE B defensive rebound (4)   |              |           |  |
| 04:04     | 10 MILLER J 3pt FG , jump shot missed  |              |           |  |



**UTEP at Kennesaw St.**

02/20/25 KSU Convocation Center, Kennesaw  
2024-25 Men's Basketball

**Game Time:** 7:00 PM  
**Game Duration:** 2:01  
**Attendance:** 2,025

**Officials:** Owen Shortt, Ron Groover, Lucas Santos

| Game Time            | KSU  | Score        | Diff      | UTEP   |
|----------------------|--|--------------|-----------|--|
| 04:01                | 14 WOOLEY A offensive rebound (1)  |              |           |  |
| 03:49                | 5 COTTLE S 2pt FG second chance in the paint, layup missed                         |              |           |  |
| 03:46                | 25 GORDON R offensive rebound (3)  |              |           |  |
| 03:46                | 25 GORDON R 2pt FG second chance in the paint, tip-in layup made (4)               | <b>44-31</b> | <b>13</b> |  |
| 03:21                | 10 MILLER J foul shooting (1 - 5)  |              |           | 4 CAMPER JR. C foul drawn (3)  |
| 03:21                | Timeout media  |              |           |  |
| 03:21                |  |              |           | 4 CAMPER JR. C free throw 1 - 2 missed                                       |
| 03:21                |  |              |           | offensive dead ball rebound (4)  |
| 03:21                |  |              |           | 4 CAMPER JR. C free throw 2 - 2 missed                                       |
| 03:20                | 14 WOOLEY A defensive rebound (2)  |              |           |  |
| 03:08                | 10 MILLER J turnover bad pass (1)  |              |           | 5 TERRELL JR. D steal (1)  |
| 03:05                |  | <b>44-33</b> | <b>11</b> | 5 TERRELL JR. D 2pt FG fast break from turnover in the paint, dunk, made (7) |
| 02:52                | 5 COTTLE S 3pt FG , jump shot missed   |              |           |  |
| 02:49                |  |              |           | 23 FRAZIER III O defensive rebound (1)                                       |
| 02:49                |  |              |           | 23 FRAZIER III O turnover lost ball (2)                                      |
| 02:49                | 10 MILLER J substitution out   |              |           |  |
| 02:49                | 11 HEARD D substitution in   |              |           |  |
| 02:40                | 25 GORDON R 3pt FG from turnover, jump shot missed                                 |              |           |  |
| 02:39                | offensive dead ball rebound (1)  |              |           |  |
| 02:39                | 11 HEARD D foul drawn (1)  |              |           | 13 BARNES D foul loose ball (1 - 3)  |
| 02:35                | 5 COTTLE S foul drawn (1)  |              |           | 4 CAMPER JR. C foul personal (1 - 4)   |
| 02:19                | 5 COTTLE S foul drawn (2)  |              |           | 13 BARNES D foul personal (2 - 5)  |
| 02:19                |  |              |           | 13 BARNES D substitution out   |
| 02:19                |  |              |           | 11 HORTON T substitution in  |
| 02:09                | 5 COTTLE S 3pt FG from turnover second chance, jump shot missed                    |              |           |  |
| 02:06                | 25 GORDON R offensive rebound (4)  |              |           |  |
| 01:59                | 5 COTTLE S 2pt FG from turnover second chance in the paint, driving layup made (9) | <b>46-33</b> | <b>13</b> |  |
| 01:59                | 11 HEARD D assist (2)  |              |           |  |
| 01:59                | 5 COTTLE S foul drawn (3)  |              |           | 4 CAMPER JR. C foul shooting (2 - 6)   |
| 01:59                |  |              |           | 23 FRAZIER III O substitution out  |
| 01:59                |  |              |           | 34 KALU K substitution in  |
| 01:59                | 5 COTTLE S free throw 1 - 1 made (10)  | <b>47-33</b> | <b>14</b> |  |
| 01:28                |  |              |           | 11 HORTON T 3pt FG , jump shot missed  |
| 01:26                | 25 GORDON R defensive rebound (5)  |              |           |  |
| 01:14                | 5 COTTLE S 3pt FG , jump shot missed   |              |           |  |
| 01:11                |  |              |           | 33 JONES E defensive rebound (2)   |
| 00:58                |  |              |           | 4 CAMPER JR. C turnover bad pass (1)   |
| 00:58                |  |              |           | 4 CAMPER JR. C substitution out  |
| 00:58                |  |              |           | 12 BYNUM A substitution in   |
| 00:46                | 14 WOOLEY A turnover lost ball (2)   |              |           |  |
| 00:17                |  |              |           | 11 HORTON T 3pt FG from turnover, jump shot missed                           |
| 00:15                |  |              |           | offensive dead ball rebound (5)  |
| 00:15                |  |              |           | turnover shot clock (8)  |
| 00:01                | 14 WOOLEY A 2pt FG from turnover in the paint, driving layup missed                |              |           |  |
| 00:00                |  |              |           | 34 KALU K defensive rebound (2)  |
| <b>END OF PERIOD</b> |  |              |           |  |



Official Basketball Play by Play - First Half

### UTEP at Kennesaw St.

02/20/25 KSU Convocation Center, Kennesaw  
2024-25 Men's Basketball

Game Time: 7:00 PM

Game Duration: 2:01

Attendance: 2,025

Officials: Owen Shortt, Ron Groover, Lucas Santos

| Game Time      | KSU | Score | Diff | UTEP |
|----------------|-----|-------|------|------|
| KSU 47-33 UTEP |     |       |      |      |



**UTEP at Kennesaw St.**

02/20/25 KSU Convocation Center, Kennesaw  
2024-25 Men's Basketball

Game Time: 7:00 PM  
Game Duration: 2:01  
Attendance: 2,025

Officials: Owen Shortt, Ron Groover, Lucas Santos

**UTEP - 33**

| NO.           | Name              | Min     | FG    | 3P   | FT  | Rebounds |    |     | Fouls |    | TP | AS | TO | ST | Blocks |    | +/- |
|---------------|-------------------|---------|-------|------|-----|----------|----|-----|-------|----|----|----|----|----|--------|----|-----|
|               |                   |         | M-A   | M-A  | M-A | OR       | DR | TOT | PF    | FD |    |    |    |    | BS     | BA |     |
| 23            | Otis Frazier III  | F 10:41 | 0-1   | 0-1  | 0-0 | 0        | 1  | 1   | 0     | 0  | 0  | 0  | 2  | 1  | 0      | 0  | -19 |
| 34            | Kevin Kalu        | F 09:51 | 1-2   | 0-0  | 0-0 | 0        | 2  | 2   | 1     | 0  | 2  | 0  | 1  | 0  | 0      | 1  | -14 |
| 4             | Corey Camper Jr.  | G 16:38 | 4-6   | 0-0  | 0-2 | 1        | 3  | 4   | 2     | 3  | 8  | 2  | 1  | 1  | 0      | 1  | -9  |
| 5             | David Terrell Jr. | G 17:09 | 3-4   | 0-0  | 1-2 | 0        | 0  | 0   | 0     | 1  | 7  | 2  | 3  | 1  | 0      | 0  | -16 |
| 13            | Devon Barnes      | G 10:19 | 0-2   | 0-2  | 0-0 | 0        | 0  | 0   | 2     | 0  | 0  | 0  | 0  | 0  | 0      | 0  | -15 |
| 12            | Ahamad Bynum      | 10:06   | 3-4   | 2-3  | 2-3 | 0        | 0  | 0   | 0     | 1  | 10 | 0  | 0  | 0  | 0      | 0  | 5   |
| 33            | Elijah Jones      | 12:08   | 1-4   | 0-0  | 0-0 | 1        | 1  | 2   | 0     | 0  | 2  | 0  | 0  | 0  | 1      | 1  | -1  |
| 32            | Derick Hamilton   | 02:30   | 0-0   | 0-0  | 0-0 | 0        | 0  | 0   | 0     | 0  | 0  | 0  | 0  | 0  | 0      | 0  | 4   |
| 3             | Baylor Hebb       | 05:15   | 1-1   | 0-0  | 0-0 | 0        | 2  | 2   | 0     | 0  | 2  | 0  | 0  | 0  | 0      | 0  | -3  |
| 11            | Trey Horton       | 05:23   | 1-5   | 0-4  | 0-0 | 1        | 1  | 2   | 1     | 0  | 2  | 1  | 0  | 0  | 0      | 0  | -2  |
| Team          |                   |         |       |      |     | 1        | 1  | 2   |       |    | 0  |    | 1  |    |        |    |     |
| <b>Totals</b> |                   |         | 14-29 | 2-10 | 3-7 | 4        | 11 | 15  | 6     | 5  | 33 | 5  | 8  | 3  | 1      | 3  | -14 |

| Shooting By Period |       |       |
|--------------------|-------|-------|
| 1st FG%            | 14-29 | 48.3% |
| 3PT%               | 2-10  | 20.0% |
| FT%                | 3-7   | 42.9% |
| GM FG%             | 14-29 | 48.3% |
| 3PT%               | 2-10  | 20.0% |
| FT%                | 3-7   | 42.9% |

Dead Ball Rebounds: 4, 1

Technical Fouls::NONE

**Kennesaw St. - 47**

| NO.           | Name             | Min     | FG    | 3P   | FT  | Rebounds |    |     | Fouls |    | TP | AS | TO | ST | Blocks |    | +/- |
|---------------|------------------|---------|-------|------|-----|----------|----|-----|-------|----|----|----|----|----|--------|----|-----|
|               |                  |         | M-A   | M-A  | M-A | OR       | DR | TOT | PF    | FD |    |    |    |    | BS     | BA |     |
| 13            | Braedan Lue      | F 17:06 | 4-5   | 3-4  | 0-0 | 1        | 3  | 4   | 0     | 0  | 11 | 1  | 1  | 1  | 0      | 0  | 17  |
| 25            | Rongie Gordon    | F 14:45 | 2-4   | 0-2  | 0-0 | 2        | 3  | 5   | 1     | 0  | 4  | 3  | 1  | 0  | 1      | 0  | 11  |
| 5             | Simeon Cottle    | G 16:34 | 4-9   | 1-5  | 1-1 | 0        | 0  | 0   | 0     | 3  | 10 | 3  | 0  | 0  | 0      | 0  | 9   |
| 10            | Jamil Miller     | G 09:27 | 4-6   | 0-2  | 0-1 | 0        | 3  | 3   | 1     | 1  | 8  | 0  | 1  | 0  | 2      | 0  | 9   |
| 14            | Adrian Wooley    | G 18:11 | 2-5   | 2-3  | 3-3 | 1        | 1  | 2   | 1     | 1  | 9  | 5  | 2  | 1  | 0      | 1  | 16  |
| 11            | Delaney Heard    | 10:33   | 0-0   | 0-0  | 0-0 | 0        | 0  | 0   | 1     | 1  | 0  | 2  | 0  | 1  | 0      | 0  | 5   |
| 6             | Frankqon Sherman | 08:09   | 1-3   | 1-2  | 0-0 | 1        | 0  | 1   | 0     | 0  | 3  | 0  | 0  | 0  | 0      | 0  | 0   |
| 1             | Ricardo Wright   | 05:15   | 1-3   | 0-1  | 0-0 | 0        | 0  | 0   | 1     | 0  | 2  | 1  | 0  | 0  | 0      | 0  | 3   |
| Team          |                  |         |       |      |     | 0        | 1  | 1   |       |    | 0  |    | 0  |    |        |    |     |
| <b>Totals</b> |                  |         | 18-35 | 7-19 | 4-5 | 5        | 11 | 16  | 5     | 6  | 47 | 15 | 5  | 3  | 3      | 1  | 14  |

| Shooting By Period |       |       |
|--------------------|-------|-------|
| 1st FG%            | 18-35 | 51.4% |
| 3PT%               | 7-19  | 36.8% |
| FT%                | 4-5   | 80%   |
| GM FG%             | 18-35 | 51.4% |
| 3PT%               | 7-19  | 36.8% |
| FT%                | 4-5   | 80.0% |

Dead Ball Rebounds: 1, 0

Technical Fouls::NONE

|                  | UTEP                      | KSU                       |
|------------------|---------------------------|---------------------------|
| Biggest lead     | 0 (1 <sup>st</sup> 20:00) | 14 (1 <sup>st</sup> 1:59) |
| Best Scoring Run | 7(1 <sup>st</sup> 5:46)   | 9(1 <sup>st</sup> 3:46)   |
| Lead Changes     | 0                         |                           |
| Times Tied       | 0                         |                           |
| Time with Lead   | 00:00                     | 19:05                     |

| Points from   | UTEP | KSU |
|---------------|------|-----|
| Turnovers     | 7    | 13  |
| Paint         | 22   | 20  |
| Second Chance | 4    | 4   |
| Fast Breaks   | 5    | 4   |
| Bench         | 16   | 5   |

|      | Period by Period Scoring |     |     |
|------|--------------------------|-----|-----|
|      | 1st                      | 2nd | TOT |
| UTEP | 33                       | 40  | 73  |
| KSU  | 47                       | 36  | 83  |



**UTEP at Kennesaw St.**

02/20/25 KSU Convocation Center, Kennesaw  
2024-25 Men's Basketball

Officials: Owen Shortt, Ron Groover, Lucas Santos

**Period 2**

**Quarter Starters:**

|             |                |                 |             |                  |             |
|-------------|----------------|-----------------|-------------|------------------|-------------|
| <b>KSU</b>  | 5 Cottle S     | 10 Miller J     | 13 Lue B    | 14 Wooley A      | 25 Gordon R |
| <b>UTEP</b> | 4 Camper Jr. C | 5 Terrell Jr. D | 13 Barnes D | 23 Frazier III O | 34 Kalu K   |

| Game Time | KSU   | Score        | Diff      | UTEP  |
|-----------|---|--------------|-----------|---|
| 20:00     | 11 HEARD D substitution out                           |              |           |   |
| 20:00     | 10 MILLER J substitution in                           |              |           |   |
| 20:00     |   |              |           | 11 HORTON T substitution out  |
| 20:00     |   |              |           | 12 BYNUM A substitution out   |
| 20:00     |   |              |           | 33 JONES E substitution out   |
| 20:00     |   |              |           | 4 CAMPER JR. C substitution in  |
| 20:00     |   |              |           | 13 BARNES D substitution in   |
| 20:00     |   |              |           | 23 FRAZIER III O substitution in  |
| 19:38     | 25 GORDON R turnover bad pass (2)                     |              |           | 23 FRAZIER III O steal (2)  |
| 19:20     |   |              |           | 34 KALU K 2pt FG from turnover in the paint, layup blocked                            |
| 19:20     | 25 GORDON R block (2)                                 |              |           |   |
| 19:07     |   |              |           | 34 KALU K offensive rebound (3)   |
| 19:07     |   |              |           | 34 KALU K 2pt FG from turnover second chance in the paint, tip-in layup missed        |
| 19:06     |   |              |           | 34 KALU K offensive rebound (4)   |
| 19:06     |   |              |           | 34 KALU K 2pt FG from turnover second chance in the paint, tip-in layup missed        |
| 19:00     |   |              |           | 23 FRAZIER III O offensive rebound (2)  |
| 19:00     |   |              |           | 23 FRAZIER III O 2pt FG from turnover second chance in the paint, tip-in layup missed |
| 18:59     | 10 MILLER J defensive rebound (4)                     |              |           |   |
| 18:58     | 25 GORDON R 2pt FG in the paint, layup made (6)       | <b>49-33</b> | <b>16</b> |   |
| 18:58     | 5 COTTLE S assist (4)                                 |              |           |   |
| 18:46     |   | <b>49-35</b> | <b>14</b> | 13 BARNES D 2pt FG in the paint, layup made (2)                                       |
| 18:46     | 25 GORDON R foul shooting (2 - 1)                     |              |           | 13 BARNES D foul drawn (1)  |
| 18:46     | 5 COTTLE S substitution out                           |              |           |   |
| 18:46     | 1 WRIGHT R substitution in                            |              |           |   |
| 18:46     |   |              |           | 13 BARNES D free throw 1 - 1 missed   |
| 18:45     | 10 MILLER J defensive rebound (5)                     |              |           |   |
| 18:20     | 14 WOOLEY A foul drawn (2)                            |              |           | 4 CAMPER JR. C foul shooting (3 - 1)  |
| 18:20     | 14 WOOLEY A free throw 1 - 2 made (10)                | <b>50-35</b> | <b>15</b> |   |
| 18:20     | 1 WRIGHT R substitution out                           |              |           |   |
| 18:20     | 5 COTTLE S substitution in                            |              |           |   |
| 18:20     | 14 WOOLEY A free throw 2 - 2 made (11)                | <b>51-35</b> | <b>16</b> |   |
| 18:02     |   | <b>51-37</b> | <b>14</b> | 34 KALU K 2pt FG in the paint, layup made (4)   |
| 18:02     |   |              |           | 13 BARNES D assist (1)  |
| 17:32     | 5 COTTLE S foul drawn (4)                             |              |           | 13 BARNES D foul shooting (3 - 2)   |
| 17:32     | 5 COTTLE S free throw 1 - 2 made (11)                 | <b>52-37</b> | <b>15</b> |   |
| 17:32     | 5 COTTLE S free throw 2 - 2 made (12)                 | <b>53-37</b> | <b>16</b> |   |
| 17:02     |   |              |           | 13 BARNES D 3pt FG , jump shot missed   |
| 16:59     | 25 GORDON R defensive rebound (6)                     |              |           |   |
| 16:50     | 13 LUE B 3pt FG , jump shot missed                    |              |           |   |
| 16:47     | 14 WOOLEY A offensive rebound (3)                     |              |           |   |
| 16:44     | 14 WOOLEY A 3pt FG second chance, jump shot made (14) | <b>56-37</b> | <b>19</b> |   |



**UTEP at Kennesaw St.**

02/20/25 KSU Convocation Center, Kennesaw  
2024-25 Men's Basketball

**Game Time:** 7:00 PM  
**Game Duration:** 2:01  
**Attendance:** 2,025

**Officials:** Owen Shortt, Ron Groover, Lucas Santos

| Game Time | KSU  | Score        | Diff      | UTEP  |
|-----------|--|--------------|-----------|---|
| 16:44     | 5 COTTLE S assist (5)                                    |              |           |   |
| 16:30     |  |              |           | 13 BARNES D substitution out                                |
| 16:30     |  |              |           | 23 FRAZIER III O substitution out                           |
| 16:30     |  |              |           | 34 KALU K substitution out                                  |
| 16:30     |  |              |           | 11 HORTON T substitution in                                 |
| 16:30     |  |              |           | 12 BYNUM A substitution in                                  |
| 16:30     |  |              |           | 33 JONES E substitution in                                  |
| 16:27     |  | <b>56-39</b> | <b>17</b> | 11 HORTON T 2pt FG outside the paint, jump shot made (4)    |
| 16:08     | 14 WOOLEY A 3pt FG , jump shot missed                    |              |           |   |
| 16:05     |  |              |           | 33 JONES E defensive rebound (3)                            |
| 15:58     |  | <b>56-41</b> | <b>15</b> | 4 CAMPER JR. C 2pt FG in the paint, driving layup made (10) |
| 15:41     | 5 COTTLE S 3pt FG , jump shot missed                     |              |           |   |
| 15:39     |  |              |           | 33 JONES E defensive rebound (4)                            |
| 15:21     |  | <b>56-43</b> | <b>13</b> | 5 TERRELL JR. D 2pt FG in the paint, driving layup made (9) |
| 15:21     | 25 GORDON R foul shooting (3 - 2)                        |              |           | 5 TERRELL JR. D foul drawn (2)                              |
| 15:21     | Timeout media  |              |           |   |
| 15:21     | 25 GORDON R substitution out                             |              |           |   |
| 15:21     | 6 SHERMAN F substitution in                              |              |           |   |
| 15:21     |  | <b>56-44</b> | <b>12</b> | 5 TERRELL JR. D free throw 1 - 1 made (10)                  |
| 14:58     | 6 SHERMAN F foul drawn (1)                               |              |           | 11 HORTON T foul shooting (2 - 3)                           |
| 14:58     | 6 SHERMAN F free throw 1 - 2 made (4)                    | <b>57-44</b> | <b>13</b> |   |
| 14:58     | 6 SHERMAN F free throw 2 - 2 made (5)                    | <b>58-44</b> | <b>14</b> |   |
| 14:28     |  |              |           | 5 TERRELL JR. D 2pt FG in the paint, layup blocked          |
| 14:28     | 13 LUE B block (1)                                       |              |           |   |
| 14:24     |  |              |           | 11 HORTON T offensive rebound (3)                           |
| 14:27     |  |              |           | turnover shot clock (9)                                     |
| 14:09     | 13 LUE B 2pt FG from turnover in the paint, layup missed |              |           |   |
| 14:05     |  |              |           | 12 BYNUM A defensive rebound (1)                            |
| 14:02     | 5 COTTLE S foul shooting (1 - 3)                         |              |           | 12 BYNUM A foul drawn (2)                                   |
| 14:02     |  | <b>58-45</b> | <b>13</b> | 12 BYNUM A free throw 1 - 2 made (11)                       |
| 14:02     |  | <b>58-46</b> | <b>12</b> | 12 BYNUM A free throw 2 - 2 made (12)                       |
| 13:48     | 14 WOOLEY A 2pt FG in the paint, driving layup made (16) | <b>60-46</b> | <b>14</b> |   |
| 13:40     |  | <b>60-49</b> | <b>11</b> | 11 HORTON T 3pt FG , jump shot made (7)                     |
| 13:40     |  |              |           | 5 TERRELL JR. D assist (3)                                  |
| 13:16     | 13 LUE B 2pt FG in the paint, dunk, made (13)            | <b>62-49</b> | <b>13</b> |   |
| 12:56     | 13 LUE B substitution out                                |              |           |   |
| 12:56     | 25 GORDON R substitution in                              |              |           |   |
| 12:56     |  |              |           | 33 JONES E substitution out                                 |
| 12:56     |  |              |           | 23 FRAZIER III O substitution in                            |
| 12:49     |  | <b>62-51</b> | <b>11</b> | 12 BYNUM A 2pt FG in the paint, jump shot made (14)         |
| 12:49     | 6 SHERMAN F foul shooting (1 - 4)                        |              |           | 12 BYNUM A foul drawn (3)                                   |
| 12:49     |  | <b>62-52</b> | <b>10</b> | 12 BYNUM A free throw 1 - 1 made (15)                       |
| 12:49     |  |              |           | 4 CAMPER JR. C substitution out                             |
| 12:49     |  |              |           | 1 THOMAS K substitution in                                  |
| 12:41     | 14 WOOLEY A foul drawn (3)                               |              |           | 5 TERRELL JR. D foul personal (1 - 4)                       |
| 12:26     | 5 COTTLE S foul drawn (5)                                |              |           | 1 THOMAS K foul personal (1 - 5)                            |
| 12:11     | 10 MILLER J 2pt FG in the paint, driving layup made (10) | <b>64-52</b> | <b>12</b> |   |
| 12:11     | 14 WOOLEY A assist (6)                                   |              |           |   |
| 11:58     |  |              |           | 5 TERRELL JR. D 3pt FG , jump shot missed                   |



**UTEP at Kennesaw St.**

02/20/25 KSU Convocation Center, Kennesaw  
2024-25 Men's Basketball

**Game Time:** 7:00 PM  
**Game Duration:** 2:01  
**Attendance:** 2,025

**Officials:** Owen Shortt, Ron Groover, Lucas Santos

| Game Time | KSU   | Score        | Diff      | UTEP  |
|-----------|---|--------------|-----------|---|
| 11:55     | 10 MILLER J defensive rebound (6)                     |              |           |   |
| 11:38     | 25 GORDON R turnover bad pass (3)                     |              |           | 23 FRAZIER III O steal (3)  |
| 11:33     |   | <b>64-54</b> | <b>10</b> | 5 TERRELL JR. D 2pt FG fast break from turnover in the paint, driving layup made (12) |
| 11:33     |   |              |           | 23 FRAZIER III O assist (1)   |
| 11:20     | 25 GORDON R turnover lost ball (4)                    |              |           | 5 TERRELL JR. D steal (2)   |
| 11:17     |   | <b>64-56</b> | <b>8</b>  | 5 TERRELL JR. D 2pt FG fast break from turnover in the paint, dunk, made (14)         |
| 11:16     | Timeout 30 Sec  |              |           |   |
| 11:16     | Timeout media   |              |           |   |
| 11:16     | 25 GORDON R substitution out                          |              |           |   |
| 11:16     | 13 LUE B substitution in                              |              |           |   |
| 11:16     |   |              |           | 11 HORTON T substitution out  |
| 11:16     |   |              |           | 12 BYNUM A substitution out   |
| 11:16     |   |              |           | 13 BARNES D substitution in   |
| 11:16     |   |              |           | 34 KALU K substitution in   |
| 10:57     | 14 WOOLEY A 3pt FG , jump shot made (19)              | <b>67-56</b> | <b>11</b> |   |
| 10:57     | 5 COTTLE S assist (6)                                 |              |           |   |
| 10:39     |   | <b>67-59</b> | <b>8</b>  | 23 FRAZIER III O 3pt FG , jump shot made (3)  |
| 10:39     |   |              |           | 5 TERRELL JR. D assist (4)  |
| 10:14     | 13 LUE B 3pt FG , jump shot missed                    |              |           |   |
| 10:12     |   |              |           | 5 TERRELL JR. D defensive rebound (1)   |
| 10:00     | 10 MILLER J foul shooting (2 - 5)                     |              |           | 5 TERRELL JR. D foul drawn (3)  |
| 10:00     | Timeout media   |              |           |   |
| 10:00     | 10 MILLER J substitution out                          |              |           |   |
| 10:00     | 11 HEARD D substitution in                            |              |           |   |
| 10:00     |   | <b>67-60</b> | <b>7</b>  | 5 TERRELL JR. D free throw 1 - 2 made (15)  |
| 10:00     |   |              |           | 5 TERRELL JR. D free throw 2 - 2 missed   |
| 10:00     | 11 HEARD D defensive rebound (1)                      |              |           |   |
| 09:45     | 13 LUE B 3pt FG , jump shot made (16)                 | <b>70-60</b> | <b>10</b> |   |
| 09:45     | 14 WOOLEY A assist (7)                                |              |           |   |
| 09:11     |   |              |           | 13 BARNES D 2pt FG outside the paint, turnaround jump shot missed                     |
| 09:09     | 14 WOOLEY A defensive rebound (4)                     |              |           |   |
| 08:48     | 6 SHERMAN F foul drawn (2)                            |              |           | 34 KALU K foul shooting (2 - 6)   |
| 08:48     | 6 SHERMAN F free throw 1 - 2 made (6)                 | <b>71-60</b> | <b>11</b> |   |
| 08:48     |   |              |           | 1 THOMAS K substitution out   |
| 08:48     |   |              |           | 4 CAMPER JR. C substitution in  |
| 08:47     | 6 SHERMAN F free throw 2 - 2 missed                   |              |           |   |
| 08:46     | 11 HEARD D offensive rebound (2)                      |              |           |   |
| 08:46     | jump ball situation                                   |              |           |   |
| 08:46     | 11 HEARD D turnover lost ball (1)                     |              |           | 23 FRAZIER III O steal (4)  |
| 08:30     |   |              |           | 23 FRAZIER III O 2pt FG from turnover in the paint, layup blocked                     |
| 08:30     | 13 LUE B block (2)                                    |              |           |   |
| 08:29     | defensive rebound (25)                                |              |           |   |
| 08:18     | 14 WOOLEY A 2pt FG in the paint, driving layup missed |              |           |   |
| 08:16     |   |              |           | 13 BARNES D defensive rebound (1)   |
| 08:14     | 5 COTTLE S foul shooting (2 - 6)                      |              |           | 5 TERRELL JR. D foul drawn (4)  |
| 08:14     |   |              |           | 5 TERRELL JR. D free throw fast break 1 - 2 missed                                    |



**UTEP at Kennesaw St.**

02/20/25 KSU Convocation Center, Kennesaw  
2024-25 Men's Basketball

**Game Time:** 7:00 PM  
**Game Duration:** 2:01  
**Attendance:** 2,025

**Officials:** Owen Shortt, Ron Groover, Lucas Santos

| Game Time | KSU  | Score        | Diff      | UTEP   |
|-----------|--|--------------|-----------|--|
| 08:14     |  |              |           | offensive dead ball rebound (6)                                |
| 08:14     |  |              |           | 13 BARNES D substitution out                                   |
| 08:14     |  |              |           | 23 FRAZIER III O substitution out                              |
| 08:14     |  |              |           | 11 HORTON T substitution in                                    |
| 08:14     |  |              |           | 12 BYNUM A substitution in                                     |
| 08:14     |  | <b>71-61</b> | <b>10</b> | 5 TERRELL JR. D free throw fast break 2 - 2 made (16)          |
| 07:56     | 14 WOOLEY A 3pt FG , jump shot missed                                |              |           |  |
| 07:52     |  |              |           | 4 CAMPER JR. C defensive rebound (5)                           |
| 07:31     |  | <b>71-64</b> | <b>7</b>  | 12 BYNUM A 3pt FG , step back jump shot made (18)              |
| 07:31     |  |              |           | 34 KALU K assist (1)   |
| 07:13     | 5 COTTLE S 2pt FG outside the paint, pull up jump shot missed        |              |           |  |
| 07:10     |  |              |           | defensive rebound (26)   |
| 07:10     | Timeout media  |              |           |  |
| 06:50     |  |              |           | 4 CAMPER JR. C 2pt FG in the paint, floating jump shot missed  |
| 06:47     |  |              |           | 5 TERRELL JR. D offensive rebound (2)                          |
| 06:43     |  |              |           | 12 BYNUM A 3pt FG second chance, jump shot missed              |
| 06:41     | 13 LUE B defensive rebound (5)                                       |              |           |  |
| 06:25     | 14 WOOLEY A turnover (3)   |              |           |  |
| 06:06     |  |              |           | 34 KALU K 2pt FG from turnover in the paint, hook shot blocked |
| 06:06     | 13 LUE B block (3)   |              |           |  |
| 06:03     |  |              |           | 34 KALU K offensive rebound (5)                                |
| 06:04     | 13 LUE B foul shooting (1 - 7)                                       |              |           | 34 KALU K foul drawn (1)                                       |
| 06:04     |  | <b>71-65</b> | <b>6</b>  | 34 KALU K free throw 1 - 2 made (5)                            |
| 06:04     |  |              |           | 34 KALU K free throw 2 - 2 missed                              |
| 06:03     | 13 LUE B defensive rebound (6)                                       |              |           |  |
| 05:52     | 13 LUE B 2pt FG in the paint, driving layup made (18)                | <b>73-65</b> | <b>8</b>  |  |
| 05:52     | 13 LUE B foul drawn (1)  |              |           | 34 KALU K foul shooting (3 - 7)                                |
| 05:52     |  |              |           | 34 KALU K substitution out                                     |
| 05:52     |  |              |           | 23 FRAZIER III O substitution in                               |
| 05:51     | 13 LUE B free throw 1 - 1 missed                                     |              |           |  |
| 05:50     |  |              |           | 5 TERRELL JR. D defensive rebound (3)                          |
| 05:35     | 6 SHERMAN F steal (1)  |              |           | 4 CAMPER JR. C turnover lost ball (2)                          |
| 05:09     | 14 WOOLEY A 2pt FG from turnover outside the paint, jump shot missed |              |           |  |
| 05:07     |  |              |           | 12 BYNUM A defensive rebound (2)                               |
| 04:59     |  |              |           | 4 CAMPER JR. C 2pt FG in the paint, layup missed               |
| 04:57     | 6 SHERMAN F defensive rebound (2)                                    |              |           |  |
| 04:43     | 6 SHERMAN F foul drawn (3)   |              |           | 5 TERRELL JR. D foul personal (2 - 8)                          |
| 04:43     | 13 LUE B substitution out  |              |           |  |
| 04:43     | 25 GORDON R substitution in  |              |           |  |
| 04:43     | 6 SHERMAN F 1&1 free throw 1 made (7)                                | <b>74-65</b> | <b>9</b>  |  |
| 04:43     | 6 SHERMAN F 1&1 free throw 2 made (8)                                | <b>75-65</b> | <b>10</b> |  |
| 04:29     |  |              |           | 12 BYNUM A 3pt FG , jump shot missed                           |
| 04:27     | 14 WOOLEY A defensive rebound (5)                                    |              |           |  |
| 04:02     | 14 WOOLEY A foul drawn (4)   |              |           | 4 CAMPER JR. C foul personal (4 - 9)                           |
| 04:02     |  |              |           | 11 HORTON T substitution out                                   |
| 04:02     |  |              |           | 33 JONES E substitution in                                     |
| 04:02     | 14 WOOLEY A 1&1 free throw 1 made (20)                               | <b>76-65</b> | <b>11</b> |  |
| 04:02     | 14 WOOLEY A 1&1 free throw 2 made (21)                               | <b>77-65</b> | <b>12</b> |  |



**UTEP at Kennesaw St.**

02/20/25 KSU Convocation Center, Kennesaw  
2024-25 Men's Basketball

**Game Time:** 7:00 PM  
**Game Duration:** 2:01  
**Attendance:** 2,025

**Officials:** Owen Shortt, Ron Groover, Lucas Santos

| Game Time | KSU   | Score        | Diff      | UTEP   |
|-----------|---|--------------|-----------|--|
| 03:52     |   | <b>77-67</b> | <b>10</b> | 33 JONES E 2pt FG in the paint, layup made (4)                     |
| 03:52     |   |              |           | 12 BYNUM A assist (1)  |
| 03:37     | 5 COTTLE S turnover lost ball (1)                 |              |           |  |
| 03:37     | Timeout media                                     |              |           |  |
| 03:28     |   |              |           | 12 BYNUM A 3pt FG from turnover, jump shot missed                  |
| 03:25     | 6 SHERMAN F defensive rebound (3)                 |              |           |  |
| 02:57     | 6 SHERMAN F 2pt FG in the paint, layup made (10)  | <b>79-67</b> | <b>12</b> |  |
| 02:46     | 5 COTTLE S foul personal (3 - 8)                  |              |           | 12 BYNUM A foul drawn (4)  |
| 02:46     |   |              |           | 33 JONES E substitution out  |
| 02:46     |   |              |           | 34 KALU K substitution in  |
| 02:46     |   | <b>79-68</b> | <b>11</b> | 12 BYNUM A 1&1 free throw 1 made (19)                              |
| 02:46     |   | <b>79-69</b> | <b>10</b> | 12 BYNUM A 1&1 free throw 2 made (20)                              |
| 02:46     |   |              |           | 12 BYNUM A substitution out  |
| 02:46     |   |              |           | 13 BARNES D substitution in  |
| 02:34     | 14 WOOLEY A turnover (4)                          |              |           |  |
| 02:06     |   |              |           | 23 FRAZIER III O 3pt FG from turnover, jump shot missed            |
| 02:01     | 6 SHERMAN F defensive rebound (4)                 |              |           |  |
| 02:00     | 6 SHERMAN F foul drawn (4)                        |              |           | 23 FRAZIER III O foul personal (1 - 10)                            |
| 02:00     | 6 SHERMAN F free throw 1 - 2 made (11)            | <b>80-69</b> | <b>11</b> |  |
| 02:00     |   |              |           | 23 FRAZIER III O substitution out                                  |
| 02:00     |   |              |           | 34 KALU K substitution out   |
| 02:00     |   |              |           | 11 HORTON T substitution in  |
| 02:00     |   |              |           | 12 BYNUM A substitution in   |
| 02:00     | 6 SHERMAN F free throw 2 - 2 made (12)            | <b>81-69</b> | <b>12</b> |  |
| 01:49     | 6 SHERMAN F steal (2)                             |              |           | 5 TERRELL JR. D turnover lost ball (4)                             |
| 01:46     | 6 SHERMAN F foul drawn (5)                        |              |           | 13 BARNES D foul shooting (4 - 11)                                 |
| 01:46     | 6 SHERMAN F free throw fast break 1 - 2 missed    |              |           |  |
| 01:46     | offensive dead ball rebound (2)                   |              |           |  |
| 01:46     | 6 SHERMAN F free throw fast break 2 - 2 made (13) | <b>82-69</b> | <b>13</b> |  |
| 01:37     |   |              |           | 4 CAMPER JR. C 3pt FG , jump shot missed                           |
| 01:35     |   |              |           | offensive dead ball rebound (7)                                    |
| 01:35     | 5 COTTLE S foul loose ball (4 - 9)                |              |           | 12 BYNUM A foul drawn (5)  |
| 01:35     |   | <b>82-70</b> | <b>12</b> | 12 BYNUM A 1&1 free throw 1 made (21)                              |
| 01:35     |   | <b>82-71</b> | <b>11</b> | 12 BYNUM A 1&1 free throw 2 made (22)                              |
| 01:10     | 5 COTTLE S turnover travel (2)                    |              |           |  |
| 00:56     |   |              |           | 12 BYNUM A 2pt FG from turnover in the paint, driving layup missed |
| 00:54     | 25 GORDON R defensive rebound (7)                 |              |           |  |
| 00:40     | 25 GORDON R foul drawn (1)                        |              |           | 11 HORTON T foul personal (3 - 12)                                 |
| 00:40     | 25 GORDON R free throw 1 - 2 missed               |              |           |  |
| 00:40     | offensive dead ball rebound (3)                   |              |           |  |
| 00:40     |   |              |           | 5 TERRELL JR. D substitution out                                   |
| 00:40     |   |              |           | 1 THOMAS K substitution in   |
| 00:40     | 25 GORDON R free throw 2 - 2 made (7)             | <b>83-71</b> | <b>12</b> |  |
| 00:34     | 5 COTTLE S foul shooting (5 - 10)                 |              |           | 12 BYNUM A foul drawn (6)  |
| 00:34     | 5 COTTLE S substitution out                       |              |           |  |
| 00:34     | 1 WRIGHT R substitution in                        |              |           |  |
| 00:34     |   | <b>83-72</b> | <b>11</b> | 12 BYNUM A free throw fast break 1 - 2 made (23)                   |
| 00:34     |   | <b>83-73</b> | <b>10</b> | 12 BYNUM A free throw fast break 2 - 2 made (24)                   |



Official Basketball Play by Play - Second Half

**UTEP at Kennesaw St.**

02/20/25 KSU Convocation Center, Kennesaw  
2024-25 Men's Basketball

**Game Time:** 7:00 PM

**Game Duration:** 2:01

**Attendance:** 2,025

**Officials:** Owen Shortt, Ron Groover, Lucas Santos

| Game Time             | KSU                      | Score | Diff | UTEP                        |
|-----------------------|--------------------------|-------|------|-----------------------------|
| 00:34                 |                          |       |      | 12 BYNUM A substitution out |
| 00:34                 |                          |       |      | 15 HOLMES A substitution in |
| 00:04                 | turnover shot clock (14) |       |      |                             |
| <b>END OF GAME</b>    |                          |       |      |                             |
| <b>KSU 83-73 UTEP</b> |                          |       |      |                             |



UTEP at Kennesaw St.

02/20/25 KSU Convocation Center, Kennesaw  
2024-25 Men's Basketball

Game Time: 7:00 PM  
Game Duration: 2:01  
Attendance: 2,025

Officials: Owen Shortt, Ron Groover, Lucas Santos

UTEP - 40

| NO.           | Name              | Min     | FG    | 3P   | FT    | Rebounds |    |     | Fouls |    | TP | AS | TO | ST | Blocks |    | +/- |
|---------------|-------------------|---------|-------|------|-------|----------|----|-----|-------|----|----|----|----|----|--------|----|-----|
|               |                   |         | M-A   | M-A  | M-A   | OR       | DR | TOT | PF    | FD |    |    |    |    | BS     | BA |     |
| 23            | Otis Frazier III  | F 12:04 | 1-4   | 1-2  | 0-0   | 1        | 0  | 1   | 1     | 0  | 3  | 1  | 0  | 3  | 0      | 1  | -6  |
| 34            | Kevin Kalu        | F 09:40 | 1-5   | 0-0  | 1-2   | 3        | 0  | 3   | 2     | 1  | 3  | 1  | 0  | 0  | 0      | 2  | -4  |
| 4             | Corey Camper Jr.  | G 15:59 | 1-4   | 0-1  | 0-0   | 0        | 1  | 1   | 2     | 0  | 2  | 0  | 1  | 0  | 0      | 5  |     |
| 5             | David Terrell Jr. | G 19:20 | 3-5   | 0-1  | 3-5   | 1        | 2  | 3   | 2     | 3  | 9  | 2  | 1  | 1  | 0      | 3  |     |
| 13            | Devon Barnes      | G 09:18 | 1-3   | 0-1  | 0-1   | 0        | 1  | 1   | 2     | 1  | 2  | 1  | 0  | 0  | 0      | -8 |     |
| 11            | Trey Horton       | 11:26   | 2-2   | 1-1  | 0-0   | 1        | 0  | 1   | 2     | 0  | 5  | 0  | 0  | 0  | 0      | 13 |     |
| 12            | Ahamad Bynum      | 12:08   | 2-6   | 1-4  | 9-9   | 0        | 2  | 2   | 0     | 5  | 14 | 1  | 0  | 0  | 0      | 13 |     |
| 33            | Elijah Jones      | 04:50   | 1-1   | 0-0  | 0-0   | 0        | 2  | 2   | 0     | 0  | 2  | 0  | 0  | 0  | 0      | 4  |     |
| 1             | KJ Thomas         | 04:41   | 0-0   | 0-0  | 0-0   | 0        | 0  | 0   | 1     | 0  | 0  | 0  | 0  | 0  | 0      | 0  |     |
| 15            | Antwonnie Holmes  | 00:34   | 0-0   | 0-0  | 0-0   | 0        | 0  | 0   | 0     | 0  | 0  | 0  | 0  | 0  | 0      | 0  |     |
| Team          |                   |         |       |      |       | 0        | 1  | 1   |       |    | 0  |    | 1  |    |        |    |     |
| <b>Totals</b> |                   |         | 12-30 | 3-10 | 13-17 | 6        | 9  | 15  | 12    | 10 | 40 | 6  | 3  | 4  | 0      | 4  | 4   |

| Shooting By Period  |       |       |
|---------------------|-------|-------|
| 2 <sup>nd</sup> FG% | 12-30 | 40.0% |
| 3PT%                | 3-10  | 30.0% |
| FT%                 | 13-17 | 76.5% |
| GM FG%              | 12-30 | 40.0% |
| 3PT%                | 3-10  | 30.0% |
| FT%                 | 13-17 | 76.5% |

Dead Ball Rebounds: 2, 0

Technical Fouls::NONE

Kennesaw St. - 36

| NO.           | Name              | Min     | FG   | 3P  | FT    | Rebounds |    |     | Fouls |    | TP | AS | TO | ST | Blocks |    | +/- |
|---------------|-------------------|---------|------|-----|-------|----------|----|-----|-------|----|----|----|----|----|--------|----|-----|
|               |                   |         | M-A  | M-A | M-A   | OR       | DR | TOT | PF    | FD |    |    |    |    | BS     | BA |     |
| 13            | Braedan Lue       | F 13:37 | 3-6  | 1-3 | 0-1   | 0        | 2  | 2   | 1     | 1  | 7  | 0  | 0  | 0  | 3      | 0  | -1  |
| 25            | Rongie Gordon     | F 11:02 | 1-1  | 0-0 | 1-2   | 0        | 2  | 2   | 2     | 1  | 3  | 0  | 3  | 0  | 1      | 0  | -4  |
| 5             | Simeon Cottle     | G 18:60 | 0-2  | 0-1 | 2-2   | 0        | 0  | 0   | 5     | 2  | 2  | 3  | 2  | 0  | 0      | -3 |     |
| 10            | Jamil Miller      | G 10:00 | 1-1  | 0-0 | 0-0   | 0        | 3  | 3   | 1     | 0  | 2  | 0  | 0  | 0  | 0      | -6 |     |
| 14            | Adrian Wooley     | G 20:00 | 3-7  | 2-4 | 4-4   | 1        | 2  | 3   | 0     | 3  | 12 | 2  | 2  | 0  | 0      | -4 |     |
| 1             | Ricardo Wright    | 01:00   | 0-0  | 0-0 | 0-0   | 0        | 0  | 0   | 0     | 0  | 0  | 0  | 0  | 0  | 0      | -1 |     |
| 6             | Frankquon Sherman | 15:21   | 1-1  | 0-0 | 8-10  | 0        | 3  | 3   | 1     | 5  | 10 | 0  | 0  | 2  | 0      | -3 |     |
| 11            | Delaney Heard     | 10:00   | 0-0  | 0-0 | 0-0   | 1        | 1  | 2   | 0     | 0  | 0  | 0  | 1  | 0  | 0      | 2  |     |
| Team          |                   |         |      |     |       | 0        | 1  | 1   |       |    | 0  |    | 1  |    |        |    |     |
| <b>Totals</b> |                   |         | 9-18 | 3-8 | 15-19 | 2        | 14 | 16  | 10    | 12 | 36 | 5  | 9  | 2  | 4      | 0  | -4  |

| Shooting By Period  |       |       |
|---------------------|-------|-------|
| 2 <sup>nd</sup> FG% | 9-18  | 50.0% |
| 3PT%                | 3-8   | 37.5% |
| FT%                 | 15-19 | 78.9% |
| GM FG%              | 9-18  | 50.0% |
| 3PT%                | 3-8   | 37.5% |
| FT%                 | 15-19 | 78.9% |

Dead Ball Rebounds: 2, 0

Technical Fouls::NONE

|                  | UTEP                      | KSU                        |
|------------------|---------------------------|----------------------------|
| Biggest lead     | 0 (1 <sup>st</sup> 20:00) | 19 (2 <sup>nd</sup> 16:44) |
| Best Scoring Run | 7(2 <sup>nd</sup> 15:21)  | 6(2 <sup>nd</sup> 4:02)    |
| Lead Changes     | 0                         |                            |
| Times Tied       | 0                         |                            |
| Time with Lead   | 00:00                     | 19:20                      |

| Points from   | UTEP | KSU |
|---------------|------|-----|
| Turnovers     | 5    | 1   |
| Paint         | 16   | 12  |
| Second Chance | 3    | 3   |
| Fast Breaks   | 7    | 1   |
| Bench         | 21   | 10  |

|      | Period by Period Scoring |     |     |
|------|--------------------------|-----|-----|
|      | 1st                      | 2nd | TOT |
| UTEP | 33                       | 40  | 73  |
| KSU  | 47                       | 36  | 83  |



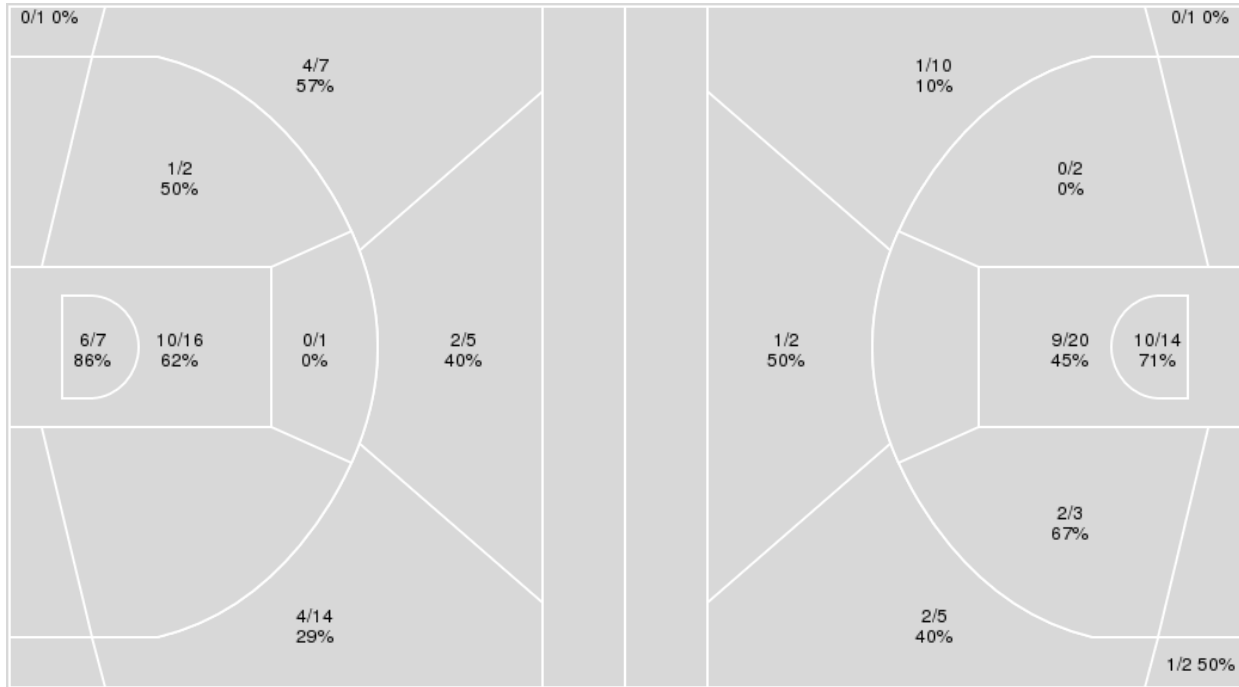
**Officials:** Owen Shortt, Ron Groover, Lucas Santos

{ Players => All; } FG Types => All; Results => All;

{ Players => 0, 1, 2, 3, 4, 5, 11, 12, 13, 15, 20, 23, 25, 32, 33, 34; } FG  
 Types => All; Results => All;

**Kennesaw St.**

**UTEP**



| <b>Kennesaw St.</b> | <b>M/A</b> | <b>%</b> |
|---------------------|------------|----------|
| Field Goals         | 27/53      | 51       |
| 2 Points            | 17/26      | 65       |
| 3 Points            | 10/27      | 37       |
| Free Throws         | 19/24      | 79       |

| <b>UTEP</b> | <b>M/A</b> | <b>%</b> |
|-------------|------------|----------|
| Field Goals | 26/59      | 44       |
| 2 Points    | 21/39      | 54       |
| 3 Points    | 5/20       | 25       |
| Free Throws | 16/24      | 67       |



**UTEP at Kennesaw St.**

02/20/25 KSU Convocation Center, Kennesaw  
2024-25 Men's Basketball

Officials: Owen Shortt, Ron Groover, Lucas Santos

**UTEP**

| No | Name              | Mins  |       | Score   |         | Points Diff |     | Points per Min |      | Assists |     | Rebounds |     | Steals |     | Turnovers |     |
|----|-------------------|-------|-------|---------|---------|-------------|-----|----------------|------|---------|-----|----------|-----|--------|-----|-----------|-----|
|    |                   | On    | Off   | On      | Off     | On          | Off | On             | Off  | On      | Off | On       | Off | On     | Off | On        | Off |
| 1  | KJ Thomas         | 04:41 | 35:19 | 10 - 10 | 63 - 73 | 0           | -10 | 2.13           | 1.78 | 2       | 9   | 1        | 29  | 2      | 5   | 0         | 11  |
| 3  | Baylor Hebb       | 05:15 | 34:45 | 9 - 12  | 64 - 71 | -3          | -7  | 1.71           | 1.84 | 1       | 10  | 6        | 24  | 0      | 7   | 2         | 9   |
| 4  | Corey Camper Jr.  | 32:37 | 07:23 | 65 - 69 | 8 - 14  | -4          | -6  | 1.99           | 1.08 | 9       | 2   | 26       | 4   | 5      | 2   | 8         | 3   |
| 5  | David Terrell Jr. | 36:29 | 03:31 | 62 - 75 | 11 - 8  | -13         | 3   | 1.70           | 3.12 | 10      | 1   | 26       | 4   | 7      | 0   | 11        | 0   |
| 11 | Trey Horton       | 16:49 | 23:11 | 35 - 24 | 38 - 59 | 11          | -21 | 2.08           | 1.64 | 5       | 6   | 17       | 13  | 2      | 5   | 5         | 6   |
| 12 | Ahamad Bynum      | 22:14 | 17:46 | 59 - 41 | 14 - 42 | 18          | -28 | 2.65           | 0.79 | 8       | 3   | 21       | 9   | 3      | 4   | 4         | 7   |
| 13 | Devon Barnes      | 19:37 | 20:23 | 24 - 47 | 49 - 36 | -23         | 13  | 1.22           | 2.40 | 3       | 8   | 11       | 19  | 4      | 3   | 7         | 4   |
| 15 | Antwonnie Holmes  | 00:34 | 39:26 | 0 - 0   | 73 - 83 | 0           | -10 | 0.00           | 1.85 | 0       | 11  | 0        | 30  | 0      | 7   | 0         | 11  |
| 23 | Otis Frazier III  | 22:45 | 17:15 | 29 - 54 | 44 - 29 | -25         | 15  | 1.27           | 2.55 | 5       | 6   | 10       | 20  | 7      | 0   | 7         | 4   |
| 32 | Derick Hamilton   | 02:30 | 37:30 | 10 - 6  | 63 - 77 | 4           | -14 | 4.00           | 1.68 | 2       | 9   | 2        | 28  | 0      | 7   | 0         | 11  |
| 33 | Elijah Jones      | 16:58 | 23:02 | 39 - 36 | 34 - 47 | 3           | -13 | 2.30           | 1.48 | 5       | 6   | 13       | 17  | 2      | 5   | 5         | 6   |
| 34 | Kevin Kalu        | 19:31 | 20:29 | 23 - 41 | 50 - 42 | -18         | 8   | 1.18           | 2.44 | 5       | 6   | 17       | 13  | 3      | 4   | 6         | 5   |

**Kennesaw St.**

| No | Name              | Mins  |       | Score   |         | Points Diff |     | Points per Min |      | Assists |     | Rebounds |     | Steals |     | Turnovers |     |
|----|-------------------|-------|-------|---------|---------|-------------|-----|----------------|------|---------|-----|----------|-----|--------|-----|-----------|-----|
|    |                   | On    | Off   | On      | Off     | On          | Off | On             | Off  | On      | Off | On       | Off | On     | Off | On        | Off |
| 1  | Ricardo Wright    | 06:15 | 33:45 | 13 - 11 | 70 - 62 | 2           | 8   | 2.08           | 2.07 | 4       | 16  | 5        | 27  | 1      | 4   | 1         | 13  |
| 5  | Simeon Cottle     | 35:34 | 04:26 | 74 - 68 | 9 - 5   | 6           | 4   | 2.08           | 2.03 | 17      | 3   | 28       | 4   | 4      | 1   | 13        | 1   |
| 6  | Frankquon Sherman | 23:30 | 16:30 | 47 - 50 | 36 - 23 | -3          | 13  | 2.00           | 2.18 | 10      | 10  | 17       | 15  | 3      | 2   | 8         | 6   |
| 10 | Jamil Miller      | 19:27 | 20:33 | 45 - 42 | 38 - 31 | 3           | 7   | 2.31           | 1.85 | 12      | 8   | 14       | 18  | 2      | 3   | 5         | 9   |
| 11 | Delaney Heard     | 20:33 | 19:27 | 38 - 31 | 45 - 42 | 7           | 3   | 1.85           | 2.31 | 8       | 12  | 18       | 14  | 3      | 2   | 9         | 5   |
| 13 | Braedan Lue       | 30:43 | 09:17 | 63 - 47 | 20 - 26 | 16          | -6  | 2.05           | 2.15 | 16      | 4   | 26       | 6   | 4      | 1   | 8         | 6   |
| 14 | Adrian Wooley     | 38:11 | 01:49 | 79 - 67 | 4 - 6   | 12          | -2  | 2.07           | 2.20 | 19      | 1   | 31       | 1   | 5      | 0   | 14        | 0   |
| 25 | Rongie Gordon     | 25:47 | 14:13 | 56 - 49 | 27 - 24 | 7           | 3   | 2.17           | 1.90 | 14      | 6   | 21       | 11  | 3      | 2   | 12        | 2   |

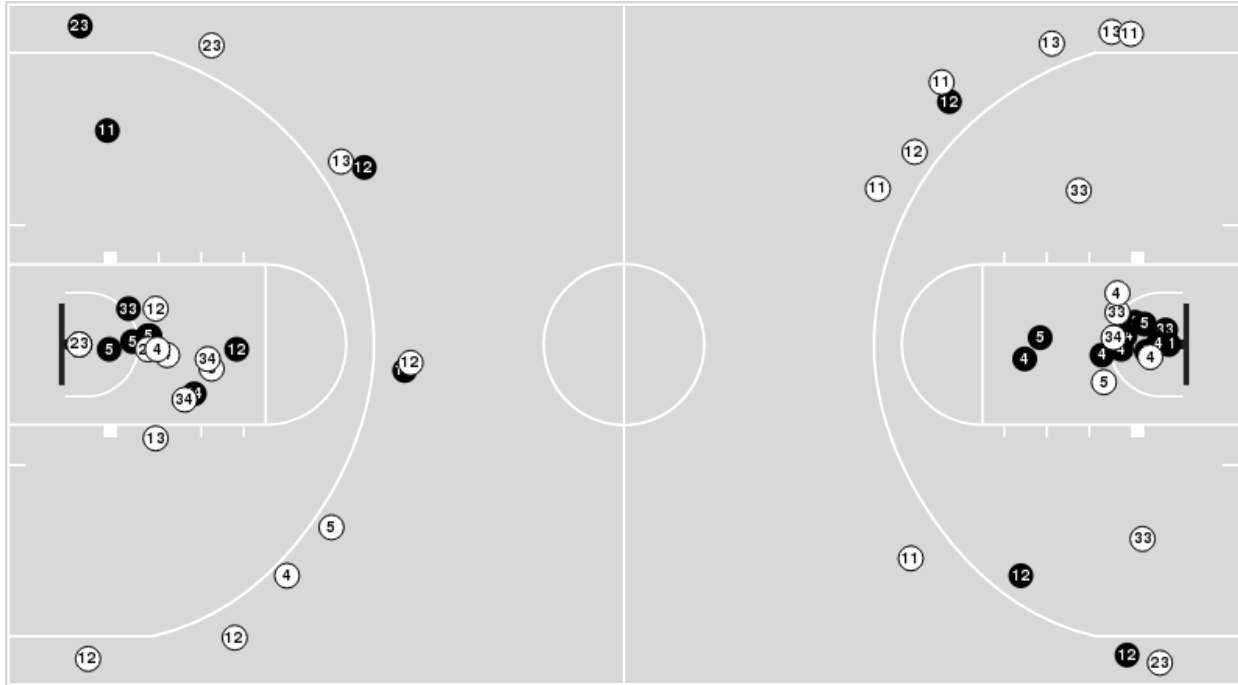


**Officials:** Owen Shortt, Ron Groover, Lucas Santos

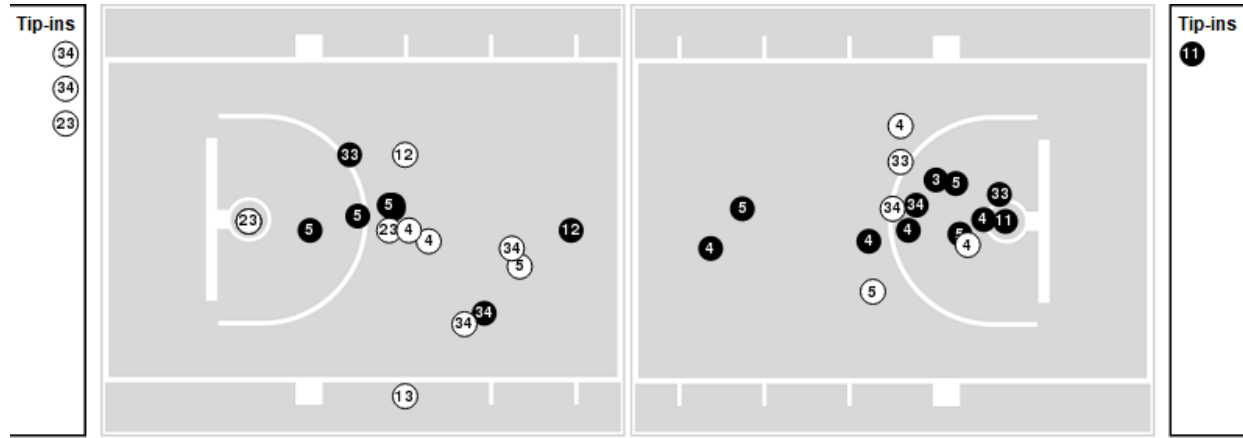
Players => 0, 1, 2, 3, 4, 5, 11, 12, 13, 15, 20, 23, 25, 32, 33, 34 FG Types=>All Results=>All

**UTEP**

**All Field Goals**



**Blow Up Chart**



**N** Made    **O** Missed    **N** - Player Number

| UTEP        | M/A   | %  |
|-------------|-------|----|
| Field Goals | 26/59 | 44 |
| 2 Points    | 21/39 | 54 |
| 3 Points    | 5/20  | 25 |
| Free Throws | 16/24 | 67 |

| UTEP                 | M/A          | %  |
|----------------------|--------------|----|
| Points in the Paint  | 38 (19 / 34) | 56 |
| Fast Break Points    | 12 (8/10)    | 80 |
| Second Chance Points | 7 (5/12)     | 42 |
| Effective FG%        | 48           |    |

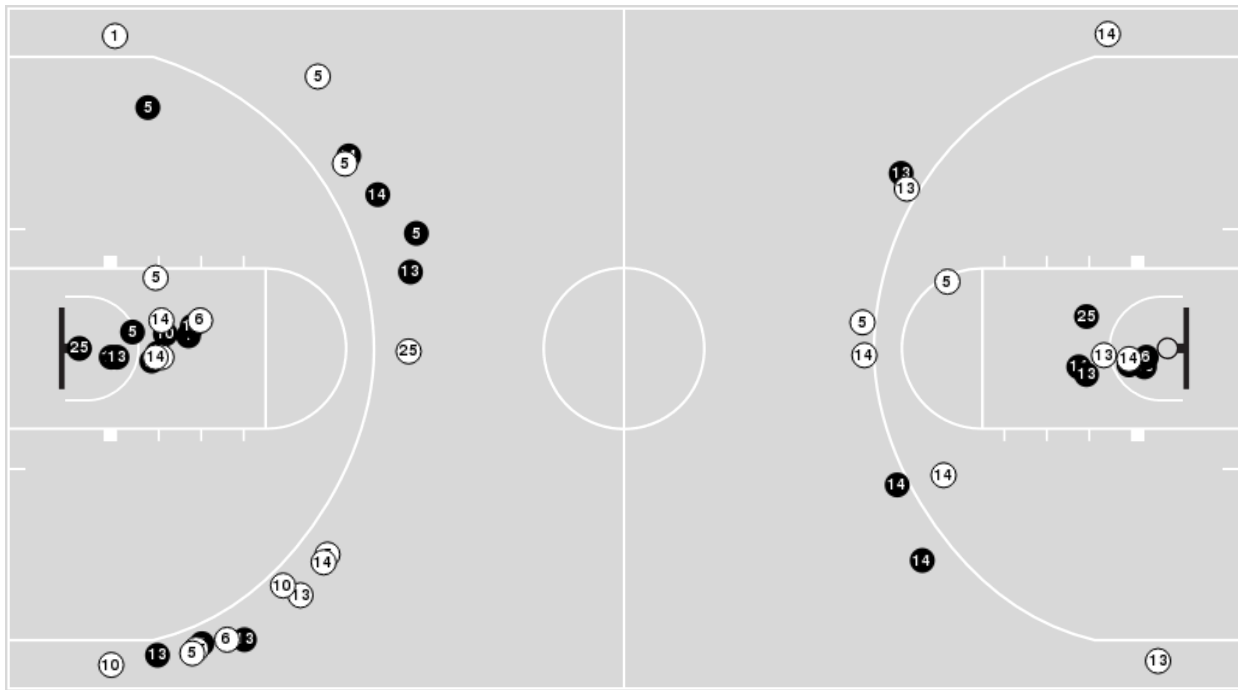


**Officials:** Owen Shortt, Ron Groover, Lucas Santos

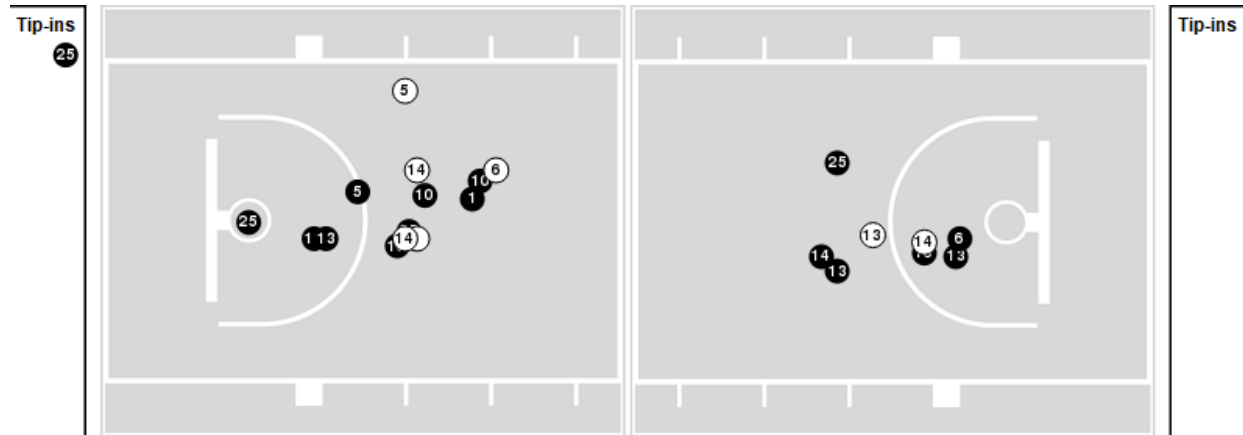
Players => AllFG Types=>AllResults=>All

**Kennesaw St.**

**All Field Goals**



**Blow Up Chart**



● Made    ○ Missed    N - Player Number

| Kennesaw St. | M/A   | %  |
|--------------|-------|----|
| Field Goals  | 27/53 | 51 |
| 2 Points     | 17/26 | 65 |
| 3 Points     | 10/27 | 37 |
| Free Throws  | 19/24 | 79 |

| Kennesaw St.         | M/A          | %  |
|----------------------|--------------|----|
| Points in the Paint  | 32 (16 / 23) | 70 |
| Fast Break Points    | 5 (3/4)      | 75 |
| Second Chance Points | 7 (3/6)      | 50 |
| Effective FG%        | 60           |    |



**UTEP at Kennesaw St.**

02/20/25 KSU Convocation Center, Kennesaw  
2024-25 Men's Basketball

**Game Time:** 7:00 PM  
**Game Duration:** 2:01  
**Attendance:** 2,025

**Officials:** Owen Shortt, Ron Groover, Lucas Santos

**UTEP**

| Lineup   | Quarter On | Time On | Quarter Off | Time Off | Time on Court | Score | Score Diff | Reb | Stl | Tov | Ass | PPP    |
|--|------------|---------|-------------|----------|---------------|-------|------------|-----|-----|-----|-----|--------|
| 4- Camper Jr. C/ 5- Terrell Jr. D/ 13- Barnes D/ 23- Frazier III O/ 34- Kalu K/  | 1          | 20:00   | 1           | 16:31    | 03:29         | 4-12  | -8         | 0   | 1   | 2   | 1   | 0.5714 |
| 4- Camper Jr. C/ 5- Terrell Jr. D/ 12- Bynum A/ 23- Frazier III O/ 33- Jones E/  | 1          | 16:31   | 1           | 14:43    | 01:48         | 4-5   | -1         | 0   | 1   | 0   | 0   | 1.6393 |
| 4- Camper Jr. C/ 5- Terrell Jr. D/ 12- Bynum A/ 32- Hamilton D/ 33- Jones E/     | 1          | 14:43   | 1           | 12:13    | 02:30         | 10-6  | 4          | 2   | 0   | 0   | 2   | 1.8382 |
| 3- Hebb B/ 5- Terrell Jr. D/ 13- Barnes D/ 23- Frazier III O/ 34- Kalu K/        | 1          | 12:13   | 1           | 09:49    | 02:24         | 0-5   | -5         | 2   | 0   | 2   | 0   | 0.0000 |
| 3- Hebb B/ 4- Camper Jr. C/ 12- Bynum A/ 13- Barnes D/ 33- Jones E/              | 1          | 09:49   | 1           | 08:03    | 01:46         | 6-5   | 1          | 3   | 0   | 0   | 0   | 1.8072 |
| 3- Hebb B/ 4- Camper Jr. C/ 11- Horton T/ 12- Bynum A/ 33- Jones E/              | 1          | 08:03   | 1           | 06:58    | 01:05         | 3-2   | 1          | 1   | 0   | 0   | 1   | 1.5000 |
| 4- Camper Jr. C/ 5- Terrell Jr. D/ 11- Horton T/ 12- Bynum A/ 34- Kalu K/        | 1          | 06:58   | 1           | 04:59    | 01:59         | 4-4   | 0          | 4   | 0   | 0   | 1   | 1.3333 |
| 4- Camper Jr. C/ 5- Terrell Jr. D/ 13- Barnes D/ 23- Frazier III O/ 33- Jones E/ | 1          | 04:59   | 1           | 02:19    | 02:40         | 2-5   | -3         | 1   | 1   | 2   | 0   | 0.4098 |
| 4- Camper Jr. C/ 5- Terrell Jr. D/ 11- Horton T/ 23- Frazier III O/ 33- Jones E/ | 1          | 02:19   | 1           | 01:59    | 00:20         | 0-2   | -2         | 0   | 0   | 0   | 0   | 0.0000 |
| 4- Camper Jr. C/ 5- Terrell Jr. D/ 11- Horton T/ 33- Jones E/ 34- Kalu K/        | 1          | 01:59   | 1           | 00:58    | 01:00         | 0-1   | -1         | 1   | 0   | 1   | 0   | 0.0000 |
| 5- Terrell Jr. D/ 11- Horton T/ 12- Bynum A/ 33- Jones E/ 34- Kalu K/            | 1          | 00:58   | 2           | 20:00    | 00:58         | 0-0   | 0          | 1   | 0   | 1   | 0   | 0.0000 |
| 4- Camper Jr. C/ 5- Terrell Jr. D/ 13- Barnes D/ 23- Frazier III O/ 34- Kalu K/  | 2          | 20:00   | 2           | 16:30    | 03:30         | 4-9   | -5         | 3   | 1   | 0   | 1   | 0.9009 |
| 4- Camper Jr. C/ 5- Terrell Jr. D/ 11- Horton T/ 12- Bynum A/ 33- Jones E/       | 2          | 16:30   | 2           | 12:56    | 03:34         | 12-6  | 6          | 4   | 0   | 1   | 1   | 1.8987 |
| 4- Camper Jr. C/ 5- Terrell Jr. D/ 11- Horton T/ 12- Bynum A/ 23- Frazier III O/ | 2          | 12:56   | 2           | 12:49    | 00:07         | 3-0   | 3          | 0   | 0   | 0   | 0   | 2.0833 |
| 1- Thomas K/ 5- Terrell Jr. D/ 11- Horton T/ 12- Bynum A/ 23- Frazier III O/     | 2          | 12:49   | 2           | 11:16    | 01:33         | 4-2   | 2          | 0   | 2   | 0   | 1   | 1.3333 |
| 1- Thomas K/ 5- Terrell Jr. D/ 13- Barnes D/ 23- Frazier III O/ 34- Kalu K/      | 2          | 11:16   | 2           | 08:48    | 02:28         | 4-7   | -3         | 1   | 0   | 0   | 1   | 1.3889 |
| 4- Camper Jr. C/ 5- Terrell Jr. D/ 13- Barnes D/ 23- Frazier III O/ 34- Kalu K/  | 2          | 08:48   | 2           | 08:14    | 00:34         | 0-0   | 0          | 1   | 1   | 0   | 0   | 0.0000 |
| 4- Camper Jr. C/ 5- Terrell Jr. D/ 11- Horton T/ 12- Bynum A/ 34- Kalu K/        | 2          | 08:14   | 2           | 05:52    | 02:22         | 5-2   | 3          | 4   | 0   | 0   | 1   | 1.5060 |
| 4- Camper Jr. C/ 5- Terrell Jr. D/ 11- Horton T/ 12- Bynum A/ 23- Frazier III O/ | 2          | 05:52   | 2           | 04:02    | 01:50         | 0-2   | -2         | 2   | 0   | 1   | 0   | 0.0000 |
| 4- Camper Jr. C/ 5- Terrell Jr. D/ 12- Bynum A/ 23- Frazier III O/ 33- Jones E/  | 2          | 04:02   | 2           | 02:46    | 01:16         | 2-4   | -2         | 0   | 0   | 0   | 1   | 1.0000 |
| 4- Camper Jr. C/ 5- Terrell Jr. D/ 12- Bynum A/ 23- Frazier III O/ 34- Kalu K/   | 2          | 02:46   | 2           | 02:46    | 00:00         | 2-0   | 2          | 0   | 0   | 0   | 0   | 2.2727 |
| 4- Camper Jr. C/ 5- Terrell Jr. D/ 13- Barnes D/ 23- Frazier III O/ 34- Kalu K/  | 2          | 02:46   | 2           | 02:00    | 00:46         | 0-1   | -1         | 0   | 0   | 0   | 0   | 0.0000 |
| 4- Camper Jr. C/ 5- Terrell Jr. D/ 11- Horton T/ 12- Bynum A/ 13- Barnes D/      | 2          | 02:00   | 2           | 00:40    | 01:19         | 2-2   | 0          | 0   | 0   | 1   | 0   | 0.5155 |
| 1- Thomas K/ 4- Camper Jr. C/ 11- Horton T/ 12- Bynum A/ 13- Barnes D/           | 2          | 00:40   | 2           | 00:34    | 00:06         | 2-1   | 1          | 0   | 0   | 0   | 0   | 2.2727 |
| 1- Thomas K/ 4- Camper Jr. C/ 11- Horton T/ 13- Barnes D/ 15- Holmes A/          | 2          | 00:34   | 2           | 00:00    | 00:34         | 0-0   | 0          | 0   | 0   | 0   | 0   | 0.0000 |



**UTEP at Kennesaw St.**

02/20/25 KSU Convocation Center, Kennesaw  
2024-25 Men's Basketball

Game Time: 7:00 PM

Game Duration: 2:01

Attendance: 2,025

Officials: Owen Shortt, Ron Groover, Lucas Santos

**Kennesaw St.**

| Lineup   | Quarter On | Time On | Quarter Off | Time Off | Time on Court | Score | Score Diff | Reb | Stl | Tov | Ass | PPP    |
|--|------------|---------|-------------|----------|---------------|-------|------------|-----|-----|-----|-----|--------|
| 5- Cottle S/ 10- Miller J/ 13- Lue B/ 14- Wooley A/ 25- Gordon R/    | 1          | 20:00   | 1           | 16:31    | 03:29         | 12-4  | 8          | 3   | 1   | 1   | 5   | 2.0000 |
| 5- Cottle S/ 11- Heard D/ 13- Lue B/ 14- Wooley A/ 25- Gordon R/     | 1          | 16:31   | 1           | 14:31    | 02:00         | 5-5   | 0          | 1   | 0   | 2   | 1   | 1.2500 |
| 5- Cottle S/ 6- Sherman F/ 11- Heard D/ 14- Wooley A/ 25- Gordon R/  | 1          | 14:31   | 1           | 12:13    | 02:18         | 6-9   | -3         | 1   | 0   | 0   | 2   | 1.5000 |
| 1- Wright R/ 6- Sherman F/ 11- Heard D/ 13- Lue B/ 14- Wooley A/     | 1          | 12:13   | 1           | 08:47    | 03:26         | 8-3   | 5          | 3   | 1   | 0   | 3   | 1.3333 |
| 1- Wright R/ 5- Cottle S/ 6- Sherman F/ 10- Miller J/ 13- Lue B/     | 1          | 08:47   | 1           | 06:58    | 01:49         | 4-6   | -2         | 1   | 0   | 0   | 1   | 1.0000 |
| 5- Cottle S/ 10- Miller J/ 13- Lue B/ 14- Wooley A/ 25- Gordon R/    | 1          | 06:58   | 1           | 06:02    | 00:56         | 0-2   | -2         | 0   | 0   | 0   | 0   | 0.0000 |
| 5- Cottle S/ 6- Sherman F/ 10- Miller J/ 14- Wooley A/ 25- Gordon R/ | 1          | 06:02   | 1           | 05:26    | 00:36         | 2-2   | 0          | 0   | 0   | 0   | 1   | 2.0000 |
| 5- Cottle S/ 10- Miller J/ 13- Lue B/ 14- Wooley A/ 25- Gordon R/    | 1          | 05:26   | 1           | 02:49    | 02:37         | 7-2   | 5          | 5   | 1   | 1   | 1   | 1.2153 |
| 5- Cottle S/ 11- Heard D/ 13- Lue B/ 14- Wooley A/ 25- Gordon R/     | 1          | 02:49   | 2           | 20:00    | 02:49         | 3-0   | 3          | 2   | 0   | 1   | 1   | 0.5515 |
| 5- Cottle S/ 10- Miller J/ 13- Lue B/ 14- Wooley A/ 25- Gordon R/    | 2          | 20:00   | 2           | 18:46    | 01:14         | 2-2   | 0          | 1   | 0   | 1   | 1   | 1.0000 |
| 1- Wright R/ 10- Miller J/ 13- Lue B/ 14- Wooley A/ 25- Gordon R/    | 2          | 18:46   | 2           | 18:20    | 00:26         | 1-0   | 1          | 1   | 0   | 0   | 0   | 2.2727 |
| 5- Cottle S/ 10- Miller J/ 13- Lue B/ 14- Wooley A/ 25- Gordon R/    | 2          | 18:20   | 2           | 15:21    | 02:59         | 6-8   | -2         | 2   | 0   | 0   | 1   | 1.3889 |
| 5- Cottle S/ 6- Sherman F/ 10- Miller J/ 13- Lue B/ 14- Wooley A/    | 2          | 15:21   | 2           | 12:56    | 02:25         | 6-6   | 0          | 0   | 0   | 0   | 0   | 1.5464 |
| 5- Cottle S/ 6- Sherman F/ 10- Miller J/ 14- Wooley A/ 25- Gordon R/ | 2          | 12:56   | 2           | 11:16    | 01:40         | 2-7   | -5         | 1   | 0   | 2   | 1   | 0.6667 |
| 5- Cottle S/ 6- Sherman F/ 10- Miller J/ 13- Lue B/ 14- Wooley A/    | 2          | 11:16   | 2           | 10:00    | 01:16         | 3-3   | 0          | 0   | 0   | 0   | 1   | 1.5000 |
| 5- Cottle S/ 6- Sherman F/ 11- Heard D/ 13- Lue B/ 14- Wooley A/     | 2          | 10:00   | 2           | 04:43    | 05:17         | 6-6   | 0          | 7   | 1   | 2   | 1   | 0.7212 |
| 5- Cottle S/ 6- Sherman F/ 11- Heard D/ 14- Wooley A/ 25- Gordon R/  | 2          | 04:43   | 2           | 00:34    | 04:08         | 10-6  | 4          | 4   | 1   | 3   | 0   | 1.1905 |
| 1- Wright R/ 6- Sherman F/ 11- Heard D/ 14- Wooley A/ 25- Gordon R/  | 2          | 00:34   | 2           | 00:00    | 00:34         | 0-2   | -2         | 0   | 0   | 1   | 0   | 0.0000 |



**UTEP at Kennesaw St.**

02/20/25 KSU Convocation Center, Kennesaw  
2024-25 Men's Basketball

Officials: Owen Shortt, Ron Groover, Lucas Santos

**UTEP**

| Lineup   | Time  | Score | Score Diff | Pts/Min | Reb | Stl | Tov | Ass | PPP    |
|--|-------|-------|------------|---------|-----|-----|-----|-----|--------|
| 4- Camper Jr. C/ 5- Terrell Jr. D/ 13- Barnes D/ 23- Frazier III O/ 34- Kalu K/  | 08:19 | 8-22  | -14        | 0.9619  | 4   | 3   | 2   | 2   | 0.5764 |
| 4- Camper Jr. C/ 5- Terrell Jr. D/ 11- Horton T/ 12- Bynum A/ 34- Kalu K/        | 04:21 | 9-6   | 3          | 2.0690  | 8   | 0   | 0   | 2   | 1.4241 |
| 4- Camper Jr. C/ 5- Terrell Jr. D/ 11- Horton T/ 12- Bynum A/ 33- Jones E/       | 03:34 | 12-6  | 6          | 3.3645  | 4   | 0   | 1   | 1   | 1.8987 |
| 4- Camper Jr. C/ 5- Terrell Jr. D/ 12- Bynum A/ 23- Frazier III O/ 33- Jones E/  | 03:04 | 6-9   | -3         | 1.9565  | 0   | 1   | 0   | 1   | 1.3514 |
| 4- Camper Jr. C/ 5- Terrell Jr. D/ 13- Barnes D/ 23- Frazier III O/ 33- Jones E/ | 02:40 | 2-5   | -3         | 0.7500  | 1   | 1   | 2   | 0   | 0.4098 |
| 4- Camper Jr. C/ 5- Terrell Jr. D/ 12- Bynum A/ 32- Hamilton D/ 33- Jones E/     | 02:30 | 10-6  | 4          | 4.0000  | 2   | 0   | 0   | 2   | 1.8382 |
| 1- Thomas K/ 5- Terrell Jr. D/ 13- Barnes D/ 23- Frazier III O/ 34- Kalu K/      | 02:28 | 4-7   | -3         | 1.6216  | 1   | 0   | 0   | 1   | 1.3889 |
| 3- Hebb B/ 5- Terrell Jr. D/ 13- Barnes D/ 23- Frazier III O/ 34- Kalu K/        | 02:24 | 0-5   | -5         | 0.0000  | 2   | 0   | 2   | 0   | 0.0000 |
| 4- Camper Jr. C/ 5- Terrell Jr. D/ 11- Horton T/ 12- Bynum A/ 23- Frazier III O/ | 01:57 | 3-2   | 1          | 1.5385  | 2   | 0   | 1   | 0   | 0.6757 |
| 3- Hebb B/ 4- Camper Jr. C/ 12- Bynum A/ 13- Barnes D/ 33- Jones E/              | 01:46 | 6-5   | 1          | 3.3962  | 3   | 0   | 0   | 0   | 1.8072 |
| 1- Thomas K/ 5- Terrell Jr. D/ 11- Horton T/ 12- Bynum A/ 23- Frazier III O/     | 01:33 | 4-2   | 2          | 2.5806  | 0   | 2   | 0   | 1   | 1.3333 |
| 4- Camper Jr. C/ 5- Terrell Jr. D/ 11- Horton T/ 12- Bynum A/ 13- Barnes D/      | 01:19 | 2-2   | 0          | 1.5056  | 0   | 0   | 1   | 0   | 0.5155 |
| 3- Hebb B/ 4- Camper Jr. C/ 11- Horton T/ 12- Bynum A/ 33- Jones E/              | 01:05 | 3-2   | 1          | 2.7692  | 1   | 0   | 0   | 1   | 1.5000 |
| 4- Camper Jr. C/ 5- Terrell Jr. D/ 11- Horton T/ 33- Jones E/ 34- Kalu K/        | 01:00 | 0-1   | -1         | 0.0000  | 1   | 0   | 1   | 0   | 0.0000 |
| 5- Terrell Jr. D/ 11- Horton T/ 12- Bynum A/ 33- Jones E/ 34- Kalu K/            | 00:58 | 0-0   | 0          | 0.0000  | 1   | 0   | 1   | 0   | 0.0000 |
| 1- Thomas K/ 4- Camper Jr. C/ 11- Horton T/ 13- Barnes D/ 15- Holmes A/          | 00:34 | 0-0   | 0          | 0.0000  | 0   | 0   | 0   | 0   | 0.0000 |
| 4- Camper Jr. C/ 5- Terrell Jr. D/ 11- Horton T/ 23- Frazier III O/ 33- Jones E/ | 00:20 | 0-2   | -2         | 0.0000  | 0   | 0   | 0   | 0   | 0.0000 |
| 1- Thomas K/ 4- Camper Jr. C/ 11- Horton T/ 12- Bynum A/ 13- Barnes D/           | 00:06 | 2-1   | 1          | 20.0000 | 0   | 0   | 0   | 0   | 2.2727 |
| 4- Camper Jr. C/ 5- Terrell Jr. D/ 12- Bynum A/ 23- Frazier III O/ 34- Kalu K/   | 00:00 | 2-0   | 2          | ∞       | 0   | 0   | 0   | 0   | 2.2727 |



UTEP at Kennesaw St.

02/20/25 KSU Convocation Center, Kennesaw  
2024-25 Men's Basketball

Officials: Owen Shortt, Ron Groover, Lucas Santos

Kennesaw St.

| Lineup   | Time  | Score | Score Diff | Pts/Min | Reb | Stl | Tov | Ass | PPP    |
|--|-------|-------|------------|---------|-----|-----|-----|-----|--------|
| 5- Cottle S/ 10- Miller J/ 13- Lue B/ 14- Wooley A/ 25- Gordon R/    | 11:15 | 27-18 | 9          | 2.4000  | 11  | 2   | 3   | 8   | 1.4151 |
| 5- Cottle S/ 6- Sherman F/ 11- Heard D/ 14- Wooley A/ 25- Gordon R/  | 06:26 | 16-15 | 1          | 2.4825  | 5   | 1   | 3   | 2   | 1.2903 |
| 5- Cottle S/ 6- Sherman F/ 11- Heard D/ 13- Lue B/ 14- Wooley A/     | 05:17 | 6-6   | 0          | 1.1356  | 7   | 1   | 2   | 1   | 0.7212 |
| 5- Cottle S/ 11- Heard D/ 13- Lue B/ 14- Wooley A/ 25- Gordon R/     | 04:49 | 8-5   | 3          | 1.6609  | 3   | 0   | 3   | 2   | 0.8475 |
| 5- Cottle S/ 6- Sherman F/ 10- Miller J/ 13- Lue B/ 14- Wooley A/    | 03:41 | 9-9   | 0          | 2.4434  | 0   | 0   | 0   | 1   | 1.5306 |
| 1- Wright R/ 6- Sherman F/ 11- Heard D/ 13- Lue B/ 14- Wooley A/     | 03:26 | 8-3   | 5          | 2.3301  | 3   | 1   | 0   | 3   | 1.3333 |
| 5- Cottle S/ 6- Sherman F/ 10- Miller J/ 14- Wooley A/ 25- Gordon R/ | 02:16 | 4-9   | -5         | 1.7647  | 1   | 0   | 2   | 2   | 1.0000 |
| 1- Wright R/ 5- Cottle S/ 6- Sherman F/ 10- Miller J/ 13- Lue B/     | 01:49 | 4-6   | -2         | 2.2018  | 1   | 0   | 0   | 1   | 1.0000 |
| 1- Wright R/ 6- Sherman F/ 11- Heard D/ 14- Wooley A/ 25- Gordon R/  | 00:34 | 0-2   | -2         | 0.0000  | 0   | 0   | 1   | 0   | 0.0000 |
| 1- Wright R/ 10- Miller J/ 13- Lue B/ 14- Wooley A/ 25- Gordon R/    | 00:26 | 1-0   | 1          | 2.3077  | 1   | 0   | 0   | 0   | 2.2727 |