



Officials: Kevin Mathis, Brent Dugas, Rob Foster

Western Ky. - 87

Record: 13-6 (2-3)

| NO. | Name | Min | FG | | | Rebounds | | | Fouls | | TP | AS | TO | ST | Blocks | | +/- |
|---------------|-----------------|---------|-------|------|------|----------|----|-----|-------|----|----|----|----|----|--------|----|-----|
| | | | M-A | M-A | M-A | OR | DR | TOT | PF | FD | | | | | BS | BA | |
| 5 | Babacar Faye | F 17:51 | 5-6 | 0-0 | 2-2 | 1 | 2 | 3 | 3 | 1 | 12 | 1 | 0 | 2 | 2 | 0 | -5 |
| 24 | Tyrone Marshall | F 30:49 | 3-6 | 2-2 | 0-1 | 0 | 4 | 4 | 2 | 1 | 8 | 4 | 4 | 2 | 1 | 1 | -6 |
| 2 | Don McHenry | G 32:38 | 8-15 | 1-4 | 1-2 | 0 | 3 | 3 | 5 | 3 | 18 | 5 | 2 | 1 | 0 | 1 | -8 |
| 10 | Brandon Newman | G 28:32 | 2-5 | 0-2 | 0-2 | 0 | 4 | 4 | 1 | 3 | 4 | 2 | 4 | 0 | 0 | 1 | -6 |
| 11 | Dontaie Allen | G 17:02 | 2-7 | 1-4 | 0-0 | 0 | 1 | 1 | 2 | 1 | 5 | 0 | 4 | 1 | 0 | 0 | -5 |
| 23 | Enoch Kalambay | 23:54 | 3-6 | 0-0 | 1-2 | 3 | 6 | 9 | 1 | 1 | 7 | 3 | 2 | 1 | 0 | 0 | -13 |
| 0 | Rodney Howard | 22:09 | 8-8 | 0-0 | 0-0 | 0 | 1 | 1 | 1 | 1 | 16 | 2 | 0 | 1 | 0 | 0 | -1 |
| 15 | Jack Edelen | 04:52 | 1-1 | 0-0 | 0-0 | 0 | 0 | 0 | 1 | 1 | 2 | 1 | 1 | 0 | 0 | 0 | 5 |
| 30 | Teagan Moore | 22:14 | 7-9 | 0-0 | 1-3 | 0 | 3 | 3 | 5 | 2 | 15 | 1 | 2 | 0 | 0 | 0 | 9 |
| Team | | | | | | 2 | 3 | 5 | | | 0 | | 0 | | | | |
| Totals | | | 39-63 | 4-12 | 5-12 | 6 | 27 | 33 | 21 | 14 | 87 | 19 | 19 | 8 | 3 | 3 | -6 |

| Shooting By Period | | |
|---------------------|-------|-------|
| 1 st FG% | 17-32 | 53.1% |
| 3PT% | 3-9 | 33.3% |
| FT% | 3-4 | 75% |
| 2 nd FG% | 22-31 | 71.0% |
| 3PT% | 1-3 | 33.3% |
| FT% | 2-8 | 25% |
| GM FG% | 39-63 | 61.9% |
| 3PT% | 4-12 | 33.3% |
| FT% | 5-12 | 41.7% |

Dead Ball Rebounds: 3, 0

Technical Fouls::NONE

UTEP - 93

Record: 11-8 (2-2)

| NO. | Name | Min | FG | | | Rebounds | | | Fouls | | TP | AS | TO | ST | Blocks | | +/- |
|---------------|-------------------|---------|-------|------|-------|----------|----|-----|-------|----|----|----|----|----|--------|----|-----|
| | | | M-A | M-A | M-A | OR | DR | TOT | PF | FD | | | | | BS | BA | |
| 23 | Otis Frazier III | F 28:45 | 3-8 | 0-2 | 0-0 | 4 | 5 | 9 | 2 | 0 | 6 | 6 | 1 | 4 | 0 | 0 | 8 |
| 34 | Kevin Kalu | F 17:25 | 3-6 | 0-0 | 1-1 | 2 | 3 | 5 | 0 | 2 | 7 | 0 | 0 | 0 | 1 | 0 | -8 |
| 0 | Zid Powell | G 27:45 | 4-15 | 2-6 | 7-8 | 1 | 2 | 3 | 1 | 4 | 17 | 3 | 2 | 2 | 1 | 1 | 5 |
| 2 | Tae Hardy | G 38:41 | 9-18 | 4-7 | 5-5 | 2 | 2 | 4 | 2 | 4 | 27 | 1 | 4 | 4 | 1 | 1 | 7 |
| 4 | Corey Camper Jr. | G 30:52 | 6-11 | 1-4 | 6-7 | 0 | 3 | 3 | 2 | 4 | 19 | 3 | 0 | 0 | 0 | 1 | 10 |
| 13 | Calvin Solomon | 17:02 | 1-1 | 0-0 | 0-0 | 1 | 2 | 3 | 3 | 0 | 2 | 1 | 2 | 3 | 0 | 0 | 7 |
| 5 | David Terrell Jr. | 17:40 | 1-2 | 0-0 | 4-6 | 1 | 1 | 2 | 2 | 4 | 6 | 1 | 1 | 1 | 0 | 0 | 6 |
| 33 | Elijah Jones | 05:33 | 3-3 | 0-0 | 0-1 | 1 | 2 | 3 | 1 | 1 | 6 | 0 | 1 | 0 | 0 | 0 | 7 |
| 11 | Trey Horton | 10:57 | 1-3 | 0-1 | 1-1 | 0 | 0 | 0 | 1 | 1 | 3 | 0 | 1 | 1 | 0 | 0 | -5 |
| 3 | Baylor Hebb | 05:20 | 0-0 | 0-0 | 0-0 | 0 | 1 | 1 | 0 | 1 | 0 | 0 | 1 | 0 | 0 | 0 | -7 |
| Team | | | | | | 0 | 1 | 1 | | | 0 | | 1 | | | | |
| Totals | | | 31-67 | 7-20 | 24-29 | 12 | 22 | 34 | 14 | 21 | 93 | 15 | 14 | 15 | 3 | 3 | 6 |

| Shooting By Period | | |
|---------------------|-------|-------|
| 1 st FG% | 15-34 | 44.1% |
| 3PT% | 5-12 | 41.7% |
| FT% | 7-7 | 100% |
| 2 nd FG% | 16-33 | 48.5% |
| 3PT% | 2-8 | 25.0% |
| FT% | 17-22 | 77.3% |
| GM FG% | 31-67 | 46.3% |
| 3PT% | 7-20 | 35.0% |
| FT% | 24-29 | 82.8% |

Dead Ball Rebounds: 2, 0

Technical Fouls::NONE

| | WKU | UTEP |
|------------------|---------------------------|---------------------------|
| Biggest lead | 4 (1 st 18:20) | 10 (2 nd 0:27) |
| Best Scoring Run | 8 (1 st 9:00) | 8 (2 nd 2:43) |
| Lead Changes | 9 | |
| Times Tied | 15 | |
| Time with Lead | 10:33 | 22:29 |

| Points from | WKU | UTEP |
|---------------|-----|------|
| Turnovers | 17 | 19 |
| Paint | 60 | 40 |
| Second Chance | 5 | 11 |
| Fast Breaks | 27 | 31 |
| Bench | 40 | 17 |

| | Period by Period Scoring | | |
|------|--------------------------|-----|-----|
| | 1st | 2nd | TOT |
| WKU | 40 | 47 | 87 |
| UTEP | 42 | 51 | 93 |



Western Ky. at UTEP

01/20/24 Don Haskins Center, El Paso
2023-24 Men's Basketball

Game Time: 7:00 PM
Game Duration: 1:54
Attendance: 4,151

Officials: Kevin Mathis, Brent Dugas, Rob Foster

Period 1

Quarter Starters:

| | | | | | |
|-------------|-------------|-----------|----------------|------------------|---------------|
| UTEP | 0 Powell Z | 2 Hardy T | 4 Camper Jr. C | 23 Frazier III O | 34 Kalu K |
| WKU | 2 McHenry D | 5 Faye B | 10 Newman B | 11 Allen D | 24 Marshall T |

| Game Time | UTEP | Score | Diff | WKU |
|-----------|--|-------|------|--|
| 20:00 | 34 KALU K jumpball lost | | | 5 FAYE B jumpball won |
| 19:44 | | | | 10 NEWMAN B 2pt FG outside the paint, jump shot blocked |
| 19:44 | 34 KALU K block (1) | | | |
| 19:40 | 34 KALU K defensive rebound (1) | | | |
| 19:31 | 2 HARDY T turnover bad pass (1) | | | 11 ALLEN D steal (1) |
| 19:26 | | | | 11 ALLEN D 2pt FG from turnover in the paint, driving layup missed |
| 19:25 | 34 KALU K defensive rebound (2) | | | |
| 19:25 | jump ball situation | | | |
| 19:08 | 0 POWELL Z 2pt FG outside the paint, jump shot missed | | | |
| 19:08 | 2 HARDY T offensive rebound (1) | | | |
| 19:08 | 2 HARDY T foul drawn (1) | | | 11 ALLEN D foul personal (1 - 1) |
| 18:52 | 23 FRAZIER III O 2pt FG second chance in the paint, hook shot missed | | | |
| 18:48 | 23 FRAZIER III O offensive rebound (1) | | | |
| 18:43 | 4 CAMPER JR. C 3pt FG second chance, pull up jump shot missed | | | |
| 18:39 | | | | 10 NEWMAN B defensive rebound (1) |
| 18:36 | 0 POWELL Z foul shooting (1 - 1) | | | 5 FAYE B foul drawn (1) |
| 18:36 | | 0-1 | -1 | 5 FAYE B free throw fast break 1 - 2 made (1) |
| 18:36 | 34 KALU K substitution out | | | |
| 18:36 | 13 SOLOMON C substitution in | | | |
| 18:36 | | 0-2 | -2 | 5 FAYE B free throw fast break 2 - 2 made (2) |
| 18:24 | 2 HARDY T turnover bad pass (2) | | | 24 MARSHALL T steal (1) |
| 18:20 | | 0-4 | -4 | 24 MARSHALL T 2pt FG fast break from turnover in the paint, dunk, made (2) |
| 17:58 | 23 FRAZIER III O 2pt FG in the paint, hook shot made (2) | 2-4 | -2 | |
| 17:58 | 0 POWELL Z assist (1) | | | |
| 17:42 | | | | 11 ALLEN D 3pt FG , jump shot missed |
| 17:38 | 23 FRAZIER III O defensive rebound (2) | | | |
| 17:35 | 2 HARDY T 3pt FG fast break, pull up jump shot made (3) | 5-4 | 1 | |
| 17:35 | 23 FRAZIER III O assist (1) | | | |
| 17:21 | | | | 11 ALLEN D turnover bad pass (1) |
| 17:21 | | | | 11 ALLEN D substitution out |
| 17:21 | | | | 23 KALAMBAY E substitution in |
| 17:03 | 0 POWELL Z 2pt FG from turnover in the paint, jump shot blocked | | | |
| 17:03 | | | | 5 FAYE B block (1) |
| 16:58 | | | | 24 MARSHALL T defensive rebound (1) |
| 16:53 | | | | 10 NEWMAN B 3pt FG , pull up jump shot missed |
| 16:49 | | | | 5 FAYE B offensive rebound (1) |
| 16:40 | | | | 2 MCHENRY D 2pt FG second chance outside the paint, jump shot missed |
| 16:37 | 23 FRAZIER III O defensive rebound (3) | | | |
| 16:30 | 23 FRAZIER III O 3pt FG , pull up jump shot missed | | | |



Western Ky. at UTEP

01/20/24 Don Haskins Center, El Paso
2023-24 Men's Basketball

Game Time: 7:00 PM
Game Duration: 1:54
Attendance: 4,151

Officials: Kevin Mathis, Brent Dugas, Rob Foster

| Game Time | UTEP | Score | Diff | WKU |
|-----------|---|-------------|----------|--|
| 16:26 | | | | 10 NEWMAN B defensive rebound (2) |
| 16:19 | 23 FRAZIER III O foul personal (1 - 2) | | | 10 NEWMAN B foul drawn (1) |
| 16:19 | 0 POWELL Z substitution out | | | |
| 16:19 | 5 TERRELL JR. D substitution in | | | |
| 16:13 | 5 TERRELL JR. D foul personal (1 - 3) | | | 10 NEWMAN B foul drawn (2) |
| 16:13 | 13 SOLOMON C substitution out | | | |
| 16:13 | 33 JONES E substitution in | | | |
| 16:07 | | | | 10 NEWMAN B 3pt FG , jump shot missed |
| 16:03 | 33 JONES E defensive rebound (1) | | | |
| 15:50 | 2 HARDY T 2pt FG outside the paint, step back jump shot made (5) | 7-4 | 3 | |
| 15:31 | | 7-6 | 1 | 5 FAYE B 2pt FG in the paint, hook shot made (4) |
| 15:13 | 2 HARDY T 3pt FG , pull up jump shot made (8) | 10-6 | 4 | |
| 15:06 | 5 TERRELL JR. D foul personal (2 - 4) | | | 2 MCHENRY D foul drawn (1) |
| 15:06 | Timeout media | | | |
| 15:06 | 5 TERRELL JR. D substitution out | | | |
| 15:06 | 23 FRAZIER III O substitution out | | | |
| 15:06 | 33 JONES E substitution out | | | |
| 15:06 | 0 POWELL Z substitution in | | | |
| 15:06 | 11 HORTON T substitution in | | | |
| 15:06 | 13 SOLOMON C substitution in | | | |
| 15:06 | | | | 5 FAYE B substitution out |
| 15:06 | | | | 24 MARSHALL T substitution out |
| 15:06 | | | | 0 HOWARD R substitution in |
| 15:06 | | | | 11 ALLEN D substitution in |
| 14:54 | | 10-9 | 1 | 2 MCHENRY D 3pt FG , pull up jump shot made (3) |
| 14:54 | | | | 23 KALAMBAY E assist (1) |
| 14:30 | 2 HARDY T 3pt FG , jump shot missed | | | |
| 14:27 | 2 HARDY T offensive rebound (2) | | | |
| 14:22 | 0 POWELL Z 3pt FG second chance, pull up jump shot made (3) | 13-9 | 4 | |
| 14:22 | 2 HARDY T assist (1) | | | |
| 14:04 | | | | 11 ALLEN D 2pt FG in the paint, driving layup missed |
| 13:59 | 13 SOLOMON C defensive rebound (1) | | | |
| 13:56 | 0 POWELL Z 2pt FG outside the paint, jump shot missed | | | |
| 13:50 | 13 SOLOMON C offensive rebound (2) | | | |
| 13:50 | 4 CAMPER JR. C 2pt FG second chance in the paint, layup made (2) | 15-9 | 6 | |
| 13:33 | 11 HORTON T steal (1) | | | 23 KALAMBAY E turnover lost ball (1) |
| 13:28 | 2 HARDY T 2pt FG from turnover in the paint, driving layup missed | | | |
| 13:25 | | | | 23 KALAMBAY E defensive rebound (1) |
| 13:21 | 13 SOLOMON C foul personal (1 - 5) | | | 0 HOWARD R foul drawn (1) |
| 13:21 | 13 SOLOMON C substitution out | | | |
| 13:21 | 23 FRAZIER III O substitution in | | | |
| 13:21 | | | | 2 MCHENRY D substitution out |
| 13:21 | | | | 10 NEWMAN B substitution out |
| 13:21 | | | | 15 EDELEN J substitution in |
| 13:21 | | | | 30 MOORE T substitution in |
| 13:21 | 2 HARDY T substitution out | | | |
| 13:21 | 13 SOLOMON C substitution in | | | |



Western Ky. at UTEP

01/20/24 Don Haskins Center, El Paso
2023-24 Men's Basketball

Game Time: 7:00 PM
Game Duration: 1:54
Attendance: 4,151

Officials: Kevin Mathis, Brent Dugas, Rob Foster

| Game Time | UTEP | Score | Diff | WKU |
|-----------|---|--------------|----------|---|
| 13:11 | 23 FRAZIER III O foul personal (2 - 6) | | | 11 ALLEN D foul drawn (1) |
| 13:11 | 23 FRAZIER III O substitution out | | | |
| 13:11 | 3 HEBB B substitution in | | | |
| 13:04 | | | | 23 KALAMBAY E 2pt FG in the paint, jump shot missed |
| 13:02 | | | | 23 KALAMBAY E offensive rebound (2) |
| 12:57 | | 15-11 | 4 | 23 KALAMBAY E 2pt FG second chance in the paint, driving layup made (2) |
| 12:42 | 0 POWELL Z 3pt FG , step back jump shot made (6) | 18-11 | 7 | |
| 12:42 | 4 CAMPER JR. C assist (1) | | | |
| 12:34 | | 18-13 | 5 | 15 EDELEN J 2pt FG fast break in the paint, driving layup made (2) |
| 12:14 | 0 POWELL Z 3pt FG , step back jump shot missed | | | |
| 12:10 | | | | 11 ALLEN D defensive rebound (1) |
| 12:05 | 13 SOLOMON C steal (1) | | | 11 ALLEN D turnover bad pass (2) |
| 12:02 | 13 SOLOMON C turnover out of bounds (1) | | | |
| 12:02 | 0 POWELL Z substitution out | | | |
| 12:02 | 13 SOLOMON C substitution out | | | |
| 12:02 | 2 HARDY T substitution in | | | |
| 12:02 | 34 KALU K substitution in | | | |
| 12:02 | | | | 11 ALLEN D substitution out |
| 12:02 | | | | 23 KALAMBAY E substitution out |
| 12:02 | | | | 10 NEWMAN B substitution in |
| 12:02 | | | | 24 MARSHALL T substitution in |
| 11:39 | | | | 30 MOORE T 2pt FG from turnover in the paint, layup missed |
| 11:38 | 3 HEBB B defensive rebound (1) | | | |
| 11:38 | 3 HEBB B foul drawn (1) | | | 15 EDELEN J foul personal (1 - 2) |
| 11:38 | Timeout media | | | |
| 11:38 | | | | 15 EDELEN J substitution out |
| 11:38 | | | | 2 MCHENRY D substitution in |
| 11:24 | 34 KALU K 2pt FG in the paint, dunk, missed | | | |
| 11:20 | | | | 0 HOWARD R defensive rebound (1) |
| 11:11 | | 18-15 | 3 | 30 MOORE T 2pt FG in the paint, driving layup made (2) |
| 10:36 | 11 HORTON T 2pt FG outside the paint, jump shot missed | | | |
| 10:32 | 34 KALU K offensive rebound (3) | | | |
| 10:31 | 34 KALU K 2pt FG second chance in the paint, jump shot missed | | | |
| 10:29 | | | | 10 NEWMAN B defensive rebound (3) |
| 10:24 | | 18-17 | 1 | 2 MCHENRY D 2pt FG fast break outside the paint, hook shot made (5) |
| 10:03 | 4 CAMPER JR. C 2pt FG in the paint, layup blocked | | | |
| 10:03 | | | | 24 MARSHALL T block (1) |
| 09:58 | | | | 2 MCHENRY D defensive rebound (1) |
| 09:53 | | | | 10 NEWMAN B turnover travel (1) |
| 09:53 | 3 HEBB B substitution out | | | |
| 09:53 | 11 HORTON T substitution out | | | |
| 09:53 | 34 KALU K substitution out | | | |
| 09:53 | 0 POWELL Z substitution in | | | |
| 09:53 | 5 TERRELL JR. D substitution in | | | |
| 09:53 | 13 SOLOMON C substitution in | | | |
| 09:53 | | | | 0 HOWARD R substitution out |



Western Ky. at UTEP

01/20/24 Don Haskins Center, El Paso
2023-24 Men's Basketball

Game Time: 7:00 PM
Game Duration: 1:54
Attendance: 4,151

Officials: Kevin Mathis, Brent Dugas, Rob Foster

| Game Time | UTEP | Score | Diff | WKU |
|-----------|--|--------------|-----------|---|
| 09:53 | | | | 5 FAYE B substitution in |
| 09:22 | turnover shot clock (4) | | | |
| 09:04 | | | | 24 MARSHALL T 2pt FG from turnover in the paint, layup missed |
| 09:04 | | | | offensive rebound (11) |
| 09:04 | 4 CAMPER JR. C substitution out | | | |
| 09:04 | 23 FRAZIER III O substitution in | | | |
| 09:00 | | 18-19 | -1 | 2 MCHENRY D 2pt FG from turnover second chance outside the paint, floating jump shot made (7) |
| 08:43 | 2 HARDY T 2pt FG in the paint, driving layup made (10) | 20-19 | 1 | |
| 08:43 | 0 POWELL Z assist (2) | | | |
| 08:24 | | | | 2 MCHENRY D 3pt FG , pull up jump shot missed |
| 08:21 | 5 TERRELL JR. D defensive rebound (1) | | | |
| 08:16 | 0 POWELL Z 3pt FG , jump shot missed | | | |
| 08:15 | | | | defensive rebound (12) |
| 07:56 | | 20-21 | -1 | 5 FAYE B 2pt FG in the paint, driving layup made (6) |
| 07:39 | 2 HARDY T 3pt FG , step back jump shot made (13) | 23-21 | 2 | |
| 07:39 | 23 FRAZIER III O assist (2) | | | |
| 07:29 | | 23-23 | 0 | 5 FAYE B 2pt FG in the paint, turnaround jump shot made (8) |
| 07:21 | Timeout media | | | |
| 07:21 | 13 SOLOMON C substitution out | | | |
| 07:21 | 33 JONES E substitution in | | | |
| 07:21 | | | | 30 MOORE T substitution out |
| 07:21 | | | | 23 KALAMBAY E substitution in |
| 07:06 | 33 JONES E 2pt FG in the paint, jump shot made (2) | 25-23 | 2 | |
| 06:53 | 5 TERRELL JR. D foul drawn (1) | | | 10 NEWMAN B foul offensive (1 - 3) |
| 06:53 | | | | 10 NEWMAN B turnover offensive (2) |
| 06:27 | 2 HARDY T 3pt FG from turnover, pull up jump shot missed | | | |
| 06:24 | | | | 24 MARSHALL T defensive rebound (2) |
| 06:17 | | | | 23 KALAMBAY E turnover lost ball (2) |
| 06:04 | 33 JONES E turnover bad pass (1) | | | 23 KALAMBAY E steal (1) |
| 05:52 | | | | 2 MCHENRY D 3pt FG from turnover, jump shot missed |
| 05:49 | defensive rebound (14) | | | |
| 05:49 | 5 TERRELL JR. D substitution out | | | |
| 05:49 | 11 HORTON T substitution in | | | |
| 05:31 | 23 FRAZIER III O 2pt FG in the paint, driving layup missed | | | |
| 05:26 | 33 JONES E offensive rebound (2) | | | |
| 05:26 | 33 JONES E 2pt FG second chance in the paint, layup made (4) | 27-23 | 4 | |
| 05:18 | | 27-25 | 2 | 5 FAYE B 2pt FG fast break in the paint, turnaround jump shot made (10) |
| 05:08 | 11 HORTON T 3pt FG , jump shot missed | | | |
| 05:04 | | | | 23 KALAMBAY E defensive rebound (3) |
| 04:57 | | | | 2 MCHENRY D 2pt FG in the paint, driving layup missed |
| 04:54 | 33 JONES E defensive rebound (3) | | | |
| 04:49 | 2 HARDY T 2pt FG in the paint, layup blocked | | | |
| 04:49 | | | | 5 FAYE B block (2) |
| 04:45 | | | | 24 MARSHALL T defensive rebound (3) |
| 04:43 | | 27-27 | 0 | 10 NEWMAN B 2pt FG fast break outside the paint, jump shot made (2) |
| 04:43 | | | | 2 MCHENRY D assist (1) |



Western Ky. at UTEP

01/20/24 Don Haskins Center, El Paso
2023-24 Men's Basketball

Game Time: 7:00 PM
Game Duration: 1:54
Attendance: 4,151

Officials: Kevin Mathis, Brent Dugas, Rob Foster

| Game Time | UTEP | Score | Diff | WKU |
|-----------|--|--------------|----------|--|
| 04:26 | 0 POWELL Z turnover bad pass (1) | | | 5 FAYE B steal (1) |
| 04:19 | | | | 2 MCHENRY D 2pt FG from turnover in the paint, floating jump shot missed |
| 04:15 | 23 FRAZIER III O defensive rebound (4) | | | |
| 04:13 | 11 HORTON T 2pt FG fast break in the paint, driving layup made (2) | 29-27 | 2 | |
| 04:13 | 23 FRAZIER III O assist (3) | | | |
| 04:13 | 11 HORTON T foul drawn (1) | | | 23 KALAMBAY E foul shooting (1 - 4) |
| 04:13 | 11 HORTON T free throw fast break 1 - 1 made (3) | 30-27 | 3 | |
| 04:13 | 0 POWELL Z substitution out | | | |
| 04:13 | 33 JONES E substitution out | | | |
| 04:13 | 4 CAMPER JR. C substitution in | | | |
| 04:13 | 13 SOLOMON C substitution in | | | |
| 04:13 | | | | 2 MCHENRY D substitution out |
| 04:13 | | | | 5 FAYE B substitution out |
| 04:13 | | | | 10 NEWMAN B substitution out |
| 04:13 | | | | 23 KALAMBAY E substitution out |
| 04:13 | | | | 0 HOWARD R substitution in |
| 04:13 | | | | 11 ALLEN D substitution in |
| 04:13 | | | | 15 EDELEN J substitution in |
| 04:13 | | | | 30 MOORE T substitution in |
| 03:52 | | 30-30 | 0 | 24 MARSHALL T 3pt FG , step back jump shot made (5) |
| 03:52 | | | | 15 EDELEN J assist (1) |
| 03:22 | 23 FRAZIER III O 2pt FG in the paint, floating jump shot made (4) | 32-30 | 2 | |
| 03:16 | 23 FRAZIER III O steal (1) | | | 15 EDELEN J turnover lost ball (1) |
| 03:12 | 4 CAMPER JR. C foul drawn (1) | | | 30 MOORE T foul shooting (1 - 5) |
| 03:12 | Timeout media | | | |
| 03:12 | | | | 15 EDELEN J substitution out |
| 03:12 | | | | 2 MCHENRY D substitution in |
| 03:12 | 4 CAMPER JR. C free throw fast break 1 - 2 made (3) | 33-30 | 3 | |
| 03:12 | 4 CAMPER JR. C free throw fast break 2 - 2 made (4) | 34-30 | 4 | |
| 02:59 | 13 SOLOMON C foul shooting (2 - 7) | | | 30 MOORE T foul drawn (1) |
| 02:59 | | | | 30 MOORE T free throw 1 - 2 missed |
| 02:59 | | | | offensive dead ball rebound (1) |
| 02:59 | 13 SOLOMON C substitution out | | | |
| 02:59 | 23 FRAZIER III O substitution out | | | |
| 02:59 | 0 POWELL Z substitution in | | | |
| 02:59 | 34 KALU K substitution in | | | |
| 02:59 | | 34-31 | 3 | 30 MOORE T free throw 2 - 2 made (3) |
| 02:42 | 4 CAMPER JR. C 2pt FG in the paint, turnaround jump shot missed | | | |
| 02:39 | | | | 30 MOORE T defensive rebound (1) |
| 02:26 | | 34-33 | 1 | 0 HOWARD R 2pt FG in the paint, layup made (2) |
| 02:26 | | | | 24 MARSHALL T assist (1) |
| 02:05 | 4 CAMPER JR. C 2pt FG outside the paint, jump shot made (6) | 36-33 | 3 | |
| 02:02 | 2 HARDY T steal (1) | | | 24 MARSHALL T turnover bad pass (1) |
| 02:02 | 2 HARDY T foul drawn (2) | | | 2 MCHENRY D foul shooting (1 - 6) |
| 02:02 | 2 HARDY T free throw fast break 1 - 2 made (14) | 37-33 | 4 | |
| 02:02 | 11 HORTON T substitution out | | | |



Official Basketball Play by Play - First Half

Western Ky. at UTEP

01/20/24 Don Haskins Center, El Paso
2023-24 Men's Basketball

Game Time: 7:00 PM
Game Duration: 1:54
Attendance: 4,151

Officials: Kevin Mathis, Brent Dugas, Rob Foster

| Game Time | UTEP | Score | Diff | WKU |
|-----------------------|---|--------------|----------|--|
| 02:02 | 3 HEBB B substitution in | | | |
| 02:02 | 2 HARDY T free throw fast break 2 - 2 made (15) | 38-33 | 5 | |
| 01:43 | | | | 2 MCHENRY D 3pt FG , pull up jump shot missed |
| 01:41 | 0 POWELL Z defensive rebound (1) | | | |
| 01:36 | 0 POWELL Z foul drawn (1) | | | 0 HOWARD R foul personal (1 - 7) |
| 01:36 | | | | 11 ALLEN D substitution out |
| 01:36 | | | | 23 KALAMBAY E substitution in |
| 01:36 | 0 POWELL Z 1&1 free throw 1 made (7) | 39-33 | 6 | |
| 01:36 | 0 POWELL Z 1&1 free throw 2 made (8) | 40-33 | 7 | |
| 01:19 | | 40-35 | 5 | 30 MOORE T 2pt FG in the paint, jump shot made (5) |
| 01:19 | | | | 2 MCHENRY D assist (2) |
| 01:02 | 3 HEBB B turnover out of bounds (1) | | | |
| 00:49 | | 40-37 | 3 | 0 HOWARD R 2pt FG from turnover in the paint, hook shot made (4) |
| 00:49 | | | | 24 MARSHALL T assist (2) |
| 00:47 | Timeout 30 Sec | | | |
| 00:47 | | | | 2 MCHENRY D substitution out |
| 00:47 | | | | 15 EDELEN J substitution in |
| 00:36 | 2 HARDY T turnover lost ball (3) | | | |
| 00:36 | | | | 15 EDELEN J substitution out |
| 00:36 | | | | 2 MCHENRY D substitution in |
| 00:24 | | 40-40 | 0 | 24 MARSHALL T 3pt FG from turnover, step back jump shot made (8) |
| 00:24 | | | | 0 HOWARD R assist (1) |
| 00:01 | 4 CAMPER JR. C 2pt FG outside the paint, jump shot made (8) | 42-40 | 2 | |
| END OF PERIOD | | | | |
| UTEP 42-40 WKU | | | | |



Western Ky. at UTEP

01/20/24 Don Haskins Center, El Paso
2023-24 Men's Basketball

Game Time: 7:00 PM
Game Duration: 1:54
Attendance: 4,151

Officials: Kevin Mathis, Brent Dugas, Rob Foster

Western Ky. - 40

| NO. | Name | F | Min | FG | 3P | FT | Rebounds | | | Fouls | | TP | AS | TO | ST | Blocks | | +/- |
|---------------|-----------------|---|-------|-------|-----|-----|----------|----|-----|-------|----|----|----|----|----|--------|----|-----|
| | | | | M-A | M-A | M-A | OR | DR | TOT | PF | FD | | | | | BS | BA | |
| 5 | Babacar Faye | F | 10:34 | 4-4 | 0-0 | 2-2 | 1 | 0 | 1 | 0 | 1 | 10 | 0 | 0 | 1 | 2 | 0 | -6 |
| 24 | Tyrone Marshall | F | 16:56 | 3-4 | 2-2 | 0-0 | 0 | 3 | 3 | 0 | 0 | 8 | 2 | 1 | 1 | 1 | 0 | -1 |
| 2 | Don McHenry | G | 17:05 | 3-9 | 1-4 | 0-0 | 0 | 1 | 1 | 1 | 1 | 7 | 2 | 0 | 0 | 0 | 0 | -4 |
| 10 | Brandon Newman | G | 14:28 | 1-4 | 0-2 | 0-0 | 0 | 3 | 3 | 1 | 2 | 2 | 0 | 2 | 0 | 0 | 1 | -4 |
| 11 | Dontaie Allen | G | 08:20 | 0-3 | 0-1 | 0-0 | 0 | 1 | 1 | 1 | 1 | 0 | 0 | 2 | 1 | 0 | 0 | -4 |
| 23 | Enoch Kalambay | | 10:03 | 1-2 | 0-0 | 0-0 | 1 | 2 | 3 | 1 | 0 | 2 | 1 | 2 | 1 | 0 | 0 | -4 |
| 0 | Rodney Howard | | 09:26 | 2-2 | 0-0 | 0-0 | 0 | 1 | 1 | 1 | 1 | 4 | 1 | 0 | 0 | 0 | 0 | 4 |
| 15 | Jack Edelen | | 02:55 | 1-1 | 0-0 | 0-0 | 0 | 0 | 0 | 1 | 0 | 2 | 1 | 1 | 0 | 0 | 0 | 2 |
| 30 | Teagan Moore | | 10:13 | 2-3 | 0-0 | 1-2 | 0 | 1 | 1 | 1 | 1 | 5 | 0 | 0 | 0 | 0 | 0 | 7 |
| Team | | | | | | | 1 | 1 | 2 | | | 0 | | | 0 | | | |
| Totals | | | | 17-32 | 3-9 | 3-4 | 3 | 13 | 16 | 7 | 7 | 40 | 7 | 8 | 4 | 3 | 1 | -2 |

| Shooting By Period | | |
|--------------------|-------|-------|
| 1st FG% | 17-32 | 53.1% |
| 3PT% | 3-9 | 33.3% |
| FT% | 3-4 | 75% |
| GM FG% | 17-32 | 53.1% |
| 3PT% | 3-9 | 33.3% |
| FT% | 3-4 | 75.0% |

Dead Ball Rebounds: 1, 0

Technical Fouls::NONE

UTEP - 42

| NO. | Name | F | Min | FG | 3P | FT | Rebounds | | | Fouls | | TP | AS | TO | ST | Blocks | | +/- |
|---------------|-------------------|---|-------|-------|------|-----|----------|----|-----|-------|----|----|----|----|----|--------|----|-----|
| | | | | M-A | M-A | M-A | OR | DR | TOT | PF | FD | | | | | BS | BA | |
| 23 | Otis Frazier III | F | 11:09 | 2-5 | 0-1 | 0-0 | 1 | 3 | 4 | 2 | 0 | 4 | 3 | 0 | 1 | 0 | 0 | 7 |
| 34 | Kevin Kalu | F | 06:32 | 0-2 | 0-0 | 0-0 | 1 | 2 | 3 | 0 | 0 | 0 | 0 | 0 | 0 | 1 | 0 | -7 |
| 0 | Zid Powell | G | 15:24 | 2-7 | 2-4 | 2-2 | 0 | 1 | 1 | 1 | 1 | 8 | 2 | 1 | 0 | 0 | 1 | 2 |
| 2 | Tae Hardy | G | 18:41 | 5-9 | 3-5 | 2-2 | 2 | 0 | 2 | 0 | 2 | 15 | 1 | 3 | 1 | 0 | 1 | 3 |
| 4 | Corey Camper Jr. | G | 15:09 | 3-6 | 0-1 | 2-2 | 0 | 0 | 0 | 0 | 1 | 8 | 1 | 0 | 0 | 0 | 1 | 0 |
| 13 | Calvin Solomon | | 09:13 | 0-0 | 0-0 | 0-0 | 1 | 1 | 2 | 2 | 0 | 0 | 0 | 1 | 1 | 0 | 0 | 3 |
| 5 | David Terrell Jr. | | 05:17 | 0-0 | 0-0 | 0-0 | 0 | 1 | 1 | 2 | 1 | 0 | 0 | 0 | 0 | 0 | 0 | 4 |
| 33 | Elijah Jones | | 04:15 | 2-2 | 0-0 | 0-0 | 1 | 2 | 3 | 0 | 0 | 4 | 0 | 1 | 0 | 0 | 0 | 6 |
| 11 | Trey Horton | | 09:00 | 1-3 | 0-1 | 1-1 | 0 | 0 | 0 | 0 | 1 | 3 | 0 | 0 | 1 | 0 | 0 | -1 |
| 3 | Baylor Hebb | | 05:20 | 0-0 | 0-0 | 0-0 | 0 | 1 | 1 | 0 | 1 | 0 | 0 | 1 | 0 | 0 | 0 | -7 |
| Team | | | | | | | 0 | 1 | 1 | | | 0 | | 1 | | | | |
| Totals | | | | 15-34 | 5-12 | 7-7 | 6 | 12 | 18 | 7 | 7 | 42 | 7 | 8 | 4 | 1 | 3 | 2 |

| Shooting By Period | | |
|--------------------|-------|--------|
| 1st FG% | 15-34 | 44.1% |
| 3PT% | 5-12 | 41.7% |
| FT% | 7-7 | 100% |
| GM FG% | 15-34 | 44.1% |
| 3PT% | 5-12 | 41.7% |
| FT% | 7-7 | 100.0% |

Dead Ball Rebounds: 0, 0

Technical Fouls::NONE

| | WKU | UTEP |
|------------------|---------------|---------------|
| Biggest lead | 4 (1st 18:20) | 7 (1st 12:42) |
| Best Scoring Run | 8(1st 9:00) | 7(1st 15:50) |
| Lead Changes | 5 | |
| Times Tied | 4 | |
| Time with Lead | 01:35 | 15:15 |

| | WKU | UTEP |
|---------------|-----|------|
| Points from | | |
| Turnovers | 9 | 4 |
| Paint | 22 | 14 |
| Second Chance | 4 | 7 |
| Fast Breaks | 12 | 12 |
| Bench | 13 | 7 |

| | Period by Period Scoring | | |
|------|--------------------------|-----|-----|
| | 1st | 2nd | TOT |
| WKU | 40 | 47 | 87 |
| UTEP | 42 | 51 | 93 |



Western Ky. at UTEP

01/20/24 Don Haskins Center, El Paso
2023-24 Men's Basketball

Game Time: 7:00 PM
Game Duration: 1:54
Attendance: 4,151

Officials: Kevin Mathis, Brent Dugas, Rob Foster

Period 2

Quarter Starters:

| | | | | | |
|-------------|-------------|-----------|----------------|------------------|---------------|
| UTEP | 0 Powell Z | 2 Hardy T | 4 Camper Jr. C | 23 Frazier III O | 34 Kalu K |
| WKU | 2 McHenry D | 5 Faye B | 10 Newman B | 11 Allen D | 24 Marshall T |

| Game Time | UTEP | Score | Diff | WKU |
|-----------|---|--------------|-----------|--|
| 20:00 | 3 HEBB B substitution out | | | |
| 20:00 | 23 FRAZIER III O substitution in | | | |
| 20:00 | | | | 0 HOWARD R substitution out |
| 20:00 | | | | 23 KALAMBAY E substitution out |
| 20:00 | | | | 30 MOORE T substitution out |
| 20:00 | | | | 5 FAYE B substitution in |
| 20:00 | | | | 10 NEWMAN B substitution in |
| 20:00 | | | | 11 ALLEN D substitution in |
| 19:31 | | | | 11 ALLEN D 3pt FG , pull up jump shot missed |
| 19:28 | 2 HARDY T defensive rebound (3) | | | |
| 19:16 | 2 HARDY T 2pt FG outside the paint, jump shot missed | | | |
| 19:11 | | | | 5 FAYE B defensive rebound (2) |
| 19:05 | | 42-42 | 0 | 2 MCHENRY D 2pt FG in the paint, floating jump shot made (9) |
| 18:50 | 34 KALU K 2pt FG in the paint, dunk, made (2) | 44-42 | 2 | |
| 18:50 | 4 CAMPER JR. C assist (2) | | | |
| 18:43 | | | | 24 MARSHALL T 2pt FG outside the paint, jump shot missed |
| 18:39 | 34 KALU K defensive rebound (4) | | | |
| 18:37 | 23 FRAZIER III O 2pt FG in the paint, layup missed | | | |
| 18:37 | 34 KALU K offensive rebound (5) | | | |
| 18:37 | 34 KALU K 2pt FG second chance in the paint, dunk, missed | | | |
| 18:37 | | | | defensive rebound (18) |
| 18:37 | | | | 10 NEWMAN B substitution out |
| 18:37 | | | | 30 MOORE T substitution in |
| 18:18 | | 44-44 | 0 | 2 MCHENRY D 2pt FG in the paint, driving layup made (11) |
| 18:01 | 0 POWELL Z 2pt FG outside the paint, jump shot missed | | | |
| 17:58 | | | | 5 FAYE B defensive rebound (3) |
| 17:44 | | 44-46 | -2 | 11 ALLEN D 2pt FG in the paint, driving layup made (2) |
| 17:28 | 2 HARDY T turnover bad pass (4) | | | 24 MARSHALL T steal (2) |
| 17:26 | | | | 24 MARSHALL T 2pt FG from turnover in the paint, layup blocked |
| 17:26 | 2 HARDY T block (1) | | | |
| 17:26 | | | | offensive rebound (20) |
| 17:21 | | | | 30 MOORE T 2pt FG from turnover second chance in the paint, layup missed |
| 17:21 | 4 CAMPER JR. C defensive rebound (1) | | | |
| 17:21 | 34 KALU K foul drawn (1) | | | 5 FAYE B foul personal (1 - 1) |
| 17:21 | | | | 5 FAYE B substitution out |
| 17:21 | | | | 24 MARSHALL T substitution out |
| 17:21 | | | | 0 HOWARD R substitution in |
| 17:21 | | | | 23 KALAMBAY E substitution in |
| 17:04 | 0 POWELL Z 3pt FG , jump shot missed | | | |
| 17:02 | 23 FRAZIER III O offensive rebound (5) | | | |
| 17:02 | 23 FRAZIER III O turnover bad pass (1) | | | |
| 16:49 | 2 HARDY T steal (2) | | | 11 ALLEN D turnover lost ball (3) |



Western Ky. at UTEP

01/20/24 Don Haskins Center, El Paso
2023-24 Men's Basketball

Game Time: 7:00 PM
Game Duration: 1:54
Attendance: 4,151

Officials: Kevin Mathis, Brent Dugas, Rob Foster

| Game Time | UTEP | Score | Diff | WKU |
|-----------|---|--------------|-----------|---|
| 16:45 | 2 HARDY T 2pt FG fast break from turnover in the paint, driving layup made (17) | 46-46 | 0 | |
| 16:33 | | | | 2 MCHENRY D 2pt FG outside the paint, hook shot blocked |
| 16:33 | 0 POWELL Z block (1) | | | |
| 16:29 | 4 CAMPER JR. C defensive rebound (2) | | | |
| 16:23 | 0 POWELL Z 2pt FG in the paint, layup made (10) | 48-46 | 2 | |
| 16:02 | | 48-48 | 0 | 0 HOWARD R 2pt FG in the paint, layup made (6) |
| 16:02 | | | | 30 MOORE T assist (1) |
| 15:39 | 4 CAMPER JR. C 2pt FG outside the paint, turnaround jump shot made (10) | 50-48 | 2 | |
| 15:15 | 0 POWELL Z steal (1) | | | 11 ALLEN D turnover lost ball (4) |
| 15:05 | 2 HARDY T 2pt FG from turnover outside the paint, jump shot missed | | | |
| 15:02 | | | | 23 KALAMBAY E defensive rebound (4) |
| 14:57 | 0 POWELL Z steal (2) | | | 2 MCHENRY D turnover lost ball (1) |
| 14:54 | 0 POWELL Z 2pt FG from turnover in the paint, layup missed | | | |
| 14:46 | 0 POWELL Z offensive rebound (2) | | | |
| 14:46 | 0 POWELL Z 2pt FG from turnover second chance in the paint, layup missed | | | |
| 14:45 | | | | 30 MOORE T defensive rebound (2) |
| 14:42 | | 50-50 | 0 | 0 HOWARD R 2pt FG fast break in the paint, layup made (8) |
| 14:42 | | | | 2 MCHENRY D assist (3) |
| 14:21 | 4 CAMPER JR. C foul drawn (2) | | | 2 MCHENRY D foul personal (2 - 2) |
| 14:21 | Timeout media | | | |
| 14:21 | 0 POWELL Z substitution out | | | |
| 14:21 | 4 CAMPER JR. C substitution out | | | |
| 14:21 | 34 KALU K substitution out | | | |
| 14:21 | 5 TERRELL JR. D substitution in | | | |
| 14:21 | 11 HORTON T substitution in | | | |
| 14:21 | 13 SOLOMON C substitution in | | | |
| 14:21 | | | | 2 MCHENRY D substitution out |
| 14:21 | | | | 11 ALLEN D substitution out |
| 14:21 | | | | 10 NEWMAN B substitution in |
| 14:21 | | | | 15 EDELEN J substitution in |
| 14:08 | 11 HORTON T foul offensive (1 - 1) | | | 15 EDELEN J foul drawn (1) |
| 14:08 | 11 HORTON T turnover offensive (1) | | | |
| 14:02 | | 50-52 | -2 | 30 MOORE T 2pt FG fast break from turnover in the paint, driving layup made (7) |
| 13:47 | 13 SOLOMON C 2pt FG in the paint, turnaround jump shot made (2) | 52-52 | 0 | |
| 13:31 | | 52-54 | -2 | 0 HOWARD R 2pt FG in the paint, alleyoop made (10) |
| 13:31 | | | | 23 KALAMBAY E assist (2) |
| 13:18 | 5 TERRELL JR. D turnover bad pass (1) | | | 0 HOWARD R steal (1) |
| 13:09 | | 52-56 | -4 | 30 MOORE T 2pt FG from turnover in the paint, layup made (9) |
| 13:09 | | | | 23 KALAMBAY E assist (3) |
| 12:47 | 23 FRAZIER III O 3pt FG , pull up jump shot missed | | | |
| 12:42 | | | | 23 KALAMBAY E defensive rebound (5) |
| 12:24 | 2 HARDY T foul shooting (1 - 2) | | | 10 NEWMAN B foul drawn (3) |
| 12:24 | | | | 10 NEWMAN B free throw 1 - 2 missed |
| 12:24 | | | | offensive dead ball rebound (2) |
| 12:24 | 11 HORTON T substitution out | | | |



Western Ky. at UTEP

01/20/24 Don Haskins Center, El Paso
2023-24 Men's Basketball

Game Time: 7:00 PM
Game Duration: 1:54
Attendance: 4,151

Officials: Kevin Mathis, Brent Dugas, Rob Foster

| Game Time | UTEP | Score | Diff | WKU |
|-----------|--|--------------|-----------|---|
| 12:24 | 23 FRAZIER III O substitution out | | | |
| 12:24 | 0 POWELL Z substitution in | | | |
| 12:24 | 4 CAMPER JR. C substitution in | | | |
| 12:24 | | | | 15 EDELEN J substitution out |
| 12:24 | | | | 30 MOORE T substitution out |
| 12:24 | | | | 2 MCHENRY D substitution in |
| 12:24 | | | | 24 MARSHALL T substitution in |
| 12:24 | | | | 10 NEWMAN B free throw 2 - 2 missed |
| 12:21 | 0 POWELL Z defensive rebound (3) | | | |
| 11:53 | 4 CAMPER JR. C 3pt FG , jump shot made (13) | 55-56 | -1 | |
| 11:53 | 0 POWELL Z assist (3) | | | |
| 11:52 | | | | 23 KALAMBAY E 2pt FG in the paint, layup missed |
| 11:52 | 13 SOLOMON C defensive rebound (3) | | | |
| 11:52 | 13 SOLOMON C turnover lost ball (2) | | | 2 MCHENRY D steal (1) |
| 11:52 | | 55-58 | -3 | 2 MCHENRY D 2pt FG fast break from turnover in the paint, driving layup made (13) |
| 11:18 | 4 CAMPER JR. C foul drawn (3) | | | 2 MCHENRY D foul shooting (3 - 3) |
| 11:18 | Timeout media | | | |
| 11:18 | 13 SOLOMON C substitution out | | | |
| 11:18 | 33 JONES E substitution in | | | |
| 11:18 | | | | 0 HOWARD R substitution out |
| 11:18 | | | | 5 FAYE B substitution in |
| 11:18 | 4 CAMPER JR. C free throw 1 - 3 made (14) | 56-58 | -2 | |
| 11:18 | 4 CAMPER JR. C free throw 2 - 3 made (15) | 57-58 | -1 | |
| 11:18 | 4 CAMPER JR. C free throw 3 - 3 made (16) | 58-58 | 0 | |
| 11:05 | | 58-60 | -2 | 2 MCHENRY D 2pt FG in the paint, layup made (15) |
| 11:05 | | | | 5 FAYE B assist (1) |
| 10:58 | 33 JONES E 2pt FG fast break in the paint, floating jump shot made (6) | 60-60 | 0 | |
| 10:58 | 4 CAMPER JR. C assist (3) | | | |
| 10:58 | 33 JONES E foul drawn (1) | | | 5 FAYE B foul shooting (2 - 4) |
| 10:55 | 33 JONES E free throw fast break 1 - 1 missed | | | |
| 10:55 | | | | defensive rebound (24) |
| 10:45 | 33 JONES E foul shooting (1 - 3) | | | 2 MCHENRY D foul drawn (2) |
| 10:45 | | | | 2 MCHENRY D free throw 1 - 2 missed |
| 10:45 | | | | offensive dead ball rebound (3) |
| 10:45 | | 60-61 | -1 | 2 MCHENRY D free throw 2 - 2 made (16) |
| 10:25 | 0 POWELL Z turnover bad pass (2) | | | 5 FAYE B steal (2) |
| 10:16 | | 60-63 | -3 | 23 KALAMBAY E 2pt FG from turnover in the paint, layup made (4) |
| 10:16 | | | | 10 NEWMAN B assist (1) |
| 10:00 | 5 TERRELL JR. D 2pt FG in the paint, layup missed | | | |
| 10:00 | 5 TERRELL JR. D offensive rebound (2) | | | |
| 10:00 | 5 TERRELL JR. D foul drawn (2) | | | 5 FAYE B foul shooting (3 - 5) |
| 10:00 | 5 TERRELL JR. D free throw 1 - 2 made (1) | 61-63 | -2 | |
| 10:00 | | | | 5 FAYE B substitution out |
| 10:00 | | | | 0 HOWARD R substitution in |
| 10:00 | 33 JONES E substitution out | | | |
| 10:00 | 34 KALU K substitution in | | | |
| 10:00 | 5 TERRELL JR. D free throw 2 - 2 made (2) | 62-63 | -1 | |



Western Ky. at UTEP

01/20/24 Don Haskins Center, El Paso
2023-24 Men's Basketball

Game Time: 7:00 PM
Game Duration: 1:54
Attendance: 4,151

Officials: Kevin Mathis, Brent Dugas, Rob Foster

| Game Time | UTEP | Score | Diff | WKU |
|-----------|--|--------------|-----------|---|
| 10:00 | 5 TERRELL JR. D substitution out | | | |
| 10:00 | 23 FRAZIER III O substitution in | | | |
| 09:48 | 2 HARDY T steal (3) | | | 2 MCHENRY D turnover bad pass (2) |
| 09:42 | 4 CAMPER JR. C 3pt FG from turnover, pull up jump shot missed | | | |
| 09:38 | | | | 10 NEWMAN B defensive rebound (4) |
| 09:33 | 4 CAMPER JR. C foul personal (1 - 4) | | | 2 MCHENRY D foul drawn (3) |
| 09:24 | | 62-65 | -3 | 10 NEWMAN B 2pt FG in the paint, layup made (4) |
| 09:24 | | | | 0 HOWARD R assist (2) |
| 09:04 | 4 CAMPER JR. C 2pt FG in the paint, driving layup made (18) | 64-65 | -1 | |
| 08:50 | | 64-67 | -3 | 0 HOWARD R 2pt FG in the paint, layup made (12) |
| 08:50 | | | | 10 NEWMAN B assist (2) |
| 08:34 | 2 HARDY T 2pt FG outside the paint, jump shot missed | | | |
| 08:28 | | | | 23 KALAMBAY E defensive rebound (6) |
| 08:25 | 23 FRAZIER III O steal (2) | | | 24 MARSHALL T turnover bad pass (2) |
| 08:20 | 2 HARDY T 3pt FG fast break from turnover, pull up jump shot made (20) | 67-67 | 0 | |
| 08:20 | 23 FRAZIER III O assist (4) | | | |
| 08:16 | 4 CAMPER JR. C substitution out | | | |
| 08:16 | 5 TERRELL JR. D substitution in | | | |
| 08:16 | | | | 23 KALAMBAY E substitution out |
| 08:16 | | | | 30 MOORE T substitution in |
| 07:59 | | 67-69 | -2 | 2 MCHENRY D 2pt FG outside the paint, jump shot made (18) |
| 07:40 | 2 HARDY T 3pt FG , step back jump shot missed | | | |
| 07:37 | 23 FRAZIER III O offensive rebound (6) | | | |
| 07:30 | 0 POWELL Z 2pt FG second chance outside the paint, jump shot missed | | | |
| 07:27 | | | | 2 MCHENRY D defensive rebound (2) |
| 07:24 | 23 FRAZIER III O steal (3) | | | 24 MARSHALL T turnover bad pass (3) |
| 07:17 | 0 POWELL Z 2pt FG fast break from turnover in the paint, driving layup made (12) | 69-69 | 0 | |
| 07:17 | 23 FRAZIER III O assist (5) | | | |
| 07:03 | | 69-71 | -2 | 0 HOWARD R 2pt FG in the paint, layup made (14) |
| 07:03 | | | | 2 MCHENRY D assist (4) |
| 06:41 | 0 POWELL Z 3pt FG , jump shot missed | | | |
| 06:36 | | | | 2 MCHENRY D defensive rebound (3) |
| 06:23 | | 69-73 | -4 | 30 MOORE T 2pt FG in the paint, driving layup made (11) |
| 05:56 | 34 KALU K 2pt FG in the paint, hook shot made (4) | 71-73 | -2 | |
| 05:56 | 23 FRAZIER III O assist (6) | | | |
| 05:56 | 34 KALU K foul drawn (2) | | | 24 MARSHALL T foul shooting (1 - 6) |
| 05:56 | Timeout media | | | |
| 05:56 | 0 POWELL Z substitution out | | | |
| 05:56 | 4 CAMPER JR. C substitution in | | | |
| 05:56 | | | | 24 MARSHALL T substitution out |
| 05:56 | | | | 11 ALLEN D substitution in |
| 05:56 | 34 KALU K free throw 1 - 1 made (5) | 72-73 | -1 | |
| 05:39 | | 72-75 | -3 | 30 MOORE T 2pt FG in the paint, driving layup made (13) |
| 05:39 | 4 CAMPER JR. C foul shooting (2 - 5) | | | 30 MOORE T foul drawn (2) |
| 05:39 | | | | 30 MOORE T free throw 1 - 1 missed |
| 05:36 | 23 FRAZIER III O defensive rebound (7) | | | |



Western Ky. at UTEP

01/20/24 Don Haskins Center, El Paso
2023-24 Men's Basketball

Game Time: 7:00 PM
Game Duration: 1:54
Attendance: 4,151

Officials: Kevin Mathis, Brent Dugas, Rob Foster

| Game Time | UTEP | Score | Diff | WKU |
|-----------|--|--------------|-----------|---|
| 05:18 | 34 KALU K 2pt FG in the paint, dunk, made (7) | 74-75 | -1 | |
| 05:18 | 5 TERRELL JR. D assist (1) | | | |
| 04:58 | | | | 11 ALLEN D 3pt FG , pull up jump shot missed |
| 04:54 | 2 HARDY T defensive rebound (4) | | | |
| 04:46 | 5 TERRELL JR. D foul drawn (3) | | | 2 MCHENRY D foul shooting (4 - 7) |
| 04:46 | 5 TERRELL JR. D free throw 1 - 2 missed | | | |
| 04:46 | offensive dead ball rebound (1) | | | |
| 04:46 | 34 KALU K substitution out | | | |
| 04:46 | 13 SOLOMON C substitution in | | | |
| 04:46 | | | | 0 HOWARD R substitution out |
| 04:46 | | | | 2 MCHENRY D substitution out |
| 04:46 | | | | 10 NEWMAN B substitution out |
| 04:46 | | | | 5 FAYE B substitution in |
| 04:46 | | | | 23 KALAMBAY E substitution in |
| 04:46 | | | | 24 MARSHALL T substitution in |
| 04:46 | 5 TERRELL JR. D free throw 2 - 2 made (3) | 75-75 | 0 | |
| 04:38 | 2 HARDY T steal (4) | | | 30 MOORE T turnover lost ball (1) |
| 04:29 | 2 HARDY T foul drawn (3) | | | 30 MOORE T foul personal (2 - 8) |
| 04:29 | 2 HARDY T 1&1 free throw 1 made (21) | 76-75 | 1 | |
| 04:29 | 2 HARDY T 1&1 free throw 2 made (22) | 77-75 | 2 | |
| 04:26 | 23 FRAZIER III O steal (4) | | | 24 MARSHALL T turnover bad pass (4) |
| 04:03 | 2 HARDY T 2pt FG from turnover outside the paint, pull up jump shot missed | | | |
| 04:00 | | | | 30 MOORE T defensive rebound (3) |
| 03:36 | 13 SOLOMON C steal (2) | | | 30 MOORE T turnover bad pass (2) |
| 03:32 | 4 CAMPER JR. C foul drawn (4) | | | 11 ALLEN D foul shooting (2 - 9) |
| 03:32 | Timeout media | | | |
| 03:32 | | | | 30 MOORE T substitution out |
| 03:32 | | | | 15 EDELEN J substitution in |
| 03:32 | 4 CAMPER JR. C free throw fast break 1 - 2 missed | | | |
| 03:32 | offensive dead ball rebound (2) | | | |
| 03:32 | 4 CAMPER JR. C free throw fast break 2 - 2 made (19) | 78-75 | 3 | |
| 03:32 | | | | 11 ALLEN D substitution out |
| 03:32 | | | | 15 EDELEN J substitution out |
| 03:32 | | | | 2 MCHENRY D substitution in |
| 03:32 | | | | 10 NEWMAN B substitution in |
| 03:32 | | | | Timeout 30 Sec |
| 03:32 | Timeout media | | | |
| 03:10 | 13 SOLOMON C steal (3) | | | 10 NEWMAN B turnover lost ball (3) |
| 02:43 | 2 HARDY T 2pt FG from turnover in the paint, driving layup made (24) | 80-75 | 5 | |
| 02:38 | | 80-77 | 3 | 5 FAYE B 2pt FG fast break in the paint, dunk, made (12) |
| 02:38 | | | | 2 MCHENRY D assist (5) |
| 02:10 | 5 TERRELL JR. D 2pt FG in the paint, driving layup made (5) | 82-77 | 5 | |
| 01:59 | | | | 5 FAYE B 2pt FG in the paint, hook shot missed |
| 01:57 | | | | 23 KALAMBAY E offensive rebound (7) |
| 01:57 | | | | 23 KALAMBAY E 2pt FG second chance in the paint, layup missed |
| 01:57 | | | | 23 KALAMBAY E offensive rebound (8) |
| 01:57 | 2 HARDY T foul shooting (2 - 6) | | | 23 KALAMBAY E foul drawn (1) |



Western Ky. at UTEP

01/20/24 Don Haskins Center, El Paso
2023-24 Men's Basketball

Game Time: 7:00 PM
Game Duration: 1:54
Attendance: 4,151

Officials: Kevin Mathis, Brent Dugas, Rob Foster

| Game Time | UTEP | Score | Diff | WKU |
|-----------|---|--------------|-----------|--|
| 01:57 | | 82-78 | 4 | 23 KALAMBAY E free throw 1 - 2 made (5) |
| 01:57 | | | | 5 FAYE B substitution out |
| 01:57 | | | | 0 HOWARD R substitution in |
| 01:57 | | | | 2 MCHENRY D substitution out |
| 01:57 | | | | 30 MOORE T substitution in |
| 01:56 | | | | 23 KALAMBAY E free throw 2 - 2 missed |
| 01:53 | 4 CAMPER JR. C defensive rebound (3) | | | |
| 01:33 | 4 CAMPER JR. C 3pt FG , jump shot missed | | | |
| 01:25 | 23 FRAZIER III O offensive rebound (8) | | | |
| 01:25 | 23 FRAZIER III O 2pt FG second chance in the paint, layup made (6) | 84-78 | 6 | |
| 01:21 | | | | Timeout 30 Sec |
| 01:21 | | | | 30 MOORE T substitution out |
| 01:21 | | | | 2 MCHENRY D substitution in |
| 00:57 | | 84-80 | 4 | 0 HOWARD R 2pt FG outside the paint, pull up jump shot made (16) |
| 00:57 | | | | 24 MARSHALL T assist (3) |
| 00:57 | 5 TERRELL JR. D substitution out | | | |
| 00:57 | 0 POWELL Z substitution in | | | |
| 00:57 | | | | 2 MCHENRY D substitution out |
| 00:57 | | | | 30 MOORE T substitution in |
| 00:55 | 0 POWELL Z foul drawn (2) | | | 30 MOORE T foul personal (3 - 10) |
| 00:55 | | | | 30 MOORE T substitution out |
| 00:55 | | | | 2 MCHENRY D substitution in |
| 00:55 | 0 POWELL Z free throw fast break 1 - 2 made (13) | 85-80 | 5 | |
| 00:55 | 0 POWELL Z free throw fast break 2 - 2 made (14) | 86-80 | 6 | |
| 00:55 | 0 POWELL Z substitution out | | | |
| 00:55 | 5 TERRELL JR. D substitution in | | | |
| 00:41 | 5 TERRELL JR. D steal (1) | | | 10 NEWMAN B turnover lost ball (4) |
| 00:38 | 2 HARDY T 2pt FG fast break from turnover in the paint, driving layup made (26) | 88-80 | 8 | |
| 00:38 | 13 SOLOMON C assist (1) | | | |
| 00:38 | 2 HARDY T foul drawn (4) | | | 2 MCHENRY D foul shooting (5 - 11) |
| 00:38 | | | | 2 MCHENRY D substitution out |
| 00:38 | | | | 11 ALLEN D substitution in |
| 00:38 | | | | 10 NEWMAN B substitution out |
| 00:38 | | | | 30 MOORE T substitution in |
| 00:38 | 2 HARDY T free throw fast break 1 - 1 made (27) | 89-80 | 9 | |
| 00:32 | 13 SOLOMON C foul personal (3 - 7) | | | 24 MARSHALL T foul drawn (1) |
| 00:31 | 5 TERRELL JR. D substitution out | | | |
| 00:31 | 0 POWELL Z substitution in | | | |
| 00:31 | | | | 0 HOWARD R substitution out |
| 00:31 | | | | 5 FAYE B substitution in |
| 00:31 | | | | 24 MARSHALL T 1&1 free throw 1 missed |
| 00:29 | 23 FRAZIER III O defensive rebound (9) | | | |
| 00:27 | 0 POWELL Z foul drawn (3) | | | 24 MARSHALL T foul personal (2 - 12) |
| 00:27 | 0 POWELL Z free throw fast break 1 - 2 made (15) | 90-80 | 10 | |
| 00:26 | 0 POWELL Z free throw fast break 2 - 2 missed | | | |
| 00:25 | | | | 24 MARSHALL T defensive rebound (4) |



Official Basketball Play by Play - Second Half

Western Ky. at UTEP

01/20/24 Don Haskins Center, El Paso
2023-24 Men's Basketball

Game Time: 7:00 PM

Game Duration: 1:54

Attendance: 4,151

Officials: Kevin Mathis, Brent Dugas, Rob Foster

| Game Time | UTEP | Score | Diff | WKU |
|-----------------------|--|-------|------|--|
| 00:20 | | 90-82 | 8 | 30 MOORE T 2pt FG fast break in the paint, driving layup made (15) |
| 00:19 | 0 POWELL Z foul drawn (4) | | | 30 MOORE T foul personal (4 - 13) |
| 00:19 | 0 POWELL Z free throw fast break 1 - 2 made (16) | 91-82 | 9 | |
| 00:19 | 0 POWELL Z free throw fast break 2 - 2 made (17) | 92-82 | 10 | |
| 00:19 | 0 POWELL Z substitution out | | | |
| 00:19 | 5 TERRELL JR. D substitution in | | | |
| 00:13 | | 92-84 | 8 | 23 KALAMBAY E 2pt FG fast break in the paint, driving layup made (7) |
| 00:12 | 5 TERRELL JR. D foul drawn (4) | | | 30 MOORE T foul personal (5 - 14) |
| 00:12 | | | | 30 MOORE T substitution out |
| 00:12 | | | | 10 NEWMAN B substitution in |
| 00:12 | 5 TERRELL JR. D free throw fast break 1 - 2 made (6) | 93-84 | 9 | |
| 00:12 | 5 TERRELL JR. D free throw fast break 2 - 2 missed | | | |
| 00:11 | | | | 23 KALAMBAY E defensive rebound (9) |
| 00:05 | | 93-87 | 6 | 11 ALLEN D 3pt FG fast break, jump shot made (5) |
| 00:05 | | | | 24 MARSHALL T assist (4) |
| END OF GAME | | | | |
| UTEP 93-87 WKU | | | | |



Western Ky. at UTEP

01/20/24 Don Haskins Center, El Paso
2023-24 Men's Basketball

Game Time: 7:00 PM
Game Duration: 1:54
Attendance: 4,151

Officials: Kevin Mathis, Brent Dugas, Rob Foster

Western Ky. - 47

| NO. | Name | F | Min | FG | 3P | FT | Rebounds | | | Fouls | | TP | AS | TO | ST | Blocks | | +/- |
|---------------|-----------------|---|-------|-------|-----|-----|----------|----|-----|-------|----|----|----|----|----|--------|----|-----|
| | | | | M-A | M-A | M-A | OR | DR | TOT | PF | FD | | | | | BS | BA | |
| 5 | Babacar Faye | F | 07:17 | 1-2 | 0-0 | 0-0 | 0 | 2 | 2 | 3 | 0 | 2 | 1 | 0 | 1 | 0 | 0 | 1 |
| 24 | Tyrone Marshall | F | 13:53 | 0-2 | 0-0 | 0-1 | 0 | 1 | 1 | 2 | 1 | 0 | 2 | 3 | 1 | 0 | 1 | -5 |
| 2 | Don McHenry | G | 15:32 | 5-6 | 0-0 | 1-2 | 0 | 2 | 2 | 4 | 2 | 11 | 3 | 2 | 1 | 0 | 1 | -4 |
| 10 | Brandon Newman | G | 14:04 | 1-1 | 0-0 | 0-2 | 0 | 1 | 1 | 0 | 1 | 2 | 2 | 2 | 0 | 0 | 0 | -2 |
| 11 | Dontaie Allen | G | 08:42 | 2-4 | 1-3 | 0-0 | 0 | 0 | 0 | 1 | 0 | 5 | 0 | 2 | 0 | 0 | 0 | -1 |
| 30 | Teagan Moore | | 12:01 | 5-6 | 0-0 | 0-1 | 0 | 2 | 2 | 4 | 1 | 10 | 1 | 2 | 0 | 0 | 0 | 2 |
| 0 | Rodney Howard | | 12:43 | 6-6 | 0-0 | 0-0 | 0 | 0 | 0 | 0 | 0 | 12 | 1 | 0 | 1 | 0 | 0 | -5 |
| 23 | Enoch Kalambay | | 13:51 | 2-4 | 0-0 | 1-2 | 2 | 4 | 6 | 0 | 1 | 5 | 2 | 0 | 0 | 0 | 0 | -9 |
| 15 | Jack Edelen | | 01:57 | 0-0 | 0-0 | 0-0 | 0 | 0 | 0 | 0 | 1 | 0 | 0 | 0 | 0 | 0 | 0 | 3 |
| Team | | | | | | | 1 | 2 | 3 | | | 0 | | 0 | | | | |
| Totals | | | | 22-31 | 1-3 | 2-8 | 3 | 14 | 17 | 14 | 7 | 47 | 12 | 11 | 4 | 0 | 2 | -4 |

| Shooting By Period | | |
|---------------------|-------|-------|
| 2 nd FG% | 22-31 | 71.0% |
| 3PT% | 1-3 | 33.3% |
| FT% | 2-8 | 25% |
| GM FG% | 22-31 | 71.0% |
| 3PT% | 1-3 | 33.3% |
| FT% | 2-8 | 25.0% |

Dead Ball Rebounds: 2, 0

Technical Fouls::NONE

UTEP - 51

| NO. | Name | F | Min | FG | 3P | FT | Rebounds | | | Fouls | | TP | AS | TO | ST | Blocks | | +/- |
|---------------|-------------------|---|-------|-------|-----|-------|----------|----|-----|-------|----|----|----|----|----|--------|----|-----|
| | | | | M-A | M-A | M-A | OR | DR | TOT | PF | FD | | | | | BS | BA | |
| 23 | Otis Frazier III | F | 17:36 | 1-3 | 0-1 | 0-0 | 3 | 2 | 5 | 0 | 0 | 2 | 3 | 1 | 3 | 0 | 0 | 1 |
| 34 | Kevin Kalu | F | 10:53 | 3-4 | 0-0 | 1-1 | 1 | 1 | 2 | 0 | 2 | 7 | 0 | 0 | 0 | 0 | 0 | -1 |
| 0 | Zid Powell | G | 12:21 | 2-8 | 0-2 | 5-6 | 1 | 1 | 2 | 0 | 3 | 9 | 1 | 1 | 2 | 1 | 0 | 3 |
| 2 | Tae Hardy | G | 20:00 | 4-9 | 1-2 | 3-3 | 0 | 2 | 2 | 2 | 2 | 12 | 0 | 1 | 3 | 1 | 0 | 4 |
| 4 | Corey Camper Jr. | G | 15:43 | 3-5 | 1-3 | 4-5 | 0 | 3 | 3 | 2 | 3 | 11 | 2 | 0 | 0 | 0 | 0 | 10 |
| 3 | Baylor Hebb | | 00:00 | 0-0 | 0-0 | 0-0 | 0 | 0 | 0 | 0 | 0 | 0 | 0 | 0 | 0 | 0 | 0 | 0 |
| 5 | David Terrell Jr. | | 12:23 | 1-2 | 0-0 | 4-6 | 1 | 0 | 1 | 0 | 3 | 6 | 1 | 1 | 1 | 0 | 0 | 2 |
| 11 | Trey Horton | | 01:57 | 0-0 | 0-0 | 0-0 | 0 | 0 | 0 | 1 | 0 | 0 | 0 | 1 | 0 | 0 | 0 | -4 |
| 13 | Calvin Solomon | | 07:49 | 1-1 | 0-0 | 0-0 | 0 | 1 | 1 | 1 | 0 | 2 | 1 | 1 | 2 | 0 | 0 | 4 |
| 33 | Elijah Jones | | 01:18 | 1-1 | 0-0 | 0-1 | 0 | 0 | 0 | 1 | 1 | 2 | 0 | 0 | 0 | 0 | 0 | 1 |
| Team | | | | | | | 0 | 0 | 0 | | | 0 | | 0 | | | | |
| Totals | | | | 16-33 | 2-8 | 17-22 | 6 | 10 | 16 | 7 | 14 | 51 | 8 | 6 | 11 | 2 | 0 | 4 |

| Shooting By Period | | |
|---------------------|-------|-------|
| 2 nd FG% | 16-33 | 48.5% |
| 3PT% | 2-8 | 25.0% |
| FT% | 17-22 | 77.3% |
| GM FG% | 16-33 | 48.5% |
| 3PT% | 2-8 | 25.0% |
| FT% | 17-22 | 77.3% |

Dead Ball Rebounds: 2, 0

Technical Fouls::NONE

| | WKU | UTEP |
|------------------|---------------------------|---------------------------|
| Biggest lead | 4 (2 nd 13:09) | 10 (2 nd 0:27) |
| Best Scoring Run | 4(2 nd 17:44) | 8(2 nd 2:43) |
| Lead Changes | 4 | |
| Times Tied | 11 | |
| Time with Lead | 08:58 | 06:45 |

| Points from | WKU | UTEP |
|---------------|-----|------|
| Turnovers | 8 | 15 |
| Paint | 38 | 26 |
| Second Chance | 1 | 4 |
| Fast Breaks | 15 | 19 |
| Bench | 27 | 10 |

| | Period by Period Scoring | | |
|------|--------------------------|-----|-----|
| | 1st | 2nd | TOT |
| WKU | 40 | 47 | 87 |
| UTEP | 42 | 51 | 93 |



Western Ky. at UTEP

01/20/24 Don Haskins Center, El Paso
2023-24 Men's Basketball

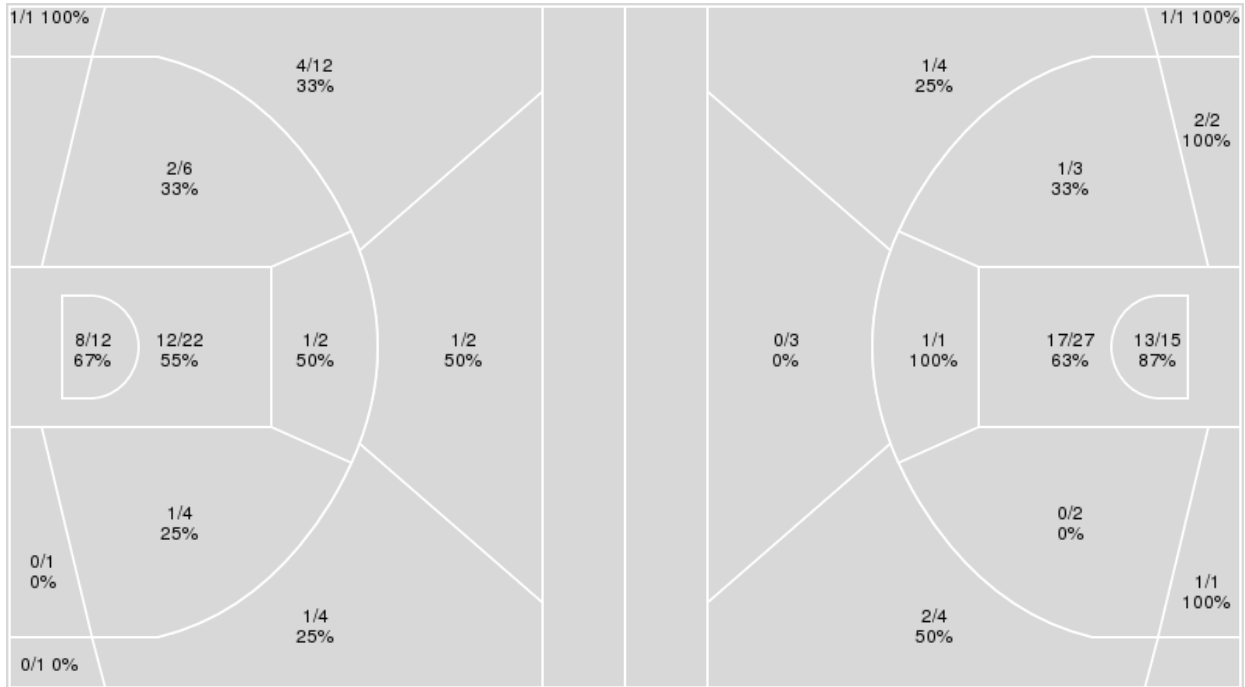
Officials: Kevin Mathis, Brent Dugas, Rob Foster

{ Players => 0, 1, 2, 3, 4, 5, 11, 13, 15, 20, 21, 23, 32, 33, 34; } FG
Types => All; Results => All;

{ Players => 0, 1, 2, 3, 4, 5, 10, 11, 12, 13, 15, 22, 23, 24, 30, 31; } FG
Types => All; Results => All;

UTEP

Western Ky.



| UTEP | M/A | % |
|-------------|-------|----|
| Field Goals | 31/67 | 46 |
| 2 Points | 24/47 | 51 |
| 3 Points | 7/20 | 35 |
| Free Throws | 24/29 | 83 |

| Western Ky. | M/A | % |
|-------------|-------|----|
| Field Goals | 39/63 | 62 |
| 2 Points | 35/51 | 69 |
| 3 Points | 4/12 | 33 |
| Free Throws | 5/12 | 42 |



Western Ky. at UTEP

01/20/24 Don Haskins Center, El Paso
2023-24 Men's Basketball

Game Time: 7:00 PM
Game Duration: 1:54
Attendance: 4,151

Officials: Kevin Mathis, Brent Dugas, Rob Foster

Western Ky.

| No | Name | Mins | | Score | | Points Diff | | Points per Min | | Assists | | Rebounds | | Steals | | Turnovers | |
|----|-----------------|-------|-------|---------|---------|-------------|-----|----------------|------|---------|-----|----------|-----|--------|-----|-----------|-----|
| | | On | Off | On | Off | On | Off | On | Off | On | Off | On | Off | On | Off | On | Off |
| 0 | Rodney Howard | 22:09 | 17:51 | 50 - 51 | 37 - 42 | -1 | -5 | 2.26 | 2.07 | 14 | 5 | 14 | 19 | 2 | 6 | 12 | 7 |
| 2 | Don McHenry | 32:38 | 07:22 | 67 - 75 | 20 - 18 | -8 | 2 | 2.05 | 2.71 | 15 | 4 | 27 | 6 | 7 | 1 | 14 | 5 |
| 5 | Babacar Faye | 17:51 | 22:09 | 37 - 42 | 50 - 51 | -5 | -1 | 2.07 | 2.26 | 5 | 14 | 19 | 14 | 6 | 2 | 7 | 12 |
| 10 | Brandon Newman | 28:32 | 11:28 | 58 - 64 | 29 - 29 | -6 | 0 | 2.03 | 2.53 | 12 | 7 | 24 | 9 | 7 | 1 | 10 | 9 |
| 11 | Dontaie Allen | 17:02 | 22:58 | 36 - 41 | 51 - 52 | -5 | -1 | 2.11 | 2.22 | 6 | 13 | 14 | 19 | 3 | 5 | 11 | 8 |
| 15 | Jack Edelen | 04:52 | 35:08 | 13 - 8 | 74 - 85 | 5 | -11 | 2.67 | 2.11 | 3 | 16 | 3 | 30 | 1 | 7 | 2 | 17 |
| 23 | Enoch Kalambay | 23:54 | 16:06 | 53 - 66 | 34 - 27 | -13 | 7 | 2.22 | 2.11 | 16 | 3 | 20 | 13 | 5 | 3 | 14 | 5 |
| 24 | Tyrone Marshall | 30:49 | 09:11 | 68 - 74 | 19 - 19 | -6 | 0 | 2.21 | 2.07 | 14 | 5 | 27 | 6 | 7 | 1 | 14 | 5 |
| 30 | Teagan Moore | 22:14 | 17:46 | 53 - 44 | 34 - 49 | 9 | -15 | 2.38 | 1.91 | 10 | 9 | 17 | 16 | 2 | 6 | 11 | 8 |

UTEP

| No | Name | Mins | | Score | | Points Diff | | Points per Min | | Assists | | Rebounds | | Steals | | Turnovers | |
|----|-------------------|-------|-------|---------|---------|-------------|-----|----------------|------|---------|-----|----------|-----|--------|-----|-----------|-----|
| | | On | Off | On | Off | On | Off | On | Off | On | Off | On | Off | On | Off | On | Off |
| 0 | Zid Powell | 27:45 | 12:15 | 65 - 60 | 28 - 27 | 5 | 1 | 2.34 | 2.28 | 13 | 2 | 27 | 7 | 9 | 6 | 12 | 2 |
| 2 | Tae Hardy | 38:41 | 01:19 | 90 - 83 | 3 - 4 | 7 | -1 | 2.33 | 2.28 | 14 | 1 | 34 | 0 | 14 | 1 | 13 | 1 |
| 3 | Baylor Hebb | 05:20 | 34:40 | 8 - 15 | 85 - 72 | -7 | 13 | 1.50 | 2.45 | 1 | 14 | 3 | 31 | 1 | 14 | 3 | 11 |
| 4 | Corey Camper Jr. | 30:52 | 09:08 | 75 - 65 | 18 - 22 | 10 | -4 | 2.43 | 1.97 | 10 | 5 | 28 | 6 | 14 | 1 | 10 | 4 |
| 5 | David Terrell Jr. | 17:40 | 22:20 | 45 - 39 | 48 - 48 | 6 | 0 | 2.55 | 2.15 | 8 | 7 | 11 | 23 | 6 | 9 | 6 | 8 |
| 11 | Trey Horton | 10:57 | 29:03 | 22 - 27 | 71 - 60 | -5 | 11 | 2.01 | 2.44 | 3 | 12 | 8 | 26 | 4 | 11 | 4 | 10 |
| 13 | Calvin Solomon | 17:02 | 22:58 | 46 - 39 | 47 - 48 | 7 | -1 | 2.70 | 2.05 | 8 | 7 | 11 | 23 | 8 | 7 | 6 | 8 |
| 23 | Otis Frazier III | 28:45 | 11:15 | 67 - 59 | 26 - 28 | 8 | -2 | 2.33 | 2.31 | 11 | 4 | 25 | 9 | 12 | 3 | 8 | 6 |
| 33 | Elijah Jones | 05:33 | 34:27 | 18 - 11 | 75 - 76 | 7 | -1 | 3.24 | 2.18 | 2 | 13 | 6 | 28 | 0 | 15 | 3 | 11 |
| 34 | Kevin Kalu | 17:25 | 22:35 | 29 - 37 | 64 - 50 | -8 | 14 | 1.67 | 2.83 | 5 | 10 | 17 | 17 | 7 | 8 | 5 | 9 |

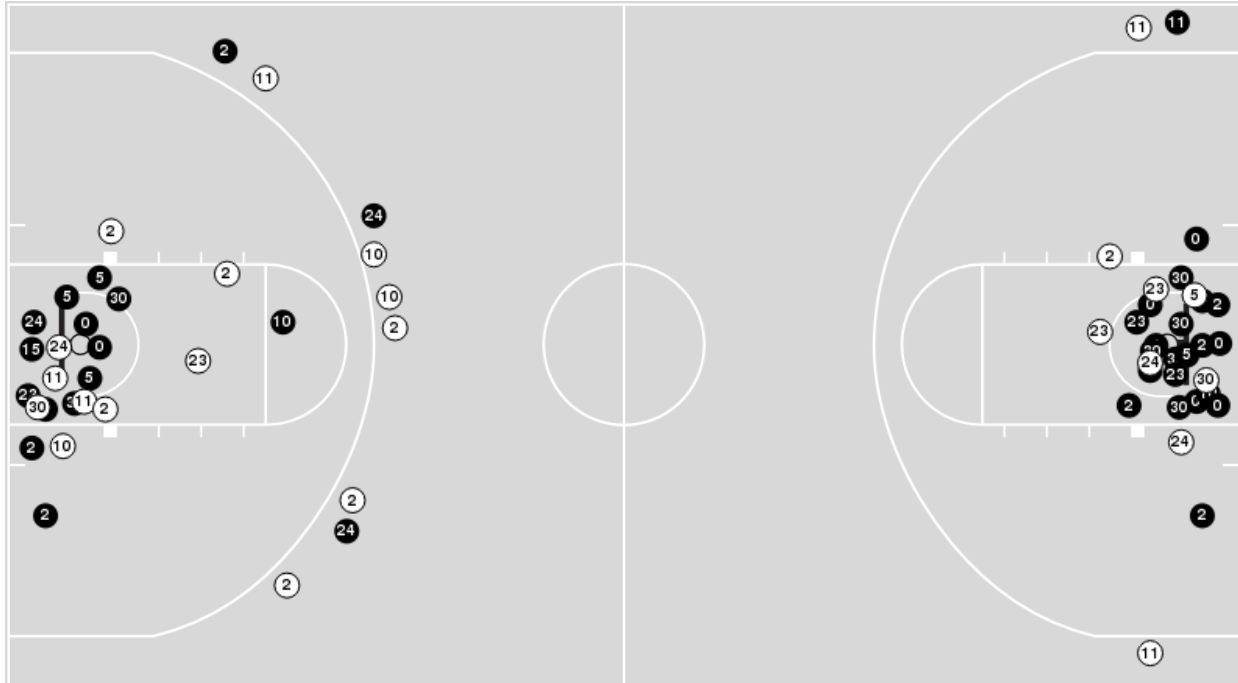


Officials: Kevin Mathis, Brent Dugas, Rob Foster

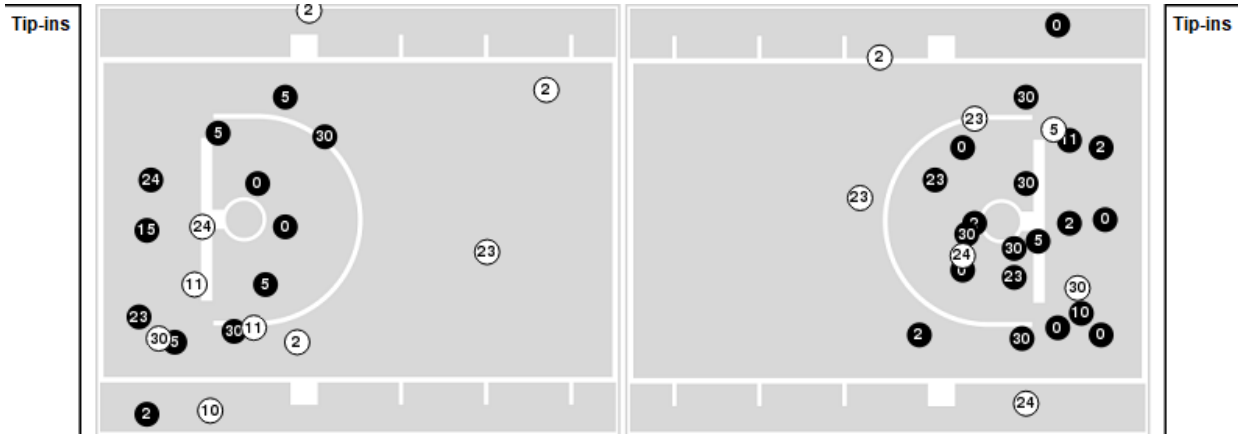
Players => 0, 1, 2, 3, 4, 5, 10, 11, 12, 13, 15, 22, 23, 24, 30, 31 FG Types=>All Results=>All

Western Ky.

All Field Goals



Blow Up Chart



● Made ○ Missed N - Player Number

| Western Ky. | M/A | % |
|-------------|-------|----|
| Field Goals | 39/63 | 62 |
| 2 Points | 35/51 | 69 |
| 3 Points | 4/12 | 33 |
| Free Throws | 5/12 | 42 |

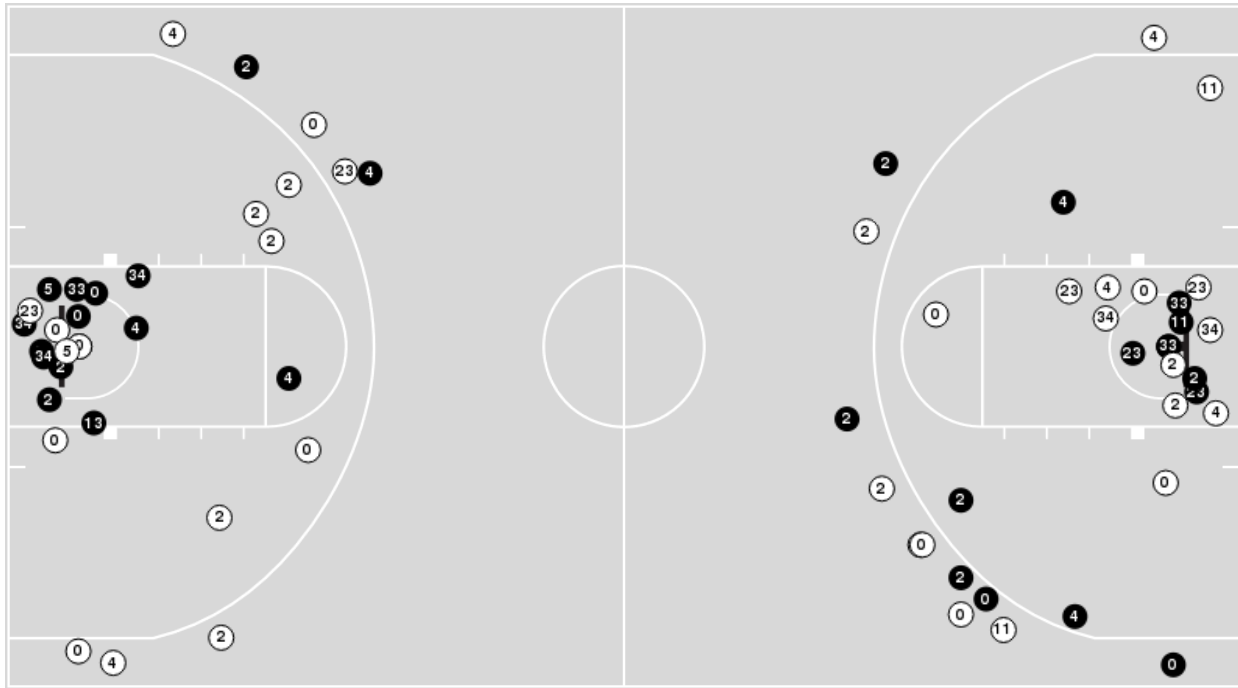
| Western Ky. | M/A | % |
|----------------------|--------------|----|
| Points in the Paint | 60 (30 / 42) | 71 |
| Fast Break Points | 27 (14/15) | 93 |
| Second Chance Points | 5 (3/7) | 43 |
| Effective FG% | 65 | |



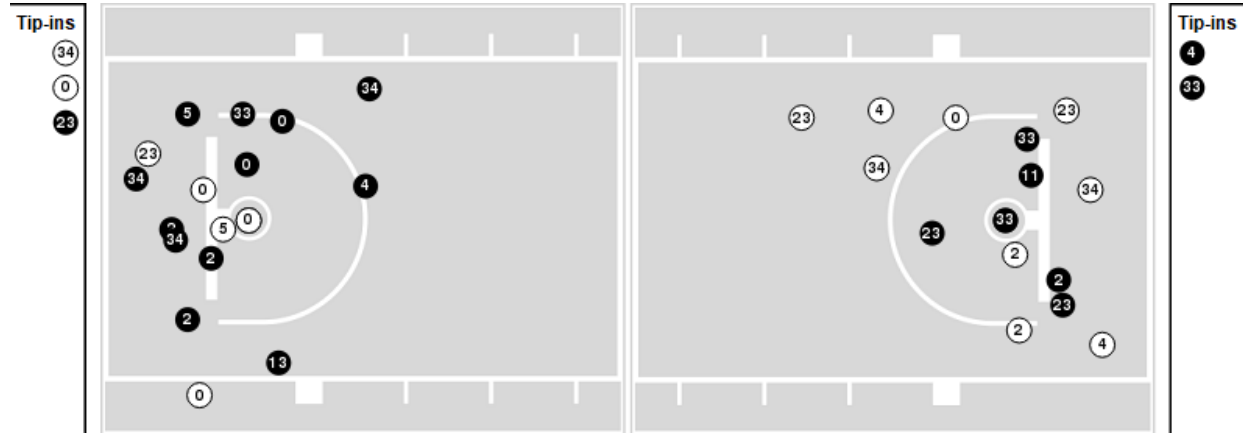
Players => 0, 1, 2, 3, 4, 5, 11, 13, 15, 20, 21, 23, 32, 33, 34 FG Types=>All Results=>All

UTEP

All Field Goals



Blow Up Chart



● Made ○ Missed N - Player Number

| UTEP | M/A | % |
|-------------|-------|----|
| Field Goals | 31/67 | 46 |
| 2 Points | 24/47 | 51 |
| 3 Points | 7/20 | 35 |
| Free Throws | 24/29 | 83 |

| UTEP | M/A | % |
|----------------------|--------------|----|
| Points in the Paint | 40 (20 / 34) | 59 |
| Fast Break Points | 31 (22/26) | 85 |
| Second Chance Points | 11 (6/12) | 50 |
| Effective FG% | 51 | |



Western Ky. at UTEP

01/20/24 Don Haskins Center, El Paso
2023-24 Men's Basketball

Game Time: 7:00 PM
Game Duration: 1:54
Attendance: 4,151

Officials: Kevin Mathis, Brent Dugas, Rob Foster

Western Ky.

| Lineup | Quarter On | Time On | Quarter Off | Time Off | Time on Court | Score | Score Diff | Reb | Stl | Tov | Ass | PPP |
|--|------------|---------|-------------|----------|---------------|-------|------------|-----|-----|-----|-----|--------|
| 2- McHenry D/ 5- Faye B/ 10- Newman B/ 11- Allen D/ 24- Marshall T/ | 1 | 20:00 | 1 | 17:21 | 02:39 | 4-5 | -1 | 1 | 2 | 1 | 0 | 0.6803 |
| 2- McHenry D/ 5- Faye B/ 10- Newman B/ 23- Kalambay E/ 24- Marshall T/ | 1 | 17:21 | 1 | 15:06 | 02:15 | 2-5 | -3 | 3 | 0 | 0 | 0 | 0.6667 |
| 0- Howard R/ 2- McHenry D/ 10- Newman B/ 11- Allen D/ 23- Kalambay E/ | 1 | 15:06 | 1 | 13:21 | 01:45 | 3-5 | -2 | 1 | 0 | 1 | 1 | 1.0000 |
| 0- Howard R/ 11- Allen D/ 15- Edelen J/ 23- Kalambay E/ 30- Moore T/ | 1 | 13:21 | 1 | 12:02 | 01:19 | 4-3 | 1 | 2 | 0 | 1 | 0 | 1.3333 |
| 0- Howard R/ 10- Newman B/ 15- Edelen J/ 24- Marshall T/ 30- Moore T/ | 1 | 12:02 | 1 | 11:38 | 00:24 | 0-0 | 0 | 0 | 0 | 0 | 0 | 0.0000 |
| 0- Howard R/ 2- McHenry D/ 10- Newman B/ 24- Marshall T/ 30- Moore T/ | 1 | 11:38 | 1 | 09:53 | 01:45 | 4-0 | 4 | 3 | 0 | 1 | 0 | 1.3333 |
| 2- McHenry D/ 5- Faye B/ 10- Newman B/ 24- Marshall T/ 30- Moore T/ | 1 | 09:53 | 1 | 07:21 | 02:32 | 6-5 | 1 | 2 | 0 | 0 | 0 | 1.5000 |
| 2- McHenry D/ 5- Faye B/ 10- Newman B/ 23- Kalambay E/ 24- Marshall T/ | 1 | 07:21 | 1 | 04:13 | 03:08 | 4-7 | -3 | 3 | 2 | 2 | 1 | 0.5714 |
| 0- Howard R/ 11- Allen D/ 15- Edelen J/ 24- Marshall T/ 30- Moore T/ | 1 | 04:13 | 1 | 03:12 | 01:01 | 3-2 | 1 | 0 | 0 | 1 | 1 | 1.5000 |
| 0- Howard R/ 2- McHenry D/ 11- Allen D/ 24- Marshall T/ 30- Moore T/ | 1 | 03:12 | 1 | 01:36 | 01:36 | 3-6 | -3 | 1 | 0 | 1 | 1 | 0.7732 |
| 0- Howard R/ 2- McHenry D/ 23- Kalambay E/ 24- Marshall T/ 30- Moore T/ | 1 | 01:36 | 1 | 00:47 | 00:48 | 4-2 | 2 | 0 | 0 | 0 | 2 | 2.0000 |
| 0- Howard R/ 15- Edelen J/ 23- Kalambay E/ 24- Marshall T/ 30- Moore T/ | 1 | 00:47 | 1 | 00:36 | 00:10 | 0-0 | 0 | 0 | 0 | 0 | 0 | 0.0000 |
| 0- Howard R/ 2- McHenry D/ 23- Kalambay E/ 24- Marshall T/ 30- Moore T/ | 1 | 00:36 | 2 | 20:00 | 00:36 | 3-2 | 1 | 0 | 0 | 0 | 1 | 3.0000 |
| 2- McHenry D/ 5- Faye B/ 10- Newman B/ 11- Allen D/ 24- Marshall T/ | 2 | 20:00 | 2 | 18:37 | 01:23 | 2-2 | 0 | 2 | 0 | 0 | 0 | 0.6667 |
| 2- McHenry D/ 5- Faye B/ 11- Allen D/ 24- Marshall T/ 30- Moore T/ | 2 | 18:37 | 2 | 17:21 | 01:16 | 4-0 | 4 | 2 | 1 | 0 | 0 | 1.3333 |
| 0- Howard R/ 2- McHenry D/ 11- Allen D/ 23- Kalambay E/ 30- Moore T/ | 2 | 17:21 | 2 | 14:21 | 03:00 | 4-6 | -2 | 2 | 0 | 3 | 2 | 0.6667 |
| 0- Howard R/ 10- Newman B/ 15- Edelen J/ 23- Kalambay E/ 30- Moore T/ | 2 | 14:21 | 2 | 12:24 | 01:57 | 6-2 | 4 | 1 | 1 | 0 | 2 | 1.7442 |
| 0- Howard R/ 2- McHenry D/ 10- Newman B/ 23- Kalambay E/ 24- Marshall T/ | 2 | 12:24 | 2 | 11:18 | 01:06 | 2-3 | -1 | 0 | 1 | 0 | 0 | 0.8197 |
| 2- McHenry D/ 5- Faye B/ 10- Newman B/ 23- Kalambay E/ 24- Marshall T/ | 2 | 11:18 | 2 | 10:00 | 01:18 | 5-6 | -1 | 1 | 1 | 0 | 2 | 1.7361 |
| 0- Howard R/ 2- McHenry D/ 10- Newman B/ 23- Kalambay E/ 24- Marshall T/ | 2 | 10:00 | 2 | 08:16 | 01:44 | 4-6 | -2 | 2 | 0 | 2 | 2 | 1.0000 |
| 0- Howard R/ 2- McHenry D/ 10- Newman B/ 24- Marshall T/ 30- Moore T/ | 2 | 08:16 | 2 | 05:56 | 02:20 | 6-4 | 2 | 2 | 0 | 1 | 1 | 1.5000 |
| 0- Howard R/ 2- McHenry D/ 10- Newman B/ 11- Allen D/ 30- Moore T/ | 2 | 05:56 | 2 | 04:46 | 01:10 | 2-3 | -1 | 0 | 0 | 0 | 0 | 0.8197 |
| 5- Faye B/ 11- Allen D/ 23- Kalambay E/ 24- Marshall T/ 30- Moore T/ | 2 | 04:46 | 2 | 03:32 | 01:14 | 0-3 | -3 | 1 | 0 | 3 | 0 | 0.0000 |
| 5- Faye B/ 11- Allen D/ 15- Edelen J/ 23- Kalambay E/ 24- Marshall T/ | 2 | 03:32 | 2 | 03:32 | 00:00 | 0-1 | -1 | 0 | 0 | 0 | 0 | 0.0000 |
| 2- McHenry D/ 5- Faye B/ 10- Newman B/ 23- Kalambay E/ 24- Marshall T/ | 2 | 03:32 | 2 | 01:57 | 01:35 | 3-4 | -1 | 2 | 0 | 1 | 1 | 1.2295 |
| 0- Howard R/ 2- McHenry D/ 10- Newman B/ 23- Kalambay E/ 24- Marshall T/ | 2 | 01:57 | 2 | 01:57 | 00:00 | 0-0 | 0 | 0 | 0 | 0 | 0 | 0.0000 |
| 0- Howard R/ 10- Newman B/ 23- Kalambay E/ 24- Marshall T/ 30- Moore T/ | 2 | 01:57 | 2 | 01:21 | 00:36 | 0-2 | -2 | 0 | 0 | 0 | 0 | 0.0000 |
| 0- Howard R/ 2- McHenry D/ 10- Newman B/ 23- Kalambay E/ 24- Marshall T/ | 2 | 01:21 | 2 | 00:57 | 00:23 | 2-0 | 2 | 0 | 0 | 0 | 1 | 2.0000 |
| 0- Howard R/ 10- Newman B/ 23- Kalambay E/ 24- Marshall T/ 30- Moore T/ | 2 | 00:57 | 2 | 00:55 | 00:02 | 0-0 | 0 | 0 | 0 | 0 | 0 | 0.0000 |
| 0- Howard R/ 2- McHenry D/ 10- Newman B/ 23- Kalambay E/ 24- Marshall T/ | 2 | 00:55 | 2 | 00:38 | 00:17 | 0-4 | -4 | 0 | 0 | 1 | 0 | 0.0000 |
| 0- Howard R/ 10- Newman B/ 11- Allen D/ 23- Kalambay E/ 24- Marshall T/ | 2 | 00:38 | 2 | 00:38 | 00:00 | 0-0 | 0 | 0 | 0 | 0 | 0 | 0.0000 |
| 0- Howard R/ 11- Allen D/ 23- Kalambay E/ 24- Marshall T/ 30- Moore T/ | 2 | 00:38 | 2 | 00:31 | 00:07 | 0-1 | -1 | 0 | 0 | 0 | 0 | 0.0000 |
| 5- Faye B/ 11- Allen D/ 23- Kalambay E/ 24- Marshall T/ 30- Moore T/ | 2 | 00:31 | 2 | 00:12 | 00:18 | 4-3 | 1 | 1 | 0 | 0 | 0 | 1.6393 |
| 5- Faye B/ 10- Newman B/ 11- Allen D/ 23- Kalambay E/ 24- Marshall T/ | 2 | 00:12 | 2 | 00:00 | 00:12 | 3-1 | 2 | 1 | 0 | 0 | 1 | 3.0000 |



Western Ky. at UTEP

01/20/24 Don Haskins Center, El Paso
2023-24 Men's Basketball

Game Time: 7:00 PM
Game Duration: 1:54
Attendance: 4,151

Officials: Kevin Mathis, Brent Dugas, Rob Foster

UTEP

Table with columns: Lineup, Quarter On, Time On, Quarter Off, Time Off, Time on Court, Score, Score Diff, Reb, Stl, Tov, Ass, PPP. Contains 40 rows of player rotation data.



Western Ky. at UTEP

01/20/24 Don Haskins Center, El Paso
2023-24 Men's Basketball

Game Time: 7:00 PM
Game Duration: 1:54
Attendance: 4,151

Officials: Kevin Mathis, Brent Dugas, Rob Foster

Western Ky.

| Lineup | Time | Score | Score Diff | Pts/Min | Reb | Stl | Tov | Ass | PPP |
|--|-------|-------|------------|---------|-----|-----|-----|-----|--------|
| 2- McHenry D/ 5- Faye B/ 10- Newman B/ 23- Kalambay E/ 24- Marshall T/ | 08:16 | 14-22 | -8 | 1.6935 | 9 | 3 | 3 | 4 | 0.9138 |
| 0- Howard R/ 2- McHenry D/ 10- Newman B/ 24- Marshall T/ 30- Moore T/ | 04:05 | 10-4 | 6 | 2.4490 | 5 | 0 | 2 | 1 | 1.4286 |
| 2- McHenry D/ 5- Faye B/ 10- Newman B/ 11- Allen D/ 24- Marshall T/ | 04:02 | 6-7 | -1 | 1.4876 | 3 | 2 | 1 | 0 | 0.6757 |
| 0- Howard R/ 2- McHenry D/ 10- Newman B/ 23- Kalambay E/ 24- Marshall T/ | 03:30 | 8-13 | -5 | 2.2814 | 2 | 1 | 3 | 3 | 0.9479 |
| 0- Howard R/ 2- McHenry D/ 11- Allen D/ 23- Kalambay E/ 30- Moore T/ | 03:00 | 4-6 | -2 | 1.3333 | 2 | 0 | 3 | 2 | 0.6667 |
| 2- McHenry D/ 5- Faye B/ 10- Newman B/ 24- Marshall T/ 30- Moore T/ | 02:32 | 6-5 | 1 | 2.3684 | 2 | 0 | 0 | 0 | 1.5000 |
| 0- Howard R/ 10- Newman B/ 15- Edelen J/ 23- Kalambay E/ 30- Moore T/ | 01:57 | 6-2 | 4 | 3.0769 | 1 | 1 | 0 | 2 | 1.7442 |
| 0- Howard R/ 2- McHenry D/ 10- Newman B/ 11- Allen D/ 23- Kalambay E/ | 01:45 | 3-5 | -2 | 1.7143 | 1 | 0 | 1 | 1 | 1.0000 |
| 0- Howard R/ 2- McHenry D/ 11- Allen D/ 24- Marshall T/ 30- Moore T/ | 01:36 | 3-6 | -3 | 1.8750 | 1 | 0 | 1 | 1 | 0.7732 |
| 5- Faye B/ 11- Allen D/ 23- Kalambay E/ 24- Marshall T/ 30- Moore T/ | 01:32 | 4-6 | -2 | 2.6002 | 2 | 0 | 3 | 0 | 0.7353 |
| 0- Howard R/ 2- McHenry D/ 23- Kalambay E/ 24- Marshall T/ 30- Moore T/ | 01:25 | 7-4 | 3 | 4.9296 | 0 | 0 | 0 | 3 | 2.3333 |
| 0- Howard R/ 11- Allen D/ 15- Edelen J/ 23- Kalambay E/ 30- Moore T/ | 01:19 | 4-3 | 1 | 3.0380 | 2 | 0 | 1 | 0 | 1.3333 |
| 2- McHenry D/ 5- Faye B/ 11- Allen D/ 24- Marshall T/ 30- Moore T/ | 01:16 | 4-0 | 4 | 3.1579 | 2 | 1 | 0 | 0 | 1.3333 |
| 0- Howard R/ 2- McHenry D/ 10- Newman B/ 11- Allen D/ 30- Moore T/ | 01:10 | 2-3 | -1 | 1.7143 | 0 | 0 | 0 | 0 | 0.8197 |
| 0- Howard R/ 11- Allen D/ 15- Edelen J/ 24- Marshall T/ 30- Moore T/ | 01:01 | 3-2 | 1 | 2.9508 | 0 | 0 | 1 | 1 | 1.5000 |
| 0- Howard R/ 10- Newman B/ 23- Kalambay E/ 24- Marshall T/ 30- Moore T/ | 00:38 | 0-2 | -2 | 0.0000 | 0 | 0 | 0 | 0 | 0.0000 |
| 0- Howard R/ 10- Newman B/ 15- Edelen J/ 24- Marshall T/ 30- Moore T/ | 00:24 | 0-0 | 0 | 0.0000 | 0 | 0 | 0 | 0 | 0.0000 |
| 5- Faye B/ 10- Newman B/ 11- Allen D/ 23- Kalambay E/ 24- Marshall T/ | 00:12 | 3-1 | 2 | 13.9535 | 1 | 0 | 0 | 1 | 3.0000 |
| 0- Howard R/ 15- Edelen J/ 23- Kalambay E/ 24- Marshall T/ 30- Moore T/ | 00:10 | 0-0 | 0 | 0.0000 | 0 | 0 | 0 | 0 | 0.0000 |
| 0- Howard R/ 11- Allen D/ 23- Kalambay E/ 24- Marshall T/ 30- Moore T/ | 00:07 | 0-1 | -1 | 0.0000 | 0 | 0 | 0 | 0 | 0.0000 |
| 5- Faye B/ 11- Allen D/ 15- Edelen J/ 23- Kalambay E/ 24- Marshall T/ | 00:00 | 0-1 | -1 | NaN | 0 | 0 | 0 | 0 | 0.0000 |
| 0- Howard R/ 10- Newman B/ 11- Allen D/ 23- Kalambay E/ 24- Marshall T/ | 00:00 | 0-0 | 0 | NaN | 0 | 0 | 0 | 0 | 0.0000 |



Western Ky. at UTEP

01/20/24 Don Haskins Center, El Paso
2023-24 Men's Basketball

Game Time: 7:00 PM
Game Duration: 1:54
Attendance: 4,151

Officials: Kevin Mathis, Brent Dugas, Rob Foster

UTEP

| Lineup | Time | Score | Score Diff | Pts/Min | Reb | Stl | Tov | Ass | PPP |
|--|-------|-------|------------|---------|-----|-----|-----|-----|--------|
| 0- Powell Z/ 2- Hardy T/ 4- Camper Jr. C/ 23- Frazier III O/ 34- Kalu K/ | 08:47 | 13-15 | -2 | 1.4801 | 11 | 5 | 3 | 2 | 0.7647 |
| 2- Hardy T/ 4- Camper Jr. C/ 5- Terrell Jr. D/ 13- Solomon C/ 23- Frazier III O/ | 04:38 | 14-10 | 4 | 3.0183 | 2 | 5 | 0 | 1 | 1.6432 |
| 0- Powell Z/ 2- Hardy T/ 4- Camper Jr. C/ 13- Solomon C/ 23- Frazier III O/ | 02:30 | 10-5 | 5 | 3.9814 | 3 | 0 | 1 | 2 | 1.3089 |
| 0- Powell Z/ 2- Hardy T/ 5- Terrell Jr. D/ 23- Frazier III O/ 34- Kalu K/ | 02:20 | 4-6 | -2 | 1.7143 | 1 | 1 | 0 | 2 | 1.0000 |
| 2- Hardy T/ 3- Hebb B/ 4- Camper Jr. C/ 11- Horton T/ 34- Kalu K/ | 02:09 | 0-4 | -4 | 0.0000 | 2 | 0 | 0 | 0 | 0.0000 |
| 0- Powell Z/ 2- Hardy T/ 3- Hebb B/ 4- Camper Jr. C/ 34- Kalu K/ | 02:02 | 5-7 | -2 | 2.4590 | 1 | 0 | 2 | 0 | 1.1574 |
| 2- Hardy T/ 5- Terrell Jr. D/ 11- Horton T/ 13- Solomon C/ 23- Frazier III O/ | 01:57 | 2-6 | -4 | 1.0256 | 0 | 0 | 2 | 0 | 0.5000 |
| 0- Powell Z/ 2- Hardy T/ 4- Camper Jr. C/ 5- Terrell Jr. D/ 13- Solomon C/ | 01:55 | 3-2 | 1 | 1.5652 | 2 | 0 | 2 | 1 | 1.0000 |
| 0- Powell Z/ 2- Hardy T/ 4- Camper Jr. C/ 11- Horton T/ 13- Solomon C/ | 01:45 | 5-3 | 2 | 2.8571 | 3 | 1 | 0 | 1 | 1.6667 |
| 0- Powell Z/ 2- Hardy T/ 5- Terrell Jr. D/ 13- Solomon C/ 23- Frazier III O/ | 01:43 | 5-6 | -1 | 2.9126 | 1 | 0 | 0 | 2 | 1.6667 |
| 0- Powell Z/ 2- Hardy T/ 11- Horton T/ 23- Frazier III O/ 33- Jones E/ | 01:36 | 5-4 | 1 | 3.1250 | 3 | 0 | 1 | 1 | 0.9191 |
| 0- Powell Z/ 2- Hardy T/ 5- Terrell Jr. D/ 23- Frazier III O/ 33- Jones E/ | 01:32 | 2-0 | 2 | 1.3043 | 1 | 0 | 1 | 0 | 0.6667 |
| 0- Powell Z/ 2- Hardy T/ 4- Camper Jr. C/ 5- Terrell Jr. D/ 33- Jones E/ | 01:18 | 6-5 | 1 | 4.6154 | 1 | 0 | 1 | 1 | 1.4286 |
| 2- Hardy T/ 4- Camper Jr. C/ 11- Horton T/ 13- Solomon C/ 23- Frazier III O/ | 01:14 | 4-3 | 1 | 3.2432 | 0 | 1 | 0 | 0 | 2.1277 |
| 2- Hardy T/ 4- Camper Jr. C/ 5- Terrell Jr. D/ 23- Frazier III O/ 34- Kalu K/ | 01:10 | 3-2 | 1 | 2.5714 | 2 | 0 | 0 | 1 | 1.5957 |
| 0- Powell Z/ 3- Hebb B/ 4- Camper Jr. C/ 11- Horton T/ 13- Solomon C/ | 01:09 | 3-4 | -1 | 2.6087 | 0 | 1 | 1 | 1 | 1.0000 |
| 2- Hardy T/ 4- Camper Jr. C/ 5- Terrell Jr. D/ 23- Frazier III O/ 33- Jones E/ | 01:07 | 5-2 | 3 | 4.4776 | 1 | 0 | 0 | 0 | 2.5000 |
| 0- Powell Z/ 2- Hardy T/ 4- Camper Jr. C/ 11- Horton T/ 34- Kalu K/ | 00:57 | 3-3 | 0 | 3.1579 | 0 | 1 | 0 | 0 | 1.2295 |
| 0- Powell Z/ 4- Camper Jr. C/ 11- Horton T/ 13- Solomon C/ 23- Frazier III O/ | 00:10 | 0-0 | 0 | 0.0000 | 0 | 0 | 0 | 0 | 0.0000 |
| 0- Powell Z/ 2- Hardy T/ 4- Camper Jr. C/ 11- Horton T/ 23- Frazier III O/ | 00:00 | 0-0 | 0 | NaN | 0 | 0 | 0 | 0 | 0.0000 |
| 0- Powell Z/ 2- Hardy T/ 4- Camper Jr. C/ 5- Terrell Jr. D/ 34- Kalu K/ | 00:00 | 1-0 | 1 | ∞ | 0 | 0 | 0 | 0 | 2.2727 |