



**UTSA at UTEP**

03/08/22 Ford Center at the Star, Frisco  
2021-22 Women's Basketball

Game Time: 4:00 PM  
Game Duration: 2:07  
Attendance: 3,606

Officials:

UTSA - 58

Record: 7-22

NO.	Name	F	Min	FG			Rebounds			Fouls		TP	AS	TO	ST	Blocks		+/-
				M-A	M-A	M-A	OR	DR	TOT	PF	FD					BS	BA	
0	Elyssa Coleman	F	42:21	10-18	0-2	1-2	3	8	11	4	1	21	0	2	0	2	0	4
2	Jadyn Pimentel	G	39:40	4-13	2-3	4-6	0	6	6	3	7	14	1	4	6	1	2	-2
10	Queen Ulabo	G	24:45	2-5	0-0	0-0	4	1	5	2	2	4	1	1	1	0	0	5
12	LaPraisjah Johnson	G	24:52	0-2	0-0	4-4	0	0	0	2	2	4	0	2	0	0	0	-4
40	Chantel Govan	G	28:12	1-4	0-1	0-2	0	0	0	3	2	2	4	0	1	0	0	2
11	Charlene Mass		12:00	1-4	1-3	1-2	0	2	2	2	2	4	0	1	0	0	0	-3
5	Yuliyana Valcheva		05:51	0-1	0-0	0-0	1	0	1	1	0	0	0	0	0	0	0	-6
3	Elena Blanding		02:39	0-1	0-0	0-0	0	0	0	0	0	0	0	0	0	0	0	-3
1	Hailey Atwood		27:37	1-3	0-1	2-2	1	4	5	1	1	4	2	1	0	0	0	1
21	Deborah Nwakamma		17:03	2-8	1-5	0-0	0	2	2	2	0	5	0	1	0	0	0	11
Team							2	3	5			0		0				
<b>Totals</b>				21-59	4-15	12-18	11	26	37	20	17	58	8	12	8	3	2	1

Technical Fouls::NONE

Shooting By Period		
1 <sup>st</sup> FG%	4-17	23.5%
3PT%	1-3	33.3%
FT%	1-2	50%
2 <sup>nd</sup> FG%	4-16	25.0%
3PT%	1-8	12.5%
FT%	2-2	100%
3 <sup>rd</sup> FG%	5-11	45.5%
3PT%	0-0	0.0%
FT%	3-4	75%
4 <sup>th</sup> FG%	6-10	60.0%
3PT%	1-2	50.0%
FT%	5-6	83.3%
OT FG%	2-5	40.0%
3PT%	1-2	50.0%
FT%	1-4	25%
GM FG%	21-59	35.6%
3PT%	4-15	26.7%
FT%	12-18	66.7%

Dead Ball Rebounds: 5, 0

UTEP - 57

Record: 14-15

NO.	Name	F	Min	FG			Rebounds			Fouls		TP	AS	TO	ST	Blocks		+/-
				M-A	M-A	M-A	OR	DR	TOT	PF	FD					BS	BA	
2	Teal Battle	F	25:18	3-4	0-0	1-2	2	3	5	3	1	7	0	1	0	0	0	2
21	Elina Arike	F	17:05	0-3	0-0	2-2	3	2	5	1	2	2	1	2	0	0	1	-12
3	Katia Gallegos	G	36:53	3-12	0-0	2-2	0	1	1	2	2	8	3	2	1	1	1	-3
5	Destiny Thurman	G	42:42	8-19	4-8	3-3	2	5	7	0	4	23	0	2	1	0	0	1
15	Avery Crouse	G	28:16	1-4	1-3	4-4	2	3	5	4	1	7	0	2	3	1	0	-11
55	Brenda Fontana		16:18	0-2	0-2	0-0	1	3	4	2	1	0	0	1	0	0	0	11
22	Erin Wilson		17:42	0-3	0-2	0-2	2	3	5	3	5	0	1	3	1	0	0	14
0	Mahri Petree		32:44	2-9	2-5	1-2	3	5	8	2	3	7	1	2	0	0	1	-5
23	Eliana Cabral		08:02	1-2	0-1	1-2	0	0	0	0	1	3	1	2	1	0	0	-2
Team							2	3	5			0		2				
<b>Totals</b>				18-58	7-21	14-19	17	28	45	17	20	57	7	19	7	2	3	-1

Technical Fouls::NONE

Shooting By Period		
1 <sup>st</sup> FG%	6-14	42.9%
3PT%	5-6	83.3%
FT%	3-4	75%
2 <sup>nd</sup> FG%	0-13	0.0%
3PT%	0-6	0.0%
FT%	3-4	75%
3 <sup>rd</sup> FG%	6-11	54.5%
3PT%	1-1	100.0%
FT%	3-3	100%
4 <sup>th</sup> FG%	4-11	36.4%
3PT%	1-6	16.7%
FT%	4-6	66.7%
OT FG%	2-9	22.2%
3PT%	0-2	0.0%
FT%	1-2	50%
GM FG%	18-58	31.0%
3PT%	7-21	33.3%
FT%	14-19	73.7%

Dead Ball Rebounds: 2, 0

	UTS	UTE
Biggest lead	3 (1 <sup>st</sup> 6:36)	13 (1 <sup>st</sup> 1:10)
Best Scoring Run	8 (2 <sup>nd</sup> 6:44)	10 (1 <sup>st</sup> 1:10)
Lead Changes	8	
Times Tied	7	
Time with Lead	08:48	31:20

Points from	UTS	UTE
Turnovers	18	10
Paint	26	16
Second Chance	11	14
Fast Breaks	5	2
Bench	13	10

	Period by Period Scoring					
	1st	2nd	3rd	4th	OT1	TOT
UTS	10	11	13	18	6	58
UTE	20	3	16	13	5	57



## Period 1

## Quarter Starters:

UTE	2 Battle T	3 Gallegos K	5 Thurman D	15 Crouse A	21 Arike E
UTS	0 Coleman E	2 Pimentel J	10 Ulabo Q	12 Johnson L	40 Govan C

Game Time	UTE	Score	Diff	UTS
10:00	2 BATTLE T jumpball won			0 COLEMAN E jumpball lost
09:41	15 CROUSE A turnover lost ball (1)			40 GOVAN C steal (1)
09:24		0-2	-2	0 COLEMAN E 2pt FG from turnover outside the paint, jump shot made (2)
09:10	15 CROUSE A 3pt FG , jump shot made (3)	3-2	1	
09:10	21 ARIKE E assist (1)			
08:48				0 COLEMAN E 2pt FG in the paint, hook shot missed
08:45				0 COLEMAN E offensive rebound (1)
08:44				0 COLEMAN E 2pt FG second chance in the paint, layup missed
08:36				0 COLEMAN E offensive rebound (2)
08:36		3-4	-1	0 COLEMAN E 2pt FG second chance in the paint, layup made (4)
08:20	21 ARIKE E 2pt FG in the paint, layup missed			
08:17	5 THURMAN D offensive rebound (1)			
08:11	15 CROUSE A 3pt FG second chance, jump shot missed			
08:07	2 BATTLE T offensive rebound (1)			
07:53	21 ARIKE E foul offensive (1 - 1)			2 PIMENTEL J foul drawn (1)
07:53	21 ARIKE E turnover offensive (1)			
07:53	21 ARIKE E substitution out			
07:53	55 FONTANA B substitution in			
07:49				10 ULABO Q 2pt FG from turnover outside the paint, jump shot missed
07:47	15 CROUSE A defensive rebound (1)			
07:31	2 BATTLE T foul offensive (1 - 2)			10 ULABO Q foul drawn (1)
07:31	2 BATTLE T turnover offensive (1)			
07:05				12 JOHNSON L 2pt FG from turnover in the paint, driving layup missed
07:03	2 BATTLE T defensive rebound (2)			
06:55	5 THURMAN D 2pt FG outside the paint, step back jump shot missed			
06:54				10 ULABO Q defensive rebound (1)
06:54	15 CROUSE A foul personal (1 - 3)			40 GOVAN C foul drawn (1)
06:54	15 CROUSE A substitution out			
06:54	22 WILSON E substitution in			
06:36		3-6	-3	10 ULABO Q 2pt FG in the paint, driving layup made (2)
06:17	2 BATTLE T foul drawn (1)			12 JOHNSON L foul shooting (1 - 1)
06:17	2 BATTLE T free throw 1 - 2 made (1)	4-6	-2	
06:17	2 BATTLE T free throw 2 - 2 missed			
06:17	55 FONTANA B offensive rebound (1)			
06:07	5 THURMAN D 3pt FG second chance, jump shot made (3)	7-6	1	
06:07	3 GALLEGOS K assist (1)			
05:48				0 COLEMAN E turnover lost ball (1)
05:48	2 BATTLE T substitution out			
05:48	0 PETREE M substitution in			



Officials:

Game Time	UTE	Score	Diff	UTS
05:33	0 PETREE M 3pt FG from turnover, jump shot made (3)	10-6	4	
05:33	22 WILSON E assist (1)			
05:15				2 PIMENTEL J 2pt FG outside the paint, jump shot missed
05:09				10 ULABO Q offensive rebound (2)
05:08				12 JOHNSON L 2pt FG second chance in the paint, jump shot missed
05:04	5 THURMAN D defensive rebound (2)			
04:50	0 PETREE M foul offensive (1 - 4)			10 ULABO Q foul drawn (2)
04:50	0 PETREE M turnover offensive (1)			
04:50	Timeout media			
04:50				12 JOHNSON L substitution out
04:50				11 MASS C substitution in
04:21				40 GOVAN C 2pt FG from turnover in the paint, driving layup missed
04:20	defensive rebound (7)			
04:07	3 GALLEGOS K 2pt FG in the paint, layup blocked			
04:07				2 PIMENTEL J block (1)
04:03				0 COLEMAN E defensive rebound (3)
03:49				2 PIMENTEL J 2pt FG in the paint, jump shot missed
03:46	0 PETREE M defensive rebound (1)			
03:46	0 PETREE M foul drawn (1)			40 GOVAN C foul personal (1 - 2)
03:46				40 GOVAN C substitution out
03:46				12 JOHNSON L substitution in
03:27	3 GALLEGOS K 2pt FG in the paint, jump shot missed			
03:26	0 PETREE M offensive rebound (2)			
03:25	0 PETREE M 2pt FG second chance in the paint, jump shot missed			
03:24				2 PIMENTEL J defensive rebound (1)
03:24	22 WILSON E foul personal (1 - 5)			2 PIMENTEL J foul drawn (2)
03:24	3 GALLEGOS K substitution out			
03:24	23 CABRAL E substitution in			
03:24				10 ULABO Q substitution out
03:24				5 VALCHEVA Y substitution in
03:24				2 PIMENTEL J free throw 1 - 2 missed
03:24				offensive dead ball rebound (1)
03:24		10-7	3	2 PIMENTEL J free throw 2 - 2 made (1)
03:07	5 THURMAN D 3pt FG , jump shot made (6)	13-7	6	
02:46				5 VALCHEVA Y 2pt FG in the paint, jump shot missed
02:43				0 COLEMAN E offensive rebound (4)
02:43				2 PIMENTEL J substitution out
02:43				40 GOVAN C substitution in
02:43	jump ball situation			
02:41				0 COLEMAN E 2pt FG second chance outside the paint, jump shot missed
02:37	5 THURMAN D defensive rebound (3)			
02:32	5 THURMAN D 2pt FG outside the paint, jump shot missed			
02:30	22 WILSON E offensive rebound (1)			
02:30	22 WILSON E foul drawn (1)			11 MASS C foul personal (1 - 3)
02:30				0 COLEMAN E substitution out
02:30				3 BLANDING E substitution in



Officials:

Game Time	UTE	Score	Diff	UTS
02:25	22 WILSON E foul drawn (2)			40 GOVAN C foul personal (2 - 4)
02:25				40 GOVAN C substitution out
02:25				2 PIMENTEL J substitution in
02:18	23 CABRAL E 2pt FG second chance in the paint, jump shot made (2)	15-7	8	
02:18	0 PETREE M assist (1)			
02:07				3 BLANDING E 2pt FG in the paint, jump shot missed
02:04	55 FONTANA B defensive rebound (2)			
01:59	22 WILSON E turnover travel (1)			
01:49				12 JOHNSON L turnover bad pass (1)
01:49				12 JOHNSON L substitution out
01:49				1 ATWOOD H substitution in
01:39	5 THURMAN D 3pt FG from turnover, jump shot made (9)	18-7	11	
01:39	23 CABRAL E assist (1)			
01:37				Timeout 30 Sec
01:17				2 PIMENTEL J 3pt FG , jump shot missed
01:12	22 WILSON E defensive rebound (2)			
01:10	22 WILSON E foul drawn (3)			2 PIMENTEL J foul shooting (1 - 5)
01:10				3 BLANDING E substitution out
01:10				5 VALCHEVA Y substitution out
01:10				0 COLEMAN E substitution in
01:10				10 ULABO Q substitution in
01:10	22 WILSON E substitution out			
01:10	15 CROUSE A substitution in			
01:10	15 CROUSE A free throw fast break 1 - 2 made (4)	19-7	12	
01:10	15 CROUSE A free throw fast break 2 - 2 made (5)	20-7	13	
00:57		20-10	10	11 MASS C 3pt FG , jump shot made (3)
00:57				10 ULABO Q assist (1)
00:24	0 PETREE M turnover lost ball (2)			10 ULABO Q steal (1)
00:16				11 MASS C 3pt FG from turnover, jump shot missed
00:00	0 PETREE M defensive rebound (3)			
00:00	5 THURMAN D 2pt FG outside the paint, jump shot missed			
00:00	15 CROUSE A offensive rebound (2)			
<b>END OF PERIOD</b>				
<b>UTE 20-10 UTS</b>				



**UTSA at UTEP**

03/08/22 Ford Center at the Star, Frisco  
2021-22 Women's Basketball

Game Time: 4:00 PM  
Game Duration: 2:07  
Attendance: 3,606

Officials:

**UTSA - 10**

NO.	Name	F	Min	FG	3P	FT	Rebounds			Fouls		TP	AS	TO	ST	Blocks		+/-
				M-A	M-A	M-A	OR	DR	TOT	PF	FD					BS	BA	
0	Elyssa Coleman	F	08:40	2-5	0-0	0-0	3	1	4	0	0	4	0	1	0	0	0	-5
2	Jadyn Pimentel	G	09:42	0-3	0-1	1-2	0	1	1	1	2	1	0	0	0	1	0	-10
10	Queen Ulabo	G	07:46	1-2	0-0	0-0	1	1	2	0	2	2	1	0	1	0	0	-3
12	LaPraisjah Johnson	G	07:07	0-2	0-0	0-0	0	0	0	1	0	0	0	1	0	0	0	-8
40	Chantel Govan	G	06:32	0-1	0-0	0-0	0	0	0	2	1	0	0	0	1	0	0	-4
11	Charlene Mass		04:50	1-2	1-2	0-0	0	0	0	1	0	3	0	0	0	0	0	-6
5	Yuliyana Valcheva		02:14	0-1	0-0	0-0	0	0	0	0	0	0	0	0	0	0	0	-7
3	Elena Blanding		01:20	0-1	0-0	0-0	0	0	0	0	0	0	0	0	0	0	0	-5
1	Hailey Atwood		01:49	0-0	0-0	0-0	0	0	0	0	0	0	0	0	0	0	0	-2
Team							0	0	0			0						
<b>Totals</b>				4-17	1-3	1-2	4	3	7	5	5	10	1	2	2	1	0	-10

Shooting By Period		
1st FG%	4-17	23.5%
3PT%	1-3	33.3%
FT%	1-2	50%
GM FG%	4-17	23.5%
3PT%	1-3	33.3%
FT%	1-2	50.0%

Dead Ball Rebounds: 1, 0

Technical Fouls::NONE

**UTEP - 20**

NO.	Name	F	Min	FG	3P	FT	Rebounds			Fouls		TP	AS	TO	ST	Blocks		+/-
				M-A	M-A	M-A	OR	DR	TOT	PF	FD					BS	BA	
2	Teal Battle	F	04:12	0-0	0-0	1-2	1	1	2	1	1	1	0	1	0	0	0	1
21	Elina Arike	F	02:07	0-1	0-0	0-0	0	0	0	1	0	0	1	1	0	0	0	-1
3	Katia Gallegos	G	06:36	0-2	0-0	0-0	0	0	0	0	0	0	1	0	0	0	1	4
5	Destiny Thurman	G	10:00	3-6	3-3	0-0	1	2	3	0	0	9	0	0	0	0	0	10
15	Avery Crouse	G	04:16	1-2	1-2	2-2	1	1	2	1	0	5	0	1	0	0	0	-2
55	Brenda Fontana		07:53	0-0	0-0	0-0	1	1	2	0	0	0	0	0	0	0	0	11
22	Erin Wilson		05:44	0-0	0-0	0-0	1	1	2	1	3	0	1	1	0	0	0	12
0	Mahri Petree		05:48	1-2	1-1	0-0	1	2	3	1	1	3	1	2	0	0	0	9
23	Eliana Cabral		03:24	1-1	0-0	0-0	0	0	0	0	0	2	1	0	0	0	0	6
Team							0	1	1			0						
<b>Totals</b>				6-14	5-6	3-4	6	9	15	5	5	20	5	6	0	0	1	10

Shooting By Period		
1st FG%	6-14	42.9%
3PT%	5-6	83.3%
FT%	3-4	75%
GM FG%	6-14	42.9%
3PT%	5-6	83.3%
FT%	3-4	75.0%

Dead Ball Rebounds: 0, 0

Technical Fouls::NONE

	UTS	UTE
Biggest lead	3 (1st 6:36)	13 (1st 1:10)
Best Scoring Run	4 (1st 6:36)	10 (1st 1:10)
Lead Changes	3	
Times Tied	0	
Time with Lead	02:43	06:41

Points from	UTS	UTE
Turnovers	3	6
Paint	4	2
Second Chance	2	5
Fast Breaks	0	2
Bench	3	5

	Period by Period Scoring					
	1st	2nd	3rd	4th	OT1	TOT
UTS	10	11	13	18	6	58
UTE	20	3	16	13	5	57



**UTSA at UTEP**

03/08/22 Ford Center at the Star, Frisco  
2021-22 Women's Basketball

**Game Time:** 4:00 PM  
**Game Duration:** 2:07  
**Attendance:** 3,606

**Officials:**

**Period 2**

**Quarter Starters:**

<b>UTE</b>	0 Petree M	5 Thurman D	15 Crouse A	55 Fontana B	3 Gallegos K
<b>UTS</b>	0 Coleman E	1 Atwood H	2 Pimentel J	10 Ulabo Q	11 Mass C

Game Time	UTE	Score	Diff	UTS
10:00	23 CABRAL E substitution out			
10:00	3 GALLEGOS K substitution in			
09:43	5 THURMAN D 2pt FG outside the paint, jump shot missed			
09:38				0 COLEMAN E defensive rebound (5)
09:30	15 CROUSE A steal (1)			2 PIMENTEL J turnover bad pass (1)
09:25	0 PETREE M 2pt FG from turnover outside the paint, jump shot blocked			
09:25				0 COLEMAN E block (1)
09:25	offensive rebound (16)			
08:57	0 PETREE M 2pt FG from turnover second chance outside the paint, jump shot missed			
08:54				11 MASS C defensive rebound (1)
08:53	55 FONTANA B foul personal (1 - 1)			11 MASS C foul drawn (1)
08:53	55 FONTANA B substitution out			
08:53	2 BATTLE T substitution in			
08:53				11 MASS C substitution out
08:53				21 NWAKAMMA D substitution in
08:41				21 NWAKAMMA D 2pt FG outside the paint, jump shot missed
08:39	5 THURMAN D defensive rebound (4)			
08:16	5 THURMAN D 3pt FG , jump shot missed			
08:13				0 COLEMAN E defensive rebound (6)
08:04				0 COLEMAN E 3pt FG , jump shot missed
08:00				10 ULABO Q offensive rebound (3)
07:59				10 ULABO Q 2pt FG second chance in the paint, layup missed
07:57	5 THURMAN D defensive rebound (5)			
07:53	5 THURMAN D turnover bad pass (1)			
07:53	Timeout 30 Sec			
07:53	Timeout media			
07:52	23 CABRAL E substitution in			
07:52	5 THURMAN D substitution out			
07:32				1 ATWOOD H 2pt FG from turnover outside the paint, jump shot missed
07:29				10 ULABO Q offensive rebound (4)
07:21		<b>20-12</b>	<b>8</b>	1 ATWOOD H 2pt FG from turnover second chance in the paint, driving layup made (2)
07:02	0 PETREE M 3pt FG , jump shot missed			
06:58				0 COLEMAN E defensive rebound (7)
06:57	23 CABRAL E steal (1)			0 COLEMAN E turnover bad pass (2)
06:53	3 GALLEGOS K turnover bad pass (1)			
06:53	2 BATTLE T substitution out			
06:53	21 ARIKE E substitution in			
06:53	3 GALLEGOS K substitution out			
06:53	5 THURMAN D substitution in			
06:51				2 PIMENTEL J 2pt FG from turnover in the paint, jump shot missed



**UTSA at UTEP**

03/08/22 Ford Center at the Star, Frisco  
2021-22 Women's Basketball

**Game Time:** 4:00 PM  
**Game Duration:** 2:07  
**Attendance:** 3,606

**Officials:**

Game Time	UTE	Score	Diff	UTS
06:49				10 ULABO Q offensive rebound (5)
06:44		<b>20-15</b>	<b>5</b>	21 NWAKAMMA D 3pt FG from turnover second chance, jump shot made (3)
06:06	5 THURMAN D foul drawn (1)			1 ATWOOD H foul shooting (1 - 1)
06:06	5 THURMAN D free throw 1 - 2 made (10)	<b>21-15</b>	<b>6</b>	
06:06	5 THURMAN D free throw 2 - 2 made (11)	<b>22-15</b>	<b>7</b>	
05:48		<b>22-17</b>	<b>5</b>	21 NWAKAMMA D 2pt FG in the paint, jump shot made (5)
05:33	23 CABRAL E turnover lost ball (1)			2 PIMENTEL J steal (1)
05:28				2 PIMENTEL J 2pt FG from turnover in the paint, layup missed
05:25				1 ATWOOD H offensive rebound (1)
05:19				21 NWAKAMMA D 3pt FG from turnover second chance, step back jump shot missed
05:15	15 CROUSE A defensive rebound (3)			
05:07	23 CABRAL E 3pt FG , jump shot missed			
05:03	21 ARIKE E offensive rebound (1)			
05:02	23 CABRAL E foul drawn (1)			2 PIMENTEL J foul shooting (2 - 2)
05:02	15 CROUSE A substitution out			
05:02	22 WILSON E substitution in			
05:02				2 PIMENTEL J substitution out
05:02				10 ULABO Q substitution out
05:02				5 VALCHEVA Y substitution in
05:02				40 GOVAN C substitution in
05:02	23 CABRAL E free throw 1 - 2 missed			
05:02	offensive dead ball rebound (1)			
05:02	23 CABRAL E free throw 2 - 2 made (3)	<b>23-17</b>	<b>6</b>	
04:47				21 NWAKAMMA D 3pt FG , jump shot missed
04:43	22 WILSON E defensive rebound (3)			
04:24	22 WILSON E 2pt FG outside the paint, jump shot missed			
04:20				0 COLEMAN E defensive rebound (8)
04:05		<b>23-19</b>	<b>4</b>	0 COLEMAN E 2pt FG in the paint, layup made (6)
04:05				40 GOVAN C assist (1)
03:40	22 WILSON E turnover lost ball (2)			
03:40	0 PETREE M substitution out			
03:40	23 CABRAL E substitution out			
03:40	15 CROUSE A substitution in			
03:40	55 FONTANA B substitution in			
03:40				21 NWAKAMMA D substitution out
03:40				11 MASS C substitution in
03:18				11 MASS C 3pt FG from turnover, jump shot missed
03:12				5 VALCHEVA Y offensive rebound (1)
03:12	jump ball situation			
03:12				1 ATWOOD H substitution out
03:12				21 NWAKAMMA D substitution in
02:55				40 GOVAN C 3pt FG second chance, jump shot missed
02:51	15 CROUSE A defensive rebound (4)			
02:47	5 THURMAN D 2pt FG in the paint, jump shot missed			
02:44	22 WILSON E offensive rebound (4)			
02:44	22 WILSON E turnover out of bounds (3)			
02:44	5 THURMAN D substitution out			
02:44	3 GALLEGOS K substitution in			



## UTSA at UTEP

03/08/22 Ford Center at the Star, Frisco  
2021-22 Women's BasketballGame Time: 4:00 PM  
Game Duration: 2:07  
Attendance: 3,606

Officials:

Game Time	UTE	Score	Diff	UTS
02:44				0 COLEMAN E substitution out
02:44				11 MASS C substitution out
02:44				1 ATWOOD H substitution in
02:44				3 BLANDING E substitution in
02:22				21 NWAKAMMA D 3pt FG from turnover, jump shot missed
02:19	55 FONTANA B defensive rebound (3)			
02:19	jump ball situation			
02:01	22 WILSON E 3pt FG , jump shot missed			
02:00	offensive rebound (25)			
02:00	55 FONTANA B foul drawn (1)			5 VALCHEVA Y foul personal (1 - 3)
01:54	55 FONTANA B 3pt FG second chance, jump shot missed			
01:50	15 CROUSE A offensive rebound (5)			
01:40	55 FONTANA B 3pt FG second chance, jump shot missed			
01:37				1 ATWOOD H defensive rebound (2)
01:25	15 CROUSE A foul shooting (2 - 2)			1 ATWOOD H foul drawn (1)
01:25	15 CROUSE A substitution out			
01:25	22 WILSON E substitution out			
01:25	0 PETREE M substitution in			
01:25	5 THURMAN D substitution in			
01:25				5 VALCHEVA Y substitution out
01:25				40 GOVAN C substitution out
01:25				10 ULABO Q substitution in
01:25				11 MASS C substitution in
01:25		23-20	3	1 ATWOOD H free throw 1 - 2 made (3)
01:25		23-21	2	1 ATWOOD H free throw 2 - 2 made (4)
01:25				3 BLANDING E substitution out
01:25				0 COLEMAN E substitution in
01:09	3 GALLEGOS K 2pt FG outside the paint, jump shot missed			
01:06				1 ATWOOD H defensive rebound (3)
00:48	3 GALLEGOS K foul drawn (1)			11 MASS C foul offensive (2 - 4)
00:48				11 MASS C turnover offensive (1)
00:30	5 THURMAN D 2pt FG from turnover in the paint, jump shot missed			
00:27				0 COLEMAN E defensive rebound (9)
00:03				0 COLEMAN E 3pt FG , jump shot missed
00:00	55 FONTANA B defensive rebound (4)			
<b>END OF PERIOD</b>				
<b>UTE 23-21 UTS</b>				



UTSA at UTEP

03/08/22 Ford Center at the Star, Frisco  
2021-22 Women's Basketball

Game Time: 4:00 PM  
Game Duration: 2:07  
Attendance: 3,606

Officials:

UTSA - 11

NO.	Name	Min	FG			Rebounds			Fouls		TP	AS	TO	ST	Blocks		+/-
			M-A	3P	FT	OR	DR	TOT	PF	FD					BS	BA	
0	Elyssa Coleman	F 08:41	1-3	0-2	0-0	0	5	5	0	0	2	0	1	0	1	0	6
2	Jadyn Pimentel	G 04:58	0-2	0-0	0-0	0	0	0	1	0	0	0	1	1	0	0	5
10	Queen Ulabo	G 06:23	0-1	0-0	0-0	3	0	3	0	0	0	0	0	0	0	0	7
12	LaPraisjah Johnson	G 00:00	0-0	0-0	0-0	0	0	0	0	0	0	0	0	0	0	0	0
40	Chantel Govan	G 03:37	0-1	0-1	0-0	0	0	0	0	0	0	1	0	0	0	0	1
21	Deborah Nwakamma	08:25	2-6	1-4	0-0	0	0	0	0	0	5	0	0	0	0	0	8
5	Yuliyana Valcheva	03:37	0-0	0-0	0-0	1	0	1	1	0	0	0	0	0	0	0	1
11	Charlene Mass	03:28	0-1	0-1	0-0	0	1	1	1	1	0	0	1	0	0	0	2
1	Hailey Atwood	09:32	1-2	0-0	2-2	1	2	3	1	1	4	0	0	0	0	0	8
3	Elena Blanding	01:19	0-0	0-0	0-0	0	0	0	0	0	0	0	0	0	0	0	2
Team						0	0	0			0						
<b>Totals</b>			4-16	1-8	2-2	5	8	13	4	2	11	1	3	1	1	0	8

Shooting By Period		
2 <sup>nd</sup> FG%	4-16	25.0%
3PT%	1-8	12.5%
FT%	2-2	100%
GM FG%	4-16	25.0%
3PT%	1-8	12.5%
FT%	2-2	100.0%

Dead Ball Rebounds: 0, 0

Technical Fouls::NONE

UTEP - 3

NO.	Name	Min	FG			Rebounds			Fouls		TP	AS	TO	ST	Blocks		+/-
			M-A	3P	FT	OR	DR	TOT	PF	FD					BS	BA	
2	Teal Battle	F 02:00	0-0	0-0	0-0	0	0	0	0	0	0	0	0	0	0	0	-2
21	Elna Arike	F 06:53	0-0	0-0	0-0	1	0	1	0	0	0	0	0	0	0	0	-6
3	Katia Gallegos	G 05:51	0-1	0-0	0-0	0	0	0	0	1	0	0	1	0	0	0	-4
5	Destiny Thurman	G 07:42	0-4	0-1	2-2	0	2	2	0	1	2	0	1	0	0	0	-6
15	Avery Crouse	G 07:13	0-0	0-0	0-0	1	2	3	1	0	0	0	0	1	0	0	-5
23	Eliana Cabral	04:12	0-1	0-1	1-2	0	0	0	0	1	1	0	1	1	0	0	-6
22	Erin Wilson	03:37	0-2	0-1	0-0	1	1	2	0	0	0	0	2	0	0	0	-1
55	Brenda Fontana	04:47	0-2	0-2	0-0	0	2	2	1	1	0	0	0	0	0	0	-2
0	Mahri Petree	07:45	0-3	0-1	0-0	0	0	0	0	0	0	0	0	0	0	1	-8
Team						2	0	2			0						
<b>Totals</b>			0-13	0-6	3-4	5	7	12	2	4	3	0	5	2	0	1	-8

Shooting By Period		
2 <sup>nd</sup> FG%	0-13	0.0%
3PT%	0-6	0.0%
FT%	3-4	75%
GM FG%	0-13	0.0%
3PT%	0-6	0.0%
FT%	3-4	75.0%

Dead Ball Rebounds: 1, 0

Technical Fouls::NONE

	UTS	UTE
Biggest lead	0 (1 <sup>st</sup> 10:00)	10 (2 <sup>nd</sup> 9:43)
Best Scoring Run	5(2 <sup>nd</sup> 6:44)	2(2 <sup>nd</sup> 6:06)
Lead Changes	0	
Times Tied	0	
Time with Lead	00:00	09:43

Points from	UTS	UTE
Turnovers	5	0
Paint	6	0
Second Chance	5	1
Fast Breaks	0	0
Bench	9	1

	Period by Period Scoring					
	1st	2nd	3rd	4th	OT1	TOT
UTS	10	11	13	18	6	58
UTE	20	3	16	13	5	57



**UTSA at UTEP**

03/08/22 Ford Center at the Star, Frisco  
2021-22 Women's Basketball

Game Time: 4:00 PM  
Game Duration: 2:07  
Attendance: 3,606

Officials:

**UTSA - 21**

NO.	Name	F	Min	FG	3P	FT	Rebounds			Fouls		TP	AS	TO	ST	Blocks		+/-
				M-A	M-A	M-A	OR	DR	TOT	PF	FD					BS	BA	
0	Elyssa Coleman	F	17:21	3-8	0-2	0-0	3	6	9	0	0	6	0	2	0	1	0	1
2	Jadyn Pimentel	G	14:40	0-5	0-1	1-2	0	1	1	2	2	1	0	1	1	1	0	-5
10	Queen Ulabo	G	14:09	1-3	0-0	0-0	4	1	5	0	2	2	1	0	1	0	0	4
12	LaPraisjah Johnson	G	07:07	0-2	0-0	0-0	0	0	0	1	0	0	0	1	0	0	0	-8
40	Chantel Govan	G	10:09	0-2	0-1	0-0	0	0	0	2	1	0	1	0	1	0	0	-3
11	Charlene Mass		08:18	1-3	1-3	0-0	0	1	1	2	1	3	0	1	0	0	0	-4
5	Yuliyana Valcheva		05:51	0-1	0-0	0-0	1	0	1	1	0	0	0	0	0	0	0	-6
3	Elena Blanding		02:39	0-1	0-0	0-0	0	0	0	0	0	0	0	0	0	0	0	-3
1	Hailey Atwood		11:21	1-2	0-0	2-2	1	2	3	1	1	4	0	0	0	0	0	6
21	Deborah Nwakamma		08:25	2-6	1-4	0-0	0	0	0	0	0	5	0	0	0	0	0	8
Team							0	0	0			0		0				
<b>Totals</b>				8-33	2-11	3-4	9	11	20	9	7	21	2	5	3	2	0	-2

Shooting By Period		
1 <sup>st</sup> FG%	4-17	23.5%
3PT%	1-3	33.3%
FT%	1-2	50%
2 <sup>nd</sup> FG%	4-16	25.0%
3PT%	1-8	12.5%
FT%	2-2	100%
GM FG%	8-33	24.2%
3PT%	2-11	18.2%
FT%	3-4	75.0%

Dead Ball Rebounds: 1, 0

Technical Fouls::NONE

**UTEP - 23**

NO.	Name	F	Min	FG	3P	FT	Rebounds			Fouls		TP	AS	TO	ST	Blocks		+/-
				M-A	M-A	M-A	OR	DR	TOT	PF	FD					BS	BA	
2	Teal Battle	F	06:12	0-0	0-0	1-2	1	1	2	1	1	1	0	1	0	0	0	-1
21	Elna Arike	F	09:00	0-1	0-0	0-0	1	0	1	1	0	0	1	1	0	0	0	-7
3	Katia Gallegos	G	12:27	0-3	0-0	0-0	0	0	0	0	1	0	1	1	0	0	1	0
5	Destiny Thurman	G	17:42	3-10	3-4	2-2	1	4	5	0	1	11	0	1	0	0	0	4
15	Avery Crouse	G	11:29	1-2	1-2	2-2	2	3	5	2	0	5	0	1	1	0	0	-7
55	Brenda Fontana		12:40	0-2	0-2	0-0	1	3	4	1	1	0	0	0	0	0	0	9
22	Erin Wilson		09:21	0-2	0-1	0-0	2	2	4	1	3	0	1	3	0	0	0	11
0	Mahri Petree		13:33	1-5	1-2	0-0	1	2	3	1	1	3	1	2	0	0	1	1
23	Eliana Cabral		07:36	1-2	0-1	1-2	0	0	0	0	1	3	1	1	1	0	0	0
Team							2	1	3			0		0				
<b>Totals</b>				6-27	5-12	6-8	11	16	27	7	9	23	5	11	2	0	2	2

Shooting By Period		
1 <sup>st</sup> FG%	6-14	42.9%
3PT%	5-6	83.3%
FT%	3-4	75%
2 <sup>nd</sup> FG%	0-13	0.0%
3PT%	0-6	0.0%
FT%	3-4	75%
GM FG%	6-27	22.2%
3PT%	5-12	41.7%
FT%	6-8	75.0%

Dead Ball Rebounds: 1, 0

Technical Fouls::NONE

	UTS	UTE
Biggest lead	3 (1 <sup>st</sup> 6:36)	13 (1 <sup>st</sup> 1:10)
Best Scoring Run	8(2 <sup>nd</sup> 6:44)	10(1 <sup>st</sup> 1:10)
Lead Changes	3	
Times Tied	0	
Time with Lead	02:43	16:41

Points from	UTS	UTE
Turnovers	8	6
Paint	10	2
Second Chance	7	6
Fast Breaks	0	2
Bench	12	6

	Period by Period Scoring					
	1st	2nd	3rd	4th	OT1	TOT
UTS	10	11	13	18	6	58
UTE	20	3	16	13	5	57



**UTSA at UTEP**

03/08/22 Ford Center at the Star, Frisco  
2021-22 Women's Basketball

**Game Time:** 4:00 PM  
**Game Duration:** 2:07  
**Attendance:** 3,606

**Officials:**

**Period 3**

**Quarter Starters:**

<b>UTE</b>	2 Battle T	3 Gallegos K	5 Thurman D	15 Crouse A	21 Arike E
<b>UTS</b>	0 Coleman E	1 Atwood H	2 Pimentel J	10 Ulabo Q	40 Govan C

Game Time	UTE	Score	Diff	UTS
10:00	0 PETREE M substitution out			
10:00	55 FONTANA B substitution out			
10:00	2 BATTLE T substitution in			
10:00	15 CROUSE A substitution in			
10:00				11 MASS C substitution out
10:00				21 NWAKAMMA D substitution out
10:00				2 PIMENTEL J substitution in
10:00				40 GOVAN C substitution in
09:49				10 ULABO Q 2pt FG in the paint, driving layup missed
09:46	21 ARIKE E defensive rebound (2)			
09:27	2 BATTLE T 2pt FG in the paint, turnaround jump shot made (3)	<b>25-21</b>	<b>4</b>	
08:57		<b>25-23</b>	<b>2</b>	10 ULABO Q 2pt FG in the paint, jump shot made (4)
08:57				2 PIMENTEL J assist (1)
08:39	2 BATTLE T 2pt FG outside the paint, jump shot missed			
08:37				0 COLEMAN E defensive rebound (10)
08:25				0 COLEMAN E 2pt FG outside the paint, jump shot missed
08:22	21 ARIKE E defensive rebound (3)			
07:56	3 GALLEGOS K 2pt FG in the paint, floating jump shot made (2)	<b>27-23</b>	<b>4</b>	
07:42		<b>27-25</b>	<b>2</b>	0 COLEMAN E 2pt FG in the paint, hook shot made (8)
07:22	21 ARIKE E 2pt FG in the paint, layup missed			
07:20	21 ARIKE E offensive rebound (4)			
07:20	21 ARIKE E foul drawn (1)			0 COLEMAN E foul shooting (1 - 1)
07:20	21 ARIKE E free throw 1 - 2 made (1)	<b>28-25</b>	<b>3</b>	
07:20	21 ARIKE E free throw 2 - 2 made (2)	<b>29-25</b>	<b>4</b>	
07:07	3 GALLEGOS K foul personal (1 - 1)			2 PIMENTEL J foul drawn (3)
07:01				10 ULABO Q substitution out
07:01				12 JOHNSON L substitution in
06:59	3 GALLEGOS K steal (1)			12 JOHNSON L turnover lost ball (2)
06:26	turnover shot clock (12)			
06:13		<b>29-27</b>	<b>2</b>	0 COLEMAN E 2pt FG from turnover in the paint, layup made (10)
06:13				1 ATWOOD H assist (1)
05:56	21 ARIKE E 2pt FG in the paint, jump shot blocked			
05:56				0 COLEMAN E block (2)
05:52				2 PIMENTEL J defensive rebound (2)
05:50				2 PIMENTEL J 2pt FG in the paint, layup blocked
05:50	15 CROUSE A block (1)			
05:50				offensive rebound (23)
05:50	2 BATTLE T substitution out			
05:50	21 ARIKE E substitution out			
05:50	0 PETREE M substitution in			
05:50	55 FONTANA B substitution in			
05:45		<b>29-29</b>	<b>0</b>	2 PIMENTEL J 2pt FG second chance outside the paint, floating jump shot made (3)



**UTSA at UTEP**

03/08/22 Ford Center at the Star, Frisco  
2021-22 Women's Basketball

**Game Time:** 4:00 PM  
**Game Duration:** 2:07  
**Attendance:** 3,606

**Officials:**

Game Time	UTE	Score	Diff	UTS
05:23	5 THURMAN D 2pt FG in the paint, floating jump shot made (13)	<b>31-29</b>	<b>2</b>	
05:23	5 THURMAN D foul drawn (2)			0 COLEMAN E foul shooting (2 - 2)
05:23				40 GOVAN C substitution out
05:23				11 MASS C substitution in
05:23	5 THURMAN D free throw 1 - 1 made (14)	<b>32-29</b>	<b>3</b>	
05:16				2 PIMENTEL J turnover lost ball (2)
05:00	55 FONTANA B turnover lost ball (1)			2 PIMENTEL J steal (2)
04:48	15 CROUSE A foul shooting (3 - 2)			12 JOHNSON L foul drawn (1)
04:48	Timeout media			
04:48	15 CROUSE A substitution out			
04:48	22 WILSON E substitution in			
04:48				1 ATWOOD H substitution out
04:48				10 ULABO Q substitution in
04:48		<b>32-30</b>	<b>2</b>	12 JOHNSON L free throw 1 - 2 made (1)
04:48		<b>32-31</b>	<b>1</b>	12 JOHNSON L free throw 2 - 2 made (2)
04:16	turnover shot clock (14)			
03:52	22 WILSON E steal (1)			2 PIMENTEL J turnover bad pass (3)
03:51	jump ball situation			
03:51	0 PETREE M substitution out			
03:51	2 BATTLE T substitution in			
03:31	5 THURMAN D 2pt FG from turnover outside the paint, step back jump shot made (16)	<b>34-31</b>	<b>3</b>	
03:01	55 FONTANA B foul shooting (2 - 3)			0 COLEMAN E foul drawn (1)
03:01				0 COLEMAN E free throw 1 - 2 missed
03:01				offensive dead ball rebound (2)
03:01		<b>34-32</b>	<b>2</b>	0 COLEMAN E free throw 2 - 2 made (11)
03:01				11 MASS C substitution out
03:01				1 ATWOOD H substitution in
03:01				12 JOHNSON L substitution out
03:01				40 GOVAN C substitution in
02:36	2 BATTLE T 2pt FG in the paint, layup made (5)	<b>36-32</b>	<b>4</b>	
02:16				2 PIMENTEL J 2pt FG outside the paint, jump shot missed
02:12	5 THURMAN D defensive rebound (6)			
02:12	5 THURMAN D foul drawn (3)			10 ULABO Q foul personal (1 - 3)
02:12	55 FONTANA B substitution out			
02:12	0 PETREE M substitution in			
02:12				10 ULABO Q substitution out
02:12				12 JOHNSON L substitution in
01:49	5 THURMAN D 2pt FG in the paint, pull up jump shot missed			
01:45				1 ATWOOD H defensive rebound (4)
01:41				2 PIMENTEL J 2pt FG in the paint, jump shot blocked
01:41	3 GALLEGOS K block (1)			
01:35	3 GALLEGOS K defensive rebound (1)			
01:34	3 GALLEGOS K turnover lost ball (2)			2 PIMENTEL J steal (3)
01:32				Timeout 30 Sec
01:32	Timeout media			
01:32				40 GOVAN C substitution out
01:32				21 NWAKAMMA D substitution in
01:10				0 COLEMAN E 2pt FG from turnover in the paint, jump shot missed



Official Basketball Play by Play - 3rd Period

**UTSA at UTEP**

03/08/22 Ford Center at the Star, Frisco  
2021-22 Women's Basketball

**Game Time:** 4:00 PM  
**Game Duration:** 2:07  
**Attendance:** 3,606

**Officials:**

Game Time	UTE	Score	Diff	UTS
01:06	2 BATTLE T defensive rebound (3)			
00:46	0 PETREE M 3pt FG , jump shot made (6)	<b>39-32</b>	<b>7</b>	
00:46	3 GALLEGOS K assist (2)			
00:28		<b>39-34</b>	<b>5</b>	0 COLEMAN E 2pt FG in the paint, layup made (13)
00:28				1 ATWOOD H assist (2)
00:04	3 GALLEGOS K 2pt FG outside the paint, jump shot missed			
00:02				1 ATWOOD H defensive rebound (5)
<b>END OF PERIOD</b>				
<b>UTE 39-34 UTS</b>				



UTSA at UTEP

03/08/22 Ford Center at the Star, Frisco  
2021-22 Women's Basketball

Game Time: 4:00 PM  
Game Duration: 2:07  
Attendance: 3,606

Officials:

UTSA - 13

NO.	Name	Min	FG			Rebounds			Fouls		TP	AS	TO	ST	Blocks		+/-
			M-A	3P	FT	OR	DR	TOT	PF	FD					BS	BA	
0	Elyssa Coleman	F 10:00	3-5	0-0	1-2	0	1	1	2	1	7	0	0	0	1	0	-3
2	Jadyn Pimentel	G 10:00	1-4	0-0	0-0	0	1	1	0	1	2	1	2	2	0	2	-3
10	Queen Ulabo	G 05:35	1-2	0-0	0-0	0	0	0	1	0	2	0	0	0	0	0	-3
12	LaPraisjah Johnson	G 06:12	0-0	0-0	2-2	0	0	0	0	1	2	0	1	0	0	0	1
40	Chantel Govan	G 06:06	0-0	0-0	0-0	0	0	0	0	0	0	0	0	0	0	0	-2
11	Charlene Mass	02:22	0-0	0-0	0-0	0	0	0	0	0	0	0	0	0	0	0	0
1	Hailey Atwood	08:13	0-0	0-0	0-0	0	2	2	0	0	0	2	0	0	0	0	-4
21	Deborah Nwakamma	01:32	0-0	0-0	0-0	0	0	0	0	0	0	0	0	0	0	0	-1
Team						1	0	1			0		0				
<b>Totals</b>			5-11	0-0	3-4	1	4	5	3	3	13	3	3	2	1	2	-3

Shooting By Period		
3rd FG%	5-11	45.5%
3PT%	0-0	0.0%
FT%	3-4	75%
GM FG%	5-11	45.5%
3PT%	0-0	0.0%
FT%	3-4	75.0%

Dead Ball Rebounds: 1, 0

Technical Fouls::NONE

UTEP - 16

NO.	Name	Min	FG			Rebounds			Fouls		TP	AS	TO	ST	Blocks		+/-
			M-A	3P	FT	OR	DR	TOT	PF	FD					BS	BA	
2	Teal Battle	F 08:01	2-3	0-0	0-0	0	1	1	0	0	4	0	0	0	0	0	4
21	Elna Arike	F 04:10	0-2	0-0	2-2	1	2	3	0	1	2	0	0	0	0	1	0
3	Katia Gallegos	G 10:00	1-2	0-0	0-0	0	1	1	1	0	2	1	1	1	1	0	3
5	Destiny Thurman	G 10:00	2-3	0-0	1-1	0	1	1	0	2	5	0	0	0	0	0	3
15	Avery Crouse	G 05:12	0-0	0-0	0-0	0	0	0	1	0	0	0	0	0	1	0	1
0	Mahri Petree	04:11	1-1	1-1	0-0	0	0	0	0	0	3	0	0	0	0	0	0
55	Brenda Fontana	03:38	0-0	0-0	0-0	0	0	0	1	0	0	0	1	0	0	0	2
22	Erin Wilson	04:48	0-0	0-0	0-0	0	0	0	0	0	0	0	0	1	0	0	2
Team						0	0	0			0		2				
<b>Totals</b>			6-11	1-1	3-3	1	5	6	3	3	16	1	4	2	2	1	3

Shooting By Period		
3rd FG%	6-11	54.5%
3PT%	1-1	100.0%
FT%	3-3	100%
GM FG%	6-11	54.5%
3PT%	1-1	100.0%
FT%	3-3	100.0%

Dead Ball Rebounds: 0, 0

Technical Fouls::NONE

	UTS	UTE
Biggest lead	0 (1 <sup>st</sup> 10:00)	7 (3 <sup>rd</sup> 0:46)
Best Scoring Run	4(3 <sup>rd</sup> 5:45)	5(3 <sup>rd</sup> 0:46)
Lead Changes	0	
Times Tied	1	
Time with Lead	00:00	09:27

Points from	UTS	UTE
Turnovers	4	2
Paint	8	8
Second Chance	2	2
Fast Breaks	0	0
Bench	0	3

	Period by Period Scoring					
	1st	2nd	3rd	4th	OT1	TOT
UTS	10	11	13	18	6	58
UTE	20	3	16	13	5	57



**UTSA at UTEP**

03/08/22 Ford Center at the Star, Frisco  
2021-22 Women's Basketball

**Game Time:** 4:00 PM  
**Game Duration:** 2:07  
**Attendance:** 3,606

**Officials:**

**Period 4**

**Quarter Starters:**

<b>UTE</b>	0 Petree M	2 Battle T	3 Gallegos K	5 Thurman D	15 Crouse A
<b>UTS</b>	0 Coleman E	1 Atwood H	2 Pimentel J	21 Nwakamma D	40 Govan C

Game Time	UTE	Score	Diff	UTS
10:00	22 WILSON E substitution out			
10:00	15 CROUSE A substitution in			
10:00				12 JOHNSON L substitution out
10:00				40 GOVAN C substitution in
09:46	15 CROUSE A steal (2)			1 ATWOOD H turnover bad pass (1)
09:30	5 THURMAN D 3pt FG from turnover, jump shot missed			
09:27				defensive rebound (26)
09:04		<b>39-36</b>	<b>3</b>	0 COLEMAN E 2pt FG in the paint, turnaround jump shot made (15)
08:36	15 CROUSE A 2pt FG in the paint, driving layup missed			
08:33				21 NWAKAMMA D defensive rebound (1)
08:33	jump ball situation			
08:33	15 CROUSE A steal (3)			21 NWAKAMMA D turnover lost ball (1)
08:28	15 CROUSE A turnover lost ball (2)			2 PIMENTEL J steal (4)
08:26	15 CROUSE A foul personal (4 - 1)			2 PIMENTEL J foul drawn (4)
08:26	15 CROUSE A substitution out			
08:26	22 WILSON E substitution in			
08:03				21 NWAKAMMA D 2pt FG from turnover in the paint, floating jump shot missed
08:03	defensive rebound (34)			
08:03	0 PETREE M foul drawn (2)			21 NWAKAMMA D foul personal (1 - 1)
08:03				21 NWAKAMMA D substitution out
08:03				12 JOHNSON L substitution in
07:47	5 THURMAN D foul drawn (4)			12 JOHNSON L foul personal (2 - 2)
07:35	5 THURMAN D turnover lost ball (2)			2 PIMENTEL J steal (5)
07:30		<b>39-38</b>	<b>1</b>	0 COLEMAN E 2pt FG fast break from turnover in the paint, layup made (17)
07:23	22 WILSON E foul drawn (4)			2 PIMENTEL J foul personal (3 - 3)
07:23				1 ATWOOD H substitution out
07:23				10 ULABO Q substitution in
07:02	5 THURMAN D 3pt FG , jump shot made (19)	<b>42-38</b>	<b>4</b>	
07:02	3 GALLEGOS K assist (3)			
06:59	Timeout 30 Sec			
06:59	Timeout media			
06:43	22 WILSON E foul shooting (2 - 2)			12 JOHNSON L foul drawn (2)
06:43	22 WILSON E substitution out			
06:43	23 CABRAL E substitution in			
06:43		<b>42-39</b>	<b>3</b>	12 JOHNSON L free throw 1 - 2 made (3)
06:43		<b>42-40</b>	<b>2</b>	12 JOHNSON L free throw 2 - 2 made (4)
06:43				40 GOVAN C substitution out
06:43				1 ATWOOD H substitution in
06:24	23 CABRAL E turnover travel (2)			
06:24				1 ATWOOD H substitution out
06:24				40 GOVAN C substitution in



**UTSA at UTEP**

03/08/22 Ford Center at the Star, Frisco  
2021-22 Women's Basketball

**Game Time:** 4:00 PM  
**Game Duration:** 2:07  
**Attendance:** 3,606

**Officials:**

Game Time	UTE	Score	Diff	UTS
06:17	2 BATTLE T foul shooting (2 - 3)			2 PIMENTEL J foul drawn (5)
06:17	2 BATTLE T substitution out			
06:17	23 CABRAL E substitution out			
06:17	15 CROUSE A substitution in			
06:17	21 ARIKE E substitution in			
06:17		<b>42-41</b>	<b>1</b>	2 PIMENTEL J free throw fast break 1 - 2 made (4)
06:17		<b>42-42</b>	<b>0</b>	2 PIMENTEL J free throw fast break 2 - 2 made (5)
06:14				40 GOVAN C substitution out
06:14				1 ATWOOD H substitution in
05:54	0 PETREE M 3pt FG , jump shot missed			
05:52	21 ARIKE E offensive rebound (5)			
05:51	jump ball situation			
05:51	21 ARIKE E turnover lost ball (2)			2 PIMENTEL J steal (6)
05:51				1 ATWOOD H substitution out
05:51				40 GOVAN C substitution in
05:37		<b>42-44</b>	<b>-2</b>	40 GOVAN C 2pt FG from turnover in the paint, driving layup made (2)
05:14	5 THURMAN D 3pt FG , jump shot missed			
05:09				defensive rebound (28)
04:55	21 ARIKE E foul drawn (2)			10 ULABO Q foul offensive (2 - 4)
04:55				10 ULABO Q turnover offensive (1)
04:55				40 GOVAN C substitution out
04:55				1 ATWOOD H substitution in
04:26	5 THURMAN D 2pt FG from turnover outside the paint, step back jump shot made (21)	<b>44-44</b>	<b>0</b>	
03:58				0 COLEMAN E 2pt FG in the paint, turnaround jump shot missed
03:54				offensive rebound (29)
03:54				1 ATWOOD H substitution out
03:54				40 GOVAN C substitution in
03:47				Timeout 30 Sec
03:40		<b>44-46</b>	<b>-2</b>	2 PIMENTEL J 2pt FG second chance outside the paint, pull up jump shot made (7)
03:13	3 GALLEGOS K 2pt FG in the paint, driving layup made (4)	<b>46-46</b>	<b>0</b>	
02:52		<b>46-49</b>	<b>-3</b>	2 PIMENTEL J 3pt FG , jump shot made (10)
02:26	3 GALLEGOS K 2pt FG outside the paint, jump shot missed			
02:22				2 PIMENTEL J defensive rebound (3)
02:22	3 GALLEGOS K foul personal (2 - 4)			2 PIMENTEL J foul drawn (6)
02:22	3 GALLEGOS K substitution out			
02:22	21 ARIKE E substitution out			
02:22	2 BATTLE T substitution in			
02:22	22 WILSON E substitution in			
02:22				10 ULABO Q substitution out
02:22				1 ATWOOD H substitution in
02:02				1 ATWOOD H 3pt FG , jump shot missed
01:59	22 WILSON E defensive rebound (5)			
01:59	22 WILSON E foul drawn (5)			0 COLEMAN E foul personal (3 - 5)
01:59	22 WILSON E free throw fast break 1 - 2 missed			
01:59	offensive dead ball rebound (2)			
01:57	22 WILSON E free throw fast break 2 - 2 missed			



**UTSA at UTEP**

03/08/22 Ford Center at the Star, Frisco  
2021-22 Women's Basketball

**Game Time:** 4:00 PM  
**Game Duration:** 2:07  
**Attendance:** 3,606

**Officials:**

Game Time	UTE	Score	Diff	UTS
01:55	0 PETREE M offensive rebound (4)			
01:48	15 CROUSE A foul drawn (1)			0 COLEMAN E foul shooting (4 - 6)
01:48	22 WILSON E substitution out			
01:48	3 GALLEGOS K substitution in			
01:48	15 CROUSE A free throw 1 - 2 made (6)	<b>47-49</b>	<b>-2</b>	
01:48	15 CROUSE A free throw 2 - 2 made (7)	<b>48-49</b>	<b>-1</b>	
01:29		<b>48-51</b>	<b>-3</b>	0 COLEMAN E 2pt FG outside the paint, jump shot made (19)
01:29				40 GOVAN C assist (2)
01:09	15 CROUSE A 3pt FG , jump shot missed			
01:05	2 BATTLE T offensive rebound (4)			
01:05	2 BATTLE T 2pt FG second chance in the paint, layup made (7)	<b>50-51</b>	<b>-1</b>	
01:05	Timeout 30 Sec			
00:34				40 GOVAN C 2pt FG outside the paint, jump shot missed
00:33	defensive rebound (39)			
00:15	3 GALLEGOS K foul drawn (2)			40 GOVAN C foul shooting (3 - 7)
00:15	3 GALLEGOS K free throw 1 - 2 made (5)	<b>51-51</b>	<b>0</b>	
00:15	3 GALLEGOS K free throw 2 - 2 made (6)	<b>52-51</b>	<b>1</b>	
00:15				Timeout 60 Sec
00:15				1 ATWOOD H substitution out
00:15				21 NWAKAMMA D substitution in
00:07	0 PETREE M foul shooting (2 - 5)			2 PIMENTEL J foul drawn (7)
00:07				2 PIMENTEL J free throw 1 - 2 missed
00:07				offensive dead ball rebound (3)
00:07	Timeout 60 Sec			
00:07		<b>52-52</b>	<b>0</b>	2 PIMENTEL J free throw 2 - 2 made (11)
00:07				21 NWAKAMMA D substitution out
00:07				1 ATWOOD H substitution in
00:00	5 THURMAN D 3pt FG , jump shot missed			
00:00				defensive rebound (31)
<b>END OF PERIOD</b>				
<b>UTE 52-52 UTS</b>				



**UTSA at UTEP**

03/08/22 Ford Center at the Star, Frisco  
2021-22 Women's Basketball

Game Time: 4:00 PM  
Game Duration: 2:07  
Attendance: 3,606

Officials:

**UTSA - 18**

NO.	Name	F/G	Min	FG	3P	FT	Rebounds			Fouls		TP	AS	TO	ST	Blocks		+/-
				M-A	M-A	M-A	OR	DR	TOT	PF	FD					BS	BA	
0	Elyssa Coleman	F	10:00	3-4	0-0	0-0	0	0	0	2	0	6	0	0	0	0	0	5
2	Jadyn Pimentel	G	10:00	2-2	1-1	3-4	0	1	1	1	4	8	0	0	3	0	0	5
10	Queen Ulabo	G	05:01	0-0	0-0	0-0	0	0	0	1	0	0	0	1	0	0	0	4
12	LaPraisjah Johnson	G	08:03	0-0	0-0	2-2	0	0	0	1	1	2	0	0	0	0	0	3
40	Chantel Govan	G	08:17	1-2	0-0	0-0	0	0	0	1	0	2	1	0	0	0	0	7
1	Hailey Atwood		06:33	0-1	0-1	0-0	0	0	0	0	0	0	0	1	0	0	0	-2
21	Deborah Nwakamma		02:06	0-1	0-0	0-0	0	1	1	1	0	0	0	1	0	0	0	3
Team							1	3	4			0		0				
<b>Totals</b>				6-10	1-2	5-6	1	5	6	7	5	18	1	3	3	0	0	5

Shooting By Period		
4 <sup>th</sup> FG%	6-10	60.0%
3PT%	1-2	50.0%
FT%	5-6	83.3%
GM FG%	6-10	60.0%
3PT%	1-2	50.0%
FT%	5-6	83.3%

Dead Ball Rebounds: 1, 0

Technical Fouls::NONE

**UTEP - 13**

NO.	Name	F/G	Min	FG	3P	FT	Rebounds			Fouls		TP	AS	TO	ST	Blocks		+/-
				M-A	M-A	M-A	OR	DR	TOT	PF	FD					BS	BA	
2	Teal Battle	F	06:05	1-1	0-0	0-0	1	0	1	1	0	2	0	0	0	0	0	0
21	Elna Arike	F	03:55	0-0	0-0	0-0	1	0	1	0	1	0	0	1	0	0	0	-5
3	Katia Gallegos	G	09:26	1-2	0-0	2-2	0	0	0	1	1	4	1	0	0	0	0	-5
5	Destiny Thurman	G	10:00	2-5	1-4	0-0	0	0	0	0	1	5	0	1	0	0	0	-5
15	Avery Crouse	G	07:51	0-2	0-1	2-2	0	0	0	1	1	2	0	1	2	0	0	-4
0	Mahri Petree		10:00	0-1	0-1	0-0	1	0	1	1	1	0	0	0	0	0	0	-5
22	Erin Wilson		02:17	0-0	0-0	0-2	0	1	1	1	2	0	0	0	0	0	0	1
23	Eliana Cabral		00:26	0-0	0-0	0-0	0	0	0	0	0	0	0	1	0	0	0	-2
Team							0	2	2			0		0				
<b>Totals</b>				4-11	1-6	4-6	3	3	6	5	7	13	1	4	2	0	0	-5

Shooting By Period		
4 <sup>th</sup> FG%	4-11	36.4%
3PT%	1-6	16.7%
FT%	4-6	66.7%
GM FG%	4-11	36.4%
3PT%	1-6	16.7%
FT%	4-6	66.7%

Dead Ball Rebounds: 1, 0

Technical Fouls::NONE

	UTS	UTE
Biggest lead	3 (4 <sup>th</sup> 2:52)	5 (4 <sup>th</sup> 9:30)
Best Scoring Run	6(4 <sup>th</sup> 5:37)	4(4 <sup>th</sup> 0:15)
Lead Changes	2	
Times Tied	5	
Time with Lead	04:14	03:21

Points from	UTS	UTE
Turnovers	6	2
Paint	6	4
Second Chance	2	4
Fast Breaks	4	0
Bench	0	0

	Period by Period Scoring					
	1st	2nd	3rd	4th	OT1	TOT
UTS	10	11	13	18	6	58
UTE	20	3	16	13	5	57



UTSA at UTEP

03/08/22 Ford Center at the Star, Frisco  
2021-22 Women's Basketball

Game Time: 4:00 PM  
Game Duration: 2:07  
Attendance: 3,606

Officials:

UTSA - 31

NO.	Name	Min	FG			Rebounds			Fouls		TP	AS	TO	ST	Blocks		+/-
			M-A	M-A	M-A	OR	DR	TOT	PF	FD					BS	BA	
0	Elyssa Coleman	F 20:00	6-9	0-0	1-2	0	1	1	4	1	13	0	0	0	1	0	2
2	Jadyn Pimentel	G 20:00	3-6	1-1	3-4	0	2	2	1	5	10	1	2	5	0	2	2
10	Queen Ulabo	G 10:36	1-2	0-0	0-0	0	0	0	2	0	2	0	1	0	0	0	1
12	LaPraisjah Johnson	G 14:15	0-0	0-0	4-4	0	0	0	1	2	4	0	1	0	0	0	4
40	Chantel Govan	G 14:23	1-2	0-0	0-0	0	0	0	1	0	2	1	0	0	0	0	5
11	Charlene Mass	02:22	0-0	0-0	0-0	0	0	0	0	0	0	0	0	0	0	0	0
1	Hailey Atwood	14:46	0-1	0-1	0-0	0	2	2	0	0	0	2	1	0	0	0	-6
21	Deborah Nwakamma	03:38	0-1	0-0	0-0	0	1	1	1	0	0	0	1	0	0	0	2
Team						2	3	5			0		0				
<b>Totals</b>			11-21	1-2	8-10	2	9	11	10	8	31	4	6	5	1	2	2

Shooting By Period		
3 <sup>rd</sup> FG%	5-11	45.5%
3PT%	0-0	0.0%
FT%	3-4	75%
4 <sup>th</sup> FG%	6-10	60.0%
3PT%	1-2	50.0%
FT%	5-6	83.3%
GM FG%	11-21	52.4%
3PT%	1-2	50.0%
FT%	8-10	80.0%

Dead Ball Rebounds: 2, 0

Technical Fouls::NONE

UTEP - 29

NO.	Name	Min	FG			Rebounds			Fouls		TP	AS	TO	ST	Blocks		+/-
			M-A	M-A	M-A	OR	DR	TOT	PF	FD					BS	BA	
2	Teal Battle	F 14:06	3-4	0-0	0-0	1	1	2	1	0	6	0	0	0	0	0	4
21	Elna Arike	F 08:05	0-2	0-0	2-2	2	2	4	0	2	2	0	1	0	0	1	-5
3	Katia Gallegos	G 19:26	2-4	0-0	2-2	0	1	1	2	1	6	2	1	1	1	0	-2
5	Destiny Thurman	G 20:00	4-8	1-4	1-1	0	1	1	0	3	10	0	1	0	0	0	-2
15	Avery Crouse	G 13:03	0-2	0-1	2-2	0	0	0	2	1	2	0	1	2	1	0	-3
0	Mahri Petree	14:11	1-2	1-2	0-0	1	0	1	1	1	3	0	0	0	0	0	-5
55	Brenda Fontana	03:38	0-0	0-0	0-0	0	0	0	1	0	0	0	1	0	0	0	2
22	Erin Wilson	07:05	0-0	0-0	0-2	0	1	1	1	2	0	0	0	1	0	0	3
23	Eliana Cabral	00:26	0-0	0-0	0-0	0	0	0	0	0	0	0	1	0	0	0	-2
Team						0	2	2			0		2				
<b>Totals</b>			10-22	2-7	7-9	4	8	12	8	10	29	2	8	4	2	1	-2

Shooting By Period		
3 <sup>rd</sup> FG%	6-11	54.5%
3PT%	1-1	100.0%
FT%	3-3	100%
4 <sup>th</sup> FG%	4-11	36.4%
3PT%	1-6	16.7%
FT%	4-6	66.7%
GM FG%	10-22	45.5%
3PT%	2-7	28.6%
FT%	7-9	77.8%

Dead Ball Rebounds: 1, 0

Technical Fouls::NONE

	UTS	UTE
Biggest lead	3 (4 <sup>th</sup> 2:52)	7 (3 <sup>rd</sup> 0:46)
Best Scoring Run	6(4 <sup>th</sup> 7:30)	5(3 <sup>rd</sup> 0:46)
Lead Changes	2	
Times Tied	6	
Time with Lead	04:14	13:18

Points from	UTS	UTE
Turnovers	10	4
Paint	14	12
Second Chance	4	6
Fast Breaks	4	0
Bench	0	3

	Period by Period Scoring					
	1st	2nd	3rd	4th	OT1	TOT
UTS	10	11	13	18	6	58
UTE	20	3	16	13	5	57



**UTSA at UTEP**

03/08/22 Ford Center at the Star, Frisco  
2021-22 Women's Basketball

**Game Time:** 4:00 PM  
**Game Duration:** 2:07  
**Attendance:** 3,606

**Officials:**

**Overtime 1**

**Quarter Starters:**

<b>UTE</b>	0 Petree M	2 Battle T	3 Gallegos K	5 Thurman D	15 Crouse A
<b>UTS</b>	1 Atwood H	2 Pimentel J	40 Govan C	21 Nwakamma D	0 Coleman E

Game Time	UTE	Score	Diff	UTS
05:00				21 NWAKAMMA D substitution in
05:00				12 JOHNSON L substitution out
05:00	0 PETREE M jumpball won			2 PIMENTEL J jumpball lost
04:50				1 ATWOOD H substitution out
04:50				12 JOHNSON L substitution in
04:34	3 GALLEGOS K 2pt FG outside the paint, jump shot missed			
04:34				2 PIMENTEL J defensive rebound (4)
04:34	2 BATTLE T foul shooting (3 - 6)			40 GOVAN C foul drawn (2)
04:34				40 GOVAN C free throw fast break 1 - 2 missed
04:34				offensive dead ball rebound (4)
04:34				40 GOVAN C free throw fast break 2 - 2 missed
04:31	0 PETREE M defensive rebound (5)			
04:17	0 PETREE M foul drawn (3)			21 NWAKAMMA D foul shooting (2 - 8)
04:17	0 PETREE M free throw 1 - 2 made (7)	<b>53-52</b>	<b>1</b>	
04:16	0 PETREE M free throw 2 - 2 missed			
04:15				2 PIMENTEL J defensive rebound (5)
04:03		<b>53-54</b>	<b>-1</b>	0 COLEMAN E 2pt FG in the paint, layup made (21)
04:03				40 GOVAN C assist (3)
03:40	0 PETREE M 3pt FG , jump shot missed			
03:35				0 COLEMAN E defensive rebound (11)
03:20				2 PIMENTEL J 2pt FG in the paint, driving layup missed
03:17	0 PETREE M defensive rebound (6)			
03:03	3 GALLEGOS K 2pt FG outside the paint, jump shot made (8)	<b>55-54</b>	<b>1</b>	
02:45	5 THURMAN D steal (1)			2 PIMENTEL J turnover bad pass (4)
02:26	0 PETREE M 2pt FG from turnover in the paint, jump shot missed			
02:24				2 PIMENTEL J defensive rebound (6)
02:07		<b>55-57</b>	<b>-2</b>	2 PIMENTEL J 3pt FG , jump shot made (14)
02:07				40 GOVAN C assist (4)
01:44	3 GALLEGOS K 2pt FG in the paint, driving layup missed			
01:40	0 PETREE M offensive rebound (7)			
01:24	3 GALLEGOS K 2pt FG second chance outside the paint, step back jump shot missed			
01:21	5 THURMAN D offensive rebound (7)			
01:20	5 THURMAN D 2pt FG second chance in the paint, layup made (23)	<b>57-57</b>	<b>0</b>	
01:20	Timeout 30 Sec			
01:20	15 CROUSE A substitution out			
01:20	22 WILSON E substitution in			
01:20				12 JOHNSON L substitution out
01:20				40 GOVAN C substitution out
01:20				1 ATWOOD H substitution in
01:20				11 MASS C substitution in
00:56				21 NWAKAMMA D 3pt FG , jump shot missed



**UTSA at UTEP**

03/08/22 Ford Center at the Star, Frisco  
2021-22 Women's Basketball

**Game Time:** 4:00 PM  
**Game Duration:** 2:07  
**Attendance:** 3,606

**Officials:**

Game Time	UTE	Score	Diff	UTS
00:52	0 PETREE M defensive rebound (8)			
00:34	22 WILSON E 3pt FG , jump shot missed			
00:31				21 NWAKAMMA D defensive rebound (2)
00:14				11 MASS C 2pt FG outside the paint, jump shot missed
00:09	2 BATTLE T defensive rebound (5)			
00:05	3 GALLEGOS K 2pt FG in the paint, jump shot missed			
00:02				11 MASS C defensive rebound (2)
00:03	22 WILSON E foul personal (3 - 7)			11 MASS C foul drawn (2)
00:03	22 WILSON E substitution out			
00:03	15 CROUSE A substitution in			
00:03				11 MASS C free throw fast break 1 - 2 missed
00:03				offensive dead ball rebound (5)
00:03		<b>57-58</b>	<b>-1</b>	11 MASS C free throw fast break 2 - 2 made (4)
<b>END OF GAME</b>				
<b>UTE 57-58 UTS</b>				



**UTSA at UTEP**

03/08/22 Ford Center at the Star, Frisco  
2021-22 Women's Basketball

Game Time: 4:00 PM  
Game Duration: 2:07  
Attendance: 3,606

Officials:

**UTSA - 6**

NO.	Name	Min	FG			Rebounds			Fouls		TP	AS	TO	ST	Blocks		+/-
			M-A	M-A	M-A	OR	DR	TOT	PF	FD					BS	BA	
0	Elyssa Coleman	F 05:00	1-1	0-0	0-0	0	1	1	0	0	2	0	0	0	0	0	1
2	Jadyn Pimentel	G 05:00	1-2	1-1	0-0	0	3	3	0	0	3	0	1	0	0	0	1
10	Queen Ulabo	G 00:00	0-0	0-0	0-0	0	0	0	0	0	0	0	0	0	0	0	0
12	LaPraisjah Johnson	G 03:30	0-0	0-0	0-0	0	0	0	0	0	0	0	0	0	0	0	0
40	Chantel Govan	G 03:40	0-0	0-0	0-2	0	0	0	0	1	0	2	0	0	0	0	0
21	Deborah Nwakamma	05:00	0-1	0-1	0-0	0	1	1	1	0	0	0	0	0	0	0	1
1	Hailey Atwood	01:30	0-0	0-0	0-0	0	0	0	0	0	0	0	0	0	0	0	1
11	Charlene Mass	01:20	0-1	0-0	1-2	0	1	1	0	1	1	0	0	0	0	0	1
Team						0	0	0		0		0					
<b>Totals</b>			2-5	1-2	1-4	0	6	6	1	2	6	2	1	0	0	0	1

Shooting By Period		
OT FG%	2-5	40.0%
3PT%	1-2	50.0%
FT%	1-4	25%
GM FG%	2-5	40.0%
3PT%	1-2	50.0%
FT%	1-4	25.0%

Dead Ball Rebounds: 2, 0

Technical Fouls::NONE

**UTEP - 5**

NO.	Name	Min	FG			Rebounds			Fouls		TP	AS	TO	ST	Blocks		+/-
			M-A	M-A	M-A	OR	DR	TOT	PF	FD					BS	BA	
2	Teal Battle	F 05:00	0-0	0-0	0-0	0	1	1	1	0	0	0	0	0	0	0	-1
21	Elna Arike	F 00:00	0-0	0-0	0-0	0	0	0	0	0	0	0	0	0	0	0	0
3	Katia Gallegos	G 05:00	1-5	0-0	0-0	0	0	0	0	0	2	0	0	0	0	0	-1
5	Destiny Thurman	G 05:00	1-1	0-0	0-0	1	0	1	0	0	2	0	0	1	0	0	-1
15	Avery Crouse	G 03:44	0-0	0-0	0-0	0	0	0	0	0	0	0	0	0	0	0	-1
0	Mahri Petree	05:00	0-2	0-1	1-2	1	3	4	0	1	1	0	0	0	0	0	-1
22	Erin Wilson	01:16	0-1	0-0	0-0	0	0	0	1	0	0	0	0	0	0	0	0
Team						0	0	0		0		0					
<b>Totals</b>			2-9	0-2	1-2	2	4	6	2	1	5	0	0	1	0	0	-1

Shooting By Period		
OT FG%	2-9	22.2%
3PT%	0-2	0.0%
FT%	1-2	50%
GM FG%	2-9	22.2%
3PT%	0-2	0.0%
FT%	1-2	50.0%

Dead Ball Rebounds: 0, 0

Technical Fouls::NONE

	UTS	UTE
Biggest lead	2 (1 <sup>st</sup> OT 2:07)	1 (1 <sup>st</sup> OT 4:17)
Best Scoring Run	3 (1 <sup>st</sup> OT 2:07)	2 (1 <sup>st</sup> OT 3:03)
Lead Changes	4	
Times Tied	1	
Time with Lead	01:51	01:10

Points from	UTS	UTE
Turnovers	0	0
Paint	2	2
Second Chance	0	2
Fast Breaks	1	0
Bench	1	1

	Period by Period Scoring					
	1st	2nd	3rd	4th	OT1	TOT
UTS	10	11	13	18	6	58
UTE	20	3	16	13	5	57



**UTSA at UTEP**

03/08/22 Ford Center at the Star, Frisco  
2021-22 Women's Basketball

**Game Time:** 4:00 PM  
**Game Duration:** 2:07  
**Attendance:** 3,606

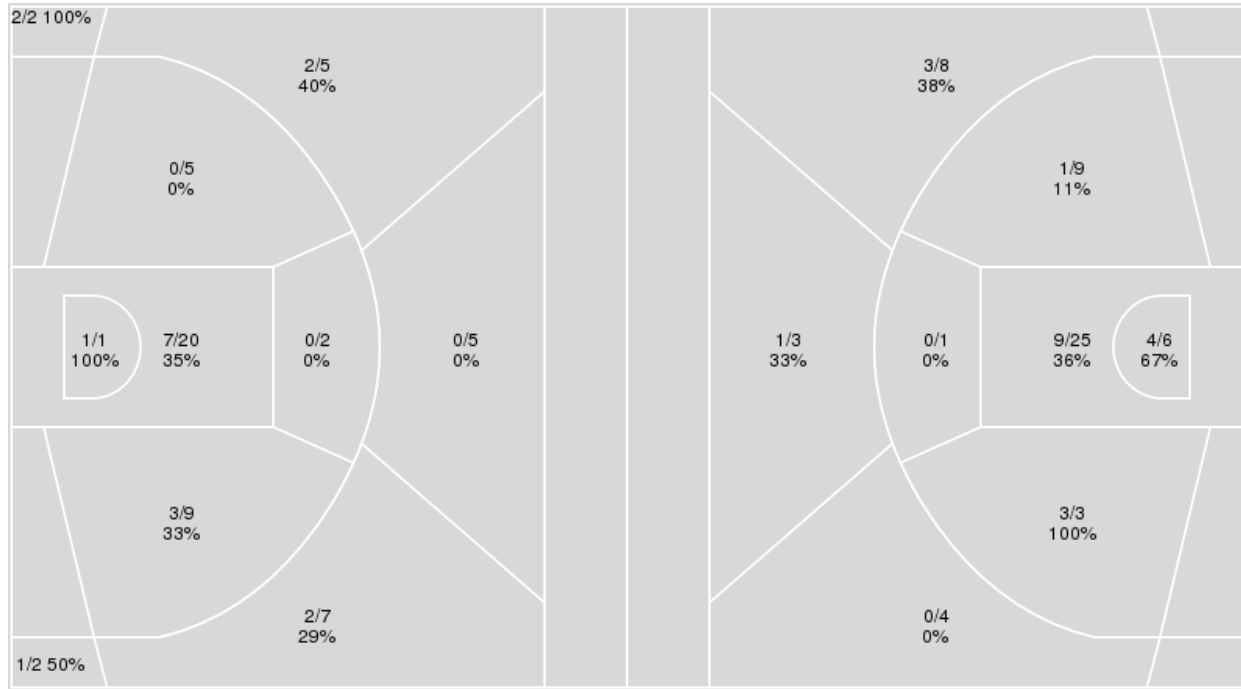
**Officials:**

{ Players => 0, 2, 3, 4, 5, 10, 12, 15, 20, 21, 22, 23, 24, 55; } FG Types => All; Results => All;

{ Players => 0, 1, 2, 3, 4, 5, 10, 11, 12, 13, 21, 22, 23, 24, 40, 45; } FG Types => All; Results => All;

**UTEP**

**UTSA**



UTEP	M/A	%
Field Goals	18/58	31
2 Points	11/37	30
3 Points	7/21	33
Free Throws	14/19	74

UTSA	M/A	%
Field Goals	21/59	36
2 Points	17/44	39
3 Points	4/15	27
Free Throws	12/18	67



## UTSA at UTEP

03/08/22 Ford Center at the Star, Frisco  
2021-22 Women's BasketballGame Time: 4:00 PM  
Game Duration: 2:07  
Attendance: 3,606

Officials:

## UTSA

No	Name	Mins		Score		Points Diff		Points per Min		Assists		Rebounds		Steals		Turnovers	
		On	Off	On	Off	On	Off	On	Off	On	Off	On	Off	On	Off	On	Off
0	Elyssa Coleman	42:21	02:39	56 - 52	2 - 5	4	-3	1.32	0.75	8	0	36	1	8	0	11	1
1	Hailey Atwood	27:37	17:23	31 - 30	27 - 27	1	0	1.12	1.55	6	2	24	13	7	1	7	5
2	Jadyn Pimentel	39:40	05:20	54 - 56	4 - 1	-2	3	1.36	0.75	7	1	32	5	8	0	11	1
3	Elena Blanding	02:39	42:21	2 - 5	56 - 52	-3	4	0.75	1.32	0	8	1	36	0	8	1	11
5	Yuliyana Valcheva	05:51	39:09	3 - 9	55 - 48	-6	7	0.51	1.40	1	7	4	33	0	8	1	11
10	Queen Ulabo	24:45	20:15	36 - 31	22 - 26	5	-4	1.45	1.09	2	6	20	17	4	4	6	6
11	Charlene Mass	12:00	33:00	10 - 13	48 - 44	-3	4	0.83	1.45	1	7	10	27	2	6	5	7
12	LaPraisjah Johnson	24:52	20:08	37 - 41	21 - 16	-4	5	1.49	1.04	5	3	18	19	5	3	7	5
21	Deborah Nwakamma	17:03	27:57	22 - 11	36 - 46	11	-10	1.29	1.29	4	4	19	18	2	6	5	7
40	Chantel Govan	28:12	16:48	39 - 37	19 - 20	2	-1	1.38	1.13	6	2	21	16	4	4	6	6

## UTEP

No	Name	Mins		Score		Points Diff		Points per Min		Assists		Rebounds		Steals		Turnovers	
		On	Off	On	Off	On	Off	On	Off	On	Off	On	Off	On	Off	On	Off
0	Mahri Petree	32:44	12:16	40 - 45	17 - 13	-5	4	1.22	1.39	5	2	31	14	6	1	14	5
2	Teal Battle	25:18	19:42	34 - 32	23 - 26	2	-3	1.34	1.17	4	3	24	21	5	2	10	9
3	Katia Gallegos	36:53	08:07	44 - 47	13 - 11	-3	2	1.19	1.60	5	2	32	13	7	0	14	5
5	Destiny Thurman	42:42	02:18	57 - 56	0 - 2	1	-2	1.33	0.00	7	0	42	3	6	1	18	1
15	Avery Crouse	28:16	16:44	31 - 42	26 - 16	-11	10	1.10	1.55	1	6	28	17	6	1	12	7
21	Elina Arike	17:05	27:55	16 - 28	41 - 30	-12	11	0.94	1.47	1	6	15	30	1	6	7	12
22	Erin Wilson	17:42	27:18	26 - 12	31 - 46	14	-15	1.47	1.14	6	1	23	22	1	6	7	12
23	Eliana Cabral	08:02	36:58	13 - 15	44 - 43	-2	1	1.62	1.19	2	5	9	36	1	6	6	13
55	Brenda Fontana	16:18	28:42	24 - 13	33 - 45	11	-12	1.47	1.15	4	3	21	24	2	5	7	12

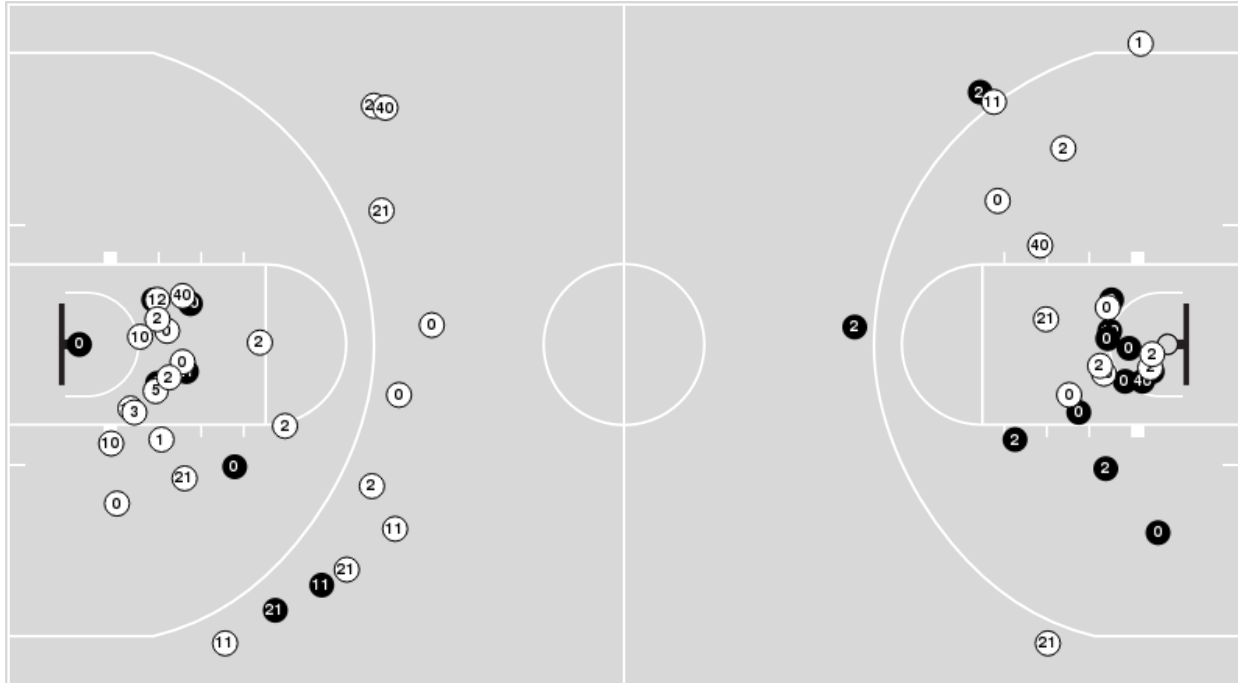


Officials:

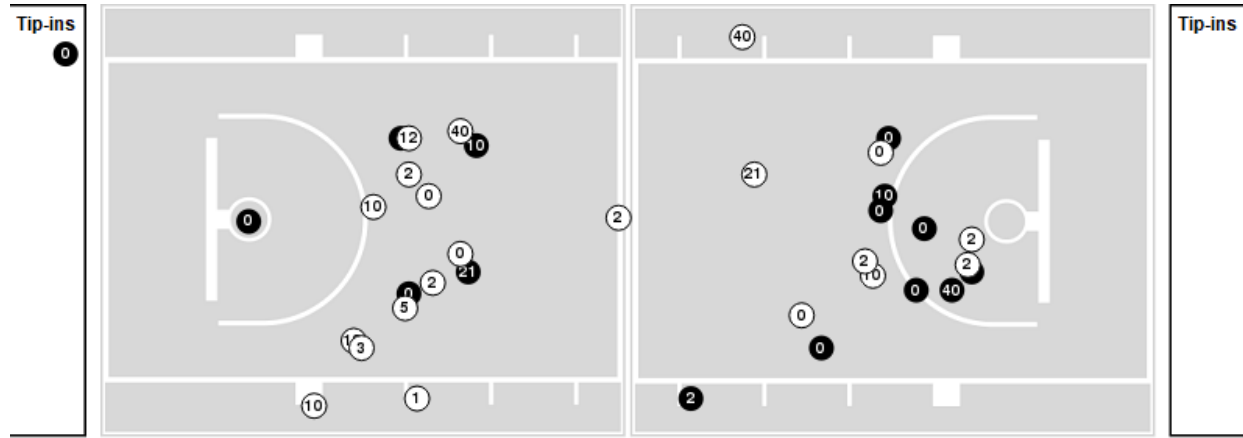
Players => 0, 1, 2, 3, 4, 5, 10, 11, 12, 13, 21, 22, 23, 24, 40, 45 FG Types=>AllResults=>All

**UTSA**

**All Field Goals**



**Blow Up Chart**



● Made ○ Missed N - Player Number

UTSA	M/A	%
Field Goals	21/59	36
2 Points	17/44	39
3 Points	4/15	27
Free Throws	12/18	67

UTSA	M/A	%
Points in the Paint	26 (13 / 31)	42
Fast Break Points	5 (4/7)	57
Second Chance Points	11 (5/11)	45
Effective FG%	39	

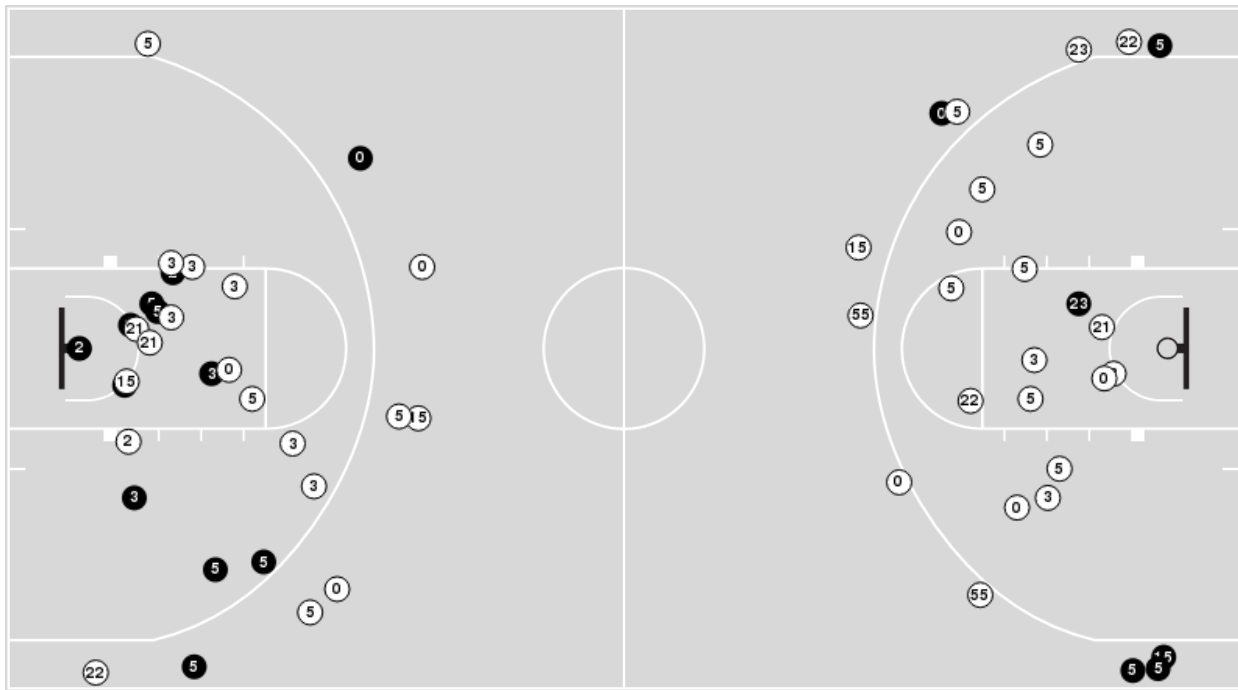


Officials:

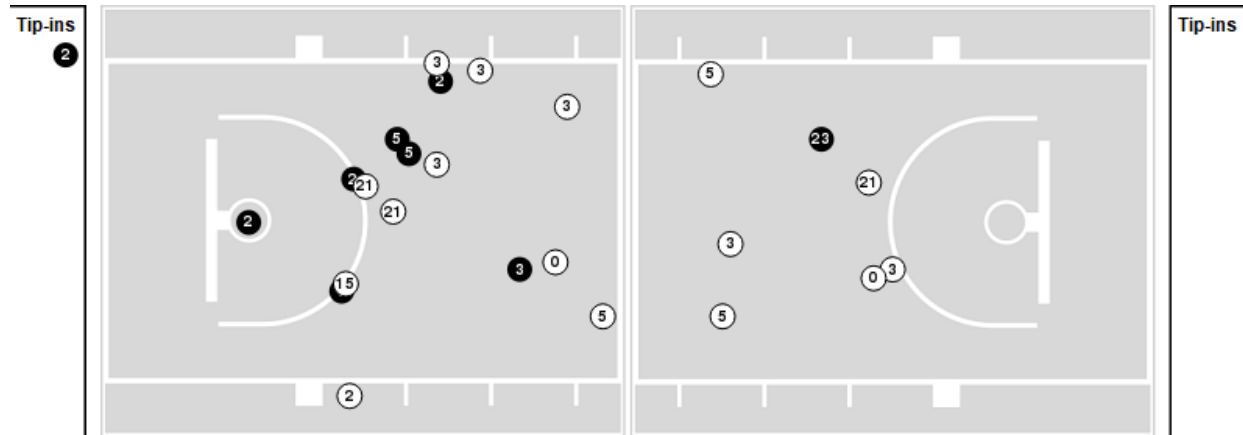
Players => 0, 2, 3, 4, 5, 10, 12, 15, 20, 21, 22, 23, 24, 55FG Types=>AllResults=>All

**UTEP**

**All Field Goals**



**Blow Up Chart**



● Made ○ Missed N - Player Number

UTEP	M/A	%
Field Goals	18/58	31
2 Points	11/37	30
3 Points	7/21	33
Free Throws	14/19	74

UTEP	M/A	%
Points in the Paint	16 (8 / 21)	38
Fast Break Points	2 (2/4)	50
Second Chance Points	14 (9/16)	56
Effective FG%	37	



UTSA at UTEP

03/08/22 Ford Center at the Star, Frisco  
2021-22 Women's Basketball

Game Time: 4:00 PM  
Game Duration: 2:07  
Attendance: 3,606

Officials:

UTSA

Lineup	Quarter On	Time On	Quarter Off	Time Off	Time on Court	Score	Score Diff	Reb	Stl	Tov	Ass	PPP
0- Coleman E/ 2- Pimentel J/ 10- Ulabo Q/ 12- Johnson L/ 40- Govan C/	1	10:00	1	04:50	05:10	6-10	-4	4	1	1	0	0.8571
0- Coleman E/ 2- Pimentel J/ 10- Ulabo Q/ 11- Mass C/ 40- Govan C/	1	04:50	1	03:46	01:04	0-0	0	1	0	0	0	0.0000
0- Coleman E/ 2- Pimentel J/ 10- Ulabo Q/ 11- Mass C/ 12- Johnson L/	1	03:46	1	03:24	00:22	0-0	0	1	0	0	0	0.0000
0- Coleman E/ 2- Pimentel J/ 5- Valcheva Y/ 11- Mass C/ 12- Johnson L/	1	03:24	1	02:43	00:41	1-3	-2	1	0	0	0	1.1364
0- Coleman E/ 5- Valcheva Y/ 11- Mass C/ 12- Johnson L/ 40- Govan C/	1	02:43	1	02:30	00:13	0-0	0	0	0	0	0	0.0000
3- Blanding E/ 5- Valcheva Y/ 11- Mass C/ 12- Johnson L/ 40- Govan C/	1	02:30	1	02:25	00:05	0-0	0	0	0	0	0	0.0000
2- Pimentel J/ 3- Blanding E/ 5- Valcheva Y/ 11- Mass C/ 12- Johnson L/	1	02:25	1	01:49	00:36	0-2	-2	0	0	1	0	0.0000
1- Atwood H/ 2- Pimentel J/ 3- Blanding E/ 5- Valcheva Y/ 11- Mass C/	1	01:49	1	01:10	00:39	0-3	-3	0	0	0	0	0.0000
0- Coleman E/ 1- Atwood H/ 2- Pimentel J/ 10- Ulabo Q/ 11- Mass C/	1	01:10	2	08:53	02:17	3-2	1	2	1	1	1	1.0000
0- Coleman E/ 1- Atwood H/ 2- Pimentel J/ 10- Ulabo Q/ 21- Nwakamma D/	2	08:53	2	05:02	03:51	7-2	5	6	1	1	0	1.0000
0- Coleman E/ 1- Atwood H/ 5- Valcheva Y/ 21- Nwakamma D/ 40- Govan C/	2	05:02	2	03:40	01:22	2-1	1	1	0	0	1	1.0000
0- Coleman E/ 1- Atwood H/ 5- Valcheva Y/ 11- Mass C/ 40- Govan C/	2	03:40	2	03:12	00:28	0-0	0	1	0	0	0	0.0000
0- Coleman E/ 5- Valcheva Y/ 11- Mass C/ 21- Nwakamma D/ 40- Govan C/	2	03:12	2	02:44	00:28	0-0	0	0	0	0	0	0.0000
1- Atwood H/ 3- Blanding E/ 5- Valcheva Y/ 21- Nwakamma D/ 40- Govan C/	2	02:44	2	01:25	01:19	0-0	0	1	0	0	0	0.0000
1- Atwood H/ 3- Blanding E/ 10- Ulabo Q/ 11- Mass C/ 21- Nwakamma D/	2	01:25	2	01:25	00:00	2-0	2	0	0	0	0	2.2727
0- Coleman E/ 1- Atwood H/ 10- Ulabo Q/ 11- Mass C/ 21- Nwakamma D/	2	01:25	3	10:00	01:25	0-0	0	2	0	1	0	0.0000
0- Coleman E/ 1- Atwood H/ 2- Pimentel J/ 10- Ulabo Q/ 40- Govan C/	3	10:00	3	07:01	02:59	4-6	-2	1	0	0	1	1.0000
0- Coleman E/ 1- Atwood H/ 2- Pimentel J/ 12- Johnson L/ 40- Govan C/	3	07:01	3	05:23	01:38	4-2	2	2	0	1	1	1.3333
0- Coleman E/ 1- Atwood H/ 2- Pimentel J/ 11- Mass C/ 12- Johnson L/	3	05:23	3	04:48	00:35	0-1	-1	0	1	1	0	0.0000
0- Coleman E/ 2- Pimentel J/ 10- Ulabo Q/ 11- Mass C/ 12- Johnson L/	3	04:48	3	03:01	01:47	3-2	1	0	0	1	0	1.0870
0- Coleman E/ 1- Atwood H/ 2- Pimentel J/ 10- Ulabo Q/ 12- Johnson L/	3	03:01	3	03:01	00:00	0-0	0	0	0	0	0	0.0000
0- Coleman E/ 1- Atwood H/ 2- Pimentel J/ 10- Ulabo Q/ 40- Govan C/	3	03:01	3	02:12	00:49	0-2	-2	0	0	0	0	0.0000
0- Coleman E/ 1- Atwood H/ 2- Pimentel J/ 12- Johnson L/ 40- Govan C/	3	02:12	3	01:32	00:40	0-0	0	1	1	0	0	0.0000
0- Coleman E/ 1- Atwood H/ 2- Pimentel J/ 12- Johnson L/ 21- Nwakamma D/	3	01:32	4	10:00	01:32	2-3	-1	1	0	0	1	1.0000
0- Coleman E/ 1- Atwood H/ 2- Pimentel J/ 21- Nwakamma D/ 40- Govan C/	4	10:00	4	08:03	01:57	2-0	2	2	1	2	0	0.5000
0- Coleman E/ 1- Atwood H/ 2- Pimentel J/ 12- Johnson L/ 40- Govan C/	4	08:03	4	07:23	00:40	2-0	2	0	1	0	0	2.0000
0- Coleman E/ 2- Pimentel J/ 10- Ulabo Q/ 12- Johnson L/ 40- Govan C/	4	07:23	4	06:43	00:40	2-3	-1	0	0	0	0	2.2727
0- Coleman E/ 1- Atwood H/ 2- Pimentel J/ 10- Ulabo Q/ 12- Johnson L/	4	06:43	4	06:24	00:19	0-0	0	0	0	0	0	0.0000
0- Coleman E/ 2- Pimentel J/ 10- Ulabo Q/ 12- Johnson L/ 40- Govan C/	4	06:24	4	06:14	00:10	2-0	2	0	0	0	0	2.2727
0- Coleman E/ 1- Atwood H/ 2- Pimentel J/ 10- Ulabo Q/ 12- Johnson L/	4	06:14	4	05:51	00:23	0-0	0	0	1	0	0	0.0000
0- Coleman E/ 2- Pimentel J/ 10- Ulabo Q/ 12- Johnson L/ 40- Govan C/	4	05:51	4	04:55	00:56	2-0	2	1	0	1	0	1.0000
0- Coleman E/ 1- Atwood H/ 2- Pimentel J/ 10- Ulabo Q/ 12- Johnson L/	4	04:55	4	03:54	01:01	0-2	-2	1	0	0	0	0.0000
0- Coleman E/ 2- Pimentel J/ 10- Ulabo Q/ 12- Johnson L/ 40- Govan C/	4	03:54	4	02:22	01:32	5-2	3	1	0	0	0	2.5000
0- Coleman E/ 1- Atwood H/ 2- Pimentel J/ 12- Johnson L/ 40- Govan C/	4	02:22	4	00:15	02:06	2-6	-4	0	0	0	1	0.6667
0- Coleman E/ 2- Pimentel J/ 12- Johnson L/ 21- Nwakamma D/ 40- Govan C/	4	00:15	4	00:07	00:09	1-0	1	0	0	0	0	1.1364
0- Coleman E/ 1- Atwood H/ 2- Pimentel J/ 12- Johnson L/ 40- Govan C/	4	00:07	OT1	05:00	00:07	0-0	0	1	0	0	0	0.0000
0- Coleman E/ 1- Atwood H/ 2- Pimentel J/ 21- Nwakamma D/ 40- Govan C/	OT1	05:00	OT1	04:50	00:10	0-0	0	0	0	0	0	0.0000
0- Coleman E/ 2- Pimentel J/ 12- Johnson L/ 21- Nwakamma D/ 40- Govan C/	OT1	04:50	OT1	01:20	03:30	5-5	0	4	0	1	2	1.0246
0- Coleman E/ 1- Atwood H/ 2- Pimentel J/ 11- Mass C/ 21- Nwakamma D/	OT1	01:20	OT1	00:00	01:20	1-0	1	2	0	0	0	0.3472



**UTSA at UTEP**

03/08/22 Ford Center at the Star, Frisco  
2021-22 Women's Basketball

**Game Time:** 4:00 PM  
**Game Duration:** 2:07  
**Attendance:** 3,606

**Officials:**

**UTEP**

Lineup	Quarter On	Time On	Quarter Off	Time Off	Time on Court	Score	Score Diff	Reb	Stl	Tov	Ass	PPP
2- Battle T/3- Gallegos K/5- Thurman D/15- Crouse A/21- Arike E/	1	10:00	1	07:53	02:07	3-4	-1	2	0	2	1	1.0000
2- Battle T/3- Gallegos K/5- Thurman D/15- Crouse A/55- Fontana B/	1	07:53	1	06:54	00:59	0-0	0	2	0	1	0	0.0000
2- Battle T/3- Gallegos K/5- Thurman D/22- Wilson E/55- Fontana B/	1	06:54	1	05:48	01:06	4-2	2	1	0	0	1	4.5455
0- Petree M/3- Gallegos K/5- Thurman D/22- Wilson E/55- Fontana B/	1	05:48	1	03:24	02:24	3-0	3	4	0	1	1	0.7500
0- Petree M/5- Thurman D/22- Wilson E/23- Cabral E/55- Fontana B/	1	03:24	1	01:10	02:14	8-1	7	4	0	1	2	2.0000
0- Petree M/5- Thurman D/15- Crouse A/23- Cabral E/55- Fontana B/	1	01:10	2	10:00	01:10	2-3	-1	2	0	1	0	1.0638
0- Petree M/3- Gallegos K/5- Thurman D/15- Crouse A/55- Fontana B/	2	10:00	2	08:53	01:07	0-0	0	1	1	0	0	0.0000
0- Petree M/2- Battle T/3- Gallegos K/5- Thurman D/15- Crouse A/	2	08:53	2	07:52	01:01	0-0	0	2	0	1	0	0.0000
0- Petree M/2- Battle T/3- Gallegos K/15- Crouse A/23- Cabral E/	2	07:52	2	06:53	00:59	0-2	-2	0	1	1	0	0.0000
0- Petree M/5- Thurman D/15- Crouse A/21- Arike E/23- Cabral E/	2	06:53	2	05:02	01:51	2-5	-3	2	0	1	0	1.0638
0- Petree M/5- Thurman D/21- Arike E/22- Wilson E/23- Cabral E/	2	05:02	2	03:40	01:22	1-2	-1	1	0	1	0	0.3472
5- Thurman D/15- Crouse A/21- Arike E/22- Wilson E/55- Fontana B/	2	03:40	2	02:44	00:56	0-0	0	2	0	1	0	0.0000
3- Gallegos K/15- Crouse A/21- Arike E/22- Wilson E/55- Fontana B/	2	02:44	2	01:25	01:19	0-0	0	3	0	0	0	0.0000
0- Petree M/3- Gallegos K/5- Thurman D/21- Arike E/55- Fontana B/	2	01:25	3	10:00	01:25	0-2	-2	1	0	0	0	0.0000
2- Battle T/3- Gallegos K/5- Thurman D/15- Crouse A/21- Arike E/	3	10:00	3	05:50	04:10	6-6	0	3	1	1	0	1.0204
0- Petree M/3- Gallegos K/5- Thurman D/15- Crouse A/55- Fontana B/	3	05:50	3	04:48	01:02	3-2	1	0	0	1	0	1.2295
0- Petree M/3- Gallegos K/5- Thurman D/22- Wilson E/55- Fontana B/	3	04:48	3	03:51	00:57	0-2	-2	0	1	1	0	0.0000
2- Battle T/3- Gallegos K/5- Thurman D/22- Wilson E/55- Fontana B/	3	03:51	3	02:12	01:39	4-1	3	1	0	0	0	2.0000
0- Petree M/2- Battle T/3- Gallegos K/5- Thurman D/22- Wilson E/	3	02:12	4	10:00	02:12	3-2	1	2	0	1	1	0.7500
0- Petree M/2- Battle T/3- Gallegos K/5- Thurman D/15- Crouse A/	4	10:00	4	08:26	01:34	0-2	-2	0	2	1	0	0.0000
0- Petree M/2- Battle T/3- Gallegos K/5- Thurman D/22- Wilson E/	4	08:26	4	06:43	01:43	3-2	1	1	0	1	1	1.5000
0- Petree M/2- Battle T/3- Gallegos K/5- Thurman D/23- Cabral E/	4	06:43	4	06:17	00:26	0-2	-2	0	0	1	0	0.0000
0- Petree M/3- Gallegos K/5- Thurman D/15- Crouse A/21- Arike E/	4	06:17	4	02:22	03:55	4-9	-5	1	0	1	0	0.8000
0- Petree M/2- Battle T/5- Thurman D/15- Crouse A/22- Wilson E/	4	02:22	4	01:48	00:34	0-0	0	2	0	0	0	0.0000
0- Petree M/2- Battle T/3- Gallegos K/5- Thurman D/15- Crouse A/	4	01:48	OT1	01:20	05:28	11-8	3	6	1	0	0	1.1411
0- Petree M/2- Battle T/3- Gallegos K/5- Thurman D/22- Wilson E/	OT1	01:20	OT1	00:03	01:16	0-0	0	2	0	0	0	0.0000
0- Petree M/2- Battle T/3- Gallegos K/5- Thurman D/15- Crouse A/	OT1	00:03	OT1	00:00	00:04	0-1	-1	0	0	0	0	0.0000



**UTSA at UTEP**

03/08/22 Ford Center at the Star, Frisco  
2021-22 Women's Basketball

**Game Time:** 4:00 PM  
**Game Duration:** 2:07  
**Attendance:** 3,606

**Officials:**

**UTSA**

Lineup	Time	Score	Score Diff	Pts/Min	Reb	Stl	Tov	Ass	PPP
0- Coleman E/ 2- Pimentel J/ 10- Ulabo Q/ 12- Johnson L/ 40- Govan C/	08:28	17-15	2	2.0079	6	1	2	0	1.3323
0- Coleman E/ 1- Atwood H/ 2- Pimentel J/ 12- Johnson L/ 40- Govan C/	05:11	8-8	0	1.5434	4	2	1	2	1.0000
0- Coleman E/ 1- Atwood H/ 2- Pimentel J/ 10- Ulabo Q/ 21- Nwakamma D/	03:51	7-2	5	1.8182	6	1	1	0	1.0000
0- Coleman E/ 1- Atwood H/ 2- Pimentel J/ 10- Ulabo Q/ 40- Govan C/	03:48	4-8	-4	1.0526	1	0	0	1	0.8000
0- Coleman E/ 2- Pimentel J/ 12- Johnson L/ 21- Nwakamma D/ 40- Govan C/	03:39	6-5	1	1.6438	4	0	1	2	1.0417
0- Coleman E/ 1- Atwood H/ 2- Pimentel J/ 10- Ulabo Q/ 11- Mass C/	02:17	3-2	1	1.3139	2	1	1	1	1.0000
0- Coleman E/ 2- Pimentel J/ 10- Ulabo Q/ 11- Mass C/ 12- Johnson L/	02:09	3-2	1	1.3953	1	0	1	0	1.0870
0- Coleman E/ 1- Atwood H/ 2- Pimentel J/ 21- Nwakamma D/ 40- Govan C/	02:07	2-0	2	0.9449	2	1	2	0	0.5000
0- Coleman E/ 1- Atwood H/ 2- Pimentel J/ 10- Ulabo Q/ 12- Johnson L/	01:43	0-2	-2	0.0000	1	1	0	0	0.0000
0- Coleman E/ 1- Atwood H/ 2- Pimentel J/ 12- Johnson L/ 21- Nwakamma D/	01:32	2-3	-1	1.3043	1	0	0	1	1.0000
0- Coleman E/ 1- Atwood H/ 10- Ulabo Q/ 11- Mass C/ 21- Nwakamma D/	01:25	0-0	0	0.0000	2	0	1	0	0.0000
0- Coleman E/ 1- Atwood H/ 5- Valcheva Y/ 21- Nwakamma D/ 40- Govan C/	01:22	2-1	1	1.4634	1	0	0	1	1.0000
0- Coleman E/ 1- Atwood H/ 2- Pimentel J/ 11- Mass C/ 21- Nwakamma D/	01:20	1-0	1	0.7500	2	0	0	0	0.3472
1- Atwood H/ 3- Blanding E/ 5- Valcheva Y/ 21- Nwakamma D/ 40- Govan C/	01:19	0-0	0	0.0000	1	0	0	0	0.0000
0- Coleman E/ 2- Pimentel J/ 10- Ulabo Q/ 11- Mass C/ 40- Govan C/	01:04	0-0	0	0.0000	1	0	0	0	0.0000
0- Coleman E/ 2- Pimentel J/ 5- Valcheva Y/ 11- Mass C/ 12- Johnson L/	00:41	1-3	-2	1.4634	1	0	0	0	1.1364
1- Atwood H/ 2- Pimentel J/ 3- Blanding E/ 5- Valcheva Y/ 11- Mass C/	00:39	0-3	-3	0.0000	0	0	0	0	0.0000
2- Pimentel J/ 3- Blanding E/ 5- Valcheva Y/ 11- Mass C/ 12- Johnson L/	00:36	0-2	-2	0.0000	0	0	1	0	0.0000
0- Coleman E/ 1- Atwood H/ 2- Pimentel J/ 11- Mass C/ 12- Johnson L/	00:35	0-1	-1	0.0000	0	1	1	0	0.0000
0- Coleman E/ 1- Atwood H/ 5- Valcheva Y/ 11- Mass C/ 40- Govan C/	00:28	0-0	0	0.0000	1	0	0	0	0.0000
0- Coleman E/ 5- Valcheva Y/ 11- Mass C/ 21- Nwakamma D/ 40- Govan C/	00:28	0-0	0	0.0000	0	0	0	0	0.0000
0- Coleman E/ 5- Valcheva Y/ 11- Mass C/ 12- Johnson L/ 40- Govan C/	00:13	0-0	0	0.0000	0	0	0	0	0.0000
3- Blanding E/ 5- Valcheva Y/ 11- Mass C/ 12- Johnson L/ 40- Govan C/	00:05	0-0	0	0.0000	0	0	0	0	0.0000
1- Atwood H/ 3- Blanding E/ 10- Ulabo Q/ 11- Mass C/ 21- Nwakamma D/	00:00	2-0	2	∞	0	0	0	0	2.2727



**UTSA at UTEP**

03/08/22 Ford Center at the Star, Frisco  
2021-22 Women's Basketball

**Game Time:** 4:00 PM  
**Game Duration:** 2:07  
**Attendance:** 3,606

**Officials:**

**UTEP**

Lineup	Time	Score	Score Diff	Pts/Min	Reb	Stl	Tov	Ass	PPP
0- Petree M/ 2- Battle T/ 3- Gallegos K/ 5- Thurman D/ 15- Crouse A/	08:07	11-11	0	1.3552	8	3	2	0	0.7514
2- Battle T/ 3- Gallegos K/ 5- Thurman D/ 15- Crouse A/ 21- Arike E/	06:17	9-10	-1	1.4324	5	1	3	1	1.0135
0- Petree M/ 2- Battle T/ 3- Gallegos K/ 5- Thurman D/ 22- Wilson E/	05:11	6-4	2	1.1576	5	0	2	2	0.7500
0- Petree M/ 3- Gallegos K/ 5- Thurman D/ 15- Crouse A/ 21- Arike E/	03:55	4-9	-5	1.0213	1	0	1	0	0.8000
0- Petree M/ 3- Gallegos K/ 5- Thurman D/ 22- Wilson E/ 55- Fontana B/	03:21	3-2	1	0.8955	4	1	2	1	0.6000
2- Battle T/ 3- Gallegos K/ 5- Thurman D/ 22- Wilson E/ 55- Fontana B/	02:45	8-3	5	2.9091	2	0	0	1	2.7778
0- Petree M/ 5- Thurman D/ 22- Wilson E/ 23- Cabral E/ 55- Fontana B/	02:14	8-1	7	3.5821	4	0	1	2	2.0000
0- Petree M/ 3- Gallegos K/ 5- Thurman D/ 15- Crouse A/ 55- Fontana B/	02:09	3-2	1	1.3953	1	1	1	0	0.6757
0- Petree M/ 5- Thurman D/ 15- Crouse A/ 21- Arike E/ 23- Cabral E/	01:51	2-5	-3	1.0811	2	0	1	0	1.0638
0- Petree M/ 3- Gallegos K/ 5- Thurman D/ 21- Arike E/ 55- Fontana B/	01:25	0-2	-2	0.0000	1	0	0	0	0.0000
0- Petree M/ 5- Thurman D/ 21- Arike E/ 22- Wilson E/ 23- Cabral E/	01:22	1-2	-1	0.7317	1	0	1	0	0.3472
3- Gallegos K/ 15- Crouse A/ 21- Arike E/ 22- Wilson E/ 55- Fontana B/	01:19	0-0	0	0.0000	3	0	0	0	0.0000
0- Petree M/ 5- Thurman D/ 15- Crouse A/ 23- Cabral E/ 55- Fontana B/	01:10	2-3	-1	1.7143	2	0	1	0	1.0638
2- Battle T/ 3- Gallegos K/ 5- Thurman D/ 15- Crouse A/ 55- Fontana B/	00:59	0-0	0	0.0000	2	0	1	0	0.0000
0- Petree M/ 2- Battle T/ 3- Gallegos K/ 15- Crouse A/ 23- Cabral E/	00:59	0-2	-2	0.0000	0	1	1	0	0.0000
5- Thurman D/ 15- Crouse A/ 21- Arike E/ 22- Wilson E/ 55- Fontana B/	00:56	0-0	0	0.0000	2	0	1	0	0.0000
0- Petree M/ 2- Battle T/ 5- Thurman D/ 15- Crouse A/ 22- Wilson E/	00:34	0-0	0	0.0000	2	0	0	0	0.0000
0- Petree M/ 2- Battle T/ 3- Gallegos K/ 5- Thurman D/ 23- Cabral E/	00:26	0-2	-2	0.0000	0	0	1	0	0.0000