



UTEP at NM State

11/30/22 Pan American Center, Las Cruces, N.M.
2022-23 Men's Basketball

Game Time: 7:00 PM
Game Duration: 2:20
Attendance: 6,332

Officials: Mike Scyphers, Winston Smith, Gregory Nixon

UTEP - 70

Record: 5-2

NO.	Name	F	Min	FG	3P	FT	Rebounds			Fouls		TP	AS	TO	ST	Blocks		+/-
				M-A	M-A	M-A	OR	DR	TOT	PF	FD					BS	BA	
12	Jamari Sibley	F	23:10	1-5	0-2	0-0	1	3	4	1	1	2	0	0	0	0	0	-25
13	Calvin Solomon	F	21:33	3-5	0-0	1-3	0	3	3	3	2	7	0	1	1	0	1	6
21	Ze'rik Onyema	F	15:59	1-2	0-0	0-2	1	1	2	4	2	2	1	1	1	0	1	-13
2	Tae Hardy	G	34:53	7-13	2-8	8-8	0	3	3	3	5	24	0	5	1	0	0	-30
5	Shamar Givance	G	35:33	0-4	0-3	9-10	0	3	3	3	7	9	8	2	1	1	1	-19
4	Mario McKinney Jr.		31:33	7-13	1-6	7-10	4	3	7	1	8	22	0	3	1	0	0	-13
23	Otis Frazier III		07:18	0-1	0-1	0-1	0	2	2	1	1	0	0	1	0	0	0	2
34	Kevin Kalu		13:14	1-1	0-0	0-0	1	0	1	2	0	2	1	0	0	0	0	-7
11	Carlos Lemus		15:00	0-3	0-2	2-2	0	0	0	4	1	2	0	2	1	0	0	-17
32	Derick Hamilton		01:47	0-1	0-0	0-0	0	0	0	1	0	0	0	0	0	0	0	-9
Team							0	0	0			0		0				
Totals				20-48	3-22	27-36	7	18	25	23	27	70	10	15	6	1	3	-25

Shooting By Period		
1 st FG%	8-25	32.0%
3PT%	3-12	25.0%
FT%	12-16	75%
2 nd FG%	12-23	52.2%
3PT%	0-10	0.0%
FT%	15-20	75%
GM FG%	20-48	41.7%
3PT%	3-22	13.6%
FT%	27-36	75.0%

Dead Ball Rebounds: 5, 0

Technical Fouls: McKinney Jr. 1st 9:18

NM State - 95

Record: 3-2

NO.	Name	F	Min	FG	3P	FT	Rebounds			Fouls		TP	AS	TO	ST	Blocks		+/-
				M-A	M-A	M-A	OR	DR	TOT	PF	FD					BS	BA	
2	Issa Muhammad	F	31:29	5-7	1-1	4-4	3	5	8	3	3	15	2	1	3	2	0	22
4	James Beck	F	18:18	2-3	1-1	2-2	1	3	4	2	2	7	1	1	1	0	0	32
3	Xavier Pinson	G	26:31	5-8	3-5	5-7	1	1	2	4	4	18	4	5	1	0	0	19
11	DaJuan Gordon	G	15:59	4-7	0-3	1-2	0	0	0	4	2	9	0	0	1	0	0	10
42	Deshawndre Washington	G	32:55	3-8	1-3	3-4	0	8	8	2	5	10	5	5	0	0	1	16
0	Anthony Roy		20:00	7-10	3-4	6-6	1	1	2	5	3	23	0	2	1	0	0	16
1	Marchelus Avery		21:38	1-3	1-3	0-2	2	2	4	4	1	3	2	0	1	1	0	4
34	Shakiru Odunewu		01:47	0-0	0-0	0-0	0	0	0	0	0	0	0	0	0	0	0	-2
13	Doctor Bradley		09:08	1-1	0-0	0-0	0	2	2	2	0	2	1	0	0	0	0	-5
5	Kyle Feit		22:15	2-5	2-4	2-2	0	2	2	1	3	8	1	1	1	0	0	13
Team							0	0	0			0		1				
Totals				30-52	12-24	23-29	8	24	32	27	23	95	16	16	9	3	1	25

Shooting By Period		
1 st FG%	15-28	53.6%
3PT%	5-10	50.0%
FT%	9-11	81.8%
2 nd FG%	15-24	62.5%
3PT%	7-14	50.0%
FT%	14-18	77.8%
GM FG%	30-52	57.7%
3PT%	12-24	50.0%
FT%	23-29	79.3%

Dead Ball Rebounds: 2, 1

Technical Fouls: NONE

	UTEP	NMSU
Biggest lead	2 (1 st 19:42)	25 (2 nd 0:23)
Best Scoring Run	9 (2 nd 8:09)	10 (1 st 9:18)
Lead Changes	3	
Times Tied	2	
Time with Lead	02:18	36:39

	UTEP	NMSU
Points from	UTEP	NMSU
Turnovers	15	16
Paint	32	34
Second Chance	6	11
Fast Breaks	15	6
Bench	26	36

	Period by Period Scoring		
	1st	2nd	TOT
UTEP	31	39	70
NMSU	44	51	95



UTEP at NM State

11/30/22 Pan American Center, Las Cruces, N.M.
2022-23 Men's Basketball

Game Time: 7:00 PM
Game Duration: 2:20
Attendance: 6,332

Officials: Mike Scyphers, Winston Smith, Gregory Nixon

Period 1

Quarter Starters:

NMSU	2 Muhammad I	3 Pinson X	4 Beck J	11 Gordon D	42 Washington D
UTEP	2 Hardy T	5 Givance S	12 Sibley J	13 Solomon C	21 Onyema Z

Game Time	NMSU	Score	Diff	UTEP
20:00	2 MUHAMMAD I jumpball lost			13 SOLOMON C jumpball won
19:42		0-2	-2	12 SIBLEY J 2pt FG in the paint, jump shot made (2)
19:42				21 ONYEMA Z assist (1)
19:23	2 MUHAMMAD I turnover lost ball (1)			21 ONYEMA Z steal (1)
19:06				2 HARDY T 3pt FG from turnover, jump shot missed
19:00				12 SIBLEY J offensive rebound (1)
18:54	11 GORDON D foul personal (1 - 1)			12 SIBLEY J foul drawn (1)
18:48				5 GIVANCE S 3pt FG from turnover second chance, jump shot missed
18:43	4 BECK J defensive rebound (1)			
18:42	4 BECK J turnover bad pass (1)			5 GIVANCE S steal (1)
18:36				21 ONYEMA Z 2pt FG from turnover in the paint, dunk, blocked
18:36	2 MUHAMMAD I block (1)			
18:34	2 MUHAMMAD I defensive rebound (1)			
18:34	42 WASHINGTON D foul drawn (1)			13 SOLOMON C foul personal (1 - 1)
18:34				13 SOLOMON C substitution out
18:34				4 MCKINNEY JR. M substitution in
18:24	3 PINSON X 3pt FG , jump shot made (3)	3-2	1	
18:24	4 BECK J assist (1)			
18:11				5 GIVANCE S turnover lost ball (1)
18:10	4 BECK J foul drawn (1)			5 GIVANCE S foul personal (1 - 2)
18:10	3 PINSON X 2pt FG from turnover in the paint, layup made (5)	5-2	3	
17:56	jump ball situation			
17:56	2 MUHAMMAD I steal (1)			21 ONYEMA Z turnover lost ball (1)
17:37	42 WASHINGTON D 2pt FG from turnover outside the paint, step back jump shot missed			
17:32				12 SIBLEY J defensive rebound (2)
17:18				12 SIBLEY J 2pt FG outside the paint, jump shot missed
17:14				21 ONYEMA Z offensive rebound (1)
17:14	3 PINSON X foul shooting (1 - 2)			21 ONYEMA Z foul drawn (1)
17:14				21 ONYEMA Z free throw 1 - 2 missed
17:14				offensive dead ball rebound (1)
17:14	4 BECK J substitution out			
17:14	11 GORDON D substitution out			
17:14	0 ROY A substitution in			
17:14	1 AVERY M substitution in			
17:14				5 GIVANCE S substitution out
17:14				23 FRAZIER III O substitution in
17:14				21 ONYEMA Z free throw 2 - 2 missed
17:14	42 WASHINGTON D defensive rebound (1)			
16:39	0 ROY A 2pt FG in the paint, layup made (2)	7-2	5	
16:39	0 ROY A foul drawn (1)			23 FRAZIER III O foul shooting (1 - 3)
16:39	2 MUHAMMAD I substitution out			
16:39	34 ODUNEWU S substitution in			



UTEP at NM State

11/30/22 Pan American Center, Las Cruces, N.M.
2022-23 Men's Basketball

Game Time: 7:00 PM
Game Duration: 2:20
Attendance: 6,332

Officials: Mike Scyphers, Winston Smith, Gregory Nixon

Game Time	NMSU	Score	Diff	UTEP
16:39				21 ONYEMA Z substitution out
16:39				34 KALU K substitution in
16:39	0 ROY A free throw 1 - 1 made (3)	8-2	6	
16:11		8-5	3	2 HARDY T 3pt FG , jump shot made (3)
16:11				34 KALU K assist (1)
15:50	42 WASHINGTON D foul offensive (1 - 3)			2 HARDY T foul drawn (1)
15:50	42 WASHINGTON D turnover offensive (1)			
15:50	Timeout media			
15:43				12 SIBLEY J substitution out
15:43				13 SOLOMON C substitution in
15:30				13 SOLOMON C 2pt FG from turnover in the paint, layup blocked
15:30	1 AVERY M block (1)			
15:30				offensive dead ball rebound (2)
15:30	1 AVERY M substitution out			
15:30	42 WASHINGTON D substitution out			
15:30	2 MUHAMMAD I substitution in			
15:30	11 GORDON D substitution in			
15:22				23 FRAZIER III O 3pt FG from turnover second chance, jump shot missed
15:15	1 AVERY M defensive rebound (1)			
15:14	34 ODUNEWU S substitution out			
15:14	1 AVERY M substitution in			
15:14	2 MUHAMMAD I foul drawn (1)			34 KALU K foul personal (1 - 4)
15:14				2 HARDY T substitution out
15:14				5 GIVANCE S substitution in
15:07	2 MUHAMMAD I 3pt FG , jump shot made (3)	11-5	6	
15:07	3 PINSON X assist (1)			
14:39	3 PINSON X foul personal (2 - 4)			4 MCKINNEY JR. M foul drawn (1)
14:39	3 PINSON X substitution out			
14:39	42 WASHINGTON D substitution in			
14:38	11 GORDON D foul personal (2 - 5)			4 MCKINNEY JR. M foul drawn (2)
14:38	11 GORDON D substitution out			
14:38	13 BRADLEY D substitution in			
14:35		11-7	4	34 KALU K 2pt FG in the paint, dunk, made (2)
14:35				5 GIVANCE S assist (1)
14:09	0 ROY A 2pt FG in the paint, jump shot missed			
14:06				5 GIVANCE S defensive rebound (1)
14:00		11-10	1	4 MCKINNEY JR. M 3pt FG , jump shot made (3)
13:36	1 AVERY M 3pt FG , jump shot missed			
13:33				4 MCKINNEY JR. M defensive rebound (1)
13:30		11-12	-1	4 MCKINNEY JR. M 2pt FG fast break in the paint, layup made (5)
13:15	1 AVERY M foul drawn (1)			34 KALU K foul shooting (2 - 5)
13:15	1 AVERY M free throw 1 - 2 missed			
13:15	offensive dead ball rebound (1)			
13:15	0 ROY A substitution out			
13:15	5 FEIT K substitution in			
13:15				23 FRAZIER III O substitution out
13:15				34 KALU K substitution out



Official Basketball Play by Play - First Half

UTEP at NM State

11/30/22 Pan American Center, Las Cruces, N.M.
2022-23 Men's Basketball

Game Time: 7:00 PM
Game Duration: 2:20
Attendance: 6,332

Officials: Mike Scyphers, Winston Smith, Gregory Nixon

Game Time	NMSU	Score	Diff	UTEP
13:15				11 LEMUS C substitution in
13:15				21 ONYEMA Z substitution in
13:15	1 AVERY M free throw 2 - 2 missed			
13:15	2 MUHAMMAD I offensive rebound (2)			
12:59	42 WASHINGTON D 3pt FG second chance, jump shot missed			
12:56				5 GIVANCE S defensive rebound (2)
12:45				4 MCKINNEY JR. M 3pt FG , jump shot missed
12:43	42 WASHINGTON D defensive rebound (2)			
12:30	5 FEIT K 3pt FG , jump shot made (3)	14-12	2	
12:30	13 BRADLEY D assist (1)			
12:24	2 MUHAMMAD I substitution out			
12:24	4 BECK J substitution in			
12:02	1 AVERY M foul shooting (1 - 6)			5 GIVANCE S foul drawn (1)
12:02		14-13	1	5 GIVANCE S free throw 1 - 2 made (1)
12:02				4 MCKINNEY JR. M substitution out
12:02				13 SOLOMON C substitution out
12:02				2 HARDY T substitution in
12:02				12 SIBLEY J substitution in
12:02		14-14	0	5 GIVANCE S free throw 2 - 2 made (2)
11:38	4 BECK J 2pt FG in the paint, jump shot made (2)	16-14	2	
11:26	13 BRADLEY D foul personal (1 - 7)			5 GIVANCE S foul drawn (2)
11:26	Timeout media			
11:26		16-15	1	5 GIVANCE S 1&1 free throw 1 made (3)
11:26		16-16	0	5 GIVANCE S 1&1 free throw 2 made (4)
11:08	5 FEIT K foul drawn (1)			21 ONYEMA Z foul personal (1 - 6)
11:08	1 AVERY M substitution out			
11:08	13 BRADLEY D substitution out			
11:08	0 ROY A substitution in			
11:08	2 MUHAMMAD I substitution in			
11:05	2 MUHAMMAD I foul drawn (2)			21 ONYEMA Z foul personal (2 - 7)
11:05				21 ONYEMA Z substitution out
11:05				32 HAMILTON D substitution in
11:05	2 MUHAMMAD I 1&1 free throw 1 made (4)	17-16	1	
11:05	2 MUHAMMAD I 1&1 free throw 2 made (5)	18-16	2	
10:47				2 HARDY T turnover dribbling violation (1)
10:40	42 WASHINGTON D 2pt FG fast break from turnover in the paint, layup made (2)	20-16	4	
10:40	42 WASHINGTON D foul drawn (2)			32 HAMILTON D foul shooting (1 - 8)
10:40				11 LEMUS C substitution out
10:40				4 MCKINNEY JR. M substitution in
10:40	42 WASHINGTON D free throw fast break 1 - 1 made (3)	21-16	5	
10:27				4 MCKINNEY JR. M 3pt FG , jump shot missed
10:25	defensive dead ball rebound (2)			
10:09	5 FEIT K 2pt FG in the paint, jump shot missed			
10:02	4 BECK J offensive rebound (2)			
10:00	2 MUHAMMAD I 2pt FG second chance in the paint, layup made (7)	23-16	7	
09:53				12 SIBLEY J 3pt FG , jump shot missed
09:51	5 FEIT K defensive rebound (1)			
09:44	42 WASHINGTON D 2pt FG in the paint, jump shot missed			



UTEP at NM State

11/30/22 Pan American Center, Las Cruces, N.M.
2022-23 Men's Basketball

Game Time: 7:00 PM
Game Duration: 2:20
Attendance: 6,332

Officials: Mike Scyphers, Winston Smith, Gregory Nixon

Game Time	NMSU	Score	Diff	UTEP
09:41				12 SIBLEY J defensive rebound (3)
09:28				32 HAMILTON D 2pt FG in the paint, jump shot missed
09:24	4 BECK J defensive rebound (3)			
09:18	0 ROY A 2pt FG in the paint, jump shot made (5)	25-16	9	
09:18				32 HAMILTON D substitution out
09:18				13 SOLOMON C substitution in
09:18				4 MCKINNEY JR. M foul class B technical (0 - 8)
09:18				4 MCKINNEY JR. M turnover offensive (1)
09:18	42 WASHINGTON D free throw 1 - 1 made (4)	26-16	10	
09:05	0 ROY A foul personal (1 - 8)			5 GIVANCE S foul drawn (3)
09:05		26-17	9	5 GIVANCE S 1&1 free throw 1 made (5)
09:05	4 BECK J substitution out			
09:05	1 AVERY M substitution in			
09:05		26-18	8	5 GIVANCE S 1&1 free throw 2 made (6)
08:52	42 WASHINGTON D 2pt FG in the paint, jump shot blocked			
08:52				5 GIVANCE S block (1)
08:52	1 AVERY M offensive rebound (2)			
08:37	2 MUHAMMAD I 2pt FG second chance in the paint, jump shot missed			
08:34				13 SOLOMON C defensive rebound (1)
08:22				13 SOLOMON C 2pt FG in the paint, layup missed
08:17	2 MUHAMMAD I defensive rebound (3)			
07:56	42 WASHINGTON D foul offensive (2 - 9)			5 GIVANCE S foul drawn (4)
07:56	42 WASHINGTON D turnover offensive (2)			
07:56	Timeout media			
07:56	0 ROY A substitution out			
07:56	13 BRADLEY D substitution in			
07:47	2 MUHAMMAD I foul personal (1 - 10)			13 SOLOMON C foul drawn (1)
07:47		26-19	7	13 SOLOMON C free throw 1 - 2 made (1)
07:47				13 SOLOMON C free throw 2 - 2 missed
07:46	13 BRADLEY D defensive rebound (1)			
07:28	2 MUHAMMAD I 2pt FG in the paint, layup made (9)	28-19	9	
07:28	1 AVERY M assist (1)			
06:59				2 HARDY T 3pt FG , jump shot missed
06:55	2 MUHAMMAD I defensive rebound (4)			
06:50	0 ROY A 2pt FG in the paint, layup missed			
06:42				2 HARDY T defensive rebound (1)
06:25		28-21	7	2 HARDY T 2pt FG outside the paint, step back jump shot made (5)
06:10	1 AVERY M substitution out			
06:10	0 ROY A substitution in			
05:58	1 AVERY M 3pt FG , jump shot missed			
05:52				13 SOLOMON C defensive rebound (2)
05:52	42 WASHINGTON D substitution out			
05:52	1 AVERY M substitution in			
05:52	1 AVERY M foul shooting (2 - 11)			2 HARDY T foul drawn (2)
05:52		28-22	6	2 HARDY T free throw fast break 1 - 2 made (6)
05:52		28-23	5	2 HARDY T free throw fast break 2 - 2 made (7)
05:52	13 BRADLEY D substitution out			
05:52	3 PINSON X substitution in			



Official Basketball Play by Play - First Half

UTEP at NM State

11/30/22 Pan American Center, Las Cruces, N.M.
2022-23 Men's Basketball

Game Time: 7:00 PM
Game Duration: 2:20
Attendance: 6,332

Officials: Mike Scyphers, Winston Smith, Gregory Nixon

Game Time	NMSU	Score	Diff	UTEP
05:33	3 PINSON X 3pt FG , jump shot missed			
05:29	1 AVERY M offensive rebound (3)			
05:25	0 ROY A 2pt FG second chance in the paint, dunk, made (7)	30-23	7	
05:04		30-25	5	2 HARDY T 2pt FG in the paint, jump shot made (9)
04:52	3 PINSON X foul drawn (1)			13 SOLOMON C foul personal (2 - 9)
04:52				13 SOLOMON C substitution out
04:52				34 KALU K substitution in
04:52	3 PINSON X 1&1 free throw 1 made (6)	31-25	6	
04:52	3 PINSON X 1&1 free throw 2 made (7)	32-25	7	
04:29		32-28	4	2 HARDY T 3pt FG , jump shot made (12)
04:09	0 ROY A 3pt FG , jump shot made (10)	35-28	7	
04:09	5 FEIT K assist (1)			
03:38				12 SIBLEY J 3pt FG , jump shot missed
03:36				4 MCKINNEY JR. M offensive rebound (2)
03:36	2 MUHAMMAD I foul personal (2 - 12)			4 MCKINNEY JR. M foul drawn (3)
03:36	Timeout media			
03:36				5 GIVANCE S substitution out
03:36				11 LEMUS C substitution in
03:36				4 MCKINNEY JR. M free throw 1 - 2 missed
03:36				offensive dead ball rebound (3)
03:36	2 MUHAMMAD I substitution out			
03:36	4 BECK J substitution in			
03:36		35-29	6	4 MCKINNEY JR. M free throw 2 - 2 made (6)
03:27	5 FEIT K turnover out of bounds (1)			
03:14				4 MCKINNEY JR. M 3pt FG from turnover, jump shot missed
03:11				34 KALU K offensive rebound (1)
03:04				11 LEMUS C 2pt FG from turnover second chance in the paint, layup missed
03:00	0 ROY A defensive rebound (1)			
02:55	0 ROY A foul drawn (2)			11 LEMUS C foul shooting (1 - 10)
02:55	0 ROY A free throw 1 - 2 made (11)	36-29	7	
02:55	3 PINSON X substitution out			
02:55	13 BRADLEY D substitution in			
02:55	0 ROY A free throw 2 - 2 made (12)	37-29	8	
02:36				12 SIBLEY J 2pt FG in the paint, layup missed
02:32	1 AVERY M defensive rebound (4)			
02:26	13 BRADLEY D 2pt FG in the paint, dunk, made (2)	39-29	10	
02:26	1 AVERY M assist (2)			
02:26				Timeout 30 Sec
02:00				4 MCKINNEY JR. M 2pt FG in the paint, jump shot missed
01:56	13 BRADLEY D defensive rebound (2)			
01:42	0 ROY A 3pt FG , jump shot made (15)	42-29	13	
01:15	0 ROY A steal (1)			11 LEMUS C turnover lost ball (1)
01:09	0 ROY A turnover bad pass (1)			
01:09				11 LEMUS C substitution out
01:09				12 SIBLEY J substitution out
01:09				5 GIVANCE S substitution in
01:09				23 FRAZIER III O substitution in
00:57	1 AVERY M steal (1)			2 HARDY T turnover bad pass (2)



Official Basketball Play by Play - First Half

UTEP at NM State

11/30/22 Pan American Center, Las Cruces, N.M.
2022-23 Men's Basketball

Game Time: 7:00 PM

Game Duration: 2:20

Attendance: 6,332

Officials: Mike Scyphers, Winston Smith, Gregory Nixon

Game Time	NMSU	Score	Diff	UTEP
00:35	5 FEIT K 3pt FG from turnover, jump shot missed			
00:33				4 MCKINNEY JR. M defensive rebound (3)
00:33	1 AVERY M foul personal (3 - 13)			4 MCKINNEY JR. M foul drawn (4)
00:33		42-30	12	4 MCKINNEY JR. M free throw fast break 1 - 2 made (7)
00:33	1 AVERY M substitution out			
00:33	13 BRADLEY D substitution out			
00:33	2 MUHAMMAD I substitution in			
00:33	3 PINSON X substitution in			
00:33		42-31	11	4 MCKINNEY JR. M free throw fast break 2 - 2 made (8)
00:33	Timeout 30 Sec			
00:05	3 PINSON X 2pt FG outside the paint, jump shot missed			
00:05	3 PINSON X offensive rebound (1)			
00:05	3 PINSON X 2pt FG second chance in the paint, layup made (9)	44-31	13	
END OF PERIOD				
NMSU 44-31 UTEP				



UTEP at NM State

11/30/22 Pan American Center, Las Cruces, N.M.
2022-23 Men's Basketball

Game Time: 7:00 PM
Game Duration: 2:20
Attendance: 6,332

Officials: Mike Scyphers, Winston Smith, Gregory Nixon

UTEP - 31

NO.	Name	Min	FG			Rebounds			Fouls		TP	AS	TO	ST	Blocks		+/-
			M-A	3P	FT	OR	DR	TOT	PF	FD					BS	BA	
12	Jamari Sibley	F 15:10	1-5	0-2	0-0	1	2	3	0	1	2	0	0	0	0	0	-15
13	Calvin Solomon	F 09:33	0-2	0-0	1-2	0	2	2	2	1	1	0	0	0	0	1	8
21	Ze'rik Onyema	F 05:31	0-1	0-0	0-2	1	0	1	2	1	0	1	1	1	0	1	-6
2	Tae Hardy	G 16:48	4-6	2-4	2-2	0	1	1	0	2	12	0	2	0	0	0	-15
5	Shamar Givance	G 15:33	0-1	0-1	6-6	0	2	2	1	4	6	1	1	1	1	0	-7
4	Mario McKinney Jr.	17:12	2-6	1-4	3-4	1	2	3	0	4	8	0	1	0	0	0	-12
23	Otis Frazier III	05:08	0-1	0-1	0-0	0	0	0	1	0	0	0	0	0	0	0	4
34	Kevin Kalu	08:16	1-1	0-0	0-0	1	0	1	2	0	2	1	0	0	0	0	-2
11	Carlos Lemus	05:02	0-1	0-0	0-0	0	0	0	1	0	0	0	1	0	0	0	-11
32	Derick Hamilton	01:47	0-1	0-0	0-0	0	0	0	1	0	0	0	0	0	0	0	-9
Team						0	0	0			0		0				
Totals			8-25	3-12	12-16	4	9	13	10	13	31	3	6	2	1	2	-13

Shooting By Period		
1 st FG%	8-25	32.0%
3PT%	3-12	25.0%
FT%	12-16	75%
GM FG%	8-25	32.0%
3PT%	3-12	25.0%
FT%	12-16	75.0%

Dead Ball Rebounds: 3, 0

Technical Fouls: McKinney Jr. 1st 9:18

NM State - 44

NO.	Name	Min	FG			Rebounds			Fouls		TP	AS	TO	ST	Blocks		+/-
			M-A	3P	FT	OR	DR	TOT	PF	FD					BS	BA	
2	Issa Muhammad	F 14:32	3-4	1-1	2-2	1	3	4	2	2	9	0	1	1	1	0	12
4	James Beck	F 09:41	1-1	0-0	0-0	1	2	3	0	1	2	1	1	0	0	0	16
3	Xavier Pinson	G 08:51	3-5	1-2	2-2	1	0	1	2	1	9	1	0	0	0	0	9
11	DaJuan Gordon	G 03:38	0-0	0-0	0-0	0	0	0	2	0	0	0	0	0	0	0	6
42	Deshawndre Washington	G 13:17	1-5	0-1	2-2	0	2	2	2	2	4	0	2	0	0	1	4
0	Anthony Roy	13:21	5-7	2-2	3-3	0	1	1	1	2	15	0	1	1	0	0	10
1	Marchelus Avery	14:04	0-2	0-2	0-2	2	2	4	3	1	0	2	0	1	1	0	0
34	Shakiru Odunewu	01:25	0-0	0-0	0-0	0	0	0	0	0	0	0	0	0	0	0	-2
13	Doctor Bradley	07:56	1-1	0-0	0-0	0	2	2	1	0	2	1	0	0	0	0	-4
5	Kyle Feit	13:15	1-3	1-2	0-0	0	1	1	0	1	3	1	1	0	0	0	14
Team						0	0	0			0		0				
Totals			15-28	5-10	9-11	5	13	18	13	10	44	6	6	3	2	1	13

Shooting By Period		
1 st FG%	15-28	53.6%
3PT%	5-10	50.0%
FT%	9-11	81.8%
GM FG%	15-28	53.6%
3PT%	5-10	50.0%
FT%	9-11	81.8%

Dead Ball Rebounds: 1, 1

Technical Fouls: NONE

	UTEP	NMSU	Points from		Period by Period Scoring				
Biggest lead	2 (1 st 19:42)	13 (1 st 1:42)	UTEP	NMSU	1 st	2 nd	TOT		
Best Scoring Run	7 (1 st 13:30)	10 (1 st 9:18)	Turnovers	1	6	UTEP	31	39	70
Lead Changes	3		Paint	8	20	NMSU	44	51	95
Times Tied	2		Second Chance	1	6				
Time with Lead	02:18	16:39	Fast Breaks	6	3				
			Bench	10	20				



UTEP at NM State

11/30/22 Pan American Center, Las Cruces, N.M.
2022-23 Men's Basketball

Game Time: 7:00 PM
Game Duration: 2:20
Attendance: 6,332

Officials: Mike Scyphers, Winston Smith, Gregory Nixon

Period 2

Quarter Starters:

NMSU	2 Muhammad I	3 Pinson X	4 Beck J	11 Gordon D	42 Washington D
UTEP	2 Hardy T	4 McKinney Jr. M	5 Givance S	13 Solomon C	21 Onyema Z

Game Time	NMSU	Score	Diff	UTEP
20:00	0 ROY A substitution out			
20:00	5 FEIT K substitution out			
20:00	11 GORDON D substitution in			
20:00	42 WASHINGTON D substitution in			
20:00				23 FRAZIER III O substitution out
20:00				34 KALU K substitution out
20:00				13 SOLOMON C substitution in
20:00				21 ONYEMA Z substitution in
19:51	11 GORDON D 3pt FG , jump shot missed			
19:48				2 HARDY T defensive rebound (2)
19:39				5 GIVANCE S 3pt FG , jump shot missed
19:35	42 WASHINGTON D defensive rebound (3)			
19:28	11 GORDON D 2pt FG in the paint, layup made (2)	46-31	15	
19:14	4 BECK J steal (1)			4 MCKINNEY JR. M turnover bad pass (2)
19:09	3 PINSON X turnover dribbling violation (1)			
18:50				4 MCKINNEY JR. M 3pt FG from turnover, jump shot missed
18:47	42 WASHINGTON D defensive rebound (4)			
18:39	3 PINSON X 3pt FG , jump shot made (12)	49-31	18	
18:39	42 WASHINGTON D assist (1)			
18:24				2 HARDY T turnover dribbling violation (3)
18:24				4 MCKINNEY JR. M substitution out
18:24				11 LEMUS C substitution in
18:12	3 PINSON X turnover bad pass (2)			
17:58		49-33	16	13 SOLOMON C 2pt FG from turnover in the paint, layup made (3)
17:58				5 GIVANCE S assist (2)
17:58	11 GORDON D foul shooting (3 - 1)			13 SOLOMON C foul drawn (2)
17:58	11 GORDON D substitution out			
17:58	0 ROY A substitution in			
17:58				13 SOLOMON C free throw 1 - 1 missed
17:57	2 MUHAMMAD I defensive rebound (5)			
17:43	0 ROY A 2pt FG in the paint, layup made (17)	51-33	18	
17:43	3 PINSON X assist (2)			
17:31	4 BECK J foul personal (1 - 2)			21 ONYEMA Z foul drawn (2)
17:27	2 MUHAMMAD I steal (2)			5 GIVANCE S turnover bad pass (2)
17:13	0 ROY A 3pt FG from turnover, jump shot made (20)	54-33	21	
17:02	4 BECK J foul personal (2 - 3)			5 GIVANCE S foul drawn (5)
17:02	4 BECK J substitution out			
17:02	1 AVERY M substitution in			
17:02				11 LEMUS C substitution out
17:02				4 MCKINNEY JR. M substitution in
17:00	1 AVERY M foul shooting (4 - 4)			2 HARDY T foul drawn (3)
17:00		54-34	20	2 HARDY T free throw 1 - 2 made (13)



UTEP at NM State

11/30/22 Pan American Center, Las Cruces, N.M.
2022-23 Men's Basketball

Game Time: 7:00 PM
Game Duration: 2:20
Attendance: 6,332

Officials: Mike Scyphers, Winston Smith, Gregory Nixon

Game Time	NMSU	Score	Diff	UTEP
17:00	1 AVERY M substitution out			
17:00	13 BRADLEY D substitution in			
17:00		54-35	19	2 HARDY T free throw 2 - 2 made (14)
16:41	0 ROY A 3pt FG , jump shot missed			
16:37				21 ONYEMA Z defensive rebound (2)
16:35				4 MCKINNEY JR. M turnover travel (3)
16:20	42 WASHINGTON D turnover bad pass (3)			
16:10	13 BRADLEY D foul shooting (2 - 5)			5 GIVANCE S foul drawn (6)
16:10				5 GIVANCE S free throw 1 - 2 missed
16:10				offensive dead ball rebound (4)
16:10	13 BRADLEY D substitution out			
16:10	5 FEIT K substitution in			
16:10		54-36	18	5 GIVANCE S free throw 2 - 2 made (7)
15:50	0 ROY A foul offensive (2 - 6)			4 MCKINNEY JR. M foul drawn (5)
15:50	0 ROY A turnover offensive (2)			
15:50	Timeout media			
15:38				2 HARDY T 3pt FG from turnover, jump shot missed
15:34	3 PINSON X defensive rebound (2)			
15:28	2 MUHAMMAD I 2pt FG in the paint, jump shot missed			
15:24	2 MUHAMMAD I offensive rebound (6)			
15:16	2 MUHAMMAD I 2pt FG second chance in the paint, hook shot made (11)	56-36	20	
14:51	2 MUHAMMAD I steal (3)			13 SOLOMON C turnover lost ball (1)
14:36	42 WASHINGTON D 3pt FG from turnover, jump shot missed			
14:33				13 SOLOMON C defensive rebound (3)
14:29	2 MUHAMMAD I substitution out			
14:29	4 BECK J substitution in			
14:29				4 MCKINNEY JR. M substitution out
14:29				13 SOLOMON C substitution out
14:29				12 SIBLEY J substitution in
14:29				23 FRAZIER III O substitution in
14:24		56-38	18	2 HARDY T 2pt FG in the paint, floating jump shot made (16)
14:09	5 FEIT K 3pt FG , jump shot missed			
14:05				5 GIVANCE S defensive rebound (3)
14:04	5 FEIT K substitution out			
14:04	11 GORDON D substitution in			
14:02		56-40	16	21 ONYEMA Z 2pt FG in the paint, dunk, made (2)
14:02				5 GIVANCE S assist (3)
13:46	42 WASHINGTON D foul drawn (3)			21 ONYEMA Z foul shooting (3 - 1)
13:46	42 WASHINGTON D free throw 1 - 2 made (5)	57-40	17	
13:46				21 ONYEMA Z substitution out
13:46				34 KALU K substitution in
13:46	42 WASHINGTON D free throw 2 - 2 missed			
13:45				23 FRAZIER III O defensive rebound (1)
13:44	11 GORDON D steal (1)			23 FRAZIER III O turnover lost ball (1)
13:34	11 GORDON D 3pt FG from turnover, jump shot missed			
13:31	0 ROY A offensive rebound (2)			
13:22	4 BECK J 2pt FG from turnover second chance outside the paint, jump shot missed			
13:22				23 FRAZIER III O defensive rebound (2)



UTEP at NM State

11/30/22 Pan American Center, Las Cruces, N.M.
2022-23 Men's Basketball

Game Time: 7:00 PM
Game Duration: 2:20
Attendance: 6,332

Officials: Mike Scyphers, Winston Smith, Gregory Nixon

Game Time	NMSU	Score	Diff	UTEP
13:22	0 ROY A foul personal (3 - 7)			23 FRAZIER III O foul drawn (1)
13:22				23 FRAZIER III O 1&1 free throw 1 missed
13:21	42 WASHINGTON D defensive rebound (5)			
13:09	42 WASHINGTON D foul drawn (4)			12 SIBLEY J foul personal (1 - 2)
12:57	3 PINSON X 3pt FG , jump shot made (15)	60-40	20	
12:36	3 PINSON X steal (1)			2 HARDY T turnover lost ball (4)
12:30	11 GORDON D 2pt FG fast break from turnover in the paint, layup made (4)	62-40	22	
12:30	42 WASHINGTON D assist (2)			
12:19	3 PINSON X foul personal (3 - 8)			2 HARDY T foul drawn (4)
12:19	3 PINSON X substitution out			
12:19	4 BECK J substitution out			
12:19	2 MUHAMMAD I substitution in			
12:19	5 FEIT K substitution in			
12:19				12 SIBLEY J substitution out
12:19				23 FRAZIER III O substitution out
12:19				4 MCKINNEY JR. M substitution in
12:19				13 SOLOMON C substitution in
12:19		62-41	21	2 HARDY T 1&1 free throw 1 made (17)
12:19		62-42	20	2 HARDY T 1&1 free throw 2 made (18)
12:19				2 HARDY T substitution out
12:19				11 LEMUS C substitution in
12:04	11 GORDON D foul drawn (1)			5 GIVANCE S foul personal (2 - 3)
11:58	0 ROY A foul drawn (3)			11 LEMUS C foul shooting (2 - 4)
11:58	Timeout media			
11:58	0 ROY A free throw 1 - 3 made (21)	63-42	21	
11:58	0 ROY A free throw 2 - 3 made (22)	64-42	22	
11:58	0 ROY A free throw 3 - 3 made (23)	65-42	23	
11:35	0 ROY A foul shooting (4 - 9)			11 LEMUS C foul drawn (1)
11:35		65-43	22	11 LEMUS C free throw 1 - 2 made (1)
11:35	0 ROY A substitution out			
11:35	3 PINSON X substitution in			
11:35		65-44	21	11 LEMUS C free throw 2 - 2 made (2)
11:22	11 GORDON D 3pt FG , jump shot missed			
11:18				4 MCKINNEY JR. M defensive rebound (4)
11:07				11 LEMUS C 3pt FG , jump shot missed
11:03	42 WASHINGTON D defensive rebound (6)			
10:55	3 PINSON X turnover bad pass (3)			13 SOLOMON C steal (1)
10:50		65-46	19	4 MCKINNEY JR. M 2pt FG fast break from turnover in the paint, layup made (10)
10:50				5 GIVANCE S assist (4)
10:30	3 PINSON X turnover lost ball (4)			11 LEMUS C steal (1)
10:25		65-48	17	4 MCKINNEY JR. M 2pt FG fast break from turnover in the paint, layup made (12)
10:25				5 GIVANCE S assist (5)
10:24	Timeout 30 Sec			
10:24	Timeout media			
10:24				34 KALU K substitution out
10:24				2 HARDY T substitution in
09:59	5 FEIT K 3pt FG , jump shot made (6)	68-48	20	



UTEP at NM State

11/30/22 Pan American Center, Las Cruces, N.M.
2022-23 Men's Basketball

Game Time: 7:00 PM
Game Duration: 2:20
Attendance: 6,332

Officials: Mike Scyphers, Winston Smith, Gregory Nixon

Game Time	NMSU	Score	Diff	UTEP
09:41		68-50	18	4 MCKINNEY JR. M 2pt FG in the paint, layup made (14)
09:33	3 PINSON X turnover lost ball (5)			
09:29		68-52	16	13 SOLOMON C 2pt FG from turnover in the paint, dunk, made (5)
09:29				5 GIVANCE S assist (6)
09:15	5 FEIT K foul drawn (2)			2 HARDY T foul personal (1 - 5)
09:02	42 WASHINGTON D foul drawn (5)			11 LEMUS C foul personal (3 - 6)
08:54	3 PINSON X foul drawn (2)			13 SOLOMON C foul personal (3 - 7)
08:54	3 PINSON X 1&1 free throw 1 missed			
08:54				2 HARDY T defensive rebound (3)
08:47				2 HARDY T 3pt FG , jump shot missed
08:46				4 MCKINNEY JR. M offensive rebound (5)
08:46	5 FEIT K foul personal (1 - 10)			4 MCKINNEY JR. M foul drawn (6)
08:46		68-53	15	4 MCKINNEY JR. M free throw fast break 1 - 2 made (15)
08:46	5 FEIT K substitution out			
08:46	1 AVERY M substitution in			
08:46		68-54	14	4 MCKINNEY JR. M free throw fast break 2 - 2 made (16)
08:36	42 WASHINGTON D turnover lost ball (4)			4 MCKINNEY JR. M steal (1)
08:31		68-56	12	4 MCKINNEY JR. M 2pt FG from turnover in the paint, dunk, made (18)
08:25	11 GORDON D substitution out			
08:25	0 ROY A substitution in			
08:25	turnover sec 5 (15)			
08:12				11 LEMUS C 3pt FG from turnover, jump shot missed
08:09				4 MCKINNEY JR. M offensive rebound (6)
08:09	0 ROY A foul shooting (5 - 11)			4 MCKINNEY JR. M foul drawn (7)
08:09	0 ROY A substitution out			
08:09	4 BECK J substitution in			
08:09		68-57	11	4 MCKINNEY JR. M free throw 1 - 2 made (19)
08:09				4 MCKINNEY JR. M free throw 2 - 2 missed
08:08	2 MUHAMMAD I defensive rebound (7)			
07:54	1 AVERY M 3pt FG , jump shot made (3)	71-57	14	
07:54	2 MUHAMMAD I assist (1)			
07:51	4 BECK J foul drawn (2)			11 LEMUS C foul personal (4 - 8)
07:51	4 BECK J 1&1 free throw 1 made (3)	72-57	15	
07:51	4 BECK J 1&1 free throw 2 made (4)	73-57	16	
07:44				11 LEMUS C turnover travel (2)
07:44	Timeout 30 Sec			
07:27	2 MUHAMMAD I foul drawn (3)			5 GIVANCE S foul personal (3 - 9)
07:27	2 MUHAMMAD I 1&1 free throw 1 made (12)	74-57	17	
07:27	2 MUHAMMAD I 1&1 free throw 2 made (13)	75-57	18	
07:08				2 HARDY T 3pt FG , jump shot missed
07:05				4 MCKINNEY JR. M offensive rebound (7)
06:54		75-59	16	2 HARDY T 2pt FG second chance in the paint, jump shot made (20)
06:40	jump ball situation			
06:40				4 MCKINNEY JR. M 3pt FG , jump shot missed
06:40	4 BECK J defensive rebound (4)			
06:01	4 BECK J 3pt FG , jump shot made (7)	78-59	19	
06:01	3 PINSON X assist (3)			



UTEP at NM State

11/30/22 Pan American Center, Las Cruces, N.M.
2022-23 Men's Basketball

Game Time: 7:00 PM
Game Duration: 2:20
Attendance: 6,332

Officials: Mike Scyphers, Winston Smith, Gregory Nixon

Game Time	NMSU	Score	Diff	UTEP
05:50		78-61	17	13 SOLOMON C 2pt FG in the paint, layup made (7)
05:50				11 LEMUS C substitution out
05:50				13 SOLOMON C substitution out
05:50				12 SIBLEY J substitution in
05:50				21 ONYEMA Z substitution in
05:21	42 WASHINGTON D 2pt FG in the paint, dunk, made (7)	80-61	19	
05:21	3 PINSON X assist (4)			
05:07		80-63	17	2 HARDY T 2pt FG in the paint, alleyoop made (22)
05:07				5 GIVANCE S assist (7)
04:53	2 MUHAMMAD I 2pt FG in the paint, alleyoop made (15)	82-63	19	
04:53	42 WASHINGTON D assist (3)			
04:40	2 MUHAMMAD I foul shooting (3 - 12)			5 GIVANCE S foul drawn (7)
04:40		82-64	18	5 GIVANCE S free throw 1 - 2 made (8)
04:40	4 BECK J substitution out			
04:40	11 GORDON D substitution in			
04:40		82-65	17	5 GIVANCE S free throw 2 - 2 made (9)
04:19	3 PINSON X foul drawn (3)			4 MCKINNEY JR. M foul shooting (1 - 10)
04:19	3 PINSON X free throw 1 - 2 made (16)	83-65	18	
04:19	3 PINSON X free throw 2 - 2 made (17)	84-65	19	
03:54				2 HARDY T 3pt FG , jump shot missed
03:50	42 WASHINGTON D defensive rebound (7)			
03:25	42 WASHINGTON D turnover bad pass (5)			2 HARDY T steal (1)
03:21	3 PINSON X foul shooting (4 - 13)			2 HARDY T foul drawn (5)
03:21	Timeout media			
03:21		84-66	18	2 HARDY T free throw fast break 1 - 2 made (23)
03:21		84-67	17	2 HARDY T free throw fast break 2 - 2 made (24)
03:21	3 PINSON X foul drawn (4)			2 HARDY T foul personal (2 - 11)
03:21	3 PINSON X free throw fast break 1 - 2 missed			
03:21	offensive dead ball rebound (3)			
03:21	3 PINSON X free throw fast break 2 - 2 made (18)	85-67	18	
03:21	3 PINSON X substitution out			
03:21	5 FEIT K substitution in			
03:14		85-69	16	4 MCKINNEY JR. M 2pt FG in the paint, layup made (21)
03:14				5 GIVANCE S assist (8)
02:54	5 FEIT K foul drawn (3)			2 HARDY T foul personal (3 - 12)
02:54	5 FEIT K free throw 1 - 2 made (7)	86-69	17	
02:54	5 FEIT K free throw 2 - 2 made (8)	87-69	18	
02:48				5 GIVANCE S 2pt FG in the paint, layup blocked
02:48	2 MUHAMMAD I block (2)			
02:42	5 FEIT K defensive rebound (2)			
02:19	jump ball situation			
02:13	11 GORDON D 2pt FG outside the paint, jump shot made (6)	89-69	20	
02:13	42 WASHINGTON D assist (4)			
02:07	11 GORDON D foul personal (4 - 14)			4 MCKINNEY JR. M foul drawn (8)
02:07				4 MCKINNEY JR. M free throw fast break 1 - 2 missed
02:07				offensive dead ball rebound (5)
02:07	2 MUHAMMAD I substitution out			
02:07	3 PINSON X substitution in			
02:07		89-70	19	4 MCKINNEY JR. M free throw fast break 2 - 2 made (22)



UTEP at NM State

11/30/22 Pan American Center, Las Cruces, N.M.
2022-23 Men's Basketball

Game Time: 7:00 PM
Game Duration: 2:20
Attendance: 6,332

Officials: Mike Scyphers, Winston Smith, Gregory Nixon

Game Time	NMSU	Score	Diff	UTEP
02:07				4 MCKINNEY JR. M substitution out
02:07				11 LEMUS C substitution in
01:36	11 GORDON D foul drawn (2)			21 ONYEMA Z foul shooting (4 - 13)
01:36	11 GORDON D free throw 1 - 2 made (7)	90-70	20	
01:36	1 AVERY M substitution out			
01:36	2 MUHAMMAD I substitution in			
01:36				21 ONYEMA Z substitution out
01:36				34 KALU K substitution in
01:36	11 GORDON D free throw 2 - 2 missed			
01:35				12 SIBLEY J defensive rebound (4)
01:25				5 GIVANCE S 3pt FG , jump shot missed
01:21	42 WASHINGTON D defensive rebound (8)			
01:15	11 GORDON D 2pt FG in the paint, layup made (9)	92-70	22	
01:15	42 WASHINGTON D assist (5)			
00:55	5 FEIT K steal (1)			2 HARDY T turnover lost ball (5)
00:29	3 PINSON X 3pt FG from turnover, jump shot missed			
00:25	2 MUHAMMAD I offensive rebound (8)			
00:23	42 WASHINGTON D 3pt FG from turnover second chance, jump shot made (10)	95-70	25	
00:23	2 MUHAMMAD I assist (2)			
00:22	2 MUHAMMAD I substitution out			
00:22	3 PINSON X substitution out			
00:22	42 WASHINGTON D substitution out			
00:22	1 AVERY M substitution in			
00:22	13 BRADLEY D substitution in			
00:22	34 ODUNEWU S substitution in			
END OF GAME				
NMSU 95-70 UTEP				



UTEP at NM State

11/30/22 Pan American Center, Las Cruces, N.M.
2022-23 Men's Basketball

Game Time: 7:00 PM
Game Duration: 2:20
Attendance: 6,332

Officials: Mike Scyphers, Winston Smith, Gregory Nixon

UTEP - 39

NO.	Name	Min	FG	3P	FT	Rebounds			Fouls		TP	AS	TO	ST	Blocks		+/-
			M-A	M-A	M-A	OR	DR	TOT	PF	FD					BS	BA	
12	Jamari Sibley	F 08:00	0-0	0-0	0-0	0	1	1	1	0	0	0	0	0	0	0	-10
13	Calvin Solomon	F 12:00	3-3	0-0	0-1	0	1	1	1	1	6	0	1	1	0	0	-2
21	Ze'rik Onyema	F 10:28	1-1	0-0	0-0	0	1	1	2	1	2	0	0	0	0	0	-7
2	Tae Hardy	G 18:05	3-7	0-4	6-6	0	2	2	3	3	12	0	3	1	0	0	-15
5	Shamar Givance	G 20:00	0-3	0-2	3-4	0	1	1	2	3	3	7	1	0	0	1	-12
11	Carlos Lemus	09:58	0-2	0-2	2-2	0	0	0	3	1	2	0	1	1	0	0	-6
4	Mario McKinney Jr.	14:21	5-7	0-2	4-6	3	1	4	1	4	14	0	2	1	0	0	-1
23	Otis Frazier III	02:10	0-0	0-0	0-1	0	2	2	0	1	0	0	1	0	0	0	-2
34	Kevin Kalu	04:58	0-0	0-0	0-0	0	0	0	0	0	0	0	0	0	0	0	-5
Team						0	0	0			0						
Totals			12-23	0-10	15-20	3	9	12	13	14	39	7	9	4	0	1	-12

Shooting By Period		
2 nd FG%	12-23	52.2%
3PT%	0-10	0.0%
FT%	15-20	75%
GM FG%	12-23	52.2%
3PT%	0-10	0.0%
FT%	15-20	75.0%

Dead Ball Rebounds: 2, 0

Technical Fouls::NONE

NM State - 51

NO.	Name	Min	FG	3P	FT	Rebounds			Fouls		TP	AS	TO	ST	Blocks		+/-
			M-A	M-A	M-A	OR	DR	TOT	PF	FD					BS	BA	
2	Issa Muhammad	F 16:57	2-3	0-0	2-2	2	2	4	1	1	6	2	0	2	1	0	10
4	James Beck	F 08:37	1-2	1-1	2-2	0	1	1	2	1	5	0	0	1	0	0	16
3	Xavier Pinson	G 17:40	2-3	2-3	3-5	0	1	1	2	3	9	3	5	1	0	0	10
11	DaJuan Gordon	G 12:21	4-7	0-3	1-2	0	0	0	2	2	9	0	0	1	0	0	4
42	Deshawndre Washington	G 19:38	2-3	1-2	1-2	0	6	6	0	3	6	5	3	0	0	0	12
0	Anthony Roy	06:39	2-3	1-2	3-3	1	0	1	4	1	8	0	1	0	0	0	6
1	Marchelus Avery	07:34	1-1	1-1	0-0	0	0	0	1	0	3	0	0	0	0	0	4
13	Doctor Bradley	01:12	0-0	0-0	0-0	0	0	0	1	0	0	0	0	0	0	0	-1
5	Kyle Feit	09:00	1-2	1-2	2-2	0	1	1	1	2	5	0	0	1	0	0	-1
34	Shakiru Odunewu	00:22	0-0	0-0	0-0	0	0	0	0	0	0	0	0	0	0	0	0
Team						0	0	0			0		1				
Totals			15-24	7-14	14-18	3	11	14	14	13	51	10	10	6	1	0	12

Shooting By Period		
2 nd FG%	15-24	62.5%
3PT%	7-14	50.0%
FT%	14-18	77.8%
GM FG%	15-24	62.5%
3PT%	7-14	50.0%
FT%	14-18	77.8%

Dead Ball Rebounds: 1, 0

Technical Fouls::NONE

	UTEP	NMSU
Biggest lead	0 (1 st 20:00)	25 (2 nd 0:23)
Best Scoring Run	9(2 nd 8:09)	7(2 nd 7:27)
Lead Changes	0	
Times Tied	0	
Time with Lead	00:00	19:51

Points from	UTEP	NMSU
Turnovers	14	10
Paint	24	14
Second Chance	5	5
Fast Breaks	9	3
Bench	16	16

	Period by Period Scoring		
	1st	2nd	TOT
UTEP	31	39	70
NMSU	44	51	95



UTEP at NM State

11/30/22 Pan American Center, Las Cruces, N.M.
2022-23 Men's Basketball

Game Time: 7:00 PM
Game Duration: 2:20
Attendance: 6,332

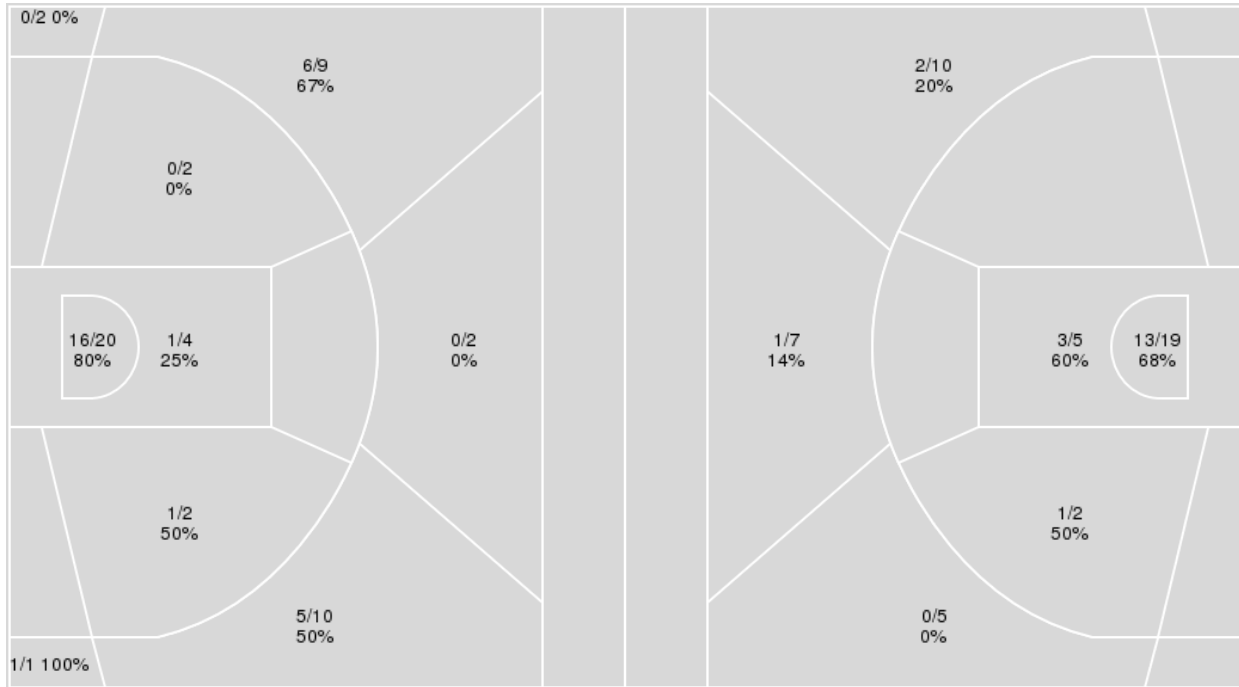
Officials: Mike Scyphers, Winston Smith, Gregory Nixon

{ Players => 0, 1, 2, 3, 4, 5, 11, 13, 14, 15, 21, 22, 23, 24, 25, 31, 33, 34, 42; } FG Types => All; Results => All;

{ Players => 0, 1, 2, 3, 4, 5, 11, 12, 13, 15, 20, 21, 23, 32, 34; } FG Types => All; Results => All;

NM State

UTEP



NM State	M/A	%
Field Goals	30/52	58
2 Points	18/28	64
3 Points	12/24	50
Free Throws	23/29	79

UTEP	M/A	%
Field Goals	20/48	42
2 Points	17/26	65
3 Points	3/22	14
Free Throws	27/36	75



UTEP at NM State

11/30/22 Pan American Center, Las Cruces, N.M.
2022-23 Men's Basketball

Game Time: 7:00 PM
Game Duration: 2:20
Attendance: 6,332

Officials: Mike Scyphers, Winston Smith, Gregory Nixon

UTEP

No	Name	Mins		Score		Points Diff		Points per Min		Assists		Rebounds		Steals		Turnovers	
		On	Off	On	Off	On	Off	On	Off	On	Off	On	Off	On	Off	On	Off
2	Tae Hardy	34:53	05:07	56 - 86	14 - 9	-30	5	1.61	2.74	7	3	21	4	4	2	15	0
4	Mario McKinney Jr.	31:33	08:27	59 - 72	11 - 23	-13	-12	1.87	1.30	7	3	20	5	4	2	10	5
5	Shamar Givance	35:33	04:27	66 - 85	4 - 10	-19	-6	1.86	0.90	9	1	24	1	6	0	14	1
11	Carlos Lemus	15:00	25:00	26 - 43	44 - 52	-17	-8	1.73	1.76	4	6	8	17	3	3	5	10
12	Jamari Sibley	23:10	16:50	34 - 59	36 - 36	-25	0	1.47	2.14	5	5	13	12	3	3	8	7
13	Calvin Solomon	21:33	18:27	45 - 39	25 - 56	6	-31	2.09	1.36	6	4	15	10	5	1	7	8
21	Ze'rik Onyema	15:59	24:01	24 - 37	46 - 58	-13	-12	1.50	1.92	5	5	8	17	3	3	7	8
23	Otis Frazier III	07:18	32:42	16 - 14	54 - 81	2	-27	2.19	1.65	3	7	6	19	0	6	3	12
32	Derick Hamilton	01:47	38:13	0 - 9	70 - 86	-9	-16	0.00	1.83	0	10	1	24	0	6	1	14
34	Kevin Kalu	13:14	26:46	24 - 31	46 - 64	-7	-18	1.81	1.72	4	6	9	16	2	4	5	10

NM State

No	Name	Mins		Score		Points Diff		Points per Min		Assists		Rebounds		Steals		Turnovers	
		On	Off	On	Off	On	Off	On	Off	On	Off	On	Off	On	Off	On	Off
0	Anthony Roy	20:00	20:00	48 - 32	47 - 38	16	9	2.40	2.35	5	11	17	15	6	3	7	9
1	Marchelus Avery	21:38	18:22	49 - 45	46 - 25	4	21	2.27	2.50	10	6	15	17	2	7	7	9
2	Issa Muhammad	31:29	08:31	78 - 56	17 - 14	22	3	2.48	2.00	14	2	27	5	5	4	13	3
3	Xavier Pinson	26:31	13:29	65 - 46	30 - 24	19	6	2.45	2.22	12	4	20	12	7	2	14	2
4	James Beck	18:18	21:42	56 - 24	39 - 46	32	-7	3.06	1.80	9	7	16	16	7	2	6	10
5	Kyle Feit	22:15	17:45	51 - 38	44 - 32	13	12	2.29	2.48	7	9	20	12	4	5	7	9
11	DaJuan Gordon	15:59	24:01	38 - 28	57 - 42	10	15	2.38	2.37	7	9	12	20	5	4	9	7
13	Doctor Bradley	09:08	30:52	13 - 18	82 - 52	-5	30	1.42	2.66	3	13	6	26	2	7	2	14
34	Shakiru Odunewu	01:47	38:13	1 - 3	94 - 67	-2	27	0.56	2.46	0	16	1	31	0	9	1	15
42	Deshawndre Washington	32:55	07:05	76 - 60	19 - 10	16	9	2.31	2.68	13	3	26	6	7	2	14	2

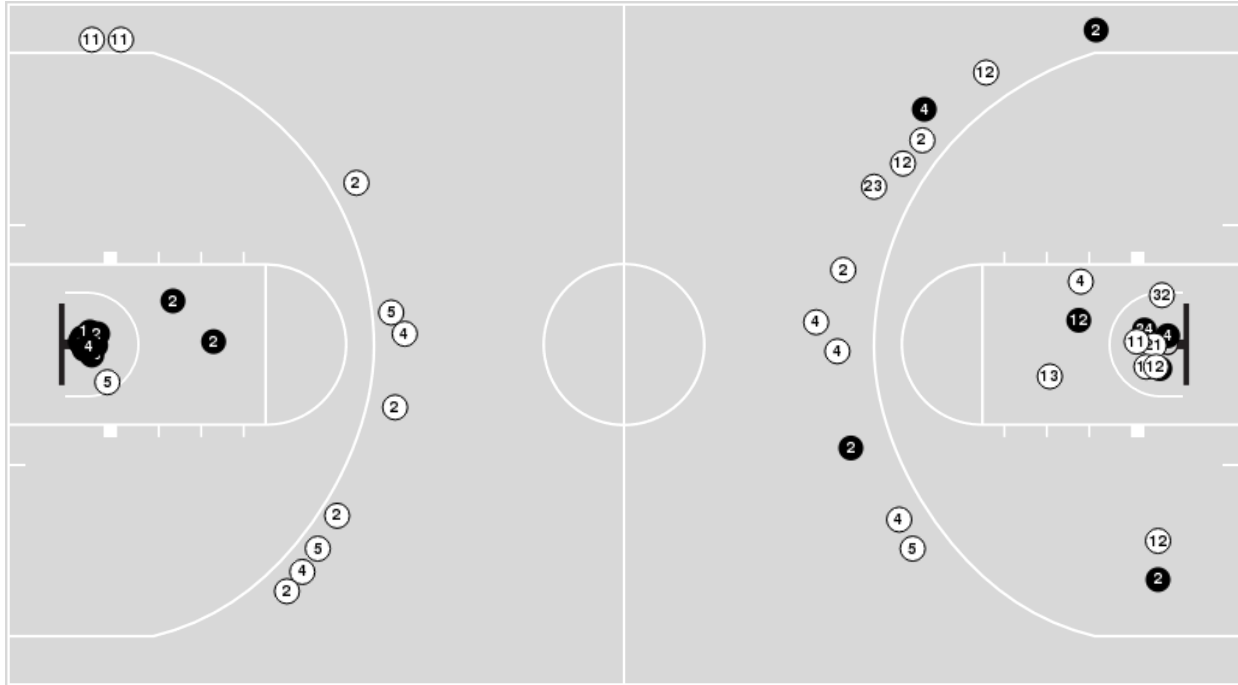


Officials: Mike Scyphers, Winston Smith, Gregory Nixon

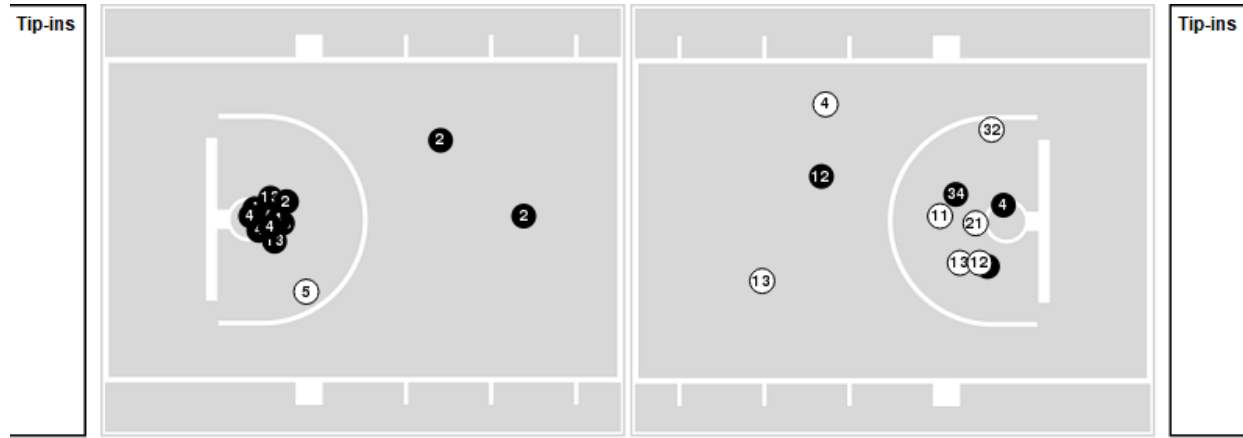
Players => 0, 1, 2, 3, 4, 5, 11, 12, 13, 15, 20, 21, 23, 32, 34 FG Types=>All Results=>All

UTEP

All Field Goals



Blow Up Chart



● Made ○ Missed N - Player Number

UTEP	M/A	%
Field Goals	20/48	42
2 Points	17/26	65
3 Points	3/22	14
Free Throws	27/36	75

UTEP	M/A	%
Points in the Paint	32 (16 / 24)	67
Fast Break Points	15 (12/14)	86
Second Chance Points	6 (5/12)	42
Effective FG%	45	

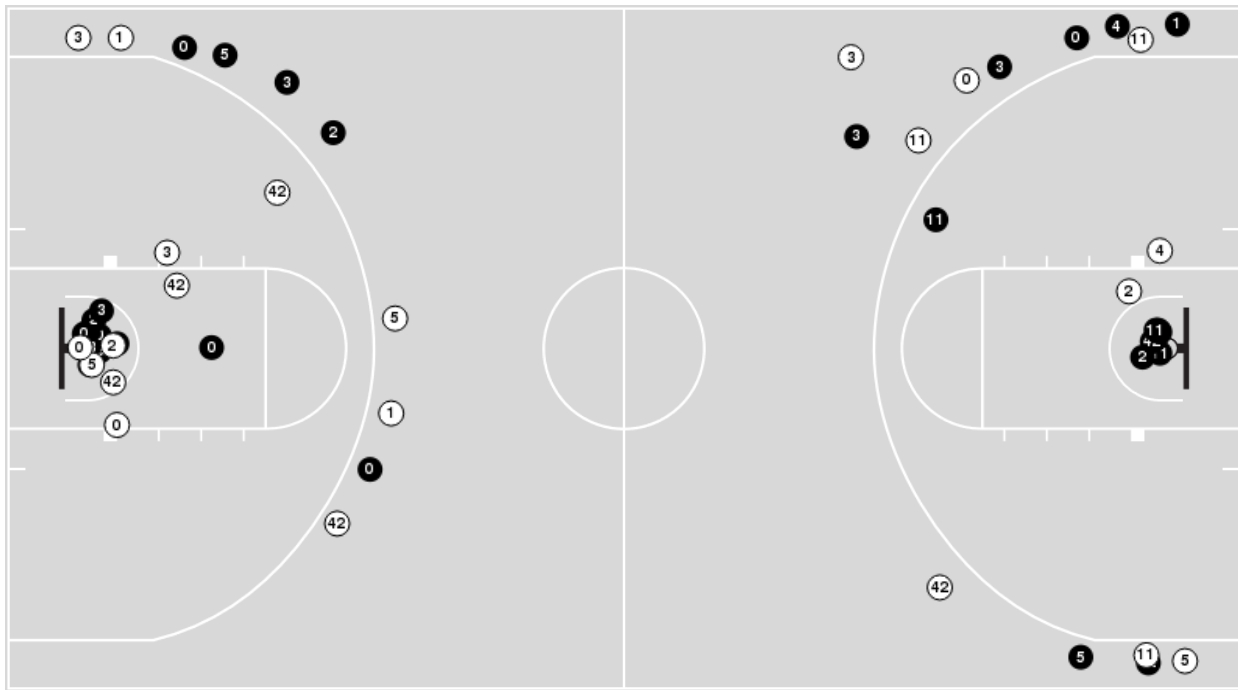


Officials: Mike Scyphers, Winston Smith, Gregory Nixon

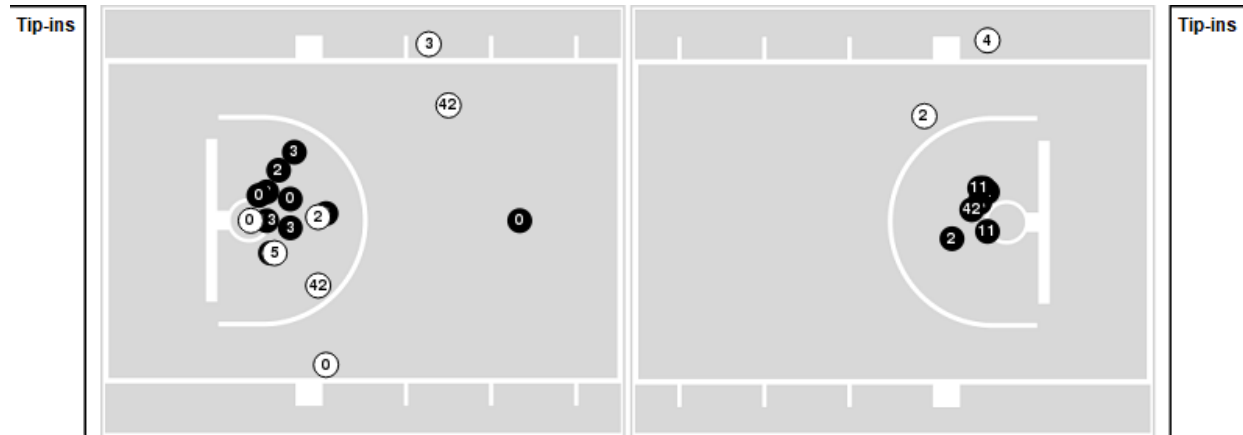
Players => 0, 1, 2, 3, 4, 5, 11, 13, 14, 15, 21, 22, 23, 24, 25, 31, 33, 34, 42FG Types=>AllResults=>All

NM State

All Field Goals



Blow Up Chart



● Made ○ Missed N - Player Number

NM State	M/A	%
Field Goals	30/52	58
2 Points	18/28	64
3 Points	12/24	50
Free Throws	23/29	79

NM State	M/A	%
Points in the Paint	34 (17 / 24)	71
Fast Break Points	6 (4/5)	80
Second Chance Points	11 (5/8)	63
Effective FG%	69	



UTEP at NM State

11/30/22 Pan American Center, Las Cruces, N.M.
2022-23 Men's Basketball

Game Time: 7:00 PM
Game Duration: 2:20
Attendance: 6,332

Officials: Mike Scyphers, Winston Smith, Gregory Nixon

UTEP

Lineup	Quarter On	Time On	Quarter Off	Time Off	Time on Court	Score	Score Diff	Reb	Stl	Tov	Ass	PPP
2- Hardy T/ 5- Givance S/ 12- Sibley J/ 13- Solomon C/ 21- Onyema Z/	1	20:00	1	18:34	01:26	2-0	2	1	2	0	1	0.6667
2- Hardy T/ 4- McKinney Jr. M/ 5- Givance S/ 12- Sibley J/ 21- Onyema Z/	1	18:34	1	17:14	01:20	0-5	-5	2	0	2	0	0.0000
2- Hardy T/ 4- McKinney Jr. M/ 12- Sibley J/ 21- Onyema Z/ 23- Frazier III O/	1	17:14	1	16:39	00:35	0-2	-2	0	0	0	0	0.0000
2- Hardy T/ 4- McKinney Jr. M/ 12- Sibley J/ 23- Frazier III O/ 34- Kalu K/	1	16:39	1	15:43	00:56	3-1	2	0	0	0	1	3.0000
2- Hardy T/ 4- McKinney Jr. M/ 13- Solomon C/ 23- Frazier III O/ 34- Kalu K/	1	15:43	1	15:14	00:29	0-0	0	0	0	0	0	0.0000
4- McKinney Jr. M/ 5- Givance S/ 13- Solomon C/ 23- Frazier III O/ 34- Kalu K/	1	15:14	1	13:15	01:59	7-3	4	2	0	0	1	2.3333
4- McKinney Jr. M/ 5- Givance S/ 11- Lemus C/ 13- Solomon C/ 21- Onyema Z/	1	13:15	1	12:02	01:13	1-3	-2	1	0	0	0	0.6944
2- Hardy T/ 5- Givance S/ 11- Lemus C/ 12- Sibley J/ 21- Onyema Z/	1	12:02	1	11:05	00:57	3-2	1	0	0	0	0	2.2727
2- Hardy T/ 5- Givance S/ 11- Lemus C/ 12- Sibley J/ 32- Hamilton D/	1	11:05	1	10:40	00:25	0-4	-4	0	0	1	0	0.0000
2- Hardy T/ 4- McKinney Jr. M/ 5- Givance S/ 12- Sibley J/ 32- Hamilton D/	1	10:40	1	09:18	01:22	0-5	-5	1	0	0	0	0.0000
2- Hardy T/ 4- McKinney Jr. M/ 5- Givance S/ 12- Sibley J/ 13- Solomon C/	1	09:18	1	04:52	04:26	9-5	4	3	0	1	0	1.1780
2- Hardy T/ 4- McKinney Jr. M/ 5- Givance S/ 12- Sibley J/ 34- Kalu K/	1	04:52	1	03:36	01:16	3-5	-2	1	0	0	0	3.0000
2- Hardy T/ 4- McKinney Jr. M/ 11- Lemus C/ 12- Sibley J/ 34- Kalu K/	1	03:36	1	01:09	02:27	1-7	-6	1	0	1	0	0.2049
2- Hardy T/ 4- McKinney Jr. M/ 5- Givance S/ 23- Frazier III O/ 34- Kalu K/	1	01:09	2	20:00	01:09	2-2	0	1	0	1	0	1.0638
2- Hardy T/ 4- McKinney Jr. M/ 5- Givance S/ 13- Solomon C/ 21- Onyema Z/	2	20:00	2	18:24	01:36	0-5	-5	1	0	2	0	0.0000
2- Hardy T/ 5- Givance S/ 11- Lemus C/ 13- Solomon C/ 21- Onyema Z/	2	18:24	2	17:02	01:22	2-5	-3	0	0	1	1	0.8197
2- Hardy T/ 4- McKinney Jr. M/ 5- Givance S/ 13- Solomon C/ 21- Onyema Z/	2	17:02	2	14:29	02:33	3-2	1	2	0	2	0	0.6303
2- Hardy T/ 5- Givance S/ 12- Sibley J/ 21- Onyema Z/ 23- Frazier III O/	2	14:29	2	13:46	00:43	4-1	3	1	0	0	1	2.0000
2- Hardy T/ 5- Givance S/ 12- Sibley J/ 23- Frazier III O/ 34- Kalu K/	2	13:46	2	12:19	01:27	0-5	-5	2	0	2	0	0.0000
2- Hardy T/ 4- McKinney Jr. M/ 5- Givance S/ 13- Solomon C/ 34- Kalu K/	2	12:19	2	12:19	00:00	2-0	2	0	0	0	0	2.2727
4- McKinney Jr. M/ 5- Givance S/ 11- Lemus C/ 13- Solomon C/ 34- Kalu K/	2	12:19	2	10:24	01:55	6-3	3	1	2	0	2	1.5464
2- Hardy T/ 4- McKinney Jr. M/ 5- Givance S/ 11- Lemus C/ 13- Solomon C/	2	10:24	2	05:50	04:34	13-13	0	4	1	1	1	1.4840
2- Hardy T/ 4- McKinney Jr. M/ 5- Givance S/ 12- Sibley J/ 21- Onyema Z/	2	05:50	2	02:07	03:43	9-11	-2	0	1	0	2	1.3554
2- Hardy T/ 5- Givance S/ 11- Lemus C/ 12- Sibley J/ 21- Onyema Z/	2	02:07	2	01:36	00:31	0-1	-1	0	0	0	0	0.0000
2- Hardy T/ 5- Givance S/ 11- Lemus C/ 12- Sibley J/ 34- Kalu K/	2	01:36	2	00:00	01:36	0-5	-5	1	0	1	0	0.0000



UTEP at NM State

11/30/22 Pan American Center, Las Cruces, N.M.
2022-23 Men's Basketball

Game Time: 7:00 PM
Game Duration: 2:20
Attendance: 6,332

Officials: Mike Scyphers, Winston Smith, Gregory Nixon

NM State

Lineup	Quarter On	Time On	Quarter Off	Time Off	Time on Court	Score	Score Diff	Reb	Stl	Tov	Ass	PPP
2- Muhammad I/3- Pinson X/ 4- Beck J/ 11- Gordon D/ 42- Washington D/	1	20:00	1	17:14	02:46	5-2	3	2	1	2	1	1.0000
0- Roy A/ 1- Avery M/ 2- Muhammad I/ 3- Pinson X/ 42- Washington D/	1	17:14	1	16:39	00:35	2-0	2	1	0	0	0	2.0000
0- Roy A/ 1- Avery M/ 3- Pinson X/ 34- Odunewu S/ 42- Washington D/	1	16:39	1	15:30	01:09	1-3	-2	0	0	1	0	0.6944
0- Roy A/ 2- Muhammad I/ 3- Pinson X/ 11- Gordon D/ 34- Odunewu S/	1	15:30	1	15:14	00:16	0-0	0	1	0	0	0	0.0000
0- Roy A/ 1- Avery M/ 2- Muhammad I/ 3- Pinson X/ 11- Gordon D/	1	15:14	1	14:39	00:35	3-0	3	0	0	0	1	3.0000
0- Roy A/ 1- Avery M/ 2- Muhammad I/ 11- Gordon D/ 42- Washington D/	1	14:39	1	14:38	00:01	0-0	0	0	0	0	0	0.0000
0- Roy A/ 1- Avery M/ 2- Muhammad I/ 13- Bradley D/ 42- Washington D/	1	14:38	1	13:15	01:23	0-7	-7	0	0	0	0	0.0000
1- Avery M/ 2- Muhammad I/ 5- Feit K/ 13- Bradley D/ 42- Washington D/	1	13:15	1	12:24	00:51	3-0	3	2	0	0	1	2.0833
1- Avery M/ 4- Beck J/ 5- Feit K/ 13- Bradley D/ 42- Washington D/	1	12:24	1	11:08	01:16	2-4	-2	0	0	0	0	2.0000
0- Roy A/ 2- Muhammad I/ 4- Beck J/ 5- Feit K/ 42- Washington D/	1	11:08	1	09:05	02:03	10-1	9	3	0	0	0	1.7361
0- Roy A/ 1- Avery M/ 2- Muhammad I/ 5- Feit K/ 42- Washington D/	1	09:05	1	07:56	01:09	0-1	-1	2	0	1	0	0.0000
1- Avery M/ 2- Muhammad I/ 5- Feit K/ 13- Bradley D/ 42- Washington D/	1	07:56	1	06:10	01:46	2-3	-1	2	0	0	1	1.0000
0- Roy A/ 2- Muhammad I/ 5- Feit K/ 13- Bradley D/ 42- Washington D/	1	06:10	1	05:52	00:18	0-0	0	0	0	0	0	0.0000
0- Roy A/ 1- Avery M/ 2- Muhammad I/ 5- Feit K/ 13- Bradley D/	1	05:52	1	05:52	00:00	0-2	-2	0	0	0	0	0.0000
0- Roy A/ 1- Avery M/ 2- Muhammad I/ 3- Pinson X/ 5- Feit K/	1	05:52	1	03:36	02:16	7-5	2	1	0	0	1	2.4306
0- Roy A/ 1- Avery M/ 3- Pinson X/ 4- Beck J/ 5- Feit K/	1	03:36	1	02:55	00:41	1-1	0	1	0	1	0	0.6944
0- Roy A/ 1- Avery M/ 4- Beck J/ 5- Feit K/ 13- Bradley D/	1	02:55	1	00:33	02:22	6-1	5	2	2	1	1	1.3514
0- Roy A/ 2- Muhammad I/ 3- Pinson X/ 4- Beck J/ 5- Feit K/	1	00:33	2	20:00	00:33	2-1	1	1	0	0	0	2.0000
2- Muhammad I/3- Pinson X/ 4- Beck J/ 11- Gordon D/ 42- Washington D/	2	20:00	2	17:58	02:02	5-2	3	2	1	2	1	1.0000
0- Roy A/ 2- Muhammad I/ 3- Pinson X/ 4- Beck J/ 42- Washington D/	2	17:58	2	17:02	00:56	5-0	5	1	1	0	1	2.5000
0- Roy A/ 1- Avery M/ 2- Muhammad I/ 3- Pinson X/ 42- Washington D/	2	17:02	2	17:00	00:02	0-1	-1	0	0	0	0	0.0000
0- Roy A/ 2- Muhammad I/ 3- Pinson X/ 13- Bradley D/ 42- Washington D/	2	17:00	2	16:10	00:50	0-1	-1	0	0	1	0	0.0000
0- Roy A/ 2- Muhammad I/ 3- Pinson X/ 5- Feit K/ 42- Washington D/	2	16:10	2	14:29	01:41	2-1	1	2	1	1	0	0.6667
0- Roy A/ 3- Pinson X/ 4- Beck J/ 5- Feit K/ 42- Washington D/	2	14:29	2	14:04	00:25	0-2	-2	0	0	0	0	0.0000
0- Roy A/ 3- Pinson X/ 4- Beck J/ 11- Gordon D/ 42- Washington D/	2	14:04	2	12:19	01:45	6-2	4	2	2	0	1	1.5464
0- Roy A/ 2- Muhammad I/ 5- Feit K/ 11- Gordon D/ 42- Washington D/	2	12:19	2	11:35	00:44	3-3	0	0	0	0	0	2.2727
2- Muhammad I/3- Pinson X/ 5- Feit K/ 11- Gordon D/ 42- Washington D/	2	11:35	2	08:46	02:49	3-10	-7	1	0	3	0	0.5515
1- Avery M/ 2- Muhammad I/ 3- Pinson X/ 11- Gordon D/ 42- Washington D/	2	08:46	2	08:25	00:21	0-3	-3	0	0	1	0	0.0000
0- Roy A/ 1- Avery M/ 2- Muhammad I/ 3- Pinson X/ 42- Washington D/	2	08:25	2	08:09	00:16	0-0	0	0	0	1	0	0.0000
1- Avery M/ 2- Muhammad I/ 3- Pinson X/ 4- Beck J/ 42- Washington D/	2	08:09	2	04:40	03:29	14-8	6	2	0	0	4	2.4306
1- Avery M/ 2- Muhammad I/ 3- Pinson X/ 11- Gordon D/ 42- Washington D/	2	04:40	2	03:21	01:19	3-3	0	1	0	1	0	1.0870
1- Avery M/ 2- Muhammad I/ 5- Feit K/ 11- Gordon D/ 42- Washington D/	2	03:21	2	02:07	01:14	4-2	2	1	0	0	1	2.1277
1- Avery M/ 3- Pinson X/ 5- Feit K/ 11- Gordon D/ 42- Washington D/	2	02:07	2	01:36	00:31	1-1	0	0	0	0	0	2.2727
2- Muhammad I/3- Pinson X/ 5- Feit K/ 11- Gordon D/ 42- Washington D/	2	01:36	2	00:22	01:14	5-0	5	2	1	0	2	2.0492
1- Avery M/ 5- Feit K/ 11- Gordon D/ 13- Bradley D/ 34- Odunewu S/	2	00:22	2	00:00	00:22	0-0	0	0	0	0	0	0.0000



UTEP at NM State

11/30/22 Pan American Center, Las Cruces, N.M.
2022-23 Men's Basketball

Game Time: 7:00 PM
Game Duration: 2:20
Attendance: 6,332

Officials: Mike Scyphers, Winston Smith, Gregory Nixon

UTEP

Lineup	Time	Score	Score Diff	Pts/Min	Reb	Stl	Tov	Ass	PPP
2- Hardy T/ 4- McKinney Jr. M/ 5- Givance S/ 12- Sibley J/ 21- Onyema Z/	05:03	9-16	-7	1.7822	2	1	2	2	0.9912
2- Hardy T/ 4- McKinney Jr. M/ 5- Givance S/ 11- Lemus C/ 13- Solomon C/	04:34	13-13	0	2.8467	4	1	1	1	1.4840
2- Hardy T/ 4- McKinney Jr. M/ 5- Givance S/ 12- Sibley J/ 13- Solomon C/	04:26	9-5	4	2.0301	3	0	1	0	1.1780
2- Hardy T/ 4- McKinney Jr. M/ 5- Givance S/ 13- Solomon C/ 21- Onyema Z/	04:09	3-7	-4	0.7229	3	0	4	0	0.3425
2- Hardy T/ 4- McKinney Jr. M/ 11- Lemus C/ 12- Sibley J/ 34- Kalu K/	02:27	1-7	-6	0.4082	1	0	1	0	0.2049
4- McKinney Jr. M/ 5- Givance S/ 13- Solomon C/ 23- Frazier III O/ 34- Kalu K/	01:59	7-3	4	3.5294	2	0	0	1	2.3333
4- McKinney Jr. M/ 5- Givance S/ 11- Lemus C/ 13- Solomon C/ 34- Kalu K/	01:55	6-3	3	3.1304	1	2	0	2	1.5464
2- Hardy T/ 5- Givance S/ 11- Lemus C/ 12- Sibley J/ 34- Kalu K/	01:36	0-5	-5	0.0000	1	0	1	0	0.0000
2- Hardy T/ 5- Givance S/ 11- Lemus C/ 12- Sibley J/ 21- Onyema Z/	01:28	3-3	0	2.0455	0	0	0	0	2.2727
2- Hardy T/ 5- Givance S/ 12- Sibley J/ 23- Frazier III O/ 34- Kalu K/	01:27	0-5	-5	0.0000	2	0	2	0	0.0000
2- Hardy T/ 5- Givance S/ 12- Sibley J/ 13- Solomon C/ 21- Onyema Z/	01:26	2-0	2	1.3953	1	2	0	1	0.6667
2- Hardy T/ 4- McKinney Jr. M/ 5- Givance S/ 12- Sibley J/ 32- Hamilton D/	01:22	0-5	-5	0.0000	1	0	0	0	0.0000
2- Hardy T/ 5- Givance S/ 11- Lemus C/ 13- Solomon C/ 21- Onyema Z/	01:22	2-5	-3	1.4634	0	0	1	1	0.8197
2- Hardy T/ 4- McKinney Jr. M/ 5- Givance S/ 12- Sibley J/ 34- Kalu K/	01:16	3-5	-2	2.3684	1	0	0	0	3.0000
4- McKinney Jr. M/ 5- Givance S/ 11- Lemus C/ 13- Solomon C/ 21- Onyema Z/	01:13	1-3	-2	0.8219	1	0	0	0	0.6944
2- Hardy T/ 4- McKinney Jr. M/ 5- Givance S/ 23- Frazier III O/ 34- Kalu K/	01:09	2-2	0	1.7391	1	0	1	0	1.0638
2- Hardy T/ 4- McKinney Jr. M/ 12- Sibley J/ 23- Frazier III O/ 34- Kalu K/	00:56	3-1	2	3.2143	0	0	0	1	3.0000
2- Hardy T/ 5- Givance S/ 12- Sibley J/ 21- Onyema Z/ 23- Frazier III O/	00:43	4-1	3	5.5814	1	0	0	1	2.0000
2- Hardy T/ 4- McKinney Jr. M/ 12- Sibley J/ 21- Onyema Z/ 23- Frazier III O/	00:35	0-2	-2	0.0000	0	0	0	0	0.0000
2- Hardy T/ 4- McKinney Jr. M/ 13- Solomon C/ 23- Frazier III O/ 34- Kalu K/	00:29	0-0	0	0.0000	0	0	0	0	0.0000
2- Hardy T/ 5- Givance S/ 11- Lemus C/ 12- Sibley J/ 32- Hamilton D/	00:25	0-4	-4	0.0000	0	0	1	0	0.0000
2- Hardy T/ 4- McKinney Jr. M/ 5- Givance S/ 13- Solomon C/ 34- Kalu K/	00:00	2-0	2	∞	0	0	0	0	2.2727



UTEP at NM State

11/30/22 Pan American Center, Las Cruces, N.M.
2022-23 Men's Basketball

Game Time: 7:00 PM
Game Duration: 2:20
Attendance: 6,332

Officials: Mike Scyphers, Winston Smith, Gregory Nixon

NM State

Lineup	Time	Score	Score Diff	Pts/Min	Reb	Stl	Tov	Ass	PPP
2- Muhammad I/ 3- Pinson X/ 4- Beck J/ 11- Gordon D/ 42- Washington D/	04:48	10-4	6	2.0833	4	2	4	2	1.0000
2- Muhammad I/ 3- Pinson X/ 5- Feit K/ 11- Gordon D/ 42- Washington D/	04:03	8-10	-2	1.9753	3	1	3	2	1.0152
1- Avery M/ 2- Muhammad I/ 3- Pinson X/ 4- Beck J/ 42- Washington D/	03:29	14-8	6	4.0191	2	0	0	4	2.4306
1- Avery M/ 2- Muhammad I/ 5- Feit K/ 13- Bradley D/ 42- Washington D/	02:37	5-3	2	1.9108	4	0	0	2	1.4535
0- Roy A/ 1- Avery M/ 4- Beck J/ 5- Feit K/ 13- Bradley D/	02:22	6-1	5	2.5352	2	2	1	1	1.3514
0- Roy A/ 1- Avery M/ 2- Muhammad I/ 3- Pinson X/ 5- Feit K/	02:16	7-5	2	3.0882	1	0	0	1	2.4306
0- Roy A/ 2- Muhammad I/ 4- Beck J/ 5- Feit K/ 42- Washington D/	02:03	10-1	9	4.8780	3	0	0	0	1.7361
0- Roy A/ 3- Pinson X/ 4- Beck J/ 11- Gordon D/ 42- Washington D/	01:45	6-2	4	3.4286	2	2	0	1	1.5464
0- Roy A/ 2- Muhammad I/ 3- Pinson X/ 5- Feit K/ 42- Washington D/	01:41	2-1	1	1.1881	2	1	1	0	0.6667
1- Avery M/ 2- Muhammad I/ 3- Pinson X/ 11- Gordon D/ 42- Washington D/	01:40	3-6	-3	1.8000	1	0	2	0	0.7979
0- Roy A/ 1- Avery M/ 2- Muhammad I/ 13- Bradley D/ 42- Washington D/	01:23	0-7	-7	0.0000	0	0	0	0	0.0000
1- Avery M/ 4- Beck J/ 5- Feit K/ 13- Bradley D/ 42- Washington D/	01:16	2-4	-2	1.5789	0	0	0	0	2.0000
1- Avery M/ 2- Muhammad I/ 5- Feit K/ 11- Gordon D/ 42- Washington D/	01:14	4-2	2	3.2432	1	0	0	1	2.1277
0- Roy A/ 1- Avery M/ 3- Pinson X/ 34- Odunewu S/ 42- Washington D/	01:09	1-3	-2	0.8696	0	0	1	0	0.6944
0- Roy A/ 1- Avery M/ 2- Muhammad I/ 5- Feit K/ 42- Washington D/	01:09	0-1	-1	0.0000	2	0	1	0	0.0000
0- Roy A/ 2- Muhammad I/ 3- Pinson X/ 4- Beck J/ 42- Washington D/	00:56	5-0	5	5.3571	1	1	0	1	2.5000
0- Roy A/ 1- Avery M/ 2- Muhammad I/ 3- Pinson X/ 42- Washington D/	00:53	2-1	1	2.2642	1	0	1	0	1.0000
0- Roy A/ 2- Muhammad I/ 3- Pinson X/ 13- Bradley D/ 42- Washington D/	00:50	0-1	-1	0.0000	0	0	1	0	0.0000
0- Roy A/ 2- Muhammad I/ 5- Feit K/ 11- Gordon D/ 42- Washington D/	00:44	3-3	0	4.0909	0	0	0	0	2.2727
0- Roy A/ 1- Avery M/ 3- Pinson X/ 4- Beck J/ 5- Feit K/	00:41	1-1	0	1.4634	1	0	1	0	0.6944
0- Roy A/ 1- Avery M/ 2- Muhammad I/ 3- Pinson X/ 11- Gordon D/	00:35	3-0	3	5.1429	0	0	0	1	3.0000
0- Roy A/ 2- Muhammad I/ 3- Pinson X/ 4- Beck J/ 5- Feit K/	00:33	2-1	1	3.6364	1	0	0	0	2.0000
1- Avery M/ 3- Pinson X/ 5- Feit K/ 11- Gordon D/ 42- Washington D/	00:31	1-1	0	1.9355	0	0	0	0	2.2727
0- Roy A/ 3- Pinson X/ 4- Beck J/ 5- Feit K/ 42- Washington D/	00:25	0-2	-2	0.0000	0	0	0	0	0.0000
1- Avery M/ 5- Feit K/ 11- Gordon D/ 13- Bradley D/ 34- Odunewu S/	00:22	0-0	0	0.0000	0	0	0	0	0.0000
0- Roy A/ 2- Muhammad I/ 5- Feit K/ 13- Bradley D/ 42- Washington D/	00:18	0-0	0	0.0000	0	0	0	0	0.0000
0- Roy A/ 2- Muhammad I/ 3- Pinson X/ 11- Gordon D/ 34- Odunewu S/	00:16	0-0	0	0.0000	1	0	0	0	0.0000
0- Roy A/ 1- Avery M/ 2- Muhammad I/ 11- Gordon D/ 42- Washington D/	00:01	0-0	0	0.0000	0	0	0	0	0.0000
0- Roy A/ 1- Avery M/ 2- Muhammad I/ 5- Feit K/ 13- Bradley D/	00:00	0-2	-2	NaN	0	0	0	0	0.0000