



UTEP Athletic Communications | 500 W. University Ave. | Brumbelow Building | El Paso, Texas 79968-0579

Game 14 | Jan 5, 2018 | 5 p.m. MST / 7 p.m. EST | FIU Arena | Miami, Fla.

Radio: 600 ESPN El Paso | Internet: CUSA.tv | Twitter: @UTEPWBB & @FIUWBB

THE MATCHUP



UTEP MINERS (9-4, 0-0 C-USA)

Head Coach: Kevin Baker
 Overall Record: 353-135 (16th year)
 College Record: 131-34 (Sixth year)
 Record at UTEP: 9-4 (First year)

STAT LEADERS

PPG: Tamara Seda (15.7)
 RPG: Tamara Seda (10.5)
 APG: Faith Cook (2.8)
 SPG: Jordan Alexander (0.8)
 BPG: Tamara Seda (0.6)



FIU PANTHERS (3-10, 0-0 C-USA)

Head Coach: Tiara Malcom
 Record at FIU: 8-34 (Second year)
 Overall Record: Same

STAT LEADERS

PPG: Kristian Hudson (14.6)
 RPG: Kiandre'a Pound (9.2)
 APG: Kristian Hudson (3.8)
 SPG: Shante Walker (0.8)
 BPG: Kiandre'a Pound (0.8)

UTEP 2017-18 SCHEDULE

Date	Opponent	Time
Oct. 29	Sul Ross&	W, 99-40
Nov. 4	St. Mary's&	L, 62-68
Nov. 11	CSU Bakersfield	W, 67-56
Nov. 18	Texas A&M-Corpus Christi	W, 69-49
Nov. 24	Texas Southern 66, NM State 50\$	
	Arkansas\$	W, 64-61
Nov. 25	Arkansas 69, NM State 60\$	
	Texas Southern\$	W, 65-55
Nov. 30	New Mexico	L, 35-59
Dec. 2	Houston Baptist	W, 69-62
Dec. 5	at Arkansas State	L, 73-76
Dec. 10	at NM State	L, 68-76
Dec. 17	vs. East Carolina%	W, 93-79 (OT)
Dec. 21	vs. Samford+	W, 46-33
Dec. 22	at Tulane+	L, 56-67
Dec. 29	at Cal State Fullerton	W, 92-91 (2OT)
Dec. 30	at UC Riverside	W, 73-62
Jan. 5	at FIU*	5 p.m.
Jan. 7	at Florida Atlantic*	12 p.m.
Jan. 11	Charlotte* (beIN Sports)	1 p.m.
Jan. 13	Middle Tennessee*	12 p.m.
Jan. 18	Florida Atlantic*	7 p.m.
Jan. 26	at Rice*	6 p.m.
Jan. 28	at North Texas*	2 p.m.
Feb. 2	UAB* (beIN Sports)	7 p.m.
Feb. 4	at UTSA*	1 p.m.
Feb. 10	LA Tech*	1 p.m.
Feb. 15	at Marshall*	4 p.m.
Feb. 17	at Old Dominion*	12 p.m.
Feb. 23	UTSA*	7 p.m.
Feb. 25	at Southern Miss*	1 p.m.
March 1	FIU*	7 p.m.
March 3	WKU*	1 p.m.
March 7-10	2018 C-USA Championships^	TBA

Bold denotes home game

& Exhibition Game

\$ Sixth-Annual UTEP Thanksgiving Classic (El Paso, Texas)

% Carolinas Challenge (Myrtle Beach, S.C.)

+ Tulane Classic (New Orleans, La.)

* Conference USA Game

^ Conference USA Championships (Frisco, Texas)

All Times Mountain

THE SERIES

UTEP leads the series with FIU, 5-2, including 5-1 since the Panthers joined Conference USA, but the ledger is tied , 1-1 when playing in Miami.

UTEP TIPS OFF CONFERENCE USA PLAY AT FIU FRIDAY

UTEP (9-4, 0-0 C-USA) will tip off 2018 Conference USA play at FIU (3-10, 0-0 C-USA) at 5 p.m. MST/7 p.m. EST Friday. The Miners have won two straight and four of the past five, including a 73-62 victory to wrap up non-conference play at UC Riverside on Dec. 30. The Panthers capped non-league action on a high note by downing Vermont, 80-70, on Dec. 30. The game will be broadcast locally in El Paso on 600 ESPN El Paso with **Brandon Cohn** on the call and streamed live on CUSA.tv (subscription required). Fans may also receive timely updates by following the Miners on Twitter @UTEPWBB.

TALKING LEAGUE LIDLIFTERS

UTEP is 9-3 in Conference USA openers since joining the league (2005-06). The Miners had won seven straight in the situation before falling, 83-81, in overtime at home against UTSA on Jan. 1, 2017, last season. Overall UTEP stands at 14-22 all time in conference openers.

WRAPPING UP LONG STRETCH BETWEEN HOME GAMES

After a season-opening six-game homestand (5-1), the Miners are on the final leg of a period of more than five-and-a-half weeks without playing a home game (Dec. 2-Jan. 11). UTEP is in the stretch run (4-3 thus far) of playing nine games (six road, three neutral) in between. The first seven games were of the non-conference variety but the final two (at FIU Friday, at Florida Atlantic Sunday) will serve as the opening weekend of Conference USA play. It is the longest such stretch since the 1987-88 season (Nov. 29-Jan. 4), during which the Orange and Blue had 12 contests between home tilts.

GAME FORMAT

For the third straight season, NCAA women's basketball games will be played in four 10-minute quarters. Teams reach the bonus and shoot two free throws on the fifth team foul in each quarter. In the four-quarter format, team fouls reset to zero at the start of each quarter. Teams have four timeouts (three 30s, one 60), three which carry over to the second half. They will be able to advance the ball to the frontcourt after a timeout with less than 59.9 seconds in 4Q. There are seven media timeouts (four under five minutes in quarter/first called), two intermission media timeouts (after first and third quarters) and the first team-called timeout during the second half. Bands or amplified music may play during any dead ball.

CONNECT ON SOCIAL MEDIA

Fans are encouraged to connect with the Miners on Facebook (UTEP Women's Basketball), Instagram (@utepwbb) and Twitter (@UTEPWBB). They are also encouraged to use #WeAreMiners in posts.

INSIDE THE SERIES

UTEP leads the series with FIU, 5-2, including 5-1 since the Panthers joined Conference USA, but the ledger is tied , 1-1 when playing in Miami. This is the Miners' first trip to FIU arena since FIU used a 35+ foot 3-point buzzer-beating heave to down UTEP, 88-87, in triple overtime in Miami on Jan. 12, 2017. It was the longest game in program history while affording FIU its first victory against UTEP as a member of C-USA. This is the third straight year that UTEP and FIU are playing a home-and-home series. UTEP swept the season series in 2015-16 while both home teams successfully defended their home court last season.

UTEP'S LAST STARTING LINE-UP

Guard	Guard	Guard	Forward	Forward
#00 Jenkins 5-3, Fr.-HS	#44 Zec 5-11, So.-1L	#14 Howell 5-10, Jr.-2L	#11 Alexander 5-11, Jr.-TR	#42 Seda 6-4, R-Sr.-2L

@UTEPWBB

ATHLETICS COMMUNICATION

Associated Director of Media Relations (Women's Basketball SID)

Mark Brunner
mbrunner@utep.edu
915-472-6038 (c)
915-747-5722 (o)

INTERVIEWS & PRACTICE COVERAGE

Please contact Mark Brunner with all interview requests for coaches and players. Do not contact players at home or on their cell phones unless arranged by the media relations office.

UTEP QUICK FACTS

UNIVERSITY INFORMATION

Location..... El Paso, Texas
Founded.....1914
Enrollment.....23,922
Colors..... Orange, Navy and Silver Accent
President Diana Natalicio
Athletics Director.....Jim Senter

BASKETBALL INFORMATION

Head Coach Kevin Baker
Alma Mater Steven F. Austin / 1994
Overall Record 353-135 (16th year)
College Record 131-34 (Sixth year)
UTEP Record 9-4 (First year)

Assistant Coach Nicole Dunson
Alma Mater UTSA / 2005

Assistant Coach Michael Madrid
Alma Mater ENMU / 1998

Assistant Coach Lori Morris
Alma Mater University of San Diego / 1984

Basketball Phone (915) 747-8605

Letter Winners R/L 8/4

Starters R/L 3/2

Newcomers 4

2016-17 Overall Record 8-23

2017 Conference USA Record 5-13 (11th)

2017 C-USA Championship 0-1 (lost in first round)

First Season of Program
1974-75

All-Time Record 556-652 (44th season)
Home 356-215
Away 141-358
Neutral 59-79

NCAA Tourney Appearances Two (1-2 all-time)

2012 (0-1 record; automatic bid)

#4 Penn State 85, #13 UTEP 77 (3/18/12)

2008 (1-1 record; at-large bid)

#7 UTEP 92, #10 WKU, 60 (3/22/08)

at #2 Stanford 88, #10 UTEP 54 (3/24/08)

WNIT Tourney Appearances: Two (8-2 all-time)

2016 (3-1; C-USA automatic bid)

at UTEP 66, Abilene Christian 62 (3/17/16)-First round

at UTEP 74, Arkansas State 68 (3/21/16)-Second round

at UTEP 79, TCU 71 (3/24/16)-Third round

Oregon 71, at UTEP 67 (3/28/16)-Quarterfinals

2014 (5-1 record; C-USA at-large bid)

at UTEP 74, Arkansas State 64 (3/21/14)

at UTEP 76, Saint Mary's 64 (3/24/14)

at UTEP 68, Colorado 60 (3/28/14)

at UTEP 70, Washington 63 (3/31/14)

at UTEP 66, South Dakota State 63 (4/2/14)

Rutgers 56, at UTEP 54 (4/5/15)

GETTING TO KNOW FIU

FIU is 3-10 on the season, including 3-6 at home, and enters the match-up with the Miners having bested Vermont, 80-70, in its non-conference finale on Dec. 30. Half of its losses on the year have been by single digits, including a buzzer-beating setback vs. Clemson on Dec. 21. The Panthers are paced by **Kristian Hudson** (14.6 ppg, 4.8 rpg, 3.8 apg) and **Kiandre'a Pound** (14.2 ppg, 9.2 rpg) but **Alexis Gordon** (7.5 ppg) and **Shante Walker** (7.2 ppg) have proven to be capable scoring threats. In fact Gordon erupted for 40 points in the win over Vermont to garner C-USA Player of the Week accolades as announced by the league office on Jan. 2. She drilled a school-record nine 3-pointers in the contest and had 20 points in each half. It marked the second straight week FIU has claimed the honor; Hudson was so recognized on Dec. 26. The Panthers have top-100 NCAA team rankings in free-throw percentage (73.6-64th), free throws made (187-79th) and are close to cracking that barrier for free throws attempted (254-105th) and 3-point field-goal percentage defense (29.7-106th). Individually Hudson is 42nd in minutes per game (36.5), 56th for free-throw percentage (85.4) 131st in field goals attempted (180), 196th in assists per game (3.8) and 249th in scoring (14.6). Pound is 62nd in rebounding (9.2), 191st in field-goal percentage (44.8) and 232nd in free-throw percentage (74.0). FIU returned three starters and four letter winners overall from last year's team (5-24) and was picked 14th in the 2017-18 C-USA preseason poll. Notable school alumni include **Andy Garcia** (actor) and **Dennis Lehane** (author of Mystic River).

LAST MEETING WITH FIU (at UTEP 88, FIU 47 (2/25/17))

UTEP stormed out to a 28-9 first-quarter lead and never looked back on the way to posting a resounding 88-47 victory to send Sparkle Taylor out in style on "Senior Day" on Feb. 25, 2017. The 41-point margin of victory is the second biggest in a conference game in program history. UTEP led 44-25 at the half and any aspirations the visitors had of mounting a second-half comeback when the Orange and Blue ripped off 20 straight points over the first five-plus minutes of the third quarter. Taylor poured in a game-high 23 points to go along with seven rebounds and career-best tying five assists in a fitting final home performance for her career. **Katarina Zec** (career-high 13 points), **Tamara Seda** (15 points, six rebounds) and **Najala Howell** (13 points, eight boards) also hit double figures for the Orange and Blue. UTEP drilled 44.9 percent (31-69) from the field, including a ridiculous 61.1 percent (11-18) during the huge third quarter (31-8). The 31 points in that frame tied as the third-most ever by the Miners in a quarter. FIU finished at 36.5 percent (19-52) from the floor, which was hurt by going 0-10 from three-point range. The visitors also made 17 turnovers-compared to a season-low nine by UTEP- which lead to a 28-7 advantage for the Miners in points off turnovers.

GOING BACK IN TIME (UTEP 73, at UC Riverside 62 (12/30/17))

Najala Howell poured in a career-high 23 points while **Tamara Seda** notched her second straight double-double (21 points, 14 rebounds) to help power UTEP to a wire-to-wire 73-62 win at UC Riverside on Dec. 30. The Miners bolted out to a 20-point lead at the half and led by 17 with six minutes to play before the Highlanders scored the next 12 points in the game to cut the margin down to five (67-62). UTEP kept its composure while regaining momentum for good on a triple by Howell to help fuel a game-closing 6-0 run. **Faith Cook**, who finished with seven points and six assists, set up both field goals down the stretch. UTEP connected on 43.9 percent (29-66) from the floor, aided by drilling 20-36 during the impressive opening half. The Miners dished out a season-high 20 assists while finishing with a season-low 14 turnovers for the second time in as many nights. **Zuzanna Puc** joined Howell and Seda in double figures for scoring with a campaign-high 15 points in 25 minutes of action off the pine.

WHAT A DIFFERENCE A YEAR MAKES

UTEP rolled to a record of 9-4 in non-conference play, which already surpasses last season's overall victory total (8-23). The Miners tripled their non-league victory total (3-9) in 2016-17. UTEP has enjoyed three different winning streaks of at least two contests, including peeling off four consecutive triumphs to christen the campaign. Last year's squad only managed win back-to-back games once. The difference in play extends beyond wins and losses, as evidenced by the chart below which compares and contrasts the average stats by this year's Miners vs. the 2016-17 squad through 13 contests played.

UTEP AVERAGE STATS THROUGH 13 GAMES (9-4 IN 2017-18; 3-10 IN 2016-17)

Team	PPG	PPGA	FG%	FGD%	3fg%	3FGD%	FT%	RB	RBM	AST	TO	STL	BLK
2017-18	66.9	63.5	43.5	38.4	37.7	28.2	73.6	42.3	+11.3	13.9	19.5	3.9	1.6
2016-17	62.5	68.8	38.4	39.8	24.8	31.8	68.6	42.5	+3.1	13.8	17.8	6.2	5.3

QUICK RUNDOWN ON THE SEASON

UTEP bolted out of the gate at 4-0 for the year for the ninth time in program history and stood at 5-1 following its season-opening six game homestand. After dropping their next two contests, both on the road, the Orange and Blue rallied to win two straight and four of five to close out non-conference play at 9-4 and with momentum. Two of the victories in the surge have come in overtime, including a thrilling 92-91 double OT triumph at Cal State Fullerton on Dec. 29.

SENSATIONAL START TO BAKER ERA

Kevin Baker joined former Miner coach **Carol Ammermann** (1974-75) as the only two first-year Miner head coaches to begin their tenure at the school with four consecutive victories. After improving to 5-1 UTEP dropped back-to-back contests but it bounced back to forge a 4-1 mark since and wrap up non-conference play at 9-4. The effort permitted Baker to match Ammermann for the best start in program history by a first-year head coach. In 1974-75, the program's first season, Ammermann also had UTEP at 9-4 at this juncture. With a win against FIU on Friday, Baker would own the best record by a first-year Miner head coach through 15 contests.



TEAM COMPARISON

UTEP	CATEGORY	FIU
9-4, 0-0	Win-Loss	3-10, 0-0
W 2	Current Streak	W 1
6-4	Record In Last 10 Games	3-10
66.9 (8/163)	Scoring Offense	62.5 (11/243)
63.5 (8/144)	Scoring Defense	72.1 (14/299)
+3.4 (9/152)	Scoring Margin	-9.6 (12/291)
43.5 (5/74)	Field Goal pct.	36.7 (13/297)
38.4 (6/72)	Field Goal pct. def.	39.2 (10/154)
37.7 (3/30)	3-point FG pct.	32.5 (8/139)
28.2 (3/55)	3-point FG pct. def.	29.7 (7/106)
73.6 (3/65)	Free Throw pct.	73.6 (2/64)
42.3 (2/56)	Rebounds/game	39.1 (8/148)
+11.3 (1/9)	Rebounds Margin	-4.6 (14/291)
13.9 (6/151)	Assists/game	11.1 (13/296)
19.5 (11/315)	Turnovers/Game	18.5 (9/286)
12.4 (13/332)	Turnovers forced/game	14.1 (11/298)
-7.1 (14/342)	Turnover margin	-4.6 (13/321)
3.9 (14/345)	Steals/game	4.8 (13/340)
1.6 (14/330)	Blocks/game	2.1 (12/298)

(C-USA/National Rankings)

Bold denotes statistical advantage

2017-18 C-USA STANDINGS

Team	C-USA	Overall	Last 10	Streak
UAB	0-0	11-2	8-2	W 4
Rice	0-0	10-2	8-2	W 5
North Texas	0-0	9-3	7-3	W 2
WKU	0-0	9-4	8-2	W 1
Louisiana Tech	0-0	9-4	6-4	W 5
UTEP	0-0	9-4	6-4	W 2
Southern Miss	0-0	8-5	5-5	W 1
Middle Tennessee	0-0	8-5	5-5	W 2
Florida Atlantic	0-0	6-5	6-4	W 2
Marshall	0-0	6-7	5-5	W 3
Charlotte	0-0	4-9	3-7	L 1
FIU	0-0	3-10	3-7	W 1
UTSA	0-0	2-10	1-9	L 5
Old Dominion	0-0	2-11	2-8	W 1

Through Games Played On Dec. 30

CHANCE TO MAKE HISTORY

With 16 Conference USA games on the docket, at 9-4 **Kevin Baker** is in prime position to become the most successful first-year head coach at UTEP. **Carol Ammermann** (11-5, 1974-75) and **Janet Wood** (11-16, 1979-80) currently share the platform. Ammermann is also responsible for the lone winning record by a first-year Miner head coach in school history. Prior to Baker's arrival the seven head coaches at UTEP went a combined 54-120 (8-17 average record) in their first year at the helm of the program.

CLEANING UP THE GLASS

UTEP sports a +11.3 rebounding margin (42.3-31.0) on the season to pace C-USA and rank ninth nationally. Helping that figure are 29.7 defensive rebounds per contest which ranks second in the league and places 25th in the country. The 42.3 rebounds per game is second in C-USA and 56th in the nation. Senior **Tamara Seda** has been the top performer at 10.5 rpg, which paces the league and is 22nd in the country. Seda is grabbing four offensive rebounds per game, which is first in C-USA and 14th nationally.

STREAKING ON THE BOARDS

The Miners have outrebounded their opponents in all 13 contests of the campaign, the longest such streak to start a year since at least 1982-83 (prior records incomplete). The prior best to start a year was nine in a row (1996-97). Overall it is the longest stretch at any point of a campaign since UTEP won the rebounding battle in the final 17 contests of the 2011-12 season.

BOX OUT

UTEP has done an excellent job of boxing out this season. The Miners have secured a Conference USA leading 72.7 percent of the possible defensive rebounds. UTEP has grabbed the defensive rebound 386 times out of a possible 531 boards. The Miners' 29.7 defensive rebounds per game is second in the league and 25th nationally.

MORE ON THE MARGIN ON THE GLASS

Aiding UTEP's numbers in the rebounding department was back-to-back games in which it had a +20 advantage earlier this year. The Miners were +24 (51-27) against Arkansas on Nov. 24 and +21 (46-25) vs. Texas Southern on Nov. 25. It was the first time UTEP had won the rebounding battle by 20+ boards in back-to-back games since the 2011-12 season. That year UTEP achieved the feat in wins against Texas State on Dec. 31, 2011 (50-24, +26) and SMU on Jan. 5, 2012, (52-28, +24).

SOLID SHOOTING

UTEP enters the match-up at FIU having drilled 43.5 percent (300-690) from the floor to rate sixth in C-USA and 72nd nationally. The Miners have hit better than 50 percent from the floor in five contests, including in each of the first three games of the season for the first time since at least 1982-83 (prior records incomplete).

BOMBS AWAY

UTEP stands at 37.7 percent (72-191) from 3-point range this season to ranks third in C-USA and 30th nationally. The Miners have hit connected on at least 40 percent from distance in back-to-back tilts and seven times (6-1) overall on the season. UTEP has a pair of games that it sunk 10+ treys; it was 12-22 at NM State and 10-21 against HBU on Dec. 2. The 12 makes at NM State tied for sixth on the school's single-game records.

GETTING TO THE LINE

The Miners have done an outstanding job of getting to the charity stripe and taking advantage once there. In fact UTEP has made more free throws than its foes have attempted. The Orange and Blue are 198-268 (73.6 percent) at the free-throw line in 2017-18 while the opposition stands 111-176 (63.1 percent). Overall it works out to 15.2 free throws made per game for UTEP to 8.5 for its opponents. Helping that figure was nailing a school-record 42 free throws on 50 attempts (third most at school) vs. East Carolina on Dec. 17. The effort has the Miners third in the league and 45th in the country for free throws made (198), second for C-USA and 65th nationally for free throws attempted (269) and third in the conference and 65th in the nation in free-throw percentage (73.6).

GETTING DEFENSIVE

UTEP is holding foes to 63.5 points per game on 38.4 percent (312-813) shooting, including 28.2 percent (91-323) on 3-point shots. The effort has the Miners third in C-USA and 55th nationally for 3-point percentage defense. Helping those numbers has been keeping more than half (eight of 13) opponents to 62 or fewer points, including an opponent season-low 33 points by Samford on Dec. 21.

KEEPING THE FOULS TO A MINIMUM

One thing that UTEP has done exceptionally well in 2017-18 has been limiting its fouls. The Miners have committed 15 or fewer fouls in eight contests. Overall UTEP has been tagged with 15.5 personal fouls per game to rank third in C-USA and 55th in the nation.

MORE ON THE DEFENSE

UTEP has kept eight foes to below 40.0 percent from the floor, including holding the first three opponents on the year to under 33 percent for the first time since 1982-83 (prior records incomplete). The best effort came against Samford when it shot 20.8 percent on Dec. 21. That effort ranked as the sixth-best defensive field-goal percentage in program history. In terms of guarding the 3-point shot, 10 opponents have been kept to below 33.3 percent from distance. The Miners turned in a historic performance last time out at UC Riverside when the Highlanders finished 0-16 from distance on Dec. 30. It marked the most 3-point attempts by an opponent without a make since the shot was added in women's college hoops for the 1987-88 campaign.

RECORD WHEN

	2017-18	Baker at UTEP
At home	5-1	Same
On road	2-3	Same
At neutral sites	2-0	Same
In overtime	1-0	Same
Decided by 3 points or less	2-1	Same
Decided by 4-5 points	0-0	Same
Decided by 6-10 points	2-1	Same
Decided by 11-20 points	5-1	Same
Decided by 21-plus points	0-1	Same
Led after first quarter	9-2	Same
Tied after first quarter	0-0	Same
Trailed after first quarter	0-2	Same
Led at Half	7-2	Same
Tied at the half	0-0	Same
Trailed at the half	2-2	Same
Led after third quarter	7-0	Same
Tied after third quarter	1-0	Same
Trailed after third quarter	1-4	Same
Shot 50% or better	5-0	Same
Shot 40-49.9%	2-2	Same
Shot less than 40%	2-2	Same
Opp. shot 50% or better	0-0	Same
Opp. shot 40-49%	3-2	Same
Opp. shot less than 40%	6-2	Same
UTEP 40% or better on 3s (min. 4)	6-1	Same
More rebounds than opp.	9-4	Same
Less rebounds than opp.	0-0	Same
Rebounds are equal	0-0	Same
More turnovers than opp.	8-4	Same
Less turnovers than opp.	1-0	Same
Turnovers equal	0-0	Same
Scored 100-plus points	0-0	Same
Scored 90-99 points	2-0	Same
Scored 80-89 points	0-0	Same
Scored 70-79 points	1-1	Same
Scored 60-69 points	5-1	Same
Scored 50-59 points	0-1	Same
Scored less than 50 points	1-1	Same
Allowed 90-plus points	1-0	Same
Allowed 80-89 points	0-0	Same
Allowed 70-79 points	1-2	Same
Allowed 60-69 points	3-1	Same
Allowed 50-59 points	2-1	Same
Allowed less than 50 points	2-0	Same
On Mondays	0-0	Same
On Tuesdays	0-1	Same
On Wednesdays	0-0	Same
On Thursdays	1-1	Same
On Fridays	2-1	Same
On Saturdays	5-0	Same
On Sundays	1-1	Same
On National TV	0-0	Same
In November	4-1	Same
In December	5-3	Same
In January	0-0	Same
In February	0-0	Same
In March	0-0	Same
In April	0-0	Same
In day games	5-2	Same
In night games (5 p.m. or later)	4-2	Same
In white/pink uniforms	5-1	Same
In navy uniforms	3-2	Same
In orange uniforms	1-1	Same

PLENTY OF PLAYING TIME TO GO AROUND

The Miners have only nine active players on the roster, meaning that there's plenty of playing time to go around. Head coach **Kevin Baker** has done a good job of spreading the minutes around with eight different Miners (**Najala Howell**-32.8, **Tamara Seda**-31.8, **Katarina Zec**-29.7, **Jordan Alexander**-27.6, **Faith Cook**-27.5, **Zuzanna Puc**-20.4, **Jordan Jenkins**-16.8 and **Roeshonda Patterson**-16.3 logging at least 15 minutes per contest. That leaves **Rachel Tapps** (3.4) as the lone player on the squad at below 10.0 mpg.

SEDA DOMINATING DOWN LOW

Senior **Tamara Seda** has been a force to be reckoned with in 2017-18. She paces C-USA and is among the national leaders for double-doubles (seven-first/20th), rebounding (10.5 rpg-1st/22nd), field-goal percentage (min. 50 FGA, 55.4-first/43rd) and offensive rebounds per game (4-1st/14th). Seda also leads UTEP and places among the league and national rankings for scoring (15.7 ppg-seventh/168th) and free throws made (50-3rd/109th) and attempted (77-2nd/45th). She enjoyed a stretch (11/24/17-12/5/17) with five straight double-doubles, the longest such streak by a Miner in non-conference play since at least 1982-83 (prior records incomplete). Seda has reached double figures in scoring in a team-high 11 contests, including four games with 20+ points (career-high 30-at Cal State Fullerton-12/29/17, 21-at UC Riverside-12/30/17, 20-Arkansas-11/24/17 and 20-CSU Bakersfield-11/11/17).

WHAT A WEEKEND

Tamara Seda turned in a simply dominant weekend of action in helping guide the Miners to two road wins in as many days at Cal State Fullerton on Dec. 29 (92-91, 2OT) and at UC Riverside on Dec. 30 (73-62). She averaged 25.5 points and 13.0 rebounds while shooting a combined 84.0 percent (21-25) from the floor. It marked the first time of her career with back-to-back 20+ point contests, including a career-high 30-point outburst at CSUF.

HOWELL'S ALL-AROUND EFFORT

Junior **Najala Howell** leads the Miners in playing time (32.8 mpg), 3-pointers made (21), attempted (46) and percentage (45.7), ranks second on the team in scoring (13.5 ppg) and third in assists (2.2 apg) and rebounding (6.6 rpg). She has reached double figures for scoring in 10 games this year, including a career-high 23-point effort at UC Riverside last time out on Dec. 30. Her 83.3 free-throw percentage is 86th in the country.

COMING ALIVE FROM 3-POINT LAND

Najala Howell leads the team in 3-pointers made (21), attempted (46) and percentage (45.7). Helping that cause was sinking a career-high five triples (on five attempts) in the win at UC Riverside on Dec. 30. In fact she already has sunk more treys than she did last year when she finished 19-54 for a readout of 35.2 percent.

ALEXANDER GETTING AFTER IT

Junior **Jordan Alexander**, one of two newcomers on this year's squad, has established herself as a difference maker. She ranks second on the team in rebounding (6.9 rpg), offensive rebounds (24) and free throws attempted (48), third in free throws made (36) and fourth in scoring (7.4) and minutes per game (27.6 mpg). She has a trio of double-digit scoring efforts, including a career-high tying 15 points vs. East Carolina on Dec. 17. Alexander has also secured 10+ boards in two contests and joins Tamara Seda as the lone Miners to have at least five rebounds in every game.

ZEC STEPPING HER GAME UP

Sophomore **Katarina Zec** is third on the team in scoring (9.4 ppg). She has reached double figures in scoring in seven games, which already eclipses her total (six) of such contests from her freshman season. She has a pair of 20+ point efforts (career-high 22-at NM State-12/10/17 and 21-at Cal State Fullerton-12/29/17), both of which have come on the road. She was locked in from distance against the Aggies, making a school-record tying seven triples out of 10 attempts. Overall she is second on the team for 3-pointers made (15), and third for 3-pointers attempted (39) and percentage (38.5). As a freshman she pitched in 5.7 ppg and 1.7 rpg in 20.8 mpg.

COOK MAKING IMPROVEMENT TOO

Faith Cook, who leads all Miner reserves in playing time (27.5 mpg), is accounting for 5.6 ppg after putting up 1.9 ppg a year ago. She also paces the team in assists (2.8 apg), which tops her effort (1.7 apg) from a year ago as well. A notable area of improvement has been her shooting from distance. After going 19.3 percent (11-57) from 3-point range as a freshman, she has moved to 37.5 percent (15-40) from beyond-the-arc, already giving her four more triples made than during her entire 2016-17 season. She is second on the squad in 3-pointers made and attempted.

PATTERSON PITCHING IN OFF THE PINE

Sophomore **Roeshonda Patterson** has emerged as a scoring threat off the bench for the Miners in 2017-18. She is providing 6.3 ppg to place second among the reserves and rank sixth on the squad overall. She has drilled 44.3 percent (27-61) from the floor, including a readout of 39.4 percent (13-33) on triples to place second on the team. It is a vast improvement from a year ago when she chipped in 2.3 ppg one 22.5 percent shooting (18-80), including 22.8 percent (13-57) on 3 pointers.

PUC FINDING HER RHYTHM

Sophomore **Zuzanna Puc** has provided a boost from the bench by pacing the reserves in both scoring (7.2 ppg) and rebounding (4.3 rpg) in 20.4 mpg. Puc averaged 3.7 points and 3.5 rebounds over the first eight games (she missed the first two with injuries) but has rounded into form of late. The past five games she has contributed 11.4 ppg and 5.2 rpg. She has hit double figures in three of those contests, including a season-high 15 points at UC Riverside on Dec. 30.



MISCELLANEOUS STATS

When Starting	'17-18 Record	Career Record
Tamara Seda	9-4	17-25
Katarina Zec	9-4	13-18
Zuzanna Puc	0-0	7-17
Najala Howell	9-4	9-8
Jordan Alexander	9-4	Same
Jordan Jenkins	9-4	Same
Faith Cook	0-0	2-4
Rachel Tapps	0-0	1-1

Double-Figure Scoring	'17-18	Career
Tamara Seda	11	29
Najala Howell	10	23
Katarina Zec	7	13
Zuzanna Puc	3	9
Jakeira Ford	1	5
Jordan Alexander	3	Same
Roeshonda Patterson	2	3
Faith Cook	2	Same

Double-Figure Rebounding	'17-18	Career
Tamara Seda	7	21
Zuzanna Puc	0	4
Jordan Alexander	2	Same
Najala Howell	1	2
Jakeira Ford	0	1

Double-Doubles	'17-18	Career
Tamara Seda	7	18
Zuzanna Puc	0	2
Najala Howell	1	2
Jordan Alexander	1	Same

2017-18 STARTING LINE UPS	RECORD
Jenkins, Zec, Howell, Alexander and Seda	9-4

JENKINS MAKING AN IMPACT WITH PASSING

Freshman **Jordan Jenkins** ranks leads the team in assist-to-turnover ratio (+1.3) while ranking second on the squad in assists (2.5). In terms of her own offense six of her nine field goals made have come on 3-point shots. Helping that was scoring a career-high seven points on 2-4 shooting, including 2-2 at the free-throw line, in a personal-best 27 minutes at Tulane on Dec. 22.

STARTING FAST

UTEP has been at its best in the first quarter this year with a +4.4 scoring margin (16.9-12.5) in the frame. Overall the Miners have led through 10 minutes of action in 11 contests (9-2). The first quarter is UTEP's best both in terms of scoring average and scoring defense.

STAUNCH FIRST-QUARTER DEFENSE

Three times this year the Miners have held opponents to five points or less in the first quarter of play, including keeping Samford to four opening-quarter points on Dec. 21. The Miners previously achieved the feat against Arkansas on Nov. 24 (three points) and CSU Bakersfield (five points) on Nov. 11. The three points conceded vs. Arkansas ties the program standard for fewest points allowed in a frame.

IN THE NCAA RANKINGS

The Miners have top-100 NCAA team rankings for rebound margin (+11.3-ninth), defensive rebounds per game (30-25th), 3-point field-goal percentage (37.7-30th), free throws made (198-45th), fewest personal fouls per game (15.5-55th), 3-point field-goal defense (28.2-55th), rebounds per game (42.3-56th), free-throw percentage (73.6-65th), free throws attempted (269-65th) and field-goal percentage (43.5-72nd). Areas of concern include turnovers per game (19.5-315th), blocks per game (1.8-330th), forcing turnovers (12.4-332nd), turnover margin (-7.1-342nd) and steals per game (3.9-345th). Individually **Tamara Seda** is 14th in offensive rebounds per game (four), 20th for double-doubles (seven), 22nd in rebounds per game (10.5), 43rd in field-goal percentage (55.4), 45th in free throw attempts (77), 109th for free throws made (50) and 168th in points per game (15.7). **Najala Howell** is 86th in free-throw percentage (83.3)

GETTING TO KNOW THE 2017-18 MINERS

UTEP returned eight letter winners (**Faith Cook**, **Jakeira Ford**, **Najala Howell**, **Roeshonda Patterson**, **Zuzanna Puc**, **Tamara Seda**, **Rachel Tapps** and **Katarina Zec**) from last year's squad (8-23, 5-11 Conference USA) but Ford is no longer on the squad. Puc, Seda and Zec all started for UTEP in 2016-17. The Miners also added four newcomers (**Jordan Alexander**, **Ariona Gill**, **Jordan Jenkins** and **Neidy Ocuane**) but Gill and Ocuane are slated to take a redshirt year in 2017-18. The squad is under the direction of first-year head coach **Kevin Baker**, who is assisted by first-year assistants **Nicole Dunson**, **Michael Madrid** and **Lori Morris**.

ROSTER BREAKDOWN

Head coach **Kevin Baker** inherited a young team, with 55.6% of the active roster (5-of-9) comprised of sophomores (**Faith Cook**, **Roeshonda Patterson**, **Zuzanna Puc**, **Rachel Tapps** and **Katarina Zec**). The Miners have just three upperclassmen, in the form of one senior (**Tamara Seda**) to go along with returning junior **Najala Howell** and junior-college transfer **Jordan Alexander**. Freshman **Jordan Jenkins** rounded out the active roster. Two other newcomers (junior-college transfers **Ariona Gill** and **Neidy Ocuane**) are sitting out the 2017-18 season as redshirts.

NEW FACES

The Miners have four newcomers in 2017-18, though two of the additions (junior **Ariona Gill**, 5-11, G/F, San Jacinto College) and junior **Neidy Ocuane** (5-5, G, Seward County CC) are redshirting. Junior **Jordan Alexander** (5-11, F, Trinity Valley CC) and freshman **Jordan Jenkins** (5-3, G, Buffalo HS) both have started all 12 games. Last year Alexander helped TVCC qualify for its 10th straight trip to the national tournament and finish with an overall record of 30-6. She put up 6.5 points per game while also grabbing 2.5 rebounds per game. Jenkins averaged 20 points, eight steals, seven assists and six rebounds to help her squad earn runner-up honors in Texas 2017 in the UIL 3A playoffs. Ocuane paced her team in assists per game (4.7) and steals per game (2.4) while ranking fourth in scoring (11.2). Her efforts helped it win the program's first conference title in eight years.

NOTING THE SCHEDULE

The return of the UTEP Thanksgiving Classic and a 16-game Conference USA slate, match-ups against both New Mexico and NM State and non-conference contests against power league members Arkansas and East Carolina highlight the 2017-18 UTEP women's basketball schedule. There are also games against three teams that played in the 2017 NCAA Tournament (NM State, Texas Southern and WKU) and four from the 2017 Postseason WNIT (Georgetown, LA Tech, Middle Tennessee and Southern Miss)

THE BAKER FILE

Kevin Baker was appointed as the eighth head coach in UTEP women's basketball history on Monday, April 24, 2017. He has a unique background which has seen him rise through the coaching ranks from high school level, to NCAA Division III, then NCAA Division II and now his NCAA Division I position at UTEP. Throughout his ascent, though, he has consistently found a way to win. He is 353-135 overall in his 16th year as a head coach, including 131-34 in his sixth season as a college head coach. He has set school records for wins at every stop of his career, and has taken every school to the playoffs with a total of five district championships. He is an eight-time Coach of the Year. In his stops most recently prior to UTEP, Baker's teams captured back-to-back conference championships at UT-Tyler and Angelo State. Baker has led both a Division II (Angelo State) and Division III (UT-Tyler) school to the Sweet 16 of the NCAA Tournament.

EXPERIENCED STAFF

While head coach **Kevin Baker** and his three assistants (**Nicole Dunson**, **Michael Madrid** and **Lori Morris**) are in their first year at UTEP, they brought plenty of coaching experience to the Sun City. The quartet entered the 2017-18 season with a combined 93 years of coaching experience (Morris-37 years, Baker-23 years, Madrid-22 years and Dunson-11 years).

BASIC FACTS ON THE PROGRAM

UTEP is 556-652 in its 44th season as a women's basketball program, including 9-4 in 2017-18. The Miners have made four postseason bids (2016,-WNIT quarterfinals; 2014-WNIT runner-up, 2012-NCAA first round and 2008-NCAA second round), sporting a combined record of 9-4 (8-2 WNIT, 1-2 NCAA). UTEP has claimed four league championships (2016 C-USA regular season, 2012 C-USA regular season and conference tournament and 2008 C-USA regular season). It has a 1-1 record all time in league tournament title games, winning the title in 2012 and falling in 2008. There have been six 20+ win seasons (all since 2006-07), including four of the past six years. UTEP has cracked the top-25 poll in two seasons (2015-16, 2007-08), including being ranked in the final six weeks in '07-08, while receiving votes in eight campaigns total ('15-16, '13-14, '12-13, '11-12, '08-09, '07-08 and '06-07). The Miners have been mentioned in the AP Preseason Poll four times, including garnering three points in 2016-17. In 2008 UTEP became the first C-USA women's team to finish undefeated in league play (16-0) while claiming the program's initial league title in 2008. The Miners finished 15-1 in C-USA in 2012 in addition to also winning the program's first conference tournament championship. UTEP owns the C-USA single-season record for winning streak at 23, which was set in 2007-08. The University of Texas at El Paso (founded in 1914) recently enjoyed its centennial celebration. Notable alumni include former ABC News Chief White House Correspondent **Sam Donaldson**, well-respected NFL referee **Ed Hochuli**, former NASA astronaut **Danny Olivass** engineer & **Dennis Poon**, who designed Taipei 101 & some of the tallest buildings in the world.

THIRD-BEST IN TEXAS SINCE 2006-07

The Miners have the third-highest winning percentage among all DI programs in Texas since 2006-07. Baylor (361-52, 87.4%), and Texas A&M (294-102, 74.2%) lead the way followed by UTEP (238-124, 65.7%). Texas (245-134, 64.6%-4th), Lamar (217-139, 61.0%-5th), Stephen F. Austin (211-142, 59.8%-6th), TCU (208-155, 57.3%-7th), SMU (192-164, 53.9%-9th), Prairie View A&M (190-172, 52.5%-9th) and Texas Tech (184-180, 50.5%-10th) round out the top 10.

SPECIAL RUN

The Miners are 138-70 since the start of the 2011-12 season, with 83 double-digit victories in that time frame. UTEP has played postseason basketball in three of the past six seasons, making two deep runs in the WNIT (2014 runner-up, 2016 quarterfinals) and earning the C-USA automatic bid to the 2012 NCAA Tournament (lost, first round). It has enjoyed 14 separate winning streaks of at least three games during that time frame.

HOME SWEET HOME

UTEP has an all-time home record of 356-215, including standing 5-1 this year. The Miners have amassed a record of 157-41 at home since 2006-07, including 90-24 since 2011-12. Aiding that 90-24 record over the past six years was a school-record 19-1 home mark in 2015-16. The Miners' next home contest is against Charlotte on Jan. 11, which will be the seventh of 14 regular-season tilts at the Don Haskins Center in 2017-18. UTEP has been particularly strong in non-conference play, sporting a record of 80-12 at home in the situation since 2006-07.

ALL ABOUT THE FANS

The Miners received tremendous support to help propel them to a pair of deep runs in the WNIT (2014 runner-up honors, 2016 quarterfinals) in the past four years. UTEP averaged 7,773 fans per game during the 10 WNIT contests (8-2 record) in El Paso. Aiding those numbers were back-to-back sellouts, the first in program history, in the semifinals and finals of the 2014 WNIT. The Miners have ranked in the top-50 nationally for attendance in three of the past six years. UTEP placed 28th in 2013-14 (3,793 avg.), 42nd in 2012-13 (2,708 avg.) and 46th in 2011-12 (2,639 avg.). The Miners are 28-10 when playing in front of 4,000+ fans since 2001-02. They are 25-3 in the situation at the Don Haskins Center and 3-7 when doing so on the road.

TRAVEL TIME

UTEP is 141-358 all time on the road, including a mark of 2-3 this year. That already eclipses last year's road win total (1-9). When playing at a neutral site the Miners stand 59-78, including 2-0 this year. Since the start of the 2006-07 season UTEP is 59-65 on the road, including 35-34 since 2011-12.

CAREER ACHIEVEMENTS

Redshirt-senior **Tamara Seda** ranks tied fifth at UTEP for in double-doubles (18), sixth in blocked shots (78), tied 10th in rebounding average (7.1), 12th in rebounds (557), 28th in free throws made (159), tied 30th in field goals made (246), tied 35th in scoring (651) and 39th for games played (78).

2016-17 IN REVIEW

UTEP went through a rebuilding year in 2016-17, finishing with a record of 8-23, including 5-13 in Conference USA play, before bowing out in the first round of the 2017 C-USA Championships. The youth-laden Miners lost all five starters from the 2015-16 season and returned only four letter winners from that squad, giving them a new look for the year. UTEP played its most challenging non-conference schedule in program history with a single-season school-record five games against teams from power five conferences. It went 0-5 in those contests while finishing 3-4 vs. non power league programs in non-conference play. Overall UTEP was saddled with a 2-9 start to the year before going 3-3 over the next six games. The Miners then lost a season-long six straight and eight of the next nine before posting back-to-back victories. UTEP dropped its final two games of the regular season and was upended by sixth-seeded Old Dominion in the first round of the C-USA Championships, 80-70.

CLIFF NOTES ON THE 2017-18 SEASON**UTEP OUTLASTS CAL STATE FULLERTON, 92-91, IN DOUBLE OVERTIME (UTEP 92, at Cal State Fullerton 91, 2OT, (12/29/17))**

Tamara Seda posted a huge double-double (career-high 30 points, 12 rebounds) to help UTEP outlast homestanding Cal State Fullerton, 92-91, in double overtime Friday night. The game featured six ties and eight lead changes, with the final one coming after **Zuzanna Puc** banked home a runner in the lane to put the Miners up by one with 15 seconds left. The Titans, who had their three-game winning streak snapped, misfired on a baseline jumper as time expired. UTEP connected on 54.0 percent (34-63) of its shots, won the boards (35-33) and committed a season-low tying 14 turnovers. **Katarina Zec** poured in 21 points to buoy Seda while **Najala Howell** (16 points) and Puc (12 points) also reached double figures in scoring. **Faith Cook** tallied five points to go along with a team-high four assists.

SEDA JOINS 30-POINT GAME CLUB

Tamara Seda became just the second Miner in program history to score at least 30 points in a road game when she finished with 30 points (11-13 FG, 8-10 FT) in the 92-91 double overtime win at Cal State Fullerton on Dec. 29. She joined former Miner great and WNBA player **Kayla Thornton**, who went off for 32 points at Memphis on Feb. 24, 2013. Overall it marked the 19th 30-point game at the school.



HISTORIC POINT PRODUCTION ON THE ROAD

UTEP erupted for 92 points in the double overtime win at Cal State Fullerton on Dec. 29. It marked just the second 90+ point effort in a road game in program history. The only other occasion the Miners achieved the feat came way back on Nov. 28, 1976, in a 107-37 win against a team from Fort Bliss.

HIGH SCORING AFFAIR

UTEP and Cal State Fullerton combined for 183 points in the double overtime thriller on Dec. 29. That marks the sixth-most combined points in a game in program history.

BIG-TIME FIRST HALF

UTEP set season highs for first quarter (24), second quarter (24) and first half (48) scoring outputs in the eventual 92-91 double overtime win at Cal State Fullerton on Dec. 29.

UTEP FALLS AT TULANE, 67-56, IN TITLE TILT OF 22ND-ANNUAL TULANE CLASSIC (at Tulane 67, UTEP 56, 12/22/17)

The UTEP women's basketball team was knocked off by host Tulane, 67-56, in the championship contest of the 22nd-annual Tulane Classic inside historic Fogelman Arena on Dec. 22. The Miners trailed by just three (21-18) after the first quarter but the Green Wave opened up the second frame on an 11-0 run to grab control of the contest. UTEP continued to battle as the game wore on but could never get closer than nine points the rest of the way. **Katarina Zec** tallied 14 points to pace the Orange and Blue, who finished at 36.2 percent (21-58) from the floor. UTEP won the rebounding battle (43-38) for the 11th time in as many contests but it wasn't enough to offset the 40 percent (27-68) shooting by the Green Wave. Tulane was paced by 22 points by **Kolby Morgan**, but needed 23 field goal attempts to do so. **Jordan Jenkins** added a career-high seven points while **Zuzanna Puc** (nine points), **Roeshonda Patterson** (eight points), **Tamara Seda** (six points, eight rebounds) also contributed for the Orange and Blue.

UTEP STIFLES SAMFORD, 46-33, (UTEP 46, vs. Samford 33, 12/21/17)

UTEP turned in its best defensive effort of the year in an impressive 46-33 victory against Samford in its opening game of the 22nd-annual Tulane Classic inside historic Fogelman Arena on Dec. 21. The Miners advance to challenge host Tulane in the championship contest of the classic at 2 p.m. MST/3 p.m. CST Friday while the Bulldogs will play Troy in the consolation tilt after having their three-game winning streak snapped. UTEP set season bests for fewest points allowed (33) and defensive field-goal percentage (20.8 percent). That defensive field-goal percentage ranks as the sixth best in program history. The Miners never trailed in the contest, and at one point led by as many as 26 (44-18), which is their biggest advantage of the campaign. UTEP was up 19-9 at the break. It marked the first time that the Miners held an opponent to fewer than 10 points in a half since keeping NM State to eight on Nov. 29, 2011. The Orange and Blue ended any aspirations of a comeback by Samford after they started the second half on a 10-0 run. **Najala Howell** tallied 12 points to go along with eight rebounds to lead the way for the Miners. **Roeshonda Patterson** (eight points, career-high four rebounds), **Zuzanna Puc** (eight points, four rebounds), **Tamara Seda** (seven points, eight boards) and **Jordan Alexander** (seven points, seven rebounds, four charges) also got after it for the Orange and Blue. The Miners finished at 34.0 percent (16-47) from the floor, aided by a sizzling 61.5 percent (8-13) during the third quarter. UTEP also won the rebounding battle (49-30) for the 10th time in as many tilts this season.

STRANGE WIN

UTEP secured a win when scoring 50 points or less in the game for the first time since doing so twice in the 2012-13 season. Additionally it marked the second-largest margin of victory (13 points) in a contest when the Miners were held to 50 points or less. Overall the Miners are now 16-156 in contests when tallying 50 points or less.

UTEP SHOOTS PAST EAST CAROLINA, 93-79, IN OVERTIME (UTEP 93, East Carolina 79, (OT) 12/17/17)

Six different players reached double figures in scoring and UTEP connected on a school-record 42 free throws to power past former Conference USA foe East Carolina, 93-79, in overtime in a neutral site contest as part of the Carolinas Challenge on Dec. 17. The Pirates buried a triple to take a 78-75 lead 21 seconds into OT but the Miners finished the contest on an incredible 18-1 run to halt ECU's five-game winning streak. UTEP went 13-14 from the charity stripe in the OT period to cap a record-setting day at the free-throw line. Overall the Miners nailed a program-best 42 free throws on 50 attempts (third most at school). UTEP also shot 50 percent (23-46) from the floor and won the boards (40-33), which helped compensate for 23 turnovers. **Faith Cook** poured in a career-high 16 points to share the team lead in scoring with **Tamara Seda**. **Najala Howell** proved big with her second-career double-double (15 points, 11 rebounds) while junior **Jordan Alexander** tallied a career-high tying 15 points to go along with eight boards. **Zuzanna Puc** pitched in a season-high 16 points off the pine and **Katarina Zec** overcame early foul trouble to also hit double figures in scoring (11 points). Howell was a perfect 10-10 at the charity stripe while Cook (8-10), Alexander (7-10), Seda (6-6), Zec (6-6) and Puc (4-5) also took care of business at the line.

UTEP UPENDED AT NM STATE, 76-68 (at NM State 76, UTEP 68, 12/10/17)

Katarina Zec poured in a career-high 22 points while matching the program record for 3-pointers with seven but homestanding NM State downed UTEP, 76-68, inside the Pan-American Center on Dec. 10. The Miners led by one (34-33) at the half before the Aggies used a huge third quarter (25-13) to surge into the lead. The margin swelled to as many as 15 (67-52) before UTEP eventually struck back with a 7-0 run to cut it to seven (69-62) but it was too little too late. Both squads shot well from the floor (UTEP 44.8 percent, NM State 45.3 percent) while also nailing 12 three pointers each, but NM State converted 21 UTEP turnovers into 23 points to create some separation. Conversely NM State's 11 giveaways led to seven UTEP points. The Miners tried to make up for it by winning the boards (40-31) for the eighth time in as many games, which resulted in a 12-4 cushion in second chance points, but it wasn't enough. **Tamara Seda** joined Zec in double figures with 12 points while junior **Jordan Alexander** flirted with a double-double (eight points, career-high 11 rebounds). **Najala Howell** and **Roeshonda Patterson** each finished with nine in the game.

UTEP EDGED AT ARKANSAS STATE, 76-73 (at Arkansas State 76, UTEP 73 (12/5/17)

Tamara Seda (19 points, 16 rebounds), **Najala Howell** (17 points) and **Roeshonda Patterson** (career-high 17 points) all reached double figures in scoring but UTEP was edged at Arkansas State, 76-73, on Dec. 5. The Red Wolves set opponent season highs for points (76) and field-goal percentage (49.2) to help them rally past the Miners. UTEP was up 44-36 at the half but A-State used a huge third quarter (24-11) to surge into the lead and the Miners could never recover. They went down fighting, though, whittling a nine-point deficit (72-63) down to three on a pair of occasions but couldn't quite complete the comeback. The Orange and Blue connected on 42.9 percent (27-63) from the floor while also winning the boards (43-27) but couldn't get enough stops to pull off the win. UTEP's 73 points establish a season high. Seda has now recorded five straight double-doubles, the longest such streak by a Miner in non-conference play since at least 1982-83 (prior records incomplete).

UTEP SINKS HBU, 69-62 (at UTEP 69, HBU 62 (12/2/17)

Senior **Tamara Seda** recorded her fourth straight double-double (18 points, 16 rebounds) while junior **Najala Howell** poured in a season-high tying 19 points to help lead UTEP to a 69-62 victory against HBU at the Don Haskins Center on Dec. 2. The Huskies led 31-26 at the half but the Miners came alive after the break to post the come-from-behind win to close out the season-opening six-game homestand in style. The game featured eight ties and seven lead changes, with the final one coming down the stretch when UTEP peeled off nine straight points-all on treys- to turn a one-point deficit (57-56) into their largest lead of the contest (65-57). HBU scored the next five points but the Miners put the game out of reach with a Jordan Alexander jumper with 21 seconds to play. UTEP set season highs for 3-pointers made (10), attempted (21) and percentage (47.6), including going 6-8 from distance in the final frame to help complete the comeback. The Miners also won the boards (44-32) while holding HBU to 38.1 percent (24-63) from the floor, including 19.0 percent (4-21) from distance. Sophomore **Roeshonda Patterson** provided a spark off the bench with a career-high matching 11 points to join Howell and Seda in double figures. Freshman **Jordan Jenkins** pitched in a personal-best six points to go along with six assists.

UTEP SUFFERS FIRST LOSS OF SEASON VS. (RV) NEW MEXICO (New Mexico 59, at UTEP 35 (11/30/17))

UTEP held New Mexico to 59 points-30 below its average- but couldn't get enough shots to fall in a 59-35 setback at the Don Haskins Center on Nov. 30. The undefeated Lobos, who are receiving votes for both top-25 polls, were limited to 39.7 percent (23-58) from the floor and 33.0 percent (12-36) from distance but they overcame through a physical defensive effort that gave the Miners fits. UTEP shot 25.0 percent (11-44) in the game while being harassed into 25 turnovers that led to 22 UNM points. The Miners won the battle of the boards, 44-31, but it wasn't enough to compensate for the off shooting night. Senior **Tamara Seda** recorded her third straight double-double (11 points, 13 rebounds) to pace UTEP while sophomore **Katarina Zec** added nine points. Sophomore **Zuzanna Puc** came off the bench to contribute five points and a season-high eight rebounds. Sophomore **Roeshonda Patterson** also pitched in five points and sophomore **Faith Cook** registered a career-high seven boards.

UTEP GRINDS OUT 65-55 WIN VS. TEXAS SOUTHERN (at UTEP 65, Texas Southern 55 (11/25/17))

Junior **Najala Howell** (16 points, 10 rebounds) and senior **Tamara Seda** (13 points, 13 rebounds) each posted double-doubles to help UTEP notch a hard-fought 65-55 win against Texas Southern in the final game of the sixth-annual UTEP Thanksgiving Classic at the Don Haskins Center on Nov. 25. The Miners never trailed in the contest and used a 10-0 run midway through the fourth quarter to break the game's one and only tie (48-48, 5:20 4Q) in decisive fashion. UTEP held the Lady Tigers, who have averaged 20 wins the past five years, to 38.8 percent shooting (19-49) while also crushing them on the boards (46-25). Playing a big role in the rebounding margin was a season-high 21 offensive rebounds which led to 21 second-chance points for the home side. The Miners connected on 34.0 percent (18-53) of their shots but they more than made up for that with their rebounding and defensive efforts, in addition to setting season bests for free-throws made (26), attempted (33) and percentage (.788). In fact the Orange and Blue were 16-17 at the charity stripe in the pressure-packed fourth quarter. Sophomore **Katarina Zec** chipped in 10 points, her third straight game in double figures, while also grabbing a career-high eight rebounds. Junior **Jordan Alexander** registered 13 points and six caroms while sophomore **Roeshonda Patterson** provided a spark off the best with a season-high seven points and career-high matching three rebounds.

UTEP TAKES DOWN SEC FOE ARKANSAS, 64-61 (at UTEP 64, Arkansas 61 (11/24/17))

UTEP posted a wire-to-wire 64-61 victory against Southeastern Conference foe Arkansas in its opening game of the sixth-annual UTEP Thanksgiving Classic at the Don Haskins Center on Nov. 24. The Miners raced out to a 13-2 lead four minutes in, were up 18 (38-20) at half and 16 (52-36) through three quarters before withstanding a furious rally attempt by the Razorbacks. UA managed to whittle UTEP's advantage all the way down to one (62-61) but sophomore **Faith Cook** hit a fade away jumper to beat the shot clock with eight seconds left in the game to put the Miners back up by three. The visitor's Devin Cosper then misfired on a triple at the other end. **Tamara Seda** notched a double-double (career-high tying 20 points, 10 rebounds) to lead UTEP, but she was buoyed by 14 points and eight rebounds from **Najala Howell** and 10 points and six boards by **Katarina Zec**. **Jordan Jenkins** did her part with a career-high seven assists while **Zuzanna Puc** pitched in eight points and four boards in 15 minutes off the bench in her 2017-18 debut. UTEP connected on better than 50.0 percent (50.8 percent, 27-53) from the floor for the third straight game, something it hasn't done to start a season since at least 1981-82 (prior stats incomplete). The Miners also defended tirelessly, holding Arkansas to 30.0 percent (21-70) from the floor. The Razorbacks jacked up 41 3-point shots, but only made 11, for a readout of 26.8 percent. The Orange and Blue took care of business on the boards, winning the rebounding battle to the tune of 51-27. Helping that figure was 40 defensive boards, the most against a division I opponent since also securing 40 against Tulane on March 8, 2013. An area of concern for UTEP was turnovers (23) which led to 22 Arkansas points. But the Orange and Blue compensated for that by the dominance in other areas, in addition to holding a 38-18 advantage in points in the paint.

TAKING DOWN A POWER PROGRAM

UTEP downed Arkansas, 64-61, on Nov. 24 to secure its first win in program history against an SEC opponent. Overall it is UTEP's initial regular-season victory against a power-five conference foe since it crushed Kansas State, 84-39, on Nov. 16, 2013. The Miners are now 11-53 all time vs. teams from a power five conference (at point of match-up), but they are 7-10 since 2012-13.

UTEP CRUISES PAST TEXAS A&M-CORPUS CHRISTI, 69-49

at UTEP 69, Texas A&M-Corpus Christi 49 (11/18/17)

UTEP played well in all facets off the game in a convincing 69-49 victory against Texas A&M-Corpus Christi at the Don Haskins Center on Nov. 18. The Miners shot 54.3 percent (25-46) from the floor while stifling the Islanders to a readout of 31.1 percent (19-61), including 4-15 (26.7 percent) from distance. UTEP won the boards (38-30), racked up 19 assists compared to 14 turnovers and led for the majority of the contest. **Najala Howell** paced the Orange and Blue with 19 points-one shy of a personal best- while also dishing out a career-high seven assists. **Katarina Zec** (12 points), **Tamara Seda** (11 points) and **Jakeira Ford** (10 points) all joined her in double figures for scoring while **Jordan Alexander** pitched in seven points. Four different Miners grabbed at least five rebounds, with Ford leading the way with six caroms. UTEP led by two (14-12) after the first quarter before outscoring the visitors 35-16 over the next two frames to blow open the game.

UTEP RALLIES PAST CSU BAKERSFIELD IN OPENER, 67-56

at UTEP 67, CSU Bakersfield 56 (11/11/17)

UTEP used a huge fourth quarter to rally past CSU Bakersfield, 67-56, in the 2017-18 season opener for both squads at the Don Haskins Center on Nov. 11. The Roadrunners led by eight (45-37) through three quarters of action but the Miners opened up the final frame on an 13-1 run to help fuel a dominant 30-11 advantage over the last 10 minutes of action. Senior **Tamara Seda** (20 points), junior **Jordan Alexander** (15 points) and sophomore **Faith Cook** (14 points) each established career highs to lead the way for the Miners, who were victorious in head coach **Kevin Baker's** Division I coaching debut. Junior **Najala Howell** (10 points) also reached double digits in scoring for UTEP, which nailed 51.2 percent (21-41) from the floor and 42.9 percent (6-14) from beyond-the-arc. Alexander, who played her freshman year at DI Louisiana before transferring to Trinity Valley, grabbed a personal-best 10 boards for her first career double-double while Seda added eight caroms. UTEP won the rebounding battle, 36-30, which was aided by a whopping 16-2 advantage in the fourth quarter. The Miners held CSUB to 32.8 percent (20-61) from the floor.

SAVE THE BEST FOR LAST

After scoring 37 points through three quarters of action, the Miners erupted for 30 points over the final 10 minutes to erase an eight-point deficit and rally past CSU Bakersfield on Nov. 11. The 30 points are the most scored in the fourth quarter by the Miners in program history and rank tied for fifth-most points in a quarter overall at the school.

START IT OFF STRONG

UTEP improved to 24-20 all time in season openers, including 21-7 when doing so in El Paso. Overall in home openers, the Miners now stand 28-14 (missing outcomes in some years).

RECAPPING THE EXHIBITION SEASON

For the first time since the 2007-08 season, the Miners played a pair of exhibition games to prepare for the regular season. UTEP split the contests, drilling NCAA Division III member Sul Ross State, 99-40, on Oct. 29, while falling to NCAA Division II member St. Mary's (Texas), 68-62, on Nov. 4. **Katarina Zec** (17.5 points per game) was the top point producer for the Miners but four others (**Tamara Seda**-16.5 ppg, **Najala Howell**-15.0 ppg, **Jordan Alexander**-11.0 ppg and **Jakeira Ford**-11.0 ppg) also averaged double figures in scoring. As a team UTEP shot 45.5 percent (56-123) from the floor while holding its foes to 30.9 percent (38-123). The Miners excelled at the free-throw line (35-42, 83.3 percent) and also dominated the rebounding department (51.0 rebounds per game to 27.5 opponent rebounds per game).



2016-17 Results

Date	Opponent	Time
NOVEMBER (2-5)		
Nov. 4	St. Mary's&	W, 72-54
Nov. 11	Northern Arizona	L, 51-65
Nov. 13	Texas Southern	L, 68-89
Nov. 17	Western New Mexico	W, 93-46
Nov. 24	vs. LSU\$	L, 45-78
Nov. 25	vs. NC States	L, 55-71
Nov. 26	vs. Kansas State\$	L, 40-61
Nov. 30	Houston Baptist	W, 75-45

DECEMBER (1-4)

Dec. 11	at New Mexico	L, 66-79
Dec. 15	NM State	L, 59-67
Dec. 19	Pittsburgh+	L, 46-71
Dec. 20	Alabama+	L, 60-78
Dec. 28	CSU Bakersfield	W, 74-61

JANUARY (3-5)

Jan. 1	UTSA*	L, 81-83 (OT)
Jan. 5	LA Tech*	W, 69-62
Jan. 7	Southern Miss*	L, 68-79
Jan. 12	at FIU* (beIn)	L, 87-88 (3OT)
Jan. 14	at Florida Atlantic*	W, 51-50
Jan. 21	at UTSA*	L, 76-97
Jan. 26	WKU* (beIN)	L, 54-71
Jan. 28	Marshall*	W, 84-74

FEBRUARY (2-6)

Feb. 2	at UAB*	L, 61-74
Feb. 4	at Middle Tennessee* (ESPN3)	L, 53-76
Feb. 9	at LA Tech*	L, 61-68
Feb. 11	at Southern Miss*	L, 48-73
Feb. 16	North Texas* (beIN)	L, 69-76
Feb. 18	Rice*	L, 76-80
Feb. 23	Florida Atlantic*	W, 69-59
Feb. 25	FIU*	W, 88-47

MARCH (0-3)

March 2	at Old Dominion* (beIN)	L, 68-87
March 4	at Charlotte* (ESPN3)	L, 74-84
March 8	vs. Old Dominion^ (First)	L, 70-80

Bold denotes home game

& Exhibition Game

\$ 2016 Paradise Jam (U.S. Virgin Islands)

+ Patrick Harrington Tournament (Niceville, Fla.)

* Conference USA Game

^ Conference USA Championships

All Times Mountain

UTEP 2017-18 ROSTERS

NUMERICAL ROSTER

No.	Name	Pos.	Ht.	Cl.-Exp.	Hometown (High School/Previous School)
00	Jordan Jenkins	G	5-3	Fr.-HS	Buffalo, Texas (Buffalo HS)
1	Roeshonda Patterson	G	5-8	So.-1L	Odessa, Texas (New Way Christian Academy)
3	Jordan Alexander	F	5-11	Jr.-TR	Dallas, Texas (Trinity Valley CC)
4	Neidy Ocuanel	G	5-5	Jr.-TR	Maputo, Mozambique (Seward County CC)
5	Zuzanna Puc	F	6-2	So.-1L	Poznan, Poland (ZSMS Poznan)
10	Faith Cook	G	5-3	So.-1L	Baytown, Texas (Goose Creek Memorial HS)
12	Ariona Gill!	G/F	5-11	Jr.-TR	Las Vegas, Nevada (San Jacinto College)
14	Najala Howell	G	5-10	Jr.-2L	DeSoto, Texas (DeSoto HS)
24	Rachel Tapps	G	5-8	So.-1L	Cypress, Texas (Cypress Ranch HS)
42	Tamara Seda	F	6-4	R-Sr.-2L	Maputo, Mozambique (Seward County CC)
44	Katarina Zec	G	5-11	So.-1L	Belgrade, Serbia (Sportska gimnazija)

Head Coach: Kevin Baker

Assistant Coaches: Nicole Dunson, Michael Madrid and Lori Morris

Video Coordinator: Decker Smith

Graduate Assistant: Lexi Murphy

Athletic Trainer: Wil Hodnett, LAT, ATC

! Denotes will redshirt in 2017-18

Letter Winners Returning (8): Faith Cook, Jakeira Ford (no longer on team), Najala Howell, Roeshonda Patterson, Zuzanna Puc*, Tamara Seda*, Rachel Tapps and Katarina Zec*

Letterwinners Lost (4): Jessica Barbosa, Ax Bernard, Lulu McKinney* and Sparkle Taylor*

Non Letter Winners Lost (1): Chanel Khammarath

Newcomers (4): Jordan Alexandander, Ariona Gill, Jordan Jenkins and Neidy Ocuane

*Denotes starter in 2016-17

ALPHABETICAL ROSTER

No.	Name	Pos.	Ht.	Cl.-Exp.	Hometown (High School/Previous School)
3	Jordan Alexander	F	5-11	Jr.-TR	Dallas, Texas (Trinity Valley CC)
10	Faith Cook	G	5-3	So.-1L	Baytown, Texas (Goose Creek Memorial HS)
14	Najala Howell	G	5-10	Jr.-2L	DeSoto, Texas (DeSoto HS)
12	Ariona Gill!	G/F	5-11	Jr.-TR	Las Vegas, Nevada (San Jacinto College)
00	Jordan Jenkins	G	5-3	Fr.-HS	Buffalo, Texas (Buffalo HS)
4	Neidy Ocuanel	G	5-5	Jr.-TR	Maputo, Mozambique (Seward County CC)
1	Roeshonda Patterson	G	5-8	So.-1L	Odessa, Texas (New Way Christian Academy)
5	Zuzanna Puc	F	6-2	So.-1L	Poznan, Poland (ZSMS Poznan)
42	Tamara Seda	F	6-4	R-Sr.-2L	Maputo, Mozambique (Seward County CC)
24	Rachel Tapps	G	5-8	So.-1L	Cypress, Texas (Cypress Ranch HS)
44	Katarina Zec	G	5-10	So.-1L	Belgrade, Serbia (Sportska gimnazija)

! Denotes will redshirt in 2017-18

2016-17 STAT LEADERS

Points Per Game: Sparkle Taylor (18.4)
Rebounds Per Game: Tamara Seda (9.0)
Assists Per Game: Lulu McKinney (4.9)
Steals Per Game: Sparkle Taylor (1.3)
Blocks Per Game: Tamara Seda (1.6)
Minutes Per Game: Lulu McKinney (31.4)

PRONUNCIATION GUIDE

ARIONA Gill	Air-ee-ah-nuh
NAJALA Howell	Nah-jah-luh
NEIDY OCUANE	Nay-dee Ock-oo-ah-nay
ROESHONDA Patterson	Ro-shawn-duh
ZUZANNA PUC	Zoo-zah-nuh Poots
TAMARA SEDA	Tuh-mair-uh Say-duh
Katarina ZEC	Zetz

UTEP INDIVIDUAL CAREER HIGHS

#3 JORDAN ALEXANDER | 5-11 | F | JR-TR

PTS:..... 15, (twice, most recent vs. East Carolina-12/17/17)
 REB:..... 11, at NM State-12/10/17
 AST:..... 4, CSUB-11/11/17
 STL:..... 2, vs. Samford-12/21/17
 BLK:..... 1, four (most recent at NM State-12/10/17)
 FG:..... 4, twice (most recent vs. East Carolina-12/17/17)
 FGA:..... 10, at NM State-12/10/17
 3FG:..... 2, at LA Tech-12/19/15*
 3FGA:..... 2, three times (most recent Alcorn State-12/29/15*)
 FT:..... 8, CSUB-11/11/17
 FTA:..... 11, CSUB-11/11/17
 MIN:..... 35, vs. East Carolina-12/17/17
 (*Denotes with Louisiana in '15-16)

#10 FAITH COOK | 5-3 | G | SO-1L

PTS:..... 16, vs. East Carolina-12/17/17
 REB:..... 7, New Mexico-11/30/17
 AST:..... 9, NM State-12/15/16
 STL:..... 3, FIU-2/25/17
 BLK:..... 1, UTSA-1/1/17
 FG:..... 4, CSUB-11/11/17
 FGA:..... 10, CSUB-12/28/16
 3FG:..... 3, CSUB-11/11/17
 3FGA:..... 7, at Tulane-12/22/17
 FT:..... 8, vs. East Carolina-12/17/17
 FTA:..... 10, vs. East Carolina-12/17/17
 MIN:..... 35, twice (most recent at CSUF-12/29/17)

#14 NAJALA HOWELL | 5-10 | G | JR-2L

PTS:..... 23-at UC Riverside-12/30/17
 REB:..... 12, WNMU-11/17/16
 AST:..... 7, TXAMUCC-11/18/17
 STL:..... 3, twice (most recent vs. East Carolina-12/17/17)
 BLK:..... 1, four times (most recent at Tulane-12/22/17)
 FG:..... 9-at UC Riverside-12/30/17
 FGA:..... 18, UTSA-1/1/17
 3FG:..... 5-at UC Riverside-12/30/17
 3FGA:..... 6, HBU-12/2/17
 FT:..... 10-vs. East Carolina-12/17/17
 FTA:..... 10, twice (most recent vs. East Carolina-12/17/17)
 MIN:..... 45, at CSUF-12/29/17

#00 JORDAN JENKINS | 5-3 | G | FR-HS

PTS:..... 7, at Tulane-12/22/17
 REB:..... 5, TXAMUCC-11/18/17
 AST:..... 7, 3, Arkansas-11/24/17
 STL:..... 1, four times (most recent at Tulane-12/22/17)
 BLK:..... 0
 FG:..... 2, twice (most recent at Tulane-12/22/17)
 FGA:..... 5-at UC Riverside-12/30/17
 3FG:..... 2, HBU-12/2/17
 3FGA:..... 5-at UC Riverside-12/30/17
 FT:..... 2, twice (most recent at Tulane-12/22/17)
 FTA:..... 2, three times (most recent at Tulane-12/22/17)
 MIN:..... 27, at Tulane-12/22/17

#1 ROESHONDA PATTERSON | 5-8 | G | SO-1L

PTS:..... 16, at Arkansas State-12/5/17
 REB:..... 4, vs. Samford-12/21/17
 AST:..... 5, vs. Samford-12/21/17
 STL:..... 3, at Arkansas State-12/5/17
 BLK:..... 1, four times (most recent vs. Samford-12/21/17)
 FG:..... 6, at Arkansas State-12/5/17
 FGA:..... 10, at Arkansas State-12/5/17
 3FG:..... 3, twice (most recent HBU-12/2/17)
 3FGA:..... 7, three times (most recent at Charlotte-3/4/17)
 FT:..... 2, three times (most recent vs. Samford-12/21/17)
 FTA:..... 3, twice (most recent vs. Samford-12/21/17)
 MIN:..... 25, vs. Samford-12/21/17

#5 ZUZANNA PUC | 6-2 | F | SO-1L

PTS:..... 19, WNMU-11/17/16
 REB:..... 12, twice (most recent FAU-2/23/17)
 AST:..... 3, twice (most recent FAU-2/23/17)
 STL:..... 3, three times (most recent at UC Riverside-12/30/17)
 BLK:..... 2, seven times (most recent HBU-12/2/17)
 FG:..... 9, WNMU-11/17/16
 FGA:..... 11, WNMU-11/17/16
 3FG:..... 1, twice (most recent vs. Alabama-12/20/16)
 3FGA:..... 2, four times (most recent at UAB-2/2/17)
 FT:..... 5, twice (most recent 23-at UC Riverside-12/30/17)
 FTA:..... 7, twice (most recent 23-at UC Riverside-12/30/17)
 MIN:..... 34, twice (most recent FAU-2/23/17)

#42 TAMARA SEDA | 6-4 | F | R-SR-2L

PTS:..... 30, at CSUF-12/29/17
 REB:..... 17, twice (most recent-Southern Miss-1/7/17)
 AST:..... 4, HBU-12/2/17
 STL:..... 3, at Old Dominion-3/2/17
 BLK:..... 4, twice (most recent at MTSU-2/4/17)
 FG:..... 11, at CSUF-12/29/17
 FGA:..... 20, Arkansas-11/24/17
 3FG:..... 0
 3FGA:..... 1, vs. East Carolina-12/17/17
 FT:..... 9, CSUB-12/28/16
 FTA:..... 13, CSUB-12/28/16
 MIN:..... 45, at FIU-1/12/17

#24 RACHEL TAPPS | 5-8 | G | SO-1L

PTS:..... 5, NC State-11/25/16
 REB:..... 4, vs. Alabama-12/20/16
 AST:..... 4, HBU-11/30/16
 STL:..... 1, six times (most recent at ODU-3/2/17)
 BLK:..... 1, three times (most recent at Charlotte-3/4/17)
 FG:..... 2, LSU-11/24/16
 FGA:..... 5, LSU-11/24/16
 3FG:..... 0
 3FGA:..... 2, twice (most recent at UTSA-1/21/17)
 FT:..... 3, NC State-11/25/16
 FTA:..... 4, twice (most recent NC State-11/25/16)
 MIN:..... 18, at FIU-1/12/17

#44 KATARINA ZEC | 5-11 | G | SO-1L

PTS:..... 22, at NM State-12/10/17
 REB:..... 8, Texas Southern-11/25/17
 AST:..... 6, at LA Tech-2/9/17
 STL:..... 2, three times (most recent Texas Southern-11/25/17)
 BLK:..... 1, four times (most recent at CSUF-12/29/17)
 FG:..... 8, at CSUF-12/29/17
 FGA:..... 13, at CSUF-12/29/17
 3FG:..... 7, at NM State-12/10/17
 3FGA:..... 10, at NM State-12/10/17
 FT:..... 6, vs. East Carolina-12/17/17
 FTA:..... 6, vs. East Carolina-12/17/17
 MIN:..... 39, twice (most recent Arkansas-11/24/17)



2017-18 GAME-BY-GAME STATS

Opponent	Date	W/L	Pts	1Q/2Q/3Q/4Q/OT(s)	In		Off		2nd	Bench	FG-FGA	Pct	3 PT		FT	Pct	O-D-Tot	Avg	PF	A	TO	Blk	Stl	Pts	Avg
					Largest Lead	Paint	TOs	Chance					3 PT	3PT											
@UTEP	11/11/17	W	67	12/14/11/30	11	30	13	10	16		21-41	.512	6-14	4/29	19-26	.731	6-30-36	36.0	15	17	21	1	3	67	67.0
CSUB			56	5/22/18/11	8	14	21	13	19		20-61	.328	7-27	2/59	9-12	.750	13-17-30	30.0	24	7	14	2	6	56	56.0
@UTEP	11/18/17	W	69	14/14/21/20	24	38	10	3	17		25-46	.543	4-8	5/00	15-25	.600	7-31-38	37.0	17	19	14	1	3	69	68.0
Texas A&M-Corpus Christi			49	12/6/10/21	6	22	14	13	28		19-61	.311	4-15	2/67	7-10	.700	12-18-30	30.0	24	11	12	4	7	49	52.5
@UTEP	11/24/17	W	64	15/23/14/12	20	38	0	10	13		27-53	.509	5-13	3/85	5-7	.714	11-40-51	41.7	13	19	23	0	1	64	66.7
Arkansas			61	3/17/16/25	0	18	22	18	16		21-70	.300	11-41	2/68	8-14	.571	12-15-27	27.0	15	13	4	4	14	61	61.0
@UTEP	11/25/17	W	65	16/15/11/23	10	18	13	21	13		18-53	.340	3-12	2/50	26-33	.788	21-25-46	42.8	13	8	16	2	3	65	66.2
Texas Southern			55	14/11/10/20	0	22	7	7	13		19-49	.388	7-22	3/18	10-13	.769	7-18-25	25.0	26	10	15	5	5	55	55.0
@UTEP	11/30/17	L	35	13/9/4/9	0	16	7	11	10		11-44	.250	2-12	1/67	11-16	.688	15-29-44	43.0	12	7	25	2	2	35	60.0
New Mexico			59	21/13/12/13	28	20	22	7	19		23-58	.397	12-36	3/33	1-7	.143	9-22-31	28.6	24	16	12	2	14	59	56.0
@UTEP	12/2/17	W	69	17/9/19/14	8	18	10	6	17		22-52	.423	10-21	4/76	15-21	.714	13-31-44	43.2	17	18	22	5	5	69	61.5
HBU			62	11/20/14/17	8	32	21	11	6		24-63	.381	4-21	1/90	10-18	.556	13-19-32	32.0	24	12	12	1	6	62	62.0
UTEP	12/5/17	L	73	21/23/11/18	11	38	19	19	27		27-63	.429	3-16	1/88	16-20	.800	18-25-43	43.1	14	11	19	2	9	73	63.1
@Arkansas State			76	15/21/24/16	9	30	17	4	23		29-59	.492	8-25	3/20	10-18	.556	8-19-27	28.9	21	13	15	3	9	76	59.7
UTEP	12/10/17	L	68	14/20/13/21	3	22	7	12	17		26-58	.448	12-23	5/22	4-9	.444	13-27-40	42.8	13	17	21	3	1	68	63.8
at NM State			76	19/14/25/18	15	24	23	4	6		29-64	.453	12-28	4/29	6-8	.750	9-22-31	31.0	11	17	11	1	10	76	76.0
UTEP	12/17/17	W	93	22/20/18/15/18	14	30	13	6	33		23-46	.500	5-12	4/17	42-50	.840	10-30-40	42.4	22	10	23	0	5	93	67.0
vs. East Carolina			79	15/15/23/22/4	3	32	29	15	36		30-74	.405	5-19	2/63	14-20	.700	16-17-33	29.6	36	16	14	3	8	79	63.7
UTEP	12/21/17	W	46	9/10/23/4	26	28	17	6	16		16-47	.340	1-6	1/67	13-18	.722	11-38-49	43.1	18	8	23	1	5	46	64.9
vs. Samford			33	4/5/9/15	0	16	10	7	6		11-53	.208	3-26	1/15	8-13	.615	7-23-30	29.6	24	7	16	8	8	33	60.6
UTEP	12/22/17	L	56	18/5/15/18	4	26	11	8	22		21-58	.362	7-21	3/33	7-9	.778	14-29-43	43.1	15	11	18	2	3	56	64.1
@Tulane			67	21/18/11/17	18	28	22	15	17		27-68	.397	8-22	3/64	5-10	.500	15-23-38	30.4	15	18	9	5	10	67	61.2
UTEP	12/29/17	W	92	24/24/15/5/11/13	18	42	14	9	17		34-63	.540	6-13	4/62	18-24	.750	8-27-35	42.4	21	16	14	2	4	92	66.4
@Cal State Fullerton			91	14/18/18/18/11/12	2	32	13	2	37		33-68	.485	10-25	4/00	15-23	.652	10-23-33	30.6	25	17	12	2	3	91	63.7
UTEP	12/30/17	W	73	25/24/10/14	23	34	15	11	27		29-66	.439	8-20	4/00	7-11	.636	17-24-41	42.3	12	20	14	0	7	73	66.9
at UC Riverside			62	9/20/15/18	0	32	17	11	16		27-65	.415	0-16	0/00	8-10	.800	14-22-36	31.0	16	16	15	8	6	62	63.5
UTEP			870	220/210/185/213/29/13	26	378	149	132	305		300-690	.435	72-191	377	198-269	.736	164-386-550	42.3	202	181	253	21	51	870	66.9
Opponents			826	163/200/205/231/15/12	28	322	238	128	242		312-813	.384	91-323	282	111-176	.631	145-258-403	31.0	285	173	161	48	106	826	63.5

2017-18 POINTS-REBOUNDS-ASSISTS

Opponent	Jenkins	Patterson	Alexander	Puc	Cook	Howell	Ford	Tapps	Seda	Zec
CSU Bakersfield	0-3-3	DNP	15-10-4	DNP	14-2-0	10-3-3	2-1-0	0-0-0	20-8-3	6-6-4
Texas A&M Corpus Christi	3-5-2	3-3-0	7-5-2	DNP	4-3-5	19-4-7	10-6-2	0-0-1	11-5-0	12-3-0
Arkansas	3-4-7	0-1-0	3-9-0	8-4-1	5-2-4	15-8-4	0-2-1	0-1-0	20-10-0	10-6-2
Texas Southern	0-1-1	7-3-0	13-6-1	3-2-1	3-0-2	16-10-0	0-0-0	DNP	13-13-1	10-8-2
New Mexico	0-1-0	5-0-0	3-5-0	5-8-1	0-7-3	2-4-0	DNP	0-0-0	11-13-2	9-1-1
Houston Baptist	6-1-6	11-1-2	4-5-0	2-5-2	4-1-2	19-7-1	DNP	DNP	18-16-4	5-2-1
at Arkansas State	4-4-3	16-3-3	6-7-2	2-0-0	3-1-1	17-6-1	6-2-0	DNP	19-16-0	0-1-1
at NM State	0-0-2	9-2-2	8-11-2	2-2-1	6-1-5	9-7-4	DNP	DNP	12-8-1	22-4-0
vs. East Carolina	3-0-1	3-3-0	15-8-1	14-1-1	16-4-3	15-11-1	DNP	0-1-1	16-6-1	11-3-1
vs. Samford	2-1-1	8-4-5	7-7-1	8-6-0	0-4-0	12-8-0	0-0-0	0-2-0	7-8-1	2-5-0
at Tulane	7-2-4	8-2-1	5-5-1	8-9-0	6-4-1	2-5-2	DNP	0-0-0	6-8-2	14-2-0
at CSU Fullerton	0-1-0	0-1-1	8-7-1	12-4-1	5-1-4	16-4-3	DNP	0-1-1	30-12-3	21-3-2
at UC Riverside	0-1-2	5-2-1	2-5-3	15-6-2	7-0-6	23-9-2	DNP	0-0-0	21-14-1	0-0-3
at FIU										
at Florida Atlantic										
Charlotte										
Middle Tennessee										
Florida Atlantic										
at Rice										
at North Texas										
UAB										
at UTSA										
LA Tech										
at Marshall										
at Old Dominion										
UTSA										
at Southern Miss										
FIU										
WKU										

Bold for 10+ points, rebounds or assists

HIGHS AND LOWS

- 2017-18 UTEP Highs -

Points.....	93-vs. East Carolina-12/17/17
First Half Points.....	49-at UC Riverside-12/30/17
Second Half Points.....	43-HBU-12/2/17
1Q Points.....	25-at UC Riverside-12/30/17
2Q Points.....	24 (2X)
3Q Points.....	23-vs. Samford-12/21/17
4Q Points.....	30-CSUB-11/11/17
OT Points.....	18-vs. East Carolina-12/17/17
Field Goals.....	34-at CSUF-12/29/17
Field Goals Att.....	66-at UC Riverside-12/30/17
Field Goal Pct.....	54.3-TXAMUCC-11/18/17
3 Pt. Field Goals.....	12-at NM State-12/10/17
3 Pt. Field Goals Att.....	23-at NM State-12/10/17
3 Pt. Field Goal Pct.....	52.2-at NM State-12/10/17
Free Throws.....	42-vs. East Carolina-12/17/17
Free Throws Att.....	50-vs. East Carolina-12/17/17
Free Throw Pct.....	84.0-vs. East Carolina-12/17/17
Rebounds.....	51-Arkansas-11/24/17
Off. Rebounds.....	21-Texas Southern-11/25/17
Def. Rebounds.....	40-Arkansas-11/24/17
Assists.....	20-at UC Riverside-12/30/17
Steals.....	9-at Arkansas State-12/5/17
Blocked Shots.....	5-HBU-12/2/17
Turnovers.....	25-New Mexico-11/30/17
Fouls.....	22-vs. East Carolina-12/17/17

(min. 10 attempts for percentage categories)

- 2017-18 UTEP Lows -

Points.....	35-New Mexico-11/30/17
First Half Points.....	19-vs. Samford-12/21/17
Second Half Points.....	13-New Mexico-11/30/17
1Q Points.....	9-vs. Samford-12/21/17
2Q Points.....	5-at Tulane-12/22/17
3Q Points.....	4-New Mexico-11/30/17
4Q Points.....	4-vs. Samford-12/21/17
OT Points.....	11-at CSUF-12/29/17
Field Goals.....	11-New Mexico-11/30/17
Field Goals Att.....	41-CSUB-11/11/17
Field Goal Pct.....	25.0-New Mexico-11/30/17
3 Pt. Field Goals.....	1-vs. Samford-12/21/17
3 Pt. Field Goals Att.....	6-vs. Samford-12/21/17
3 Pt. Field Goal Pct.....	16.7-New Mexico-11/30/17
Free Throws.....	4-at NM State-12/10/17
Free Throws Att.....	7-Arkansas-11/24/17
Free Throw Pct.....	60.0-TXAMUCC-11/18/17
Rebounds.....	35-at CSUF-12/29/17
Off. Rebounds.....	6-CSUB-11/11/17
Def. Rebounds.....	24-at UC Riverside-12/30/17
Assists.....	7-New Mexico-11/30/17
Steals.....	1 (2X)
Blocked Shots.....	0 (3X)
Turnovers.....	14 (3X)
Fouls.....	12 (2X)

(min. 10 attempts for percentage categories)

- 2017-18 Opponent Highs -

Points.....	91-at CSUF-12/29/17
First Half Points.....	39-at Tulane-12/22/17
Second Half Points.....	45-vs. East Carolina-12/17/17
1Q Points.....	21 (2X)
2Q Points.....	22-CSUB-11/11/17
3Q Points.....	25-at NM State-12/10/17
4Q Points.....	25-Arkansas-11/24/17
OT Points.....	12-at CSUF-12/29/17
Field Goals.....	33-at CSUF-12/29/17
Field Goals Att.....	74-vs. East Carolina-12/17/17
Field Goal Pct.....	49.2-at Arkansas State-12/5/17
3 Pt. Field Goals.....	12 (2X)
3 Pt. Field Goals Att.....	41-Arkansas-11/24/17
3 Pt. Field Goal Pct.....	42.9-at NM State-12/10/17
Free Throws.....	15-at CSUF-12/29/17
Free Throws Att.....	23-at CSUF-12/29/17
Free Throw Pct.....	80.0-at UC Riverside-12/30/17
Rebounds.....	38-at Tulane-12/22/17
Off. Rebounds.....	16-vs. East Carolina-12/17/17
Def. Rebounds.....	23 (2X)
Assists.....	18-at Tulane-12/22/17
Steals.....	14 (2X)
Blocked Shots.....	8 (2X)
Turnovers.....	16-vs. Samford-12/21/17
Fouls.....	36-vs. East Carolina-12/17/17

(min. 10 attempts for percentage categories)

- 2017-18 Opponent Lows -

Points.....	33-vs. Samford-12/21/17
First Half Points.....	9-vs. Samford-12/21/17
Second Half Points.....	24-vs. Samford-12/21/17
1Q Points.....	3-Arkansas-11/24/17
2Q Points.....	5-vs. Samford-12/21/17
3Q Points.....	9-vs. Samford-12/21/17
4Q Points.....	11-CSUB-11/11/17
OT Points.....	4-vs. East Carolina-12/17/17
Field Goals.....	11-vs. Samford-12/21/17
Field Goals Att.....	49-Texas Southern-11/25/17
Field Goal Pct.....	20.8-vs. Samford-12/21/17
3 Pt. Field Goals.....	0-at UC Riverside-12/30/17
3 Pt. Field Goals Att.....	15-TXAMUCC-11/18/17
3 Pt. Field Goal Pct.....	00.0-at UC Riverside-12/30/17
Free Throws.....	1-New Mexico-11/30/17
Free Throws Att.....	7-New Mexico-11/30/17
Free Throw Pct.....	50.0-at Tulane-12/22/17
Rebounds.....	25-Texas Southern-11/25/17
Off. Rebounds.....	7 (2X)
Def. Rebounds.....	15-Arkansas-11/24/17
Assists.....	7 (2X)
Steals.....	3-at CSUF-12/29/17
Blocked Shots.....	1 (2X)
Turnovers.....	4-Arkansas-11/24/17
Fouls.....	11-at NM State-12/10/17

(min. 10 attempts for percentage categories)

MARGIN WIN/LOSS

Margin	Won By	Lost By	Record
1	1	-	1-0
2	-	-	-
3	1	1	1-1
4	-	-	-
5	-	-	-
6	-	-	-
7	1	-	1-0
8	-	1	0-1
9	-	-	-
10	1	-	1-0
11	2	1	2-1
12	-	-	-
13	1	-	1-0
14	1	-	1-0
15	-	-	-
16	-	-	-
17	-	-	-
18	-	-	-
19	-	-	-
20	1	-	1-0
21	-	-	-
22	-	-	-
23	-	-	-
24	-	1	-
25	-	-	-
26	-	-	-
27	-	-	-
28	-	-	-
29	-	-	-
30	-	-	-
SUM	9	4	9-4

Biggest Home Win: 20 (69-49 vs. TXAMUCC-11/18/17)
Biggest Home Loss: 24 (59-35 vs. UNM-11/30/17)

Biggest Road Win: 11 (73-62) at CSUF-12/30/17
Biggest Road Loss: 11 (67-56) at Tulane-12/22/17

Biggest Neutral Win: 14 (93-79, 2OT) vs. ECU, 12/17/17
Biggest Neutral Loss: NA



UTEP SINGLE GAME RECORDS

FIELD GOALS MADE

FG	OPP	DATE
1. 49	Colorado State*	2/9/80
2. 46	vs. Texas Lutheran+	12/4/82
3. 45	UT-Perian Basin+	12/15/06
4. 41	WNMU+	11/17/16
41	UT-Permian Basin+	12/21/05
6. 40	Savannah State	11/22/08
7. 39	Hardin Simmons+	2/16/85
8. 39	Texas State	12/17/10
9. 38	Fresno State*	1/11/03
38	at BYU	1/6/90
38	Eastern New Mexico+	1/13/87

FIELD GOALS ATTEMPTED

FGA	OPP	DATE
1. 93	vs. Texas Lutheran+	12/4/82
2. 87	at New Mexico State*	12/15/79
3. 86	New Mexico State*	12/13/80
4. 85	UT-Dallas+	11/20/04
85	vs. Arizona	11/25/83
85	Eastern New Mexico+	3/1/80
7. 84	at Southern Utah	12/29/88
84	Hardin Simmons+	2/16/85
84	at Eastern New Mexico+	1/28/84
10.83	Charlotte*	2/27/16
83	at BYU	1/6/90
83	at New Mexico	11/29/86
83	at Oral Roberts	2/24/86

FIELD GOAL PERCENTAGE (MINIMUM 24 MADE)

FG%	OPP	DATE
1. .660 (35-53)	Southern Miss*	2/21/09
2. .636 (28-44)	UCF*	1/24/10
3. .615 (32-52)	at UTPA	2/7/89
4. .612 (41-67)	WNMU+	11/17/16
5. .611 (33-54)	at San Diego	1/7/87
6. .588 (30-51)	TXA&M CC	12/18/02
7. .577 (30-52)	Alcorn State	12/20/09
8. .576 (38-66)	Fresno State*	1/11/03
9. .574 (31-54)	at N. Colorado	12/13/05
10. .571 (40-70)	Savannah State	11/22/08

FIELD GOAL PERCENTAGE DEFENSE

FG% Defense	OPP	DATE
1. .167 (8-48)	UTPB+	12/14/15
2. .184 (9-49)	NM State	11/29/11
3. .196 (10-51)	UT-Dallas+	11/20/04
4. .205 (9-44)	NM State	12/05/12
5. .206 (13-63)	Tulsa	1/31/13
6. .208 (11-53)	vs. Samford	12/21/17
7. .209 (9-43)	UTPA	12/22/96
8. .214 (12-56)	Montana State	12/22/03
9. .216 (16-74)	Alcorn State	12/20/09
10. .222 (12-54)	Fresno State*	2/12/04
.222 (12-54)	Prairie View	3/1/96
Other games of 23.0 or worse		
.224 (15-67)	WNMU+	11/17/16
.224 (13-58)	at Colo. State*	2/6/93
.226 (14-62)	UTPB+	12/15/06
.229 (11-48)	ENMU+	12/8/12
.230 (14-61)	at UNM*	3/1/95

THREE POINTERS MADE

3PM	OPP	DATE
1. 14	Toledo	11/24/09
14	Savannah State	11/22/08
14	vs. Eastern Illinois	11/20/09
13	Tulsa*	1/22/09
13	at Tulane*	1/12/08
6. 12	at NM State	12/10/17
12	New Mexico	12/2/15
12	Tulsa*	1/11/14
12	vs. Missouri State	12/4/09
10.11	Idaho State	11/28/15
11	#24 Western Kentucky*	1/22/15
11	Prairie View A&M	12/20/14
11	at Tulane*	2/1/14
11	Northern Arizona	11/22/13
11	Denver	11/26/11
11	Cal State Northridge	12/3/10
11	Idaho State	11/26/10
11	Arizona	11/26/06
11	SMU*	1/8/06
11	at Hawaii*	1/20/05
11	at Tulsa*	2/9/02
11	Louisiana Tech*	1/31/02
11	at SMU*	1/3/02
11	at Southern Utah	1/26/93

THREE POINTERS ATTEMPTED

3PA	OPP	DATE
1. 34	Southern Miss*	3/1/15
2. 32	Idaho State	11/28/15
32	at SMU	11/16/14
32	Toledo	11/24/09
32	vs. SMU*	3/9/08
6. 31	Louisiana Tech*	1/31/02
7. 30	Louisiana Tech*	2/5/14
30	at Tulsa*	2/9/02
30	at Louisiana Tech*	1/5/02
10.29	Marshall*	1/29/14
29	at Hawaii*	1/20/05
29	vs. SMU*	3/5/02

THREE POINT PERCENTAGE (MINIMUM 8 MADE)

3FG%	OPP	DATE
1. .733 (11-15)	at S. Utah	1/26/93
2. .647 (11-17)	Southern Miss*	2/21/09
3. .615 (8-13)	Cal Poly	12/16/03
4. .600 (9-15)	TX Southern	12/13/09
.600 (9-15)	vs. SAC St.	12/30/08
6. .579 (11-19)	Idaho State	11/26/10
.579 (11-19)	at Tulane*	1/18/09
8. .578 (11-19)	CS Northridge	12/3/10
9. .571 (8-14)	ECU	2/10/08
10. .563 (9-16)	vs. WKU	3/22/08
.563 (9-16)	at Rice*	2/7/02

FREE THROWS MADE

FTM	OPP	DATE
1. 42	vs. East Carolina	12/17/10
2. 40	East Carolina*	1/6/11
3. 36	Oregon State	12/21/86
4. 35	Kansas State	11/16/13
5. 34	Bellhaven+	11/27/93
6. 33	Middle Tennessee*	1/7/16
33	Louisiana Tech*	2/27/15
8. 31	vs. Illinois-Chicago	12/19/96
31	Southeast Louisiana	2/24/90
10.30	East Carolina*	2/22/14
30	UTPB+	11/8/13

FREE THROWS ATTEMPTED

FTA	OPP	DATE
1. 54	East Carolina*	1/6/11
2. 53	Bellhaven+	11/27/93
3. 50	vs. East Carolina	12/17/10
4. 49	Oregon State	12/21/86
5. 47	Kansas State	11/16/13
47	at UCF	12/18/97
7. 45	UTPB+	11/8/13
8. 44	vs. McNeese State	12/20/93
9. 42	NM State*	12/13/97
10.41	at New Mexico State*	11/26/96
41	Simon Fraser+	11/17/89
41	Arizona	2/22/86
41	Wyoming*	2/14/81

FREE THROW PERCENTAGE (MIN. 10 MADE)

FT%	OPP	DATE
1. 100 (16-16)	at Wyoming	1/14/89
100 (10-10)	New Mexico	2/21/85
100 (10-10)	vs. San Diego	11/23/84
4. .962 (25-26)	San Jose State*	3/6/03
5. .941 (16-17)	UC Irvine	11/13/10
.941 (16-17)	at WNMU+	12/7/87
7. .929 (13-14)	at Boise State*	2/22/03
.929 (13-14)	at Colo. St.*	2/5/98
9. .917 (11-12)	at UAB*	1/29/15
.917 (11-12)	at Toledo	12/21/07
Other games of 90 percent or better		
.909 (10-11)	NM State*	11/23/04
.909 (20-22)	Boise State*	1/25/03
.909 (10-11)	Creighton	2/15/92

OFFENSIVE REBOUNDS

ORB	OPP	DATE
1. 32	Abilene Christian+	11/30/93
2. 31	Sul Ross State+	12/1/97
3. 29	Houston Baptist	11/19/11
4. 28	Lamar	11/20/98
28	Bellhaven+	11/27/93
28	at Western Michigan	1/3/93
28	at Oral Roberts	1/27/89
28	at Southern Utah	12/29/88
9. 27	UT-Dallas+	11/20/04
27	vs. Weber State	11/30/91
27	UTPA	1/7/89
27	Eastern New Mexico+	11/28/88
27	at Oral Roberts	2/24/86

TOTAL REBOUNDS

RB	OPP (Opp RB/Margin)	DATE
1. 66	WNMU+ (21/+39)	11/17/16
2. 65	Sul Ross State+ (40/+25)	12/1/97
3. 64	Bellhaven+ (28/+36)	11/27/93
64	UTPA (25/+39)	1/7/89
5. 61	vs. McNeese State (40/+61)	11/24/89
61	New Mexico (NA/NA)	3/3/83
7. 60	Houston Baptist (38/+22)	11/19/11
60	at La.-Lafayette (56/+4)	11/27/05
60	Air Force (35/+25)	2/14/98
60	Azusa Pacific+ (45/+15)	11/22/96
60	Abilene Christian+ (37/+23)	11/30/93
60	Alaska (44/+16)	12/16/89
60	at Colorado State* (NA/NA)	1/10/81

REBOUNDING MARGIN

MAR	OPP (UTEP RB/OPP RB)	DATE
1. +45	WNMU+ (66/21)	11/17/16
2. +39	UTPA (64-25)	1/7/89
3. +36	Bellhaven+ (64-28)	11/27/93
4. +32	Savannah State (50-18)	11/22/08
5. +28	ENMU+ (57-29)	12/2/14
6. +27	Prairie View A&M (58-31)	11/21/99
+27	Texas Southern (50-23)	1/18/94
8. +26	Lamar (54-28)	12/1/11
+26	Texas State (50-24)	12/31/11
+26	UC Irvine (54-28)	11/13/10
+26	Prairie View A&M (58-32)	3/1/96

PERSONAL FOULS

PF	OPP	DATE
1. 37	at US International+	1/29/89
2. 33	Eastern Arizona+	1/10/79
3. 32	at Utah*	3/12/92
32	Alaska	12/16/89
5. 31	vs. Old Dominion	3/11/16
31	at Rice	12/6/91
31	at Southeast Louisiana	1/13/90
31	at McNeese State	1/3/86
9. 30	North Texas*	2/16/17
30	Texas State	11/30/13
30	at TCU	1/12/97
30	at Oregon	1/3/94
30	at Texas State	2/19/90
30	at Lamar	1/4/86
30	New Mexico State	12/3/85
30	at Hardin Simmons+*	2/2/85

ASSISTS

AST	OPP	DATE
1. 33	Savannah State	11/22/08
2. 31	UT-Permian Basin+	12/15/06
3. 29	Texas State	12/17/10
4. 28	Tulsa*	2/7/10
5. 27	at UCF*	2/24/08
27	at UTPA	2/7/89
7. 26	WNMU+	11/17/16
26	at Tulane*	2/1/14
26	Mississippi Valley St.	12/14/08
26	East Carolina*	2/10/08
26	Arkansas-Pine Bluff	12/20/06
26	Montana State	12/22/03
26	at Portland State	2/28/89

FEWEST TURNOVERS COMMITTED

TO	OPP	DATE
1. 0	vs. UTPA	12/3/82
2. 5	Louisiana Tech*	1/30/16
5	East Carolina*	2/10/08
5	vs. UTPA	11/27/81
5. 6	Sam Houston State	12/28/12
6	at Wyoming	2/28/91
7. 7	Old Dominion*	2/25/16
7	New Mexico	12/2/15
7	UT-Permian Basin+	12/15/06
7	Wyoming	1/31/91

MOST TURNOVERS COMMITTED

TO	OPP	DATE
1. 41	at Houston*	11/27/01
2. 40	at Houston	12/18/87
3. 37	vs. Grambling State	12/5/98
4. 35	Western New Mexico+	12/8/88
5. 34	at No. 25 Arizona	11/29/04
34	New Mexico	11/19/99
34	at Texas State	2/7/87
34	at New Mexico State	11/24/84
9. 33	at Tulane*	1/30/11
33	at San Diego State	1/25/96
33	at McNeese State	12/18/95
33	at UC-Irvine	12/2/95
33	at New Mexico State	12/2/93

MOST TURNOVERS FORCED

TO	OPP	DATE
1. 39	UTSA	1/8/90
2. 38	Christian Brothers+	11/27/94
3. 37	UTPA	12/22/96
4. 36	St. Mary's	11/20/06
36	Southern Utah	2/3/90
6. 34	Kansas State	11/16/13
34	Tulsa*	1/18/97
8. 33	Houston Baptist	11/15/15
33	vs. Texas Southern	11/22/12
33	Prairie View A&M	12/12/06

Other games of at least 30

32	East Carolina*	2/22/14
32	TXA&M Kingsville+	12/9/89
32	at UTPA	2/5/87
31	UTPB+	12/14/15
31	NM State	11/18/98
31	at UTPA	2/17/90
31	Lamar	1/4/89
31	NM State	12/12/84
31	vs. Arizona	11/25/83
30	Charlotte*	2/27/16
30	Northern Colorado	11/27/13
30	vs. UAPB	11/30/07
30	Sul Ross State	11/30/98
30	vs. Grambling State	12/05/95
30	NM State	11/26/95
30	TCU	12/12/92
30	Southern Utah	12/29/88
30	UT-Pan American	1/4/88
30	San Diego State	12/29/87
30	Oral Roberts	1/27/89

BLOCKS

BLK	OPP	DATE
1. 13	Memphis*	2/10/07
13	at New Mexico State	12/15/79
3. 12	Houston Baptist	11/30/16
12	UCF	2/19/09
12	Louisiana-Lafayette	12/10/06
6. 11	Texas State	2/18/85
11	vs. Auburn	12/11/81
11	New Mexico State	11/16/81
9. 10	vs. Belmont	12/21/13
10	Alcorn State	11/22/10
10	at SMU*	1/31/08
10	Prairie View A&M	12/12/06
10	Hawaii*	2/19/05
10	UT-Dallas+	11/20/04
10	Rice*	1/10/04
10	Tulsa*	2/15/03
10	at Oral Roberts	2/24/86

STALS

UTEP SINGLE GAME RECORDS CONTINUED

MOST POINTS SCORED (GAME)

PTS	OPP	DATE
1. 115	Colorado State*	2/9/80
2. 107	UT-Permian Basin+ at Fort Bliss*	12/15/06 11/28/76
4. 105	Southern Miss*	2/21/09
105	vs. Texas Lutheran+	12/4/82
6. 103	Savannah State	11/22/08
103	UT-Permian Basin+	12/21/05
8. 100	Sul Ross State+	12/3/76
9. 98	Houston Baptist	11/15/15
9. 97	Tulsa*	1/11/14
10.96	Arkansas-Pine Bluff	12/20/06
96	Florida A&M	1/4/92
96	Oral Roberts	2/15/89
96	Fort Bliss+	11/10/77

All other games scored more than 90 points

94	Charlotte*	2/27/16
94	NM State	11/12/13
94	Texas State	12/17/10
93	vs. East Carolina	12/17/10
93	WNMU+	11/17/16
93	Hardin-Simmons+	11/29/96
93	vs. Abilene Christian+	12/7/79
92	at Cal State Fullerton	12/29/17
92	Northern Arizona	11/22/13
92	vs. Western Kentucky	3/22/08
92	vs. Southern Miss	3/08/12
92	Eastern New Mexico+	11/13/87
92	Hardin-Simmons*+	2/16/85
92	vs. Schreiner College+	11/16/79
91	Howard Payne+	1/24/87
90	Fresno State*	1/11/03

FEWEST POINTS SCORED (GAME)

PTS	OPP	DATE
1. 28	at Tulsa*	1/27/00
2. 31	at Rice*	2/1/07
31	SMU*	1/20/00
31	at Hawaii*	1/7/99
31	at Rice*	1/27/06
32	at TXA&MCC	12/6/01
7. 35	New Mexico	11/30/17
8. 36	Hawaii*	2/3/00
9. 37	New Mexico	11/30/00
37	at Wyoming	1/14/77

MOST POINTS ALLOWED (GAME)

PTS	OPP	DATE
1. 124	at Texas	11/17/78
2. 116	at San Diego State	1/4/84
3. 111	at BYU*	2/2/79
111	at BYU*	1/2/82
5. 109	at Colorado*	2/10/79
6. 108	at No. 6 La. Tech*	2/27/03
108	at BYU*	2/19/81
9. 105	at San Diego State	12/10/82
8. 104	Colorado State*	2/9/80
10.103	at Texas Tech	1/4/83

All other allowed 100+ points in game

102	vs. Georgia Tech	12/20/13
100	at Houston	11/27/01
100	vs. South Carolina	11/28/97
100	at Colorado State	1/13/96
100	at Texas State	2/7/87
100	at Wyoming	1/12/80

FEWEST POINTS ALLOWED (GAME)

PTS	OPP	DATE
1. 19	Fort Bliss+	11/10/77
2. 20	Beaumont+	1/15/75
20	at Beaumont+	12/13/74
4. 25	Fort Bliss+	1/27/75
5. 26	Beaumont+	1/29/75
6. 27	NM State	11/29/11
7. 28	Western New Mexico+	12/9/76
8. 29	Sul Ross State+	11/30/98
9. 30	at Sul Ross State+	1/15/78
10.32	UTPB+	12/14/15
32	at UTSA	1/11/93

All other games fewer than 40 points allowed

33	vs. Samford	12/21/17
33	UTPA	12/22/96
35	Tulsa*	1/31/13
35	vs. CS Northridge	12/12/87
36	UT Dallas+	11/20/05
36	Sull Ross State+	12/30/00
36	UTPA	12/15/90
37	at New Mexico*	3/1/95
37	Bellhaven+	11/27/93
37	UTPA	1/7/89
37	Sul Ross State+	11/29/87
38	at UTPA	2/8/88
38	UCF*	1/29/12
38	Fresno State*	2/12/04
39	Kansas State	11/16/13
39	Hawaii*	1/22/04
39	Central Arizona+	2/19/77

MOST POINTS SCORED (HALF)

PTS	OPP (HALF)	DATE
1. 65	Colorado State* (2nd)	2/9/80
2. 58	at Tulane* (2nd)	2/1/14
58	Southern Miss* (2nd)	1/22/14
58	Savannah State+ (2nd)	11/22/08
58	at Fort Bliss+ (2nd)	11/28/76
6. 56	UTPB+ (1st)	12/15/06
56	Hardin-Simmons+ (2nd)	11/29/96
56	ENMU+ (2nd)	1/13/87
9. 55	NM State (2nd)	11/12/13
55	Southern Miss* (1st)	2/21/09
55	vs. Texas Lutheran+ (1st)	12/4/82
55	Sul Ross State+ (2nd)	12/3/76

MOST POINTS SCORED (FIRST HALF)

PTS	OPP	DATE
1. 56	UTPB+	12/15/06
2. 55	Southern Miss*	2/21/09
55	vs. Texas Lutheran+	12/4/82
4. 54	Arkansas Pine Bluff	12/20/06
5. 52	Tulsa*	1/18/97
6. 51	UTPB+	12/21/05
7. 50	Tulsa*	1/11/14
50	vs. NW State	12/1/02
50	Oral Roberts	2/15/89
50	Colorado State*	2/9/80

MOST POINTS SCORED (SECOND HALF)

PTS	OPP	DATE
1. 65	Colorado State*	2/9/80
2. 58	at Tulane*	2/1/14
58	Southern Miss*	1/22/14
58	Savannah State+	11/22/08
58	at Fort Bliss+	11/28/76
6. 56	Hardin-Simmons+	11/29/96
56	Eastern New Mexico+	1/13/87
8. 55	NM State	11/12/13
55	Sul Ross State+	12/3/76
10.54	East Carolina	1/13/13
54	vs. Western Kentucky	3/22/08

FEWEST POINTS SCORED (HALF)

PTS	OPP (HALF)	DATE
1. 8	at Rice* (1st)	2/1/07
2. 10	at New Mexico* (1st)	2/20/97
3. 11	at Fresno State* (1st)	2/6/03
11	at Tulsa* (1st)	1/27/00
11	vs. FIU (1st)	11/27/98
11	at Texas Tech (1st)	1/4/96
7. 12	at SMU* (1st)	1/29/04
8. 13	New Mexico (2nd)	11/30/17
13	at Rice* (1st)	1/27/06
13	Fresno State* (1st)	2/12/04
13	at Kansas (1st)	12/7/03
13	New Mexico (1st)	11/23/01
13	Hawaii* (1st)	2/3/00
13	at San Diego State* (1st)	2/29/92
13	at Texas State (2nd)	2/19/90
13	Texas State (2nd)	12/13/89
13	at Northern Ariz. (1st)	12/13/85

FEWEST POINTS SCORED (FIRST HALF)

PTS	OPP	DATE
1. 8	at Rice*	2/1/07
2. 10	at New Mexico*	2/20/97
3. 11	at Texas Tech	1/4/96
11	vs. Fla. International	11/27/98
11	at Tulsa*	1/27/00
11	at Fresno State*	2/6/03
7. 12	at SMU*	1/29/04
8. 13	at Northern Arizona	12/13/85
13	at San Diego State*	2/29/92
13	Hawaii*	2/3/00
13	New Mexico	11/23/01
13	at Kansas	12/7/03
13	Fresno State*	2/12/04
13	at Rice*	1/27/06

FEWEST POINTS SCORED (SECOND HALF)

PTS	OPP	DATE
1. 13	New Mexico	11/30/17
13	at Texas State	2/19/90
13	Texas State	12/13/89
4. 14	at BYU*	1/28/99
5. 15	at San Diego State*	1/22/97
6. 16	SMU*	1/20/00
16	Creighton	2/15/92
8. 17	at UCF*	1/15/06
17	at Tulsa*	1/16/03
17	at Tulsa*	1/27/00
17	vs. TCU*	3/1/99
17	at Hawaii*	1/7/99
17	at San Diego State*	1/25/96
17	NM State	12/3/85

MOST POINTS SCORED (QUARTER)

PTS	OPP (QTR)	DATE
1. 36	Houston Baptist (1)	11/15/15
2. 32	WNMU+ (1)	11/17/16
3. 31	FIU* (3)	2/25/17
31	Houston Baptist (3)	11/15/15
5. 30	CSU Bakersfield (4)	11/11/17
30	Marshall* (2)	1/28/17
7. 29	Hampton (1)	11/22/15
8. 28	FIU* (1)	2/25/17
9. 27	Marshall* (4)	1/28/17
27	at WKU* (4)	2/6/16
27	at WKU* (2)	2/6/16
27	UTPB+ (4)	12/14/15

ALL OTHER QUARTERS 26+

26	at Charlotte* (1)	3/4/17
26	UAB* (4)	1/10/16

FEWEST POINTS SCORED (QUARTER)

PTS	OPP (QTR)	DATE
1. 4	vs. Samford (4)	12/21/17
4	New Mexico (3)	11/30/17
3. 5	at Cal State Fullerton (4)	12/29/17
5	at Tulane (2)	12/22/17
5	vs. LSU (3)	11/24/16
6. 6	at Southern Miss* (3)	2/11/17
6	at FIU* (4)	1/12/17
8. 7	at Middle Tennessee* (1)	2/4/17
7	vs. Pitt (4)	12/19/16
7	NM State (3)	12/15/16
7	Northern Arizona (2)	11/11/16
7	at Long Beach State (1)	12/18/15

MOST POINTS ALLOWED (QUARTER)

PTS	OPP (QTR)	DATE
1. 35	at UTSA* (1)	1/21/17
2. 28	at Middle Tennessee* (4)	2/4/17
28	at New Mexico (2)	12/11/16
4. 27	Texas Southern (2)	11/13/16
27	at UTSA* (4)	3/3/16
27	Middle Tennessee* (4)	1/7/15
7. 26	North Texas* (2)	2/16/17
26	at LA Tech* (4)	2/20/16
26	at Marshall* (4)	2/4/16
26	vs. UNLV (4)	12/19/15

FEWEST POINTS ALLOWED (QUARTER)

PTS	OPP (QTR)	DATE
1. 3	Arkansas (1)	11/24/17
3	UTPB+ (2)	12/14/15
3. 4	vs. Samford (1)	12/21/17
4. 4	FAU* (2)	2/23/17
5. 5	vs. Samford (1)	12/21/17
5	CSU Bakersfield (1)	11/11/17
5	WNMU+ (3)	11/17/16
5	FAU* (3)	2/13/16
5	UTPB+ (4)	12/14/15
10.6	Texas A&M-CC (2)	11/18/17
6	WNMU+ (1)	11/17/16

LARGEST LEAD AT HALFTIME

PTS	OPP	DATE
1. 44	UTPB	12/16/06
2. 34	Eastern New Mexico+	12/1/08
34	Sul Ross State+	12/30/00
34	Ft. Bliss+	11/10/77
5. 33	Prairie View A&M	12/20/14
33	Kansas State	11/16/13
7. 30	UTPA	1/4/88
8. 29	Arkansas Pine Bluff	12/20/06
9. 25	Northern Arizona	11/22/13
25	Eastern New Mexico+	12/8/12
25	at Fort Bliss+	11/28/76

All other games led by at least 23

24	Southern Miss*	2/21/09
24	MSVU	12/14/08
23	vs. Belmont	12/21/13
23	Nevada*	2/14/04

LARGEST DEFICIT AT HALFTIME

PTS	OPP	DATE
1. 42	at Rice*	2/1/07
2. 42	vs. Penn State	11/19/83
3. 39	New Mexico	11/23/01
4. 37	at La. Tech*	1/5/02
5. 35	at Arizona State	11/22/85
6. 33	at No. 6 La.Tech*	2/27/03
7. 32	vs. Auburn	12/11/81
8. 31	at Colorado State*	2/11/82
9. 30	vs. Fla. International	11/27/98
30	at Houston	12/18/87
30	at San Diego State	1/4/84

LARGEST MARGIN OF VICTORY

PTS	OPP	DATE
1. 77	Ft. Bliss+	11/10/77
2. 70	at Ft. Bliss+	11/28/76
3. 64	UTPB+	12/15/06
4. 57	Savannah State+	11/22/08
5. 54	UTPB+	12/14/15
6. 49	Northern Arizona	11/22/13
7. 48	Sul Ross State+	12/30/00
8. 46	UTPA	1/2/06
46	at Sul Ross State+	1/15/78
10.45	Kansas State	11/16/13
45	Western New Mexico+	12/9/76

All other wins by 35+ points

44	Houston*	1/23/12
44	Juarez+	12/5/81
43	Eastern New Mexico+	12/1/08
42	UTPB+	12/21/05
42	Montana State	12/22/03
41	FIU*	2/25/17
41	Hardin-Simmons+	11/29/96
41	Florida A&M	1/4/92
41	at Central Arizona+	11/23/80
41	Beaumont+	11/29/75
41	Fort Bliss+	1/27/75
40	Sul Ross State+	11/29/87
39	UT-Dallas+	11/20/04
38	Prairie View A&M	12/20/14
38	Eastern New Mexico+	1/13/87
38	Beaumont+	1/15/75
38	at BeaumontT+	12/13/74
37	Texas State	12/17/10
37	Prairie View A&M	3/1/96
37	at Sul Ross State+	Jan. 1978
36	New Mexico State	11/16/11
36	vs. McMurray+	1/29/81
36	UTPA	1/4/88
35	Houston Baptist	11/15/15
35	Eastern New Mexico+	12/2/14
35	Alcorn State	12/20/10
35	UTPA	12/22/96
35	Bellhaven+	11/27/93
35	New Mexico*	2/1/92

LARGEST MARGIN OF DEFEAT

</



UTEP INDIVIDUAL SINGLE-GAME RECORDS

POINTS			
PTS	NAME	OPP	DATE
1. 40	Holly Russ	UTSA	2/19/91
2. 37	Holly Russ	Baylor	12/17/91
3. 36	Kayla Thornton	vs. Belmont	12/21/13
4. 35	Kiana Taylor	South Carolina	11/28/97
35	Holly Russ	San Diego State*	1/19/91
6. 34	Sparkle Taylor	Rice*	2/18/17
34	Sparkle Taylor	North Texas*	2/16/17
34	Amy Pack	Sul Ross State	12/30/00
34	Lenore Dembs	Hardin-Simmons	2/16/85
34	Be Stoney	BYU*	1/30/80

OTHER 30+ POINT GAMES			
PTS	NAME	OPP	DATE
33	Jareica Hughes	Rice*	3/7/08
33	Amy Pack	San Jose State*	2/5/00
33	Holly Russ	Wichita State	12/1/90
32	Sparkle Taylor	vs. Old Dominion	3/8/16
32	Kayla Thornton	at Memphis*	2/24/13
31	Jenzel Nash	Charlotte*	2/27/16
31	Gloria Estrada	NMSU*	1/29/77
30	Tamara Seda	at Cal State Fullerton	12/29/17
30	Donna Stoney	Henderson	11/21/81

MOST POINTS SCORED (QUARTER)				
PTS	NAME	OPP	QTR	DATE
1. 18	Sparkle Taylor	Northern Arizona	3	11/11/16
2. 14	Cameasha Turner	at WKU*	2	2/6/16
14	Lulu McKinney	UNM	2	12/2/15
4. 13	Sparkle Taylor	North Texas*	3	2/16/17
13	Sparkle Taylor	WKU*	3	1/26/17
13	Sparkle Taylor	UTSA*	3	1/1/17
13	Jenzel Nash	at La Tech*	3	2/20/16
7. 12	Sparkle Taylor	at ODU*	4	3/2/17
12	Lulu McKinney	Charlotte*	OT (2)	2/27/16
12	Starr Breedlove	at FIU*	1	1/23/16
12	Jenzel Nash	Idaho State	4	11/28/15

FIELD GOALS MADE			
FGM	NAME	OPP	DATE
1. 16	Lenore Dembs	Hardin-Simmons	2/16/85
2. 14	Heidi Walker	PVAMU	11/21/99
14	Kiana Taylor	South Carolina	11/28/97
14	Holly Russ	UT-San Antonio	2/19/91
14	Holly Russ	San Diego State	1/19/91
14	Kris Hudson	Texas Lutheran	12/4/82
14	Donna Stoney	Henderson State	11/21/81
14	Gloria Estrada	NMSU	1/29/77
9. 13	Sparkle Taylor	vs. Old Dominion	3/8/16
13	Kayla Thornton	vs. Belmont	12/21/13
13	Lisa Watson	AK-Anchorage	2/26/89
13	Traci Miller	Arkansas State	12/6/86
13	Carolyn Prince	at TXAM Kingsville	12/5/80

FIELD GOALS ATTEMPTED			
FGA	NAME	OPP	DATE
1. 31	Holly Russ	UT-San Antonio	2/19/91
2. 30	Holly Russ	Creighton	2/21/91
3. 29	Jenzel Nash	Charlotte*	2/27/16
29	Holly Russ	Creighton	1/26/91
5. 28	Holly Russ	Utah	2/20/92
28	Holly Russ	Weber State	11/30/91
28	Traci Miller	Arkansas State	12/6/86
28	Lenore Dembs	Hardin-Simmons	2/16/85
9. 27	Holly Russ	San Diego State	2/16/91
27	Holly Russ	San Diego State	1/19/91
27	Holly Russ	Wichita State	12/1/90

FIELD GOAL PERCENTAGE (MINIMUM 7 MADE)			
FG%	NAME	OPP	DATE
1. 100	Ana Valtierra	Fresno State	1/11/03
100	Kiana Taylor	New Mexico	1/24/98
100	Kevia Ford	Wyoming	2/25/95
100	Kevia Ford	Texas Southern	1/18/94
100	Michelle Roper	Wyoming	3/6/93
100	Donetta Yellets	UT-San Antonio	2/5/87
7. 93.3	Donna Stoney	Henderson state	11/21/81
8. 90.0	Jareica Hughes	Tulane	1/12/08
90.0	Janet Brunson	NMSU	1/13/84
10. 88.9	Heidi Walker	UL-Lafayette	11/19/00
88.9	Kiana Taylor	UCF	12/18/97
88.9	T.D. Foster	Southeast Louisiana	2/24/90

THREE-POINTERS MADE			
3PM	NAME	OPP	DATE
1. 7	Katarina Zec	at NM State	12/10/17
7	Dietra Caldwell	Toledo	11/24/09
7	Sviatlana Trukshanina	Tulsa	1/22/09
7	Holly Russ	UT-San Antonio	2/19/91
5. 6	Lulu McKinney	New Mexico	12/2/15
6	Kelli Willingham	at UAB	1/8/14
6	Kayla Thornton	at Memphis	2/24/13
6	Sviatlana Trukshanina	TX Southern	12/13/09
6	Jareica Hughes	Toledo	11/24/09
6	Dietra Caldwell	UCF	2/19/09
6	Dietra Caldwell	SSVU	11/22/08
6	Romie DeAnda	San Jose State	3/6/03
6	Kia Dowell	at Kansas	11/24/02
6	Kimya Murray	SMU	3/5/02
6	Amy Billhymmer	Tulsa	1/17/97
6	Jill Lewis	NMSU	12/16/93
6	Laura Walker	NMSU	12/21/92

THREE-POINTERS ATTEMPTED			
3PA	NAME	OPP	DATE
1. 16	Amy Billhymmer	Illinois-Chicago	12/19/96
2. 15	Laura Walker	NMSU	12/21/92
3. 14	Kimya Murray	SMU	3/5/02
4. 13	Kayla Thornton	at Memphis	2/24/13
13	Amy Billhymmer	TCU	1/12/97
13	Amy Billhymmer	BYU	1/29/94
13	Holly Russ	UT-San Antonio	2/19/91
13	Holly Russ	San Diego State	2/16/91
13	Terri Powell	U.S. International	2/14/88

THREE-POINT PERCENTAGE (MINIMUM 4 MADE)			
3FG%	NAME	OPP	DATE
1. 100.0	Najala Howell	at UCC Riverside	12/30/17
100.0	Timika Williams	vs. Missouri State	12/4/09
100.0	Briana Green	at Tulane	1/18/09
100.0	Shalana Taylor	ULL	12/10/06
100.0	Ana Valtierra	SMU	1/8/06
100.0	Laura Walker	Baylor	12/2/92
7. 85.7	Sviatlana Trukshanina	Texas Southern	12/13/09
8. 83.3	Jareica Hughes	Tulane	1/12/08
83.3	Ana Valtierra	Nevada	2/14/04
83.3	Terri Powell	San Diego State	12/29/87

FREE THROWS MADE			
FTM	NAME	OPP	DATE
1. 17	Gloria Brown	at Southern Miss	1/26/12
2. 14	Amy Pack	San Jose State	1/2/01
14	Holly Russ	UT-Pan American	1/21/91
14	Sonya Howell	Southeast La.	2/24/90
5. 13	Kayla Thornton	East Carolina	2/22/14
13	Amy Pack	Tulsa	1/21/01
13	Amy Pack	Nevada	1/5/01
8. 12	Gloria Brown	East Carolina	1/6/11
12	Noni Wharemate	San Jose State	3/6/03
12	Amy Pack	at UTSA	11/24/00
12	Shani Dinwiddie	Rice	2/15/97
12	Kamequa Chancellor	NMSU	11/26/96
12	Kiana Taylor	BYU	1/29/94
12	Shenita Waddell	Wyoming	3/10/93
12	Holly Russ	Baylor	12/17/91
12	Traci Miller	Oregon State	12/21/86
12	Dawn Coy	Oregon State	12/21/86

FREE THROWS ATTEMPTED			
FTA	NAME	OPP	DATE
1. 19	Gloria Brown	at Southern Miss	1/26/12
19	Amy Pack	San Jose State	1/2/01
19	Kiana Taylor	BYU	1/29/94
4. 18	Marta Dydek	San Jose State	2/17/05
18	Amy Pack	Nevada	1/5/01
18	Sonya Howell	Southeast La.	2/24/90
18	Tonie Greene	Okla. City Univ	1/21/84
8. 17	Amy Pack	San Jose State	1/12/01
17	Marcella Lopez	West Texas State	2/18/85
10. 16	Anete Steinberga	East Carolina	1/6/11
16	Fannie Goodwin	vs. Marshall	3/6/09
16	Amy Pack	Tulsa	1/21/01

FREE THROW PERCENTAGE (MINIMUM 7 MADE)			
FT%	NAME	OPP	DATE
1. 100.0	Najala Howell	vs. East Carolina	12/17/17
100.0	Starr Breedlove	TCU	3/24/16
100.0	Cameasha Turner	Marshall	1/7/16
100.0	Cameasha Turner	Marshall	1/24/15
100.0	Kayla Thornton	vs. Georgia Tech	12/21/13
100.0	Kayla Thornton	Texas State	12/1/12
100.0	Kim Smith	Tulsa	1/27/11
100.0	Gloria Brown	East Carolina	1/6/11
100.0	Gloria Brown	New Mexico	12/20/10
100.0	Jareica Hughes	Rice	3/7/08
100.0	Ana Valtierra	UTPA	1/2/06
100.0	Kasia Krezel	Illinois State	12/18/05
100.0	Vaida Zagurskyte	Alabama State	12/6/03
100.0	Ingrid Goslin	San Jose State	3/6/03
100.0	Christina Mata	TCU	2/21/01
100.0	Christina Mata	NMSU	12/8/00
100.0	Heidi Walker	UL-Lafayette	11/19/00
100.0	Amy Pack	at Nevada	11/26/99
100.0	Kim Daniel	San Diego State	1/9/99
100.0	Kim Daniel	UT-Arlington	12/30/98
100.0	Jill Lewis	Rice	1/16/97
100.0	Kiana Taylor	CS-Northridge	1/16/96
100.0	Cabora Mack	BYU	2/3/96
100.0	Holly Russ	Colorado State	3/1/91
100.0	Lisa Watson	U.S. International	1/29/89
100.0	Traci Miller	Northern Iowa	11/23/85
100.0	Lenore Dembs	New Mexico	2/21/85

REBOUNDS			
RB	NAME	OPP	DATE
1. 20	Kamequa Chancellor	SE Missouri State	11/29/97
20	Kayla Thornton	Tulsa	1/11/14
3. 19	Gloria Brown	at Southern Miss	1/26/12
19	Charnette Phelps	UAB	1/22/06
5. 18	Kayla Thornton	Tulane	2/1/14
18	Chrishauna Parker	vs. UAB	3/14/13
18	Monica Ramirez	Colorado State	1/15/94
18	Marcella Lopez	West Texas State	2/18/85

18	Tonie Greene	Eastern NM	2/17/83
18	Tonie Greene	Central Arizona	2/12/83
ALL OTHERS WITH 17			
17	Tamara Seda	Southern Miss	1/7/17
17	Tamara Seda	CSUB	12/28/16
17	Anete Steinberga	Tulane	3/8/13
17	Gloria Brown	Tulane	2/13/11
17	Dragana Zoric	Houston	12/4/02
17	Dragana Zoric	Houston	12/4/02
17	Da'Techia Specht	Fort Lewis	11/25/97
17	Kevia Ford	New Mexico	3/1/95
17	Charsa Palomere	San Diego State	1/19/91
17	Charsa Palomere	UT-Pan American	12/15/90
17	Charsa Palomere	Loyola Marymount	2/8/90
17	Charsa Palomere	NMSU	11/28/89
17	Vernita Gant	New Mexico	11/29/86

ASSISTS			
AST	NAME	OPP	DATE
1. 13	Jareica Hughes	at SMU	1/15/10
13	Shalana Taylor	at Illinois State	12/19/04
3. 12	Shalana Taylor	SMU	1/27/05
12	Martha Contreras	Southern Colorado	1/31/88
5. 11	Kelli Willingham	CS Northridge	12/3/10
11	Jareica Hughes	Southern Miss	2/21/09
11	Tiffney Touton	at SMU	1/3/02
11	Christina Mata	SJSU	2/5/00
9. 10	Dietra Caldwell	Tulsa	2/7/10
10	Briana Green	UCF	1/24/10
10	Briana Green	SVSU	11/22/08
10	Jareica Hughes	NMSU	12/8/07
10	Jareica Hughes	PVAMU	12/12/06
10	Shalana Taylor	Hawaii	2/19/05
10	Shalana Taylor	Northern Colorado	12/17/04
10	Terri Pedregon	Wyoming	2/25/95
10	Sonya Howell	Wichita State	12/10/88
10	Heather Estey	Loyola-Marymount	1/9/87
10	Heather Estey	Loyola-Marymount	1/29/85
10	Teri Staker	New Mexico	1/14/85

STEALS			
STL	NAME	OPP	DATE
1. 10	Sonya Howell	UT-San Antonio	2/17/90
2. 8	Cameasha Turner	UAB	1/10/16
8	Natasha Lacy	Southern Miss	3/8/08
8	Terri Pedregon	Texas Tech	12/7/94
8	Martha Contreras	UT-San Antonio	2/5/87
8	Chris Hall	Eastern N.M.	1/13/87
7. 7	Starr Breedlove	FAU*	2/13/16
7	Chrishauna Parker	Kansas State	11/16/13
7	Jenzel Nash	at Tulane	1/15/12
7	Martha Lacy	Houston	2/14/08
7	Natasha Lacy	Western Kentucky	3/22/08
7	Jareica Hughes	Tulsa	2/2/08
7	Kimya Murray	Louisiana Tech	1/31/02
7	Terri Pedregon	Christian Brothers	11/27/94
7	Norma Sierra	UT-San Antonio	1/6/89
7	Martha Contreras	Colorado State	1/23/88
7	Kris Hudson	at NMSU	2/19/83

BLOCKS			
BLK	NAME	OPP	DATE
1. 10	Izabela Piekarska	ULL	12/10/06
10	Kim Watts	Auburn	12/11/81
3. 9	Kim Watts	at NM State	12/15/79
8	Gloria Brown	at NM State	11/16/11
7	Fannie Goodwin	UCF	2/19/09
7	Izabela Piekarska	Tulane	11/25/05
6. 6	Gloria Brown	Tulane	11/23/11
6	Gloria Brown	Houston	1/16/11
6	Izabela Piekarska	SMU	1/31/08
6	Izabela Piekarska	Memphis	2/10/07
6	Marta Dydek	at Louisiana Tech	2/24/05
6	Marta Dydek	Fresno State	1/15/05
6	Donetta Yellets	SW Texas State	2/7/87
6	Marcella Lopez	West Texas State	2/18/85
6	Kim Watts	Colorado State	1/30/82
6	Kim Watts	Wyoming	1/29/82
6	Kim Watts	at Utah	1/4/82
6	Kim Watts	Marquette	12/12/81
6	Kim Watts	Juarez	12/5/81

TURNOVERS			
TO	NAME	OPP	DATE
1. 15	Holly Russ	Lamar	1/3/91
2. 13	Selina Thomas	West Texas State	2/4/85
3. 11	Kristi Lattin	Grambling State	12/5/98
11	LaShonda Gray	Grambling State	12/5/98
11	Holly Russ	San Diego State	2/16/91
11	Liz Rayas	Northern Arizona	3/4/86
7. 10	Amy Pack	SMU	1/19/01
10	Terri Pedregon	NMSU	12/2/93
10	Holly Russ	TCU	11/23/91
10	Sonya Howell	Wichita State	12/10/88

UTEP CAREER RECORDS

GAMES PLAYED		
PLAYER	YEARS	GP
1. Kristine Vitola	2009-14	134
2. Kayla Thornton	2010-14	128
3. Kelli Willingham	2010-14	126
4. Sparkle Taylor	2013-17	125
5. Cameasha Turner	2012-16	124
6. Chrishauna Parker	2011-16	122
7. Timika Williams	2006-10	120
8. Izabela Piekarska	2004-08	119
9. Kasia Krezel	2004-08	117
10. Ana Valtierra	2002-07	116

ALL OTHER MINERS 70+ GP		
PLAYER	YEARS	GP
11. Jareica Hughes	2006-10	115
12. Norma Sierra	1988-92	113
13. Terri Pedregon	1991-95	110
14. Anete Steinberga	2009-13	106
15. Amy Billhymmer	1993-97	105
16. Kiana Taylor	1993-96, 97-98	105
17. Kristi Lattin	1995-99	104
18. Cabora Mack	1992-96	104
19. Kris Hudson	1981-85	104
20. Kim Watts	1978-82	104
21. Charmette Phelps	2003-07	103
22. Kim Daniel	1995-99	102
23. Kanequa Chancellor	1994-98	102
24. Jenzel Nash	2011-16	100
25. Jonna Launiainen	2003-07	97
26. Sviatlana Trukshanina	2007-11	96
27. Chris Hall	1985-89	96
28. Briana Green	2008-12	95
29. Irene Gari	2012-15	95
30. Ingrid Goslin	2002-06	93
31. Lulu McKinney	2014-17	92
32. Donna Stoney	1979-82	90
33. Dietra Caldwell	2008-11	89
34. Agata Dobrowolska	2013-16	84
35. Angie McGee	2002-05	84
36. Leslie Kilmer	1987-90	83
37. Monica Ramirez	1991-94	81
38. Shani Dinwiddie	1993-97	79
39. Tamara Seda	2015-	78
40. Michelle Montoya	1995-98	77
41. Jill Lewis	1993-97	77
42. Jackie Preston	1989-93	75
43. DaTechia Sprecht	1995-99	74
44. Shalana Taylor	2004-07	72

GAMES STARTED		
PLAYER	YEARS	GS
1. Kelli Willingham	2010-14	117
2. Jareica Hughes	2006-10	114
3. Kayla Thornton	2010-14	109
4. Timika Williams	2006-10	107
5. Ana Valtierra	2002-07	103
6. Cameasha Turner	2012-16	101
7. Chrishauna Parker	2011-16	97
8. Anete Steinberga	2009-13	87
9. Kasia Krezel	2004-08	82
10. Dietra Caldwell	2008-11	81

ALL OTHER MINERS 50+ GS		
PLAYER	YEARS	GS
11. Kristine Vitola	2009-14	79
12. Terri Pedregon	1991-95	78
13. Kiana Taylor	1993-96, 97-98	77
14. Izabela Piekarska	2004-08	76
15. Christina Mata	1999-01	68
16. Amy Billhymmer	1993-97	60
17. Charmette Phelps	2003-07	57
18. Angie McGee	2002-05	57
19. Michelle Montoya	1995-98	56
20. Kanequa Chancellor	1994-98	55
21. Sparkle Taylor	2013-17	53
22. Shalana Taylor	2004-07	53
23. Norma Sierra	1988-92	53
24. Dragana Zoric	2001-03	52

GAMES WON		
PLAYER	YEARS	GW
1. Chrishauna Parker	2011-16	110
2. Kayla Thornton	2010-14	96
3. Kelli Willingham	2010-14	96
4. Kristine Vitola	2009-14	96
5. Cameasha Turner	2012-16	92
6. Marissa Rodriguez	2010-15	92
7. Jenzel Nash	2011-16	87
8. Jareica Hughes	2006-10	84
9. Timika Williams	2006-10	84
10. Anete Steinberga	2009-13	83

ALL OTHER MINERS 50+ WINS		
PLAYER	YEARS	WINS
11. Briana Green	2008-12	79

FIELD GOALS MADE		
PLAYER	YEARS	FG
1. Kayla Thornton	2010-14	600
2. Sparkle Taylor	2013-17	530
3. Jareica Hughes	2006-10	527
4. Be Stoney	1977-81	516
5. Izabela Piekarska	2004-08	495
6. Timika Williams	2006-10	442
7. Kiana Taylor	1993-96, 97-98	423
8. Kasia Krezel	2004-08	413
9. Anete Steinberga	2009-13	405
10. Holly Russ	1990-92	380

ALL OTHER MINERS 225+ FGM		
PLAYER	YEARS	FG
11. Lisa Watson	1987-89	379
12. Jenzel Nash	2011-16	370
13. Cameasha Turner	2012-16	363
14. Kris Hudson	1981-85	352
15. Kristi Lattin	1995-99	352
16. Kristine Vitola	2009-14	343
17. Kelli Willingham	2010-14	340
18. Chris Hall	1985-89	336
19. Norma Sierra	1988-92	332
20. Amy Billhymmer	1993-97	312
21. Monika Ramirez	1991-94	312
22. Carolyn Prince	1979-81	312
23. Dietra Caldwell	2008-11	306
24. Traci Miller	1985-87	293
25. Dragana Zoric	2001-03	289
26. Gloria Brown	2010-12	281
27. Chrishauna Parker	2011-16	277
28. Kanequa Chancellor	1994-98	276
29. Charmette Phelps	2003-07	271
30. Tamara Seda	2015-	246
31. Briana Green	2008-12	246
32. Donna Stoney	1979-82	245
33. Jill Lewis	1993-97	241
34. Charsa Palamore	1989-91	227

FIELD GOALS ATTEMPTED		
PLAYER	YEARS	FGA
1. Kayla Thornton	2010-14	1,387
2. Be Stoney	1977-81	1,329
3. Jareica Hughes	2006-10	1,291
4. Izabela Piekarska	2004-08	1,170
5. Sparkle Taylor	2013-17	1,145
6. Kasia Krezel	2004-08	1,114
7. Holly Russ	1990-92	1,058
8. Jenzel Nash	2011-16	1,036
9. Kelli Willingham	2010-14	1,002
10. Timika Williams	2006-10	973

ALL OTHER MINERS 800+ FGA		
PLAYER	YEARS	FGA
11. Amy Billhymmer	1993-97	925
12. Lisa Watson	1987-89	909
13. Norma Sierra	1988-92	872
14. Kris Hudson	1995-97	864
15. Kiana Taylor	1993-96, 97-98	859
16. Cameasha Turner	2012-16	857
17. Lenore Dembs	1983-85	827
18. Kristi Lattin	1995-99	824

FIELD GOAL PERCENT (MIN 200 MADE)		
PLAYER	YEARS	FG%
1. Gloria Brown	2010-12	53.7
2. Michelle Roper	1991-93	51.2
3. Kiana Taylor	1993-96, 97-98	49.2
4. Heidi Walker	1999-01	48.4
5. Carolyn Prince	1979-81	48.0
6. Chrishauna Parker	2011-16	47.5
7. Shani Dinwiddie	1993-97	45.9
8. Timika Williams	2006-10	45.4
9. Anete Steinberga	2009-13	45.3
10. Donna Stoney	1979-82	44.0

THREE-POINT FIELD GOALS MADE		
PLAYER	YEARS	3PM
1. Kelli Willingham	2010-14	215
2. Amy Billhymmer	1993-97	208
3. Dietra Caldwell	2008-11	182
4. Jareica Hughes	2006-10	142
5. Kasia Krezel	2004-08	138
6. Sviatlana Trukshanina	2007-11	116
7. Terri Powell	1987-89	109
8. Lulu McKinney	2014-17	107
9. Ana Valtierra	2002-07	97
10. Cameasha Turner	2012-16	91

ALL OTHER MINERS 50+ 3PM		
PLAYER	YEARS	3PM
11. Kayla Thornton	2010-14	89
12. Izabela Piekarska	2004-08	86
13. Kimya Murray	2001-02	80
14. Stacie Telles	2013-15	76
15. Jonna Launiainen	2003-07	75
16. Laura Walker	1992-93, 94-95	73
17. Briana Green	2008-12	72
18. Jill Lewis	1993-97	68
19. Holly Russ	1990-92	63
20. Romie DeAnda	2001-03	61
21. Timika Williams	2006-10	60
22. Angie McGee	2002-05	55
23. Kia Dowell	2002-04	51
24. Kim Daniel	1995-99	50

THREE-POINT FIELD GOALS ATTEMPTED		
PLAYER	YEARS	3PA
1. Amy Billhymmer	1993-97	642
2. Kelli Willingham	2010-14	619
3. Kasia Krezel	2004-08	480
4. Dietra Caldwell	2008-11	456
5. Jareica Hughes	2006-10	430
6. Lulu McKinney	2014-17	379
7. Kayla Thornton	2010-14	312
8. Cameasha Turner	2012-16	306
9. Terri Powell	1987-89	284
10. Sviatlana Trukshanina	2007-11	277

ALL OTHER MINERS 150+ 3PA		
PLAYER	YEARS	3PA
11. Laura Walker	1992-93, 94-95	261
12. Holly Russ	1990-92	240
13. Izabela Piekarska	2004-08	235
14. Jill Lewis	1993-94, 95-96	228
15. Jenzel Nash	2011-16	222
16. Christina Mata	1997-01	222
17. Terri Pedregon	1991-95	220
18. Stacie Telles	2013-15	218
19. Ana Valtierra	2002-07	215
20. Briana Green	2008-12	209
21. Kimya Murray	2001-02	206
22. Angie McGee	2002-05	195
23. Timika Williams	2006-10	193

FREE THROWS MADE		
PLAYER	YEARS	FTM
1. Kayla Thornton	2010-14	390
2. Jareica Hughes	2006-10	359
3. Amy Pack	1999-91	326
4. Kiana Taylor	1993-96, 97-98	286
5. Holly Russ	1990-92	273
6. Sparkle Taylor	2013-17	272
7. Cameasha Turner	2012-16	272
8. Kristi Lattin	1995-99	260
9. Chrishauna Parker	2011-16	257
10. Monica Ramirez	1991-94	253

ALL OTHER MINERS 150+ FTM		
PLAYER	YEARS	FTM
11. Jenzel Nash	2011-16	237
12. Chris Hall	1985-89	232
13. Kanequa Chancellor	1994-98	229
14. Be Stoney	1977-81	217
15. Anete Steinberga	2009-13	211
16. Kasia Krezel	2004-08	208
17. Lisa Watson	1987-89	207
18. Jill Lewis	1993-97	199
19. Gloria Brown	2010-12	194
20. Terri Pedregon	1991-95	191
21. Dawn Coy	1985-87	189
22. Lenore Dembs	1983-85	187
23. Ana Valtierra	2002-07	184
24. Kelli Willingham	2010-14	178
25. Izabela Piekarska	2004-08	175
26. Charmette Phelps	2003-07	169
27. Traci Miller	1985-87	161
28. Tamara Seda	2015-	159
29. Vaida Zagurskyte	2002-04	150

FREE THROWS ATTEMPTED		
PLAYER	YEARS	FTA
1. Kayla Thornton	2010-14	530
2. Jareica Hughes	2006-10	492
3. Kiana Taylor	1993-96, 97-98	467
4. Amy Pack	1999-91	436
5. Chrishauna Parker	2011-16	405
6. Kanequa Chancellor	1994-98	399
7. Holly Russ	1990-92	393
8. Monica Ramirez	1991-94	388
9. Sparkle Taylor	2013-17	380
10. Cameasha Turner	2012-16	373

ALL OTHER MINERS 270+ FTA		
PLAYER	YEARS	FTA
11. Kristi Lattin	1995-99	372
12. Tomietta Greene	1981-84	361
13. Chris Hall	1985-89	343
14. Anete Steinberga	2009-13	341
15. Jenzel Nash	2011-16	334
16. Terri Pedregon	1991-95	291
17. Jill Lewis	1993-94, 95-97	290
18. Kristine Vitola	2009-14	285
19. Lisa Watson	1987-89	279
20. Kasia Krezel	2004-08	270



UTEP CAREER RECORDS CONTINUED

FREE-THROW PERCENTAGE (MIN. 100 MADE)

(must have concluded career)

Player	Years	FT%
1. Gloria Brown	2010-12	80.8
2. Kelli Willingham	2010-14	78.8
Dragana Zoric	2001-03	78.8
4. Ana Valtierra	2002-07	78.3
5. Izabela Piekarska	2004-08	77.8
6. Noni Wharemate	2002-04	77.6
7. Kasia Krezel	2004-08	77.0
8. Kristine Vitola	2009-14	75.4
9. Amy Pack	1999-01	74.8
10. Lisa Watson	1987-89	74.2

SCORING

Player	Years	PTS
1. Kayla Thornton	2010-14	1,679
2. Jareica Hughes	2006-10	1,555
3. Sparkle Taylor	2013-17	1,352
4. Izabela Piekarska	2004-08	1,251
5. Be Stoney	1977-81	1,249
6. Kasia Krezel	2004-08	1,172
7. Kiana Taylor	1993-96, 97-98	1,134
8. Cameasha Turner	2012-16	1,089
9. Timika Williams	2006-10	1,087
10. Kelli Willingham	2010-14	1,073

ALL OTHER MINERS 500+ PTS

11. Holly Russ	1990-92	1,068
12. Anete Steinberga	2009-13	1,024
13. Jenzel Nash	2011-16	1,023
14. Amy Pack	1999-01	968
15. Kristi Lattin	1995-99	966
Lisa Watson	1987-89	966
17. Kristine Vitola	2009-14	941
18. Amy Billhymer	1993-97	931
19. Chris Hall	1985-89	926
20. Dietra Caldwell	2008-11	898
21. Monica Ramirez	1991-94	882
22. Lenore Dembs	1983-85	849
23. Chrishauna Parker	2011-16	821
24. Norma Sierra	1988-92	804
Kanequa Chancellor	1994-98	781
26. Carolyn Prince	1979-81	771
27. Gloria Brown	2010-12	761
28. Kris Hudson	1981-85	756
29. Jill Lewis	1993-94, 95-96	749
30. Traci Miller	1985-87	747
31. Dragana Zoric	2001-03	738
32. Ana Valtierra	2002-07	714
33. Charnette Phelps	2003-07	711
34. Jeanine Brown Warren	1980-82	667
35. Tamara Seda	2015-	651
36. Lulu McKinney	2014-17	650
Briana Green	2008-12	650
38. Terri Pedregon	1991-95	631
39. Terri Powell	1987-89	621
40. Vaida Zagurskyte	2002-04	620
41. Donna Stoney	1979-82	598
42. Angie McGee	2002-05	574
43. Shanie Dinwiddie	1993-97	568
Charsa Palamore	1989-91	559
45. Kim Daniel	1995-99	555
46. Cabora Mack	1992-96	522
47. Michelle Roper	1991-93	521
48. Marcella Lopez	1982-86	512

SCORING AVERAGE (MIN. 700 POINTS)

Player	Years	AVG
1. Holly Russ	1990-92	20.2
2. Amy Pack	1999-01	17.6
3. Lisa Watson	1987-89	17.0
4. Lenore Dembs	1983-85	15.4
5. Be Stoney	1977-81	15.0
6. Traci Miller	1985-87	14.6
7. Dragana Zoric	2001-03	13.9
8. Jareica Hughes	2006-10	13.5
9. Kayla Thornton	2010-14	13.1
10. Gloria Brown	2009-12	12.1

REBOUNDS

Player	Years	RB
1. Kayla Thornton	2010-14	1,032
2. Chrishauna Parker	2011-16	866
3. Kim Watts	1978-82	810
4. Timika Williams	2006-10	794
5. Kiana Taylor	1993-96, 97-98	676
6. Izabela Piekarska	2004-08	651
7. Kristine Vitola	2009-14	617
8. Anete Steinberga	2009-13	582
9. Dee Caine	1981-85	567
10. Be Stoney	1977-81	563

ALL OTHER MINERS 350+ RB

11. Tonietta Greene	1981-84	561
12. Tamara Seda	2015-	557
13. Kanequa Chancellor	1994-98	546
14. Charnette Phelps	2003-07	537
Monica Ramirez	1991-94	531
16. Norma Sierra	1988-92	523
17. Chris Hall	1985-89	522
18. Gloria Brown	2010-12	509
19. Sparkle Taylor	2013-17	503
20. Kristi Lattin	1995-99	496
21. Amy Pack	1999-01	477
22. Ana Valtierra	2002-07	478
23. Jill Lewis	1993-97	462
Cameasha Turner	2012-16	456
25. Jareica Hughes	2006-10	449
26. Charsa Palamore	1989-91	433
27. Lisa Watson	1987-89	427
Angie McGee	2002-05	420
29. Dragana Zoric	2001-03	417
30. Vernita Gant	1985-87	407
31. Jenzel Nash	2011-16	374
32. Cabora Mack	1992-96	370
33. Marcella Lopez	1982-86	366
34. Holly Russ	1990-92	362
35. Terri Pedregon	1991-95	359
36. DaTechia Sprecht	1995-99	354

REBOUNDING AVERAGE (MIN. 400 RB)

Player	Years	AVG
1. Amy Pack	1999-01	8.9
2. Kayla Thornton	2010-14	8.1
Gloria Brown	2010-12	8.1
Vernita Gant	1985-87	8.1
5. Charsa Palamore	1989-91	8.0
6. Dragana Zoric	2001-03	7.9
7. Kim Watts	1978-82	7.8
8. Tonietta Greene	1981-84	7.6
Lisa Watson	1987-89	7.5
10. Tamara Seda	2015-	7.1
Chrishauna Parker	2011-16	7.1
All other Miners with 6.6		
12. Be Stoney	1977-81	6.8
13. Timika Williams	2006-10	6.6
Monica Ramirez	1991-94	6.6

ASSISTS

Player	Years	AST
1. Jareica Hughes	2006-10	599
2. Kelli Willingham	2010-14	373
3. Terri Pedregon	1991-95	326
4. Ana Valtierra	2002-07	324
5. Shalana Taylor	2004-07	313
6. Lulu McKinney	2014-17	308
7. Chrishauna Parker	2011-16	291
8. Dietra Caldwell	2008-11	249
9. Norma Sierra	1988-92	248
10. Jill Lewis	1993-94, 95-96	231

ALL OTHER MINERS 150+ AST

11. Kasia Krezel	2004-08	230
12. Christina Mata	1997-01	211
13. Briana Green	2008-12	206
14. Cameasha Turner	2012-16	196
15. Jenzel Nash	2011-16	194
16. Vaida Zagurskyte	2002-04	182
17. Michelle Montoya	1995-95	179
Sonya Howell	1988-90	178
19. Noni Wharemate	2002-04	177
20. Heather Estey	1985-87	173
Martha Contreras	1986-88	173
22. Lenore Dembs	1983-85	159
23. Stacie Telles	2013-15	158
24. Natasha Lacy	2007-08	156
25. Kayla Thornton	2010-14	152
Jonna Launiainen	2003-07	152

ASSISTS AVERAGE (MIN. 125 ASSISTS)

Player	Years	AVG
1. Jareica Hughes	2006-10	5.2
2. Natasha Lacy	2007-08	4.8
3. Shalana Taylor	2004-07	4.4
4. Starr Breedlove	2015-16	3.8
Vaida Zagurskyte	2002-04	3.8
6. Heather Estey	1985-97	3.7
7. Sonya Howell	1988-90	3.6
8. Martha Contreras	1986-88	3.5
9. Sharon Jackson	1982-84	3.4
10. Noni Wharemate	2002-04	3.3

STEALS

Player	Years	STL
1. Jareica Hughes	2006-10	277
2. Kayla Thornton	2010-14	217
3. Terri Pedregon	1991-95	210
4. Ana Valtierra	2002-07	175
5. Jenzel Nash	2011-16	174
6. Cameasha Turner	2012-16	162
7. Kasia Krezel	2004-08	158
8. Kristi Lattin	1995-99	156
9. Norma Sierra	1988-92	146
10. Jill Lewis	1993-94, 95-96	141

ALL OTHER MINERS 75+ STL

11. Holly Russ	1990-92	134
12. Christina Mata	1997-01	133
Kelli Willingham	2010-14	131
14. Timika Williams	2006-10	129
15. Martha Contreras	1986-88	122
16. Sonya Howell	1988-90	120
Kiana Taylor	1993-96, 97-98	120
18. Chrishauna Parker	2011-16	116
19. Dietra Caldwell	2008-11	115
20. Lenore Dembs	1983-85	108
Natasha Lacy	2007-08	108
22. Starr Breedlove	2015-16	107
23. Chris Hall	1985-89	106
24. Lulu McKinney	2014-17	104
25. Shalana Taylor	2004-07	94
Charnette Phelps	2003-07	94
27. Charsa Palamore	1989-91	92
28. Sparkle Taylor	2013-17	89
Gloria Brown	2010-12	89
30. Angie McGee	2002-05	87
31. Briana Green	2008-12	80
32. Tyeasha Tolliver	1993-95	77
33. Dragana Zoric	2001-03	76
Marcella Lopez	1982-86	76

STEALS AVERAGE (MIN. 100 STEALS)

Player	Years	AVG
1. Natasha Lacy	2007-08	3.4
2. Starr Breedlove	2015-16	3.1
3. Holly Russ	1990-92	2.5
4. Jareica Hughes	2006-10	2.4
Sonya Howell	1988-90	2.4
Martha Contreras	1986-88	2.4
7. Terri Pedregon	1991-95	1.9
Lenore Dembs	1983-85	1.9
9. Jill Lewis	1993-94, 95-96	1.8
10. Ana Valtierra	2002-07	1.5
Kristi Lattin	1995-99	1.5

BLOCKED SHOTS

Player	Years	BLK
1. Kim Watts	1978-82	264
2. Izabela Piekarska	2004-08	252
3. Kristine Vitola	2009-14	190
4. Gloria Brown	2010-12	162
5. Marta Dydek	2003-05	100
6. Tamara Seda	2015-	78
7. Dee Caine	1981-85	68
8. Kayla Thornton	2010-14	67
9. Kiana Taylor	1993-96, 97-98	65
10. Timika Williams	2006-10	63

ALL OTHER MINERS 30+ BLK

11. Donetta Yellets	1985-87	54
12. Daeshianna McCants	2014-15	40
13. Vernita Gant	1985-87	39
Fannie Goodwin	2008-09	38
Charnette Phelps	2003-07	35
16. Ana Valtierra	2002-07	34
17. Kristi Lattin	1995-99	33
18. Ax Bernard	2016-17	32
Claudia Porras	2006-08	32
Kanequa Chancellor	1994-98	32
Leslie Kilmer	1987-90	32

BLOCKS AVERAGE (MIN. 50 BLOCKS)

Player	Years	AVG
1. Gloria Brown	2010-12	2.6
2. Kim Watts	1978-82	2.5
3. Izabela Piekarska	2004-08	2.1
4. Marta Dydek	2003-05	1.7
5. Kristine Vitola	2009-14	1.4
6. Donetta Yellets	1985-87	1.2
7. Tamara Seda	2015-	1.1
8. Dee Caine	1981-85	0.8
9. Daeshianna McCants	2014-16	0.7
10. Kiana Taylor	1993-96, 97-98	0.6

DOUBLE-DOUBLES

Player	Years	DD
1. Kayla Thornton	2010-14	40
2. Amy Pack	1999-01	22
3. Gloria Brown	2010-12	20
Kiana Taylor	1993-96, 97-98	20
5. Tamara Seda	2015-	18
Dragana Zoric	2001-03	18
7. Chrishauna Parker	2011-16	15
8. Kanequa Chancellor	1994-98	13
Monica Ramirez	1991-94	13
10. Lisa Watson	1987-89	12

ALL OTHER MINERS 12+ DOUBLE-DOUBLES

Timika Williams	2006-10	11
Chris Hall	1985-89	11
Charnette Phelps	2003-07	10
Charsa Palamore	1989-91	10
Vernita Gant	1985-87	10

Bold denotes active players

Official Basketball Box Score -- Game Totals -- Final Statistics
CSU Bakersfield vs UTEP
 11/11/17 1 p.m. at El Paso, Texas

CSU Bakersfield 56 - 0-1

#	Player	Total			3-Ptr			Rebounds			PF	TP	A	TO	Blk	Stl	Min
		FG	FGA	FT	FTA	Off	Def	Tot	Off	Def							
15	McHenry, Malaysia	f	2-10	0-4	2-2	2	3	5	4	6	1	1	0	1	0	1	30
21	Lofton, Alize'	f	2-4	0-1	0-1	1	2	3	1	4	0	3	0	0	0	19	
12	Gilbert, Alexxus	g	4-12	1-5	1-1	0	1	1	10	1	1	0	0	0	0	28	
20	Johnson, Jazmine	g	5-8	1-1	4-4	2	1	3	4	15	1	2	0	2	32		
30	Tokuhara, Kate	g	1-2	0-0	0-0	1	1	2	3	2	1	1	0	0	12		
01	Harris, Dajje	f	1-5	1-4	1-2	0	0	0	1	4	0	0	0	0	11		
02	Jones, Dalis	f	0-3	0-2	0-0	0	0	0	2	0	2	0	0	1	13		
24	Williams, Aja	f	4-14	4-10	1-2	1	3	4	3	13	1	3	0	2	26		
32	Barthee, Jazmyne	g	0-2	0-0	0-0	2	4	6	2	0	0	2	2	0	15		
54	Austin, Vanessa	f	1-1	0-0	0-0	2	1	3	3	2	0	1	0	0	14		
Team						2	1	3									
Totals			20-61	7-27	9-12	13	17	30	24	56	7	14	2	6	200		

1st - FG %: 2-10 20.0% 2nd: 8-19 42.1% 3rd: 7-16 43.8% 4th: 3-16 18.8% Game: 20-61 32.8% Deadball Rebounds 1
 3FG %: 1-5 20.0% 3-10 30.0% 1-3 33.3% 2-9 22.2% 0-2 0.0% 0-12 0.0% 0-12 0.0%
 FT %: 0-0 0.0% 3-3 100.0% 3-4 75.0% 3-5 60.0% 9-12 75.0%

UTEP 67 - 1-0

#	Player	Total			3-Ptr			Rebounds			PF	TP	A	TO	Blk	Stl	Min
		FG	FGA	FT	FTA	Off	Def	Tot	Off	Def							
03	ALEXANDER, Jordan	f	3-7	1-1	8-11	0	10	10	2	15	4	1	1	1	28		
42	SEDA, Tamara	f	8-11	0-0	4-5	2	6	8	4	20	3	4	0	0	31		
00	JENKINS, Jordan	g	0-3	0-2	0-0	1	2	3	0	0	3	3	0	0	23		
14	HOWELL, Najala	g	3-8	2-5	2-4	0	3	3	0	10	3	2	0	0	38		
44	ZEC, Katarina	g	2-4	0-1	2-2	1	5	6	4	6	4	5	0	2	39		
10	COOK, Faith	g	4-6	3-5	3-4	0	2	2	4	14	0	5	0	0	25		
23	FORD, Jakeira	f	1-1	0-0	0-0	0	1	1	1	2	0	0	0	0	12		
24	TAPPS, Rachel	f	0-1	0-0	0-0	0	0	0	0	0	0	1	0	0	4		
Team						2	1	3									
Totals			21-41	6-14	19-26	6	30	36	15	67	17	21	1	3	200		

1st - FG %: 5-9 55.6% 2nd: 4-13 30.8% 3rd: 4-9 44.4% 4th: 8-10 80.0% Game: 21-41 51.2% Deadball Rebounds 4
 3FG %: 2-3 66.7% 2-6 33.3% 0-3 0.0% 2-2 100.0% 1-4 25.0% 1-2 50.0% 5-7 71.4%
 FT %: 0-2 0.0% 4-4 100.0% 3-4 75.0% 12-16 75.0% 19-26 73.1%

Officials: Scott Yarbrough, Teresa Turner, Kristen Bell
 Technical fouls: CSU Bakersfield-None. UTEP-None.
 Attendance: 426

Score by periods	1st	2nd	3rd	4th	Total
CSU Bakersfield	5	22	18	11	56
UTEP	12	14	11	30	67

Points	In	Off	2nd	Fast	Bench
CSUB	14	21	13	6	19
UTEPW	30	13	10	2	16

1st FG - CSUB 4th-00:39, UTEPW 4th-01:20.
 Largest lead - CSUB by 8 3rd-03:51, UTEPW by 11 4th-00:05.
 CSUB led for 13:27. UTEPW led for 25:30. Game was tied for 01:03.

Score tied - 3 times.
 Lead changed - 6 times.

Official Basketball Box Score -- Game Totals -- Final Statistics
Arkansas vs UTEP
 11/24/17 2:30 p.m. at El Paso, Texas (Don Haskins Center)

Arkansas 61 - 3-2

#	Player	Total			3-Ptr			Rebounds			PF	TP	A	TO	Blk	Stl	Min
		FG	FGA	FT	FTA	Off	Def	Tot	Off	Def							
10	WILLIAMS, Kiara	f	0-2	0-0	1-2	1	0	1	3	1	0	1	0	1	8		
03	MONK, Malica	g	3-15	1-6	3-3	0	2	2	10	5	1	0	3	36			
14	MASON, Jailyn	g	3-9	2-6	0-0	1	3	4	1	8	2	0	1	24			
21	COSPER, Devin	g	8-17	6-13	0-2	1	4	5	22	0	1	0	4	31			
22	ZIMMERMAN, Bailey	g	1-5	0-3	2-2	2	1	3	0	4	2	0	0	23			
01	NORTHCROSS-BAKER,	f	3-12	0-6	1-1	2	0	2	1	7	3	0	0	16			
04	SWENSON, Keiryin	f	2-7	2-6	0-2	1	1	2	0	6	0	1	0	16			
13	SPANGLER, Grayce	f	0-0	0-0	0-0	0	0	0	0	0	0	0	0	5			
20	STOUT, Sydney	f	0-0	0-0	0-0	0	0	0	0	0	0	0	0	6			
24	THOMAS,Taylah	f	0-2	0-1	1-2	2	2	4	1	1	0	0	0	16			
30	WEAVER, Macy	f	1-1	0-0	0-0	2	1	3	3	2	1	0	4	19			
Team						0	1	1									
Totals			21-70	11-41	8-14	12	15	27	15	61	13	4	4	14	200		

1st - FG %: 0-15 0.0% 2nd: 7-19 36.8% 3rd: 5-17 29.4% 4th: 9-19 47.4% Game: 21-70 30.0% Deadball Rebound 3
 3FG %: 0-9 0.0% 2-10 20.0% 3-9 33.3% 6-13 46.2% 11-41 26.8%
 FT %: 3-6 50.0% 1-1 100.0% 3-6 50.0% 1-1 100.0%

UTEP 64 - 3-0

#	Player	Total			3-Ptr			Rebounds			PF	TP	A	TO	Blk	Stl	Min
		FG	FGA	FT	FTA	Off	Def	Tot	Off	Def							
03	ALEXANDER, Jordan	f	1-3	0-0	1-2	3	6	9	2	3	0	1	0	1	23		
42	SEDA, Tamara	f	9-20	0-0	2-3	2	8	10	3	20	0	3	0	0	31		
00	JENKINS, Jordan	g	1-4	1-3	0-0	1	3	4	1	3	7	5	0	0	22		
14	HOWELL, Najala	g	6-7	3-4	0-0	0	8	8	0	15	4	3	0	0	33		
44	ZEC, Katarina	g	4-6	0-2	2-2	2	4	6	3	10	2	5	0	0	39		
01	PATTERSON, Roeshonda	f	0-2	0-2	0-0	0	1	1	0	0	0	0	0	0	7		
05	PUC, Zuzanna	f	4-7	0-0	0-0	1	3	4	2	8	1	3	0	0	14		
10	COOK, Faith	g	2-4	1-2	0-0	0	2	2	1	5	4	3	0	0	20		
23	FORD, Jakeira	f	0-0	0-0	0-0	0	2	2	1	0	1	0	0	0	9		
24	TAPPS, Rachel	f	0-0	0-0	0-0	0	1	1	0	0	0	0	0	0	2		
Team						2	2	4									
Totals			27-53	5-13	5-7	11	40	51	13	64	19	23	0	1	200		

1st - FG %: 7-16 43.8% 2nd: 9-13 69.2% 3rd: 6-14 42.9% 4th: 5-10 50.0% Game: 27-53 50.9% Deadball Rebound 2
 3FG %: 0-2 0.0% 3-5 60.0% 1-4 25.0% 1-2 50.0% 5-13 38.5%
 FT %: 1-1 100.0% 2-2 100.0% 1-2 50.0% 1-2 50.0%

Officials: Michelle Kramer, Jeremy Hohn, Rick Thorne
 Technical fouls: Arkansas-None. UTEP-None.
 Attendance: 633

Score by periods	1st	2nd	3rd	4th	Total
Arkansas	3	17	16	25	61
UTEP	15	23	14	12	64

Points	In	Off	2nd	Fast	Bench
AR	18	22	18	14	16
UTEPW	38	0	10	2	13

1st FG - AR 4th-00:38, UTEPW 4th-00:08.
 Largest lead - AR None, UTEPW by 20 3rd-09:45.
 AR led for 00:00. UTEPW led for 39:27. Game was tied for 00:33.

Score tied - 0 times.
 Lead changed - 0 times.

Official Basketball Box Score -- Game Totals -- Final Statistics
Texas A&M-Corpus Chr vs UTEP
 11/18/17 7 p.m. at El Paso, Texas (Don Haskins Center)

Texas A&M-Corpus Chr 49 - 2-2

#	Player	Total			3-Ptr			Rebounds			PF	TP	A	TO	Blk	Stl	Min
		FG	FGA	FT	FTA	Off	Def	Tot	Off	Def							
20	Henry,Kre'Ana	f	4-9	0-1	1-2	1	3	4	3	9	1	0	0	0	18		
11	Robinson,Lajaneira	g	1-3	1-1	2-2	0	4	4	3	5	3	2	0	1	24		
15	Mbamalu,Brittany	g	2-8	1-6	0-0	2	1	3	1	5	2	2	0	1	28		
21	Young,Emma	g	0-7	0-2	0-0	2	3	5	1	0	2	1	0	0	23		
22	Booth,Dalesia	g	1-6	0-1	0-0	2	1	3	2	2	0	1	3	25			
01	Wright,Giana	f	1-8	0-1	0-0	1	2	3	4	2	0	0	1	1	21		
10	Jackson,Brianna	f	2-5	0-0	1-2	0	1	1	1	5	1	0	0	0	12		
12	Evans,Dae Dae	f	4-7	2-2	3-4	0	0	0	2	13	1	0	0	1	23		
30	Cottrell,Sydney-Anne	f	0-2	0-1	0-0	0	0	0	2	0	2	0	2	1	7		
34	Matthews,Tiara	f	3-4	0-0	0-0	1	2	3	4	6	1	3	0	0	14		
42	Bush,K'Neshia	f	1-2	0-0	0-0	2	0	2	1	2	0	0	0	0	5		
Team						1	1	2									
Totals			19-61	4-15	7-10	12	18	30	24	49	11	12	4	7	200		

1st - FG %: 5-13 38.5% 2nd: 3-18 16.7% 3rd: 3-14 21.4% 4th: 8-16 50.0% Game: 19-61 31.1% Deadball Rebounds 2
 3FG %: 2-5 40.0% 0-3 0.0% 0-2 0.0% 2-5 40.0% 4-15 26.7% 7-10 70.0%
 FT %: 0-0 0.0% 0-0 0.0% 4-6 66.7% 3-4 75.0%

UTEP 69 - 2-0

#	Player	Total			3-Ptr			Rebounds			PF	TP	A	TO	Blk	Stl	Min
		FG	FGA	FT	FTA	Off	Def	Tot	Off	Def							
03	ALEXANDER, Jordan	f	1-7	0-0	5-6	0											



Official Basketball Box Score -- Game Totals -- Final Statistics
New Mexico vs UTEP
11/30/17 5:30 p.m. at El Paso, Texas (Don Haskins Center)

New Mexico 59 - 8-0

#	Player	Total			3-Ptr			Rebounds			PF	TP	A	TO	Blk	Stl	Min
		FG-FGA	FG-FGA	FT-FTA	FG-FGA	FG-FGA	FT-FTA	Off	Def	Tot							
44	NUNN, Jaisa	c	2-2	0-0	0-2	2	4	6	3	4	1	1	0	3	20		
00	BEYNON, Cherise		4-4	3-3	0-0	0	1	1	4	11	1	2	1	1	12		
02	BUCK, Tesha	g	7-18	5-12	0-0	0	3	3	3	19	0	1	0	3	33		
03	FLYE, N'Dea	g	1-4	0-1	1-3	2	0	2	4	3	6	2	0	2	23		
04	LAPEYROLERIE, Alex	g	1-13	1-12	0-0	1	3	4	3	3	2	0	0	3	37		
10	SMITH, Jasmine		1-2	0-1	0-0	0	0	0	1	2	0	0	0	0	12		
25	BRYAN, Laneah		1-3	1-3	0-0	0	3	3	0	3	2	1	0	0	22		
32	ANDERSON, Antonia		4-5	1-1	0-2	3	3	6	2	9	1	1	1	2	20		
35	WASHINGTON, Madi		2-7	1-3	0-0	0	2	2	3	5	2	2	0	0	21		
	Team					1	3	4									
	Totals		23-58	12-36	1-7	9	22	31	24	59	16	12	2	14	200		

1st - FG %: 8-18 44.4% 2nd: 5-13 38.5% 3rd: 5-15 33.3% 4th: 5-12 41.7% Game: 23-58 39.7% Deadball Rebounds 3
3FG %: 5-10 50.0% 2-9 22.2% 2-10 20.0% 12-36 33.3% 1-7 14.3% 1-5 20.0% 2-8 33.3% 4-21 19.0% 1-1 100.0% 0-2 0.0% 0-4 0.0% 1-7 14.3%

UTEP 35 - 4-1

#	Player	Total			3-Ptr			Rebounds			PF	TP	A	TO	Blk	Stl	Min
		FG-FGA	FG-FGA	FT-FTA	FG-FGA	FG-FGA	FT-FTA	Off	Def	Tot							
03	ALEXANDER, Jordan	f	0-4	0-1	3-4	1	4	5	4	3	0	2	0	1	26		
42	SEDA, Tamara	f	5-12	0-0	1-2	4	9	13	3	11	2	4	0	0	33		
00	JENKINS, Jordan	g	0-1	0-0	0-0	1	0	1	0	0	0	2	0	0	6		
14	HOWELL, Najala	g	0-4	0-2	2-2	1	3	4	1	2	0	3	0	0	33		
44	ZEC, Katarina	g	3-11	1-5	2-2	1	0	1	2	9	1	6	0	0	29		
01	PATTERSON, Roeshonda		2-5	1-1	0-0	0	0	0	2	5	0	0	1	0	15		
05	PUC, Zuzanna		1-3	0-0	3-6	2	6	8	0	5	1	3	1	0	23		
10	COOK, Faith		0-4	0-3	0-0	2	5	7	0	0	3	5	0	1	34		
24	TAPPS, Rachel		0-0	0-0	0-0	0	0	0	0	0	0	0	0	0	1		
	Team					3	2	5									
	Totals		11-44	2-12	11-16	15	29	44	12	35	7	25	2	2	200		

1st - FG %: 3-10 30.0% 2nd: 3-13 23.1% 3rd: 2-9 22.2% 4th: 3-12 25.0% Game: 11-44 25.0% Deadball Rebounds 1
3FG %: 1-3 33.3% 1-4 25.0% 0-1 0.0% 0-4 0.0% 2-12 16.7% 1-16 6.8% FT %: 6-6 100.0% 2-4 50.0% 0-2 0.0% 3-4 75.0% 11-16 68.8%

Officials: Angel Kent, Timothy Resch, Darren McClure
Technical fouls: New Mexico-None. UTEP-None.
Attendance: 1350

Score by periods	1st	2nd	3rd	4th	Total
New Mexico	21	13	12	13	59
UTEP	13	9	4	9	35

Points	In Paint	Off T/O	2nd Chance	Fast Break	Bench
New Mexico	20	22	7	12	19
UTEP	16	7	11	0	10

1st FG - NM 4th-02:08, UTEPW 4th-00:32.
Largest lead - NM by 28 4th-06:23, UTEPW None.
NM led for 39:39, UTEPW led for 00:00. Game was tied for 00:21.

Official Basketball Box Score -- Game Totals -- Final Statistics
UTEP vs Arkansas State
12/5/17 5:00 p.m. at First National Bank Arena

UTEP 73 - 5-2

#	Player	Total			3-Ptr			Rebounds			PF	TP	A	TO	Blk	Stl	Min
		FG-FGA	FG-FGA	FT-FTA	FG-FGA	FG-FGA	FT-FTA	Off	Def	Tot							
03	ALEXANDER, Jordan	f	3-9	0-1	0-0	4	3	7	2	6	2	0	0	1	29		
42	SEDA, Tamara	f	7-9	0-0	5-8	9	7	16	0	19	0	1	1	0	34		
00	JENKINS, Jordan	g	1-4	0-1	2-2	0	4	4	3	4	3	3	0	1	19		
14	HOWELL, Najala	g	6-17	0-5	5-5	2	4	6	2	17	1	5	0	3	33		
44	ZEC, Katarina	g	0-1	0-0	0-0	0	1	1	1	0	1	2	0	0	17		
01	PATTERSON, Roeshonda		6-10	2-5	2-3	1	2	3	3	16	3	2	0	3	24		
05	PUC, Zuzanna		0-1	0-0	2-2	0	0	0	2	0	0	1	0	1	8		
10	COOK, Faith		1-6	1-4	0-0	1	0	1	1	3	1	4	0	1	22		
23	FORD, Jakeira		3-6	0-0	0-0	0	2	2	0	6	0	0	0	0	14		
	Team					1	2	3			2						
	Totals		27-63	3-16	16-20	18	25	43	14	73	11	19	2	9	200		

1st - FG %: 8-15 53.3% 2nd: 10-17 58.8% 3rd: 5-17 29.4% 4th: 4-14 28.6% Game: 27-63 42.9% Deadball Rebounds 3
3FG %: 0-1 0.0% 2-5 40.0% 0-5 0.0% 1-5 20.0% 3-16 18.8% FT %: 5-5 100.0% 1-1 100.0% 1-2 50.0% 3-12 75.0% 16-20 80.0%

Arkansas State 76 - 4-4

#	Player	Total			3-Ptr			Rebounds			PF	TP	A	TO	Blk	Stl	Min
		FG-FGA	FG-FGA	FT-FTA	FG-FGA	FG-FGA	FT-FTA	Off	Def	Tot							
01	Bradshaw, Lauren	f	3-8	0-1	0-1	3	0	3	4	6	0	1	1	0	25		
50	Heckert, Madison	f	1-4	1-3	0-0	1	1	2	3	3	1	0	1	0	24		
00	Ford, Jada	g	8-17	5-13	2-4	1	1	2	2	23	1	2	0	1	26		
03	Wallace, Morgan	g	2-6	0-1	0-0	0	3	3	2	4	2	0	0	0	21		
10	Westbrook, Akasha	g	6-8	1-1	4-7	0	2	2	2	17	3	3	0	4	37		
02	Taylor, Starr		4-4	0-0	0-0	0	3	3	2	8	4	5	0	2	15		
05	Tennison, Payton		3-6	1-4	0-0	0	0	0	2	7	1	0	1	1	14		
11	Peavy, Lycia		0-1	0-1	2-4	0	1	1	0	2	0	0	0	0	14		
20	Hopkins, Tayton		1-1	0-0	0-0	0	0	0	0	2	0	2	0	0	4		
32	Hopkins, Tahlon		0-1	0-1	0-0	0	1	1	1	0	0	0	0	1	6		
33	Obinabo, Ogo		0-0	0-0	0-0	0	0	0	0	0	0	0	0	0	3		
35	Martin, Peyton		1-3	0-0	2-2	2	3	5	3	4	1	1	0	0	11		
	Team					1	4	5			1						
	Totals		29-59	8-25	10-18	8	19	27	21	76	13	15	3	9	200		

1st - FG %: 7-15 46.7% 2nd: 8-21 38.1% 3rd: 8-12 66.7% 4th: 6-11 54.5% Game: 29-59 49.2% Deadball Rebounds 5
3FG %: 1-6 16.7% 2-9 22.2% 4-4 100.0% 1-6 16.7% 8-25 32.0% FT %: 0-0 0.0% 3-3 100.0% 4-6 66.7%

Officials: Pualani Spurlock, Darren McClure, Kylie Galloway
Technical fouls: UTEP-None. Arkansas State-None.
Attendance:

Score by periods	1st	2nd	3rd	4th	Total
UTEP	21	23	11	18	73
Arkansas State	15	21	24	16	76

Points	In Paint	Off T/O	2nd Chance	Fast Break	Bench
UTEP	38	19	19	6	27
Arkansas State	30	17	4	10	23

Last FG - UTEPW 4th-00:15, ASU 4th-02:51.
Largest lead - UTEPW by 11 2nd-06:39, ASU by 9 4th-06:48.
UTEPW led for 26:44, ASU led for 12:09. Game was tied for 01:07.

Official Basketball Box Score -- Game Totals -- Final Statistics
HBU vs UTEP
12/2/17 1 p.m. at El Paso, Texas (Don Haskins Center)

HBU 62 - 2-4

#	Player	Total			3-Ptr			Rebounds			PF	TP	A	TO	Blk	Stl	Min
		FG-FGA	FG-FGA	FT-FTA	FG-FGA	FG-FGA	FT-FTA	Off	Def	Tot							
23	Calver, Lauren	f	2-7	0-1	2-4	1	1	2	3	6	0	3	0	1	25		
25	Gwarda, Natalia	c	2-7	0-0	0-0	1	2	3	4	4	3	1	1	0	21		
05	Taylor, Sophie	g	5-18	2-10	1-1	1	3	4	4	13	3	3	0	1	35		
11	Daub, Britta	g	2-2	1-1	2-4	0	2	2	3	7	1	2	0	0	18		
14	Johnson, Amanda	g	11-19	1-4	3-5	3	3	6	2	26	4	1	0	2	40-		
13	Valdez-Crader, Megan		1-7	0-5	2-4	2	2	4	2	4	1	0	0	2	30		
33	Moore, Brooklyn		1-2	0-0	0-0	1	5	6	1	2	0	0	0	0	23		
45	Kirienko, Veronika		0-1	0-0	0-0	1	0	1	5	0	0	2	0	0	8		
	Team					3	1	4									
	Totals		24-63	4-21	10-18	13	19	32	24	62	12	12	1	6	200		

1st - FG %: 5-13 38.5% 2nd: 8-19 42.1% 3rd: 5-14 35.7% 4th: 6-17 35.3% Game: 24-63 38.1% Deadball Rebounds 3
3FG %: 0-3 0.0% 1-7 14.3% 1-5 20.0% 2-8 33.3% FT %: 1-2 50.0% 3-3 100.0% 3-6 50.0% 3-7 42.9% 10-18 55.6%

UTEP 69 - 5-1

#	Player	Total			3-Ptr			Rebounds			PF	TP	A	TO	Blk	Stl	Min
		FG-FGA	FG-FGA	FT-FTA	FG-FGA	FG-FGA	FT-FTA	Off	Def	Tot							
03	ALEXANDER, Jordan	f	2-3	0-0	0-0	0	5	5	4	4	0	1	1	0	18		
42	SEDA, Tamara	f	5-10	0-0	8-10	7	9	16	1	18	4	2	1	1	39		
00	JENKINS, Jordan	g	2-4	2-4	0-0	0	1	1	2	6	3	0	0	0	24		
14	HOWELL, Najala	g	6-13	4-6	3-6	0	7	7	2	19							

Official Basketball Box Score -- Game Totals -- Final Statistics
JTEP vs East Carolina
12-17-17 1:30 p.m. at Myrtle Beach (SC) Convention Center

UTEP 93 - 6-3

Table with columns: #, Player, Total FG-FGA, 3-Ptr FG-FGA, FT-FTA, Rebounds (Off, Def, Tot), PF, TP, A TO, Blk, Stl, Min. Includes team totals and shooting percentages.

East Carolina 79 - 6-5

Table with columns: #, Player, Total FG-FGA, 3-Ptr FG-FGA, FT-FTA, Rebounds (Off, Def, Tot), PF, TP, A TO, Blk, Stl, Min. Includes team totals and shooting percentages.

Officials: Chaney Meunch, Trey Miles and Daniel Drake

Technical fouls: UTEP-None. East Carolina-None.

Attendance: 672

JAROLINA CHALLENGE at El Paso Miners vs. East Carolina Pirates

Score by periods table with columns: 1st, 2nd, 3rd, 4th, OT, Total. Includes points, in paint, off T/O, 2nd chance, fast break, bench.

Official Basketball Box Score -- Game Totals -- Final Statistics
JTEP vs Tulane
2/22/17 3 p.m. at New Orleans

JTEP 56 - 7-4

Table with columns: #, Player, Total FG-FGA, 3-Ptr FG-FGA, FT-FTA, Rebounds (Off, Def, Tot), PF, TP, A TO, Blk, Stl, Min. Includes team totals and shooting percentages.

Tulane 67 - 8-5

Table with columns: #, Player, Total FG-FGA, 3-Ptr FG-FGA, FT-FTA, Rebounds (Off, Def, Tot), PF, TP, A TO, Blk, Stl, Min. Includes team totals and shooting percentages.

Officials: Denise Brooks, Jules Gallien, Marc Merriert

Technical fouls: UTEP-None. Tulane-None.

Attendance: 706

Score by periods table with columns: 1st, 2nd, 3rd, 4th, OT, Total. Includes points, in paint, off T/O, 2nd chance, fast break, bench.

ast FG - UTEPW 4th-00:52, TLN 4th-00:28. argest lead - UTEPW by 4 1st-07:24, TLN by 18 3rd-09:24. TEPU led for 03:30. TLN led for 34:33. Game was tied for 01:56.

12/21/17 5 p.m. at New Orleans

Samford 33 - 6-7

Table with columns: #, Player, Total FG-FGA, 3-Ptr FG-FGA, FT-FTA, Rebounds (Off, Def, Tot), PF, TP, A TO, Blk, Stl, Min. Includes team totals and shooting percentages.

UTEP 46 - 7-3

Table with columns: #, Player, Total FG-FGA, 3-Ptr FG-FGA, FT-FTA, Rebounds (Off, Def, Tot), PF, TP, A TO, Blk, Stl, Min. Includes team totals and shooting percentages.

Officials: Isaac Johnson, Rob Fessler, Jennifer White

Technical fouls: Samford-TEAM, UTEP-None.

Attendance: 672

Technical foul, Samford bench, 9:36 4th

Score by periods table with columns: 1st, 2nd, 3rd, 4th, Total. Includes points, in paint, off T/O, 2nd chance, fast break, bench.

Last FG - SAM 4th-01:42, UTEPW 4th-04:09. Largest lead - SAM None, UTEPW by 26 4th-09:36. SAM led for 00:00. UTEPW led for 33:34. Game was tied for 06:23.

Official Basketball Box Score -- Game Totals -- Final Statistics
UTEP vs Cal State Fullerton
12/29/17 7:00 pm PT at Titan Gym

UTEP 92 - 8-4

Table with columns: #, Player, Total FG-FGA, 3-Ptr FG-FGA, FT-FTA, Rebounds (Off, Def, Tot), PF, TP, A TO, Blk, Stl, Min. Includes team totals and shooting percentages.

Cal State Fullerton 91 - 5-8

Table with columns: #, Player, Total FG-FGA, 3-Ptr FG-FGA, FT-FTA, Rebounds (Off, Def, Tot), PF, TP, A TO, Blk, Stl, Min. Includes team totals and shooting percentages.

Officials: Janetta Graham, Crystal Hogan, Brad Schmidt

Technical fouls: UTEP-None. Cal State Fullerton-None.

Attendance: 137

Score by periods table with columns: 1st, 2nd, 3rd, 4th, OT, Total. Includes points, in paint, off T/O, 2nd chance, fast break, bench.

Last FG - UTEPW 02:00:15, CSF 02:00:31. Largest lead - UTEPW by 18 2nd-01:29, CSF by 2 4th-02:33. UTEPW led for 41:59. CSF led for 02:11. Game was tied for 05:06.



Official Basketball Box Score -- Game Totals -- Final Statistics
 JTEP vs UC Riverside
 12/30/17 5:00 pm at Riverside, CA

UTEP 73 - 9-4

#	Player	Total			3-Ptr			Rebounds			PF	TP	A	TO	Blk	Stl	Min
		FG-FGA	FG-FGA	FT-FTA	FG-FGA	FG-FGA	FT-FTA	Off	Def	Tot							
42	SEDA, Tamara	f	10-12	0-0	1-2	5	9	14	2	21	1	2	0	2	34		
00	JENKINS, Jordan	g	0-5	0-5	0-0	0	1	1	1	0	2	0	0	0	14		
03	ALEXANDER, Jordan	g	1-6	0-0	0-0	2	3	5	3	2	3	0	0	1	19		
14	HOWELL, Najala	g	9-17	5-5	0-0	5	4	9	0	23	2	1	0	0	33		
44	ZEC, Katarina	g	0-6	0-1	0-0	0	0	0	1	0	3	2	0	0	28		
01	PATTERSON, Roeshonda	f	2-7	1-5	0-0	1	1	2	0	5	1	1	0	1	12		
05	PUC, Zuzanna	f	5-8	0-0	5-7	2	4	6	1	15	2	2	0	3	25		
10	COOK, Faith	f	2-4	2-4	1-2	0	0	0	4	7	6	5	0	0	30		
24	TAPPS, Rachel	f	0-1	0-0	0-0	0	0	0	0	0	0	0	0	0	5		
Team						2	2	4			1						
Totals			29-66	8-20	7-11	17	24	41	12	73	20	14	0	7	200		

1st - FG %:	10-20	50.0%	2nd: 10-16	62.5%	3rd: 4-11	36.4%	4th: 5-19	26.3%	Game: 29-66	43.9%	Deadball
3FG %:	5-11	45.5%	1-1	100.0%	1-3	33.3%	1-5	20.0%	8-20	40.0%	Rebounds
FT %:	0-0	0.0%	3-3	100.0%	1-2	50.0%	3-6	50.0%	7-11	63.6%	2,1

UC Riverside 62 - 3-11

#	Player	Total			3-Ptr			Rebounds			PF	TP	A	TO	Blk	Stl	Min
		FG-FGA	FG-FGA	FT-FTA	FG-FGA	FG-FGA	FT-FTA	Off	Def	Tot							
02	Ewodo, Marina	f	4-8	0-3	0-0	6	2	8	4	8	2	0	0	1	36		
20	Kergret, Malou De	f	0-6	0-3	0-0	0	1	1	0	0	1	2	0	0	22		
22	Lewis, Skyler	f	3-6	0-0	1-2	1	6	7	3	7	5	2	5	0	34		
04	Curry, Michelle	g	8-17	0-0	5-6	3	6	9	2	21	2	5	0	1	32		
12	Holt, Lauren	g	4-9	0-4	2-2	0	1	1	2	10	2	3	0	1	33		
03	Eaton, Tianna	f	1-3	0-1	0-0	2	0	2	1	2	0	2	2	1	7		
10	Cooper, Kellanei	f	2-9	0-5	0-0	1	2	3	0	4	2	0	0	2	18		
14	Otto, Jannon	f	5-7	0-0	0-0	0	2	2	4	10	2	1	1	0	15		
43	Clay, Jalyn	f	0-0	0-0	0-0	0	0	0	0	0	0	0	0	0	3		
Team						1	2	3									
Totals			27-65	0-16	8-10	14	22	36	16	62	16	15	8	6	200		

1st - FG %:	4-13	30.8%	2nd: 9-18	50.0%	3rd: 7-17	41.2%	4th: 7-17	41.2%	Game: 27-65	41.5%	Deadball
3FG %:	0-3	0.0%	0-5	0.0%	0-3	0.0%	0-5	0.0%	0-16	0.0%	Rebounds
FT %:	1-1	100.0%	2-3	66.7%	1-2	50.0%	4-4	100.0%	8-10	80.0%	1

Officials: Rick Thorne, Esther Hsu, Sean Martin
 Technical fouls: UTEP-None. UC Riverside-None.
 Attendance: 311

Score by periods	1st	2nd	3rd	4th	Total
UTEP	25	24	10	14	73
UC Riverside	9	20	15	18	62

Points	In	Off	2nd	Fast	Bench
UTEPW	34	15	11	2	27
UCR	32	17	11	2	16

.ast FG - UTEPW 4th-01:10, UCR 4th-02:25.
 .argest lead - UTEPW by 23 3rd-08:58, UCR None.
 JTEPW led for 38:56. UCR led for 00:00. Game was tied for 00:50.

Score tied - 0 times.
 Lead changed - 0 times.

2017-18 UTEP OVERALL STATS

2017-18 UTEP Basketball UTEP Combined Team Statistics (Dec. 30, 2017) All games

RECORD:	OVERALL	HOME	AWAY	NEUTRAL
ALL GAMES	9-4	5-1	2-3	2-0
CONFERENCE	0-0	0-0	0-0	0-0
NON-CONFERENCE	9-4	5-1	2-3	2-0

#	Player	gp-gs	min	Total		3-Point		F-Throw		Rebounds				pf	dq	a	to	blk	stl	pts	avg		
				fg-fga	fg%	3fg-fga	3fg%	ft-fa	ft%	off	def	tot	avg										
42	SEDA, Tamara	13-13	414	31.8	77-139	.554	0-1	.000	50-77	.649	57	80	137	10.5	32	1	19	39	8	5	204	15.7	
14	HOWELL, Najala	13-13	427	32.8	57-132	.432	21-46	.457	40-48	.833	19	67	86	6.6	18	0	28	39	1	9	175	13.5	
44	ZEC, Katarina	13-13	386	29.7	42-107	.393	15-39	.385	23-25	.920	17	27	44	3.4	34	0	17	29	1	5	122	9.4	
03	ALEXANDER, Jordan	13-13	359	27.6	29-84	.345	2-8	.250	36-48	.750	24	66	90	6.9	33	1	18	23	4	10	96	7.4	
05	PUC, Zuzanna	11-0	224	20.4	30-60	.500	0-0	.000	19-27	.704	13	34	47	4.3	22	0	10	28	4	6	79	7.2	
01	PATTERSON, Roesho	12-0	196	16.3	27-61	.443	13-33	.394	8-10	.800	5	20	25	2.1	24	0	15	19	3	8	75	6.3	
10	COOK, Faith	13-0	357	27.5	20-57	.351	15-40	.375	18-26	.692	4	26	30	2.3	24	0	36	43	0	4	73	5.6	
23	x-FORD, Jakeira	6-0	62	10.3	9-13	.692	0-0	.000	0-0	.000	2	9	11	1.8	2	0	3	1	0	0	18	3.0	
00	JENKINS, Jordan	13-13	218	16.8	9-33	.273	6-23	.261	4-6	.667	4	20	24	1.8	11	0	32	24	0	4	28	2.2	
24	TAPPS, Rachel	9-0	32	3.6	0-4	.000	0-1	.000	0-2	.000	0	5	5	0.6	2	0	3	2	0	0	0	0.0	
Team											19	32	51										
Total.....		13	2675	300-690		.435	72-191	.377	198-269	.736	164	386	550	42.3	202	2	181	253	21	51	870	66.9	
Opponents.....		13	2675	312-813		.384	91-323	.282	111-176	.631	145	258	403	31.0	285	-	173	161	48	106	826	63.5	

x-Inactive player

TEAM STATISTICS	UTEPW	OPP	Date	Opponent	Score	Att.
SCORING	870	826	11/11/17	CSU BAKERSFIELD	w 67-56	426
Points per game	66.9	63.5	11/18/17	TEXAS A&M-CORPUS CHR	w 69-49	536
Scoring margin	+3.4	-	11/24/17	ARKANSAS	w 64-61	633
FIELD GOALS-ATT	300-690	312-813	11/25/17	TEXAS SOUTHERN	w 65-55	709
Field goal pct	.435	.384	11/30/17	NEW MEXICO	L 35-59	1350
3 POINT FG-ATT	72-191	91-323	12/2/17	HBU	w 69-62	412
3-point FG pct	.377	.282	12/5/17	at Arkansas State	L 73-76	2116
3-pt FG made per game	5.5	7.0	12/10/17	at NM State	L 68-76	886
FREE THROWS-ATT	198-269	111-176	12-17-17	vs East Carolina	Wot 93-79	0
Free throw pct	.736	.631	12/21/17	vs Samford	w 46-33	672
F-Throws made per game	15.2	8.5	12/22/17	at Tulane	L 56-67	706
REBOUNDS	550	403	12/29/17	at Cal State Fullerton	Wo2 92-91	137
Rebounds per game	42.3	31.0	12/30/17	at UC Riverside	w 73-62	311
Rebounding margin	+11.3	-				
ASSISTS	181	173	* - Conference game			
Assists per game	13.9	13.3				
TURNOVERS	253	161				
Turnovers per game	19.5	12.4				
Turnover margin	-7.1	-				
Assist/turnover ratio	0.7	1.1				
STEALS	51	106				
Steals per game	3.9	8.2				
BLOCKS	21	48				
Blocks per game	1.6	3.7				
ATTENDANCE	4066	4828				
Home games-Avg/Game	6-678	5-831				
Neutral site-Avg/Game	-	2-336				

Score by Periods	1st	2nd	3rd	4th	OT	OT2	Totals
UTEP	220	210	185	213	29	13	870
Opponents	163	200	205	231	15	12	826



UTEP RADIO AND TV SHEET



Head Coach
Kevin Baker
 at UTEP: 9-4 (1st yr)
 Overall: 353-135 (16th yr)
 College: 131-34 (6th yr)

#00 Jordan Jenkins
 5-3, Fr.-HS
 2.2 PPG
 1.8 RPG
 2.5 APG
 0.0 BPG
 0.3 SPG
 16.8 MPG

#1 Roeshonda Patterson
 5-8, So.-1L
 6.3 PPG
 2.1 RPG
 1.3 APG
 0.3 BPG
 0.7 SPG
 16.3 MPG

#3 Jordan Alexander
 5-11, Jr.-TR
 7.4 PPG
 6.9 RPG
 1.4 APG
 0.3 BPG
 0.8 SPG
 27.6 MPG

#4 Neidy Ocuane!^
 5-6, Jr.-TR
 0.0 PPG
 0.0 RPG
 0.0 APG
 0.0 BPG
 0.0 SPG
 00.0 MPG



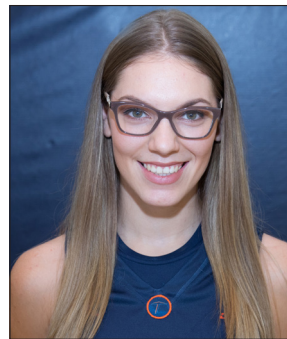
#5 Zuzanna Puc
 6-2, So.-1L
 7.2 PPG
 4.3 RPG
 0.9 APG
 0.4 BPG
 0.5 SPG
 20.4 MPG

#10 Faith Cook
 5-3, So.-1L
 5.6 PPG
 2.3 RPG
 2.8 APG
 0.0 BPG
 0.3 SPG
 27.5 MPG

#12 Ariona Gill!^
 5-11, Jr.-TR
 0.0 PPG
 0.0 RPG
 0.0 APG
 0.0 BPG
 0.0 SPG
 00.0 MPG

#14 Najala Howell
 5-10, Jr.-2L
 13.5 PPG
 6.6 RPG
 2.2 APG
 0.1 BPG
 0.7 SPG
 32.8 MPG

#24 Rachel Tapps
 5-8, So.-1L
 0.0 PPG
 0.6 RPG
 0.3 APG
 0.0 BPG
 0.0 SPG
 3.6 MPG



#42 Tamara Seda
 6-4, R-Sr.-2L
 15.7 PPG
 10.5 RPG
 1.5 APG
 0.6 BPG
 0.4 SPG
 31.8 MPG

#44 Katarina Zec
 5-11, So.-1L
 9.4 PPG
 3.4 RPG
 1.3 APG
 0.1 BPG
 0.4 SPG
 29.7 MPG

^DNP Last Game | ! Denotes redshirting season