

UTEP COACHING STAFF



2008-09 MINER WOMEN



KEITHA ADAMS

Head Coach
Eighth Season
BS Southwestern College '89
Oxford, Kansas



Under the guidance of Keitha Adams, the UTEP women's basketball program has soared to heights that even the most ardent Miner fan could possibly imagine.

UTEP has evolved into a championship caliber program, and is firmly entrenched on the regional and national landscapes.

The Miners have rolled to back-to-back 20-win seasons—the first such in the 35-year history of the program— including the institution-tying (men's or women's basketball) 28 victories during the historic 2007-08 campaign.

At 50-12 UTEP is one of only 29 squads nationally, and one of a mere 12 non-BCS teams, to have 50 or more victories since 2006. To truly appreciate how impressive it is to have achieved that feat at UTEP, consider that prior to Adams' arrival the highest triumph total for a two-year period is 29. That number was nearly matched by the 2007-08 team alone.

The Miners had a season for the ages last year, with competing at their first NCAA tournament, claiming the program's initial and just the second league title ever by a women's squad at UTEP and finishing an unprecedented 16-0 in Conference USA play among the accomplishments.

Before Adams patrolled the sidelines, the Miners had never won more than 20 games in a campaign, let alone compete in a postseason tournament (no WNIT or NCAA appearances pre Adams). In 2007-08, not only did UTEP achieve both of those feats, but it also made some noise in the "Big Dance" by throttling Western Kentucky, 92-60, in the first round before bowing out to eventual national runner-up Stanford.

UTEP burst onto the national scene, earning placement among the top 25 in the ESPN/USA Today Coaches poll and the Associated Press poll. It climbed as high as 18th, and concluded the campaign ranked by each of the rating systems.

It was a season of streaks, with the Miners winning a school and C-USA record 23 straight games from Dec. 8-March 8. When the run was finally halted in the league championship title game, it stood as the longest active stretch in the country.

Adams was named the C-USA coach of the year and was one of eight finalists for the WBCA's National Coach of the Year award. Jareica Hughes was named the C-USA Player of the Year, becoming the first Miner and just the second sophomore in league history to grab the honor. Natasha Lacy was selected as the league's Newcomer of the Year, and joined Izabela Piekarska on the all-conference second team to afford UTEP a program-best three honorees.

The efforts of the Orange and Blue have not gone unnoticed in the Sun City, as Adams has renewed interest in the once dormant program. The Miners have paced C-USA in attendance on consecutive campaigns, including a school-record average of 3,109 this past year.

That effort placed UTEP 39th nationally. Aiding that figure was a single-season program best five crowds which surpassed the 5,000 barrier, including a school-record 7,255 against SMU on Feb. 28.



**2008 WBCA
National Coach
of the Year Finalist**

BASKETBALL MEDIA GUIDE

UTEP has rewarded the fans in that time frame, posting a sparkling record of 30-2 the past two years at the Don. Overall, UTEP has claimed 24 of its past 25 games in the Sun City. The Miners were 14-0 in El Paso in 2007-08, marking the first unbeaten slate at home in school history.

There was a fitting conclusion to the season, with Lacy and Piekarska becoming the first players in school history to be selected in the WNBA draft. Lacy was tabbed by Detroit in the second round with the 28th overall pick while Piekarska was chosen by Sacramento during the third round at the 43rd overall spot.

The Miners had a terrific 2006-07 campaign, setting then school standards for wins (22) and fewest losses (eight).

There were early indications that the campaign would be special, as the Miners burst out of the gates at 11-1. The momentum carried into conference play, where UTEP -- which was tabbed to finish 10th out of 12 teams in the pre-season coaches' poll -- exceeded expectations by winning a then school record-matching 10 league games en route to tying for fourth place. Included among those triumphs were the first three conference tilts, marking the Miners' first 3-0 start in league play.

UTEP racked up a school-standard breaking 16 home victories, which included a then program best 13 consecutive wins at one point. They also took care of business on the road, securing five wins to equal the then second-most in school history.

The Miners turned some heads nationally by receiving votes in the Associate Press top-25 poll for the first time in school history. Helping realize that was UTEP stringing together 10 straight triumphs, also at the time a program first.

The squad was very good at both ends of the court, with UTEP setting school records to that point for assists (510), points scored (2,063) and steals (343) while checking in second for blocked shots (134), three-pointers made (168) and turnovers forced (628).

The Miners paced C-USA in four statistical categories, while ranking second in six others. Nationally, UTEP finished in the top 70 in 10 departments, including ranking 10th in assists per game and 16th in steals per game.

Two of Adams' players received postseason accolades, as Hughes reeled in a bevy of awards from the league office. She was named both the C-USA Freshman and Newcomer of the Year, becoming just the third player in UTEP history to be so honored. Hughes was voted onto the five-member all-league defensive and rookie teams, as well as tabbed to the all conference third team.

Fellow classmate Timika Williams joined Hughes on the league's all-freshman team. Her selection made UTEP the only member institution to have multiple players on the squad.

Adams' team registered 14 wins during the 2005-06 season, the then fifth-highest total in program annals. The squad was once again strong in the Don, racking up nine wins compared to five losses.

Her 2004-05 team was one of the youngest in the conference, with underclassmen accounting for nine of the 14 players. Nonetheless, UTEP earned 12 victories and won nine games at home for the second consecutive season.

In Adams' third year, the Miners had the tallest team in school history and won 16 games, 10 Western Athletic Conference games and finished 32nd in the nation in scoring defense at 58.1 ppg. Additionally, UTEP held a school-record six opponents under 45 points.

In 2002-03, she had a second team All-WAC selection and two players chosen for the WAC All-Newcomer team. The Miners improved on their victory total by seven and set the then school record with 418 assists.

Head coach Keitha Adams receives tremendous support from her parents.



ADAMS' YEAR-BY-YEAR COACHING RECORDS

Independence CC				UTEP			
Year	Position	Record	Postseason	Year	Position	Record	Conference
1994-95	Assistant Coach	25-11	NJCAA Nationals	2001-02	Head Coach	3-25	1-17 (10th)
1995-96	Assistant Coach	34-4	NJCAA Finalist	2002-03	Head Coach	10-19	5-13 (9th)
1996-97	Head Coach	22-11	NJCAA Regionals	2003-04	Head Coach	16-13	10-8 (4th)
1997-98	Head Coach	24-9	NJCAA Regionals	2004-05	Head Coach	12-17	7-11 (t-7th)
1998-99	Head Coach	22-10	NJCAA Regionals	2005-06	Head Coach	14-15	6-10 (10th)
1999-00	Head Coach	28-5	NJCAA Regionals	2006-07	Head Coach	22-8	10-6 (t4th)
2000-01	Head Coach	31-2	NJCAA Regionals	2007-08	Head Coach	28-4	16-0 (1st)
Assistant Coach Totals		59-15 (.797)		Seven-Year Totals		105-101 (.510)	55-65 (.458)
Head Coach Totals		127-37 (.774)					

2008-09 MINER WOMEN

Head coach Keitha Adams and Hall of Fame Coach Don Haskins



"I feel very honored and fortunate that I was able to get to know him. It was great to talk basketball with him, he just had so much knowledge. He was a part of our team last year. He would always call me after our games and gave me great advice. I will miss him so much, especially the post-game talks."

In her first year at UTEP, Adams mentored second team all-league and all-newcomer Kimya Murray.

Adams came to UTEP after several successful years as head and assistant coach at Independence Community College in Independence, Kan.

At Independence C.C., Adams was the head coach for five seasons and guided the Lady Pirates to a 127-37 record, including back-to-back Kansas Jayhawk Community College Conference titles in 1999-00 and 2000-01. Her teams also combined for a 35-1 conference record over her final two seasons.

In 2000-01, she paced the Lady Pirates to a 31-2 mark, the conference title and was named the KJCCC Eastern Division Coach of the Year. Her team also led the nation, averaging 94.0 points per game, and she coached the conference's freshman of the year. Independence ended the regular season rated fifth in the NJCAA poll.

During the 1999-2000 season Adams led Independence C.C. to a 28-5 record and her first conference crown. She also took her Lady Pirate squad deep into the Regional Tournament.

In her first three seasons as head coach, Adams' teams won 22, 24 and 22 games respectively and advanced to the Regional Tournament in each of those seasons.

A tireless recruiter, Adams has driven throughout the United States and made several international connections to find her talent. While at Independence, Adams honed her athletes into all-conference, All-American and Academic All-American caliber players. Included in the bunch were 22 all-KJCCC selections and five NJCAA All-Americans.

Adams also had an impressive track record of sending her student-athletes on to play at four-year schools. Fifteen of her former players went on to play NCAA Division I basketball, including two in the SEC, two in the Big 12, one in the ACC, three in the WAC and one in Conference USA.

Svetlana Volnaya, who played at Virginia, was chosen in the third round by the Detroit Shock in the 2001 WNBA Draft. Lacy and Piekarska were 2008 WNBA draft picks.

Success on the basketball court is only one part of Adams' coaching philosophy. More importantly, Adams stresses academics and brought an impressive track record in the classroom to UTEP. While at Independence, four of her teams had cumulative grade point averages of 3.20 or better. The 1995-96 team was the NJCAA Academic Team of the Year after posting a 3.59 average. In 1996-97, her team was second in the nation with a team average of 3.29, while her team was fourth in 1997-98 (3.26).

Since coming to UTEP, her players have earned mention to the conference's Academic Honor Roll 29 times.

Adams was an assistant coach at Independence C.C. for two seasons (1994-96) prior to being elevated to head coach. As the Lady Pirates' top assistant and recruiting coordinator, she helped the team fashion a 34-4 mark in 1995-96 and finish as the national runner-up at the NJCAA Tournament, limiting opponents to 57.4 points per game, a school record.

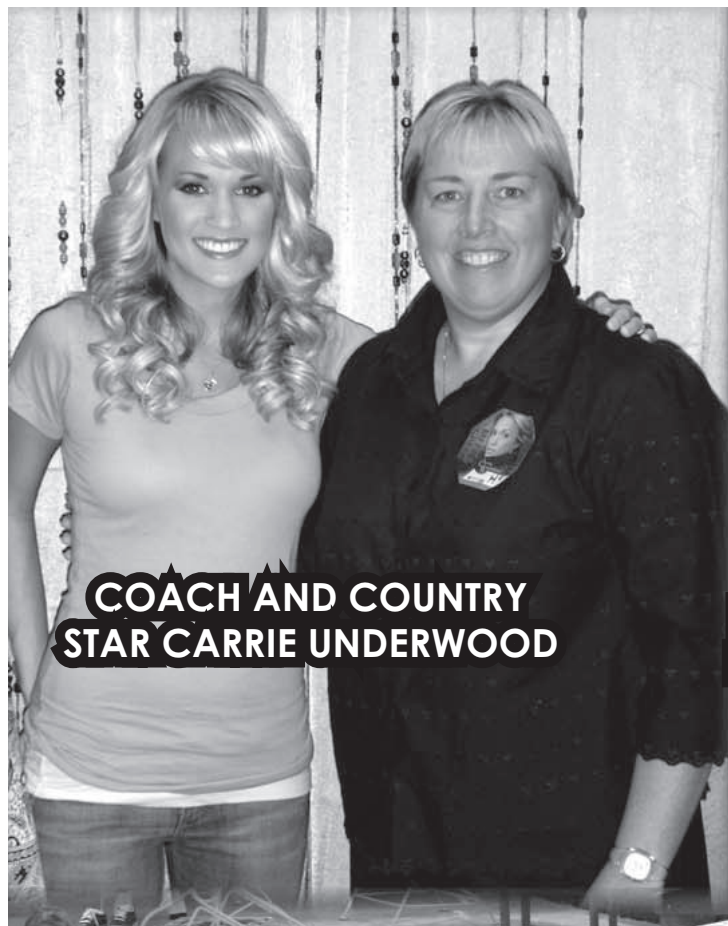
She also served as men's and women's tennis coach from 1994-95 at Independence.

Prior to joining the collegiate ranks, Adams coached basketball, softball, volleyball and track and field at Winfield High School in Winfield, Kan.

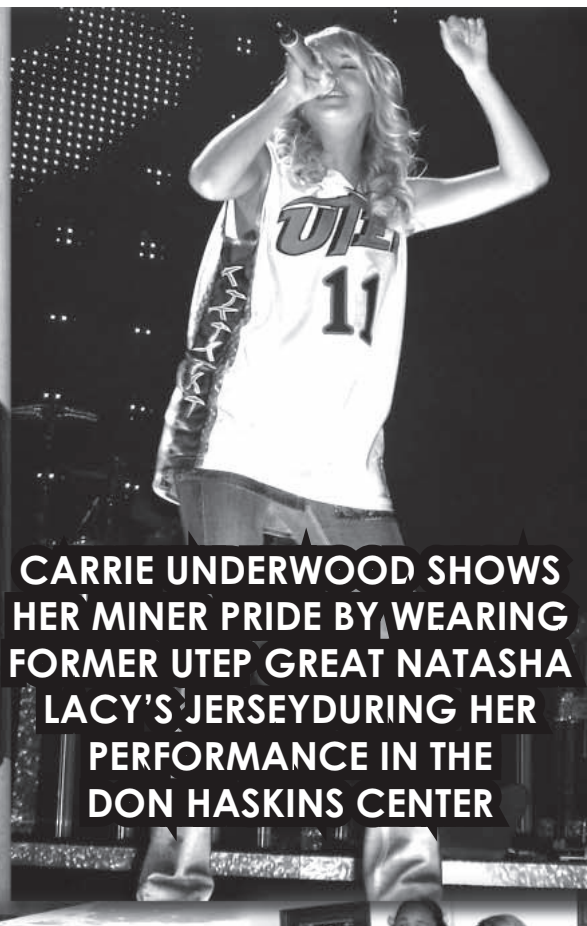
She was also an assistant basketball coach at Belle Plaine (Kan.) H.S., from 1987-89.

A native of Oxford, Kan., Adams graduated with a degree in health, physical education and recreation from Southwestern College in 1989.

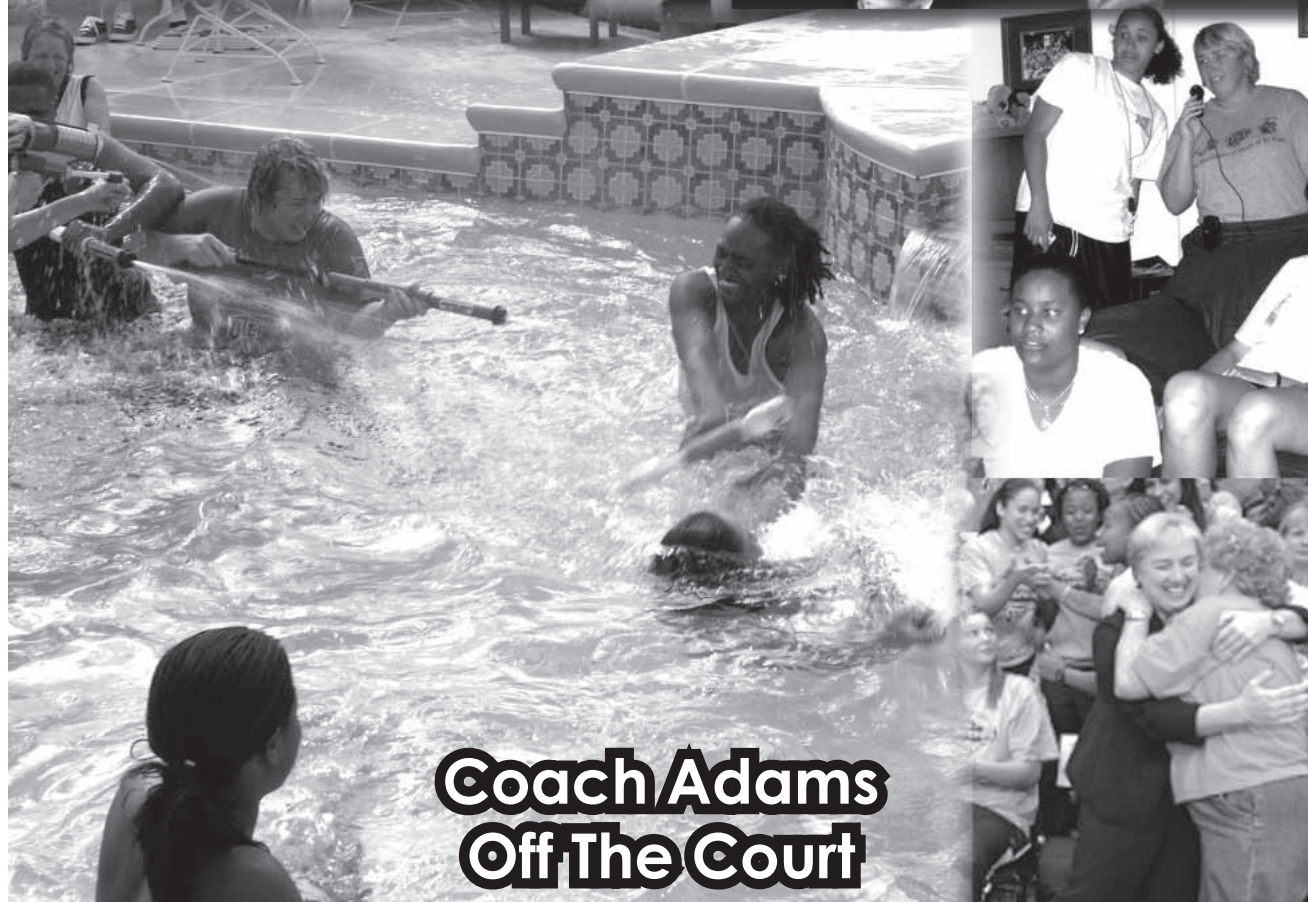
Adams was Oxford High School's all-time leading scorer and earned all-state honors as a prep. Her jersey was retired in 1986.



COACH AND COUNTRY STAR CARRIE UNDERWOOD



CARRIE UNDERWOOD SHOWS HER MINER PRIDE BY WEARING FORMER UTEP GREAT NATASHA LACY'S JERSEY DURING HER PERFORMANCE IN THE DON HASKINS CENTER



Coach Adams Off The Court

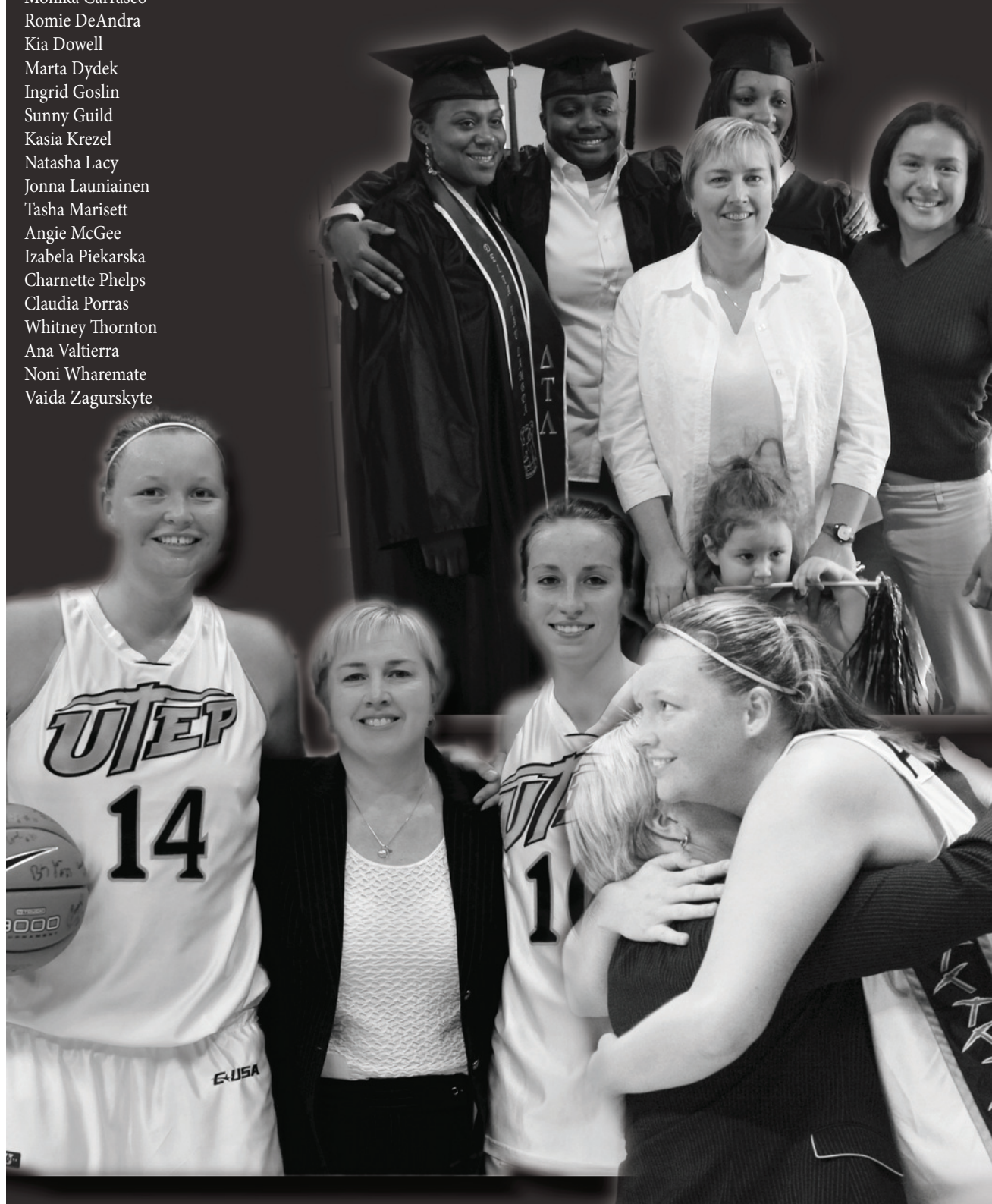
2008-09 MINER WOMEN

GRADUATES UNDER COACH ADAMS

EVERY STUDENT WHO HAS EXHAUSTED HER ELIGIBILITY HAS EARNED A DEGREE

UTEP GRADUATES UNDER KEITHA ADAMS

Danielle Brown
Monika Carrasco
Romie DeAndrea
Kia Dowell
Marta Dydek
Ingrid Goslin
Sunny Guild
Kasia Krezel
Natasha Lacy
Jonna Launiainen
Tasha Marisett
Angie McGee
Izabela Piekarska
Charnette Phelps
Claudia Porras
Whitney Thornton
Ana Valtierra
Noni Wharemate
Vaida Zagurskyte



The Adams File

Career Highlights

- Guided UTEP to a 50-12 record since start of 2006-07
- Consecutive 20-win seasons for first time in school history
- 28-4 mark in 2007-08, including unprecedented 16-0 C-USA
- Team was nationally ranked the final six weeks of the season
- Miners advanced into the second round of the NCAA tournament by trouncing Western Kentucky, 92-60.
- Has renewed interest locally by going 30-2 at home since the start of the 2006-07 season. Miners have led C-USA in attendance in both years as result.
- Coached five all-league honorees, including two-time member Jareica Hughes.
- Mentored four all-freshman selections, including a C-USA best two honorees (Jareica Hughes and Timika Williams) in 2006-07. That figure was eclipsed in 2007-08 when the Miners had three all-league selections.
- Helped develop Jareica Hughes, who was the C-USA 2006-07 Freshman and Newcomer of the Year, in addition to being tabbed to the league's all-defensive team and third-team all conference. In 2007-08, Hughes was the C-USA Player of the Year.
- Led UTEP to a then school-record 22 wins in 2006-07.
- Has graduated every player who has exhausted her eligibility.
- Coached 14 players who have gone on to play professionally.
- Was Independence Community College head coach from 1996-01, leading the Lady Pirates to a 127-37 record.
- Guided Independence C.C. to back-to-back Kansas Jayhawk Community College Conference titles in 1999-00 and 2000-01
- Coached 22 all-KJCCC selections and five NJCAA All-Americans
- Had 15 former student-athletes go on to play at NCAA Division I schools including two in the SEC, two in the Big 12, one in the ACC, three in the WAC and one in Conference USA
- Independence finished as national runner-up at the NJCAA Tournament in 1995-96
- In 1995-96, Independence C.C. was the NJCAA Academic Team of the Year with a team grade point average of 3.59

Coaching Experience

1987-89	Assistant Coach, Belle Plaine High School
1989-94	Head Coach, Winfield High School
1994-96	Assistant Coach, Independence CC
1996-2001	Head Coach, Independence CC
2001-present	Head Coach, UTEP

Coaching Honors

1995-96	NJCAA Championship national finalist NJCAA Academic Team of the Year Fourth-best team GPA in the NJCAA
1996-97	NJCAA Academic national runner-up
1996-2001	Five straight Regional Tournament Appearances
1999-2000	KJCCC East Champions
2000	KJCCC Coach of the Year
2000-01	KJCCC East Champions
2001	KJCCC Coach of the Year
2008	WBCA Region V Coach of the Year
2008	WBCA National Coach of the Year Finalist
2008	Conference USA Coach of the Year

What They Are Saying

I think Keitha is a heck of a coach. The thing to me that makes Keitha stand out from the rest is her work ethic. She is a tireless worker. This program rose up a lot last year, and it is going to get better and better each year. She is a very nice person, and I enjoy being around her. She comes over to my house from time-to-time, and I love talking basketball with her.

Late Hall of Fame Basketball Coach- Don Haskins

Keitha has a tremendous work ethic. She is a tireless recruiter and spends a lot of time studying the game, breaking down film. There are not many coaches in this industry who will out-work her. All of those attributes and her attitude make Keitha a special coach.

Oklahoma State Associate Women's Basketball Head Coach- Jim Littell

Keitha went into a program that obviously had a lot of challenges. She had a philosophy that she believed in. It's easy to question things when it's not going your way, but she stuck with her philosophies and beliefs. That has paid off, and she has definitely built a program that is one of the best in Conference USA.

Nebraska Men's Basketball Head Coach- Doc Sadler

Last year the Miners officially became a player on the national landscape, taking C-USA by storm in the process. What a story UTEP was!! And with the great Jareica Hughes returning, hopes remain high for this club, and with good reason. Keitha continues to prove herself as one of the conference's top coaches and has put together the perfect recipe of great talent, passionate crowds and a supportive administration... UTEP hoops is for real!

CBS College Sports Broadcaster- Ann Schatz

2008-09 MINER WOMEN



DARRIEN BRUNSON



**Assistant
Coach**
Seventh Season
MS Pittsburg State '98
Wichita, Kan.



With a wealth of experience as a coach, athletic administrator and educator, not to mention a standout playing career at the collegiate level, there are few assistant coaches in the country with a better pedigree than Darren Brunson.

In his seventh year on the Miners' coaching staff after coming to UTEP during the spring of 2002, Brunson has played an integral role in helping turn the Miners into a championship caliber program that has drawn notice both regionally and nationally. The Miners have registered back-to-back 20 win seasons, including the historic 2007-08 campaign.

He has been highly involved with UTEP's recruiting efforts, particularly in the states of Kentucky, Michigan, North Carolina and Ohio, while also assisting in the day-to-day aspects of the program.

Brunson came to UTEP after 15 years at Independence Community College, where he wore many hats.

From 1991-2001, Brunson served as the director of athletics at Independence. During that span, Brunson took the Independence athletics department to a higher level with innovative fund-raising campaigns.

One of his most important decisions during his tenure as AD was to hire Keitha Adams as the head women's basketball coach. The move was the start of a tremendous professional relationship for the pair, with Brunson later joining Adams in El Paso as an assistant coach. It is the position he still holds to this date.

Brunson first went to Independence in 1987 as the assistant men's basketball coach. In 1989 he took over the women's program and helped rebuild the team into an annual contender for the conference title.

He also took on the assistant director of athletics title during his time as head women's basketball coach. In addition, he was the men's and women's basketball academic counselor.

During the 1990 season, Brunson was called to active military duty for Operation Desert Storm and Desert Shield, where he received the Army Commendation Medal and a Certificate of Achievement.

Brunson taught business courses, served as an academic and career counselor, chaired the physical education division and worked as a residence hall director while at Independence.

A native of Wichita, Kan., Brunson is a 1987 graduate of St. Mary's University in San Antonio, Texas, with a bachelor's degree in business administration. He later earned his master's in administration from Pittsburg State in 1998.

Brunson was one of the best players in St. Mary's history, earning induction into the institution's Hall of Fame in 2004.

A talented point guard, Brunson racked up 478 assists from 1983-85. That figure shattered the then school record for career helpers (392) and still ranks among the top five totals at the school to this date. The same can be said for his assist per game average, which was a mind-boggling figure of 7.5.

Following his illustrious career, he moved into the coaching ranks at St. Mary's. He served as a student assistant coach for the Rattlers from 1985-87.

Brunson's wife name is Cynthia and has three sons (Darren, Jr. 20, Darius 10, Deion eight) and a daughter (Deiona, one).



Coach Brunson's two youngest sons and his daughter.



EWA LASKOWSKA

Assistant Coach
Eighth Season
BS Pittsburg State '99
Stalowa Wola, Poland



After an outstanding collegiate career, Ewa Laskowska made a seamless transition to the coaching ranks where she is a rising star in her profession.

In her eighth season as an assistant at UTEP, and in her 11th year as part of Keitha Adams' staff, Laskowska has been an instrumental part in the Miners' success. She has helped UTEP record back-to-back 20 win seasons, including the historic 2007-08 campaign. The Miners finished 28-4 and an unprecedented 16-0 in Conference USA on the way to claiming the program's first league title and advancing to the second round of the NCAA tournament.

Laskowska's efforts at UTEP have earned her the well-deserved reputation of being an outstanding domestic and international recruiter. In her time in the Sun City, she has attracted countless players rated by the *All-Star Girls Report*, along with securing commitments from some of the top international talent.

Aiding that process was a term as an assistant coach with the U17 Venezuelan National team in the spring of 2007. Her efforts helped the squad win the South American Championship for the first time in the history of the program.

She has assisted in the recruitment of several players who gained postseason accolades for performances on the court and in the classroom. In addition, 13 players coached by Laskowska are now playing professionally, with three having been selected in the WNBA draft.

Laskowska is also involved in assisting with practice planning, on-court coaching, working on scouting reports, skills workouts, game scheduling and academics.

Her efforts have helped turn the Miners into a championship caliber program that has drawn notice both regionally and nationally.

Laskowska came to UTEP after serving as Adams' top assistant at Independence Community College since 1998. She was also a player for Adams from 1995-97 at the national power ICC.

During her span as an assistant for the Lady Pirates, she helped the team to back-to-back conference championships.

Independence C.C. went 18-0 in the Jayhawk Conference, set a school record with a 34-game winning streak (over two years) and finished the season 31-2 in 2000-01.

She helped Independence C.C. lead the nation in scoring offense with 94.0 points per game, and a final team national ranking of fifth in the NJCAA poll. Laskowska also helped to oversee the academic progress of the student-athletes.

She assisted in directing a team which posted a cumulative grade point average of 3.26, which was fourth-best in the nation in 2000-01.

Laskowska also assisted in recruiting and coaching two All-Americans, 12 all-conference players and one Jayhawk Conference most valuable player.

Laskowska also worked as coordinator of international students at ICC for one year.

A native of Stalowa Wola, Poland, Ewa Laskowska was one of the top student-athletes in Independence C.C. history.

She was twice named NJCAA All-American and Kodak All-American, in addition to gaining all-region and all-conference honors twice.

Laskowska was the most valuable player at the NJCAA Region VI Tournament and was named to the all-tournament team at the NJCAA Championships.

She was also an academic All-America selection and received the Jim Goodman fans favorite Award. As a freshman she helped the Lady Pirates finish second in the nation with a 34-4 record.

After two years at Independence C.C. she earned a scholarship at Kansas State University, and she finished her bachelor's degree in psychology at Pittsburg State in 1999.



2008-09 MINER WOMEN

SUPPORT STAFF

There are plenty of individuals who are involved with the UTEP women's basketball program in many different capacities. These individuals work very hard and do their best to support the Miners in whatever way they can.



John Barela
Strength & Conditioning



Mark Brunner
WBB SID



Lisa Campos
Associate AD/SWA



Catherine Carpenter
Administrative Secretary



Monika Carrasco
Program Coordinator



Carly Hawkins
Student Manager



Rhonda Hill
Athletic Trainer, ATC



Myndi Luevano
WBB Marketing & Promotions



Lynne Meade
Director of Compliance



Darnell Talbert
Life Skills



Ana Valtierra
Program Coordinator



► Guide To The NCAA Rules For Alumni, Faculty And Friends

"Institutional control" of athletics is a fundamental requirement of NCAA legislation. As such, the University of Texas at El Paso is responsible for ensuring that members of the faculty and staff, coaches, student-athletes, alumni, donors, boosters and friends of the institution comply with all applicable NCAA rules. The information below is intended to provide a basic overview of NCAA rules governing UTEP alumni, faculty and friends. Because of the complexity of the rules, the following does not include all applicable situations and should not be relied upon exclusively. UTEP appreciates your interest and support but reminds you that an inappropriate contact or an inadvertent action on your part can jeopardize the eligibility of a prospective or enrolled student-athlete and the university. If you have specific questions, please contact the Athletics Department's Compliance Office at (915) 747-8607.

You Are Considered A "Representative Of UTEP's Athletics Interests" (i.e., a booster) If You:

- Have ever made any type of financial or in-kind contribution to the athletics department, to a specific sport program, or to an athletics booster organization, including purchasing season tickets to athletics events.
- Are or have been a member of any organization or agency promoting UTEP athletics.
- Have ever helped to arrange or have provided employment for an enrolled student-athlete, a prospective student-athlete, or their parents or relatives.
- Have ever assisted in any manner in the recruitment of prospective student-athletes.
- Have ever provided benefits to enrolled student-athletes or their families.
- Have otherwise promoted the institution's athletics program in any manner.

Boosters Are Prohibited From:

- Contacting a prospect in person on or off our campus.
- Writing or telephoning a prospect or a member of the prospect's family.
- Making arrangements for a prospect or the prospect's relatives or friends to receive money or financial aid of any kind.
- Providing transportation for a prospect or the prospect's relatives or friends to visit our campus.
- Providing free tickets or tickets at a reduced cost for prospects or the prospect's relatives or friends to attend an athletic event.
- Entertaining high school, preparatory school or community college coaches.



Once you become a booster, you retain that status FOREVER!

A prospective student-athlete (a prospect) is any person who has begun classes for the ninth grade. A prospective student-athlete remains a prospect even after he or she has signed a National Letter of Intent or accepts an offer of financial aid to attend UTEP. The prospect remains a prospect until they report for the first day of classes for a regular term (fall or spring), they participate in a regular squad practice or competition, or they officially register and enroll and attend classes during the summer prior to initial enrollment and receive institutional athletics aid.

Rules Governing Contacts With And Benefits For Student-Athletes

NCAA legislation expressly prohibits University supporters from providing "extra benefits" to enrolled student-athletes or their families. An extra benefit is any special arrangement to provide a student-athlete or his/her family a benefit not authorized by NCAA legislation. In general, boosters may not provide anything or make special arrangements for student-athletes or their families that are not available to the general student population.

Examples Of Prohibited "Extra Benefits"

Include, But Are Not Limited To:

- Providing cash or loans in any amount.
- Signing or co-signing for a loan or guarantee of bond.
- Use of an automobile or other personal property (e.g., boats, summer homes, stereos).
- Gifts of any kind, including birthday cards, flowers, holiday gifts and gifts of clothing or equipment.
- Any tangible items, including merchandise.
- Free or reduced-cost services, rentals, or purchases (e.g., car repairs, legal services, haircuts, meals at local restaurants).
- Purchasing complimentary admissions from a student-athlete.
- Providing an honorarium to a student-athlete for a speaking engagement.
- Providing typing services or other costs associated with school projects or reports.

Boosters MAY provide enrolled student-athletes with an occasional home meal, provided the meal takes place at the booster's home and NOT at a local restaurant establishment. The meal may be catered and must be limited to infrequent or special occasions. The Compliance Office must approve all such meals.

Compliance with NCAA rules is of the highest priority for our athletics program and institution. Even the best-intentioned action on your part may be a violation of NCAA rules. Please **re-member to ASK before you ACT.**

Boosters Are Permitted To:

- Notify our coaches about prospects that may be strong additions to our teams.
- Attend high school or two-year college athletic contests or other events where prospects compete, however, boosters may not contact the prospect or the prospect's relatives.
- Continue existing friendships with families of prospects, but boosters may not attempt to recruit the prospect.
- Employ a prospect after they have graduated from high school or a two-year college.

MINER ATHLETIC CLUB

Making a difference and helping student-athletes reach their highest potential and goals can only be accomplished with your help. Not only do these exceptional individuals need your support at their games, but also your financial assistance which will provide the funds to offset the cost of scholarships. Your support ensures that they receive the necessary encouragement and resources to excel in the classroom and compete at the highest level of Division I competition. Make your commitment to these outstanding student-athletes and join the Miner Athletic Club today!

MINER ATHLETIC CLUB Q&A

What is the Miner Athletic Club?

The Miner Athletic Club (MAC) is the primary fundraising division of the UTEP Athletics Department. Its mission is to raise funds to offset the cost of scholarships awarded to UTEP student-athletes annually. More than 2,500 dedicated alumni, friends, and fans assist the Miner Athletic Club in providing close to 300 student-athletes the opportunity to pursue a college degree. Their education will serve as a solid foundation for their pursuits and contributions to society.

Why should I donate to the Miner Athletic Club?

Private support is essential to the success of UTEP's intercollegiate athletic program because the UTEP Athletics Department receives no financial assistance from the state of Texas. The UTEP Athletics Department is a self-funded entity, it is solely dependent upon sporting event revenue and fundraising to operate and provide student-athlete scholarships. When you join to the Miner Athletic Club, UTEP can accomplish its goal of providing quality young men and women the opportunity to receive a first class education and to compete at the highest level of intercollegiate athletics.

What benefits do I receive for becoming a member of the Miner Athletic Club?

The Miner Athletic Club is dedicated to providing an exciting and rewarding experience for its members. Miner Athletic Club members receive a variety of spirited membership items which include an annual window decal and Athletics Department email newsletters. A portion of all gifts are tax deductible. For additional benefits and corresponding donations levels, please refer to the Miner Athletic Club brochure. Membership benefits will be mailed in December.

Is my donation tax deductible?

As allowed by IRS regulations, donations involving premium seating benefits are 80% deductible. Any additional donation is 100% tax deductible. Benefits reflect a donor's total contribution tabulated from January 1 through December 31 annually.

How do I become a member of the Miner Athletic Club?

You can become a member of the Miner Athletic Club by donating a minimum of \$100 to the Miner Athletic Club and/or by purchasing premium seats in the Sun Bowl and/or Don Haskins Center.



METHODS OF GIVING

Donate Online

You can now make your gift to the Miner Athletic Club online. Please visit <https://givingto.utep.edu/makeagift.php> to make your donation.

Cash, Check and Credit Card Donations:

The Miner Athletic Club gladly accepts all cash, check and credit card contributions. Members may make a one-time gift or choose to divide their contributions into several scheduled payments.

Gifts-In-Kind:

UTEP Athletics also accepts gifts in the form of product or services that the department can use during the course of the year. All gifts-in-kind must be pre-approved by the Miner Athletic Club office. If you are interested in making an in-kind donation, please contact our office directly.

Donations through Premium Seating:

Premium seats are available for season ticket purchase at the Sun Bowl and Don Haskins Center for the football and men's basketball seasons. The total cost of these seats includes the actual ticket price and a donation portion. Monies donated through premium season ticket purchases are directly applied to the Miner Athletic Club to offset the cost of student-athlete scholarships. Likewise, this donation is calculated in determining your Miner Athletic Club membership level.

Corporate Matching Gifts:

Many companies have programs in which they match employee contributions to scholarship funds. If your company is a participant, complete the company's matching gift form and enclose it with your contribution to the Miner Athletic Club. This is an easy way to increase your donation and receive the benefits of the next Miner Athletic Club membership level. Your spouse's company may match your gift also.

Other Giving Opportunities:

Endowments and Memorial Gifts
Gifts of Stock and Securities
Bequest/Life Insurance/Trusts

For additional information please contact the Miner Athletic Club office at (915) 747-8759 or mac@utep.edu.

MINER ATHLETIC CLUB STAFF

Darren D'Attilio

Associate Athletics Director for Development
Office: 915-747-6785
e-mail: ddattilio@utep.edu

Chris Lynn

Assistant Director for Development
Office: 915-747-6912
e-mail: clynn2@utep.edu

Brandan Hoffer

Assistant Director for Development
Office: 915-747-6782
e-mail: bwhoffer2@utep.edu

Genevieve Gomez

Administrative Assistant
Office: 915-747-8759
e-mail: gmgomez2@utep.edu

MINER ATHLETIC CLUB

Brumbelow Building, Room 109
500 W. University Ave.
El Paso, TX 79968
Phone: 915-747-8759
Fax: 915-747-5247
Email: mac@utep.edu
Website: www.minerathleticclub.com

MISSION STATEMENT

The Office of Athletics Development at the University of Texas at El Paso (UTEP) supports the mission of the UTEP Department of Intercollegiate Athletics.

The Office of Athletics Development serves to raise monies that offset the cost of student-athlete scholarships as well as provide support for sport specific fund-raising needs. Scholarship monies are raised by the Miner Athletic Club through special events, an annual fundraising campaign (Team Fund Drive), annual membership, major and planned gifts, and through donor portions of ticket sales. Financial contributions are critical as they directly support UTEP student-athletes in their quest for excellence in academics, athletics and leadership through service to the El Paso community.

The Office of Athletics Development values the financial and in-kind contributions made by individual and corporate donors and volunteers. These donors and volunteers form the framework from which athletic development operates. The Miner Athletic Club strives to identify, recognize, motivate, and celebrate these donors and volunteers through recognition events, benefit packages, and awards throughout the year.

The Office of Athletics Development collaborates with all other offices within the Athletic Department in continuously promoting, supporting, and celebrating UTEP Athletics and the quality young men and women who are proud to wear the Orange and Blue.