



2021-22 USF BULLS WOMEN'S BASKETBALL GAME NOTES

NCAA Tournament (7): 2021, 2018, 2017, 2016, 2015, 2013, 2006

WNIT (9): 2019, 2014, 2012, 2010, 2009, 2008, 2007, 2005, 2004

WNIT Champions (1): 2009 | WNIT Final Four (2): 2014, 2009

Primary Contact: Michael Hogan | Phone: (W) 813-974-5755 (C) 813-469-0616 | Email: mhogan@usf.edu
Twitter: @USFWBB | Instagram: USFWBB | Facebook: facebook.com/usfwomensbasketball | Web: GoUSFBulls.com

2021-22 USF SCHEDULE/RESULTS

NOVEMBER

9	Texas Rio Grande Valley (ESPN+)	W, 63-56
11	Alabama State (ESPN+)	W, 72-37
15	at No. 15/12 Tennessee ^ (SECN+)	L, 52-49
20	vs. Syracuse (FloHoops) &	W, 77-53
21	vs. No. 2/2 UConn (FloHoops) &	L, 60-53
22	vs. No. 9/9 Oregon (ESPN+)	W, 71-62
26	vs. No. 7/5 Stanford (FloHoops) #	W, 57-54

DECEMBER

2	at UT Arlington (ESPN+)	7 p.m. ET
12	at VCU	1 p.m.
15	Stetson (ESPN+)	11 a.m.
17	High Point (ESPN+)	7 p.m.
20	vs. West Virginia %	1:15 p.m.
21	vs. Mississippi %	1:15 p.m.
29	Jacksonville (ESPN+)	4 p.m.

JANUARY

2	Memphis (ESPN+)	2 p.m.
5	at Cincinnati * (ESPN+)	7 p.m.
9	Wichita State * (EPNU)	12 p.m.
12	at Tulane * (ESPN+)	7 p.m. ET
16	at UCF * (ESPN+)	3 p.m.
19	Tulsa * (ESPN+)	7 p.m.
22	Temple * (ESPN+)	3 p.m.
26	at SMU * (ESPN+)	8 p.m. ET
30	at Houston * (ESPN+)	4 p.m. ET

FEBRUARY

6	Tulane * (ESPN+)	12 p.m.
9	at Temple * (ESPN+)	7 p.m.
13	UCF * (ESPN2)	2 p.m.
16	Cincinnati * (ESPN+)	7 p.m.
23	at Wichita State * (ESPN+)	7 p.m. ET
27	at East Carolina * (ESPN+)	1 p.m.

MARCH

2	Houston * (ESPN+)	7 p.m.
8	AAC Tournament First Round ^	TBA
9	AAC Tournament Quarterfinals ^	TBA
10	AAC Tournament Semifinals ^	TBA
11	AAC Tournament Championship ^	TBA

* American Athletic Conference Game | \$ AAC/SEC Challenge
& Battle 4 Atlantis, Paradise Island, Bahamas

Baha Mar Pink Flamingo Championship, Nassau, Bahamas

% West Palm Invitational, West Palm Beach, Fla.

^ American Athletic Conference Tournament, Fort Worth, Texas.

All times are Eastern time and are subject to change

GAME EIGHT | THUR., DEC. 2 | 7 P.M. ET | ARLINGTON, TEXAS



No. 13/17 USF
BULLS
5-2

AT

UT ARLINGTON
LADY MAVS
4-2



Last Game ___ Nov. 26 vs. No. 7/5 Stanford, W, 57-54
Next Game ___ Dec. 12 at VCU, 1 p.m.
Head Coach ___ Jose Fernandez
Alma Mater ___ FIU, 1994
Career Record ___ 397-278 (22nd season)
at USF ___ Same

Last Game ___ Nov. 28 vs. Kansas City, L, 85-76
Next Game ___ Dec. 4 vs. Rice, 2 p.m.
Head Coach ___ Shereka Wright
Alma Mater ___ Purdue, 2004
Career Record ___ 17-9 (Second season)
at UT Arlington ___ Same

GAMEDAY INFORMATION

TV/Online ___ ESPN+ (\$)
 ___ Ron Thulin (PxP), Fred Williams (Color)
Audio ___ Bulls Unlimited (iHeartRadio/GoUSFBulls.com)
___ Darek Sharp (PxP)

Live Stats ___ GoUSFBulls.com/StatBroadcast
Series ___ USF leads series, 2-1
Twitter Updates ___ @USFWBB
Tickets ___ UTATickets.com

QUICK HITS

■ South Florida heads back on the road looking for its third straight win, and its fourth win in its last five games, when the Bulls travel to the Lone Star state to face UT Arlington on Thursday ... Tip-off is at 7 p.m. ET with the game being broadcast on ESPN+.

■ Thursday is the sixth of seven-straight road contests for USF, a stretch that started on Nov. 15 at No. 15 Tennessee and ends in Richmond at VCU on Dec. 12 (1 p.m.) ... The Bulls are 3-2 during the stretch.

■ USF is coming off a 57-54 win over No. 7/5 Stanford on Nov. 26 ... The win was the Bulls' second-straight top 10 win ... Sydni Harvey had 15 points and Elena Tsineke and Elisa Pinzan had 14 and 11, respectively ... Bethy Mununga had 23 rebounds.

■ South Florida is currently ranked No. 13 in the Associated Press Top 25 poll, jumping five spots from the previous week ... In addition, they are No. 17 in the most recent Coaches Poll.

USF'S PROBABLE STARTERS



PG | 5-6 | JR.

4 - ELISA
PINZAN

PPG	9.7
RPG	3.4
APG	6.0
SPG	1.6



G | 5-10 | Jr.

3 - SYDNI
HARVEY

PPG	14.9
RPG	2.0
APG	1.3
SPG	1.7



G | 5-8 | So.

5 - ELENA
TSINEKE

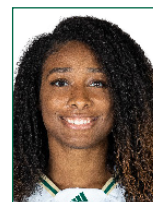
PPG	13.8
RPG	4.7
APG	2.2
SPG	1.2



F | 6-0 | Sr.

20 - BETHY
MUNUNGA

PPG	9.1
RPG	12.1
APG	1.9
SPG	1.1



C | 6-2 | P-BAC

21 - SHAE
LEVERETT

PPG	2.1
RPG	4.7
APG	0.4
SPG	0.9

USF QUICK FACTS

THE UNIVERSITY

City/Zip Code	Tampa, Fla. 33620
Founded	1956
Enrollment	50,577
Nickname	Bulls
Arena	Yuengling Center
Capacity	10,411
Affiliation	NCAA Division I
Conference	The American Athletic Conference
President	Dr. Steven C. Currall
Vice President of Athletics	Michael Kelly
Sr. Assoc. Director of Athletics/SWA	Marquita Armstead

BASKETBALL HISTORY

First Year	1972-73
All-Time Record	692-691 (50th year)
All-Time AAC Record	95-37 (Sixth season)
All-Time BIG EAST Record	151-112 (Eight seasons)
All-Time Conference USA Record	113-168 (10 seasons)
All-Time Metro Conference Record	34-64 (Four seasons)
All-Time Sun Belt Conference Record	71-118 (Seven seasons)
All-Time Post-Season	17-14 (NCAA & WNIT)
AAC Tournament Record	15-7
NCAA Tournament Record	4-7
Years in NCAA Tourn./Last	7/2021
Last NCAA opponent	March 23, 2021 vs. 1 seed NC State (San Antonio, Texas)
Result	Lost, 79-67
WNIT Record	14-8
Years in the WNIT Tourn./Last	9/2019
Last WNIT opponent	March 24, 2019 at James Madison
Result	Lost, 71-54

COACHING STAFF

Head Coach	Jose Fernandez
Alma Mater, Year	Florida International '94
Record at USF (Years)	397-278 (22nd season)
Career Record (Years)	Same
Career Conference Record (Years)	175-157 (22ndst season)
Associate Head Coach	Michele Woods-Baxter, St. John Fisher '87
Assistant Head Coach	Danny Hughes, TCU '89
Assistant Coach/Rec. Coord.	Yolisha Jackson, Jacksonville '05
Dir. of Basketball Operations	Mercedes Jorge, Embry-Riddle '17
Coord. of Basketball Oper.	Brandon Jaijairam, USF '20
Video Coordinator	Anthony Brammer, Old Dominion '08
Strength & Conditioning Coach	Irele Oderinde, WKU, '03
Certified Athletic Trainer	Erin Barbour, Tulsa '18
Academic Coordinator	Terrell Elliston, VCU '10
Administrative Assistant	Barbara Riffe

ATHLETIC MEDIA RELATIONS

Associate Dir. of Communications/WBB Contact	Michael Hogan
Office Phone	(813) 974-5755
Cell Phone	(813) 469-0616
E-mail	mhogan@usf.edu

2021-22 USF BULLS



► Standing (L-R): Aerial Wilson, Bethy Mununga, Odeth Betancourt, Dulcy Fankam Mendjiadeu, Shae Leverett, Cristina Bermejo, Patience Williams, Sara Guerreiro. Sitting (L-R): Bella Weary, Maria Alvarez, Elisa Pinzan, Sydni Harvey, Elena Tsineke, Elena Tsineke, Mihaela Lazic.

No.	Name	P	Ht.	Yr.	Hometown/High School/Previous School
0	Odeth Betancourt	F	6-2	So.	San Cristobal, Venezuela/Panola College (Texas)
1	Maria Alvarez	G	5-7	So.	Bal Harbour, Fla./Miami Country Day School
2	Mihaela Lazic	PG	5-6	R-Fr.	Slavonski Brod, Croatia/Klasicna Gimnazija
3	Sydni Harvey	G	5-10	Jr.	Nashville, Tenn./Brentwood Academy
4	Elisa Pinzan	PG	5-8	Jr.	Murano, Italy/Istituto Tecnico Algarotti Venezia
5	Elena Tsineke	G	5-8	So.	Thessaloniki, Greece/Hellenic College of Thessaloniki
11	Patience Williams	F/C	6-1	Fr.	Minneapolis, Minn./Benilde St. Margaret/Florida SouthWestern St.
12	Cristina Bermejo	W	6-1	So.	Sant Just Desvern, Spain/Ins Sant Just Desvern
13	Sara Guerreiro	G	5-8	Fr.	Seixal, Portugal/Escola Básica e Secundária Amélia Rey Colasso
20	Bethy Mununga	F	6-0	Sr.	Zellik, Belgium/Institut Sainte-Marie Jambes/NE Oklahoma A&M College
21	Shae Leverett	C	6-2	P-Bacc.	Rincon, Ga./South Effingham H.S.
22	Aerial Wilson	PG	5-10	So.	Dundas, Ontario, Canada/Memphis/The RISE Centre
24	Bella Weary	G	5-6	Fr.	Jacksonville, Fla./DME Academy
32	Dulcy Fankam Mendjiadeu	F	6-4	R-Sr.	Nkongsamba, Cameroon/Memphis/Walters State CC

USF BASKETBALL STAFF

Head Coach: Jose Fernandez (Florida International, '94) – 22nd Season at USF/22nd overall as head coach
 Associate Head Coach: Michele Woods-Baxter (St. John Fisher, '87) – 14th season at USF
 Assistant Head Coach: Danny Hughes (TCU, '90) – Fourth season at USF
 Assistant Coach/Recruiting Coordinator: Yolisha Jackson (Jacksonville, '05) – Second season at USF
 Director of Operations: Mercedes Jorge (Embry-Riddle, '17) – Second season at USF
 Coordinator of Basketball Operations: Brandon Jaijairam (USF '20) – First season at USF
 Video Coordinator: Anthony Brammer (Old Dominion, '08) – Third season at USF
 Strength and Conditioning: Irele Oderinde (WKU, '03) – Second season at USF
 Certified Athletic Trainer: Erin Barbour (Tulsa '18) – First season at USF
 Academic Advisor: Terrell Elliston (VCU '10) – First season at USF

PRO-NUN-SEE-A-SHUN GUIDE

Players		
Cristina Bermejo	Chris-Tina Bur-MAY-Hoe	Elena Tsineke
Odeth Betancourt	Oh-death Bet-AN-Court	Aerial Wilson
Dulcy Fankam Mendjiadeu	Dull-see Fan-come	
	Men-gee-ahh-due	
Sara Guerreiro	Guh-RYE-row	
Sydni Harvey	Sid-NEE	
Mihaela Lazic	Me-HIGH-La Lah-ZICH	
Shae Leverett	LEV-Rett	
Bethy Mununga	Betty MOO-Nun-Guh	
Elisa Pinzan	Uh-LEEZA PIN-Zahn	

Elena Tsineke Uh-LAY-Nuh CHIN-ECK-eh
 Aerial Wilson Air-E-Uhl

Staff

Assistant Coach Yolisha Jackson YO-Lee-Shuh
 Strength Coach Irele Oderinde EAR-Lay
 Oder-IN-Day

USF BROADCAST NOTES



0

ODETH BETANCOURT

(OH-DEATH)



	GP/S	PPG	RPG	APG	SPG	BPG	FG%	FT%
21-22	2/0	1.0	0.5	0.0	0.0	0.0	50.0	00.0
Career	2/0	1.0	0.5	0.0	0.0	0.0	50.0	00.0



1

MARIA ALVAREZ



	GP/S	PPG	RPG	APG	SPG	BPG	FG%	FT%
21-22	7/0	3.7	1.3	1.0	0.1	0.0	26.7	50.0
Career	43/9	7.3	2.1	1.7	0.6	0.0	35.1	61.2



2

MIHAELA LAZIC

(ME-HIGH-LA)
(LAH-ZICH)

	GP/S	PPG	RPG	APG	SPG	BPG	FG%	FT%
21-22	1/0	3.0	1.0	0.0	0.0	0.0	50.0	50.0
Career	19/2	1.8	0.7	1.0	0.2	0.0	36.8	50.0



3

SYDNI HARVEY

(SID-NEE)



	GP/S	PPG	RPG	APG	SPG	BPG	FG%	FT%
21-22	7/7	14.9	2.0	1.3	1.7	0.3	40.5	88.9
Career	84/70	12.0	2.4	1.9	0.8	0.1	34.1	81.2



4

ELISA PINZAN

(UH-LEEZA)
(PIN-ZAHN)

	GP/S	PPG	RPG	APG	SPG	BPG	FG%	FT%
20-21	7/7	9.7	3.4	6.0	1.6	0.0	37.3	92.3
Career	88/69	7.8	2.7	4.7	1.2	0.0	32.2	82.9



5

ELENA TSINEKE

(UH-LAY-NUH)
(CHIN-ECK-EH)

	GP/S	PPG	RPG	APG	SPG	BPG	FG%	FT%
21-22	6/6	13.8	4.7	2.2	1.2	0.0	34.7	90.9
Career	54/45	13.0	2.4	1.7	0.6	0.2	37.5	88.3



11

PATIENCE WILLIAMS



	GP/S	PPG	RPG	APG	SPG	BPG	FG%	FT%
21-22	4/0	1.0	0.5	0.3	0.7	0.3	33.3	00.0
Career	4/0	1.0	0.5	0.3	0.7	0.3	33.3	00.0



12

CRISTINA BERMEJO

(BUR-MAY-HOE)



	GP/S	PPG	RPG	APG	SPG	BPG	FG%	FT%
21-22	6/0	1.3	1.0	0.5	0.2	0.0	27.3	00.0
Career	49/2	1.7	1.8	0.6	0.3	0.2	30.4	75.0



13

SARA GUERREIRO

(GUH-RYE-row)



	GP/S	PPG	RPG	APG	SPG	BPG	FG%	FT%
21-22	7/0	0.6	0.9	0.6	0.4	0.0	28.6	00.0
Career	16/0	0.9	0.9	0.4	0.3	0.0	29.2	00.0

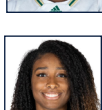


20

BETHY MUNUNGA

(BETTY)
(MOO-NUN-GUH)

	GP/S	PPG	RPG	APG	SPG	BPG	FG%	FT%
21-22	7/7	9.1	12.1	1.9	1.1	1.0	37.7	62.5
Career	59/57	9.4	11.3	1.3	1.2	1.0	46.8	70.6

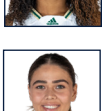


21

SHAE LEVERETT



	GP/S	PPG	RPG	APG	SPG	BPG	FG%	FT%
21-22	7/7	2.1	4.7	0.4	0.9	0.0	38.5	55.6
Career	123/65	4.8	5.8	0.4	0.6	0.8	58.7	54.9



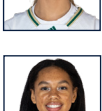
22

AERIAL WILSON

(AIR-E-UHL)



	GP/S	PPG	RPG	APG	SPG	BPG	FG%	FT%
21-22	7/1	0.7	0.1	1.1	0.7	0.0	33.3	00.0
Career	57/50	3.6	2.2	3.4	0.9	0.2	29.8	64.6



24

BELLA WEARY



	GP/S	PPG	RPG	APG	SPG	BPG	FG%	FT%
21-22	2/0	0.0	0.5	0.0	0.0	0.0	00.0	00.0
Career	2/0	0.0	0.5	0.0	0.0	0.0	00.0	00.0



32

DULCY FANKAM MENDJIADEU

(DULL-See)
(FAN-COME)
(MEN-GEE-AHH-DUE)

	GP/S	PPG	RPG	APG	SPG	BPG	FG%	FT%
21-22	7/0	8.0	4.6	0.4	1.3	0.7	36.7	60.0
Career	57/49	12.3	8.8	0.7	1.2	1.1	47.1	64.1

F | 6-2 | SO. | SAN CRISTOBAL, VENEZUELA

- Scored in her first collegiate GP with 2 pts. vs. Syracuse (11/20) ... Named a NJCAA HM All-American at Panola College (Texas).
- Averaged 11.0 ppg., 12.4 rpg., 2.2 bpg. during '20-21 ... Rebounding average was 1st in Region XIV, 8th in NJCAA.
- Finished '20-21 tops in the region, 14th nationally in blocks ... Represented Venezuela 14 times internationally.

G | 5-7 | SO. | MIAMI, FLA.

- Was named the 2021 AAC Co-Sixth POY ... 10 pts. vs. Alabama State (11/11) ... Double figures in 13-of-43 career GP.
- Career high 23 pts. vs. Houston (1/9/21) ... 18 pts. vs. No. 4 Baylor (12/1/21) ... 6 state titles at Miami Country Day.
- Born in Colombia ... Set a FIBA record with 10 3pt. FGM for Colombia vs. Belarus in 2019 FIBA U17 World Cup.

PG | 5-6 | R-FR. | SLAVONSKI BROD, CROATIA

- 1st career start vs. Tulsa (2/13/21) and netted a career-high 10 pts. ... Had 6 pts., 5 asts. vs. Jacksonville (11/28/21).
- Only 1 GP in '19-20 due to a back injury ... Played in the '17, '18 FIBA European Championships for Croatia.
- Avg. 7.9 ppg., 3.2 rpg., 1.8 apg. in 7 games with Croatia in the 2018 European Championships.

G | 5-10 | JR. | NASHVILLE, TENN.

- 22 pts. vs. No. 9 Oregon (11/22) ... 15 pts. including game-winning 3 pt. FG vs. No. 7 Stanford (11/26) with 2.8 seconds left.
- AAC Tourney MOP ... '20-21 All-AAC 3rd Team ... Career-high 28 pts. vs. Tulane (3/7/20), 25 pts. vs. Tulane (1/19/20), Temple (2/9/20).
- Played in the USA Basketball 3x3 National Championships in Aug. 2019, in Las Vegas, with the UConn squad.

PG | 5-8 | JR. | MURANO, ITALY

- 1st in AAC in asts. (42), 1st in AAC, 16th in D-I in apg. ... 11 pts., 55.6 FG% vs. No. 16 Tennessee (11/15) ... 11 pts., 6 asts. vs. No. 7 Stanford (11/26).
- 400th ast. vs. Oregon (11/22) ... Career high 14 asts. vs. Houston (1/9/21), 11 asts. at Cincinnati (12/22) ... 15 pts. vs. UConn (2/16/20).
- 14 pts. at Baylor (11/19/19) ... AAC MIP, All-AAC 2nd Team in '20-21; Preseason All-AAC 2nd Team prior to the '20-21.

G | 5-8 | SO. | THESSALONIKI, GREECE

- Double figures in 37-of-54 GP, 16 of last 18 ... 17 pts. vs. Syracuse (11/20), 17 pts., 7 rbs., 4 asts. vs. No. 2 UConn (11/21).
- Battle 4 Atlantis All-Tourney Team ... 13 pts., 3 rbs. vs. No. 15 Tennessee (11/15) ... Career-high 31 pts. vs. Wichita St. (1/6/21).
- Preseason All-AAC 1st Team, AMD Preseason Watch List in '21-22 ... AAC All-Tourney Team, All-AAC 1st Team in '20-21.

F/C | 6-1 | FR. | MINNEAPOLIS, MINN.

- Was a 3rd Team NJCAA All-American, Region VIII Southern Conference POY after 1 year at Florida SouthWest State.
- A finalist for National Freshman of the Year, after avg. 13.1 ppg., 8.9 rpg., while shooting 56.0 FG%.
- Had 5 double-doubles, including 31 pts., 18 rbs. vs. Indian River State and a career-high 32 pts., 18 rbs. vs. Palm Beach State.

W | 6-1 | FR. | SANT JUST DESVERN, SPAIN

- Tied career-high with 10 pts. vs. Stetson (12/13/20) ... 10 pts., 5 rbs. vs. Idaho (12/15/19), 9 pts. vs. SMU (2/29/19).
- 1st career GS at Memphis (2/22/19) had a career-high tying 5 rbs., 5 ast. ... Mother and father played pro in Spain.
- Her sister Neus, currently an international model, played for the Spanish Senior National Team and pro in Spain.

G | 5-8 | FR. | SEIXAL, PORTUGAL

- 4 pts. vs. UTRGV (11/9); 6 pts. in collegiate debut vs. Jacksonville (11/28/20) ... Played for Quinta dos Lombos, in Lisbon.
- Split time with Portugal's U20 national team in 2019, Avg. 8.0 ppg., 1.7 rpg. and 1.5 apg.
- Was named First Team of the National Final Four in Portugal in 2019, equivalent of the Final Four in America.

F | 6-0 | SR. | ZELLIK, BELGIUM

- 1st in AAC, in rpg. and TR (62) ... 21 double-doubles in 59 GP, 39 GP with 10-plus rbs. ... Career-high 23 rbs. vs. No. 7 Stanford (11/26).
- Career high 23 pts., 21 rbs. vs. ECU (1/2/21) ... AAC Tour. rec. 49 rbs. in '21 ... 13 pts., 10 rbs. vs. Baylor (12/1/20), 16 pts., 12 rbs. at Baylor (11/19/19).
- '21 Preseason All-AAC 1st Team ... AAC All-Tour. Team, All-AAC 1st Team in '20-21 ... Born in the Dem. Rep. of the Congo, raised in Belgium.

C | 6-2 | POST-BACC. | RINCON, GEORGIA

- 2nd in rpg. in '20-21 ... 6 pts., 8 rbs., 2 blk., 2 stls. vs. No. 4 Mississippi St. (12/5/20) ... Career-high 20 pts., 18 rbs. at Wichita St. (2/23/19).
- 3rd on the team in rpg. in '19-20 ... Season-high 14 rbs. vs. Houston (1/29/19), 13 rbs., 12 pts. vs. Saint Francis (Pa.) (11/24/19).
- 8 rbs. at Baylor (11/19/19) ... Grabbed 700th career rbd. vs. UConn (11/21), 710 career rbs., 338 OR ... 2 double-doubles in '19-20.

PG | 5-10 | SO. | DUNDAS, ONTARIO, CANADA

- Transferred from AAC foe Memphis with teammate Dulcy Fankam Mendjiadeu after 2 years with the Tigers.
- Played in 50 games with 49 starts at Memphis ... Avg. 4.0 ppg., 3.7 apg., and 1.0 spg. at Memphis.
- Started all 19 games in '20-21 ... Was 2nd in the AAC in apg., behind current teammate Elisa Pinzan, and 9th in D-I.

G | 5-6 | FR. | JACKSONVILLE, FLA.

- Had a standout scholastic career at Bartram Trail HS, reaching 1,000 pts. (1,038) by the end of her soph. year.
- Finished high school at DME Academy, avg. 17.0 ppg., 4.0 apg., 3.0 rpg., and 1.0 spg.
- Her father, Fred, was an All-American football player Florida, winning the 1996 National Championship ... 5 years in the NFL.

C | 6-4 | R-SR. | NKONGSAMBA, CAMEROON

- Transferred from AAC foe Memphis after 2 years with the Tigers ... 17 pts., 7 rbs., 3 blks. vs. No. 9 Oregon (11/22).
- '21-22 Preseason All-AAC 1st Team ... 2nd Team All-AAC in '20-21 ... Career-high 23 pts. vs. Liberty (12/6/20).
- 7th in '20-21 in the AAC in ppg. (14.1), 2nd in rpg. (10.6) ... Only player in the AAC to average a double-double (10).

HEAD COACH JOSE FERNANDEZ | 397-278 CAREER RECORD (22ND SEASON) | 2018 & 2021 AAC COACH OF THE YEAR



Named the 2018 and 2021 American Athletic Conference Coach of the Year, head coach Jose Fernandez has been laying the groundwork brick by brick for 21 seasons for the Bulls to grow into a perennial Top 25 program. Under his guidance, USF has trans-

formed from a program with only five winning seasons to a staple in the NCAA Tournament.

A coach known for his recruiting connections and incredible work ethic; Fernandez has created a culture of excellence at USF.

Fernandez has watched his team reach new milestones, including six 20-win seasons in the last nine years, dating back to the 2012-13 season. The Bulls have reached the NCAA Tournament seven times, including six trips in their last nine seasons, and postseason play in 16 of the last 18 seasons. Fernandez led the Bulls to the NCAA Tournament for the fourth time in as many years in 2018 as the senior class became the first in program history to reach four NCAA Tournaments. The Bulls also reached their ninth Women's National Invitation Tournament (WNIT) in 2019, despite numerous season-ending injuries to key players, and advanced to the second round of the event.

Officially named head coach on Nov. 14, 2000 – just seven months after arriving at USF as an assistant coach – Fernandez has led the Bulls in an amazing turnaround under his tenure. In addition to the program's seven trips to the NCAA Tournament, Fernandez has also guided USF to nine WNIT appearances, which includes the 2009 WNIT title and a semifinal appearance in 2014. The Bulls have also advanced to the American Athletic Conference (AAC) Tournament championship game in five of the past seven seasons and have made at least the semifinal round during every season in the AAC.

During the 2021-22 campaign, the Green and Gold made program history winning its first American Athletic Conference regular-season championship and followed that up with The American Tournament title in Fort Worth, Texas. During their tournament run, the Bulls defeated Wichita State, 48-44, Tulane, 51-47, and rival UCF, 64-54, the same Knights team that USF beat, 65-52, to win the regular-season crown on March 2 in the Yuengling Center.

Fernandez also knows how to get the most out of his talent with Maria Jespersen earning Associated Press All-America honorable mention honors in 2018. USF has had two players earn AP All-America honorable mention honors, Jespersen and Courtney Williams, in 2016, and Fernandez has coached them both.

Playing for Fernandez could also lead to the pros, as was the case for five players in program history to be drafted by WNBA teams. Kitija Laksa became the third player in program history to be selected in the first round in 2020, going 11th overall to the Seattle Storm. Other Bulls select-

ed in the WNBA Draft, under Fernandez, include Courtney Williams, who went eighth overall to the Phoenix Mercury in 2016, Inga Orekhova, who was chosen 18th overall by the Atlanta Dream in 2014; Andrea Smith, who was chosen 35th by the Connecticut Sun in 2013 and Jessica Dickson, who was chosen 21st in the 2007 WNBA Draft by the Sacramento Monarchs.

USF made its first-ever NCAA Tournament during the 2005-06 season. Fernandez also led USF to its first-ever NCAA Tournament victory with a 71-70 win over Texas Tech in 2013. The Bulls, and Fernandez, made history again in 2015, when they hosted USF's first-ever NCAA Tournament basketball game at the Yuengling Center. The Bulls defeated LSU in the first round, in front of a hometown crowd of over 5,000 fans. In his third NCAA Tournament in four years, Fernandez took the Bulls back to the second round, defeating No. 22 Colorado State 48-45 in Los Angeles, Calif. USF returned to the tournament in 2017, but the Bulls lost at the buzzer to Missouri.

The Miami native has had 16 seasons with a .500 record or better leading USF. In the 22 years prior to his arrival, the Bulls recorded just three winning seasons, all 14-13 slates. Fernandez has guided USF to nine seasons with 20-plus wins, including a 26-8 record during the 2017-18 campaign that marked the fourth straight season with 24 or more wins. He posted his 300th career win at USF during the 2016-17 season and has compiled a record of 392-276 in 21 seasons leading the Bulls' program, including 13 or more wins in The American in five of the eight seasons in the conference. The Bulls have posted 13 wins over Top 25 ranked teams, including an 67-63 overtime win over No. 6 Mississippi State in the Yuengling Center in 2020. The Bulldogs were the highest ranked team that USF has ever defeated.

Fernandez believes to be the best; you have to play the best. Since arriving at USF, Fernandez and his staff have worked to schedule the toughest teams in women's basketball. The Bulls have sought after perennial powers like Baylor, Mississippi State, DePaul, Florida, Florida State, Georgia, Louisville, Notre Dame, LSU, Miami, Michigan State, Nebraska, Ohio State, Oklahoma, UNLV, Texas and Wake Forest, to name a few. USF has boasted some of the toughest strength of schedules in the country.

Fernandez got his start in coaching while working on his associate degree at Miami-Dade CC Kendall – where he earned his degree in 1991. Fernandez served as a student assistant coach for the men's basketball team and was immediately thrown into the fray with on-floor coaching, scouting, and most importantly, overseeing recruiting correspondence and getting his name out in front of coaches around the state.

It was at Miami-Dade that Fernandez met Cesar Odio, who not only saw his tremendous potential and hired him as a student assistant, but then promoted him to a full-time assistant coach upon his graduation in 1991. He would stay at Miami-Dade for one season (1991-92) before becoming the assistant boys' basketball coach at Miami's Sunset High School (1992-94).

Following his two seasons at Sunset, Fernandez and Odio would renew acquaintances when Odio was tabbed head men's basketball coach at Barry University in Miami Shores, Fla. (1994-96). Fernandez came along as Odio's top assistant and immediately established himself as a coach who had a sharp eye for talent and potential. During his two-year stay at Barry, Fernandez helped the Buccaneers to consecutive winning seasons, after the program only had two in the first 10 years, and a combined 34-21 record.

Fernandez entered the world of girls' basketball in 1996, when he secured his first head coaching job at Miami's Lourdes Academy. During his three seasons at Lourdes, Fernandez led the Bobcats to a stellar 83-16 (.838) record and a trip to the state 5A championship game in 1998 where they finished as the runner-up. In addition to his coaching responsibilities at Lourdes, Fernandez established valuable roots among Florida and high school coaches from around the nation as director and founder of the successful Miami Suns AAU program.

THE FERNANDEZ FILE

Born	Nov. 18, 1971
Hometown	Miami, Fla.
College	FIU, 1994
	B.S. in Physical Ed.
Wife	Tonya
Children	Sydney, Alex, Taylor Brianna and Brooke

AAC REGULAR SEASON CHAMPIONS (1)
2021AAC TOURNAMENT CHAMPIONS (1)
2021NCAA APPEARANCES (7)
2006, 2013, 2015, 2016, 2017, 2018, 2021WNIT APPEARANCES (9)
2004, 2005, 2007, 2008, 2009, 2010, 2012, 2014, 2019WNIT FINAL FOUR (2)
2009, 2014WNIT CHAMPIONSHIP (1)
2009

COACHING CAREER

1989-91	Miami-Dade CC Kendall, Student Asst.
1991-92	Miami-Dade CC Kendall, Asst. Coach
1992-94	Sunset High School, Asst. Boy's Coach
1994-96	Barry University, Asst. Men's Coach
1996-99	Lourdes Academy (Miami), Head Coach
1996-99	Miami Suns AAU, Head Coach
1999-2000	Barry University, Asst. Coach
2000-present	USF, Head Coach

Fernandez broke into collegiate women's basketball when he returned to Barry for his second of two tours of duty at the school. In his second stint, he served one year (1999-00) as the top assistant coach for the Buccaneers. Although it was just one season, Fernandez helped Barry record the second-most wins in the program's history as the Buccaneers posted a 22-8 record and the program's second-best slate ever in the Sunshine State Conference at 10-4. The

team's 22 wins that season is still just one of three 20-wins campaigns for Barry since the women's basketball team started competing during the 1988-89 season.

After graduating from Miami-Dade Kendall, Fernandez earned his bachelor's degree in physical education in 1994 from Florida International University. Along with his coaching duties at the beginning of his professional career,

Fernandez also taught physical education at Miami's Coral Reef Senior High School, Southwest Senior High School and Hialeah Middle School.

Fernandez and his wife, Tonya, live in Tampa with their daughters, Sydnie, Alex, Taylor, Brianna and Brooke.

JOSE FERNANDEZ YEAR-BY-YEAR

Year	School	Overall	Conf.	Postseason
2000-01	USF	4-24	1-15	-
2001-02	USF	14-13	4-10	-
2002-03	USF	7-20	2-12	-
2003-04	USF	14-15	7-7	WNIT First Round
2004-05	USF	21-11	9-5	WNIT Second Round
2005-06	USF	19-12	9-7	NCAA First Round
2006-07	USF	21-12	9-7	WNIT Second Round
2007-08	USF	16-16	5-11	WNIT First Round
2008-09	USF	27-10	8-8	WNIT Champions
2009-10	USF	15-16	6-10	WNIT First Round
2010-11	USF	12-19	3-13	-
2011-12	USF	19-16	8-8	WNIT Third Round
2012-13	USF	22-11	9-7	NCAA Second Round
2013-14	USF	23-13	13-5	WNIT Semifinals
2014-15	USF	27-8	15-3	NCAA Second Round
2015-16	USF	24-10	14-4	NCAA Second Round
2016-17	USF	24-9	11-5	NCAA First Round
2017-18	USF	26-8	13-3	NCAA First Round
2018-19	USF	19-16	7-9	WNIT Second Round
2019-20	USF	19-12	10-6	No postseason due to COVID
2020-21	USF	19-4	13-2	NCAA Second Round
2021-22	USF	5-2	0-0	-
Totals	22nd Season	397-278	175-157	



JOSE FERNANDEZ HEAD COACHING BREAKDOWN

Year	Overall	Home	Road	Neutral	Conf.	Postseason
2000-01	4-24	4-13	0-11	0-0	1-15	-
2001-02	14-13	9-6	5-7	0-0	4-10	-
2002-03	7-20	7-8	0-12	0-0	2-12	-
2003-04	14-15	9-6	5-8	0-1	7-7	0-2 (C-USA, WNIT)
2004-05	21-11	13-2	7-8	1-1	9-5	2-2 (C-USA, WNIT)
2005-06	19-12	12-3	5-7	2-2	9-7	0-2 (BIG EAST, NCAA)
2006-07	21-12	15-3	4-8	2-1	9-7	2-2 (BIG EAST, WNIT)
2007-08	16-16	11-7	3-8	2-1	5-11	1-2 (BIG EAST, WNIT)
2008-09	27-10	16-6	9-3	2-1	8-8	6-1 (BIG EAST, WNIT)
2009-10	15-16	9-8	5-7	1-1	6-10	0-2 (BIG EAST, WNIT)
2010-11	12-19	8-7	2-10	2-2	3-13	-
2011-12	19-16	11-3	4-7	4-6	8-8	3-2 (BIG EAST, WNIT)
2012-13	22-11	11-5	9-3	2-3	9-7	2-2 (BIG EAST, NCAA)
2013-14	23-13	13-8	9-5	1-0	13-5	5-2 (AAC, WNIT)
2014-15	27-8	13-3	9-3	5-2	15-3	3-2 (AAC, NCAA)
2015-16	24-10	15-1	6-6	3-3	14-4	3-2 (AAC, NCAA)
2016-17	24-9	10-4	8-2	6-3	11-5	2-2 (AAC, NCAA)
2017-18	26-8	13-1	8-3	5-4	13-3	2-2 (AAC, NCAA)
2018-19	19-16	11-5	5-6	3-5	7-9	3-2 (AAC, WNIT)
2019-20	19-13	14-2	4-6	1-5	10-6	1-1 (AAC)
2020-21	19-3	10-1	5-2	4-0	13-2*	3-1 (AAC, NCAA)
2021-21	5-2	2-0	0-1	3-1	0-0	-



TALE OF THE TAPE

THE UT ARLINGTON SERIES

Series Record	USF leads, 2-1
USF at home	USF leads, 2-0
USF at UT Arlington	UT Arlington leads, 1-0
USF at neutral site	0-0
First meeting	Dec. 23, 1992 (USF W, 69-62)
Last meeting	Nov. 19, 2005 (USF W, 74-50)
Last USF win	Nov. 19, 2005 (74-50)
Last UT Arlington win	Dec. 3, 1993 (81-54)
Current streak	USF one win

STATISTICAL COMPARISON

USF		UTA
5-2	Overall	4-2
36.1	Field Goal%	41.9
34.0	3-Pt. Field Goal%	24.0
71.9	Free Throw%	72.8
36.7	Oppt. Field Goal%	42.5
30.5	Oppt. 3-Pt. Field Goal%	33.1
60.3	Oppt. Free Throw%	77.0
41.3	Rebounding Avg.	35.3
+4.6	Rebounding Margin	-4.8
15.1	Assists/Gm.	15.5
12.7	Turnovers/Gm.	14.3
2.1	Blocks/Gm.	2.5
9.3	Steals/Gm.	8.3
63.1	Points/Gm.	70.2
53.4	Points Allowed/Gm.	72.0

USF CAREER STATS VS. UT ARLINGTON

No.	Name	G	Ppg	Rpg	Apq
0	Betancourt	0	0.0	0.0	0.0
1	Alvarez	0	0.0	0.0	0.0
2	Lazic	0	0.0	0.0	0.0
3	Harvey	0	0.0	0.0	0.0
4	Pinzan	0	0.0	0.0	0.0
5	Tsineke	0	0.0	0.0	0.0
11	Williams	0	0.0	0.0	0.0
12	Bermejo	0	0.0	0.0	0.0
13	Guerreiro	0	0.0	0.0	0.0
20	Mununga	0	0.0	0.0	0.0
21	Leverett	0	0.0	0.0	0.0
22	Wilson	0	0.0	0.0	0.0
24	Weary	0	0.0	0.0	0.0
32	Fankam Mendjiadeu	0	0.0	0.0	0.0

BULLS' CAREER STARTS & GAMES PLAYED

No.	Name	18-19	19-20	20-21	21-22	Tot	GP
0	Betancourt	-	-	-	-	-	2
1	Alvarez	-	8	1	-	9	43
2	Lazic	-	0	2	-	2	19
3	Harvey	24	16	23	7	70	84
4	Pinzan	15	24	23	7	69	88
5	Tsineke	-	22	17	6	45	54
11	Williams	-	-	-	-	-	4
12	Bermejo	-	1	1	-	2	49
13	Guerreiro	-	-	9	-	0	16
20	Mununga	-	27	23	7	57	59
21	Leverett^	24	12	22	7	65	123
22	Wilson	-	30*	19*	1	50	57
24	Weary	-	-	-	-	-	2
32	F. Mendjiadeu	-	31	18	-	49	57

* Starts occurred while at Memphis | ^ Had no starts during 17-18 in 27 GP

TICKET INFORMATION

■ USF Athletics announced that it is returning to full capacity for the 2021-22 season, presented by Tampa General Hospital, in the Yuengling Center for women's and men's basketball ... Face masks are not required but are recommended ... Season tickets are on sale now in addition to a limited number of court side seats ... For ticket questions or to purchase tickets, fans are encouraged to visit USFBullstix.com or call 1-800-GoBulls to purchase their season tickets.

2021-22 USF WBB PROMOTIONAL GAMES

■ USF women's basketball will have several promotional and theme nights during the 2021-22 campaign to celebrate various events, achievements, initiatives, and people associated with the program ... Below are a list of promotional nights for this season.

2021-22 Promotional Games

Nov. 9, UTRGV	AAC Championship White Out
Nov. 11, Alabama St.	Courtney Williams Night
Dec. 15, Stetson	Education Day (11 a.m.)
Dec. 17, High Point	Pride Night/ Teddy Bear Toss
Jan. 9, Wichita State	International Day
Jan. 19, Tulsa	Salute to Service
Jan. 22, Temple	We Back Pat
Feb. 6, Tulane	50 Years Celebration/ National Girls & Women in Sports Day/ Stampede for Women
Feb. 13, Central Florida	War on I-4
Feb. 16, Cincinnati	Think Pink/Play For Kay
March 2, Houston	Senior Night

■ For more information on these promotional games, or to purchase tickets, please visit USFBullstix.com or call 1-800-GoBulls.

UP NEXT FOR USF

■ The Bulls close out their seven-game road stretch in Richmond, Va., facing defending Atlantic 10 champion VCU on Dec. 12 at 1 p.m.

■ South Florida will finally return home to the Yuengling Center, for two straight, beginning on Wednesday, Dec. 15 against in-state foe Stetson for Education Day, with tip-off at 11 a.m. ... The Bulls will close out the short home short two-game stretch on Dec. 17 against High Point at 7 p.m.

A QUICK LOOK AT THE BULLS

■ The Bulls lead, or are in the top three, in the American Athletic Conference in several statistical categories through games of Nov. 30 (Complete NCAA team and individual ranking summaries can be found on pgs. 14-15):

Assist/Turnover Ratio	2nd (1.19)
Assists	2nd (106)
Assists Per Game	3rd (15.1)
Fewest Fouls	4th (108)
Fewest Turnovers	2nd (89)
FG Percentage Defense	3rd (36.7)
FT Percentage	5th (71.9)
Offensive Rebounds Per Game	3rd (16.1)
Rebounding Margin	5th (4.6)
Rebounds	4th (289)
Rebounds Per Game	4th (41.29)
Scoring Defense	2nd (53.4)
Scoring Margin	4th (9.7)
Steals	4th (65)
Steals Per Game	5th (9.3)
3-Point FG Attempted	2nd (156)
3-Point FG Made	1st (53)
3-Point FG Per Game	2nd (7.6)
3-Point FG Percentage	2nd (34.0)
Turnover Margin	2nd (5.43)

USF WOMEN'S BASKETBALL CELEBRATES 50 YEARS



USF women's basketball is celebrating its 50th anniversary season. Throughout the season, the Bulls will salute the program's legacy with tributes to their 16 postseason teams - including - seven NCAA Tournament teams, and 67 all-conference players, along with special game promotions. On Nov. 11, South Florida honored its fourth player, raising USF great, and WNBA All-Star, Courtney Williams' jersey into the rafters, two nights prior to being inducted into the USF Athletics Hall of Fame.

USF WEEKLY MEDIA PLANNER

MON. 29	TUE. 30	WED. 1	THURS. 2	FRI. 3	SAT. 4	SUN. 5
Practice 2:30 p.m.	Practice 1 p.m.	Travel to Arlington, Texas Practice 5 p.m.	vs. UT Arlington 7 p.m. ET	Travel to Tampa	Exam Break begins Practice TBA	Practice TBA

SCOUTING UT ARLINGTON

■ UT Arlington comes into Thursday's game with a 4-2 record and winners of four of its last five ... The Lady Mavs' two losses came to No. 7/8 Baylor, 81-54, in the season opener on Nov. 11, and in their last outing, 85-76, to Kansas City on Nov. 28 in Las Vegas, snapping their four-game winning streak.

■ Starr Jacobs leads three players in double figures in the scoring column for the Lady Mavs, averaging 21.3 points per game, followed by Terrryn Milton and De'Sha Benjamin, netting 12.8 and 11.0 points per game, respectively ... Katie Ferrell paces the team on the glass, grabbing 5.7 rebounds per outing.

THE SERIES AGAINST THE LADY MAVS

■ Friday's game against UT Arlington marks the fourth meeting all-time between the two schools, and the first since the 2005-06 campaign ... The Bulls hold a 2-1 series lead with the only loss coming in Arlington, Texas.

USF all-time against UT Arlington

12/28/92	H	W	69-62
12/3/93	A	L	81-54
11/19/05	H	W	74-50

LAST TIME OUT

■ Sydni Harvey scored 15 points, including the go-ahead three with 2.8 seconds left, to lead South Florida to a thrilling 57-54 win over, then, No. 7/5 - and defending national champion - Stanford on Nov. 26 in Nassau, Bahamas ... Also, with her eighth point of the night, Harvey became the 25th player in program history to score 1,000 career points.

■ In addition to Harvey, Elena Tsineke added 14 points and Elisa Pinzan had 11 points in the win ... Bethy Mununga hauled down a career-high 23 rebounds against the Cardinal, tied for the most in the nation this season through that game.

■ The Bulls dominated the glass on the much bigger Cardinal, outrebounding Stanford, 52-38, and 24-16 on the offensive glass

■ South Florida led by as many as 12 points, 23-11 with 7:48 left in the second quarter, while Stanford's biggest lead came with nine seconds left, a two-point 54-52 margin.

ELENA TSINEKE NAMED AMONG ELITE COMPANY; NAMED TO B4A ALL-TOURNEY TEAM

■ South Florida's Elena Tsineke was included with some pretty impressive company as she was selected as one of five players named to the Inaugural Bad Boy Mowers All-Tournament Team ... Joining Tsineke was Aliyah Boston (South Carolina), Zia Cooke (South Carolina), Paige Bueckers (UConn), and Taylor Robertson (Oklahoma).

■ During the three-day event, Tsineke helped to lead the Bulls to a 2-1 record and a third place finish with wins over Syracuse (77-53) on Nov. 20 and No. 9/9 Oregon (71-62) on Nov. 22 in the tournament finale for both schools ... South Florida's only loss was a 60-53 setback to No. 2/2 UConn on Nov. 21, day two of the event.

■ Tsineke averaged 12.6 points and 6.0 rebounds, in addition to 2.7 assists and 1.7 steals per game ... She started off the tournament with back-to-back 17-point games against Syracuse and UConn.

400 ON THE HORIZON FOR FERNANDEZ

■ Jose Fernandez enters the season - his 22nd as a head coach - within reach of a milestone victory ... Fernandez boasts a 397-278 career coaching record on the sidelines with the Bulls, just three wins shy of his 400th career win ... Fernandez won his 350th game on Feb. 23, 2019, when the Bulls defeated Wichita State in the Yuengling Center, 55-46.

■ Coming into the season, only 141 coaches - with a minimum of 10 years in Division I - have reached the 400 win marker.

FERNANDEZ AMONG THE AMERICAN'S ELITE

■ Fernandez also comes into the season as one of the elite coaches in the history of The American ... Entering his 22nd season, the Miami native is second all-time in overall wins - only trailing UConn head coach Geno Auriemma (252) - while coaching in the AAC with 186 victories, and is fifth all-time in winning percentage (69.1 percent, 186-83); and third among head coaches with 100 or more games coached in the conference.

■ In addition, coming into 2021-22 in career American Athletic Conference league games, Fernandez is second all-time in conference wins with 96, and fourth in conference winning percentage (72.2 percent, 96-37); second with over 100 games coached in The American.

USF'S RECORD WHEN ...

Leading at halftime	5-1
Trailing at halftime	0-1
Tied at halftime	0-0
Overtime	0-0
USF shoots 50% or better from field	0-0
USF shoots 40-49% from field	2-0
USF shoots under 40% from field	3-2
Opp. shoots 50% or better from field	0-0
Opp. shoots 40-49% from field	1-1
Opp. shoots under 40% from field	4-1
USF outrebounds opponent	3-1
Opp. outrebounds USF	2-1
Tied in rebounds	0-0
USF records 10 or more steals	3-0
USF records 15 or more assists	2-1
USF commits less than 15 turnovers	3-2
USF commits 15 or more turnovers	2-0
USF commits less turnovers than opp.	4-1
USF commits more turnovers than opp.	1-1
USF shoots 70% or better from the line	4-0
USF shoots under 70% from the line	1-2
USF scores 59 points or less	1-2
USF scores between 60-69 points	1-0
USF scores between 70-79 points	3-0
USF scores between 80-89 points	0-0
USF scores between 90-99 points	0-0
USF scores more than 100 points	0-0
Two or less Bulls score in double figures	0-2
Three Bulls score in double figures	5-0
Four or more Bulls score in double figures	0-0
USF plays at Yuengling Center	2-0
USF plays on the road	0-1
USF plays at a neutral site	3-1
Playing in November	5-2
Playing in December	0-0
Playing in January	0-0
Playing in February	0-0
Playing in March	0-0
Playing on Saturday	1-0
Playing on Sunday	0-1
Playing on Monday	1-1
Playing on Tuesday	1-0
Playing on Wednesday	0-0
Playing on Thursday	1-0
Playing on Friday	1-0
Playing during the afternoon	3-1
Playing during the evening	2-1
Games decided by three points or less	1-1
Games decided by four to 10 points	2-1
Games decided by 11-20 points	0-0
Games decided by more than 20 points	2-0

SCORING MARGINS

Points: Margin of victory										
1	2	3	4	5	6	7	8	9	10+	
-	-	1	-	-	-	1	-	1	2	

Points: Margin of defeat										
1	2	3	4	5	6	7	8	9	10+	
-	-	1	-	-	-	1	-	-	-	

2020-21 USF STARTING LINEUPS

Guard/Wing	Guard	Guard	Forward	Forward	W-L
Tsineke	Pinzan	Harvey	Mununga	Leverett	4-2
Wilson	Pinzan	Harvey	Mununga	Leverett	1-0

A LOOK AT THE AMERICAN

AMERICAN ATHLETIC CONFERENCE STANDINGS (THRU 11/30)

	AAC	Pct.	Over.	Pct.
Tulsa	0-0	.000	6-0	1.000
Tulane	0-0	.000	6-1	.857
Wichita State	0-0	.000	6-1	.857
UCF	0-0	.000	5-1	.833
Memphis	0-0	.000	6-2	.750
South Florida	0-0	.000	5-2	.714
East Carolina	0-0	.000	4-3	.571
Temple	0-0	.000	4-3	.571
Cincinnati	0-0	.000	3-3	.500
Houston	0-0	.000	3-4	.429
SMU	0-0	.000	3-4	.429

PRESEASON POLL

1. South Florida (10)	7. East Carolina
2. Central Florida (1)	8. Wichita State
3. Houston	9. Tulsa
4. Tulane	10. SMU
5. Temple	11. Memphis
6. Cincinnati	

AMERICAN ATHLETIC CONFERENCE SCHEDULE

December 2

Arkansas at UCF	6 p.m.
South Florida at UT Arlington	7 p.m.

December 3

Houston at Alabama	7 p.m.
SMU at North Texas	7 p.m.

December 4

Towson at East Carolina	12 p.m.
Wichita State at South Dakota	2 p.m.
Southern at Memphis	3 p.m.
Tulane at Arkansas-Pine Bluff	4:30 p.m.

December 5

Temple at Duquesne	1 p.m.
Tulane at Miami	2 p.m.
Ole Miss at Cincinnati	2 p.m.

December 6

North Carolina Central at East Carolina	6 p.m.
---	--------

December 7

Delaware at SMU	8 p.m.
-----------------	--------

December 8

Troy at Tulane	7 p.m.
Missouri S&T at Tulsa	7:30 p.m.

December 9

Jacksonville State at Houston	8 p.m.
-------------------------------	--------

MILESTONE WATCH

■ In addition to Jose Fernandez climbing towards the 400 career win plateau, several players on the roster are also within reach of career milestones.

Upcoming milestones ...

Bethy Mununga ___ 674 rebounds (26 rbs. from 700)

■ Against UConn on Nov. 21, Shae Leverett hauled down eight rebounds to reach the 700 career rebound mark ... She finished the game with 702 for her career.

■ With her first assist of the afternoon against No. 9/9 Oregon, Elisa Pinzan reached the 400 career assist mark ... Pinzan finished the game with 10 assists and 409 for her career.

■ On the same day that she put the dagger in the defending national champion - and then No. 7/5-ranked - Stanford Cardinal with the go-ahead three with 2.8 seconds left, Sydni Harvey reached the 1,000-point plateau with her eighth point of the afternoon ... She is the 25th player in program history to reach the milestone.

USF TABBED FIRST IN PRESEASON AAC POLL

■ For the second straight year South Florida has been picked to finish atop the American Athletic Conference this season in the league's preseason coaches poll (Complete poll in the "A Look At The American" section on page 8) ... It marks the second time in program history that the Bulls have been selected first in a preseason conference poll

■ The Bulls earned the top spot with 100 total points and 10 of the 11 first-place votes ... Central Florida (91) was picked to finish second and Houston

MISCELLANEOUS USF STATISTICS

Double Figure Scorers

Elena Tsineke	6
Sydni Harvey	4
Dulcy Fankam Mendjiadeu	3
Bethy Mununga	2
Elisa Pinzan	2
Maria Alvarez	1

Double-Doubles

Bethy Mununga	1
Elisa Pinzan	1

Games Leading (Sharing) Scoring Honors

Elena Tsineke	3
Sydni Harvey	2
Bethy Mununga	1
Elisa Pinzan	1

Games Leading (Sharing) Rebounding Honors

Bethy Mununga	5 (1)
Dulcy Fankam Mendjiadeu	1
Shae Leverett	(1)

(77) third, while Tulane (72) and Temple (69) round out the top five teams in the preseason poll ... Cincinnati (44), East Carolina (38), and Wichita State (36) were slotted sixth through eighth, respectively, with Tulsa (32), SMU (26), and Memphis (20) rounding out the bottom three teams ... South Florida (10) and Central Florida (1) were the only two schools to earn first-place votes.

■ During the first eight years of The American, the Bulls were picked second five times (2014-15, 2015-16, 2017-18, 2018-19, 2019-20), behind previous AAC member, UConn, which was selected first all seven seasons ... USF was tabbed third in 2013-14 and 2016-17.

MUNUNGA NAMED TO KATRINA MCCLAIN AWARD WATCH LIST

■ Bethy Mununga has been chosen as one of 20 watch list candidates for the 2022 Katrina McClain Award, given by the Naismith Memorial Basketball Hall of Fame and the Women's Basketball Coaches Association (WBCA) to the player recognized as the top power forward in women's NCAA Division I college basketball ... Mununga is the lone representative of the American Athletic Conference.

■ Mununga was an American Athletic Conference First Team All-Conference selection, in 2020-21, and was named to The American All-Tournament Team.

USF'S LARGEST IN 2021-22

Lead	42 vs. Alabama State (63-21)
Deficit	13 vs. UConn (27-14)
Margin of victory	35 vs. Alabama State (72-35)
Margin of defeat	7 vs. UConn (60-53)
Halftime lead	25 vs. Alabama State (39-14)
Halftime deficit	9 vs. UConn (34-25)
Deficit in win	7 vs. Syracuse (20-13)
Halftime deficit in win	-
Lead in loss	9 at Tennessee (27-18)
Halftime lead in loss	7 at Tennessee (27-20)

USF: HOME, ROAD & NEUTRAL

Category	Home	Road	Neutral
Record	2-0	0-1	3-1
Field Goal%	39.7	28.6	36.3
3-Pt. Field Goal%	30.0	34.8	36.1
Free Throw%	70.6	62.5	74.1
Oppt. Field Goal%	30.1	33.3	41.0
Oppt. 3-Pt. Field Goal%	31.3	0.0	34.4
Oppt. Free Throw%	64.0	44.4	65.7
Rebounding Avg.	38.5	42.0	42.5
Rebounding Margin	0.0	-6.0	+9.5
Assists/Gm.	16.0	8.0	16.5
Turnovers/Gm.	12.5	14.0	12.5
Blocks/Gm.	2.5	0.0	2.5
Steals/Gm.	11.0	3.0	10.0
Points/Gm.	67.5	49.0	64.5
Points Allowed/Gm.	46.5	52.0	57.3



averaging 16.3 rebounds per game in the three AAC tourney games ... She also grabbed a tournament record of 49 rebounds ... Mununga was just shy of averaging a double-double for the season, netting 9.7 points per game, good enough for fourth on the team, and 12.9 rebounds per outing ... Her rebound-per-game average was tops in The American and third in the nation, while her total rebounds (297) were first in the AAC and 10th in the nation.

TSINEKE NAMED TO PRESEASON ANN MEYERS-DRYSDALE AWARD WATCH LIST

■ Elena Tsineke has been chosen as one of 20 watch list candidates for the 2022 Ann Meyers-Drysdale Award ... The award is given by the Naismith Memorial Basketball Hall of Fame and the Women's Basketball Coaches Association to the player recognized as the top shooting guard in women's NCAA Division I college basketball.

■ Tsineke is the Bulls' top returning scorer and turned in another marquee season for South Florida, establishing herself as one of the premier players in The American and one of the top young shooting guards in the nation ... She was named to The American All-Conference First Team at the conclusion of the 2020-21 campaign after averaging a team-high 13.6 points per game – good enough for eighth in the conference – 2.2 rebounds per game, and 1.8 assists per outing ... She was also selected to the AAC All-Tournament Team, averaging 13.3 points per contest in the three games.

HOME, SWEET HOME

■ To say that the Bulls have defended their home court over the last five-plus seasons is an understatement ... Through Nov. 11 against Alabama State, USF boasts a dominating 87-16 record at the Yuengling Center since the 2014-15 season ... The



Green and Gold has dropped just one game in three of the six seasons, coming last season in 2020-21 (10-1) during the their Covid-shortened campaign, and the 2017-18 (13-1) and 2015-16 (15-1) seasons ... The Bulls posted a 14-2 slate in 2019-20.

■ USF has also proven to be one of the elite teams in The American, and to do that you need to win games at home ... The Bulls are 44-13 in AAC games at home, and were 29-5 prior to the 2018-19 season.

■ Games at the Yuengling Center are no vacation for nonconference foes when they come to Tampa ... Over the last seven-plus seasons, the Bulls have posted a 42-3 record in nonconference games at home ... Through Nov. 11, USF has won 39 of its last 41 games, with the only losses coming to defending 2019 National Champion Baylor, 67-62, during the 2020-21 campaign, and Louisville, 66-52, during the 2016-17 season.

■ During the last seven years, the likes of Baylor, Mississippi State, Oklahoma, LSU, Louisville, Penn State, Oklahoma State, St. John's and Texas have visited USF for nonconference matchups.

PRIMED FOR THE POSTSEASON

■ Entering the 2021-22 campaign, USF has made 16 postseason tournament appearances and has had seven NCAA Tournament berths in head coach Jose Fernandez's 21 seasons ... The all-time winningest coach in program history, Fernandez has guided USF to nine 20-win seasons, two WNIT Final Four appearances, the 2009 WNIT championship, and just under 400 wins entering the 2021-22 campaign.

■ Boasting a 19-13 record through the end of The American Tournament in 2019-20, the Bulls were poised to make their 16th postseason appear-

GETTING SOCIAL WITH THE BULLS

■ Fans are encouraged to follow @USFWBB on Twitter, and "Like" USF women's basketball on Facebook (www.Facebook.com/USFwomensbasketball) for the latest Bulls' basketball news ... Follow all of USF's athletic teams on Twitter (@USFAthletics), Facebook (Facebook.com/USFAthletics), YouTube (BullsVision), and Instagram (USFAthletics).

TOP 25 RANKINGS

ASSOCIATED PRESS (Nov. 29)

1.	South Carolina	7-0
T2.	Connecticut	3-1
T2.	NC State	6-1
4.	Stanford	5-2
5.	Baylor	6-1
6.	Indiana	5-1
7.	Arizona	7-0
8.	Maryland	6-2
9.	Iowa	4-0
10.	Louisville	5-1
11.	Tennessee	6-0
12.	Michigan	7-0
13.	SOUTH FLORIDA	5-2
14.	Iowa State	7-0
15.	Texas	4-1
16.	Kentucky	4-1
17.	Texas A&M	7-0
18.	Oregon	3-2
18.	Ohio St.	5-0
20.	Georgia	6-0
21.	Brigham Young	7-0
22.	Florida Gulf Coast	7-0
23.	Oregon St.	3-2
24.	Notre Dame	6-1
25.	Florida State	4-2

Also Receiving Votes: West Virginia 46; Virginia Tech 37; Colorado 30; UCLA 29; Georgia Tech 21; Duke 15; Arkansas 11; Gonzaga 7; North Carolina 2; Washington St. 2; DePaul 2; Oklahoma 1; Purdue 1; Missouri St. 1.

USA TODAY/WBCA COACHES POLL (Nov. 30)

1.	South Carolina	8-0
2.	UConn	3-1
3.	NC State	6-1
4.	Stanford	5-2
5.	Louisville	5-1
6.	Indiana	5-1
7.	Baylor	6-1
8.	Maryland	6-2
9.	Michigan	7-0
10.	Tennessee	6-0
11.	Arizona	7-0
12.	Iowa	4-0
13.	Iowa State	7-0
14.	Texas	4-1
15.	Texas A&M	7-0
16.	Oregon	3-2
17.	SOUTH FLORIDA	5-2
18.	Kentucky	4-1
19.	Georgia	6-0
20.	Ohio St.	5-0
21.	Oregon St.	3-2
22.	Florida Gulf Coast	7-0
23.	Brigham Young	7-0
24.	UCLA	4-2
25.	Notre Dame	6-1

Also Receiving Votes: Georgia Tech 52; Gonzaga 51; **West Virginia 42**; North Carolina 33; Florida State 23; Virginia Tech 20; Arkansas 16; Colorado 15; **Central Florida 9**; Wake Forest 6; Oklahoma 6; Missouri St. 6; Washington St. 5; **Mississippi 4**; Tulane 1; Coastal Carolina 1.

Opponents in **Bold**

ance before the NCAA shut the season down due to the Covid-19.

THE BULLS IN THE AAC WITHOUT UCONN

■ USF enters its eighth season in the American Athletic Conference and up until the 2020-21 campaign, they had the pleasure of facing UConn upwards of three times in a season, which skewed the Bulls' record in conference play ... Below is USF's records against **current** AAC members overall, during the 2018-21 seasons, including conference tournament play.

■ The 11 losses during the 2018-20 campaigns came when both rosters were riddled by injury.

USF's record in the AAC excluding UConn

Team	Over.	18-20	20-21
Memphis	11-3*	2-1	2-0*
Cincinnati	13-3	2-3	2-0
Tulsa	9-0	2-0	2-0
East Carolina	10-1	2-0	1-0
Wichita State	3-1	2-0	2-0
Houston	10-2	3-1	1-1
Tulane	17-0	6-0	3-0
Temple	14-3	2-1	1-0
UCF	9-5	0-4	2-1
SMU	11-1	2-1	0-0
Totals	103-19	23-11	16-2

* Includes a forfeit win over Memphis in 2020-21.

ELISA CLIMBING THE ASSIST LIST

■ On Nov. 22 against No. 9/9 Oregon, Elisa Pinzan became just the fourth player in program history to dish out 400 career assists, handing out 10 against the Ducks ... She finished with game with 409 for her career ... She is currently fourth on the school's all-time list with 415 career dimes.

USF career assist leaders

1. Shantia Grace (2005-09)	610
2. Laia Flories (2014-2018)	519
3. Renee Bellamy (1991-94)	429
4. Elisa Pinzan (2018-present)	415
5. Jenny Koeppel (1994-97)	389

6. Jackie Eisenhower (1988-91)	387
7. Shaletia Stringfield (2011-12, 13-16)	379
8. Dione Smith (1998-00, 02)	366
9. Anedra Gilmore (2003-05)	365

LEVERETT REACHES 700 REBOUND MARKER

■ With her sixth rebound of the game against Syracuse, on Nov. 21, 2021, Shae Leverett reached the 700-rebound plateau for her career ... Currently, Leverett has 710 rebounds for her career and is in sole possession of 12th on the schools all-time rebounding list.

USF career rebounding leaders

1. Alisia Jenkins (2012-16)	1,284
2. Wanda Guyton (1985, 87-89)	1,077
3. Courtney Williams (2012-16)	931
4. Mary Klinewski (1982-85)	909
5. Tamara Henshaw (2016-20)	895
6. Maria Jespersen (2014-18)	891
7. Jessica Lawson (2007-10)	863
8. Nalini Miller (2003-07)	823
9. Keira Rozier (1992-95)	770
10. Jessica Dickson (2003-07)	746
11. Ezira Parsons (2001-06)	729
12. Shae Leverett (2016-present)	710
13. Bethy Mununga (2019-present)	674
14. Joyce Lewis (1981-83)	658
15. Renee Bellamy (1991-94)	650
16. Kristi Poore (1990-93)	630

AND 600 BOARDS FOR BETHY

■ With her 18 rebounds in the season-opener against UTRGV on Nov. 9, Bethy Mununga recorded a pretty impressive milestone for someone that has only played in 53 career games to that point ... Mununga grabbed her 600th career rebound against the Vaqueros ... She currently sits with 674 career rebounds for her career, after her 23-rebound performance against No. 7/5 Stanford on Nov. 26, good enough for a career 11.4 per game average.

CHAIRWOMAN OF THE BOARDS ...

■ During her 59-game career at South Florida, Bethy Mununga has proven herself as one of the most dominating rebounders in Division I, averaging 11.4 rebounds per game for her career ... During her time in the Green and

Gold, Mununga has recorded 39 double-figure rebounding games

Mununga's career games with 10-plus rebounds

23	vs. Stanford (Nov. 26, 2021)
21	East Carolina (Jan. 2, 2021)
20	at Temple (Feb. 24, 2021)
18	vs. Tulane (March 10, 2021)
18	UTRGV (Nov. 9, 2021)
17	Tulane (Feb. 20, 2021)
17	at Tulane (Feb. 13, 2020)
16	Central Florida (March 11, 2021)
16	SMU (Feb. 29, 2020)
15	vs. Wichita State (March 9, 2021)
15	Tulsa (Feb. 13, 2021)
15	at Wichita State (Jan. 22, 2020)
14	at Central Florida (March 4, 2021)
14	Cincinnati (Feb. 17, 2021)
14	Houston (Jan. 9, 2021)
14	at Cincinnati (Dec. 22, 2020)
14	vs. Tulane (March 7, 2020)
14	Brown (Dec. 30, 2019)
13	Central Florida (March 2, 2021)
13	at Tennessee (Nov. 15, 2021)
12	Mississippi State (Dec. 5, 2020)
12	vs. Syracuse (Nov. 20, 2021)
12	at UConn (March 2, 2020)
12	vs. FGCU (Nov. 29, 2019)
12	vs. South Dakota State (Nov. 28, 2019)
12	at Baylor (Nov. 19, 2019)
12	VCU (Nov. 15, 2019)
12	Jacksonville (Nov. 5, 2019)
11	vs. Washington State (March 21, 2021)
11	Stetson (Dec. 13, 2020)
11	Jacksonville (Nov. 28, 2020)
11	at Central Florida (Feb. 19, 2020)
11	Howard (Nov. 12, 2019)
10	at Memphis (Dec. 16, 2020)
10	Baylor (Dec. 1, 2020)
10	East Carolina (Feb. 25, 2020)
10	UConn (Feb. 16, 2020)
10	Tulane (Jan. 25, 2020)
10	vs. Notre Dame (Nov. 30, 2019)

2021-22 USF HONORS

Dulcy Fankam Mendjiadeu

■ Preseason AAC All-Conference First Team

Jose Fernandez

■ WHoopDirt.com National Coach of the Week (Nov. 30)

Sydni Harvey

- AAC Player of the Week (Nov. 29)
- AAC Weekly Honor Roll (Nov. 15)
- Preseason AAC All-Conference Second Team

Bethy Mununga

- Preseason Katrina McClain Award Watch List
- Preseason AAC All-Conference First Team

Elisa Pinzan

- Preseason AAC All-Conference Second Team

Elena Tsineke

- Bad Boy Mowers All-Tournament Team
- AAC Weekly Honor Roll (Nov. 22)
- Preseason Ann Meyers-Drysdale Award Watch List
- Preseason AAC All-Conference First Team

Team

- NCAA.com Team of the Week (Nov. 30)
- ESPN Team of the Week (Nov. 29)

DOUBLE DIPPING

■ It took four games, but Bethy Mununga recorded her first double-double of the season on Nov. 20 against Syracuse, recording an 18-point, 12-rebound effort in the first game of the Battle 4 Atlantis ... Mununga fell just one-point shy in the opener against UTRGV, on Nov. 9, with 18 rebounds and nine points.

■ Elisa Pinzan quickly became the second player of the season to record a double-double with her career-high 26-point and 10-assist effort against No. 9/9 Oregon on Nov. 22 in the third place game of the Battle 4 Atlantis ... It marked her third career double-double, and second points and assists double-double.

2021-22 USF double-doubles

Mununga ____ Nov. 20 vs. Syracuse (18 pts./12 rbs.)

Pinzan ____ Nov. 22 vs. Oregon (26 pts., 10 asts.)

A DOUBLE-DOUBLE MACHINE

■ Bethy Mununga has been a double-double machine since stepping on USF's campus ... Mununga has 21 double-doubles in her 59 games with the Bulls.

Mununga's career double-doubles

Nov. 5, 2019 vs. Jacksonville	11 pts./12 rbs.
Nov. 12, 2019 vs. Howard	14 pts./11 rbs.
Nov. 15, 2019 vs. VCU	14 pts./12 rbs.
Nov. 19, 2019 vs. No. 2/2 Baylor	16 pts./12 rbs.
Nov. 28, 2019 vs. South Dakota St.	15 pts./12 rbs.
Dec. 30, 2019 vs. Brown	16 pts./14 rbs.
Jan. 22, 2020 at Wichita State	13 pts./15 rbs.
Feb. 13, 2020 at Tulane	11 pts./17 rbs.
Feb. 29, 2020 vs. SMU	13 pts./16 rbs.
Dec. 1, 2020 vs. No. 4/4 Baylor	13 pts./10 rbs.
Dec. 13, 2020 vs. Stetson	11 pts./11 rbs.
Dec. 22, 2020 at Cincinnati	13 pts./14 rbs.
Jan. 4, 2021 vs. ECU	23 pts./21 rbs.
Jan. 9, 2021 vs. Houston	12 pts./14 rbs.
Feb. 13, 2021 vs. Tulsa	19 pts./15 rbs.
Feb. 17, 2021 vs. Cincinnati	19 pts./14 rbs.
Feb. 20, 2021 vs. Tulane	17 pts./17 rbs.
Feb. 24, 2021 at Temple	10 pts./20 rbs.
March 2, 2021 vs. UCF	11 pts./13 rbs.
March 4, 2021 at UCF	11 pts./14 rbs.
Nov. 20, 2021 vs. Syracuse	18 pts./12 rbs.

DROPPIN' DIMES

■ Elisa Pinzan comes into Thursday's game at UT Arlington ranked **first in The American**, and **ninth in the nation**, in total assists with 42, through games of Nov. 30 ... She is also **tops in the conference in assists per game** and **19th in the nation**, dishing out 6.0 dimes per contest.

DON'T STOP THE PINZANITY!!

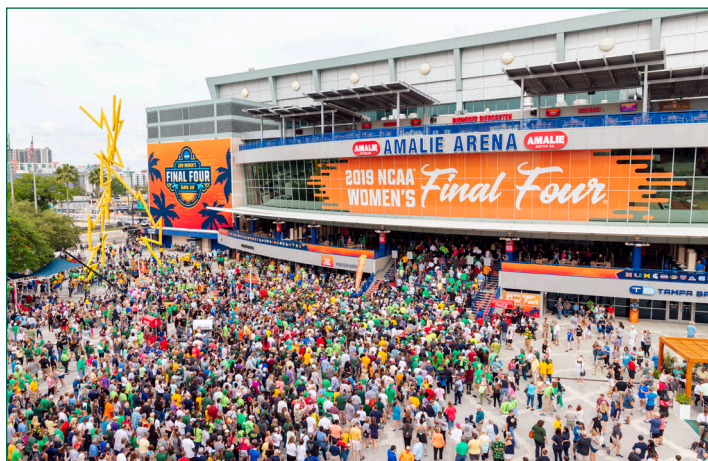
■ Elisa Pinzan continues to be one of the nation's premier distributors of the ball, averaging 4.7 assists per game during her career ... Through Nov. 26, Pinzan has handed out five-or-more assists 438 times ... In addition, she has handed out seven-plus assists 24 times.

■ Pinzan's career-high was set on Jan. 9, 2021 against Houston, when she handed out 14 assists, which is tied for the second most in a single game in program history.

Pinzan's career games with five-plus assists

14	Houston (Jan. 9, 2021)
11	at Cincinnati (Dec. 22, 2020)
10	vs. Oregon (Nov. 22, 2021)
9	vs. Syracuse (Nov. 20, 2021)

NCAA SELECTS TAMPA BAY TO HOST FOUR SIGNATURE D-I EVENTS; WOMEN'S FINAL FOUR MAKES FOURTH STOP IN TAMPA



■ On Wednesday, Oct. 14, 2020, the National Collegiate Athletic Association (NCAA) announced that Tampa Bay has been selected as the host site of four major NCAA Championships, which includes the 2023 Division I Men's Frozen Four, 2023 Division I Women's Volleyball Championship, 2025 NCAA Division I Women's Final Four and 2026 NCAA Division I Men's Basketball First and Second Rounds.

In 2023, Tampa Bay will have the unique opportunity to host the Men's Frozen Four and Women's Volleyball Championship in the same calendar year, both at Amalie Arena. This marks Tampa Bay's third time hosting the Men's Frozen Four (2012, 2016) and second time hosting the Women's Volleyball Championship (2009).

In 2025, Tampa Bay will welcome the Women's Final Four back for a record fourth time. Tampa Bay has welcomed more fans in Women's Final Four history than any other city, with a combined 123,039 fans attending in 2008, 2015 and 2019. In 2019, sellout crowds in Amalie Arena totaled 40,189 fans as the Baylor Lady Bears claimed the national championship.

- ✓ 2023 NCAA Division I Men's Frozen Four (University of Wisconsin, host)
- ✓ 2023 NCAA Division I Women's Volleyball Championship (USF, host)
- ✓ 2025 NCAA Division I Women's Final Four (USF, host)
- ✓ 2026 NCAA Division I Men's Basketball First and Second Rounds (USF, host)



GAMEDAY. EVERY DAY.

9	Cincinnati (Feb. 17, 2021)
9	Wichita State (Jan. 6, 2021)
9	Mississippi State (Dec. 5, 2020)
9	SMU (Feb. 29, 2020)
8	at UCF (March 4, 2021)
8	UCF (March 2, 2021)
8	East Carolina (Jan. 2, 2021)
8	VCU (Nov. 15, 2019)
8	vs. Tulane (March 8, 2019)
8	Bethune Cookman (Nov. 15, 2018)
7	Tulsa (Feb. 13, 2021)
7	at Tulane (Jan. 13, 2021)
7	Temple (Feb. 9, 2020)
7	at Wichita State (Jan. 22, 2020)
7	at Temple (Jan. 16, 2020)
7	at Tulsa (Jan. 12, 2020)
7	Alabama State (Dec. 6, 2019)
7	Wichita State (Feb. 23, 2019)
7	Tulsa (Feb. 16, 2019)
7	Oklahoma (Nov. 18, 2018)
6	vs. Stanford (Nov. 26, 2021)
6	vs. UConn (Nov. 21, 2021)
6	Alabama State (Nov. 11, 2021)
6	vs. Tulane (March 10, 2021)
6	at Temple (Feb. 24, 2021)
6	Baylor (Dec. 1, 2020)
6	at Memphis (2/22/20)
6	Tulane (Jan. 25, 2020)
6	at Baylor (Nov. 19, 2019)
6	Memphis (Jan. 23, 2019)
6	vs. Virginia (Dec. 21, 2018)
5	vs. Wichita State (March 9, 2021)
5	at Houston (Feb. 27, 2021)
5	East Carolina (Feb. 25, 2020)
5	at UCF (Jan. 19, 2020)
5	Texas (Nov. 8, 2019)
5	Jacksonville (Nov. 5, 2019)
5	UConn (March 3, 2019)
5	vs. UCLA (Nov. 24, 2018)

A MURDER'S ROW OF THE NATION'S BEST

■ Once again, USF will play its usual demanding non-conference schedule, only this year, head coach Jose Fernandez may have outdone himself not only by putting together one of the best nonconference slates in program history but one that will most certainly be looked at as one of the best in the nation.

■ The Bulls will begin a five-game stretch – that will include four games in The Bahamas – when they travel to Knoxville to face Tennessee on Nov. 15 in the AAC/SEC Challenge ... USF then heads to Paradise Island, The Bahamas for the inaugural Battle 4 Atlantis, Nov. 20-22 at the Atlantis Paradise Island Hotel ... Other teams participating are Buffalo, UConn, Minnesota, Oklahoma, Oregon, South Carolina, and Syracuse ... The Bulls will close out the five-game stretch on Nov. 26 when they travel 20 miles up the road to Nassau to take on defending National

Champion Stanford in the Pink Flamingo Championship at the Baha Mar Convention Center.

■ Depending on matchups and outcomes in the Battle 4 Atlantis, USF could find itself set up to play three of the four teams that advanced to the Final Four last year in San Antonio, Texas, with UConn and South Carolina as potential opponents before it meets Stanford.

■ USF also travels across the Sunshine State to the West Palm Invitational in West Palm Beach, Fla. where it will butt heads with West Virginia (NCAA Second Round) and Texas Tech, Dec. 20-21.

FIVE NAMED TO PRESEASON ALL-AAC TEAM

■ In addition to South Florida being picked first in The American preseason poll, the Bulls had five players named to the preseason All-Conference team ... Elena Tsineke, Bethy Mununga, and Dulcy Fankam Mendjiadeu were named First Team All-Conference, while Sydney Harvey and Elisa Pinzan were tabbed Second Team selections.

■ Tsineke, the Bulls' top returning scorer, was named to the American Athletic Conference All-Conference First Team after averaging a team-high 13.6 points per game – good enough for eighth in The American – 2.2 rebounds per game, and 1.8 assists per outing ... She was also selected to the AAC All-Tournament Team, averaging 13.3 points per contest in the three games.

■ One of the top power forwards in the nation, Mununga was an American Athletic Conference First Team All-Conference selection and was named to The American All-Tournament Team, averaging 16.3 rebounds per game in the three AAC tourney games ... She also grabbed a tournament record 49 rebounds ... Mununga was just shy of averaging a double-double for the season, netting 9.7 points per game, good enough for fourth on the team, and 12.9 rebounds per outing ... Her rebound-per-game average was tops in The American and third in the nation, while her total rebounds (297) were first in the AAC and 10th in the nation.

■ Fankam Mendjiadeu played the last two seasons at American Athletic Conference foe Memphis and was a Second Team all-conference selection in 2020-21 ... She finished the season seventh in The American in scoring (14.1 ppg.) and second in rebounding (10.6 rpg.), making her the only player in the conference to average a double-double ... In addition, she was second in the league in blocked shots, averaging 1.6 rejections per outing, and was third in the conference in field goal percentage, shooting 47.6 percent (107-for-225).

■ Harvey was named the AAC Tournament Most Outstanding Player and selected to the All-Tournament Team, and was also named to The American All-Conference Third Team ... She averaged 11.7 points per contest on the year

and 11.6 points per outing in conference games ... Harvey finished her junior campaign with 903 career points and is on the cusp of becoming the 25th player in program history to reach the 1,000-point plateau ... She led the Bulls in three-point field goals made with 43, which was also tied for the fourth-most in the conference, and her 1.9 treys made per game was seventh in the AAC.

■ One of the top point guards in the nation during the 2020-21 campaign, Pinzan was named the American Athletic Conference Most Improved Player and was chosen to The American All-Conference Second Team ... She was third on the team in scoring, averaging 10.3 points per game, and grabbed 3.3 rebounds per contest, tied for third on the team ... Pinzan made her name as an elite distributor and protector of the ball ... She led The American, and was seventh in the nation, in assists per game (6.5) and assist/turnover ratio (3.04), and was tops in the AAC, and 10th in the nation, in total assists (149).



NCAA Statistics

WHERE USF RANKS AS A TEAM IN THE NCAA (THROUGH NOV. 30)

South Fla. - 2021-22 Women's Basketball Ranking Summary thru games 11/30/2021

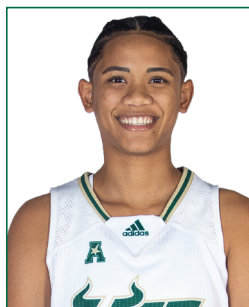
Statistic	National Rank	Conference Rank	Value	National Leader	Value	Conference Leader	Value
Assist Turnover Ratio (348 ranked)	32	2	1.19	Kentucky	1.67	Tulsa	1.42
Assists (348 ranked)	47	2	106	Michigan St.	163	SMU	108
Assists Per Game (348 ranked)	90	3	15.1	Oklahoma	21.4	SMU	15.4
Blocked Shots (348 ranked)	232	11	15	South Carolina	61	East Carolina	35
Blocked Shots Per Game (348 ranked)	282	11	2.1	Georgia	8.5	East Carolina Cincinnati	5.0
Defensive Rebounds per Game (30 ranked)				Nebraska	36.3	Tulane	32.1
Fewest Fouls (344 ranked)	204	4	108	IUPUI	35	UCF	88
Fewest Turnovers (348 ranked)	90	2	89	Southern Ill.	26	Tulsa	65
Field-Goal Percentage (348 ranked)	284	10	36.1	UConn	53.0	Tulsa	45.6
Field-Goal Percentage Defense (348 ranked)	94	3	36.7	Coastal Carolina	28.2	UCF	32.6
Free Throw Attempts (348 ranked)	193	9	96	Arkansas St.	193	Memphis	151
Free Throws Made (348 ranked)	175	10	69	Arkansas St.	137	Memphis	106
Free-Throw Percentage (348 ranked)	121	5	71.9	Southern Ill.	90.0	UCF	80.4
Offensive Rebounds per Game (30 ranked)	22	3	16.1	Texas	18.6	Wichita St.	16.9
Personal Fouls Per Game (348 ranked)	93	4	15.4	Wyoming	10.0	Tulane	13.7
Rebound Margin (348 ranked)	105	5	4.6	Coastal Carolina	18.3	Wichita St.	13.0
Rebounds (348 ranked)	49	4	289	Ga. Southern	383	Memphis	347
Rebounds Per Game (348 ranked)	79	4	41.29	Troy	50.00	Tulane	47.71
Scoring Defense (348 ranked)	36	2	53.4	Coastal Carolina	41.7	UCF	43.2
Scoring Margin (348 ranked)	104	4	9.7	Ohio St.	36.0	Wichita St.	14.4
Scoring Offense (348 ranked)	214	8	63.1	Ohio St.	89.4	Tulane	74.4
Steals (348 ranked)	65	4	65	SFA	113	East Carolina	83
Steals Per Game (348 ranked)	117	5	9.3	Grand Canyon	17.8	East Carolina	11.9
Three Pt FG Defense (348 ranked)	191	6	30.5	IUPUI	14.9	UCF	26.0
Three-Point Field Goals Attempted (146 ranked)	51	2	156	FGCU	241	Tulane	157
Three-Point Field Goals Made (348 ranked)	41	1	53	Iowa St.	87	South Fla.	53
Three-Point Field Goals Per Game (348 ranked)	74	2	7.6	Iowa St.	12.4	Tulsa	8.2
Three-Point Field-Goal Percentage (348 ranked)	91	2	34.0	Texas A&M	44.7	Tulsa	41.5
Turnover Margin (348 ranked)	36	2	5.43	Texas	13.80	Tulsa	6.83
Turnovers Forced (348 ranked)	134	7	18.14	Grand Canyon	29.40	East Carolina	23.14
Turnovers Per Game (348 ranked)	26	2	12.7	Colorado St.	9.7	Tulsa	10.8
Won-Lost Percentage (327 ranked)	81	6	71.4	23 teams tied	100.0	Tulsa	100.0

WHERE USF RANKS INDIVIDUALLY IN THE NCAA (THROUGH NOV. 30)

Statistic	Player	National Rank	Conference Rank	Value National Leader	Value	Conference Leader	Value
Assist Turnover Ratio (250 ranked)	Elisa Pinzan	33	2	2.80 Jazmine Massengill, Kentucky Allison Weidner, Nebraska	5.75	Kaila Anderson, Tulane	2.88
Assists (133 ranked)	Elisa Pinzan	10	1	42 LaTora Duff, New Mexico	53	Elisa Pinzan, South Fla.	42
Assists Per Game (249 ranked)	Elisa Pinzan	16	1	6.0 Tra'daya Smith, Longwood	7.2	Elisa Pinzan, South Fla.	6.0
Blocked Shots (133 ranked)				Ayoka Lee, Kansas St.	33	Mia Heide, Tulane	14
Blocked Shots Per Game (215 ranked)	Bethy Mununga	215	9	1.00 Nancy Mulkey, Washington	4.80	Mia Heide, Tulane	2.00
Defensive Rebounds per Game (29 ranked)	Bethy Mununga	13	2	8.1 Jasmine Franklin, Missouri St.	9.8	Savannah Wilkinson, SMU	8.4
Double Doubles (23 ranked)				NaLyssa Smith, Baylor Camilla Emsbo, Yale	7	Savannah Wilkinson, SMU	5
Field Goal Attempts (148 ranked)	Elena Tsineke	47	3	98 Jasmine Dickey, Delaware	174	Savannah Wilkinson, SMU	105
Field Goals Made (143 ranked)				Ayoka Lee, Kansas St.	82	Taniyah Thompson, East Carolina Savannah Wilkinson, SMU	43 43
Field-Goal Percentage (250 ranked)				Katelyn Young, Murray St.	74.0	Mia Davis, Temple	49.4
Final Points (198 ranked)	Sydni Harvey	104	4	104 Jasmine Dickey, Delaware	200	Taniyah Thompson, East Carolina	114
Free Throw Attempts (140 ranked)				Jennifer Coleman, Navy	55	Enani Jefferson, Memphis	42
Free Throws Made (148 ranked)				Jennifer Coleman, Navy	42	Enani Jefferson, Memphis	32
Free-Throw Percentage (250 ranked)				4 players tied	100.0	Diamond Battles, UCF	93.1
Minutes Played (150 ranked)	Elisa Pinzan	72	4	238:41 Jordyn Cambridge, Vanderbilt	292:05	Jamirah Shutes, Memphis	242:09
Minutes Played Per Game (150 ranked)	Elisa Pinzan	112	3	34.10 Lauren Park-Lane, Seton Hall	39.69	Moon Ursin, Tulane	34.53
Offensive Rebounds per Game (24 ranked)	Bethy Mununga	24	1	4.0 Josie Williams, Utah Valley	6.3	Bethy Mununga, South Fla.	4.0
Points Per Game (246 ranked)	Sydni Harvey Elena Tsineke	178 246	5 9	14.9 Jasmine Dickey, Delaware 13.8	28.6	Maya Mayberry, Tulsa	17.7
Rebounds (142 ranked)	Bethy Mununga	4	1	85 NaLyssa Smith, Baylor	105	Bethy Mununga, South Fla.	85
Rebounds Per Game (249 ranked)	Bethy Mununga	7	1	12.1 Josie Williams, Utah Valley	14.0	Bethy Mununga, South Fla.	12.1
Steals (115 ranked)				Jordyn Cambridge, Vanderbilt	29	Akira Levy, Cincinnati	19
Steals Per Game (182 ranked)				Claudia Soriano, Northeastern	4.67	Akira Levy, Cincinnati	3.17
Three-Point Field Goals Attempted (136 ranked)	Sydni Harvey	29	1	48 Abbey Hsu, Columbia	78	Sydni Harvey, South Fla.	48
Three-Point Field Goals Made (146 ranked)	Sydni Harvey	8	1	24 Taylor Robertson, Oklahoma	36	Sydni Harvey, South Fla.	24
Three-Point Field Goals Per Game (245 ranked)	Sydni Harvey	11	2	3.43 Taylor Robertson, Oklahoma	5.14	Maya Mayberry, Tulsa	3.50
Three-Point Field-Goal Percentage (204 ranked)	Sydni Harvey	23	2	50.0 Naomie Alnatas, Kansas City	68.2	Maya Mayberry, Tulsa	51.2
Triple Doubles (1 ranked)				10 players tied	1		

USF TV/RADIO PHOTO ROSTER

0



**Odeth
BETANCOURT**

F | 6-2 | So.
Cristobal, Venezuela

1



**Maria
ALVAREZ**

G | 5-7 | So.
Bal Harbour, Fla.

2



**Mihaela
LAZIC**

PG | 5-6 | R-Fr.
Slavonski Brod, Croatia

3



**Sydny
HARVEY**

G | 5-10 | Jr.
Nashville, Tenn.

4



**Elisa
PINZAN**

PG | 5-8 | Jr.
Murano, Italy

5



**Elena
TSINEKE**

G | 5-8 | So.
Thessaloniki, Greece

11



**Patience
WILLIAMS**

F/C | 6-1 | Fr.
Minneapolis, Minn.

12



**Cristina
BERMEJO**

W | 6-1 | So.
Sant Just Desvern, Spain

13



**Sara
GUERREIRO**

G | 5-8 | Fr.
Seixal, Portugal

20



**Bethy
MUNUNGA**

F | 6-0 | Sr.
Zellik, Belgium

21



**Shae
LEVERETT**

C | 6-2 | Post Bacc.
Rincon, Ga.

22



**Aerial
WILSON**

PG | 5-10 | So.
Dundas, Ontario, Canada

24



**Bella
WEARY**

G | 5-10 | Fr.
Jacksonville, Fla.

32



**Dulcy
FANKAM MENDJIADEU**

F | 6-4 | R-Sr.
Nkongsamba, Cameroon

USF ALL-TIME IN OVERTIME

■ **Overtime Games: 28-13**
 ■ **22-8 under Jose Fernandez**

Year	Opponent	W/L	Score
2/21/75	vs. Rollins	W	64-62 (OT)
2/18/78	at Florida State	L	76-84 (OT)
12/3/81	at Youngstown State	W	63-61 (OT)
12/17/83	Florida A&M	W	66-64 (OT)
1/22/84	Alabama State	W	102-96 (3OT)
2/15/84	Florida Southern	L	61-64 (OT)
1/30/93	Virginia Tech	L	83-85 (OT)
2/15/93	at Mercer	L	72-73 (OT)
1/8/94	Charlotte	W	77-69 (OT)
12/4/98	Chattanooga	W	77-76 (OT)
12/16/98	Minnesota	L	64-68 (OT)

12/18/00	Western Kentucky	L	81-84 (OT)
1/28/01	Memphis	L	71-81 (OT)
11/30/02	Bethune-Cookman	W	66-59 (OT)
2/2/04	#18 TCU	W	89-84 (2OT)
2/6/04	at Cincinnati	W	66-64 (OT)
12/1/04	at #8 Connecticut	L	65-75 (OT)
12/7/05	#11 DePaul	W	79-77 (OT)
1/28/06	at #21 Notre Dame	W	68-64 (OT)
12/29/06	at Saint Joseph's	W	80-76 (OT)
1/13/07	Notre Dame	W	87-78 (OT)
11/28/08	vs. Iowa	W	82-79 (OT)
3/8/08	vs Syracuse	W	68-67 (OT)
1/10/09	St. John's	W	81-71 (OT)
3/21/09	F&CU	W	88-81 (OT)
11/13/09	Florida A&M	L	73-68 (OT)

11/28/09	Loyola Marymount	W	77-71 (OT)
12/18/10	UNLV	W	59-54 (OT)
11/12/11	vs. Arkansas	L	65-61 (OT)
11/23/11	vs. Central Michigan	W	86-80 (OT)
1/17/12	DePaul	W	66-63 (OT)
2/27/12	Providence	W	64-56 (OT)
11/13/12	at Clemson	W	75-73 (OT)
1/8/13	Notre Dame	L	75-71 (OT)
3/25/13	vs. California	L	82-79 (OT)
12/21/14	at Penn State	W	90-87 (OT)
1/20/16	at Memphis	L	88-87 (OT)
12/20/17	vs Dayton	W	93-87 (OT)
2/18/18	at UCF	W	77-68 (OT)
12/5/20	#6 Mississippi St.	W	67-63 (OT)
2/17/21	Cincinnati	W	69-65 (OT)

USF VS. RANKED OPPONENTS

■ **Overall vs. Ranked Opponents: 19-92**
 ■ **17-92 under Jose Fernandez**

Date	Opponent	Rank	Score
1/31/94	Southern Miss	24	W, 80-74
2/23/97	Tulane	24	W, 80-71
12/28/02	Connecticut	2	L, 56-72
1/19/03	at DePaul	24	L, 57-63
1/4/04	at Georgia	12	L, 65-92
1/18/04	DePaul	17	L, 74-84
1/31/04	Houston	24	L, 57-62
2/2/04	TCU	18	W, 89-84 (2OT)
11/14/04	at Duke	6	L, 50-82
12/1/04	at Connecticut	8	L, 65-75 (OT)
1/30/05	at DePaul	17	L, 66-74
12/2/05	at North Carolina	7	L, 47-71
12/7/05	DePaul	11	W, 79-77 (OT)
12/10/05	Michigan State	13	L, 66-81
12/30/05	at LSU	3	L, 44-87
1/11/06	Rutgers	10	L, 65-66
1/24/06	at Connecticut	5	L, 47-77
1/28/06	at Notre Dame	21	W, 68-64 (OT)
2/5/06	at St. John's	25	L, 71-78
12/3/06	at Michigan State	20/18	L, 71-79
12/12/06	vs. Vanderbilt	12/12	L, 68-76
1/3/07	LSU	6/6	L, 48-60
1/16/07	Louisville	15/15	W, 74-58
1/20/07	at Pittsburgh	25/RV	L, 48-73
2/20/07	Connecticut	3/3	L, 67-81
2/24/07	at Marquette	19/19	L, 63-75
3/4/07	vs. Connecticut	3/3	L, 54-74
11/15/07	vs. Duke	10/9	L, 52-89
1/5/08	West Virginia	17/16	L, 73-79
1/30/08	at Connecticut	1/1	L, 48-71
2/5/08	DePaul	25/25	W, 78-73
2/16/08	Rutgers	5/4	L, 50-71
2/27/08	at Notre Dame	14/14	L, 49-92
3/9/08	vs. West Virginia	14/18	L, 42-64
11/27/08	vs. California	3/4	L, 55-85

1/06/09	Connecticut	1/1	L, 37-83
1/14/09	Louisville	7/11	L, 60-76
2/17/09	Notre Dame	24/24	L, 79-86
3/08/09	vs. Connecticut	1/1	L, 42-79
1/4/10	at Connecticut	1/1	L, 42-84
1/9/10	Georgetown	RV/25	L, 52-66
1/12/10	at Notre Dame	3/3	L, 64-81
1/16/10	Syracuse	25/25	W, 73-64
2/20/10	West Virginia	9/8	L, 45-54
12/2/10	Connecticut	1/1	L, 54-80
1/11/11	at DePaul	14/21	L, 61-77
1/22/11	at West Virginia	9/9	L, 52-78
2/5/11	Notre Dame	8/8	L, 68-76
2/8/11	at Georgetown	16/16	L, 38-67
2/16/11	St. John's	RV/22	L, 60-80
2/28/11	Georgetown	17/19	W, 60-55
1/7/12	Georgetown	16/16	L, 56-66
1/17/12	DePaul	14/21	W, 66-63 (OT)
1/27/12	at Connecticut	1/1	L, 62-77
2/1/12	West Virginia	9/9	L, 52-55
2/8/12	at St. John's	RV/22	L, 57-67
2/25/12	at Notre Dame	8/8	L, 68-80
3/3/12	vs. DePaul	14/21	L, 62-76
12/16/12	Nebraska	24/24	L, 52-62
1/8/13	Notre Dame	8/8	L, 71-75 (OT)
1/30/13	Louisville	12/12	L, 75-78
2/20/13	at Louisville	11/12	W, 73-62
2/23/13	Syracuse	18/21	W, 68-66
3/2/13	Connecticut	1/1	L, 51-85
3/10/13	vs. Notre Dame	2/2	L, 66-75
3/25/13	vs. California	6/6	L, 78-82 (OT)
11/8/13	Maryland	6/8	L, 70-78
12/14/13	vs. Oklahoma State	14/18	L, 56-75
1/12/14	Louisville	5/5	L, 54-62
1/26/14	at Connecticut	1/1	L, 53-81
2/2/14	at Louisville	5/5	L, 59-79
2/16/14	Connecticut	1/1	L, 38-63
3/9/14	vs. Louisville	3/4	L, 56-60

11/19/14	at Maryland	8/9	L, 67-85
11/29/14	vs. Kentucky	9/10	L, 57-61
1/18/15	at Connecticut	2/2	L, 50-92
3/2/15	Connecticut	1/1	L, 65-88
3/9/15	vs. Connecticut	1/1	L, 70-84
3/23/15	Louisville	8/8	L, 52-60
11/19/15	at Baylor	5/4	L, 63-65
12/30/15	vs. Mississippi State	8/8	L, 58-68
1/10/16	UConn	1/1	L, 59-75
2/15/16	at Louisville	11/12	L, 50-67
2/29/16	at UConn	1/1	L, 59-79
3/7/16	vs. UConn	1/1	L, 51-77
3/19/16	vs. Colorado State	22/22	W, 48-45
3/21/16	at UCLA	10/12	L, 67-72
1/10/17	at UConn	1/1	L, 37-102
1/22/17	Louisville	9/8	L, 52-66
2/19/17	Temple	RV/25	L, 71-77
2/27/17	UConn	1/1	L, 68-96
3/5/17	Temple	25/21	W, 63-58
3/6/17	UConn	1/1	L, 44-100
2/11/18	Ohio State	13/13	W, 84-65
1/13/19	at UConn	3/2	L, 46-63
3/4/19	vs. UConn	2/2	L, 47-57
3/10/19	vs. UConn	2/2	L, 45-81
11/8/19	Texas	15/15	W, 64-57
11/19/19	at Baylor	2/2	L, 46-58
12/19/19	vs. Mississippi State	15/15	L, 61-86
2/16/20	vs. UConn	5/6	L, 47-67
3/2/20	at UConn	5/4	L, 39-80
3/8/20	vs. UConn	5/4	L, 38-79
12/1/20	Baylor	4/4	L, 62-67
12/5/20	Mississippi State	6/7	W, 67-63
3/23/21	vs. NC State	3/3	L, 79-67
11/15/21	at Tennessee	15/12	L, 52-49
11/21/21	vs. UConn	2/2	L, 60-53
11/22/21	vs. Oregon	9/9	W, 71-62
11/26/21	vs. Stanford	7/5	W, 57-54

USF CAREER HIGHS

0 - ODETH BETANCOURT

Points	2 vs. Syracuse (11/20/21)
Rebounds	1 vs. Syracuse (11/20/21)
Field Goals Made	1 vs. Syracuse (11/20/21)
Field Goals Attempted	2 vs. Syracuse (11/20/21)
Three-Point Field Goals Made	0
Three-Point Field Goals Attempted	0
Free Throws Made	0
Free Throws Attempted	0
Assists	0
Steals	0
Blocks	0
Minutes	2 vs. Stanford (11/26/21)

1 - MARIA ALVAREZ

Points	23 vs. Houston (1/9/21)
Rebounds	6, 2X, last at UNLV (12/21/19)
Field Goals Made	7, 2X, last vs. Houston (1/9/21)
Field Goals Attempted	14 vs. Notre Dame (11/30/19)
Three-Point Field Goals Made	6, 2X, last vs. Houston (1/9/21)
Three-Point Field Goals Attempted	13 vs. Notre Dame (11/30/19)
Free Throws Made	4, 2X, last vs. East Carolina (1/2/20)
Free Throws Attempted	4, 5X, last vs. East Carolina (1/2/20)
Assists	6, 2X, last vs. Mississippi State (12/19/19)
Steals	3 at Tulane (1/13/21)
Blocks	0
Minutes	37 vs. Idaho (12/15/19)

2 - MIHAELA LAZIC

Points	10 vs. Tulsa (2/13/21)
Rebounds	3 vs. Stetson (12/13/20)
Field Goals Made	4 vs. Tulsa (2/13/21)
Field Goals Attempted	11 vs. Tulsa (2/13/21)
Three-Point Field Goals Made	1, 2X, last at Temple (2/24/21)
Three-Point Field Goals Attempted	4 vs. Tulsa (2/13/21)
Free Throws Made	1, 2X, last at Temple (2/24/21)
Free Throws Attempted	2 vs. Tulsa (2/13/21)
Assists	5 vs. Jacksonville (11/28/20)
Steals	1, 2X, last vs. Cincinnati (2/17/21)
Blocks	0
Minutes	33 vs. Tulsa (2/13/21)

3 - SYDNI HARVEY

Points	28, vs. Tulane (3/7/20)
Rebounds	7, 2X, last vs. Wichita State (3/9/21)
Field Goals Made	9 vs. Tulane (1/19/19)
Field Goals Attempted	21 vs. Oklahoma (11/18/18)
Three-Point Field Goals Made	7 vs. Temple (2/9/20)
Three-Point Field Goals Attempted	11 at Cincinnati (12/22/20)
Free Throws Made	10 vs. Tulane (3/7/20)
Free Throws Attempted	12 vs. Tulane (3/7/20)
Assists	7 vs. Tulsa (2/13/21)
Steals	3 vs. Syracuse (11/20/21)
Blocks	1, 10X, last vs. Oregon (11/22/21)
Minutes	41 vs. Cincinnati (2/17/21)

4 - ELISA PINZAN

Points	26 vs. Oregon (11/22/21)
Rebounds	11 vs. Mississippi State (12/5/20)
Field Goals Made	8 vs. UCF (1/19/20)
Field Goals Attempted	20 vs. UConn (2/16/20)
Three-Point Field Goals Made	7 vs. UCF (1/19/20)
Three-Point Field Goals Attempted	12 vs. UCF (1/19/20)
Free Throws Made	8, 3X, last vs. Oregon (11/22/21)
Free Throws Attempted	9 at Memphis (12/16/20)
Assists	14 vs. Houston (1/9/21)
Steals	6, 2X, last vs. Tulsa (2/13/21)
Blocks	1, 2X, last vs. Tulsa (2/13/21)
Minutes	45 vs. Cincinnati (2/17/21)

5 - ELENA TSINEKE

Points	31 vs. Wichita State (1/6/21)
Rebounds	7 vs. UConn (11/21/21)
Field Goals Made	11 vs. Wichita State (1/6/21)
Field Goals Attempted	24 vs. NC State (3/23/21)
Three-Point Field Goals Made	5 vs. Wichita State (1/6/21)
Three-Point Field Goals Attempted	12 vs. Notre Dame (11/30/19)
Free Throws Made	7 vs. Florida Gulf Coast (11/29/19)
Free Throws Attempted	8 vs. Florida Gulf Coast (11/29/19)
Assists	7 vs. Jacksonville (11/28/20)
Steals	4 vs. Tulane (1/25/20)
Blocks	2 vs. Stetson (12/13/20)
Minutes	38 vs. Tulane (3/7/20)

11 - PATIENCE WILLIAMS

Points	4 vs. Syracuse (11/20/21)
Rebounds	1, 2X, last vs. Alabama State (11/11/21)
Field Goals Made	2 vs. Syracuse (11/20/21)
Field Goals Attempted	2 vs. Syracuse (11/20/21)
Three-Point Field Goals Made	0
Three-Point Field Goals Attempted	0
Free Throws Made	0
Free Throws Attempted	0
Assists	1 vs. UTRGV (11/9/21)
Steals	1, 2X, last vs. Alabama State (11/11/21)
Blocks	1 vs. UTRGV (11/9/21)
Minutes	9 vs. Alabama State (11/11/21)

12 - CRISTINA BERMEJO

Points	10, 2X, last vs. Stetson (12/13/20)
Rebounds	6 vs. Syracuse (11/20/21)
Field Goals Made	4, 2X, last vs. SMU (2/29/20)
Field Goals Attempted	9 vs. Idaho (12/15/19)
Three-Point Field Goals Made	2 vs. Idaho (12/15/19)
Three-Point Field Goals Attempted	5 vs. Idaho (12/15/19)
Free Throws Made	4 vs. Stetson (12/13/20)
Free Throws Attempted	4 vs. Stetson (12/13/20)
Assists	5 at Memphis (2/22/20)
Steals	2, 3X, last at Memphis (2/22/20)
Blocks	2, 3X, last at Tulsa (12/30/20)
Minutes	24 at Memphis (2/22/20)

USF CAREER HIGHS

13 - SARA GUERREIRO

Points	6 vs. Jacksonville (11/28/20)
Rebounds	3, 2X, last vs. Syracuse (11/20/21)
Field Goals Made	3 vs. Jacksonville (11/28/20)
Field Goals Attempted	6 vs. Stetson (12/13/20)
Three-Point Field Goals Made	0
Three-Point Field Goals Attempted	3 vs. Stetson (12/13/20)
Free Throws Made	0
Free Throws Attempted	4 vs. Stetson (12/13/20)
Assists	3 vs. Alabama State (11/11/21)
Steals	1, 4X, last vs. Oregon (11/22/21)
Blocks	0
Minutes	18 vs. Alabama State (11/11/21)

20 - BETHY MUNUNGA

Points	23 vs. East Carolina (1/2/20)
Rebounds	23 vs. Stanford (11/26/21)
Field Goals Made	7, 5X, last vs. UConn (11/21/21)
Field Goals Attempted	15 vs. Cincinnati (2/17/21)
Three-Point Field Goals Made	3 vs. Baylor (12/1/20)
Three-Point Field Goals Attempted	4 vs. UTRGV (11/9/21)
Free Throws Made	10 vs. Tulane (2/20/21)
Free Throws Attempted	14 vs. Tulane (2/20/21)
Assists	4, 2X, last vs. Stanford (11/26/21)
Steals	5 vs. Tulane (2/20/21)
Blocks	4 at Wichita State (1/22/20)
Minutes	45 vs. Cincinnati (2/17/21)

21 - SHAE LEVERETT

Points	20 vs. Wichita State (2/23/19)
Rebounds	18 vs. Wichita State (2/23/19)
Field Goals Made	6, 3X, last at James Madison (2/24/19)
Field Goals Attempted	10 vs. Wichita State (2/23/19)
Three-Point Field Goals Made	0
Three-Point Field Goals Attempted	1 at Houston (2/27/19)
Free Throws Made	10 vs. Wichita State (2/23/19)
Free Throws Attempted	12 at SMU (1/26/19)
Assists	3 at ECU (2/20/19)
Steals	4, 2X, last vs. Cincinnati (2/17/21)
Blocks	7 vs. Memphis (1/23/19)
Minutes	43 vs. Cincinnati (2/17/21)

22 - AERIAL WILSON

Points	10, 2X, last at Cincinnati (1/20/21)*
Rebounds	9, vs. Liberty (12/6/20)*
Field Goals Made	4, 3X, last vs. SMU (1/21/20)*
Field Goals Attempted	11, vs. Cincinnati (3/8/21)*
Three-Point Field Goals Made	2, vs. SMU (3/6/20)*
Three-Point Field Goals Attempted	5, vs. Cincinnati (13/8/21)*
Free Throws Made	3, vs. Liberty (12/6/20)*
Free Throws Attempted	6, vs. Tulane (2/4/20)*
Assists	10, 2X, last vs. East Carolina (2/6/21)*
Steals	5, 2X, last vs. George Washington (11/17/19)*
Blocks	1, 9X, last vs. SMU (3/6/20)*
Minutes	40, 4X, last vs. Cincinnati (3/8/21)*

24 - BELLA WEARY


Points	0
Rebounds	1 vs. Syracuse (11/20/21)
Field Goals Made	0
Field Goals Attempted	1 vs. Alabama State (11/11/21)
Three-Point Field Goals Made	0
Three-Point Field Goals Attempted	1 vs. Alabama State (11/11/21)
Free Throws Made	0
Free Throws Attempted	0
Assists	0
Steals	0
Blocks	0
Minutes	4 vs. Alabama State (11/11/21)

32 - DULCY FANKAM MENDJIADEU

Points	23 vs. Liberty (12/6/20)*
Rebounds	17 at Saint Louis (12/4/20)*
Field Goals Made	10 vs. Cincinnati (1/8/20)*
Field Goals Attempted	17 at Saint Louis (12/4/20)*
Three-Point Field Goals Made	0
Three-Point Field Goals Attempted	1, 2X, last at Houston (2/13/21)*
Free Throws Made	9 vs. UConn (1/14/20)*
Free Throws Attempted	10 vs. UConn (1/14/20)*
Assists	2, 10X, last vs. Alabama State (11/11/21)
Steals	6 vs. Tulane (2/23/21)*
Blocks	4, 3X, last at Temple (3/4/21)*
Minutes	40 vs. East Carolina (2/15/20)*

* Career highs achieved at Memphis

NOV. 9, 2021 | UTRGV | TAMPA, FLA.



Official Basketball Box Score - Final

UTRGV at South Fla.
11/09/21 Yuengling Center, Tampa
2021-22 Women's Basketball

Game Time: 8:00 PM

Game Duration: 3:12

Attendance: 2,710

Officials: Isaac Johnson, Tasha Smith, Courtney Robinson

UTRGV - 56

Record: 0-1


NO. Name		Min	FG			3P	FT	Rebounds		Fouls		TP	AS	TO	ST	Blocks		+/-	Shooting By Period	
			M-A	M-A	M-A			OR	DR	PF	FF					BS	BA			
3 Iva Belosevic	F	16:58	0-2	0-0	0-0	0	2	2	5	0	1	4	1	1	0	0	-3	1st FG%	4-14	28.6%
5 Taylor Muff	F	37:49	6-9	3-5	0-0	2	7	9	1	2	15	0	1	0	1	4	-4	3PT%	3-8	37.5%
11 Jena Williams	G	26:32	1-4	1-3	0-0	0	2	2	2	3	3	5	3	2	0	0	-8	FT%	1-2	50%
15 Maria Llorente	G	21:05	4-7	0-0	0-0	0	3	3	1	3	10	2	2	1	0	0	-5	2nd FG%	7-16	43.8%
33 Sara Bershers	G	19:22	2-9	1-6	1-1	1	2	3	2	2	6	1	3	0	0	1	-12	3PT%	1-8	12.5%
23 Brooke Jessen		15:33	0-3	0-1	2-2	0	5	5	3	1	2	0	1	0	0	0	-8	FT%	0-0	0%
24 Haile Jones		14:13	3-6	2-4	1-2	1	1	2	3	1	9	0	2	0	0	1	3	3rd FG%	6-11	54.5%
14 Burcu Soysal		09:40	0-2	0-0	0-0	0	1	1	1	0	0	0	1	0	1	0	1	3PT%	4-6	66.7%
20 Arianna Sturdivant		17:09	2-6	1-4	1-1	0	0	0	0	2	6	1	2	1	0	0	4	4th FG%	3-11	27.3%
21 Tiffany McGarity		11:54	2-2	1-1	0-0	0	1	1	0	0	5	1	1	0	0	0	4	3PT%	1-8	16.7%
22 KaCee Kyle		09:39	0-2	0-2	0-0	0	2	2	1	0	0	1	0	0	0	0	-3	FT%	2-3	66.7%
Team							4	2	6	0	0	2						GM FG%	20-52	38.5%
Totals		20:52	9:28	7:11		8	28	36	19	13	56	12	23	6	2	3	-7	3PT%	9-28	32.1%
<div>Technical Fouls: NONE</div> <div>Shooting By Period</div> <div> <div>1st FG%</div> <div>4-14</div> <div>28.6%</div> </div> <div> <div>3PT%</div> <div>3-8</div> <div>37.5%</div> </div> <div> <div>FT%</div> <div>1-2</div> <div>50%</div> </div> <div> <div>2nd FG%</div> <div>7-16</div> <div>43.8%</div> </div> <div> <div>3PT%</div> <div>1-8</div> <div>12.5%</div> </div> <div> <div>FT%</div> <div>0-0</div> <div>0%</div> </div> <div> <div>3rd FG%</div> <div>6-11</div> <div>54.5%</div> </div> <div> <div>3PT%</div> <div>4-6</div> <div>66.7%</div> </div> <div> <div>FT%</div> <div>4-6</div> <div>66.7%</div> </div> <div> <div>4th FG%</div> <div>3-11</div> <div>27.3%</div> </div> <div> <div>3PT%</div> <div>1-8</div> <div>16.7%</div> </div> <div> <div>FT%</div> <div>2-3</div> <div>66.7%</div> </div> <div> <div>GM FG%</div> <div>20-52</div> <div>38.5%</div> </div> <div> <div>3PT%</div> <div>9-28</div> <div>32.1%</div> </div> <div> <div>FT%</div> <div>7-11</div> <div>63.6%</div> </div>																				

Dead Ball Rebounds: 3 0

South Fla. - 63		Record: 1-0												
NO.	Name	Min	FG M-A	3P M-A	FT M-A	Rebounds OR DR	Fouls PF FO	TP	AS	TO	ST	Blocks BS BA	+/	Shooting By Period
20	Bethy Mununga	F 30:51	3-9	0-4	3-5	7 11 18	2 3	9	1	3	2	0	6	1st FG% 8-14 57.1%
21	Shae Leverett	F 27:12	1-2	0-0	3-7	3 2 5	2 6	5	0	0	1	0	14	3PT% 3-3 100.0%
3	Sydney Harvey	G 29:27	5-13	3-9	0-0	0 1 1	1 0	13	2	2	2	1	0	FT% 4-7 57.1%
4	Elisa Pinzan	G 34:12	2-8	1-4	0-0	0 5 5	2 1	5	2	3	1	0	0	2nd FG% 4-19 21.1%
5	Elena Tsineke	G 28:40	8-16	1-5	1-1	2 0 2	2 5	18	2	3	0	0	0	3PT% 1-9 11.1%
11	Patience Williams	05:47	0-3	0-0	0-0	1 0 1	0 0	0	0	1	1	0	-1	FT% 2-2 100%
32	Dulcy Mendjadjou Fankam	16:10	2-10	0-0	6-8	4 3 7	1 4	10	0	1	0	1	-5	3rd FG% 7-20 35.0%
1	Maria Alvarez	14:41	1-4	1-2	0-0	0 0 0	1 0	3	1	1	0	0	-13	3PT% 2-5 40.0%
13	Sara Guerrero	07:12	0-1	0-0	0-0	0 0 0	2 0	0	0	0	0	1	0	FT% 5-9 55.6%
22	Aerial Wilson	05:48	0-1	0-1	0-0	0 0 0	0 0	0	1	1	0	0	-1	4th FG% 9-14 21.4%
Team						3 3 6		0	1					3PT% 0-8 0.0%
Totals		22:67	6-25	13-21		20 25 45	13 19	63	10	15	8	3	2 7	FT% 2-3 66.7%
Technical Fouls: NONE														
Shooting By Period														
1st FG% 8-14 57.1%														
3PT% 3-3 100.0%														
FT% 4-7 57.1%														
2nd FG% 4-19 21.1%														
3PT% 1-9 11.1%														
FT% 2-2 100%														
3rd FG% 7-20 35.0%														
3PT% 2-5 40.0%														
FT% 5-9 55.6%														
4th FG% 9-14 21.4%														
3PT% 0-8 0.0%														
FT% 2-3 66.7%														
GM FG% 22-67 32.8%														
3PT% 6-25 24.0%														
FT% 13-21 61.9%														
Dead Ball Rebounds: 5 0														

		UTR	USF			Points from	UTR	USF			Period by Period Scoring
Biggest lead		0 (1st 10:00)	14 (2nd 7:03)			Turnovers	8	19			1st 2nd 3rd 4th TOT
Best Scoring Run		7 (3rd 9:45)	10 (1st 5:51)			Paint	18	28			
Lead Changes		0				Second Chance	5	15			UTR 12 15 20 9 56
Times Tied		0				Fast Breaks	4	6			USF 23 11 21 8 63
Time with Lead		00:00	39:12			Bench	22	13			

NOV. 11, 2021 | ALABAMA STATE | TAMPA, FLA.



Official Basketball Box Score - Final

Alabama St. at South Fla.

11/11/21 Yuengling Center, Tampa

2021-22 Women's Basketball

Game Time: 7:00 PM

Game Duration: 1:46

Attendance: 2,123

Officials: Ron Ledington, Mark Resch, Alexis Perez

Alabama St. - 37

Record: 0-2

NO. Name	Min	FG M-A	3P M-A	FT M-A	Rebounds OR DR TOT	Fouls PF FO	TP	AS	TO	ST	Blocks BS BA	+/-
14 Jada Nneji	F 16:56	0-2	0-0	0-0	1 3 4	2 0	0	0	0	0	1	-19
34 Farrah Pearson	F 20:39	1-4	0-2	1-2	2 4 6	4 1	3	0	2	0	0	-10
00 Ayana Emmanuel	G 31:00	4-14	3-9	1-2	0 2 2	1 5	12	0	3	1	1	-22
2 Kaliya Jackson	G 24:59	1-5	0-1	5-6	2 3 5	1 3	7	1	0	0	0	-25
4 Dakiyah Sanders	G 24:11	0-4	0-0	0-0	1 1 2	1 0	4	1	4	3	0	-25
1 Tyeshia Ruddolph	28:08	2-8	0-4	0-0	3 3 6	1 0	4	3	5	0	1	-22
3 Jayla Crawford	18:17	3-7	3-4	0-2	0 1 1	3 1	9	0	2	0	0	-14
42 Malia Grace	13:16	0-1	0-0	0-0	1 2 3	2 1	0	0	1	0	0	-22
13 Brazyl Watkins	09:12	0-3	0-0	0-0	0 1 1	0 0	0	0	1	0	0	-14
12 Tamia Stallings	15:22	0-3	0-0	2-2	1 2 3	2 5	2	0	0	0	0	-2
Totals					5 3 8	0						
		11-51	6-20	9-14	16 25 41	17 16	37	5	23	4	3 2 35	

Technical Fouls: NONE

Shooting By Period

1st FGM	1-11	9.1%
1st 3PT	3-13	33.3%
2nd FGM	2-2	100%
2nd 3PT	4-17	23.5%
3rd FGM	1-7	14.3%
3rd 3PT	0-2	0%
4th FGM	3-13	23.1%
4th 3PT	3-6	50%
FT	7-10	70%


GM FGM

11-51	21.6%	
3PT	6-20	30.0%
FT	9-14	64.3%

3rd Qtr Ball Rebounds:

11-14	78.6%
-------	-------

NOV. 21, 2021 | NO. 2/2 VS. UCONN | PARADISE ISLAND, BAHAMAS



Official Basketball Box Score - Final

South Fla. at UConn
 11/21/21 Atlantis Resort, Paradise Island
 2021 Bad Boy Mowers Women's Battle 4 Atlantis

Game Time: 12:00 AM

Game Duration: 1:34

Attendance: 1,124

South Fla. - 53

Record: 3-2

NO. Name	Min	FG	3P	FT	Rebounds	Fouls	TP	AS	TO	ST	Blocks	+/-
		M-A	M-A	M-A	OR DR TOT	PF FD					BS BA	
20 Bethy Mununga	F 32:41	7-12	1-2	0-0	3 5 8	2 0	15	2	3	2	0	-9
21 Shae Leverett	F 31:42	2-3	0-0	0-0	3 5 8	1 1	4	1	0	1	0	0
3 Sydri Harvey	G 33:54	2-10	2-7	0-0	0 0 0	1 3	6	3	3	2	0	0
4 Elisa Pinzan	G 38:21	3-8	2-4	0-0	0 3 3	3 0	8	6	1	1	0	-1
5 Elena Tsineke	G 35:40	7-20	2-4	1-2	4 3 7	4 2	17	4	1	2	0	-7
32 Dulcy Mendjadeu Fankam	08:18	1-3	0-0	0-0	0 0 0	2 0	2	0	0	0	0	10
1 Maria Alvarez	10:05	0-3	0-3	1-2	0 2 2	0 2	1	1	0	0	0	-10
22 Aerial Wilson	01:39	0-0	0-0	0-0	0 0 0	0 0	0	0	0	0	0	-6
12 Cristina Bermejo	07:19	0-0	0-0	0-0	0 0 0	0 0	1	0	0	0	0	2
13 Sara Guerreiro	00:21	0-0	0-0	0-0	0 0 0	0 0	0	0	0	0	0	0
Team					5 1 6		0	3				
Totals		22-59	7-20	2-4	15 19 34	13 9	53	17	11	8	0	-7

Technical Fouls:NONE

Shooting By Period

1st FG% 5-12 41.7%

3PT% 4-6 66.7%

FT% 0-0 0%

2nd FG% 4-14 28.6%

3PT% 1-4 25.0%

FT% 2-4 50%

3rd FG% 9-20 45.0%

3PT% 2-4 50.0%

FT% 0-0 0%

4th FG% 4-13 30.8%

3PT% 0-0 0%

FT% 0-0 0%

GM FG% 22-59 37.3%

3PT% 7-20 35.0%


FT% 2-4 50.0%

Dead Ball Rebounds: 1, 0

UConn - 60															Record: 3-0															Shooting By Period														
NO. Name		Min	FG		3P		FT			Rebounds			Fouls			TP		AS		TO		ST		Blocks		+/-																		
			M-A	M-A	M-A	M-A	OR	DR	TOT	PF	FD	FF	FD	FF	FD								BS	BA																				
3 Aaliyah Edwards		F 16:28	0-3	0-0	0-0	0-0	0	3	3	2	0	0	0	0	0	0	0	0	0	0	0	0	0	0	0	-12																		
20 Olivia Nelson-Osoda		F 35:47	2-3	0-0	1-2	0-0	1	5	5	2	3	5	7	2	1	1	0	13																										
5 Paige Buckers		G 38:11	8-16	3-10	2-2	0-0	3	3	3	0	6	21	7	3	1	1	0	6																										
13 Christyn Williams		G 34:01	3-8	2-5	2-2	0-0	0	0	0	4	1	10	0	5	0	0	0	1																										
22 Evina Westbrook		G 29:59	2-6	0-3	0-0	1	3	4	0	2	4	3	1	1	0	0	0	7																										
35 Azzi Fudd		27:15	6-10	6-9	0-0	2	2	2	0	0	18	1	2	0	1	0	15																											
14 Dorka Juhasz		12:26	1-1	0-0	0-0	1	5	6	0	0	2	1	1	0	0	0	7																											
10 Nika Muhl		02:29	0-0	0-0	0-0	0	0	0	0	0	0	0	0	0	0	0	-1																											
33 Caroline Ducharme		03:24	0-0	0-0	0-0	1	0	1	1	1	0	0	0	0	1	0	-1																											
Team							3	2	5		0	1																																
Totals			22-47	11-27	5-6	6	23	29	9	13	60	19	15	4	3	0	7																											
Technical Fouls: NONE																																												
Dead Ball Rebounds: 1, 0																																												

Biggest lead	USF	CON	Points from Turnovers	USF	CON	Period by Period Scoring
	3 (3 rd 0:19)	13 (2 nd 8:05)	12	14		1st 2nd 3rd 4th TOT
Best Scoring Run	11 (3 rd 0:19)	12 (2 nd 8:05)	Paint	20	16	USF 14 11 20 8 53
Lead Changes	2		Second Chance	8	6	CON 18 16 11 15 60
Times Tied	2		Fast Breaks	6	5	
Time with Lead	01:12	37:03	Bench	3	20	

NOV. 22, 2021 | VS. NO. 9/9 OREGON | PARADISE ISLAND, BAHAMAS



Official Basketball Box Score - Final

Oregon at South Fla.
11/22/21 Atlantis Resort, Paradise Island
2021 Bad Boy Motors Women's Battle 4 Atlantis

Game Time: 2:30 PM

Game Duration: 2:30

Attendance: 269

Oregon - 62

Record: 3-2

NO. Name	Min	FG	3P	FT	Rebounds	Fouls	TP	AS	TO	ST	Blocks	+/-
M-A	M-A	M-A	M-A	OR DR TOT	PF FD						BS BA	
22 Kylee Watson	F 27:47	2-6	0-0	1-2	1 6 7	4 5	5	1	2	0	1	-6
32 Sedona Prince	F 26:57	3-6	0-0	7-9	2 4 6	2 8	13	3	3	0	1	-16
0 Ahlise Hurst	G 37:14	6-13	3-7	0-0	0 2 2	3 0	15	3	3	2	2	-1
23 Maddie Scherr	G 19:06	2-4	1-1	0-0	0 2 2	5 1	5	2	7	0	0	0
33 Sydney Parrish	G 35:54	7-10	1-3	0-0	0 1 1	4 2	15	1	3	0	0	-10
10 Chanaya Pinto	29:17	1-2	1-2	0-0	0 7 7	5 1	3	1	5	0	0	0
15 Phillipina Kyei	10:40	2-6	0-0	0-0	1 2 3	1 1	4	0	1	0	0	-5
5 Shannon Dufficy	13:05	0-1	0-1	2-2	1 2 3	0 1	2	0	1	0	1	-7
Team					2 2 4		0		0			
Totals		23-48	6-14	10-13	7 28 35	24 19	62	11	25	2	5	-9

Technical Fouls:NONE

Shooting By Period

1st FG% 7-13 53.8%

3PT% 4-4 100.0%

FT% 0-0 0%

2nd FG% 4-9 44.4%

3PT% 1-2 50%

FT% 1-2 50%

3rd FG% 5-10 50.0%

3PT% 0-3 0.0%

FT% 2-2 100%

4th FG% 7-16 43.8%

3PT% 2-5 40.0%

FT% 7-9 77.8%

GM FG% 23-48 47.9%

3PT% 6-14 42.9%

FT% 10-13 76.9%

Dead Ball Rebounds: 2, 0

South Fla. - 71															Record: 4-2															Shooting By Period														
NO. Name		Min	FG M-A	3P M-A	FT M-A	Rebounds OR DR TOT	Fouls PF FD	TP	AS	TO	ST	Blocks BS BA	+/-																															
20 Bethy Mununga		F 24:30	1-5	0-1	0-0	2 4 6	5 2	2	1	3	1	3	0	1st FG% 5-13 38.5%																														
21 Shae Leverett		F 23:29	0-0	0-0	0-0	2 2 4	3 2	0	0	1	3	0	0	3PT% 1-5 20.0%																														
3 Sydri Harvey		G 33:46	5-13	4-7	8-10	0 2 2	1 8	22	1	0	2	1	3	2nd FG% 6-17 35.3%																														
4 Elisa Pinzan		G 34:25	7-10	4-4	8-8	0 4 4	0 6	26	10	3	4	0	1	FT% 2-2 100%																														
5 Elena Tsineke		G 31:14	2-15	0-3	0-0	3 2 5	3 1	4	2	3	1	0	1	2nd FG% 6-17 35.3%																														
12 Cristina Bermejo		10:25	0-2	0-0	0-0	0 0 0	3 0	0	0	1	1	0	9	3PT% 2-5 40.0%																														
1 Maria Alvarez		08:25	0-3	0-2	0-0	0 0 0	0 0	0	2	0	1	0	0	FT% 2-3 66.7%																														
32 Dulcy Mendjadeu Fankam		25:26	8-15	0-0	1-4	3 4 7	4 4	17	0	0	2	3	0	3rd FG% 7-23 30.4%																														
22 Aerial Wilson		04:34	0-0	0-0	0-0	0 0 0	0 0	1	0	0	0	0	0	3PT% 3-5 60.0%																														
13 Sara Guerreiro		03:46	0-1	0-1	0-0	0 0 0	0 0	0	1	0	1	0	-2	FT% 0-1 0%																														
Team						5 1 6		0	1					4th FG% 5-11 45.5%																														
Totals		23-64	8-18	17-22		15 19 34	19 24	71	17	12	16	7	5	9	3PT% 2-3 66.7%																													
															Technical Fouls: NONE																													
															GM FG% 23-64 35.9%																													
															3PT% 8-18 44.4%																													
															FT% 17-22 77.3%																													
															Dead Ball Rebounds: 3, 0																													

Biggest lead	ORE	USF	Points from Turnovers	ORE	USF	Period by Period Scoring
	6 (1 st 5:21)	17 (4 th 5:10)	17	28		1st 2nd 3rd 4th TOT
Best Scoring Run	8 (4 th 0:47)	10 (4 th 5:10)	Paint	24	22	ORE 18 9 12 23 62
Lead Changes	1		Second Chance	9	13	USF 13 16 17 25 71
Times Tied	2		Fast Breaks	8	21	
Time with Lead	09:30	25:55	Bench	9	17	

NOV. 26, 2021 | VS. STANFORD | NASSAU, BAHAMAS



Official Basketball Box Score - Final

South Fla. at Stanford
11/26/21 Baha Mar Convention Center, Nassau
2021-22 Women's Basketball

Game Time: 12:00 PM

Game Duration: 1:49

Attendance: 205

South Fla. - 57

Record: 5-2

NO. Name	Min	FG M-A	3P M-A	FT M-A	Rebounds OR DR TOT	Fouls PF FD	TP	AS	TO	ST	Blocks BS BA	+/-
20 Bethy Mununga	F 38:06	2-12	0-3	2-4	8 15 23	2 4	6	4	0	0	2	6
21 Shae Leverett	F 12:46	0-1	0-0	0-0	2 2 4	5 1	0	0	0	3	0	0
3 Sydri Harvey	G 28:26	4-7	3-4	4-4	1 2 3	1 3	15	0	3	2	0	-3
4 Elisa Pinzan	G 40:00	3-11	3-7	2-3	1 4 5	0 2	11	6	3	2	0	1
5 Elena Tsineke	G 33:58	7-20	0-2	0-0	3 2 5	2 1	14	2	2	0	0	2
32 Dulcy Mendjadeu Fankam	21:32	4-12	0-0	0-0	2 1 3	3 0	8	0	1	2	0	4
1 Maria Alvarez	03:05	0-1	0-1	0-0	0 0 0	0 0	0	0	0	0	0	5
12 Cristina Bermejo	16:07	1-3	1-3	0-0	0 0 0	0 3	3	1	1	0	0	-8
13 Sara Guerreiro	01:11	0-0	0-0	0-0	0 0 0	0 0	0	0	0	0	0	0
11 Patience Williams	03:02	0-0	0-0	0-0	0 0 0	1 0	0	0	1	0	0	-2
0 Odeth Betancourt	01:31	0-0	0-0	0-0	0 0 0	0 0	0	0	1	0	0	1
22 Aerial Wilson	00:16	0-0	0-0	0-0	0 0 0	0 0	0	0	0	0	0	0
Team					7 2 9		0	1				
Totals		21-67	7-20	8-11	24 28 52	14 14	57	13	16	6	2	7

Technical Fouls:NONE

Shooting By Period

1st FG% 5-22 22.7%

3PT% 1-6 16.7%

FT% 4-4 100%

2nd FG% 5-13 38.5%

3PT% 3-6 50.0%

FT% 0-0 0%

3rd FG% 5-14 35.7%

3PT% 1-3 33.3%

FT% 0-0 0%

4th FG% 6-18 33.3%

3PT% 2-5 40.0%

FT% 4-7 57.1%

GM FG% 21-67 31.3%

3PT% 7-20 35.0%

FT% 8-11 72.7%

Dead Ball Rebounds: 1, 0

Stanford - 54		Record: 4-2															
NO.	Name	Min	FG		3P	FT	Rebounds		Fouls		TP	AS	TO	ST	Blocks	+/-	
			M-A	M-A			M-A	OR	DR	PF							FD
11	Ashten Prechtel	F 05:18	0-2	0-2	0-0	0	1	1	1	0	0	0	1	0	0	-4	
22	Cameron Brink	F 34:24	10-17	0-1	3-8	5	6	11	4	9	23	2	3	0	4	8	
3	Anna Wilson	G 03:29	0-1	0-0	0-0	0	0	0	1	0	0	0	0	0	1	-4	
12	Lexie Hull	G 22:43	1-7	1-2	0-0	4	5	9	1	1	3	4	2	1	0	-5	
24	Lacie Hull	G 37:24	2-5	1-3	0-0	0	2	2	0	0	5	5	3	2	1	0	
30	Haley Jones	31:23	0-6	0-1	0-0	1	3	4	1	0	3	0	1	1	1	0	
5	Francesca Belibi	02:39	0-0	0-0	0-0	1	1	3	1	0	0	0	0	1	0	-9	
33	Hannah Jump	24:04	3-10	3-9	0-0	1	1	1	1	9	1	0	0	0	0	2	
20	Elise Boggsna	07:37	0-1	0-0	0-0	0	0	0	0	0	0	1	0	0	0	0	
14	Jordan Hamilton	00:59	0-0	0-0	0-0	0	0	0	1	0	0	1	0	0	0	0	
10	Alyssa Jerome	01:37	0-0	0-0	0-0	0	0	0	0	0	0	0	0	0	0	-3	
44	Kiki Iriafan	00:27	0-0	0-0	0-2	1	0	1	1	1	0	0	0	0	0	0	
21	Brooke Demetree	27:56	5-11	3-6	1-2	0	3	3	0	1	14	1	2	2	0	6	
Team							4	1	5	0							
Totals			21-60		8-25	4-12	16	22	38	14	54	16	13	6	7	2	-3
Technical Fouls: NONE																	
Dead Ball Rebounds: 3-2																	



2021-22 South Fla. Women's Basketball Combined Team Statistics All games

Page 1/1
as of Nov 27, 2021

Game Records

Record	Overall	Home	Away	Neutral
ALL GAMES	5-2	2-0	0-1	3-1
CONFERENCE	0-0	0-0	0-0	0-0
NON-CONFERENCE	5-2	2-0	0-1	3-1

Score by Periods

Team	1st	2nd	3rd	4th	OT	TOT
South Fla.	108	107	133	94	0	442
Opponents	92	75	103	104	0	374

Team Box Score

No.	Player				Total		3-Point		F-Throw		Rebounds													
		GP-GS	MIN	AVG	FG-FGA	FG%	3FG-3FGA	3FG%	FT-FTA	FT%	OFF	DEF	TOT	AVG	PF	DQ	A	TO	BLK	STL	PTS	AVG		
3	HARVEY, Sydni	7-7	202:30	28.9	32-79	.405	24-48	.500	16-18	.889	4	10	14	2.0	12	1	9	11	2	12	104	14.9		
5	TSINEKE, Elena	6-6	189:18	31.6	34-98	.347	5-21	.238	10-11	.909	17	11	28	4.7	11	0	13	14	0	7	83	13.8		
4	PINZAN, Elisa	7-7	238:41	34.1	22-59	.373	12-32	.375	12-13	.923	2	22	24	3.4	7	0	42	15	0	11	68	9.7		
20	MUNUNGA, Bethy	7-7	206:16	29.5	26-69	.377	2-15	.133	10-16	.625	28	57	85	12.1	16	1	13	13	7	8	64	9.1		
32	MENDJIADU FANKAM, Dulcy	7-0	123:48	17.7	22-60	.367	0-0	.000	12-20	.600	15	17	32	4.6	18	0	3	8	5	9	56	8.0		
1	ALVAREZ, Maria	7-0	81:58	11.7	8-30	.267	7-24	.292	3-6	.500	0	9	9	1.3	1	0	7	4	0	1	26	3.7		
2	LAZIC, Mihaela	1-0	09:49	9.8	1-2	.500	0-1	.000	1-2	.500	0	1	1	1.0	0	0	0	1	0	0	3	3.0		
21	LEVERETT, Shae	7-7	161:23	23.1	5-13	.385	0-0	.000	5-9	.556	14	19	33	4.7	22	2	3	5	0	6	15	2.1		
12	BERMEJO, Cristina	6-0	69:12	11.5	3-11	.273	2-5	.400	0-0	.000	1	5	6	1.0	8	0	3	2	0	1	8	1.3		
11	WILLIAMS, Patience	4-0	21:41	5.4	2-6	.333	0-0	.000	0-0	.000	1	1	2	0.5	5	0	1	3	1	2	4	1.0		
0	BETANCOURT, Odeth	2-0	02:55	1.5	1-2	.500	0-0	.000	0-0	.000	1	0	1	0.5	0	0	0	1	0	0	2	1.0		
22	WILSON, Aerial	7-1	49:36	7.1	2-6	.333	1-5	.200	0-1	.000	0	1	1	0.1	3	0	8	4	0	5	5	0.7		
13	GUERREIRO, Sara	7-0	37:03	5.3	2-7	.286	0-4	.000	0-0	.000	1	5	6	0.9	5	0	4	1	0	3	4	0.6		
24	WEARY, Bella	2-0	05:49	2.9	0-1	.000	0-1	.000	0-0	.000	1	0	1	0.5	0	0	0	0	0	0	0	0.0		
Team											28	18	46					7						
Total		7	1400		160-443	.361	53-156	.340	69-96	.719	113	176	289	41.3	108	4	106	89	15	65	442	63.1		
Opponents		7	1400		140-381	.367	47-154	.305	47-78	.603	77	180	257	36.7	114	3	82	127	30	32	374	53.4		

Team Statistics

	USF	OPP
Scoring	442	374
Points per game	63.1	53.4
Scoring margin	+9.7	-
Field goals-att	160-443	140-381
Field goal pct	.361	.367
3 point fg-att	53-156	47-154
3-point FG pct	.340	.305
3-pt FG made per game	7.6	6.7
Free throws-att	69-96	47-78
Free throw pct	.719	.603
F-Throws made per game	9.9	6.7
Rebounds	289	257
Rebounds per game	41.3	36.7
Rebounding margin	+4.6	-
Assists	106	82
Assists per game	15.1	11.7
Turnovers	89	127
Turnovers per game	12.7	18.1
Turnover margin	+5.4	-
Assist/turnover ratio	1.2	0.6
Steals	65	32
Steals per game	9.3	4.6
Blocks	15	30
Blocks per game	2.1	4.3
Winning streak	2	-
Home win streak	2	-
Attendance	4833	6017
Home games-Avg/Game	2-2417	1-6017
Neutral site-Avg/Game	-	4-648

Team Results

Date	Opponent		Score	Att.
11/09/2021	UTRGV	W	63-56	2710
11/11/2021	Alabama St.	W	72-37	2123
11/15/2021	at Tennessee	L	49-52	6017
11/20/2021	vs Syracuse	W	77-53	993
11/21/2021	vs UConn	L	53-60	1124
11/22/2021	vs Oregon	W	71-62	269
11/26/2021	vs Stanford	W	57-54	205



2021-22 South Fla. Women's Basketball
Season/Career Statistics
All games

Page 1/1
as of Nov 27, 2021

Summary

Player	Season Statistics										Career Statistics									
	GP-GS	MIN/G	FG%	3FG%	FT%	R/G	A/G	STL	BLK	PTS/G	GP-GS	MIN/G	FG%	3FG%	FT%	R/G	A/G	STL	BLK	PTS/G
ALVAREZ, Maria	7-0	11.7	.267	.292	.500	1.3	1.0	1	0	3.7	43-9	19.4	.351	.350	.612	2.1	1.7	28	0	7.3
BERMEJO, Cristina	6-0	11.5	.273	.400	.000	1.0	0.5	1	0	1.3	49-2	9.7	.304	.250	.750	1.8	0.6	17	8	1.7
BETANCOURT, Odeth	2-0	1.5	.500	.000	.000	0.5	0.0	0	0	1.0	2-0	1.5	.500	.000	.000	0.5	0.0	0	0	1.0
GUERREIRO, Sara	7-0	5.3	.286	.000	.000	0.9	0.6	3	0	0.6	16-0	5.4	.292	.000	.000	0.9	0.4	4	0	0.9
HARVEY, Sydni	7-7	28.9	.405	.500	.889	2.0	1.3	12	2	14.9	84-70	28.3	.341	.374	.812	2.4	1.9	67	10	12.0
LAZIC, Mihaela	1-0	9.8	.500	.000	.500	1.0	0.0	0	0	3.0	19-2	7.4	.368	.111	.500	0.7	1.0	3	0	1.8
LEVERETT, Shae	7-7	23.1	.385	.000	.556	4.7	0.4	6	0	2.1	123-65	22.5	.587	.000	.549	5.8	0.4	71	103	4.8
MENDJIADU FANKAM, Dulcy	7-0	17.7	.367	.000	.600	4.6	0.4	9	5	8.0	7-0	17.7	.367	.000	.600	4.6	0.4	9	5	8.0
MUNUNGA, Bethy	7-7	29.5	.377	.133	.625	12.1	1.9	8	7	9.1	59-57	28.8	.460	.214	.701	11.4	1.3	69	59	9.4
PINZAN, Elisa	7-7	34.1	.373	.375	.923	3.4	6.0	11	0	9.7	88-69	30.6	.322	.306	.829	2.7	4.7	106	2	7.8
TSINEKE, Elena	6-6	31.6	.347	.238	.909	4.7	2.2	7	0	13.8	54-45	26.7	.375	.303	.883	2.4	1.7	34	10	13.0
WEARY, Bella	2-0	2.9	.000	.000	.000	0.5	0.0	0	0	0.0	2-0	2.9	.000	.000	.000	0.5	0.0	0	0	0.0
WILLIAMS, Patience	4-0	5.4	.333	.000	.000	0.5	0.3	2	1	1.0	4-0	5.4	.333	.000	.000	0.5	0.3	2	1	1.0
WILSON, Aerial	7-1	7.1	.333	.200	.000	0.1	1.1	5	0	0.7	7-1	7.1	.333	.200	.000	0.1	1.1	5	0	0.7

Scoring

Player	Season Statistics								Career Statistics							
	FG-FGA	FG%	3FG-3FGA	3FG%	FT-FTA	FT%	PTS	PTS/G	FG-FGA	FG%	3FG-3FGA	3FG%	FT-FTA	FT%	PTS	PTS/G
ALVAREZ, Maria	8-30	.267	7-24	.292	3-6	.500	26	3.7	100-285	.351	82-234	.350	30-49	.612	312	7.3
BERMEJO, Cristina	3-11	.273	2-5	.400	0-0	.000	8	1.3	28-92	.304	9-36	.250	18-24	.750	83	1.7
BETANCOURT, Odeth	1-2	.500	0-0	.000	0-0	.000	2	1.0	1-2	.500	0-0	.000	0-0	.000	2	1.0
GUERREIRO, Sara	2-7	.286	0-4	.000	0-0	.000	4	0.6	7-24	.292	0-9	.000	0-2	.000	14	0.9
HARVEY, Sydni	32-79	.405	24-48	.500	16-18	.889	104	14.9	301-883	.341	151-404	.374	254-313	.812	1007	12.0
LAZIC, Mihaela	1-2	.500	0-1	.000	1-2	.500	3	3.0	14-38	.368	2-18	.111	4-8	.500	34	1.8
LEVERETT, Shae	5-13	.385	0-0	.000	5-9	.556	15	2.1	220-375	.587	0-1	.000	156-284	.549	596	4.8
MENDJIADU FANKAM, Dulcy	22-60	.367	0-0	.000	12-20	.600	56	8.0	22-60	.367	0-0	.000	12-20	.600	56	8.0
MUNUNGA, Bethy	26-69	.377	2-15	.133	10-16	.625	64	9.1	208-452	.460	9-42	.214	129-184	.701	554	9.4
PINZAN, Elisa	22-59	.373	12-32	.375	12-13	.923	68	9.7	220-683	.322	116-379	.306	131-158	.829	687	7.8
TSINEKE, Elena	34-98	.347	5-21	.238	10-11	.909	83	13.8	254-677	.375	81-267	.303	113-128	.883	702	13.0
WEARY, Bella	0-1	.000	0-1	.000	0-0	.000	0	0.0	0-1	.000	0-1	.000	0-0	.000	0	0.0
WILLIAMS, Patience	2-6	.333	0-0	.000	0-0	.000	4	1.0	2-6	.333	0-0	.000	0-0	.000	4	1.0
WILSON, Aerial	2-6	.333	1-5	.200	0-1	.000	5	0.7	2-6	.333	1-5	.200	0-1	.000	5	0.7

Totals

Player	Season Statistics									Career Statistics								
	O-REB	D-REB	TOTAL	PF	FO	A	TO	A/TO		O-REB	D-REB	TOTAL	PF	FO	A	TO	A/TO	
ALVAREZ, Maria	0	9	9	1	0	7	4	1.8		15	76	91	50	2	73	52	1.4	
BERMEJO, Cristina	1	5	6	8	0	3	2	1.5		23	63	86	55	0	28	41	0.7	
BETANCOURT, Odeth	1	0	1	0	0	0	1	0.0		1	0	1	0	0	0	1	0.0	
GUERREIRO, Sara	1	5	6	5	0	4	1	4.0		6	8	14	6	0	6	5	1.2	
HARVEY, Sydni	4	10	14	12	1	9	11	0.8		75	123	198	162	6	161	182	0.9	
LAZIC, Mihaela	0	1	1	0	0	0	1	0.0		2	12	14	6	0	19	15	1.3	
LEVERETT, Shae	14	19	33	22	2	3	5	0.6		338	372	710	304	14	53	124	0.4	
MENDJIADU FANKAM, Dulcy	15	17	32	18	0	3	8	0.4		15	17	32	18	0	3	8	0.4	
MUNUNGA, Bethy	28	57	85	16	1	13	13	1.0		239	435	674	176	5	77	149	0.5	
PINZAN, Elisa	2	22	24	7	0	42	15	2.8		19	218	237	95	1	415	221	1.9	
TSINEKE, Elena	17	11	28	11	0	13	14	0.9		56	72	128	111	3	94	135	0.7	
WEARY, Bella	1	0	1	0	0	0	0	0.0		1	0	1	0	0	0	0	0.0	
WILLIAMS, Patience	1	1	2	5	0	1	3	0.3		1	1	2	5	0	1	3	0.3	
WILSON, Aerial	0	1	1	3	0	8	4	2.0		0	1	1	3	0	8	4	2.0	



2021-22 South Fla. Women's Basketball
Season Schedule/Results & Leaders
All games

Page 1/1
as of Nov 27, 2021

Game Records

Record	Overall	Home	Away	Neutral
ALL GAMES	5-2	2-0	0-1	3-1
CONFERENCE	0-0	0-0	0-0	0-0
NON-CONFERENCE	5-2	2-0	0-1	3-1

Team Results

Date	Opponent		Score	Att.	High Points	High Rebounds
11/09/2021	UTRGV	W	63-56	2710	(18) TSINEKE, Elena	(18) MUNUNGA, Bethy
11/11/2021	Alabama St.	W	72-37	2123	(22) HARVEY, Sydni	(5) MUNUNGA, Bethy
11/15/2021	at Tennessee	L	49-52	6017	(13) TSINEKE, Elena	(13) MUNUNGA, Bethy
11/20/2021	vs Syracuse	W	77-53	993	(18) MUNUNGA, Bethy	(12) MUNUNGA, Bethy
11/21/2021	vs UConn	L	53-60	1124	(17) TSINEKE, Elena	(8) LEVERETT, Shae
						(8) MUNUNGA, Bethy
11/22/2021	vs Oregon	W	71-62	269	(26) PINZAN, Elisa	(7) MENDJIADEU FANKAM, Dulcy
11/26/2021	vs Stanford	W	57-54	205	(15) HARVEY, Sydni	(23) MUNUNGA, Bethy

Attendance Summary

	Games	Attend	Avg/Game
Home	2	4833	2417
Away	1	6017	6017
Neutral	4	2591	648
Total	7	13441	1920



**2021-22 South Fla. Women's Basketball
Team Game-by-Game
All games**

Page 1/1
as of Nov 27, 2021

				Total		3-Pointers		Free throws		Rebounds											
Opponent	Date	Score		FG-FGA	PCT	3FG-3FGA	PCT	FT-FTA	PCT	OFF	DEF	TOT	AVG	PF	A	TO	BLK	STL	PTS	AVG	
UTRGV	11/09/2021	63-56	W	22-67	.328	6-25	.240	13-21	.619	20	25	45	45.0	13	10	15	3	8	63	63.0	
Alabama St.	11/11/2021	72-37	W	26-54	.481	9-25	.360	11-13	.846	5	27	32	38.5	16	22	10	2	14	72	67.5	
at Tennessee	11/15/2021	49-52	L	18-63	.286	8-23	.348	5-8	.625	16	26	42	39.7	22	8	14	0	3	49	61.3	
vs Syracuse	11/20/2021	77-53	W	28-69	.406	8-25	.320	13-17	.765	18	32	50	42.3	11	19	11	1	10	77	65.3	
vs UConn	11/21/2021	53-60	L	22-59	.373	7-20	.350	2-4	.500	15	19	34	40.6	13	17	11	0	8	53	62.8	
vs Oregon	11/22/2021	71-62	W	23-64	.359	8-18	.444	17-22	.773	15	19	34	39.5	19	17	12	7	16	71	64.2	
vs Stanford	11/26/2021	57-54	W	21-67	.313	7-20	.350	8-11	.727	24	28	52	41.3	14	13	16	2	6	57	63.1	
Total		442		160-443	.361	53-156	.340	69-96	.719	113	176	289	41.3	108	106	89	15	65	442	63.1	
Opponents		374		140-381	.367	47-154	.305	47-78	.603	77	180	257	36.7	114	82	127	30	32	374	53.4	

South Fla. Averages

Games Played	Points/game	FG Pct	3FG Pct	FT Pct	Rebounds/game	Assists/game	Turnovers/game	Assist/Turnover ratio	Steals/game	Blocks/game
7	63.1	36.1	34.0	71.9	41.3	15.1	12.7	1.2	9.3	2.1



**2021-22 South Fla. Women's Basketball
Opponents Game-by-Game
All games**

Page 1/1
as of Nov 27, 2021

				Total		3-Pointers		Free throws		Rebounds											
Opponent	Date	Score		FG-FGA	PCT	3FG-3FGA	PCT	FT-FTA	PCT	OFF	DEF	TOT	AVG	PF	A	TO	BLK	STL	PTS	AVG	
UTRGV	11/09/2021	63-56	W	20-52	.385	9-28	.321	7-11	.636	8	28	36	36.0	19	12	23	2	6	56	56.0	
Alabama St.	11/11/2021	72-37	W	11-51	.216	6-20	.300	9-14	.643	16	25	41	38.5	17	5	23	3	4	37	46.5	
at Tennessee	11/15/2021	49-52	L	22-66	.333	0-13	.000	8-18	.444	20	28	48	41.7	15	8	13	7	5	52	48.3	
vs Syracuse	11/20/2021	77-53	W	21-57	.368	7-27	.259	4-4	1.000	4	26	30	38.8	16	11	15	3	5	53	49.5	
vs UConn	11/21/2021	53-60	L	22-47	.468	11-27	.407	5-6	.833	6	23	29	36.8	9	19	15	3	4	60	51.6	
vs Oregon	11/22/2021	71-62	W	23-48	.479	6-14	.429	10-13	.769	7	28	35	36.5	24	11	25	5	2	62	53.3	
vs Stanford	11/26/2021	57-54	W	21-60	.350	8-25	.320	4-12	.333	16	22	38	36.7	14	16	13	7	6	54	53.4	
Total		374		140-381	.367	47-154	.305	47-78	.603	77	180	257	36.7	114	82	127	30	32	374	53.4	
South Fla.		442		160-443	.361	53-156	.340	69-96	.719	113	176	289	41.3	108	106	89	15	65	442	63.1	

Opponents Averages

Games Played	Points/game	FG Pct	3FG Pct	FT Pct	Rebounds/game	Assists/game	Turnovers/game	Assist/Turnover ratio	Steals/game	Blocks/game
7	53.4	36.7	30.5	60.3	36.7	11.7	18.1	0.6	4.6	4.3



2021-22 South Fla. Women's Basketball
Team High/Low Analysis
All games

Page 1/4
as of Nov 27, 2021

South Fla. - Game Highs

POINTS	77		vs Syracuse (N) (11/20/2021)
	72		Alabama St. (11/11/2021)
	71		vs Oregon (N) (11/22/2021)
	63		UTRGV (11/09/2021)
	57		vs Stanford (N) (11/26/2021)
FIELD GOALS MADE	28		vs Syracuse (N) (11/20/2021)
	26		Alabama St. (11/11/2021)
FIELD GOAL ATTEMPTS	69		vs Syracuse (N) (11/20/2021)
	67		vs Stanford (N) (11/26/2021)
	67		UTRGV (11/09/2021)
FIELD GOAL PERCENTAGE	.481	(26-54)	Alabama St. (11/11/2021)
	.406	(28-69)	vs Syracuse (N) (11/20/2021)
3 PT FG MADE	9		Alabama St. (11/11/2021)
	8		vs Oregon (N) (11/22/2021)
	8		vs Syracuse (N) (11/20/2021)
	8		at Tennessee (11/15/2021)
3 PT FG ATTEMPTS	25		vs Syracuse (N) (11/20/2021)
	25		Alabama St. (11/11/2021)
	25		UTRGV (11/09/2021)
3 PT FG PERCENTAGE	.444	(8-18)	vs Oregon (N) (11/22/2021)
	.360	(9-25)	Alabama St. (11/11/2021)
FREE THROWS MADE	17		vs Oregon (N) (11/22/2021)
	13		vs Syracuse (N) (11/20/2021)
	13		UTRGV (11/09/2021)
FREE THROW ATTEMPTS	22		vs Oregon (N) (11/22/2021)
	21		UTRGV (11/09/2021)
FREE THROW PERCENTAGE	.846	(11-13)	Alabama St. (11/11/2021)
	.773	(17-22)	vs Oregon (N) (11/22/2021)
REBOUNDS	52		vs Stanford (N) (11/26/2021)
	50		vs Syracuse (N) (11/20/2021)
ASSISTS	22		Alabama St. (11/11/2021)
	19		vs Syracuse (N) (11/20/2021)
STEALS	16		vs Oregon (N) (11/22/2021)
	14		Alabama St. (11/11/2021)
BLOCKED SHOTS	7		vs Oregon (N) (11/22/2021)
	3		UTRGV (11/09/2021)
TURNOVERS	16		vs Stanford (N) (11/26/2021)
	15		UTRGV (11/09/2021)
FOULS	22		at Tennessee (11/15/2021)
	19		vs Oregon (N) (11/22/2021)



2021-22 South Fla. Women's Basketball
Team High/Low Analysis
All games

Page 2/4
as of Nov 27, 2021

Opponent - Game Highs

POINTS	62		vs Oregon (N) (11/22/2021)
	60		vs UConn (N) (11/21/2021)
	56		UTRGV (11/09/2021)
	54		vs Stanford (N) (11/26/2021)
	53		vs Syracuse (N) (11/20/2021)
FIELD GOALS MADE	23		vs Oregon (N) (11/22/2021)
	22		vs UConn (N) (11/21/2021)
	22		at Tennessee (11/15/2021)
FIELD GOAL ATTEMPTS	66		at Tennessee (11/15/2021)
	60		vs Stanford (N) (11/26/2021)
FIELD GOAL PERCENTAGE	.479	(23-48)	vs Oregon (N) (11/22/2021)
	.468	(22-47)	vs UConn (N) (11/21/2021)
3 PT FG MADE	11		vs UConn (N) (11/21/2021)
	9		UTRGV (11/09/2021)
3 PT FG ATTEMPTS	28		UTRGV (11/09/2021)
	27		vs UConn (N) (11/21/2021)
	27		vs Syracuse (N) (11/20/2021)
3 PT FG PERCENTAGE	.429	(6-14)	vs Oregon (N) (11/22/2021)
	.407	(11-27)	vs UConn (N) (11/21/2021)
FREE THROWS MADE	10		vs Oregon (N) (11/22/2021)
	9		Alabama St. (11/11/2021)
FREE THROW ATTEMPTS	18		at Tennessee (11/15/2021)
	14		Alabama St. (11/11/2021)
FREE THROW PERCENTAGE	1.000	(4-4)	vs Syracuse (N) (11/20/2021)
	.833	(5-6)	vs UConn (N) (11/21/2021)
REBOUNDS	48		at Tennessee (11/15/2021)
	41		Alabama St. (11/11/2021)
ASSISTS	19		vs UConn (N) (11/21/2021)
	16		vs Stanford (N) (11/26/2021)
STEALS	6		vs Stanford (N) (11/26/2021)
	6		UTRGV (11/09/2021)
BLOCKED SHOTS	7		vs Stanford (N) (11/26/2021)
	7		at Tennessee (11/15/2021)
TURNOVERS	25		vs Oregon (N) (11/22/2021)
	23		Alabama St. (11/11/2021)
	23		UTRGV (11/09/2021)
FOULS	24		vs Oregon (N) (11/22/2021)
	19		UTRGV (11/09/2021)



**2021-22 South Fla. Women's Basketball
Team High/Low Analysis
All games**

Page 3/4
as of Nov 27, 2021

South Fla. - Game Lows

POINTS	49		at Tennessee (11/15/2021)
	53		vs UConn (N) (11/21/2021)
	57		vs Stanford (N) (11/26/2021)
	63		UTRGV (11/09/2021)
	71		vs Oregon (N) (11/22/2021)
FIELD GOALS MADE	18		at Tennessee (11/15/2021)
	21		vs Stanford (N) (11/26/2021)
FIELD GOAL ATTEMPTS	54		Alabama St. (11/11/2021)
	59		vs UConn (N) (11/21/2021)
FIELD GOAL PERCENTAGE	.286	(18-63)	at Tennessee (11/15/2021)
	.313	(21-67)	vs Stanford (N) (11/26/2021)
3 PT FG MADE	6		UTRGV (11/09/2021)
	7		vs Stanford (N) (11/26/2021)
	7		vs UConn (N) (11/21/2021)
3 PT FG ATTEMPTS	18		vs Oregon (N) (11/22/2021)
	20		vs Stanford (N) (11/26/2021)
	20		vs UConn (N) (11/21/2021)
3 PT FG PERCENTAGE	.240	(6-25)	UTRGV (11/09/2021)
	.320	(8-25)	vs Syracuse (N) (11/20/2021)
FREE THROWS MADE	2		vs UConn (N) (11/21/2021)
	5		at Tennessee (11/15/2021)
FREE THROW ATTEMPTS	4		vs UConn (N) (11/21/2021)
	8		at Tennessee (11/15/2021)
FREE THROW PERCENTAGE	.500	(2-4)	vs UConn (N) (11/21/2021)
	.619	(13-21)	UTRGV (11/09/2021)
REBOUNDS	32		Alabama St. (11/11/2021)
	34		vs Oregon (N) (11/22/2021)
	34		vs UConn (N) (11/21/2021)
ASSISTS	8		at Tennessee (11/15/2021)
	10		UTRGV (11/09/2021)
STEALS	3		at Tennessee (11/15/2021)
	6		vs Stanford (N) (11/26/2021)
BLOCKED SHOTS	0		vs UConn (N) (11/21/2021)
	0		at Tennessee (11/15/2021)
TURNOVERS	10		Alabama St. (11/11/2021)
	11		vs UConn (N) (11/21/2021)
	11		vs Syracuse (N) (11/20/2021)
FOULS	11		vs Syracuse (N) (11/20/2021)
	13		vs UConn (N) (11/21/2021)
	13		UTRGV (11/09/2021)



2021-22 South Fla. Women's Basketball
Team High/Low Analysis
All games

Page 4/4
as of Nov 27, 2021

Opponent - Game Lows

POINTS	37	Alabama St. (11/11/2021)
	52	at Tennessee (11/15/2021)
	53	vs Syracuse (N) (11/20/2021)
	54	vs Stanford (N) (11/26/2021)
	56	UTRGV (11/09/2021)
FIELD GOALS MADE	11	Alabama St. (11/11/2021)
	20	UTRGV (11/09/2021)
FIELD GOAL ATTEMPTS	47	vs UConn (N) (11/21/2021)
	48	vs Oregon (N) (11/22/2021)
FIELD GOAL PERCENTAGE	.216 (11-51)	Alabama St. (11/11/2021)
	.333 (22-66)	at Tennessee (11/15/2021)
3 PT FG MADE	0	at Tennessee (11/15/2021)
	6	vs Oregon (N) (11/22/2021)
	6	Alabama St. (11/11/2021)
3 PT FG ATTEMPTS	13	at Tennessee (11/15/2021)
	14	vs Oregon (N) (11/22/2021)
3 PT FG PERCENTAGE	.000 (0-13)	at Tennessee (11/15/2021)
	.259 (7-27)	vs Syracuse (N) (11/20/2021)
FREE THROWS MADE	4	vs Stanford (N) (11/26/2021)
	4	vs Syracuse (N) (11/20/2021)
FREE THROW ATTEMPTS	4	vs Syracuse (N) (11/20/2021)
	6	vs UConn (N) (11/21/2021)
FREE THROW PERCENTAGE	.333 (4-12)	vs Stanford (N) (11/26/2021)
	.444 (8-18)	at Tennessee (11/15/2021)
REBOUNDS	29	vs UConn (N) (11/21/2021)
	30	vs Syracuse (N) (11/20/2021)
ASSISTS	5	Alabama St. (11/11/2021)
	8	at Tennessee (11/15/2021)
STEALS	2	vs Oregon (N) (11/22/2021)
	4	vs UConn (N) (11/21/2021)
	4	Alabama St. (11/11/2021)
BLOCKED SHOTS	2	UTRGV (11/09/2021)
	3	vs UConn (N) (11/21/2021)
	3	vs Syracuse (N) (11/20/2021)
	3	Alabama St. (11/11/2021)
TURNOVERS	13	vs Stanford (N) (11/26/2021)
	13	at Tennessee (11/15/2021)
FOULS	9	vs UConn (N) (11/21/2021)
	14	vs Stanford (N) (11/26/2021)



2021-22 South Fla. Women's Basketball
Player Highs Analysis
All games

Page 1/2
as of Nov 27, 2021

South Fla. - Individual Game Highs

POINTS	26		Elisa Pinzan vs Oregon (N) (11/22/2021)
	22		Sydni Harvey vs Oregon (N) (11/22/2021)
	22		Sydni Harvey vs Alabama St. (11/11/2021)
	18		Bethy Mununga vs Syracuse (N) (11/20/2021)
	18		Elena Tsineke vs UTRGV (11/09/2021)
FIELD GOALS MADE	8		Dulcy Mendjiadeu Fankam vs Oregon (N) (11/22/2021)
	8		Elena Tsineke vs UTRGV (11/09/2021)
FIELD GOAL ATTEMPTS	20		Elena Tsineke vs Stanford (N) (11/26/2021)
	20		Elena Tsineke vs UConn (N) (11/21/2021)
FIELD GOAL PERCENTAGE (min 5 made)	.700	(7-10)	Elisa Pinzan vs Oregon (N) (11/22/2021)
	.667	(6-9)	Dulcy Mendjiadeu Fankam vs Alabama St. (11/11/2021)
3 PT FG MADE	6		Sydni Harvey vs Alabama St. (11/11/2021)
	4		Elisa Pinzan vs Oregon (N) (11/22/2021)
	4		Sydni Harvey vs Oregon (N) (11/22/2021)
3 PT FG ATTEMPTS	9		Sydni Harvey vs UTRGV (11/09/2021)
	8		Sydni Harvey vs Alabama St. (11/11/2021)
3 PT FG PERCENTAGE (min 2 made)	1.000	(4-4)	Elisa Pinzan vs Oregon (N) (11/22/2021)
	.750	(6-8)	Sydni Harvey vs Alabama St. (11/11/2021)
	.750	(3-4)	Sydni Harvey vs Stanford (N) (11/26/2021)
FREE THROWS MADE	8		Elisa Pinzan vs Oregon (N) (11/22/2021)
	8		Sydni Harvey vs Oregon (N) (11/22/2021)
FREE THROW ATTEMPTS	10		Sydni Harvey vs Oregon (N) (11/22/2021)
	8		Elisa Pinzan vs Oregon (N) (11/22/2021)
	8		Dulcy Mendjiadeu Fankam vs UTRGV (11/09/2021)
FREE THROW PERCENTAGE (min 3 made)	1.000	(8-8)	Elisa Pinzan vs Oregon (N) (11/22/2021)
	1.000	(4-4)	Sydni Harvey vs Stanford (N) (11/26/2021)
	1.000	(4-4)	Elena Tsineke vs Syracuse (N) (11/20/2021)
	1.000	(4-4)	Elena Tsineke at Tennessee (11/15/2021)
REBOUNDS	23		Bethy Mununga vs Stanford (N) (11/26/2021)
	18		Bethy Mununga vs UTRGV (11/09/2021)
ASSISTS	10		Elisa Pinzan vs Oregon (N) (11/22/2021)
	9		Elisa Pinzan vs Syracuse (N) (11/20/2021)
STEALS	4		Elisa Pinzan vs Oregon (N) (11/22/2021)
	4		Aerial Wilson vs Alabama St. (11/11/2021)
BLOCKED SHOTS	3		Bethy Mununga vs Oregon (N) (11/22/2021)
	3		Dulcy Mendjiadeu Fankam vs Oregon (N) (11/22/2021)
TURNOVERS	4		Bethy Mununga vs Syracuse (N) (11/20/2021)
	4		Elena Tsineke vs Syracuse (N) (11/20/2021)
	4		Elisa Pinzan at Tennessee (11/15/2021)
FOULS	5		Shae Leverett vs Stanford (N) (11/26/2021)
	5		Bethy Mununga vs Oregon (N) (11/22/2021)
	5		Sydni Harvey at Tennessee (11/15/2021)
	5		Shae Leverett at Tennessee (11/15/2021)



2021-22 South Fla. Women's Basketball
Player Highs Analysis
All games

Page 2/2
as of Nov 27, 2021

Opponent - Individual Game Highs

POINTS	24	Jordan Horston at Tennessee (11/15/2021)
	23	Cameron Brink vs Stanford (N) (11/26/2021)
	21	Paige Bueckers vs UConn (N) (11/21/2021)
	18	Azzi Fudd vs UConn (N) (11/21/2021)
	15	Ahlise Hurst vs Oregon (N) (11/22/2021)
	15	Sydney Parrish vs Oregon (N) (11/22/2021)
	15	Taylor Muff vs UTRGV (11/09/2021)
FIELD GOALS MADE	10	Cameron Brink vs Stanford (N) (11/26/2021)
	9	Jordan Horston at Tennessee (11/15/2021)
FIELD GOAL ATTEMPTS	24	Jordan Horston at Tennessee (11/15/2021)
	17	Cameron Brink vs Stanford (N) (11/26/2021)
FIELD GOAL PERCENTAGE (min 5 made)	.700 (7-10)	Sydney Parrish vs Oregon (N) (11/22/2021)
	.667 (6-9)	Taylor Muff vs UTRGV (11/09/2021)
3 PT FG MADE	6	Azzi Fudd vs UConn (N) (11/21/2021)
	4	Christianna Carr vs Syracuse (N) (11/20/2021)
3 PT FG ATTEMPTS	10	Paige Bueckers vs UConn (N) (11/21/2021)
	9	Hannah Jump vs Stanford (N) (11/26/2021)
	9	Azzi Fudd vs UConn (N) (11/21/2021)
	9	Christianna Carr vs Syracuse (N) (11/20/2021)
	9	Ayana Emmanuel vs Alabama St. (11/11/2021)
3 PT FG PERCENTAGE (min 2 made)	.750 (3-4)	Jayla Crawford vs Alabama St. (11/11/2021)
	.667 (6-9)	Azzi Fudd vs UConn (N) (11/21/2021)
FREE THROWS MADE	7	Sedona Prince vs Oregon (N) (11/22/2021)
	6	Jordan Horston at Tennessee (11/15/2021)
FREE THROW ATTEMPTS	9	Sedona Prince vs Oregon (N) (11/22/2021)
	8	Cameron Brink vs Stanford (N) (11/26/2021)
	8	Jordan Horston at Tennessee (11/15/2021)
FREE THROW PERCENTAGE (min 3 made)	.833 (5-6)	Kailya Jackson vs Alabama St. (11/11/2021)
	.778 (7-9)	Sedona Prince vs Oregon (N) (11/22/2021)
REBOUNDS	11	Cameron Brink vs Stanford (N) (11/26/2021)
	10	Tamari Key at Tennessee (11/15/2021)
ASSISTS	7	Paige Bueckers vs UConn (N) (11/21/2021)
	7	Olivia Nelson-Ododa vs UConn (N) (11/21/2021)
STEALS	3	Daklyah Sanders vs Alabama St. (11/11/2021)
	2	Brooke Demetre vs Stanford (N) (11/26/2021)
	2	Lacie Hull vs Stanford (N) (11/26/2021)
	2	Ahlise Hurst vs Oregon (N) (11/22/2021)
	2	Naje Murray vs Syracuse (N) (11/20/2021)
	2	Eboni Walker vs Syracuse (N) (11/20/2021)
	2	Jordan Walker at Tennessee (11/15/2021)
	2	Jordan Horston at Tennessee (11/15/2021)
	2	Jena' Williams vs UTRGV (11/09/2021)
BLOCKED SHOTS	6	Tamari Key at Tennessee (11/15/2021)
	4	Cameron Brink vs Stanford (N) (11/26/2021)
TURNOVERS	7	Maddie Scherr vs Oregon (N) (11/22/2021)
	5	Chanaya Pinto vs Oregon (N) (11/22/2021)
	5	Christyn Williams vs UConn (N) (11/21/2021)
	5	Tyesha Rudolph vs Alabama St. (11/11/2021)
FOULS	5	Chanaya Pinto vs Oregon (N) (11/22/2021)
	5	Maddie Scherr vs Oregon (N) (11/22/2021)
	5	Iva Belosevic vs UTRGV (11/09/2021)



2021-22 South Fla. Women's Basketball
Category Leaders
All games

Page 1/3
as of Nov 27, 2021

Points

##	Player	G	Pts	Pts/G
3	Harvey, Sydni	7	104	14.9
5	Tsineke, Elena	6	83	13.8
4	Pinzan, Elisa	7	68	9.7
20	Mununga, Bethy	7	64	9.1
32	Mendjiadeu Fankam, Dulcy	7	56	8.0
1	Alvarez, Maria	7	26	3.7
21	Leverett, Shae	7	15	2.1
12	Bermejo, Cristina	6	8	1.3
22	Wilson, Aerial	7	5	0.7
11	Williams, Patience	4	4	1.0
13	Guerreiro, Sara	7	4	0.6
2	Lazic, Mihaela	1	3	3.0
0	Betancourt, Odeth	2	2	1.0

Scoring Average

##	Player	G	Pts	Pts/G
3	Harvey, Sydni	7	104	14.9
5	Tsineke, Elena	6	83	13.8
4	Pinzan, Elisa	7	68	9.7
20	Mununga, Bethy	7	64	9.1
32	Mendjiadeu Fankam, Dulcy	7	56	8.0
1	Alvarez, Maria	7	26	3.7
2	Lazic, Mihaela	1	3	3.0
21	Leverett, Shae	7	15	2.1
12	Bermejo, Cristina	6	8	1.3
11	Williams, Patience	4	4	1.0
0	Betancourt, Odeth	2	2	1.0
22	Wilson, Aerial	7	5	0.7
13	Guerreiro, Sara	7	4	0.6

Field Goal Percentage

##	Player	FG	Att	Pct
0	Betancourt, Odeth	1	2	.500
2	Lazic, Mihaela	1	2	.500
3	Harvey, Sydni	32	79	.405
21	Leverett, Shae	5	13	.385
20	Mununga, Bethy	26	69	.377
4	Pinzan, Elisa	22	59	.373
32	Mendjiadeu Fankam, Dulcy	22	60	.367
5	Tsineke, Elena	34	98	.347
11	Williams, Patience	2	6	.333
22	Wilson, Aerial	2	6	.333
13	Guerreiro, Sara	2	7	.286
12	Bermejo, Cristina	3	11	.273
1	Alvarez, Maria	8	30	.267

Field Goal Attempts

##	Player	G	Att	Att/G
5	Tsineke, Elena	6	98	16.3
3	Harvey, Sydni	7	79	11.3
20	Mununga, Bethy	7	69	9.9
32	Mendjiadeu Fankam, Dulcy	7	60	8.6
4	Pinzan, Elisa	7	59	8.4

Field Goals Made

##	Player	G	Made	Made/G
5	Tsineke, Elena	6	34	5.7
3	Harvey, Sydni	7	32	4.6
20	Mununga, Bethy	7	26	3.7
4	Pinzan, Elisa	7	22	3.1
32	Mendjiadeu Fankam, Dulcy	7	22	3.1

3-Point FG Percentage

##	Player	3FG	Att	Pct
3	Harvey, Sydni	24	48	.500
12	Bermejo, Cristina	2	5	.400
4	Pinzan, Elisa	12	32	.375
1	Alvarez, Maria	7	24	.292
5	Tsineke, Elena	5	21	.238
22	Wilson, Aerial	1	5	.200
20	Mununga, Bethy	2	15	.133

3-Point FG Attempts

##	Player	G	Att	Att/G
3	Harvey, Sydni	7	48	6.9
4	Pinzan, Elisa	7	32	4.6
1	Alvarez, Maria	7	24	3.4
5	Tsineke, Elena	6	21	3.5
20	Mununga, Bethy	7	15	2.1

3-Point FG Made

##	Player	G	Made	Made/G
3	Harvey, Sydni	7	24	3.4
4	Pinzan, Elisa	7	12	1.7
1	Alvarez, Maria	7	7	1.0
5	Tsineke, Elena	6	5	0.8
20	Mununga, Bethy	7	2	0.3



2021-22 South Fla. Women's Basketball
Category Leaders
All games

Page 2/3
as of Nov 27, 2021

Free Throw Percentage

##	Player	Made	Att	Pct
4	Pinzan, Elisa	12	13	.923
5	Tsineke, Elena	10	11	.909
3	Harvey, Sydni	16	18	.889
20	Mununga, Bethy	10	16	.625
32	Mendjiadeu Fankam, Dulcy	12	20	.600
21	Leverett, Shae	5	9	.556
1	Alvarez, Maria	3	6	.500
2	Lazic, Mihaela	1	2	.500

Free Throw Attempts

##	Player	G	Att	Att/G
32	Mendjiadeu Fankam, Dulcy	7	20	2.9
3	Harvey, Sydni	7	18	2.6
20	Mununga, Bethy	7	16	2.3
4	Pinzan, Elisa	7	13	1.9
5	Tsineke, Elena	6	11	1.8

Free Throws Made

##	Player	G	Made	Made/G
3	Harvey, Sydni	7	16	2.3
4	Pinzan, Elisa	7	12	1.7
32	Mendjiadeu Fankam, Dulcy	7	12	1.7
5	Tsineke, Elena	6	10	1.7
20	Mununga, Bethy	7	10	1.4

Rebounds

##	Player	G	Reb	Reb/G
20	Mununga, Bethy	7	85	12.1
21	Leverett, Shae	7	33	4.7
32	Mendjiadeu Fankam, Dulcy	7	32	4.6
5	Tsineke, Elena	6	28	4.7
4	Pinzan, Elisa	7	24	3.4

Assists

##	Player	G	Ast	Ast/G
4	Pinzan, Elisa	7	42	6.0
5	Tsineke, Elena	6	13	2.2
20	Mununga, Bethy	7	13	1.9
3	Harvey, Sydni	7	9	1.3
22	Wilson, Aerial	7	8	1.1

Rebounds Average

##	Player	G	Reb	Reb/G
20	Mununga, Bethy	7	85	12.1
21	Leverett, Shae	7	33	4.7
5	Tsineke, Elena	6	28	4.7
32	Mendjiadeu Fankam, Dulcy	7	32	4.6
4	Pinzan, Elisa	7	24	3.4

Steals

##	Player	G	Stl	Stl/G
3	Harvey, Sydni	7	12	1.7
4	Pinzan, Elisa	7	11	1.6
32	Mendjiadeu Fankam, Dulcy	7	9	1.3
20	Mununga, Bethy	7	8	1.1
5	Tsineke, Elena	6	7	1.2

Offensive Rebounds

##	Player	G	OReb	OReb/G
20	Mununga, Bethy	7	28	4.0
5	Tsineke, Elena	6	17	2.8
32	Mendjiadeu Fankam, Dulcy	7	15	2.1
21	Leverett, Shae	7	14	2.0
3	Harvey, Sydni	7	4	0.6

Blocked Shots

##	Player	G	Blk	Blk/G
20	Mununga, Bethy	7	7	1.0
32	Mendjiadeu Fankam, Dulcy	7	5	0.7
3	Harvey, Sydni	7	2	0.3
11	Williams, Patience	4	1	0.3

Defensive Rebounds

##	Player	G	DReb	DReb/G
20	Mununga, Bethy	7	57	8.1
4	Pinzan, Elisa	7	22	3.1
21	Leverett, Shae	7	19	2.7
32	Mendjiadeu Fankam, Dulcy	7	17	2.4
5	Tsineke, Elena	6	11	1.8

Minutes

##	Player	G	Min	Min/G
4	Pinzan, Elisa	7	239	34:06
20	Mununga, Bethy	7	206	29:28
3	Harvey, Sydni	7	203	28:56
5	Tsineke, Elena	6	189	31:33
21	Leverett, Shae	7	161	23:03



2021-22 South Fla. Women's Basketball
Category Leaders
All games

Page 3/3
as of Nov 27, 2021

Fouls

##	Player	G	PF	PF/G
21	Leverett, Shae	7	22	3.1
32	Mendjiadeu Fankam, Dulcy	7	18	2.6
20	Mununga, Bethy	7	16	2.3
3	Harvey, Sydni	7	12	1.7
5	Tsineke, Elena	6	11	1.8

Turnovers

##	Player	G	TO	TO/G
4	Pinzan, Elisa	7	15	2.1
5	Tsineke, Elena	6	14	2.3
20	Mununga, Bethy	7	13	1.9
3	Harvey, Sydni	7	11	1.6
32	Mendjiadeu Fankam, Dulcy	7	8	1.1

Foul Outs

##	Player	G	FO
21	Leverett, Shae	7	2
3	Harvey, Sydni	7	1
20	Mununga, Bethy	7	1



2021-22 South Fla. Women's Basketball
Points-rebounds-assists
All games

Page 1/1
as of Nov 27, 2021

Opponent	Date	Score		0 BETANCOURT	1 ALVAREZ,MA	2 LAZIC,MIHA	3 HARVEY,SYD	4 PINZAN,ELI	5 TSINEKE,EL	11 WILLIAMS,P	12 BERMEJO,CR	13 GUERREIRO,	20 MUNUNGA,BE	21 LEVERETT,S
UTRGV	11/09/2021	63-56	W	DNP	3-0-1	DNP	13-1-2	5-5-2	18-2-2	0-1-1	DNP	0-0-0	9-18-1	5-5-0
Alabama St.	11/11/2021	72-37	W	DNP	10-4-2	3-1-0	22-4-2	7-3-6	DNP	0-1-0	0-0-1	4-2-3	8-5-3	2-3-1
at Tennessee	11/15/2021	49-52	L	DNP	6-3-0	DNP	9-3-0	11-2-3	13-3-1	DNP	3-0-1	0-1-0	6-13-0	0-4-1
vs Syracuse	11/20/2021	77-53	W	2-1-0	6-0-1	DNP	17-1-1	0-2-9	17-6-2	4-0-0	2-6-0	0-3-0	18-12-2	4-5-0
vs UConn	11/21/2021	53-60	L	DNP	1-2-1	DNP	6-0-3	8-3-6	17-7-4	DNP	0-0-0	0-0-0	15-8-2	4-8-1
vs Oregon	11/22/2021	71-62	W	DNP	0-0-2	DNP	22-2-1	26-4-10	4-5-2	DNP	0-0-0	0-0-1	2-6-1	0-4-0
vs Stanford	11/26/2021	57-54	W	0-0-0	0-0-0	DNP	15-3-0	11-5-6	14-5-2	0-0-0	3-0-1	0-0-0	6-23-4	0-4-0

Opponent	Date	Score		22 WILSON,AER	24 WEARY,BELL	32 MENDJIADU
UTRGV	11/09/2021	63-56	W	0-0-1	DNP	10-7-0
Alabama St.	11/11/2021	72-37	W	2-1-2	0-0-0	14-4-2
at Tennessee	11/15/2021	49-52	L	0-0-1	DNP	1-3-1
vs Syracuse	11/20/2021	77-53	W	3-0-4	0-1-0	4-8-0
vs UConn	11/21/2021	53-60	L	0-0-0	DNP	2-0-0
vs Oregon	11/22/2021	71-62	W	0-0-0	DNP	17-7-0
vs Stanford	11/26/2021	57-54	W	0-0-0	DNP	8-3-0



2021-22 South Fla. Women's Basketball
Individual Game-by-Game
All games

Page 1/14
as of Nov 27, 2021

#0 BETANCOURT, Odeth

Opponent	Date	GS	MIN	Total		3-Pointers		Free throws		Rebounds											
				FG-FGA	PCT	3FG-3FGA	PCT	FT-FTA	PCT	OFF	DEF	TOT	AVG	PF	A	TO	BLK	STL	PTS	AVG	
vs Syracuse	11/20/2021		01:24	1-2	.500	0-0	.000	0-0	.000	1	0	1	1.0	0	0	0	0	0	2	2.0	
vs Stanford	11/26/2021		01:31	0-0	.000	0-0	.000	0-0	.000	0	0	0	0.5	0	0	1	0	0	0	1.0	
Totals		0	02:55	1-2	.500	0-0	.000	0-0	.000	1	0	1	0.5	0	0	1	0	0	2	1.0	

Player Averages

Games Played	Minutes/game	Points/game	FG Pct	3FG Pct	FT Pct	Rebounds/game	Assists/game	Turnovers/game	Assist/Turnover ratio	Steals/game	Blocks/game
2	1.5	1.0	50.0	0.0	0.0	0.5	0.0	0.5	0.0	0.0	0.0



2021-22 South Fla. Women's Basketball
Individual Game-by-Game
All games

Page 2/14
as of Nov 27, 2021

#1 ALVAREZ, Maria

Opponent	Date	GS	MIN	Total		3-Pointers		Free throws		Rebounds				PF	A	TO	BLK	STL	PTS	AVG
				FG-FGA	PCT	3FG-3FGA	PCT	FT-FTA	PCT	OFF	DEF	TOT	AVG							
UTRGV	11/09/2021		14:41	1-4	.250	1-2	.500	0-0	.000	0	0	0	0.0	1	1	1	0	0	3	3.0
Alabama St.	11/11/2021		16:44	3-6	.500	2-4	.500	2-2	1.000	0	4	4	2.0	0	2	1	0	0	10	6.5
at Tennessee	11/15/2021		12:49	2-8	.250	2-7	.286	0-2	.000	0	3	3	2.3	0	0	0	0	0	6	6.3
vs Syracuse	11/20/2021		16:09	2-5	.400	2-5	.400	0-0	.000	0	0	0	1.8	0	1	2	0	0	6	6.3
vs UConn	11/21/2021		10:05	0-3	.000	0-3	.000	1-2	.500	0	2	2	1.8	0	1	0	0	0	1	5.2
vs Oregon	11/22/2021		08:25	0-3	.000	0-2	.000	0-0	.000	0	0	0	1.5	0	2	0	0	1	0	4.3
vs Stanford	11/26/2021		03:05	0-1	.000	0-1	.000	0-0	.000	0	0	0	1.3	0	0	0	0	0	0	3.7
Totals		0	81:58	8-30	.267	7-24	.292	3-6	.500	0	9	9	1.3	1	7	4	0	1	26	3.7

Player Averages

Games Played	Minutes/game	Points/game	FG Pct	3FG Pct	FT Pct	Rebounds/game	Assists/game	Turnovers/game	Assist/Turnover ratio	Steals/game	Blocks/game
7	11.7	3.7	26.7	29.2	50.0	1.3	1.0	0.6	1.8	0.1	0.0



2021-22 South Fla. Women's Basketball
Individual Game-by-Game
All games

Page 3/14
as of Nov 27, 2021

#2 LAZIC, Mihaela

Opponent	Date	GS	MIN	Total		3-Pointers		Free throws		Rebounds											
				FG-FGA	PCT	3FG-3FGA	PCT	FT-FTA	PCT	OFF	DEF	TOT	AVG	PF	A	TO	BLK	STL	PTS	AVG	
Alabama St.	11/11/2021		09:49	1-2	.500	0-1	.000	1-2	.500	0	1	1	1.0	0	0	1	0	0	3	3.0	
Totals		0	09:49	1-2	.500	0-1	.000	1-2	.500	0	1	1	1.0	0	0	1	0	0	3	3.0	

Player Averages

Games Played	Minutes/ game	Points/ game	FG Pct	3FG Pct	FT Pct	Rebounds/ game	Assists/ game	Turnovers/ game	Assist/Turnover ratio	Steals/ game	Blocks/ game
1	9.8	3.0	50.0	0.0	50.0	1.0	0.0	1.0	0.0	0.0	0.0



2021-22 South Fla. Women's Basketball
Individual Game-by-Game
All games

Page 4/14
as of Nov 27, 2021

#3 HARVEY, Sydni

Opponent	Date	GS	MIN	Total		3-Pointers		Free throws		Rebounds											
				FG-FGA	PCT	3FG-3FGA	PCT	FT-FTA	PCT	OFF	DEF	TOT	AVG	PF	A	TO	BLK	STL	PTS	AVG	
UTRGV	11/09/2021	*	29:27	5-13	.385	3-9	.333	0-0	.000	0	1	1	1.0	1	2	2	1	2	13	13.0	
Alabama St.	11/11/2021	*	20:04	7-11	.636	6-8	.750	2-2	1.000	1	3	4	2.5	0	2	1	0	1	22	17.5	
at Tennessee	11/15/2021	*	34:03	3-13	.231	3-6	.500	0-0	.000	1	2	3	2.7	5	0	2	0	0	9	14.7	
vs Syracuse	11/20/2021	*	22:50	6-12	.500	3-7	.429	2-2	1.000	1	0	1	2.3	3	1	0	0	3	17	15.3	
vs UConn	11/21/2021	*	33:54	2-10	.200	2-7	.286	0-0	.000	0	0	0	1.8	1	3	3	0	2	6	13.4	
vs Oregon	11/22/2021	*	33:46	5-13	.385	4-7	.571	8-10	.800	0	2	2	1.8	1	1	0	1	2	22	14.8	
vs Stanford	11/26/2021	*	28:26	4-7	.571	3-4	.750	4-4	1.000	1	2	3	2.0	1	0	3	0	2	15	14.9	
Totals		7	202:30	32-79	.405	24-48	.500	16-18	.889	4	10	14	2.0	12	9	11	2	12	104	14.9	

Player Averages

Games Played	Minutes/game	Points/game	FG Pct	3FG Pct	FT Pct	Rebounds/game	Assists/game	Turnovers/game	Assist/Turnover ratio	Steals/game	Blocks/game
7	28.9	14.9	40.5	50.0	88.9	2.0	1.3	1.6	0.8	1.7	0.3



2021-22 South Fla. Women's Basketball
Individual Game-by-Game
All games

Page 5/14
as of Nov 27, 2021

#4 PINZAN, Elisa

Opponent	Date	GS	MIN	Total		3-Pointers		Free throws		Rebounds				PF	A	TO	BLK	STL	PTS	AVG
				FG-FGA	PCT	3FG-3FGA	PCT	FT-FTA	PCT	OFF	DEF	TOT	AVG							
UTRGV	11/09/2021	*	34:12	2-8	.250	1-4	.250	0-0	.000	0	5	5	5.0	2	2	3	0	1	5	5.0
Alabama St.	11/11/2021	*	24:25	2-7	.286	1-6	.167	2-2	1.000	1	2	3	4.0	0	6	0	0	2	7	6.0
at Tennessee	11/15/2021	*	37:25	5-9	.556	1-3	.333	0-0	.000	0	2	2	3.3	1	3	4	0	0	11	7.7
vs Syracuse	11/20/2021	*	29:52	0-6	.000	0-4	.000	0-0	.000	0	2	2	3.0	1	9	1	0	1	0	5.8
vs UConn	11/21/2021	*	38:21	3-8	.375	2-4	.500	0-0	.000	0	3	3	3.0	3	6	1	0	1	8	6.2
vs Oregon	11/22/2021	*	34:25	7-10	.700	4-4	1.000	8-8	1.000	0	4	4	3.2	0	10	3	0	4	26	9.5
vs Stanford	11/26/2021	*	40:00	3-11	.273	3-7	.429	2-3	.667	1	4	5	3.4	0	6	3	0	2	11	9.7
Totals		7	238:41	22-59	.373	12-32	.375	12-13	.923	2	22	24	3.4	7	42	15	0	11	68	9.7

Player Averages

Games Played	Minutes/game	Points/game	FG Pct	3FG Pct	FT Pct	Rebounds/game	Assists/game	Turnovers/game	Assist/Turnover ratio	Steals/game	Blocks/game
7	34.1	9.7	37.3	37.5	92.3	3.4	6.0	2.1	2.8	1.6	0.0



2021-22 South Fla. Women's Basketball
Individual Game-by-Game
All games

Page 6/14
as of Nov 27, 2021

#5 TSINEKE, Elena

Opponent	Date	GS	MIN	Total		3-Pointers		Free throws		Rebounds				PF	A	TO	BLK	STL	PTS	AVG
				FG-FGA	PCT	3FG-3FGA	PCT	FT-FTA	PCT	OFF	DEF	TOT	AVG							
UTRGV	11/09/2021	*	28:40	8-16	.500	1-5	.200	1-1	1.000	2	0	2	2.0	2	2	3	0	0	18	18.0
at Tennessee	11/15/2021	*	31:04	4-15	.267	1-4	.250	4-4	1.000	3	0	3	2.5	0	1	1	0	2	13	15.5
vs Syracuse	11/20/2021	*	28:42	6-12	.500	1-3	.333	4-4	1.000	2	4	6	3.7	0	2	4	0	2	17	16.0
vs UConn	11/21/2021	*	35:40	7-20	.350	2-4	.500	1-2	.500	4	3	7	4.5	4	4	1	0	2	17	16.3
vs Oregon	11/22/2021	*	31:14	2-15	.133	0-3	.000	0-0	.000	3	2	5	4.6	3	2	3	0	1	4	13.8
vs Stanford	11/26/2021	*	33:58	7-20	.350	0-2	.000	0-0	.000	3	2	5	4.7	2	2	2	0	0	14	13.8
Totals		6	189:18	34-98	.347	5-21	.238	10-11	.909	17	11	28	4.7	11	13	14	0	7	83	13.8

Player Averages

Games Played	Minutes/game	Points/game	FG Pct	3FG Pct	FT Pct	Rebounds/game	Assists/game	Turnovers/game	Assist/Turnover ratio	Steals/game	Blocks/game
6	31.6	13.8	34.7	23.8	90.9	4.7	2.2	2.3	0.9	1.2	0.0



2021-22 South Fla. Women's Basketball
Individual Game-by-Game
All games

Page 7/14
as of Nov 27, 2021

#11 WILLIAMS, Patience

Opponent	Date	GS	MIN	Total		3-Pointers		Free throws		Rebounds				PF	A	TO	BLK	STL	PTS	AVG
				FG-FGA	PCT	3FG-3FGA	PCT	FT-FTA	PCT	OFF	DEF	TOT	AVG							
UTRGV	11/09/2021		05:47	0-3	.000	0-0	.000	0-0	.000	1	0	1	1.0	0	1	0	1	1	0	0.0
Alabama St.	11/11/2021		09:20	0-1	.000	0-0	.000	0-0	.000	0	1	1	1.0	4	0	2	0	1	0	0.0
vs Syracuse	11/20/2021		03:32	2-2	1.000	0-0	.000	0-0	.000	0	0	0	0.7	0	0	0	0	0	4	1.3
vs Stanford	11/26/2021		03:02	0-0	.000	0-0	.000	0-0	.000	0	0	0	0.5	1	0	1	0	0	0	1.0
Totals		0	21:41	2-6	.333	0-0	.000	0-0	.000	1	1	2	0.5	5	1	3	1	2	4	1.0

Player Averages

Games Played	Minutes/game	Points/game	FG Pct	3FG Pct	FT Pct	Rebounds/game	Assists/game	Turnovers/game	Assist/Turnover ratio	Steals/game	Blocks/game
4	5.4	1.0	33.3	0.0	0.0	0.5	0.3	0.8	0.3	0.5	0.3



2021-22 South Fla. Women's Basketball
Individual Game-by-Game
All games

Page 8/14
as of Nov 27, 2021

#12 BERMEJO, Cristina

Opponent	Date	GS	MIN	Total		3-Pointers		Free throws		Rebounds				PF	A	TO	BLK	STL	PTS	AVG
				FG-FGA	PCT	3FG-3FGA	PCT	FT-FTA	PCT	OFF	DEF	TOT	AVG							
Alabama St.	11/11/2021		08:03	0-3	.000	0-1	.000	0-0	.000	0	0	0	0.0	1	1	0	0	0	0	0.0
at Tennessee	11/15/2021		14:18	1-1	1.000	1-1	1.000	0-0	.000	0	0	0	0.0	3	1	0	0	0	3	1.5
vs Syracuse	11/20/2021		13:01	1-2	.500	0-0	.000	0-0	.000	1	5	6	2.0	1	0	0	0	0	2	1.7
vs UConn	11/21/2021		07:19	0-0	.000	0-0	.000	0-0	.000	0	0	0	1.5	0	0	0	0	0	0	1.3
vs Oregon	11/22/2021		10:25	0-2	.000	0-0	.000	0-0	.000	0	0	0	1.2	3	0	1	0	1	0	1.0
vs Stanford	11/26/2021		16:07	1-3	.333	1-3	.333	0-0	.000	0	0	0	1.0	0	1	1	0	0	3	1.3
Totals		0	69:12	3-11	.273	2-5	.400	0-0	.000	1	5	6	1.0	8	3	2	0	1	8	1.3

Player Averages

Games Played	Minutes/game	Points/game	FG Pct	3FG Pct	FT Pct	Rebounds/game	Assists/game	Turnovers/game	Assist/Turnover ratio	Steals/game	Blocks/game
6	11.5	1.3	27.3	40.0	0.0	1.0	0.5	0.3	1.5	0.2	0.0



2021-22 South Fla. Women's Basketball
Individual Game-by-Game
All games

Page 9/14
as of Nov 27, 2021

#13 GUERREIRO, Sara

Opponent	Date	GS	MIN	Total		3-Pointers		Free throws		Rebounds				PF	A	TO	BLK	STL	PTS	AVG
				FG-FGA	PCT	3FG-3FGA	PCT	FT-FTA	PCT	OFF	DEF	TOT	AVG							
UTRGV	11/09/2021		07:12	0-1	.000	0-0	.000	0-0	.000	0	0	0	0.0	2	0	0	0	1	0	0.0
Alabama St.	11/11/2021		17:44	2-3	.667	0-1	.000	0-0	.000	0	2	2	1.0	2	3	0	0	1	4	2.0
at Tennessee	11/15/2021		02:04	0-0	.000	0-0	.000	0-0	.000	0	1	1	1.0	1	0	1	0	0	0	1.3
vs Syracuse	11/20/2021		04:45	0-2	.000	0-2	.000	0-0	.000	1	2	3	1.5	0	0	0	0	0	0	1.0
vs UConn	11/21/2021		00:21	0-0	.000	0-0	.000	0-0	.000	0	0	0	1.2	0	0	0	0	0	0	0.8
vs Oregon	11/22/2021		03:46	0-1	.000	0-1	.000	0-0	.000	0	0	0	1.0	0	1	0	0	1	0	0.7
vs Stanford	11/26/2021		01:11	0-0	.000	0-0	.000	0-0	.000	0	0	0	0.9	0	0	0	0	0	0	0.6
Totals		0	37:03	2-7	.286	0-4	.000	0-0	.000	1	5	6	0.9	5	4	1	0	3	4	0.6

Player Averages

Games Played	Minutes/ game	Points/ game	FG Pct	3FG Pct	FT Pct	Rebounds/ game	Assists/ game	Turnovers/ game	Assist/Turnover ratio	Steals/ game	Blocks/ game
7	5.3	0.6	28.6	0.0	0.0	0.9	0.6	0.1	4.0	0.4	0.0



2021-22 South Fla. Women's Basketball
Individual Game-by-Game
All games

Page 10/14
as of Nov 27, 2021

#20 MUNUNGA, Bethy

Opponent	Date	GS	MIN	Total		3-Pointers		Free throws		Rebounds				PF	A	TO	BLK	STL	PTS	AVG
				FG-FGA	PCT	3FG-3FGA	PCT	FT-FTA	PCT	OFF	DEF	TOT	AVG							
UTRGV	11/09/2021	*	30:51	3-9	.333	0-4	.000	3-5	.600	7	11	18	18.0	2	1	3	0	2	9	9.0
Alabama St.	11/11/2021	*	26:24	3-7	.429	0-2	.000	2-2	1.000	0	5	5	11.5	0	3	0	2	2	8	8.5
at Tennessee	11/15/2021	*	25:42	3-12	.250	0-2	.000	0-0	.000	5	8	13	12.0	3	0	0	0	0	6	7.7
vs Syracuse	11/20/2021	*	28:02	7-12	.583	1-1	1.000	3-5	.600	3	9	12	12.0	2	2	4	0	1	18	10.3
vs UConn	11/21/2021	*	32:41	7-12	.583	1-2	.500	0-0	.000	3	5	8	11.2	2	2	3	0	2	15	11.2
vs Oregon	11/22/2021	*	24:30	1-5	.200	0-1	.000	0-0	.000	2	4	6	10.3	5	1	3	3	1	2	9.7
vs Stanford	11/26/2021	*	38:06	2-12	.167	0-3	.000	2-4	.500	8	15	23	12.1	2	4	0	2	0	6	9.1
Totals		7	206:16	26-69	.377	2-15	.133	10-16	.625	28	57	85	12.1	16	13	13	7	8	64	9.1

Player Averages

Games Played	Minutes/game	Points/game	FG Pct	3FG Pct	FT Pct	Rebounds/game	Assists/game	Turnovers/game	Assist/Turnover ratio	Steals/game	Blocks/game
7	29.5	9.1	37.7	13.3	62.5	12.1	1.9	1.9	1.0	1.1	1.0



2021-22 South Fla. Women's Basketball
Individual Game-by-Game
All games

Page 11/14
as of Nov 27, 2021

#21 LEVERETT, Shae

Opponent	Date	GS	MIN	Total		3-Pointers		Free throws		Rebounds				PF	A	TO	BLK	STL	PTS	AVG
				FG-FGA	PCT	3FG-3FGA	PCT	FT-FTA	PCT	OFF	DEF	TOT	AVG							
UTRGV	11/09/2021	*	27:12	1-2	.500	0-0	.000	3-7	.429	3	2	5	5.0	2	0	0	0	1	5	5.0
Alabama St.	11/11/2021	*	20:10	1-2	.500	0-0	.000	0-0	.000	1	2	3	4.0	3	1	0	0	0	2	3.5
at Tennessee	11/15/2021	*	21:20	0-2	.000	0-0	.000	0-0	.000	1	3	4	4.0	5	1	1	0	1	0	2.3
vs Syracuse	11/20/2021	*	24:44	1-3	.333	0-0	.000	2-2	1.000	2	3	5	4.3	3	0	0	0	0	4	2.8
vs UConn	11/21/2021	*	31:42	2-3	.667	0-0	.000	0-0	.000	3	5	8	5.0	1	1	0	0	1	4	3.0
vs Oregon	11/22/2021	*	23:29	0-0	.000	0-0	.000	0-0	.000	2	2	4	4.8	3	0	1	0	3	0	2.5
vs Stanford	11/26/2021	*	12:46	0-1	.000	0-0	.000	0-0	.000	2	2	4	4.7	5	0	3	0	0	0	2.1
Totals		7	161:23	5-13	.385	0-0	.000	5-9	.556	14	19	33	4.7	22	3	5	0	6	15	2.1

Player Averages

Games Played	Minutes/ game	Points/ game	FG Pct	3FG Pct	FT Pct	Rebounds/ game	Assists/ game	Turnovers/ game	Assist/Turnover ratio	Steals/ game	Blocks/ game
7	23.1	2.1	38.5	0.0	55.6	4.7	0.4	0.7	0.6	0.9	0.0



2021-22 South Fla. Women's Basketball
Individual Game-by-Game
All games

Page 12/14
as of Nov 27, 2021

#22 WILSON, Aerial

Opponent	Date	GS	MIN	Total		3-Pointers		Free throws		Rebounds				PF	A	TO	BLK	STL	PTS	AVG
				FG-FGA	PCT	3FG-3FGA	PCT	FT-FTA	PCT	OFF	DEF	TOT	AVG							
UTRGV	11/09/2021		05:48	0-1	.000	0-1	.000	0-0	.000	0	0	0	0.0	0	1	1	0	0	0	0.0
Alabama St.	11/11/2021	*	23:02	1-2	.500	0-1	.000	0-1	.000	0	1	1	0.5	2	2	2	0	4	2	1.0
at Tennessee	11/15/2021		02:35	0-0	.000	0-0	.000	0-0	.000	0	0	0	0.3	0	1	1	0	0	0	0.7
vs Syracuse	11/20/2021		11:43	1-3	.333	1-3	.333	0-0	.000	0	0	0	0.3	1	4	0	0	1	3	1.3
vs UConn	11/21/2021		01:39	0-0	.000	0-0	.000	0-0	.000	0	0	0	0.2	0	0	0	0	0	0	1.0
vs Oregon	11/22/2021		04:34	0-0	.000	0-0	.000	0-0	.000	0	0	0	0.2	0	0	0	0	0	0	0.8
vs Stanford	11/26/2021		00:16	0-0	.000	0-0	.000	0-0	.000	0	0	0	0.1	0	0	0	0	0	0	0.7
Totals		1	49:36	2-6	.333	1-5	.200	0-1	.000	0	1	1	0.1	3	8	4	0	5	5	0.7

Player Averages

Games Played	Minutes/game	Points/game	FG Pct	3FG Pct	FT Pct	Rebounds/game	Assists/game	Turnovers/game	Assist/Turnover ratio	Steals/game	Blocks/game
7	7.1	0.7	33.3	20.0	0.0	0.1	1.1	0.6	2.0	0.7	0.0



2021-22 South Fla. Women's Basketball
Individual Game-by-Game
All games

Page 13/14
as of Nov 27, 2021

#24 WEARY, Bella

Opponent	Date	GS	MIN	Total		3-Pointers		Free throws		Rebounds											
				FG-FGA	PCT	3FG-3FGA	PCT	FT-FTA	PCT	OFF	DEF	TOT	AVG	PF	A	TO	BLK	STL	PTS	AVG	
Alabama St.	11/11/2021		04:25	0-1	.000	0-1	.000	0-0	.000	0	0	0	0.0	0	0	0	0	0	0	0.0	
vs Syracuse	11/20/2021		01:24	0-0	.000	0-0	.000	0-0	.000	1	0	1	0.5	0	0	0	0	0	0	0.0	
Totals		0	05:49	0-1	.000	0-1	.000	0-0	.000	1	0	1	0.5	0	0	0	0	0	0	0.0	

Player Averages

Games Played	Minutes/game	Points/game	FG Pct	3FG Pct	FT Pct	Rebounds/game	Assists/game	Turnovers/game	Assist/Turnover ratio	Steals/game	Blocks/game
2	2.9	0.0	0.0	0.0	0.0	0.5	0.0	0.0	0.0	0.0	0.0



2021-22 South Fla. Women's Basketball
Individual Game-by-Game
All games

Page 14/14
as of Nov 27, 2021

#32 MENDJIADU FANKAM, Dulcy

Opponent	Date	GS	MIN	Total		3-Pointers		Free throws		Rebounds				PF	A	TO	BLK	STL	PTS	AVG
				FG-FGA	PCT	3FG-3FGA	PCT	FT-FTA	PCT	OFF	DEF	TOT	AVG							
UTRGV	11/09/2021		16:10	2-10	.200	0-0	.000	6-8	.750	4	3	7	7.0	1	0	1	1	0	10	10.0
Alabama St.	11/11/2021		19:50	6-9	.667	0-0	.000	2-2	1.000	0	4	4	5.5	4	2	3	0	3	14	12.0
at Tennessee	11/15/2021		18:40	0-3	.000	0-0	.000	1-2	.500	2	1	3	4.7	4	1	3	0	0	1	8.3
vs Syracuse	11/20/2021		13:52	1-8	.125	0-0	.000	2-4	.500	4	4	8	5.5	0	0	0	1	2	4	7.3
vs UConn	11/21/2021		08:18	1-3	.333	0-0	.000	0-0	.000	0	0	0	4.4	2	0	0	0	0	2	6.2
vs Oregon	11/22/2021		25:26	8-15	.533	0-0	.000	1-4	.250	3	4	7	4.8	4	0	0	3	2	17	8.0
vs Stanford	11/26/2021		21:32	4-12	.333	0-0	.000	0-0	.000	2	1	3	4.6	3	0	1	0	2	8	8.0
Totals		0	123:48	22-60	.367	0-0	.000	12-20	.600	15	17	32	4.6	18	3	8	5	9	56	8.0

Player Averages

Games Played	Minutes/game	Points/game	FG Pct	3FG Pct	FT Pct	Rebounds/game	Assists/game	Turnovers/game	Assist/Turnover ratio	Steals/game	Blocks/game
7	17.7	8.0	36.7	0.0	60.0	4.6	0.4	1.1	0.4	1.3	0.7



**South Fla. Women's Basketball
Individual Career Summaries
All games**

Page 1/8
as of Nov 27, 2021

ALVAREZ, Maria

				Field Goals		3-Point		F-Throws		Rebounds									Scoring	
SEASON	TEAM	GP-GS	MIN/AVG	FG-FGA	FG%	3FG-3FGA	3FG%	FT-FTA	FT%	OFF	DEF	TOT	AVG	PF-FO	A	TO	BLK	STL	PTS	AVG
2019-20	USF	15-8	410/27.3	44-131	.336	34-108	.315	10-20	.500	7	37	44	2.9	26-1	49	25	0	15	132	8.8
2020-21	USF	21-1	344/16.4	48-124	.387	41-102	.402	17-23	.739	8	30	38	1.8	23-1	17	23	0	12	154	7.3
2021-22	USF	7-0	82/11.7	8-30	.267	7-24	.292	3-6	.500	0	9	9	1.3	1-0	7	4	0	1	26	3.7
TOTAL		43-9	836/19.4	100-285	.351	82-234	.350	30-49	.612	15	76	91	2.1	50-2	73	52	0	28	312	7.3

Single Game Highs

Statistic	Value	
Points	23	vs Houston 01/09/21
Rebounds	6	vs Mississippi St. 12/19/19, at UNLV 12/21/19
Assists	6	vs FGCU 11/29/19, vs Mississippi St. 12/19/19
Steals	3	at Tulane 01/13/21
FG Made	7	vs VCU 11/15/19, vs Houston 01/09/21
FG Attempts	14	vs Notre Dame 11/30/19
3FG Made	6	vs Alabama St. 12/06/19, vs Houston 01/09/21
3FG Attempts	13	vs Notre Dame 11/30/19
FT Made	4	vs Baylor 12/01/20, vs East Carolina 01/02/21
FT Attempts	4	5 times

BERMEJO, Cristina

				Field Goals		3-Point		F-Throws		Rebounds									Scoring	
SEASON	TEAM	GP-GS	MIN/AVG	FG-FGA	FG%	3FG-3FGA	3FG%	FT-FTA	FT%	OFF	DEF	TOT	AVG	PF-FO	A	TO	BLK	STL	PTS	AVG
2019-20	USF	24-1	241/10.0	17-52	.327	6-22	.273	10-16	.625	13	33	46	1.9	29-0	18	29	5	14	50	2.1
2020-21	USF	19-1	163/8.6	8-29	.276	1-9	.111	8-8	1.000	9	25	34	1.8	18-0	7	10	3	2	25	1.3
2021-22	USF	6-0	69/11.5	3-11	.273	2-5	.400	0-0	.000	1	5	6	1.0	8-0	3	2	0	1	8	1.3
TOTAL		49-2	473/9.7	28-92	.304	9-36	.250	18-24	.750	23	63	86	1.8	55-0	28	41	8	17	83	1.7

Single Game Highs

Statistic	Value	
Points	10	vs Idaho 12/15/19, vs Stetson 12/13/20
Rebounds	6	vs Syracuse 11/20/21
Assists	5	at Memphis 02/22/20
Steals	2	at Memphis 02/22/20, at Tulane 02/13/20, vs Saint Francis (PA) 11/24/19
Blocks	2	vs Jacksonville 11/05/19, vs Alabama St. 12/06/19, at Tulsa 12/30/20
FG Made	4	vs SMU 02/29/20, vs Idaho 12/15/19
FG Attempts	9	vs Idaho 12/15/19
3FG Made	2	vs Idaho 12/15/19
3FG Attempts	5	vs Idaho 12/15/19
FT Made	4	vs Stetson 12/13/20
FT Attempts	4	vs Stetson 12/13/20



South Fla. Women's Basketball
Individual Career Summaries
All games

Page 2/8
as of Nov 27, 2021

BETANCOURT, Odeth

				Field Goals		3-Point		F-Throws		Rebounds									Scoring	
SEASON	TEAM	GP-GS	MIN/AVG	FG-FGA	FG%	3FG-3FGA	3FG%	FT-FTA	FT%	OFF	DEF	TOT	AVG	PF-FO	A	TO	BLK	STL	PTS	AVG
2021-22	USF	2-0	3/1.5	1-2	.500	0-0	.000	0-0	.000	1	0	1	0.5	0-0	0	1	0	0	2	1.0
TOTAL		2-0	3/1.5	1-2	.500	0-0	.000	0-0	.000	1	0	1	0.5	0-0	0	1	0	0	2	1.0

Single Game Highs

Statistic	Value	
Points	2	vs Syracuse 11/20/21
Rebounds	1	vs Syracuse 11/20/21
FG Made	1	vs Syracuse 11/20/21
FG Attempts	2	vs Syracuse 11/20/21

GUERREIRO, Sara

				Field Goals		3-Point		F-Throws		Rebounds									Scoring	
SEASON	TEAM	GP-GS	MIN/AVG	FG-FGA	FG%	3FG-3FGA	3FG%	FT-FTA	FT%	OFF	DEF	TOT	AVG	PF-FO	A	TO	BLK	STL	PTS	AVG
2020-21	USF	9-0	49/5.5	5-17	.294	0-5	.000	0-2	.000	5	3	8	0.9	1-0	2	4	0	1	10	1.1
2021-22	USF	7-0	37/5.3	2-7	.286	0-4	.000	0-0	.000	1	5	6	0.9	5-0	4	1	0	3	4	0.6
TOTAL		16-0	86/5.4	7-24	.292	0-9	.000	0-2	.000	6	8	14	0.9	6-0	6	5	0	4	14	0.9

Single Game Highs

Statistic	Value	
Points	6	vs Jacksonville 11/28/20
Rebounds	3	vs Jacksonville 11/28/20, vs Syracuse 11/20/21
Assists	3	vs Alabama St. 11/11/21
Steals	1	4 times
FG Made	3	vs Jacksonville 11/28/20
FG Attempts	6	vs Stetson 12/13/20
3FG Attempts	3	vs Stetson 12/13/20
FT Attempts	2	vs Houston 01/09/21



**South Fla. Women's Basketball
Individual Career Summaries
All games**

Page 3/8
as of Nov 27, 2021

HARVEY, Sydni

				Field Goals		3-Point		F-Throws		Rebounds									Scoring	
SEASON	TEAM	GP-GS	MIN/AVG	FG-FGA	FG%	3FG-3FGA	3FG%	FT-FTA	FT%	OFF	DEF	TOT	AVG	PF-FO	A	TO	BLK	STL	PTS	AVG
2018-19	USF	32-24	964/30.1	120-371	.323	45-131	.344	90-107	.841	30	53	83	2.6	72-4	82	93	2	21	375	11.7
2019-20	USF	22-16	582/26.5	73-205	.356	39-97	.402	74-88	.841	11	23	34	1.5	40-1	30	44	4	20	259	11.8
2020-21	USF	23-23	631/27.4	76-228	.333	43-128	.336	74-100	.740	30	37	67	2.9	38-0	40	34	2	14	269	11.7
2021-22	USF	7-7	203/28.9	32-79	.405	24-48	.500	16-18	.889	4	10	14	2.0	12-1	9	11	2	12	104	14.9
TOTAL		84-70	2380/28.3	301-883	.341	151-404	.374	254-313	.812	75	123	198	2.4	162-6	161	182	10	67	1007	12.0

Single Game Highs

Statistic	Value	
Points	28	vs Tulane 03/07/20
Rebounds	7	vs Memphis 01/23/19, vs Wichita St. 03/09/21
Assists	7	vs Tulsa 02/13/21
Steals	3	vs Syracuse 11/20/21
Blocks	1	10 times
FG Made	9	vs Tulane 01/19/19
FG Attempts	21	vs Oklahoma 11/18/18
3FG Made	7	vs Temple 02/09/20
3FG Attempts	11	at Cincinnati 12/22/20
FT Made	10	vs Tulane 03/07/20
FT Attempts	12	vs Tulane 03/07/20

LAZIC, Mihaela

				Field Goals		3-Point		F-Throws		Rebounds									Scoring	
SEASON	TEAM	GP-GS	MIN/AVG	FG-FGA	FG%	3FG-3FGA	3FG%	FT-FTA	FT%	OFF	DEF	TOT	AVG	PF-FO	A	TO	BLK	STL	PTS	AVG
2019-20	USF	1-0	8/8.5	0-1	.000	0-1	.000	0-0	.000	0	2	2	2.0	1-0	0	0	0	0	0	0.0
2020-21	USF	17-2	122/7.2	13-35	.371	2-16	.125	3-6	.500	2	9	11	0.6	5-0	19	14	0	3	31	1.8
2021-22	USF	1-0	10/9.8	1-2	.500	0-1	.000	1-2	.500	0	1	1	1.0	0-0	0	1	0	0	3	3.0
TOTAL		19-2	140/7.4	14-38	.368	2-18	.111	4-8	.500	2	12	14	0.7	6-0	19	15	0	3	34	1.8

Single Game Highs

Statistic	Value	
Points	10	vs Tulsa 02/13/21
Rebounds	3	vs Stetson 12/13/20
Assists	5	vs Jacksonville 11/28/20
Steals	1	at Tulsa 12/30/20, vs Cincinnati 02/17/21, at Houston 02/27/21
FG Made	4	vs Tulsa 02/13/21
FG Attempts	11	vs Tulsa 02/13/21
3FG Made	1	vs Tulsa 02/13/21, at Temple 02/24/21
3FG Attempts	4	vs Tulsa 02/13/21
FT Made	1	4 times
FT Attempts	2	4 times



**South Fla. Women's Basketball
Individual Career Summaries
All games**

Page 4/8
as of Nov 27, 2021

LEVERETT, Shae

SEASON	TEAM	GP-GS	MIN/AVG	Field Goals		3-Point		F-Throws		Rebounds									Scoring	
				FG-FGA	FG%	3FG-3FGA	3FG%	FT-FTA	FT%	OFF	DEF	TOT	AVG	PF-FO	A	TO	BLK	STL	PTS	AVG
2017-18	USF	27-0	290/10.7	19-29	.655	0-0	.000	9-18	.500	29	35	64	2.4	38-1	4	11	8	6	47	1.7
2018-19	USF	35-24	938/26.8	91-160	.569	0-1	.000	78-120	.650	115	146	261	7.5	88-1	22	51	55	19	260	7.4
2019-20	USF	31-12	709/22.9	66-102	.647	0-0	.000	41-81	.506	98	98	196	6.3	77-6	10	35	18	19	173	5.6
2020-21	USF	23-22	666/28.9	39-71	.549	0-0	.000	23-56	.411	82	74	156	6.8	79-4	14	22	22	21	101	4.4
2021-22	USF	7-7	161/23.1	5-13	.385	0-0	.000	5-9	.556	14	19	33	4.7	22-2	3	5	0	6	15	2.1
TOTAL		123-65	2764/22.5	220-375	.587	0-1	.000	156-284	.549	338	372	710	5.8	304-14	53	124	103	71	596	4.8

Single Game Highs

Statistic	Value	
Points	20	vs Wichita St. 02/23/19
Rebounds	18	vs Wichita St. 02/23/19
Assists	3	at East Carolina 02/20/19
Steals	4	vs Houston 01/09/21, vs Cincinnati 02/17/21
Blocks	7	vs Memphis 01/23/19
FG Made	6	vs Vermont 12/17/18, at James Madison 03/24/19, vs Arkansas St. 11/17/17
FG Attempts	10	vs Wichita St. 02/23/19
3FG Attempts	1	at Houston 02/27/19
FT Made	10	vs Wichita St. 02/23/19
FT Attempts	12	at SMU 01/26/19

MENDJIADEU FANKAM, Dulcy

SEASON	TEAM	GP-GS	MIN/AVG	Field Goals		3-Point		F-Throws		Rebounds									Scoring	
				FG-FGA	FG%	3FG-3FGA	3FG%	FT-FTA	FT%	OFF	DEF	TOT	AVG	PF-FO	A	TO	BLK	STL	PTS	AVG
2019-20	Mem	31-31	872/28.1	152-312	.487	0-1	.000	73-111	.658	99	167	266	8.6	69-3	16	82	27	36	377	12.2
2020-21	Mem	19-18	580/30.5	107-225	.476	0-1	.000	54-86	.628	74	128	202	10.6	40-2	22	56	30	24	268	14.1
2021-22	USF	7-0	124/17.7	22-60	.367	0-0	.000	12-20	.600	15	17	32	4.6	18-0	3	8	5	9	56	8.0
TOTAL FOR USF		7-0	124/17.7	22-60	.367	0-0	.000	12-20	.600	15	17	32	4.6	18-0	3	8	5	9	56	8.0
TOTAL		57-49	1575/27.6	281-597	.471	0-2	.000	139-217	.641	188	312	500	8.8	127-5	41	146	62	69	701	12.3

Single Game Highs

Statistic	Value	
Points	23	vs Liberty 12/06/20
Rebounds	17	at Saint Louis 12/04/20
Assists	2	10 times
Steals	6	vs Tulane 02/23/21
Blocks	4	at Cincinnati 01/20/21, vs Cincinnati 02/10/21, at Temple 03/04/21
FG Made	10	vs Cincinnati 01/08/20
FG Attempts	17	at Saint Louis 12/04/20
3FG Attempts	1	vs UAB 12/08/19, at Houston 02/13/21
FT Made	9	vs UConn 01/14/20
FT Attempts	10	vs UConn 01/14/20



South Fla. Women's Basketball
Individual Career Summaries
All games

Page 5/8
as of Nov 27, 2021

MUNUNGA, Bethy

SEASON	TEAM	GP-GS	MIN/AVG	Field Goals		3-Point		F-Throws		Rebounds									Scoring	
				FG-FGA	FG%	3FG-3FGA	3FG%	FT-FTA	FT%	OFF	DEF	TOT	AVG	PF-FO	A	TO	BLK	STL	PTS	AVG
2019-20	USF	29-27	759/26.2	109-218	.500	1-5	.200	49-69	.710	110	182	292	10.1	81-0	35	75	27	34	268	9.2
2020-21	USF	23-23	732/31.8	73-165	.442	6-22	.273	70-99	.707	101	196	297	12.9	79-4	29	61	25	27	222	9.7
2021-22	USF	7-7	206/29.5	26-69	.377	2-15	.133	10-16	.625	28	57	85	12.1	16-1	13	13	7	8	64	9.1
TOTAL		59-57	1697/28.8	208-452	.460	9-42	.214	129-184	.701	239	435	674	11.4	176-5	77	149	59	69	554	9.4

Single Game Highs

Statistic	Value	
Points	23	vs East Carolina 01/02/21
Rebounds	23	vs Stanford 11/26/21
Assists	4	vs Stetson 12/13/20, vs Stanford 11/26/21
Steals	5	vs Tulane 02/20/21
Blocks	4	at Wichita St. 01/22/20
FG Made	7	5 times
FG Attempts	15	vs Cincinnati 02/17/21
3FG Made	3	vs Baylor 12/01/20
3FG Attempts	4	vs UTRGV 11/09/21
FT Made	10	vs Tulane 02/20/21
FT Attempts	14	vs Tulane 02/20/21



**South Fla. Women's Basketball
Individual Career Summaries
All games**

Page 6/8
as of Nov 27, 2021

PINZAN, Elisa

				Field Goals		3-Point		F-Throws		Rebounds									Scoring	
SEASON	TEAM	GP-GS	MIN/AVG	FG-FGA	FG%	3FG-3FGA	3FG%	FT-FTA	FT%	OFF	DEF	TOT	AVG	PF-FO	A	TO	BLK	STL	PTS	AVG
2018-19	USF	31-15	762/24.6	40-153	.261	23-95	.242	36-44	.818	4	56	60	1.9	41-0	103	74	0	26	139	4.5
2019-20	USF	27-24	874/32.4	83-234	.355	48-132	.364	30-37	.811	6	72	78	2.9	21-1	121	83	1	28	244	9.0
2020-21	USF	23-23	815/35.5	75-237	.316	33-120	.275	53-64	.828	7	68	75	3.3	26-0	149	49	1	41	236	10.3
2021-22	USF	7-7	239/34.1	22-59	.373	12-32	.375	12-13	.923	2	22	24	3.4	7-0	42	15	0	11	68	9.7
TOTAL		88-69	2690/30.6	220-683	.322	116-379	.306	131-158	.829	19	218	237	2.7	95-1	415	221	2	106	687	7.8

Single Game Highs

Statistic	Value	
Points	26	vs Oregon 11/22/21
Rebounds	11	vs Mississippi St. 12/05/20
Assists	14	vs Houston 01/09/21
Steals	6	at Tulane 01/13/21, vs Tulsa 02/13/21
Blocks	1	vs Notre Dame 11/30/19, vs Tulsa 02/13/21
FG Made	8	vs UCF 01/19/20
FG Attempts	20	vs UConn 02/16/20
3FG Made	7	vs UCF 01/19/20
3FG Attempts	12	vs UCF 01/19/20
FT Made	8	vs Houston 03/09/19, vs UCF 03/11/21, vs Oregon 11/22/21
FT Attempts	9	at Memphis 12/16/20



**South Fla. Women's Basketball
Individual Career Summaries
All games**

Page 7/8
as of Nov 27, 2021

TSINEKE, Elena

SEASON	TEAM	GP-GS	MIN/AVG	Field Goals		3-Point		F-Throws		Rebounds									Scoring	
				FG-FGA	FG%	3FG-3FGA	3FG%	FT-FTA	FT%	OFF	DEF	TOT	AVG	PF-FO	A	TO	BLK	STL	PTS	AVG
2019-20	USF	27-22	746/27.6	115-307	.375	44-138	.319	60-68	.882	17	36	53	2.0	63-2	44	77	8	18	334	12.4
2020-21	USF	21-17	506/24.1	105-272	.386	32-108	.296	43-49	.878	22	25	47	2.2	37-1	37	44	2	9	285	13.6
2021-22	USF	6-6	189/31.6	34-98	.347	5-21	.238	10-11	.909	17	11	28	4.7	11-0	13	14	0	7	83	13.8
TOTAL		54-45	1442/26.7	254-677	.375	81-267	.303	113-128	.883	56	72	128	2.4	111-3	94	135	10	34	702	13.0

Single Game Highs

Statistic	Value	
Points	31	vs Wichita St. 01/06/21
Rebounds	7	vs UConn 11/21/21
Assists	7	vs Jacksonville 11/28/20
Steals	4	vs Tulane 01/25/20
Blocks	2	vs Stetson 12/13/20
FG Made	11	vs Wichita St. 01/06/21
FG Attempts	24	vs NC State 03/23/21
3FG Made	5	vs Wichita St. 01/06/21
3FG Attempts	12	vs Notre Dame 11/30/19
FT Made	7	vs FGCU 11/29/19
FT Attempts	8	vs FGCU 11/29/19

WEARY, Bella

SEASON	TEAM	GP-GS	MIN/AVG	Field Goals		3-Point		F-Throws		Rebounds									Scoring	
				FG-FGA	FG%	3FG-3FGA	3FG%	FT-FTA	FT%	OFF	DEF	TOT	AVG	PF-FO	A	TO	BLK	STL	PTS	AVG
2021-22	USF	2-0	6/2.9	0-1	.000	0-1	.000	0-0	.000	1	0	1	0.5	0-0	0	0	0	0	0	0.0
TOTAL		2-0	6/2.9	0-1	.000	0-1	.000	0-0	.000	1	0	1	0.5	0-0	0	0	0	0	0	0.0

Single Game Highs

Statistic	Value	
Rebounds	1	vs Syracuse 11/20/21
FG Attempts	1	vs Alabama St. 11/11/21
3FG Attempts	1	vs Alabama St. 11/11/21



**South Fla. Women's Basketball
Individual Career Summaries
All games**

Page 8/8
as of Nov 27, 2021

WILLIAMS, Patience

				Field Goals		3-Point		F-Throws		Rebounds									Scoring	
SEASON	TEAM	GP-GS	MIN/AVG	FG-FGA	FG%	3FG-3FGA	3FG%	FT-FTA	FT%	OFF	DEF	TOT	AVG	PF-FO	A	TO	BLK	STL	PTS	AVG
2021-22	USF	4-0	22/5.4	2-6	.333	0-0	.000	0-0	.000	1	1	2	0.5	5-0	1	3	1	2	4	1.0
TOTAL		4-0	22/5.4	2-6	.333	0-0	.000	0-0	.000	1	1	2	0.5	5-0	1	3	1	2	4	1.0

Single Game Highs

Statistic	Value	
Points	4	vs Syracuse 11/20/21
Rebounds	1	vs UTRGV 11/09/21, vs Alabama St. 11/11/21
Assists	1	vs UTRGV 11/09/21
Steals	1	vs UTRGV 11/09/21, vs Alabama St. 11/11/21
Blocks	1	vs UTRGV 11/09/21
FG Made	2	vs Syracuse 11/20/21
FG Attempts	3	vs UTRGV 11/09/21

WILSON, Aerial

				Field Goals		3-Point		F-Throws		Rebounds									Scoring	
SEASON	TEAM	GP-GS	MIN/AVG	FG-FGA	FG%	3FG-3FGA	3FG%	FT-FTA	FT%	OFF	DEF	TOT	AVG	PF-FO	A	TO	BLK	STL	PTS	AVG
2019-20	Mem	31-30	863/27.8	42-128	.328	17-57	.298	14-23	.609	22	36	58	1.9	69-1	70	67	6	32	115	3.7
2020-21	Mem	19-19	647/34.1	29-111	.261	9-44	.205	17-24	.708	19	47	66	3.5	45-0	115	71	3	17	84	4.4
2021-22	USF	7-1	50/7.1	2-6	.333	1-5	.200	0-1	.000	0	1	1	0.1	3-0	8	4	0	5	5	0.7
TOTAL FOR USF		7-1	50/7.1	2-6	.333	1-5	.200	0-1	.000	0	1	1	0.1	3-0	8	4	0	5	5	0.7
TOTAL		57-50	1560/27.4	73-245	.298	27-106	.255	31-48	.646	41	84	125	2.2	117-1	193	142	9	54	204	3.6

Single Game Highs

Statistic	Value	
Points	10	at Saint Louis 12/04/20, at Cincinnati 01/20/21
Rebounds	9	vs Liberty 12/06/20
Assists	10	vs Houston 12/22/20, vs East Carolina 02/06/21
Steals	5	vs George Washington 11/17/19, at Tulsa 01/09/21
Blocks	1	9 times
FG Made	4	vs SMU 01/21/20, at Saint Louis 12/04/20, at Cincinnati 01/20/21
FG Attempts	11	vs Cincinnati 03/08/21
3FG Made	2	vs SMU 03/06/20
3FG Attempts	5	vs Cincinnati 03/08/21
FT Made	3	vs Liberty 12/06/20
FT Attempts	6	vs Tulane 02/04/20