



2017 UTAH UTES VOLLEYBALL

f t i @UTAHVOLLEYBALL

MATCH NOTES

VOLLEYBALL CONTACT: Dameon Myres | dmyres@huntsman.utah.edu | 801.587.7298

2017 SCHEDULE & RESULTS

DATE OPPONENT TV TIME/RESULT

BLUEGRASS BATTLE | Lexington, Ky.

A 25	vs. Cincinnati	W, 3-0 (25-10,25-18,25-17)
A 25	at #14 Kentucky	L, 2-3 (23-25,27-29,25-13,25-20,12-15)
A 26	vs. Arkansas State	W, 3-0 (26-24,25-23,25-20)

RAINBOW WAHINE CLASSIC | Honolulu

A 31	vs. South Dakota	W, 3-0 (25-22,25-10,25-15)
S 1	vs. Western Carolina	W, 3-0 (25-20,25-18,25-22)
S 3	at Hawaii	W, 3-1 (20-25,26-24,25-15,25-23)

UTAH VOLLEYBALL CLASSIC | Salt Lake City

S 8	#15 SAN DIEGO	W, 3-2 (25-22,17-25,25-19,22-25,16-14)
S 9	GREEN BAY	W, 3-0 (25-9,25-16,25-15)
S 9	MISSOURI	W, 3-0 (25-20,27-25,25-19)

S 14 #14 BYU L, 2-3 (25-16,13-25,17-25,25-20,16-18)

S 15 at Utah Valley W, 3-1 (19-25,25-18,25-16,25-22)

S 22 * #25 COLORADO W, 3-1 (25-14,16-25,25-20,25-17)

S 24 * CALIFORNIA W, 3-0 (25-19,25-21,25-12)

S 29 * #12 OREGON L, 2-3 (16-25,13-25,25-16,25-17,19-21)

S 30 * OREGON STATE W, 3-0 (27-25,25-16,25-17)

O 6 * at #9 Washington W, 3-2 (27-25, 26-24, 21-25, 23-25, 16-14)

O 8 * at Washington State W, 3-1 (25-21, 25-19, 21-25, 25-21)

O 13 * at Arizona 6 p.m.

O 15 * at Arizona State P12N 1 p.m.

O 20 * UCLA P12N 6 p.m.

O 22 * USC P12N 1 p.m.

O 25 * at Oregon P12N 7 p.m.

O 27 * at Oregon State 6 p.m.

N 2 * WASHINGTON STATE 7 p.m.

N 4 * WASHINGTON 7 p.m.

N 9 * at USC P12N 6 p.m.

N 10 * at UCLA 8 p.m.

N 17 * ARIZONA STATE P12N TBD

N 18 * ARIZONA 7 p.m.

N 22 * at Stanford P12N TBD

N 24 * at Colorado P12N 8 p.m.

Home Matches in **BOLD** | All Times are local to site

* Pac-12 Conference Match

P12N - Televised LIVE on Pac-12 Networks

MATCH 18

#13 UTAH UTES (14-3, 5-1) at ARIZONA WILDCATS (8-7, 2-4)



HEAD COACH
Beth Launier (28th Year)
UTAH / CAREER RECORD
535-339 / 535-339



HEAD COACH
Dave Rubio (31st Season)
ARIZONA / CAREER RECORD
487-299 / 609-365

MATCH INFORMATION

Date: Friday, Oct. 13, 2017
Time: 7 p.m. MT
Location: Tucson, Ariz. | McKale Center
TV: N/A

Stream: Arizona Live Stream
Live Stats: www.GoHuskies.com
Series | Streak: Arizona leads, 27-5 | Arizona, W6
Last Match: Utah 1, at Arizona 3 | 11/23/2016

MATCH 19

#13 UTAH UTES (14-3, 5-1) at ARIZONA STATE SUN DEVILS (10-8, 0-6)



HEAD COACH
Beth Launier (28th Year)
UTAH / CAREER RECORD
535-339 / 535-339



HEAD COACH
Sanja Tomasevic (1st Season)
ARIZONA STATE / CAREER RECORD
10-8 / 10-8

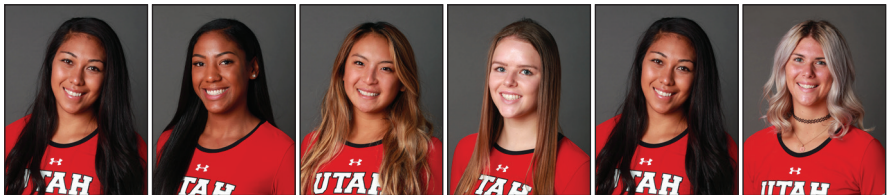
MATCH INFORMATION

Date: Sunday, Oct. 15, 2017
Time: 2 p.m. MT
Location: Tempe, Ariz. | Wells Fargo Arena
TV: Pac-12 Networks (Kate Scott, Dain Blanton)

Stream: Pac-12 NOW
Live Stats: www.TheSunDevils.com
Series | Streak: ASU leads, 13-11 | Utah, W1
Last Match: at Utah 3, ASU 2 | 09/24/2016

UTAH VOLLEYBALL STATISTICAL LEADERS

KILLS HITTING PCT. ASSISTS ACES DIGS TOTAL BLOCKS



Adora Anae 262 Kills	Tawnee Luafalemana .386 Pct.	Bailey Choy 631 Assists	Shannon Scully 12 Service Aces	Adora Anae 171 Digs	Berkeley Oblad 80 Blocks
--------------------------------	--	-----------------------------------	--	-------------------------------	------------------------------------

FIVE THINGS TO KNOW

- » Utah moved up four spots to No. 13 in this week's AVCA top-25 poll. It is Utah's highest ranking since coming in at No. 15 in 2006's final poll of the season.
- » Utah also climbed up from No. 14 to No. 9 in this week's NCAA RRI rankings, according to NCAA.com rankings that were released on Monday.
- » Utah is coming off a 2-0 weekend, which included upsetting No. 9 Washington and then defeating Washington State on the road. It was Utah's first-ever win over the Huskies in Seattle.
- » Utah senior **Adora Anae** and junior **Berkeley Oblad** were named this week's Pac-12 Players of the Week. Anae was tabbed Offensive POW, while Oblad earned Defensive POW honors.
- » In addition to her Pac-12 weekly honor, Anae was also named the NCAA National Player of the Week by both the AVCA and espnW. It is just the second time a Utah player has earned AVCA National Player of the Week honors - the first since Brenda Barton-Whicker earned the honor back on Sept. 15, 1997.



QUICK FACTS

UNIVERSITY OF UTAH INFORMATION

Location	Salt Lake City, Utah
Elevation	4,657 ft.
Founded	1850
Enrollment	31,515
Nickname	Utes
Colors	Crimson & White
Mascot	Swoop (Red-Tailed Hawk)
Conference	Pac-12
President	David W. Pershing
Athletics Director	Chris Hill, Ph.D.
Associate AD/SWA	Nona Richardson

VOLLEYBALL HISTORY

First Year of Volleyball	1975
All-Time Record	767-621 (.552)
All-Time Conference Record	324-281 (.535)
All-Time Pac-12 Record	49-79 (.382)
NCAA Tournament Appearances	13 (1998-2006, 2008, 2013-14, 2016)
Sweet Sixteen Appearances	2 (2001, 2008)

COACHING STAFF INFORMATION

Head Coach	Beth Launiere (Aquinas, '85)
Utah Record	535-339 (.612), 28 Years
Career Record	Same
Conference Record	243-189 (.632)
Office Phone	801.581.6843
Email	blauniere@huntsman.utah.edu
Associate Head Coach	JJ Van Niel (USC, '98)
Office Phone	801.581.4397
Email	jvanniel@huntsman.utah.edu
Assistant Coach	Malia Shoji (UC San Diego, '09)
Office Phone	801.585.3217
Email	mshoji@huntsman.utah.edu
Volunteer Assistant Coach	Andrew Richards
Director of Operations / Technical Coordinator	Beau Lawler
Director of Digital Content	Tyler Legerski
Director of Alumni & Community Relations	Kate Holdeman
Athletic Trainer	Lindsay Adams

ARENA INFORMATION

Arena	Jon M. Huntsman Center / Crimson Court
Capacity	15,000 / 1,500

2016 TEAM INFORMATION

2016 Overall Record	20-12
2016 Pac-12 Record (Finish)	11-9 (5th)
2016 Postseason	NCAA, 1st Round
Final AVCA Ranking	No. 25

MEDIA INFORMATION

Associate AD/Athletic Communications	Liz Abel
Associate Director/Volleyball Contact	Dameon Myres
Office Phone	801.587.7298
Cell Phone	801.201.4834
Email	dmyres@huntsman.utah.edu
Fax	801.581.4358
Mailing Address	1825 E. South Campus Dr. Salt Lake City, UT 84112

2016 OUTLOOK

Letterwinners Returning/Lost	7/8
Starters Returning/Lost	4 + Libero/1
Newcomers	8 (7 High School, 1 Transfer)

TEAM COMPARISON

	UTAH	ARIZONA	ARIZONA STATE
W-L	14-3, 5-1	8-7, 2-4	10-8, 0-6
RANK	#13	N/A	N/A
KILLS	953	724	877
KILLS/SET	14.66	13.16	13.70
HIT PCT.	.285	.227	.238
ASSISTS	903	668	840
ASSISTS/SET	13.89	12.15	13.12
ACES	58	45	53
ACES/SET	0.89	0.82	0.83
DIGS	943	774	1,059
DIGS/SET	14.51	14.07	16.55
BLOCKS	167.0	138.0	138.0
BLOCKS/SET	2.57	2.51	2.16

FIRST SERVE

The No. 13-ranked Utah Utes (14-3, 5-1) will take its current three-match winning streak back onto the road this week to face both squads from the desert. The Utes will match-up with Arizona Wildcats (8-7, 2-4) on Friday, Oct. 13 at 7 p.m. MT in Tucson, Ariz., before closing out its four-match road swing against the Arizona State Sun Devils (10-8, 0-6) on Sunday at 2 p.m. MT in Tempe, Ariz.

SCOUTING THE OPPOSITION

Arizona Wildcats

Arizona is coming off a 1-1 weekend against both Los Angeles based schools, falling in straight sets to No. 13-ranked UCLA, but then sweeping past No. 15-ranked USC. The win over the Trojans snapped a four-match losing streak in the process. Despite the win though, the Wildcats are just 2-4 overall in Pac-12 play heading into this week.

The Wildcats have four players that have tallied at least 100 kills on the season, but are led overall by Kendra Dahlke's total of 142 kills and 3.16 kills-per-set average. Paige Whipple follows with 120 kills on the season. Julia Patterson runs the offense and has tallied a team-best 585 assists and a 10.64 assists-per-set average. Patterson ranks second on the team with 145 digs, just two shy of team-leader Kimberly Gutierrez's total of 147 digs. Devyn Cross has a team-high 51 total blocks, which also includes a team-best nine solo blocks.

Arizona State Sun Devils

After closing out non-conference play with a six-match winning streak, Arizona State has dropped its previous six matches, which have all come in Pac-12 play. The Sun Devils are coming off a pair of four-set losses to both UCLA and USC this past weekend in Tempe.

Oluoma Okaro leads the team with 285 kills and a 4.45 kills-per-set average, which ranks third in the Pac-12. Ivana Jeremic (178 kills) and Griere Hughes (174 kills) follow as the other Sun Devil players with 100+ kills on the season. Shelie Dobmeier (375 assists) and Nicole Peterson (311 assists) combine to run the ASU offense, but it's Dobmeier's 11.03 assists-per-set that ranks fourth in the conference. Halle Harker leads ASU and the conference with 346 digs and a 5.41 digs-per-set average. Carmen Unzue leads the team at the net with 57 total blocks (1.00/set) on the season.

SERIES HISTORY

Arizona leads the all-time series with a 27-5 overall record, which also includes a 10-1 mark over the Utes since Utah joined the Pac-12. The Wildcats have won six straight matches, with Utah's last win coming back on Oct. 27, 2013, in Salt Lake City. The Utes are 0-10 all-time when facing the Wildcats in Tucson.

Arizona State leads the all-time series 13-11, but Utah won the only meeting between the two teams last season, downing the Sun Devils in five sets at the Huntsman Center. Utah has won seven of the 11 meetings between the two teams since Utah joined the Pac-12, but are just 2-3 when playing the Sun Devils in Tempe. Utah is 3-7 all-time when playing ASU at Wells Fargo Arena.

COVERING THE UTES

Utah's match at Arizona will be live streamed via www.ArizonaWildcats.com, while Sunday's contest against Arizona State will be televised live on the Pac-12 Networks. Kate Scott will have the call for the afternoon contest and Dain Blanton will provide color commentary. Fans can also follow the action on-line by logging onto Pac-12.com/live or watching via smart phones and tablets using the Pac-12 Now App, which can be downloaded at the

@ANALATOR TRACKER

TRACKING ADORA ANAE'S MARCH TO BREAKING UTAH'S ALL-TIME CAREER KILLS RECORD

Senior Adora Anae opened the 2017 campaign ranked No. 4 all-time in school history with 1,373 career kills. Each week we will track her progress on the way to setting the all-time new school record.

DATE	OPPONENT	CAREER KILLS	CURRENT TOTAL	RANK	DATE	OPPONENT	CAREER KILLS	CURRENT TOTAL	RANK
08/25	Cincinnati	19	1,392	No. 3	10/06	Washington	25	1,615	No. 2
08/25	Kentucky	26	1,418	No. 3	10/08	Washington State	20	1,625	No. 1
08/26	Arkansas State	12	1,430	No. 3					
08/31	South Dakota	12	1,442	No. 3					
09/01	W. Carolina	13	1,455	No. 3					
09/03	Hawaii	19	1,474	No. 3					
09/08	San Diego	19	1,493	No. 3					
09/09	Green Bay	5	1,498	No. 3					
09/09	Missouri	15	1,513	No. 3					
09/14	BYU	13	1,526	No. 3					
09/16	Utah Valley	DNP	1,526	No. 3					
09/22	Colorado	21	1,547	No. 3					
09/24	California	14	1,561	No. 3					
09/29	Oregon	18	1,579	No. 2					
09/30	Oregon State	11	1,590	No. 2					

#	PLAYER	YEARS	TOTAL
2.	ADORA ANAE	2014-Present	1,635
2.	Kim Turner	2000-03	1,620
3.	Brenda Barton-Whicker	1994-96	1,565
4.	Chelsey Schofield-Olsen	2011-14	1,379

Apple Store, Google Play Store or Amazon Apps Store.

Live stats will be provided for both contests this weekend, with links to these matches found at www.ArizonaWildcats.com (Friday) and www.TheSunDevils.com (Sunday).

LAST TIME OUT

Utah went 2-0 with its road swing through the Evergreen state last weekend, first upsetting then No. 9-ranked Washington in five sets last Friday and then downing Washington State in four sets on Sunday.

Utah went up 2-0 on the Huskies, but UW came back with back-to-back wins in the third and fourth sets to take the match to a decisive fifth set. **Adora Anae** came through in the end, notching 25 kills and helping lead the Utes to a 16-14 win in the final set to take the frame. It was Utah's first-ever win over the Huskies in Seattle. **Berkeley Oblad** matched a career-high with 15 kills and registered a new career-high 11 total blocks for the first double-double of her career. Utah would go on to record a season-high 16.5 total blocks in the match - the team's highest single-match block total since totaling 17.5 blocks against Gonzaga back on Sept. 5, 2015. **Brianna Doehrmann** set a new season-high with 18 digs on the night and **Camryn Machado** tallied her first career double-double with 23 assists and 10 digs - both season highs for the freshman.

Utah erased any doubts of having a hangover from its win over UW with a four-set win over the Cougars at Bohler Gym on Sunday, giving the Utes its second two-match weekend sweep of the season and moving to 5-1 in Pac-12 play. Anae again led the Utes with 20 kills, while also moving up to No. 1 all-time in school history with her 1,621st career kill. She matched a season-high with 16 digs to record the 53rd double-double of her career. Doehrmann added 17 digs and **Shannon Scully** totaled 14 digs on the afternoon. Oblad led the team at the next with six total blocks.

POLL TALK

Utah moved up four spots to No. 13 in this week's AVCA Top-25 Coaches Poll, giving the Utes its highest ranking in the poll since coming in at No. 11 back on Nov. 27, 2006. Utah has now been ranked inside the AVCA Poll for 17 straight weeks dating back to last season - the team's longest stretch of being ranked since a run of 45 straight weeks back from 09/11/2000 - 12/02/2002.

This is Utah's highest ranking in the AVCA Poll as a member of the Pac-12 Conference.

UTES AGAINST RANKED TEAMS

With its win over No. 9-ranked Washington, Utah moved to 3-3 against AVCA top-25 ranked teams this season. All three losses have come to teams ranked No. 14 or higher (No. 14 Kentucky, No. 14 BYU and No. 12 Oregon) and all three losses came in five sets. Utah is 9-10 against ranked teams the past two seasons.

2017 AVCA TOP-25 POLL (OCT. 9, 2017)

NO.	SCHOOL (1ST)	TOTAL POINTS	2017 REC	PREVIOUS WEEK
1	Florida (61)	1597	13-0	1
2	Penn State (1)	1482	15-1	3
3	Stanford (2)	1474	13-2	2
4	Nebraska	1404	13-3	4
5	Texas	1366	12-2	5
6	Minnesota	1286	15-2	6
7	BYU	1183	17-1	8
8	Kentucky	1110	14-2	10
9	Kansas	993	16-2	11
10	Michigan State	973	12-3	14
11	Wisconsin	944	11-4	7
12	UCLA	867	11-4	13
13	Utah	848	14-3	17
14	Washington	832	14-3	9
15	Oregon	673	10-4	16
16	Purdue	658	15-2	18
17	Creighton	564	12-5	12
18	San Diego	530	12-4	19
19	Southern California	484	13-4	15
20	Northern Iowa	351	16-4	21
21	Colorado State	309	16-2	23
22	Wichita State	241	14-3	24
23	Iowa State	185	11-3	20
24	Cal Poly	133	16-2	NR
25	Baylor	91	15-4	NR

Others receiving votes: Western Kentucky 81; Michigan 47; Colorado 18; Marquette 13; Illinois 10; Missouri State 8; Pittsburgh 3

Dropped Out: Michigan 22; Colorado 25

UTES IN THE POLLS

WEEK	DATE	RANK (PTS)
Preseason	Aug. 9	No. 23 (203)
Week 1	Aug. 28	No. 22 (315)
Week 2	Sept. 4	No. 18 (481)
Week 3	Sept. 11	No. 16 (658)
Week 4	Sept. 18	No. 16 (631)
Week 5	Sept. 25	No. 15 (703)
Week 6	Oct. 2	No. 17 (595)
Week 7	Oct. 9	No. 13 (848)
Week 8	Oct. 16	--
Week 9	Oct. 23	--
Week 10	Oct. 30	--
Week 11	Nov. 6	--
Week 12	Nov. 13	--
Week 13	Nov. 20	--
Week 14	Nov. 27	--
Final	Dec. 18	--

UTAH'S RPI RANKINGS

DATE	RANK	DATE	RANK
Oct. 2	No. 14	Nov. 6	--
Oct. 9	No. 9	Nov. 13	--
Oct. 16	--	Nov. 20	--
Oct. 23	--	Nov. 27	--
Oct. 30	--	Final	--



INSIDE THE SERIES

ARIZONA

OVERALL	5-27, L6		
HOME	3-11, L2		
AWAY	0-10, L10		
NEUTRAL	2-6, L1		
PAC-12 PLAY	1-10, L6		
3 SETS (Pac-12 only)	0-5, L5		
4 SETS (Pac-12 only)	1-3, L1		
5 SETS (Pac-12 only)	0-2, L2		
11/14/1975	H	L	0-2
10/22/1976	N	L	0-2
11/20/1976	N	L	0-2
10/08/1977	H	W	3-2
11/19/1977	H	L	1-3
09/28/1978	N	L	0-2
10/20/1978	A	L	0-3
11/17/1978	N	L	0-3
11/18/1978	N	L	2-3
09/14/1979	H	L	1-3
09/22/1979	N	W	2-1
09/05/1981	H	L	0-3
09/07/1982	A	L	1-3
09/18/1982	N	W	2-1
10/21/1984	H	L	0-3
09/06/1985	A	L	1-3
09/16/2000	H	L	0-3
09/05/2001	A	L	0-3
11/30/2002	H	W	3-1
12/03/2005	H	L	1-3
09/11/2009	N	L	0-3
10/15/2011	H	L	1-3
11/11/2011	A	L	0-3
10/12/2012	H	L	2-3
11/17/2012	A	L	1-3
10/27/2013	H	W	3-1
11/14/2013	A	L	0-3
10/03/2014	H	L	0-3
11/01/2014	A	L	0-3
10/25/2015	A	L	0-3
11/12/2015	H	L	2-3
11/23/2016	A	L	1-3

ARIZONA STATE

OVERALL	11-13, W1		
HOME	7-4, W1		
AWAY	3-7, L2		
NEUTRAL	1-2, L2		
PAC-12 PLAY	7-4, W1		
3 SETS (Pac-12 only)	2-2, L2		
4 SETS (Pac-12 only)	3-0, W3		
5 SETS (Pac-12 only)	2-2, W1		
11/14/1975	H	L	0-2
10/22/1976	A	L	0-2
10/08/1977	H	L	0-3
10/13/1978	H	W	3-1
11/17/1978	N	W	3-2
09/19/1980	N	L	1-2
09/08/1982	A	L	0-3
09/18/1982	N	L	0-2
10/20/1984	H	L	1-3
09/07/1985	A	L	2-3
08/29/2003	A	L	1-3
08/28/2009	H	W	3-0
09/18/2010	A	W	3-2
10/14/2011	H	W	3-0
11/12/2011	A	L	2-3
10/14/2012	H	W	3-0
11/16/2012	A	W	3-1
10/24/2013	H	W	3-2
11/17/2013	A	W	3-1
10/05/2014	H	W	3-1
10/31/2014	A	L	2-3
10/23/2015	A	L	0-3
11/14/2015	H	L	0-3
09/24/2016	H	W	3-2

ANAE AND OBLAD NAMED PAC-12 PLAYERS OF THE WEEK

Senior **Adora Anae** and junior **Berkeley Oblad** were each named Pac-12 Volleyball Players of the Week on Monday. Anae was tabbed the conference's Offensive Player of the Week, while Oblad earned Defensive Player of the Week honors.

Anae tallied 45 kills with a 5.00 kills-per-set average, notched four service aces, 27 digs and three total blocks on the way to helping guide Utah to a pair of wins in the Evergreen state this past weekend. Anae registered a double-double with 25 kills and 11 digs in Utah's upset win over No. 9-ranked Washington on Friday and then turned around to record another double-double with 20 kills and 16 digs against Washington State on Sunday.

Anae became Utah's all-time leader after registering her 1,621st career kill in the first set against the Cougars on Sunday. She surpassed former All-American Kim Turner's total of 1,620 kills. Following her 20-kill performance against WSU, the fourth-year veteran has now tallied 1,635 in her career with the Utes.

Oblad was just as phenomenal on the week, totaling 24 kills and a .320 hitting percentage, 10 digs and 17 total blocks on the weekend. She set new career-highs with 15 kills and 11 total blocks in Utah's win against the Huskies on Friday, which helped secure the Utes' first-ever win over UW in Seattle. It also marked Oblad's first-ever career double-double effort. She then followed Friday's performance with nine kills and six total blocks against WSU on Sunday.

This marks Anae's first player of the week honor for the 2017 season and the third Pac-12 weekly honor of her career overall. This is Oblad's second weekly honor of the season and career after earning defensive player of the week accolades back on Sept. 11.

ANAE ADDS TO WEEKLY AWARDS WITH NATIONAL PLAYER OF THE WEEK HONORS

Adora Anae earned a pair national honors on Tuesday as she was named the Sports Imports/AVCA and espnW National Player of the Week. Anae, who was tabbed the Pac-12 Volleyball Offensive Player of the Week on Monday, becomes just the second player in program history to receive the AVCA's weekly national honor and the first since **Brenda Barton-Whicker** back on Sept. 15, 1997. She is the first player to earn espnW national honors.

The Punaluu, Hawaii native helped lead the Utes to a 2-0 record on the road this past weekend, which included upsetting then No. 9-ranked Washington this past Friday and earning Utah's first-ever win over the Huskies in Seattle. Utah then closed out the weekend knocking off Washington State on Sunday. Anae totaled 25 kills in the win over UW and then registered

2017 HONOR ROLL

ADORA ANAE

- Pac-12 All-Preseason Team 08/16
- Bluegrass Battle All-Tournament 08/26
- VolleyMob.com Honorable Mention POW 08/28
- Rainbow Wahine Classic All-Tournament (MVP) 09/03
- Pac-12 Offensive Player of the Week 10/09
- Sports Imports/AVCA National Player of the Week 10/10
- espnW National Player of the Week 10/10
- VolleyMob.com Honorable Mention POW 10/10

DANI BARTON

- Pac-12 Freshman of the Week 09/04

BAILEY CHOY

- Rainbow Wahine Classic All-Tournament 09/03
- Utah Classic All-Tournament 09/09

BERKELEY OBLAD

- Rainbow Wahine Classic All-Tournament 09/03
- Utah Classic All-Tournament (MVP) 09/09
- Pac-12 Defensive Player of the Week 09/11
- Pac-12 Defensive Player of the Week 10/09

TAWNEE LUFALEMANA

- Bluegrass Battle All-Tournament 08/26
- Pac-12 Defensive Player of the Week 09/04

CARLY TRUEMAN

- Utah Classic All-Tournament 09/09

MISCELLANEOUS STATISTICS

10+ Kills	'14	'15	'16	'17	Car	Streak
A. Anae	14	26	31	15	86	8
C. Trueman	2	8	21	9	40	--
B. Oblad	--	7	7	7	21	--
T. Luafalemana	--	--	12	3	15	--
D. Barton	--	--	--	6	6	1
S. Scully	--	--	--	1	1	--

20+ Kills	'14	'15	'16	'17	Car	Streak
A. Anae	1	11	15	4	31	2
C. Trueman	--	--	1	--	1	--

30+ Kills	'14	'15	'16	'17	Car	Streak
A. Anae	--	--	1	--	1	--

10+ Digs	'14	'15	'16	'17	Car	Streak
A. Anae	5	22	23	9	59	4
B. Doehrmann	--	--	14	7	21	4
B. Choy	--	--	10	7	17	--
S. Scully	--	--	--	8	8	2
T. Glasker	--	--	2	1	3	--
K. Abels	--	--	--	2	2	--
C. Machado	--	--	--	1	1	--

20+ Digs	'14	'15	'16	'17	Car	Streak
A. Anae	--	4	4	--	8	--
B. Doehrmann	--	--	1	--	1	--

8+ Blocks	'14	'15	'16	'17	Car	Streak
C. Trueman	2	1	--	--	3	--
B. Oblad	--	--	3	2	5	--
T. Luafalemana	--	--	1	1	2	--
D. Barton	--	--	--	1	1	--
K. Koerber	--	--	--	1	1	--

10+ Blocks	'14	'15	'16	'17	Car	Streak
C. Trueman	1	--	--	--	1	--
T. Luafalemana	--	--	--	1	1	--
D. Barton	--	--	--	1	1	--
B. Oblad	--	--	--	1	1	--

40+ Assists	'14	'15	'16	'17	Car	Streak
B. Choy	--	--	5	6	11	--

50+ Assists	'14	'15	'16	'17	Car	Streak
B. Choy	--	--	1	4	5	--

Double-Doubles	'14	'15	'16	'17	Car	Streak
A. Anae	4	19	21	9	53	4
B. Choy	--	--	10	7	15	--
C. Trueman	1	--	--	--	1	--
D. Barton	--	--	--	1	1	--
S. Scully	--	--	--	1	1	--
C. Machado	--	--	--	1	1	--
B. Oblad	--	--	--	1	1	--



another 20-kill effort against WSU. She registered double-doubles in both contests, posting 11 digs against the Huskies and then notching 16 digs against the Cougars. She would go on to average 5.00 kills and 3.00 digs per set.

Along with helping guide Utah to a 14-3 overall record and a 5-1 mark in Pac-12 play, the four-year veteran also managed to become the program's all-time leader in kills as she surpassed former All-American Kim Turner's career total of 1,620 kills. Anae heads into the week now with 1,635 career kills.

Anae was also named VolleyMob.com Player of the Week Honorable Mention.

WITH THE ASSIST

Utah ranks No. 1 in the Pac-12 and No. 3 overall in the nation with a 13.89 assists-per-set team average. Midway through the season, Utah's 13.89 per-set average currently ranks only behind 2007's 14.41/set and 2006's 14.95/set totals. The Utes also rank No. 1 in the Pac-12 with 903 total team assists on the season.

Sophomore Bailey Choy ranks second in the Pac-12 with 631 total assists, while her 9.71 assists-per-set average ranks seventh in the conference. She ranks among the nation's top-100 in both categories.

LEADERS OF THE PAC

While leading the conference in assists, Utah also ranks among the best in the Pac-12 in team kills (953) and kills-per-set (14.66). The Utes rank No. 8 in the nation with it's 14.66 kills/set average.

SEEING DOUBLE

Senior **Adora Anae** has tallied four straight double-doubles and nine overall on the season, while sophomore **Bailey Choy** has tallied seven double-doubles on the season. Junior Berkeley Oblad and freshman Camryn Machado both notched their first career double-doubles just this past weekend, while freshmen **Dani Barton** and **Shannon Scully** have also notched double-doubles earlier in the season.

Barton, who registered her double-double with 10 kills and 11 blocks, became the first Utah player to notch a double-double with kills and blocks since **Erin Redd-Brandon** did so back in 2013. Oblad also notched her double-double with 15 kills and 11 blocks, giving Utah its first player duo to record a double-double in the same season via kills and blocks since **Lori Baird** and **Emilie Toone** did so back in 2006.

PAC-12 WEEKLY HONORS

Utah has had four different players honored by the Pac-12 so far this season. Senior **Tawnee Luafalemana** was named the league's defensive player of the week back on Sept. 4, while freshman **Dani Barton** was tabbed Pac-12 Freshman of the Week on the same date. Junior **Berkeley Oblad** followed with Pac-12 Defensive Player of the Week on Sept. 11 and again on Oct. 9. Senior **Adora Anae** was named Offensive Player of the Week on Oct. 9, as well.

UTES PICKED TO FINISH FOURTH IN PAC-12

Utah earned its highest preseason finish since joining the Pac-12 back in 2012, coming in at No. 4 in the 2017 preseason coaches' poll. The Utes garnered one first-place vote in the poll for a total of 88 points. Washington was picked to win the league, while Stanford and Oregon followed to round out the top-three.

ANAE NAMED TO ALL-PAC-12 PRESEASON TEAM

Adora Anae was named to the All-Pac-12 Preseason Team for a second straight season. Anae, who enters her senior season with the Utes, was an All-Pac-12 First Team selection following the 2016 season. She led the league in kills (592), kills-per-set (4.70) and points-per-set (5.22).

UP NEXT

Utah returns back to the friendly confines of the Huntsman Center next week, taking on both Los Angeles-based squads. The Utes will face UCLA next Friday, Oct. 20 at 6 p.m. MT and will then close out the weekend hosting USC on Sunday, Oct. 22 at 1 p.m. MT.

RECORDS WATCH

CAREER KILLS

PLAYER	YEARS	TOTAL
1. Adora Anae	2014-Present	1,635
2. Kim Turner	2000-03	1,620
3. Brenda Barton-Whicker	1994-96	1,565
4. Chelsey Schofield-Olsen	2011-14	1,379
5. Morgan Odale	2010-13	1,322
6. Sara Shakula	1995-98	1,306
7. McKelle Stilson	1998-01	1,283
8. Sharman Grant	1992-94	1,252
9. Shelly Sommerfeldt	2002-05	1,245
10. Lori Baird	2005-08	1,236

CAREER ATTEMPTS

PLAYER	YEARS	TOTAL
1. Chelsey Schofield-Olsen	2011-14	4,228
2. Adora Anae	2014-Present	4,141
3. Morgan Odale	2010-13	4,023
4. Brenda Barton-Whicker	1994-97	3,996
5. Sharman Grant	1991-94	3,724
6. Shelly Sommerfeldt	2002-05	3,336
7. Kim Turner	2000-03	3,306
8. Sara Shakula	1995-98	3,216
9. Debbie Gibby-Smith	1989-92	3,106
10. Kathryn Haynie	2005-08	3,031

CAREER DIGS

PLAYER	YEARS	TOTAL
1. Keisha Fisher	2007-10	1,608
2. Connie Dangerfield	2003-04, 06-07	1,571
3. Brenda Barton-Whicker	1994-97	1,313
4. Chelsey Schofield-Olsen	2011-14	1,286
5. Julie Kirby	1991-94	1,216
6. Morgan Odale	2010-13	1,200
7. Jenni Eyre	1984-87	1,103
8. Adora Anae	2014-Present	1,095
9. Lea Adolph	2011-14	1,042
10. Jackie Morrill	2000-03	1,032

2017 MISCELLANEOUS SEASON FACTS

VS. RANKED OPPONENTS (3-3)

DATE	OPPONENT	UTAH RANK	RESULT
08/25	at [14] Kentucky	[23]	L, 2-3
09/08	[15] San Diego	[18]	W, 3-2
09/14	[14] BYU	[16]	L, 2-3
09/22	[25] Colorado	[16]	W, 3-1
09/29	[12] Oregon	[15]	L, 2-3
10/06	at [9] Washington	[17]	W, 3-2

STRAIGHT-SET WINS (8)

DATE	OPPONENT	SITE	SCORES
08/25	vs. Cincinnati	Lexington, Ky.	25-10,25-18,25-17
08/26	vs. Arkansas State	Lexington, Ky.	26-24,25-23,25-20
08/31	vs. South Dakota	Honolulu	25-22,25-10,25-15
09/01	vs. Western Carolina	Honolulu	25-20,25-18,25-22
09/09	Green Bay	Salt Lake City	25-9,25-16,25-15
09/09	Missouri	Salt Lake City	25-20,27-25,25-19
09/24	California	Salt Lake City	25-19,25-21,25-12
09/30	Oregon State	Salt Lake City	27-25,25-16,25-17

2017 NUMERICAL ROSTER

NO.	NAME	POS.	HT.	YR.	HOMETOWN (LAST SCHOOL)
1	Dani Barton	OH	6-0	Fr.	Sandy, Utah (Brighton)
2	Shannon Scully	OH	6-2	Fr.	Huntington Beach, Calif. (Mater Dei)
3	Torre Glasker	OH/L	5-10	So.	South Jordan, Utah (Bingham)
4	Kenzie Koerber	OH	6-3	Fr.	Chino Hills, Calif. (Chino Hills)
5	Lauga Gauta	OH	5-11	Jr.	Garden Grove, Calif. (Garden Grove / NW College)
6	Camryn Machado	S	5-9	Fr.	Cardiff by the Sea, Calif. (La Costa Canyon)
8	Bailey Choy	S	5-9	So.	Honolulu, Hawaii ('Iolani)
9	Kristen Abels	L/DS	5-9	Fr.	Chula Vista, Calif. (Eastlake)
10	Carly Trueman	OH	6-1	Sr.	Tucson, Ariz. (Tucson High Magnet)
11	Alexa Van Komen	S	5-8	Fr.	El Dorado Hills, Calif. (Oak Ridge)
12	Berkley Oblad	MB	6-4	Jr.	Henderson, Nev. (Coronado)
14	Adora Anae	OH	6-1	Sr.	Punaluu, Hawaii (Kahuku)
17	Brianna Doehrmann	L/DS	5-7	So.	Murrieta, Calif. (Vista Murrieta)
18	Lauren Sproule	OH	6-0	R-Fr.	Lethbridge, Alberta, Canada (Chinook)
19	Phoebe Grace	MB	6-2	Fr.	Laie, Hawaii (Kahuku)
20	Tawnee Luafalemana	MB	6-0	Sr.	Carson, Calif. (Carson / College of Southern Idaho)

2017 ALPHABETICAL ROSTER

NO.	NAME	POS.	HT.	YR.	HOMETOWN (LAST SCHOOL)
9	Kristen Abels	L/DS	5-9	Fr.	Chula Vista, Calif. (Eastlake)
14	Adora Anae	OH	6-1	Sr.	Punaluu, Hawaii (Kahuku)
1	Dani Barton	OH	6-0	Fr.	Sandy, Utah (Brighton)
8	Bailey Choy	S	5-9	So.	Honolulu, Hawaii ('Iolani)
17	Brianna Doehrmann	L/DS	5-7	So.	Murrieta, Calif. (Vista Murrieta)
5	Lauga Gauta	OH	5-11	Jr.	Garden Grove, Calif. (Garden Grove / NW College)
3	Torre Glasker	OH/L	5-10	So.	South Jordan, Utah (Bingham)
19	Phoebe Grace	MB	6-2	Fr.	Laie, Hawaii (Kahuku)
4	Kenzie Koerber	OH	6-3	Fr.	Chino Hills, Calif. (Chino Hills)
20	Tawnee Luafalemana	MB	6-0	Sr.	Carson, Calif. (Carson / College of Southern Idaho)
6	Camryn Machado	S	5-9	Fr.	Cardiff by the Sea, Calif. (La Costa Canyon)
12	Berkley Oblad	MB	6-4	Jr.	Henderson, Nev. (Coronado)
2	Shannon Scully	OH	6-2	Fr.	Huntington Beach, Calif. (Mater Dei)
18	Lauren Sproule	OH	6-0	R-Fr.	Lethbridge, Alberta, Canada (Chinook)
10	Carly Trueman	OH	6-1	Sr.	Tucson, Ariz. (Tucson High Magnet)
11	Alexa Van Komen	S	5-8	Fr.	El Dorado Hills, Calif. (Oak Ridge)

COACHING STAFF

HEAD COACH - Beth Launiere (28th Season)

ASSOCIATE HEAD COACH - JJ Van Niel (3rd Season)

ASSISTANT COACH - Malia Shoji (3rd Season)

VOLUNTEER ASSISTANT COACH - Andrew Richards

DIRECTOR OF OPERATIONS / TECHNICAL COORDINATOR - Beau Lawler

DIRECTOR OF DIGITAL CONTENT - Tyler Legerski

DIRECTOR OF ALUMNI & COMMUNITY RELATIONS - Kate Holdeman

ATHLETIC TRAINER - Lindsay Adams

2017 ROSTER BREAKDOWN

BY CLASS

Seniors (3): Adora Anae, Tawnee Luafalemana, Carly Trueman

Juniors (2): Lauga Gauta, Berkeley Oblad

Sophomores (3): Bailey Choy, Brianna Doehrmann, Torre Glasker

Redshirt Freshmen (1): Lauren Sproule

Freshmen (7): Kristen Abels, Dani Barton, Phoebe Grace, Kenzie Koerber, Camryn Machado, Shannon Scully, Alexa Van Komen

BY POSITION

Outside Hitters (8): Adora Anae, Dani Barton, Lauga Gauta, Torre Glasker, Kenzie Koerber, Shannon Scully, Lauren Sproule, Carly Trueman

Middle Blockers (3): Phoebe Grace, Tawnee Luafalemana, Berkeley Oblad

Setters (3): Bailey Choy, Camryn Machado, Alexa Van Komen

Liberos/Defensive Specialists (3): Kristen Abels, Brianna Doehrmann, Torre Glasker

BY STATE/COUNTRY

Arizona (1): Carly Trueman

California (8): Kristen Abels, Brianna Doehrmann, Lauga Gauta, Kenzie Koerber, Tawnee Luafalemana, Camryn Machado, Shannon Scully, Alexa Van Komen

Canada (1): Lauren Sproule

Hawaii (3): Adora Anae, Bailey Choy, Phoebe Grace

Nevada (1): Berkeley Oblad

Utah (2): Dani Barton, Torre Glasker

PRONUNCIATION GUIDE

NAME	PRONUNCIATION
Adora Anae	uh-NYE
Brianna Doehrmann	DOOR-man
Lauga Gauta	LONG-uh oon-GOW-tah
Kenzie Koerber	KERR-ber
Tawnee Luafalemana	LOUIE-fall-EE-ma-na
Berkley Oblad	oh - BLAD (rhymes with glad)
Lauren Sproule	SPROLL

2017 UTAH UTES RADIO/TV ROSTER



DANI BARTON
Fr. | OH | 6-0
Sandy, Utah



SHANNON SCULLY
Fr. | OH | 6-2
Huntington Beach, Calif.



TORRE GLASKER
So. | OH/L | 5-10
South Jordan, Utah



KENZIE KOERBER
Fr. | OH | 6-3
Chino Hills, Calif.



LAUGA GAUTA
Jr. | OH | 5-11
Garden Grove, Calif.



CAMRYN MACHADO
Fr. | S | 5-9
Cardiff by the Sea, Calif.



BAILEY CHOY
So. | S | 5-9
Honolulu, Hawai'i



KRISTEN ABELS
Fr. | L/DS | 5-9
Chula Vista, Calif.



CARLY TRUEMAN
Sr. | OH | 6-1
Tucson, Ariz.



ALEXA VAN KOMEN
Fr. | S | 5-8
El Dorado Hills, Calif.



BERKELEY OBLAD
Jr. | MB | 6-4
Henderson, Nev.



ADORA ANAE
Sr. | OH | 6-1
Punaluu, Hawai'i



BRIANNA DOEHRMANN
So. | L/DS | 5-7
Murrieta, Calif.



LAUREN SPROULE
RS-Fr. | OH | 6-0
Lethbridge, Alberta



PHOEBE GRACE
Fr. | MB | 6-2
Laie, Hawai'i



TAWNEE LUFAILEMANA
Sr. | MB | 6-0
Carson, Calif.



BETH LAUNIERE
Head Coach
28th Season



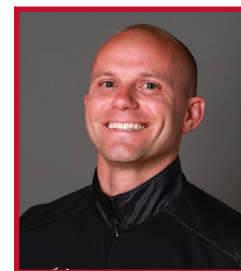
JJ VAN NIEL
Associate Head Coach
3rd Season



MALIA SHOJI
Assistant Coach
3rd Season



ANDREW RICHARDS
Volunteer Assistant Coach



BEAU LAWLER
Director of Operations
2nd Season



BETH LAUNIERE

Head Coach
28th Season
Aquinas, '85

535-339 (.612)

LAUNIERE'S CAREER RECORD

YEAR	OVERALL			CONFERENCE		
	W	L	PCT.	W	L	PCT.
1990	7	21	.250	0	10	.000
1991	15	20	.428	3	9	.333
1992	18	15	.545	3	11	.214
1993	25	11	.694	7	7	.500
1994	16	13	.551	7	7	.500
1995	14	17	.451	7	7	.500
1996	20	12	.625	10	6	.625
1997	22	9	.709	11	5	.687
1998	21	10	.677	9	5	.642
1999	22	10	.687	10	4	.714
2000	23	8	.741	10	4	.714
2001	25	7	.781	11	3	.785
2002	25	9	.735	10	4	.714
2003	22	9	.709	12	2	.857
2004	24	7	.774	13	1	.928
2005	23	9	.718	11	5	.687
2006	28	4	.875	16	0	1.000
2007	15	15	.500	9	7	.562
2008	26	6	.812	14	2	.875
2009	17	12	.586	10	6	.625
2010	17	14	.548	11	5	.687
2011	11	20	.354	6	16	.272
2012	14	19	.424	5	15	.250
2013	21	13	.617	9	11	.450
2014	20	13	.606	9	11	.450
2015	10	21	.345	4	16	.222
2016	20	12	.625	11	9	.550
2017	14	3	.823	5	1	.750
TOTAL	535	339	.612	243	189	.562

LAUNIERE VS. 2017 OPPONENTS

Arizona	2-14	UCLA	2-13
Arizona State	9-5	USC	2-12
Arkansas State	2-0	Utah Valley	11-1
BYU	23-32	Washington	2-13
California	9-5	Washington State	9-10
Cincinnati	2-0	Western Carolina	1-0
Colorado	10-7	Wisconsin - Green Bay	2-0
Hawaii	1-10		
Kentucky	0-1	TOTALS	108-160
Missouri	4-1		
Oregon	5-11		
Oregon State	7-8		
San Diego	2-4		
South Dakota	1-0		
Stanford	2-13		

THE BETH LAUNIERE FILE

HOMETOWN

- Grand Rapids, Mich.

EDUCATION

- Bachelor's Degree, Business Administration & Economics (Aquinas, 1985)
- Master's Degree, Sports Administration (Illinois, 1989)

COACHING EXPERIENCE

- Utah, Head Coach - 1990-Present
- Illinois, Assistant Coach - 1988-89
- Ferris State, Assistant Coach - 1985-87

COACHING ACCOMPLISHMENTS

- AVCA West Region Coach of the Year (2001, 2006, 2008)
- Coach of the Year (MWC: 2004, 2006, 2008)
- Utah Don Reddish Award (1998, 2001, 2002, 2004, 2005)

MILESTONE VICTORIES

- 1st: Sept. 4, 1990 - vs. Fresno-Pacific (W, 3-2)
- 100th: Sept. 20, 1996 - vs. Utah State (W, 3-0)
- 200th: Nov. 16, 2000 - vs. UNLV (W, 3-1)
- 300th: Aug. 26, 2005 - vs. Idaho State (W, 3-0)
- 400th: Sept. 25, 2009 - vs. BYU (W, 3-2)
- 500th: Nov. 1, 2015 - vs. Oregon State (W, 3-1)

TEAM ACCOMPLISHMENTS

- 13 NCAA Tournament Appearances (1998-2006, 2008, 2013, 2014, 2016)
- Two NCAA Tournament Regional Semifinal Appearances (2001, 2008)
- Three Conference Titles (MWC: 2004, 2006, 2008)
- Three Conference Tournament Championships (2001, 2002, 2005)
- 10 AVCA All-Americans
 - Kim Turner (Third Team, 2003)
 - Lyndsey Henderson (HM, 2004)
 - Shelly Sommerfeldt (HM, 2005)
 - Arial Salvo (Second Team, 2006)
 - Whitney Webb (Third Team, 2006)
 - Emillie Toone (HM, 2006; HM, 2008)
 - Lori Baird (Third Team, 2008)
 - Shelby Dalton (HM, 2013)
 - Adora Anae (Second Team, 2016)

UNDER LAUNIERE, UTAH ...

- Became the first school in the MWC to win 16 matches in conference play and just the second to go undefeated (16-0, 2006).
- Won a school-record 28 matches in the 2006 season, which included a school-record 25 straight victories.
- Led the nation in blocks twice (1993 and 2006).
- Recorded 16, 20-win seasons.
- Gone undefeated on Crimson Court twice (2001, 2006).
- Received its first national ranking in the AVCA poll, coming in at No. 18 in September 2000. Utah earned its highest national ranking in September 2002, coming in at No. 8.
- Defeated the No. 1 team in the nation for the first time, downing Stanford, 3-2, on Sept. 5, 2000.
- Made its first postseason appearance in the National Invitational Volleyball Championship (NIVC), finishing in third place (1993).



UTAH VOLLEYBALL FACILITIES

CRIMSON COURT

Utah's Crimson Court is one of the finest volleyball-only practice facilities in the nation.

One of the most intimidating competition venues in the country from 2000 through 2012, Utah racked up a 130-35 (.788) home record and has tallied a 75-19 (.798) mark in conference home matches during that span. Overall from 1994 through 2013, the Utes went 189-65 (.750) at Crimson Court with a 113-37 (.753) mark against league foes



The court was built prior to the 1994 season and officially dedicated on Sept. 9, 1994. It was christened with a win over Montana State and a marathon five-set victory over San Jose State in the Utah Classic. A new playing surface was installed during the summer of 2011.

The largest crowd ever recorded at Crimson Court assembled on Sept. 25, 2009, as 1,747 fans watched Utah rally from down two sets to defeat BYU. The near-capacity crowd also was treated to a 35th Anniversary celebration and Alumni Reunion.

Utah set the single-season attendance record in 2001. The Utes hosted 12,020 fans over the course of 15 matches, averaging 801 fans per contest.

Crimson Court was a launching pad for 10 of the Utes' NCAA Tournament appearances and also played host to the NCAA Tournament, entertaining opening-round action in 2001 and 2005.

HUNTSMAN CENTER

Regarded as one of the top college arenas in the nation since opening its doors in 1969, the Jon M. Huntsman Center has provided an imposing home venue advantage for Utah's basketball and gymnastics teams. And during the fall of 2013, it became the permanent home for the Ute volleyball team.



In its first full season in the Huntsman Center, the Utah volleyball team went 8-5. The Utes won the 2013 Utah Classic with wins over Utah State, Fairfield and Northern Iowa along with wins over Colorado, Washington State, Arizona State, Arizona and Oregon State.

For a structure in its 43rd year of existence, a feeling of newness still pervades underneath the silver dome. But don't let the pristine picture fool you. As serene as the Huntsman Center may look empty, when the Utes are on the floor and fans are in the stands, the place transforms into a madhouse.

A landmark on the U. campus, the Jon M. Huntsman Center is the perfect place to watch a sporting event. With 15,000 chair seats assuring a great view from anywhere in the arena, the Huntsman Center is the largest venue in the Pac-12 Conference.

From its perch at the southeast end of campus, the Huntsman Center stands sentinel over the University of Utah. Inside the facility are athletic coaches' and administrative offices and locker rooms. The enormous reflective silver dome is the largest of its kind in the world. Underground tunnels stretching 2,220 feet connect the arena with the four-building physical education complex.

The famous "steel cloud," a huge mass of steel and concrete, hangs from the dome's interior and holds the scoreboard, and the public address and lighting systems. The building was engineered in such a way that the cloud actually holds the dome in place.

Prior to the 2011-12 season, the entire Huntsman Center playing floor was replaced. A new, \$1.3 million scoreboard was installed in the fall of 2007. The new scoreboard features an LED ring by Optotech around the bottom and four LCD video screens, which provide brighter, clearer pictures than ever before seen in the Huntsman Center. The scoreboard also features a player stat board and is 1.5 times bigger than its predecessor.

UTAH AT CRIMSON COURT

ALL-TIME RECORD

YEAR	OVERALL	PCT.	CONF.	PCT.
1994	5-2	.714	4-2	.667
1995	7-0	1.000	6-1	.857
1996	8-5	.615	5-3	.625
1997	9-3	.750	6-2	.750
1998	8-2	.800	5-2	.714
1999	8-4	.667	5-2	.714
2000	10-2	.833	6-1	.857
2001	15-0	1.000	7-0	1.000
2002	14-2	.875	6-1	.857
2003	11-2	.846	6-1	.857
2004	12-3	.800	6-1	.857
2005	12-2	.857	7-1	.875
2006	13-0	1.000	8-0	1.000
2007	7-5	.583	6-2	.750
2008	12-1	.923	8-0	1.000
2009	11-3	.786	6-2	.750
2010	8-4	.667	6-2	.750
2011	6-11	.353	3-8	.273
2012	7-5	.583	4-6	.400
2013	0-1	.000	0-1	.000
2014	5-1	.833	1-1	.500
TOTAL	194-66	.746	114-38	.750

TOP-10 CROWDS AT CRIMSON COURT

RANK	ATT.	OPPONENT	DATE
1.	1,747	BYU	Sept. 25, 2009
2.	1,591	BYU	Nov. 4, 2005
3.	1,571	BYU	Oct. 23, 2001
4.	1,532	BYU	Oct. 12, 2007
5.	1,453	BYU	Oct. 15, 1999
6.	1,382	BYU	Oct. 11, 2002
7.	1,345	Colorado State	Nov. 3, 2001
8.	1,331	BYU	Oct. 29, 2010
9.	1,320	BYU	Nov. 14, 2003
10.	1,280	BYU	Nov. 14, 2008

UTAH AT JON M. HUNTSMAN CENTER

ALL-TIME RECORD

Year	Overall	Pct.	Conf.	Pct.
1983	0-1	.000	0-0	.000
1993	0-1	.000	0-0	.000
2012	0-1	.000	0-1	.000
2013	8-5	.615	5-5	.500
2014	6-1	.860	6-1	.860
2015	5-9	.357	3-7	.300
2016	7-7	.500	4-6	.400
2017	6-2	.750	3-1	.750
TOTAL	32-27	.542	21-21	.500

TOP-10 CROWDS AT HUNTSMAN CENTER

RANK	ATT.	OPPONENT	DATE
1.	4,637	BYU	Sept. 14, 2017
2.	3,056	BYU	Sept. 17, 2015
3.	2,218	Stanford	Sept. 21, 2012
4.	2,123	BYU	Sept. 17, 2013
5.	2,034	Stanford	Nov. 5, 2016
6.	1,923	Oregon	Sept. 29, 2017
7.	1,857	Washington	Nov. 15, 2014
8.	1,835	Oregon	Oct. 21, 2016
9.	1,746	Utah State	Sept. 17, 2016
10.	1,718	Arizona State	Sept. 24, 2016

2017 PAC-12 CONFERENCE STANDINGS

	PAC-12		OVERALL		H	A	N	LAST 10	STREAK
	W-L	PCT	W-L	PCT					
Stanford	6-0	1.000	13-2	.867	4-0	7-0	2-2	9-1	W 8
Utah	5-1	.833	14-3	.824	6-2	4-1	4-0	8-2	W 3
USC	5-1	.833	13-4	.765	5-0	5-2	3-2	8-2	W 1
Washington	4-2	.667	14-3	.824	6-2	5-1	3-0	8-2	W 1
UCLA	4-2	.667	11-4	.733	3-2	5-2	3-0	6-4	W 3
Oregon	3-3	.500	10-4	.714	8-1	1-2	1-1	7-3	W 1
Washington State	2-4	.333	13-5	.722	4-3	6-2	3-0	6-4	L 1
Colorado	2-4	.333	12-5	.706	7-1	3-3	2-1	6-4	L 2
California	2-4	.333	11-6	.647	8-1	1-5	2-0	5-5	L 2
Arizona	2-4	.333	8-7	.533	5-4	1-3	2-0	4-6	W 1
Oregon State	1-5	.167	11-7	.611	4-1	2-5	5-1	4-6	L 1
Arizona State	0-6	.000	10-8	.556	3-4	2-3	5-1	4-6	L 6

THIS WEEK IN THE PAC-12

Wednesday, Oct. 11

#15 Oregon at #14 Washington	P12N	7 p.m. PT
------------------------------	------	-----------

Friday, Oct. 13

#15 Oregon at Washington State	P12N	6 p.m. PT
#3 Stanford at #12 UCLA	P12N	6 p.m. PT
#13 Utah at Arizona		6 p.m. PT
Oregon State at #14 Washington		7 p.m. PT
California at #19 USC		7 p.m. PT
Colorado at Arizona State	P12N	7 p.m. PT

Saturday, Oct. 14

California at #12 UCLA	P12B	6 p.m. PT
------------------------	------	-----------

Sunday, Oct. 15

Oregon State at Washington State	P12N	1 p.m. PT
#13 Utah at Arizona State	P12N	1 p.m. PT
Colorado at Arizona		1 p.m. PT
#3 Stanford at #19 USC	P12N	3 p.m. PT

PAC-12 PLAYERS OF THE WEEK

OFFENSE

A 28	Khalia Lanier	USC
S 4	Mary-Kate Marshall	Oregon State
S 11	Taylor Agost	Oregon
S 18	Alexa Smith	Colorado
S 25	Brittany Abercrombie	USC
O 2	Brittany Abercrombie	USC
O 9	Adora Anae	Utah
O 16		
O 23		
O 30		
N 6		
N 13		
N 20		
N 27		

DEFENSE

A 28	Zana Muno	UCLA
S 4	Tawnee Luafalemana	Utah
S 11	Berkeley Oblad	Utah
S 18	Halle Harker	Arizona State
S 25	Victoria Garrick	USC
O 2	Naghede Abu	Colorado
O 9	Berkeley Oblad	Utah
O 16		
O 23		
O 30		
N 6		
N 13		
N 20		
N 27		

FRESHMAN

A 28	Mac May	UCLA
S 4	Dani Barton	Utah
S 11	Mima Mirkovic	Cal
S 18	Bryinna DeLuzio	Colorado
S 25	Mac May	UCLA
O 2	Bryinna DeLuzio	Colorado
O 9	Lauren Sanders	Washington
O 16		
O 23		
O 30		
N 6		
N 13		
N 20		
N 27		



UTAH'S RECORD WHEN ...

OVERALL

Home	6-2
Away	2-1
Neutral	4-0
Pac-12 Home	3-1
Pac-12 Away	2-0
On TV	5-3
Playing a Ranked Opp.	3-3
Playing a Non-Ranked Opp.	11-0
Playing as a ranked team	14-3

MONTH

August	3-1
September	9-2
October	2-0
November	0-0
December	0-0

DAY

Tuesday	0-0
Wednesday	0-0
Thursday	1-1
Friday	6-2
Saturday	4-0
Sunday	3-0

SETS

Three-Set Matches	8-0
Four-Set Matches	4-0
Five-Set Matches	2-3

STATISTICAL COMPARISON

Leading in Kills	13-2
Trailing in Kills	1-1
Tied in Kills	0-0
Leading in Digs	12-3
Trailing in Digs	2-0
Tied in Digs	0-0
Leading in Blocks	9-2
Trailing in Blocks	5-0
Tied in Blocks	0-1
Leading in Attack Pct.	13-1
Trailing in Attack Pct.	1-2
Tied in Attack Pct.	0-0
Leading in Service Aces	6-2
Trailing in Service Aces	5-1
Tied in Service Aces	3-0
Hitting .400 or Better	2-0
Hitting .350 to .399	2-0
Hitting .300 to .349	4-0
Hitting .250 to .299	3-2
Hitting .200 to .249	2-1
Hitting Below .200	1-0
Opp. Hitting Below .100	2-0
Opp. Hitting .101 to .200	7-0
Opp. Hitting .201 to .300	5-3
Opp Hitting .301 or Better	0-0

THE LAST TIME ...

UTAH AS A TEAM ...

Won in three sets	vs. Oregon State (09/30/17)
Won in four sets	at Washington State (10/08/17)
Won in five sets	at #9 Washington (10/06/17)
Lost in three sets	vs. #13 Stanford (11/05/16)
Lost in four sets	vs. UNLV (12/02/16)
Lost in five sets	vs. #12 Oregon (09/29/17)
Won vs. ranked opp. (home)	vs. #25 Colorado (09/22/17)
Won vs. ranked opp. (road)	at #9 Washington (10/06/16)
Won vs. ranked opp. (neutral)	vs. #20 Colorado State (11/23/07)
Lost vs. ranked opp. (home)	vs. #12 Oregon (09/29/17)
Lost vs. ranked opp. (road)	at #14 Kentucky (08/25/17)
Lost vs. ranked opp. (neutral)	vs. #21 Michigan (09/18/10)
Had 85+ kills	86, at UNLV (11/24/07)
Had 95+ kills	99, vs. San Diego State (10/21/00)
Had 200+ attacks	224, at UNLV (11/24/07)
Hit .350-.399	.390, vs. Green Bay (09/09/17)
Hit .400-.499	.407, vs. California (09/24/17)
Hit .500 or better	.512 vs. New Mexico (10/03/03)
Had 75+ assists	79, at UNLV (11/24/07)
Had 85+ assists	94, vs. San Diego State (10/21/00)
Had 10+ aces	10, at Gonzaga (09/05/15)
Had 15+ aces	16, vs. Rice (09/03/94)
Had 15+ blocks	16.5, at Washington (10/06/17)
Had 20+ blocks	20.0, vs. Arizona (10/27/13)
Had 90+ digs	91, vs. Oregon State (11/01/15)
Had 100+ digs	104, vs. Washington State (10/04/13)

A UTAH PLAYER HAD ...

15 or more kills	20, Adora Anae at Washington State (10/08/17)
20 or more kills	20, Adora Anae at Washington State (10/08/17)
30 or more kills	31, Adora Anae at BYU (09/15/16)
40 or more assists	41, Bailey Choy at Washington (10/06/17)
50 or more assists	54, Bailey Choy at Utah Valley (09/15/17)
60 or more assists	64, Stephanie Neeley at Arizona State (09/18/10)
20 or more digs	20, Brianna Doerhmann at Oregon (11/09/16)
25 or more digs	25, Adora Anae at USC (10/28/16)
30 or more digs	33, Keisha Fishner at Colorado State (09/18/08)
5 or more blocks	Berkeley Oblad (6), at Washington State (10/08/17)
10 or more blocks	Berkeley Oblad (11), at Washington (10/08/17)
Recorded a triple-double	Kelsie Kartchner vs. Hawaii, 11 K, 28 A, 11 D (11/24/04)

2017 UTAH VOLLEYBALL COMBINED STATISTICS

**2017 Utah Utes Volleyball
Utah Combined Team Statistics (as of Oct 10, 2017)
All matches**

RECORD:	OVERALL	HOME	AWAY	NEUTRAL
ALL GAMES	14-3	6-2	4-1	4-0
CONFERENCE	5-1	3-1	2-0	0-0
NON-CONFERENCE	9-2	3-1	2-1	4-0

#	Player	sp	Attack				Set		Serve			Dig			Blocking					points			
			k	k/s	e	ta	pct	a	a/s	sa	se	sa/s	re	dig	dig/s	bs	ba	total	blk/s		be	bhe	
14	Anae, Adora	60	262	4.37	84	603	.295	17	0.28	10	24	0.17	12	171	2.85	8	21	29	0.48	8	1	290.5	
10	Trueman, Carly	61	154	2.52	63	387	.235	2	0.03	0	0	0.00	0	35	0.57	2	20	22	0.36	5	0	166.0	
12	Oblad, Berkeley	65	153	2.35	42	310	.358	8	0.12	9	21	0.14	1	38	0.58	5	75	80	1.23	4	0	204.5	
20	Luafalemana, Tawnee	65	136	2.09	36	259	.386	5	0.08	0	0	0.00	0	28	0.43	10	62	72	1.11	15	1	177.0	
1	Barton, Dani	63	130	2.06	50	331	.242	0	0.00	0	0	0.00	0	20	0.32	2	54	56	0.89	6	0	159.0	
4	Koerber, Kenzie	53	39	0.74	16	132	.174	2	0.04	0	0	0.00	1	26	0.49	0	34	34	0.64	4	1	56.0	
5	Gauta, Lauga	13	23	1.77	8	52	.288	0	0.00	1	4	0.08	1	17	1.31	1	1	2	0.15	1	0	25.5	
2	Scully, Shannon	62	22	0.35	9	63	.206	15	0.24	12	14	0.19	10	149	2.40	0	1	1	0.02	0	0	34.5	
8	Choy, Bailey	65	21	0.32	6	53	.283	631	9.71	8	17	0.12	0	139	2.14	0	9	9	0.14	5	4	33.5	
6	Machado, Camryn	50	9	0.18	4	18	.278	161	3.22	3	10	0.06	0	59	1.18	0	0	0	0.00	0	2	12.0	
18	Sproule, Lauren	5	2	0.40	3	5	-.200	0	0.00	0	0	0.00	0	0	0.00	0	1	1	0.20	0	0	2.5	
17	Doehrmann, Brianna	54	2	0.04	0	2	1.000	35	0.65	4	9	0.07	13	145	2.69	0	0	0	0.00	0	2	6.0	
3	Glasker, Torre	29	0	0.00	1	1	-1.000	4	0.14	4	4	0.14	4	35	1.21	0	0	0	0.00	0	1	4.0	
9	Abels, Kristen	38	0	0.00	0	0	.000	23	0.61	7	13	0.18	6	81	2.13	0	0	0	0.00	0	1	7.0	
	TEAM	-	-	-	-	-	-	-	-	-	-	-	2	-	-	-	-	-	-	-	-	-	-
	UTAH	65	953	14.66	322	2216	.285	903	13.89	58	117	0.89	50	943	14.51	28	278	167.0	2.57	48	13	1178.0	
	Opponents	65	784	12.06	350	2238	.194	729	11.22	50	125	0.77	58	816	12.55	27	217	135.5	2.08	22	16	969.5	

Team Statistics	UTAH	OPP	Date	Opponent	Score	Score by set	Att.	
ATTACK								
Kills	953	784	!Aug 25	vs Cincinnati	w 3-0	25-10,25-18,25-17	1642	
Errors	322	350	!Aug 25	at #14 Kentucky	L 2-3	23-25,27-29,25-13,25-20,12-15	1642	
Total Attacks	2216	2238	!Aug 26	vs Arkansas State	w 3-0	26-24,25-23,25-20	1772	
Attack Pct	.285	.194	@Aug 31	vs South Dakota	w 3-0	25-22,25-10,25-15	5413	
Kills/Set	14.7	12.1	@Sep 01	vs Western Carolina	w 3-0	25-20,25-18,25-22	5001	
SET								
Assists	903	729	@Sep 03	at Hawaii	w 3-1	20-25,26-24,25-15,25-23	6948	
Assists/Set	13.9	11.2	#Sep 08	#15 SAN DIEGO	w 3-2	25-22,17-25,25-19,22-25,16-14	1616	
SERVE								
Aces	58	50	#Sep 09	GREEN BAY	w 3-0	25-9,25-16,25-15	746	
Errors	117	125	#Sep 09	MISSOURI	w 3-0	25-20,27-25,25-19	847	
Attempts	1490	1310	Sep 14	#14 BYU	L 2-3	25-16,13-25,17-25,25-20,16-18	4637	
Serve Pct	.921	.905	Sep 15	at Utah Valley	w 3-1	19-25,25-18,25-16,25-22	1081	
Aces/Set	0.9	0.8	*Sep 22	#25 COLORADO	w 3-1	25-14,16-25,25-20,25-17	1480	
SERVE RECEPTIONS								
Errors	50	58	*Sep 24	CALIFORNIA	w 3-0	25-19,25-21,25-12	1218	
Errors/Set	0.8	0.9	*Sep 29	#12 OREGON	L 2-3	16-25,13-25,25-16,25-17,19-21	1923	
Attempts	1184	1373	*Sep 30	OREGON STATE	w 3-0	27-25,25-16,25-17	1523	
Reception Pct	.958	.958	*Oct 06	at #9 Washington	w 3-2	27-25,26-24,21-25,23-25,16-14	3019	
DEFENSE								
Digs	943	816	*Oct 08	at Washington State	w 3-1	25-21,25-19,21-25,25-21	675	
Digs/Set	14.5	12.6	! - Bluegrass Battle (Lexington, Ky.)					
BLOCKING								
Block Solo	28	27	@ - Hawaiian Airlines Rainbow Wahine Classic (Honolulu)					
Block Assist	278	217	# - Utah Volleyball Classic (Salt Lake City)					
Total Blocks	167.0	135.5	Record in 3-set matches: 8-0					
Blocks/Set	2.6	2.1	Record in 4-set matches: 4-0					
Block Errors	48	22	Record in 5-set matches: 2-3					
Ball handling errors	13	16						
ATTENDANCE								
Total	13990	13365						
Dates/Avg Per Date	8/1749	5/2673						
Neutral site #/Avg	4/3457							
Current win streak	3	-						
Home win streak	1	-						



2017 UTAH VOLLEYBALL PAC-12 CONFERENCE STATISTICS

2017 Utah Utes Volleyball
Utah Combined Team Statistics (as of Oct 10, 2017)
Conference matches

RECORD:	OVERALL	HOME	AWAY	NEUTRAL
ALL GAMES	5-1	3-1	2-0	0-0
CONFERENCE	5-1	3-1	2-0	0-0
NON-CONFERENCE	0-0	0-0	0-0	0-0

#	Player	sp	Attack				pct	Set		Serve			Dig			Blocking					points	
			k	k/s	e	ta		a	a/s	sa	se	sa/s	re	dig	dig/s	bs	ba	total	blk/s	be		bhe
14	Anae, Adora	24	109	4.54	37	250	.288	5	0.21	5	9	0.21	5	76	3.17	0	6	6	0.25	2	1	117.0
12	Oblad, Berkeley	24	64	2.67	18	130	.354	5	0.21	5	9	0.21	0	16	0.67	1	35	36	1.50	1	0	87.5
10	Trueman, Carly	24	62	2.58	28	172	.198	0	0.00	0	0	0.00	0	15	0.62	0	11	11	0.46	3	0	67.5
20	Luafalemana, Tawnee	24	51	2.12	15	98	.367	4	0.17	0	0	0.00	0	13	0.54	4	15	19	0.79	6	1	62.5
1	Barton, Dani	24	43	1.79	25	141	.128	0	0.00	0	0	0.00	0	9	0.38	0	16	16	0.67	1	0	51.0
4	Koerber, Kenzie	24	19	0.79	5	53	.264	0	0.00	0	0	0.00	0	16	0.67	0	17	17	0.71	3	1	27.5
6	Machado, Camryn	24	5	0.21	2	12	.250	91	3.79	1	3	0.04	0	34	1.42	0	0	0	0.00	0	1	6.0
5	Gauta, Lauga	2	4	2.00	0	7	.571	0	0.00	0	0	0.00	0	3	1.50	0	0	0	0.00	0	0	4.0
8	Choy, Bailey	24	4	0.17	1	12	.250	201	8.38	3	7	0.12	0	53	2.21	0	1	1	0.04	2	3	7.5
2	Scully, Shannon	24	1	0.04	2	11	-.091	9	0.38	5	2	0.21	6	57	2.38	0	0	0	0.00	0	0	6.0
17	Doehrmann, Brianna	24	0	0.00	0	0	.000	20	0.83	1	4	0.04	8	85	3.54	0	0	0	0.00	0	1	1.0
3	Glasker, Torre	7	0	0.00	0	0	.000	2	0.29	1	0	0.14	1	6	0.86	0	0	0	0.00	0	0	1.0
9	Abels, Kristen	2	0	0.00	0	0	.000	0	0.00	0	0	0.00	1	6	3.00	0	0	0	0.00	0	0	0.0
	#TM	-	-	-	-	-	-	-	-	-	-	-	0	-	-	-	-	-	-	-	-	-
	UTAH	24	362	15.08	133	886	.258	337	14.04	21	34	0.88	21	389	16.21	5	101	55.5	2.31	18	8	438.5
	Opponents	24	292	12.17	115	852	.208	273	11.38	21	43	0.88	21	332	13.83	8	97	56.5	2.35	8	8	369.5

Team Statistics	UTAH	OPP	Date	Opponent	Score	Score by set	Att.
ATTACK			*Sep 22	#25 COLORADO	w 3-1	25-14,16-25,25-20,25-17	1480
Kills	362	292	*Sep 24	CALIFORNIA	w 3-0	25-19,25-21,25-12	1218
Errors	133	115	*Sep 29	#12 OREGON	L 2-3	16-25,13-25,25-16,25-17,19-21	1923
Total Attacks	886	852	*Sep 30	OREGON STATE	w 3-0	27-25,25-16,25-17	1523
Attack Pct	.258	.208	*Oct 06	at #9 Washington	w 3-2	27-25,26-24,21-25,23-25,16-14	3019
Kills/Set	15.1	12.2	*Oct 08	at Washington State	w 3-1	25-21,25-19,21-25,25-21	675
SET							
Assists	337	273	! - Bluegrass Battle (Lexington, Ky.)				
Assists/Set	14.0	11.4	@ - Hawaiian Airlines Rainbow Wahine Classic (Honolulu)				
SERVE			# - Utah Volleyball Classic (Salt Lake City)				
Aces	21	21	Record in 3-set matches: 2-0				
Errors	34	43	Record in 4-set matches: 2-0				
Attempts	547	495	Record in 5-set matches: 1-1				
Serve Pct	.938	.913					
Aces/Set	0.9	0.9					
SERVE RECEPTIONS							
Errors	21	21					
Errors/Set	0.9	0.9					
Attempts	452	513					
Reception Pct	.954	.959					
DEFENSE							
Digs	389	332					
Digs/Set	16.2	13.8					
BLOCKING							
Block Solo	5	8					
Block Assist	101	97					
Total Blocks	55.5	56.5					
Blocks/Set	2.3	2.4					
Block Errors	18	8					
Ball handling errors	8	8					
ATTENDANCE							
Total	6144	3694					
Dates/Avg Per Date	4/1536	2/1847					
Neutral site #/Avg	0/0						
Current win streak	3	-					
Home win streak	1	-					

2017 UTAH VOLLEYBALL STATISTICS (HOME MATCHES ONLY)

**2017 Utah Utes Volleyball
Utah Combined Team Statistics (as of Oct 04, 2017)
Home games**

RECORD:	OVERALL	HOME	AWAY	NEUTRAL
ALL GAMES	6-2	6-2	0-0	0-0
CONFERENCE	3-1	3-1	0-0	0-0
NON-CONFERENCE	3-1	3-1	0-0	0-0

#	Player	sp	Attack				Set		Serve			Dig			Blocking					points		
			k	k/s	e	ta	pct	a	a/s	sa	se	sa/s	re	dig	dig/s	bs	ba	total	blk/s		be	bhe
14	Anae, Adora	30	116	3.87	40	272	.279	7	0.23	1	11	0.03	5	82	2.73	7	8	15	0.50	4	1	128.0
10	Trueman, Carly	30	82	2.73	31	195	.262	0	0.00	0	0	0.00	0	17	0.57	2	10	12	0.40	1	0	89.0
12	Oblad, Berkeley	31	76	2.45	16	146	.411	3	0.10	4	9	0.13	0	12	0.39	3	38	41	1.32	3	0	102.0
1	Barton, Dani	31	68	2.19	26	174	.241	0	0.00	0	0	0.00	0	12	0.39	2	30	32	1.03	0	0	85.0
20	Luafalemana, Tawnee	31	64	2.06	20	136	.324	1	0.03	0	0	0.00	0	18	0.58	7	24	31	1.00	6	1	83.0
4	Koerber, Kenzie	27	18	0.67	5	49	.265	1	0.04	0	0	0.00	0	10	0.37	0	11	11	0.41	2	0	23.5
5	Gauta, Lauga	7	10	1.43	2	17	.471	0	0.00	1	3	0.14	1	7	1.00	1	1	2	0.29	1	0	12.5
8	Choy, Bailey	31	4	0.13	4	23	.000	292	9.42	3	7	0.10	0	80	2.58	0	3	3	0.10	4	3	8.5
6	Machado, Camryn	26	4	0.15	3	12	.083	80	3.08	1	2	0.04	0	34	1.31	0	0	0	0.00	0	1	5.0
2	Scully, Shannon	28	2	0.07	3	18	-.056	6	0.21	3	6	0.11	5	59	2.11	0	0	0	0.00	0	0	5.0
18	Sproule, Lauren	2	1	0.50	1	2	.000	0	0.00	0	0	0.00	0	0	0.00	0	0	0	0.00	0	0	1.0
3	Glasker, Torre	13	0	0.00	1	1	-1.000	2	0.15	2	0	0.15	2	13	1.00	0	0	0	0.00	0	1	2.0
9	Abels, Kristen	18	0	0.00	0	0	.000	11	0.61	0	5	0.00	4	40	2.22	0	0	0	0.00	0	0	0.0
17	Doehrmann, Brianna	27	0	0.00	0	0	.000	20	0.74	3	5	0.11	9	70	2.59	0	0	0	0.00	0	1	3.0
	#TM	-	-	-	-	-	-	-	-	-	-	-	0	-	-	-	-	-	-	-	-	-
	UTAH	31	445	14.35	152	1045	.280	423	13.65	18	48	0.58	26	454	14.65	22	125	84.5	2.73	21	8	547.5
	Opponents	31	369	11.90	168	1065	.189	348	11.23	26	53	0.84	18	385	12.42	12	76	50.0	1.61	10	10	445.0

Team Statistics	UTAH	OPP
ATTACK		
Kills	445	369
Errors	152	168
Total Attacks	1045	1065
Attack Pct	.280	.189
Kills/Set	14.4	11.9
SET		
Assists	423	348
Assists/Set	13.6	11.2
SERVE		
Aces	18	26
Errors	48	53
Attempts	689	611
Serve Pct	.930	.913
Aces/Set	0.6	0.8
SERVE RECEPTIONS		
Errors	26	18
Errors/Set	0.8	0.6
Attempts	558	641
Reception Pct	.953	.972
DEFENSE		
Digs	454	385
Digs/Set	14.6	12.4
BLOCKING		
Block Solo	22	12
Block Assist	125	76
Total Blocks	84.5	50.0
Blocks/Set	2.7	1.6
Block Errors	21	10
Ball handling errors	8	10
ATTENDANCE		
Total	13990	0
Dates/Avg Per Date	8/1749	0/0
Neutral site #/Avg	0/0	
Current win streak	1	-
Home win streak	1	-

Date	Opponent	Score	Score by set	Att.
#Sep 08	#15 SAN DIEGO	w 3-2	25-22,17-25,25-19,22-25,16-14	1616
#Sep 09	GREEN BAY	w 3-0	25-9,25-16,25-15	746
#Sep 09	MISSOURI	w 3-0	25-20,27-25,25-19	847
Sep 14	#14 BYU	L 2-3	25-16,13-25,17-25,25-20,16-18	4637
*Sep 22	#25 COLORADO	w 3-1	25-14,16-25,25-20,25-17	1480
*Sep 24	CALIFORNIA	w 3-0	25-19,25-21,25-12	1218
*Sep 29	#12 OREGON	L 2-3	16-25,13-25,25-16,25-17,19-21	1923
*Sep 30	OREGON STATE	w 3-0	27-25,25-16,25-17	1523

! - Bluegrass Battle (Lexington, Ky.)
 @ - Hawaiian Airlines Rainbow Wahine Classic (Honolulu)
 # - Utah Volleyball Classic (Salt Lake City)

Record in 3-set matches: 4-0
 Record in 4-set matches: 1-0
 Record in 5-set matches: 1-2



2017 UTAH VOLLEYBALL STATISTICS (ROAD MATCHES ONLY)

2017 Utah Utes Volleyball
Utah Combined Team Statistics (as of Oct 10, 2017)
Away games

RECORD:	OVERALL	HOME	AWAY	NEUTRAL
ALL GAMES	4-1	0-0	4-1	0-0
CONFERENCE	2-0	0-0	2-0	0-0
NON-CONFERENCE	2-1	0-0	2-1	0-0

#	Player	sp	Attack				Set		Serve			Dig		Blocking					points			
			k	k/s	e	ta	pct	a	a/s	sa	se	sa/s	re	dig	dig/s	bs	ba	total		blk/s	be	bhe
14	Anae, Adora	18	90	5.00	33	218	.261	5	0.28	6	10	0.33	5	55	3.06	1	7	8	0.44	1	0	100.5
20	Luafalemana, Tawnee	22	49	2.23	13	83	.434	3	0.14	0	0	0.00	0	5	0.23	2	24	26	1.18	5	0	63.0
10	Trueman, Carly	20	48	2.40	22	138	.188	2	0.10	0	0	0.00	0	13	0.65	0	10	10	0.50	4	0	53.0
12	Oblad, Berkeley	22	47	2.14	22	112	.223	3	0.14	2	7	0.09	0	19	0.86	1	33	34	1.55	1	0	66.5
1	Barton, Dani	22	46	2.09	19	120	.225	0	0.00	0	0	0.00	0	7	0.32	0	20	20	0.91	6	0	56.0
2	Scully, Shannon	22	17	0.77	5	33	.364	6	0.27	5	6	0.23	3	63	2.86	0	1	1	0.05	0	0	22.5
4	Koerber, Kenzie	16	11	0.69	7	46	.087	1	0.06	0	0	0.00	1	10	0.62	0	15	15	0.94	2	1	18.5
8	Choy, Bailey	22	10	0.45	2	19	.421	221	10.05	4	6	0.18	0	42	1.91	0	5	5	0.23	0	1	16.5
5	Gauta, Lauga	4	10	2.50	6	28	.143	0	0.00	0	0	0.00	0	4	1.00	0	0	0	0.00	0	0	10.0
6	Machado, Camryn	16	5	0.31	1	6	.667	50	3.12	0	4	0.00	0	19	1.19	0	0	0	0.00	0	1	5.0
17	Doehrmann, Brianna	22	1	0.05	0	1	1.000	15	0.68	1	3	0.05	4	64	2.91	0	0	0	0.00	0	1	2.0
3	Glasker, Torre	6	0	0.00	0	0	.000	0	0.00	2	3	0.33	1	12	2.00	0	0	0	0.00	0	0	2.0
9	Abels, Kristen	11	0	0.00	0	0	.000	7	0.64	3	5	0.27	0	22	2.00	0	0	0	0.00	0	1	3.0
	TEAM	-	-	-	-	-	-	-	-	-	-	-	1	-	-	-	-	-	-	-	-	-
	UTAH	22	334	15.18	130	804	.254	313	14.23	23	44	1.05	15	335	15.23	4	115	61.5	2.80	19	5	418.5
	Opponents	22	274	12.45	107	782	.214	249	11.32	15	40	0.68	23	295	13.41	10	119	69.5	3.16	6	4	358.5

Team Statistics	UTAH	OPP	Date	Opponent	Score	Score by set	Att.
ATTACK			!Aug 25	at #14 Kentucky	L 2-3	23-25,27-29,25-13,25-20,12-15	1642
Kills	334	274	@Sep 03	at Hawaii	w 3-1	20-25,26-24,25-15,25-23	6948
Errors	130	107	Sep 15	at Utah Valley	w 3-1	19-25,25-18,25-16,25-22	1081
Total Attacks	804	782	*Oct 06	at #9 Washington	w 3-2	27-25,26-24,21-25,23-25,16-14	3019
Attack Pct	.254	.214	*Oct 08	at Washington State	w 3-1	25-21,25-19,21-25,25-21	675
Kills/Set	15.2	12.5					
SET							
Assists	313	249		! - Bluegrass Battle (Lexington, Ky.)			
Assists/Set	14.2	11.3		@ - Hawaiian Airlines Rainbow Wahine Classic (Honolulu)			
SERVE				# - Utah Volleyball Classic (Salt Lake City)			
Aces	23	15					
Errors	44	40					
Attempts	507	473					
Serve Pct	.913	.915					
Aces/Set	1.0	0.7					
SERVE RECEPTIONS							
Errors	15	23					
Errors/Set	0.7	1.0					
Attempts	433	463					
Reception Pct	.965	.950					
DEFENSE							
Digs	335	295					
Digs/Set	15.2	13.4					
BLOCKING							
Block Solo	4	10					
Block Assist	115	119					
Total Blocks	61.5	69.5					
Blocks/Set	2.8	3.2					
Block Errors	19	6					
Ball handling errors	5	4					
ATTENDANCE							
Total	0	13365					
Dates/Avg Per Date	0/0	5/2673					
Neutral site #/Avg	0/0						
Current win streak	4	-					
Home win streak	0	-					

2017 UTAH VOLLEYBALL MATCH-BY-MATCH STATISTICS

2017 Utah Utes Volleyball
Utah Team Match-by-Match (as of Oct 10, 2017)
All matches

Date	Opponent	sp	attack				set			serve				recept			blocking				bhe	points	score	
			k	e	ta	pct	a	ta	pct	sa	se	ta	pct	re	ta	pct	dig	bs	ba	be				total
Aug 25, 2017	vs Cincinnati	3	37	6	73	.425	36	-	-	4	8	74	.892	0	36	1.000	33	0	10	0	5.0	0	46.0	3-0
Aug 25, 2017	at Kentucky	5	70	23	162	.290	65	-	-	8	16	112	.857	4	91	.956	64	1	20	3	11.0	1	89.0	2-3
Aug 26, 2017	vs Arkansas State	3	47	11	104	.346	45	-	-	3	6	74	.919	3	60	.950	43	0	10	6	5.0	0	55.0	3-0
Aug 31, 2017	vs South Dakota	3	42	9	89	.371	40	-	-	7	5	73	.932	2	41	.951	38	0	10	1	5.0	0	54.0	3-0
Sep 01, 2017	vs Western Carolina	3	48	14	101	.337	46	-	-	3	6	73	.918	4	56	.929	40	2	8	1	6.0	0	57.0	3-0
Sep 03, 2017	at Hawaii	4	52	27	153	.163	50	-	-	2	6	95	.937	3	77	.961	72	2	34	4	19.0	1	73.0	3-1
Sep 08, 2017	SAN DIEGO	5	67	24	160	.269	65	-	-	0	7	104	.933	4	100	.960	56	6	14	3	13.0	0	80.0	3-2
Sep 09, 2017	GREEN BAY	3	41	9	82	.390	37	-	-	2	3	73	.959	1	38	.974	38	2	22	3	13.0	1	56.0	3-0
Sep 09, 2017	MISSOURI	3	49	15	105	.324	48	-	-	1	6	75	.920	5	59	.915	46	6	14	2	13.0	1	63.0	3-0
Sep 14, 2017	BYU	5	67	26	158	.259	65	-	-	4	14	97	.856	2	96	.979	64	4	19	4	13.5	1	84.5	2-3
Sep 15, 2017	at Utah Valley	4	71	25	143	.322	69	-	-	3	6	93	.935	1	78	.987	60	0	16	3	8.0	0	82.0	3-1
Sep 22, 2017	COLORADO	4	64	27	170	.218	59	-	-	1	1	90	.989	3	72	.958	82	1	12	3	7.0	2	72.0	3-1
Sep 24, 2017	CALIFORNIA	3	46	9	91	.407	40	-	-	4	6	73	.918	3	49	.939	37	0	12	0	6.0	1	56.0	3-0
Sep 29, 2017	OREGON	5	61	25	155	.232	60	-	-	5	8	100	.920	7	90	.922	62	2	16	4	10.0	1	76.0	2-3
Sep 30, 2017	OREGON STATE	3	50	17	124	.266	49	-	-	1	3	77	.961	1	54	.981	69	1	16	2	9.0	1	60.0	3-0
Oct 06, 2017	at Washington	5	75	29	186	.247	69	-	-	4	8	112	.929	4	105	.962	68	0	33	7	16.5	2	95.5	3-2
Oct 08, 2017	at Washington State	4	66	26	160	.250	60	-	-	6	8	95	.916	3	82	.963	71	1	12	2	7.0	1	79.0	3-1
Opponents		65	953	322	2216	.285	903	-	-	58	117	1490	.921	50	1184	.958	943	28	278	48	167.0	13	1178.0	
			784	350	2238	.194	729	-	-	50	125	1310	.905	58	1373	.958	816	27	217	22	135.5	16	969.5	

Sets played: 65
Kills per set: 14.66
Assists per set: 13.89

Service aces per set: 0.89
Digs per set: 14.51
Blocks per set: 2.57

Points per set: 18.12
Ball handling errors per set: 0.20
Reception errors per set: 0.77



2017 UTAH VOLLEYBALL MATCH-BY-MATCH LEADERS

DATE	OPPONENT	KILLS	ATTEMPTS	ASSISTS	DIGS	BLOCKS (TOTAL)
08/25	vs. Cincinnati	(19) Anae	(25) Anae	(21) Choy	(10) Scully	(5) Luafalemana
08/25	at Kentucky	(26) Anae	(57) Anae	(53) Choy	(15) Scully	(5) Luafalemana/Oblad
08/26	vs. Arkansas State	(12) Anae	(29) Anae	(33) Choy	(9) Anae	(4) Luafalemana
08/31	vs. South Dakota	(12) Anae	(25) Anae	(27) Choy	(7) Anae	(2) Oblad/Anae/Luafalemana
09/01	vs. Western Carolina	(13) Anae	(34) Anae	(37) Choy	(9) Anae	(4) Luafalemana
09/03	at Hawaii	(19) Anae	(53) Anae	(38) Choy	(16) Anae	(12) Luafalemana
09/08	SAN DIEGO	(19) Anae	(51) Anae	(50) Choy	(14) Choy	(5) Luafalemana
09/09	GREEN BAY	(10) Luafalemana	(20) Barton	(24) Choy	(10) Abels	(9) Obald
09/09	MISSOURI	(15) Anae	(30) Anae	(39) Choy	(11) Anae	(5) Anae/Luafalemana
09/14	BYU	(15) Barton	(37) Anae	(54) Choy	(13) Abels	(7) Barton
09/15	at Utah Valley	(18) Luafalemana	(32) Trueman	(54) Choy	(13) Scully	(5) Oblad
09/22	COLORADO*	(21) Anae	(48) Anae	(40) Choy	(14) Doehrmann	(4) Luafalemana
09/24	CALIFORNIA*	(14) Anae	(22) Anae	(24) Choy	(8) Anae	(4) Oblad
09/29	OREGON*	(18) Anae	(46) Anae	(32) Choy	(13) Anae	(6) Oblad
09/30	OREGON STATE*	(13) Trueman	(31) Trueman	(29) Choy	(17) Doehrmann	(6) Oblad
10/06	at Washington*	(25) Anae	(61) Anae	(41) Choy	(18) Doehrmann	(11) Oblad
10/08	at Washington State*	(20) Anae	(47) Anae	(35) Choy	(17) Doehrmann	(6) Oblad
10/13	at Arizona*					
10/15	at Arizona State*					
10/20	UCLA*					
10/22	USC*					
10/25	at Oregon*					
10/27	at Oregon State*					
11/02	WASHINGTON STATE*					
11/04	WASHINGTON*					
11/09	at USC*					
11/10	at UCLA*					
11/17	ARIZONA STATE*					
11/18	ARIZONA*					
11/22	at Stanford*					
11/24	at Colorado*					

INDIVIDUAL MATCH HIGHS (ALL SETS)

ATTACK PERCENT (K-E-TA) *minimum 10 kills*

.857 (18- 0-21)	Luafalemana, Tawnee	at Utah Valley (Sep 15, 2017)
.760 (19- 0-25)	Anae, Adora	vs Cincinnati (Aug 25, 2017)
.625 (11- 1-16)	Oblad, Berkeley	vs California (Sep 24, 2017)

KILLS (K-E-TA)

26 (26- 6-57) 5s	Anae, Adora	at Kentucky (Aug 25, 2017)
25 (25-9-61) 5s	Anae, Adora	at Washington (Oct 08, 2017)
21 (21- 8-48) 4s	Anae, Adora	vs Colorado (Sep 22, 2017)

TOTAL ATTEMPTS (K-E-TA)

61 (25-9-61) 5s	Anae, Adora	at Washington (Oct 08, 2017)
57 (26- 6-57) 5s	Anae, Adora	at Kentucky (Aug 25, 2017)
53 (19- 9-53) 4s	Anae, Adora	at Hawaii (Sep 03, 2017)

ASSISTS

54 (4s)	Choy, Bailey	at Utah Valley (Sep 15, 2017)
54 (5s)	Choy, Bailey	vs BYU (Sep 14, 2017)
53 (5s)	Choy, Bailey	at Kentucky (Aug 25, 2017)

DIGS

18 (5s)	Doehrmann, Bri	at Washington (Oct 06, 2017)
17 (3s)	Doehrmann, Bri	vs Oregon State (Sep 30, 2017)
17 (4s)	Doehrmann, Bri	at Washington State (Oct 08, 2017)

ACES

3	Anae, Adora	at Washington (Oct 08, 2017)
3	Scully, Shannon	vs South Dakota (Aug 31, 2017)
3	Oblad, Berkeley	vs California (Sep 24, 2017)

BLOCKS (BS-BA)

12 (2-10)	Luafalemana, Tawnee	at Hawaii (Sep 03, 2017)
11 (0-11)	Oblad, Berkeley	at Washington (Oct 08, 2017)
11 (0-11)	Barton, Dani	at Hawaii (Sep 03, 2017)

TEAM MATCH HIGHS (ALL SETS)

ATTACK PERCENT (K-E-TA)

.425 (37- 6- 73)	vs Cincinnati (Aug 25, 2017)
.407 (46- 9- 91)	vs California (Sep 24, 2017)
.390 (41- 9- 82)	vs Green Bay (Sep 09, 2017)

KILLS (K-E-TA)

75 (75-29-186) 5s	at Washington (Oct 06, 2017)
71 (71-25-143) 4s	at Utah Valley (Sep 15, 2017)
70 (70-23-162) 5s	at Kentucky (Aug 25, 2017)

TOTAL ATTEMPTS (K-E-TA)

186 (75-29-186) 5s	at Washington (Oct 06, 2017)
170 (64-27-170) 4s	vs Colorado (Sep 22, 2017)
162 (70-23-162) 5s	at Kentucky (Aug 25, 2017)

ASSISTS

69 (5s)	at Washington (Oct 06, 2017)
69 (4s)	at Utah Valley (Sep 15, 2017)
65 (5s)	at Kentucky (Aug 25, 2017)
65 (5s)	vs San Diego (Sep 08, 2017)

DIGS

82 (4s)	vs Colorado (Sep 22, 2017)
72 (4s)	at Hawaii (Sep 03, 2017)
71 (4s)	at Washington State (Oct 08, 2017)

ACES

8	at Kentucky (Aug 25, 2017)
7	vs South Dakota (Aug 31, 2017)
6	at Washington State (Oct 08, 2017)

BLOCKS

19.0	at Hawaii (Sep 03, 2017)
16.5	at Washington (Oct 06, 2017)
13.5	vs BYU (Sep 14, 2017)

DOUBLE-DOUBLES

ADORA ANAE

26 K	12 D	at Kentucky	08/25/17
19 K	16 D	at Hawaii	09/03/17
15 K	11 D	vs. Missouri	09/09/17
13 K	12 D	vs. BYU	09/14/17
21 K	13 D	vs. Colorado	09/22/17
18 K	13 D	vs. Oregon	09/29/17
11 K	15 D	vs. Oregon State	09/30/17
25 K	11 D	at Washington	10/06/17
20 K	16 D	at Washington State	10/08/17

DANI BARTON

10 K	11 B	at Hawaii	09/03/17
------	------	-----------	----------

BAILEY CHOY

38 A	11 D	at Hawaii	09/03/17
50 A	14 D	vs. San Diego	09/08/17
39 A	10 D	vs. Missouri	09/09/17
54 A	11 D	at Utah Valley	09/15/17
40 A	13 D	vs. Colorado	09/22/17
32 A	11 D	vs. Oregon	09/29/17
29 A	11 D	vs. Oregon State	09/30/17

CAMRYN MACHADO

23 A	10 D	at Washington	10/06/17
------	------	---------------	----------

BERKELEY OBLAD

15 K	11 B	at Washington	10/08/17
------	------	---------------	----------

SHANNON SCULLY

15 K	13 D	at Utah Valley	09/15/17
------	------	----------------	----------

20-KILL MATCHES

ADORA ANAE

26	at Kentucky	08/25/17
21	vs. Colorado	09/22/17
25	at Washington	10/06/17
20	at Washington State	10/08/17

20-DIG MATCHES

#1 | DANI BARTON



2017 SEASON HIGHS

Kills	15 (2x), MR: vs. BYU (09/14/17)
Attempts	37, at Washington State (10/08/17)
Attack Pct. (min. 5 kills)	.464 (15-2-28), vs. San Diego (09/08/17)
Assists	--
Aces	--
Digs	3 (2x), MR: vs. California (09/24/17)
Blocks (Total)	11, at Hawaii (09/03/17)

OH | 6-0 | FR. | SANDY, UTAH | BRIGHTON HIGH SCHOOL

CAREER HIGHS

Kills	15 (2x), MR: vs. BYU (09/14/17)
Attempts	37, at Washington State (10/08/17)
Attack Pct. (min. 5 kills)	.464 (15-2-28), vs. San Diego (09/08/17)
Assists	--
Aces	--
Digs	3 (2x), MR: vs. California (09/24/17)
Blocks (Total)	11, at Hawaii (09/03/17)

BARTON'S CAREER STATISTICS

Season	SP	MP	K	K/S	E	TA	Pct	A	A/S	SA	SA/S	SE	DIG	D/S	RE	BS	BA	TB	B/S	BE	BHE	Points	Pts/S
2017	63	17	130	2.06	50	331	.242	0	0.00	0	0.00	0	20	0.32	0	2	54	56	0.89	6	0	159.0	2.52
TOTAL	63	17	130	2.06	50	331	.242	0	0.00	0	0.00	0	20	0.32	0	2	54	56	0.89	6	0	159.0	2.52

#2 | SHANNON SCULLY



2017 SEASON HIGHS

Kills	15, at Utah Valley (09/15/17)
Attempts	26, at Utah Valley (09/15/17)
Attack Pct. (min. 5 kills)	.462 (15-3-26), at Utah Valley (09/15/17)
Assists	4, at Washington State (10/08/17)
Aces	3, vs. South Dakota (08/31/17)
Digs	15, at Kentucky (08/25/17)
Blocks (Total)	1, at Utah Valley (09/15/17)

OH | 6-2 | FR. | HUNTINGTON BEACH, CALIF. | MATER DEI HIGH SCHOOL

CAREER HIGHS

Kills	15, at Utah Valley (09/15/17)
Attempts	26, at Utah Valley (09/15/17)
Attack Pct. (min. 5 kills)	.462 (15-3-26), at Utah Valley (09/15/17)
Assists	4, at Washington State (10/08/17)
Aces	3, vs. South Dakota (08/31/17)
Digs	15, at Kentucky (08/25/17)
Blocks (Total)	1, at Utah Valley (09/15/17)

SCULLY'S CAREER STATISTICS

Season	SP	MP	K	K/S	E	TA	Pct	A	A/S	SA	SA/S	SE	DIG	D/S	RE	BS	BA	TB	B/S	BE	BHE	Points	Pts/S
2017	62	17	22	0.35	9	63	.206	15	0.24	12	0.19	14	149	2.40	10	0	1	1	0.02	0	0	34.5	0.56
TOTAL	62	17	22	0.35	9	63	.206	15	0.24	12	0.19	14	149	2.40	10	0	1	1	0.02	0	0	34.5	0.56

#3 | TORRE GLASKER



2017 SEASON HIGHS

Kills	--
Attempts	1, vs. Missouri (09/09/17)
Attack Pct. (min. 5 kills)	--
Assists	1 (4x), MR: vs. Oregon (09/29/17)
Aces	1 (4x), MR: vs. Oregon (09/29/17)
Digs	11, at Utah Valley (09/15/17)
Blocks (Total)	--

OH/L | 5-10 | SO. | SOUTH JORDAN, UTAH | BINGHAM HIGH SCHOOL

CAREER HIGHS

Kills	9, at California (10/07/16)
Attempts	27, vs. Gonzaga (08/27/16)
Attack Pct. (min. 5 kills)	.438 (9-2-16), at California (10/07/16)
Assists	1 (6x), MR: vs. Oregon (09/29/17)
Aces	2, vs. Idaho State (08/26/16)
Digs	15, vs. Illinois State (09/03/16)
Blocks (Total)	2 (3x), MR: at California (10/07/16)

GLASKER'S CAREER STATISTICS

Season	SP	MP	K	K/S	E	TA	Pct	A	A/S	SA	SA/S	SE	DIG	D/S	RE	BS	BA	TB	B/S	BE	BHE	Points	Pts/S
2016	67	25	38	0.57	21	131	.130	2	0.03	6	0.09	9	105	1.57	10	0	9	9	0.13	2	1	48.5	0.72
2017	29	11	0	0.00	1	1	-1.000	4	0.14	4	0.14	4	35	1.21	4	0	0	0	0.00	0	1	4.0	0.14
TOTAL	96	36	38	0.40	22	132	.121	6	0.06	10	0.10	13	140	1.46	14	0	9	9	0.09	2	2	52.5	0.55

#4 | KENZIE KOERBER

OH | 6-3 | FR. | CHINO HILLS, CALIF. | CHINO HILLS HIGH SCHOOL



2017 SEASON HIGHS

Kills	5, vs. Oregon (09/29/17)
Attempts	13 (3x), MR: at Washington (10/06/17)
Attack Pct. (min. 5 kills)	.625 (5-0-8), vs. Oregon (09/29/17)
Assists	1 (2x), MR: at Utah Valley (09/15/17)
Aces	--
Digs	5, vs. Colorado (09/22/17)
Blocks (Total)	8, at Washington (10/06/17)

CAREER HIGHS

Kills	5, vs. Oregon (09/29/17)
Attempts	13 (3x), MR: at Washington (10/06/17)
Attack Pct. (min. 5 kills)	.625 (5-0-8), vs. Oregon (09/29/17)
Assists	1 (2x), MR: at Utah Valley (09/15/17)
Aces	--
Digs	5, vs. Colorado (09/22/17)
Blocks (Total)	8, at Washington (10/06/17)

KOERBER'S CAREER STATISTICS

Season	SP	MP	K	K/S	E	TA	Pct	A	A/S	SA	SA/S	SE	DIG	D/S	RE	BS	BA	TB	B/S	BE	BHE	Points	Pts/S
2017	53	17	39	0.74	16	132	.174	2	0.04	0	0.00	0	26	0.49	1	0	34	34	0.64	4	1	56.0	1.06
TOTAL	53	17	39	0.74	16	132	.174	2	0.04	0	0.00	0	26	0.49	1	0	34	34	0.64	4	1	56.0	1.06

#5 | LAUGA GAUTA

OH | 5-11 | JR. | GARDEN GROVE, CALIF. | GARDEN GROVE HIGH SCHOOL (NORTHWEST COLLEGE [WYO.]



2017 SEASON HIGHS

Kills	8, at Hawaii (09/03/17)
Attempts	19, at Hawaii (09/03/17)
Attack Pct. (min. 5 kills)	.263 (8-2-19), at Hawaii (09/03/17)
Assists	--
Aces	1, vs. Green Bay (09/09/17)
Digs	6, vs. South Dakota (08/31/17)
Blocks (Total)	2, vs. Green Bay (09/09/17)

CAREER HIGHS

Kills	8, at Hawaii (09/03/17)
Attempts	19, at Hawaii (09/03/17)
Attack Pct. (min. 5 kills)	.263 (8-2-19), at Hawaii (09/03/17)
Assists	--
Aces	1, vs. Green Bay (09/09/17)
Digs	6, vs. South Dakota (08/31/17)
Blocks (Total)	2, vs. Green Bay (09/09/17)

GAUTA'S CAREER STATISTICS

Season	SP	MP	K	K/S	E	TA	Pct	A	A/S	SA	SA/S	SE	DIG	D/S	RE	BS	BA	TB	B/S	BE	BHE	Points	Pts/S
2017	13	7	23	1.77	8	52	.288	0	0.00	1	0.08	4	17	1.31	1	1	1	2	0.15	1	0	25.5	1.96
TOTAL	13	7	23	1.77	8	52	.288	0	0.00	1	0.08	4	17	1.31	1	1	1	2	0.15	1	0	25.5	1.96

#6 | CAMRYN MACHADO

S | 5-9 | FR. | CARDIFF BY THE SEA, CALIF. | LA COSTA CANYON HIGH SCHOOL



2017 SEASON HIGHS

Kills	2 (3x), MR: vs. Washington State (10/08/17)
Attempts	5, vs. Oregon State (09/30/17)
Attack Pct. (min. 5 kills)	--
Assists	23, at Washington (10/06/17)
Aces	2, vs. Cincinnati (08/25/17)
Digs	10, at Washington (10/06/17)
Blocks (Total)	--

CAREER HIGHS

Kills	2 (3x), MR: vs. Washington State (10/08/17)
Attempts	5, vs. Oregon State (09/30/17)
Attack Pct. (min. 5 kills)	--
Assists	23, at Washington (10/06/17)
Aces	2, vs. Cincinnati (08/25/17)
Digs	10, at Washington (10/06/17)
Blocks (Total)	--

MACHADO'S CAREER STATISTICS

Season	SP	MP	K	K/S	E	TA	Pct	A	A/S	SA	SA/S	SE	DIG	D/S	RE	BS	BA	TB	B/S	BE	BHE	Points	Pts/S
2017	50	17	9	0.18	4	18	.278	161	3.22	3	0.06	10	59	1.18	0	0	0	0	0.00	0	2	12.0	0.24
TOTAL	50	17	9	0.18	4	18	.278	161	3.22	3	0.06	10	59	1.18	0	0	0	0	0.00	0	2	12.0	0.24



#8 | BAILEY CHOY



2017 SEASON HIGHS

Kills	4, at Kentucky (08/25/17)
Attempts	6, vs. BYU (09/14/17)
Attack Pct. (min. 5 kills)	--
Assists	54 (2x), MR: at Utah Valley (09/15/17)
Aces	1 (8x), MR: at Washington State (10/08/17)
Digs	14, vs. San Diego (09/08/17)
Blocks (Total)	2 (2x), MR: at Utah Valley (09/15/17)

CHOY'S CAREER STATISTICS

Season	SP	MP	K	K/S	E	TA	Pct	A	A/S	SA	SA/S	SE	DIG	D/S	RE	BS	BA	TB	B/S	BE	BHE	Points	Pts/S
2016	128	32	17	0.13	9	50	.160	918	7.17	24	0.19	24	233	1.82	0	1	15	16	0.13	4	17	49.5	0.39
2017	65	17	21	0.32	6	53	.283	631	9.71	8	0.12	17	139	2.14	0	0	9	9	0.14	5	4	33.5	0.52
TOTAL	193	49	38	0.20	15	103	.223	1549	8.03	32	0.17	4	372	1.93	0	1	24	25	0.13	9	21	83.0	0.43

S | 5-9 | SO. | HONOLULU, HAWAII | 'IOLANI HIGH SCHOOL

CAREER HIGHS

Kills	4 (2x), MR: at Kentucky (08/25/17)
Attempts	8, vs. Arizona State (09/24/16)
Attack Pct. (min. 5 kills)	--
Assists	57, at BYU (09/15/16)
Aces	3, at Oregon State (11/10/16)
Digs	18, vs. Arizona State (09/24/16)
Blocks (Total)	4, vs. Illinois State (09/03/16)

#9 | KRISTEN ABELS



2017 SEASON HIGHS

Kills	--
Attempts	--
Attack Pct. (min. 5 kills)	--
Assists	6, at Utah Valley (09/15/17)
Aces	2 (3x), MR: vs. South Dakota (08/31/17)
Digs	13, vs. BYU (09/14/17)
Blocks (Total)	--

L/D/S | 5-9 | FR. | CHULA VISTA, CALIF. | EASTLAKE HIGH SCHOOL

CAREER HIGHS

Kills	--
Attempts	--
Attack Pct. (min. 5 kills)	--
Assists	6, at Utah Valley (09/15/17)
Aces	2 (3x), MR: vs. South Dakota (08/31/17)
Digs	13, vs. BYU (09/14/17)
Blocks (Total)	--

ABELS' CAREER STATISTICS

Season	SP	MP	K	K/S	E	TA	Pct	A	A/S	SA	SA/S	SE	DIG	D/S	RE	BS	BA	TB	B/S	BE	BHE	Points	Pts/S
2017	38	11	0	0.00	0	0	.000	23	0.61	7	0.18	13	81	2.13	6	0	0	0	0.00	0	1	7.0	0.18
TOTAL	38	11	0	0.00	0	0	.000	23	0.61	7	0.18	13	81	2.13	6	0	0	0	0.00	0	1	7.0	0.18

#10 | CARLY TRUEMAN



2017 SEASON HIGHS

Kills	16, vs. San Diego (09/08/17)
Attempts	39, at Washington (10/06/17)
Attack Pct. (min. 5 kills)	.500 (7-1-12), vs. California (09/24/17)
Assists	2, at Kentucky (08/25/17)
Aces	--
Digs	4 (3x), MR: at Washington State (10/08/17)
Blocks (Total)	5, at Washington (10/06/17)

OH | 6-1 | SR. | TUCSON, ARIZ. | TUCSON HIGH MAGNET SCHOOL

CAREER HIGHS

Kills	20, vs. Illinois State (09/03/16)
Attempts	45 (2x), MR: vs. Illinois St. (09/03/16)
Attack Pct. (min. 5 kills)	.824 (14-0-17), at Gonzaga (09/05/15)
Assists	2 (2x), MR: at Kentucky (08/25/17)
Aces	3, vs. Idaho State (08/28/15)
Digs	6, vs. Arizona State (09/24/16)
Blocks (Total)	10, vs. Washington State (11/13/14)

TRUEMAN'S CAREER STATISTICS

Season	SP	MP	K	K/S	E	TA	Pct	A	A/S	SA	SA/S	SE	DIG	D/S	RE	BS	BA	TB	B/S	BE	BHE	Points	Pts/S
2014	107	30	178	1.66	78	422	.237	2	0.02	6	0.06	6	26	0.24	2	2	111	113	1.06	5	0	241.5	2.25
2015	101	28	218	2.16	115	617	.167	5	0.05	5	0.05	15	48	0.48	0	2	53	55	0.54	2	1	251.5	2.49
2016	120	31	346	2.88	139	887	.233	6	0.05	0	0.00	0	61	0.51	2	6	30	36	0.30	1	0	367.0	3.06
2017	61	17	154	2.52	63	387	.235	2	0.03	0	0.00	0	35	0.57	0	2	20	22	0.36	5	0	166.0	2.72
TOTAL	389	106	896	2.30	395	2313	.217	15	0.04	11	0.03	21	170	0.44	4	12	214	226	0.58	13	1	1,026.0	2.64

#11 | ALEXA VAN KOMEN

S | 5-8 | FR. | EL DORADO HILLS, CALIF. | OAK RIDGE HIGH SCHOOL



2017 SEASON HIGHS

Kills	--
Attempts	--
Attack Pct. (min. 5 kills)	--
Assists	--
Aces	--
Digs	--
Blocks (Total)	--

CAREER HIGHS

Kills	--
Attempts	--
Attack Pct. (min. 5 kills)	--
Assists	--
Aces	--
Digs	--
Blocks (Total)	--

VAN KOMEN'S CAREER STATISTICS

Season	SP	MP	K	K/S	E	TA	Pct	A	A/S	SA	SA/S	SE	DIG	D/S	RE	BS	BA	TB	B/S	BE	BHE	Points	Pts/S
2017	-	-	-	-	-	-	-	-	-	-	-	-	-	-	-	-	-	-	-	-	-	-	-
TOTAL	-	-	-	-	-	-	-	-	-	-	-	-	-	-	-	-	-	-	-	-	-	-	-

#12 | BERKELEY OBLAD

MB | 6-4 | JR. | HENDERSON, NEV. | CORONADO HIGH SCHOOL



2017 SEASON HIGHS

Kills	15, at Washington (10/06/17)
Attempts	24, at Kentucky (08/25/17)
Attack Pct. (min. 5 kills)	.625 (11-1-16), vs. California (09/24/17)
Assists	2 (2x), MR: vs. Oregon State (09/30/17)
Aces	3, vs. California (09/24/17)
Digs	7, at Washington (10/06/17)
Blocks (Total)	11, at Washington (10/06/17)

CAREER HIGHS

Kills	15 (2x), MR: at Washington (10/06/17)
Attempts	35, vs. Colorado (09/23/15)
Attack Pct. (min. 5 kills)	.625 (11-1-16), vs. California (09/24/17)
Assists	2 (7x), MR: vs. Oregon State (09/30/17)
Aces	4, at USC (10/28/16)
Digs	7, at Washington (10/06/17)
Blocks (Total)	11, at Washington (10/06/17)

OBLAD'S CAREER STATISTICS

Season	SP	MP	K	K/S	E	TA	Pct	A	A/S	SA	SA/S	SE	DIG	D/S	RE	BS	BA	TB	B/S	BE	BHE	Points	Pts/S
2015	115	31	180	1.57	100	506	.158	8	0.07	9	0.08	29	26	0.23	2	1	94	95	0.83	24	2	237.0	2.06
2016	122	31	231	1.89	82	532	.280	14	0.11	21	0.17	45	61	0.50	2	6	106	112	0.92	9	0	311.0	2.55
2017	65	17	153	2.35	42	310	.358	8	0.12	9	0.14	21	38	0.58	1	5	75	80	1.23	4	0	204.5	3.15
TOTAL	302	79	564	1.87	224	1348	.252	30	0.10	39	0.13	95	125	0.41	5	12	275	287	0.95	37	2	752.5	2.49

#14 | ADORA ANAE

OH | 6-1 | SR. | PUNALUU, HAWAII | KAHUKU HIGH SCHOOL



2017 SEASON HIGHS

Kills	26, at Kentucky (08/25/17)
Attempts	57, at Kentucky (08/25/17)
Attack Pct. (min. 5 kills)	.760 (19-0-25), vs. Cincinnati (08/25/17)
Assists	4, vs. Cincinnati (08/25/17)
Aces	3, at Washington State (10/08/17)
Digs	16 (2x), MR: at Washington State (10/08/17)
Blocks (Total)	5, vs. Missouri (09/09/17)

CAREER HIGHS

Kills	31, at BYU (09/15/16)
Attempts	77, vs. Oregon State (11/01/15)
Attack Pct. (min. 5 kills)	.760 (19-0-25), vs. Cincinnati (08/25/17)
Assists	4 (3x), MR: vs. Cincinnati (08/25/17)
Aces	5, at Portland (09/10/16)
Digs	25 (3x), MR: at USC (10/28/16)
Blocks (Total)	7, at Oregon State (10/02/15)

ANAE'S CAREER STATISTICS

Season	SP	MP	K	K/S	E	TA	Pct	A	A/S	SA	SA/S	SE	DIG	D/S	RE	BS	BA	TB	B/S	BE	BHE	Points	Pts/S
2014	114	32	280	2.46	122	679	.233	9	0.08	4	0.04	17	129	1.13	16	10	60	70	0.61	20	1	324.0	2.84
2015	118	31	501	4.25	227	1431	.191	24	0.20	22	0.19	40	388	3.29	45	11	43	54	0.46	10	1	555.5	4.70
2016	126	32	592	4.70	235	1428	.250	27	0.21	34	0.27	44	407	3.23	24	10	44	54	0.43	12	2	658.0	5.22
2017	60	16	262	4.37	84	603	.295	17	0.28	10	0.17	24	171	2.85	12	8	21	29	0.48	8	1	290.5	4.84
TOTAL	418	111	1635	3.91	668	4141	.234	77	0.18	70	0.17	125	1095	2.62	97	39	168	207	0.50	50	5	1,828.0	4.37



#17 | BRI DOEHRMANN

L/DS | 5-7 | SO. | MURRIETA, CALIF. | VISTA MURRIETA HIGH SCHOOL



2017 SEASON HIGHS

Kills	1 (2x), MR: vs. Arkansas State (08/26/17)
Attempts	1 (2x), MR: vs. Arkansas State (08/26/17)
Attack Pct. (min. 5 kills)	--
Assists	6, vs. San Diego (09/08/17)
Aces	2, vs. BYU (09/14/17)
Digs	18, at Washington (10/06/17)
Blocks (Total)	--

CAREER HIGHS

Kills	1 (2x), MR: vs. Arkansas State (08/26/17)
Attempts	1 (7x), MR: vs. Arkansas State (08/26/17)
Attack Pct. (min. 5 kills)	--
Assists	9, vs. Washington State (11/17/16)
Aces	3, vs. Arizona State (09/24/16)
Digs	20, at Oregon (11/09/16)
Blocks (Total)	--

DOEHRMANN'S CAREER STATISTICS

Season	SP	MP	K	K/S	E	TA	Pct	A	A/S	SA	SA/S	SE	DIG	D/S	RE	BS	BA	TB	B/S	BE	BHE	Points	Pts/S
2016	109	29	0	0.00	1	5	-.200	63	0.58	14	0.13	11	268	2.46	15	0	0	0	0.00	0	1	14.0	0.13
2017	54	14	2	0.04	0	2	1.000	35	0.65	4	0.07	9	145	2.69	13	0	0	0	0.00	0	2	6.0	0.11
TOTAL	163	43	2	0.01	1	7	.143	98	0.60	18	0.11	20	413	2.53	28	0	0	0	0.00	0	3	20.0	0.12

#18 | LAUREN SPROULE

OH | 6-0 | RS-FR. | LETHBRIDGE, ALBERTA | CHINOOK HIGH SCHOOL



2017 SEASON HIGHS

Kills	1 (2x), MR: vs. Green Bay (09/09/17)
Attempts	2 (2x), MR: vs. Green Bay (09/09/17)
Attack Pct. (min. 5 kills)	--
Assists	--
Aces	--
Digs	--
Blocks (Total)	1, vs. South Dakota (08/31/17)

CAREER HIGHS

Kills	1 (2x), MR: vs. Green Bay (09/09/17)
Attempts	2 (2x), MR: vs. Green Bay (09/09/17)
Attack Pct. (min. 5 kills)	--
Assists	--
Aces	--
Digs	--
Blocks (Total)	1, vs. South Dakota (08/31/17)

SPROULE'S CAREER STATISTICS

Season	SP	MP	K	K/S	E	TA	Pct	A	A/S	SA	SA/S	SE	DIG	D/S	RE	BS	BA	TB	B/S	BE	BHE	Points	Pts/S
2017	5	3	2	0.40	3	5	-.200	0	0.00	0	0.00	0	0	0.00	0	0	1	1	0.20	0	0	2.5	0.50
TOTAL	5	3	2	0.40	3	5	-.200	0	0.00	0	0.00	0	0	0.00	0	0	1	1	0.20	0	0	2.5	0.50

#19 | PHOEBE GRACE

MB | 6-2 | FR. | LAIE, HAWAII | KAHUKU HIGH SCHOOL



2017 SEASON HIGHS

Kills	--
Attempts	--
Attack Pct. (min. 5 kills)	--
Assists	--
Aces	--
Digs	--
Blocks (Total)	--

CAREER HIGHS

Kills	--
Attempts	--
Attack Pct. (min. 5 kills)	--
Assists	--
Aces	--
Digs	--
Blocks (Total)	--

GRACE'S CAREER STATISTICS

Season	SP	MP	K	K/S	E	TA	Pct	A	A/S	SA	SA/S	SE	DIG	D/S	RE	BS	BA	TB	B/S	BE	BHE	Points	Pts/S
2017	-	-	-	-	-	-	-	-	-	-	-	-	-	-	-	-	-	-	-	-	-	-	-
TOTAL	-	-	-	-	-	-	-	-	-	-	-	-	-	-	-	-	-	-	-	-	-	-	-

#20 | TAWNEE LUFALEMANA

MB | 6-0 | SR. | CARSON, CALIF. | CARSON HIGH SCHOOL



2017 SEASON HIGHS

Kills	18, at Utah Valley (09/15/17)
Attempts	22, vs. BYU (09/14/17)
Attack Pct. (min. 5 kills)	.857 (18-0-21), at Utah Valley (09/15/17)
Assists	3, at Washington State (10/08/17)
Aces	--
Digs	6, vs. Oregon State (09/30/17)
Blocks (Total)	12, at Hawaii (09/03/17)

CAREER HIGHS

Kills	18, at Utah Valley (09/15/17)
Attempts	33, vs. Gonzaga (08/27/16)
Attack Pct. (min. 5 kills)	.857 (18-0-21), at Utah Valley (09/15/17)
Assists	3, at Washington State (10/08/17)
Aces	1, vs. CSU Bakersfield (09/10/16)
Digs	6, vs. Oregon State (09/30/17)
Blocks (Total)	12, at Hawaii (09/03/17)

LUFALEMANA'S CAREER STATISTICS

Season	SP	MP	K	K/S	E	TA	Pct	A	A/S	SA	SA/S	SE	DIG	D/S	RE	BS	BA	TB	B/S	BE	BHE	Points	Pts/S
2016	128	32	262	2.05	63	604	.329	6	0.05	1	0.01	8	42	0.33	0	14	118	132	1.03	22	0	336.0	2.63
2017	65	17	136	2.09	36	259	.386	5	0.08	0	0.00	0	28	0.43	0	10	62	72	1.11	15	1	177.0	2.72
TOTAL	193	49	398	2.06	99	863	.346	11	0.06	1	0.01	8	70	0.36	0	24	180	204	1.06	37	1	513.0	2.66