

2025-26 SAN FRANCISCO WOMEN'S BASKETBALL BROADCAST MEDIA SHEET



#2 Mara Neira
Sr. | G | Baiona, Spain

GP/GS	PPG	RPG	APG	FG%	3PT%	FT%	MPG
20-19	7.5	4.1	1.9	.307	.281	.818	22.8

LAST GAME: Six points, seven rebounds, three assists, two steals in 28 minutes vs. Pacific (Jan. 24)

- Matched a season-high in points with 19 on eight made field goals in the overtime victory at LMU.
- Scored 16 points, all in the third quarter, while shooting 54.5 percent (six-for-11) with four three-pointers in the 67-64 victory over Portland.
- Registered 19 points and knocked down a season-high five three-pointers in the win over Lehigh.
- Comes to the Hilltop following a season at Appalachian State and a two-year stint at Presbyterian.

* Played 2022-23 and 2023-24 seasons at Presbyterian and 2024-25 season at Appalachian State



#3 Noelia Mourinho
Fr. | G | O Porrino, Spain

GP/GS	PPG	RPG	APG	FG%	3PT%	FT%	MPG
20-20	7.8	7.1	2.1	.466	.000	.621	22.6

LAST GAME: Four points, eight rebounds, two assists, two steals in 15 minutes vs. Pacific (Jan. 24)

- Recorded her first-career double-double with 16 points and 12 rebounds while shooting 58.3 percent (seven-for-12) at Washington State.
- Secured a career-best 17 rebounds, the most by a first-year player in the Molly Goodenbour era, at Long Beach State.
- Recorded 16 points on 57.1 percent (eight-of-14) shooting, eight rebounds, and three assists against UC San Diego.
- Spent time with Segle XXI Barcelona of Liga Femenina 2 and the Spanish national team.

* Last played for Segle XXI Barcelona of Liga Femenina 2



#4 Meghan McIntyre
Gr. | G | Garden Grove, Calif.

GP/GS	PPG	RPG	APG	FG%	3PT%	FT%	MPG
20-3	4.3	4.2	1.9	.398	.206	.684	19.1

LAST GAME: Two points, three rebounds, three assists, one steal in 23 minutes vs. Pacific (Jan. 24)

- Scored a season-high 16 points and recorded seven assists in the win over CSU Monterey Bay.
- Recorded a near triple-double in her Division I debut with 11 points, 10 points and seven assists against UNC Greensboro.
- In 2024-25 she ranked first in the Cascade Collegiate Conference in assists with a career-best 154 while averaging 4.4 assists per contest.
- Was named an NAIA All-American in her final season, becoming the 14th player in Southern Oregon program history to earn All-America honors.

* Played 2023-24 and 2024-25 seasons at NAIA Southern Oregon, and previously played at Orange Coast Community College and Golden West Community College



#7 Nevaeh Ferrara Horne
Jr. | F | Regina, Canada

GP/GS	PPG	RPG	APG	FG%	3PT%	FT%	MPG
14-0	2.1	1.6	0.2	.458	.500	.714	9.7

LAST GAME: One minute played vs. Santa Clara (Jan. 8)

- Recorded a season-high 11 points in 23 minutes off the bench against against CSU Monterey Bay.
- Secured a career-best 11 rebounds in the win over UNC Greensboro.
- Appeared in 60 games, earning 33 starts in two seasons at North Dakota and averaged 4.1 points, 2.0 rebounds, and 0.8 assists per game.
- Posted a career-best 17 points and shot 60 percent (six-for-10) from the field against St. Thomas (MN).

* Played 2023-24 and 2024-25 seasons at North Dakota



#9 Aina Cargol
Fr. | G | Olot, Spain

GP/GS	PPG	RPG	APG	FG%	3PT%	FT%	MPG
20-20	11.4	3.1	4.6	.434	.403	.716	31.4

LAST GAME: 15 points, six rebounds, one assist in 34 minutes vs. Pacific (Jan. 24)

- Registered career-highs in points (21), three-pointers (four), rebounds (six), and minutes (40) at Washington State.
- Named WCC Freshman of the Week for the second time after averaging 12.7 points, 3.7 rebounds, and 6.7 assists per game against Portland, USD, and LMU.
- Recorded 10 assists, becoming the first player this season with double-digit assists in a game, in the win over Lehigh.
- Earned WCC Freshman of the Week on Nov. 17 after averaging 15.5 points, 4.5 rebounds, and 4.5 assists per game against Seton Hall and UCSD.

* Last played for Spar Girona of Liga Femenina de Baloncesto



#10 Amy Pateman
Fr. | G | Auckland, New Zealand

GP/GS	PPG	RPG	APG	FG%	3PT%	FT%	MPG
8-0	1.6	0.6	0.4	.357	.222	.500	6.3

LAST GAME: One minute played at Gonzaga (Jan. 15)

- Recorded season-highs in points (nine), rebounds (two), assists (one), and minutes (16) against CSU Monterey Bay.
- Scored her first-career point on a free throw at Boise State.
- Averaged 20.5 points, 4.9 rebounds, and 4.5 assists per game in four years at Westlake Girls High School in Auckland, New Zealand.
- Competed with the New Zealand national team in the 2022 U17 World Cup, and averaged 2.4 PPG, 2.1 RPG, and 0.7 APG.

* Last played for Westlake Girls High School in Auckland, New Zealand



#12 Nataša Taušová
Fr. | F | Poprad, Slovakia

GP/GS	PPG	RPG	APG	FG%	3PT%	FT%	MPG
20-16	7.4	3.6	1.2	.403	.264	.522	24.6

LAST GAME: 15 points, four rebounds, two assists, two blocks, two steals in 31 minutes vs. Pacific (Jan. 24)

- Totaled multiple career-highs in the win over Pacific, including points (15), blocks (two), three-pointers (three), and made field goals (six).
- Recorded career-highs in rebounds (eight) and steals (four) against Santa Clara.
- Recorded 14 points on 44.4 percent shooting, knocked down two three-pointers, and secured five rebounds against Colorado State.
- Completed for the Slovak national team and averaged 5.0 points and 2.0 rebounds per game in two games at the 2025 FIBA Women's EuroBasket Qualifiers.

* Last played for Piastanske Cajky of the Women's Basketball Extraliga



#14 Michelle Ugwah
R-So. | F | Cork, Ireland

GP/GS	PPG	RPG	APG	FG%	3PT%	FT%	MPG
7-0	3.4	3.3	1.0	.344	.000	.400	15.4

LAST GAME: Three points, eight rebounds, one assist, one block, two steals in 22 minutes vs. Pacific (Jan. 24)

- Enters her red-shirt sophomore season after spending two seasons at Morehead State.
- Averaged 7.5 points per game with the Eagles, while ranking second on the team in rebounding at 5.7 per game.
- Defensively, she added 18 blocks and 27 steals, third and fourth-best on the team.
- Appeared in 23 games with 19 starts in 2024-25, and scored a career-high 20 points at Lindenwood (Feb. 13).

* Played 2023-24 and 2024-25 seasons at Morehead State (missed 2023-24 season due to injury)



#21 Olivia Williams
R-Sr. | G | San Francisco, Calif.

GP/GS	PPG	RPG	APG	FG%	3PT%	FT%	MPG
11-0	2.9	1.7	0.5	.314	.100	.900	10.5

LAST GAME: Three rebounds, three assists, one steal in 15 minutes vs. Pacific (Jan. 24)

- Recorded seven points, three rebounds, two steals, and knocked down five of her six attempts at the free throw line against CSU Monterey Bay.
- Joins the program after spending four years at UC Irvine, averaging 6.4 points and 2.5 rebounds per game, and totaled 66 assists in 79 total games.
- Played in 31 games in 2024-25, leading the Anteaters to their fourth-straight 20-win season.
- Ranked fourth on the team in scoring at 7.4 points per game and led the team in three-pointers with 39.

* Played 2021-22, 2022-23, 2023-24, and 2024-25 seasons at UC Irvine (missed 2023-24 season due to injury)



#22 Paula Tirado
R-So. | G | Mataro, Spain

GP/GS	PPG	RPG	APG	FG%	3PT%	FT%	MPG
19-2	5.7	1.6	1.1	.453	.385	.727	18.2

LAST GAME: Five points, one assist, one steal in nine minutes vs. San Diego (Jan. 22)

- Recorded a career-best 15 points on six-of-eight shooting in the win at Washington State.
- Recorded a new career-high in rebounds with five against Oregon State.
- Appeared in 29 games and earned one start in 2023-24 and averaged 2.7 points per game and shot 29.5 percent from the field.
- Missed the entire 2024-25 season due to injury.

* (missed 2024-25 season due to injury)



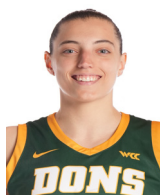
#23 Candy Edokpaigbe
So. | G | Naples, Italy

GP/GS	PPG	RPG	APG	FG%	3PT%	FT%	MPG
20-20	17.1	4.5	1.3	.508	.260	.771	31.5

LAST GAME: 23 points, two rebounds, one assist, one steal in 29 minutes vs. Pacific (Jan. 24)

- In the win over San Diego that completed the season sweep, she knocked down a career-best 10 free throws, finishing with 24 points
- Registered a 24-point, 10-rebound double-double, her first as a Don, third overall in her career, in the win over UC San Diego.
- Recorded career-highs in points with 26 while leading the team to a win over UNC Greensboro in the season opener.
- Appeared and started all 30 games at Seattle U in 2024-25 and led the team in scoring, averaging 11.1 points per game.

* Played 2024-25 season at Seattle U



#24 Sol Castro
Gr. | F | Rio Colorado, Argentina

GP/GS	PPG	RPG	APG	FG%	3PT%	FT%	MPG
15-0	4.2	4.0	0.7	.377	.000	.486	12.6

LAST GAME: Three minutes played vs. Pacific (Jan. 24)

- Secured a season-high 13 rebounds, including five offensive boards, in the win over Portland.
- Scored 14 points on 66.7 percent (six-of-nine) shooting and grabbed eight rebounds in season debut in the win over Lehigh.
- Appeared in four games in 2024-25 and averaged 5.3 points, 4.8 rebounds, and 0.8 assists per game.
- Finished the 2024-25 season opener at Colorado State with two points, five rebounds, and a team-high two blocks.

* Played 2020-21, 2021-22, and 2022-23 seasons at Robert Morris (missed 2022-23 and 2023-24 seasons and 27 games of 2024-25 season due to injury)



#32 Sophia Priestley
Fr. | F | Oslo, Norway

GP/GS	PPG	RPG	APG	FG%	3PT%	FT%	MPG
8-0	1.1	1.3	0.4	.600	.000	1.000	5.8

LAST GAME: One point, three rebounds, one assist in eight minutes vs. Colorado State (Dec. 13)

- Appeared in four minutes and scored her first-career points and grabbed one rebound against UNC Greensboro.
- Played for Ullern IF Oslo of the Norwegian Kvinneligaen.
- In her lone season with the organization in 2024-25, averaged 13.9 points and 6.7 rebounds per game, second-best on the team, while shooting 55 percent from the field in 19 games.

* Last played for IF Oslo of the Norwegian Kvinneligaen



Molly Goodenbour
Head Coach

- Entering her 10th season at the helm of the program, the third-longest tenured head coach in program history.
- Led the program to a 15-16 record in 2024-25 and an appearance in the West Coast Conference Championship Quarterfinals.
- Coached the program to one of its best-ever starts in conference play in 2024-25, leading the Dons to a perfect 5-0 record, defeating teams by an average of 13.8 points per game.
- Guided San Francisco to a season sweep of Gonzaga last season, the first time the Dons have earned two wins over the Bulldogs in the regular season since 2001-02, while earning their first win in Spokane since 2006.
- Signed a three-year contract extension last May, extending her through the 2027-28 season.
- Has coached six players to All-WCC First Team selections and eight student-athletes to the WCC All-Academic Team throughout her career.
- Has won six of her 15 games coached at the West Coast Conference Championship while playing in seven quarterfinal rounds and four semifinal rounds.
- She enters the 2025-26 season with a 124-119 record (.510) against the 2025-26 opponents while having double-digit victories over LMU (16), Pacific (16), Santa Clara (13), Pepperdine (12), San Diego (10), and CSUMB (10).