

## 2025-26 SAN FRANCISCO WOMEN'S BASKETBALL BROADCAST MEDIA SHEET



#2 Mara Neira  
Sr. | G | Baiona, Spain

GP/GS	PPG	RPG	APG	FG%	3PT%	FT%	MPG
7-6	7.9	4.1	2.3	.317	.273	1.000	18.0

**LAST GAME:** Seven points, four rebounds, three assists, one steal in 10 minutes vs. CSU Monterey Bay (Nov. 30)

- Registered 19 points and knocked down a season-high five three-pointers in the win over Lehigh.
- Scored in double figures for the first time, totaling 10 points while securing six rebounds and dishing out three assists in the win over UC San Diego.
- Comes to the Hilltop following a season at Appalachian State and a two-year stint at Presbyterian.
- Participated in one season at Appalachian State (2024-25) and led the program in steals per game (1.6) and three-point percentage (34.7).

\* Played 2022-23 and 2023-24 seasons at Presbyterian and 2024-25 season at Appalachian State



#3 Noelia Mourinho  
Fr. | G | O Porriño, Spain

GP/GS	PPG	RPG	APG	FG%	3PT%	FT%	MPG
7-7	8.6	6.9	2.1	.500	.000	.571	19.7

**LAST GAME:** Six points, six rebounds, one assist, one steal in 16 minutes vs. CSU Monterey Bay (Nov. 30)

- Secured a career-best 17 rebounds, the most by a first-year player in the Molly Goodenbour era, at Long Beach State.
- Recorded 16 points on 57.1 percent (eight-of-14) shooting, eight rebounds, and three assists against UC San Diego.
- Scored in double figures for the first with 11 points and grabbed a team-high seven rebounds at Boise State.
- Spent time with Segle XXI Barcelona of Liga Femenina 2 and the Spanish national team.

\* Last played for Segle XXI Barcelona of Liga Femenina 2



#4 Meghan McIntyre  
Gr. | G | Garden Grove, Calif.

GP/GS	PPG	RPG	APG	FG%	3PT%	FT%	MPG
7-2	6.7	5.3	3.6	.486	.333	.600	22.7

**LAST GAME:** 16 points, four rebounds, seven assists, one steal in 24 minutes vs. CSU Monterey Bay (Nov. 30)

- Scored a season-high 16 points and recorded seven assists in the win over CSU Monterey Bay.
- Recorded a near triple-double in her Division I debut with 11 points, 10 points and seven assists against UNC Greensboro.
- In 2024-25 she ranked first in the Cascade Collegiate Conference in assists with a career-best 154 while averaging 4.4 assists per contest.
- Was named an NAIA All-American in her final season, becoming the 14th player in Southern Oregon program history to earn All-America honors.

\* Played 2023-24 and 2024-25 seasons at NAIA Southern Oregon, and previously played at Orange Coast Community College and Golden West Community College



#7 Nevaeh Ferrara Horne  
Jr. | F | Regina, Canada

GP/GS	PPG	RPG	APG	FG%	3PT%	FT%	MPG
7-0	2.6	2.6	0.3	.467	1.000	.500	12.6

**LAST GAME:** 11 points, two rebounds, one assist, one block, one steal in 23 minutes vs. CSU Monterey Bay (Nov. 30)

- Recorded a season-high 11 points in 23 minutes off the bench against vs. CSU Monterey Bay.
- Secured a career-best 11 rebounds in the win over UNC Greensboro.
- Appeared in 60 games, earning 33 starts in two seasons at North Dakota and averaged 4.1 points, 2.0 rebounds, and 0.8 assists per game.
- Posted a career-best 17 points and shot 60 percent (six-for-10) from the field against St. Thomas (MN).

\* Played 2023-24 and 2024-25 seasons at North Dakota



#9 Aina Cargol  
Fr. | G | Olot, Spain

GP/GS	PPG	RPG	APG	FG%	3PT%	FT%	MPG
7-7	8.7	2.6	4.1	.404	.400	.682	28.4

**LAST GAME:** One rebounds, two assists in 13 minutes vs. CSU Monterey Bay (Nov. 30)

- Recorded 10 assists, becoming the first player this season with double-digit assists in a game, in the win over Lehigh.
- Earned WCC Freshman of the Week on Nov. 17 after averaging 15.5 points, 4.5 rebounds, and 4.5 assists per game against Seton Hall and UCSD.
- Reached the 20-point threshold for the first time in her career with 20 points on 58.3 (seven-of-12) shooting against Seton Hall.
- Scored seven points and went a perfect two-for-two at the free throw line in her collegiate debut against UNC Greensboro.

\* Last played for Spar Girona of Liga Femenina de Baloncesto



#10 Amy Pateman  
Fr. | G | Auckland, New Zealand

GP/GS	PPG	RPG	APG	FG%	3PT%	FT%	MPG
4-0	2.5	0.5	0.3	.444	.250	.500	6.3

**LAST GAME:** Nine points, two rebounds, one assist in 16 minutes vs. CSU Monterey Bay (Nov. 30)

- Recorded season-highs in points (nine), rebounds (two), assists (one), and minutes (16) against vs. CSU Monterey Bay.
- Scored her first-career point on a free throw at Boise State.
- Averaged 20.5 points, 4.9 rebounds, and 4.5 assists per game in four years at Westlake Girls High School in Auckland, New Zealand.
- Competed with the New Zealand national team in the 2022 U17 World Cup, and averaged 2.4 PPG, 2.1 RPG, and 0.7 APG.

\* Last played for Westlake Girls High School in Auckland, New Zealand



#12 Nataša Taušová  
Fr. | F | Poprad, Slovakia

GP/GS	PPG	RPG	APG	FG%	3PT%	FT%	MPG
7-4	5.3	3.3	0.7	.366	.238	.333	22.1

**LAST GAME:** Five rebounds, three steals in 16 minutes vs. CSU Monterey Bay (Nov. 30)

- Scored in double figures for the first time with 13 points in 24 minutes off the bench against Seton Hall.
- Competed for the Slovak national team and appeared in two games, averaging 5.0 points and 2.0 rebounds per game in the 2025 FIBA Women's EuroBasket Qualifiers.
- Averaged 9.3 points, 4.8 rebounds, and 1.2 assists per game for Slovakia at the 2024 U18 Women's EuroBasket Division B.

\* Last played for Piestanske Cajky of the Women's Basketball Extraliga



#14 Michelle Ugwah  
R-So. | F | Cork, Ireland

GP/GS	PPG	RPG	APG	FG%	3PT%	FT%	MPG
5-0	4.2	3.0	1.2	.370	.000	.333	16.4

**LAST GAME:** Six points, three rebounds, three assists, two blocks, one steal in 17 minutes at Long Beach State (Nov. 20)

- Enters her red-shirt sophomore season after spending two seasons at Morehead State.
- Averaged 7.5 points per game with the Eagles, while ranking second on the team in rebounding at 5.7 per game.
- Defensively, she added 18 blocks and 27 steals, third and fourth-best on the team.
- Appeared in 23 games with 19 starts in 2024-25, and scored a career-high 20 points at Lindenwood (Feb. 13).

\* Played 2023-24 and 2024-25 seasons at Morehead State (missed 2023-24 season due to injury)



#21 Olivia Williams  
R-Sr. | G | San Francisco, Calif.

GP/GS	PPG	RPG	APG	FG%	3PT%	FT%	MPG
1-0	7.0	3.0	0.0	.333	.000	.833	14.0

**LAST GAME:** Seven points, three rebounds, two steals in 14 minutes vs. CSU Monterey Bay (Nov. 30)

- Recorded seven points, three rebounds, two steals, and knocked down five of her six attempts at the free throw line against vs. CSU Monterey Bay.
- Joins the program after spending four years at UC Irvine, averaging 6.4 points and 2.5 rebounds per game, and totaled 66 assists in 79 total games.
- Played in 31 games in 2024-25, leading the Anteaters to their fourth-straight 20-win season.
- Ranked fourth on the team in scoring at 7.4 points per game and led the team in three-pointers with 39.

\* Played 2021-22, 2022-23, 2023-24, and 2024-25 seasons at UC Irvine (missed 2023-24 season due to injury)



#22 Paula Tirado  
R-So. | G | Mataro, Spain

GP/GS	PPG	RPG	APG	FG%	3PT%	FT%	MPG
7-2	6.6	1.6	1.8	.472	.500	.714	21.0

**LAST GAME:** Sevens points, two rebounds, four assists, two steals in 23 minutes vs. CSU Monterey Bay (Nov. 30)

- Recorded a new career-high in rebounds with four at Long Beach State.
- Scored a career-high 13 points while connecting on all three of her three-point attempts in 27 minutes off the bench at Boise State.
- Appeared in 29 games and earned one start in 2023-24 and averaged 2.7 points per game and shot 29.5 percent from the field.
- Missed the entire 2024-25 season due to injury.

\* (missed 2024-25 season due to injury)



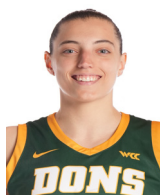
#23 Candy Edokpaigbe  
So. | G | Naples, Italy

GP/GS	PPG	RPG	APG	FG%	3PT%	FT%	MPG
7-7	18.6	5.1	1.6	.612	.318	.655	29.6

**LAST GAME:** 14 points, one rebound in 14 minutes vs. CSU Monterey Bay (Nov. 30)

- Registered a 24-point, 10-rebound double-double, her first as a Don, third overall in her career, in the win over UC San Diego.
- Recorded career-highs in points (26) and field goals (10) while leading the team to a win over UNC Greensboro in the season opener.
- Appeared and started all 30 games at Seattle U in 2024-25 and led the team in scoring, averaging 11.1 points per game.
- Tallied 18 double-digit scoring efforts on the year, including two 20+ point games at Seattle U.

\* Played 2024-25 season at Seattle U



#24 Sol Castro  
Gr. | F | Rio Colorado, Argentina

GP/GS	PPG	RPG	APG	FG%	3PT%	FT%	MPG
2-0	13.5	7.5	0.0	.588	.000	.700	14.5

**LAST GAME:** 13 points, seven rebounds, two blocks in 14 minutes vs. CSU Monterey Bay (Nov. 30)

- Scored 14 points on 66.7 percent (six-of-nine) shooting and grabbed eight rebounds in season debut in the win over Lehigh.
- Appeared in four games in 2024-25 and averaged 5.3 points, 4.8 rebounds, and 0.8 assists per game.
- Finished the season opener at Colorado State with two points, five rebounds, and a team-high two blocks (Nov. 4).
- Posted 13 points, seven, rebounds, and two assists off the bench in the win over Portland State (Nov. 12).

\* Played 2020-21, 2021-22, and 2022-23 seasons at Robert Morris (missed 2022-23 and 2023-24 seasons and 27 games of 2024-25 season due to injury)



#32 Sophia Priestley  
Fr. | F | Oslo, Norway

GP/GS	PPG	RPG	APG	FG%	3PT%	FT%	MPG
5-0	1.6	1.2	0.4	.750	.000	1.000	6.2

**LAST GAME:** Two points, three rebounds, two assists, one steal in 17 minutes vs. CSU Monterey Bay (Nov. 30)

- Appeared in four minutes and scored her first-career points and grabbed one rebound against UNC Greensboro.
- Played for Ullern IF Oslo of the Norwegian Kvinneligaen.
- In her lone season with the organization in 2024-25, averaged 13.9 points and 6.7 rebounds per game, second-best on the team, while shooting 55 percent from the field in 19 games.

\* Last played for IF Oslo of the Norwegian Kvinneligaen



Molly Goodenbour  
Head Coach

- Entering her 10th season at the helm of the program, the third-longest tenured head coach in program history.
- Led the program to a 15-16 record in 2024-25 and an appearance in the West Coast Conference Championship Quarterfinals.
- Coached the program to one of its best-ever starts in conference play, leading the Dons to a perfect 5-0 record, defeating teams by an average of 13.8 points.
- Guided San Francisco to a season sweep of Gonzaga last season, the first time the Dons have earned two wins over the Bulldogs in the regular season since 2001-02, while earning their first win in Spokane since 2006.
- Signed a three-year contract extension last May, extending her through the 2027-28 season.
- Has coached six players to All-WCC First Team selections and eight student-athletes to the WCC All-Academic Team throughout her career.
- Has won six of her 15 games coached at the West Coast Conference Championship while playing in seven quarterfinal rounds and four semifinal rounds.
- She enters the 2025-26 season with a 124-119 record (.510) against the 2025-26 opponents while having double-digit victories over LMU (16), Pacific (16), Santa Clara (13), Pepperdine (12), San Diego (10), and CSUMB (10).