



2022-23 San Francisco Dons

WOMEN'S BASKETBALL

Game 3 - November 16, 2022

SCHEDULE/RESULTS

2022-23 RECORD: 1-1/0-0 WCC

H: 1-1 / A: 0-0 / N: 0-0

November 2022

7 Mon.	vs. Cal State East Bay	W: 79-66
11 Fri.	vs. Washington State	L: 69-63
16 Sat.	vs. Troy	6:00 PM
19 Sat.	vs. USC	2:00 PM
21 Mon.	vs. Penn	11:00 AM
25 Fri.	vs. South Carolina State	3:30 PM
26 Sat.	vs. Long Beach State	3:30 PM

December 2022

1 Thu.	at CSUN	7:00 PM
4 Sun.	#San Diego State	2:30 PM
7 Wed.	vs. Arkansas Pine-Bluff	5:00 PM
10 Sat.	at Colorado State	1:00 PM
17 Sat.	*vs. Loyola Marymount	2:00 PM
19 Mon.	*vs. Pepperdine	2:00 PM
22 Thu.	vs. Northern New Mexico	2:00 PM
31 Sat.	*at Santa Clara	2:00 PM

January 2023

5 Thu.	*at Gonzaga	6:00 PM
7 Sat.	*at Portland	5:00 PM
12 Thu.	*vs. Pacific	6:00 PM
14 Sat.	*vs. Saint Mary's	2:00 PM
19 Thu.	*at BYU	10:00 AM
21 Sat.	*at San Diego	2:00 PM
28 Sat.	*vs. Santa Clara	2:00 PM

February 2023

2 Thu.	*vs. Portland	6:00 PM
4 Sat.	*vs. Gonzaga	2:00 PM
9 Thu.	*at Saint Mary's	6:30 PM
11 Sat.	*at Pacific	2:00 PM
16 Thu.	*vs. San Diego	6:00 PM
18 Sat.	*vs. BYU	2:00 PM
23 Thu.	*at Pepperdine	6:00 PM
25 Thu.	*at Loyola Marymount	2:00 PM

March 2022

2-7 Thu.-Tue.	^WCC Tournament	TBD
---------------	-----------------	-----

* Designates West Coast Conference Game

! - USF Thanksgiving Classic- War Memorial at the Sobrato Center

^ - WCC Tournament - Orleans Arena (Las Vegas, Nev.)

- Neutral Site

All times listed are Pacific

COMMUNICATIONS

ALEC HENDEN

Assistant Director for Communications

E: ahenden@usfca.edu

C: 602-692-5139

Address: 2130 Fulton Street, San Francisco, CA, 94117

GAME 3 BREAKDOWN- War Memorial at the Sobrato Center • San Francisco, CA • 6:00 PM PT •



San Francisco Dons

RECORD	HEAD COACH
1-1, 0-0 WCC	Molly Goodenbour
RANKING	CAREER RECORD
-- AP	260-230 (.531)
LAST GAME	RECORD AT USF
L, 69-63	87-99 (.468)
vs. Washington State	vs. Troy
Nov. 11, 2022	0-0



Troy Trojans

RECORD	HEAD COACH
2-1, 0-0 Sun Belt	Chanda Rigby
RANKING	CAREER RECORD
-- AP	401-224 (.642)
LAST GAME	RECORD AT SCHOOL
L, 95-83	194-119 (.620)
at UCLA	vs. USF
Nov. 16, 2022	0-0

ON THE AIR



WCC Network
Play-by-Play: George Devine
Analyst: Jessica Blodgett



TIP OFF

Returning to action this season with an experienced and slightly revamped roster, the Dons split their opening week of games by gliding past Cal State East Bay thanks to a strong second half before fighting hard and ultimately falling short against Washington State to end the week.

USF currently boasts three scorers so far that are averaging double digit points with Ioanna Krimili (14.5 PPG), Dickie (13.5 PPG) and Gayles (11.5 PPG) as the three Dons have been on the attack early on this season.

The Dons' defense has been on point through the first two games of the 2021-22 season as USF has held their opponents to a 36.6% field goal percentage and they've done a great job of limiting their opponents from deep as Cal State East Bay and Washington State were held to 23.3% from three-point range.

After struggling at times last season with rebounding as a team, USF as held their own through the first two games of the season as they have an even rebounding margin averaging 44 per game and breaking even against Washington State who has many post players that are known for their ability to clean the glass.

The Dons under Goodenbour are seeking their third consecutive postseason berth after making consecutive appearances in the WNIT. Goodenbour's highly successful tenure on the Hilltop leaves her currently 14 victories away from 100 total at USF.

Roaring 20's: The Dons have posted a 33-27 record since the turn of century, while also experiencing tremendous success in the conference with a 20-15 mark.

PROJECTED STARTERS

Amy BAUM Gr • Guard	Jessica MCDOW-ELL-WHITE SR • Forward	Kennedy DICKIE SR • Forward	Debra DOS SANTOS R-So • Forward	Ioanna KRIMILI R-Jr • Guard
MIN 37.3	MIN 32.3	MIN 25.3	MIN N/A	MIN 35.4
PPG 12.6	PPG 5.6	PPG 9.1	PPG N/A	PPG 19.4
FG% 48.1	FG% 38.2	FG% 35.5	FG% N/A	FG% 43.0
3PT% 16.7	APG 4.2	RPG 6.7	REB N/A	REB 4.2

2021-22 USF MEN'S BASKETBALL GAME NOTES

2021-22 USF WOMEN'S BASKETBALL ROSTER

NUMERICAL ROSTER

No.	Name	Pos	H	Yr	Hometown/Previous Schools
0	Malia Latu	G	5-8	So.	East Palo Alto, Calif. / Menlo-Atherton HS / Skyline College
1	Loren Christie	F	6-3	Sr.	Hertfordshire, England / Barking Abbey School / Buffalo
2	Kia Vaalavirta	G	5-8	Gr.	Espoo, Finland / Mäkelänrinteen Lukio
3	Amy Baum	G	5-7	Gr.	Melbourne, Australia / Rowville Secondary / Hawaii Pacific
4	Jessica McDowell-White	G	5-6	Sr.	Brisbane, Australia / Brisbane State HS / Eastern Washington
5	Amalie Langer	G	5-9	Gr.	Rungsted, Denmark / Rungsted Gymnasium
10	Lorena Barbosa	F	6-5	RFr.	Itatiba, Brazil / Gloria Azedia Bonetti
11	Jasmine Gayles	G	5-7	Sr.	Seattle, Wash. / West Settle HS / Northern Colorado
12	Kennedy Dickie	F	6-0	Sr.	Kelowna, British Columbia / Kelowna Secondary / Eastern Washington
13	Debora dos Santos	F	6-0	R-So.	Rio de Janeiro, Brazil / Wasatch Academy / South Plains College
14	Marina Hernandez	F	6-2	Fr.	Alicante, Spain / Le Fuente San Luis
20	Aya Keita	G	5-9	So.	Győr, Hungary / Kazinczy Ferenec Grammar School
21	Ioanna Krimili	G	5-10	RJr.	Heraklion, Greece / Aristotelio College
32	Cami Fulcher	G	5-8	So.	West Linn, Ore. / West Linn HS
55	Abby Rathbun	G/F	5-11	Gr.	Moses Lake, Wash. / Moses Lake HS

ALPHABETICAL ROSTER

No.	Name	Pos	H	Yr	Hometown/Previous Schools
10	Lorena Barbosa	F	6-5	RFr.	Itatiba, Brazil / Gloria Azedia Bonetti
3	Amy Baum	G	5-7	Gr.	Melbourne, Australia / Rowville Secondary / Hawaii Pacific
1	Loren Christie	F	6-3	Sr.	Hertfordshire, England / Barking Abbey School / Buffalo
12	Kennedy Dickie	F	6-0	Sr.	Kelowna, British Columbia / Kelowna Secondary / Eastern Washington
13	Debora dos Santos	F	6-0	R-So.	Rio de Janeiro, Brazil / Wasatch Academy / South Plains College
32	Cami Fulcher	G	5-8	So.	West Linn, Ore. / West Linn HS
11	Jasmine Gayles	G	5-7	Sr.	Seattle, Wash. / West Settle HS / Northern Colorado
14	Marina Hernandez	F	6-2	Fr.	Alicante, Spain / Le Fuente San Luis
20	Aya Keita	G	5-9	So.	Győr, Hungary / Kazinczy Ferenec Grammar School
21	Ioanna Krimili	G	5-10	RJr.	Heraklion, Greece / Aristotelio College
5	Amalie Langer	G	5-9	Gr.	Rungsted, Denmark / Rungsted Gymnasium
0	Malia Latu	G	5-8	So.	East Palo Alto, Calif. / Menlo-Atherton HS / Skyline College
4	Jessica McDowell-White	G	5-6	Sr.	Brisbane, Australia / Brisbane State HS / Eastern Washington
55	Abby Rathbun	G/F	5-11	Gr.	Moses Lake, Wash. / Moses Lake HS
2	Kia Vaalavirta	G	5-8	Gr.	Espoo, Finland / Mäkelänrinteen Lukio

COACHING STAFF

Molly Goodenbour	Head Coach, 7th season (18th overall)	Stanford, '93
Janell Jones	Associate Head Coach, 7th season	Oklahoma Christian, '83
Arthur Moreira	Assistant Coach, 6th season	Sonoma State, '16
Derek Saich	Assistant Coach, 2nd season	UC Santa Barbara, '15
Owen Brown	Assistant Coach for Player Development, 3rd season	San Francisco, '19

SUPPORT STAFF

Dolapo Balogun	Director of Basketball Operations, 1st season	Southeast Missouri State, '19
KaShanna Jones	Associate Athletic Trainer, 2nd season	
Matt Ward	Assistant Strength and Conditioning Coach, 1st season	

PRONUNCIATIONS:

0 Malia Latu -- Muh-lee-uh LAW-to
 1 Loren Christie -- Lore-in
 2 Kia Vaalavirta -- Key-uh Vol-uh-veer-tuh
 3 Amy Baum -- Bah-m
 4 Jessica McDowell-White -- Mc-dow-ell
 5 Amalie Langer -- Aw-muh-lee Layn-gur
 10 Lorena Barbosa -- Low-ren-uh Bar-bo-sa
 11 Jasmine Gayles -- Jaz-min Gay-ulls
 12 Kennedy Dickie -- Ken-ugh-dee Dick-ee
 13 Debora Dos Santos -- Deb-ruh Dos-San-toes
 14 Marina Hernandez -- Muh-ree-nuh Her-nahn-dez
 20 Aya Keita -- Eye-uh Kay-tuh
 21 Ioanna Krimili -- Ee-oh-anna Cree-me-lee
 32 Cami Fulcher -- Cam-ee Full-chur
 55 Abby Rathbun -- Ab-ee Rath-bun

CLASS BREAKDOWN

GRADUATE STUDENTS (4):	SOPHOMORES: (4)
Kia Vaalavirta	Malia Latu
Amy Baum	Debora Dos Santos
Amalie Langer	Aya Keita
Abby Rathbun	Cami Fulcher
SENIORS: (4)	FRESHMEN: (2)
Loren Christie	Lorena Barbosa
Jessica McDowell-White	Marina Hernandez
Jasmine Gayles	
Kennedy Dickie	
JUNIORS: (1)	
Ioanna Krimili	

HOME STATE/COUNTRY

CALIFORNIA: (1)	CANADA: (1)
Malia Latu	Kennedy Dickie
OREGON: (1)	DENMARK: (1)
Cami Fulcher	Amalie Langer
WASHINGTON: (2)	ENGLAND: (1)
Jasmine Gayles	Loren Christie
Abby Rathbun	FINLAND: (1)
AUSTRALIA: (2)	Kia Vaalavirta
Amy Baum	GREECE: (1)
Jessica McDowell-White	Ioanna Krimili
BRAZIL: (2)	HUNGARY: (1)
Lorena Barbosa	Aya Keita
Debora Dos Santos	SPAIN: (1)
	Marina Hernandez

RADIO/TV ROSTER



0 Malia Latu
So. • G • 5-8
East Palo Alto, Calif.
Menlo-Atherton HS
Skyline College



1 Loren Christie
Sr. • F • 6-3
Hertfordshire, England
Barking Abbey School
Buffalo



2 Kia Vaalavirta
Gr. • G • 5-8
Espoo, Finland
Mäkelänrinteen
Lukio



3 Amy Baum
Gr. • G • 5-7
Melbourne, Australia
Rowville Secondary
Hawaii Pacific



4 Jessica McDowell-White
Sr. • G • 5-6
Brisbane, Australia
Brisbane State HS
Eastern Washington



5 Amalie Langer
Gr. • G • 5-9
Rungsted, Denmark
Rungsted Gymnasium



10 Lorena Barbosa
R-Fr. • F • 6-5
Itatiba, Brazil
Gloria Azedia Bonetti



11 Jasmine Gayles
Sr. • G • 5-7
Seattle, Wash.
West Seattle HS
Northern Colorado



12 Kennedy Dickie
Sr. • F • 6-0
Kelowna, British Columbia
Kelowna Secondary
Eastern Washington



13 Debora Dos Santos
R-So. • F • 6-0
Rio de Janeiro, Brazil
Wasatch Academy
South Plains College



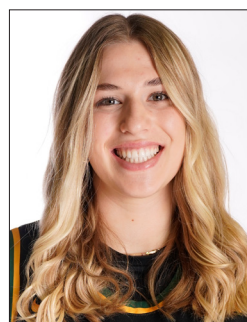
14 Marina Hernandez
Fr. • F • 6-2
Alicante, Spain
Le Fuente San Luis



20 Aya Keita
So. • G • 5-9
Győr, Hungary
Kazinczy Ferenec
Grammar School



21 Ioanna Krimili
R-Jr. • G • 5-10
Heraklion, Greece
Aristotelio College



32 Cami Fulcher
So. • G • 5-8
West Linn, Ore.
West Linn HS



55 Abby Rathbun
Gr. • G/F • 5-11
Moses Lake, Wash.
Moses Lake HS



Molly Goodenbour
Head Coach
7th Season



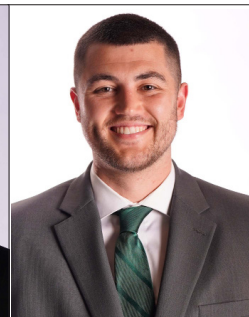
Janell Jones
Associate Head Coach
7th Season



Arthur Moreira
Assistant Coach
6th Season



Derek Saich
Assistant Coach
2nd Season/1st Season Overall



Owen Brown
Assistant Coach for Player Development
3rd Season



Dolapo Balogun
Director of Operations
1st Season

QUICK FACTS & HEAD COACH TODD GOLDEN

UNIVERSITY INFORMATION

Name University of San Francisco
 Location 2130 Fulton Street
 San Francisco, CA 94117-1080
 Religious Affiliation Roman Catholic (Jesuit)
 Year Founded 1855
 Enrollment 10,714
 President (Yr.) Fr. Paul J. Fitzgerald, S.J. (8th)
 Vice Pres. Business & Finance (Yr.) Charlie Cross (22nd)
 Director of Athletics (Yr.) Larry Williams (1st)

ATHLETICS INFORMATION

Nickname Dons
 Colors Green (PMS 3435) & Gold (PMS 123)
 Conference West Coast Conference
 National Affiliation NCAA Division I
 Arena War Memorial at the Sobrato Center
 Capacity 3,006

WOMEN'S BASKETBALL COACHING STAFF

Molly Goodenbour Head Coach
 Seventh Season (Stanford, '93)
 Janell Jones Associate Head Coach
 Seventh Season (Oklahoma Christian, '98)
 Arthur Moreira Assistant Coach
 Sixth Season (Sonoma State, '16)
 Derek Saich Assistant Coach
 Second Season (UC Santa Barbara, '15)
 Owen Brown Assistant Coach for Player Development
 Second Season (San Francisco '19)
 Dolpao Balogun Director of Operations
 First Season (Southeast Missouri State, '19)

WEB ADDRESSES/SOCIAL MEDIA

USF www.usfca.edu
 San Francisco Athletics www.usfdons.com
 West Coast Conference www.wccsports.com
 Twitter @DonsAthletics
 @USFDonsWBB
 Instagram @USFDonsWBB
 Facebook Facebook.com/USFDonsWBB

HOW TO REFERENCE THE UNIVERSITY

We are the University of San Francisco, established by the Jesuits in 1855 as the first university in San Francisco.

When referencing the school and its teams, please use "The University of San Francisco," "San Francisco," "USF," or "The Dons."

DO NOT use "Frisco," "San Fran," "San Francisco University," "SFU" or any other iteration. Also, when referring our women's teams, DO NOT use "Lady Dons."

Molly Goodenbour, a two-time national champion at Stanford who has 13 years of head coaching experience on the collegiate level, was named the ninth head coach in University of San Francisco women's basketball history on Sept. 28, 2016, and enters her fourth season at the helm of the program in 2019-20. This is Goodenbour's third coaching stint on the Hilltop, where she served as an assistant coach with the Dons during the 1994-95 and 2005-06 seasons.

In her first three years on the Hilltop, Goodenbour posted impressive numbers, including becoming the winningest coach in USF history through 50 games (27-23), as well as through two seasons at 34-28 (.548). Goodenbour quickly built up her impressive resume at USF, becoming the first coach to post winning overall and conference records in her first two seasons on the job.

Goodenbour's third WCC Tournament in 2019 saw her lead the Dons to a first-round victory over Portland, marking the seventh year in a row the Dons advanced beyond their opening game.

Goodenbour's 2017-18 squad placed three WCC All-Conference and All-Academic honorees. Anna Seilund earned First-Team All-WCC and Second-Team All-WCC went to Michaela Rakova and Kalyn Simon.

She finished her first year on the Hilltop in 2016-17 with an 18-13 overall record that included an 11-7 mark in West Coast Conference play, good for a fourth-place finish, the Dons' highest since the 2002-03 season. Goodenbour became the first USF head coach since Sue Rojewicz in 1982-83 to post a winning record in her first year at the helm and compiled the second-best record by a first-year coach in program history. USF's 11 WCC wins under Goodenbour were the most since the 1996-97 campaign.

Under Goodenbour, the Dons led the conference in free-throw percentage at 77.8%, which stands as the best single-season percentage in program history. Goodenbour's team also led the WCC in 3-point shooting (34.6%) in 2016-17. Their 217 three-pointers made were the most in program history, including a program-best 15 3s in a win over Portland on Feb. 18, 2017.

PRIOR TO USF

Goodenbour came to USF from Cal State East Bay, where she was named head coach in June of 2016. She has previous heading coaching experience at Santa Rosa Junior College, Chico State, UC Irvine and Cal State Dominguez Hills.

Prior to her appointment at Cal State East Bay, Goodenbour spent four seasons as the head coach at Cal State Dominguez Hills. After taking over a program that had posted a 7-48 record in the previous two seasons, Goodenbour led the Toros to a 77-34 (.694) record in her four seasons. Under her guidance, the Toros won California Collegiate Athletic Association (CCAA) Tournament Championships in 2013-14 and 2014-15 and CCAA regular season titles in 2014-15 and 2015-16 and made three consecutive NCAA Division II Tournament appearances from 2013-16. Her 2014-15 squad won a school-record 26 games and earned the No. 2 seed in the NCAA West Regional.

MOLLY GOODENBOUR

Head Coach
 Stanford, '08
 7th Season at USF
 7th Season Overall
 Career Record 259-229 (18th season)
 Overall USF 86-98 (7th season)
 WCC Games 48-56 (7th season)



Goodenbour began her coaching career at Santa Rosa Junior College in 2002-03. After one season as an associate head coach, she took over the head coaching duties for two seasons (2003-05) and led the Bear Cubs to a 69-21 record, two conference championships and a quarter-final appearance in the California state championship.

She was appointed head coach at Chico State in 2006-07 where she led the Wildcats to a 52-11 record and a pair of NCAA Tournament appearances. In 2007-08, she was named the CCAA's Coach of the Year after guiding her team to a 28-6 overall record, regular season and conference tournament titles along with a Sweet 16 appearance. The Wildcats finished the year ranked No. 17 in Division II.

Goodenbour's first Division I head coaching job came at UC Irvine, where she served as the Anteaters' coach from 2008-12. The Anteaters qualified for the Big West Tournament in each of her four seasons, posted the highest single-season win total (15 in 2010-11) in nearly a decade and had eight players earn all-conference honors during her four-year tenure.

GOODENBOUR THE PLAYER

A native of Waterloo, Iowa, Goodenbour was a standout performer at Stanford, where she was a four-year letterwinner under Tara VanDerveer from 1989-93. She helped the Cardinal to four straight Pac-10 championships, three NCAA Final Fours and a pair of NCAA Championships in 1990 and '92. Goodenbour was named the most valuable player of the 1992 Final Four after setting an NCAA Tournament record for most postseason 3-pointers made with 18. She finished her collegiate career with 1,040 points and still ranks among the school's career top-12 in 3-pointers made (178), assists (441) and free throw percentage (.793).

After graduating from Stanford with a degree in biology, Goodenbour was selected to the U.S. National team, which won a gold medal at the 1993 World Championship Qualifying Tournament in Brazil.

Molly is married to Pat Fuscald, a former USF men's assistant coach who has served as the head coach at Sonoma State University for the past 25 seasons.

THE MATCHUP



OVERALL	0-0
HOME	0-0
AWAY	0-0
NEUTRAL SITES	--
LAST MEETING	--
FIRST MEETING	--
LARGEST WIN	--
LAST WIN	--
LAST LOSS	--
STREAK	--

COMPARISON		
	USF	TRO
Points Per Game	71.0	79.3
Opponent Points Per Game	67.5	80.3
Field Goal Pct.	35.7	31.9
Opp. FG Pct.	36.6	46.2
3-PT FG Pct.	28.6	26.1
Opp. 3-PT FG Pct.	23.3	32.4
Free Throw Pct.	87.0	63.5
Rebound Margin	0.0	+7.0
Rebounds Per Game	44.0	53.0
Blocks Per Game	2.0	3.0
Steals Per Game	5.0	13.3
Assists Per Game	14.0	13.3
Turnovers Per Game	14.0	13.7

ABOUT THE RACERS

About University of San Francisco

The University of San Francisco (usfca.edu) is located in the heart of one of the world's most innovative and diverse cities and is home to a vibrant academic community of students and faculty who achieve excellence in their fields. Its diverse student body enjoys direct access to faculty, small classes, and outstanding opportunities in the city itself. Founded in 1855, USF is San Francisco's first university, and its Jesuit Catholic mission helps ignite a student's passion for social justice and a desire to "Change the World From Here." USF has a storied athletics tradition, and today its accomplished Division I scholar athletes compete in seven men's sports and eight women's sports. USF is a member of the West Coast Conference. For more information on USF Athletics, visit usfdons.com and follow the Dons the Dons on social media on Twitter, Facebook, and Instagram @DonsAthletics.

VS. TROY

About The Trojans

The Trojans from Alabama have posted a 2-1 record so far this season as they've picked up victories over Samford and UT Martin on the road before coming up short in Westwood against UCLA on Monday by a 95-83 score.

Troy has been led this season by three scorers averaging at least 12 points per game in the early part of the season, including junior guard Makayia Hallmon who has averaged 12.7 PPG this season on 34% shooting from the field to go along with four steals and two blocks so far this season.

Entering the 2022-23 season, Troy was picked to finish at the top of the Sun Belt Conference as they received 12 of 13 first place votes and senior forward Felmas Koranga was picked as the conference's Preseason Player of the Year.

All-Time Series

Wednesday evening's matchup with Troy will be the first time the Dons and Tigers have faced off in each program's history.

LAST BOX SCORE



MALIA LATU (Muh-lee-uh LAW-to)

Sophomore • Guard • 5-8 • East Palo Alto, Calif. • Menlo Atherton HS • Skyline College

SEASON STATS

PPG	RPG	APG	FG%	3FG%	FT%
23.9	8.5	3.5	45.0	39.0	69.9

LAST GAME

MIN	PTS	REBS	ASTS	BLKS	STLS
4	0	1	0	0	0

Played and started in all 27 games for the Trojans...Averaged 23.9 PPG shooting 45% from the field and 39% from three-point range...Recorded a total of 230 rebounds on the season for an average of 8.5 boards per game...Latu was a pest on the defensive side of the ball as well collecting 85 steals...First-Team All-State and First-Team All-Conference selection

Born to Sione Latu and Lorrita Achia
Has four siblings: Jeremiah (20), Feliciano (15),
Patelesio (10) and Deraj (10)
Hobbies include: Spending time with her family,
looking at nature and relaxing
Favorite food is pizza
Favorite athlete is Luka Doncic

Season Highs

Points _____
Minutes _____
Field Goals Made _____
Field Goal Attempts _____
3-Point Field Goals Made _____
3-Point Field Goal Attempts _____
Free Throws Made _____
Free Throw Attempts _____
Rebounds _____
Assists _____
Blocks _____
Steals _____



2022-23 San Francisco Women's Basketball
Individual Game-by-Game
All games

Page 1/12
as of Nov 16, 2022

#0 LATU, Malia

Opponent	Date	GS	MIN	Total FG-FGA	PCT	3FG-3FGA	PCT	FT-FTA	PCT	Rebounds OFF DEF TOT AVG	PF	A	TO	BLK	STL	PTS	AVG
Cal St. East Bay	11/07/2022		04:00	0-2	.000	0-0	.000	0-0	.000	0 1 1 1.0	0	0	0	0	0	0	0.0
Totals			0 04:00	0-2	.000	0-0	.000	0-0	.000	0 1 1 1.0	0	0	0	0	0	0	0.0

Player Averages

Games Played	Minutes/ game	Points/ game	FG Pct	3FG Pct	FT Pct	Rebounds/ game	Assists/ game	Turnovers/ game	Assist/Turnover ratio	Steals/ game	Blocks/ game
1	4.0	0.0	0.0	0.0	0.0	1.0	0.0	0.0	0.0	0.0	0.0



CAREER YEAR-BY-YEAR STATISTICS (*at Skyline College)

Year	GP	GS	Min	Avg	FG	FGA	Pct	3FG	3FGA	Pct	FT	FTA	Pct	Off	Def	Tot	Avg	PF	FO	Ast	TO	Blk	Stl	Pts	Avg
2021-22	27	27	N/A	N/A	250	555	.450	80	205	.390	65	93	.699	N/A	N/A	230	8.5	56	0	95	78	6	85	645	23.9
TOTAL	27	27	N/A	N/A	250	555	.450	80	205	.390	65	93	.699	N/A	N/A	230	8.5	56	0	95	78	6	85	645	23.9



LOREN CHRISTIE (Loor-in)

Senior • Forward • 6-3 • Hertfordshire, England • Barking Abbey School • Buffalo

SEASON STATS

PPG	RPG	APG	FG%	3FG%	FT%
5.3	4.4	0.7	45.1	24.1	68.6

LAST GAME

MIN	PTS	REBS	ASTS	BLKS	STLS
24	12	4	0	0	1

Competed in all 34 games her played and made 17 starts...Averaged 5.3 PPG and 4.4 rebounds per game for the Bulls...Scored in double-figures eight times including a season-high 14 points over Miami...Recorded an 11 point and 13 rebound double-double in her team's win over Akron...Played 18 minutes and scored two points while grabbing four rebounds in her team's NCAA Tournament game against Tennessee

Born to David and Marina Christie
Has two siblings: Jack and Oliver
Favorite foods include: Tacos, avocados and chicken
Enjoys listening to hip hop and rap music
Favorite athlete is Giannis Antetokounmpo



2022-23 San Francisco Women's Basketball
Individual Game-by-Game
All games

Page 2/12
as of Nov 16, 2022

#1 CHRISTIE, Loren

Opponent		Date	GS	MIN	Total		3-Pointers		Free throws		Rebounds												
Opponent	Date	GS	MIN	F	G-FGA	PCT	3F	3F-GFA	PCT	F	T-FTA	PCT	OFF	DEF	TOT	AVG	PF	A	TO	BLK	STL	PTS	AVG
Cal St. East Bay	11/07/2022		11:43	1-1	1.000	1.0	1.0	1.000	2.0	2.0	1.000	0.0	3	3	3.0	2.0	0	0	0	0	0	5	5.0
Washington St.	11/11/2022		23:43	5-9	.556	2.4	.500	2.0	.000	1.3	4.3	.305	4	4	8.0	4.0	0	1	12	8.5			
Totals				0	35:26	6-10	.600	3-5	.600	2-4	.500	1	6	7	3.5	6	0	4	0	1	17	8.5	

Player Averages

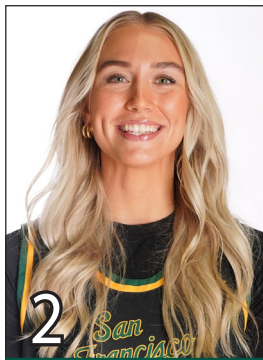
Games Played	Minutes/ game	Points/ game	FG Pct	3FG Pct	FT Pct	Rebounds/ game	Assists/ game	Turnovers/ game	Assist/Turnover ratio	Steals/ game	Blocks/ game
2	17.7	8.5	66.0	60.0	50.0	3.5	0.0	2.8	0.0	0.5	0.0



FAST FIVE...

CAREER YEAR-BY-YEAR STATISTICS

Year	GP	GS	Min	Avg	FG	FGA	Pct	3FG	3FGA	Pct	FT	FTA	Pct	Off	Def	Tot	Avg	PF	FO	Ast	TO	Blk	Stl	Pts	Avg
2019-20	27	8	465	17.2	28	98	.286	13	61	.213	12	21	.571	21	75	96	3.6	48	1	12	35	8	6	81	3.0
2020-21	15	5	236	15.7	16	52	.308	4	16	.250	9	12	.750	16	52	68	4.5	31	1	7	25	8	3	45	3.0
2021-22	34	17	682	20.1	69	153	.451	7	29	.241	35	51	.686	42	106	148	4.4	83	1	16	46	35	12	180	5.3
TOTAL	126	69	3162	25.1	438	926	.473	107	335	.319	148	214	.692	54	349	403	3.2	198	2	287	189	52	146	1131	9.0



KIA VAALAVIRTA (Key-uh Vol-uh-veer-tuh)

Graduate Student • Guard • 5-8 • Espoo, Finland • Mäkelänrinteen Lukio

SEASON STATS

PPG	RPG	APG	FG%	3FG%	FT%
2.5	1.5	0.4	32.9	32.3	58.3

LAST GAME

MIN	PTS	REBS	ASTS	BLKS	STLS
16	2	2	1	0	0

Competed in 30 games this season for the Dons, including making three appearances in the starting lineup...Played in 383 minutes for an average of 12.8 minutes played per contest...Shot 32.9 percent from the field (25-76) and 32.3 percent from three-point distance (10-31)...Scored a season-high of 11 points in USF's road win over Tulsa on Dec. 22 while logging a season-high 26 minutes and scoring seven points and grabbing seven rebounds against Pacific in Stockton to help the Dons secure the road victory...Finished her season by scoring three points in 24 minutes against Air Force in the WNIT.

Was a two-time Finnish national champion with her U-16 club team, Tapiolan Honka.

Also placed second in the Finnish Women's League - the highest level in Finland - with Espoo United in 2017.

Averaged an impressive 14.8 points, 8.8 rebounds and 2.8 assists while playing in the Finland Women's Division I, earning her Best "6th Man" Honors from the league.

An all-around contributor while playing in U-16 and U-18 basketball in her home country of Finland, she averaged 9.1 points, 5.1 rebounds, 1.6 assists and 1.4 steals in over 80 games played during those competitions.

Helped lead her U-19 Tapiolan Honka club team to two top-three finishes at the national level.



2021-22 San Francisco Women's Basketball Individual Game-by-Game All games

Page 3/12
as of Nov 16, 2022

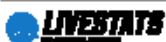
#2 VAALAVIRTA, Kia

				Total		3-Pointers		Free throws		Rebounds										
Opponent	Date	GS	MIN	FG-FGA	PCT	3FG-3FGA	PCT	FT-FTA	PCT	OFF	DEF	TOT	AVG	PF	A	TO	BLK	STL	PTS	AVG
Cal St. East Bay	11/07/2022		17:06	2-3	.667	0-0	.000	2-3	.667	0	3	3	3.0	1	2	0	0	2	6	6.0
Washington St.	11/11/2022	*	15:51	0-1	.000	0-0	.000	2-2	1.000	1	1	2	2.5	4	1	2	0	0	2	4.0
Totals		1	32:57	2-4	.500	0-0	.000	4-5	.800	1	4	5	2.5	5	3	4	0	2	8	4.0

Player Averages

Games Played	Minutes/ game	Points/ game	FG Pct	3FG Pct	FT Pct	Rebounds/ game	Assists/ game	Turnovers/ game	Assist/Turnover ratio	Steals/ game	Blocks/ game
2	16.5	4.0	50.0	0.0	66.0	2.5	1.5	2.0	0.8	1.0	0.0

F



CAREER YEAR-BY-YEAR STATISTICS

Year	GP	GS	Min	Avg	FG	FGA	Pct	3FG	3FGA	Pct	FT	FTA	Pct	Off	Def	Tot	Avg	PF	FO	Ast	TO	Blk	Stl	Pts	Avg
2019-20	29	23	839	28.9	55	170	.324	28	100	.280	32	43	.744	1	63	64	2.2	70	1	64	77	3	24	170	5.9
2020-21	27	0	313	11.6	28	64	.438	14	33	.424	18	26	.692	7	19	26	1.0	29	1	20	21	0	8	88	3.3
2021-22	30	3	383	12.8	25	76	.329	10	31	.323	14	24	.583	15	31	46	1.5	31	0	17	17	1	7	74	2.5
TOTAL USF	118	37	2,102	17.8	160	463	.346	77	252	.306	96	140	.686	37	170	207	1.8	175	4	130	166	6	56	493	4.2



AMY BAUM (Bah-m)

Graduate Student • Guard • 5-7 • Melbourne, Australia • Rowville Secondary • Hawaii Pacific

SEASON STATS

PPG	RPG	APG	FG%	3FG%	FT%
12.6	9.4	6.6	48.1	16.7	38.5

LAST GAME

MIN	PTS	REBS	ASTS	BLKS	STLS
26	0	1	3	0	0

Led Division II in both assists per game and assist to turnover ratio

Recorded the first triple-double in Hawaii Pacific women's basketball history

Set the Hawaii Pacific record for career assists with 504

Averaged 14.5 PPG, 7.2 rebounds per game, 8.6 assists per game and 2.1 steals per game



2022-23 San Francisco Women's Basketball
Individual Game-by-Game
All games

Page 4/12
as of Nov 16, 2022

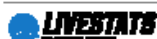
#3 BAUM, Amy

Opponent	Date	GS	MIN	Total FG-FGA	PCT	3-Pointers 3FG-3FGA	PCT	Free throws FT-FTA	PCT	Rebounds OFF/DEF/TOT	PF	A	TO	BLK	STL	PTS	AVG
Cal St. East Bay	11/07/2022	*	21:52	3-5	.600	3-4	.750	0-0	.000	1 1 2	2.0	4	2	0	0	9	9.0
Washington St.	11/11/2022	*	26:00	0-4	.000	0-1	.000	0-0	.000	1 0 1	1.5	0	3	0	0	0	4.5
Totals		2	47:52	3-9	.333	3-5	.600	0-0	.000	2 1 3	1.5	4	5	0	0	9	4.5

Player Averages

Games Played	Minutes/ game	Points/ game	FG Pct	3FG Pct	FT Pct	Rebounds/ game	Assists/ game	Turnovers/ game	Assist/Turnover ratio	Steals/ game	Blocks/ game
2	23.9	4.5	33.3	60.0	0.0	1.5	2.5	0.0	5.0	0.0	0.0

FAST



CAREER YEAR-BY-YEAR STATISTICS

Year	GP	GS	Min	Avg	FG	FGA	Pct	3FG	3FGA	Pct	FT	FTA	Pct	Off	Def	Tot	Avg	PF	FO	Ast	TO	Blk	Stl	Pts	Avg
2020-21	17	0	121	7.1	11	38	.289	4	25	.160	7	8	.875	7	15	22	1.3	17	0	2	13	1	3	33	1.9
TOTAL	17	0	121	7.1	11	38	.289	4	25	.160	7	8	.875	7	15	22	1.3	17	0	2	13	1	3	33	1.9



JESSICA MCDOWELL-WHITE (Mc-Dow-ell)

Senior • Guard • 5-6 • Brisbane, Australia • Brisbane State HS. • Eastern Washington

SEASON STATS

PPG	RPG	APG	FG%	3FG%	FT%
5.6	3.9	4.3	38.2	31.0	88.0

LAST GAME

MIN	PTS	REBS	ASTS	BLKS	STLS
32	8	1	3	0	0

Played and started in all 33 games for the Dons during the 2021-22 season...Logged 1,065 total minutes as she averaged 32.3 minutes per game and played the entire 40 minutes twice...Finished the season by scoring 185 total points and averaging 5.6 points per game...Led USF in assists this season as she dished out 142 total dimes this season for a greater than 2-to-1 assist to turnover ratio...Scored a season-high 14 points during the Dons' road victory over Pacific in Stockton as she knocked down four three-point shots in the victory



2022-23 San Francisco Women's Basketball
Individual Game-by-Game
All games

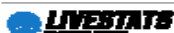
Page 5/12
as of Nov 16, 2022

#4 MCDOWELL-WHITE, Jessica

Opponent	Date	GS	MIN	Total FG-FGA	PCT	3FG-3FGA	PCT	Free throws FT-FTA	PCT	Rebounds OFF DEF TOT	AVG	PF	A	TO	BLK	STL	PTS	AVG
Cal St. East Bay	11/07/2022	*	35:11	1-5	.200	1-3	.333	0-0	.000	0 2 2	2.0	3	5	2	0	0	3	3.0
Washington St.	11/11/2022	*	32:46	3-6	.500	2-4	.500	0-0	.000	0 1 1	1.5	3	3	1	0	0	8	5.5
Totals			2	67:57	4-11	.364	3-7	.429	0-0	0 3 3	1.5	6	8	3	0	0	11	5.5

Player Averages

Games Played	Minutes/game	Points/game	FG Pct	3FG Pct	FT Pct	Rebounds/game	Assists/game	Turnovers/game	Assist/Turnover ratio	Steals/game	Blocks/game
2	34.0	5.5	36.4	42.9	0.0	1.5	4.0	1.5	2.7	0.0	0.0



FAST FIVE...

CAREER YEAR-BY-YEAR STATISTICS

Year	GP	GS	Min	Avg	FG	FGA	Pct	3FG	3FGA	Pct	FT	FTA	Pct	Off	Def	Tot	Avg	PF	FO	Ast	TO	Blk	Stl	Pts	Avg
2019-20	29	23	839	28.9	55	170	.324	28	100	.280	32	43	.744	1	63	64	2.2	70	1	64	77	3	24	170	5.9
2020-21	27	0	313	11.6	28	64	.438	14	33	.424	18	26	.692	7	19	26	1.0	29	1	20	21	0	8	88	3.3
2021-22	30	3	383	12.8	25	76	.329	10	31	.323	14	24	.583	15	31	46	1.5	31	0	17	17	1	7	74	2.5
TOTAL USF	118	37	2,102	17.8	160	463	.346	77	252	.306	96	140	.686	37	170	207	1.8	175	4	130	166	6	56	493	4.2



AMALIE LANGER (Ah-muh-lee Layn-gur)

Graduate Student • Guard • 5-9 • Rungsted Denmark • Rungsted Gymnasium

SEASON STATS

PPG	RPG	APG	FG%	3FG%	FT%
6.3	1.5	0.6	43.4	41.3	66.7

LAST GAME

MIN	PTS	REBS	ASTS	BLKS	STLS

Started in all 31 games she played in for the Dons this season, as she logged 721 total minutes for an average of 23.3 minutes per contest...Scored 195 total points as she averaged 6.3 points per game playing for USF this season...Shot 43.4 percent from the field going 66-for-152, from three point range, Langer finished the year shooting a very impressive 41 percent on 31-for-75 attempts.. Collected 38 steals and dished out 18 assists for USF this season.

An all-star player and national champion at multiple levels in her home country of Denmark.

Has been in the starting lineup for the Denmark national team since her U-14 days.

Most recently acting as the captain for the U-20 national team.

Won golds at the Denmark national championship for U-14, U-16 and twice for U-19.

Twice named the MVP at the Scania Cup (the Nordic club championships) while earning four all-star nods. Totaled three Nordic Club Championships.

Also named an all-star twice in European Youth Basketball League play.

Played for four years in the best national women's league in Denmark, starting as a 15-year-old in 2015.

She would become a full-time member of the Hørsholm 79'ers team in 2016, '17 and '18, playing as a starter on several occasions.

Her Hørsholm 79'ers earned a silver in the 2017 national championships, and won gold in 2018.

FAST FIVE...

CAREER YEAR-BY-YEAR STATISTICS

Year	GP	GS	Min	Avg	FG	FGA	Pct	3FG	3FGA	Pct	FT	FTA	Pct	Off	Def	Tot	Avg	PF	FO	Ast	TO	Blk	Stl	Pts	Avg
2019-20	34	24	698	20.5	56	119	.471	9	26	.346	29	33	.879	59	128	187	5.5	93	3	35	62	8	13	150	4.4
2020-21	25	21	694	27.8	44	119	.370	24	69	.348	15	19	.789	36	91	127	5.1	77	2	40	43	14	15	127	5.1
TOTAL	59	45	1351	23.6	100	238	.420	33	95	.347	44	52	.846	95	219	314	5.3	170	5	75	105	22	28	277	4.7



LORENA BARBOSA (Low-ren-ugh Bar-bo-sa)

RS Freshman • Forward • 6-5 • Itatiba, Brazil • Gloria Azedia Bonetti

SEASON STATS

PPG	RPG	APG	FG%	3FG%	FT%
N/A	N/A	N/A	N/A	N/A	N/A

LAST GAME

MIN	PTS	REBS	ASTS	BLKS	STLS

Born October 15 in Bahia, Brazil
 Parents are Jacilene and Claudio
 One of Lorena's hobbies is cooking
 Undecided on what her major will be

FAST FIVE...

CAREER YEAR-BY-YEAR STATISTICS

Year GP GS Min Avg FG FGA Pct FG FGA Pct FT FTA Pct Off Def Tot Avg PF FO Ast TO Blk Stl Pts Avg



JASMINE GAYLES (Jaz-min Gay-ulls)

Senior • Guard • 5-7 • Seattle, Wash. • West Seattle HS • Northern Colorado

SEASON STATS

PPG	RPG	APG	FG%	3FG%	FT%
11.6	3.2	0.9	45.3	34.5	70.4

LAST GAME

MIN	PTS	REBS	ASTS	BLKS	STLS
13	0	4	1	0	0

Transferred to San Francisco from Northern Colorado prior to the season...Played in all 33 games for the Dons this season while also making two starts...Finished the season with 703 total minutes played for an average of 21.3 minutes per game mostly coming off the bench...Scored 382 total points for an average of 11.3 PPG good for second on USF's roster.

Parents Hyong and Leland Gayles.

Younger brother Leland III.

Jasmine's Dad, Leland Jr. played college football for Arizona and grandfather Leland Sr. played college football for UCLA.

Worked with Habitat for Humanity.

The thing she misses most about home is the Seattle rain.

After graduation, Jasmine wants to pursue a career in law.

Her favorite show is The Office, favorite food is pasta and her favorite athlete is Kennedy Dickie.



2022-23 San Francisco Women's Basketball Individual Game-by-Game All games

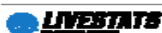
Page 6/12
as of Nov 16, 2022

#11 GAYLES, Jasmine

Opponent	Date	GS	MIN	FG-FGA	PCT	3FG-3FGA	PCT	FT-FTA	PCT	OFF	DEF	TOT	AVG	PF	A	TO	BLK	STL	PTS	AVG
Cal St. East Bay	11/07/2022		30:30	6-15	.400	0-6	.000	11-12	.917	2	9	11	11.0	2	4	1	0	0	23	23.0
Washington St.	11/11/2022		13:18	0-4	.000	0-1	.000	0-0	.000	1	3	4	7.5	1	1	1	0	0	0	11.5
Totals		0	43:48	6-19	.316	0-7	.000	11-12	.917	3	12	15	7.5	3	5	2	0	0	23	11.5

Player Averages

Games Played	Minutes/ game	Points/ game	FG Pct	3FG Pct	FT Pct	Rebounds/ game	Assists/ game	Turnovers/ game	Assist/Turnover ratio	Steals/ game	Blocks/ game
2	21.9	11.5	31.6	0.0	91.7	7.5	2.5	1.0	2.5	0.0	0.0



FAST FIVE...

CAREER YEAR-BY-YEAR STATISTICS

Year	GP	GS	Min	Avg	FG	FGA	Pct	3FG	3FGA	Pct	FT	FTA	Pct	Off	Def	Tot	Avg	PF	FO	Ast	TO	Blk	Stl	Pts	Avg
2020-21	5	0	18	3.6	1	5	.200	0	3	.000	0	1	.000	0	5	5	1.0	3	0	1	1	0	0	2	0.4
TOTAL	5	0	18	3.6	1	5	.200	0	3	.000	0	1	.000	0	5	5	1.0	3	0	1	1	0	0	2	0.4



KENNEDY DICKIE (Ken-uh-dee Dick-ee)

Senior • Forward • 6-0 • Kelowna, British Columbia • Kelowna Secondary • Eastern Washington

SEASON STATS

PPG	RPG	APG	FG%	3FG%	FT%
9.1	6.7	0.6	35.5	30.6	62.1

LAST GAME

MIN	PTS	REBS	ASTS	BLKS	STLS
31	11	8	0	0	2

Transferred to the Dons ahead of the 2021-22 season

Named to the All-WCC Second Team following her tremendous debut season on the Hilltop

Played in all 33 USF games this season while also making 19 starts

Finished the season playing 836 total minutes and averaged 25.3 minutes per game playing in the USF front court

Parents are Ross and Brenda Dickie...Siblings are Cordell and Madison

Kennedy believes the best part of being a student-athlete is the support of the athletic department and the atmosphere between the athletes

She chose USF because of the coaching staff and the team being built and she wanted to be a part of it

Enjoys the diversity of San Francisco and the food

The thing she misses most from home is maple bacon

If Kennedy wasn't playing sports she would go on a reality TV competition or she would go traveling

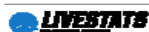
Her favorite movie is the Wolf of Wall Street, favorite food is sushi and favorite athlete is Jasmine Gayles

#12 DICKIE, Kennedy

Opponent	Date	GS	MIN	Total		3-Pointers		Free throws		Rebounds		PF	A	TO	BLK	STL	PTS	AVG
				FG-FGA	PCT	3FG-3FGA	PCT	FT-FTA	PCT	OFF	DEF							
Cal St. East Bay	11/07/2022	*	23:29	5-8	.625	2-4	.500	4-5	.800	1	7	8	8.0	3	0	2	16	16.0
Washington St.	11/11/2022	*	30:18	3-9	.333	1-2	.500	4-4	1.000	2	9	11	9.5	4	0	1	11	13.5
Totals			2	53:48	8-17	.471	3-6	.500	8-9	.889	3	16	19	9.5	7	0	2	13.5

Player Averages

Games Played	Minutes/ game	Points/ game	FG Pct	3FG Pct	FT Pct	Rebounds/ game	Assists/ game	Turnovers/ game	Assist/Turnover ratio	Steals/ game	Blocks/ game
2	26.9	13.5	47.1	50.0	88.9	9.5	0.0	3.0	0.0	1.0	0.5



FAST FIVE...

CAREER YEAR-BY-YEAR STATISTICS

Year	GP	GS	Min	Avg	FG	FGA	Pct	3FG	3FGA	Pct	FT	FTA	Pct	Off	Def	Tot	Avg	PF	FO	Ast	TO	Blk	Stl	Pts	Avg
2020-21	4	0	15	3.8	2	3	.667	0	1	.000	0	0	.000	0	0	0	0.0	2	0	0	1	1	0	4	1.0
TOTAL	4	0	15	3.8	2	3	.667	0	1	.000	0	0	.000	0	0	0	0.0	2	0	0	1	1	0	4	1.0



DEBORA DOS SANTOS (Deb-ruh Dos-San-toes)

RS Sophomore • Forward • 6-0 • Rio de Janeiro, Brazil • Wasatch Academy • South Plaines College

SEASON STATS

PPG	RP6	APG	FG%	3FG%	FT%
N/A	N/A	N/A	N/A	N/A	N/A

LAST GAME

MIN	PTS	REBS	ASTS	BLKS	STLS
18	16	7	1	1	0

Played the 2020-21 season at South Plaines College in Levelland, Texas

Third team All-American honors

Freshman of the Year and WJAC MVP

Averaged 13.6 points and 13 rebounds

Native of Rio de Janeiro, Brazil
Parents are Flavia and Reginaldo
One brother named Israel

#13 DOS SANTOS, Debora

Opponent	Date	GS	MIN	Total FG-FGA	PCT	3-Pointers 3FG-3FGA	PCT	Free throws FT-FTA	PCT	Rebounds OFF DEF TOT AVG	PF	A	TO	BLK	STL	PTS	AVG
Cal St. East Bay	11/07/2022	*	11:45	1-5	.200	0-0	.000	0-0	.000	2 1 3 3.0	1	0	1	1	1	2	2.0
Washington St.	11/11/2022		18:21	7-13	.538	0-0	.000	2-2	1.000	3 4 7 5.0	4	1	0	1	0	16	9.0
Totals		1	30:06	8-18	.444	0-0	.000	2-2	1.000	5 5 10 5.0	5	1	1	2	1	18	9.0

Player Averages

Games Played	Minutes/ game	Points/ game	FG Pct	3FG Pct	FT Pct	Rebounds/ game	Assists/ game	Turnovers/ game	Assist/Turnover ratio	Steals/ game	Blocks/ game
2	15.0	9.0	44.4	0.0	100.0	5.0	6.5	0.5	1.0	6.5	1.0



FAST FIVE...

CAREER YEAR-BY-YEAR STATISTICS

Year GP GS Min Avg FG FGA Pct 3FG 3FGA Pct FT FTA Pct Off Def Tot Avg PF FO Ast TO Blk Stl Pts Avg



MARINA HERNANDEZ (Muh-ree-nuh Her-nahn-dez)

Freshman • Forward • 6-2 • Alicante, Spain • Le Fuente San Luis

SEASON STATS

PPG	RPG	APG	FG%	3FG%	FT%
N/A	N/A	N/A	N/A	N/A	N/A

LAST GAME

MIN	PTS	REBS	ASTS	BLKS	STLS
2	0	1	0	0	0

Played high school basketball at Le Fuente San Luis

Won the Conference of Comunidad Valenciana four times

Born to Ana Maria Torro Palau and Juan Enrique Hernandez Martin
Has one sibling: Alvaro (13)
Mother, Ana Maria competed at the University of Alicante for six years
One of her hobbies is reading
Studying marketing at USF



2022-23 San Francisco Women's Basketball
Individual Game-by-Game
All games

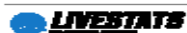
Page 9/12
as of Nov 16, 2022

#14 HERNANDEZ, Marina

Opponent	Date	GS	MIN	Total		3-Pointers		Free throws		Rebounds				PF	A	TO	BLK	STL	PTS	AVG
				FG-FGA	PCT	3FG-3FGA	PCT	FT-FTA	PCT	OFF	DEF	TOT	AVG							
Cal St. East Bay	11/07/2022		05:54	0-1	.000	0-0	.000	0-0	.000	1	0	1	1.0	2	0	2	0	0	0.0	
Washington St.	11/11/2022		01:49	0-1	.000	0-1	.000	0-0	.000	1	0	1	1.0	0	0	0	0	0	0.0	
Totals		0	07:44	0-2	.000	0-1	.000	0-0	.000	2	0	2	1.0	2	0	2	0	0	0.0	

Player Averages

Games Played	Minutes/ game	Points/ game	FG Pct	3FG Pct	FT Pct	Rebounds/ game	Assists/ game	Turnovers/ game	Assist/Turnover ratio	Steals/ game	Blocks/ game
2	3.9	0.0	0.0	0.0	0.0	1.0	0.0	1.0	0.0	0.0	0.0



FAST FIVE...

CAREER YEAR-BY-YEAR STATISTICS

Year GP GS Min Avg FG FGA Pct 3FG 3FGA Pct FT FTA Pct Off Def Tot Avg PF FO Ast TO Blk Stl Pts Avg



AYA KÉITA (Eye-uh Kay-tuh)

Sophomore • Guard • 5-9 • Gyor, Hungary • Kazinczy Ferenec Grammar School

SEASON STATS

PPG	RPG	APG	FG%	3FG%	FT%
0.8	0.1	0.2	25.0	.000	50.0

LAST GAME

MIN	PTS	REBS	ASTS	BLKS	STLS
8	0	0	0	0	2

Played in nine games coming off the USF bench and totaling 19 minutes of action on the court....Recorded her first collegiate points on the road in a loss to Colorado on Dec. 20 where she also played a season-high 11 minutes against the Buffaloes...Finished her season by coming off the bench and scoring two points in two minutes of action in USF's home victory over Pepperdine.

Parents Lamine M. Kéita and Tunde Takacs
Siblings are Fatouma, Sadibou, and Reni
Favorite hobby is hiking
She misses the people and food most from home
If Aya wasn't playing sports she'd be a veterinarian
Her favorite TV show is How to Get Away With Murder and Aya's favorite food is pancakes
Studying business at USF



2022-23 San Francisco Women's Basketball Individual Game-by-Game All games

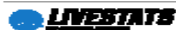
Page 10/12
as of Nov 16, 2022

#20 KÉITA, Aya

Opponent	Date	GS	MIN	Total FG-FGA	PCT	3-Pointers 3FG-3FGA	PCT	Free throws FT-FTA	PCT	Rebounds OFF DEF TOT AVG	PF	A TO	BLK	STL	PTS	AVG
Cal St. East Bay	11/07/2022		08:02	0-2	.000	0-1	.000	0-0	.000	0	0	0	0	0	0	0.0
Totals		0	08:02	0-2	.000	0-1	.000	0-0	.000	0	0	0	0	0	0	0.0

Player Averages

Games Played	Minutes/game	Points/game	FG Pct	3FG Pct	FT Pct	Rebounds/game	Assists/game	Turnovers/game	Assist/Turnover ratio	Steals/game	Blocks/game
1	8.0	0.0	0.0	0.0	0.0	0.0	0.0	0.0	0.0	0.0	0.0



FAST FIVE...

CAREER YEAR-BY-YEAR STATISTICS

Year	GP	GS	Min	Avg	FG	FGA	Pct	3FG	3FGA	Pct	FT	FTA	Pct	Off	Def	Tot	Avg	PF	FO	Ast	TO	Blk	Stl	Pts	Avg
2018-19	17	0	123	7.2	20	43	.465	17	38	.447	7	8	.875	2	18	20	1.2	11	0	5	6	4	2	64	3.8
2019-20	31	0	335	10.8	46	111	.414	35	89	.393	13	14	.929	11	46	57	1.8	30	0	13	13	6	11	140	4.5
2020-21	25	21	674	27.0	81	194	.418	55	150	.367	19	28	.679	25	114	139	5.6	63	1	20	24	21	20	236	9.4
TOTAL	73	21	1130	15.5	147	348	.422	107	277	.386	39	50	.780	38	178	216	3.0	104	1	38	43	31	33	440	6.0



IOANNA KRIMILI (Ee-oh-ahna Cree-me-lee)

RS Junior • Guard • 5-10 • Heraklion, Greece • Aristotelio College

SEASON STATS

PPG	RPG	APG	FG%	3FG%	FT%
19.4	4.2	3.2	43.0	35.0	85.5

LAST GAME

MIN	PTS	REBS	ASTS	BLKS	STLS
38	14	4	4	0	0

Was selected to her second consecutive All-WCC First team after her tremendous follow up season on the Hilltop...Played and started in 31 games for the Dons during the 2021-22 season as she led USF in minutes played 1,098 as she played 40 or more minutes five times...Led the WCC and USF in total points and PPG for the second consecutive year, scoring 602 points and averaging 19.4 for the Dons...Reached the 1,000 career point milestone in impressive fashion as she scored 25 points at home in USF's victory over Pepperdine on Feb. 5

Parents Stella Tsafatsinou and Ilias Krimilis
Older brother Xristofros
Hobbies include watching basketball in her free time.
Favorite food is gyros.
Favorite athlete is Giannis Antetokounmpo.



2022-23 San Francisco Women's Basketball Individual Game-by-Game All games

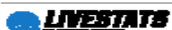
Page 11/12
as of Nov 16, 2022

#21 KRIMILI, Ioanna

		Total		3-Pointers		Free throws		Rebounds												
Opponent	Date	GS	MIN	FG-FGA	PCT	3FG-3FGA	PCT	FT-FTA	PCT	OFF	DEF	TOT	AVG	PF	A	TO	BLK	STL	PTS	AVG
Cal St. East Bay	11/07/2022	*	28:30	4-14	.286	0-8	.000	7-8	.875	0	3	3	3.0	4	2	4	1	2	15	15.0
Washington St.	11/11/2022	*	37:53	4-17	.235	0-2	.000	6-6	1.000	0	4	4	3.5	2	4	2	0	0	14	14.5
Totals			2:66:23	8-31	.258	0-10	.000	13-14	.929		7	7	7.35	6	6	1	2	29	14.5	

Player Averages

Games Played	Minutes/ game	Points/ game	FG Pct	3FG Pct	FT Pct	Rebounds/ game	Assists/ game	Turnovers/ game	Assist/Turnover ratio	Steals/ game	Blocks/ game
2	39.2	14.5	25.8	0.0	92.9	3.5	3.0	3.0	1.0	1.0	0.5



FAST FIVE...

CAREER YEAR-BY-YEAR STATISTICS

Year GP GS Min Avg FG FGA Pct 3FG 3FGA Pct FT FTA Pct Off Def Tot Avg PF FO Ast TO Blk Stl Pts Avg



CAMI FULCHER (Cam-ee Full-chur)

Sophomore • Guard • 5-8 • West Linn, Ore. • West Linn HS

SEASON STATS

PPG	RPG	APG	FG%	3FG%	FT%
1.0	0.0	0.0	.000	.000	.500

LAST GAME

MIN	PTS	REBS	ASTS	BLKS	STLS
2	0	1	0	0	0

Played in nine games coming off the bench for the Dons to begin her collegiate career

Scored her first collegiate point in a road loss to BYU on Jan. 29 with a made three point shot

Majoring in politics with a minor in criminal justice

Contemplating a career as an environmental lawyer

Born May 20 in White Rock, B.C., Canada
 Parents are Clint and Nancy Fulcher
 Cami has one older sister, Kennedy
 Kennedy played basketball at Concordia Irvine, Clint skied at Southern Oregon, grandfather Dave Powell played football at Oregon
 If Cami wasn't playing sports she would be an environmental activist who travels the world
 Favorite food is cheese bagels
 Favorite athlete is Sabrina Ionescu
 Cami has dual-citizenship in both Canada and the United States



2022-23 San Francisco Women's Basketball Individual Game-by-Game All games

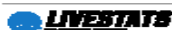
Page 12/12
as of Nov 18, 2022

#32 FULCHER, Cami

Opponent	Date	GS	MIN	Total FG-FGA	PCT	3-Pointers 3FG-3FGA	PCT	Free throws FT-FTA	PCT	Rebounds OFF/DEF/TOT	AVG	PF	A	TO	BLK	STL	PTS	AVG
Cal St. East Bay	11/07/2022		01:57	0-1	.000	0-0	.000	0-0	.000	1 0 1	1.0	1	0	0	0	0	0	0.0
Totals		0	01:57	0-1	.000	0-0	.000	0-0	.000	1 0 1	1.0	1	0	0	0	0	0	0.0

Player Averages

Games Played	Minutes/ game	Points/ game	FG Pct	3FG Pct	FT Pct	Rebounds/ game	Assists/ game	Turnovers/ game	Assist/Turnover ratio	Steals/ game	Blocks/ game
1	2.0	0.0	0.0	0.0	0.0	1.0	0.0	0.0	0.0	0.0	0.0



FAST FIVE...

CAREER YEAR-BY-YEAR STATISTICS

Year GP GS Min Avg FG FGA Pct 3FG 3FGA Pct FT FTA Pct Off Def Tot Avg PF FO Ast TO Blk Stil Pts Avg



ABBY RATHBUN (Ab-ee Rath-bun)

Graduate Student • Guard/Forward • 5-11 • Moses Lake, Wash. • Moses Lake HS

SEASON STATS

PPG	RPG	APG	FG%	3FG%	FT%
4.0	3.4	1.3	51.5	.000	70.0

LAST GAME vs. #1/1 Gonzaga (3/7/22)

MIN	PTS	REBS	ASTS	BLKS	STLS
--	--	--	--	--	--

Played in 12 games and made 11 starts for USF....Logged 238 minutes, averaging 19.8 minutes per game...Scored 48 points to average 4.0 PPG and shot 51.5 percent from the field (17-of-33)...Shot 70 percent from the free throw line (14-of-20)...Season ended with Abby scoring four points in 18 minutes played during USF's road victory over Tulsa to wrap up non-conference play.

Parents Greg and Jennifer Rathbun
Two younger brother Tell and Taggart
Favorite thing about San Francisco is the food
Misses the fall weather and football games most from home
Favorite musical artists are Beyoncé, Jay-Z and J. Cole
Favorite foods are steak and watermelon
Favorite athlete is Abby Wambach

Game-by-Game Totals

Game	Min	FG-FGA	PCT	3PT-A	PCT	FT-A	PCT	O-D-T	PF	A	TO	BLK	ST	TP
------	-----	--------	-----	-------	-----	------	-----	-------	----	---	----	-----	----	----

FAST FIVE...

CAREER YEAR-BY-YEAR STATISTICS

Year	GP	GS	Min	Avg	FG	FGA	Pct	FG	FGA	Pct	FT	FTA	Pct	Off	Def	Tot	Avg	PF	FO	Ast	TO	Blk	Stl	Pts	Avg
2019-20	7	0	28	4.0	2	3	.667	0	0	.000	2	2	1.000	2	1	3	0.4	4	0	1	1	0	0	6	0.9
2020-21	23	2	245	10.7	22	42	.524	1	1	1.000	6	12	.500	15	21	36	1.6	38	0	6	17	2	2	51	2.2
TOTAL	30	2	273	9.1	24	45	.533	1	1	1.000	8	14	.571	17	22	39	1.3	42	0	7	18	2	2	57	1.9

