



2022 UNIVERSITY OF SOUTH FLORIDA CROSS COUNTRY INVITATIONAL

MEET DATE: Friday, October 14, 2022

LOCATION: The CLAW at USF
13801 North 46th Street
Tampa, FL 33613

SCHEDULE: 5:00pm- College Women 5k
5:50pm- College Men 8k

Runners who do not finish their race within 30 minutes will be pulled from the course prior to the start of the next race.

On grass, rolling hills — 1/4' spikes or racing flats recommended

All college entries must be submitted via www.DirectAthletics.com by 5:00pm on October 7th.

COURSE: **RSVP by September 20, if you have intentions on attending. Contact Coach Griffiths.**

ENTRY INFORMATION: NO HIGH SCHOOL ATHLETES WILL BE ALLOWED IN COLLEGE RACES.

University/College - \$400.00 maximum per team of 5 or more (PER GENDER)

UNATTACHED ENTRIES: Unattached Individual - \$20.00 entry fee.

ALL ENTRIES MUST BE PAID VIA DIRECTATHLETICS , WHEN REGISTERING

ENTRY FEE:

Packet Pickup will begin at 3:00pm by the club house. The course will be open for warm-ups beginning October 14th at 6:00am. Box assignments will be preassigned.

PACKET PICKUP/WARMUP: Course maps will be available at packet pick-up starting at 3:00pm. They will also be available online at www.gousfbulls.com the week prior to the meet.

PARKING: Bus drop off area will be at the course entrance at N 46th street, buses will park at USF Sycamore Dr. lot. Spectator parking will be located on the USF campus across E Fletcher Ave.

DRESSING FACILITIES: There are NO dressing or shower facilities available at the course. Portable bathrooms will be available at the course.

RESULTS: Results will be found at www.halfmiletiming.com.

FOR FURTHER INFORMATION: Contact Meet Director: Damon Griffiths CELL (813) 599-1650

USF CROSS COUNTRY INVITATIONAL WOMEN'S 5K



BLUE - START/MILE 1

RED - MILE 2

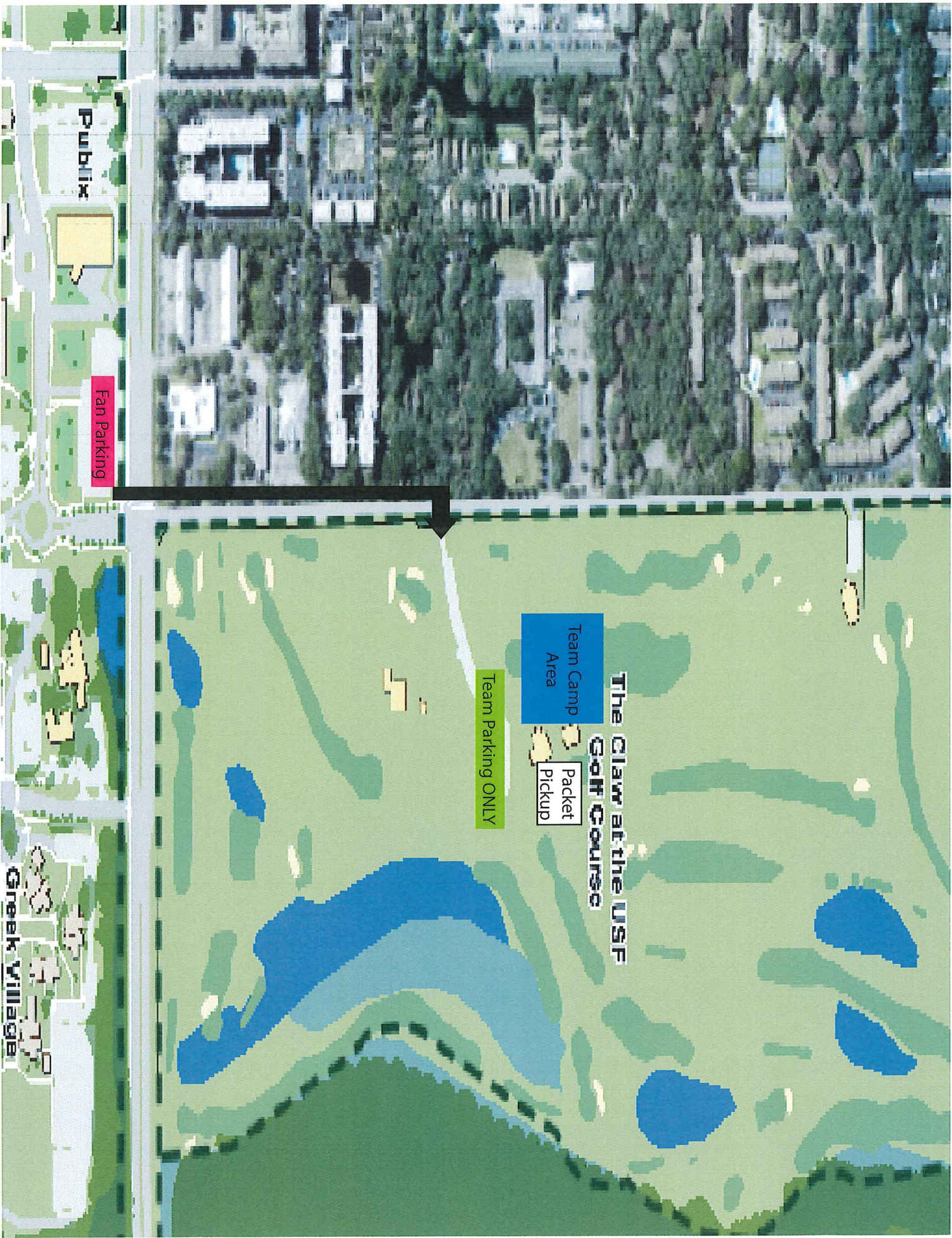
YELLOW - MILE 3/FINISH

USF CROSS COUNTRY INVITATIONAL MEN'S 8K



BLUE - START/MILE 1 RED - MILE 2 PINK - MILE 3

GREEN - MILE 4 WHITE - MILE 5/FINISH



Publix

Fan Parking

Team Camp Area

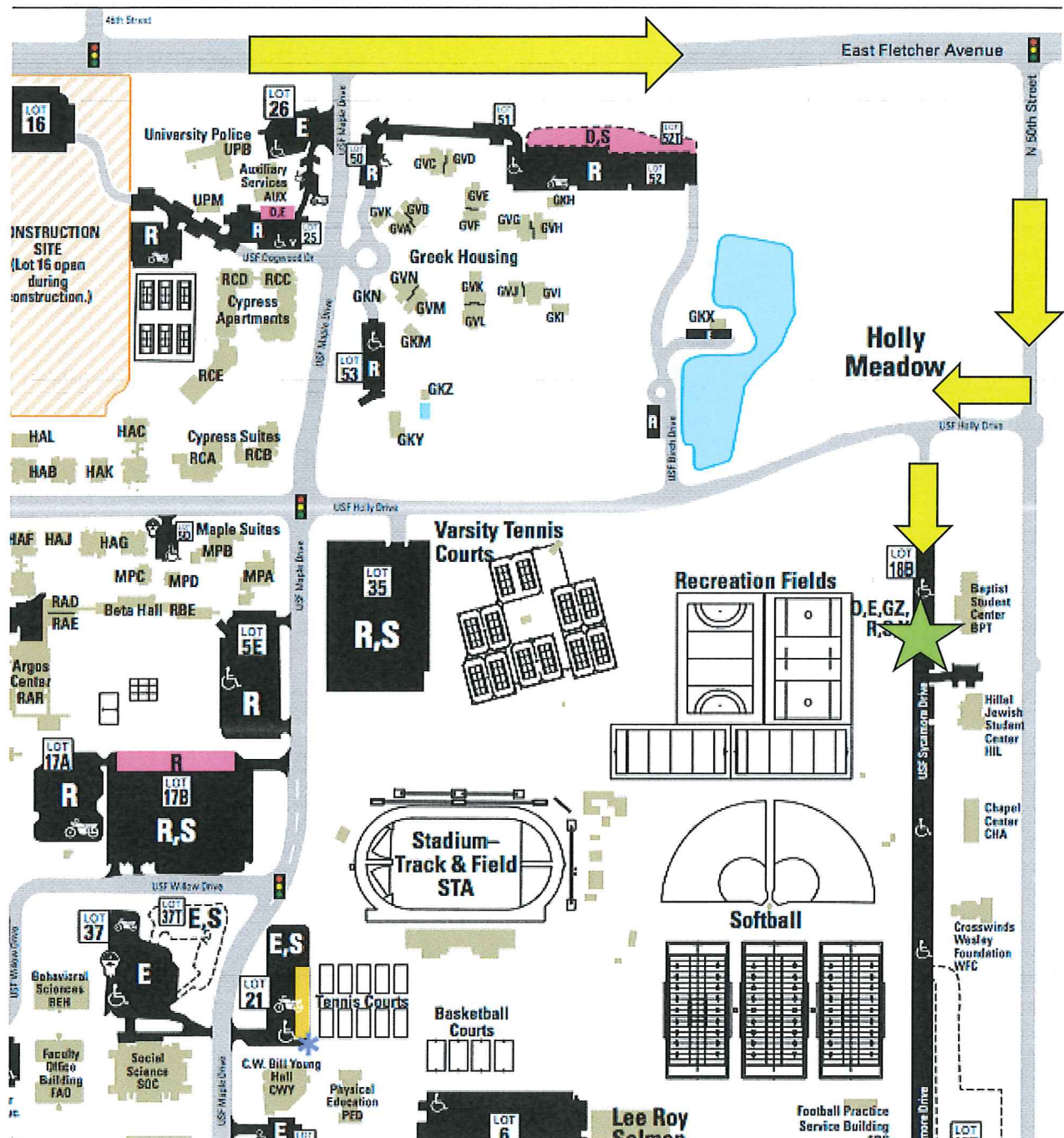
Packet Pickup

Team Parking ONLY

The Claw at the USF
GOLF COURSE

Greek Village

Directions to North Sycamore Dr.



Denotes Bus Parking