

WICHITA STATE



8

WICHITA STATE (3-4, 0-2) at #18/22 **SOUTH FLORIDA** (7-1, 4-0)
Wednesday, Jan. 6, 2021 • 6:00 p.m. CT
Tampa, Fla. • Yuengling Center (10,411)

WICHITA STATE

USF

Overall	AAC	Record	Overall	Conf.
3-4	0-2	Record	7-1	4-0
3-3	0-1	Home	4-1	1-0
0-1	0-1	Away	3-0	3-0
0-0	-	Neutral	0-0	-
L4	L2	Streak	W6	W4
-/-	-	AP / Coaches	#18/22	-
181	-	NET*	18	-

* - NET Rankings as of Jan. 4.

Keitha Adams	Head Coach	Jose Fernandez
45-54	4 th	Current School
329-263	20 th	Overall
		380-273 21 st

Individual Leaders

Asia Strong	15.0	Points	Sydni Harvey	11.5
Seraphine Bastin	6.7	Rebounds	Bethy Mununga	12.0
Seraphine Bastin	4.4	Assists	Elisa Pinzan	6.1
Trajata Colbert	10	Blocks	Beatriz Jordao	10
Seraphine Bastin	13	Steals	Elisa Pinzan	12

Total	Team Stats	Total
67.9	Offense	71.3
66.1	Defense	53.9
1.7	Scoring Margin	17.4
0.0	Rebound Margin	11.4
13.3	Assists	16.8
3.1	Blocks	4.3
9.3	Steals	5.1
-0.9	Turnover Margin	1.4
0.7	A-TO Ratio	1.3
43.0	FG %	38.3
38.4	FG % Defense	33.1
5.0	3-Pointers	7.5
34.3	3-Point %	29.7
63.4	FT %	68.5

STARTERS & KEY RESERVES

Probable Starters	Ht	Cl.	Pts	Reb
F 00 Asia Strong	6-2	Jr.	15.0	6.0
G 2 Mariah McCully	5-7	Sr.	10.6	2.6
G 12 Carla Bremaud	5-10	Jr.	8.3	2.9
G 23 Seraphine Bastin	5-7	Jr.	11.3	6.7
F 24 Trajata Colbert	6-2	Jr.	8.4	5.0

Key Reserves	Ht	Cl.	Pts	Reb
G 1 DJ McCarty	5-8	So.	6.4	3.2*
G 10 Mariah McKinney	5-8	Jr.	0.0	0.0
F 13 Ene Adams	6-1	So.	2.7	6.1
G 20 Shamayah Duncan	5-11	Fr.	1.8	1.0

* assists

STARTING FIVE

► Conference play continues with a road trip to Tampa, Fla., to face the 21st-ranked USF Bulls on Wednesday, Jan. 6 at 6 p.m. CT.

1 ON THE AIR: Wednesday's game can be heard on the radio at KFH 97.5 FM/1240 AM with the voice of Shocker Women's Basketball Steve Strain calling the action. Strain is in his seventh season broadcasting games for the women's program. The game will also be televised on ESPN+ and the ESPN app.

2 LAST TIME OUT: Wichita State suffered its fourth straight loss after a 3-0 start with a 65-59 loss vs. Cincinnati on Saturday. Wichita State shot a season-low 36.5 percent from the field and dropped to 0-5 all-time vs. Cincinnati. **Asia Strong** scored a team-high tying 15 points to go with six rebounds. Strong has now scored 10 or more points in six of the team's seven games. **Mariah McCully** also finished with 15 points, one shy of a season high. **Carla Bremaud** went 4-of-8 from beyond the arc to chip in 12 points and **Seraphine Bastin** came up two points shy of a triple-double. Bastin tallied eight points, 10 rebounds, 10 assists and four steals.

3 SCOUTING THE BULLS: Nationally-ranked USF is 7-1 overall and 4-0 in American Athletic Conference play. The Bulls enter the matchup ranked No. 18 in the AP and No. 22 in the Coaches Poll. The highlight of their season to this point came in an upset of No. 6 Mississippi State on Dec. 5, 67-63. USF's lone loss came in tight matchup with No. 4 Baylor, 67-62. Sydni Harvey averages a team-high 11.5 points to lead a balanced scoring attack that sees eight players scoring 6.0 points or more per game. Bethy Mununga leads the league in rebounds, rebounds per game and double-doubles. USF tops the AAC in assists, field goal pct. defense, free throws, rebounds, 3-point defense and 3-pointers made and attempted.

4 STRONG START: Wichita State junior forward **Asia Strong** is off to fast start in her first season at Wichita State. The South Bend, Ind., native has scored 10 or more points in six of the team's seven games, including two games of 20 or more. Strong set a season high in points and rebounds vs. UNI on Dec. 6 with 22 points and 13 rebounds. Strong leads Wichita State in scoring at 15.0 points per game. She ranks in the top five in the conference in field goals made (2nd), field goal attempts (3rd), points per game (4th) and field goal percentage (5th).

5 HONOR ROLL: Junior **Seraphine Bastin** picked up her first American Athletic Conference Weekly Honor Roll selection of the season following a stellar two-game stretch at Houston (Dec. 30) and vs. Cincinnati (Jan. 2). Bastin averaged 13.0 points, 10.5 rebounds, 7.0 assists and 2.0 steals, while shooting 14-of-14 at the free throw line. The Belgium native had a pair of double-doubles, going for 18 points and 11 rebounds at Houston and finishing with a near triple-double vs. Cincinnati. Against the Bearcats she logged eight points, 10 rebounds and 10 assists.

TUNING IN

TELECAST	ESPN+
Talent:	Jim Louk & Leah Secondo
Streaming:	ESPN.com/ESPNplus
RADIO	Shocker Radio // KFH 97.5 FM/1240 AM
Talent:	Steve Strain
Streaming:	KFHRadio.com
LIVE STATS	GoUSFBulls.com
FACEBOOK	@GoShockersWBB
TWITTER	@GoShockersWBB
INSTAGRAM	goshockerswbb
YOUTUBE	wsuathletics

2020-21 SCHEDULE/RESULTS

Date	Opponent	Time (CST)	TV
Nov. 27	TEXAS A&M CORPUS CHRISTI	W, 78-58	ESPN+
Nov. 30	ALCORN STATE	W, 71-53	ESPN+
Dec. 4	SOUTHERN	W, 57-53	ESPN+
Dec. 6	NORTHERN IOWA	L, 91-93 2OT	ESPN+
Dec. 10	SOUTH DAKOTA	L, 54-62	ESPN+
Dec. 16 at	Tulsa*	Postponed	ESPN+
Dec. 19 at	Tulane*	Postponed	ESPN+
Dec. 23	SMU*	Postponed	ESPN+
Dec. 30 at	Houston*	L, 65-79	ESPN+
Jan. 2	CINCINNATI*	L, 59-65	ESPN+
Jan. 6 at	#18/22 USF*	6:00 PM	ESPN+
Jan. 9	ECU*	2:00 PM	ESPN+
Jan. 13 at	Memphis*	6:30 PM	ESPN+
Jan. 20	USF*	6:00 PM	ESPN+
Jan. 23 at	Temple*	12:00 PM	ESPN+
Jan. 27 at	Cincinnati*	1:00 PM	ESPN+
Jan. 30	UCF*	7:00 PM	ESPN+
Feb. 3	TULANE*	3:00 PM	ESPN+
Feb. 6	TEMPLE*	2:00 PM	ESPN+
Feb. 10 at	UCF	4:00 PM	ESPN+
Feb. 17	MEMPHIS*	6:00 PM	ESPN+
Feb. 20 at	ECU*	12:00 PM	ESPN+
Feb. 24	HOUSTON*	6:00 PM	ESPN+
Feb. 27 at	SMU*	12:00 PM	ESPN+
Mar. 2	TULSA*	6:00 PM	ESPN+

* - American Athletic Conference game

+ - American Athletic Conference Championship (Fort Worth, Texas / Dickies Arena)

COMMUNICATIONS

WESTON PLETCHER

Asst. Director of Communications/WBB

✉ wpletcher@goshockers.com

📞 316-347-1925

📠 316-978-5447



2020-21 WICHITA STATE NUMERICAL ROSTER					
NO.	NAME	POS.	HT.	CLASS	HOMETOWN/PREVIOUS SCHOOL
00	Asia Strong	F	6-2	Jr.	South Bend, Ind. / Riley HS / Trinity Valley CC
1	DJ McCarty	G	5-8	So.	DeSoto, Texas / Cedar Hill HS
2	Mariah McCully	G	5-7	Sr.	Grand Rapids, Mich. / Grand Rapids Christian / Wabash Valley
10	Mariah McKinney	G	5-8	Jr.	Wichita, Kan. / Wichita East HS / Fort Scott CC
12	Carla Bremaud	G	5-11	Jr.	Angers, France / Life Prep Academy (Wichita, Kan.)
13	Ene Adams	F	6-1	Jr.	Jos, Nigeria / Grayson College
14	Carla Budane	F	6-0	Fr.	Lisboa, Portugal / Escola Secundaria Vergilio Ferreira
15	Jaida Hampton	G	5-10	Jr.	Lansing, Mich. / East Lansing HS
20	Shamaryah Duncan	G	5-11	Fr.	Waco, Texas / Midway HS
23	Seraphine Bastin	G	5-8	Jr.	Dinant, Belgium / Sainte-Marie Namur
24	Trajata Colbert	F	6-2	Jr.	Rochelle, Ga. / Wilcox County HS
42	Asia Henderson	C	6-3	R-Jr.	Hope Mills, N.C. / South View HS

2020-21 WICHITA STATE ALPHABETICAL ROSTER					
NO.	NAME	POS.	HT.	CLASS	HOMETOWN/PREVIOUS SCHOOL
13	Ene Adams	F	6-1	Jr.	Jos, Nigeria / Grayson College
23	Seraphine Bastin	G	5-8	So.	Dinant, Belgium / Sainte-Marie Namur
12	Carla Bremaud	G	5-11	So.	Angers, France / Life Prep Academy (Wichita, Kan.)
14	Carla Budane	F	6-0	Fr.	Lisboa, Portugal / Escola Secundaria Vergilio Ferreira
24	Trajata Colbert	F	6-2	So.	Rochelle, Ga. / Wilcox County HS
20	Shamaryah Duncan	G	5-11	Fr.	Waco, Texas / Midway HS
15	Jaida Hampton	G	5-10	So.	Lansing, Mich. / East Lansing HS
42	Asia Henderson	C	6-3	R-So.	Hope Mills, N.C. / South View HS
1	DJ McCarty	G	5-8	Fr.	DeSoto, Texas / Cedar Hill HS
10	Mariah McKinney	G	5-8	Jr.	Wichita, Kan. / Wichita East HS / Fort Scott CC
2	Mariah McCully	G	5-7	Jr.	Grand Rapids, Mich. / Grand Rapids Christian / Wabash Valley
00	Asia Strong	F	6-2	Jr.	South Bend, Ind. / Riley HS / Trinity Valley CC

COACHING STAFF

Head Coach: Keitha Adams (4th Season at WSU; 20th Overall)

Associate Head Coach: Ewa Laskowska

Assistant Coach: Chester Nichols

Assistant Coach: Kelli Bagley

Director of Operations: Erica Yancey

PRONUNCIATION GUIDE

ENE Adams	Uh-Nay
SERAPHINE BASTIN	Sara-FEEN BASS-ten
CARLA BREMAUD	Bree-MAW
TRAJATA Colbert	Truh-JAW-tuh
EWA LASKOWSKA	Ava Lass-KOW-ska

2020-21 WICHITA STATE ROSTER INFORMATION**By State/Country**

Belgium	(1) Seraphine Bastin
France	(1) Carla Bremaud
Georgia	(1) Trajata Colbert
Indiana	(1) Asia Strong
Kansas	(1) Mariah McKinney
Michigan	(2) Jaida Hampton Mariah McCully
North Carolina	(1) Asia Henderson
Portugal	(1) Carla Budane
Nigeria	(1) Ene Adams
Texas	(2) Shamaryah Duncan DJ McCarty

By Class

Freshman	(2) Carla Budane Shamaryah Duncan
Sophomores	(1) DJ McCarty
Juniors	(7) Ene Adams Seraphine Bastin Carla Bremaud Trajata Colbert Jaida Hampton Mariah McKinney Asia Strong
R-Juniors	(1) Asia Henderson
Seniors	(1) Mariah McCully

By Height

6-3	(1) Asia Henderson
6-2	(2) Trajata Colbert Asia Strong
6-1	(1) Ene Adams
6-0	(1) Carla Budane
5-11	(2) Carla Bremaud Shamaryah Duncan
5-10	(1) Jaida Hampton
5-8	(3) Seraphine Bastin DJ McCarty Mariah McKinney
5-7	(1) Mariah McCully

QUICK FACTS**GENERAL INFORMATION**

Institution	Wichita State University
Location	Wichita, Kan.
Enrollment	16,058
Founded	1895 (as Fairmount College)
Nickname	Shockers
Mascot	WuShock
Colors	Black and Yellow
Affiliation	NCAA Division I
Conference	American Athletic
Interim President	Dr. Richard Muma
Alma Mater (Year)	Texas Medical Branch
Athletic Director	Darron Boatright
Alma Mater (Year)	Murray State ('98)
Athletic Department Phone	(316) 978-3251
Website	www.goshockers.com
Twitter	@GoShockersWBB
Instagram	goshockerswbb

"THE ROUNDHOUSE"

Arena Name	Charles Koch Arena
Court Name	Devlin Court
Capacity	10,506
Opened	Dec. 3, 1955 (renovated/renamed in Fall, 2003)

HISTORY

First Year of Basketball	1905-06
All-Time Record	615-702 (47th Season)
Record in Charles Koch Arena	377-239
Conference Titles (Last)	3 (2015)
Conference Tournament Titles (Last)	3 (2015)

POSTSEASON

NCAA Appearances	3
Last Appearance	2015
NCAA Tournament Record	0-3
WNIT Appearances (Most Recent)	4 (2012)
WBI Appearances (Most Recent)	1 (2010)

COACHING STAFF

Head Coach	Keitha Adams (Southwestern '89)
Associate Head Coach	Ewa Laskowska (Pitt State, '99)
Assistant Coach	Chester Nichols (Greenville '97)
Assistant Coach	Kelli Bagley (UTEP '14)
Dir. of Operations	Erica Yancey (UTEP '07)
Video Coordinator	Chelsie Johnson (Bob Jones '11)
Strength & Conditioning	Hannah Wilkinson (Mississippi St '11)
Athletic Trainer	Tatum Carroll (Wichita State '01)

WICHITA STATE STRATEGIC COMMUNICATIONS

Women's Basketball Contact	Weston Pletcher
Email	wpletcher@goshockers.com
Office	316-978-5447
Cell	316-347-1925
Mailing	Intercollegiate Athletics 1845 Fairmount Street Wichita, KS 67260-0018

**KEITHA ADAMS RADIO SHOW**► **Mondays, 5-6 p.m. // KFH 97.5 FM/1240 AM**

Beginning Nov. 23, join host Steve Strain on Monday evenings for the Keitha Adams Show, live from A.J.'s Sports Bar & Grill at 13th and Greenwich.

Show dates: Nov. 23, Dec. 7, Dec. 14, Jan. 4, Jan. 11, Jan. 18, Jan. 25, Feb. 1, Feb. 8, Feb. 15, Feb. 22, March 1.

No Show: Nov. 30, Dec. 21, Dec. 28

UPCOMING PROMOTIONS► **No Promotions through at least Jan. 9, 2021****ACTIVE CAREER STAT LEADERS**

Category	Leader	Total
Games Played	Bastin, Bremaud	67
Games Started	Bastin	67
Minutes	Carla Bremaud	1,970
Points	Carla Bremaud	579
Rebounds	Seraphine Bastin	337
Assists	Seraphine Bastin	234
Blocks	Asia Henderson	34
Steals	Seraphine Bastin	96
3-PT FG Made	Carla Bremaud	102

WICHITA STATE HEAD COACHES

Larry Thyne	1974-78
Kathryn Bunnell	1978-83
Karen Harden	1983-89
Linda Hargrove	1989-98; 2017
Darryl Smith	1998-03
Jane Albright	2003-08
Jody Adams	2008-17
Keitha Adams	2017-Present

WICHITA STATE HEAD COACHING RECORDS

Larry Thyne	32-56 (.364)
Kathryn Bunnell	71-73 (.493)
Karen Harden	63-98 (.391)
Linda Hargrove	219-143 (.454)
Darryl Smith	74-68 (.521)
Jane Albright	48-95 (.336)
Jody Adams	161-115 (.583)
Kirk Crawford*	2-0 (1.000)
Keitha Adams	45-54 (.455)

* Interim head coach in 2016-17

NOTABLES**PERFECT AT THE LINE**

► Junior **Seraphine Bastin** went a perfect 12-for-12 at the free throw line in Wichita State's Dec. 30 contest at Houston. Her unblemished night at the charity stripe tied a school record for most free throws made without a miss. Bastin matched the record set by Jennifer Kaczka (12/8/01), Keomi Johnson (11/21/99) and Karen Lewis (3/4/95).

DYNAMIC POINT GUARD

► Wichita State's point guard **Seraphine Bastin** has started the season on a mission. Bastin is averaging 11.3 points, 6.7 rebounds, 4.4 assists and 1.9 steals a game, while shooting 46.9 percent from the field and 82.1 percent from the free throw line. The 5-foot-8 guard leads the team in rebounding, assists, steals and double-doubles. In her last two games at Houston and vs. Cincinnati, Bastin racked up double-doubles of 18 points and 11 rebounds and 10 rebounds and 10 assists. She missed a triple-double vs. Cincy by two points. Bastin ranks second in The American in free throws made (32), third in free throw attempts (39), fourth in free throw percentage (82.1) and assists (31), fifth in assists per game (4.4) and sixth in steals per game (1.86).

COLBERT'S CAREER HIGH

► Junior forward **Trajata Colbert** posted her first career 20-point game vs. UNI on Dec. 6. The Rochelle, Ga., native scored 14 of her career-high 21 points in the first half, and was a career-best 9-of-14 from the field. Colbert also added five rebounds, two assists and two steals in the double overtime contest.

BOMBS FOR BREMAUD

► Junior guard **Carla Bremaud** is on fire from three-point range to open the season. The France native has connected on 15-of-33 attempts (45.5 percent) through seven games. In the American Athletic Conference, Bremaud ranks first in three-point field goal percentage (45.5 percent) and second in three-point field goals per game (2.14).

STRONG COLLECTS SECOND HONOR ROLL

► Wichita State junior forward **Asia Strong** picked up her second American Athletic Conference Weekly Honor Roll selection on Dec. 7 after posting 16.0 points and 5.7 rebounds in three games during the week of Nov. 30-Dec. 6. Strong helped Wichita State go 2-1 during the week, highlighted by her first career double-double vs. UNI with 22 points and 13 rebounds. Both were season highs. She also posted games of 16 and 10 points vs. Alcorn and Southern during the span.

MEDIA REQUESTS**Credential Requests**

All requests for working press, radio, television, photography or scouting credentials and parking passes should be made by emailing Weston Pletcher, Assistant Director of Communications, at wpletcher@goshockers.com, at least 24 hours before game time. Press row seating at Charles Koch Arena, Home of Devlin Court is for working media only. All space for the working press, radio and television is allocated by the Wichita State Strategic Communications Office, which reserves the right to deny credentials to any outlet. Spouses, dates, children and non-workers are restricted from press row. Any abuse of a working credential will result in the media agency losing credential privileges. Single-game credentials can be picked up the day of a game at the North Tunnel Entrance of Charles Koch Arena, the home of Wichita State Women's Basketball.

WICHITA STATE WEBSITE - GOSHOCKERS.COM

Visit the official Wichita State University Athletics website at goshockers.com. The official American Athletic Conference website is theamerican.org.

IN-GAME LIVE STATS

Wichita State University has partnered with StatBroadcast Systems to provide stats technologies, namely its StatMonitr wireless stat monitors and online media stats at Wichita State home games this season. To access live game stats on your personal laptop, visit shockerstats.com.

WEEKDAY INTERVIEWS

Media wanting to interview players or coaches during the week must make arrangements through the Wichita State Communications Office. Please contact Weston Pletcher at (316) 347-1925 or email wpletcher@goshockers.com.

POSTGAME INTERVIEWS

Wichita State's Keitha Adams and players will be available via Zoom following the conclusion of the game. A member of the Wichita State Communications staff will solicit media requests for players at the final media timeout. After the game, those players will be escorted to the interview area along with their coaches by a member of that school's communications office as well as a representative of Wichita State Communications.

WEEKLY MEDIA CALENDAR

4 Monday	5 Tuesday	6 Wednesday	7 Thursday	8 Friday	9 Saturday	10 Sunday
Practice (10:30-12:30 p.m.)	Practice (10:00-12:00 p.m.)	Shootaround (12:00-1:00 p.m.)	Practice (1:00-3:00 p.m.)	Practice (10:00-12:30 p.m.)	Shootaround (8:45-10:00 a.m.)	OFF DAY
	Travel to Tampa	WSU at USF 7:00 p.m. ET			WSU vs. ECU 2:00 p.m.	



THIS DAY IN WICHITA STATE BASKETBALL HISTORY

JANUARY

6

Wichita State on Jan. 6: 4-9

Wichita State will look to reverse its fortunes when playing on the 6th of January. The matchup with the Bulls marks the 14th time the Shockers have played on January 6 in program history. The most recent game on January 6 came in 2018 - an 59-53 loss at UCF. Rangie Bessard scored a team-high 17 points to go with nine rebounds, while Diamond Lockhart added 11 points. UCF only attempted two three-pointers in the contest, missing both. WSU's first game on Jan. 6 came in 1984 against Northern Iowa (W, 100-57).

A SHOCKER WIN WOULD...

- ... make them 4-4 on the season
- ... make them 1-2 in conference play
- ... snap a four-game losing streak
- ... be their first vs. a ranked foe since 2018
- ... move them to 3-2 all-time vs. USF
- ... snap a two-game losing streak vs. the Bulls
- ... run Adams' career coaching record to 457-300
- ... make Adams 330-263 at the Division I level
- ... make Wichita State 616-702 all-time

A SHOCKER LOSS WOULD...

- ... make them 3-5 to start the season
- ... make them 0-3 in conference play
- ... give them five straight losses after starting 3-0
- ... drop them to 2-3 all-time vs. USF
- ... be their third straight loss to the Bulls
- ... lower Adams' career coaching record to 456-301
- ... make Adams 329-264 at the Division I level
- ... make Wichita State 615-703 all-time

SHOCKERS ADD WALK-ON

► Wichita State added some roster depth over the holiday break in the addition of walk-on **Mariah McKinney**. McKinney is a Wichita native having played her prep basketball at nearby Wichita East High School. Most recently she completed a season at Fort Scott Community College in 2018-19. McKinney played in 27 contests for the Greyhounds and averaged 5.5 points, 4.0 rebounds, 1.9 assists and 1.1 steals per game.

STRONG NETS FIRST WEEKLY HONOR ROLL

► Junior forward **Asia Strong** picked up Wichita State's first American Athletic Conference weekly honor on Nov. 30. Strong paced the Shockers to a season-opening win over Texas A&M Corpus Christi on Friday, Nov. 27 with a game-high 20 points and also pulling down six rebounds. It was the first career weekly honor for Strong.

AUTOMATIC CARLA

► Dating back to last season, Wichita State junior guard **Carla Bremaud** has made her last 14 free throws. She finished the 2019-20 campaign at 86.1 percent and is 5-for-5 so far this season. She continues to climb the charts at Wichita State for career free throw percentage. With only 51 made free throws during her first two-plus seasons, she doesn't yet qualify for the career top 10 list.

UNI LEFTOVERS

- More notables from Wichita State's double OT loss to UNI on Dec. 6
- Wichita State is 5-1 all-time in 2OT games.
- Wichita State is 1-1 in overtime games under Keitha Adams.
- Wichita State had two players (Asia Strong, Trajata Colbert) score 20 or more points for the first time since Feb. 24, 2018 vs. Tulane.
- UNI's 93 points were the most by an opponent in Charles Koch Arena since Dec. 30, 2006 when Evansville scored 99 in overtime.
- Wichita State erased a 16-point 4th quarter deficit.

McCULLY LANDS ON PRESEASON SECOND TEAM

► Wichita State senior guard **Mariah McCully** became the first Shocker to collect preseason accolades for Wichita State since joining the American Athletic Conference when she was placed on the Preseason All-Conference Second Team by the league's coaches. McCully earned All-Conference Third Team honors after leading Wichita State in scoring (12.6 ppg) and steals (5.6) as a junior in 2019-20.

ABOUT THE BULLS

► Located in Tampa, Fla., the University of South Florida has an enrollment of 50,577 as a member of the American Athletic Conference. USF returns 10 letterwinners, including four starters off last year's squad that finished 19-13 and 10-6 in The American. USF was picked by the league's coaches to finish first in the Preseason Coaches Poll. For the first time in American Athletic Conference history, a team other than UConn was picked atop the standings. Elisa Pinzan and Elena Tsineke were named to Preseason Second Team All-Conference.

► Head Coach Jose Fernandez is in his 21st season at the helm of the USF program. Under his guidance, USF has transformed from a program with only five winning seasons to a staple in the NCAA Tournament to finish tied for 2nd, UC's best league finish in its seven-year membership in the AAC. Fernandez has watched his team reach new milestones, including six 20-win seasons in the last eight years dating back to the 2012-13 season. The Bulls have reached the NCAA Tournament six times, including five trips in their last seven seasons, and postseason play in 15 of the last 17 seasons. Fernandez is USF's winningest coach in program history with more than 300-plus wins in his tenure. He has led USF to the American Athletic Conference Championship game in four of the last six seasons.



-VS-



ALL-TIME SERIES VS. USF

2/25/83	W	75-52	N
1/21/18	W	64-56	H
2/23/19	L	46-55	A
1/22/20	L	50-56	H

MATCHUP NOTES

OVERALL	Series Tied 2-2
Home	1-1
Away	0-1
Neutral Site	1-0
Current Streak	USF, W2
Longest WICH Winning Streak	W2, 1983-2018
Longest USF Winning Streak	W2, 2019-2020
Largest WICH Margin of Victory	23 (75-52) Feb. 25, 1983
Largest USF Margin of Victory	9 (55-46) Feb. 23, 2019

THE SERIES VS. USF

► Wichita State and USF have met four times prior to Wednesday's matchup, with both teams winning two games apiece. The first ever meeting came all the way back in Feb. 1983 on a neutral court that Wichita State won going away, 75-52. This will be the second time Wichita State has faced a nationally-ranked USF squad. ► This will be just the second-ever trip to Tampa for Wichita State. The Shockers dropped a 55-46 contest in 2019 to USF in the Yuengling Center. USF makes the return trip to Wichita in just two weeks on Jan. 20.

LAST MEETING

► Wichita State hosted USF in the lone meeting between the two programs during the 2019-20 season on Jan. 22, 2020. USF erased a six-point fourth quarter deficit to defeat Wichita State, 56-50. Mariah McCully scored nearly half of Wichita State's points, going for a game-high 21. Carla Bremaud added 16 and three steals. The rest of the Wichita State lineup combined for 13 points. ► Wichita State shot just 32.1 percent from the field, thanks in large part to a second quarter that saw the Shockers go 3-for-16. USF committed 25 turnovers in the game, but outrebounded Wichita State by 13. USF's Bethy Mununga grabbed 15 boards for the Bulls to go with 13 points.

UP NEXT

Wichita State faces ECU for the first time in 2021 when the Pirates come to Charles Koch Arena Saturday, Jan. 6 for a 2 p.m. tip on ESPN+.

**BREMAUD SURPASSES 500 CAREER POINTS**

► Wichita State junior guard **Carla Bremaud** scored her 500th career point on Saturday, Feb. 29, 2020 vs. Cincinnati. She enters the 2020-21 campaign with 564 career points through her first two seasons as a Shocker. She is the active career scoring leader for Wichita State and is averaging 8.6 points per game in the 67 games she's suited up. Bremaud is on pace to become the 21st Shocker to score 1,000 career points in the Black & Yellow.

ABOUT WICHITA STATE

► Wichita State returns three starters and eight letterwinners from a season ago after posting the first winning record since the 2014-15 campaign. The 2020-21 squad brings back 65.0 percent of its scoring from 2019-20, led by senior **Mariah McCully** - an American Athletic Conference Third Team selection during her first season. McCully is a preseason Second Team All-Conference selection by the league's coaches. Joining McCully in a loaded backcourt is point guard **Seraphine Bastin** and shooting guard **Carla Bremaud**. Bastin led the team in assists and rebounds a season ago, while ranking second in scoring and steals.

► Wichita State returns its top five scorers from 2019-20, but will have to replace key losses in the frontcourt with the graduation of **Raven Prince** and **Shyia Smith** to transfer. Junior **Trajata Colbert** looks to start this season where she left off as a sophomore. Injuries hampered much of her sophomore campaign, but she will be a key piece to Wichita State's success in 2020-21.

► Five newcomers will fight for playing time, led by junior forward **Asia Strong**. Strong will have a chance to make an instant impact for the Shockers with her athleticism and ability to stretch the floor from beyond the arc. The two other first-year players include junior college transfer - forward **Ene Adams** and a freshman guard from the Lone Star State rounds out the first-time Shockers - **Shamaryah Duncan**.

INTERNATIONAL FLAVOR

► For the fourth season in a row, the Shocker basketball team will feature several players from international countries. **Carla Bremaud** (Angers, France) and **Seraphine Bastin** (Dinant, Belgium) all return after their first two seasons in the program and will be joined by junior **Ene Adams** (Jos, Nigeria) and freshman **Carla Budane** (Lisboa, Portugal).

► In the 12 seasons prior to **Keitha Adams** taking over the program, Wichita State had one international player (Marija Pacar). Under Adams, 10 international players have played for the Shockers in just four seasons.

► Associate Head Coach **Ewa Laskowska** leads the charge in international recruiting thanks to Stalowa Wola, Poland, being her hometown.

SHOCKERS PICKED 6TH IN PRESEASON POLL

► Wichita State was picked to finish 6th in the American Athletic Conference by the league's coaches. It is the highest preseason pick for the Shockers since joining The American.

► WSU returns 65.0 percent of its scoring from a season ago, including All-Conference Second Team selection **Mariah McCully**.

BREMAUD ON THE CAREER CHARTS

► Wichita State junior guard **Carla Bremaud** comes into the 2020-21 season already in the top 10 for three-pointers attempted in a career at Wichita State. Her 313 three-point attempts place her in seventh and needing 11 more to pass Alie Decker for sixth in school history. Bremaud also passed Jessica Diamond and Shelley Crow for seventh place on the career three-pointers made list. She now has 102 made triples and is 19 shy of moving into sole possession of sixth place.

RECORD BOOK WATCH - CAREER RECORDS**3-POINT FIELD GOALS MADE**

1.	177	Courtney Sims	1997-01
2.	143	Tisharria Huggins	2000-04
3.	128	Alie Decker	2012-15
4.	127	LaTeasha Hill	1996-00
5.	124	Kim Evans	1992-96
6.	121	Haleigh Lankster	2008-12
7.	102	Carla Bremaud	2018-Pres.
8.	98	Shelley Crow	1986-90
	98	Jessica Diamond	2009-13
10.	94	Michaela Dapprich	2012-15

3-POINT FIELD GOALS ATTEMPTED

1.	503	Courtney Sims	1997-01
2.	472	LaTeasha Hill	1996-00
3.	443	Tisharria Huggins	2000-04
4.	392	Kim Evans	1992-96
5.	375	Haleigh Lankster	2008-12
6.	323	Alie Decker	2012-15
7.	313	Carla Bremaud	2018-Pres.
8.	304	Jessica Diamond	2009-13
9.	301	Shelley Crow	1986-90
10.	286	Lexee McDonnell	2005-07

FREE THROW PERCENTAGE (MIN. 75 MADE)

1.	.890	Diamond Lockhart	2015-18
2.	.807	Jessica Diamond	2009-13
3.	.799	Alex Harden	2011-15
	.799	Courtney Sims	1997-01
5.	.782	Rangie Bessard	2015-18
6.	.775	Seraphine Bastin	2018-Pres.
7.	.767	Ann Hollingsworth	1991-95
8.	.763	Taylor Steven	2004-08
9.	.761	Tisharria Huggins	2000-04
10.	.761	Carla Bremaud	2018-Pres.
11.	.754	Jodie Gullett	1995-98

LATE START

► The 2020-21 season is certain to be unlike any other. COVID has placed a high level of uncertainty on the college basketball season. That can be seen in the late start to the season. The last time a Wichita State women's basketball team took the court to open a season this late was back in the 1995-96 campaign when the season kicked off on Nov. 28.

THE ROUNDHOUSE

INSIDE SHOCKER SPORTS

Paul Suellentrop takes you inside Shocker Athletics all season long. Visit [GoShockers.com/TheRoundhouse](https://www.goshockers.com/TheRoundhouse) or follow @RoundhouseNews on Twitter for the latest content.

Trajata Colbert played in 15 games last season. The injuries that sidelined her for much of her sophomore season did not stop her from paying attention and improving.

"Coming back from an injury, you know what to do and what not to do," she said.

As a junior, Colbert is showing she made good use of that time. In four games, averaging 16 minutes of playing time, she averages 10.3 points and 4.3 rebounds while shooting 62.1 percent from the field. She scored a career-high 21 points in Sunday's double-overtime loss to Northern Iowa.

"The last two games she's really been a force," Wichita State coach Keitha Adams said. "She's played physical and is doing a really good job of posting hard."

Wichita State (3-1) meets South Dakota (1-2) at 6 p.m. Thursday at Koch Arena, its final non-conference game before American Athletic Conference play begins at Tulsa on Dec. 16. South Dakota, which went 30-2 last season, lost to No. 1 South Carolina (81-71) and No. 18 Gonzaga (54-50) before defeating Lipscomb 89-52.

Colbert considers her strong start this season a continuation of last season's progress. In her final four games, she averaged 11.5 points and 6.0 rebounds. Colbert's role is to score in the lane, rebound and use her two-plus seasons of experience to help her teammates.

"This is my third year here, so I really understand what Coach Adams wants from me and how the team operates," she said. "As an experienced player, communicate what she wants. How she wants our defense to be played, how she wants our motion to be run."

Adams is happy with Colbert using that experience as a vocal leader.

"You can hear her on the bench and you can hear her on the floor," Adams said. "When she talks, there's always good purpose with it. When she speaks up and she's vocal our players tend to listen."

Colbert and newcomer Asia Strong are combining to give the Shockers a potent inside scoring combination. The Shockers are scoring 74.3 points a game on 47 percent shooting. Last season, they averaged 63.1 points on 39 percent shooting. Strong's addition - she averages 17 points on 47-percent shooting - and Colbert's presence make the Shockers harder to defend.

"That's something Coach Adams always wanted for us - our posts to look for each other," Colbert said. "We look for each other. Asia Strong is a good finisher around the basket. We work well together."

Against Northern Iowa, Colbert grabbed three offensive rebounds in the first quarter, each of which produced a basket. Grabbing rebounds isn't all about height and jumping. Research and smarts help and Colbert studies that part, as well.

"The principles of rebounding - knowing where the shot is coming from to know where the rebound is going to go," she said.

Most rebounds, coaches say, study confirms and Colbert proves, come off the rim opposite from the shooter. That knowledge helps, but Colbert recognizes the simple truth that effort is necessary.

"Boxing out and just crashing," she said. "You go for a rebound and you're more likely to get one."



FOUR INK NLI'S DURING FALL SIGNING PERIOD

► Wichita State women's basketball and head coach **Keitha Adams** announced the signing of four student-athletes to a National Letter of Intent Thursday, Nov. 12. **Ella Anciaux**, **Jane Asinde**, **Nhug Bosch** and **Jayze'lee Waihi** completed their NLI's to become members of the Wichita State basketball program.

► **Ella Anciaux** | **Wichita, Kan.** | **6'4"** | **Forward**

Ella Anciaux made the choice to stay home and play for the Shockers. The Wichita native will join the program after a decorated prep career at Kapaun Mount Carmel. She is a 3-star recruit and rated the No. 3 prospect in the state of Kansas by World Exposure Report. Anciaux is coming off a junior campaign where she averaged a double-double of 20.0 points and 10.0 rebounds per game, while also blocking 3.0 shots a game. She is a two-time First Team All-State performer and two-time First Team All-City honoree as well. Anciaux will have lettered all four years in basketball, while being named team captain three times. Off the court, she is a member of the National Honor Society, Kapaun Student-Athlete Leadership Program and is on the board for the Crusader Advocacy Program. She has also been on the Superior Honor Roll all four years of high school. Anciaux is the daughter of Todd and Kimberly Anciaux. She has five siblings: brothers – Will, Nick and Grady; sisters – Adelyn and Greta.

► **Jane Asinde** | **Kampala, Uganda** | **6'1"** | **Forward**

Jane Asinde becomes the second player to sign with Wichita State from Grayson College where former assistant coach Bill Damuth is currently the head coach. Asinde was named the Conference Freshman of the Year, while also earning all-conference and all-region honors for Grayson. She averaged 13.4 points and 8.8 rebounds, while shooting 53.9 percent from the field. Asinde scored a career-high 26 points on Feb. 8, 2020 vs. Southwestern Christian College to go with 12 rebounds. Asinde pulled down a season-high 17 rebounds twice and finished with 14 games of 10 or more rebounds. She is the daughter of Oloka Chrispin and Janet Athieno. Asinde has one brother, Etyang David and one sister, Caroline Otto.

► **Nhug Bosch** | **Barcelona, Spain** | **5'7"** | **Guard**

Nhug Bosch continues the run of international players to join the Shocker program since Adams took over four years ago. Bosch is a four-year starter and captain for her school INS Joan Coromines in Barcelona. A member of the Spain U18 team, Bosch averaged 10.6 points and was named the Catalan League MVP.

► **Jayze'lee Waihi** | **Hamilton, New Zealand** | **5'8"** | **Guard**

Jayze'lee Waihi makes the third international signee of the class. Waihi calls New Zealand home where she will wrap up her career at St. Peter's School Cambridge. A four-year starter, Waihi averaged 25.0 points, 8.0 rebounds and 4.0 assists last season. She has been a standout on the New Zealand U17 National Team where she racked up MVP and Tournament Team honors three times. At the New Zealand U17 National Age Group Tournament, Waihi set career bests in points (45), rebounds (12) and steals (7).



THE AMERICAN ON ESPN+

► In the Spring of 2019, the American Athletic Conference and ESPN agreed to a 12-year media rights extension beginning in 2020-21. Under the agreement of the extension, hundreds of additional American Athletic Conference sports events annually will be distributed on the ESPN+ digital platform.

What does this mean for American Athletic Conference fans?

- If not on ESPN2 or ESPNU, every other women's basketball home game will be on ESPN+.
- Additionally, ESPN+ will feature hundreds of American Athletic Conference events from other sports, including volleyball, men's and women's soccer, softball, baseball and women's lacrosse and more.
- All American Athletic Conference Championship events that are not aired on ESPNU will also be distributed on ESPN+.

Where can I find the American Athletic Conference games scheduled on ESPN+?

- Visit the ESPN+ schedule page for the complete event schedule information. Look for The American logo.

How do I subscribe to ESPN+?

- A subscription to ESPN+ is available for purchase via ESPN.com or the ESPN App for iOS and Android devices. Fans can access ESPN+ content only after they have subscribed.

What is the price of ESPN+?

- ESPN+ is offered at \$5.99/month or \$49.99/year. Fans can also subscribe to ESPN+ as part of the Disney Bundle, which includes Disney+, ESPN+ and Hulu (ad-supported) for just \$12.99/month.

Where can I watch ESPN+ with my subscription?

- Subscribers can watch ESPN+ on ESPNplus.com and on the ESPN App on Apple devices (iPhone, iPad, tvOS), Android smartphones, Android TV, Chromecast, Roku devices, PlayStation 4, Xbox One, and Amazon Fire devices (TV, Stick, smart TV, Tablets).

Can fans watch multiple ESPN+ streams at the same time?

- Yes, you can access three streams from ESPN+ at any one time.

Are American Athletic Conference games on ESPN+ available outside the U.S.?

- Video streaming via ESPN+ is not currently available outside the U.S.

Whom do I contact if there are questions about the ESPN+ or the ESPN App?

- Online & Chat: <https://help.espnplus.com>
- Phone: 1-800-727-1800

WICHITA STATE BY THE NUMBERS

3	Conference championships in school history - all consecutive (2013, 2014, 2015)
4	International players on this year's team
5	Non-Conference matchups on the schedule this season
9	Head Coaches in program history
15	Home games in 2020-21
20	1,000 point scorers in school history, led by Alex Harden's 1,708
47	Seasons of Wichita State women's basketball
57.1	Percentage of the 2020-21 roster that are upperclassmen
65.0	Percentage of points returning from the 2019-20 squad
159	Career starts for Wichita State returners entering the season
182	Wins last decade (2010-2019) - the most in program history
329	Division I coaching wins for Keitha Adams
377	All-time Wichita State wins in Charles Koch Arena. The building originally opened as Levitt Arena
456	Career wins for Keitha Adams , including junior college
615	All-time Wichita State women's basketball victories



AMERICAN PRESEASON POLL

1.	USF (8)	98
2.	UCF (1)	79
3.	Tulane	78
4.	Cincinnati	73
5.	Temple	57
6.	Wichita State	54
7.	Houston	49
8.	Memphis	40
9.	ECU	36
10.	SMU	31
11.	Tulsa	10

1,000 POINT SCORERS

Name	Career Points	Years
1. Alex Harden	1,708	2011-15
2. Allison Daniel	1,638	1982-86
3. Jennifer Kaczka	1,557	1998-02
4. Kiki Stephens	1,489	2004-08
5. Kim Evans	1,488	1992-96
6. Rangie Bessard	1,467	2015-18
7. Jessica Diamond	1,432	2009-13
8. Terry O'Bryon	1,425	1977-81
9. Lisa Hodgson	1,424	1980-84
10. LaTeasha Hill	1,385	1996-00
11. Angela Buckner	1,382	2000-04
12. Haleigh Lankster	1,366	2008-12
13. Ann Hollingsworth	1,272	1991-95
14. Crystal Westfield	1,203	1984-88
15. Tootie Shaw	1,159	1993-97
16. Carlesa Dennis	1,121	2001-04
17. Theresa Dreiling	1,112	1979-83
18. Antionette Wells	1,100	2003-07
19. Tonya Lane	1,069	1987-91
20. Keomi Johnson	1,037	1996-00

DOUBLE-DOUBLES

Seraphine Bastin - Career: 4, Season: 2

10 rebounds, 10 assists vs. Cincinnati (Jan. 2, 2021)
 18 points, 11 rebounds at Houston (Dec. 30, 2020)
 12 points, 15 rebounds at Tulsa (Feb. 23, 2020)
 13 points, 10 rebounds vs. Tulsa (March 8, 2019)

Trajata Colbert - Career: 2, Season: 0

11 points, 11 rebounds vs. Houston (March 6, 2020)
 12 points, 13 rebounds vs. Houston Baptist (Nov. 17, 2018)

Asia Strong - Career: 1, Season: 1

22 points, 13 rebounds vs. UNI (Dec. 6, 2020)

STREAKIN'

Seraphine Bastin

Consecutive Starts: **35**
 Consecutive Free Throws Made: **16**
 Consecutive Games with 5+ Rebounds: **5**

Carla Bremaud

Consecutive Starts: **30**
 Consecutive Free Throws Made: **14**

ROSTER BREAKDOWN

Category	Returning	Lost
Starters	3	2
Letterwinners	8	7
Minutes	58.9%	41.1%
Starts	56.1%	43.9%
Points	65.0%	35.0%
Rebounds	55.8%	44.2%
Assists	66.8%	33.2%
Blocks	59.2%	40.8%
Steals	67.6%	32.4%

Starters Returning (3)

Player	Ht	Cl	Pos	PPG	RPG
Seraphine Bastin	5-8	Jr.	G	7.7	5.1
Carla Bremaud	5-11	Jr.	G	7.4	2.8
Mariah McCully	5-7	Sr.	G	12.6	2.5

Total Returning Lettermen (7)

Player	Ht	Cl	Pos	PPG	RPG
Seraphine Bastin	5-8	Jr.	G	7.7	5.1
Carla Bremaud	5-11	Jr.	G	7.4	2.8
Trajata Colbert	6-2	Jr.	F	7.3	3.5
Jaida Hampton	5-10	Jr.	G	3.0	0.7
Asia Henderson	6-3	R-Jr.	C	4.4	4.0
DJ McCarty	5-8	So.	G	6.8	2.0
Mariah McCully	5-7	Sr.	G	12.6	2.5

Newcomers (5)

Player	Ht	Cl	Pos	PPG	RPG
Ene Adams	6-1	Jr.	F	-	-
Carla Budane	6-0	Fr.	F	-	-
Shamaryah Duncan	5-11	Fr.	G	-	-
Mariah McKinney	5-8	Jr.	G	-	-
Asia Strong	6-2	Jr.	F	-	-

Starters Lost (2)

Player	Ht	Cl	Pos	PPG	RPG
Raven Prince	6-1	R-Sr.	F	5.2	3.5
Shyia Smith	5-11	So.	F	6.1	5.1

Total Lettermen Lost (7)

Player	Ht	Cl	Pos	PPG	RPG
Maya Brewer	5-11	Sr.	G	6.3	1.8
Vendela Danielsson	5-8	Jr.	G	1.9	0.3
Diamond Forrest	6-5	Jr.	C	0.4	0.7
Raven Prince	6-1	R-Sr.	F	5.6	4.2
Ashley Reid	5-5	Sr.	G	4.2	1.5
Natalia Rynng	5-10	R-Fr.	F	0.4	0.0
Shyia Smith	5-11	So.	F	6.1	5.1

TOP 10 HOME ATTENDANCES-KOCH ARENA

1.	10,307	Northern Colorado	Dec. 7, 2012
2.	10,103	Texas State	Dec. 18, 2007
3.	10,087	Arkansas-Pine Bluff	Dec. 5, 2014
4.	9,831	Savannah State	Dec. 10, 2010
5.	9,534	Arkansas State	Dec. 2, 2016
6.	9,196	SIU-Edwardsville	Dec. 2, 2009
7.	9,194	IPFW	Nov. 8, 2013
8.	8,474	Southeast Missouri	Dec. 4, 2015
9.	8,069	Western Illinois	Dec. 1, 2017
10.	7,356	Grambling State	Dec. 11, 2018

WICHITA STATE'S RECORD WHEN...

	2020-21	Adams Era
scoring <60 points	1-2	8-35
scoring 60-69 points	0-1	15-16
scoring 70-79 points	2-0	15-2
scoring 80-89 points	0-0	6-0
scoring 90-99 points	0-1	0-1
scoring 100 or more points	0-0	1-0
allowing <60 points	3-0	27-6
allowing 60-69 points	0-2	12-21
allowing 70-79 points	0-1	3-15
allowing 80-89 points	0-0	3-6
allowing 90-99 points	0-1	0-5
allowing 100 or more points	0-0	0-1
shooting <30%	0-0	0-5
shooting 30-39%	0-3	11-40
shooting 40-49%	2-1	22-16
shooting 50% or higher	1-0	7-6
opponents shoot <30%	0-0	12-1
opponents shoot 30-39%	2-2	17-13
opponents shoot 40-49%	1-2	15-28
opponents shoot 50% or higher	0-0	1-12
committing more turnovers	1-3	16-32
committing fewer turnovers	2-1	21-17
teams tie in turnovers	0-0	8-5
outrebounding the opponent	1-2	33-15
outrebounded	2-2	11-35
teams tie in rebounding	0-0	1-4
leading after 1st half	3-0	37-5
trailing after 1st half	0-4	5-47
teams are tied at halftime	0-0	3-2
game decided by 10 points or less	1-3	23-20
game decided by 1-5 points	1-1	8-6
game decided by 6-10 points	0-2	16-14
game decided by 11-15 points	0-1	9-14
game decided by 16+ points	2-0	12-20
overtime games	0-1	1-1
televised games:	3-4	32-40
ESPN3	0-0	
ESPN+	3-4	
on Monday:	1-0	6-3
on Tuesday:	0-0	3-6
on Wednesday:	0-1	9-12
on Thursday:	0-1	0-4
on Friday:	2-0	5-5
on Saturday:	0-1	13-19
on Sunday:	0-1	9-5
in November:	2-0	13-10
in December:	1-3	10-14
in January:	0-1	10-14
in February:	0-0	10-11
in March:	0-0	2-5



ASSOCIATED PRESS (AP) TOP 25

As of Jan. 4 (2020-21 WSU Opponents)

Rank	School	Record	Points
1.	Stanford	9-0	745
2.	Louisville	7-0	695
3.	North Carolina State	10-0	680
4.	UConn	6-0	680
5.	South Carolina	6-1	647
6.	Baylor	8-1	590
7.	Arizona	8-1	535
8.	Texas A&M	10-0	534
9.	UCLA	6-2	505
10.	Kentucky	9-1	497
11.	Oregon	8-1	453
12.	Maryland	6-1	392
13.	Arkansas	10-2	372
14.	Mississippi State	6-2	365
15.	Michigan	7-0	349
16.	Ohio State	4-0	256
17.	Texas	8-1	251
18.	USF	7-1	204
19.	Indiana	5-2	193
20.	DePaul	5-3	173
21.	Gonzaga	8-2	113
22.	Northwestern	4-2	108
23.	Michigan State	8-0	106
24.	Syracuse	5-1	98
25.	Missouri State	4-2	66

Others Receiving Votes: North Carolina 32; South Dakota State 27; Georgia 25; Iowa 18; Tennessee 10; Rice 9; Alabama 8; Arizona State 7; Washington State 3; Oregon State 2; Iowa State 2.

USA TODAY/WBCA COACHES TOP 25

As of Dec. 29 (2020-21 WSU Opponents)

Rank	School	Record	Points
1.	Stanford	7-0	773
2.	Louisville	5-0	729
3.	North Carolina State	8-0	709
4.	South Carolina	5-1	678
5.	UConn	5-0	661
6.	Baylor	7-1	597
7.	Oregon	7-0	567
8.	Arizona	7-0	558
9.	Texas A&M	9-0	532
10.	Arkansas	9-1	477
11.	Kentucky	7-1	429
12.	UCLA	5-2	412
13.	Mississippi State	5-1	396
14.	Maryland	5-1	388
15.	Ohio State	4-0	327
16.	Northwestern	4-0	304
17.	Michigan	5-0	279
18.	Indiana	4-2	210
19.	Texas	6-1	205
20.	Syracuse	5-1	177
21.	DePaul	5-2	149
22.	USF	5-1	119
23.	Gonzaga	6-2	92
24.	Missouri State	4-2	73
25.	South Dakota State	7-2	40

Others Receiving Votes: Michigan State 31; Georgia 30; Virginia Tech 22; Arizona State 20; Florida State 18; Clemson 16; Iowa 14; Florida Gulf Coast 13; Rutgers 7; Oregon State 6; North Carolina 6; Tennessee 3; IUPUI 3; UCF 3; North Dakota State 1; Georgia Tech 1.

STATISTIC BREAKDOWN



	NCAA	AAC	VALUE
W-L%	208	6	.429
SCORING	157	4	67.9
SCORING DEFENSE	170	6	66.1
SCORING MARGIN	144	5	1.7
REBOUNDING	191	7	37.9
REBOUNDING MARGIN	182	6	0.0
ASSISTS	154	5	13.3
ASSIST-TO RATIO	185	4	0.73
TURNOVER MARGIN	208	7	-0.86
STEALS	84	4	9.3
BLOCKS	155	7	3.1
FG%	93	2	.430
FG% DEFENSE	113	4	.384
3FG%	81	2	.343
3FG% DEFENSE	118	7	.290
3FG AVG.	236	6	5.0
FT	268	7	.634

INDIVIDUAL	NCAA	AAC	VALUE
Points Per Game			
Asia Strong	224	4	15.0

Field Goals Made			
Asia Strong	121	2	47

Field Goal Attempts			
Asia Strong	122	3	103

Field Goal Percentage			
Asia Strong	202	5	45.6

Free Throws Made			
Seraphine Bastin	65	2	32

Free Throw Attempts			
Seraphine Bastin	85	3	39

Free Throw Percentage			
Seraphine Bastin	148	4	82.1

Assists Per Game			
Seraphine Bastin	85	5	4.4
DJ McCarty	249	8	3.3

Assist-Turnover Ratio			
DJ McCarty	204	6	1.44
Seraphine Bastin	210	7	1.41

Steals Per Game			
Seraphine Bastin	232	6	1.86

Blocked Shots			
Trajata Colbert	106	2	10

Blocked Shots Per Game			
Trajata Colbert	113	3	1.43

3-Point Field Goals Per Game			
Carla Bremaud	151	2	2.14

3-Point Field Goal Percentage			
Carla Bremaud	58	1	45.5

2020-21 AMERICAN CONFERENCE STANDINGS

Team	AAC	PCT.	OVR	Pct.
USF	7-1	.875	4-0	1.000
UCF	5-1	.833	3-0	1.000
Temple	2-3	.400	2-0	1.000
ECU	5-4	.556	3-1	.750
Houston	5-2	.714	2-1	.667
Tulane	5-3	.625	1-2	.333
Cincinnati	2-5	.286	1-2	.333
Wichita State	3-4	.429	0-2	.000
Memphis	2-6	.250	0-3	.000
Tulsa	1-3	.250	0-3	.000
SMU	0-6	.000	0-2	.000

THE AMERICAN - WEEKLY HONORS

American Player of the Week

Nov. 30 - Ilmar'i Thomas (Cincinnati)

Dec. 7 - Elisa Pinzan (USF)

Dec. 14 - Jerkaila Jordan (Tulane)

Dec. 21 - Lashonda Monk (ECU)

Dec. 28 - Taniyah Thompson (ECU)

Jan. 4 - Bethy Mununga (USF), Ilmar'i Thomas (Cincinnati)

American Freshman of the Week

Nov. 30 - Jerkaila Jordan (Tulane)

Dec. 7 - Jerkaila Jordan (Tulane)

Dec. 14 - Wyvette Mayberry (Tulsa)

Dec. 21 - Kiera Brown (UCF)

Dec. 28 - Jasha Clinton (Temple)

Jan. 4 - Jerkaila Jordan (Tulane)

American Weekly Honor Roll Selections

Nov. 30 - Diamond Battles (UCF), Britney Onyeje (Houston), Beatriz Jordao (USF), Krystal Freeman (Tulane), **Asia Strong (Wichita State)**.Dec. 7 - Courtajia Sanders (UCF), Britney Onyeje (UH), Dulcy Fankam Mendjiadeu (Memphis), Mia Davis (Temple), **Asia Strong (WSU)**.

Dec. 14 - Ilmar'i Thomas (Cincy), Taniyah Thompson (ECU), Miya Crump (Houston), Dulcy Fankam Mendjiadeu (Memphis), Elena Tsineke (USF).

Dec. 21 - Krystal Freeman (Tulane), Elisa Pinzan (USF), Masseny Kaba (UCF), Mia Davis (Temple), Dulcy Fankam Mendjiadeu (Memphis).

Dec. 28 - Ilmar'i Thomas (Cincy), Eryka Sidney (Houston), Madison Griggs (Memphis), Sydney Harvey (USF), Alexa Williamson (Temple).

Jan. 4 - Courtajia Sanders (UCF), Lashonda Monk (ECU), Eryka Sidney (Houston), Dynah Jones (Tulane), **Seraphine Bastin (WSU)**.



LAST TIME OUT

WICHITA STATE VS. CINCINNATI GS
WICHITA, KAN. / CHARLES KOCH ARENA

STATISTICAL LEADERS --

Scoring: McCully, Strong (15)

Rebounding: Bastin (10)

Assists: Bastin (10)

Steals: Bastin (4)

Blocks: Colbert (2)

NOTES --

- Wichita State is now 0-5 all-time vs. Cincinnati.
- Wichita State used the starting lineup of Seraphine Bastin, Carla Bremaud, Mariah McCully, Asia Strong and Trajata Colbert for the first time this season.
- Wichita State shot a season-low 36.5 percent from the field.
- Wichita State made only 6-of-12 attempts at the free throw line. Both were season lows.
- Wichita State's 22 three-point attempts were a season high.
- Wichita State was outrebounded by seven, falling to 2-2 this season when losing the rebound battle.
- Wichita State swiped 10 steals. It was the fourth game with 10 or more.
- Junior Asia Strong scored a team-high tying 15 points. Strong has scored 10 or more points in six of the team's seven games this season.
- Senior Mariah McCully also finished with 15 points, her third game in double figures this season and one point shy of a season high.
- Junior Carla Bremaud went 4-for-8 from beyond the arc to finish with 12 points. Bremaud scored all 12 points after halftime.
- Junior Seraphine Bastin finished two points shy of a triple-double with eight points, 10 rebounds and 10 assists. It is her second straight game with a double-double and fourth of her career. Her 10 assists were the most by a Shocker since Marisah Henderson had 13 at Missouri State on Jan. 23, 2010.
- Cincinnati's Ilmar'I Thomas entered the game as the nation's second leading scorer. Thomas finished with a double-double of 24 points and 17 rebounds. Her 17 rebounds were the most by an opponent this season.

QUOTABLE:

"We got to find a way to play well from the start. In our last game, we start the quarter with a turnover. We don't start off well. You have to start off well, play solid throughout and finish great. It's a 40 minute game. We struggled shooting free throws today. We were 6-for-12, and what did we lose by? We lost by six. Free throws and rebounding. They killed us on the boards. Ilmar'I (Thomas) had 17 rebounds and we probably gave her three and-1 plays. She had 24 points and one of the things we needed to do was shut her down today. We really needed this win today. Close, but not enough."

- Head Coach Keitha Adams on early game struggles and the loss to Cincinnati



Official Basketball Box Score - Final
Cincinnati at Wichita St.
01/02/21 Charles Koch Arena, Wichita, Kan.
2020-21 Women's Basketball

Game Time: 2:00 PM
Game Duration: 1:53
Attendance: 587

Officials: Bryan Enterline, Jeffrey Smith, Ashley Gloss

Cincinnati - 65

Record: 2-5 (1-2)

NO.	Name	Min	FG M-A	3P M-A	FT M-A	Rebounds OR DR TOT	Fouls PF FD	TP	AS	TO	ST	Blocks BS BA	+/
15	Arame Niang	F 26:12	5-10	0-2	0-0	1 5 6	2 0 10	1	0	2	3	0	-4
23	Ilmar'I Thomas	F 38:24	8-18	0-0	8-9	8 9 17	1 8 24	5	4	0	3	1	8
2	Destiny Haymer	G 33:23	5-11	0-3	0-0	1 3 4	4 0 10	3	1	0	0	0	4
20	Jillian Hayes	G 32:35	1-7	0-2	0-4	1 1 2	3 2 2	1	4	1	0	1	6
21	Milan Schimmel	G 37:28	2-4	2-2	6-6	0 7 7	2 5 12	5	2	0	1	0	4
33	Sofia Gritzali	09:09	1-1	1-1	0-0	0 1 1	0 0 3	0	2	1	0	0	4
10	Jadyn Scott	10:43	1-2	0-0	0-0	0 1 1	2 1 2	1	3	0	0	0	5
3	Jada Scott	12:06	1-4	0-1	0-0	0 1 1	2 0 2	0	0	0	0	1	3
Team						3 0 3				0			
Totals			24-57	3-11	14-19	14 28 42	16 16 65	16	16	4	7	3	6

Technical Fouls: NONE

Shooting By Period		
1st FG%	6-13	46.2%
3PT%	1-3	33.3%
FT%	3-3	100%
2nd FG%	7-16	43.8%
3PT%	1-4	25.0%
FT%	0-2	0%
3rd FG%	6-14	42.9%
3PT%	0-3	0.0%
FT%	8-8	100%
4th FG%	5-14	35.7%
3PT%	1-1	100.0%
FT%	3-6	50%
GM FG%	24-57	42.1%
3PT%	3-11	27.3%
FT%	14-19	73.7%

Dead Ball Rebounds: 3, 0

Wichita St. - 59

Record: 3-4 (0-2)

NO.	Name	Min	FG M-A	3P M-A	FT M-A	Rebounds OR DR TOT	Fouls PF FD	TP	AS	TO	ST	Blocks BS BA	+/
00	Asia Strong	F 37:29	6-14	1-3	2-6	1 5 6	3 3 15	0	4	0	0	4	-4
24	Trajata Colbert	F 13:25	1-4	0-0	1-2	1 1 2	4 1 3	0	3	1	2	2	-8
2	Mariah McCully	G 34:51	6-18	2-8	1-2	0 2 2	3 3 15	1	1	0	0	1	-3
12	Carla Bremaud	G 33:13	4-8	4-8	0-0	3 2 5	3 1 12	1	1	1	0	0	-7
23	Seraphine Bastin	G 36:50	3-8	0-0	2-2	2 8 10	2 5 8	10	2	4	0	0	-9
13	Ene Adams	09:14	1-2	0-0	0-0	1 2 3	0 2 2	0	0	0	0	0	9
1	DJ McCarty	11:56	1-3	0-0	0-0	0 0 0	1 0 2	2	2	0	2	0	-2
20	Shamaryah Duncan	23:02	1-6	0-3	0-0	1 0 1	0 1 2	1	0	2	1	0	-6
Team						5 1 6				2			
Totals			23-63	7-22	6-12	14 21 35	16 16 59	15	13	10	3	7	-6

Technical Fouls: NONE

Shooting By Period		
1st FG%	7-14	50.0%
3PT%	0-1	0.0%
FT%	0-0	0%
2nd FG%	6-18	33.3%
3PT%	1-5	20.0%
FT%	0-0	0%
3rd FG%	6-16	37.5%
3PT%	3-9	33.3%
FT%	1-4	25%
4th FG%	4-15	26.7%
3PT%	3-7	42.9%
FT%	5-8	62.5%
GM FG%	23-63	36.5%
3PT%	7-22	31.8%
FT%	6-12	50.0%

Dead Ball Rebounds: 4, 0

	CIN	WSU
Biggest lead	12 (1st 5:57)	3 (2nd 6:10)
Best Scoring Run	14 (1st 5:57)	8 (1st 3:05)
Lead Changes	7	
Times Tied	5	
Time with Lead	32:22	04:34

	CIN	WSU
Points from		
Turnovers	14	12
Paint	30	28
Second Chance	11	16
Fast Breaks	11	10
Bench	7	6

Period by Period Scoring				
	1st	2nd	3rd	4th TOT
CIN	16	15	20	14 65
WSU	14	13	16	16 59





HEAD COACH KEITHA ADAMS



CAREER | 456-300 (.604), 25th
3 Conf. Regular Season Titles
1 Conf. Tournament Titles
2 NCAA Tournament bids
2 WNIT bids

CAREER ACCOLADES:

- 3x C-USA Coach of the Year
- UTEP All-Time Wins Leader

► INDEPENDENCE CC (1996-2001)

Season	W-L	Postseason
1996-97	22-11	NJCAA Regionals
1997-98	24-9	NJCAA Regionals
1998-99	22-10	NJCAA Regionals
1999-00	28-5	NJCAA Regionals
2000-01	31-2	NJCAA Regionals
TOTAL	127-37	

► UTEP (2001-17)

Season	W-L	Conference	Postseason
2001-02	3-25	1-17	10 th
2002-03	10-19	5-13	9 th
2003-04	16-13	10-8	4 th
2004-05	12-17	7-11	t7 th
2005-06	14-15	6-10	10 th
2006-07	22-8	10-6	t4 th
2007-08	28-4	16-0	1 st
2008-09	18-12	11-5	t2 nd
2009-10	16-16	6-10	10 th
2010-11	16-14	7-9	t7 th
2011-12	29-4	15-1	1 st
2012-13	22-10	8-8	5 th
2013-14	29-8	12-4	3 rd
2014-15	12-16	7-11	10 th
2015-16	29-5	16-2	1 st
2016-17	8-23	5-13	12 th
TOTAL	284-209	142-128	

► WICHITA STATE (2017-PRESENT)

Season	W-L	Conference	Postseason
2017-18	14-17	9-7	t-5 th
2018-19	12-18	5-11	t-9 th
2019-20	16-15	7-9	t-6 th
2020-21	3-4	0-2	
TOTAL	45-54	21-29	

Keitha Adams was named the Wichita State Head Women's Basketball Coach on March 29, 2017.

Adams begins her fourth season with the Shockers after leading the program to a 42-50 record during her first three seasons. In 2019-20, Adams' squad recorded its first winning season, with a 16-15 record, since 2014-15. Led by Third Team All-Conference selection Mariah McCully, Wichita State also collected its first American Athletic Conference Championship victory since joining The American. The Shockers defeated Houston in the first round, 72-64.

Her 2018-19 squad was tied for the fifth youngest in all of Division I women's college basketball, having had to replace eight seniors to graduation. Despite a young roster, the Shockers ranked in the top four in The American in steals and three-point defense.

In the second game of the season, an overtime win against Missouri State on Nov. 10, 2018, she recorded her 300th career win at the Division I level.

Picked to finish 10th in the 2017-18 preseason coaches poll, Wichita State exceeded expectations in year one of The American en route to earning the No. 6 seed in the conference tournament after going 9-7 in league play.

The highlight of the season came during a season-best five game winning streak that saw the Shockers upset No. 23 USF in Charles Koch Arena on Jan. 21. It marked just the third win vs. a ranked opponent in school history and first since Dec. 27, 1998 vs. No. 25 Missouri State.

Adams, an Oxford, Kan., native and Southwestern [Kan.] graduate returned to the Sunflower State after 16 years as the head coach at UTEP. She also coached at Independence [Kan.] Community College, Winfield [Kan.] High School and Belle Plaine [Kan.] High School.

"Today is a very special day in my life," Adams said after being named the Shockers' head coach. "I'm extremely excited about being the head women's basketball coach at Wichita State University. I'd like to thank President John Bardo, Darron Boatright, and Linda Hargrove for this opportunity. I'm a small town Kansas girl who grew up watching the Shockers. I'm honored to now be a part of this great University!"

"I'm excited to work with our players to build special memories in Charles Koch Arena that we will all cherish. I look forward to sharing my passion for this great game with Shocker fans, my friends and my family. Go Shocks!"

She was responsible for all four UTEP postseason bids (NCAA in 2012 and 2008; WNIT 2016 and 2014) and all four championships (2016 C-USA regular season, 2012 C-USA regular season and conference tournament and 2008 C-USA regular season) in school history.

All six Miner 20+ win seasons were during Adams' tenure, including a school-record tying 29 in 2015-16.

UTEP cracked the top-25 poll in two seasons (2015-16, 2007-08), including being ranked in the final six weeks in '07-08, while receiving votes in eight campaigns total ('15-16, '13-14, '12-13, '11-12, '08-09, '07-08 and '06-07). UTEP has also been mentioned in the preseason poll three times, most recently garnering a trio of votes in 2012-13.

The only three-time Conference USA Women's Basketball Coach of the Year (2016, 2012 and 2008), in league history, Adams graduated every player who exhausted their eligibility at UTEP during her tenure.

UTEP's all-time win leader (284-209, 16 years), Adams is 425-263 overall as a collegiate head coach (22 years).

The Miners had no postseason bids, no conference crowns (let alone finish better than third), never advanced beyond the semifinals in the league tournament nor received a vote for a top-25 poll prior to her arrival.

UTEP put together one of the finest years in program history in 2015-16. The Miners equaled the school record for wins (29), took home the 2016 C-USA regular-season championship (16-2) and advanced to the quarterfinals of the 2016 WNIT.

The Miners received votes in the USA TODAY Sports women's basketball coaches top-25 poll for six consecutive weeks, including breaking into the top 25 (#25) for the second time in school history the week of March 1-6. UTEP also picked up votes for a school-record 14 straight weeks in the AP Top-25 poll.

Adams made the move to UTEP after several successful years as head and assistant coach at Independence Community College in Independence, Kan.

At Independence C.C., Adams was the head coach for five seasons and guided the Lady Pirates to a 127-37 record, including back-to-back Kansas Jayhawk Community College Conference titles in 1999-00 and 2000-01. Her teams also combined for a 35-1 conference record over her final two seasons.

In 2000-01, she paced the Lady Pirates to a 31-2 mark, the conference title and was named the KJCCC Eastern Division Coach of the Year. Her team also led the nation, averaging 94.0 points per game, and she coached the conference's freshman of the year. Independence ended the regular season rated fifth in the NJCAA poll.

During the 1999-2000 season Adams led Independence C.C. to a 28-5 record and her first conference crown. She also took her Lady Pirate squad deep into the Regional Tournament.

In her first three seasons as head coach, Adams's teams won 22, 24 and 22 games respectively and advanced to the Regional Tournament in each of those seasons.

While at Independence, Adams honed her athletes into all-conference, All-American and Academic All-American caliber players. Included were 22 all-KJCCC selections and five NJCAA All-Americans.

Adams also had an impressive track record of sending her student-athletes on to play at four-year schools. Fifteen of her former players went on to play NCAA Division I basketball, including two in the SEC, two in the Big 12, one in the ACC, three in the WAC and one in Conference USA. Svetlana Volnaya, who played at Virginia, was chosen in the third round by the Detroit Shock in the 2001 WNBA Draft.

While at Independence, four of her teams had cumulative grade point averages of 3.20 or better. The 1995-96 team was the NJCAA Academic Team of the Year after posting a 3.59 average. In 1996-97, her team was second in the nation with a team average of 3.29, while her team was fourth in 1997-98 (3.26).

Adams was an assistant coach at Independence C.C. for two seasons (1994-96) prior to being elevated to head coach. As the Lady Pirates' top assistant and recruiting coordinator, she helped the team fashion a 34-4 mark in 1995-96 and finish as the national runner-up at the NJCAA Tournament, limiting opponents to 57.4 points per game, a school record.

She also served as men's and women's tennis coach from 1994-95 at Independence. Prior to joining the collegiate ranks, Adams coached basketball, softball, volleyball and track and field at Winfield High School in Winfield, Kan.

She was also an assistant basketball coach at Belle Plaine (Kan.) H.S., from 1987-89. A native of Oxford, Kan., Adams graduated with a degree in health, physical education and recreation from Southwestern College in 1989.

Adams was Oxford High School's all-time leading scorer and earned all-state honors as a prep. Her jersey was retired in 1986.



SEASON STATISTICS

INDIVIDUAL -- ALL GAMES

TOTAL: 3-4

HOME: 3-3

AWAY: 0-1

NEUTRAL: 0-0

Game Records

Record	Overall	Home	Away	Neutral
ALL GAMES	3-4	3-3	0-1	0-0
CONFERENCE	0-2	0-1	0-1	0-0
NON-CONFERENCE	3-2	3-2	0-0	0-0

Score by Periods

Team	1st	2nd	3rd	4th	OT	TOT
Wichita St.	100	103	125	134	13	475
Opponents	123	94	128	103	15	463

Team Box Score

No.	Player				Total		3-Point		F-Throw		Rebounds													
		GP-GS	MIN	AVG	FG-FGA	FG%	3FG-FGA	3FG%	FT-FTA	FT%	OFF	DEF	TOT	AVG	PF	DQ	A	TO	BLK	STL	PTS	AVG		
00	STRONG, Asia	7-6	217:25	31.1	47-103	.456	3-12	.250	8-17	.471	17	25	42	6.0	21	1	5	23	4	2	105	15.0		
4	JOHNSON, Rachel	4-1	109:56	27.5	16-27	.593	7-13	.538	7-10	.700	3	10	13	3.3	8	0	5	13	1	5	46	11.5		
23	BASTIN, Seraphine	7-7	239:56	34.3	23-49	.469	1-7	.143	32-39	.821	13	34	47	6.7	18	0	31	22	0	13	79	11.3		
2	MCCULLY, Mariah	5-2	134:34	26.9	18-57	.316	7-23	.304	10-14	.714	1	12	13	2.6	15	0	12	15	0	6	53	10.6		
24	COLBERT, Trajata	7-3	123:48	17.7	25-42	.595	0-0	.000	9-23	.391	10	25	35	5.0	18	1	4	16	10	8	59	8.4		
12	BREMAUD, Carla	7-7	224:28	32.1	19-50	.380	15-33	.455	5-5	1.000	5	15	20	2.9	17	0	9	5	4	8	58	8.3		
1	MCCARTY, DJ	7-5	182:42	26.1	15-36	.417	1-6	.167	14-24	.583	5	17	22	3.1	16	0	23	16	2	12	45	6.4		
13	ADAMS, Ene	7-4	120:49	17.3	6-23	.261	0-1	.000	7-13	.538	15	28	43	6.1	11	0	3	9	0	4	19	2.7		
20	DUNCAN, Shamaryah	6-0	91:04	15.2	5-18	.278	1-7	.143	0-0	.000	2	4	6	1.0	10	0	1	5	1	7	11	1.8		
10	MCKINNEY, Mariah	1-0	05:18	5.3	0-0	.000	0-0	.000	0-0	.000	0	0	0	0.0	1	0	0	0	0	0	0	0.0		
Team											14	10	24					3						
Total		7	1450		174-405	.430	35-102	.343	92-145	.634	85	180	265	37.9	135	2	93	127	22	65	475	67.9		
Opponents		7	1450		162-422	.384	49-169	.290	90-138	.652	93	172	265	37.9	136	0	92	121	31	57	463	66.1		

INDIVIDUAL -- AAC ONLY

TOTAL: 0-2

HOME: 0-1

AWAY: 0-1

Game Records

Record	Overall	Home	Away	Neutral
ALL GAMES	0-2	0-1	0-1	0-0
CONFERENCE	0-2	0-1	0-1	0-0
NON-CONFERENCE	0-0	0-0	0-0	0-0

Score by Periods

Team	1st	2nd	3rd	4th	OT	TOT
Wichita St.	26	23	39	36	0	124
Opponents	38	30	44	32	0	144

Team Box Score

No.	Player				Total		3-Point		F-Throw		Rebounds											
		GP-GS	MIN	AVG	FG-FGA	FG%	3FG-FGA	3FG%	FT-FTA	FT%	OFF	DEF	TOT	AVG	PF	DQ	A	TO	BLK	STL	PTS	AVG
00	STRONG, Asia	2-1	63:01	31.5	12-27	.444	2-5	.400	2-6	.333	4	9	13	6.5	8	1	0	12	0	0	28	14.0
23	BASTIN, Seraphine	2-2	67:12	33.6	6-13	.462	0-0	.000	14-14	1.000	5	16	21	10.5	6	0	14	8	0	4	26	13.0
2	MCCULLY, Mariah	2-1	59:09	29.6	8-27	.296	2-11	.182	3-4	.750	1	3	4	2.0	6	0	1	3	0	2	21	10.5
12	BREMAUD, Carla	2-2	58:21	29.2	5-16	.313	5-12	.417	0-0	.000	3	3	6	3.0	7	0	3	2	0	4	15	7.5
24	COLBERT, Trajata	2-2	34:24	17.2	5-9	.556	0-0	.000	1-2	.500	3	5	8	4.0	6	0	1	5	3	2	11	5.5
1	MCCARTY, DJ	2-1	35:13	17.6	5-11	.455	0-0	.000	1-4	.250	1	3	4	2.0	3	0	5	5	0	5	11	5.5
20	DUNCAN, Shamaryah	2-0	50:07	25.1	3-13	.231	1-6	.167	0-0	.000	1	0	1	0.5	2	0	1	2	1	6	7	3.5
13	ADAMS, Ene	2-1	27:15	13.6	1-7	.143	0-1	.000	3-4	.750	3	8	11	5.5	3	0	0	0	0	1	5	2.5
10	MCKINNEY, Mariah	1-0	05:18	5.3	0-0	.000	0-0	.000	0-0	.000	0	0	0	0.0	1	0	0	0	0	0	0	0.0
Team											5	4	9					2				
Total		2	400		45-123	.366	10-35	.286	24-34	.706	26	51	77	38.5	42	1	25	39	4	24	124	62.0
Opponents		2	400		49-121	.405	13-40	.325	33-53	.623	31	56	87	43.5	34	0	29	38	16	18	144	72.0



SEASON STATISTICS

SCHEDULE & RESULTS

DATE	AP/CO	OPPONENT	RESULT	STRK	RECORD	AAC	HI SCORER	HI REBOUNDER	HI ASSISTS	ATTEND.
N. 27	-/-	TEXAS A&M CORPUS CHRISTI	W 78-58	Won 1	1-0		(20) Strong	(10) Adams	(6) Bastin	0
N. 30	-/-	ALCORN STATE	W 71-53	Won 2	2-0		(16) Strong	(8) Adams	(6) McCarty	0
D. 4	-/-	SOUTHERN	W 57-53	Won 3	3-0		(11) Bastin, McCarty	(9) Adams	(6) McCarty	0
D. 6	-/-	NORTHERN IOWA	L 91-93	Lost 1	3-1		(22) Strong	(13) Strong	(4) McCully	0
D. 10	-/-	SOUTH DAKOTA	L 54-62	Lost 2	3-2		(16) McCully	(10) Colbert	(3) Bastin, McCully	625
D. 16	-/-	at Tulsa*	Postponed							
D. 19	-/-	at Tulane*	Postponed							
D. 23	-/-	SMU*	Postponed							
D. 30	-/-	at Houston*	L 65-79	Lost 3	3-3	0-1	(18) Bastin	(11) Bastin	(4) Bastin	458
J. 2	-/-	CINCINNATI*	L 59-65	Lost 4	3-4	0-2	(15) McCully, Strong	(10) Bastin	(10) Bastin	587
J. 6	#18/22	at USF*								
J. 9	-/-	ECU*								
J. 13	-/-	at Memphis*								
J. 20	-/-	USF*								
J. 23	-/-	at Temple*								
J. 27	-/-	at Cincinnati*								
J. 30	-/-	UCF*								
F. 3	-/-	TULANE*								
F. 6	-/-	TEMPLE*								
F. 10	-/-	at UCF*								
F. 17	-/-	MEMPHIS*								
F. 20	-/-	at ECU*								
F. 24	-/-	HOUSTON*								
F. 27	-/-	at SMU*								
M. 2	-/-	TULSA*								

SCORING MARGINS

	1	2	3	4	5	6	7	8	9	10	11	12	13	14	15	16	17	18	19	20-24	25-29	30+	40+	<10	10+	20+
WINS	.	.	.	1	1	.	1	.	.	.	1	1	1
LOSSES	.	1	.	.	.	1	.	1	1	3	1	.

ATTENDANCE FIGURES

Site	Games	Sellouts	Total	Average
HOME (Charles Koch Arena)	6	0	1212	202
AWAY	1	0	458	458
NEUTRAL	-	0	-	-
American Championship	-	0	-	-
TOTALS	7	0	1,670	238.6

SCHEDULE KEY:

- Home Games in CAPS
- * = American Athletic Conference game
- [] = Opponent's Tournament Seed
- % = American Athletic Conference Tournament (Fort Worth, Texas / Dickies Arena)



SEASON STATISTICS

GAME-BY-GAME COMPARISON (WSU listed first in bold, then opponent)

	1st	2nd	3rd	4th	OT	Tot	+/-	FGM-FGA	Pct.	3PM-3PA	Pct.	FTM-FTA	Pct.	Reb	+/-	A	TO	TO Mar	Blk	Stl	Fouls
TEXAS A&M CORPUS CHRISTI	12	24	24	18	-	78	+20	28-58	.483	8-19	.421	14-22	.636	30		16	11	+12	2	11	14
	13	13	17	15	-	58		21-52	.404	6-20	.300	10-12	.833	35	-5	14	23		6	7	22
ALCORN STATE	14	15	22	20	-	71	+18	27-53	.509	6-13	.462	11-16	.688	34	+2	18	17		3	8	14
	17	10	13	13	-	53		20-60	.333	10-31	.323	3-10	.300	32		12	16	-1	1	6	17
SOUTHERN	17	13	14	13	-	57	+4	21-47	.447	2-10	.200	13-25	.520	32		10	12	+2	6	6	23
	15	9	14	15	-	53		17-54	.315	5-25	.200	14-20	.700	39	-7	7	14		1	4	21
NORTHERN IOWA	17	16	18	27	13	91		34-76	.447	3-9	.333	20-27	.741	48	+14	14	25		2	10	25
	19	17	31	11	15	93	-2	34-69	.493	10-31	.323	15-23	.652	34		18	21	-4	3	8	23
SOUTH DAKOTA	14	12	8	20	-	54		19-48	.396	6-16	.375	10-21	.476	44	+6	10	23		5	6	18
	21	15	9	17	-	62	-8	21-66	.318	5-22	.227	15-20	.750	38		12	9	-14	4	14	19
at Houston	12	10	23	20	-	65		22-60	.367	3-13	.231	18-22	.818	42		10	26		1	14	26
	22	15	24	18	-	79	-14	25-64	.391	10-29	.345	19-34	.559	45	-3	13	22	-4	9	14	18
CINCINNATI	14	13	16	16	-	59		23-63	.365	7-22	.318	6-12	.500	35		15	13	+3	3	10	16
	16	15	20	14	-	65	-6	24-57	.421	3-11	.273	14-19	.737	42	-7	16	16		7	4	16
at USF																					
ECU																					
at Memphis																					
USF																					
at Temple																					
at Cincinnati																					
UCF																					
TULANE																					
TEMPLE																					
at UCF																					
MEMPHIS																					
at ECU																					
HOUSTON																					
at SMU																					
TULSA																					



SEASON STATISTICS

TEAM HIGHS / LOWS

WICHITA STATE			OPPONENT	
Points, 1st Half	High	36	TEXAS A&M CORPUS CHRISTI (11/27/20)	37
	Low	22	at Houston (12/30/20)	24
Points, 2nd Half	High	45	NORTHERN IOWA (12/6/20)	42
	Low	27	SOUTHERN (12/4/20)	26
Total Points	High	91	NORTHERN IOWA (12/6/20)	93
	Low	54	SOUTH DAKOTA (12/10/20)	53
FG Made	High	34	NORTHERN IOWA (12/6/20)	34
	Low	19	SOUTH DAKOTA (12/10/20)	17
FG Attempted	High	76	NORTHERN IOWA (12/6/20)	69
	Low	47	SOUTHERN (12/4/20)	52
FG Percentage	High	.509	ALCORN STATE (11/30/20)	.493
	Low	.365	CINCINNATI (1/2/21)	.315
3-Pt. FG Made	High	8	TEXAS A&M CORPUS CHRISTI (11/27/20)	10
	Low	2	SOUTHERN (12/4/20)	3
3-Pt. FG Attempts	High	22	CINCINNATI (1/2/21)	31
	Low	9	NORTHERN IOWA (12/6/20)	11
3-Pt. FG Pct.	High	.462	ALCORN STATE (11/30/20)	.345
	Low	.200	SOUTHERN (12/4/20)	.200
FT Made	High	20	NORTHERN IOWA (12/6/20)	19
	Low	6	CINCINNATI (1/2/21)	3
FT Attempted	High	27	NORTHERN IOWA (12/6/20)	34
	Low	12	CINCINNATI (1/2/21)	10
FT Percentage	High	.818	at Houston (12/30/20)	.833
	Low	.476	SOUTH DAKOTA (12/10/20)	.300
Off. Rebounds	High	18	NORTHERN IOWA (12/6/20)	17
	Low	8	SOUTHERN (12/4/20)	7
Total Rebounds	High	48	NORTHERN IOWA (12/6/20)	45
	Low	30	TEXAS A&M CORPUS CHRISTI (11/27/20)	32
Rebound Margin	High	+14	NORTHERN IOWA (12/6/20)	+7
	Low	-7	2x, last CINCINNATI (1/2/21)	-14
Assists	High	18	ALCORN STATE (11/30/20)	18
	Low	10	3x, last at Houston (12/30/20)	7
Blocked Shots	High	6	SOUTHERN (12/4/20)	9
	Low	1	at Houston (12/30/20)	1
Steals	High	14	at Houston (12/30/20)	14
	Low	6	2x, last SOUTH DAKOTA (12/10/20)	4
Turnovers Forced	High	23	TEXAS A&M CORPUS CHRISTI (11/27/20)	26
	Low	9	SOUTH DAKOTA (12/10/20)	11
Personal Fouls	High	26	at Houston (12/30/20)	23
	Low	14	2x, last ALCORN STATE (11/30/20)	16

INDIVIDUAL HIGHS

WICHITA STATE			OPPONENT	
Points	22	Asia Strong -- NORTHERN IOWA (12/6/20)	29	Chloe Lamb -- SOUTH DAKOTA (12/10/20)
FG Made	11	Asia Strong -- NORTHERN IOWA (12/6/20)	10	Chloe Lamb -- SOUTH DAKOTA (12/10/20)
FG Attempted	25	Asia Strong -- NORTHERN IOWA (12/6/20)	22	Chloe Lamb -- SOUTH DAKOTA (12/10/20)
FG Percentage	.750	(6-8) Rachel Johnson -- NORTHERN IOWA (12/6/20)	1.000	(6-6) Eryka Sidney -- at Houston (12/30/20)
3-Pt. FG Made	5	Carla Bremaud -- TEXAS A&M CORPUS CHRISTI (11/27/20)	5	Eryka Sidney -- at Houston (12/30/20)
3-Pt. FG Attempted	8	3x, last Carla Bremaud -- CINCINNATI (1/2/21)	10	2x, last Britney Onyeje -- at Houston (12/30/20)
3-Pt. Percentage	.625	(5-8) Carla Bremaud -- A&M CORPUS CHRISTI (11/27/20)	1.000	(5-5) Eryka Sidney -- at Houston (12/30/20)
FT Made	12	Seraphine Bastin -- at Houston (12/30/20)	10	Bre Gunnels -- NORTHERN IOWA (12/6/20)
FT Attempted	12	Seraphine Bastin -- at Houston (12/30/20)	12	Bre Gunnels -- NORTHERN IOWA (12/6/20)
FT Percentage	1.000	(12-12) Seraphine Bastin -- at Houston (12/30/20)	1.000	(6-6) Milan Schimmel -- CINCINNATI (1/2/21)
Rebounds	13	Asia Strong -- NORTHERN IOWA (12/6/20)	17	Ilmar'I Thomas -- CINCINNATI (1/2/21)
Assists	10	Seraphine Bastin -- CINCINNATI (1/2/21)	6	Julia Blackshell-Fair -- at Houston (12/30/20)
Blocked Shots	3	2x, last Trajata Colbert -- SOUTH DAKOTA (12/10/20)	4	Jazmaine Lewis -- at Houston (12/30/20)
Steals	4	3x, last Seraphine Bastin -- CINCINNATI (1/2/21)	7	Paige Allen -- TEXAS A&M CORPUS CHRISTI (11/27/20)
Minutes	43	Carla Bremaud -- NORTHERN IOWA (12/6/20)	39	Bre Gunnels -- NORTHERN IOWA (12/6/20)



POINTS-REBOUNDS-ASSISTS

#-#-# = Starter

Bastin, Bremaud, McCarty, Adams, Strong	2-1
Bastin, Bremaud, McCarty, McCully, Strong	1-0
Bastin, Bremaud, Johnson, Strong, Colbert	0-1
Bastin, Bremaud, McCarty, Adams, Colbert	0-1
Bastin, Bremaud, McCully, Strong, Colbert	0-1

15

**LEADS - DEFICITS - SPECIALTY STATS**

LARGEST LEADS & DEFICITS

16



BIG GAMES

		Leading Scorer		Leading Rebounder		Assist Leader		10+ Points		20+ Points		30+ Points		5+ Rebounds		5+ Assists		P-R Double-Double		P-A Double-Double	
#	Player	20-21	Career	20-21	Career	20-21	Career	20-21	Career	20-21	Career	20-21	Career	20-21	Career	20-21	Career	20-21	Career	20-21	Career
00	STRONG, Asia	4	4	1	1	-	-	6	6	2	2	-	-	5	5	-	-	1	1	-	-
1	MCCARTY, DJ	1	3	-	-	2	6	1	8	-	-	-	-	1	2	3	3	-	-	-	-
2	MCCULLY, Mariah	2	15	-	1	2	4	3	22	-	2	-	-	-	4	-	-	-	-	-	-
10	MCKINNEY, Mariah	-	-	-	-	-	-	-	-	-	-	-	-	-	-	-	-	-	-	-	-
12	BREMAUD, Carla	-	8	-	2	-	4	3	28	-	-	-	-	2	12	-	-	-	-	-	-
13	ADAMS, Ene	-	-	3	3	-	-	-	-	-	-	-	-	4	4	-	-	-	-	-	-
14	BUDANE, Carla	-	-	-	-	-	-	-	-	-	-	-	-	-	-	-	-	-	-	-	-
15	HAMPTON, Jaida	-	8	-	-	-	3	-	10	-	-	-	-	-	3	-	-	-	-	-	-
20	DUNCAN, Shamaryah	-	-	-	-	-	-	-	-	-	-	-	-	-	-	-	-	-	-	-	-
23	BASTIN, Seraphine	2	9	2	21	4	41	4	19	-	1	-	-	5	35	2	15	1	3	-	-
24	COLBERT, Trajata	-	6	1	5	-	-	1	9	1	1	-	-	4	9	-	-	-	2	-	-
42	HENDERSON, Asia	-	1	-	7	-	-	-	3	-	-	-	-	-	13	-	-	-	-	-	-

[illegible]

**A TEAM SCORED 100+ POINTS IN A GAME**

WSU	100 (W, 100-50)	vs. Arkansas-Pine Bluff, 12/16/2019
Opp.	124 (L, 43-124)	by UConn, 2/10/2018

A TEAM SCORED 50 OR FEWER POINTS IN A GAME

WSU	32 (L, 32-65)	vs. UCF, 3/7/2020
Opp.	50 (W, 100-50)	by Arkansas-Pine Bluff, 12/16/2019

A TEAM SCORED 90+ POINTS IN CHARLES KOCH ARENA

WSU	91 (L, 91-93 2OT)	vs. Northern Iowa, 12/6/2020
Opp.	93 (L, 91-93 2OT)	by Northern Iowa, 12/6/2020

A TEAM SCORED 90 POINTS IN A LOSS

WSU	91 (91-93 2OT)	vs. Northern Iowa, 12/6/2020
Opp.	95 (99-95)	by New Mexico State, 12/6/2001

A TEAM SCORED 60 OR FEWER POINTS IN A VICTORY

WSU	57 (W, 57-53)	vs. Southern, 12/4/2020
Opp.	56 (L, 50-56)	by USE, 1/22/2020

A TEAM HAD 5+ PLAYERS SCORE IN DOUBLE FIGURES

WSU	Brewer (19), Reid (15), McCarty (14), Bastin (13), Henderson (10)	at Temple, 2/5/2020
Opp.	Gunnels (18), Maahs (17), McDermott (15), Kroeger (13), Rucker (12)	by UNI, 12/6/2020

A TEAM WON A GAME BY 25+ POINTS

WSU	+50 (W, 100-50)	vs. Arkansas-Pine Bluff, 12/16/2019
Opp.	+45 (95-50)	by UCF, 3/2/2020

A TEAM WON A GAME BY 40+ POINTS

WSU	+50 (W, 100-50)	vs. Arkansas-Pine Bluff, 12/16/2019
Opp.	+45 (95-50)	by UCF, 3/2/2020

A TEAM WON AN OVERTIME GAME (SINGLE-OVERTIME)

WSU	63-60	vs. Missouri State, 11/10/2018
Opp.	64-56	by Houston, 1/25/2020

A TEAM WON A DOUBLE-OVERTIME GAME

WSU	73-64	vs. Long Beach State, 12/19/2011
Opp.	93-91	Northern Iowa, 12/6/2020

A TEAM WON A TRIPLE-OVERTIME GAME

WSU	Never	
Opp.	Never	

A TEAM SHOT 60% FG IN A GAME

WSU	70.0 (35-50)	vs. Temple, 2/14/2018
Opp.	71.2% (47-66)	by UConn, 2/10/2018

A TEAM SHOT 30% OR WORSE FG IN A GAME

WSU	27.3% (12-44)	vs. UCF, 3/7/2020
Opp.	28.6% (16-56)	by Tulsa, 1/15/2020

A TEAM MADE 10+ 3-POINT FG IN A GAME

WSU	15	at Temple, 2/5/2020
Opp.	10	by Houston, 12/30/2020

A TEAM DID NOT MAKE A 3-POINT FG IN A GAME

WSU	0-13	at Creighton, 12/14/2019
Opp.	0-2	by UCF, 1/6/2018

A TEAM SHOT 60% 3-POINT FG IN A GAME (min. 10 attempts)

WSU	63.6% (7-11)	vs. SMU, 1/16/2018
Opp.	61.1% (11-18)	by UCF, 3/2/2020

A TEAM MADE 20+ FREE THROWS IN A GAME

WSU	20-27	vs. Northern Iowa, 12/6/2020
Opp.	20-23	by UCF, 3/2/2020

A TEAM MADE 5 OR FEWER FREE THROWS IN A GAME

WSU	4-4	vs. UCF, 3/7/2020
Opp.	3-10	by Alcorn State, 11/30/2020

A TEAM SHOT 90% OR BETTER FREE THROWS IN A GAME

WSU	93.3% (14-15)	vs. Houston, 3/6/2020
Opp.	94.1% (16-17)	by Oral Roberts, 11/11/2019

A TEAM SHOT 40% OR WORSE FREE THROWS IN A GAME

WSU	20.0% (1-5)	at Oral Roberts, 11/11/2019
Opp.	30.0% (3-10)	by Alcorn State, 11/30/2020

A TEAM HAD 20+ OFFENSIVE REBOUNDS IN A GAME

WSU	21	at Houston, 1/25/2020
Opp.	22	by USE, 2/23/2019

A TEAM HAD 5 OR FEWER OFFENSIVE REBOUNDS IN A GAME

WSU	5	at UConn, 1/2/2020
Opp.	3	by Arkansas-Pine Bluff, 11/7/2018

A TEAM HAD 30+ DEFENSIVE REBOUNDS IN A GAME

WSU	30	at Houston, 12/30/2020
Opp.	30	by SMU, 2/19/2020

A TEAM HAD 35+ DEFENSIVE REBOUNDS IN A GAME

WSU	35	vs. Tulsa, 1/15/2020
Opp.	36	by Northwestern, 12/19/2018

A TEAM HAD 25 OR FEWER TOTAL REBOUNDS IN A GAME

WSU	22	at UCF, 3/2/2020
Opp.	17	by Arkansas-Pine Bluff, 11/7/2018

A TEAM OUT-REBOUNDED ITS OPPONENT BY 15+

WSU	+25 (53-28)	at Houston, 1/25/2020
Opp.	+18 (40-22)	by UCF, 3/2/2020

A TEAM HAD 25+ ASSISTS IN A GAME

WSU	26	vs. Temple, 2/14/2018
Opp.	32	by UConn, 2/10/2018

A TEAM HAD 7 OR FEWER ASSISTS IN A GAME

WSU	6	vs. UCF, 3/7/2020
Opp.	7	by Southern, 12/4/2020

**A TEAM COMMITTED 25 TURNOVERS IN A GAME**

WSU	26	at Houston, 12/30/2020
Opp.	26	by Tulane, 2/16/2020

A TEAM COMMITTED 7 OR FEWER TURNOVERS IN A GAME

WSU	6	vs. SIU, 2/22/2015
Opp.	6	by Cincinnati, 2/10/2019

A TEAM HAD 15+ STEALS IN A GAME

WSU	17	at Tulane, 2/26/2020
Opp.	18	by ECU, 1/12/2020

A TEAM DID NOT HAVE A STEAL IN A GAME

WSU		
Opp.		by UNI, 3/16/2013

A TEAM HAD 10+ BLOCKED SHOTS IN A GAME

WSU	12	at Tulane, 1/13/2018
Opp.	11	by USEF, 2/23/2019

A TEAM DID NOT BLOCK A SHOT IN A GAME

WSU		vs. Virginia Tech, 12/21/2019
Opp.		by Houston, 1/25/2020

A TEAM COMMITTED 25+ FOULS IN A GAME

WSU	26	at Houston, 12/30/2020
Opp.	25	by ECU, 2/1/2020

A TEAM COMMITTED 10 OR FEWER FOULS IN A GAME

WSU	10	vs. Incarnate Word, 12/17/2016
Opp.	8	by UConn, 2/26/2019

A TEAM HAD A PLAYER DISQUALIFIED (FOUL OUT)

WSU	Asia Strong	at Houston, 12/30/2020
Opp.	Destiny Johnson	of Tulsa, 2/23/2020

A TEAM HAD TWO OR MORE PLAYERS DISQUALIFIED (FOUL OUT)

WSU	Asia Henderson/Ashlei Kirven	at Houston, 1/25/2020
Opp.	Tiara Chambers/Dominique Clayton	of ECU, 1/12/2020

A TEAM SCORED 50+ POINTS IN A HALF

WSU	57, 1st Half	vs. Arkansas-Pine Bluff, 12/16/2019
Opp.	59, 2nd Half	by UCF, 3/2/2020

A TEAM HAD 20 OR FEWER POINTS IN A HALF

WSU	14, 1st Half	vs. UCF, 3/7/2020
Opp.	20, 1st Half	by Houston, 3/6/2020

A PLAYER SCORED 30+ POINTS IN A GAME

WSU	38 by Rangie Bessard	vs. Temple, 2/14/2018
Opp.	37 by Kay Kay Wright	of UCF, 3/2/2020

A PLAYER SCORED 40+ POINTS IN A GAME

WSU	41 by Kareema Williams	vs. Illinois State, 2/6/1992
Opp.		

A PLAYER SHOT 80% OR BETTER FG IN A GAME (MIN. 10 ATT.)

WSU	81.8% (9-11) by TaQuandra Mike	vs. SIU, 2/21/2016
Opp.	86.7% (13-15) by Napheesa Collier	of UConn, 2/26/2019

A PLAYER MADE 7+ 3-POINTERS IN A GAME

WSU	9 by Alie Decker	vs. Winthrop, 12/20/2014
Opp.	7 by Dymond Gladney	of Houston, 3/6/2020

A PLAYER SHOT 100% 3-POINT FG (MIN. 4 ATT.)

WSU	4-4 by Tisharria Huggins	vs. UNI, 2/5/2004
Opp.	5-5 by Eryka Sidney	of Houston, 12/30/2020

A PLAYER SHOT 100% FREE THROWS IN A GAME (MIN. 10 ATT.)

WSU	12-12 by Seraphine Bastin	at Houston, 12/30/2020
Opp.	10-10 by Shernise Robertson	of Sam Houston State, 12/28/2014

A PLAYER MADE 10 FREE THROWS IN A GAME

WSU	12 (12-12) by Seraphine Bastin	at Houston, 12/30/2020
Opp.	10 (10-12) by Bre Gunnels	of Northern Iowa, 12/6/2020

A PLAYER HAD 10+ DEFENSIVE REBOUNDS IN A GAME

WSU	12 by Seraphine Bastin	at Tulsa, 2/23/2020
Opp.	10 by Chloe Lamb	of South Dakota, 12/10/2020

A PLAYER HAD 8+ OFFENSIVE REBOUNDS IN A GAME

WSU	8 by Rangie Bessard	vs. Drake, 3/11/2017
Opp.	8 by Ilmar'I Thomas	of Cincinnati, 1/2/2021

A PLAYER HAD 15+ TOTAL REBOUNDS IN A GAME

WSU	15 by Seraphine Bastin	at Tulsa, 2/23/2020
Opp.	17 by Ilmar'I Thomas	of Cincinnati, 1/2/2021

A PLAYER HAD 10+ ASSISTS IN A GAME

WSU	10 by Seraphine Bastin	vs. Cincinnati, 1/2/2021
Opp.	10 by Taja Cole	of Virginia Tech, 12/21/2019

A PLAYER HAD 5+ TURNOVERS IN A GAME

WSU	8 by Asia Strong	at Houston, 12/30/2020
Opp.	5 by Bre Gunnels	of Northern Iowa, 12/6/2020

A PLAYER HAD 5+ BLOCKED SHOTS IN A GAME

WSU	5 by Asia Henderson	vs. Houston, 3/6/2020
Opp.	7 by Olivia Nelson-Ododa	of UConn, 1/2/2020

A PLAYER HAD 5+ STEALS IN A GAME

WSU	7 by Mariah McCully	at Tulane, 2/16/2020
Opp.	5 by Liv Korngable	of South Dakota, 12/10/2020

A PLAYER PLAYED ALL 40 MINUTES IN REGULATION

WSU	Diamond Lockhart, Aundra Stovall, Jaleesa Chapel	vs. Southeast Missouri, 12/4/2015
Opp.	Dymond Gladney	of Houston, 3/6/2020

TWO PLAYERS HAD A DOUBLE-DOUBLE IN A GAME

WSU	Rangie Bessard (15p, 11r) & Sabrina Lozada-Cabbage (12p, 11r)	at Tulsa, 2/26/2018
Opp.	Taja Cole (15 p, 10a), Trinity Baptiste (14p, 10r) & Lydia Rivers (11p & 12r)	of Virginia Tech, 12/21/2019



BOX SCORES

November 27 | Wichita, Kan. | Charles Koch Arena

Official Basketball Box Score - Final
A&M-Corpus Christi at Wichita St.
11/27/20 Charles Koch Arena, Wichita, Kan.
2020-21 Women's BasketballGame Time: 6:00 PM
Game Duration: 2:01

Officials: Lauren Nienstra, Chris Saucedo, Meriah Vidal

A&M-Corpus Christi - 58

Record: 0-2

NO.	Name	Min	FG M-A	3P M-A	FT M-A	Rebounds OR DR TOT	Fouls PF FD	TP	AS	TO	ST	Blocks BS BA	+/-			
13	Aecia Westbrook	F 31:27	5-7	0-1	7-8	5	3	8	3	7	17	3	0	1	-16	
1	Giana Wright	G 19:06	2-4	0-0	0-0	0	0	0	2	0	4	2	2	0	1	6
3	Torionna Nesbitt	G 26:29	0-1	0-1	0-0	0	1	1	4	1	0	2	2	0	0	-3
11	Paige Allen	G 30:51	4-14	2-7	3-4	1	5	6	3	3	13	2	7	0	0	-15
20	Makina Serrata	G 15:55	3-8	0-0	0-0	2	1	3	2	1	6	2	2	0	1	2
12	Mreia Aguado	11:55	2-3	0-0	0-0	1	0	1	1	0	4	0	2	0	0	-6
5	Elijah Pricebrooks	11:49	1-2	0-1	0-0	0	2	2	4	0	2	0	1	0	0	-17
10	Hayle Campbell	06:55	1-3	1-2	0-0	0	0	0	1	0	3	0	1	0	0	-5
3	Lynn Tarnis	18:52	0-1	0-0	0-0	2	2	4	1	0	0	2	1	0	2	-24
2	Jade Thompson	08:33	0-0	0-0	0-0	0	1	1	1	2	0	0	1	0	0	-4
14	Olivia Dowden	14:24	3-8	3-8	0-0	0	2	2	0	0	9	0	0	0	0	-16
22	Alexandria Pollard	02:03	0-1	0-0	0-0	0	0	0	0	0	0	0	0	0	0	-2
33	Dalaysia Gillard	01:41	0-0	0-0	0-0	0	1	1	0	0	0	0	1	0	0	-2
Team						2	4	6			0		0			
Totals			21-52	6-20	10-12	13	22	35	22	14	58	14	23	7	6	-20

Technical Fouls: NONE

Wichita St. - 78

Record: 1-0

NO.	Name	Min	FG M-A	3P M-A	FT M-A	Rebounds OR DR TOT	Fouls PF FD	TP	AS	TO	ST	Blocks BS BA	+/-				
00	Asia Strong	F 28:44	9-15	1-2	1-1	2	4	6	2	3	20	0	1	1	2	20	
1	DJ McCarty	G 34:07	3-6	1-3	2-3	0	1	1	4	4	9	5	3	1	0	13	
2	Meriah McCully	G 27:19	4-11	1-4	3-4	0	3	3	2	2	12	4	3	3	0	1	4
12	Carla Bremaud	G 35:54	5-10	5-8	0-0	0	3	3	4	0	15	1	0	2	1	0	19
23	Seraphine Bastin	G 33:46	4-7	0-1	3-4	0	2	2	0	4	11	6	2	4	0	13	
13	Ene Adams	20:39	1-5	0-0	4-8	6	4	0	1	5	6	0	1	0	0	2	14
24	Trajata Colbert	11:12	1-2	0-0	1-2	0	2	2	1	2	3	0	1	0	0	1	14
20	Shamaryah Duncan	08:19	1-2	0-1	0-0	1	0	1	0	2	2	0	0	0	0	0	6
Team						2	0	2			0		0				
Totals			28-58	8-19	14-22	11	19	30	14	22	78	16	11	11	2	6	20

Technical Fouls: NONE

Biggest lead	9 (1 st 4:34)	20 (4 th 2:21)
Best Scoring Run	8 (2 nd 4:15)	11 (3 rd 3:19)
Lead Changes	6	
Times Tied	2	
Time with Lead	09:33	28:58

December 4 | Wichita, Kan. | Charles Koch Arena

Official Basketball Box Score - Final
Southern U. at Wichita St.
12/04/20 Charles Koch Arena, Wichita, Kan.
2020-21 Women's BasketballGame Time: 6:00 PM
Game Duration: 2:03

Officials: Isaac D. Johnson, Natasha Camy, Jennifer White

Southern U. - 53

Record: 0-3

NO.	Name	Min	FG M-A	3P M-A	FT M-A	Rebounds OR DR TOT	Fouls PF FD	TP	AS	TO	ST	Blocks BS BA	+/-			
22	Tanara Moore	F 31:26	0-1	0-0	0-0	1	3	4	2	0	0	0	0	0		
44	Raven White	C 33:35	0-1	0-0	3-6	3	7	10	2	5	3	0	2	0	-1	
4	Chloe Fleming	G 15:12	1-3	1-3	0-0	0	3	3	2	4	3	0	2	0	-1	
20	Amani McWain	G 29:20	6-20	2-10	0-0	2	2	4	2	3	14	0	1	0	3	
5	Genoveva Johnson	G 30:06	7-12	0-2	9-10	0	4	4	6	23	3	1	0	1	13	
25	Nakia Kincey	22:10	1-4	1-3	0-0	0	3	3	2	1	3	2	1	0	-19	
12	Tyneisha Metcalf	21:29	1-8	1-6	1-2	1	1	2	3	1	4	2	0	1	0	
1	Cabria Lee	09:58	0-3	0-1	1-2	0	1	1	1	1	1	0	3	0	-8	
11	Zaria Harleaux	06:44	1-2	0-0	0-0	0	0	0	3	0	2	0	0	0	-4	
Team						6	2	8			0		1			
Totals			17-54	5-25	14-20	13	26	39	21	23	53	7	14	4	1	-6

Technical Fouls: NONE

Wichita St. - 57

Record: 3-0

NO.	Name	Min	FG M-A	3P M-A	FT M-A	Reb OR DR TOT	Fouls PF FF	TP	AS	TO	ST	Blocks BS BA	+				
00	Asia Strong	F 36:00	4-13	0-2	2-5	2	2	4	4	10	2	1	1	0	3		
13	Ene Adams	F 21:58	2-5	0-0	0-1	1	6	9	4	1	4	0	2	1	0	-3	
1	DJ McCarty	G 34:39	3-5	0-0	5-8	0	4	4	2	7	11	6	1	2	1	0	2
12	Carla Bremaud	G 30:10	2-7	1-4	2-2	0	2	2	4	1	7	0	1	0	2	1	4
23	Seraphine Bastin	G 29:27	4-7	0-1	3-5	2	3	5	4	4	11	1	2	1	0	0	2
4	Rachel Johnson	24:22	2-5	1-3	1-2	0	2	2	1	2	6	1	2	1	0	0	1
24	Trajata Colbert	15:21	4-5	0-0	0-2	0	4	4	3	2	8	0	2	0	3	0	11
20	Shamaryah Duncan	08:03	0-0	0-0	0-0	0	1	1	1	0	0	0	1	0	0	0	0
Team						1	0	1			0		0				
Totals			21-47	2-10	13-25	8	24	32	23	21	57	10	12	6	6	1	4

Technical Fouls: NONE

Biggest lead	3 (1 st 8:45)	12 (4 th 2:36)
Best Scoring Run	7 (4 th 0:40)	9 (2 nd 4:30)
Lead Changes	3	
Times Tied	5	
Time with Lead	02:55	32:43



November 30 | Wichita, Kan. | Charles Koch Arena

Official Basketball Box Score - Final
Alcorn vs Wichita St.
11/30/20 Charles Koch Arena, Wichita, Kan.Game Time: 6:00 PM
Game Duration: 1:54

Alcorn - 53 • 0-2

##	Player		Total FG/FGA	3-Ptr FG/FGA	FT-FTA	Rebounds tot	PF	TP	A	TO	Blk	Stl	Min		
11	Deja Mitchell	F	3-4	0-0	1-2	4	2	6	2	7	0	3	0	29:20	
3	Nia McCalphie	G	2-9	2-6	0-0	1	2	3	3	6	1	4	0	29:09	
13	Kirdis Clark	G	4-12	3-6	0-4	4	4	8	3	11	4	2	0	24:09	
14	Cayla Obillo	G	3-9	2-5	0-0	1	5	6	3	8	2	4	1	23:52	
25	Tyginnae Wright	G	3-9	1-5	0-0	3	1	4	2	7	2	0	0	18:02	
15	Diamond Hall	G	3-10	2-8	1-2	0	2	2	1	9	1	1	0	16:09	
30	Aysha Kirkland	G	1-4	0-0	0-0	0	0	0	1	2	1	0	0	15:02	
5	Quintasia Leatherwood	G	1-2	0-0	0-0	0	1	1	0	2	1	1	0	06:08	
21	Aja Wheeler	G	0-0	0-0	0-0	0	0	0	0	0	0	1	0	03:49	
4	Kailyn Watkins	G	0-1	0-1	1-2	0	0	0	2	1	0	0	0	04:20	
Team						1	1	2							
Totals			20-60	10-31	3-10	14	18	32	17	53	12	16	1	6	200:00
FG %		1st: 7-18 38.9%	2nd: 3-11 27.3%	3rd: 5-14 35.7%	4th: 5-17 29.4%	Game: 20-60 33.3%		Opp: 10-31 32.3%							Deadball Rebounds
3PT %		1st: 3-11 27.3%	2nd: 3-7 42.9%	3rd: 1-2 50.0%	4th: 1-6 16.7%	Game: 3-10 30.0%		Opp: 2-10 20.0%							
FT %		1st: 0-0 0.0%	2nd: 1-2 50.0%	3rd: 1-2 50.0%	4th: 1-6 16.7%	Game: 3-10 30.0%		Opp: 0-0 0.0%							

FG % 1st: 7-18 38.9% 2nd: 3-11 27.3% 3rd: 5-14 35.7% 4th: 5-17 29.4% Game: 20-60 33.3%
3PT % 1st: 3-11 27.3% 2nd: 3-7 42.9% 3rd: 2-5 40.0% 4th: 2-8 25.0% Game: 10-31 32.3%
FT % 1st: 0-0 0.0% 2nd: 1-2 50.0% 3rd: 1-2 50.0% 4th: 1-6 16.7% Game: 3-10 30.0%

Dead Ball Rebounds: 4.0

Wichita St. - 71 • 2-0

		Total	3-Ptr	FT-FTA	Rebounds			PF	A	TO	Blk	Stl	Min	
##	Player	FG-FGA	FG-FGA		Off	Def	Tot							
00	Asia Strong	F 8-15	0-1	0-1	0	0	0	16	2	1	2	0	23:17	
13	Ene Adams	F 2-4	0-0	0-0	3	5	8	1	4	0	2	0	20:51	
1	DJ McCarty	G 1-3	0-0	3-4	2	2	4	2	5	6	2	0	29:04	
12	Carla Bremaud	G 5-8	3-5	1-1	0	1	1	14	1	2	0	1	31:17	
23	Seraphine Bastin	G 2-4	1-2	3-4	2	1	3	8	4	1	0	1	35:56	
24	Trajata Colbert	G 4-8	0-0	1-2	2	4	6	2	9	1	1	1	15:31	
20	Rachel Johnson	4-10	2-5	3-4	1	5	6	2	13	3	4	0	25:52	
20	Shamaryah Duncan	1-1	0-0	0-0	0	2	2	4	2	0	2	0	18:12	
Team					0	4	4			0				
Totals		27-53	6-13	11-16	10	24	34	14	71	18	17	3	8	200:00
FG % 1st: 6-12		50.0%	2nd: 6-14	42.9%	3rd: 8-16	50.0%	4th: 7-11	63.6%	Game: 27-53	50.9%				Deadball Rebounds
FT % 1st: 2-3		66.7%	2nd: 2-4	50.0%	3rd: 2-4	50.0%	4th: 1-2	50.0%	Game: 11-16	68.8%				
FTA % 1st: 12		50.0%	2nd: 13	33.3%	3rd: 45	80.0%	4th: 56	83.3%	Game: 11-16	68.8%				

FG % 1st: 6-12 50.0% 2nd: 6-14 42.9% 3rd: 8-16 50.0% 4th: 7-11 63.6% Game: 27-53 50.9%
3PT % 1st: 1-4 25.0% 2nd: 2-3 66.7% 3rd: 2-4 50.0% 4th: 1-2 50.0% Game: 6-13 46.2%
FT % 1st: 1-2 50.0% 2nd: 1-3 33.3% 3rd: 4-5 80.0% 4th: 5-6 83.3% Game: 11-16 68.8%

Dead Ball Rebounds: 3.5

Officials: John Capolino, Bianca Burns, Zac Brest

Technical Fouls: Alcorn - NONE Wichita St. - NONE

Score by periods	1st	2nd	3rd	4th	Total
Alcorn	17	10	13	13	53
Wichita St.	14	15	22	20	71

	In	Off	2nd	Fast	
Points	Paint	T/O	Chance	Break	Bench
ASU	16	12	11	1	14
WSU	40	17	12	15	24

Score tied - 6 times.
Lead changed - 4 times.Last FG - ASU 4th-1:53, WSU 4th-0:28.
Largest lead - ASU by 6 2nd-8:31, WSU by 19 4th-3:40
ASU led for 1:39, WSU led for 2:25, Game was tied for 06:56

December 6 | Wichita, Kan. | Charles Koch Arena



BOX SCORES

S

December 10 | Wichita, Kan. | Charles Koch Arena

Official Basketball Box Score - Final
South Dakota at Wichita St.
12/10/20 Charles Koch Arena, Wichita, Kan.
2020-21 Women's BasketballGame Time: 6:00 PM
Game Duration: 1:53
Attendance: 625

Officials: Bruce Morris, Fatou Gassoko-Stephens, Jules Gallen

South Dakota - 62

Record: 2-2

NO. Name	Min	FG M-A	3P M-A	FT M-A	Rebounds OR DR TOT	Fouls PF FD	TP	AS	TO	ST	Blocks BS BA	+/-
34 Hannah Sjerven	C 25:18	5-11	0-0	4-6	3 2 5	3 7	14	2	1	0	2 3	7
2 Liv Kongable	G 38:40	3-16	0-5	2-2	2 0 2	1 3	8	5	4	5	1 0	11
22 Chloe Lamb	G 39:21	10-22	3-8	6-8	1 10 11	1 5	29	2	3	4	0 1	11
32 Kyah Watson	G 14:38	2-4	1-3	0-0	2 1 3	3 1	5	1	0	3	0 0	13
42 Nadie Krull	G 34:49	0-5	0-1	2-2	0 3 3	3 1	2	2	0	1	0 0	11
23 Natalie Mazurek	11:58	0-1	0-0	0-0	1 2 3	3 0	0	0	0	0	1 0	1
41 Alexi Hempe	15:12	0-3	0-2	1-2	1 1 2	2 1	1	1	0	0	0 0	2
35 Allison Peplowski	09:28	0-0	0-0	0-0	0 2 2	2 0	0	0	1	1	0 0	2
10 Morgan Hansen	04:07	0-1	0-0	0-0	1 0 1	0 0	0	0	0	0	0 1	-9
1 Claudia Kunzer	05:11	1-2	1-2	0-0	1 1 2	1 0	3	0	0	0	0 0	-3
3 Macy Guebert	00:39	0-1	0-1	0-0	0 0 0	0 0	0	0	0	0	0 0	-3
14 Regan Sankey	00:39	0-0	0-0	0-0	0 0 0	0 0	0	0	0	0	0 0	-3
Team					3 1 4		0					
Totals	21:66	5-22	15-20	15-23	38	19 18	62	12	9	14	4 5	8

Technical Fouls: NONE

Shooting By Period	1st	2nd	3rd	4th	GM
FG%	9-22	40.9%			
3PT%	2-8	25.0%			
FT%	1-2	50%			
1st FG%	5-16	31.3%			
2nd FG%	3-3	100%			
3rd FG%	4-16	25.0%			
4th FG%	1-5	20.0%			
3PT%	0-0	0%			
1st 3PT%	0-5	0.0%			
2nd 3PT%	11-15	73.3%			
GM FG%	21-66	31.8%			
3PT%	5-22	22.7%			
FT%	15-20	75.0%			

Dead Ball Rebounds: 3, 0

Wichita St. - 54

Record: 3-2

NO. Name	Min	FG M-A	3P M-A	FT M-A	Rebounds OR DR TOT	Fouls PF FD	TP	AS	TO	ST	Blocks BS BA	+/-
00 Asia Strong	F 33:48	3-8	0-1	3-4	2 4 6	4 4	9	1	3	0	1 0	-13
24 Trajatta Colbert	F 25:18	2-4	0-0	3-10	2 8 10	2 5	7	0	3	3	3 0	2
4 Rachel Johnson	G 26:16	4-4	2-2	0-0	1 1 2	2 1	10	1	3	2	0 0	-5
12 Carla Bremaud	G 26:01	0-4	0-2	0-0	0 3 3	2 1	0	2	0	0	0 1	-7
23 Seraphine Bastin	G 31:32	2-7	0-1	3-4	3 5 8	2 4	7	3	5	1	0 1	-12
2 Mariah McCully	25:30	6-14	4-8	0-0	0 3 3	3 0	16	3	7	0	0 1	6
1 DJ McCarty	18:21	2-6	0-2	1-3	0 3 3	1 4	5	0	0	0	1 1	-3
13 Ene Adams	13:14	0-1	0-0	0-0	0 3 3	2 0	0	0	1	0	0 0	-8
Team					4 2 6		0		1			
Totals	19:48	6-16	10-21	12-32	44	18 19	54	10	23	6	5 4	-8

Technical Fouls: NONE

Shooting By Period	1st	2nd	3rd	4th	GM
FG%	5-10	50.0%			
3PT%	1-1	100.0%			
FT%	3-8	37.5%			
1st FG%	5-16	31.3%			
2nd FG%	1-7	14.3%			
3rd FG%	1-10	10.0%			
4th FG%	0-1	0.0%			
1st 3PT%	6-10	60%			
2nd 3PT%	4-7	57.1%			
3rd 3PT%	0-1	0%			
GM FG%	19-48	39.6%			
3PT%	6-16	37.5%			
FT%	10-21	47.6%			

Dead Ball Rebounds: 5, 0

	USD	WSU
Biggest lead	14 (4 th 3:46)	9 (1 st 10:00)
Best Scoring Run	8 (1 st 7:53)	9 (2 nd 2:57)
Lead Changes	0	
Times Tied	0	
Time with Lead	39:51	00:00

Points from	USD	WSU
Turnovers	22	6
Paint	26	20
Second Chance	13	11
Fast Breaks	5	1
Bench	4	21

Period by Period Scoring	1st	2nd	3rd	4th	TOT
USD	21	15	9	17	62
WSU	14	12	8	20	54

6

December 16 | Tulsa, Okla. | Donald W. Reynolds Center



POSTPONED

7

December 19 | New Orleans, La. | Fogelman Arena



POSTPONED

8

December 23 | Wichita, Kan. | Charles Koch Arena



POSTPONED



BOX SCORES

9

December 30 | Houston, Texas | Fertitta Center

UH

Official Basketball Box Score - Final
Wichita St. at Houston
12/30/20 Fertitta Center, Houston
2020-21 Women's BasketballGame Time: 7:00 P
Game Duration: 2:1
Attendance: 41

Officials: Scott Yarbrough, Norma Jones, Billy Sini

Wichita St. - 65

Record: 3-3 (0-1)

NO. Name	Min	FG M-A	3P M-A	FT M-A	Rebounds OR DR TOT	Fouls PF FO	TP	AS	TO	ST	Blocks BS BA	+/-
13 Ene Adams	F 18:01	0-5	0-1	3-4	2 6 8	3 3	3	0	0	1	0	-7
24 Trajatta Colbert	F 20:58	4-5	0-0	0-0	2 4 6	2 1	8	1	2	1	1	-17
1 DJ McCarty	G 23:17	4-8	0-0	1-4	1 3 4	2 2	9	3	5	3	0	1
12 Carla Bremaud	G 25:08	1-8	1-4	0-0	0 1 1	4 0	3	2	1	3	0	-14
23 Seraphine Bastin	G 30:22	3-5	0-0	12-12	3 8 11	4 8	18	4	6	0	0	-18
2 Mariah McCully	24:18	2-9	0-3	2-2	1 1 2	3 2	6	0	2	2	0	-7
00 Asia Strong	25:33	6-13	1-2	0-0	3 4 7	5 1	13	0	8	0	0	-9
20 Shamayah Duncan	27:05	2-7	1-3	0-0	0 0 0	2 1	5	0	2	4	0	5
10 Mariah McKinney	05:18	0-0	0-0	0-0	0 0 0	1 0	0	0	0	0	0	-3
Team					0 3 3	0	0					
Totals		22-60	3-13	18-22	12 30 42	26 18	65	10	26	14	1 9	-14

Technical Fouls: NONE

Shooting By Period	1st	2nd	3rd	4th	FT	GM FG%
1st FG%	4-11	36.4%				
3PT%	0-1	0.0%				
FT%	4-4	100%				
2nd FG%	5-11	45.5%				
3PT%	0-1	0.0%				
FT%	0-0	0%				
3rd FG%	9-20	45.0%				
3PT%	2-4	50.0%				
FT%	3-6	50%				
4th FG%	4-18	22.2%				
3PT%	1-7	14.3%				
FT%	11-12	91.7%				
GM FG%	22-60	36.7%				
3PT%	3-13	23.1%				
FT%	18-22	81.8%				

Dead Ball Rebounds: 2, 1

Houston - 79

Record: 5-1 (2-0)

NO. Name	Min	FG M-A	3P M-A	FT M-A	Rebounds OR DR TOT	Fouls PF FO	TP	AS	TO	ST	Blocks BS BA	+/-
1 Bria Patterson	F 28:35	3-9	1-2	3-6	5 8 13	0 5	10	1	1	1	2	13
44 Jazmaine Lewis	F 21:47	4-5	0-0	3-8	3 4 7	4 6	11	0	1	1	4	0
0 Eryka Sidney	G 24:00	6-6	5-5	0-2	0 4 4	3 3	17	3	4	1	0	10
10 Britney Onyeje	G 28:11	4-12	2-10	2-2	1 1 2	3 1	12	0	3	3	0	16
23 Julia Blackshell-Fair	G 28:17	4-9	0-0	1-4	5 3 8	1 4	9	6	3	2	0	15
30 Talyana Hill	13:49	0-4	0-0	0-0	1 1 2	4 0	0	0	0	2	1	0
5 Dymond Gladney	19:19	1-2	1-2	0-0	0 1 1	2 0	3	4	3	0	0	3
14 Laila Blair	16:45	3-7	1-4	6-6	0 2 2	1 3	13	0	3	0	0	-1
2 Miya Crump	12:07	0-7	0-4	4-6	1 3 4	0 3	4	0	1	1	2	0
34 Kamryn Jones	02:06	0-0	0-0	0-0	0 0 0	0 0	0	0	1	0	0	-3
25 Ca'Leah Burrell	05:04	0-3	0-2	0-0	0 1 1	0 1	0	0	1	0	0	0
Team					1 0 1	0	0					
Totals		25-64	10-29	19-34	17 28 45	18 26	79	13	22	14	9 1	14

Technical Fouls: NONE

Shooting By Period	1st	2nd	3rd	4th	FT	GM FG%
1st FG%	8-17	47.1%				
3PT%	4-8	50.0%				
FT%	2-4	50%				
2nd FG%	5-18	27.8%				
3PT%	3-10	30.0%				
FT%	2-4	50%				
3rd FG%	8-18	44.4%				
3PT%	2-6	33.3%				
FT%	6-10	60%				
4th FG%	4-11	36.4%				
3PT%	1-5	20.0%				
FT%	9-16	56.3%				
GM FG%	25-64	39.1%				
3PT%	10-29	34.5%				
FT%	19-34	55.9%				

Dead Ball Rebounds: 2, 1

	WSU	HOU
Biggest lead	0 (1st 10:00)	23 (3rd 3:24)
Best Scoring Run	5 (3rd 2:43)	7 (1st 6:50)
Lead Changes	0	
Times Tied	0	
Time with Lead	00:00	38:12
Points from	WSU/HOU	
Turnovers	13 21	
Paint	30 28	
Second Chance	12 11	
Fast Breaks	8 5	
Bench	24 20	
Period by Period Scoring		
1st	12 10	23 20
2nd	10 23	20 65
3rd	22 14	18 79
4th	22 14	18 79
TOT		

10

January 2 | Wichita, Kan. | Charles Koch Arena

C

Official Basketball Box Score - Final
Cincinnati at Wichita St.
01/02/21 Charles Koch Arena, Wichita, Kan.
2020-21 Women's BasketballGame Time: 2:00 PM
Game Duration: 1:53
Attendance: 367

Officials: Bryan Esterline, Jeffrey Smith, Ashley Goss

Cincinnati - 65

Record: 2-5 (1-2)

NO. Name	Min	FG M-A	3P M-A	FT M-A	Rebounds OR DR TOT	Fouls PF FO	TP	AS	TO	ST	Blocks BS BA	+/-
15 Arame Niang	F 26:12	5-10	0-2	0-0	1 5 6	2 0	10	1	0	2	3	-4
23 Ilmar Thomas	F 38:24	8-18	0-0	8-9	8 9 17	1 8	24	5	4	0	3	1 8
2 Destiny Haymer	G 33:23	5-11	0-3	0-0	1 3 4	4 0	10	3	1	0	0	4
20 Jillian Hayes	G 32:35	1-7	0-2	0-4	1 1 2	3 2	2	1	4	1	0	1 6
21 Milan Schimmel	G 37:28	2-4	2-2	6-6	0 7 7	2 5	12	5	2	0	1	0 4
33 Sofia Grizali	09:09	1-1	1-1	0-0	0 1 1	0 0	3	0	2	1	0	0 4
10 Jady Scott	10:43	1-2	0-0	0-0	0 1 1	2 1	2	1	3	0	0	0 5
3 Jada Scott	12:06	1-4	0-1	0-0	0 1 1	2 0	2	0	0	0	0	1 3
Team					3 0 3	0	0					
Totals		24-57	3-11	14-19	14 28 42	16 16	65	16	16	4	7 3	6

Technical Fouls: NONE

Shooting By Period	1st	2nd	3rd	4th	FT	GM FG%
1st FG%	6-13	46.2%				
3PT%	1-3	33.3%				
FT%	3-3	100%				
2nd FG%	7-16	43.8%				
3PT%	1-4	25.0%				
FT%	0-2	0%				
3rd FG%	6-14	42.9%				
3PT%	0-3	0.0%				
FT%	8-8	100%				
4th FG%	5-14	35.7%				
3PT%	1-1	100.0%				
FT%	3-6	50%				
GM FG%	24-57	42.1%				
3PT%	3-11	27.3%				
FT%	14-19	73.7%				

Dead Ball Rebounds: 3, 0

Wichita St. - 59

Record: 3-4 (0-2)

NO. Name	Min	FG M-A	3P M-A	FT M-A	Rebounds OR DR TOT	Fouls PF FO	TP	AS	TO	ST	Blocks BS BA	+/-
00 Asia Strong	F 37:29	6-14	1-3	2-6	1 5 6	3 3	15	0	4	0	0	-4
24 Trajatta Colbert	F 13:25	1-4	0-0	1-2	1 1 2	4 1	3	0	3	1	2	-8
2 Mariah McCully	G 34:51	6-18	2-8	1-2	0 2 2	3 3	15	1	1	0	0	1 -3
12 Carla Bremaud	G 33:13	4-8	4-8	0-0	3 2 5	3 1	12	1	1	0	0	-7
23 Seraphine Bastin	G 36:50	3-8	0-0	2-2	2 8 10	2 5	8	10	2	4	0	-9
13 Ene Adams	09:14	1-2	0-0	0-0	1 2 3	0 2	2	0	0	0	0	9
1 DJ McCarty	11:56	1-3	0-0	0-0	0 0 0	1 0	2	2	0	0	0	-2
20 Shamayah Duncan	23:02	1-6	0-3	0-0	1 0 1	0 1	2	1	0	2	1	0 -6
Team					5 1 6	0	0					
Totals		23-63	7-22	6-12	14 21 35	16 16	59	15	13	10	3 7	-6

Technical Fouls: NONE

Shooting By Period	1st	2nd	3rd	4th	FT	GM FG%
1st FG%	7-14	50.0%				
3PT%	0-1	0.0%				
FT%	0-0	0%				
2nd FG%	6-18	33.3%				
3PT%	1-5	20.0%				
FT%	0-0	0%				
3rd FG%	6-16	37.5%				
3PT%	3-9	33.3%				
FT%	1-4	25%				
4th FG%	4-15	26.7%				
3PT%	3-7	42.9%				
FT%	5-6	83.3%				
GM FG%	23-63	36.5%				
3PT%	7-22	31.8%				
FT%	6-12	50.0%				

Dead Ball Rebounds: 4, 0

	CIN	WSU	Points from		CIN	WSU	Period by Period Scoring					
Biggest lead	12 (1st 5:57)	3 (2nd 6:10)	Turnovers	14	12		1st	2nd	3rd	4th	TOT	
Best Scoring Run	14 (1st 5:57)	8 (1st 3:05)	Paint	30	28		CIN	16	15	20	14	65
Lead Changes	7		Second Chance	11	16		WSU	14	13	16	16	59
Times Tied	5		Fast Breaks	11	10							
Time with Lead	32:22	04:34	Bench	7	6							

11

January 6 | Tampa, Fla. | Yuengling Center

WSU

12

January 9 | Wichita, Kan. | Charles Koch Arena

C



ASIA STRONG

JUNIOR**FORWARD****6'2"****SOUTH BEND, IND.****TRINITY VALLEY CC****SEASON STATS**

PPG	RPG	FG%	3FG%	FT%
15.0	6.0	45.6%	25.0%	47.1%

LAST GAME vs. Cincinnati (1.2.21)

MIN	PTS	REB	AST	BLK
37	15	6	0	0

OVERVIEW**2020-21 (Junior)**

Team-high tying 15 points vs. Cincinnati (Jan. 2) to go with six rebounds... Scored 13 points to go with seven rebounds at Houston (Dec. 30)... Named to the American Athletic Conference Weekly Honor Roll for a second time on Dec. 7... Posted her first career double-double with 22 points and 13 rebounds in a double overtime game vs. UNI (Dec. 6)... Scored 12 of her game-high 16 points in the second half against Alcorn State (Nov. 30)... Earned her first American Athletic Conference weekly honor on Nov. 30 after being named to the Honor Roll... Scored a game-high 20 points in her Wichita State debut vs. A&M Corpus Christi (Nov. 27).

Trinity Valley CC

Ranked No. 9 in the Don Olson Basketball Report... Helped Trinity Valley to a 32-1 record and a perfect 18-0 mark in conference play as a sophomore... Averaged 14.6 points and 9.2 rebounds, while making 24 starts... A capable shooter, she shot 52.6 percent from the field and 81.0 percent from the free throw line... Her career high came in the season opener where she dropped 32 points and 11 rebounds vs. Southern University-Shreveport... Scored 10 or more points in every game but three, including four games of 20 or more... Her 15 double-doubles were a team-high, highlighted by a career-high 15 rebounds in the season finale against Angelina College... Earned Region XIV All-Tournament Team and All-Conference honors, helping the Lady Cards clinch the Region XIV Championship.

Personal

She is the daughter of Glendetta Jones, and has three brothers: Keenan, Thomas and Gabriel... She is undecided on a major at Wichita State.

CAREER HIGHS

Opponent	Opponent	Date
Points	22	NORTHERN IOWA 12/6/20
Rebounds	13	NORTHERN IOWA 12/6/20
Field Goals	11	NORTHERN IOWA 12/6/20
FG Attempts	25	NORTHERN IOWA 12/6/20
3-Pointers	1	3x, last CINCINNATI 1/2/21
3-Pt Attempts	3	CINCINNATI 1/2/21
Free Throws	3	SOUTH DAKOTA 12/10/20
FT Attempts	6	CINCINNATI 1/2/21
Assists	2	2x, last SOUTHERN 12/4/20
Steals	1	2x, last SOUTHERN 12/4/20
Blocks	2	ALCORN STATE 11/30/20
Minutes	37	CINCINNATI 1/2/21

MISCELLANEOUS

Category	20-21	Career
Games Played	7	7
Games Started	6	6
20+ Minutes	7	7
10+ Points	6	6
20+ Points	2	2
2+ Blocks	1	1
5+ Rebounds	5	5
Leading Scorer	4	4
Leading Rebounder	1	1
Blocks Leader	2	2

2020-21 GAME-BY-GAME STATISTICS

Date	Opponent	gs	min	fg	fga	3p	3pa	ft	fta	reb	pf	ast	to	blk	stl	pts
N-27	TEXAS A&M CC	*	29	9	15	1	2	1	1	6	2	0	1	1	1	20
N-30	ALCORN STATE	*	23	8	15	0	1	0	1	0	0	2	1	2	0	16
D-4	SOUTHERN	*	36	4	13	0	2	2	5	4	4	2	1	0	1	10
D-6	NORTHERN IOWA	*	33	11	25	0	1	0	0	13	3	0	5	0	0	22
D-10	SOUTH DAKOTA	*	34	3	8	0	1	3	4	6	4	1	3	1	0	9
D-30	at Houston*		26	6	13	1	2	0	0	7	5	0	8	0	0	13
J-2	CINCINNATI*	*	37	6	14	1	3	2	6	6	3	0	4	0	0	15
J-6	at USF*															
J-9	ECU*															
J-13	at Memphis*															
J-20	USF*															
J-23	at Temple*															
J-27	at Cincinnati*															
J-30	UCF*															
F-3	TULANE*															
F-6	TEMPLE*															
F-10	at UCF*															
F-17	MEMPHIS*															
F-20	at ECU*															
F-24	HOUSTON*															
F-27	at SMU*															
M-2	TULSA*															

CAREER HONORS

- American Athletic Conference Weekly Honor Roll (Nov. 30, 2020)
- American Athletic Conference Weekly Honor Roll (Dec. 7, 2020)

STRONG'S CAREER TOTALS

Season		GP	GS	Min	Avg	FG	FGA	%	3FG	FGA	%	FT	FTA	%	Off	Def	Tot	Avg	PF	FO	A	TO	Blk	Stl	Pts	Avg
2020-21	Junior	7	6	217	31.1	47	103	.456	3	12	.250	8	17	.471	17	25	42	6.0	21	1	5	23	4	2	105	15.0
	TOTALS	7	6	217	31.1	47	103	.456	3	12	.250	8	17	.471	17	25	42	6.0	21	1	5	23	4	2	105	15.0



DJ MCCARTY

SOPHOMORE**GUARD****5'8"****DESOTO, TEXAS****CEDAR HILLS HS****SEASON STATS**

PPG	APG	FG%	3FG%	FT%
6.4	3.2	41.7%	16.7%	58.3%

LAST GAME vs. Cincinnati (12.21)

MIN	PTS	REB	AST	STL
12	2	0	2	2

OVERVIEW**2020-21 (Sophomore)**

Tied her career high in steals with three to go with nine points at Houston (Dec. 30)... Pulled down a career-high six rebounds in the double overtime game vs. UNI (Dec. 6)... Three straight games setting a new career high in assists after handing out six against Alcorn State (Nov. 30) and Southern (Dec. 4)... Dished out a then career-high five assists to go with nine points in the season opener vs. A&M Corpus Christi (Nov. 27).

2019-20 (Freshman)

Saw action in 24 games, making seven starts... Finished with seven games of 10 or more points... Added 11 points at UCF (March 2) in the regular season finale... Scored 12 points on a perfect shooting day, going 5-for-5 at Tulsa (Feb. 23)... Tied a season high in assists with four vs. SMU (Feb. 19)... Finished with 14 points and four assists in the win at Temple (Feb. 5)... Hit the game-winner vs. ECU on Feb. 1 on a corner three-pointer with 11 seconds left... Tied her season high in steals with three at SMU (Jan. 29)... Recorded her first weekly honor on Dec. 2 after being named the American Athletic Conference Freshman of the Week... Set a career high with 18 points on 7-of-11 shooting at Louisiana Tech on Nov. 20... Made her first career start vs. Southern on Nov. 17, 2019... Scored a team-high 17 points on 7-of-13 shooting and a 3-for-5 mark from long range in 33 minutes off the bench in her first true road game at Oral Roberts on Nov. 11.

Cedar Hill HS

Lettered all four years at Cedar Hill and was a two-time captain... She averaged 15.0 points, 6.0 rebounds and 4.0 assists per game as a junior en route to First Team All-District honors as a sophomore and junior... Helped lead her team to a 29-11 record as a junior and TABC All-Region... Also racked up Newcomer of the Year honors as a freshman.

Personal

She is the daughter of David and Tameka McCarty and has one brother, Davion... She plans on majoring in nursing at Wichita State.

CAREER HIGHS

Opponent	Opponent	Date
Points	18	at Louisiana Tech 11/20/19
Rebounds	6	NORTHERN IOWA 12/6/20
Field Goals	7	2x, last at La Tech 11/20/19
FG Attempts	13	at Oral Roberts 11/11/19
3-Pointers	3	2x, last at Temple 2/5/20
3-Pt Attempts	5	2x, last at Temple 2/5/20
Free Throws	5	SOUTHERN 12/4/20
FT Attempts	8	SOUTHERN 12/4/20
Assists	6	2x, last SOUTHERN 12/4/20
Steals	3	3x, last at Houston 12/30/20
Blocks	1	4x, last SOUTH DAKOTA 12/10/20
Minutes	35	SOUTHERN 12/4/20

MISCELLANEOUS

Category	20-21	Career
Games Played	7	31
Games Started	5	12
20+ Minutes	5	16
10+ Points	1	8
20+ Points	-	-
5+ Assists	3	3
5+ Rebounds	1	1
Leading Scorer	1	3
Leading Rebounder	-	-
Assist Leader	2	5

2020-21 GAME-BY-GAME STATISTICS

Date	Opponent	gs	min	fg	fga	3p	3pa	ft	fta	reb	pf	ast	to	blk	stl	pts
N-27	TEXAS A&M CC	*	34	3	6	1	3	2	3	1	4	5	3	0	1	9
N-30	ALCORN STATE	*	29	1	3	0	0	3	4	4	2	6	2	0	2	5
D-4	SOUTHERN	*	35	3	5	0	0	5	8	4	2	6	1	1	2	11
D-6	NORTHERN IOWA	*	31	1	5	0	1	2	2	6	4	1	5	0	2	4
D-10	SOUTH DAKOTA		18	2	6	0	2	1	3	3	1	0	0	1	0	5
D-30	at Houston*	*	23	4	8	0	0	1	4	4	2	3	5	0	3	9
J-2	CINCINNATI*		12	1	3	0	0	0	0	0	1	2	0	0	2	2
J-6	at USF*															
J-9	ECU*															
J-13	at Memphis*															
J-20	USF*															
J-23	at Temple*															
J-27	at Cincinnati*															
J-30	UCF*															
F-3	TULANE*															
F-6	TEMPLE*															
F-10	at UCF*															
F-17	MEMPHIS*															
F-20	at ECU*															
F-24	HOUSTON*															
F-27	at SMU*															
M-2	TULSA*															

CAREER HONORS

- American Athletic Conference Freshman of the Week (Dec. 2, 2019)

MCCARTY'S CAREER TOTALS

Season		GP	GS	Min	Avg	FG	FGA	%	3FG	FGA	%	FT	FTA	%	Off	Def	Tot	Avg	PF	FO	A	TO	Blk	Stl	Pts	Avg
2019-20	Freshman	24	7	431	18.0	60	142	.423	12	38	.316	32	47	.681	9	40	49	2.0	50	3	41	41	2	30	164	6.8
2020-21	Sophomore	7	5	183	26.1	15	36	.417	1	6	.167	14	24	.583	5	17	22	3.1	16	0	23	16	2	12	45	6.4
TOTALS		31	12	614	19.8	75	178	.421	13	44	.295	46	71	.648	14	57	71	2.3	66	3	64	57	4	42	209	6.7



MARIAH MCCULLY

SENIOR

GUARD

5'7"

GRAND RAPIDS, MICH.

WABASH VALLEY

SEASON STATS

PPG	RPG	FG%	3FG%	FT%
10.6	2.6	31.6%	30.4%	71.4%

LAST GAME vs. Cincinnati (1.2.21)

MIN	PTS	REB	AST	STL
35	15	2	1	0

OVERVIEW

2020-21 (Senior)

Team-high tying 15 points vs. Cincinnati on Jan. 2... Scored a team-high 16 points behind 4-of-8 shooting beyond the arc vs. South Dakota (Dec. 10)... Finished with 12 points and a career-high tying four assists in the season opener vs. A&M Corpus Christi (Nov. 27).

2019-20 (Junior)

Played in 26 of the team's 31 games, making 16 starts... Led Wichita State in scoring (12.6), steals (56), field goals made (119) and attempted (341)... Second on the team in free throws made (63) and attempted (92)... Team-best 19 games of 10 or more points and led the Shockers in scoring 13 different times... Named Third Team All-Conference... Scored 10 or more points in 17 straight games during the season... Earned her second American Athletic Conference Weekly Honor Roll selection on Feb. 17... Second straight game with a game-best 19 points, while also dishing out a season-high four assists vs. SMU (Feb. 19)... Game-high 19 points to go with a season-high seven steals at Tulane (Feb. 16)... Returned after missing three games with a concussion to score a team-high 17 points and grab a season-high seven rebounds vs. Memphis (Feb. 12)... Registered her second 20-point game of the season vs. USF (Jan. 22) and 13th straight game in double figures... Eleventh straight game in double figures came in a win vs. Tulsa (Jan. 15), finishing with 11 points... Team-high 16 points at No. 1 UConn (Jan. 2)... Extended her streak of 10-plus points to seven in a row with a team-high 18 vs. Grambling (Dec. 30)... Named to the American Athletic Conference Weekly Honor Roll on Dec. 9... Hit the game-winner with 1.7 seconds left vs. Montana State (Dec. 20) and finished with 10 points... Fourth straight game in double figures with 17 vs. UAPB (Dec. 16), and also grabbed a career-high six boards... Game-high 14 points to go with a career-best six steals at Creighton (Dec. 14)... Scored a career-high 25 points vs. Eastern Michigan (Dec. 7) on 8-of-18 shooting to go with three steals... Recorded her second double-figure outing at #18 Missouri State (Dec. 4) with 13 points... Made her Shocker debut on Nov. 17, 2019 vs. Southern and finished with a game-high 12 points in 22 minutes off the bench, while also collecting three rebounds, three assists and four steals.

Wabash Valley College (2017-18)

Played in 30 games, including 27 starts and posted 18.8 points, 4.8 assists and 4.7 rebounds per game... Helped lead Wabash Valley to a 30-3 record and a perfect 18-0 mark in conference play... Scored in double-figures every game but one... Finished with 12 games of 20 or more points... Tallied a season-high 34 points vs. Vincennes on 13-of-20 shooting... Also had games of 31 and 30 points... Dished out a season-best 12 assists at Vincennes... Pulled down 11 rebounds at John A. Logan.

Personal

Daughter of Alonzo and Bernita McCully and has one sister, Alexis... Plans to major in communications at Wichita State.

CAREER HONORS

- Preseason All-Conference Second Team (2020-21)
- Third Team All-Conference (2019-20)
- American Athletic Conference Weekly Honor Roll (Feb. 17, 2020)
- American Athletic Conference Weekly Honor Roll (Dec. 9, 2019)

MCCULLY'S CAREER TOTALS

Season		GP	GS	Min	Avg	FG	FGA	%	3FG	FGA	%	FT	FTA	%	Off	Def	Tot	Avg	PF	FO	A	TO	Blk	Stl	Pts	Avg
2019-20	Junior	26	16	678	26.1	119	341	.349	26	113	.230	63	92	.685	16	50	66	2.5	52	0	39	81	2	56	327	12.6
2020-21	Senior	5	2	135	26.9	18	57	.316	7	23	.304	10	14	.714	1	12	13	2.6	15	0	12	15	0	6	53	10.6
TOTALS		31	18	813	26.2	137	398	.344	33	136	.243	73	106	.689	17	62	79	2.5	67	0	51	96	2	62	380	12.3

CAREER HIGHS

Opponent	Opponent	Date
Points	25	EASTERN MICHIGAN 12/7/19
Rebounds	7	MEMPHIS 2/12/20
Field Goals	8	4x, last SMU 2/19/20
FG Attempts	19	TEMPLE 1/19/20
3-Pointers	4	SOUTH DAKOTA 12/10/20
3-Pt Attempts	10	at Tulane 2/16/20
Free Throws	9	MEMPHIS 2/12/20
FT Attempts	13	MEMPHIS 2/12/20
Assists	4	3x, last NORTHERN IOWA 12/6/20
Steals	7	at Tulane 2/16/20
Blocks	1	2x, last at Tulane 2/16/20
Minutes	35	2x, last CINCINNATI 1/2/21

MISCELLANEOUS

Category	20-21	Career
Games Played	5	31
Games Started	2	18
20+ Minutes	5	29
10+ Points	3	22
20+ Points	-	2
5+ Assists	-	-
5+ Rebounds	-	4
Leading Scorer	2	15
Leading Rebounder	-	1
Assist Leader	1	3

2020-21 GAME-BY-GAME STATISTICS

Date	Opponent	gs	min	fg	fga	3p	3pa	ft	fta	reb	pf	ast	to	blk	stl	pts
N-27	TEXAS A&M CC	*	27	4	11	1	4	3	4	3	2	4	3	0	3	12
N-30	ALCORN STATE	DNP														
D-4	SOUTHERN	DNP														
D-6	NORTHERN IOWA		23	0	5	0	0	4	6	3	4	4	2	0	1	4
D-10	SOUTH DAKOTA		25	6	14	4	8	0	0	3	3	3	7	0	0	16
D-30	at Houston*		24	2	9	0	3	2	2	2	3	0	2	0	2	6
J-2	CINCINNATI*	*	35	6	18	2	8	1	2	2	3	1	1	0	0	15
J-6	at USF*															
J-9	ECU*															
J-13	at Memphis*															
J-20	USF*															
J-23	at Temple*															
J-27	at Cincinnati*															
J-30	UCF*															
F-3	TULANE*															
F-6	TEMPLE*															
F-10	at UCF*															
F-17	MEMPHIS*															
F-20	at ECU*															
F-24	HOUSTON*															
F-27	at SMU*															
M-2	TULSA*															



MARIAH MCKINNEY

JUNIOR

GUARD

5'8"

WICHITA, KAN.

FORT SCOTT CC

SEASON STATS (2020-21)

PPG	RPG	FG%	3FG%	FT%
0.0	0.0	0.0%	0.0%	0.0%

LAST GAME at Houston (12.30.20)

MIN	PTS	REB	AST	STL
5	0	0	0	0

10

OVERVIEW

2020-21 (Junior)

Made her Wichita State debut at Houston on Dec. 30, logging five minutes.

Fort Scott CC (2018-19)

Played in 27 games, making 19 starts... Averaged 5.5 points, 4.0 rebounds, 1.9 assists and 1.1 steals per game as a freshman... Shot 34.9 percent from the field, and 45.5 percent from three-point range... Scored 10 or more points six times... Scored a season-high 12 points three different times... Pulled down a season-high eight rebounds vs. Southeast Community College and dished out a season-best six assists vs. Olive-Harvey College.

High School

Four-year letterwinner and captain at Wichita East High School... Earned Second Team All-Conference honors twice... Helped East to an 18-5 record as a senior... Also ran track for East and was on the 4x400 relay team that advanced to State as a sophomore.

Personal

She is the daughter of Mike McKinney and Chanel Sanders... Has six sisters: Mierra, Madison, Michelle, Samiya, Taliah and Renza; and two brothers: Michael and Magic... Majoring in psychology at Wichita State.

CAREER HIGHS

Category	Opponent	Date
Points	-	-
Rebounds	-	-
Field Goals	-	-
FG Attempts	-	-
3-Pointers	-	-
3-Pt Attempts	-	-
Free Throws	-	-
FT Attempts	-	-
Assists	-	-
Steals	-	-
Blocks	-	-
Minutes	5 at Houston	12/30/20

MISCELLANEOUS

Category	20-21	Career
Games Played	1	1
Games Started	-	-
20+ Minutes	-	-
10+ Points	-	-
20+ Points	-	-
5+ Assists	-	-
5+ Rebounds	-	-
Leading Scorer	-	-
Leading Rebounder	-	-
Assist Leader	-	-

2020-21 GAME-BY-GAME STATISTICS

Date	Opponent	gs	min	fg	fga	3p	3pa	ft	fta	reb	pf	ast	to	blk	stl	pts
D-30	at Houston*		5	0	0	0	0	0	0	0	1	0	0	0	0	0
J-2	CINCINNATI*		DNP													
J-6	at USF*															
J-9	ECU*															
J-13	at Memphis*															
J-20	USF*															
J-23	at Temple*															
J-27	at Cincinnati*															
J-30	UCF*															
F-3	TULANE*															
F-6	TEMPLE*															
F-10	at UCF*															
F-17	MEMPHIS*															
F-20	at ECU*															
F-24	HOUSTON*															
F-27	at SMU*															
M-2	TULSA*															

MCKINNEY'S CAREER TOTALS

Season	GP	GS	Min	Avg	FG	FGA	%	3FG	FGA	%	FT	FTA	%	Off	Def	Tot	Avg	PF	FO	A	TO	Blk	Stl	Pts	Avg
2020-21 Junior	1	0	5	5.3	0	0	.000	0	0	.000	0	0	.000	0	0	0	0.0	1	0	0	0	0	0	0	0.0
TOTALS	1	0	5	5.3	0	0	.000	0	0	.000	0	0	.000	0	0	0	0.0	1	0	0	0	0	0	0	0.0



CARLA BREMAUD

JUNIOR**GUARD****5'11"****ANGERS, FRANCE****LIFE PREP ACADEMY****SEASON STATS**

PPG	RPG	FG%	3FG%	FT%
8.3	2.9	38.0%	45.5%	100.0%

LAST GAME vs. Cincinnati (1.2.21)

MIN	PTS	REB	AST	STL
33	12	5	1	1

OVERVIEW**2020-21 (Junior)**

Went 4-for-8 from beyond the arc to finish with 12 points vs. Cincinnati (Jan. 2)... Continued her hot start with 14 points on 3-of-5 shooting from three-point range vs. Alcorn (Nov. 30)... Scored 12 of her 15 points in the fourth quarter and finished a career-best 5-of-8 from beyond the arc.

2019-20 (Sophomore)

Started all 30 games she suited up in and finished with 10 games in double figures... Led Wichita State in three-pointers made (40) and attempted (126) and free throw percentage (86.1 percent)... Eleven games with multiple three-pointers... Finished third on the team with 39 steals... Went 4-for-5 to finish with 11 points and five rebounds vs. Houston in the first round of the AAC Tournament (March 6)... Tied a career high with four three-pointers vs. SMU (Feb. 19) to finish with 14 points... Pulled down a career-high seven rebounds at Houston (Jan. 25)... Totaled 16 points and three steals vs. USF (Jan. 22)... Poured in 10 of her team-high tying 13 points in the second half vs. Tulsa (Jan. 15)... Second straight game with 13 points at No. 1 UConn (Jan. 2)... Went 5-for-10 for 13 points and five rebounds vs. Grambling (Dec. 30)... Had a game-high 15 points, including the game-tying three-pointer vs. Montana State (Dec. 20)... Scored 15 points behind 4-of-6 shooting from three-point range in the win vs. Oklahoma (Nov. 30)... Swiped a career-high five steals vs. Houston Baptist (Nov. 25)... Notched her first double-figure outing of the season at Oral Roberts (Nov. 11), finishing with 15 points on 6-of-12 shooting.

2018-19 (Freshman)

American All-Academic Team... Named to the 2019 American Athletic Conference All-Freshman Team... One of four Shockers to play in all 30 games, making 29 starts... Led Wichita State in minutes (29.7), scoring (9.9), three-pointers made (47) and attempted (154)... Finished with a team-high 15 games of 10 or more points, including six games as the leading scorer... Ended the season with back-to-back games in double-figures vs. Tulsa... The lone Shocker to reach double-figures vs. UConn (Feb. 26) with 15 points on 6-of-10 shooting... Tied her season high in steals with four against SMU (Feb. 17) to go with 11 points... Went 5-for-9 from the field and 3-of-5 from beyond the arc, finishing with a game-high 13 points at Memphis (Feb. 6)... Led the team with 12 points vs. Temple on Feb. 2 for her 10th game in double-figures... Collected her ninth game with 10 or more points vs. Houston (Jan. 20) with 17 points to go with a season-high four steals... Scored 10 of her team-high 14 points at SMU (Jan. 15) in the first half to go with a season-high three blocks... Tallied a season and team-high 18 points at ECU (Jan. 9) behind 4-of-8 shooting from three-point range... Tied a season high in rebounds with six to go with 13 points in the Shockers' win over Savannah State (Dec. 30)... Helped WSU end a three-game losing streak by scoring 14 points and grabbing a season-high six rebounds vs. Grambling State on Dec. 11... Chipped in 11 points in a loss vs. Creighton on Dec. 8... Added another double-figure outing vs. Louisiana Tech (Nov. 24) with 11 points on 3-of-9 shooting from beyond the arc... Recorded her second straight game in double-figures with 11 points vs. Sam Houston State (Nov. 14)... Scored a team-high 15 points, including the game-tying three-pointer to send the game to overtime vs. Missouri State (Nov. 10).

Personal

Daughter of Freddy and Charlotte Bremaud... Has two brothers... Favorite subject in school is math... Favorite TV Show is Riverdale... Favorite movie is Harry Potter... Chose Wichita State over Portland State, San Diego and UC Riverside... Plans to major in sport management at Wichita State.

CAREER HONORS

- American Athletic Conference All-Freshman Team (2018-19)

CAREER HIGHS

Opponent	Opponent	Date
Points	18 at ECU	1/9/19
Rebounds	7 at Houston	1/25/20
Field Goals	7 2x, last HOUSTON	1/20/19
FG Attempts	15 2x, last at USF	2/23/19
3-Pointers	5 A&M CORPUS CHRISTI	11/27/20
3-Pt Attempts	11 vs. Montana State	12/20/19
Free Throws	6 2x, last SOUTHERN	11/17/19
FT Attempts	6 2x, last SOUTHERN	11/17/19
Assists	4 MEMPHIS	1/12/19
Steals	5 HOUSTON BAPTIST	11/25/19
Blocks	3 at SMU	1/15/19
Minutes	43 NORTHERN IOWA	12/6/20

MISCELLANEOUS

Category	20-21	Career
Games Played	7	67
Games Started	7	66
20+ Minutes	7	64
10+ Points	3	28
20+ Points	-	-
5+ Assists	-	-
5+ Rebounds	2	12
Leading Scorer	-	8
Leading Rebounder	-	2
Assist Leader	-	3

2020-21 GAME-BY-GAME STATISTICS

Date	Opponent	gs	min	fg	fga	3p	3pa	ft	fta	reb	pf	ast	to	blk	stl	pts
N-27	TEXAS A&M CC	*	36	5	10	5	8	0	0	3	4	1	0	1	2	15
N-30	ALCORN STATE	*	31	5	8	3	5	1	1	1	0	1	2	0	1	14
D-4	SOUTHERN	*	30	2	7	1	4	2	2	2	4	0	1	2	0	7
D-6	NORTHERN IOWA	*	43	2	5	1	2	2	2	5	0	2	0	1	1	7
D-10	SOUTH DAKOTA	*	26	0	4	0	2	0	0	3	2	2	0	0	0	0
D-30	at Houston*	*	25	1	8	1	4	0	0	1	4	2	1	0	3	3
J-2	CINCINNATI*	*	33	4	8	4	8	0	0	5	3	1	1	0	1	12
J-6	at USF*															
J-9	ECU*															
J-13	at Memphis*															
J-20	USF*															
J-23	at Temple*															
J-27	at Cincinnati*															
J-30	UCF*															
F-3	TULANE*															
F-6	TEMPLE*															
F-10	at UCF*															
F-17	MEMPHIS*															
F-20	at ECU*															
F-24	HOUSTON*															
F-27	at SMU*															
M-2	TULSA*															

BREMAUD'S CAREER TOTALS

Season	GP	GS	Min	Avg	FG	FGA	%	3FG	FGA	%	FT	FTA	%	Off	Def	Tot	Avg	PF	FO	A	TO	Blk	Stl	Pts	Avg
2018-19 Freshman	30	29	892	29.7	118	297	.397	47	154	.305	15	26	.577	11	68	79	2.6	50	0	30	64	12	32	298	9.9
2019-20 Sophomore	30	30	853	28.4	76	232	.328	40	126	.317	31	36	.861	11	73	84	2.8	58	1	26	55	10	39	223	7.4
2020-21 Junior	7	7	224	32.1	19	50	.380	15	33	.455	5	5	1.000	5	15	20	2.9	17	0	8	5	4	8	58	8.3
TOTALS	67	66	1970	29.4	213	579	.368	102	313	.326	51	67	.761	27	156	183	2.7	125	1	65	124	26	79	579	8.6



ENE ADAMS

SOPHOMORE**FORWARD****6'1"****JOS. NIGERIA****GRAYSON COLLEGE****SEASON STATS**

PPG	RPG	FG%	3FG%	FT%
2.7	6.1	26.1%	-	53.8%

LAST GAME vs. Cincinnati (1.2.21)

MIN	PTS	REB	AST	STL
9	2	3	0	0

OVERVIEW**2020-21 (Sophomore)**

Grabbed eight rebounds at Houston (Dec. 30)... Nearly recorded a double-double in her collegiate debut, tallying 10 rebounds to go with six points vs. A&M Corpus Christi (Nov. 27).

Grayson College

Started 23 of the 30 games she appeared in and averaged 7.6 points and 7.8 rebounds per game... Scored a season-high 17 points at Temple College on Jan. 8... Scored 10 or more points in nine contests... Pulled down a career-high 20 rebounds on Dec. 7 at Northern Oklahoma-Enid... Eight games with double-digit rebounds... Grabbed at least four rebounds in every game but one.

Personal

She is the daughter of Grace Adams, and has two sisters: Hassana Omale and Juliet Emmanuel and one brother, Frank Adams... She plans to major in business at Wichita State.

CAREER HIGHS

Opponent	Opponent	Date
Points	6	A&M CORPUS CHRISTI 11/27/20
Rebounds	10	A&M CORPUS CHRISTI 11/27/20
Field Goals	2	2x, last SOUTHERN 12/4/20
FG Attempts	5	3x last at Houston 12/30/20
3-Pointers	-	-
3-Pt Attempts	1	at Houston 12/30/20
Free Throws	4	A&M CORPUS CHRISTI 11/27/20
FT Attempts	8	A&M CORPUS CHRISTI 11/27/20
Assists	2	NORTHERN IOWA 12/6/20
Steals	2	ALCORN STATE 11/30/20
Blocks	-	-
Minutes	22	SOUTHERN 12/4/20

MISCELLANEOUS

Category	20-21	Career
Games Played	7	7
Games Started	4	4
20+ Minutes	3	3
10+ Points	-	-
20+ Points	-	-
5+ Assists	-	-
5+ Rebounds	4	4
Leading Scorer	-	-
Leading Rebounder	3	3
Assist Leader	-	-

2020-21 GAME-BY-GAME STATISTICS

Date	Opponent	gs	min	fg	fga	3p	3pa	ft	fta	reb	pf	ast	to	blk	stl	pts
N-27	TEXAS A&M CC		21	1	5	0	0	4	8	10	1	0	1	0	0	6
N-30	ALCORN STATE	*	21	2	4	0	0	0	0	8	1	1	4	0	2	4
D-4	SOUTHERN	*	22	2	5	0	0	0	1	9	4	0	2	0	1	4
D-6	NORTHERN IOWA	*	17	0	1	0	0	0	0	2	0	2	1	0	0	0
D-10	SOUTH DAKOTA		13	0	1	0	0	0	0	3	2	0	1	0	0	0
D-30	at Houston*	*	18	0	5	0	1	3	4	8	3	0	0	0	1	3
J-2	CINCINNATI*		9	1	2	0	0	0	0	3	0	0	0	0	0	2
J-6	at USF*															
J-9	ECU*															
J-13	at Memphis*															
J-20	USF*															
J-23	at Temple*															
J-27	at Cincinnati*															
J-30	UCF*															
F-3	TULANE*															
F-6	TEMPLE*															
F-10	at UCF*															
F-17	MEMPHIS*															
F-20	at ECU*															
F-24	HOUSTON*															
F-27	at SMU*															
M-2	TULSA*															

ADAMS' CAREER TOTALS

Season	GP	GS	Min	Avg	FG	FGA	%	3FG	FGA	%	FT	FTA	%	Off	Def	Tot	Avg	PF	FO	A	TO	Blk	Stl	Pts	Avg
2020-21	7	4	121	17.3	6	23	.261	0	1	.000	7	13	.538	15	28	43	6.1	11	0	3	9	0	4	19	2.7
TOTALS	7	4	121	17.3	6	23	.261	0	1	.000	7	13	.538	15	28	43	6.1	11	0	3	9	0	4	19	2.7



JAIDA HAMPTON

JUNIOR

GUARD

5'10"

LANSING, MICH.

EAST LANSING HS

SEASON STATS (2019-20)

PPG	RPG	FG%	3FG%	FT%
3.0	0.7	39.1%	28.6%	100%

LAST GAME vs.

MIN	PTS	REB	AST	STL
-	-	-	-	-

OVERVIEW

2019-20 (Sophomore)

Played in the first seven games before missing the rest of the season due to injury... Scored nine of her 11 points in the fourth quarter at Oral Roberts (Nov. 11).

2018-19 (Freshman)

Duel in the Desert All-Tournament Team... Member of the Wichita State Student-Athlete Advisory Committee (SAAC)... Appeared in 26 of Wichita State's 30 contests, making 13 starts... Averaged 6.6 points and 2.5 rebounds per game... Had nine games with 10 or more points and was the team's high scorer eight times... Came off the bench and scored a team-high 12 points vs. ECU (Jan. 29)... Continued her hot streak at Tulsa (Jan. 4) with a game and season-high 18 points... Tallied 16 points on 6-of-10 shooting, including a perfect 3-for-3 from beyond the arc vs. Savannah State (Dec. 30)... Tied her then season high with 14 points vs. Washington State (Dec. 20)... Scored 14 points in the Shockers' win over Grambling State (Dec. 11)... Led Wichita State with 10 points vs. Tennessee Tech on Dec. 2... Scored a team-high tying 12 points at South Dakota (Nov. 21)... Made her first career start vs. Houston Baptist on Nov. 17... Tallied a team-high 13 points to go with five rebounds and four steals in the win vs. Sam Houston State (Nov. 14).

East Lansing HS

Lettered all four years (three-time team captain) of high school in basketball, plus one year each in volleyball and track and field... Went 78-19 during her four-year career and finished with more than 1,000 points and 500 rebounds... Led team to a 26-1 record and the Class A State runner-up... Helped set the school record with 26 straight wins... Named the East Lansing Team MVP, Lansing State Journal Girls Basketball Player of the Year and 2018 Miss Michigan after posting 16.5 points, 5.6 rebounds, 1.8 assists and 1.3 steals per game as a senior... Member of the CAAC Blue All-Conference Team, Detroit Free Press Dream Team, AP First Team All-State, Basketball Coaches Association of Michigan Best of the Best All-State Team and All-USA Michigan Girls Basketball Team... As a junior, she averaged 14.4 points, 6.0 rebounds, 2.1 steals and 1.4 assists... Several accolades include: LSJ 2017 Dream Team member, 2017 CAAC-Blue All-Conference Team, 2017 BCAM Class A Best of the Best, 2017 AP Class A All-State honorable mention, 2017 Detroit News Class A All-State Third Team, 2016 LSJ All-Area honorable mention and CAAC-Blue All-Conference honorable mention... Named a top 20 player by the Detroit Free Press in 2016-17... Helped lead her team to a 21-3 record as a junior and three straight CAAC-Blue Conference championships... Member of two straight CAAC District Championship teams and a regional championship as a sophomore.

Personal

Daughter of Brigida Beverly... Has one brother, Gabriel, and one sister, Kalaia... Chose Wichita State over Western Michigan, Detroit and Central Michigan... Favorite athlete is Elena Delle Donne... Favorite TV show is Pretty Little Liars... Plans to major in biological science at Wichita State.

CAREER HONORS

- Duel in the Desert All-Tournament Team (2018)

HAMPTON'S CAREER TOTALS

Season		GP	GS	Min	Avg	FG	FGA	%	3FG	FGA	%	FT	FTA	%	Off	Def	Tot	Avg	PF	FO	A	TO	Blk	Stl	Pts	Avg
2018-19	Freshman	26	13	578	22.2	60	196	.306	16	66	.242	35	46	.761	17	48	65	2.5	30	0	30	52	4	21	171	6.6
2019-20	Sophomore	7	0	66	9.5	9	23	.391	2	7	.286	1	1	1.000	1	4	5	0.7	0	0	2	2	1	3	21	3.0
2020-21	Junior																									
	TOTALS	33	13	644	19.5	69	219	.315	18	73	.247	36	47	.766	18	52	70	2.1	30	0	32	54	5	24	192	5.8

CAREER HIGHS

Category	Opponent	Date
Points	18 at Tulsa	1/4/19
Rebounds	5 2x, last GRAMBLING	12/11/18
Field Goals	7 at Tulsa	1/4/19
FG Attempts	16 MEMPHIS	1/12/19
3-Pointers	3 SAVANNAH STATE	12/30/18
3-Pt Attempts	8 MEMPHIS	1/12/19
Free Throws	5 vs. Washington State	12/20/18
FT Attempts	6 vs. Washington State	12/20/18
Assists	4 2x, last vs. Washington St	12/20/18
Steals	4 SAM HOUSTON ST	11/14/18
Blocks	1 5x, last at Oral Roberts	11/11/19
Minutes	35 at Tulsa	1/4/19

MISCELLANEOUS

Category	20-21	Career
Games Played	-	33
Games Started	-	13
20+ Minutes	-	20
10+ Points	-	9
20+ Points	-	-
5+ Assists	-	-
5+ Rebounds	-	3
Leading Scorer	-	8
Leading Rebounder	-	-
Assist Leader	-	2

2020-21 GAME-BY-GAME STATISTICS

Date	Opponent	gs	min	fg	fga	3p	3pa	ft	fta	reb	pf	ast	to	blk	stl	pts
N-27	TEXAS A&M CC		DNP													
N-30	ALCORN STATE		DNP													
D-4	SOUTHERN		DNP													
D-6	NORTHERN IOWA		DNP													
D-10	SOUTH DAKOTA		DNP													
D-30	at Houston*		DNP													
J-2	CINCINNATI*		DNP													
J-6	at USF*															
J-9	ECU*															
J-13	at Memphis*															
J-20	USF*															
J-23	at Temple*															
J-27	at Cincinnati*															
J-30	UCF*															
F-3	TULANE*															
F-6	TEMPLE*															
F-10	at UCF*															
F-17	MEMPHIS*															
F-20	at ECU*															
F-24	HOUSTON*															
F-27	at SMU*															
M-2	TULSA*															



SHAMARYAH DUNCAN

FRESHMAN**GUARD****5'11"****WACO, TEXAS****MIDWAY HS****SEASON STATS**

PPG	RPG	FG%	3FG%	FT%
1.8	1.0	27.8%	14.3%	0.0%

LAST GAME vs. Cincinnati (1.2.21)

MIN	PTS	REB	AST	STL
23	2	1	1	2

OVERVIEW**2020-21 (Freshman)**

Swiped a season-high four steals to go with five points at Houston (Dec. 30)... Played eight minutes and registered two points and a rebound in her collegiate debut vs. A&M Corpus Christi (Nov. 27).

High School

Duncan played for head coach Ben Holder where she averaged 14.4 points, 4.2 steals and 3.0 assists per game, while also making 42 percent of her three-point attempts as a junior... A four-year starter and two-time team captain... She was named the Offensive Player of the Year and Super Centex Player of the Year in 2018-19 after earning Newcomer of the Year honors in 2017-18... Was a two-time all-district selection after helping Midway to the District Championship... Also competed on the track team where she was a regional qualifier in the high jump and 4x400 meter relay.

Personal

She is the daughter of Toronal and Jada Duncan, and has two brothers (Malakyah, Darien) and two sisters (Azaryah, Toronica). She plans to major in nursing at Wichita State.

CAREER HIGHS

Opponent	Opponent	Date
Points	5 at Houston	12/30/20
Rebounds	2 ALCORN STATE	11/30/20
Field Goals	2 at Houston	12/30/20
FG Attempts	7 at Houston	12/30/20
3-Pointers	1 at Houston	12/30/20
3-Pt Attempts	3 2x, last CINCINNATI	1/2/21
Free Throws	-	-
FT Attempts	-	-
Assists	1 CINCINNATI	1/2/21
Steals	4 at Houston	12/30/20
Blocks	1 CINCINNATI	1/2/21
Minutes	27 at Houston	12/30/20

MISCELLANEOUS

Category	20-21	Career
Games Played	6	6
Games Started	-	-
20+ Minutes	2	2
10+ Points	-	-
20+ Points	-	-
5+ Assists	-	-
5+ Rebounds	-	-
Leading Scorer	-	-
Leading Rebounder	-	-
Assist Leader	-	-

2020-21 GAME-BY-GAME STATISTICS

Date	Opponent	gs	min	fg	fga	3p	3pa	ft	fta	reb	pf	ast	to	blk	stl	pts
N-27	TEXAS A&M CC	8	1	2	0	1	0	0	1	0	0	0	0	0	0	2
N-30	ALCORN STATE	18	1	1	0	0	0	0	2	4	0	2	0	0	0	2
D-4	SOUTHERN	8	0	0	0	0	0	0	1	1	0	1	0	0	0	0
D-6	NORTHERN IOWA	6	0	2	0	0	0	0	1	3	0	0	0	0	1	0
D-10	SOUTH DAKOTA	DNP														
D-30	at Houston*	27	2	7	1	3	0	0	0	2	0	2	0	4	5	
J-2	CINCINNATI*	23	1	6	0	3	0	0	1	0	1	0	1	2	2	
J-6	at USF*															
J-9	ECU*															
J-13	at Memphis*															
J-20	USF*															
J-23	at Temple*															
J-27	at Cincinnati*															
J-30	UCF*															
F-3	TULANE*															
F-6	TEMPLE*															
F-10	at UCF*															
F-17	MEMPHIS*															
F-20	at ECU*															
F-24	HOUSTON*															
F-27	at SMU*															
M-2	TULSA*															

DUNCAN'S CAREER TOTALS

Season	GP	GS	Min	Avg	FG	FGA	%	3FG	FGA	%	FT	FTA	%	Off	Def	Tot	Avg	PF	FO	A	TO	Blk	Stl	Pts	Avg
2020-21	6	0	91	15.2	5	18	.278	1	7	.143	0	0	.000	2	4	6	1.0	10	0	1	5	1	7	11	1.8
TOTALS	6	0	91	15.2	5	18	.278	1	7	.143	0	0	.000	2	4	6	1.0	10	0	1	5	1	7	11	1.8



SERAPHINE BASTIN

JUNIOR**GUARD****5'8"****DINANT, BELGIUM****SAINTE-MARIE NAMUR****SEASON STATS**

PPG	RPG	FG%	3FG%	FT%
11.3	6.7	46.9%	14.3%	82.1%

LAST GAME vs. Cincinnati (1.2.21)

MIN	PTS	REB	AST	STL
37	8	10	10	4

OVERVIEW**2020-21 (Junior)**

Picked up her first American Athletic Conference Weekly Honor Roll selection of the season on Jan. 4... Nearly recorded a triple-double vs. Cincinnati (Jan. 2), tallying eight points, 10 rebounds, 10 assists and four steals... Recorded her first double-double of the season at Houston (Dec. 30) with 18 points and 11 rebounds... Registered 16 points and eight rebounds in a double overtime game vs. UNI (Dec. 6)... Scored a team-high 11 points to go with five rebounds vs. Southern (Dec. 4)... Totaled 11 points, six assists and a career-high tying four steals in the opener vs. A&M Corpus Christi (Nov. 27).

2019-20 (Sophomore)

Started all 30 games she appeared in, finishing with seven games of 10 or more points... Led Wichita State in rebounds (5.1) and assists (10.6)... Second on the team in scoring (7.7), steals (4.5) and free throw percentage (78.6)... Team-high 16 games of five or more rebounds and led the team in assists 21 times... One of only two Shockers to score 20 points in a game this season... Collected her third American Weekly Honor Roll selection on Feb. 24... Posted her first double-double of the season with 12 points and a career-high 15 rebounds at Tulsa (Feb. 23)... Nearly had a triple-double at Temple (Feb. 5) with 13 points, eight rebounds and eight assists... Just missed a double-double at Houston (Jan. 25) with eight points, 10 boards and four steals... Named to the American Weekly Honor Roll for the second time this season on Jan. 20... Second straight game in double figures with 12 against Temple (Jan. 19)... Tallied 11 of her team-high 13 points after halftime in the comeback win vs. Tulsa (Jan. 15)... Scored a team-high tying 16 points to go with a season-high seven assists and six rebounds against Oklahoma on Nov. 30... Named to the American Weekly Honor Roll on Nov. 25... Scored a career-high 20 points to go with eight rebounds, four assists and three steals in the win at Louisiana Tech (Nov. 20).

2018-19 (Freshman)

American All-Academic Team... One of only two Shockers to play and start all 30 games... Played 20 or more minutes in every game but one... Third on the team in scoring (7.1), second in rebounds (4.6) and minutes (865) and first in assists (97) and steals (38)... Eight games in double-figures and three games with 10 or more rebounds... Led the Shockers in scoring three times, rebounds seven times and assists 16 times... Registered her first career double-double vs. Tulsa in the first round of the American Athletic Conference Championship (March 8) with 13 points and 10 rebounds... In the regular season finale vs. Tulsa (March 4), she set season highs in points (19), field goals made (7) and attempted (13)... Left her fingerprints all over the game vs. SMU (Feb. 17), finishing with 10 points, seven rebounds and a season-high nine assists... Back-to-back outings with 10 or more points after logging a season-high tying 12 in a win at Memphis (Feb. 6)... Recorded her first double-figure outing of the conference season vs. Temple when she scored 10 of her 11 points before halftime... Tied her season high in rebounds with 10 vs. ECU (Jan. 29)... Pulled down a game-high 10 rebounds vs. Memphis (Jan. 12)... Set season highs in free throws made (7) and attempted (10) vs. Savannah State to finish with 11 points, five assists, four rebounds and three steals... Notched her second consecutive game in double-figures with 12 points to go with four assists at South Dakota (Nov. 21)... Recorded her first double-figure game vs. Houston Baptist (Nov. 17) with 11 points and a season-high tying five rebounds... Dished out a game-high six assists for the second straight game in WISU's overtime win vs. Missouri State (Nov. 10)... Made her collegiate debut vs. Arkansas-Pine Bluff (Nov. 7) and tallied nine points, six assists and five rebounds in 23 minutes.

Personal

Daughter of Chantal Bastin... Has three brothers... Favorite subject in school is history... Favorite athletes are Stephen Curry and Serena Williams... Favorite food is chicken... Chose Wichita State over Kentucky, Wake Forest and Butler... Plans to major in management at Wichita State.

CAREER HIGHS

Opponent	Opponent	Date
Points	20	at Louisiana Tech 11/20/19
Rebounds	15	at Tulsa 2/23/20
Field Goals	7	TULSA 3/4/19
FG Attempts	13	3x, last TULSA 1/15/20
3-Pointers	3	OKLAHOMA 11/30/19
3-Pt Attempts	4	2x, last OKLAHOMA 11/30/19
Free Throws	12	at Houston 12/30/20
FT Attempts	14	at Louisiana Tech 11/20/19
Assists	10	CINCINNATI 1/2/21
Steals	4	4x, last CINCINNATI 1/2/21
Blocks	2	at Houston 1/25/20
Minutes	42	NORTHERN IOWA 12/6/20

MISCELLANEOUS

Category	20-21	Career
Games Played	7	67
Games Started	7	67
20+ Minutes	7	64
10+ Points	4	19
20+ Points	-	1
5+ Assists	2	15
5+ Rebounds	5	34
Leading Scorer	2	9
Leading Rebounder	2	21
Assist Leader	4	41

2020-21 GAME-BY-GAME STATISTICS

Date	Opponent	gs	min	fg	fga	3p	3pa	ft	fta	reb	pf	ast	to	blk	stl	pts
N-27	TEXAS A&M CC	*	34	4	7	0	1	3	4	2	0	6	2	0	4	11
N-30	ALCORN STATE	*	36	2	4	1	2	3	4	3	3	4	1	0	1	8
D-4	SOUTHERN	*	29	4	7	0	1	3	5	5	4	1	2	0	1	11
D-6	NORTHERN IOWA	*	42	5	11	0	2	6	8	8	3	3	4	0	2	16
D-10	SOUTH DAKOTA	*	32	2	7	0	1	3	4	8	2	3	5	0	1	7
D-30	at Houston*	*	30	3	5	0	0	12	12	11	4	4	6	0	0	18
J-2	CINCINNATI*	*	37	3	8	0	0	2	2	10	2	10	2	0	4	8
J-6	at USF*															
J-9	ECU*															
J-13	at Memphis*															
J-20	USF*															
J-23	at Temple*															
J-27	at Cincinnati*															
J-30	UCF*															
F-3	TULANE*															
F-6	TEMPLE*															
F-10	at UCF*															
F-17	MEMPHIS*															
F-20	at ECU*															
F-24	HOUSTON*															
F-27	at SMU*															
M-2	TULSA*															

CAREER HONORS

- American Athletic Conference Weekly Honor Roll (Nov. 25, 2019)
- American Athletic Conference Weekly Honor Roll (Jan. 20, 2020)
- American Athletic Conference Weekly Honor Roll (Feb. 24, 2020)
- American Athletic Conference Weekly Honor Roll (Jan. 4, 2021)

BASTIN'S CAREER TOTALS

Season		GP	GS	Min	Avg	FG	FGA	%	3FG	FGA	%	FT	FTA	%	Off	Def	Tot	Avg	PF	FO	A	TO	Blk	Stl	Pts	Avg
2018-19	Freshman	30	30	863	28.8	74	201	.368	5	26	.192	60	81	.741	46	92	138	4.6	72	1	97	101	2	38	213	7.1
2019-20	Sophomore	30	30	845	28.2	73	179	.408	8	30	.267	77	98	.786	43	109	152	5.1	78	2	106	85	3	45	231	7.7
2020-21	Junior	7	7	240	34.3	23	49	.469	1	7	.143	32	39	.821	13	34	47	6.7	18	0	31	22	0	13	79	11.3
TOTALS		67	67	1948	29.1	170	429	.396	14	63	.222	169	218	.775	102	235	337	5.0	168	3	234	208	5	96	523	7.8



TRAJATA COLBERT

JUNIOR

FORWARD

6'2"

ROCHELLE, GA.

WILCOX COUNTY HS

SEASON STATS

PPG	RPG	FG%	3FG%	FT%
8.4	5.0	59.5%	-	39.1%

LAST GAME vs. Cincinnati (1.2.21)

MIN	PTS	REB	BLK	STL
13	3	2	2	1

OVERVIEW

2020-21 (Junior)

Grabbed a team-high 10 rebounds to go with seven points, three blocks and three steals vs. South Dakota (Dec. 10)... Scored 14 of her career-high 21 points in the first half of a double overtime game vs. UNI (Dec. 6)... Was 9-for-14 from the field and added five rebounds, two assists and two steals in the game.

2019-20 (Sophomore)

Played in 15 games, while starting three... Missed several games during the season due to injury... Led Wichita State in field goal percentage at 55.7 percent... Had six games of 10 or more points... Second straight game in double-figures with a team-high 10 points and six rebounds in the final game of the season vs. UCF (March 7)... Logged her first double-double of the season vs. Houston in the first round of the AAC Championship (March 6) with 11 points and 11 rebounds... Scored a career-high 13 points in 14 minutes off the bench vs. SMU (Feb. 19), while also setting a career high in free throws made (3) and attempted (5)... Reached double figures for the first time since the season opener when she scored a team-high 12 points at ECU (Jan. 12)... Made her first career start in the season opener vs. Northern Iowa (Nov. 9) and finished with a game-high 12 points on 6-of-11 shooting.

2018-19 (Freshman)

Appeared in 21 of Wichita State's 30 games as a true freshman... Averaged 2.6 points and 2.1 rebounds in 7.1 minutes per game... Three games with 10 or more points... Led the Shockers in scoring twice and rebounding once... Recorded her second straight game with 11 points, while playing a season-high 16 minutes at Cincinnati (Feb. 10)... Came in off the bench to play 14 minutes and scoring 11 points and grabbing five rebounds in a win at Memphis on Feb. 6... Posted her first career double-double in only 13 minutes of action off the bench vs. Houston Baptist (Nov. 17) with 12 points and 13 rebounds.

Wilcox County HS

Averaged 16.0 points and 15.0 rebounds as a senior and lettered all four years in basketball... Also lettered all four years in track... Earned All-Area and All-Region honors as a senior... Named the Region 2-A Defensive Player of the Year... Helped lead her team to the state playoffs as a sophomore, junior and senior... As a senior led Wilcox to the Elite Eight round of the state playoffs... High school team improved its record every year she was on the team.

Personal

Daughter of David Colbert and Jennifer Johnson... Has four siblings: Braniyah, Queen, Brooklyn and Savana... Favorite TV show is Law & Order SVU... Favorite book is The Canterbury Tales... Chose Wichita State over College of Charleston, Western Kentucky and Arkansas State... Plans to major in education at Wichita State.

CAREER HIGHS

Opponent	Opponent	Date
Points	21	NORTHERN IOWA 12/6/20
Rebounds	13	HOUSTON BAPTIST 11/17/18
Field Goals	9	NORTHERN IOWA 12/6/20
FG Attempts	14	NORTHERN IOWA 12/6/20
3-Pointers	-	
3-Pt Attempts	-	
Free Throws	5	at UCF 3/2/20
FT Attempts	10	SOUTH DAKOTA 12/10/20
Assists	2	2x, last UNI 12/6/20
Steals	3	SOUTH DAKOTA 12/10/20
Blocks	3	2x, last SOUTH DAKOTA 12/10/20
Minutes	30	vs. UCF 3/7/20

MISCELLANEOUS

Category	20-21	Career
Games Played	7	43
Games Started	3	6
20+ Minutes	3	7
10+ Points	1	10
20+ Points	1	1
2+ Blocks	2	4
5+ Rebounds	4	8
Leading Scorer	-	6
Leading Rebounder	1	5
Blocks Leader	2	6

2020-21 GAME-BY-GAME STATISTICS

Date	Opponent	gs	min	fg	fga	3p	3pa	ft	fta	reb	pf	ast	to	blk	stl	pts
N-27	TEXAS A&M CC	11	1	2	0	0	1	2	2	1	0	1	0	0	3	3
N-30	ALCORN STATE	16	4	8	0	0	1	2	6	2	1	1	1	1	9	9
D-4	SOUTHERN	15	4	5	0	0	0	2	4	3	0	2	3	0	8	8
D-6	NORTHERN IOWA	22	9	14	0	0	3	5	5	5	2	4	0	2	21	21
D-10	SOUTH DAKOTA	*	25	2	4	0	0	3	10	10	2	0	3	3	7	7
D-30	at Houston*	*	21	4	5	0	0	0	0	6	2	1	2	1	1	8
J-2	CINCINNATI*	*	13	1	4	0	0	1	2	2	4	0	3	2	1	3
J-6	at USF*															
J-9	ECU*															
J-13	at Memphis*															
J-20	USF*															
J-23	at Temple*															
J-27	at Cincinnati*															
J-30	UCF*															
F-3	TULANE*															
F-6	TEMPLE*															
F-10	at UCF*															
F-17	MEMPHIS*															
F-20	at ECU*															
F-24	HOUSTON*															
F-27	at SMU*															
M-2	TULSA*															

COLBERT'S CAREER TOTALS

Season		GP	GS	Min	Avg	FG	FGA	%	3FG	FGA	%	FT	FTA	%	Off	Def	Tot	Avg	PF	FO	A	TO	Blk	Stl	Pts	Avg
2018-19	Freshman	21	0	148	7.1	23	55	.418	0	0	.000	8	19	.421	19	26	45	2.1	28	0	3	18	8	4	54	2.6
2019-20	Sophomore	15	3	231	15.4	44	79	.557	0	0	.000	22	36	.611	27	26	53	3.5	34	1	0	20	6	4	110	7.3
2020-21	Junior	7	3	124	17.7	25	42	.595	0	0	.000	9	23	.391	10	25	35	5.0	18	1	4	16	10	8	59	8.4
TOTALS		43	6	503	11.7	92	176	.523	0	0	.000	39	78	.500	56	77	133	3.1	80	2	7	54	24	16	223	5.2



ASIA HENDERSON

R-JUNIOR**CENTER****6'3"****HOPE MILLS, N.C.****SOUTH VIEW HS****SEASON STATS (2019-20)**

PPG	RPG	FG%	3FG%	FT%
4.4	4.0	40.8%	0.0%	61.4%

LAST GAME vs.

MIN	PTS	REB	AST	STL
-	-	-	-	-

OVERVIEW**2019-20 (Redshirt Sophomore)**

Saw action in 30 of the team's 31 games, and made one start... Third on the team in rebounding (4.0)... Led Wichita State in blocked shots (26)... Had three games with 10-plus points and seven games as the team's top rebounder... Tied a career-high with five blocked shots vs. Houston (March 6)... Made her first career start at UCF (March 2) and finished with six points and eight rebounds... Back-to-back games in double-figures after scoring 10 at Temple (Feb. 5)... Set a career high with 11 points - nine in the second half vs. ECU (Feb. 1)... Three straight games with eight or more rebounds to open conference play against Tulane, ECU and Tulsa... Pulled down a career-best 12 rebounds to go with eight points and five blocked shots vs. Arkansas-Pine Bluff (Dec. 16)... Set career highs in minutes (24) and steals (3) at #18 Missouri State on Dec. 4... Scored 10 points on 4-of-7 shooting vs. Southern (Nov. 17).

2018-19 (Redshirt Freshman)

American All-Academic Team... Serves as the secretary on the SAAC Leadership Council... Appeared in 20 of Wichita State's 30 games... Averaged 2.7 points and 1.9 rebounds per game in 7.7 minutes... Tied a season high with six points in 11 minutes off the bench at Temple (March 2)... Pulled down a season-high six rebounds vs. Temple (Feb. 2)... Swiped a season-high three steals at ECU (Jan. 9)... Scored her first career points vs. Houston Baptist (Nov. 17)... Made her collegiate debut vs. Missouri State on Nov. 10.

2017-18 (Freshman)

Redshirted her first season at Wichita State.

High School

Earned several accolades during her high school career at South View High School, including the Conference Most Valuable Player, First Team All-Region, First Team All-District, Female Athlete of the Year and participant in the Carolina East-West All-Star game... Averaged 16.0 points, 14.0 rebounds, 5.1 blocks and 1.7 steals per game as a senior... Improved in every category from her freshman to senior season... Averaged a double-double during both her junior and senior seasons after posting 7.2 points and 4.9 rebounds per game as a sophomore... School record holder for rebounds and blocks in a single game, blocks, double-doubles and triple-doubles in a single season... Helped South View HS to win the Mid-South Conference championship as a sophomore and junior and runner-up finish in the conference and tournament championship as a senior... Four-time letterwinner in basketball, while also lettering in volleyball and track & field two years each.

Personal

Born in Laurinburg, N.C. ... Daughter of Anthony Sinclair and Iris Bethea-Sinclair... Has two brothers: Jeremiah and John and two sisters: Alayna and Ayanna... Her mother played college basketball at UNC Pembroke... Plans to major in biochemistry at Wichita State.

CAREER HIGHS

Category	Opponent	Date
Points	11 ECU	2/1/20
Rebounds	12 ARKANSAS-PINE BLUFF	12/16/19
Field Goals	4 4x, last at Temple	2/5/20
FG Attempts	9 2x, last at Tulane	2/16/20
3-Pointers	-	-
3-Pt Attempts	1 GRAMBLING	12/30/19
Free Throws	4 2x, last TULANE	1/5/20
FT Attempts	6 ARKANSAS-PINE BLUFF	12/16/19
Assists	1 2x, last at UCF	3/2/20
Steals	3 2x, last at Missouri State	12/4/19
Blocks	5 2x, last vs. Houston	3/6/20
Minutes	24 2x, last ECU	2/1/20

MISCELLANEOUS

Category	20-21	Career
Games Played	-	49
Games Started	-	1
20+ Minutes	-	4
10+ Points	-	3
20+ Points	-	-
5+ Assists	-	-
5+ Rebounds	-	13
Leading Scorer	-	1
Leading Rebounder	-	7
Assist Leader	-	-

2020-21 GAME-BY-GAME STATISTICS

Date	Opponent	gs	min	fg	fga	3p	3pa	ft	fta	reb	pf	ast	to	blk	stl	pts
N-27	TEXAS A&M CC		DNP													
N-30	ALCORN STATE		DNP													
D-4	SOUTHERN		DNP													
D-6	NORTHERN IOWA		DNP													
D-10	SOUTH DAKOTA		DNP													
D-30	at Houston*		DNP													
J-2	CINCINNATI*		DNP													
J-6	at USF*															
J-9	ECU*															
J-13	at Memphis*															
J-20	USF*															
J-23	at Temple*															
J-27	at Cincinnati*															
J-30	UCF*															
F-3	TULANE*															
F-6	TEMPLE*															
F-10	at UCF*															
F-17	MEMPHIS*															
F-20	at ECU*															
F-24	HOUSTON*															
F-27	at SMU*															
M-2	TULSA*															

HENDERSON'S CAREER TOTALS

Season		GP	GS	Min	Avg	FG	FGA	%	3FG	FGA	%	FT	FTA	%	Off	Def	Tot	Avg	PF	FO	A	TO	Blk	Stl	Pts	Avg
2018-19	Redshirt Freshman	20	0	153	7.6	21	58	.362	0	0	.000	12	19	.632	16	21	37	1.9	14	0	1	8	8	6	54	2.7
2019-20	Redshirt Sophomore	30	1	391	13.0	53	130	.408	0	1	.000	27	44	.614	54	67	121	4.0	40	1	1	29	26	16	133	4.4
2020-21	Redshirt Junior																									
	TOTALS	50	1	543	10.9	74	188	.394	0	1	.000	39	63	.619	70	88	158	3.2	54	1	2	37	34	22	187	3.7



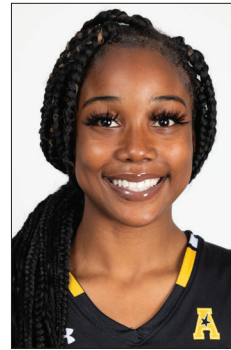
PHOTO ROSTER



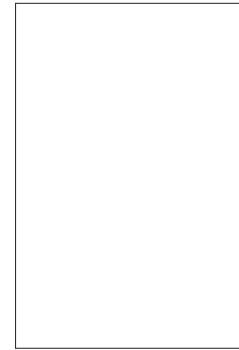
ASIA STRONG
00 Jr. | F | 6-2
South Bend, Ind.



DJ MCCARTY
1 So. | G | 5-8
DeSoto, Texas



MARIAH MCGULLY
2 Sr. | G | 5-7
Grand Rapids, Mich.



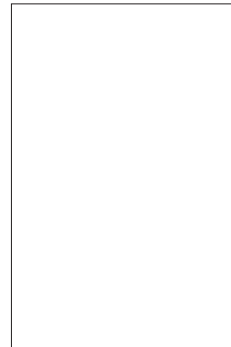
MARIAH MCKINNEY
10 Jr. | G | 5-8
Wichita, Kan.



CARLA BREMAUD
12 Jr. | G | 5-11
Angers, France



ENE ADAMS
13 So. | F | 6-1
Jos, Nigeria



CARLA BUDANE
14 Fr. | F | 6-0
Lisboa, Portugal



JAIDA HAMPTON
15 Jr. | G | 5-10
Lansing, Mich.



SHAMARYAH DUNCAN
20 Fr. | G | 5-11
Waco, Texas



SERAPHINE BASTIN
23 Jr. | G | 5-8
Dinant, Belgium



TRAJATA COLBERT
24 Jr. | F | 6-2
Rochelle, Ga.



ASIA HENDERSON
42 R-Jr. | C | 6-3
Hope Mills, N.C.



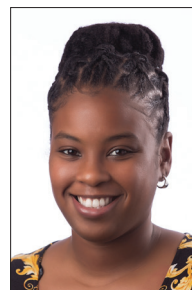
KEITHA ADAMS
Head Coach



EWA LASKOWSKA
Associate Head Coach



CHESTER NICHOLS
Assistant Coach



KELLI BAGLEY
Assistant Coach



ERICA YANCEY
Director of Basketball Ops