



**2023 USC  
WOMEN'S TENNIS**

# 2023 USC WOMEN'S TENNIS

## 2022-23 WOMEN'S TENNIS ROSTER

NAME	HT	YR	HOMETOWN	HIGH SCHOOL / COLLEGE
Eryn Cayetano	5-2	SR	Long Beach, Calif.	Saint Anthony HS
Emma Charney	5-7	FR	Mount Pleasant, SC	Mount Pleasant HS
Naomi Cheong	5-6	JR	Las Vegas, Nev	Odyssey Charter HS
Snow Han	5-9	R-SO	Wuhan, China	Hubei Sports School
McKenna Koenig	5-7	R-SO	Scottsdale, Ariz.	Desert Mountain HS
Gabrielle Lee	5-6	R-SO	Hobart, Wisc.	Bay Port HS
Isabelle Lee	5-6	R-SO	Hobart, Wisc.	Bay Port HS
Sloane Morra	5-10	SO	Rockville, Md.	Walter Johnson HS
Grace Piper	5-6	SO	Taunton, Somerset, England	The Castle School
Nathalie Rodilosso	5-9	GR	Rye, New York	Rye High School /Princeton
Maddy Sieg	5-10	FR	Greenwich, CT	Laurel Springs School

**HEAD COACH:** Alison Swain (6th season)

**ASSISTANT COACH:** Elizabeth Begley (2nd season)

**VOLUNTEER ASSISTANT COACH:** George Wang (2nd season)

## PRONUNCIATION GUIDE

Naomi Cheong  
nay-O-mee CHONG

McKenna Koenig  
KO-nig

Nathalie Rodilosso  
NAT-Uh-Lee Rah-Di-Low-So

Maddy Sieg  
Maddy SEEJ

## 2023 POSTSEASON



**2023 PAC-12  
CHAMIONSHIPS**  
Wednesday-Saturday,  
April 26-29



**2023 NCAA REGIONALS**  
Friday-Saturday, May (dates TBD)  
Sites To Be Determined

**2023 NCAA CHAMPIONSHIPS**  
Thursday-Monday, May (dates TBD)  
University of Central Florida

## TABLE OF CONTENTS

Quick Facts / Media Notes .....	3
Alison Swain, Head Coach .....	4
Coaching Staff .....	5
Marks Tennis Stadium/Support Staff ..	6
2023 Women of Troy .....	7
2022 Results .....	13
2022 Match-By-Match Results .....	14
All-Time Honors .....	17
USC Letterwinners .....	21
History & National Championships ..	22
Year-By-Year .....	23
Opponent Series Records .....	28

## MEDIA NOTES

**Interviews:** To arrange an interview with coaches or athletes, please contact Gia Larez (805-704-365) at least one day in advance. Check with the USC Sports Information Office regarding the team practice schedule. Players can be made available after practice sessions and following home matches.

**Trojans On The Web:** Current women's tennis information, as well as news, features and updated statistics can be found on the web at: [usctrojans.com](http://usctrojans.com)



For more information on the Pac-12 Conference, go to: [pac-12.org](http://pac-12.org)



For more information on all NCAA Division I sports and championships, go to: [ncaa.com](http://ncaa.com)

For more information on the Intercollegiate Tennis Association (ITA), go to: [itatennis.com](http://itatennis.com)

*\* Due to NCAA penalty vacating wins recorded by ineligible player, 3 wins left undecided in 2008; 1 win (conference) becomes a loss and 4 wins left undecided in 2009. [Original records: USC all-time program record 821-314 (.723); USC all-time conference 311-196 (.613); all-time NCAA record 76-35 (.685)]*

## QUICK FACTS

### University Information

Location: ..... Los Angeles, Calif.  
 Founded: ..... 1880  
 Enrollment: 43,000 (19,000 undergrad)  
 President: ..... Carol Folt  
 Athletic Director: ..... Mike Bohn  
 Senior Woman Administrator: ... Joyce  
 ..... Bell Limbrick  
 National Affiliation: ... NCAA Division I  
 Conference: ..... Pac-12  
 Nickname: Trojans or Women of Troy  
 Fight Song: ..... "Fight On"  
 Colors: ..... Cardinal & Gold  
 Home Court: .. Marks Tennis Stadium  
 Capacity: ..... 1,000

### Tennis Information

Head Coach: ..... Alison Swain  
 Alma Mater: ..... Williams College '01  
 Record at USC: ..... 71-47 (.602)  
 ..... (Entering her sixth season)  
 Overall Record: ..... 295-75 (.797)  
 ..... 15 seasons  
 Swain's Phone: ..... (213) 740-3828  
 Assistant Coach: ..... Elizabeth Begley  
 Vol. Assistant Coach: ..... George Wang  
 2022 Overall Record: ..... 18-12  
 2022 Pac-12 Record: ..... 7-3  
 2022 Postseason: ..... 1-2  
 ..... Reached Round of 32  
 Final Team Ranking: ..... No. 20

### Tennis History

All-Time Program Record: ... \*831-327  
 ..... (.717)  
 All-Time Conference Record: \*317-200  
 ..... (.613)  
 All-Time NCAA Record: ..... \*75-37  
 ..... (.669)  
 National Team Championships: ..... 6  
 ..... (1977, 1978, 1979, 1980, 1  
 ..... 983 [NCAA], 1985 [NCAA])  
 National Singles Championships: ..... 5  
 ..... (1976, 1977, 1978, 1981, 1983)  
 National Doubles Championships: ... 2  
 ..... (1980, 2013)  
 Conference Championships: ..... 11  
 (1977, 1978, 1979, 1980, 1981, 1982,  
 1983, 1985, 1986, 2009, 2012, 2013,  
 2015)  
 NCAA Appearances ..... 38  
 Record Consecutive NCAA  
 Appearances ..... 26 (1991-2017)  
 All-Americans ..... 99

### Sports Information

Women's Tennis SID: ..... Gia Larez  
 SID Phone: ..... (805) 704-3651  
 E-mail: ..... [glarez@usc.edu](mailto:glarez@usc.edu)  
 Website: ..... [www.usctrojans.com](http://www.usctrojans.com)  
 Sports Information Address: .....  
 ..... USC Sports Information  
 ..... 3501 Watt Way, Heritage Hall 103  
 ..... Los Angeles, CA 90089

### Credits

The 2022 Women's Tennis Media Guide was prepared by Giavanna Larez, Sports Information Director. Special thanks to John McGillen for team photos, actions and head shots. Action photography also courtesy of Dan Avila, Heston Quan, Gary Rus, Sam Haythorn, Hali Helfgott, Bill Kallenberg, John McGillen, Jim Sabo, Eddie Siegel, Michael Sugarman, Jon SooHoo, Po-He Tseng and Troy Witt.

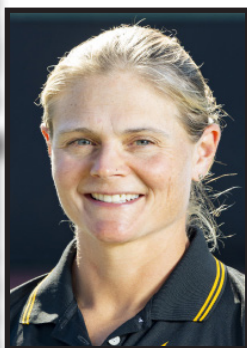


# ALISON SWAIN

Head Coach

6th Season

8-Time DIII NCAA Championship Coach



Alison Swain, who built a women's tennis dynasty at Williams College by leading the Ephs to 8 NCAA Division III team championships, was officially hired to be the USC women's tennis head coach on June 7, 2017. She enters her sixth season (2022-23) as the head coach of the

Women of Troy.

Through her five seasons at USC, she holds a 71-47 overall record (.602) with a 24-18 record (.571) in Pac-12 matches.

During 2022, the Women of Troy recorded an 18-12 record and went 7-3 in Pac-12 Conference play. USC, which remained in the top-25 nationally all season, kicked off 2022 with a 5-0 start to the season and secured a trip to the ITA National Indoor Championships for the first time since 2015. USC would be selected to compete in the 2022 NCAA Tournament, defeating San Diego State in Malibu, CA before falling to #8 Pepperdine during the Second Round. Junior Eryn Cayetano and Salma Ewing both turned in stellar seasons, earning placement in the NCAA Singles Tournament and picking up All-American singles honors. The Trojans wrapped up the season as the No. 20 ranked squad in the country, with four singles players and three doubles pairings ranked nationally.

In 2021, the Women of Troy recorded a 13-11 record and went 5-5 in Pac-12 Conference play. After being selected to compete in the 2021 NCAA Tournament, the Trojans upset both Oklahoma and Florida in the First and Second Rounds to advance to the Round of 16 where they fell to North Carolina State. Junior Salma Ewing earned placement in the NCAA Singles Tournament where she fell in the First Round. The Trojans finished No. 27 in the

country with three singles players nationally ranked. In 2020, the Trojans had a 7-6 record and went 0-2 in Pac-12 Conference play. During the 2020 campaign, the sport was shut down nationally midseason due to the COVID-19 pandemic.

In 2019, the Trojans had a 20-8 record and went 7-3 in Pac-12 Conference play. They were selected to compete in their 36th all-time NCAA appearance where they reached the Round of 16.

During the 2019 season, Swain coached the Trojan pair of Angela Kulikov and Rianna Valdes who were semifinalists in the 2019 NCAA Doubles Tournament. The duo entered the tournament as the No. 1 ranked team in the nation. In addition, Salma Ewing was selected to compete in the NCAA Singles Tournament where she fell in the First Round. USC finished the season ranked No. 16 in the country with two singles players and one doubles pair nationally ranked.

In 2018, USC went 13-10 and 5-5 in Pac-12 conference play. The team reached the Quarterfinals of the Pac-12 Tournament, where they fell to Arizona State. Trojan Gabby Smith was selected to compete in the 2018 NCAA Singles Tournament where she fell in the First Round. USC finished the season ranked No. 49 in the country with two singles players and one doubles pair nationally ranked.

Prior to arriving at Troy, Swain posted an .889 winning percentage (224-28) in her 10 seasons (2008-17) at Williams, including 48-2 in NCAA tournament play. She led the Ephs to 8 NCAA team championships, including in each of her first 6 seasons (an NCAA Division III record and tying Stanford for most consecutive at any level) as well as in 2015 (going 25-0) and the just-concluded 2017 campaign. In her other 2 seasons, Williams was the NCAA runnerup in 2016 and was third in 2014. She also helped Williams win 5 conference championships.



She was named the 2013 ITA National Division III Coach of the Year, was a 5-time conference Coach of the Year and twice (2010-13) was the ITA Northeast Coach of the Year. She produced 2 NCAA champion doubles teams (Juli Raventos and Linda Shin in 2015 and 2016) and a trio of NCAA singles runners-up, along with 18 All-Americans, 2 ITA National Senior Players of the Year and an ITA National Most Improved Senior of the Year. She also was an assistant professor of physical education at Williams.

Swain was the second person in any division to win an NCAA tennis team championship as a player and a coach. She co-captained Williams' 2001 NCAA championship squad (the first in school history). She won All-New England Small College Athletic Conference honors and was named a Scholar-Athlete All-American.

After graduating from Williams in 2001 with a degree in American studies, she taught eighth grade and coached the girls' tennis team at Woodward Academy in College Park, Ga., for 3 years (2002-04), winning the region each year and getting to the state finals in 2004. She received a master's degree in education from Washington in 2006 and then taught upper schoolers at Telluride (Colo.) Mountain School for a year (2006-07) before returning to her alma mater to take the Williams head job in the summer of 2007.

Swain is a native of Bainbridge, Wash. She and her mother, Sue Swain, were the nation's top-ranked mother/daughter doubles team in 2003, winning both the National Mother/Daughter Indoor and Grass Court doubles tourneys. She has been an instructor in indoor cycling and downhill skiing, as well as a white water rafting guide.

## SWAIN'S CAREER COACHING RECORD

School	Year	Wins	Loss	Pct.	NCAA Finish	Nat'l Rank	Conf. Record
Williams	2008	21	3	.875	NCAA Champs	1st	6-0
Williams	2009	21	2	.913	NCAA Champs	1st	7-1
Williams	2010	23	3	.885	NCAA Champs	1st	8-0
Williams	2011	22	3	.880	NCAA Champs	1st	5-1
Williams	2012	24	2	.923	NCAA Champs	1st	7-0
Williams	2013	23	4	.852	NCAA Champs	1st	6-2
Williams	2014	23	3	.885	NCAA Semis	3rd	7-1
Williams	2015	25	0	1.000	NCAA Champs	1st	7-0
Williams	2016	22	4	.846	NCAA Finals	2nd	6-1
Williams	2017	20	4	.833	NCAA Champs	1st	7-1
USC	2018	13	10	.565	-----	No. 49	5-5
USC	2019	20	8	.714	Round of 16	No. 16	7-3
USC	2020*	7	6	.538	No NCAA Tourney	No. 39	0-2*
USC	2021	13	11	.542	Round of 16	No. 27	5-5

**TOTAL** 14 Years 277 63 .815  
**Williams Totals** 10 Years 224 28 .889



## ELIZABETH BEGLEY

Assistant Coach

2nd Season



Elizabeth Begley, a two-time Big-12 Champion starter for the Longhorns with over five years of Division I coaching experience, was named the USC Women's Tennis Assistant Coach by Head Coach Alison Swain in December of 2021. She enters her second season as the Assistant Women's Tennis Coach for the Women of Troy.

During 2022, the Women of Troy recorded an 18-12 record and went 7-3 in Pac-12 Conference play. USC, which remained in the top-25 nationally all season, kicked off 2022 with a 5-0 start to the season and secured a trip to the ITA National Indoor Championships for the first time since 2015. Later in the season, the Women of Troy would be selected to compete in the 2022 NCAA Tournament, defeating San Diego State in Malibu, CA before falling to #8 Pepperdine during the Second Round. The Trojans wrapped up the season as the No. 20 ranked squad in the country, with four singles players and three doubles pairings ranked nationally.

Begley arrived at Troy after most recently holding the assistant coach position at Loyola Marymount University since the summer of 2018. At LMU, Begley helped take the Lions from unranked to a top-45 ITA ranking in one season, reaching a program high rank of 44 in 2020 (March 10, 2020). She also led recruiting efforts that led to LMU signing the most decorated recruit in program history.

Prior to her joining LMU's coaching staff, Begley spent the previous three years as the Cornelia Drake and John Van Ryn Jr. '28 Assistant Coach of Women's Tennis at Princeton (2015-2018).

As a coach at Princeton, Begley helped Princeton to a pair of Ivy League titles (2016 & 2018) as the Tigers went 19-4 overall and 7-0 in conference play en route to a berth into the NCAA Championship Tournament. Over her three years, Princeton compiled a 45-23 overall record and was 16-5 in Ivy League play. The Tigers improved from unranked to 22nd during Begley's three years on staff.

Before Princeton, Begley spent one season as a volunteer assistant coach at Baylor, where she helped the Bears to the NCAA team quarterfinals, a berth in the NCAA singles Round of 16 and the NCAA doubles quarterfinals. While three Baylor players earned All-Big 12 honors, the program also had the Big 12 Player of the Year and the Big 12 Coach of the Year.

During her playing career at Texas, Begley had 86 career singles wins and helped the Longhorns to two Big 12 championships, finishing her senior season as the team's No. 2 singles player and ranked 114th in the nation by the ITA. Texas played in the NCAA team tournament in each of her first three seasons, winning at least one match all three times and advancing to the Round of 16 her sophomore year. Twice, Begley was an All-Big 12 singles selection and was also a two-time Big 12 individual position champion. Begley was selected as the Most Outstanding Performer at the 2012 Big 12 Championships and won the 2014 ITA Texas Region Arthur Ashe, Jr. Sportsmanship & Leadership Award. Begley earned her bachelor's degree in sociology from the University of Texas at Austin in 2014.

## GEORGE WANG

Volunteer Assistant Coach

2nd Season



George Wang, a well-versed tennis instructor with both domestic and international experience, joined the USC women's tennis program in 2021 as the volunteer assistant coach. He enters his second season with the Women of Troy.

During 2022, the Women of Troy recorded an 18-12 record and went 7-3 in Pac-12 Conference play. USC, which remained in the top-25 nationally all season, kicked off 2022 with a 5-0 start to the season and secured a trip to the ITA National Indoor Championships for the first time since 2015. Later in the season, the Women of Troy would be selected to compete in the 2022 NCAA Tournament, defeating San Diego State in Malibu, CA before falling to #8 Pepperdine during the Second Round. Junior Eryn Cayetano and Salma Ewing both turned in stellar seasons, earning placement in the NCAA Singles Tournament and picking up All-American singles honors. The Trojans wrapped up the season as the No. 20 ranked squad in the country, with four singles players and three doubles pairings ranked nationally.

Wang arrives at Troy after most recently holding the head coach position at Mater Dei High School in Santa Ana, Calif. Under his tutelage, the Monarchs lost only one match, boasting a 14-1 record for their season played in the spring of 2021.

Wang currently is a Deputy Tournament Director for WTA and ATP events in Taipei, Taiwan, where he develops business strategies, implements his plan and ensures the tennis tournaments are run properly and efficiently.

From 2012-2017, he was a touring manager for professional tennis players. He traveled with the athletes around the world as they competed in major tennis tournaments, including all four Grand Slams. He created daily practice plans and fitness regimes for match preparation and organized all off-court logistics like travel, player networking and language translation.

Wang was the assistant tennis coach at Henderson State University in Arkadelphia, Ark. From 2008-09. While there, the Reddies went 11-6 overall and 5-1 in the Gulf South Conference.

Also in 2009, he was the assistant coach with Team Chinese Taipei at the World University Games.

Wang earned his bachelor's degree in communication with a minor in sociology from DePaul University. While pursuing his degree, he was the volunteer assistant coach with the women's tennis team in the fall of 2007.

He earned his master's degree in sports management / administration from Henderson State University.

Wang is trilingual and is fluent in Mandarin and Taiwanese. He has two children, including a son named Dylan.



Support Staff

SUPPORT STAFF



GIA LAREZ  
Women's Tennis Sports  
Information Director



PHILIP SIORDIA  
Tennis  
Director of Operations



JUSTIN SHIBEL  
Women's Tennis  
Athletic Trainer



TBD  
Madison Peele  
Strength Coach



WHITNEY ROTROCK  
Women's Tennis  
Academic Counselor

DAVID X. MARKS TENNIS STADIUM



The USC men's and women's tennis teams have called the David X. Marks Tennis Stadium home since its construction in 1971. This season, Trojan tennis sees its home revamped and renovated, bringing the venue up to date and in line with the impressive accomplishments of both programs. USC broke ground on the new Buntmann Family Tennis Center on Feb. 24, 2015, starting an impressive renovation project with the goal of elevating Marks Tennis Stadium to be on par with the best facilities in the country by creating an inviting, elegant, bright and safe training and competition environment.

The Buntmann Family Tennis Center entrance and lobby now welcomes fans and visitors and puts on display the rich history of USC tennis. To improve the building functionality and support the tennis program operations, the new Lisa and Douglas Goldman Family Student-Athlete Learning Studio supports direct collaboration between coaches, staff and athletes on a daily basis.

The teams are now able to utilize and enjoy brand-new suites with lockers, showers, team meeting rooms and lounges. Both teams also have access to a new training room, a stringing storage area and a large multi-purpose room. To better accommodate and enhance the spectator experience, new spectator shade canopies has been added, a new elevator to the seating area has been installed.

In addition to the lead gift from the Buntmann family, the renovation was made possible thanks to financial support from the Lisa and Douglas Goldman family, the Fritz. B Burns Foundation, John Shea and Michael Uytengsu.

The Buntmann Family Tennis Center is just the latest of a string of improvements made at Marks Stadium. During winter of 2006, a sixth court was added to the main stadium, allowing for dual-match competition to be played out entirely in front of fans within the 1,000-seat venue.

A new and much-anticipated addition was made in May 2005 with the installation of a \$300,000 LED Daktronic interactive scoreboard, emblazoned with a list of all national championships won by the USC men's and women's tennis programs. Fans can now follow each match point-for-point from their stadium seat and online at [usctrojans.com](http://usctrojans.com).

The stadium also underwent renovations during the summer of 2002. Seven hundred chair-back seats were added to replace the bleachers on the baselines and the courts were all repainted and lined.

Two of the courts are named after famous USC alumni and Wimbledon singles champions, Alex Olmedo and Stan Smith. The center court is named for USC's 13 Grand Slam doubles champions — Byron Black, Bob Falkenburg, Luke Jensen, Murphy Jensen, Rick Leach, Bob Lutz, Gene Mako, Olmedo, Rafael Osuna, Dennis Ralston, Raul Ramirez, Ted Schroeder and Smith. Plaques honoring Trojan legends Dick Leach and George Toley also adorn the entrance of Marks Stadium.

The stadium was dedicated in 1973 when former Trojan stars Alex Olmedo, Stan Smith, Dennis Ralston and Bob Lutz held a tennis exhibition. The 1974 men's NCAA Tournament was held at Marks Stadium (USC finished second).



## 2022 Dual Match Results (18-12, 7-3 Pac-12)

### CLINCHERS

Grace Piper - 3 , McKenna Koenig - 3 , Snow Han - 3,  
Danielle Willson - 3, Eryn Cayetano - 2, Salma Ewing 2,  
Sloane Morra - 1, Naomi Cheong - 1

Record when...

### TROJAN DOUBLES

doubles point won: 11-1  
doubles point lost: 6-10







## NATHALIE RODILOSSO

Graduate Transfer  
Rye, New York  
Rye HS

**2022-23**

- Captured the Singles title at the Newport Beach 2K UTR Tournament on August 8

**AT PRINCETON - 2017-2022:**

- **Three-time ITA Scholar Athlete (2022)**
- Academic All-Ivy League (2022)
- Led the team in doubles wins each season with the Tigers (87-25 in four seasons)
- Went 44-33 in singles as a Tiger (primarily at the #6 position)
- Captured the Singles title at the Newport Beach 2K UTR Tournament on August 8

**HIGH SCHOOL:**

- Ranked as the No. 5 player in New York, No. 17 player in the Mid-Atlantic and a four-star recruit (tennisre-cruiting.com)
- Won the Eastern Cup National Doubles event in Oceanside, N.Y. in Sept. 2016
- Made the semifinals of NYSPHSAA Section 1 tournament and the quarterfinals of the state tournament as a senior
- Two-time Rye County champion

**PERSONAL:** Born August 18, 1999, Nathalie is the daughter of Alison and Francis Rodilosso ... Pursuing a M.S. in Entrepreneurship and Innovation at USC ... Earned her degree from Princeton in Public and International Affairs ... Nathalie aspires to go to medical school, enjoys working with kids and lists skiing as one of her hobbies.



## EMMA CHARNEY

Freshman  
Mount Pleasant, SC  
Mount Pleasant HS

**HIGH SCHOOL/ITF:**

- Blue Chip five-star recruit from South Carolina
- No. 10 recruit in the nation and No. 1 recruit in South Carolina (Tennis Recruiting Network) Two-time J4 Atlanta ITF singles champion ('20, '21)
- Two-time J4 ITF doubles champion (2021 J4 Atlanta w/ Piper Charney, 2021 J4 Delray Beach w/ Elisabeth Jones)
- J5 McKinney ITF singles champion (2021)
- J5 McKinney ITF doubles champion w/ Natalie Block
- 2019 South Carolina Player of the Year
- Career-high ITF Junior Ranking of #238 (October 25, 2021)

**PERSONAL:** Born March 16, 2003, Emma is the daughter of Leslie and Jason Charney ... Business Administration major ... Lists boating and working out as two of her favorite things to do ... Aspires to take her tennis to the highest level possible





**2021-22 SEASON:** Eryn Cayetano finished her stellar junior campaign as a Honda Sport Award finalist (tennis) and All-American (singles) ... In the early goings of what would become her winningest season as a Trojan, Cayetano made a statement in winning the 2021 ITA National Fall Singles Championship (first Trojan to win the title since Maria Sanchez in 2010) ... Primarily played from the No. 2 (10-2) and No. 1 (6-7) positions ... Led USC in singles wins with 39 on the year ... Finished the season ranked No. 3 in the ITA singles rankings and held the top spot from Dec., 2021 through Feb., 2022 ... In

doubles, went 19-10 overall and 12-8 in dual matches ... Cayetano and Salma Ewing went 5-0 in doubles (No. 1 position) and reached a season high ranking of No. 62 as a duo ... Cayetano and Grace Piper (12-10 overall) reached a season high ranking of #26 (Dec. 8) ... After receiving the Pac-12's automatic bid, Cayetano would make her first NCAA Singles Championship appearance and make a run to the quarterfinals ... Clinched two dual matches for the Women of Troy (3/13 against Arizona & 4/5 against CSUN) and defeated 20 ranked opponents during the 2021-22 season ... Recipient of the ITA's Southwest Region Cissie Leary Sportsmanship Award ... Received All-Pac-12 First Team accolades ... Pac-12 Women's Tennis Player of the week (March 15) after recording six victories (three singles, three doubles) in one weekend ... Named to the USTA's 2022 Collegiate Summer Team ... ITF Los Angeles Doubles Champion (Salma Ewing).

**2020-2021 SEASON:** In a shortened season due to the COVID-19 pandemic, Cayetano finished the season with a 11-6 overall record and a 6-2 Pac-12 record.... Helped the team to reach the NCAA Round of 16...Concluded the season ranked No. 80 in the nation...Played primarily from the No. 2 (7-3) position, but also saw action from No. 1 (3-3), and No. 3 (1-0)...Defeated three ranked opponents, highlighted by a victory over Pepperdine's No. 12 Shiori Fukuda on Feb. 13... Clinched one match for the Trojans (Washington)...Had a season-high singles ranking of 48 to begin the season...Went 11-13 in doubles... Primarily played with partner Angela Kulikov from the No. 1 position (6-8)...The duo beat on ranked opponent...Also played with Naomi Cheong from the No. 1 position (5-5).

**2019-2020 SEASON:** Eryn Cayetano had a stellar debut as a freshman in 2020, although the season was cut short due to the coronavirus pandemic. Before the suspension of the season, Cayetano went 11-4 overall in singles and 9-3 in dual matches...Primarily played from the No. 2 position (4-3), but also saw action from No. 1 (1-0), No. 3 (1-0), No. 4 (1-0) and No. 5 (2-0)...Defeated two ranked opponents, highlighted by her victory over No. 8 Abbey Forbes from UCLA on Feb. 28...Clinched two matches for the Women of Troy versus US Santa Barbara and Loyola Marymount...Had a season and career high singles ranking of No. 44 on March 3...Went 13-5 in doubles... With partner Angela Kulikov, went 8-2 overall and in dual matches primarily playing from the No. 1 position...The duo had an eight-match winning streak highlighted by defeating UCLA's No. 1 Bolton/Hart 6-1 on Feb. 28 and Princeton's No. 19 Joyce/Freeman 6-3 on Jan. 26... The pair had a season high doubles rank of No. 16 on March 3...Also partnered with Estella Jaeger (0-1), Sydney Van Alphen (1-1) and Danielle Willson (4-1)...In the fall, competed in the National Collegiate Tennis Classic where she reached the semifinals.



## CAYETANO'S CAREER STATISTICS

Year	SINGLES			DOUBLES			Year	SINGLES			DOUBLES		
	Overall	Dual Matches		Overall	Dual Matches			Overall	Dual Matches		Overall	Dual Matches	
	W	L	Pct.	W	L	Pct.		W	L	Pct.	W	L	Pct.
2020	11	4	.733	9	3	.750	2020	13	5	.722	8	2	.800
2021	11	6	.646	11	6	.646	2021	11	13	.458	11	13	.458
2022	39	11	.78	19	10	.655	2022	19	10	.665	12	8	.6
TOTALS	61	21	.743	39	19	.672		43	28	.605	31	23	.574

**HIGH SCHOOL:** Cayetano was ranked the No. 18 player nationally by Tennis Recruiting...Has collected multiple USTA national titles... Was the 2018 Ojai Junior Tournament champion...Earned the 2018 USTA National Sportsmanship Award...Won the 2018 CIF Southern Section Division II Girls' Individual Tennis Championship...Named the 2018 Press-Telegram Girls Tennis Dream Player of the Year... Placed second at the 2017 USTA Winter Nationals...Named an All-American as a senior...Four-time team MVP...Four-time Dey Rey League champion...Four-time first team All-Del Rey League...Also played varsity golf and was the 2017 co-captain and was a two-time first-team All-Del Rey League in golf.

**PERSONAL:** Eryn Grace Cayetano was born on April 13, 2001... Daughter of Noralyn and Edades Cayetano...Has on sister, Edalyn... Lists Kobe Bryant as her biggest sports hero...Would like to visit every Disney theme park...Majoring in human biology with aspirations to become a doctor of physical therapy or a physicians assistant.



# NAOMI CHEONG

Junior  
Las Vegas, Nev.  
Odyssey Charter HS



**2021-22 SEASON:** Naomi Cheong had a late start to the season due to injury, but got into the action during the midst of Pac-12 play (March 11) ...Went 10-3 overall in singles and 7-2 in dual matches ... Primarily played from the No. 5 (4-0) and No. 4 (2-2) positions...In doubles, went 5-8 overall and 5-7 in dual matches ... Primarily played with Snow Han (2-4) or Grace Piper (3-3) from the No. 2 position... Clinched one match for the Trojans (Oregon-April 10) ... Received All-Pac-12 Second Team honors ... Ended the season with an ITA Rank of #113, but reached a season high rank of #78 on March 24 ... Semifinalist at the Milwaukee Classic.

**2020-21 SEASON:** In a shortened season due to the COVID-19 pandemic, Cheong finished the season with a 9-8 overall record and a 4-4 Pac-12 record... Helped the team to reach the NCAA Round of 16...Concluded the season ranked No. 111 in the nation...Saw action from the No. 1 (1-3), No. 2 (6-2) and No. 3 (2-3) positions... Hallmark win of the season was a victory over the No. 1 player in the nation, Pepperdine's Ashley Lahey, 6-0, 7-5 on Feb. 13...Defeated three ranked opponents... Clinched two matches for Troy (Denver and Arizona State)...Had a season-high singles ranking of 62, but began the season as the No. 10 ranked newcomer in the nation...Went 9-7 in doubles...With partner Eryn Cayetano, went 5-5 overall playing all matches from the No. 1 position...Also partnered with Summer Dvorak (3-2) and Salma Ewing (2-0)...Cheong/Ewing were ranked No. 63 in the nation On March 17.

**HIGH SCHOOL:** Played United States Tennis Association junior tennis tournaments until the age of 15, where she was ranked No. 1 in the Inter-Mountain USTA Section from 2014-16 and No. 2 nationally...While competing in junior tennis, she won four tournament titles (both national and international) and had six second place finishes...Was the recipient of the USTA Nevada Player of the Year Award in both 2016 and 2017... Because of her success at the junior level, she transitioned to playing professional International Tennis Federation tournaments full time in 2017... She achieved an impressive high UTR of 11.99... Has many notable professional tournament finishes including reaching the quarterfinals of the 2017 ITF Pro Circuit \$100K in Tokyo, the semifinals of the 2017 ITA Pro Circuit \$25K in Hamamatsu, Japan and two quarterfinal finishes of ITA Pro Circuit \$25K tournament (Hamamatsu, Japan and Makinohara, Japan)... Achieved a high WTA ranking of #485.



CHEONG'S CAREER STATISTICS												
Year	SINGLES						DOUBLES					
	Overall			Dual Matches			Overall			Dual Matches		
	W	L	Pct.	W	L	Pct.	W	L	Pct.	W	L	Pct.
2021	9	8	.529	9	8	.529	9	7	.563	9	7	.563
2022	10	3	.769	7	2	.777	5	8	.384	5	7	.416
Total	19	11	.633	16	10	.615	14	15	.482	14	14	.50

**PERSONAL:** Naomi Cheong was born on May 16, 2002...Daughter of Claudia Yang and Renato Cheong...Has one sister, Natalie...Is majoring in International Relations...Aspires to play professional tennis after graduation.

# McKENNA KOENIG

Redshirt So.  
Scottsdale, Ariz.  
Desert Mountain HS



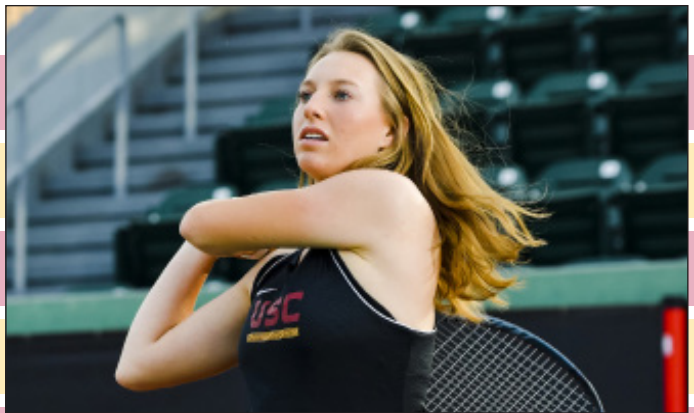
**2021-22 SEASON:** McKenna Koenig went 10-6 in singles overall and 6-1 in dual action during the 2021-22 season ... Clinched three matches for the Women of Troy (1/23 against Saint Mary's, 3/12 against Hawaii Pacific and 4/10 against Cal Poly) ... Played primarily from the No. 5 (3-0) and No. 6 (3-1) position ... In doubles, went 5-7 overall and 5-4 in dual action ... Saw action with Leyden Games and Salma Ewing in doubles

**2020-21 SEASON:** Koenig did not see any action as a freshman in the shortened 2021 season.

**HIGH SCHOOL:** Koenig was a four-year member of the varsity tennis team at Desert Mountain High School in Scottsdale, Ariz. ...Her high school team was the 2017 and 2018 Arizona Division 1 High School Team State Champion...Was the Doubles State Champion in 2018

and a finalist in 2017...Holds a number of titles including being selected to the All-State Division 1 First Team in 2017, 2018 and 2019, earning All-State Player of the Year in doubles in 2018 and being named the Desert Valley All-Region Player of the Year in 2018...Has won multiple USTA tournament titles including an L3 National-Doubles in Tucson, Ariz., an L3 National-Doubles in Surprise, Ariz. and a L3 National-Singles in Yakima, Wash.

**PERSONAL:** McKenna Beth Koenig was born on October 9, 2001...Daughter of William and Julie Koenig...Has one sister, Ava...Is majoring in Business Finance...Her father attended USC...Her mother played tennis at Ithaca College...Aspires to work in real estate.



KOENIG'S CAREER STATISTICS												
Year	SINGLES						DOUBLES					
	Overall			Dual Matches			Overall			Dual Matches		
	W	L	Pct.	W	L	Pct.	W	L	Pct.	W	L	Pct.
2022	10	6	.625	6	1	.857	5	7	.416	5	4	.555



# SNOW HAN

**Redshirt Sophomore**  
**Wuhan, China**  
**Hubei Sports School**



**2021-22 SEASON:** Han turned in an impressive first season with the Women of Troy, earning All-Pac-12 Second Team honors and boasting the second most singles victories on the squad for the 2021-22 season ... Went 33-12 overall in singles and 19-6 in dual matches, playing primarily at the No. 3 position (16-6) ... Defeated six ranked opponents during the 2021-22 season ... Wrapped up the year at No. 87 in the ITA's final rankings, but reached a career high ranking of No. 25 (Dec. 8) earlier in the season ... Clinched three matches for USC (1/23 against USF, 3/6 against Colorado and 3/11 Arizona State) ... Had a 12-match unbeaten streak in dual action from 1/29 through 3/19 ... In doubles, was 18-22 overall and 9-16 in dual matches

... Played primarily with Salma Ewing (10-7, 3-5) at the No. 1 and No. 2 positions, reaching a season's best ITA rank of No. 5 ... Also played at the No. 3 position alongside Danielle Willson (3-8) ... Won her first ITF 15K Title at the University of San Diego (June 12) ... A few weeks later, Han captured her second ITF 15K Title in Lakewood, CA (July 17, 2022) ... Won her doubles (Salma Ewing) flight at Fall Ranked Spotlight ... Competed in ITA Fall Nationals (doubles and singles).

**2020-21 SEASON:** Han did not compete with the Trojans due to the COVID-19 pandemic.

**HIGH SCHOOL:** Han ranked No. 74 in World ITF Juniors...Has competed at Junior Wimbledon and the Junior US Open...Won seven Junior World Singles Titles in total and has been a finalist in three Junior World Doubles tournaments.

**PERSONAL:** Jiangxue "Snow" Han was born on November 28, 2001 in Wuhan, China...Daughter of Xing Han and Jingsong Huang...Has one brother named Ruisen Huang...Majoring in international relations global business.



## HAN'S CAREER STATISTICS

Year	SINGLES						DOUBLES					
	Overall			Dual Matches			Overall			Dual Matches		
	W	L	Pct.	W	L	Pct.	W	L	Pct.	W	L	Pct.
2022	33	12	.733	19	6	.76	18	22	.45	9	16	.36

2022-23 Trojans

# GABRIELLE LEE

**Redshirt Sophomore**  
**Hobart, Wisc.**  
**Bay Port HS**



**2021-22 SEASON:** Gabrielle Lee went 3-7 overall in singles and 3-4 in doubles during the 2021-22 season ... Appeared in one dual match for the Women of Troy alongside twin sister Isabelle Lee, recording a 6-4 doubles victory over CSUN's Zhyteina/O'Neil ... Named to the Pac-12 Spring Academic Honor Roll ... ITA Scholar Athlete.

**2020-21 SEASON:** Gabrielle Lee was a remote student at USC due to the COVID-19 pandemic, but was not a member of the USC women's tennis team.

**HIGH SCHOOL:** Lee was ranked as high as the No. 2 player in Wisconsin...Placed second in a National Level 2 doubles tournament...

Represented Wisconsin for the Baird Cup reached the Semifinal...Won the Sportsmanship Award at the Baird Cup.

**PERSONAL:** Gabrielle Young Jin Lee was born on September 11, 2001... Daughter of Francis Lee and Christina Sim...Has a twin sister, Isabelle, who is also a member of the USC women's tennis team...Was a National Merit Award Winner in high school...Earned AP Scholar with Distinction and was a member of the National Honor Society...Majoring in Biochemistry and on the Pre-Med track...Aspires to attend medical school and study surgical oncology.



## LEE'S CAREER STATISTICS

Year	SINGLES						DOUBLES					
	Overall			Dual Matches			Overall			Dual Matches		
	W	L	Pct.	W	L	Pct.	W	L	Pct.	W	L	Pct.
2022	3	7	.3	-	-	-	3	4	.428	1	0	100



## ISABELLE LEE

Redshirt Freshman  
Hobart, Wisc.  
Bay Port HS



**2021-22 SEASON:** Isabelle Lee went 4-4 overall in singles and 0-1 in dual matches during the 2021-22 season ... Appeared in five dual matches for the Trojans, primarily at the No. 6 position ... In doubles, was 5-5, primarily playing alongside her twin sister Gabrielle Lee (3-1, 1-0 dual) ... Named to the Pac-12 Spring Academic Honor Roll ... ITA Scholar Athlete

**2020-21 SEASON:** Gabrielle Lee was a remote student at USC due to the COVID-19 pandemic, but was not a member of the USC women's tennis team.

**HIGH SCHOOL:** Lee was named First Team All-State as a freshman...Was a USTA Wisconsin District Qualifier winner in 2017 and 2018...Placed first at the 2019 Wisconsin Baird Cup and also won the Sportsmanship Award...Placed second at National L2 Doubles in 2019.

**PERSONAL:** Isabelle SueJin Lee was born on September 11, 2001...Daughter of Francis Lee and Christina Sim...Has a twin sister, Gabrielle, who is also a member of the USC women's tennis team...Was a National Merit Award Winner in high school...Earned AP Scholar with Distinction...Majoring in Neuroscience...Aspires to attend medical school.



## LEE'S CAREER STATISTICS

Year	SINGLES						DOUBLES					
	Overall			Dual Matches			Overall			Dual Matches		
	W	L	Pct.	W	L	Pct.	W	L	Pct.	W	L	Pct.
2022	4	4	.5	0	1	-	5	5	.5	2	0	100

## MADISON SIEG

Freshman  
Greenwich, CT  
Laurel Springs HS

**HIGH SCHOOL/ITF:**

- Blue Chip five-star recruit from Greenwich, Conn.
- No. 5 recruit in the nation (Tennis Recruiting Network) and listed as the No. 1 player in New England (also No. 1 player in Connecticut)
- Career-high rankings of #714 (WTA singles 06/2022), and #14 (ITF World Junior)
- Has won three ITF Singles titles as well as seven ITF Doubles titles
- Women's 15K Naples, FL ITF Singles Champion
- Runner up at 25K Saskatoon, reaching a career high WTA ranking of #540
- Quarterfinalist in doubles at the 2021 Wimbledon Jr. Championships, quarterfinalist in doubles at the 2020 Roland Garros Jr.

French Open and quarterfinalist at the 25k Orlando, FL ITF Singles

- Won the 2018 Orange Bowl Singles G16
- Semifinalist at the 2021 Easter Bowl G18
- Finalist at the ITF 15k Cancun, Mexico
- Finished second at the 2018 Eddie Herr Championship G16

**PERSONAL:** Born June 17, 2003, Madison is the daughter of Heliane Steden and Andrew Sieg ... Business Administration major ... Aspires to be a professional tennis player and someday work in the field of finance ... Mom Heliane played tennis for USC from 1983-86, was a five-time All-American in both singles and doubles and helped the Women of Troy to two National Championships (also won the bronze medal at the Pan American Games in 1983 ... Lists traveling and music as hobbies.







**Sophomore**  
**Rockville, Md.**  
**Walter Johnson HS**

# SLOANE MORRA



**2021-22 SEASON:** Sloane Morra went 6-8 overall in singles and 1-6 in dual action as a Trojan freshman ... Played primarily at the No. 4 position (0-5) ... Clinched one match for the Women of Troy (4/1 against Washington State) ... In doubles, went 4-11 overall and 4-7 in dual action ... Primarily played alongside Danielle Willson (2-5) at the No. 3 position (2-3) ... ITA Scholar Athlete

**HIGH SCHOOL:** Morra had quite the untraditional route to collegiate tennis. Mirroring the path of her sister, four-time ITA All-American Cameron Morra, a junior at North Carolina, she did not

play on the Junior Tennis Circuit. Instead she grew up training with her sister and father, who is her primary coach, on the tennis court in their backyard.

Morra began playing tennis when she was a toddler and her talent quickly became apparent. She competed for her high school tennis team at Walter Johnson High School in North Bethesda, Md. during her freshman year. Morra went undefeated that season. She was the Team County Champion and helped to lead her high school team to an undefeated season.

**PERSONAL:** Sloane Elizabeth Morra was born on June 16, 2002... Daughter of David and Elizabeth Morra...Has one sister, Cameron, who plays tennis at North Carolina...Majoring in journalism.



## MORRA'S CAREER STATISTICS

Year	SINGLES						DOUBLES					
	Overall			Dual Matches			Overall			Dual Matches		
	W	L	Pct.	W	L	Pct.	W	L	Pct.	W	L	Pct.
2022	6	8	.428	1	6	.142	4	11	.266	4	7	.363

# GRACE PIPER

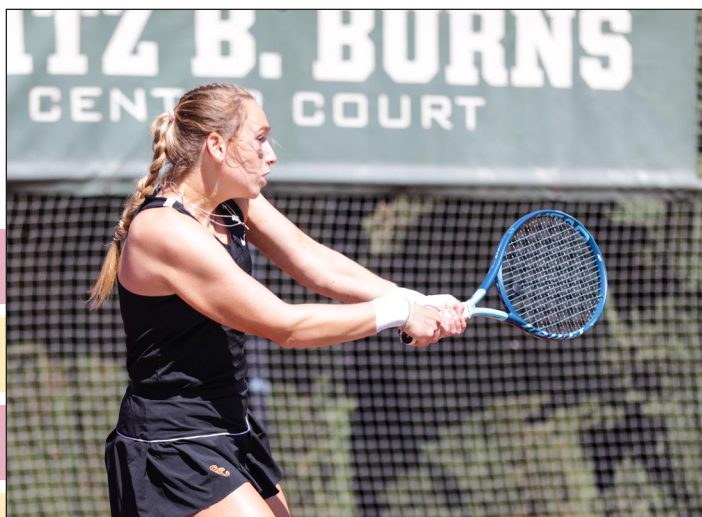
**Sophomore**  
**Taunton, Somerset, England**  
**The Castle School**



**2021-22 SEASON:** Grace Piper went 17-23 overall in singles, 11-11 in dual action ... Played primarily at the No. 4 (5-6) and No. 5 (6-5) positions ... Clinched three matches for the Women of Troy (1/22 against LMU, 1/29 against Baylor and 4/2 against Washington) ... Kicked off dual action with a five-match win streak (spanned from Jan. 22 through Feb. 11) ... In doubles, went 19-16 overall and 10-11 in dual action ... Saw action with Eryn Cayetano (12-10, 5-8 dual) and Naomi Cheong (3-3, 3-3 dual) ... Piper and Cayetano reached a season high ITA ranking of No. 26 in Dec. 2021 and wrapped the season as the No. 69 ranked duo ... Won doubles flight at Fall Ranked Spotlight alongside Eryn Cayetano.

**HIGH SCHOOL:** Piper holds a career-high ranking as the No. 4 female in the United Kingdom Junior National Rankings...Was the 2020 British Tour Premier Singles Champion and the 2020 British Tour Tier 1 Singles Runner Up...Claimed the 2019 British Tour Tier 1 Singles Championship as well as the 2019 British National Singles U18 Champion title...Was the 2019 British National Doubles U18 Runner Up...Was the U18 champion at the 2019 British National Winter Tour, the 2019 British National Tour Sutton and was the 2019 British Tour Exeter Women's Open Champion...Competed at the 2019 Roehampton 25K Pro Circuit where she reached the Main Draw Round of 16...Played at the 2019 Woking 25K Pro Circuit and competed in the finals of the Qualifying Round.

**PERSONAL:** Grace Heather Piper was born on September 11, 2002...Daughter of Neil and Annalise Piper...Has one brother, Harry...Majoring in human biology and sports performance.



## PIPER'S CAREER STATISTICS

Year	SINGLES						DOUBLES					
	Overall			Dual Matches			Overall			Dual Matches		
	W	L	Pct.	W	L	Pct.	W	L	Pct.	W	L	Pct.
2022	17	23	.425	11	11	.5	19	16	.542	10	11	.476





### 2022 BREAKDOWN

Overall Record:	18-12
Pac-12 Record:	7-3
Pac-12 Finish:	4th
Home Record:	13-1
Away Record:	3-8
Neutral Record:	2-3

### 2022 FINAL PAC-12 STANDINGS

School	Conf.	Overall	Final Rank
1. Cal	8-1	18-8	#11
2. UCLA	7-1	13-7	#19
3. Stanford	7-2	19-6	#13
4. USC	7-3	18-12	#20
5. Arizona State	6-4	17-8	#17
6. Oregon	5-5	15-9	#38
7. Washington	4-6	14-12	#37
8. Arizona	3-7	16-11	#47
9. Utah	3-7	15-11	#49
10. Wash. State	2-8	8-15	#69
11. Colorado	1-9	8-13	--

### 2022 RESULTS

#### 2022 (18-12, 7-3 conference)

Head Coach:	Alison Swain
Pac-12 Finish:	4th
Postseason:	Second Round
National Finish:	No. 20
J22 W 4-0	LMU
J22 W 4-0	vs. San Fran.
J23 W 4-2	vs. Saint Mary's
J28 W 4-3	vs. Miami
J29 W 4-3	at Baylor
F11 L 1-4	vs. Texas
F12 W 4-3	vs. Wisconsin
F13 L 1-4	vs. Texas A&M
F19 L 1-4	at OK. State
F20 L 0-4	at Oklahoma
F25 L 1-4	at UCLA
F26 L 3-4	vs. UCSB
M4 L 2-4	* vs. Utah
M6 W 5-1	* vs. Colorado
M11 W 4-1	* vs. ASU
M12 W 4-0	* at Arizona
M12 W 4-0	Hawaii Pacific
M19 L 2-5	at Pepperdine
M25 L 2-5	* vs. Stanford
M26 L 3-4	* vs. Cal
A1 W 4-3	* vs. WSU
A2 W 4-1	* vs. Washington
A5 W 4-0	vs. Hawai'i
A5 W 4-0	vs. CSUN
A10 W 4-0	* vs. Oregon
A10 W 4-2	vs. Cal Poly
A15 W 4-3	* vs. UCLA
A21 L 3-4	% vs. ASU
M6 W 4-0	^ vs. SDSU
M7 L 1-4	^ at Pepperdine
#ITA Kickoff Weekend (Waco, TX.)	
* Pac-12 match	
% at Libbey Park (Ojai, Calif.)	

### 2021-22 USC WOMEN'S TENNIS INDIVIDUAL RECORDS

SINGLES	#1	#2	#3	#4	#5	#6	DUAL	PAC-12	OVERALL	STREAK
#3 Eryn Cayetano	6-7	10-2	--	--	--	--	16-9	7-3	39-11	L1
#113 Naomi Cheong	--	1-0	--	2-2	4-0	--	7-2	5-1	10-3	L1
#44 Salma Ewing	5-4	5-4	--	--	--	--	10-7	4-2	21-13	L1
Leyden Games	--	--	0-1	--	--	3-0	3-1	--	9-10	W3
#87 Snow Han	--	3-0	16-6	--	--	--	19-6	7-3	33-12	L1
McKenna Koenig	--	--	--	--	3-0	3-1	6-1	3-0	10-6	W4
Gabrielle Lee	--	--	--	--	--	--	--	--	3-7	W1
Isabelle Lee	--	--	--	--	0-1	--	0-1	--	4-4	L1
Sloane Morra	--	--	--	0-5	0-1	1-0	1-6	1-1	6-8	W1
Grace Piper	--	--	--	5-6	6-5	--	11-11	4-5	17-23	L1
Danielle Willson	--	--	--	0-1	2-1	5-8	7-10	3-5	8-11	W1

<b>Totals</b>	<b>11-11</b>	<b>19-6</b>	<b>16-7</b>	<b>7-14</b>	<b>15-8</b>	<b>12-9</b>	<b>80-55</b>	<b>34-21</b>	<b>160-108</b>	
---------------	--------------	-------------	-------------	-------------	-------------	-------------	--------------	--------------	----------------	--

DOUBLES	#1	#2	#3	DUAL	PAC-12	OVERALL	STREAK
#69 Cayetano/Piper	4-6	1-2	--	5-8	3-3	12-10	
Cheong/G. Lee	--	--	--	--	--	0-1	L1
#62 Ewing/Han	1-2	2-3	--	3-5	1-0	10-7	W1
Han/Games	--	--	--	--	--	1-0	W1
Han/I. Lee	--	--	--	--	--	1-2	L1
Han/G. Lee	--	0-1	--	0-1	0-1	0-1	L1
Han/Willson	--	0-2	3-4	3-6	2-2	3-8	L1
Games/Koenig	--	--	0-1	0-1	--	0-3	L3
Games/Piper	--	--	--	--	--	0-1	L1
Koenig/G. Lee	--	--	--	--	--	0-1	L1
Koenig/Piper	--	1-0	1-0	2-0	--	2-0	W2
G. Lee/I. Lee	--	--	1-0	1-0	--	3-1	W2
Morra/I. Lee	--	--	--	--	--	0-2	L2
Morra/Piper	--	--	--	--	--	0-1	L1
Morra/Willson	--	--	2-3	2-3	0-1	2-5	L1
Piper/Willson	--	--	--	--	--	2-1	W1
Han/Koenig	--	--	1-0	1-0	--	1-0	W1
Ewing/Koenig	--	0-3	--	0-3	--	0-3	L3
Cayetano/Willson	1-0	1-0	--	2-0	1-0	2-0	W2
Cheong/Han	--	2-4	--	2-4	2-2	2-4	L3
Morra/Ewing	--	--	1-2	1-2	1-1	1-3	W1
Games/I. Lee	--	--	1-0	1-0	--	1-0	W1
Morra/Koenig	--	--	1-0	1-0	--	1-0	W1
Cheong/Piper	0-1	3-2	--	3-3	3-0	3-3	L1
#64 Cayetano/Ewing	5-0	--	--	5-0	1-0	5-0	W5
Koenig/Willson	--	--	1-0	1-0	--	1-0	W1

<b>Totals</b>	<b>11-9</b>	<b>10-17</b>	<b>12-10</b>	<b>33-36</b>	<b>14-10</b>	<b>53-57</b>	
---------------	-------------	--------------	--------------	--------------	--------------	--------------	--

### 2022 ITA FINAL RANKINGS

TEAM RANKINGS	SINGLES RANKINGS	DOUBLES RANKINGS
20. USC	3. Eryn Cayetano	60. Salma Ewing/Snow Han
	44. Salma Ewing	62. Eryn Cayetano/Salma Ewing
	87. Snow Han	69. Eryn Cayetano/ Grace Piper
	113. Naomi Cheong	

### TROJANS IN THE 2021-22 ITA NATIONAL RANKINGS (Through May 4, 2022)

	S7	D8	J5	J19	J26	F2	F9	F16	F23	M2	M9	M16	M23	M30	A6	A13	A20	M4
USC	•	•	18	17	15	10	•	10	12	21	20	18	17	21	18	19	17	19
Eryn Cayetano	56	1	•	•	•	•	1	•	5	•	6	6	6	•	4	6	7	7
Naomi Cheong	81	98	•	•	•	•	•	•	•	•	•	78	78	•	115	73	96	84
Salma Ewing	18	12	•	•	•	•	18	•	36	•	29	41	41	•	42	42	39	50
Snow Han	•	39	•	•	•	•	52	•	56	•	60	•	77	•	82	98	97	104
Danielle Willson	•	•	•	•	•	•	•	•	103	•	•	•	•	•	•	•	•	•
Cayetano/Piper	•	26	•	•	•	•	40	•	•	•	29	•	64	•	46	65	53	74
Ewing/Han	•	23	•	•	•	•	5	•	19	•	49	•	30	•	50	46	63	58
Cayetano/Ewing	•	•	•	•	•	•	•	•	•	•	•	•	•	•	•	•	•	72



## 2022 Dual Match Results (18-12, 7-3 Pac-12)

## #17 USC 4, LMU 0

Jan. 22, 2022 | Marks Stadium (Los Angeles, Calif.)

## DOUBLES

(1) #23 Ewing/Han (USC) def. #18 Tcherkes-Zade/Rutkowska (LMU) – 6-2

(2) #26 Cayetano/Piper (USC) vs Miroshnichenko/Voracek (LMU) – 4-4 susp.

(3) Willson/Morra (USC) def. Rogozinska-Dzik/Shirokova (LMU) – 6-3 USC wins doubles point.

Order of finish: 1, 3

## SINGLES

(1) #1 Eryn Cayetano (USC) vs. Veronika Miroshnichenko (LMU) – 6-4, 3-4 susp.

(2) #12 Salma Ewing (USC) def. Eva Marie Voracek (LMU) – 6-3, 6-1

(3) #39 Snow Han (USC) def. #123 Wiktoria Rutkowska (LMU) – 6-1, 6-4

(4) Leyden Games (USC) vs. Stefania Rogozinska-Dzik (LMU) – 4-6, 1-4 susp.

(5) Grace Piper (USC) def. Ulyana Shirokova (LMU) – 6-4, 6-1\*

(6) Sloane Morra (USC) vs. Isabella Tcherkes-Zade (LMU) – 5-7, 3-2 susp.

Order of finish: 2, 3, 5\*

## #17 USC 4, USF 0

Jan. 22, 2022 | Marks Stadium (Los Angeles, Calif.)

## DOUBLES

(1) Ewing/Willson (USC) vs. Colver/Martinez Vaquero (USF) – 4-3 susp.

(2) #26 Cayetano/Piper (USC) def. Bui/Chhabra (USF) – 6-1

(3) Han/Koenig (USC) def. Mushika/Qui (USF) – 6-3

USC wins doubles point.

Order of finish: 2, 3

## SINGLES

(1) #1 Eryn Cayetano (USC) def. Maria Martinez Vaquero (USF) – 6-3, 6-2

(2) #39 Snow Han (USC) def. Chiho Mushika (USF) – 6-3, 6-1\*

(3) Leyden Games (USC) vs. Mya Bui (USF) – 6-1, 5-4 susp.

(4) Grace Piper (USC) def. Caragh Courtney (USF) – 6-0, 6-4

(5) McKenna Koenig (USC) vs. Simran Chhabra (USF) – 3-6, 6-3 susp.

(6) Isabelle Lee (USC) vs. Rita Colyer (USF) – 6-2, 5-2 susp.

Order of finish: 1, 4, 2\*

## #17 USC 4, Saint Mary's 2

Jan. 23, 2022 | Marks Stadium (Los Angeles, Calif.)

## DOUBLES

(1) Ewing/Han (USC) def. Kozyreva/Massey (Saint Mary's) – 6-1

(2) Piper/Koenig (USC) def. Harris/Ronney (Saint Mary's) – 7-6 (4)

(3) Willson/Morra (USC) vs. Rook/Silva (Saint Mary's) – 6-6, 3-2 susp. USC wins doubles point.

Order of finish: 1, 2\*

## SINGLES

(1) Maria Kozyreva (Saint Mary's) def. #12 Salma Ewing (USC) – 7-6 (5), 6-1

(2) #39 Snow Han (USC) def. Jordan Harris (Saint Mary's) – 6-2, 6-3

(3) Julia Ronney (Saint Mary's) def. Leyden Games (USC) – 6-3, 7-5

(4) Sloane Morra (USC) vs. Lene Mari Hovda (Saint Mary's) – 2-6, 6-3, 2-1 susp.

(5) Grace Piper (USC) def. Jocelyn Massey (Saint Mary's) – 6-1, 7-5

(6) McKenna Koenig (USC) def. Stefanie Silva (Saint Mary's) – 6-1, 3-6, 6-0\*

Order of finish: 2, 5, 1, 3, 6\*

## #15 USC 4, #23 Miami 3

Jan. 28, 2022 | Hurd Tennis Center (Waco, TX)

## DOUBLES

(1) #40 Achong/Richardson (UM) vs. #23 Han/Ewing (USC) 4-5, susp.

(2) Khodan/Tahan (UM) def. #26 Cayetano/Piper (USC) 6-3

(3) Boch-Collins/Pfennig (UM) def. Morra/Willson (USC) 6-1 Miami wins doubles point.

Order of finish: 3, 2

## SINGLES

(1) #1 Eryn Cayetano (USC) def. Eden Richardson (UM) 2-6, 7-5, 6-3

(2) #12 Salma Ewing (USC) def. #104 Daevenia Achong (UM) 5-7, 7-5, 6-0

(3) #76 Isabella Pfennig (UM) def. #39 Snow Han (USC) 4-6, 6-2, 6-3

(4) Audrey Boch-Collins (UM) def. Sloane Morra (USC) 7-6 (8-6), 6-4

(5) Grace Piper (USC) def. Diana Khodan (UM) 6-1, 6-4

(6) Danielle Wilson (USC) def. Maya Tahan (UM) 7-6 (7-5), 1-6, 7-6(6)

Order of finish: 5, 3, 1, 2, 4, 6\*

## #15 USC 4, #22 Baylor 3

Jan. 29, 2022 | Hurd Tennis Center (Waco, Texas)

## DOUBLES

1. #4 Krywoj/Herrero (BU) def. #23 Han/Ewing (USC) 6-4

2. Shcherbinina/Sahdieva (BU) vs. #26 Cayetano/Piper (USC) 4-5, susp.

3. Harvison/Baranano (BU) def. Koenig/Games (USC) 6-1

Baylor wins doubles point.

Order of finish: 3, 1

## SINGLES

1. #1 Eryn Cayetano (USC) def. Mel Krywoj (BU) 7-5, 6-2

2. #12 Salma Ewing (USC) def. #97 Alina Shcherbinina (BU) 6-3, 6-2

3. #39 Snow Han (USC) def. Isabella Harvison (BU) 6-2, 6-4

4. #77 Alicia Herrero (BU) def. Sloane Morra (USC) 6-1, 1-6, 6-4

5. Grace Piper (USC) def. Anita Sahdieva (BU) 4-6, 6-3, 6-4\*

6. Paula Baranano (BU) def. Danielle Wilson (USC) 6-3, 6-2

Order of finish: 2, 6, 3, 1, 4, 5\*

## #1 Texas 4, #10 USC 1

Feb. 11, 2022 | Madison, Wisconsin

## DOUBLES

(1) #35 Cayetano/Piper (USC) def. Collins/Zeynalova (UT) – 6-2

(2) Stearns/Chavatipon (UT) def. Ewing/Koenig (USC) – 6-2

(3) A. Zamarripa / B. Zamarripa (UT) def. Willson/Han (USC) – 6-3

Order of finish: 2, 1, 3

Texas wins doubles point.

## SINGLES

(1) #42 Payton Stearns (UT) def. #1 Eryn Cayetano (USC) 6-2, 6-1

(2) #18 Salma Ewing (USC) vs. #26 Kylie Collins (UT) – 7-5, 3-6 susp.

(3) #52 Snow Han (USC) def. Charlotte Chavatipon (UT) – 6-1, 6-4

(4) Sabrina Zeynalova (UT) def. Grace Piper (USC) – 6-3, 7-5\*

(5) Vivian Ovrotsky (UT) def. Danielle Willson (USC) – 6-3, 6-4

(6) McKenna Koenig (USC) vs. Malaika Rapolu (UT) – 6-2, 1-6, 3-5 susp.

Order of finish: 1, 3, 5, 4\*

## #10 USC 4, Wisconsin 3

ITA National Team Indoor Championships – Consolation

Feb. 12, 2022 | Nielsen Tennis Stadium - Madison, Wisconsin

## DOUBLES

(1) #40 Cayetano/Piper (USC) vs. Cai/Mukhortova (WISC) – 5-6 SUSP.

(2) Cataldi/ Semenovski (WISC) def. Ewing/Koenig (USC) – 7-5

(3) Johnson/Markham (WISC) def. Willson/Han (USC) – 6-3

Order of finish: 3, 2

Wisconsin wins doubles point.

## SINGLES

(1) #1 Eryn Cayetano (USC) def. #86 Xinyu Cai – 6-3, 7-6(3)

(2) Ava Markham (WISC) def. #18 Salma Ewing (USC) – 7-6(3), 6-3

(3) #52 Snow Han (USC) def. Alina Mukhortova (WISC) – 7-5, 3-6, 6-2

(4) Denise Stoica (WISC) def. Grace Piper (USC) – 7-6(3), 7-5

(5) Danielle Willson (USC) def. Charmaine Seah (WISC) – 7-6(6), 2-6, 6-1

(6) McKenna Koenig (USC) def. Taylor Cataldi (WISC) – 6-4, 7-5

Order of finish: 2, 6, 1, 4, 3, 5\*

## #8 Texas A&amp;M 4, #10 USC 1

ITA National Team Indoor Championships – Consolation

Feb. 13 | Nielsen Tennis Stadium – Madison, Wisconsin

## DOUBLES

(1) #2 Goldsmith/Makarova (TAMU) def. #40 Cayetano/Piper (USC) 6-2

(2) Branstine/Stoiana (TAMU) def. Ewing/Koenig (USC) 6-2

(3) Han/Willson (USC) vs. Mireles/Pielet (TAMU) 2-5 SUSP.

Order of Finish: 1, 2

Texas A&amp;M wins doubles point.

## SINGLES

(1) #111 Carson Branstine (TAMU) def. #1 Eryn Cayetano (USC) 6-4, 6-3

(2) #105 Tatiana Makarova (TAMU) def. #18 Salma Ewing (USC) 7-5, 6-4\*

(3) #52 Snow Han (USC) def. #122 Mary Stoiana (TAMU) 6-4, 6-3

(4) #117 Jayci Goldsmith (TAMU) vs. Grace Piper (USC) 7-6(5), 2-6, 1-1 SUSP.

(5) Gianna Pielet (TAMU) vs. Danielle Willson (USC) 6-2, 1-6, 2-4 SUSP.

(6) Jeanette Mireles (TAMU) def. McKenna Koenig (USC) 6-0, 6-4

Order of Finish: Singles 6, 1, 3, 2\*

## #22 Oklahoma State 4, #10 USC 1

Feb. 19, 2022 | Stillwater, Oklahoma

## DOUBLES

(1) Sawangkaew/Zerulo (OSU) def. #40 Cayetano/Piper (USC) – 7-6(2)

(2) Rioux/Miyamoto (OSU) def. #5 Ewing/Han (USC) – 6-2

(3) Morra/Willson (USC) def. Orpana/Detkovskaya (OSU) – 6-3

Order of finish: 2, 3, 1

Oklahoma State wins doubles point.

## SINGLES

(1) Lisa Marie Rioux (OSU) def. #1 Eryn Cayetano – 6-0, 6-3

(2) #30 Mhai Sawangkaew (OSU) def. #18 Salma Ewing (USC) – 6-4, 6-2\*

(3) #52 Snow Han (USC) vs. Martina Zerulo (OSU) – 7-5, 4-1 SUSP.

(4) Oona Orpana (OSU) def. Sloane Morra (USC) – 6-0, 6-1

(5) Grace Piper (USC) def. Ayumi Miyamoto (OSU) – 6-3, 6-1

(6) Danielle Willson (USC) vs. Sofia Rojas (OSU) – 6-0, 1-6, 4-2 SUSP

Order of finish: 4, 5, 1, 2\*

## #2 OU 4, #10 USC 0

Feb 20, 2022 | Headington Family Tennis Center - Norman, Okla.

## DOUBLES

(1) #11 I. Corley/C. Corley (OU) def. #5 Ewing/Han (USC) 6-1

(2) #47 Sleeth/Pisareva (OU) def. #40 Cayetano/Piper (USC) 6-1

(3) Willson/Morra (USC) vs. Staker/Chanta (OU) 4-2 SUSP.

Order of finish: 1, 2

Oklahoma wins doubles point.

## SINGLES

(1) #15 Layne Sleeth (OU) def. #1 Eryn Cayetano (USC) 6-1, 6-4\*

(2) #57 Ivana Corley (OU) vs. #18 Salma Ewing (USC) 2-6, 6-3, SUSP.

(3) #52 Snow Han (USC) vs. #35 Carmen Corley (OU) 6-2, 1-6, 0-2, SUSP.

(4) #88 Anchisa Chanta (OU) vs. Sloane Morra (USC) 6-2, 5-2, SUSP.

(5) Alexandra Pisareva (OU) def. Grace Piper (USC) 6-1, 6-0

(6) #103 Emma Staker (OU) def. Danielle Willson (USC) 6-1, 6-0

Order of finish: 5, 6, 1\*

## UCLA 4, #12 USC 0

Feb. 25, 2022 | Los Angeles Tennis Center - Los Angeles, CA

## DOUBLES

1. #28 Bolton/Wagle (UCLA) vs. Cayetano/Piper (USC) 4-4, SUSP.

2. #30 Catanzarite/Forbes (UCLA) def. #19 Ewing/Han (USC) 6-2

3. Hance/Vagramov (UCLA) def. Morra/Willson (USC) 6-1

UCLA wins doubles point.

Order of finish: 3, 2

## SINGLES

1. #115 Abbey Forbes (UCLA) def. #5 Eryn Cayetano (USC) 6-4, 7-5

2. Elysia Bolton (UCLA) vs. #36 Salma Ewing (USC) 6-3, 6-6 (3-5), SUSP.

3. #56 Snow Han (USC) def. #102 Sasha Vagramov (UCLA) 6-1, 6-4

4. #111 Kimmi Hance (UCLA) def. Sloane Morra (USC) 6-1, 6-2

5. Elise Wagle (UCLA) vs. Grace Piper (USC) 6-4, 3-6, 3-0, SUSP.

6. Ava Catanzarite (UCLA) def. Danielle Willson (USC) 1-6, 6-2, 6-1

Order of finish: 4, 3, 6, 1

## UCSB 4, #12 USC 3

Feb. 26, 2022 | Marks Tennis Stadium – Los Angeles, Calif.

## DOUBLES

(1) S. Khatamova/E. Volodko (UCSB) def. Cayetano/Piper (USC) – 6-1

(2) A. Honer/K. Reuter (UCSB) def. #19 Ewing/Han (USC) – 6-1

(3) Willson/Morra (USC) vs. C. Kiss/M. Gonzales Ballbe (UCSB) – 3-4 SUSP.

Order of finish: 2, 1

UCSB wins doubles point.

## SINGLES

(1) #5 Eryn Cayetano (USC) def. Shakhnoza Khatamova (UCSB) – 6-3, 5-7, 7-6(6)

(2) #36 Salma Ewing (USC) def. Camille Kiss (UCSB) – 2-6, 6-1, 6-3

(3) #56 Snow Han (USC) def. Elizaveta Volodka (UCSB) – 6-4, 6-1

(4) Amelia Honer (UCSB) def. Sloane Morra (USC) – 6-0, 6-4

(5) Filipa Syversen (UCSB) def. Grace Piper (USC) – 6-2, 0-6, 7-6(6)\*

(6) Kira Reuter (UCSB) def. #103 Danielle Willson (USC) – 6-3, 6-3

Order of finish: 4, 3, 6, 2, 5\*, 1



**#27 Utah 4, #21 USC 2**

March 4, 2022 | George S. Eccles Tennis Center - Salt Lake City, Utah  
DOUBLES

1. Cayetano/Piper (USC) def. Huang/Tattini (Utah) 6-2
2. Dush/Goncharova (Utah) def. Han/G. Lee (USC) 6-3
3. Hung/Lamoreaux (Utah) def. Willson/Morra (USC) 6-3

Utah wins doubles point.

Order of finish: 1,3,2

SINGLES

1. Linda Huang (Utah) def. #5 Eryn Cayetano (USC) 7-6(9-7), 6-1
2. Emily Dush (Utah) vs. #36 Salma Ewing (USC) 6-3, 4-6, 2-4 SUSP.
3. #56 Snow Han (USC) def. Lindsay Hung (Utah) 6-2, 6-1
4. Grace Piper (USC) def. Anastasia Goncharova (Utah) 6-1, 7-5
5. Madison Tattini (Utah) def. Sloane Morra (USC) 7-5, 6-4
6. Anya Lamoreaux (Utah) def. #103 Danielle Willson (USC) 6-3, 6-3

Order of finish: 3,6,4,1,5,2

**#21 USC 5, Colorado 1**

March 6, 2022 | Rocky Mountain Tennis Center – Boulder, Colo.  
DOUBLES

1. Eryn Cayetano/Grace Piper (USC) def. Pozo/Forster 6-1
2. #19 Salma Ewing/ Snow Han (USC) def. Stanojevic/Balbert 2-2
3. Tokac/Puzak (CU) vs. Morra Willson (USC) 4-3 SUSP.

Order of finish: 1,2

USC wins doubles point.

SINGLES

1. #5 Eryn Cayetano (USC) def. Caroline Pozo (CU) 6-4, 6-2
2. #36 Salma Ewing (USC) def. Antonia Balbert (CU) 6-3, 6-2
3. #56 Snow Han (USC) def. Megan Forster (CU) 6-2, 4-6, 6-3\*
4. Mila Stanojevic (CU) def. #103 Danielle Willson (USC) 6-0, 6-3
5. McKenna Koenig (USC) def. Betina Tokac (CU) 6-3, 6-4
6. Isabelle Lee (USC) vs. Ky Ecton (CU) 6-4 SUSP.

Order of finish: 1,2,3\*,4,5

**#20 USC 4, #30 Arizona State 1**

March 11, 2022 | Marks Stadium – Los Angeles, CA  
DOUBLES

1. #49 Cayetano/Piper (USC) def. #56 Spaka/Turkovic (ASU) - 6-2
2. Cheong/Han (USC) def. Gallagher/Morlet (ASU) - 7-6(7-4)
3. Hill/Jankowski (ASU) def. Morra/Ewing (USC) - 6-4

Order of finish: 1,3,2

USC wins doubles point.

SINGLES

1. #29 Salma Ewing(USC) vs. Guilia Morlet (ASU)- 6-4, 3-4 SUSP.
2. #6 Eryn Cayetano(USC) def. Domenika Turkovic (ASU) - 6-4, 6-2
3. #60 Snow Han (USC) def. Sedona Gallagher (ASU) - 6-2, 6-4\*
4. Cali Jankowski (ASU) def. Grace Piper (USC) - 6-4, 6-4
5. Naomi Cheong (USC) vs. Patricija Spaka (ASU) – 6-4, 5-4 SUSP.
6. McKenna Koenig (USC) def. Natasha Hill (ASU) - 6-1, 6-2

Order of finish: 6, 2, 4, 3\*

**#20 USC 4, Arizona 0**

March 12, 2022 | Marks Stadium – Los Angeles, CA  
Doubles

1. Han/Cheong (USC) vs. Fry/Iglipias (Ariz.) - 4-4 SUSP.
2. Cayetano/Willson (USC) def. Castillo-Meza/Wilkins (Ariz.) – 6-1
3. Morra/Ewing (USC) def. Salma Ziouti/Lexi Rynghler (Ariz.) - 6-1

Order of finish: 3, 2

USC wins doubles point.

Singles

1. #29 Salma Ewing (USC) vs. Salma Ziouti (Ariz.) – 6-3, 6-0
2. #6 Eryn Cayetano (USC) def. Lexi Rynghler (Ariz.) – 6-1, 2-6, 6-3\*
3. #60 Snow Han (USC) vs. Kayla Wilkins (Ariz.) - 5-7, 5-5 SUSP.
4. Naomi Cheong (USC) def. Midori Castillo-Meza (Ariz.) - 6-3, 6-3
5. Sloane Morra (USC) vs. Parker Fry (Ariz.) - 4-6, 6-5 SUSP.
6. McKenna Koenig (USC) vs. Khim Iglipias (Ariz.) – 6-4, 5-7 SUSP.

Order of finish: 1, 4, 2\*

**#20 USC 4, Hawaii Pacific 0**

March 12, 2022 | Marks Stadium – Los Angeles, CA  
DOUBLES

1. Bayetano/Willson (USC) def. Pipa/Tilgner (HPU) – 6-4
2. Morra/Ewing (USC) vs. Miyahara/Busson (HPU) – 6-5 SUSP.
3. Games/I. Lee (USC) def. Mokrova/Ruszczynska (HPU) - 6-0

Order of finish: 3, 1

USC wins doubles point.

SINGLES

1. #29 Salma Ewing (USC) vs. Shaline Pipa (HPU) 6-4, 2-4 SUSP.
2. #6 Eryn Cayetano (USC) def. Elodie Busson (HPU) – 6-3, 6-2
3. #60 Snow Han (USC) def. Marleen Tilgner (HPU) – 6-2, 6-0
4. Danielle Willson (USC) vs. Mihoki Miyahara (HPU) – 6-1, 3-4 SUSP
5. McKenna Koenig (USC) def. Valentina Mokrova (HPU) – 6-4, 6-2\*
6. Isabelle Lee (USC) vs. Marta Ruszczynska (HPU) – 6-1, 4-4 SUSP

Order of finish: 3,2,5\*

**#8 Pepperdine 5, #18 USC 2**

March 19, 2022 | Malibu, Calif.  
DOUBLES

1. #14 Flores/Zaar (PEP) def. #49 Cayetano/Piper (USC) – 5-2 SUSP.
2. #9 Broadus/Tjen (PEP) def. Cheong/Han (USC) – 6-1
3. Iamachkine/Pachkaleva (PEP) def. Ewing/Morra (USC) – 6-4

Order of finish: 2,3

Pepperdine wins doubles point.

SINGLES

1. Shiori Fukuda (PEP) def. #6 Eryn Cayetano (USC) – 6-2, 6-2
2. Lisa Zaar (PEP) def. #29 Salma Ewing (USC) 6-4, 4-6, 11-9
3. Janice Tjen (PEP) def. #60 Snow Han (USC) 6-4, 7-6(7-5)
4. Savannah Broadus (PEP) def. Grace Piper (USC) – 6-2, 6-2
5. Naomi Cheong (USC) def. Victoria Flores (PEP) – 6-3, 4-6, 7-5
6. Danielle Willson (USC) def. Anastasia Iamachkine (PEP) 4-6, 6-4, 7-6(8-6)

Order of finish: 4, 1,3\*,2,5,6

**#19 Stanford 5, #17 USC 2**

March 25, 2022 | Palo Alto, Calif.

DOUBLES

1. #7 Blake/Ma (STAN) def. #64 Cayetano/Piper (USC) 6-4
2. Xu/Yepifanova (STAN) def. Cheong/Han (USC) 6-3
3. Ewing/Morra (USC) led Choy/Madurawe (STAN) 5-4,SUSP.

Order of Finish: 2, 1

Stanford wins doubles point.

SINGLES

1. #13 Connie Ma (STAN) def. #41 Salma Ewing (USC) 6-4, 7-6 (4)
2. #6 Eryn Cayetano (USC) def. #18 Alexandra Yepifanova (STAN) 5-7, 6-2, 1-0 (8)
3. Angelica Blake (STAN) def. No. 77 Snow Han (USC) 6-4, 6-3
4. #78 Naomi Cheong (USC) def. India Houghton (STAN) 6-2, 6-3
5. #87 Valencia Xu (STAN) def. Grace Piper (USC) 6-4, 6-1
6. Sara Choy (STAN) def. Danielle Wilson (USC) 6-2, 6-4

Order of Finish: 5, 3, 4, 6\*, 2, 1

**#14 California 4, #17 USC 3**

March 26, 2022 | Hellman Tennis Complex | Berkeley, Calif.

DOUBLES

1. #29 Alsola/Wiersholm (Cal) def. #64 Cayetano/Piper (USC) 6-3\*
2. #35 Giavara/Viller Moeller (Cal) vs. Han/Cheong (USC) 3-4 SUSP.
3. Richardson/Rosenqvist (Cal) def. Morra/Ewing (USC) 6-0

Order of Finish – 3, 1\*

Cal wins doubles point.

SINGLES

1. #41 Salma Ewing (USC) def. #101 Haley Giavara (Cal), 6-2, 6-3
2. #6 Eryn Cayetano (USC) def. #62 Jessica Alsola (Cal), 6-3, 2-6, 6-4
3. #122 Katja Wiersholm (Cal) def. #77 Snow Han (USC), 6-4, 6-3
4. Julia Rosenqvist (Cal) def. #78 Naomi Cheong (USC), 6-2, 6-3
5. Hannah Viller Moeller (Cal) def. Grace Piper (USC), 6-4, 6-4
6. Danielle Wilson (USC) def. Erin Richardson (Cal), 3-6, 6-3, 6-3

Order of Finish – 1, 4, 3, 5\*, 6, 2

**#21 USC 4, Washington State 3**

April 1, 2022 | Marks Stadium – Los Angeles, CA  
Doubles

1. Bayerlova/Murphy (WSU) def. #64 Cayetano/ Piper (USC)– 6-2
2. Ly-Nguyen/Lee (WSU) def. Cheong/ Han (USC) def.– 6-4
3. Ewing/ Morra (USC) vs. Kumhorn/Abouelsaad (WSU) – 5-4, SUSP.

Order of finish: 1, 2

Washington State wins doubles point.

SINGLES

1. #91 Michela Bayerlova (WSU) def. #41 Salma Ewing (USC)– 3-6, 6-4, 7-6(5)
2. #6 Eryn Cayetano (USC) def. Savanna Ly-Nguyen (WSU) – 6-1, 6-3
3. Maxine Murphy (WSU) def. #77 Snow Han (USC) – 7-6(3), 7-5
4. Grace Piper (USC) def. Hania Abouelsaad (WSU) – 6-4, 6-4
5. Danielle Willson (USC) def. Elyse Tse (WSU) – 6-3, 6-3
6. Sloane Morra (USC) def. Yang Lee (WSU) – 7-6 (4), 4-6, 6-4\*

Order of finish: 2, 5, 4, 3, 6\*, 1

**#21 USC 4, #24 Washington 1**

April 2, 2022 | Marks Stadium – Los Angeles, CA  
DOUBLES

1. #64 Cayetano/ Piper (USC) vs. Wong/Zupancic (UW) – 6-5, SUSP.
2. Fortin/Sato (UW), def. Willson/ Han (USC) – 6-4
3. Leung/Weil (UW) def. Ewing/ Morra (USC) – 6-4

Order of finish: 3,2

Washington wins doubles point.

SINGLES

1. #41 Salma Ewing (USC) vs. Vanessa Wong (UW) – 7-6 (7-0), 5-3, SUSP.
2. #6 Eryn Cayetano (USC) def. Sarah-Maude Fortin (UW) – 6-1, 6-2
3. #77 Snow Han (USC) vs. Nika Zupancic (UW) – 6-2, 2-0 (Retirement UW)
4. #78 Naomi Cheong (USC) vs. Hikaru Sato (UW) – 1-6, 6-2, 3-3, SUSP.
5. Grace Piper (USC) def. Yolanda Lin (UW) – 7-5, 7-6 (7-2)\*
6. Danielle Willson (USC) def. Kelly Leung (UW) – 6-4, 7-6 (11-9)

Order of finish: 3, 2, 6, 5\*

**#21 USC 4, Hawaii 0**

April 5, 2022 | Marks Stadium – Los Angeles, CA  
DOUBLES

1. Cayetano/Ewing (USC) def. Romain/Takamura (Hawaii) – 6-2
2. Cheong/Piper (USC) vs. Zandberg/Vilecek (Hawaii) - 4-3, SUSP.
3. Willson/Koenig (USC) def. Surapaneni/Heynemans (Hawaii) – 6-0

Order of finish: 3, 1

USC wins doubles point.

SINGLES

1. #41 Salma Ewing (USC) def. Lea Romain (Hawaii) – 6-4, 6-1\*
2. #6 Eryn Cayetano (USC) def. Satsuki Takamura (Hawaii) – 6-1, 6-0
3. #78 Naomi Cheong vs. Ana Vilecek (Hawaii) – 6-3, 1-3 SUSP.
4. Danielle Willson (USC) vs. Tal Talya Zandberg (Hawaii) – 6-4, 1-3 SUSP.
5. McKenna Koenig (USC) vs. Gitte Heynemans (Hawaii) – 6-3, 4-1 SUSP.
6. Leyden Games (USC) def. Madison Kim (Hawaii) – 6-1, 6-2

Order of finish: 2, 6, 1\*

**#21 USC 4, CSUN 0**

April 5, 2022 | Marks Stadium – Los Angeles, CA

DOUBLES

1. Cayetano/Ewing (USC) def. Coetzee/Fraile Toboso (CSUN) – 6-1
2. Turchak/Repina (CSUN) vs. Cheong/Piper (USC) – 5-4 (USC Retired)

3. I. Lee/G. Lee (USC) def. Zhyteina/O'Neill (CSUN) – 6-4

Order of finish: 1, 2, 3

USC wins doubles point.

SINGLES

1. #6 Eryn Cayetano (USC) def. Ekaterina Repina (CSUN) – 6-3, 6-1\*
2. #78 Naomi Cheong (USC) def. Ana Isabel Fraile Toboso (CSUN) – 6-0, 6-2
3. Danielle Willson (USC) vs. Sasha Turchak (CSUN) – 6-3, 1-4 SUSP.
4. McKenna Koenig (USC) vs. Jenna Dorian(CSUN) – 7-5, 0-2 SUSP.
5. Isabelle Lee (USC) vs. Victoria Santibanez Luna (CSUN) – 7-5, 0-2 SUSP.
6. Leyden Games (USC) def. Jasmine Tolmoyan (CSUN) – 6-1, 6-2

Order of finish: 2, 6, 1\*

**#18 USC 4 , Oregon 0**

April 10, 2022 | Marks Stadium – Los Angeles, CA

**DOUBLES**

1. Cayetano/Ewing (USC) vs. Luescher/Martinez (UO) – 5-6, SUSP.
2. Cheong/Piper (USC) def. Mulville/Petchey (UO) – 6-1
3. Willson/Han (USC) def. Teixido/Young (UO) – 7-5

Order of finish: 2, 3

USC wins doubles point.

**SINGLES**

1. #42 Salma Ewing (USC) vs. Sophie Luescher (UO) – 6-4, 4-4 SUSP.
2. #4 Eryn Cayetano (USC) vs. Myah Petchey (UO) – 6-4, 3-2 SUSP.
3. #82 Snow Han (USC) def. Ares Teixido Garcia (UO) – 6-3, 6-3
4. Grace Piper (USC) def. Karin Young (UO) – 6-1, 6-2
5. #115 Naomi Cheong (USC) def. Uxie Martinez Moral (UO) – 6-2, 6-4\*
6. Danielle Willson (USC) vs. Misaki Kobayashi (UO) – 6-4, 5-1 SUSP.

Order of finish: 3,4,5\*

**#18 USC 4, Cal Poly 2**

April 10, 2022 | Marks Stadium – Los Angeles, CA

**DOUBLES**

1. Ackerman/Bhunu (CP) def. Cheong/Piper (USC) – 6-4
2. D. Dunkle/Lamette (CP) def. Han/Willson (USC) – 7-6(3)
3. Morra/Koenig (USC) def. Bente/ P. Dunkle (CP) – 7-5

Order of finish: 1,3,2

Cal Poly wins doubles point.

**SINGLES**

1. #42 Salma Ewing (USC) def. Kim Bhunu (CP) – 6-2, 6-4
2. #82 Snow Han (USC) def. Laura Bente (CP) – 6-0, 6-4
3. Sloane Morra (USC) vs. Melissa LeMette (CP) – 4-6, 6-2, 3-4 SUSP.
4. McKenna Koenig (USC) def. Emily Ackerman (CP) – 6-3, 3-6, 6-3\*
5. Delanie Dunkle (CP) def. Isabelle Lee (USC) – 6-4, 6-3
6. Leyden Games (USC) def. Peyton Dunkle (CP) – 6-2, 6-1

Order of finish: 6, 2, 1, 5, 4\*

**#19 USC 4, #15 UCLA 3**

April 15, 2022 | Marks Stadium – Los Angeles, CA

**DOUBLES**

1. Cayetano/Ewing (USC) def. #49 Bolton/Wagle (UCLA) – 7-6 (9-7)
2. Cheong/Piper (USC) def. #56 Catanzarite/Forbes (UCLA) – 6-4
3. Vagramov/Hance (UCLA) def. Willson/Han (USC) – 7-6 (8-6)

Order of finish: 2, 3, 1

USC wins doubles point.

**SINGLES**

1. #42 Salma Ewing (USC) def. #28 Abigail Forbes (UCLA) – 6-4, 2-6, 6-3\*
2. #82 Elysia Bolton (UCLA) def. #6 Eryn Cayetano (USC) – 2-6, 7-5, 6-3
3. #98 Snow Han (USC) def. Sasha Vagramov (UCLA) – 6-3, 6-0
4. #120 Kimmi Hance (UCLA) def. Grace Piper (USC) – 0-6, 6-4, 6-1
5. #73 Naomi Cheong (USC) def. Elise Wagle (UCLA) – 6-1, 6-3
6. Vanessa Ong (UCLA) def. Danielle Willson (USC) – 7-6 (2), 7-5

Order of finish: 5, 3, 4, 6, 2, 1\*

**No. 5 Arizona State 4, No. 4 USC 3**

April 21 | Ojai Valley Athletic Club – Ojai, Calif.

**DOUBLES:**

1. Salma Ewing/Eryn Cayetano, USC v. Patricija Spaka/Domenika Turkovic, ASU - 5-3 unf.
2. Grace Piper/Naomi Cheong, USC def. Giulia Morlet/Sedona Gallagher, ASU - 6-2
3. Snow Han/Dani Willson, USC def. Marianna Argyrokastriti/Call Jankowski, ASU - 6-2

Order of finish: 2, 3

**SINGLES:**

1. Giulia Morlet, ASU def. Salma Ewing, USC - 6-2, 7-6 (7)
2. Domenika Turkovic, ASU def. Eryn Cayetano, USC - 6-4, 0-6, 6-4
3. Snow Han, USC def. Sedona Gallagher, ASU - 6-2, 6-2
4. Cali Janikowski, ASU def. Grace Piper, USC - 6-2, 6-4
5. Naomi Cheong, USC def. Patricija Spaka, ASU - 6-2, 6-3
6. Marianna Argyrokastriti, ASU def. Dani Willson, USC - 6-3, 6-3

Order of finish: 3, 5, 6, 4, 2, 1

**No. 19 USC 4, No. 65 SDSU 0**

May 6 | Malibu, Calif. - NCAA First Round

**DOUBLES**

1. #72 Cayetano/Ewing (USC) def. Melosch/Nadozie (SDSU) 6-2
2. Cheong/Piper (USC) vs. Arnold/Jordan (SDSU) 5-5 SUSP.
3. Han/Willson (USC) def. Morin/Pitts (SDSU) 6-4

Order of finish: 1,3

USC wins doubles point.

**SINGLES**

1. #50 Salma Ewing (USC) vs. Tamara Arnold (SDSU) 6-4, 1-2 SUSP.
2. #7 Eryn Cayetano (USC) vs. Nnena Nadozie (SDSU) 6-1, 5-5 SUSP.
3. #104 Snow Han (USC) def. Regina Pitts (SDSU) 6-3, 6-2
4. #84 Naomi Cheong (USC) vs. Alicia Melosch (SDSU) 7-5, 0-1 SUSP.
5. Grace Piper (USC) def. Julia Jordan (SDSU) 6-2, 6-0
6. Danielle Willson (USC) def. Cecile Morin (SDSU) 6-4, 6-2

Order of finish: 5,3,6

**No. 8 Pepperdine 4, No. 19 USC 1**

May 7 | Malibu, Calif. - NCAA Second Round

**DOUBLES**

1. #72 Cayetano/Ewing def. #45 Flores/Zaar 6-4
2. #42 Broadus/Tjen def. Cheong/Piper 7-6 (9)
3. Fukuda/Pachkaleva def. Han/Willson 7-5

Order of finish: 1, 3, 2

**SINGLES**

1. #91 Tjen vs. #50 Ewing 6-3, 4-3 unfinished
2. #7 Cayetano def. #15 Fukuda 6-0, 6-3
3. #27 Zaar def. #104 Han 6-1, 6-1
4. #40 Pachkaleva def. #84 Cheong 6-4, 6-2\*
5. #85 Broadus def. Piper 6-2, 6-0
6. #59 Flores vs. Willson 6-2, 5-2 unfinished

Order of finish: 5, 2, 3, 4\*







1980 AIAW CHAMPIONSHIP TEAM

### NATIONAL TEAM CHAMPIONSHIPS (7)

1977	Dave Borelli (AIAW)
1977	Dave Borelli (USTA)
1978	Dave Borelli (USTA)
1979	Dave Borelli (AIAW)
1980	Dave Borelli (AIAW)
1983	Dave Borelli (NCAA)
1985	Dave Borelli (NCAA)

### NATIONAL SINGLES CHAMPIONSHIPS (5)

1976	Barbara Hallquist (USTA)
1977	Barbara Hallquist (USTA)
1978	Stacy Margolin (USTA)
1981	Anna Maria Fernandez (AIAW)
1983	Beth Herr (NCAA)

### NATIONAL DOUBLES CHAMPIONSHIPS (2)

1980	T. Lewis/A. White (AIAW)
2013K	Christian/S. Santamaria (NCAA)

### ALL-AMERICANS

1975	Diane Desfor
1976	Diane Desfor
	Barbara Hallquist
1977	Diane Desfor
	Gretchen Galt
	Barbara Hallquist
	Sheila McInerney
1978	Barbara Hallquist
	Sheila McInerney
	Lea Antonopolis
	Stacy Margolin
1979	Barbara Hallquist
	Sheila McInerney
	Stacy Margolin
	Anna Lucia Fernandez
	Anna Maria Fernandez
	Trey Lewis

1980	Sheila McInerney
	Anna Lucia Fernandez
	Anna Maria Fernandez
	Trey Lewis
	Nina Voydat
	Anne White
1981	Anna Maria Fernandez
	Kelly Henry
	Linda Siegel
	Nina Voydat
1982	Anna Lucia Fernandez
	Cecilia Fernandez
	Kelly Henry
	Sue Pendo
1983	Cecilia Fernandez (S)
	Kelly Henry (S)
	Beth Herr (S)
	Janet Lagasse (D)
	Sue Pendo (D)
1984	Cecilia Fernandez (S)
	Kelly Henry (S, D)
	Cheryl Jones (S)
	Sue Pendo (D)
	Heliane Steden (S)
1985	Cecilia Fernandez (S, D)
	Caroline Kuhlman (S, D)
	Mary Norwood (D)
	Heliane Steden (S, D)
1986	Caroline Kuhlman (S, D)
	Dena Levy (D)
	Mary Norwood (D)
	Heliane Steden (S, D)
1987	Lupita Novelo (D)
	Ginny Purdy (D)
1988	Trisha Laux (S)
1989	Trisha Laux (S)
	Stephanie London (S)
1990	Trisha Laux (S)
	Stephanie London (D)
	Lupita Novelo (S, D)
1991	Trisha Laux (S)
1992	Petra Schmitt (S)

1994	Maggie Simkova (S)
	Suzanne Italiano (D)
	Petra Schmitt (D)
1996	Suzanne Italiano (D)
	Nicole London (D)
1999	Ditta Huber (S)
2000	Jewel Peterson (S)
2001	Jewel Peterson (S)
2002	Jewel Peterson (S,D)
	Tiffany Brymer (D)
2003	Jewel Peterson (S)
2004	Luana Magnani (S,D)
	Carine Vermeulen (D)
2005	Nicole Leimbach (S)
	Lindsey Nelson (S)
2006	Amanda Fink (S)
	Lindsey Nelson (S)
2007	Sarah Fansler (S)
	Lindsey Nelson (S)
2008	Amanda Fink (S, D)
	Gabriela Niculescu (D)
2010	Maria Sanchez (S)
2011	Maria Sanchez (S, D)
	Kaitlyn Christian (D)
2012	Sabrina Santamaria (S, D)
	Kaitlyn Christian (D)
	Danielle Lao (S)
	Zoë Scandalis (S)
2013	Sabrina Santamaria (S, D)
	Kaitlyn Christian (D)
	Danielle Lao (S)
2014	Zoë Scandalis (S)
2015	Giuliana Olmos (S)
	Sabrina Santamaria (S)
2016	Giuliana Olmos (D)
	Gabby Smith (D)
2019	Angela Kulikov (D)
	Rianna Valdes (D)
2022	Eryn Cayetano (S)
	Salma Ewing (S)
(S) — Singles (D) — Doubles	



TRISHA LAUX

**HONDA AWARD**

1981 ..... Anna Maria Fernandez

**NCAA ALL-TOURNAMENT TEAM**

2012 ..... Sabrina Santamaria (No. 3 singles)  
 ..... Danielle Lao (No. 3 doubles)  
 ..... Alison Ramos (No. 3 doubles)

**ITA NATIONAL AWARDS**ITA Collegiate Hall of Fame

Inducted in 2021 Anna Maria Fernandez-Ruffels

ITA All-Star Team

2007 ..... Lindsey Nelson  
 2011 ..... Maria Sanchez  
 2012 ..... Kaitlyn Christian  
               Sabrina Santamaria  
 2013 ..... Kaitlyn Christian  
               Sabrina Santamaria

ITA National Indoor Singles Champion

2010 ..... Maria Sanchez

ITA National Indoor Doubles Champion

2011 ..... Kaitlyn Christian & Sabrina Santamaria  
 2012 ..... Kaitlyn Christian & Sabrina Santamaria

ITA National Team Indoors All-Tournament Team

2013 ..... Danielle Lao (No. 1 singles)  
 Kaitlyn Christian/Sabrina Santamaria (No. 2 doubles)

ITA National Fall Singles Champion

1986 ..... Carolina Kuhlman  
 2010 ..... Maria Sanchez  
 2021 ..... Eryn Cayetano

ITA/Riviera All-American Doubles Champion

2012 ..... Kaitlyn Christian &amp; Sabrina Santamaria

ITA National Senior Player of the Year

2011 ..... Maria Sanchez

ITA National Doubles Team of the Year

2013 ..... Kaitlyn Christian &amp; Sabrina Santamaria

ITA National Player to Watch

2012 ..... Zoë Scandalis

ITA National Rookie of the Year

2006 ..... Amanda Fink  
 2007 ..... Sarah Fansler

**ITA REGIONAL AWARDS**ITA Regional Singles Champion

2002 ..... Jewel Peterson  
 2005 ..... Amanda Fink  
 2006 ..... Sarah Fansler  
 2008 ..... Maria Sanchez  
 2009 ..... Maria Sanchez  
 2010 ..... Danielle Lao  
 2011 ..... Sabrina Santamaria  
 2015 ..... Zoë Scandalis  
 2018 ..... Salma Ewing

ITA Regional Doubles Champion

2002 Tiffany Brymer & Jewel Peterson  
 2006 Anca Anastasiu & Julie Smekodub  
 2007 ..... Amanda Fink & Gabriella Niculescu  
 2008 ..... Gabriella Niculescu & Maria Sanchez  
 2010 ..... Valeria Pulido & Alison Ramos  
 2012 ..... Danielle Lao & Valeria Pulido  
 2015 ..... Giuliana Olmos & Gabby Smith

ITA Regional Coach of the Year

2003 ..... Richard Gallien  
 2009 ..... Richard Gallien  
 2013 ..... Richard Gallien  
 2015 ..... Richard Gallien

ITA Regional Assistant Coach of the Year

2009 ..... West Nott  
 2015 ..... West Nott

ITA Regional Senior Player of the Year

2011 ..... Maria Sanchez  
 2013 ..... Danielle Lao

ITA Regional Most Improved Senior

2020 ..... Angela Kulikov  
 2022 ..... Salma Ewing

ITA Regional Player to Watch

2011 ..... Kaitlyn Christian  
 2012 ..... Zoë Scandalis

ITA Regional Rookie of the Year

2006 ..... Amanda Fink  
 2007 ..... Sarah Fansler  
 2010 ..... Danielle Lao  
 2015 ..... Madison Westby

ITA/Arthur Ashe Leadership and Cissie Leary Sportsmanship Award

2007 ..... Anca Anastasiu



JEWEL PETERSON

2016 ..... Giuliana Olmos  
 2020 ..... Becca Weissmann  
 2021 ..... Angela Kulikov  
 2022 ..... Eryn Cayetano

**PAC-12 SINGLES CHAMPIONS**

2007 ..... Lindsey Nelson  
 2009 ..... Amanda Fink

**PAC-12 DOUBLES CHAMPIONS**

1987 ..... Lupita Novelo/Ginny Purdy  
 2008\* Amanda Fink/Gabriela Niculescu  
 2009\* Amanda Fink/Gabriela Niculescu  
 2012 ..... Kaitlyn Christian/Sabrina Santamaria  
 2013 ..... Kaitlyn Christian/Sabrina Santamaria  
 2014 Kaitlyn Christian/Giuliana Olmos

**PAC-12 COACH OF THE YEAR**

1999 ..... Richard Gallien  
 2006 ..... Richard Gallien  
 2009 ..... Richard Gallien  
 2013 ..... Richard Gallien  
 2015 ..... Richard Gallien  
 2017 ..... Richard Gallien

**PAC-12 PLAYER OF THE YEAR**

2005 ..... Nicole Leimbach  
 2007 ..... Lindsey Nelson  
 2011 ..... Maria Sanchez  
 2013 ..... Sabrina Santamaria

\* 2008 and 2009 Pac-10 doubles titles later vacated due to NCAA penalty vacating wins recorded by ineligible player.



### PAC-12 FRESHMAN OF THE YEAR

2006 ..... Amanda Fink  
2007 ..... Sarah Fansler  
2015 ..... Madison Westby

### PAC-12 DOUBLES TEAM OF THE YEAR

2009 Amanda Fink/Gabriela Niculescu  
2012 ..... Kaitlyn Christian/Sabrina Santamaria  
2013 ..... Kaitlyn Christian/Sabrina Santamaria

### ALL-PAC-12

1987 ..... Stephanie Harges  
1988 ..... Trisha Laux  
1990 ..... Trisha Laux  
1991 ..... Trisha Laux  
1995 ..... Susie Italiano (2nd team)  
..... Maggie Simkova (2nd team)  
1996 ..... Suzie Italiano (2nd team)  
1998 ..... Ditta Huber (2nd team)  
1999 ..... Ditta Huber (1st team)  
..... Kara Warkentin (2nd team)  
..... Jacqui Boyd (honorable mention)  
2000 ..... Kara Warkentin (2nd team)  
..... Veronika Safarova (2nd team)  
..... Jewel Peterson (honorable mention)  
2001 ..... Jewel Peterson (1st team)  
..... Maureen Diaz (2nd team)  
2002 ..... Jewel Peterson (1st team)  
..... Luana Magnani (2nd team)  
..... Tiffany Brymer (honorable mention)  
2003 ..... Jewel Peterson (1st team)  
..... Luana Magnani (honorable mention)  
2004 ..... Anca Anastasiu (2nd team)  
..... Luana Magnani (2nd team)  
Carine Vermeulen (honorable mention)  
2005 ..... Nicole Leimbach (1st team)  
..... Lindsey Nelson (1st team)  
..... Anca Anastasiu (2nd team)  
2006 ..... Amanda Fink (1st team)  
..... Lindsey Nelson (1st team)  
..... Luana Magnani (2nd team)  
..... Dianne Matias (honorable mention)  
2007 ..... Sarah Fansler (1st team)  
..... Lindsey Nelson (1st team)  
..... Amanda Fink (honorable mention)  
2008 ..... Amanda Fink (1st team)  
..... Lindsey Nelson (honorable mention)  
Gabriela Niculescu (honorable mention)  
2009 ..... Amanda Fink (1st team)  
..... Maria Sanchez (2nd team)  
..... Sarah Fansler (honorable mention)  
2010 ..... Maria Sanchez (1st team)  
..... Danielle Lao (honorable mention)  
..... Alison Ramos (honorable mention)  
2011 ..... Maria Sanchez (1st team)  
..... Danielle Lao (2nd team)

2012 ..... Zoë Scandalis (1st team)  
..... Danielle Lao (2nd team)  
..... Sabrina Santamaria (2nd team)  
..... Kaitlyn Christian (honorable mention)

2013 ..... Danielle Lao (1st team)  
..... Sabrina Santamaria (1st team)  
..... Zoë Scandalis (2nd team)  
2014 ..... Zoë Scandalis (1st team)  
..... Giuliana Olmos (honorable mention)  
..... Sabrina Santamaria (honorable mention)

2015 ..... Giuliana Olmos (1st team)  
..... Sabrina Santamaria (2nd team)  
..... Zoë Scandalis (2nd team)  
2016 ..... Giuliana Olmos (1st team)  
..... Zoë Katz (honorable mention)  
..... Gabby Smith (honorable mention)  
..... Madison Westby (honorable mention)  
2017 ..... Gabby Smith (1st team)  
..... Jessica Failla (2nd team)  
2018 ..... Gabby Smith (1st team)  
..... Rianna Valdes (honorable mention)  
2019 ..... Salma Ewing (2nd team)  
..... Angela Kulikov (honorable mention)  
2021 ..... Salma Ewing (1st team)  
..... Eryn Cayetano (2nd team)  
..... Naomi Cheong (honorable mention)  
..... Danielle Willson (honorable mention)  
2022 ..... Salma Ewing (1st team)  
..... Eryn Cayetano (1st team)  
..... Snow Han (honorable mention)  
..... Naomi Cheong (honorable mention)

### PAC-12 SCHOLAR-ATHLETE OF THE YEAR

2018 ..... Gabby Smith

### PAC-12 ALL-ACADEMIC

(Honorable mention awards available only 2002 to present)

1991 ..... none  
1992 ..... Petra Schmitt (2nd team)  
..... Magdalena Simkova (2nd team)  
1993 ..... Petra Schmitt (1st team)  
..... Maggie Simkova (1st team)  
1994 ..... Maggie Simkova (1st team)  
..... Petra Schmitt (2nd team)  
..... Ayisha Zaman (2nd team)  
1995 ..... Maggie Simkova (1st team)  
..... Petra Schmitt (2nd team)  
1996 ..... Ayisha Zaman (1st team)  
1997 ..... Karolina Bakalarova (1st team)  
1998 ..... Karolina Bakalarova (1st team)  
1999 ..... Karolina Bakalarova (1st team)  
..... Veronika Safarova (2nd team)  
2000 ..... n/a  
2001 ..... n/a  
2002 ..... Jewel Peterson (honorable mention)  
..... Maureen Diaz (honorable mention)  
2003 ..... n/a  
2004 ..... none  
2005 ..... Anca Anastasiu (1st team)  
..... Nicole Leimbach (1st team)



..... Lindsey Nelson (1st team)  
..... Judy DeVera (honorable mention)  
2006 ..... Anca Anastasiu (1st team)  
..... Judy DeVera (honorable mention)  
..... Lindsey Nelson (honorable mention)  
2007 ..... Anca Anastasiu (1st team)  
..... Lindsey Nelson (honorable mention)  
..... Amanda Fink (honorable mention)  
2008 ..... Lindsey Nelson (honorable mention)  
..... Amanda Fink (honorable mention)  
..... Gabriella Niculescu (honorable mention)  
2009 ..... Amanda Fink (2nd team)  
..... Cristala Andrews (honorable mention)  
..... Lyndsay Kinstler (honorable mention)  
..... Leyla Entekhabi (honorable mention)  
..... Gabriella Niculescu (honorable mention)  
2010 ..... Alison Ramos (2nd team)  
..... Cristala Andrews (honorable mention)  
..... Leyla Entekhabi (honorable mention)  
..... Lyndsay Kinstler (honorable mention)  
2011 ..... Alison Ramos (2nd team)  
..... Cristala Andrews (honorable mention)  
..... Lyndsay Kinstler (honorable mention)  
2012 ..... Alison Ramos (2nd team)  
2013 ..... Zoë Scandalis (1st team)  
..... Gabriella DeSimone (honorable mention)  
2014 ..... Zoë Scandalis (1st team)  
..... Gabriella DeSimone (honorable mention)  
2015 ..... Zoë Scandalis (1st team)  
..... Gabriella DeSimone (honorable mention)  
2016 ..... Gabby Smith (2nd team)  
..... Madison Westby (honorable mention)  
2017 ..... Gabby Smith (2nd team)  
..... Rianna Valdes (2nd team)  
..... Madison Westby (2nd team)  
..... Jessica Failla (honorable mention)  
2018 ..... Angela Kulikov (1st team)  
..... Gabby Smith (2nd team)  
..... Rianna Valdes (2nd team)  
..... Madison Westby (2nd team)  
2019 ..... Angela Kulikov (1st team)  
..... Becca Weissmann (1st team)  
..... Rianna Valdes (2nd team)



ANNA MARIA FERNANDEZ

2020 . . . . . Angela Kulikov (honor roll)  
 . . . . . Ana Neffa (honor roll)  
 . . . . . Becca Weissmann (honor roll)  
 . . . . . Danielle Willson (honor roll)  
 2021 . . . . . Naomi Cheong (honor roll)  
 . . . . . Summer Dvorak (honor roll)  
 . . . . . Angela Kulikov (honor roll)  
 . . . . . Clare McKee (honor roll)  
 . . . . . Payton Saca (honor roll)  
 . . . . . Danielle Willson (honor roll)  
 2022 . . . . . Danielle Willson (honor roll)  
 . . . . . Gabrielle Lee (honor roll)  
 . . . . . Isabelle Lee (honor roll)

## OTHER AWARDS

### Trey Lewis

Pan Am Games (Silver Medal) . . 1979

### Anna Maria Fernandez

Tennis Broderick Award . . . . . 1981

Tennis Magazine Female

College Player of the Year . . . . . 1981

### Cecilia Fernandez — USA

World Univ. Games (Singles: Gold Medal). . . . . 1983

### Heliane Steden

Pan Am Games (Bronze Medal). 1983

### Claudia Hernandez

Mexican National Singles Champ 1982, 84-87, 89

### Caroline Kuhlman

Goodwill Games (Gold Medal) . 1986

### Valeria Pulido — Mexico

World Univ. Games (Doubles: Bronze Medal). . . . . 2011

### Sabrina Santamaria — USA

World Univ. Games (Singles: Silver Medal) . . . . . 2013

## OTHER USTA & AIAW HONORS

### Diane Desfor

Amateur Clay Court Doubles . . . 1975

Amateur Grass Court Singles . . . 1976

### Gretchen Galt

21 & Under Doubles . . . . . 1976

### Barbara Hallquist

Grass Court Doubles . . . . . 1976

21 & Under Singles . . . . . 1976

Amateur Indoor Singles . . . . . 1977

Amateur Clay Court Doubles . . . 1977

Amateur Indoor Doubles . . . . . 1978

### Leslie Allen

ATA Singles . . . . . 1977

### Sheila McInerney

Amateur Clay Court Singles . . . 1977

Amateur Clay Court Doubles . . . 1977

Amateur Clay Court Mixed Doubles . 1977

Amateur Indoor Doubles. . . . . 1978

Amateur Clay Court Singles . . . 1979

Amateur Clay Court Doubles . . . 1979

### Stacy Margolin

Amateur Hard Court Singles . . . 1978

### Anna Lucia Fernandez

Amateur Indoor Doubles. . . . . 1979

Amateur Clay Court Doubles . . . 1980

### Trey Lewis

Amateur Indoor Doubles. . . . . 1979

21 & Under Doubles . . . . . 1979

AIAW Doubles . . . . . 1980

### Anne White

AIAW Doubles . . . . . 1980

Amateur Clay Court Singles . . . 1980

Amateur Clay Court Doubles . . . 1980

Amateur Clay Court Mx. Doubles 1980

### Nina Voydat

Amateur Indoor Singles . . . . . 1980

### Susan Pendo

National Amateur Mixed Doubles . 1982

National Amateur Doubles . . . . . 1982

### Cecilia Fernandez

USTA Singles . . . . . 1983

### Heliane Steden

USTA Singles . . . . . 1983

### Caroline Kuhlman

USTA Singles . . . . . 1984

## FEDERATION CUP

1983 . . . . . Heliane Steden (Mex.)

. . . . . Claudia Hernandez (Mex.)

1984 . . . . . Heliane Steden (Mex.)

. . . . . Claudia Hernandez (Mex.)

1985 . . . . . Heliane Steden (Mex.)

. . . . . Claudia Hernandez (Mex.)

1986 . . . . . Claudia Hernandez (Mex.)

1987 . . . . . Claudia Hernandez (Mex.)

1988 . . . . . Claudia Hernandez (Mex.)

1989 . . . . . Claudia Hernandez (Mex.)

1990 . . . . . Claudia Hernandez (Mex.)

. . . . . Lupita Novelo (Mex.)

1991 . . . . . Lupita Novelo (Mex.)

1992 . . . . . Lupita Novelo (Mex.)

1993 . . . . . Lupita Novelo (Mex.)

## JUNIOR FEDERATION CUP

1974 . . . . . Diane Desfor

1975 . . . . . Diane Desfor

1976 . . . . . Diane Desfor (MVP)

. . . . . Gretchen Galt

. . . . . Barbara Hallquist

1977 . . . . . Barbara Hallquist (MVP)

. . . . . Sheila McInerney

1978 . . . . . Barbara Hallquist

. . . . . Sheila McInerney

. . . . . Stacy Margolin

. . . . . Lea Antonopolis

1979 . . . . . Sheila McInerney

. . . . . Anna Maria Fernandez

. . . . . Anna Lucia Fernandez

. . . . . Trey Lewis

1980 . . . . . Anne White (MVP)

. . . . . Anna Maria Fernandez

. . . . . Anna Lucia Fernandez

. . . . . Nina Voydat

1981 . . . . . Anna Maria Fernandez

. . . . . Kelly Henry

. . . . . Nina Voydat

1982 . . . . . Cecilia Fernandez

. . . . . Kelly Henry

1983 . . . . . Cecilia Fernandez

1984 . . . . . Cecilia Fernandez

1985 . . . . . Caroline Kuhlman (MVP)

. . . . . Maeve Quinlan

. . . . . Trisha Laux

1986 . . . . . Caroline Kuhlman (MVP)

. . . . . Maeve Quinlan

. . . . . Trisha Laux

1987 . . . . . Trisha Laux





**BARBARA HALLQUIST\*\***

\*\* In 1976, Barbara Hallquist became the first female athlete at USC to receive an athletic scholarship.

### .A.

Allen, Leslie ..... 1977  
Allred, Linda ..... 1990, 91, 92  
Anastasiu, Anca ..... 2004, 05, 06, 07  
Andrews, Cristala ..... 2008, 09, 10, 11  
Antonopolis, Lea ..... 1978

### .B.

Bakalarova, Karolina ..... 1996, 97, 98, 99  
Bardot, Jan ..... 1977, 78  
Basica, Amber ..... 1996, 97, 98  
Bayani, Bernadette ..... 2001, 02, 03, 04  
Boren, Brynn ..... 2014  
Boyd, Jacqui ..... 1997, 98, 99, 2000  
Branstine, Carson ..... 2020  
Branstine, Constance ..... 2018, 19, 20, 21  
Brown, Susan ..... 1978, 80  
Brymer, Tiffany ..... 2000, 01, 02, 03

### .C.

**Cayetano, Eryn ..... 20, 21, 22**  
Chen, Elaine ..... 1977  
**Cheong, Naomi ..... 21, 22**  
Christian, Caroline ..... 1999, 00, 01, 02  
Christian, Kaitlyn ..... 2011, 12, 13, 14  
Colville, Mary Ann ..... 1976  
Corcoleotes, Alexa ..... 2018, 19

### .D.

Decker-Sadowski, Katja ..... 2007  
Dennis, Cindy ..... 1978, 79, 80, 81  
Desfor, Diane ..... 1975, 76, 77  
DeSimone, Gabriella ..... 2012, 13, 14, 15  
DeVera, Judy ..... 2004, 05, 06, 07  
Diaz, Maureen ..... 2001, 02, 03  
Douglass, Debbie ..... 1977

### .E.

Ellis, Ashley ..... 2007  
Entekhabi, Leyla ..... 2008, 09, 10  
Esmero, Melissa ..... 2001, 02, 03, 04  
Everly, Erin ..... 2005  
Ewing, Salma ..... 2019, 20, 21, 22

### .F.

Failla, Jessica ..... 2016, 17  
Fansler, Sarah ..... 2007, 08, 09, 10  
Fernandez, Anna Lucia ..... 1979, 80, 81, 82  
Fernandez, Anna Maria ..... 1979, 80, 81, 82  
Fernandez, Cecilia ..... 1982, 83, 84, 85  
Fink, Amanda ..... 2006, 07, 08, 09

### .G.

Galt, Gretchen ..... 1975, 76, 77  
**Games, Leyden ..... 22**  
Goldman, Jennifer ..... 2010

### .H.

Hallquist, Barbara \*\* ..... 1976, 77, 78, 79  
Hamilton-Heinberg, Krissy ..... 1999, 00, 01  
**Han, Snow ..... 22**  
Harper, Amber ..... 2007, 08  
Harges, Stephanie ..... 1985, 87, 88, 89  
Henry, Kelly ..... 1981, 82, 83, 84  
Hernandez, Claudia ..... 1985, 86  
Hernando, Melissa ..... 1992, 93, 94, 95  
Herr, Beth ..... 1983  
Heynen, Carol ..... 1982, 83, 84  
Huber, Ditta ..... 1996, 97, 98, 99

### .I.

Irinco, Christina ..... 2001  
Italiano, Suzanne ..... 1993, 94, 95, 96

### .J.

Jaeger, Estella ..... 2019, 20  
Jimenez, Eva ..... 1996, 97  
Jones (Woods), Cheryl ..... 1983, 84

### .K.

Katz, Zoë ..... 2014, 15, 16, 17  
Keating, Paige ..... 2014, 15, 16  
Kimura, Sayaka ..... 1994, 95  
Kinstler, Lyndsay ..... 2008, 09, 10, 11  
Kochoff, Anya ..... 1987, 88, 89, 90  
**Koenig, McKenna ..... 21, 22**  
Kuhlman, Caroline ..... 1985, 86, 88, 89  
Kulikov, Angela ..... 2017, 18, 19, 20, 21

### .L.

Lagasse, Janet ..... 1983  
Lao, Danielle ..... 2010, 11, 12, 13  
Lau, Sabrina ..... 1994, 95, 96, 97  
Laux, Kirstin ..... 1988  
Laux, Trisha ..... 1988, 89, 90, 91  
**Lee, Gabrielle ..... 22**  
**Lee, Isabelle ..... 22**  
Leimbach, Nicole ..... 2005  
Letzt, Alex ..... 2016  
Levy, Dena ..... 1983, 84, 85  
Lewis, Trey ..... 1979, 80  
Lillie, Kathleen ..... 1981, 82, 83, 84  
London, Nicole ..... 1995, 96, 97, 98  
London, Stephanie ..... 1988, 89, 90, 91  
Loyola, Anita ..... 2000, 01, 02, 03  
Lum, Janice ..... 1989, 91

### .M.

Magnani, Luana ..... 2002, 03, 04, 06  
Margolin, Stacy ..... 1978, 79  
Marsico, Elizabeth ..... 2009, 10  
Matias, Dianne ..... 2004, 05, 06, 07  
McGarrigle, Kathleen ..... 1987  
McInerney, Sheila ..... 1977, 78, 79, 80  
Miller, Hayley ..... 2011  
**Morra, Sloane ..... 22**

### .N.

Neffa, Ana ..... 2019, 20  
Nguyen, Jennifer ..... 1992  
Nelson, Lindsey ..... 2005, 06, 07, 08  
Niculescu, Gabriela ..... 2008, 09  
Norwood, Mary ..... 1985, 86, 87, 88  
Novelo, Lupita ..... 1987, 88, 89, 90

### .O.

Olmos, Giuliana ..... 2013, 14, 15, 16  
Owens, Jackie ..... 2013

### .P.

Pendo, Sue ..... 1982, 83, 84  
Peterson, Jewel ..... 2000, 01, 02, 03  
Peterson, Whitney ..... 2006, 07  
**Piper, Grace ..... 22**  
Pulido, Valeria ..... 2010, 11, 12, 13  
Purdy, Ginny ..... 1986, 87, 88, 89

### .Q.

Quaresma, Carla ..... 1992, 93  
Quinlan, Maeve ..... 1986, 87

### .R.

Ramos, Alison ..... 2009, 10, 11, 12  
Reed, Kathleen ..... 1987  
Reede, Casey ..... 2014, 15  
Rose, Courtney ..... 1991, 92, 93, 94

### .S.

Saca, Payton ..... 2020, 21  
Safarova, Veronika ..... 1997, 98, 99, 2000  
Sanchez, Maria ..... 2008, 09, 10, 11  
Santamaria, Sabrina ..... 2012, 13, 14, 15  
Sauer, Erica ..... 2004  
Scandalis, Zoë ..... 2012, 13, 14, 15  
Schmitt, Petra ..... 1992, 93, 94, 95  
Sessarego, Paola ..... 1980, 81, 82  
Siegel, Linda ..... 1980, 81  
Simkova, Maggie ..... 1992, 93, 94, 95  
Smekodub, Julie ..... 2007  
Smith, Gabby ..... 2015, 16, 17, 18  
Snyder, Taylynn ..... 2005  
Steden, Heliane ..... 1983, 84, 85, 86

### .T.

Trump, Pam ..... 1995, 96, 97, 98  
Tullberg, Julie ..... 1990, 91, 92

### .V.

Valdes, Rianna ..... 2016, 17, 18, 19  
Van Alphen, Sydney ..... 2017, 18, 19, 20  
Venter, Kristen ..... 2016, 17  
Vermeulen, Carine ..... 2003, 04, 05, 06  
Voydat, Nina ..... 1980, 81, 82, 83

### .W.

Warkentin, Kara ..... 1998, 99, 2000  
Westby, Madison ..... 2015, 16, 17, 18  
Weissmann, Becca ..... 2018, 19, 20  
White, Anne ..... 1980  
Willson, Danielle ..... 2019, 20, 21, 22

### .X.

Xepoleas, Meredith ..... 2015, 16

### .Y.

Yates, Ellie ..... 2013, 14

### .Z.

Zaman, Ayisha ..... 1993, 94, 95, 96

## USC WOMEN'S TENNIS HISTORY

Year	Overall	National Finish	Conf.	Conf. Finish
1977	17-0	1st	8-0	1st
1978	16-1	1st	8-0	1st
1979	20-1	1st	7-1	1st
1980	30-0	1st	11-0	1st
1981	33-1	3rd	13-0	1st
1982 <sup>^</sup>	22-5	4th	11-1	1st (t)
1983	31-0	NCAA CHAMPION	13-0	1st
1984	26-7	2nd	13-2	2nd
1985	33-2	NCAA CHAMPION	13-1	1st (t)
1986	22-3	2nd	7-1	1st (t)
1987	14-13	First Round	4-6	4th
1988	19-5	Semifinals	7-3	2nd
1989	16-7	Quarterfinals	6-4	3rd (t)
1990	19-8	Quarterfinals	5-5	3rd (t)
1991	7-18	—	0-10	6th
1992	8-12	Second Round	1-9	6th
1993	15-9	First Round	3-7	5th
1994	11-13	Second Round	2-7	5th
1995	8-14	First Round	2-8	6th
1996	16-9	First Round	4-6	4th
1997	10-16	Regionals	0-10	6th
1998	13-11	Regionals	3-5	6th
1999	21-9	Quarterfinals	7-1	2nd
2000	18-9	Quarterfinals	4-4	4th
2001	20-8	Quarterfinals	6-2	2nd (t)
2002	19-8	Round of 16	7-1	2nd
2003	22-6	Quarterfinals	5-3	4th
2004	18-7	Round of 16	7-1	2nd
2005	19-4	Quarterfinals	7-1	2nd
2006	21-4	Semifinals	7-1	2nd
2007	19-5	Round of 16	6-2	2nd (t)
2008	*16-8	*Round of 16	5-3	4th
2009	*16-4	Second Round	*7-1	1st
2010	14-10	Second Round	5-3	4th
2011	15-8	Second Round	4-4	4th
2012	24-4	Semifinals	9-1	1st (t)
2013	23-3	Round of 16	10-0	1st
2014	18-8	Round of 16	7-3	4th
2015	25-3	Semifinals	10-0	1st
2016	13-6	Second Round	7-1	2nd
2017	13-11	First Round	6-4	6th
2018	13-10	---	5-5	8th
2019	20-8	Round of 16	7-3	4th
2020	7-6	No NCAA Tourney	0-2	11th
2021	13-11	Round of 16	5-5	7th
2022	18-12	Second Round	7-3	4th
*791-302 (.723)		*279-130 (.682)		

<sup>^</sup> NCAA women's tennis competition began in 1982.

\* Due to NCAA penalty vacating wins recorded by ineligible player, 3 wins left undecided in 2008; 1 win (conference) becomes a loss and 4 wins left undecided in 2009. [Original records: 19-8 overall and still 5-3 Pac-10 in 2008; 21-3 overall and 8-0 in 2009; Original all-time overall record 839-326 (.720); all-time conference record 318-199 (.615)]



1977 AIAW/USTA CHAMPIONS



1978 USTA CHAMPIONS



1979 AIAW CHAMPIONS

Sheila McInerney

1979 USTA Singles Champion



1980 AIAW CHAMPIONS



1985 NCAA CHAMPIONS



1983 NCAA CHAMPIONS



## 2022 (18-12, 7-3 conference)

Head Coach: Alison Swain  
Pac-12 Finish: 4th  
Postseason: Second Round  
National Finish: No. 20

J22	W	4-0	LMU
J22	W	4-0	vs. San Fran.
J23	W	4-2	vs. Saint Mary's
J28	W	4-3	vs. Miami
J29	W	4-3	at Baylor
F11	L	1-4	vs. Texas
F12	W	4-3	vs. Wisconsin
F13	L	1-4	vs. Texas A&M
F19	L	1-4	at OK. State
F20	L	0-4	at Oklahoma
F25	L	1-4	at UCLA
F26	L	3-4	vs. UCSB
M4	L	2-4	* vs. Utah
M6	W	5-1	* vs. Colorado
M11	W	4-1	* vs. ASU
M12	W	4-0	* at Arizona
M12	W	4-0	Hawaii Pacific
M19	L	2-5	at Pepperdine
M25	L	2-5	* vs. Stanford
M26	L	3-4	* vs. Cal
A1	W	4-3	* vs. WSU
A2	W	4-1	* vs. Washington
A5	W	4-0	vs. Hawai'i
A5	W	4-0	vs. CSUN
A10	W	4-0	* vs. Oregon
A10	W	4-2	vs. Cal Poly
A15	W	4-3	* vs. UCLA
A21	L	3-4	% vs. ASU
M6	W	4-0	^ vs. SDSU
M7	L	1-4	^ at Pepperdine

#ITA Kickoff Weekend (Waco, TX.)  
\* Pac-12 match  
% at Libbey Park (Ojai, Calif.)  
^ NCAA 1st and 2nd Rounds (Malibu, Calif.)

## 2021 (13-11, 5-5 conference)

Head Coach: Alison Swain  
Pac-12 Finish: 7th  
Postseason: Round of 16  
National Finish: No. 27

J24	W	4-1	#Denver
J25	L	2-4	#at Pepperdine
F6	W	4-0	vs. Saint Mary's
F6	W	4-0	vs. CSUF
F13	L	3-4	at Pepperdine
F18	W	6-1	vs. Hawai'i
F20	W	6-1	vs. San Diego
F26	L	1-6	vs. UCLA
F27	W	6-1	vs. OK. State
M5	W	4-3	* at Washington
M7	L	3-4	* at Wash. State
M12	-	3-1	at UCSB (DNF)
M14	L	1-4	vs. Pepperdine
M19	W	4-0	* vs. Colorado
M20	W	7-0	* vs. Utah
M26	L	2-5	* at Oregon
A2	W	6-1	* at Arizona
A3	W	5-2	* at Arizona State
A9	L	3-4	* vs. California
A10	L	1-6	* vs. Stanford
A16	L	0-4	* at UCLA
A24	L	3-4	%Arizona State
M7	W	4-3	^ Oklahoma
M8	W	4-1	^ Florida
M16	L	1-4	\$ NC State

#ITA Kickoff Weekend (Malibu, Calif.)  
\* Pac-12 match  
% at Libbey Park (Ojai, Calif.)  
^ NCAA Regionals (Gainesville, Fla.)  
\$ NCAA Championships (Orlando, Fla.)  
(DNF) Did not Finish

## 2020 (7-6, 0-2 conference)

Head Coach: Alison Swain  
Pac-12 Finish: N/A (COVID-19)  
Postseason: N/A (COVID-19)  
National Finish: N/A (COVID-19)

J25	W	4-3	vs. Kentucky
J26	L	3-4	vs. Princeton
J31	W	4-0	vs. Saint Mary's
F1	W	4-2	vs UCSB
F1	W	4-1	vs Long Beach St
F15	L	3-4	~vs. Notre Dame
F21	W	4-1	vs Hawaii
F21	W	4-3	at SDSU
F22	L	1-4	at San Diego
F28	L	2-5	vs UCLA
F29	W	4-2	vs LMU
M6	L	0-7	*at Stanford
M7	L	1-6	*at California

*Remainder of season cancelled due to COVID-19 pandemic*  
\* Pac-12 match  
~ in Orlando, Fla. (College Match Day)

## 2019 (20-8, 7-3 conference)

Head Coach: Alison Swain  
Pac-12 Finish: 4th  
Postseason: Round of 16  
National Finish: No. 16

J21	W	4-1	vs South Carolina
J30	W	4-2	vs. LMU
J30	W	4-2	vs. San Diego
F9	L	3-4	at SMU
F16	W	5-2	at UCSB
F24	L	2-5	at California
F26	W	5-2	vs. SDSU
M1	W	4-1	at UCLA
M3	W	4-0	vs Saint Mary's
M3	W	4-1	vs Hawaii
M8	W	6-1	*at Arizona
M9	W	4-3	*at Arizona State
M16	W	4-2	~vs. Baylor
M23	W	5-2	*at Oregon
M29	W	6-1	*vs California
M30	L	3-4	*vs Stanford
A2	W	5-2	vs CSUF
A5	W	4-0	*vs Colorado
A6	W	4-0	*vs Utah
A9	L	1-4	vs Pepperdine
A12	L	2-4	*at Washington
A14	W	4-1	*at Wash. State
A20	L	2-4	*vs UCLA
A25	W	4-1	%vs California
A26	L	0-4	%vs Stanford
M4	W	4-0	^vs. Illinois State
M5	W	4-0	^vs UNLV
M11	L	0-4	\$at So. Carolina

\* Pac-12 match  
~ at Indian Wells, Calif.  
% at Libbey Park (Ojai, Calif.)  
^ NCAA Regionals (Marks Stadium)  
\$ NCAA Super Regionals (Columbia, SC)

## 2018 (13-10, 5-5 conference)

Head Coach: Alison Swain  
Pac-12 Finish: 8th  
Postseason: ---  
National Finish: No. 49

J14	W	6-1	San Diego
J19	W	5-2	LMU
J20	L	6-1	UCSB
J26	L	4-2	vs. Clemson
J27	W	4-0	vs. Oklahoma
F16	W	5-2	at San Diego State
F23	W	4-3	California
F24	W	4-2	Fresno State
F24	W	4-0	Long Beach State
M2	(cancelled)		UCLA
M9	L	7-0	*at California
M10	L	4-0	*at Stanford
M16	W	4-3	*Oregon
M17	L	4-0	~vs. Baylor

M21 (cancelled) Pepperdine  
M23 L 4-1 \*Washington St.  
M24 W 4-3 \*Washington  
A3 L 4-0 at Pepperdine  
A6 W 6-1 \*at Colorado  
A8 W 4-1 \*at Utah  
A13 W 4-0 \*Arizona  
A14 L 4-3 \*Arizona State  
A21 L 4-0 \*at UCLA  
A25 W 4-1 %Arizona  
A26 L 4-2 %Arizona State  
\* Pac-12 match  
~ at Indian Wells, Calif.  
% at Libbey Park (Ojai, Calif.)

## 2017 (13-11, 6-4 conference)

Head Coach: Richard Gallien  
Pac-12 Finish: 6th  
Postseason: NCAA First Round  
National Finish: No. 27

J19	W	5-2	UCSB
J28	W	4-2	vs. Rice
J29	L	4-1	at Auburn
F1	W	7-0	San Diego State
F3	(rainout)		Florida
F18	L	4-3	UCLA
F25	L	6-1	at California
M3	W	5-2	Michigan
M10	L	4-3	*California
M11	L	4-0	*Stanford
M17	L	4-1	vs. Baylor~
M19	L	4-3	*at Oregon
M22	W	4-3	Loyola Marymount
M31	W	4-1	* at Wash. State
A2	L	4-3	at *Washington
A7	W	7-0	*Utah
A8	W	7-0	*Colorado
A14	W	4-3	*at Arizona State
A15	W	5-2	*at Arizona
A18	L	4-3	Pepperdine
A22	W	4-3	*at UCLA
A26	W	4-0	%Washington St.
A27	W	4-3	%Arizona State
A28	L	4-3	%California
M13	L	4-2	^Denver

\* Pac-12 match  
~ at Indian Wells, Calif.  
% at Libbey Park (Ojai, Calif.)  
^ NCAA Regionals (Lubbock, Texas)

## 2016 (13-6, 7-1 conference)

Head Coach: Richard Gallien  
Pac-12 Finish: 2nd  
Postseason: NCAA Second Round  
National Finish: No. 21

J20	W	4-3	UCSB
J29	L	4-3	Pepperdine
J30	W	6-2	Saint Mary's
F6	W	6-1	at South Florida
F7	L	7-0	at Florida
F19	L	6-1	California
F25	L	5-2	at UCLA
M4	W	5-2	*Washington
M5	W	5-1	*Washington St.
M11	(rainout)		*at Stanford
M12	(rainout)		*at California
M16	W	5-2	Oklahoma State
M19	W	4-0	Baylor~
M25	W	7-0	*Oregon
A1	W	4-0	at *Utah
A3	W	6-1	*at Colorado
A8	(rainout)		*Arizona
A10	W	4-0	*Arizona State
A17	W	4-1	*UCLA
A20	L	4-2	*Stanford %
M13	W	4-0	^UNLV
M14	L	4-2	^at Pepperdine

\* Pac-12 match  
~ at Indian Wells, Calif.  
% at Libbey Park (Ojai, Calif.)  
^ NCAA Regionals (Malibu, Calif.)

## 2015 (25-3, 10-0 conference)

Head Coach: Richard Gallien  
Pac-12 Finish: Champion  
Postseason: NCAA Semifinal  
National Finish: No. 2

J14	W	7-0	LMU~
J24	W	4-0	@Denver
J25	W	4-0	@Pepperdine
J30	W	4-3	at Pepperdine
F6	L	4-2	&at Virginia
F7	W	4-0	&Kentucky
F8	W	4-2	&Michigan
F14	W	4-3	Vanderbilt
F15	W	7-0	Texas
F20	W	4-3	at California
F21	W	5-2	at Saint Mary's
M4	L	4-3	at UCLA
M11	W	7-0	San Diego State
M15	W	6-1	*at Wash. St.
M21	W	4-3	*California
M22	W	6-1	*Stanford
M27	W	6-1	*at Oregon
M28	W	7-0	*at Washington
A3	W	5-2	*at Arizona
A4	W	5-2	*at Arizona State
A10	W	7-0	Utah
A11	W	7-0	*Colorado
A16	W	4-3	*UCLA
M9	W	4-0	^Youngstown St.
M10	W	4-0	^Virginia Tech
M15	W	4-0	%Texas Tech
M17	W	4-1	#at Baylor
M18	L	4-0	#Vanderbilt

\* Pac-12 match  
~ at Manhattan Beach Country Club  
@ ITA Kick-Off Weekend (Marks Stadium)  
& ITA National Team Indoors (Charlottesville, Va.)  
^ NCAA Regionals (Marks Stadium)  
# NCAA Championships (Waco, Texas)

## 2014 (18-8, 7-3 conference)

Head Coach: Richard Gallien  
Pac-12 Finish: 4th  
Postseason: NCAA Round of 16  
National Finish: No. 16

J24	W	4-0	@North Texas
J25	W	4-0	@Saint Mary's
J30	W	5-2	Pepperdine
F7	W	4-3	&Alabama
F8	L	4-0	&UCLA
F9	L	4-1	&Florida
F15	W	7-0	UC Irvine ~
F18	W	7-0	at SDSU
F22	W	6-1	California
F27	W	6-1	Saint Mary's
M2	W	4-3	at Texas
M7	L	5-2	UCLA
M11	L	4-3	Baylor
M14	W	4-0	*at Colorado
M16	W	4-1	*at Utah
M23	W	4-0	*at Washington
M28	W	4-0	*Oregon
M29	W	4-1	*Washington St.
A4	L	4-0	*at California
A5	L	4-0	*at Stanford
A11	W	4-2	*Arizona State
A12	W	4-0	*Arizona
A18	L	4-1	*at UCLA
M9	W	4-0	^Idaho
M10	W	4-2	^Michigan
M15	L	4-3	#Georgia

\* Pac-12 match  
@ ITA Kick-Off Weekend (Marks Stadium)  
~ at Laguna Niguel Racquet Club  
& ITA National Team Indoors (Charlottesville, Va.)  
^ NCAA Regionals (Marks Stadium)  
# NCAA Championships (Athens, Ga.)

## 2013 (23-3, 10-0 conference)



Head Coach: Richard Gallien  
Pac-12 Finish: Champion  
Postseason: NCAA Round of 16  
National Finish: No. 6

J16	W	7-0	UC Irvine
J26	W	6-0	@Akon
J27	W	4-0	@UC Irvine
J31	W	7-0	at Pepperdine
F2	W	7-0	Fresno State
F8	W	4-1	&at Virginia
F9	L	4-3	&North Carolina
F10	W	4-1	&California
F20	W	7-0	San Diego State
F23	L	5-2	at California
M1	W	5-2	at San Diego
M8	W	4-2	at UCLA
M12	W	7-0	Texas
M15	W	7-0	*Colorado
M16	W	7-0	*Utah
M22	W	6-1	*at Washington
M23	W	7-0	*at Wash. St.
M29	W	6-1	*California
M30	W	6-1	*Stanford
A5	W	7-0	*at Arizona State
A6	W	6-1	*at Arizona
A14	W	5-2	*at Oregon
A18	W	6-1	*UCLA
M11	W	4-0	^Sac. State
M12	W	4-0	^UC Irvine
M17	L	4-3	#Stanford

\* Pac-12 match  
@ ITA Kick-Off Weekend (Marks Stadium)  
& ITA National Team Indoors (Charlottesville, Va.)  
^ NCAA Regionals (Marks Stadium)  
# NCAA Championships (Urbana, Ill.)

## 2012 (24-4, 9-1 conference)

Head Coach: Richard Gallien  
Pac-12 Finish: Co-Champion  
Postseason: NCAA Semifinals  
National Finish: No. 4

J20	W	7-0	UC Irvine
J28	W	7-0	@vs. Sac. St.
J29	W	6-1	@at Arizona St.
F2	W	7-0	St. Mary's
F4	W	7-0	Pepperdine
F10	W	4-2	&vs. UNC
F11	W	4-1	&vs. Tennessee
F12	L	4-0	&vs. UCLA
F23	W	7-0	UCSB
F25	W	4-3	California
M1	L	4-3	UCLA
M3	W	6-1	San Diego
M10	W	6-1	*Washington St.
M14	W	4-3	at Texas
M23	W	7-0	*at Utah
M25	W	7-0	*at Colorado
M30	W	7-0	*Oregon
M31	W	7-0	*Washington
A6	W	6-1	*Arizona
A7	W	6-1	*Arizona State
A13	L	4-2	*at Stanford
A14	W	4-3	*at California
A20	W	6-1	*at UCLA
M11	W	4-0	^Fairfield
M12	W	4-1	^Vanderbilt
M17	W	4-1	#Baylor
M19	W	4-2	#Stanford
M21	L	4-3	#UCLA

\* Pac-12 match  
@ ITA Kick-Off Weekend (Tempe, Ariz.)  
& ITA National Team Indoors

*\* Due to NCAA penalty vacating wins recorded by ineligible player, 1 win (Washington conference) became a loss and 4 wins left undecided in 2009 [Original records: 21-3 overall]*

(Charlottesville, Va.)  
^ NCAA Regionals (Marks Stadium)  
# NCAA Championships (Athens,

Ga.)

## 2011 (15-8, 4-4 conference)

Head Coach: Richard Gallien  
Pac-10 Finish: 5th  
Postseason: NCAA Second Round

National Finish: No. 19

J18	W	6-1	Cal State Northridge
J21	W	6-1	Long Beach State
J29	W	4-3	@NC State
J30	L	5-2	@Michigan
F8	W	7-0	San Diego State
F10	W	6-1	South Florida
F13	W	6-1	Texas
F25	W	5-2	at San Diego
M2	L	5-2	at UCLA
M4	W	6-1	*Washington
M10	W	6-1	Fresno State
M12	W	5-2	at Pepperdine
M15	W	4-3	Syracuse
M16	L	4-3	Arizona State
M25	L	5-2	*California
M26	L	6-1	*Stanford
A1	W	7-0	*at Oregon
A2	W	6-1	*at Wash. St.
A8	L	6-1	*at Arizona State
A9	W	(forfeit)	*at Arizona
A15	L	5-2	*UCLA
M14	W	4-1	^St. Mary's
M15	L	4-1	^at California

*\* Due to NCAA penalty vacating wins recorded by ineligible player, 3 wins left undecided in 2008 [Original records: 19-8 overall].*

\* Pac-10 match  
@ ITA Kick-Off Weekend (Ann Arbor, Mich.)  
^ NCAA Regionals (Berkeley, Calif.)

## 2010 (14-10, 5-3 conference)

Head Coach: Richard Gallien  
Pac-10 Finish: 4th  
Postseason: NCAA Second Round  
National Finish: No. 20

J24	W	7-0	Long Beach St.
J25	W	6-1	UC Irvine
J29	W	4-0	@San Diego
J30	W	4-0	@Auburn
F4	W	6-1	Pepperdine
F12	W	5-2	&Clemson
F13	L	4-2	&Duke
F14	L	5-2	&Baylor
F23	W	5-2	at SDSU
F26	L	5-2	California
M3	L	4-3	UCLA
M5	W	7-0	*at Oregon
M9	L	5-2	Baylor
M13	L	4-3	at Arizona State
M17	W	6-1	Fresno State
M26	W	5-2	*Washington
M27	W	7-0	*Washington St.
A3	L	5-2	*at California
A4	3-3 (susp)		*at Stanford
A9	W	5-2	*Arizona State
A10	W	7-0	*Arizona
A16	L	6-1	*at UCLA
A21	L	4-3	*Stanford
M14	W	4-0	^Sac. State
M15	L	4-1	^at California

\* Pac-10 match  
@ ITA Kick-Off Weekend (Marks Stadium)  
& ITA National Team Indoors (Madison, Wisc.)  
+ match completed with doubles point played in Ojai, Calif.  
^ NCAA Regionals (Berkeley, Calif.)

## 2009 (\*16-4, \*7-1 conference)

Head Coach: Richard Gallien  
Pac-10 Finish: \*1st  
Postseason: NCAA Second Round

National Finish: No. 9			
J21	W	6-1	UC Irvine
J28	W	7-0	Long Beach St.
J31	W*	4-0	@Michigan State
F1	W	4-1	@Texas A&M
F13	L	4-3	&Georgia
F14	W*	4-3	&Florida
F15	W*	4-3	&Clemson
F24	W	7-0	San Diego State
M1	W	6-1	Cal Poly
M4	L	4-3	at UCLA
M6	W	7-0	~Oregon
M11	W	5-2	Arizona State
M12	W	7-0	William & Mary
M18	W	6-1	at Pepperdine
M24	W*	5-2	at San Diego
M27	W	4-3	~California
M28	W	5-2	~Stanford
A3	W	7-0	~at Wash. St.
*A4	L*	4-3	~at Washington
A10	W	5-2	~at Arizona
A11	W	4-2	~at Arizona State
A17	W	5-2	~UCLA
M9	W	4-0	^Fairfield
M10	L	4-3	^Washington

~ Pac-10 match  
@ ITA Indoors Qualifying (Marks Stadium)  
& ITA National Team Indoors (Madison, Wisc.)  
^ NCAA Regional at Marks Stadium

## 2008 (\*16-8, 5-3 conference)

Head Coach: Richard Gallien  
Pac-10 Finish: 4th  
Postseason: NCAA Round of 16  
National Finish: No. 11

J16	W	6-1	LMU
J25	W	7-0	UC Irvine
J30	W	7-0	Long Beach St.
J31	W	5-2	Pepperdine
F7	W*	4-3	&Arkansas
F8	L	4-3	&North Carolina
F9	L	4-3	&Georgia
F15	W	7-0	at San Diego St.
F22	W	6-1	at Arizona
F23	W	5-2	at Arizona State
F29	W	6-1	California
M1	L	4-3	Stanford
M7	W	6-1	~Washington
M8	W	7-0	~Washington St.
M13	L	6-1	UCLA
M19	W	5-2	at Texas
M25	W	6-1	San Diego
M27	W	6-1	Fresno State
M28	W	7-0	~Oregon
A4	L	5-2	~at Stanford
A5	L	6-1	~at California
A11	W	5-2	~Arizona State
A12	W	6-1	~Arizona
A18	L	5-2	~at UCLA
M9	W*	4-0	^Marist
M10	W*	4-0	^Pepperdine
M15	L	4-0	#UCLA

~ Pac-10 match  
& ITA National Team Indoors (Madison, Wisc.)  
^ NCAA Regional at Marks Stadium  
# NCAA Championships at Tulsa, Okla.

## 2007 (19-5, 6-2 conference)

Head Coach: Richard Gallien  
Pac-10 Finish: t-2nd  
Postseason: NCAA Round of 16  
National Finish: No. 10

J24	W	7-0	Long Beach State
J27	W	6-1	Pepperdine
F1	W	7-0	at San Diego
F8	W	7-0	Cal Poly
F13	W	7-0	San Diego State

F16	L	5-2	at Stanford
F17	L	5-2	at California
F23	W	5-2	at Pepperdine
M2	W	7-0	*at Wash. St.
M3	W	7-0	*at Washington
M8	W	4-3	at UCLA
M14	W	6-1	Texas
M16	W	4-3	Arizona State
M17	W	7-0	Arizona
M21	W	3-4~	Fresno State
M31	W	7-0	*at Oregon
A6	W	5-2	*at Arizona
A7	W	6-1	*at Arizona State
A13	W	4-3	*California
A14	L	4-3	*Stanford
A21	L	4-3	*UCLA
M12	W	4-0	^Boston Univ.
M13	W	4-0	^Texas
M18	L	4-3	#Miami

\* Pac-10 match  
^ NCAA Regional at Marks Stadium  
# NCAA Championships at Athens, Ga.  
~ USC win following protest of match

## 2006 (21-4, 7-1 conference)

Head Coach: Richard Gallien  
Pac-10 Finish: 2nd  
Postseason: NCAA Semifinals  
National Finish: No. 3

J19	W	7-0	UC Irvine
J20	W	6-1	Long Beach St.
J25	W	7-0	San Diego
F14	W	7-0	at San Diego St.
F17	L	5-2	Stanford
F18	W	4-3	California
F24	W	5-2	at Arizona State
F25	W	6-1	at Arizona
M1	W	6-1	Pepperdine
M10	W	7-0	*Washington
M11	W	6-0	*Washington St.
M15	L	4-3	Baylor
M22	W	6-1	Illinois
M31	W	6-1	*Arizona
A1	W	5-2	*Arizona State
A7	W	5-1	*at California
A8	L	6-1	*at Stanford
A15	W	7-0	*Oregon
A18	W	4-3	UCLA
A22	W	5-2	*at UCLA
M12	W	4-0	^Army
M13	W	4-0	^Long Beach St.
M18	W	4-1	#VCU
M19	W	4-3	#Northwestern
M22	L	4-1	#Miami

\* Pac-10 match  
^ NCAA Regional at Marks Stadium  
# NCAA Championships at Palo Alto, Calif.

## 2005 (19-4, 7-1 conference)

Head Coach: Richard Gallien  
Pac-10 Finish: 2nd  
Postseason: NCAA Quarterfinals  
National Finish: No. 7

J19	W	6-1	Cal Poly
J21	W	7-0	Long Beach St.
F3	W	7-0	at Pepperdine
F16	W	7-0	at San Diego
F23	W	7-0	San Diego State
F25	W	5-2	at California
F26	L	5-2	at Stanford
M9	W	4-3	*UCLA
M11	W	7-0	*at Wash. St.
M12	W	6-1	*at Washington
M16	W	5-2	Texas
M23	W	4-3	TCU
M25	W	6-1	*at Arizona State
M26	W	6-1	*at Arizona
M30	W	5-2	Harvard
A1	W	5-2	*at Oregon
A8	L	4-3	*Stanford
A9	W	4-3	*California
A16	L	5-2	UCLA
M13	W	4-0	^Illinois-Chicago



M14 W 4-0 ^Arizona State  
M19 W 4-3 #UCLA  
M20 L 4-2 #Florida  
\* Pac-10 match  
^ NCAA Regional at Los Angeles  
# NCAA Championships at Athens, Ga.

## 2004 (18-7, 7-1 conference)

Head Coach: Richard Gallien  
Pac-10 Finish: 2nd  
Postseason: NCAA Round of 16  
National Finish: No. 8  
J22 W 7-0 Long Beach St.  
J23 W 6-1 TCU  
J28 W 7-0 UC Irvine  
J30 W 4-3 UCLA  
F5 L 4-3 %Texas A&M  
F6 L 1-6 %BYU  
F7 L 1-6 %Kentucky  
F28 W 7-0 Pepperdine  
M3 W 5-2 \*at UCLA  
M5 W 7-0 \*Oregon  
M9 W 4-3 North Carolina  
M12 W 4-3 \*at Arizona State  
M13 W 5-2 \*at Arizona  
M20 W 5-2 at Texas  
M24 W 5-2 San Diego  
M25 W 7-0 LMU  
A2 L 1-6 at Stanford  
A3 L 2-5 at California  
A9 W 6-1 \*Washington St.  
A10 W 5-2 \*Washington  
A16 W 5-2 \*California  
A17 L 0-7 \*Stanford  
M14 W 4-0 ^American  
M15 W 4-0 ^Arizona  
M20 L 2-4 #UCLA  
\* Pac-10 match  
% ITA Team Champ. at Madison, Wisc.  
@ Matches cancelled due to rain  
^ NCAA Regional at Los Angeles  
# NCAA Championships at Athens, Ga.

## 2003 (22-6, 5-3 conference)

Head Coach: Richard Gallien  
Pac-10 Finish: 4th  
Postseason: NCAA Quarterfinals  
National Finish: No. 5  
J22 W 7-0 Cal Poly  
J24 W 7-0 UC Irvine  
J31 W 4-3 at UCLA  
F6 W 4-3 %Northwestern  
F7 W 5-2 %Georgia  
F8 L 1-5 %Florida  
F15 W 5-2 at Pepperdine  
F21 W 7-0 at Arizona  
F22 W 7-0 at Arizona State  
F26 W 7-0 at San Diego  
F28 W 7-0 San Diego State  
M5 W 5-2 \* UCLA  
M8 W 5-2 \* at Oregon  
M12 W 6-1 Texas  
M19 W 5-2 South Alabama  
M21 W 6-1 Pepperdine  
M28 W 6-1 \* Arizona State  
M29 W 4-3 \* Arizona  
A4 L 2-5 Stanford  
A5 W 4-3 California  
A11 L 1-6 \* at Washington  
A12 W 5-1 \* at Wash. St.  
A18 L 1-6 \* at California  
A19 L 2-5 \* at Stanford  
M9 W 4-0 ^ Sac. State  
M10 W 4-0 ^ Georgia Tech  
M15 W 4-0 # Kansas State  
M16 L 1-4 # California  
\* Pac-10 match  
% ITA Team Champ. at Madison, Wisc.  
^ NCAA Regional at Los Angeles  
# NCAA Championships at Gainesville, Fla.

## 2002 (19-8, 7-1 conference)

Head Coach: Richard Gallien

Pac-10 Finish: 2nd  
Postseason: NCAA Round of 16  
National Finish: No. 11  
J22 W 6-1 UC Santa Barbara  
J24 W 7-0 UC Irvine  
F1 L 2-5 UCLA  
F7 L 2-5 % Notre Dame  
F8 L 3-4 % Northwestern  
F9 W 6-1 % Oklahoma St.  
F15 W 5-2 LMU  
F22 W 6-1 Arizona  
F23 L 3-4 Arizona State  
F27 W 6-1 at Pepperdine  
F28 W 7-0 San Diego  
M7 W 4-3 \* at UCLA  
M8 W 7-0 \* Oregon  
M13 W 7-0 at San Diego St.  
M20 W 6-1 Fresno State  
M22 W 6-1 Pepperdine  
M29 W 5-2 \* at Arizona State  
M30 W 6-1 \* at Arizona  
A5 L 1-6 at Stanford  
A6 L 3-4 at California  
A12 W 5-2 \* Washington  
A13 W 5-2 \* Washington St.  
A19 W 5-2 \* California  
A20 L 2-5 \* Stanford  
M11 W 5-0 ^ Oral Roberts  
M12 W 4-0 ^ Oregon  
M16 L 1-4 # UCLA  
\* Pac-10 match  
% ITA Team Champ. at Madison, Wisc.  
^ NCAA Regional at Los Angeles  
# NCAA Championships at Stanford, Calif.

## 2001 (20-8, 6-2 conference)

Head Coach: Richard Gallien  
Pac-10 Finish: 2nd (tie)  
Postseason: NCAA Quarterfinals  
National Finish: No. 8  
J17 W 7-0 UC Irvine  
J18 W 7-0 Long Beach St.  
J27 W 5-2 \* Arizona  
J28 L 1-6 \* Arizona State  
F7 W 6-0 San Diego State  
F9 W 4-3 Pepperdine  
F15 W 5-0 % Wake Forest  
F16 L 0-7 % Stanford  
F7 L 2-5 % Wake Forest  
F22 W 7-0 San Diego  
F23 W 5-2 \* Oregon  
M3 W 5-2 at UCLA  
M8 W 5-2 William & Mary  
M11 W 6-1 Miami  
M16 W 5-2 at Arizona  
M17 L 1-6 at Arizona State  
M21 L 3-4 at Pepperdine  
M28 W 7-0 LMU  
M30 W 6-1 \* UCLA  
A7 L 0-7 \* at Stanford  
A13 W 4-3 \* at Wash. St.  
A14 W 4-3 \* at Washington  
A20 L 1-6 Stanford  
A21 W 5-2 \* California  
A12 W 4-0 ^ Maryland-Balt. City  
M13 W 4-1 ^ South Alabama  
M17 W 5-1 # Northwestern  
M18 L 0-4 # Georgia  
\* Pac-10 match  
% ITA Team Champ. at Madison, Wisc.  
^ NCAA Regional at Norfolk, Va.  
# NCAA Championships at Stone Mtn., Ga.

## 2000 (18-9, 4-4 conference)

Head Coach: Richard Gallien  
Pac-10 Finish: 4th  
Postseason: NCAA Quarterfinals  
National Finish: No. 11  
J18 W 6-3 UCSB  
J20 W 7-2 UC Irvine  
J28 L 3-6 \* at Arizona State  
J29 W 9-0 \* at Arizona  
F1 W 8-0 LMU

F12 W 7-2 \* at Oregon  
F17 W 7-1 % Tennessee  
F18 L 2-6 % Georgia  
F19 W 5-2 % Notre Dame  
F26 W 5-1 at San Diego St.  
M1 L 4-5 UCLA  
M10 W 6-2 Arizona  
M11 W 6-3 Arizona State  
M15 W 6-2 Illinois  
M22 W 7-2 Fresno State  
M29 W 7-1 Harvard  
M1 L 3-6 \* at UCLA  
A7 L 4-5 California  
A8 L 1-6 Stanford  
A14 W 6-3 \* Washington St.  
A15 W 5-4 \* Washington  
A21 L 3-6 at Stanford  
A22 L 1-5 \* at California  
M13 W 5-0 ^ Maryland-Balt. City  
M14 W 5-2 ^ Arizona  
M18 W 5-2 # Louisiana State  
M19 L 1-5 # Georgia  
\* Pac-10 match  
% ITA Team Champ. at Madison, Wisc.  
^ NCAA Regional at Los Angeles  
# NCAA Championships at Malibu, Calif.

## 1999 (21-9, 7-1 conference)

Head Coach: Richard Gallien  
Pac-10 Finish: 2nd  
Postseason: NCAA Quarterfinals  
National Finish: No. 10  
J21 W 9-0 UC Irvine  
J23 W 9-0 LMU  
J29 W 5-4 \* at Arizona State  
J30 W 6-1 \* at Arizona  
F2 W 7-2 Fresno State  
F8 W 7-2 Colorado  
F13 W 6-3 \* at UCLA  
F18 L 4-5 % William & Mary  
F19 W 5-4 % Arkansas  
F20 L 3-5 % Notre Dame  
F28 W 8-0 UNLV  
M3 L 2-6 UCLA  
M6 W 6-1 Tulsa  
M9 W 5-1 Wisconsin  
M12 W 6-3 Arizona  
M13 L 4-5 Arizona State  
M17 W 8-0 Oklahoma  
M26 L 3-6 at Pepperdine  
M30 W 9-0 Alabama  
A2 L 3-6 California  
A3 L 1-5 Stanford  
A8 W 5-1 \* Washington St.  
A10 W 6-2 \* Washington  
A11 W 5-1 \* Oregon  
A16 L 1-6 \* at Stanford  
A17 W 5-4 \* at California  
M15 W 5-0 ^ Drake  
M16 W 5-1 ^ San Diego  
M20 W 5-4 # Miami  
M21 L 1-5 # Stanford  
\* Pac-10 match  
% ITA Team Champ. at Dallas, Texas  
^ NCAA Regional at Los Angeles  
# NCAA Championships at Gainesville, Fla.

## 1998 (13-11, 3-5 conference)

Head Coach: Richard Gallien  
Pac-10 Finish: 6th  
Postseason: NCAA Regionals  
National Finish: No. 20  
J23 W 8-0 UC Santa Barbara  
J25 W 7-2 Utah  
J30 L 2-7 \* at Arizona  
J31 L 3-6 \* at Arizona State  
F4 W 6-2 Fresno State  
F13 L 4-5 at UCLA  
F19 W 6-3 at San Diego  
F21 W 7-0 San Diego State  
M1 W 5-2 UNLV  
M5 W 5-1 Boise State  
M7 L 4-5 \* UCLA  
M13 L 3-5 Arizona State

M14 W 5-1 Arizona  
M17 L 4-5 Pepperdine  
M28 L 4-5 Kansas  
A5 L 0-6 Stanford  
A9 W 8-1 \* Washington St.  
A10 W 6-2 \* Washington  
A13 W 6-0 \* Oregon  
A17 L 1-8 \* at Stanford  
A18 L 4-5 \* at California  
M15 W 5-4 # Washington  
M16 W 5-1 # San Diego State  
M17 L 1-5 # Pepperdine  
\* Pac-10 match  
# NCAA West Regional at Las Vegas, Nev.

## 1997 (10-16, 0-10 conference)

Head Coach: Richard Gallien  
Pac-10 Finish: 6th  
Postseason: NCAA Regionals  
National Finish: No. 32  
J23 W 9-0 UCSB  
J29 L 4-5 Fresno State  
F5 L 3-5 San Diego  
F11 W 8-1 LMU  
F14 L 2-7 \* at Arizona  
F15 L 3-6 \* at Arizona State  
F20 W 5-2 % Kansas  
F21 L 0-7 % Florida  
F22 L 1-5 % Wake Forest  
M1 W 5-4 at San Diego St.  
M7 L 2-7 \* Arizona State  
M8 L 4-5 \* Arizona  
M13 L 3-6 \* UCLA  
M19 W 5-4 Boise State  
M20 L 4-5 Pepperdine  
M24 W 7-2 Washington  
M25 W 6-2 Oregon  
A4 L 3-6 \* at California  
A5 L 2-7 \* at Stanford  
A11 L 2-7 \* at UCLA  
A14 W 5-4 UNLV  
A18 L 1-6 \* Stanford  
A19 L 0-6 \* California  
M9 W 5-2 # Fresno State  
M10 W 5-1 # San Diego  
M11 L 2-5 # Pepperdine  
\* Pac-10 match  
% ITA Team Champ. at Madison, Wisc.  
# NCAA West Regional at San Diego, Calif.

## 1996 (16-9, 4-6 conference)

Head Coach: Richard Gallien  
Pac-10 Finish: 4th  
Postseason: NCAA Quarterfinals  
National Finish: No. 18  
J23 W 6-2 UCSB  
J26 W 6-2 Washington St.  
F2 L 1-5 \* at Arizona  
F3 W 7-2 \* at Arizona State  
F14 W 8-1 LMU  
F17 L 1-5 at Pepperdine  
F28 W 9-0 CSUF  
M2 L 4-5 Texas  
M8 W 5-4 \* Arizona State  
M9 L 1-5 \* Arizona  
M14 L 1-5 \* at UCLA  
M19 W 8-1 Princeton  
M21 W 9-0 Washington  
M27 W 8-1 Boise State  
M30 W 5-4 Harvard  
A3 W 6-0 UNLV  
A5 W 5-2 \* California  
A6 L 2-6 \* Stanford  
A12 L 3-5 \* UCLA  
A19 L 1-5 \* at Stanford  
A20 W 6-3 \* at California  
M3 W 6-1 ^ Fresno State  
M4 W 5-3 ^ Arizona State  
M5 W 5-2 ^ California  
M18 L 2-5 # Duke  
\* Pac-10 match  
^ NCAA West Regional at Malibu, Calif.  
# NCAA Championships at Tallahassee, Fla.

**1995 (8-14, 2-8 conference)**

Head Coach: Ed Burt (Interim)

Pac-10 Finish: 6th

Postseason: NCAA First Round

National Finish: No. 22

J18	W	9-0	Fresno State
J27	W	6-3	Washington St.
F10	L	4-5	* Arizona
F11	W	5-4	* Arizona State
F15	W	7-2	San Diego State
F17	L	1-5	at Pepperdine
F20	W	5-4	San Diego
F23	L	0-6	% Florida
F24	L	4-5	% William & Mary
F25	W	5-4	% Kentucky
M10	L	3-5	* at Arizona State
M11	L	0-6	* at Arizona
M17	L	1-8	at Texas
M18	L	2-7	vs. Duke (@ Texas)

A1	L	1-5	* at UCLA
A8	L	1-5	* at Stanford
A9	L	3-5	* at California
A12	W	5-1	Pacific
A15	W	5-3	* UCLA
A21	L	0-6	* Stanford
A22	L	4-5	* California
M13	L	2-5	# Arizona State

\* Pac-10 match

% ITA Team Indoor Championships

# NCAA Championships at Malibu, Calif.

**1994 (11-13, 2-7 conference)**

Head Coach: Cheryl Woods

Pac-10 Finish: 5th

Postseason: NCAA Second Round

National Finish: No. 19

J27	W	8-0	Washington St.
F11	L	0-5	* at Arizona
F12	L	1-5	* at Arizona State
F16	W	5-3	at San Diego St.
F19	L	2-5	Pepperdine
F23	L	4-5	at San Diego
F25	W	6-1	Washington
F27	L	0-6	Texas
M3	L	0-6	% Georgia
M4	W	5-0	% Virginia
M5	W	5-3	% Clemson
M11	L	2-5	* Arizona State
M12	W	6-3	* Arizona
M18	W	6-3	* UCLA
M30	W	5-1	UNLV
A1	L	0-6	* California
A2	L	0-6	* Stanford
A4	L	4-5	UCSB
A5	W	5-4	Pacific
A9	L	0-6	* at UCLA
A13	W	5-4	Fresno State
A15	L	(forfeit)*	at Stanford
M13	W	6-0	# Clemson
M14	L	2-5	# Georgia

\* Pac-10 match

% ITA Team Indoor Championships

# NCAA Championships at Athens, Ga.

**1993 (15-9, 3-7 conference)**

Head Coach: Cheryl Woods

Pac-10 Finish: 5th

Postseason: NCAA First Round

National Finish: No. 10

J20	W	9-0	Loyola Marymount
J28	W	7-0	UNLV
J31	W	5-1	Miami
F9	W	8-0	Fresno State
F12	W	5-1	* Arizona
F13	W	5-4	* Arizona State
F22	W	6-3	San Diego State
F25	W	5-1	% Pepperdine
F26	L	1-5	% Florida
F27	W	5-1	% UCLA
M9	W	8-1	at UCSB

M12	L	3-6	* at Arizona State
M13	L	3-6	* at Arizona
M17	W	9-0	New Mexico
M18	W	5-1	* UCLA
M23	W	7-0	Washington
M30	W	8-0	Harvard
A2	L	0-7	* at Stanford
A3	L	4-5	* at California
A10	L	4-5	* at UCLA
A13	W	6-0	San Diego
A16	L	2-7	* Stanford
A17	L	1-5	* California
M12	L	1-5	# Texas

\* Pac-10 match

% ITA Team Indoor Championships

# NCAA Championships at Gainseville, Fla.

**1992 (8-12, 1-9 conference)**

Head Coach: Cheryl Woods

Pac-10 Finish: 6th

Postseason: NCAA Second Round

National Finish: No. 15

J22	W	9-0	Loyola Marymount
J24	W	9-0	Fresno State
F28	W	8-1	UCSB
F4	W	5-4	at Pepperdine
F14	L	1-5	* at Arizona
F15	L	3-6	* at Arizona State
F19	L	4-5	at San Diego St.
F22	W	5-4	San Diego
M7	L	0-6	* at Stanford
M7	L	4-5	* at California
M13	W	5-3	* UCLA
M17	L	4-5	Kentucky
M23	W	7-2	Pacific
M27	L	4-5	* Arizona State
M28	L	1-5	* Arizona
A3	L	1-5	* California
A4	L	1-5	* Stanford
A11	L	2-5	* at UCLA
M13	W	6-2	# Kentucky
M14	L	0-5	# Florida

\* Pac-10 match

# NCAA Championships at Stanford, Calif.

**1991 (7-18, 0-10 conference)**

Head Coach: Cheryl Woods

Pac-10 Finish: 6th

Postseason: None

National Finish: No. 24

J23	W	9-0	Fresno State
J31	W	7-2	LMU
F11	W	7-2	UCSB
F15	L	2-5	* at Arizona State
F16	L	4-5	* at Arizona
F19	W	7-2	Long Beach St.
F20	L	1-5	Pepperdine
F24	L	3-6	at San Diego
F28	L	3-5	% Indiana
M1	L	2-5	% Wisconsin
M2	L	2-5	% William & Mary
M9	L	4-5	at Texas
M10	L	4-5	vs. Oklahoma St. (at Texas)

M15 L 1-5 \* UCLA

M18 W 5-4 Yale

M29 L 4-5 \* Arizona

M30 L 3-6 \* Arizona State

A1 W 6-3 Pacific

A5 L 0-6 \* at Stanford

A6 L 0-6 \* at California

A9 W 6-3 at UC Irvine

A13 L 1-5 \* at UCLA

A16 L 3-5 San Diego State

A19 L 1-5 \* Stanford

A20 L 3-6 \* California

\* Pac-10 match

% ITA Team Indoor Championships

**1990 (19-8, 5-5 conference)**

Head Coach: Cheryl Woods

Pac-10 Finish: 3rd (tie)

Postseason: NCAA Quarterfinals

National Finish: No. 7

J17	W	5-4	Utah
J23	W	7-2	USIU
J25	W	9-0	Long Beach State
F3	W	6-3	at San Diego State
F15	W	8-1	at Pepperdine
F20	W	7-1	UC Irvine
F23	W	7-2	* at Arizona
F24	W	5-4	* at Arizona State
M1	W	5-1	% William & Mary
M2	L	0-6	% Florida
M3	W	5-2	% California
M10	W	5-4	* UCLA
M16	W	6-3	Trinity
M17	W	6-3	Texas
M19	W	8-1	Yale
M23	W	6-3	San Diego
M30	L	3-6	Oklahoma State
M31	W	6-3	* Arizona State
A1	W	6-3	* Arizona
A6	L	3-6	* California
A7	L	1-5	* Stanford
A11	W	6-2	UC Santa Barbara
A14	L	4-5	* at UCLA
A20	L	4-5	* at California
A21	L	2-7	* at Stanford
M10	W	7-2	# Tennessee
M11	L	2-5	# Florida

\* Pac-10 match

% ITA Team Indoor Championships

# NCAA Championships at Gainesville, Fla.

**1989 (16-7, 6-4 conference)**

Head Coach: Cheryl Woods

Pac-10 Finish: 3rd (tie)

Postseason: NCAA Quarterfinals

National Finish: No. 6

J26	W	9-0	Long Beach State
J30	W	9-0	USIU
F18	W	5-4	* at Arizona State
F19	W	6-3	* at Arizona
F22	W	9-0	UC Irvine
F23	W	9-0	Fresno State
F25	W	9-0	Loyola Marymount
M1	W	5-4	UC Santa Barbara
M4	W	5-3	at Texas
M9	W	5-4	at Pepperdine
M11	W	5-1	* UCLA
M29	W	5-3	& Oklahoma State
M30	L	2-5	& Georgia
A1	W	5-4	* Arizona
A2	W	7-2	* Arizona State
A6	L	3-5	Pepperdine
A8	L	3-6	* Stanford
A9	L	4-5	* California
A15	L	3-6	* at UCLA
A22	W	5-2	* at California
A23	L	1-5	* at Stanford
M11	W	7-1	# Arizona State
M12	L	4-5	# UCLA

\* Pac-10 match

&amp; Oklahoma State Tournament

# NCAA Championships at Gainesville, Fla.

**1988 (19-5, 7-3 conference)**

Head Coach: Dave Borelli

Pac-10 Finish: 2nd

Postseason: NCAA Semifinals

National Finish: No. 3

J15	W	7-0	Long Beach State
J16	W	7-2	UC Santa Barbara
J27	W	9-0	Loyola Marymount
F18	W	8-1	Florida
F20	W	6-3	* Arizona State
F21	W	7-2	* Arizona
F23	W	5-4	* UCLA
F28	W	8-1	at Indiana
M1	W	6-3	at Kentucky
M3	W	7-2	% Trinity
M4	W	6-3	% Miami
M5	L	3-5	% Florida
M10	W	8-1	Texas
M24	L	2-7	* Stanford
M25	W	5-3	* California

A5 W 7-0 USIU

A9 L 4-5 \* at Arizona

A10 W 5-4 \* at Arizona State

A16 L 1-5 \* at Stanford

A17 W 5-4 \* at California

A29 W 6-3 \* at UCLA

M12 W 5-1 # BYU

M13 W 5-3 # Kentucky

M14 L 1-5 # Stanford

\* Pac-10 match

% ITA Team Indoor Championships

# NCAA Championships at UCLA

**1987 (14-13, 4-6 conference)**

Head Coach: Dave Borelli

Pac-10 Finish: 4th

Postseason: NCAA First Round

National Finish: No. 14

J17	W	8-1	Long Beach State
J28	W	9-0	Loyola Marymount
J29	W	6-3	at Pepperdine
F12	W	5-4	at UC Irvine
F17	W	8-0	USIU
F20	L	2-7	& Florida
F21	L	4-5	& Miami
F22	W	7-2	& Clemson
M7	L	4-5	* at Arizona State
M8	L	4-5	* at Arizona
M10	W	8-1	Pacific
M12	W	5-4	Oklahoma State
M14	L	3-6	* at UCLA
M17	W	7-2	San Diego State
M26	W	9-0	Iowa
M28	W	6-3	* Arizona
M29	W	6-3	* Arizona State
A3	W	6-3	* at California
A4	L	3-6	* at Stanford
A10	L	4-5	at San Diego State
A13	L	2-7	at Trinity
A14	L	2-7	at Texas
A17	L	3-6	* Stanford
A18	L	3-6	* California
A21	L	3-6	Indiana
M2	W	6-3	* UCLA
M13	L	0-9	# Stanford

\* Pac-10 match

&amp; Miami Invitational

# NCAA Championships at UCLA

**1986 (22-3, 7-1 conference)**

Head Coach: Dave Borelli

Pac-West Finish: 1st (tie)

Postseason: NCAA Finals

National Finish: No. 2

J22	W	7-2	Long Beach State
J24	W	9-0	at Pepperdine
J25	W	8-1	at UCSB
F11	W	7-2	UC Irvine
F16	W	6-3	California
F20	L	4-5	San Diego State
F28	W	6-3	Pacific
M4	W	9-0	UC Santa Barbara
M7	W	8-1	Pepperdine
M9	W	9-0	* at UCLA
M12	W	7-2	Texas
M15	W	8-1	* at Arizona
M16	W	5-1	* at Arizona State
M21	W	8-1	at San Diego State
A4	W	6-3	* Stanford
A7	W	7-2	USIU
A13	W	6-3	* Arizona State
A15	W	6-3	Trinity
A19	L	4-5	* at Stanford
A22	W	7-2	* Arizona
A29	W	6-3	* UCLA
M15	W	8-1	# Texas A&M
M16	W	5-1	# Arizona State
M17	W	6-3	# Trinity
M18	L	4-5	# Stanford

\* Pac-West match

# NCAA Championships at Austin, Texas

**1985 (33-2, 13-1 conference)**

Head Coach: Dave Borelli

WCAA Finish: 1st (tie)

Postseason: NCAA Champion



## National Finish: No. 1

J25	W	9-0	at Cal State Fullerton
J27	W	9-0	at UC Santa Barbara
J29	W	7-2	at Pepperdine
F1	W	8-1	& Clemson
F2	W	6-3	& Florida
F3	W	5-4	& Miami
F14	W	8-1	* at Long Beach St.
F16	W	9-0	USIU
F20	W	9-0	Cal State Fullerton
F22	W	7-2	UC Irvine
F27	W	9-0	UC Santa Barbara
M1	W	8-1	* San Diego State
M3	W	9-0	* California
M5	W	8-1	* UCLA
M9	W	7-2	* at Arizona State
M10	W	6-3	* at Arizona
M15	W	8-1	* Long Beach State
M16	W	7-2	Pacific
M20	W	6-3	Pepperdine
M24	W	7-2	* Arizona State
M27	W	5-4	* Stanford
M29	W	6-3	* at San Diego State
M30	W	8-1	Harvard
A10	W	9-0	Indiana
A12	W	5-4	% Northwestern
A13	W	5-1	% Florida
A14	L	4-5	% Stanford
A20	L	4-5	* at Stanford
A21	W	5-3	* at California
A23	W	5-4	* Arizona
M1	W	6-3	* at UCLA
M16	W	8-1	# Arizona State
M17	W	9-0	# San Diego State
M18	W	9-0	# California
M19	W	6-3	# Miami

\* conference match  
& Miami Invitational  
% Texas Invitational  
# NCAA Championships at Oklahoma City, Okla.

## 1984 (26-7, 13-2 conference)

Head Coach: Dave Borelli			
WCAA Finish: 2nd			
Postseason: NCAA Finals			
National Finish: No. 2			
J17	W	6-3	USIU
J27	W	8-1	Pacific
J31	W	9-0	* at CSUF
F1	W	6-3	* at San Diego State
F3	W	9-0	* San Diego
F7	L	4-5	Pepperdine
F14	W	8-1	* at Long Beach St.
F17	W	7-2	& Clemson
F18	L	4-5	& Florida
F19	L	4-5	& Miami
F23	W	9-0	* Cal State Fullerton
F25	W	5-4	* at Arizona
F26	W	7-2	* at Arizona State
M3	W	7-2	* at UCLA
M7	W	9-0	North Carolina
M9	W	9-0	* Long Beach State
M10	W	8-1	California
M13	L	3-6	Texas
M20	W	5-4	at Pepperdine
M30	W	7-2	* Arizona State
M31	W	9-0	Harvard
A3	W	8-1	UC Santa Barbara
A7	L	4-5	* Stanford
A12	W	5-4	* San Diego State
A14	L	2-7	* Stanford
A15	W	7-2	California
A19	W	9-0	UC Irvine
A20	W	8-1	* UCLA
A23	W	8-1	* Arizona
M12	W	8-1	# Harvard
M13	W	7-2	# Miami
M14	W	5-4	# Trinity
M15	L	0-9	# Stanford

\* conference match  
& Miami Invitational  
# NCAA Championships at Los Angeles

## 1983 (31-0, 13-0 conference)

Head Coach: Dave Borelli

## WCAA Finish: 1st

Postseason: NCAA Champion			
National Finish: No. 1			
F3	W	9-0	San Diego
F9	W	8-1	UC Irvine
F11	W	7-2	California
F14	W	9-0	* at Cal State Fullerton
F15	W	9-0	UC Santa Barbara
F17	W	9-0	* Long Beach State
F22	W	6-3	* UCLA
F25	W	9-0	Michigan
F26	W	7-2	* at Arizona
M3	W	9-0	% Miami
M4	W	8-1	% South Carolina
M5	W	5-4	% Stanford
M6	W	5-4	% Trinity
M9	W	8-1	Pepperdine
M10	W	9-0	Texas
M12	W	8-1	* at Arizona State
M20	W	7-2	at Pepperdine
M24	W	5-4	* Stanford
M29	W	9-0	* at Long Beach State
A2	W	8-1	Harvard
A8	W	9-0	* Arizona State
A13	W	8-1	* San Diego State
A14	W	5-4	* at UCLA
A17	W	8-0	* Arizona
A18	W	7-2	* at San Diego State
A26	W	9-0	* Cal State Fullerton
A29	W	7-2	at California
M14	W	9-0	# Pepperdine
M15	W	7-2	# California
M16	W	8-1	# Stanford
M17	W	8-1	# Trinity

\* conference match  
% Nike Invitational  
% NCAA Championships at Albuquerque, N.M.

## 1982 (22-5, 11-1 conference)

Head Coach: Dave Borelli			
WCAA Finish: 1st (tie)			
Postseason: NCAA Semifinals			
National Finish: No. 4			
J26	W	9-0	at Pepperdine
J30	W	9-0	Pacific
F12	W	9-0	* at Cal State Fullerton
F16	W	9-0	* at Long Beach State
F19	W	9-0	* Arizona State
F21	W	8-1	California
F25	W	9-0	* Long Beach State
F26	W	7-2	* at San Diego State
M4	W	9-0	% Miami
M5	L	2-7	% UCLA
M6	W	8-1	% Indiana
M7	W	7-2	% Trinity
M8	W	7-2	* Cal State Fullerton
M19	L	4-5	* at UCLA
M22	W	7-2	Colorado
A3	W	8-1	* at Arizona
A4	W	7-2	* at Arizona State
A14	W	8-1	UC Irvine
A17	L	4-5	at Stanford
A21	W	8-1	* Arizona
M13	W	9-0	* San Diego State
A30	W	7-2	* UCLA
M13	W	9-0	# Pepperdine
M13	W	8-1	# South Carolina
M13	L	4-5	# UCLA
M13	L	3-6	# Trinity

\* conference match  
% Nike Invitational  
# NCAA Championships at Salt Lake City, Utah

## 1981 (33-1, 13-0 conference)

Head Coach: Dave Borelli  
WCAA Finish: 1st

## Postseason: AIAW Semifinals

National Finish: No. 3			
F10	W	8-1	UC Santa Barbara
F12	W	5-4	at Pepperdine
F14	W	7-2	* Long Beach State
F17	W	7-2	* San Diego
F20	W	8-1	* at Cal State Fullerton
M13	W	9-0	* at Arizona
M14	W	9-0	* at Arizona State
M17	W	7-2	* at San Diego State
M19	W	8-1	Colorado
M22	W	8-1	Northwestern
M26	W	9-0	% Florida
M27	W	8-1	% Indiana
M28	W	7-2	% Trinity
M29	W	7-2	% Stanford
A2	W	7-2	at Texas
A3	W	9-0	^ Texas Tech
A4	W	7-2	^ Clemson
A5	W	7-2	^ Trinity
A8	W	6-3	* at Long Beach St.
A10	W	6-3	* UCLA
A18	W	5-4	Stanford
A21	W	7-2	* Arizona
A28	W	6-3	* San Diego State
A30	W	8-1	UC Irvine
M1	W	7-2	* Arizona State
M3	W	6-3	* at UCLA
M5	W	8-1	* Cal State Fullerton
M8	W	5-4	at Stanford
M9	W	8-1	at California
M12	W	8-1	BYU
J3	W	7-2	# Princeton
J4	L	1-8	# Florida
J5	W	6-3	# Arizona
J6	W	5-4	# BYU

\* conference match

% Nike Invitational

^ Matches played at Austin, Texas

# AIAW Nationals

## 1980 (30-0, 11-0 conference)

Head Coach: Dave Borelli			
WCAA Finish: 1st			
Postseason: AIAW Champion			
National Finish: No. 1			
W	8-1	^ Cal State Fullerton	
W	9-0	^ Pepperdine	
W	6-0	^ BYU	
F26	W	9-0	at UC Irvine
F28	W	9-0	* Long Beach State
M4	W	9-0	at Pepperdine
M8	W	8-1	* at UCLA
M11	W	9-0	* at Cal State Fullerton
M12	W	8-1	Yale
M21	W	9-0	* at Arizona State
M22	W	9-0	* at Arizona
M25	W	7-2	% Trinity
M26	W	7-2	% Stanford
M27	W	6-3	% Florida
M28	W	9-0	% UCLA
M29	W	7-2	% BYU
A4	W	8-1	Stanford
A8	W	7-2	* at Long Beach St.
A10	W	6-3	* at San Diego St.
A18	W	8-1	at Stanford
A30	W	9-0	* Arizona State
M3	W	7-2	Pepperdine
W	8-1	UC Santa Barbara	
W	8-1	* San Diego St.	
M13	W	9-0	* UCLA
W	8-1	* Cal State Fullerton	
W	9-0	# Indiana	
W	8-1	# Rollins	
W	7-2	# Trinity	
W	9-0	# Florida	

\* conference match

^ Ed Doty Invitational

% Nike Invitational

# AIAW Nationals

## 1979 (20-1, 7-1 conference)

Head Coach: Dave Borelli  
WCAA Finish: 1st  
Postseason: AIAW Champion  
National Finish: No. 1

M5	W	6-3	* San Diego State
M7	W	8-1	UC Santa Barbara
M10	W	7-2	* UCLA
M12	W	6-3	Pepperdine
M15	W	8-1	* at Long Beach St.
M23	W	9-0	San Diego
M24	W	6-3	Colorado
A2	W	9-0	BYU
A4	W	8-1	* at San Diego St.
A7	W	6-3	Stanford
W	9-0	* at CSUF	
A16	W	8-1	* Long Beach State
A18	W	8-1	UC Irvine
A21	W	5-4	at Stanford
M1	W	9-0	* CSUF
M5	L	4-5	* at UCLA
W	8-1	Cal Poly Pomona	
J5	W	8-1	# Pepperdine
J6	W	9-0	# South Florida
J7	W	8-1	# Rollins
J8	W	8-1	# Stanford

\* conference match

# AIAW Nationals

## 1978 (16-1, 8-0 conference)

Head Coach: Dave Borelli			
WCAA Finish: 1st			
Postseason: USTA Champion/AIAW Finals			
National Finish: No. 1/No. 2			
Non-Conference: (5-0)			
M13	W	9-0	* at Cal State Fullerton
M16	W	8-1	Pepperdine
W	9-0	* Long Beach St.	
A3	W	7-2	* Cal St Fullerton
W	6.5-2.5	* at Long Beach St.	
A11	W	7-2	Trinity
A15	W	7-2	* at UCLA
A18	W	8-1	Florida
A21	W	5-4	at Stanford
A25	W	9-0	* San Diego St.
M2	W	8-1	BYU
W	5-4	* San Diego St.	
M6	W	6-3	* UCLA
W	9-0	# San Diego	
W	5-4	# Rollins	
W	9-0	# Florida	
L	4-5	# Stanford	

\* conference match

# AIAW Nationals

## 1977 (17-0, 8-0 conference)

Head Coach: Dave Borelli			
WCAA Finish: 1st			
Postseason: AIAW/USTA Championships			
National Finish: No. 1			
F22	W	9-0	* at Long Beach State
F25	W	7-2	Pepperdine
M2	W	7-2	UC Irvine
M7	W	9-0	* at Cal State Fullerton
M13	W	8-1	at UCSB
M19	W	7-2	* at UCLA
M22	W	9-0	* San Diego State
M28	W	7-2	* at Long Beach State
A1	W	6-3	* at San Diego State
A9	W	6-3	* UCLA
A11	W	9-0	Odessa College
A14	W	9-0	San Diego
A16	W	7-2	Stanford
A18	W	7-2	BYU
A27	W	5-4	at UC Irvine
M3	W	8-1	* Cal State Fullerton
M14	W	6-3	at Stanford

\* conference match



## TROJANS CURRENTLY IN THE PROS

Kaitlyn Christian	Rianna Valdes
Maria Sanchez	Giuliana Olmos
Danielle Lao	Angela Kulikov
Sabrina Santamaria	

## Opponent Series Records

(with year of first match in parentheses)

Opponent	W	L	Opponent	W	L
Akron (2013)	1	0	North Texas (2014)	1	0
Alabama (1999)	2	0	Northwestern (1981)	5	1
American (2004)	1	0	Notre Dame (1999)	1	3
Arizona (1980)	56	15	Odessa (1977)	1	0
Arizona State (1980)	57	26	Oklahoma (1999)	4	1
Arkansas (1999)	1*	0	Oklahoma State (1987)	4	3
Army (2006)	1	0	Oral Roberts (2002)	1	0
Auburn (2010)	1	1	Oregon (1997)	24	2
Baylor (2006)	5	6	Pacific (1982)	9	0
Boise State (1996)	3	0	Pepperdine (1977)	43*	22
Boston University (2007)	1	0	Princeton (1981)	2	1
Brigham Young (1977)	8	1	Rice (2017)	1	0
Cal Poly Pomona (1979)	1	0	Rollins (1978)	3	0
Cal Poly SLO (2003)	5	0	SMU (2019)	0	1
Cal State Fullerton (1977)	22	0	Sacramento State (2003)	4	0
Cal State Northridge (2011)	2	0	Saint Mary's (2011)	10	0
California (1981)	41	41	San Diego (1977)	28*	4
Clemson (1981)	7*	1	San Diego State (1977)	47	4
Colorado (1979)	14	0	San Francisco (2022)	1	0
Denver (2015)	2	1	South Alabama (2001)	2	0
Drake (1999)	1	0	South Carolina (1982)	3	1
Duke (1995)	0	3	South Florida (1979)	3	0
Fairfield (2009)	2	0	Stanford (1977)	21	70
Florida (1978)	9*	14	Syracuse (2011)	1	0
Fresno State (1989)	18	1	Tennessee (1990)	3	0
Georgia (1989)	1	9	Texas (1981)	17	8
Georgia Tech (2003)	1	0	Texas A&M (1986)	2	2
Harvard (1983)	8	0	TCU (2004)	2	0
Hawaii (2019)	4	0	Texas Tech (1981)	2	0
Hawaii Pacific (2022)	1	0	Trinity (1978)	13	2
Idaho (2014)	1	0	Tulsa (1999)	1	0
Illinois (2000)	2	0	UC Irvine (1977)	29	0
Illinois-Chicago (2005)	1	0	UCLA (1977)	51	51
Illinois State (2019)	1	0	UC Santa Barbara (1977)	26	3
Indiana (1980)	5	2	UNLV (1993)	8	0
Iowa (1987)	1	0	USIU (1984)	7	0
Kansas (1997)	1	1	Utah (1990)	11	1
Kansas State (2003)	1	0	Vanderbilt (2012)	2	1
Kentucky (1988)	6	2	Virginia (1994)	2	1
Long Beach State (1977)	36	0	VCU (2006)	1	0
Louisiana State (2000)	1	0	Virginia Tech (2015)	1	0
Loyola Marymount (1987)	20	0	Wake Forest (1997)	1	2
Marist (2008)	0*	0	Washington (1993)	25*	5
Maryland-Baltimore Cty. (2000)	2	0	Washington State (1994)	26	2
Miami (1982)	10	4	William & Mary (1990)	3	3
Michigan (1983)	4	1	Wisconsin (1991)	2	1
Michigan State (2009)	0*	0	Youngstown State (2015)	1	0
New Mexico (1993)	1	0	Yale (1980)	3	0
North Carolina (1984)	3	2	Program Record	*831-327	
North Carolina State (2011)	1	1			

\* Due to NCAA penalty vacating wins recorded by ineligible player, 3 wins in 2008 left undecided; 1 win in 2009 became a loss, and 4 wins in 2009 left undecided.

[Pre-Sanction records vs. opponents: Arkansas 2-0, Clemson 8-1, Florida 10-14, Marist 1-0, Michigan State 1-0, Pepperdine 44-20, San Diego 29-4, Washington 25-4; Pre-Sanction program record: 831-327]

## ITA HALL OF FAME



Former Trojan Anna Maria Fernandez-Ruffels was named to the 2021 ITA Women's Collegiate Tennis Hall of Fame Class. While at USC, Fernandez-Ruffels was a four-time All-American (1979-82) and helped to lead the Trojans to back-to-back national team championships in 1979 and 1980. In 1981, Fernandez-Ruffels went on to win the AIAW Singles National Championship and was awarded the Honda-Broderick Award, which is presented annually to the nation's best collegiate women's tennis player. Also in 1981, she was named the Tennis Magazine College Player of the Year.

Professionally, Fernandez-Ruffels won five WTA titles in doubles and reached a career high doubles ranking of No. 44. In singles play, she ranked as high as No. 19.

In 2010, former USC player Barbara Hallquist DeGroot and coach Dave Borelli were among the class of six former student-athletes and coaches to be inducted into the ITA Women's Collegiate Hall of Fame in a ceremony held on the William and Mary campus. Borelli -- former USC coach and current coach at TCU -- won seven national collegiate championships as coach at USC. Barbara Hallquist DeGroot was a four-time All-American who captured two national collegiate singles titles as a Trojan.

David Borelli served as women's tennis coach at USC from 1974 to 1988, winning seven national team championships and earning NCAA National Collegiate Coach of the Year honors in 1981. As an undergraduate, Borelli played on the USC men's tennis team, earning the USC Outstanding Senior Scholar Athlete Award in 1974. He began his coaching career while attending USC Law School, from which he earned a J.D. in 1977. While at USC, Borelli guided individual players to five national collegiate singles titles and one doubles title; 25 of his players earned a total of 56 All-America honors. He went on to work as a USTA professional tour coach, mentoring such Top 100 players as Mardy Fish in their rookie careers. In 2002, Borelli became head coach of women's tennis at Texas Christian University, leading his teams from No. 56 to No. 15 in the national rankings. Coach of the TCU men's team from 2006-2010, Borelli returned as head coach of the TCU women's team in July 2010.

The first woman to receive a full athletic scholarship at USC, Barbara Hallquist DeGroot captured the national collegiate singles title in both 1976 and 1977 and played on four national championship teams under coach David Borelli. Ranked No. 1 in Southern California as a junior player, Hallquist won two national USTA junior titles, and nine national USTA titles overall. She was a co-recipient of the USTA Girls' Sportsmanship Trophy in 1975. At USC, Hallquist was a four-time All-American, named Outstanding Female Senior Student-Athlete in 1979 and winning the USC Post Graduate Scholarship Award. Turning pro after college and attaining a career high world ranking of No. 30, she competed in all four Grand Slam events and reached the quarterfinals in singles at the 1980 U.S. Open. From 1985-88, Hallquist served as USC assistant coach, helping guide the team to the 1985 NCAA team championship.