



2019 USC WOMEN'S TENNIS

2019 USC WOMEN'S TENNIS

2018-19 WOMEN'S TENNIS ROSTER

NAME	R/L	HT	YR	EXP	HOMETOWN (HIGH SCHOOL / COLLEGE)
Constance Branstine	R	5-9	JR	1V	Orange, Calif. (Villa Park HS / UC Irvine)
Alexa Corcoleotes	R	5-10	SO	1V	Mountain View, Calif. (K12 Academy)
Salma Ewing	R	5-9	FR	HS	Lakewood, Calif. (Laurel Springs)
Estella Jaeger	R	5-7	FR	HS	Delbrueck, Germany (ISP International)
Angela Kulikov	R	5-7	JR	2V	Sun Valley, Calif. (Connections Academy)
Ana Neffa	R	5-7	SO	TR	Key Biscayne, Fla. (St. Thomas University)
Rianna Valdes	R	5-7	JR	2V	Boca Raton, Fla. (Allendale Academy)
Sydney Van Alphen	R	5-6	SO	1V	Newport Beach, Calif. (Connections Academy)
Becca Weissmann	R	5-7	SO	TR	Loveland, Colo. (Connections Academy / LSU)
Danielle Willson	R	5-11	FR	HS	Newport Beach, Calif. (Corona del Mar HS)

HEAD COACH: Alison Swain (2nd season)

ASSISTANT COACH: Chris Wootton (2nd season)

VOLUNTEER ASSISTANT: Rachel Manasse (1st season)

PRONUNCIATION GUIDE

Constance **Branstine**
bran-STEIN

Alexa **CORCOLEOTES**
cor-co-lee-0-tis

Salma **EWING**
YOU-ing

Estella **JAEGER**
YAY-ger

Angela **KULIKOV**
KOO-lee-kov

Becca **Weissmann**
WISE-man



2018 POSTSEASON



2018 PAC-12 CHAMPIONSHIPS

Wednesday-Sunday, April 25-19
Ojai, Calif.



2018 NCAA REGIONALS

Friday-Saturday, May 11-12
Sites To Be Determined

2018 NCAA CHAMPIONSHIPS

Thursday-Monday, May 17-28
Wake Forest Tennis Complex | Winston-Salem, NC

TABLE OF CONTENTS

Quick Facts / Media Notes..... 3
 Alison Swain, Head Coach 4
 Coaching Staff 5
 Marks Tennis Stadium / Support Staff .. 6
 2018 Women of Troy 7
 2017 Results 13
 2017 Match-By-Match Results..... 14
 All-Time Honors 17
 USC Letterwinners 21
 History & National Championships..... 22
 Year-By-Year 23
 Opponent Series Records 28

MEDIA NOTES

Interviews: To arrange an interview with coaches or athletes, please contact Katie Ryan (213-740-8480) at least one day in advance. Check with the USC Sports Information Office regarding the team practice schedule. Players can be made available after practice sessions and following home matches.

Trojans On The Web: Current women's tennis information, as well as news, features and updated statistics can be found on the web at: usctrojans.com



For more information on the Pac-12 Conference, go to: pac-12.org



For more information on all NCAA Division I sports and championships, go to: naaa.com

For more information on the Intercollegiate Tennis Association (ITA), go to: itatennis.com

** Due to NCAA penalty vacating wins recorded by ineligible player, 3 wins left undecided in 2008; 1 win [conference] becomes a loss and 4 wins left undecided in 2009. [Original records: USC all-time program record 768-279 (.734); USC all-time conference 299-186 (.616); all-time NCAA record 72-33 (.686)]*

QUICK FACTS

University Information

Location:..... Los Angeles, Calif.
 Founded:..... 1880
 Enrollment:.... 43,000 (19,000 undergrad)
 President: C.L. Max Nikias
 Athletic Director: Lynn Swann
 Senior Woman Administrator: Donna Heinel
 National Affiliation: NCAA Division I
 Conference:..... Pac-12
 Nickname: Trojans or Women of Troy
 Fight Song: "Fight On"
 Colors:..... Cardinal & Gold
 Home Court: Marks Tennis Stadium
 Capacity:..... 1,000

Tennis Information

Head Coach:..... Alison Swain
 Alma Mater:..... Williams College '01
 Record at USC:..... 13-10 (.565)
 (Entering her second season)
 Overall Record:..... 237-38 (.889)
 11 seasons
 Swain's Phone: (213) 740-3828
 Assistant Coach:..... Chris Wootton
 Vol. Asst. Coach: Rachel Manasse

 2018 Overall Record:..... 13-10
 2018 Pac-12 Record:..... 5-5
 2018 Postseason: No Postseason
 Final Team Ranking: No. 49
 Letterwinners Returning/Lost: 6 / 2
 Newcomers: 4

Tennis History

All-Time Program Record:..... *760-280
 (.735)
 All-Time Conference Record:..... *298-187
 (.614)
 All-Time NCAA Record: *70-34
 (.673)
 National Team Championships: 6
 (1977, 1978, 1979, 1980, 1981, 1985)
 National Singles Championships: 5
 (1976, 1977, 1978, 1981, 1983)
 National Doubles Championships:..... 2
 (1980, 2013)
 Conference Championships: 11
 (1977, 1978, 1979, 1980, 1981, 1982, 1983, 1985, 1986, 2009, 2012, 2013, 2015)
 NCAA Appearances..... 35
 Consecutive NCAA Appearances..... 0
 Record Consecutive NCAA Appearances..... 26 (1991-2017)

Sports Information

Women's Tennis SID: Katie Ryan
 SID Phone: (213) 740-8480
 Cell Phone: (949) 874-5475
 SID Fax:..... (213) 740-7584
 E-mail: katierya@usc.edu
 Website:..... www.usctrojans.com
 Sports Information Address:
 USC Sports Information
 3501 Watt Way, Heritage Hall 103
 Los Angeles, CA 90089

Credits

The 2018 Women's Tennis Media Guide was prepared by Katie Ryan, Assistant Sports Information Director. Special thanks to John McGillen for team photos, actions and head shots, and also to the Figges for head shots. Action photography also courtesy of Dan Avila, Heston Quan, Gary Rus, Sam Haythorn, Hali Helfgott, Bill Kallenberg, John McGillen, Jim Sabo, Eddie Siegel, Michael Sugarman, Jon SooHoo, Po-He Tseng and Troy Witt.



ALISON SWAIN

Head Coach
2nd Season

8-Time DIII NCAA Championship Coach

Coaching Staff



Alison Swain, who built a women's tennis dynasty at Williams College by leading the Ephs to 8 NCAA Division III team championships, including in 2017, was named the women's head coach at USC by Trojan athletic director Lynn Swann on June 7, 2017.



"We are delighted and excited to welcome Alison Swain to the Trojan Family," said Swann. "She is a proven winner as a head coach. Winning a national championship at any level is difficult to do; winning 8 of them like Alison has done in a 10-year span is beyond impressive. We are confident that she can bring the Women of Troy to that championship level.

"She has a vision and a plan for our program. She is an educator and a developer of tennis players, of scholar-athletes and of women. She will create a supportive and healthy culture for our program that will lead to success in the classroom, in life and on the tennis court."

Said Swain: "I would first like to thank Lynn Swann, (USC associate athletic director) Scott Jacobson and the entire search committee for the incredible opportunity to join the USC family. USC has an exceptional athletics tradition, but more importantly the university truly values creating an overall amazing experience for its student-athletes in the classroom, on the court and beyond.

"I have had an incredible 10 years at Williams and am so grateful for the opportunity I was given to coach high-caliber student-athletes and be part of a close-knit and driven athletic department. It is exciting for me to enter into a similar environment at USC. I am honored to have this opportunity to work with the players to create an exciting future

for USC women's tennis. I can't wait to meet the entire team and get started."

Swain, 38, posted an .889 winning percentage (224-28) in her 10 seasons (2008-17) at Williams, including 48-2 in NCAA tournament play. She led the Ephs to 8 NCAA team championships, including in each of her first 6 seasons (an NCAA Division III record and tying Stanford for most consecutive at any level) as well as in 2015 (going 25-0) and the just-concluded 2017 campaign. In her other 2 seasons, Williams was the NCAA runnerup in 2016 and was third in 2014. She also helped Williams win 5 conference championships.

She was named the 2013 ITA National Division III Coach of the Year, was a 5-time conference Coach of the Year and twice (2010-13) was the ITA Northeast Coach of the Year. She produced 2 NCAA champion double teams (Juli Raventos and Linda Shin in 2015 and 2016) and a trio of NCAA singles runners-up, along with 18 All-Americans, 2 ITA National Senior Players of the Year and an ITA National Most Improved Senior of the Year.

She also was an assistant professor of physical education at Williams.

"What an inspired choice!" said Timothy Russell, chief executive officer of the Intercollegiate Tennis

Association. "USC has made a triple crown

appointment. With Alison Swain, the Trojans have a great coach with a championship pedigree, a fabulous teacher with a proven commitment to the highest levels of academic achievement and a splendid mentor of extraordinary character. Alison is a proven leader in the world of college tennis, including as a magnificent member of the new ITA Board. She is poised for an incredibly successful future."

Swain was the second person in any division to win an NCAA tennis team championship as a player and a coach. She co-captained Williams' 2001 NCAA championship squad (the first in school history). She won All-New England Small College Athletic Conference honors and was named a Scholar-Athlete All-American.

After graduating from Williams in 2001 with a degree in American studies, she taught eighth grade and coached the girls' tennis team at Woodward Academy in College Park, Ga., for 3 years (2002-04), winning the region each year and getting to the state finals in 2004. She received a master's degree in education from Washington in 2006 and then taught upper schoolers at Telluride (Colo.) Mountain School for a year (2006-07) before returning to her alma mater to take the Williams head job in the summer of 2007.

Swain is a native of Bainbridge, Wash. She is a member of the board of directors of the ITA through June of 2018. She and her mother, Sue Swain, were the nation's top-ranked mother/daughter doubles team in 2003, winning both the National Mother/Daughter Indoor and Grass Court doubles tourneys. She has been an instructor in indoor cycling and downhill skiing, as well as a white water rafting guide.

SWAIN'S CAREER COACHING RECORD

School	Year	Wins	Loss	Pct.	NCAA Finish	Nat'l Rank	Conf. Record
Williams	2008	21	3	.875	NCAA Champs 1st		6-0
Williams	2009	21	2	.913	NCAA Champs 1st		7-1
Williams	2010	23	3	.885	NCAA Champs 1st		8-0
Williams	2011	22	3	.880	NCAA Champs 1st		5-1
Williams	2012	24	2	.923	NCAA Champs 1st		7-0
Williams	2013	23	4	.852	NCAA Champs 1st		6-2
Williams	2014	23	3	.885	NCAA Semis 3rd		7-1
Williams	2015	25	0	1.000	NCAA Champs 1st		7-0
Williams	2016	22	4	.846	NCAA Finals 2nd		6-1
Williams	2017	20	4	.833	NCAA Champs 1st		7-1
USC	2018	13	10	.565	----	No. 49	5-5
TOTAL	11 Years	??	??	???	----		???
Williams Totals	10 Years	224	28	.889			



CHRIS WOOTTON

Assistant Coach

2nd Season



Chris Wootton will begin his second season as the USC women's tennis assistant coach.

Wootton arrived at Troy after most recently coaching one year at Williams College under Swain. He coached the women's tennis team to the 2017 NCAA Division III national team championship. Wootton coached five All-Americans during his year at Williams. In the 2017 season, he coached the Ephs to a 20-4 overall record (.833). In addition to winning the national championship, Williams claimed the New England Small College Athletic Conference title for the third year in a row.

Before coaching the Ephs, Wootton was the men's graduate assistant for the University of Texas at Tyler, where he coached the Patriots to an 18-10 overall record and their eighth American Southwest Conference title. That season, UTT reached the Round of 16 at the NCAA Division III National Championships.

Before becoming a coach, Wootton competed for the men's tennis team at Mississippi College (2011-13) and the University of Texas at Tyler (2013-15) where he graduated with a bachelor's degree in business administration. While competing at UTT, Wootton was named an All-American in doubles in 2015. He is the oldest All-American in NCAA history in any sport across all divisions as he earned All-American status at age 39.

Wootton taught tennis throughout the South between the years of 1995 and 2011, when he coached over 50 NCAA college tennis players and seven ATP/WTA touring pros. In 2009, he was named the Director of Tennis at a 14-court public tennis facility in Jackson, Miss.

He played professionally for six years collecting both singles and doubles wins over top 100 ATP players.

As a youth player, Wootton was ranked in the Top 25 in both singles and doubles in the Boys 18's in the USTA in 1994. He earned the Reebok U.S. National Tennis Player of the Year Award in 1991 at the age of 15.

Wootton, age 41, is married to his wife, Robin. He has two daughters, Christiane, 19 and Isabel, 16.

Coaching Staff

RACHEL MANASSE

Volunteer Asst. Coach

1st Season



Rachel Manasse, who spent the last year as the head men's and women's tennis coach at Occidental College in Los Angeles, has been named the new USC women's tennis volunteer assistant coach.

"We are thrilled to have Rachel joining our coaching staff," said Swain. "Not only does she bring several years of college coaching experience, she was also a nationally ranked doubles and singles player during her college career. I'm confident she will be a great addition to our program."

Manasse arrives at Troy after most recently coaching one year as the head coach of both the men's and women's tennis programs at Occidental College. During her tenure with the Tigers, both of her teams were regionally ranked in the West for Division III. The men's team closed out the year with the No. 16 rank after Manasse brought in the No. 20 Division III men's recruiting class in the country, while the women finished the season with the No. 18 rank. In addition, both programs were named ITA All-Academic teams.

Before coaching at Occidental, Manasse was an assistant coach for the Claremont-Mudd-Scripps women's tennis team for three years. While coaching the Athenas, her team went 75-9 overall and 31-1 in Southern California Intercollegiate Athletic Conference (SCIAC) play. In addition to winning three SCIAC Championships, the Athenas competed in the NCAA Division III tournament each year, including a third place finish in 2015.

Manasse also brings a wealth of strength and conditioning knowledge as she is a certified strength and conditioning specialist by the National Strength and Condition Association and worked as a strength and conditioning coach during her time at Claremont-Mudd-Scripps.

Before coaching at the collegiate level, Manasse was the Director of Operations at RAMP Tennis Academy in Carson, Calif. and was also a tennis instructor at RAMP Tennis Academy and the Manhattan Country Club in Manhattan Beach, Calif.

Manasse graduated from California State University Long Beach in 2012 with a degree in nutrition and dietetics and a minor in chemistry. She was a member of the 49ers women's tennis team and was nationally ranked in both singles and doubles. After her collegiate career, Manasse played professionally where she earned one WTA point in doubles.



Support Staff

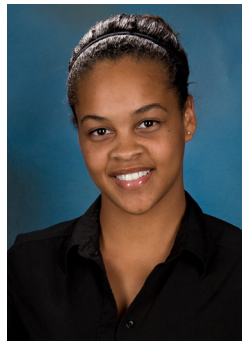
SUPPORT STAFF



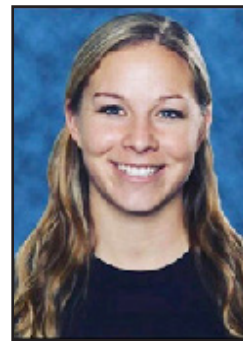
KATIE RYAN
Women's Tennis Sports
Information Director



PHILIP SIORDIA
Tennis
Director of Operations



CATHERINE HILL
Women's Tennis
Athletic Trainer



DARIEN PYKA
Women's Tennis
Strength Coach



WHITNEY ROTROCK
Women's Tennis
Academic Counselor

DAVID X. MARKS TENNIS STADIUM



The USC men's and women's tennis teams have called the David X. Marks Tennis Stadium home since its construction in 1971. This season, Trojan tennis sees its home revamped and renovated, bringing the venue up to date and in line with the impressive accomplishments of both programs. USC broke ground on the new Buntmann Family Tennis Center on Feb. 24, 2015, starting an impressive renovation project with the goal of elevating Marks Tennis Stadium to be on par with the best facilities in the country by creating an inviting, elegant, bright and safe training and competition environment.

The Buntmann Family Tennis Center entrance and lobby now welcomes fans and visitors and puts on display the rich history of USC tennis. To improve the building functionality and support the tennis program operations, the new Lisa and Douglas Goldman Family Student-Athlete Learning Studio supports direct collaboration between coaches, staff and athletes on a daily basis.

The teams are now able to utilize and enjoy brand-new suites with lockers, showers, team meeting rooms and lounges. Both teams also have access to a new training room, a stringing storage area and a large multi-purpose room. To better accommodate and enhance the spectator experience, new spectator shade canopies has been added, a new elevator to the seating area has been installed.

In addition to the lead gift from the Buntmann family, the renovation was made possible thanks to financial support from the Lisa and Douglas Goldman family, the Fritz. B Burns Foundation, John Shea and Michael Uytensu.

The Buntmann Family Tennis Center is just the latest of a string of improvements made at Marks Stadium. During winter of 2006, a sixth court was added to the main stadium, allowing for dual-match competition to be played out entirely in front of fans within the 1,000-seat venue.

A new and much-anticipated addition was made in May 2005 with the installation of a \$300,000 LED Daktronic interactive scoreboard, emblazoned with a list of all national championships won by the USC men's and women's tennis programs. Fans can now follow each match point-for-point from their stadium seat and online at uscstrojans.com.

The stadium also underwent renovations during the summer of 2002. Seven hundred chair-back seats were added to replace the bleachers on the baselines and the courts were all repainted and lined.

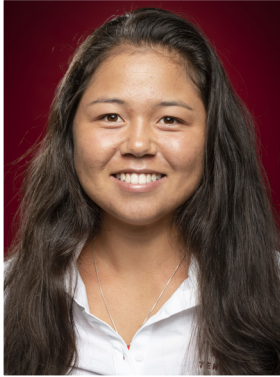
Two of the courts are named after famous USC alumni and Wimbledon singles champions, Alex Olmedo and Stan Smith. The center court is named for USC's 13 Grand Slam doubles champions – Byron Black, Bob Falkenburg, Luke Jensen, Murphy Jensen, Rick Leach, Bob Lutz, Gene Mako, Olmedo, Rafael Osuna, Dennis Ralston, Raul Ramirez, Ted Schroeder and Smith. Plaques honoring Trojan legends Dick Leach and George Toley also adorn the entrance of Marks Stadium.

The stadium was dedicated in 1973 when former Trojan stars Alex Olmedo, Stan Smith, Dennis Ralston and Bob Lutz held a tennis exhibition. The 1974 men's NCAA Tournament was held at Marks Stadium (USC finished second).



RIANNA VALDES

Senior
Boca Raton, Fla.
Allendale Academy



Highest Career Singles Rank: #48 (Jan. 5, 2016)
Highest Career Doubles Rank: #23 (Preseason 2017-18)
Partner: Gabby Smith

2018-19 SEASON: Rianna Valdes enters her senior season at USC.

2017-18 SEASON: Rianna Valdes concluded her junior season ranked No. 105 in the nation in singles and No. 58 in the nation in doubles with her partner, Angela Kulikov...Earned recognition as an All-Pac-12 Honorable Mention...Named an ITA Scholar Athlete and was a member of USC's ITA All-Academic Team... Selected to the Pac-12 All-Academic Second Team... Finished the season 14-7 in singles and 8-5 in dual matches...Played primarily in the No. 2 position [4-3]...Also played at No. 3 [4-1] and No. 4 [0-1]...Clinched three matches for USC against California in February, Oregon in March and Colorado in April...In doubles, went 13-11 overall and 8-9 in dual matches with partner Angela Kulikov...Played at the No. 1 position [8-9]...Also paired with Alexa Corcoleotes [1-1] and Gabby Smith [1-1]...In the Fall, Valdes competed in the ITA All-American Championships, ITA Southwest Regionals and was undefeated in the Roberta Alison Fall Classic.

2016-17 SEASON: Valdes finished her sophomore campaign ranked No. 41 in the nation in doubles with her partner, former Trojan Jessica Failla...Selected to the All-Pac-12 Academic Second Team and was a member of USC's ITA All-Academic Team...Won Pac-12 Player of the Week on March 6 for the first time in her career after clinching the upset over No. 4 Michigan...Had two other clinchers versus Rice and San Diego State...Went 11-12 overall in singles and 8-10 in dual matches...Played primarily in the No. 3 position [5-7]...Also competed in the No. 2 position [0-1], No. 4 [2-2] and No. 5 [1-0]...In doubles, went 13-8 overall and 7-6 in dual matches with partner Jessica Failla...Played primarily at the No. 1 slot [5-3], but also played at No. 2 [2-3]...Also partnered with Angela Kulikov [1-0] and Madison Westby [1-1]...In the Fall, Valdes competed at the UNLV Invitational and the ITA Southwest Regionals...Entered the season ranked No. 83 in the nation in singles.

2015-16 SEASON: Valdes finished her freshman season ranked No. 116 in the nation in singles...Went 15-10 overall in singles, going 7-6 in dual matches...Played primarily in the No. 6 position [7-3]...Also competed at No. 5 [0-3]...Had the clinching win in one dual match [Oregon]...In doubles, went 15-4 overall with a 5-4 mark in dual matches...Was 9-0 both overall and in dual matches with Jessica Failla...Also went 5-3 overall and 2-1 in dual matches with Madison Westby and 1-1 overall with Giuliana Olmos...In the fall, competed in the Riviera/ITA All-American Championships, ITA Southwest Regionals, Jack Kramer Invitational and the National Collegiate Tennis Classic...Entered her sophomore season ranked No. 31 in the nation in doubles in ITA pre-season rankings.

HIGH SCHOOL: Valdes attended Allendale Academy... Was ranked in the top 500 in the WTA... Best victories were wins over Marcela Zacarias and #179 WTA Patricia Tig... At the junior level, recorded wins over Alexa Graham and top-10 World Junior Fanny Stollar.

PERSONAL: Rianna Tei Valdes is the daughter of Pete and Lauri... Has one brother, Joe... Enjoys listening to music and going to the beach in her free time... Favorite foods at Italian and Asian... Majoring in health promotion.



VALDES' CAREER STATISTICS												
Year	SINGLES						DOUBLES					
	Overall			Dual Matches			Overall			Dual Matches		
	W	L	Pct.	W	L	Pct.	W	L	Pct.	W	L	Pct.
2016	15	10	.600	7	6	.539	15	4	.789	11	1	.917
2017	11	12	.478	8	10	.444	15	9	.625	9	7	.563
2018	14	7	.667	8	5	.615	13	11	.542	8	9	.471
TOTALS	40	29	.580	23	21	.523	43	24	.642	28	17	.622



Returning Trojans

ANGELA KULIKOV

Junior
Sun Valley, Calif.
Capistrano Connections



2018-19 SEASON: Angela Kulikov enters her junior season at USC.

2017-18 SEASON: Angela Kulikov finished her sophomore campaign ranked 58 in the nation in doubles with her partner, Rianna Valdes... Selected to the Pac-12 All-Academic First Team...Named an ITA Scholar Athlete and was a member of USC's ITA All-Academic Team... Finished the season 16-12 in singles and 8-7 in dual matches...Played primarily in the No. 4 position [3-6]...also played at No. 3 [2-0] and No. 5 [3-1]...Had three clinching wins for USC against San Diego State, Long Beach State and Arizona in the first round of the Pac-12 Championships...In doubles, went 17-11 overall and

11-9 in dual matches with partner Rianna Valdes...Played at the No. 1 position [8-9]... Also paired with Becca Weissmann [5-1] and Madison Westby [1-1]...In the Fall, Kulikov competed in the USC-USG Challenge and Roberta Alison Fall Classic...Advanced to the ITA Southwest Regionals Quarterfinals and the Battle of the Bay Finals.

2016-17 SEASON: Kulikov concluded her freshman campaign earning ITA Scholar-Athlete status and was a member of USC's ITA All-Academic team...Finished the season 19-13 in singles and 10-9 in dual matches...Played primarily in the No. 6 position [7-4]...Also played at No. 4 [1-0] and No. 5 [2-5]...Clinched two matches for USC against Arizona and Arizona State in the quarterfinals of the Pac-12 Championships... In doubles, went 12-7 overall and 8-4 in dual matches with partner Madison Westby... Played at the No. 3 slot [8-4]...Also partnered with Zoë Katz [0-1], Gabby Smith [3-1], Rianna Valdes [1-0] and Sydney Van Alphen [0-3]...In the Fall, Kulikov went undefeated at the UNLV Invitational in singles winning her respective draw...Also competed at the ITA All-American Championships, ITA Southwest Regional, Jack Kramer Invitational and the National Collegiate Tennis Classic where she reached the semifinals.

HIGH SCHOOL: Kulikov was a member of the 2013 ITF Aarhus Doubles Championship winning team in Denmark...Won the 2013 ITF Deloitte Junior Cup in Denmark...Was a finalist in the USTA G14 National Clay Court Championships in 2012...Ranked No. 7 nationally by USTA in 2012...Was the 2011 USTA G14 Regional Champion.

PERSONAL: Angela Kirsten Kulikov was born on March 31, 1998 in Los Angeles, Calif...Daughter of Vadim Kulikov and Debbie De Jesus...Has one brother, Chris... Enjoys playing football and in the off-season, plays quarterback in a women's flag football league...Coaches her little brother's football team...Lists Rafael Nadal as her biggest sports hero because she admires his attitude and style of play...Her aunt, Riza De Jesus also attended USC...Lists Bridesmaids as her favorite movie and Grey's Anatomy and The Office as her favorite TV shows...Would like to visit New York City and Paris, France...Hopes to play professional tennis upon graduating from USC... Is a cognitive science major.



KULIKOV'S CAREER STATISTICS

Year	SINGLES			DOUBLES								
	Overall	Dual Matches		Overall	Dual Matches							
	W	L	Pct.	W	L	Pct.	W	L	Pct.	W	L	Pct.
2017	19	13	.594	10	9	.526	16	12	.571	10	8	.556
2018	16	12	.571	8	7	.533	17	11	.607	11	9	.550
TOTALS	35	25	.583	18	16	.529	33	23	.589	21	17	.553



CONSTANCE BRANSTINE

Junior
Orange, Calif.
UCI

2018-19 SEASON: Constance Branstine begins her junior season at USC.



2017-18 SEASON: Branstine finished her sophomore season 12-12 in singles and 8-6 in dual matches... Played primarily from the No. 6 position (5-4)... Also played at No. 4 (1-0) and No. 5 (2-2)... Clinched one match for USC against Utah in April... In doubles, went 11-11 with partner Madison Westby... Played at the No. 3 slot (10-9)... Also partnered with Alexa Corcoleotes (0-1) and Sydney Van Alphen (1-1)... In the Fall, Branstine competed at the USTA Pro Circuit, ITA Southwest Regionals, Roberta Alison Fall Classic and Jack Kramer Invitational.

UCI: Branstine competed her freshman season as a member of UC Irvine's women's tennis team... Selected to the 2017 All-Big West First Team in singles and was an honorable mention in doubles... Played at the No. 1 position in both singles and doubles.

HIGH SCHOOL: Branstine was a member of the 2015 Southern California section team that won the USTA National 18's National Team championship... Named the 2016 OC Register Girls' Tennis Player of the Year... Earned All-Orange County First Team honors while competing at Villa Park in 2015 and 2016... Led the Spartans to back-to-back Crestview League team titles... Had a 45-2 record as a senior... Was a five-star blue chip recruit and the No. 24 player in the class of 2016 according to TennisRecruiting.net... Was sixth overall in the Southern California 18's division.

PERSONAL: Constance Grace Branstine was born on May 5, 1997 in Irvine, Calif... Daughter of Bruce and Carol Branstine... Has two sisters, Cassidy and Carson... Cassidy played college tennis at UC Irvine... Her cousin, Freddie Freeman, plays for the Atlanta Braves... Is a communication major.



BRANSTINE'S CAREER STATISTICS

Year	SINGLES			DOUBLES								
	Overall	Dual Matches		Overall	Dual Matches							
	W	L	Pct.	W	L	Pct.	W	L	Pct.			
2017 (UCI)	13	14	.481	8	9	.471	9	15	.375	7	13	.350
2018	12	12	.490	8	6	.571	11	11	.500	0	0	.000
TOTALS	25	26	.490	12	23	.343	20	26	.435	7	13	.350

BECCA WEISSMANN

Junior
Loveland, Colo.
LSU

2018-19 SEASON: Becca Weissmann enters her junior season at USC.



2017-18 SEASON: Weissmann concluded her sophomore season 18-8 in singles and 9-6 in dual matches... Named an ITA Scholar Athlete and was a member of USC's ITA All-Academic Team... Played primarily in the No. 2 position (6-4)... Also played at the No. 3 position (3-2)... Had three clinching wins: San Diego and Loyola Marymount in January and Fresno State in February... In doubles, went 8-7 with partner Gabby Smith... Played at the No. 2 position... Also paired with Angela Kulikov (5-1) and Sydney Van Alphen (3-2)... In the Fall, Weissmann competed in the ITA Southwest Regionals and Roberta Alison Fall Classic... Won her match in the USC-UGA Challenge... Won the

Battle of the Bay Finals at USC.

LSU: Weissmann competed her freshman season as a member of the LSU women's tennis team... Member of LSU's 2016 class, the No. 1 recruiting class in the nation that year... Played primarily in the No. 5 singles position and No. 2 in doubles... Named All-Academic Scholar-Athlete.

HIGH SCHOOL: Weissmann was ranked as the No. 1 player in the state of Colorado and as high as 12th in the nation... Was a five-star blue chip recruit according to TennisRecruiting.net... Won the Colorado 5A state singles title in 2013 as a freshman... Began her high school tennis career with a 34-0 record... Was the U18 Girls Championship winner at the 2013 Florida Open... Won the 2014 Eddie Herr International 16's doubles tournament... Won the Gold Ball at the Alabama Team National Championships... Received the Sportsmanship Award at the 2013 Winter Nationals.

PERSONAL: Rebecca Joy Weissmann was born on October 4, 1997 in Loveland, Colo... Daughter of Jeff and Colleen Weissmann... Has three sisters, Jennifer, Kimberly and Anna, and three brothers, Ryan, Scott and Sam... Has always wanted to go skydiving... Enjoys watching Gossip Girl and This Is Us.



WEISSMANN'S CAREER STATISTICS

Year	SINGLES			DOUBLES								
	Overall	Dual Matches		Overall	Dual Matches							
	W	L	Pct.	W	L	Pct.	W	L	Pct.			
2017 (LSU)	9	13	.409	6	11	.353	11	12	.478	10	10	.500
2018	18	8	.692	9	6	.600	16	10	.615	8	7	.533
TOTALS	27	21	.563	15	17	.469	27	22	.551	18	17	.514



Returning-Trojans

SYDNEY VAN ALPHEN

Junior
Newport Beach, Calif.
Connection Academy



2018-19 SEASON: Sydney Van Alphen enters her junior season at USC.

2017-18 SEASON: Van Alphen finished her sophomore season 5-8 in singles and 0-4 in dual matches...Played at the No. 5 [0-2] and No. 6 [0-2] slots...In doubles, went 4-5 overall and 0-2 in dual matches with Gabby Smith at the No. 2 position...Also paired with Becca Weissmann (3-2) and Constance Branstine (1-1)...In the Fall, Van Alphen competed in the USTA Pro Circuit, USC-UGA Challenge, ITA Southwest Regionals and Roberta Alison Fall Classic.

2016-17 SEASON: Van Alphen concluded her freshman season after enrolling early to compete in the 2017 spring season...Member of USC's ITA All-Academic Team...Went 7-7 overall and 5-6 in dual matches in singles...Played primarily in the No. 6 position (5-5)...Also played at the No.

5 spot [0-1]...Had two clinchers against UC Santa Barbara and Washington State...In doubles, went 0-3 with partner Angela Kulikov and 0-1 with partner Jessica Failla.

HIGH SCHOOL: Van Alphen was the No. 1 ranked girls 18's player in Southern California as of August 2016...Was ranked No. 13 nationally in the girls 18's age group as of June 2016...Won the championship title at both the girls 18's singles USTA Matador Junior Open and the Girl's 18's USTA Regional Championships Las Vegas in 2015...Was a finalist at the 18's singles USTA National Selection Irvine in 2015...In 2016, was named the champion of the Women's Open Glendora, as well as being a finalist at the Oracle ITA Junior Master's Qualifier and the Girl's 18's USTA National Selection Alpine...Placed third in the 2016 USTA Girls 18's National Team Championships and fourth in the 2016 Girls 18's Southern California Sectional Championships...In 2014, she lived in Belgium, where her father was born, for six months. While abroad, she had the opportunity to play in multiple ITF competitions, including the Doubles ITF Heiveld, where she was a finalist.

PERSONAL: Sydney Van Alphen was born on April 30, 1999, in Newport Beach, Calif...Daughter of Marc and Lisa Van Alphen...Has one sister, Morgan...Enjoys watching White Collar and Modern Family...Has always wanted to go skydiving...Would like to visit Australia and Iceland...Majoring in business administration.



VAN ALPHEN'S CAREER STATISTICS

Year	SINGLES			DOUBLES					
	Overall	Dual Matches		Overall	Dual Matches				
	W	L	Pct.	W	L	Pct.	W	L	Pct.
2017	7	7	.500	5	6	.455	0	4	.000
2018	5	8	.385	0	4	.000	4	5	.444
TOTALS	12	15	.444	5	10	.500	4	9	.308

ALEXA CORCOLEOTES

Sophomore
Mountain View, Calif.
K12 Academy



2018-19 SEASON: Alexa Corcoleotes begins her sophomore season at USC.

2017-18 SEASON: Alexa Corcoleotes concluded her freshman campaign 8-9 in singles and 2-5 in dual matches...Played primarily from the No. 6 position (2-4)...also played in the No. 5 slot [0-1]...In doubles, went 2-3 overall...Paired with Constance Branstine (0-1), Rianna Valdes (1-1) and Madison Westby (1-1)...In the Fall, Corcoleotes competed in the Battle of the Bay, ITA Southwest Regionals and Jack Kramer Invitational...Won her match in the USC-UGA Challenge...Went undefeated in the Roberta Alison Fall Classic.

HIGH SCHOOL: In September of 2016, Corcoleotes was ranked the No. 39 player nationally in the Class of 2017...Ranked the No. 365 player in the world by

the International Junior Tennis Federation in February of 2015...Earned first WTA point at the Sacramento 60K in 2017...Won the Gold Ball in doubles at the 2016 Women's Grass Court Nationals and the Silver Ball in doubles at the 2016 Women's Hard Court Nationals...Placed second in singles and first in doubles at the 2014 Girls' 14's USTA Regional Championships...Competed in and reached the semifinals of both singles and doubles tournaments in multiple international events from 2013-15, taking place in Brazil, Canada, Mexico and the United States.

PERSONAL: Alexandra Nicole Corcoleotes was born on October 13, 1998 in Mountain View, Calif...Daughter of Nick and Michelle Corcoleotes...Enjoys listening to The Lacs, Chris Brown and Migos...Lists sushi, pizza and cheeseburgers as her favorite foods...Would like to visit Italy and Greece...Majoring in international relations and global business...Aspires to work in the marketing department at Nike.



CORCOLEOTES' CAREER STATISTICS

Year	SINGLES			DOUBLES					
	Overall	Dual Matches		Overall	Dual Matches				
	W	L	Pct.	W	L	Pct.	W	L	Pct.
2018	8	9	.471	2	5	.286	2	3	.400
							0	0	.000



SALMA EWING

Freshman
Lakewood, Calif.
Laurel Springs



2018-19 SEASON: Salma Ewing begins her freshman season at USC.

HIGH SCHOOL: Ewing was named the #1 recruit in the 2018 tennis recruiting class by Tennis Recruiting Network...Finished fourth place at the 2018 Hard Court Nationals...Qualified and competed in multiple Jr. Grand Slams: the 2018 US Open, and 2017 Wimbledon...Was the 2017 WTA Stellenbosch \$15k Champion...Was a 2016 ITF Costa Rica Grade 1 finalist.

PERSONAL: Salma Ewing was born on August 28, 2000 in Pasadena, CA...Daughter of Reyana and Vincent Ewing...Lists jambalaya, tacos, and cucumber rolls in soy paper as her favorite foods... Has always wanted to skydive and cliff jump...

Hopes to visit Paris, Monaco, and the Netherlands....Aspires to play professional tennis.



ESTELLA JAEGER

Freshman
Delbrück, Germany
ISP International



2018-19 SEASON: Estella Jaeger begins her freshman season at USC.

HIGH SCHOOL: Jaeger won multiple ITF juniors tournaments in both singles and doubles...Was the German Doubles Champion in the winter of 2015 and reached the finals of the German doubles championship in the summer of 2015 and 2016... Placed third in the German Singles Championships in 2015 and 2016...Was nominated for the U15 German National Team in 2015.

PERSONAL: Estella Jaeger was born on April 29, 2000...Daughter of Matthias and Beate Jaeger... Has one sister, Alicia...Aspires to write and publish a book...Majoring is Psychology.





Trojan-Newcomers

ANA NEFFA

Sophomore
Key Biscayne, Fla.
Homeschool



2018-19 SEASON: Ana Neffa begins her sophomore season at USC.

St. THOMAS UNIVERSITY (MIAMI): Neffa did not play tennis at St. Thomas University during her freshman year.

HIGH SCHOOL: Neffa had an ITF Junior ranking of #111 and a WTA ranking of #483 in the world... Earned multiple notable ITF tournament wins including over the #69 and #198 ranked players in the world.

PERSONAL: Ana Neffa was born on January 17, 1997...Daughter of Gustavo Neffa and Rossana De Los Rios...Mother was a professional tennis player from Paraguay and was the only female

tennis representative for Paraguay in the 1992 and 2000 Olympics....Her father was a professional soccer player who played for multiple Paraguayan and Italian teams... Aspires to become a professional tennis player...Majoring in psychology.



DANIELLE WILLSON

Freshman
Corona del Mar, Calif.
Corona del Mar HS



2018-19 SEASON: Danielle Willson begins her freshman season at USC.

HIGH SCHOOL: Willson helped to lead Corona del Mar High school to become the 2017 CIF Champions and Pacific Coast League Champions...Was the 2017 CIF Singles champion...Was named a 2017 and 2018 High School All-American...Was the 2018 Southern California Tennis MVP...Named the 2018 Pacific Coast League MVP...Selected to the All-Pacific Coast League First Team all four years in high school...Named the Corona del Mar High School 2018 Queen Athlete of the Year.

PERSONAL: Danielle Lillian Willson was born on August 1, 1999...Daughter of Marvin Willson and Carol Springstead...Has a brother, Sean and a sister Ali...Lists Roger Federer as her biggest sports

hero...Enjoys participating in community service...Majoring in business.





2018 BREAKDOWN

Overall Record:.....	13-10
Pac-12 Record:.....	5-5
Pac-12 Finish:.....	8th
Home Record:.....	8-3
Away Record:.....	3-4
Neutral Record:.....	2-3

2018 FINAL PAC-12 STANDINGS

School	Conf.	Overall	Final Rank
1. Stanford	9-0	24-3	#1
2. UCLA	9-1	23-6	#10
3. Arizona State	7-3	16-8	#36
4. California	6-4	11-9	#52
5. Washington St.	5-5	21-7	#42
6. Oregon	5-5	16-10	#28
7. Washington	5-5	16-11	#43
8. USC	5-5	13-10	#49
8. Colorado	2-7	9-12	--
10. Utah	1-9	10-14	--
11. Arizona	0-10	9-16	--

2018 RESULTS

Date	Opponent	Result
Jan. 19	UC Santa Barbara	W 5-2
Jan. 28	vs. Rice	W 4-2
Jan. 30	at #15 Auburn	L 4-1
Feb. 1	San Diego State	W 7-0
Feb. 3	vs. #1 Florida	Canceled
Feb. 18	#20 UCLA	L 4-3
Feb. 25	at #18 California	L 6-1
March 3	#4 Michigan	W 5-2
March 10	#12 California*	W 4-3
March 11	#14 Stanford*	L 4-0
March 17	vs. #16 Baylor~	L 4-1
March 19	at #35 Oregon*	L 4-3
March 22	Loyola Marymount	W 4-3
March 31	at Washington State*	W 4-1
April 2	at #35 Washington*	L 4-3
April 7	Utah*	W 7-0
April 8	Colorado*	W 7-0
April 14	at #29 Arizona State*	W 4-3
April 15	at Arizona*	W 5-2
April 18	#13 Pepperdine	L 4-3
April 22	at #22 UCLA*	W 4-3
April 26	Washington State %	W 4-0
April 27	#26 Arizona State%	W 4-3
April 28	#16 California%	L 4-2
May 13	vs. #44 Denver@	L 4-2

Home matches in Bold (at Marks Stadium)
 * Pac-12 match
 ~ at Indian Wells, Calif.
 % Pac-12 Championships (Ojai, Calif.)
 @ NCAA Regionals (Lubbock, Texas)

2017-18 USC WOMEN'S TENNIS INDIVIDUAL RECORDS

SINGLES	#1	#2	#3	#4	#5	#6	DUAL	PAC-12	OVERALL	STREAK
Constance Branstine	--	--	--	1-0	2-2	5-4	8-6	4-3	12-12	W1
Alexa Corcoleotes	--	--	--	--	0-1	2-4	2-5	1-2	8-9	L1
Angela Kulikov	--	--	2-0	3-6	3-1	--	8-7	2-4	16-12	L1
#39 Gabby Smith	11-7	--	--	--	--	--	11-7	5-3	23-14	L1
#105 Rianna Valdes	--	4-3	4-1	0-1	--	--	8-5	4-3	14-7	L2
Sydney Van Alphen	--	--	--	--	0-2	0-2	0-4	0-2	5-8	L5
Becca Weissmann	--	6-4	3-2	--	--	--	9-6	3-2	18-8	L3
Madison Westby	--	1-0	4-3	4-4	2-4	--	11-11	4-5	18-16	W2
Totals	11-7	11-7	13-6	8-11	7-10	7-10	57-51	23-24	114-86	
DOUBLES	#1	#2	#3	DUAL	PAC-12	OVERALL	STREAK			
Branstine/Corcoleotes	--	--	--	--	--	0-1	L1			
Branstine/Van Alphen	--	--	--	--	--	1-1	L1			
Branstine/Westby	--	--	10-9	10-9	4-4	11-11	L1			
Corcoleotes/Valdes	--	--	--	--	--	1-1	L1			
Corcoleotes/Westby	--	--	--	--	--	1-1	L1			
#58 Kulikov/Valdes	8-9	--	--	8-9	2-6	11-9	W1			
Kulikov/Weissmann	--	--	--	--	--	5-1	L1			
Kulikov/Westby	--	--	--	--	--	1-1	L1			
Smith/Valdes	--	--	--	--	--	1-1	W1			
Smith/Van Alphen	--	0-2	--	0-2	0-2	0-2	L2			
Smith/Weissmann	--	8-7	--	8-7	1-2	8-7	L4			
Smith/Westby	--	--	--	--	--	2-1	L1			
Weissmann/Van Alphen	--	--	--	--	--	2-1	L1			
Totals	8-9	8-9	10-9	26-27	7-14	45-39				

2017 ORACLE/ITA FINAL RANKINGS

TEAM RANKINGS

- Stanford
- Vanderbilt
- North Carolina
- Duke
- Georgia Tech
- Texas
- Georgia
- Ole Miss
- Texas Tech
- UCLA
- Florida
- South Carolina
- Pepperdine
- Oklahoma State
- Northwestern
- Florida State
- Miami
- Kansas
- Tulsa
- Illinois

49. USC

SINGLES RANKINGS

- Astra Sharma, Vanderbilt
- Arianne Hartono, Ole Miss
- Bianca Turari, Texas
- Makenna Jones, North Carolina
- Estela Perez-Somarriba, Miami
- Ashley Lahey, Pepperdine
- Samantha Harris, Duke
- Gabriela Knutson, Syracuse
- Anastasia Rychagova, Kansas
- Fernanda Contreras, Vanderbilt
- Mayar Sherif Ahmed, Pepperdine
- Paige Hourigan, Georgia Tech
- Ena Shibahara, UCLA
- Andrea Lazaro, Florida International
- Aliona Bolsova Zadoinov, Fla. Atlantic
- Anna Danilina, Florida
- Katarina Jokic, Georgia
- Gabriela Talaba, Texas Tech
- Luisa Stefani, Pepperdine
- Stacey Fung, Washington

39. Gabby Smith, USC
 105. Rianna Valdes, USC

DOUBLES RANKINGS

- Hourigan/Jones, Georgia Tech
- Hamlin/McCarthy, Duke
- Aney/Graham, North Carolina
- Contreras/Sharma, Vanderbilt
- Babic/Blanco, Oklahoma State
- Arbuthnott/Gordon, Stanford
- Hartono/Bortles, Ole Miss
- Knutson/Rameriz, Syracuse
- Larner/Lipp, Northwestern
- Harris/Chen, Duke
- Davis/Carter, Wake Forest
- Hart/Fleming, UCLA
- Christofi/Coppoc, Georgia
- Golovin/Richardson, LSU
- John-Baptiste/Hattingh, Arizona St.
- Proctor/Kauffman, Winthrop
- Sanford/Daavettilla, North Carolina
- Stefani/Sherif Ahmed, Pepperdine
- Khmelnitckaia/Rychagova, Kansas
- Wiktorin/Rogers, North Carolina St.

58. Kulikov/Valdes, USC

TROJANS IN THE 2017-18 ITA NATIONAL RANKINGS...

	Pre/S13	N15	J3	J17	J24	J31	F7	F14	F20	F27	M6	M13	M20	M27	A3	A10	A17	A24	M3M23/M30	
USC	--	--	--	--	--	--	--	--	48	32	47	NR	41	39	40	41	47	49	50	49
Constance Branstine	--	--	--	.	--	.	.	.	--	--	--	--	--	--
Alexa Corcoleotes	--	--	--	--	--	--	--	--	--	--	--	--	--	--	--	--
Angela Kulikov	--	--	--	--	--	.	.	.	--	--	--	--	--	--
Gabby Smith	14	35	23	.	30	.	37	.	57	.	35	48	36	40	35	39
Rianna Valdes	--	--	--	92	98	91	90	99	105
Sydney Van Alphen	--	--	--	--	--	.	--	--	--	--	--	--	--	--	--	--
Becca Weissmann	--	--	--	--	--	--	--	--	--	--	--	--	--	--
Madison Westby	--	85	102	.	110	.	--	--	--	--	--	--	--	--	--	--
Kulikov/Westby	46	--	--	--	--	.	--	--	--	--	--	--	--	--	--	--
Kulivov/Valdes	--	46	26	.	39	.	43	.	43	.	32	46	46	48	42	58
Smith/Valdes	23	--	--	--	--	--	--	--	--
Valdes/Westby	--	--	--	--	--	.	--	--	--	--	--	--	--	--	--	--

* denotes only team rankings released on particular date



USC 6, San Diego 1

January 14, 2018 - Marks Stadium (Los Angeles, Calif.)

DOUBLES

#46 Valdes/Kulikov (USC) def. Anderson/Morales (USD) - 6-1
Smith/Weissmann (USC) def. Torres/Chow (USD) - 6-1
Westby/Branstine (USC) def. Garcia/Nonnenmacher (USD) - 6-4
Order of Finish: 2, 1, 3

SINGLES

#35 Gabby Smith (USC) def. Nicole Anderson (USD) - 6-2, 6-0
Becca Weissmann (USC) def. Daniela Morales (USD) - 7-6 (6) , 6-3*
#85 Madison Westby (USC) def. Gemma Garcia (USD) - 3-6, 6-1, 6-1
Angela Kulikov (USC) def. Maria-Paula Torres (USD) - 5-7, 6-2, 6-1
Carolin Nonnenmacher (USD) def. Sydney Van Alphen (USC) - 4-6, 6-4, 10-6
Constance Branstine (USC) def. Sophia Chow (USD) - 6-3, 6-2
Order of Finish: 1, 6, 2, 3, 4, 5*

USC 5, Loyola Marymount 2

January 19, 2018 - Marks Stadium (Los Angeles, Calif.)

Doubles

#46 Valdes/Kulikov (USC) def. #10 Miroshnichenko/Voracek (LMU) - 6-4
Smith/Weissmann (USC) vs. Anderson/Romeka (LMU) - 4-5 susp.
Westby/Branstine (USC) def. Tumosa/De Lucas (LMU) - 6-0
Order of Finish: 3, 1
USC wins doubles point

Singles

#29 Veronica Miroshnichenko (LMU) def. #35 Gabby Smith (USC) - 6-4, 5-7, 1-0 (13-11)
Becca Weissmann (USC) def. #107 Eva Marie Voracek (LMU) - 6-1, 7-5*
Rianna Valdes (USC) def. Siobhan Anderson (LMU) - 6-1, 6-3
#85 Madison Westby (USC) def. Anna Romeka (LMU) - 6-1, 3-6, 6-4
Angela Kulikov (USC) def. Camila Tumosa (LMU) - 6-2, 6-0
Yesica De Lucas (LMU) def. Sydney Van Alphen (USC) - 4-6, 6-1, 7-6 (2)
Order of Finish: 5, 3, 2, 4, 6, 1*

UC Santa Barbara 6, USC 1

January 20, 2018 - Marks Stadium (Los Angeles, Calif.)

Doubles

Dubavets/Da Silveira (UCSB) def. #46 Valdes/Kulikov (USC) - 6-4
Smith/Weissmann (USC) def. Volodko/Lev Ari (UCSB) - 6-3
Yamada/Atanasson (UCSB) def. Westby/Branstine (USC) - 6-3
Order of Finish: 2, 3, 1
UCSB wins doubles point

Singles

#35 Gabby Smith (USC) def. Palina Dubavets (UCSB) - 6-2, 3-6, 1-0 (10-8)
Natalie Da Silveira (UCSB) def. Becca Weissmann (USC) - 6-2, 7-5*
Amanda Atanasson (UCSB) def. #85 Madison Westby (USC) - 6-1, 7-5
Elizaveta Volodko (UCSB) def. Rianna Valdes (USC) - 6-3, 6-3
Stephanie Yamada (UCSB) def. Constance Branstine (USC) - 4-6, 6-0, 6-3
Amit Lev Ari (UCSB) def. Alexa Corcoletes (USC) - 6-0, 5-7, 7-6 (10)
Order of Finish: 4, 3, 2, 1, 5, 6*

Clemson 4, USC 2

January 26, 2018 - Carolina Tennis Center (Columbia, S.C.)

Doubles

#46 Valdes/Kulikov (USC) vs. Leduc/Navarro (CU) - 4-5 susp.
Smith/Weissmann (USC) def. Gorches/Riley (CU) - 6-2
Branstine/Westby (USC) def. Miller-Krasilnikov/Schroeder (CU) - 6-2
Order of Finish: 2, 3
USC wins doubles point

Singles

#20 Marie Leduc (CU) def. #35 Gabby Smith (USC) - 2-6, 7-6 (3), 6-3
Becca Weissmann (USC) def. Sydney Riley (CU) - 6-1, 6-0
Tate Schroeder (CU) def. #85 Madison Westby (USC) - 2-6, 7-6 (4), 6-1
Fernanda Navarro (CU) def. Angela Kulikov (USC) - 6-1, 6-0
Constance Branstine (USC) vs. Constanza Gorches (CU) - 7-5, 6-7 (8), 4-1 susp.
Daniela Ruiz (CU) def. Alexa Corcoletes (USC) - 6-3, 6-1
Order of Finish: 4, 6, 2, 3, 1

USC 4, Oklahoma 0

January 27, 2018 - Carolina Tennis Center (Columbia, S.C.)

Doubles

#46 Valdes/Kulikov (USC) vs. Brigante/Sethi (OU) - 5-4 susp.
Smith/Weissmann (USC) def. Miyazaki/Romero (OU) - 6-3
Branstine/Westby (USC) def. Miller/Stripp (OU) - 6-2
Order of Finish: 3, 2
USC wins doubles point

Singles

#35 Gabby Smith (USC) def. #14 Lily Miyazaki (OU) - 2-6, 6-2, 6-4
Becca Weissmann (USC) def. Simran Kaur Sethi (OU) - 6-2, 6-1
#85 Madison Westby (USC) def. Christina Brigante (OU) - 6-3, 6-3
Angela Kulikov (USC) vs. Camila Romero (OU) - 6-7 (6), 5-5 susp.
Constance Branstine (USC) vs. Malene Stripp (OU) - 5-7, 6-3, 0-3 susp.
Sydney Van Alphen (USC) vs. Skyler Miller (OU) - 2-6, 7-5, 0-4 susp.
Order of Finish: 2, 3, 1

USC 5, San Diego State 2

February 16, 2018 - San Diego, Calif.

Doubles

#26 Valdes/Kulikov (USC) def. Moinard/Smith (SDSU) - 6-2
Buth/Diaz (SDSU) def. Smith/Weissmann (USC) - 7-6 (4)
Nadozie/Aubets (SDSU) def. Westby/Branstine (USC) - 6-4
Order of Finish: 1, 3, 2
SDSU wins doubles point

Singles

#23 Gabby Smith (USC) def. Jana Buth (SDSU) - 3-6, 6-1, 6-3
Becca Weissmann (USC) def. Magda Aubets (SDSU) - 6-2, 6-3
Rianna Valdes (USC) def. Paola Diaz (SDSU) - 6-3, 6-4
Jenny Moinard (SDSU) def. #102 Madison Westby (USC) - 6-4, 4-6, 6-3
Angela Kulikov (USC) def. Nnena Nadozie (SDSU) - 6-4, 7-6 (5)
Constance Branstine (USC) def. Abbie Mulbarger (SDSU) - 6-2, 6-2
Order of Finish: 6, 3, 2, 5, 4, 1

#48 USC 4, #34 California 3

February 23, 2018 - Marks Stadium (Los Angeles, Calif.)

Doubles

#39 Valdes/Kulikov (USC) def. Bright/Rosenqvist (Cal) - 6-1
Smith/Weissmann (USC) def. Hauger/Smith (Cal) - 6-2
Westby/Branstine (USC) vs. Dunk/Glozman (Cal) - 5-4 susp.
Order of Finish: 1, 2
USC wins doubles point

Singles

#42 Olivia Huger (Cal) def. #30 Gabby Smith (USC) - 3-6, 6-3, 7-5
#29 Anna Bright (Cal) def. Becca Weissmann (USC) - 6-3, 6-1
Rianna Valdes (USC) def. Julia Rosenqvist (Cal) - 6-7 (3), 7-6 (3), 6-1*
Maria Smith (Cal) def. #110 Madison Westby (USC) - 6-2, 1-6, 6-0
Angela Kulikov (USC) def. Vivian Glozman (Cal) - 6-3, 6-0
Constance Branstine (USC) def. Hana Mraz (Cal) - 1-6, 6-3, 6-3
Order of Finish: 5, 2, 6, 4, 3, 1*

USC 4, Fresno State 2

February 24, 2018 - Marks Stadium (Los Angeles, Calif.)

Doubles

#49 Lawson/Wilson (FSU) def. #39 Valdes/Kulikov (USC) - 6-3
Smith/Weissmann (USC) def. Dario/Stloukalova (FSU) - 6-0
Noble/Triebe (FSU) def. Westby/Branstine (USC) - 6-1
Order of Finish: 2, 3, 1
Fresno State wins doubles point

Singles

#30 Gabby Smith (USC) def. Emma Wilson (FSU) - 6-2, 6-4
Becca Weissmann (USC) def. Katerina Stloukalova (FSU) - 6-3, 6-2*
Rianna Valdes (USC) def. Georgia Lawson (FSU) - 6-3, 6-0
#110 Madison Westby (USC) def. Juliane Triebe (FSU) - 6-1, 6-0
Ndindi Ndunda (FSU) def. Constance Branstine (USC) - 6-0, 6-3
Sydney Van Alphen (USC) vs. Olivia Noble (FSU) - 6-2, 5-3 susp.
*Order of Finish: 4, 3, 5, 1, 2**



USC 4, Long Beach State 0

February 24, 2018 - Marks Stadium (Los Angeles, Calif.)

Doubles

#39 Valdes/Kulikov (USC) vs. Munoz/Pacholski (LBSU) - 5-5 susp.
Smith/Weissmann (USC) def. Devarakonda/Casasampere (LBSU) - 6-1
Westby/Branstine (USC) def. Gulin/Sadeghvaziri (LBSU) - 6-2

Order of Finish: 2, 3

USC wins doubles point

Singles

Becca Weissmann (USC) vs. Lena Pacholski (LBSU) - 4-6, 2-2 susp.
#110 Madison Westby (USC) def. Naraia Munoz (LBSU) - 6-2, 6-1
Angela Kulikov (USC) def. Maren Helgo (LBSU) - 6-4, 6-2*
Constance Branstine (USC) vs. Sadaf Sadeghvaziri (LBSU) - 6-3, 5-2 susp.
Sydney Van Alphen (USC) vs. Lalita Devarakonda (LBSU) - 5-7, 2-2 susp.
Alexa Corcoletes (USC) def. Carlota Casasampere (LBSU) - 6-2, 6-2

*Order of Finish: 2, 6, 3**

California 7, USC 0

March 9, 2018, - Berkeley, Calif.

Doubles

1. Hauger/Rosenqvist (Cal) def. No. 43 Kulikov/Valdes (USC) - 6-1
2. Bright/Glozman (Cal) vs. Smith/Weissmann (USC) - 6-2, 6-0
3. Dunk/Smith (Cal) def. Branstine/Westby (USC) - 6-3*

Cal wins doubles point

*Order of Finish: 1, 3**

Singles

1. No. 68 Julia Rosenqvist (Cal) def. No. 37 Gabby Smith (USC) - 5-7, 6-3, 6-3
2. No. 35 Anna Bright (Cal) def. Becca Weissmann (USC) - 6-2, 6-0
3. No. 32 Olivia Hauger (Cal) def. Rianna Valdes (USC) - 4-6, 7-5, 6-3
4. Maria Smith (Cal) def. Madison Westby (USC) - 7-6(5), 6-3*
5. Hana Mraz (Cal) def. Angela Kulikov (USC) - 6-1, 1-6, 7-6(9)
6. Vivian Glozman (Cal) def. Constance Branstine (USC) - 6-2, 6-3

Order of Finish: 2, 6, 4, 3, 5, 1*

No. 46 Stanford 4, No. 47 USC 0

March 10, 2018 - Taube Family Tennis Stadium (Palo Alto, Calif.)

Doubles

No. 3 Arbuthnott/Gordon (Stan.) def. #43 Valdes/Kulikov (USC) - 6-2
Smith/Weissmann (USC) vs. Lampl/Yee (Stan.) - 5-3 susp.
Higuchi/Shin (Stan.) def. Westby/Branstine (USC) - 6-2

Order of Finish: 1, 3

Stanford wins doubles point

Singles

No. 17 Michaela Gordon (Stan.) def. No. 37 Gabby Smith (USC) - 6-1, 6-2
Becca Weissmann (USC) vs. Caroline Lampl (Stan.) - 2-6, 3-5 susp.
Rianna Valdes (USC) vs. No. 33 Emily Arbuthnott (Stan.) - 3-6, 2-4 susp.
Janice Shin (Stan.) def. Madison Westby (USC) - 6-1, 6-1
Angela Kulikov (USC) vs. Emma Higuchi (Stan.) - 2-6, 4-3 susp.
Kimberly Yee (Stan.) def. Alexa Corcoletes (USC) - 6-3, 6-1*

*Order of Finish: 4, 1, 6**

USC 4, Oregon 3

March 16, 2018 - Marks Stadium (Los Angeles, Calif.)

Doubles

#43 Valdes/Kulikov (USC) def. #61 Eshet/Sangwan (UO) - 6-0
Smith/Weissmann (USC) vs. Kahfiani/Tobita (UO) - 5-1 susp.
Westby/Branstine (USC) def. Rose/Wagner (UO) - 6-1

Order of Finish: 1, 3

USC wins doubles point

Singles

#37 Gabby Smith (USC) def. Alyssa Tobita (UO) - 6-2, 6-1
Rianna Valdes (USC) def. Shweta Sangwan (UO) - 7-6 (5), 6-3*
Becca Weissmann (USC) def. Julia Eshet (UO) - 6-1, 6-4
Julia Lilien (UO) def. Angela Kulikov (USC) - 6-3, 6-4
Daniela Nasser (UO) def. Madison Westby (USC) - 7-6 (3), 7-5
Paiton Wagner (UO) def. Constance Branstine (USC) - 6-1, 7-6 (3)

Order of Finish: 1, 4, 6, 3, 2, 5*

Baylor 4, USC 0

March 17, 2018 - BNP Paribas Collegiate Open (Indian Wells, Calif.)

Doubles

#43 Valdes/Kulikov (USC) def. Sorokolet/Hinajosa (BU) - 6-2
Van Zyl/Testa (BU) def. Smith/Weissmann (USC) - 6-2
Shakraishcuk/Sujova (BU) def. Branstine/Westby (USC) - 7-6 (5)

Order of Finish: 1, 2, 3

Baylor wins doubles point

Singles

#37 Gabby Smith (USC) vs. Theresa Van Zyl (BU) - 7-6 (7), 1-2 susp.
Rianna Valdes (USC) vs. Kris Sorokolet (BU) - 4-6, 5-6 susp.
Becca Weissmann (USC) vs. Camilla Abbate (BU) - 2-6, 6-5 susp.
Angela Kulikov (USC) vs. Angie Shakraishcuk (BU) - 6-4, 0-6, 1-5 ret. Inj.
Jessica Hinajosa (BU) def. Madison Westby (USC) - 6-2, 6-4
Livia Kraus (BU) def. Constance Branstine (USC) - 6-2, 6-1

Order of Finish: 6, 5, 4

#39 Washington State 4, #41 USC 1

March 23, 2018 - Marks Stadium (Los Angeles, Calif.)

Doubles

#43 Valdes/Kulikov (USC) vs. Michalkova/Ates (WSU) - 4-5 susp.
Yusupova/Mylonas (WSU) def. Smith/Van Alphen (USC) - 6-2
Misovska/Bayerlova (WSU) def. Branstine/Westby (USC) - 6-3

Order of Finish: 2, 3

Washington State wins doubles point

Singles

#43 Michaela Bayerlova (WSU) def. #57 Gabby Smith (USC) - 6-3, 6-3
Angela Kulikov (USC) vs. Guzal Yusupova (WSU) - 4-6, 7-5, 0-1 susp.
Madison Westby (USC) def. Tiffany Mylonas (WSU) - 6-4, 6-1
Constance Branstine (USC) vs. Barbora Michalkova (WSU) - 5-7, 6-3, 5-4 susp.
Aneta Miksovska (WSU) def. Alexa Corcoletes (USC) - 6-4, 6-1
Melisa Ates (WSU) def. Sydney Van Alphen (USC) - 6-3, 4-6, 6-2*

*Order of Finish: 5, 3, 1, 6**

#41 USC 4, #47 Washington 3

March 24, 2018 - Marks Stadium (Los Angeles, Calif.)

Doubles

Kobayashi/Wong (UW) def. #43 Valdes/Kulikov (USC) - 7-6 (3)
Hance/Prokopiuk (UW) def. Smith/Van Alphen (USC) - 6-1
Branstine/Westby (USC) def. Fung/Kopcalic (UW) - 6-3

Order of Finish: 2, 3, 1

Washington wins doubles point

Singles

#57 Gabby Smith (USC) def. #16 Stacey Fung (UW) - 6-4, 1-6, 7-5*
#62 Vanessa Wong (UW) def. Rianna Valdes (USC) - 6-3, 6-0
Madison Westby (USC) def. Miki Kobayashi (UW) - 6-4, 6-3
Constance Branstine (USC) def. Alexis Prokopiuk (UW) - 6-1, 6-2



Kenadi Hance [UW] def. Sydney Van Alphen [USC] - 6-3, 6-2
Alexa Corcoleotes [USC] def. Katarina Kopcalic [UW] - 6-1, 6-3
Order of Finish: 2, 4, 6, 3, 5, 1*

#8 Pepperdine 4, #40 USC 0

April 3, 2018 - Ralphs-Straus Tennis Center (Malibu, Calif.)

Doubles

#17 Stefani/Sherif [Pepp.] def. #32 Valdes/Kulikov [USC] - 6-2
#75 Levashova/Milovanovic [Pepp.] def. Smith/Weissmann [USC] - 6-2
Branstine/Westby [USC] vs. Lahey/Lekaj [Pepp.] - 4-5 susp.
Order of Finish: 1, 2

Pepperdine wins doubles point

Singles

#25 Luisa Stefani [Pepp.] def. #35 Gabby Smith [USC] - 6-2, 6-4*
Angela Kulikov [USC] vs. #17 Ashley Lahey [Pepp.] - 6-3, 1-5 susp.
#12 Mayar Sherif [Pepp.] def. Madison Westby [USC] - 6-3, 6-1
Constance Branstine [USC] vs. #72 Evgeniya Levashova [Pepp.] - 5-7, 1-2 susp.
Sydney Van Alphen [USC] vs. #115 Laura Gulbe [USC] - 4-6, 0-4 susp.
Dzina Milovanovic [Pepp.] def. Alexa Corcoleotes [USC] - 6-1, 6-2
Order of Finish: 6, 3, 1*

#40 USC 6, Colorado 1

April 6, 2018 - Boulder, Colo.

Doubles

#32 Kulikov/Valdes [USC] vs. Beck/Hale [CU] - 5-4 susp.
Smith/Weissmann [USC] def. Daniel/Dleynik [CU] - 6-3
Branstine/Westby [USC] def. Wojcik/Ronaldson [CU] - 6-3
Order of Finish: 2, 3

USC wins doubles point

Singles

#35 Gabby Smith [USC] def. Linda Huang [CU] - 6-2, 6-3
#92 Rianna Valdes [USC] def. Chloe Hule [CU] - 6-4, 3-6, 6-3
Becca Weissmann [USC] def. Jeannez Daniel [CU] - 6-2, 1-6, 6-2
Louise Ronaldson [CU] def. Angela Kulikov [USC] - 6-2, 4-6, 1-0 (10-8)
Madison Westby [USC] def. Kyra Wojcik [CU] - 6-2, 6-1
Constance Branstine [USC] def. Ilana Oleynik [CU] - 6-1, 6-0
Order of Finish: 1, 3, 2*, 5, 6, 4

#40 USC 4, Utah 1

April 8, 2018 - Salt Lake City, Utah

Doubles

Petrovic/Cheng [UU] def. #32 Kulikov/Valdes [USC] - 6-4
Smith/Weissmann [USC] vs. Calton/Turley [UU] - 3-5 susp.
Chisholm/Robertson [UU] def. Branstine/Westby [USC] - 6-2
Order of Finish: 3, 1

Utah wins doubles point

Singles

#35 Gabby Smith [USC] vs. Alexia Petrovic [UU] - 6-4, 3-4 susp.
#92 Rianna Valdes [USC] def. Brianna Chisholm [UU] - 7-6, 6-2
Becca Weissmann [USC] def. Jena Cheng [UU] - 6-1, 6-2
Angela Kulikov [USC] def. Taylor Calton [UU] - 6-4, 6-1
Madison Westby [USC] vs. Whitney Turley [UU] - 5-7, 4-4 susp.
Constance Branstine [USC] def. Victoria Robertson [UU] - 6-4, 6-1
Order of Finish: 3, 4, 2, 6*

#41 USC 4, Arizona 0

April 13, 2018 - Marks Stadium | Los Angeles, Calif.

Doubles

#46 Kulikov/Valdes [USC] def. Lewis/Van Aelst [UA] - 6-3
Smith/Weissmann [USC] vs. Chyppha/Wesbrooks [UA] - 3-5 susp.
Branstine/Westby [USC] def. Corley/Thomas [UA] - 6-0
Order of Finish: 3, 1

USC wins doubles point

Singles

#48 Gabby Smith [USC] def. Devin Chyppha [UA] - 6-3, 6-1
Becca Weissmann [USC] vs. Mary Lewis [UA] - 7-5, 1-2 susp.
Angela Kulikov [USC] vs. Paris Corley [UA] - 3-6, 4-2 susp.
Madison Westby [USC] def. Camila Wesbrooks [UA] - 6-4, 6-1
Constance Branstine [USC] def. Marie Van Aelst [UA] - 6-2, 6-3
Sydney Van Alphen [USC] vs. Talya Zandberg [UA] - 6-3, 3-0 susp.
Order of Finish: 4, 5, 1*

#33 Arizona State 4, #41 USC 3

April 14, 2018 - David X Marks Tennis Stadium (Los Angeles, Calif.)

Doubles

#21 Hattingsh/John-Baptiste [ASU] def. #32 Valdes/Kulikov [USC] - 6-4
Slaysman/Fossa Huergo [ASU] def. Smith/Weissmann [USC] - 6-2
Branstine/Westby [USC] vs. Klanecek/Kolarova [ASU] - 4-4 susp.
Order of Finish: 1, 2

Arizona State wins doubles point

Singles

#48 Gabby Smith [USC] def. #53 Lauryn John-Baptiste [ASU] - 6-2, 7-5
#98 Rianna Valdes [USC] def. Ilze Hattingsh [ASU] - 6-3, 6-3
Nicole Fossa Huergo [ASU] def. Becca Weissmann [USC] - 6-4, 7-6 (6)*
Angela Kulikov [USC] def. Savannah Slaysman [ASU] - 2-6, 6-3, 6-4
Sasa Klanecek [ASU] def. Madison Westby [USC] - 7-6 (5), 6-3
Tereza Kolarova [ASU] def. Constance Branstine [USC] - 7-5, 6-2
Order of Finish: 2, 6, 4, 5, 1, 3*

No. 14 UCLA 4, No. 47 USC 0

April 21, 2018 - Westwood, Calif.

Doubles

No. 6 Fleming/Hart [UCLA] def. #46 Kulikov/Valdes [USC] - 6-4
No. 52 Andrews/Broomfield [UCLA] def. Smith/Weissmann [USC] - 6-1
Branstine/Westby [USC] vs. Miller/Shibahara [UCLA] - 4-5
Order of Finish: 2, 1

UCLA wins doubles point

Singles

#36 Gabby Smith [USC] vs. #15 Ena Shibahara [UCLA] - 2-6, 4-3 susp.
No. 35 Jada Hart [UCLA] def. #91 Rianna Valdes [USC] - 6-3, 6-2*
Becca Weissmann [USC] vs. Terri Fleming [UCLA] - 7-6 (3), 0-1 susp.
No. 55 Abi Altick [UCLA] def. Angela Kulikov [USC] - 6-2, 6-0
Ayan Broomfield [UCLA] def. Madison Westby [USC] - 6-1, 6-2
Constance Branstine [USC] vs. #98 Alaina Miller [UCLA] - 6-7 (5), 1-3 susp.
Order of Finish: 5, 4, 2*

PAC-12 CHAMPIONSHIP

#49 [6] USC 4, [11] Arizona 1

April 25, 2018 - DVAC & Weil Academy | Ojai, Calif.

Doubles

#48 Kulikov/Valdes [USC] def. Lewis/Van Aelst [UA] - 7-5
Chyppha/Wesbrooks [UA] def. Smith/Weissmann [USC] - 6-4
Branstine/Westby [USC] def. Corley/Thomas [UA] - 6-3
Order of Finish: 3, 2, 1

USC wins doubles point

Singles

#36 Gabby Smith [USC] vs. Devin Chyppha [UA] - 6-7 (6), 6-3, 4-1 susp.
Paris Corley [UA] def. Becca Weissmann [USC] - 4-6, 6-0, 6-4
Angela Kulikov [USC] def. Mary Lewis [UA] - 5-7, 6-4, 6-4*
Madison Westby [USC] def. Camila Wesbrooks [UA] - 3-6, 6-2, 6-3
Constance Branstine [USC] def. Marie Van Aelst [UA] - 6-2, 6-3
Sydney Van Alphen [USC] vs. Sophia Thomas [UA] - 7-5, 3-6, 2-1 susp.
Order of Finish: 5, 4, 2, 3*

#35 [3] ASU 4, No. 49 [6] USC 2

April 26, 2018 - Ojai Valley Athletic Club | Ojai, Calif.

Doubles

Valdes/Kulikov [USC] vs. Hattingsh/John-Baptiste [ASU] - 5-5 unf.
Kolarova/Slaysman [ASU] def. Smith/Weissmann [USC] - 6-2
Fossa Huergo/Klanecek [ASU] def. Westby/Branstine [USC] - 6-3
Order of Finish: 2, 3

ASU wins doubles point

Singles

Gabby Smith [USC] def. Lauryn John-Baptiste [ASU] - 3-6, 6-3, 6-1
Ilze Hattingsh [ASU] def. Rianna Valdes [USC] - 6-3, 7-5
Nicole Fossa Huergo [ASU] def. Becca Weissmann [USC] - 7-6 (5), 7-5*
Savannah Slaysman [ASU] def. Angela Kulikov [USC] - 6-3, 6-3
Madison Westby [USC] def. Sasa Klanecek [ASU] - 3-6, 6-0, 6-1
Constance Branstine [USC] vs. Tereza Kolarova [ASU] - 7-5, 3-6, 4-2 unf.
Order of Finish: 4, 2, 5, 1, 3*



1980 AIAW CHAMPIONSHIP TEAM

NATIONAL TEAM CHAMPIONSHIPS (7)

1977	Dave Borelli (AIAW)
1977	Dave Borelli (USTA)
1978	Dave Borelli (USTA)
1979	Dave Borelli (AIAW)
1980	Dave Borelli (AIAW)
1983	Dave Borelli (NCAA)
1985	Dave Borelli (NCAA)

NATIONAL SINGLES CHAMPIONSHIPS (5)

1976	Barbara Hallquist (USTA)
1977	Barbara Hallquist (USTA)
1978	Stacy Margolin (USTA)
1981	Anna Maria Fernandez (AIAW)
1983	Beth Herr (NCAA)

NATIONAL DOUBLES CHAMPIONSHIPS (2)

1980	T. Lewis/A. White (AIAW)
2013	..	K. Christian/S. Santamaria (NCAA)

ALL-AMERICANS

1975	Diane Desfor
1976	Diane Desfor
	Barbara Hallquist
1977	Diane Desfor
	Gretchen Galt
	Barbara Hallquist
	Sheila McInerney
1978	Barbara Hallquist
	Sheila McInerney
	Lea Antonopolis
	Stacy Margolin
1979	Barbara Hallquist
	Sheila McInerney
	Stacy Margolin
	Anna Lucia Fernandez

	Anna Maria Fernandez
	Trey Lewis
1980	Sheila McInerney
	Anna Lucia Fernandez
	Anna Maria Fernandez
	Trey Lewis
	Nina Voydat
	Anne White
1981	Anna Maria Fernandez
	Kelly Henry
	Linda Siegel
	Nina Voydat
1982	Anna Lucia Fernandez
	Cecilia Fernandez
	Kelly Henry
	Sue Pendo
1983	Cecilia Fernandez (S)
	Kelly Henry (S)
	Beth Herr (S)
	Janet Lagasse (D)
	Sue Pendo (D)
1984	Cecilia Fernandez (S)
	Kelly Henry (S, D)
	Cheryl Jones (S)
	Sue Pendo (D)
	Heliane Steden (S)
1985	Cecilia Fernandez (S, D)
	Caroline Kuhlman (S, D)
	Mary Norwood (D)
	Heliane Steden (S, D)
1986	Caroline Kuhlman (S, D)
	Dena Levy (D)
	Mary Norwood (D)
	Heliane Steden (S, D)
1987	Lupita Novelo (D)
	Ginny Purdy (D)
1988	Trisha Laux (S)
1989	Trisha Laux (S)
	Stephanie London (S)

1990	Trisha Laux (S)
	Stephanie London (D)
	Lupita Novelo (S, D)
1991	Trisha Laux (S)
1992	Petra Schmitt (S)
1994	Maggie Simkova (S)
	Suzanne Italiano (D)
	Petra Schmitt (D)
1996	Suzanne Italiano (D)
	Nicole London (D)
1999	Ditta Huber (S)
2000	Jewel Peterson (S)
2001	Jewel Peterson (S)
2002	Jewel Peterson (S,D)
	Tiffany Brymer (D)
2003	Jewel Peterson (S)
2004	Luana Magnani (S,D)
	Carine Vermeulen (D)
2005	Nicole Leimbach (S)
	Lindsey Nelson (S)
2006	Amanda Fink (S)
	Lindsey Nelson (S)
2007	Sarah Fansler (S)
	Lindsey Nelson (S)
2008	Amanda Fink (S, D)
	Gabriela Niculescu (D)
2010	Maria Sanchez (S)
2011	Maria Sanchez (S, D)
	Kaitlyn Christian (D)
2012	Sabrina Santamaria (S, D)
	Kaitlyn Christian (D)
	Danielle Lao (S)
	Zoë Scandalis (S)
2013	Sabrina Santamaria (S, D)
	Kaitlyn Christian (D)
	Danielle Lao (S)
2014	Zoë Scandalis (S)
2015	Giuliana Olmos (S)
	Sabrina Santamaria (S)
2016	Giuliana Olmos (D)
	Gabby Smith (D)

(S) – Singles (D) – Doubles



TRISHA LAUX



HONDA AWARD

1981 Anna Maria Fernandez

NCAA ALL-TOURNAMENT TEAM

2012 . . Sabrina Santamaria (No. 3 singles)
. Danielle Lao (No. 3 doubles)
. Alison Ramos (No. 3 doubles)

ITA NATIONAL AWARDS

ITA All-Star Team

2007 Lindsey Nelson
2011 Maria Sanchez
2012 Kaitlyn Christian
. Sabrina Santamaria
2013 Kaitlyn Christian
. Sabrina Santamaria

ITA National Indoor Singles Champion

2010 Maria Sanchez

ITA National Indoor Doubles Champion

2011 Kaitlyn Christian & Sabrina Santamaria
2012 Kaitlyn Christian & Sabrina Santamaria

ITA National Team Indoors All-Tournament Team

2013 Danielle Lao (No. 1 singles)
. Kaitlyn Christian/Sabrina Santamaria (No. 2 doubles)

ITA/Riviera All-American Doubles Champion

2012 Kaitlyn Christian & Sabrina Santamaria

ITA National Senior Player of the Year

2011 Maria Sanchez

ITA National Doubles Team of the Year

2013 Kaitlyn Christian & Sabrina Santamaria

ITA National Player to Watch

2012 Zoë Scandalis

ITA National Rookie of the Year

2006 Amanda Fink
2007 Sarah Fansler

ITA REGIONAL AWARDS

ITA Regional Singles Champion

2002 Jewel Peterson
2005 Amanda Fink
2006 Sarah Fansler
2008 Maria Sanchez
2009 Maria Sanchez
2010 Danielle Lao
2011 Sabrina Santamaria
2015 Zoë Scandalis
2018 Salma Ewing

ITA Regional Doubles Champion

2002 . . . Tiffany Brymer & Jewel Peterson
2006 . . Anca Anastasiu & Julie Smekodub
2007 . . Amanda Fink & Gabriella Niculescu
2008 Gabriella Niculescu & Maria Sanchez
2010 Valeria Pulido & Alison Ramos
2012 Danielle Lao & Valeria Pulido
2015 Giuliana Olmos & Gabby Smith

ITA Regional Coach of the Year

2003 Richard Gallien
2009 Richard Gallien
2013 Richard Gallien
2015 Richard Gallien

ITA Regional Assistant Coach of the Year

2009 West Nott
2015 West Nott

ITA Regional Senior Player of the Year

2011 Maria Sanchez
2013 Danielle Lao

ITA Regional Player to Watch

2011 Kaitlyn Christian
2012 Zoë Scandalis

ITA Regional Rookie of the Year

2006 Amanda Fink
2007 Sarah Fansler
2010 Danielle Lao
2015 Madison Westby

ITA/Arthur Ashe Leadership and Sportsmanship Award

2007 Anca Anastasiu
2016 Giuliana Olmos



JEWEL PETERSON

PAC-12 SINGLES CHAMPIONS

2007 Lindsey Nelson
2009 Amanda Fink

PAC-12 DOUBLES CHAMPIONS

1987 Lupita Novelo/Ginny Purdy
2008* . . Amanda Fink/Gabriela Niculescu
2009* . . Amanda Fink/Gabriela Niculescu
2012 Kaitlyn Christian/Sabrina Santamaria
2013 Kaitlyn Christian/Sabrina Santamaria
2014 Kaitlyn Christian/Giuliana Olmos

* 2008 and 2009 Pac-10 doubles titles later vacated due to NCAA penalty vacating wins recorded by ineligible player.

PAC-12 COACH OF THE YEAR

1999 Richard Gallien
2006 Richard Gallien
2009 Richard Gallien
2013 Richard Gallien
2015 Richard Gallien
2017 Richard Gallien

PAC-12 PLAYER OF THE YEAR

2005 Nicole Leimbach
2007 Lindsey Nelson
2011 Maria Sanchez
2013 Sabrina Santamaria

PAC-12 FRESHMAN OF THE YEAR

2006 Amanda Fink
2007 Sarah Fansler
2015 Madison Westby

PAC-12 DOUBLES TEAM OF THE YEAR

2009 . . . Amanda Fink/Gabriela Niculescu
2012 Kaitlyn Christian/Sabrina Santamaria
2013 Kaitlyn Christian/Sabrina Santamaria



ALL-PAC-12

1987 Stephanie Harges
 1988 Trisha Laux
 1990 Trisha Laux
 1991 Trisha Laux
 1995 Susie Italiano (2nd team)
 Maggie Simkova (2nd team)
 1996 Suzie Italiano (2nd team)
 1998 Ditta Huber (2nd team)
 1999 Ditta Huber (1st team)
 Kara Warkentin (2nd team)
 Jacqui Boyd (honorable mention)
 2000 Kara Warkentin (2nd team)
 Veronika Safarova (2nd team)
 Jewel Peterson (honorable mention)
 2001 Jewel Peterson (1st team)
 Maureen Diaz (2nd team)
 2002 Jewel Peterson (1st team)
 Luana Magnani (2nd team)
 Tiffany Brymer (honorable mention)
 2003 Jewel Peterson (1st team)
 Luana Magnani (honorable mention)
 2004 Anca Anastasiu (2nd team)
 Luana Magnani (2nd team)
 Carine Vermeulen (honorable mention)
 2005 Nicole Leimbach (1st team)
 Lindsey Nelson (1st team)
 Anca Anastasiu (2nd team)
 2006 Amanda Fink (1st team)
 Lindsey Nelson (1st team)
 Luana Magnani (2nd team)
 Dianne Matias (honorable mention)
 2007 Sarah Fansler (1st team)
 Lindsey Nelson (1st team)
 Amanda Fink (honorable mention)
 2008 Amanda Fink (1st team)
 Lindsey Nelson (honorable mention)
 Gabriela Niculescu (honorable mention)
 2009 Amanda Fink (1st team)
 Maria Sanchez (2nd team)
 Sarah Fansler (honorable mention)
 2010 Maria Sanchez (1st team)
 Danielle Lao (honorable mention)
 Alison Ramos (honorable mention)
 2011 Maria Sanchez (1st team)
 Danielle Lao (2nd team)
 2012 Zoë Scandalis (1st team)
 Danielle Lao (2nd team)
 Sabrina Santamaria (2nd team)
 Kaitlyn Christian (honorable mention)
 2013 Danielle Lao (1st team)
 Sabrina Santamaria (1st team)
 Zoë Scandalis (2nd team)
 2014 Zoë Scandalis (1st team)
 Giuliana Olmos (honorable mention)
 Sabrina Santamaria (honorable mention)
 2015 Giuliana Olmos (1st team)
 Sabrina Santamaria (2nd team)
 Zoë Scandalis (2nd team)

2016 Giuliana Olmos (1st team)
 Zoë Katz (honorable mention)
 Gabby Smith (honorable mention)
 Madison Westby (honorable mention)
 2017 **Gabby Smith** (1st team)
 Jessica Failla (2nd team)
 2018 Gabby Smith (1st team)
 Rianna Valdes (honorable mention)

PAC-12 SCHOLAR-ATHLETE OF THE YEAR

2018 Gabby Smith

PAC-12 ALL-ACADEMIC

(Honorable mention awards available only 2002 to present)

1991 none
 1992 Petra Schmitt (2nd team)
 Magdalena Simkova (2nd team)
 1993 Petra Schmitt (1st team)
 Maggie Simkova (1st team)
 1994 Maggie Simkova (1st team)
 Petra Schmitt (2nd team)
 Ayisha Zaman (2nd team)
 1995 Maggie Simkova (1st team)
 Petra Schmitt (2nd team)
 1996 Ayisha Zaman (1st team)
 1997 Karolina Bakalarova (1st team)
 1998 Karolina Bakalarova (1st team)
 1999 Karolina Bakalarova (1st team)
 Veronika Safarova (2nd team)
 2000 n/a
 2001 n/a
 2002 Jewel Petereson (honorable mention)
 Maureen Diaz (honorable mention)
 2003 n/a
 2004 none
 2005 Anca Anastasiu (1st team)
 Nicole Leimbach (1st team)
 Lindsey Nelson (1st team)
 Judy DeVera (honorable mention)
 2006 Anca Anastasiu (1st team)
 Judy DeVera (honorable mention)
 Lindsey Nelson (honorable mention)
 2007 Anca Anastasiu (1st team)
 Lindsey Nelson (honorable mention)
 Amanda Fink (honorable mention)
 2008 Lindsey Nelson (honorable mention)
 Amanda Fink (honorable mention)
 Gabriella Niculescu (honorable mention)
 2009 Amanda Fink (2nd team)
 Cristala Andrews (honorable mention)
 Lyndsay Kinstler (honorable mention)
 Leyla Entekhabi (honorable mention)
 Gabriella Niculescu (honorable mention)
 2010 Alison Ramos (2nd team)
 Cristala Andrews (honorable mention)
 Leyla Entekhabi (honorable mention)
 Lyndsay Kinstler (honorable mention)



2011 Alison Ramos (2nd team)
 Cristala Andrews (honorable mention)
 Lyndsay Kinstler (honorable mention)
 2012 Alison Ramos, (2nd team)
 2013 Zoë Scandalis (1st team)
 Gabriella DeSimone (honorable mention)
 2014 Zoë Scandalis (1st team)
 Gabriella DeSimone (honorable mention)
 2015 Zoë Scandalis (1st team)
 Gabriella DeSimone (honorable mention)
 2016 Gabby Smith (2nd team)
 Madison Westby (honorable mention)
 2017 Gabby Smith (2nd team)
 Rianna Valdes (2nd team)
 Madison Westby (2nd team)
 Jessica Failla (honorable mention)
 2018 **Angela Kulikov** (1st team)
 Gabby Smith (2nd team)
 Rianna Valdes (2nd team)
 Madison Westby (2nd team)



ANNA MARIA FERNANDEZ

OTHER AWARDS

- Trey Lewis
Pan Am Games (Silver Medal) 1979
- Anna Maria Fernandez
Tennis Broderick Award 1981
Tennis Magazine Female
College Player of the Year 1981
- Cecilia Fernandez – USA
World Univ. Games (Singles: Gold Medal). 1983
- Heliane Steden
Pan Am Games (Bronze Medal). 1983
- Claudia Hernandez
Mexican National Singles Champ 1982, 84-87, 89
- Caroline Kuhlman
Goodwill Games (Gold Medal) 1986
- Valeria Pulido – Mexico
World Univ. Games (Doubles: Bronze Medal). 2011
- Sabrina Santamaria – USA
World Univ. Games (Singles: Silver Medal) 2013

OTHER USTA & AIAW HONORS

- Diane Desfor
Amateur Clay Court Doubles 1975
Amateur Grass Court Singles 1976
- Gretchen Galt

- 21 & Under Doubles 1976
- Barbara Hallquist
Grass Court Doubles 1976
21 & Under Singles 1976
Amateur Indoor Singles 1977
Amateur Clay Court Doubles 1977
Amateur Indoor Doubles 1978

- Leslie Allen
ATA Singles. 1977

- Sheila McInerney
Amateur Clay Court Singles 1977
Amateur Clay Court Doubles 1977
Amateur Clay Court Mixed Doubles 1977
Amateur Indoor Doubles 1978
Amateur Clay Court Singles. 1979
Amateur Clay Court Doubles 1979

- Stacy Margolin
Amateur Hard Court Singles 1978

- Anna Lucia Fernandez
Amateur Indoor Doubles 1979
Amateur Clay Court Doubles. 1980

- Trey Lewis
Amateur Indoor Doubles 1979
21 & Under Doubles 1979
AIAW Doubles 1980

- Anne White
AIAW Doubles 1980
Amateur Clay Court Singles 1980
Amateur Clay Court Doubles 1980
Amateur Clay Court Mixed Doubles 1980

- Nina Voydat
Amateur Indoor Singles 1980

- Susan Pendo
National Amateur Mixed Doubles 1982
National Amateur Doubles 1982

- Cecilia Fernandez
USTA Singles 1983

- Heliane Steden
USTA Singles 1983

- Caroline Kuhlman
USTA Singles 1984

FEDERATION CUP

- 1983. Heliane Steden (Mex.)
. Claudia Hernandez (Mex.)
- 1984. Heliane Steden (Mex.)
. Claudia Hernandez (Mex.)

- 1985. Heliane Steden (Mex.)
. Claudia Hernandez (Mex.)
- 1986. Claudia Hernandez (Mex.)
- 1987. Claudia Hernandez (Mex.)
- 1988. Claudia Hernandez (Mex.)
- 1989. Claudia Hernandez (Mex.)
- 1990. Claudia Hernandez (Mex.)
. Lupita Novelo (Mex.)
- 1991. Lupita Novelo (Mex.)
- 1992. Lupita Novelo (Mex.)
- 1993. Lupita Novelo (Mex.)

JUNIOR FEDERATION CUP

- 1974 Diane Desfor
- 1975 Diane Desfor
- 1976 Diane Desfor (MVP)
. Gretchen Galt
. Barbara Hallquist
- 1977 Barbara Hallquist (MVP)
. Sheila McInerney
- 1978 Barbara Hallquist
. Sheila McInerney
. Stacy Margolin
. Lea Antonopolis
- 1979 Sheila McInerney
. Anna Maria Fernandez
. Anna Lucia Fernandez
. Trey Lewis
- 1980. Anne White (MVP)
. Anna Maria Fernandez
. Anna Lucia Fernandez
. Nina Voydat
- 1981 Anna Maria Fernandez
. Kelly Henry
. Nina Voydat
- 1982. Cecilia Fernandez
. Kelly Henry
- 1983. Cecilia Fernandez
- 1984. Cecilia Fernandez
- 1985. Caroline Kuhlman (MVP)
. Maeve Quinlan
. Trisha Laux
- 1986. Caroline Kuhlman (MVP)
. Maeve Quinlan
. Trisha Laux
- 1987 Trisha Laux



BARBARA HALLQUIST**

** In 1976, Barbara Hallquist became the first female athlete at USC to receive an athletic scholarship.

. A .

- Allen, Leslie 1977
- Allred, Linda 1990, 91, 92
- Anastasiu, Anca 2004, 05, 06, 07
- Andrews, Cristala 2008, 09, 10, 11
- Antonopolis, Lea 1978

. B .

- Bakalarova, Karolina 1996, 97, 98, 99
- Bardot, Jan 1977, 78
- Basica, Amber 1996, 97, 98
- Bayani, Bernadette 2001, 02, 03, 04
- Boren, Brynn 2014
- Boyd, Jacqui 1997, 98, 99, 2000
- Branstine, Constance 2018**
- Brown, Susan 1978, 80
- Brymer, Tiffany 2000, 01, 02, 03

. C .

- Chen, Elaine 1977
- Christian, Caroline 1999, 00, 01, 02
- Christian, Kaitlyn 2011, 12, 13, 14
- Colville, Mary Ann 1976
- Corcoleotes, Alexa 2018**

. D .

- Decker-Sadowski, Katja 2007
- Dennis, Cindy 1978, 79, 80, 81
- Desfor, Diane 1975, 76, 77
- DeSimone, Gabriella 2012, 13, 14, 15
- DeVera, Judy 2004, 05, 06, 07
- Diaz, Maureen 2001, 02, 03
- Douglass, Debbie 1977

. E .

- Ellis, Ashley 2007
- Entekhabi, Leyla 2008, 09, 10
- Esmero, Melissa 2001, 02, 03, 04
- Everly, Erin 2005

. F .

- Failla, Jessica 2016, 17
- Fansler, Sarah 2007, 08, 09, 10
- Fernandez, Anna Lucia 1979, 80, 81, 82
- Fernandez, Anna Maria 1979, 80, 81, 82
- Fernandez, Cecilia 1982, 83, 84, 85
- Fink, Amanda 2006, 07, 08, 09

. G .

- Galt, Gretchen 1975, 76, 77

- Goldman, Jennifer 2010

. H .

- Hallquist, Barbara ** 1976, 77, 78, 79
- Hamilton-Heinberg, Krissy 1999, 00, 01
- Harper, Amber 2007, 08
- Harges, Stephanie 1985, 87, 88, 89
- Henry, Kelly 1981, 82, 83, 84
- Hernandez, Claudia 1985, 86
- Hernando, Melissa 1992, 93, 94, 95
- Herr, Beth 1983
- Heynen, Carol 1982, 83, 84
- Huber, Ditta 1996, 97, 98, 99

. I .

- Irinco, Christina 2001
- Italiano, Suzanne 1993, 94, 95, 96

. J .

- Jimenez, Eva 1996, 97
- Jones (Woods), Cheryl 1983, 84

. K .

- Katz, Zoë 2014, 15, 16, 17
- Keating, Paige 2014, 15, 16



MARIA SANCHEZ

- Kimura, Sayaka 1994, 95
- Kinstler, Lyndsay 2008, 09, 10, 11
- Kochoff, Anya 1987, 88, 89, 90
- Kuhlman, Caroline 1985, 86, 88, 89
- Kulikov, Angela 2017, 18**

. L .

- Lagasse, Janet 1983
- Lao, Danielle 2010, 11, 12, 13
- Lau, Sabrina 1994, 95, 96, 97
- Laux, Kirstin 1988
- Laux, Trisha 1988, 89, 90, 91
- Leimbach, Nicole 2005
- Letzt, Alex 2016
- Levy, Dena 1983, 84, 85
- Lewis, Trey 1979, 80
- Lillie, Kathleen 1981, 82, 83, 84
- London, Nicole 1995, 96, 97, 98
- London, Stephanie 1988, 89, 90, 91
- Loyola, Anita 2000, 01, 02, 03
- Lum, Janice 1989, 91

. M .

- Magnani, Luana 2002, 03, 04, 06
- Margolin, Stacy 1978, 79

- Marsico, Elizabeth 2009, 10
- Matias, Dianne 2004, 05, 06, 07
- McGarrigle, Kathleen 1987
- McInerney, Sheila 1977, 78, 79, 80
- Miller, Hayley 2011

. N .

- Nguyen, Jennifer 1992
- Nelson, Lindsey 2005, 06, 07, 08
- Niculescu, Gabriela 2008, 09
- Norwood, Mary 1985, 86, 87, 88
- Novelo, Lupita 1987, 88, 89, 90

. O .

- Olmos, Giuliana 2013, 14, 15, 16
- Owens, Jackie 2013

. P .

- Pendo, Sue 1982, 83, 84
- Peterson, Jewel 2000, 01, 02, 03
- Peterson, Whitney 2006, 07
- Pulido, Valeria 2010, 11, 12, 13
- Purdy, Ginny 1986, 87, 88, 89

. Q .

- Quaresma, Carla 1992, 93
- Quinlan, Maeve 1986, 87

. R .

- Ramos, Alison 2009, 10, 11, 12
- Reed, Kathleen 1987
- Reede, Casey 2014, 15
- Rose, Courtney 1991, 92, 93, 94

. S .

- Safarova, Veronika 1997, 98, 99, 2000
- Sanchez, Maria 2008, 09, 10, 11
- Santamaria, Sabrina 2012, 13, 14, 15
- Sauer, Erica 2004
- Scandalis, Zoë 2012, 13, 14, 15
- Schmitt, Petra 1992, 93, 94, 95
- Sessarego, Paola 1980, 81, 82
- Siegel, Linda 1980, 81
- Simkova, Maggie 1992, 93, 94, 95
- Smekodub, Julie 2007
- Smith, Gabby 2015, 16, 17, 18
- Snyder, Taylynn 2005
- Steden, Heliane 1983, 84, 85, 86

. T .

- Trump, Pam 1995, 96, 97, 98
- Tullberg, Julie 1990, 91, 92

. V .

- Valdes, Rianna 2016, 17, 18**
- Van Alphen, Sydney 2017, 18**
- Venter, Kristen 2016, 17
- Vermeulen, Carine 2003, 04, 05, 06
- Voydat, Nina 1980, 81, 82, 83

. W .

- Warkentin, Kara 1998, 99, 2000
- Westby, Madison 2015, 16, 17, 18
- Weissmann, Becca 2018**
- White, Anne 1980

. X .

- Xepoleas, Meredith 2015, 16

. Y .

- Yates, Ellie 2013, 14

. Z .

- Zaman, Ayisha 1993, 94, 95, 96



2018 (13-10, 5-5 conference)

Head Coach: Alison Swain
 Pac-12 Finish: 8th
 Postseason: ---
 National Finish: No. 49

J14 W 6-1 San Diego
 J19 W 5-2 Loyola Marymount
 J20 L 6-1 UC Santa Barbara
 J26 L 4-2 vs. Clemson
 J27 W 4-0 vs. Oklahoma
 F16 W 5-2 at San Diego State
 F23 W 4-3 California
 F24 W 4-2 Fresno State
 F24 W 4-0 Long Beach State
 M2 [cancelled] UCLA
 M9 L 7-0 *at California
 M10 L 4-0 *at Stanford
 M16 W 4-3 *Oregon
 M17 L 4-0 ~vs. Oregon
 M21 [cancelled] Pepperdine
 M23 L 4-1 *Washington State
 M24 W 4-3 *Washington
 A3 L 4-0 at Pepperdine
 A6 W 6-1 *at Colorado
 A8 W 4-1 *at Utah
 A13 W 4-0 *Arizona
 A14 L 4-3 *Arizona State
 A21 L 4-0 *at UCLA
 A25 W 4-1 %Arizona
 A26 L 4-2 %Arizona State

* Pac-12 match
 ~ at Indian Wells, Calif.
 %at Libbey Park (Ojai, Calif.)

2017 (13-11, 6-4 conference)

Head Coach: Richard Gallien
 Pac-12 Finish: 6th
 Postseason: NCAA First Round
 National Finish: No. 27

J19 W 5-2 UC Santa Barbara
 J28 W 4-2 vs. Rice
 J29 L 4-1 at Auburn
 F1 W 7-0 San Diego State
 F3 (rainout) Florida
 F18 L 4-3 UCLA
 F25 L 6-1 at California
 M3 W 5-2 Michigan
 M10 L 4-3 *California
 M11 L 4-0 *Stanford
 M17 L 4-1 vs. Baylor~
 M19 L 4-3 *at Oregon
 M22 W 4-3 Loyola Marymount
 M31 W 4-1 *at Washington St.
 A2 L 4-3 at *Washington
 A7 W 7-0 *Utah
 A8 W 7-0 *Colorado
 A14 W 4-3 *at Arizona State
 A15 W 5-2 *at Arizona
 A18 L 4-3 Pepperdine
 A22 W 4-3 *at UCLA
 A26 W 4-0 %Washington St.
 A27 W 4-3 %Arizona State
 A28 L 4-3 %California
 M13 L 4-2 ^Denver

* Pac-12 match
 ~ at Indian Wells, Calif.
 %at Libbey Park (Ojai, Calif.)
 ^ NCAA Regionals (Lubbock, Texas)

2016 (13-6, 7-1 conference)

Head Coach: Richard Gallien
 Pac-12 Finish: 2nd
 Postseason: NCAA Second Round
 National Finish: No. 21

J20 W 4-3 UC Santa Barbara
 J29 L 4-3 Pepperdine
 J30 W 6-2 Saint Mary's
 F6 W 6-1 at South Florida
 F7 L 7-0 at Florida
 F19 L 6-1 California
 F25 L 5-2 at UCLA
 M4 W 5-2 *Washington
 M5 W 5-1 *Washington St.

M11 (rainout) *at Stanford
 M12 (rainout) *at California
 M16 W 5-2 Oklahoma State
 M19 W 4-0 Baylor~
 M25 W 7-0 *Oregon
 A1 W 4-0 at *Utah
 A3 W 6-1 *at Colorado
 A8 (rainout) *Arizona
 A10 W 4-0 *Arizona State
 A17 W 4-1 *UCLA
 A20 L 4-2 *Stanford %
 M13 W 4-0 ^UNLV
 M14 L 4-2 ^at Pepperdine

* Pac-12 match
 ~ at Indian Wells, Calif.
 %at Libbey Park (Ojai, Calif.)
 ^ NCAA Regionals (Malibu, Calif.)

2015 (25-3, 10-0 conference)

Head Coach: Richard Gallien
 Pac-12 Finish: Champion
 Postseason: NCAA Semifinal
 National Finish: No. 2

J14 W 7-0 LMU~
 J24 W 4-0 @Denver
 J25 W 4-0 @Pepperdine
 J30 W 4-3 at Pepperdine
 F6 L 4-2 @at Virginia
 F7 W 4-0 @Kentucky
 F8 W 4-2 @Michigan
 F14 W 4-3 Vanderbilt
 F15 W 7-0 Texas
 F20 W 4-3 at California
 F21 W 5-2 at Saint Mary's
 M4 L 4-3 at UCLA
 M1 W 7-0 San Diego State
 M15 W 6-1 *at Washington St.
 M21 W 4-3 *California
 M22 W 6-1 *Stanford
 M27 W 6-1 *at Oregon
 M28 W 7-0 *at Washington
 A3 W 5-2 *at Arizona
 A4 W 5-2 *at Arizona State
 A10 W 7-0 Utah
 A11 W 7-0 *Colorado
 A16 W 4-3 *UCLA
 M9 W 4-0 ^Youngstown St.
 M10 W 4-0 ^Virginia Tech
 M15 W 4-0 #Texas Tech
 M17 W 4-1 #at Baylor
 M18 L 4-0 #Vanderbilt

* Pac-12 match
 ~ at Manhattan Beach Country Club
 @ ITA Kick-Off Weekend (Marks Stadium)
 @ ITA National Team Indoors (Charlottesville, Va.)
 ^ NCAA Regionals (Marks Stadium)
 # NCAA Championships (Waco, Texas)

2014 (18-8, 7-3 conference)

Head Coach: Richard Gallien
 Pac-12 Finish: 4th
 Postseason: NCAA Round of 16
 National Finish: No. 16

J24 W 4-0 @North Texas
 J25 W 4-0 @Saint Mary's
 J30 W 5-2 Pepperdine
 F7 W 4-3 @Alabama
 F8 L 4-0 @UCLA
 F9 L 4-1 @Florida
 F15 W 7-0 UC Irvine ~
 F18 W 7-0 at San Diego State
 F22 W 6-1 California
 F27 W 6-1 Saint Mary's
 M2 W 4-3 at Texas
 M7 L 5-2 UCLA
 M11 L 4-3 Baylor
 M14 W 4-0 *at Colorado
 M16 W 4-1 *at Utah
 M23 W 4-0 *at Washington
 M28 W 4-0 *Oregon
 M29 W 4-1 *Washington St.
 A4 L 4-0 *at California
 A5 L 4-0 *at Stanford
 A11 W 4-2 *Arizona State

A12 W 4-0 *Arizona
 A18 L 4-1 *at UCLA
 M9 W 4-0 ^Idaho
 M10 W 4-2 ^Michigan
 M15 L 4-3 #Georgia

* Pac-12 match
 @ ITA Kick-Off Weekend (Marks Stadium)
 ~ at Laguna Niguel Racquet Club
 @ ITA National Team Indoors (Charlottesville, Va.)
 ^ NCAA Regionals (Marks Stadium)
 # NCAA Championships (Athens, Ga.)

2013 (23-3, 10-0 conference)

Head Coach: Richard Gallien
 Pac-12 Finish: Champion
 Postseason: NCAA Round of 16
 National Finish: No. 6

J16 W 7-0 UC Irvine
 J26 W 6-0 @Akron
 J27 W 4-0 @UC Irvine
 J31 W 7-0 at Pepperdine
 F2 W 7-0 Fresno State
 F8 W 4-1 @at Virginia
 F9 L 4-3 @North Carolina
 F10 W 4-1 @California
 F20 W 7-0 San Diego State
 F23 L 5-2 at California
 M1 W 5-2 at San Diego
 M8 W 4-2 at UCLA
 M12 W 7-0 Texas
 M15 W 7-0 *Colorado
 M16 W 7-0 *Utah
 M22 W 6-1 *at Washington
 M23 W 7-0 *at Washington St.
 M29 W 6-1 *California
 M30 W 6-1 *Stanford
 A5 W 7-0 *at Arizona State
 A6 W 6-1 *at Arizona
 A14 W 5-2 *at Oregon
 A18 W 6-1 *UCLA
 M11 W 4-0 ^Sacramento State
 M12 W 4-0 ^UC Irvine
 M17 L 4-3 #Stanford

* Pac-12 match
 @ ITA Kick-Off Weekend (Marks Stadium)
 @ ITA National Team Indoors (Charlottesville, Va.)
 ^ NCAA Regionals (Marks Stadium)
 # NCAA Championships (Urbana, Ill.)

2012 (24-4, 9-1 conference)

Head Coach: Richard Gallien
 Pac-12 Finish: Co-Champion
 Postseason: NCAA Semifinals
 National Finish: No. 4

J20 W 7-0 UC Irvine
 J28 W 7-0 @vs. Sacramento
 J29 W 6-1 @at Arizona State
 F2 W 7-0 St. Mary's
 F4 W 7-0 Pepperdine
 F10 W 4-2 @vs. North Carolina
 F11 W 4-1 @vs. Tennessee
 F12 L 4-0 @vs. UCLA
 F23 W 7-0 UC Santa Barbara
 F25 W 4-3 California
 M1 L 4-3 UCLA
 M3 W 6-1 San Diego
 M10 W 6-1 *Washington St.
 M14 W 4-3 at Texas
 M23 W 7-0 *at Utah
 M25 W 7-0 *at Colorado
 M30 W 7-0 *Oregon
 M31 W 7-0 *Washington
 A6 W 6-1 *Arizona
 A7 W 6-1 *Arizona State
 A13 L 4-2 *at Stanford
 A14 W 4-3 *at California
 A20 W 6-1 *at UCLA
 M11 W 4-0 ^Fairfield
 M12 W 4-1 ^Vanderbilt
 M17 W 4-1 #Baylor
 M19 W 4-2 #Stanford
 M21 L 4-3 #UCLA

* Pac-12 match

@ ITA Kick-Off Weekend (Tempe, Ariz.)
 @ ITA National Team Indoors (Charlottesville, Va.)
 ^ NCAA Regionals (Marks Stadium)
 # NCAA Championships (Athens, Ga.)

2011 (15-8, 4-4 conference)

Head Coach: Richard Gallien
 Pac-10 Finish: 5th
 Postseason: NCAA Second Round
 National Finish: No. 19

J18 W 6-1 Cal State Northridge
 J21 W 6-1 Long Beach State
 J29 W 4-3 @NC State
 J30 L 5-2 @Michigan
 F8 W 7-0 San Diego State
 F10 W 6-1 South Florida
 F13 W 6-1 Texas
 F25 W 5-2 at San Diego
 M2 L 5-2 at UCLA
 M4 W 6-1 *Washington
 M10 W 6-1 Fresno State
 M12 W 5-2 at Pepperdine
 M15 W 4-3 Syracuse
 M16 L 4-3 Arizona State
 M25 L 5-2 *California
 M26 L 6-1 *Stanford
 A1 W 7-0 *at Oregon
 A2 W 6-1 *at Washington St.
 A8 L 6-1 *at Arizona State
 A9 W (forfeit) *at Arizona

A15 L 5-2 *UCLA
 M14 W 4-1 ^St. Mary's
 M15 L 4-1 ^at California

* Pac-10 match
 @ ITA Kick-Off Weekend (Ann Arbor, Mich.)
 ^ NCAA Regionals (Berkeley, Calif.)

2010 (14-10, 5-3 conference)

Head Coach: Richard Gallien
 Pac-10 Finish: 4th
 Postseason: NCAA Second Round
 National Finish: No. 20

J24 W 7-0 Long Beach State
 J25 W 6-1 UC Irvine
 J29 W 4-0 @San Diego
 J30 W 4-0 @Auburn
 F4 W 6-1 Pepperdine
 F12 W 5-2 @Clemson
 F13 L 4-2 @Duke
 F14 L 5-2 @Baylor
 F23 W 5-2 at San Diego State
 F26 L 5-2 California
 M3 L 4-3 UCLA
 M5 W 7-0 *at Oregon
 M9 L 5-2 Baylor
 M13 L 4-3 at Arizona State
 M17 W 6-1 Fresno State
 M26 W 5-2 *Washington
 M27 W 7-0 *Washington St.

A3 L 5-2 *at California
 A4 3-3 (susp) *at Stanford
 A9 W 5-2 *Arizona State
 A10 W 7-0 *Arizona
 A16 L 6-1 *at UCLA
 A21 L 4-3 ^Stanford
 M14 W 4-0 ^Sacramento State
 M15 L 4-1 ^at California

* Pac-10 match
 @ ITA Kick-Off Weekend (Marks Stadium)
 @ ITA National Team Indoors (Madison, Wisc.)
 + match completed with doubles point played in Ojai, Calif.

** Due to NCAA penalty vacating wins recorded by ineligible player, 1 win (conference) became a loss and 4 wins left undecided in 2009 [Original records: 21-3 overall and 8-0 Pac-10 in 2009].*

^ NCAA Regionals (Berkeley, Calif.)

2009 (*16-4, *7-1 conference)

Head Coach: Richard Gallien
 Pac-10 Finish: *1st
 Postseason: NCAA Second Round
 National Finish: No. 9

J21	W	6-1	UC Irvine
J28	W	7-0	Long Beach State
J31	W*	4-0	@Michigan State
F1	W	4-1	@Texas A&M
F13	L	4-3	@Georgia
F14	W*	4-3	@Florida
F15	W*	4-3	@Clemson
F24	W	7-0	San Diego State
M1	W	6-1	Cal Poly
M4	L	4-3	at UCLA
M6	W	7-0	~Oregon
M11	W	5-2	Arizona State
M12	W	7-0	William & Mary
M18	W	6-1	at Pepperdine
M24	W*	5-2	at San Diego
M27	W	4-3	~California
M28	W	5-2	~Stanford
A3	W	7-0	~at Washington St.
A4	L*	4-3	~at Washington
A10	W	5-2	~at Arizona
A11	W	4-2	~at Arizona State
A17	W	5-2	~UCLA
M9	W	4-0	^Fairfield
M10	L	4-3	^Washington

~ Pac-10 match
 @ ITA Indoors Qualifying (Marks Stadium)
 & ITA National Team Indoors (Madison, Wisc.)
 ^ NCAA Regional at Marks Stadium

2008 (*16-8, 5-3 conference)

** Due to NCAA penalty vacating wins recorded by ineligible player, 3 wins left undecided in 2008 [Original records: 19-8 overall].*

Head Coach: Richard Gallien
 Pac-10 Finish: 4th
 Postseason: NCAA Round of 16
 National Finish: No. 11

J16	W	6-1	Loyola Marymount
J25	W	7-0	UC Irvine
J30	W	7-0	Long Beach State
J31	W	5-2	Pepperdine
F7	W*	4-3	@Arkansas
F8	L	4-3	@North Carolina
F9	L	4-3	@Georgia
F15	W	7-0	at San Diego State
F22	W	6-1	at Arizona
F23	W	5-2	at Arizona State
F29	W	6-1	California
M1	L	4-3	Stanford
M7	W	6-1	~Washington
M8	W	7-0	~Washington St.
M13	L	6-1	UCLA
M19	W	5-2	at Texas
M25	W	6-1	San Diego
M27	W	6-1	Fresno State
M28	W	7-0	~Oregon
A4	L	5-2	~at Stanford
A5	L	6-1	~at California
A11	W	5-2	~Arizona State
A12	W	6-1	~Arizona
A18	L	5-2	~at UCLA
M9	W*	4-0	^Marist
M10	W*	4-0	^Pepperdine
M15	L	4-0	#UCLA

~ Pac-10 match
 & ITA National Team Indoors (Madison, Wisc.)
 ^ NCAA Regional at Marks Stadium
 # NCAA Championships at Tulsa, Okla.

2007 (19-5, 6-2 conference)

Head Coach: Richard Gallien
 Pac-10 Finish: t-2nd
 Postseason: NCAA Round of 16
 National Finish: No. 10

J24	W	7-0	Long Beach State
-----	---	-----	------------------

J27	W	6-1	Pepperdine
F1	W	7-0	at San Diego
F8	W	7-0	Cal Poly
F13	W	7-0	San Diego State
F16	L	5-2	at Stanford
F17	L	5-2	at California
F23	W	5-2	at Pepperdine
M2	W	7-0	*at Washington St.
M3	W	7-0	*at Washington
M8	W	4-3	at UCLA
M14	W	6-1	Texas
M16	W	4-3	Arizona State
M17	W	7-0	Arizona
M21	W	3-4~	Fresno State
M31	W	7-0	*at Oregon
A6	W	5-2	*at Arizona
A7	W	6-1	*at Arizona State
A13	W	4-3	*California
A14	L	4-3	*Stanford
A21	L	4-3	*UCLA
M12	W	4-0	^Boston Univ.
M13	W	4-0	^Texas
M18	L	4-3	#Miami

* Pac-10 match
 ^ NCAA Regional at Marks Stadium
 # NCAA Championships at Athens, Ga.
 ~ USC win following protest of match

2006 (21-4, 7-1 conference)

Head Coach: Richard Gallien
 Pac-10 Finish: 2nd
 Postseason: NCAA Semifinals
 National Finish: No. 3

J19	W	7-0	UC Irvine
J20	W	6-1	Long Beach State
J25	W	7-0	San Diego
F14	W	7-0	at San Diego State
F17	L	5-2	Stanford
F18	W	4-3	California
F24	W	5-2	at Arizona State
F25	W	6-1	at Arizona
M1	W	6-1	Pepperdine
M10	W	7-0	*Washington
M11	W	6-0	*Washington St.
M15	L	4-3	Baylor
M22	W	6-1	Illinois
M31	W	6-1	*Arizona
A1	W	5-2	*Arizona State
A7	W	5-1	*at California
A8	L	6-1	*at Stanford
A15	W	7-0	*Oregon
A18	W	4-3	UCLA
A22	W	5-2	*at UCLA
M12	W	4-0	^Army
M13	W	4-0	^Long Beach State
M18	W	4-1	#VCU
M19	W	4-3	#Northwestern
M22	L	4-1	#Miami

* Pac-10 match
 ^ NCAA Regional at Marks Stadium
 # NCAA Championships at Palo Alto, Calif.

2005 (19-4, 7-1 conference)

Head Coach: Richard Gallien
 Pac-10 Finish: 2nd
 Postseason: NCAA Quarterfinals
 National Finish: No. 7

J19	W	6-1	Cal Poly
J21	W	7-0	Long Beach State
F3	W	7-0	at Pepperdine
F16	W	7-0	at San Diego
F23	W	7-0	San Diego State
F25	W	5-2	at California
F26	L	5-2	at Stanford
M9	W	4-3	*UCLA
M11	W	7-0	*at Washington St.
M12	W	6-1	*at Washington
M16	W	5-2	Texas
M23	W	4-3	TCU
M25	W	6-1	*at Arizona State
M26	W	6-1	*at Arizona
M30	W	5-2	Harvard
A1	W	5-2	*at Oregon
A8	L	4-3	*Stanford
A9	W	4-3	*California
A16	L	5-2	UCLA

M13	W	4-0	^Illinois-Chicago
M14	W	4-0	^Arizona State
M19	W	4-3	#UCLA
M20	L	4-2	#Florida

* Pac-10 match
 ^ NCAA Regional at Los Angeles
 # NCAA Championships at Athens, Ga.

2004 (18-7, 7-1 conference)

Head Coach: Richard Gallien
 Pac-10 Finish: 2nd
 Postseason: NCAA Round of 16
 National Finish: No. 8

J22	W	7-0	Long Beach State
J23	W	6-1	TCU
J28	W	7-0	UC Irvine
J30	W	4-3	UCLA
F5	L	4-3	%Texas A&M
F6	L	1-6	%BYU
F7	L	1-6	%Kentucky
F28	W	7-0	Pepperdine
M3	W	5-2	*at UCLA
M5	W	7-0	*Oregon
M9	W	4-3	North Carolina
M12	W	4-3	*at Arizona State
M13	W	5-2	*at Arizona
M20	W	5-2	at Texas
M24	W	5-2	San Diego
M25	W	7-0	Loyola Marymount
A2	L	1-6	at Stanford
A3	L	2-5	at California
A9	W	6-1	*Washington St.
A10	W	5-2	*Washington
A16	W	5-2	*California
A17	L	0-7	*Stanford
M14	W	4-0	^American
M15	W	4-0	^Arizona
M20	L	2-4	#UCLA

* Pac-10 match
 % ITA Team Champ. at Madison, Wisc.
 @ Matches cancelled due to rain
 ^ NCAA Regional at Los Angeles
 # NCAA Championships at Athens, Ga.

2003 (22-6, 5-3 conference)

Head Coach: Richard Gallien
 Pac-10 Finish: 4th
 Postseason: NCAA Quarterfinals
 National Finish: No. 5

J22	W	7-0	Cal Poly
J24	W	7-0	UC Irvine
J31	W	4-3	at UCLA
F6	W	4-3	%Northwestern
F7	W	5-2	%Georgia
F8	L	1-5	%Florida
F15	W	5-2	at Pepperdine
F21	W	7-0	at Arizona
F22	W	7-0	at Arizona State
F26	W	7-0	at San Diego
F28	W	7-0	San Diego State
M5	W	5-2	*UCLA
M8	W	5-2	*at Oregon
M12	W	6-1	Texas
M19	W	5-2	South Alabama
M21	W	6-1	Pepperdine
M28	W	6-1	*Arizona State
M29	W	4-3	*Arizona
A4	L	2-5	Stanford
A5	W	4-3	California
A11	L	1-6	*at Washington
A12	W	5-1	*at Washington St.
A18	L	1-6	*at California
A19	L	2-5	*at Stanford
M9	W	4-0	^Sacramento State

^ Georgia Tech
 # Kansas State
 # California
 * Pac-10 match
 % ITA Team Champ. at Madison, Wisc.

2002 (19-8, 7-1 conference)

Head Coach: Richard Gallien
 Pac-10 Finish: 4th
 Postseason: NCAA Quarterfinals
 National Finish: No. 11

J18	W	6-3	UC Santa Barbara
J20	W	7-2	UC Irvine
J28	L	3-6	*at Arizona State

Head Coach: Richard Gallien
 Pac-10 Finish: 2nd
 Postseason: NCAA Round of 16
 National Finish: No. 11

J22	W	6-1	UC Santa Barbara
J24	W	7-0	UC Irvine
F1	L	2-5	UCLA
F7	L	2-5	% Notre Dame
F8	L	3-4	% Northwestern
F9	W	6-1	% Oklahoma State
F15	W	5-2	Loyola Marymount
F22	W	6-1	Arizona
F23	L	3-4	Arizona State
F27	W	6-1	at Pepperdine
F28	W	7-0	San Diego
M7	W	4-3	*at UCLA
M8	W	7-0	*Oregon
M13	W	7-0	at San Diego State
M20	W	6-1	Fresno State
M22	W	6-1	Pepperdine
M29	W	5-2	*at Arizona State
M30	W	6-1	*at Arizona
A5	L	1-6	at Stanford
A6	L	3-4	at California
A12	W	5-2	* Washington
A13	W	5-2	* Washington St.
A19	W	5-2	* California
A20	L	2-5	* Stanford
M11	W	5-0	^ Oral Roberts
M12	W	4-0	^ Oregon
M16	L	1-4	# UCLA

* Pac-10 match
 % ITA Team Champ. at Madison, Wisc.
 ^ NCAA Regional at Los Angeles
 # NCAA Championships at Stanford, Calif.

2001 (20-8, 6-2 conference)

Head Coach: Richard Gallien
 Pac-10 Finish: 2nd (tie)
 Postseason: NCAA Quarterfinals
 National Finish: No. 8

J17	W	7-0	UC Irvine
J18	W	7-0	Long Beach State
J27	W	5-2	* Arizona
J28	L	1-6	* Arizona State
F7	W	6-0	San Diego State
F9	W	4-3	Pepperdine
F15	W	5-0	% Wake Forest
F16	L	0-7	% Stanford
F7	L	2-5	% Wake Forest
F22	W	7-0	San Diego
F23	W	5-2	* Oregon
M3	W	5-2	at UCLA
M8	W	5-2	William & Mary
M11	W	6-1	Miami
M16	W	5-2	at Arizona
M17	L	1-6	at Arizona State
M21	L	3-4	at Pepperdine
M28	W	7-0	Loyola Marymount
M30	W	6-1	* UCLA
A7	L	0-7	* at Stanford
A13	W	4-3	* at Washington St.
A14	W	4-3	* at Washington
A20	L	1-6	Stanford
A21	W	5-2	* California
A12	W	4-0	^ Maryland-Balt. City

^ South Alabama
 # Northwestern
 # Georgia
 * Pac-10 match
 % ITA Team Champ. at Madison, Wisc.
 ^ NCAA Regional at Norfolk, Va.
 # NCAA Championships at Stone Mtn., Ga.

2000 (18-9, 4-4 conference)

Head Coach: Richard Gallien
 Pac-10 Finish: 4th
 Postseason: NCAA Quarterfinals
 National Finish: No. 11

J18	W	6-3	UC Santa Barbara
J20	W	7-2	UC Irvine
J28	L	3-6	* at Arizona State

J29 W 9-0 * at Arizona
 F1 W 8-0 Loyola Marymount
 F12 W 7-2 * at Oregon
 F17 W 7-1 % Tennessee
 F18 L 2-6 % Georgia
 F19 W 5-2 % Notre Dame
 F26 W 5-1 at San Diego State
 M1 L 4-5 UCLA
 M10 W 6-2 Arizona
 M11 W 6-3 Arizona State
 M15 W 6-2 Illinois
 M22 W 7-2 Fresno State
 M29 W 7-1 Harvard
 M1 L 3-6 * at UCLA
 A7 L 4-5 California
 A8 L 1-6 Stanford
 A14 W 6-3 * Washington St.
 A15 W 5-4 * Washington
 A21 L 3-6 at Stanford
 A22 L 1-5 * at California
 M13 W 5-0 ^ Maryland-Balt.
 City
 M14 W 5-2 ^ Arizona
 M18 W 5-2 # Louisiana State
 M19 L 1-5 # Georgia

* Pac-10 match
 % ITA Team Champ. at Madison, Wisc.
 ^ NCAA Regional at Los Angeles
 # NCAA Championships at Malibu, Calif.

1999 (21-9, 7-1 conference)

Head Coach: Richard Gallien
 Pac-10 Finish: 2nd
 Postseason: NCAA Quarterfinals
 National Finish: No. 10
 J21 W 9-0 UC Irvine
 J23 W 9-0 Loyola Marymount
 J29 W 5-4 * at Arizona State
 J30 W 6-1 * at Arizona
 F2 W 7-2 Fresno State
 F8 W 7-2 Colorado
 F13 W 6-3 * at UCLA
 F18 L 4-5 % William & Mary
 F19 W 5-4 % Arkansas
 F20 L 3-5 % Notre Dame
 F28 W 8-0 UNLV
 M3 L 2-6 UCLA
 M6 W 6-1 Tulsa
 M9 W 5-1 Wisconsin
 M12 W 6-3 Arizona
 M13 L 4-5 Arizona State
 M17 W 8-0 Oklahoma
 M26 L 3-6 at Pepperdine
 M30 W 9-0 Alabama
 A2 L 3-6 California
 A3 L 1-5 Stanford
 A8 W 5-1 * Washington St.
 A10 W 6-2 * Washington
 A11 W 5-1 * Oregon
 A16 L 1-6 * at Stanford
 A17 W 5-4 * at California
 M15 W 5-0 ^ Drake
 M16 W 5-1 ^ San Diego
 M20 W 5-4 # Miami
 M21 L 1-5 # Stanford

* Pac-10 match
 % ITA Team Champ. at Dallas, Texas
 ^ NCAA Regional at Los Angeles
 # NCAA Championships at Gainesville, Fla.

1998 (13-11, 3-5 conference)

Head Coach: Richard Gallien
 Pac-10 Finish: 6th
 Postseason: NCAA Regionals
 National Finish: No. 20
 J23 W 8-0 UC Santa Barbara
 J25 W 7-2 Utah
 J30 L 2-7 * at Arizona
 J31 L 3-6 * at Arizona State
 F4 W 6-2 Fresno State
 F13 L 4-5 at UCLA
 F19 W 6-3 at San Diego
 F21 W 7-0 San Diego State
 M1 W 5-2 UNLV
 M5 W 5-1 Boise State

M7 L 4-5 * UCLA
 M13 L 3-5 Arizona State
 M14 W 5-1 Arizona
 M17 L 4-5 Pepperdine
 M28 L 4-5 Kansas
 A5 L 0-6 Stanford
 A9 W 8-1 * Washington St.
 A10 W 6-2 * Washington
 A13 W 6-0 * Oregon
 A17 L 1-8 * at Stanford
 A18 L 4-5 * at California
 M15 W 5-4 # Washington
 M16 W 5-1 # San Diego State
 M17 L 1-5 # Pepperdine
 * Pac-10 match
 # NCAA West Regional at Las Vegas, Nev.

1997 (10-16, 0-10 conference)

Head Coach: Richard Gallien
 Pac-10 Finish: 6th
 Postseason: NCAA Regionals
 National Finish: No. 32
 J23 W 9-0 UC Santa Barbara
 J29 L 4-5 Fresno State
 F5 L 3-5 San Diego
 F11 W 8-1 Loyola Marymount
 F14 L 2-7 * at Arizona
 F15 L 3-6 * at Arizona State
 F20 W 5-2 % Kansas
 F21 L 0-7 % Florida
 F22 L 1-5 % Wake Forest
 M1 W 5-4 at San Diego State
 M7 L 2-7 * Arizona State
 M8 L 4-5 * Arizona
 M13 L 3-6 * UCLA
 M19 W 5-4 Boise State
 M20 L 4-5 Pepperdine
 M24 W 7-2 Washington
 M25 W 6-2 Oregon
 A4 L 3-6 * at California
 A5 L 2-7 * at Stanford
 A11 L 2-7 * at UCLA
 A14 W 5-4 UNLV
 A18 L 1-6 * Stanford
 A19 L 0-6 * California
 M9 W 5-2 # Fresno State
 M10 W 5-1 # San Diego
 M11 L 2-5 # Pepperdine
 * Pac-10 match
 % ITA Team Champ. at Madison, Wisc.
 # NCAA West Regional at San Diego, Calif.

1996 (16-9, 4-6 conference)

Head Coach: Richard Gallien
 Pac-10 Finish: 4th
 Postseason: NCAA Quarterfinals
 National Finish: No. 18
 J23 W 6-2 UC Santa Barbara
 J26 W 6-2 Washington St.
 F2 L 1-5 * at Arizona
 F3 W 7-2 * at Arizona State
 F14 W 8-1 Loyola Marymount
 F17 L 1-5 at Pepperdine
 F28 W 9-0 Cal State Fullerton
 M2 L 4-5 Texas
 M8 W 5-4 * Arizona State
 M9 L 1-5 * Arizona
 M14 L 1-5 * at UCLA
 M19 W 8-1 Princeton
 M21 W 9-0 Washington
 M27 W 8-1 Boise State
 M30 W 5-4 Harvard
 A3 W 6-0 UNLV
 A5 W 5-2 * California
 A6 L 2-6 * Stanford
 A12 L 3-5 * UCLA
 A19 L 1-5 * at Stanford
 A20 W 6-3 * at California
 M3 W 6-1 ^ Fresno State
 M4 W 5-3 ^ Arizona State
 M5 W 5-2 ^ California
 M18 L 2-5 # Duke
 * Pac-10 match
 ^ NCAA West Regional at Malibu, Calif.

NCAA Championships at Tallahassee, Fla.

1995 (8-14, 2-8 conference)

Head Coach: Ed Burt (Interim)
 Pac-10 Finish: 6th
 Postseason: NCAA First Round
 National Finish: No. 22
 J18 W 9-0 Fresno State
 J27 W 6-3 Washington St.
 F10 L 4-5 * Arizona
 F11 W 5-4 * Arizona State
 F15 W 7-2 San Diego State
 F17 L 1-5 at Pepperdine
 F20 W 5-4 San Diego
 F23 L 0-6 % Florida
 F24 L 4-5 % William & Mary
 F25 W 5-4 % Kentucky
 M10 L 3-5 * at Arizona State
 M11 L 0-6 * at Arizona
 M17 L 1-8 at Texas
 M18 L 2-7 vs. Duke (at Texas)
 A1 L 1-5 * at UCLA
 A8 L 1-5 * at Stanford
 A9 L 3-5 * at California
 A12 W 5-1 Pacific
 A15 W 5-3 * UCLA
 A21 L 0-6 * Stanford
 A22 L 4-5 * California
 M13 L 2-5 # Arizona State
 * Pac-10 match
 % ITA Team Indoor Championships
 # NCAA Championships at Malibu, Calif.

1994 (11-13, 2-7 conference)

Head Coach: Cheryl Woods
 Pac-10 Finish: 5th
 Postseason: NCAA Second Round
 National Finish: No. 19
 J27 W 8-0 Washington St.
 F11 L 0-5 * at Arizona
 F12 L 1-5 * at Arizona State
 F16 W 5-3 at San Diego State
 F19 L 2-5 Pepperdine
 F23 L 4-5 at San Diego
 F25 W 6-1 Washington
 F27 L 0-6 Texas
 M3 L 0-6 % Georgia
 M4 W 5-0 % Virginia
 M5 W 5-3 % Clemson
 M11 L 2-5 * Arizona State
 M12 W 6-3 * Arizona
 M18 W 6-3 * UCLA
 M30 W 5-1 UNLV
 A1 L 0-6 * California
 A2 L 0-6 * Stanford
 A4 L 4-5 UC Santa Barbara
 A5 W 5-4 Pacific
 A9 L 0-6 * at UCLA
 A13 W 5-4 Fresno State
 A15 L [forfeit]
 * at Stanford
 M13 W 6-0 # Clemson
 M14 L 2-5 # Georgia
 * Pac-10 match
 % ITA Team Indoor Championships
 # NCAA Championships at Athens, Ga.

1993 (15-9, 3-7 conference)

Head Coach: Cheryl Woods
 Pac-10 Finish: 5th
 Postseason: NCAA First Round
 National Finish: No. 10
 J20 W 9-0 Loyola Marymount
 J28 W 7-0 UNLV
 J31 W 5-1 Miami
 F9 W 8-0 Fresno State
 F12 W 5-1 * Arizona
 F13 W 5-4 * Arizona State
 F22 W 6-3 San Diego State
 F25 W 5-1 % Pepperdine
 F26 L 1-5 % Florida
 F27 W 5-1 % UCLA
 M9 W 8-1 at UC Santa Bar-
 M12 L 3-6 * at Arizona State

M13 L 3-6 * at Arizona
 M17 W 9-0 New Mexico
 M18 W 5-1 * UCLA
 M23 W 7-0 Washington
 M30 W 8-0 Harvard
 A2 L 0-7 * at Stanford
 A3 L 4-5 * at California
 A10 L 4-5 * at UCLA
 A13 W 6-0 San Diego
 A16 L 2-7 * Stanford
 A17 L 1-5 * California
 M12 L 1-5 # Texas
 * Pac-10 match
 % ITA Team Indoor Championships
 # NCAA Championships at Gainesville, Fla.

1992 (8-12, 1-9 conference)

Head Coach: Cheryl Woods
 Pac-10 Finish: 6th
 Postseason: NCAA Second Round
 National Finish: No. 15
 J22 W 9-0 Loyola Marymount
 J24 W 9-0 Fresno State
 F28 W 8-1 UC Santa Barbara
 F4 W 5-4 at Pepperdine
 F14 L 1-5 * at Arizona
 F15 L 3-6 * at Arizona State
 F19 L 4-5 at San Diego State
 F22 W 5-4 San Diego
 M7 L 0-6 * at Stanford
 M7 L 4-5 * at California
 M13 W 5-3 * UCLA
 M17 L 4-5 Kentucky
 M23 W 7-2 Pacific
 M27 L 4-5 * Arizona State
 M28 L 1-5 * Arizona
 A3 L 1-5 * California
 A4 L 1-5 * Stanford
 A11 L 2-5 * at UCLA
 M13 W 6-2 # Kentucky
 M14 L 0-5 # Florida
 * Pac-10 match
 # NCAA Championships at Stanford, Calif.

1991 (7-18, 0-10 conference)

Head Coach: Cheryl Woods
 Pac-10 Finish: 6th
 Postseason: None
 National Finish: No. 24
 J23 W 9-0 Fresno State
 J31 W 7-2 Loyola Marymount
 F11 W 7-2 UC Santa Barbara
 F15 L 2-5 * at Arizona State
 F16 L 4-5 * at Arizona
 F19 W 7-2 Long Beach State
 F20 L 1-5 Pepperdine
 F24 L 3-6 at San Diego
 F28 L 3-5 % Indiana
 M1 L 2-5 % Wisconsin
 M2 L 2-5 % William & Mary
 M9 L 4-5 at Texas
 M10 L 4-5 vs. Oklahoma St. (at Texas)
 M15 L 1-5 * UCLA
 M18 W 5-4 Yale
 M29 L 4-5 * Arizona
 M30 L 3-6 * Arizona State
 A1 W 6-3 Pacific
 A5 L 0-6 * at Stanford
 A6 L 0-6 * at California
 A9 W 6-3 at UC Irvine
 A13 L 1-5 * at UCLA
 A16 L 3-5 San Diego State
 A19 L 1-5 * Stanford
 A20 L 3-6 * California
 * Pac-10 match
 % ITA Team Indoor Championships

1990 (19-8, 5-5 conference)

Head Coach: Cheryl Woods
 Pac-10 Finish: 3rd (tie)
 Postseason: NCAA Quarterfinals
 National Finish: No. 7
 J17 W 5-4 Utah
 J23 W 7-2 USIU
 J25 W 9-0 Long Beach State

F3 W 6-3 at San Diego State
 F15 W 8-1 at Pepperdine
 F20 W 7-1 UC Irvine
 F23 W 7-2 * at Arizona
 F24 W 5-4 * at Arizona State
 M1 W 5-1 % William & Mary
 M2 L 0-6 % Florida
 M3 W 5-2 % California
 M10 W 5-4 * UCLA
 M16 W 6-3 Trinity
 M17 W 6-3 Texas
 M19 W 8-1 Yale
 M23 W 6-3 San Diego
 M30 L 3-6 Oklahoma State
 M31 W 6-3 * Arizona State
 A1 W 6-3 * Arizona
 A6 L 3-6 * California
 A7 L 1-5 * Stanford
 A11 W 6-2 UC Santa Barbara
 A14 L 4-5 * at UCLA
 A20 L 4-5 * at California
 A21 L 2-7 * at Stanford
 M10 W 7-2 # Tennessee
 M11 L 2-5 # Florida
 * Pac-10 match
 % ITA Team Indoor Championships
 # NCAA Championships at Gainesville, Fla.

1989 (16-7, 6-4 conference)
 Head Coach: Cheryl Woods
 Pac-10 Finish: 3rd (tie)
 Postseason: NCAA Quarterfinals
 National Finish: No. 6
 J26 W 9-0 Long Beach State
 J30 W 9-0 USIU
 F18 W 5-4 * at Arizona State
 F19 W 6-3 * at Arizona
 F22 W 9-0 UC Irvine
 F23 W 9-0 Fresno State
 F25 W 9-0 Loyola Marymount
 M1 W 5-4 UC Santa Barbara
 M4 W 5-3 at Texas
 M9 W 5-4 at Pepperdine
 M11 W 5-1 * UCLA
 M29 W 5-3 & Oklahoma State
 M30 L 2-5 & Georgia
 A1 W 5-4 * Arizona
 A2 W 7-2 * Arizona State
 A6 L 3-5 Pepperdine
 A8 L 3-6 * Stanford
 A9 L 4-5 * California
 A15 L 3-6 * at UCLA
 A22 W 5-2 * at California
 A23 L 1-5 * at Stanford
 M11 W 7-1 # Arizona State
 M12 L 4-5 # UCLA
 * Pac-10 match
 & Oklahoma State Tournament
 # NCAA Championships at Gainesville, Fla.

1988 (19-5, 7-3 conference)
 Head Coach: Dave Borelli
 Pac-10 Finish: 2nd
 Postseason: NCAA Semifinals
 National Finish: No. 3
 J15 W 7-0 Long Beach State
 J16 W 7-2 UC Santa Barbara
 J27 W 9-0 Loyola Marymount
 F18 W 8-1 Florida
 F20 W 6-3 * Arizona State
 F21 W 7-2 * Arizona
 F23 W 5-4 * UCLA
 F28 W 8-1 at Indiana
 M1 W 6-3 at Kentucky
 M3 W 7-2 % Trinity
 M4 W 6-3 % Miami
 M5 L 3-5 % Florida
 M10 W 8-1 Texas
 M24 L 2-7 * Stanford
 M25 W 5-3 * California
 A5 W 7-0 USIU
 A9 L 4-5 * at Arizona
 A10 W 5-4 * at Arizona State
 A16 L 1-5 * at Stanford
 A17 W 5-4 * at California

A29 W 6-3 * at UCLA
 M12 W 5-1 # BYU
 M13 W 5-3 # Kentucky
 M14 L 1-5 # Stanford
 * Pac-10 match
 % ITA Team Indoor Championships
 # NCAA Championships at UCLA

1987 (14-13, 4-6 conference)
 Head Coach: Dave Borelli
 Pac-10 Finish: 4th
 Postseason: NCAA First Round
 National Finish: No. 14
 J17 W 8-1 Long Beach State
 J28 W 9-0 Loyola Marymount
 J29 W 6-3 at Pepperdine
 F12 W 5-4 at UC Irvine
 F17 W 8-0 USIU
 F20 L 2-7 & Florida
 F21 L 4-5 & Miami
 F22 W 7-2 & Clemson
 M7 L 4-5 * at Arizona State
 M8 L 4-5 * at Arizona
 M10 W 8-1 Pacific
 M12 W 5-4 Oklahoma State
 M14 L 3-6 * at UCLA
 M17 W 7-2 San Diego State
 M26 W 9-0 Iowa
 M28 W 6-3 * Arizona
 M29 W 6-3 * Arizona State
 A3 W 6-3 * at California
 A4 L 3-6 * at Stanford
 A10 L 4-5 at San Diego State
 A13 L 2-7 at Trinity
 A14 L 2-7 at Texas
 A17 L 3-6 * Stanford
 A18 L 3-6 * California
 A21 L 3-6 Indiana
 M2 W 6-3 * UCLA
 M13 L 0-9 # Stanford
 * Pac-10 match
 & Miami Invitational
 # NCAA Championships at UCLA

1986 (22-3, 7-1 conference)
 Head Coach: Dave Borelli
 Pac-West Finish: 1st (tie)
 Postseason: NCAA Finals
 National Finish: No. 2
 J22 W 7-2 Long Beach State
 J24 W 9-0 at Pepperdine
 J25 W 8-1 at UC Santa Barbara
 F11 W 7-2 UC Irvine
 F16 W 6-3 California
 F20 L 4-5 San Diego State
 F28 W 6-3 Pacific
 M4 W 9-0 UC Santa Barbara
 M7 W 8-1 Pepperdine
 M9 W 9-0 * at UCLA
 M12 W 7-2 Texas
 M15 W 8-1 * at Arizona
 M16 W 5-1 * at Arizona State
 M21 W 8-1 at San Diego State
 A4 W 6-3 * Stanford
 A7 W 7-2 USIU
 A13 W 6-3 * Arizona State
 A15 W 6-3 Trinity
 A19 L 4-5 * at Stanford
 A22 W 7-2 * Arizona
 A29 W 6-3 * UCLA
 M15 W 8-1 # Texas A&M
 M16 W 5-1 # Arizona State
 M17 W 6-3 # Trinity
 M18 L 4-5 # Stanford
 * Pac-West match
 # NCAA Championships at Austin, Texas

1985 (33-2, 13-1 conference)
 Head Coach: Dave Borelli
 WCAA Finish: 1st (tie)
 Postseason: NCAA Champion
 National Finish: No. 1
 J25 W 9-0 at Cal State Fullerton
 J27 W 9-0 at UC Santa Barbara
 J29 W 7-2 at Pepperdine
 F1 W 8-1 & Clemson
 F2 W 6-3 & Florida

F3 W 5-4 & Miami
 F14 W 8-1 * at Long Beach State
 F16 W 9-0 USIU
 F20 W 9-0 Cal State Fullerton
 F22 W 7-2 UC Irvine
 F27 W 9-0 UC Santa Barbara
 M1 W 8-1 * San Diego State
 M3 W 9-0 * California
 M5 W 8-1 * UCLA
 M9 W 7-2 * at Arizona State
 M10 W 6-3 * at Arizona
 M15 W 8-1 * Long Beach State
 M16 W 7-2 Pacific
 M20 W 6-3 Pepperdine
 M24 W 7-2 * Arizona State
 M27 W 5-4 * Stanford
 M29 W 6-3 * at San Diego State
 M30 W 8-1 Harvard
 A10 W 9-0 Indiana
 A12 W 5-4 % Northwestern
 A13 W 5-1 % Florida
 A14 L 4-5 % Stanford
 A20 L 4-5 * at Stanford
 A21 W 5-3 * at California
 A23 W 5-4 * Arizona
 M1 W 6-3 * at UCLA
 M16 W 8-1 # Arizona State
 M17 W 9-0 # San Diego State
 M18 W 9-0 # California
 M19 W 6-3 # Miami
 * conference match
 & Miami Invitational
 % NCAA Invitational
 # Texas Championships at Oklahoma City, Okla.

1984 (26-7, 13-2 conference)
 Head Coach: Dave Borelli
 WCAA Finish: 2nd
 Postseason: NCAA Finals
 National Finish: No. 2
 J17 W 6-3 USIU
 J27 W 8-1 Pacific
 J31 W 9-0 * at Cal State Fullerton
 F1 W 6-3 * at San Diego State
 F3 W 9-0 * San Diego
 F7 L 4-5 Pepperdine
 F14 W 8-1 * at Long Beach State
 F17 W 7-2 & Clemson
 F18 L 4-5 & Florida
 F19 L 4-5 & Miami
 F23 W 9-0 * Cal State Fullerton
 F25 W 5-4 * at Arizona
 F26 W 7-2 * at Arizona State
 M3 W 7-2 * at UCLA
 M7 W 9-0 North Carolina
 M9 W 9-0 * Long Beach State
 M10 W 8-1 California
 M13 L 3-6 Texas
 M20 W 5-4 at Pepperdine
 M30 W 7-2 * Arizona State
 M31 W 9-0 Harvard
 A3 W 8-1 UC Santa Barbara
 A7 L 4-5 * Stanford
 A12 W 5-4 * San Diego State
 A14 L 2-7 * Stanford
 A15 W 7-2 California
 A19 W 9-0 UC Irvine
 A20 W 8-1 * UCLA
 A23 W 8-1 * Arizona
 M12 W 8-1 # Harvard
 M13 W 7-2 # Miami
 M14 W 5-4 # Trinity
 M15 L 0-9 # Stanford
 * conference match
 & Miami Invitational
 # NCAA Championships at Los Angeles

1983 (31-0, 13-0 conference)
 Head Coach: Dave Borelli
 WCAA Finish: 1st
 Postseason: NCAA Champion
 National Finish: No. 1
 J25 W 9-0 at Cal State Fullerton
 J27 W 9-0 at UC Santa Barbara
 J29 W 7-2 at Pepperdine
 F1 W 8-1 & Clemson
 F2 W 6-3 & Florida

F14 W 9-0 * at Cal State Fullerton
 F15 W 9-0 UC Santa Barbara
 F17 W 9-0 * Long Beach State
 F22 W 6-3 * UCLA
 F25 W 9-0 Michigan
 F26 W 7-2 * at Arizona
 M3 W 9-0 % Miami
 M4 W 8-1 % South Carolina
 M5 W 5-4 % Stanford
 M6 W 5-4 % Trinity
 M9 W 8-1 Pepperdine
 M10 W 9-0 Texas
 M12 W 8-1 * at Arizona State
 M20 W 7-2 at Pepperdine
 M24 W 5-4 * Stanford
 M29 W 9-0 * at Long Beach State
 A2 W 8-1 Harvard
 A8 W 9-0 * Arizona State
 A13 W 8-1 * San Diego State
 A14 W 5-4 * at UCLA
 A17 W 8-0 * Arizona
 A18 W 7-2 * at San Diego State
 A26 W 9-0 * Cal State Fullerton
 A29 W 7-2 at California
 M14 W 9-0 # Pepperdine
 M15 W 7-2 # California
 M16 W 8-1 # Stanford
 M17 W 8-1 # Trinity
 * conference match
 % Nike Invitational
 # NCAA Championships at Albuquerque, N.M.

1982 (22-5, 11-1 conference)
 Head Coach: Dave Borelli
 WCAA Finish: 1st (tie)
 Postseason: NCAA Semifinals
 National Finish: No. 4
 J26 W 9-0 at Pepperdine
 J30 W 9-0 Pacific
 F12 W 9-0 * at Cal State Fullerton
 F16 W 9-0 * at Long Beach State
 F19 W 9-0 * Arizona State
 F21 W 8-1 California
 F25 W 9-0 * Long Beach State
 F26 W 7-2 * at San Diego State
 M4 W 9-0 % Miami
 M5 L 2-7 % UCLA
 M6 W 8-1 % Indiana
 M7 W 7-2 % Trinity
 M8 W 7-2 * Cal State Fullerton
 W 6-3 Pepperdine
 M19 L 4-5 * at UCLA
 M22 W 7-2 Colorado
 A3 W 8-1 * at Arizona
 A4 W 7-2 * at Arizona State
 A14 W 8-1 UC Irvine
 A17 L 4-5 at Stanford
 A21 W 8-1 * Arizona
 W 9-0 * San Diego State
 A30 W 7-2 * UCLA
 W 9-0 # Pepperdine
 W 8-1 # South Carolina
 L 4-5 # UCLA
 L 3-6 # Trinity
 * conference match
 % Nike Invitational
 # NCAA Championships at Salt Lake City, Utah

1981 (33-1, 13-0 conference)
 Head Coach: Dave Borelli
 WCAA Finish: 1st
 Postseason: AIAW Semifinals
 National Finish: No. 3
 F10 W 8-1 UC Santa Barbara
 F12 W 5-4 at Pepperdine
 F14 W 7-2 * Long Beach State
 F17 W 7-2 * San Diego
 F20 W 8-1 * at Cal State Fullerton
 M13 W 9-0 * at Arizona
 M14 W 9-0 * at Arizona State
 M17 W 7-2 * at San Diego State
 M19 W 8-1 Colorado
 M22 W 8-1 Northwestern
 M26 W 9-0 % Florida
 M27 W 8-1 % Indiana

M28 W 7-2 % Trinity
 M29 W 7-2 % Stanford
 A2 W 7-2 at Texas
 A3 W 9-0 ^ Texas Tech
 A4 W 7-2 ^ Clemson
 A5 W 7-2 ^ Trinity
 A8 W 6-3 * at Long Beach St.
 A10 W 6-3 * UCLA
 A18 W 5-4 Stanford
 A21 W 7-2 * Arizona
 A28 W 6-3 * San Diego State
 A30 W 8-1 UC Irvine
 M1 W 7-2 * Arizona State
 M3 W 6-3 * at UCLA
 M5 W 8-1 * Cal State Fullerton
 M8 W 5-4 at Stanford
 M9 W 8-1 at California
 M12 W 8-1 BYU
 J3 W 7-2 # Princeton
 J4 L 1-8 # Florida
 J5 W 6-3 # Arizona
 J6 W 5-4 # BYU

* conference match
 % Nike Invitational
 ^ Matches played at Austin, Texas
 # AIAW Nationals

1980 (30-0, 11-0 conference)

Head Coach: Dave Borelli
 WCAA Finish: 1st
 Postseason: AIAW Champion
 National Finish: No. 1
 W 8-1 ^ Cal State Fullerton
 W 9-0 ^ Pepperdine
 W 6-0 ^ BYU
 F26 W 9-0 at UC Irvine
 F28 W 9-0 * Long Beach State
 M4 W 9-0 at Pepperdine
 M8 W 8-1 * at UCLA
 M11 W 9-0 * at Cal State Fullerton
 M12 W 8-1 Yale
 M21 W 9-0 * at Arizona State
 M22 W 9-0 * at Arizona
 M25 W 7-2 % Trinity
 M26 W 7-2 % Stanford
 M27 W 6-3 % Florida
 M28 W 9-0 % UCLA
 M29 W 7-2 % BYU
 A4 W 8-1 Stanford
 A8 W 7-2 * at Long Beach St.
 A10 W 6-3 * at San Diego St.
 A18 W 8-1 at Stanford
 A30 W 9-0 * Arizona State
 M3 W 7-2 Pepperdine
 W 8-1 UC Santa Barbara
 W 8-1 * San Diego St.
 M13 W 9-0 * UCLA
 W 8-1 * Cal State Fullerton
 W 9-0 # Indiana
 W 8-1 # Rollins
 W 7-2 # Trinity
 W 9-0 # Florida

* conference match
 ^ Ed Doty Invitational
 % Nike Invitational
 # AIAW Nationals

1979 (20-1, 7-1 conference)

Head Coach: Dave Borelli
 WCAA Finish: 1st
 Postseason: AIAW Champion
 National Finish: No. 1
 M5 W 6-3 * San Diego State
 M7 W 8-1 UC Santa Barbara
 M10 W 7-2 * UCLA
 M12 W 6-3 Pepperdine
 M15 W 8-1 * at Long Beach State
 M23 W 9-0 San Diego
 M24 W 6-3 Colorado
 A2 W 9-0 BYU
 A4 W 8-1 * at San Diego State
 A7 W 6-3 Stanford
 W 9-0 * at Cal State Fullerton
 A16 W 8-1 * Long Beach State
 A18 W 8-1 UC Irvine
 A21 W 5-4 at Stanford
 M1 W 9-0 * Cal State Fullerton
 M5 L 4-5 * at UCLA

J5 W 8-1 Cal Poly Pomona
 J6 W 8-1 # Pepperdine
 J6 W 9-0 # South Florida
 J7 W 8-1 # Rollins
 J8 W 8-1 # Stanford
 * conference match
 # AIAW Nationals

1978 (16-1, 8-0 conference)

Head Coach: Dave Borelli
 WCAA Finish: 1st
 Postseason: USTA Champion/AIAW Finals
 National Finish: No. 1/No. 2
 Non-Conference: (5-0)
 M13 W 9-0 * at Cal State Fullerton
 M16 W 8-1 Pepperdine
 W 9-0 * Long Beach State
 A3 W 7-2 * Cal State Fullerton
 W 6.5-2.5 * at Long Beach St.
 A11 W 7-2 Trinity
 A15 W 7-2 * at UCLA
 A18 W 8-1 Florida
 A21 W 5-4 at Stanford
 A25 W 9-0 * San Diego State
 M2 W 8-1 BYU
 W 5-4 * San Diego State
 M6 W 6-3 * UCLA
 W 9-0 # San Diego
 W 5-4 # Rollins
 W 9-0 # Florida
 L 4-5 # Stanford
 * conference match
 # AIAW Nationals

1977 (17-0, 8-0 conference)

Head Coach: Dave Borelli
 WCAA Finish: 1st
 Postseason: AIAW/USTA Champions
 National Finish: No. 1
 F22 W 9-0 * at Long Beach State
 F25 W 7-2 Pepperdine
 M2 W 7-2 UC Irvine
 M7 W 9-0 * at Cal State Fullerton
 M13 W 8-1 at UC Santa Barbara
 M19 W 7-2 * at UCLA
 M22 W 9-0 * San Diego State
 M28 W 7-2 * at Long Beach State
 A1 W 6-3 * at San Diego State
 A9 W 6-3 * UCLA
 A11 W 9-0 Odessa College
 A14 W 9-0 San Diego
 A16 W 7-2 Stanford
 A18 W 7-2 BYU
 A27 W 5-4 at UC Irvine
 M3 W 8-1 * Cal State Fullerton
 M14 W 6-3 at Stanford
 * conference match



TROJANS CURRENTLY IN THE PROS

- Kaitlyn Christian
- Maria Sanchez
- Danielle Lao
- Sabrina Santamaria
- Madison Westby
- Zoë Scandalis
- Giuliana Olmos

Opponent Series Records

(with year of first match in parentheses)

Opponent	W	L	Opponent	W	L
Akron (2013)	1	0	North Texas (2014)	1	0
Alabama (1999)	2	0	Northwestern (1981)	5	1
American (2004)	1	0	Notre Dame (1999)	1	2
Arizona (1980)	53	15	Odessa (1977)	1	0
Arizona State (1980)	54	24	Oklahoma (1999)	3	0
Arkansas (1999)	1*	0	Oklahoma State (1987)	3	2
Army (2006)	1	0	Oral Roberts (2002)	1	0
Auburn (2010)	1	1	Oregon (1997)	22	1
Baylor (2006)	3	6	Pacific (1982)	9	0
Boise State (1996)	3	0	Pepperdine (1977)	43*	16
Boston University (2007)	1	0	Princeton (1981)	2	0
Brigham Young (1977)	8	1	Rice (2017)	1	0
Cal Poly Pomona (1979)	1	0	Rollins (1978)	3	0
Cal Poly SLO (2003)	4	0	Sacramento State (2003)	4	0
Cal State Fullerton (1977)	20	0	Saint Mary's (2011)	6	0
Cal State Northridge (2011)	1	0	San Diego (1977)	26*	3
California (1981)	39	37	San Diego State (1977)	44	4
Clemson (1981)	7*	1	South Alabama (2001)	2	0
Colorado (1979)	11	0	South Carolina (1982)	2	0
Denver (2015)	1	1	South Florida (1979)	3	0
Drake (1999)	1	0	Stanford (1977)	21	65
Duke (1995)	0	3	Syracuse (2011)	1	0
Fairfield (2009)	2	0	Tennessee (1990)	3	0
Florida (1978)	8*	14	Texas (1981)	17	7
Fresno State (1989)	18	1	Texas A&M (1986)	2	1
Georgia (1989)	1	9	TCU (2004)	2	0
Georgia Tech (2003)	1	0	Texas Tech (1981)	2	0
Harvard (1983)	8	0	Trinity (1978)	13	2
Idaho (2014)	1	0	Tulsa (1999)	1	0
Illinois (2000)	2	0	UC Irvine (1977)	29	0
Illinois-Chicago (2005)	1	0	UCLA (1977)	49	46
Indiana (1980)	5	2	UC Santa Barbara (1977)	24	2
Iowa (1987)	1	0	UNLV (1993)	7	0
Kansas (1997)	1	1	USIU (1984)	7	0
Kansas State (2003)	1	0	Utah (1990)	9	0
Kentucky (1988)	5	2	Vanderbilt (2012)	2	1
Long Beach State (1977)	35	0	Virginia (1994)	2	1
Louisiana State (2000)	1	0	VCU (2006)	1	0
Loyola Marymount (1987)	17	0	Virginia Tech (2015)	1	0
Marist (2008)	0*	0	Wake Forest (1997)	1	2
Maryland-Baltimore Cty. (2000)	2	0	Washington (1993)	23*	4
Miami (1982)	9	4	Washington State (1994)	24	1
Michigan (1983)	4	1	William & Mary (1990)	3	3
Michigan State (2009)	0*	0	Wisconsin (1991)	1	1
New Mexico (1993)	1	0	Youngstown State (2015)	1	0
North Carolina (1984)	3	2	Yale (1980)	3	0
North Carolina State (2011)	1	0	Program Record	*773-290	

Bold indicates 2019 opponents.

* Due to NCAA penalty vacating wins recorded by ineligible player, 3 wins in 2008 left undecided; 1 win in 2009 became a loss, and 4 wins in 2009 left undecided.

[Original records vs. opponents: Arkansas 2-0, Clemson 8-0, Florida 9-14, Marist 1-0, Michigan State 1-0, Pepperdine 44-15, San Diego 26-3, Washington 23-3; Original program record: 768-279]

ITA HALL OF FAME



In 2010, former USC player Barbara Hallquist DeGroot and coach Dave Borelli were among the class of six former student-athletes and coaches to be inducted into the ITA Women's Collegiate Hall of Fame in a ceremony held on the William and Mary campus. Borelli -- former USC coach and current coach at TCU -- won seven national collegiate championships as coach at USC. Barbara Hallquist DeGroot was a four-time All-American who captured two national collegiate singles titles as a Trojan.

Joining Hallquist DeGroot and Borelli at the event were Wimbledon doubles champion JoAnne Russell, an All-American at Trinity University in Texas; Courtney Allen, NCAA Division III Rookie of the Year and Senior Player of the Year at Principia College; Ed Hegmann, former women's tennis coach and current athletic director at the University of Mary Washington, a two-time NCAA Division III Coach of the Year; and Carrie Meyer Richardson, winner of the 1974 national collegiate singles title while a freshman at Marymount College in Florida.

David Borelli served as women's tennis coach at USC from 1974 to 1988, winning seven national team championships and earning NCAA National Collegiate Coach of the Year honors in 1981. As an undergraduate, Borelli played on the USC men's tennis team, earning the USC Outstanding Senior Scholar Athlete Award in 1974. He began his coaching career while attending USC Law School, from which he earned a J.D. in 1977. While at USC, Borelli guided individual players to five national collegiate singles titles and one doubles titles; 25 of his players earned a total of 56 All-America honors. He went on to work as a USTA professional tour coach, mentoring such Top 100 players as Mark Fish in their rookie careers. In 2002, Borelli became head coach of women's tennis at Texas Christian University, leading his teams from No. 56 to No. 15 in the national rankings. Coach of the TCU men's team from 2006-2010, Borelli returned as head coach of the TCU women's team in July 2010.

The first woman to receive a full athletic scholarship at USC, Barbara Hallquist DeGroot captured the national collegiate singles title in both 1976 and 1977 and played on four national championship teams under coach David Borelli. Ranked No. 1 in Southern California as a junior player, Hallquist won two national USTA junior titles, and nine national USTA titles overall. She was a co-recipient of the USTA Girls' Sportsmanship Trophy in 1975. At USC, Hallquist was a four-time All-American, named Outstanding Female Senior Student-Athlete in 1979 and winning the USC Post Graduate Scholarship Award. Turning pro after college and attaining a career high world ranking of No. 30, she competed in all four Grand Slam events and reached the quarterfinals in singles at the 1980 U.S. Open. From 1985-88, Hallquist served as USC assistant coach, helping guide the team to the 1985 NCAA team championship. She was the women's tennis coach at Cate School in Carpinteria, Calif., and now is a volunteer assistant at USC.

The ITA Women's Collegiate Hall of Fame was established in 1995 and honors outstanding collegiate players and coaches, as well as players who attended college and later had a significant impact on women's tennis. The Hall of Fame is located at the College of William and Mary's McCormack-Nagelsen Tennis Center, named for the late Mark McCormack, founder of sports marketing giant International Management Group, and his wife, former tennis pro Betsy Nagelsen.