



GAME NOTES

Columbia, S.C. NCAA Regional

Columbia, S.C. • May 18-20 • Carolina Softball Stadium at Beckham Field

301 Coleman Building • (724) 799-4480 • Assistant SID/Softball Contact: Korey Blucas • k_blucas@uncg.edu

2018 SCHEDULE

UNCG SCHEDULE (46-11, 13-3)

Date	Opponent	Location	Time/Result
Kickin' Chicken Classic			
2/9	Presbyterian	Conway, S.C.	14 - 0 (W) 5
2/10	Coastal Carolina	Conway, S.C.	2-1 (L)
2/10	Saint Francis (PA)	Conway, S.C.	9 - 8 (W)
2/11	Iowa State	Conway, S.C.	2 - 0 (W)
Eastern Michigan Madeira Beach Spring Invitational			
2/16	Massachusetts	Madeira Beach, Fla.	5 - 2 (W)
2/16	Ohio	Madeira Beach, Fla.	2 - 5 (L)
2/17	UMKC	Madeira Beach, Fla.	3 - 2 (W)
2/17	Virginia	Madeira Beach, Fla.	3 - 2 (W)
2/18	Lipscomb	Madeira Beach, Fla.	6 - 2 (W)
UNCG Invitational			
2/23	Seton Hall	UNCG Softball Stadium	12 - 5 (W)
2/24	Seton Hall	UNCG Softball Stadium	1 - 2 (L)
2/24	Virginia	UNCG Softball Stadium	8 - 0 (W)
2/25	Virginia	UNCG Softball Stadium	5 - 0 (W)
2/25	Appalachian State	UNCG Softball Stadium	3 - 0 (W)
9th Annual Bulldog Classic			
3/2	Jacksonville State	Athens, Ga.	3 - 2 (W) 9
3/2	Radford	Athens, Ga.	6 - 2 (W)
3/3	Radford	Athens, Ga.	0 - 1 (L)
3/3	#14/14 Georgia	Athens, Ga.	0 - 7 (L)
3/4	#14/14 Georgia	Athens, Ga.	1 - 6 (L)
3/9	Elon	UNCG Softball Stadium	5-3 (W)
3/10	Elon	Elon, N.C.	4-1 (W) 8
3/10	Elon	Elon, N.C.	6-4 (L)
3/14	North Carolina A&T	UNCG Softball Stadium	10-1 (W) 5
Spartan Classic			
3/16	Canisius	UNCG Softball Stadium	2-1 (W) 8
3/16	Canisius	UNCG Softball Stadium	7-4 (W)
3/17	Canisius	UNCG Softball Stadium	9-1 (W) 6
3/17	Towson	UNCG Softball Stadium	3-2 (W) 8
3/18	Towson	UNCG Softball Stadium	10-4 (W)
3/24	Furman *	UNCG Softball Stadium	4-1 (W)
3/24	Furman *	UNCG Softball Stadium	22-0 (W) 5
3/25	Furman *	UNCG Softball Stadium	1-0 (W)
3/ 28	Charlotte	Charlotte, N.C.	8-0 (W)
3/30	Western Carolina *	Cullowhee, N.C.	12-2 (W)
3/30	Western Carolina *	Cullowhee, N.C.	3-0 (W)
3/31	Western Carolina *	Cullowhee, N.C.	9-7 (W)
4/4	North Carolina	Chapel Hill, N.C.	4-3 (W) 10
4/8	Mercer *	UNCG Softball Stadium	7-0 (W)
4/8	Mercer *	UNCG Softball Stadium	0-3 (L)
4/10	Presbyterian	UNCG Softball Stadium	11-1 (W) 5
4/10	Presbyterian	UNCG Softball Stadium	8-0 (W) 5
4/14	ETSU *	Johnson City, Tenn.	1-0 (W)
4/14	ETSU *	Johnson City, Tenn.	2-0 (W)
4/15	ETSU *	Johnson City, Tenn.	Cancelled
4/18	Appalachian State	UNCG Softball Stadium	4-3 (W)
4/18	Appalachian State	UNCG Softball Stadium	4-3 (W) 8
4/21	Chattanooga *	UNCG Softball Stadium	4-5 (L) 10
4/21	Chattanooga *	UNCG Softball Stadium	4-2 (W)
4/22	Chattanooga *	UNCG Softball Stadium	4-0 (W)
4/25	Campbell	UNCG Softball Stadium	6-5 (W) 9
4/ 28	NC State	Raleigh, N.C.	5-4 (W)
4/28	NC State	Raleigh, N.C.	1-8 (L)
4/29	NC State	Raleigh, N.C.	24-2 (W) 5
5/5	Samford *	Birmingham, Ala.	5-3 (W)
5/5	Samford *	Birmingham, Ala.	9-2 (W)
5/6	Samford *	Birmingham, Ala.	5-6 (L)
5/10	#4 Chattanooga^	UNCG Softball Stadium	4-1 (W)
5/11	#6 ETSU^	UNCG Softball Stadium	6-3 (W)
5/12	#6 ETSU^	UNCG Softball Stadium	5-2 (W)
5/18	#9 South Carolina%	Columbia, S.C.	7:30 pm
5/19	Hofstra/Liberty%	Columbia, S.C.	TBA

* Southern Conference games
 ^ SoCon Tournament
 %-NCAA Regional
 All times Eastern

THE SERIES

UNCG All-Time vs:
 South Carolina: 1-8
 Liberty: 32-12
 Hofstra: 0-1



NOTABLES

SOCON CHAMPS 2X

UNCG swept both the Southern Conference Regular Season and Tournament Championships this year. The No. 1 seed Spartans won its first SoCon Tournament Championship after winning all three games by three-run margins. They first beat No. 4 Chattanooga 4-1, toppled No. 6 ETSU 6-3 the next day, and won once again against the Bucs 4-1 in the championship game on Sunday.

The win in the SoCon Championship game was the first in four tries for UNCG, including three times on its home field (2014 and 2013). The Spartans become the first team to claim both the regular season and tournament championship since Samford accomplished the feat in 2016.

Alicia Bazonski was named the SoCon Tournament Most Outstanding Player. Bazonski started and won all three games for UNCG in the circle. With a 1.07 ERA, two complete games and 19.2 innings pitched, she allowed just three runs, three walks and 17 hits with seven strikeouts.

Marisa Sholtes and **Rachael McClaskey** were named to the all-tournament team. Sholtes went 1-3 in championship game with a run and had a two-run homer, double and walk in Friday's win over ETSU. McClaskey knocked in the first run in Saturday's game, smacked a two-run homer to right field on Friday and went 1-2 in the first win over Chattanooga.

The Spartans won their second-straight and first outright SoCon Championship with a pair of wins at Samford two weekends ago to earn the No. 1 seed and first round bye. The Spartans finished conference play with a 13-3 record, two games ahead of second-place Mercer (11-5) and three in front of third-place Furman (10-6). UNCG won all but on SoCon series this year, splitting a pair of home games in a rain-shortened series versus Mercer. The Spartans swept Furman (home), Western Carolina (away) and ETSU (away) and won two of three against Chattanooga (home) and at Samford.

NCAA History

UNCG will be making its second NCAA Regional Appearance in program history, as the 1997 team won the Big South

NOTABLES

Tournament to advance to the NCAA Tournament. The Spartans played in the NCAA Play-in Series from 1994-96. They lost two of three to Canisius at home in 1994 and at Campbell in 1995 and were swept by Jacksonville State at home in 1996.

ALL TIME SERIES

UNCG has squared off versus the three schools in the regional a combined 54 times with a heavy majority of the games coming against Liberty. The Spartans own a 32-12 advantage over the Lady Flames, and the two schools were both in the Big South Conference from 1994-1997 before UNCG left for the Southern Conference. They played a doubleheader each year from 2005-14, and the Spartans went 3-1 against the Lady Flames under head coach Janelle Breneman. The Pride won the only meeting against UNCG with a 16-0 in five innings on Feb. 11, 2011 in the Seminole Kick Off Classic.

The Spartans' only other regional appearance was also at South Carolina in 1997, where they fell 5-0 to the Gamecocks and bowed out with a 2-0 loss in nine innings to USF. The lone win versus the Gamecocks was a 5-2 victory on April 29, 1995 in the Virginia Classic. UNCG has dropped the only two games against South Carolina (2016: 11-3, 2014: 13-0) under Breneman.

WINNINGEST REGION IN THE LAND

The Spartans are in the regional with the best combined RPI, 113. The next best is the Seattle Region, at 132, followed by Fayetteville at 139 and Tallahassee at 144. The regional is the only one with all four teams with at least 40 wins. The combined win total, 178, is 19 more than the second-highest-winning Regional, Tallahassee (159). Eugene and Knoxville are at 157 wins apiece, followed by UCLA (156) and Seattle (155). The Spartans own the highest win percentage of the regional at .807 (46-11).

COACH OF THE YEAR

Janelle Breneman became the first in school history to be named SoCon Coach of the Year and just the second to win the coaching award from any conference after leading the Spartans to their second-straight and first outright regular season championship. With the eighth-best win-loss percentage (.807) in the nation, the 46 wins this year are the second-most victories in a single-season in program history. Earlier this season the Spartans ripped off a 15-game winning streak, matching the feat done by the 1995 team for the second-longest victory streak in program history. The coach of the year award is the second in Breneman's career after garnering the honor from the Patriot League while at Bucknell in 2004.

ALL-CONFERENCE RECOGNITION

UNCG had six players named All-SoCon and two to the all-freshman teams last Tuesday. A league-high four Spartans were named to the first team: pitcher **Alicia Bazonski**, third baseman **Gabi Cabbage**, second baseman **Jasmine Palmer** and first baseman **Marisa Sholtes**. Bazonski wraps up her career as a three-time all-conference player after being named to the second team the last two years. Cabbage and Sholtes repeated as first teamers. Pitcher **Stephanie Bryden** and outfielder **Makenna Matthijs** were named to the second team, and pitcher **Hannah Stiltner** joined Matthijs on the all-freshman team.

The four All-SoCon First Team selections tie a program-high set in 2000, and the six total all-conference honors rank second most behind the 2013's collection of eight all-league selections. In Breneman's six-year tenure at UNCG, she has had 16 first team and 17 second team selections.

WINNINGEST TEAM IN SCHOOL HISTORY

UNCG has the highest winning-percentage in program history at .807. The 46 wins are the second-most victories in a single-season in program history. With a series win at NC State three weekends ago they joined the 1997 (40-25) and 1995 (49-17) teams as the only squads to reach 40 wins in a season.

THE BRENEMAN-SMITH CONNECTION

Before being named the ninth head softball coach in UNCG softball history on July 18, 2012, **Janelle Breneman** spent the previous eight years working with South Carolina head coach **Beverly Smith**. Breneman spent 2010-11 as the top assistant coach under Smith at South Carolina. She was the infield coach and played a pivotal role in the team's defense, while assisting the team's offense. Under her direction, South Carolina saw its fielding percentage improve over 26 points her first year in Columbia, while leading the SEC in double plays. Offensively, the Gamecocks improved in every statistical category during her tenure, including raising the team batting average 51 points in her first year.

Prior to South Carolina, Breneman spent six seasons as an assistant coach along with Smith at North Carolina for head coach Donna Papa. They helped the Tar Heels post five 40-plus win seasons, advance to the NCAA Tournament every season and top-25 rankings in four of the six seasons in Chapel Hill. Under Breneman's guidance, the North Carolina defense led the Atlantic Coast Conference in fielding each year and finished in the top 33 in NCAA Division I all six seasons.

SPARTANS EXCEL IN ALL THREE FACETS

This season the Spartans have had one of the top offenses in the SoCon. They lead the league in slugging percentage (.459), on-base percentage (.384), runs scored (320), RBIs (298), home runs

NOTABLES

(83), doubles (84), walks (193), hit by pitches (67) and sacrifice flies (15). They also rank second in sacrifice bunts (55) and hits (414), third in batting average (.280) and tied for third in triples (four). In the nation UNCG places 26th in doubles per game (1.47), 30th in scoring, 29th in home runs per game (1.02), 45th in slugging percentage and 93rd in batting average.

Just like their offense, the Spartans' pitching ranks among the best in the conference in several categories: first in ERA (2.00), opposing batting average (.212) and least amount of sacrifice bunts (25) and sacrifice flies (five) allowed and second in strikeouts (333), saves (four), least hit batters (15) and strikeouts looking (66). Overall in the nation UNCG ranks 22nd in ERA. The Spartans also have the top fielding percentage (.971) in the league that's 29th in Division I.

SLUGGING SHOLTES

Starting every game this year at first base, **Marisa Sholtes** leads the SoCon in several categories: slugging percentage (.751), on-base percentage (.490), home runs (16), RBIs (54), doubles (16) and walks (32). She tied for first in runs with Jasmine Palmer (49), second in hits (63), third in batting average (.373) and tied for fourth in hit by pitches (eight). In the nation she places 25th in homers, 24th in total bases (127), 36th in slugging percentage, 56th in on-base percentage and 82nd in runs per game (0.8). She has won the conference player of the week twice this season and was named player of the month in February.

With 26 career homers, she ranks seventh in the all-time category in program history. Her 16 home runs this year is tied for third most in a single-season, and she needs just one more to tie for first. With 54 RBIs she has the fourth-most in a year. She ranks fourth in slugging percentage, her 16 doubles this season is tied for sixth-most and the 32 walks are tied for seventh.

Home runs (Career)

1. Lindsay Thomas.....2013-16	57
2. Karyn Thompson.....1993-96	46
3. Katelyn Bedwell.....2011-14	40
4. Penny Thompson.....2000-03	36
5. Kaitlin Merkt.....2007-11	32
6. Nicole Thomas.....2013-16	31
7. Marisa Sholtes.....2015-Pres.....	26

Home runs (Single Season)

1. Lindsay Thomas.....2013	17
Katelyn Bedwell.....2014	17
3. Marisa Sholtes.....2016	16
Lindsay Thomas.....2016	16
5. Karyn Thompson.....1995	14
6. Jordan Gontram.....2018	13
Penny Thompson.....2002	13

Lindsay Thomas.....2014	13
Nicole Thomas.....2014	13

RBIs (Single Season)

1. Katelyn Bedwell.....2014	66
2. Karyn Thompson.....1995	57
3. Karyn Thompson.....1996	55
4. Marisa Sholtes.....2018	54
5. Nicole Thomas.....2014	53

Slugging Percentage (Single Season)

1. Lindsay Thomas.....2016811
2. Katelyn Bedwell.....2014786
3. Lindsay Thomas.....2013760
4. Marisa Sholtes.....2018751
5. Lindsay Thomas.....2014705

Doubles (Single Season)

1. Lara Long.....1998	21
2. Lara Long.....1997	20
3. Lindsay Thomas.....2016	18
4. Katelyn Bedwell.....2014	17
Lindsay Thomas.....2014	17
6. Marisa Sholtes.....2018	16
Joni Gomez.....2004	16
8. Makenna Matthijs.....2018	15
Kim Benningfield.....2002	15
Jennifer Bonilla.....2005	15

Walks

1. Karyn Thompson.....1996	51
2. Karyn Thompson.....1995	43
3. Nicole Thomas.....2014	37
4. Lindsay Thomas.....2013	35
5. Judy Baker.....1997	33
Kelly Allen.....2005	33
7. Jasmine Palmer.....2017	32
Marisa Sholtes.....2018	32

MOMMY, DADDY...IT'S THE KILLA BEEZ

Alicia Bazonski and **Stephanie Bryden** have been the best one-two combo in the circle in the league. On a team-high 37 starts and 173.2 innings pitched, Bazonski ranks in the nation 74th in ERA (1.89) that's the ninth-best in a single-season in school history. In the SoCon she placed second in wins (20), third in ERA, fourth in strikeouts (108), tied for fifth in saves (two), sixth in lowest opposing batting average (.232) and ninth in strikeouts looking (23). In conference play, she turned it up a notch with a 7-2 record, 1.29 ERA and six complete games in 10 games started and won pitcher of the week once.

In 26 appearances, 11 starts and 121.2 innings pitched, Bryden leads the league in ERA (1.50) and opposing batting average (.153) and is second in strikeouts (159) and least amount of home runs given up (six), third in wins (16) and games in relief (14), fourth in games finished (12) and seventh in strikeouts looking (27). Per seven innings, she ranks in the nation 13th in hits (3.68) and 19th in strikeouts

NOTABLES

(9.1) and places 30th in ERA and 41st in strikeout-to-walk ratio (4.3). Her ERA ranks tied for fourth-best in a single year as a Spartan.

In conference play she threw lights out with a 4-0 record, 0.22 ERA, .128 opposing batting average and 43 strikeouts to 14 walks in 32 innings pitched. As a hitter, she has more than held her own with a .295 batting average, .449 slugging percentage, 23 RBIs and eight extra-base hits.

Earned Run Average (Single Season)

1.	Erin Chandler	1993	1.32
2.	Amber Watson	2003	1.35
3.	Amy Poole	2001	1.39
4.	Stephanie Bryden	2018	1.50
	Winn Hazlegrove	1993	1.50
6.	Christine Hornak	1997	1.58
7.	Winn Hazlegrove	1994	1.68
8.	Amy Poole	2000	1.73
9.	Alicia Bazonski	2018	1.85
10.	Erin Chandler	1995	1.87

BAZONSKI CLIMBING UP THE CAREER LISTS

Alicia Bazonski has been a workhorse in the circle as a primary starter each season in her four-year career as a Spartan. This season she has climbed up several all-time career records in the program's history. Currently she tied for first appearances (147), second in starts (120), ranks third in wins (68), fourth in saves (six), fifth in innings pitched (698.1) and sixth in strikeouts (405). She needs just one more start to become the all-time leader in appearances and tied for first in starts, five innings to reach third and 12 more strikeouts to reach fifth.

Wins

1.	Winn Hazlegrove	1992-95	84
2.	Erin Chandler	1993-96	70
3.	Alicia Bazonski	2015-Pres	68
4.	Christine Hornak	1997-98	52
5.	Amber Watson	2000-03	48

Strikeouts

1.	Amber Harrell	2007-10	657
2.	Vanessa Oakes	2004-07	565
3.	Hannah Angel	2005-09	484
4.	Raeanne Hanks	2010-14	437*
5.	Winn Hazlegrove	1992-95	416
6.	Alicia Bazonski	2015-Pres	405

Saves

1.	Maureen Flynn	1999-02	12
2.	Winn Hazlegrove	1992-95	10
3.	Raeanne Hanks	2010-14	8*
4.	Alicia Bazonski	2015-Pres	6
5.	Erica Navarette	2012-13	5

Starts

1.	Winn Hazlegrove	1992-95	120
----	-----------------	---------	-----

2.	Alicia Bazonski	2015-17	119
3.	Vanessa Oakes	2004-07	118
4.	Erin Chandler	1993-96	113
5.	Amber Harrell	2007-10	106

Appearances

1.	Alicia Bazonski	2015-17	147
	Winn Hazlegrove	1992-95	147
3.	Vanessa Oakes	2004-07	145
4.	Amber Harrell	2007-10	140
5.	Erin Chandler	1993-96	136

Innings pitched

1.	Winn Hazlegrove	1992-95	839.0
2.	Vanessa Oakes	2004-07	735.1
3.	Amber Harrell	2007-10	703.0
4.	Erin Chandler	1993-96	702.1
5.	Alicia Bazonski	2015-Pres	698.1

PALMER CRUSHING THE SOCON

Starting all 57 games at second base, **Jasmine Palmer** also ranks among the top hitters in the league: first in hit by pitches (18), tied for first in runs (49) with Sholtes, tied for second in sac flies (three), fourth in hits (56) and on-base percentage (.444), tied for fourth in doubles (13), sixth in walks (22), tied for seventh in RBIs (33) and ninth in batting average (.324). In conference play she increased her batting average (.340), slugging percentage (.723), on-base percentage (.468) and RBIs (16) production, all team-highs.

MORE LOADED CAST THAN THE AVENGERS

Even with two of the best hitters and pitchers in the SoCon with Palmer, Sholtes, Bazonski and Bryden, the Spartans feature strong hitting all throughout the lineup and pitching depth that has been counted on for several relief wins. **Gabi Cabbage** ranks fourth in the team in batting average (.295), slugging percentage (.482) and on-base percentage (.368) and has belted seven homers with 33 RBIs. In the league she ranks tied for second in sac flies (three), tied for sixth in doubles (10) and hits (49) and tied for seventh in RBIs. She produced the game-winning run in the SoCon Championship Game with a three-run homer. She has started all but three games at third base.

Starting leftfielder **Makenna Matthijs** stepped into right field as a freshman and has 56 starts this year. She also places among the top hitters in the league so far this season: first in sac bunts (17), tied for second in doubles (15), tied for fourth in runs (38), tied for fifth in RBIs (37), fifth in walks (23) and tied for sixth in hits (49). In the nation she ranks eighth in sacrifice hits per game (0.3) and 112th in doubles per game (0.27). Her 15 doubles is one behind Sholtes for a tie for eighth in a single-season in program history. She led the team with three player of the week honors, tying **Penny Thomas** in 2002 for the most won by a Spartan in one season.

NOTABLES

Hannah Stiltner sports a 2.70 ERA and 8-4 record in 22 appearances, eight starts and 59.2 innings pitched. In the SoCon she ranks second in games finished (13), tied for third in opposing batting average (.194) and games in relief (14) and sixth in ERA. She was a reliable relief pitcher during league action, owning a 2.29 ERA and 11 strikeouts in seven appearances and 18.1 innings pitched. She picked up her four wins in relief in a six-game span from April 18-25 against Appalachian State twice, Chattanooga and Campbell.

Centerfielder **Jordan Gontram** has been one of the top power hitters in the SoCon. Gontram ranks third in homers (13), fourth in RBIs (38), fifth in slugging percentage (.581), tied for eighth in walks (21) and tied for ninth in runs (33). She ranks tied for sixth in homers for a single-season in school history.

A classic slap-hitter, **Alexis Overdiep** has used her speed to put pressure on the infield. Overdiep ranks tied for third in triples (two) and tied for seventh in runs (35). She uses her speed in right field to cover much of her area and is one of four SoCon players with a perfect fielding percentage of 1.000. The starting shortstop **Rachael McClaskey** has a .759 OPS as the No. 7-9 hitter in the batting lineup. Starting catcher **Becca Kale** has been among the defensive catchers in her career, and this year leads the SoCon in runners picked off (three), thrown out 28 stealers in 41 attempts and is seventh in fielding percentage (.987).

WE OWN THE STATE...AND THE ACC

UNCG finished the regular season 6-1 against the ACC and 14-2 against in-state opponents by a combined score of 107-48. The Spartans went 3-0 against Virginia, won 4-3 in 10 innings at North Carolina on April 4 and took two of three games at NC State three weekends ago. They own series wins against North Carolina, Western Carolina, Elon, Charlotte, Appalachian State, Campbell and North Carolina A&T. They also own seven of the SoCon's 14 wins against power five opponents with a 2-0 win over Iowa State at the Kickin' Chicken Classic at Coastal Carolina on Feb. 11.

<u>Opponent</u>	<u>Record</u>	<u>Cmb. score</u>
App St.	3-0	11-6
Campbell	1-0	6-5
Charlotte	1-0	7-0
Elon	2-1	13-10
UNC	1-0	4-3
N.C. A&T	1-0	10-1
NC St.	2-1	30-14
Virginia	3-0	16-2
Western Car.	3-0	24-9

ASSISTANT VS ALMA MATER

Tracey Lynch becomes the second assistant coach for UNCG to face her alma mater this year. Lynch played at Liberty from 2005-07 before suffering a shoulder injury that limited her to just three games played in 2006 and ended her college career. After undergoing surgery and the rehabilitation process, Lynch was able to re-take the field in 2008 as the starting catcher of the Competitive Edge International Softball team, which traveled to China to challenge the Chinese Olympic and National teams.

Earlier this season UNCG won a three-game series at NC State, the alma mater of assistant coach **Bethaney Wells**. Starting in the outfield, Wells led the Wolfpack to an ACC Tournament Championship in 2013 and earned NFCA All-America Scholar Athlete from 2011-13. She ranks third all-time for career home runs (30) at NC State and is also ranked within the top-10 in career RBI (97) and slugging percentage (.484).

HOME RECORD IS PRETTY, PRETTY, PRETTY GOOD

UNCG owns an impressive 22-3 home record, the best mark in the SoCon and in program history. The Spartans won every single home weekday game, were 6-2 in conference action and went 9-1 in its two home tournaments, the Spartan Classic (5-0) and UNCG Invitational (4-1). UNCG has averaged 6.1 runs per game with a .312 batting average, .518 slugging percentage, .405 on-base percentage, 27 homers and 47 doubles. The pitching has also improved at home with a 1.55 ERA, 153 strikeouts to 61 walks and a .185 opposing batting average.

THAT WAS HOW MANY WINS IN A ROW?!

The Spartans ripped off a 15-game winning streak from March 15-April 8, matching the feat done by the 1995 team for the second-longest victory streak in program history. After dropping the series finale to Elon on March 10, UNCG almost went a month without a loss. The victory streak started with a 10-1 (five innings) win over North Carolina A&T. The Spartans went a perfect 5-0 in their Spartan Classic, swept Furman by a combined score of 27-1, shutout Charlotte 7-1 on the road, swept Western Carolina on the road by a combined score of 24-9, beat Mercer 7-0 at home before falling 3-0 in the second game of the doubleheader. With the 11th win, UNCG passed the 1992 and 2002 teams for the third longest winning streak.

NOT 1, NOT 2, NOT 3, NOT...

The Spartans have now earned a program-high nine conference weekly awards this season, tying with Furman as the most in the SoCon. Makenna Matthijs led the team with three player of the week honors, tying Penny Thomas in 2002 for the most won by a Spartan in one season. Marisa Sholtes has attained

NOTABLES

the award twice. Stephanie Bryden won pitcher of the week twice while Alicia Bazonski garnered the award once.

WIN 200 AS A SPARTAN

Breneman reached win no. 200 guiding the Spartans after the 4-1 win over Chattanooga to start the SoCon Tournament. In her six years she has coached UNCG to a winning record each year and 30+ wins in four seasons. Breneman has the second-most wins by a UNCG, and is behind **Melody Cope** who 220-129-3 (.629) from 1992-97 in the program's only time in the Big South Conference.

2013	38-19	.622
2014	31-26	.544
2015	25-22	.532
2016	33-26	.610
2017	29-24	.547
2018	46-11	.807
Totals	202-128	.612

EXTRA INNING MAGIC

Part of the reason the Spartans have racked up 43 wins this year is due to the ability to overcome adversity in late inning situations. UNCG is 7-1 in extra innings and own nine walk-off wins. The Spartans have defeated Jacksonville State 3-2 in nine innings, at Elon 4-1 in eight innings, Canisius 2-1 in eight innings, Towson 3-2 in eight innings, North Carolina on the road 4-3 in 10 innings and Campbell 6-5 in nine innings. Chattanooga defeat UNCG 5-4 in 10 innings for the lone extra-inning loss.

OFFENSIVE EXPLOSIONS, PART I & II

UNCG has twice exploded on offense for 20+ run victories in just five innings, defeating Furman 22-0 on March 25 and NC State on the road 24-2 in the series-clinching win on April 29.

The 22 runs in the first game at the time tied for the sixth-highest number of runs scored in a game in program history and fourth-most in Division I. The Spartans hadn't scored that many runs since a 32-0 win over North Carolina A&T on April 5, 1995.

UNCG scored 22 runs in a 22-2 victory over Avella on March 21, 1988 and 22-0 win against Morgan State on Feb. 20, 1995.

Matthijs led the way, going 4-4 with four runs and seven RBIs. Her hits and RBIs tied for second-most in a single game in program history while her runs tied for third-most. UNCG opened the game with 10 runs in the opening frame. After a scoreless second inning, the Spartans added eight more runs in the third. At the plate eight different Spartans had hits and an RBI. Sholtes and Bryden both went 3-3 with three RBIs.

The 24 runs are the fifth-most runs scored in a

single game in program history and third-most in Division 1 play. The 24 runs are also the most allowed by NC State in its program history.

Cabbage had six RBI's in the game, tying for fifth most in a single-game in school history. She went 2-4 with a homer, double, two runs and a walk. UNCG scored 11 runs in the first inning. The Spartans had seven hits, a double and home run and three walks. After adding another run in the third inning, UNCG scored 12 runs in the fourth inning, surpassing the first inning as the most runs scored in an inning this season. The Spartans had 12 runs, seven hits, two doubles and 6 walks. The Spartans had 14 hits, three doubles, a home run and 13 walks. Sholtes led the way at the plate, going 3-4 with five RBIs, three runs, two doubles and a walk. Palmer went 2-3 with three RBIs, four runs and a walk. McClaskey was the fourth Spartan to have multiple hits, going 2-3 with two RBIs, a walk and a run.

RUB SOME DIRT ON IT

UNCG leads the SoCon in hit by pitches with 67, more than double of the next-highest team in Mercer (32). The Spartans have five in the top 10 in the category. Jasmine Palmer places first with 18, and Kale is behind her with 15. Palmer ranks 27th in the nation in hit by pitches per game (0.32) while Kale is 38th at 0.27. Marisa Sholtes is tied for fourth with eight, Emily Acquaviva has been plunked seven times with just 57 at-bats and Rachael McClaskey is tied for seventh with six.

SMART COOKIES

UNCG placed three players on Google Cloud Academic All-District Team selected by CoSIDA. **Alicia Bazonski, Jasmine Palmer** and **Jordan Gontram** each received Academic All-District honors for their performance on the field and in the classroom this season. The three selections are the most from any one team in District III, with just one other university having multiple members named to the 11-member All-District team.

Bazonski has earned a 3.51 GPA and is a public health education major with a concentration in community health education. Palmer is in her second year at UNCG and has earned a 4.00 GPA while majoring in communication studies. Gontram has earned a 4.00 GPA as a business administration major. Gontram and Palmer have both garnered the SoCon Student-Athlete of the Week Award this season.

Mackenzie Winslow garnered the Pinnacle Award, which is given out to the SoCon Tournament winning team's player with the highest GPA. The senior just graduated with a degree in Business Administration on a perfect 4.0 GPA.

ROSTER

NUMERICAL

No.	Name	Pos.	B/T	Yr.	Ht.	Hometown/Previous School
1	Breanna Butcher	UTL	R/R	5-4	Fr.	Walkertown, N.C./Walkertown
2	Rebecca Kale	C	R/R	5-5	Sr.	Hudson, N.C./South Caldwell
3	Stephanie Bryden	P/DP	R/R	5-8	Jr.	Orlando, Fla./East River
4	Alexis Overdiep	OF	L/R	5-3	Sr.	Apex, N.C./Apex
5	Jasmine Palmer	UT	R/R	5-7	Jr.	Biltmore Lake, N.C./Florida State
6	Gabrielle Cubbage	SS	R/R	5-7	Sr.	Felton, Del./Lake Forest
7	Mackenzie Winslow	P	R/R	5-9	Sr.	Mooresville, N.C./Lake Norman
8	Kylie Bouplon	P	R/R	5-8	So.	Winston-Salem, N.C./Forsyth Country Day
9	Hannah Stiltner	P	R/R	5-7	Fr.	Megan, N.C./ Eastern Alamance
11	Makenna Matthijs	C	R/R	5-7	Fr.	Greenville, N.C./D.H. Conley
12	Kayleigh Willis	INF	R/R	5-7	So.	Virginia Beach, Va./Frank W. Cox
13	Alicia Bazonski	P	R/R	5-7	Sr.	Sheffield, Mass./Mount Everett
14	Rachel Johnson	C	R/R	5-10	Fr.	Apex, N.C./Panther Creek
17	Melanie Darges	INF	R/R	5-6	Fr.	Raleigh, N.C./Athens Drive Magnet
19	Kendall McKinney	OF	R/R	5-11	R-Sr.	Suwanee, Ga./North Gwinnett
21	Jordan Gontram	INF	R/R	5-10	So.	Wake Forest, N.C./Heritage
22	Marisa Sholtes	1B	L/R	6-0	R-Jr.	Albany, N.Y./South Colonie Central
34	Emily Acquaviva	OF	R/R	5-9	Jr.	New Hartford, N.Y./Stony Brook
35	Rachael McClaskey	SS	L/R	5-5	Sr.	Pine Hill, N.J./Overbrook

ALPHABETICAL

No.	Name	Pos.	B/T	Yr.	Ht.	Hometown/Previous School
34	Emily Acquaviva	OF	R/R	5-9	Jr.	New Hartford, N.Y./Stony Brook
13	Alicia Bazonski	P	R/R	5-7	Sr.	Sheffield, Mass./Mount Everett
8	Kylie Bouplon	P	R/R	5-8	So.	Winston-Salem, N.C./Forsyth Country Day
3	Stephanie Bryden	P/DP	R/R	5-8	Jr.	Orlando, Fla./East River
1	Breanna Butcher	UTL	R/R	5-4	Fr.	Walkertown, N.C./Walkertown
6	Gabrielle Cubbage	SS	R/R	5-7	Sr.	Felton, Del./Lake Forest
17	Melanie Darges	INF	R/R	5-6	Fr.	Raleigh, N.C./Athens Drive Magnet
21	Jordan Gontram	INF	R/R	5-10	So.	Wake Forest, N.C./Heritage
14	Rachel Johnson	C	R/R	5-10	Fr.	Apex, N.C./Panther Creek
2	Rebecca Kale	C	R/R	5-5	Sr.	Hudson, N.C./South Caldwell
11	Makenna Matthijs	C	R/R	5-7	Fr.	Greenville, N.C./D.H. Conley
35	Rachael McClaskey	SS	L/R	5-5	Sr.	Pine Hill, N.J./Overbrook
19	Kendall McKinney	OF	R/R	5-11	R-Sr.	Suwanee, Ga./North Gwinnett
4	Alexis Overdiep	OF	L/R	5-3	Sr.	Apex, N.C./Apex
5	Jasmine Palmer	UT	R/R	5-7	Jr.	Biltmore Lake, N.C./Florida State
22	Marisa Sholtes	1B	L/R	6-0	R-Jr.	Albany, N.Y./South Colonie Central
9	Hannah Stiltner	P	R/R	5-7	Fr.	Megan, N.C./ Eastern Alamance
12	Kayleigh Willis	INF	R/R	5-7	So.	Virginia Beach, Va./Frank W. Cox
7	Mackenzie Winslow	P	R/R	5-9	Sr.	Mooresville, N.C./Lake Norman

SEASON STATISTICS

Record: 46-11 Home: 25-3 Away: 12-6 Neutral: 9-2 SoCon: 13-3

Player	avg	gp-gs	ab	r	h	2b	3b	hr	rbi	tb	slg%	bb	hp	so	gdp	ob%	sf	sh	sb-att	po	a	e	fld%	
22 Marisa Sholtes	.373	57-57	169	49	63	16	0	16	54	127	.751	32	8	28	1	.490	1	2	0-1	408	12	8	.981	
5 Jasmine Palmer	.324	57-57	173	49	56	13	1	5	33	86	.497	22	18	19	2	.444	3	1	2-2	100	101	6	.971	
12 Kayleigh Willis	.309	40-23	81	9	25	2	0	5	21	42	.519	4	4	23	0	.371	0	0	0-0	0	0	0	.000	
6 Gabrielle Cubbage	.295	54-54	166	28	49	10	0	7	33	80	.482	20	1	23	1	.368	3	6	1-1	52	100	12	.927	
3 Stephanie Bryden	.295	30-26	78	8	23	6	0	2	23	35	.449	8	2	8	0	.367	2	2	0-0	6	11	0	1.000	
11 Makenna Matthijs	.287	56-56	171	38	49	15	1	3	37	75	.439	23	0	24	0	.367	2	17	1-1	67	3	5	.933	
35 Rachael McClaskey	.263	57-57	137	25	36	5	0	5	24	56	.409	13	6	22	0	.350	1	6	1-2	69	119	6	.969	
21 Jordan Gontram	.257	51-50	136	33	35	5	0	13	38	79	.581	21	3	40	0	.364	2	6	0-0	44	2	1	.979	
4 Alexis Overdiep	.247	57-57	150	35	37	2	2	0	6	43	.287	20	2	19	0	.343	0	3	7-8	53	1	0	1.000	
2 Rebecca Kale	.213	55-55	127	21	27	6	0	1	13	36	.283	12	15	33	0	.351	0	8	2-2	345	22	5	.987	
34 Emily Acquaviva	.123	39-20	57	17	7	3	0	0	5	10	.175	11	7	15	0	.329	1	4	2-2	10	0	0	1.000	

19 Kendall McKinney	.250	15-2	16	1	4	1	0	1	5	8	.500	3	0	6	0	.368	0	0	0-0	0	0	0	.000	
17 Melanie Darges	.176	21-3	17	5	3	0	0	0	6	3	.176	2	1	4	0	.300	0	0	0-0	4	8	0	1.000	
14 Rachel Johnson	.000	5-0	2	0	0	0	0	0	0	0	.000	2	0	1	0	.500	0	0	0-0	1	0	0	1.000	
13 Alicia Bazonski	.000	7-7	0	0	0	0	0	0	0	0	.000	0	0	0	0	.000	0	0	0-0	2	62	2	.970	
8 Kylie Bouplon	.000	1-1	0	0	0	0	0	0	0	0	.000	0	0	0	0	.000	0	0	0-0	2	4	1	.857	
9 Hannah Stiltner	.000	3-3	0	0	0	0	0	0	0	0	.000	0	0	0	0	.000	0	0	0-0	2	5	2	.778	
1 Breanna Butcher	.000	7-0	0	2	0	0	0	0	0	0	.000	0	0	0	0	.000	0	0	0-0	1	0	0	1.000	
Totals	.280	57	1480	320	414	84	4	58	298	680	.459	193	67	265	4	.384	15	55	16-19	1166	450	48	.971	
Opponents	.212	57	1443	137	306	48	4	31	123	455	.315	134	16	333	14	.285	5	25	28-41	1104	424	62	.961	

LOB - Team (390), Opp (325). DPs turned - Team (20), Opp (13). CI - Team (1), Kale 1. Picked off - Palmer 2.

(All games Sorted by Earned run avg)

Player	era	w-l	app	gs	cg	sho	sv	ip	h	r	er	bb	so	2b	3b	hr	b/avg	wp	hp	bk	sfa	sha		
3 Stephanie Bryden	1.50	16-1	26	12	5	1/5	0	121.2	64	30	26	37	159	16	1	6	.153	8	6	0	2	10		
13 Alicia Bazonski	1.85	20-5	34	31	15	4/6	2	173.2	156	58	46	60	108	16	1	16	.232	8	5	0	1	9		
9 Hannah Stiltner	2.70	8-4	22	8	4	1/4	1	59.2	42	29	23	30	46	8	1	6	.194	10	3	0	2	2		

8 Kylie Bouplon	3.33	2-1	12	6	1	0/2	1	33.2	44	20	16	7	20	8	1	3	.319	0	2	0	0	4		
Totals	2.00	46-11	57	57	25	14/8	4	388.2	306	137	111	134	333	48	4	31	.212	26	16	0	5	25		
Opponents	5.12	11-46	57	57	25	3/1	1	368.0	414	320	269	193	265	84	4	58	.280	45	67	0	15	55		

PB - Team (7), Kale 7, Opp (5). Pickoffs - Team (3), Kale 3, Opp (2). SBA/ATT - Kale (28-41), Bazonski (10-16), Bryden (8-10), Bouplon (5-8), Stiltner (5-7).

SOCON ONLY STATISTICS

Record: 13-3 Home: 6-2 Away: 7-1 SoCon: 13-3

Player	avg	gp-gs	ab	r	h	2b	3b	hr	rbi	tb	slg%	bb	hp	so	gdp	ob%	sf	sh	sb-att	po	a	e	fld%	
5 Jasmine Palmer	.340	16-16	47	16	16	3	0	5	16	34	.723	8	5	3	1	.468	2	1	1-1	26	22	2	.960	
11 Makenna Matthijs	.302	16-16	53	12	16	5	0	1	14	24	.453	4	0	8	0	.345	1	5	1-1	19	0	1	.950	
6 Gabrielle Cubbage	.295	16-16	44	9	13	2	0	0	3	15	.341	10	1	6	0	.436	0	4	0-0	14	29	4	.915	
3 Stephanie Bryden	.289	13-12	38	4	11	5	0	1	10	19	.500	2	0	4	0	.325	0	1	0-0	1	2	0	1.000	
2 Rebecca Kale	.270	16-16	37	7	10	1	0	1	7	14	.378	5	5	12	0	.426	0	2	0-0	95	4	1	.990	
22 Marisa Sholtes	.265	16-16	49	13	13	3	0	5	13	31	.633	10	2	9	0	.410	0	1	0-0	123	3	3	.977	
21 Jordan Gontram	.261	16-16	46	12	12	1	0	4	14	25	.543	5	1	7	0	.346	0	2	0-0	13	0	0	1.000	
35 Rachael McClaskey	.243	16-16	37	9	9	2	0	1	4	14	.378	5	2	5	0	.364	0	3	0-0	25	37	3	.954	
4 Alexis Overdiep	.182	16-16	33	7	6	1	1	0	0	9	.273	7	0	6	0	.325	0	2	0-0	14	0	0	1.000	
34 Emily Acquaviva	.067	9-4	15	0	1	0	0	0	1	1	.067	1	1	4	0	.176	0	3	1-1	1	0	0	1.000	

19 Kendall McKinney	.333	4-0	3	1	1	0	0	1	3	4	1.333	1	0	0	0	.500	0	0	0-0	0	0	0	.000	
12 Kayleigh Willis	.300	10-0	10	1	3	0	0	0	2	3	.300	1	0	3	0	.364	0	0	0-0	0	0	0	.000	
17 Melanie Darges	.000	2-0	1	1	0	0	0	0	0	0	.000	0	1	0	0	.500	0	0	0-0	0	0	0	.000	
1 Breanna Butcher	.000	2-0	0	0	0	0	0	0	0	0	.000	0	0	0	0	.000	0	0	0-0	0	0	0	.000	
13 Alicia Bazonski	.000	3-3	0	0	0	0	0	0	0	0	.000	0	0	0	0	.000	0	0	0-0	1	21	1	.957	
9 Hannah Stiltner	.000	2-2	0	0	0	0	0	0	0	0	.000	0	0	0	0	.000	0	0	0-0	0	1	1	.500	
Totals	.269	16	413	92	111	23	1	19	87	193	.467	59	18	67	1	.381	3	24	3-3	332	120	17	.964	
Opponents	.198	16	415	31	82	13	2	6	26	117	.282	44	6	89	4	.283	1	7	6-9	315	112	21	.953	

LOB - Team (111), Opp (111). DPs turned - Team (6), Opp (4).

(SoCon games only Sorted by Earned run avg)

Player	era	w-l	app	gs	cg	sho	sv	ip	h	r	er	bb	so	2b	3b	hr	b/avg	wp	hp	bk	sfa	sha
3 Stephanie Bryden	0.22	4-0	6	2	0	0/2	0	32.0	14	2	1	14	43	2	1	0	.128	1	2	0	0	2
13 Alicia Bazonski	1.29	7-2	12	10	6	4/2	1	54.1	43	13	10	19	29	6	0	4	.207	3	3	0	0	2
9 Hannah Stiltner	2.29	2-1	7	2	1	0/2	0	18.1	16	10	6	11	11	3	1	1	.225	3	0	0	1	1

8 Kylie Bouplon	2.33	0-0	2	2	0	0/0	0	6.0	9	6	2	0	6	2	0	1	.333	0	1	0	0	2
Totals	1.20	13-3	16	16	7	7/3	1	110.2	82	31	19	44	89	13	2	6	.198	7	6	0	1	7
Opponents	4.47	3-13	16	16	9	1/0	0	105.0	111	92	67	59	67	23	1	19	.269	11	18	0	3	24

PB - Team (3), Kale 3, Opp (1). SBA/ATT - Kale (6-9), Stiltner (3-3), Bryden (3-3), Bazonski (0-3).

STREAKS/MULTIPLE HIT/RBI GAMES

Multiple Hit Games	2	3	4	5+	Total
22 Marisa Sholtes	12	4	-	-	16
5 Jasmine Palmer	11	2	1	-	14
11 Makenna Matthijs	9	2	1	-	12
6 Gabrielle Cubbage	7	3	-	-	10
4 Alexis Overdiep	9	-	-	-	9
35 Rachael McClaskey	5	2	-	-	7
3 Stephanie Bryden	5	1	-	-	6
21 Jordan Gontram	4	2	-	-	6
2 Rebecca Kale	5	-	-	-	5
12 Kayleigh Willis	2	2	-	-	4
TEAM	69	18	2	0	89

Multiple RBI Games	2	3	4	5+	Total
22 Marisa Sholtes	6	5	1	2	14
21 Jordan Gontram	8	2	-	1	11
11 Makenna Matthijs	7	1	1	1	10
5 Jasmine Palmer	5	3	-	-	8
6 Gabrielle Cubbage	2	3	1	1	7
35 Rachael McClaskey	5	2	-	-	7
3 Stephanie Bryden	3	3	-	-	6
12 Kayleigh Willis	4	1	1	-	6
2 Rebecca Kale	2	1	-	-	3
19 Kendall McKinney	-	1	-	-	1
17 Melanie Darges	1	-	-	-	1
4 Alexis Overdiep	1	-	-	-	1
34 Emily Acquaviva	-	1	-	-	1
TEAM	44	23	4	5	76

Hitting Streaks	Longest	Current
5 Jasmine Palmer	11	-
3 Stephanie Bryden	9	1
11 Makenna Matthijs	9	-
22 Marisa Sholtes	8	2
6 Gabrielle Cubbage	7	1
4 Alexis Overdiep	6	-
21 Jordan Gontram	4	-
2 Rebecca Kale	4	-
34 Emily Acquaviva	4	-
35 Rachael McClaskey	4	4
12 Kayleigh Willis	3	3
19 Kendall McKinney	2	2
17 Melanie Darges	1	-

Reached Base Streaks	Longest	Current
3 Stephanie Bryden	17	1
5 Jasmine Palmer	11	3
6 Gabrielle Cubbage	11	1
22 Marisa Sholtes	10	2
4 Alexis Overdiep	10	-
11 Makenna Matthijs	9	-
2 Rebecca Kale	7	7
34 Emily Acquaviva	6	-
35 Rachael McClaskey	6	4
12 Kayleigh Willis	5	3
21 Jordan Gontram	4	-
17 Melanie Darges	2	-
19 Kendall McKinney	2	2
14 Rachel Johnson	2	-

TEAM RECORD WHEN...

In Day Games	37-8
In Night Games	9-3
In Doubleheaders	18-4
When Scoring First	34-4
When Opponents Score First	12-7
When Ahead After Six	26-0
When Trailing After Six	4-9
When Tied After Six	14-4
In One-Run Games	12-4
In Two-Run Games	4-0
In Extra Innings.....	7-1
When Scoring 0-2 Runs	5-8
When Scoring 3-5 Runs	18-3
When Scoring 6-9 Runs	15-2
When Scoring 10+ Runs	8-0
On Tuesdays.....	2-0
On Wednesdays.....	5-0
On Thursdays	2-0
On Fridays.....	11-1
On Saturdays	16-6
On Sundays	11-3
In February.....	11-2
In March.....	17-4
In April	13-3
In May	5-1
In North Carolina	33-7
Outside of North Carolina.....	13-4
Against Southern Conference	16-3
Against Non-Conference Opponents	30-8
Against Chattanooga	3-1
Against ETSU	4-0
Against Furman.....	3-0
Against Mercer.....	1-1
Against Samford	2-1
Against Western Carolina	3-0
Against RPI 1-25.....	0-2
Against RPI 26-50.....	0-0
Against RPI 51-100.....	10-3

PITCHERS CAREER STATS

#3 STEPHANIE BRYDEN

Junior • Pitcher/Designated Player • R/R • 5-8 • Orlando, Fla./East River



CAREER STATISTICS

Year	avg	gp-gs	ab	r	h	2b	3b	hr	rbi	bb	so	sb-att
2016	.336	48-42	119	21	40	8	1	3	24	8	14	0-0
2018	.295	30-26	78	8	23	6	0	2	23	8	8	0-0
TOTAL	.320	78-68	197	29	63	14	1	5	47	16	22	0-0

Year	era	w-l	app	gs	cg	sho	sv	ip	h	r	er	bb	so
2016	3.83	12-14	34	27	11	2/2	0	150.0	155	96	82	51	129
2017	3.15	1-1	9	0	0	0/0	1	26.2	31	15	12	12	18
2018	1.50	16-1	26	12	5	1/5	0	121.2	64	30	26	37	159
TOTAL	2.82	29-16	69	39	16	3/7	1	298.1	250	141	120	100	306

#8 KYLIE BOUPLON

Sophomore • Pitcher • R/R • 5-8 • Wilson, N.C./Forsyth County Day

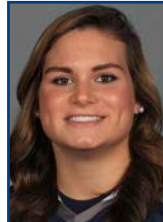


CAREER STATISTICS

Year	era	w-l	app	gs	cg	sho	sv	ip	h	r	er	bb	so
2017	5.47	8-6	30	16	6	0/1	1	94.2	111	87	74	48	63
2018	3.33	2-1	12	6	1	0/2	1	33.2	44	20	16	7	20
TOTAL	4.91	10-7	42	22	7	0/3	2	128.1	155	107	90	55	83

#9 HANNAH STILTNER

Freshman • Pitcher • R/R • 5-11 • Mebane, N.C./Eastern Alamance



CAREER STATISTICS

Year	era	w-l	app	gs	cg	sho	sv	ip	h	r	er	bb	so
2015	2.70	8-4	22	8	4	1/4	1	59.2	42	29	23	30	46
TOTAL	2.70	8-4	22	8	4	1/4	1	59.2	42	29	23	30	46

#13 ALICIA BAZONSKI

Senior • Pitcher • R/R • 5-7 • Sheffield, Mass./Mount Everett



CAREER STATISTICS

Year	era	w-l	app	gs	cg	sho	sv	ip	h	r	er	bb	so
2015	3.68	11-11	32	25	9	1/0	2	139.0	166	99	73	51	70
2016	2.93	19-9	41	29	14	5/1	1	181.1	181	103	76	66	114
2017	3.32	18-14	40	34	18	2/0	1	204.1	241	126	97	65	113
2018	1.85	20-5	34	31	15	4/6	2	173.2	156	58	46	60	108
TOTAL	2.93	68-39	147	119	56	12/7	6	698.1	744	386	292	242	405

RESULTS

Date	Opponent	Score	Inns	Overall	SoCon	Pitcher of record	Attend	Time
Feb 09, 2018	vs Presbyterian	w 14-0	5	1-0-0	0-0-0	Bazonski (W 1-0)	234	2:00
Feb 10, 2018	at Coastal Carolina	L 1-2	7	1-1-0	0-0-0	Bazonski (L 1-1)	234	2:00
Feb 10, 2018	vs #20 Saint Francis	w 9-8	7	2-1-0	0-0-0	Bryden (W 2-0)	234	2:30
Feb 11, 2018	vs Iowa State	w 2-0	7	3-1-0	0-0-0	Bazonski (W 2-1)	234	2:00
Feb 16, 2018	vs Massachusetts	w 5-2	7	4-1-0	0-0-0	Bryden (W 1-0)	0	1:42
Feb 16, 2018	vs Ohio	L 2-5	7	4-2-0	0-0-0	Bryden (L 0-1)	102	2:22
Feb 17, 2018	vs UMKC	w 3-2	7	5-2-0	0-0-0	Stiltner (W 1-0)	192	2:01
Feb 17, 2018	vs Virginia	w 3-2	7	6-2-0	0-0-0	Bazonski (W 3-1)	117	1:30
Feb 18, 2018	vs Lipscomb	w 6-2	7	7-2-0	0-0-0	Bazonski (W 4-1)	100	2:09
Feb 23, 2018	SETON HALL	w 12-5	7	8-2-0	0-0-0	Bouplon (W 1-0)	222	2:10
Feb 24, 2018	SETON HALL	L 1-2	7	8-3-0	0-0-0	Stiltner (L 1-1)	235	1:49
Feb 24, 2018	VIRGINIA	w 8-0	5	9-3-0	0-0-0	Bryden (W 3-1)	244	1:36
Feb 25, 2018	VIRGINIA	w 5-0	7	10-3-0	0-0-0	Bryden (W 4-1)	156	2:03
Feb 25, 2018	APPALACHIAN STATE	w 3-0	7	11-3-0	0-0-0	Bazonski (W 5-1)	164	1:20
Mar 02, 2018	vs Jacksonville State	w 3-2	(9)	12-3-0	0-0-0	Bryden (W 5-1)	72	2:49
Mar 02, 2018	vs Radford	w 6-2	7	13-3-0	0-0-0	Bazonski (W 6-1)	98	1:42
Mar 03, 2018	vs Radford	L 0-1	7	13-4-0	0-0-0	Stiltner (L 1-2)	67	1:38
Mar 03, 2018	at #14 Georgia	L 0-7	7	13-5-0	0-0-0	Bazonski (L 6-2)	0	2:12
Mar 04, 2018	at #14 Georgia	L 1-6	7	13-6-0	0-0-0	Stiltner (L 1-3)	417	1:42
Mar 09, 2018	ELON	w 5-3	7	14-6-0	0-0-0	Bazonski (W 7-2)	78	1:55
Mar 10, 2018	at Elon-1	w 4-1	(8)	15-6-0	0-0-0	Bryden (W 6-1)	101	1:38
Mar 10, 2018	at Elon-2	L 4-6	7	15-7-0	0-0-0	Bouplon (L 1-1)	104	1:55
Mar 15, 2018	NORTH CAROLINA A&T	w 10-1	5	16-7-0	0-0-0	Stiltner (W 2-3)	81	1:18
Mar 16, 2018	CANISIUS-1	w 2-1	(8)	17-7-0	0-0-0	Bryden (W 7-1)	104	1:59
Mar 16, 2018	CANISIUS-2	w 7-4	7	18-7-0	0-0-0	Bazonski (W 8-2)	107	2:12
Mar 17, 2018	CANISIUS	w 9-1	6	19-7-0	0-0-0	Bouplon (W 2-1)	111	1:31
Mar 17, 2018	TOWSON	w 3-2	(8)	20-7-0	0-0-0	Bazonski (W 9-2)	122	2:06
Mar 18, 2018	TOWSON	w 10-4	7	21-7-0	0-0-0	Bryden (W 8-1)	103	2:10
* Mar 24, 2018	FURMAN-1	w 4-1	7	22-7-0	1-0-0	Bryden (W 10-2)	133	1:50
* Mar 25, 2018	FURMAN-1	w 22-0	5	23-7-0	2-0-0	Bazonski (W 10-2)	122	1:35
* Mar 25, 2018	FURMAN-2	w 1-0	7	24-7-0	3-0-0	Bazonski (W 11-2)	122	1:24
Mar 28, 2018	at Charlotte	w 8-0	7	25-7-0	3-0-0	Bryden (W 10-1)	203	1:55
* Mar 30, 2018	at Western Carolina-1	w 12-2	5	26-7-0	4-0-0	Bazonski (W 12-2)	115	2hr
* Mar 30, 2018	at Western Carolina-2	w 3-0	7	27-7-0	5-0-0	Bryden (W 11-1)	125	1hr
* Mar 31, 2018	at Western Carolina	w 9-7	7	28-7-0	6-0-0	Bryden (W 12-1)	150	2hr
Apr 04, 2018	at North Carolina	w 4-3	(10)	29-7-0	6-0-0	Bryden (W 13-1)	429	2:35
* Apr 08, 2018	MERCER-2	L 0-3	7	29-8-0	6-1-0	Bazonski (L 13-3)	155	1:58
* Apr 08, 2018	MERCER-1	w 7-0	7	30-8-0	7-1-0	Bazonski (W 13-2)	158	1:44
Apr 10, 2018	PRESBYTERIAN-1	w 11-1	5	31-8-0	7-1-0	Bazonski (W 14-3)	84	1:27
Apr 10, 2018	PRESBYTERIAN-2	w 8-0	5	32-8-0	7-1-0	Stiltner (W 3-3)	92	1:16
* Apr 14, 2018	at ETSU-1	w 1-0	7	33-8-0	8-1-0	Bryden (W 14-1)	312	1:49
* Apr 14, 2018	at ETSU-2	w 2-0	7	34-8-0	9-1-0	Bazonski (W 15-3)	312	1:21
Apr 18, 2018	APPALACHIAN STATE-1	w 4-3	7	35-8-0	9-1-0	Stiltner (W 4-3)	333	2:10
Apr 18, 2018	APPALACHIAN STATE-2	w 4-3	(8)	36-8-0	9-1-0	Stiltner (W 5-3)	341	2:13
* Apr 21, 2018	CHATTANOOGA-1	L 4-5	(10)	36-9-0	9-2-0	Bazonski (L 15-4)	303	2:37
* Apr 21, 2018	CHATTANOOGA-2	w 4-2	7	37-9-0	10-2-0	Stiltner (W 6-3)	387	2:13
* Apr 21, 2018	CHATTANOOGA	w 4-0	7	38-9-0	11-2-0	Bazonski (W 16-4)	377	2:05
Apr 25, 2018	CAMPBELL	w 6-5	(9)	39-9-0	11-2-0	Stiltner (W 7-3)	139	2:20
Apr 28, 2018	at NC State-1	w 5-4	7	40-9-0	11-2-0	Bryden (W 14-1)	-	2:00
Apr 28, 2018	at NC State-2	L 1-8	7	40-10-0	11-2-0	Bazonski (L 16-5)	465	2:00
Apr 29, 2018	at NC State	w 24-2	5	41-10-0	11-2-0	Bryden (W 16-1)	359	2:15
* May 05, 2018	at Samford-1	w 5-3	7	42-10-0	12-2-0	Bazonski (W 17-5)	135	2:02
* May 05, 2018	at Samford-2	w 9-2	7	43-10-0	13-2-0	Stiltner (W 8-3)	135	2:06
* May 06, 2018	at Samford	L 5-6	7	43-11-0	13-3-0	Stiltner (L 8-4)	197	1:53
May 10, 2018	CHATTANOOGA	w 4-1	7	44-11-0	13-3-0	Bazonski (W 17-5)	237	1:47
May 11, 2018	ETSU	w 6-3	7	45-11-0	13-3-0	Bazonski (W 18-5)	248	1:55
May 12, 2018	ETSU	w 5-2	7	46-11-0	13-3-0	Bazonski (W 19-5)	311	1:50

() extra inning game

SITUATIONAL STATISTICS

Player	vs left			vs right			w/runners			w/bases empty			w/bases loaded			as leadoff			fly	gnd	fly/
	h	ab	avg	h	ab	avg	h	ab	avg	h	ab	avg	h	ab	avg	rch	ops	pct	out	out	gnd
34 Emily Acquaviva	0	6	.000	7	51	.137	2	25	.080	5	32	.156	1	4	.250	7	17	.412	13	25	0.5
3 Stephanie Bryden	7	18	.389	16	60	.267	15	46	.326	8	32	.250	2	5	.400	8	20	.400	32	17	1.9
6 Gabrielle Cubbage	8	27	.296	41	139	.295	31	103	.301	18	63	.286	2	4	.500	7	23	.304	60	37	1.6
17 Melanie Darges	0	1	.000	3	16	.188	3	9	.333	0	8	.000	2	2	1.000	0	4	.000	6	4	1.5
21 Jordan Gontram	5	19	.263	30	117	.256	18	77	.234	17	59	.288	4	7	.571	17	30	.567	42	22	1.9
14 Rachel Johnson	0	0	.000	0	2	.000	0	2	.000	0	0	.000	0	0	.000	0	0	.000	1	0	99.9
2 Rebecca Kale	7	27	.259	20	100	.200	15	66	.227	12	61	.197	0	5	.000	7	27	.259	37	30	1.2
11 Makenna Matthijs	8	28	.286	41	143	.287	25	78	.321	24	93	.258	7	13	.538	15	48	.313	54	60	0.9
35 Rachael McClaskey	9	19	.474	27	118	.229	26	75	.347	10	62	.161	3	5	.600	7	38	.184	43	39	1.1
19 Kendall McKinney	0	0	.000	4	16	.250	4	13	.308	0	3	.000	1	5	.200	1	3	.333	5	1	5.0
4 Alexis Overdiep	6	29	.207	31	121	.256	15	56	.268	22	94	.234	1	3	.333	26	61	.426	19	73	0.3
5 Jasmine Palmer	8	27	.296	48	146	.329	32	87	.368	24	86	.279	2	10	.200	33	61	.541	50	40	1.2
22 Marisa Sholtes	11	31	.355	52	138	.377	43	104	.413	20	65	.308	4	9	.444	15	26	.577	31	44	0.7
12 Kayleigh Willis	2	13	.154	23	68	.338	16	45	.356	9	36	.250	2	4	.500	6	18	.333	15	15	1.0
Totals	71	245	.290	343	1235	.278	245	786	.312	169	694	.244	31	76	.408	149	376	.396	408	407	1.0
Opponents	0	0	.000	306	1443	.212	127	610	.208	179	833	.215	8	45	.178	118	385	.306	334	459	0.7

Player	pinch hitting			w/runners in scoring pos			w/runner on 3rd and LT 2 out			with 2 outs			success adv runners			2- rnrns		rch	rch	kl	
	h	ab	avg	h	ab	avg	rbi	ops	pct	h	ab	avg	adv	ops	pct	rbi	w/out	lob	err	fc	kl
34 Emily Acquaviva	1	5	.200	2	15	.133	4	5	.800	0	15	.000	19	36	.528	0	8	9	2	5	4
3 Stephanie Bryden	2	3	.667	12	31	.387	8	11	.727	14	34	.412	29	53	.547	12	6	17	3	5	3
6 Gabrielle Cubbage	0	0	.000	19	62	.306	7	13	.538	25	65	.385	55	119	.462	22	13	42	4	12	7
17 Melanie Darges	2	7	.286	3	9	.333	3	3	1.000	1	10	.100	5	11	.455	2	0	6	0	0	0
21 Jordan Gontram	1	1	1.000	12	54	.222	9	17	.529	9	50	.180	39	96	.406	13	8	55	5	2	6
14 Rachel Johnson	0	2	.000	0	1	.000	0	0	.000	0	1	.000	1	3	.333	0	0	2	0	0	0
2 Rebecca Kale	0	0	.000	11	45	.244	5	15	.333	13	49	.265	44	85	.518	7	11	32	5	7	6
11 Makenna Matthijs	0	0	.000	21	53	.396	7	16	.438	14	43	.326	59	105	.562	24	23	32	2	8	9
35 Rachael McClaskey	0	0	.000	19	46	.413	4	9	.444	18	47	.383	49	91	.538	18	10	31	4	6	5
19 Kendall McKinney	4	11	.364	2	9	.222	2	3	.667	1	8	.125	4	13	.308	1	0	15	0	0	2
4 Alexis Overdiep	0	1	.000	10	37	.270	1	4	.250	11	46	.239	30	65	.462	5	7	29	4	2	9
5 Jasmine Palmer	0	0	.000	21	55	.382	10	18	.556	17	53	.321	60	101	.594	12	12	39	10	8	3
22 Marisa Sholtes	0	0	.000	31	68	.456	8	13	.615	26	66	.394	68	122	.557	24	11	35	5	8	2
12 Kayleigh Willis	4	16	.250	11	33	.333	1	5	.200	11	36	.306	20	46	.435	16	0	22	3	0	6
Totals	14	46	.304	174	518	.336	69	132	.523	160	523	.306	482	946	.510	156	109	390	47	63	62
Opponents	4	38	.105	79	367	.215	28	72	.389	94	477	.197	269	686	.392	51	70	325	37	56	66

Success Advancing Runners = percentage of times the batter advanced at least one runner during a plate appearance
 #Rnrs Adv w/Out = TOTAL number of runners advanced when the player made an out

Player	vs left			vs right			w/runners			w/bases empty			vs leadoff			with 2 outs			fly	gnd	fly/	
	h	ab	avg	h	ab	avg	h	ab	avg	h	ab	avg	rch	ops	pct	h	ab	avg	out	out	gnd	gdp
13 Alicia Bazonski	50	221	.226	106	450	.236	64	299	.214	92	372	.247	54	172	.314	42	215	.195	108	285	0.4	9
8 Kylie Bouplon	17	52	.327	27	86	.314	22	60	.367	22	78	.282	12	35	.343	18	51	.353	28	48	0.6	1
3 Stephanie Bryden	28	160	.175	36	258	.140	24	157	.153	40	261	.153	37	121	.306	25	145	.172	124	76	1.6	0
9 Hannah Stiltner	17	63	.270	25	153	.163	17	94	.181	25	122	.205	15	57	.263	9	66	.136	74	50	1.5	4
Totals	112	496	.226	194	947	.205	127	610	.208	179	833	.215	118	385	.306	94	477	.197	334	459	0.7	14
Opponents	136	456	.298	278	1024	.271	245	786	.312	169	694	.244	149	376	.396	160	523	.306	408	407	1.0	4

Player	ap	gs	ip/app	*h/g	*r/g	*er/g	*bb/g	*so/g	k/bb	*2b/g	*3b/g	*hr/g	*fo/g	*go/g	*bf/g	sba	att	pct
13 Alicia Bazonski	34	31	5.11	6.29	2.34	1.85	2.42	4.35	1.8	0.64	0.04	0.64	4.35	11.49	30.11	10	16	.625
8 Kylie Bouplon	12	6	2.81	9.15	4.16	3.33	1.46	4.16	2.9	1.66	0.21	0.62	5.82	9.98	31.40	5	8	.625
3 Stephanie Bryden	26	12	4.68	3.68	1.73	1.50	2.13	9.15	4.3	0.92	0.06	0.35	7.13	4.37	27.21	8	10	.800
9 Hannah Stiltner	22	8	2.71	4.93	3.40	2.70	3.52	5.40	1.5	0.94	0.12	0.70	8.68	5.87	29.68	5	7	.714
Totals	57	57	6.82	5.51	2.47	2.00	2.41	6.00	2.5	0.86	0.07	0.56	6.02	8.27	29.25	28	41	.683
Opponents	57	57	6.46	7.88	6.09	5.12	3.67	5.04	1.4	1.60	0.08	1.10	7.76	7.74	34.43	16	19	.842

* = average based on 7-inning game

TEAM LEADERS

Hitting minimums - 50 AB 1.0 TPA/Game
Pitching minimums - 1.0 IP/Game

Batting avg

1. 22 Marisa Sholtes	.373
2. 5 Jasmine Palmer	.324
3. 12 Kayleigh Willis	.309
4. 6 Gabrielle Cubbage	.295
5. 3 Stephanie Bryden	.295

Runs scored

1. 22 Marisa Sholtes	49
5 Jasmine Palmer	49
3. 11 Makenna Matthijs	38
4. 4 Alexis Overdiep	35
5. 21 Jordan Gontram	33

Doubles

1. 22 Marisa Sholtes	16
2. 11 Makenna Matthijs	15
3. 5 Jasmine Palmer	13
4. 6 Gabrielle Cubbage	10
5. 2 tied at.....	6

Total bases

1. 22 Marisa Sholtes	127
2. 5 Jasmine Palmer	86
3. 6 Gabrielle Cubbage	80
4. 21 Jordan Gontram	79
5. 11 Makenna Matthijs	75

Sac bunts

1. 11 Makenna Matthijs	17
2. 2 Rebecca Kale	8
3. 35 Rachael McClaskey	6
21 Jordan Gontram	6
6 Gabrielle Cubbage	6

Caught stealing

1. 4 Alexis Overdiep	1
22 Marisa Sholtes	1
35 Rachael McClaskey	1

Strikeouts

1. 21 Jordan Gontram	40
2. 2 Rebecca Kale	33
3. 22 Marisa Sholtes	28
4. 11 Makenna Matthijs	24
5. 2 tied at.....	23

At bats

1. 5 Jasmine Palmer	173
2. 11 Makenna Matthijs	171
3. 22 Marisa Sholtes	169
4. 6 Gabrielle Cubbage	166
5. 4 Alexis Overdiep	150

Games as sub

1. 34 Emily Acquaviva	19
2. 17 Melanie Darges	18
3. 12 Kayleigh Willis	17
4. 19 Kendall McKinney	13
5. 1 Breanna Butcher	7

Slugging pct

1. 22 Marisa Sholtes	.751
2. 21 Jordan Gontram	.581
3. 12 Kayleigh Willis	.519
4. 5 Jasmine Palmer	.497
5. 6 Gabrielle Cubbage	.482

Hits

1. 22 Marisa Sholtes	63
2. 5 Jasmine Palmer	56
3. 11 Makenna Matthijs	49
6 Gabrielle Cubbage	49
5. 4 Alexis Overdiep	37

Triples

1. 4 Alexis Overdiep	2
2. 5 Jasmine Palmer	1
11 Makenna Matthijs	1

Walks

1. 22 Marisa Sholtes	32
2. 11 Makenna Matthijs	23
3. 5 Jasmine Palmer	22
4. 21 Jordan Gontram	21
5. 2 tied at.....	20

Sac flies

1. 6 Gabrielle Cubbage	3
5 Jasmine Palmer	3
3. 21 Jordan Gontram	2
3 Stephanie Bryden	2
11 Makenna Matthijs	2

Steal attempts

1. 4 Alexis Overdiep	8
2. 35 Rachael McClaskey	2
34 Emily Acquaviva	2
2 Rebecca Kale	2
5 Jasmine Palmer	2

Grounded into DP

1. 5 Jasmine Palmer	2
2. 6 Gabrielle Cubbage	1
22 Marisa Sholtes	1

Games played

1. 5 Jasmine Palmer	57
35 Rachael McClaskey	57
22 Marisa Sholtes	57
4 Alexis Overdiep	57
5. 11 Makenna Matthijs	56

On base pct

1. 22 Marisa Sholtes	.490
2. 5 Jasmine Palmer	.444
3. 12 Kayleigh Willis	.371
4. 6 Gabrielle Cubbage	.368
5. 11 Makenna Matthijs	.367

Runs batted in

1. 22 Marisa Sholtes	54
2. 21 Jordan Gontram	38
3. 11 Makenna Matthijs	37
4. 5 Jasmine Palmer	33
6 Gabrielle Cubbage	33

Home runs

1. 22 Marisa Sholtes	16
2. 21 Jordan Gontram	13
3. 6 Gabrielle Cubbage	7
4. 3 tied at.....	5

Hit by pitch

1. 5 Jasmine Palmer	18
2. 2 Rebecca Kale	15
3. 22 Marisa Sholtes	8
4. 34 Emily Acquaviva	7
5. 35 Rachael McClaskey	6

Stolen bases

1. 4 Alexis Overdiep	7
2. 5 Jasmine Palmer	2
2 Rebecca Kale	2
34 Emily Acquaviva	2
5. 3 tied at.....	1

Stolen base pct

1. 5 Jasmine Palmer	1.000
11 Makenna Matthijs	1.000
6 Gabrielle Cubbage	1.000
2 Rebecca Kale	1.000
34 Emily Acquaviva	1.000

Total plate appearances

1. 5 Jasmine Palmer	217
2. 11 Makenna Matthijs	213
3. 22 Marisa Sholtes	212
4. 6 Gabrielle Cubbage	196
5. 4 Alexis Overdiep	175

Game starts

1. 5 Jasmine Palmer	57
35 Rachael McClaskey	57
22 Marisa Sholtes	57
4 Alexis Overdiep	57
5. 11 Makenna Matthijs	56

ROSTER REPORT

#1 BREANNA BUTCHER



Freshman • Utility • L/R • 5-4 • Walkertown, N.C./Walkertown

CAREER STATISTICS

#2 BECCA KALE



Senior • Catcher • R/R • 5-5 • Hudson, N.C./South Caldwell

CAREER STATISTICS

Year	avg	gp-gs	ab	r	h	2b	3b	hr	rbi	bb	so	sb-att
2015	.333	15-5	3	5	1	0	0	0	0	1	1	0-0
2016	.132	18-16	38	5	5	1	0	1	5	1	8	0-0
2017	.232	51-51	125	17	29	6	1	2	14	11	26	1-1
2018	.213	55-55	127	21	27	6	0	1	13	12	33	2-2
TOTAL	.212	139-127	293	48	62	13	1	4	32	25	68	3-3

#4 ALEXIS OVERDIEP



Senior • Outfielder • L/R • 5-3 • Apex, N.C./Apex

CAREER STATISTICS

Year	avg	gp-gs	ab	r	h	2b	3b	hr	rbi	bb	so	sb-att
2015	.281	37-24	64	9	18	2	0	0	10	4	13	3-5
2016	.116	45-23	43	14	5	0	0	0	1	5	7	1-2
2017	.277	51-47	112	28	31	3	1	0	5	20	16	11-13
2018	.247	57-57	150	35	37	2	2	0	6	20	19	7-8
TOTAL	.247	190-151	369	86	91	7	3	0	22	49	55	22-28

ROSTER REPORT

#5 JASMINE PALMER



Junior • Second Base • R/R • 5-7 • Candler, N.C./Florida State

CAREER STATISTICS

Year	avg	gp-gs	ab	r	h	2b	3b	hr	rbi	bb	so	sb-att
2017	.301	48-48	123	42	37	8	0	7	19	32	10	3-3
2018	.324	57-57	173	49	56	13	1	5	33	22	19	2-2
TOTAL	.314	105-105	296	91	93	21	1	12	52	54	29	5-5

#6 GABI CUBBAGE



Senior • Shortstop • R/R • 5-7 • Felton, Del./Lake Forest

CAREER STATISTICS

Year	avg	gp-gs	ab	r	h	2b	3b	hr	rbi	bb	so	sb-att
2015	.222	42-29	72	16	16	2	0	2	13	7	15	1-1
2016	.185	31-6	27	9	5	0	0	0	3	2	5	0-0
2017	.288	53-53	163	33	47	12	1	8	40	18	30	1-1
2018	.295	54-54	166	28	49	10	0	7	33	20	23	1-1
TOTAL	.273	180-142	428	86	117	24	1	17	89	47	73	3-3

ROSTER REPORT

#11 MAKENNA MATTHIJS



Freshman • Outfielder/Catcher • R/R • 5-7 • Greenville, N.C./D.H. Conley

CAREER STATISTICS

Year	avg	gp-gs	ab	r	h	2b	3b	hr	rbi	bb	so	sb-att
2018	.287	56-56	171	38	49	15	1	3	37	23	24	1-1
TOTAL	.287	56-56	171	38	49	15	1	3	37	23	24	1-1

#12 KAYLEIGH WILLIS



Sophomore • Outfielder • R/R • 5-7 • Virginia Beach, Va./Frank W. Cox

CAREER STATISTICS

Year	avg	gp-gs	ab	r	h	2b	3b	hr	rbi	bb	so	sb-att
2017	.233	27-4	30	4	7	0	0	3	13	0	9	0-0
2018	.309	40-23	81	9	25	2	0	5	21	4	23	0-0
TOTAL	.288	67-27	111	13	32	2	0	8	34	4	32	0-0

#14 RACHEL JOHNSON



Freshman • Catcher • R/R • 5-10 • Apex, N.C./Panther Creek

CAREER STATISTICS

Year	avg	gp-gs	ab	r	h	2b	3b	hr	rbi	bb	so	sb-att
2018	.000	5-0	2	0	0	0	0	0	0	2	1	0-0
TOTAL	.000	5-0	2	0	0	0	0	0	0	2	1	0-0

ROSTER REPORT

#17 MELANIE DARGES



Freshman Infielder • R/R • 5-6 • Raleigh, N.C./Athens Drive Magnet

CAREER STATISTICS

Year	avg	gp-gs	ab	r	h	2b	3b	hr	rbi	bb	so	sb-att
2018	.176	21-3	17	5	3	0	0	0	6	2	4	0-0
TOTAL	.176	21-3	17	5	3	0	0	0	6	2	4	0-0

#19 KENDALL MCKINNEY



Rs-Senior • Outfielder • R/R • 5-11 • Suwanee, Ga./North Gwinnett

CAREER STATISTICS

Year	avg	gp-gs	ab	r	h	2b	3b	hr	rbi	bb	so	sb-att
2014	.204	44-17	54	13	11	4	0	1	6	2	16	1-1
2015	.235	28-12	34	9	8	2	0	0	12	3	9	2-2
2016	.200	52-44	115	24	23	1	0	9	21	7	35	1-1
2018	.250	15-2	16	1	4	1	0	1	5	3	6	0-0
TOTAL	.210	139-75	219	47	46	8	0	11	44	15	66	4-4

#21 JORDAN GONTRAM



Sophomore • Outfielder • R/R • 5-10 • Wake Forest, N.C./Heritage

CAREER STATISTICS

Year	avg	gp-gs	ab	r	h	2b	3b	hr	rbi	bb	so	sb-att
2017	.198	46-46	111	17	22	4	0	9	27	25	36	3-3
2018	.257	51-50	136	33	35	5	0	13	38	21	40	0-0
TOTAL	.231	97-96	247	50	57	9	0	22	65	46	76	3-3

ROSTER REPORT

#22 MARISA SHOLTES



Rs-Junior • First Baseman • L/R • 6-0 • Albany, N.Y./South Colonie Central

CAREER STATISTICS

Year	avg	gp-gs	ab	r	h	2b	3b	hr	rbi	bb	so	sb-att
2015	.000	10-7	17	1	0	0	0	0	0	1	5	1-1
2016	.235	14-2	17	1	4	0	0	0	2	0	6	0-0
2017	.330	34-33	91	16	30	4	0	10	31	11	21	0-1
2018	.373	57-57	169	49	63	16	0	16	54	32	28	0-1
TOTAL	.330	115-99	294	67	97	20	0	26	87	44	60	1-3

#34 EMILY ACQUAVIVA



Junior • Outfielder • R/R • 5-9 • New Hartford, N.Y./Stony Brook

CAREER STATISTICS

Year	avg	gp-gs	ab	r	h	2b	3b	hr	rbi	bb	so	sb-att
2016	.000	17-0	0	8	0	0	0	0	0	0	0	0-0
2017	.252	53-53	131	27	33	7	0	6	21	17	32	1-1
2018	.123	39-20	57	17	7	3	0	0	5	11	15	2-2
TOTAL	.213	109-73	188	52	40	10	0	6	26	28	47	3-3

#35 RACHAEL MCCLASKEY



Senior • Shortstop • L/R • 5-5 • Pine Hill, N.J./Overbrook

CAREER STATISTICS

Year	avg	gp-gs	ab	r	h	2b	3b	hr	rbi	bb	so	sb-att
2015	.214	28-18	28	10	6	1	0	0	1	4	8	1-1
2016	.299	56-56	154	35	46	7	1	2	24	16	18	7-8
2017	.253	53-53	146	31	37	8	1	8	34	23	17	2-3
2018	.263	57-57	137	25	36	5	0	5	24	13	22	1-2
TOTAL	.269	194-184	465	101	125	21	2	15	83	56	65	11-14