



2014-15 UNCG MEN'S BASKETBALL



2014-15 SCHEDULE

| Date | Opponent | Time |
|--------------|------------------------|---------------|
| N 14 | CHOWAN % ^ | W, 76-62 |
| N. 18 | UNCW | L, 72-84 |
| N. 21 | vs. Longwood % | L, 79-81 (OT) |
| N. 22 | at Eastern Michigan % | L, 62-70 |
| N. 23 | vs. Youngstown State % | L, 67-76 |
| N. 28 | at Indiana | L, 79-87 |
| | | |
| D. 1 | HIGH POINT | L, 68-76 |
| D. 6 | at Presbyterian | W, 55-53 |
| D. 10 | GREENSBORO COLLEGE | W, 82-78 |
| D. 13 | at ETSU * | W, 80-79 |
| D. 16 | NORTH CAROLINA | L, 56-79 |
| D. 20 | ELON | L, 64-71 |
| D. 28 | at East Carolina | L, 50-71 |
| D. 31 | MARS HILL ^ | 2 p.m. |
| | | |
| J. 3 | MERCER * | 5 p.m. |
| J. 5 | THE CITADEL * | 7 p.m. |
| J. 8 | at Furman * | 7 p.m. |
| J. 10 | at Western Carolina * | 4:30 p.m. |
| J. 14 | VMI * | 7 p.m. |
| J. 22 | at Samford * | 7 p.m. |
| J. 24 | at Chattanooga * | 6 p.m. |
| J. 29 | WOFFORD * | 7 p.m. |
| J. 31 | WESTERN CAROLINA * | 5 p.m. |
| | | |
| F. 3 | at VMI * | 7 p.m. |
| F. 7 | at The Citadel * | 1 p.m. |
| F. 12 | ETSU * | 7 p.m. |
| F. 14 | at Mercer * | 4 p.m. |
| F. 19 | at Wofford * | 7 p.m. |
| F. 22 | FURMAN * | 1 p.m. |
| F. 26 | SAMFORD * | 7 p.m. |
| F. 28 | CHATTANOOGA * | 5 p.m. |
| | | |
| M. 6 | SoCon First Round | TBA |
| M. 7 | SoCon Quarterfinals | TBA |
| M. 8 | SoCon Semifinals | TBA |
| M. 9 | SoCon Final | 7 p.m. |

* - Southern Conference game
% - EMU Showcase

^ Fleming Gymnasium on campus

& - Southern Conference Tournament at
US Cellular Center - Asheville, N.C.

Media Information

Assistant AD for Athletics Communications
Matt McCollester (primary contact)
matt.mccollester@uncg.edu
O - 336-334-5615
C - 336-676-3407

Athletics Communications Assistant Director
Chip Welch (secondary contact)
chip.welch@uncg.edu
C - 336-420-6342



(4-9)

VS



(7-4)

Game 14

December 31, 2014

Fleming Gymnasium

Greensboro, N.C.

RADIO
1320 AM WCOG
TuneIn Radio
(Scott Pryzwansky)

TELEVISION
SoCon Digital Network

INTERNET
Live Stats link at
www.uncgspartans.com
Follow @UNCGScores

What's On Tap . . .

The Spartans return home for three straight games, beginning with a matinee New Year's Eve against Mars Hill College on campus at Fleming Gymnasium ... The game marks the Spartans' final non-conference contest of the year and is set for a 2 p.m. tip-off ... This marks the second time this year UNCG has played at its former home, Fleming Gymnasium ... The Spartans opened the season with a 76-62 victory over Chowan in Fleming Nov. 14 ... Wednesday's game will be streamed online for free in full HD on the SoCon Digital Network ... The game will also be radio broadcast on 1320 WCOG AM and online at the TuneIn App with Scott Pryzwansky providing the call.

UNCG Please

Please refer to UNCG as simply UNCG or the Spartans. Please do not refer to UNCG as UNC Greensboro, UNC-Greensboro, North Carolina-Greensboro, North Carolina at Greensboro, or any other variation of the university's name. Thank you

Series History vs. Mars Hill . . .

Wednesday's game marks the second meeting all-time between UNCG and Mars Hill ... The teams only other meeting came November 28, 1987 with the Spartans posting a 71-57 victory over the Lions on a neutral court at the Lenoir-Rhyne Tournament.

Last Time Out . . .

The Spartans dropped their third straight game Sunday, falling 71-50 at East Carolina ... UNCG was held to its lowest scoring output of the season against the Pirates as it shot just 35.0 percent (21-of-60) from the field and just 16.7 percent (4-of-24) from long range ... East Carolina conversely connected on 57.5 percent (23-of-40) from the field, 42.9 percent (6-of-14) from distance and 73.1 percent (19-of-26) from the charity stripe ... The Pirates were strong in the first half, hitting 72.7 percent (16-of-22) from the field as they opened to a 45-26 halftime lead.

Sophomore guard **Diante Baldwin** made his first start of the season Sunday at East Carolina ... Baldwin responded by scoring a career-high 19 points as he was 7-of-11 from the field and hit 4-of-6 at the free throw line ... He also notched a career-high six steals in the loss ... Senior **Nicholas Paulos** added nine points and eight rebounds while sophomore guard **Tevon Saddler** chipped in eight points.

Reprieve For Spartans . . .

The Spartans spent the first month of the season battling injury trouble as they were

UNCG's Probable Starters



#0 Tevon Saddler, So., G
#3 Diante Baldwin, So., G
#13 Kayle Locke, Jr., F
#31 Nicholas Paulos, Sr., F
#33 RJ White, R-So., C

Mar Hill's Probable Starters



#2 Jalen Witherspoon, Jr., G
#4 Thomas Anderson, Sr., F
#10 Patrick Monroe, Jr., G
#12 Valentine Baur, So., G
#42 Isaiah Cuthbertson, Sr., F



2014-15 UNCG MEN'S BASKETBALL



2014-15 SoCon STANDINGS

| Team | SoCon | | | Overall | | |
|------------------|-------|---|-------|---------|---|------|
| | W | L | Pct | W | L | Pct |
| UNCG | 1 | 0 | 1.000 | 4 | 9 | .308 |
| Chattanooga | 1 | 0 | 1.000 | 8 | 6 | .571 |
| Mercer | 1 | 0 | 1.000 | 6 | 7 | .462 |
| Furman | 1 | 0 | 1.000 | 2 | 8 | .250 |
| ETSU | 1 | 1 | .500 | 6 | 3 | .667 |
| VMI | 1 | 1 | .500 | 5 | 7 | .417 |
| Wofford | 0 | 0 | .000 | 9 | 3 | .750 |
| The Citadel | 0 | 1 | .000 | 4 | 7 | .364 |
| Western Carolina | 0 | 1 | .000 | 4 | 8 | .333 |
| Samford | 0 | 2 | .000 | 6 | 8 | .429 |

SCHOOL INFORMATION

School..... UNCG
 Location Greensboro, N.C.
 Founded 1891
 Enrollment 18,502 (14,664 undergrad)
 Nickname Spartans
 Colors Navy, Gold & White
 Arena Greensboro Coliseum
 Capacity 7,617/23,000
 Affiliation NCAA Division I
 Conference Southern
 Chancellor Dr. Linda P. Brady
 Director of Athletics Kim Record
 Alma Mater Virginia, 1984
 Athletics Dept. Phone 336-334-5952
 Ticket Office Phone 336-334-3250

TEAM INFORMATION

2013-14 Overall Record 14-18
 2013-14 SoCon Record 7-9
 SoCon Finish Sixth
 Letterwinners Returning/Lost 8/6
 Starters Returning/Lost 3/2
 Newcomers 5
 Head Coach Wes Miller

COACHING STAFF

Alma Mater North Carolina, 2007
 Career Record 38-60 (Fourth year)
 Record at UNCG 38-60 (Fourth year)
 Associate Head Coach Mike Roberts
 Alma Mater Indiana, 2005
 Assistant Coach Duane Simpkins
 Alma Mater Maryland, 1996
 Assistant Coach Jackie Manuel
 Alma Mater North Carolina, 2006

MEDIA INFORMATION

Asst. AD Matt McCollester
 Email matt.mccollester@uncg.edu
 Cell Phone 336-676-3407
 Assistant Director Chip Welch
 Assistant Director Justin Glover
 Video Intern Kaylee Donegan
 Director of New Media Dacia Ijames
 Media Relations Office 336-334-5615
 Website www.uncgspartans.com
 Mailing Address UNCG Athletics
 PO Box 26168
 Greensboro, NC 27402-6168

forced to dress only eight scholarship players and 10 total players for most of the season due to injuries, particularly at the guard position ... UNCG has started to get healthy as sophomore guard **Diante Baldwin** has returned and played the last five games of the season while freshman guard **Marvin Smith** saw his first action of the year Sunday at East Carolina.

Senior guard **Jamal Mitchell** suffered a season-ending knee injury at Eastern Michigan ... Freshman guard **C.J. Coleman** is out for the season after having another surgery on his ankle he injured in high school.

Reliance On Starting Five . . .

The Spartans' injury situation this season has forced them to rely heavily on the starting five for most of the production ... The Spartans' five starters are averaging a combined 58.6 points and 22.4 rebounds per game while the UNCG bench is averaging just 9.8 points and 10.0 rebounds per game ... Additionally, the starting five has accounted for 85.6 percent of the Spartans' points this season while playing 76.7 percent of the team's minutes this year ... Only three players off the bench have played even more than 100 minutes in the first 13 games in **Jordy Kuiper** (167), **Ben Dickinson** (140) and **Asad Lamot** (131).

Scouting The Spartans . . .

The Spartans enter Wednesday's matinee with a 4-9 overall record, having dropped three straight games to North Carolina, Elon and East Carolina ... UNCG is 2-4 at home this season but is 1-0 at Fleming Gymnasium where it posted a 76-62 victory over Chowan Nov. 14 ... The Spartans are averaging just 68.5 points per game, including just 56.7 points per game in the current three-game losing streak ... Conversely, the Spartans had won three straight games prior to the losing streak with wins over Presbyterian, Greensboro College and East Tennessee State ... During the winning streak, UNCG averaged 72.3 points per game.

Sophomore guard **Tevon Saddler** leads the team in scoring at 14.8 points per game ... Saddler has scored in double

PRESEASON SoCon POLLS

Coaches Poll

| Team (1st Place Votes) | Total |
|------------------------|-------|
| 1. Wofford (8) | 80 |
| 2. Chattanooga (2) | 70 |
| 3. ETSU | 65 |
| 4. Mercer | 54 |
| 5. UNCG | 51 |
| 6. VMI | 39 |
| 7. Western Carolina | 38 |
| 8. Furman | 24 |
| 9. The Citadel | 16 |
| 10. Samford | 13 |

2014-15 Preseason All-Conference Team

Tevon Saddler, UNCG
 Ashton Moore, The Citadel
 Rashawn Rembert, ETSU
 Stephen Croone, Furman
 Casey Jones, Chattanooga
 QJ Peterson, VMI
 James Sinclair, Western Carolina
 Karl Cochran, Wofford
 Spencer Collins, Wofford
 Lee Skinner, Wofford

2014-15 Preseason Player of the Year

Karl Cochran Wofford

figures in 10 of 13 games but has failed to reach double digits in two out of the last three games, averaging 9.7 points during the losing streak ... He leads the team with 50 assists and is tied for the team lead with 23 steals ... He has gone to the free throw line a team-high 78 times, but just 11 times in the last three games.

Junior forward **Kayel Locke** is second on the team in scoring at 12.2 points per game and second on the glass at 5.6 rebounds per game ... Locke is shooting 45.2 percent (57-of-126) from the field and 61.8 percent (42-of-68) from the free throw line ... Redshirt sophomore center **R.J. White** is third on the team in scoring at 11.5 points per game and leads the team on the glass, grabbing 7.5 rebounds per game ... White is shooting 53.8 percent (63-of-117) from the field.

Senior guard **Nicholas Paulos** is tied for third in scoring at 11.5 points per game ... Paulos leads the team with 41



2014-15 UNCG MEN'S BASKETBALL



3-pointers, connecting on 43.2 percent from long range ... Sophomore guard **Diante Baldwin** has played the last five games after missing the first eight due to injury and is averaging 10.4 points and 3.4 assists per game.

Scouting The Lions . . .

Mars Hill enters Sunday's game with a 7-4 overall record with losses to Lincoln Memorial, Catawba, Wingate and most recently Pfeiffer ... The Lions also have played NCAA Division I foe Winthrop, falling 96-51 in an exhibition game in December ... Wednesday's game against the Spartans will also count as an exhibition game for the Lions and not reflect on their overall record.

Mars Hill is averaging 76.1 points per game this season while allowing 70.4 points per game ... The Lions are averaging 8.4 3-pointers per game, hitting 35.1 percent from distance ... Patrick Monroe leads the Lions in scoring at 12.8 points per game and has hit a team-high 30 3-pointers ... Michael Carson is second on the team in scoring at 10.3 points per game, despite only making one start.

Isaiah Cuthbertson leads Mars Hill on the glass grabbing 8.9 rebounds per game while also averaging 9.9 points per game ... Justin Yeargin averaged 14.8 points per game in the first five games of the year but has not played in a game since Nov. 22.

Paulos' 3-Point Chase . . .

Senior guard **Nicholas Paulos** enters Wednesday's game with 212 career 3-pointers made ... Paulos moved into fourth place all-time in school history against ETSU as he hit 4-of-7 from long range, raising his total to 204 career 3-pointers made surpassing Kendall Toney at 202 ... Paulos is 49 3-pointers away from entering the top three in program history as Jay Joseph holds third place with 261 3-pointers made.

- 1.) Scott Hartzell, 309 (1992-96)
- 2.) Mikko Koivisto, 263 (2006-10)
- 3.) Jay Joseph, 261 (2000-04)
- 4.) **Nicholas Paulos, 212 (2011-15)**
- 5.) Kendall Toney, 202 (2006-10)

A Grand Chase . . .

The Spartans also have two players

TALE OF THE TAPE (2014-15 OVERALL STATS)

| | UNCG | Mars Hill |
|-------------------------|-------------------|-------------------|
| Scoring Offense | 68.5 | 76.1 |
| Scoring Defense | 74.4 | 70.4 |
| Scoring Margin | -5.9 | +5.7 |
| Free Throw % | .659 (168-of-255) | .703 (161-of-229) |
| Field Goal % | .427 (316-of-740) | .411 (292-of-710) |
| Field Goal Defense | .466 (319-of-684) | .451 (275-of-610) |
| Three-Point FG % | .338 (90-of-226) | .351 (92-of-262) |
| Three-Point FG Defense | .393 (97-of-247) | .393 (77-of-196) |
| Three-Point FG Made | 6.9 | 8.4 |
| Rebounding Offense | 32.4 | 40.3 |
| Rebounding Defense | 35.0 | 35.2 |
| Rebounding Margin | -2.6 | +5.1 |
| Offensive Rebounds/Game | 11.2 | 16.0 |
| Defensive Rebounds/Game | 21.2 | 24.3 |
| Blocked Shots Per Game | 2.2 | 1.2 |
| Assists Per Game | 11.5 | 14.2 |
| Steals Per Game | 7.2 | 6.3 |
| Turnover Margin | +1.0 | +3.5 |
| Assist/Turnover Ratio | 0.9 | 1.2 |

chasing down the 1,000-point barrier this year in junior **Kayel Locke** and senior **Nicholas Paulos** ... They are trying to join the 1,000-point club at UNCG that is currently 19 members strong ... Locke has scored 835 career points in 76 games with 61 starts ... He opened his career with 307 points as a freshman 370 last year and is averaging 12.2 points per game ... Paulos enters Wednesday's game with 828 points in his career in 105 games with 48 starts ... He scored 160 points as a freshman, 248 as a sophomore, 271 last year and is averaging 11.5 points this year, his highest total for his career ... Both Locke and Paulos are on track to reach the 1,000-point mark by averaging 9.2 and 9.6 points per game during the final 19 games of the regular season respectively ... Additionally, sophomore guard **Tevon Saddler** is the next closest Spartan at 579 career points in 44 games ... Saddler scored 386 points last year and is averaging 14.8 points per game this season.

Big Man In The Middle . . .

Redshirt sophomore center **R.J. White** has been an anchor in the post for the Spartans this season ... White is fourth on the in scoring at 11.5 points per game ... He leads the team and the SoCon on

the glass, grabbing 7.5 rebounds per game ... His 53.8 percent (63-of-117) shooting from the field ranks third in the league ... Additionally, he has posted five double-doubles this season against Longwood (19 & 10), Youngstown State (20 & 12), at Presbyterian (11 & 10), at East Tennessee State (12 & 10) and against Elon (16 & 12) ... In his last 18 games (last seven of last year and first 11 of this year), White is averaging 12.5 points and 7.6 rebounds per game as he has taken a prominent role on the team.

By The Numbers - Wins & Losses . . .

The Spartans enter Wednesday's game with a 4-9 record on the year and nine of the 13 games have been decided by single digits ... The Spartans only three games decided by more than 10 points was their victory over Chowan (14 points) and losses to UNCW (12 points), North Carolina (23 points) and East Carolina (21 points) ... Additionally, in games the Spartans have won sophomore guard **Tevon Saddler** averages 19.3 points per game compared to 12.9 points per game in their losses ... Additionally, redshirt sophomore center **R.J. White** averages 13.3 points and 9.3 rebounds per game this season in victories while scoring 10.7 points and 6.5 rebounds per game ... The main differ-



2014-15 UNCG MEN'S BASKETBALL



ence for White has been staying out of foul trouble in victories as he averages 29.5 minutes per game in the four victories while just 23.9 minutes per game in the nine losses.

Nik Brown Leaves Program . . .

UNCG men's basketball junior guard **Nik Brown** has left the program for medical reasons and is no longer enrolled at the school, head coach Wes Miller announced Friday ... Brown has sat out all nine games this year due to medical reasons after transferring in from Brunswick Community College.

Spartans Sign Four . . .

UNCG head coach Wes Miller announced the signings of four high school standouts to National Letters of Intent Tuesday during the early signing period ... Joining the Spartans for the 2015-16 season are **Demetrius Troy** (Raleigh, N.C./Word of God), **Taqqi Muhammad** (Richmond, Va./John Marshall), **Jelani Mofford** (Mississauga, Ontario/Athlete Institute Basketball Academy) and **James Dickey** (Raleigh, N.C./Word of God), in the highly touted recruiting class.

Troy, a 6-0 point guard from Raleigh, plays interscholastically at Word of God School and for Team Loaded North Carolina on the AAU circuit ... He was rated the No. 3 point guard in North Carolina for the class of 2015 by the Phenom Hoops Report and was the No. 16 overall player in the state in the same report.

Troy earned First Team All-State honors last season by the NCISAA as he helped Word of God post a 15-8 record, advancing to the state quarterfinals ... He participated in the NC Top 80 event this summer and also helped Team Loaded NC in the adidas events this year ... He averaged 15.0 points for Team Loaded this summer, helping it post a 15-3 record as he shot 40 percent from 3-point land.

Muhammad, a 6-4 shooting guard from Richmond, Virginia, plays for John Marshall High School where he is the team captain this season ... He helped the Justices win the 3A Virginia State Championship last season as a junior, averaging 10.9 points and 4.0 rebounds per

game ... VirginiaPreps.com named him First Team All-Underclassman in the state as he shot 59 percent (107-of-181) from the field.

Muhammad is one of the top defenders in the state of Virginia, having the ability to guard anywhere from the point guard to the four position on the court ... He was named Second Team All-Underclassman as a sophomore when he helped John Marshall finish as the state runner-up in Virginia ... He plays AAU Basketball for Team Loaded Virginia.

Mofford, a 6-5 wing from Brampton, Ontario, is playing this season at the Athlete Institute Basketball Academy in Ontario, Canada, one of the top prep schools in North America ... He played AAU Basketball this summer for the CIA-Bounce team.

Dickey, a 6-9 power forward from Raleigh, also plays at Word of God School and for Team Loaded North Carolina in the AAU circuit as a teammate with Troy ... The Phenom Hoops Report rates him the No. 20 overall prospect for the class of 2015 in North Carolina and is the fourth rated power forward in the class by the report.

Dickey also is a NC Top 80 Alum this year and made a name for his self this summer were he finished in the top 10 in points and rebounds for the NC Top 80 ... He also helped Word of God to a 15-8 record last season and helped the team win the 2013 NCISAA State championship.

SoCon Preseason Poll . . .

UNCG was picked to finish fifth overall in the 10-team Southern Conference preseason coaches poll ... The Spartans picked up 51 total votes from the 10 league coaches in the preseason poll ... UNCG returns eight letterwinners and three starters from last year's 14-win team ... Defending SoCon Tournament Champion Wofford was picked to win the league in 2014-15 with eight first place votes and 80 total points, while Chattanooga was second with 70 total points and two first place votes.

SoCon newcomers ETSU and Mercer were picked third and fourth, respec-

tively with 65 and 54 votes ... After the Spartans in fifth place, VMI (39 votes), Western Carolina (38), Furman (24), The Citadel (16) and Samford (13) round out the preseason poll ... Wofford's Karl Cochran was chosen as the preseason Player of the Year.

Saddler Preseason All-SoCon . . .

Saddler was one of 10 members chosen to the preseason All-SoCon team after being named the SoCon Freshman of the Year last season, the first time a Spartan has earned the honor since Kyle Hines in 2005 ... He led the league in scoring among all freshman, averaging 12.5 points per game while also grabbing 3.8 rebounds per game ... He was 11th overall in the league with 3.0 assists per game and his 1.3 steals per game led all league rookies ... Saddler finished second in the league in both free throws made (145) and attempted (216).

Saddler was named the SoCon CRONS Freshman of the Week a league-best five times this year ... He scored in double figures on 20 different occasions, including three games of at least 20 points ... He was consistent throughout the year, averaging 12.5 points per league game this season and 2.7 assists per game ... He scored a career-high 34 points against East Carolina this year, the highest point total among all freshmen in the league ... His 386 points scored this season ranks third all-time in UNCG history among freshmen.

Looking Ahead . . .

The Spartans will jump back into Southern Conference play Saturday as they host league-newcomer and 2014 NCAA Tournament participant Mercer at the Greensboro Coliseum.



2014-15 UNCG MEN'S BASKETBALL



HEAD COACH WES MILLER



NORTH CAROLINA, 2007



Wes Miller enters his fourth season as the UNCG men's basketball coach in 2014-15 after taking over the reins of the program in December of 2011 on an interim basis. Miller has spent his first three years building a championship-mentality throughout the program and has laid the groundwork for future success.

Miller led the Spartans to 14 wins last season, their highest-win total since 2007-08. Included in that mark was the program's first victory over an ACC school since 2007 and just their second victory all-time against the conference with a come-from-behind win at Virginia Tech. Freshman Tevon Saddler was named as the Southern Conference Player of the Year in 2013-14, the Spartans first such honor since Kyle Hines won the award in 2005.

Junior Kyle Cain was named First Team All-SoCon and Second Team All-Region last year. Cain became the second straight Spartan to sign a professional contract overseas, inking with Ramat Hasharon in Israel. Trevis Simpson is in his second year playing professionally in Greece after starring for the Spartans from 2011-2014.

Miller and his staff were very active on the recruiting trail in his first full season as the Spartans bringing in seven newcomers for the 2013-14 season, the first full recruiting class under Miller's tenure. The highly-touted class includes six freshmen and one transfer. The Spartans were aggressive in recruiting North Carolina where they signed three All-State selections, including Clay Byrd and Diante Baldwin.

Miller and his staff also built on their success recruiting from the Baltimore area as they signed the Maryland Player of the Year, Tevon Saddler, a year removed from signing another Baltimore area standout in top-returning scorer Kayel Locke.

Miller, who was the youngest head coach in NCAA Division I at the time of his hire, made the removal of the interim tag an easy decision as he was named the Southern Conference Coach of the Year after leading the Spartans to the SoCon North Division title at the end of the 2011-12 season.

Miller took control of the program Dec. 13, 2011 with the Spartans sitting at 2-8 and led them through one of the biggest turnarounds in program history. Miller guided the Spartans to an 11-11 record the rest of the season to finish with a 13-19 overall record, including a 10-8 mark in SoCon play.

The Spartans lost their first six games under Miller to fall to 2-14 on the season but the program made an 180-degree turnaround posting an 11-5 record down the stretch. UNCG posted a seven-game winning streak during league play, which included several dramatic victories. The Spartans carried that momentum into the conference tournament where they advanced to the SoCon semifinals for the first time since the 2007-08 season.

Miller, who also spent the 2010-11 season as an assistant coach at UNCG, is no stranger to the state of North Carolina. He played three seasons at the University of North Carolina and spent two seasons as an assistant coach at Elon and High Point. Miller also ran his own basketball camps in Charlotte and Greensboro for two summers.

In three seasons as a player at North Carolina under head coach and mentor Roy Williams, Miller helped the Tar Heels to the national championship in 2005, two Atlantic Coast Conference regular-season championships and one ACC Tournament title. He was team captain as a senior in 2006-07, leading UNC to 31 wins and the NCAA Elite 8 as well as the ACC regular-season and tournament titles, and a final No. 3 national ranking.

As a junior, Miller shot 44.1 percent from the 3-point line, which was seventh-best in a single season in the UNC record book. His 64 treys that season ranked eighth in the ACC. He earned the team's Defensive Player of the Year and Most Improved Player awards that season, as well.

A fan favorite at UNC, Miller authored a book entitled *The Road to Blue Heaven*, which was published as a diary of his experiences as a North Carolina basketball player. In addition to his success on the floor, Miller excelled off the court, earning ACC Academic Honor Roll recognition and the UNC Athletic Director's Scholar Athlete-Award. He earned his degree in political science from North Carolina in 2007.

Upon his graduation from North Carolina, Miller played one season of professional basketball for the London Capitals of the British Basketball League, where he averaged 19.6 points per game to rank eighth in the league.

Miller was a prep standout at the New Hampton School in New Hampshire. He earned a scholarship to James Madison University, where he played one season before transferring to North Carolina to become a walk-on for Roy Williams' squad.

Miller married the former Ashley Love in August 2011.

WES MILLER'S COACHING CAREER

| Year | School | Position | Record |
|---|------------|---------------------|--------------|
| 2014-15 | UNCG | Head Coach | 4-9 |
| 2013-14 | UNCG | Head Coach | 14-18 |
| 2012-13 | UNCG | Head Coach | 9-22 |
| 2011-12 | UNCG | Interim Head Coach* | 11-11 |
| Head Coaching Career Record | | | 38-60 |
| * - Miller named interim head coach Dec. 13, 2011 | | | |
| 2011-12 | UNCG | Assistant Coach | 2-8 |
| 2010-11 | UNCG | Assistant Coach | 7-24 |
| 2009-10 | High Point | Assistant Coach | 15-15 |
| 2008-09 | Elon | Assistant Coach | 12-19 |



2014-15 UNCG MEN'S BASKETBALL



2014-15 NUMERICAL ROSTER

| No. | Name | Pos. | Ht. | Wt. | Cl. | Exp. | Hometown/Previous School |
|-----|------------------|------|------|-----|-------|------|--|
| 0 | Tevon Saddler | G | 6-6 | 205 | So. | 1L | Aberdeen, Md./St. Frances |
| 1 | Marvin Smith Jr. | G/F | 6-6 | 190 | Fr. | HS | Richmond, Va./Fork Union Military Academy |
| 2 | Asad Lamot | G | 6-1 | 185 | R-Jr. | RS | Mebane, N.C./Lees-McRae |
| 3 | Diante Baldwin | G | 6-0 | 181 | So. | 1L | Greensboro, N.C./High Point Christian |
| 11 | C.J. Coleman | G | 6-3 | 180 | Fr. | HS | Fortville, Ind./Mt Vernon |
| 13 | Kayel Locke | F | 6-5 | 240 | Jr. | 2L | Baltimore, Md./McDonogh |
| 14 | Ben Dickinson | F | 6-9 | 230 | R-Jr. | TR | Alexandria, Va./Loyola Marymount |
| 15 | Garrett Collins | G | 6-5 | 185 | Fr. | HS | Asheville, N.C./Fishburne Military Academy |
| 25 | Lloyd Burgess | C | 6-11 | 270 | Fr. | HS | Durham, N.C./Christ School |
| 30 | Clay Byrd | G | 6-0 | 176 | So. | 1L | Connelly Springs, N.C./East Burke |
| 31 | Nicholas Paulos | G/F | 6-7 | 185 | Sr. | 3L | Salt Lake City, Utah/New Hampton School |
| 32 | Jordy Kuiper | F | 6-9 | 250 | So. | 1L | Groningen, Netherlands/Canaries Basketball |
| 33 | RJ White | C | 6-8 | 280 | R-So. | 1L | Frisco, Texas/Frisco |
| 35 | Jamal Mitchell | G | 6-4 | 190 | Sr. | 1L | Charlotte, N.C./Gardner-Webb |
| 41 | Michael Adams | G | 6-2 | 202 | Jr. | HS | Raleigh, N.C./Leesville Road |

2014-15 ALPHABETICAL ROSTER

| No. | Name | Pos. | Ht. | Wt. | Cl. | Exp. | Hometown/Previous School |
|-----|------------------|------|------|-----|-------|------|--|
| 41 | Michael Adams | G | 6-2 | 202 | Jr. | HS | Raleigh, N.C./Leesville Road |
| 3 | Diante Baldwin | G | 6-0 | 181 | So. | 1L | Greensboro, N.C./High Point Christian |
| 25 | Lloyd Burgess | C | 6-11 | 270 | Fr. | HS | Durham, N.C./Christ School |
| 30 | Clay Byrd | G | 6-0 | 176 | So. | 1L | Connelly Springs, N.C./East Burke |
| 11 | C.J. Coleman | G | 6-3 | 180 | Fr. | HS | Fortville, Ind./Mt Vernon |
| 15 | Garrett Collins | G | 6-5 | 185 | Fr. | HS | Asheville, N.C./Fishburne Military Academy |
| 14 | Ben Dickinson | F | 6-9 | 230 | R-Jr. | TR | Alexandria, Va./Loyola Marymount |
| 32 | Jordy Kuiper | F | 6-9 | 250 | So. | 1L | Groningen, Netherlands/Canaries Basketball |
| 2 | Asad Lamot | G | 6-1 | 185 | R-Jr. | RS | Mebane, N.C./Lees-McRae |
| 13 | Kayel Locke | F | 6-5 | 240 | Jr. | 2L | Baltimore, Md./McDonogh |
| 35 | Jamal Mitchell | G | 6-4 | 190 | Sr. | 1L | Charlotte, N.C./Gardner-Webb |
| 31 | Nicholas Paulos | G/F | 6-7 | 185 | Sr. | 3L | Salt Lake City, Utah/New Hampton School |
| 0 | Tevon Saddler | G | 6-6 | 205 | So. | 1L | Aberdeen, Md./St. Frances |
| 1 | Marvin Smith Jr. | G/F | 6-6 | 190 | Fr. | HS | Richmond, Va./Fork Union Military Academy |
| 33 | RJ White | C | 6-8 | 280 | R-So. | 1L | Frisco, Texas/Frisco |

Head Coach: Wes Miller, fourth season (North Carolina, 2007)

Associate Head Coach: Mike Roberts, third season (Indiana, 2005)

Assistant Coach/Recruiting Coordinator: Duane Simpkins, third season (Maryland, 1996)

Assistant Coach: Jackie Manuel, third season (North Carolina, 2006)

Director of Basketball Operations: Pat Flesher, first season (Pepperdine, 2013)

PRONUNCIATION GUIDE

Tevon Saddler – TAY-von

Kayel Locke – K-L (like two letters)

Nicholas Paulos – PAUL-lus

Jordy Kuiper – KIE-purr



2014-15 UNCG MEN'S BASKETBALL



2014-15 MISCELLANEOUS STATISTICS

2014-15 Game-By-Game Starting Lineups

| | | | | | | |
|-------|---------------------|---------|---------|--------|-------|-------|
| 11/14 | CHOWAN | Saddler | Byrd | Paulos | Locke | White |
| 11/18 | UNCW | Saddler | Byrd | Paulos | Locke | White |
| 11/21 | vs. Longwood | Saddler | Byrd | Paulos | Locke | White |
| 11/22 | at Eastern Michigan | Saddler | Byrd | Paulos | Locke | White |
| 11/23 | vs. Youngstown St. | Saddler | Byrd | Paulos | Locke | White |
| 11/28 | at Indiana | Saddler | Byrd | Paulos | Locke | White |
| 12/1 | HIGH POINT | Saddler | Byrd | Paulos | Locke | White |
| 12/6 | at Presbyterian | Saddler | Byrd | Paulos | Locke | White |
| 12/10 | GREENSBORO | Saddler | Byrd | Paulos | Locke | White |
| 12/13 | at ETSU | Saddler | Byrd | Paulos | Locke | White |
| 12/16 | NORTH CAROLINA | Saddler | Byrd | Paulos | Locke | White |
| 12/20 | ELON | Saddler | Byrd | Paulos | Locke | White |
| 12/28 | at East Carolina | Saddler | Baldwin | Paulos | Locke | White |
| 12/31 | MARS HILL | | | | | |

Double-Figure Scoring Games

| | 2014-15 | Career |
|-----------------|---------|--------|
| Tevon Saddler | 9 | 29 |
| R.J. White | 8 | 15 |
| Nicholas Paulos | 7 | 31 |
| Kayel Locke | 7 | 47 |
| Clay Byrd | 2 | 3 |
| Diante Baldwin | 2 | 2 |
| Jordy Kuiper | 1 | 1 |

20 Points or More Scoring Games

| | 2014-15 | Career |
|-----------------|---------|--------|
| R.J. White | 2 | 3 |
| Kayel Locke | 2 | 8 |
| Tevon Saddler | 2 | 5 |
| Nicholas Paulos | 1 | 7 |
| Clay Byrd | 1 | 1 |

Double-Double Games

| | 2014-15 | Career |
|--------------|---------|--------|
| R.J. White | 5 | 6 |
| Jordy Kuiper | 1 | 1 |

Games Led UNCG In Scoring

| | 2014-15 | Career |
|-----------------|---------|--------|
| Kayel Locke | 5 | 15 |
| R.J. White | 4 | 5 |
| Tevon Saddler | 3 | 7 |
| Nicholas Paulos | 1 | 10 |
| Diante Baldwin | 1 | 1 |

Games Led UNCG In Rebounding

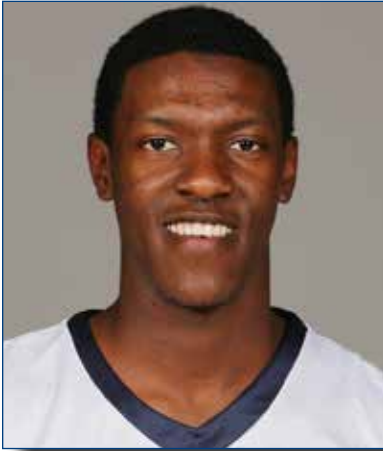
| | 2014-15 | Career |
|-----------------|---------|--------|
| R.J. White | 6 | 12 |
| Kayel Locke | 2 | 5 |
| Tevon Saddler | 2 | 4 |
| Nicholas Paulos | 2 | 4 |
| Jordy Kuiper | 1 | 1 |
| Diante Baldwin | 1 | 1 |

2014-15 MISCELLANEOUS STATISTICS

| | | |
|---|---|---|
| Largest Lead:23 vs. Chowan (11/14/14) | Home Games 2-4 | When shooting 70% or better from FT..... 3-2 |
| Largest Deficit:32 vs. North Carolina (12/16/14) | Away Games 1-3 | When shooting under 70% from FT 0-7 |
| Largest Margin of Victory:14 vs. Chowan (11/14/14) | Neutral Games 0-2 | When shooting 35% or better from 3 1-4 |
| Largest Margin of Defeat:23 vs. North Carolina (12/16/14) | Conference Games 0-0 | When shooting under 35% from 3..... 2-5 |
| Largest Halftime Lead:19 vs. Chowan (11/14/14) | Non-Conference Games 3-9 | When opponent shoots 35%+ from 3..... 3-7 |
| Largest Halftime Deficit:21 vs. North Carolina (12/16/14) | Overtime Games 0-1 | When opponent shoots >35% from 3..... 0-2 |
| Largest Halftime Deficit In Win: n/a | Games versus ranked opponents 0-1 | When hitting seven or more 3's 1-4 |
| Largest Lead In Loss:10 vs. Longwood (11/21/14) | Games decided by 5 points or less..... 2-1 | When hitting less than seven 3's..... 2-5 |
| Largest Deficit In Win:15 vs. Greensboro College (12/10/14) | Games decided by 6-10 points 0-5 | When opponent hits 7 < 3's..... 3-4 |
| Most Points Scored In A Half:45 at Indiana (11/28/14) | Games decided by 11 or more points..... 1-3 | When opponent hits >7 3's..... 0-5 |
| Most Points Allowed In A Half:50 at Indiana (11/28/14) | When ahead at the half 2-1 | When committing 15 or more to's..... 1-4 |
| Most Points Scored In A Game:82 vs. Greensboro College (12/10/14) | When trailing at the half 0-7 | When committing less than 15 to's 2-5 |
| Most Points Allowed In A Game:87 at Indiana (11/28/14) | When tied at the half 1-1 | When forcing 15 or more to's 2-4 |
| | When outrebounding opponent 2-4 | When failing to force 15 turnovers..... 1-5 |
| | When outrebounded or tied 1-4 | When handing out 15+ assists 0-2 |
| | When scoring 90+ points..... 0-0 | When handing out >15 assists 3-6 |
| | When scoring 80-89 points 1-0 | When recording 6+ steals..... 2-8 |
| | When scoring 70-79 points 1-4 | When recording fewer than 6 steals..... 1-1 |
| | When scoring under 70 points..... 1-5 | When UNCG bench outscored opp. 1-0 |
| | When opponent scores under 70 1-0 | When UNCG bench is outscored or tied..... 2-9 |
| | When opponent scores 70-79..... 2-6 | When Locke leads team in scoring..... 1-4 |
| | When opponent scores 80-89..... 0-3 | White White leads team in scoring..... 1-3 |
| | When opponent scores 90+ 0-0 | When Saddler leads team in scoring 1-2 |
| | When shooting 45% or better 2-3 | When Paulos leads team in scoring 0-1 |
| | When shooting under 45% 1-6 | When Baldwin leads team in scoring..... 0-1 |
| | When holding opponents under 45% 3-3 | |
| | When opponent shoots over 45%..... 0-6 | |



2014-15 UNCG Men's BASKETBALL



Tevon Saddler's Notebook

Opened the season with 21 points against Chowan (Nov. 14) ... Added 16 points, six assists and five rebounds against UNCW (Nov. 18) ... Scored 19 points against Longwood (Nov. 21), despite playing only 27 minutes due to foul trouble ... Scored 14 points, grabbed six rebounds, dished out three assists and tallied three steals at Indiana (Nov. 28) ... Scored a team-high 24 points against Greensboro College (Dec. 10) as he was 7-of-13 from the field and 9-of-10 from the free throw line ... Scored 24 points, dished out six assists and grabbed five rebounds at ETSU (Dec. 13) as he was 9-of-12 from the field and 6-of-9 from the line ... Named the SoCon Player of the Week after his performance at ETSU ... Scored 15 points on 8-of-10 shooting from the free throw line against Elon (Dec. 20).

#0

TEVON SADDLER

SOPHOMORE

SEASON HIGHS

Points24, two times
Rebounds7 vs. YSU (11/23/14)
Assists6, two times
Steals5 vs. Chowan (11/14/14)
Blocks2 vs. GC (12/10/14)
FG Made9 at ETSU (12/13/14)
FG Att17 at Indiana (11/28/14)
3FG Made1, four times
3FG Att.2, three times
FT Made10 vs. Chowan (11/14/14)
FT Att.12 vs. Chowan (11/14/14)

CAREER HIGHS

Points34 vs. ECU (11/12/13)
Rebounds8, two times
Assists7 vs. Davidson (1/18/14)
Steals5 vs. Chowan (11/14/15)
Blocks2 at Ga. Southern (2/13/14)
FG Made10 vs. ECU (11/12/13)
FG Att17 at Indiana (11/28/14)
3FG Made3, two times
3FG Att.2 vs. Chowan (11/14/15)
FT Made14 vs. ECU (11/12/13)
FT Att.19 vs. ECU (11/12/13)

2014-15 UNCG Men's Basketball UNCG Individual Game-by-Game (as of Dec 30, 2014) All games

#00 SADDLER, Tevon

| Opponent | Date | gs | min | Total | | 3-Pointers | | Free throws | | Rebounds | | | | pf | a | t/o | blk | stl | pts | avg | |
|-------------------------|----------|----|-----|--------|--------|------------|-------|-------------|-------|----------|-----|-----|-----|-----|----|-----|-----|-----|-----|------|------|
| | | | | fg-fga | pct | 3fg-fga | pct | ft-fa | pct | off | def | tot | avg | | | | | | | | |
| CHOWAN | 11/14/14 | * | 34 | 5-13 | .385 | 1-2 | .500 | 10-12 | .833 | 2 | 0 | 2 | 2.0 | 4 | 3 | 4 | 0 | 5 | 21 | 21.0 | |
| UNCW | 11/18/14 | * | 35 | 6-11 | .545 | 0-2 | .000 | 4-8 | .500 | 1 | 4 | 5 | 3.5 | 3 | 6 | 7 | 1 | 3 | 16 | 18.5 | |
| vs Longwood | 11/21/14 | * | 27 | 7-11 | .636 | 1-3 | .333 | 4-6 | .667 | 2 | 3 | 5 | 4.0 | 5 | 4 | 6 | 0 | 2 | 19 | 18.7 | |
| at Eastern Michigan | 11/22/14 | * | 30 | 3-10 | .300 | 0-1 | .000 | 7-10 | .700 | 1 | 5 | 6 | 4.5 | 4 | 5 | 4 | 0 | 2 | 13 | 17.3 | |
| vs Youngstown State | 11/23/14 | * | 35 | 3-13 | .231 | 1-1 | 1.000 | 4-5 | .800 | 2 | 5 | 7 | 5.0 | 3 | 5 | 6 | 0 | 0 | 11 | 16.0 | |
| at Indiana | 11/28/14 | * | 35 | 7-17 | .412 | 0-2 | .000 | 0-0 | .000 | 0 | 6 | 6 | 5.2 | 3 | 3 | 7 | 0 | 3 | 14 | 15.7 | |
| HIGH POINT | 12/01/14 | * | 33 | 4-12 | .333 | 0-1 | .000 | 6-7 | .857 | 0 | 3 | 3 | 4.9 | 4 | 4 | 4 | 0 | 1 | 14 | 15.4 | |
| at Presbyterian College | 12/06/14 | * | 34 | 4-13 | .308 | 0-2 | .000 | 0-0 | .000 | 2 | 2 | 4 | 4.8 | 2 | 3 | 2 | 0 | 0 | 8 | 14.5 | |
| GREENSBORO COLLEGE | 12/10/14 | * | 32 | 7-13 | .538 | 1-2 | .500 | 9-10 | .900 | 0 | 1 | 1 | 4.3 | 4 | 4 | 2 | 2 | 3 | 24 | 15.6 | |
| at ETSU | 12/13/14 | * | 34 | 9-12 | .750 | 0-1 | .000 | 6-9 | .667 | 1 | 4 | 5 | 4.4 | 3 | 6 | 3 | 1 | 1 | 24 | 16.4 | |
| NORTH CAROLINA | 12/16/14 | * | 15 | 3-8 | .375 | 0-2 | .000 | 0-1 | .000 | 1 | 0 | 1 | 4.1 | 5 | 0 | 2 | 0 | 1 | 6 | 15.5 | |
| ELON | 12/20/14 | * | 34 | 3-14 | .214 | 1-1 | 1.000 | 8-10 | .800 | 1 | 3 | 4 | 4.1 | 3 | 3 | 4 | 0 | 0 | 15 | 15.4 | |
| at East Carolina | 12/28/14 | * | 27 | 4-11 | .364 | 0-3 | .000 | 0-0 | .000 | 2 | 2 | 4 | 4.1 | 3 | 4 | 4 | 0 | 2 | 8 | 14.8 | |
| Totals | | | 13 | 405 | 65-158 | .411 | 5-23 | .217 | 58-78 | .744 | 15 | 38 | 53 | 4.1 | 46 | 50 | 55 | 4 | 23 | 193 | 14.8 |

Games played: 13
 Minutes/game: 31.2
 Points/game: 14.8
 FG Pct: 41.1
 3FG Pct: 21.7
 FT Pct: 74.4

Rebounds/game: 4.1
 Assists/game: 3.8
 Turnovers/game: 4.2
 Assist/turnover ratio: 0.9
 Steals/game: 1.8
 Blocks/game: 0.3

TEVON SADDLER'S CAREER STATISTICS

| Season | gp-gs | min/avg | Total | | 3-Point | | F-Throws | | Rebounds | | | | Scoring | | | | | | | |
|---------|-------|-----------|---------|------|---------|------|----------|------|----------|-----|-----|-----|---------|----|-----|-----|-----|-----|-----|------|
| | | | fg-fga | pct | fg-fga | pct | ft-fa | pct | off | def | tot | avg | pf | fo | ast | to | blk | stl | pts | avg |
| 2013-14 | 31-27 | 866/27.9 | 120-304 | .395 | 1-11 | .091 | 145-216 | .671 | 36 | 81 | 117 | 3.8 | 94 | 3 | 89 | 120 | 14 | 40 | 386 | 12.5 |
| 2014-15 | 13-13 | 405/31.2 | 65-158 | .411 | 5-23 | .217 | 58-78 | .744 | 15 | 38 | 53 | 4.1 | 46 | 2 | 50 | 55 | 4 | 23 | 193 | 14.8 |
| TOTAL | 44-40 | 1271/28.9 | 185-462 | .400 | 6-34 | .176 | 203-294 | .690 | 51 | 119 | 170 | 3.9 | 140 | 5 | 139 | 175 | 18 | 63 | 579 | 13.2 |



2014-15 UNCG MEN'S BASKETBALL



Marvin Smith's Notebook

Did not play the first 12 games due to a stress fracture ... Dressed for his first game against Elon (Dec. 20).

#1

MARVIN SMITH

FRESHMAN

SEASON HIGHS

Points 2 at East Carolina (12/28/14)
 Rebounds 2 at East Carolina (12/28/14)
 Assists n/a
 Steals n/a
 Blocks n/a
 FG Made 1 at East Carolina (12/28/14)
 FG Att 6 at East Carolina (12/28/14)
 3FG Made n/a
 3FG Att. 2 at East Carolina (12/28/14)
 FT Made n/a
 FT Att. n/a

CAREER HIGHS

Points 2 at East Carolina (12/28/14)
 Rebounds 2 at East Carolina (12/28/14)
 Assists n/a
 Steals n/a
 Blocks n/a
 FG Made 1 at East Carolina (12/28/14)
 FG Att 6 at East Carolina (12/28/14)
 3FG Made n/a
 3FG Att. 2 at East Carolina (12/28/14)
 FT Made n/a
 FT Att. n/a

2014-15 UNCG Men's Basketball UNCG Individual Game-by-Game (as of Dec 30, 2014) All games

#01 SMITH, Marvin

| Opponent | Date | gs | min | Total | | 3-Pointers | | Free throws | | Rebounds | | | | pf | a | t/o | blk | stl | pts | avg |
|------------------|----------|----|-----|--------|------|------------|------|-------------|------|----------|-----|-----|-----|----|---|-----|-----|-----|-----|-----|
| | | | | fg-fga | pct | 3fg-fga | pct | ft-fa | pct | off | def | tot | avg | | | | | | | |
| at East Carolina | 12/28/14 | 9 | | 1-6 | .167 | 0-2 | .000 | 0-0 | .000 | 2 | 0 | 2 | 2.0 | 1 | 0 | 0 | 0 | 0 | 2 | 2.0 |
| Totals | | 0 | 9 | 1-6 | .167 | 0-2 | .000 | 0-0 | .000 | 2 | 0 | 2 | 2.0 | 1 | 0 | 0 | 0 | 0 | 2 | 2.0 |

Games played: 1
 Minutes/game: 9.0
 Points/game: 2.0
 FG Pct: 16.7
 3FG Pct: 0.0

Rebounds/game: 2.0

MARVIN SMITH'S CAREER STATISTICS

| Season | gp-gs | min/avg | Total | | 3-Point | | F-Throws | | Rebounds | | | | Scoring | | | | | | | |
|---------|-------|---------|--------|------|---------|------|----------|------|----------|-----|-----|-----|---------|----|-----|----|-----|-----|-----|-----|
| | | | fg-fga | pct | fg-fga | pct | ft-fa | pct | off | def | tot | avg | pf | fo | ast | to | blk | stl | pts | avg |
| 2014-15 | 1-0 | 9/9.0 | 1-6 | .167 | 0-2 | .000 | 0-0 | .000 | 2 | 0 | 2 | 2.0 | 1 | 0 | 0 | 0 | 0 | 0 | 2 | 2.0 |



2014-15 UNCG MEN'S BASKETBALL



Asad Lamot's Notebook

Played in his first career game as a Spartan against Chowan (Nov. 14) ... Scored a career-high seven points against Youngstown State (Nov. 23), despite fouling out after 14 minutes of play ... Scored four points and dished out two assists at Indiana (Nov. 28).

#2

ASAD LAMOT

REDSHIRT JUNIOR

SEASON HIGHS

Points7 vs. YSU (11/23/14)
 Rebounds1, five times
 Assists2, two times
 Steals2 vs. Longwood (11/21/14)
 Blocksn/a
 FG Made3 vs. YSU (11/23/14)
 FG Att5 at Presbyterian (12/6/14)
 3FG Made1, four times
 3FG Att3, two times
 FT Made2 vs. Chowan (11/14/14)
 FT Att2, two times

CAREER HIGHS

Points7 vs. YSU (11/23/14)
 Rebounds1, five times
 Assists2, two times
 Steals2 vs. Longwood (11/21/14)
 Blocksn/a
 FG Made3 vs. YSU (11/23/14)
 FG Att5 at Presbyterian (12/6/14)
 3FG Made1, four times
 3FG Att3, two times
 FT Made2 vs. Chowan (11/14/14)
 FT Att2, two times

2014-15 UNCG Men's Basketball UNCG Individual Game-by-Game (as of Dec 26, 2014) All games

#02 LAMOT, Asad

| Opponent | Date | gs | min | Total | | 3-Pointers | | Free throws | | Rebounds | | | | pf | a | t/o | blk | stl | pts | avg |
|-------------------------|----------|----|-----|--------|-------|------------|-------|-------------|-------|----------|-----|-----|-----|----|---|-----|-----|-----|-----|-----|
| | | | | fg-fga | pct | 3fg-fga | pct | ft-fa | pct | off | def | tot | avg | | | | | | | |
| CHOWAN | 11/14/14 | | 13 | 0-2 | .000 | 0-1 | .000 | 2-2 | 1.000 | 0 | 0 | 0 | 0.0 | 2 | 0 | 0 | 0 | 1 | 2 | 2.0 |
| UNCW | 11/18/14 | 6 | | 0-1 | .000 | 0-1 | .000 | 0-0 | .000 | 0 | 1 | 1 | 0.5 | 0 | 0 | 0 | 0 | 0 | 0 | 1.0 |
| vs Longwood | 11/21/14 | 18 | | 0-3 | .000 | 0-1 | .000 | 0-0 | .000 | 0 | 1 | 1 | 0.7 | 3 | 1 | 3 | 0 | 2 | 0 | 0.7 |
| at Eastern Michigan | 11/22/14 | 16 | | 1-4 | .250 | 1-2 | .500 | 0-0 | .000 | 1 | 0 | 1 | 0.8 | 2 | 0 | 1 | 0 | 0 | 3 | 1.3 |
| vs Youngstown State | 11/23/14 | 14 | | 3-4 | .750 | 1-2 | .500 | 0-0 | .000 | 0 | 1 | 1 | 0.8 | 5 | 1 | 2 | 0 | 1 | 7 | 2.4 |
| at Indiana | 11/28/14 | 16 | | 1-1 | 1.000 | 1-1 | 1.000 | 1-2 | .500 | 1 | 0 | 1 | 0.8 | 3 | 2 | 0 | 0 | 0 | 4 | 2.7 |
| HIGH POINT | 12/01/14 | 19 | | 1-4 | .250 | 0-3 | .000 | 0-0 | .000 | 0 | 2 | 2 | 1.0 | 4 | 1 | 1 | 0 | 0 | 2 | 2.6 |
| at Presbyterian College | 12/06/14 | 19 | | 1-5 | .200 | 1-3 | .333 | 0-0 | .000 | 1 | 2 | 3 | 1.3 | 1 | 2 | 0 | 0 | 0 | 3 | 2.6 |
| GREENSBORO COLLEGE | 12/10/14 | 3 | | 0-0 | .000 | 0-0 | .000 | 0-0 | .000 | 0 | 0 | 0 | 1.1 | 0 | 0 | 0 | 0 | 0 | 0 | 2.3 |
| at ETSU | 12/13/14 | 3 | | 1-1 | 1.000 | 1-1 | 1.000 | 0-0 | .000 | 0 | 0 | 0 | 1.0 | 1 | 0 | 0 | 0 | 0 | 3 | 2.4 |
| NORTH CAROLINA | 12/16/14 | 4 | | 0-0 | .000 | 0-0 | .000 | 0-0 | .000 | 0 | 0 | 0 | 0.9 | 0 | 0 | 0 | 0 | 0 | 0 | 2.2 |
| ELON | 12/20/14 | 0 | | 0-0 | .000 | 0-0 | .000 | 0-0 | .000 | 0 | 0 | 0 | 0.8 | 0 | 0 | 0 | 0 | 0 | 0 | 2.0 |
| Totals | | 0 | 131 | 8-25 | .320 | 5-15 | .333 | 3-4 | .750 | 3 | 7 | 10 | 0.8 | 21 | 7 | 7 | 0 | 4 | 24 | 2.0 |

Games played: 12
 Minutes/game: 10.9
 Points/game: 2.0
 FG Pct: 32.0
 3FG Pct: 33.3
 FT Pct: 75.0

Rebounds/game: 0.8
 Assists/game: 0.6
 Turnovers/game: 0.6
 Assist/turnover ratio: 1.0
 Steals/game: 0.3

ASAD LAMOT'S CAREER STATISTICS

| Season | gp-gs | min/avg | Total | | 3-Point | | F-Throws | | Rebounds | | | | Scoring | | | | | | | |
|---------|-------|----------|--------|------|---------|------|----------|------|----------|-----|-----|-----|---------|----|-----|----|-----|-----|-----|-----|
| | | | fg-fga | pct | fg-fga | pct | ft-fa | pct | off | def | tot | avg | pf | fo | ast | to | blk | stl | pts | avg |
| 2014-15 | 12-0 | 131/10.9 | 8-25 | .320 | 5-15 | .333 | 3-4 | .750 | 3 | 7 | 10 | 0.8 | 21 | 1 | 7 | 7 | 0 | 4 | 24 | 2.0 |
| TOTAL | 12-0 | 131/10.9 | 8-25 | .320 | 5-15 | .333 | 3-4 | .750 | 3 | 7 | 10 | 0.8 | 21 | 1 | 7 | 7 | 0 | 4 | 24 | 2.0 |



2014-15 UNCG MEN'S BASKETBALL



Diante Baldwin's Notebook

Missed the first eight games of the season due to an injury ... Returned to the lineup against Greensboro College (Dec. 10) and scored nine points, notched four steals and handed out three assists in 25 minutes ... Scored a career-high 13 points and grabbed a career-high nine rebounds against North Carolina (Dec. 16) ... Made his first start of the season at East Carolina (Dec. 28) and scored a career-high 19 points on 7-of-11 shooting from the field.

#3

DIANTE BALDWIN

SOPHOMORE

SEASON HIGHS

Points 19 at East Carolina (12/28/14)
Rebounds 9 vs. UNC (12/16/14)
Assists 4, two times
Steals 6 at East Carolina (12/28/14)
Blocks n/a
FG Made 7 at East Carolina (12/28/14)
FG Att 15 vs. UNC (12/16/14)
3FG Made 1, two times
3FG Att. 2 at East Carolina (12/28/14)
FT Made 5 at ETSU (12/13/14)
FT Att. 9 vs. UNC (12/16/14)

CAREER HIGHS

Points 19 at East Carolina (12/28/14)
Rebounds 9 vs. UNC (12/16/14)
Assists 5 vs. Chowan (11/17/13)
Steals 6 at East Carolina (12/28/14)
Blocks 1, three times
FG Made 7 at East Carolina (12/28/14)
FG Att 15 vs. UNC (12/16/14)
3FG Made 1, nine times
3FG Att. 2, seven times
FT Made 5 at ETSU (12/13/14)
FT Att. 9 vs. UNC (12/16/14)

2014-15 UNCG Men's Basketball UNCG Individual Game-by-Game (as of Dec 30, 2014) All games

#03 BALDWIN, Diante

| Opponent | Date | gs | min | Total | | 3-Pointers | | Free throws | | Rebounds | | | | pf | a | t/o | blk | stl | pts | avg |
|--------------------|----------|----|-----|--------|------|------------|-------|-------------|-------|----------|-----|-----|-----|----|----|-----|-----|-----|-----|------|
| | | | | fg-fga | pct | 3fg-fga | pct | ft-fa | pct | off | def | tot | avg | | | | | | | |
| GREENSBORO COLLEGE | 12/10/14 | | 25 | 3-5 | .600 | 1-1 | 1.000 | 2-2 | 1.000 | 1 | 2 | 3 | 3.0 | 1 | 3 | 3 | 0 | 4 | 9 | 9.0 |
| at ETSU | 12/13/14 | | 25 | 0-5 | .000 | 0-1 | .000 | 5-6 | .833 | 0 | 2 | 2 | 2.5 | 2 | 3 | 1 | 0 | 1 | 5 | 7.0 |
| NORTH CAROLINA | 12/16/14 | | 34 | 5-15 | .333 | 0-3 | .000 | 3-9 | .333 | 3 | 6 | 9 | 4.7 | 1 | 4 | 3 | 0 | 2 | 13 | 9.0 |
| ELON | 12/20/14 | | 30 | 1-5 | .200 | 0-0 | .000 | 4-7 | .571 | 1 | 2 | 3 | 4.3 | 2 | 4 | 2 | 0 | 0 | 6 | 8.3 |
| at East Carolina | 12/28/14 | * | 35 | 7-11 | .636 | 1-2 | .500 | 4-6 | .667 | 0 | 1 | 1 | 3.6 | 3 | 3 | 2 | 0 | 6 | 19 | 10.4 |
| Totals | | | 149 | 16-41 | .390 | 2-7 | .286 | 18-30 | .600 | 5 | 13 | 18 | 3.6 | 9 | 17 | 11 | 0 | 13 | 52 | 10.4 |

Games played: 5
 Minutes/game: 29.8
 Points/game: 10.4
 FG Pct: 39.0
 3FG Pct: 28.6
 FT Pct: 60.0

Rebounds/game: 3.6
 Assists/game: 3.4
 Turnovers/game: 2.2
 Assist/turnover ratio: 1.5
 Steals/game: 2.6

DIANTE BALDWIN'S CAREER STATISTICS

| Season | gp-gs | min/avg | Total | | 3-Point | | F-Throws | | Rebounds | | | | Scoring | | | | | | | |
|---------|-------|----------|--------|------|---------|------|----------|------|----------|-----|-----|-----|---------|----|-----|----|-----|-----|-----|------|
| | | | fg-fga | pct | fg-fga | pct | ft-fa | pct | off | def | tot | avg | pf | fo | ast | to | blk | stl | pts | avg |
| 2013-14 | 30-2 | 491/16.4 | 40-81 | .494 | 7-18 | .389 | 17-47 | .362 | 6 | 48 | 54 | 1.8 | 65 | 3 | 31 | 27 | 5 | 15 | 104 | 3.5 |
| 2014-15 | 5-1 | 149/29.8 | 16-41 | .390 | 2-7 | .286 | 18-30 | .600 | 5 | 13 | 18 | 3.6 | 9 | 0 | 17 | 11 | 0 | 13 | 52 | 10.4 |
| TOTAL | 35-3 | 640/18.3 | 56-122 | .459 | 9-25 | .360 | 35-77 | .455 | 11 | 61 | 72 | 2.1 | 74 | 3 | 48 | 38 | 5 | 28 | 156 | 4.5 |



2014-15 UNCG Men's BASKETBALL



Kayel Locke's Notebook

Scored 22 points against UNCW (Nov. 18) as he was 12-of-16 from the free throw line ... Scored a team-high 14 points against Eastern Michigan (11/22/14) as he was 5-of-9 shooting from the field ... Scored 14 points at Indiana (Nov. 28) ... Scored a game-high 20 points and grabbed eight rebounds at Presbyterian (Dec. 6), including the game-winning basket with 3.2 seconds remaining ... Scored a team-high 17 points against North Carolina (Dec. 16) ... Scored a team-high 17 points and grabbed nine rebounds against Elon (Dec. 20) as he was 6-of-17 from the field and 5-of-6 from the free throw line.

#13

KAYEL LOCKE

JUNIOR

SEASON HIGHS

Points22 vs. UNCW (11/18/14)
Rebounds9 vs. Elon (12/20/14)
Assists2 vs. Chowan (11/14/14)
Steals1 vs. Longwood (11/21/14)
Blocksn/a
FG Made9 at Presbyterian (12/6/14)
FG Att17, two times
3FG Made1, two times
3FG Att1, six times
FT Made12 vs. UNCW (11/18/14)
FT Att16 vs. UNCW (11/18/14)

CAREER HIGHS

Points25 vs. Claflin (12/11/13)
Rebounds9, three times
Assists3 vs. James Madison (12/18/13)
Steals2, five times
Blocks2 vs. Chattanooga, (2/23/14)
FG Made10, two times
FG Attempts17, three times
3FG Made1, 12 times
3FG Att2, two times
FT Made14 vs. N.C. A&T (11/28/12)
FT Att16, two times

2014-15 UNCG Men's Basketball UNCG Individual Game-by-Game (as of Dec 30, 2014) All games

#13 LOCKE, Kayel

| Opponent | Date | gs | min | Total | | 3-Pointers | | Free throws | | Rebounds | | | | pf | a | t/o | blk | stl | pts | avg | |
|-------------------------|----------|----|-----|--------|--------|------------|-------|-------------|-------|----------|-----|-----|-----|-----|----|-----|-----|-----|-----|------|------|
| | | | | fg-fga | pct | 3fg-fga | pct | ft-fa | pct | off | def | tot | avg | | | | | | | | |
| CHOWAN | 11/14/14 | * | 25 | 2-6 | .333 | 0-0 | .000 | 2-4 | .500 | 1 | 2 | 3 | 3.0 | 5 | 2 | 1 | 0 | 0 | 6 | 6.0 | |
| UNCW | 11/18/14 | * | 35 | 5-9 | .556 | 0-1 | .000 | 12-16 | .750 | 5 | 3 | 8 | 5.5 | 4 | 0 | 3 | 0 | 0 | 22 | 14.0 | |
| vs Longwood | 11/21/14 | * | 33 | 3-6 | .500 | 0-1 | .000 | 2-3 | .667 | 2 | 6 | 8 | 6.3 | 3 | 1 | 3 | 0 | 1 | 8 | 12.0 | |
| at Eastern Michigan | 11/22/14 | * | 23 | 5-9 | .556 | 1-1 | 1.000 | 3-6 | .500 | 4 | 2 | 6 | 6.3 | 2 | 0 | 1 | 0 | 0 | 14 | 12.5 | |
| vs Youngstown State | 11/23/14 | * | 17 | 4-6 | .667 | 0-0 | .000 | 0-0 | .000 | 0 | 2 | 2 | 5.4 | 5 | 0 | 1 | 0 | 1 | 8 | 11.6 | |
| at Indiana | 11/28/14 | * | 36 | 6-15 | .400 | 1-1 | 1.000 | 1-3 | .333 | 1 | 0 | 1 | 4.7 | 1 | 2 | 1 | 0 | 1 | 14 | 12.0 | |
| HIGH POINT | 12/01/14 | * | 29 | 6-10 | .600 | 0-1 | .000 | 1-2 | .500 | 1 | 1 | 2 | 4.3 | 3 | 1 | 2 | 0 | 0 | 13 | 12.1 | |
| at Presbyterian College | 12/06/14 | * | 35 | 9-17 | .529 | 0-1 | .000 | 2-2 | 1.000 | 3 | 5 | 8 | 4.8 | 2 | 1 | 1 | 0 | 0 | 20 | 13.1 | |
| GREENSBORO COLLEGE | 12/10/14 | * | 22 | 1-10 | .100 | 0-1 | .000 | 3-4 | .750 | 5 | 3 | 8 | 5.1 | 2 | 1 | 2 | 0 | 0 | 5 | 12.2 | |
| at ETSU | 12/13/14 | * | 30 | 3-7 | .429 | 0-1 | .000 | 6-8 | .750 | 1 | 6 | 7 | 5.3 | 3 | 0 | 1 | 0 | 0 | 12 | 12.2 | |
| NORTH CAROLINA | 12/16/14 | * | 35 | 6-7 | .857 | 0-0 | .000 | 5-12 | .417 | 1 | 3 | 4 | 5.2 | 3 | 1 | 1 | 1 | 0 | 17 | 12.6 | |
| ELON | 12/20/14 | * | 37 | 6-17 | .353 | 0-0 | .000 | 5-6 | .833 | 5 | 4 | 9 | 5.5 | 3 | 1 | 3 | 0 | 1 | 17 | 13.0 | |
| at East Carolina | 12/28/14 | * | 29 | 1-7 | .143 | 0-0 | .000 | 0-2 | .000 | 5 | 2 | 7 | 5.6 | 5 | 0 | 4 | 0 | 0 | 2 | 12.2 | |
| Totals | | | 13 | 386 | 57-126 | .452 | 2-8 | .250 | 42-68 | .618 | 34 | 39 | 73 | 5.6 | 41 | 10 | 24 | 1 | 4 | 158 | 12.2 |

Games played: 13
 Minutes/game: 29.7
 Points/game: 12.2
 FG Pct: 45.2
 3FG Pct: 25.0
 FT Pct: 61.8

Rebounds/game: 5.6
 Assists/game: 0.8
 Turnovers/game: 1.8
 Assist/turnover ratio: 0.4
 Steals/game: 0.3
 Blocks/game: 0.1

KAYEL LOCKE'S CAREER STATISTICS

| Season | gp-gs | min/avg | Total | | 3-Point | | F-Throws | | Rebounds | | | | Scoring | | | | | | | |
|---------|-------|-----------|---------|------|---------|------|----------|------|----------|-----|-----|-----|---------|----|-----|-----|-----|-----|-----|------|
| | | | fg-fga | pct | fg-fga | pct | ft-fa | pct | off | def | tot | avg | pf | fo | ast | to | blk | stl | pts | avg |
| 2012-13 | 31-17 | 683/22.0 | 111-265 | .419 | 5-26 | .192 | 80-120 | .667 | 61 | 76 | 137 | 4.4 | 89 | 4 | 21 | 37 | 5 | 14 | 307 | 9.9 |
| 2013-14 | 32-31 | 870/27.2 | 132-285 | .463 | 5-22 | .227 | 101-136 | .743 | 72 | 69 | 141 | 4.4 | 97 | 6 | 31 | 62 | 4 | 15 | 370 | 11.6 |
| 2014-15 | 13-13 | 386/29.7 | 57-126 | .452 | 2-8 | .250 | 42-68 | .618 | 34 | 39 | 73 | 5.6 | 41 | 3 | 10 | 24 | 1 | 4 | 158 | 12.2 |
| TOTAL | 76-61 | 1939/25.5 | 300-676 | .444 | 12-56 | .214 | 223-324 | .688 | 167 | 184 | 351 | 4.6 | 227 | 13 | 62 | 123 | 10 | 33 | 835 | 11.0 |



2014-15 UNCG MEN'S BASKETBALL



Ben Dickinson's Notebook

Scored seven points and grabbed six rebounds against UNCW (Nov. 18) ... Grabbed seven rebounds against Longwood (Nov. 21).

#14

BEN DICKINSON

JUNIOR

SEASON HIGHS

Points 7 vs. UNCW (11/18/14)
Rebounds 7 vs. Longwood (11/21/14)
Assists 1, two times
Steals 1 at EMU (11/22/14)
Blocks n/a
FG Made 2, two times
FG Att 7 vs. Longwood (11/21/14)
3FG Made n/a
3FG Att. 1, two times
FT Made 3 vs. UNCW (11/18/14)
FT Att. 4 vs. UNCW (11/18/14)

CAREER HIGHS

Points 7 vs. UNCW (11/18/14)
Rebounds 7 vs. Longwood (11/21/14)
Assists 1, two times
Steals 1 at EMU (11/22/14)
Blocks n/a
FG Made 2, two times
FG Att 7 vs. Longwood (11/21/14)
3FG Made n/a
3FG Att. 1, two times
FT Made 3 vs. UNCW (11/18/14)
FT Att. 4 vs. UNCW (11/18/14)

2014-15 UNCG Men's Basketball UNCG Individual Game-by-Game (as of Dec 30, 2014) All games

#14 DICKINSON, Ben

| Opponent | Date | gs | min | Total | | 3-Pointers | | Free throws | | Rebounds | | | | pf | a | t/o | blk | stl | pts | avg |
|-------------------------|----------|----|-----|--------|------|------------|------|-------------|-------|----------|-----|-----|-----|----|---|-----|-----|-----|-----|-----|
| | | | | fg-fga | pct | 3fg-fga | pct | ft-fta | pct | off | def | tot | avg | | | | | | | |
| CHOWAN | 11/14/14 | | 8 | 1-3 | .333 | 0-0 | .000 | 2-2 | 1.000 | 1 | 1 | 2 | 2.0 | 4 | 0 | 2 | 0 | 0 | 4 | 4.0 |
| UNCW | 11/18/14 | 14 | | 2-3 | .667 | 0-1 | .000 | 3-4 | .750 | 3 | 3 | 6 | 4.0 | 2 | 1 | 1 | 0 | 0 | 7 | 5.5 |
| vs Longwood | 11/21/14 | 19 | | 1-7 | .143 | 0-1 | .000 | 1-2 | .500 | 4 | 3 | 7 | 5.0 | 3 | 1 | 3 | 0 | 0 | 3 | 4.7 |
| at Eastern Michigan | 11/22/14 | 12 | | 2-5 | .400 | 0-0 | .000 | 0-1 | .000 | 1 | 0 | 1 | 4.0 | 2 | 0 | 3 | 0 | 1 | 4 | 4.5 |
| vs Youngstown State | 11/23/14 | 16 | | 1-2 | .500 | 0-0 | .000 | 0-0 | .000 | 0 | 1 | 1 | 3.4 | 1 | 1 | 0 | 0 | 0 | 2 | 4.0 |
| at Indiana | 11/28/14 | 6 | | 0-0 | .000 | 0-0 | .000 | 1-2 | .500 | 1 | 1 | 2 | 3.2 | 1 | 0 | 0 | 0 | 0 | 1 | 3.5 |
| HIGH POINT | 12/01/14 | 14 | | 3-4 | .750 | 0-0 | .000 | 0-0 | .000 | 1 | 0 | 1 | 2.9 | 2 | 0 | 1 | 0 | 1 | 6 | 3.9 |
| at Presbyterian College | 12/06/14 | 7 | | 1-2 | .500 | 0-0 | .000 | 0-0 | .000 | 1 | 3 | 4 | 3.0 | 1 | 0 | 0 | 0 | 0 | 2 | 3.6 |
| GREENSBORO COLLEGE | 12/10/14 | 8 | | 0-1 | .000 | 0-0 | .000 | 1-2 | .500 | 1 | 0 | 1 | 2.8 | 1 | 0 | 0 | 0 | 0 | 1 | 3.3 |
| at ETSU | 12/13/14 | 5 | | 0-0 | .000 | 0-0 | .000 | 0-0 | .000 | 0 | 1 | 1 | 2.6 | 4 | 0 | 1 | 0 | 0 | 0 | 3.0 |
| NORTH CAROLINA | 12/16/14 | 12 | | 1-5 | .200 | 0-1 | .000 | 0-0 | .000 | 1 | 3 | 4 | 2.7 | 4 | 0 | 0 | 0 | 0 | 2 | 2.9 |
| ELON | 12/20/14 | 5 | | 0-0 | .000 | 0-0 | .000 | 0-0 | .000 | 0 | 0 | 0 | 2.5 | 0 | 0 | 0 | 0 | 0 | 0 | 2.7 |
| at East Carolina | 12/28/14 | 14 | | 0-0 | .000 | 0-0 | .000 | 0-0 | .000 | 0 | 1 | 1 | 2.4 | 3 | 0 | 1 | 0 | 0 | 0 | 2.5 |
| Totals | | 0 | 140 | 12-32 | .375 | 0-3 | .000 | 8-13 | .615 | 14 | 17 | 31 | 2.4 | 28 | 3 | 12 | 0 | 2 | 32 | 2.5 |

Games played: 13
Minutes/game: 10.8
Points/game: 2.5
FG Pct: 37.5
3FG Pct: 0.0
FT Pct: 61.5

Rebounds/game: 2.4
Assists/game: 0.2
Turnovers/game: 0.9
Assist/turnover ratio: 0.3
Steals/game: 0.2

BEN DICKINSON'S CAREER STATISTICS

| Season | gp-gs | min/avg | Total | | 3-Point | | F-Throws | | Rebounds | | | | Scoring | | | | | | | |
|---------|-------|----------|--------|------|---------|------|----------|------|----------|-----|-----|-----|---------|----|-----|----|-----|-----|-----|-----|
| | | | fg-fga | pct | fg-fga | pct | ft-fta | pct | off | def | tot | avg | pf | fo | ast | to | blk | stl | pts | avg |
| 2014-15 | 13-0 | 140/10.8 | 12-32 | .375 | 0-3 | .000 | 8-13 | .615 | 14 | 17 | 31 | 2.4 | 28 | 0 | 3 | 12 | 0 | 2 | 32 | 2.5 |
| TOTAL | 13-0 | 140/10.8 | 12-32 | .375 | 0-3 | .000 | 8-13 | .615 | 14 | 17 | 31 | 2.4 | 28 | 0 | 3 | 12 | 0 | 2 | 32 | 2.5 |



2014-15 UNCG MEN'S BASKETBALL



Clay Byrd's Notebook

Made his first career start against Chowan (Nov. 14) and scored seven points ... Scored a career-high 18 points against Longwood (Nov. 21) as he was 6-of-11 from 3-point land ... Scored a career-high 20 points at Indiana (Nov. 28), hitting 6-of-11 from 3-point land ... Scored 12 points at ETSU (Dec. 13) as he was 4-of-8 from 3-point land.

#30

CLAY BYRD

SOPHOMORE

SEASON HIGHS

Points 20 at Indiana (11/28/14)
Rebounds 3 vs. Longwood (11/21/14)
Assists 4 vs. YSU (11/23/14)
Steals 2 vs. UNCW (11/18/14)
Blocks n/a
FG Made 7 at Indiana (11/28/14)
FG Att 13 at Indiana (11/28/14)
3FG Made 6, two times
3FG Att. 11, three times
FT Made 3 vs. YSU (11/23/14)
FT Att. 3 vs. YSU (11/23/14)

CAREER HIGHS

Points 20 at Indiana (11/28/14)
Rebounds 3 vs. Longwood (11/21/14)
Assists 4 vs. YSU (11/23/14)
Steals 2 vs. UNCW (11/18/14)
Blocks n/a
FG Made 7 at Indiana (11/28/14)
FG Att 13 at Indiana (11/28/14)
3FG Made 6, two times
3FG Att. 11, three times
FT Made 3 vs. YSU (11/23/14)
FT Att. 3 vs. YSU (11/23/14)

2014-15 UNCG Men's Basketball UNCG Individual Game-by-Game (as of Dec 30, 2014) All games

#30 BYRD, Clay

| Opponent | Date | gs | min | Total | | 3-Pointers | | Free throws | | Rebounds | | | | pf | a | t/o | blk | stl | pts | avg | |
|-------------------------|----------|----|-----|--------|-------|------------|-------|-------------|-------|----------|-----|-----|-----|-----|----|-----|-----|-----|-----|------|-----|
| | | | | fg-fga | pct | 3fg-fga | pct | ft-fa | pct | off | def | tot | avg | | | | | | | | |
| CHOWAN | 11/14/14 | * | 28 | 2-6 | .333 | 1-4 | .250 | 2-2 | 1.000 | 0 | 1 | 1 | 1.0 | 4 | 3 | 0 | 0 | 0 | 7 | 7.0 | |
| UNCW | 11/18/14 | * | 24 | 1-5 | .200 | 1-5 | .200 | 0-0 | .000 | 0 | 0 | 0 | 0.5 | 2 | 0 | 0 | 0 | 2 | 3 | 5.0 | |
| vs Longwood | 11/21/14 | * | 42 | 6-12 | .500 | 6-11 | .545 | 0-0 | .000 | 0 | 3 | 3 | 1.3 | 4 | 2 | 1 | 0 | 0 | 18 | 9.3 | |
| at Eastern Michigan | 11/22/14 | * | 36 | 3-11 | .273 | 3-11 | .273 | 0-0 | .000 | 0 | 0 | 0 | 1.0 | 3 | 1 | 0 | 0 | 0 | 9 | 9.3 | |
| vs Youngstown State | 11/23/14 | * | 34 | 2-8 | .250 | 2-8 | .250 | 3-3 | 1.000 | 0 | 0 | 0 | 0.8 | 1 | 4 | 0 | 0 | 1 | 9 | 9.2 | |
| at Indiana | 11/28/14 | * | 33 | 7-13 | .538 | 6-11 | .545 | 0-0 | .000 | 1 | 0 | 1 | 0.8 | 3 | 0 | 0 | 0 | 1 | 20 | 11.0 | |
| HIGH POINT | 12/01/14 | * | 33 | 2-7 | .286 | 1-6 | .167 | 0-0 | .000 | 0 | 1 | 1 | 0.9 | 2 | 2 | 3 | 0 | 1 | 5 | 10.1 | |
| at Presbyterian College | 12/06/14 | * | 36 | 0-3 | .000 | 0-3 | .000 | 0-0 | .000 | 0 | 1 | 1 | 0.9 | 0 | 2 | 1 | 0 | 0 | 0 | 8.9 | |
| GREENSBORO COLLEGE | 12/10/14 | * | 25 | 1-9 | .111 | 1-9 | .111 | 0-0 | .000 | 1 | 1 | 2 | 1.0 | 1 | 1 | 0 | 0 | 0 | 3 | 8.2 | |
| at ETSU | 12/13/14 | * | 34 | 4-8 | .500 | 4-8 | .500 | 0-0 | .000 | 0 | 1 | 1 | 1.0 | 3 | 2 | 0 | 0 | 0 | 12 | 8.6 | |
| NORTH CAROLINA | 12/16/14 | * | 28 | 1-9 | .111 | 1-9 | .111 | 0-0 | .000 | 0 | 0 | 0 | 0.9 | 0 | 1 | 2 | 0 | 0 | 3 | 8.1 | |
| ELON | 12/20/14 | * | 23 | 0-1 | .000 | 0-1 | .000 | 5-6 | .833 | 0 | 1 | 1 | 0.9 | 2 | 0 | 0 | 0 | 1 | 5 | 7.8 | |
| at East Carolina | 12/28/14 | | 16 | 0-4 | .000 | 0-4 | .000 | 0-0 | .000 | 0 | 0 | 0 | 0.8 | 1 | 0 | 0 | 0 | 0 | 7.2 | | |
| Totals | | | 12 | 392 | 29-96 | .302 | 26-90 | .289 | 10-11 | .909 | 2 | 9 | 11 | 0.8 | 26 | 18 | 7 | 0 | 6 | 94 | 7.2 |

Games played: 13
 Minutes/game: 30.2
 Points/game: 7.2
 FG Pct: 30.2
 3FG Pct: 28.9
 FT Pct: 90.9

Rebounds/game: 0.8
 Assists/game: 1.4
 Turnovers/game: 0.5
 Assist/turnover ratio: 2.6
 Steals/game: 0.5

CLAY BYRD'S CAREER STATISTICS

| Season | gp-gs | min/avg | Total | | 3-Point | | F-Throws | | Rebounds | | | | Scoring | | | | | | | |
|---------|-------|----------|--------|------|---------|------|----------|------|----------|-----|-----|-----|---------|----|-----|----|-----|-----|-----|-----|
| | | | fg-fga | pct | fg-fga | pct | ft-fa | pct | off | def | tot | avg | pf | fo | ast | to | blk | stl | pts | avg |
| 2013-14 | 11-0 | 49/4.5 | 8-20 | .400 | 8-20 | .400 | 0-0 | .000 | 0 | 2 | 2 | 0.2 | 3 | 0 | 1 | 1 | 1 | 1 | 24 | 2.2 |
| 2014-15 | 13-12 | 392/30.2 | 29-96 | .302 | 26-90 | .289 | 10-11 | .909 | 2 | 9 | 11 | 0.8 | 26 | 0 | 18 | 7 | 0 | 6 | 94 | 7.2 |
| TOTAL | 24-12 | 441/18.4 | 37-116 | .319 | 34-110 | .309 | 10-11 | .909 | 2 | 11 | 13 | 0.5 | 29 | 0 | 19 | 8 | 1 | 7 | 118 | 4.9 |



2014-15 UNCG MEN'S BASKETBALL



Nicholas Paulos' Notebook

Played a career-high 44 minutes against Longwood (Nov. 21) on his way to playing 117 of a possible 125 minutes at the EMU Showcase ... Scored a team-high 24 points at Indiana (Nov. 28) as he was 9-of-12 from the field and 6-of-8 from 3-point land ... Also grabbed six rebounds, dished out three assists and notched three steals ... Scored 19 points against Greensboro College (Dec. 10) ... Added 12 points against ETSU (Dec. 13) with 4-of-7 shooting.

#31

NICHOLAS PAULOS

JUNIOR

SEASON HIGHS

Points 24 at Indiana (11/28/14)
Rebounds 7 vs. Longwood (11/21/14)
Assists 4 vs. EMU (11/23/14)
Steals 3, two times
Blocks 1 vs. Longwood (11/21/14)
FG Made 9 at Indiana (11/28/14)
FG Att 12, two times
3FG Made 6 at Indiana (11/28/14)
3FG Att 9 vs. Longwood (11/21/14)
FT Made 1 vs. Longwood (11/21/14)
FT Att 2 vs. Longwood (11/21/14)

CAREER HIGHS

Points 30 at Chttanooaga (2/21/13)
Rebounds 9 vs. Richmond (12/30/11)
Assists 4, two times
Steals 3 vs. Lees-McRae (1/9/13)
Blocks 1, 24 times
FG Made 9, two times
FG Attempts 15 vs. Towson (11/20/11)
3FG Made 10 at Chttanooaga (2/21/13)
3FG Att 12, three times
FT Made 4 vs. Clafin (12/11/13)
FT Att 4 vs. Clafin (12/11/13)

2014-15 UNCG Men's Basketball UNCG Individual Game-by-Game (as of Dec 30, 2014) All games

#31 PAULOS, Nicholas

| Opponent | Date | gs | min | Total | | 3-Pointers | | Free throws | | Rebounds | | | | pf | a | t/o | blk | stl | pts | avg | |
|-------------------------|----------|----|-----|--------|--------|------------|-------|-------------|-------|----------|-----|-----|-----|-----|----|-----|-----|-----|-----|------|------|
| | | | | fg-fga | pct | 3fg-fga | pct | ft-fa | pct | off | def | tot | avg | | | | | | | | |
| CHOWAN | 11/14/14 | * | 35 | 3-6 | .500 | 2-5 | .400 | 0-0 | .000 | 0 | 5 | 5 | 5.0 | 3 | 1 | 1 | 0 | 1 | 8 | 8.0 | |
| UNCW | 11/18/14 | * | 38 | 2-9 | .222 | 2-8 | .250 | 0-0 | .000 | 1 | 5 | 6 | 5.5 | 1 | 1 | 0 | 1 | 2 | 6 | 7.0 | |
| vs Longwood | 11/21/14 | * | 44 | 4-12 | .333 | 3-9 | .333 | 1-2 | .500 | 2 | 5 | 7 | 6.0 | 0 | 1 | 5 | 0 | 3 | 12 | 8.7 | |
| at Eastern Michigan | 11/22/14 | * | 36 | 3-5 | .600 | 3-5 | .600 | 0-0 | .000 | 1 | 3 | 4 | 5.5 | 2 | 4 | 2 | 0 | 0 | 9 | 8.8 | |
| vs Youngstown State | 11/23/14 | * | 37 | 4-10 | .400 | 2-7 | .286 | 0-0 | .000 | 0 | 2 | 2 | 4.8 | 2 | 3 | 0 | 0 | 0 | 10 | 9.0 | |
| at Indiana | 11/28/14 | * | 37 | 9-12 | .750 | 6-8 | .750 | 0-0 | .000 | 0 | 6 | 6 | 5.0 | 3 | 3 | 4 | 0 | 3 | 24 | 11.5 | |
| HIGH POINT | 12/01/14 | * | 37 | 4-8 | .500 | 4-8 | .500 | 0-0 | .000 | 0 | 2 | 2 | 4.6 | 3 | 2 | 2 | 0 | 0 | 12 | 11.6 | |
| at Presbyterian College | 12/06/14 | * | 33 | 4-5 | .800 | 3-4 | .750 | 0-0 | .000 | 0 | 2 | 2 | 4.3 | 5 | 0 | 0 | 0 | 0 | 11 | 11.5 | |
| GREENSBORO COLLEGE | 12/10/14 | * | 37 | 7-13 | .538 | 4-9 | .444 | 1-1 | 1.000 | 0 | 3 | 3 | 4.1 | 0 | 2 | 1 | 0 | 1 | 19 | 12.3 | |
| at ETSU | 12/13/14 | * | 35 | 4-8 | .500 | 4-7 | .571 | 0-0 | .000 | 0 | 5 | 5 | 4.2 | 0 | 3 | 2 | 0 | 1 | 12 | 12.3 | |
| NORTH CAROLINA | 12/16/14 | * | 38 | 4-8 | .500 | 4-8 | .500 | 0-0 | .000 | 0 | 2 | 2 | 4.0 | 2 | 0 | 2 | 1 | 1 | 12 | 12.3 | |
| ELON | 12/20/14 | * | 32 | 2-7 | .286 | 1-5 | .200 | 0-0 | .000 | 1 | 2 | 3 | 3.9 | 5 | 0 | 3 | 0 | 2 | 5 | 11.7 | |
| at East Carolina | 12/28/14 | * | 39 | 3-12 | .250 | 3-12 | .250 | 0-0 | .000 | 1 | 7 | 8 | 4.2 | 1 | 0 | 1 | 0 | 0 | 9 | 11.5 | |
| Totals | | | 13 | 478 | 53-115 | .461 | 41-95 | .432 | 2-3 | .667 | 6 | 49 | 55 | 4.2 | 27 | 20 | 23 | 2 | 14 | 149 | 11.5 |

Games played: 13
 Minutes/game: 36.8
 Points/game: 11.5
 FG Pct: 46.1
 3FG Pct: 43.2
 FT Pct: 66.7

Rebounds/game: 4.2
 Assists/game: 1.5
 Turnovers/game: 1.8
 Assist/turnover ratio: 0.9
 Steals/game: 1.1
 Blocks/game: 0.2

NICHOLAS PAULOS' CAREER STATISTICS

| Season | gp-gs | min/avg | Total | | 3-Point | | F-Throws | | Rebounds | | | | Scoring | | | | | | | |
|---------|--------|-----------|---------|------|---------|------|----------|-------|----------|-----|-----|-----|---------|----|-----|----|-----|-----|-----|------|
| | | | fg-fga | pct | fg-fga | pct | ft-fa | pct | off | def | tot | avg | pf | fo | ast | to | blk | stl | pts | avg |
| 2011-12 | 29-0 | 400/13.8 | 56-155 | .361 | 39-112 | .348 | 9-9 | 1.000 | 19 | 42 | 61 | 2.1 | 41 | 0 | 10 | 19 | 6 | 12 | 160 | 5.5 |
| 2012-13 | 31-3 | 621/20.0 | 83-194 | .428 | 63-155 | .406 | 19-23 | .826 | 19 | 66 | 85 | 2.7 | 62 | 4 | 16 | 24 | 9 | 22 | 248 | 8.0 |
| 2013-14 | 32-32 | 948/29.6 | 93-222 | .419 | 69-189 | .365 | 16-18 | .889 | 16 | 98 | 114 | 3.6 | 73 | 3 | 32 | 32 | 12 | 14 | 271 | 8.5 |
| 2014-15 | 13-13 | 478/36.8 | 53-115 | .461 | 41-95 | .432 | 2-3 | .667 | 6 | 49 | 55 | 4.2 | 27 | 2 | 20 | 23 | 2 | 14 | 149 | 11.5 |
| TOTAL | 105-48 | 2447/23.3 | 285-686 | .415 | 212-551 | .385 | 46-53 | .868 | 60 | 255 | 315 | 3.0 | 203 | 9 | 78 | 98 | 29 | 62 | 828 | 7.9 |



2014-15 UNCG MEN'S BASKETBALL



Jordy Kuiper's Notebook

Scored two points, grabbed four rebounds and dished out a career-high five assists at Indiana (Nov. 28) ... Notched his first career double-double against Greensboro College (Dec. 10) with a career-high 11 points and 10 rebounds ... Scored six points at East Carolina (Dec. 28) on 3-of-4 shooting.

#32

JORDY KUIPER

FRESHMAN

SEASON HIGHS

Points 11 vs. GC (12/10/14)
 Rebounds 10 vs. GC (12/10/14)
 Assists 5 at Indiana (11/28/14)
 Steals 1 at Indiana (11/28/14)
 Blocks 1, two times
 FG Made 4 vs. GC (12/10/14)
 FG Att 5 vs. GC (12/10/14)
 3FG Made n/a
 3FG Att n/a
 FT Made 3, two times
 FT Att 4 vs. Chowan (11/14/14)

CAREER HIGHS

Points 11 vs. GC (12/10/14)
 Rebounds 10 vs. GC (12/10/14)
 Assists 5 at Indiana (11/28/14)
 Steals 1 at Indiana (11/28/14)
 Blocks 1, two times
 FG Made 3 vs. GC (12/10/14)
 FG Attempts 5 vs. GC (12/10/14)
 3FG Made n/a
 3FG Att n/a
 FT Made 3, two times
 FT Att 4 vs. Chowan (11/14/14)

2014-15 UNCG Men's Basketball UNCG Individual Game-by-Game (as of Dec 30, 2014) All games

#32 KUIPER, Jordy

| Opponent | Date | gs | min | Total | | 3-Pointers | | Free throws | | Rebounds | | | | pf | a | t/o | blk | stl | pts | avg |
|-------------------------|----------|----|-----|--------|------|------------|------|-------------|-------|----------|-----|-----|-----|----|---|-----|-----|-----|-----|-----|
| | | | | fg-fga | pct | 3fg-fga | pct | ft-fa | pct | off | def | tot | avg | | | | | | | |
| CHOWAN | 11/14/14 | 21 | | 0-3 | .000 | 0-0 | .000 | 3-4 | .750 | 3 | 3 | 6 | 6.0 | 2 | 0 | 0 | 1 | 0 | 3 | 3.0 |
| UNCW | 11/18/14 | 7 | | 0-0 | .000 | 0-0 | .000 | 0-0 | .000 | 1 | 0 | 1 | 3.5 | 0 | 0 | 0 | 0 | 0 | 1.5 | |
| vs Longwood | 11/21/14 | 4 | | 0-0 | .000 | 0-0 | .000 | 0-0 | .000 | 0 | 0 | 0 | 2.3 | 4 | 0 | 0 | 0 | 0 | 1.0 | |
| at Eastern Michigan | 11/22/14 | 26 | | 2-4 | .500 | 0-0 | .000 | 0-0 | .000 | 2 | 2 | 4 | 2.8 | 3 | 0 | 0 | 1 | 0 | 4 | 1.8 |
| vs Youngstown State | 11/23/14 | 15 | | 0-0 | .000 | 0-0 | .000 | 0-0 | .000 | 2 | 0 | 2 | 2.6 | 3 | 1 | 1 | 0 | 0 | 1.4 | |
| at Indiana | 11/28/14 | 23 | | 1-3 | .333 | 0-0 | .000 | 0-0 | .000 | 3 | 1 | 4 | 2.8 | 4 | 5 | 0 | 0 | 1 | 2 | 1.5 |
| HIGH POINT | 12/01/14 | 11 | | 0-0 | .000 | 0-0 | .000 | 2-4 | .500 | 1 | 4 | 5 | 3.1 | 4 | 0 | 2 | 0 | 0 | 2 | 1.6 |
| at Presbyterian College | 12/06/14 | 2 | | 0-0 | .000 | 0-0 | .000 | 0-0 | .000 | 0 | 0 | 0 | 2.8 | 0 | 0 | 0 | 0 | 0 | 1.4 | |
| GREENSBORO COLLEGE | 12/10/14 | 19 | | 4-5 | .800 | 0-0 | .000 | 3-3 | 1.000 | 4 | 6 | 10 | 3.6 | 1 | 0 | 0 | 0 | 0 | 11 | 2.4 |
| at ETSU | 12/13/14 | 3 | | 0-0 | .000 | 0-0 | .000 | 0-0 | .000 | 0 | 0 | 0 | 3.2 | 0 | 0 | 0 | 1 | 0 | 0 | 2.2 |
| NORTH CAROLINA | 12/16/14 | 11 | | 0-0 | .000 | 0-0 | .000 | 2-2 | 1.000 | 0 | 0 | 0 | 2.9 | 1 | 1 | 0 | 1 | 1 | 2 | 2.2 |
| ELON | 12/20/14 | 6 | | 0-0 | .000 | 0-0 | .000 | 0-0 | .000 | 1 | 0 | 1 | 2.8 | 4 | 0 | 1 | 0 | 1 | 0 | 2.0 |
| at East Carolina | 12/28/14 | 19 | | 3-4 | .750 | 0-0 | .000 | 0-2 | .000 | 0 | 1 | 1 | 2.6 | 4 | 0 | 2 | 0 | 0 | 6 | 2.3 |
| Totals | | 0 | 167 | 10-19 | .526 | 0-0 | .000 | 10-15 | .667 | 17 | 17 | 34 | 2.6 | 30 | 7 | 6 | 4 | 3 | 30 | 2.3 |

Games played: 13
 Minutes/game: 12.8
 Points/game: 2.3
 FG Pct: 52.6
 FT Pct: 66.7

Rebounds/game: 2.6
 Assists/game: 0.5
 Turnovers/game: 0.5
 Assist/turnover ratio: 1.2
 Steals/game: 0.2
 Blocks/game: 0.3

JORDY KUIPER'S CAREER STATISTICS

| Season | gp-gs | min/avg | Total | | 3-Point | | F-Throws | | Rebounds | | | | Scoring | | | | | | | |
|---------|-------|----------|--------|------|---------|------|----------|------|----------|-----|-----|-----|---------|----|-----|----|-----|-----|-----|-----|
| | | | fg-fga | pct | fg-fga | pct | ft-fa | pct | off | def | tot | avg | pf | fo | ast | to | blk | stl | pts | avg |
| 2013-14 | 24-0 | 106/4.4 | 1-9 | .111 | 0-0 | .000 | 1-5 | .200 | 6 | 18 | 24 | 1.0 | 19 | 0 | 0 | 9 | 0 | 0 | 3 | 0.1 |
| 2014-15 | 13-0 | 167/12.8 | 10-19 | .526 | 0-0 | .000 | 10-15 | .667 | 17 | 17 | 34 | 2.6 | 30 | 0 | 7 | 6 | 4 | 3 | 30 | 2.3 |
| TOTAL | 37-0 | 273/7.4 | 11-28 | .393 | 0-0 | .000 | 11-20 | .550 | 23 | 35 | 58 | 1.6 | 49 | 0 | 7 | 15 | 4 | 3 | 33 | 0.9 |



2014-15 UNCG MEN'S BASKETBALL



RJ White's Notebook

Nearly posted a double-double in the season-opener against Chowan (Nov. 14) as he scored 20 points and grabbed nine rebounds ... Scored 16 points against UNCW (Nov. 18) ... Named to the EMU Showcase All-Tournament Team ... Posted a double-double of 19 points and 10 rebounds against Longwood (Nov. 21) ... Added his second double dip of the weekend with 20 points and 12 rebounds against Youngstown State (Nov. 23) as he hit a career-high four 3-pointers ... Notched a double-double at Presbyterian (Dec. 6) with 11 points and 10 rebounds ... Recorded a double-double at ETSU (Dec. 13) with 12 points and 10 rebounds ... Blocked a career-high five shots against Elon (Dec. 20) as he posted a double-double with 16 points and 12 rebounds.

#33

RJ WHITE

REDSHIRT SOPHOMORE

SEASON HIGHS

Points20, two times
Rebounds12, two times
Assists3 at Presbyterian (12/6/14)
Steals3, four times
Blocks5 vs. Elon (12/20/14)
FG Made8, two times
FG Att16 vs. YSU (11/23/14)
3FG Made4 vs. YSU (11/23/14)
3FG Att.6 vs. YSU (11/23/14)
FT Made5 vs. Chowan (11/14/14)
FT Att.8 vs. Chowan (11/14/14)

CAREER HIGHS

Points21 vs. Elon (2/19/14)
Rebounds12, two times
Assists3 at Presbyterian (12/6/14)
Steals4 vs. Elon (2/19/14)
Blocks5 vs. Elon (12/20/14)
FG Made8, three times
FG Attempts16, two times
3FG Made4 vs. YSU (11/23/14)
3FG Att.6 vs. YSU (11/23/14)
FT Made7 vs. Elon (2/19/14)
FT Att.10 vs. Elon (2/19/14)

2014-15 UNCG Men's Basketball UNCG Individual Game-by-Game (as of Dec 30, 2014) All games

#33 WHITE, RJ

| Opponent | Date | gs | min | Total | | 3-Pointers | | Free throws | | Rebounds | | | pf | a | t/o | blk | stl | pts | avg | | |
|-------------------------|----------|----|-----|--------|--------|------------|------|-------------|-------|----------|-----|-----|-----|-----|-----|-----|-----|-----|-----|------|------|
| | | | | fg-fga | pct | 3fg-fga | pct | ft-fga | pct | off | def | tot | | | | | | | | avg | |
| CHOWAN | 11/14/14 | * | 24 | 7-10 | .700 | 1-3 | .333 | 5-8 | .625 | 2 | 7 | 9 | 9.0 | 4 | 1 | 1 | 1 | 3 | 20 | 20.0 | |
| UNCW | 11/18/14 | * | 25 | 7-14 | .500 | 1-4 | .250 | 1-5 | .200 | 2 | 3 | 5 | 7.0 | 2 | 1 | 2 | 1 | 3 | 16 | 18.0 | |
| vs Longwood | 11/21/14 | * | 34 | 8-14 | .571 | 1-2 | .500 | 2-4 | .500 | 4 | 6 | 10 | 8.0 | 4 | 2 | 3 | 1 | 2 | 19 | 18.3 | |
| at Eastern Michigan | 11/22/14 | * | 19 | 2-5 | .400 | 0-0 | .000 | 2-3 | .667 | 0 | 3 | 3 | 6.8 | 4 | 1 | 2 | 0 | 1 | 6 | 15.3 | |
| vs Youngstown State | 11/23/14 | * | 32 | 8-16 | .500 | 4-6 | .667 | 0-2 | .000 | 4 | 8 | 12 | 7.8 | 3 | 0 | 2 | 1 | 3 | 20 | 16.2 | |
| at Indiana | 11/28/14 | * | 14 | 0-2 | .000 | 0-0 | .000 | 0-0 | .000 | 0 | 3 | 3 | 7.0 | 5 | 2 | 0 | 0 | 0 | 0 | 13.5 | |
| HIGH POINT | 12/01/14 | * | 24 | 7-7 | 1.000 | 0-0 | .000 | 0-2 | .000 | 2 | 5 | 7 | 7.0 | 5 | 2 | 1 | 3 | 3 | 14 | 13.6 | |
| at Presbyterian College | 12/06/14 | * | 34 | 5-10 | .500 | 0-1 | .000 | 1-1 | 1.000 | 2 | 8 | 10 | 7.4 | 3 | 3 | 2 | 2 | 2 | 11 | 13.3 | |
| GREENSBORO COLLEGE | 12/10/14 | * | 29 | 5-6 | .833 | 0-1 | .000 | 0-0 | .000 | 2 | 6 | 8 | 7.4 | 4 | 1 | 5 | 2 | 2 | 10 | 12.9 | |
| at ETSU | 12/13/14 | * | 31 | 5-11 | .455 | 0-1 | .000 | 2-3 | .667 | 2 | 8 | 10 | 7.7 | 4 | 0 | 1 | 1 | 0 | 12 | 12.8 | |
| NORTH CAROLINA | 12/16/14 | * | 22 | 0-4 | .000 | 0-1 | .000 | 1-2 | .500 | 3 | 1 | 4 | 7.4 | 4 | 0 | 3 | 1 | 2 | 1 | 11.7 | |
| ELON | 12/20/14 | * | 33 | 7-13 | .538 | 1-2 | .500 | 1-1 | 1.000 | 3 | 9 | 12 | 7.8 | 5 | 0 | 4 | 5 | 2 | 16 | 12.1 | |
| at East Carolina | 12/28/14 | * | 12 | 2-5 | .400 | 0-1 | .000 | 0-0 | .000 | 2 | 3 | 5 | 7.5 | 5 | 1 | 0 | 0 | 0 | 4 | 11.5 | |
| Totals | | | 13 | 333 | 63-117 | .538 | 8-22 | .364 | 15-31 | .484 | 28 | 70 | 98 | 7.5 | 52 | 14 | 26 | 18 | 23 | 149 | 11.5 |

Games played: 13
 Minutes/game: 25.6
 Points/game: 11.5
 FG Pct: 53.8
 3FG Pct: 36.4
 FT Pct: 48.4

Rebounds/game: 7.5
 Assists/game: 1.1
 Turnovers/game: 2.0
 Assist/turnover ratio: 0.5
 Steals/game: 1.8
 Blocks/game: 1.4

RJ WHITE'S CAREER STATISTICS

| Season | gp-gs | min/avg | Total | | 3-Point | | F-Throws | | Rebounds | | | | Scoring | | | | | | | |
|---------|-------|----------|---------|------|---------|------|----------|-------|----------|-----|-----|-----|---------|----|-----|----|-----|-----|-----|------|
| | | | fg-fga | pct | fg-fga | pct | ft-fga | pct | off | def | tot | avg | pf | fo | ast | to | blk | stl | pts | avg |
| 2012-13 | 7-0 | 48/6.9 | 3-11 | .273 | 0-1 | .000 | 4-4 | 1.000 | 3 | 13 | 16 | 2.3 | 9 | 0 | 2 | 4 | 4 | 1 | 10 | 1.4 |
| 2013-14 | 32-0 | 503/15.7 | 85-164 | .518 | 1-4 | .250 | 38-61 | .623 | 43 | 128 | 171 | 5.3 | 107 | 4 | 11 | 42 | 16 | 16 | 209 | 6.5 |
| 2014-15 | 13-13 | 333/25.6 | 63-117 | .538 | 8-22 | .364 | 15-31 | .484 | 28 | 70 | 98 | 7.5 | 52 | 4 | 14 | 26 | 18 | 23 | 149 | 11.5 |
| TOTAL | 52-13 | 884/17.0 | 151-292 | .517 | 9-27 | .333 | 57-96 | .594 | 74 | 211 | 285 | 5.5 | 168 | 8 | 27 | 72 | 38 | 40 | 368 | 7.1 |



2014-15 UNCG MEN'S BASKETBALL



Jamal Mitchell's Notebook

Suffered a knee injury four minutes into the Longwood game (Nov. 21).

#35

JAMAL MITCHELL

SENIOR

SEASON HIGHS

Points 5 vs. Chowan (11/14/14)
Rebounds 1 vs. Chowan (11/14/14)
Assists 2 vs. Chowan (11/14/14)
Steals n/a
Blocks n/a
FG Made 1, two times
FG Att 3 vs. UNCW (11/18/14)
3FG Made 1 vs. Chowan (11/14/14)
3FG Att. 1 vs. Chowan (11/14/14)
FT Made 2 vs. Chowan (11/14/14)
FT Att. 2 vs. Chowan (11/14/14)

CAREER HIGHS

Points 5 vs. Chowan (11/14/14)
Rebounds 1 vs. Chowan (11/14/14)
Assists 2 vs. Chowan (11/14/14)
Steals n/a
Blocks n/a
FG Made 1, two times
FG Att 3 vs. UNCW (11/18/14)
3FG Made 1 vs. Chowan (11/14/14)
3FG Att. 1 vs. Chowan (11/14/14)
FT Made 2 vs. Chowan (11/14/14)
FT Att. 2 vs. Chowan (11/14/14)

2014-15 UNCG Men's Basketball UNCG Individual Game-by-Game (as of Nov 24, 2014) All games

#35 MITCHELL, Jamal

| Opponent | Date | gs | min | Total | | 3-Pointers | | Free throws | | Rebounds | | | | pf | a | t/o | blk | stl | pts | avg |
|---------------|----------|----------|-----------|------------|-------------|------------|--------------|-------------|--------------|----------|----------|----------|------------|----------|----------|----------|----------|----------|----------|------------|
| | | | | fg-fga | pct | 3fg-fga | pct | ft-fa | pct | off | def | tot | avg | | | | | | | |
| CHOWAN | 11/14/14 | 12 | | 1-1 | 1.000 | 1-1 | 1.000 | 2-2 | 1.000 | 1 | 0 | 1 | 1.0 | 3 | 2 | 0 | 0 | 0 | 5 | 5.0 |
| UNCW | 11/18/14 | 16 | | 1-3 | .333 | 0-0 | .000 | 0-0 | .000 | 0 | 0 | 0 | 0.5 | 2 | 0 | 0 | 0 | 0 | 2 | 3.5 |
| vs Longwood | 11/21/14 | 4 | | 0-1 | .000 | 0-0 | .000 | 0-0 | .000 | 0 | 0 | 0 | 0.3 | 0 | 0 | 0 | 0 | 0 | 0 | 2.3 |
| Totals | | 0 | 32 | 2-5 | .400 | 1-1 | 1.000 | 2-2 | 1.000 | 1 | 0 | 1 | 0.3 | 5 | 2 | 0 | 0 | 0 | 7 | 2.3 |

Games played: 3
Minutes/game: 10.7
Points/game: 2.3
FG Pct: 40.0
3FG Pct: 100.0
FT Pct: 100.0

Rebounds/game: 0.3
Assists/game: 0.7
Assist/turnover ratio: 99.9

JAMAL MITCHELL'S CAREER STATISTICS

| Season | gp-gs | min/avg | Total | | 3-Point | | F-Throws | | | Rebounds | | | | Scoring | | | | | | |
|--------------|------------|---------------|------------|-------------|------------|-------------|------------|-------------|----------|----------|----------|------------|----------|----------|----------|----------|----------|----------|----------|------------|
| | | | fg-fga | pct | fg-fga | pct | ft-fa | pct | off | def | tot | avg | pf | fo | ast | to | blk | stl | pts | avg |
| 2013-14 | 5-0 | 11/2.2 | 0-1 | .000 | 0-1 | .000 | 1-2 | .500 | 0 | 0 | 0 | 0.0 | 2 | 0 | 0 | 0 | 0 | 1 | 1 | 0.2 |
| 2014-15 | 3-0 | 32/10.7 | 2-5 | .400 | 1-1 | 1.000 | 2-2 | 1.000 | 1 | 0 | 1 | 0.3 | 5 | 0 | 2 | 0 | 0 | 0 | 7 | 2.3 |
| TOTAL | 8-0 | 43/5.4 | 2-6 | .333 | 1-2 | .500 | 3-4 | .750 | 1 | 0 | 1 | 0.1 | 7 | 0 | 2 | 0 | 0 | 1 | 8 | 1.0 |



2014-15 UNCG Men's BASKETBALL



2014-15 UNCG Men's Basketball UNCG Combined Team Statistics (as of Dec 28, 2014) All games

| RECORD: | OVERALL | HOME | AWAY | NEUTRAL |
|----------------|---------|------|------|---------|
| ALL GAMES | 4-9 | 2-4 | 2-3 | 0-2 |
| CONFERENCE | 1-0 | 0-0 | 1-0 | 0-0 |
| NON-CONFERENCE | 3-9 | 2-4 | 1-3 | 0-2 |

| # | Player | gp-gs | min | Total | | 3-Point | | F-Throw | | Rebounds | | | pf | dq | a | to | blk | stl | pts | avg | | | | |
|----------------|------------------|-------|------|--------|---------|---------|--------|---------|---------|----------|-----|-----|-----|------|-----|----|-----|-----|-----|-----|-----|------|--|--|
| | | | | fg-fga | fg% | 3fg-fga | 3fg% | ft-fga | ft% | off | def | tot | | | | | | | | | avg | | | |
| 00 | SADDLER, Tevon | 13-13 | 405 | 31.2 | 65-158 | .411 | 5-23 | .217 | 58-78 | .744 | 15 | 38 | 53 | 4.1 | 46 | 2 | 50 | 55 | 4 | 23 | 193 | 14.8 | | |
| 13 | LOCKE, Kayel | 13-13 | 386 | 29.7 | 57-126 | .452 | 2-8 | .250 | 42-68 | .618 | 34 | 39 | 73 | 5.6 | 41 | 3 | 10 | 24 | 1 | 4 | 158 | 12.2 | | |
| 33 | WHITE, RJ | 13-13 | 333 | 25.6 | 63-117 | .538 | 8-22 | .364 | 15-31 | .484 | 28 | 70 | 98 | 7.5 | 52 | 4 | 14 | 26 | 18 | 23 | 149 | 11.5 | | |
| 31 | PAULOS, Nicholas | 13-13 | 478 | 36.8 | 53-115 | .461 | 41-95 | .432 | 2-3 | .667 | 6 | 49 | 55 | 4.2 | 27 | 2 | 20 | 23 | 2 | 14 | 149 | 11.5 | | |
| 03 | BALDWIN, Diante | 5-1 | 149 | 29.8 | 16-41 | .390 | 2-7 | .286 | 18-30 | .600 | 5 | 13 | 18 | 3.6 | 9 | 0 | 17 | 11 | 0 | 13 | 52 | 10.4 | | |
| 30 | BYRD, Clay | 13-12 | 392 | 30.2 | 29-96 | .302 | 26-90 | .289 | 10-11 | .909 | 2 | 9 | 11 | 0.8 | 26 | 0 | 18 | 7 | 0 | 6 | 94 | 7.2 | | |
| 14 | DICKINSON, Ben | 13-0 | 140 | 10.8 | 12-32 | .375 | 0-3 | .000 | 8-13 | .615 | 14 | 17 | 31 | 2.4 | 28 | 0 | 3 | 12 | 0 | 2 | 32 | 2.5 | | |
| 35 | MITCHELL, Jamal | 3-0 | 32 | 10.7 | 2-5 | .400 | 1-1 | 1.000 | 2-2 | 1.000 | 1 | 0 | 1 | 0.3 | 5 | 0 | 2 | 0 | 0 | 0 | 7 | 2.3 | | |
| 32 | KUIPER, Jordy | 13-0 | 167 | 12.8 | 10-19 | .526 | 0-0 | .000 | 10-15 | .667 | 17 | 17 | 34 | 2.6 | 30 | 0 | 7 | 6 | 4 | 3 | 30 | 2.3 | | |
| 01 | SMITH, Marvin | 1-0 | 9 | 9.0 | 1-6 | .167 | 0-2 | .000 | 0-0 | .000 | 2 | 0 | 2 | 2.0 | 1 | 0 | 0 | 0 | 0 | 0 | 2 | 2.0 | | |
| 02 | LAMOT, Asad | 12-0 | 131 | 10.9 | 8-25 | .320 | 5-15 | .333 | 3-4 | .750 | 3 | 7 | 10 | 0.8 | 21 | 1 | 7 | 7 | 0 | 4 | 24 | 2.0 | | |
| 15 | COLLINS, Garrett | 2-0 | 3 | 1.5 | 0-0 | .000 | 0-0 | .000 | 0-0 | .000 | 0 | 0 | 0 | 0.0 | 0 | 0 | 2 | 0 | 0 | 1 | 0 | 0.0 | | |
| Team | | | | | | | | | | | 19 | 16 | 35 | | | | | | | | | | | |
| Total..... | | 13 | 2625 | | 316-740 | .427 | 90-266 | .338 | 168-255 | .659 | 146 | 275 | 421 | 32.4 | 286 | 12 | 150 | 176 | 29 | 93 | 890 | 68.5 | | |
| Opponents..... | | 13 | 2625 | | 319-684 | .466 | 97-247 | .393 | 232-308 | .753 | 135 | 320 | 455 | 35.0 | 232 | - | 169 | 189 | 35 | 76 | 967 | 74.4 | | |

| TEAM STATISTICS | UNCG | OPP | Date | Opponent | Score | Att. |
|------------------------|---------|---------|------------------------------|-------------------------|-----------|-------|
| SCORING | 890 | 967 | 11/14/14 | CHOWAN | w 76-62 | 1835 |
| Points per game | 68.5 | 74.4 | 11/18/14 | UNCW | L 72-84 | 2539 |
| Scoring margin | -5.9 | - | ! 11/21/14 | vs Longwood | Lot 79-81 | 0 |
| FIELD GOALS-ATT | 316-740 | 319-684 | ! 11/22/14 | at Eastern Michigan | L 62-70 | 624 |
| Field goal pct | .427 | .466 | ! 11/23/14 | vs Youngstown State | L 67-76 | 0 |
| 3 POINT FG-ATT | 90-266 | 97-247 | 11/28/14 | at Indiana | L 79-87 | 12285 |
| 3-point FG pct | .338 | .393 | 12/01/14 | HIGH POINT | L 68-76 | 3032 |
| 3-pt FG made per game | 6.9 | 7.5 | 12/06/14 | at Presbyterian College | w 55-53 | 305 |
| FREE THROWS-ATT | 168-255 | 232-308 | 12/10/14 | GREENSBORO COLLEGE | w 82-78 | 3652 |
| Free throw pct | .659 | .753 | * 12/13/14 | at ETSU | w 80-79 | 2375 |
| F-Throws made per game | 12.9 | 17.8 | 12/16/14 | NORTH CAROLINA | L 56-79 | 11108 |
| REBOUNDS | 421 | 455 | 12/20/14 | ELON | L 64-71 | 1939 |
| Rebounds per game | 32.4 | 35.0 | 12/28/14 | at East Carolina | L 50-71 | 4418 |
| Rebounding margin | -2.6 | - | | | | |
| ASSISTS | 150 | 169 | ! = EMU Showcase game | | | |
| Assists per game | 11.5 | 13.0 | * = Southern Conference game | | | |
| TURNOVERS | 176 | 189 | | | | |
| Turnovers per game | 13.5 | 14.5 | | | | |
| Turnover margin | +1.0 | - | | | | |
| Assist/turnover ratio | 0.9 | 0.9 | | | | |
| STEALS | 93 | 76 | | | | |
| Steals per game | 7.2 | 5.8 | | | | |
| BLOCKS | 29 | 35 | | | | |
| Blocks per game | 2.2 | 2.7 | | | | |
| ATTENDANCE | 24105 | 20007 | | | | |
| Home games-Avg/Game | 6-4018 | 5-4001 | | | | |
| Neutral site-Avg/Game | - | 2-0 | | | | |

| Score by Periods | 1st | 2nd | OT | Totals |
|------------------|-----|-----|----|--------|
| UNCG | 412 | 468 | 10 | 890 |
| Opponents | 471 | 484 | 12 | 967 |



2014-15 UNCG Men's BASKETBALL



2014-15 UNCG Men's Basketball UNCG Combined Team Statistics (as of Dec 13, 2014) Conference games

| RECORD: | OVERALL | HOME | AWAY | NEUTRAL |
|----------------|---------|------|------|---------|
| ALL GAMES | 1-0 | 0-0 | 1-0 | 0-0 |
| CONFERENCE | 1-0 | 0-0 | 1-0 | 0-0 |
| NON-CONFERENCE | 0-0 | 0-0 | 0-0 | 0-0 |

| # | Player | gp-gs | min | avg | Total | | | 3-Point | | F-Throw | | Rebounds | | | | pf | dq | a | to | blk | stl | pts | avg |
|----------------|------------------|-------|-----|------|--------|-------|---------|---------|-------|---------|-----|----------|-----|------|----|----|----|---|----|-----|-----|------|-----|
| | | | | | fg-fga | fg% | 3fg-fga | 3fg% | ft-fa | ft% | off | def | tot | avg | | | | | | | | | |
| 00 | SADDLER, Tevon | 1-1 | 34 | 34.0 | 9-12 | .750 | 0-1 | .000 | 6-9 | .667 | 1 | 4 | 5 | 5.0 | 3 | 0 | 6 | 3 | 1 | 1 | 24 | 24.0 | |
| 33 | WHITE, RJ | 1-1 | 31 | 31.0 | 5-11 | .455 | 0-1 | .000 | 2-3 | .667 | 2 | 8 | 10 | 10.0 | 4 | 0 | 0 | 1 | 1 | 0 | 12 | 12.0 | |
| 31 | PAULOS, Nicholas | 1-1 | 35 | 35.0 | 4-8 | .500 | 4-7 | .571 | 0-0 | .000 | 0 | 5 | 5 | 5.0 | 0 | 0 | 3 | 2 | 0 | 1 | 12 | 12.0 | |
| 13 | LOCKE, Kayel | 1-1 | 30 | 30.0 | 3-7 | .429 | 0-1 | .000 | 6-8 | .750 | 1 | 6 | 7 | 7.0 | 3 | 0 | 0 | 1 | 0 | 0 | 12 | 12.0 | |
| 30 | BYRD, Clay | 1-1 | 34 | 34.0 | 4-8 | .500 | 4-8 | .500 | 0-0 | .000 | 0 | 1 | 1 | 1.0 | 3 | 0 | 2 | 0 | 0 | 0 | 12 | 12.0 | |
| 03 | BALDWIN, Diante | 1-0 | 25 | 25.0 | 0-5 | .000 | 0-1 | .000 | 5-6 | .833 | 0 | 2 | 2 | 2.0 | 2 | 0 | 3 | 1 | 0 | 1 | 5 | 5.0 | |
| 02 | LAMOT, Asad | 1-0 | 3 | 3.0 | 1-1 | 1.000 | 1-1 | 1.000 | 0-0 | .000 | 0 | 0 | 0 | 0.0 | 1 | 0 | 0 | 0 | 0 | 0 | 3 | 3.0 | |
| 32 | KUIPER, Jordy | 1-0 | 3 | 3.0 | 0-0 | .000 | 0-0 | .000 | 0-0 | .000 | 0 | 0 | 0 | 0.0 | 0 | 0 | 0 | 0 | 1 | 0 | 0 | 0.0 | |
| 14 | DICKINSON, Ben | 1-0 | 5 | 5.0 | 0-0 | .000 | 0-0 | .000 | 0-0 | .000 | 0 | 1 | 1 | 1.0 | 4 | 0 | 0 | 1 | 0 | 0 | 0 | 0.0 | |
| Team | | | | | | | | | | | 1 | 1 | 2 | | | | | | | | | | |
| Total..... | | 1 | 200 | | 26-52 | .500 | 9-20 | .450 | 19-26 | .731 | 5 | 28 | 33 | 33.0 | 20 | 0 | 14 | 9 | 3 | 3 | 80 | 80.0 | |
| Opponents..... | | 1 | 200 | | 23-62 | .371 | 11-32 | .344 | 22-25 | .880 | 11 | 25 | 36 | 36.0 | 18 | - | 12 | 9 | 4 | 5 | 79 | 79.0 | |

| TEAM STATISTICS | UNCG | OPP | Date | Opponent | Score | Att. |
|------------------------|-------|--------|------------|----------|---------|------|
| SCORING | 80 | 79 | * 12/13/14 | at ETSU | w 80-79 | 2375 |
| Points per game | 80.0 | 79.0 | | | | |
| Scoring margin | +1.0 | - | | | | |
| FIELD GOALS-ATT | 26-52 | 23-62 | | | | |
| Field goal pct | .500 | .371 | | | | |
| 3 POINT FG-ATT | 9-20 | 11-32 | | | | |
| 3-point FG pct | .450 | .344 | | | | |
| 3-pt FG made per game | 9.0 | 11.0 | | | | |
| FREE THROWS-ATT | 19-26 | 22-25 | | | | |
| Free throw pct | .731 | .880 | | | | |
| F-Throws made per game | 19.0 | 22.0 | | | | |
| REBOUNDS | 33 | 36 | | | | |
| Rebounds per game | 33.0 | 36.0 | | | | |
| Rebounding margin | -3.0 | - | | | | |
| ASSISTS | 14 | 12 | | | | |
| Assists per game | 14.0 | 12.0 | | | | |
| TURNOVERS | 9 | 9 | | | | |
| Turnovers per game | 9.0 | 9.0 | | | | |
| Turnover margin | +0.0 | - | | | | |
| Assist/turnover ratio | 1.6 | 1.3 | | | | |
| STEALS | 3 | 5 | | | | |
| Steals per game | 3.0 | 5.0 | | | | |
| BLOCKS | 3 | 4 | | | | |
| Blocks per game | 3.0 | 4.0 | | | | |
| ATTENDANCE | 0 | 2375 | | | | |
| Home games-Avg/Game | 0-0 | 1-2375 | | | | |
| Neutral site-Avg/Game | - | 0-0 | | | | |

| Score by Periods | 1st | 2nd | Totals |
|------------------|-----|-----|--------|
| UNCG | 47 | 33 | 80 |
| Opponents | 43 | 36 | 79 |

! = EMU Showcase game
* = Southern Conference game



2014-15 UNCG Men's BASKETBALL



TEAM GAME-BY-GAME STATISTICS

2014-15 UNCG Men's Basketball UNCG Team Game-by-Game (as of Dec 30, 2014) All games

TEAM STATISTICS

| Opponent | Date | Score | | Total | | 3-Pointers | | Free throws | | Rebounds | | | | pf | a | t/o | blk | stl | pts | avg |
|-------------------------|----------|-------|-----|---------|------|------------|------|-------------|-------|----------|-----|-----|------|-----|-----|-----|-----|-----|-----|------|
| | | | | fg-fga | pct | 3fg-fga | pct | ft-fa | pct | off | def | tot | avg | | | | | | | |
| CHOWAN | 11/14/14 | 76-62 | W | 21-50 | .420 | 6-16 | .375 | 28-36 | .778 | 10 | 20 | 30 | 30.0 | 31 | 12 | 9 | 2 | 10 | 76 | 76.0 |
| UNCW | 11/18/14 | 72-84 | L | 24-55 | .436 | 4-22 | .182 | 20-33 | .606 | 13 | 19 | 32 | 31.0 | 16 | 9 | 15 | 3 | 10 | 72 | 74.0 |
| vs Longwood | 11/21/14 | 79-81 | Lot | 29-66 | .439 | 11-28 | .393 | 10-17 | .588 | 14 | 29 | 43 | 35.0 | 26 | 12 | 24 | 1 | 10 | 79 | 75.7 |
| at Eastern Michigan | 11/22/14 | 62-70 | L | 21-53 | .396 | 8-20 | .400 | 12-20 | .600 | 14 | 17 | 31 | 34.0 | 22 | 13 | 13 | 1 | 5 | 62 | 72.2 |
| vs Youngstown State | 11/23/14 | 67-76 | L | 25-59 | .424 | 10-24 | .417 | 7-10 | .700 | 9 | 21 | 30 | 33.2 | 23 | 15 | 13 | 1 | 6 | 67 | 71.2 |
| at Indiana | 11/28/14 | 79-87 | L | 31-63 | .492 | 14-23 | .609 | 3-7 | .429 | 8 | 18 | 26 | 32.0 | 23 | 17 | 12 | 0 | 9 | 79 | 72.5 |
| HIGH POINT | 12/01/14 | 68-76 | L | 27-52 | .519 | 5-19 | .263 | 9-15 | .600 | 7 | 18 | 25 | 31.0 | 27 | 12 | 16 | 3 | 6 | 68 | 71.9 |
| at Presbyterian College | 12/06/14 | 55-53 | W | 24-55 | .436 | 4-14 | .286 | 3-3 | 1.000 | 11 | 24 | 35 | 31.5 | 14 | 11 | 6 | 2 | 2 | 55 | 69.8 |
| GREENSBORO COLLEGE | 12/10/14 | 82-78 | W | 28-62 | .452 | 7-23 | .304 | 19-22 | .864 | 16 | 24 | 40 | 32.4 | 14 | 12 | 15 | 4 | 10 | 82 | 71.1 |
| at ETSU | 12/13/14 | 80-79 | W | 26-52 | .500 | 9-20 | .450 | 19-26 | .731 | 5 | 28 | 33 | 32.5 | 20 | 14 | 9 | 3 | 3 | 80 | 72.0 |
| NORTH CAROLINA | 12/16/14 | 56-79 | L | 20-56 | .357 | 5-24 | .208 | 11-26 | .423 | 10 | 16 | 26 | 31.9 | 20 | 7 | 13 | 4 | 7 | 56 | 70.5 |
| ELON | 12/20/14 | 64-71 | L | 19-57 | .333 | 3-9 | .333 | 23-30 | .767 | 15 | 22 | 37 | 32.3 | 24 | 8 | 17 | 5 | 7 | 64 | 70.0 |
| at East Carolina | 12/28/14 | 50-71 | L | 21-60 | .350 | 4-24 | .167 | 4-10 | .400 | 14 | 19 | 33 | 32.4 | 26 | 8 | 14 | 0 | 8 | 50 | 68.5 |
| UNCG | | 890 | | 316-740 | .427 | 90-266 | .338 | 168-255 | .659 | 146 | 275 | 421 | 32.4 | 286 | 150 | 176 | 29 | 93 | 890 | 68.5 |
| Opponents | | 967 | | 319-684 | .466 | 97-247 | .393 | 232-308 | .753 | 135 | 320 | 455 | 35.0 | 232 | 169 | 189 | 35 | 76 | 967 | 74.4 |

Games played: 13
Points/game: 68.5
FG Pct: 42.7
3FG Pct: 33.8
FT Pct: 65.9

Rebounds/game: 32.4
Assists/game: 11.5
Turnovers/game: 13.5
Assist/turnover ratio: 0.9
Steals/game: 7.2
Blocks/game: 2.2



2014-15 UNCG Men's BASKETBALL



OPPONENT GAME-BY-GAME STATISTICS

2014-15 UNCG Men's Basketball UNCG Opponent Game-by-Game (as of Dec 30, 2014) All games

OPPONENT STATISTICS

| Opponent | Date | Score | | Total | | 3-Pointers | | Free throws | | Rebounds | | | | pf | a | t/o | blk | stl | pts | avg |
|-------------------------|----------|-------|-----|---------|------|------------|------|-------------|------|----------|-----|-----|------|-----|-----|-----|-----|-----|-----|------|
| | | | | fg-fga | pct | 3fg-fga | pct | ft-fa | pct | off | def | tot | avg | | | | | | | |
| CHOWAN | 11/14/14 | 76-62 | W | 19-43 | .442 | 6-16 | .375 | 18-32 | .563 | 12 | 25 | 37 | 37.0 | 29 | 9 | 19 | 4 | 3 | 62 | 62.0 |
| UNCW | 11/18/14 | 72-84 | L | 32-49 | .653 | 10-16 | .625 | 10-15 | .667 | 2 | 24 | 26 | 31.5 | 23 | 18 | 19 | 3 | 7 | 84 | 73.0 |
| vs Longwood | 11/21/14 | 79-81 | Lot | 26-62 | .419 | 8-26 | .308 | 21-28 | .750 | 12 | 27 | 39 | 34.0 | 16 | 13 | 17 | 3 | 9 | 81 | 75.7 |
| at Eastern Michigan | 11/22/14 | 62-70 | L | 23-52 | .442 | 7-20 | .350 | 17-19 | .895 | 13 | 24 | 37 | 34.8 | 19 | 10 | 12 | 4 | 6 | 70 | 74.2 |
| vs Youngstown State | 11/23/14 | 67-76 | L | 23-50 | .460 | 9-20 | .450 | 21-27 | .778 | 10 | 27 | 37 | 35.2 | 13 | 16 | 13 | 2 | 3 | 76 | 74.6 |
| at Indiana | 11/28/14 | 79-87 | L | 28-56 | .500 | 9-24 | .375 | 22-29 | .759 | 13 | 26 | 39 | 35.8 | 10 | 13 | 13 | 3 | 8 | 87 | 76.7 |
| HIGH POINT | 12/01/14 | 68-76 | L | 21-49 | .429 | 6-16 | .375 | 28-33 | .848 | 12 | 21 | 33 | 35.4 | 18 | 9 | 14 | 0 | 7 | 76 | 76.6 |
| at Presbyterian College | 12/06/14 | 55-53 | W | 20-51 | .392 | 5-12 | .417 | 8-11 | .727 | 10 | 20 | 30 | 34.8 | 8 | 12 | 8 | 4 | 1 | 53 | 73.6 |
| GREENSBORO COLLEGE | 12/10/14 | 82-78 | W | 27-61 | .443 | 12-24 | .500 | 12-13 | .923 | 11 | 18 | 29 | 34.1 | 17 | 11 | 15 | 4 | 7 | 78 | 74.1 |
| at ETSU | 12/13/14 | 80-79 | W | 23-62 | .371 | 11-32 | .344 | 22-25 | .880 | 11 | 25 | 36 | 34.3 | 18 | 12 | 9 | 4 | 5 | 79 | 74.6 |
| NORTH CAROLINA | 12/16/14 | 56-79 | L | 30-61 | .492 | 3-14 | .214 | 16-23 | .696 | 20 | 31 | 51 | 35.8 | 22 | 16 | 17 | 2 | 8 | 79 | 75.0 |
| ELON | 12/20/14 | 64-71 | L | 24-48 | .500 | 5-13 | .385 | 18-27 | .667 | 7 | 24 | 31 | 35.4 | 24 | 10 | 20 | 0 | 8 | 71 | 74.7 |
| at East Carolina | 12/28/14 | 50-71 | L | 23-40 | .575 | 6-14 | .429 | 19-26 | .731 | 2 | 28 | 30 | 35.0 | 15 | 20 | 13 | 2 | 4 | 71 | 74.4 |
| Opponents | | 967 | | 319-684 | .466 | 97-247 | .393 | 232-308 | .753 | 135 | 320 | 455 | 35.0 | 232 | 169 | 189 | 35 | 76 | 967 | 74.4 |
| UNCG | | 890 | | 316-740 | .427 | 90-266 | .338 | 168-255 | .659 | 146 | 275 | 421 | 32.4 | 286 | 150 | 176 | 29 | 93 | 890 | 68.5 |

Games played: 13
Points/game: 74.4
FG Pct: 46.6
3FG Pct: 39.3
FT Pct: 75.3

Rebounds/game: 35.0
Assists/game: 13.0
Turnovers/game: 14.5
Assist/turnover ratio: 0.9
Steals/game: 5.8
Blocks/game: 2.7



2014-15 UNCG MEN'S BASKETBALL



UNCG 76, CHOWAN 62

Official Basketball Box Score -- Game Totals -- Final Statistics

Chowan vs UNCG

11/14/14 7 p.m. at Greensboro, N.C. - Fleming Gymnasium

Chowan 62 - 0-0

| # | Player | Total | | | 3-Ptr | | | Rebounds | | | PF | TP | A | TO | Blk | Stl | Min |
|----|------------------------|--------|--------|--------|-------|-----|-----|----------|-----|-----|----|----|---|-----|-----|-----|-----|
| | | FG-FGA | FG-FGA | FT-FTA | Off | Def | Tot | Off | Def | Tot | | | | | | | |
| 01 | MELLETTTE, Josh | 4-8 | 0-1 | 4-7 | 1 | 4 | 5 | 0 | 12 | 0 | 3 | 4 | 2 | 32 | | | |
| 12 | ADAMS, Michael | 6-8 | 1-2 | 3-5 | 1 | 0 | 1 | 3 | 16 | 2 | 4 | 0 | 0 | 33 | | | |
| 21 | WOMACK, Dauson | 1-5 | 0-0 | 4-8 | 1 | 3 | 4 | 5 | 6 | 2 | 2 | 0 | 1 | 19 | | | |
| 14 | BROWN, Tiron | 0-1 | 0-0 | 0-0 | 1 | 2 | 3 | 1 | 0 | 0 | 1 | 0 | 0 | 9 | | | |
| 23 | BURRIGHT, Mark Anthony | 0-1 | 0-1 | 0-0 | 0 | 0 | 0 | 0 | 0 | 0 | 0 | 0 | 0 | 3 | | | |
| 02 | SMITH, Kortez | 0-0 | 0-0 | 0-0 | 0 | 0 | 0 | 1 | 0 | 0 | 1 | 0 | 0 | 2 | | | |
| 03 | EDMONDS, Hank | 0-4 | 0-4 | 5-8 | 2 | 2 | 4 | 4 | 5 | 0 | 1 | 0 | 0 | 21 | | | |
| 04 | BETHEL, Kyree | 3-5 | 3-5 | 0-0 | 0 | 2 | 2 | 4 | 9 | 0 | 0 | 0 | 0 | 22 | | | |
| 05 | LOPEZ, Andrew | 2-3 | 1-1 | 2-2 | 1 | 2 | 3 | 0 | 7 | 4 | 3 | 0 | 0 | 24 | | | |
| 20 | BUCKHANON, Trevis | 0-0 | 0-0 | 0-2 | 1 | 1 | 2 | 5 | 0 | 0 | 0 | 0 | 0 | 8 | | | |
| 24 | POWERS, Warren | 2-4 | 0-0 | 0-0 | 2 | 4 | 6 | 5 | 4 | 1 | 3 | 0 | 0 | 17 | | | |
| 25 | ARROYO, Carlos | 1-3 | 1-2 | 0-0 | 0 | 2 | 2 | 1 | 3 | 0 | 0 | 0 | 0 | 8 | | | |
| 44 | THARP, Alex | 0-1 | 0-0 | 0-0 | 1 | 0 | 1 | 0 | 0 | 0 | 0 | 0 | 0 | 2 | | | |
| | Team | | | | 1 | 3 | 4 | | | 1 | | | | | | | |
| | Totals | 19-43 | 6-16 | 18-32 | 12 | 25 | 37 | 29 | 62 | 9 | 19 | 4 | 3 | 200 | | | |

| | | | | | | | | | |
|-----------------|------|-------|-----------|-------|-------|-------|-------|-------|----------|
| FG % 1st Half: | 9-23 | 39.1% | 2nd half: | 10-20 | 50.0% | Game: | 19-43 | 44.2% | Deadball |
| 3FG % 1st Half: | 4-10 | 40.0% | 2nd half: | 2-6 | 33.3% | Game: | 6-16 | 37.5% | Rebounds |
| FT % 1st Half: | 3-6 | 50.0% | 2nd half: | 15-26 | 57.7% | Game: | 18-32 | 56.3% | 6 |

UNCG 76 - 1-0

| # | Player | Total | | | 3-Ptr | | | Rebounds | | | PF | TP | A | TO | Blk | Stl | Min |
|----|------------------|--------|--------|--------|-------|-----|-----|----------|-----|-----|----|----|----|-----|-----|-----|-----|
| | | FG-FGA | FG-FGA | FT-FTA | Off | Def | Tot | Off | Def | Tot | | | | | | | |
| 13 | LOCKE, Kayel | 2-6 | 0-0 | 2-4 | 1 | 2 | 3 | 5 | 6 | 2 | 1 | 0 | 0 | 25 | | | |
| 33 | WHITE, RJ | 7-10 | 1-3 | 5-8 | 2 | 7 | 9 | 4 | 20 | 1 | 1 | 1 | 3 | 35 | | | |
| 00 | SADDLER, Tevon | 5-13 | 1-2 | 10-12 | 2 | 0 | 2 | 4 | 21 | 3 | 4 | 0 | 5 | 24 | | | |
| 30 | BYRD, Clay | 2-6 | 1-4 | 2-2 | 0 | 1 | 1 | 4 | 7 | 3 | 0 | 0 | 0 | 28 | | | |
| 31 | PAULOS, Nicholas | 3-6 | 2-5 | 0-0 | 0 | 5 | 5 | 3 | 8 | 1 | 1 | 0 | 1 | 35 | | | |
| 02 | LAMOT, Asad | 0-2 | 0-1 | 2-2 | 0 | 0 | 0 | 2 | 2 | 0 | 0 | 0 | 1 | 13 | | | |
| 14 | DICKINSON, Ben | 1-3 | 0-0 | 2-2 | 1 | 1 | 2 | 4 | 4 | 0 | 2 | 0 | 0 | 8 | | | |
| 32 | KUIPER, Jordy | 0-3 | 0-0 | 3-4 | 3 | 3 | 6 | 2 | 3 | 0 | 0 | 1 | 0 | 21 | | | |
| 35 | MITCHELL, Jamal | 1-1 | 1-1 | 2-2 | 1 | 0 | 1 | 3 | 5 | 2 | 0 | 0 | 0 | 12 | | | |
| | Team | | | | 0 | 1 | 1 | | | | | | | | | | |
| | Totals | 21-50 | 6-16 | 28-36 | 10 | 20 | 30 | 31 | 76 | 12 | 9 | 2 | 10 | 200 | | | |

| | | | | | | | | | |
|-----------------|-------|-------|-----------|-------|-------|-------|-------|-------|----------|
| FG % 1st Half: | 12-28 | 42.9% | 2nd half: | 9-22 | 40.9% | Game: | 21-50 | 42.0% | Deadball |
| 3FG % 1st Half: | 5-9 | 55.6% | 2nd half: | 1-7 | 14.3% | Game: | 6-16 | 37.5% | Rebounds |
| FT % 1st Half: | 15-19 | 78.9% | 2nd half: | 13-17 | 76.5% | Game: | 28-36 | 77.8% | 2 |

Officials: A.J. Desai, James Redd, Nelson Santiago
 Technical fouls: Chowan-WOMACK, Dauson. UNCG-None.
 Attendance: 1835

| Score by periods | 1st | 2nd | Total |
|------------------|-----|-----|-------|
| Chowan | 25 | 37 | 62 |
| UNCG | 44 | 32 | 76 |

| Points | In | Off | 2nd | Fast | Bench |
|--------|-------|-----|--------|-------|-------|
| CLUB | Paint | T/O | Chance | Break | |
| UNCG | 18 | 11 | 10 | 7 | 14 |

LONGWOOD 81, UNCG 79 (OT)

Official Basketball Box Score -- Game Totals -- Final Statistics

UNCG vs Longwood

11-21-14 4:34 p.m. at Ypsilanti, Mich. (Convocation Center)

UNCG 79 - 1-2

| # | Player | Total | | | 3-Ptr | | | Rebounds | | | PF | TP | A | TO | Blk | Stl | Min |
|----|------------------|--------|--------|--------|-------|-----|-----|----------|-----|-----|----|----|----|-----|-----|-----|-----|
| | | FG-FGA | FG-FGA | FT-FTA | Off | Def | Tot | Off | Def | Tot | | | | | | | |
| 13 | LOCKE, Kayel | 3-6 | 0-1 | 2-3 | 2 | 6 | 8 | 3 | 8 | 1 | 3 | 0 | 1 | 33 | | | |
| 33 | WHITE, RJ | 8-14 | 1-2 | 2-4 | 4 | 6 | 10 | 4 | 19 | 2 | 3 | 1 | 2 | 34 | | | |
| 00 | SADDLER, Tevon | 7-11 | 1-3 | 4-6 | 2 | 3 | 5 | 5 | 19 | 4 | 6 | 0 | 2 | 27 | | | |
| 30 | BYRD, Clay | 6-12 | 6-11 | 0-0 | 0 | 3 | 3 | 4 | 18 | 2 | 1 | 0 | 0 | 42 | | | |
| 31 | PAULOS, Nicholas | 4-12 | 3-9 | 1-2 | 2 | 5 | 7 | 0 | 12 | 1 | 5 | 0 | 3 | 44 | | | |
| 02 | LAMOT, Asad | 0-3 | 0-1 | 0-0 | 0 | 1 | 1 | 3 | 0 | 1 | 3 | 0 | 2 | 18 | | | |
| 14 | DICKINSON, Ben | 1-7 | 0-1 | 1-2 | 4 | 3 | 7 | 3 | 3 | 1 | 3 | 0 | 0 | 19 | | | |
| 32 | KUIPER, Jordy | 0-0 | 0-0 | 0-0 | 0 | 0 | 0 | 4 | 0 | 0 | 0 | 0 | 0 | 4 | | | |
| 35 | MITCHELL, Jamal | 0-1 | 0-0 | 0-0 | 0 | 0 | 0 | 0 | 0 | 0 | 0 | 0 | 0 | 4 | | | |
| | Team | | | | 0 | 2 | 2 | | | | | | | | | | |
| | Totals | 29-66 | 11-28 | 10-17 | 14 | 29 | 43 | 26 | 79 | 12 | 24 | 1 | 10 | 225 | | | |

| | | | | | | | | | | | | |
|-----------------|-------|-------|-----------|-------|-------|-----|-----|-------|-------|-------|-------|----------|
| FG % 1st Half: | 11-24 | 45.8% | 2nd half: | 15-35 | 42.9% | OT: | 3-7 | 42.9% | Game: | 29-66 | 43.9% | Deadball |
| 3FG % 1st Half: | 5-12 | 41.7% | 2nd half: | 5-12 | 41.7% | OT: | 1-4 | 25.0% | Game: | 11-28 | 39.3% | Rebounds |
| FT % 1st Half: | 1-2 | 50.0% | 2nd half: | 6-9 | 66.7% | OT: | 3-6 | 50.0% | Game: | 10-17 | 58.8% | 3 |

Longwood 81 - 2-1

| # | Player | Total | | | 3-Ptr | | | Rebounds | | | PF | TP | A | TO | Blk | Stl | Min |
|----|--------------------|--------|--------|--------|-------|-----|-----|----------|-----|-----|----|----|---|-----|-----|-----|-----|
| | | FG-FGA | FG-FGA | FT-FTA | Off | Def | Tot | Off | Def | Tot | | | | | | | |
| 21 | JOHNSON, Shaquille | 6-15 | 1-5 | 0-0 | 2 | 1 | 3 | 4 | 13 | 6 | 4 | 0 | 1 | 38 | | | |
| 24 | GETER, Damarion | 0-0 | 0-0 | 1-3 | 2 | 7 | 9 | 3 | 1 | 6 | 2 | 1 | 2 | 39 | | | |
| 10 | NWOGBO, Lotanna | 4-11 | 0-0 | 10-11 | 3 | 9 | 12 | 5 | 18 | 0 | 2 | 1 | 0 | 33 | | | |
| 01 | FISHER, Leron | 3-6 | 0-2 | 6-8 | 0 | 3 | 3 | 2 | 12 | 0 | 2 | 1 | 3 | 36 | | | |
| 03 | ALLEN, Darrion | 7-14 | 4-8 | 4-4 | 2 | 1 | 3 | 1 | 22 | 0 | 2 | 1 | 1 | 36 | | | |
| 11 | OBEN-RAPU, Kanayo | 0-3 | 0-1 | 0-0 | 0 | 4 | 4 | 1 | 0 | 0 | 5 | 0 | 1 | 14 | | | |
| 14 | DORSEY, Victor | 0-0 | 0-0 | 0-0 | 0 | 0 | 0 | 0 | 0 | 0 | 0 | 0 | 0 | 2 | | | |
| 20 | BADOWSKI, Ryan | 6-13 | 3-10 | 0-2 | 0 | 2 | 2 | 0 | 15 | 0 | 0 | 0 | 0 | 27 | | | |
| | Team | | | | 3 | 0 | 3 | | | | | | | | | | |
| | Totals | 26-62 | 8-26 | 21-28 | 12 | 27 | 39 | 16 | 81 | 13 | 17 | 3 | 9 | 225 | | | |

| | | | | | | | | | | | | |
|-----------------|-------|-------|-----------|-------|-------|-----|------|-------|-------|-------|-------|----------|
| FG % 1st Half: | 11-27 | 40.7% | 2nd half: | 12-25 | 48.0% | OT: | 3-10 | 30.0% | Game: | 26-62 | 41.9% | Deadball |
| 3FG % 1st Half: | 1-12 | 8.3% | 2nd half: | 5-9 | 55.6% | OT: | 2-5 | 40.0% | Game: | 8-26 | 30.8% | Rebounds |
| FT % 1st Half: | 5-8 | 62.5% | 2nd half: | 12-14 | 85.7% | OT: | 4-6 | 66.7% | Game: | 21-28 | 75.0% | 2 |

Officials: James Darryl Smith, Jim Bruno, Scott Gooden
 Technical fouls: UNCG-None. Longwood-None.
 Attendance:
 EMU Showcase Game #1
 LWU #10 fouled out with 00:12 remaining in the second half
 UNCG #00 fouled out with 3:25 remaining in OT

| Score by periods | 1st | 2nd | OT | Total |
|------------------|-----|-----|----|-------|
| UNCG | 28 | 41 | 10 | 79 |
| Longwood | 28 | 41 | 12 | 81 |

| Points | In | Off | 2nd | Fast | Bench |
|--------|-------|-----|--------|-------|-------|
| CLUB | Paint | T/O | Chance | Break | |
| UNCG | 28 | 20 | 9 | 8 | 3 |
| LWU | 32 | 27 | 15 | 10 | 15 |

Last FG - UNCG OT-01:32; LWU OT-00:28.
 Largest lead - UNCG by 10 1st:05:18; LWU by 6 2nd-14:49.
 UNCG led for 19:42; LWU led for 15:40; Game was tied for 09:32.

Score tied - 9 times.
 Lead changed - 15 times.

UNCW 84, UNCG 72

Official Basketball Box Score -- Game Totals -- Final Statistics

UNCW vs UNCG

11/18/14 7:10 p.m. at Greensboro, N.C. (Greensboro Coliseum)

UNCW 84 - 1-1

| # | Player | Total | | | 3-Ptr | | | Rebounds | | | PF | TP | A | TO | Blk | Stl | Min |
|----|-------------------|--------|--------|--------|-------|-----|-----|----------|-----|-----|----|----|---|-----|-----|-----|-----|
| | | FG-FGA | FG-FGA | FT-FTA | Off | Def | Tot | Off | Def | Tot | | | | | | | |
| 40 | Williams, Cedrick | 3-5 | 1-1 | 0-0 | 1 | 5 | 6 | 5 | 7 | 1 | 1 | 1 | 1 | 21 | | | |
| 23 | Gettys, C.J. | 3-4 | 0-0 | 1-2 | 0 | 4 | 4 | 4 | 7 | 2 | 1 | 0 | 0 | 26 | | | |
| 00 | Ponder, Craig | 9-11 | 4-4 | 4-7 | 0 | 4 | 4 | 4 | 26 | 6 | 7 | 1 | 3 | 33 | | | |
| 10 | Jackson, Freddie | 6-8 | 1-2 | 0-0 | 0 | 2 | 2 | 1 | 13 | 2 | 1 | 0 | 1 | 37 | | | |
| 24 | Spruill, Addison | 2-6 | 0-2 | 1-1 | 0 | 4 | 4 | 1 | 5 | 4 | 3 | 0 | 1 | 29 | | | |
| 04 | Talley, Jordan | 0-1 | 0-0 | 4-4 | 0 | 2 | 2 | 3 | 4 | 2 | 0 | 0 | 0 | 8 | | | |
| 13 | Ogbo, Chuck | 0-0 | 0-0 | 0-0 | 0 | 0 | 0 | 0 | 0 | 0 | 2 | 0 | 0 | 1 | | | |
| 14 | Pugh, Malik | 2-4 | 0-1 | 0-0 | 0 | 0 | 0 | 0 | 4 | 1 | 1 | 0 | 0 | 14 | | | |
| 20 | Sherwood, Dylan | 6-8 | 4-6 | 0-0 | 0 | 2 | 2 | 2 | 16 | 0 | 2 | 0 | 0 | 24 | | | |
| 30 | Hickson, Kevin | 1-2 | 0-0 | 0-1 | 1 | 0 | 1 | 3 | 2 | 0 | 0 | 1 | 1 | 7 | | | |
| | Team | | | | 0 | 1 | 1 | | | 1 | | | | | | | |
| | Totals | 32-49 | 10-16 | 10-15 | 2 | 24 | 26 | 23 | 84 | 18 | 19 | 3 | 7 | 200 | | | |

| | | | | | | | | | |
|-----------------|-------|-------|-----------|-------|-------|-------|-------|-------|----------|
| FG % 1st Half: | 16-27 | 59.3% | 2nd half: | 16-22 | 72.7% | Game: | 32-49 | 65.3% | Deadball |
| 3FG % 1st Half: | 4-8 | 50.0% | 2nd half: | 7-10 | 70.0% | Game: | 10-16 | 62.5% | Rebounds |
| FT % 1st Half: | 4-8 | 50.0% | 2nd half: | 6-7 | 85.7% | Game: | 10-15 | 66.7% | 1 |

UNCG 72 - 1-1

| # | Player | Total | | | 3-Ptr | | | Rebounds | | | PF | TP | A | TO | Blk | Stl | Min |
|----|------------------|--------|--------|--------|-------|-----|-----|----------|-----|-----|----|----|---|----|-----|-----|-----|
| | | FG-FGA | FG-FGA | FT-FTA | Off | Def | Tot | Off | Def | Tot | | | | | | | |
| 13 | LOCKE, Kayel | 5-9 | 0-1 | 12-16 | 5 | 3 | 8 | 4 | 22 | 0 | 2 | 0 | 0 | 35 | | | |
| 33 | WHITE, RJ | 7-14 | 1-4 | 1-5 | 2 | 3 | 5 | 2 | 16 | 1 | 3 | 1 | 3 | 25 | | | |
| 00 | SADDLER, Tevon | 6-11 | 0-2 | 4-8 | 1 | 4 | 5 | 3 | 16 | 6 | 7 | 1 | 3 | 35 | | | |
| 30 | BYRD, Clay | 1-5 | 1-5 | 0-0 | 0 | 0 | 0 | 2 | 3 | 0 | 0 | 0 | 2 | 24 | | | |
| 31 | PAULOS, Nicholas | 2-9 | 2-8 | 0-0 | 1 | 5 | 6 | 1 | 6 | 1 | 0 | 1 | 2 | 38 | | | |
| 02 | LAMOT, Asad | 0-1 | 0-1 | 0-0 | 0 | 1 | 1 | 0 | 0 | 0 | 0 | 0 | 0 | 6 | | | |
| 14 | DICKINSON, Ben | 2-3 | 0-1 | 3-4 | 3 | 3 | 6 | 2 | 7 | 1 | 1 | 0 | 0 | 14 | | | |
| 32 | KUIPER, Jordy | | | | | | | | | | | | | | | | |



2014-15 UNCG MEN'S BASKETBALL



YOUNGSTOWN STATE 76, UNCG 67

Official Basketball Box Score -- Game Totals -- Final Statistics
Youngstown State vs UNCG
11/23/14 Noon at Ypsilanti, Mich. (Convocation Center)

Youngstown State 76 • 3-3

| # | Player | Total | | 3-Ptr | | Rebounds | | PF | TP | A | TO | Blk | Stl | Min | |
|-----------------|------------------|--------|--------|-----------|-------|----------|-------|----|-------|-------|----------|-----|-----|-----|-----|
| | | FG-FGA | FG-FGA | FT-FTA | Off | Def | Off | | | | | | | | Def |
| 20 | HAIN, Bobby | f | 6-12 | 0-1 | 8-9 | 3 | 6 | 9 | 1 | 20 | 0 | 2 | 0 | 29 | |
| 01 | PLUMMER, Jalon | g | 0-2 | 0-2 | 2-3 | 0 | 3 | 3 | 1 | 2 | 2 | 0 | 0 | 24 | |
| 04 | AMIKER, Shawn | g | 4-9 | 0-1 | 1-4 | 3 | 7 | 10 | 3 | 9 | 3 | 2 | 1 | 30 | |
| 10 | KEENE, Marcus | g | 8-12 | 6-8 | 6-6 | 0 | 2 | 2 | 3 | 28 | 0 | 4 | 0 | 36 | |
| 11 | COLE, DJ | g | 2-6 | 1-3 | 2-3 | 0 | 4 | 4 | 1 | 7 | 9 | 2 | 0 | 38 | |
| 00 | STEWART, Shaun | g | 2-5 | 2-5 | 0-0 | 0 | 3 | 3 | 0 | 6 | 2 | 1 | 0 | 16 | |
| 02 | JOHNSON, Larry | g | 0-0 | 0-0 | 0-0 | 1 | 0 | 1 | 1 | 0 | 0 | 0 | 0 | 2 | |
| 05 | UMUDE, Sidney | g | 0-0 | 0-0 | 0-0 | 0 | 0 | 0 | 0 | 0 | 1 | 0 | 1 | 2 | |
| 23 | VAUGHN, Osandai | g | 0-1 | 0-0 | 0-0 | 1 | 0 | 1 | 1 | 0 | 0 | 1 | 0 | 7 | |
| 25 | LARSON, Fletcher | g | 1-3 | 0-0 | 2-2 | 1 | 1 | 2 | 2 | 4 | 0 | 0 | 0 | 16 | |
| Team | | | | | | 1 | 2 | 2 | | | | | | | |
| Totals | | | 23-50 | 9-20 | 21-27 | 10 | 27 | 37 | 13 | 76 | 16 | 13 | 2 | 3 | 200 |
| FG % 1st Half: | | 12-25 | 48.0% | 2nd half: | 11-25 | 44.0% | Game: | | 23-50 | 46.0% | Deadball | | | | |
| 3FG % 1st Half: | | 5-11 | 45.5% | 2nd half: | 4-9 | 44.4% | Game: | | 9-20 | 45.0% | Rebounds | | | | |
| FT % 1st Half: | | 3-6 | 50.0% | 2nd half: | 18-21 | 85.7% | Game: | | 21-27 | 77.8% | 2 | | | | |

UNCG 67 • 1-4

| # | Player | Total | | 3-Ptr | | Rebounds | | PF | TP | A | TO | Blk | Stl | Min | |
|-----------------|------------------|--------|--------|-----------|-------|----------|-------|----|-------|-------|----------|-----|-----|-----|-----|
| | | FG-FGA | FG-FGA | FT-FTA | Off | Def | Off | | | | | | | | Def |
| 13 | LOCKE, Kayel | f | 4-6 | 0-0 | 0-0 | 0 | 2 | 2 | 5 | 8 | 0 | 1 | 0 | 17 | |
| 33 | WHITE, RJ | f | 8-16 | 4-6 | 0-2 | 4 | 8 | 12 | 3 | 20 | 0 | 2 | 1 | 32 | |
| 00 | SADDLER, Tevon | g | 3-13 | 1-1 | 4-5 | 2 | 5 | 7 | 3 | 11 | 5 | 6 | 0 | 35 | |
| 30 | BYRD, Clay | g | 2-8 | 2-8 | 3-3 | 0 | 0 | 0 | 1 | 9 | 4 | 0 | 0 | 34 | |
| 31 | PAULOS, Nicholas | g | 4-10 | 2-7 | 0-0 | 2 | 2 | 2 | 2 | 10 | 3 | 0 | 0 | 37 | |
| 02 | LAMOT, Asad | g | 3-4 | 1-2 | 0-0 | 0 | 1 | 1 | 5 | 7 | 1 | 2 | 0 | 14 | |
| 14 | DICKINSON, Ben | g | 1-2 | 0-0 | 0-0 | 0 | 1 | 1 | 1 | 2 | 1 | 0 | 0 | 16 | |
| 32 | KUIPER, Jordy | g | 0-0 | 0-0 | 0-0 | 2 | 0 | 2 | 3 | 0 | 1 | 1 | 0 | 15 | |
| Team | | | | | | 1 | 2 | 3 | | | | | | | |
| Totals | | | 25-59 | 10-24 | 7-10 | 9 | 21 | 30 | 23 | 67 | 15 | 13 | 1 | 6 | 200 |
| FG % 1st Half: | | 14-30 | 46.7% | 2nd half: | 11-29 | 37.9% | Game: | | 25-59 | 42.4% | Deadball | | | | |
| 3FG % 1st Half: | | 6-13 | 46.2% | 2nd half: | 4-11 | 36.4% | Game: | | 10-24 | 41.7% | Rebounds | | | | |
| FT % 1st Half: | | 0-0 | 0.0% | 2nd half: | 7-10 | 70.0% | Game: | | 7-10 | 70.0% | 1 | | | | |

Officials: J. Todd Sweeney, Tyler Ford and Johnny Wilkins
Technical fouls: Youngstown State-None. UNCG-None.
Attendance:
EMU Showcase Game #5
UNCG #2 fouls out with 8:57 in the second half
UNCG #13 fouls out with 2:45 in the second half

| Score by periods | 1st | 2nd | Total |
|------------------|-----|-----|-------|
| Youngstown State | 32 | 44 | 76 |
| UNCG | 34 | 33 | 67 |

| Points | In | Off | 2nd | Fast | Bench |
|--------|----|-----|-----|------|-------|
| YSU | 16 | 5 | 8 | 2 | 10 |
| UNCG | 24 | 11 | 4 | 2 | 9 |

Last FG - YSU 2nd-03:15, UNCG 2nd-00:31.
Largest lead - YSU by 12-04-05, UNCG by 7-24-14-0.

Score tied - 4 times.
Lead changed - 10 times.

HIGH POINT 76, UNCG 68

Official Basketball Box Score -- Game Totals -- Final Statistics
High Point vs UNCG
12/01/14 7 p.m. at Greensboro, N.C. - Greensboro Coliseum

High Point 76 • 5-2

| # | Player | Total | | 3-Ptr | | Rebounds | | PF | TP | A | TO | Blk | Stl | Min | |
|-----------------|--------------------|--------|--------|-----------|-------|----------|-------|----|-------|-------|----------|-----|-----|-----|-----|
| | | FG-FGA | FG-FGA | FT-FTA | Off | Def | Off | | | | | | | | Def |
| 00 | BROWN, John | f | 7-13 | 0-0 | 10-12 | 3 | 2 | 5 | 4 | 24 | 2 | 2 | 0 | 29 | |
| 10 | THOMPSON, Tarique | f | 2-6 | 0-0 | 1-2 | 2 | 1 | 3 | 4 | 5 | 0 | 1 | 0 | 15 | |
| 01 | RICHARDSON, Brian | g | 3-3 | 0-0 | 2-3 | 1 | 3 | 4 | 8 | 0 | 4 | 0 | 0 | 24 | |
| 11 | MCINTYRE, Haijshen | g | 1-3 | 0-0 | 4-4 | 0 | 4 | 4 | 1 | 6 | 3 | 2 | 0 | 32 | |
| 23 | WALLACE, Devante | g | 3-12 | 2-6 | 7-8 | 2 | 5 | 7 | 1 | 15 | 3 | 3 | 0 | 36 | |
| 02 | WHITE, Austin | g | 0-1 | 0-1 | 0-0 | 0 | 0 | 0 | 0 | 1 | 1 | 0 | 0 | 14 | |
| 05 | BARBER, DeAndre | g | 1-1 | 1-1 | 0-0 | 0 | 0 | 0 | 1 | 3 | 0 | 0 | 0 | 9 | |
| 15 | CUGINI, Lorenzo | g | 4-8 | 3-7 | 4-4 | 1 | 3 | 4 | 2 | 15 | 0 | 1 | 0 | 32 | |
| 20 | JAMES, K.J. | g | 0-0 | 0-0 | 0-0 | 0 | 0 | 0 | 0 | 0 | 0 | 0 | 0 | 2 | |
| 24 | LINDAUER, Anthony | g | 0-2 | 0-1 | 0-0 | 0 | 2 | 2 | 1 | 0 | 0 | 0 | 0 | 7 | |
| Team | | | | | | 3 | 1 | 4 | | | | | | | |
| Totals | | | 21-49 | 6-16 | 28-33 | 12 | 21 | 33 | 18 | 76 | 9 | 14 | 0 | 7 | 200 |
| FG % 1st Half: | | 12-28 | 42.9% | 2nd half: | 9-21 | 42.9% | Game: | | 21-49 | 42.9% | Deadball | | | | |
| 3FG % 1st Half: | | 5-11 | 45.5% | 2nd half: | 1-5 | 20.0% | Game: | | 6-16 | 37.5% | Rebounds | | | | |
| FT % 1st Half: | | 6-9 | 66.7% | 2nd half: | 22-24 | 91.7% | Game: | | 28-33 | 84.8% | 3,1 | | | | |

UNCG 68 • 1-6

| # | Player | Total | | 3-Ptr | | Rebounds | | PF | TP | A | TO | Blk | Stl | Min | |
|-----------------|------------------|--------|--------|-----------|-------|----------|-------|----|-------|-------|----------|-----|-----|-----|-----|
| | | FG-FGA | FG-FGA | FT-FTA | Off | Def | Off | | | | | | | | Def |
| 13 | LOCKE, Kayel | f | 6-10 | 0-1 | 1-2 | 1 | 1 | 2 | 3 | 13 | 1 | 2 | 0 | 29 | |
| 33 | WHITE, RJ | c | 7-7 | 0-0 | 0-2 | 2 | 5 | 7 | 5 | 14 | 2 | 1 | 3 | 24 | |
| 00 | SADDLER, Tevon | g | 4-12 | 0-1 | 6-7 | 0 | 3 | 3 | 4 | 14 | 4 | 4 | 0 | 33 | |
| 30 | BYRD, Clay | g | 2-7 | 1-6 | 0-0 | 0 | 1 | 1 | 2 | 5 | 2 | 3 | 0 | 33 | |
| 31 | PAULOS, Nicholas | g | 4-8 | 4-8 | 0-0 | 0 | 2 | 2 | 3 | 12 | 2 | 2 | 0 | 37 | |
| 02 | LAMOT, Asad | g | 1-4 | 0-3 | 0-0 | 0 | 2 | 2 | 4 | 2 | 1 | 1 | 0 | 19 | |
| 14 | DICKINSON, Ben | g | 3-4 | 0-0 | 0-0 | 1 | 0 | 1 | 2 | 6 | 0 | 1 | 0 | 14 | |
| 32 | KUIPER, Jordy | g | 0-0 | 0-0 | 2-4 | 1 | 4 | 5 | 4 | 2 | 0 | 2 | 0 | 11 | |
| Team | | | | | | 2 | 0 | 2 | | | | | | | |
| Totals | | | 27-52 | 5-19 | 9-15 | 7 | 18 | 25 | 27 | 68 | 12 | 16 | 3 | 6 | 200 |
| FG % 1st Half: | | 11-21 | 52.4% | 2nd half: | 16-31 | 51.6% | Game: | | 27-52 | 51.9% | Deadball | | | | |
| 3FG % 1st Half: | | 3-8 | 37.5% | 2nd half: | 2-11 | 18.2% | Game: | | 5-19 | 26.3% | Rebounds | | | | |
| FT % 1st Half: | | 2-4 | 50.0% | 2nd half: | 7-11 | 63.6% | Game: | | 9-15 | 60.0% | 2 | | | | |

Officials: Bruce Bell, Jose Carrion & Steve Pyatt
Technical fouls: High Point-None. UNCG-None.
Attendance: 3032

| Score by periods | 1st | 2nd | Total |
|------------------|-----|-----|-------|
| High Point | 35 | 41 | 76 |
| UNCG | 27 | 41 | 68 |

| Points | In | Off | 2nd | Fast | Bench |
|--------|----|-----|-----|------|-------|
| HPU | 28 | 20 | 16 | 6 | 18 |
| UNCG | 32 | 16 | 10 | 14 | 10 |

Last FG - HPU 2nd-01:32, UNCG 2nd-00:48.
Largest lead - HPU by 12-05-08, UNCG by 4 1st-17:13.
HPU led for 26:18. UNCG led for 05:46. Game was tied for 07:47.

Score tied - 7 times.
Lead changed - 3 times.

INDIANA 87, UNCG 79

Official Basketball Box Score -- Game Totals -- Final Statistics
UNCG vs Indiana
11/28/14 9:00pm at Bloomington, Ind. (Assembly Hall)

UNCG 79 • 1-5

| # | Player | Total | | 3-Ptr | | Rebounds | | PF | TP | A | TO | Blk | Stl | Min | |
|-----------------|------------------|--------|--------|-----------|-------|----------|-------|----|-------|-------|----------|-----|-----|-----|-----|
| | | FG-FGA | FG-FGA | FT-FTA | Off | Def | Off | | | | | | | | Def |
| 13 | LOCKE, Kayel | f | 6-15 | 1-1 | 1-3 | 1 | 0 | 1 | 1 | 14 | 2 | 1 | 0 | 36 | |
| 31 | PAULOS, Nicholas | f | 9-12 | 6-8 | 0-0 | 0 | 6 | 6 | 3 | 24 | 3 | 4 | 0 | 37 | |
| 33 | WHITE, RJ | c | 0-2 | 0-0 | 0-0 | 0 | 3 | 3 | 5 | 0 | 2 | 0 | 0 | 14 | |
| 00 | SADDLER, Tevon | g | 7-17 | 0-2 | 0-0 | 0 | 6 | 6 | 3 | 14 | 3 | 7 | 0 | 35 | |
| 30 | BYRD, Clay | g | 7-13 | 6-11 | 0-0 | 1 | 0 | 1 | 3 | 20 | 0 | 0 | 0 | 33 | |
| 02 | LAMOT, Asad | g | 1-1 | 1-1 | 1-2 | 1 | 0 | 1 | 3 | 4 | 2 | 0 | 0 | 16 | |
| 14 | DICKINSON, Ben | g | 0-0 | 0-0 | 1-2 | 1 | 1 | 2 | 1 | 1 | 0 | 0 | 0 | 6 | |
| 32 | KUIPER, Jordy | g | 1-3 | 0-0 | 0-0 | 3 | 1 | 4 | 4 | 2 | 5 | 0 | 0 | 23 | |
| Team | | | | | | 1 | 1 | 2 | | | | | | | |
| Totals | | | 31-63 | 14-23 | 3-7 | 8 | 18 | 26 | 23 | 79 | 17 | 12 | 0 | 9 | 200 |
| FG % 1st Half: | | 13-34 | 38.2% | 2nd half: | 18-29 | 62.1% | Game: | | 31-63 | 49.2% | Deadball | | | | |
| 3FG % 1st Half: | | 7-14 | 50.0% | 2nd half: | 7-9 | 77.8% | Game: | | 14-23 | 60.9% | Rebounds | | | | |
| FT % 1st Half: | | 1-3 | 33.3% | 2nd half: | 2-4 | 50.0% | Game: | | 3-7 | 42.9% | 2 | | | | |

Indiana 87 • 5-1

| # | Player | Total | | 3-Ptr | | Rebounds | | PF | TP | A | TO | Blk | Stl | Min | |
|-----------------|-----------------------|--------|--------|-----------|-------|----------|-------|----|-------|-------|----------|-----|-----|-----|-----|
| | | FG-FGA | FG-FGA | FT-FTA | Off | Def | Off | | | | | | | | Def |
| 05 | Williams, Troy | f | 4-6 | 0-1 | 3-4 | 1 | 3 | 4 | 0 | 11 | 1 | 2 | 0 | 25 | |
| 12 | Mosquera-Perea, H. | f | 3-3 | 0-0 | 4-5 | 2 | 4 | 6 | 2 | 10 | 0 | 0 | 0 | 23 | |
| 01 | Blackmon Jr., James | g | 9-17 | 2-7 | 4-5 | 2 | 7 | 9 | 0 | 24 | 1 | 2 | 0 | 30 | |
| 04 | Johnson, Robert | g | 4-9 | 3-6 | 0-0 | 0 | 1 | 1 | 3 | 11 | 2 | 1 | 1 | 26 | |
| 11 | Ferrell, Kevin (Yogi) | g | 3-8 | 1-3 | 8-9 | 0 | 6 | 6 | 0 | 15 | 6 | 4 | 0 | 35 | |
| 02 | Zeisloft, Nick | g | 1-5 | 1-4 | 0-0 | 0 | 1 | 1 | 1 | 3 | 2 | 1 | 0 | 19 | |
| 03 | Hoetzel, Max | g | 1-1 | 1-1 | 0-0 | 0 | 1 | 1 | 0 | 3 | 0 | 0 | 0 | 3 | |
| 22 | Robinson, Stanford | g | 1-3 | 0-0 | 1-2 | 0 | 0 | 0 | 2 | 3 | 1 | 1 | 0 | 22 | |
| 25 | Holt, Emmitt | g | 0-0 | 0-0 | 0-2 | 4 | 1 | 5 | 0 | 0 | 0 | 2 | 2 | 12 | |
| 30 | Hartman, Collin | g | 2-4 | 1-2 | 2-2 | 3 | 1 | 4 | 2 | 7 | 0 | 0 | 0 | 16 | |
| Team | | | | | | 1 | 1 | 2 | | | | | | | |
| Totals | | | 28-56 | 9-24 | 22-29 | 13 | 26 | 39 | 10 | 87 | 13 | 13 | 3 | 8 | 200 |
| FG % 1st Half: | | 18-35 | 51.4% | 2nd half: | 10-21 | 47.6% | Game: | | 28-56 | 50.0% | Deadball | | | | |
| 3FG % 1st Half: | | 4-12 | 33.3% | 2nd half: | 5-12 | 41.7% | Game: | | 9-24 | 37.5% | Rebounds | | | | |
| FT % 1st Half: | | 10-13 | 76.9% | 2nd half: | 12-16 | 75.0% | Game: | | 22-29 | 75.9% | 4 | | | | |



2014-15 UNCG MEN'S BASKETBALL



UNCG 82, GREENSBORO COLLEGE 78

Official Basketball Box Score -- Game Totals -- Final Statistics
Greensboro College vs UNCG
12/10/14 11:30 a.m. at Greensboro, N.C. (Greensboro Coliseum)

Greensboro College 78 • 3-3

| # | Player | Total | | | 3-Ptr | | | Rebounds | | | PF | TP | A | TO | Blk | Stl | Min |
|----|------------------|--------|--------|--------|--------|--------|--------|----------|-----|-----|----|----|---|----|-----|-----|-----|
| | | FG-FGA | FG-FGA | FT-FTA | FG-FGA | FG-FGA | FT-FTA | Off | Def | Tot | | | | | | | |
| 33 | Raheem Martin | f | 0-1 | 0-1 | 1-2 | 0 | 6 | 6 | 2 | 1 | 3 | 3 | 1 | 2 | 24 | | |
| 40 | Parris Sciales | f | 4-15 | 1-3 | 2-2 | 3 | 4 | 7 | 3 | 11 | 1 | 2 | 0 | 0 | 38 | | |
| 11 | Devan Gregory | g | 9-14 | 5-8 | 4-4 | 1 | 3 | 4 | 3 | 27 | 2 | 2 | 2 | 2 | 35 | | |
| 24 | Hamilton Hawkins | g | 3-3 | 1-1 | 0-0 | 3 | 0 | 3 | 2 | 7 | 0 | 0 | 0 | 0 | 20 | | |
| 44 | Simeon Howard | g | 7-16 | 4-8 | 3-3 | 1 | 3 | 4 | 1 | 21 | 1 | 4 | 1 | 2 | 32 | | |
| 03 | Will Griffin | | 0-1 | 0-0 | 0-0 | 1 | 0 | 1 | 0 | 0 | 1 | 0 | 0 | 0 | 2 | | |
| 10 | Chris Corbin | | 0-2 | 0-0 | 0-0 | 0 | 1 | 1 | 2 | 0 | 2 | 3 | 0 | 1 | 18 | | |
| 12 | Joseph Gatling | | 1-2 | 0-0 | 0-0 | 0 | 0 | 0 | 1 | 2 | 1 | 0 | 0 | 0 | 7 | | |
| 22 | Brandon Pascucci | | 0-3 | 0-2 | 0-0 | 0 | 0 | 0 | 0 | 0 | 0 | 0 | 0 | 0 | 6 | | |
| 32 | David Leaman | | 0-0 | 0-0 | 0-0 | 0 | 0 | 0 | 0 | 0 | 0 | 0 | 0 | 0 | 1 | | |
| 34 | Edric Roberts | | 3-4 | 1-1 | 2-2 | 0 | 1 | 1 | 3 | 9 | 0 | 1 | 0 | 0 | 17 | | |
| | Team | | | | | 2 | 0 | 2 | | | | | | | | | |
| | Totals | | 27-61 | 12-24 | 12-13 | 11 | 18 | 29 | 17 | 78 | 11 | 15 | 4 | 7 | 200 | | |

FG % 1st Half: 15-29 51.7% 2nd half: 12-32 37.5% Game: 27-61 44.3%
 3FG % 1st Half: 9-15 60.0% 2nd half: 3-9 33.3% Game: 12-24 50.0%
 FT % 1st Half: 2-2 100.0% 2nd half: 10-11 90.9% Game: 12-13 92.3%

UNCG 82 • 3-6

| # | Player | Total | | | 3-Ptr | | | Rebounds | | | PF | TP | A | TO | Blk | Stl | Min |
|----|------------------|--------|--------|--------|--------|--------|--------|----------|-----|-----|----|----|---|----|-----|-----|-----|
| | | FG-FGA | FG-FGA | FT-FTA | FG-FGA | FG-FGA | FT-FTA | Off | Def | Tot | | | | | | | |
| 13 | LOCKE, Kayel | f | 1-10 | 0-1 | 3-4 | 5 | 3 | 8 | 2 | 5 | 1 | 2 | 0 | 0 | 22 | | |
| 33 | WHITE, RJ | c | 5-6 | 0-1 | 0-0 | 2 | 6 | 8 | 4 | 10 | 1 | 5 | 2 | 2 | 29 | | |
| 00 | SADDLER, Tevon | g | 7-13 | 1-2 | 9-10 | 0 | 1 | 1 | 4 | 24 | 4 | 2 | 2 | 3 | 32 | | |
| 30 | BYRD, Clay | g | 1-9 | 1-9 | 0-0 | 1 | 1 | 2 | 1 | 3 | 1 | 0 | 0 | 0 | 25 | | |
| 31 | PAULOS, Nicholas | g | 7-13 | 4-9 | 1-1 | 0 | 3 | 0 | 19 | 2 | 1 | 0 | 1 | 37 | | | |
| 02 | LAMOT, Asad | g | 0-0 | 0-0 | 0-0 | 0 | 0 | 0 | 0 | 0 | 0 | 0 | 0 | 0 | 3 | | |
| 03 | BALDWIN, Diante | g | 3-5 | 1-1 | 2-2 | 1 | 2 | 3 | 1 | 9 | 3 | 3 | 0 | 4 | 25 | | |
| 14 | DICKINSON, Ben | g | 0-1 | 0-0 | 1-2 | 1 | 0 | 1 | 1 | 0 | 0 | 0 | 0 | 0 | 8 | | |
| 32 | KUIPER, Jordy | g | 4-5 | 0-0 | 3-3 | 4 | 6 | 10 | 1 | 11 | 0 | 0 | 0 | 0 | 19 | | |
| | Team | | | | | 2 | 2 | 4 | | | | | | | | | |
| | Totals | | 28-62 | 7-23 | 19-22 | 16 | 24 | 40 | 14 | 82 | 12 | 15 | 4 | 10 | 200 | | |

FG % 1st Half: 14-33 42.4% 2nd half: 14-29 48.3% Game: 28-62 45.2%
 3FG % 1st Half: 3-13 23.1% 2nd half: 4-10 40.0% Game: 7-23 30.4%
 FT % 1st Half: 10-13 76.9% 2nd half: 9-9 100.0% Game: 19-22 86.4%

Officials: Samuel Croft, Sean Casady, JW Lucas
Technical fouls: Greensboro College-None, UNCG-None.
Attendance: 3652

| Score by periods | 1st | 2nd | Total |
|--------------------|-----|-----|-------|
| Greensboro College | 41 | 37 | 78 |
| UNCG | 41 | 41 | 82 |

| | In | Off | 2nd | Fast | Bench |
|--------|-------|-----|--------|-------|-------|
| Points | Paint | T/O | Chance | Break | |
| GCM | 14 | 18 | 19 | 8 | 11 |
| UNCG | 34 | 15 | 16 | 10 | 21 |

Last FG - GCM 2nd-03:49, UNCG 2nd-01:34.
Largest lead - GCM by 15 1st-11:05, UNCG by 7 2nd-05:23.

Score tied - 9 times.
Lead changed - 6 times.

NORTH CAROLINA 79, UNCG 56

Official Basketball Box Score -- Game Totals -- Final Statistics
North Carolina vs UNCG
12/16/14 7:00 p.m. at Greensboro, N.C. (Greensboro Coliseum)

North Carolina 79 • 7-3

| # | Player | Total | | | 3-Ptr | | | Rebounds | | | PF | TP | A | TO | Blk | Stl | Min |
|----|-----------------|--------|--------|--------|--------|--------|--------|----------|-----|-----|----|----|---|----|-----|-----|-----|
| | | FG-FGA | FG-FGA | FT-FTA | FG-FGA | FG-FGA | FT-FTA | Off | Def | Tot | | | | | | | |
| 03 | Kennedy Meeks | f | 8-9 | 0-0 | 2-2 | 1 | 5 | 6 | 3 | 18 | 0 | 0 | 0 | 0 | 19 | | |
| 11 | Brice Johnson | f | 4-7 | 0-0 | 0-1 | 2 | 3 | 5 | 4 | 8 | 1 | 4 | 1 | 1 | 20 | | |
| 13 | J.P. Tokoto | f | 1-3 | 0-1 | 2-4 | 1 | 2 | 3 | 4 | 4 | 2 | 6 | 0 | 0 | 26 | | |
| 05 | Marcus Paige | g | 1-8 | 1-6 | 2-2 | 1 | 6 | 7 | 0 | 5 | 2 | 2 | 0 | 2 | 26 | | |
| 44 | Justin Jackson | g | 2-8 | 0-2 | 3-3 | 1 | 2 | 3 | 0 | 7 | 3 | 1 | 0 | 0 | 21 | | |
| 00 | Nate Britt | g | 0-3 | 0-2 | 0-0 | 1 | 1 | 2 | 0 | 0 | 2 | 0 | 0 | 1 | 13 | | |
| 01 | Theo Pinson | g | 1-2 | 1-1 | 0-1 | 1 | 2 | 3 | 2 | 3 | 4 | 2 | 0 | 2 | 14 | | |
| 02 | Joel Berry II | g | 2-3 | 1-2 | 3-4 | 0 | 0 | 0 | 1 | 8 | 0 | 0 | 0 | 1 | 16 | | |
| 21 | Desmond Hubert | g | 1-2 | 0-0 | 1-2 | 2 | 1 | 3 | 1 | 3 | 0 | 0 | 0 | 0 | 3 | | |
| 14 | Jackson Simmons | g | 1-1 | 0-0 | 0-0 | 0 | 0 | 0 | 4 | 2 | 0 | 1 | 0 | 0 | 6 | | |
| 22 | Isaiah Hicks | g | 3-7 | 0-0 | 2-2 | 3 | 3 | 6 | 2 | 8 | 0 | 0 | 1 | 1 | 14 | | |
| 24 | Sasha Seymore | g | 1-1 | 0-0 | 0-0 | 0 | 0 | 0 | 0 | 2 | 0 | 1 | 0 | 0 | 2 | | |
| 25 | Justin Coleman | g | 0-0 | 0-0 | 0-0 | 0 | 1 | 1 | 0 | 1 | 0 | 0 | 0 | 0 | 2 | | |
| 42 | Joel James | g | 5-7 | 0-0 | 1-2 | 2 | 4 | 1 | 1 | 11 | 0 | 0 | 0 | 0 | 16 | | |
| 45 | Stilman White | g | 0-0 | 0-0 | 0-0 | 0 | 0 | 0 | 0 | 1 | 0 | 0 | 0 | 0 | 2 | | |
| | Team | | | | | 5 | 3 | 8 | | | | | | | | | |
| | Totals | | 30-61 | 3-14 | 16-23 | 20 | 31 | 51 | 22 | 79 | 16 | 17 | 2 | 8 | 200 | | |

FG % 1st Half: 15-31 48.4% 2nd half: 15-30 50.0% Game: 30-61 49.2%
 3FG % 1st Half: 1-9 11.1% 2nd half: 2-5 40.0% Game: 3-14 21.4%
 FT % 1st Half: 9-13 69.2% 2nd half: 7-10 70.0% Game: 16-23 69.6%

UNCG 56 • 4-7

| # | Player | Total | | | 3-Ptr | | | Rebounds | | | PF | TP | A | TO | Blk | Stl | Min |
|----|------------------|--------|--------|--------|--------|--------|--------|----------|-----|-----|----|----|---|----|-----|-----|-----|
| | | FG-FGA | FG-FGA | FT-FTA | FG-FGA | FG-FGA | FT-FTA | Off | Def | Tot | | | | | | | |
| 13 | LOCKE, Kayel | f | 6-7 | 0-0 | 5-12 | 1 | 3 | 4 | 3 | 17 | 1 | 1 | 1 | 0 | 35 | | |
| 33 | WHITE, RJ | c | 0-4 | 0-1 | 1-2 | 3 | 1 | 4 | 4 | 1 | 0 | 3 | 1 | 2 | 22 | | |
| 00 | SADDLER, Tevon | g | 3-8 | 0-2 | 0-1 | 1 | 4 | 1 | 5 | 6 | 0 | 2 | 1 | 1 | 15 | | |
| 30 | BYRD, Clay | g | 1-9 | 1-9 | 0-0 | 0 | 0 | 0 | 0 | 3 | 1 | 2 | 0 | 0 | 28 | | |
| 31 | PAULOS, Nicholas | g | 4-8 | 4-8 | 0-0 | 0 | 2 | 2 | 12 | 0 | 2 | 1 | 1 | 38 | | | |
| 02 | LAMOT, Asad | g | 0-0 | 0-0 | 0-0 | 0 | 0 | 0 | 0 | 0 | 0 | 0 | 0 | 0 | 4 | | |
| 03 | BALDWIN, Diante | g | 5-15 | 0-3 | 3-9 | 3 | 6 | 9 | 1 | 13 | 4 | 3 | 0 | 2 | 34 | | |
| 14 | DICKINSON, Ben | g | 1-5 | 0-1 | 0-0 | 1 | 3 | 4 | 4 | 2 | 0 | 0 | 0 | 0 | 12 | | |
| 15 | COLLINS, Garrett | g | 0-0 | 0-0 | 0-0 | 0 | 0 | 0 | 0 | 0 | 0 | 0 | 0 | 0 | 1 | | |
| 32 | KUIPER, Jordy | g | 0-0 | 0-0 | 2-2 | 0 | 0 | 0 | 1 | 2 | 1 | 0 | 1 | 1 | 11 | | |
| | Team | | | | | 1 | 1 | 2 | | | | | | | | | |
| | Totals | | 20-56 | 5-24 | 11-26 | 10 | 16 | 26 | 20 | 56 | 7 | 13 | 4 | 7 | 200 | | |

FG % 1st Half: 8-29 27.6% 2nd half: 12-27 44.4% Game: 20-56 35.7%
 3FG % 1st Half: 1-10 10.0% 2nd half: 4-14 28.6% Game: 5-24 20.8%
 FT % 1st Half: 2-7 28.6% 2nd half: 9-19 47.4% Game: 11-26 42.3%

Officials: Gary Maxwell, Dwayne Gladden, Todd Austin
Technical fouls: North Carolina-None, UNCG-None.
Attendance: 11108

| Score by periods | 1st | 2nd | Total |
|------------------|-----|-----|-------|
| North Carolina | 40 | 39 | 79 |
| UNCG | 19 | 37 | 56 |

Last FG - NC 2nd-00:50, UNCG 2nd-00:28.
Largest lead - NC by 32 2nd-08:28, UNCG None.
NC led for 39:17. UNCG led for 00:00. Game was tied for 00:29.

Score tied - 0 times.
Lead changed - 0 times.

UNCG 80, ETSU 79

Official Basketball Box Score -- Game Totals -- Final Statistics
UNCG vs ETSU
12/13/14 4:00pm at Freedom Hall (Johnson City, Tenn.)

UNCG 80 • 4-6, 1-0 SoCon

| # | Player | Total | | | 3-Ptr | | | Rebounds | | | PF | TP | A | TO | Blk | Stl | Min |
|----|------------------|--------|--------|--------|--------|--------|--------|----------|-----|-----|----|----|---|----|-----|-----|-----|
| | | FG-FGA | FG-FGA | FT-FTA | FG-FGA | FG-FGA | FT-FTA | Off | Def | Tot | | | | | | | |
| 13 | LOCKE, Kayel | f | 3-7 | 0-1 | 6-8 | 1 | 6 | 7 | 3 | 12 | 0 | 1 | 0 | 0 | 30 | | |
| 31 | PAULOS, Nicholas | f | 4-8 | 4-7 | 0-0 | 0 | 5 | 5 | 0 | 12 | 3 | 2 | 0 | 1 | 35 | | |
| 33 | WHITE, RJ | c | 5-11 | 0-1 | 2-3 | 2 | 8 | 10 | 4 | 12 | 0 | 1 | 1 | 0 | 31 | | |
| 00 | SADDLER, Tevon | g | 9-12 | 0-1 | 6-9 | 1 | 4 | 5 | 3 | 24 | 6 | 3 | 1 | 1 | 34 | | |
| 30 | BYRD, Clay | g | 4-8 | 4-8 | 0-0 | 0 | 1 | 1 | 3 | 12 | 2 | 0 | 0 | 0 | 34 | | |
| 02 | LAMOT, Asad | g | 1-1 | 1-1 | 0-0 | 0 | 0 | 0 | 1 | 3 | 0 | 0 | 0 | 0 | 3 | | |
| 03 | BALDWIN, Diante | g | 0-5 | 0-1 | 5-6 | 0 | 2 | 2 | 2 | 5 | 3 | 1 | 0 | 1 | 25 | | |
| 14 | DICKINSON, Ben | g | 0-0 | 0-0 | 0-0 | 0 | 1 | 1 | 4 | 0 | 0 | 1 | 0 | 0 | 5 | | |
| 32 | KUIPER, Jordy | g | 0-0 | 0-0 | 0-0 | 0 | 0 | 0 | 0 | 0 | 0 | 0 | 1 | 0 | 3 | | |
| | Team | | | | | 1 | 1 | 2 | | | | | | | | | |
| | Totals | | 26-52 | 9-20 | 19-26 | 5 | 28 | 33 | 20 | 80 | 14 | 9 | 3 | 3 | 200 | | |

FG % 1st Half: 16-29 55.2% 2nd half: 10-23 43.5% Game: 26-52 50.0%
 3FG % 1st Half: 6-13 46.2% 2nd half: 3-7 42.9% Game: 9-20 45.0%
 FT % 1st Half: 9-9 100.0% 2nd half: 10-17 58.8% Game: 19-26 73.1%

ETSU 79 • 5-2, 1-1 SoCon

| # | Player | Total | | | 3-Ptr | | | Rebounds | | | PF | TP | A | TO | Blk | Stl | Min |
|----|------------------|--------|--------|--------|--------|--------|--------|----------|-----|-----|----|----|---|----|-----|-----|-----|
| | | FG-FGA | FG-FGA | FT-FTA | FG-FGA | FG-FGA | FT-FTA | Off | Def | Tot | | | | | | | |
| 15 | Lester Wilson | f | 1-9 | 1-7 | 5-7 | 2 | 3 | 5 | 2 | 8 | 0 | 2 | 0 | 0 | 27 | | |
| 20 | Alex Bates | f | 0-2 | 0-0 | 0-0 | 1 | 3 | 4 | 0 | 0 | 0 | 0 | 0 | 0 | 17 | | |
| 01 | Petey McClain | g | 1-2 | 0-0 | 0-0 | 1 | 3 | 4 | 0 | 2 | 0 | 1 | 0 | 0 | 14 | | |
| 04 | Rashawn Rembert | g | 4-10 | 3-9 | 2-2 | 0 | 0 | 0 | 0 | 13 | 0 | 1 | 0 | 0 | 30 | | |
| 13 | A.J. Merrifield | g | 5-7 | 0-1 | 3-3 | 3 | 11 | 14 | 2 | 13 | 3 | 1 | 2 | 1 | 35 | | |
| 02 | Devin Harris | g | 0-5 | 0-1 | 2-2 | 0 | 0 | 0 | 2 | 2 | 2 | 1 | 0 | 1 | 16 | | |
| 05 | Jalen Riley | g | 9-20 | 6-12 | 4-4 | 0 | 0 | 0 | 2 | 28 | 4 | 3 | 0 | 2 | 30 | | |
| 10 | Isaac Banks | g | 1-2 | 0-0 | 2-2 | 3 | 3 | 6 | 5 | 4 | 1 | 0 | 2 | 0 | 14 | | |
| 11 | Desonta Bradford | g | 2-5 | 1-2 | 4-5 | 1 | 2 | 3 | 3 | 9 | 2 | 0 | 0 | 1 | 17 | | |
| | Team | | | | | 0 | 1 | 1 | | | | | | | | | |
| | Totals | | 23-62 | 11-32 | 22-25 | 11 | 25 | 36 | 18 | 79 | 12 | 9 | 4 | | | | |



2014-15 UNCG MEN'S BASKETBALL



EAST CAROLINA 71, UNCG 50

Official Basketball Box Score -- Game Totals -- Final Statistics

UNCG vs East Carolina

12/28/14 2:00 PM at Greenville, N.C. (Minges Coliseum)

UNCG 50 • 4-9

| # | Player | Total | | | Rebounds | | | PF | TP | A | TO | Blk | Stl | Min | |
|-----------------|------------------|--------|-------|-----------|----------|-------|-------|-------|-------|---|----|-----|-----|-----|----------|
| | | FG-FGA | 3-Ptr | FT-FTA | Off | Def | Tot | | | | | | | | |
| 13 | LOCKE, Kayel | 1-7 | 0-0 | 0-2 | 5 | 2 | 7 | 5 | 2 | 0 | 4 | 0 | 0 | 29 | |
| 31 | PAULOS, Nicholas | 3-12 | 3-12 | 0-0 | 1 | 7 | 8 | 1 | 9 | 0 | 1 | 0 | 0 | 39 | |
| 33 | WHITE, RJ | 2-5 | 0-1 | 0-0 | 2 | 3 | 5 | 5 | 4 | 1 | 0 | 0 | 0 | 12 | |
| 00 | SADDLER, Tevon | 4-11 | 0-3 | 0-0 | 2 | 2 | 4 | 3 | 8 | 4 | 4 | 0 | 2 | 27 | |
| 03 | BALDWIN, Diante | 7-11 | 1-2 | 4-6 | 0 | 1 | 1 | 3 | 19 | 3 | 2 | 0 | 6 | 35 | |
| 01 | SMITH, Marvin | 1-6 | 0-2 | 0-0 | 2 | 0 | 2 | 1 | 2 | 0 | 0 | 0 | 0 | 9 | |
| 14 | DICKINSON, Ben | 0-0 | 0-0 | 0-0 | 0 | 1 | 1 | 3 | 0 | 0 | 1 | 0 | 0 | 14 | |
| 30 | BYRD, Clay | 0-4 | 0-4 | 0-0 | 0 | 0 | 0 | 1 | 0 | 0 | 0 | 0 | 0 | 16 | |
| 32 | KUIPER, Jordy | 3-4 | 0-0 | 0-2 | 0 | 1 | 1 | 4 | 6 | 0 | 2 | 0 | 0 | 19 | |
| Team | | | | | 2 | 2 | 4 | | | | | | | | |
| Totals | | 21-60 | 4-24 | 4-10 | 14 | 19 | 33 | 26 | 50 | 8 | 14 | 0 | 8 | 200 | |
| FG % 1st Half: | | 11-30 | 36.7% | 2nd half: | 10-30 | 33.3% | Game: | 21-60 | 35.0% | | | | | | Deadball |
| 3FG % 1st Half: | | 2-9 | 22.2% | 2nd half: | 2-15 | 13.3% | Game: | 4-24 | 16.7% | | | | | | Rebounds |
| FT % 1st Half: | | 2-6 | 33.3% | 2nd half: | 2-4 | 50.0% | Game: | 4-10 | 40.0% | | | | | | 3 |

East Carolina 71 • 7-6

| # | Player | Total | | | Rebounds | | | PF | TP | A | TO | Blk | Stl | Min | |
|-----------------|-------------------|--------|-------|-----------|----------|-------|-------|-------|-------|----|----|-----|-----|-----|----------|
| | | FG-FGA | 3-Ptr | FT-FTA | Off | Def | Tot | | | | | | | | |
| 02 | WHITE, Caleb | 3-6 | 2-5 | 6-6 | 0 | 2 | 2 | 0 | 14 | 2 | 2 | 0 | 1 | 26 | |
| 13 | NZEGE, Michel | 6-7 | 0-0 | 0-0 | 0 | 5 | 5 | 2 | 12 | 1 | 0 | 1 | 0 | 18 | |
| 34 | ZANGARI, Michael | 3-7 | 0-1 | 0-2 | 0 | 2 | 2 | 3 | 6 | 0 | 0 | 0 | 1 | 18 | |
| 00 | WHISNANT, Terry | 5-8 | 3-4 | 4-5 | 0 | 2 | 2 | 2 | 17 | 6 | 0 | 1 | 0 | 28 | |
| 11 | ROBINSON, Antonio | 1-1 | 1-1 | 0-0 | 0 | 3 | 3 | 2 | 3 | 5 | 1 | 0 | 1 | 26 | |
| 01 | BRYANT, Grant | 0-0 | 0-0 | 0-0 | 0 | 0 | 0 | 0 | 0 | 0 | 1 | 0 | 0 | 1 | |
| 04 | WILLIAMS, Prince | 1-1 | 0-0 | 0-0 | 0 | 2 | 2 | 0 | 2 | 1 | 1 | 0 | 0 | 10 | |
| 05 | TEJADA, Lance | 0-0 | 0-0 | 3-6 | 0 | 0 | 0 | 2 | 3 | 1 | 2 | 0 | 0 | 12 | |
| 21 | TYSON, B.J. | 2-6 | 0-1 | 2-2 | 1 | 3 | 4 | 2 | 6 | 0 | 3 | 0 | 0 | 21 | |
| 22 | CAMPBELL, Paris | 1-2 | 0-1 | 2-2 | 1 | 4 | 5 | 1 | 4 | 4 | 2 | 0 | 1 | 23 | |
| 24 | ARMSTRONG, Keith | 0-0 | 0-0 | 0-0 | 0 | 0 | 0 | 0 | 0 | 0 | 0 | 0 | 0 | 1 | |
| 31 | ALEXANDER, Greg | 0-1 | 0-1 | 0-0 | 0 | 0 | 0 | 0 | 0 | 0 | 0 | 0 | 0 | 1 | |
| 44 | AJA, Kanu | 1-1 | 0-0 | 2-3 | 0 | 3 | 3 | 1 | 4 | 0 | 1 | 0 | 0 | 15 | |
| Team | | | | | 0 | 2 | 2 | | | | | | | | |
| Totals | | 23-40 | 6-14 | 19-26 | 2 | 28 | 30 | 15 | 71 | 20 | 13 | 2 | 4 | 200 | |
| FG % 1st Half: | | 16-22 | 72.7% | 2nd half: | 7-18 | 38.9% | Game: | 23-40 | 57.5% | | | | | | Deadball |
| 3FG % 1st Half: | | 3-4 | 75.0% | 2nd half: | 3-10 | 30.0% | Game: | 6-14 | 42.9% | | | | | | Rebounds |
| FT % 1st Half: | | 10-14 | 71.4% | 2nd half: | 9-12 | 75.0% | Game: | 19-26 | 73.1% | | | | | | 3 |

Officials: Tom O'Neill, John Gaffney, Rick Crawford
Technical fouls: UNCG-None. East Carolina-None.
Attendance: 4418

| Score by periods | 1st | 2nd | Total |
|------------------|-----|-----|-------|
| UNCG | 26 | 24 | 50 |
| East Carolina | 45 | 26 | 71 |

| Points | In | Off | 2nd | Fast | Bench |
|--------|----|-----|-----|------|-------|
| UNCG | 28 | 12 | 9 | 6 | 5 |
| ECU | 30 | 8 | 0 | 6 | 19 |