



UNIVERSITY OF NORTH ALABAMA

LADY LION VOLLEYBALL

A Total Tradition

Since 1982
27 All - GSC Selections
12 Academic All - GSC Selections

Dena Nicholson
All - Gulf South Conference
Academic All - Gulf South Conference

Deana Terry
All - Gulf South Conference

Gulf South Conference Champions
1982, 1984, 1985, 1986, 1987, 1988



UNA Volleyball '93

Media Information

Site: All University of North Alabama home volleyball games are played in the 3,500 seat Flowers Hall, located on Pine Street. Media parking is available across the street, beside and behind Flowers Hall.

Credentials: There is no admission charge to University of North Alabama home volleyball games and no press credentials are necessary.

Interviews: All requests for interviews with UNA student-athletes should be made through the sports information office by calling (205) 760-4595. UNA athletes are also routinely available for interviews following practice sessions and games.

Credits

The 1993 University of North Alabama volleyball media guide was compiled and edited by Sports Information Director Jeff Hodges and student assistant Stacy Hair. Art work by UNA publications assistant Karen Hodges. Photos by UNA photographer Shannon Wells. This brochure was printed by Don Brown Printing in Sheffield, Ala.

Sports Information Numbers

SID Office Phone ... (205) 760-4595
 SID Home Phone ... (205) 766-7572
 SID Fax Phone (205) 760-4659



Sports Information Staff

Front from left:
 Ashley Balch, Steven Smith, Tasha Conway, Stacy Hair, Jill Chandler
 and Sports Information Director Jeff Hodges

On the Cover

Continuing the University of North Alabama Lady Lions "Total Tradition" in 1993 are a pair of seniors who earned All-Gulf South Conference honors last season. Dena Nicholson (left), from Flat River, Mo., and Deana Terry from DeSoto, Mo., were selected All-GSC by the league's head volleyball coaches. Nicholson made it a double honor by being named Academic All-GSC as well with a 3.50 grade point average in Social Work. The Lady Lions have produced 27 All-GSC selections since 1982, with an additional 20 GSC All-Tournament picks and 12 Academic All-GSC selections. The Lady Lions also lead all GSC schools with six conference volleyball championships. (Photo by Shannon Wells).



SINCE 1830

UNIVERSITY
of NORTH
 ALABAMA

Non-Discrimination Policies

It is the policy of the University of North Alabama to afford equal opportunities in education and in employment to qualified persons regardless of age, color, handicap, national origin, race, religion or sex, in accord with applicable parts of the Age Discrimination in Employment Act of 1967, Title VI of the Civil Rights Act of 1964, Title IX of the Education Amendments of 1972, and Section 504 of the Rehabilitation Act of 1973, as amended. The coordinators for non discrimination policies are: for students, the Dean of Student Affairs, Bibb Graves Hall or telephone 205-760-4235; for employees, the Director of Human Resources and Affirmative Action, Bibb Graves Hall or telephone 205-760-4291.

Athletic Staff Directory

Jack Belew
 Ticket Manager 760-4335
 Wayne Byrd
 Women's Basketball 760-4616
 Phillip Cross
 Trainer 760-4563
 Gary Elliott
 Basketball 760-4396
 Billy Gamble
 Golf, Basketball Asst. 760-4567
 Judy Gullett
 Secretary 760-4396
 Derek Hill
 Football Asst. 760-4564
 Bill Hyde
 Football Asst. 760-4564

Ande Jones
Volleyball, Softball 760-4556
 Bill Jones
 Athletic Director 760-4397
 Mike Keehn
 Baseball Asst. 760-4635
 Sherry Kennemer
 Women's Tennis, Cross Country .. 760-4618
 Mike Lane
 Baseball 760-4615
 David Martin
 Football Asst. 760-4562
 Raymond Monica
 Football Asst. 760-4566
 Lyndell Rhodes
 Equipment Manager 760-4950

Lana Roberts
 Secretary 760-4397
 Willie Slater
 Football Asst. 760-4613
 Larry Thompson
 Tennis, Academic Advisor 760-4617
 Bobby Wallace
 Football 760-4397
 Dr. Robert Young
 Faculty Athletic Rep. 760-4327
 Athletic Department Fax 760-4685
 Fan Line, Ticket Information 760-LION
 (5466)



UNA Volleyball '93

Inside

Media Information	IF
Quick Facts	1
UNA Biography	2
Flowers Hall	2
President Potts & Board	3
Head Coach Ande Jones	4
Player Biographies	5
Player Biographies	6
Player Biographies	7
1992 Review and Scores	8
1993 Preview and Rosters	9
1993 Opponents	10
1993 Opponents	11
UNA Volleyball History	12
UNA Record Book	13
Lady Lion Honors	14
Lady Lion Honors	15
All-time Lettermen	16
All-time Scores	17
All-time Scores	18
All-time Scores	19
The Gulf South Conference	20
GSC Volleyball History	IB
1993 Schedule	Back

Volleyball Quick Facts

LOCATION: Florence, Alabama
 FOUNDED: 1830
 ENROLLMENT: 5,600
 PRESIDENT: Robert L. Potts
 ATHLETIC DIRECTOR: Bill L. Jones
 NICKNAME: Lions
 COLORS: Purple and Gold
 CONFERENCE: Gulf South
 AFFILIATION: NCAA Division II
 FIELD HOUSE: Flowers Hall
 capacity: 3,500
 phone: (205) 760-4396

HEAD COACH: **Ande Jones**
 alma mater: North Alabama (1976)
 record at UNA: 342-221 (15 years)
 collegiate record: 342-221 (15 years)
 office phone: (205) 760-4556

1992-93 RECORD: 17-15
 GSC FINISH: Third

ASSISTANT COACHES: Jim Montero, Student Asst.
 Veronica Starr, Part-time Asst.

LETTERMEN RETURNING: (6)

Jenny Blasingame (5-7, SO, H, Florence, Ala./Bradshaw)
 Ladonna Bradford (5-9, SO, MH, Hatton, Ala./Hatton)
 Angela Hill (5-9, JR MH/Lexington, Ala.)
 Dena Nicholson (5-9, SR, H, Flat River, Mo./Jefferson College)
 Deana Terry (5-2, SR, S, Desoto, Mo./Jefferson College)
 Keena Walls (5-9, JR, S/Altoona, Ala.)

LETTERMEN LOST: (3)

Stephanie Copeland (MH/DeSoto, Mo.)
 Suzy Page (S/OH/Cullman, Ala.)
 Daphne Smith (OH/Danville, Ala.)

NEWCOMERS:

Dawn Burroughs (FR, Lawrenceburg, Tenn./Lawrence County)
 Lechon Camp (FR, Lexington, Ala./Lexington)
 Kandas Cavender (JR, Jacksonville, Ala./Gadsden State C.C.)
 Gina Radke (FR, Birmingham, Ala./Thompson)
 Tammy Thompson (FR, Lexington, Ala./Lexington)

SPORTS INFO. DIRECTOR: Jeff Hodges

office phone: (205) 760-4595
 home phone: (205) 766-7572
 Sports Info. Fax number: (205) 760-4659
 Athletic Department Fax number: (205) 760-4685

**GULF SOUTH CONFERENCE
 VOLLEYBALL CHAMPIONS
 1982, 1984, 1985, 1986, 1987, 1988**



SINCE 1830



UNA Volleyball '93

The University of North Alabama

The University of North Alabama, established in 1830 as LaGrange College, became in 1872 the first state teachers college south of the Ohio River. UNA has developed into a regional university providing quality educational opportunities for students from the three-state region of Alabama, Mississippi and Tennessee.

The Gourman Report, which ranks the nation's universities, selected UNA as one of the better schools in Alabama. Of the 26 Alabama schools rated, UNA ranked first behind Alabama's five doctoral degree-granting institutions.

Using the Gourman criteria, North Alabama, if located in any of the other 53 U.S. territories or states, would rank first in five states, second in 12, third in 13, fourth in 10 and fifth in one. The Gourman scores ranked North Alabama first among Gulf South Conference schools.

North Alabama's academic role has expanded through the years. Bachelor's degrees are offered in majors in various areas of arts and sciences, business, education and nursing.

Preprofessional preparation for medicine, dentistry, optometry, podiatry, pharmacy, law, agriculture and forestry, engineering, veterinary medicine, medical technology and other allied health professions is offered. Various master's degrees are offered in the education and business fields.

North Alabama is the first major university to offer a four-year degree program in commercial music. Majors have interned in record industry offices in Nashville, Memphis, New York, Los Angeles, London, and nearby Muscle Shoals. UNA is one of 11 schools nationwide offering an undergraduate degree in industrial hygiene. Foreign language, nursing and science students also have opportunities to study abroad.

Numerous faculty and staff members hold positions of distinction in various national, regional and state professional organizations. Many have written books and/or published articles in newspaper, magazines and professional journals. The **Journal of Legal Economics** is published on campus.

Various centers have been established at North Alabama to serve its constituency. Operated by faculty and staff, they give undergraduate and graduate students excellent opportunities for research and public services.

Flowers Hall Home of the Lady Lions



Flowers Hall has served as the home of the University of North Alabama volleyball team since it opened its doors in 1972, and has been an important part of the Lady Lions success story.

The 3,500 seat facility has hosted numerous state and Gulf South Conference tournaments over the years, and was the scene for the first-ever GSC volleyball tournament in 1982 in which UNA captured the league's first women's sports championship.

The Lady Lions have ten home dates scheduled for 1993, including the GSC Crossover tournament on Oct. 15-16 in which the school's from the league's two divisions will meet to help determine seedings for the conference tournament - which UNA will also host on Nov. 12-13.

They include the Occupational and Environmental Health Laboratory. Its scientific research has attracted national and international attention in the health field. The Geographic Research Center, in cooperation with the National Geographic Society, has increased the profile of geography in the state and has opened doors for students to partake in mapping and demographics research for various governmental agencies. Science faculty and students teach and study marine biology-related courses at Dauphin Island Sealab near Mobile, Alabama.

North Alabama also houses the northwest Alabama Education Research and Inservice Center, which provides inservice training for elementary and secondary educators in a six-county region. North Alabama has the only state university-operated kindergarten and grammar school, which afford education students a professional development laboratory experience in teaching.

Serving a nine-County region, the Small Business Development Center provides information, counseling and assistance to small businesses or to people planning to start small busi-

nesses. The Rare and Endangered Species Research Center personnel are conducting research on several endangered species in the region. The Wellness Research and Service Center researches areas of wellness, exercise programs, nutrition, stress management, health education counseling and environmental support.

North Alabama works closely with various southern universities and many local, state and federal agencies on a myriad of projects and activities.

Supporting the faculty are the extensive resources of the Collier Library system, a federal records depository. It is computerized and tied into various library loan research networks.

North Alabama students excel in academics, student activities and athletics. Often they are recognized nationally for their achievements in specific areas.

North Alabama's alumni are equally successful. Among them are a Pulitzer Prize winner for literature, two Alabama governors, a Texas governor, numerous U.S. Congressmen, thousands of educators, and special assistant to the President of the United States.



UNA Volleyball '93

President Robert L. Potts

Robert L. Potts was named president of the University of North Alabama on August 13, 1990, after serving as Interim President for seven months. He had previously served for six years as General Counsel for the University of Alabama System.

During the Potts presidency, the University of North Alabama has made significant progress. Under his leadership the administrative structure of the University has been streamlined, admissions standards have been adopted, a University development and advancement office has been established which has resulted in the University's first million-dollar endowed chair, an innovative day care center has been created at Kilby Laboratory School, an annual fall convocation for new students is now held, and the University has enhanced its presence in the state capital through a cooperative effort with other state universities.

Potts previously served on the boards of trustees of Alabama State University and Oakwood College. He has taught at Boston University, the University of Alabama and at UNA.

Presently, he President of the Alabama Higher Education Loan Corporation and a member of the Board of Trustees of the National Conference of Bar Examiners, where he serves as Chairman of the Character and Fitness Committee. He is a former Chairman of the Alabama Board of Bar Examiners. He also serves on the Board of Directors of the Alabama Motorists Association.

Potts attended Newbold College in England and received a B.A. degree cum laude from Southern College in Tennessee.

He obtained a Juris Doctor degree from the University of Alabama School of Law, where he served as Alabama Editor of the Alabama Law Review. After clerking for the U.S. District Court Chief Judge for the Northern District of Alabama, Potts received a Master of Laws degree from Harvard University in 1971.

Before entering higher education on a full-time basis in January 1984, Potts practiced law in Florence, Alabama, where education issues were a significant part of his practice. He has lectured widely on legal and education topics and is the author of several articles which have been published in professional journals.

Board of Trustees

Billy Don Anderson
Huston Cobb, Jr.
Bill Coussons
Gene Green
Phil Logan
Charlie Maner
Brenda Morrow
E.A. Nelson, Jr.
Ben T. Richardson

Sheffield, Ala.
Leighton, Ala.
Florence, Ala.
Muscle Shoals, Ala.
Haleyville, Ala.
Huntsville, Ala.
Russellville, Ala.
Florence, Ala.
Scottsboro, Ala.

Leo and Leo II A Living Tradition at UNA

The Lion has been the official mascot of athletic teams fielded by the University of North Alabama for more than 60 years. And since 1974, UNA has been the only school in the country with a live lion mascot living on campus.

Leo, a 35-pound cub at the time, came to the campus on July 22, 1974 and spent the next 14 years "roaring" UNA to victory.

Growing to a 540-pound supporter of the university, Leo lived in the center of the UNA campus as a majestic symbol of a proud university.

But on January 20, 1988, Leo died, leaving a void at the school.

In memory of the impact Leo had at UNA and on the community as a whole, a bronze monument was placed near the compound that served as his home for 14 years.

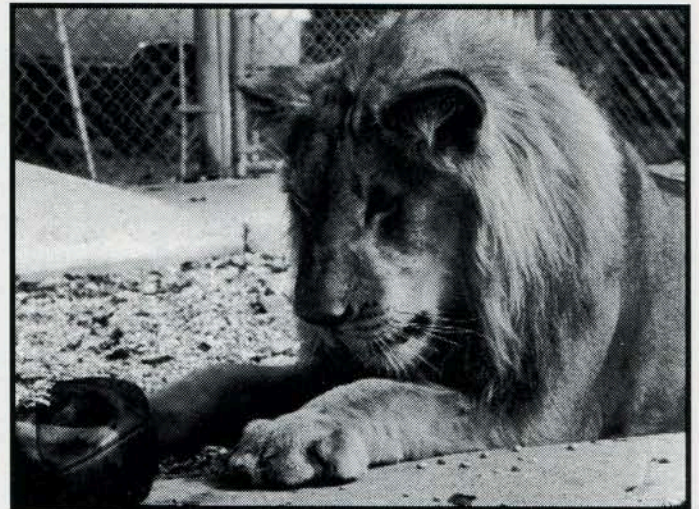
A great out-pouring of support from businesses and individuals in the Shoals area followed and resulted in Leo II being brought to UNA to take his place as "King of Lion Country."

Leo II, an orphaned lion cub, came to UNA in July of 1988 from a Texas ranch after his mother died giving birth.

Now living in the renovated compound that once housed Leo, Leo II has been hand-raised from birth and had grown to a weight of 600-pounds by his fifth birthday.

Leo II celebrates his birthday in April with a party that became an are-wide tradition with the original Leo and is now being carried on by the new "King of Lion Country."

UNA's other mascot, a student who dons a lion costume to cheer the Lions and entertain the crowd, also repre-



sents the school at athletic games and other university functions. Tryouts are held each year and the identity of the student is kept secret for as long as possible.



UNA Volleyball '93

Head Coach Ande Jones



With six Gulf South Conference championships and 342 wins over her 15 years as head coach for the Lady Lions volleyball team, Ande Jones has brought national recognition to UNA and has developed one of the top NCAA Division II programs in the country.

Since becoming head coach in 1979, Jones has won six of the 11 league championships since the GSC began competing in volleyball in 1982.

The Lady Lion program

has set the standard in the GSC, winning league championships in 1982, 1984, 1985, 1986, 1987 and 1988.

Jones has produced 28 All-GSC performers, and the conference championships claimed by the volleyball squads have helped pace the Lady Lions to winning five of the 11 GSC Women's All-Sports Trophies that have been awarded since 1982.

A native of Florence, Jones was a stellar athlete at Bradshaw High School before coming to UNA.

In college, she excelled in the classroom as well as on the court, being named to the Dean's List all four years of her career at UNA.

She also received the Eddie Flowers Award after her senior season as the Outstanding senior Physical Education Major.

Jones was all-state volleyball selection in her junior and senior seasons at UNA and was a member of UNA's state championship volleyball team in 1975.

Upon graduation, Jones went on to earn her Master's degree in Education from the University of Alabama, where she also served in the women's athletic program.

In 1976, as a graduate assistant at UNA, Jones served as head volleyball coach and led the Lady Lions to a 17-17 record and a third-place finish in the state tournament.

She then returned as head coach in 1979 and has had 11 winning seasons in 15 years at UNA and averages better than 23 wins per season.

She was selected GSC Volleyball Coach of the Year in

1983, 1985 and 1992.

Jones also coaches the UNA softball team and has led her squads to three GSC softball championships, in 1983, 1986

and 1987. She has a 168-169 record in her 10 seasons as softball coach.



In addition to those two coaching roles, Jones also serves UNA's athletic department as Senior Women's Administrator.

YEAR BY YEAR UNDER ANDE JONES

1976	17-17
1979	19-20
1980	24-13
1981	15-22
1982	29-10 GSC Champions
1983	32-8
1984	30-11 GSC Champions
1985	36-14 GSC Champions
1986	23-19 GSC Champions
1987	22-13 GSC Champions
1988	30-7 GSC Champions
1989	18-18
1990	20-17
1991	10-17
1992	17-15
Total	342-221

GSC Coach of the Year

1983, 1985, 1992



UNA Volleyball '93

JENNY BLASINGAME

**5-7, Sophomore, Hitter
Florence, Alabama**



UNA: Started for the Lady Lions in 1992...A one-year letterman at UNA... **HIGH SCHOOL:** Played at Bradshaw High School under coach Donna Boyd where the Bruins ranked third in the state in 1991 and were area champions in 1990...She made the all-area team as a junior and senior and was selected all-state in 1991...She was selected to the Mizuno All-Star Senior Team...Was named Scholar Athlete of the Year at Bradshaw in 1992... **PERSONAL:** Born on February 11, 1974...She is the daughter of Mr. and Mrs. Jim Blasingame and has one brother...Majoring in Biology.

LADONNA BRADFORD

**5-9, Sophomore, Middle
Hitter
Hatton, Alabama**



UNA: A one-year letterman at UNA... Started throughout the 1992 season and closed the season with a strong performance in the Gulf South Conference Tournament...

HIGH SCHOOL: Played for coach Becky Lee at Hatton High School where the Hornets were 2A state champions in 1990 and 1991...She was selected Class 2A State Most Valuable Player in 1991 and served as team captain, receiving the Spiker Award...Chosen all-county, all-area and all-state in 1990 and 1991...Was named to the Mizuno All-Star Senior Team...She also lettered in basketball and softball...She was chosen basketball team captain and received the Hustle and Defensive awards...Bradford helped lead the Hornets to the 2A state championship in softball in 1992... **PERSONAL:** Born on October 10, 1973...She is the daughter of Mr. and Mrs. Burrell Bradford and has four sisters...Majoring in Biology.

DAWN BURROUGHS

**5-8, Freshman, Left Hitter
Lawrenceburg, Tennessee**



HIGH SCHOOL: Played at Lawrence County High School...The Wildcats were first in the district and reached the region final...Selected all-region, all-district and Most Valuable Player...Also lettered in softball... **PERSONAL:** Born on April 17, 1975...Daughter of Jerry and Kathy Burroughs...Majoring in Physical Therapy.

LECHON CAMP

**5-11, Freshman, Right
Hitter
Lexington, Alabama**



HIGH SCHOOL: Played at Lexington High School under coach Amy Tidwell...The Golden Bears were state champions in 1990 and reached the state Final Four in 1991...Also won area and sub-state titles in 1991 and the area crown in 1992...Chosen all-county, all-area, and received the Lady Bear award...Chosen the basketball top Defensive Player in 1992 and top Offensive Player in 1993...Also received the Lady Bear award in basketball and softball in 1993...Graduated third in her senior class, a member of the National Honor Society and attended the National Young Leaders Conference... **PERSONAL:** Born on April 6, 1975...Daughter of Allen and Cathy Camp...Has one brother...Her cousin, Cody Gross, is the starting quarterback for the UNA football team...Majoring in Professional Biology.



SINCE 1830

UNIVERSITY
of NORTH
ALABAMA

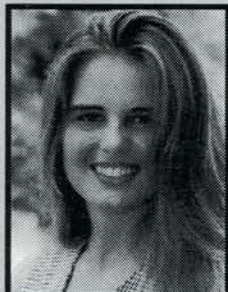


UNA Volleyball '93

KANDAS CAVENDER

**5-9, Junior, Setter-Hitter
Jacksonville, Alabama**

JUNIOR COLLEGE: Transferred to UNA from Gadsden State Community College...The Cardinals were third in the state her sophomore season...She was a two-time all-state pick and an all-region selection last season... **HIGH SCHOOL:** Played at Pleasant Valley High School under coach Sandy Hunter...In her senior season the Raiders won the county and area championships and were fourth in the state...In her junior year they also won the county and area titles and were second in the state...The Raiders also won county and area championships in her freshman and sophomore years, finishing third in the state in 1987 and winning the state championship in 1988...Chosen all-county, all-area and all-state as a junior and all-county, all-area and all-state and area most valuable player...Also played basketball and softball...She was a member of three county and area championship basketball teams, was selected all-area as a junior and senior and helped the team to the state Final Four as a senior...In softball, she lettered five years and was a member of five state championship teams...She was chosen state MVP as a junior and was a three-time all-area and two-time all-sectional selection...**PERSONAL:** Born on September 7, 1973...Daughter of Lean and James Thomason...Has one sister...Majoring in History.



ANGELA HILL

**5-9, Junior, Middle Hitter
Lexington, Alabama**

UNA: A two-year letterman at UNA... Was used primarily on the right side in 1992 and saw starting action... **HIGH**

SCHOOL: Played for the Lexington Golden Bears under Connie McGuire where she was a member of two state championship teams...The Golden Bears also captured the Briarwood Tournament and Donoho Tournament titles during her high school career...Lexington won 30 straight games during the 1990 season and posted a 45-5 record...She was selected all-state, all-area and all-county in 1989 and 1990...Also lettered in basketball where she was chosen all-area and all-county...**PERSONAL:** Born on August 29, 1973...Daughter of Mr. and Mrs. Randal Hill and has one sister...Majoring in Nursing.



DENA NICHOLSON

**5-9, Senior, Hitter
Flat River, Missouri**

UNA: Selected All-Gulf South Conference and was a GSC All-Tournament selection as well as a junior in 1992...Was a first-team Academic All-GSC selection last season with a 3.50 grade point average in Social Work...Led the GSC in attack percentage with 489 kills and just 180 errors in 1,150 total attempts for a 26.9 percentage...Ranked seventh in the GSC in digs with 217 in 116 games for a 1.87 average...A one-year letterman at UNA... **JUNIOR COLLEGE:** Played under Jo Ellen Stringer at Jefferson Community College in Missouri where the Vikings were ranked fifth in the nation in 1990 and ninth in the nation in 1991...While at JCC she made all-district and also played basketball and was chosen all-conference and all-region... **HIGH SCHOOL:** Played at Central High School and helped lead the Rebels to conference and sectional championships in 1990...Selected all-conference and all-region in 1989 and all-conference, all-region, and all-district in 1990...Also lettered in basketball four years and track two years... **PERSONAL:** Born on August 7, 1972...She is the daughter of Mr. and Mrs. Tom Nicholson and has one sister...Majoring in Social Work.



GINA RADKE

**5-11, Freshman, Middle Hitter
Birmingham, Alabama**

HIGH SCHOOL: Played at Thompson High School under coach Debbie Seales...Was middle blocker and outside hitter for the Warriors as they reached the 1992 state playoffs...Selected all-county as a senior, Scholar Athlete of the Year and Most Valuable Player...She was All-Shelby County in 1992, Scholar Athlete of the Year in 1993, and was a Shelby County All-Tournament team selection in 1992...**PERSONAL:** Born on October 15, 1975...Daughter of Richard and Pamela Nelson...Has one brother...Her cousin Brad plays AA baseball in the Minnesota Twins organization...Majoring in Nutritional Science.





UNA Volleyball '93

DEANA TERRY
5-2, Senior Setter
Desoto, Missouri



UNA: An An All-Gulf South Conference and GSC All-Tournament selection as a junior last season...Finished second in the GSC in assists with 1,060 in 116 games for a 9.13 average...A one-year letterman at UNA... **JUNIOR COLLEGE:** Played at Jefferson Community College along with UNA teammate Dena Nicholson...Chosen all-conference, all-district and to the JCCF Dream Team...Also played basketball at JCC...She is the daughter of Mr. and Mrs. Dean Terry and has two brothers...She enjoys competing in rodeos... **HIGH SCHOOL:** Played at DeSoto High School and was a two-time all-conference and all-district selection...Also played basketball and ran track and was a member of two state championship basketball teams in 1988 and 1989... **PERSONAL:** Born on February 10, 1972...Daughter of Dean and Judie Terry...Has two brothers...Majoring in Nursing.

TAMMY THOMPSON
5-11, Freshman, Middle Hitter
Lexington, Alabama



HIGH SCHOOL: Played at Lexington High School under coach Amy Tidwell...The Lady Bears won the 1989 county, area and state championship, the 1990 county, area and state championships, the 1991 county and area championships and reached the state Final Four, and the 1992 county and area championships....Selected to the all-tournament teams at the 1991 Athen's Optimist Club Tournament and the Donoho Invitational and the 1992 Athen's Optimist Club Tournament...Selected area MVP and received the Hustle Award in 1991-92...In basketball in 1991-92 and 1992-93 she was all-county, all-area and all-state...She was also all-county and all-area in softball...Salutatorian of senior class, a National Army Reserve Scholar Athlete, President of the National Honor Society, a Bryant-Jordan Scholar Athlete, received the Woodmen of the World U.S. History award, was a Girl's State delegate and a member of the Math team... **PERSONAL:** Born on January 11, 1975...Daughter of Wallace and Polly Thompson...Has two sisters...Major is undecided.

KEENA WALLS
5-9, Junior, Setter
Altoona, Alabama



UNA: Platooned with Angela Hill on the right side in 1992...Made the transition from setter to a hitting role...A two-year letterman at UNA in volleyball... **HIGH SCHOOL:** Played for Becky Vice at West End High School where she helped lead her team to three straight state championships, three county championships and three area championships...She was chosen all-county, all-area and all-state twice...She made the All-West End Invitational Tournament team and was selected state and county Most Valuable Player...Also lettered in basketball and softball...Chosen all-county and all-area in basketball...She was a member of the Beta Club, Mu Alpha Theta and the Letterman's club at West End...Ranked third in her graduating class... **PERSONAL:** Born on January 19, 1973...Daughter of Robert and Nancy Walls...Has one sister and one brother...Majoring in Sports Medicine.



Veronica Starr
Part-time Assistant Coach



Jim Montero
Student Assistant Coach



UNA Volleyball '93

1992 In Review

The 1992 season was one of streaks for the University of North Alabama Lady Lions as they fell just short of yet another Gulf South Conference volleyball title.

The Lady Lions opened the season with four straight wins, then had five game losing and winning streaks at mid-season. But UNA turned it on again down the stretch and put together a 7-2 GSC record entering the conference tournament.

An opening round loss to Livingston was overcome with wins over Lincoln Memorial and Mississippi College. But a five-game loss to Livingston in the semifinals denied the Lady Lions a chance to play for their seventh league title.

Junior transfers Deana Terry and Dena Nicholson were both named to the All-Gulf South Conference and All-GSC Tournament teams. Returning standout Stephanie Copeland joined them on the All-GSC squad, and Copeland and Nicholson earned Academic All-GSC honors as well.

Nicholson led the GSC in attack percentage at 26.9, with 489 kills in 1,150 attempts. She was also seventh in the league in digs, and Terry finished second in the GSC in assists with 1,060 for a 9.13 average.

Copeland was third in attack percentage and freshman Jenny Blasingame was ninth.

Ande Jones was named the GSC Coach of the Year for the third time in volleyball after taking the young Lady Lions to 17-15 record and the third place GSC finish.

LaDonna Bradford was selected as the team's Most Improved Player, while Nicholson received the Offensive Award and Copeland the Defensive Award.



1992 Volleyball Results

Record 17-15 * Third in GSC Tournament
(GSC: 7-2, Home: 7-2, Away: 6-3, Neutral: 4-10)

at Freed-Hardeman	W	4-15, 15-8, 15-4, 15-7
at Trevecca	W	13-15, 15-2, 15-7, 15-3
at Alabama-Huntsville	W	15-5, 11-15, 15-13, 6-15, 16-14

MUW INVITATIONAL

Mississippi College	W	15-4, 13-15, 15-2, 15-12
Huntingdon	L	9-15, 6-15, 12-15
Miss. Univ. for Women	L	16-14, 6-15, 9-15, 4-1

*Mississippi College	W	15-6, 15-3, 15-7
----------------------	---	------------------

ALABAMA-HUNTSVILLE INVITATIONAL

Jacksonville State	L	6-15, 8-15, 2-15
Tusculum College	L	11-15, 15-11, 5-15, 9-15
Presbyterian College	L	7-15, 10-15, 14-16
Christian Brothers	L	5-15, 10-15, 15-9, 14-16

*Jacksonville State	L	5-15, 15-10, 10-15, 15-17
*West Georgia	W	15-9, 15-10, 10-15, 15-1
at Samford	L	6-15, 10-15, 10-15
*at Livingston	W	15-10, 15-6, 15-8
*at Mississippi College	W	15-13, 15-5, 14-16, 15-10
Trevecca	W	15-7, 15-7, 15-8
Freed-Hardeman	W	15-8, 15-6, 15-3
Huntingdon	W	15-13, 16-14, 8-15, 4-15, 16-14
Alabama-Huntsville	L	4-15, 4-15, 15-10, 8-15

WEST GEORGIA INVITATIONAL

*West Georgia	W	15-7, 14-16, 15-9, 17-15
Jacksonville State	L	7-15, 14-16, 6-15
South Carolina-Aiken	L	6-15, 15-11, 6-15, 10-15
Milligan	W	15-12, 15-10, 15-8
Montevallo	L	4-15, 9-15, 6-15

*Lincoln Memorial	W	15-9, 14-16, 15-3, 15-2
*at Jacksonville State	L	10-15, 8-15, 6-15
*Livingston	W	15-8, 15-11, 15-10

GULF SOUTH CONFERENCE TOURNAMENT

*Livingston	L	10-15, 11-15, 15-13, 8-15
*Lincoln Memorial	W	15-8, 15-6, 15-4
*Mississippi College	W	15-9, 7-15, 15-4, 17-15
*Livingston	L	14-16, 15-11, 16-14, 4-15, 13-15

* Gulf South Conference matches

1992 Volleyball Honors

Gulf South Conference Coach of the Year:

Ande Jones, UNA

All-GSC:

Deana Terry, Stephanie Copeland, Dena Nicholson

GSC All-Tournament:

Deana Terry, Dena Nicholson



UNA Volleyball '93

Lady Lions Preview

As the only school competing in the Gulf South Conference this season that has ever won a league volleyball championship, the University of North Alabama hopes to regain its leadership role in a league that has undergone a major transition.

Since the GSC began competing in women's sports in 1982, only three schools have ever won the league's volleyball championship, with UNA leading the way with six titles, followed by Troy State and Jacksonville State.

But with the later two now having departed the GSC for moves to Division I, UNA hopes to again seize the momentum that would give the Lady Lions their first GSC crown since 1988.

Standing in the way of those hopes, however, is a new lineup of GSC opponents, including the University of Alabama-Huntsville, the University of Central Arkansas, Henderson State University and the Mississippi University for Women. Those, in addition to Lincoln Memorial University that came into the GSC in 1992-93, will give the league nine schools competing for the volleyball championship.

"It will be a different league this year," said UNA head coach **Ande Jones**. "The GSC is always tough anyway, plus both of the Arkansas schools have been very strong in their league's and divisions, and we know that MUW is always strong. And even with UAH's program as young as it is, they had a very good team last season.

"In the long run, the league will get more regional and national respect because of the programs we've added and the traditions they have," Jones added.

Leading the way for UNA will be a pair of All-GSC selections in seniors **Dena Nicholson** of Flat River, Mo., and **Deana Terry** of DeSoto, Mo.

Nicholson, who was also an

Academic All-GSC selection, led the GSC in attack percentage last season, while Terry was second in assists.

"We have an excellent nucleus of returning players. Probably the best group we have had in quite some time," said Jones. "We have the two All-GSC players to look to for leadership and to help bring the freshmen along, but we also have some young players capable of stepping in and playing and that will give our veterans some competition for their spots."

Also returning are juniors **Angela Hill** of Lexington, Ala., and **Keena Walls** of Altoona, Ala., and sophomores **Jenny Blasingame** of Florence and **LaDonna Bradford** of Hatton, Ala.

Newcomers include four freshmen and one junior college transfer.

The lone transfer is setter-hitter **Kandas Cavendar** of Gadsden State Community College.

The incoming freshmen include **Tammy Thompson** and **Lechon Camp** of Lexington, **Gina Radke** of Thompson High School in Birmingham, and **Dawn Burroughs** of Lawrence County High School in Lawrenceburg, Tenn.

North Alabama finished 17-15 last season and earned a third place finish in the GSC tournament. With such a young squad, those numbers were good enough to earn Jones her third GSC Coach of the Year award in volleyball.

The Lady Lions will open their season on Sept. 10 at the Christian Brothers Tournament in Memphis.

It will be the first of five tournaments the Lady Lions will play in, in addition to 15 dual matches.

UNA will host the 12th Gulf South Conference Tournament in Flowers Hall on Nov. 12-13.

Alphabetical Roster

Player	No.	Ht	Class	Pos.	Hometown
Jenny Blasingame	3	5-7	SO	H	Florence, Ala.
LaDonna Bradford	14	5-9	SO	MH	Hatton, Ala.
Dawn Burroughs	12	5-8	FR	LH	Lawrenceburg, Tenn.
Lechon Camp	24	5-11	FR	RH	Lexington, Ala.
Kandas Cavender	16	5-9	JR	S-H	Jacksonville, Ala.
Angela Hill	22	5-9	JR	MH	Lexington, Ala.
Dena Nicholson	17	5-9	SR	H	Flat River, Mo.
Gina Radke	4	5-11	FR	MH	Birmingham, Ala.
Deana Terry	10	5-2	SR	S	Desoto, Mo.
Tammy Thompson	42	5-11	FR	MH	Lexington, Ala.
Keena Walls	11	5-9	JR	S	Altoona, Ala.

Numerical Roster

No.	Player	Ht	Class	Pos.	Hometown
3	Jenny Blasingame	5-7	SO	H	Florence, Ala.
4	Gina Radke	5-11	FR	MH	Birmingham, Ala.
10	Deana Terry	5-2	SR	S	Desoto, Mo.
11	Keena Walls	5-9	JR	S	Altoona, Ala.
12	Dawn Burroughs	5-8	FR	LH	Lawrenceburg, Tenn.
14	LaDonna Bradford	5-9	SO	MH	Hatton, Ala.
16	Kandas Cavender	5-9	JR	S-H	Jacksonville, Ala.
17	Dena Nicholson	5-9	SR	H	Flat River, Mo.
22	Angela Hill	5-9	JR	MH	Lexington, Ala.
24	Lechon Camp	5-11	FR	RH	Lexington, Ala.
42	Tammy Thompson	5-11	FR	MH	Lexington, Ala.



UNA Volleyball '93

The Gulf South Conference Opponents

Alabama-Huntsville

Location: Huntsville, Alabama
President: Dr. Frank Franz
Enrollment: 8,000
Colors: Blue and White
Nickname: Chargers
Head Volleyball Coach: Connie Nicholson
1992 Record: 30-11
SID: Julie Woltjen
SID Office Phone: (205) 895-6144

Central Arkansas

Location: Conway, Arkansas
President: Dr. Winfred Thompson
Enrollment: 9,600
Colors: Purple and Gray
Nickname: Bears
Head Volleyball Coach: Darryl Walsh
1992 Record: 25-10
SID: Darryl Walsh
SID Office Phone: (501) 450-5244

Henderson State

Location: Arkadelphia, Arkansas
President: Dr. Charles D. Dunn
Enrollment: 4,300
Colors: Red and Gray
Nickname: Reddies
Head Volleyball Coach: Rhonda Thigpen
1992 Record: 48-12
SID: Steve Eddington
SID Office Phone: (501) 246-5511, Ext 3118

Lincoln-Memorial

Location: Harrogate, Tennessee
President: Dr. Scott Miller
Enrollment: 1,900
Colors: Blue and Gray
Nickname: Railsplitters
Head Volleyball Coach: Terri Bennett
1992 Record: 1-26
SID: Tom Amis
SID Office Phone: (615) 869-6236

Livingston

Location: Livingston, Alabama
President: Dr. James Bob Drake
Enrollment: 2,100
Colors: Red and White
Nickname: Tigers
Head Volleyball Coach: Jose Rivera
1992 Record: 8-17
SID: Dee Outlaw
SID Office Phone: (205) 652-9661, Ext 370

Mississippi College

Location: Clinton, Mississippi
President: Dr. Lewis Nobles
Enrollment: 4,000
Colors: Navy Blue and Old Gold
Nickname: Choctaws
Head Volleyball Coach: Rowanna Dozier
1992 Record: 11-32
Women's SID: Susan Tyler
SID Office Phone: (601) 925-3255

Miss. University for Women

Location: Columbus, Mississippi
President: Dr. Clyda S. Rent
Enrollment: 2,400
Colors: Navy Blue and Columbia Blue
Nickname: Blues
Head Volleyball Coach: Samye Johnson
1992 Record: 30-12
SID: Keith Gaskin
SID Office Phone: (601) 844-3705

West Georgia

Location: Carrollton, Georgia
President: Dr. Bruce Lyon
Enrollment: 7,717
Colors: Red and Blue
Nickname: Braves
Head Volleyball Coach: Robbie Cameron
1992 Record: 9-23
SID: Ken Skinner
SID Office Phone: (404) 836-6542



UNA Volleyball '93

Non-Conference Opponents

Cumberland University

Location: Lebanon, Tennessee

President: Dr. Ray C. Phillips

Enrollment: 900

Colors: Maroon and Gray

Nickname: Volleydawgs

Head Volleyball Coach: Dwayne Deering

1992 Record: 30-13

SID: Dave Sherman

SID Office Phone: (615) 444-2562

Huntingdon College

Location: Montgomery, Alabama

President: Dr. Bigham

Enrollment: 750

Colors: Red and White

Nickname: Hawks

Head Volleyball Coach: Cecilla Patterson

SID: Matt Clark

SID Office Phone: (205) 265-0511

Jacksonville State

Location: Jacksonville, Alabama

President: Dr. Harold McGee

Enrollment: 8,700

Colors: Red and White

Nickname: Gamecocks

Head Volleyball Coach: Janice Slay

1992 Record: 38-7

SID: Mike Galloway

SID Office Phone: (205) 782-5377





UNA Volleyball '93

The History of Lady Lions Volleyball

The volleyball program at the University of North Alabama began in 1969 as a part of the Physical Education Department and was known as extramurals. In those early years the Lady Lion teams competed against all of the state schools as a member of the **Association for Intercollegiate Athletics for Women**. UNA competed in the Northern District with Jacksonville State, Alabama A&M, Montevallo, Southern Benedictine and Stillman.

In 1975, in the seventh year of volleyball competition at the school, UNA claimed the **Alabama State Championship**, downing the University of Alabama 1-15, 15-12, 15-6 in the championship match for the title. The Lady Lions downed Troy State, Auburn and Montevallo in the preliminary matches before dumping Alabama.

Don McBrayer, a physical education instructor with the university then and now, served as the head coach for that first championship squad.

Lillian Goodlow, a standout in basketball and volleyball at Bradshaw High School in Florence, became the first female athlete to be awarded an athletic scholarship to UNA in the summer of 1976.

Another major step came in 1982, when the **Gulf South Conference** began awarding championships in women's

sports. The UNA volleyball team claimed the first official league title for women with a 3-0 sweep of Jacksonville State in the championship match.

The Lady Lions hosted the tournament and won all six of their matches en route to the championship.

UNA added to that GSC tradition by winning six of the first seven GSC volleyball championships, claiming the crown in 1984, 1985, 1986, 1987 and 1988 as well.

Three Lady Lion volleyball

players, **Julie Jones**, **Shea Lindley** and **Pasola Swoope**, were members of four consecutive GSC championship teams each during their playing days at UNA.

Heading the list of key builders of the UNA volleyball tradition is **Ande Jones**, who was a four-year letterman in the 1970's, was an All-State member of the 1975 state championship team, then returned as a graduate coach in 1976 and as a full-time coach in 1979.



UNA's first championship team 1975 AIAW State Champions

Team Members: From left, Debbie Drake, Debbie Lee, Pattie Fitzhugh, Jan Lough, Becky Daniel, Beth Gregory, Jo Ann Parnell, Helen Lewis, Nancy Esslinger, Ande Jones, Sheliah Bankhead, Diane Lamar.



UNA Volleyball '93

Lady Lions Year-by-Year

<u>Year</u>	<u>Rec.</u>	<u>Honors</u>	<u>Coach</u>
1969			William Glidewell
1970			William Glidewell
1971			William Glidewell
1972		3rd in state	Gay Sievers
1973		3rd in state	Gay Sievers
1974	28-8	2nd in state	Noona Kennard
1975	24-8	State Champions	Don McBrayer
1976	17-17	3rd in state	Ande Jones
1977	10-17		Sharron Perkins
1978	3-23		Sharron Perkins
1979	19-20		Ande Jones
1980	24-13		Ande Jones
1981	15-22		Ande Jones
1982	29-10	GSC Champions	Ande Jones
1983	32-8		Ande Jones
1984	30-11	GSC Champions	Ande Jones
1985	36-11	GSC Champions	Ande Jones
1986	23-19	GSC Champions	Ande Jones
1987	22-13	GSC Champions	Ande Jones
1988	30-7	GSC Champions	Ande Jones
1989	18-18		Ande Jones
1990	20-17		Ande Jones
1991	10-17		Ande Jones
1992	17-15		Ande Jones



Sharron Perkins



Don McBrayer



Ande Jones

Milligan	1	0
Mississippi College	17	0
Mississippi State	1	2
Mississippi-Women	7	34
Missouri-St. Louis	0	3
Moorehead State	0	1
Montevallo	6	23
New Haven	1	0
New Orleans	1	0
Nicholls State	0	2
North Carolina-Charlotte	0	1
North Carolina-Greensboro	2	0
North Dakota	1	0
North Georgia	1	0
Northern Kentucky	0	1
Northeast Missouri State	0	1
Oglethorpe	1	0
Presbyterian	1	2
Rollins College	5	1
St. Augustine's	2	0
St. Joseph's	1	0
Sam Houston State	0	1
Samford	2	1
School of Ozarks	1	0
South Carolina	0	1
South Carolina-Aiken	1	1
Southern Ill.-Edwardsville	1	0
Southern Mississippi	2	0
Southeast Missouri State	0	4
Southeastern Louisiana	0	1
Southwest Baptist	1	1
Southwestern	1	0
Stephen F. Austin	1	0
Stillman	6	0
Tampa	0	4
Tennessee-Chattanooga	3	0
Tennessee-Martin	30	14
Tennessee Tech	1	3
Texas-Women	2	0
Trevecca Nazarene	3	0
Troy State	22	10
Tusculum	0	2
Tuskegee	5	0
Univ. of the South	1	0
West Georgia	21	6
Western Kentucky	3	0
William Woods	1	0
TOTALS	325	204

Lady Lions vs. All Opponents (Since 1979)

<u>Opponent</u>	<u>Won</u>	<u>Lost</u>
Air Force	1	1
Alabama A&M	5	4
Alabama-Birmingham	6	3
Alabama-Huntsville	8	3
Alabama State	6	8
Alaska-Fairbanks	1	0
Appalachian State	0	1
Arkansas-Little Rock	0	1
Auburn	0	1
Austin Peay	3	1
Barry	0	1
Bellarmine	0	1
Berry	1	0
Bryan College	1	0
Christian Brothers	3	1
Columbus	3	0
Covenant	1	0
Drury	1	0
Eckerd	1	0
Florida Atlantic	0	1
Florida College	1	0
Florida International	2	1
Florida Southern	1	6
Freed-Hardeman	2	0
Georgia	0	5
Georgia Southern	1	0
Georgia Tech	2	1
Huntingdon	20	3
Indianapolis	1	0
Jackson State	3	0
Jacksonville	5	1
Jacksonville State	36	26
James Madison	1	0
Judson	4	0
Lake City College	0	1
Lawson State	2	0
Lincoln Memorial	2	0
Livingston	30	8
McKendree	1	0
Memphis State	0	2
Middle Tennessee State	14	1

Lady Lions Record Book

Most Wins in a Season: 36 in 1985 (lost 11)
 Most Losses in a Season: 23 in 1978 (won 3)
 Most Matches Played: 47 in 1985 (won 36, lost 11)



UNA Volleyball '93

Lady Lion Honors

AIAW All-State

- 1974 Jan Lough
- 1975 Ande Jones
- 1977 Debbie Drake

AIAW All-State Tournament

- 1976 Debbie Drake
- 1977 Debbie Drake

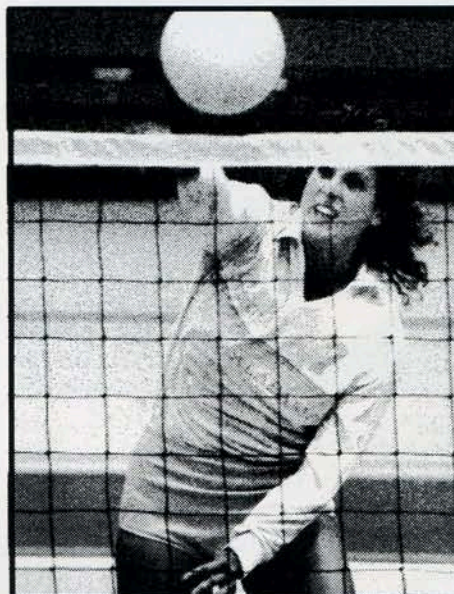
All-Gulf South Conference

- 1982 Mel Garman
- 1982 Doris Jones
- 1982 Chiquita Moore
- 1983 Jill Flippo
- 1983 Chiquita Moore
- 1984 Doris Jones
- 1984 Renita Allen
- 1984 Fran Orlando
- 1985 Fran Orlando
- 1985 Renita Allen
- 1985 Kathy Stovall
- 1986 Vicki Mesplay
- 1986 Audrey Porter
- 1987 Julie Jones
- 1987 Stacey Westmoreland
- 1987 Pasola Swoope
- 1988 Stacey Westmoreland
- 1988 Kristie Grant
- 1989 Helen Frazier
- 1989 Kristie Grant
- 1990 Kisha Love
- 1990 Kristie Grant
- 1991 Kisha Love
- 1991 Monica Gray
- 1992 Deana Terry
- 1992 Dena Nicholson
- 1992 Stephanie Copeland



Jones Jersey Retired

In 1984, University of North Alabama senior Doris Jones became the first female athlete in school history to be named to the All-Gulf South Conference team for three consecutive years. A three-year letterman from 1982-84, Jones also helped take the Lady Lions to GSC volleyball championships in 1982 and 1984. For her role in helping solidify the Lady Lions winning tradition, her jersey was retired on May 6, 1985. Above, Jones (left) receives her retired jersey from head coach Ande Jones.



GSC All-Tournament

- 1984 Doris Jones
- 1984 Denise Pollard
- 1984 Gloria Walker
- 1985 Kathy Stovall
- 1985 Julie Jones
- 1985 Fran Orlando
- 1985 Vicki Mesplay
- 1986 Vicki Mesplay
- 1986 Pasola Swoope
- 1987 Pasola Swoope
- 1988 Pasola Swoope
- 1988 Stacey Westmoreland
- 1989 Helen Frazier
- 1989 Kristie Grant
- 1990 Heather Middleton
- 1990 Monica Gray
- 1991 Monica Gray
- 1991 Stephanie Copeland
- 1992 Deana Terry
- 1992 Dena Nicholson

Academic All-GSC

- 1983 Joy Hubbard
- 1986 Julie Jones
- 1986 Lori Spaulding
- 1986 Audrey Porter
- 1987 Julie Jones
- 1988 Jennifer Bevis
- 1989 Kristie Grant
- 1990 Kristy Hunter
- 1991 Daphne Smith
- 1991 Jeannie Hamm
- 1992 Dena Nicholson
- 1992 Stephanie Copeland

All-South Region

- 1986 Vicki Mesplay
- 1987 Stacey Westmoreland
- 1987 Pasola Swoope
- 1991 Kisha Love

GSC Coach of the Year

- 1983 Ande Jones
- 1985 Ande Jones
- 1992 Ande Jones



UNA Volleyball '93

Lady Lion Gulf South Conference Champions



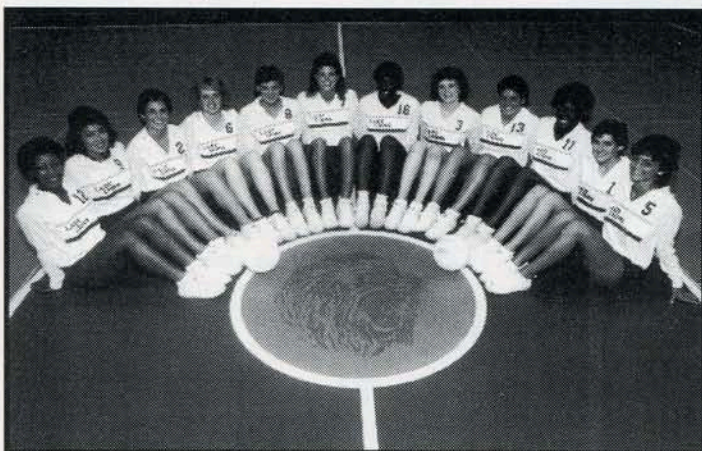
1982 Gulf South Conference Champions

Team members: Jill Flippo, Mel Garman, Joy Hubbard, Doris Jones, Brenda Lewis, Chiquita Moore, Kathy Stovall, Stephanie Taramangos, Debbie Williams, Sandy Witt



1986 Gulf South Conference Champions

Team members: Frances Bracken, Helen Frazier, Mary Kay Harrison, Julie Jones, Shea Lindley, Vicki Mesplay, Audrey Porter, Pam Pruitt, Jill Robertson, Lori Spaulding, Pasola Swoope, Amy Watkins



1984 Gulf South Conference Champions

Team members: Renita Allen, Frances Bracken, Andrea Bryner, Doris Jones, Julie Jones, Chiquita Moore, Fran Orlando, Denise Pollard, Pam Pruitt, Tommie Rowe, Kathy Stovall, Gloria Walker



1987 Gulf South Conference Champions

Team members: Jennifer Bevis, Helen Frazier, Mary Kay Harrison, Julie Jones, Shea Lindley, Wendy Skinner, Pasola Swoope, Amy Watkins, Stacey Westmoreland



1985 Gulf South Conference Champions

Team members: Renita Allen, Frances Bracken, Mary Kay Harrison, Julie Jones, Shea Lindley, Vicki Mesplay, Fran Orlando, Audrey Porter, Pam Pruitt, Tommie Rowe, Lori Spaulding, Kathy Stovall, Pasola Swoope



1988 Gulf South Conference Champions

Team members: Jennifer Bevis, Melanie Crumpton, Helen Frazier, Kristie Grant, Shea Lindley, Monica Moran, Wendy Skinner, Pasola Swoope, Stacey Westmoreland



UNA Volleyball '93

Lady Lions Volleyball Roster Since 1972

Lisa Allen	1989, 90
Renita Allen	1983, 84, 85
Terri Angel	1978, 79, 80
Sheliah Bankhead	1974, 75, 76
Pam Benton	1979, 80
Kelly Best	1980, 81
Jennifer Bevis	1987, 88
Jenny Blasingame	1992
Winnie Boyd	1972
Frances Bracken	1984, 85, 86
LaDonna Bradford	1992
Liz Brannum	1972
Natalie Bryant	1979, 80
Andrea Bryner	1984
Tricia Burcham	1991
Betty Byrd	1972
Robbie Cameron	1977, 78, 79, 80
Teena Campbell	1976
Neva Cockrell	1973
Steff Copeland	1991, 92
Melanie Crumpton	1988
Becky Daniel	1973, 74, 75, 76
Kim Dean	1979, 80
Debbie Drake	1974, 75, 76, 77
Marla Embry	1981
Nancy Esslinger	1974, 75
Debbie Farrell	1972, 73
Cathy Farris	1973
Pattie Fitzhugh	1975
Jill Flippo	1982, 83
Helen Frazier	1986, 87, 88, 89
Mel Garman	1979, 80, 81, 82
Cheryl Garvich	1973
Lillian Goodloe	1976
Kristie Grant	1988, 89, 90
Moncia Gray	1990, 91
Beth Gregory	1975, 76, 77
Julie Griffin	1990
Debbie Hammond	1981
Jeanne Hamm	1991
Mary Kay Harrison	1985, 86, 87
Angela Hill	1991, 92
Joy Hubbard	1981, 82, 83
Kristie Hunter	1989, 90
Ande Jones	1972, 73, 74, 75
Doris Jones	1982, 83, 84
Julie Jones	1984, 85, 86, 87
Phylis Joyner	1977
Debbie Kelly	1972
Diane Lamar	1975, 76
Debbie Lee	1973, 74, 75
Brenda Lewis	1981, 82
Helen Lewis	1975, 76
Shea Lindley	1985, 86, 87, 88
Dana Long	1989, 90
Jan Lough	1974, 75
Kisha Love	1990, 91
Kathy Lovell	1989
Joyce Malone	1977
Vicki Mardis	1973
Dixie McCreless	1991
Vicki Mesplay	1985, 86
Heather Middleton	1990
Chiquita Moore	1981, 82, 83, 84
Jackie Moore	1976, 77
Moncia Moran	1988
Stacey Mosley	1989
Kim Newton	1983
Pam Newton	1973
Dena Nicholson	1992
Fran Orlando	1984, 85
Janice Pace	1972, 73, 74
Suzy Page	1991, 92
Janet Parker	1973
Jo Ann Parnell	1972, 73, 74, 75
Denise Pollard	1983, 84
Audrey Porter	1985, 86
Donna Prater	1981
Pam Pruitt	1984, 85, 86
Eddie Putman	1979



Mel Garman



Chiquita Moore



Julie Jones



Shea Lindley

Debra Renkus	1977, 78, 80
Jill Robertson	1986
Tommie Rowe	1983, 84, 85
Cheryl Sandy	1976
Jeri Shepherd	1973
Wendy Skinner	1987, 88, 89
Donna Sleeper	1974
Daphne Smith	1991, 92
Lori Spaulding	1985, 86
Renee Springer	1977
Kathy Stovall	1982, 83, 84, 85
Christine Stover	1990, 91
Jane Stumpe	1977, 78, 79, 80
Pasola Swoope	1985, 86, 87, 88
Stephanie Taramangos	1982
Deana Terry	1992
Jalana Thigpen	1978, 79
Mona Tidwell	1972
Martha Varnell	1977, 78, 79, 80
Elizabeth Vickery	1981
Kenna Walls	1991, 92
Gloria Walker	1984
Amy Watkins	1986, 87, 89
Susan Werner	1983
Stacey Westmoreland	1987, 88
Febra White	1978
Debbie Williams	1980, 81, 82
Sandy Witt	1981, 82
Kim Wood	1978, 79, 80, 81

Four-Year Players

Since 1979, seven Lady Lion players have lettered four years in volleyball. They are Helen Frazier, Mel Garman, Julie Jones, Shea Lindley, Chiquita Moore, Kathy Stovall and Pasola Swoope. Of those seven, Jones, Lindley and Swoope were members of four consecutive Gulf South Conference championship squads.

74 and Counting

Since 1979, 74 different players have lettered in volleyball for the Lady Lions. Of those, 48 players lettered in more than one season for the Lady Lions.

19 Have Been All-GSC

Of the 74 letter winners in volleyball at UNA since 1979, 19 players have been selected as first-team All-Gulf South Conference, with eight of those being named All-GSC more than once.

From Player to Coaches

Three former Lady Lion volleyball players were head volleyball coaches at Gulf South Conference schools in 1992-93. Ande Jones was a Lady Lion letterman from 1972-75 and is the current head coach at North Alabama. Janice Pace Creel lettered from 1971-74 and is the current head volleyball coach at Jacksonville State. Robbie Cameron lettered at UNA from 1978-80 and is the current head volleyball coach at West Georgia College.



UNA Volleyball '93

ALL-TIME LADY LION SCORES SINCE 1979

1979

(Won 19, Lost 20)

Stillman	3-0
Huntingdon	2-0
Alabama State	1-3
Alabama A&M	3-2
Mississippi State	0-2
Georgia	0-2
Alabama-Birmingham	2-0
Auburn	0-3
Alabama-Birmingham	3-1
Georgia	0-3
Alabama	3-0
Montevallo	0-3
Huntingdon	2-0
Alabama State	2-0
Jacksonville State	3-2
Berry College	2-1
Stillman	3-0
Tennessee-Martin	1-3
Montevallo	3-1
Presbyterian	2-0
Tennessee-Chattanooga	2-0
Georgia	1-2
West Georgia	1-2
North Carolina-Charlotte	0-2
West Georgia	2-1
Troy State	2-1
Judson	2-0
Appalachian State	1-2
Moorehead State	0-2
Covenant College	2-0
Tennessee Tech	1-2
Austin Peay	0-2
Jacksonville State	2-3
Judson	2-0
Troy State	1-2
Memphis State	0-2
STATE TOURNAMENT	
Alabama State	0-3
Judson	3-0
Jacksonville State	1-3

1980

(Won 24, Lost 13)

Tuskegee	2-0
Memphis State	0-2
Alabama A&M	1-3
Huntingdon	2-1
Montevallo	3-2
Jacksonville State	3-2
Alabama-Birmingham	1-2
Stillman	3-0
Lawson State	2-1
Livingston	3-1
Troy State	1-2
Columbus College	2-0
Montevallo	1-3
New Orleans	2-0
Jackson State	2-0
Nicholls State	0-2
Southeastern Louisiana	0-2
Nicholls State	0-2
Alabama-Birmingham	2-0
Stillman	3-1
Livingston	3-0
Alabama State	3-0
Tennessee-Martin	3-0
Huntingdon	2-0
Alabama State	2-1
Jacksonville State	2-3
Judson	2-1
Alabama A&M	3-1
Lawson State	2-0
Georgia Tech	2-0
Montevallo	0-2
Tennessee-Chattanooga	2-0
Georgia	0-2
STATE TOURNAMENT	
Troy State	2-1
Jacksonville State	0-2
Alabama A&M	2-1
Alabama State	1-2



Debbie Williams



Terri Angel



Hellen Frazier

1981

(Won 15, Lost 22)

Alabama State	0-2
Huntingdon	0-2
Tuskegee	2-0
Alabama A&M	0-2
Stillman	2-0
Livingston	2-0
Stillman	2-0
Alabama-Birmingham	0-2
Mississippi-Women	0-2
Tennessee-Martin	2-1
Tennessee Tech	1-2
Western Kentucky	2-0
Montevallo	0-2
Montevallo	1-2
Huntingdon	2-0
Columbus College	2-0
Jacksonville State	1-2
Florida College	2-1
North Georgia	2-0
Huntingdon	2-1
Montevallo	2-1
Troy State	0-2
Alabama State	2-3
Alabama-Birmingham	2-1
Jacksonville State	1-2
Alabama A&M	2-3
Troy State	0-2
Tennessee-Martin	1-2
Jacksonville State	0-2
Montevallo	0-2
Livingston	2-1
Lake City C.C.	0-2
Alabama State	1-2
Georgia Tech	0-2
STATE TOURNAMENT	
Jacksonville State	2-0
Alabama State	0-2
Jacksonville State	0-2

1982

(Won 29, Lost 10)

GSC CHAMPIONS

Tuskegee	3-1
Montevallo	0-3
Alabama State	2-3
Troy State	1-2
Columbus College	2-0
Livingston	2-1
Huntingdon	2-0
Jacksonville State	3-1
Alabama-Birmingham	2-1
Alabama A&M	1-3
WEST GEORGIA INVITATIONAL	
Georgia	0-2
Bryan College	2-0
Jacksonville Univ.	0-2
Georgia Tech	2-0
Alabama State	2-0
Tennessee-Martin	1-2
UT-MARTIN INVITATIONAL	
Christian Brothers	2-0
West Georgia	2-1
Austin Peay	2-0
Southwestern (Memphis)	2-0
Tennessee-Chattanooga	2-0
Western Kentucky	2-0
Tennessee-Martin	2-0

Univ. of the South	2-0
Middle Tennessee	0-2
Tennessee Tech	0-2
Jacksonville State	3-1
Austin Peay	2-0
Tennessee-Martin	2-0
Middle Tennessee	3-0
Livingston	3-0
Montevallo	3-0
Alabama-Birmingham	3-1
GSC TOURNAMENT	
Troy State	2-1
Tennessee-Martin	2-0
Jacksonville State	2-1
Livingston	2-0
Tennessee-Martin	3-1
Jacksonville State	3-0

1983

(Won 32, Lost 8)

Montevallo	0-3
MUW INVITATIONAL	
Mississippi-Women	0-2
Jacksonville Univ.	2-1
Montevallo	2-0
Stephen F. Austin	2-0
Tennessee-Martin	2-1
Texas-Women's Univ.	2-0
Middle Tennessee	3-0
Alabama A&M	3-0
COLUMBUS COLLEGE TOURNAMENT	
Ogelthorpe	2-0
Huntingdon	2-0
West Georgia	2-0
Alabama State	2-1
Jacksonville State	2-0
Troy State	2-0
Tuskegee	2-0
Huntingdon	2-0
Livingston	3-0
Alabama State	3-1
WEST GEORGIA INVITATIONAL	
Jacksonville State	3-1
Huntingdon	2-0
Tennessee Tech	2-0
Mississippi-Women	0-2
Montevallo	0-2
Alabama-Birmingham	0-2
Western Kentucky	forfeit
Christian Brothers	2-1
Tennessee-Martin	1-2
Jacksonville State	3-0
Tennessee-Martin	2-1
West Georgia	2-0
Troy State	2-0
Livingston	2-0
Middle Tennessee	2-0
Austin Peay	2-0
Huntingdon	2-0
GSC TOURNAMENT	
West Georgia	3-0
Tennessee-Martin	3-1
Troy State	2-3
Troy State	1-3



UNA Volleyball '93

1984

(Won 30, Lost 11)

GSC CHAMPIONS

Huntingdon	3-0
Tuskegee	3-0
Mississippi-Women	3-1

MUW INVITATIONAL

Tennessee-Martin	2-1
Montevallo	1-2
Mississippi-Women	0-2
Texas-Women's Univ.	2-0

FLORIDA SOUTHERN INVITATIONAL

Air Force	2-0
Troy State	2-1
Florida International	2-0
Florida Southern	2-0
Jacksonville University	2-0
Rollins	2-0
Tennessee-Martin	2-0
Tampa	0-2

Mississippi-Women	2-1
-------------------------	-----

WEST GEORGIA INVITATIONAL

Tennessee-Martin	2-0
Jacksonville State	2-1
West Georgia	2-0
Mississippi-Women	2-1
Montevallo	0-2

Jacksonville State	3-1
Middle Tennessee	3-0
Tennessee-Martin	3-2
Livingston	2-0
Huntingdon	1-2
Troy State	2-1
West Georgia	2-0
Montevallo	2-3
Jacksonville State	2-3
Middle Tennessee	3-0

GSC TOURNAMENT

Troy State	3-0
Jacksonville State	3-1
Jacksonville State	3-1

1985

(Won 36, Lost 11)

GSC CHAMPIONS

Middle Tennessee	3-0
Livingston	3-0

MUW INVITATIONAL

Tennessee-Martin	2-0
Southern Mississippi	2-0
Huntingdon	2-0
Mississippi-Women	0-2
Montevallo	1-2
Mississippi-Women	0-2

Huntingdon	3-1
------------------	-----

FLORIDA SOUTHERN INVITATIONAL

Troy State	2-0
Florida Southern	1-2
Mississippi-Women	0-2
Jacksonville State	2-0
Alaska-Fairbanks	2-0
Florida International	2-0
Florida International	0-2

Jacksonville State	3-1
Huntingdon	3-1
Montevallo	3-2

TROY STATE INVITATIONAL

Rollins	2-0
Florida Southern	0-2
Sam Houston	0-2
St. Augustine	2-1
James Madison	2-0
Tampa	0-2
Troy State	2-0

Mississippi-Women	0-3
-------------------------	-----

WEST GEORGIA INVITATIONAL

West Georgia	2-0
Samford	2-0
Georgia Southern	2-0
Huntingdon	2-0



Mary Kaye Harrison



Renita Allen



Fran Orlando

Huntingdon	2-0
Mississippi-Women	0-2

Tennessee-Martin	3-0
Montevallo	3-1
Livingston	3-0
Mississippi-Women	0-3
Mississippi College	2-0
Jacksonville State	3-0
Jacksonville State	2-0
West Georgia	2-1
Samford	2-1
Rollins	2-0
Mississippi-Women	0-2
Middle Tennessee	3-0
Tennessee-Martin	3-0
Mississippi State	1-3

GSC TOURNAMENT

Tennessee-Martin	WON
Troy State	3-1
Jacksonville State	3-0

1986

(Won 23, Lost 19)

GSC CHAMPIONS

Montevallo	0-3
------------------	-----

MUW INVITATIONAL

Mississippi-Women	0-2
Montevallo	0-2
Southern Mississippi	2-0
Tennessee-Martin	1-3
Florida Southern	1-3
Montevallo	0-2

Mississippi State	3-1
Tennessee-Martin	3-0
Livingston	2-0
Alabama-Huntsville	2-0
Mississippi-Women	1-3
Tennessee-Martin	3-0

MISSOURI TOURNAMENT

Missouri-St. Louis	1-3
Williams Woods	2-0
SIU-Edwardsville	2-0
School of Ozarks	2-0
McKendree	2-1
Arkansas-Little Rock	0-2

TROY STATE INVITATIONAL

Troy State	2-0
Tampa	0-2
Florida Southern	0-2
Jacksonville State	2-1
Mississippi-Women	0-2

Jacksonville State	1-3
Montevallo	1-3
Jacksonville State	2-3
Troy State	2-0
West Georgia	2-0
Mississippi College	2-0

WEST GEORGIA INVITATIONAL

Rollins	1-2
Tennessee-Martin	0-2
Livingston	2-0
West Georgia	2-1

Livingston	3-0
Mississippi-Women	0-3

Middle Tennessee	3-0
------------------------	-----

GSC TOURNAMENT

West Georgia	3-0
Jacksonville State	3-0
Tennessee-Martin	3-1
Jacksonville State	1-3
Jacksonville State	3-0

1987

(Won 22, Lost 13)

GSC CHAMPIONS

Middle Tennessee	3-0
Montevallo	1-3
Tennessee-Martin	1-2
Mississippi-Women	2-3
Montevallo	0-3
Livingston	2-0
Mississippi College	2-0
Alabama-Huntsville	3-0
New Haven	3-0
Florida Southern	0-3
North Dakota	3-0
Mississippi-Women	0-3
Mississippi-Women	2-3
Alabama-Huntsville	2-0
Montevallo	2-3
Alabama-Huntsville	2-0
Livingston	2-0
Troy State	2-0
Eckerd College	2-0
Jacksonville State	2-0
Tennessee-Martin	3-0
Montevallo	0-3
West Georgia	3-0
Jacksonville State	3-2
Jacksonville State	2-0
Troy State	2-0
Tampa	0-2
Mississippi-Women	1-2
Mississippi-Women	1-3
Tennessee-Martin	3-1
Middle Tennessee	3-2

GSC TOURNAMENT

Tennessee-Martin	3-0
Jacksonville State	3-0
Jacksonville State	3-1

1988

(Won 30, Lost 7)

GSC CHAMPIONS

Middle Tennessee	3-0
------------------------	-----

MUW INVITATIONAL

Jackson State	3-0
Mississippi-Women	0-3
Jacksonville State	3-1
Southeast Missouri State	0-3

Mississippi-Women	2-3
Livingston	3-0
Mississippi College	3-0
Jacksonville State	3-1

UNA INVITATIONAL

Jacksonville State	3-0
Alabama-Huntsville	3-0
Livingston	3-0
Troy State	3-2

Tennessee-Martin	0-3
------------------------	-----

SOUTHEAST MISSOURI TOURNAMENT

Tennessee-Martin	3-1
------------------------	-----



UNA Volleyball '93

Southeast Missouri	0-3
Mississippi-Women	3-0
Drury College	3-1
Southwest Baptist	3-1

Jacksonville State	3-1
Alabama-Huntsville	3-0
Troy State	3-2
Mississippi College	3-0
West Georgia	2-3
Livingston	3-0
Mississippi-Women	0-3

WEST GEORGIA INVITATIONAL

Jacksonville State	3-1
North Carolina-Greensboro	3-1
Jacksonville State	3-1
Mississippi-Women	3-1

Alabama-Huntsville	3-0
Tennessee-Martin	3-2
Middle Tennessee	3-0

GSC TOURNAMENT

Livingston	3-0
West Georgia	3-2
Jacksonville State	3-0
Jacksonville State	3-0

1989

(Won 18, Lost 18)

TROY STATE INVITATIONAL

Huntingdon	3-1
Troy State	3-2
Mississippi College	3-0
Livingston	3-1
Mississippi-Women	0-3

Middle Tennessee	3-2
------------------------	-----

ROLLINS COLLEGE TOURNAMENT

South Carolina	2-3
Florida-Atlantic	1-3
Barry Univ.	2-3

SOUTHEAST MISSOURI TOURNAMENT

Southwest Baptist	1-3
Missouri-St. Louis	0-3
Southeast Missouri St.	0-3
Northeast Missouri St.	0-3

Jacksonville State	2-3
--------------------------	-----

UNA INVITATIONAL

Rollins	3-2
Livingston	3-1
Troy State	4-1
Jacksonville State	3-1

Tennessee-Martin	3-2
Mississippi-Women	2-3
Huntingdon	3-0
Troy State	2-1
Livingston	3-2
Mississippi College	3-0
West Georgia	0-3
Jacksonville State	2-3

WEST GEORGIA INVITATIONAL

West Georgia	2-3
Rollins	3-1
Livingston	0-3
Jacksonville State	2-3
North Carolina-Greensboro	3-0
Middle Tennessee	3-2

GSC TOURNAMENT

Troy State	2-3
Mississippi College	3-0
Tennessee-martin	2-3

1990

(Won 20, Lost 17)

TROY STATE INVITATIONAL

Livingston	2-3
Troy State	2-3
Mississippi-Women	2-3
Mississippi College	3-0
Tennessee-Martin	3-2



Kristie Grant



Kisha Love



Steff Capeland

MUW INVITATIONAL

Livingston	3-1
Troy State	1-3
Jackson State	3-0
Mississippi-Women	2-2

Mississippi-Women	3-0
-------------------------	-----

TENNESSEE-MARTIN INVITATIONAL

Missouri-St. Louis	0-3
West Georgia	3-2
Christian Brothers	3-1
Mississippi-Women	3-2
Jacksonville State	1-3

Livingston	1-3
------------------	-----

UNA INVITATIONAL

Tennessee-Martin	3-1
Mississippi-Women	1-3
Livingston	3-0
Jacksonville State	3-0

Jacksonville State	3-0
--------------------------	-----

Tennessee-Martin	1-3
------------------------	-----

Mississippi-Women	3-1
-------------------------	-----

West Georgia	3-0
--------------------	-----

Troy State	3-1
------------------	-----

Mississippi College	3-0
---------------------------	-----

Jacksonville State	1-3
--------------------------	-----

MISSOURI-ST. LOUIS TOURNAMENT

Southeast Missouri	0-3
Bellarmine	1-3
St. Josephs	3-1
Northern Kentucky	1-3
Indianapolis	3-2

Tennessee-Martin	3-2
------------------------	-----

Livingston	1-3
------------------	-----

GSC TOURNAMENT

Tennessee-Martin	1-3
West Georgia	3-0
Livingston	2-2

1991

(Won 10, Lost 17)

MUW INVITATIONAL

West Georgia	3-1
Tennessee-martin	0-3
Jacksonville State	0-3

Mississippi-Women	0-3
-------------------------	-----

Mississippi College	3-1
---------------------------	-----

Livingston	0-3
------------------	-----

Jacksonville State	2-3
--------------------------	-----

Alabama-Huntsville	1-3
--------------------------	-----

ALABAMA-HUNTSVILLE TOURNAMENT

Presbyterian	1-3
Trevecca	3-0
Tusculum	1-3

West Georgia	2-3
--------------------	-----

Tennessee-Martin	3-2
------------------------	-----

Mississippi-Women	0-3
-------------------------	-----

Jacksonville State	1-3
--------------------------	-----

Mississippi College	3-1
---------------------------	-----

Livingston	3-2
------------------	-----

Mississippi-Women	0-3
-------------------------	-----

West Georgia	3-1
--------------------	-----

WEST GEORGIA INVITATIONAL

St. Augustine	3-0
---------------------	-----

South Carolina-Aiken	3-0
Mississippi-Women	1-3
Tennessee-Martin	0-3

Alabama-Huntsville	2-3
--------------------------	-----

GSC TOURNAMENT

Jacksonville State	3-0
Mississippi College	3-1
West Georgia	3-0

1992

(Won 17, Lost 15)

Freed-Hardeman	3-1
----------------------	-----

Trevecca	3-1
----------------	-----

Alabama-Huntsville	3-2
--------------------------	-----

MUW INVITATIONAL

Mississippi College	3-1
Huntingdon	0-3
Mississippi-Women	1-3

ALABAMA-HUNTSVILLE INVITATIONAL

Jacksonville State	0-3
Tusculum	1-3
Presbyterian	1-2
Christian Brothers	1-3

Jacksonville State	2-2
--------------------------	-----

West Georgia	3-1
--------------------	-----

Samford	0-3
---------------	-----

Livingston	3-0
------------------	-----

Mississippi College	3-1
---------------------------	-----

Trevecca	3-0
----------------	-----

Freed-Hardeman	3-0
----------------------	-----

Huntingdon	3-2
------------------	-----

Alabama-Huntsville	1-3
--------------------------	-----

WEST GEORGIA INVITATIONAL

West Georgia	3-1
--------------------	-----

Jacksonville State	0-3
--------------------------	-----

South Carolina-Aiken	1-3
----------------------------	-----

Milligan	3-0
----------------	-----

Montevallo	0-3
------------------	-----

Lincoln Memorial	3-1
------------------------	-----

Jacksonville State	0-3
--------------------------	-----

Livingston	3-0
------------------	-----

GSC TOURNAMENT

Livingston	1-3
------------------	-----

Lincoln Memorial	3-0
------------------------	-----

Mississippi College	3-1
---------------------------	-----

Livingston	2-3
------------------	-----





UNA Volleyball '93

The Gulf South Conference

The Gulf South Conference is recognized as one of the premier NCAA Division II conferences in the nation, boasting 27 national champions in eight sports since 1970, including 12 national crowns during the 1980s and six already in the 1990s.

In addition, the GSC annually places its squads in the championship tournaments of virtually every sport in NCAA competition.

In the summer of 1970, representatives from six institutions — Delta State, Florence State (now North Alabama), Jacksonville State, Livingston, Tennessee-Martin and Troy State — convened in Birmingham, Ala., to form the Mid-South Conference, the forerunner of today's Gulf South Conference.

Because of scheduling problems the first year, competition was permitted only in football, with Jacksonville State winning the league's first championship.

In 1971, Southeastern Louisiana and Nicholls State joined the con-

ference, bringing the membership to eight. The league (whose office at that time was in Hammond, La.) also changed its name to the Gulf South Conference.

The following year, Mississippi College and Northwestern Louisiana were admitted to the conference.



Northwestern withdrew two years later, followed by Southeastern Louisiana and Nicholls State in 1979.

The conference continued with seven teams until 1981, when the league's presidents voted to admit Valdosta State College. The ninth member, West Georgia College, joined in June of 1983.

With the move to Division I by Tennessee-Martin and Troy State

in 1991, the GSC returned to seven member institutions.

After Troy State and UT-Martin departed, the league started an expansion movement that resulted in the acceptance of five new member institutions, including Lincoln Memorial for 1992-93 and Alabama-Huntsville, Henderson State, Central Arkansas and Mississippi University for Women for 1993-94.

Jacksonville State left the league for a move to Division I at the end of 1992-93, giving the league eleven schools, and nine volleyball-playing institutions.

The GSC's first commissioner, Stan Gallo-way, retired in 1979, and with the hiring of Jim McCullough as commissioner, the league office was moved to its present location in Birmingham.

The league named its third commissioner, Hayden Riley, in 1982, and he served two years before retiring at the end of the 1983-84 school term. Ralph McFillen served as GSC commissioner until 1987, when G.E. "Sonny" Moran took over as the league's fifth commissioner until his retirement in October 1992.

Nathan N. Salant now serves as the sixth commissioner.

History of the GSC Membership

1970 (6 schools): Delta State, Jacksonville State, Livingston, North Alabama, Tennessee-Martin, Troy State.

1971 (8 schools): Southeastern Louisiana and Nicholls State join.

1972 (10 schools): Mississippi College and Northwestern Louisiana join.

1974 (9 schools): Northwestern Louisiana withdraws.

1979 (7 schools): Nicholls State and Southeastern Louisiana withdraw

1981 (8 schools): Valdosta State joins.

1983 (9 schools): West Georgia joins.

1991 (7 schools): Troy State and Tennessee-Martin withdraw.

1992 (8 schools): Lincoln Memorial joins.

1993 (11 schools): Central Arkansas, Henderson State, Alabama-Huntsville and Mississippi University for Women join. Jacksonville State withdraws.

GSC National Championships

Basketball (3): North Alabama (1979, 1991), Jacksonville State (1985)

Women's Basketball (7): Delta State (1975, 1976, 1977, 1989, 1990, 1992), Southeastern Louisiana (1977).

Baseball (4): Troy State (1986, 1987), Jacksonville State (1990, 1991).

Football (4): Livingston (1971), Troy State (1984, 1987), Jacksonville State (1992).

Golf (3): Troy State (1976, 1977, 1984).

Women's Golf (3): Troy State (1984, 1986, 1989).

Women's Gymnastics (2): Jacksonville State (1984, 1985).

Track (1): Southeastern Louisiana (1975).



UNA Volleyball '93

1992 Gulf South Conference Individual Statistics

Attack Percentage

Player	School	Kills	Errors	Attempts	Pct.
Dena Nicholson	UNA	489	180	1150	26.9
Kristie Page	LU	197	62	518	26.1
Stephanie Copeland	UNA	160	62	473	20.7
Amy Vycital	JSU	305	111	974	19.9
Deanna Baker	JSU	320	140	955	18.8
Janet Ledbetter	JSU	374	152	1230	18.0
Camile Ponder	JSU	391	179	1207	17.6
Lynn Batey	JSU	329	145	1101	16.7
Jessica Sykes	LU	159	74	511	16.6
Melanie Poole	MC	503	229	1687	16.2
Gwen Lundin	LU	176	109	462	14.5
Kristine Beda	MC	86	38	383	12.5

Serve Percentage

Player	School	Serves	Errors	Aces	Pct.
DeAnn Mundinger	LU	300	2	9	99.3
Jennifer Mann	WGC	527	8	21	98.5
Lori Hillman	LMU	185	3	14	98.4
Amber Andrews	LMU	237	10	26	96.8
Janet Ledbetter	JSU	766	34	57	95.6
Becky Doak	LMU	238	11	11	95.4
Kristy Dermid	WGC	517	25	26	95.2

Total Blocks

Player	School	Solo	Assists	Total
Tricia Taylor	WGC	91	142	233
Lori Ponder	WGC	80	143	223
Stephanie Copeland	UNA	47	162	209
Amy Vycital	JSU	115	58	173
Deanna Baker	JSU	99	49	148
Kristi Houndsell	LMU	104	32	136
Kristy Dermid	WGC	14	93	107

Digs

Player	School	Games	Digs	Avg
DeAnn Mundinger	LU	65	199	3.06
Jessic Sykes	LU	63	149	2.37
Kristie Page	LU	61	141	2.31
Jennifer Mann	WGC	115	245	2.13
Kathy Faille	WGC	114	243	2.13
Tricia Taylor	WGC	115	227	1.97
Dena Nicholson	UNA	116	217	1.87

Assists

Player	School	Games	Digs	Avg
Tesha Zito	JSU	154	1540	10.00
Deana Terry	UNA	116	1060	9.13
DeAnn Mundinger	LU	65	529	8.14
Kristine Beba	MC	146	1074	7.36
Becky Doak	LMU	81	426	5.26
Jennifer Mann	WGC	115	333	2.90

Gulf South Conference Volleyball Champions

- 1982 North Alabama
- 1983 Troy State
- 1984 North Alabama
- 1985 North Alabama
- 1986 North Alabama
- 1987 North Alabama
- 1988 North Alabama
- 1989 Troy State
- 1990 Troy State
- 1991 Jacksonville State
- 1992 Jacksonville State

Total Championships

- 6 North Alabama
- 3 Troy State
- 2 Jacksonville State



1993 Lady Lions Volleyball Team



University of North Alabama 1993 Volleyball Schedule

Date	Opponent	Site	Time
Sept. 10	<u>Christian Brothers College Tournament</u> (North Alabama, Rhodes, Mississippi College, Alabama-Huntsville, Trevecca Nazarene, Missouri Baptist, Lambuth, Christian Brothers)	Memphis, Tenn.	All Day
Sept. 11	Christian Brothers College Tournament	Memphis, Tenn.	All Day
Sept. 17	at Mississippi-Women Tournament	Columbus, Ms.	All Day
Sept. 18	at Mississippi-Women Tournament	Columbus, Ms.	All Day
Sept. 21	at Freed-Hardeman College	Henderson, Tenn.	7:00
Sept. 23	at Cumberland University	Lebanon, Tenn.	6:00
Sept. 24	Lambuth College	HOME	6:00
Sept. 26	Freed-Hardeman College	HOME	7:00
Sept. 30	Huntingdon College	HOME	6:30
Oct. 2	*at West Georgia College	Carrollton, Ga.	7:00
Oct. 5	at Jacksonville State University	Jacksonville, Ala.	7:00
Oct. 8	at Lambuth College	Jackson, Tenn.	6:00
Oct. 9	*West Georgia College	HOME	3:00
Oct. 10	*Lincoln Memorial University	HOME	1:00
Oct. 12	*University of Alabama-Huntsville	HOME	7:00
Oct. 15	<u>Crossover Classic</u> (North Alabama, Alabama-Huntsville, Livingston, Henderson State, Central Arkansas, West Georgia, Lincoln Memorial, Mississippi College, Mississippi Univ. for Women)	HOME	All Day
Oct. 16	<u>Crossover Classic</u>	HOME	All Day
Oct. 18	Cumberland University	HOME	6:30
Oct. 21	at Jacksonville State Tournament (North Alabama, Jacksonville State, St. Leo, Rollins, Presbyterian, West Georgia)	Jacksonville, Ala.	All Day
Oct. 22	at Jacksonville State Tournament	Jacksonville, Ala.	All Day
Oct. 23*	at Lincoln Memorial	Harrogate, Tenn.	7:00
Oct. 25	Jacksonville State University	HOME	7:00
Oct. 29	at West Georgia Invitational (North Alabama, Jacksonville State, Tusculum, Florida Tech, South Carolina-Aiken, Mississippi Univ. for Women, Armstrong State)	Carrollton, Ga.	All Day
Oct. 30	at West Georgia Invitational	Carrollton, Ga.	All Day
Nov. 2	*at University of Alabama-Huntsville	Huntsville, Ala.	7:00
Nov. 12	<u>Gulf South Conference Tournament</u> (North Alabama, Central Arkansas, Henderson State, Lincoln Memorial, Livingston, Mississippi College, Miss. Univ. for Women, Alabama-Huntsville, West Georgia)	HOME	All Day
Nov. 13	<u>Gulf South Conference Tournament</u>	HOME	All Day

* - Gulf South Conference matches