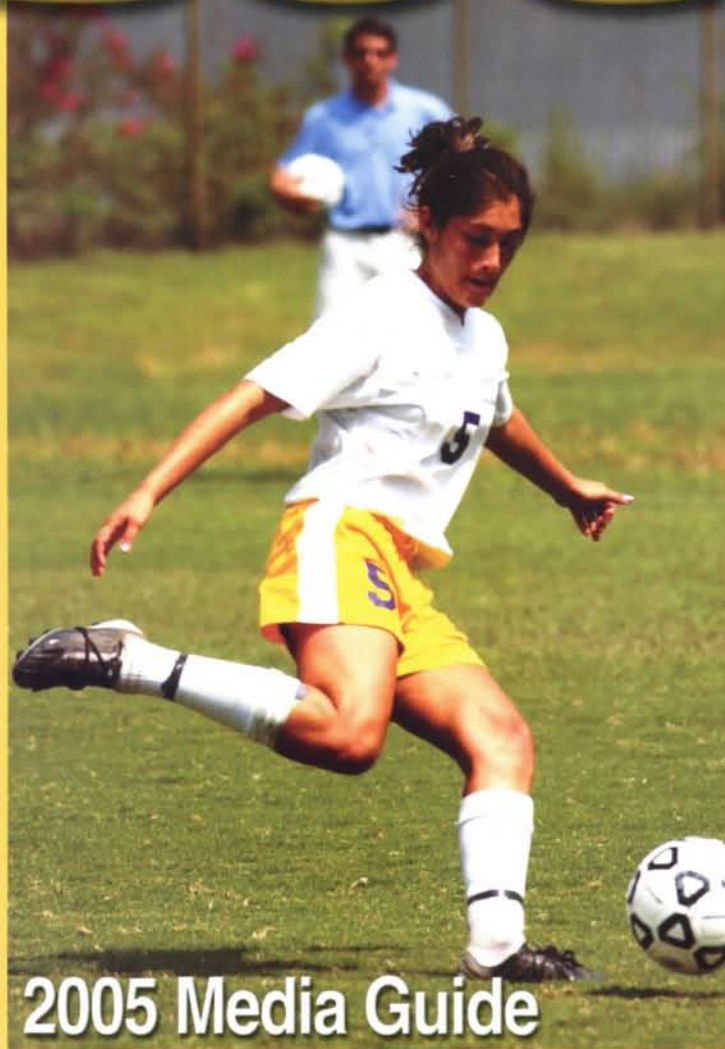


The University of North Alabama

# S O C C E R



2005 Media Guide



# UNA SPORTS INFORMATION



*Jeff Hodges*  
*Sports Info. Director*



*Shane Herrmann*  
*Assistant SID*



*Virginia Black*  
*Student Assistant*



*Mallory Chandler*  
*Student Assistant*



*Danielle Dalrymple*  
*Student Assistant*



*Meghan Quillen*  
*Student Assistant*



**UNA) SPORTS INFORMATION**

## **Gulf South Conference Sports Information Staff**

*Information Director*

**Michael Anderson**

Office Phone: (205) 991-9880

*Assistant Information Director*

**Tim Andrzejewski**

Office Phone: (205) 991-9880

**GSC ON THE WEB:**

[www.gulfsouthconference.org](http://www.gulfsouthconference.org)



**SINCE 1830**

## **UNA Sports Information**

*Sports Information  
Director*

**Jeff Hodges**

Office Phone: (256) 765-4595

Home Phone: (256) 766-7572

**SID Email:**

[sportsinformation@una.edu](mailto:sportsinformation@una.edu)

*Assistant*

*Sports Information  
Director*

**Shane Herrmann**

Office Phone: (256) 765-4895

**Email:**

[msherrmann@una.edu](mailto:msherrmann@una.edu)

*Student Assistants*

Virginia Black

Meghan Quillen

Danielle Dalrymple

Mallory Chandler

**SPORTS  
INFORMATION**

**FAX:**

(256) 765-4659

**UNA**

**ON THE WEB:**

[www.roarlions.com](http://www.roarlions.com)



# 2005 UNA SOCCER QUICK FACTS

Location ..... Florence, Alabama 35632-0001  
 Founded ..... 1830  
 Enrollment ..... 5,900  
 Interim President ..... Dr. William Cale  
 Athletic Director ..... Dr. Joel Erdmann  
 Nickname ..... Lions  
 Colors ..... Purple and Gold  
 Conference ..... Gulf South  
 National Affiliation ..... NCAA Division II  
 Head Coach ..... Graham Winkworth  
 Alma Mater ..... Central Lancashire (2000)  
 Record at UNA ..... 18-19-1 (2 years)  
 Office Phone ..... (256) 765-4845  
 Athletic Department Phone ..... (256) 765-4396  
 2004 Record ..... 10-8-1  
 Gulf South Conference Record/Finish ..... 2-6 (8th)  
 Sports Information Director ..... Jeff Hodges  
 Office Phone ..... (256) 765-4595  
 Home Phone ..... (256) 766-7572  
 Fax Number ..... (256) 765-4659  
 SID email ..... sportsinformation@una.edu  
 Asst. Sports Information Director ..... Shane Herrmann  
 Email ..... msherrmann@una.edu  
 Office Phone ..... (256) 765-4895  
 UNA Web Site ..... www.roarlions.com



**THE UNIVERSITY OF  
 NORTH ALABAMA  
 IS A MEMBER OF THE  
 GULF SOUTH CONFERENCE  
 AND NCAA DIVISION II**

## CONTENTS

Media Information ..... IF  
 The University ..... 2  
 President & Board ..... 3  
 Roster and Schedule ..... 4  
 Coach Graham Winkworth ..... 5  
 Support Staff ..... 6  
 2005 Lion Players ..... 7-11  
 2005 Team Photo ..... 12  
 2005 UNA Preview ..... 13  
 2004 Season Review ..... 14  
 2004 Statistics ..... 15  
 UNA Record Book ..... 16-17  
 All-Time Results ..... 18  
 Record vs. Opponents ..... 19  
 UNA Soccer Honors ..... 20  
 All-time Lettermen ..... 21  
 Opponent Information ..... 22  
 Gulf South Conference ..... 23  
 2004 GSC Standings ..... 24  
 UNA Athletic Staff ..... IB  
 2005 Schedule ..... Back

## CREDITS

The 2005 University of North Alabama soccer brochure was compiled and edited by UNA sports information director Jeff Hodges and student assistants Meghan Quillen and Elizabeth Shultz. Photos by UNA photographer Shannon Wells. This brochure was printed by Printers and Stationers, Inc., in Florence.



# NORTH ALABAMA

It is the policy of the University of North Alabama to afford equal opportunities in education and in employment to qualified persons regardless of age, color, disability, national origin, race, religion, or sex, in accord with applicable parts of the Age Discrimination in Employment Act of 1967, Title VI of the Civil Rights Act of 1964, Title IX of the Education Amendments of 1972, and Section 504 of the Rehabilitation Act of 1973, as amended. The coordinators for nondiscrimination policies are: for students, the Dean of Student Affairs, Bibb Graves Hall or telephone 256-765-4235; for employees, the Director of Human Resources, Bibb Graves Hall or telephone 256-765-4291.



# THE UNIVERSITY OF NORTH ALABAMA

The University of North Alabama, established in 1830 as LaGrange College, became, in 1872, the first state-supported teachers college south of the Ohio River and one of the first co-ed colleges in the nation. UNA has developed into a regional university providing quality educational opportunities for students from the three-state region of Alabama, Mississippi and Tennessee.

North Alabama's academic role has expanded through the years. Bachelor's degrees are offered in majors in the colleges of arts and sciences, business, education and nursing and allied health. Pre-Professional preparation for medicine, dentistry, optometry, podiatry, pharmacy, law, agriculture and forestry, engineering, veterinary medicine, medical technology and other allied health professions is offered. Various master's degrees are offered in the arts and sciences, education and business fields.

North Alabama was the first major university to offer a four-year degree program in commercial music. Majors have interned in record industry offices in Nashville, New York, Los Angeles, London, Stockholm, and nearby Muscle Shoals. That program has since been expanded with the development of the UNA Entertainment Industry Center and the addition of an entertainment industry management major. UNA is one of 11 schools nationwide offering an undergraduate degree in industrial hygiene. Foreign language, nursing, business, and science students also have opportunities to study abroad.

Numerous faculty and staff members hold positions of distinction in various national, regional and state professional organizations. Many have written books and/or published articles in newspaper, magazines and professional journals. The *Journal of Legal Economics* is published at UNA.

Various centers have been established at North Alabama to serve its constituency. Operated by faculty and staff, they give undergraduate and graduate students opportunities for research and public services.

These centers include the Occupational and Environmental Health Laboratory. Its scientific research has attracted national and international attention in the health field. The Geographic Research Center, in cooperation with the National Geographic Society, has increased the profile of geography in the state and has opened doors for students to have hands-



on participation in mapping and demographics research for various governmental agencies. Science faculty and students teach and study marine biology-related courses at Dauphin Island Sealab near Mobile, Alabama.

North Alabama also houses the Northwest Alabama Education Research and Inservice Center, which provides inservice training for elementary and secondary educators in a six-county region. UNA has the only state university-operated kindergarten and grammar school, which affords education students a professional development laboratory experience in teaching.

Serving a nine-County region, the Small Business Development Center provides information, counseling and assistance to small businesses or to people planning to start small businesses. The Rare and Endangered Species Research Center personnel are conducting research on several endangered species in the region. The Wellness Research and Service Center studies and develops wellness, exercise, nutrition, stress management, health education counseling and environmental support programs.

The University of North Alabama works closely with various southern universities and many local, state and federal agencies on a myriad of projects and activities.

Supporting the faculty are the extensive resources of the Collier Library system, which is also a federal records de-

pository. It is computerized and linked into various library loan research networks. Collier Library also houses several collections, including the television and film scripts and other works of actors Dr. George Lindsey and Dr. Ernest Borgnine.

UNA has developed a national following in recent years with the development of the George Lindsey/UNA Television and Film Festival, which attracts several industry luminaries to campus.

UNA students excel in academics, student activities and athletics. Often they are recognized nationally for their achievements in specific areas. In recent years, football and basketball teams have won national championships.

UNA is accredited by the Southern Association of Colleges and Schools. The colleges of business, education and nursing are nationally accredited, while several departments in the College of Arts and Sciences are nationally accredited.

The University of North Alabama's alumni are equally successful. Among them are a Pulitzer Prize winner for literature and one for editorial cartooning, two Alabama governors, a Texas governor, numerous members of the U.S. Congress, thousands of educators, national business and industry CEOs and internationally-renowned sculptor, a *National Geographic* photographer and special assistant to the President of the United States.



# PRESIDENT AND BOARD

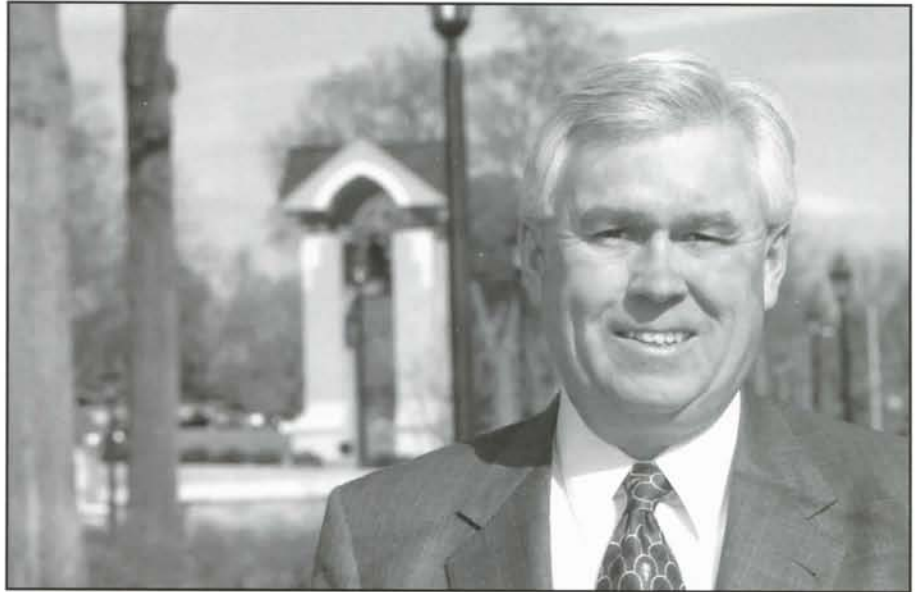
## President William G. Cale, Jr.

Dr. William G. Cale, Jr., became the President of the University of North Alabama on January 15, 2005, four days after the marking of the 175<sup>th</sup> anniversary of the school's founding.

A native of Philadelphia, Pennsylvania, he came to UNA from Penn State-Altoona, where he was the Chief Executive Officer and Dean.

Previously, Dr. Cale was the Executive Vice President for Academic Affairs at Lamar University in Beaumont, Texas. He has also served in administrative roles such as dean and department head. His academic specialty is ecology, which he has used extensively in research projects.

In Altoona, Dr. Cale served on the Board of the Altoona-Blair County Chamber of Commerce and the Altoona-Blair County Development Corporation. He

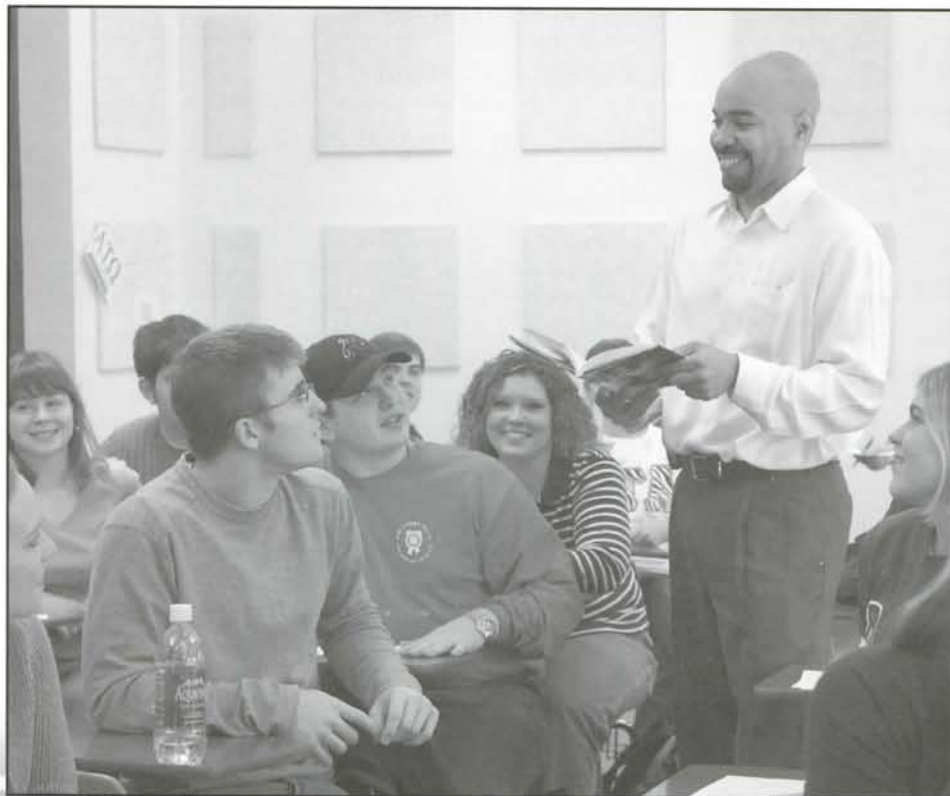


served on the Board of the Texas Energy Museum and several other boards. He has been an active member of numerous academic and civic organizations.

Dr. Cale is widely published in pro-

fessional journals. He co-authored the book, *Ivy images: A Photographic History of Penn State Altoona*.

Dr. Cale and his wife Betty Jean live in the President's Home on campus.



## BOARD OF TRUSTEES

**David Abramson**  
*Florence, Ala.*

**Billy Don Anderson**  
*Sheffield, Ala.*

**John B. Cole**  
*Florence, Ala.*

**Ronnie Flippo**  
*Washington, D.C.*

**Dr. Allen Long**  
*Sheffield, Ala.*

**Marc McCreary**  
*Florence, Ala.*

**Brenda Morrow**  
*Russellville, Ala.*

**Steve Pierce**  
*Florence, Ala.*

**Harvey F. Robbins**  
*Tuscumbia, Ala.*



# 2005 LION ROSTER

<i>No.</i>	<i>Name</i>	<i>Pos.</i>	<i>Ht.</i>	<i>Class</i>	<i>Hometown/High School</i>
<b>0</b>	<i>Chelsea Frederick</i>	G	5-8	FR	Thome, Texas/Northwest Justin
<b>1</b>	<i>Melanie Saegert</i>	G	5-6	FR	Austin, Texas/LBJ
<b>2</b>	<i>Kelsey Jennings</i>	D/M	5-1	FR	Fort Payne, Ala./Fort Payne
<b>3</b>	<i>Amy Butler</i>	D	5-1	SO	Manchester, England
<b>4</b>	<i>Ashley Thouvenot</i>	D/M/F	5-4	JR	Belleville, Ill./Southwest Ill College
<b>5</b>	<i>Rhiannon Harrison</i>	F	5-6	JR	Horn Lake, Miss./Immaculate Conception
<b>6</b>	<i>Allison Post</i>	M	5-3	SO	Lawrenceville, Ga./Brookwood
<b>7</b>	<i>Kressa Gibson</i>	M	5-3	SO	Rogers, Ark./Oral Roberts University
<b>8</b>	<i>Heather Stowe</i>	D/M	5-6	FR	Athens, Ala./East Limestone
<b>9</b>	<i>Alison Woodman</i>	M	5-4	SO	Sarasota, Fla./Rverview
<b>10</b>	<i>Emily Cotham</i>	M/F	5-4	JR	Richardson, Texas/L.V. Berkner
<b>11</b>	<i>Elise Denton</i>	M/F	5-4	FR	Madison, Ala./Bob Jones
<b>12</b>	<i>Erin Turner</i>	M/F	5-5	FR	Madison, Ala./Bob Jones
<b>13</b>	<i>Afton Holm</i>	M	5-4	SO	Plano, Texas/Plano
<b>14</b>	<i>Amy Lansom</i>	D/M	5-7	FR	Manchester, England
<b>15</b>	<i>Julia Garavaglia</i>	D	5-6	JR	St. Louis, Mo./Parkway South
<b>16</b>	<i>Christian Deihl</i>	M/F	5-8	JR	Belleville, Ill./Southwest Ill. College
<b>17</b>	<i>Christina Dorough</i>	M	5-2	SO	Tupelo, Miss./Meridian Comm. College
<b>18</b>	<i>Lindsey Kennetz</i>	D	5-8	FR	Cordova, Tenn./Cordova
<b>19</b>	<i>Jo Ellen Santos</i>	D	5-7	JR	Russellville, Ala./Spring Hill College
<b>20</b>	<i>Heather Smith</i>	M/F	5-2	SO	Clarksville, Tenn./Northwest
<b>21</b>	<i>Rachel Reed</i>	F	5-6	FR	Somerville, Ala./Priceville

**Head Coach** Graham Winkworth

**Graduate Assistant** Naomi Clarke

**Team Manager** Toni Brown



# HEAD COACH GRAHAM WINKWORTH

Graham Winkworth enters his third season as the Lions head women's soccer coach and led UNA to its first 10-win season in four years in 2004.

Winkworth, who became just the third women's soccer coach in the school's history, guided UNA to an 8-1-1 mark during his first year in 2003.

Then last season the Lions went 10-8-1 for their first winning season and first 10-win season since 2000. UNA's 6-1-1 start to the 2004 season was the best in school history.

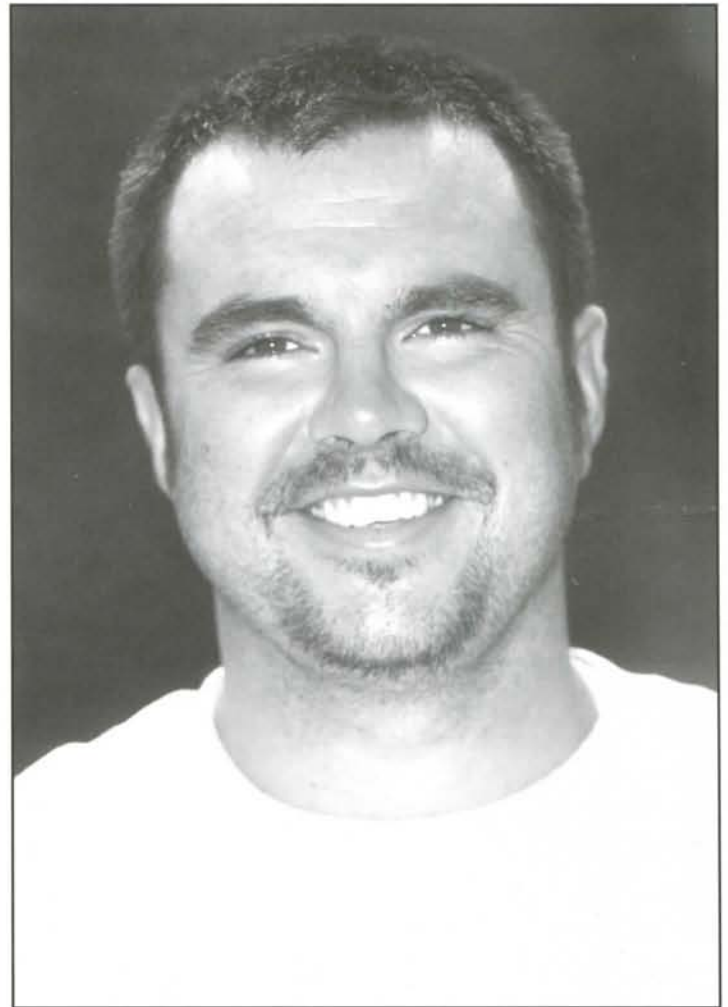
The Lions have had five players earn All-Gulf South Conference honors in Winkworth's two seasons as head coach.

The Reading, England native came to UNA after two seasons as assistant coach at the University of Central Arkansas from 2001-2003.

A graduate of the University of Central Lancashire in Preston, England, Winkworth began coaching on the youth level in 1995. He later coached on the club level before being hired as assistant men's soccer coach and head women's soccer coach at Cumberland University in Tennessee for the 2000 season. He was also briefly at Lindsey Wilson College (Ky.) before being hired at Central Arkansas.

While at UCA he helped take the school to a 10-9 record last season that included a third place finish in the Gulf South Conference and a spot in the league's post-season tournament.

Aston Rhoden began the UNA program in 1996 and coached through the 2001 season. Cory Tanzer was hired as UNA's second women's soccer coach and led the Lions to an 8-9-1 record in 2002.



## **All-time Lion Soccer Coaches**

1997-2001  
Aston Rhoden

2002  
Cory Tanzer

2003-Present  
Graham Winkworth

# 2005 UNA LIONS



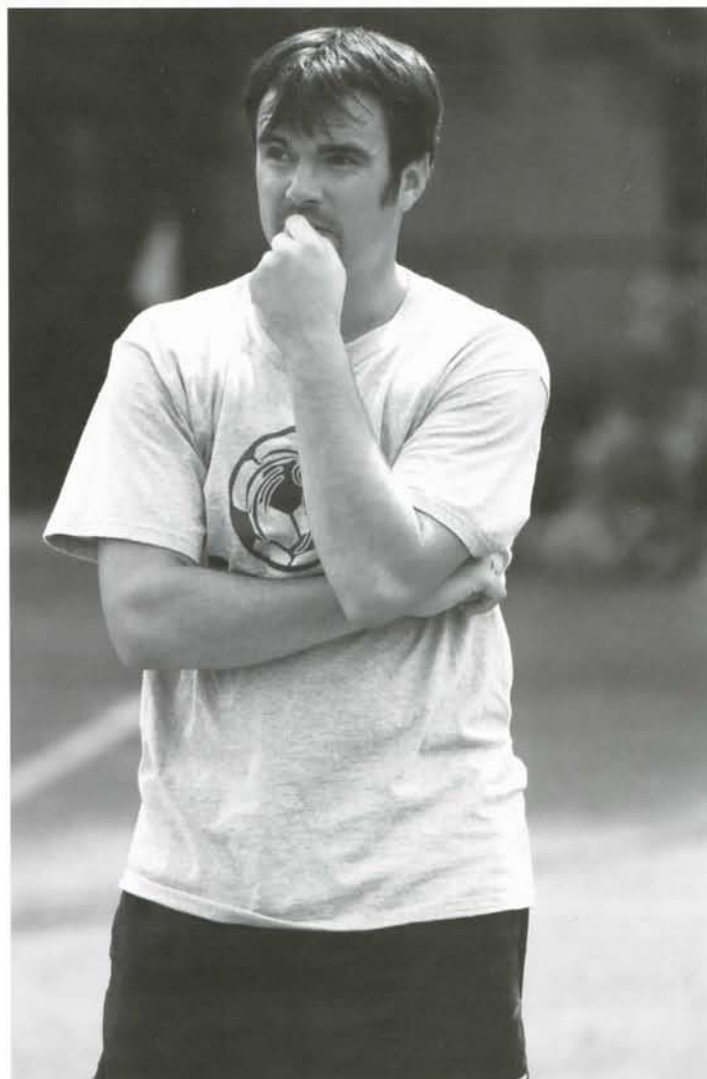
**NAOMI CLARKE**  
**GRADUATE ASSISTANT  
COACH**

Clarke joined the North Alabama soccer program in the Spring of 2004 and is set to enter her first season as a graduate assistant coach at UNA.

She is pursuing a Masters in Health Promotion and Human Performance. She holds a B.A. in Human Performance & Sport from the Metropolitan State College of Denver and is certified to teach physical education in the state of Colorado.

A native of Cambridge, New Zealand, she is currently a member of nation's senior national women's team and she also represented New Zealand at the youth levels (U.17 and U.19).

Beginning in 2000 she played at Lock Haven University in Pennsylvania and competed there for three seasons. She then played her senior season at Metropolitan State. As a collegiate player she was a four-time All-American, was All-Northeast Region three times and All-Midwest Region once, as well as All-Pennsylvania State Athletic Conference three years and All-Rocky Mountain Athletic Conference once. During her senior season she was named RMAC Player of the Year and was also PSAC Rookie of the Year in her first season at Lock Haven. She has coached at the club level in Lock Haven, Denver and Nashville, as well as at summer camps around the U.S.



*Last year Winkworth led UNA to it's first 10-win season since 2000*



**TONI BROWN**  
**MANAGER**



**JOSH VINING**  
**ATHLETIC TRAINER**



# 2005 UNA LIONS

## AMY BUTLER

### 5-1, Sophomore - Defender Manchester, England

**UNA 2004:** She played in 19 games with 18 starts on defense for the Lions and was a key defender for UNA all season. She finished the season with four total shots. **HIGH SCHOOL:** She was a team captain at Hartshead High School for coaches Simon Mellor and Nicola Murphy. She was selected to participate in training camp as a defender at the Northern England under-16 national team trials. She has played in numerous club tournaments world-wide with several MVP honors. **PERSONAL:** Her full name is Amy Louise Butler. She was born on February 12, 1984. She is the daughter of Yvonne Butler and has one brother. She is majoring in physical therapy at UNA.



#### BUTLER'S STATS AT UNA

Year	GP	GS	Sh	G	A	Pts
2004	19	18	4	0	0	0

## MORGAN CHUNN

### 5-6, Sophomore - Midfielder Somerville, Alabama

**UNA:** She played in eight games as a freshman. **HIGH SCHOOL:** She lettered four years from 2001-2004 at Alvert P. Brewer High School under coach Rhonda Slater. She received All-Morgan County honors all four seasons and was named honorable mention all-area in 2003. She was named the team's best midfielder as a junior in 2003. As a senior in 2004, she earned first-team all-area recognition, was named the Decatur Daily Player of the Year and was voted the team's MVP. She also led the Patriots to their first state playoff appearance in school history in 2004 and finished the season with 15 goals and 11 assists. **PERSONAL:** Her full name is Morgan Leann Chunn, born June 17, 1986. she is the daughter of Rosena and John Chunn and has two sisters.



## EMILY COTHAM

### 5-4, Junior - Forward Richardson, Texas

**UNA 2004:** After just two seasons with the Lions, Cotham already ranks as the leading career scorer in UNA history with 25 goals. She started all 19 games for the Lions last season. She led the team with 15 goals, which broke the UNA single-season record for most goals scored in a season. She also broke the UNA records for most total points in a season, most goals scored in a career, and most total points in a career. She had 59 total shots and eight assists. She scored two goals against Cumberland College, West Georgia, and Trevecca Nazarene. She scored one goal against Shorter College, Columbus State, Lynn University, Harding University, Ouachita Baptist, Central Arkansas, Christian Brothers, Montevallo, and Florida Tech. She also added assists in games against Cumberland, West Georgia, Martin Methodist, Ouachita, Nova Southeastern, Central Arkansas, and Clayton State. Three of her goals were game-winning goals. **UNA 2003:**



She played in 19 games with 19 starts. She was second on the team with 10 goals and had 79 shots and five assists. She scored one goal in games against Alabama A&M, Lincoln Memorial, Martin Methodist, Christian Brothers and Mobile, had two against Ouachita Baptist and three against Freed-Hardeman. She also added an assist in the win over Freed-Hardeman. **HIGH SCHOOL:** She played at L.V. Berkner High School under coach Brandon. She was captain of the junior varsity in 2000-01 and was the top goal scorer. In 2001-02 she was voted Class 5A, District 9 Newcomer of the Year, received the Heart Award, was All-District 9 and was the top goal scorer. As a senior she was captain of the varsity. She also lettered in cross country as a senior. **OTHER:** Her club team won the Arlington Labor Day Shootout. **PERSONAL:** Full name is Emily Loraine Cotham. Born on February 10, 1985. Daughter of Danny and Debbie Cotham and has two brothers and one sister. Majoring in management.

#### COTHAM'S STATS AT UNA

Year	GP	GS	Sh	G	A	Pts
2003	19	19	79	10	5	25
2004	19	18	59	15	8	38
Career	38	37	138	25	13	63

#### COTHAM'S RECORDS AT UNA

- \* Most Goals Scored in a Season: 15 in 2004
- \* Most Total Points in a Season: 38 in 2004
- \* Most Goals Scored in a Career: 25 (2003-04)
- \* Most Total Points in a Career: 63 (2003-04)

## ELISE DENTON

### 5-4, Freshman Midfielder/Forward Madison, Ala.

**HIGH SCHOOL:** She attended Bob Jones High School and played for Coach Ken Hudson. She was a forward and midfielder for the Patriots who won the Class 6A girls soccer state championship in 2003. The Lady Patriots had a record of 63-35-8 from 2002-2005. She earned the most goals award in 2004. She made the all-state team and all-metro team in 2004. She was also the MVP of the Alabama all-star team in 2004. She played for the Rampage Soccer Club which won the Division 1 state championship four years. She also played for the Kicks Futbol Club, which won the Division 1 state championship one year. She was a member of PRIDE honor roll throughout her four years of high school. **PERSONAL:** Her full name is Elise Christine Denton. She was born on March 11, 1987. She is the daughter of Ken and Margaret Denton and has one sister. She is majoring in nursing at UNA.



# 2005 UNA LIONS

## CHRISTIAN DEIHL 5-8, Junior Midfielder/Forward Belleville, Illinois

**COLLEGE:** Transferred to UNA from Southwestern Illinois College in Belleville. She played for the Blue Storm under Coach Chad Lignoul and the team was the regional runner-up in 2004. She was all-region, Region MVP and All-American in 2004. **HIGH SCHOOL:** She played at Belleville West High School under coach Jason Mathenia. She was all-conference, all-region, team MVP and Best Offensive Player in 2001. She was also an all-tournament pick at the High School Shootout in 2001. **PERSONAL:** She was born on December 25, 1983. She is the daughter of Dennis and Marylou Deihl and has two brothers and two sisters. Majoring in Physical Education at UNA.



## JULIA GARAVAGLIA 5-6, Junior - Defender St. Louis, Missouri

**UNA 2004:** She played in 17 games with eight starts as a sophomore for the Lions. She had three shots with one goal against Lambuth and two assists against Shorter and Clayton State. **UNA 2003:** She played in 16 games with eight starts as a freshman. She took four shot attempts in 2003. **HIGH SCHOOL:** She played at Parkway South High School under coach Al Trost. She was a four-year varsity starter. As a freshman she was voted most improved and she received the best defensive award as a sophomore and junior. As a senior she was the team's Most Valuable Player. Garavaglia was on the Honor Roll and the Citizenship Honor Roll. **OTHER:** She has played with a variety of club teams, including Coca-Cola, Emil Draguric, Metro 74 and Kolping Kicks. **PERSONAL:** Her full name is Julia Maria Garavaglia. Born on November 30, 1984. She is the daughter of Rico and Maida Garavaglia. Majoring in Physical Therapy.



## CHRISTINA DOROUGH 5-2, Sophomore Midfielder Tupelo, Mississippi

**HIGH SCHOOL:** She attended Tupelo High School where she played for the Lady Wave under Coach Mark Enis. While she was there her team won two state championships in a row - which was a first for Tupelo High School. Her team also won five district championships. She scored a school record 129 goals in a season. She played for the Tupelo Futbol Club for seven years and was in the Olympic Development Program for one year. She played on the varsity team 8th-12th grade. In the 2003 season, she had three goals and one assist. In 2004, she had two goals and five assists. After high school, she attended Meridian Community College in Mississippi. She played for Coach Alex George. During her semester at Meridian Community College she scored three goals and had eight assists. **PERSONAL:** Her full name is Christina Marie Dorough. She was born on June 16, 1986. She is the daughter of Thomas and Becky Dorough and has two sisters. She is majoring in graphic design at UNA.



### GARAVAGLIA'S STATS AT UNA

Year	GP	GS	Sh	G	A	Pts
2003	16	8	4	0	0	0
2004	17	8	3	1	2	4
Career	33	16	7	1	2	4

## KRESSA GIBSON 5-3, Sophomore Midfielder Rogers, Arkansas

**COLLEGE:** She transferred to UNA from Oral Roberts University. The Golden Eagles were the Mid-Continent Conference Champions and made it to the NCAA tournament in 2005. She also lettered cross-country. **HIGH SCHOOL:** She attended Rogers High School where she was captain of the Lady Mounties from 2002-2004. She played under Coach Jeff Barker. Her team made it to the state playoffs from 2001-2004. They made it to the state championship game in 2003 and won the state championship in 2004. She was honorable mention all-state and was offensive player of the year in 2000. She made all-state and the All-Arkansas team in 2002-2004. She was team MVP her last three years and she made the all-tournament team at the state championship tournament (2002-2004). She set a school record with 68 assists from 2001-2004. Throughout her high school career she had 63 goals. She was a member of the Arkansas Comets Soccer Club which won six state championships. She was in the Olympic Development Program from 1997-2000. She was senior class vice-president and graduated with high honors and a 4.0 GPA. After high school, she attended Oral Roberts in Tulsa, Oklahoma. **PERSONAL:** Her full name is Kressa Laci Gibson. She was born on October 22, 1985. She is the daughter of Kim and Jerry Vest and Billy Gibson. She has two brothers and two sisters. She is majoring in nursing and Pre-Med at UNA.



## CHELSEA FREDERICK 5-8, Freshman Goalkeeper Rhome, Texas

**HIGH SCHOOL:** She attended Colleyville Heritage where her team won district championships and were regional semi-finalists in 2001, 2002, and 2003. She then attended Southlake Senior High where her team was a district semi-finalist in 2003-2004. She spent her senior season at Northwest High School. As a freshman, sophomore, and junior, she was first-team all-district. She played eight years of club ball and was part of the Olympic Development Program. **PERSONAL:** She was born on March 25, 1987. She is the daughter of Michael and Pam Magalhaes and has one brother and two sisters. She is majoring in criminal justice at UNA.





# 2005 UNA LIONS

## RHIANNON HARRISON

5-5, Junior  
Forward

Horn Lake, Mississippi

**UNA 2004:** She played and started all 19 games for the Lions as a sophomore. She was second on the team in goals, with 11. She had one game-winning goal, five assists and 78 shots. She broke the UNA record for most assists in a career with 15 after just two seasons. Her 22 career goals ranks third in school history. She tied the UNA record for most goals in a single game, with four against Shorter. She scored two goals against Nova Southeastern and one goal against Lynn, Delta State, Ouachita Baptist, Montevallo, and Lambuth. She had assists against West Georgia, Lynn, Martin Methodist, Harding, and Central Arkansas. She was selected Academic All-Gulf South Conference. **UNA 2003:** She played in all 19 games with 19 starts for the Lions as a freshman. She led the team with 11 goals, and 10 assists and had 66 total shots. Her 10 assists in a season broke the UNA single-season record by three and was just two shy of the UNA career record at the time. For her efforts she was selected second-team All-Gulf South Conference. She scored single goals against Cumberland, Clayton State, Lincoln Memorial, Central Arkansas, Harding, Ouachita Baptist and Spring Hill and had two goals in games against Freed-Hardeman and Alabama-Huntsville. She had two assists in games against Ouachita Baptist, Martin Methodist and Freed-Hardeman. She served as a member of UNA's Student-Athlete Advisory Committee. **HIGH SCHOOL:** Played soccer at Immaculate Conception High School under coach James Beard where she was a varsity captain three years (2001-03). She was on the Memphis All-tournament team from 2000-02 and was all-region in the Memphis area from 2000-03. She was also selected "Best of the Preps" from 2000-03. Harrison ranked among the top scorers in the Memphis metro area in 2000, 2001 and 2002. She was a member of the A/B Honor Roll, served on the Student Government Association and was a National Tennessee Essay Finalist. She was also a member of Mu Alpha Gamma and Mu Alpha Theta and had the highest average in religion and psychology. **OTHER:** Harrison played for the Memphis Futbol Club from 1995-2003 and played with the club in Germany, France, Belgium and Holland in 1999. She also helped MFC win the 2003 state championship. **PERSONAL:** Born on February 5, 1986. Daughter of Lois and Robert Harrison and has two brothers. Majoring in Marine Biology.



## AFTON HOLM

5-4, Sophomore - Forward  
Plano, Texas

**UNA 2004:** She played in all 19 games with 19 starts as a freshman. She had 14 shots with one goal against Harding and an assist against Cumberland College, for a total of three points. **HIGH SCHOOL:** She lettered for coach Diane Davey at Plano Senior High School. She was a first-team all-district selection for the Class 4A Wildcats while playing forward and outside midfielder. **PERSONAL:** Her full name is Afton Deanne Holm, born on April 16, 1986. She is the daughter of Cindy Miller and Reagan Holm and has two brothers. Her major is Psychology.



### HOLM'S STATS AT UNA

Year	GP	GS	Sh	G	A	Pts
2004	19	18	14	1	1	3

## KELSEY JENNINGS

5-1, Freshman - Defender/  
Midfielder  
Fort Payne, Alabama

**HIGH SCHOOL:** She attended Fort Payne High School where she played for Coach Gena Fowler. She received the Gatorade Award in 2003. Her team won the Class 5A state championship in 2001 and 2003, along with runner-up finishes in 2000, 2002, and 2004. She was a member of the Huntsville Kicks Club Soccer team. She also lettered in cross-country and track. She was a member of the National Honor Society and the Spanish Honor Society. **PERSONAL:** Her full name is Kelsey Marie Jennings. She was born on July 20, 1987. She is the daughter of Tony and Jackie Jennings and she has one brother and two sisters. She is majoring in chemistry at UNA.



### HARRISON'S STATS AT UNA

Year	GP	GS	Sh	G	A	Pts
2003	19	19	66	11	10	32
2004	19	18	78	11	5	27
Career	38	37	144	22	15	59

### HARRISON'S RECORDS AT UNA

**Most Assists in a Season:** 10 in 2003  
**Most Assists in a Career:** 15 2003-2004  
**Most Goals Scored in a Single Game:** 4 in 2004

### HARRISON'S HONORS AT UNA

2003 Second-team All-Gulf South Conference  
2004 Academic All-Gulf South Conference

## LINDSEY KENNETZ

5-8, Freshman - Defender  
Memphis, Tenn.

**HIGH SCHOOL:** She attended Cordova High School where she was the captain of the Lady Wolves. She won the Most Hustle Award in 2001-2002. Her team won the district and region championships from 2001-2003. In 2002 Cordova was a TSSA semi-finalist. She was a member of the Division 2 state champions and the showcase champions in 2003 and the Gulf Coast Invitational champions in 2002. She played for the Fury and the Memphis Futbol Club. She graduated with academic honors. **PERSONAL:** Her full name is Lindsey Marie Kennetz. She was born on May 28, 1987. She is the daughter of Dennis and Peggy Kennetz and has one brother. She is majoring in biology at UNA.



# 2005 UNA LIONS

## AMY LANSOM

**5-7, Freshman - Defender/  
Midfielder**  
**Manchester, England**

**HIGH SCHOOL:** She attended Hyde Technology School. After high school, she attended Hyde Claredon College where she played for Coach Janice Drake. She played for the Tameside Girls who won the Cheshire and Manchester WFL in 2004 and were runner-up in 2003. She also played for the Fletcher Moss Ladies where her team claimed the Winners League Cup and was runner-up in Cheshire and Manchester WFL.

**PERSONAL:** Her full name is Amy Louise Lansom. She was born on June 10, 1987. She is the daughter of Gary and Pauline Lansom. She has two brothers. She is majoring in health, physical education and recreation at UNA.



## MELANIE SAEGERT

**5-6, Freshman -  
Goalkeeper**  
**Austin, Texas**

**HIGH SCHOOL:** She attended LBJ Liberal Arts and Science Academy. She played for the Jaquars under Coach Brian Johnson. She was the captain of her team in 2005. Her team went to the district playoffs in 2002 and 2003. She made second-team all-district in 2004 and first-team all-district in 2005. She was the starting varsity goalkeeper from 2002-2005. She was named defensive MVP in 2004 and all tournament goalkeeper in the Mustang Winter Classic in 2005. She played on the state Olympic Development team from 2000-2003. She was the starting goalie for the All Capital Soccer Club from 1996-2005 and was chosen team MVP in 2001 and captain in 2002-2003. She played with the Capital Soccer Club at an international tournament in July 2003 in Budweiss, Czech Republic. She had 17 shutouts over her high school career, including over 25 wins and several 0-0 ties. She was on the honor roll in 2003-2004 and was inducted into Peer Assistance and Leadership (PALS) in 2004-2005. She was in the German Club, which placed in German regional and state contests in 2002-2003. **PERSONAL:** Her full name is Melanie Kaye Saegert. She was born on January 11, 1987. She is the daughter of Don and Laura Saegert and has one sister. She is undecided about her major at UNA.



## ALLISON POST

**5-4, Sophomore -  
Midfielder**  
**Lawrenceville, Georgia**

**UNA 2004:** She played in all 19 games, with four starts as a midfielder. She had 11 shots with one goal and two assists, for a total of four points. Her goal was against Ouachita Baptist. **HIGH SCHOOL:** She prepped at Brookwood High School for Anita McLane. She played forward, center and outside midfielder for the Class 5A Broncos. She helped lead the team to a state championship her senior season in 2003 and a semi-final appearance the previous year as a junior.

**PERSONAL:** Her full name is Carol Allison Post. She was born on April 10, 1986. She is the daughter of Carol and William Post and has one brother. Post is majoring in Nursing at UNA.



## JO ELLEN SANTOS

**5-7, Junior - Defender**  
**Russellville, Alabama**

**UNA 2004:** She played in five games as a reserve defender/midfielder for the Lions in 2004. **SPRING HILL 2003:** She played one season at Spring Hill College under coach Wolf Koach. She saw action in all 21 games, including 16 starts for the Lady Badgers as a freshman in 2003. **HIGH SCHOOL:** She played at Saint Bernard High School for four years under Coach Joe Ferrel. She was named the team's top defensive player as a sophomore in 1999 and won the Best Midfielder Award the following year as a junior. She was also named team captain her junior and senior seasons. **PERSONAL:** Her full name is Jo Ellen Santos, born on February 8, 1984. She is the daughter of Leonides and Anna Maria Santos and she has two brothers and a sister. Her major is Criminal Justice.



### POST'S STATS AT UNA

Year	GP	GS	Sh	G	A	Pts
2004	19	4	11	1	2	4

## RACHEL REED

**5-6, Freshman - Forward**  
**Somerville, Alabama**

**HIGH SCHOOL:** She played at Priceville High School for the Lady Bulldogs where she was their captain from 2002 to 2005. She played under Coach Dennis Morris. Her team went to the state playoffs in 2004 and 2005. She was all-area and team MVP every year from 2002-2005. She was Soccer Player of the Year for the Hartselle Enquirer in 2005. During the 2004 season she scored 11 goals and in 2005 she scored 12 goals. She played for the Raptors Club team in 2004. She also lettered in basketball and track and field in high school. She was a member of the National Honor Society and graduated with a 3.9 GPA. **PERSONAL:** Her full name is Rachel Adele Reed. She was born on June 8, 1987. She is the daughter of David and Becky Reed and has one sister. She is majoring in biology at UNA.



### SANTOS'S STATS AT UNA

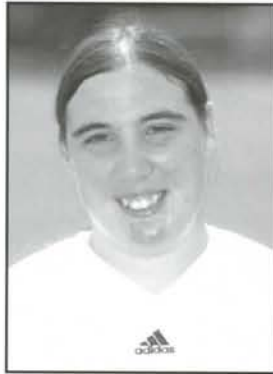
Year	GP	GS	Sh	G	A	Pts
2004	5	0	0	0	0	0

# 2005 UNA LIONS

## HEATHER SMITH

**5-2, Sophomore - Forward  
Clarksville, Tennessee**

**HIGH SCHOOL:** She played in all 19 games as a true freshman. She took nine shots with one goal and one assist. Her goal was against Christian Brothers University. **HIGH SCHOOL:** She prepped at Northwest High School for coach Shawn Woodcock. She played defensive midfielder and forward for the Vikings. She received multiple team awards throughout her career including most valuable offensive player as a senior in 2003, the defensive award and team MVP as a junior and the hustle award as a sophomore. She set a pair of school scoring records during her senior year including most goals in a season and most goals in a career. She also lettered in softball and was a member of the National Honor Society. **PERSONAL:** Her full name is Heather Louise Smith. She was born on July 17, 1986. She is the daughter of Charles and Dolores Smith and has four brothers and a sister. She is majoring in Marine Biology at UNA.



## ASHLEY THOUVENOT

**5-4, Junior - Forward/  
Defender/Midfielder  
Belleville, Ill.**

**COLLEGE:** She attended Southwestern Illinois College where she played for the Blue Storm. She was all-conference in 2004. **HIGH SCHOOL:** She attended Althoff Catholic High School where she played for Coach Ch. Wheeler. She was named to the all-conference team in 2000, was second-team all-state in 2002, and first-team all-state in 2003. She played club soccer for Gameface, Lightning, and the Belleville Fussball Club. She also lettered in dance. **PERSONAL:** She was born on April 10, 1985. She is the daughter of Lisa Thouvenot and Russell Thouvenot and has two brothers. She is majoring in biology and physical therapy at UNA.



### SMITH'S STATS AT UNA

Year	GP	GS	Sh	G	A	Pts
2004	19	0	9	1	1	3

## HEATHER STOWE

**5-6, Freshman - Defender/  
Midfielder  
Athens, Alabama**

**HIGH SCHOOL:** She attended East Limestone High School where she played for the Lady Indians. She played under Coach Brad Carwile. In 2002 the Lady Indians were state runner-up in the 4A state tournament and district and regional champions. As a junior in 2004, her team made it to the final four in the state playoffs and were district champions and section 7 champions with a 6-0 record. East Limestone was the section 7 runner-up in 2005. She was team MVP in 2002 as a freshmen. She was also all-district and first-team all-area in 2002. After an injury in 2003, she came back strong in 2004 receiving the Junior Gatorade Player of the Year award and making first-team all-area. As a team captain in 2004 she was also all-area, all-district, Decatur Daily Player of the Year and North-South Alabama All-Star. In 2005, as a senior team captain she made first-team all-state, all-area, all-district, all county, Player of the Year, and team MVP. She also lettered in basketball and indoor and outdoor track and field. She set a high jump record as a freshman in 2002. **PERSONAL:** Her full name is Heather Nicole Stowe. She was born on March 13, 1987. She is the daughter of Michael and Melissa Edwards and has three brothers. She is majoring in political science at UNA.



## ERIN TURNER

**5-5, Freshman -  
Midfielder/Forward  
Madison, Alabama**

**HIGH SCHOOL:** She played under Coach Ken Hudson at Bob Jones High School. The Lady Patriots won the Class 6A State Championship in 2003 and won their section title eight years in a row. She was named the best newcomer in 2003. In 2004 and 2005 she received the best offensive player of the year award and was named MVP in 2004. She had the most goals and the most assists from 2003-2005. She had a total of 70 goals and 52 assists in high school. She has been a member of the Olympic Development Program since she was 12. She played for the AFC Lightening, GSA Phoenix, and Lady Kicks. She was on the AB Honor Roll. **PERSONAL:** Her full name is Erin Michelle Turner. She was born on March 29, 1987. She is the daughter of Ed and Ellen Turner and has one sister. She is majoring in secondary education at UNA.



## ALISON WOODMAN

**5-4, Sophomore -  
Midfielder  
Sarasota, Florida**

**UNA 2004:** She played in all 19 games with 19 starts as a true freshman. She had 48 shots with seven goals and eight assists for a total of 22 points. She scored two goals in games against Cumberland College, Trevecca Nazarene, and Clayton State. She had one goal against Shorter. She was selected second-team All-Gulf South Conference in 2004. **HIGH SCHOOL:** She prepped at Riverview High School for coach Bill Dehart. She played outside and midfielder for the Class 6A Rams. She was named the team MVP as a senior after leading the squad to four straight playoff berths, including a district championship in 2003. She was also a four-year scholar athlete and vice president of her school's National Honor Society chapter. **PERSONAL:** Her full name is Alison Gay Woodman. She was born on April 3, 1986 and is the daughter of Peter and Patti Woodman. Woodman, a communication major, has two sisters.



### WOODMAN'S STATS AT UNA

Year	GP	GS	Sh	G	A	Pts
2004	19	18	48	7	8	22



# 2005 UNA LIONS



Members of the 2005 University of North Alabama soccer team are, front row from left, Rachel Reed, Heather Stowe, Rhiannon Harrison, Jo Ellen Santos, Lindsey Kennetz, Morgan Chunn, Julia Garavaglia, Afton Holm, Emily Cotham, Amy Lansom and Allison Post. Back from left, athletic trainer Josh Vining, Christina Dorough, Kelsey Jennings, Kressa Gibson, Amy Butler, Chelsea Frederick, Head Coach Graham Winkworth, Melanie Saegert, Alison Woodman, Elise Denton, Erin Turner, Ashley Thouvenot, Heather Smith and manager Toni Brown.



*There are no seniors on UNA's 2005 soccer team. The junior members are, front from left, Rhiannon Harrison, Julia Garavaglia and Jo Ellen Santos. Back from left, Ashley Thouvenot and Emily Cotham.*





# 2005 UNA SOCCER PREVIEW

With two of the top three scorers in school history returning for their junior seasons at the University of North Alabama, you might think UNA women's head soccer coach Graham Winkworth would be touting the offensive prowess of his Lions' team entering the 2005 season. Instead it is the UNA defense that Winkworth feels could put the Lions in contention for a spot in the Gulf South Conference Tournament.

"The biggest thing for us this season is that we will be playing in a new system that will require and an immense amount of running and will be centered around a defense that should greatly reduce the shots we take on our goal from close range and the goals we allow," Winkworth said. "We have some talented, athletic players back that will be key in our offense, but our biggest concern the last two years is that we have allowed a lot of goals and we can't continue to do that and be successful."

Winkworth said the Lions will concentrate almost exclusively on defense in their early season practices until the team learns the new 4-5-1 system. "We'll not move on to anything but defense until we defend as a whole 11 from top to bottom," he said.

The Lions have a core group of nine returnees, including five returning starters back, as they take on a rugged 20-match schedule in 2005.

UNA is coming off a 10-8-1 campaign that was the Lions first winning season since 2000. Winkworth and the Lions were disappointed by that finish, however, after getting off to the best start in school history at 6-1-1, then slumping down the stretch.

"We were glad to have a winning record but the lack of numbers last year cost us," Winkworth said. "At the most important time of the season, fatigue set in - plus we had problems in goal, and that was magnified by our lack of depth."

To solve those problems, Winkworth has added 13 newcomers, including two new goalkeepers.

Heading the list of nine Lion returnees are juniors Emily Cotham and Rhiannon Harrison.

Cotham, a forward from Richardson, Texas, set a school single-season record last year with 15 goals and is now the leading career scorer in school history as well with 25 goals in two seasons.

Harrison, a forward from Horn Lake, Miss., has 22 career goals to rank third in school history and is also UNA's career assist leader with 15.

Also returning is All-Gulf South Conference midfielder Alison Woodman. The junior from Sarasota, Fla., scored seven goals and added eight assists last season.

The remainder of UNA's returnee list includes starting defender Amy Butler of Manchester, England and forward Afton Holm

of Plano, Texas. Junior defender Julia Garavaglia of St. Louis, Mo., returns along with sophomore midfielder Allison Post of Lawrenceville, Ga., junior defender Jo Ellen Santos of Russellville, Ala., and sophomore forward Heather Smith of Clarksville, Tenn.

Garavaglia had eight starts for UNA last season, while Post started four games. Each recorded one goal and two assists a year ago.

One of the most interesting battles on the team this fall will be in goal as freshmen Chelsea Frederick of Rhome, Texas and Melanie Saegert of Austin, Texas should both contend for the starting job.

"I have no idea who will win that role. It's a complete toss-up," said Winkworth. "Competition for that position will be huge and having solid players in goal will confidence to the players in front of the goal."

Both Frederick and Saegert were part of the Olympic Development Program in Texas, with one representing South Texas and the other North Texas.

"Both are confident, solid keepers," Winkworth said. "Kelsey is very athletic in goal and Melanie is a little more physical and aggressive. We are fortunate to have two solid players like them in goal."

Offensively, Winkworth said the new system will have one target player along with outside midfielders and wingers that will do a lot of running and utilize their quickness. Harrison will likely be the target player, with Cotham playing a slightly deeper position that she has the last two years. Also in the mix will be transfers Christian Deihl and Ashley Thouvenot of Belleville, Ill., as well as Elise Denton of Madison, Ala.

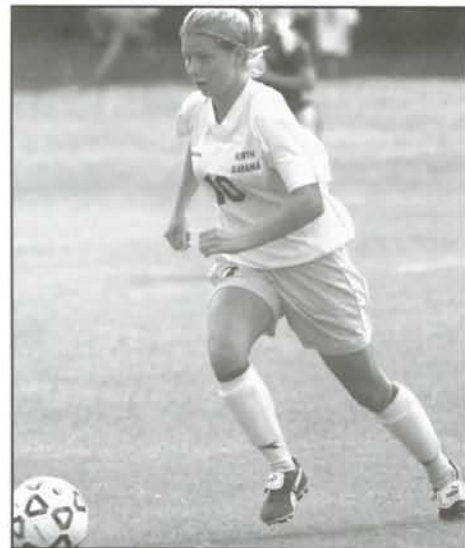
"The key to the scoring will be that the team won't only be looking to Harrison and Cotham for goals but will have four midfielders who will get forward a lot," Winkworth said.

He said midfielders like Woodman and Post will have more freedom this year to go forward and play a bigger role in the offense. Kressa Gibson, a native of Rogers, Ark., who transferred to UNA from Oral Roberts University, will also be in the mix at midfield, along with freshman Erin Turner of Madison, Ala.

"We will have plenty of depth at the positions that have to do a lot of running, where last year we didn't and players just had to stay out there the whole game," Winkworth said.

The most important position in the Lions' new system will be a central defensive midfielder who will be looked to to maintain ball control, support the four back defenders and also play an important serving role.

With UNA playing a flat back four defenders, the traditional sweeping role will be changed. Winkworth said he is looking at Holm or Garavaglia as the central defender, with speedy freshman Kelsey Jennings of Fort Payne playing



*Junior Emily Cotham already ranks as the leading scorer in UNA history with 25 goals in just two seasons*

a key role as well. Freshman Lindsey Kennetz of Cordova, Tenn., will be a physical presence in the center of the defense, according to Winkworth. Butler, who was UNA's sweeper last season, can play in either the center or outside and freshman Heather Stowe of Athens should also be in the mix.

"We've got a lot of new faces but they are talented players that I'm confident can fill the roles for us to be successful," Winkworth said.

UNA will face a 20-match schedule that includes eight home contests at North Florence Park and a 10-game GSC schedule.

UNA opens its season at home on August 28 against Spalding at 1 p.m.

Other home contests are against Alabama State (Sept. 9), Spring Hill (Sept. 11), Central Arkansas (Sept. 25), Delta State (Oct. 2), Christian Brothers (Oct. 5), West Georgia (Oct. 11) and Lincoln Memorial (Oct. 23).

UNA will play road contests at Nova Southeastern, Lynn, Harding, Ouachita Baptist, Trevecca, Montevallo, Columbus State, West Florida, Saint Leo, Alabama-Huntsville, Union and Alabama A&M.

"We have a tough schedule with a lot of in-region games and a couple of Division I matches thrown in," said Winkworth. "There isn't a weak team in the conference this year and it will be a tough race. Plus we have our first two conference games on the road."

Winkworth said key tests for the Lions early in the season will be a two-match trip to Florida to face powerful Nova Southeastern and Lynn teams, and the first conference weekend trip to Harding and Ouachita Baptist.

# 2004 IN REVIEW

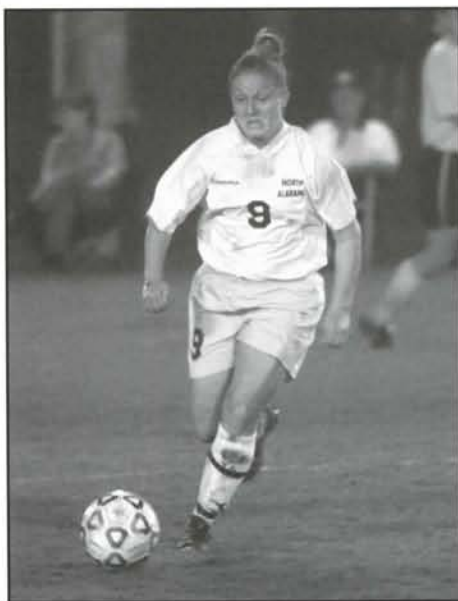
## UNA LIONS FALL SHORT OF GOALS IN 2004

The 2004 season was one that started with promise for the University of North Alabama but ended short of the Lions goal of reaching the Gulf South Conference Tournament.

In its second season under head coach Graham Winkworth, UNA went 10-8-1 overall and finished eighth in the GSC with a 2-6 conference record. But the Lions season was one of near misses. UNA started the season with a 6-1-1 record and finished with the first 10-win season at the school since 2000.

Sophomore Emily Cotham, in just her second season at the school, became UNA's all-time leading scorer with 25 career goals. Fellow sophomore Rhiannon Harrison pushed her career goal total to 22 to rank third in school history and also broke the career assist mark with 15.

Two Lions earned All-Gulf South Conference honors, with Nan Waldkirch and Alison Woodman selected All-GSC. Harrison and Waldkirch were also selected Academic All-GSC.



*Alison Woodman*

### 2004 RESULTS

**(10-8-1 overall, 2-6 GSC)**

Cumberland	4-0
Shorter	7-3
Columbus State (OT)	2-2
at West Georgia	3-1
Lynn	2-7
at Martin Methodist	3-2
at Delta State	2-0
Trevecca Nazarene	5-0
at Harding	2-4
Ouachita Baptist	3-2
Lincoln Memorial	0-4
Nova Southeastern	3-2
at Central Arkansas	2-3
Christian Brothers	1-5
at Clayton State	2-9
at Alabama-Huntsville	0-2
Montevallo (2OT)	2-3
Florida Tech	2-0
Lambuth	2-0

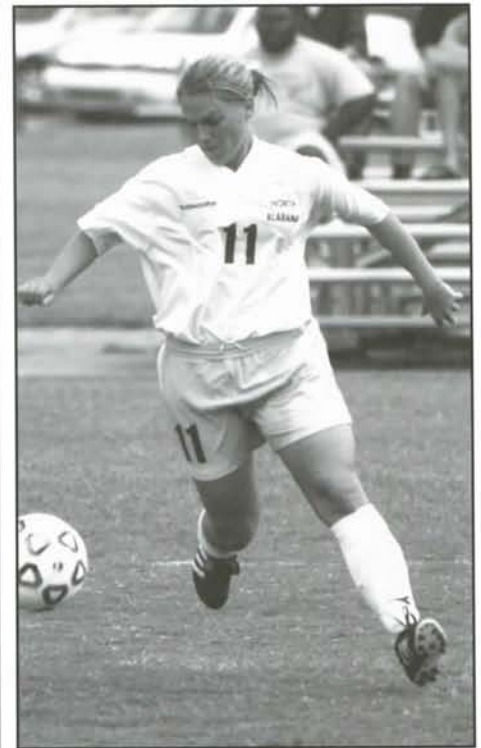
### 2004 HONORS

#### All-Gulf South Conference Second Team

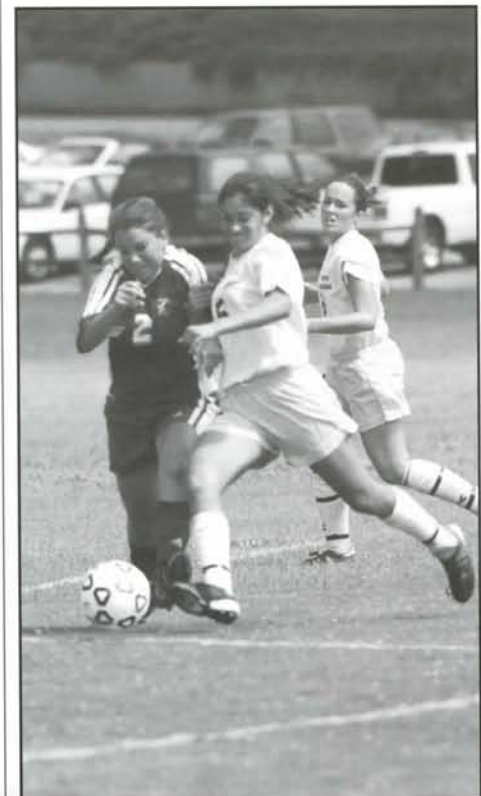
Nan Waldkirch  
Alison Woodman

#### Academic All-Gulf South Conference

Nan Waldkirch  
Rhiannon Harrison



*Nan Waldkirch*



*Rhiannon Harrison*



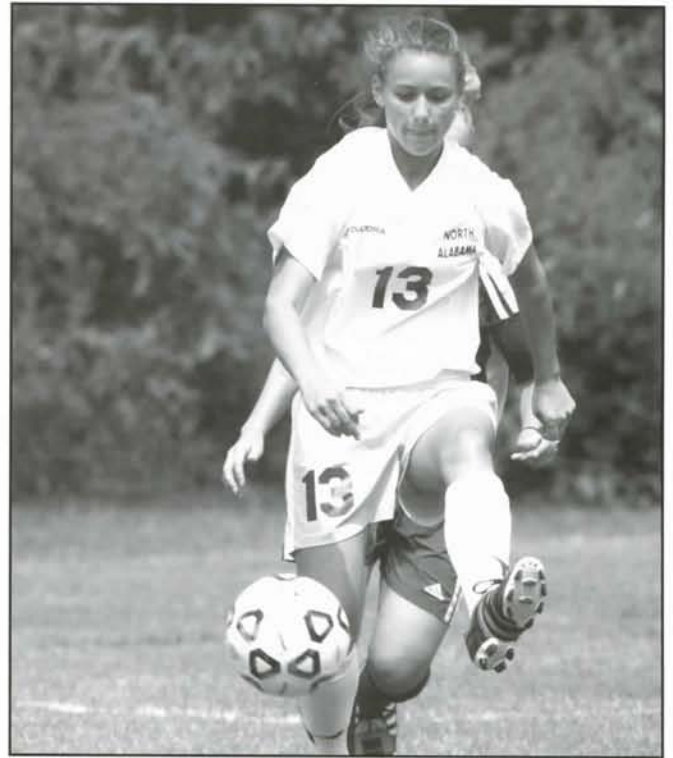
# 2004 STATISTICS

## 2004 LION STATISTICS

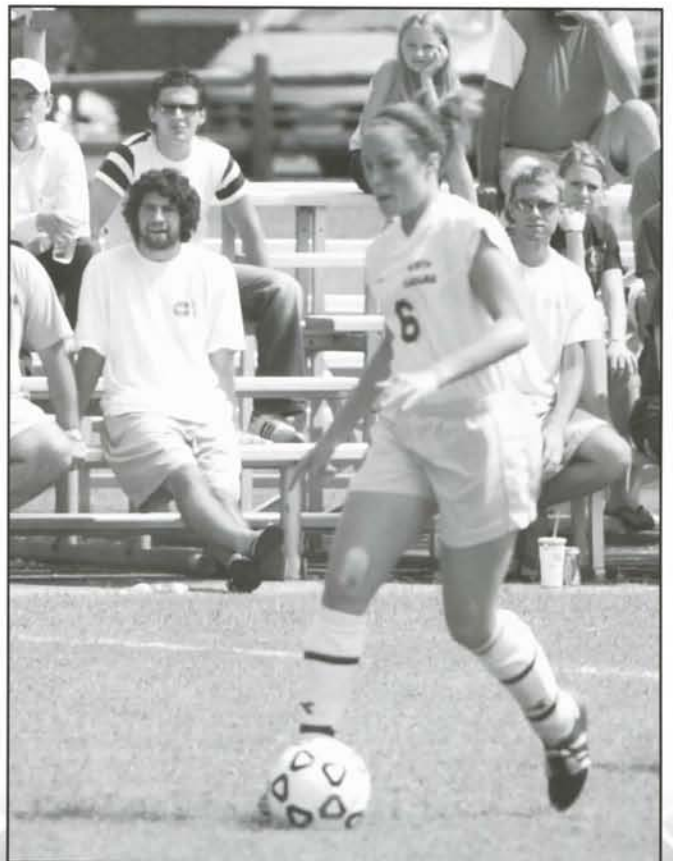
Record: 10-8-1 Overall, 2-6 Gulf South Conference

	<i>GP</i>	<i>G</i>	<i>A</i>	<i>PTS</i>	<i>SHTS</i>
Emily Cotham	19	15	8	38	59
Rhiannon Harrison	19	11	5	27	78
Alison Woodman	19	7	8	22	48
Nan Waldkirch	19	6	2	14	43
Cheryl Canavan	17	3	0	6	13
Breanna Smith	17	1	1	3	15
Afton Holm	19	1	1	3	14
Alison Post	19	1	2	4	11
Heather Smith	19	1	1	3	9
Julia Garavaglia	17	1	2	4	3
Elizabeth Shultz	6	0	1	1	1
Elizabeth Childree	14	0	0	0	10
Seola Edwards	17	0	0	0	6
Amy Butler	19	0	0	0	4
Allison Stapleton	17	0	0	0	1
Kim Goheen	10	0	0	0	0
Kelsey Hunt	16	0	0	0	0
Jo Ellen Santos	5	0	0	0	0
Morgan Chunn	8	0	0	0	0
Magan Kelley	6	0	0	0	0
Christine Kelly	6	0	0	0	0
Total	19	47	31	125	315
Opponents	19	49	33	131	251

<i>Goaltending</i>	<i>GP</i>	<i>Min</i>	<i>Sv</i>	<i>GA</i>	<i>GAA</i>
Kelsey Hunt	12	1080:00	60	27	2.25
Kim Goheen	8	561:09	39	22	3.52
Total	19	1641:09	99	49	2.69
Opponents	19	1641:09	134	47	2.58



*Afton Holm*



*Allison Post*



*Amy Butler*



# UNA SOCCER RECORD BOOK

## TEAM RECORDS

### Firsts

FIRST MATCH: August 30, 1997 vs. Oglethorpe, lost 4-2  
 FIRST HOME MATCH: Sept. 20, 1997 vs. Tennessee Tech, lost 3-2 in 2 OT's  
 FIRST VICTORY: Sept. 7, 1997 vs. Huntingdon in Birmingham, 2-0  
 FIRST HOME VICTORY: Sept. 24, 1997 vs. Alabama-Huntsville, 2-1  
 FIRST GULF SOUTH CONFERENCE VICTORY: Sept. 24, 1997 vs. Alabama-Huntsville, 2-1  
 FIRST GOAL SCORED: by Heather Dyer vs. Oglethorpe on Aug. 30, 1997  
 FIRST HOME GOAL SCORED: by Karen Anglin vs. Tennessee Tech on Sept. 20, 1997

### Season

MOST WINS: 11 in 1999 and 2000  
 MOST GOALS SCORED: 47 in 2004  
 MOST ASSISTS: 31 in 2004  
 MOST SHOTS ON GOAL: 350 in 2003  
 MOST SAVES: 153 in 2002  
 MOST SHUTOUTS: 7 in 1999  
 FEWEST GOALS ALLOWED: 26 in 2002  
 MOST IMPROVED WON-LOSS RECORD: 4 wins and 14 losses in 1998 to 11 wins, 7 losses and 1 tie in 1999  
 MOST CONSECUTIVE SHUTOUT GAMES: 3 from Oct. 16 vs. Lambuth to Oct. 24 vs. Central Arkansas in 1999  
 MOST CONSECUTIVE HOME WINS: 5 from Sept. 29 vs. Christian Brothers to Oct. 31 vs. Martin Methodist in 1999 and 5 from Sept. 5 vs. Lambuth to Oct. 20 vs. Martin Methodist in 2001

### Game

MOST GOALS SCORED: 10 vs. Bryan College on Sept. 27, 1997  
 MOST ASSISTS: 8 vs. Ouachita Baptist on Sept. 17, 1999  
 MOST SHOTS ON GOAL: 47 vs. Bryan College on Sept. 27, 1997  
 MOST GOALS ALLOWED: 12 vs. Christian Brothers on Oct. 17, 2001  
 MOST SAVES: 23 vs. West Florida, 2002  
 MOST COMBINED GOALS: 12 at Freed-Hardeman on Sept. 10, 2003 (UNA 9, Freed-Hardeman 3)



Emily Cotham

(UNA 7, Harding 4)  
 LEAST TIME ELAPSED BETWEEN GOALS (Same Team): 64 seconds vs. Gardner-Webb on Oct. 29, 1999  
 MOST CONSECUTIVE GAMES WITHOUT BEING SHUTOUT: 10 in 1999 and 10 in 2004  
 MOST CONSECUTIVE SHUTOUT MINUTES: 345 minutes from Oct. 9 vs. West Florida to Oct. 29 vs. Gardner-Webb in 1999  
 LEAST TIME ELAPSED FROM START OF GAME UNTIL FIRST GOAL: 2:08 minutes vs. South Carolina-Aiken on Sept. 2, 2000

## INDIVIDUAL RECORDS

### Season

MOST GOALS SCORED: 15 by Emily Cotham in 2004  
 MOST ASSISTS: 10 by Rhiannon Harrison in 2003  
 MOST TOTAL POINTS: 38 by Emily Cotham in 2004  
 MOST SHOTS ON GOAL: 93 by Catherine Schillig in 1999  
 MOST SAVES: 153 by Megan Thomas in 2002  
 MOST SHUTOUTS: 5 by Megan Thomas in 2002  
 MOST CONSECUTIVE SHUTOUT

MINUTES: 302 minutes by Shelley Huggins from Oct. 9 vs. West Florida to Nov. 6 vs. Lincoln Memorial (GSC Tournament) in 1999  
 MOST MINUTES IN GOAL: 1,505 by Megan Thomas in 2002  
 BEST GOALS AGAINST AVG: 1.50 by Megan Thomas in 2002

### Game

MOST GOALS SCORED: 4 by Brandi Eveland vs. Ouachita Baptist on Sept. 17, 1999  
 MOST ASSISTS IN A MATCH: 4 by Catherine Schillig vs. Ouachita Baptist on Sept. 17, 1999  
 MOST TOTAL POINTS IN A MATCH: 9 by Brandi Eveland (4 goals, 1 assist) vs. Ouachita Baptist on Sept. 17, 1999  
 MOST SAVES IN A MATCH: 23 by Megan Thomas vs. West Florida in 2002

### Career

MOST GAMES PLAYED: 74 by Nan Waldkirch from 2001-04  
 MOST GAMES STARTED: 72 by Nan Waldkirch from 2001-04  
 MOST GOALS SCORED: 25 by Emily Cotham from 2003-04  
 MOST ASSISTS: 15 by Rhiannon Harrison from 2003-04  
 MOST TOTAL POINTS: 63 by Emily Cotham from 2003-04  
 MOST SHOTS ON GOAL: 163 by Catherine Schillig in 1999-2000  
 MOST SAVES: 365 by Shelley Huggins in 1998-2001  
 MOST SHUTOUTS: 5 by Megan Thomas in 2002  
 CAREER GOALKEEPER MINUTES PLAYED: 5,008 by Shelley Huggins in 1998-2001





# UNA SOCCER RECORD BOOK

## TOP LIONS

### Most Goals Scored in a Season

15	Emily Cotham	2004
14	Catherine Schillig	1999
12	Brandi Eveland	1999
11	Rhiannon Harrison	2003
11	Rhiannon Harrison	2004
10	Emily Cotham	2003
10	Katie Robbins	2002
10	Christina Mascaro	2000
10	Catherine Schillig	2000

### Most Assists in a Season

10	Rhiannon Harrison	2003
8	Emily Cotham	2004
8	Rhiannon Harrison	2004
7	Allison Harris	2002
7	Karen Anglin	1999
7	Catherine Schillig	1999
5	Emily Cotham	2003
5	Christina Mascaro	2000

### Most Goals Scored in a Career

25	Emily Cotham	2003-04
24	Catherine Schillig	1999-00
22	Rhiannon Harrison	2003-04
21	Allison Harris	2000-03
19	Sara Tvrdy	1997-99
17	Brandi Eveland	1997-00
17	Christina Mascaro	2000-01

### Most Assists in a Career

15	Rhiannon Harrison	2003-04
13	Emily Cotham	2003-04
12	Karen Anglin	1997-99
12	Allison Harris	2000-03
10	Catherine Schillig	1999-00
10	Rhiannon Harrison	2003-Active

## ANNUAL LEADERS

### Goals Scored

1997	Heather Dyer	6
1998	Mirela Pjeshkazini	7
1999	Catherine Schillig	14
2000	Christina Mascaro	10
	Catherine Schillig	10
2001	Christina Mascaro	7
	Allison Harris	7
2002	Katie Robbins	10
2003	Rhiannon Harrison	11
2004	Emily Cotham	15

### Assists

1997	Heather Dyer	4
	Brandi Eveland	4
1998	Karen Anglin	3
1999	Catherine Schillig	7
	Karen Anglin	7
2000	Christina Mascaro	5
2001	Christina Mascaro	3
	Nan Waldkirch	3
2002	Allison Harris	7
2003	Rhiannon Harrison	10
2004	Emily Cotham	8
	Alison Woodman	8

### Points

1997	Heather Dyer	16
1998	Mirela Pjeshkazini	16
1999	Catherine Schillig	35
2000	Christina Mascaro	25
2001	Christina Mascaro	17
2002	Katie Robbins	22
2003	Rhiannon Harrison	32
2004	Emily Cotham	38

### Saves

1997	Catherine Burris	116
1998	Shelley Huggins	115
1999	Shelley Huggins	54
2000	Shelley Huggins	79
2001	Shelley Huggins	117
2002	Megan Thomas	153
2003	Kymerli Goheen	118
2004	Kymerli Goheen	60

# ALL-TIME LION SOCCER SCORES

## 1997

### (7-11 overall, 2-3 GSC) Coach Aston Rhoden

8-30	at Oglethorpe	2-4
8-31	at Emory	0-3
9-6	at Piedmont	0-3
9-7	at Huntingdon	2-0
9-13	at West Florida	0-4
9-14	at Spring Hill (OT)	3-2
9-17	at Belmont	0-1
9-20	Tennessee Tech (OT)	2-3
9-24	*Alabama-Huntsville	2-1
9-27	Bryan College	10-0
10-4	*at Lincoln Memorial	0-4
10-5	at Tennessee Wesleyan	1-0
10-9	*at Montevallo	1-2
10-15	*Christian Brothers	3-0
10-19	Mars Hill	0-2
10-21	Birmingham-Southern	0-3
10-30	Martin Methodist	1-0
(GSC Tournament - Pensacola, Fla.)		
11-8	Lincoln Memorial	0-2

## 1998

### (4-14 overall, 1-5 GSC) Coach Aston Rhoden

9-5	B'ham-Southern (N)	1-7
9-6	Clayton State (N)	3-0
9-12	Tennessee Wesleyan	0-3
9-16	*at Alabama-Huntsville	0-3
9-20	*Lincoln Memorial	0-5
9-23	at Martin Methodist	3-5
9-26	at Mars Hill (OT)	1-2
9-27	at Gardner-Webb (OT)	2-3
9-30	*Montevallo	0-5
10-3	at Tennessee Tech	0-2
10-4	at Tusculum	0-6
10-7	at Tennessee-Martin	2-4
10-10	Harding	6-4
10-16	*at Christian Brothers	1-3
10-17	*at Central Arkansas	3-0
10-22	*West Florida	1-5
10-25	Lander	8-1
10-31	Belmont	0-8

## 1999

### (11-7-1 overall, 3-2-1 GSC) Coach Aston Rhoden

8-28	North Georgia (N)	3-0
8-29	Harding (N)	2-3
9-1	Tennessee-Martin (OT)	4-3
9-11	at Erskine	1-3
9-12	at Lander	1-2
9-17	Ouachita Baptist	8-0
9-18	at Harding	3-0
9-22	*at Montevallo (OT)	2-2
9-25	Tusculum	1-4
9-29	*Christian Brothers	1-0
10-2	*at Lincoln Memorial	0-1
10-3	at Carson-Newman (OT)	2-1
10-9	*at West Florida	0-3
10-16	Lambuth	3-0
10-21	*Alabama-Huntsville	2-0
10-24	*Central Arkansas	3-0
10-29	Gardner-Webb	3-2
10-31	Martin Methodist	6-5
(GSC Tournament - Birmingham, AL.)		
11-6	Lincoln Memorial	0-1

## 2000

### (11-6 overall, 4-4 GSC) Coach Aston Rhoden

9-1	Lee University (N)	1-3
9-2	South Carolina-Aiken(N)	5-2
9-7	at Martin Methodist	2-1
9-12	at North Georgia	2-1
9-14	Clayton State	2-1
9-17	Barry (N)	0-10
9-20	at Clayton State	2-0
9-24	*Lincoln Memorial	0-3
9-29	*at Central Arkansas	2-0
10-1	*at Harding	7-4
10-4	Lipscomb	3-2
10-7	*Ouachita Baptist	6-1
10-8	Alabama A&M	4-1
10-13	*at West Florida	0-4
10-17	*Christian Brothers	0-2
10-25	*Montevallo	1-0
10-28	*at Alabama-Huntsville	1-2

## 2001

### (6-12 overall, 2-6 GSC) Coach Aston Rhoden

9-1	at Mount Olive	1-4
9-2	at South Carolina-Aiken	2-3
9-5	Lambuth	6-0
9-9	at Clayton State	1-4
9-13	at Lipscomb	3-1
9-16	Clayton State	2-0
9-23	*at Lincoln Memorial	0-2
9-28	*Central Arkansas	4-0
9-30	*Harding	2-0
10-3	at Akabama A&M	1-2
10-6	*at Ouachita Baptist	2-3
10-10	Martin Methodist	3-0
10-14	*West Florida	0-3
10-17	*at Christian Brothers	0-12
10-20	at Saint Leo	1-2
10-21	at Tampa	0-1
10-24	*at Montevallo	0-3
10-28	*Alabama-Huntsville	0-1



Julia Garavaglia

## 2002

### (8-9-1 overall, 2-5-1 GSC) Coach Cory Tanzer

8-31	Reinhardt	5-0
9-1	North Georgia	4-0
9-6	Clayton State (N)	0-1
9-7	at Kennesaw State	0-3
9-13	Tampa	1-2
9-15	Saint Leo	1-0
9-18	Martin Methodist	1-0
9-22	*Lincoln Memorial	1-1
9-27	*at Central Arkansas	0-1
9-29	*at Harding	4-1
10-5	*Ouachita Baptist	2-3
10-7	Trevecca Nazarene	8-1
10-11	*at West Florida	0-4
10-17	*Christian Brothers	1-4
10-19	Nova Southeastern (N)	0-1
10-20	at Florida Southern	1-0
10-23	*Montevallo	1-0
10-27	*at Alabama-Huntsville	0-4

## 2003

### (8-11 overall, 3-5 GSC) Coach Graham Winkworth

8-31	at Cumberland	1-0
9-2	Alabama A&M	1-0
9-5	at Carson-Newman (OT)	1-2
9-6	at Lee	0-6
9-10	at Freed Hardeman	9-3
9-13	Clayton State	2-0
9-21	*at Lincoln Memorial	4-2
9-26	*Central Arkansas (OT)	3-4
9-28	*Harding	1-4
10-1	Martin Methodist (OT)	3-4
10-4	*at Ouachita Baptist	2-1
10-10	Tampa (2 OT)	1-2
10-12	*West Florida	0-5
10-15	*at Christian Brothers	1-7
10-17	at Mobile (OT)	1-2
10-18	vs Spring Hill Collage	1-0
10-22	*at Montevallo	0-3
10-24	*Alabama-Huntsville	2-1
10-26	Barry	1-5

## 2004

### (10-8-1 overall, 2-6 GSC) Coach Graham Winkworth

8-27	Cumberland College	4-0
8-29	Shorter	7-3
9-5	Columbus State (OT)	2-2
9-6	at West Georgia	3-1
9-12	Lynn	2-7
9-15	at Martin Methodist	3-2
9-17	*at Delta State	2-0
9-23	Trevecca Nazarene	5-0
9-26	*at Harding	2-4
10-1	*Ouachita Baptist	3-2
10-3	*Lincoln Memorial	0-4
10-8	Nova Southeastern	3-2
10-10	*at Central Arkansas	2-3
10-13	*Christian Brothers	1-5
10-17	at Clayton State	2-9
10-22	*at Alabama-Huntsville	0-2
10-29	*Montevallo (2OT)	2-3
10-30	Florida Tech	2-0
11-4	Lambuth	2-0

\* Gulf South Conference Games

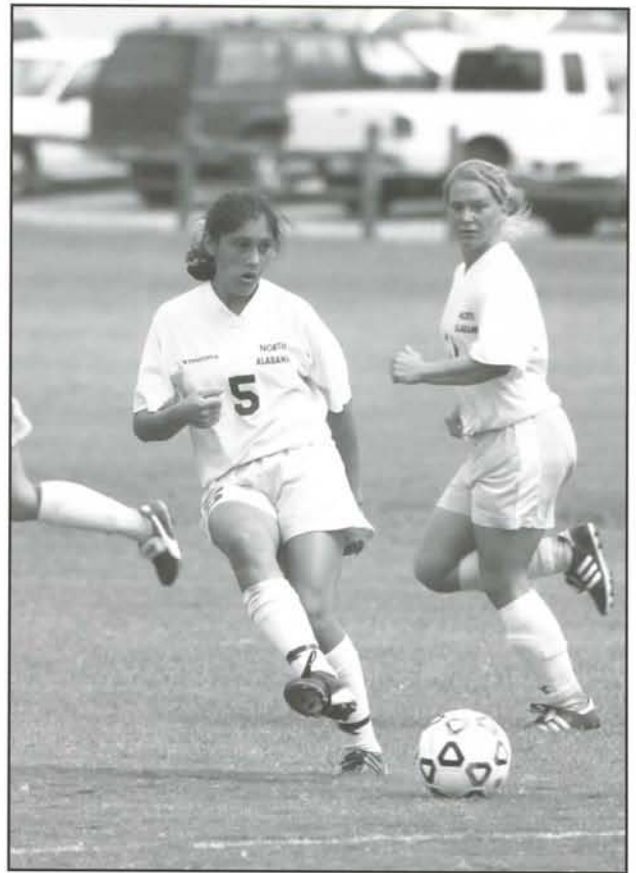


# UNA VS. ALL OPPONENTS

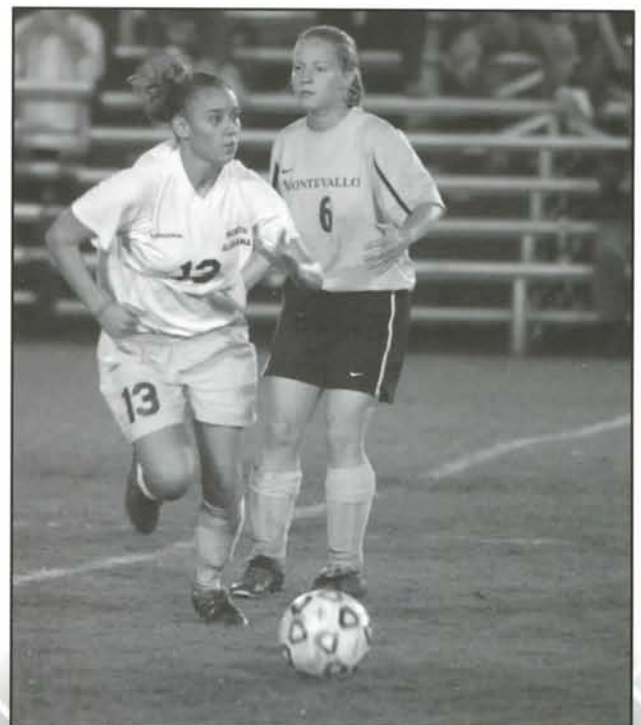
## UNA VS. ALL OPPONENTS, 1997-2004

	<i>All</i>	<i>Home</i>	<i>Away</i>	<i>Neutral</i>
Alabama A&M	2-1	2-0	0-1	0-0
Alabama-Huntsville	3-5	3-1	0-4	0-0
Barry	0-2	0-1	0-0	0-1
Belmont	0-2	0-1	0-1	0-0
Birmingham-Southern	0-2	0-1	0-0	0-1
Bryan College	1-0	1-0	0-0	0-0
Carson-Newman	1-1	0-0	1-0	0-1
Central Arkansas	4-3	2-1	2-2	0-0
Christian Brothers	2-6	2-3	0-3	0-0
Clayton State	5-3	3-0	1-2	1-1
Columbus State	0-0-1	0-0-1	0-0	0-0
Cumberland	2-0	1-0	1-0	0-0
Delta State	1-0	0-0	1-0	0-0
Emory	0-1	0-0	0-1	0-0
Erskine	0-1	0-0	0-1	0-0
Florida Southern	1-0	0-0	1-0	0-0
Florida Tech	1-0	1-0	0-0	0-0
Freed-Hardeman	1-0	0-0	1-0	0-0
Gardner-Webb	1-1	1-0	0-1	0-0
Harding	4-4	2-1	2-2	0-1
Huntingdon	1-0	0-0	1-0	0-0
Kennesaw State	0-1	0-0	0-1	0-0
Lambuth	3-0	3-0	0-0	0-0
Lander	1-1	1-0	0-1	0-0
Lee	0-2	0-0	0-1	0-1
Lincoln Memorial	1-8-1	0-3-1	1-3	0-2
Lipscomb	2-0	1-0	1-0	0-0
Lynn	0-1	0-1	0-0	0-0
Mars Hill	0-2	0-1	0-1	0-0
Martin Methodist	6-2	4-1	2-1	0-0
Mobile	0-1	0-0	0-1	0-0
Montevallo	2-5-1	2-2	0-3-1	0-0
Mount Olive	0-1	0-0	0-0	0-1
North Georgia	3-0	2-0	1-0	0-0
Nova Southeastern	1-1	1-0	0-1	0-0
Oglethorpe	0-1	0-0	0-1	0-0
Ouachita Baptist	4-2	3-1	1-1	0-0
Piedmont	0-1	0-0	0-1	0-0
Reinhardt	1-0	1-0	0-0	0-0
Saint Leo	1-1	1-0	0-1	0-0
Shorter	1-0	1-0	0-0	0-0
South Carolina-Aiken	1-1	0-0	0-1	1-0
Spring Hill	2-0	0-0	2-0	0-0
Tampa	0-3	0-2	0-1	0-0
Tennessee-Martin	1-1	1-0	0-1	0-0
Tennessee Tech	0-2	0-1	0-1	0-0
Tennessee Wesleyan	1-1	0-1	1-0	0-0
Trevecca Nazarene	2-0	2-0	0-0	0-0
Tusculum	0-2	0-1	0-1	0-0
West Florida	0-7	0-3	0-4	0-0
West Georgia	1-0	0-0	1-0	0-0

**Overall Record:**..... 65-78-3  
**at Home:** 41-26-2 **Away:** ..... 21-42-1 **Neutral Site:** 3-10



*Rhiannon Harrison and Nan Waldkirch*



*Afton Holm*



# ALL-TIME LION SOCCER HONORS

## ALL-GULF SOUTH CONFERENCE

### First-Team

- 1997 Sara Tvrdy
- 1997 Natalie Tersigni
- 1999 Brandi Eveland
- 1999 Catherine Schillig
- 2000 Shelley Huggins
- 2000 Chrisina Mascaro
- 2002 Megan Thomas
- 2002 Allison Harris
- 2003 Allison Harris

## ALL-GULF SOUTH CONFERENCE

### Second-Team

- 1998 Sylvia Sherer
- 1998 Sara Tvrdy
- 1998 Mirela Pjeshkazini
- 1998 Heather Dyer
- 1999 Gloria Repolesk
- 1999 Shelley White
- 1999 Rita Berhardt
- 1999 Sara Tvrdy
- 2000 Rita Bernhardt
- 2000 Catherine Schillig
- 2000 Beth Miller
- 2000 Shelley White
- 2001 Allison Harris
- 2001 Nan Waldkirch
- 2003 Rhiannon Harrison
- 2003 Katie Robbins
- 2004 Nan Waldkirch
- 2004 Alison Woodman

## GULF SOUTH CONFERENCE

### ALL-TOURNAMENT

- 1997 Brandi Eveland
- 1997 Heather Dyer
- 1999 Catherine Schillig

## GULF SOUTH CONFERENCE

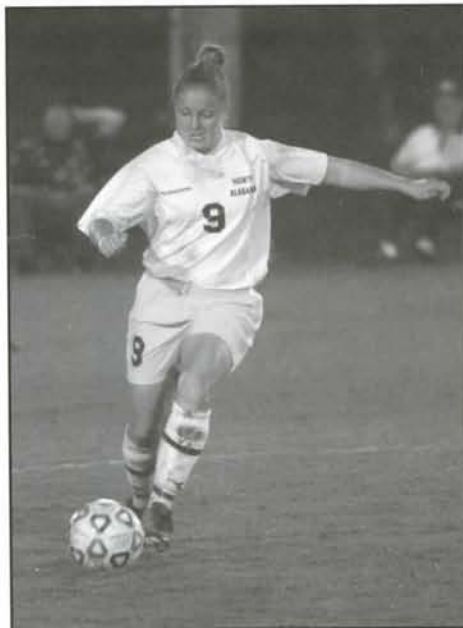
### PLAYER OF THE WEEK

- 1999 Sept. 21 Catherine Schillig
- 2000 Sept. 19 Christina Mascaro
- 2000 Oct. 3 Catherine Schillig
- 2001 Sept. 18 Christina Mascaro

## GULF SOUTH CONFERENCE

### GOALKEEPER OF THE WEEK

- 1999 Sept. 21 Shelley Huggins
- 2001 Sept. 18 Shelley Huggins
- 2002 Sept. 3 Kenya Taylor



*Alison Woodman*

- 2002 Sept. 24 Megan Thomas
- 2003 Sept. 2 Amanda Gibson

### ACADEMIC

## ALL-GULF SOUTH CONFERENCE

- 1997 Brandi Eveland
- 1997 Cristal O'Loughlin
- 1998 Heather Dyer
- 1998 Sara Tvrdy
- 1999 Sara Tvrdy
- 1999 Karen Anglin
- 1999 Shelley White
- 2000 Shelley White
- 2000 Rita Bernhardt
- 2000 Brandi Eveland
- 2001 Allison Harris
- 2001 Jaime Carmack
- 2002 Allison Harris
- 2002 Jaime Carmack

### ACADEMIC

## ALL-DISTRICT IV

### First-Team

- 2003 Allison Harris

### Second-Team

- 2003 Nan Waldkirch

### ACADEMIC

## ALL-AMERICA

### Second-Team

- 2003 Allison Harris

## NATIONAL SOCCER COACHES ASSOCIATION OF AMERICA

### ALL-SOUTH REGION

#### First-Team

- 1999 Catherine Schillig

#### Second-Team

- 2000 Christina Mascaro
- 2000 Shelley White

#### Third-Team

- 1999 Shelley White
- 1999 Brandi Eveland

## LION TEAM CAPTAINS

- 1997 Brandi Eveland
- 1997 Heather Dyer
- 1998 Brandi Eveland
- 1998 Sara Tvrdy
- 1999 Brandi Eveland
- 1999 Sara Tvrdy
- 2000 Shelley White
- 2000 Jaime Carmack
- 2001 Rita Bernhardt
- 2001 Jaime Carmack
- 2001 Sarah Spidel
- 2002 Jaime Carmack
- 2002 Rita Bernhardt
- 2002 Sarah Spidel
- 2003 Sarah Spidel
- 2003 Allison Harris
- 2003 Breanna Smith
- 2004 Rhiannon Harrison
- 2004 Nan Waldkirch
- 2004 Breanna Smith



*Kim Goheen*



# ALL-TIME LION LETTERMEN

Karen Anglin 1997, 98, 99  
(Tupelo, Miss./Tupelo)  
Michelle Bernhardt 2002  
(Hendersonville, Tenn.)  
Rita Bernhardt 1999, 00,01,02  
(Hendersonville, Tenn./Hendersonville)  
Amy Britton 1998, 99  
(Gadsden, Ala./Gadsden)  
Catherine Burris 1997  
(Arlington, Texas/Sam Houston)  
Amy Butler 2004  
(Manchester, England)  
Tiffany Cabler 1998  
(Florence, Ala./Coffee)  
Cheryl Canavan 2004  
(Sunderland, England)  
Jamie Carmack 1999, 00,01,02  
(Hendersonville, Tenn./Hendersonville)  
Stephanie Cather 2003  
(Gardendale, Ala./Minor)  
Elizabeth Childree 2004  
(Nashville, Tenn./McGavock)  
Morgan Chunn 2004  
(Somerville, Ala./Brewer)  
Kellie Corbin 1997  
(Brewton, Ala./T.R. Miller)  
Emily Cotham 2003, 04  
(Richardson, Texas/L.V.Berkner)  
Kristin Danielik 2002  
(Valrico, Fla.)  
Sarah Denholm 1997, 98  
(Huntsville, Ala./Grissom)  
Heather Dyer 1997, 98  
(White House, Tenn./White House)  
Seola Edwards 2002, 03, 04  
(Winter Haven, Fla.)  
Ashley Elliott 2001  
(Henager, Ala./Fort Payne)  
Brandi Eveland 1997,98,99,00  
(Huntsville, Ala./Grissom)  
Melissa Funke 2000, 01  
(Huntsville, Ala./Huntsville)  
Julia Garavaglia 2003, 04  
(St. Louis, Mo./Parkway)  
Amanda Gibson 2003  
(Vinemont, Ala./Vinemont)  
Kymberli Goheen 2003  
Tracy Gorham 2000, 01,02  
(Huntsville, Ala./Grissom)  
(Kirkland, Wash./Juanita)  
Allison Harris 2000,01,02,03  
(Nashville, Tenn./Hume-Fogg)  
Rhiannon Harrison 2003, 04  
(Nesbit, Miss./Immaculate)  
Afton Holm 2004  
(Plano, Texas/Plano)  
Shelley Huggins 1998,99,00,01  
(Nashville, Tenn./St. Cecilia)  
Kelsey Hunt 2004  
(Cordova, Tenn./Cordova)  
Rachel Hunter 2000,01,02,03  
(Gallatin, Tenn./Gallatin)  
Katie Ingersoll 1998,99,00,01  
(Roswell, Ga./Roswell)

Jade Ireland 1998, 99  
(Conyers, Ga./Rockdale County)  
April Jackson 2000,01,02,03  
(Vinemont, Ala./Vinemont)  
Magan Kelley 2004  
(Lawrenceburg, Tenn./Lawrence County)  
Christine Kelly 2003, 04  
(Russellville, Ala./St. Bernard)  
Lyndsey Kulaw 1998, 99  
(Decatur, Ala./Decatur)  
Kristy Lemmond 1998  
(Athens, Ala./Athens)  
Christina Mascaro 2000, 01  
(Osteen, Fla./Pine Ridge)  
Meghan McGrory 2003  
(Lakeland, Tenn/Bolton)  
Beth Miller 1997,98,99,00  
(Fairhope, Ala./Fairhope)  
Stephanie Moulder 1997, 98  
(Huntsville, Ala./St. Bernard)  
Lindsey Neeley 2003  
(Nashville, Tenn./Hillsboro)  
Cristal O'Loughlin 1997  
(Vestavia, Ala./Vestavia)  
Sara Owen 1997  
(Athens, Ala./Athens)  
Hannah Perry 1998, 99, 00  
(Athens, Tenn./McMinn County)  
Mirela Pjeshkazini 1998,99,00,01  
(New Market, Md.)  
Beth Porter 1998  
(Athens, Ala./Athens)  
Allison Post 2004  
(Lawrenceville, Ga/ Brookwood)  
Bryanna Potter 2001, 02  
(Dothan, Ala./Northview)  
Lisa Rice 1997, 98, 99  
(Mobile, Ala./McGill-Toolen)  
Katie Robbins 2002,03  
(Ocala, Fla.)

Jo Ellen Santos 2004  
(Russellville, Ala./Spring Hill College)  
Catherine Schilling 1999, 00  
(Gahanna, Ohio/Gahanna)  
Kelly Schwindaman 2001  
(Rockport, Ill./Hononegah)  
Sylvia Sherer 1998  
(Alexander City, Ala./Benjamin Russell)  
Elizabeth Shultz 2001,02, 03, 04  
(Mobile, Ala./Fairhope)  
Hope Skaggs 2001  
(Gallatin, Tenn./Gallatin)  
Ashley Smith 1997  
(Athens, Ala./Athens)  
Breanna Smith 2001,02,03, 04  
(Sacramento, Calif./Casa Robla)  
Heather Smith 2004  
(Clarksville, Tenn./Northwest)  
Leigh-Anna Smith 2001, 02  
(Tuscaloosa, Ala./Hillcrest)  
Sarah Spidel 2000,01,02,03  
(Polk, Ohio/Mapleton)  
Allison Stapleton 2004  
(Plano, Texas/Plano)  
Tiffany Swann 1999, 00, 01  
(Smiths, Bermuda/Berkeley Institute)  
Natalie Tersigni 1997  
(Hartselle, Ala./Brewer)  
Megan Thomas 2002  
(Lewisville, Texas)  
Michelle Thomas 1997,98,99,00  
(Pensacola, Fla./Washington)  
Sara Tvrdy 1997, 98, 99  
(Huntsville, Ala./Grissom)  
Nan Waldkirch 2001, 02,03, 04  
(Franklin, Tenn./Battle Ground)  
Shelley White 1998, 99, 00  
(Tupelo, Miss./Tupelo)  
Alison Woodman 2004  
(Sarasota, Fla./Riverview)



*The Lions celebrate after a muddy win over Lambuth in the 2004 season finale*



# 2004 LION GSC OPPONENTS

## Delta State

Location ..... Cleveland, Mississippi  
 President ..... Dr. John Hilpert  
 Enrollment ..... 4,125  
 Colors ..... Forest Green and White  
 Nickname ..... Lady Statesmen  
 Head Coach ..... Jim Allen  
 2004 Record ..... 3-14 (0-8)  
 SID ..... Matt Smith  
 SID Office Phone ..... (662) 846-4284  
 SID Home Phone ..... (662) 846-3750  
 SID Fax Number ..... (662) 846-4297  
 SID Email ..... psmith@deltastate.edu  
 Web Site ..... www.gostatesmen.com

## Harding

Location ..... Searcy, Arkansas  
 President ..... Dr. David B. Burks  
 Enrollment ..... 5,300  
 Colors ..... Black and Gold  
 Nickname ..... Lady Bisons  
 Head Coach ..... Greg Harris  
 2004 Record ..... 15-4-1 (6-1-1)  
 SID ..... Scott Goode  
 SID Office Phone ..... (501) 279-4760  
 SID Home Phone ..... (501) 268-1208  
 SID Fax Number ..... (501) 279-4020  
 SID Email ..... sgoode@harding.edu  
 Web Site ..... www.harding.edu/athletics

## Ouachita Baptist

Location ..... Arkadelphia, Arkansas  
 President ..... Dr. Andrew Westmoreland  
 Enrollment ..... 1,600  
 Colors ..... Purple and Gold  
 Nickname ..... Tigers  
 Head Coach ..... Erik Forrest  
 2004 Record ..... 5-10-2 (2-4-2)  
 SID ..... Chris Babb  
 SID Office Phone ..... (870) 245-5186  
 SID Home Phone ..... (870) 230-1475  
 SID Fax Number ..... (870) 245-5084  
 SID Email ..... babbc@obu.edu  
 Web Site ..... www.gotigers.obu.edu

## Lincoln Memorial

Location ..... Harrogate, Tennessee  
 President ..... Dr. Jerry C. Bishop  
 Enrollment ..... 1,753  
 Colors ..... Navy and Gray  
 Nickname ..... Lady Railsplitters  
 Head Coach ..... Helio D'Anna  
 2004 Record ..... 13-5-1 (6-1-1)  
 SID ..... Michael "Rusty" Peace  
 SID Office Phone ..... (423) 869-6236  
 SID Home Phone ..... (423) 869-5120  
 SID Fax Number ..... (423) 869-6376  
 SID Email ..... rpeace@lmunet.edu  
 Web Site ..... www.lmunet.edu/athletics

## Central Arkansas

Location ..... Conway, Arkansas  
 President ..... Dr. Winfred L. Thompson  
 Enrollment ..... 8,800  
 Colors ..... Purple and Gray  
 Nickname ..... Bears  
 Head Coach ..... Tina Conley Banham  
 2004 Record ..... 11-6 (6-2)  
 SID ..... Steve East  
 SID Office Phone ..... (501) 450-5743  
 SID Home Phone ..... (501) 450-0013  
 SID Fax Number ..... (501) 450-5740  
 SID Email ..... seast@uca.edu  
 Web Site ..... www.uca.edu/athletics/

## Christian Brothers

Location ..... Memphis, Tennessee  
 President ..... Brother Stan Sobczyk, F.S.C.  
 Enrollment ..... 1,900  
 Colors ..... Scarlet and Gray  
 Nickname ..... Lady Buccaneers  
 Head Coach ..... Seamus Loftus  
 2004 Record ..... 8-8 (5-3)  
 SID ..... Justin Maskus  
 SID Office Phone ..... (901) 321-3378  
 SID Cell Phone ..... (901) 488-6368  
 SID Fax Number ..... (901) 321-3570  
 SID Email ..... jmaskus@cbu.edu  
 Web Site ..... www.gobucsgo.com

## Alabama-Huntsville

Location ..... Huntsville, Alabama  
 President ..... Dr. Frank Franz  
 Enrollment ..... 6,700  
 Colors ..... Royal Blue and White  
 Nickname ..... Chargers  
 Head Coach ... Tafadzwa "Lincoln" Ziyenge  
 2004 Record ..... 7-6 (3-5)  
 SID ..... Antoine Bell  
 SID Office Phone ..... (256) 824-6008  
 SID Home Phone ..... (256) 859-9034  
 SID Fax Number ..... (256) 824-6947  
 SID Email ..... bella@email.uah.edu  
 Web Site ..... www.uah.edu/athletics

## West Florida

Location ..... Pensacola, Fla.  
 President ..... Dr. Morris Marx  
 Enrollment ..... 9,700  
 Colors ..... Royal Blue and Kelly Green  
 Nickname ..... Argonauts  
 Head Coach ..... Joe Bartlinski  
 2004 Record ..... 3-0 (0-0)  
 SID ..... Jake Fish  
 SID Office Phone ..... (850) 474-2140  
 SID Home Phone ..... (850) 454-9512  
 SID Fax Number ..... (850) 474-3342  
 SID Email ..... tfish@uwf.edu  
 Web Site ..... www.uwf.edu/athletics

## Montevallo

Location ..... Montevallo, Alabama  
 President ..... Dr. Robert McChesney  
 Enrollment ..... 3,000  
 Colors ..... Purple and Gold  
 Nickname ..... Lady Falcons  
 Head Coach ..... Patricia Hughes  
 2004 Record ..... 8-6 (4-4)  
 SID ..... Alfred Kojima  
 SID Office Phone ..... (205) 665-6606  
 SID Home Phone ..... (205) 746-7990  
 SID Fax Number ..... (205) 665-6586  
 SID Email ..... kojimaa@montevallo.edu  
 Web Site ..... www.montevallo.edu/athletics

## West Georgia

Location ..... Carrollton, Georgia  
 President ..... Dr. Beheruz N. Sethna  
 Enrollment ..... 10,250  
 Colors ..... Blue and Red  
 Nickname ..... Lady Braves  
 Head Coach ..... Gareth O'Sullivan  
 2004 Record ..... 2-13-1  
 SID ..... Mitch Gray  
 SID Office Phone ..... (678) 839-6542  
 SID Home Phone ..... (770) 574-9248  
 SID Fax Number ..... (678) 839-6543  
 SID Email ..... mgray@westga.edu  
 Web Site ..... www.westga.edu/~wgbraves





# GULF SOUTH CONFERENCE

The GULF SOUTH CONFERENCE (GSC) enters its 36th year of excellence, continuing a tradition of growth and success that has brought it distinction as one of the elite NCAA Division II conferences. Our 17 universities in six southeastern states feature comprehensive athletic programs that compete for 14 official conference championships: football, men's and women's cross country, men's and women's soccer, women's volleyball, men's and women's basketball, baseball, softball, men's and women's tennis and men's golf. As an all-sports conference, the GSC is dedicated to the promotion and practice of honor, integrity and sportsmanship. We take pride in our 40 National Team Championships in nine sports and the academic excellence of our coaches and student athletes.

Originally known as the Mid-South Conference, the GSC was formed by six universities in the summer of 1970: Delta State, Florence State (now North Alabama), Jacksonville State, Livingston (now West Alabama), UT-Martin, and Troy State. Due to scheduling problems

during the 1970-71 academic year, the only league sport was football. Jacksonville State won the league's first championship.

In 1971, the league changed its name to the GULF SOUTH CONFERENCE, added Southeastern Louisiana and Nicholls State (increasing the membership to eight), and opened an office in Hammond, LA. The following year, Mississippi College and Northwestern Louisiana (now Northwestern State) were admitted. Northwestern Louisiana withdrew to go Division I two years later, followed by Southeastern Louisiana and Nicholls State in 1979.

The conference continued with seven teams until 1981, when the presidents admitted Valdosta State. West Georgia joined in 1983. Eight years of stability ended in 1991 when Tennessee-Martin and Troy State went Division I, briefly dropping the GSC back to seven members, before the beginning of an expansion resulting in ten new members: Lincoln Memorial (1992-93); Alabama-Huntsville, Henderson State, Central Arkansas and Mississippi Uni-

versity for Women (1993-94); West Florida (1994-95); and Arkansas-Monticello, Arkansas Tech, Montevallo and Southern Arkansas (1995-96). Jacksonville State went Division I at the end of 1992-93. Mississippi College dropped to Division III at the end of 1995-96, and was replaced by Christian Brothers to keep the conference at 16 schools.

In July 2000, the GSC welcomed Harding University and Ouachita Baptist University, making it the largest NCAA conference at any level with 18 schools. MUW withdrew following 2002-03.

Former Commissioner Jim McCullough moved the GSC office to its present Birmingham location. The current Commissioner, Nathan (Nate) N. Salant, has been in office since October, 1992. He is assisted by Sports Information Director Mike Anderson, Assistant Sports Information Director Tim Andrzejewski and Office Manager Mary Jean Box. The Supervisors of Officials are Billy Johnson (Football), Mike Murphy (Basketball-East Division) and John Caldwell (Basketball-West Division).

## Previous 40 GSC National Championships

### **Football (9)**

West Alabama (1971), Troy State (1984, 1987),

    Jacksonville State (1992),

North Alabama (1993, 1994, 1995), Delta State (2000)

    Valdosta State (2004)

### **Basketball (3)**

North Alabama (1979, 1991), Jacksonville State (1985)

### **Baseball (5)**

Troy State (1986, 1987), Jacksonville State (1990, 1991)

    Delta State (2004)

### **Women's Basketball (7)**

Delta State (1975, 1976, 1977, 1989, 1990, 1992),

    Southeastern Louisiana (1977)

### **Women's Volleyball (1)**

    North Alabama (2003)

### **Golf (4)**

Troy State (1976, 1977, 1984), West Florida (2001)

### **Women's Golf (3)**

Troy State (1984, 1986, 1989)

### **Women's Soccer (1)**

    Christian Brothers (2002)

### **Women's Gymnastics (2)**

    Jacksonville State (1984, 1985)

### **Track (1)**

    Southeastern Louisiana (1975)

### **Ice Hockey (2)**

    Alabama-Huntsville (1996, 1998)

### **Men's Tennis (2)**

    West Florida (2004, 2005)



# GULF SOUTH CONFERENCE

## 2004 GSC FINAL STANDINGS

<i>School</i>	<i>W-L-T</i>	<i>PTS</i>	<i>GF</i>	<i>GA</i>	<i>W-L-TPTS</i>	<i>GF</i>	<i>GA</i>	<i>Streak</i>
Lincoln Memorial	6-1-1	13	21	9	13-5-1 27	55	25	L-1
Harding	6-1-1	13	21	8	15-4-1 31	52	20	L-2
Central Arkansas	6-2-0	12	26	13	11-6-0 22	52	25	L-1
Christian Brothers	5-3-0	10	30	8	8-8-0 16	41	23	W-4
Montevallo	4-4-0	8	21	17	8-6-0 16	41	23	W-5
Ouachita Baptist	2-4-2	6	8	17	5-10-2 12	20	43	W-1
Alabama-Huntsville	3-5-0	6	11	8	7-6-0 14	24	13	W-2
North Alabama	2-6-0	4	12	23	10-8-1 21	47	49	W-2
Delta State	0-8-0	0	2	46	3-14-0 6	25	82	L-12

## 2004 ALL-GULF SOUTH CONFERENCE

### First Team

GK	Whitney Johnson	Central Arkansas
GK	Cheryl Dovichak	Harding
D	Kara Pearson	Alabama-Huntsville
D	Clare Koelling	Central Arkansas
D	Megan Hatcher	Harding University
M	Shelby Poore	Alabama-Huntsville
M	Embla Gretarsdottir	Christian Brothers
M	Becky Taylor	Harding
M	Cindy Campbell	Lincoln Memorial
F	Stacy-Jo Fletcher	Christian Brothers
F	Lori Boren	Harding
F	Heloisa de Oliveira	Lincoln Memorial

### Second Team

D	Kristen Fabick	Alabama-Huntsville
D	Cassie Castelli	Lincoln Memorial
D	Caroline Albo	Montevallo
M	Mandy Pfister	Central Arkansas
M	Ciara McGuiness	Christian Brothers
<b>M</b>	<b>Nan Waldkirch</b>	<b>North Alabama</b>
<b>M</b>	<b>Alison Woodman</b>	<b>North Alabama</b>
F	Lauren King	Central Arkansas
F	Kristin Boujos	Lincoln Memorial
F	Kate Gerrard	Montevallo



## 2004 GULF SOUTH CONFERENCE Tournament

### Friday, November 5

Semi-Finals

#2 Harding 1, #3 Central Arkansas 0

#4 Christian Brothers 3, #1 Lincoln Memorial 2

### Sunday, November 7

Finals

Christian Brothers 4, West Florida 3, OT

### All-Tournament Team

Stacy-Jo Fletcher, CBU -Most Outstanding Player

Embla Gretarsdottir, CBU

Ciara McGuiness, CBU

Kendyl Washburn, HU

Megan Hatcher, HU

Lori Boren, HU

Cheryl Dovichak, HU

Mandy Pfister, CA

Whitney Johnson, CA

Stephanie Kwoka, LMU

Heloisa de Oliveira, LMU



# UNA ATHLETIC STAFF

## Lion Athletic Staff Directory All numbers are (256) 765 + four digit extension

### FLOWERS HALL

For: Men's Basketball, Women's Basketball, Golf, Cross Country, Baseball, Softball

Judy Gullett .... Secretary ..... 4396

### FLOWERS HALL ANNEX

For: Athletic Director, SWA, Football, Volleyball, Men's Tennis, Women's Tennis, Soccer, Trainers

Pam Trimble ... Secretary ..... 4397

**ATHLETIC DEPARTMENT FAX** ..... 4685

**SPORTS INFORMATION FAX** ..... 4659

**SPORTSMAN'S CLUB** ..... 4185

Lana Nale ..... Secretary ..... 4185

	<i>Position</i>	<i>Phone</i>	<i>Alma Mater</i>	<i>Year</i>
Keith Boone	Football Assistant	4613	Delta State	1999
Casey Bourgoyne	Softball Assistant	5982	Delta State	2002
Bobby Champagne	Men's Basketball	4398	South Alabama	1990
Jay Correll	Volleyball Assistant	4556	Alabama	2005
Rodney Deline	Assistant Women's Basketball	4161	Alabama	1999
Kenny Edenfield	Assistant Football	4566	Troy State	1988
Dr. Joel Erdmann	Athletic Director	4397	South Dakota State	1986
Billy Gamble	Head Golf	4113	Troy State	1967
Shane Herrmann	Assistant SID	4895	North Alabama	1999
Jeff Hodges	Sports Information Director	4595	North Alabama	1982
Mark Hudspeth	Head Football	4397	Delta State	1992
Mike Keehn	Baseball Assistant	4635	Kearney State	1985
Sherry Kennemer	Assistant to Athletic Director & Senior Woman Administrator	4618	North Alabama	1992
Mike Lane	Head Baseball	4615	Kearney State	1974
Paul Maxwell	Men & Women's Tennis	4617	Union	1996
Scott Mitchell	Flowers Hall Coordinator	4333	North Alabama	2002
Karl Morgan	Football Assistant	4564	UCLA	1984
Josh Penny	Head Athletic Trainer	4563	West Alabama	1999
Stephanie Radecki	Head Volleyball	4556	Edinboro	1998
Jeremy Reece	Head Softball	5993	Union University	1997
Pat Roden	Faculty Athletic Representative	4478	North Alabama	1975
Terry Tilghman	Football Assistant	4634	East Carolina	1995
Scott Trimble	Head M&W Cross Country Coach	4788	Athens State	1993
Todd Vardaman	University Ticket Manager	5466	North Alabama	1990
Flora Sweat	Head Women's Basketball	4616	Liberty	1998
Chris Willis	Football Assistant	4634	Delta State	1998
Graham Winkworth	Head Soccer	4845	Central Lancashire	2000
Cord Wright	Men's Basketball Assistant	4567	Limestone College	2002



Dr. Joel Erdmann  
Athletic  
Director



Sherry Kennemer  
Senior Women's  
Administrator



Todd Vardaman  
University  
Ticket Manager



Jeff Hodges  
Sports Info. Director



Josh Penny  
Athletic Trainer

# 2005 UNA SOCCER SCHEDULE

<i>DATE</i>	<i>DAY</i>	<i>OPPONENT</i>	<i>TIME</i>	<i>SITE</i>
Aug. 28	Sun.	SPALDING UNIVERSITY	1:00	HOME
Sept. 2	Fri.	Nova Southeastern	6:00	Away
Sept. 4	Sun.	Lynn University	11:00 a.m.	Away
Sept. 9	Fri.	ALABAMA STATE	6:00	HOME
Sept. 11	Sun.	SPRING HILL	1:00	HOME
Sept. 16	Fri.	*Harding	6:30	Away
Sept. 18	Sun.	*Ouachita Baptist	2:00	Away
Sept. 25	Sun.	*CENTRAL ARKANSAS	1:00	HOME
Sept. 27	Tues.	Trevecca	6:00	Away
Sept. 30	Fri.	*Montevallo	6:00	Away
Oct. 2	Sun.	*DELTA STATE	1:00	HOME
Oct. 5	Wed.	*CHRISTIAN BROTHERS	6:00	HOME
Oct. 8	Sat.	Columbus State	3:00	Away
Oct. 11	Tues.	*WEST GEORGIA	6:00	HOME
Oct. 14	Fri.	*West Florida	5:00	Away
Oct. 16	Sun.	Saint Leo	11:00 a.m.	Neutral
Oct. 21	Fri.	*Alabama Huntsville	3:00	Away
Oct. 23	Sun.	*LINCOLN MEMORIAL	1:00	HOME
Oct. 24	Mon.	Union	6:00	Away
Oct. 29	Sat.	Alabama A&M	2:00	Away

\* *Gulf South Conference Games*

*All times Central*



*Changing Lives, Creating Futures*