

# UNIVERSITY OF NORTH ALABAMA

## 1995 Lady Lion Softball

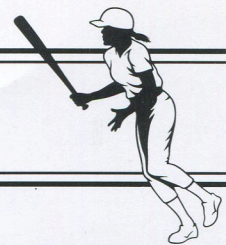


*"Giving All We Can"*  
*in Academics and Athletics*



SINCE 1830

# Athletic Directory



## Athletic Staff Directory

Jack Belew	Ticket Manager .....	760-4335
Wayne Byrd	Women's Basketball .....	760-4616
Phillip Cross	Trainer .....	760-4563
Gary Elliott	Basketball .....	760-4396
Billy Gamble	Golf, Basketball Asst. ....	760-4567
Judy Gullett	Secretary .....	760-4396
Derek Hill	Football Asst. ....	760-4564
Bill Hyde	Football Asst. ....	760-4564
Jeff Hodges	Sports Info. Director .....	760-4595
Ande Jones	Volleyball, Softball .....	760-4556
Bill Jones	Athletic Director .....	760-4397
Mike Keehn	Baseball Asst. ....	760-4635
Sherry Kennemer	Women's Tennis, Cross Country .....	760-4618
Mike Lane	Baseball .....	760-4615
David Martin	Football Asst. ....	760-4562
Raymond Monica	Football Asst. ....	760-4566
Lyndell Rhodes	Equipment Manager .....	760-4950
Lana Roberts	Secretary .....	760-4397
Willie Slater	Football Asst. ....	760-4613
Veronica Starr	Softball .....	760-4396
Dan Summy	Athletic Director .....	760-4397
Larry Thompson	Tennis, Academic Advisor .....	760-4617
Todd Vardaman	Asst. Sports Info. Director .....	760-4895
Bobby Wallace	Football .....	760-4397
Dr. Robert Young	Faculty Athletic Rep. ....	760-4327
Athletic Department Fax .....		760-4685

## Media Information

Site: All University of North Alabama home softball games are played at Cox Creek Park.

Credentials: There is no admission charge to University of North Alabama home softball games and no press credentials are necessary.

Interviews: All requests for interviews with UNA student-athletes should be made through the sports information office by calling (205) 760-4595. UNA athletes are also routinely available for interviews following practice sessions and games.

## Sports Information Numbers

SID Office Phone .....	(205) 760-4595
SID Home Phone .....	(205) 766-7572
SID Fax Phone .....	(205) 760-4659



## ATHLETIC DIRECTOR

### Dan Summy

The University of North Alabama concluded a four-month national search on December 20 with the naming of Dan Summy as the school's athletic director.

Summy, who took on his athletic director duties at UNA on January 16, came to the school from North Dakota State University where he was serving as associate athletic director and had been since 1990.

Summy is a 1971 graduate of Simpson College in Iowa, with a B.S. degree in history and education. He later received his Master's degree in mass communications from Iowa State University in 1978.

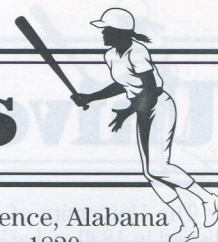
Prior to going to NDSU, Summy served as director of athletic marketing at Western Michigan University from 1986-90, and as executive director of the Pirate Club booster organization at East Tennessee State University from 1984-86.

He served as an assistant football coach at Lincoln High School in Des Moines, Iowa, from 1971-74 and then accepted a position as defensive coordinator at Iowa Lakes Community College in Estherville, Iowa in 1978, after having taught at the school for three years.

## Non-Discrimination Policies

It is the policy of the University of North Alabama to afford equal opportunities in education and in employment to qualified persons regardless of age, color, handicap, national origin, race, religion or sex, in accord with applicable parts of the Age Discrimination in Employment Act of 1967, Title VI of the Civil Rights Act of 1964, Title IX of the Education Amendments of 1972, and Section 504 of the Rehabilitation Act of 1973, as amended. The coordinators for non discrimination policies are: for students, the Dean of Student Affairs, Bibb Graves Hall or telephone 205-760-4235; for employees, the Director of Human Resources and Affirmative Action, Bibb Graves Hall or telephone 205-760-4291.

# Contents and Quick Facts



## CONTENTS

Athletic Directory	IF
Quick Facts	1
University Biography	2
Head Coach Veronica Starr	3
Player Biographies	4-7
1994 Final Statistics	8
1994 Softball Results	9
1994 Season in Review	10
1995 Preview and Rosters	11
Lady Lion Opponents	12-13
All-time Lettermen	14
Year-by-Year Records	15
Team and Individual Records	16
Annual Leaders	17
Softball History and Honors	18
Kristy Holdbrooks	19
All-time Scores	20-IB
1995 Schedule	Back

## CREDITS

The 1995 University of North Alabama Lady Lions softball brochure was compiled and edited by Sports Information Director Jeff Hodges and assistant SID Todd Vardaman. Photos are by university photographer Shannon Wells. Cover design is by UNA publications assistant Karen Hodges.

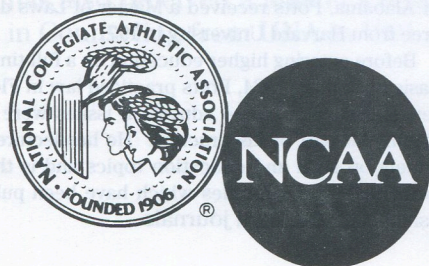
## SPORTS INFORMATION STAFF

*Sports Information Director*  
Jeff Hodges

*Assistant Sports Information Director*  
Todd Vardaman

*Student Assistants*  
Ashley Balch  
Tasha Conway  
Shanna Grissom  
Stacy Hair

**OFFICE: 760-4595**  
**FAX: 760-4659**



LOCATION	Florence, Alabama
FOUNDED	1830
ENROLLMENT	5,600
PRESIDENT	Robert L. Potts
ATHLETIC DIRECTOR	Dan Summy
NICKNAME	Lions
COLORS	Purple and Gold
CONFERENCE	Gulf South
AFFILIATION	NCAA Division II
FIELD	Veteran's Park

<b>HEAD COACH</b>	Veronica Starr
alma mater	North Alabama (1988)
record at UNA	First Year
collegiate record	First Year
office phone	(205) 760-4396
best time to call	8-11 a.m.

**1994 RECORD:** 23-19  
**GSC RECORD:** 7-9 (7th in Tournament)

<b>LETTERMEN RETURNING:</b>	7
<b>STARTERS RETURNING:</b>	6
<b>TOP RETURNEES:</b>	
Lesley Westmoreland	.379, 33 R, 35 RBI
Jessica Christ	.304, 35 R, 5 RBI
Jenny Blasingame	.287, 29 R, 20 RBI
Leigh Ann Mays	.231, 10 R, 12 RBI
Kandas Cavender	.188, 9 R, 8 RBI
Angie Williams	11-9, 2.18 ERA, 50 K
Amy Wolford	12-10, 2.48 ERA, 42 K

<b>LETTERMEN LOST:</b>	4
<b>KEY LOSSES:</b>	
Terra Lawson	.348, 33 R, 26 RBI
Keysha McCall	.298, 17 R, 21 RBI
Laura Jo McFall	.256, 23 R, 17 RBI

<b>SPORTS INFO. DIRECTOR</b>	Jeff Hodges
office phone:	(205) 760-4595
home phone:	(205) 766-7572
fax number:	(205) 760-4659
<b>SPORTS INFO. ASSISTANT</b>	Todd Vardaman
office Phone:	(205) 760-4895
home phone:	(205) 767-1697



**GULF SOUTH CONFERENCE CHAMPIONS**  
**1983, 1986, 1987**

# University of North Alabama



The University of North Alabama, established in 1830 as LaGrange College, became in 1872 the first state teachers college south of the Ohio River. UNA has developed into a regional university providing quality educational opportunities for students from the three-state region of Alabama, Mississippi and Tennessee.

The Gourman Report, which ranks the nation's universities, selected UNA as one of the better schools in Alabama. Of the 26 Alabama schools rated, UNA ranked first behind Alabama's five doctoral degree-granting institutions.

Using the Gourman criteria, North Alabama, if located in any of the other 53 U.S. territories or states, would rank first in five states, second in 12, third in 13, fourth in 10 and fifth in one. The Gourman scores ranked North Alabama first among Gulf South Conference schools.

North Alabama's academic role has expanded through the years. Bachelor's degrees are offered in majors in various areas of arts and sciences, business, education and nursing. Preprofessional preparation for medicine, dentistry, optometry, podiatry, pharmacy, law, agriculture and forestry, engineering, veterinary medicine, medical technology and other allied health professions is offered. Various master's degrees are offered in the education and business fields.

North Alabama is the first major university to offer a four-year degree program in commercial music. Majors have interned in record industry offices in Nashville, Memphis, New York, Los Angeles, London, and nearby Muscle Shoals. UNA is one of 11 schools nation wide offering an undergraduate degree in industrial hygiene. Foreign language, nursing and science students also have opportunities to study abroad.

Numerous faculty and staff members hold positions of distinction in various national, regional and state professional organizations. Many have written books and/or published articles in newspaper, magazines and professional journals. The **Journal of Legal Economics** is published on campus.

Various centers have been established at North Alabama to serve its constituency. Operated by faculty and staff, they give undergraduate and graduate students excellent opportunities for research and public services.

They include the Occupational and Environmental Health Laboratory. Its scientific research has attracted national and international attention in the health field. The Geographic Research Center, in cooperation with the National Geographic Society, has increased the profile of geography in the state and has opened doors for students to partake in mapping and demographics research for various governmental agencies. Science faculty and students teach and study marine biology-related courses at Dauphin Island Sealab near Mobile, Alabama.

North Alabama also houses the northwest Alabama Education Research and Inservice Center, which provides inservice training for elementary and secondary educators in a six-county region. North Alabama has the only state university-operated kindergarten and grammar school, which afford education students a professional development laboratory experience in teaching.

Serving a nine-County region, the Small Business Development Center provides information, counseling and assistance to small businesses or to people planning to start small businesses. The Rare and Endangered Species Research Center personnel are conducting research on several endangered species in the region. The Wellness Research and Service Center researches areas of wellness, exercise programs, nutrition, stress management, health education counseling and environmental support.

North Alabama works closely with various southern universities and many local, state and federal agencies on a myriad of projects and activities.

Supporting the faculty are the extensive resources of the Collier Library system, a federal records depository. It is computerized and tied into various library loan research networks.

North Alabama students excel in academics, student activities and athletics. Often they are recognized nationally for their achievements in specific areas.

North Alabama's alumni are equally successful. Among them are a Pulitzer Prize winner for literature, two Alabama governors, a Texas governor, numerous U.S. Congressmen, thousands of educators, and special assistant to the President of the United States.

## Board of Trustees

**Billy Don Anderson**  
Sheffield, Ala.

**Huston Cobb, Jr.**  
Leighton, Ala.

**Bill Coussons**  
Florence, Ala.

**Gene Green**  
Muscle Shoals, Ala.

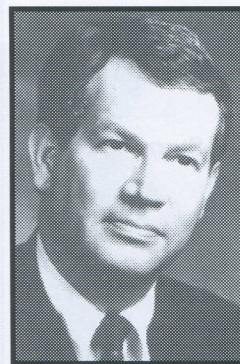
**Phil Logan**  
Haleyville, Ala.

**Charlie Maner**  
Huntsville, Ala.

**Brenda Morrow**  
Russellville, Ala.

**E.A. Nelson, Jr.**  
Florence, Ala.

**Ben T. Richardson**  
Scottsboro, Ala.



## President Robert L. Potts

Robert I. Potts was named president of the University of North Alabama on August 13, 1990, after serving as Interim President for seven months. He had previously served for six years as General Counsel for the University of Alabama System.

tem.

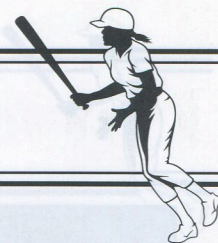
During the Potts tenure, the University of North Alabama has made significant progress. Under his leadership the administrative structure of the University has been streamlined, admissions standards have been adopted, a University Development and Advancement Office has been established which has resulted in more than doubling the University's endowment, an innovative day care center has been created at Kilby Laboratory School, an annual fall convocation for new students is now held, and the University has enhanced its presence in the State Capital through a cooperative effort with other state universities. Additionally, a campus master plan has been completed, an automation project has modernized the computing capability on campus, an Academic Resource Center has been established, and significant steps have been taken to improve student recruitment and retention.

Potts previously served on the Boards of Trustees of Alabama State University and Oakwood College. He has taught at Boston University, the University of Alabama and at UNA. Presently, he is a member of the Board of Trustees of the National Conference of Bar Examiners, where he serves as Chair. He is a former Chairman of the Alabama Board of Bar Examiners. He also serves on the Board of Directors of the Alabama Motorists Association and the Alabama Women's Hall of Fame. On January 3, 1994, United States Secretary of Education Richard W. Riley appointed Potts to the National Advisory Committee on Institutional Quality and Integrity.

Potts attended Newbold College in England and received a B.A. degree cum laude from Southern College in Tennessee. He obtained a Juris Doctor degree from the University of Alabama School of Law, where he served as Alabama Editor of the Alabama Law Review. After clerking for the U.S. District Court Chief Judge for the Northern District of Alabama, Potts received a Master of Laws degree from Harvard University in 1971.

Before entering higher education on a full-time basis in January 1984, Potts practiced law in Florence, Alabama, where education issues were a significant part of his practice. He has lectured widely on legal and education topics and is the author of several articles which have been published in professional journals.

# 19 Head Coach



**Head Coach  
Veronica Starr**

Veronica Starr enters her first season as the Lady Lions head softball coach after having played and served as an assistant in the UNA program.

A 1988 graduate of UNA with a B.S. degree in Social Work, Starr served as a part-time coach for the Lady Lions last season and was a graduate assistant coach at UNA from 1989-91.

Starr lettered two years in softball for the Lady Lions from 1986 to 1988 and was a member of back-to-back Gulf South Conference championship teams.

A native of Cedar Bluff, Ala., Starr played at Cedar Bluff High School before coming to UNA.

In addition to her B.S. degree, Starr has also received a Master's degree in Counseling from UNA in 1991.



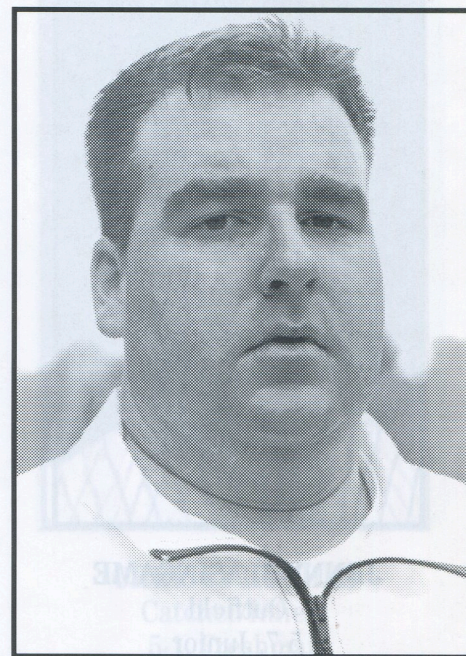
**YEAR BY YEAR  
Lady Lions Softball**

*Slow-Pitch*

1983	27-4	GSC Champions
1984	20-20	4th in GSC
1985	12-17	3rd in GSC

*Fast-Pitch*

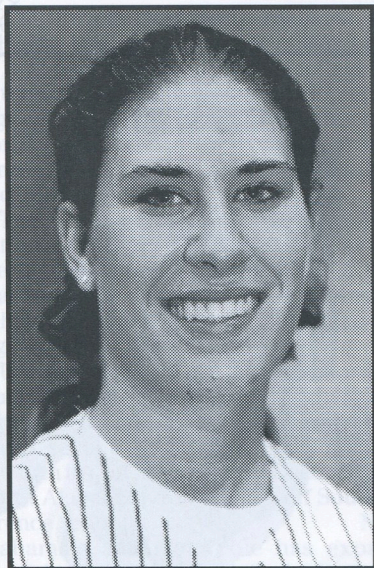
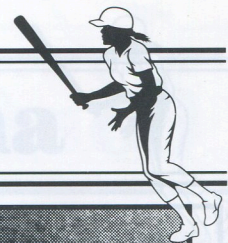
1986	16-10	GSC Champions
1987	20-11	GSC Champions
1988	21-10	Tied 5th in GSC
1989	17-14	4th in GSC
1990	7-19	4th in GSC
1991	13-17	3rd in GSC
1992	6-25	Tied 6th in GSC
1993	10-20	4th in GSC
1994	23-19	7th in GSC



**Trainer  
Derek Lewis**

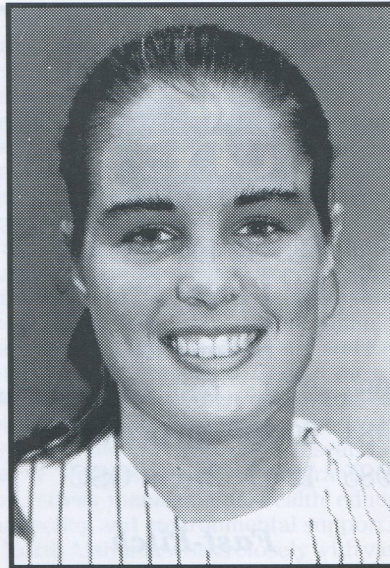


# 1995 Lady Lions



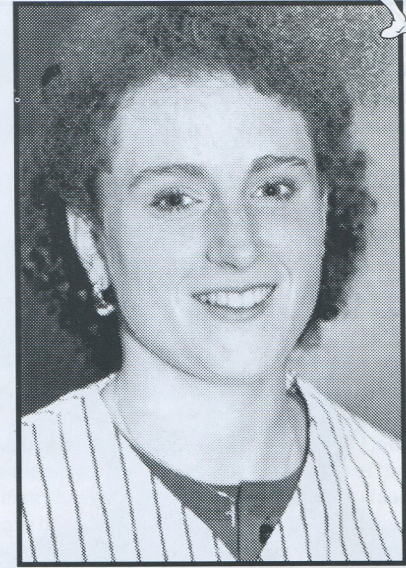
**JENNY BLASINGAME**  
 Outfield  
 5-7, Junior  
 Florence, Alabama

**1994:** Started 38 games for the Lady Lions last season, hitting .287 with 29 runs scored and 20 runs batted in. Went 37 for 129 at the plate with eight doubles, two triples and three home runs. Stole 14 bases in 20 attempts and had an .875 fielding percentage. Walked 16 times and struckout 26 times. **1993:** Played in 30 games in 1993 with 29 starts. Hit .052, going 3-for-58, with seven runs scored and one run batted in. Had one triple and two stolen bases. Had an .871 fielding percentage with eight errors in 62 chances. **UNA:** Also lettered three years in volleyball for the Lady Lions and was named GSC Player of the Week during 1994. **HIGH SCHOOL:** Played at Bradshaw High School under coach Donna Boyd where the Bruins ranked third in the state in 1991 and were area champions in 1990. She made the all-area team as a junior and senior and was selected to the Mizuno All-Star Senior Team. She was named Scholar Athlete of the Year at Bradshaw in 1992. **PERSONAL:** Full name is Jenny Marie Blasingame. She is the daughter of Jim and Patsy Blasingame and has one brother. Born on February 11, 1974. Her major is Biology.



**KANDAS CAVENDAR**  
 Infield  
 5-9, Sophomore  
 Jacksonville, Alabama

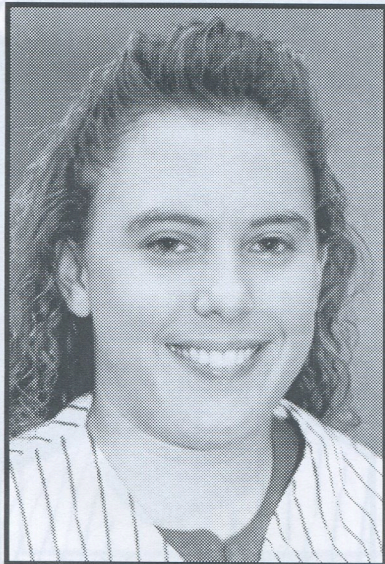
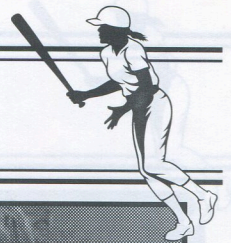
**1994:** Played in all 42 games last season, with 41 starts. Went 19 for 101 at the plate for a .188 average, with nine runs scored and eight RBI. Had three doubles and two triples and was two for three on stolen bases. Had a .943 fielding percentage with just 11 errors in 193 chances. **UNA:** Lettered two years in volleyball for the Lady Lions in the fall. **HIGH SCHOOL:** Played volleyball at Pleasant Valley High School under coach Sandy Hunter. In her senior season the Raiders won the county and area championships and were fourth in the state. In her junior year they also won the county and area titles and were second in the state. The Raiders also won county and area championships in her freshman and sophomore years, finishing third in the state in 1987 and winning the state championship in 1988. She was chosen all-county, all-area and all-state as a junior and all-county, all-area and all-state and area most valuable player. She also played basketball and softball. She was a member of three county and area championship basketball teams, was selected all-area as a junior and senior and helped the team to the Final Four as a senior. In softball, she lettered five years and was a member of five state championship teams. She was chosen state MVP as a junior and was a three-time all-area and two-time all-sectional selection. **JUNIOR COLLEGE:** Transferred to UNA from Gadsden State Community College. The Cardinals were third in the state her sophomore season. She was a two-time all-state pick and an all-region selection last season. **PERSONAL:** Full name is Kandas Dawn Cavender. She is the daughter of James and Lean Thomason and has one sister. Born on September 7, 1973. Majoring in History.



**JESSICA CHRIST**  
 Catcher/Outfield  
 5-4, Senior  
 Elkmont, Alabama

**1994:** Started 39 games last season and hit .304 with 35 runs scored and five RBI. Set a school single-season record with 27 steals in 29 attempts. Walked 21 times and struckout just nine times in 15 at bats. Had a .963 fielding percentage. Was an Academic All-GSC pick last season. **1993:** Played in 30 games in 1993 with 30 starts. Hit .258, going 23-for-89, with 11 runs scored and five runs batted in. Added one triple, six bases on balls and four stolen bases in seven attempts. Had a .953 fielding percentage with three errors in 64 attempts. Received the Lady Lion award in 1993. **UNA:** Also played basketball for the Lady Lions this fall. **HIGH SCHOOL:** Played at Elkmont High School in Elkmont under coach Lester Smith and Joey Thompson. The Red Devils were county champions and the area runner-up in 1987. She was the Best Defensive Player at Elkmont in 1987. In 1989-91 she served as team captain and was all-county. She played basketball and was team captain and Most Valuable Player in 1989-1991. She was all-county, all-area, and all-state in 1989-1991. She also played volleyball and her honors in that sport include: Most Valuable Player and team captain in 1989-1991 and all-county and all-area in 1988-1991. She was valedictorian of her class, a member of the Tandy National Honor Student, a U.S. Army National Scholar and attended Girls State. **PERSONAL:** Full name is Jessica Lee Christ. She is the daughter of Ronnie and Melinda Christ and has two brothers. Born on October 31, 1972. Her major is Mathematics.

# 1995 Lady Lions



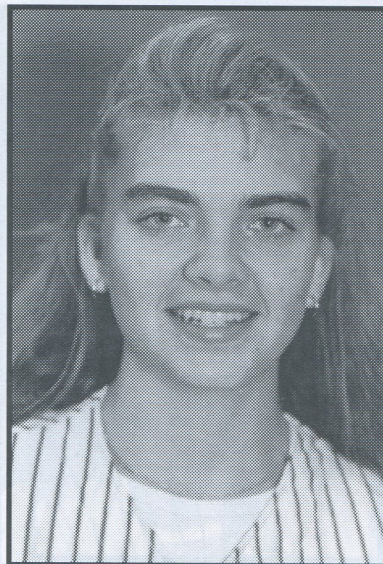
**SHANA HAMMOND**

Outfield

5-2, Junior

Lexington, Alabama

**JUNIOR COLLEGE:** Played at Shoals Community College under coach Tina Seals. Also played volleyball for Shoals as it won state and district championships in 1992-93. She received the 3-D award for desire, dedication and determination. **HIGH SCHOOL:** Played shortstop and centerfield for Lexington High School under coach Amy Tidwell. The Golden Bears reached the state Final Four in 1990 and won the county and sectional championships. Also lettered in volleyball where she was all-county and team captain, and in basketball where she was all-area, all-county and team captain. **PERSONAL:** Full name is Shana Paige Howard. Born on August 22, 1974. Daughter of Tim and Susan Hammond. Has one brother and two sisters. Majoring in Physical Education.



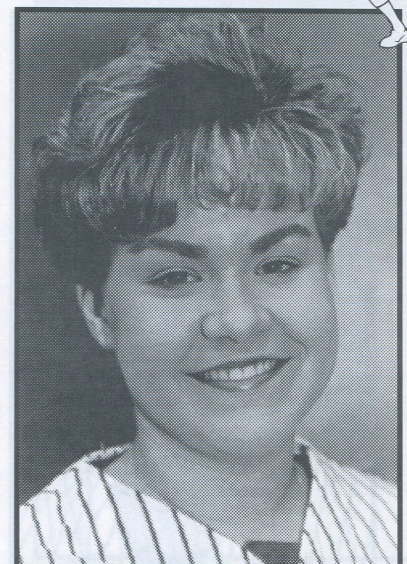
**TONYA HELTON**

Outfield

5-8, Freshman

Florence, Alabama

**HIGH SCHOOL:** Played at Central High School under coach Henry Kennedy. The Wildcats were 3A sectional champions in 1993-94. She was named all-county, all-area and high school most valuable player in 1993 and 1994. Also lettered in volleyball and was all-state in basketball in 1994 for the 3A state champions. She was also named Lauderdale County Female Athlete of the Year and an Alabama All-Star. In addition to receiving a Leadership Scholarship and the DAR and American Legion Awards, she was a Bryant-Jordan Scholar Athlete. **PERSONAL:** Full name is Tonya Beth Helton. Born on September 1, 1976. Daughter of Terry and Faye Helton and has one brother. Major is undecided.



**CHRISTY HUGHES**

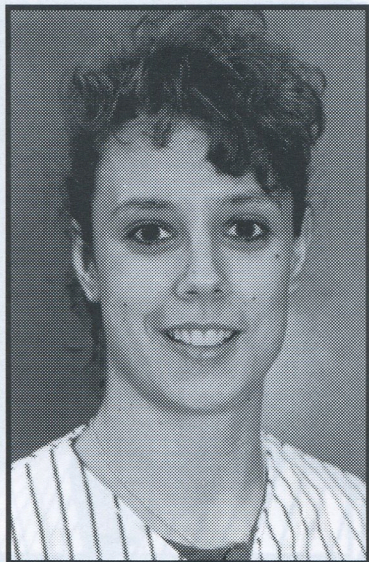
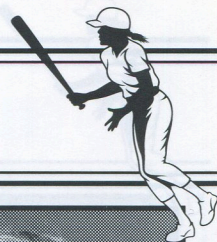
Catcher/Infield

5-1, Freshman

Tony, Alabama

**HIGH SCHOOL:** Played Sparkman High school under coach Dickie Ferguson. She was all-area as a freshman as the Senators reached the state tournament and was all-county and all-area as a sophomore and received the Most Hustle award. As a junior, she was all-county and all-area as Sparkman won the Class 5A State Championship, and she received the Most Team Spirit award. As a senior she was all-area and all-county and had the team's highest academic average. In 1993 Sparkman finished with a 55-15 record and the softball team became the first from the school to win a state championship. Also lettered three years in volleyball and was all-county, all-area and a permanent team captain, in addition to being named most valuable player. Won first place in the Madison County Poetry Contest and was second in the state. She was also a Commendable Senior, received the Most Leadership award, and was the winner of the American Legion Speech Contest. **PERSONAL:** Full name is Christy Elizabeth Hughes. Born on July 9, 1976. Daughter of Susan and Ronny Hughes. Has one brother. Majoring in Chemistry and a Pre-Pharmacy curriculum.

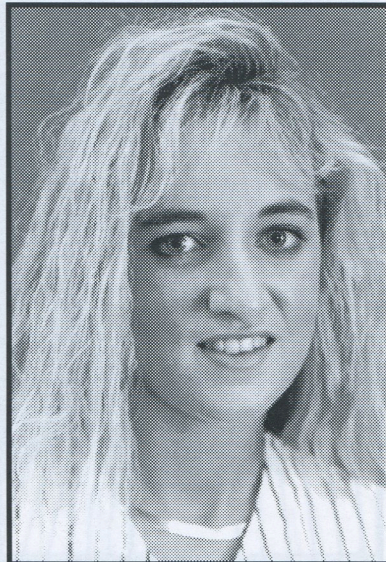
# 1995 Lady Lions



**KIMBERLY KIEL**

Outfield  
5-7, Junior  
Dothan, Alabama

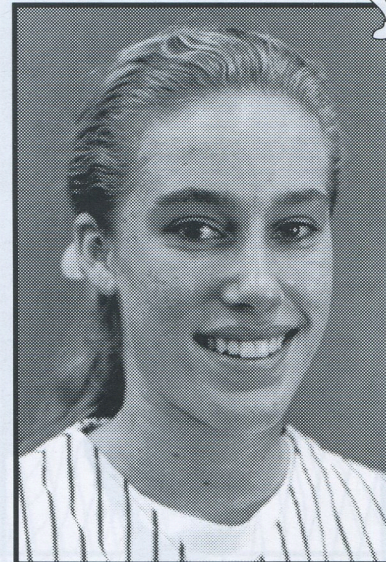
**UNA:** Played basketball for the Lady Lions this season. **JUNIOR COLLEGE:** Attended Faulkner State in Bay Minette, Ala., where she played basketball under coach Amy Champion. The Sun Chiefs were Southern Division champions in 1993 and 1994 and also AJCC state champions in 1994. She averaged 15.0 points and 4.0 rebounds and earned Academic All-America honors in 1994. **HIGH SCHOOL:** Played centerfield at Northview High School under coach Peppi Cooper. Named to the Super-12 softball team as a junior and senior, received the Leadership award two years and was Defensive Player of the Year in 1990-91. Set a school record with the best fielding percentage in 1991. Also lettered from 1988-92 in basketball and was team MVP and a Super 12 selection. A member of the National Honor Society and Who's Who Among American High School Students and received the Citizenship Award. **PERSONAL:** Full name is Kimberly Ann Kiel. Born on April 16, 1974. Daughter of Gary and Rose Kiel. Majoring in Physical Education.



**LEIGH ANN MAYS**

Infield/Outfield  
5-5, Sophomore  
Florence, Alabama

**UNA:** Played in 30 games last season with 23 starts. Hit .231, going 18-for-78 with 10 runs scored and 12 runs batted in. Had one double, six walks and 14 strikeouts and was four for five on stolen bases. Had an .857 fielding percentage with four errors in 28 chances. **HIGH SCHOOL:** Played at Bradshaw High School in Florence, playing first base, third base and all three outfield positions. **PERSONAL:** Full name Leigh Ann Mays. Daughter of James and Patsy Mays and has one sister. Born on October 29, 1974. Major is undecided.



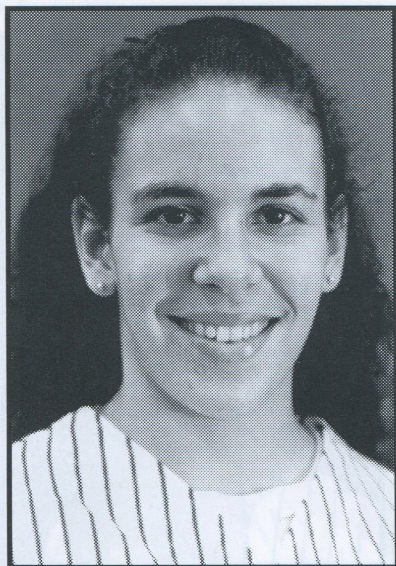
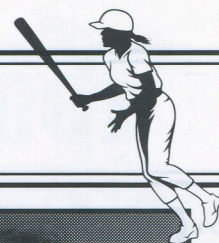
**BRANDY MCMULLEN**

Pitcher/Infield  
5-7, Freshman

Summertown, Tennessee

**HIGH SCHOOL:** Played pitcher and shortstop at Summertown High School under coach Bobby Wyrick. The Eaglettes were district champions in 1990-94, region runner-up in 1993-94 and sub state champs in 1993-94. Chosen all-district from 1992-94, honorable mention All--Midstate in 1992 and All-Midstate in 1993-94. Selected District 12A Player of the Year in 1994. Also lettered in basketball where she was all-district, all-district tournament and All-Midstate. In volleyball she was all-seasonal in 1991-93, all-district tournament, all-region tournament, District 12 Player of the Year in 1993, All-Midstate and honorable mention all-state. A member of the Beta Club, Who's Who Among American High School Students, Who's Who in Sports, Scholar Athlete of the Year, and a Bennit Jent Scholarship Recipient. **PERSONAL:** Full name is Brandy Diane McMullin. Born on March 18, 1976. Daughter of Dorris and Helen McMullin. Has one sister. Majoring in Nursing.

# 1995 Lady Lions



**ANGEL PEREZ**

Infield  
5-10, Freshman  
Huntsville, Alabama

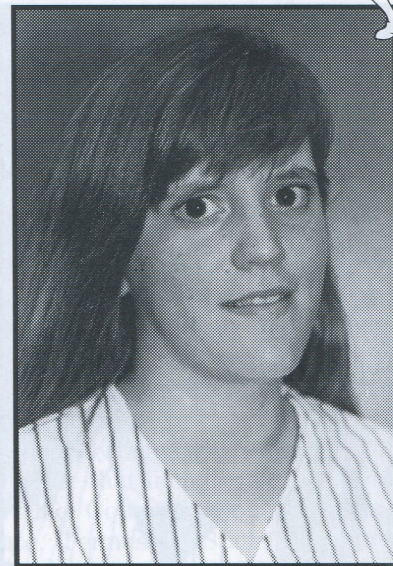
**UNA:** Lettered in volleyball for the Lady Lions in the fall. **HIGH SCHOOL:** Played at Butler High School under coach Teresa Stephens. Received the Sportsmanship Award, was all-city three years, most valuable player as a junior and senior and was voted Best All-Around. As a junior she hit .459 with 20 runs batted in. Also lettered in volleyball where shew as Best All-Around, all-area, all-area tournament and all-city. She also lettered in basketball. Received the Scholar Athletic Award, was in the Spanish Honor Society and received the Scholastic Award. She was a Junior Olympic volleyball participant from 1992-94 and competed in softball from 1991-94. **PERSONAL:** Full name is Angel Shane Perez. Born on September 22, 1976. Daughter of Angel and Treva Perez. Majoring in Commercial Spanish.



**ANGIE REAVIS**

Outfield  
5-5, Junior  
Hokes Bluff, Alabama

**JUNIOR COLLEGE:** Played at Gadsden State under coach Wayne Farley. The Cardinals finished second in the state in 1993 and won the Calhoun and Gadsden State tournaments in both 1992 and 1993. Gadsden State finished sixth nationally in the NJCAA Tournament in Lake City, Fla. Selected to the all-tournament team at the 1992 and 1993 state tournaments. **HIGH SCHOOL:** Played shortstop and outfield at Southside in Gadsden under coach Sally Mathis. The Panthers went to the state finals in 1989. In 1990 and 1991 she was selected to the all-tournament team in the sectionals at Huntsville. Was the MVP at the Gadsden State High School Tournament and Best Offensive Player of the year in 1990. Chosen team Captain and had the highest batting average on the team in 1991. Also was the head cheerleader all four years. Angie was also a class officer her sophomore and junior years and finished with a 3.0 grade point average. **PERSONAL:** Full name is Mary Angela Reavis. She is the daughter of Chuck Reavis and Pat Martin and has one sister and three step-brothers. Born on January 15, 1973. Majoring in Biology.

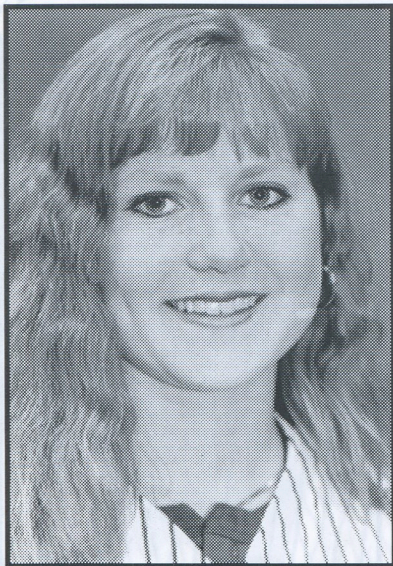
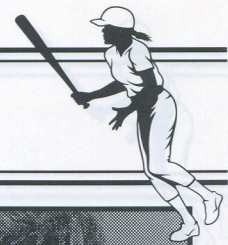


**AMY WATSON**

Infield  
5-6, Freshman  
Tupelo, Mississippi

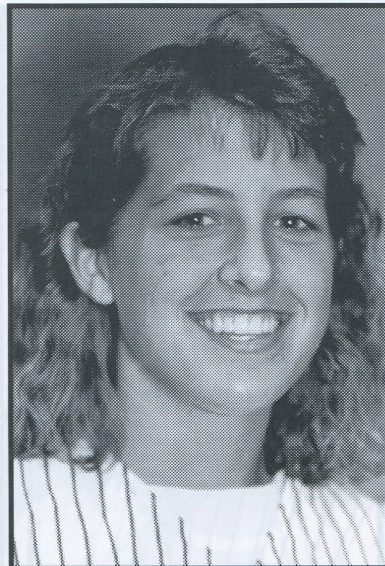
**HIGH SCHOOL:** Played at Tupelo High School under coach Sherry Rials. Played third base for the Golden Wave. Received the Best Offensive Player award in 1993 and was on the all-district team. Also lettered in soccer. Graduated with distinction. **PERSONAL:** Full name is Amy Michelle Watson. Born on December 29, 1975. Daughter of Charles and Jean Watson. Has one brother. Major is undecided.

# 1995 Lady Lions



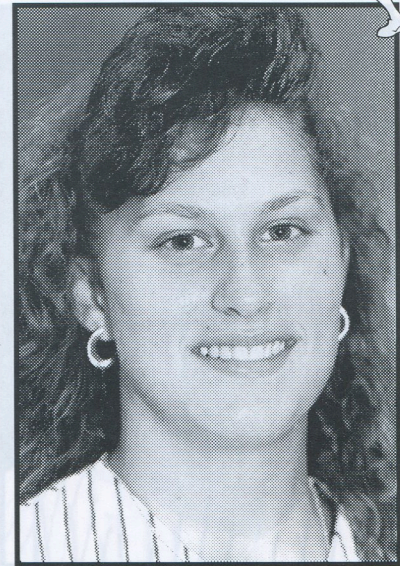
**MISTY WELCH**  
Infield/Outfield  
5-2, Freshman  
Toney, Alabama

**HIGH SCHOOL:** Played second base, shortstop and left field at Sparkman High School under coach Dickie Ferguson. The Senators went to the state tournament in softball four straight years from 1991-94, winning the 1993 state championship. The Senators also went to the state tournament in basketball. She was all-county in 1992-94, all-area in 1992-94, and had the best batting average in 1994. Also received the Hustler award in basketball. Also lettered in volleyball and basketball. **PERSONAL:** Full name is Misty Marie Welch. Born on November 11, 1975. Daughter of Gary and Sandra Welch. Has one sister. Majoring in Early Childhood Education.



**LESLEY WESTMORELAND**  
Infield  
5-7, Junior  
Decatur, Alabama

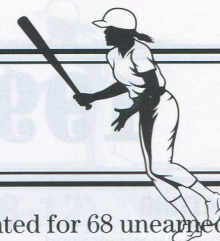
**UNA:** Selected All-Gulf South Conference last season as a sophomore. Led the Lady Lions with a .379 batting average last season, going 50-for-132. Scored 33 runs and added 35 runs batted in, four doubles, six triples and five home runs. Walked 21 times and struckout just eight times. Had a .927 fielding percentage. Played in 30 games in 1993 with 30 starts. Hit .240, going 18-for-75 with 16 runs scored and 10 runs batted in. Added four doubles and two triples. Led the team with 15 bases on balls, had five sacrifices and was four-for-four on stolen base attempts. Had a .917 fielding percentage with nine errors in 109 chances. **HIGH SCHOOL:** Played at Austin High School in Decatur under coach Tommu Hunter. The Black Bears were county champs in 1991. She was All-Morgan County, Decatur Daily All-Area and all-section in 1990-1992. She also played basketball and was chosen all-area and Decatur Daily All-Area in 1990-91. **PERSONAL:** Full name is Lesley LeAnn Westmoreland. She is the daughter of Kenneth and Judy Westmoreland and has one brother and one sister. Born on January 28, 1974. Majoring in Secondary Education.



**ANGIE WILLIAMS**  
Pitcher  
5-7, Junior  
Fayetteville, Tennessee

**UNA:** Pitched in 21 games last season and finished with an 11-9 record. Had a 2.18 earned run average with five shutouts and 50 strikeouts. Pitched 144.2 innings. Pitched in 17 games for the Lady Lions in 1993 with a 6-9 record and a 2.99 earned run average. Had 15 complete games in 17 starts and led the team with 96 innings pitched. Struckout 26 batters while walking 31. Opponents hit just .246 against her. **HIGH SCHOOL:** Played at Lincoln County High School in Fayetteville under coach Sissy Parks. The Lady Falcons placed third every year from 1990-92. In 1991-92, she was all-district in class 3A, as well as a team captain and most valuable player. As a senior she had two shutouts and several one, two and three hitters. **PERSONAL:** Full name is Angela Deanne Williams. She is the daughter of A.J. and Anita Williams and has one brother and one sister. Majoring in Computer Information Systems.

# Lady Lion Preview



**AMY WOLFORD**  
Pitcher/First Base  
5-11, Sophomore  
Marysville, Ohio

UNA: Had a 12-10 record on the mound for the Lady Lions last season and posted a 2.48 earned run average. Had 21 complete games in 22 starts and recorded 42 strikeouts, while walking 46. Opponents hit .250 against her. **HIGH SCHOOL:** Played at Marysville High School in Marysville, Ohio, under coach Larry Fox. The Monarchs were state semifinalists in 1993, and had a combined 41-3 record during her junior and senior seasons. She lettered four years. As a sophomore in 1991, she was first-team in the Central Buckeye League. During her junior year in 1992, she was first-team all-district, first-team Ohio Capital Conference and voted Most Valuable Player at her high school. As a senior her honors continued. She was first-team all-district, first-team all-state, first-team Ohio Capital Conference, and voted Most Valuable Player and Player of the Year. She had an 18-2 record in 1993, with a 0.89 earned run average. **PERSONAL:** Full name is Amy Lynn Wolford. She was born on December 6, 1974. She is the daughter of Rick and Teresa Wolford and has one brother and one sister. Majoring in Business.

With seven returning lettermen and several promising newcomers, the University of North Alabama Lady Lions softball team hopes to again contend for the Gulf South Conference championship and improve on last season's 23-19 record.

Under the direction of new head coach Veronica Starr, the Lady Lions return three of their top five hitters from last season and both pitchers.

Angie Williams finished 1993 with an 11-9 record and a 2.18 earned run average, while Amy Wolford was 12-10 with a 2.48 ERA. With the addition of a third pitcher in Brandy McMullen, the Lady Lions staff appears solid, but improved fielding will be a primary concern.

The Lady Lions made 88 errors last season and finished with a .939 fielding

average that accounted for 68 unearned runs by UNA's opponents.

Lesley Westmoreland will lead UNA's offensive attack, after hitting .379 last season and scoring 33 runs. Jessica Christ, who hit .304, and Jenny Blasingame, who hit .287, will also bolster the attack.

The Lady Lions should also be aggressive on the basepaths, after stealing 85 bases last season. That effort will be led by Christ, who set a school record with 27 last season, and Blasingame, who stole 14 last season.

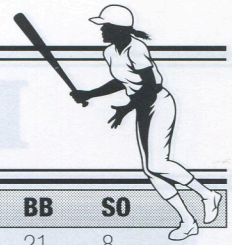
The Lady Lions will face a demanding schedule that includes non-conference foes like Columbus College, Kennesaw State, Tennessee State, Jacksonville State, Lindsey Wilson College, Bellarmine and Milligan.

## 1995 UNIVERSITY OF NORTH ALABAMA SOFTBALL ROSTER

### Numbers

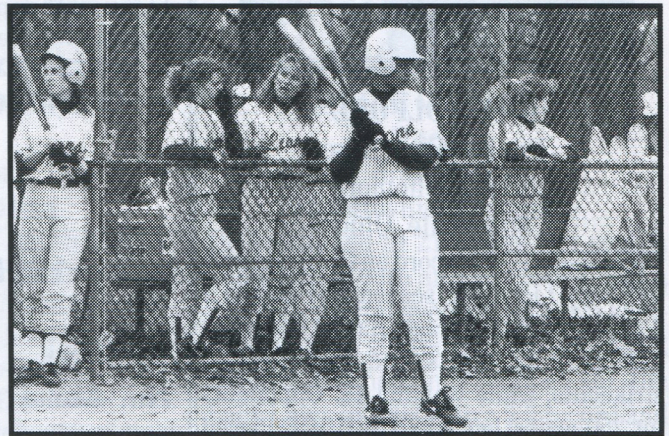
No.	Name	Pos.	Ht	Cl	Hometown
1	Amy Watson	INF	5-6	FR	Tupelo, Miss.
3	Jenny Blasingame	INF/OF	5-7	JR	Florence, Ala.
4	Angel Perez	INF	5-10	FR	Huntsville, Ala.
6	Misty Welch	INF/OF	5-2	FR	Toney, Ala.
9	Kimberly Kiel	OF	5-7	JR	Dothan, Ala.
10	Angie Williams	P	5-7	JR	Fayetteville, Tn.
11	Jessica Christ	C/OF	5-4	SR	Elkmont, Ala.
12	Angie Reavis	OF	5-5	JR	Hokes Bluff, Ala.
14	Shana Hammond	OF	5-2	JR	Lexington, Ala.
15	Leigh Ann Mays	INF/OF	5-5	SO	Florence, Ala.
16	Kandas Cavendar	INF	5-9	SO	Jacksonville, Ala.
21	Tonya Helton	OF	5-8	FR	Florence, Ala.
22	Lesley Westmoreland	INF	5-7	JR	Decatur, Ala.
28	Christy Hughes	C/INF	5-1	FR	Toney, Ala.
32	Brandy McMullen	P/INF	5-7	FR	Summertown, Tn.
44	Amy Wolford	P/1B	5-11	SO	Marysville, Ohio

# 1994 Softball Statistics



BATTING	Avg	GP-GS	AB	R	H	RBI	2B	3B	HR	BB	SO
Lesley Westmoreland	.379	42-42	132	33	50	35	4	6	5	21	8
Terra Lawson	.348	42-42	135	33	47	26	10	6	2	15	7
Jessica Christ	.304	39-39	125	35	38	5	0	0	0	21	9
Keysha McCall	.298	41-41	114	17	34	21	5	3	0	23	15
Jenny Blasingame	.287	38-38	129	29	37	20	8	2	3	16	26
Laura Jo McFall	.256	42-42	121	23	31	17	3	2	1	20	18
Leigh Ann Mays	.231	30-23	78	10	18	12	1	0	0	6	14
Kandas Cavender	.188	42-41	101	9	19	8	3	2	0	11	14
Michelle Sullivan	.142	42-41	106	16	15	6	2	1	0	14	6
Angie Williams	.083	18-17	12	1	1	0	1	0	0	0	4
Amy Wolford	.061	36-36	82	7	5	2	0	0	0	8	15
LADY LIONS	.260	42-42	1135	213	295	152	37	22	11	155	136
OPPONENTS	.246	42-42	1169	165	288	113	31	18	10	83	92

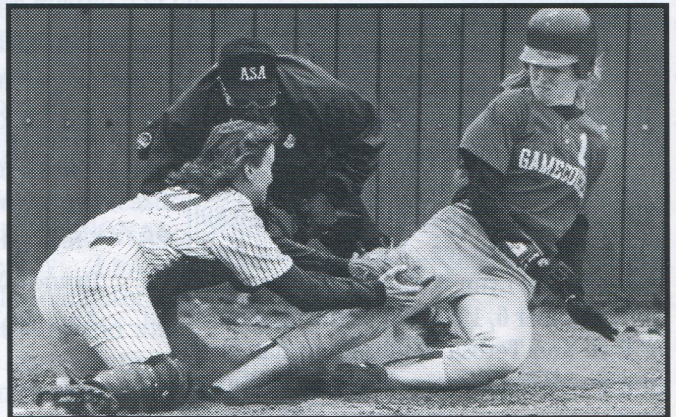
BATTING	HP	SH	SF	SB-SBA
Westmoreland	0	0	5	9-13
Lawson	1	3	7	13-14
Christ	1	2	3	27-29
McCall	1	0	3	6-7
Blasingame	0	0	3	14-20
McFall	1	4	10	4-6
Mays	0	0	3	4-5
Cavender	2	3	2	2-3
Sullivan	6	2	5	5-5
Williams	0	2	0	0-0
Wolford	0	2	2	1-1
LADY LIONS	12	18	43	85-103
OPPONENTS	4	14	21	60-66



Keysha McCall

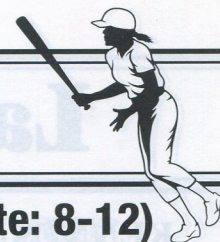
PITCHING	W-L	ERA	G-GS	CG	IP	H	R	ER	BB	SO	HB
Angie Williams	11-9	2.18	21-21	20	144.2	139	79	45	37	50	2
Amy Wolford	12-10	2.48	22-21	21	146.2	149	86	52	46	42	2
LADY LIONS	23-19	2.33	43-42	41	291.1	288	165	97	83	92	4
OPPONENTS	19-23	3.83	42-42	26	290.1	295	213	159	155	136	12

FIELDING	PO	A	E	PCT
Westmoreland	65	137	16	.927
Lawson	39	108	17	.896
Christ	68	11	3	.963
McCall	229	13	10	.960
Blasingame	41	8	7	.875
McFall	66	13	4	.952
Mays	23	1	4	.857
Cavender	109	73	11	.943
Sullivan	57	14	4	.947
Williams	7	39	1	.979
Wolford	170	63	11	.955
LADY LIONS	874	480	88	.939
OPPONENTS	871	370	81	.936



Laura McFall makes tag at home.

# 1994 Softball Scores

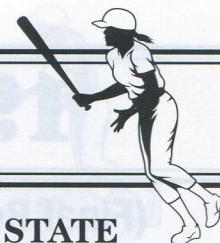


(Final Record: 23-19, at home: 3-5, on road: 12-2, neutral site: 8-12)

Opponent	Score	Line Score	Pitcher of Record	Team
at Livingston	4-3	4-4-1	3-8-5	Angie Williams S* 1-0 1-0
at Livingston	5-1	5-7-1	1-4-1	Amy Wolford S* 1-0 2-0
Valdosta State	1-3	1-3-0	3-7-0	Angie Williams S* 1-1 2-1
Valdosta State	6-8	6-7-5	8-9-2	Amy Wolford S* 1-1 2-2
Valdosta State	0-7	0-0-2	7-11-0	Angie Williams S* 1-2 2-3
Valdosta State	1-8	1-3-4	8-10-0	Amy Wolford S* 1-2 2-4
at West Georgia	13-5	13-11-3	5-9-3	Amy Wolford S* 2-2 3-4
at West Georgia	6-0	6-5-0	0-3-4	Angie Williams S* 2-2 4-4
LADY BRAVES TOURNAMENT (Carrollton, Ga.)				
Delta State	8-11	8-6-1	11-12-1	Angie Williams S* 2-3 4-5
Mississippi-Women	7-2	7-12-0	2-8-1	Amy Wolford S* 3-2 5-5
Huntingdon	0-7	0-3-1	7-10-0	Amy Wolford S* 3-3 5-6
Mississippi-Women	6-4	6-3-3	4-7-1	Angie Williams S* 3-3 6-6
Jacksonville State	3-6	3-7-2	6-12-2	Amy Wolford S* 3-4 6-7
at Lincoln Memorial	3-2	3-10-1	2-6-0	Angie Williams S* 4-3 7-7
at Lincoln Memorial	5-3	5-5-3	3-6-3	Amy Wolford S* 4-4 8-7
at Lincoln Memorial	5-7	5-10-1	7-13-4	Angie Williams S* 4-4 8-8
at Lincoln Memorial	7-6	7-8-4	6-7-1	Amy Wolford S* 5-4 9-8
at Bellarmine	6-5	6-8-3	5-10-3	Angie Williams S* 5-4 10-8
Teikyo Westmar	6-4	6-9-3	4-4-3	Amy Wolford S* 6-4 11-8
LADT ARGONAUT CLASSIC (Pensacola, Fla.)				
Milligan	8-0	8-5-0	0-1-0	Angie Williams S* 6-4 12-8
Pacific Lutheran	2-8	2-4-5	8-12-0	Amy Wolford S* 6-5 12-9
Missouri-Southern	2-3	2-5-3	3-4-0	Angie Williams S* 6-5 12-10
Anderson	9-0	9-10-1	0-5-0	Amy Wolford S* 7-5 13-10
Columbia	0-8	0-1-2	8-11-1	Angie Williams S* 6-6 13-11
Martin Methodist	10-0	10-11-1	0-5-6	Angie Williams S* 7-6 14-11
Martin Methodist	13-1	13-10-3	1-3-4	Amy Wolford S* 8-5 15-11
at Mississippi-Women	1-0	1-3-1	0-1-1	Amy Wolford S* 9-5 16-11
LADY BLUES TOURNAMENT (Columbus, Miss.)				
Livingston	4-0	4-6-0	0-1-4	Angie Williams S* 8-6 17-11
Mississippi College	4-3	4-9-1	3-3-3	Amy Wolford S* 10-5 18-11
Columbus College	0-4	0-6-4	4-4-0	Angie Williams S* 8-7 18-12
Mississippi College	1-3	1-7-2	3-4-1	Amy Wolford S* 10-6 18-13
Livingston	2-3	2-8-3	3-5-1	Angie Williams S* 8-8 18-14
Mississippi-Women	1-5	1-2-1	5-10-0	Amy Wolford S* 10-7 18-15
Delta State	9-6	9-17-3	6-7-3	Amy Wolford R 11-7 19-15
at Martin Methodist	13-2	13-7-0	2-6-4	Angie Williams S* 9-8 20-15
at Martin Methodist	12-0	12-14-4	0-5-5	Amy Wolford S* 12-7 21-15
West Georgia	5-6	5-7-5	6-7-0	Amy Wolford S* 12-8 21-16
West Georgia	6-0	6-10-0	0-5-1	Angie Williams S* 10-8 22-16
at Delta State	3-4	3-6-2	4-8-2	Amy Wolford S* 12-9 22-17
at Delta State	12-5	12-15-5	5-4-4	Angie Williams S* 11-8 23-17
GULF SOUTH CONFERENCE TOURNAMENT				
Livingston	1-7	1-5-2	7-12-5	Angie Williams S* 11-9 23-18
Mississippi College	3-5	3-6-2	5-9-2	Amy Wolford S* 12-10 23-19

\* Complete Game

# Lady Lion Opponents



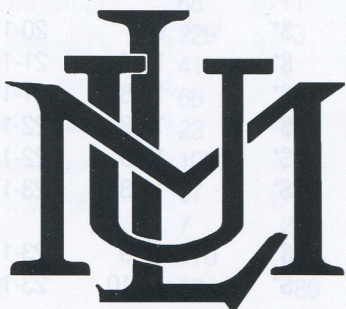
## KENNESAW STATE

Location: Marietta, Ga.  
 Enrollment: 13,000  
 Colors: Black and Gold  
 Nickname: Lady Owls  
 Conference: Peach Belt Athletic  
 National Affiliation: NCAA Division II  
 Head Coach: Scott Whitlock  
 1994 Softball Record: 48-4  
 Sports Information Director: Scott Whitlock  
 SID Office Phone: (404) 423-6387  
 SID Home Phone: (404) 926-7499



## LINCOLN MEMORIAL

Location: Harrogate, Tenn.  
 Enrollment: 1,904  
 Colors: Blue and Gray  
 Nickname: Lady Railsplitters  
 Conference: Gulf South  
 National Affiliation: NCAA Division II  
 Head Coach: Dan Burns  
 1994 Softball Record: 18-30  
 Sports Information Director: Tom Amis  
 SID Office Phone: (615) 869-6236  
 SID Home Phone: (615) 869-5189



## LIVINGSTON

Location: Livingston, Ala.  
 Enrollment: 2,302  
 Colors: Red and White  
 Nickname: Tigers  
 Conference: Gulf South  
 National Affiliation: NCAA Division II  
 Head Coach: Janet Koenig  
 1994 Softball Record: 22-26  
 Sports Information Director: Joel Schuchmann  
 SID Office Phone: (205) 652-9661 ext. 370  
 SID Home Phone: (205) 652-2221



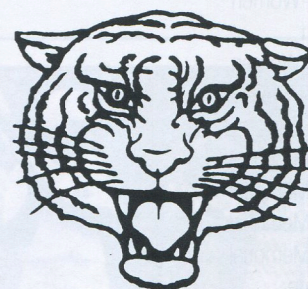
## MISSISSIPPI COLLEGE

Location: Clinton, Miss.  
 Enrollment: 4,000  
 Colors: Navy Blue and Old Gold  
 Nickname: Choctaws  
 Conference: Gulf South  
 National Affiliation: NCAA Division II  
 Head Coach: Rowanna Dozier  
 1994 Softball Record: 15-19  
 Sports Information Director: Norman H. Gough  
 SID Office Phone: (601) 925-3255  
 SID Home Phone: (601) 924-5115



## TENNESSEE STATE

Location: Nashville, Tenn.  
 Enrollment: 8,180  
 Colors: Blue and White  
 Nickname: Lady Tigers  
 Conference: Ohio Valley  
 National Affiliation: NCAA Division I  
 Head Coach: Leon Moore  
 1994 Softball Record: 1-36  
 Sports Information Director: Johnny Franks  
 SID Office Phone: (615) 963-5851  
 SID Home Phone: (615) 367-0700

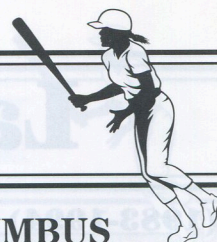


## VALDOSTA STATE

Location: Valdosta, Ga.  
 Enrollment: 8,700  
 Colors: Red and Black  
 Nickname: Lady Blazers  
 Conference: Gulf South  
 National Affiliation: NCAA Division II  
 Head Coach: Ron Durante  
 1994 Softball Record: 42-12  
 Sports Information Director: Steve Roberts  
 SID Office Phone: (912) 333-5890  
 SID Home Phone: (912) 244-6560



# Lady Lion Opponents



## WEST GEORGIA

Location: Carrollton, Ga.  
Enrollment: 8,310  
Colors: Red and Blue  
Nickname: Braves  
Conference: Gulf South  
National Affiliation: NCAA Division II  
Head Coach: Robbie Cameron  
1994 Softball Record: 2-44  
Sports Information Director: Ken Skinner  
SID Office Phone: (404) 836-6542  
SID Home Phone: (404) 834-3179



## WEST FLORIDA

Location: Pensacola, Fla.  
Enrollment: 8,000  
Colors: Blue and Green  
Nickname: Lady Argonauts  
Conference: Gulf South  
National Affiliation: NCAA Division II  
Head Coach: Tami Cyr  
1994 Softball Record: 53-19  
Sports Information Director: Karen Harrell  
SID Office Phone: (904) 474-2140  
SID Home Phone: (904) 934-8004



## LINDSEY WILSON

Location: Columbia, Ky.  
Enrollment: 1,300  
Colors: Blue and White  
Nickname: Lady Raiders  
Conference: Kentucky Intercollegiate  
National Affiliation: NAIA  
1994 Softball Record: 21-4  
Sports Information Director: Scott Wilson  
SID Office Phone: (502) 384-8043  
SID Home Phone: (502) 384-9770

## BELLARMINE

Location: Louisville, Kentucky  
Enrollment: 2,700  
Colors: Scarlett and Silver  
Nickname: Lady Knights  
Conference: Great Lakes Valley  
National Affiliation: NCAA Division II  
Head Coach: Dan Patterson  
1994 Softball Record: 19-28  
Sports Information Director: Mark Mulloy  
SID Office Phone: (502) 452-8380  
SID Home Phone: (502) 469-6719

## MILLIGAN

Location: Milligan, Tenn.  
Enrollment: 800  
Colors: Black and Orange  
Nickname: Lady Buffs  
Conference: Tennessee-Virginia Athletic  
National Affiliation: NAIA  
Head Coach: Wes Holly  
1994 Softball Record: 30-16  
Sports Information Director: Wes Holly  
SID Office Phone: (615) 461-8738

## COLUMBUS

Location: Columbus, Ga.  
Enrollment: 5,500  
Colors: Red, White and Blue  
Nickname: Cougars  
Conference: Peach Belt Athletic  
National Affiliation: NCAA Division II  
Head Coach: Judy Favor  
1994 Softball Record: 39-15  
Sports Information Director: Judy Favor  
SID Office Phone: (706) 569-3102  
SID Home Phone: (706) 568-2466

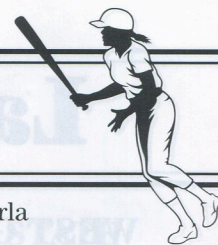


## JACKSONVILLE STATE

Location: Jacksonville, Ala.  
Enrollment: 7,500  
Colors: Red and White  
Nickname: Lady Gamecocks  
Conference: Independent  
National Affiliation: NCAA I  
Head Coach: Jena McGinnis  
1994 Softball Record: 16-22  
Sports Information Director: Mike Galloway  
SID Office Phone: (205) 782-5377  
SID Home Phone: (205) 435-1143



# Lady Lion Lettermen



## (1983-1994)

### A

Allen, Hope  
1987

### B

Belew, Jane  
1983

Berry, Belinda  
1983, 1984

Bevis, Jennifer  
1988, 1989

Blasingame, Jenny  
1993, 1994

Blount, Paige  
1983, 1984

Byers, Debbie  
1987

### C

Cavender, Kandas  
1994

Christ, Jessica  
1992, 1993, 1994

Cox, Suzie  
1992

Crumpton, Melanie  
1989

### D

Dial, Tammy  
1991

Dobbins, Deneen  
1984, 1985

Dozier, Tracey  
1983, 1984

### E

Ellingsworth, Alicia  
1993

Emerson, Verna  
1993

Everett, Leslie  
1984

### F

Flippo, Jill  
1983

Foster, Diane  
1985

### G

Goodner, Ursula  
1989, 1990

Grant, Kristie  
1989, 1990, 1991

Gray, Monica  
1991, 1992

Gunnin, Tabitha  
1988

### H

Hardeman, Amy  
1983, 1984

Harris, Beth  
1986, 1987

Herring, Cheryl  
1989, 1990

Holcomb, Ann  
1991

Holdbrooks, Kristy  
1990, 1991, 1992, 1993

Howard, Reagan  
1989

### J

Jones, Amy  
1989, 1990, 1991

Jones, Cathy  
1987, 1988

Jones, Doris  
1983, 1984

Jones, Julie  
1988

Jordan, Charlotte  
1986, 1987, 1988

### K

Kelley, Misty  
1992

Kennedy, Diana  
1984, 1985

Knight, Kim  
1983

### L

Lawson, Terra  
1993, 1994

League, Stephanie  
1991

Lewis, Cindy  
1990

Logan, Michele  
1986, 1987, 1988, 1989

Lovell, Cathy  
1990

### M

May, Elise  
1984, 1985

Mays, Leigh Ann  
1994

McCall, Keysha  
1993, 1994

McCreless, Dixie  
1992

McFall, Beth  
1985

McFall, Laura Jo  
1991, 1992, 1993, 1994

McHenney, Molly  
1990

McKinney, Candy  
1983, 1984

Miles, Myra  
1983, 1984

Moody, Lisa  
1983, 1984

Moran, Monica  
1989, 1990, 1991, 1992

Mulkey, Kim  
1992

### N

Nelson, Jane  
1986

Nicholls, Brandi  
1991

### P

Parks, Suzie  
1991

Parson, Kristi  
1992

Pettigrew, Denise  
1985

Petty, Regina  
1990

Powell, Beth  
1983

### R

Robertson, Jill  
1987

### S

Shannon, Rebecca  
1990, 1991

Shull, Mel  
1986

Sims, Marla  
1984

Slaughter, Amy  
1990, 1991

Smith, Kim  
1984, 1985, 1986

Spencer, Kim  
1986, 1987

Starr, Veronica  
1986, 1987, 1988

Stell, Sissy  
1985

Stockset, Lori  
1986, 1987, 1988, 1989

Sullivan, Michelle  
1993, 1994

Sutton, Ramona  
1983

### T

Taramangos, Stephanie  
1983, 1984

Terrell, Kelli  
1985, 1986, 1987, 1988

Terry, Lisa  
1985

Terry, Paige  
1984, 1985

Thompson, Rhonda  
1988

### U

Uhlman, Beth  
1992, 1993

### V

Varnell, Kelly  
1985, 1986, 1987, 1988

### W

Walls, Keena  
1992

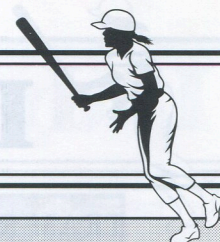
Watkins, Amy  
1987, 1988, 1989, 1990

Westmoreland, Lesley  
1993, 1994

Williams, Angie  
1993, 1994

Wolford, Amy  
1994

# Lady Lion Records



## LADY LIONS VS. ALL OPPONENTS

### Series Record

Anderson	1-0	Mississippi-Women	10-24
Arkansas State	1-0	Missouri-St. Louis	1-0
Athens State	2-7	Missouri Southern	1-0
Austin Peay State	1-1	Morehead	1-0
Bellarmino	1-0	Pacific Lutheran	0-1
Columbia	0-1	Samford	2-0
Columbus College	0-4	SIU-Edwardsville	0-1
Cumberland	1-1	St. Augustines	1-0
Delta State	9-15	Teikyo Westmar	1-0
Faulkner	0-1	Tennessee-Martin	14-21
Georgia State	1-0	Tennessee State	3-0
Huntington	1-3	Tennessee Tech	1-2
Jacksonville State	13-12	Treveca	2-0
Kentucky Wesleyan	2-0	Troy State	4-1
Lincoln Memorial	3-3	Tulane	1-0
Livingston	17-19	Wayne State	0-1
Martin College	13-0	West Florida	0-2
Mercer	1-0	West Georgia	7-2
Milligan	1-0	Valdosta State	1-6
Mississippi College	11-16		

### SLOW PITCH

Year	Record	
1983	27-4	GSC Champions
1984	20-20	4th in GSC
1985	12-17	3rd in GSC

### FAST PITCH

Year	Records	Avg	ERA	
1986	16-10	.283	2.80	GSC Champions
1987	20-11			GSC Champions
1988	21-10			Tied 5th in GSC
1989	17-14	.312	1.43	4th in GSC
1990	7-19	.172	3.01	4th in GSC
1991	13-17	.189	1.68	3rd in GSC
1992	6-25	.181	4.74	Tied 6th in GSC
1993	10-20	.223	2.70	4th in GSC
1994	23-19	.260	2.33	7th in GSC

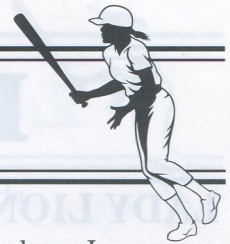
## LADY LIONS YEAR-BY-YEAR BATTING

Year	Avg	AB	R	H	RBI	2B	3B	HR	BB	HP	SO	SB
1986	.283	579	170	164	123	17	9	4	100		28	35-40
1987	.285	813	160	232	123				110		57	84-
1988	.268	818	174	219	132	30	24	8	65		48	17-18
1989	.312	830	173	259	131	17	16	15	78	8	72	
1990	.172	644	51	111	35	16	5	1	55	4	62	27-31
1991	.189	785	85	149	63	12	14	6	91		108	
1992	.181	753	74	136	53	12	7	3	60	5	109	24-28
1993	.223	740	104	165	92	18	13	3	72	8	91	41-46
1994	.260	1135	213	295	152	37	22	11	155	12	136	85-103

## LADY LIONS YEAR-BY-YEAR PITCHING

Year	W-L	ERA	GS	CG	IP	H	R-ER	BB	SO
1986	16-10	2.80	26	25	170.0	154	89-68	82	61
1987	20-11						90-		
1988	21-10	2.38	31	31	207.1	154	83-55	55	51
1989	17-14	1.43	31	27	211.0	189	119-43	83	35
1990	7-19	3.01	26	22	163.0	181	120-70	39	27
1991	13-17	1.68	30	26	208.0	196	118-50	53	36
1992	6-25	4.74	31	30	200.0	257	210-131	71	39
1993	10-20	2.70	30	28	194.1	212	139-75	54	43
1994	23-19	2.33	42	41	291.1	288	165-97	83	92

# Lady Lion Records



## TEAM RECORDS

### SEASON - Batting

Most Wins in a Season: 23 in 1994 (lost 19)  
 Most Losses in a Season: 27 in 1992 (won 6)  
 Most Games Played: 42 in 1994  
 Best Batting Average: .312 in 1989 (259-of-830)  
 Worst Batting Average: .172 in 1990 (111-of-644)  
 Most At Bats: 1135 in 1994  
 Least At Bats: 579 in 1986  
 Most Runs Scored: 213 in 1994  
 Least Runs Scored: 51 in 1990  
 Most Hits: 295 in 1994  
 Least Hits: 111 in 1990  
 Most Runs Batted In: 152 in 1994  
 Least Runs Batted In: 53 in 1992  
 Most Doubles: 37 in 1994  
 Most Triples: 24 in 1988  
 Most Home Runs: 15 in 1989  
 Least Home Runs: 1 in 1990  
 Most Bases on Balls: 155 in 1994  
 Least Bases on Balls: 55 in 1990  
 Most Times to Strikeout: 136 in 1994  
 Least Times to Strikeout: 28 in 1986  
 Most Stolen Bases: 85 in 1994  
 Least Stolen Bases: 17 in 1988

## TEAM RECORDS

### SEASON - Pitching

Best Earned Run Average: 1.43 in 1989 (43 ER, 211 IP)  
 Worst Earned Run Average: 4.74 in 1992 (131 ER, 200 IP)  
 Most Complete Games: 41 in 1994  
 Least Complete Games: 22 in 1990  
 Most Innings Pitched: 291.1 in 1994  
 Most Hits Allowed: 288 in 1994  
 Least Hits Allowed: 154 in 1986 and 1988  
 Most Runs Allowed: 210 in 1992  
 Least Runs Allowed: 83 in 1988  
 Most Earned Runs Allowed: 131 in 1992  
 Least Earned Runs Allowed: 43 in 1989  
 Most Bases on Balls Allowed: 83 in 1989 and 1994  
 Least Bases on Balls Allowed: 39 in 1990  
 Most Strikeouts: 92 in 1994  
 Least Strikeouts: 27 in 1990



Lori Stocksett

## TEAM RECORDS

### MISCELLANEOUS

Consecutive Wins: 8, last four games of 1987, first four games of 1988  
 Most Wins: 23 in 1994  
 Consecutive Losses: 7 in 1992  
 Most Losses: 25 in 1992

## INDIVIDUAL RECORDS

### SEASON - Pitching

Best Earned Run Average: 1.34 by Monica Moran, 1989  
 Most Wins: 13 by Michele Logan, 1988  
 Most Loses: 18 by Monica Moran, 1992  
 Most Innings Pitched: 157.2 by Monica Moran, 1992  
 Most Strikeouts: 50 by Charlotte Jordan, 1987 and Angie Williams, 1994  
 Most Bases on Balls Allowed: 51 by Michele Logan, 1989  
 Most Games Started: 24 by Monica Moran, 1992  
 Most Complete Games: 23 by Monica Moran, 1992

## INDIVIDUAL RECORDS

### SEASON - Batting

At Bats: 135 by Terra Lawson, 1994  
 Runs Scored: 35 by Jessica Christ, (39 games) 1994  
 Hits: 50 by Lesley Westmoreland, (42 games) 1994  
 Runs Batted In: 35 by Lesley Westmoreland, (42 games) 1994  
 Sacrifices: 13 by Michelle Logan (31 games) 1989  
 Doubles: 10 by Terra Lawson, (42 games) 1994  
 Triples: 7 by Amy Watkins, (26 games) 1988  
 Home Runs: 6 by Kristie Grant, (31

games) 1989

Strikeouts: 26 by Jenny Blasingame, (38 games) 1994  
 Bases on Balls: 23 by Keysha McCall, (41 games) 1994  
 Batting Average: .464 by Amy Watkins, (31 games) 1989  
 Stolen Bases: 27 by Jessica Christ (39 games) 1994

## INDIVIDUAL RECORDS

### CAREER - Pitching

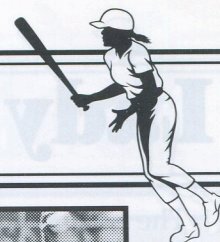
Best Earned Run Average: 1.88 by Michele Logan (98 ER, 365.1 IP), 1986-89  
 Most Games Won: 38 by Michele Logan, 1986-89  
 Most Games Lost: 45 by Monica Moran, 1989-92  
 Most Appearances: 74 by Monica Moran, 1989-92  
 Most Games Started: 69 by Monica Moran, 1989-92  
 Most Complete Games: 65 by Monica Moran, 1989-92  
 Most Innings Pitched: 467.1 by Monica Moran, 1989-92  
 Most Bases on Balls: 162 by Michele Logan, 1986-89  
 Most Strikeouts: 116 by Charlotte Jordan, 1986-88

## INDIVIDUAL RECORDS

### CAREER - Batting

Most Games Played: 119 by Lori Stocksett and Michele Logan, 1986-89  
 Most At Bats: 361 by Lori Stocksett, 1986-89  
 Most Hits: 108 by Lori Stocksett, 1986-89  
 Most Runs Scored: 82 by Charlotte Jordan, 1986-88  
 Most Runs Batted In: 71 by Lori Stocksett, 1986-89  
 Most Doubles: 15 by Amy Watkins, 1987-90  
 Most Triples: 15 by Kristie Grant, 1989-91  
 Most Home Runs: 10 by Kristie Grant 1989-91  
 Most Bases on Balls: 36 by Lori Stocksett, 1986-89  
 Best Batting Average: .362 by Amy Watkins (98-271), 1987-90  
 Most Stolen Bases: 34 by Jessica Christ (39 att in 100 games)

# Lady Lions Year by Year



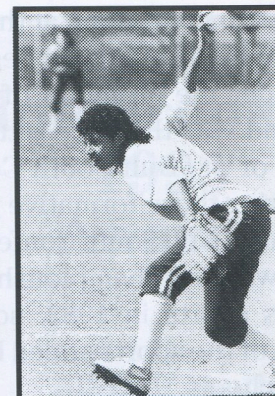
## YEAR-BY-YEAR STATISTIC LEADERS

Year	Runs Scored	Hits	RBI
1986	25-Charlotte Jordan 25-Lori Stocksett	25-Lori Stocksett	20-Lori Stocksett
1987		39-Charlotte Jordan	19-Lori Stocksett
1988	27-Charlotte Jordan	34-Lori Stocksett	24-Amy Watkins
1989	27-Kristie Grant	45-Amy Watkins	28-Amy Watkins
1990	8-Rebecca Shannon	19-Kristie Grant 19-Ursula Goodner	9-Kristie Grant
1991		31-Kristie Grant	19-Kristie Grant
1992	16-Monica Gray	23-Monica Gray	9-Monica Gray
1993	19-Kristy Holdbrooks	32-Kristy Holdbrooks	19-Alicia Ellingsworth
1994	35-Jessica Christ	50-Lesley Westmoreland	35-Lesley Westmoreland

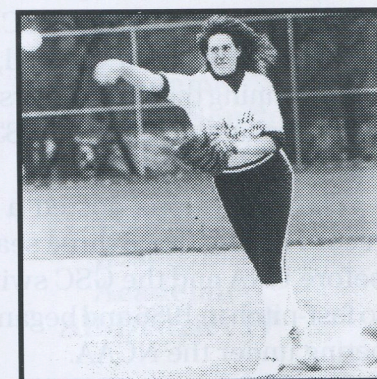
Year	Doubles	Triples	Home Runs
1986	4-Lori Stocksett 4-Melissa Shull	4-Lori Stocksett	1-Melissa Shull 1-Kelly Varnell 1-Wanda Nichols
1987			
1988	8-Amy Watkins	7-Amy Watkins	
1989	5-Kristie Grant	5-Kristie Grant	6-Kristie Grant
1990	4-Rebecca Shannon	3-Kristie Grant	1-Kristie Grant
1991	6-Kristie Grant	7-Kristie Grant	3-Kristie Grant
1992	3-Kristy Holdbrooks	3-Misty Kelley	2-Monica Gray
1993	5-Kristy Holdbrooks	4-Keysha McCall	3-Terra Lawson
1994	10-Terra Lawson	6-Lesley Westmoreland 6-Terra Lawson	5-Lesley Westmoreland

Year	Average	Bases on Balls
1986	.358-Charlotte Jordan	21-Kelli Terrell
1987	.361-Charlotte Jordan	20-Kim Spencer
1988	.351-Lori Stocksett	
1989	.464-Amy Watkins	13-Melanie Crumpton
1990	.292-Kristie Grant	8-Cheryl Herring
1991	.326-Kristie Grant	9-Monica Gray
1992	.265-Monica Moran	10-Suzie Cox
1993	.356-Kristy Holdbrooks	15-Lesley Westmoreland
1994	.379-Lesley Westmoreland	23-Keysha McCall

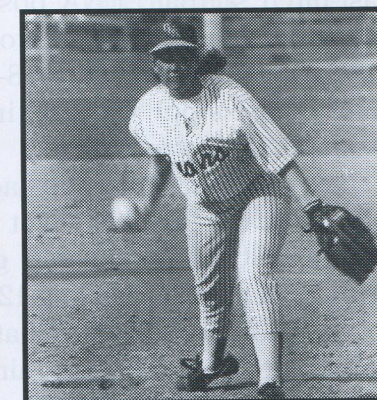
Year	Wins	Strikeouts	Earned Run Average
1986	9-Charlotte Jordan	40-Charlotte Jordan	2.53-Charlotte Jordan
1987	11-Charlotte Jordan		
1988	13-Michele Logan	26-Charlotte Jordan	1.59-Michele Logan
1989	9-Michele Logan	22-Monica Moran	1.34-Monica Moran
1990	5-Monica Moran	14-Monica Moran	2.94-Monica Moran
1991	7-Monica Moran	21-Monica Moran	2.06-Monica Moran
1992	5-Monica Moran	3-Monica Moran	3.38-Monica Moran
1993	6-Angie Williams	26-Angie Williams	2.17-Verna Emerson
1994	12-Amy Wolford	50-Angie Williams	2.18-Angie Williams



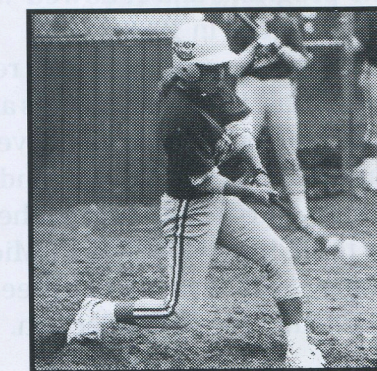
Charlotte Jordan



Michelle Logan



Monica Moran



Rebecca Shannon

# Lady Lion History & Honors



The softball program at the University of North Alabama began in 1983 under the direction of Ande Jones and was the pace-setter for the rest of the Gulf South Conference during those formative years.

When the Gulf South Conference began awarding championships in women's sports in 1982, softball was one of the sports added by the league schools.

For the first three years of the program, UNA and the GSC competed in slow-pitch softball, with UNA winning the league's first GSC softball championship in 1983 with a 27-4.

The Lady Lions posted a 59-41 record during those three seasons, before UNA and the GSC switched to fast-pitch in 1986 and began competing under the NCAA.

In 1986, in the first season of fast-pitch softball, UNA posted a 16-10 overall record and won the GSC championship with an 8-4 win over Mississippi College in the championship game.

The following year, the Lady Lions and Lady Choctaws met again in the GSC championship game, with UNA again prevailing 12-3.

The Lady Lions finished that 1987 season at 20-11 for their third 20-win season in the first four years of the program, and followed with a 21-10 record in 1988.

UNA's overall fast-pitch record for the last nine years stands at 133-145, but the Lady Lions have produced numerous All-GSC and Academic All-GSC performers, headed by three-time All-GSC pick Michele Logan, who was also a three-time Academic All-GSC selection.

## Gulf South Conference Champions

1986	North Alabama
1987	North Alabama
1988	Livingston
1989	Livingston
1990	Livingston
1991	Livingston
1992	Delta State
1993	Valdosta State
1994	Mississippi-Women



## GSC

### Coach of the Year

1986	<i>Ande Jones, North Alabama</i>
1987	Liz Kelly, Livingston
1988	Liz Kelly, Livingston
1989	Milly MacDonell, UT-Martin
1990	Amy Hardeman, Jacksonville St.
1991	Milly MacDonell, UT-Martin
1992	Ron Durante, Valdosta State
1993	Rowana Dozier, Mississippi College
1994	Ron Durante, Valdosta State

## LADY LION HONORS

### All-Gulf South Conference

#### Slow Pitch

1983	Jill Flippo
1983	Lisa Moody
1983	Belinda Berry
1983	Paige Blount
1983	Stephanie Taramangos

1985	Elise May
1985	Kim Smith

#### Fast Pitch

1986	Michele Logan	P,SS
1986	Charlotte Jordan	P,SS
1986	Lori Stocksett	OF
1987	Charlotte Jordan	P, SS
1987	Kelly Varnell	OF
1988	Michele Logan	P,SS
1988	Lori Stocksett	OF
1989	Amy Watkins	C
1989	Michele Logan	P, SS
1990	Kristie Grant	2B
1991	Kristie Grant	2B
1992	Monica Moran	P
1993	Kristy Holdbrooks	SS
1994	Lesley Westmoreland	INF
1994	Keysha McCall	UTL

## Academic

### All-Gulf South Conference

1987	Michele Logan
1988	Michele Logan
1989	Michele Logan
1989	Lori Stocksett
1989	Amy Watkins
1990	Kristy Holdbrooks
1991	Kristy Holdbrooks
1992	Kristy Holdbrooks
1992	Jessica Christ
1992	Laura Jo McFall
1993	Kristy Holdbrooks
1994	Jessica Christ
1994	Laura Jo McFall

## CoSIDA/GTE

### Academic All-District 4

1993	Kristy Holdbrooks
------	-------------------

## CoSIDA/GTE

### Academic All-America

#### (first team)

1993	Kristy Holdbrooks
------	-------------------

## CoSIDA/GTE

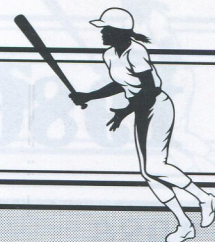
### Academic All-American of the Year

1993	Kristy Holdbrooks
------	-------------------

## Gulf South Conference Commissioner's Trophy

1993	Kristy Holdbrooks
------	-------------------

# National Headliner



UNA Shortstop Kristy Holdbrooks Became a National Headliner

University of North Alabama senior shortstop **Kristy Holdbrooks** of Haleyville made national headlines in 1993 in becoming one of the most honored athletes in school history.

During her final season with the Lady Lions, Holdbrooks hit .356 to lead the team, and also ranked among the Gulf South Conference leaders in base hits (32), runs scored (19) and stolen bases (14-14).

After being selected first-team All-Gulf South Conference by the league's head coaches, she was selected as an Academic All-GSC performer for the fourth straight year with a 3.98 cumulative grade point average in Biology.

She was voted Academic All-District IV by the College Sports Information Directors of America and was then one of 11 players selected first-team Academic All-American in softball.

A national panel later selected her as the CoSIDA/GTE Academic All-American of the Year in softball from more than 8,000 student athletes competing at every non-Division I school in the country.

Her 3.98 GPA earned her the Keller Key for having the highest academic average in her graduating class at UNA and her perfect 4.00 GPA in biology earned the Biology Award for the highest academic average in her field.

Holdbrooks was selected as UNA's Female Athlete of the Year and the school's NCAA Woman of the Year, as well as the softball team's Most Valuable Player.

The final award of her collegiate career came in June when she received the Gulf South Conference Commissioner's Trophy as the top female student-athlete in the league, becoming just the third UNA recipient of the award and only the second female.

## Holdbrooks 1993 Awards

*first-team*  
**All-Gulf South  
Conference**

*first-team*  
**Academic  
All-Gulf South  
Conference**

**CoSIDA/GTE  
*first-team*  
Academic  
All-District IV**

**CoSIDA/GTE  
*first-team*  
Academic  
All-American**

**CoSIDA/GTE  
Academic  
All-American  
of the Year**

**Gulf South  
Conference  
Commissioner's  
Trophy  
recipient**

**Keller Key  
recipient**

**UNA  
Female Athlete  
of the Year**

# 1986-94 Fast-Pitch Scores



## 1986

(16-10)

### GSC CHAMPIONS

Delta State	1-3
Livingston	4-2
Mississippi-Women	5-9
at Tennessee-Martin	1-2
at Tennessee-Martin	17-4
MUW TOURNAMENT	
*Livingston	27-0
*Mississippi College	6-2
*Mississippi-Women	3-8
*Delta State	6-4
*Tennessee-Martin	1-4
Livingston	27-0
Livingston	14-1
Georgia Southern	6-2
Tulane University	4-2
Mississippi-Women	1-2
Mercer University	12-0
Tennessee-Martin	4-3
Tennessee-Martin	1-8
West Florida	2-4
West Florida	0-1
GSC TOURNAMENT (Florence, Ala.)	
*Delta State	5-3
*Troy State	13-3
*Mississippi College	4-8
*Tennessee-Martin	12-6
*Mississippi College	5-4
*Mississippi College	8-4

## 1987

(20-11)

### GSC CHAMPIONS

Livingston	5-1
Livingston	5-3
UNA INVITATIONAL	
*Troy State	7-2
*Tennessee State	10-0
*Mississippi-Women	0-4
*Livingston	3-1
*Tennessee-Martin	8-1
Tennessee Tech	3-6
Tennessee Tech	0-4
AT MUW TOURNAMENT	
*Mississippi College	4-9
*Arkansas State	5-0
*Delta State	6-5
*Mississippi-Women	2-0
at Livingston	2-3
Mississippi-Women	0-2
Mississippi-Women	6-3
Tennessee-Martin	1-0
Tennessee-Martin	5-4
at Cumberland University	0-4
at Cumberland University	8-3
at Tennessee State	14-0
at Tennessee State	16-1
at Tennessee Tech	6-3
at Lincoln Memorial	2-6
at Mississippi-Women	2-8
at Mississippi-Women	5-8
GSC TOURNAMENT (Martin, Tenn.)	
Livingston	3-0
Delta State	2-1
Mississippi College	11-2
Mississippi College	12-3

## 1988

(21-10)

at Jacksonville State 13-2

at Jacksonville State 14-2

Martin College	5-2
Martin College	8-2
Livingston	1-2
Mississippi College	4-0
Mississippi-Women	5-2
Tennessee-Martin	7-4
Delta State	6-2
Tennessee-Martin	4-5
Tennessee-Martin	6-0
Jacksonville State	9-5
Livingston	1-6
Huntington	2-1
Columbus College	1-7
Samford University	6-1
Samford University	9-2
Jacksonville State	10-3
Jacksonville State	10-0
Tennessee-Martin	1-2
Tennessee-Martin	0-2
Martin College	3-1
Martin College	7-0
Delta State	1-2
Mississippi College	5-0
Delta State	7-4
Mississippi College	5-6
GSC TOURNAMENT (Valdosta, Ga.)	
Livingston	3-6
West Georgia	3-0
Valdosta State	13-3
Troy State	7-9

## 1989

(17-14)

UNA INVITATIONAL

*Livingston	4-7
*Tennessee-Martin	0-2
Jacksonville State	1-0
Jacksonville State	11-3
Martin College	11-3
Martin College	11-2
MUW INVITATIONAL	
*Tennessee-Martin	5-2
*Livingston	1-3
*Mississippi College	4-5
at Mississippi-Women	6-5
at Mississippi-Women	3-4
at Martin College	7-2
at Martin College	15-4
Martin College	11-9
at Jacksonville State	8-2
at Jacksonville State	16-2
Tennessee-Martin	0-1
Tennessee-Martin	3-5
Delta State	3-4
Delta State	4-2
Mississippi College	1-6
Mississippi College	5-6
at Tennessee-Martin	7-6
at Tennessee-Martin	2-3
GSC TOURNAMENT (Carrollton, GA)	
*West Georgia	13-0
*Livingston	3-4
*Troy State	5-4
*Delta State	7-0
*Tennessee-Martin	0-3

## 1990

(7-19)

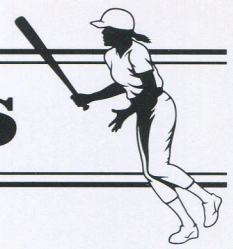
at Livingston	3-4
at Livingston	4-3
Tennessee-Martin	4-2
Tennessee-Martin	0-7
Delta State	3-2
Delta State	4-7
Mississippi-Women	1-15
Mississippi-Women	1-5
Livingston	0-10
Livingston	3-5
MUW INVITATIONAL	
*Livingston	3-2
*Mississippi-Women	1-5
*Mississippi College	0-4
*Livingston	2-5
at Tennessee-Martin	5-6
at Tennessee-Martin	2-4
Austin Peay State	0-9
Austin Peay State	1-0
at Delta State	1-2
at Delta State	3-4
at Jacksonville State	5-6
at Jacksonville State	0-6
GSC TOURNAMENT (Jacksonville, Ala.)	
*Jacksonville State	7-2
*Mississippi College	0-5
*Delta State	1-0
*Jacksonville State	0-1



1987 GSC Champions

\* indicates tournament games

# Contents and Quick Facts



## 1991

### (13-17)

Tennessee-Martin	1-4
Tennessee-Martin	1-5
Kentucky Wesleyan	3-2
Kentucky Wesleyan	2-0
Athens State	3-0
Athens State	3-2
at Jacksonville State	0-5
at Jacksonville State	2-5
at Mississippi-Women	4-3
at Mississippi-Women	2-3
UNA INVITATIONAL	
*Tennessee-Martin	10-12
*Mississippi College	5-15
*Mississippi-Women	3-2
*West Georgia	5-0
*Jacksonville State	1-11
Mississippi-Women	2-6
Mississippi-Women	0-1
Morehead	5-4
Wayne State	0-8
SIU-Edwardsville	0-5
at Athens State	0-2
at Athens State	1-2
at Tennessee-Martin	1-5
at Tennessee-Martin	4-2
GSC TOURNAMENT (Cleveland, Miss.)	

*West Georgia	5-2
*Livingston	4-7
*Troy State	10-2
*Jacksonville State	4-2
*Mississippi College	1-0
*Livingston	2-3

## 1992

### (6-27)

Tennessee-Martin	2-4
Tennessee-Martin	2-15
WEST GEORGIA TOURN.	
*Columbus College	1-8
*Livingston	4-3
*Huntington	1-6
Mississippi-Women	1-2
Mississippi-Women	5-10
JACKSONVILLE ST. TOURN.	
*at Jacksonville State	0-3
*Mississippi-Women	0-10
*Mississippi College	1-10
*Tennessee-Martin	5-4
*Huntington	2-11
at Athens State	0-6
at Athens State	2-21
UNA INVITATIONAL	
*Athens State	7-8
*Tennessee-Martin	1-4
*Jacksonville State	2-3
*Mississippi College	3-1

Athens State	0-15
Athens State	4-10
Jacksonville State	2-3
Jacksonville State	5-3
Trevecca Nazarene	5-2
Trevecca Nazarene	7-5
Mississippi-Women	1-3
Mississippi College	forfeit
Mississippi College	forfeit
Delta State	0-8
Delta State	2-5
Delta State	1-3
Delta State	4-12
GSC TOURNAMENT (Florence, Ala.)	
Livingston	4-5
Valdosta State	1-6

## 1993

### (10-20)

WEST GEORGIA TOURN.	
*Missouri St. Louis	7-4
*Faulkner	6-7
*Lincoln Memorial	0-3
at Mississippi-Women	3-4
at Mississippi-Women	0-5
Jacksonville State	1-2
Jacksonville State	3-0
JACKSONVILLE ST. TOURN.	
*Tennessee-Martin	6-3
*St. Augustine	13-2
*at Jacksonville State	1-3
*Columbus College	1-5
*West Georgia	6-8
at Livingston	4-1
at Livingston	2-1
at Mississippi College	1-2
at Mississippi College	0-4
Mississippi-Women	1-13
Mississippi-Women	6-8
Mississippi College	0-7
Mississippi College	3-2
Delta State	9-1
Delta State	1-8
at Delta State	3-7
at Delta State	1-3
Livingston	0-11
Livingston	1-4
GSC TOURNAMENT (Clinton, Miss.)	
*Valdosta State	1-2
*Delta State	11-9
*Livingston	12-2
*at Mississippi College	1-8

*Jacksonville State	3-6
at Lincoln Memorial	3-2
at Lincoln Memorial	5-3
at Lincoln Memorial	5-7
at Lincoln Memorial	7-6
at Bellarmine	6-5
Teikyo Westmar	6-4
LADY ARGONAUT CLASSIC	
*Pacific Lutheran	2-8
*Milligan	8-0
*Missouri-Southern	2-3
*Anderson	9-0
*Columbia	0-8
Martin Methodist	10-0
Martin Methodist	13-1
at Mississippi-Women	1-0

MUW TOURNAMENT	
*Livingston	4-0
*Mississippi College	4-3
*Columbus	0-4
*Mississippi College	1-3
*Livingston	2-3
*Mississippi Women	1-5
*Delta State	9-6
at Martin Methodist	13-2
at Martin Methodist	12-0
West Georgia	5-6
West Georgia	6-0
at Delta State	3-4
at Delta State	12-5
GSC TOURNAMENT (Valdosta, Ga.)	
Livingston	1-7
Mississippi College	3-5



SINCE 1830

## 1994

### (23-19)

at Livingston	4-3
at Livingston	5-1
Valdosta State	1-3
Valdosta State	6-8
Valdosta State	0-7
Valdosta State	1-8
at West Georgia	13-5
at West Georgia	6-0
WEST GEORGIA TOURN.	
*Delta State	8-11
*Mississippi-Women	7-2
*Huntingdon	0-7
*Mississippi-Women	6-4

# 1995 UNA Lady Lions Softball Schedule

## February

16	Thu	at Kennesaw State	1:00	Marietta, Ga.
17	Fri	at Columbus College	1:00	Columbus, Ga.
24	Fri	at Livingston	2:00	Livingston, Ala.
25	Sat	at Mississippi College Tournament	TBA	Clinton, Miss.
26	Sun	at Mississippi College Tournament	TBA	Clinton, Miss.

## March

2	Thu	at West Georgia	7:00	Carrollton, Ga.
3	Fri	at Lady Braves Tournament	TBA	Carrollton, Ga.
4	Sat	at Lady Braves Tournament	TBA	Carrollton, Ga.
7	<i>Tue</i>	<i>Tennessee State</i>	<i>2:00</i>	<i>HOME</i>
8	<i>Wed</i>	<i>Jacksonville State</i>	<i>1:00</i>	<i>HOME</i>
10	<i>Fri</i>	<i>Lindsey Wilson College</i>	<i>7:00</i>	<i>HOME</i>
11	<i>Sat</i>	<i>Bellarmino College</i>	<i>2:00</i>	<i>HOME</i>
12	<i>Sun</i>	<i>Milligan College</i>	<i>1:00</i>	<i>HOME</i>
18	<i>Sat</i>	<i>Lincoln Memorial</i>	<i>2:00</i>	<i>HOME</i>
19	<i>Sun</i>	<i>Lincoln Memorial</i>	<i>1:00</i>	<i>HOME</i>
23	<i>Thu</i>	<i>Delta State</i>	<i>1:30</i>	<i>HOME</i>
23	<i>Thu</i>	<i>Kennesaw State</i>	<i>6:00</i>	<i>HOME</i>
25	Sat	at Valdosta State	TBA	Valdosta, Ga.
26	Sun	at Valdosta State	TBA	Valdosta, Ga.
27	Mon	at West Florida	5:00	Pensacola, Fla.
28	Tue	at West Florida	2:00	Pensacola, Fla.

## April

6	<i>Thu</i>	<i>West Georgia</i>	<i>7:00</i>	<i>HOME</i>
7	Fri	GSC Cluster	TBA	Birmingham, Ala.
8	Sat	GSC Cluster	TBA	Birmingham, Ala.
13	Thu	at Tennessee State	3:00	Nashville, Tenn.
18	<i>Tue</i>	<i>Livingston</i>	<i>3:00</i>	<i>HOME</i>
22	Sat	GSC Tournament	All Day	Birmingham, Ala.
23	Sun	GSC Tournament	All Day	Birmingham, Ala.