



# 2014 MARYLAND FIELD HOCKEY

1987 • 1993 • 1999 • 2005 • 2006 • 2008 • 2010 • 2011

## TERPS' SCHEDULE

NFHCA POLL: 2 • RPI: 2

9-2, 3-1 Big Ten

*Conference Cup • Lancaster, Pa.*

Aug. 29 vs. #10 Massachusetts -- W, 3-2  
Aug. 31 vs. Northeastern -- W, 4-1

Sept. 5 #2 NORTH CAROLINA BTN Plus L, 1-3  
Sept. 7 MIAMI (OHIO) -- W, 3-1

*Terrapin Invitational • College Park, Md.*

Sept. 13 DREXEL -- W, 3-0  
Sept. 14 #16 TEMPLE BTN Plus W, 3-0

Sept. 20 at #15 Northwestern\* -- L, 2-3

Sept. 26 at #14 Michigan\* BTN Plus W, 2-0

Sept. 28 at #18 Michigan State\* BTN Plus W, 4-2

Oct. 3 OHIO STATE\* BTN W, 6-0

Oct. 5 #18 OLD DOMINION BTN Plus W, 3-1

Oct. 10 #4 PENN STATE\* BTN 3:30

Oct. 12 PENN BTN Plus 1:00

Oct. 15 at Princeton -- 6:00

Oct. 19 RUTGERS\* BTN Plus 1:00

Oct. 24 at #18 Indiana\* BTN Plus 3:00

Oct. 29 AMERICAN BTN Plus 6:00

Nov. 1 #10 IOWA\* BTN Plus 1:00

*Big Ten Tournament • Ann Arbor, Mich.*

Nov. 6 Quarterfinals BTN Plus TBA

Nov. 7 Semifinals BTN 1/3:45

Nov. 9 Championship BTN 1:00

*NCAA First and Second Rounds • Campus Sites*

Nov. 15 First Round -- TBA

Nov. 16 Second Round -- TBA

*NCAA Final Four • College Park, Md.*

Nov. 21 Semifinals -- 2/4:30

Nov. 23 Championship -- 1:00

*All times eastern • Home games in CAPS • Home games at Field Hockey & Lacrosse Complex • \* Big Ten game*



#4 PENN STATE  
Oct. 10, 2014 • 3:30  
College Park, Md.



PENN  
Oct. 12, 2014 • 1:00  
College Park, Md.

## RIGHT HERE, RIGHT NOW

• No. 2 Maryland will host No. 4 Penn State Friday at 3:30 p.m. and Penn Sunday at 1 p.m. at the Field Hockey & Lacrosse Complex.

• Maryland is coming off of two big wins over the weekend. The Terrapins cruised past Ohio State, 6-0, behind two goals and two assists from Katie Gerzabek and a goal and an assist from Moira Putsch. The Terps went on to beat No. 18 Old Dominion, 3-1, Sunday. Anna Dessoye, Putsch and Maxine Fluharty scored for Maryland. Over the last four games, Brooke Cabrera has allowed just one goal off of 24 shots faced in 252 minutes in goal.

• Gerzabek, Putsch and Cabrera swept the Big Ten weekly awards Tuesday. Gerzabek was named Offensive Player of the Week, Cabrera was named Defensive Player of the Week and Putsch was named Freshman of the Week. Putsch was honored for the second straight week and is the first to win the Freshman of the Week award three times in a season since Michigan State's Molly Cassidy did in 2010. Maryland is the first school to win all three in the same week since Ohio State did on Oct. 4, 2010.

• Missy Meharg is in her 27th season as the leader of the Terrapins. She's led them to a 480-117-9 (.800) record, seven NCAA titles, 10 conference titles and 16 Final Fours. She has been named NFHCA National Coach of the Year an unprecedented nine times in her career.

• In last year's NCAA Semifinal, the Terrapins fell to No. 5 Duke, 3-2. The Blue Devils scored just under three minutes into the game, then Hayley Turner tied it off a shot from Sprink two minutes later. Duke scored twice more before the end of the first half and Jill Witmer made it 3-2 with a goal before the break. The Terps outshot the Blue Devils, 11-2 in the second half, but could not score the equalizer.

## Media Relations

Assistant Director/FH Contact Rose DiPaula  
Office/Cell 301-314-7063/443-417-5266  
Email rdipaola@umd.edu  
Address 2729 Comcast Center  
College Park, MD 20742  
301-314-9094  
Media Relations Fax www.umterps.com  
Website @Uterps (Maryland Athletics)  
Twitter @TerpFieldHockey  
@MissyMeharg  
Facebook http://www.facebook.com/pages/Maryland-Field-Hockey

## 2014 RETURNING STARTERS

No.	Player	Pos	Ht	Exp.	Yr	Hometown	G	A	Other
2	Maxine Fluharty*	M/F	5-3	2V	Sr.	Millsboro, Del.	7	--	2013 NFHCA All-American, All-ACC Team
4	Kasey Tapman	M/D	5-10	2V	R-Jr.	Pocomoke City, Md.	--	--	Key member of Terps' stellar 2013 defensive unit
8	Alyssa Parker	F/M	5-4	2V	Jr.	Woodbine, Md.	1	--	Member of U.S. Under-21 Team
11	Delaney Leathers	M	5-2	So.	So.	Virginia Beach, Va.	--	--	Womensfieldhockey.com All-Rookie Squad in 2013
14	Katie Gerzabek*	F	5-2	2V	Sr.	Springfield, Pa.	2	11	2013 All-ACC Team; missed 5 games due to injury
16	Steffi Schneid	M/D	5-8	2V	Sr.	Munich, Germany	2	4	Started in 20 of 22 games in 2013
17	Anna Dessoye	M	5-6	1V	Jr.	Mountain Top, Pa.	5	6	Second on the team in scoring in 2013
18	Sarah Sprink*	D	5-8	1V	Jr.	Neuss, Germany	5	3	2013 NFHCA All-American, All-ACC Team

\*2014 captains

# 2014 MARYLAND FIELD HOCKEY

## Scouting the Nittany Lions

- Penn State is 10-2 overall, 2-1 in Big Ten play this year and is ranked No. 4 in the latest Penn Monto/NFCA Coaches poll. The Nittany Lions have won five straight games over the last few weeks. Most recently, they beat No. 14 Temple 2-0 Sunday.
- Taylor Herold is leading Penn State with 12 goals and six assists for 30 points so far this season.
- Penn State owns the all-time series over Maryland, 20-11-1, but the Terps have won the last two straight games and seven of the last eight matchups since 1994. Maryland won the most recent meeting, 8-1, on Sept. 12, 2009 in College Park.
- Maryland is 3-1 vs. Penn State at the Field Hockey & Lacrosse Complex. The Nittany Lions' lone win was a 1-0 victory in the NCAA Second Round in 2007.

## Scouting the Quakers

- Penn is 4-4 so far this season and 1-2 in Ivy League play. The Quakers fell to Dartmouth, 5-3, this past weekend.
- Emily Corcoran and Alexa Hoover lead the Quakers with eight goals apiece.
- Maryland owns the all-time series over Penn, 14-5. The Terps have won 11 straight meetings in the series, dating back to 1990. Most recently, the Terrapins won 5-1 in College Park on Oct. 12, 2008.

- The Terrapins are 2-0 vs. the Quakers at the Field Hockey & Lacrosse Complex.

## Three Named to Big Ten Players to Watch List

- Junior Anna Dessoye, senior Maxine Fluharty and senior Katie Gerzabek were named to the Big Ten Players to Watch list.
- Dessoye is Maryland's leading returning scorer, after she notched 13 goals and 16 assists in 2013.
  - Fluharty added 12 goals and seven assists last year and was named a 2013 Third Team NFCA All-American.
  - Gerzabek scored five goals and notched three assists in her 19 games played. She was named to the All-ACC Team last year.

## Terps in the Rankings

- Maryland is ranked No. 2 in the latest Penn Monto/NFCA Division I Coaches poll, released Oct. 7.
- The Terps have been ranked in the top five for the last 17 straight weeks, dating back to the preseason poll in 2013.
  - The Terrapins have appeared in the top five nationally in 159 of 164

## 2014 MARYLAND FIELD HOCKEY ROSTER

No.	Player	Pos.	Cl.	Ht.	Hometown (High School)
1	Jill Genovese	GK	Jr.	5-2	Rockville, Md. (Academy of the Holy Cross)
2	Maxine Fluharty*	M/F	Sr.	5-3	Millsboro, Del. (Sussex Technical HS)
3	Carrie Hanks	D	Fr.	5-7	Niskayuna, N.Y. (Niskayuna HS)
4	Kasey Tapman	M/D	R-Jr.	5-10	Pocomoke City, Md. (Pocomoke HS)
5	Shari Jones	F	Jr.	5-4	Princeton, N.J. (Montgomery HS)
6	Layne Litsinger	F	Fr.	5-0	White Hall, Md. (Hereford HS)
7	Emma Rissinger	F	R-So.	5-2	Lititz, Pa. (Warwick HS)
8	Alyssa Parker	F/M	Jr.	5-4	Woodbine, Md. (Glenelg HS)
9	Maddy Ulery	F	Fr.	5-4	Davidsonville, Md. (South River HS)
11	Delaney Leathers	M	So.	5-2	Virginia Beach, Va. (Ocean Lakes HS)
12	Marissa Cutry	M/D	R-Fr.	5-7	Medford, N.J. (Shawnee HS)
13	Rachel Frusher	D	So.	5-6	Perth, Western Australia (Penrhos College)
14	Katie Gerzabek*	F	Sr.	5-2	Springfield, Pa. (Academy of Notre Dame)
15	Welma Luus	F	Sr.	5-8	Pretoria, South Africa (Waterkloof HS)
16	Steffi Schneid	M/D	Sr.	5-8	Munich, Germany (Gisela-Gym. München)
17	Anna Dessoye	M	Jr.	5-6	Mountain Top, Pa. (Crestwood HS)
18	Sarah Sprink*	D	Jr.	5-8	Neuss, Germany ( Erzbischöfliches Gym. Marienberg)
19	Moiria Putsch	F/M	Fr.	5-5	Media, Pa. (Academy of Notre Dame)
20	Courtney Deena	F/M	So.	5-2	Pickerington, Ohio (Columbus Academy)
22	Lein Holsboer	M	Fr.	5-8	Hilversum, Netherlands (Gemeentelijk Gym. Hilversum)
23	Brooke Adler	F/M	So.	5-3	Baltimore, Md. (Garrison Forest School)
24	Anne-Floor Jansen van Galen	F	Jr.	5-5	Hilversum, Netherlands (University of Amsterdam)
44	Brooke Cabrera*	GK	R-Sr.	5-6	Greenwich, Conn. (Greenwich HS)
99	Melissa Flowe	GK	Fr.	5-7	Severna Park, Md. (Kecoughtan HS)

**Head Coach:** Missy Meharg (Delaware '85, 27th season)

**Associate Head Coach:** Dina Rizzo (Maryland '02, Fifth season)

**Assistant Coach/Technical Director:** Joppe de Vries (University of Amsterdam '00, Second season)

**Volunteer Assistant Coach:** Steve Simpson (Maryland '88, 10th season, non-consecutive)

**Student Assistant Coaches:** Natalie Hunter (Maryland '14); Jill Witmer (Maryland '14)

## QUICK FACTS

<b>Location:</b> College Park, Md.
<b>Conference:</b> Big Ten
<b>Enrollment:</b> 37,641
<b>Founded:</b> 1856
<b>Colors:</b> Red, White, Black, Gold
<b>Nickname:</b> Terrapins, Terps
<b>Stadium (Capacity):</b> Field Hockey & Lacrosse Complex (2,000)
<b>President:</b> Dr. Wallace Loh (Grinnell College '65)
<b>Athletics Director:</b> Kevin Anderson (San Francisco State '79)
<b>2013 Overall Record:</b> 22-2
<b>2013 Conference Record:</b> 6-0
<b>2013 ACC Tournament Finish:</b> CHAMPIONS
<b>Postseason Finish:</b> NCAA Semifinals
<b>Final Kookaburra/NFCA National Ranking:</b> 1
<b>Starters Returning/Lost:</b> 8/4
<b>Letterwinners Returning/Lost:</b> 16/6

## FIELD HOCKEY HISTORY

<b>First Year of Field Hockey (Years):</b> 1974 (41 years)
<b>Overall Record (Win Pct.):</b> 633-202-36 (.748, 41 years)
<b>Big Ten Record (Win Pct.):</b> 3-1 (.750, First year)
<b>NCAA Tournament Appearances/Last:</b> 26/2013
<b>NCAA Tournament Record:</b> 56-18 (.757)
<b>Last NCAA Tournament Opponent:</b> Duke, lost 3-2
<b>National Championships:</b> 8 (1987, 1993, 1999, 2005, 2006, 2008, 2010, 2011)
<b>Conference Championships:</b> 10 (1992, 1998, 1999, 2000, 2001, 2005, 2008, 2009, 2010, 2013)

## PRONUNCIATION GUIDE

Genovese	jen-oh-VEEZ
Shari	Sherry
Layne Litsinger	Lane LIT-sing-er
Rissinger	RIH-sing-er
Ulery	OO-ler-ee
Welma Luus	VELL-ma LOOS
Schneid	sh-nide
Dessoye	dess-OY
Putsch	Rhymes with Dutch
Lein Holsboer	Lane HOLES-bore
Anne-Floor Jansen van Galen	AHN-eh FLOOR YAN-sen van HA-len
Flowe	Flow
Meharg	ma-HARG
Dina	DEE-nah
Joppe de Vries	YO-pa de-FREEZ

# 2014 MARYLAND FIELD HOCKEY

polls since the 1999 season.

• Prior to the poll released Oct. 9, 2012, the Terrapins had not been outside the top five since before the 1999 season. They were ranked sixth in that Oct. 9 poll.

## Oh Captain, My Captain

Maxine Fluharty, Katie Gerzabek and Sarah Sprink were voted tri-captains by their teams for the 2014 season.

"Maxine, Katie and Sarah are a talented dynamic, hardworking leadership trio," head coach Missy Meharg said. "The front field, the midfield, the backfield are represented by these NCAA/FIH experienced players. All have been honored by their leagues and all three represented their countries in the Junior World Cup. They understand that the way we train and prepare puts us in position to win championships in November."

## Terps Going B1G

The Terrapins joined the Big Ten conference this year, after playing in the ACC for 31 years. Big Ten field hockey is now the biggest conference in the history of the sport in the NCAA with nine teams - Indiana, Iowa, Michigan, Michigan State, Northwestern, Ohio State, Penn State, Rutgers and Maryland.

• The Terps are 85-32-3 (.721) all-time against Big Ten opponents.  
• Head coach Missy Meharg is 69-12-1 (.848) vs. Big Ten opponents in her 27 years at the helm of the Maryland field hockey program.

## Home Sweet Home

Since its opening in 2003, the Field Hockey & Lacrosse Complex has provided the Maryland hockey program a huge home field advantage.

• The Terps are 132-15 (.898) all-time at the Complex.  
• Maryland won 38 straight games at the Complex from Oct. 11, 2008 through Oct. 14, 2011. The streak ended with a 5-2 loss to then-No. 1 Old Dominion.  
• The Field Hockey & Lacrosse Complex has played home to 22 of Maryland's NCAA Tournament games, including two Final Fours (2007, 2010). The Terrapins are 21-1 in those games and won the 2010 national title on their home field.  
• Maryland will host the 2014 NCAA Final Four at the Nov. 21 and 23.

## Pack the House

• The Maryland field hockey team has increasingly attracted more and more fans to the Field Hockey & Lacrosse Complex season after season. The Terrapins have led the nation in attendance since 2010.  
• In 2013, Maryland led the country in attendance

with 8,176 fans coming out to see the Terrapins. On average, 629 fans came to each game, which was nearly 200 more than North Carolina's average of 438 which was second in the country.

• An NCAA-record crowd of 2,381 came out to watch as Maryland beat North Carolina 3-2 in double overtime for the 2010 national championship at the Complex.

## Overtime is Terp Time

During Missy Meharg's tenure, the Terrapins have become one of the nation's most dangerous teams in overtime.

• The Terps are 56-22 (.718) all-time in games that went to overtime or penalty strokes.  
• In Meharg's tenure, the Terps are 46-18 (.719) in overtime or penalty strokes games.

## Play the Best

The Terrapins will play one of the strongest schedules in the country.

• Ten of the Terps' 18 regular season games are against teams in the NFHCA Preseason Top 20. They are 5-2 against ranked teams.  
• The Terrapins will face off against seven of the other 15 teams in the 2013 NCAA Tournament and are 3-1 so far against them.

## Meharg Named Top Recruiter

Terrapin head coach Missy Meharg was named one of college athletics' top 20 recruiters by ESPN in January 2012.

• Meharg was the only NCAA field hockey coach to make ESPN's list.  
• Her stellar recruiting classes have won her seven NCAA titles overall (1993, 1999, 2005, 2006, 2008, 2010, 2011) and 10 conference titles.  
• Here is the top 10:

1. Pat Henry, Texas A&M Track & Field
2. Anson Dorrance, UNC women's soccer
3. Ed Orgeron, USC Football
4. Chris Dailey, UConn WBB
5. **MISSY MEHARG, Maryland field hockey**
6. Mike Krzyzewski, Duke MBB
7. Russ Rose, Penn State volleyball
8. Barton Burns, Alabama football
9. Jay Clark, Georgia gymnastics
10. Chad Holbrook, South Carolina baseball

## Terps on the BTN

Twelve of the Terps' regular season games will be either shown on the Big Ten Network or streamed online through BTN Plus on BTN2Go and the Big Ten mobile apps.

• Ten of the Terrapins' matchups will be shown online through BTN Plus on BTN2Go and the Big Ten's mobile apps. The remaining games include



## PENN MONTGOMERY/NFHCA COACHES POLL (10/7)

RK	School	Record	Votes
1	North Carolina (26)	8-2	831
2	<b>MARYLAND* (14)</b>	<b>9-2</b>	<b>822</b>
3	Virginia (1)	10-3	718
4	Penn State (1)*	10-2	654
5	Louisville (1)	10-2	646
6	Connecticut	7-3	620
7	Stanford	12-1	597
8	Northwestern*	9-3	566
9	Duke	8-3	519
10	Iowa*	8-3	461
11	Albany	10-2	446
12	Boston College	8-4	300
13	Syracuse	8-3	294
14	Michigan*	8-4	285
15	Temple	8-4	284
16	Northeastern	10-2	281
17	Wake Forest	8-4	262
18	Indiana*	8-3	108
19	Old Dominion	6-5	104
20	Michigan State*	7-4	82

\* - B1G Team

## B1G STANDINGS (10/10)

Team	B1G	Overall
Northwestern	4-0 (1.000)	9-3 (.750)
<b>MARYLAND</b>	<b>3-1 (.750)</b>	<b>9-2 (.818)</b>
Michigan	3-1 (.750)	8-4 (.667)
Penn State	2-1 (.667)	10-2 (.833)
Iowa	2-1 (.667)	8-3 (.727)
Michigan State	2-2 (.500)	7-4 (.636)
Indiana	0-3 (.000)	8-3 (.727)
Rutgers	0-4 (.000)	5-6 (.455)
Ohio State	0-3 (.000)	4-7 (.364)

## B1G TEAM RANKINGS (10/10)

Scoring Margin	3rd (1.91)
Scoring Average	3rd (3.09)
Goals Against Avg	2nd (1.18)
Shots Per Game	1st (20.36)
Goals Scored Per Game	T-3rd (3.09)
Goals Allowed Per Game	2nd (1.18)
Assists Per Game	2nd (2.82)
Penalty Corners Per Game	2nd (7.82)
Goals Off Corners	1st (1.18)

## B1G INDIVIDUAL RANKINGS (10/10)

Player	Stat	B1G	Avg./G	NCAA
Cabrera	GAA	1st	1.04	7th
Dessoye	APG	T-10th	0.55	24th
	GWG	2nd	0.36	
Fluharty	GPG	T-10th	0.64	50th
Gerzabek	APG	1st	1.00	6th
Putsch	PPG	T-10th	1.64	
	GPG	T-10th	0.64	
Sprink	SPG	10th	3.36	

## MILESTONE UPDATE (10/10)

Brooke Cabrera	59 career saves
Maxine Fluharty	76 career points
Alyssa Parker	39 career points

# 2014 MARYLAND FIELD HOCKEY

## **M** TERPS Record When...

Overall .....	9-2
In B1G Games.....	3-1
In Non-conference Games .....	6-1
At Home.....	5-1
Away.....	2-1
Neutral Sites.....	2-0
Day Games.....	8-2
Night Games.....	1-0
vs. Top 5 opponents .....	0-1
vs. Top 10 opponents .....	1-1
vs. Top 20 opponents .....	5-2
vs. unranked opponents .....	4-0
vs. 2013 NCAA Tournament teams .....	3-1
Leading at halftime .....	8-0
Trailing at halftime .....	0-2
Tied at halftime .....	1-0
Overtime .....	
Maryland has more shots .....	9-1
Opponent had more shots .....	0-1
Shots are tied .....	
Maryland has more saves .....	
Opponent has more saves .....	9-2
Saves are tied.....	
Maryland has more corners.....	9-1
Opponent has more corners.....	0-1
Corners are tied.....	
Maryland scores first .....	9-0
Opponent scores first .....	0-2
Games decided by one goal.....	1-1
Games decided by 2-4 goals.....	7-1
Games decided by more than 4 goals.....	1-0
On Sunday.....	5-0
On Monday.....	
On Tuesday.....	
On Thursday.....	
On Friday.....	3-1
On Saturday .....	1-1
In August.....	2-0
In September.....	5-2
In October.....	2-0
In November .....	

10/12/14 – vs. Penn  
10/19/14 – vs. Rutgers  
10/24/14 – at Indiana  
10/29/14 – vs. American  
11/01/14 - vs. #7 Iowa

• These games can be seen online through a subscription fee. Fans can access all Big Ten content across all sports and schools on BTN Plus for \$119.95 per year or a \$14.95 monthly subscription. A Maryland School Pass, which includes all Maryland athletics contests, home and away, on BTN Plus for \$79.95 per year or for a \$9.95 monthly subscription. This service is available world-wide.

## Staff Updates

The Terrapins return three assistant staff members in 2014. Dina Rizzo, Joppe de Vries and Steve Simpson all return for the second straight year together.

• Meharg will welcome back recent Terrapin alums Natalie Hunter and Jill Witmer as student assistant coaches this year as both work to finish their degrees.

## Global Terps

Six of the 24 Terrapins are from different parts of the globe, reflecting Maryland's diversity as a campus.

• Steffi Schneid and Sarah Sprink hail from Germany and all have experience playing in the German national team system. Sprink played with the German Under-21 team in the Junior World Cup in Monchengladbach, Germany last summer.

• Rachel Frusher is from Perth, Australia. She met former Terrapin Jemma Buckley playing in the Australian system, who told her about the Terps.

• Lein Holsboer and Anne-Floor Jansen van Galen are both from the Netherlands. Jansen van Galen is an exchange student from the University of Amsterdam for the fall semester.

• Welma Luus came to Maryland to play tennis, but also has much experience in field hockey from growing up in South Africa. She played on the South African Under-18 team.

## Terrapins on U.S. National Teams

Eight Terrapins, former and present, are currently on USA Field Hockey's national team rosters.

• Katie O'Donnell competed for the U.S. Senior National Team in London last summer. She and Jill Witmer both competed for the USA in the Rabobank World Cup in the Netherlands this summer. Ali McEvoy is also a member of the U.S. Senior National Team.

• Anna Dessoye, Alyssa Parker, Delaney Leathers

and Moira Putsch are on the U.S. Under-21 Team.  
• Freshman Carrie Hanks is on the U.S. Under-19 Team.



# MissyMEHARG

**480-117-9 (.800) 27th Season**

Head coach Missy Meharg has been at the helm of the Terrapin field hockey program for 27 years, along the way building a program rich with a winning tradition. Voted National Coach of the Year an unprecedented nine times, Meharg has exemplified the tradition of excellence Maryland field hockey has become known for, a program with eight National Championships and 10 conference championships - solidifying the Terrapins' position among the top programs in the nation.

- Seven national titles, including five in seven years (1993, 1999, 2005, 2006, 2008, 2010, 2011)
- 10 conference tournament crowns
- 16 appearances in the NCAA Semifinals round, including 10 in the NCAA Finals
- Overall record of 480-117-9 gives her a winning percentage of .800
- Nine National Coach of the Year awards and seven conference Coach of the Year awards
- Led the team to two of the most successful seasons in school history in 2009 and 2010. Over those two years, the Terps earned a record of 46-2 with two ACC titles and an NCAA title
- Seven Honda Sports Awards won by five players
- 45 All-Americans, including six four-time All-

Americans and ten three-time All-Americans

• 11 players have been named ACC Players of the Year. Paula Infante earned the Defensive Player of the Award twice, while Katie O'Donnell won all four years of her career

• Meharg was contracted by NBC to work as a color commentator and analyst for field hockey during coverage of the 2012 Olympic Games in London

• Five of Meharg's former athletes have competed on U.S. Olympic teams. Katie O'Donnell and Keli Smith Puzo both represented Team USA in London in 2012. Four former Terrapins played in the Beijing Olympics in 2008. Lauren Powley, Dina Rizzo and Smith Puzo were on the 16-spot roster and Sara Silvetti served as an alternate

• Kate Kauffman Beach was the Terps' first Olympian in Atlanta Games in 1996

• Terrapin athletes have played on their respective national teams from nine countries around the world: England, Ireland, Chile, Holland, Germany,



Australia, Zimbabwe, Scotland and South Africa

• Served on the U.S. National Team coaching staff from 1993-1997. She assisted in the 1994 World Cup, the 1995 Pan American Games and the 1996 Olympics

• 2010 USA Under 21 squad coaching staff member and has worked with International teams in the ages of Under-21 and Under-18

• USA hockey level 3 coaching accreditation.

• Created 7 teaching tapes and DVDs for Championship Productions

• Over 85 Maryland players have earned spots on the ACC's Honor Roll and 56 Terrapins have been named to the National Field Hockey Coaches Association's Academic Squad

## Welsh, Infante, Rowe, O'Donnell & Frazer Win Honda Award

In 2001, defensive back Autumn Welsh became the first athlete under Missy Meharg to be recognized as the national player of the year. Welsh was named the recipient of the prestigious Honda Award, marking the first time in Maryland field hockey history that a Terp attained the honor. After leading the Terps to back-to-back NCAA Championships in 2005 and 2006, defensive midfielder Paula Infante earned the honor both years, becoming only the third field hockey player in the history of the award to win it multiple times. Infante went on to be a top-five finalist for the coveted Honda-Broderick Cup, presented to the NCAA's Collegiate Woman Athlete of the Year across all sports. In 2008, Susie Rowe capped a senior campaign in which she won her third national title with the national player of the year award after setting Maryland records with 28 goals and 74 total points scored. The defender scored the game-winner in the National Championship game, a 4-2 victory over Wake Forest. As a junior, Katie O'Donnell won the nation's top award after breaking the ACC assist records and leading the team offensively. Megan Frazer, team co-captain, won in 2011 after leading the Terrapins from an unseeded NCAA Tournament berth to another national title. Infante (2005, 06), Welsh (2001), Rowe (2008), O'Donnell (2009), Frazer (2011) and women's lacrosse standout Jen Adams (2000, 2001) are the only Honda Award recipients in Maryland athletics history.

## The Meharg File

Year	School	Overall Record	Pct.	Postseason
1985	Maryland, Asst. Coach	14-7-3	.646	NCAA Second Round
1986	Maryland, Asst. Coach	9-10-2	.476	
1987	Maryland, Asst. Coach	18-4-1	.804	NCAA Champion
1988	Maryland, Head Coach	11-9-2	.545	NCAA First Round
1989	Maryland, Head Coach	11-8-1	.575	
1990	Maryland, Head Coach	11-6-2	.632	NCAA First Round
1991	Maryland, Head Coach	17-5-1	.761	NCAA Semifinals
1992	Maryland, Head Coach	15-5-1	.738	ACC Champion, NCAA Second Round
1993	Maryland, Head Coach	21-3	.875	NCAA CHAMPION
1994	Maryland, Head Coach	10-9-2	.526	
1995	Maryland, Head Coach	19-5	.792	NCAA Finals
1996	Maryland, Head Coach	15-7	.681	NCAA Second Round
1997	Maryland, Head Coach	18-4	.818	NCAA Second Round
1998	Maryland, Head Coach	16-6	.727	ACC Champion, NCAA Second Round
1999	Maryland, Head Coach	24-1	.960	ACC Champion, NCAA CHAMPION
2000	Maryland, Head Coach	19-4	.826	ACC Champion, NCAA Semifinal
2001	Maryland, Head Coach	20-4	.833	ACC Champion, NCAA Final
2002	Maryland, Head Coach	17-5	.773	NCAA Second Round
2003	Maryland, Head Coach	20-4	.833	NCAA Semifinal
2004	Maryland, Head Coach	17-6	.739	NCAA Semifinal
2005	Maryland, Head Coach	23-2	.920	ACC Champion, NCAA CHAMPION
2006	Maryland, Head Coach	23-2	.920	NCAA CHAMPION
2007	Maryland, Head Coach	18-3	.857	NCAA Second Round
2008	Maryland, Head Coach	22-2	.917	ACC Champion, NCAA CHAMPION
2009	Maryland, Head Coach	23-1	.958	ACC Champion, NCAA Final
2010	Maryland, Head Coach	23-1	.958	ACC Champion, NCAA CHAMPION
2011	Maryland, Head Coach	19-4	.826	NCAA CHAMPION
2012	Maryland, Head Coach	18-6	.750	NCAA Semifinal
2013	Maryland, Head Coach	22-2	.917	ACC Champion, NCAA Semifinal
2014	Maryland, Head Coach	9-2	.818	
<b>27 Years</b>		<b>480-117-9</b>	<b>.800</b>	<b>24 NCAA Tournament appearances</b>
				<b>54-18 (.757 in NCAA Tournament games)</b>

## 2014 MARYLAND FIELD HOCKEY

### DinaRIZZO

**Associate Head Coach • 5th year • Maryland '02**

After conducting a full candidate search, Maryland welcomed Dina Rizzo back to College Park in June 2010, after she served as an assistant at the University of Massachusetts during the 2009 season. Head coach Missy Meharg promoted her to associate head coach in January 2013.

Prior to her time in Amherst, Mass., Rizzo spent the spring of 2009 working with the Crimson of Harvard. She got her start in coaching as a volunteer assistant with the Terrapins in 2004.

Rizzo served on the U.S. Senior National team for seven years after her graduation from Maryland, making 133 appearances. She competed in all six of the U.S.'s games in the 2008 Beijing Olympics and played in the 2006 World Cup. Rizzo was also a member of the 2003 Pan American silver medalist team and played in two Olympic qualifiers and one World Cup qualifier.

As a player at Maryland from 1998-2001, Rizzo was a member of the 1999 National Championship team. She was named a first team All-American, All-ACC and to the NCAA All-Tournament team in 2001. Rizzo earned her bachelor of arts in Communication in 2002.



### JoppedE VRIES

**Assistant Coach • 2nd year • Amsterdam '00**

Maryland field hockey head coach Missy Meharg announced the hiring of Joppe de Vries (pronounced YO-pa de-VREEZ) as the program's assistant coach and technical director in July 2013. De Vries comes to College Park with over a decade of experience, including serving as goalkeeping coach for the South African national teams in preparation for the London Olympics.

"Joppe is technically an outstanding choice to join our coaching staff," Meharg said. "He's had a variety of hands-on coaching experiences, both internationally at the Olympic level and the Dutch club system, which is the best club system in the world. We are really pleased with what he will bring to the University of Maryland. We welcome his wife and daughter as well and it will be a real honor to work with Joppe."

De Vries has taught physical education and marketing communications at the University of Amsterdam for the past eight years. Over the last 12 years, he worked with various club teams in the Netherlands, including coaching the Rotterdam Hockey Club and former Terrapin Berber Rischen. Terrapin greats Paula Infante and Boukje Vermeullen also played with the Rotterdam Hockey Club.

From 2010 through 2012, de Vries developed with the goalkeepers of South Africa's senior men's and women's national teams, as well as the Under-18 and Under-21 teams.

De Vries earned his degree in 2000 from the University of Amsterdam in physical education with a specialization in sports marketing.

De Vries and his wife, Katrien Van Den Eijnde, have a young daughter, Saar, and infant son, Tijn.



### SteveSIMPSON

**Volunteer Assistant Coach • Maryland '88**

Maryland field hockey head coach Missy Meharg announced Steve Simpson as the program's volunteer assistant coach in August of 2013. Simpson has deep roots at Maryland as an alumnus, and he was involved as an undergraduate and assistant coach.

In his two years as an assistant coach at Syracuse (2011, 2012), Simpson helped lead the Orange to a 38-7 record, one BIG EAST Tournament title, one regular season title, two NCAA Tournaments, and one Final Four.

Simpson joined the Syracuse staff after concluding a four-year stint at New Hampshire. The Wildcats won the America East regular season title in 2010. Prior to UNH, he worked at UMass, where he served as assistant coach from 2003-06.

Simpson began working with the Maryland field hockey team while he was a student at Maryland. He was a part of the program when head coach Sue Tyler and then-assistant Meharg won its first national title in 1987. He came on-board as an assistant with Meharg in 1995 and stayed on through 2003. Together, they won the 1999 national championship and went to four Final Fours.

Simpson also has international coaching experience as an assistant with the U.S. Women's National Team (1997-98) that included the Hockey World Cup in May 1998 and the Champions Trophy in 1997. In addition, he has coached at numerous "A" and "B" Camps and been active in the USFHA Futures Program, including serving as Regional Director and Director of Coaching of the Chesapeake Region.

Simpson was an internationally-rated umpire manager. He umpired at the Indoor World Cup in Leipzig, the Pan Am Games, the Pan Am Cup and the World Cup qualifier in Edinburgh in 2001.





# 2014 MARYLAND FIELD HOCKEY



**1** **Jill Genovese**  
GK • 5-2 • Jr.  
Rockville, Md.



**2** **Maxine Fluharty**  
M/F • 5-3 • So.  
Millsboro, Del.



**3** **Carrie Hanks**  
D • 5-7 • Fr.  
Niskayuna, N.Y.



**4** **Kasey Tapman**  
M/D • 5-10 • R-Jr.  
Pocomoke City, Md.



**5** **Shari Jones**  
F • 5-5 • Jr.  
Princeton, N.J.



**6** **Layne Litsinger**  
F • 5-0 • Fr.  
White Hall, Md.



**7** **Emma Rissinger**  
F • 5-2 • R-So.  
Lititz, Pa.



**8** **Alyssa Parker**  
F/M • 5-4 • Jr.  
Woodbine, Md.



**9** **Maddy Ulery**  
F • 5-4 • Fr.  
Fernhill Heath, England



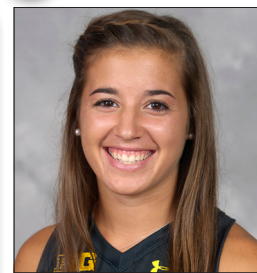
**11** **Delaney Leathers**  
M • 5-2 • So.  
Virginia Beach, Va.



**12** **Marissa Cutry**  
M/D • 5-8 • R-Fr.  
Medford, N.J.



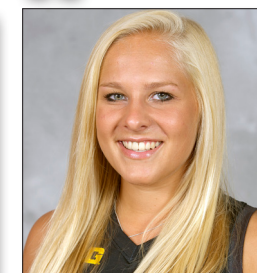
**13** **Rachel Frusher**  
D • 5-6 • So.  
Perth, Australia



**14** **Katie Gerzabek**  
F • 5-2 • Sr.  
Springfield, Pa.



**15** **Welma Luus**  
F • 5-8 • Sr.  
Pretoria, South Africa



**16** **Steffi Schneid**  
M/D • 5-8 • Sr.  
Munich, Germany



**17** **Anna Dessoye**  
M • 5-6 • Jr.  
Mountain Top, Pa.



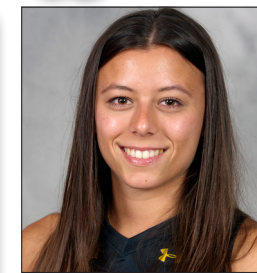
**18** **Sarah Sprink**  
D • 5-8 • Jr.  
Neuss, Germany



**19** **Moira Putsch**  
F/M • 5-5 • Fr.  
Media, Pa.



**20** **Courtney Deena**  
F/M • 5-2 • So.  
Pickerington, Ohio



**22** **Lein Holsboer**  
M • 5-8 • Fr.  
Hilversum, Netherlands



**23** **Brooke Adler**  
F/M • 5-3 • So.  
Baltimore, Md.



**24** **Anne-Floor  
Jansen van Galen**  
F • 5-5 • Jr.  
Hilversum, Netherlands



**44** **Brooke Cabrera**  
GK • 5-6 • R-Sr.  
Greenwich, Conn.



**99** **Melissa Flowe**  
GK • 5-7 • Fr.  
Severna Park, Md.

# Record BookUPDATE

## CAREER RECORDS

### POINTS

1.	306	Katie O'Donnell	07-10
2.	187	Carla Tagliente	97-00
3.	179	Nicole Muracco	06-09
4.	163	Jill Witmer	10-13
5.	162	Rachel Hiskins	98-01
6.	158	Caroline Walter	98-01
	158	Kim Turner	85-88
8.	154	Lynsey McVicker	95-97
9.	150	Susie Rowe	05-08
10.	139	Paula Infante	03-06

### GOALS

1.	99	Katie O'Donnell	07-10
2.	85	Nicole Muracco	06-09
3.	73	Carla Tagliente	97-00
4.	70	Lisa Buente	87-90
5.	67	Jill Witmer	10-13
6.	60	Susie Rowe	05-08
	60	Caroline Walter	98-01
8.	59	Carissa Messimer	99-02
9.	58	Paula Infante	03-06
	58	Kim Turner	85-88

### ASSISTS

1.	108*	Katie O'Donnell	07-10
2.	71	Jen Pratt	95-98
3.	64	Rachel Hiskins	97-01
4.	50	Lynsey McVicker	95-97
5.	49	Janneke van Leeuwen	04-07
	49	Sabrina Salam	90-93
7.	42	Kim Turner	85-88
8.	41	Harriet Tibble	09-12
	41	Carla Tagliente	97-00
10.	39	Autumn Welsh	98-01
11.	38	KATIE GERZABEK	11-pres.

### GOALS AGAINST AVERAGE

1.	0.91	Ashley Hohnstine	99-01
2.	0.94	Kathryn Masson	04-07
3.	1.01	Irene Horvat	91-94
4.	1.04	Kim Chorosiewski	84-87
5.	1.11	Mary Bernard	80-83

### SAVES

1.	747	Kim Chorosiewski	84-87
2.	540	Irene Horvat	91-94
3.	340	Andrea Closkey	88-90
4.	289	Denise Wescott	76-79
5.	236	Kathryn Masson	04-07

### SHUTOUTS

1.	42.5	Irene Horvat	91-94
2.	28	Kim Chorosiewski	84-87
3.	27	Ashley Hohnstine	99-01
4.	21	Alana Eliwatt	94-97
5.	20	Kathryn Masson	04-07

### SAVE PERCENTAGE

1.	.875	Kim Chorosiewski	84-87
2.	.873	Irene Horvat	91-94
3.	.845	Denise Wescott	76-79

## SEASON RECORDS

### POINTS

1.	98	Katie O'Donnell	2010
2.	87	Katie O'Donnell	2009
3.	74	Susie Rowe	2008
4.	68	Katie O'Donnell	2008
5.	67	Rachel Hiskins	1999
6.	66	Nicole Muracco	2009
7.	63	Lisa Buente	1990
8.	62	Rachel Hiskins	2000
9.	59	Emma Thomas	2009
	59	Caroline Walter	1999
	59	Lynsey McVicker	1997

### GOALS

1.	32	Katie O'Donnell	2010
2.	31	Nicole Muracco	2009
3.	28	Katie O'Donnell	2009
	28	Susie Rowe	2008
	28	Lisa Buente	1990
6.	25	Nicole Muracco	2008
7.	24	Emma Thomas	2009
	24	Caroline Walter	1999
	24	Nadine Bennett	1997
10.	22	Jemma Buckley	2011
	22	Jemma Buckley	2010
	22	Rachel Hiskins	2000

### ASSISTS

1.	34	Katie O'Donnell	2010
2.	33	Jen Pratt	1997
3.	31	Katie O'Donnell	2009
	31	Rachel Hiskins	1999
4.	26	Alexis Pappas	2009
	26	Katie O'Donnell	2008
6.	23	Lynsey McVicker	1997
7.	20	Harriet Tibble	2011
8.	19	Carla Tagliente	1999
9.	18	Susie Rowe	2008
	18	Rachel Hiskins	2000
	18	Jen Pratt	1998
12.	17	Katie O'Donnell	2007
		three others	

### GOALS AGAINST AVERAGE

min. 490 minutes

1.	0.54	Irene Horvat	1993
2.	0.66	Ashley Hohnstine	1999
3.	0.70	Kathryn Masson	2006
4.	0.87	Kim Chorosiewski	1985
5.	0.88	Ashley Hohnstine	2001

### SAVES

1.	215	Kim Chorosiewski	1985
2.	209	Irene Horvat	1994
3.	200	Andrea Closkey	1989
4.	194	Kim Chorosiewski	1986
5.	181	Kim Chorosiewski	1984

### SHUTOUTS

1.	12.0	Irene Horvat	1993
	12.0	Irene Horvat	1991
3.	11.0	Ashley Hohnstine	2001
4.	9.5	Irene Horvat	1992



... By the Numbers

### Two+ Goal Games

Player	Goals	Date	Opponent
Fluharty	2	9/28/14	at #18 MSU
Gerzabek	2	10/3/14	Ohio State
Putsch	2	9/13/14	Drexel

### Two+ Assist Games

Player	Asts.	Date	Opponent
Gerzabek	2	9/14/14	#16 Temple
Gerzabek	2	10/3/14	Ohio State

### Three+ Points Games

Player	Pts.	Date	Opponent
Dessoie	3	9/7/14	Miami (Ohio)
Fluharty	4	9/28/14	at #18 MSU
Gerzabek	6	10/3/14	Ohio State
Putsch	3	9/28/14	at #18 MSU
Putsch	3	10/3/14	Ohio State
Sprink	3	8/31/14	Northeastern
Sprink	3	9/13/14	Drexel
Sprink	3	9/28/14	at #18 MSU



# 2014 MARYLAND FIELD HOCKEY

## 2014 Maryland Field Hockey Maryland Combined Team Statistics (as of Oct 05, 2014) All games

RECORD:	OVERALL	HOME	AWAY	NEUTRAL
ALL GAMES	9-2	5-1	2-1	2-0
CONFERENCE	3-1	1-0	2-1	0-0
NON-CONFERENCE	6-1	4-1	0-0	2-0

Date	Opponent	Score	Att.	#	Player	gp	g	a	pts	sh	sh%	sog	sog%	qw	ps-att	dsv	
Aug 29	vs #10 UMass	w	3-2	531	19	Moir Putsch	11	7	4	18	27	.259	20	.741	1	0-0	0
Aug 31	vs Northeastern	w	4-1	427	17	Anna Dessoye	11	5	6	16	23	.217	15	.652	4	0-0	0
Sep 05	#2 NORTH CAROLINA	L	1-3	1082	14	Katie Gerzabek	11	2	11	15	35	.057	19	.543	0	0-0	0
Sep 07	MIAMI (OHIO)	w	3-1	664	2	Maxine Fluharty	11	7	0	14	31	.226	17	.548	2	0-0	0
Sep 13	DREXEL	w	3-0	581	18	Sarah Sprink	11	5	3	13	37	.135	21	.568	1	0-0	0
Sep 14	#16 TEMPLE	w	3-0	895	16	Steffi Schneid	11	2	4	8	15	.133	13	.867	1	0-0	1
* Sep 20	at #15 Northwestern	L	2-3	185	5	Shari Jones	9	2	0	4	6	.333	6	1.000	0	0-0	0
* Sep 26	at #14 Michigan	w	2-0	819	7	Emma Rissinger	11	1	1	3	9	.111	8	.889	0	0-0	0
* Sep 28	at #18 Michigan State	w	4-2	227	3	Carrie Hanks	11	1	1	3	4	.250	2	.500	0	0-0	0
* Oct 03	OHIO STATE	w	6-0	931	8	Alyssa Parker	11	1	0	2	24	.042	17	.708	0	0-0	0
Oct 05	#18 OLD DOMINION	w	3-1	676	22	Lein Holsboer	10	1	0	2	6	.167	6	1.000	0	0-0	0
TEAM STATISTICS				UMD	OPP												
SHOT STATISTICS																	
Goals-Shot attempts		34-224	13-79														
Goals scored per game		3.09	1.18														
Shot pct.		.152	.165														
Shots on goal-Attempts		149-224	42-79														
SOG pct.		.665	.532														
Shots/Game		20.4	7.2														
PENALTY CORNERS		86	39														
PENALTY STROKES		0-0	1-1														
PENALTIES																	
Green cards		5	4														
Yellow cards		2	3														
Red cards		0	0														
ATTENDANCE																	
Total		4829	1231														
Dates/Avg Per Date		6/805	3/410														
Neutral Site #/Avg		2/479															
Goals by Period						1st	2nd	Total									
						11	7	38									
						11	5	16									
						11	2	15									
						11	7	31									
						11	5	37									
						11	2	15									
						9	2	4									
						11	1	3									
						11	1	3									
						11	1	2									
						10	1	2									
						10	0	1									
						11	0	0									
						1	0	0									
						3	0	0									
						15	0	0									
						44	0	0									
						12	0	0									
						4	0	0									
						1	0	0									
						2	0	0									
						11	34	31		99	224	.152	149	.665	9	0-0	2
						11	13	9		35	79	.165	42	.532	2	1-1	6
#						Goalie	GP	Min.		GA	GAAvg	Saves	Pct	W-L-T	Sho		
44						Brooke Cabrera	11	741:54		11	1.33	23	.676	9-2-0	3/1		
1						Jill Genovese	2	28:02		2	6.42	4	.667	0-0-0	0/1		
						Total	11	769:56		13	1.52	29	.690	9-2-0	4		
						Opponents	11	769:56		34	3.97	115	.772	2-9-0	0		

#	Player	gp	g	a	pts	sh	sh%	sog	sog%	gw	ps-att	dsv
19	Moir Putsch	11	7	4	18	27	.259	20	.741	1	0-0	0
17	Anna Dessoye	11	5	6	16	23	.217	15	.652	4	0-0	0
14	Katie Gerzabek	11	2	11	15	35	.057	19	.543	0	0-0	0
2	Maxine Fluharty	11	7	0	14	31	.226	17	.548	2	0-0	0
18	Sarah Sprink	11	5	3	13	37	.135	21	.568	1	0-0	0
16	Steffi Schneid	11	2	4	8	15	.133	13	.867	1	0-0	1
5	Shari Jones	9	2	0	4	6	.333	6	1.000	0	0-0	0
7	Emma Rissinger	11	1	1	3	9	.111	8	.889	0	0-0	0
3	Carrie Hanks	11	1	1	3	4	.250	2	.500	0	0-0	0
8	Alyssa Parker	11	1	0	2	24	.042	17	.708	0	0-0	0
22	Lein Holsboer	10	1	0	2	6	.167	6	1.000	0	0-0	0
13	Rachel Frusher	10	0	1	1	2	.000	2	1.000	0	0-0	0
11	Delaney Leathers	11	0	0	0	2	.000	1	.500	0	0-0	0
24	A. Jansen van Galen	1	0	0	0	1	.000	0	.000	0	0-0	0
20	Courtney Deena	3	0	0	0	1	.000	1	1.000	0	0-0	0
15	Welma Luus	6	0	0	0	1	.000	1	1.000	0	0-0	0
44	Brooke Cabrera	11	0	0	0	0	.000	0	.000	0	0-0	0
12	Marissa Cutry	5	0	0	0	0	.000	0	.000	0	0-0	0
4	Kasey Tapman	11	0	0	0	0	.000	0	.000	0	0-0	1
1	Jill Genovese	2	0	0	0	0	.000	0	.000	0	0-0	0
Total		11	34	31	99	224	.152	149	.665	9	0-0	2
Opponents		11	13	9	35	79	.165	42	.532	2	1-1	6

#	Goalie	GP	Min.	GA	GAAvg	Saves	Pct	W-L-T	Sho
44	Brooke Cabrera	11	741:54	11	1.33	23	.676	9-2-0	3/1
1	Jill Genovese	2	28:02	2	6.42	4	.667	0-0-0	0/1
Total		11	769:56	13	1.52	29	.690	9-2-0	4
Opponents		11	769:56	34	3.97	115	.772	2-9-0	0

Goals by Period	1st	2nd	Total
Maryland	15	19	34
Opponents	3	10	13

Shots by Period	1st	2nd	Total
Maryland	95	129	224
Opponents	34	45	79

Saves by Period	1st	2nd	Total
Maryland	17	12	29
Opponents	45	70	115

Corners by Period	1st	2nd	Total
Maryland	28	58	86
Opponents	12	27	39

# 2014 MARYLAND FIELD HOCKEY

## 2014 Maryland Field Hockey Maryland Field Hockey Statistics (as of Oct 06, 2014) All games

Overall: 9-2-0 Conf: 3-1-0 Home: 5-1-0 Away: 2-1-0 Neut: 2-0-0

### OVERALL

#	Player	gp-gs	g	a	pts	sh	sh%	sog	sog%	gw	ps
19	Moir Putsch	11-10	7	4	18	27	.259	20	.741	1	0
17	Anna Dessoye	11-11	5	6	16	23	.217	15	.652	4	0
14	Katie Gerzabek	11-11	2	11	15	35	.057	19	.543	0	0
2	Maxine Fluharty	11-11	7	0	14	31	.226	17	.548	2	0
18	Sarah Sprink	11-10	5	3	13	37	.135	21	.568	1	0
16	Steffi Schneid	11-9	2	4	8	15	.133	13	.867	1	0
5	Shari Jones	9-0	2	0	4	6	.333	6	1.000	0	0
7	Emma Rissinger	11-1	1	1	3	9	.111	8	.889	0	0
3	Carrie Hanks	11-11	1	1	3	4	.250	2	.500	0	0
8	Alyssa Parker	11-9	1	0	2	24	.042	17	.708	0	0
22	Lein Holsboer	10-3	1	0	2	6	.167	6	1.000	0	0
13	Rachel Frusher	10-10	0	1	1	2	.000	2	1.000	0	0
11	Delaney Leathers	11-3	0	0	0	2	.000	1	.500	0	0
24	A. Jansen van Galen	1-0	0	0	0	1	.000	0	.000	0	0
20	Courtney Deena	3-0	0	0	0	1	.000	1	1.000	0	0
15	Welma Luus	6-0	0	0	0	1	.000	1	1.000	0	0
44	Brooke Cabrera	11-11	0	0	0	0	.000	0	.000	0	0
12	Marissa Cutry	5-0	0	0	0	0	.000	0	.000	0	0
4	Kasey Tapman	11-11	0	0	0	0	.000	0	.000	0	0
1	Jill Genovese	2-0	0	0	0	0	.000	0	.000	0	0
Total		11	34	31	99	224	.152	149	.665	9	0
Opponents		11	13	9	35	79	.165	42	.532	2	1

### CONFERENCE

gp-gs	g	a	pts	sh	sh%	sog	sog%	gw	ps
4-4	3	2	8	7	.429	6	.857	0	0
4-4	2	1	5	8	.250	4	.500	1	0
4-4	2	4	8	11	.182	8	.727	0	0
4-4	3	0	6	12	.250	6	.500	1	0
4-4	1	1	3	14	.071	7	.500	0	0
4-4	1	0	2	10	.100	8	.800	1	0
3-0	0	0	0	1	.000	1	1.000	0	0
4-0	1	1	3	3	.333	2	.667	0	0
4-4	0	0	0	1	.000	1	1.000	0	0
4-3	0	0	0	5	.000	3	.600	0	0
4-1	1	0	2	2	.500	2	1.000	0	0
4-4	0	0	0	0	.000	0	.000	0	0
4-0	0	0	0	2	.000	1	.500	0	0
1-0	0	0	0	1	.000	0	.000	0	0
1-0	0	0	0	1	.000	1	1.000	0	0
2-0	0	0	0	1	.000	1	1.000	0	0
4-4	0	0	0	0	.000	0	.000	0	0
2-0	0	0	0	0	.000	0	.000	0	0
4-4	0	0	0	0	.000	0	.000	0	0
2-0	0	0	0	0	.000	0	.000	0	0
4	14	9	37	79	.177	51	.646	3	0
4	5	4	14	30	.167	18	.600	1	1

### OVERALL

#	Player	gp-gs	min.	ga	qaavg	saves	pct	w	l	t	sho
44	Brooke Cabrera	11-10	741:54	11	1.33	23	.676	9	2	0	3
1	Jill Genovese	2-0	28:02	2	6.42	4	.667	0	0	0	0
Total		11	769:56	13	1.52	29	.690	9	2	0	4
Opponents		11	769:56	34	3.97	115	.772	2	9	0	0

### CONFERENCE

gp-gs	min.	ga	qaavg	saves	pct	w	l	t	sho
4-3	251:58	3	1.07	8	.727	3	1	0	1
2-0	28:02	2	6.42	4	.667	0	0	0	0
4	280:00	5	1.61	13	.722	3	1	0	2
4	280:00	14	4.50	37	.725	1	3	0	0

Shots by Period	1st	2nd	Total
Maryland	95	129	224
Opponents	34	45	79

Shots by Period	1st	2nd	Total
Maryland	36	43	79
Opponents	13	17	30

Goals by Period	1st	2nd	Total
Maryland	15	19	34
Opponents	3	10	13

Goals by Period	1st	2nd	Total
Maryland	7	7	14
Opponents	1	4	5

Saves by Period	1st	2nd	Total
Maryland	17	12	29
Opponents	45	70	115

Saves by Period	1st	2nd	Total
Maryland	8	5	13
Opponents	19	18	37

Attendance Summary	UMD	Opponent
Total	4829	1231
Dates/Avg Per Date	6/805	3/410
Neutral Site #/Avg	2/479	

Attendance Summary	UMD	Opponent
Total	931	1231
Dates/Avg Per Date	1/931	3/410
Neutral Site #/Avg	0/0	

# 2014 MARYLAND FIELD HOCKEY

## 2014 Maryland Field Hockey Maryland Game Results (as of Oct 06, 2014) All games

Date	Opponent	Score	Overall	Conf	Att.	Goals scored
Aug 29	vs #10 UMass	W 3-2	1-0-0	0-0-0	531	Anna Dessoie (unassisted) Alyssa Parker (Carrie Hanks) Shari Jones (Katie Gerzabek)
Aug 31	vs Northeastern	W 4-1	2-0-0	0-0-0	427	Sarah Sprink (Rachel Frusher) Maxine Fluharty (Sarah Sprink) Shari Jones (Steffi Schneid) Moirra Putsch (Anna Dessoie)
Sep 05	#2 NORTH CAROLINA	L 1-3	2-1-0	0-0-0	1082	Steffi Schneid (Katie Gerzabek;Anna Dessoie)
Sep 07	MIAMI (OHIO)	W 3-1	3-1-0	0-0-0	664	Anna Dessoie (Moirra Putsch) Maxine Fluharty (Anna Dessoie;Katie Gerzabek) Sarah Sprink (Steffi Schneid)
Sep 13	DREXEL	W 3-0	4-1-0	0-0-0	581	Moirra Putsch (Steffi Schneid) Moirra Putsch (Sarah Sprink) Sarah Sprink (Katie Gerzabek;Anna Dessoie)
Sep 14	#16 TEMPLE	W 3-0	5-1-0	0-0-0	895	Maxine Fluharty (Katie Gerzabek;Anna Dessoie) Carrie Hanks (unassisted) Sarah Sprink (Katie Gerzabek;Moirra Putsch)
* Sep 20	at #15 Northwestern	L 2-3	5-2-0	0-1-0	185	Anna Dessoie (Katie Gerzabek) Moirra Putsch (unassisted)
* Sep 26	at #14 Michigan	W 2-0	6-2-0	1-1-0	819	Steffi Schneid (unassisted) Maxine Fluharty (Anna Dessoie)
* Sep 28	at #18 Michigan State	W 4-2	7-2-0	2-1-0	227	Maxine Fluharty (Emma Rissinger) Sarah Sprink (Moirra Putsch) Maxine Fluharty (Sarah Sprink) Moirra Putsch (Katie Gerzabek)
* Oct 03	OHIO STATE	W 6-0	8-2-0	3-1-0	931	Anna Dessoie (unassisted) Katie Gerzabek (Moirra Putsch) Moirra Putsch (Katie Gerzabek) Lein Holsboer (unassisted) Katie Gerzabek (unassisted) Emma Rissinger (Katie Gerzabek)
Oct 05	#18 OLD DOMINION	W 3-1	9-2-0	3-1-0	676	Anna Dessoie (Steffi Schneid) Moirra Putsch (Katie Gerzabek) Maxine Fluharty (unassisted)

Team Record	W-L-T	Attendance	Dates	Total	Avg.
Overall:	9-2	Total:	11	7018	638
Conference:	3-1	Home:	6	4829	805
Home:	5-1	Away:	3	1231	410
Away:	2-1	Neutral:	2	958	479
Neutral:	2-0				
Overtime:	0-0				



# 2014 MARYLAND FIELD HOCKEY

## 2014 Maryland Field Hockey Individual Career History

### Brooke Adler

Season	GP-GS	G	A	Pts	Shot	Shot%	SOG	SOG%	GW	PS-Att	DSav
2013	4-0	1	2	4	2	.500	1	.500	0	0-0	0
TOTAL	4-0	1	2	4	2	.500	1	.500	0	0-0	0

### Brooke Cabrera

Season	GP-GS	G	A	Pts	Shot	Shot%	SOG	SOG%	GW	PS-Att	DSav
2012	9-0	0	0	0	0	.000	0	.000	0	0-0	0
2013	7-0	0	0	0	0	.000	0	.000	0	0-0	0
2014	11-1	0	0	0	0	.000	0	.000	0	0-0	0
TOTAL	27-1	0	0	0	0	.000	0	.000	0	0-0	0

Season	GP-GS	Minutes	GA	GAAvg	Saves	Save%	W	L	T	Sho
2012	9-3	398:22	3	0.68	20	.870	4	0	0	0.5
2013	7-2	197:59	6	2.73	16	.727	2	0	0	0.3
2014	11-10	741:54	11	1.33	23	.676	9	2	0	3.1
TOTAL	27-15	1338:15	20	1.35	59	.747	15	2	0	3.9

### Marissa Cutry

Season	GP-GS	G	A	Pts	Shot	Shot%	SOG	SOG%	GW	PS-Att	DSav
2014	5-0	0	0	0	0	.000	0	.000	0	0-0	0
TOTAL	5-0	0	0	0	0	.000	0	.000	0	0-0	0

### Courtney Deena

Season	GP-GS	G	A	Pts	Shot	Shot%	SOG	SOG%	GW	PS-Att	DSav
2013	7-0	0	0	0	0	.000	0	.000	0	0-0	0
2014	3-0	0	0	0	1	.000	1	1.000	0	0-0	0
TOTAL	10-0	0	0	0	1	.000	1	1.000	0	0-0	0

### Anna Dessoye

Season	GP-GS	G	A	Pts	Shot	Shot%	SOG	SOG%	GW	PS-Att	DSav
2012	24-20	5	3	13	29	.172	22	.759	2	0-0	0
2013	24-23	13	16	42	52	.250	35	.673	4	0-0	0
2014	11-11	5	6	16	23	.217	15	.652	4	0-0	0
TOTAL	59-54	23	25	71	104	.221	72	.692	10	0-0	0

### Melissa Flowe

# 2014 MARYLAND FIELD HOCKEY

## 2014 Maryland Field Hockey Individual Career History

### Maxine Fluharty

Season	GP-GS	G	A	Pts	Shot	Shot%	SOG	SOG%	GW	PS-Att	DSav
2011	23-23	6	1	13	26	.231	15	.577	1	0-0	0
2012	21-20	5	8	18	19	.263	12	.632	1	0-0	0
2013	24-24	12	7	31	36	.333	30	.833	3	0-0	0
2014	11-11	7	0	14	31	.226	17	.548	2	0-0	0
TOTAL	79-78	30	16	76	112	.268	74	.661	7	0-0	0

### Rachel Frusher

Season	GP-GS	G	A	Pts	Shot	Shot%	SOG	SOG%	GW	PS-Att	DSav
2014	10-10	0	1	1	2	.000	2	1.000	0	0-0	0
TOTAL	10-10	0	1	1	2	.000	2	1.000	0	0-0	0

### A. Jansen van Galen

Season	GP-GS	G	A	Pts	Shot	Shot%	SOG	SOG%	GW	PS-Att	DSav
2014	1-0	0	0	0	1	.000	0	.000	0	0-0	0
TOTAL	1-0	0	0	0	1	.000	0	.000	0	0-0	0

### Jill Genovese

Season	GP-GS	G	A	Pts	Shot	Shot%	SOG	SOG%	GW	PS-Att	DSav
2012	1-0	0	0	0	0	.000	0	.000	0	0-0	0
2013	3-0	0	0	0	0	.000	0	.000	0	0-0	0
2014	2-0	0	0	0	0	.000	0	.000	0	0-0	0
TOTAL	6-0	0	0	0	0	.000	0	.000	0	0-0	0

Season	GP-GS	Minutes	GA	GAAvg	Saves	Save%	W	L	T	Sho
2012	1-0	15:11	0	0.00	0	.000	0	0	0	0
2013	3-0	44:24	0	0.00	1	1.000	0	0	0	0.3
2014	2-0	28:02	2	6.42	4	.667	0	0	0	0.1
TOTAL	6-0	87:37	2	2.05	5	.714	0	0	0	0.4

### Katie Gerzabek

Season	GP-GS	G	A	Pts	Shot	Shot%	SOG	SOG%	GW	PS-Att	DSav
2011	23-23	17	14	48	47	.362	31	.660	3	0-0	0
2012	21-20	10	10	30	34	.294	23	.676	3	0-0	0
2013	19-16	5	3	13	29	.172	19	.655	1	0-0	0
2014	11-11	2	11	15	35	.057	19	.543	0	0-0	0
TOTAL	74-70	34	38	106	145	.234	92	.634	7	0-0	0

### Carrie Hanks

Season	GP-GS	G	A	Pts	Shot	Shot%	SOG	SOG%	GW	PS-Att	DSav
2014	11-11	1	1	3	4	.250	2	.500	0	0-0	0
TOTAL	11-11	1	1	3	4	.250	2	.500	0	0-0	0

### Lein Holsboer

Season	GP-GS	G	A	Pts	Shot	Shot%	SOG	SOG%	GW	PS-Att	DSav
2014	10-3	1	0	2	6	.167	6	1.000	0	0-0	0
TOTAL	10-3	1	0	2	6	.167	6	1.000	0	0-0	0

## 2014 MARYLAND FIELD HOCKEY

### 2014 Maryland Field Hockey Individual Career History

#### Shari Jones

Season	GP-GS	G	A	Pts	Shot	Shot%	SOG	SOG%	GW	PS-Att	DSav
2012	3-0	0	0	0	0	.000	0	.000	0	0-0	0
2013	8-0	1	0	2	4	.250	3	.750	0	0-0	0
2014	9-0	2	0	4	6	.333	6	1.000	0	0-0	0
TOTAL	20-0	3	0	6	10	.300	9	.900	0	0-0	0

#### Delaney Leathers

Season	GP-GS	G	A	Pts	Shot	Shot%	SOG	SOG%	GW	PS-Att	DSav
2013	23-11	1	1	3	3	.333	1	.333	0	0-0	0
2014	11-3	0	0	0	2	.000	1	.500	0	0-0	0
TOTAL	34-14	1	1	3	5	.200	2	.400	0	0-0	0

#### Layne Litsinger

#### Welma Luus

Season	GP-GS	G	A	Pts	Shot	Shot%	SOG	SOG%	GW	PS-Att	DSav
2013	18-0	4	1	9	23	.174	11	.478	0	0-0	0
2014	6-0	0	0	0	1	.000	1	1.000	0	0-0	0
TOTAL	24-0	4	1	9	24	.167	12	.500	0	0-0	0

#### Alyssa Parker

Season	GP-GS	G	A	Pts	Shot	Shot%	SOG	SOG%	GW	PS-Att	DSav
2012	23-6	8	1	17	18	.444	15	.833	1	0-0	0
2013	24-19	7	6	20	37	.189	24	.649	3	0-0	0
2014	11-9	1	0	2	24	.042	17	.708	0	0-0	0
TOTAL	58-34	16	7	39	79	.203	56	.709	4	0-0	0

#### Moira Putsch

Season	GP-GS	G	A	Pts	Shot	Shot%	SOG	SOG%	GW	PS-Att	DSav
2014	11-10	7	4	18	27	.259	20	.741	1	0-0	0
TOTAL	11-10	7	4	18	27	.259	20	.741	1	0-0	0

#### Emma Rissinger

Season	GP-GS	G	A	Pts	Shot	Shot%	SOG	SOG%	GW	PS-Att	DSav
2013	24-1	6	2	14	16	.375	14	.875	0	0-0	0
2014	11-1	1	1	3	9	.111	8	.889	0	0-0	0
TOTAL	35-2	7	3	17	25	.280	22	.880	0	0-0	0



## 2014 MARYLAND FIELD HOCKEY

### 2014 Maryland Field Hockey Individual Career History

#### Steffi Schneid

Season	GP-GS	G	A	Pts	Shot	Shot%	SOG	SOG%	GW	PS-Att	DSav
2011	23-10	1	1	3	5	.200	2	.400	0	0-0	0
2012	24-20	2	1	5	9	.222	8	.889	0	0-0	0
2013	24-22	2	3	7	11	.182	5	.455	1	0-0	1
2014	11-9	2	4	8	15	.133	13	.867	1	0-0	1
TOTAL	82-61	7	9	23	40	.175	28	.700	2	0-0	2

#### Sarah Sprink

Season	GP-GS	G	A	Pts	Shot	Shot%	SOG	SOG%	GW	PS-Att	DSav
2012	20-18	11	2	24	55	.200	32	.582	0	0-0	0
2013	24-24	9	5	23	54	.167	40	.741	2	0-0	0
2014	11-10	5	3	13	37	.135	21	.568	1	0-0	0
TOTAL	55-52	25	10	60	146	.171	93	.637	3	0-0	0

#### Kasey Tapman

Season	GP-GS	G	A	Pts	Shot	Shot%	SOG	SOG%	GW	PS-Att	DSav
2012	8-0	0	0	0	2	.000	1	.500	0	0-0	0
2013	23-16	0	0	0	2	.000	2	1.000	0	0-0	0
2014	11-11	0	0	0	0	.000	0	.000	0	0-0	1
TOTAL	42-27	0	0	0	4	.000	3	.750	0	0-0	1

#### Maddy Ulery