



KANSAS

#KUsoccer

f /KANSASSOCCER

t /KUWSOCCER

i /KANSASSOCCER

AUG. 22, 2019 | NEBRASKA | MATCH NOTES

KANSAS COMMUNICATIONS

JAYHAWKS

0-0-0 OVERALL

United Soccer rank: RV

Head Coach: Mark Francis

0-0-0

TOPDRAWER rank: NR

Record: 219-163-34 (21st year)



-vs-



0-0-0 OVERALL

NSCAA rank: NR

Head Coach: John Walker

0-0-0 BIG

Top Drawer rank: NR

Record: 327-158-44 (26th year)

CORNHUSKERS

2019 SCHEDULE

Date	KU Rnk	OPP Rnk	Opponent	TV	Time/Result
AUGUST					
22	rv/-	-/-	NEBRASKA	ESPN+	7 p.m.
25	rv/-	-/-	LOYOLA-CHICAGO	ESPN+	1 p.m.
29	-/-	-/-	MEMPHIS	ESPN+	7 p.m.
SEPTEMBER					
1	-/-	-/-	FLORIDA ATLANTIC	ESPN+	1 p.m.
6	-/-	-/-	vs. DePaul*		3 p.m.
8	-/-	-/-	at Purdue*		1 p.m.
13	-/-	-/-	at Northwestern		7 p.m.
15	-/-	-/-	at Western Michigan		12 p.m.
19	-/-	-/-	BYU	ESPN+	7 p.m.
22	-/-	-/-	KENNESAW STATE	ESPN+	12 p.m.
26	-/-	-/-	TEXAS*	FS1	7 p.m.
29	-/-	-/-	BAYLOR*	ESPN+	1 p.m.
October					
3	-/-	-/-	at Oklahoma State*	ESPN+	7 p.m.
10	-/-	-/-	at Oklahoma*		7 p.m.
13	-/-	-/-	at Texas Tech*		1 p.m.
18	-/-	-/-	KANSAS STATE*	ESPN+	7 p.m.
24	-/-	-/-	WEST VIRGINIA*	ESPN+	7 p.m.
27	-/-	-/-	at TCU*	FSSW	1 p.m.
31	-/-	-/-	at Iowa State*		7 p.m.
NOVEMBER					
3-10	Big 12 Championship<			TBD	TBD

All times Central and subject to change; Home games **BOLD** and played at Rock Chalk Park; Rank: United Soccer Coaches Top 25 / TopDrawer Soccer Top 25; * Boilermaker Cup (West Lafayette, Ind.); * Big 12 Conference Game; < Big 12 Championship (Kansas City, Mo.)

BY THE NUMBERS

9 The Kansas roster features nine players that have seen action in 35 or more matches, including four players who have played in 50 or more contests during their careers.

31 KU has claimed 31 wins over regular-season nonconference foes over the last five seasons, tallying a record of 31-13-6 (.680) mark with 19-5-0 record at home.

89.6 Since the start of the 2012 season, Kansas has amassed a winning percentage of .896 in matches that they have scored the first goal. KU's record in those games is 65-4-8 in that span, which includes a 9-1-2 mark in 2018.



GAME

1

NEBRASKA AT KANSAS

Regular-Season Opener

Lawrence, Kan. • Rock Chalk Park (2,500)

Thursday, August 22, 2019 • 7 p.m. CST



BIG 12 NOW ON ESPN+

Play-by-Play: Josh Klingler
Analyst: Huw Williams
Producer: Curtis Lorenz



JAYHAWK RADIO NETWORK

Radio: IMG Jayhawk Radio Network
Webcast: KUathletics.leanplayer.com
Play-by-Play: Jack Nadeau

QUICK KICKS

- Kansas will begin its 25th season of women's soccer when the Jayhawks host Nebraska in the 2019 regular-season opener. It will be the 24th meeting between the former conference rivals.
- The Jayhawks return 18 letterwinners and nine starters from last year's squad that finished 12-6-3 and advanced to the second round of the NCAA Tournament. KU notched a sixth-place finish in Big 12 play with a 5-4-0 record.
- Kansas enter the season receiving votes in the United Soccer Coaches' preseason top-25 poll. Last season the Jayhawks spent five weeks ranked among the nation's top-25, climbing as high as No. 18. Seven of KU's has regular-season opponents are ranked or receiving votes in the preseason poll.
- KU will see the return of their top offensive threat from a year ago. Senior Katie McClure was the team's second-leading scorer each of the last three years, knocking in 11 a year ago to go along with three assists. McClure also tied the program record for seven game-winning goals last season, four of which coming in overtime.
- McClure enters her final season at Kansas ranking ninth on the school's all-time goal scorer list. She has tallied 22 goals during her three years in Lawrence and needs to hit the back of the net just more times to enter the top-five of the prestigious list.
- The Jayhawks return all five defensive starters as well as its goalkeeper from a season ago. Last year the KU backline tallied nine shutouts, the third-most in program history, and constructed three opponent scoreless stretches of 240 minutes or longer.
- Kansas is 11-7-2 in regular-season openers during Mark Francis' first 20 seasons as head coach but have won just one match in openers dating back to 2015.
- The Jayhawks were picked to finish sixth in the Big 12's preseason poll as voted on by the league's coaches. KU has finished sixth or better in the league standings all but once over the last seven seasons.

SERIES AT A GLANCE

OVERALL

in Lawrence
 Last Meeting

NEBRASKA LEADS, 18-3-2

Nebraska leads, 7-1-1
 L, 0-3 (@KU, 8.18.17)



0-0-0

W-L-D

0-0-0

RV

UNITED SOCCER RANK

--

0.00

GOALS PER GAME

0.00

0.0

SHOTS PER GAME

0.0

.000

SHOT PERCENTAGE

.000

.000

SHOT ON GOAL PERCENTAGE

.000

0.00

GOALS ALLOWED PER GAME

0.00

0.0

SAVES PER GAME

0.0

.000

SAVE PERCENTAGE

.000

0-0

PENALTIES

0-0

0.0

FOULS PER GAME

0.0

0-0

YELLOW - RED CARDS

0-0

PROJECTED STARTERS



NUMERICAL ROSTER

NO.	NAME	POS.	HT.	YR.	HOMETOWN (PREVIOUS SCHOOL)
0	Gabbie Dawe	.GK	5-10	Fr.	Memphis, Tenn. (Houston HS)
00	Sarah Peters	.GK	5-10	So.	Lee's Summit, Mo. (Lee's Summit North HS)
1	Melania Pasar	.GK	5-11	Fr.	Portoroz, Slovenia (Ginnasio Antonio Sema Pirano)
2	Ellie Prybylski	.D/F	5-5	Fr.	Forsyth County, Ga. (Lambert HS)
3	Mya Sheridan	.F	5-5	Fr.	Schertz, Texas (Samuel Clemens HS)
4	Kailey Lane	.F	5-9	So.	Omaha, Neb. (Millard North HS)
6	Kaela Hansen	.D	5-7	So.	Burnaby, B.C. (Burnaby Central Secondary)
7	Avery Hall	.M	5-5	Jr.	McKinney, Texas (McKinney Boyd HS)
8	Ebba Costow	.M	5-5	Fr.	Uppsala, Sweden (Celsiusskolan)
9	Madison Meador	.D	5-7	Sr.	Ballwin, Mo. (Marquette HS/Ole Miss)
10	Gracely Briley	.M	5-9	Fr.	Olathe, Kan. (Blue Valley Southwest HS)
11	Chais Wright	.D	5-4	RS-Fr.	Kansas City, Mo. (Park Hill HS)
12	Katie McClure	.F	5-4	Sr.	Wichita, Kan. (Maize HS)
13	Kathryn Castro	.M	5-3	Sr.	Plano, Texas (Plano West Senior High)
14	Samantha Barnett	.M	5-8	So.	Edmond, Okla. (Edmond Memorial HS)
15	Ceri Holland	.M	5-5	Jr.	West Yorkshire, England (South Craven School)
16	Italia Bradley	.D	5-7	So.	Coppell, Texas (Coppell HS)
17	Lia Beyer	.D	5-7	Fr.	Parker, Colo. (Legend HS)
18	Emilie Gavillet	.GK	5-9	RS-Fr.	Montreux, Switzerland (Wilhelm Hausenstein Gymnasium)
19	Eva Eliasdóttir	.F	5-9	Sr.	Thorlakhofn, Iceland (Fjölbautaskóli Suðurlands)
20	Margherita Giubilato	.F	5-4	Fr.	Martellago, Italy (Accademia Dante Alighieri)
21	Isabella Cavalcante	.D	5-7	Jr.	Glen Ellyn, Ill. (Glenbard West HS)
22	Mandi Duggan	.F	5-2	Jr.	Aurora, Colo. (Grandview HS)
23	Grace Wiltgen	.D	5-6	So.	Denton, Texas (Denton HS)
24	Elise Reina	.D	5-2	Sr.	Fayetteville, Ark. (Har-Ber HS)
26	Addisyn Merrick	.D	5-6	Sr.	Lee's Summit, Mo. (Lee's Summit North HS)
27	Sophie Maierhofer	.M	5-7	Sr.	Graz, Austria (University of Bremen)
28	Bri Amos	.F	5-7	So.	Tulsa, Okla. (Union HS)

STAFF

NAME	POSITION // YEAR AT KU	ALMA MATER // YEAR
Mark Francis	Head Coach // 21st	SMU // 1987
Kelly Miller	Assoc. Head Coach // 21st	Copper Union // 1996
Laura Jackson	Assistant Coach // 1st	Iona // 2012
Derek Shoare	Volunteer Asst. Coach // 5th	St. Mary's (London) // 1980
Shelby Larson	Dir. of Operations // 1st	Tampa // 2014

PRONUNCIATION GUIDE

Isabella CAVALCANTE	kav-uhl-KAHN-tay
Ebba COSTOW	COST-ov
Mandi DUGGAN	DEW-guhn
Eva ELIASDÓTTIR	ell-EYE-iss-daw-ter
Emilie GAVILLET	GAH-vee-ay
MARGHERITA GIUBILATO	marg-uh-REET-uh joo-bee-LAH-toe
CERI Holland	CARE-ee
Madison MEADOR	MEH-der
Sophie MAIERHOFER	MY-er-ha-fur
Ellie PRYBYSKI	.prib-ILL-skee
Grace WILTGEN	WILL-chen
CHAIIS Wright	CHASE

RADIO/TV ROSTER



0 **GABBIE DAWE**
Fr. // GK // 5-10
Memphis, Tenn.



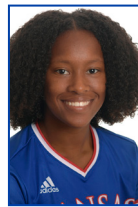
00 **SARAH PETERS**
So. // GK // 5-10
Lee's Summit, Mo.



1 **MILANIA PASAR**
Fr. // GK // 5-11
Portoroz, Slovenia



2 **ELLIE PRYBYSKI**
Fr. // D/F // 5-5
Forsyth County, Ga.



3 **MYA SHERIDAN**
Fr. // F // 5-5
Schertz, Texas



4 **KAILEY LANE**
So. // F // 5-9
Omaha, Neb.



6 **KAELA HANSEN**
So. // D // 5-7
Burnaby, B.C.



7 **AVERY HALL**
So. // M // 5-5
McKinney, Texas



8 **EBBA COSTOW**
Fr. // M // 5-5
Uppsala, Sweden



9 **MADISON MEADOR**
Sr. // D // 5-7
Ballwin, Mo.



10 **GRACELEY BRILEY**
Fr. // M // 5-9
Olathe, Kan.



11 **CHAIIS WRIGHT**
R-Fr. // D // 5-4
Kansas City, Mo.



12 **KATIE MCCLURE**
Sr. // F // 5-4
Wichita, Kan.



13 **KATHRYN CASTRO**
Jr. // M // 5-3
Plano, Texas



14 **SAMANTHA BARNETT**
So. // M // 5-8
Edmond, Okla.



15 **CERI HOLLAND**
Jr. // M // 5-5
West Yorkshire, England



16 **ITALIA BRADLEY**
So. // D // 5-7
Coppell, Texas



17 **LIA BEYER**
Fr. // D // 5-7
Parker, Colo.



18 **EBILIE GAVILLET**
R-Fr. // GK // 5-9
Montreux, Switzerland



19 **EVA ELIASDÓTTIR**
Sr. // D // 5-9
Thorlakhofn, Iceland



20 **MARGHERITA GIUBILATO**
Fr. // F // 5-4
Martellago, Italy



21 **ISABELLA CAVALCANTE**
Jr. // D // 5-7
Glen Ellyn, Ill.



22 **MANDI DUGGAN**
Jr. // F // 5-2
Aurora, Colo.



23 **GRACE WILTGEN**
So. // D // 5-6
Denton, Texas



24 **ELISE REINA**
Sr. // D // 5-2
Fayetteville, Ark.



26 **ADDISYN MERRICK**
Sr. // D // 5-6
Lee's Summit, Mo.



27 **SOPHIE MAIERHOFER**
Sr. // M // 5-7
Graz, Austria



28 **BRI AMOS**
So. // F // 5-7
Tulsa, Okla.



HC **MARK FRANCIS**
Head Coach
21st season

SERIES VS. NEBRASKA

The Kansas is 3-18-2 all-time against its former Big 12 foe, Nebraska. The two squads played each other at least one time every season from 1995 to 2010, and have met three times since 2015.

Thursday's match will be the 10th meeting between the two programs in Lawrence, with the Nebraska holding a 7-1-1 advantage.

In the most recent meeting, the Cornhuskers came to Lawrence for the 2017 regular-season opener and claimed a 3-0 win over the Jayhawks at Rock Chalk Park. KU's last win over Nebraska came by way of a 3-1 victory in 2007, also in Lawrence.

SCOUTING THE CORNHUSKERS

Nebraska enters the new season coming off a 2018 campaign that saw the Cornhuskers finish with a 9-7-5 overall record and a 5-3-3 mark in the Big Ten. NU advanced to the semifinals of the Big Ten Tournament before the season came to an end with a 2-0 loss to Minnesota. The team returns 18 of 23 letterwinners from a year ago.

Nebraska's top returning goal scorer is senior Savannah Uveges, who turned in eight last year to go along with four assists. Brenna Ochoa returns for her senior year after posting a team-leading eight assists in 2019.

In goal, senior Aubrei Corder returns after starting each of NU's 21 matches last season. She collected five solo shutouts and tallied 56 saves as the Cornhusker stopper.

Nebraska is led by John Walker, who is beginning his 26th season at the helm in Lincoln. He has led the Cornhuskers to an overall record of 327-158-44 (.660) during his tenure.

HOME SWEET HOME

The Kansas-Nebraska match Thursday will mark the eighth time in the last 10 seasons the Jayhawks will open their regular season at home. Rock Chalk Park will be a welcome site as KU is coming off a successful four-year stint playing on its home turf. The Jayhawks are 31-14-2 in matches played at home during the regular season since the start of the 2014 campaign. From 2013-14, Kansas also enjoyed an 11-match home winning streak, the longest in program history.

Kansas will try and stop a recent trend of season-opening setbacks though. The Jayhawks have lost four of their last six openers dating back to 2013. In Mark Francis' first 12 years as the KU head coach, his teams were 8-2-2 in their first games of the regular season, however are 3-5-0 in the eight seasons since.

KU IN SEASON OPENERS/LAST 10 YEARS

8/17/18	Pepperdine at Kansas	W, 1-0
8/18/17	Nebraska at Kansas	L, 0-3
8/19/16	Minnesota at Kansas	L, 1-2
8/21/15	Kansas at Nebraska	L, 0-3
8/22/14	Wyoming at Kansas	W, 3-1
8/23/13	Kansas at Arkansas	L, 0-1
8/17/12	UCSB at Kansas	W, 2-1 (OT)
8/19/11	Tennessee at Kansas	L, 1-2 (OT)
8/27/10	E. Kentucky at Kansas	W, 3-0
8/23/09	Kansas at Drake	W, 2-0

JAYHAWKS PICKED SIXTH IN BIG 12 PRESEASON COACHES' POLL

Kansas soccer was predicted to finish sixth in the 2019 league standings according to the Big 12 preseason coaches' poll which was released two weeks ago. The ranking marked the seventh time in the last eight years that KU has been picked sixth or higher in the conference's preseason poll.

West Virginia was picked to finish at the top of the standings for the seventh consecutive year in the preseason poll. The five-time Big 12 regular-season champion received four of the nine first-place votes, while Baylor and Texas, picked second and third respectively, each received three first-place votes.

Just three points separated the 2018 Big 12 Championship title-winning Mountaineers from the defending regular-season champion Bears at the top of the poll with 75 and 72 points, respectively. The Longhorns were slotted third with 65 total points ahead of TCU in fourth with 57 points. Texas Tech, Kansas and Oklahoma State were next at fifth, sixth and seventh, while Oklahoma, Iowa State and Kansas State rounded out the poll in the eighth, ninth and tenth spots.

PRESEASON BIG 12 COACHES POLL

RNK	TEAM (1ST PLACE VOTES)	POINTS
1	West Virginia	75
2	Baylor	72
3	Texas	65
4	TCU	57
5	Texas Tech	52
6	Kansas	44
7	Oklahoma State	33
8	Oklahoma	26
9	Iowa State	17
10	Kansas State	9

FEEDING ON NONCON

This season, the Jayhawks will look to make it 12-straight seasons with a .500 winning percentage or better against regular-season nonconference foes. Since the start of the

QUICK FACTS

GENERAL INFORMATION

Location	Lawrence, Kan.
Enrollment	28,401
Founded1866
NicknameJayhawks
School ColorsCrimson and Blue (PMS: Blue 293; Crimson 186)
ConferenceBig 12
ChancellorDouglas A. Girod
Athletics DirectorJeff Long
Associate Athletics Director/Soccer AdministratorJane Fulton
Athletics Websitewww.kuathletics.com
Ticket Office Phone1.800.34.HAWKS (42957)

SOCCER FACILITY

Home Facility (Capacity)	Rock Chalk Park (2,500)
KU Record at Rock Chalk Park	26-15-2 (.628)
Opened2014
SurfaceNatural Grass (Bermuda and Rye)

COACHING STAFF/SUPPORT STAFF

Head Coach	Mark Francis (SMU, 1987)
Record at Kansas	219-163-34 (21st season)
Overall	252-188-35 (24th season)
Associate Head Coach	Kelly Miller (The Cooper Union, 1996)
Year at Kansas	21st
Assistant Coach	Laura Jackson (Iona, 2012)
Year at Kansas	First
Volunteer Assistant	Derek Shoare
Year at Kansas	Fifth

2018 IN REVIEW

Overall Record	12-6-3 (.643)
Big 12 Record	5-4-0 (.556)
Big 12 Finish6th
Home	9-2-0 (.810)
Away	2-4-1 (.357)
Neutral	1-0-2 (.500)

PROGRAM HISTORY

First Year of Soccer at Kansas	1995 (25th season)
All-Time Record	243-211-37 (.533)
All-Time Big 12 Record	92-107-17 (.465)
Conference Titles	1 (2004)
NCAA Postseason Appearances	8
.	(2001, 2003, 2004, 2008, 2011, 2014, 2016, 2018)
NCAA Postseason Record	6-8-0 (.429)

2019 TEAM INFORMATION

Letterwinners Returning/Lost	18/9
Starters Returning/Lost	9/3
Newcomers	8

2018 BIG 12 STANDINGS

BIG 12 OVERALL

	Record	%	Home	Away	Stk	Pts	Record	%	Home	Away	Neut	Stk
Baylor	8-1-0	.889	5-0	3-1	W8	24	20-6-0	.769	13-0	4-5	3-1	L1
West Virginia	7-2-0	.778	2-2	5-0	L1	21	15-4-4	.739	6-3-1	6-1-1	3-0	-
Texas Tech	5-3-1	.611	2-2	3-1-1	W1	16	14-5-3	.705	8-2	6-2-1	0-1	-
TCU	5-3-1	.611	2-1-1	3-2	W3	16	13-5-3	.690	8-1-2	5-3	0-1	L1
Texas	5-3-1	.611	4-0	1-3-1	L1	16	13-5-3	.690	10-1	2-3-2	1-1	L2
KANSAS	5-4-0	.556	3-2	2-2	W1	15	12-6-3	.643	9-2	2-4-1	1-0	L1
Oklahoma	3-5-1	.389	2-2-1	1-3	L2	10	7-10-2	.421	4-4-2	3-5	0-1	L3
Oklahoma State	2-6-1	.278	0-4-1	2-2	L6	7	10-7-1	.583	5-4-1	5-3	0-0	L6
Iowa State	2-6-1	.278	1-3	1-3-1	W2	7	4-14-2	.250	3-6	1-6-2	0-2	L1
Kansas State	0-9-0	.000	0-5	0-4	L9	0	4-12-2	.278	3-7	1-5-2	0-0	L9

THIS WEEK IN THE BIG 12

All times central

Thursday, August 22

TCU at Florida State [ACC Network], 6:00 p.m.
Nebraska at Kansas [Big 12 Now on ESPN+], 7:00 p.m.
Albany at Oklahoma [SoonerSports.TV], 7:00 p.m.
Gonzaga at Texas [Longhorn Network], 7:00 p.m.
Oklahoma State at Lamar, 7:30 p.m.
Texas Tech at San Diego State, 9:00 p.m.

Friday, August 23

Duquesne at West Virginia [WVUsports.com], 6:00 p.m.
Kansas State at Creighton, 7:00 p.m.
Iowa State at UCLA, 9:00 p.m.

2018 UNITED SOCCER COACHES PRESEASON POLL
AUG. 9, 2019

Rank	Team	Previous	Record
1.	Florida State (33)	1.	.20-4-3
2.	North Carolina	2.	.21-4-2
3.	Stanford	2.	.21-1-2
4.	UCLA	5.	.17-3-2
5.	Southern California	6.	.17-2-3
6.	Penn State	8.	.18-9-1
7.	Georgetown	4.	.21-1-3
8.	Duke	10	.16-4-2
9.	Virginia	11	.16-5-1
10.	Tennessee	7.	.16-3-3
11.	West Virginia	14	.15-4-4
12.	Texas A&M	13	.17-5-1
13.	Santa Clara	12	.17-3-2
14.	Baylor	9.	.20-6-0
15.	South Carolina	17	.14-6-1
16.	Wisconsin	15	.14-4-4
17.	Vanderbilt	16	.16-4-1
18.	South Florida	19	.14-4-0
19.	Texas	20	.13-5-3
20.	Memphis	23	.17-4-0
21.	North Carolina State	22	.11-7-4
22.	Texas Tech	24	.14-5-3
23.	Wake Forest	25	.9-9-2
24.	LSU	18	.13-7-4
25.	Virginia Tech	21	.11-8-3

Others receiving votes: Clemson (73), Florida (70), TCU (54), Arkansas (45), BYU (45), Arizona (37), Boston College (33), Minnesota (33), **KANSAS (30)**, Rutgers (29), Utah (29), Washington State (29), Princeton (27), Mississippi (18), Colorado (13), Louisville (11), California (10), Saint Louis (8), Auburn (6), Arizona State (5), Butler (3), SMU (3), North Texas (1), Ohio State (1), Samford (1)

Kansas 2019 opponents are in italics

TOP DRAWER SOCCER PRESEASON POLL
AUG. 19, 2019

Rank	Team	Record	Conf.
1.	Florida State	0-0-0	.0-0-0
2.	UCLA	0-0-0	.0-0-0
3.	North Carolina	0-0-0	.0-0-0
4.	Stanford	0-0-0	.0-0-0
5.	Virginia	0-0-0	.0-0-0
6.	Penn State	0-0-0	.0-0-0
7.	USC	0-0-0	.0-0-0
8.	Georgetown	0-0-0	.0-0-0
9.	Santa Clara	0-0-0	.0-0-0
10.	Vanderbilt	0-0-0	.0-0-0
11.	Texas A&M	0-0-0	.0-0-0
12.	Tennessee	0-0-0	.0-0-0
13.	Texas	0-0-0	.0-0-0
14.	South Florida	0-0-0	.0-0-0
15.	Washington State	0-0-0	.0-0-0
16.	South Carolina	0-0-0	.0-0-0
17.	Duke	0-0-0	.0-0-0
18.	West Virginia	0-0-0	.0-0-0
19.	Rutgers	0-0-0	.0-0-0
20.	Saint Louis	0-0-0	.0-0-0
21.	NC State	0-0-0	.0-0-0
22.	BYU	0-0-0	.0-0-0
23.	Princeton	0-0-0	.0-0-0
24.	Memphis	0-0-0	.0-0-0
25.	Baylor	0-0-0	.0-0-0

Others receiving votes: Wake Forest (0-0-0), Clemson (0-0-0), Colorado (0-0-0), Ohio State (0-0-0), Virginia Tech (0-0-0)

Kansas 2019 opponents are in italics

2012 season, Kansas has posted an impressive 43-20-9 mark in its 72 regular-season nonconference matches (66%), which includes a 31-13-6 mark since 2014. In the last six seasons, KU has outscored noncon opponents by a tally of 120-72. Mark Francis has led KU to a winning record in noncon in 19 of his 20 seasons in Lawrence and is 123-52-13 in regular-season nonconference games.

EXPERIENCE VS. YOUTH

The 2019 edition of the Jayhawks will be a youthful bunch, with 17 of the 28-woman roster boasting only one season of collegiate experience or less. There are 10 true freshmen on this season's roster, who the coaches are leaning on to contribute almost immediately. The squad will feature six seniors with five of the six members of the 2019 senior class having played in at least 36 matches.

KATIE CLUTCH

Senior Katie McClure hopes to put an emphatic stamp on an already outstanding career at KU. Last year saw her make headlines across the state, the region and the nation. She led the Jayhawks with 11 goals, seven game-winning goals, 28 shots on goal and 25 points, figures that ranked the Wichita product among the top-10 in the Big 12 in their respective categories.

As she heads into her senior season, she will be in prime position to make big jumps on some impressive lists, creeping closer to inserting her name among the top offensive players in Jayhawk history. Her 22 career goals currently rank her eighth on Kansas' all-time goal scorer chart and have her only three shy from inserting her name among the school's top-10. McClure's 11 game-winning goals have her No. 2 on KU's all-time list. If she can continue her crunch time performances this season, she will need only four more game-winners to set the new program mark.

KANSAS CAREER GOAL SCORING LEADERS

Rnk	Name (Yrs.)	Goals
1.	Caroline Smith (2002-05)	51
2.	Liana Salazar (2011-15)	28
3.	Caroline Kastor (2010-13)	26
	Rachel Gilfillan (2001-04)	26
5.	Grace Hagan (2015-18)	25
6.	Whitney Berry (2009-12)	23
	Emily Cressy (2007-10)	23
	Monica Dolinsky (2006-09)	23
9.	Katie McClure (2016-Present)	22
10.	Ashley Williams (2012-15)	21

LATE MATCH MAGIC

The Jayhawks were clutch in crunch time during the 2018 campaign. Thirteen of the Jayhawks' 28 goals scored came in the 60th minute or later. That number included 10 goals Kansas tallied in the final 10 minutes of regulation or in overtime.

The Jayhawks came out on top in seven of those matches that saw Kansas score in the 80th minute or later. KU netted five golden goals in 2018, four off the boot of senior forward Katie McClure and one from senior forward Eva Eliasdottir in KU's 2-1 win over TCU (10/12). McClure scored overtime game-winners against Utah (8/31), Oklahoma (9/21), West Virginia (10/25) and Saint Louis (11/9), which were included in her seven game-

winners this season. Those seven game-winning strikes ranked her first among Big 12 players and were tied for the most by a Jayhawk in school history.

McClure and Eliasdottir's golden goals gave Kansas five victories that have come by way of an overtime last season, which marked the most in school history. The extra time win over Saint Louis on Nov. 9, the 2018 squad passed the group from 2015 for the program record for overtime wins in a season with five.

FIRST TO SCORE, WINS GALORE

Dating back to the beginning of the 2012 season, now at 144 games, Kansas has developed an interesting trend when it comes to which team tallies the first goal of the match. During that 144-game span, the Jayhawks were on the losing end only four times in contests which they put in the match's first goal. Kansas has amassed a record of 65-4-8 in those games (89.6 winning %), which included a 9-2-1 mark last season.

On the flip side, KU wasn't quite as fortunate when its opponents have gotten on the board first. Kansas' win over Oklahoma on Sept. 21, 2018 marked just the eighth victory for the Jayhawks in that same 144-game span when finding itself trailing 1-0 at any point in a match. Kansas is 8-50-4 in those games over the last five seasons, which includes four of its six losses last season.

UP NEXT

The Jayhawks will conclude their season-opening weekend when they host the Loyola-Chicago Ramblers on Sunday, Aug. 25. Kansas and Loyola will kick off inside Rock Chalk Park at 1 p.m. The match will be broadcast live via Big 12 Now via ESPN+ with Josh Klingler (play-by-play) and Huw Williams (analyst) set to call the action.

WEEK-BY-WEEK IN THE POLLS

	PS	1	2	3	4	5	6	7	8	9	10	FINAL
United Soccer Coaches	RV											
Top Drawer Soccer	--											
RPI	--											



HEAD COACH

MARK FRANCIS

21st SEASON AT KANSAS, 1999-PRESENT

Collegiate Record: 252-188-35 (.567)

At Kansas: 219-163-34 (.567) / **Big 12:** 86-86-14 (.500)

Alma Mater: SMU, 1987 / **Hometown:** London, England

KU IN THE FRANCIS ERA

14 seasons with 10 or more victories
First-Ever Big 12 Championship in **2004**
Eight NCAA Tournament Appearances
 KU's First-Ever **Sweet 16** Appearance
 Achieved First-Ever **Top-10** Ranking
Six All-Americans
Four Freshman All-Americans
74 All-Big 12 Selections
25 NSCAA All-Central Region Players
Four Academic All-Americans
177 Academic All-Big 12 Selections
14-Time NSCAA Team Academic Award

Continuity is an essential part of a successful athletic program, and in his first 20 seasons at the helm of Kansas soccer, head coach Mark Francis has brought just that.

After taking over a program just past its infancy, Francis effectively etched his signature on Kansas soccer by becoming not only the winningest coach in its history, but leading his team to eight NCAA Tournaments, 16 Big 12 Championship Tournaments and helping 74 student-athletes garner all-conference accolades, including six that went on to earn All-America status.

Since 1999, Francis has amassed a 219-163-34 record, with 14 seasons of at least 10 victories. He is ranked second among active Big 12 coaches in wins at a single school. He also leads the league among active coaches with his 86 career Big 12 victories.

Francis' résumé is extensive, as he has coached and played at nearly all levels of the game. Francis worked his way up through the head coaching ranks wearing a whistle at the high school, junior college, Division I and professional levels. As a player, Francis was a three-time All-American at SMU and spent 10 seasons playing professionally in the APSL, the NPSL and the USISL.

After moving into its new, state-of-the-art facility at Rock Chalk Park in 2014, Francis' program took another step forward, elevating itself as one of the top teams in the Big 12 and a perennial top-25 NCAA squad. Now as the tenants of one of the top soccer facilities in the U.S., Francis and his staff are attracting some of the top talent from across the globe to Lawrence and the results over the last five seasons can back up the progress being made. Francis saw his Jayhawk team take the program even further in 2018 as he coached Kansas to its eighth NCAA Tournament appearance and their fifth in the second round of the Big Dance.

Francis helped his squad to their highest Big 12 finish in over a decade in 2016 as the Jayhawks posted a second-place finish on the league table, only suffering one loss in the conference season.

It was a season to remember for Francis and the Jayhawks in 2014, as he led his squad to one of the best seasons in program history. He picked up his 200th career coaching victory in KU's 4-1 win over Wake Forest and proceed to see his team reel off eight-straight wins to start the season, the best start in program history. His team ended the year with 15 victories, the third-most ever by a Jayhawk squad and made the program's sixth NCAA tournament appearance. Junior Liana Salazar also had a breakout season in becoming Kansas' sixth All-America honoree after she was named to the Third Team.

Francis tallied his 150th KU coaching victory in 2012 and led his squad to its 10th 10-win season during his tenure in Lawrence. Senior Whitney Berry became KU's all-time assists leader (32) and the program's 11th player to be named to the All-Big 12 First Team.

The 2008 season was one for the record books as Kansas recorded 13 wins and returned to the NCAA Tournament. The Jayhawks knocked off four nationally-ranked teams en route to their tournament berth, including a pair of wins over long-time nemesis Texas A&M. KU became the first team in three years to defeat the Aggies twice in the same season.

The Jayhawks topped four other ranked teams during the season and capped their remarkable run with a 2-1 triumph over Denver in the first round of the NCAA Tournament. Several players received accolades throughout and following the season. Freshman Emily Cressy was

named a Freshman All-American by Soccer Buzz as well as Soccer America, while teammates Monica Dolinsky and Johnson joined her on the All-Central Region Team. Dolinsky was also named All-Big 12 First Team, while Cressy became KU's first Big 12 Rookie of the Year.

The 2004 season was a year filled with program firsts as numerous records were broken. The Jayhawks compiled a program-best record of 18-5 on their way to the Big 12 Championship. It was the first for the soccer team and second among KU women's sports, the first going to basketball in 1997. Francis earned Big 12 Coach of the Year as well as the Central Region Coach of the Year honors. He also won his 100th overall match with a victory against Texas Tech on Oct. 1.

In 2003, Kansas soccer reached new heights under Francis' leadership. The Jayhawks posted an 18-6-1 mark and advanced to the Sweet 16 round of the NCAA Tournament. With a 6-3-1 record in the Big 12, KU finished third. Along with the team accomplishments, several players were honored for their efforts during the 2003 campaign, including Caroline Smith being named to several All-America teams as well as Holly Gault being selected as a Freshman All-American by Soccer Buzz. With Francis' help, KU's players etched their names in the record book, as Smith became the program's all-time leader in goals, points and game-winning goals and Miller set the school mark in career shutouts and career GAA.

In 2002, Francis led Kansas to an overall record of 11-7-2, including a then-school record six-straight wins and a seven-game unbeaten streak during the first half of the season. The Jayhawks opened the season 6-1-1, marking their best start ever. Francis' team ranked in the Central Region's Top 10 for 10 consecutive weeks.

FRANCIS BY THE NUMBERS

Year	School	Record	Conf. Rec(Finish)	Conf. Tournament	NCAA
1996	South Alabama	2-17-0	--	--	--
1997	South Alabama	18-3-1	5-0-0 (1st)	Champion (2-0-0)	--
1998	South Alabama	13-5-0	5-0-0 (1st)	Semifinals (0-1-0)	--
1999	Kansas	8-10-1	3-6-1 (9th)	--	--
2000	Kansas	7-11-2	3-6-1 (18th)	Quarterfinals (0-1-0)	--
2001	Kansas	13-7-0	7-3-0 (4th)	Quarterfinals (0-1-0)	First Round (0-1-0)
2002	Kansas	11-7-2	4-5-1 (6th)	Quarterfinals (0-1-0)	--
2003	Kansas	18-6-1	6-3-1 (3rd)	Semifinals (1-1-0)	Sweet 16 (2-1-0)
2004	Kansas	18-5-0	8-2-0 (1st)	Semifinals (1-1-0)	Second Round (1-1-0)
2005	Kansas	11-7-2	6-3-1 (12nd)	Quarterfinals (0-1-0)	--
2006	Kansas	11-7-1	6-4-0 (4th)	Quarterfinals (0-0-1)	--
2007	Kansas	7-10-4	5-2-3 (13rd)	Quarterfinals (0-1-0)	--
2008	Kansas	13-8-2	4-5-1 (7th)	Semifinals (1-0-1)	Second Round (1-1-0)
2009	Kansas	12-8-2	4-6-0 (17th)	Quarterfinals (0-1-0)	--
2010	Kansas	6-13-0	1-9-0 (11th)	--	--
2011	Kansas	11-9-1	3-5-0 (16th)	Quarterfinals (0-0-1)	First Round (0-1-0)
2012	Kansas	10-8-2	3-5-0 (6th)	Quarterfinals (0-1-0)	--
2013	Kansas	7-11-2	2-5-1 (8th)	Quarterfinals (0-1-0)	--
2014	Kansas	15-6-0	5-3-0 (3rd)	Quarterfinals (0-1-0)	First Round (0-1-0)
2015	Kansas	10-9-2	3-4-1 (6th)	Final (2-1-0)	--
2016	Kansas	11-6-4	5-1-2 (2nd)	Quarterfinals (0-1-0)	Second Round (1-1-0)
2017	Kansas	8-9-3	3-5-1 (6th)	Quarterfinals (0-1-0)	--
2018	Kansas	12-6-3	5-4-0 (6th)	Quarterfinals (0-0-1)	Second Round (1-1-0)
2019	Kansas	0-0-0	0-0-0	--	--
At Kansas	21 seasons	219-163-34 (.567)	86-86-14 (.500)	5-14-4 (.212)	5-8-0 (.385)
OVERALL	24 seasons	252-188-35 (.567)	96-86-14 (.562)	7-15-4 (.346)	5-8-0 (.385)

2018 CATEGORICAL RECORDS

	Big 12	Overall		Big 12	Overall
Overall	5-4-0	12-6-3	vs. RPI 1-25 opponents	1-3-0	1-5-1
Home	3-2-0	9-2-0	vs. RPI 26-50 opponents	1-1-0	3-1-1
Road	2-2-0	2-4-1	vs. RPI 51-100 opponents	1-0-0	3-0-1
Neutral Sites	0-0-0	1-0-2	vs. RPI 101-150 opponents	2-0-0	3-0-0
			vs. RPI 151+ opponents	0-0-0	2-0-0
On Thursdays	1-0-0	1-0-1	vs. UnitedSoccer ranked opponents	1-3-0	4-5-1
On Fridays	3-1-0	8-2-0	vs. UnitedSoccer Top-10 opponents	0-0-0	0-2-0
On Saturdays	1-0-0	1-0-0	vs. UnitedSoccer unranked opponents	4-1-0	7-1-2
On Sundays	0-3-0	2-4-2			
When Scoring First	4-2-0	9-2-1	vs. nonconference opponents	0-0-0	7-2-2
When Opponent Scores First	1-2-0	3-4-0	In one-goal games	4-2-0	9-2-0
When Leading at Half	1-1-0	3-1-1	In 90+ degrees	0-0-0	1-1-0
When Trailing at Half	1-1-0	1-3-0	In 80-89 degrees	0-0-0	4-0-0
When Tied at Half	2-2-0	7-2-2	In 70-79 degrees	1-2-0	2-2-2
In Regulation	2-3-0	7-5-0	In 60-69 degrees	2-1-0	2-1-0
In Overtime	3-1-0	5-1-3	In 50-59 degrees	0-0-0	0-0-0
In August	0-0-0	4-0-1	In sub-50 degrees	2-1-0	3-2-1
In September	2-1-0	4-2-1	Wearing white uniforms	2-1-0	5-3-0
In October	3-3-0	3-3-1	Wearing blue uniforms	2-0-0	4-0-1
In November	0-0-0	1-1-0	Wearing red uniforms	1-1-0	2-1-1
When scoring zero goals	0-1-0	0-2-2	Wearing alternate uniforms	0-2-0	1-2-1
When scoring one goal	2-3-0	4-4-1	In televised games	5-4-0	11-6-3
When scoring two goals	3-0-0	5-0-0			
When scoring three goals	0-0-0	3-0-0			
When scoring four goals or more	0-0-0	0-0-0			
When allowing zero goals	3-0-0	7-0-2			
When allowing one goal	2-0-0	4-0-1			
When allowing two goals	0-3-0	1-3-0			
When allowing three goals	0-1-0	0-2-0			
When allowing four goals or more	0-0-0	0-1-0			
When outshooting opponent	4-3-0	9-3-3			
When being outshot	1-1-0	3-2-0			
When tied in shots	0-0-0	0-1-0			

MISCELLANEOUS STATS

QUICKEST GOAL:
QUICKEST GOAL AGAINST:
GAME-WINNING GOALS AFTER 75':
GAME-TYING GOALS AFTER 75':
GAME-WINNING GOALS AGAINST AFTER 75':
GAME-TYING GOALS AGAINST AFTER 75':
MULTI-GOAL GAMES:
MULTI-GOAL GAMES AGAINST:
HAT TRICKS:
HAT TRICKS AGAINST:
OWN GOALS FOR:
OWN GOALS AGAINST:
RED CARDS:
OPPONENT RED CARDS:

STARTERS - BY MATCH

	GK	F	F	M	M	M	D	D	D	D	D
Nebraska (8/22)											
Loyola-Chicago (8/25)											
Memphis (8/29)											
Florida Atlantic (9/1)											
DePaul (9/6)											
Purdue (9/8)											
Northwestern (9/13)											
Western Michigan (9/15)											
BYU (9/19)											
Kennesaw State (9/22)											
Texas (9/26)											
Baylor (9/29)											
Oklahoma State (10/3)											
Oklahoma (10/10)											
Texas Tech (10/13)											
Kansas State (10/18)											
West Virginia (10/24)											
TCU (10/27)											
Iowa State (10/31)											

THE LAST TIME...

TEAM

Home Win..... 2-1 vs. Saint Louis, Nov. 9, 2018
 Home Loss..... 1-2 vs. Texas Tech, Oct. 14, 2018
 Home Tie..... 1-1 vs. Oklahoma State, Oct. 9, 2016

Away Win 1-0 (OT) at West Virginia, Oct. 25, 2018
 Away Loss..... 1-4 at North Carolina, Nov. 16, 2018
 Away Tie 0-0 (2 OT) at Cincinnati, Sept. 6, 2018

Neutral Win..... 3-0 vs. Oregon State, Aug. 24, 2018
 Neutral Loss 0-2 vs. North Carolina, Nov. 18, 2016
 Neutral Tie 0-0 (2 OT) vs. Texas, Oct. 28, 2018

OT Win 2-1 (2OT) vs. Saint Louis, Nov. 9, 2018
 OT Loss..... 1-2 (OT) vs. Texas Tech, Oct. 14, 2016
 Played 2 OTs..... 2-1 (2OT) vs. Saint Louis, Nov. 9, 2018

Big 12 Win..... 1-0 (OT) vs. West Virginia, Oct. 25, 2018
 Big 12 Loss 1-3 at Baylor, Oct. 21, 2018
 Big 12 Tie..... 1-1 at Texas Tech, Sept. 24, 2017

Win over Top-25 team..... 1-0 vs. #13 West Virginia, Oct. 25, 2018
 Win over Top-10 team 2-1 vs. #9 Texas, Oct. 13, 2017

Scored 0 Goals..... vs. Texas, Oct. 28, 2018
 Scored 1 Goal..... at North Carolina, Nov. 16, 2018
 Scored 2 Goals vs. Saint Louis, Nov. 9, 2018
 Scored 3 Goals vs. Saint Louis, Sept. 14, 2018
 Scored 4 Goals vs. Iowa State, Oct. 4, 2015
 Score 5+ Goals 5 vs. North Colorado, Oct. 26, 2012

Allowed 0 Goals vs. Texas, Oct. 28, 2018
 Allowed 1 Goal vs. Saint Louis, Nov. 0, 2018
 Allowed 2 Goals..... at Texas, Oct. 19, 2018
 Allowed 3 Goals..... at Baylor, Oct. 21, 2018
 Allowed 4 Goals..... at North Carolina, Nov. 16, 2018
 Allowed 5+ Goals 5 vs. Texas A&M, Sept. 10, 2017

Amassed 20+ Shots..... 22 vs. Oklahoma, Oct. 28, 2018
 Amassed 30+ Shots..... 35 vs. Iowa State, Oct. 24, 2014

Allowed 20+ Shots..... (27) TCU, Nov. 1, 2017
 Allowed 30+ Shots..... (33) Texas, Nov. 5, 2004

Amassed 10+ Shots on Goal 10 at Oklahoma, Oct. 20, 2017
 Amassed 15+ Shots on Goal 15 vs. Iowa State, Oct. 24, 2014

Allowed 10+ Shots on Goal 11 by BYU, Sept. 18, 2017
 Allowed 15+ Shots on Goal 20 by Georgia, Aug. 29, 2010

Amassed 10+ Corner Kicks 10 at Iowa State, Sept. 29, 2017
 Allowed 10+ Corner Kicks 12 vs. TCU, Nov. 1, 2017

Called for 15+ Fouls 15 vs. North Carolina, Nov. 16, 2018
 Called for 25+ Fouls 25 vs. Oklahoma State, Oct. 9, 1998

Opponent Called for 15+ Fouls (17) Texas Tech, Sept. 24, 2017
 Opponent Called for 25+ Fouls (27) Oklahoma State, Oct. 9, 2016

Scored 1 Penalty Kick at Utah, Sept. 15, 2017
 Scored 2 Penalty Kicks vs. Texas Tech, Sept. 23, 2016

Allowed 1 Penalty Kick vs. Texas, Oct. 19, 2018
 Allowed 2 Penalty Kicks Oral Roberts, Sept. 27, 2009

INDIVIDUAL

Hat Trick Grace Hagan vs. Saint Louis (Sept. 14, 2018)
 Multi-Goal Match (2) Katie McClure vs. Saint Louis (Nov. 9, 2018)

2 Assists Ceri Holland vs. Saint Louis (Sept. 14, 2018)
 3 Assists Whitney Berry vs. Texas (Sept. 30, 2011)

3 Points (Goal+Assist) Katie McClure vs. Oregon State (Aug. 24, 2018)
 5+ Points (6) Grace Hagan vs. Saint Louis (Sept. 14, 2018)

8+ Shots (8) Grace Hagan at Cincinnati (Sept. 6, 2018)
 10+ Shots (12) Caroline Smith vs. Missouri (Oct. 28, 2005)

5+ Shots on Goal (5) Grace Hagan vs. Saint Louis (Sept. 14, 2018)

Scored Penalty Kick Grace Hagan at Utah (Sept. 15, 2017)
 Missed Penalty Kick Ceri Holland vs. Texas (Oct. 19, 2018)

10+ Saves (11) Kaitlyn Stroud vs. Oklahoma (Nov. 1, 2013)
 Shutout Sarah Peters vs. West Virginia (Oct. 25, 2018)

Red Card Hannah Lukinac at TCU (Sept. 22, 2017)

INDIVIDUAL OPPONENT

Hat Trick Anna Canniglia, Nebraska (Oct. 23, 2009)
 Multi-Goal Match (2) Rachael Dorwart, North Carolina (Nov. 16, 2018)

2 Assists Carla Portillo, West Virginia (Oct. 27, 2017)
 3+ Assists (3) Julia Ashley, North Carolina (Nov. 16, 2018)

3 Points Julia Ashley & Rachael Dorwart, North Carolina (Nov. 16, 2018)
 5+ Points (5) Amanda Hill, West Virginia (Oct. 16, 2015)

8+ Shots (8) Nadia Gomes, BYU (Sept. 18, 2017)
 10+ Shots (13) Courtney Saunders, Baylor (Oct. 2, 1998)

5+ Shots on Goal (6) Maddie Pokorny, Saint Louis (Nov. 9, 2017)

Scored Penalty Kick Kayra Dolas, Texas (Oct. 19, 2018)
 Missed Penalty Kick Paula Leblic, Oregon State (Aug. 27, 2017)

10+ Saves (13) Andrea Swanson, Iowa State (Oct. 24, 2014)
 Shutout Nicole Curry, Texas (Oct. 19, 2018)

Red Card Kassidie Stade, Oklahoma (Nov. 1, 2013)

OVERALL STATISTICS

2018 Kansas Soccer
Kansas Overall Individual Statistics (as of Nov 16, 2018)
All games

Overall: 12-6-3 Conf: 5-4-0 Home: 9-2-0 Away: 2-4-1 Neut: 1-0-2

##	Player	gp-gs	min	g	a	pts	sh	sh%	sog	sog%	yc	rc	gwg	pk-att	foul	cnr
12	McClure, Katie	21-21	1462	11	3	25	58	.190	26	.448	1	0	7	0-0	2	34
25	Hagan, Grace	21-21	1673	7	5	19	63	.111	28	.444	0	0	1	0-0	3	2
24	Reina, Elise	21-20	1816	2	6	10	20	.100	9	.450	0	0	1	0-0	0	52
17	Christie, Taylor	21-0	683	4	0	8	29	.138	11	.379	0	0	0	0-0	0	0
15	Holland, Ceri	21-21	1690	1	4	6	38	.026	11	.289	2	0	1	0-1	0	1
19	Eliasdottir, Eva	15-11	754	1	2	4	5	.200	1	.200	0	0	1	0-0	0	0
2	Young, Kaycie	21-21	1750	1	1	3	29	.034	7	.241	0	0	0	0-0	0	0
9	Meador, Madison	20-20	1793	1	0	2	9	.111	2	.222	1	0	1	0-0	1	0
10	Melugin, Miriam	21-15	1337	0	1	1	16	.000	5	.312	0	0	0	0-0	0	5
21	Cavalcante, Isabella	15-11	1006	0	1	1	4	.000	1	.250	0	0	0	0-0	0	0
28	Amos, Bri	10-1	228	0	1	1	3	.000	0	.000	1	0	0	0-0	0	2
13	Castro, Kathryn	21-5	779	0	0	0	9	.000	2	.222	0	0	0	0-0	0	0
6	Hansen, Kaela	21-21	1650	0	0	0	6	.000	1	.167	0	0	0	0-0	0	0
8	Courtney, Anna	12-0	164	0	0	0	5	.000	1	.200	0	0	0	0-0	0	2
26	Merrick, Addisyn	21-19	1855	0	0	0	4	.000	2	.500	2	0	0	0-0	0	0
14	Barnett, Samantha	20-0	281	0	0	0	4	.000	1	.250	0	0	0	0-0	0	1
23	Wiltgen, Grace	15-2	617	0	0	0	3	.000	2	.667	0	0	0	0-0	0	0
27	Maierhofer, Sophie	6-1	123	0	0	0	2	.000	0	.000	0	0	0	0-0	0	1
22	Duggan, Mandi	6-0	99	0	0	0	1	.000	0	.000	0	0	0	0-0	0	0
16	Bradley, Italia	13-0	170	0	0	0	0	.000	0	.000	0	0	0	0-0	0	0
7	Hall, Avery	3-0	45	0	0	0	0	.000	0	.000	0	0	0	0-0	0	0
5	Pesek, Olivia	1-0	11	0	0	0	0	.000	0	.000	0	0	0	0-0	0	0
4	Lane, Kailey	4-0	30	0	0	0	0	.000	0	.000	0	0	0	0-0	0	0
3	Swaby-Wallerson, Maya	2-0	21	0	0	0	0	.000	0	.000	0	0	0	0-0	0	0
Total		21	-	28	24	80	308	.091	110	.357	7	0	12	0-1	214	-
Opponents		21	-	23	24	70	201	.114	82	.408	5	0	6	1-1	166	-

#	Goalie	gp-gs	Goal Average			Saves		Record				Shots faced
			min	ga	gaavg	saves	pct	w	l	t	sho/cbo	
0	Breshears, Lauren	2-0	19:52	0	0.00	1	1.000	0	0	0	0/0	2
00	Peters, Sarah	21-21	1989:12	23	1.04	57	.712	12	6	3	9/0	198
TM	TEAM	-	0:00	0	0.00	1	1.000	0	0	0	0/0	0
Total		21	2009:04	23	1.03	59	.720	12	6	3	9	200
Opponents		21	2009:04	28	1.25	82	.745	6	12	3	4	306

Team saves: 1

Goals by Period	1st	2nd	OT	OT2	OT3	Total
Kansas	12	11	2	3	0	28
Opponents	10	12	1	0	0	23

Shots by Period	1st	2nd	OT	OT2	OT3	Total
Kansas	131	151	17	9	0	308
Opponents	84	104	5	8	0	201

Saves by Period	1st	2nd	OT	OT2	OT3	Total
Kansas	26	29	2	2	0	59
Opponents	34	42	3	3	0	82

Corners by Period	1st	2nd	OT	OT2	OT3	Total
Kansas	45	45	5	5	0	100
Opponents	36	60	4	2	0	102

Fouls by Period	1st	2nd	OT	OT2	OT3	Total
Kansas	95	109	6	4	0	214
Opponents	64	91	6	5	0	166

Attendance Summary	KU	Opponent
Total	7482	7047
Dates/Avg Per Date	11/680	7/1007
Neutral Site #/Avg	3/197	

CONFERENCE STATISTICS

2018 Kansas Soccer Kansas Overall Individual Statistics (as of Oct 25, 2018) Conference games

Overall: 5-4-0 Conf: 5-4-0 Home: 3-2-0 Away: 2-2-0 Neut: 0-0-0

##	Player	gp-gs	min	g	a	pts	sh	sh%	sog	sog%	yc	rc	gwg	pk-att	foul	cnr
25	Hagan, Grace	9-9	745	4	2	10	26	.154	14	.538	0	0	0	0-0	0	0
12	McClure, Katie	9-9	631	3	0	6	23	.130	9	.391	0	0	3	0-0	0	17
24	Reina, Elise	9-9	792	1	4	6	11	.091	5	.455	0	0	0	0-0	0	37
19	Eliasdottir, Eva	9-9	539	1	2	4	4	.250	1	.250	0	0	1	0-0	0	0
15	Holland, Ceri	9-9	751	1	0	2	19	.053	6	.316	2	0	1	0-1	0	1
17	Christie, Taylor	9-0	265	1	0	2	12	.083	6	.500	0	0	0	0-0	0	0
10	Melugin, Miriam	9-7	527	0	1	1	9	.000	3	.333	0	0	0	0-0	0	0
2	Young, Kaycie	9-9	745	0	0	0	11	.000	2	.182	0	0	0	0-0	0	0
13	Castro, Kathryn	9-2	339	0	0	0	5	.000	1	.200	0	0	0	0-0	0	0
28	Amos, Bri	2-0	49	0	0	0	3	.000	0	.000	0	0	0	0-0	0	0
6	Hansen, Kaela	9-9	727	0	0	0	3	.000	0	.000	0	0	0	0-0	0	0
27	Maierhofer, Sophie	4-0	82	0	0	0	2	.000	0	.000	0	0	0	0-0	0	1
26	Merrick, Addisyn	9-7	703	0	0	0	2	.000	1	.500	0	0	0	0-0	0	0
23	Wiltgen, Grace	6-0	179	0	0	0	2	.000	1	.500	0	0	0	0-0	0	0
21	Cavalcante, Isabella	5-2	284	0	0	0	1	.000	0	.000	0	0	0	0-0	0	0
14	Barnett, Samantha	8-0	73	0	0	0	1	.000	1	1.000	0	0	0	0-0	0	1
9	Meador, Madison	9-9	812	0	0	0	1	.000	0	.000	1	0	0	0-0	0	0
22	Duggan, Mandi	3-0	68	0	0	0	0	.000	0	.000	0	0	0	0-0	0	0
16	Bradley, Italia	4-0	48	0	0	0	0	.000	0	.000	0	0	0	0-0	0	0
8	Courtney, Anna	4-0	25	0	0	0	0	.000	0	.000	0	0	0	0-0	0	1
4	Lane, Kailey	1-0	7	0	0	0	0	.000	0	.000	0	0	0	0-0	0	0
Total		9	-	11	9	31	135	.081	50	.370	3	0	5	0-1	89	-
Opponents		9	-	11	9	31	88	.125	39	.443	2	0	4	1-1	71	-

#	Goalie	gp-gs	Goal Average			Saves		Record				Shots faced
			min	ga	gaavg	saves	pct	w	l	t	sho/cbo	
00	Peters, Sarah	9-9	839:48	11	1.18	28	.718	5	4	0	3/0	88
Total		9	839:48	11	1.18	28	.718	5	4	0	3	88
Opponents		9	839:48	11	1.18	39	.780	4	5	0	1	134

Team saves: 0

Goals by Period	1st	2nd	OT	OT2	Total
Kansas	4	4	2	1	11
Opponents	3	7	1	0	11

Shots by Period	1st	2nd	OT	OT2	Total
Kansas	65	61	5	4	135
Opponents	33	51	3	1	88

Saves by Period	1st	2nd	OT	OT2	Total
Kansas	9	17	1	1	28
Opponents	19	17	1	2	39

Corners by Period	1st	2nd	OT	OT2	Total
Kansas	26	29	2	1	58
Opponents	14	35	2	0	51

Fouls by Period	1st	2nd	OT	OT2	Total
Kansas	37	49	2	1	89
Opponents	26	41	4	0	71

Attendance Summary	KU	Opponent
Total	4193	4012
Dates/Avg Per Date	5/839	4/1003
Neutral Site #/Avg	0/0	

2018 KANSAS TEAM STATS GAME-BY-GAME

Date	Opponent	Score	G	A	Pts	Sh	Sh%	Sog	Sog%	GW	PK-Att	YC	RC	Min
Aug 17, 2018	PEPPERDINE	1-0	1	0	2	6	.167	2	.333	1	0-0	0	0	990
Aug 19, 2018	SOUTH DAKOTA STATE	3-0	3	2	8	24	.125	7	.292	1	0-0	0	0	992
Aug 24, 2018	vs Oregon State	3-0	3	2	8	13	.231	6	.462	1	0-0	0	0	972
Aug 26, 2018	vs Oregon	1-1	1	1	3	19	.053	7	.368	0	0-0	0	0	1210
Aug 31, 2018	UTAH	2-1	2	2	6	16	.125	7	.438	1	0-0	0	0	1167
Sep 02, 2018	BUTLER	1-0	1	2	4	10	.100	4	.400	1	0-0	1	0	990
Sep 06, 2018	at Cincinnati	0-0	0	0	0	19	.000	6	.316	0	0-0	1	0	1209
Sep 14, 2018	SAINT LOUIS	3-2	3	2	8	11	.273	8	.727	1	0-0	0	0	990
Sep 16, 2018	at Texas A&M	0-3	0	0	0	12	.000	2	.167	0	0-0	1	0	989
Sep 21, 2018	OKLAHOMA	2-1	2	2	6	19	.105	6	.316	1	0-0	1	0	1198
Sep 23, 2018	OKLAHOMA STATE	1-2	1	1	3	21	.048	6	.286	0	0-0	0	0	990
Sep 29, 2018	IOWA STATE	1-0	1	1	3	17	.059	7	.412	1	0-0	0	0	989
Oct 05, 2018	at Kansas State	2-0	2	1	5	14	.143	6	.429	1	0-0	0	0	989
Oct 12, 2018	TCU	2-1	2	1	5	14	.143	4	.286	1	0-0	0	0	1007
Oct 14, 2018	TEXAS TECH	1-2	1	1	3	19	.053	7	.368	0	0-0	0	0	1003
Oct 19, 2018	at Texas	0-2	0	0	0	12	.000	7	.583	0	0-1	1	0	989
Oct 21, 2018	at Baylor	1-3	1	1	3	8	.125	2	.250	0	0-0	1	0	990
Oct 25, 2018	at West Virginia	1-0	1	1	3	11	.091	5	.455	1	0-0	0	0	1076
Oct 28, 2018	vs Texas	0-0	0	0	0	22	.000	5	.227	0	0-0	0	0	1211
Nov 09, 2018	SAINT LOUIS	2-1	2	3	7	14	.143	4	.286	1	0-0	1	0	1134
Nov 16, 2018	at North Carolina	1-4	1	1	3	7	.143	2	.286	0	0-0	0	0	961
		28-23	28	24	80	308	.091	110	.357	12	0-1	7	0	22046
Opponent			23	24	70	201	.114	82	.408	6	1-1	5	0	-

TEAM PER-GAME

Games played: 21

Shots per game: 14.67; Goals per game: 1.33

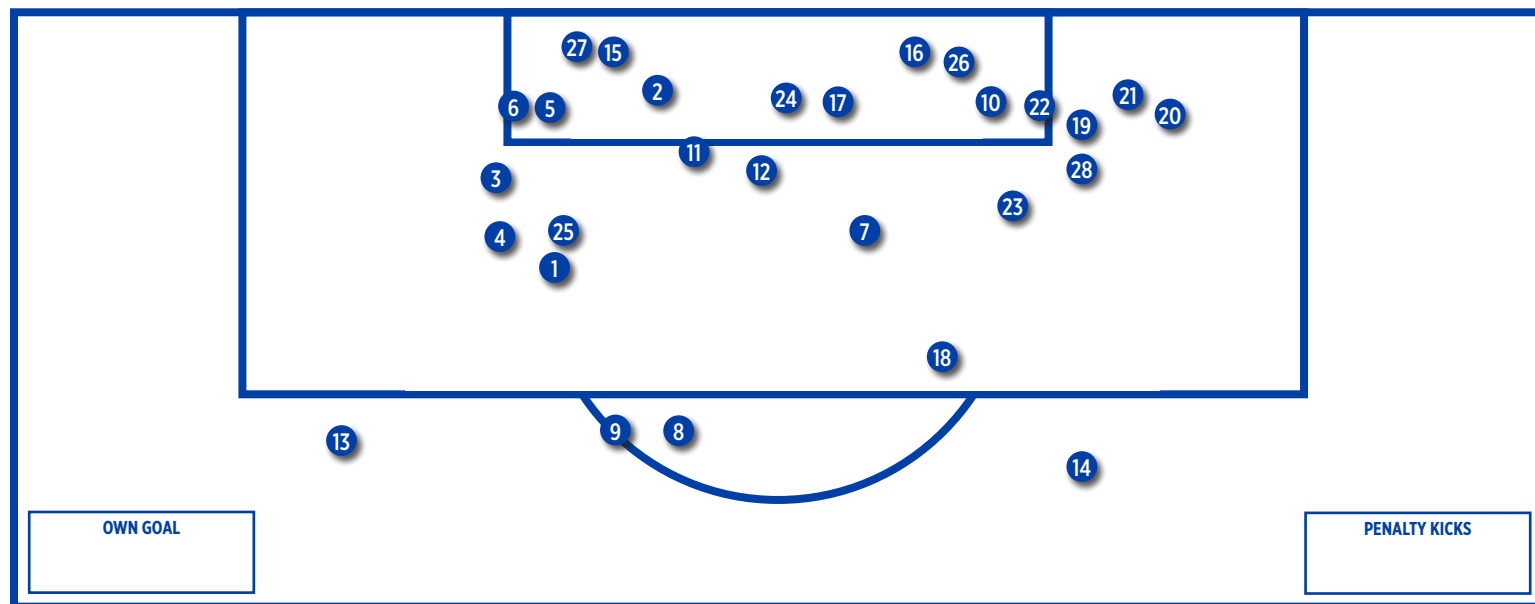
Assists per game: 1.14; Points per game: 3.81

2018 KANSAS GAME-BY-GAME COMPARISON (KANSAS/OPPONENT)

Date	Opponent	Score	Goals	Assists	Shots	On Goal	Corners	CKgoals	Fouls	YC	RC	Offside
Aug 17	PEPPERDINE	1-0	1/0	0/0	6/8	2/2	2/5	0/0	5/6	0/0	0/0	5/3
Aug 19	SOUTH DAKOTA STATE	3-0	3/0	2/0	24/7	7/2	5/3	1/0	11/5	0/0	0/0	1/2
Aug 24	Oregon State	3-0	3/0	2/0	13/2	6/0	1/1	0/0	11/9	0/0	0/0	1/2
Aug 26	Oregon	1-1	1/1	1/1	19/6	7/3	5/3	0/0	9/5	0/0	0/0	1/6
Aug 31	UTAH	2-1	2/1	2/0	16/12	7/2	4/5	0/0	14/12	0/1	0/0	4/1
Sep 02	BUTLER	1-0	1/0	2/0	10/6	4/2	2/2	1/0	10/9	1/1	0/0	1/0
Sep 06	Cincinnati	0-0	0/0	0/0	19/7	6/1	7/2	0/0	11/6	1/0	0/0	3/4
Sep 14	SAINT LOUIS	3-2	3/2	2/3	11/6	8/3	5/2	0/0	8/10	0/0	0/0	2/0
Sep 16	Texas A&M	0-3	0/3	0/4	12/12	2/8	2/9	0/0	11/9	1/1	0/0	2/3
Sep 21	OKLAHOMA	2-1	2/1	2/1	19/9	6/5	6/5	0/0	9/8	1/0	0/0	4/2
Sep 23	OKLAHOMA STATE	1-2	1/2	1/1	21/6	6/5	9/3	1/0	9/7	0/0	0/0	0/2
Sep 29	IOWA STATE	1-0	1/0	1/0	17/4	7/1	8/2	0/0	11/9	0/0	0/0	0/1
Oct 05	Kansas State	2-0	2/0	1/0	14/10	6/2	6/7	0/0	14/10	0/1	0/0	5/1
Oct 12	TCU	2-1	2/1	1/1	14/11	4/4	4/6	0/0	6/7	0/0	0/0	0/2
Oct 14	TEXAS TECH	1-2	1/2	1/1	19/10	7/3	8/7	0/0	8/6	0/1	0/0	1/2
Oct 19	Texas	0-2	0/2	0/2	12/9	7/3	5/7	0/0	11/4	1/0	0/0	3/3
Oct 21	Baylor	1-3	1/3	1/3	8/15	2/8	5/7	1/1	12/8	1/0	0/0	0/2
Oct 25	West Virginia	1-0	1/0	1/0	11/14	5/8	7/7	0/0	9/12	0/0	0/0	1/2
Oct 28	Texas	0-0	0/0	0/0	22/16	5/4	4/8	0/0	6/5	0/0	0/0	0/4
Nov 09	SAINT LOUIS	2-1	2/1	3/1	14/13	4/8	3/3	0/0	14/9	1/0	0/0	5/0
Nov 16	North Carolina	1-4	1/4	1/6	7/18	2/8	2/8	0/1	15/10	0/0	0/0	2/4
		28-23	28/23	24/24	308/201	110/82	100/102	4/2	214/166	7/5	0/0	41/46

Note: Game totals are displayed in the format TEAM/OPPONENT for each category

2018 KANSAS GOAL CHART



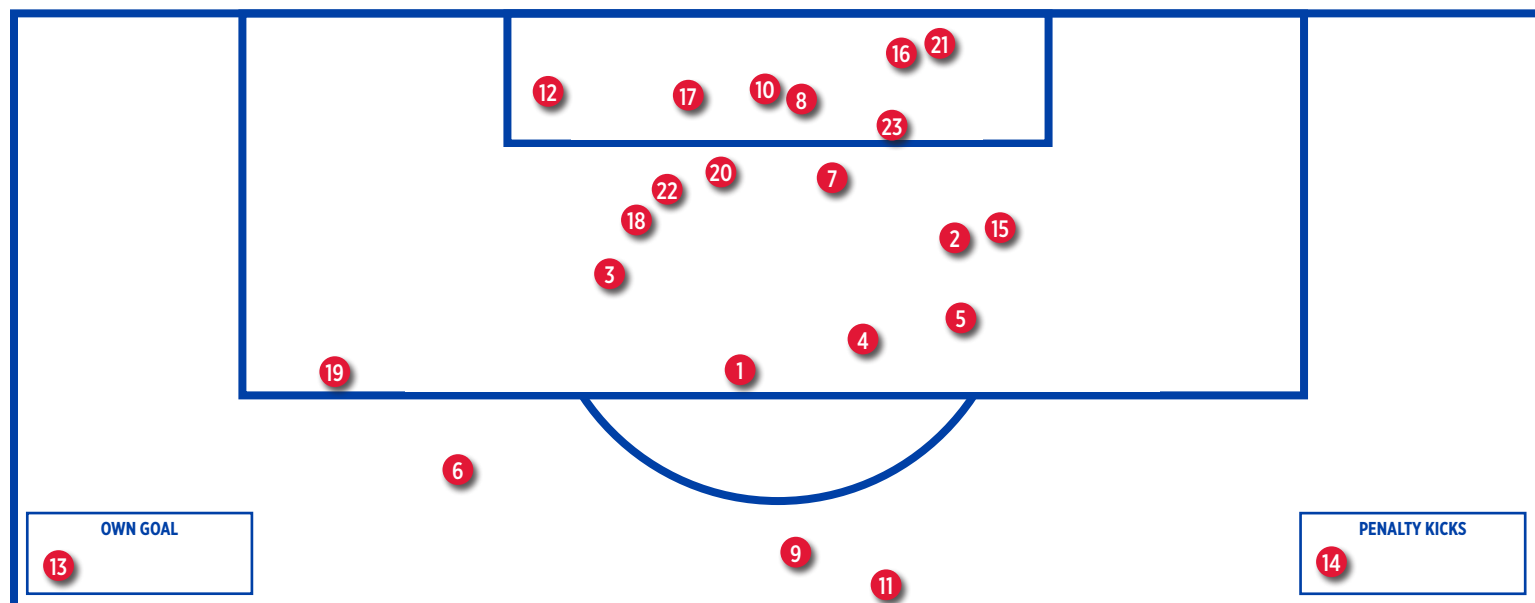
KANSAS GOAL INFORMATION

1 - Katie McClure (unassisted) vs. Pepperdine, 60:05
 2 - Madison Meador (McClure) vs. South Dakota State, 16:36 *
 3 - Katie McClure (Hagan) vs. South Dakota State, 47:38
 4 - Taylor Christie (unassisted) vs. South Dakota State, 75:34
 5 - Katie McClure (Reina) vs. Oregon State, 16:57
 6 - Taylor Christie (McClure) vs. Oregon State, 27:42
 7 - Taylor Christie (unassisted) vs. Oregon State, 39:06
 8 - Kaycie Young (Cavalcante) vs. Oregon, 25:01
 9 - Katie McClure (Young) vs. Utah, 86:16
 10 - Katie McClure (Holland) vs. Utah, 106:11

11 - Elise Reina (McClure, Amos) vs. Butler, 84:27 *
 12 - Grace Hagan (Holland) vs. Saint Louis, 20:56 +
 13 - Grace Hagan (unassisted) vs. Saint Louis, 30:51
 14 - Grace Hagan (Holland) vs. Saint Louis, 52:12
 15 - Elise Reina (unassisted) vs. Oklahoma, 59:24
 16 - Katie McClure (Eliasdottir, Melugin) vs. Oklahoma, 109:06
 17 - Grace Hagan (Reina) vs. Oklahoma State, 89:47 *
 18 - Ceri Holland (Hagan) vs. Iowa State, 81:06
 19 - Katie McClure (Eliasdottir) vs. Kansas State, 21:02
 20 - Taylor Christie (unassisted) vs. Kansas State, 33:28

21 - Grace Hagan (unassisted) vs. TCU, 30:39
 22 - Eva Eliasdottir (Reina) vs. TCU, 91:31
 23 - Grace Hagan (Reina) vs. Texas Tech, 52:41
 24 - Grace Hagan (Reina) vs. Baylor, 32:04 *
 25 - Katie McClure (Hagan) vs. West Virginia, 97:45
 26 - Katie McClure (Reina) vs. Saint Louis, 18:26
 27 - Katie McClure (Holland, Hagan) vs. Saint Louis, 103:05 +
 28 - Katie McClure (Hagan) vs. North Carolina, 81:48

2018 OPPONENT GOAL CHART



OPPONENT GOAL INFORMATION

1 - Emma Eddy (Oregon), 83:46
 2 - Hailey Skolmoski (Utah), 85:40
 3 - Alyssa Seitzer (Saint Louis), 18:00
 4 - Hannah Friedrich (Saint Louis), 19:02
 5 - Abby Grace Cooper (Texas A&M), 38:52
 6 - Addie McCain (Texas A&M), 64:44
 7 - Ally Watt (Texas A&M), 66:14
 8 - Kaylee Dao (Oklahoma), 16:46
 9 - Haley Woodard (Oklahoma State), 47:29
 10 - Marlo Zoller (Oklahoma State), 66:53 +

11 - Maddy Warren (TCU), 38:24
 12 - Cassie Hiatt (Texas Tech), 88:32 +
 13 - Own Goal (Texas Tech), 91:26
 14 - Kayra Dollas (Texas), 24:35 <
 15 - Haley Berg (Texas), 85:08
 16 - Camryn Wendlandt (Baylor), 50:10 *
 17 - Elena Reyna (Baylor), 72:13 +
 18 - Raegan Padgett (Baylor), 81:23
 19 - Maddie Pokorny (Saint Louis), 33:17
 20 - Brianna Pinto (North Carolina), 11:13

21 - Annie Kingman (North Carolina), 41:10 *
 22 - Rachael Dorward (North Carolina), 43:32
 23 - Rachael Dorward (North Carolina), 65:26

Key: + Off free kick, < Penalty Kick, * Off Corner

SINGLE MATCH INDIVIDUAL RECORDS

POINTS

No.	Player	Points
1.	Shannon McCabe (vs. Francis Marion, Oct. 19, 2008)	7
	Caroline Smith (vs. Northwestern, Aug. 29, 2003)	7
3.	Grace Hagan (vs. Saint Louis, Sept. 14, 2018)	6
	Monica Dolinsky (at Missouri, Oct. 15, 2006)	6
	Jessica Smith (vs. Oklahoma State, Oct. 7, 2005)	6
	Caroline Smith (vs. Florida State, Sept. 12, 2003)	6
	Monica Brothers (at Oklahoma State, Sept. 30, 2001)	6
	Natalie Hoogveld (at Colorado, Oct. 14, 2001)	6
	Brianna Valento (vs. St. Louis, Oct. 30, 2001)	6

GOALS

No.	Player	Goals
1.	Grace Hagan (vs. Saint Louis, Sept. 14, 2018)	3
	Shannon McCabe (vs. Francis Marion, Oct. 19, 2008)	3
	Jessica Smith (vs. Oklahoma State, Oct. 7, 2005)	3
	Caroline Smith (vs. Florida State, Sept. 12, 2003)	3
	Caroline Smith (vs. Northwestern, Aug. 29, 2003)	3
	Brianna Valento (vs. St. Louis, Oct. 30, 2001)	3
	Natalie Hoogveld (at Colorado, Oct. 14, 2001)	3
	Monica Brothers (vs. Oklahoma State, Sept. 30, 2001)	3

ASSISTS

No.	Player	Goals
1.	Hilla Rantala (at Oklahoma State, Sept. 30, 2001)	4
2.	Whitney Berry (vs. Texas, Sept. 30, 2011)	3
	Monica Dolinsky (vs. Texas A&M, Nov. 5, 2008)	3
	Jessica Bush (vs. UAB, Sept. 5, 2008)	3
	Hilla Rantala (vs. St. Louis, Oct. 30, 2001)	3
	Melanie Schroeder (vs. UNLV, Sept. 7, 2001)	3

SHOTS

No.	Player	Shots
1.	Caroline Smith (vs. Missouri, Oct. 28, 2005)	12
2.	Caroline Smith (vs. Colorado, Sept. 27, 2002)	10
	Denise Cooke (vs. CMSU, Oct. 13, 1995)	10

SHOTS ON GOAL

No.	Player	SOG
1.	Caroline Smith (vs. Missouri, Oct. 28, 2005)	7
2.	Caroline Smith (at Mississippi State, Sept. 8, 2002)	6
3.	Grace Hagan (vs. Saint Louis, Sept. 14, 2018)	5
	Ingrid Vidal (at Missouri, Oct. 21, 2011)	5
	Jessica Smith (vs. Oklahoma State, Oct. 7, 2005)	5
	Caroline Smith (vs. UC Irvine, Sept. 16, 2005)	5
	Caroline Smith (vs. Baylor, Oct. 3, 2004)	5
	Nicole Cauzillo (vs. Texas Tech, Oct. 1, 2004)	5

	Caroline Smith (vs. Colorado, Sept. 27, 2002)	5
	Monica Brothers (vs. North Texas, Aug. 31, 2001)	5

SAVES

No.	Player	Saves
1.	Betsy Pollard (at Texas Tech, Oct. 3, 1999)	16
2.	Kat Liebetrau (at Georgia, Aug. 29, 2010)	15
	Laura Rohde (at Mississippi, Oct. 29, 1999)	15
	Jen Fecke (vs. UTEP, Oct. 6, 1996)	15
5.	Betsy Pollard (at Georgia, Sept. 17, 1999)	14
	Betsy Pollard (at Utah, Sept. 3, 1999)	14
	Jen Fecke (at Baylor, Sept. 14, 1997)	14

INDIVIDUAL STREAKS

Consecutive Matches w/ a Point	9
(Hilla Rantala, Aug. 31-Oct. 5, 2001)	
Consecutive Matches w/ a Goal	5 (twice)
(Liana Salazar, Aug. 22 - Sept. 5 2014) (Hilla Rantala, Sept. 1-Sept. 23, 2001)	
Consecutive Matches w/ an Assist	4
(Whitney Berry, Sept. 27-Oct. 9, 2009)	
Consecutive Matches w/ a GWG	3 (twice)
(Jessica Bush, Oct. 13-Oct. 20, 2006) (Ashley Williams Oct. 3- Oct. 10, 2014)	

Single Match Team Records

Points	19
(vs. Francis Marion, Oct. 19, 2008)	
Goals	7
(vs. Francis Marion, Oct. 19, 2008)	
Assists	6 (four times)
(at Texas Tech, Oct. 14, 2005), (vs. Creighton, Nov. 12, 2004) (vs. Texas Tech, Oct. 1, 2004), (vs. Colorado, Sept. 27, 2002)	
Shots	36
(vs. Michigan, Aug. 26, 2005)	
Shots on Goal	20
(vs. Wyoming, Aug. 29, 1999)	
Saves	16
(at Texas Tech, Oct. 3, 1999)	
Shots Allowed	45
(at Nebraska, Sept. 22, 1995)	
Shots on Goal Allowed	19
(at Nebraska, Oct. 15, 1999)	
Fewest Shots	0
(at Virginia, Sept. 19, 1997)	
Fewest Shots on Goal	0 (3 times)
(vs. Baylor, Oct. 15, 2017), (vs. West Virginia, Nov. 6, 2013), (at Virginia, Sept. 19, 1997)	
Corner Kicks	21
(vs. Baylor, Sept. 23, 2005)	
Fouls	25
(at Oklahoma State, Oct. 9, 1998)	
Goals (In Defeat)	4
(vs. Nebraska, Oct. 23, 2009 [L, 4-7])	
Goals (Both Teams)	11
(vs. Nebraska, Oct. 23, 2009 [L, 4-7])	
Goals Allowed	8 (twice)
(at Nebraska, Oct. 15, 1999), (at Nebraska, Sept. 22, 1995)	

Consecutive Shutouts	5
(Meghan Miller, Aug. 28-Sept. 9, 2004)	
OPPONENT HIGHS	
Points	7
(Anna Caniglia, Nebraska, Oct. 23, 2009)	
Goals	3 (nine times)
Last: (Anna Caniglia, Nebraska, Oct. 23, 2009)	
Assists	3
(Julia Ashley, North Carolina, Nov. 16, 2018) (Kristen Koop, Texas A&M, Sept. 13, 1996) (Sandy Smith, Nebraska, Sept. 22, 1995)	
Shots	13
(Courtney Saunders, Baylor, Oct. 2, 1998)	
Shots on Goal	6 (two times)
(Maddie Pokorny, Saint Louis, Nov. 9, 2018) (Becky Nelson, Oklahoma, Oct. 24, 2003)	
Saves	16
(Amanda Vandervort, Wyoming, Aug. 29, 1999)	

Goals Allowed (In Victory)	3 (three times)
(vs. Duke, Sept. 10, 2006 [W, 4-3]) (at Oklahoma State, Sept. 30, 2001 [W, 5-3]) (vs. Colorado, Sept. 28, 1997 [W, 4-3])	
First Half Goals	4
(vs. Central Missouri State, Oct. 18, 2002)	
Second Half Goals	5
(vs. Francis Marion, Oct. 19, 2008)	
Margin of Victory	7
(vs. Francis Marion, Oct. 19, 2008 [W, 7-0])	
Margin of Defeat	7 (twice)
(at Nebraska, 10/15/1999 [1-8, L]), (at Nebraska, 9/22/1995 [1-8, L])	
Quickest Goal	0:18
(Caroline Kastor, at Colorado, Oct. 25, 2010)	
Quickest Goal Allowed	0:11
(Whitney Palmer, Oklahoma, Oct. 10, 2010)	
Quickest Goal (Second Half)	45:11
(Shayna Teutsch, at UTEP, Oct. 6, 1996)	
Quickest Goal Allowed (Second Half)	45:39
(Katy Lindenmuth, Wisconsin, Aug. 28, 2005)	
Quickest Goal (Overtime)	91:55
(Kim Boyer, vs. Missouri State, Sept. 18, 2007)	
Quickest Goal Allowed (Overtime)	92:03
(Kasey Langdon, Oklahoma St., Oct. 10, 2008)	
Shortest Span Between Goals	0:15
(Lindsey Horner, Carmel Kaplinger vs. Iowa State, Sept. 29, 2000)	
Shortest Span Between Goals Allowed	0:14
(Katie Baruth and Carol Ditch, Texas, Sept. 15, 1996)	
Shortest Span Between Goals (Both Teams)	0:08
(KayAnne Gummersall, Duke and Holly Gault, Kansas, Sept. 10, 2006)	
Attendance (Home)	2,514
(vs. Kansas State, Oct. 6, 2017)	
Attendance (Away)	5,205
(at Saint Louis, Sept. 8, 2017)	

SINGLE SEASON RECORDS

POINTS

No.	Player	Points
1.Caroline Smith (2003)	41 (19 goals, 3 assists)
2.Caroline Smith (2004)	32 (11 goals, 10 assists)
.Hilla Rantala (2001)	32 (10 goals, 12 assists)
4.Liana Salazar (2014)	30 (13 goals, 4 assists)
5.Whitney Berry (2011)	29 (8 goals, 13 assists)
6.Ingrid Vidal (2011)	28 (11 goals, 6 assists)
.Monica Dolinsky (2008)	28 (9 goals, 10 assists)
8.Emily Cressy (2009)	27 (12 goals, 3 assists)
.Caroline Smith (2002)	27 (12 goals, 3 assists)
10.Caroline Smith (2005)	26 (9 goals, 8 assists)

GOALS

No.	Player	Goals
1.Caroline Smith (2003)	19
2.Liana Salazar (2014)	13
3.Emily Cressy (2009)	12
.Caroline Smith (2002)	12
5. . . .	Katie McClure (2018)	11
.Caroline Kastor (2012)	11
.Ingrid Vidal (2011)	11
.Caroline Smith (2004)	11
9.Hilla Rantala (2001)	10
10.Monica Dolinsky (2008)	9
.Shannon McCabe (2008)	9
.Caroline Smith (2005)	9
.Monica Brothers (2001)	9

GAME-WINNING GOALS

No.	Player	GWG
1. . . .	Katie McClure (2018)	7
.Caroline Smith (2003)	7
3.Caroline Kastor (2012)	5
.Emily Cressy (2009)	5
.Rachel Gilfillan (2004)	5
6.Liana Salazar (2014)	4
.Ashley Williams (2014)	4
.Ingrid Vidal (2011)	4
.Emily Cressy (2008)	4
.Shannon McCabe (2008)	4
.Jessica Bush (2006)	4
.Caroline Smith (2002)	4
.Monica Brothers (2001)	4

ASSISTS

No.	Player	Assists
1.Whitney Berry (2011)	13
2.Hilla Rantala (2001)	12
3.Monica Dolinsky (2009)	10
.Monica Dolinsky (2008)	10
.Caroline Smith (2004)	10
6.Whitney Berry (2009)	9
7.Caroline Smith (2005)	8
.Melanie Schroeder (2000)	8
.Meghann Haven (1999)	8
10.Ali Kimura (2014)	7
.Whitney Berry (2012)	7
.Caroline Kastor (2011)	7
.Jessica Bush (2008)	7
.Holly Gault (2006)	7
.Lauren Williams (2004)	7

SHOTS

No.	Player	Shots
1.Caroline Smith (2005)	98
2.Caroline Smith (2004)	92
3.Whitney Berry (2011)	85
.Caroline Smith (2003)	85
5.Monica Dolinsky (2008)	79
6.Emily Cressy (2009)	73
7.Monica Dolinsky (2009)	71
8.Denise Cooke (1995)	68
9.Whitney Berry (2012)	66
10.Whitney Berry (2010)	65

SHOTS ON GOAL

No.	Player	SOG
1.Caroline Smith (2003)	46
2.Caroline Smith (2004)	45
3.Caroline Smith (2005)	43
4.Emily Cressy (2009)	42
5.Whitney Berry (2011)	41
6.Monica Dolinsky (2008)	37
7.Caroline Kastor (2012)	32
.Caroline Smith (2002)	32
9.Whitney Berry (2012)	30
.Hilla Rantala (2001)	30

* - Individual shots on goal kept since 1999

MINUTES PLAYED (FIELD)

No.	Player	Minutes
1.Estelle Johnson (2008)	2,110
2.Shelby Williamson (2009)	2,012
3.Estelle Johnson (2009)	1,987
4.Kayla Morrison (2016)	1,985
5.Afton Sauer (2004)	1,981
6.Kayla Morrison (2015)	1,977
7.Morgan Williams (2015)	1,963
8.Geneva Magness (2009)	1,958
9.Lauren Jackson (2009)	1,916
10.Afton Sauer (2007)	1,911

* - Individual minutes kept since 2004

MINUTES PLAYED (KEEPERS)

No.	Player	Minutes
1.Meghan Miller (2003)	2,281
2.Maddie Dobyns (2015)	2,074
3.Meghan Miller (2004)	2,060
4. . . .	Sarah Peters (2018)	1,989
5.Colleen Quinn (2007)	1,952

SAVES

No.	Player	Saves
1.Jen Fecke (1996)	150
2.Jen Fecke (1997)	147
3.Betsy Pollard (1999)	125
4.Kat Liebetrau (2010)	113
5.Meghan Miller (2003)	111

GOALS AGAINST AVG. (MINIMUM 1,000 MIN.)

No.	Player	GAA
1.Meghan Miller (2004) (13 GA, 2,061 min.)	0.57
2.Kaitlyn Stroud (2014) (14 GA, 1,722 min.)	0.73
3.Meghan Miller (2003) (19 GA, 2,281 min.)	0.75
4.Maddie Dobyns (2016) (14 GA, 1,554 min.)	0.81
5.Julie Hanley (2006) (19 GA, 1,738 min.)	0.98

SAVE PERCENTAGE (MINIMUM 1,000 MIN.)

No.	Player	Save Pct.
1.Meghan Miller (2004) (13 GA, 96 saves)	.881
2.Meghan Miller (2003) (19 GA, 111 saves)	.854
3.Kaitlyn Stroud (2014) (14 GA, 77 saves)	.846
4.Betsy Pollard (1999) (29 GA, 125 saves)	.812
5.Kaitlyn Stroud (2013) (25 GA, 107 saves)	.811

SHUTOUTS

No.	Player	Shutouts
1.Meghan Miller (2004)	11
2.Meghan Miller (2003)	10
3. . . .	Sarah Peters (2018)	9
4.Kaitlyn Stroud (2014)	8
5.Julie Hanley (2006)	7
6.Maddie Dobyns (2015)	6

WINS

No.	Player	Wins
1.Meghan Miller (2004)	18
.Meghan Miller (2003)	18
3.Kaitlyn Stroud (2014)	14
4.Julie Hanley (2008)	13
.Meghan Miller (2001)	13
6. . . .	Sarah Peters (2018)	12
7.Julie Hanley (2006)	11

CAREER RECORDS

POINTS

No.	Player	Pts.
1.Caroline Smith (2002-05)	126 (51 goals, 24 assists)
2.Whitney Berry (2009-12)	78 (23 goals, 32 assists)
3.Monica Dolinsky (2006-09)	76 (23 goals, 30 assists)
4.Liana Salazar (2011-15)	68 (28 goals, 12 assists)
.Rachel Gilfillan (2001-04)	68 (26 goals, 16 assists)
6.Grace Hagan (2015-18)	67 (25 goals, 17 assists)
7.Caroline Kastor (2010-13)	66 (26 goals, 14 assists)
8.Ashley Williams (2012-15)	52 (21 goals, 10 assists)
.Emily Cressy (2008-10)	52 (23 goals, 6 assists)

GOALS

No.	Player	Goals
1.Caroline Smith (2002-05)	51
2.Liana Salazar (2011-15)	28
3.Caroline Kastor (2010-13)	26
.Rachel Gilfillan (2001-04)	26
5.Grace Hagan (2015-18)	25
6.Whitney Berry (2009-12)	23
.Emily Cressy (2008-10)	23
.Monica Dolinsky (2006-09)	23
9.Katie McClure (2016-Present)	22
10.Ashley Williams (2012-15)	21

GAME-WINNING GOALS

No.	Player	GWG
1.Caroline Smith (2002-05)	14
2.Katie McClure (2016-Present)	11
.Emily Cressy (2008-10)	11
4.Ashley Williams (2012-15)	10
.Rachel Gilfillan (2001-04)	10
6.Monica Brothers (2001-04)	8
7.Liana Salazar (2011-15)	7
.Caroline Kastor (2010-13)	7
.Monica Dolinsky (2006-09)	7
.Jessica Bush (2005-08)	7
11.Jamie Fletcher (2011-14)	6
.Shannon McCabe (2006-09)	6

ASSISTS

No.	Player	Assists
1.Whitney Berry (2009-12)	32
2.Monica Dolinsky (2006-09)	30
3.Caroline Smith (2002-05)	24
4.Jessica Bush (2005-08)	21
5.Holly Gault (2003-06)	19
.Hilla Rantala (1999-2001)	19
7.Grace Hagan (2015-18)	17
.Amy Geha (2001-04)	17
.Melanie Schroeder (1998-2001)	17
10.Rachel Gilfillan (2001-04)	16

SHOTS

No.	Player	Shots
1.Caroline Smith (2002-05)	333
2.Whitney Berry (2009-12)	267
3.Monica Dolinsky (2006-09)	226
4.Jamie Fletcher (2011-14)	206
5.Liana Salazar (2011-15)	194
6.Grace Hagan (2015-Present)	179
7.Rachel Gilfillan (2001-04)	175
8.Katie McClure (2016-Present)	164
9.Caroline Kastor (2010-13)	159
10.Ashley Williams (2012-15)	154

SHOTS ON GOAL

No.	Player	SOG
1.Caroline Smith (2002-05)	166
2.Whitney Berry (2009-12)	113
3.Monica Dolinsky (2006-09)	96
4.Rachel Gilfillan (2001-04)	92
5.Liana Salazar (2011-15)	86
6.Grace Hagan (2015-18)	82
7.Katie McClure (2016-Present)	79
.Jamie Fletcher (2011-14)	79
9.Emily Cressy (2008-10)	78
10.Caroline Kastor (2010-13)	77

GAMES PLAYED (FIELD)

No.	Player	Games
1.Amy Geha (2001-04)	88
2.Rachel Gilfillan (2001-04)	87
.Lauren Williams (2001-04)	87
4.Estelle Johnson (2006-09)	85
.Holly Gault (2003-06)	85
.Monica Brothers (2001-04)	85
7.Lacey Novak (2003-06)	84
.Stacy Leeper (2001-04)	84
9.Grace Hagan (2015-18)	83
.Kayla Morrison (2014-17)	83
.Liana Salazar (2011-15)	83
.Kim Boyer (2006-09)	83
.Monica Dolinsky (2006-09)	83
.Jessica Bush (2005-08)	83
.Afton Sauer (2004-07)	83
.Jessica Smith (2002-05)	83

GAMES STARTED (FIELD)

No.	Player	Games
1.Kayla Morrison (2014-17)	83
.Estelle Johnson (2006-09)	83
.Afton Sauer (2004-07)	83
4.Liana Salazar (2011-15)	82
.Whitney Berry (2009-12)	82
.Shelby Williamson (2009-12)	82
.Jessica Bush (2005-08)	82
.Holly Gault (2003-06)	82
9.Grace Hagan (2015-18)	80
.Tayler Estrada (2013-16)	80
11.Caroline Smith (2002-05)	79
12.Jamie Fletcher (2011-14)	76

MINUTES PLAYED (FIELD)*

No.	Player	Minutes
1.Estelle Johnson (2006-09)	7,470
2.Afton Sauer (2004-07)	7,459
3.Kayla Morrison (2014-17)	7,368
4.Shelby Williamson (2009-12)	7,232
5.Liana Salazar (2011-15)	6,933
6.Whitney Berry (2009-12)	6,739
7.Tayler Estrada (2013-16)	6,578
8.Grace Hagan (2015-18)	6,454
9.Missy Geha (2005-08)	6,416
10.Jamie Fletcher (2011-14)	6,337

. . * Minutes played became an official stat in 2004

GAMES PLAYED (KEEPERS)

No.	Player	Games
1.Meghan Miller (2001-04)	88
2.Julie Hanley (2005-09)	65
3.Kaitlyn Stroud (2010-14)	63
4.Maddie Dobyns (2014-Present)	60
5.Kat Liebetrau (2009-12)	54

SAVES

No.	Player	Saves
1.Jen Fecke (1996-98)	375
2.Meghan Miller (2001-04)	362
3.Kaitlyn Stroud (2010-2014)	281
4.Kat Liebetrau (2009-12)	228
.Julie Hanley (2005-09)	228

GOALS AGAINST AVG. (MIN. 2,000 MIN.)

No.	Player	GAA
1.Meghan Miller (2001-04) (85 GA, 7,836 min.)	0.98
2.Maddie Dobyns (2014-17) (64 GA, 5,427 min.)	1.06
3.Kaitlyn Stroud (2010-14) (75 GA, 5,582 min.)	1.21
4.Julie Hanley (2005-09) (81 GA, 5,515 min.)	1.32
5.Colleen Quinn (2004-07) (44 GA, 2,923 min.)	1.35

SAVE PERCENTAGE (MIN. 100 SHOTS FACED)

No.	Player	Save Pct.
1.Betsy Pollard (1996-99) (29 GA, 127 saves)	.814
2.Meghan Miller (2001-04) (85 GA, 362 saves)	.810
3.Kaitlyn Stroud (2010-14) (75 GA, 281 saves)	.789
4.Colleen Quinn (2004-07) (44 GA, 157 saves)	.781
5.Jen Fecke (1996-98) (110 GA, 375 saves)	.773

SHUTOUTS

No.	Player	Shutouts
1.Meghan Miller (2001-04)	28
2.Julie Hanley (2005-09)	16
3.Maddie Dobyns (2014-17)	14
4.Kaitlyn Stroud (2010-14)	13
5.Kat Liebetrau (2009-12)	12

WINS

No.	Player	Wins
1.Meghan Miller (2001-04)	60
2.Julie Hanley (2005-09)	36
3.Kaitlyn Stroud (2010-14)	32
4.Maddie Dobyns (2014-17)	29
5.Kat Liebetrau (2009-12)	23

CAREER STATISTICS

Amos, Bri

Season	GP-GS	G	A	Pts	Shot	Shot%	SOG	SOG%	GW	PK-Att
2018	10-1	0	1	1	3	.000	0	.000	0	0-0
TOTAL	10-1	0	1	1	3	.000	0	.000	0	0-0

Barnett, Samantha

Season	GP-GS	G	A	Pts	Shot	Shot%	SOG	SOG%	GW	PK-Att
2018	20-0	0	0	0	4	.000	1	.250	0	0-0
TOTAL	20-0	0	0	0	4	.000	1	.250	0	0-0

Bradley, Italia

Season	GP-GS	G	A	Pts	Shot	Shot%	SOG	SOG%	GW	PK-Att
2018	13-0	0	0	0	0	.000	0	.000	0	0-0
TOTAL	13-0	0	0	0	0	.000	0	.000	0	0-0

Castro, Kathryn

Season	GP-GS	G	A	Pts	Shot	Shot%	SOG	SOG%	GW	PK-Att
2017	18-4	0	0	0	7	.000	3	.429	0	0-0
2018	21-5	0	0	0	9	.000	2	.222	0	0-0
TOTAL	39-9	0	0	0	16	.000	5	.312	0	0-0

Cavalcante, Isabella

Season	GP-GS	G	A	Pts	Shot	Shot%	SOG	SOG%	GW	PK-Att
2017	20-20	1	1	3	10	.100	4	.400	1	0-0
2018	15-11	0	1	1	4	.000	1	.250	0	0-0
TOTAL	35-31	1	2	4	14	.071	5	.357	1	0-0

Duggan, Mandi

Season	GP-GS	G	A	Pts	Shot	Shot%	SOG	SOG%	GW	PK-Att
2016	20-4	3	0	6	10	.300	3	.300	3	0-0
2018	6-0	0	0	0	1	.000	0	.000	0	0-0
TOTAL	26-4	3	0	6	11	.273	3	.273	3	0-0

Eliasdottir, Eva

Season	GP-GS	G	A	Pts	Shot	Shot%	SOG	SOG%	GW	PK-Att
2016	16-0	0	1	1	3	.000	2	.667	0	0-0
2017	20-20	1	1	3	5	.200	1	.200	0	0-0
2018	15-11	1	2	4	5	.200	1	.200	1	0-0
TOTAL	51-31	2	4	8	13	.154	4	.308	1	0-0

Hansen, Kaela

Season	GP-GS	G	A	Pts	Shot	Shot%	SOG	SOG%	GW	PK-Att
2018	21-21	0	0	0	6	.000	1	.167	0	0-0
TOTAL	21-21	0	0	0	6	.000	1	.167	0	0-0

Holland, Ceri

Season	GP-GS	G	A	Pts	Shot	Shot%	SOG	SOG%	GW	PK-Att
2017	20-20	1	1	3	34	.029	14	.412	0	0-0
2018	21-21	1	4	6	38	.026	11	.289	1	0-1
TOTAL	41-41	2	5	9	72	.028	25	.347	1	0-1

Lane, Kailey

Season	GP-GS	G	A	Pts	Shot	Shot%	SOG	SOG%	GW	PK-Att
2018	4-0	0	0	0	0	.000	0	.000	0	0-0
TOTAL	4-0	0	0	0	0	.000	0	.000	0	0-0

Maierhofer, Sophie

Season	GP-GS	G	A	Pts	Shot	Shot%	SOG	SOG%	GW	PK-Att
2016	12-9	1	0	2	3	.333	2	.667	0	0-0
2017	18-16	4	1	9	25	.160	12	.480	1	0-0
2018	6-1	0	0	0	2	.000	0	.000	0	0-0
TOTAL	36-26	5	1	11	30	.167	14	.467	1	0-0

McClure, Katie

Season	GP-GS	G	A	Pts	Shot	Shot%	SOG	SOG%	GW	PK-Att
2016	21-16	5	2	12	54	.093	28	.519	3	0-0
2017	20-20	6	2	14	52	.115	25	.481	1	0-0
2018	21-21	11	3	25	58	.190	26	.448	7	0-0
TOTAL	62-57	22	7	51	164	.134	79	.482	11	0-0

Meador, Madison

Season	GP-GS	G	A	Pts	Shot	Shot%	SOG	SOG%	GW	PK-Att
2016*	20-18	0	0	0	13	.000	4	.308	0	0-0
2017	18-3	0	2	2	3	.000	1	.333	0	0-0
2018	20-20	1	0	2	9	.111	2	.222	1	0-0
TOTAL	38-23	1	2	4	12	.083	3	.250	1	0-0
All*	58-41	1	2	4	25	.040	7	.280	1	0-0

* Statistics from prior team/school

Merrick, Addisyn

Season	GP-GS	G	A	Pts	Shot	Shot%	SOG	SOG%	GW	PK-Att
2016	21-14	1	0	2	11	.091	5	.455	0	0-0
2017	20-20	0	0	0	1	.000	1	1.000	0	0-0
2018	21-19	0	0	0	4	.000	2	.500	0	0-0
TOTAL	62-53	1	0	2	16	.062	8	.500	0	0-0

Peters, Sarah

Season	GP-GS	G	A	Pts	Shot	Shot%	SOG	SOG%	GW	PK-Att
2018	21-0	0	0	0	0	.000	0	.000	0	0-0
TOTAL	21-0	0	0	0	0	.000	0	.000	0	0-0

Season	GP-GS	Minutes	GA	GAAvg	Saves	Save%	W	L	T	Sho
2018	21-21	1989:12	23	1.04	57	.712	12	6	3	9
TOTAL	21-21	1989:12	23	1.04	57	.712	12	6	3	9

Reina, Elise

Season	GP-GS	G	A	Pts	Shot	Shot%	SOG	SOG%	GW	PK-Att
2016	3-0	0	0	0	1	.000	0	.000	0	0-0
2017	18-2	0	1	1	5	.000	0	.000	0	0-0
2018	21-20	2	6	10	20	.100	9	.450	1	0-0
TOTAL	42-22	2	7	11	26	.077	9	.346	1	0-0

Wiltgen, Grace

Season	GP-GS	G	A	Pts	Shot	Shot%	SOG	SOG%	GW	PK-Att
2018	15-2	0	0	0	3	.000	2	.667	0	0-0
TOTAL	15-2	0	0	0	3	.000	2	.667	0	0-0

TV/RADIO ROSTER



0 **GABBIE DAWE**
Fr. / GK / 5-10
Memphis, Tenn.



00 **SARAH PETERS**
So. / GK / 5-10
Lee's Summit, Mo.



1 **MELANIA PASAR**
Fr. / GK / 5-11
Potoroz, Slovenia



2 **ELLIE PRYBYLSKI**
Fr. / D / F / 5-5
Forsyth County, Ga.



3 **MYA SHERIDAN**
Fr. / F / 5-5
Schertz, Texas



4 **KAILEY LANE**
So. / F / 5-9
Omaha, Neb.



6 **KAELA HANSEN**
So. / D / 5-7
Burnaby, British Columbia



7 **AVERY HALL**
Jr. / M / 5-5
McKinney, Texas



8 **EBBA COSTOW**
Fr. / M / 5-5
Uppsala, Sweden



9 **MADISON MEADOR**
Sr. / D / 5-7
Ballwin, Mo.



10 **GRACELEY BRILEY**
Fr. / M / 5-9
Olathe, Kan.



11 **CHAIS WRIGHT**
RS-Fr. / D / 5-4
Kansas City, Mo.



12 **KATIE MCCLURE**
Fr. / F / 5-4
Wichita, Kan.



13 **KATHRYN CASTRO**
Jr. / M / 5-3
Plano, Texas



14 **SAMANTHA BARNETT**
So. / M / 5-8
Edmond, Okla.



15 **CERI HOLLAND**
Jr. / M / 5-6
West Yorkshire, England



16 **ITALIA BRADLEY**
So. / D / 5-7
Coppell, Texas



17 **LIA BEYER**
Fr. / D / 5-7
Parker, Colo.



18 **EMILIE GAVILLET**
RS-Fr. / GK / 5-9
Montreux, Switzerland



19 **EVA ELÍASDÓTTIR**
Sr. / F / 5-6
Thorlakhshofn, Iceland



20 **MARGHERITA GIUBILATO**
Fr. / F / M / 5-4
Martellago, Italy



21 **ISABELLA CAVALCANTE**
Jr. / D / 5-7
Glen Ellyn, Ill.



22 **MANDI DUGGAN**
Jr. / F / 5-2
Aurora, Colo.



23 **GRACE WILTGEN**
Fr. / D / 5-6
Denton, Texas



24 **ELISE REINA**
Fr. / D / 5-2
Fayetteville, Ark.



26 **ADDISYN MERRICK**
Sr. / D / 5-5
Lee's Summit, Mo.



27 **SOPHIE MAIERHOFER**
Sr. / M / 5-7



28 **BRI AMOS**
So. / M / 5-7
Tulsa, Okla.



MARK FRANCIS
Head Coach
21st Season