



Officials: Jesse Dickerson, Doug Knight, Jamie Broderick

Tennessee St. - 60

Record: 2-1

NO.	Name	F	Min	FG			3P			FT			Rebounds			Fouls		TP	AS	TO	ST	Blocks		+/-
				M-A	M-A	M-A	OR	DR	TOT	PF	FD	OR	DR	TOT	BS	BA								
0	Elise Harden	F	17:22	2-6	0-0	1-1	1	6	7	2	4	5	1	0	0	0	2	1	0	0	0	2	-11	
5	Dominique Claytor	F	24:54	3-5	0-0	1-2	1	4	5	5	1	7	2	3	3	0	0	2	3	3	0	0	-19	
3	Alexis Pierce	G	24:43	2-11	1-6	2-2	0	1	1	2	1	7	4	0	0	0	1	7	4	0	0	1	-11	
13	Gia Adams	G	23:03	5-16	2-7	0-0	0	3	3	4	0	12	3	3	3	0	2	12	3	3	0	2	-8	
15	Tatyana Davis	G	23:20	3-12	1-8	2-2	0	1	1	2	4	9	1	6	2	0	0	9	1	6	2	0	-23	
11	Kennedy Davis		19:23	0-3	0-0	0-0	0	1	1	0	0	0	0	0	3	1	0	0	3	1	0	0	-11	
14	Sierra McCullough		17:15	2-6	0-1	1-2	2	4	6	3	3	5	0	1	0	0	2	0	1	0	0	2	-9	
1	Lacy Robins		16:08	4-8	1-2	0-0	2	1	3	3	0	9	2	2	2	1	0	9	2	2	1	0	-1	
4	Kianni Westbrook		10:35	0-1	0-0	2-2	0	1	1	3	1	2	0	0	0	0	0	2	0	0	0	0	-8	
10	Saniah Parker		23:17	2-9	0-5	0-0	3	0	3	4	0	4	0	1	2	0	0	4	0	1	2	0	-14	
Team							5	1	6			0			0									
Totals				23-77	5-29	9-11	14	23	37	28	14	60	13	19	13	1	7						-23	

Technical Fouls:Robins 2nd0:26

Shooting By Period		
1 st FG%	4-19	21.1%
3PT%	3-11	27.3%
FT%	2-2	100%
2 nd FG%	9-23	39.1%
3PT%	2-9	22.2%
FT%	1-2	50%
3 rd FG%	2-14	14.3%
3PT%	0-6	0.0%
FT%	5-6	83.3%
4 th FG%	8-21	38.1%
3PT%	0-3	0.0%
FT%	1-1	100%
GM FG%	23-77	29.9%
3PT%	5-29	17.2%
FT%	9-11	81.8%

Dead Ball Rebounds: 1, 1

Kansas - 83

Record: 2-0

NO.	Name	F	Min	FG			3P			FT			Rebounds			Fouls		TP	AS	TO	ST	Blocks		+/-
				M-A	M-A	M-A	OR	DR	TOT	PF	FD	OR	DR	TOT	BS	BA								
10	Ioanna Chatzileonti	F	27:27	4-7	0-0	8-8	3	5	8	1	4	16	2	3	0	2	0	16	2	3	0	2	19	
1	Taiyanna Jackson	C	28:27	3-7	0-0	0-3	5	8	13	4	2	6	1	3	1	2	0	6	1	3	1	2	19	
5	Aniya Thomas	G	31:10	7-13	2-6	3-4	1	4	5	1	5	19	5	4	2	2	0	19	5	4	2	2	25	
13	Holly Kersgieter	G	16:12	3-6	1-3	1-2	0	1	1	2	1	8	2	3	3	0	0	8	2	3	3	0	12	
15	Zakiyah Franklin	G	31:56	5-6	0-1	3-3	0	6	6	0	5	13	6	3	1	0	0	13	6	3	1	0	30	
12	Katrine Jessen		19:02	4-7	0-0	2-5	2	3	5	3	5	10	0	1	3	0	0	10	0	1	3	0	11	
25	Chandler Prater		19:47	1-6	0-3	4-4	1	5	6	2	2	6	3	3	1	0	1	6	3	3	1	0	5	
20	Julie Brosseau		12:56	0-3	0-3	3-4	0	1	1	2	3	3	0	2	0	0	0	3	0	2	0	0	-1	
14	Danai Papadopoulou		04:42	1-1	0-0	0-0	0	0	0	0	0	2	0	0	0	1	0	2	0	0	0	1	-1	
11	Sanna Strom		08:21	0-3	0-1	0-0	0	2	2	0	0	0	0	0	0	0	0	0	0	0	0	0	-4	
Team							1	5	6			0			0									
Totals				28-59	3-17	24-33	13	40	53	15	27	83	19	22	11	7	1						23	

Technical Fouls:Kersgieter 2nd0:26

Shooting By Period		
1 st FG%	10-13	76.9%
3PT%	0-2	0.0%
FT%	6-11	54.5%
2 nd FG%	7-16	43.8%
3PT%	1-4	25.0%
FT%	7-8	87.5%
3 rd FG%	6-17	35.3%
3PT%	2-9	22.2%
FT%	8-8	100%
4 th FG%	5-13	38.5%
3PT%	0-2	0.0%
FT%	3-6	50%
GM FG%	28-59	47.5%
3PT%	3-17	17.6%
FT%	24-33	72.7%

Dead Ball Rebounds: 3, 1

	TSU	KU
Biggest lead	2 (1 st 7:51)	31 (3 rd 5:15)
Best Scoring Run	7 (4 th 1:50)	16 (1 st 1:25)
Lead Changes	2	
Times Tied	1	
Time with Lead	00:10	39:20

	TSU	KU
Points from		
Turnovers	16	22
Paint	18	44
Second Chance	16	16
Fast Breaks	4	25
Bench	20	21

	Period by Period Scoring				
	1st	2nd	3rd	4th	TOT
TSU	13	21	9	17	60
KU	26	22	22	13	83

Game Notes:KU #13 H. Kersgieter disqualified from the game with 26 seconds left in the second quarter. ♦

**Period 1****Quarter Starters:**

KU	1 Jackson T	5 Thomas A	10 Chatzileonti I	13 Kersgieter H	15 Franklin Z
TSU	0 Harden E	3 Pierce A	5 Claytor D	13 Adams G	15 Davis T

Game Time	KU	Score	Diff	TSU
10:00	1 JACKSON T jumpball won			0 HARDEN E jumpball lost
09:55	10 CHATZILEONTI I 2pt FG fast break in the paint, layup made (2)	2-0	2	
09:55	5 THOMAS A assist (1)			
09:39	1 JACKSON T steal (1)			5 CLAYTOR D turnover lost ball (1)
09:29	1 JACKSON T 2pt FG from turnover in the paint, layup missed			
09:25				0 HARDEN E defensive rebound (1)
09:18				15 DAVIS T 3pt FG , jump shot missed
09:14	15 FRANKLIN Z defensive rebound (1)			
09:06	10 CHATZILEONTI I 2pt FG in the paint, layup made (4)	4-0	4	
08:48		4-2	2	13 ADAMS G 2pt FG outside the paint, jump shot made (2)
08:34	15 FRANKLIN Z 2pt FG outside the paint, floating jump shot made (2)	6-2	4	
08:24		6-5	1	3 PIERCE A 3pt FG , jump shot made (3)
08:18				15 DAVIS T substitution out
08:18				11 DAVIS K substitution in
08:11	5 THOMAS A 3pt FG , jump shot missed			
08:07				5 CLAYTOR D defensive rebound (1)
07:51		6-8	-2	13 ADAMS G 3pt FG , jump shot made (5)
07:51				5 CLAYTOR D assist (1)
07:41	5 THOMAS A 2pt FG in the paint, layup made (2)	8-8	0	
07:22	15 FRANKLIN Z steal (1)			13 ADAMS G turnover bad pass (1)
07:16	15 FRANKLIN Z 2pt FG fast break from turnover in the paint, layup made (4)	10-8	2	
06:59				3 PIERCE A 3pt FG , jump shot missed
06:54	defensive rebound (2)			
06:54				3 PIERCE A substitution out
06:54				5 CLAYTOR D substitution out
06:54				14 MCCULLOUGH S substitution in
06:54				15 DAVIS T substitution in
06:39	13 KERSGIETER H 2pt FG in the paint, layup made (2)	12-8	4	
06:39	15 FRANKLIN Z assist (1)			
06:27				13 ADAMS G 2pt FG in the paint, layup blocked
06:27	5 THOMAS A block (1)			
06:22	5 THOMAS A defensive rebound (1)			
06:18	13 KERSGIETER H 3pt FG , jump shot missed			
06:15				14 MCCULLOUGH S defensive rebound (1)
05:55				0 HARDEN E 2pt FG in the paint, layup blocked
05:55	1 JACKSON T block (1)			
05:51	13 KERSGIETER H defensive rebound (1)			
05:49	5 THOMAS A 2pt FG fast break in the paint, layup made (4)	14-8	6	
05:49	13 KERSGIETER H assist (1)			
05:24				14 MCCULLOUGH S 3pt FG , jump shot missed
05:22	1 JACKSON T defensive rebound (1)			



Tennessee St. at Kansas

11/14/21 Allen Fieldhouse, Lawrence
2021-22 Women's Basketball

Game Time: 2:01 PM
Game Duration: 2:09
Attendance: 1,122

Officials: Jesse Dickerson, Doug Knight, Jamie Broderick

Game Time	KU	Score	Diff	TSU
05:15	13 KERSGIETER H turnover lost ball (1)			11 DAVIS K steal (1)
05:10				11 DAVIS K 2pt FG from turnover in the paint, layup missed
05:10				offensive rebound (4)
05:10	1 JACKSON T substitution out			
05:10	5 THOMAS A substitution out			
05:10	12 JESSEN K substitution in			
05:10	25 PRATER C substitution in			
05:10				0 HARDEN E substitution out
05:10				11 DAVIS K substitution out
05:10				13 ADAMS G substitution out
05:10				15 DAVIS T substitution out
05:10				1 ROBINS L substitution in
05:10				3 PIERCE A substitution in
05:10				4 WESTBROOK K substitution in
05:10				10 PARKER S substitution in
04:50				10 PARKER S 3pt FG from turnover second chance, jump shot missed
04:46	10 CHATZILEONTI I defensive rebound (1)			
04:41	25 PRATER C 2pt FG fast break in the paint, layup made (2)	16-8	8	
04:41	15 FRANKLIN Z assist (2)			
04:41				Timeout 30 Sec
04:41	Timeout media			
04:41	13 KERSGIETER H substitution out			
04:41	5 THOMAS A substitution in			
04:20				10 PARKER S 3pt FG , jump shot missed
04:17	12 JESSEN K defensive rebound (1)			
04:17	12 JESSEN K foul drawn (1)			4 WESTBROOK K foul personal (1 - 1)
04:00	10 CHATZILEONTI I foul drawn (1)			14 MCCULLOUGH S foul shooting (1 - 2)
04:00				1 ROBINS L substitution out
04:00				3 PIERCE A substitution out
04:00				14 MCCULLOUGH S substitution out
04:00				5 CLAYTOR D substitution in
04:00				13 ADAMS G substitution in
04:00				15 DAVIS T substitution in
04:00	10 CHATZILEONTI I free throw 1 - 2 made (5)	17-8	9	
04:00	10 CHATZILEONTI I free throw 2 - 2 made (6)	18-8	10	
03:32				15 DAVIS T 2pt FG outside the paint, jump shot missed
03:29	5 THOMAS A defensive rebound (2)			
03:27	5 THOMAS A turnover bad pass (1)			
03:16				15 DAVIS T 3pt FG from turnover, jump shot missed
03:11	15 FRANKLIN Z defensive rebound (2)			
03:09	5 THOMAS A 2pt FG fast break in the paint, layup made (6)	20-8	12	
03:09	15 FRANKLIN Z assist (3)			
03:09	5 THOMAS A foul drawn (1)			4 WESTBROOK K foul shooting (2 - 3)
03:09	10 CHATZILEONTI I substitution out			
03:09	15 FRANKLIN Z substitution out			
03:09	1 JACKSON T substitution in			
03:09	20 BROSSEAU J substitution in			
03:09				4 WESTBROOK K substitution out



Tennessee St. at Kansas

11/14/21 Allen Fieldhouse, Lawrence
2021-22 Women's Basketball

Game Time: 2:01 PM
Game Duration: 2:09
Attendance: 1,122

Officials: Jesse Dickerson, Doug Knight, Jamie Broderick

Game Time	KU	Score	Diff	TSU
03:09				0 HARDEN E substitution in
03:09	5 THOMAS A free throw fast break 1 - 1 missed			
03:07				0 HARDEN E defensive rebound (2)
02:59				13 ADAMS G 3pt FG , jump shot missed
02:54				0 HARDEN E offensive rebound (3)
02:52				13 ADAMS G 2pt FG second chance in the paint, layup missed
02:49	1 JACKSON T defensive rebound (2)			
02:45	20 BROSSEAU J foul drawn (1)			13 ADAMS G foul personal (1 - 4)
02:36	1 JACKSON T foul drawn (1)			0 HARDEN E foul shooting (1 - 5)
02:36	25 PRATER C substitution out			
02:36	13 KERSGIETER H substitution in			
02:36	1 JACKSON T free throw 1 - 2 missed			
02:36	offensive dead ball rebound (1)			
02:36	1 JACKSON T free throw 2 - 2 missed			
02:36				5 CLAYTOR D defensive rebound (2)
02:33	5 THOMAS A steal (1)			15 DAVIS T turnover bad pass (1)
02:28	5 THOMAS A foul drawn (2)			13 ADAMS G foul personal (2 - 6)
02:16				13 ADAMS G substitution out
02:16				15 DAVIS T substitution out
02:16				1 ROBINS L substitution in
02:16				3 PIERCE A substitution in
02:13	13 KERSGIETER H turnover lost ball (2)			5 CLAYTOR D steal (1)
02:10				5 CLAYTOR D 2pt FG from turnover outside the paint, jump shot missed
02:08	1 JACKSON T defensive rebound (3)			
02:05	12 JESSEN K foul drawn (2)			0 HARDEN E foul personal (2 - 7)
01:57				0 HARDEN E substitution out
01:57				14 MCCULLOUGH S substitution in
02:01	12 JESSEN K free throw 1 - 2 made (1)	21-8	13	
02:01	12 JESSEN K free throw 2 - 2 missed			
02:01				14 MCCULLOUGH S defensive rebound (2)
01:49				14 MCCULLOUGH S 2pt FG outside the paint, jump shot missed
01:46	20 BROSSEAU J defensive rebound (1)			
01:44	1 JACKSON T turnover travel (1)			
01:32	13 KERSGIETER H steal (1)			10 PARKER S turnover lost ball (1)
01:27				3 PIERCE A substitution out
01:27				11 DAVIS K substitution in
01:27	12 JESSEN K substitution out			
01:27	10 CHATZILEONTI I substitution in			
01:27				10 PARKER S substitution out
01:27				15 DAVIS T substitution in
01:25	13 KERSGIETER H foul drawn (1)			1 ROBINS L foul personal (1 - 8)
01:25	13 KERSGIETER H free throw 1 - 2 made (3)	22-8	14	
01:25	13 KERSGIETER H free throw 2 - 2 missed			
01:25				defensive dead ball rebound (1)
01:25	13 KERSGIETER H foul intentional (1 - 1)			15 DAVIS T foul drawn (1)
01:25		22-9	13	15 DAVIS T free throw 1 - 2 made (1)
01:25		22-10	12	15 DAVIS T free throw 2 - 2 made (2)
01:08	13 KERSGIETER H steal (2)			15 DAVIS T turnover lost ball (2)



Official Basketball Play by Play - 1st Period

Tennessee St. at Kansas

11/14/21 Allen Fieldhouse, Lawrence
2021-22 Women's Basketball

Game Time: 2:01 PM

Game Duration: 2:09

Attendance: 1,122

Officials: Jesse Dickerson, Doug Knight, Jamie Broderick

Game Time	KU	Score	Diff	TSU
01:03	20 BROSSEAU J foul drawn (2)			15 DAVIS T foul personal (1 - 9)
01:03				15 DAVIS T substitution out
01:03				3 PIERCE A substitution in
01:03	20 BROSSEAU J free throw 1 - 2 made (1)	23-10	13	
01:03	20 BROSSEAU J free throw 2 - 2 made (2)	24-10	14	
00:50		24-13	11	1 ROBINS L 3pt FG , jump shot made (3)
00:50				3 PIERCE A assist (1)
00:23	10 CHATZILEONTI I 2pt FG in the paint, jump shot made (8)	26-13	13	
00:23	5 THOMAS A assist (2)			
00:03				3 PIERCE A 3pt FG , jump shot missed
00:00	defensive dead ball rebound (2)			
END OF PERIOD				
KU 26-13 TSU				



Tennessee St. at Kansas

11/14/21 Allen Fieldhouse, Lawrence
2021-22 Women's Basketball

Game Time: 2:01 PM
Game Duration: 2:09
Attendance: 1,122

Officials: Jesse Dickerson, Doug Knight, Jamie Broderick

Tennessee St. - 13

NO.	Name	F	Min	FG			Rebounds			Fouls		TP	AS	TO	ST	Blocks		+/-	
				M-A	M-A	M-A	OR	DR	TOT	PF	FD					BS	BA		
0	Elise Harden	F	06:02	0-1	0-0	0-0	1	2	3	2	0	0	0	0	0	0	1	-6	
5	Dominique Claytor	F	07:06	0-1	0-0	0-0	0	2	2	0	0	0	1	1	1	0	0	-7	
3	Alexis Pierce	G	06:08	1-3	1-3	0-0	0	0	0	0	0	3	1	0	0	0	0	-6	
13	Gia Adams	G	06:34	2-5	1-2	0-0	0	0	0	2	0	5	0	1	0	0	1	-10	
15	Tatyana Davis	G	05:34	0-3	0-2	2-2	0	0	0	1	1	2	0	2	0	0	0	-8	
11	Kennedy Davis		04:35	0-1	0-0	0-0	0	0	0	0	0	0	0	0	1	0	0	-5	
14	Sierra McCullough		04:51	0-2	0-1	0-0	0	2	2	1	0	0	0	0	0	0	0	-7	
1	Lacy Robins		03:26	1-1	1-1	0-0	0	0	0	1	0	3	0	0	0	0	0	-3	
4	Kianni Westbrook		02:01	0-0	0-0	0-0	0	0	0	2	0	0	0	0	0	0	0	-6	
10	Saniah Parker		03:43	0-2	0-2	0-0	0	0	0	0	0	0	0	1	0	0	0	-7	
Team							1	0	1			0		0					
Totals				4-19	3-11	2-2	2	6	8	9	1	13	2	5	2	0	2		-13

Shooting By Period		
1st FG%	4-19	21.1%
3PT%	3-11	27.3%
FT%	2-2	100%
GM FG%	4-19	21.1%
3PT%	3-11	27.3%
FT%	2-2	100.0%

Dead Ball Rebounds: 0, 1

Technical Fouls::NONE

Kansas - 26

NO.	Name	F	Min	FG			Rebounds			Fouls		TP	AS	TO	ST	Blocks		+/-	
				M-A	M-A	M-A	OR	DR	TOT	PF	FD					BS	BA		
10	Ioanna Chatzileonti	F	08:18	3-3	0-0	2-2	0	1	1	0	1	8	0	0	0	0	0	12	
1	Taiyanna Jackson	C	07:59	0-1	0-0	0-2	0	3	3	0	1	0	0	1	1	1	0	7	
5	Aniya Thomas	G	09:31	3-4	0-1	0-1	0	2	2	0	2	6	2	1	1	1	0	11	
13	Holly Kersgieter	G	07:55	1-2	0-1	1-2	0	1	1	1	1	3	1	2	2	0	0	9	
15	Zakiyah Franklin	G	06:51	2-2	0-0	0-0	0	2	2	0	0	4	3	0	1	0	0	12	
12	Katrine Jessen		03:43	0-0	0-0	1-2	0	1	1	0	2	1	0	0	0	0	0	7	
25	Chandler Prater		02:34	1-1	0-0	0-0	0	0	0	0	0	2	0	0	0	0	0	6	
20	Julie Brosseau		03:09	0-0	0-0	2-2	0	1	1	0	2	2	0	0	0	0	0	1	
Team							0	1	1			0		0					
Totals				10-13	0-2	6-11	0	12	12	1	9	26	6	4	5	2	0		13

Shooting By Period		
1st FG%	10-13	76.9%
3PT%	0-2	0.0%
FT%	6-11	54.5%
GM FG%	10-13	76.9%
3PT%	0-2	0.0%
FT%	6-11	54.5%

Dead Ball Rebounds: 1, 1

Technical Fouls::NONE

	TSU	KU	Points from		Period by Period Scoring						
Biggest lead	2 (1 st 7:51)	14 (1 st 1:25)	TSU	KU	1st	2nd	3rd	4th	TOT		
Best Scoring Run	6(1 st 7:51)	16(1 st 1:25)	Turnovers	0	5						
Lead Changes	2		Paint	0	18	TSU	13	21	9	17	60
Times Tied	1		Second Chance	0	0	KU	26	22	22	13	83
Time with Lead	00:10	09:20	Fast Breaks	0	10						
			Bench	3	5						

Game Notes: KU #13 H. Kersgieter disqualified from the game with 26 seconds left in the second quarter. ♦



Tennessee St. at Kansas

11/14/21 Allen Fieldhouse, Lawrence
2021-22 Women's Basketball

Game Time: 2:01 PM

Game Duration: 2:09

Attendance: 1,122

Officials: Jesse Dickerson, Doug Knight, Jamie Broderick

Period 2

Quarter Starters:

KU	1 Jackson T	5 Thomas A	10 Chatzileonti I	15 Franklin Z	25 Prater C
TSU	3 Pierce A	5 Claytor D	10 Parker S	14 McCullough S	15 Davis T

Game Time	KU	Score	Diff	TSU
10:00	13 KERSGIETER H substitution out			
10:00	20 BROSSEAU J substitution out			
10:00	15 FRANKLIN Z substitution in			
10:00	25 PRATER C substitution in			
10:00				1 ROBINS L substitution out
10:00				11 DAVIS K substitution out
10:00				10 PARKER S substitution in
10:00				15 DAVIS T substitution in
09:46				15 DAVIS T 2pt FG in the paint, layup missed
09:42				14 MCCULLOUGH S offensive rebound (3)
09:42				14 MCCULLOUGH S 2pt FG second chance in the paint, layup blocked
09:42	1 JACKSON T block (2)			
09:40				5 CLAYTOR D offensive rebound (3)
09:33				15 DAVIS T 3pt FG second chance, jump shot missed
09:30	defensive rebound (13)			
09:16	15 FRANKLIN Z 3pt FG , jump shot missed			
09:13	25 PRATER C offensive rebound (1)			
09:13	25 PRATER C foul drawn (1)			10 PARKER S foul shooting (1 - 1)
09:13	5 THOMAS A substitution out			
09:13	13 KERSGIETER H substitution in			
09:13	25 PRATER C free throw 1 - 2 made (3)	27-13	14	
09:13	25 PRATER C free throw 2 - 2 made (4)	28-13	15	
08:55				14 MCCULLOUGH S turnover travel (1)
08:55				10 PARKER S substitution out
08:55				11 DAVIS K substitution in
08:54	10 CHATZILEONTI I turnover bad pass (1)			15 DAVIS T steal (1)
08:48		28-15	13	15 DAVIS T 2pt FG from turnover outside the paint, jump shot made (4)
08:48				5 CLAYTOR D assist (2)
08:36	1 JACKSON T 2pt FG fast break in the paint, layup made (2)	30-15	15	
08:36	15 FRANKLIN Z assist (4)			
08:36	1 JACKSON T foul drawn (2)			14 MCCULLOUGH S foul shooting (2 - 2)
08:36	1 JACKSON T free throw fast break 1 - 1 missed			
08:34				5 CLAYTOR D defensive rebound (4)
08:30				15 DAVIS T turnover travel (3)
08:30				14 MCCULLOUGH S substitution out
08:30				4 WESTBROOK K substitution in
08:27	15 FRANKLIN Z 2pt FG from turnover in the paint, layup made (6)	32-15	17	
08:27	13 KERSGIETER H assist (2)			
08:27	15 FRANKLIN Z foul drawn (1)			4 WESTBROOK K foul shooting (3 - 3)
08:27				4 WESTBROOK K substitution out
08:27				0 HARDEN E substitution in



Tennessee St. at Kansas

11/14/21 Allen Fieldhouse, Lawrence
2021-22 Women's Basketball

Officials: Jesse Dickerson, Doug Knight, Jamie Broderick

Game Time	KU	Score	Diff	TSU
08:27	15 FRANKLIN Z free throw 1 - 1 made (7)	33-15	18	
07:57				3 PIERCE A 3pt FG , jump shot missed
07:53	25 PRATER C defensive rebound (2)			
07:40	25 PRATER C 3pt FG , jump shot missed			
07:36				3 PIERCE A defensive rebound (1)
07:28				0 HARDEN E 2pt FG in the paint, layup blocked
07:28	10 CHATZILEONTI I block (1)			
07:25	10 CHATZILEONTI I defensive rebound (2)			
07:13	1 JACKSON T foul offensive (1 - 1)			0 HARDEN E foul drawn (1)
07:13	1 JACKSON T turnover offensive (2)			
07:13	1 JACKSON T substitution out			
07:13	12 JESSEN K substitution in			
07:13				5 CLAYTOR D substitution out
07:13				11 DAVIS K substitution out
07:13				15 DAVIS T substitution out
07:13				1 ROBINS L substitution in
07:13				10 PARKER S substitution in
07:13				13 ADAMS G substitution in
06:54		33-17	16	1 ROBINS L 2pt FG from turnover outside the paint, jump shot made (5)
06:54				3 PIERCE A assist (2)
06:54	12 JESSEN K foul personal (1 - 2)			0 HARDEN E foul drawn (2)
06:54				13 ADAMS G 3pt FG , jump shot missed
06:54				10 PARKER S offensive rebound (1)
06:54		33-20	13	13 ADAMS G 3pt FG second chance, jump shot made (8)
06:42	10 CHATZILEONTI I substitution out			
06:42	1 JACKSON T substitution in			
06:32				13 ADAMS G 3pt FG , jump shot missed
06:28				10 PARKER S offensive rebound (2)
06:22				3 PIERCE A 2pt FG second chance in the paint, layup missed
06:20	defensive rebound (17)			
06:20	13 KERSGIETER H substitution out			
06:20	5 THOMAS A substitution in			
06:20				0 HARDEN E substitution out
06:20				13 ADAMS G substitution out
06:20				5 CLAYTOR D substitution in
06:20				15 DAVIS T substitution in
06:11	5 THOMAS A turnover lost ball (2)			
06:01				3 PIERCE A 3pt FG from turnover, jump shot missed
05:58	15 FRANKLIN Z defensive rebound (3)			
05:47	25 PRATER C 2pt FG in the paint, layup missed			
05:46	5 THOMAS A offensive rebound (3)			
05:46	jump ball situation			
05:46	25 PRATER C substitution out			
05:46	13 KERSGIETER H substitution in			
05:46				3 PIERCE A substitution out
05:46				11 DAVIS K substitution in
05:46	13 KERSGIETER H 3pt FG second chance, jump shot made (6)	36-20	16	
05:46	15 FRANKLIN Z assist (5)			



Tennessee St. at Kansas

11/14/21 Allen Fieldhouse, Lawrence
2021-22 Women's Basketball

Game Time: 2:01 PM
Game Duration: 2:09
Attendance: 1,122

Officials: Jesse Dickerson, Doug Knight, Jamie Broderick

Game Time	KU	Score	Diff	TSU
05:13				1 ROBINS L 2pt FG in the paint, layup missed
05:10				1 ROBINS L offensive rebound (1)
05:10		36-22	14	1 ROBINS L 2pt FG second chance in the paint, layup made (7)
04:57	5 THOMAS A foul drawn (3)			5 CLAYTOR D foul personal (1 - 4)
04:57	Timeout media			
04:57				1 ROBINS L substitution out
04:57				5 CLAYTOR D substitution out
04:57				0 HARDEN E substitution in
04:57				14 MCCULLOUGH S substitution in
04:55	13 KERSGIETER H 3pt FG , jump shot missed			
04:51				14 MCCULLOUGH S defensive rebound (4)
04:46	12 JESSEN K steal (1)			15 DAVIS T turnover bad pass (4)
04:43	12 JESSEN K 2pt FG fast break from turnover in the paint, layup made (3)	38-22	16	
04:36	12 JESSEN K steal (2)			15 DAVIS T turnover lost ball (5)
04:29	12 JESSEN K 2pt FG from turnover in the paint, jump shot missed			
04:25	1 JACKSON T offensive rebound (4)			
04:24	13 KERSGIETER H 2pt FG from turnover second chance in the paint, layup made (8)	40-22	18	
04:24	1 JACKSON T assist (1)			
04:18				Timeout 30 Sec
04:18				15 DAVIS T substitution out
04:18				1 ROBINS L substitution in
04:04				11 DAVIS K 2pt FG outside the paint, jump shot missed
04:01	1 JACKSON T defensive rebound (5)			
03:53	12 JESSEN K 2pt FG in the paint, layup missed			
03:50				0 HARDEN E defensive rebound (4)
03:38	12 JESSEN K foul personal (2 - 3)			14 MCCULLOUGH S foul drawn (1)
03:38	12 JESSEN K substitution out			
03:38	10 CHATZILEONTI I substitution in			
03:38				14 MCCULLOUGH S substitution out
03:38				5 CLAYTOR D substitution in
03:36		40-24	16	5 CLAYTOR D 2pt FG outside the paint, jump shot made (2)
03:36				1 ROBINS L assist (1)
03:25	jump ball situation			
03:25	5 THOMAS A turnover lost ball (3)			5 CLAYTOR D steal (2)
03:25				0 HARDEN E substitution out
03:25				3 PIERCE A substitution in
03:16				11 DAVIS K turnover travel (1)
03:05	13 KERSGIETER H 2pt FG from turnover outside the paint, pull up jump shot missed			
03:03	10 CHATZILEONTI I offensive rebound (3)			
03:03	10 CHATZILEONTI I foul drawn (2)			3 PIERCE A foul personal (1 - 5)
03:03				11 DAVIS K substitution out
03:03				15 DAVIS T substitution in
03:03	5 THOMAS A substitution out			
03:03	25 PRATER C substitution in			
03:03	10 CHATZILEONTI I free throw 1 - 2 made (9)	41-24	17	
03:03	10 CHATZILEONTI I free throw 2 - 2 made (10)	42-24	18	



Tennessee St. at Kansas

11/14/21 Allen Fieldhouse, Lawrence
2021-22 Women's Basketball

Game Time: 2:01 PM
Game Duration: 2:09
Attendance: 1,122

Officials: Jesse Dickerson, Doug Knight, Jamie Broderick

Game Time	KU	Score	Diff	TSU
02:55				3 PIERCE A 3pt FG , jump shot missed
02:51				10 PARKER S offensive rebound (3)
02:37	1 JACKSON T foul shooting (2 - 4)			5 CLAYTOR D foul drawn (1)
02:37				5 CLAYTOR D free throw 1 - 2 missed
02:37				offensive dead ball rebound (2)
02:37		42-25	17	5 CLAYTOR D free throw 2 - 2 made (3)
02:37	1 JACKSON T substitution out			
02:37	14 PAPADOPOULOU D substitution in			
02:37				1 ROBINS L substitution out
02:37				11 DAVIS K substitution in
02:36	25 PRATER C foul offensive (1 - 5)			15 DAVIS T foul drawn (2)
02:36	25 PRATER C turnover offensive (1)			
02:36				11 DAVIS K substitution out
02:36				1 ROBINS L substitution in
02:23				15 DAVIS T 3pt FG from turnover, jump shot missed
02:19				1 ROBINS L offensive rebound (2)
02:17		42-27	15	10 PARKER S 2pt FG from turnover second chance outside the paint, jump shot made (2)
02:17				1 ROBINS L assist (2)
01:59	10 CHATZILEONTI I 2pt FG fast break in the paint, layup made (12)	44-27	17	
01:59	25 PRATER C assist (1)			
01:54				1 ROBINS L turnover dribbling violation (1)
01:54				5 CLAYTOR D substitution out
01:54				10 PARKER S substitution out
01:54				11 DAVIS K substitution in
01:54				14 MCCULLOUGH S substitution in
01:42	10 CHATZILEONTI I 2pt FG from turnover in the paint, jump shot missed			
01:39				14 MCCULLOUGH S defensive rebound (5)
01:27		44-30	14	15 DAVIS T 3pt FG , jump shot made (7)
01:12	25 PRATER C 2pt FG outside the paint, pull up jump shot missed			
01:07				11 DAVIS K defensive rebound (1)
00:52				3 PIERCE A 2pt FG in the paint, layup blocked
00:52	14 PAPADOPOULOU D block (1)			
00:52				offensive rebound (22)
00:52				15 DAVIS T substitution out
00:52				5 CLAYTOR D substitution in
00:49		44-32	12	1 ROBINS L 2pt FG second chance outside the paint, jump shot made (9)
00:49				3 PIERCE A assist (3)
00:35	14 PAPADOPOULOU D 2pt FG fast break in the paint, layup made (2)	46-32	14	
00:35	25 PRATER C assist (2)			
00:26	jump ball situation			
00:26	13 KERSGIETER H steal (3)			1 ROBINS L turnover lost ball (2)
00:26				1 ROBINS L foul player technical (2 - 6)
00:26	13 KERSGIETER H foul player technical (2 - 6)			
00:26	13 KERSGIETER H turnover offensive (3)			
00:21	25 PRATER C foul drawn (2)			5 CLAYTOR D foul shooting (2 - 7)



Official Basketball Play by Play - 2nd Period

Tennessee St. at Kansas

11/14/21 Allen Fieldhouse, Lawrence
2021-22 Women's Basketball

Game Time: 2:01 PM

Game Duration: 2:09

Attendance: 1,122

Officials: Jesse Dickerson, Doug Knight, Jamie Broderick

Game Time	KU	Score	Diff	TSU
00:21	25 PRATER C free throw 1 - 2 made (5)	47-32	15	
00:21	25 PRATER C free throw 2 - 2 made (6)	48-32	16	
00:21	13 KERSGIETER H substitution out			
00:21	14 PAPADOPOULOU D substitution out			
00:21	5 THOMAS A substitution in			
00:21	11 STROM S substitution in			
00:21				1 ROBINS L substitution out
00:21				14 MCCULLOUGH S substitution out
00:21				10 PARKER S substitution in
00:21				15 DAVIS T substitution in
00:02		48-34	14	5 CLAYTOR D 2pt FG outside the paint, step back jump shot made (5)
END OF PERIOD				
KU 48-34 TSU				



Tennessee St. at Kansas

11/14/21 Allen Fieldhouse, Lawrence
2021-22 Women's Basketball

Game Time: 2:01 PM
Game Duration: 2:09
Attendance: 1,122

Officials: Jesse Dickerson, Doug Knight, Jamie Broderick

Tennessee St. - 21

NO.	Name	F	Min	FG			Rebounds			Fouls		TP	AS	TO	ST	Blocks		+/-
				M-A	M-A	M-A	OR	DR	TOT	PF	FD					BS	BA	
0	Elise Harden	F	03:39	0-1	0-0	0-0	0	1	1	0	2	0	0	0	0	0	1	2
5	Dominique Claytor	F	06:47	2-2	0-0	1-2	1	1	2	2	1	5	1	0	1	0	0	-5
3	Alexis Pierce	G	07:39	0-5	0-3	0-0	0	1	1	1	0	0	2	0	0	0	1	2
13	Gia Adams	G	00:53	1-3	1-3	0-0	0	0	0	0	0	3	0	0	0	0	0	5
15	Tatyana Davis	G	07:21	2-5	1-3	0-0	0	0	0	0	1	5	0	3	1	0	0	-6
10	Saniah Parker		06:46	1-1	0-0	0-0	3	0	3	1	0	2	0	0	0	0	0	1
11	Kennedy Davis		06:20	0-1	0-0	0-0	0	1	1	0	0	0	0	1	0	0	0	-3
4	Kianni Westbrook		00:03	0-0	0-0	0-0	0	0	0	1	0	0	0	0	0	0	0	-2
1	Lacy Robins		06:11	3-4	0-0	0-0	2	0	2	1	0	6	2	2	0	0	0	6
14	Sierra McCullough		04:21	0-1	0-0	0-0	1	2	3	1	1	0	0	1	0	0	1	-5
Team							1	0	1			0		0				
Totals				9-23	2-9	1-2	8	6	14	7	5	21	5	7	2	0	3	-1

Shooting By Period		
2 nd FG%	9-23	39.1%
3PT%	2-9	22.2%
FT%	1-2	50%
GM FG%	9-23	39.1%
3PT%	2-9	22.2%
FT%	1-2	50.0%

Dead Ball Rebounds: 1, 0

Technical Fouls: Robins 2nd 0:26

Kansas - 22

NO.	Name	F	Min	FG			Rebounds			Fouls		TP	AS	TO	ST	Blocks		+/-
				M-A	M-A	M-A	OR	DR	TOT	PF	FD					BS	BA	
10	Ioanna Chatzileonti	F	06:56	1-2	0-0	2-2	1	1	2	0	1	4	0	1	0	1	0	-4
1	Taiyanna Jackson	C	06:52	1-1	0-0	0-1	1	1	2	2	1	2	1	1	0	1	0	9
5	Aniya Thomas	G	04:26	0-0	0-0	0-0	1	0	1	0	1	0	0	2	0	0	0	1
13	Holly Kersgieter	G	08:17	2-4	1-2	0-0	0	0	0	1	0	5	1	1	1	0	0	3
15	Zakayah Franklin	G	10:00	1-2	0-1	1-1	0	1	1	0	1	3	2	0	0	0	0	1
20	Julie Brosseau		00:00	0-0	0-0	0-0	0	0	0	0	0	0	0	0	0	0	0	0
25	Chandler Prater		07:17	0-3	0-1	4-4	1	1	2	1	2	4	2	1	0	0	0	-2
12	Katrine Jessen		03:35	1-3	0-0	0-0	0	0	0	2	0	2	0	0	2	0	0	0
14	Danai Papadopoulou		02:15	1-1	0-0	0-0	0	0	0	0	0	2	0	0	0	1	0	-1
11	Sanna Strom		00:22	0-0	0-0	0-0	0	0	0	0	0	0	0	0	0	0	0	-2
Team							0	2	2			0		0				
Totals				7-16	1-4	7-8	4	6	10	6	6	22	6	6	3	3	0	1

Shooting By Period		
2 nd FG%	7-16	43.8%
3PT%	1-4	25.0%
FT%	7-8	87.5%
GM FG%	7-16	43.8%
3PT%	1-4	25.0%
FT%	7-8	87.5%

Dead Ball Rebounds: 0, 0

Technical Fouls: Kersgieter 2nd 0:26

	TSU	KU
Biggest lead	0 (1 st 10:00)	18 (2 nd 8:27)
Best Scoring Run	5 (2 nd 6:54)	5 (2 nd 8:27)
Lead Changes	0	
Times Tied	0	
Time with Lead	00:00	09:46

	TSU	KU
Points from		
Turnovers	6	9
Paint	2	12
Second Chance	10	9
Fast Breaks	0	8
Bench	8	8

Period by Period Scoring					
	1st	2nd	3rd	4th	TOT
TSU	13	21	9	17	60
KU	26	22	22	13	83

Game Notes: KU #13 H. Kersgieter disqualified from the game with 26 seconds left in the second quarter. ♦



Tennessee St. at Kansas

11/14/21 Allen Fieldhouse, Lawrence
2021-22 Women's Basketball

Game Time: 2:01 PM
Game Duration: 2:09
Attendance: 1,122

Officials: Jesse Dickerson, Doug Knight, Jamie Broderick

Tennessee St. - 34

NO.	Name	Min	FG			Rebounds			Fouls		TP	AS	TO	ST	Blocks		+/-
			M-A	3P	FT	OR	DR	TOT	PF	FD					BS	BA	
0	Elise Harden	F 09:41	0-2	0-0	0-0	1	3	4	2	2	0	0	0	0	0	2	-4
5	Dominique Claytor	F 13:53	2-3	0-0	1-2	1	3	4	2	1	5	2	1	2	0	0	-12
3	Alexis Pierce	G 13:47	1-8	1-6	0-0	0	1	1	1	0	3	3	0	0	0	1	-4
13	Gia Adams	G 07:27	3-8	2-5	0-0	0	0	0	2	0	8	0	1	0	0	1	-5
15	Tatyana Davis	G 12:55	2-8	1-5	2-2	0	0	0	1	2	7	0	5	1	0	0	-14
11	Kennedy Davis	10:55	0-2	0-0	0-0	0	1	1	0	0	0	0	1	1	0	0	-8
14	Sierra McCullough	09:12	0-3	0-1	0-0	1	4	5	2	1	0	0	1	0	0	1	-12
1	Lacy Robins	09:37	4-5	1-1	0-0	2	0	2	2	0	9	2	2	0	0	0	3
4	Kianni Westbrook	02:04	0-0	0-0	0-0	0	0	0	3	0	0	0	0	0	0	0	-8
10	Saniah Parker	10:29	1-3	0-2	0-0	3	0	3	1	0	2	0	1	0	0	0	-6
Team						2	0	2			0		0				
Totals			13-42	5-20	3-4	10	12	22	16	6	34	7	12	4	0	5	-14

Shooting By Period		
1 st FG%	4-19	21.1%
3PT%	3-11	27.3%
FT%	2-2	100%
2 nd FG%	9-23	39.1%
3PT%	2-9	22.2%
FT%	1-2	50%
GM FG%	13-42	31.0%
3PT%	5-20	25.0%
FT%	3-4	75.0%

Dead Ball Rebounds: 1, 1

Technical Fouls: Robins 2nd 0:26

Kansas - 48

NO.	Name	Min	FG			Rebounds			Fouls		TP	AS	TO	ST	Blocks		+/-
			M-A	3P	FT	OR	DR	TOT	PF	FD					BS	BA	
10	Ioanna Chatzileonti	F 15:14	4-5	0-0	4-4	1	2	3	0	2	12	0	1	0	1	0	8
1	Taiyanna Jackson	C 14:51	1-2	0-0	0-3	1	4	5	2	2	2	1	2	1	2	0	16
5	Aniya Thomas	G 13:57	3-4	0-1	0-1	1	2	3	0	3	6	2	3	1	1	0	12
13	Holly Kersgieter	G 16:12	3-6	1-3	1-2	0	1	1	2	1	8	2	3	3	0	0	12
15	Zakiah Franklin	G 16:51	3-4	0-1	1-1	0	3	3	0	1	7	5	0	1	0	0	13
12	Katrine Jessen	07:18	1-3	0-0	1-2	0	1	1	2	2	3	0	0	2	0	0	7
25	Chandler Prater	09:51	1-4	0-1	4-4	1	1	2	1	2	6	2	1	0	0	0	4
20	Julie Brosseau	03:09	0-0	0-0	2-2	0	1	1	0	2	2	0	0	0	0	0	1
14	Danai Papadopoulou	02:15	1-1	0-0	0-0	0	0	0	0	0	2	0	0	0	1	0	-1
11	Sanna Strom	00:22	0-0	0-0	0-0	0	0	0	0	0	0	0	0	0	0	0	-2
Team						0	3	3			0		0				
Totals			17-29	1-6	13-19	4	18	22	7	15	48	12	10	8	5	0	14

Shooting By Period		
1 st FG%	10-13	76.9%
3PT%	0-2	0.0%
FT%	6-11	54.5%
2 nd FG%	7-16	43.8%
3PT%	1-4	25.0%
FT%	7-8	87.5%
GM FG%	17-29	58.6%
3PT%	1-6	16.7%
FT%	13-19	68.4%

Dead Ball Rebounds: 1, 1

Technical Fouls: Kersgieter 2nd 0:26

	TSU	KU
Biggest lead	2 (1 st 7:51)	18 (2 nd 8:27)
Best Scoring Run	6 (1 st 7:51)	16 (1 st 1:25)
Lead Changes	2	
Times Tied	1	
Time with Lead	00:10	19:20

	TSU	KU
Points from		
Turnovers	6	14
Paint	2	30
Second Chance	10	9
Fast Breaks	0	18
Bench	11	13

Period by Period Scoring					
	1st	2nd	3rd	4th	TOT
TSU	13	21	9	17	60
KU	26	22	22	13	83

Game Notes: KU #13 H. Kersgieter disqualified from the game with 26 seconds left in the second quarter. ♦



Period 3

Quarter Starters:

KU	1 Jackson T	5 Thomas A	10 Chatzileonti I	15 Franklin Z	25 Prater C
TSU	0 Harden E	3 Pierce A	5 Claytor D	13 Adams G	15 Davis T

Game Time	KU	Score	Diff	TSU
10:00	11 STROM S substitution out			
10:00	1 JACKSON T substitution in			
10:00				10 PARKER S substitution out
10:00				11 DAVIS K substitution out
10:00				0 HARDEN E substitution in
10:00				13 ADAMS G substitution in
09:42				15 DAVIS T turnover out of bounds (6)
09:23	1 JACKSON T 2pt FG from turnover in the paint, layup made (4)	50-34	16	
09:23	5 THOMAS A assist (3)			
08:54				5 CLAYTOR D turnover travel (2)
08:39	10 CHATZILEONTI I 2pt FG from turnover in the paint, jump shot missed			
08:35				0 HARDEN E defensive rebound (5)
08:24				3 PIERCE A 2pt FG in the paint, jump shot missed
08:20	15 FRANKLIN Z defensive rebound (4)			
08:15	5 THOMAS A 3pt FG , jump shot made (9)	53-34	19	
08:15	15 FRANKLIN Z assist (6)			
07:57	5 THOMAS A steal (2)			13 ADAMS G turnover bad pass (2)
07:51	15 FRANKLIN Z foul drawn (2)			3 PIERCE A foul shooting (2 - 1)
07:51				0 HARDEN E substitution out
07:51				3 PIERCE A substitution out
07:51				15 DAVIS T substitution out
07:51				10 PARKER S substitution in
07:51				11 DAVIS K substitution in
07:51				14 MCCULLOUGH S substitution in
07:51	15 FRANKLIN Z free throw fast break 1 - 2 made (8)	54-34	20	
07:50	15 FRANKLIN Z free throw fast break 2 - 2 made (9)	55-34	21	
07:37				10 PARKER S 3pt FG , jump shot missed
07:33	1 JACKSON T defensive rebound (6)			
07:28	15 FRANKLIN Z foul drawn (3)			13 ADAMS G foul personal (3 - 2)
07:28				13 ADAMS G substitution out
07:28				1 ROBINS L substitution in
07:28				Timeout 30 Sec
07:28				Timeout media
07:23	5 THOMAS A 3pt FG , jump shot missed			
07:17	1 JACKSON T offensive rebound (7)			
07:11	5 THOMAS A 3pt FG second chance, jump shot made (12)	58-34	24	
07:11	25 PRATER C assist (3)			
06:56	5 THOMAS A foul shooting (1 - 1)			14 MCCULLOUGH S foul drawn (2)
06:56		58-35	23	14 MCCULLOUGH S free throw 1 - 2 made (1)
06:56				14 MCCULLOUGH S free throw 2 - 2 missed
06:54	10 CHATZILEONTI I defensive rebound (4)			
06:48	15 FRANKLIN Z foul drawn (4)			5 CLAYTOR D foul personal (3 - 3)



Tennessee St. at Kansas

11/14/21 Allen Fieldhouse, Lawrence
2021-22 Women's Basketball

Game Time: 2:01 PM
Game Duration: 2:09
Attendance: 1,122

Officials: Jesse Dickerson, Doug Knight, Jamie Broderick

Game Time	KU	Score	Diff	TSU
06:48				5 CLAYTOR D substitution out
06:48				0 HARDEN E substitution in
06:35	5 THOMAS A 2pt FG outside the paint, jump shot missed			
06:32	10 CHATZILEONTI I offensive rebound (5)			
06:31	10 CHATZILEONTI I foul drawn (3)			14 MCCULLOUGH S foul shooting (3 - 4)
06:31	25 PRATER C substitution out			
06:31	20 BROSSEAU J substitution in			
06:31				0 HARDEN E substitution out
06:31				1 ROBINS L substitution out
06:31				11 DAVIS K substitution out
06:31				3 PIERCE A substitution in
06:31				4 WESTBROOK K substitution in
06:31				15 DAVIS T substitution in
06:31	10 CHATZILEONTI I free throw 1 - 2 made (13)	59-35	24	
06:31	10 CHATZILEONTI I free throw 2 - 2 made (14)	60-35	25	
06:31				14 MCCULLOUGH S substitution out
06:31				11 DAVIS K substitution in
06:19				3 PIERCE A 2pt FG outside the paint, jump shot missed
06:18				offensive rebound (24)
06:18	1 JACKSON T substitution out			
06:18	12 JESSEN K substitution in			
06:18				11 DAVIS K substitution out
06:18				1 ROBINS L substitution in
06:14	10 CHATZILEONTI I foul shooting (1 - 2)			3 PIERCE A foul drawn (1)
06:14		60-36	24	3 PIERCE A free throw 1 - 2 made (4)
06:14		60-37	23	3 PIERCE A free throw 2 - 2 made (5)
05:55	12 JESSEN K 2pt FG in the paint, layup made (5)	62-37	25	
05:55	10 CHATZILEONTI I assist (1)			
05:55	12 JESSEN K foul drawn (3)			10 PARKER S foul shooting (2 - 5)
05:55	12 JESSEN K free throw 1 - 1 made (6)	63-37	26	
05:44				1 ROBINS L 3pt FG , jump shot missed
05:41	10 CHATZILEONTI I defensive rebound (6)			
05:39	5 THOMAS A 2pt FG fast break in the paint, layup made (14)	65-37	28	
05:39	10 CHATZILEONTI I assist (2)			
05:39	5 THOMAS A foul drawn (4)			15 DAVIS T foul shooting (2 - 6)
05:39	5 THOMAS A free throw fast break 1 - 1 made (15)	66-37	29	
05:24				1 ROBINS L 2pt FG outside the paint, step back jump shot missed
05:20	5 THOMAS A defensive rebound (4)			
05:15	10 CHATZILEONTI I foul drawn (4)			1 ROBINS L foul shooting (3 - 7)
05:15	5 THOMAS A substitution out			
05:15	11 STROM S substitution in			
05:15				1 ROBINS L substitution out
05:15				13 ADAMS G substitution in
05:15	10 CHATZILEONTI I free throw 1 - 2 made (15)	67-37	30	
05:15	10 CHATZILEONTI I free throw 2 - 2 made (16)	68-37	31	
05:15				3 PIERCE A substitution out
05:15				5 CLAYTOR D substitution in
05:04		68-39	29	13 ADAMS G 2pt FG outside the paint, jump shot made (10)



Tennessee St. at Kansas

11/14/21 Allen Fieldhouse, Lawrence
2021-22 Women's Basketball

Game Time: 2:01 PM
Game Duration: 2:09
Attendance: 1,122

Officials: Jesse Dickerson, Doug Knight, Jamie Broderick

Game Time	KU	Score	Diff	TSU
04:47	20 BROSSEAU J 3pt FG , jump shot missed			
04:43	12 JESSEN K offensive rebound (2)			
04:41	12 JESSEN K turnover bad pass (1)			15 DAVIS T steal (2)
04:40	20 BROSSEAU J foul personal (1 - 3)			15 DAVIS T foul drawn (3)
04:40	Timeout media			
04:39	10 CHATZILEONTI I substitution out			
04:39	1 JACKSON T substitution in			
04:25				5 CLAYTOR D turnover bad pass (3)
04:08	11 STROM S 2pt FG from turnover outside the paint, jump shot missed			
04:05				15 DAVIS T defensive rebound (1)
03:54				15 DAVIS T 3pt FG , jump shot missed
03:50	1 JACKSON T defensive rebound (8)			
03:48	11 STROM S 2pt FG in the paint, layup missed			
03:44				5 CLAYTOR D defensive rebound (5)
03:36				15 DAVIS T 3pt FG , jump shot missed
03:33	1 JACKSON T defensive rebound (9)			
03:21	11 STROM S substitution out			
03:21	15 FRANKLIN Z substitution out			
03:21	5 THOMAS A substitution in			
03:21	25 PRATER C substitution in			
03:21				5 CLAYTOR D substitution out
03:21				15 DAVIS T substitution out
03:21				1 ROBINS L substitution in
03:21				14 MCCULLOUGH S substitution in
03:09	5 THOMAS A 3pt FG , jump shot missed			
03:04	offensive rebound (33)			
02:57	25 PRATER C 3pt FG second chance, jump shot blocked			
02:57				1 ROBINS L block (1)
02:52				4 WESTBROOK K defensive rebound (1)
02:27	12 JESSEN K foul shooting (3 - 4)			4 WESTBROOK K foul drawn (1)
02:27	12 JESSEN K substitution out			
02:27	10 CHATZILEONTI I substitution in			
02:27				10 PARKER S substitution out
02:27				11 DAVIS K substitution in
02:27		68-40	28	4 WESTBROOK K free throw 1 - 2 made (1)
02:27		68-41	27	4 WESTBROOK K free throw 2 - 2 made (2)
02:27	1 JACKSON T substitution out			
02:27	14 PAPADOPOULOU D substitution in			
02:16	20 BROSSEAU J 3pt FG , jump shot missed			
02:13				1 ROBINS L defensive rebound (3)
02:08				13 ADAMS G 3pt FG , jump shot missed
02:05	25 PRATER C defensive rebound (3)			
01:58	20 BROSSEAU J turnover lost ball (1)			1 ROBINS L steal (1)
01:54				13 ADAMS G 2pt FG from turnover in the paint, layup blocked
01:54	5 THOMAS A block (2)			
01:54				offensive rebound (29)
01:37				11 DAVIS K turnover out of bounds (2)
01:37				1 ROBINS L substitution out



Official Basketball Play by Play - 3rd Period

Tennessee St. at Kansas

11/14/21 Allen Fieldhouse, Lawrence
2021-22 Women's Basketball

Game Time: 2:01 PM

Game Duration: 2:09

Attendance: 1,122

Officials: Jesse Dickerson, Doug Knight, Jamie Broderick

Game Time	KU	Score	Diff	TSU
01:37				3 PIERCE A substitution in
01:27	5 THOMAS A 2pt FG from turnover in the paint, layup made (17)	70-41	29	
01:07				4 WESTBROOK K 2pt FG outside the paint, jump shot missed
01:03	25 PRATER C defensive rebound (4)			
00:48	20 BROSSEAU J 3pt FG , jump shot missed			
00:44				13 ADAMS G defensive rebound (1)
00:39				13 ADAMS G 2pt FG in the paint, layup missed
00:35				14 MCCULLOUGH S offensive rebound (6)
00:35		70-43	27	14 MCCULLOUGH S 2pt FG second chance in the paint, layup made (3)
00:23	25 PRATER C 3pt FG , jump shot missed			
00:20				defensive rebound (32)
00:20				4 WESTBROOK K substitution out
00:20				11 DAVIS K substitution out
00:20				14 MCCULLOUGH S substitution out
00:20				5 CLAYTOR D substitution in
00:20				10 PARKER S substitution in
00:20				15 DAVIS T substitution in
00:07	jump ball situation			
00:07	25 PRATER C steal (1)			13 ADAMS G turnover lost ball (3)
00:07	20 BROSSEAU J substitution out			
00:07	15 FRANKLIN Z substitution in			
00:05	5 THOMAS A turnover bad pass (4)			10 PARKER S steal (1)
00:00				10 PARKER S 3pt FG from turnover, jump shot missed
00:00	25 PRATER C defensive rebound (5)			
END OF PERIOD				
KU 70-43 TSU				



Tennessee St. at Kansas

11/14/21 Allen Fieldhouse, Lawrence
2021-22 Women's Basketball

Game Time: 2:01 PM
Game Duration: 2:09
Attendance: 1,122

Officials: Jesse Dickerson, Doug Knight, Jamie Broderick

Tennessee St. - 9

NO.	Name	F	Min	FG		3P		FT		Rebounds			Fouls		TP	AS	TO	ST	Blocks		+/-	
				M-A	M-A	M-A	M-A	OR	DR	TOT	PF	FD	BS	BA								
0	Elise Harden	F	02:26	0-0	0-0	0-0	0-0	0-0	0	1	1	0	0	0	0	0	0	0	0	0	0	-5
5	Dominique Claytor	F	05:26	0-0	0-0	0-0	0-0	0-0	0	1	1	1	0	0	0	0	2	0	0	0	0	-7
3	Alexis Pierce	G	05:02	0-2	0-0	2-2	0-0	0-0	0	0	0	1	1	2	0	0	0	0	0	0	0	-13
13	Gia Adams	G	07:47	1-4	0-1	0-0	0-0	0-0	0	1	1	1	0	2	0	2	0	0	0	1	0	-5
15	Tatyana Davis	G	05:39	0-2	0-2	0-0	0-0	0-0	0	1	1	1	1	0	0	1	1	1	0	0	0	-11
10	Saniah Parker		05:44	0-2	0-2	0-0	0-0	0-0	0	0	0	1	0	0	0	0	0	1	0	0	0	-10
11	Kennedy Davis		03:40	0-0	0-0	0-0	0-0	0-0	0	0	0	0	0	0	0	0	1	0	0	0	0	-2
14	Sierra McCullough		04:21	1-1	0-0	1-2	0-0	0-0	1	0	1	1	1	3	0	0	0	0	0	0	0	-4
1	Lacy Robins		03:44	0-2	0-1	0-0	0-0	0-0	0	1	1	1	0	0	0	0	0	1	1	0	0	-4
4	Kianni Westbrook		06:11	0-1	0-0	2-2	0-0	0-0	0	1	1	0	1	2	0	0	0	0	0	0	0	-4
Team									2	1	3											
Totals				2-14	0-6	5-6	3	7	10	7	4	9	0	6	3	1	1					-13

Shooting By Period		
3rd FG%	2-14	14.3%
3PT%	0-6	0.0%
FT%	5-6	83.3%
GM FG%	2-14	14.3%
3PT%	0-6	0.0%
FT%	5-6	83.3%

Dead Ball Rebounds: 0, 0

Technical Fouls::NONE

Kansas - 22

NO.	Name	F	Min	FG		3P		FT		Rebounds			Fouls		TP	AS	TO	ST	Blocks		+/-
				M-A	M-A	M-A	M-A	OR	DR	TOT	PF	FD	BS	BA							
10	Ioanna Chatzileonti	F	07:48	0-1	0-0	4-4	1	2	3	1	2	4	2	0	0	0	0	0	0	0	13
1	Taiyanna Jackson	C	05:54	1-1	0-0	0-0	1	3	4	0	0	2	0	0	0	0	0	0	0	0	9
5	Aniya Thomas	G	08:06	4-7	2-4	1-1	0	1	1	1	1	11	1	1	1	1	1	0	0	13	
13	Holly Kersgieter	G	00:00	0-0	0-0	0-0	0	0	0	0	0	0	0	0	0	0	0	0	0	0	0
15	Zakiyah Franklin	G	06:47	0-0	0-0	2-2	0	1	1	0	3	2	1	0	0	0	0	0	0	15	
20	Julie Brosseau		06:23	0-3	0-3	0-0	0	0	0	1	0	0	0	0	0	1	0	0	0	4	
12	Katrine Jessen		03:51	1-1	0-0	1-1	1	0	1	1	1	3	0	1	0	0	0	0	0	4	
11	Sanna Strom		01:54	0-2	0-0	0-0	0	0	0	0	0	0	0	0	0	0	0	0	0	0	
25	Chandler Prater		06:50	0-2	0-2	0-0	0	3	3	0	0	0	1	0	0	1	0	1	0	7	
14	Danai Papadopoulou		02:27	0-0	0-0	0-0	0	0	0	0	0	0	0	0	0	0	0	0	0	0	
Team									1	0	1										
Totals				6-17	2-9	8-8	4	10	14	4	7	22	5	3	2	1	1				13

Shooting By Period		
3rd FG%	6-17	35.3%
3PT%	2-9	22.2%
FT%	8-8	100%
GM FG%	6-17	35.3%
3PT%	2-9	22.2%
FT%	8-8	100.0%

Dead Ball Rebounds: 0, 0

Technical Fouls::NONE

	TSU	KU	Points from		Period by Period Scoring						
Biggest lead	0 (1 st 10:00)	31 (3 rd 5:15)	Turnovers	0	6	1st	2nd	3rd	4th	TOT	
Best Scoring Run	4(3 rd 2:27)	10(3 rd 7:11)	Paint	2	8	TSU	13	21	9	17	60
Lead Changes	0		Second Chance	4	5	KU	26	22	22	13	83
Times Tied	0		Fast Breaks	0	5						
Time with Lead	00:00	09:23	Bench	5	3						

Game Notes:KU #13 H. Kersgieter disqualified from the game with 26 seconds left in the second quarter. ♦



Tennessee St. at Kansas

11/14/21 Allen Fieldhouse, Lawrence
2021-22 Women's Basketball

Officials: Jesse Dickerson, Doug Knight, Jamie Broderick

Period 4

Quarter Starters:

KU	1 Jackson T	5 Thomas A	11 Strom S	12 Jessen K	15 Franklin Z
TSU	3 Pierce A	5 Claytor D	10 Parker S	13 Adams G	15 Davis T

Game Time	KU	Score	Diff	TSU
10:00	10 CHATZILEONTI I substitution out			
10:00	14 PAPADOPOULOU D substitution out			
10:00	25 PRATER C substitution out			
10:00	1 JACKSON T substitution in			
10:00	11 STROM S substitution in			
10:00	12 JESSEN K substitution in			
09:55		70-45	25	5 CLAYTOR D 2pt FG in the paint, layup made (7)
09:55				15 DAVIS T assist (1)
09:24	11 STROM S 3pt FG , jump shot missed			
09:19				13 ADAMS G defensive rebound (2)
09:16				13 ADAMS G 2pt FG in the paint, driving layup missed
09:13	15 FRANKLIN Z defensive rebound (5)			
08:50	5 THOMAS A foul drawn (5)			5 CLAYTOR D foul shooting (4 - 1)
08:50	5 THOMAS A free throw 1 - 2 made (18)	71-45	26	
08:50	5 THOMAS A free throw 2 - 2 made (19)	72-45	27	
08:50				15 DAVIS T substitution out
08:50				14 MCCULLOUGH S substitution in
08:33				10 PARKER S 2pt FG in the paint, jump shot missed
08:31	11 STROM S defensive rebound (1)			
08:23	15 FRANKLIN Z turnover lost ball (1)			13 ADAMS G steal (1)
08:18		72-47	25	3 PIERCE A 2pt FG fast break from turnover in the paint, layup made (7)
08:18				13 ADAMS G assist (1)
08:06	12 JESSEN K foul drawn (4)			10 PARKER S foul shooting (3 - 2)
08:06				3 PIERCE A substitution out
08:06				11 DAVIS K substitution in
08:06	12 JESSEN K free throw 1 - 2 missed			
08:06	offensive dead ball rebound (3)			
08:06	12 JESSEN K free throw 2 - 2 missed			
08:05	1 JACKSON T offensive rebound (10)			
07:54	12 JESSEN K foul drawn (5)			10 PARKER S foul personal (4 - 3)
07:54				10 PARKER S substitution out
07:54				4 WESTBROOK K substitution in
07:52	5 THOMAS A 3pt FG second chance, jump shot missed			
07:48				13 ADAMS G defensive rebound (3)
07:45				11 DAVIS K 2pt FG in the paint, layup missed
07:41	12 JESSEN K defensive rebound (3)			
07:41	jump ball situation			
07:41	12 JESSEN K substitution out			
07:41	10 CHATZILEONTI I substitution in			
07:29	1 JACKSON T turnover travel (3)			
07:17				13 ADAMS G 2pt FG from turnover outside the paint, jump shot missed
07:14	defensive rebound (41)			



Tennessee St. at Kansas

11/14/21 Allen Fieldhouse, Lawrence
2021-22 Women's Basketball

Game Time: 2:01 PM
Game Duration: 2:09
Attendance: 1,122

Officials: Jesse Dickerson, Doug Knight, Jamie Broderick

Game Time	KU	Score	Diff	TSU
07:11	11 STROM S substitution out			
07:11	25 PRATER C substitution in			
07:07	10 CHATZILEONTI I turnover lost ball (2)			13 ADAMS G steal (2)
07:07	1 JACKSON T foul personal (3 - 1)			14 MCCULLOUGH S foul drawn (3)
06:45				14 MCCULLOUGH S 2pt FG from turnover in the paint, layup blocked
06:45	10 CHATZILEONTI I block (2)			
06:45				offensive rebound (35)
06:43	Timeout 30 Sec			
06:43	Timeout media			
06:43				5 CLAYTOR D substitution out
06:43				15 DAVIS T substitution in
06:40		72-49	23	14 MCCULLOUGH S 2pt FG from turnover second chance in the paint, layup made (5)
06:40				13 ADAMS G assist (2)
06:25	1 JACKSON T 2pt FG in the paint, layup missed			
06:20	1 JACKSON T offensive rebound (11)			
06:20	1 JACKSON T 2pt FG second chance in the paint, layup missed			
06:19	1 JACKSON T offensive rebound (12)			
06:17	1 JACKSON T 2pt FG second chance in the paint, layup made (6)	74-49	25	
06:02		74-51	23	13 ADAMS G 2pt FG in the paint, driving layup made (12)
05:47	25 PRATER C turnover bad pass (2)			13 ADAMS G steal (3)
05:41		74-53	21	15 DAVIS T 2pt FG fast break from turnover outside the paint, jump shot made (9)
05:41				13 ADAMS G assist (3)
05:34	15 FRANKLIN Z foul drawn (5)			13 ADAMS G foul personal (4 - 4)
05:34	1 JACKSON T substitution out			
05:34	12 JESSEN K substitution in			
05:34				4 WESTBROOK K substitution out
05:34				11 DAVIS K substitution out
05:34				14 MCCULLOUGH S substitution out
05:34				15 DAVIS T substitution out
05:34				0 HARDEN E substitution in
05:34				1 ROBINS L substitution in
05:34				3 PIERCE A substitution in
05:34				5 CLAYTOR D substitution in
05:24	15 FRANKLIN Z 2pt FG outside the paint, pull up jump shot made (11)	76-53	23	
05:16				0 HARDEN E 2pt FG in the paint, layup missed
05:14	10 CHATZILEONTI I defensive rebound (7)			
05:01	5 THOMAS A 2pt FG outside the paint, floating jump shot missed			
04:58	12 JESSEN K offensive rebound (4)			
04:58	25 PRATER C substitution out			
04:58	20 BROSSEAU J substitution in			
04:58				13 ADAMS G substitution out
04:58				10 PARKER S substitution in
04:54	10 CHATZILEONTI I 2pt FG second chance in the paint, jump shot missed			
04:51				0 HARDEN E defensive rebound (6)



Tennessee St. at Kansas

11/14/21 Allen Fieldhouse, Lawrence
2021-22 Women's Basketball

Game Time: 2:01 PM

Game Duration: 2:09

Attendance: 1,122

Officials: Jesse Dickerson, Doug Knight, Jamie Broderick

Game Time	KU	Score	Diff	TSU
04:32				10 PARKER S 2pt FG outside the paint, jump shot missed
04:28	15 FRANKLIN Z defensive rebound (6)			
04:25	15 FRANKLIN Z turnover lost ball (2)			1 ROBINS L steal (2)
04:05				5 CLAYTOR D 2pt FG from turnover in the paint, jump shot missed
04:02	5 THOMAS A defensive rebound (5)			
03:53	12 JESSEN K 2pt FG outside the paint, jump shot missed			
03:49	10 CHATZILEONTI I offensive rebound (8)			
03:47	10 CHATZILEONTI I turnover bad pass (3)			5 CLAYTOR D steal (3)
03:32				1 ROBINS L 2pt FG from turnover outside the paint, jump shot missed
03:28	12 JESSEN K defensive rebound (5)			
03:16	20 BROSSEAU J foul drawn (3)			5 CLAYTOR D foul personal (5 - 5)
03:16	10 CHATZILEONTI I substitution out			
03:16	15 FRANKLIN Z substitution out			
03:16	11 STROM S substitution in			
03:16	1 JACKSON T substitution in			
03:16				1 ROBINS L substitution out
03:16				5 CLAYTOR D substitution out
03:16				13 ADAMS G substitution in
03:16				14 MCCULLOUGH S substitution in
03:16	20 BROSSEAU J free throw 1 - 2 missed			
03:16	offensive dead ball rebound (4)			
03:16	20 BROSSEAU J free throw 2 - 2 made (3)	77-53	24	
03:02		77-55	22	0 HARDEN E 2pt FG in the paint, layup made (2)
03:02				3 PIERCE A assist (4)
02:59	1 JACKSON T foul shooting (4 - 2)			0 HARDEN E foul drawn (3)
02:50	0 HAYNES-OVERTON E substitution out			
02:50	1 JACKSON T substitution in			
02:50				14 MCCULLOUGH S substitution out
02:50				11 DAVIS K substitution in
02:29		77-56	21	0 HARDEN E free throw 1 - 1 made (3)
02:27	5 THOMAS A substitution out			
02:27	25 PRATER C substitution in			
02:27				0 HARDEN E substitution out
02:27				15 DAVIS T substitution in
02:08	20 BROSSEAU J foul offensive (2 - 3)			15 DAVIS T foul drawn (4)
02:08	20 BROSSEAU J turnover offensive (2)			
02:08				11 DAVIS K substitution out
02:08				0 HARDEN E substitution in
02:07		77-58	19	10 PARKER S 2pt FG from turnover in the paint, layup made (4)
02:07				0 HARDEN E assist (1)
02:04	1 JACKSON T 2pt FG in the paint, layup missed			
02:04				0 HARDEN E defensive rebound (7)
02:03				10 PARKER S 3pt FG , jump shot missed
02:03	25 PRATER C defensive rebound (6)			
02:03	25 PRATER C foul offensive (2 - 4)			0 HARDEN E foul drawn (4)
02:03	25 PRATER C turnover offensive (3)			
02:03				13 ADAMS G substitution out
02:03				1 ROBINS L substitution in



Tennessee St. at Kansas

11/14/21 Allen Fieldhouse, Lawrence
2021-22 Women's Basketball

Game Time: 2:01 PM

Game Duration: 2:09

Attendance: 1,122

Officials: Jesse Dickerson, Doug Knight, Jamie Broderick

Game Time	KU	Score	Diff	TSU
01:50		77-60	17	0 HARDEN E 2pt FG from turnover in the paint, jump shot made (5)
01:34	20 BROSSEAU J substitution out			
01:34	25 PRATER C substitution out			
01:34	5 THOMAS A substitution in			
01:34	15 FRANKLIN Z substitution in			
01:34				1 ROBINS L substitution out
01:34				3 PIERCE A substitution out
01:34				11 DAVIS K substitution in
01:34				13 ADAMS G substitution in
01:30	12 JESSEN K 2pt FG in the paint, jump shot made (8)	79-60	19	
01:20				15 DAVIS T 3pt FG , jump shot missed
01:20	defensive rebound (51)			
01:15	15 FRANKLIN Z turnover bad pass (3)			10 PARKER S steal (2)
01:09				13 ADAMS G 3pt FG from turnover, jump shot missed
01:06	1 JACKSON T defensive rebound (13)			
00:55	12 JESSEN K 2pt FG outside the paint, jump shot made (10)	81-60	21	
00:55	5 THOMAS A assist (4)			
00:41	12 JESSEN K steal (3)			11 DAVIS K turnover bad pass (3)
00:34	15 FRANKLIN Z 2pt FG fast break from turnover in the paint, layup made (13)	83-60	23	
00:34	5 THOMAS A assist (5)			
00:17				0 HARDEN E 2pt FG in the paint, jump shot missed
00:14	11 STROM S defensive rebound (2)			
END OF GAME				
KU 83-60 TSU				



Tennessee St. at Kansas

11/14/21 Allen Fieldhouse, Lawrence
2021-22 Women's Basketball

Game Time: 2:01 PM
Game Duration: 2:09
Attendance: 1,122

Officials: Jesse Dickerson, Doug Knight, Jamie Broderick

Tennessee St. - 17

NO.	Name	F	Min	FG			Rebounds			Fouls		TP	AS	TO	ST	Blocks		+/-
				M-A	3P	FT	OR	DR	TOT	PF	FD					BS	BA	
0	Elise Harden	F	05:15	2-4	0-0	1-1	0	2	2	0	2	5	1	0	0	0	0	-2
5	Dominique Claytor	F	05:35	1-2	0-0	0-0	0	0	0	2	0	2	0	0	1	0	0	0
3	Alexis Pierce	G	05:54	1-1	0-0	0-0	0	0	0	0	0	2	1	0	0	0	0	6
13	Gia Adams	G	07:49	1-4	0-1	0-0	0	2	2	1	0	2	3	0	3	0	0	2
15	Tatyana Davis	G	04:46	1-2	0-1	0-0	0	0	0	0	1	2	1	0	0	0	0	2
14	Sierra McCullough		03:42	1-2	0-0	0-0	0	0	0	0	1	2	0	0	0	0	1	7
11	Kennedy Davis		04:48	0-1	0-0	0-0	0	0	0	0	0	0	0	1	0	0	0	-1
4	Kianni Westbrook		02:20	0-0	0-0	0-0	0	0	0	0	0	0	0	0	0	0	0	4
1	Lacy Robins		02:47	0-1	0-0	0-0	0	0	0	0	0	0	0	0	1	0	0	0
10	Saniah Parker		07:04	1-4	0-1	0-0	0	0	0	2	0	2	0	0	1	0	0	2
Team							1	0	1			0		0				
Totals				8-21	0-3	1-1	1	4	5	5	4	17	6	1	6	0	1	4

Shooting By Period		
4 th FG%	8-21	38.1%
3PT%	0-3	0.0%
FT%	1-1	100%
GM FG%	8-21	38.1%
3PT%	0-3	0.0%
FT%	1-1	100.0%

Dead Ball Rebounds: 0, 0

Technical Fouls::NONE

Kansas - 13

NO.	Name	F	Min	FG			Rebounds			Fouls		TP	AS	TO	ST	Blocks		+/-
				M-A	3P	FT	OR	DR	TOT	PF	FD					BS	BA	
10	Ioanna Chatzileonti	F	04:25	0-1	0-0	0-0	1	1	2	0	0	0	0	2	0	1	0	-2
1	Taiyanna Jackson	C	07:42	1-4	0-0	0-0	3	1	4	2	0	2	0	1	0	0	0	-6
5	Aniya Thomas	G	09:07	0-2	0-1	2-2	0	1	1	0	1	2	2	0	0	0	0	0
13	Holly Kersgieter	G	00:00	0-0	0-0	0-0	0	0	0	0	0	0	0	0	0	0	0	0
15	Zakiyah Franklin	G	08:18	2-2	0-0	0-0	0	2	2	0	1	4	0	3	0	0	0	2
14	Danai Papadopoulou		00:00	0-0	0-0	0-0	0	0	0	0	0	0	0	0	0	0	0	0
11	Sanna Strom		06:05	0-1	0-1	0-0	0	2	2	0	0	0	0	0	0	0	0	-2
12	Katrine Jessen		07:53	2-3	0-0	0-2	1	2	3	0	2	4	0	0	1	0	0	0
25	Chandler Prater		03:06	0-0	0-0	0-0	0	1	1	1	0	0	0	2	0	0	0	-6
20	Julie Brosseau		03:24	0-0	0-0	1-2	0	0	0	1	1	1	0	1	0	0	0	-6
Team							0	2	2			0		0				
Totals				5-13	0-2	3-6	5	12	17	4	5	13	2	9	1	1	0	-4

Shooting By Period		
4 th FG%	5-13	38.5%
3PT%	0-2	0.0%
FT%	3-6	50%
GM FG%	5-13	38.5%
3PT%	0-2	0.0%
FT%	3-6	50.0%

Dead Ball Rebounds: 2, 0

Technical Fouls::NONE

	TSU	KU	Points from		Period by Period Scoring					
			TSU	KU	1st	2nd	3rd	4th	TOT	
Biggest lead	0 (1 st 10:00)	27 (4 th 8:50)	10	2						
Best Scoring Run	7(4 th 1:50)	6(4 th 0:34)	14	6	TSU	13	21	9	17	60
Lead Changes	0		2	2	KU	26	22	22	13	83
Times Tied	0		4	2						
Time with Lead	00:00	09:55	4	5						

Game Notes: KU #13 H. Kersgieter disqualified from the game with 26 seconds left in the second quarter. ♦



Tennessee St. at Kansas

11/14/21 Allen Fieldhouse, Lawrence
2021-22 Women's Basketball

Game Time: 2:01 PM
Game Duration: 2:09
Attendance: 1,122

Officials: Jesse Dickerson, Doug Knight, Jamie Broderick

Tennessee St. - 26

NO.	Name	F	Min	FG			Rebounds			Fouls		TP	AS	TO	ST	Blocks		+/-
				M-A	M-A	M-A	OR	DR	TOT	PF	FD					BS	BA	
0	Elise Harden	F	07:41	2-4	0-0	1-1	0	3	3	0	2	5	1	0	0	0	0	-7
5	Dominique Claytor	F	11:01	1-2	0-0	0-0	0	1	1	3	0	2	0	2	1	0	0	-7
3	Alexis Pierce	G	10:56	1-3	0-0	2-2	0	0	0	1	1	4	1	0	0	0	0	-7
13	Gia Adams	G	15:36	2-8	0-2	0-0	0	3	3	2	0	4	3	2	3	0	1	-3
15	Tatyana Davis	G	10:25	1-4	0-3	0-0	0	1	1	1	2	2	1	1	1	0	0	-9
10	Saniah Parker		12:48	1-6	0-3	0-0	0	0	0	3	0	2	0	0	2	0	0	-8
11	Kennedy Davis		08:28	0-1	0-0	0-0	0	0	0	0	0	0	0	2	0	0	0	-3
14	Sierra McCullough		08:03	2-3	0-0	1-2	1	0	1	1	2	5	0	0	0	0	1	3
1	Lacy Robins		06:31	0-3	0-1	0-0	0	1	1	1	0	0	0	0	2	1	0	-4
4	Kianni Westbrook		08:31	0-1	0-0	2-2	0	1	1	0	1	2	0	0	0	0	0	0
Team							3	1	4			0		0				
Totals				10-35	0-9	6-7	4	11	15	12	8	26	6	7	9	1	2	-9

Shooting By Period		
3 rd FG%	2-14	14.3%
3PT%	0-6	0.0%
FT%	5-6	83.3%
4 th FG%	8-21	38.1%
3PT%	0-3	0.0%
FT%	1-1	100%
GM FG%	10-35	28.6%
3PT%	0-9	0.0%
FT%	6-7	85.7%

Dead Ball Rebounds: 0, 0

Technical Fouls::NONE

Kansas - 35

NO.	Name	F	Min	FG			Rebounds			Fouls		TP	AS	TO	ST	Blocks		+/-
				M-A	M-A	M-A	OR	DR	TOT	PF	FD					BS	BA	
10	Ioanna Chatzileonti	F	12:13	0-2	0-0	4-4	2	3	5	1	2	4	2	2	0	1	0	11
1	Taiyanna Jackson	C	13:36	2-5	0-0	0-0	4	4	8	2	0	4	0	1	0	0	0	3
5	Aniya Thomas	G	17:13	4-9	2-5	3-3	0	2	2	1	2	13	3	1	1	1	0	13
13	Holly Kersgieter	G	00:00	0-0	0-0	0-0	0	0	0	0	0	0	0	0	0	0	0	0
15	Zakiyah Franklin	G	15:05	2-2	0-0	2-2	0	3	3	0	4	6	1	3	0	0	0	17
20	Julie Brosseau		09:47	0-3	0-3	1-2	0	0	0	2	1	1	0	2	0	0	0	-2
12	Katrine Jessen		11:44	3-4	0-0	1-3	2	2	4	1	3	7	0	1	1	0	0	4
11	Sanna Strom		07:59	0-3	0-1	0-0	0	2	2	0	0	0	0	0	0	0	0	-2
25	Chandler Prater		09:56	0-2	0-2	0-0	0	4	4	1	0	0	1	2	1	0	1	1
14	Danai Papadopoulou		02:27	0-0	0-0	0-0	0	0	0	0	0	0	0	0	0	0	0	0
Team							1	2	3			0		0				
Totals				11-30	2-11	11-14	9	22	31	8	12	35	7	12	3	2	1	9

Shooting By Period		
3 rd FG%	6-17	35.3%
3PT%	2-9	22.2%
FT%	8-8	100%
4 th FG%	5-13	38.5%
3PT%	0-2	0.0%
FT%	3-6	50%
GM FG%	11-30	36.7%
3PT%	2-11	18.2%
FT%	11-14	78.6%

Dead Ball Rebounds: 2, 0

Technical Fouls::NONE

	TSU	KU	Points from		Period by Period Scoring						
Biggest lead	0 (1 st 10:00)	31 (3 rd 5:15)	Turnovers	10	8	1st	2nd	3rd	4th	TOT	
Best Scoring Run	7(4 th 1:50)	10(3 rd 7:11)	Paint	16	14	TSU	13	21	9	17	60
Lead Changes	0		Second Chance	6	7	KU	26	22	22	13	83
Times Tied	0		Fast Breaks	4	7						
Time with Lead	00:00	19:23	Bench	9	8						

Game Notes: KU #13 H. Kersgieter disqualified from the game with 26 seconds left in the second quarter. ♦



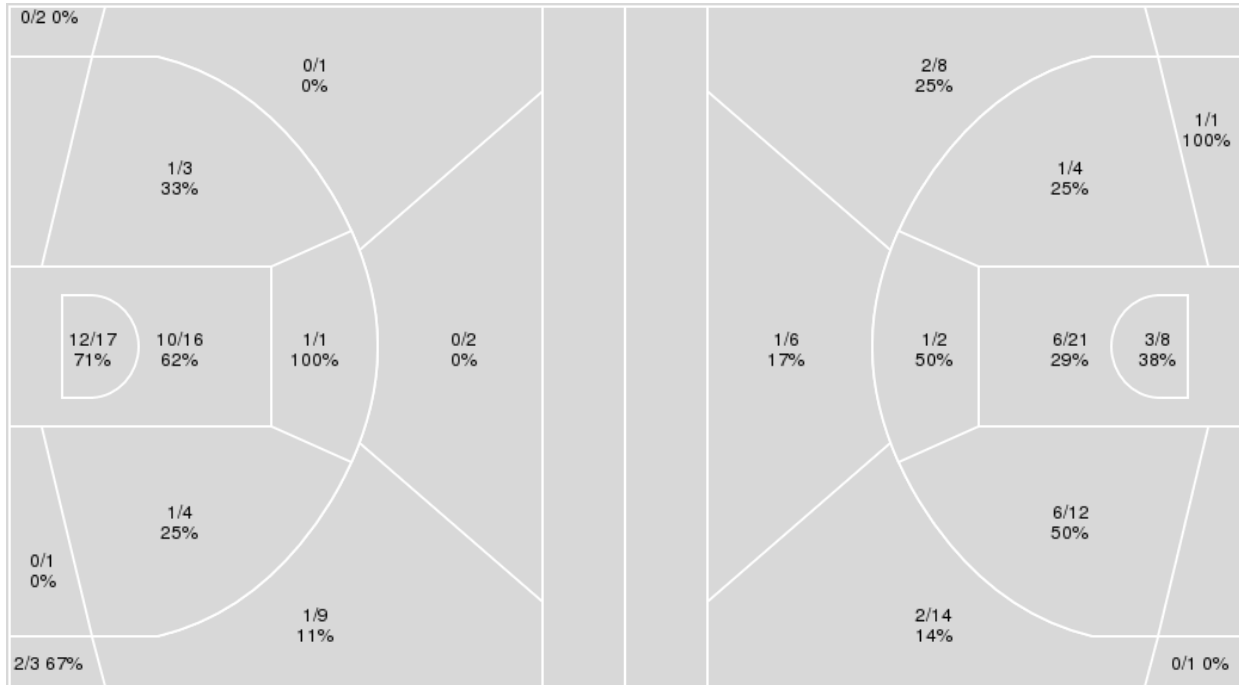
Officials: Jesse Dickerson, Doug Knight, Jamie Broderick

{ Players => All; } FG Types => All; Results => All;

{ Players => All; } FG Types => All; Results => All;

Kansas

Tennessee St.



Kansas	M/A	%
Field Goals	28/59	47
2 Points	25/42	60
3 Points	3/17	18
Free Throws	24/33	73

Tennessee St.	M/A	%
Field Goals	23/77	30
2 Points	18/48	38
3 Points	5/29	17
Free Throws	9/11	82



Tennessee St. at Kansas

11/14/21 Allen Fieldhouse, Lawrence
2021-22 Women's Basketball

Game Time: 2:01 PM
Game Duration: 2:09
Attendance: 1,122

Officials: Jesse Dickerson, Doug Knight, Jamie Broderick

Tennessee St.

No	Name	Mins		Score		Points Diff		Points per Min		Assists		Rebounds		Steals		Turnovers	
		On	Off	On	Off	On	Off	On	Off	On	Off	On	Off	On	Off	On	Off
0	Elise Harden	17:22	22:38	22 - 33	38 - 50	-11	-12	1.27	1.68	5	8	15	22	6	7	9	10
1	Lacy Robins	16:08	23:52	29 - 30	31 - 53	-1	-22	1.80	1.30	5	8	14	23	5	8	6	13
3	Alexis Pierce	24:43	15:17	43 - 54	17 - 29	-11	-12	1.74	1.11	10	3	22	15	6	7	12	7
4	Kianni Westbrook	10:35	29:25	14 - 22	46 - 61	-8	-15	1.32	1.56	2	11	11	26	4	9	2	17
5	Dominique Claytor	24:54	15:06	33 - 52	27 - 31	-19	-4	1.33	1.79	8	5	20	17	9	4	15	4
10	Saniah Parker	23:17	16:43	30 - 44	30 - 39	-14	-9	1.29	1.79	7	6	20	17	8	5	10	9
11	Kennedy Davis	19:23	20:37	33 - 44	27 - 39	-11	-12	1.70	1.31	7	6	19	18	7	6	9	10
13	Gia Adams	23:03	16:57	34 - 42	26 - 41	-8	-15	1.48	1.53	8	5	22	15	8	5	10	9
14	Sierra McCullough	17:15	22:45	27 - 36	33 - 47	-9	-14	1.57	1.45	7	6	19	18	6	7	8	11
15	Tatyana Davis	23:20	16:40	35 - 58	25 - 25	-23	0	1.50	1.50	6	7	23	14	6	7	14	5

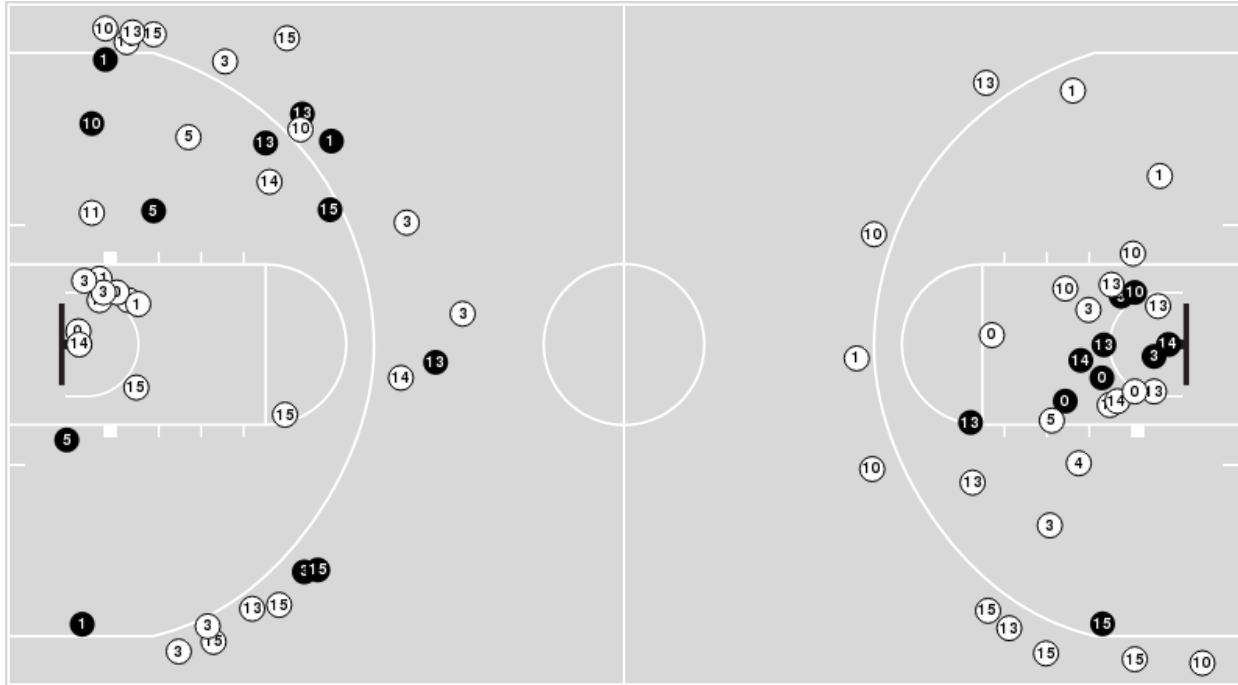
Kansas

No	Name	Mins		Score		Points Diff		Points per Min		Assists		Rebounds		Steals		Turnovers	
		On	Off	On	Off	On	Off	On	Off	On	Off	On	Off	On	Off	On	Off
1	Taiyanna Jackson	28:27	11:33	59 - 40	24 - 20	19	4	2.07	2.08	13	6	37	16	9	2	14	8
5	Aniya Thomas	31:10	08:50	64 - 39	19 - 21	25	-2	2.05	2.15	14	5	45	8	10	1	15	7
10	Ioanna Chatzileonti	27:27	12:33	66 - 47	17 - 13	19	4	2.40	1.35	15	4	34	19	6	5	15	7
11	Sanna Strom	08:21	31:39	11 - 15	72 - 45	-4	27	1.32	2.27	2	17	12	41	1	10	6	16
12	Katrine Jessen	19:02	20:58	33 - 22	50 - 38	11	12	1.73	2.38	8	11	32	21	5	6	11	11
13	Holly Kersgieter	16:12	23:48	44 - 32	39 - 28	12	11	2.72	1.64	11	8	14	39	8	3	8	14
14	Danai Papadopoulou	04:42	35:18	8 - 9	75 - 51	-1	24	1.70	2.12	2	17	3	50	2	9	4	18
15	Zakayah Franklin	31:56	08:04	74 - 44	9 - 16	30	-7	2.32	1.12	18	1	46	7	7	4	17	5
20	Julie Brosseau	12:56	27:04	19 - 20	64 - 40	-1	24	1.47	2.36	3	16	16	37	4	7	8	14
25	Chandler Prater	19:47	20:13	37 - 32	46 - 28	5	18	1.87	2.28	9	10	26	27	3	8	12	10

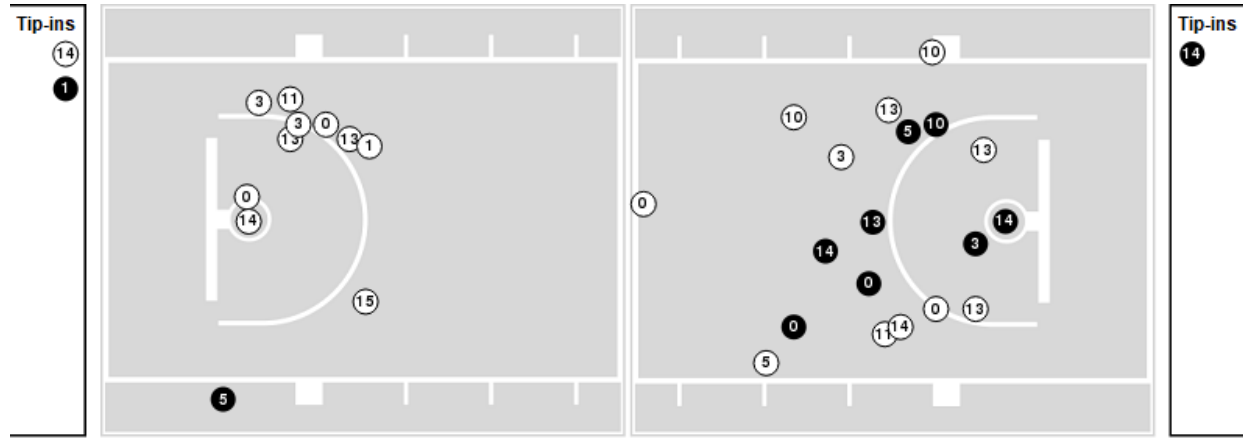


Players => AllFG Types=>AllResults=>All
Tennessee St.

All Field Goals



Blow Up Chart



● Made ○ Missed N - Player Number

Tennessee St.	M/A	%
Field Goals	23/77	30
2 Points	18/48	38
3 Points	5/29	17
Free Throws	9/11	82

Tennessee St.	M/A	%
Points in the Paint	18 (9 / 29)	31
Fast Break Points	4 (2/2)	100
Second Chance Points	16 (9/15)	60
Effective FG%	33	

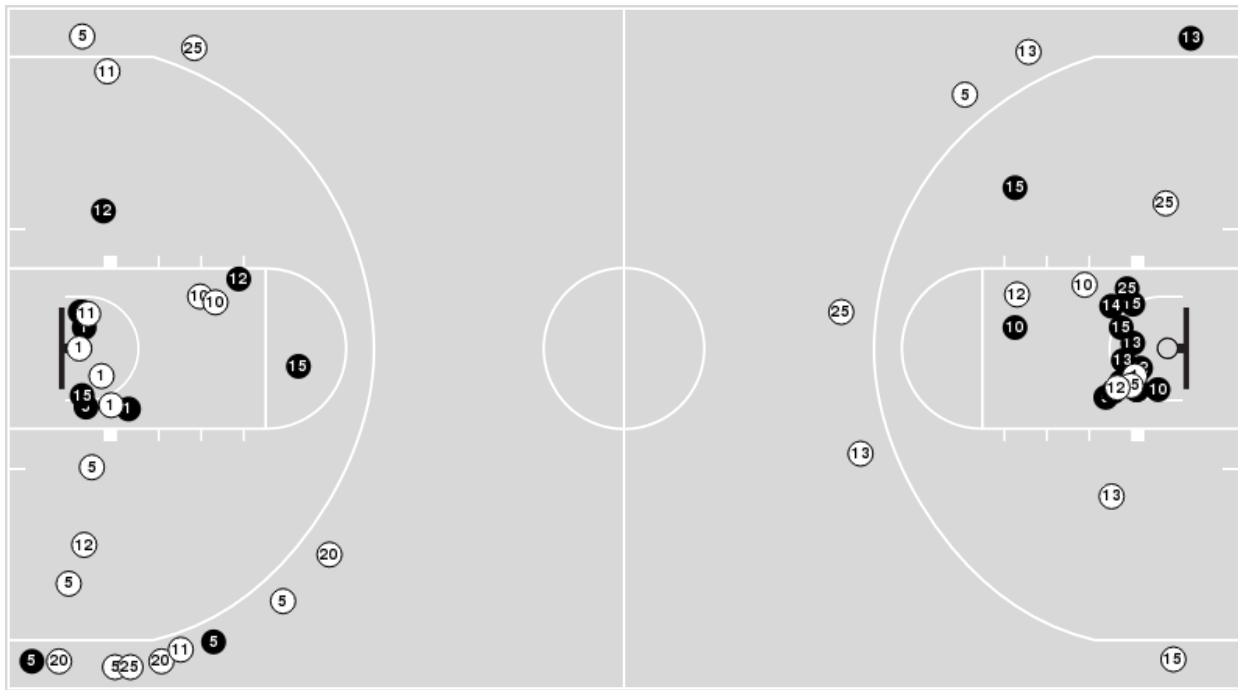


Officials: Jesse Dickerson, Doug Knight, Jamie Broderick

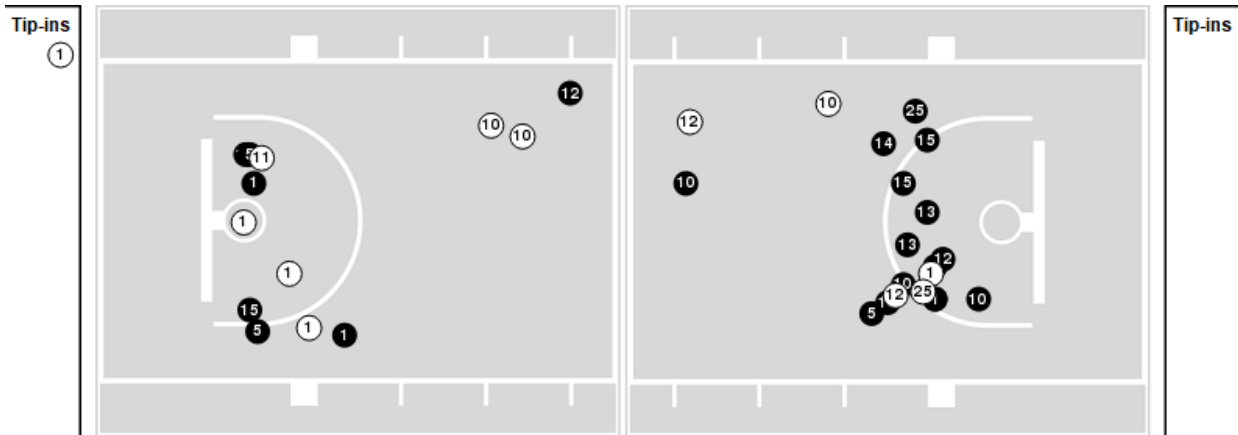
Players => AllFG Types=>AllResults=>All

Kansas

All Field Goals



Blow Up Chart



● Made ○ Missed N - Player Number

Kansas	M/A	%
Field Goals	28/59	47
2 Points	25/42	60
3 Points	3/17	18
Free Throws	24/33	73

Kansas	M/A	%
Points in the Paint	44 (22 / 33)	67
Fast Break Points	25 (14/16)	88
Second Chance Points	16 (10/14)	71
Effective FG%	50	



Tennessee St. at Kansas

11/14/21 Allen Fieldhouse, Lawrence
2021-22 Women's Basketball

Game Time: 2:01 PM
Game Duration: 2:09
Attendance: 1,122

Officials: Jesse Dickerson, Doug Knight, Jamie Broderick

Tennessee St.

Lineup	Quarter On	Time On	Quarter Off	Time Off	Time on Court	Score	Score Diff	Reb	Stl	Tov	Ass	PPP
0- Harden E/3- Pierce A/5- Claytor D/ 13- Adams G/ 15- Davis T/	1	10:00	1	08:18	01:42	5-6	-1	1	0	1	0	1.2500
0- Harden E/3- Pierce A/5- Claytor D/ 11- Davis K/ 13- Adams G/	1	08:18	1	06:54	01:24	3-4	-1	1	0	1	1	1.0000
0- Harden E/ 11- Davis K/ 13- Adams G/ 14- McCullough S/ 15- Davis T/	1	06:54	1	05:10	01:44	0-4	-4	2	1	0	0	0.0000
1- Robins L/3- Pierce A/ 4- Westbrook K/ 10- Parker S/ 14- McCullough S/	1	05:10	1	04:00	01:10	0-2	-2	0	0	0	0	0.0000
4- Westbrook K/ 5- Claytor D/ 10- Parker S/ 13- Adams G/ 15- Davis T/	1	04:00	1	03:09	00:51	0-4	-4	0	0	0	0	0.0000
0- Harden E/ 5- Claytor D/ 10- Parker S/ 13- Adams G/ 15- Davis T/	1	03:09	1	02:16	00:53	0-0	0	3	0	1	0	0.0000
0- Harden E/ 1- Robins L/ 3- Pierce A/ 5- Claytor D/ 10- Parker S/	1	02:16	1	01:57	00:19	0-0	0	0	1	0	0	0.0000
1- Robins L/ 3- Pierce A/ 5- Claytor D/ 10- Parker S/ 14- McCullough S/	1	01:57	1	01:27	00:30	0-1	-1	1	0	1	0	0.0000
1- Robins L/ 5- Claytor D/ 10- Parker S/ 11- Davis K/ 14- McCullough S/	1	01:27	1	01:27	00:00	0-0	0	0	0	0	0	0.0000
1- Robins L/ 5- Claytor D/ 11- Davis K/ 14- McCullough S/ 15- Davis T/	1	01:27	1	01:03	00:24	2-1	1	0	0	1	0	1.0638
1- Robins L/ 3- Pierce A/ 5- Claytor D/ 11- Davis K/ 14- McCullough S/	1	01:03	2	10:00	01:03	3-4	-1	0	0	0	1	1.5000
3- Pierce A/ 5- Claytor D/ 10- Parker S/ 14- McCullough S/ 15- Davis T/	2	10:00	2	08:55	01:05	0-2	-2	2	0	1	0	0.0000
3- Pierce A/ 5- Claytor D/ 11- Davis K/ 14- McCullough S/ 15- Davis T/	2	08:55	2	08:30	00:25	2-2	0	1	1	1	1	1.0000
3- Pierce A/ 4- Westbrook K/ 5- Claytor D/ 11- Davis K/ 15- Davis T/	2	08:30	2	08:27	00:03	0-2	-2	0	0	0	0	0.0000
0- Harden E/ 3- Pierce A/ 5- Claytor D/ 11- Davis K/ 15- Davis T/	2	08:27	2	07:13	01:14	0-1	-1	1	0	0	0	0.0000
0- Harden E/ 1- Robins L/ 3- Pierce A/ 10- Parker S/ 13- Adams G/	2	07:13	2	06:20	00:53	5-0	5	2	0	0	1	1.6667
1- Robins L/ 3- Pierce A/ 5- Claytor D/ 10- Parker S/ 15- Davis T/	2	06:20	2	05:46	00:34	0-0	0	0	0	0	0	0.0000
1- Robins L/ 5- Claytor D/ 10- Parker S/ 11- Davis K/ 15- Davis T/	2	05:46	2	04:57	00:49	2-3	-1	1	0	0	0	2.0000
0- Harden E/ 10- Parker S/ 11- Davis K/ 14- McCullough S/ 15- Davis T/	2	04:57	2	04:18	00:39	0-4	-4	1	0	2	0	0.0000
0- Harden E/ 1- Robins L/ 10- Parker S/ 11- Davis K/ 14- McCullough S/	2	04:18	2	03:38	00:40	0-0	0	1	0	0	0	0.0000
0- Harden E/ 1- Robins L/ 5- Claytor D/ 10- Parker S/ 11- Davis K/	2	03:38	2	03:25	00:13	2-0	2	0	1	0	1	2.0000
1- Robins L/ 3- Pierce A/ 5- Claytor D/ 10- Parker S/ 11- Davis K/	2	03:25	2	03:03	00:22	0-0	0	0	0	1	0	0.0000
1- Robins L/ 3- Pierce A/ 5- Claytor D/ 10- Parker S/ 15- Davis T/	2	03:03	2	02:37	00:26	1-2	-1	1	0	0	0	1.1364
3- Pierce A/ 5- Claytor D/ 10- Parker S/ 11- Davis K/ 15- Davis T/	2	02:37	2	02:36	00:01	0-0	0	0	0	0	0	0.0000
1- Robins L/ 3- Pierce A/ 5- Claytor D/ 10- Parker S/ 15- Davis T/	2	02:36	2	01:54	00:42	2-2	0	1	0	1	1	1.0000
1- Robins L/ 3- Pierce A/ 11- Davis K/ 14- McCullough S/ 15- Davis T/	2	01:54	2	00:52	01:01	3-0	3	3	0	0	0	3.0000
1- Robins L/ 3- Pierce A/ 5- Claytor D/ 11- Davis K/ 14- McCullough S/	2	00:52	2	00:21	00:31	2-4	-2	0	0	1	1	1.0000
3- Pierce A/ 5- Claytor D/ 10- Parker S/ 11- Davis K/ 15- Davis T/	2	00:21	3	10:00	00:22	2-0	2	0	0	0	0	2.0000
0- Harden E/ 3- Pierce A/ 5- Claytor D/ 13- Adams G/ 15- Davis T/	3	10:00	3	07:51	02:09	0-5	-5	1	0	3	0	0.0000
5- Claytor D/ 10- Parker S/ 11- Davis K/ 13- Adams G/ 14- McCullough S/	3	07:51	3	07:28	00:23	0-2	-2	0	0	0	0	0.0000
1- Robins L/ 5- Claytor D/ 10- Parker S/ 11- Davis K/ 14- McCullough S/	3	07:28	3	06:48	00:40	1-3	-2	0	0	0	0	1.1364
0- Harden E/ 1- Robins L/ 10- Parker S/ 11- Davis K/ 14- McCullough S/	3	06:48	3	06:31	00:17	0-0	0	0	0	0	0	0.0000
3- Pierce A/ 4- Westbrook K/ 10- Parker S/ 14- McCullough S/ 15- Davis T/	3	06:31	3	06:31	00:00	0-2	-2	0	0	0	0	0.0000
3- Pierce A/ 4- Westbrook K/ 10- Parker S/ 11- Davis K/ 15- Davis T/	3	06:31	3	06:18	00:13	0-0	0	1	0	0	0	0.0000
1- Robins L/ 3- Pierce A/ 4- Westbrook K/ 10- Parker S/ 15- Davis T/	3	06:18	3	05:15	01:03	2-6	-4	0	0	0	0	0.6944
3- Pierce A/ 4- Westbrook K/ 10- Parker S/ 13- Adams G/ 15- Davis T/	3	05:15	3	05:15	00:00	0-2	-2	0	0	0	0	0.0000
4- Westbrook K/ 5- Claytor D/ 10- Parker S/ 13- Adams G/ 15- Davis T/	3	05:15	3	03:21	01:54	2-0	2	2	1	1	0	0.5000
1- Robins L/ 4- Westbrook K/ 10- Parker S/ 13- Adams G/ 14- McCullough S/	3	03:21	3	02:27	00:54	0-0	0	1	0	0	0	0.0000
1- Robins L/ 4- Westbrook K/ 11- Davis K/ 13- Adams G/ 14- McCullough S/	3	02:27	3	01:37	00:50	2-0	2	2	1	1	0	0.6944
3- Pierce A/ 4- Westbrook K/ 11- Davis K/ 13- Adams G/ 14- McCullough S/	3	01:37	3	00:20	01:17	2-2	0	3	0	0	0	1.0000
3- Pierce A/ 5- Claytor D/ 10- Parker S/ 13- Adams G/ 15- Davis T/	3	00:20	4	08:50	01:30	2-2	0	1	1	1	1	0.5000
3- Pierce A/ 5- Claytor D/ 10- Parker S/ 13- Adams G/ 14- McCullough S/	4	08:50	4	08:06	00:44	2-0	2	0	1	0	1	1.0000
5- Claytor D/ 10- Parker S/ 11- Davis K/ 13- Adams G/ 14- McCullough S/	4	08:06	4	07:54	00:12	0-0	0	0	0	0	0	0.0000
4- Westbrook K/ 5- Claytor D/ 11- Davis K/ 13- Adams G/ 14- McCullough S/	4	07:54	4	06:43	01:11	0-0	0	2	1	0	0	0.0000
4- Westbrook K/ 11- Davis K/ 13- Adams G/ 14- McCullough S/ 15- Davis T/	4	06:43	4	05:34	01:09	6-2	4	0	1	0	2	2.0000
0- Harden E/ 1- Robins L/ 3- Pierce A/ 5- Claytor D/ 13- Adams G/	4	05:34	4	04:58	00:36	0-2	-2	0	0	0	0	0.0000
0- Harden E/ 1- Robins L/ 3- Pierce A/ 5- Claytor D/ 10- Parker S/	4	04:58	4	03:16	01:42	0-0	0	1	2	0	0	0.0000
0- Harden E/ 3- Pierce A/ 10- Parker S/ 13- Adams G/ 14- McCullough S/	4	03:16	4	02:50	00:26	2-1	1	0	0	0	1	2.0000
0- Harden E/ 3- Pierce A/ 10- Parker S/ 11- Davis K/ 13- Adams G/	4	02:50	4	02:27	00:23	1-0	1	0	0	0	0	2.2727
3- Pierce A/ 10- Parker S/ 11- Davis K/ 13- Adams G/ 15- Davis T/	4	02:27	4	02:08	00:19	0-0	0	0	0	0	0	0.0000



Tennessee St. at Kansas

11/14/21 Allen Fieldhouse, Lawrence
2021-22 Women's Basketball

Game Time: 2:01 PM

Game Duration: 2:09

Attendance: 1,122

Officials: Jesse Dickerson, Doug Knight, Jamie Broderick

Tennessee St.

Lineup	Quarter On	Time On	Quarter Off	Time Off	Time on Court	Score	Score Diff	Reb	Stl	Tov	Ass	PPP
0- Harden E/ 3- Pierce A/ 10- Parker S/ 13- Adams G/ 15- Davis T/	4	02:08	4	02:03	00:05	2-0	2	1	0	0	1	1.0000
0- Harden E/ 1- Robins L/ 3- Pierce A/ 10- Parker S/ 15- Davis T/	4	02:03	4	01:34	00:29	2-0	2	0	0	0	0	2.0000
0- Harden E/ 10- Parker S/ 11- Davis K/ 13- Adams G/ 15- Davis T/	4	01:34	4	00:00	01:34	0-6	-6	0	1	1	0	0.0000



Tennessee St. at Kansas

11/14/21 Allen Fieldhouse, Lawrence
2021-22 Women's Basketball

Game Time: 2:01 PM
Game Duration: 2:09
Attendance: 1,122

Officials: Jesse Dickerson, Doug Knight, Jamie Broderick

Kansas

Lineup	Quarter On	Time On	Quarter Off	Time Off	Time on Court	Score	Score Diff	Reb	Stl	Tov	Ass	PPP
1- Jackson T/5- Thomas A/ 10- Chatzileonti I/ 13- Kersgieter H/ 15- Franklin Z/	1	10:00	1	05:10	04:50	14-8	6	5	2	1	3	1.2727
10- Chatzileonti I/ 12- Jessen K/ 13- Kersgieter H/ 15- Franklin Z/ 25- Prater C/	1	05:10	1	04:41	00:29	2-0	2	1	0	0	1	2.0000
5- Thomas A/ 10- Chatzileonti I/ 12- Jessen K/ 15- Franklin Z/ 25- Prater C/	1	04:41	1	03:09	01:32	4-0	4	3	0	1	1	1.3889
1- Jackson T/5- Thomas A/ 12- Jessen K/ 20- Brosseau J/ 25- Prater C/	1	03:09	1	02:36	00:33	0-0	0	1	0	0	0	0.0000
1- Jackson T/5- Thomas A/ 12- Jessen K/ 13- Kersgieter H/ 20- Brosseau J/	1	02:36	1	01:27	01:09	1-0	1	2	2	2	0	0.2660
1- Jackson T/5- Thomas A/ 10- Chatzileonti I/ 13- Kersgieter H/ 20- Brosseau J/	1	01:27	2	10:00	01:27	5-5	0	0	1	0	1	1.8116
1- Jackson T/5- Thomas A/ 10- Chatzileonti I/ 15- Franklin Z/ 25- Prater C/	2	10:00	2	09:13	00:47	0-0	0	2	0	0	0	0.0000
1- Jackson T/ 10- Chatzileonti I/ 13- Kersgieter H/ 15- Franklin Z/ 25- Prater C/	2	09:13	2	07:13	02:00	7-2	5	2	0	2	2	1.0355
10- Chatzileonti I/ 12- Jessen K/ 13- Kersgieter H/ 15- Franklin Z/ 25- Prater C/	2	07:13	2	06:42	00:31	0-5	-5	0	0	0	0	0.0000
1- Jackson T/ 12- Jessen K/ 13- Kersgieter H/ 15- Franklin Z/ 25- Prater C/	2	06:42	2	06:20	00:22	0-0	0	1	0	0	0	0.0000
1- Jackson T/5- Thomas A/ 12- Jessen K/ 15- Franklin Z/ 25- Prater C/	2	06:20	2	05:46	00:34	0-0	0	2	0	1	0	0.0000
1- Jackson T/5- Thomas A/ 12- Jessen K/ 13- Kersgieter H/ 15- Franklin Z/	2	05:46	2	03:38	02:08	7-2	5	2	2	0	2	1.4000
1- Jackson T/5- Thomas A/ 10- Chatzileonti I/ 13- Kersgieter H/ 15- Franklin Z/	2	03:38	2	03:03	00:35	0-2	-2	1	0	1	0	0.0000
1- Jackson T/ 10- Chatzileonti I/ 13- Kersgieter H/ 15- Franklin Z/ 25- Prater C/	2	03:03	2	02:37	00:26	2-1	1	0	0	0	0	2.2727
10- Chatzileonti I/ 13- Kersgieter H/ 14- Papadopoulou D/ 15- Franklin Z/ 25- Prater C/	2	02:37	2	00:21	02:15	6-7	-1	0	1	2	2	0.8721
5- Thomas A/ 10- Chatzileonti I/ 11- Strom S/ 15- Franklin Z/ 25- Prater C/	2	00:21	3	10:00	00:22	0-2	-2	0	0	0	0	0.0000
1- Jackson T/5- Thomas A/ 10- Chatzileonti I/ 15- Franklin Z/ 25- Prater C/	3	10:00	3	06:31	03:29	10-1	9	5	1	0	3	2.0492
1- Jackson T/5- Thomas A/ 10- Chatzileonti I/ 15- Franklin Z/ 20- Brosseau J/	3	06:31	3	06:18	00:13	2-0	2	0	0	0	0	2.2727
5- Thomas A/ 10- Chatzileonti I/ 12- Jessen K/ 15- Franklin Z/ 20- Brosseau J/	3	06:18	3	05:15	01:03	6-2	4	2	0	0	2	2.0833
10- Chatzileonti I/ 11- Strom S/ 12- Jessen K/ 15- Franklin Z/ 20- Brosseau J/	3	05:15	3	04:39	00:36	2-2	0	1	0	1	0	1.0638
1- Jackson T/ 11- Strom S/ 12- Jessen K/ 15- Franklin Z/ 20- Brosseau J/	3	04:39	3	03:21	01:18	0-0	0	2	0	0	0	0.0000
1- Jackson T/5- Thomas A/ 12- Jessen K/ 20- Brosseau J/ 25- Prater C/	3	03:21	3	02:27	00:54	0-0	0	1	0	0	0	0.0000
1- Jackson T/5- Thomas A/ 10- Chatzileonti I/ 20- Brosseau J/ 25- Prater C/	3	02:27	3	02:27	00:00	0-2	-2	0	0	0	0	0.0000
5- Thomas A/ 10- Chatzileonti I/ 14- Papadopoulou D/ 20- Brosseau J/ 25- Prater C/	3	02:27	3	00:07	02:19	2-2	0	2	1	1	0	0.4000
5- Thomas A/ 10- Chatzileonti I/ 14- Papadopoulou D/ 15- Franklin Z/ 25- Prater C/	3	00:07	4	10:00	00:08	0-0	0	1	0	1	0	0.0000
1- Jackson T/5- Thomas A/ 11- Strom S/ 12- Jessen K/ 15- Franklin Z/	4	10:00	4	07:41	02:19	2-4	-2	4	0	1	0	0.5319
1- Jackson T/5- Thomas A/ 10- Chatzileonti I/ 11- Strom S/ 15- Franklin Z/	4	07:41	4	07:11	00:30	0-0	0	1	0	1	0	0.0000
1- Jackson T/5- Thomas A/ 10- Chatzileonti I/ 15- Franklin Z/ 25- Prater C/	4	07:11	4	05:34	01:37	2-6	-4	2	0	2	0	0.6667
5- Thomas A/ 10- Chatzileonti I/ 12- Jessen K/ 15- Franklin Z/ 25- Prater C/	4	05:34	4	04:58	00:36	2-0	2	2	0	0	0	2.0000
5- Thomas A/ 10- Chatzileonti I/ 12- Jessen K/ 15- Franklin Z/ 20- Brosseau J/	4	04:58	4	03:16	01:42	0-0	0	4	0	2	0	0.0000
1- Jackson T/5- Thomas A/ 11- Strom S/ 12- Jessen K/ 20- Brosseau J/	4	03:16	4	02:50	00:26	1-2	-1	0	0	0	0	1.1364
1- Jackson T/5- Thomas A/ 11- Strom S/ 12- Jessen K/ 20- Brosseau J/	4	02:50	4	02:27	00:23	0-1	-1	0	0	0	0	0.0000
1- Jackson T/ 11- Strom S/ 12- Jessen K/ 20- Brosseau J/ 25- Prater C/	4	02:27	4	01:34	00:53	0-4	-4	1	0	2	0	0.0000
1- Jackson T/5- Thomas A/ 11- Strom S/ 12- Jessen K/ 15- Franklin Z/	4	01:34	4	00:00	01:34	6-0	6	3	1	1	2	1.5000



Tennessee St. at Kansas

11/14/21 Allen Fieldhouse, Lawrence
2021-22 Women's Basketball

Game Time: 2:01 PM
Game Duration: 2:09
Attendance: 1,122

Officials: Jesse Dickerson, Doug Knight, Jamie Broderick

Tennessee St.

Lineup	Time	Score	Score Diff	Pts/Min	Reb	Stl	Tov	Ass	PPP
0- Harden E/ 3- Pierce A/ 5- Claytor D/ 13- Adams G/ 15- Davis T/	03:51	5-11	-6	1.2987	2	0	4	0	0.6250
4- Westbrook K/ 5- Claytor D/ 10- Parker S/ 13- Adams G/ 15- Davis T/	02:45	2-4	-2	0.7273	2	1	1	0	0.3333
0- Harden E/ 1- Robins L/ 3- Pierce A/ 5- Claytor D/ 10- Parker S/	02:01	0-0	0	0.0000	1	3	0	0	0.0000
0- Harden E/ 11- Davis K/ 13- Adams G/ 14- McCullough S/ 15- Davis T/	01:44	0-4	-4	0.0000	2	1	0	0	0.0000
1- Robins L/ 3- Pierce A/ 5- Claytor D/ 10- Parker S/ 15- Davis T/	01:42	3-4	-1	1.7647	2	0	1	1	0.7732
1- Robins L/ 3- Pierce A/ 5- Claytor D/ 11- Davis K/ 14- McCullough S/	01:34	5-8	-3	3.1915	0	0	1	2	1.2500
0- Harden E/ 10- Parker S/ 11- Davis K/ 13- Adams G/ 15- Davis T/	01:34	0-6	-6	0.0000	0	1	1	0	0.0000
3- Pierce A/ 5- Claytor D/ 10- Parker S/ 13- Adams G/ 15- Davis T/	01:30	2-2	0	1.3333	1	1	1	1	0.5000
0- Harden E/ 3- Pierce A/ 5- Claytor D/ 11- Davis K/ 13- Adams G/	01:24	3-4	-1	2.1429	1	0	1	1	1.0000
3- Pierce A/ 4- Westbrook K/ 11- Davis K/ 13- Adams G/ 14- McCullough S/	01:17	2-2	0	1.5584	3	0	0	0	1.0000
0- Harden E/ 3- Pierce A/ 5- Claytor D/ 11- Davis K/ 15- Davis T/	01:14	0-1	-1	0.0000	1	0	0	0	0.0000
4- Westbrook K/ 5- Claytor D/ 11- Davis K/ 13- Adams G/ 14- McCullough S/	01:11	0-0	0	0.0000	2	1	0	0	0.0000
1- Robins L/ 3- Pierce A/ 4- Westbrook K/ 10- Parker S/ 14- McCullough S/	01:10	0-2	-2	0.0000	0	0	0	0	0.0000
4- Westbrook K/ 11- Davis K/ 13- Adams G/ 14- McCullough S/ 15- Davis T/	01:09	6-2	4	5.2174	0	1	0	2	2.0000
3- Pierce A/ 5- Claytor D/ 10- Parker S/ 14- McCullough S/ 15- Davis T/	01:05	0-2	-2	0.0000	2	0	1	0	0.0000
1- Robins L/ 3- Pierce A/ 4- Westbrook K/ 10- Parker S/ 15- Davis T/	01:03	2-6	-4	1.9048	0	0	0	0	0.6944
1- Robins L/ 3- Pierce A/ 11- Davis K/ 14- McCullough S/ 15- Davis T/	01:01	3-0	3	2.9508	3	0	0	0	3.0000
0- Harden E/ 1- Robins L/ 10- Parker S/ 11- Davis K/ 14- McCullough S/	00:57	0-0	0	0.0000	1	0	0	0	0.0000
1- Robins L/ 4- Westbrook K/ 10- Parker S/ 13- Adams G/ 14- McCullough S/	00:54	0-0	0	0.0000	1	0	0	0	0.0000
0- Harden E/ 5- Claytor D/ 10- Parker S/ 13- Adams G/ 15- Davis T/	00:53	0-0	0	0.0000	3	0	1	0	0.0000
0- Harden E/ 1- Robins L/ 3- Pierce A/ 10- Parker S/ 13- Adams G/	00:53	5-0	5	5.6604	2	0	0	1	1.6667
1- Robins L/ 4- Westbrook K/ 11- Davis K/ 13- Adams G/ 14- McCullough S/	00:50	2-0	2	2.4000	2	1	1	0	0.6944
1- Robins L/ 5- Claytor D/ 10- Parker S/ 11- Davis K/ 15- Davis T/	00:49	2-3	-1	2.4490	1	0	0	0	2.0000
3- Pierce A/ 5- Claytor D/ 10- Parker S/ 13- Adams G/ 14- McCullough S/	00:44	2-0	2	2.7273	0	1	0	1	1.0000
1- Robins L/ 5- Claytor D/ 10- Parker S/ 11- Davis K/ 14- McCullough S/	00:40	1-3	-2	1.5000	0	0	0	0	1.1364
0- Harden E/ 10- Parker S/ 11- Davis K/ 14- McCullough S/ 15- Davis T/	00:39	0-4	-4	0.0000	1	0	2	0	0.0000
0- Harden E/ 1- Robins L/ 3- Pierce A/ 5- Claytor D/ 13- Adams G/	00:36	0-2	-2	0.0000	0	0	0	0	0.0000
5- Claytor D/ 10- Parker S/ 11- Davis K/ 13- Adams G/ 14- McCullough S/	00:35	0-2	-2	0.0000	0	0	0	0	0.0000
1- Robins L/ 3- Pierce A/ 5- Claytor D/ 10- Parker S/ 14- McCullough S/	00:30	0-1	-1	0.0000	1	0	1	0	0.0000
0- Harden E/ 1- Robins L/ 3- Pierce A/ 10- Parker S/ 15- Davis T/	00:29	2-0	2	4.1379	0	0	0	0	2.0000
0- Harden E/ 3- Pierce A/ 10- Parker S/ 13- Adams G/ 14- McCullough S/	00:26	2-1	1	4.6154	0	0	0	1	2.0000
3- Pierce A/ 5- Claytor D/ 11- Davis K/ 14- McCullough S/ 15- Davis T/	00:25	2-2	0	4.8000	1	1	1	1	1.0000
1- Robins L/ 5- Claytor D/ 11- Davis K/ 14- McCullough S/ 15- Davis T/	00:24	2-1	1	5.0000	0	0	1	0	1.0638
3- Pierce A/ 5- Claytor D/ 10- Parker S/ 11- Davis K/ 15- Davis T/	00:23	2-0	2	5.2174	0	0	0	0	2.0000
0- Harden E/ 3- Pierce A/ 10- Parker S/ 11- Davis K/ 13- Adams G/	00:23	1-0	1	2.6087	0	0	0	0	2.2727
1- Robins L/ 3- Pierce A/ 5- Claytor D/ 10- Parker S/ 11- Davis K/	00:22	0-0	0	0.0000	0	0	1	0	0.0000
3- Pierce A/ 10- Parker S/ 11- Davis K/ 13- Adams G/ 15- Davis T/	00:19	0-0	0	0.0000	0	0	0	0	0.0000
0- Harden E/ 1- Robins L/ 5- Claytor D/ 10- Parker S/ 11- Davis K/	00:13	2-0	2	9.2308	0	1	0	1	2.0000
3- Pierce A/ 4- Westbrook K/ 10- Parker S/ 11- Davis K/ 15- Davis T/	00:13	0-0	0	0.0000	1	0	0	0	0.0000
0- Harden E/ 3- Pierce A/ 10- Parker S/ 13- Adams G/ 15- Davis T/	00:05	2-0	2	24.0000	1	0	0	1	1.0000
3- Pierce A/ 4- Westbrook K/ 5- Claytor D/ 11- Davis K/ 15- Davis T/	00:03	0-2	-2	0.0000	0	0	0	0	0.0000
3- Pierce A/ 4- Westbrook K/ 10- Parker S/ 14- McCullough S/ 15- Davis T/	00:00	0-2	-2	NaN	0	0	0	0	0.0000
3- Pierce A/ 4- Westbrook K/ 10- Parker S/ 13- Adams G/ 15- Davis T/	00:00	0-2	-2	NaN	0	0	0	0	0.0000



Tennessee St. at Kansas

11/14/21 Allen Fieldhouse, Lawrence
2021-22 Women's Basketball

Game Time: 2:01 PM
Game Duration: 2:09
Attendance: 1,122

Officials: Jesse Dickerson, Doug Knight, Jamie Broderick

Kansas

Lineup	Time	Score	Score Diff	Pts/Min	Reb	Stl	Tov	Ass	PPP
1- Jackson T/ 5- Thomas A/ 10- Chatzileonti I/ 15- Franklin Z/ 25- Prater C/	05:53	12-7	5	2.0397	9	1	2	3	1.5228
1- Jackson T/ 5- Thomas A/ 10- Chatzileonti I/ 13- Kersgieter H/ 15- Franklin Z/	05:25	14-10	4	2.5846	6	2	2	3	1.1667
1- Jackson T/ 5- Thomas A/ 11- Strom S/ 12- Jessen K/ 15- Franklin Z/	03:53	8-4	4	2.0601	7	1	2	2	1.0309
5- Thomas A/ 10- Chatzileonti I/ 12- Jessen K/ 15- Franklin Z/ 20- Brosseau J/	02:45	6-2	4	2.1818	6	0	2	2	1.0204
1- Jackson T/ 10- Chatzileonti I/ 13- Kersgieter H/ 15- Franklin Z/ 25- Prater C/	02:26	9-3	6	3.6986	2	0	2	2	1.1780
5- Thomas A/ 10- Chatzileonti I/ 14- Papadopoulou D/ 20- Brosseau J/ 25- Prater C/	02:19	2-2	0	0.8633	2	1	1	0	0.4000
10- Chatzileonti I/ 13- Kersgieter H/ 14- Papadopoulou D/ 15- Franklin Z/ 25- Prater C/	02:15	6-7	-1	2.6667	0	1	2	2	0.8721
5- Thomas A/ 10- Chatzileonti I/ 12- Jessen K/ 15- Franklin Z/ 25- Prater C/	02:08	6-0	6	2.8125	5	0	1	1	1.5464
1- Jackson T/ 5- Thomas A/ 12- Jessen K/ 13- Kersgieter H/ 15- Franklin Z/	02:08	7-2	5	3.2813	2	2	0	2	1.4000
1- Jackson T/ 5- Thomas A/ 12- Jessen K/ 20- Brosseau J/ 25- Prater C/	01:27	0-0	0	0.0000	2	0	0	0	0.0000
1- Jackson T/ 5- Thomas A/ 10- Chatzileonti I/ 13- Kersgieter H/ 20- Brosseau J/	01:27	5-5	0	3.4483	0	1	0	1	1.8116
1- Jackson T/ 11- Strom S/ 12- Jessen K/ 15- Franklin Z/ 20- Brosseau J/	01:18	0-0	0	0.0000	2	0	0	0	0.0000
1- Jackson T/ 5- Thomas A/ 12- Jessen K/ 13- Kersgieter H/ 20- Brosseau J/	01:09	1-0	1	0.8696	2	2	2	0	0.2660
10- Chatzileonti I/ 12- Jessen K/ 13- Kersgieter H/ 15- Franklin Z/ 25- Prater C/	01:00	2-5	-3	2.0000	1	0	0	1	2.0000
1- Jackson T/ 11- Strom S/ 12- Jessen K/ 20- Brosseau J/ 25- Prater C/	00:53	0-4	-4	0.0000	1	0	2	0	0.0000
1- Jackson T/ 5- Thomas A/ 11- Strom S/ 12- Jessen K/ 20- Brosseau J/	00:49	1-3	-2	1.2245	0	0	0	0	1.1364
10- Chatzileonti I/ 11- Strom S/ 12- Jessen K/ 15- Franklin Z/ 20- Brosseau J/	00:36	2-2	0	3.3333	1	0	1	0	1.0638
1- Jackson T/ 5- Thomas A/ 12- Jessen K/ 15- Franklin Z/ 25- Prater C/	00:34	0-0	0	0.0000	2	0	1	0	0.0000
1- Jackson T/ 5- Thomas A/ 10- Chatzileonti I/ 11- Strom S/ 15- Franklin Z/	00:30	0-0	0	0.0000	1	0	1	0	0.0000
1- Jackson T/ 12- Jessen K/ 13- Kersgieter H/ 15- Franklin Z/ 25- Prater C/	00:22	0-0	0	0.0000	1	0	0	0	0.0000
5- Thomas A/ 10- Chatzileonti I/ 11- Strom S/ 15- Franklin Z/ 25- Prater C/	00:22	0-2	-2	0.0000	0	0	0	0	0.0000
1- Jackson T/ 5- Thomas A/ 10- Chatzileonti I/ 15- Franklin Z/ 20- Brosseau J/	00:13	2-0	2	9.2308	0	0	0	0	2.2727
5- Thomas A/ 10- Chatzileonti I/ 14- Papadopoulou D/ 15- Franklin Z/ 25- Prater C/	00:08	0-0	0	0.0000	1	0	1	0	0.0000
1- Jackson T/ 5- Thomas A/ 10- Chatzileonti I/ 20- Brosseau J/ 25- Prater C/	00:00	0-2	-2	NaN	0	0	0	0	0.0000