



KANSAS

@KUSoftball
#KUsoftball

2019 SOFTBALL GAME NOTES

KANSAS SCHEDULE

KAJIKAWA CLASSIC

2/8	vs. No. 25 Oregon	L, 5-14
2/8	vs. Stanford	L, 3-12 (5)
2/9	at No. 12 Arizona State	L, 6-14 (5)
2/9	vs. Utah	L, 4-6
2/10	vs. Missouri	L, 2-3

D9 CITRUS BLOSSOM

2/15	vs. UMASS	W, 4-2
2/15	vs. Iowa	L, 1-2
2/16	vs. Providence	W, 2-1
2/16	vs. Bethune Cookman	L, 1-3
2/17	vs. Missouri	L, 0-12 (5)

TENNESSEE CLASSIC

2/22	at No. 7 Tennessee	L, 0-9 (5)
2/24	vs. Louisville	L, 3-5
2/24	vs. Virginia	W, 5-2

NC STATE & DUKE INVITATIONAL

3/1	at NC State	L, 1-4 (6)
3/2	vs. Mississippi State	L, 3-6
3/2	at Duke	L, 7-8 (9)
3/3	vs. Campbell	L, 3-9
3/3	vs. Charleston Southern	W, 6-0

JAYHAWK INVITATIONAL

3/8	vs. SEMO	L, 0-2
3/8	vs. MAINE	W, 6-4
3/9	vs. MAINE	CANCELED
3/9	vs. SEMO	L, 1-2
3/10	vs. UMKC	L, 4-5 (8)

ROCK CHALK CHALLENGE

2/15	vs. TULSA	L, 5-11
2/16	vs. NEBRASKA	W, 2-0
2/16	vs. TULSA	L, 0-4
2/17	vs. NEBRASKA	W, 1-0
3/18	vs. OMAHA	W, 8-0 (6)
3/20	at Wichita State	Wichita, Kan.
3/22	vs. GREEN BAY	Lawrence, Kan.
3/23	vs. GREEN BAY (DH)	Lawrence, Kan.
3/29	vs. BAYLOR *	Lawrence, Kan.
3/30	vs. BAYLOR *	Lawrence, Kan.
3/31	vs. BAYLOR *	Lawrence, Kan.
4/3	at Tulsa	Tulsa, Okla.
4/5	at Oklahoma State *	Stillwater, Okla.
4/6	at Oklahoma State *	Stillwater, Okla.
4/7	at Oklahoma State *	Stillwater, Okla.
4/12	vs. OKLAHOMA *	Lawrence, Kan.
4/13	vs. OKLAHOMA *	Lawrence, Kan.
4/14	vs. OKLAHOMA *	Lawrence, Kan.
4/18	at Texas Tech *	Lubbock, Texas
4/19	at Texas Tech *	Lubbock, Texas
4/20	at Texas Tech *	Lubbock, Texas
4/26	vs. TEXAS *	Lawrence, Kan.
4/27	vs. TEXAS *	Lawrence, Kan.
4/28	vs. TEXAS *	Lawrence, Kan.
5/3	at Iowa State *	Ames, Iowa
5/4	at Iowa State *	Ames, Iowa
5/5	at Iowa State *	Ames, Iowa
5/10	Big 12 Tournament	Oklahoma City, Okla.
5/11	Big 12 Tournament	Oklahoma City, Okla.
TOTAL		8-19 (.296)

All times Central. Home game in ALL CAPS. * = conference game.



VS



GAME 28

Kansas vs Wichita State

Wichita, Kan. | Wilkins Stadium
Wednesday, March 20 | 6 p.m.

KANSAS		WICHITA STATE	
-	8-19	OVERALL	18-9
NFCA/USA TODAY			NFCA/USA TODAY
-	-	CONF.	-
BIG 12			AMERICAN
Jennifer McFalls		COACH	Kristi Bredbenner
1st Season // 8-19 (.296)			8th season // 220-190 (.536)
.383	.247	BAVG.	.298
#21 Gayre			#0 Perrigan
12	83	RUNS	26
#14 Ramsey			#23 Derrico
27	170	HITS	27
#4 Sykes			#0 Perrigan
13	75	RBI	21
#4 Sykes			#0 Perrigan
5-5	9-12	SB-ATT	20-24
#11 Omli			#10 Glover
92.2	176.2	IP	178.0
#12 Minor			#99 McDonald
2.71	4.91	ERA	2.67
#7 Travieso			#43 Martinez
51	124	SO	126
#6 Mills/#12 Minor			#8 Bingham

SERIES AT A GLANCE

Overall	Kansas leads, 70-19 // L2
in Lawrence	Kansas leads, 36-8 // L2
in Wichita	Kansas leads, 30-9 // W5
Neutral	Kansas leads, 4-2 // W2
Longest KU Win Streak	W16 // 1988-93

BROADCAST INFORMATION

Jayhawk IMG Radio Network
KUAthletics.com/radio
Jackson Schneider

KANSAS COMMUNICATIONS

Brent Beerends
beerends@ku.edu | 785-393-7725

QUICK HITS

- The Jayhawks earned their first **two-game winning streak** of the season, beating Nebraska 1-0 (3/17) and Omaha 8-0 (3/18).
- The **shutout victories** also mark the first time in back-to-back games since March 17-21, 2018 that KU has held opponents scoreless. On March 17 Kansas held Saint Louis scoreless (4-0) and followed the feat with another zero run affair against UMKC (3-0) on March 18. KU concluded the streak on March 21 against Incarnate Word (5-0).
- Freshman **Lexy Mills** pitched her **first career no-hit performance** against Omaha, finishing with **10 strikeouts** and four walks while holding the Mavericks hitless. Mills has recorded **back-to-back double-digit strikeouts**, tallying **11 strikeouts** against UMKC (3/10) and **10 strikeouts** against Omaha (3/18).
- Against Omaha, Kansas recorded its first **walk-off victory** of 2019, scoring four runs in the bottom of the sixth inning to beat the Mavs, 8-0.
- Kansas finished the **Rock Chalk Challenge** 2-2 and recently finished the **Jayhawk Invitational** 1-3, claiming its **first home victory** of the season against Maine on March 8. The 6-4 victory over Maine is the **first home victory for head coach Jennifer McFalls**.
- In the Rock Chalk Challenge, KU earned **two-shutout victories** over Nebraska, beating the Huskers 2-0 (3/16) and 1-0 (3/17).
- Brynn Minor** earned **two victories** in the RCC and matched her four-win season total from 2018.
- Minor** pitched her first career game of seven innings or more with **zero walks** against Nebraska (3/17). The senior from Wichita, Kansas finished with a **season-high seven strikeouts**.
- Morgyn Wynne** tallied her first RBI since Feb. 9 against Arizona State in the 1-0 victory over Nebraska. Wynne also earned her **first start as catcher**.
- In the March 16 contest against Nebraska, Kansas won the game 2-0 and had **zero RBI**, scoring both runs on two Nebraska errors. The **zero-RBI victory** is the first since March 1, 2014 when the Jayhawks beat Murray State in the Coach B Classic in Chattanooga, 3-2.
- Kansas started the 2019 season at the **Kajikawa Classic** in Tempe, Arizona, finishing with a 0-5 record, and secured its **first two wins of the season** at the **Diamond 9 Citrus Blossom Invitational**.
- Against UMASS Feb. 15, the **Jayhawks defeated** the Minutewoman 4-2 for their **first win of the season** and **first win of head coach Jennifer McFalls' career**.
- The Jayhawks finished the altered Tennessee Classic schedule, 1-2, earning a **5-2 victory over Virginia**.
- At the NC State Invitational and Duke Invitational, the Jayhawks earned their **fourth win** of the season in the weekend finale against Charleston Southern, beating the Buccaneers 6-0.
- The 6-0 **shutout** of Charleston Southern on March 3 was the **first shutout** for Kansas since March 21, 2018 at Incarnate Word (5-0).
- Freshman Lexy Mills notched a career game against UMKC on March 10, pitching a **career-high eight innings** with a **career-high 11 strikeouts**. Mills also tallied her first two-hitter.
- Senior pitcher **Brynn Minor** recorded her **first career shutout** at Kansas, pitching a **complete game two-hitter** against Charleston Southern on March 3. Minor added **two additional shutouts** this season against Nebraska twice on March 16 (2-0) and March 17 (1-0).
- Kansas holds a **70-19 edge** over Wichita State, including a **five-game winning streak in Wichita, Kansas**. The Shockers have won the previous two meetings between the state of Kansas schools.

GENERAL INFORMATION

School: The University of Kansas [KU.edu]
Location: Lawrence, Kan.
Founded: 1866
Nickname: Jayhawks
Conference: Big 12 Conference [Big12Sports.com]
Enrollment: 28,447
Colors: Crimson & Blue
Stadium: Arrocha Ballpark at Rock Chalk Park
Stadium Capacity: 1,100
Website: KUAthletics.com

ADMINISTRATION

Chancellor: Douglas A. Giron
Director of Athletics: Jeff Long
Senior Woman Administrator: Nicole Corcoran
Associate Athletics Director (Softball Administrator):
Jane Widger Fulton

COACHING STAFF

Head Coach: Jen McFalls (1st season overall / 1st season at KU)
McFall's Record at KU/Overall: 8-19 (.296)
Associate Head Coach: Rich Wieligman
Assistant Coach: Jeremy Manley
Director of Softball Operations: Cacy Williams
Volunteer Assistant Coach: Gina Fogue

2018 REVIEW

Record: 27-25, 2-16 Big 12 (7th)
Final Ranking: N/A [NFCA] / #112 [NCAA RPI]
Postseason: N/A

2019 PREVIEW

Letterwinners Returning/Lost: 12/13
Starters Returning/Lost: 5/6
Newcomers: 7 newcomers (4 Freshmen, 3 Transfers)

TEAM HISTORY

First Year of Softball: 1969
First Year of NCAA Division I Softball: 1982
All-Time Record (1973 - 2019): 1,410-931-5 (.603) *
All-Time NCAA Record (1982 - 2018): 1,189-849-4 (.584)
All-Time Big 12 Regular Season Record (1996 - 2018): 152-263 (.366)
NCAA Tournament Appearances: 12 (1983, 1985, 1986, 1992, 1993, 1994, 1997, 1999, 2005, 2006, 2014, 2015)
* - Records not available prior to 1973 season

PRONUNCIATION GUIDE

Jennifer **MARWITZ** MAR-wits
Emily **BERMEL** BER-mull
Tarin **TRAVIESO** traa-VEE-es-oh
Madison **SYKES** Si-kes
BRYNN Minor BR-in
Shelby **GAYRE** Gay-rr
Morgyn **WYNNE** Win
Macy **OMLI** Om-lee
Becki **MONAGHAN** Mon-a-han

STIFF COMPETITION

• In the *USA Today/NFCA* Top 25 Coaches Poll, **Kansas is scheduled to play six teams** (No. 2 Oklahoma, No. 5 Tennessee, No. 10 Texas, No. 14 Texas Tech, No. 18 Arizona State and No. 21 Oklahoma State in 2019. four other KU opponents (Stanford, Baylor, Mississippi State and Missouri) are receiving votes in the poll.

BIG 12 PRESEASON POLL

• The Jayhawks were **voted seventh** in the Big 12 Preseason Poll with Oklahoma, Texas, Baylor, Oklahoma State, Texas Tech and Iowa State descending in that order in front of Kansas.

YOUTH MOVEMENT

• Kansas' **19-player roster** is compiled of **10 underclassmen** (five sophomores, five freshman) and only three seniors (Emily Bermel, Jennifer Marwitz and Brynn Minor).

BIG 12 STANDINGS

3/19/19 TEAM	— BIG 12 —					— OVERALL —				
	W-L	%	H	A	N	W-L	%	H	A	N
Texas Tech	-	-	-	-	-	27-2	.931	11-0	1-1	15-1
Oklahoma	-	-	-	-	-	25-2	.926	7-0	3-0	15-2
Texas	-	-	-	-	-	26-6	.813	16-2	3-2	7-2
Oklahoma State	-	-	-	-	-	21-7	.750	5-0	7-2	9-5
Iowa State	-	-	-	-	-	17-10	.630	0-0	3-4	14-6
Baylor	-	-	-	-	-	13-9	.591	5-5	4-1	4-3
Kansas	-	-	-	-	-	8-19	.296	4-5	0-4	4-10

2019 KANSAS ALPHABETICAL ROSTER

No	Player	Pos	Ht	Cl	Hometown / H.S. / Previous School
20	Bermel, Emily	OF	5-4	Sr.	Lawrence, Kan. / Lawrence Free State HS
1	Dellinger, Sam	UTL	5-3	Jr.	Papillion, Neb. / Papillion-La Vista HS / Creighton
21	Gayre, Shelby	C/UTL	5-9	So.	D'Hanis, Texas / D'Hanis HS
10	Hornbuckle, Cheyenne	INF	5-2	Fr.	Bakersfield, Calif. / Stockdale HS
2	Hughston, Shelby	C/INF	5-2	Jr.	Bastrop, Texas / Cedar Creek HS / Lamar
5	Jackson, Brittany	OF	5-1	So.	Mansfield, Texas / Lake Ridge HS
27	Marwitz, Jennifer	OF	5-6	Sr.	Oklahoma City, Okla. / Mount Saint Mary HS
6	Mills, Lexy	P/UTL	5-8	Fr.	Calabasas, Calif. / Agoura HS
12	Minor, Brynn	P/UTL	5-9	Sr.	Wichita, Kan. / Eisenhower HS / Butler County CC
9	Monaghan, Becki	C/INF	5-10	Jr.	Stony Plain, Alberta / Memorial Composite HS
11	Omlie, Macy	OF	5-7	Fr.	Goddard, Kan. / Eisenhower HS
18	Pruett, Kirsten	P	5-9	So.	Bastrop, Texas / Cedar Creek HS / Louisiana
14	Ramsey, Sydnee	INF	5-5	R-Fr.	Oklahoma City, Okla. / Westmoore HS
3	Roberts, Mandy	P	5-5	Jr.	Lee's Summit, Mo. / Lee's Summit West HS
8	Rodriguez, Miranda	INF	5-8	Jr.	Elk Grove, Calif. / Elk Grove HS / Cosumnes River College
4	Sykes, Madison	INF	5-6	Jr.	Blue Springs, Mo. / Blue Springs HS
23	Todd, Hannah	P	5-10	So.	Cartersville, Ga. / Cartersville HS / North Carolina
7	Travieso, Tarin	P/UTL	5-6	So.	San Antonio, Texas / Antonian College Prep HS
16	Wynne, Morgyn	INF	5-7	Fr.	Pittsburg, Calif. / Concord HS

2019 KANSAS NUMERICAL ROSTER

No	Player	Pos	Ht	Cl	Hometown / H.S. / Previous School
1	Sam Dellinger	UTL	5-3	Jr.	Papillion, Neb. / Papillion-La Vista HS / Creighton
2	Shelby Hughston	C/INF	5-2	Jr.	Bastrop, Texas / Cedar Creek HS / Lamar
3	Mandy Roberts	P	5-5	Jr.	Lee's Summit, Mo. / Lee's Summit West HS
4	Madison Sykes	INF	5-6	Jr.	Blue Springs, Mo. / Blue Springs HS
5	Brittany Jackson	OF	5-1	So.	Mansfield, Texas / Lake Ridge HS
6	Lexy Mills	P/UTL	5-8	Fr.	Calabasas, Calif. / Agoura HS
7	Tarin Travieso	P/UTL	5-6	So.	San Antonio, Texas / Antonian College Prep HS
8	Miranda Rodriguez	INF	5-8	Jr.	Elk Grove, Calif. / Elk Grove HS / Cosumnes River College
9	Becki Monaghan	C/INF	5-10	Jr.	Stony Plain, Alberta / Memorial Composite HS
10	Cheyenne Hornbuckle	INF	5-2	Fr.	Bakersfield, Calif. / Stockdale HS
11	Macy Omlie	OF	5-7	Fr.	Goddard, Kan. / Eisenhower HS
12	Brynn Minor	P/UTL	5-9	Sr.	Wichita, Kan. / Eisenhower HS / Butler County CC
14	Sydnee Ramsey	INF	5-5	R-Fr.	Oklahoma City, Okla. / Westmoore HS
16	Morgyn Wynne	INF	5-7	Fr.	Pittsburg, Calif. / Concord HS
18	Kirsten Pruett	P	5-9	So.	Bastrop, Texas / Cedar Creek HS / Louisiana
20	Emily Bermel	OF	5-4	Sr.	Lawrence, Kan. / Lawrence Free State HS
21	Shelby Gayre	C/UTL	5-9	So.	D'Hanis, Texas / D'Hanis HS
23	Hannah Todd	P	5-10	So.	Cartersville, Ga. / Cartersville HS / North Carolina
27	Jennifer Marwitz	OF	5-6	Sr.	Oklahoma City, Okla. / Mount Saint Mary HS

NEW YEAR, NEW SEASON, NEW COACH

• On **August 20, 2018** Kansas Athletic Director Jeff Long **announced the hiring of Jennifer McFalls** as the **ninth head coach** in softball program history.
• **McFalls** was previously an assistant coach at Texas and helped the Longhorns **reach the NCAA Tournament in all eight (2011-18) years** she was there.
• Prior to coaching, she was a four-year starter at shortstop for Texas A&M and **earned first-team All-America honors in 1993**.
• McFalls also played on the **USA's gold-medal-winning team at the 2000 Olympics**, scoring the game-winning run in the USA's victory over Japan.

TRANSFERS

• KU's roster is compiled of **six transfers**, including 2019 newcomers **Shelby Hughston, Kirsten Pruett** and **Hannah Todd**. The trio join **Dellinger** (Creighton, 2017), **Miranda Rodriguez** (Cosumnes River College, 2017) and **Brynn Minor** (Butler County CC, 2016-17).

REPLACING PRODUCTION

• Kansas is forced to replace its top-three hitters from 2018 - **Jessie Roane, Erin McGinley and Harli Ridling**. The senior trio each started all 52 games for the Jayhawks and accounted for 41.3 percent (158 of 382) of the team's hits and 41.4 percent (87 of 210) of the team's RBI.
• KU will also be forced to replace its top-two pitching arms from 2018. **Andie Formby** and **Sarah Miller** combined for 46 games started inside the circle for the Jayhawks.

MINOR PERFORMANCE

• Senior **Brynn Minor** was named the **2017 National Junior College Athletic Association (NJCAA) D1 Player of the Year** and **2017 NJCAA Betty Jo Graber Student Female Athlete of the Year** after helping lead Butler County Community College to the **2017 NJCAA National Championship**.

MINOR PERFORMANCE CONTINUED...

• **Minor** finished her sophomore campaign at Butler CC with a **13-0 record** and a **1.07 earned run average**, while setting a **single-season record** with a **.497 batting average** and **30 home runs**.

300 CAREER AT BATS

• **Sam Dellinger** and **Shelby Hughston** are the only two Jayhawks to have tallied 300-or-more career at bats. **Hughston** earned her 300th at bat against Nebraska (3/17). Both Dellinger and Hughston started their careers at other schools before attending Kansas.

A MAJOR MINOR LEADER

• Since being inserted back into a hitting role for Kansas, **Minor** has the fourth-highest batting average (.275) minimum 20 attempts. Minor has logged 11 hits and has six RBI.
• **Minor** has also made 19 appearances (92.2 IP) with 10 starts in the circle for Kansas. The senior from Wichita, Kansas leads KU in appearances (19), games started (10) and innings pitched (92.2).

BRITTANY JACKSON RETURNS

• After missing the first three tournaments of the season, **Brittany Jackson** - who started all 52 games at center field in 2018 - played in four games with three starts at the NC State and Duke Invitational. Jackson has been reinserted into her center field role, playing in 13 games with 12 starts this season.

INJURIES

• Through the first month of the season, Kansas suffered multiple injuries. **Jackson** missed the first three tournaments with an injury, **Sydnee Ramsey** missed the D9 Citrus Blossom Invitational and **Tarin Travieso** recently has been able to pitch for the Jayhawks.
• **Shelby Gayre**, Kansas' starting catcher this season, left the game against Campbell after a collision at home plate, which ended her season.

CONSISTANCY IS KEY

• **Becki Monaghan** played in her **100th career game** at Kansas when the Jayhawks clashed with Missouri (2/19) at the Diamond 9 Citrus Blossom Invitational. Monaghan has the **most active game** starts in a Kansas uniform, tallying **117 starts** through three seasons.

OFF THE BENCH

• **Cheyenne Hornbuckle** made a resounding return off the bench for Kansas against Maine, hitting her first career home run and providing an insurance run for KU against the Blackbears.
• **Hornbuckle** finished the Jayhawk Invitational with three starts in four games played with a .400 batting average and two RBI.

SERIES SUMMARY

Kansas vs. Wichita State (7-3 | Last 10):

DATE	SITE	RESULT
4/28/09	Wichita, Kan.	W, 3-0
4/28/10	Lawrence, Kan.	L, 1-4
4/28/10	Lawrence, Kan.	W, 9-2
4/27/11	Wichita, Kan.	W, 11-3 (6)
4/27/11	Wichita, Kan.	W, 6-3
4/11/12	Lawrence, Kan.	W, 9-1 (5)
4/11/12	Lawrence, Kan.	W, 8-3
4/2/14	Wichita, Kan.	W, 10-1
3/29/16	Lawrence, Kan.	L, 1-6
4/11/17	Lawrence, Kan.	L, 0-6

BY THE NUMBERS

0

Freshman Lexy Mills pitched her first career no-hitter at Kansas when the Jayhawks hosted Omaha on March 18. Mills finished with 10 strikeouts and four walks, while earning the impressive no-hit performance.

4

Kansas has tallied four shutout victories in 2019, and have accomplished back-to-back shutouts for the first time since March 17-21, 2018. On March 17, 2018 Kansas held Saint Louis scoreless (4-0) and followed the feat with another zero run affair against UMKC (3-0) on March 18. KU concluded the streak on March 21 against Incarnate Word (5-0).

5

Macy Omli has a team-high five steals and has a 5-5 mark on the base paths. Emily Bermel (1-2), Madison Sykes (1-2), and Brittany Jackson (1-1) each have recorded one steal this season.

11

Lexy Mills tallied a career performance against UMKC, finishing with a career-high eight innings pitched along with a career-high 11 strikeouts. Mills recorded her second double-digit strikeout performance against Omaha on March 18, finishing with 10 strikeouts.

13

Madison Sykes has a team-high 13 RBI and recently hit her team-leading third home run of the season.

27

Kansas tallied 27 wins in 2018 and finished with an overall record of 27-25, 2-16 in the Big 12.

82

Madison Sykes has a team-high 82 at bats in 2019 and is joined by Becki Monaghan (81) as the only Jayhawks with 80-or-more at bats this season.

92.2

Senior Brynn Minor leads Kansas with 10 starts in 19 appearances, while pitching a team-high 92.2 innings pitched. Minor is the team leader in wins (4), complete games (4), saves (2) and innings pitched.

100

Junior Becki Monaghan earned her 100th career start when the Jayhawks played Mississippi State on March 2 at the Duke Softball Field.



JENNIFER MCFALLS

HEAD COACH

1st Season at KU // 1st Season Overall

Alma Mater

Texas A&M, 1997

Hometown

Grand Prairie, Texas

YEAR-BY-YEAR AT KANSAS

YEAR	W	L	%	NOTES
2019	8	19	.296	First Season
Career	8	19	.296	1st Season at KU

THE MCFALLS FILE

COACHING EXPERIENCE

2018-Present, Kansas, Head Coach
2010-18, Texas, Assistant Coach
2015, Dallas Charge (NPF), Head Coach
2006-10, Midlothian HS, Head Coach
2003-05, Hockaday School, Head Coach
1998, Oklahoma, Assistant Coach
1995-97, Texas A&M, Assistant Coach

USA SOFTBALL

2005-10, USA Softball selection committee
2000, Olympic gold medal winner
1994-2000, U.S. National Team member
1996, Olympic team alternate
1999, Pan American Games winner
1998, World Championships gold medal winner

PLAYING EXPERIENCE

1991-94, Texas A&M, Shortstop
1993, First-Team NFCA All-America selection
1993-94, All-South Region First-Team honoree
1994, Texas A&M Female Athlete of the Year
2001, Texas A&M Hall of Fame member

WHAT THEY'RE SAYING ABOUT MCFALLS

"We are excited to name Jennifer McFalls as our new softball coach," **Kansas Athletic Director Jeff Long said**. "She brings outstanding credentials as a coach in the Big 12 Conference and as a national-caliber player. Our student-athletes will benefit greatly from her knowledge and passion for the game of softball."

STATS RANKING SUMMARY			
3/18/19	NCAA	BIG 12	VALUE
BATTING AVG.	215th	7th	.247
ERA	227th	7th	4.91
FIELDING %	137th	6th	0.958
HRs / GAME	156th	7th	0.48
RUNS / GAME	242nd	7th	3.07
DOUBLE PLAYS / GAME	63rd	2nd	0.41

HITTING STREAKS		
#	NAME	CURRENT LONGEST
1	Sam Dellinger	1 2
2	Shelby Hughston	1 3
3	Mandy Roberts	- -
4	Madison Sykes	1 7
5	Brittany Jackson	2 2
6	Lexy Mills	- -
7	Tarin Travieso	1 1
8	Mirando Rodriguez	1 1
9	Becki Monaghan	2 6
10	Cheyenne Hornbuckle	- 5
11	Macy Omli	- 2
12	Brynn Minor	- 2
14	Sydnee Ramsey	1 5
16	Morgyn Wynne	2 4
18	Kristen Pruett	- -
20	Emily Bermel	- 3
21	Shelby Gayre	3 3
23	Hannah Todd	- -
27	Jennifer Marwitz	1 3

2019 MULTI-HIT GAMES					
#	NAME	2	3	4	5+ TOTAL
1	Sam Dellinger	-	-	-	-
2	Shelby Hughston	2	-	-	2
3	Mandy Roberts	-	-	-	-
4	Madison Sykes	6	2	-	8
5	Brittany Jackson	-	-	-	-
6	Lexy Mills	-	-	-	-
7	Tarin Travieso	-	-	-	-
8	Miranda Rodriguez	-	-	-	-
9	Becki Monaghan	3	-	-	3
10	Cheyenne Hornbuckle	1	-	-	1
11	Macy Omli	1	-	-	1
12	Brynn Minor	1	1	-	2
14	Sydnee Ramsey	3	-	-	3
16	Morgyn Wynne	3	1	-	4
18	Kirsten Pruett	-	-	-	-
20	Emily Bermel	1	-	-	1
21	Shelby Gayre	3	1	1	5
23	Hannah Todd	-	-	-	-
27	Jennifer Marwitz	3	-	-	3
# TEAM		25	5	1	33

2019 MULTI-RBI GAMES					
#	NAME	2	3	4	5+ TOTAL
1	Sam Dellinger	-	-	-	-
2	Shelby Hughston	2	-	-	2
3	Mandy Roberts	-	-	-	-
4	Madison Sykes	1	2	-	3
5	Brittany Jackson	1	-	-	1
6	Lexy Mills	-	-	-	-
7	Tarin Travieso	-	-	-	-
8	Miranda Rodriguez	-	-	-	-
9	Becki Monaghan	3	-	-	3
10	Cheyenne Hornbuckle	1	-	-	1
11	Macy Omli	-	-	-	-
12	Brynn Minor	1	-	-	1
14	Sydnee Ramsey	3	-	-	3
16	Morgyn Wynne	-	-	-	-
18	Kirsten Pruett	-	-	-	-
20	Emily Bermel	-	-	-	-
21	Shelby Gayre	1	1	-	2
23	Hannah Todd	-	-	-	-
27	Jennifer Marwitz	1	-	-	1
# TEAM		14	3	-	18

WYNNE THEM OVER

• Freshman **Morgyn Wynne** started her freshman career off with a bang, **leading Kansas in batting average (.571), hits (8) and slugging percentage (.929)** at the Kajikawa Classic.

• **Wynne** has recently been thrust into a unfamiliar role for the Jayhawks, and has taken over catching duties following the injury to Shelby Gayre. Wynne started the previous two games against Nebraska (3/17) and Omaha (3/18) behind the plate. The freshman from Pittsburg, California finished the two games with three hits in five plate appearances with a home run, two doubles and two RBI.

SCHEDULE CHANGES

• Kansas was originally slated to play **five games** at the Tennessee Classic, but due to inclement weather the Jayhawks were only able to play **three games**.

• The Jayhawks then played another altered schedule due to weather at the NC State Invitational and Duke Invitational. Originally scheduled to play Campbell on March 1, the Camels and Jayhawks met on March 3. KU was able to compete in **all five games** in Raleigh/Durham, North Carolina.

• In their first home tournament of the year - The Jayhawk Invitational - Kansas played **four games** instead of the originally scheduled five. Kansas finished 1-3 in the invitational.

• Originally scheduled for Tuesday, March 12, the single game midweek clash against Omaha was **moved to Monday, March 18**. KU earned the 8-0 walk-off victory.

• Due to potentially inclement weather on Saturday, March 23, the **upcoming three-game series** against Green Bay has been adjusted. The Jayhawks and Phoenix are slated to play two games on Friday starting at 4 p.m. and a single game on Saturday, March 23 at 2 p.m.

CACY WILLIAMS | WICHITA STATE CONNECTION

• **Cacy Williams**, Kansas' director of softball operations, returns to Wichita State where she named the 2014, 2015 Missouri Valley Player of the Year and 2014 Newcomer of the Year. Williams was also named a two-time NFCA All-Midwest Region First Team selection and a three-time MVC Scholar-Athlete First Team honoree.

• Williams broke the Wichita State single season batting average record (.424), runs record (57), slugging percentage (.812), on-base percentage (.531), total bases (138), home runs (16), RBIs (47), hits (72) and walks (35) in her first season as a Shocker.

• Williams still has her name riddled through the Wichita State record book, ranking third in career batting average (.360), first in slugging percentage (.673), on-base percentage (.457), seventh in doubles (35), home runs (39), sixth in runs scored (136), second in RBI (135), third in total bases (340), 10th in walks (80), sixth in putouts (935) and first in fielding percentage (.997).

RECAPING THE JAYHAWK INVITAIONAL

• After four weekends on the road to start the season, Kansas returned to play its first home games of the 2019 season. With the temperatures hovering around 40 degrees and strong winds, the schedule was moved up and hour each of the first two days. Kansas started the tournament with a 0-2 loss to SEMO on March 8, but rebounded to earn the 6-4 victory over Maine in the night cap. The victory was the first home win of head coach Jennifer McFalls career.

• With winds as high as 35 miles per hour, rain and cold temperatures, KU did not play its scheduled games on Saturday, March 9 against Maine and SEMO, which again altered the Jayhawk Invitational schedule.

• On the final day of competition, the Jayhawks fell to SEMO (1-2) and UMKC (4-5) at Arrocha Ballpark. Freshman Lexy Mills finished with a team-high 11 strikeouts in a single game this season, while pitching a career-high eight innings against UMKC (2/10) Brynn Minor pitched 14.2 innings in three appearances, while allowing only four earned runs.

RECAPING THE ROCK CHALK CHALLENGE

KU'S RECORD WHEN		
	OVERALL	BIG 12
OVERALL	8-19	-
Home	4-5	-
Away	0-4	-
Neutral	4-10	-
Longest Winning Streak	2	-
Current Streak	2	-
vs. NFCA Top 25	0-3	-
February	3-10	-
March	5-9	-
April	-	-
May	-	-
Day Games	8-19	-
Night Games	0-0	-
vs. Left-Handed Starter	0-3	-
vs. Right-Handed Starter	8-16	-
1-run games	2-5	-
2-run games	3-4	-
5+ run games	2-7	-
Extra Inning	0-2	-
Shutouts	4-4	-
KU Scores: 0-2 runs	3-9	-
KU Scores: 3-5 runs	2-8	-
KU Scores: 6-9 runs	3-2	-
KU Scores: 10+ runs	-	-
Opponent Scores: 0-2 runs	7-3	-
Opponent Scores: 3-5 runs	1-6	-
Opponent Scores: 6-9 runs	0-5	-
Opponent Scores: 10 or more runs	0-5	-
KU scores first	6-6	-
Opponent scores first	2-13	-
LEADING after 4	5-2	-
TRAILING after 4	1-14	-
TIED after 4	2-3	-
LEADING after 5	6-0	-
TRAILING after 5	1-14	-
TIED after 5	1-1	-
LEADING after 6	7-1	-
TRAILING after 6	0-12	-
TIED after 6	0-1	-
Hit 0 home runs	5-12	-
Hit 1 home run	2-5	-
Hit 2+ home runs	0-5	-
KU: No errors	2-7	-
KU: 1 error	3-5	-
KU: 2+ errors	3-7	-
Opponent: No errors	2-13	-
Opponent: 1 error	3-3	-
Opponent: 2+ errors	3-3	-
Out-hit opponent	6-5	-
Out-hit by opponent	2-13	-
Hits tied	0-1	-

UPCOMING MILESTONES		
NAME	NEXT MILESTONE	CURRENT #
Emily Bermel	125 games played	105
Sam Dellinger	350 at bats	329
Sam Dellinger	100 career hits	97
Shelby Hughston	150 games played	140
Shelby Hughston	350 at bats	303
Brynn Minor	10 career wins	8
Becki Monaghan	125 games played	117
Becki Monaghan	125 games started	112
Sydnee Ramsey	100 career at bats	91
Madison Sykes	50 career RBI	28
Madison Sykes	125 games played	104

USA TODAY/NFCA COACHES POLL

3/18/19

RANK	SCHOOL (1ST-PLACE VOTES)	PTS	W-L	PREV.
1	UCLA (31)	799	25-1	1
2	Oklahoma	760	25-2	2
3	Florida State (1)	717	27-3	3
4	Alabama	703	31-0	4
5	Tennessee	662	22-4	6
6	Florida	621	24-5	7
7	Washington	612	22-6	5
8	LSU	546	23-6	9
9	Louisiana	521	23-3	10
10	Texas	506	25-6	11
11	Arizona	459	21-7	12
12	Georgia	417	25-6	8
13	Kentucky	393	20-7	15
14	Texas Tech	383	27-2	13
15	Arkansas	368	21-7	14
16	South Carolina	307	21-7	16
17	Auburn	289	26-4	20
18	Arizona State	257	22-8	17
19	James Madison	173	15-5	22
20	Minnesota	170	19-8	21
21	Oklahoma State	154	20-7	18
22	Indiana	137	25-6	19
23	Wisconsin	130	21-3	23
24	Ole Miss	89	21-7	NR
25	Michigan	54	15-10	25

Others receiving votes:

Virginia Tech (42), Northwestern (37), Illinois (21), Boise State (15), Stanford (13), Notre Dame (10), UNLV (9), Colorado State (6), Oregon State (6), Baylor (5), Mississippi State (5), Louisiana Tech (2), Missouri (1), USC Upstate (1).

2019 KU OPPONENT

ESPN.COM/USA SOFTBALL

3/19/19

RANK	SCHOOL (1ST-PLACE VOTES)	PTS	W-L	PREV.
1	UCLA (20)	500	25-1	1
2	Oklahoma	471	25-2	2
3	Alabama	451	31-0	4
4	Florida State	445	27-3	3
5	Tennessee	419	22-4	5
6	LSU	379	23-6	8
7	Florida	357	24-5	7
8	Washington	352	22-6	6
9	Louisiana	321	23-3	11
10	Arizona	314	21-7	12
11	Texas	288	25-6	13
12	Texas Tech	287	27-2	10
13	Auburn	260	26-4	16
14	Kentucky	235	20-7	18
15	Georgia	222	25-6	9
16	Arizona State	157	22-8	19
17	Oklahoma State	134	20-7	14
18	Arkansas	127	21-7	17
19	Minnesota	109	19-8	21
20	Indiana	102	25-6	15
21	James Madison	101	15-5	23
22	Wisconsin	93	21-3	22
23	Ole Miss	75	21-7	RV
24	Virginia Tech	72	21-4	25
25	Michigan	61	15-10	24

Others receiving votes: South Carolina (60), Northwestern (41), Illinois (22), Boise State (11), Stanford (10), Houston (8), Oregon State (8), USC Upstate (6), Missouri (1), Notre Dame (1), South Florida (1)

2019 KU OPPONENT

SOFTBALL AMERICA

3/18/19

RANK	SCHOOL (1ST-PLACE VOTES)	W-L	PREV.
1	UCLA	25-1	1
2	Oklahoma	25-2	3
3	Alabama	31-0	5
4	Florida State	27-3	2
5	Tennessee	22-4	4
6	LSU	24-6	8
7	Florida	24-6	6
8	Texas	27-6	9
9	Washington	22-6	7
10	Kentucky	20-7	12
11	Arizona	21-7	13
12	Louisiana	23-3	14
13	Texas Tech	27-2	11
14	Minnesota	19-8	15
15	Ole Miss	21-7	25
16	James Madison	15-5	18
17	Georgia	25-6	10
18	Arkansas	21-7	21
19	South Carolina	21-7	16
20	Wisconsin	21-3	20
21	Arizona State	22-8	22
22	Auburn	26-4	23
23	Virginia Tech	21-4	NR
24	Oklahoma State	21-7	17
25	Colorado State	20-4	NR

2019 KU OPPONENT

• Kansas finished the Rock Chalk Challenge 2-2 with two victories over Nebraska. The Jayhawks fell to Tulsa twice, and suffered a 5-11 loss to open the RCC on Friday, March 15. In the loss, **Brynn Minor** tallied her first career home run at Kansas, hitting a solo home run in the fourth inning. **Minor** earned the loss in the circle, but rebounded against Nebraska on Saturday, March 16.

• On the second day of the Rock Chalk Challenge, Kansas earned its second shutout of the season, beating Nebraska, 2-0. **Minor** earned her second shutout of the season and Kansas scored both runs on a two-error play by the Huskers. The zero-RBI win was the first for Kansas since its 3-2 victory over Murray State March 1, 2014 in the Coach B Classic in Chattanooga, Tennessee. In the second game of the day, KU fell to Tulsa, 4-0, and **Tarin Travieso** earned her first start of the season. **Travieso** tallied a season-high 4.0 innings pitched, while allowing two earned runs with one strikeout.

• Kansas again found success against Nebraska in the RCC finale, beating the Huskers 1-0 on Sunday, March 17. The Jayhawks earned their lone RBI of the game in the sixth inning when **Morgyn Wynne** - who earned her first start as catcher - hit a RBI double to right field, which plated **Emily Bernel**. **Minor** earned her second shutout victory of the challenge.

VS. OMAHA | NO-HITTER

• Kansas earned its first walk-off victory and no-hit performance of the season against Omaha on March 18, beating the Mavericks 8-0 in six innings. Freshman **Lexy Mills** finished with 10 strikeouts and four walks, while holding the Mavs hitless.

• The Jayhawks needed four-runs in the bottom of the sixth inning to end the game, and produced their sixth four-run inning of the season. Sophomore **Brittany Jackson** laced a double to the outfield, plating the final two runs of the game.

• The Jayhawks tallied their first no-hitter since March 20, 2016 against St. Louis, 9-0. Andie Formby pitched six innings with four strikeouts and one walk.

VS. WICHITA STATE

• Wichita State enters its one-game series with Kansas 18-9 and recently finished the USF Spring Invitational, 1-4. The Shockers earned their lone victory over Towson, 5-4, and lost games to Chattanooga, North Dakota State, No. 20 Minnesota and Monmouth.

• In the overall series between the two state of Kansas schools, the Jayhawks hold a firm 70-19 edge and a five-game winning streak in Wichita, Kansas. The Shockers have won the last two meetings on March 29, 2016 (6-1) and April 11, 2017 (6-0).

• The Shockers are led at the plate by Madison Perrigan, who is their team leader in batting average (.346), home runs (5), RBI (21), on-base percentage (1.159), walks (21), doubles (7), triples (2), total bases (53) and slugging percentage (.679).

• The Wichita State pitching staff has three members with sub-3.00 earned run averages, and are led by Hailey Martinez. Martinez has a team-low 1.59 ERA and a 2-0 record, while Erin McDonald has a team-high 76.0 innings pitched with a 2.76 ERA. Caitlin Bingham has a team-high 60 strikeouts and 13 games started, while pitching a total of 67.2 innings.

UP NEXT

• Following the single-game midweek clash at Wichita State, Kansas hosts Green Bay for a three-game series starting Friday, March 22. The Jayhawks and Phoenix are slated to play a doubleheader starting at 4 p.m. on Friday and conclude the series with a single game on Saturday, March 23 at 2 p.m.

CURRENT STREAKS

STREAK	CURRENT #
Wins	2
Three strikeouts (Pitching)	11
Three hits (Batting)	2
Five hits (Batting)	2
No errors (Defense)	1
Score 1 or more runs	2
Score 3 or more runs	1
Score 5 or more runs	1
Score 7 or more runs	1

2019 WALK-OFF WINS

DATE	OPPONENT	RESULT
3/18	vs. Omaha	W, 8-0 (6)

Brittany Jackson hit a two-RBI double to capture its first walk-off victory of the season.

2019 SHUTOUTS

DATE	OPPONENT	RESULT
3/3	vs. Charleston Southern	W, 6-0

Minor recorded her first career shutout at Kansas, pitching the entire seven innings and allowing only two hits.

3/16	vs. Nebraska	W, 2-0
------	--------------	--------

Kansas finished with its first zero-RBI victory since March 1, 2014. KU scored both runs on a two-error play by Nebraska.

3/17	vs. Nebraska	W, 1-0
------	--------------	--------

Brynn Minor pitched a complete game with a season-high seven strikeouts and zero walks. Morgyn Wynne earned her first start as catcher and hit the game-winning RBI in the sixth inning.

3/18	vs. Omaha	W, 8-0 (6)
------	-----------	------------

Kansas earned its first walk-off victory of the season, while also earning its second-consecutive shutout.

SAM DELLINGER // 1 // PAPILLION, NEB. // JUNIOR // UTILITY // 5-3 // BATS/THROWS: R/R

NOTES: Started 23 games in 2018 ... First double of the season vs. Maine (3/8) ... Transferred from Creighton where she earned All-Big East First Team Honors (2017) ... Started 50 games for the Bluejays as a freshman and tallied a .338 batting average ... Played in 51 games with 48 starts in 2018 and finished with .340 on-base percentage and a .435 slugging percentage.

GAMES PLAYED	GAMES STARTED	BATTING AVERAGE	HITS	DOUBLES	HOME RUNS	RBI
18	12	.162	6	2	-	2

SEASON HIGHS:

AT BATS: 4 | 2x; last vs. Virginia (2/24/19)
RUNS: 2 | at Arizona State (2/10/19)
HITS: 1 | 6x; last vs. Omaha (3/18/19)
RBI: 1 | 2x; last vs. Virginia (2/24/19)
DOUBLES: 1 | 2x; last vs. Omaha (3/18/19)
HOME RUNS: N/A
WALKS: 1 | 2x; last vs. Stanford (2/8/19)

CAREER HIGHS:

AT BATS: 5 | vs. Weber State (2/25/17)*
RUNS: 3 | 2x; last vs. Stephen F. Austin (2/23/18)
HITS: 4 | 2x; last at UTSA (2/16/18)
RBI: 6 | at Georgetown (3/25/17)*
DOUBLES: 2 | 2x; last at ULM (4/25/18)*
HOME RUNS: 2 | vs. Butler (4/23/17)*
WALKS: 2 | 2x; last vs. Colorado State (3/30/18)

SHELBY HUGHSTON // 2 // BASTROP, TEXAS // JUNIOR // CATCHER/INFIELDER // 5-2 // BATS/THROWS: L/R

NOTES: Started 23 games, splitting time between catcher and shortstop ... Earned first triple as a Jayhawk vs. Mississippi State (3/2) ... Fifth on the team in RBI (7) ... Transferred from Lamar ... Started 52 games for UL in 2017 and 55 games in 2018 ... Finished with a .242 batting average last season and was second on the team with 90 assists.

GAMES PLAYED	GAMES STARTED	BATTING AVERAGE	HITS	DOUBLES	TRIPLES	RBI
24	23	.208	11	2	1	7

SEASON HIGHS:

AT BATS: 4 | 2x; last at Duke (3/2/19)
RUNS: 1 | 5x; last vs. Omaha (3/18/19)
HITS: 3 | vs. UMMASS (2/15/19)
RBI: 2 | 2x; last vs. Virginia (2/24/19)
DOUBLES: 1 | 2x; last vs. Charleston Southern (3/3/19)
WALKS: 3 | vs. Louisville (2/24/19)
STOLEN BASES: N/A

CAREER HIGHS:

AT BATS: 4 | 8x; last at Duke (3/2/19)
RUNS: 3 | at Incarnate Word (4/26/17)*
HITS: 3 | 2x; last at ULM (4/25/18)*
RBI: 2 | 3x; last vs. UMMASS (2/15/19)
DOUBLES: 2 | 2x; last at ULM (4/25/18)*
WALKS: 3 | vs. Louisville (2/24/19)
STOLEN BASES: 1 | 9x; last at ULM (4/25/18)*

MANDY ROBERTS // 3 // LEE'S SUMMIT, MO. // JUNIOR // PITCHER // 5-5 // BATS/THROWS: R/R

NOTES: First 2019 appearance came against No. 12 Arizona State (2/9) and pitched a scoreless 1.1 innings against Providence (2/16/19) ... Made two appearances and pitched 1.1 innings in 2018 ... Finished her freshman campaign with a 4-3 record in 19 appearances ... Pitched 41.2 innings in 2017, holding opposing batters to a .283 average.

WINS	LOSSES	ERA	INNINGS PITCHED	WALKS	STRIKEOUTS	SAVES
-	-	9.00	5.0	6	2	-

SEASON HIGHS (PITCHING):

IP: 1 | 2x; last vs. Campbell (3/3/19)
HITS: 3 | at Tennessee (2/22/19)
RUNS: 3 | at Tennessee (2/22/19)
ER: 3 | at Tennessee (2/22/19)
SO: 2 | at Arizona State (2/9/19)
WALKS: 3 | vs. Tulsa (3/16/19)
HBP: N/A

CAREER HIGHS (PITCHING):

IP: 5.0 | vs. South Dakota State (2/19/17)
HITS: 5 | 3x; last at Oklahoma (4/14/18)
RUNS: 7 | at Oklahoma (4/14/18)
ER: 7 | at Oklahoma (4/14/18)
SO: 6 | at North Florida (2/17/17)
WALKS: 5 | vs. Nevada (4/23/17)
HBP: 1 | at Oklahoma State (3/31/17)

MADISON SYKES // 4 // BLUE SPRINGS, MO. // JUNIOR // INFIELDER // 5-6 // BATS/THROWS: L/R

NOTES: One of two players to start all 27 games ... Team-high 27 hits ... Logged three-RBI games vs. Louisville (2/24) and Campbell (3/3) ... First home run of the season came against Louisville (2/24) ... Eight multiple hit games in 2019 ... 2018 Academic All-Big 12 First Team ... Played in 37 games with 14 starts in 2018 and 40 games with 36 starts in 2017.

GAMES PLAYED	GAMES STARTED	BATTING AVERAGE	HITS	DOUBLES	HOME RUNS	WALKS
27	27	.329	27	4	3	11

SEASON HIGHS:

AT BATS: 4 | 8x; last vs. Tulsa (3/15/19)
RUNS: 1 | 9x; last vs. Omaha (3/18/19)
HITS: 3 | 2x; last at Duke (3/2/19)
RBI: 3 | 2x; last vs. Campbell (3/3/19)
DOUBLES: 1 | 4x; last vs. SEMO (3/10/19)
TRIPLES: N/A
HOME RUNS: 1 | 3x; last vs. Omaha (3/18/19)

CAREER HIGHS:

AT BATS: 4 | 12x; last vs. Tulsa (3/15/19)
RUNS: 3 | vs. Green Bay (3/10/17)
HITS: 3 | 3x; last at Duke (3/2/19)
RBI: 3 | 4x; last vs. Campbell (3/3/19)
DOUBLES: 1 | 6x; last vs. SEMO (3/10/19)
TRIPLES: 1 | vs. Green Bay (3/10/17)
HOME RUNS: 1 | 5x; last vs. Campbell (3/2/19)

BRITTANY JACKSON // 5 // MANSFIELD, TEXAS // SOPHOMORE // OUTFIELD // 5-1 // BATS/THROWS: L/L

NOTES: First appearance this season vs. Mississippi State (3/2) ... Logged first RBI, hit and run of the season at Duke (3/2) ... Played and started in all 52 games as a freshman in 2018 ... One of three Jayhawks to start all 52 games of the 2018 season at one position ... Stole a team-high 12 bases on 14 attempts last season.

GAMES PLAYED	GAMES STARTED	BATTING AVERAGE	HITS	DOUBLES	STOLEN BASES	WALKS
13	12	.241	7	2	2	4

SEASON HIGHS:

AT BATS: 4 | 2x; last vs. Omaha (3/18/19)
HITS: 1 | 7x; last vs. Omaha (3/18/19)
RBI: 2 | vs. Omaha (3/18/19)
DOUBLES: 1 | 2x; last vs. Omaha (3/18/19)
TRIPLES: N/A
WALKS: 2 | vs. UMKC (3/11/19)
STOLEN BASES: 1 | 2x; last vs. Nebraska (3/16/19)

CAREER HIGHS:

AT BATS: 5 | 3x; last vs. Oklahoma State (4/5/18)
HITS: 3 | 2x; last vs. Northern Colorado (3/17/18)
RBI: 3 | vs. Elon (3/4/18)
DOUBLES: 1 | 6x; last vs. Omaha (3/18/19)
TRIPLES: 1 | vs. Elon (3/4/18)
WALKS: 3 | vs. Colorado State (3/30/18)
STOLEN BASES: 2 | vs. UNI (3/9/18)

LEXY MILLS // 6 // CALABASAS, CALIF. // FRESHMAN // PITCHER/UTILITY // 5-8 // BATS/THROWS: R/R

NOTES: First career start against Stanford (2/8/19) and first career win against Providence (2/16/19) ... Pitched a career-high 8.0 innings against UMKC (3/10) with a career-high 11 strikeouts ... Pitched a no-hitter against Omaha (3/18) ... Attended Agoura High School in Agoura Hills, California and earned all-state honors twice.

GAMES PLAYED	GAMES STARTED	INNINGS PITCHED	ERA	STRIKEOUTS	WALKS	HBP
13	8	39.1	4.81	51	42	5

SEASON HIGHS (PITCHING):

IP: 8.0 | vs. UMKC (3/10/19)
HITS: 5 | vs. Campbell (3/3/19)
RUNS: 7 | vs. Stanford (2/8/19)
ER: 7 | vs. Stanford (2/8/19)
SO: 11 | vs. UMKC (3/10/19)
WALKS: 8 | vs. UMKC (3/10/19)
HBP: 1 | 5x; last vs. Omaha (3/18/19)

CAREER HIGHS (PITCHING):

IP: 8.0 | vs. UMKC (3/10/19)
HITS: 5 | vs. Campbell (3/3/19)
RUNS: 7 | vs. Stanford (2/8/19)
ER: 7 | vs. Stanford (2/8/19)
SO: 11 | vs. UMKC (3/10/19)
WALKS: 8 | vs. UMKC (3/10/19)
HBP: 1 | 5x; last vs. Omaha (3/18/19)

TARIN TRAVIESO // 7 // SAN ANTONIO, TEXAS // SOPHOMORE // PITCHER/UTILITY // 5-6 // BATS/THROWS: L/L

NOTES: First start of 2019 against Bethune-Cookman (2/16/19) ... Pitched a season-high 4.0 innings against Tulsa (3/16) ... First hit of 2019 against Omaha (3/18) ... 2018 Big 12 All-Freshman Team and the 2017-18 Academic All-Big 12 Rookie Team honoree ... Played in 41 games with 40 starts in 2018 ... Eight career multi-hit games and six multi-RBI games.

GAMES PLAYED	GAMES STARTED	BATTING AVERAGE	INNINGS PITCHED	ERA	STRIKEOUTS	WALKS
18	4	.050	10.1	2.71	5	5

SEASON HIGHS (PITCHING):

IP: 4.0 | vs. Tulsa (3/16/19)
SO: 2 | vs. Campbell (3/3/19)
ER: 2 | 2x; last vs. Omaha (3/18/19)

SEASON HIGHS (HITTING):

AT BATS: 2 | 3x; last vs. UMKC (3/10/19)
HITS: 1 | vs. Omaha (3/18/19)
RBI: 1 | 2x; last vs. Omaha (3/18/19)

CAREER HIGHS (PITCHING):

IP: 7.0 | vs. Elon (3/4/18)
SO: 5 | vs. Elon (3/4/18)
ER: 7 | at Oklahoma (3/14/18)

CAREER HIGHS (HITTING):

AT BATS: 6 | vs. Colorado State (3/30/18)
HITS: 2 | 8x; last vs. OK State (4/5/18)
RBI: 6 | at UTSA (2/16/18)

MIRANDA RODRIGUEZ // 8 // ELK GROVE, CALIF. // JUNIOR // INFIELDER // 5-8 // BATS/THROWS: L/R

NOTES: Started 17 games at second base ... First career hit, RBI and double against UMMASS (2/15/19) ... Transferred from Consummes River College in Sacramento, California ... Led the Hawks with 67 hits and three triples in 2017 ... Added 11 doubles and 37 RBIs on a .424 batting average at the plate.

GAMES PLAYED	GAMES STARTED	BATTING AVERAGE	HITS	DOUBLES	RBI	WALKS
19	17	.118	4	1	3	4

SEASON HIGHS:

AT BATS: 3 | 4x; last vs. Iowa (2/15/19)
RUNS: 1 | 2x; last vs. Omaha (3/18/19)
HITS: 2 | 3x; last vs. Omaha (3/18/19)
RBI: 1 | 3x; last vs. Omaha (3/18/19)
DOUBLES: 1 | vs. UMMASS (2/15/19)
HOME RUNS: N/A
WALKS: 1 | 4x; last vs. Omaha (3/18/19)

CAREER HIGHS:

AT BATS: 3 | 5x; last vs. Iowa (2/15/19)
RUNS: 1 | 3x; last vs. Omaha (3/18/19)
HITS: 1 | 4x; last vs. Omaha (3/18/19)
RBI: 1 | 3x; last vs. Omaha (3/18/19)
DOUBLES: 1 | vs. UMMASS (2/15/19)
HOME RUNS: N/A
WALKS: 1 | 4x; last vs. Omaha (3/18/19)

BECKI MONAGHAN // 9 // STONY PLAIN, ALBERTA, CANADA // JUNIOR // CATCHER/INFIELDER // 5-10 // BATS/THROWS: R/R

NOTES: Started all 27 games at first base and has a .994 fielding percentage ... Tied for second in home runs (2) and fourth in hits (20) ... 2018 Academic All-Big 12 First Team ... 2016-17 NFCA All-America Scholar-Athlete ... 2017 KU Softball Rookie of the Year ... Played in 42 games with 38 starts at first base in 2018 and appeared in 48 games with 47 starts in 2017.

GAMES PLAYED	GAMES STARTED	BATTING AVERAGE	HITS	RBI	HOME RUNS	WALKS
27	27	.247	20	8	2	7

SEASON HIGHS:

AT BATS: 4 | 6x; last vs. Tulsa (3/15/19)
RUNS: 1 | 4x; last vs. Bethune-Cookman (2/16/19)
HITS: 2 | vs. Tulsa (3/15/19)
RBI: 2 | 3x; last vs. Tulsa (3/15/19)
DOUBLES: 1 | 5x; last vs. Omaha (3/18/19)
HOME RUNS: 1 | 2x; last vs. Bethune-Cookman (2/16/19)
WALKS: 2 | vs. Virginia (2/24/19)

CAREER HIGHS:

AT BATS: 5 | at Nebraska (4/19/17)
RUNS: 2 | 2x; last vs. Texas Tech (4/28/18)
HITS: 3 | vs. Omaha (3/19/17)
RBI: 2 | 9x; last vs. Missouri (2/10/19)
DOUBLES: 2 | vs. Mercer (3/3/17)
HOME RUNS: 1 | 6x; last vs. Bethune-Cookman (2/16/19)
WALKS: 3 | vs. Baylor (3/25/17)

CHEYENNE HORNBuckle // 10 // BAKERSFIELD, CALIF. // FRESHMAN // INFIELDER // 5-2 // BATS/THROWS: L/L

NOTES: First career appearance in pinch hit role against Stanford (2/8/19) ... First career start against No. 12 Arizona State, finishing with first hit and RBI ... First career home run against Maine (3/8) ... A fourth-generation Jayhawk ... Attended Stockdale High School in Bakersfield, California ... Led the Mustangs to three-straight Southwest Yosemite League (SWYL) titles.

GAMES PLAYED	GAMES STARTED	BATTING AVERAGE	HITS	RBI	HOME RUNS	WALKS
11	6	.316	6	3	1	-

SEASON HIGHS:

AT BATS: 4 | vs. UMKC (3/10/19)
RUNS: 2 | vs. Maine (3/8/19)
HITS: 2 | vs. Maine (3/8/19)
RBI: 2 | vs. Maine (3/8/19)
DOUBLE: N/A
HOME RUNS: 1 | vs. Maine (3/8/19)
STOLEN BASES: N/A

CAREER HIGHS:

AT BATS: 4 | vs. UMKC (3/10/19)
RUNS: 2 | vs. Maine (3/8/19)
HITS: 2 | vs. Maine (3/8/19)
RBI: 2 | vs. Maine (3/8/19)
DOUBLE: N/A
HOME RUNS: 1 | vs. Maine (3/8/19)
STOLEN BASES: N/A

* AT PREVIOUS SCHOOL

MACY OMLI // 11 // GODDARD, KAN. // FRESHMAN // OUTFIELD // 5-7 // BATS/THROWS: L/R

NOTES: Played in 21 games with 15 starts ... Started first 12 games at center field ... Team leader with five stolen bases ... Attended Eisenhower High School at Goddard, Kansas ... A three-sport athlete, and a member of the National Honor Society ... As a sophomore at Eisenhower HS, finished with a .722 batting average.

GAMES PLAYED	GAMES STARTED	BATTING AVERAGE	HITS	DOUBLES	RBI	STOLEN BASES
21	15	.194	6	-	-	5

SEASON HIGHS:

AT BATS: 3 | 4x; vs. Bethune-Cookman (2/16/19)
RUNS: 1 | 6x; last vs. Tulsa (3/15/19)
HITS: 2 | vs. Providence (2/16/19)
RBI: N/A
HOME RUNS: N/A
WALKS: 1 | 2x; last vs. Missouri (2/10/19)
STOLEN BASES: 2 | vs. Missouri (2/10/19)

CAREER HIGHS:

AT BATS: 3 | 4x; vs. Bethune-Cookman (2/16/19)
RUNS: 1 | 5x; last vs. SEMO (3/10/19)
HITS: 2 | vs. Providence (2/16/19)
RBI: N/A
HOME RUNS: N/A
WALKS: 1 | 2x; last vs. Missouri (2/10/19)
STOLEN BASES: 2 | vs. Missouri (2/10/19)

BRYNN MINOR // 12 // WICHITA, KAN. // SENIOR // PITCHER/UTILITY // 5-9 // BATS/THROWS: R/R

NOTES: First win of 2019 came against Virginia (2/24) ... Team leader in starts (10) and innings pitched (92.2) and tied for team lead in strikeouts (51) ... Fourth on the team in batting average (.275) ... 2017 NJCAA Betty Jo Graber Female Student Athlete of the Year and Dudley NJCAA D1 Softball Player of the Year ... NFCA NJCAA D1 All-American (2016 3rd Team, 2017 First Team).

GAMES PLAYED	GAMES STARTED	BATTING AVERAGE	HITS	INNINGS PITCHED	ERA	STRIKEOUTS
21	18	.275	11	92.2	3.63	51

SEASON HIGHS (HITTING):

HITS: 3 | vs. Charleston Southern (3/3/19)
AT BATS: 4 | 4x; last vs. Tulsa (3/15/19)
RBI: 2 | vs. Mississippi State (3/2/19)
SEASON HIGHS (PITCHING):
IP: 7.0 | 8x; last vs. Nebraska (3/17/19)
SO: 7 | 2x; last vs. Nebraska (3/17/19)
ER: 8 | vs. Tulsa (3/15/19)

CAREER HIGHS (HITTING):

HITS: 3 | vs. Charleston Southern (3/3/19)
AT BATS: 5 | vs. Colorado State (3/30/18)
RBI: 2 | vs. Mississippi State (3/2/19)
CAREER HIGHS (PITCHING):
IP: 9.2 | vs. Colorado State (3/30/18)
SO: 14 | vs. Colorado State (3/30/18)
ER: 8 | vs. Tulsa (3/15/19)

SYDNEE RAMSEY // 14 // OKLAHOMA CITY, OKLA. // R-FRESHMAN // INFILDER // 5-5 // BATS/THROWS: R/R

NOTES: Started the first five games of 2019, and logged back-to-back multi-RBI games ... Missed D9 Citrus Blossom Invitational due to injury precaution... Started the first 10 games of the 2018 season prior to a season-ending knee injury ... Recorded a .280 batting average, .419 on-base percentage and a .400 slugging percentage in 2018.

GAMES PLAYED	GAMES STARTED	BATTING AVERAGE	HITS	DOUBLES	HOME RUNS	RBI
19	19	.227	15	5	2	8

SEASON HIGHS:

AT BATS: 5 | at Duke (3/2/19)
RUNS: 2 | 3x; last vs. Charleston Southern (3/3/19)
HITS: 2 | 3x; last vs. Maine (3/8/19)
RBI: 2 | 3x; last vs. Maine (3/8/19)
HOME RUNS: 1 | 2x; last at Arizona State (2/9/19)
WALKS: 1 | 2x; last vs. SEMO (3/10/19)
STOLEN BASES: N/A

CAREER HIGHS:

AT BATS: 5 | at Duke (3/2/19)
RUNS: 2 | 4x; last vs. Charleston Southern (3/3/19)
HITS: 2 | 4x; last vs. Maine (3/8/19)
RBI: 2 | 3x; last vs. Maine (3/8/19)
HOME RUNS: 1 | 3x; last at Arizona State (2/9/19)
WALKS: 2 | 2x; last vs. Missouri State (2/17/18)
STOLEN BASES: N/A

MORGYN WYNNE // 16 // PITTSBURG, CALIF. // FRESHMAN // INFILDER // 5-7 // BATS/THROWS: R/R

NOTES: Started past two games as catcher ... Fourth on the team in hits (16) and third in batting average (.308) ... First career home run against Arizona State (2/9) ... Three-hit performance against Arizona State (2/9) ... Attended Concord High School in California ... A three-time all-North Coast Section (NCS) performer ... Helped lead the Minutemen to the 2017 NCS Title.

GAMES PLAYED	GAMES STARTED	BATTING AVERAGE	HITS	DOUBLES	HOME RUNS	RBI
21	16	.308	16	5	2	4

SEASON HIGHS:

AT BATS: 4 | 5x; last vs. UMKC (3/10/19)
RUNS: 2 | vs. Omaha (3/18/19)
HITS: 3 | at Arizona State (2/9/19)
DOUBLES: 2 | vs. Nebraska (3/17/19)
RBI: 1 | 3x; last vs. Omaha (3/18/19)
WALKS: 1 | vs. Mississippi State (3/2/19)
HBP: 1 | 3x; last vs. Omaha (3/18/19)

CAREER HIGHS:

AT BATS: 4 | 5x; last vs. UMKC (3/10/19)
RUNS: 2 | vs. Omaha (3/18/19)
HITS: 3 | at Arizona State (2/9/19)
DOUBLES: 2 | vs. Nebraska (3/17/19)
RBI: 1 | 3x; last vs. Omaha (3/18/19)
WALKS: 1 | vs. Mississippi State (3/2/19)
HBP: 1 | 3x; last vs. Omaha (3/18/19)

KIRSTEN PRUETT // 18 // BASTROP, TEXAS // SOPHOMORE // PITCHER // 5-9 // BATS/THROWS: R/R

NOTES: Made first appearance against Stanford (2/8/19) and first career start against No. 12 Arizona State (2/9) ... Pitched 2.0 innings against UMMASS to earn the Jayhawks first win of 2019 (2/15) ... Transferred from Louisiana ... Redshirted the 2017 season and made one appearance in the circle in 2018 ... Tossed three strikeouts in 1.2 innings against No. 2 Florida last season.

GAMES PLAYED	GAMES STARTED	ERA	INNINGS PITCHED	WALKS	STRIKEOUTS	SAVES
9	4	8.56	18.0	12	9	-

SEASON HIGHS (PITCHING):

IP: 5.2 | vs. Iowa (2/15/19)
HITS: 9 | vs. Missouri (2/17/19)
RUNS: 9 | vs. Missouri (2/17/19)
ER: 7 | vs. Missouri (2/17/19)
SO: 3 | vs. Iowa (2/15/19)
WALKS: 5 | vs. Missouri (2/17/19)
HBP: 1 | vs. Iowa (2/15/19)

CAREER HIGHS (PITCHING):

IP: 5.2 | vs. Iowa (2/15/19)
HITS: 9 | vs. Missouri (2/17/19)
RUNS: 9 | vs. Missouri (2/17/19)
ER: 7 | vs. Missouri (2/17/19)
SO: 3 | 2x; last vs. Iowa (2/15/19)
WALKS: 5 | vs. Missouri (2/17/19)
HBP: 1 | vs. Iowa (2/15/19)

EMILY BERREL // 20 // LAWRENCE, KAN. // SENIOR // OUTFILDER // 5-4 // BATS/THROWS: L/R

NOTES: Played in all but one game in 2019 ... Earned her first RBI of the season against Arizona State (2/9/19) ... First multi-hit game of the season against Maine (3/8) ... Fifth on the team in batting average (.262) ... Two-time NFCA All-America Scholar-Athlete (2015-16, 2016-17) ... Two-time Academic All-Big 12 First Team (2017, 2018) ... Academic All-Big 12 Rookie Team (2016).

GAMES PLAYED	GAMES STARTED	BATTING AVERAGE	HITS	RBI	DOUBLES	WALKS
26	23	.262	11	1	1	4

SEASON HIGHS:

AT BATS: 4 | at Duke (3/2/19)
RUNS: 2 | vs. Maine (3/8/19)
RBI: 5 | at Duke (3/2/19)
TRIPLES: N/A
RBI: 1 | at Arizona State (2/9/19)
WALKS: 2 | vs. Nebraska (3/16/19)
STOLEN BASES: 1 | vs. Charleston Southern (3/3/19)

CAREER HIGHS:

AT BATS: 4 | 2x; last vs. Nevada (4/23/17)
RUNS: 3 | vs. Nevada (4/23/17)
HITS: 4 | vs. Nevada (4/23/17)
TRIPLES: 1 | vs. Nevada (4/23/17)
RBI: 2 | vs. Iowa (3/12/17)
WALKS: 2 | vs. Nebraska (3/16/19)
STOLEN BASES: 2 | vs. Nevada (4/23/17)

SHELBY GAYRE // 21 // D'HANIS, TEXAS // SOPHOMORE // CATCHER/UTILITY // 5-9 // BATS/THROWS: R/R

NOTES: Started 16 games at catcher and suffered a season-ending injury against Campbell ... Logged a three-RBI game against Utah (2/9) ... 2017-18 Academic All-Big 12 Rookie Team ... Played in 48 games with 43 starts (42 starts at SS and one start as the DP) ... Recorded a .273 average, .373 on-base percentage and a .500 slugging percentage.

GAMES PLAYED	GAMES STARTED	BATTING AVERAGE	HITS	DOUBLES	HOME RUNS	RBI
16	16	.383	18	3	2	11

SEASON HIGHS:

AT BATS: 5 | at Duke (3/2/19)
HITS: 4 | at Duke (3/2/19)
RBI: 5 | at Duke (3/2/19)
DOUBLES: 2 | 3x; last vs. Mississippi State (3/2/19)
TRIPLES: N/A
HOME RUNS: 1 | 2x; last at Duke (3/2/19)
WALKS: 1 | 3x; last vs. Campbell (3/3/19)

CAREER HIGHS:

AT BATS: 5 | 2x; last at Duke (3/2/19)
HITS: 4 | at Duke (3/2/19)
RBI: 5 | at Duke (3/2/19)
DOUBLES: 2 | 2x; last vs. Iowa State (4/2/18)
TRIPLES: 1 | vs. Nebraska (3/10/18)
HOME RUNS: 1 | 9x; last at Duke (3/2/19)
WALKS: 2 | vs. Texas Tech (4/28/18)

HANNAH TODD // 23 // CARTERSVILLE, GA. // SOPHOMORE // PITCHER // 5-10 // BATS/THROWS: R/R

NOTES: Pitched a career high 5.0 innings against No. 25 Oregon in season opener ... First career start against Maine (3/8) ... Transferred from North Carolina ... Appeared in five games with two starts last season with the Tarheels ... Posted a 1.25 ERA with 220 strikeouts while batting .330 as a senior at Cartersville High School.

GAMES PLAYED	GAMES STARTED	ERA	INNINGS PITCHED	WALKS	STRIKEOUTS	SAVES
8	3	9.88	11.1	17	6	-

SEASON HIGHS (PITCHING):

IP: 5.0 | vs. Oregon (2/8/19)
HITS: 9 | vs. Oregon (2/8/19)
RUNS: 9 | vs. Oregon (2/8/19)
ER: 8 | vs. Oregon (2/8/19)
SO: 2 | 2x; last vs. Tulsa (3/16/19)
WALKS: 8 | vs. Oregon (2/8/19)
HBP: 1 | at Arizona State (2/9/19)

CAREER HIGHS (PITCHING):

IP: 5.0 | vs. Oregon (2/8/19)
HITS: 9 | vs. Oregon (2/8/19)
RUNS: 9 | vs. Oregon (2/8/19)
ER: 8 | vs. Oregon (2/8/19)
SO: 2 | 2x; last vs. Tulsa (3/16/19)
WALKS: 8 | vs. Oregon (2/8/19)
HBP: 1 | 2x; last at Arizona State (2/9/19)

JENNIFER MARWITZ // 27 // OKLAHOMA CITY, OKLA. // SENIOR // OUTFILDER // 5-6 // BATS/THROWS: L/L

NOTES: Made 18 starts in 2018, most starts in a season in her career ... Started the season opener against No. 25 Oregon ... Three multiple-hit games in 2019 ... Hit first career triple against Charleston Southern (3/3) and logged a two-RBI game.

GAMES PLAYED	GAMES STARTED	BATTING AVERAGE	HITS	DOUBLES	TRIPLES	RBI
24	18	.204	11	2	1	3

SEASON HIGHS:

AT BATS: 4 | 2x; last vs. Tulsa (3/15/19)
HITS: 2 | 3x; last at NC State (3/1/19)
RBI: 2 | vs. Charleston Southern (3/3/19)
DOUBLES: 1 | 2x; last vs. Omaha (3/18/19)
TRIPLES: 1 | vs. Charleston Southern (3/3/19)
HOME RUNS: N/A
WALKS: 2 | 2x; last vs. UMKC (3/10/19)

CAREER HIGHS:

AT BATS: 4 | 2x; last vs. Tulsa (3/15/19)
HITS: 2 | 3x; last vs. UMMASS (2/15/19)
RBI: 2 | vs. Charleston Southern (3/3/19)
DOUBLES: 1 | 3x; last vs. Omaha (3/18/19)
TRIPLES: 1 | vs. Charleston Southern (3/3/19)
HOME RUNS: N/A
WALKS: 2 | 3x; last vs. UMKC (3/10/19)

* AT PREVIOUS SCHOOL

TV/RADIO ROSTER



1 SAM DELLINGER
UTL // 5-5 // R/R // JR
PAPILLION, NEB.



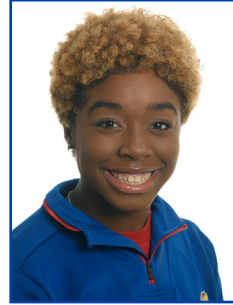
2 SHELBY HUGHSTON
C/INF // 5-2 // R/R // JR
BASTROP, TEXAS



3 MANDY ROBERTS
P // 5-5 // R/R // JR
LEE'S SUMMIT, MO.



4 MADISON SYKES
INF // 5-6 // L/R // JR
BLUE SPRINGS, MO.



5 BRITTANY JACKSON
OF // 5-1 // L/L // SO
MANSFIELD, TEXAS



6 LEXY MILLS
P/UTL // 5-8 // R/R // FR
CALABASAS, CALIF.



7 TARIN TRAVIESO
P/UTL // 5-6 // L/L // SO
SAN ANTONIO, TEXAS



8 MIRANDA RODRIGUEZ
INF // 5-8 // L/R // JR
ELK GROVE, CALIF.



9 BECKI MONAGHAN
C/INF // 5-10 // R/R // JR
STONY PLAIN, ALBERTA (CAN.)



10 CHEYENNE HORNBUCKLE
INF // 5-2 // L/L // FR
BAKERSFIELD, CALIF.



11 MACY OMLI
OF // 5-7 // L/R // FR
GODDARD, KAN.



12 BRYNN MINOR
P/UTL // 5-9 // R/R // SR
WICHITA, KAN.



14 SYDNEE RAMSEY
INF // 5-6 // R/R // R-FR
OKLAHOMA CITY, OKLA.



15 MORGYN WYNNE
INF // 5-7 // R/R // FR
PITTSBURG, CALIF.



18 KIRSTEN PRUETT
P // 5-9 // R/R // SO
BASTROP, TEXAS



20 EMILY BERNEL
OF // 5-4 // L/R // SR
LAWRENCE, KAN.



21 SHELBY GAYRE
C/UTL // 5-9 // R/R // SO
D'HANIS, TEXAS



23 HANNAH TODD
P // 5-10 // R/R // SO
CARTERSVILLE, GA.



27 JENNIFER MARWITZ
OF // 5-6 // L/L // SR
OKLAHOMA CITY, OKLA.



HC JENNIFER MCFALLS
HEAD COACH



AC RICH WIELIGMAN
ASSOCIATE HEAD COACH



AC JEREMY MANLEY
ASSISTANT COACH



DO CACY WILLIAMS
DIRECTOR OF OPERATIONS



VC GINA FOGUE
VOLUNTEER ASSISTANT COACH

CALIFORNIA (4)

LEXY MILLS
CALABASAS, CALIF.
MIRANDA RODRIGUEZ
ELK GROVE, CALIF.
CHEYENNE HORNBUCKLE
BAKERSFIELD, CALIF.
MORGYN WYNNE
PITTSBURG, CALIF.

CANADA (1)

BECKI MONAGHAN
STONY PLAIN, ALBERTA

GEORGIA (1)

HANNAH TODD
CARTERSVILLE, GA.

KANSAS (3)

MACY OMLI
GODDARD, KAN.
EMILY BERNEL
LAWRENCE, KAN.
BRYNN MINOR
WICHITA, KAN.

MISSOURI (2)

MANDY ROBERTS
LEE'S SUMMIT, MO.
MADISON SYKES
BLUE SPRINGS, MO.

NEBRASKA (1)

SAM DELLINGER
PAPILLION, NEB.

OKLAHOMA (2)

SYDNEE RAMSEY
OKLAHOMA CITY, OKLA.
JENNIFER MARWITZ
OKLAHOMA CITY, OKLA.

TEXAS (5)

SHELBY HUGHSTON
BASTROP, TEXAS
BRITTANY JACKSON
MANSFIELD, TEXAS
TARIN TRAVIESO
SAN ANTONIO, TEXAS
KIRSTEN PRUETT
BASTROP, TEXAS
SHELBY GAYRE
D'HANIS, TEXAS

2019 OVERALL STATISTICS

Record: 8-19 Home: 4-5 Away: 0-4 Neutral: 4-10 Big 12: 0-0

Player	avg	gp-gs	ab	r	h	2b	3b	hr	rbi	tb	slg%	bb	hp	so	gdp	ob%	sf	sh	sb-att	po	a	e	fld%
21 Gayre, Shelby	.383	16-16	47	6	18	3	0	2	11	27	.574	3	1	12	1	.431	0	1	0-0	72	9	3	.964
4 Sykes, Madison	.329	27-27	82	9	27	4	0	3	13	40	.488	11	0	17	2	.409	0	1	1-2	48	51	3	.971
16 Wynne, Morgyn	.308	21-16	52	4	16	5	0	2	4	27	.519	1	3	11	0	.357	0	0	0-0	19	7	2	.929
12 Minor, Brynn	.275	17-14	40	2	11	0	0	1	6	14	.350	5	1	5	0	.362	1	0	0-0	3	22	1	.962
20 Bermel, Emily	.262	26-23	42	7	11	1	0	0	1	12	.286	4	0	4	0	.326	0	1	1-2	31	1	2	.941
9 Monaghan, Becki	.247	27-27	81	5	20	5	0	2	8	31	.383	7	1	5	0	.315	0	0	0-0	166	7	1	.994
5 Jackson, Brittany	.241	13-12	29	6	7	2	0	0	4	9	.310	4	1	4	0	.353	0	4	2-3	16	3	0	1.000
14 Ramsey, Sydnee	.227	19-19	66	12	15	5	0	2	8	26	.394	3	0	5	0	.261	0	0	0-0	26	30	6	.903
2 Hughston, Shelby	.208	24-23	53	6	11	2	1	0	7	15	.283	8	2	13	0	.333	0	3	0-0	62	23	6	.934
27 Marwitz, Jennifer	.204	24-18	54	4	11	2	1	0	3	15	.278	7	0	12	0	.295	0	0	0-0	19	3	0	1.000
11 Omli, Macy	.194	21-15	31	7	6	0	0	0	0	6	.194	2	0	11	0	.242	0	1	5-5	9	0	1	.900
1 Dellinger, Sam	.162	18-12	37	8	6	2	0	0	2	8	.216	2	1	5	1	.225	0	0	0-0	6	0	1	.857
8 Rodriguez, Miranda	.118	19-17	34	3	4	1	0	0	3	5	.147	4	0	7	1	.211	0	1	0-0	41	26	5	.931

10 Hornbuckle, Cheyenne	.316	11-6	19	4	6	0	0	1	3	9	.474	0	0	1	0	.316	0	0	0-0	9	6	1	.938
7 Travieso, Tarin	.050	18-4	20	0	1	0	0	0	2	1	.050	1	1	8	0	.136	0	0	0-0	2	0	0	1.000
6 Mills, Lexy	.000	1-1	0	0	0	0	0	0	0	0	.000	0	0	0	0	.000	0	0	0-0	0	11	0	1.000
3 Roberts, Mandy	.000	2-1	0	0	0	0	0	0	0	0	.000	0	0	0	0	.000	0	0	0-0	0	0	0	.000
23 Todd, Hannah	.000	3-2	0	0	0	0	0	0	0	0	.000	0	0	0	0	.000	0	0	0-0	0	2	0	1.000
Totals	.247	27	687	83	170	32	2	13	75	245	.357	62	11	120	5	.319	1	12	9-12	530	206	32	.958
Opponents	.274	27	689	140	189	27	4	21	130	287	.417	112	19	124	7	.387	7	21	39-45	528	198	21	.972

LOB - Team (165), Opp (180). DPs turned - Team (11), Opp (6). CI - Team (0), Opp (1).

(All games Sorted by Earned run avg)

Player	era	w-l	app	gs	cg	sho	sv	ip	h	r	er	bb	so	2b	3b	hr	b/avg	wp	hp	bk	sfa	sha
12 Minor, Brynn	3.63	4-10	19	10	4	1/2	2	92.2	93	49	48	30	51	14	0	7	.262	6	11	0	2	10
6 Mills, Lexy	4.81	3-4	13	8	2	1/0	0	39.1	27	34	27	42	51	4	0	4	.194	4	5	0	0	8

7 Travieso, Tarin	2.71	0-1	5	1	0	0/0	0	10.1	13	4	4	5	5	2	1	1	.302	1	0	0	0	0
18 Pruett, Kirsten	8.56	1-4	9	4	0	0/0	0	18.0	27	27	22	12	9	2	2	4	.338	5	1	0	1	1
3 Roberts, Mandy	9.80	0-0	6	1	0	0/1	0	5.0	8	7	7	6	2	2	0	1	.400	2	0	0	1	1
23 Todd, Hannah	9.88	0-0	8	3	0	0/1	0	11.1	21	19	16	17	6	3	1	4	.404	5	2	0	3	1
Totals	4.91	8-19	27	27	6	4/2	2	176.2	189	140	124	112	124	27	4	21	.274	23	19	0	7	21
Opponents	2.82	19-8	27	27	12	4/1	3	176.0	170	83	71	62	120	32	2	13	.247	15	11	0	1	12

PB - Team (6), Hughston 4, Gayre 2, Opp (5). SBA/ATT - Minor (18-21), Gayre (16-21), Hughston (20-21), Mills (8-10), Pruett (6-6), Todd (3-4), Roberts (3-3), Wynne (3-3), Travieso (1-1).

2019 KANSAS BATTING GAME-BY-GAME

Date	Opponent	ab	r	h	rbi	2b	3b	hr	tb	bb	ibb	sb	cs	hbp	sac	sf	gdp	k	po	a	e	lob	avg
Feb 08	vs Oregon	25	5	4	5	1	0	2	11	2	0	0	0	0	0	0	0	11	21	10	3	1	.160
Feb 08	vs Stanford	20	3	5	3	1	0	0	6	4	0	0	0	1	1	0	0	5	12	2	1	8	.200
Feb 09	at Arizona State	25	6	9	5	1	0	2	16	2	0	0	0	1	0	0	1	0	12	1	1	7	.257
Feb 09	vs UTAH	31	4	11	4	2	0	0	13	2	0	0	0	0	0	0	1	4	21	9	0	8	.287
Feb 10	vs Missouri	29	2	10	2	0	0	0	10	2	0	2	0	0	1	0	0	6	21	14	3	9	.300
Feb 15	vs UMASS	27	4	11	4	2	0	0	13	2	0	0	0	0	1	0	0	6	21	10	1	8	.318
Feb 15	vs Iowa	29	1	8	1	1	0	0	9	1	0	1	0	0	0	0	0	7	18	9	0	8	.312
Feb 16	vs Providence	31	2	9	2	0	0	1	12	1	0	2	0	0	0	0	0	2	21	11	2	9	.309
Feb 16	vs Bethune-Cookman	22	1	1	1	0	0	1	4	1	0	0	0	1	0	0	0	5	21	7	0	2	.285
Feb 17	vs Missouri	18	0	4	0	0	0	0	4	3	0	0	0	0	0	0	1	5	15	7	4	6	.280
Feb 22	at Tennessee	16	0	1	0	0	0	0	1	1	0	0	0	0	0	0	0	6	12	8	0	2	.267
Feb 24	vs Louisville	25	3	3	3	1	0	1	7	4	0	0	0	0	0	0	0	8	21	6	2	5	.255
Feb 24	vs Virginia	25	5	5	4	0	0	0	5	6	0	0	0	2	1	0	0	4	21	8	1	8	.251
Mar 01	at NC State	23	1	5	1	3	0	0	8	0	0	0	0	0	0	0	0	7	18	1	2	4	.249
Mar 02	vs Mississippi State	27	3	7	3	2	1	0	11	4	0	0	0	1	0	1	0	7	18	4	0	9	.249
Mar 02	at Duke	38	7	12	7	3	0	1	18	3	0	0	1	0	0	0	0	8	26	16	0	8	.255
Mar 03	vs Campbell	27	3	5	3	0	0	1	8	1	0	1	0	1	0	0	0	2	21	5	2	5	.251
Mar 03	vs Charleston Southern	28	6	9	6	3	1	0	14	4	0	2	0	0	0	0	0	1	21	11	1	8	.255
Mar 08	SEMO	23	0	4	0	2	0	0	6	0	0	0	0	2	1	0	0	2	21	8	1	5	.252
Mar 08	MAINE	25	6	9	4	2	0	1	14	0	0	0	0	0	3	0	0	0	21	10	2	4	.257
Mar 10	SEMO	27	1	6	1	1	0	0	7	1	0	0	1	0	0	0	0	3	21	4	1	6	.255
Mar 10	UMKC	29	4	5	2	0	0	0	5	6	0	0	0	0	1	0	0	3	24	8	2	9	.251
Mar 15	TULSA	30	5	8	5	1	0	1	12	2	0	0	0	0	0	0	1	6	21	13	1	7	.252
Mar 16	NEBRASKA	20	2	3	0	0	0	0	3	6	0	1	0	0	2	0	0	2	21	5	0	8	.248
Mar 16	TULSA	23	0	2	0	0	0	0	2	0	0	0	0	1	0	0	0	6	21	6	0	3	.243
Mar 17	NEBRASKA	20	1	5	1	2	0	0	7	1	0	0	1	0	1	0	1	3	21	7	2	3	.243
Mar 18	OMAHA	24	8	9	8	4	0	2	19	3	0	0	0	1	0	0	0	1	18	6	0	5	.247
Totals		687	83	170	75	32	2	13	245	62	0	9	3	11	12	1	5	120	530	206	32	165	.247

2019 KANSAS PITCHING GAME-BY-GAME

Date	Opponent	ip	h	r	er	bb	so	2b	3b	hr	wp	bk	hbp	dp	ibb	score	w-l	sv	era
Feb 08	vs Oregon	7.0	13	14	13	10	0	1	0	4	5	0	0	1	0	5-14	0-1	0	13.00
Feb 08	vs Stanford	4.0	8	12	9	5	1	2	0	1	2	0	1	0	0	3-12	0-2	0	14.00
Feb 09	at Arizona State	4.0	9	14	12	10	7	0	1	2	1	0	1	0	0	6-14	0-3	0	15.87
Feb 09	vs UTAH	7.0	8	6	6	4	3	1	0	1	1	0	1	1	0	4-6	0-4	0	12.73
Feb 10	vs Missouri	7.0	7	3	3	3	0	1	0	0	1	0	1	2	0	2-3	0-5	0	10.38
Feb 15	vs UMASS	7.0	6	2	2	2	3	4	0	1	0	0	0	0	0	4-2	1-5	0	8.75
Feb 15	vs Iowa	6.0	5	2	2	1	3	0	0	0	0	0	1	1	0	1-2	1-6	0	7.83
Feb 16	vs Providence	7.0	4	1	0	5	5	0	0	0	0	0	0	0	0	2-1	2-6	1	6.71
Feb 16	vs Bethune-Cookman	7.0	5	3	3	1	7	1	0	0	0	0	0	0	0	1-3	2-7	1	6.25
Feb 17	vs Missouri	5.0	9	12	10	6	3	0	0	2	3	0	1	0	0	0-12	2-8	1	6.89
Feb 22	at Tennessee	4.0	10	9	9	4	2	2	0	1	2	0	0	1	0	0-9	2-9	1	7.43
Feb 24	vs Louisville	7.0	7	5	4	2	8	3	1	1	1	0	0	0	0	3-5	2-10	1	7.10
Feb 24	vs Virginia	7.0	4	2	2	1	4	0	0	1	0	0	0	0	0	5-2	3-10	1	6.65
Mar 01	at NC State	6.0	6	4	4	5	9	0	0	2	0	0	1	0	0	1-4	3-11	1	6.51
Mar 02	vs Mississippi State	6.0	8	6	6	2	3	0	0	2	0	0	0	0	0	3-6	3-12	1	6.54
Mar 02	at Duke	8.2	13	8	7	4	2	3	1	0	1	0	0	0	0	7-8	3-13	1	6.46
Mar 03	vs Campbell	7.0	12	9	8	6	5	2	1	1	2	0	0	0	0	3-9	3-14	1	6.56
Mar 03	vs Charleston Southern	7.0	2	0	0	1	3	0	0	0	0	0	2	1	0	6-0	4-14	1	6.16
Mar 08	SEMO	7.0	8	2	2	3	3	3	0	0	0	0	3	2	0	0-2	4-15	1	5.92
Mar 08	MAINE	7.0	7	4	3	9	5	1	0	0	0	0	1	0	0	6-4	5-15	2	5.76
Mar 10	SEMO	7.0	5	2	2	2	5	0	0	0	0	0	4	0	0	1-2	5-16	2	5.56
Mar 10	UMKC	8.0	2	5	2	8	11	0	0	1	2	0	1	0	0	4-5	5-17	2	5.35
Mar 15	TULSA	7.0	15	11	11	3	5	2	0	1	0	0	0	0	0	5-11	5-18	2	5.61
Mar 16	NEBRASKA	7.0	4	0	0	2	6	0	0	0	1	0	0	0	0	2-0	6-18	2	5.36
Mar 16	TULSA	7.0	6	4	4	9	4	1	0	0	1	0	0	1	0	0-4	6-19	2	5.30
Mar 17	NEBRASKA	7.0	6	0	0	0	7	0	0	0	0	0	0	1	0	1-0	7-19	2	5.09
Mar 18	OMAHA	6.0	0	0	0	4	10	0	0	0	0	0	1	0	0	8-0	8-19	2	4.91
Totals		176.2	189	140	124	112	124	27	4	21	23	0	19	11	0	83-140	8-19	2	4.91

2019 TEAM & INDIVIDUAL GAME HIGHS

Batting

At bats:	38	-	at Duke (Mar 02, 2019)
Runs scored:	8	-	vs Omaha (Mar 18, 2019)
Hits:	12	-	at Duke (Mar 02, 2019)
RBIs:	8	-	vs Omaha (Mar 18, 2019)
Doubles:	4	-	vs Omaha (Mar 18, 2019)
Triples:	1	-	vs Mississippi State (Mar 02, 2019 at Durham, N.C.)
Home runs:	1	-	vs Charleston Southern (Mar 03, 2019 at Durham, N.C.)
	2	-	vs Oregon (Feb 08, 2019 at Tempe, Ariz.)
	2	-	at Arizona State (Feb 09, 2019)
Total bases:	19	-	vs Omaha (Mar 18, 2019)
Walks:	6	-	vs Virginia (Feb 24, 2019 at Knoxville, Tenn.)
	6	-	vs UMKC (Mar 10, 2019)
	6	-	vs Nebraska (Mar 16, 2019)
Strikeouts:	11	-	vs Oregon (Feb 08, 2019 at Tempe, Ariz.)
Sac hits:	3	-	vs Maine (Mar 08, 2019)
Sac flies:	1	-	vs Mississippi State (Mar 02, 2019 at Durham, N.C.)
Stolen bases:	2	-	vs Missouri (Feb 10, 2019 at Tempe, AZ)
	2	-	vs Providence (Feb 16, 2019 at Kissimmee, FL)
	2	-	vs Charleston Southern (Mar 03, 2019 at Durham, N.C.)
Hit by pitch:	2	-	vs Virginia (Feb 24, 2019 at Knoxville, Tenn.)
	2	-	vs SEMO (Mar 08, 2019)
Caught stealing:	1	-	at Duke (Mar 02, 2019)
	1	-	vs SEMO (Mar 10, 2019)
Runners LOB:	1	-	vs Nebraska (Mar 17, 2019)
Hit into DP:	1	-	(4 times)
	1	-	(6 times)

Fielding

Putouts:	26	-	at Duke (Mar 02, 2019)
Assists:	16	-	at Duke (Mar 02, 2019)
Errors:	4	-	vs Missouri (Feb 17, 2019 at Kissimmee, FL)
Passed balls:	2	-	vs UMKC (Mar 10, 2019)
DPs turned:	2	-	vs Missouri (Feb 10, 2019 at Tempe, AZ)
	2	-	vs SEMO (Mar 08, 2019)

Pitching

Innings pitched:	8.2	-	at Duke (Mar 02, 2019)
Runs allowed:	14	-	vs Oregon (Feb 08, 2019 at Tempe, Ariz.)
	14	-	at Arizona State (Feb 09, 2019)
Earned runs:	13	-	vs Oregon (Feb 08, 2019 at Tempe, Ariz.)
Walks allowed:	10	-	vs Oregon (Feb 08, 2019 at Tempe, Ariz.)
	10	-	at Arizona State (Feb 09, 2019)
Strikeouts:	11	-	vs UMKC (Mar 10, 2019)
Hits allowed:	15	-	vs Tulsa (Mar 15, 2019)
Doubles allowed:	4	-	vs UMass (Feb 15, 2019 at Kissimmee, FL)
Triples allowed:	1	-	(4 times)
Homers allowed:	4	-	vs Oregon (Feb 08, 2019 at Tempe, Ariz.)

Batting

At bats:	5	-	Ramsey, Sydnee at Duke (Mar 02, 2019)
Runs scored:	5	-	Gayre, Shelby at Duke (Mar 02, 2019)
Hits:	2	-	(7 times)
RBIs:	4	-	Gayre, Shelby at Duke (Mar 02, 2019)
Doubles:	5	-	Gayre, Shelby at Duke (Mar 02, 2019)
Triples:	2	-	Wynne, Morgyn vs Nebraska (Mar 17, 2019)
Home runs:	1	-	Hughston, Shelby vs Mississippi State (Mar 02, 2019 at Durham, N.C.)
	1	-	Marwitz, Jennifer vs Charleston Southern (Mar 03, 2019 at Durham, N.C.)
Total bases:	1	-	(13 times)
Walks:	7	-	Gayre, Shelby at Duke (Mar 02, 2019)
Strikeouts:	3	-	Hughston, Shelby vs Louisville (Feb 24, 2019 at Knoxville, Tenn.)
Sac hits:	3	-	(4 times)
Sac flies:	2	-	Jackson, Brittany vs Maine (Mar 08, 2019)
Stolen bases:	1	-	Minor, Brynn vs Mississippi State (Mar 02, 2019 at Durham, N.C.)
Caught stealing:	2	-	Oml, Macy vs Missouri (Feb 10, 2019 at Tempe, AZ)
	2	-	Hughston, Shelby vs Virginia (Feb 24, 2019 at Knoxville, Tenn.)
Runners LOB:	1	-	Sykes, Madison at Duke (Mar 02, 2019)
	1	-	Bermel, Emily vs SEMO (Mar 10, 2019)
	1	-	Jackson, Brittany vs Nebraska (Mar 17, 2019)
	7	-	Dellinger, Sam vs UTAH (Feb 09, 2019 at Tempe, AZ)

Fielding

Putouts:	12	-	Hughston, Shelby vs UMKC (Mar 10, 2019)
Assists:	5	-	Sykes, Madison at Duke (Mar 02, 2019)
Errors:	5	-	Ramsey, Sydnee vs Charleston Southern (Mar 03, 2019 at Durham, N.C.)
	5	-	Ramsey, Sydnee vs Tulsa (Mar 15, 2019)
Passed balls:	3	-	Ramsey, Sydnee vs Oregon (Feb 08, 2019 at Tempe, Ariz.)
	2	-	Hughston, Shelby vs UMKC (Mar 10, 2019)

Pitching

Innings pitched:	8.0	-	Mills, Lexy vs UMKC (Mar 10, 2019)
Runs allowed:	9	-	Todd, Hannah vs Oregon (Feb 08, 2019 at Tempe, Ariz.)
	9	-	Pruett, Kirsten vs Missouri (Feb 17, 2019 at Kissimmee, FL)
Earned runs:	8	-	Todd, Hannah vs Oregon (Feb 08, 2019 at Tempe, Ariz.)
	8	-	Minor, Brynn vs Tulsa (Mar 15, 2019)
Walks allowed:	8	-	Todd, Hannah vs Oregon (Feb 08, 2019 at Tempe, Ariz.)
	8	-	Mills, Lexy vs UMKC (Mar 10, 2019)
Strikeouts:	11	-	Mills, Lexy vs UMKC (Mar 10, 2019)
Hits allowed:	12	-	Minor, Brynn vs Tulsa (Mar 15, 2019)
Doubles allowed:	4	-	Minor, Brynn vs UMass (Feb 15, 2019 at Kissimmee, FL)
Triples allowed:	1	-	(4 times)
Homers allowed:	3	-	Todd, Hannah vs Oregon (Feb 08, 2019 at Tempe, Ariz.)
Wild pitches:	5	-	Todd, Hannah vs Oregon (Feb 08, 2019 at Tempe, Ariz.)
Hit batters:	4	-	Minor, Brynn vs SEMO (Mar 10, 2019)

2019 OPPONENT TEAM & INDIVIDUAL GAME HIGHS

Batting

At bats:	36	-	vs Tulsa (Mar 15, 2019)
Runs scored:	14	-	vs Oregon (Feb 08, 2019 at Tempe, Ariz.)
	14	-	at Arizona State (Feb 09, 2019)
Hits:	15	-	vs Tulsa (Mar 15, 2019)
RBIs:	14	-	vs Oregon (Feb 08, 2019 at Tempe, Ariz.)
	14	-	at Arizona State (Feb 09, 2019)
Doubles:	4	-	vs UMass (Feb 15, 2019 at Kissimmee, FL)
Triples:	1	-	(4 times)
Home runs:	4	-	vs Oregon (Feb 08, 2019 at Tempe, Ariz.)
Total bases:	26	-	vs Oregon (Feb 08, 2019 at Tempe, Ariz.)
Walks:	10	-	vs Oregon (Feb 08, 2019 at Tempe, Ariz.)
	10	-	at Arizona State (Feb 09, 2019)
Strikeouts:	11	-	vs UMKC (Mar 10, 2019)
Sac hits:	6	-	at Duke (Mar 02, 2019)
Sac flies:	1	-	(7 times)
Stolen bases:	4	-	vs Missouri (Feb 17, 2019 at Kissimmee, FL)
Hit by pitch:	4	-	vs SEMO (Mar 10, 2019)
Caught stealing:	2	-	at Duke (Mar 02, 2019)
Runners LOB:	12	-	vs Maine (Mar 08, 2019)
Hit into DP:	2	-	vs Missouri (Feb 10, 2019 at Tempe, AZ)
	2	-	vs SEMO (Mar 08, 2019)

Fielding

Putouts:	27	-	at Duke (Mar 02, 2019)
Assists:	14	-	vs Missouri (Feb 10, 2019 at Tempe, AZ)
Errors:	3	-	vs Virginia (Feb 24, 2019 at Knoxville, Tenn.)
	3	-	vs Tulsa (Mar 15, 2019)
	3	-	vs Nebraska (Mar 16, 2019)
Passed balls:	2	-	at NC State (Mar 01, 2019)
DPs turned:	1	-	(6 times)

Pitching

Innings pitched:	9.0	-	at Duke (Mar 02, 2019)
Runs allowed:	8	-	vs Omaha (Mar 18, 2019)
Earned runs:	8	-	vs Omaha (Mar 18, 2019)
Walks allowed:	6	-	vs Virginia (Feb 24, 2019 at Knoxville, Tenn.)
	6	-	vs UMKC (Mar 10, 2019)
	6	-	vs Nebraska (Mar 16, 2019)
Strikeouts:	11	-	vs Oregon (Feb 08, 2019 at Tempe, Ariz.)
Hits allowed:	12	-	at Duke (Mar 02, 2019)
Doubles allowed:	4	-	vs Omaha (Mar 18, 2019)
Triples allowed:	1	-	vs Mississippi State (Mar 02, 2019 at Durham, N.C.)
	1	-	vs Charleston Southern (Mar 03, 2019 at Durham, N.C.)
Homers allowed:	2	-	vs Oregon (Feb 08, 2019 at Tempe, Ariz.)
	2	-	at Arizona State (Feb 09, 2019)
	2	-	vs Omaha (Mar 18, 2019)
Wild pitches:	3	-	vs Virginia (Feb 24, 2019 at Knoxville, Tenn.)
Hit batters:	2	-	vs Virginia (Feb 24, 2019 at Knoxville, Tenn.)

Batting

At bats:	5	-	(7 times)
Runs scored:	4	-	Bunker, A. vs Oregon (Feb 08, 2019 at Tempe, Ariz.)
Hits:	3	-	(13 times)
RBIs:	6	-	Inouye, K. vs Stanford (Feb 08, 2019 at Tempe, Ariz.)
Doubles:	6	-	Hackbarth,M at Arizona State (Feb 09, 2019)
Triples:	3	-	J. Kavel at Duke (Mar 02, 2019)
Home runs:	1	-	(4 times)
	2	-	Galey, H. vs Oregon (Feb 08, 2019 at Tempe, Ariz.)
	2	-	Hackbarth,M at Arizona State (Feb 09, 2019)
Total bases:	2	-	Mi. Davidson vs Mississippi State (Mar 02, 2019 at Durham, N.C.)
	9	-	Galey, H. vs Oregon (Feb 08, 2019 at Tempe, Ariz.)
	9	-	Hackbarth,M at Arizona State (Feb 09, 2019)
Walks:	3	-	Mi. Davidson vs Mississippi State (Mar 02, 2019 at Durham, N.C.)
	3	-	WANCHECK,C vs Campbell (Mar 03, 2019 at Raleigh, N.C.)
Strikeouts:	3	-	Garcia, S vs UMKC (Mar 10, 2019)
Sac hits:	3	-	Onstad, C vs UMKC (Mar 10, 2019)
Sac flies:	4	-	Rollow, M vs UMKC (Mar 10, 2019)
Stolen bases:	1	-	(21 times)
Hit by pitch:	1	-	(7 times)
	2	-	MESSEX vs SEMO (Mar 08, 2019)
	2	-	GALLO vs SEMO (Mar 10, 2019)
Caught stealing:	1	-	(6 times)
Runners LOB:	5	-	ARELLANES vs SEMO (Mar 08, 2019)

Fielding

Putouts:	11	-	Utecht, A. vs Oregon (Feb 08, 2019 at Tempe, Ariz.)
	11	-	FREDENDALL vs Campbell (Mar 03, 2019 at Raleigh, N.C.)
Assists:	11	-	Onstad, C vs UMKC (Mar 10, 2019)
	5	-	Ash. Davis vs Virginia (Feb 24, 2019 at Knoxville, Tenn.)
Errors:	5	-	RICHARDS,M vs Campbell (Mar 03, 2019 at Raleigh, N.C.)
	2	-	Loomis,B at Arizona State (Feb 09, 2019)
Passed balls:	2	-	Wagner at NC State (Mar 01, 2019)

Pitching

Innings pitched:	7.0	-	(7 times)
Runs allowed:	5	-	(5 times)
Earned runs:	5	-	(5 times)
Walks allowed:	5	-	A. Frei vs Virginia (Feb 24, 2019 at Knoxville, Tenn.)
Strikeouts:	10	-	Dail, J. vs Oregon (Feb 08, 2019 at Tempe, Ariz.)
Hits allowed:	11	-	OLIVER, K. vs UMass (Feb 15, 2019 at Kissimmee, FL)
Doubles allowed:	3	-	Wallace at NC State (Mar 01, 2019)
	3	-	CLARK, H. vs Charleston Southern (Mar 03, 2019 at Durham, N.C.)
Triples allowed:	1	-	G. Fagan vs Mississippi State (Mar 02, 2019 at Durham, N.C.)
	1	-	CLARK, H. vs Charleston Southern (Mar 03, 2019 at Durham, N.C.)
Homers allowed:	2	-	Dail, J. vs Oregon (Feb 08, 2019 at Tempe, Ariz.)
	2	-	Meza,C at Arizona State (Feb 09, 2019)
Wild pitches:	2	-	Dail, J. vs Oregon (Feb 08, 2019 at Tempe, Ariz.)