



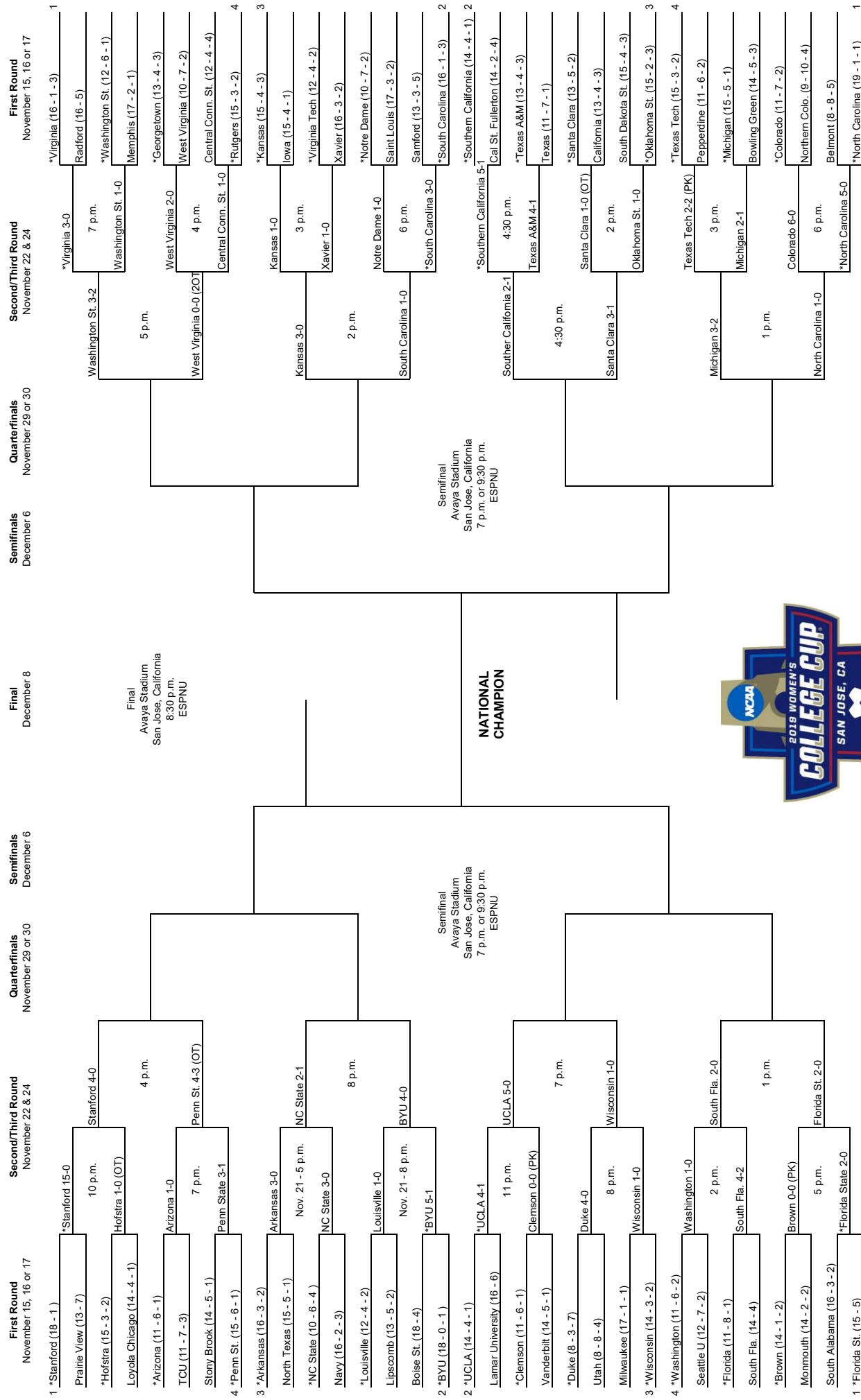
2019 BIG 12 TOURNAMENT CHAMPIONS



KANSAS WOMEN'S SOCCER POSTSEASON GUIDE

NCAA CHAMPIONSHIP • THIRD ROUND • COLUMBIA, S.C.

NOVEMBER 24, 2019



*Host institution for preliminary round games.

All game times are Eastern standard time.

Order of semifinal games determined after quarterfinal round games are completed.

Second semifinal games will begin 45 minutes after conclusion of first game.

© 2019 National Collegiate Athletic Association. No commercial use without the NCAA's written permission.

The NCAA opposes all forms of sports wagering.



KANSAS

#KUsoccer

f /KANSASSOCCER

t /KUWSOCCER

o /KANSASSOCCER

NOV. 24, 2019 | SOUTH CAROLINA | NCAA CHAMPIONSHIP - THIRD ROUND | MATCH NOTES

KANSAS COMMUNICATIONS

JAYHAWKS

17-4-3 OVERALL

United Soccer rank: 11

Head Coach: Mark Francis

4-2-3

TopDrawer rank: 14

Record: 236-167-37 (21st year)



-vs-



18-1-3 OVERALL

United Soccer rank: 5

Head Coach: Shelley Smith

7-0-3

TopDrawer rank: 6

Record: 253-116-48 (19th year)

GAMECOCKS

2019 SCHEDULE

| Date | KU Rnk | OPP Rnk | Opponent | TV | Time/Result |
|--------------------------|--------|---------|---------------------|--------------|--------------|
| AUGUST (3-0-0) | | | | | |
| 22 | rv/- | -/- | NEBRASKA | ESPN+ | W, 4-0 |
| 25 | rv/- | -/- | LOYOLA-CHICAGO | ESPN+ | W, 6-0 |
| 29 | 18/- | 20/18 | MEMPHIS | ESPN+ | W, 2-1 |
| SEPTEMBER (6-3-0) | | | | | |
| 1 | 18/- | -/- | FLORIDA ATLANTIC | ESPN+ | W, 1-0 |
| 6 | 11/- | -/- | vs. DePaul* | | L, 0-1 |
| 8 | 11/- | rv/- | at Purdue* | BTN+ | W, 2-1 |
| 13 | 18/- | -/- | at Northwestern | BTN+ | W, 1-0 |
| 15 | 18/- | -/- | at Western Michigan | | W, 2-0 |
| 19 | 14/rv | 7/7 | BYU | ESPN+ | L, 0-2 |
| 22 | 14/rv | -/- | KENNESAW STATE | ESPN+ | W, 3-1 |
| 26 | 17/rv | -/- | TEXAS* | FS1 | L, 0-1 |
| 29 | 17/rv | -/- | BAYLOR* | ESPN+ | W, 4-1 |
| OCTOBER (3-1-2) | | | | | |
| 3 | 21/rv | 25/- | at Oklahoma State* | ESPN+ | L, 2-5 |
| 10 | rv/- | -/- | at Oklahoma* | FS Oklahoma | W, 1-0 (OT) |
| 13 | rv/- | 14/25 | at Texas Tech* | FS Southwest | T, 0-0 (2OT) |
| 18 | 23/- | -/- | KANSAS STATE* | ESPN+ | W, 3-0 |
| 24 | 23/rv | -/- | WEST VIRGINIA* | ESPN+ | T, 1-1 (2OT) |
| 27 | 23/rv | -/- | at TCU* | FS Southwest | T 2-2 (2OT) |
| 31 | 23/rv | -/- | at Iowa State* | | W, 2-1 |
| NOVEMBER (5-0-0) | | | | | |
| 3 | 25/rv | -/- | vs. West Virginia< | ESPN+ | W, 2-0 |
| 8 | 21/rv | 10/14 | vs. Oklahoma State< | ESPN+ | W, 2-1 (2OT) |
| 10 | 21/rv | rv/- | vs. TCU< | FS1 | W, 1-0 |
| 16 | 11/16 | rv/- | Iowa& | ESPN3 | W, 1-0 |
| 22 | 11/14 | 24/18 | vs. Xavier& | ESPN3/SEC+ | W, 3-0 |
| 24 | 11/14 | 5/6 | at South Carolina& | ESPN3/SEC+ | 1 p.m. (CT) |

All times Central and subject to change; Home games **BOLD** and played at Rock Chalk Park; Rank: United Soccer Coaches Top 25 / TopDrawer Soccer Top 25; * Boilermaker Challenge Cup (West Lafayette, Ind.); < Big 12 Conference Game; & Big 12 Championship (Kansas City, Mo.); & NCAA Championship

BY THE NUMBERS

6 Sunday's contest will pit teams that boast two of the six longest active unbeaten streaks in the NCAA. KU enters the match having gone unbeaten in its previous 11 outings (6th longest), while South Carolina has not lost in 15 matches (2nd longest).

10 KU enters the match against South Carolina unbeaten in the 10 matches it has played on Sundays this season. At 8-0-2 on the first day of the week in 2019, KU is looking to finish a season unbeaten on Sundays for just the second time.

43 With her three-goal outing against Xavier Friday, Katie McClure has now tallied 17 goals and nine assists in 2019, giving the senior 43 points. The 43 points are the most by a Jayhawk in a single season.

GAME

25

(3) KANSAS at (2) SOUTH CAROLINA

NCAA Championship • Third Round

Columbia, S.C. • Stone Stadium (5,700)

Sunday, November 24, 2019 • 2 p.m. (ET)/1 p.m. (CT)



ESPN3 / SEC+

Play-by-Play: Brad Muller
Analyst: Poppy Miller



JAYHAWK RADIO
NETWORK

Radio: IMG Jayhawk Radio Network
Webcast: KUathletics.leanplayer.com
Play-by-Play: Nick Springer

QUICK KICKS

- The No. 3-seeded Kansas soccer team will look to punch a ticket to the quarterfinals of the NCAA Championship for the first time in program history when they meet the No. 2 seed South Carolina Gamecocks on Sunday, Nov. 24 in Columbia.
- The Jayhawks are 8-8-0 in their nine appearances in the NCAA Tournament. KU is making its second all-time appearance in the third round and its first since 2003.
- KU is coming off a 3-0 win over the Xavier Musketeers in the second round of the NCAA Tournament Friday in Columbia. Senior Katie McClure posted a hat trick, her second of the season, in the win.
- In KU's last appearance in the Sweet 16 in 2003, the Jayhawks fell to second-ranked UCLA, 1-0, in Los Angeles.
- KU is riding an 11-match unbeaten streak, a new program record for consecutive games without a loss. KU's last loss came at Oklahoma State, 5-2, in Stillwater on Oct. 3.
- Kansas is unbeaten on its 10 Sunday matches this season. The Jayhawks boast an 8-0-2 mark, a +18 goal differential (23-5), a 0.48 goals-against average and six shutouts on Sundays this year.
- The Jayhawks' 12 shutouts on the year are the second-most by a KU team in program history. Kansas also boasts a goals-against average of 0.42 during its 11-game unbeaten streak, having conceded only five goals in that span.
- Senior Katie McClure has scored 17 goals this season, good for seventh in the NCAA and second-most by a Jayhawk in program history.
- The Kansas defense has not conceded a goal in its last 378 minutes. The Jayhawks have now posted six opponent scoreless streaks of 300 minutes or longer over the last five years, including two this season.
- Since 2014, the Jayhawks are 54-2-2 in matches in which they score two or more goals. This includes a 20-1-1 mark since the start of the 2018 season, with the lone blemish coming in the 5-2 loss to OSU last month.

SERIES AT A GLANCE

| OVERALL | FIRST MEETING |
|----------------------|-------------------------------|
| vs. SEC | 28-36-5 |
| Last Meeting vs. SEC | L, 0-3 at Texas A&M (9.16.18) |



17-4-3

W-L-D >>

18-1-3

9

RPI RANK >>

5

1.88

<< GOALS PER GAME

1.86

14.7

<< SHOTS PER GAME

12.5

.128

SHOT PERCENTAGE >>

.150

.415

SHOT ON GOAL PERCENTAGE >>

.482

0.75

GOALS ALLOWED PER GAME >>

0.32

3.7

<< SAVES PER GAME

2.1

.830

SAVE PERCENTAGE >>

.870

3-3

<< PENALTIES

2-3

10.1

<< FOULS PER GAME

8.5

17-0

<< YELLOW - RED CARDS

12-0

LAST MATCH STARTERS



NUMERICAL ROSTER

| NO. | NAME | POS. | HT. | YR. | HOMETOWN (PREVIOUS SCHOOL) |
|-----|----------------------|------|------|--------|---|
| 0 | Gabbie Dawe | .GK | 5-10 | Fr. | Memphis, Tenn. (Houston HS) |
| 00 | Sarah Peters | .GK | 5-10 | So. | Lee's Summit, Mo. (Lee's Summit North HS) |
| 1 | Melania Pasar | .GK | 5-11 | Fr. | Portoroz, Slovenia (Ginnasio Antonio Sema Pirano) |
| 2 | Ellie Prybylski | .D/F | 5-5 | Fr. | Forsyth County, Ga. (Lambert HS) |
| 3 | Mya Sheridan | .F | 5-5 | Fr. | Schertz, Texas (Samuel Clemens HS) |
| 4 | Kailey Lane | .F | 5-9 | So. | Omaha, Neb. (Millard North HS) |
| 6 | Kaela Hansen | .D | 5-7 | So. | Burnaby, B.C. (Burnaby Central Secondary) |
| 7 | Avery Hall | .M | 5-5 | Jr. | McKinney, Texas (McKinney Boyd HS) |
| 8 | Ebba Costow | .M | 5-5 | Fr. | Uppsala, Sweden (Celsiusskolan) |
| 9 | Madison Meador | .D | 5-7 | Sr. | Ballwin, Mo. (Marquette HS/Ole Miss) |
| 10 | Gracely Briley | .M | 5-9 | Fr. | Olathe, Kan. (Blue Valley Southwest HS) |
| 11 | Chais Wright | .D | 5-4 | RS-Fr. | Kansas City, Mo. (Park Hill HS) |
| 12 | Katie McClure | .F | 5-4 | Sr. | Wichita, Kan. (Maize HS) |
| 13 | Kathryn Castro | .M | 5-3 | Sr. | Plano, Texas (Plano West Senior High) |
| 14 | Samantha Barnett | .M | 5-8 | So. | Edmond, Okla. (Edmond Memorial HS) |
| 15 | Ceri Holland | .M | 5-5 | Jr. | West Yorkshire, England (South Craven School) |
| 16 | Italia Bradley | .D | 5-7 | So. | Coppell, Texas (Coppell HS) |
| 17 | Lia Beyer | .D | 5-7 | Fr. | Parker, Colo. (Legend HS) |
| 18 | Emilie Gavillet | .GK | 5-9 | RS-Fr. | Montreux, Switzerland (Wilhelm Hausenstein Gymnasium) |
| 19 | Eva Eliasdóttir | .F | 5-9 | Sr. | Thorlakhofn, Iceland (Fjölbautaskóli Suðurlands) |
| 20 | Margherita Giubilato | .F | 5-4 | Fr. | Martellago, Italy (Accademia Dante Alighieri) |
| 21 | Isabella Cavalcante | .D | 5-7 | Jr. | Glen Ellyn, Ill. (Glenbard West HS) |
| 22 | Mandi Duggan | .F | 5-2 | Jr. | Aurora, Colo. (Grandview HS) |
| 23 | Grace Wiltgen | .D | 5-6 | So. | Denton, Texas (Denton HS) |
| 24 | Elise Reina | .D | 5-2 | Sr. | Fayetteville, Ark. (Har-Ber HS) |
| 26 | Addisyn Merrick | .D | 5-6 | Sr. | Lee's Summit, Mo. (Lee's Summit North HS) |
| 27 | Sophie Maierhofer | .M | 5-7 | Sr. | Graz, Austria (University of Bremen) |
| 28 | Bri Amos | .F | 5-7 | So. | Tulsa, Okla. (Union HS) |

STAFF

| NAME | POSITION // YEAR AT KU | ALMA MATER // YEAR |
|-------------------|------------------------------|-----------------------------|
| Mark Francis | Head Coach // 21st | SMU // 1987 |
| Kelly Miller | Assoc. Head Coach // 21st | Copper Union // 1996 |
| Laura Jackson | Assistant Coach // 1st | Iona // 2012 |
| Derek Shoare | Volunteer Asst. Coach // 5th | St. Mary's (London) // 1980 |
| Shelby Larson | Dir. of Operations // 1st | Tampa // 2014 |
| Demetrius Daniels | Equipment Manager // 12th | Austin Peay // 2006 |

PRONUNCIATION GUIDE

| | |
|----------------------|---------------------------------|
| Isabella CAVALCANTE | kav-uhl-KAHN-tay |
| Ebba COSTOW | COST-ov |
| Mandi DUGGAN | DEW-guhn |
| Eva ELIASDÓTTIR | ell-EYE-iss-daw-ter |
| Emilie GAVILLET | GAH-vee-ay |
| MARGHERITA GIUBILATO | marg-uh-REET-uh joo-bee-LAH-toe |
| CERI Holland | CARE-ee |
| Madison MEADOR | MEH-der |
| Sophie MAIERHOFER | MY-er-ha-fur |
| Ellie PRYBYLSKI | .prib-ILL-skee |
| Grace WILTGEN | WILL-chen |
| CHAIIS Wright | CHASE |

RADIO/TV ROSTER



0 **GABBIE DAWE**
Fr. // GK // 5-10
Memphis, Tenn.



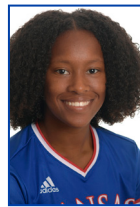
00 **SARAH PETERS**
So. // GK // 5-10
Lee's Summit, Mo.



1 **MILANIA PASAR**
Fr. // GK // 5-11
Portoroz, Slovenia



2 **ELLIE PRYBYLSKI**
Fr. // D/F // 5-5
Forsyth County, Ga.



3 **MYA SHERIDAN**
Fr. // F // 5-5
Schertz, Texas



4 **KAILEY LANE**
So. // F // 5-9
Omaha, Neb.



6 **KAELA HANSEN**
So. // D // 5-7
Burnaby, B.C.



7 **AVERY HALL**
So. // M // 5-5
McKinney, Texas



8 **EBBA COSTOW**
Fr. // M // 5-5
Uppsala, Sweden



9 **MADISON MEADOR**
Sr. // D // 5-7
Ballwin, Mo.



10 **GRACELEY BRILEY**
Fr. // M // 5-9
Olathe, Kan.



11 **CHAIIS WRIGHT**
R-Fr. // D // 5-4
Kansas City, Mo.



12 **KATIE MCCLURE**
Sr. // F // 5-4
Wichita, Kan.



13 **KATHRYN CASTRO**
Jr. // M // 5-3
Plano, Texas



14 **SAMANTHA BARNETT**
So. // M // 5-8
Edmond, Okla.



15 **CERI HOLLAND**
Jr. // M // 5-5
West Yorkshire, England



16 **ITALIA BRADLEY**
So. // D // 5-7
Coppell, Texas



17 **LIA BEYER**
Fr. // D // 5-7
Parker, Colo.



18 **EBILIE GAVILLET**
R-Fr. // GK // 5-9
Montreux, Switzerland



19 **EVA ELIASDÓTTIR**
Sr. // D // 5-9
Thorlakhofn, Iceland



20 **MARGHERITA GIUBILATO**
Fr. // F // 5-4
Martellago, Italy



21 **ISABELLA CAVALCANTE**
Jr. // D // 5-7
Glen Ellyn, Ill.



22 **MANDI DUGGAN**
Jr. // F // 5-2
Aurora, Colo.



23 **GRACE WILTGEN**
So. // D // 5-6
Denton, Texas



24 **ELISE REINA**
Sr. // D // 5-2
Fayetteville, Ark.



26 **ADDISYN MERRICK**
Sr. // D // 5-6
Lee's Summit, Mo.



27 **SOPHIE MAIERHOFER**
Sr. // M // 5-7
Graz, Austria



28 **BRI AMOS**
So. // F // 5-7
Tulsa, Okla.



HC **MARK FRANCIS**
Head Coach
21st season

SERIES VS. SOUTH CAROLINA

The contest Friday will mark the first between Kansas and South Carolina. The Jayhawks are 28-36-5 all-time against current members of the SEC. This includes a 2-2-0 mark against SEC squads since 2015.

SCOUTING THE GAMECOCKS

The Gamecocks (18-1-3) are making their fifth appearance in the third round of the NCAA Tournament in program history after claiming a 1-0 win over Notre Dame in the second round Friday. USC concluded its SEC slate unbeaten at 7-0-2 and went on to claim the conference tournament title. The Gamecocks enter the Sweet 16 in the midst of a 15-game unbeaten streak.

South Carolina is led on the offensive side by Elexa Bahr and Luciana Zullo, who have each netted six goals. They are two of 10 Gamecocks who have tallied multiple goals in 2019. The USC defense has allowed only seven goals in 22 games this year. Mikayala Krzczowski has started in goal in each of her team's matches this season. She has picked up 15 shutouts, collected 43 saves and amassed a 0.32 goals-against average.

South Carolina is led by Shelley Smith, who is in her 19th season in Columbia. The Gamecocks are 253-116-48 during her tenure.

LET'S DANCE!

The Kansas Jayhawks are making their ninth appearance in the NCAA Championship and their second in the second round when they meet South Carolina in Columbia Sunday. Kansas is 8-8-0 all-time in NCAA Tournament games with its best run coming in 2003 when the Jayhawks advanced to the Sweet 16, where they fell to UCLA, 1-0, in Los Angeles. Kansas has advanced past the first round in six of its nine appearances and each of its last three trips to the NCAA tourney.

Kansas is making its second-straight appearance in the Big Dance. Last year, KU welcomed Saint Louis for its second meeting of the season at Rock Chalk Park. KU's Katie scored the golden goal in the second overtime to hand the Jayhawks a 2-1 win. Kansas then fell to No. 1-seed North Carolina in the second round, 4-1.

NO SUNDAY SCARIES

With its 1-0 win over TCU on Nov. 10, Kansas remained unbeaten on Sundays this season. At 8-0-2, the Jayhawks are looking to finish the year without a Sunday loss for just the second time in program history. In 2016, KU went 6-0-3 on Sundays.

The torrid play on the first day of the week this season comes after the Jayhawks went a combined 5-7-3 on Sundays during the 2017 and 2018 campaigns.

Kansas has a +17 goal differential (22-5), a 0.53 goals-against average and five shutouts in Sunday matches this season.

RECORD BOOK REVIEW

As Kansas continues to advance through the late stages of the 2019 campaign, several Jayhawks have moved their names up on the program's all-time career and single-season records chart. Here are some of the notable players making waves in the KU record book:

- **Team:** The 2019 Jayhawks have secured 17 wins, the second-most in program history. KU's 45 goals rank as the fourth-most by a Jayhawk squad. The team's six-game winning streak is also the third-longest in program history.
- **Katie McClure:** The senior forward ranks in the top-two of the KU career charts in points (94 - 2nd) and goals (39 - 2nd) and in the top-three on the single-season charts in points (43 - 2nd), goals (17 - 2nd), game-winning goals (7 - 1st) and shots (100 - 1st).
- **Addysn Merrick:** The senior defender is now first in the single-season minutes list, now with 2,188 on the year. She also is now the record holder on the career minutes list, having logged 7,540 minutes over the last four seasons.
- **Sarah Peters:** The sophomore goalkeeper's has collected 17 wins in between the posts for KU this season, the third-most in program history. Her goals-against average of 0.70 is the second-lowest by a Jayhawk keeper. Peters' 11 shutouts are tied for the school record mark and the most by a Jayhawk goalkeeper since 2004.

NCAA SECOND ROUND LEFTOVERS

- The No. 3-seeded Jayhawks topped the Xavier Musketeers, 3-0, in the second round Friday in Columbia behind Katie McClure's second-career hat trick.
- The win moved Kansas to its second third round in program history and the first since 2003.
- McClure's hat trick was her second of the season as well as her career. It was also her fourth multi-goal outing of her senior campaign.
- KU completed its 12th shutout of the season, one shy of the single-season program record.
- The win also saw the Jayhawks extend their unbeaten streak to 11 matches, while KU snapped Xavier's eight-game winning streak.
- KU's three goals matched the most allowed by the Musketeers this season. Xavier had conceded a total of only two goals in its previous eight outings.
- McClure's seven shots brought her season total to 100, making her the first Jayhawk in program history to hit the century mark in shots.
- Addysn Merrick played the full 90 minutes, moving her career total to 7,540, a new program record.
- Sarah Peters tallied the 11th clean sheet of the season via the shutout of the Musketeers, tying her for the most by a KU keeper in a single season.

QUICK FACTS

GENERAL INFORMATION

| | |
|---|---|
| Location | Lawrence, Kan. |
| Enrollment | 28,401 |
| Founded | 1866 |
| Nickname | Jayhawks |
| School Colors | Crimson and Blue (PMS: Blue 293; Crimson 186) |
| Conference | Big 12 |
| Chancellor | Douglas A. Giron |
| Athletics Director | Jeff Long |
| Associate Athletics Director/Soccer Administrator | Jane Fulton |
| Athletics Website | www.kuathletics.com |
| Ticket Office Phone | 1.800.34.HAWKS (42957) |

SOCCER FACILITY

| | |
|--|---------------------------------|
| Home Facility (Capacity) | Rock Chalk Park (2,500) |
| KU Record at Rock Chalk Park | 34-17-3 (.657) |
| Opened | 2014 |
| Surface | Natural Grass (Bermuda and Rye) |

COACHING STAFF/SUPPORT STAFF

| | |
|--------------------------------|---------------------------------------|
| Head Coach | Mark Francis (SMU, 1987) |
| Record at Kansas | 236-167-37 (21st season) |
| Overall | 269-192-38 (24th season) |
| Associate Head Coach | Kelly Miller (The Cooper Union, 1996) |
| Year at Kansas | 21st |
| Assistant Coach | Laura Jackson (Iona, 2012) |
| Year at Kansas | First |
| Volunteer Assistant | Derek Shoare |
| Year at Kansas | Fifth |

2018 IN REVIEW

| | |
|--------------------------|---------------|
| Overall Record | 12-6-3 (.643) |
| Big 12 Record | 5-4-0 (.556) |
| Big 12 Finish | 6th |
| Home | 9-2-0 (.810) |
| Away | 2-4-1 (.357) |
| Neutral | 1-0-2 (.500) |

PROGRAM HISTORY

| | |
|--|--------------------|
| First Year of Soccer at Kansas | 1995 (25th season) |
| All-Time Record | 260-215-40 (.543) |
| All-Time Big 12 Record | 96-109-20 (.471) |
| Conference Titles | 1 (2004) |
| NCAA Postseason Appearances | 9 |
| (2001, 2003, 2004, 2008, 2011, 2014, 2016, 2018, 2019) | |
| NCAA Postseason Record | 8-8-0 (.500) |

2019 TEAM INFORMATION

| | |
|--|------|
| Letterwinners Returning/Lost | 18/9 |
| Starters Returning/Lost | 9/3 |
| Newcomers | 8 |

BIG 12 STANDINGS

BIG 12

OVERALL

| | Record | % | Home | Away | Stk | Pts | Record | % | Home | Away | Neut | Stk |
|----------------|--------------|--------------|--------------|--------------|-----------|-----------|---------------|--------------|--------------|--------------|--------------|-----------|
| Oklahoma State | 7-1-1 | 0.833 | 4-0 | 3-1-1 | W7 | 22 | 16-3-3 | 0.795 | 10-0-1 | 5-1-2 | 1-2-0 | L1 |
| Texas Tech | 6-1-2 | 0.778 | 2-1-2 | 4-0 | W3 | 20 | 15-4-3 | 0.750 | 6-1-3 | 6-1-0 | 3-2-0 | L1 |
| Texas | 6-3 | 0.667 | 2-3 | 4-0 | W1 | 18 | 11-8-1 | 0.575 | 6-5-0 | 5-3-0 | 0-0-1 | L1 |
| West Virginia | 5-3-1 | 0.611 | 3-2 | 2-1-1 | W2 | 16 | 12-7-2 | 0.619 | 8-2-1 | 3-3-1 | 1-2-0 | W2 |
| KANSAS | 4-2-3 | 0.611 | 2-1-1 | 2-1-2 | W1 | 15 | 17-4-3 | 0.771 | 8-2-1 | 5-1-2 | 4-1-0 | W6 |
| TCU | 4-3-2 | 0.556 | 2-1-2 | 2-2 | L1 | 14 | 11-8-3 | 0.568 | 5-2-2 | 5-5-0 | 1-1-1 | L2 |
| Baylor | 4-5 | 0.444 | 2-2 | 2-3 | L1 | 12 | 8-8-3 | 0.500 | 4-3-1 | 4-4-2 | 0-1-0 | L2 |
| Oklahoma | 3-5-1 | 0.389 | 2-2 | 1-3-1 | L3 | 10 | 8-9-3 | 0.475 | 4-3-1 | 4-5-2 | 0-1-0 | L4 |
| Kansas State | 1-8 | 0.111 | 1-3 | 0-5 | L4 | 3 | 3-13-2 | 0.222 | 3-6-0 | 0-7-2 | 0-0-0 | L4 |
| Iowa State | 0-9 | 0.000 | 0-5 | 0-4 | L9 | 0 | 3-15 | 0.167 | 1-6 | 2-9 | 0-0 | L10 |

THIS WEEK IN THE BIG 12

All times central

Sunday, Nov. 24 - NCAA Third Round

Kansas at South Carolina, 1 p.m.
West Virginia vs. Washington State, 4 p.m.

UNITED SOCCER COACHES POLL
NOV. 12, 2019

| Rank | Team | Previous | Record |
|------|---------------------|------------|----------------|
| 1. | Stanford (25) | 838 | .18-1-0 |
| 2. | North Carolina (8) | 822 | .19-1-1 |
| 3. | Virginia | 777 | .16-1-3 |
| 4. | BYU | 735 | .18-0-1 |
| 5. | South Carolina (1) | 702 | .16-1-3 |
| 6. | Florida State | 664 | .15-5-0 |
| 7. | UCLA | 631 | .14-4-1 |
| 8. | Arkansas | 601 | .16-3-2 |
| 9. | Southern California | 549 | .14-4-1 |
| 10. | Wisconsin | 517 | .14-3-2 |
| 11. | KANSAS. | 481 | .15-4-3 |
| 12. | Duke | 440 | .8-3-7 |
| 13. | Oklahoma State | 424 | .15-2-3 |
| 14. | Memphis | 377 | .17-2-1 |
| 15. | Texas Tech | 294 | .15-3-2 |
| 16. | Brown. | 288 | .14-1-2 |
| 17. | South Florida | 264 | .14-4-0 |
| 18. | Penn State | 257 | .15-6-1 |
| 19. | Michigan | 244 | .15-5-1 |
| 20. | Santa Clara. | 229 | .13-5-2 |
| 21. | Rutgers. | 179 | .15-3-2 |
| 22. | Texas A&M | 112 | .13-4-3 |
| 23. | Louisville | 105 | .12-4-2 |
| 24. | Xavier. | 97 | .16-3-2 |
| 25. | Georgetown | 81 | .13-4-3 |

Others receiving votes: North Carolina State (69), Florida (64), Washington (64), Virginia Tech (26), Vanderbilt (24), Clemson (21), California (20), Hofstra (9), Pepperdine (9), Iowa (7), North Texas (6), Washington State (3), Central Florida (1)

Kansas 2019 opponents are in italics

TOP DRAWER SOCCER POLL
NOV. 18, 2019

| Rank | Team | Record | Conf. |
|------|------------------|---------------|---------------|
| 1. | North Carolina | 20-1-1 | .9-0-1 |
| 2. | Stanford | 19-1-0 | .11-0-0 |
| 3. | Virginia | 17-1-3 | .6-0-3 |
| 4. | BYU | 19-0-1 | .8-0-1 |
| 5. | Florida State | 16-5-0 | .8-2-0 |
| 6. | South Carolina | 17-1-3 | .8-0-3 |
| 7. | UCLA | 15-4-1 | .8-3-0 |
| 8. | Arkansas | 17-3-2 | .8-1-1 |
| 9. | USC | 15-4-1 | .7-4-0 |
| 10. | Brown. | 14-1-3 | .6-0-1 |
| 11. | South Florida | 15-4-0 | .7-2-0 |
| 12. | Oklahoma State | 16-2-3 | .7-1-1 |
| 13. | Texas A&M | 14-4-3 | .7-2-1 |
| 14. | KANSAS. | 16-4-3 | .4-2-3 |
| 15. | Wisconsin | 15-3-2 | .10-0-1 |
| 16. | Duke | 9-3-7 | .3-1-6 |
| 17. | Clemson | 11-6-2 | .5-5-0 |
| 18. | Xavier. | 17-3-2 | .7-2-0 |
| 19. | Washington | 12-6-2 | .7-4-0 |
| 20. | Texas Tech | 15-3-3 | .6-1-2 |
| 21. | Washington State | 13-6-1 | .5-5-1 |
| 22. | Santa Clara. | 14-5-2 | .7-0-2 |
| 23. | Arizona | 12-6-1 | .5-5-1 |
| 24. | Memphis | 17-3-1 | .8-0-1 |
| 25. | California | 13-5-3 | .5-3-3 |

Others receiving votes: Vanderbilt (14-5-2), Hofstra (16-3-2), Michigan (16-5-1), NC State (11-6-4), Georgetown (13-5-3)

Kansas 2019 opponents are in italics

RPI TOP-25

| Rank | Team | Record |
|------|---------------------|----------------|
| 1. | Stanford | .18-1-0 |
| 2. | North Carolina | .19-1-1 |
| 3. | Virginia | .16-1-3 |
| 4. | Florida St. | .15-5-0 |
| 5. | South Carolina | .16-1-3 |
| 6. | Arkansas | .16-3-2 |
| 7. | UCLA | .14-4-1 |
| 8. | Southern California | .14-4-1 |
| 9. | KANSAS. | .15-4-3 |
| 10. | Brown. | .14-1-2 |
| 11. | Oklahoma St. | .15-2-3 |
| 12. | BYU | .18-0-1 |
| 13. | Rutgers. | .15-3-2 |
| 14. | Duke | .8-3-7 |
| 15. | Virginia Tech. | .12-4-2 |
| 16. | Hofstra | .15-3-2 |
| 17. | Wisconsin | .14-3-2 |
| 18. | Washington | .11-6-2 |
| 19. | NC State | .10-6-4 |
| 20. | Texas Tech | .15-3-2 |
| 21. | Texas A&M | .13-4-3 |
| 22. | Penn St. | .15-6-1 |
| 23. | Florida | .11-8-1 |
| 24. | South Fla. | .14-4-0 |
| 25. | Michigan | .15-5-1 |

RPI WATCH

RECORD VS.

| | |
|-------------|--------|
| RPI 1-25 | .1-2-1 |
| RPI 26-50 | .3-1-1 |
| RPI 51-100 | .6-1-1 |
| RPI 101-150 | .2-0-0 |
| RPI 150+ | .3-0-0 |

GOAL DIFFERENTIAL VS.

| | |
|-------------|-----|
| RPI 1-25 | -.4 |
| RPI 26-50 | +3 |
| RPI 51-100 | +13 |
| RPI 101-150 | +5 |
| RPI 150+ | +6 |

BEST RESULTS

| | |
|-----------------------|--------|
| vs #11 Oklahoma State | W, 2-1 |
| vs #26 Memphis | W, 2-1 |
| at #31 Oklahoma State | W, 2-0 |

WORST RESULTS

| | |
|----------------|--------|
| vs. #48 Texas | L, 0-1 |
| vs. #60 DePaul | L, 0-1 |

KANSAS RANK

9

KANSAS Strength of Schedule

17

BIG 12 RPI

4

POST-SEASON EXPERIENCE

The Jayhawks will field a veteran group Sunday, one of the program's most experienced when it comes to the NCAA Tournament. The Kansas roster features eight Jayhawks who have played in at least four NCAA Tournament games in their careers.

Seniors Katie McClure and Addisyn Merrick have both tallied six starts in the NCAA Tournament, which ties a program record.

That school record for most NCAA Tournament games played now belongs to seven Jayhawks who played in six tournament games from 2001-04. In addition to Merrick and McClure, Monica Brothers, Amy Geha, Stacy Leeper, Gabriela Quiggle and Lauren Williams also played on three KU squads that advanced to the Big Dance.

TOP-25 TAKEDOWNS

Sunday's match against No. 5 South Carolina will be KU's seventh against a team ranked in the top-25 this season. Kansas is now 3-2-1 in its first six outings against ranked foes. The win over No. 10 Oklahoma State on Nov. 8 marked the fourth-consecutive season the Jayhawks have tallied at least two victories over a team ranked among the top-25 in the nation.

Kansas is 10-15-3 against ranked foes since 2016, with seven of those losses coming against teams inside the top-10. Prior to this recent run, the Jayhawks managed just six victories over top-25 teams from 2010-15.

ALL-CONFERENCE CORONATION

Kansas soccer senior Addisyn Merrick was named the Big 12 Defensive Player of the Year and was one of three Jayhawks to be named to the All-Big 12 teams when the league office announced its postseason awards Tuesday.

In addition to Merrick's Player of the Year honor, she was named to the All-Big 12 First Team and was joined there by senior forward Katie McClure, who was a unanimous selection. Junior midfielder Ceri Holland was tabbed to the All-Big 12 Second Team.

The announcement means Kansas has had at least one Jayhawk on the All-Big 12 teams each year since the current format began in 2000. The three Jayhawks selected also marked the seventh time in the last eight seasons that three or more KU representatives were selected to the all-conference squads.

LET'S GET DEFENSIVE

The Jayhawks have proven to be a stout defensive team, carrying over the trend from their last several seasons. Kansas currently boasts a goals-against average of 0.72 this season, which encompasses 12 shutouts in its 24 outings. The Jayhawks are allowing less than five opponent shots on goal per match.

KU has already put together several impressive shutout streaks to start this season and is currently building one of the longest in program history. The Jayhawks have gone 378 minutes since conceding their last goal, a mark that ranks as the fifth-longest streak in program history. KU has now tallied six opponent scoreless streaks of 300 minutes or more in the last five seasons, which includes two this season.

KU'S LONGEST OPPONENT SCORELESS STREAKS

| RNK | YEAR (DATES OF STREAK) | LENGTH |
|-----|------------------------------|-----------------|
| 1 | 2001 (Oct.-Nov. 8) | 550 min. |
| 2 | 2004 (Aug. 28-Sept. 11) | 492 min. |
| 3 | 2017 (Aug. 18-Sept. 3) | 450 min. |
| 4 | 2004 (Oct. 8-24) | 385 min. |
| 5 | 2019 (Nov. 8-Present) | 378 min. |
| 6 | 2006 (Oct. 13-27) | 374 min. |
| 7 | 2014 (Sept. 19-Oct. 3) | 360 min. |
| | 2002 (Sept. 13-27) | 360 min. |
| 9 | 2012 (Aug. 24-Sept. 2) | 351 min. |
| 10 | 2013 (Aug. 23-Sept. 1) | 348 min. |

OVERTIME = OUR TIME

Seeing five overtimes in its last 11 outings, the Jayhawks are once again putting up solid performances when the match goes to extra time. Following KU's double overtime win over Oklahoma

WEEK-BY-WEEK IN THE POLLS

| | PS | 1 | 2 | 3 | 4 | 5 | 6 | 7 | 8 | 9 | 10 | 11 | 12 | FINAL |
|-----------------------|----|----|----|----|----|----|----|----|----|----|----|----|----|-------|
| United Soccer Coaches | RV | 18 | 11 | 18 | 14 | 17 | 21 | RV | 23 | 23 | 25 | 21 | 11 | |
| Top Drawer Soccer | -- | -- | -- | -- | RV | RV | RV | -- | -- | RV | RV | RV | 16 | |
| RPI | -- | -- | -- | -- | -- | 8 | 13 | 18 | 14 | 17 | 19 | 19 | 9 | |

2019 BIG 12 POSTSEASON AWARDS

Offensive Player of the Year

Kirsten Davis, TTU, Jr.

Defensive Player of the Year

ADDISYN MERRICK, KU, SR.

Freshman of the Year

Madison White, TTU, Fr.

Coach of the Year

Colin Carmichael, OSU

FIRST TEAM

GK - Madison White, TTU, Fr.

D - Kim Rodriguez, OSU, Jr.**

D - ADDISYN MERRICK, KU, SR.

D - Cassie Hiatt, TTU, So.

M - Kaylee Dao, OSU, Sr.**

M - Julia Grosso, UT, So.

M - Yazmeen Ryan, TCU, Jr.

M - Grace Yochum, OSU, So.

F - Kirsten Davis, TTU, Jr.**

F - KATIE MCCLURE, KU, SR.**

F - Messiah Bright, TCU, So.

SECOND TEAM

GK - Rylee Foster, WVU, Sr.

D - Charmé Morgan, OSU, Jr.

D - Emma Regan, UT, So.

D - Jordan Brewster, WVU, So.

M - CERI HOLLAND, KU, JR.

M - Jaci Jones, OSU, Sr.

M - Haley Berg, UT, Jr.

F - Raegan Padgett, BU, Sr.

F - Cyera Hintzen, UT, Sr.

F - Olyvia Dowell, OSU, Fr.

U - Brookelynn Entz, KSU, Jr.

ALL-FRESHMAN TEAM

Elizabeth Kooiman, BU, F**

Maya McCutcheon, OU, D

Olyvia Dowell, OSU, F

Gracie Brian, TCU, MF**

Grace Collins, TCU, F

Sydney Nobles, UT, F

Hannah Anderson, TTU, D**

Macy Schultz, TTU, F

Madison White, TTU, GK

Nicole Payne, WVU, D

Enzi Broussard, WVU, F

** Unanimous Selection

State on Nov. 8, the Jayhawks are 11-3-14 in their last 28 contests that have gone past the 90th minute. This stretch dates back to the 2015 season.

Eva Eliasdottir's game-winner in the 109th minute against the Cowgirls was the 11th golden goals in this span, which includes seven over the last two seasons.

The Jayhawks have been on the wrong end of a golden goal just three times during this four-year stretch and only once in the 14 overtime matches they have played in since the start of the 2018.

NO GAMES OFF

Before Kansas soccer even hit the pitch for its first match of the season, the Jayhawks knew they would be in for a gauntlet of a schedule in 2019.

The 2019 Jayhawks' slate, which currently sits as the 17th-toughest in all of NCAA DI, features 10 teams that competed in the NCAA Tournament a year ago as well as three reigning conference champions. The Jayhawks, sitting at 17-4-3, have played or will play seven teams that are ranked or receiving votes in the most recent United Soccer Coaches' top-25 poll. That number includes five squads inside the top-15.

The Jayhawks have played six games against top-25 teams this season - No. 20 Memphis (W, 2-1), No. 7 BYU (L, 0-2), No. 25 Oklahoma State (L, 2-5), No. 14 Texas Tech (T, 0-0), No. 10 Oklahoma State (W, 2-1) and No. 24 Xavier (W, 3-0).

IRON JAYHAWK

Senior Katie McClure has continued an impressive streak into her final year in Lawrence as she has started each of the Jayhawks' last 81 matches of the Jayhawks' matches dating back to her freshman year in 2016. McClure's mark is already among the longest in program history as it sits sixth on the all-time list among field players.

CONSECUTIVE MATCHES STARTED BY A JAYHAWK FIELD PLAYER

| Rnk | Name (Yrs.) | Games |
|-----------|-------------------------------------|-----------|
| 1. | Kayla Morrison (2014-17) | 83 |
| | Estelle Johnson (2006-09) | 83 |
| | Afton Sauer (2004-07) | 83 |
| 4. | Whitney Berry (2009-12) | 82 |
| | Shelby Williamson (2009-12) | 82 |
| 6. | Katie McClure (2016-Present) | 81 |

SPREADING THE WEALTH

The KU offense has shown to be a tough assignment for opposing defenses this year after a host of Jayhawks have made their presence known on the stat sheet. Sixteen different Jayhawks have had their hand in at least one of the team's 45 goals thus far in 2019, either scoring or assisting. A total of ten players have managed to tally double-digit shots.

This is a trend that has been carried over from last year's squad which was also an unselfish bunch, as 11 different Jayhawks tallied at least one goal or assist in 2018.

MCCLURE MINUTES

Senior Katie McClure is putting an emphatic stamp on an already outstanding career at KU, having posted 17 goals (seven game-winners) and nine assists through her 24 outings this season. Last year saw her make headlines across the state, the region and the nation. She led the Jayhawks with 11 goals, seven game-winning goals, 28 shots on goal and 25 points, figures that ranked the Wichita product among the top-10 in the Big 12 in their respective categories.

Twenty-four matches into her career finale, she has made big jumps on some impressive lists, creeping closer to inserting her name among the top offensive players in Jayhawk history. Her 39-career goals currently rank her second on Kansas' all-time goal scorer chart. McClure's 18 game-winning goals are the most ever for a Jayhawk.

KANSAS CAREER GOAL SCORING LEADERS

| Rnk | Name (Yrs.) | Goals |
|-----------|-------------------------------------|-----------|
| 1. | Caroline Smith (2002-05) | 51 |
| 2. | Katie McClure (2016-Present) | 39 |
| 3. | Liana Salazar (2011-15) | 28 |
| 4. | Caroline Kastor (2010-13) | 26 |
| | Rachel Gilfillan (2001-04) | 26 |

FIRST TO SCORE, WINS GALORE

Dating back to the beginning of the 2012 season, now at 168 games, Kansas has developed an interesting trend when it comes to which team tallies the first goal of the match. During that 168-game span, the Jayhawks were on the losing end only four times in contests which they put in the match's first goal. Kansas has amassed a record of 79-4-9 in those games (90.8 winning %), which includes 14 of KU's wins and one draw this season.

UP NEXT

The winner of the Kansas-South Carolina contest will advance to the Elite Eight and host the next contest at their home venue. The national quarterfinal round will take place on either Friday, Nov. 29 or Nov. 30. Start times will be determined after all match-ups are set.

NCAA / BIG 12 RANKINGS

BIG 12 Top-10 (11.22.19); NCAA Top-100 (11.22.19)



TEAM

| | |
|---------------------------------|----|
| W-L-T Percentage (.771, 17-4-3) | 2 |
| Points Per Game (5.5) | 59 |
| Goals Per Game (1.88) | 62 |
| Assists Per Game (1.71) | 51 |
| Shots Per Game (14.7) | 78 |
| Shots on Goal Per Game (6.1) | - |
| Corners Per Game (5.3) | 85 |
| Offsides Per Game (1.8) | - |
| Fouls Per Game (10.1) | - |
| Goals-Against Avg. (0.72) | 27 |
| Saves Per Game (3.7) | - |
| Save Percentage (.830) | 36 |
| Shutouts (12) | 40 |

INDIVIDUAL (ALL GAMES)

TOTAL POINTS

| | |
|--------------------|---|
| Katie McClure (43) | 6 |
|--------------------|---|

TOTAL GOALS

| | |
|--------------------|---|
| Katie McClure (17) | 7 |
|--------------------|---|

GAME-WINNING GOALS

| | |
|-------------------|---|
| Katie McClure (7) | 5 |
|-------------------|---|

SHOTS PER GAME

| | |
|---------------------|----|
| Katie McClure (4.2) | 25 |
|---------------------|----|

SHUTOUTS

| | |
|-------------------|---|
| Sarah Peters (11) | 9 |
|-------------------|---|

GOALS-AGAINST AVERAGE

| | |
|---------------------|----|
| Sarah Peters (0.70) | 29 |
|---------------------|----|

GAMES STARTED STREAKS

| Player | Current | Career Long |
|---------------------|---------|-------------|
| Katie McClure | 81 | 81 |
| Ceri Holland | 64 | 64 |
| Sarah Peters | 44 | 44 |
| Kaela Hansen | 44 | 44 |
| Isabella Cavalcante | 28 | 28 |
| Addisyn Merrick | 26 | 44 |
| Sophie Maierhofer | 24 | 24 |
| Mandi Duggan | 11 | 11 |
| Samantha Barnett | 9 | 9 |
| Chais Wright | 6 | 6 |
| Italia Bradley | 2 | 2 |
| Elise Reina | 0 | 24 |
| Eva Eliasdottir | 0 | 20 |
| Madison Meador | 0 | 15 |
| Ellie Prybylski | 0 | 11 |
| Grace Wiltgen | 0 | 10 |
| Kailey Lane | 0 | 7 |
| Kathryn Castro | 0 | 6 |
| Bri Amos | 0 | 4 |
| Ebba Costow | 0 | 4 |

CARD ACCUMULATIONS

| Player | Yellow | Red |
|---------------------|--------|-----|
| Ceri Holland | 4 | 0 |
| Mandi Duggan | 2 | 0 |
| Isabella Cavalcante | 2 | 0 |
| Sophie Maierhofer | 2 | 0 |
| Bri Amos | 1 | 0 |
| Samantha Barnett | 1 | 0 |
| Katie McClure | 1 | 0 |
| Madison Meador | 1 | 0 |
| Addisyn Merrick | 1 | 0 |
| Sarah Peters | 1 | 0 |
| Mya Sheridan | 1 | 0 |

Yellow Accumulation Rule: Any player(s) or coach(es) who have received a total of five cautions in one season shall be suspended and shall not participate in the next regularly scheduled game, including postseason games.



HEAD COACH

MARK FRANCIS

21st SEASON AT KANSAS, 1999-PRESENT

Collegiate Record: 269-192-38 (.577)

At Kansas: 236-167-37 (.577) / **Big 12:** 90-88-17 (.505)

Alma Mater: SMU, 1987 / **Hometown:** London, England

KU IN THE FRANCIS ERA

15 seasons with 10 or more victories
First-Ever Big 12 Championship in 2004
Nine NCAA Tournament Appearances
 Two **Sweet 16** Appearances
 Achieved First-Ever **Top-10** Ranking
Six All-Americans
Four Freshman All-Americans
77 All-Big 12 Selections
25 NSCAA All-Central Region Players
Four Academic All-Americans
195 Academic All-Big 12 Selections
15-Time NSCAA Team Academic Award

Continuity is an essential part of a successful athletic program, and in his first 20 seasons at the helm of Kansas soccer, head coach Mark Francis has brought just that.

After taking over a program just past its infancy, Francis effectively etched his signature on Kansas soccer by becoming not only the winningest coach in its history, but leading his team to eight NCAA Tournaments, 16 Big 12 Championship Tournaments and helping 74 student-athletes garner all-conference accolades, including six that went on to earn All-America status.

Since 1999, Francis has amassed a 219-163-34 record, with 14 seasons of at least 10 victories. He is ranked second among active Big 12 coaches in wins at a single school. He also leads the league among active coaches with his 86 career Big 12 victories.

Francis' résumé is extensive, as he has coached and played at nearly all levels of the game. Francis worked his way up through the head coaching ranks wearing a whistle at the high school, junior college, Division I and professional levels. As a player, Francis was a three-time All-American at SMU and spent 10 seasons playing professionally in the APSL, the NPSL and the USISL.

After moving into its new, state-of-the-art facility at Rock Chalk Park in 2014, Francis' program took another step forward, elevating itself as one of the top teams in the Big 12 and a perennial top-25 NCAA squad. Now as the tenants of one of the top soccer facilities in the U.S., Francis and his staff are attracting some of the top talent from across the globe to Lawrence and the results over the last five seasons can back up the progress being made. Francis saw his Jayhawk team take the program even further in 2018 as he coached Kansas to its eighth NCAA Tournament appearance and their fifth in the second round of the Big Dance.

Francis helped his squad to their highest Big 12 finish in over a decade in 2016 as the Jayhawks posted a second-place finish on the league table, only suffering one loss in the conference season.

It was a season to remember for Francis and the Jayhawks in 2014, as he led his squad to one of the best seasons in program history. He picked up his 200th career coaching victory in KU's 4-1 win over Wake Forest and proceed to see his team reel off eight-straight wins to start the season, the best start in program history. His team ended the year with 15 victories, the third-most ever by a Jayhawk squad and made the program's sixth NCAA tournament appearance. Junior Liana Salazar also had a breakout season in becoming Kansas' sixth All-America honoree after she was named to the Third Team.

Francis tallied his 150th KU coaching victory in 2012 and led his squad to its 10th 10-win season during his tenure in Lawrence. Senior Whitney Berry became KU's all-time assists leader (32) and the program's 11th player to be named to the All-Big 12 First Team.

The 2008 season was one for the record books as Kansas recorded 13 wins and returned to the NCAA Tournament. The Jayhawks knocked off four nationally-ranked teams en route to their tournament berth, including a pair of wins over long-time nemesis Texas A&M. KU became the first team in three years to defeat the Aggies twice in the same season.

The Jayhawks topped four other ranked teams during the season and capped their remarkable run with a 2-1 triumph over Denver in the first round of the NCAA Tournament. Several players received accolades throughout and following the season. Freshman Emily Cressy was

named a Freshman All-American by Soccer Buzz as well as Soccer America, while teammates Monica Dolinsky and Johnson joined her on the All-Central Region Team. Dolinsky was also named All-Big 12 First Team, while Cressy became KU's first Big 12 Rookie of the Year.

The 2004 season was a year filled with program firsts as numerous records were broken. The Jayhawks compiled a program-best record of 18-5 on their way to the Big 12 Championship. It was the first for the soccer team and second among KU women's sports, the first going to basketball in 1997. Francis earned Big 12 Coach of the Year as well as the Central Region Coach of the Year honors. He also won his 100th overall match with a victory against Texas Tech on Oct. 1.

In 2003, Kansas soccer reached new heights under Francis' leadership. The Jayhawks posted an 18-6-1 mark and advanced to the Sweet 16 round of the NCAA Tournament. With a 6-3-1 record in the Big 12, KU finished third. Along with the team accomplishments, several players were honored for their efforts during the 2003 campaign, including Caroline Smith being named to several All-America teams as well as Holly Gault being selected as a Freshman All-American by Soccer Buzz. With Francis' help, KU's players etched their names in the record book, as Smith became the program's all-time leader in goals, points and game-winning goals and Miller set the school mark in career shutouts and career GAA.

In 2002, Francis led Kansas to an overall record of 11-7-2, including a then-school record six-straight wins and a seven-game unbeaten streak during the first half of the season. The Jayhawks opened the season 6-1-1, marking their best start ever. Francis' team ranked in the Central Region's Top 10 for 10 consecutive weeks.

FRANCIS BY THE NUMBERS

| Year | School | Record | Conf. Rec(Finish) | Conf. Tournament | NCAA |
|------------------|-------------------|--------------------------|------------------------|-----------------------|----------------------|
| 1996 | South Alabama | 2-17-0 | -- | -- | -- |
| 1997 | South Alabama | 18-3-1 | 5-0-0 (1st) | Champion (2-0-0) | -- |
| 1998 | South Alabama | 13-5-0 | 5-0-0 (1st) | Semifinals (0-1-0) | -- |
| 1999 | Kansas | 8-10-1 | 3-6-1 (9th) | -- | -- |
| 2000 | Kansas | 7-11-2 | 3-6-1 (18th) | Quarterfinals (0-1-0) | -- |
| 2001 | Kansas | 13-7-0 | 7-3-0 (4th) | Quarterfinals (0-1-0) | First Round (0-1-0) |
| 2002 | Kansas | 11-7-2 | 4-5-1 (6th) | Quarterfinals (0-1-0) | -- |
| 2003 | Kansas | 18-6-1 | 6-3-1 (3rd) | Semifinals (1-1-0) | Sweet 16 (2-1-0) |
| 2004 | Kansas | 18-5-0 | 8-2-0 (1st) | Semifinals (1-1-0) | Second Round (1-1-0) |
| 2005 | Kansas | 11-7-2 | 6-3-1 (12nd) | Quarterfinals (0-1-0) | -- |
| 2006 | Kansas | 11-7-1 | 6-4-0 (4th) | Quarterfinals (0-0-1) | -- |
| 2007 | Kansas | 7-10-4 | 5-2-3 (13rd) | Quarterfinals (0-1-0) | -- |
| 2008 | Kansas | 13-8-2 | 4-5-1 (7th) | Semifinals (1-0-1) | Second Round (1-1-0) |
| 2009 | Kansas | 12-8-2 | 4-6-0 (17th) | Quarterfinals (0-1-0) | -- |
| 2010 | Kansas | 6-13-0 | 1-9-0 (11th) | -- | -- |
| 2011 | Kansas | 11-9-1 | 3-5-0 (16th) | Quarterfinals (0-0-1) | First Round (0-1-0) |
| 2012 | Kansas | 10-8-2 | 3-5-0 (6th) | Quarterfinals (0-1-0) | -- |
| 2013 | Kansas | 7-11-2 | 2-5-1 (8th) | Quarterfinals (0-1-0) | -- |
| 2014 | Kansas | 15-6-0 | 5-3-0 (3rd) | Quarterfinals (0-1-0) | First Round (0-1-0) |
| 2015 | Kansas | 10-9-2 | 3-4-1 (6th) | Runner-Up (2-1-0) | -- |
| 2016 | Kansas | 11-6-4 | 5-1-2 (2nd) | Quarterfinals (0-1-0) | Second Round (1-1-0) |
| 2017 | Kansas | 8-9-3 | 3-5-1 (6th) | Quarterfinals (0-0-1) | -- |
| 2018 | Kansas | 12-6-3 | 5-4-0 (6th) | Quarterfinals (0-0-1) | Second Round (1-1-0) |
| 2019 | Kansas | 17-4-3 | 4-2-3 (5th) | Champion (3-0-0) | Third Round (2-0-0) |
| At Kansas | 21 seasons | 236-167-37 (.576) | 90-88-17 (.505) | 8-13-5 (.404) | 8-8-0 (.500) |
| OVERALL | 24 seasons | 269-192-38 (.576) | 99-88-17 (.526) | 10-14-5 (.431) | 8-8-0 (.500) |

CATEGORICAL RECORDS

| | Big 12 | Overall | | Big 12 | Overall |
|--|--------|---------|---|--------|---------|
| Overall | 4-2-3 | 17-4-3 | vs. RPI 1-25 opponents | 0-1-1 | 1-2-1 |
| Home | 2-1-1 | 8-2-1 | vs. RPI 26-50 opponents | 1-1-1 | 6-1-1 |
| Road | 2-1-2 | 5-1-2 | vs. RPI 51-100 opponents | 1-0-1 | 6-1-1 |
| Neutral Sites | 0-0-0 | 4-1-0 | vs. RPI 101-150 opponents | 0-0-0 | 2-0-0 |
| | | | vs. RPI 151+ opponents | 2-0-0 | 2-0-0 |
| On Thursdays | 2-2-1 | 4-3-1 | vs. UnitedSoccer ranked opponents | 0-1-1 | 3-2-1 |
| On Fridays | 1-0-0 | 4-1-0 | vs. UnitedSoccer Top-10 opponents | 0-0-0 | 1-1-0 |
| On Saturdays | 0-0-0 | 1-0-0 | vs. UnitedSoccer unranked opponents | 4-1-2 | 14-2-2 |
| On Sundays | 1-0-2 | 8-0-2 | | | |
| When Scoring First | 4-0-1 | 14-0-1 | vs. nonconference opponents | 0-0-0 | 10-2-0 |
| When Opponent Scores First | 0-2-1 | 3-4-1 | | | |
| When Leading at Half | 3-0-1 | 9-0-1 | In one-goal games | 2-1-0 | 9-2-0 |
| When Trailing at Half | 0-1-1 | 2-1-1 | | | |
| When Tied at Half | 1-1-1 | 6-2-1 | In 90+ degrees | 0-0-0 | 0-0-0 |
| In Regulation | 3-2-0 | 15-4-0 | In 80-89 degrees | 1-0-1 | 2-1-1 |
| In Overtime | 1-0-3 | 2-0-3 | In 70-79 degrees | 0-1-1 | 5-2-1 |
| In August | 0-0-0 | 3-0-0 | In 60-69 degrees | 1-1-0 | 5-1-0 |
| In September | 1-1-0 | 6-3-0 | In 50-59 degrees | 1-0-0 | 3-0-0 |
| In October | 3-1-3 | 3-1-3 | In sub-50 degrees | 1-0-1 | 2-0-1 |
| In November | 0-0-0 | 5-0-0 | | | |
| When scoring zero goals | 0-1-1 | 0-3-1 | Wearing white uniforms | 2-1-0 | 6-2-0 |
| When scoring one goal | 1-0-1 | 5-0-1 | Wearing blue uniforms | 0-0-2 | 8-1-2 |
| When scoring two goals | 1-1-1 | 6-1-1 | Wearing red uniforms | 0-1-1 | 1-1-1 |
| When scoring three goals | 1-0-0 | 3-0-0 | Wearing alternate uniforms | 2-0-0 | 2-0-0 |
| When scoring four goals or more | 1-0-0 | 3-0-0 | | | |
| When allowing zero goals | 2-0-1 | 11-0-1 | In televised games | 4-2-3 | 16-3-3 |
| When allowing one goal | 2-1-1 | 6-2-1 | | | |
| When allowing two goals | 0-0-1 | 0-1-1 | | | |
| When allowing three goals | 0-0-0 | 0-0-0 | | | |
| When allowing four goals or more | 0-1-0 | 0-1-0 | | | |
| When outshooting opponent | 2-2-2 | 9-3-2 | | | |
| When being outshot | 2-0-1 | 8-1-1 | | | |
| When tied in shots | 0-0-0 | 0-0-0 | | | |

STARTERS - BY MATCH

| | GK | F | F | M | M | M | D | D | D | D | D |
|-------------------------|--------|---------|--------|---------|------------|---------|-----------|--------|---------|------------|------------|
| Nebraska (8/22) | Peters | McClure | Amos | Costow | Maierhofer | Holland | Prybylski | Hansen | Merrick | Cavalcante | Reina |
| Loyola-Chicago (8/25) | Peters | McClure | Amos | Costow | Maierhofer | Holland | Prybylski | Hansen | Merrick | Cavalcante | Reina |
| Memphis (8/29) | Peters | McClure | Amos | Costow | Maierhofer | Holland | Prybylski | Hansen | Merrick | Cavalcante | Reina |
| Florida Atlantic (9/1) | Peters | McClure | Amos | Costow | Maierhofer | Holland | Reina | Hansen | Merrick | Meador | Cavalcante |
| DePaul (9/6) | Peters | McClure | Amos | Costow | Maierhofer | Holland | Bradley | Hansen | Merrick | Meador | Cavalcante |
| Purdue (9/8) | Peters | McClure | Lane | Castro | Maierhofer | Holland | Bradley | Hansen | Merrick | Meador | Cavalcante |
| Northwestern (9/13) | Peters | McClure | Lane | Castro | Maierhofer | Holland | Prybylski | Hansen | Merrick | Meador | Cavalcante |
| Western Michigan (9/15) | Peters | McClure | Lane | Castro | Maierhofer | Holland | Prybylski | Hansen | Merrick | Meador | Cavalcante |
| BYU (9/19) | Peters | McClure | Lane | Castro | Maierhofer | Holland | Prybylski | Hansen | Merrick | Meador | Cavalcante |
| Kennesaw State (9/22) | Peters | McClure | Lane | Castro | Maierhofer | Holland | Prybylski | Hansen | Merrick | Meador | Cavalcante |
| Texas (9/26) | Peters | McClure | Lane | Castro | Maierhofer | Holland | Prybylski | Hansen | Merrick | Meador | Cavalcante |
| Baylor (9/29) | Peters | McClure | Lane | Costow | Maierhofer | Holland | Prybylski | Hansen | Merrick | Cavalcante | Wiltgen |
| Oklahoma State (10/3) | Peters | McClure | Lane | Costow | Maierhofer | Holland | Prybylski | Hansen | Merrick | Cavalcante | Wiltgen |
| Oklahoma (10/10) | Peters | McClure | Duggan | Costow | Maierhofer | Holland | Prybylski | Hansen | Merrick | Cavalcante | Wiltgen |
| Texas Tech (10/13) | Peters | McClure | Duggan | Costow | Maierhofer | Holland | Prybylski | Hansen | Merrick | Cavalcante | Wiltgen |
| Kansas State (10/18) | Peters | McClure | Duggan | Barnett | Maierhofer | Holland | Prybylski | Hansen | Merrick | Cavalcante | Wiltgen |
| West Virginia (10/24) | Peters | McClure | Duggan | Barnett | Maierhofer | Holland | Prybylski | Hansen | Merrick | Cavalcante | Wiltgen |
| TCU (10/27) | Peters | McClure | Duggan | Barnett | Maierhofer | Holland | Prybylski | Hansen | Merrick | Cavalcante | Wiltgen |
| Iowa State (10/31) | Peters | McClure | Duggan | Barnett | Maierhofer | Holland | Wright | Hansen | Merrick | Cavalcante | Wiltgen |
| West Virginia (11/3) | Peters | McClure | Duggan | Barnett | Maierhofer | Holland | Wright | Hansen | Merrick | Cavalcante | Wiltgen |
| Oklahoma State (11/8) | Peters | McClure | Duggan | Barnett | Maierhofer | Holland | Wright | Hansen | Merrick | Cavalcante | Wiltgen |
| TCU (11/10) | Peters | McClure | Duggan | Barnett | Maierhofer | Holland | Wright | Hansen | Merrick | Cavalcante | Wiltgen |
| Iowa (11/16) | Peters | McClure | Duggan | Barnett | Maierhofer | Holland | Wright | Hansen | Merrick | Cavalcante | Bradley |
| Xavier (11/22) | Peters | McClure | Duggan | Barnett | Maierhofer | Holland | Wright | Hansen | Merrick | Cavalcante | Bradley |

MISCELLANEOUS STATS

QUICKEST GOAL:

Ceri Holland (1:39) vs. Kansas State, 10/18/19

QUICKEST GOAL AGAINST:

Gabriella Coleman (1:05) of Oklahoma St., 11/8/19

GAME-WINNING GOALS AFTER 75':

Katie McClure (88:54) vs. Memphis, 8/29/19

Kailey Lane (84:51) at Purdue, 9/8/19

Chais Wright (79:43) at W. Michigan, 9/15/19

Mandi Duggan (98:07) at Oklahoma, 10/10/19

Eva Eliasdottir (109:00) vs. Oklahoma St., 11/8/19

GAME-TYING GOALS AFTER 75':

Ceri Holland (83:18) vs. West Virginia, 10/24/19

GAME-WINNING GOALS AGAINST AFTER 75':

GAME-TYING GOALS AGAINST AFTER 75':

Messiah Bright (89:47) of TCU (10.27.19)

MULTI-GOAL GAMES:

Katie McClure (3) vs. Nebraska, 8/22/19

Ceri Holland (2) vs. Loyola-Chicago, 8/25/19

Katie McClure (2) vs. Kennesaw State, 9/22/19

Mandi Duggan (2) vs. Baylor, 9/29/19

Katie McClure (2) vs. Kansas State, 10/18/19

Katie McClure (3) vs. Xavier, 11/22/19

MULTI-GOAL GAMES AGAINST:

Charme Margan (2) of Oklahoma State, 10/3/19

HAT TRICKS:

Katie McClure vs. Nebraska, 8/22/19

Katie McClure vs. Xavier, 11/22/19

HAT TRICKS AGAINST:

OWN GOALS FOR:

OWN GOALS AGAINST:

RED CARDS:

OPPONENT RED CARDS:

THE LAST TIME...

TEAM

Home Win..... 1-0 vs. Iowa, Nov. 16, 2019
 Home Loss..... 0-1 vs. Texas, Sept. 16, 2019
 Home Tie..... 1-1 vs. West Virginia, Oct. 24, 2019

Away Win 2-1 at Iowa State, Oct. 31, 2019
 Away Loss..... 2-5 at Oklahoma State, Oct. 3, 2019
 Away Tie 2-2 (2 OT) at TCU, Oct. 27, 2019

Neutral Win..... 3-0 vs. Xavier, Nov. 22, 2019
 Neutral Loss 0-1 vs. DePaul, Sept. 6, 2019
 Neutral Tie 0-0 (2 OT) vs. Texas, Oct. 28, 2018

OT Win 2-1 (2OT) vs. Oklahoma State, Nov. 8, 2019
 OT Loss..... 1-2 (OT) vs. Texas Tech, Oct. 14, 2018
 Played 2 OTs..... 2-1 (2OT) vs. Oklahoma State, Nov. 8, 2019

Big 12 Win..... 2-1 vs. Iowa State, Oct. 31, 2019
 Big 12 Loss 2-5 vs. Oklahoma State, Oct. 3, 2019
 Big 12 Tie..... 2-2 (2 OT) at TCU, Oct. 27, 2019

Win over Top-25 team..... 3-0 vs. #24 Xavier, Nov. 22, 2019
 Win over Top-10 team 2-1 (2OT) vs. #10 Oklahoma State, Nov. 8, 2019

Scored 0 Goals..... vs. Texas Tech, Oct. 13, 2019
 Scored 1 Goal..... vs. Iowa, Nov. 16, 2019
 Scored 2 Goals vs. Oklahoma State, Nov. 8, 2019
 Scored 3 Goals vs. Xavier, Nov. 22, 2019
 Scored 4 Goals..... vs. Baylor, Sept. 29, 2019
 Score 5+ Goals 6 vs. Loyola-Chicago, Aug. 25, 2019

Allowed 0 Goals vs. Xavier, Nov. 22, 2019
 Allowed 1 Goal vs. Oklahoma State, Nov. 8, 2019
 Allowed 2 Goals..... at TCU, Oct. 27, 2019
 Allowed 3 Goals..... at Baylor, Oct. 21, 2018
 Allowed 4 Goals..... at North Carolina, Nov. 16, 2018
 Allowed 5+ Goals 5 at Oklahoma State, Oct. 6, 2019

Amassed 20+ Shots..... 26 vs. West Virginia, Oct. 24, 2019
 Amassed 30+ Shots..... 31 at Western Michigan, Sept. 15, 2019

Allowed 20+ Shots..... (24) Oklahoma State, Nov. 8, 2019
 Allowed 30+ Shots..... (33) Texas, Nov. 5, 2004

Amassed 10+ Shots on Goal..... 10 vs. Xavier, Nov. 22, 2019
 Amassed 15+ Shots on Goal 15 at Western Michigan, Sept. 15, 2019

Allowed 10+ Shots on Goal..... 10 vs. Oklahoma State, Nov. 8, 2019
 Allowed 15+ Shots on Goal 20 by Georgia, Aug. 29, 2010

Amassed 10+ Corner Kicks 10 at Iowa State, Sept. 29, 2017
 Allowed 10+ Corner Kicks 10 vs. TCU, Nov. 10, 2019

Called for 15+ Fouls 23 vs. Oklahoma State, Nov. 8, 2019
 Called for 25+ Fouls 25 vs. Oklahoma State, Oct. 9, 1998

Opponent Called for 15+ Fouls..... (19) Iowa, Nov. 16, 2019
 Opponent Called for 25+ Fouls..... (27) Oklahoma State, Oct. 9, 2016

Scored 1 Penalty Kick..... vs. TCU, Oct. 27, 2019
 Scored 2 Penalty Kicks..... vs. Texas Tech, Sept. 23, 2016

Allowed 1 Penalty Kick vs. Texas, Oct. 19, 2018
 Allowed 2 Penalty Kicks..... Oral Roberts, Sept. 27, 2009

INDIVIDUAL

Hat Trick..... Katie McClure vs. Xavier (Nov. 22, 2019)
 Brace..... (2) Katie McClure vs. Kansas State (Oct. 18, 2019)

2 Assists Ebba Costow vs. Kansas State (Oct. 18, 2019)
 3 Assists Whitney Berry vs. Texas (Sept. 30, 2011)

3 Points (Goal+Assist) Katie McClure vs. Purdue (Sept. 8, 2019)
 5+ Points..... (6) Katie McClure vs. Xavier (Nov. 22, 2019)

8+ Shots..... (12) Katie McClure vs. West Virginia (Oct. 24, 2019)
 10+ Shots (12) Katie McClure vs. West Virginia (Oct. 24, 2019)

5+ Shots on Goal (6) Katie McClure vs. Xavier (Nov. 22, 2019)

Scored Penalty Kick Ceri Holland vs. TCU (Oct. 27, 2019)
 Missed Penalty Kick Ceri Holland vs. Texas (Oct. 19, 2018)

10+ Saves (11) Kaitlyn Stroud vs. Oklahoma (Nov. 1, 2013)
 Shutout Sarah Peters vs. Xavier (Nov. 22, 2019)

Red Card Hannah Lukinac at TCU (Sept. 22, 2017)

INDIVIDUAL OPPONENT

Hat Trick..... Anna Canniglia, Nebraska (Oct. 23, 2009)
 Brace..... Charme Morgan, Oklahoma State (Oct. 3, 2019)

2 Assists Jaci Jones, Oklahoma State (Oct. 3, 2019)
 3+ Assists..... (3) Julia Ashley, North Carolina (Nov. 16, 2018)

3 Points Julia Ashley & Rachael Dorwart, North Carolina (Nov. 16, 2018)
 5+ Points..... (5) Amanda Hill, West Virginia (Oct. 16, 2015)

8+ Shots..... (9) Olivia Dowell, Oklahoma State (Nov. 8, 2019)
 10+ Shots (13) Courtney Saunders, Baylor (Oct. 2, 1998)

5+ Shots on Goal (6) Maddie Pokorny, Saint Louis (Nov. 9, 2017)

Scored Penalty Kick Kayra Dollas, Texas (Oct. 19, 2018)
 Missed Penalty Kick Paula Leblic, Oregon State (Aug. 27, 2017)

10+ Saves (13) Maggie Rogers, Western Michigan (Sept. 15, 2019)
 Shutout Madison White, Texas Tech (Oct. 13, 2019)

Red Card Kassidie Stade, Oklahoma (Nov. 1, 2013)

OVERALL STATISTICS



2019 Kansas Soccer
Kansas Overall Individual Statistics (as of Nov 22, 2019)
All games



Overall: 17-4-3 Conf: 4-2-3 Home: 8-2-1 Away: 5-1-2 Neut: 4-1-0

| ## | Player | gp-gs | min | g | a | pts | sh | sh% | sog | sog% | yc | rc | gwg | pk-att | fg | ot | hat | gtg | foul | cnr |
|-----------|----------------------|-------|------|----|----|-----|-----|------|-----|-------|----|----|-----|--------|----|----|-----|-----|------|-----|
| 12 | McClure, Katie | 24-24 | 1692 | 17 | 9 | 43 | 100 | .170 | 43 | .430 | 1 | 0 | 7 | 0-0 | 7 | 0 | 2 | 1 | 6 | 0 |
| 15 | Holland, Ceri | 24-24 | 1945 | 8 | 6 | 22 | 63 | .127 | 25 | .397 | 4 | 0 | 2 | 3-3 | 1 | 0 | 0 | 2 | 7 | 24 |
| 4 | Lane, Kailey | 24-8 | 1024 | 5 | 3 | 13 | 23 | .217 | 11 | .478 | 0 | 0 | 4 | 0-0 | 2 | 0 | 0 | 0 | 3 | 0 |
| 22 | Duggan, Mandi | 24-11 | 1040 | 5 | 1 | 11 | 28 | .179 | 13 | .464 | 2 | 0 | 2 | 0-0 | 3 | 1 | 0 | 0 | 3 | 1 |
| 28 | Amos, Bri | 24-5 | 718 | 1 | 4 | 6 | 10 | .100 | 6 | .600 | 1 | 0 | 0 | 0-0 | 0 | 0 | 0 | 0 | 6 | 4 |
| 8 | Costow, Ebba | 22-9 | 780 | 1 | 4 | 6 | 5 | .200 | 3 | .600 | 0 | 0 | 0 | 0-0 | 0 | 0 | 0 | 0 | 2 | 25 |
| 14 | Barnett, Samantha | 24-9 | 1052 | 2 | 1 | 5 | 16 | .125 | 8 | .500 | 1 | 0 | 0 | 0-0 | 0 | 0 | 0 | 1 | 4 | 0 |
| 21 | Cavalcante, Isabella | 24-24 | 2041 | 1 | 3 | 5 | 19 | .053 | 6 | .316 | 2 | 0 | 0 | 0-0 | 0 | 0 | 0 | 0 | 5 | 0 |
| 2 | Prybylski, Ellie | 24-15 | 1093 | 0 | 5 | 5 | 5 | .000 | 1 | .200 | 0 | 0 | 0 | 0-0 | 0 | 0 | 0 | 0 | 0 | 29 |
| 27 | Maierhofer, Sophie | 24-24 | 1954 | 2 | 0 | 4 | 21 | .095 | 7 | .333 | 2 | 0 | 0 | 0-0 | 1 | 0 | 0 | 0 | 6 | 3 |
| 13 | Castro, Kathryn | 24-6 | 829 | 1 | 2 | 4 | 17 | .059 | 9 | .529 | 0 | 0 | 0 | 0-0 | 0 | 0 | 0 | 0 | 2 | 3 |
| 11 | Wright, Chais | 19-6 | 751 | 1 | 1 | 3 | 11 | .091 | 4 | .364 | 0 | 0 | 1 | 0-0 | 1 | 0 | 0 | 0 | 1 | 0 |
| 19 | Eliasdottir, Eva | 14-0 | 340 | 1 | 0 | 2 | 7 | .143 | 3 | .429 | 0 | 0 | 1 | 0-0 | 0 | 1 | 0 | 0 | 1 | 0 |
| 26 | Merrick, Addisyn | 24-24 | 2188 | 0 | 1 | 1 | 3 | .000 | 0 | .000 | 1 | 0 | 0 | 0-0 | 0 | 0 | 0 | 0 | 0 | 0 |
| 23 | Wiltgen, Grace | 23-11 | 947 | 0 | 1 | 1 | 3 | .000 | 2 | .667 | 0 | 0 | 0 | 0-0 | 0 | 0 | 0 | 0 | 0 | 0 |
| 16 | Bradley, Italia | 22-4 | 822 | 0 | 1 | 1 | 2 | .000 | 0 | .000 | 0 | 0 | 0 | 0-0 | 0 | 0 | 0 | 0 | 0 | 1 |
| 6 | Hansen, Kaela | 24-24 | 1917 | 0 | 0 | 0 | 7 | .000 | 1 | .143 | 0 | 0 | 0 | 0-0 | 0 | 0 | 0 | 0 | 2 | 0 |
| 10 | Briley, Gracely | 6-0 | 122 | 0 | 0 | 0 | 6 | .000 | 1 | .167 | 0 | 0 | 0 | 0-0 | 0 | 0 | 0 | 0 | 0 | 2 |
| 7 | Hall, Avery | 8-0 | 104 | 0 | 0 | 0 | 3 | .000 | 2 | .667 | 0 | 0 | 0 | 0-0 | 0 | 0 | 0 | 0 | 0 | 0 |
| 9 | Meador, Madison | 17-8 | 694 | 0 | 0 | 0 | 2 | .000 | 0 | .000 | 1 | 0 | 0 | 0-0 | 0 | 0 | 0 | 0 | 1 | 0 |
| 24 | Reina, Elise | 4-4 | 236 | 0 | 0 | 0 | 1 | .000 | 1 | 1.000 | 0 | 0 | 0 | 0-0 | 0 | 0 | 0 | 0 | 0 | 8 |
| 20 | Giubilato, Margherit | 4-0 | 47 | 0 | 0 | 0 | 0 | .000 | 0 | .000 | 0 | 0 | 0 | 0-0 | 0 | 0 | 0 | 0 | 0 | 0 |
| 18 | Gavillet, Emilie | 1-0 | 10 | 0 | 0 | 0 | 0 | .000 | 0 | .000 | 0 | 0 | 0 | 0-0 | 0 | 0 | 0 | 0 | 0 | 0 |
| 17 | Beyer, Lia | 3-0 | 63 | 0 | 0 | 0 | 0 | .000 | 0 | .000 | 0 | 0 | 0 | 0-0 | 0 | 0 | 0 | 0 | 0 | 0 |
| 3 | Sheridan, Mya | 9-0 | 77 | 0 | 0 | 0 | 0 | .000 | 0 | .000 | 1 | 0 | 0 | 0-0 | 0 | 0 | 0 | 0 | 0 | 0 |
| 1 | Pasar, Melania | 2-0 | 37 | 0 | 0 | 0 | 0 | .000 | 0 | .000 | 0 | 0 | 0 | 0-0 | 0 | 0 | 0 | 0 | 0 | 0 |
| 00 | Peters, Sarah | 24-24 | 2200 | 0 | 0 | 0 | 0 | .000 | 0 | .000 | 1 | 0 | 0 | 0-0 | 0 | 0 | 0 | 0 | 1 | 0 |
| Total | | 24 | - | 45 | 42 | 132 | 352 | .128 | 146 | .415 | 17 | 0 | 17 | 3-3 | 15 | 2 | 2 | 4 | 243 | - |
| Opponents | | 24 | - | 18 | 14 | 50 | 290 | .062 | 106 | .366 | 13 | 0 | 4 | 0-1 | 8 | 0 | 0 | 2 | 222 | - |

| # | Goalie | gp-gs | Goal Average | | | Saves | | Record | | | | Shots | |
|-----------|------------------|-------|--------------|----|-------|-------|-------|--------|----|---|---------|-------|--|
| | | | min | ga | gaavg | saves | pct | w | l | t | sho/cbo | faced | |
| 18 | Gavillet, Emilie | 1-0 | 9:31 | 0 | 0.00 | 0 | .000 | 0 | 0 | 0 | 0/1 | 0 | |
| 00 | Peters, Sarah | 24-24 | 2200:50 | 17 | 0.70 | 82 | .828 | 17 | 4 | 3 | 11/1 | 280 | |
| 1 | Pasar, Melania | 2-0 | 36:46 | 1 | 2.45 | 0 | .000 | 0 | 0 | 0 | 0/1 | 3 | |
| TM TEAM | | - | 0:00 | 0 | 0.00 | 6 | 1.000 | 0 | 0 | 0 | 1/0 | 0 | |
| Total | | 24 | 2247:07 | 18 | 0.72 | 88 | .830 | 17 | 4 | 3 | 12 | 283 | |
| Opponents | | 24 | 2247:07 | 45 | 1.80 | 101 | .692 | 4 | 17 | 3 | 4 | 348 | |

Team saves: 6

| Goals by Period | 1st | 2nd | OT | OT2 | Total |
|-----------------|-----|-----|----|-----|-------|
| Kansas | 21 | 22 | 1 | 1 | 45 |
| Opponents | 7 | 11 | 0 | 0 | 18 |

| Shots by Period | 1st | 2nd | OT | OT2 | Total |
|-----------------|-----|-----|----|-----|-------|
| Kansas | 139 | 195 | 11 | 7 | 352 |
| Opponents | 118 | 157 | 11 | 4 | 290 |

| Saves by Period | 1st | 2nd | OT | OT2 | Total |
|-----------------|-----|-----|----|-----|-------|
| Kansas | 35 | 46 | 5 | 2 | 88 |
| Opponents | 39 | 55 | 5 | 2 | 101 |

| Corners by Period | 1st | 2nd | OT | OT2 | Total |
|-------------------|-----|-----|----|-----|-------|
| Kansas | 43 | 78 | 5 | 0 | 126 |
| Opponents | 41 | 57 | 0 | 4 | 102 |

| Fouls by Period | 1st | 2nd | OT | OT2 | Total |
|-----------------|-----|-----|----|-----|-------|
| Kansas | 98 | 134 | 4 | 7 | 243 |
| Opponents | 104 | 108 | 4 | 6 | 222 |

| Attendance Summary | KU | Opponent |
|--------------------|--------|----------|
| Total | 8607 | 5858 |
| Dates/Avg Per Date | 11/782 | 8/732 |
| Neutral Site #/Avg | 5/359 | |

CONFERENCE STATISTICS



2019 Kansas Soccer
Kansas Overall Individual Statistics (as of Oct 31, 2019)
Conference games



Overall: 4-2-3 Conf: 4-2-3 Home: 2-1-1 Away: 2-1-2 Neut: 0-0-0

| ## | Player | gp-gs | min | g | a | pts | sh | sh% | sog | sog% | yc | rc | gwg | pk-att | fg | ot | hat | gtg | foul | cnr |
|-----------|----------------------|-------|-----|----|----|-----|-----|------|-----|-------|----|----|-----|--------|----|----|-----|-----|------|-----|
| 12 | McClure, Katie | 9-9 | 738 | 4 | 4 | 12 | 47 | .085 | 18 | .383 | 1 | 0 | 0 | 0-0 | 2 | 0 | 0 | 0 | 1 | 0 |
| 15 | Holland, Ceri | 9-9 | 800 | 5 | 0 | 10 | 29 | .172 | 14 | .483 | 3 | 0 | 2 | 1-1 | 1 | 0 | 0 | 1 | 3 | 11 |
| 22 | Duggan, Mandi | 9-6 | 516 | 4 | 0 | 8 | 14 | .286 | 6 | .429 | 0 | 0 | 1 | 0-0 | 2 | 1 | 0 | 0 | 1 | 1 |
| 8 | Costow, Ebba | 8-4 | 287 | 1 | 2 | 4 | 2 | .500 | 2 | 1.000 | 0 | 0 | 0 | 0-0 | 0 | 0 | 0 | 0 | 0 | 9 |
| 4 | Lane, Kailey | 9-3 | 389 | 1 | 1 | 3 | 8 | .125 | 3 | .375 | 0 | 0 | 1 | 0-0 | 0 | 0 | 0 | 0 | 0 | 0 |
| 13 | Castro, Kathryn | 9-1 | 295 | 0 | 2 | 2 | 2 | .000 | 1 | .500 | 0 | 0 | 0 | 0-0 | 0 | 0 | 0 | 0 | 2 | 2 |
| 28 | Amos, Bri | 9-0 | 186 | 0 | 2 | 2 | 0 | .000 | 0 | .000 | 0 | 0 | 0 | 0-0 | 0 | 0 | 0 | 0 | 1 | 2 |
| 2 | Prybylski, Ellie | 9-8 | 437 | 0 | 1 | 1 | 4 | .000 | 1 | .250 | 0 | 0 | 0 | 0-0 | 0 | 0 | 0 | 0 | 0 | 16 |
| 23 | Wiltgen, Grace | 9-8 | 446 | 0 | 1 | 1 | 1 | .000 | 0 | .000 | 0 | 0 | 0 | 0-0 | 0 | 0 | 0 | 0 | 0 | 0 |
| 16 | Bradley, Italia | 9-0 | 327 | 0 | 1 | 1 | 0 | .000 | 0 | .000 | 0 | 0 | 0 | 0-0 | 0 | 0 | 0 | 0 | 0 | 0 |
| 27 | Maierhofer, Sophie | 9-9 | 828 | 0 | 0 | 0 | 7 | .000 | 3 | .429 | 1 | 0 | 0 | 0-0 | 0 | 0 | 0 | 0 | 2 | 1 |
| 21 | Cavalcante, Isabella | 9-9 | 878 | 0 | 0 | 0 | 5 | .000 | 2 | .400 | 0 | 0 | 0 | 0-0 | 0 | 0 | 0 | 0 | 3 | 0 |
| 19 | Eliasdottir, Eva | 8-0 | 225 | 0 | 0 | 0 | 5 | .000 | 2 | .400 | 0 | 0 | 0 | 0-0 | 0 | 0 | 0 | 0 | 1 | 0 |
| 6 | Hansen, Kaela | 9-9 | 744 | 0 | 0 | 0 | 4 | .000 | 1 | .250 | 0 | 0 | 0 | 0-0 | 0 | 0 | 0 | 0 | 0 | 0 |
| 14 | Barnett, Samantha | 9-4 | 458 | 0 | 0 | 0 | 3 | .000 | 2 | .667 | 1 | 0 | 0 | 0-0 | 0 | 0 | 0 | 0 | 2 | 0 |
| 11 | Wright, Chais | 7-1 | 265 | 0 | 0 | 0 | 1 | .000 | 0 | .000 | 0 | 0 | 0 | 0-0 | 0 | 0 | 0 | 0 | 1 | 0 |
| 26 | Merrick, Addisyn | 9-9 | 872 | 0 | 0 | 0 | 0 | .000 | 0 | .000 | 0 | 0 | 0 | 0-0 | 0 | 0 | 0 | 0 | 0 | 0 |
| 20 | Giubilato, Margherit | 1-0 | 9 | 0 | 0 | 0 | 0 | .000 | 0 | .000 | 0 | 0 | 0 | 0-0 | 0 | 0 | 0 | 0 | 0 | 0 |
| 9 | Meador, Madison | 4-1 | 68 | 0 | 0 | 0 | 0 | .000 | 0 | .000 | 0 | 0 | 0 | 0-0 | 0 | 0 | 0 | 0 | 0 | 0 |
| 7 | Hall, Avery | 1-0 | 2 | 0 | 0 | 0 | 0 | .000 | 0 | .000 | 0 | 0 | 0 | 0-0 | 0 | 0 | 0 | 0 | 0 | 0 |
| 3 | Sheridan, Mya | 1-0 | 10 | 0 | 0 | 0 | 0 | .000 | 0 | .000 | 1 | 0 | 0 | 0-0 | 0 | 0 | 0 | 0 | 0 | 0 |
| Total | | 9 | - | 15 | 14 | 44 | 132 | .114 | 55 | .417 | 7 | 0 | 4 | 1-1 | 5 | 1 | 0 | 1 | 83 | - |
| Opponents | | 9 | - | 11 | 10 | 32 | 124 | .089 | 50 | .403 | 7 | 0 | 2 | 0-1 | 3 | 0 | 0 | 2 | 78 | - |

| # | Goalie | gp-gs | Goal Average | | | Saves | | Record | | | Shots | |
|-----------|---------------|-------|--------------|----|-------|-------|-------|--------|---|---|---------|-------|
| | | | min | ga | gaavg | saves | pct | w | l | t | sho/cbo | faced |
| 00 | Peters, Sarah | 9-8 | 878:07 | 11 | 1.13 | 38 | .776 | 4 | 2 | 3 | 3/0 | 122 |
| TM | TEAM | - | 0:00 | 0 | 0.00 | 1 | 1.000 | 0 | 0 | 0 | 0/0 | 0 |
| Total | | 9 | 878:07 | 11 | 1.13 | 39 | .780 | 4 | 2 | 3 | 3 | 122 |
| Opponents | | 9 | 878:07 | 15 | 1.54 | 40 | .727 | 2 | 4 | 3 | 2 | 130 |

Team saves: 1

| Goals by Period | 1st | 2nd | OT | OT2 | Total |
|-----------------|-----|-----|----|-----|-------|
| Kansas | 4 | 10 | 1 | 0 | 15 |
| Opponents | 4 | 7 | 0 | 0 | 11 |

| Shots by Period | 1st | 2nd | OT | OT2 | Total |
|-----------------|-----|-----|----|-----|-------|
| Kansas | 44 | 73 | 10 | 5 | 132 |
| Opponents | 49 | 65 | 8 | 2 | 124 |

| Saves by Period | 1st | 2nd | OT | OT2 | Total |
|-----------------|-----|-----|----|-----|-------|
| Kansas | 16 | 19 | 3 | 1 | 39 |
| Opponents | 12 | 22 | 4 | 2 | 40 |

| Corners by Period | 1st | 2nd | OT | OT2 | Total |
|-------------------|-----|-----|----|-----|-------|
| Kansas | 15 | 27 | 3 | 0 | 45 |
| Opponents | 15 | 21 | 0 | 3 | 39 |

| Fouls by Period | 1st | 2nd | OT | OT2 | Total |
|-----------------|-----|-----|----|-----|-------|
| Kansas | 35 | 41 | 2 | 5 | 83 |
| Opponents | 33 | 39 | 2 | 4 | 78 |

| Attendance Summary | KU | Opponent |
|--------------------|-------|----------|
| Total | 3928 | 4399 |
| Dates/Avg Per Date | 4/982 | 5/880 |
| Neutral Site #/Avg | 0/0 | |

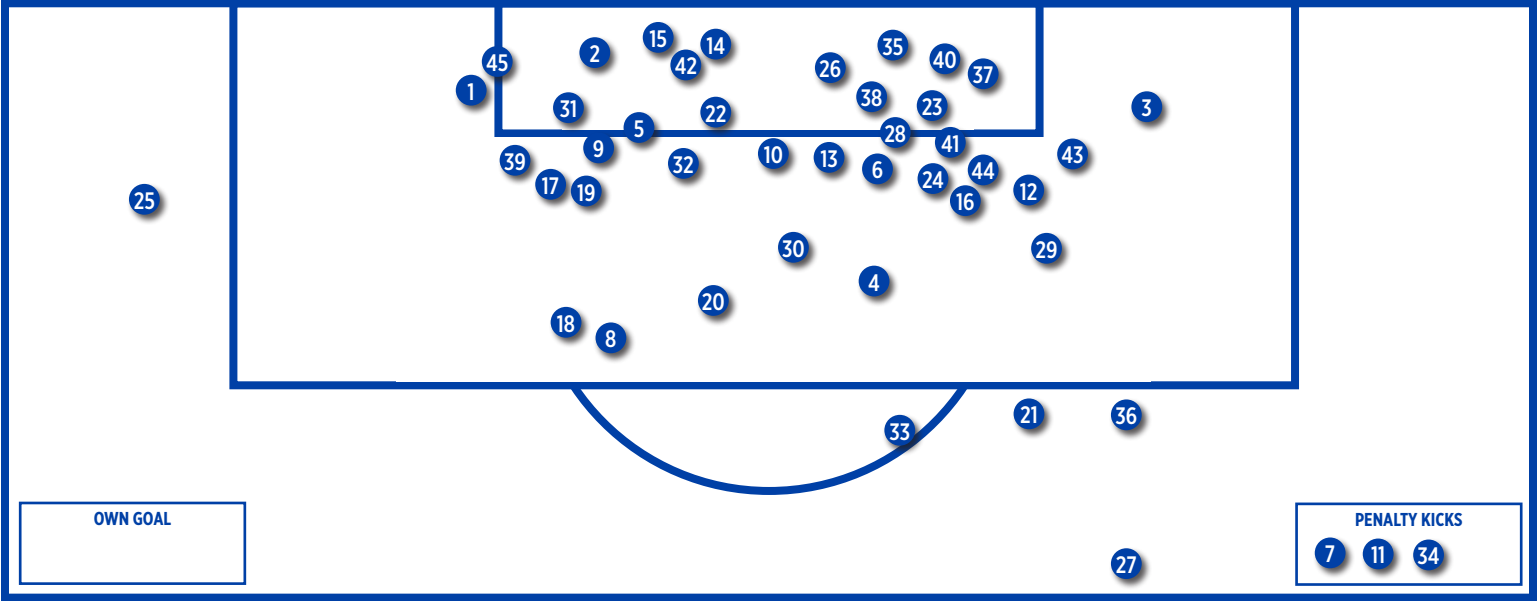
KANSAS TEAM STATS GAME-BY-GAME

| Date | Opponent | Score | G | A | Pts | Sh | Sh% | Sog | Sog% | GW | GT | UA | OT | PK-Att | YC | RC | Min |
|--------------|---------------------|-------|----|----|-----|-----|------|-----|------|----|----|----|----|--------|----|----|-------|
| Aug 22, 2019 | NEBRASKA | 4-0 | 4 | 3 | 11 | 15 | .267 | 6 | .400 | 1 | 0 | 2 | 0 | 0-0 | 0 | 0 | 991 |
| Aug 25, 2019 | LOYOLA-CHICAGO | 6-0 | 6 | 6 | 18 | 23 | .261 | 12 | .522 | 1 | 0 | 2 | 0 | 1-1 | 0 | 0 | 991 |
| Aug 29, 2019 | MEMPHIS | 2-1 | 2 | 1 | 5 | 10 | .200 | 7 | .700 | 1 | 1 | 1 | 0 | 1-1 | 1 | 0 | 991 |
| Sep 01, 2019 | FLORIDA ATLANTIC | 1-0 | 1 | 2 | 4 | 4 | .250 | 1 | .250 | 1 | 0 | 0 | 0 | 0-0 | 0 | 0 | 990 |
| Sep 06, 2019 | vs DePaul | 0-1 | 0 | 0 | 0 | 20 | .000 | 3 | .150 | 0 | 0 | 0 | 0 | 0-0 | 0 | 0 | 990 |
| Sep 08, 2019 | at Purdue | 2-1 | 2 | 3 | 7 | 13 | .154 | 5 | .385 | 1 | 1 | 0 | 0 | 0-0 | 2 | 0 | 989 |
| Sep 13, 2019 | at Northwestern | 1-0 | 1 | 1 | 3 | 8 | .125 | 4 | .500 | 1 | 0 | 0 | 0 | 0-0 | 1 | 0 | 991 |
| Sep 15, 2019 | at Western Michigan | 2-0 | 2 | 1 | 5 | 31 | .065 | 15 | .484 | 1 | 0 | 1 | 0 | 0-0 | 0 | 0 | 990 |
| Sep 19, 2019 | BYU | 0-2 | 0 | 0 | 0 | 12 | .000 | 4 | .333 | 0 | 0 | 0 | 0 | 0-0 | 0 | 0 | 1003 |
| Sep 22, 2019 | KENNESAW STATE | 3-1 | 3 | 1 | 7 | 19 | .158 | 7 | .368 | 1 | 0 | 2 | 0 | 0-0 | 0 | 0 | 989 |
| Sep 26, 2019 | TEXAS | 0-1 | 0 | 0 | 0 | 12 | .000 | 1 | .083 | 0 | 0 | 0 | 0 | 0-0 | 0 | 0 | 989 |
| Sep 29, 2019 | BAYLOR | 4-1 | 4 | 4 | 12 | 10 | .400 | 5 | .500 | 1 | 0 | 1 | 0 | 0-0 | 1 | 0 | 989 |
| Oct 03, 2019 | at Oklahoma State | 2-5 | 2 | 1 | 5 | 14 | .143 | 7 | .500 | 0 | 0 | 1 | 0 | 0-0 | 2 | 0 | 990 |
| Oct 10, 2019 | at Oklahoma | 1-0 | 1 | 0 | 2 | 10 | .100 | 4 | .400 | 1 | 0 | 1 | 1 | 0-0 | 1 | 0 | 1079 |
| Oct 13 | at Texas Tech | 0-0 | 0 | 0 | 0 | 11 | .000 | 7 | .636 | 0 | 0 | 0 | 0 | 0-0 | 0 | 0 | 1210 |
| Oct 18, 2019 | KANSAS STATE | 3-0 | 3 | 3 | 9 | 18 | .167 | 7 | .389 | 1 | 0 | 0 | 0 | 0-0 | 0 | 0 | 990 |
| Oct 24, 2019 | WEST VIRGINIA | 1-1 | 1 | 2 | 4 | 26 | .038 | 11 | .423 | 0 | 1 | 0 | 0 | 0-0 | 0 | 0 | 1211 |
| Oct 27, 2019 | at TCU | 2-2 | 2 | 1 | 5 | 15 | .133 | 7 | .467 | 0 | 0 | 1 | 0 | 1-1 | 3 | 0 | 1210 |
| Oct 31, 2019 | at Iowa State | 2-1 | 2 | 3 | 7 | 16 | .125 | 6 | .375 | 1 | 0 | 0 | 0 | 0-0 | 0 | 0 | 990 |
| Nov 03, 2019 | vs West Virginia | 2-0 | 2 | 3 | 7 | 14 | .143 | 8 | .571 | 1 | 0 | 0 | 0 | 0-0 | 0 | 0 | 989 |
| Nov 08, 2019 | vs Oklahoma State | 2-1 | 2 | 3 | 7 | 15 | .133 | 3 | .200 | 1 | 1 | 0 | 1 | 0-0 | 1 | 0 | 1192 |
| Nov 10, 2019 | vs TCU | 1-0 | 1 | 1 | 3 | 14 | .071 | 5 | .357 | 1 | 0 | 0 | 0 | 0-0 | 2 | 0 | 989 |
| Nov 16, 2019 | IOWA | 1-0 | 1 | 2 | 4 | 7 | .143 | 1 | .143 | 1 | 0 | 0 | 0 | 0-0 | 3 | 0 | 990 |
| Nov 22, 2019 | vs Xavier | 3-0 | 3 | 1 | 7 | 15 | .200 | 10 | .667 | 1 | 0 | 2 | 0 | 0-0 | 0 | 0 | 990 |
| Kansas | | 45-18 | 45 | 42 | 132 | 352 | .128 | 146 | .415 | 17 | 4 | 14 | 2 | 3-3 | 17 | 0 | 24723 |

KANSAS GAME-BY-GAME COMPARISON (KANSAS/OPPONENT)

| Date | Opponent | Score | Goals | Assists | Shots | On Goal | Corners | CKgoals | Fouls | YC | RC | Offside |
|--------|------------------|-------|-------|---------|---------|---------|---------|---------|---------|-------|-----|---------|
| Aug 22 | NEBRASKA | 4-0 | 4/0 | 3/0 | 15/13 | 6/3 | 3/5 | 0/0 | 9/4 | 0/0 | 0/0 | 4/3 |
| Aug 25 | LOYOLA-CHICAGO | 6-0 | 6/0 | 6/0 | 23/3 | 12/0 | 8/2 | 1/0 | 10/8 | 0/0 | 0/0 | 0/1 |
| Aug 29 | MEMPHIS | 2-1 | 2/1 | 1/0 | 10/11 | 7/3 | 4/4 | 0/1 | 18/14 | 1/0 | 0/0 | 1/1 |
| Sep 01 | FLORIDA ATLANTIC | 1-0 | 1/0 | 2/0 | 4/9 | 1/2 | 8/4 | 0/0 | 8/13 | 0/1 | 0/0 | 4/1 |
| Sep 06 | DePaul | 0-1 | 0/1 | 0/0 | 20/5 | 3/1 | 9/2 | 0/0 | 6/6 | 0/0 | 0/0 | 1/0 |
| Sep 08 | Purdue | 2-1 | 2/1 | 3/1 | 13/18 | 5/8 | 3/3 | 0/0 | 13/11 | 2/0 | 0/0 | 3/3 |
| Sep 13 | Northwestern | 1-0 | 1/0 | 1/0 | 8/3 | 4/3 | 6/4 | 0/0 | 7/10 | 1/0 | 0/0 | 0/1 |
| Sep 15 | Western Michigan | 2-0 | 2/0 | 1/0 | 31/5 | 15/1 | 6/2 | 0/0 | 13/7 | 0/0 | 0/0 | 2/0 |
| Sep 19 | BYU | 0-2 | 0/2 | 0/1 | 12/16 | 4/4 | 6/5 | 0/0 | 6/5 | 0/1 | 0/0 | 4/3 |
| Sep 22 | KENNESAW STATE | 3-1 | 3/1 | 1/1 | 19/5 | 7/2 | 7/2 | 0/0 | 6/4 | 0/0 | 0/0 | 4/0 |
| Sep 26 | TEXAS | 0-1 | 0/1 | 0/2 | 12/9 | 1/5 | 9/3 | 0/0 | 5/8 | 0/1 | 0/0 | 2/1 |
| Sep 29 | BAYLOR | 4-1 | 4/1 | 4/1 | 10/15 | 5/4 | 4/9 | 1/1 | 5/9 | 1/2 | 0/0 | 2/4 |
| Oct 03 | Oklahoma State | 2-5 | 2/5 | 1/3 | 14/13 | 7/10 | 4/2 | 0/1 | 15/9 | 2/1 | 0/0 | 0/2 |
| Oct 10 | Oklahoma | 1-0 | 1/0 | 0/0 | 10/16 | 4/6 | 4/4 | 0/0 | 15/10 | 1/0 | 0/0 | 3/0 |
| Oct 13 | Texas Tech | 0-0 | 0/0 | 0/0 | 11/14 | 7/4 | 5/5 | 0/0 | 8/11 | 0/0 | 0/0 | 2/1 |
| Oct 18 | KANSAS STATE | 3-0 | 3/0 | 3/0 | 18/14 | 7/7 | 3/4 | 1/0 | 7/10 | 0/1 | 0/0 | 1/1 |
| Oct 24 | WEST VIRGINIA | 1-1 | 1/1 | 2/1 | 26/5 | 11/3 | 8/3 | 0/0 | 4/7 | 0/0 | 0/0 | 4/0 |
| Oct 27 | TCU | 2-2 | 2/2 | 1/3 | 15/25 | 7/7 | 3/8 | 0/0 | 17/9 | 3/2 | 0/0 | 5/0 |
| Oct 31 | Iowa State | 2-1 | 2/1 | 3/0 | 16/13 | 6/4 | 5/1 | 0/0 | 7/5 | 0/0 | 0/0 | 2/1 |
| Nov 03 | West Virginia | 2-0 | 2/0 | 3/0 | 14/8 | 8/2 | 4/6 | 0/0 | 14/10 | 0/0 | 0/0 | 4/0 |
| Nov 08 | Oklahoma State | 2-1 | 2/1 | 3/1 | 15/24 | 3/10 | 6/6 | 0/0 | 23/13 | 1/0 | 0/0 | 0/2 |
| Nov 10 | TCU | 1-0 | 1/0 | 1/0 | 14/18 | 5/4 | 3/10 | 0/0 | 8/8 | 2/0 | 0/0 | 1/2 |
| Nov 16 | IOWA | 1-0 | 1/0 | 2/0 | 7/14 | 1/5 | 3/4 | 0/0 | 12/19 | 3/2 | 0/0 | 2/1 |
| Nov 22 | Xavier | 3-0 | 3/0 | 1/0 | 15/14 | 10/8 | 5/4 | 0/0 | 7/12 | 0/2 | 0/0 | 0/2 |
| Totals | | 45-18 | 45/18 | 42/14 | 352/290 | 146/106 | 126/102 | 3/3 | 243/222 | 17/13 | 0/0 | 51/30 |

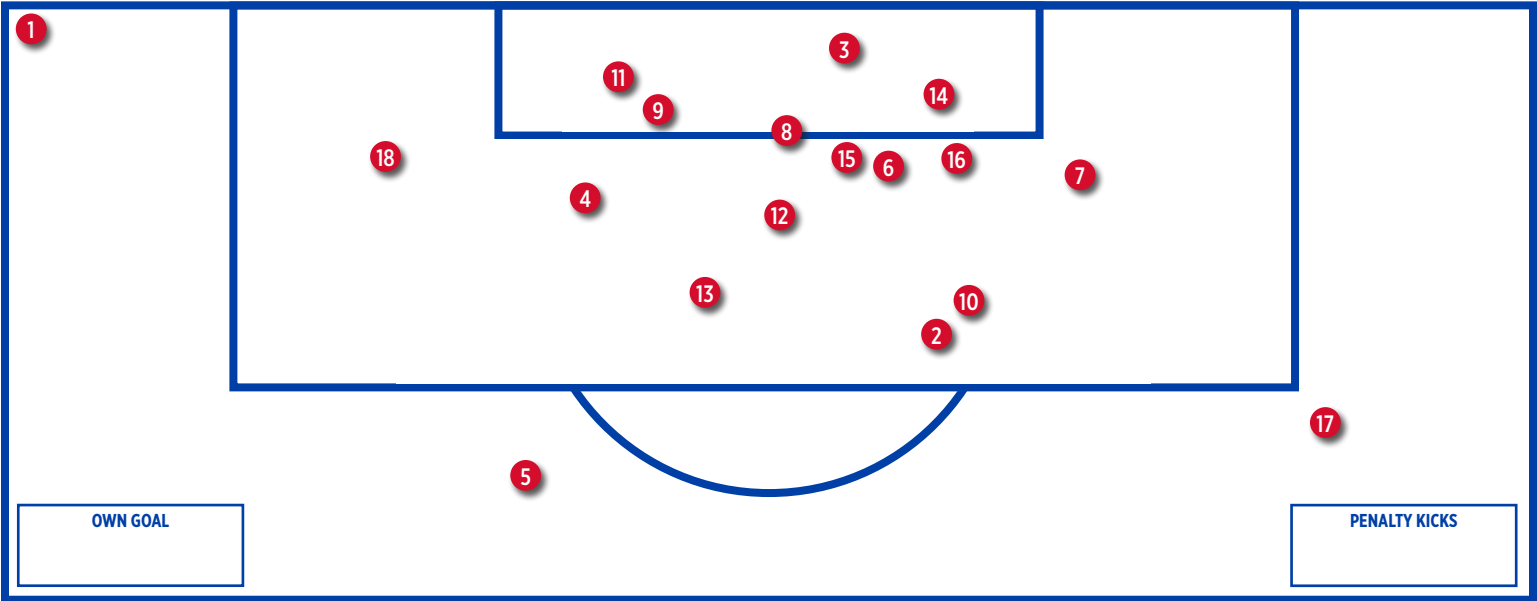
KANSAS GOAL CHART



KANSAS GOAL INFORMATION

| | | |
|--|--|---|
| 1 - Katie McClure (Amos) vs. Nebraska, 2:54 | 16 - Kailey Lane (Prybylski) vs. Northwestern, 24:06 * | 31 - Katie McClure (Costow) vs. Kansas State, 80:01 * |
| 2 - Bri Amos (McClure, Holland) vs. Nebraska, 8:07 | 17 - Chais Wright (unassisted) vs. Western Michigan, 79:43 * | 32 - Ceri Holland (Castro, Amos) vs. West Virginia, 83:18 |
| 3 - Katie McClure (unassisted) vs. Nebraska, 24:18 | 18 - Samantha Barnett (Costow) vs. Western Michigan, 80:29 | 33 - Katie McClure (Bradley) vs. TCU, 20:04 |
| 4 - Katie McClure (unassisted) vs. Nebraska, 77:40 | 19 - Sophie Maierhofer (Holland) vs. Kennesaw State, 7:47 | 34 - Ceri Holland (unassisted) vs. TCU, 87:26 < |
| 5 - Katie McClure (Holland) vs. Loyola-Chicago, 3:27 | 20 - Katie McClure (unassisted) vs. Kennesaw State, 17:00 | 35 - Katie McClure (Lane, Castro) vs. Iowa State, 36:02 |
| 6 - Sophie Maierhofer (McClure, Prybylski) vs. Loyola-Chicago, 26:59 | 21 - Katie McClure (unassisted) vs. Kennesaw State, 55:38 | 36 - Ceri Holland (Wiltgen) vs. Iowa State, 61:21 |
| 7 - Ceri Holland (unassisted) vs. Loyola-Chicago, 27:22 < | 22 - Mandi Duggan (Amos) vs. Baylor, 29:09 | 37 - Katie McClure (Wright) vs. West Virginia, 16:58 |
| 8 - Kathryn Castro (Lane, Merrick) vs. Loyola-Chicago, 34:41 | 23 - Kailey Lane (McClure, Prybylski) vs. Baylor, 49:52 | 38 - Isabella Cavalcante (Holland, Lane) vs. West Virginia, 29:57 * |
| 9 - Kailey Lane (unassisted) vs. Loyola-Chicago, 41:22 | 24 - Mandi Duggan (McClure) vs. Baylor, 80:42 | 39 - Samantha Barnett (McClure) vs. Oklahoma State, 6:45 |
| 10 - Ceri Holland (Costrow) vs. Loyola-Chicago, 53:04* | 25 - Ebba Costow (unassisted) vs. Baylor, 89:59 * | 40 - Eva Eliasdottir (Holland, Cavalcante) vs. Oklahoma State, 109:00 + |
| 11 - Ceri Holland (penalty) vs. Memphis, 51:42 < | 26 - Ceri Holland (McClure) vs. Oklahoma St., 52:38 | 41 - Mandi Duggan (Holland) vs. TCU, 54:05 |
| 12 - Katie McClure (Cavalcante) vs. Memphis, 88:54 | 27 - Mandi Duggan (unassisted) vs. Oklahoma St., 61:22 | 42 - Kailey Lane (McClure, Prybylski) vs. Iowa, 69:41 |
| 13 - Katie McClure (Amos, Cavalcante) vs. Florida Atlantic, 12:21 | 28 - Mandi Duggan (unassisted) vs. Oklahoma, 98:07 | 43 - Katie McClure (unassisted) vs. Xavier, 4:25 |
| 14 - Katie McClure (Barnett) vs. Purdue, 58:14 | 29 - Ceri Holland (McClure) vs. Kansas State, 1:39 | 44 - Katie McClure (Duggan) vs. Xavier, 18:56 |
| 15 - Kailey Lane (Prybylski, McClure) vs. Purdue, 84:51 | 30 - Katie McClure (Costow) vs. Kansas State, 79:14 | 45 - Katie McClure (unassisted) vs. Xavier, 47:21 |

OPPONENT GOAL CHART



OPPONENT GOAL INFORMATION

| | | |
|--|---|---|
| 1 - Stasia Mallin (Memphis), 8:44 * | 9 - Camy Huddleston (Oklahoma St), 9:52 * | 17 - Courtney Powell (Iowa State), 76:24 |
| 2 - Jade Eriksen-Russo (DePaul), 45:26 | 10 - Charme Morgan (Oklahoma St), 28:28 | 18 - Gabriella Coleman (Oklahoma State), 1:05 |
| 3 - Hannah Melchiorre (Purdue), 20:57 * | 11 - Julia Lenhardt (Oklahoma St), 31:01 + | |
| 4 - Elise Flake (BYU), 45:33 | 12 - Charme Morgan (Oklahoma St), 52:08 | |
| 5 - Mikayla Colohan (BYU), 47:14 | 13 - Gabriella Coleman (Oklahoma St), 70:11 | |
| 6 - Camryn Simmons (Kennesaw State), 73:32 | 14 - Enzi Broussard (West Virginia), 4:43 | |
| 7 - Cyera Hintzen (Texas), 69:36 + | 15 - Tara Smith (TCU), 48:11 * | |
| 8 - Michaela Gorman (Baylor), 85:38 * | 16 - Messiah Bright (TCU), 89:47 | |

Key: + Off free kick, < Penalty Kick, * Off Corner

SINGLE MATCH INDIVIDUAL RECORDS

POINTS

| No. | Player | Points |
|-----|--|--------|
| 1. | Katie McClure (vs. Nebraska, Aug. 22, 2019) | 7 |
| | Shannon McCabe (vs. Francis Marion, Oct. 19, 2008) | 7 |
| | Caroline Smith (vs. Northwestern, Aug. 29, 2003) | 7 |
| 3. | Grace Hagan (vs. Saint Louis, Sept. 14, 2018) | 6 |
| | Monica Dolinsky (at Missouri, Oct. 15, 2006) | 6 |
| | Jessica Smith (vs. Oklahoma State, Oct. 7, 2005) | 6 |
| | Caroline Smith (vs. Florida State, Sept. 12, 2003) | 6 |
| | Monica Brothers (at Oklahoma State, Sept. 30, 2001) | 6 |
| | Natalie Hoogveld (at Colorado, Oct. 14, 2001) | 6 |
| | Brianna Valento (vs. St. Louis, Oct. 30, 2001) | 6 |

GOALS

| No. | Player | Goals |
|-----|---|-------|
| 1. | Katie McClure (vs. Xavier, Nov. 22, 2019) | 3 |
| | Katie McClure (vs. Nebraska, Aug. 22, 2019) | 3 |
| | Grace Hagan (vs. Saint Louis, Sept. 14, 2018) | 3 |
| | Shannon McCabe (vs. Francis Marion, Oct. 19, 2008) | 3 |
| | Jessica Smith (vs. Oklahoma State, Oct. 7, 2005) | 3 |
| | Caroline Smith (vs. Florida State, Sept. 12, 2003) | 3 |
| | Caroline Smith (vs. Northwestern, Aug. 29, 2003) | 3 |
| | Brianna Valento (vs. St. Louis, Oct. 30, 2001) | 3 |
| | Natalie Hoogveld (at Colorado, Oct. 14, 2001) | 3 |
| | Monica Brothers (vs. Oklahoma State, Sept. 30, 2001) | 3 |

ASSISTS

| No. | Player | Goals |
|-----|--|-------|
| 1. | Hilla Rantala (at Oklahoma State, Sept. 30, 2001) | 4 |
| 2. | Whitney Berry (vs. Texas, Sept. 30, 2011) | 3 |
| | Monica Dolinsky (vs. Texas A&M, Nov. 5, 2008) | 3 |
| | Jessica Bush (vs. UAB, Sept. 5, 2008) | 3 |
| | Hilla Rantala (vs. St. Louis, Oct. 30, 2001) | 3 |
| | Melanie Schroeder (vs. UNLV, Sept. 7, 2001) | 3 |

SHOTS

| No. | Player | Shots |
|-----|--|-------|
| 1. | Katie McClure (vs. West Virginia, Oct. 24, 2019) | 12 |
| | Caroline Smith (vs. Missouri, Oct. 28, 2005) | 12 |
| 3. | Katie McClure (vs. Kansas State, Oct. 18, 2019) | 10 |
| | Caroline Smith (vs. Colorado, Sept. 27, 2002) | 10 |
| | Denise Cooke (vs. CMSU, Oct. 13, 1995) | 10 |

SHOTS ON GOAL

| No. | Player | SOG |
|-----|--|-----|
| 1. | Caroline Smith (vs. Missouri, Oct. 28, 2005) | 7 |
| 2. | Katie McClure (vs. Xavier, Nov. 22, 2019) | 6 |
| | Katie McClure (vs. West Virginia, Oct. 24, 2019) | 6 |

| | | |
|----|---|---|
| | Caroline Smith (at Mississippi State, Sept. 8, 2002) | 6 |
| 4. | Grace Hagan (vs. Saint Louis, Sept. 14, 2018) | 5 |
| | Ingrid Vidal (at Missouri, Oct. 21, 2011) | 5 |
| | Jessica Smith (vs. Oklahoma State, Oct. 7, 2005) | 5 |
| | Caroline Smith (vs. UC Irvine, Sept. 16, 2005) | 5 |
| | Caroline Smith (vs. Baylor, Oct. 3, 2004) | 5 |
| | Nicole Cauzillo (vs. Texas Tech, Oct. 1, 2004) | 5 |
| | Caroline Smith (vs. Colorado, Sept. 27, 2002) | 5 |
| | Monica Brothers (vs. North Texas, Aug. 31, 2001) | 5 |

SAVES

| No. | Player | Saves |
|-----|--|-------|
| 1. | Betsy Pollard (at Texas Tech, Oct. 3, 1999) | 16 |
| 2. | Kat Liebetrau (at Georgia, Aug. 29, 2010) | 15 |
| | Laura Rohde (at Mississippi, Oct. 29, 1999) | 15 |
| | Jen Fecke (vs. UTEP, Oct. 6, 1996) | 15 |
| 5. | Betsy Pollard (at Georgia, Sept. 17, 1999) | 14 |
| | Betsy Pollard (at Utah, Sept. 3, 1999) | 14 |
| | Jen Fecke (at Baylor, Sept. 14, 1997) | 14 |

Single Match Team Records

Points 19
(vs. Francis Marion, Oct. 19, 2008)

Goals 7
(vs. Francis Marion, Oct. 19, 2008)

Assists 6 (five times)
(last vs. Loyola Chicago, Aug. 25, 2019)

Shots 36
(vs. Michigan, Aug. 26, 2005)

Shots on Goal 20
(vs. Wyoming, Aug. 29, 1999)

Saves 16
(at Texas Tech, Oct. 3, 1999)

Shots Allowed 45
(at Nebraska, Sept. 22, 1995)

Shots on Goal Allowed 19
(at Nebraska, Oct. 15, 1999)

Fewest Shots 0
(at Virginia, Sept. 19, 1997)

Fewest Shots on Goal 0 (3 times)
(vs. Baylor, Oct. 15, 2017), (vs. West Virginia, Nov. 6, 2013),
(at Virginia, Sept. 19, 1997)

Corner Kicks 21
(vs. Baylor, Sept. 23, 2005)

Fouls 25
(at Oklahoma State, Oct. 9, 1998)

Goals (In Defeat) 4
(vs. Nebraska, Oct. 23, 2009 [L, 4-7])

Goals (Both Teams) 11
(vs. Nebraska, Oct. 23, 2009 [L, 4-7])

Goals Allowed 8 (twice)
(at Nebraska, Oct. 15, 1999), (at Nebraska, Sept. 22, 1995)

INDIVIDUAL STREAKS

Consecutive Matches w/ a Point 9
(Hilla Rantala, Aug. 31-Oct. 5, 2001)

Consecutive Matches w/ a Goal 5 (twice)
(Liana Salazar, Aug. 22 - Sept. 5 2014)
(Hilla Rantala, Sept. 1-Sept. 23, 2001)

Consecutive Matches w/ an Assist 4
(Whitney Berry, Sept. 27-Oct. 9, 2009)

Consecutive Matches w/ a GWG 4
(Katie McClure, Aug. 22-Sept. 1, 2019)

Consecutive Shutouts 5
(Meghan Miller, Aug. 28-Sept. 9, 2004)

OPPONENT HIGHS

Points 7
(Anna Caniglia, Nebraska, Oct. 23, 2009)

Goals 3 (nine times)
Last: (Anna Caniglia, Nebraska, Oct. 23, 2009)

Assists 3
(Julia Ashley, North Carolina, Nov. 16, 2018)
(Kristen Koop, Texas A&M, Sept. 13, 1996)
(Sandy Smith, Nebraska, Sept. 22, 1995)

Shots 13
(Courtney Saunders, Baylor, Oct. 2, 1998)

Shots on Goal 6 (two times)
(Maddie Pokorny, Saint Louis, Nov. 9, 2018)
(Becky Nelson, Oklahoma, Oct. 24, 2003)

Goals Allowed (In Victory) 3 (three times)
(vs. Duke, Sept. 10, 2006 [W, 4-3])
(at Oklahoma State, Sept. 30, 2001 [W, 5-3])
(vs. Colorado, Sept. 28, 1997 [W, 4-3])

First Half Goals 5
(vs. Loyola-Chicago, Aug. 25, 2019)

Second Half Goals 5
(vs. Francis Marion, Oct. 19, 2008)

Margin of Victory 7
(vs. Francis Marion, Oct. 19, 2008 [W, 7-0])

Margin of Defeat 7 (twice)
(at Nebraska, 10/15/1999 [1-8, L]), (at Nebraska, 9/22/1995 [1-8, L])

Quickest Goal 0:18
(Caroline Kastor, at Colorado, Oct. 25, 2010)

Quickest Goal Allowed 0:11
(Whitney Palmer, Oklahoma, Oct. 10, 2010)

Quickest Goal (Second Half) 45:11
(Shayna Teutsch, at UTEP, Oct. 6, 1996)

Quickest Goal Allowed (Second Half) 45:33
(Elise Flake, BYU, Sept. 19, 2019)

Quickest Goal (Overtime) 91:55
(Kim Boyer, vs. Missouri State, Sept. 18, 2007)

Quickest Goal Allowed (Overtime) 92:03
(Kasey Langdon, Oklahoma St., Oct. 10, 2008)

Shortest Span Between Goals 0:15
(Lindsey Horner, Carmel Kaplinger vs. Iowa State, Sept. 29, 2000)

Shortest Span Between Goals Allowed 0:14
(Katie Baruth and Carol Ditch, Texas, Sept. 15, 1996)

Shortest Span Between Goals (Both Teams) 0:08
(KayAnne Gummertsall, Duke and Holly Gault, Kansas, Sept. 10, 2006)

Attendance (Home) 2,514
(vs. Kansas State, Oct. 6, 2017)

Attendance (Away) 5,205
(at Saint Louis, Sept. 8, 2017)

SINGLE SEASON RECORDS

POINTS

| No. | Player | Points |
|----------|---------------------------------------|------------------------------------|
| 1. . . . | Katie McClure (2019) | 43 (17 goals, 9 assists) |
| 2. . . . | .Caroline Smith (2003) | 41 (19 goals, 3 assists) |
| 3. . . . | .Caroline Smith (2004) | 32 (11 goals, 10 assists) |
| | .Hilla Rantala (2001) | 32 (10 goals, 12 assists) |
| 5. . . . | .Liana Salazar (2014) | 30 (13 goals, 4 assists) |
| 6. . . . | .Whitney Berry (2011) | 29 (8 goals, 13 assists) |
| 7. . . . | .Ingrid Vidal (2011) | 28 (11 goals, 6 assists) |
| | .Monica Dolinsky (2008) | 28 (9 goals, 10 assists) |
| 9. . . . | .Emily Cressy (2009) | 27 (12 goals, 3 assists) |
| | .Caroline Smith (2002) | 27 (12 goals, 3 assists) |

GOALS

| No. | Player | Goals |
|-----------|---------------------------------------|-----------|
| 1. . . . | .Caroline Smith (2003) | 19 |
| 2. . . . | Katie McClure (2019) | 17 |
| 3. . . . | .Liana Salazar (2014) | 13 |
| 4. . . . | .Emily Cressy (2009) | 12 |
| | .Caroline Smith (2002) | 12 |
| 6. . . . | .Katie McClure (2018) | 11 |
| | .Caroline Kastor (2012) | 11 |
| | .Ingrid Vidal (2011) | 11 |
| | .Caroline Smith (2004) | 11 |
| 10. . . . | .Hilla Rantala (2001) | 10 |

GAME-WINNING GOALS

| No. | Player | GWG |
|----------|---------------------------------------|----------|
| 1. . . . | Katie McClure (2019) | 7 |
| | .Katie McClure (2018) | 7 |
| | .Caroline Smith (2003) | 7 |
| 4. . . . | .Caroline Kastor (2012) | 5 |
| | .Emily Cressy (2009) | 5 |
| | .Rachel Gilfillan (2004) | 5 |
| 7. . . . | .Eight Times | 4 |

ASSISTS

| No. | Player | Assists |
|-----------|---------------------------------------|----------|
| 1. . . . | .Whitney Berry (2011) | 13 |
| 2. . . . | .Hilla Rantala (2001) | 12 |
| 3. . . . | .Monica Dolinsky (2009) | 10 |
| | .Monica Dolinsky (2008) | 10 |
| | .Caroline Smith (2004) | 10 |
| 6. . . . | Katie McClure (2019) | 9 |
| | .Whitney Berry (2009) | 9 |
| 8. . . . | .Caroline Smith (2005) | 8 |
| | .Melanie Schroeder (2000) | 8 |
| | .Meghann Haven (1999) | 8 |
| 11. . . . | .Ali Kimura (2014) | 7 |
| | .Whitney Berry (2012) | 7 |
| | .Caroline Kastor (2011) | 7 |
| | .Jessica Bush (2008) | 7 |
| | .Holly Gault (2006) | 7 |
| | .Lauren Williams (2004) | 7 |

SHOTS

| No. | Player | Shots |
|-----------|---------------------------------------|------------|
| 1. . . . | Katie McClure (2019) | 100 |
| 2. . . . | .Caroline Smith (2005) | 98 |
| 3. . . . | .Caroline Smith (2004) | 92 |
| 4. . . . | .Whitney Berry (2011) | 85 |
| | .Caroline Smith (2003) | 85 |
| 6. . . . | .Monica Dolinsky (2008) | 79 |
| 7. . . . | .Emily Cressy (2009) | 73 |
| | .Monica Dolinsky (2009) | 71 |
| 9. . . . | .Denise Cooke (1995) | 68 |
| 10. . . . | .Whitney Berry (2012) | 66 |

SHOTS ON GOAL

| No. | Player | SOG |
|-----------|---------------------------------------|-----------|
| 1. . . . | .Caroline Smith (2003) | 46 |
| 2. . . . | .Caroline Smith (2004) | 45 |
| 3. . . . | Katie McClure (2019) | 43 |
| 4. . . . | .Caroline Smith (2005) | 43 |
| 5. . . . | .Emily Cressy (2009) | 42 |
| 6. . . . | .Whitney Berry (2011) | 41 |
| | .Monica Dolinsky (2008) | 37 |
| 8. . . . | .Caroline Kastor (2012) | 32 |
| | .Caroline Smith (2002) | 32 |
| 10. . . . | .Whitney Berry (2012) | 30 |
| | .Hilla Rantala (2001) | 30 |

* - Individual shots on goal kept since 1999

MINUTES PLAYED (FIELD)

| No. | Player | Minutes |
|-----------|---|--------------|
| 1. . . . | Addisyn Merrick (2019) | 2,188 |
| 2. . . . | .Estelle Johnson (2008) | 2,110 |
| 3. . . . | Isabella Cavalcante (2019) | 2,045 |
| 4. . . . | .Shelby Williamson (2009) | 2,012 |
| 5. . . . | .Estelle Johnson (2009) | 1,987 |
| 6. . . . | .Kayla Morrison (2016) | 1,985 |
| 7. . . . | .Afton Sauer (2004) | 1,981 |
| 8. . . . | .Kayla Morrison (2015) | 1,977 |
| 9. . . . | .Morgan Williams (2015) | 1,963 |
| 10. . . . | .Geneva Magness (2009) | 1,958 |

* - Individual minutes kept since 2004

MINUTES PLAYED (KEEPERS)

| No. | Player | Minutes |
|----------|--------------------------------------|--------------|
| 1. . . . | .Meghan Miller (2003) | 2,281 |
| 2. . . . | Sarah Peters (2019) | 2,201 |
| 3. . . . | .Maddie Dobyns (2015) | 2,074 |
| 4. . . . | .Meghan Miller (2004) | 2,060 |
| 5. . . . | .Sarah Peters (2018) | 1,989 |

SAVES

| No. | Player | Saves |
|----------|---------------------------------|-------|
| 1. . . . | .Jen Fecke (1996) | 150 |
| 2. . . . | .Jen Fecke (1997) | 147 |
| 3. . . . | .Betsy Pollard (1999) | 125 |
| 4. . . . | .Kat Liebetrau (2010) | 113 |
| 5. . . . | .Meghan Miller (2003) | 111 |

GOALS AGAINST AVG. (MINIMUM 1,000 MIN.)

| No. | Player | GAA |
|----------|---|-------------|
| 1. . . . | .Meghan Miller (2004) (13 GA, 2,061 min.) | 0.57 |
| 2. . . . | Sarah Peters (2019) (17 GA, 2,201 min.) | 0.70 |
| 3. . . . | .Kaitlyn Stroud (2014) (14 GA, 1,722 min.) | 0.73 |
| 4. . . . | .Meghan Miller (2003) (19 GA, 2,281 min.) | 0.75 |
| 5. . . . | .Maddie Dobyns (2016) (14 GA, 1,554 min.) | 0.81 |
| 6. . . . | .Julie Hanley (2006) (19 GA, 1,738 min.) | 0.98 |

SAVE PERCENTAGE (MINIMUM 1,000 MIN.)

| No. | Player | Save Pct. |
|----------|---|-------------|
| 1. . . . | .Meghan Miller (2004) (13 GA, 96 saves) | .881 |
| 2. . . . | .Meghan Miller (2003) (19 GA, 111 saves) | .854 |
| 3. . . . | .Kaitlyn Stroud (2014) (14 GA, 77 saves) | .846 |
| 4. . . . | Sarah Peters (2019) (17 GA, 82 saves) | .828 |
| 5. . . . | .Betsy Pollard (1999) (29 GA, 125 saves) | .812 |
| 6. . . . | .Kaitlyn Stroud (2013) (25 GA, 107 saves) | .811 |

SHUTOUTS

| No. | Player | Shutouts |
|----------|--------------------------------------|-----------|
| 1. . . . | Sarah Peters (2019) | 11 |
| | .Meghan Miller (2004) | 11 |
| 3. . . . | .Meghan Miller (2003) | 10 |
| 4. . . . | .Sarah Peters (2018) | 9 |
| 5. . . . | .Kaitlyn Stroud (2014) | 8 |
| 6. . . . | .Julie Hanley (2006) | 7 |

WINS

| No. | Player | Wins |
|----------|--------------------------------------|-----------|
| 1. . . . | .Meghan Miller (2004) | 18 |
| | .Meghan Miller (2003) | 18 |
| 3. . . . | Sarah Peters (2019) | 17 |
| 4. . . . | .Kaitlyn Stroud (2014) | 14 |
| 5. . . . | .Julie Hanley (2008) | 13 |
| | .Meghan Miller (2001) | 13 |
| 7. . . . | .Sarah Peters (2018) | 12 |
| 8. . . . | .Julie Hanley (2006) | 11 |

CAREER RECORDS

POINTS

| No. | Player | Pts. |
|----------|---|--------------------------------------|
| 1. . . . | Caroline Smith (2002-05) | 126 (51 goals, 24 assists) |
| 2. . . . | Katie McClure (2016-Present) | 94 (39 goals, 16 assists) |
| 3. . . . | Whitney Berry (2009-12) | 78 (23 goals, 32 assists) |
| 4. . . . | Monica Dolinsky (2006-09) | 76 (23 goals, 30 assists) |
| 5. . . . | Liana Salazar (2011-15) | 68 (28 goals, 12 assists) |
| | Rachel Gilfillan (2001-04) | 68 (26 goals, 16 assists) |
| 7. . . . | Grace Hagan (2015-18) | 67 (25 goals, 17 assists) |
| 8. . . . | Caroline Kastor (2010-13) | 66 (26 goals, 14 assists) |
| 9. . . . | Ashley Williams (2012-15) | 52 (21 goals, 10 assists) |
| | Emily Cressy (2008-10) | 52 (23 goals, 6 assists) |

GOALS

| No. | Player | Goals |
|-----------|---|-----------|
| 1. . . . | Caroline Smith (2002-05) | 51 |
| 2. . . . | Katie McClure (2016-Present) | 39 |
| 3. . . . | Liana Salazar (2011-15) | 28 |
| 4. . . . | Caroline Kastor (2010-13) | 26 |
| | Rachel Gilfillan (2001-04) | 26 |
| 6. . . . | Grace Hagan (2015-18) | 25 |
| 7. . . . | Whitney Berry (2009-12) | 23 |
| | Emily Cressy (2008-10) | 23 |
| | Monica Dolinsky (2006-09) | 23 |
| 10. . . . | Ashley Williams (2012-15) | 21 |

GAME-WINNING GOALS

| No. | Player | GWG |
|----------|---|-----------|
| 1. . . . | Katie McClure (2016-Present) | 18 |
| 2. . . . | Caroline Smith (2002-05) | 14 |
| 3. . . . | Emily Cressy (2008-10) | 11 |
| 4. . . . | Ashley Williams (2012-15) | 10 |
| | Rachel Gilfillan (2001-04) | 10 |
| 6. . . . | Monica Brothers (2001-04) | 8 |
| 7. . . . | Liana Salazar (2011-15) | 7 |
| | Caroline Kastor (2010-13) | 7 |
| | Monica Dolinsky (2006-09) | 7 |
| | Jessica Bush (2005-08) | 7 |

ASSISTS

| No. | Player | Assists |
|-----------|---|-----------|
| 1. . . . | Whitney Berry (2009-12) | 32 |
| 2. . . . | Monica Dolinsky (2006-09) | 30 |
| 3. . . . | Caroline Smith (2002-05) | 24 |
| 4. . . . | Jessica Bush (2005-08) | 21 |
| 5. . . . | Holly Gault (2003-06) | 19 |
| | Hilla Rantala (1999-2001) | 19 |
| 7. . . . | Grace Hagan (2015-18) | 17 |
| | Amy Geha (2001-04) | 17 |
| | Melanie Schroeder (1998-2001) | 17 |
| 10. . . . | Katie McClure (2016-Present) | 16 |
| | Rachel Gilfillan (2001-04) | 16 |

SHOTS

| No. | Player | Shots |
|-----------|---|------------|
| 1. . . . | Caroline Smith (2002-05) | 333 |
| 2. . . . | Whitney Berry (2009-12) | 267 |
| 3. . . . | Katie McClure (2016-Present) | 264 |
| 4. . . . | Monica Dolinsky (2006-09) | 226 |
| 5. . . . | Jamie Fletcher (2011-14) | 206 |
| 6. . . . | Liana Salazar (2011-15) | 194 |
| 7. . . . | Grace Hagan (2015-Present) | 179 |
| 8. . . . | Rachel Gilfillan (2001-04) | 175 |
| 9. . . . | Caroline Kastor (2010-13) | 159 |
| 10. . . . | Ashley Williams (2012-15) | 154 |

SHOTS ON GOAL

| No. | Player | SOG |
|-----------|---|------------|
| 1. . . . | Caroline Smith (2002-05) | 166 |
| 2. . . . | Katie McClure (2016-Present) | 122 |
| 3. . . . | Whitney Berry (2009-12) | 113 |
| 4. . . . | Monica Dolinsky (2006-09) | 96 |
| 5. . . . | Rachel Gilfillan (2001-04) | 92 |
| 6. . . . | Liana Salazar (2011-15) | 86 |
| 7. . . . | Grace Hagan (2015-18) | 82 |
| 8. . . . | Jamie Fletcher (2011-14) | 79 |
| 9. . . . | Emily Cressy (2008-10) | 78 |
| 10. . . . | Caroline Kastor (2010-13) | 77 |

GAMES PLAYED (FIELD)

| No. | Player | Games |
|----------|--|-----------|
| 1. . . . | Amy Geha (2001-04) | 88 |
| 2. . . . | Rachel Gilfillan (2001-04) | 87 |
| | Lauren Williams (2001-04) | 87 |
| 4. . . . | Katie McClure (2016-19) | 86 |
| | Addisyn Merrick (2016-19) | 86 |
| 6. . . . | Estelle Johnson (2006-09) | 85 |
| | Holly Gault (2003-06) | 85 |
| | Monica Brothers (2001-04) | 85 |
| 9. . . . | Lacey Novak (2003-06) | 84 |
| | Stacy Leeper (2001-04) | 84 |

GAMES STARTED (FIELD)

| No. | Player | Games |
|-----------|---|-----------|
| 1. . . . | Kayla Morrison (2014-17) | 83 |
| | Estelle Johnson (2006-09) | 83 |
| | Afton Sauer (2004-07) | 83 |
| 4. . . . | Liana Salazar (2011-15) | 82 |
| | Whitney Berry (2009-12) | 82 |
| | Shelby Williamson (2009-12) | 82 |
| | Jessica Bush (2005-08) | 82 |
| | Holly Gault (2003-06) | 82 |
| 9. . . . | Katie McClure (2016-present) | 81 |
| 10. . . . | Grace Hagan (2015-18) | 80 |
| | Taylor Estrada (2013-16) | 80 |

MINUTES PLAYED (FIELD)*

| No. | Player | Minutes |
|-----------|---|--------------|
| 1. . . . | Addisyn Merrick (2016-Present) | 7,540 |
| 2. . . . | Estelle Johnson (2006-09) | 7,470 |
| 3. . . . | Afton Sauer (2004-07) | 7,459 |
| 4. . . . | Kayla Morrison (2014-17) | 7,368 |
| 5. . . . | Shelby Williamson (2009-12) | 7,232 |
| 6. . . . | Liana Salazar (2011-15) | 6,933 |
| 7. . . . | Whitney Berry (2009-12) | 6,739 |
| 8. . . . | Taylor Estrada (2013-16) | 6,578 |
| 9. . . . | Grace Hagan (2015-18) | 6,454 |
| 10. . . . | Missy Geha (2005-08) | 6,416 |

* Minutes played became an official stat in 2004

GAMES PLAYED (KEEPERS)

| No. | Player | Games |
|----------|--|-------|
| 1. . . . | Meghan Miller (2001-04) | 88 |
| 2. . . . | Julie Hanley (2005-09) | 65 |
| 3. . . . | Kaitlyn Stroud (2010-14) | 63 |
| 4. . . . | Maddie Dobyns (2014-Present) | 60 |
| 5. . . . | Kat Liebetrau (2009-12) | 54 |

SAVES

| No. | Player | Saves |
|----------|--------------------------------------|-------|
| 1. . . . | Jen Fecke (1996-98) | 375 |
| 2. . . . | Meghan Miller (2001-04) | 362 |
| 3. . . . | Kaitlyn Stroud (2010-2014) | 281 |
| 4. . . . | Kat Liebetrau (2009-12) | 228 |
| | Julie Hanley (2005-09) | 228 |

GOALS AGAINST AVG. (MIN. 2,500 MIN.)

| No. | Player | GAA |
|----------|--|-------------------------------------|
| 1. . . . | Sarah Peters (2018-Present) | 0.86 (40 GA, 4,190 min.) |
| 2. . . . | Meghan Miller (2001-04) | 0.98 (85 GA, 7,836 min.) |
| 3. . . . | Maddie Dobyns (2014-17) | 1.06 (64 GA, 5,427 min.) |
| 4. . . . | Kaitlyn Stroud (2010-14) | 1.21 (75 GA, 5,582 min.) |
| 5. . . . | Julie Hanley (2005-09) | 1.32 (81 GA, 5,515 min.) |

SAVE PERCENTAGE (MIN. 100 SHOTS FACED)

| No. | Player | Save Pct. |
|----------|--|------------------------------------|
| 1. . . . | Betsy Pollard (1996-99) | .814 (29 GA, 127 saves) |
| 2. . . . | Meghan Miller (2001-04) | .810 (85 GA, 362 saves) |
| 3. . . . | Kaitlyn Stroud (2010-14) | .789 (75 GA, 281 saves) |
| 4. . . . | Colleen Quinn (2004-07) | .781 (44 GA, 157 saves) |
| 5. . . . | Sarah Peters (2018-Present) | .777 (40 GA, 139 saves) |
| 6. . . . | Jen Fecke (1996-98) | .773 (110 GA, 375 saves) |

SHUTOUTS

| No. | Player | Shutouts |
|----------|--|-----------|
| 1. . . . | Meghan Miller (2001-04) | 28 |
| 2. . . . | Sarah Peters (2018-Present) | 20 |
| 3. . . . | Julie Hanley (2005-09) | 16 |
| 4. . . . | Maddie Dobyns (2014-17) | 14 |
| 5. . . . | Kaitlyn Stroud (2010-14) | 13 |
| 6. . . . | Kat Liebetrau (2009-12) | 12 |

WINS

| No. | Player | Wins |
|----------|--|-----------|
| 1. . . . | Meghan Miller (2001-04) | 60 |
| 2. . . . | Julie Hanley (2005-09) | 36 |
| 3. . . . | Kaitlyn Stroud (2010-14) | 32 |
| 4. . . . | Sarah Peters (2018-Present) | 29 |
| | Maddie Dobyns (2014-17) | 29 |

TV/RADIO ROSTER



0 **GABBIE DAWÉ**
Fr. / GK / 5-10
Memphis, Tenn.



00 **SARAH PETERS**
So. / GK / 5-10
Lee's Summit, Mo.



1 **MELANIA PASAR**
Fr. / GK / 5-11
Potoroz, Slovenia



2 **ELLIE PRYBYLSKI**
Fr. / D / F / 5-5
Forsyth County, Ga.



3 **MYA SHERIDAN**
Fr. / F / 5-5
Schertz, Texas



4 **KAILEY LANE**
So. / F / 5-9
Omaha, Neb.



6 **KAELA HANSEN**
So. / D / 5-7
Burnaby, British Columbia



7 **AVERY HALL**
Jr. / M / 5-5
McKinney, Texas



8 **EBBA COSTOW**
Fr. / M / 5-5
Uppsala, Sweden



9 **MADISON MEADOR**
Sr. / D / 5-7
Ballwin, Mo.



10 **GRACELEY BRILEY**
Fr. / M / 5-9
Olathe, Kan.



11 **CHAIS WRIGHT**
RS-Fr. / D / 5-4
Kansas City, Mo.



12 **KATIE McCLURE**
Sr. / F / 5-4
Wichita, Kan.



13 **KATHRYN CASTRO**
Jr. / M / 5-3
Plano, Texas



14 **SAMANTHA BARNETT**
So. / M / 5-8
Edmond, Okla.



15 **CERI HOLLAND**
Jr. / M / 5-6
West Yorkshire, England



16 **ITALIA BRADLEY**
So. / D / 5-7
Coppell, Texas



17 **LIA BEYER**
Fr. / D / 5-7
Parker, Colo.



18 **EMILIE GAVILLET**
RS-Fr. / GK / 5-9
Montreux, Switzerland



19 **EVA ELÍASDÓTTIR**
Sr. / F / 5-6
Thorlakhshofn, Iceland



20 **MARGHERITA GIUBILATO**
Fr. / F / M / 5-4
Martellago, Italy



21 **ISABELLA CAVALCANTE**
Jr. / D / 5-7
Glen Ellyn, Ill.



22 **MANDI DUGGAN**
Jr. / F / 5-2
Aurora, Colo.



23 **GRACE WILTGEN**
Fr. / D / 5-6
Denton, Texas



24 **ELISE REINA**
Sr. / D / 5-2
Fayetteville, Ark.



26 **ADDISYN MERRICK**
Sr. / D / 5-5
Lee's Summit, Mo.



27 **SOPHIE MAIERHOFER**
Sr. / M / 5-7



28 **BRI AMOS**
So. / M / 5-7
Tulsa, Okla.



MARK FRANCIS
Head Coach
21st Season