



KANSAS

#KUsoccer

f /KANSASSOCCER

t /KUWSOCCER

i /KANSASSOCCER

NOV. 10, 2019 | TCU | MATCH NOTES

KANSAS COMMUNICATIONS

JAYHAWKS

14-4-3 OVERALLUnited Soccer rank: **21**

Head Coach: Mark Francis

4-2-3 TopDrawer rank: **RV**

Record: 233-167-37 (21st year)



-vs-

TCU**11-6-3** OVERALLUnited Soccer rank: **RV**

Head Coach: Eric Bell

4-3-2 TopDrawer rank: **--**

Record: 77-60-25 (8th year)

HORNED FROGS

2019 SCHEDULE

Date	KU Rnk	OPP Rnk	Opponent	TV	Time/Result
AUGUST (3-0-0)					
22	rv/-	-/-	NEBRASKA	ESPN+	W, 4-0
25	rv/-	-/-	LOYOLA-CHICAGO	ESPN+	W, 6-0
29	18/-	20/18	MEMPHIS	ESPN+	W, 2-1
SEPTEMBER (6-3-0)					
1	18/-	-/-	FLORIDA ATLANTIC	ESPN+	W, 1-0
6	11/-	-/-	vs. DePaul*		L, 0-1
8	11/-	rv/-	at Purdue*	BTN+	W, 2-1
13	18/-	-/-	at Northwestern	BTN+	W, 1-0
15	18/-	-/-	at Western Michigan		W, 2-0
19	14/rv	7/7	BYU	ESPN+	L, 0-2
22	14/rv	-/-	KENNESAW STATE	ESPN+	W, 3-1
26	17/rv	-/-	TEXAS*	FSI	L, 0-1
29	17/rv	-/-	BAYLOR*	ESPN+	W, 4-1
OCTOBER (3-1-2)					
3	21/rv	25/-	at Oklahoma State*	ESPN+	L, 2-5
10	rv/-	-/-	at Oklahoma*	FS Oklahoma	W, 1-0 (OT)
13	rv/-	14/25	at Texas Tech*	FS Southwest	T, 0-0 (2OT)
18	23/-	-/-	KANSAS STATE*	ESPN+	W, 3-0
24	23/rv	-/-	WEST VIRGINIA*	ESPN+	T, 1-1 (2OT)
27	23/rv	-/-	at TCU*	FS Southwest	T 2-2 (2OT)
31	23/rv	-/-	at Iowa State*		W, 2-1
NOVEMBER (2-0-0)					
3	25/rv	-/-	vs. West Virginia<	ESPN+	W, 2-0
8	21/rv	10/14	vs. Oklahoma State<	ESPN+	W, 2-1 (2OT)
10	21/rv	rv/-	vs. TCU<	FSI	12:30 p.m.

All times Central and subject to change; Home games **BOLD** and played at Rock Chalk Park; Rank: United Soccer Coaches Top 25 / TopDrawer Soccer Top 25; * Boilermaker Challenge Cup (West Lafayette, Ind.); < Big 12 Conference Game; < Big 12 Championship (Kansas City, Mo.)

BY THE NUMBERS

00

During KU's eight-game unbeaten streak, Jayhawk goalkeeper No. 00 Sarah Peters has posted a 0.56 goals-against average, collected 4.6 saves per game, amassed a .881 save percentage, and notched four shutouts.

5

Since conceding five goals at Oklahoma State on Oct. 3, KU's opponents have scored just five times in the eight matches since.

40

With their two scores Friday night, the Jayhawks hit the 40-goal plateau for the first time since 2011 and the eighth time in the 25 years of the program.



GAME

22

(5) KANSAS vs (6) TCU

Big 12 Championship • Final

Kansas City, Mo. • Swope Soccer Village (1,000)

Sunday, November 10, 2019 • 12:30 p.m. CT



Play-by-Play: Brenda Vanlengen
Analyst: Jessica Stamp
Producer: Brad Mertel



JAYHAWK RADIO NETWORK
Radio: IMG Jayhawk Radio Network
Webcast: KUathletics.leanplayer.com
Play-by-Play: Jack Nadeau

QUICK KICKS

- No. 21 Kansas looks to bring home its first Big 12 Championship title when the No. 5-seed Jayhawks meet the No. 6 seed TCU Horned Frogs in the tournament final on Sunday, Nov. 10 at 12:30 p.m.
- The Jayhawks will be playing in their second Big 12 Championship title match and first since 2015.
- The Jayhawks are now 7-13-5 in their 18 appearances in the Big 12 Championship, which includes a 4-3-2 record since 2015.
- The No. 5 seed has claimed the Big 12 Championship title three times since 2009, second only to the No. 2 seed, which has won the tournament four times in that span.
- Kansas holds a slight edge in the series with TCU at 4-3-3, with six of those 10 contests have been decided in overtime, including the 2-2 draw between the two squads earlier this season in Fort Worth.
- Kansas is coming off a 2-1 double overtime win over top-seeded Oklahoma State in the tournament semifinals on Friday. Eva Eliasdottir netted the golden goal in the 109th minute as KU claimed its third win over a top-10 team since 2017.
- KU is riding an eight-match unbeaten streak, a mark that ties the program record for consecutive games without a loss, shared by the 2008 and 2018 squads. It's last loss came at Oklahoma State, 5-2, in Stillwater on Oct. 3.
- Senior Katie McClure has scored 14 goals this season, good for second-most in the Big 12 in 2019 and the second-most by a Jayhawk in program history.
- After its double-overtime win Friday night, Kansas is now 7-1-6 in matches that have gone to extra time in the last two seasons.
- Kansas is unbeaten on its nine Sunday matches this season. The Jayhawks boast a 7-0-2 mark, a +17 goal differential (22-5), a 0.53 goals-against average and five shutouts on Sundays this year.
- Since 2014, the Jayhawks are 53-2-2 in matches in which they score two or more goals. This includes a 19-1-1 mark since the start of the 2018 season, with the lone blemish coming in the 5-2 loss to OSU last month.

SERIES AT A GLANCE

OVERALL

in Big 12 Champ.

Last Meeting

KU LEADS, 4-3-3

TCU leads, 1-0-1

T, 2-2 @ TCU (10.27.19)

**14-4-3**

<< W-L-D

11-6-3**19**

<< RPI RANK

63**1.90**

GOALS PER GAME >>

1.95**15.0**

SHOTS PER GAME >>

16.7**.127**

<< SHOT PERCENTAGE

.117**.411**

<< SHOT ON GOAL PERCENTAGE

.389**0.86**

<< GOALS ALLOWED PER GAME

1.20**3.4**

SAVES PER GAME >>

4.4**.798**

<< SAVE PERCENTAGE

.778**3-3**

<< PENALTIES

2-3**10.3**

<< FOULS PER GAME

9.5**12-0**

YELLOW - RED CARDS >>

16-2

LAST MATCH STARTERS



NUMERICAL ROSTER

NO.	NAME	POS.	HT.	YR.	HOMETOWN (PREVIOUS SCHOOL)
0	Gabbie Dawe	.GK	5-10	Fr.	Memphis, Tenn. (Houston HS)
00	Sarah Peters	.GK	5-10	So.	Lee's Summit, Mo. (Lee's Summit North HS)
1	Melania Pasar	.GK	5-11	Fr.	Portoroz, Slovenia (Ginnasio Antonio Sema Pirano)
2	Ellie Prybylski	.D/F	5-5	Fr.	Forsyth County, Ga. (Lambert HS)
3	Mya Sheridan	.F	5-5	Fr.	Schertz, Texas (Samuel Clemens HS)
4	Kailey Lane	.F	5-9	So.	Omaha, Neb. (Millard North HS)
6	Kaela Hansen	.D	5-7	So.	Burnaby, B.C. (Burnaby Central Secondary)
7	Avery Hall	.M	5-5	Jr.	McKinney, Texas (McKinney Boyd HS)
8	Ebba Costow	.M	5-5	Fr.	Uppsala, Sweden (Celsiusskolan)
9	Madison Meador	.D	5-7	Sr.	Ballwin, Mo. (Marquette HS/Ole Miss)
10	Gracely Briley	.M	5-9	Fr.	Olathe, Kan. (Blue Valley Southwest HS)
11	Chais Wright	.D	5-4	RS-Fr.	Kansas City, Mo. (Park Hill HS)
12	Katie McClure	.F	5-4	Sr.	Wichita, Kan. (Maize HS)
13	Kathryn Castro	.M	5-3	Sr.	Plano, Texas (Plano West Senior High)
14	Samantha Barnett	.M	5-8	So.	Edmond, Okla. (Edmond Memorial HS)
15	Ceri Holland	.M	5-5	Jr.	West Yorkshire, England (South Craven School)
16	Italia Bradley	.D	5-7	So.	Coppell, Texas (Coppell HS)
17	Lia Beyer	.D	5-7	Fr.	Parker, Colo. (Legend HS)
18	Emilie Gavillet	.GK	5-9	RS-Fr.	Montreux, Switzerland (Wilhelm Hausenstein Gymnasium)
19	Eva Eliasdóttir	.F	5-9	Sr.	Thorlakhofn, Iceland (Fjölbrotaskóli Suðurlands)
20	Margherita Giubilato	.F	5-4	Fr.	Martellago, Italy (Accademia Dante Alighieri)
21	Isabella Cavalcante	.D	5-7	Jr.	Glen Ellyn, Ill. (Glenbard West HS)
22	Mandi Duggan	.F	5-2	Jr.	Aurora, Colo. (Grandview HS)
23	Grace Wiltgen	.D	5-6	So.	Denton, Texas (Denton HS)
24	Elise Reina	.D	5-2	Sr.	Fayetteville, Ark. (Har-Ber HS)
26	Addisyn Merrick	.D	5-6	Sr.	Lee's Summit, Mo. (Lee's Summit North HS)
27	Sophie Maierhofer	.M	5-7	Sr.	Graz, Austria (University of Bremen)
28	Bri Amos	.F	5-7	So.	Tulsa, Okla. (Union HS)

STAFF

NAME	POSITION // YEAR AT KU	ALMA MATER // YEAR
Mark Francis	Head Coach // 21st	SMU // 1987
Kelly Miller	Assoc. Head Coach // 21st	Copper Union // 1996
Laura Jackson	Assistant Coach // 1st	Iona // 2012
Derek Shoare	Volunteer Asst. Coach // 5th	St. Mary's (London) // 1980
Shelby Larson	Dir. of Operations // 1st	Tampa // 2014
Demetrius Daniels	Equipment Manager // 12th	Austin Peay // 2006

PRONUNCIATION GUIDE

Isabella CAVALCANTE	kav-uhl-KAHN-tay
Ebba COSTOW	COST-ov
Mandi DUGGAN	DEW-guhn
Eva ELIASDÓTTIR	ell-EYE-iss-daw-ter
Emilie GAVILLET	GAH-vee-ay
MARGHERITA GIUBILATO	marg-uh-REET-uh joo-bee-LAH-toe
CERI Holland	CARE-ee
Madison MEADOR	MEH-der
Sophie MAIERHOFER	MY-er-ha-fur
Ellie PRYBYLSKI	.prib-ILL-skee
Grace WILTGEN	WILL-chen
CHAIIS Wright	CHASE

RADIO/TV ROSTER



0 **GABBIE DAWE**
Fr. // GK // 5-10
Memphis, Tenn.



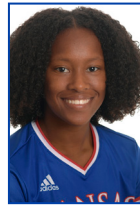
00 **SARAH PETERS**
So. // GK // 5-10
Lee's Summit, Mo.



1 **MILANIA PASAR**
Fr. // GK // 5-11
Portoroz, Slovenia



2 **ELLIE PRYBYLSKI**
Fr. // D/F // 5-5
Forsyth County, Ga.



3 **MYA SHERIDAN**
Fr. // F // 5-5
Schertz, Texas



4 **KAILEY LANE**
So. // F // 5-9
Omaha, Neb.



6 **KAELA HANSEN**
So. // D // 5-7
Burnaby, B.C.



7 **AVERY HALL**
So. // M // 5-5
McKinney, Texas



8 **EBBA COSTOW**
Fr. // M // 5-5
Uppsala, Sweden



9 **MADISON MEADOR**
Sr. // D // 5-7
Ballwin, Mo.



10 **GRACELEY BRILEY**
Fr. // M // 5-9
Olathe, Kan.



11 **CHAIIS WRIGHT**
R-Fr. // D // 5-4
Kansas City, Mo.



12 **KATIE MCCLURE**
Sr. // F // 5-4
Wichita, Kan.



13 **KATHRYN CASTRO**
Jr. // M // 5-3
Plano, Texas



14 **SAMANTHA BARNETT**
So. // M // 5-8
Edmond, Okla.



15 **CERI HOLLAND**
Jr. // M // 5-5
West Yorkshire, England



16 **ITALIA BRADLEY**
So. // D // 5-7
Coppell, Texas



17 **LIA BEYER**
Fr. // D // 5-7
Parker, Colo.



18 **EBILIE GAVILLET**
R-Fr. // GK // 5-9
Montreux, Switzerland



19 **EVA ELIASDÓTTIR**
Sr. // D // 5-9
Thorlakhofn, Iceland



20 **MARGHERITA GIUBILATO**
Fr. // F // 5-4
Martellago, Italy



21 **ISABELLA CAVALCANTE**
Jr. // D // 5-7
Glen Ellyn, Ill.



22 **MANDI DUGGAN**
Jr. // F // 5-2
Aurora, Colo.



23 **GRACE WILTGEN**
So. // D // 5-6
Denton, Texas



24 **ELISE REINA**
Sr. // D // 5-2
Fayetteville, Ark.



26 **ADDISYN MERRICK**
Sr. // D // 5-6
Lee's Summit, Mo.



27 **SOPHIE MAIERHOFER**
Sr. // M // 5-7
Graz, Austria



28 **BRI AMOS**
So. // F // 5-7
Tulsa, Okla.



HC **MARK FRANCIS**
Head Coach
21st season

SERIES VS. TCU

The contest Sunday will mark the 11th between Kansas and TCU, with the Jayhawks holding a slight edge over the Horned Frogs at 4-3-3. Nine of the 10 meetings have been decided by one goal and six of those 10 contests have been decided in overtime. The includes meeting earlier this season in Fort Worth, a 2-2 draw.

SCOUTING THE HORNE FROGS

TCU enters Sunday's match coming off a 2-1 win over No. 13 Texas Tech in the Big 12 semifinals Friday night. The win over the Red Raiders was the Horned Frogs second in six outings.

Offensively, TCU is led by Messiah Bright, who has scored 12 goals to go along with six assists. Yazmeen Ryan is tops on her squad with nine assists. She is also one of four Horned Frogs to have tallied 45 or more shots so far this year.

On defense, TCU has conceded 24 goals and picked up eight shutouts through its first 20 outings of 2019. Emily Alvarado has started in goal for the Horned Frogs in all 20 matches this season. She boasts a goals-against average of 1.19 and has collected 84 saves.

TCU is led by Eric Bell, who is in his eighth season at the helm in Fort Worth. Bell has a record of 77-60-25 as the TCU head coach.

CHAMPIONSHIP TIME

Kansas finds itself in the Big 12 Championship final for the second time and the first time since 2015. KU lost that lone bid to claim the tournament trophy that year to Texas Tech, 1-0.

At the Big 12 Championship, now in its 24th year, Kansas has amassed a record of 7-13-5 in its 19 appearances, and is 4-3-2 in the event since 2015. This season marks the second time Kansas is a No. 5 seed, with the previous year coming in 2005.

Kansas has history on its side as the No. 5 seed. The fifth-seeded team has claimed the Championship title twice in the last four years and three times in the last 10 years. Only the No. 2 seed has claimed the trophy more (four times) in that span.

NO SUNDAY SCARIES

With its 2-0 win over West Virginia on Nov. 3, Kansas remained unbeaten on Sundays this season. At 7-0-2, the Jayhawks are looking to finish the year without a Sunday loss for just the second time in program history. In 2016, KU went 6-0-3 on Sundays.

The torrid play on the first day of the week this season comes after the Jayhawks went a combined 5-7-3 on Sundays during the 2017 and 2018 campaigns.

Kansas has a +17 goal differential (22-5), a 0.53 goals-against average and five shutouts in Sunday matches this season.

BIG 12 SEMIFINAL LEFTOVERS

- With the victory over OSU, KU advanced to the Big 12 Championship final for the second time in program history and the first since 2015.
- The match marked KU's seventh victory over a team ranked in the top-10 of the national polls in program history and the Jayhawks' third win over a top-10 squad since 2017.
- The win was KU's first against the No. 1 seed in the Big 12 Championship. The Jayhawks are now 1-3-0 against the top seed in the league tournament.
- Eva Eliassdottir's golden goal at the 109:00 mark was the latest in Big 12 Championship history and the third-latest in program history under the current overtime rules.
- The victory also marked Kansas' eighth-consecutive unbeaten result, which tied the program record. KU's last loss came on Oct. 3 to Oklahoma State in Stillwater.
- With its extra time win, KU claimed its seventh overtime win since the beginning of the 2018 season. KU is 7-1-6 in its 14 overtime contests over the last two seasons.

TOP-25 TAKEDOWNS

Friday night's match against No. 10 Oklahoma State was KU's fifth against a team ranked in the top-25 this season. Kansas is now 2-2-1 in those five outings against ranked foes. The win over the Cowgirls marked the fourth-consecutive season the Jayhawks have tallied at least two victories over a team ranked among the top-25 in the nation.

Kansas is 9-15-3 against ranked foes since 2016, with seven of those losses coming against teams inside the top-10. Prior to this recent run, the Jayhawks managed just six victories over top-25 teams from 2010-15.

ALL-CONFERENCE CORONATION

Kansas soccer senior Addisyn Merrick was named the Big 12 Defensive Player of the Year and was one of three Jayhawks to be named to the All-Big 12 teams when the league office announced its postseason awards Tuesday.

In addition to Merrick's Player of the Year honor, she was named to the All-Big 12 First Team and was joined there by senior forward Katie McClure, who was a unanimous selection. Junior midfielder Ceri Holland was tabbed to the All-Big 12 Second Team.

The announcement means Kansas has had at least one Jayhawk on the All-Big 12 teams each year since the current format began in 2000. The three Jayhawks selected also marked the seventh time in the last eight seasons that three or more KU representatives were selected to the all-conference squads.

QUICK FACTS**GENERAL INFORMATION**

Location	Lawrence, Kan.
Enrollment	28,401
Founded	1866
Nickname	Jayhawks
School Colors	Crimson and Blue (PMS: Blue 293; Crimson 186)
Conference	Big 12
Chancellor	Douglas A. Giron
Athletics Director	Jeff Long
Associate Athletics Director/Soccer Administrator	Jane Fulton
Athletics Website	www.kuathletics.com
Ticket Office Phone	1.800.34.HAWKS (42957)

SOCCER FACILITY

Home Facility (Capacity)	Rock Chalk Park (2,500)
KU Record at Rock Chalk Park	33-17-3 (.651)
Opened	2014
Surface	Natural Grass (Bermuda and Rye)

COACHING STAFF/SUPPORT STAFF

Head Coach	Mark Francis (SMU, 1987)
Record at Kansas	233-167-37 (21st season)
Overall	266-192-38 (24th season)
Associate Head Coach	Kelly Miller (The Cooper Union, 1996)
Year at Kansas	21st
Assistant Coach	Laura Jackson (Iona, 2012)
Year at Kansas	First
Volunteer Assistant	Derek Shoare
Year at Kansas	Fifth

2018 IN REVIEW

Overall Record	12-6-3 (.643)
Big 12 Record	5-4-0 (.556)
Big 12 Finish	6th
Home	9-2-0 (.810)
Away	2-4-1 (.357)
Neutral	1-0-2 (.500)

PROGRAM HISTORY

First Year of Soccer at Kansas	1995 (25th season)
All-Time Record	257-215-40 (.541)
All-Time Big 12 Record	96-109-20 (.471)
Conference Titles	1 (2004)
NCAA Postseason Appearances	8
(2001, 2003, 2004, 2008, 2011, 2014, 2016, 2018)	
NCAA Postseason Record	6-8-0 (.429)

2019 TEAM INFORMATION

Letterwinners Returning/Lost	18/9
Starters Returning/Lost	9/3
Newcomers	8

BIG 12 STANDINGS**BIG 12**

	Record	%	Home	Away	Stk	Pts
Oklahoma State	7-1-1	0.833	4-0	3-1-1	W7	22
Texas Tech	6-1-2	0.778	2-1-2	4-0	W3	20
Texas	6-3	0.667	2-3	4-0	W1	18
West Virginia	5-3-1	0.611	3-2	2-1-1	W2	16
KANSAS	4-2-3	0.611	2-1-1	2-1-2	W1	15
TCU	4-3-2	0.556	2-1-2	2-2	L1	14
Baylor	4-5	0.444	2-2	2-3	L1	12
Oklahoma	3-5-1	0.389	2-2	1-3-1	L3	10
Kansas State	1-8	0.111	1-3	0-5	L4	3
Iowa State	0-9	0.000	0-5	0-4	L9	0

OVERALL

	Record	%	Home	Away	Neut	Stk
Oklahoma State	15-2-3	0.825	9-0-1	5-1-2	1-1-0	L1
Texas Tech	15-3-2	0.800	6-1-2	6-1-0	3-1-0	L1
Texas	11-7-1	0.605	6-5-0	5-2-0	0-0-1	T1
West Virginia	10-7-2	0.579	8-2-1	2-3-1	0-2-0	L1
KANSAS	14-4-3	0.738	7-2-1	5-1-2	2-1-0	W3
TCU	11-6-3	0.625	5-2-2	5-4-0	1-0-1	W1
Baylor	8-8-3	0.500	4-3-1	4-4-2	0-1-0	L2
Oklahoma	8-9-3	0.475	4-3-1	4-5-2	0-1-0	L4
Kansas State	3-13-2	0.222	3-6-0	0-7-2	0-0-0	L4
Iowa State	3-15	0.167	1-6	2-9	0-0	L10

THIS WEEK IN THE BIG 12

All times central

Sunday, Nov. 10 - Big 12 Final
Kansas vs. TCU, 12:30 p.m.

UNITED SOCCER COACHES POLL
NOV. 5, 2019

Rank	Team	Previous	Record
1.	Virginia (27)	841	.15-0-3
2.	Stanford (6)	819	.17-1-0
3.	North Carolina	785	.17-1-1
4.	BYU (1)	732	.16-0-1
5.	Florida State	706	.15-4-0
6.	Arkansas	685	.14-2-2
7.	South Carolina	634	.13-1-3
8.	Memphis	575	.16-1-1
9.	Southern California	566	.14-3-1
10.	Oklahoma State	523	.15-1-3
11.	Wisconsin	493	.14-3-2
12.	Duke	452	.8-3-7
13.	Texas Tech	423	.15-2-2
14.	UCLA	404	.13-4-1
15.	Rutgers	359	.15-2-2
16.	Texas A&M	332	.13-3-3
17.	Brown	321	.13-1-1
18.	Georgetown	251	.12-3-3
19.	Michigan	210	.14-4-1
20.	Santa Clara	182	.11-5-2
21.	KANSAS	153	.13-4-3
22.	Louisville	141	.12-4-2
23.	North Carolina State	115	.10-5-4
24.	Washington State	108	.12-5-1
25.	Clemson	48	.11-6-1

Others receiving votes: Virginia Tech (31), California (28), Central Florida (23), Vanderbilt (19), Washington (17), South Florida (16), Xavier (15), Penn State (13), Florida (11), Hofstra (7), TCU (5), Iowa (4), Florida Atlantic (3)

Kansas 2019 opponents are in italics

TOP DRAWER SOCCER POLL
NOV. 4, 2019

Rank	Team	Record	Conf.
1.	Virginia	.15-0-3	.6-0-3
2.	North Carolina	.17-1-1	.9-0-1
3.	Stanford	.17-1-0	.10-0-0
4.	BYU	.16-0-1	.6-0-1
5.	Arkansas	.14-2-2	.8-1-1
6.	Florida State	.15-4-0	.8-2-0
7.	South Carolina	.13-1-3	.7-0-3
8.	Memphis	.16-1-1	.8-0-1
9.	Brown	.13-1-1	.6-0-0
10.	USC	.14-3-1	.7-3-0
11.	UCLA	.13-4-1	.7-3-0
12.	Rutgers	.15-2-2	.8-2-1
13.	Georgetown	.12-3-3	.6-1-2
14.	Oklahoma State	.15-1-3	.7-1-1
15.	Texas A&M	.13-3-3	.7-2-1
16.	California	.13-3-3	.5-2-3
17.	Wisconsin	.14-3-2	.10-0-1
18.	Duke	.8-3-7	.3-1-6
19.	Clemson	.11-6-1	.5-5-0
20.	Virginia Tech	.12-4-2	.4-4-2
21.	Washington State	.12-5-1	.5-4-1
22.	Washington	.10-6-2	.6-4-0
23.	South Florida	.12-4-0	.7-2-0
24.	Texas Tech	.15-2-2	.6-1-2
25.	Vanderbilt	.13-4-1	.6-3-1

Others receiving votes: KANSAS (13-4-3), Hofstra (14-3-2), Santa Clara (11-5-2), Michigan (14-4-1), NC State (10-5-4)

Kansas 2019 opponents are in italics

RPI TOP-25

Rank	Team	Record
1.	Stanford	.17-1-0
2.	North Carolina	.17-1-1
3.	Florida St.	.15-4-0
4.	Virginia	.15-0-3
5.	Arkansas	.14-2-2
6.	Brown	.13-1-1
7.	Southern California	.14-3-1
8.	UCLA	.13-4-1
9.	South Carolina	.13-1-3
10.	Oklahoma St.	.15-1-3
11.	Rutgers	.15-2-2
12.	BYU	.16-0-1
13.	Duke	.8-3-7
14.	Virginia Tech	.12-4-2
15.	Texas Tech	.15-2-2
16.	Texas A&M	.13-3-3
17.	Wisconsin	.14-3-2
18.	Hofstra	.14-3-2
19.	KANSAS	.13-4-3
20.	Washington St.	.12-5-1
21.	NC State	.10-5-4
22.	Washington	.10-6-2
23.	Florida	.10-7-1
24.	Memphis	.16-1-1
25.	Michigan	.14-4-1

OVERTIME = OUR TIME

Seeing five overtimes in its last eight outings, the Jayhawks are once again putting up solid performances when the match goes to extra time. Following KU's win over Oklahoma State Friday night, the Jayhawks are 11-3-14 in their last 28 contests that have gone past the 90th minute. This stretch dates back to the 2015 season.

Eva Eliasdottir's game-winner in the 109th minute against the Cowgirls was the 11th golden goals in this span, which includes seven over the last two seasons.

The Jayhawks have been on the wrong end of a golden goal just three times during this four-year stretch and only once in the 14 overtime matches they have played since the start of the 2018.

LET'S GET DEFENSIVE

The Jayhawks have proven to be a stout defensive team, carrying over the trend from their last several seasons. Kansas currently boasts a goals-against average of 0.82 this season, which encompasses nine shutouts in its 21 outings. The Jayhawks are allowing less than five opponent shots on goal per match.

KU has already put together several impressive shutout streaks to start this season. The Jayhawks recently wrapped up their longest shutout streak of the season, a 323-minute stretch. KU has now tallied five opponent scoreless streaks of 300 minutes or more in the last five seasons.

KU'S LONGEST OPPONENT SCORELESS STREAKS

RNK	YEAR (DATES OF STREAK)	LENGTH
1	2001 (Oct.-Nov. 8)	550 min.
2	2004 (Aug. 28-Sept. 11)	492 min.
3	2017 (Aug. 18-Sept. 3)	450 min.
4	2004 (Oct. 8-24)	385 min.
5	2006 (Oct. 13-27)	374 min.
6	2014 (Sept. 19-Oct. 3)	360 min.
	2002 (Sept. 13-27)	360 min.
8	2012 (Aug. 24-Sept. 2)	351 min.
9	2013 (Aug. 23-Sept. 1)	348 min.
10	2019 (Oct. 3-Oct. 24)	323 min.

RPI WATCH

RECORD VS.

RPI 1-25	.1-2-1
RPI 26-50	.2-1-1
RPI 51-100	.5-1-1
RPI 101-150	.2-0-0
RPI 150+	.3-0-0

GOAL DIFFERENTIAL VS.

RPI 1-25	-.4
RPI 26-50	+2
RPI 51-100	+12
RPI 101-150	+5
RPI 150+	+6

BEST RESULTS

vs #24 Memphis	W, 2-1
vs #30 West Virginia	W, 2-0
at #15 Texas Tech	T, 0-0

WORST RESULTS

vs. #43 Texas	L, 0-1
vs. #62 DePaul	L, 0-1

UPCOMING OPPONENTS

RPI	Team	Conference
10	Oklahoma State	Big 12

KANSAS
RANK
19

KANSAS
Strength of
Schedule
23

BIG 12
RPI
4

NO GAMES OFF

Before Kansas soccer even hit the pitch for its first match of the season, the Jayhawks knew they would be in for a gauntlet of a schedule in 2019.

The 2019 Jayhawks' slate, which currently sits as the 23rd-toughest in all of NCAA DI, features nine teams that competed in the NCAA Tournament a year ago as well as three reigning conference champions. The Jayhawks, sitting at 14-4-3, have played or will play five teams that are ranked or receiving votes in the most recent United Soccer Coaches' top-25 poll. That number includes three squads inside the top-10.

The Jayhawks have played five games against top-25 teams this season - No. 20 Memphis (W, 2-1), No. 7 BYU (L, 0-2), No. 25 Oklahoma State (L, 2-5), No. 14 Texas Tech (T, 0-0) and No. 10 Oklahoma State (W, 2-1)

RPI REVIEW

With the release of the season's seventh official Ratings Percentage Index (RPI) report by the NCAA this week, several good signs stick out for the Jayhawks. Kansas checked in at No. 19 on the list that takes numerous factors into account including strength of schedule, record against top-50 teams and home versus road record.

This week's report shows that the Big 12 is among the nation's toughest conferences after the conclusion of nonconference play. The league tallied the fourth-highest ranking in the week's RPI and boasts eight of its 10 teams inside the top-80. The conference's high ranking also means the Jayhawks could get more chances to up their national standing with two more rounds of the Big 12 Championship looming this week.

SPREADING THE WEALTH

The KU offense has shown to be a tough assignment for opposing defenses this year after a host of Jayhawks have made their presence known on the stat sheet. Sixteen different Jayhawks have had their hand in at least one of the team's 40 goals thus far in 2019, either scoring or assisting. A total of eight players have managed to tally double-digit shots.

WEEK-BY-WEEK IN THE POLLS

	PS	1	2	3	4	5	6	7	8	9	10	11	12	FINAL
United Soccer Coaches	RV	18	11	18	14	17	21	RV	23	23	25	21		
Top Drawer Soccer	--	--	--	--	RV	RV	RV	--	--	RV	RV	RV		
RPI	--	--	--	--	--	8	13	18	14	17	19	19		

2019 BIG 12 POSTSEASON AWARDS

Offensive Player of the Year
Kirsten Davis, TTU, Jr.

Defensive Player of the Year
ADDISYN MERRICK, KU, Sr.

Freshman of the Year
Madison White, TTU, Fr.

Coach of the Year
Colin Carmichael, OSU

FIRST TEAM

GK - Madison White, TTU, Fr.
D - Kim Rodriguez, OSU, Jr.**
D - Addisyn Merrick, KU, Sr.
D - Cassie Hiatt, TTU, So.
M - Kaylee Dao, OSU, Sr.**
M - Julia Grosso, UT, So.
M - Yazmeen Ryan, TCU, Jr.
M - Grace Yochum, OSU, So.
F - Kirsten Davis, TTU, Jr.**
F - Katie McClure, KU, Sr.**
F - Messiah Bright, TCU, So.

SECOND TEAM

GK - Rylee Foster, WVU, Sr.
D - Charmé Morgan, OSU, Jr.
D - Emma Regan, UT, So.
D - Jordan Brewster, WVU, So.
M - Ceri Holland, KU, Jr.
M - Jaci Jones, OSU, Sr.
M - Haley Berg, UT, Jr.
F - Raegan Padgett, BU, Sr.
F - Cyera Hintzen, UT, Sr.
F - Olyvia Dowell, OSU, Fr.
U - Brookelynn Entz, KSU, Jr.

ALL-FRESHMAN TEAM

Elizabeth Kooiman, BU, F**
Maya McCutcheon, OU, D
Olyvia Dowell, OSU, F
Gracie Brian, TCU, MF**
Grace Collins, TCU, F
Sydney Nobles, UT, F
Hannah Anderson, TTU, D**
Macy Schultz, TTU, F
Madison White, TTU, GK
Nicole Payne, WVU, D
Enzi Broussard, WVU, F

** Unanimous Selection

This is a trend that has been carried over from last year's squad which was also an unselfish bunch, as 11 different Jayhawks tallied at least one goal or assist in 2018.

IRON JAYHAWK

Senior Katie McClure has continued an impressive streak into her final year in Lawrence as she has started each of the Jayhawks' last 78 matches of the Jayhawks' matches dating back to her freshman year in 2016. McClure's mark is already among the longest in program history as it sits sixth on the all-time list among field players.

CONSECUTIVE MATCHES STARTED BY A JAYHAWK FIELD PLAYER

Rnk	Name (Yrs.)	Games
1.	Kayla Morrison (2014-17)	83
	Estelle Johnson (2006-09)	83
	Afton Sauer (2004-07)	83
4.	Whitney Berry (2009-12)	82
	Shelby Williamson (2009-12)	82
6.	Katie McClure (2016-Present)	78

KATIE MCCLUTCH

Senior Katie McClure has firmly positioned herself as one of the most clutch players in program history. This season, the Wichita product has tallied six game-winning goals, including the winner against West Virginia in the Big 12 quarterfinals on Nov. 3. These late-match heroics are nothing new for McClure, who has proved time and time again throughout her career that she performs best when the match is in its final stages.

Her goal against Kennesaw State on Sept. 22 marked the 16th game-winner of her career and has her at No. 1 on the Kansas all-time list.

Of McClure's 36-career goals, 12 of them have come in the final 15 minutes of regulation or overtime, which includes four golden goals last season.

McCLURE MINUTES

Senior Katie McClure is putting an emphatic stamp on an already outstanding career at KU, having posted 14 goals (six game-winners) and seven assists through her first 21 outings this season. Last year saw her make headlines across the state, the region and the nation. She led the Jayhawks with 11 goals, seven game-winning goals, 28 shots on goal and 25 points, figures that ranked the Wichita product among the top-10 in the Big 12 in their respective categories.

Twenty-one matches into her career finale, she has made big jumps on some impressive lists, creeping closer to inserting her name among the top offensive players in Jayhawk history. Her 36-career goals currently rank her second on Kansas' all-time goal scorer chart. McClure's 17 game-winning goals are the most ever for a Jayhawk.

KANSAS CAREER GOAL SCORING LEADERS

Rnk	Name (Yrs.)	Goals
1.	Caroline Smith (2002-05)	51
2.	Katie McClure (2016-Present)	36
3.	Liana Salazar (2011-15)	28
4.	Caroline Kastor (2010-13)	26
	Rachel Gilfillan (2001-04)	26

LATE MATCH MAGIC

The Jayhawks have been a clutch bunch so far this season, a trend which they have carried over from a year ago. Kansas has netted 13 goals in the final 15 minutes of regulation or overtime, five of which have been game-winners.

The Jayhawks were also clutch in crunch time during the 2018 campaign. Thirteen of the Jayhawks' 28 goals scored came in the 60th minute or later. That number included 10 goals Kansas tallied in the final 10 minutes of regulation or in overtime.

The Jayhawks came out on top in seven of those matches that saw Kansas score in the 80th minute or later. KU netted five golden goals in 2018, four off the boot of senior forward Katie McClure and one from senior forward Eva Eliasdottir in KU's 2-1 win over TCU (10/12). McClure scored seven game-winners last season. Those seven game-winning strikes ranked her first among Big 12 players and were tied for the most by a Jayhawk in school history.

FIRST TO SCORE, WINS GALORE

Dating back to the beginning of the 2012 season, now at 165 games, Kansas has developed an interesting trend when it comes to which team tallies the first goal of the match. During that 165-game span, the Jayhawks were on the losing end only four times in contests which they put in the match's first goal. Kansas has amassed a record of 76-4-9 in those games (90.4 winning %), which includes 11 of KU's wins and one draw this season.

UP NEXT

The Jayhawks look forward to learning their postseason fate on Monday, Nov. 11 when the field of 64 is announced for the NCAA Women's Soccer Championship. The Selection Show is set for 3:30 p.m. (CT) on NCAA.com.

NCAA / BIG 12 RANKINGS

BIG 12 Top-10 (10.31.19); NCAA Top-100 (10.31.19)



TEAM

W-L-T Percentage (.725, 13-4-3)	3	45
Points Per Game (5.5)	4	63
Goals Per Game (1.90)	4	63
Assists Per Game (1.7)	4	53
Shots Per Game (15.1)	6	73
Shots on Goal Per Game (6.4)	5	-
Corners Per Game (5.5)	5	73
Offsides Per Game (1.8)	6	-
Fouls Per Game (9.7)	6	-
Goals-Against Avg. (0.82)	3	47
Saves Per Game (3.1)	10	-
Save Percentage (.785)	3	-
Shutouts (9)	3	-

INDIVIDUAL (ALL GAMES)

TOTAL POINTS

Katie McClure (35)	2	9
--------------------	---	---

TOTAL GOALS

Katie McClure (14)	2	13
--------------------	---	----

GAME-WINNING GOALS

Katie McClure (6)	1	10
-------------------	---	----

SHOTS PER GAME

Katie McClure (4.4)	2	20
---------------------	---	----

SHUTOUTS

Sarah Peters (8)	1	31
------------------	---	----

GOALS-AGAINST AVERAGE

Sarah Peters (0.79)	3	48
---------------------	---	----

GAMES STARTED STREAKS

Player	Current	Career Long
Katie McClure	78	78
Ceri Holland	61	61
Sarah Peters	41	41
Kaela Hansen	41	41
Isabella Cavalcante	25	25
Addisyn Merrick	23	44
Sophie Maierhofer	20	20
Grace Wiltgen	9	9
Mandi Duggan	8	8
Samantha Barnett	6	6
Chais Wright	3	3
Elise Reina	0	24
Eva Eliasdottir	0	20
Madison Meador	0	15
Ellie Prybylski	0	11
Kailey Lane	0	7
Kathryn Castro	0	6
Bri Amos	0	4
Ebba Costow	0	4
Italia Bradley	0	2

CARD ACCUMULATIONS

Player	Yellow	Red
Ceri Holland	3	0
Mandi Duggan	2	0
Isabella Cavalcante	2	0
Sophie Maierhofer	1	0
Katie McClure	1	0
Addisyn Merrick	1	0
Sarah Peters	1	0
Mya Sheridan	1	0

Yellow Accumulation Rule: Any player(s) or coach(es) who have received a total of five cautions in one season shall be suspended and shall not participate in the next regularly scheduled game, including postseason games.



HEAD COACH

MARK FRANCIS

21st SEASON AT KANSAS, 1999-PRESENT

Collegiate Record: 266-192-38 (.575)

At Kansas: 233-167-37 (.575) / **Big 12:** 90-88-17 (.505)

Alma Mater: SMU, 1987 / **Hometown:** London, England

KU IN THE FRANCIS ERA

15 seasons with 10 or more victories
First-Ever Big 12 Championship in **2004**
Eight NCAA Tournament Appearances
 KU's First-Ever **Sweet 16** Appearance
 Achieved First-Ever **Top-10** Ranking
Six All-Americans
Four Freshman All-Americans
77 All-Big 12 Selections
25 NSCAA All-Central Region Players
Four Academic All-Americans
195 Academic All-Big 12 Selections
15-Time NSCAA Team Academic Award

Continuity is an essential part of a successful athletic program, and in his first 20 seasons at the helm of Kansas soccer, head coach Mark Francis has brought just that.

After taking over a program just past its infancy, Francis effectively etched his signature on Kansas soccer by becoming not only the winningest coach in its history, but leading his team to eight NCAA Tournaments, 16 Big 12 Championship Tournaments and helping 74 student-athletes garner all-conference accolades, including six that went on to earn All-America status.

Since 1999, Francis has amassed a 219-163-34 record, with 14 seasons of at least 10 victories. He is ranked second among active Big 12 coaches in wins at a single school. He also leads the league among active coaches with his 86 career Big 12 victories.

Francis' résumé is extensive, as he has coached and played at nearly all levels of the game. Francis worked his way up through the head coaching ranks wearing a whistle at the high school, junior college, Division I and professional levels. As a player, Francis was a three-time All-American at SMU and spent 10 seasons playing professionally in the APSL, the NPSL and the USISL.

After moving into its new, state-of-the-art facility at Rock Chalk Park in 2014, Francis' program took another step forward, elevating itself as one of the top teams in the Big 12 and a perennial top-25 NCAA squad. Now as the tenants of one of the top soccer facilities in the U.S., Francis and his staff are attracting some of the top talent from across the globe to Lawrence and the results over the last five seasons can back up the progress being made. Francis saw his Jayhawk team take the program even further in 2018 as he coached Kansas to its eighth NCAA Tournament appearance and their fifth in the second round of the Big Dance.

Francis helped his squad to their highest Big 12 finish in over a decade in 2016 as the Jayhawks posted a second-place finish on the league table, only suffering one loss in the conference season.

It was a season to remember for Francis and the Jayhawks in 2014, as he led his squad to one of the best seasons in program history. He picked up his 200th career coaching victory in KU's 4-1 win over Wake Forest and proceed to see his team reel off eight-straight wins to start the season, the best start in program history. His team ended the year with 15 victories, the third-most ever by a Jayhawk squad and made the program's sixth NCAA tournament appearance. Junior Liana Salazar also had a breakout season in becoming Kansas' sixth All-America honoree after she was named to the Third Team.

Francis tallied his 150th KU coaching victory in 2012 and led his squad to its 10th 10-win season during his tenure in Lawrence. Senior Whitney Berry became KU's all-time assists leader (32) and the program's 11th player to be named to the All-Big 12 First Team.

The 2008 season was one for the record books as Kansas recorded 13 wins and returned to the NCAA Tournament. The Jayhawks knocked off four nationally-ranked teams en route to their tournament berth, including a pair of wins over long-time nemesis Texas A&M. KU became the first team in three years to defeat the Aggies twice in the same season.

The Jayhawks topped four other ranked teams during the season and capped their remarkable run with a 2-1 triumph over Denver in the first round of the NCAA Tournament. Several players received accolades throughout and following the season. Freshman Emily Cressy was

named a Freshman All-American by Soccer Buzz as well as Soccer America, while teammates Monica Dolinsky and Johnson joined her on the All-Central Region Team. Dolinsky was also named All-Big 12 First Team, while Cressy became KU's first Big 12 Rookie of the Year.

The 2004 season was a year filled with program firsts as numerous records were broken. The Jayhawks compiled a program-best record of 18-5 on their way to the Big 12 Championship. It was the first for the soccer team and second among KU women's sports, the first going to basketball in 1997. Francis earned Big 12 Coach of the Year as well as the Central Region Coach of the Year honors. He also won his 100th overall match with a victory against Texas Tech on Oct. 1.

In 2003, Kansas soccer reached new heights under Francis' leadership. The Jayhawks posted an 18-6-1 mark and advanced to the Sweet 16 round of the NCAA Tournament. With a 6-3-1 record in the Big 12, KU finished third. Along with the team accomplishments, several players were honored for their efforts during the 2003 campaign, including Caroline Smith being named to several All-America teams as well as Holly Gault being selected as a Freshman All-American by Soccer Buzz. With Francis' help, KU's players etched their names in the record book, as Smith became the program's all-time leader in goals, points and game-winning goals and Miller set the school mark in career shutouts and career GAA.

In 2002, Francis led Kansas to an overall record of 11-7-2, including a then-school record six-straight wins and a seven-game unbeaten streak during the first half of the season. The Jayhawks opened the season 6-1-1, marking their best start ever. Francis' team ranked in the Central Region's Top 10 for 10 consecutive weeks.

FRANCIS BY THE NUMBERS

Year	School	Record	Conf. Rec(Finish)	Conf. Tournament	NCAA
1996	South Alabama	2-17-0	--	--	--
1997	South Alabama	18-3-1	5-0-0 (1st)	Champion (2-0-0)	--
1998	South Alabama	13-5-0	5-0-0 (1st)	Semifinals (0-1-0)	--
1999	Kansas	8-10-1	3-6-1 (9th)	--	--
2000	Kansas	7-11-2	3-6-1 (18th)	Quarterfinals (0-1-0)	--
2001	Kansas	13-7-0	7-3-0 (4th)	Quarterfinals (0-1-0)	First Round (0-1-0)
2002	Kansas	11-7-2	4-5-1 (6th)	Quarterfinals (0-1-0)	--
2003	Kansas	18-6-1	6-3-1 (3rd)	Semifinals (1-1-0)	Sweet 16 (2-1-0)
2004	Kansas	18-5-0	8-2-0 (1st)	Semifinals (1-1-0)	Second Round (1-1-0)
2005	Kansas	11-7-2	6-3-1 (12nd)	Quarterfinals (0-1-0)	--
2006	Kansas	11-7-1	6-4-0 (4th)	Quarterfinals (0-0-1)	--
2007	Kansas	7-10-4	5-2-3 (13rd)	Quarterfinals (0-1-0)	--
2008	Kansas	13-8-2	4-5-1 (7th)	Semifinals (1-0-1)	Second Round (1-1-0)
2009	Kansas	12-8-2	4-6-0 (17th)	Quarterfinals (0-1-0)	--
2010	Kansas	6-13-0	1-9-0 (11th)	--	--
2011	Kansas	11-9-1	3-5-0 (16th)	Quarterfinals (0-0-1)	First Round (0-1-0)
2012	Kansas	10-8-2	3-5-0 (6th)	Quarterfinals (0-1-0)	--
2013	Kansas	7-11-2	2-5-1 (8th)	Quarterfinals (0-1-0)	--
2014	Kansas	15-6-0	5-3-0 (3rd)	Quarterfinals (0-1-0)	First Round (0-1-0)
2015	Kansas	10-9-2	3-4-1 (6th)	Final (2-1-0)	--
2016	Kansas	11-6-4	5-1-2 (2nd)	Quarterfinals (0-1-0)	Second Round (1-1-0)
2017	Kansas	8-9-3	3-5-1 (6th)	Quarterfinals (0-0-1)	--
2018	Kansas	12-6-3	5-4-0 (6th)	Quarterfinals (0-0-1)	Second Round (1-1-0)
2019	Kansas	14-4-3	4-2-3 (5th)	(2-0-0)	--
At Kansas	21 seasons	233-167-37 (.575)	90-88-17 (.505)	7-13-5 (.282)	5-8-0 (.385)
OVERALL	24 seasons	266-192-38 (.575)	99-88-17 (.526)	9-14-5 (.396)	5-8-0 (.385)

CATEGORICAL RECORDS

	Big 12	Overall		Big 12	Overall
Overall	4-2-3	14-4-3	vs. RPI 1-25 opponents	0-1-1	1-2-1
Home	2-1-1	7-2-1	vs. RPI 26-50 opponents	1-1-1	4-1-1
Road	2-1-2	5-1-2	vs. RPI 51-100 opponents	1-0-1	5-1-1
Neutral Sites	0-0-0	2-1-0	vs. RPI 101-150 opponents	0-0-0	2-0-0
			vs. RPI 151+ opponents	2-0-0	2-0-0
On Thursdays	2-2-1	4-3-1	vs. UnitedSoccer ranked opponents	0-1-1	2-2-1
On Fridays	1-0-0	3-1-0	vs. UnitedSoccer Top-10 opponents	0-0-0	1-1-0
On Sundays	1-0-2	7-0-2	vs. UnitedSoccer unranked opponents	4-1-2	12-2-2
When Scoring First	4-0-1	11-0-1	vs. nonconference opponents	0-0-0	8-2-0
When Opponent Scores First	0-2-1	3-4-1			
When Leading at Half	3-0-1	8-0-1	In one-goal games	2-1-0	7-2-0
When Trailing at Half	0-1-1	2-1-1			
When Tied at Half	1-1-1	4-2-1	In 90+ degrees	0-0-0	0-0-0
In Regulation	3-2-0	12-4-0	In 80-89 degrees	1-0-1	2-1-1
In Overtime	1-0-3	2-0-3	In 70-79 degrees	0-1-1	5-2-1
In August	0-0-0	3-0-0	In 60-69 degrees	1-1-0	4-1-0
In September	1-1-0	6-3-0	In 50-59 degrees	1-0-0	1-0-0
In October	3-1-3	3-1-3	In sub-50 degrees	1-0-1	2-0-1
In November	0-0-0	2-0-0			
When scoring zero goals	0-1-1	0-3-1	Wearing white uniforms	2-1-0	4-2-0
When scoring one goal	1-0-1	3-0-1	Wearing blue uniforms	0-0-2	7-1-2
When scoring two goals	1-1-1	6-1-1	Wearing red uniforms	0-1-1	1-1-1
When scoring three goals	1-0-0	2-0-0	Wearing alternate uniforms	2-0-0	2-0-0
When scoring four goals or more	1-0-0	3-0-0			
When allowing zero goals	2-0-1	8-0-1	In televised games	4-2-3	13-3-3
When allowing one goal	2-1-1	6-2-1			
When allowing two goals	0-0-1	0-1-1			
When allowing three goals	0-0-0	0-0-0			
When allowing four goals or more	0-1-0	0-1-0			
When outshooting opponent	2-2-2	8-3-2			
When being outshot	2-0-1	6-1-1			
When tied in shots	0-0-0	0-0-0			

MISCELLANEOUS STATS

QUICKEST GOAL:

Ceri Holland (1:39) vs. Kansas State, 10/18/19

QUICKEST GOAL AGAINST:

Gabriella Coleman (1:05) of Oklahoma St., 11/8/19

GAME-WINNING GOALS AFTER 75':

Katie McClure (88:54) vs. Memphis, 8/29/19

Kailey Lane (84:51) at Purdue, 9/8/19

Chais Wright (79:43) at W. Michigan, 9/15/19

Mandi Duggan (98:07) at Oklahoma, 10/10/19

Eva Eliasdottir (109:00) vs. Oklahoma St., 11/8/19

GAME-TYING GOALS AFTER 75':

Ceri Holland (83:18) vs. West Virginia, 10/24/19

GAME-WINNING GOALS AGAINST AFTER 75':

GAME-TYING GOALS AGAINST AFTER 75':

Messiah Bright (89:47) of TCU (10.27.19)

MULTI-GOAL GAMES:

Katie McClure (3) vs. Nebraska, 8/22/19

Ceri Holland (2) vs. Loyola-Chicago, 8/25/19

Katie McClure (2) vs. Kennesaw State, 9/22/19

Mandi Duggan (2) vs. Baylor, 9/29/19

Katie McClure (2) vs. Kansas State, 10/18/19

MULTI-GOAL GAMES AGAINST:

Charme Margan (2) of Oklahoma State, 10/3/19

HAT TRICKS:

Katie McClure vs. Nebraska, 8/22/19

HAT TRICKS AGAINST:

OWN GOALS FOR:

OWN GOALS AGAINST:

RED CARDS:

OPPONENT RED CARDS:

STARTERS - BY MATCH

	GK	F	F	M	M	M	D	D	D	D	D
Nebraska (8/22)	Peters	McClure	Amos	Costow	Maierhofer	Holland	Prybylski	Hansen	Merrick	Cavalcante	Reina
Loyola-Chicago (8/25)	Peters	McClure	Amos	Costow	Maierhofer	Holland	Prybylski	Hansen	Merrick	Cavalcante	Reina
Memphis (8/29)	Peters	McClure	Amos	Costow	Maierhofer	Holland	Prybylski	Hansen	Merrick	Cavalcante	Reina
Florida Atlantic (9/1)	Peters	McClure	Amos	Costow	Maierhofer	Holland	Reina	Hansen	Merrick	Meador	Cavalcante
DePaul (9/6)	Peters	McClure	Amos	Costow	Maierhofer	Holland	Bradley	Hansen	Merrick	Meador	Cavalcante
Purdue (9/8)	Peters	McClure	Lane	Castro	Maierhofer	Holland	Bradley	Hansen	Merrick	Meador	Cavalcante
Northwestern (9/13)	Peters	McClure	Lane	Castro	Maierhofer	Holland	Prybylski	Hansen	Merrick	Meador	Cavalcante
Western Michigan (9/15)	Peters	McClure	Lane	Castro	Maierhofer	Holland	Prybylski	Hansen	Merrick	Meador	Cavalcante
BYU (9/19)	Peters	McClure	Lane	Castro	Maierhofer	Holland	Prybylski	Hansen	Merrick	Meador	Cavalcante
Kennesaw State (9/22)	Peters	McClure	Lane	Castro	Maierhofer	Holland	Prybylski	Hansen	Merrick	Meador	Cavalcante
Texas (9/26)	Peters	McClure	Lane	Castro	Maierhofer	Holland	Prybylski	Hansen	Merrick	Meador	Cavalcante
Baylor (9/29)	Peters	McClure	Lane	Costow	Maierhofer	Holland	Prybylski	Hansen	Merrick	Cavalcante	Wiltgen
Oklahoma State (10/3)	Peters	McClure	Lane	Costow	Maierhofer	Holland	Prybylski	Hansen	Merrick	Cavalcante	Wiltgen
Oklahoma (10/10)	Peters	McClure	Duggan	Costow	Maierhofer	Holland	Prybylski	Hansen	Merrick	Cavalcante	Wiltgen
Texas Tech (10/13)	Peters	McClure	Duggan	Costow	Maierhofer	Holland	Prybylski	Hansen	Merrick	Cavalcante	Wiltgen
Kansas State (10/18)	Peters	McClure	Duggan	Barnett	Maierhofer	Holland	Prybylski	Hansen	Merrick	Cavalcante	Wiltgen
West Virginia (10/24)	Peters	McClure	Duggan	Barnett	Maierhofer	Holland	Prybylski	Hansen	Merrick	Cavalcante	Wiltgen
TCU (10/27)	Peters	McClure	Duggan	Barnett	Maierhofer	Holland	Prybylski	Hansen	Merrick	Cavalcante	Wiltgen
Iowa State (10/31)	Peters	McClure	Duggan	Barnett	Maierhofer	Holland	Wright	Hansen	Merrick	Cavalcante	Wiltgen
West Virginia (11/3)	Peters	McClure	Duggan	Barnett	Maierhofer	Holland	Wright	Hansen	Merrick	Cavalcante	Wiltgen
Oklahoma State (11/8)	Peters	McClure	Duggan	Barnett	Maierhofer	Holland	Wright	Hansen	Merrick	Cavalcante	Wiltgen

THE LAST TIME...

TEAM

Home Win.....3-0 vs. Kansas State, Oct. 18, 2019
 Home Loss.....0-1 vs. Texas, Sept. 16, 2019
 Home Tie.....1-1 vs. West Virginia, Oct. 24, 2019

Away Win.....2-1 at Iowa State, Oct. 31, 2019
 Away Loss.....2-5 at Oklahoma State, Oct. 3, 2019
 Away Tie.....2-2 (2 OT) at TCU, Oct. 27, 2019

Neutral Win.....2-1 (2OT) vs. Oklahoma State, Nov. 8, 2019
 Neutral Loss.....0-1 vs. DePaul, Sept. 6, 2019
 Neutral Tie.....0-0 (2 OT) vs. Texas, Oct. 28, 2018

OT Win.....2-1 (2OT) vs. Oklahoma State, Nov. 8, 2019
 OT Loss.....1-2 (OT) vs. Texas Tech, Oct. 14, 2018
 Played 2 OTs.....2-1 (2OT) vs. Oklahoma State, Nov. 8, 2019

Big 12 Win.....2-1 vs. Iowa State, Oct. 31, 2019
 Big 12 Loss.....2-5 vs. Oklahoma State, Oct. 3, 2019
 Big 12 Tie.....2-2 (2 OT) at TCU, Oct. 27, 2019

Win over Top-25 team.....2-1 (2OT) vs. #10 Oklahoma State, Nov. 8, 2019
 Win over Top-10 team.....2-1 (2OT) vs. #10 Oklahoma State, Nov. 8, 2019

Scored 0 Goals.....vs. Texas Tech, Oct. 13, 2019
 Scored 1 Goal.....vs. West Virginia, Oct. 24, 2019
 Scored 2 Goals.....vs. Oklahoma State, Nov. 8, 2019
 Scored 3 Goals.....vs. Kansas State, Oct. 18, 2019
 Scored 4 Goals.....vs. Baylor, Sept. 29, 2019
 Score 5+ Goals.....6 vs. Loyola-Chicago, Aug. 25, 2019

Allowed 0 Goals.....vs. West Virginia, Nov. 3, 2019
 Allowed 1 Goal.....vs. Oklahoma State, Nov. 8, 2019
 Allowed 2 Goals.....at TCU, Oct. 27, 2019
 Allowed 3 Goals.....at Baylor, Oct. 21, 2018
 Allowed 4 Goals.....at North Carolina, Nov. 16, 2018
 Allowed 5+ Goals.....5 at Oklahoma State, Oct. 6, 2019

Amassed 20+ Shots.....26 vs. West Virginia, Oct. 24, 2019
 Amassed 30+ Shots.....31 at Western Michigan, Sept. 15, 2019

Allowed 20+ Shots.....(24) Oklahoma State, Nov. 8, 2019
 Allowed 30+ Shots.....(33) Texas, Nov. 5, 2004

Amassed 10+ Shots on Goal.....11 vs. West Virginia, Oct. 24, 2019
 Amassed 15+ Shots on Goal.....15 at Western Michigan, Sept. 15, 2019

Allowed 10+ Shots on Goal.....10 vs. Oklahoma State, Nov. 8, 2019
 Allowed 15+ Shots on Goal.....20 by Georgia, Aug. 29, 2010

Amassed 10+ Corner Kicks.....10 at Iowa State, Sept. 29, 2017
 Allowed 10+ Corner Kicks.....12 vs. TCU, Nov. 1, 2017

Called for 15+ Fouls.....23 vs. Oklahoma State, Nov. 8, 2019
 Called for 25+ Fouls.....25 vs. Oklahoma State, Oct. 9, 1998

Opponent Called for 15+ Fouls.....(17) Texas Tech, Sept. 24, 2017
 Opponent Called for 25+ Fouls.....(27) Oklahoma State, Oct. 9, 2016

Scored 1 Penalty Kick.....vs. TCU, Oct. 27, 2019
 Scored 2 Penalty Kicks.....vs. Texas Tech, Sept. 23, 2016

Allowed 1 Penalty Kick.....vs. Texas, Oct. 19, 2018
 Allowed 2 Penalty Kicks.....Oral Roberts, Sept. 27, 2009

INDIVIDUAL

Hat Trick.....Katie McClure vs. Nebraska (Aug. 22, 2019)
 Brace.....(2) Katie McClure vs. Kansas State (Oct. 18, 2019)

2 Assists.....Ebba Costow vs. Kansas State (Oct. 18, 2019)
 3 Assists.....Whitney Berry vs. Texas (Sept. 30, 2011)

3 Points (Goal+Assist).....Katie McClure vs. Purdue (Sept. 8, 2019)
 5+ Points.....(5) Katie McClure vs. Kansas State (Oct. 18, 2019)

8+ Shots.....(12) Katie McClure vs. West Virginia (Oct. 24, 2019)
 10+ Shots.....(12) Katie McClure vs. West Virginia (Oct. 24, 2019)

5+ Shots on Goal.....(6) Katie McClure vs. West Virginia (Oct. 24, 2019)

Scored Penalty Kick.....Ceri Holland vs. TCU (Oct. 27, 2019)
 Missed Penalty Kick.....Ceri Holland vs. Texas (Oct. 19, 2018)

10+ Saves.....(11) Kaitlyn Stroud vs. Oklahoma (Nov. 1, 2013)
 Shutout.....Sarah Peters vs. West Virginia (Nov. 3, 2019)

Red Card.....Hannah Lukinac at TCU (Sept. 22, 2017)

INDIVIDUAL OPPONENT

Hat Trick.....Anna Canniglia, Nebraska (Oct. 23, 2009)
 Brace.....Charme Morgan, Oklahoma State (Oct. 3, 2019)

2 Assists.....Jaci Jones, Oklahoma State (Oct. 3, 2019)
 3+ Assists.....(3) Julia Ashley, North Carolina (Nov. 16, 2018)

3 Points.....Julia Ashley & Rachael Dorwart, North Carolina (Nov. 16, 2018)
 5+ Points.....(5) Amanda Hill, West Virginia (Oct. 16, 2015)

8+ Shots.....(9) Olivia Dowell, Oklahoma State (Nov. 8, 2019)
 10+ Shots.....(13) Courtney Saunders, Baylor (Oct. 2, 1998)

5+ Shots on Goal.....(6) Maddie Pokorny, Saint Louis (Nov. 9, 2017)

Scored Penalty Kick.....Kayra Dollas, Texas (Oct. 19, 2018)
 Missed Penalty Kick.....Paula Leblic, Oregon State (Aug. 27, 2017)

10+ Saves.....(13) Maggie Rogers, Western Michigan (Sept. 15, 2019)
 Shutout.....Madison White, Texas Tech (Oct. 13, 2019)

Red Card.....Kassidie Stade, Oklahoma (Nov. 1, 2013)

OVERALL STATISTICS



2019 Kansas Soccer
Kansas Overall Individual Statistics (as of Nov 08, 2019)
All games



Overall: 14-4-3 Conf: 4-2-3 Home: 7-2-1 Away: 5-1-2 Neut: 2-1-0

##	Player	gp-gs	min	g	a	pts	sh	sh%	sog	sog%	yc	rc	gwg	pk-att	fg	ot	hat	gtg	foul	cnr
12	McClure, Katie	21-21	1480	14	8	36	90	.156	36	.400	1	0	6	0-0	6	0	1	1	6	0
15	Holland, Ceri	21-21	1690	8	5	21	59	.136	23	.390	3	0	2	3-3	1	0	0	2	6	18
4	Lane, Kailey	21-8	910	4	3	11	20	.200	9	.450	0	0	3	0-0	1	0	0	0	3	0
22	Duggan, Mandi	21-8	890	4	0	8	25	.160	12	.480	1	0	1	0-0	2	1	0	0	2	1
28	Amos, Bri	21-5	657	1	4	6	9	.111	5	.556	0	0	0	0-0	0	0	0	0	5	4
8	Costow, Ebba	20-9	751	1	4	6	4	.250	2	.500	0	0	0	0-0	0	0	0	0	1	25
14	Barnett, Samantha	21-6	881	2	1	5	15	.133	7	.467	1	0	0	0-0	0	0	0	1	3	0
21	Cavalcante, Isabella	21-21	1771	1	3	5	15	.067	6	.400	2	0	0	0-0	0	0	0	0	5	0
27	Maierhofer, Sophie	21-21	1705	2	0	4	18	.111	7	.389	1	0	0	0-0	1	0	0	0	5	3
13	Castro, Kathryn	21-6	738	1	2	4	17	.059	9	.529	0	0	0	0-0	0	0	0	0	2	3
2	Prybylski, Ellie	21-15	1015	0	4	4	5	.000	1	.200	0	0	0	0-0	0	0	0	0	0	29
11	Wright, Chais	16-3	559	1	1	3	8	.125	4	.500	0	0	1	0-0	1	0	0	0	1	0
19	Eliasdottir, Eva	12-0	322	1	0	2	7	.143	3	.429	0	0	1	0-0	0	1	0	0	1	0
26	Merrick, Addisyn	21-21	1919	0	1	1	2	.000	0	.000	1	0	0	0-0	0	0	0	0	0	0
23	Wiltgen, Grace	20-10	826	0	1	1	2	.000	1	.500	0	0	0	0-0	0	0	0	0	0	0
16	Bradley, Italia	19-2	691	0	1	1	1	.000	0	.000	0	0	0	0-0	0	0	0	0	0	1
6	Hansen, Kaela	21-21	1653	0	0	0	7	.000	1	.143	0	0	0	0-0	0	0	0	0	2	0
10	Briley, Gracely	6-0	122	0	0	0	6	.000	1	.167	0	0	0	0-0	0	0	0	0	0	2
7	Hall, Avery	7-0	89	0	0	0	3	.000	2	.667	0	0	0	0-0	0	0	0	0	0	0
9	Meador, Madison	15-8	687	0	0	0	2	.000	0	.000	0	0	0	0-0	0	0	0	0	0	0
24	Reina, Elise	4-4	236	0	0	0	1	.000	1	1.000	0	0	0	0-0	0	0	0	0	0	8
20	Giubilato, Margherit	4-0	47	0	0	0	0	.000	0	.000	0	0	0	0-0	0	0	0	0	0	0
18	Gavillet, Emilie	1-0	10	0	0	0	0	.000	0	.000	0	0	0	0-0	0	0	0	0	0	0
17	Beyer, Lia	3-0	63	0	0	0	0	.000	0	.000	0	0	0	0-0	0	0	0	0	0	0
3	Sheridan, Mya	8-0	75	0	0	0	0	.000	0	.000	1	0	0	0-0	0	0	0	0	0	0
1	Pasar, Melania	2-0	37	0	0	0	0	.000	0	.000	0	0	0	0-0	0	0	0	0	0	0
00	Peters, Sarah	21-21	1930	0	0	0	0	.000	0	.000	1	0	0	0-0	0	0	0	0	1	0
Total		21	-	40	38	118	316	.127	130	.411	12	0	14	3-3	12	2	1	4	216	-
Opponents		21	-	18	14	50	244	.074	89	.365	9	0	4	0-1	8	0	0	2	183	-

#	Goalie	gp-gs	Goal Average			Saves		Record				Shots faced
			min	ga	gaavg	saves	pct	w	l	t	sho/cbo	
18	Gavillet, Emilie	1-0	9:31	0	0.00	0	.000	0	0	0	0/1	0
00	Peters, Sarah	21-21	1930:50	17	0.79	68	.800	14	4	3	8/1	237
1	Pasar, Melania	2-0	36:46	1	2.45	0	.000	0	0	0	0/1	3
TM TEAM		-	0:00	0	0.00	3	1.000	0	0	0	1/0	0
Total		21	1977:07	18	0.82	71	.798	14	4	3	9	240
Opponents		21	1977:07	40	1.82	90	.692	4	14	3	4	312

Team saves: 3

Goals by Period	1st	2nd	OT	OT2	Total
Kansas	19	19	1	1	40
Opponents	7	11	0	0	18

Shots by Period	1st	2nd	OT	OT2	Total
Kansas	124	174	11	7	316
Opponents	104	125	11	4	244

Saves by Period	1st	2nd	OT	OT2	Total
Kansas	33	31	5	2	71
Opponents	35	48	5	2	90

Corners by Period	1st	2nd	OT	OT2	Total
Kansas	39	71	5	0	115
Opponents	32	48	0	4	84

Fouls by Period	1st	2nd	OT	OT2	Total
Kansas	95	110	4	7	216
Opponents	83	90	4	6	183

Attendance Summary	KU	Opponent
Total	7060	5858
Dates/Avg Per Date	10/706	8/732
Neutral Site #/Avg	3/228	

CONFERENCE STATISTICS



2019 Kansas Soccer
Kansas Overall Individual Statistics (as of Oct 31, 2019)
Conference games



Overall: 4-2-3 Conf: 4-2-3 Home: 2-1-1 Away: 2-1-2 Neut: 0-0-0

##	Player	gp-gs	min	g	a	pts	sh	sh%	sog	sog%	yc	rc	gwg	pk-att	fg	ot	hat	gtg	foul	cnr
12	McClure, Katie	9-9	738	4	4	12	47	.085	18	.383	1	0	0	0-0	2	0	0	0	1	0
15	Holland, Ceri	9-9	800	5	0	10	29	.172	14	.483	3	0	2	1-1	1	0	0	1	3	11
22	Duggan, Mandi	9-6	516	4	0	8	14	.286	6	.429	0	0	1	0-0	2	1	0	0	1	1
8	Costow, Ebba	8-4	287	1	2	4	2	.500	2	1.000	0	0	0	0-0	0	0	0	0	0	9
4	Lane, Kailey	9-3	389	1	1	3	8	.125	3	.375	0	0	1	0-0	0	0	0	0	0	0
13	Castro, Kathryn	9-1	295	0	2	2	2	.000	1	.500	0	0	0	0-0	0	0	0	0	2	2
28	Amos, Bri	9-0	186	0	2	2	0	.000	0	.000	0	0	0	0-0	0	0	0	0	1	2
2	Prybylski, Ellie	9-8	437	0	1	1	4	.000	1	.250	0	0	0	0-0	0	0	0	0	0	16
23	Wiltgen, Grace	9-8	446	0	1	1	1	.000	0	.000	0	0	0	0-0	0	0	0	0	0	0
16	Bradley, Italia	9-0	327	0	1	1	0	.000	0	.000	0	0	0	0-0	0	0	0	0	0	0
27	Maierhofer, Sophie	9-9	828	0	0	0	7	.000	3	.429	1	0	0	0-0	0	0	0	0	2	1
21	Cavalcante, Isabella	9-9	878	0	0	0	5	.000	2	.400	0	0	0	0-0	0	0	0	0	3	0
19	Eliasdottir, Eva	8-0	225	0	0	0	5	.000	2	.400	0	0	0	0-0	0	0	0	0	1	0
6	Hansen, Kaela	9-9	744	0	0	0	4	.000	1	.250	0	0	0	0-0	0	0	0	0	0	0
14	Barnett, Samantha	9-4	458	0	0	0	3	.000	2	.667	1	0	0	0-0	0	0	0	0	2	0
11	Wright, Chais	7-1	265	0	0	0	1	.000	0	.000	0	0	0	0-0	0	0	0	0	1	0
26	Merrick, Addisyn	9-9	872	0	0	0	0	.000	0	.000	0	0	0	0-0	0	0	0	0	0	0
20	Giubilato, Margherit	1-0	9	0	0	0	0	.000	0	.000	0	0	0	0-0	0	0	0	0	0	0
9	Meador, Madison	4-1	68	0	0	0	0	.000	0	.000	0	0	0	0-0	0	0	0	0	0	0
7	Hall, Avery	1-0	2	0	0	0	0	.000	0	.000	0	0	0	0-0	0	0	0	0	0	0
3	Sheridan, Mya	1-0	10	0	0	0	0	.000	0	.000	1	0	0	0-0	0	0	0	0	0	0
Total		9	-	15	14	44	132	.114	55	.417	7	0	4	1-1	5	1	0	1	83	-
Opponents		9	-	11	10	32	124	.089	50	.403	7	0	2	0-1	3	0	0	2	78	-

#	Goalie	gp-gs	Goal Average			Saves		Record			Shots	
			min	ga	gaavg	saves	pct	w	l	t	sho/cbo	faced
00	Peters, Sarah	9-8	878:07	11	1.13	38	.776	4	2	3	3/0	122
TM	TEAM	-	0:00	0	0.00	1	1.000	0	0	0	0/0	0
Total		9	878:07	11	1.13	39	.780	4	2	3	3	122
Opponents		9	878:07	15	1.54	40	.727	2	4	3	2	130

Team saves: 1

Goals by Period	1st	2nd	OT	OT2	Total
Kansas	4	10	1	0	15
Opponents	4	7	0	0	11

Shots by Period	1st	2nd	OT	OT2	Total
Kansas	44	73	10	5	132
Opponents	49	65	8	2	124

Saves by Period	1st	2nd	OT	OT2	Total
Kansas	16	19	3	1	39
Opponents	12	22	4	2	40

Corners by Period	1st	2nd	OT	OT2	Total
Kansas	15	27	3	0	45
Opponents	15	21	0	3	39

Fouls by Period	1st	2nd	OT	OT2	Total
Kansas	35	41	2	5	83
Opponents	33	39	2	4	78

Attendance Summary	KU	Opponent
Total	3928	4399
Dates/Avg Per Date	4/982	5/880
Neutral Site #/Avg	0/0	

KANSAS TEAM STATS GAME-BY-GAME

Date	Opponent	Score	G	A	Pts	Sh	Sh%	Sog	Sog%	GW	GT	UA	OT	PK-Att	YC	RC	Min
Aug 22, 2019	NEBRASKA	4-0	4	3	11	15	.267	6	.400	1	0	2	0	0-0	0	0	991
Aug 25, 2019	LOYOLA-CHICAGO	6-0	6	6	18	23	.261	12	.522	1	0	2	0	1-1	0	0	991
Aug 29, 2019	MEMPHIS	2-1	2	1	5	10	.200	7	.700	1	1	1	0	1-1	1	0	991
Sep 01, 2019	FLORIDA ATLANTIC	1-0	1	2	4	4	.250	1	.250	1	0	0	0	0-0	0	0	990
Sep 06, 2019	vs DePaul	0-1	0	0	0	20	.000	3	.150	0	0	0	0	0-0	0	0	990
Sep 08, 2019	at Purdue	2-1	2	3	7	13	.154	5	.385	1	1	0	0	0-0	2	0	989
Sep 13, 2019	at Northwestern	1-0	1	1	3	8	.125	4	.500	1	0	0	0	0-0	1	0	991
Sep 15, 2019	at Western Michigan	2-0	2	1	5	31	.065	15	.484	1	0	1	0	0-0	0	0	990
Sep 19, 2019	BYU	0-2	0	0	0	12	.000	4	.333	0	0	0	0	0-0	0	0	1003
Sep 22, 2019	KENNESAW STATE	3-1	3	1	7	19	.158	7	.368	1	0	2	0	0-0	0	0	989
Sep 26, 2019	TEXAS	0-1	0	0	0	12	.000	1	.083	0	0	0	0	0-0	0	0	989
Sep 29, 2019	BAYLOR	4-1	4	4	12	10	.400	5	.500	1	0	1	0	0-0	1	0	989
Oct 03, 2019	at Oklahoma State	2-5	2	1	5	14	.143	7	.500	0	0	1	0	0-0	2	0	990
Oct 10, 2019	at Oklahoma	1-0	1	0	2	10	.100	4	.400	1	0	1	1	0-0	1	0	1079
Oct 13, 2019	at Texas Tech	0-0	0	0	0	11	.000	7	.636	0	0	0	0	0-0	0	0	1210
Oct 18, 2019	KANSAS STATE	3-0	3	3	9	18	.167	7	.389	1	0	0	0	0-0	0	0	990
Oct 24, 2019	WEST VIRGINIA	1-1	1	2	4	26	.038	11	.423	0	1	0	0	0-0	0	0	1211
Oct 27, 2019	at TCU	2-2	2	1	5	15	.133	7	.467	0	0	1	0	1-1	3	0	1210
Oct 31, 2019	at Iowa State	2-1	2	3	7	16	.125	6	.375	1	0	0	0	0-0	0	0	990
Nov 03, 2019	vs West Virginia	2-0	2	3	7	14	.143	8	.571	1	0	0	0	0-0	0	0	989
Nov 08, 2019	vs Oklahoma State	2-1	2	3	7	15	.133	3	.200	1	1	0	1	0-0	1	0	1192
		40-18	40	38	118	316	.127	130	.411	14	4	12	2	3-3	12	0	21754
Opponent			18	14	50	244	.074	89	.365	4	2	7	0	0-1	9	0	-

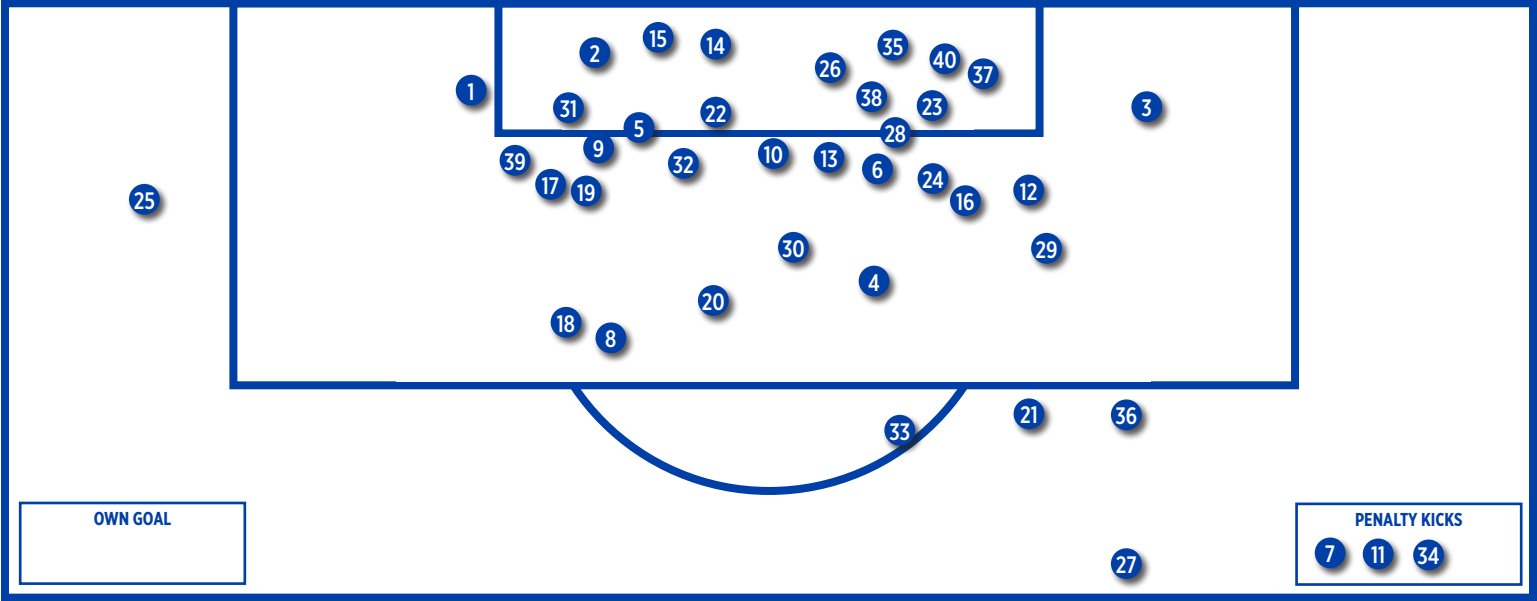
TEAM PER-GAME

KANSAS GAME-BY-GAME COMPARISON (KANSAS/OPPONENT)

Date	Opponent	Score	Goals	Assists	Shots	On Goal	Corners	CKgoals	Fouls	YC	RC	Offside
Aug 22	NEBRASKA	4-0	4/0	3/0	15/13	6/3	3/5	0/0	9/4	0/0	0/0	4/3
Aug 25	LOYOLA-CHICAGO	6-0	6/0	6/0	23/3	12/0	8/2	1/0	10/8	0/0	0/0	0/1
Aug 29	MEMPHIS	2-1	2/1	1/0	10/11	7/3	4/4	0/1	18/14	1/0	0/0	1/1
Sep 01	FLORIDA ATLANTIC	1-0	1/0	2/0	4/9	1/2	8/4	0/0	8/13	0/1	0/0	4/1
Sep 06	DePaul	0-1	0/1	0/0	20/5	3/1	9/2	0/0	6/6	0/0	0/0	1/0
Sep 08	Purdue	2-1	2/1	3/1	13/18	5/8	3/3	0/0	13/11	2/0	0/0	3/3
Sep 13	Northwestern	1-0	1/0	1/0	8/3	4/3	6/4	0/0	7/10	1/0	0/0	0/1
Sep 15	Western Michigan	2-0	2/0	1/0	31/5	15/1	6/2	0/0	13/7	0/0	0/0	2/0
Sep 19	BYU	0-2	0/2	0/1	12/16	4/4	6/5	0/0	6/5	0/1	0/0	4/3
Sep 22	KENNESAW STATE	3-1	3/1	1/1	19/5	7/2	7/2	0/0	6/4	0/0	0/0	4/0
Sep 26	TEXAS	0-1	0/1	0/2	12/9	1/5	9/3	0/0	5/8	0/1	0/0	2/1
Sep 29	BAYLOR	4-1	4/1	4/1	10/15	5/4	4/9	1/1	5/9	1/2	0/0	2/4
Oct 03	Oklahoma State	2-5	2/5	1/3	14/13	7/10	4/2	0/1	15/9	2/1	0/0	0/2
Oct 10	Oklahoma	1-0	1/0	0/0	10/16	4/6	4/4	0/0	15/10	1/0	0/0	3/0
Oct 13	Texas Tech	0-0	0/0	0/0	11/14	7/4	5/5	0/0	8/11	0/0	0/0	2/1
Oct 18	KANSAS STATE	3-0	3/0	3/0	18/14	7/7	3/4	1/0	7/10	0/1	0/0	1/1
Oct 24	WEST VIRGINIA	1-1	1/1	2/1	26/5	11/3	8/3	0/0	4/7	0/0	0/0	4/0
Oct 27	TCU	2-2	2/2	1/3	15/25	7/7	3/8	0/0	17/9	3/2	0/0	5/0
Oct 31	Iowa State	2-1	2/1	3/0	16/13	6/4	5/1	0/0	7/5	0/0	0/0	2/1
Nov 03	West Virginia	2-0	2/0	3/0	14/8	8/2	4/6	0/0	14/10	0/0	0/0	4/0
Nov 08	Oklahoma State	2-1	2/1	3/1	15/24	3/10	6/6	0/0	23/13	1/0	0/0	0/2
		40-18	40/18	38/14	316/244	130/89	115/84	3/3	216/183	12/9	0/0	48/25

Note: Game totals are displayed in the format TEAM/OPPONENT for each category

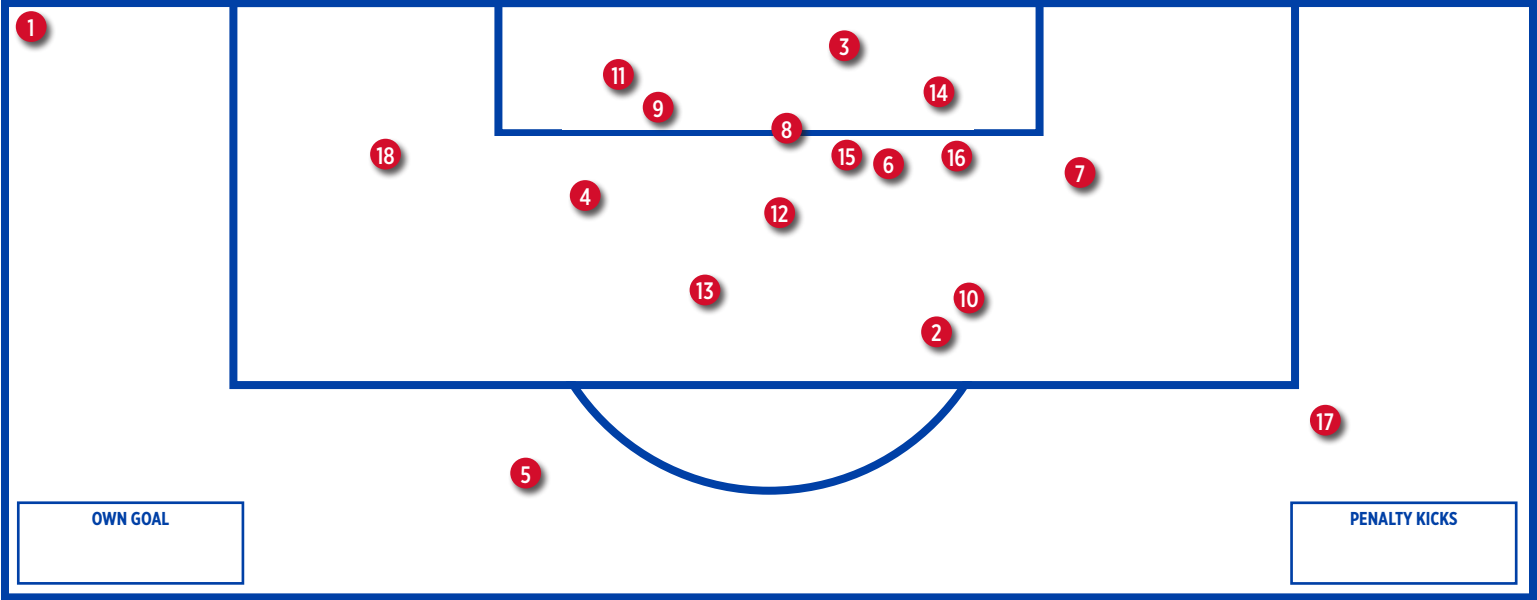
KANSAS GOAL CHART



KANSAS GOAL INFORMATION

1 - Katie McClure (Amos) vs. Nebraska, 2:54	15 - Kailey Lane (Prybylski, McClure) vs. Purdue, 84:51	29 - Ceri Holland (McClure) vs. Kansas State, 1:39
2 - Bri Amos (McClure, Holland) vs. Nebraska, 8:07	16 - Kailey Lane (Prybylski) vs. Northwestern, 24:06 *	30 - Katie McClure (Costow) vs. Kansas State, 79:14
3 - Katie McClure (unassisted) vs. Nebraska, 24:18	17 - Chais Wright (unassisted) vs. Western Michigan, 79:43 *	31 - Katie McClure (Costow) vs. Kansas State, 80:01 *
4 - Katie McClure (unassisted) vs. Nebraska, 77:40	18 - Samantha Barnett (Costow) vs. Western Michigan, 80:29	32 - Ceri Holland (Castro, Amos) vs. West Virginia, 83:18
5 - Katie McClure (Holland) vs. Loyola-Chicago, 3:27	19 - Sophie Maierhofer (Holland) vs. Kennesaw State, 7:47	33 - Katie McClure (Bradley) vs. TCU, 20:04
6 - Sophie Maierhofer (McClure, Prybylski) vs. Loyola-Chicago, 26:59	20 - Katie McClure (unassisted) vs. Kennesaw State, 17:00	34 - Ceri Holland (unassisted) vs. TCU, 87:26 <
7 - Ceri Holland (unassisted) vs. Loyola-Chicago, 27:22 <	21 - Katie McClure (unassisted) vs. Kennesaw State, 55:38	35 - Katie McClure (Lane, Castro) vs. Iowa State, 36:02
8 - Kathryn Castro (Lane, Merrick) vs. Loyola-Chicago, 34:41	22 - Mandi Duggan (Amos) vs. Baylor, 29:09	36 - Ceri Holland (Wiltgen) vs. Iowa State, 61:21
9 - Kailey Lane (unassisted) vs. Loyola-Chicago, 41:22	23 - Kailey Lane (McClure, Prybylski) vs. Baylor, 49:52	37 - Katie McClure (Wright) vs. West Virginia, 16:58
10 - Ceri Holland (Costrow) vs. Loyola-Chicago, 53:04*	24 - Mandi Duggan (McClure) vs. Baylor, 80:42	38 - Isabella Cavalcante (Holland, Lane) vs. West Virginia, 29:57 *
11 - Ceri Holland (penalty) vs. Memphis, 51:42 <	25 - Ebba Costow (unassisted) vs. Baylor, 89:59 *	39 - Samantha Barnett (McClure) vs. Oklahoma State, 6:45
12 - Katie McClure (Cavalcante) vs. Memphis, 88:54	26 - Ceri Holland (McClure) vs. Oklahoma St., 52:38	40 - Eva Eliasdottir (Holland, Cavalcante) vs. Oklahoma State, 109:00 +
13 - Katie McClure (Amos, Cavalcante) vs. Florida Atlantic, 12:21	27 - Mandi Duggan (unassisted) vs. Oklahoma St., 61:22	
14 - Katie McClure (Barnett) vs. Purdue, 58:14	28 - Mandi Duggan (unassisted) vs. Oklahoma, 98:07	

OPPONENT GOAL CHART



OPPONENT GOAL INFORMATION

1 - Stasia Mallin (Memphis), 8:44 *	10 - Charme Morgan (Oklahoma St), 28:28
2 - Jade Eriksen-Russo (DePaul), 45:26	11 - Julia Lenhardt (Oklahoma St), 31:01 +
3 - Hannah Melchiorre (Purdue), 20:57 *	12 - Charme Morgan (Oklahoma St), 52:08
4 - Elise Flake (BYU), 45:33	13 - Gabriella Coleman (Oklahoma St), 70:11
5 - Mikayla Colohan (BYU), 47:14	14 - Enzi Broussard (West Virginia), 4:43
6 - Camryn Simmons (Kennesaw State), 73:32	15 - Tara Smith (TCU), 48:11 *
7 - Cyera Hintzen (Texas), 69:36 +	16 - Messiah Bright (TCU), 89:47
8 - Michaela Gorman (Baylor), 85:38 *	17 - Courtney Powell (Iowa State), 76:24
9 - Camy Huddleston (Oklahoma St), 9:52 *	18 - Gabriella Coleman (Oklahoma State), 1:05

Key: + Off free kick, < Penalty Kick, * Off Corner

SINGLE MATCH INDIVIDUAL RECORDS

POINTS

No.	Player	Points
1.	Katie McClure (vs. Nebraska, Aug. 22, 2019)	7
	Shannon McCabe (vs. Francis Marion, Oct. 19, 2008)	7
	Caroline Smith (vs. Northwestern, Aug. 29, 2003)	7
3.	Grace Hagan (vs. Saint Louis, Sept. 14, 2018)	6
	Monica Dolinsky (at Missouri, Oct. 15, 2006)	6
	Jessica Smith (vs. Oklahoma State, Oct. 7, 2005)	6
	Caroline Smith (vs. Florida State, Sept. 12, 2003)	6
	Monica Brothers (at Oklahoma State, Sept. 30, 2001)	6
	Natalie Hoogveld (at Colorado, Oct. 14, 2001)	6
	Brianna Valento (vs. St. Louis, Oct. 30, 2001)	6

GOALS

No.	Player	Goals
1.	Katie McClure (vs. Nebraska, Aug. 22, 2019)	3
	Grace Hagan (vs. Saint Louis, Sept. 14, 2018)	3
	Shannon McCabe (vs. Francis Marion, Oct. 19, 2008)	3
	Jessica Smith (vs. Oklahoma State, Oct. 7, 2005)	3
	Caroline Smith (vs. Florida State, Sept. 12, 2003)	3
	Caroline Smith (vs. Northwestern, Aug. 29, 2003)	3
	Brianna Valento (vs. St. Louis, Oct. 30, 2001)	3
	Natalie Hoogveld (at Colorado, Oct. 14, 2001)	3
	Monica Brothers (vs. Oklahoma State, Sept. 30, 2001)	3

ASSISTS

No.	Player	Goals
1.	Hilla Rantala (at Oklahoma State, Sept. 30, 2001)	4
2.	Whitney Berry (vs. Texas, Sept. 30, 2011)	3
	Monica Dolinsky (vs. Texas A&M, Nov. 5, 2008)	3
	Jessica Bush (vs. UAB, Sept. 5, 2008)	3
	Hilla Rantala (vs. St. Louis, Oct. 30, 2001)	3
	Melanie Schroeder (vs. UNLV, Sept. 7, 2001)	3

SHOTS

No.	Player	Shots
1.	Katie McClure (vs. West Virginia, Oct. 24, 2019)	12
	Caroline Smith (vs. Missouri, Oct. 28, 2005)	12
3.	Katie McClure (vs. Kansas State, Oct. 18, 2019)	10
	Caroline Smith (vs. Colorado, Sept. 27, 2002)	10
	Denise Cooke (vs. CMSU, Oct. 13, 1995)	10

SHOTS ON GOAL

No.	Player	SOG
1.	Caroline Smith (vs. Missouri, Oct. 28, 2005)	7
2.	Katie McClure (vs. West Virginia, Oct. 24, 2019)	6
	Caroline Smith (at Mississippi State, Sept. 8, 2002)	6
4.	Grace Hagan (vs. Saint Louis, Sept. 14, 2018)	5

	Ingrid Vidal (at Missouri, Oct. 21, 2011)	5
	Jessica Smith (vs. Oklahoma State, Oct. 7, 2005)	5
	Caroline Smith (vs. UC Irvine, Sept. 16, 2005)	5
	Caroline Smith (vs. Baylor, Oct. 3, 2004)	5
	Nicole Cauzillo (vs. Texas Tech, Oct. 1, 2004)	5
	Caroline Smith (vs. Colorado, Sept. 27, 2002)	5
	Monica Brothers (vs. North Texas, Aug. 31, 2001)	5

SAVES

No.	Player	Saves
1.	Betsy Pollard (at Texas Tech, Oct. 3, 1999)	16
2.	Kat Liebetrau (at Georgia, Aug. 29, 2010)	15
	Laura Rohde (at Mississippi, Oct. 29, 1999)	15
	Jen Fecke (vs. UTEP, Oct. 6, 1996)	15
5.	Betsy Pollard (at Georgia, Sept. 17, 1999)	14
	Betsy Pollard (at Utah, Sept. 3, 1999)	14
	Jen Fecke (at Baylor, Sept. 14, 1997)	14

INDIVIDUAL STREAKS

Consecutive Matches w/ a Point	9
(Hilla Rantala, Aug. 31-Oct. 5, 2001)	
Consecutive Matches w/ a Goal	.5 (twice)
(Liana Salazar, Aug. 22 - Sept. 5 2014)	
(Hilla Rantala, Sept. 1-Sept. 23, 2001)	
Consecutive Matches w/ an Assist	4
(Whitney Berry, Sept. 27-Oct. 9, 2009)	
Consecutive Matches w/ a GWG	4
(Katie McClure, Aug. 22-Sept. 1, 2019)	
Consecutive Shutouts	5
(Meghan Miller, Aug. 28-Sept. 9, 2004)	
OPPONENT HIGHS	
Points	7
(Anna Caniglia, Nebraska, Oct. 23, 2009)	
Goals	3 (nine times)
Last: (Anna Caniglia, Nebraska, Oct. 23, 2009)	
Assists	3
(Julia Ashley, North Carolina, Nov. 16, 2018)	
(Kristen Koop, Texas A&M, Sept. 13, 1996)	
(Sandy Smith, Nebraska, Sept. 22, 1995)	
Shots	13
(Courtney Saunders, Baylor, Oct. 2, 1998)	
Shots on Goal	6 (two times)
(Maddie Pokorny, Saint Louis, Nov. 9, 2018)	
(Becky Nelson, Oklahoma, Oct. 24, 2003)	

Single Match Team Records

Points	19
(vs. Francis Marion, Oct. 19, 2008)	
Goals	7
(vs. Francis Marion, Oct. 19, 2008)	
Assists	6 (five times)
(last vs. Loyola Chicago, Aug. 25, 2019)	
Shots	36
(vs. Michigan, Aug. 26, 2005)	
Shots on Goal	20
(vs. Wyoming, Aug. 29, 1999)	
Saves	16
(at Texas Tech, Oct. 3, 1999)	
Shots Allowed	45
(at Nebraska, Sept. 22, 1995)	
Shots on Goal Allowed	19
(at Nebraska, Oct. 15, 1999)	
Fewest Shots	0
(at Virginia, Sept. 19, 1997)	
Fewest Shots on Goal	0 (3 times)
(vs. Baylor, Oct. 15, 2017), (vs. West Virginia, Nov. 6, 2013), (at Virginia, Sept. 19, 1997)	
Corner Kicks	21
(vs. Baylor, Sept. 23, 2005)	
Fouls	25
(at Oklahoma State, Oct. 9, 1998)	
Goals (In Defeat)	4
(vs. Nebraska, Oct. 23, 2009 [L, 4-7])	
Goals (Both Teams)	11
(vs. Nebraska, Oct. 23, 2009 [L, 4-7])	
Goals Allowed	8 (twice)
(at Nebraska, Oct. 15, 1999), (at Nebraska, Sept. 22, 1995)	

Goals Allowed (In Victory)	3 (three times)
(vs. Duke, Sept. 10, 2006 [W, 4-3]) (at Oklahoma State, Sept. 30, 2001 [W, 5-3]) (vs. Colorado, Sept. 28, 1997 [W, 4-3])	
First Half Goals	5
(vs. Loyola-Chicago, Aug. 25, 2019)	
Second Half Goals	5
(vs. Francis Marion, Oct. 19, 2008)	
Margin of Victory	7
(vs. Francis Marion, Oct. 19, 2008 [W, 7-0])	
Margin of Defeat	7 (twice)
(at Nebraska, 10/15/1999 [1-8, L]), (at Nebraska, 9/22/1995 [1-8, L])	
Quickest Goal	0:18
(Caroline Kastor, at Colorado, Oct. 25, 2010)	
Quickest Goal Allowed	0:11
(Whitney Palmer, Oklahoma, Oct. 10, 2010)	
Quickest Goal (Second Half)	45:11
(Shayna Teutsch, at UTEP, Oct. 6, 1996)	
Quickest Goal Allowed (Second Half)	45:33
(Elise Flake, BYU, Sept. 19, 2019)	
Quickest Goal (Overtime)	91:55
(Kim Boyer, vs. Missouri State, Sept. 18, 2007)	
Quickest Goal Allowed (Overtime)	92:03
(Kasey Langdon, Oklahoma St., Oct. 10, 2008)	
Shortest Span Between Goals	0:15
(Lindsey Horner, Carmel Kaplinger vs. Iowa State, Sept. 29, 2000)	
Shortest Span Between Goals Allowed	0:14
(Katie Baruth and Carol Ditch, Texas, Sept. 15, 1996)	
Shortest Span Between Goals (Both Teams)	0:08
(KayAnne Gummertsall, Duke and Holly Gault, Kansas, Sept. 10, 2006)	
Attendance (Home)	2,514
(vs. Kansas State, Oct. 6, 2017)	
Attendance (Away)	5,205
(at Saint Louis, Sept. 8, 2017)	

SINGLE SEASON RECORDS

POINTS

No.	Player	Points
1.	.Caroline Smith (2003)	41 (19 goals, 3 assists)
2.	. Katie McClure (2019)	36 (14 goals, 8 assists)
3.	.Caroline Smith (2004)	32 (11 goals, 10 assists)
	.Hilla Rantala (2001)	32 (10 goals, 12 assists)
5.	.Liana Salazar (2014)	30 (13 goals, 4 assists)
6.	.Whitney Berry (2011)	29 (8 goals, 13 assists)
7.	.Ingrid Vidal (2011)	28 (11 goals, 6 assists)
	.Monica Dolinsky (2008)	28 (9 goals, 10 assists)
9.	.Emily Cressy (2009)	27 (12 goals, 3 assists)
	.Caroline Smith (2002)	27 (12 goals, 3 assists)

GOALS

No.	Player	Goals
1.	.Caroline Smith (2003)	19
2.	. Katie McClure (2019)	14
3.	.Liana Salazar (2014)	13
4.	.Emily Cressy (2009)	12
	.Caroline Smith (2002)	12
6.	.Katie McClure (2018)	11
	.Caroline Kastor (2012)	11
	.Ingrid Vidal (2011)	11
	.Caroline Smith (2004)	11
10.	.Hilla Rantala (2001)	10

GAME-WINNING GOALS

No.	Player	GWG
1.	.Katie McClure (2018)	7
	.Caroline Smith (2003)	7
3.	. Katie McClure (2019)	6
4.	.Caroline Kastor (2012)	5
	.Emily Cressy (2009)	5
	.Rachel Gilfillan (2004)	5
7.	.Eight Times	4

ASSISTS

No.	Player	Assists
1.	.Whitney Berry (2011)	13
2.	.Hilla Rantala (2001)	12
3.	.Monica Dolinsky (2009)	10
	.Monica Dolinsky (2008)	10
	.Caroline Smith (2004)	10
6.	.Whitney Berry (2009)	9
7.	. Katie McClure (2019)	8
	.Caroline Smith (2005)	8
	.Melanie Schroeder (2000)	8
	.Meghann Haven (1999)	8
11.	.Ali Kimura (2014)	7
	.Whitney Berry (2012)	7
	.Caroline Kastor (2011)	7
	.Jessica Bush (2008)	7
	.Holly Gault (2006)	7
	.Lauren Williams (2004)	7

SHOTS

No.	Player	Shots
1.	.Caroline Smith (2005)	98
2.	.Caroline Smith (2004)	92
3.	. Katie McClure (2019)	90
4.	.Whitney Berry (2011)	85
	.Caroline Smith (2003)	85
6.	.Monica Dolinsky (2008)	79
7.	.Emily Cressy (2009)	73
	.Monica Dolinsky (2009)	71
9.	.Denise Cooke (1995)	68
10.	.Whitney Berry (2012)	66

SHOTS ON GOAL

No.	Player	SOG
1.	.Caroline Smith (2003)	46
2.	.Caroline Smith (2004)	45
3.	.Caroline Smith (2005)	43
4.	.Emily Cressy (2009)	42
5.	.Whitney Berry (2011)	41
6.	.Monica Dolinsky (2008)	37
7.	. Katie McClure (2019)	36
8.	.Caroline Kastor (2012)	32
	.Caroline Smith (2002)	32
10.	.Whitney Berry (2012)	30
	.Hilla Rantala (2001)	30

* - Individual shots on goal kept since 1999

MINUTES PLAYED (FIELD)

No.	Player	Minutes
1.	.Estelle Johnson (2008)	2,110
2.	.Shelby Williamson (2009)	2,012
3.	.Estelle Johnson (2009)	1,987
4.	.Kayla Morrison (2016)	1,985
5.	.Afton Sauer (2004)	1,981
6.	.Kayla Morrison (2015)	1,977
7.	.Morgan Williams (2015)	1,963
8.	.Geneva Magness (2009)	1,958
9.	. Addisyn Merrick (2019)	1,919
10.	.Lauren Jackson (2009)	1,916

* - Individual minutes kept since 2004

MINUTES PLAYED (KEEPERS)

No.	Player	Minutes
1.	.Meghan Miller (2003)	2,281
2.	.Maddie Dobyns (2015)	2,074
3.	.Meghan Miller (2004)	2,060
4.	.Sarah Peters (2018)	1,989
5.	.Colleen Quinn (2007)	1,952

SAVES

No.	Player	Saves
1.	.Jen Fecke (1996)	150
2.	.Jen Fecke (1997)	147
3.	.Betsy Pollard (1999)	125
4.	.Kat Liebetrau (2010)	113
5.	.Meghan Miller (2003)	111

GOALS AGAINST AVG. (MINIMUM 1,000 MIN.)

No.	Player	GAA
1.	.Meghan Miller (2004) (13 GA, 2,061 min.)	0.57
2.	.Kaitlyn Stroud (2014) (14 GA, 1,722 min.)	0.73
3.	.Meghan Miller (2003) (19 GA, 2,281 min.)	0.75
4.	. Sarah Peters (2019) (17 GA, 1,931 min.)	0.79
5.	.Maddie Dobyns (2016) (14 GA, 1,554 min.)	0.81
6.	.Julie Hanley (2006) (19 GA, 1,738 min.)	0.98

SAVE PERCENTAGE (MINIMUM 1,000 MIN.)

No.	Player	Save Pct.
1.	.Meghan Miller (2004) (13 GA, 96 saves)	.881
2.	.Meghan Miller (2003) (19 GA, 111 saves)	.854
3.	.Kaitlyn Stroud (2014) (14 GA, 77 saves)	.846
4.	.Betsy Pollard (1999) (29 GA, 125 saves)	.812
5.	.Kaitlyn Stroud (2013) (25 GA, 107 saves)	.811

SHUTOUTS

No.	Player	Shutouts
1.	.Meghan Miller (2004)	11
2.	.Meghan Miller (2003)	10
3.	.Sarah Peters (2018)	9
4.	. Sarah Peters (2019)	8
	.Kaitlyn Stroud (2014)	8
6.	.Julie Hanley (2006)	7

WINS

No.	Player	Wins
1.	.Meghan Miller (2004)	18
	.Meghan Miller (2003)	18
3.	. Sarah Peters (2019)	14
	.Kaitlyn Stroud (2014)	14
5.	.Julie Hanley (2008)	13
	.Meghan Miller (2001)	13
7.	.Sarah Peters (2018)	12
8.	.Julie Hanley (2006)	11

CAREER RECORDS

POINTS

No.	Player	Pts.
1. . . .	Caroline Smith (2002-05)	126 (51 goals, 24 assists)
2. . . .	Katie McClure (2016-Present)	87 (36 goals, 15 assists)
3. . . .	Whitney Berry (2009-12)	78 (23 goals, 32 assists)
4. . . .	Monica Dolinsky (2006-09)	76 (23 goals, 30 assists)
5. . . .	Liana Salazar (2011-15)	68 (28 goals, 12 assists)
	Rachel Gilfillan (2001-04)	68 (26 goals, 16 assists)
7. . . .	Grace Hagan (2015-18)	67 (25 goals, 17 assists)
8. . . .	Caroline Kastor (2010-13)	66 (26 goals, 14 assists)
9. . . .	Ashley Williams (2012-15)	52 (21 goals, 10 assists)
	Emily Cressy (2008-10)	52 (23 goals, 6 assists)

GOALS

No.	Player	Goals
1. . . .	Caroline Smith (2002-05)	51
2. . . .	Katie McClure (2016-Present)	36
3. . . .	Liana Salazar (2011-15)	28
4. . . .	Caroline Kastor (2010-13)	26
	Rachel Gilfillan (2001-04)	26
6. . . .	Grace Hagan (2015-18)	25
7. . . .	Whitney Berry (2009-12)	23
	Emily Cressy (2008-10)	23
	Monica Dolinsky (2006-09)	23
10. . . .	Ashley Williams (2012-15)	21

GAME-WINNING GOALS

No.	Player	GWG
1. . . .	Katie McClure (2016-Present)	17
2. . . .	Caroline Smith (2002-05)	14
3. . . .	Emily Cressy (2008-10)	11
4. . . .	Ashley Williams (2012-15)	10
	Rachel Gilfillan (2001-04)	10
6. . . .	Monica Brothers (2001-04)	8
7. . . .	Liana Salazar (2011-15)	7
	Caroline Kastor (2010-13)	7
	Monica Dolinsky (2006-09)	7
	Jessica Bush (2005-08)	7
11. . . .	Jamie Fletcher (2011-14)	6
	Shannon McCabe (2006-09)	6

ASSISTS

No.	Player	Assists
1. . . .	Whitney Berry (2009-12)	32
2. . . .	Monica Dolinsky (2006-09)	30
3. . . .	Caroline Smith (2002-05)	24
4. . . .	Jessica Bush (2005-08)	21
5. . . .	Holly Gault (2003-06)	19
	Hilla Rantala (1999-2001)	19
7. . . .	Grace Hagan (2015-18)	17
	Amy Geha (2001-04)	17
	Melanie Schroeder (1998-2001)	17
10. . . .	Rachel Gilfillan (2001-04)	16

SHOTS

No.	Player	Shots
1. . . .	Caroline Smith (2002-05)	333
2. . . .	Whitney Berry (2009-12)	267
3. . . .	Katie McClure (2016-Present)	254
4. . . .	Monica Dolinsky (2006-09)	226
5. . . .	Jamie Fletcher (2011-14)	206
6. . . .	Liana Salazar (2011-15)	194
7. . . .	Grace Hagan (2015-Present)	179
8. . . .	Rachel Gilfillan (2001-04)	175
9. . . .	Caroline Kastor (2010-13)	159
10. . . .	Ashley Williams (2012-15)	154

SHOTS ON GOAL

No.	Player	SOG
1. . . .	Caroline Smith (2002-05)	166
2. . . .	Katie McClure (2016-Present)	115
3. . . .	Whitney Berry (2009-12)	113
4. . . .	Monica Dolinsky (2006-09)	96
5. . . .	Rachel Gilfillan (2001-04)	92
6. . . .	Liana Salazar (2011-15)	86
7. . . .	Grace Hagan (2015-18)	82
8. . . .	Jamie Fletcher (2011-14)	79
9. . . .	Emily Cressy (2008-10)	78
10. . . .	Caroline Kastor (2010-13)	77

GAMES PLAYED (FIELD)

No.	Player	Games
1. . . .	Amy Geha (2001-04)	88
2. . . .	Rachel Gilfillan (2001-04)	87
	Lauren Williams (2001-04)	87
4. . . .	Estelle Johnson (2006-09)	85
	Holly Gault (2003-06)	85
	Monica Brothers (2001-04)	85
7. . . .	Lacey Novak (2003-06)	84
	Stacy Leeper (2001-04)	84
9. . . .	Katie McClure (2016-19)	83
	Addisyn Merrick (2016-19)	83
	Grace Hagan (2015-18)	83
	Kayla Morrison (2014-17)	83
	Liana Salazar (2011-15)	83
	Kim Boyer (2006-09)	83
	Monica Dolinsky (2006-09)	83
	Jessica Bush (2005-08)	83
	Afton Sauer (2004-07)	83
	Jessica Smith (2002-05)	83

GAMES STARTED (FIELD)

No.	Player	Games
1. . . .	Kayla Morrison (2014-17)	83
	Estelle Johnson (2006-09)	83
	Afton Sauer (2004-07)	83
4. . . .	Liana Salazar (2011-15)	82
	Whitney Berry (2009-12)	82
	Shelby Williamson (2009-12)	82
	Jessica Bush (2005-08)	82
	Holly Gault (2003-06)	82
9. . . .	Grace Hagan (2015-18)	80
	Taylor Estrada (2013-16)	80
11. . . .	Caroline Smith (2002-05)	79
12. . . .	Katie McClure (2016-present)	78

MINUTES PLAYED (FIELD)*

No.	Player	Minutes
1. . . .	Estelle Johnson (2006-09)	7,470
2. . . .	Afton Sauer (2004-07)	7,459
3. . . .	Kayla Morrison (2014-17)	7,368
4. . . .	Addisyn Merrick (2016-Present)	7,271
5. . . .	Shelby Williamson (2009-12)	7,232
6. . . .	Liana Salazar (2011-15)	6,933
7. . . .	Whitney Berry (2009-12)	6,739
8. . . .	Taylor Estrada (2013-16)	6,578
9. . . .	Grace Hagan (2015-18)	6,454
10. . . .	Missy Geha (2005-08)	6,416

* Minutes played became an official stat in 2004

GAMES PLAYED (KEEPERS)

No.	Player	Games
1. . . .	Meghan Miller (2001-04)	88
2. . . .	Julie Hanley (2005-09)	65
3. . . .	Kaitlyn Stroud (2010-14)	63
4. . . .	Maddie Dobyns (2014-Present)	60
5. . . .	Kat Liebetrau (2009-12)	54

SAVES

No.	Player	Saves
1. . . .	Jen Fecke (1996-98)	375
2. . . .	Meghan Miller (2001-04)	362
3. . . .	Kaitlyn Stroud (2010-2014)	281
4. . . .	Kat Liebetrau (2009-12)	228
	Julie Hanley (2005-09)	228

GOALS AGAINST AVG. (MIN. 2,500 MIN.)

No.	Player	GAA
1. . . .	Sarah Peters (2018-Present)	0.92 (40 GA, 3,920 min.)
2. . . .	Meghan Miller (2001-04)	0.98 (85 GA, 7,836 min.)
3. . . .	Maddie Dobyns (2014-17)	1.06 (64 GA, 5,427 min.)
4. . . .	Kaitlyn Stroud (2010-14)	1.21 (75 GA, 5,582 min.)
5. . . .	Julie Hanley (2005-09)	1.32 (81 GA, 5,515 min.)

SAVE PERCENTAGE (MIN. 100 SHOTS FACED)

No.	Player	Save Pct.
1. . . .	Betsy Pollard (1996-99)814 (29 GA, 127 saves)
2. . . .	Meghan Miller (2001-04)810 (85 GA, 362 saves)
3. . . .	Kaitlyn Stroud (2010-14)789 (75 GA, 281 saves)
4. . . .	Colleen Quinn (2004-07)781 (44 GA, 157 saves)
5. . . .	Jen Fecke (1996-98)773 (110 GA, 375 saves)

SHUTOUTS

No.	Player	Shutouts
1. . . .	Meghan Miller (2001-04)	28
2. . . .	Sarah Peters (2018-Present)	17
3. . . .	Julie Hanley (2005-09)	16
4. . . .	Maddie Dobyns (2014-17)	14
5. . . .	Kaitlyn Stroud (2010-14)	13
6. . . .	Kat Liebetrau (2009-12)	12

WINS

No.	Player	Wins
1. . . .	Meghan Miller (2001-04)	60
2. . . .	Julie Hanley (2005-09)	36
3. . . .	Kaitlyn Stroud (2010-14)	32
4. . . .	Maddie Dobyns (2014-17)	29
5. . . .	Sarah Peters (2018-Present)	26
6. . . .	Kat Liebetrau (2009-12)	23

CAREER STATISTICS

Amos, Bri											
Season	GP-GS	Min.	G	A	Pts	Shot	Shot%	SOG	SOG%	GW	PK-Att
2018	10-1	228	0	1	1	3	.000	0	.000	0	0-0
2019	21-5	657	1	4	6	9	.111	5	.556	0	0-0
TOTAL	31-6	885	1	5	7	12	.083	5	.417	0	0-0

Barnett, Samantha											
Season	GP-GS	Min.	G	A	Pts	Shot	Shot%	SOG	SOG%	GW	PK-Att
2018	20-0	281	0	0	0	4	.000	1	.250	0	0-0
2019	21-6	881	2	1	5	15	.133	7	.467	0	0-0
TOTAL	41-6	1162	2	1	5	19	.105	8	.421	0	0-0

Beyer, Lia											
Season	GP-GS	Min.	G	A	Pts	Shot	Shot%	SOG	SOG%	GW	PK-Att
2019	3-0	63	0	0	0	0	.000	0	.000	0	0-0
TOTAL	3-0	63	0	0	0	0	.000	0	.000	0	0-0

Bradley, Italia											
Season	GP-GS	Min.	G	A	Pts	Shot	Shot%	SOG	SOG%	GW	PK-Att
2018	13-0	170	0	0	0	0	.000	0	.000	0	0-0
2019	19-2	691	0	1	1	1	.000	0	.000	0	0-0
TOTAL	32-2	861	0	1	1	1	.000	0	.000	0	0-0

Briley, Gracely											
Season	GP-GS	Min.	G	A	Pts	Shot	Shot%	SOG	SOG%	GW	PK-Att
2019	6-0	122	0	0	0	6	.000	1	.167	0	0-0
TOTAL	6-0	122	0	0	0	6	.000	1	.167	0	0-0

Castro, Kathryn											
Season	GP-GS	Min.	G	A	Pts	Shot	Shot%	SOG	SOG%	GW	PK-Att
2017	18-4	550	0	0	0	7	.000	3	.429	0	0-0
2018	21-5	779	0	0	0	9	.000	2	.222	0	0-0
2019	21-6	738	1	2	4	17	.059	9	.529	0	0-0
TOTAL	60-15	2067	1	2	4	33	.030	14	.424	0	0-0

Cavalcante, Isabella											
Season	GP-GS	Min.	G	A	Pts	Shot	Shot%	SOG	SOG%	GW	PK-Att
2017	20-20	1663	1	1	3	10	.100	4	.400	1	0-0
2018	15-11	1006	0	1	1	4	.000	1	.250	0	0-0
2019	21-21	1771	1	3	5	15	.067	6	.400	0	0-0
TOTAL	56-52	4440	2	5	9	29	.069	11	.379	1	0-0

Costow, Ebba											
Season	GP-GS	Min.	G	A	Pts	Shot	Shot%	SOG	SOG%	GW	PK-Att
2019	20-9	751	1	4	6	4	.250	2	.500	0	0-0
TOTAL	20-9	751	1	4	6	4	.250	2	.500	0	0-0

Duggan, Mandi											
Season	GP-GS	Min.	G	A	Pts	Shot	Shot%	SOG	SOG%	GW	PK-Att
2016	20-4	504	3	0	6	10	.300	3	.300	3	0-0
2018	6-0	99	0	0	0	1	.000	0	.000	0	0-0
2019	21-8	890	4	0	8	25	.160	12	.480	1	0-0
TOTAL	47-12	1493	7	0	14	36	.194	15	.417	4	0-0

Eliasdottir, Eva											
Season	GP-GS	Min.	G	A	Pts	Shot	Shot%	SOG	SOG%	GW	PK-Att
2016	16-0	297	0	1	1	3	.000	2	.667	0	0-0
2017	20-20	1640	1	1	3	5	.200	1	.200	0	0-0
2018	15-11	754	1	2	4	5	.200	1	.200	1	0-0
2019	12-0	322	1	0	2	7	.143	3	.429	1	0-0
TOTAL	63-31	3013	3	4	10	20	.150	7	.350	2	0-0

Gavillet, Emilie											
Season	GP-GS	Min.	G	A	Pts	Shot	Shot%	SOG	SOG%	GW	PK-Att
2019	1-0	10	0	0	0	0	.000	0	.000	0	0-0
TOTAL	1-0	10	0	0	0	0	.000	0	.000	0	0-0

Season	GP-GS	Minutes	GA	GAAvg	Saves	Save%	W	L	T	Sho
2019	1-0	9:31	0	0.00	0	.000	0	0	0	0.1
TOTAL	1-0	9:31	0	0.00	0	.000	0	0	0	0.1

Giubilato, Margherit											
Season	GP-GS	Min.	G	A	Pts	Shot	Shot%	SOG	SOG%	GW	PK-Att
2019	4-0	47	0	0	0	0	.000	0	.000	0	0-0
TOTAL	4-0	47	0	0	0	0	.000	0	.000	0	0-0

Hall, Avery											
Season	GP-GS	Min.	G	A	Pts	Shot	Shot%	SOG	SOG%	GW	PK-Att
2017	1-0	13	0	0	0	0	.000	0	.000	0	0-0
2018	3-0	45	0	0	0	0	.000	0	.000	0	0-0
2019	7-0	89	0	0	0	3	.000	2	.667	0	0-0
TOTAL	11-0	147	0	0	0	3	.000	2	.667	0	0-0

Hansen, Kaela											
Season	GP-GS	Min.	G	A	Pts	Shot	Shot%	SOG	SOG%	GW	PK-Att
2018	21-21	1650	0	0	0	6	.000	1	.167	0	0-0
2019	21-21	1653	0	0	0	7	.000	1	.143	0	0-0
TOTAL	42-42	3303	0	0	0	13	.000	2	.154	0	0-0

Holland, Ceri											
Season	GP-GS	Min.	G	A	Pts	Shot	Shot%	SOG	SOG%	GW	PK-Att
2017	20-20	1564	1	1	3	34	.029	14	.412	0	0-0
2018	21-21	1690	1	4	6	38	.026	11	.289	1	0-1
2019	21-21	1690	8	5	21	59	.136	23	.390	2	3-3
TOTAL	62-62	4944	10	10	30	131	.076	48	.366	3	3-4

Lane, Kailey											
Season	GP-GS	Min.	G	A	Pts	Shot	Shot%	SOG	SOG%	GW	PK-Att
2018	4-0	30	0	0	0	0	.000	0	.000	0	0-0
2019	21-8	910	4	3	11	20	.200	9	.450	3	0-0
TOTAL	25-8	940	4	3	11	20	.200	9	.450	3	0-0

Maierhofer, Sophie											
Season	GP-GS	Min.	G	A	Pts	Shot	Shot%	SOG	SOG%	GW	PK-Att
2016	12-9	714	1	0	2	3	.333	2	.667	0	0-0
2017	18-16	1159	4	1	9	25	.160	12	.480	1	0-0
2018	6-1	123	0	0	0	2	.000	0	.000	0	0-0
2019	21-21	1705	2	0	4	18	.111	7	.389	0	0-0
TOTAL	57-47	3701	7	1	15	48	.146	21	.438	1	0-0

McClure, Katie											
Season	GP-GS	Min.	G	A	Pts	Shot	Shot%	SOG	SOG%	GW	PK-Att
2016	21-16	1405	5	2	12	54	.093	28	.519	3	0-0
2017	20-20	1412	6	2	14	52	.115	25	.481	1	0-0
2018	21-21	1462	11	3	25	58	.190	26	.448	7	0-0
2019	21-21	1480	14	8	36	90	.156	36	.400	6	0-0
TOTAL	83-78	5759	36	15	87	254	.142	115	.453	17	0-0

Meador, Madison											
Season	GP-GS	Min.	G	A	Pts	Shot	Shot%	SOG	SOG%	GW	PK-Att
2017	18-3	726	0	2	2	3	.000	1	.333	0	0-0
2018	20-20	1793	1	0	2	9	.111	2	.222	1	0-0
2019	15-8	687	0	0	0	2	.000	0	.000	0	0-0
TOTAL	53-31	3206	1	2	4	14	.071	3	.214	1	0-0

Merrick, Addisyn											
Season	GP-GS	Min.	G	A	Pts	Shot	Shot%	SOG	SOG%	GW	PK-Att
2016	21-14	1630	1	0	2	11	.091	5	.455	0	0-0
2017	20-20	1867	0	0	0	1	.000	1	1.000	0	0-0
2018	21-19	1855	0	0	0	4	.000	2	.500	0	0-0
2019	21-21	1919	0	1	1	2	.000	0	.000	0	0-0
TOTAL	83-74	7271	1	1	3	18	.056	8	.444	0	0-0

Pasar, Melania											
Season	GP-GS	Min.	G	A	Pts	Shot	Shot%	SOG	SOG%	GW	PK-Att
2019	2-0	37	0	0	0	0	.000	0	.000	0	0-0
TOTAL	2-0	37	0	0	0	0	.000	0	.000	0	0-0

Season	GP-GS	Minutes	GA	GAAvg	Saves	Save%	W	L	T	Sho
2019	2-0	36:46	1	2.45	0	.000	0	0	0	0.1
TOTAL	2-0	36:46	1	2.45	0	.000	0	0	0	0.1

Peters, Sarah											
Season	GP-GS	Min.	G	A	Pts	Shot	Shot%	SOG	SOG%	GW	PK-Att
2018	21-0	1989	0	0	0	0	.000	0	.000	0	0-0
2019	21-0	1930	0	0	0	0	.000	0	.000	0	0-0
TOTAL	42-0	3919	0	0	0	0	.000	0	.000	0	0-0

TV/RADIO ROSTER



0 **GABBIE DAWE**
Fr. / GK / 5-10
Memphis, Tenn.



00 **SARAH PETERS**
So. / GK / 5-10
Lee's Summit, Mo.



1 **MELANIA PASAR**
Fr. / GK / 5-11
Potoroz, Slovenia



2 **ELLIE PRYBYLSKI**
Fr. / D / F / 5-5
Forsyth County, Ga.



3 **MYA SHERIDAN**
Fr. / F / 5-5
Schertz, Texas



4 **KAILEY LANE**
So. / F / 5-9
Omaha, Neb.



6 **KAELA HANSEN**
So. / D / 5-7
Burnaby, British Columbia



7 **AVERY HALL**
Jr. / M / 5-5
McKinney, Texas



8 **EBBA COSTOW**
Fr. / M / 5-5
Uppsala, Sweden



9 **MADISON MEADOR**
Sr. / D / 5-7
Ballwin, Mo.



10 **GRACELEY BRILEY**
Fr. / M / 5-9
Olathe, Kan.



11 **CHAIS WRIGHT**
RS-Fr. / D / 5-4
Kansas City, Mo.



12 **KATIE MCCLURE**
Sr. / F / 5-4
Wichita, Kan.



13 **KATHRYN CASTRO**
Jr. / M / 5-3
Plano, Texas



14 **SAMANTHA BARNETT**
So. / M / 5-8
Edmond, Okla.



15 **CERI HOLLAND**
Jr. / M / 5-6
West Yorkshire, England



16 **ITALIA BRADLEY**
So. / D / 5-7
Coppell, Texas



17 **LIA BEYER**
Fr. / D / 5-7
Parker, Colo.



18 **EMILIE GAVILLET**
RS-Fr. / GK / 5-9
Montreux, Switzerland



19 **EVA ELÍASDÓTTIR**
Sr. / F / 5-6
Thorlákshöfn, Iceland



20 **MARGHERITA GIUBILATO**
Fr. / F / M / 5-4
Martellago, Italy



21 **ISABELLA CAVALCANTE**
Jr. / D / 5-7
Glen Ellyn, Ill.



22 **MANDI DUGGAN**
Jr. / F / 5-2
Aurora, Colo.



23 **GRACE WILTGEN**
Fr. / D / 5-6
Denton, Texas



24 **ELISE REINA**
Fr. / D / 5-2
Fayetteville, Ark.



26 **ADDISYN MERRICK**
Sr. / D / 5-5
Lee's Summit, Mo.



27 **SOPHIE MAIERHOFER**
Sr. / M / 5-7



28 **BRI AMOS**
So. / M / 5-7
Tulsa, Okla.



MARK FRANCIS
Head Coach
21st Season