



KANSAS

#KUsoccer

f /KANSASSOCCER

t /KUWSOCCER

i /KANSASSOCCER

OCT. 31, 2019 | WEST VIRGINIA | MATCH NOTES

KANSAS COMMUNICATIONS

JAYHAWKS

11-4-3 OVERALLUnited Soccer rank: **RV**

Head Coach: Mark Francis

3-2-3

TopDrawer rank: --

Record: 230-167-37 (21st year)



-vs-

**3-14-0** OVERALL

United Soccer rank: --

Head Coach: Tony Minatta

0-8-0

TopDrawer rank: --

Record: 76-59-13 (8th year)

CYCLONES

2019 SCHEDULE

Date	KU Rnk	OPP Rnk	Opponent	TV	Time/Result
AUGUST (3-0-0)					
22	rv/-	-/-	NEBRASKA	ESPN+	W, 4-0
25	rv/-	-/-	LOYOLA-CHICAGO	ESPN+	W, 6-0
29	18/-	20/18	MEMPHIS	ESPN+	W, 2-1
SEPTEMBER (6-3-0)					
1	18/-	-/-	FLORIDA ATLANTIC	ESPN+	W, 1-0
6	11/-	-/-	vs. DePaul*		L, 0-1
8	11/-	rv/-	at Purdue*	BTN+	W, 2-1
13	18/-	-/-	at Northwestern	BTN+	W, 1-0
15	18/-	-/-	at Western Michigan		W, 2-0
19	14/rv	7/7	BYU	ESPN+	L, 0-2
22	14/rv	-/-	KENNESAW STATE	ESPN+	W, 3-1
26	17/rv	-/-	TEXAS*	FSI	L, 0-1
29	17/rv	-/-	BAYLOR*	ESPN+	W, 4-1
OCTOBER (2-1-2)					
3	21/rv	25/-	at Oklahoma State*	ESPN+	L, 2-5
10	rv/-	-/-	at Oklahoma*	FS Oklahoma	W, 1-0 (OT)
13	rv/-	14/25	at Texas Tech*	FS Southwest	T, 0-0 (2OT)
18	23/-	-/-	KANSAS STATE*	ESPN+	W, 3-0
24	23/-	-/-	WEST VIRGINIA*	ESPN+	T, 1-1 (2OT)
27	23/-	-/-	at TCU*	FS Southwest	T 2-2 (2OT)
31	-/-	-/-	at Iowa State*		7 p.m.
NOVEMBER					
3-10	Big 12 Championship<		TBD		TBD

All times Central and subject to change; Home games **BOLD** and played at Rock Chalk Park; Rank: United Soccer Coaches Top 25 / TopDrawer Soccer Top 25; * Boilermaker Challenge Cup (West Lafayette, Ind.); * Big 12 Conference Game; < Big 12 Championship (Kansas City, Mo.)

BY THE NUMBERS

10 Kansas has lost just three of its last 10 regular-season finales dating back to 2009. The Jayhawks are 11-8-1 in regular-season finales under head coach Mark Francis.

15 A win Thursday would give the Jayhawks at least 15 points in Big 12 play for the fourth time since 2014.

18 Eighteen of KU's 34 goals this season have come in either the first 15 minutes or the final 15 minutes of regulation and overtime. Last season, the Jayhawks didn't score any goals in the first 15 minutes but netted nine of their 28 goals after the 74th minute.



GAME

19

KANSAS at IOWA STATE

Ames, Iowa • ISU Soccer Complex (1,500)

Thursday, October 31, 2019 • 7 p.m. CT



CYCLONE.TV



JAYHAWK RADIO NETWORK

Radio: IMG Jayhawk Radio Network

Webcast: KUathletics.leanplayer.com

Play-by-Play: Jack Nadeau

QUICK KICKS

- Kansas will look to close out the regular-season on a high note when the Jayhawks meet the Iowa State Cyclones in Ames on Thursday, Oct. 31. KU carries an eight-match unbeaten streak against ISU into the contest.
- With one match remaining in league play, the Jayhawks sit in a tie for sixth place with 12 points. With a win, KU could finish as high as third on the final league table.
- The Jayhawks are coming off a 2-2 draw at TCU on Oct. 27 in Fort Worth. KU netted the go-ahead goal via a penalty kick in the 87th minute, however TCU tied the match with 13 seconds remaining in regulation.
- KU is riding a five-match unbeaten streak, its longest such streak since starting the 2018 campaign going undefeated in its first eight contests. The program record for consecutive games without a loss is eight, shared by the 2008 and 2018 squads.
- Kansas was slotted at No. 19 in the season's sixth Rating Percentage Index (RPI) released by the NCAA this week. It marked the first time since 2014 that the Jayhawks were slotted in the top-20 of the RPI in six-straight weeks.
- The Jayhawks have gone to overtime in four of their last five outings, going 1-0-3 in those four extra time games. KU is 10-3-14 in their last 27 overtime matches, and 6-1-6 in OTs since the start of the 2018 season.
- KU's 34 goals scored this season rank 50th in the NCAA and fourth in the conference. The figure has already surpassed the goals scored in each of the last four seasons.
- Katie McClure recently moved to No. 2 on KU's all-time points list. The senior forward has amassed 82 points via her 34 goals and 14 career assists.
- Since 2014, the Jayhawks are 50-2-2 in matches in which they score two or more goals. This includes a 16-1-1 mark since the start of the 2018 season, with the lone blemish coming in the 5-2 loss to OSU three weeks ago.
- A win Thursday would make the 2019 Jayhawks the sixth KU squad in program history to finish a regular season with 12 or more wins. They would join the teams from 2014 (15), 2009 (12), 2004 (16), 2003 (15) and 2001 (13).

SERIES AT A GLANCE

OVERALL

in Ames

Last Meeting

KU LEADS, 19-5-1

KU leads, 7-4-1

W, 1-0 @ KU (9.29.18)

**11-4-3**

<< W-L-D

3-14-0**25**

<< UNITED SOCCER RANK

-**1.89**

<< GOALS PER GAME

0.59**15.1**

<< SHOTS PER GAME

10.2**.125**

<< SHOT PERCENTAGE

.057**.417**

<< SHOT ON GOAL PERCENTAGE

.299**0.85**

<< GOALS ALLOWED PER GAME

1.71**3.2**

SAVES PER GAME >>

5.1**.781**

<< SAVE PERCENTAGE

.736**3-3**

<< PENALTIES

0-0**9.6**

<< FOULS PER GAME

8.6**11-0**

<< YELLOW - RED CARDS >>

11-0

LAST MATCH STARTERS



NUMERICAL ROSTER

NO.	NAME	POS.	HT.	YR.	HOMETOWN (PREVIOUS SCHOOL)
0	Gabbie Dawe	.GK	5-10	Fr.	Memphis, Tenn. (Houston HS)
00	Sarah Peters	.GK	5-10	So.	Lee's Summit, Mo. (Lee's Summit North HS)
1	Melania Pasar	.GK	5-11	Fr.	Portoroz, Slovenia (Ginnasio Antonio Sema Pirano)
2	Ellie Prybylski	.D/F	5-5	Fr.	Forsyth County, Ga. (Lambert HS)
3	Mya Sheridan	.F	5-5	Fr.	Schertz, Texas (Samuel Clemens HS)
4	Kailey Lane	.F	5-9	So.	Omaha, Neb. (Millard North HS)
6	Kaela Hansen	.D	5-7	So.	Burnaby, B.C. (Burnaby Central Secondary)
7	Avery Hall	.M	5-5	Jr.	McKinney, Texas (McKinney Boyd HS)
8	Ebba Costow	.M	5-5	Fr.	Uppsala, Sweden (Celsiuskolan)
9	Madison Meador	.D	5-7	Sr.	Ballwin, Mo. (Marquette HS/Ole Miss)
10	Gracely Briley	.M	5-9	Fr.	Olathe, Kan. (Blue Valley Southwest HS)
11	Chais Wright	.D	5-4	RS-Fr.	Kansas City, Mo. (Park Hill HS)
12	Katie McClure	.F	5-4	Sr.	Wichita, Kan. (Maize HS)
13	Kathryn Castro	.M	5-3	Sr.	Plano, Texas (Plano West Senior High)
14	Samantha Barnett	.M	5-8	So.	Edmond, Okla. (Edmond Memorial HS)
15	Ceri Holland	.M	5-5	Jr.	West Yorkshire, England (South Craven School)
16	Italia Bradley	.D	5-7	So.	Coppell, Texas (Coppell HS)
17	Lia Beyer	.D	5-7	Fr.	Parker, Colo. (Legend HS)
18	Emilie Gavillet	.GK	5-9	RS-Fr.	Montreux, Switzerland (Wilhelm Hausenstein Gymnasium)
19	Eva Eliasdóttir	.F	5-9	Sr.	Thorlakhofn, Iceland (Fjölbautaskóli Suðurlands)
20	Margherita Giubilato	.F	5-4	Fr.	Martellago, Italy (Accademia Dante Alighieri)
21	Isabella Cavalcante	.D	5-7	Jr.	Glen Ellyn, Ill. (Glenbard West HS)
22	Mandi Duggan	.F	5-2	Jr.	Aurora, Colo. (Grandview HS)
23	Grace Wiltgen	.D	5-6	So.	Denton, Texas (Denton HS)
24	Elise Reina	.D	5-2	Sr.	Fayetteville, Ark. (Har-Ber HS)
26	Addisyn Merrick	.D	5-6	Sr.	Lee's Summit, Mo. (Lee's Summit North HS)
27	Sophie Maierhofer	.M	5-7	Sr.	Graz, Austria (University of Bremen)
28	Bri Amos	.F	5-7	So.	Tulsa, Okla. (Union HS)

STAFF

NAME	POSITION // YEAR AT KU	ALMA MATER // YEAR
Mark Francis	Head Coach // 21st	SMU // 1987
Kelly Miller	Assoc. Head Coach // 21st	Copper Union // 1996
Laura Jackson	Assistant Coach // 1st	Iona // 2012
Derek Shoare	Volunteer Asst. Coach // 5th	St. Mary's (London) // 1980
Shelby Larson	Dir. of Operations // 1st	Tampa // 2014

PRONUNCIATION GUIDE

Isabella CAVALCANTE	kav-uhl-KAHN-tay
Ebba COSTOW	COST-ov
Mandi DUGGAN	DEW-guhn
Eva ELIASDÓTTIR	ell-EYE-iss-daw-ter
Emilie GAVILLET	GAH-vee-ay
MARGHERITA GIUBILATO	marg-uh-REET-uh joo-bee-LAH-toe
CERI Holland	CARE-ee
Madison MEADOR	MEH-der
Sophie MAIERHOFER	MY-er-ha-fur
Ellie PRYBYLSKI	.prib-ILL-skee
Grace WILTGEN	WILL-chen
CHAIIS Wright	CHASE

RADIO/TV ROSTER



0 **GABBIE DAWE**
Fr. // GK // 5-10
Memphis, Tenn.



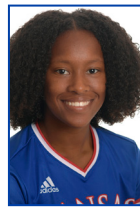
00 **SARAH PETERS**
So. // GK // 5-10
Lee's Summit, Mo.



1 **MILANIA PASAR**
Fr. // GK // 5-11
Portoroz, Slovenia



2 **ELLIE PRYBYLSKI**
Fr. // D/F // 5-5
Forsyth County, Ga.



3 **MYA SHERIDAN**
Fr. // F // 5-5
Schertz, Texas



4 **KAILEY LANE**
So. // F // 5-9
Omaha, Neb.



6 **KAELA HANSEN**
So. // D // 5-7
Burnaby, B.C.



7 **AVERY HALL**
So. // M // 5-5
McKinney, Texas



8 **EBBA COSTOW**
Fr. // M // 5-5
Uppsala, Sweden



9 **MADISON MEADOR**
Sr. // D // 5-7
Ballwin, Mo.



10 **GRACELEY BRILEY**
Fr. // M // 5-9
Olathe, Kan.



11 **CHAIIS WRIGHT**
R-Fr. // D // 5-4
Kansas City, Mo.



12 **KATIE MCCLURE**
Sr. // F // 5-4
Wichita, Kan.



13 **KATHRYN CASTRO**
Jr. // M // 5-3
Plano, Texas



14 **SAMANTHA BARNETT**
So. // M // 5-8
Edmond, Okla.



15 **CERI HOLLAND**
Jr. // M // 5-5
West Yorkshire, England



16 **ITALIA BRADLEY**
So. // D // 5-7
Coppell, Texas



17 **LIA BEYER**
Fr. // D // 5-7
Parker, Colo.



18 **EBILIE GAVILLET**
R-Fr. // GK // 5-9
Montreux, Switzerland



19 **EVA ELIASDÓTTIR**
Sr. // D // 5-9
Thorlakhofn, Iceland



20 **MARGHERITA GIUBILATO**
Fr. // F // 5-4
Martellago, Italy



21 **ISABELLA CAVALCANTE**
Jr. // D // 5-7
Glen Ellyn, Ill.



22 **MANDI DUGGAN**
Jr. // F // 5-2
Aurora, Colo.



23 **GRACE WILTGEN**
So. // D // 5-6
Denton, Texas



24 **ELISE REINA**
Sr. // D // 5-2
Fayetteville, Ark.



26 **ADDISYN MERRICK**
Sr. // D // 5-6
Lee's Summit, Mo.



27 **SOPHIE MAIERHOFER**
Sr. // M // 5-7
Graz, Austria



28 **BRI AMOS**
So. // F // 5-7
Tulsa, Okla.



HC **MARK FRANCIS**
Head Coach
21st season

SERIES VS. IOWA STATE

The contest Thursday will mark the 26th between Kansas and Iowa State in the series that began in 1995. The Jayhawks hold a 19-5-1 advantage all-time against the Cyclones and are 7-0-1 in their last eight contests against ISU. The matches have been competitive in recent years though, with four of the last five outings against the Cyclones having been decided up one goal.

SCOUTING THE CYCLONES

Iowa State enters Friday's in the midst of a 10-game losing skid and is coming off a 0-2 loss at Baylor on Oct. 27. While the Cyclones have not won or drawn in Big 12 play this season, five of their eight losses came by one goal.

Offensively, ISU is led by Courtney Powell, who has scored three goals on 25 shots. Claudia Najera is tops on her squad with four assists. Mira Emma and Kenady Adams have also added a pair of goals each and are two of nine Cyclones to have had their hand in at least one of their team's goals this season.

On defense, ISU has conceded 29 goals and picked up two shutouts in 17 outings this season. Deyja Schwichtenberg has started in goal for the Cyclones in 11 matches. She boasts a goals-against average of 1.48 and has collected 48 saves.

Iowa State is led by Tony Minatta, who is in his sixth season at the helm in Ames. Minatta has a record of 33-71-6 as the ISU head coach.

OVERTIME = OUR TIME

After enduring its fourth overtime in its last five outings, the Jayhawks are once again putting up solid performances when the match goes to extra time. Following KU's draw with TCU Sunday the Jayhawks are 10-3-14 in their last 27 contests that have gone past the 90th minute. This stretch dates back to the 2015 season.

Kansas has netted 10 golden goals in this span, which includes six over the last two seasons.

The Jayhawks have been on the wrong end of a golden goal just three times during this four-year stretch and only once in the 13 overtime matches it has played since the start of the 2018.

NO SUNDAY SCARIES

With its 2-2 draw against TCU on Oct. 27, Kansas will conclude the regular season unbeaten on Sundays this season. At 6-0-2 this season, the Jayhawks are looking to finish the year without a Sunday loss for just the second time in program history. In 2016, KU went 6-0-3 on Sundays.

The torrid play on the first day of the week this season comes after the Jayhawks went a combined 5-7-3 on Sundays during the 2017 and 2018 campaigns.

Kansas has a +15 goal differential (20-5), a 0.59 goals-against average and four shutouts in Sunday matches this season.

LET'S GET DEFENSIVE

The Jayhawks have proven to be a stout defensive team, carrying over the trend from their last several seasons. Kansas currently boasts a goals-against average of 0.85 this season, which encompasses eight shutouts in its 18 outings. The Jayhawks are allowing less than five opponent shots on goal per match.

KU has already put together several impressive shutout streaks to start this season. The Jayhawks recently wrapped up their longest shutout streak of the season, a 323-minute stretch. KU has now tallied five opponent scoreless streaks of 300 minutes or more in the last five seasons.

KU'S LONGEST OPPONENT SCORELESS STREAKS

RNK	YEAR (DATES OF STREAK)	LENGTH
1	2001 (Oct.-Nov. 8)	550 min.
2	2004 (Aug. 28-Sept. 11)	492 min.
3	2017 (Aug. 18-Sept. 3)	450 min.
4	2004 (Oct. 8-24)	385 min.
5	2006 (Oct. 13-27)	374 min.
6	2014 (Sept. 19-Oct. 3)	360 min.
	2002 (Sept. 13-27)	360 min.
8	2012 (Aug. 24-Sept. 2)	351 min.
9	2013 (Aug. 23-Sept. 1)	348 min.
10	2019 (Oct. 3-Oct. 24)	323 min.

NO GAMES OFF

Before Kansas soccer even hit the pitch for its first match of the season, the Jayhawks knew they would be in for a gauntlet of a schedule in 2019.

The 2019 Jayhawks' slate, which currently sits as the 14th-toughest in all of NCAA DI, features nine teams that competed in the NCAA Tournament a year ago as well as three reigning conference champions. The Jayhawks, sitting at 11-4-3 after their first 18 games of the season, have played or will play five teams that are ranked or receiving votes in the most recent United Soccer Coaches' top-25 poll. That number includes two squads inside the top-10.

The Jayhawks have already played four top-25 teams over the first two months of the season - No. 20 Memphis (W, 2-1), No. 7 BYU (L, 0-2), No. 25 Oklahoma State (L, 2-5) and No. 14 Texas Tech (T, 0-0).

It appears as though KU could face several more battles with top-25 teams this season with the league tournament still to come. The conference currently features four teams that are ranked or receiving votes in the Coaches' poll and that includes No. 12 Oklahoma State, No. 15 Texas Tech and the 25th-ranked Jayhawks.

QUICK FACTS**GENERAL INFORMATION**

Location	Lawrence, Kan.
Enrollment	28,401
Founded	1866
Nickname	Jayhawks
School Colors	Crimson and Blue (PMS: Blue 293; Crimson 186)
Conference	Big 12
Chancellor	Douglas A. Girod
Athletics Director	Jeff Long
Associate Athletics Director/Soccer Administrator	Jane Fulton
Athletics Website	www.kuathletics.com
Ticket Office Phone	1.800.34.HAWKS (42957)

SOCCER FACILITY

Home Facility (Capacity)	Rock Chalk Park (2,500)
KU Record at Rock Chalk Park	33-17-3 (.651)
Opened	2014
Surface	Natural Grass (Bermuda and Rye)

COACHING STAFF/SUPPORT STAFF

Head Coach	Mark Francis (SMU, 1987)
Record at Kansas	230-167-37 (21st season)
Overall	263-192-38 (24th season)
Associate Head Coach	Kelly Miller (The Cooper Union, 1996)
Year at Kansas	21st
Assistant Coach	Laura Jackson (Iona, 2012)
Year at Kansas	First
Volunteer Assistant	Derek Shoare
Year at Kansas	Fifth

2018 IN REVIEW

Overall Record	12-6-3 (.643)
Big 12 Record	5-4-0 (.556)
Big 12 Finish	6th
Home	9-2-0 (.810)
Away	2-4-1 (.357)
Neutral	1-0-2 (.500)

PROGRAM HISTORY

First Year of Soccer at Kansas	1995 (25th season)
All-Time Record	255-215-40 (.539)
All-Time Big 12 Record	95-109-20 (.469)
Conference Titles	1 (2004)
NCAA Postseason Appearances	8
(2001, 2003, 2004, 2008, 2011, 2014, 2016, 2018)	
NCAA Postseason Record	6-8-0 (.429)

2019 TEAM INFORMATION

Letterwinners Returning/Lost	18/9
Starters Returning/Lost	9/3
Newcomers	8

BIG 12 STANDINGS**BIG 12**

	Record	%	Home	Away	Stk	Pts
Oklahoma State	6-1-1	0.813	3-0	3-1-1	W6	19
Texas Tech	5-1-2	0.750	1-1-2	4-0	W2	17
Texas	5-3	0.625	2-3	3-0	L1	15
TCU	4-2-2	0.625	2-1-2	2-1	T1	14
West Virginia	4-3-1	0.563	2-2	2-1-1	W1	13
KANSAS	3-2-3	0.563	2-1-1	1-1-2	T2	12
Baylor	4-4	0.500	2-2	2-2	W1	12
Oklahoma	3-4-1	0.438	2-1	1-3-1	L2	10
Kansas State	1-7	0.125	1-3	0-4	L3	3
Iowa State	0-8	0.000	0-4	0-4	L8	0

OVERALL

	Record	%	Home	Away	Neut	Stk
Oklahoma State	13-1-3	0.853	8-0-1	5-1-2	0-0-0	W6
Texas Tech	13-2-2	0.824	5-1-2	6-1-0	2-0-0	W2
Texas	10-7	0.588	6-5	4-2	0-0	L1
TCU	10-5-2	0.647	5-2-2	5-3-0	0-0-0	T1
West Virginia	9-6-2	0.588	7-2-1	2-3-1	0-1-0	W1
KANSAS	11-4-3	0.694	7-2-1	4-1-2	0-1-0	T2
Baylor	8-6-3	0.559	4-3-1	4-3-2	0-0-0	W1
Oklahoma	8-7-3	0.528	4-2-1	4-5-2	0-0-0	L2
Kansas State	3-12-2	0.235	3-6-0	0-6-2	0-0-0	L3
Iowa State	3-14	0.176	1-5	2-9	0-0	L9

THIS WEEK IN THE BIG 12

All times central

Thursday, October 31

TCU at West Virginia [FS1], 6 p.m.
 Kansas at Iowa State [Cyclones.tv], 7 p.m.
 Texas at Oklahoma [FSOK], 7 p.m.
 Baylor at Oklahoma State [Big 12 Now on ESPN+], 7 p.m.
 Kansas State at Texas Tech, 7 p.m.

UNITED SOCCER COACHES POLL
OCT. 29, 2019

Rank	Team	Previous	Record
1.	Virginia (26)	842	.14-0-3
2.	Stanford (8)	821	.15-1-0
3.	North Carolina	781	.15-1-1
4.	BYU	735	.15-0-1
5.	Florida State	698	.13-4-0
6.	Arkansas	668	.13-2-2
7.	Wisconsin	616	.13-2-2
8.	South Carolina	603	.12-1-3
9.	Duke	531	.8-1-7
10.	Memphis	516	.15-1-1
11.	Southern California	504	.12-3-1
12.	Oklahoma State	493	.13-1-3
13.	UCLA	470	.11-4-1
14.	Louisville	375	.12-2-2
15.	Texas Tech	345	.13-2-2
16.	Rutgers	307	.14-2-2
17.	Texas A&M	270	.12-3-3
18.	Brown	232	.12-1-1
19.	Georgetown	223	.11-3-3
20.	Michigan	178	.13-4-1
21.	Washington	166	.10-4-2
22.	Clemson	143	.10-5-1
23.	Santa Clara	127	.10-5-2
24.	South Florida	120	.12-3-0
25.	KANSAS	83	.11-4-3

Others receiving votes: Florida (68), Virginia Tech (53), California (26), Iowa (23), Washington State (9), TCU (8), Hofstra (6), Florida Atlantic (4), Xavier (3), NC State (3)

Kansas 2019 opponents are in italics

TOP DRAWER SOCCER POLL
OCT. 28, 2019

Rank	Team	Record	Conf.
1.	Virginia	.14-0-3	.6-0-3
2.	North Carolina	.15-1-1	.8-0-1
3.	Stanford	.15-1-0	.8-0-0
4.	BYU	.15-0-1	.5-0-1
5.	Arkansas	.13-2-2	.7-1-1
6.	Florida State	.13-4-0	.7-2-0
7.	South Carolina	.12-1-3	.6-0-3
8.	Memphis	.15-1-1	.7-0-1
9.	Brown	.12-1-1	.5-0-0
10.	Wisconsin	.13-2-2	.9-0-1
11.	Duke	.8-1-7	.3-0-6
12.	USC	.12-3-1	.5-3-0
13.	UCLA	.11-4-1	.5-3-0
14.	Rutgers	.14-2-2	.8-2-1
15.	Louisville	.12-2-2	.5-2-2
16.	Georgetown	.11-3-3	.5-1-2
17.	Oklahoma State	.13-1-3	.6-1-1
18.	Texas A&M	.12-3-3	.6-2-1
19.	South Florida	.12-3-0	.7-1-0
20.	Clemson	.10-5-1	.4-5-0
21.	Virginia Tech	.11-4-2	.3-4-2
22.	California	.11-3-3	.3-2-3
23.	Washington State	.10-5-1	.3-4-1
24.	Washington	.10-4-2	.6-2-0
25.	Texas Tech	.13-2-2	.5-1-2

Others receiving votes: Vanderbilt (12-4-1), KANSAS (11-4-3), Hofstra (13-3-2), Santa Clara (10-5-2), Michigan (13-4-1)

Kansas 2019 opponents are in italics

RPI TOP-25

Rank	Team	Record
1.	Stanford	.15-1-0
2.	North Carolina	.15-1-1
3.	Virginia	.14-0-3
4.	Florida St.	.13-4-0
5.	Southern California	.12-3-1
6.	Arkansas	.13-2-2
7.	Brown	.12-1-1
8.	Wisconsin	.13-2-2
9.	Virginia Tech	.11-4-2
10.	Washington	.10-4-2
11.	UCLA	.11-4-1
12.	South Carolina	.12-1-3
13.	Rutgers	.14-2-2
14.	Duke	.8-1-7
15.	Texas Tech	.13-2-2
16.	Oklahoma St.	.13-1-3
17.	BYU	.15-0-1
18.	Louisville	.12-2-2
19.	KANSAS	.11-4-3
20.	Texas A&M	.12-3-3
21.	Florida	.10-6-1
22.	Hofstra	.13-3-2
23.	Fla. Atlantic	.13-3-1
24.	Santa Clara	.10-5-2
25.	Memphis	.15-1-1

RPI WATCH

RECORD VS.	GOAL DIFFERENTIAL VS.
RPI 1-25 2-2-1	RPI 1-25 -3
RPI 26-50 0-1-1	RPI 26-50 -1
RPI 51-100 4-1-1	RPI 51-100 +10
RPI 101-150 4-0-0	RPI 101-150 +8
RPI 150+ 1-0-0	RPI 150+ +3

BEST RESULTS
vs #23 Florida Atlantic W, 1-0
vs #25 Memphis W, 2-1
at #15 Texas Tech. T, 0-0

WORST RESULTS
vs. #46 Texas L, 0-1
vs. #60 DePaul L, 0-1

UPCOMING OPPONENTS
RPI Team Conference
203 Iowa State. Big 12

KANSAS
RANK
19

KANSAS
Strength of
Schedule
14

BIG 12
RPI
4

SPREADING THE WEALTH

The KU offense has shown to be a tough assignment for opposing defenses this year after a host of Jayhawks have made their presence known on the stat sheet. Fourteen different Jayhawks have had their hand in at least one of the team's goals thus far in 2019, either scoring or assisting. A total of eight players have managed to tally double-digit shots.

This is a trend that has been carried over from last year's squad which was also an unselfish bunch, as 11 different Jayhawks tallied at least one goal or assist in 2018.

IRON JAYHAWK

Senior Katie McClure has continued an impressive streak into her final year in Lawrence as she has started each of the Jayhawks' last 75 matches of the Jayhawks' matches dating back to her freshman year in 2016. McClure's mark is already among the longest in program history as it sits sixth on the all-time list among field players.

CONSECUTIVE MATCHES STARTED BY
A JAYHAWK FIELD PLAYER

Rnk	Name (Yrs.)	Games
1.	Kayla Morrison (2014-17)	83
	Estelle Johnson (2006-09)	83
	Afton Sauer (2004-07)	83
4.	Whitney Berry (2009-12)	82
	Shelby Williamson (2009-12)	82
6.	Katie McClure (2016-Present)	75

HOME SWEET HOME

Rock Chalk Park has been a welcome site for the Jayhawks in recent years as KU is enjoying a successful four-year stint playing on its home turf. The Jayhawks are 37-16-3 (.685) in matches played at home during the regular season since the start of the 2014 campaign. From 2013-14, Kansas also enjoyed an 11-match home winning streak, the longest in program history.

Since moving into Rock Chalk Park, Kansas has built a goal differential of +42 and boasts a goals-against average of 0.91, a number that includes 20 shutouts.

RPI REVIEW

With the release of the season's sixth official Ratings Percentage Index (RPI) report by the NCAA this week, several good signs stick out for the Jayhawks. Kansas checked in at No. 19 on the list that takes numerous factors into account including strength of schedule, record against top-50 teams and home versus road record. In the first report released on Sept. 24, KU was slotted at No. 8, it's highest to start the year since the weekly RPI report became public in 2011.

This week's report shows that the Big 12 is among the nation's toughest conferences after the conclusion of nonconference play. The league tallied the fourth-highest ranking in the week's RPI and boasts eight of its 10 teams inside the top-70. The conference's high ranking also means the Jayhawks could get more chances to up their national standing with the Blg 12 Championship looming next week.

BOUNCING BACK

The Jayhawks have been good bouncing back when they are coming off a loss, especially when they are playing on their home turf. KU has carried over this trend into this season, claiming wins following each of their three losses so far this season.

Since moving to Rock Chalk Park in 2014, Kansas is 9-3-2 when playing a home match following a loss. That includes a 4-0-0 since the start of the 2018 season.

The KU offense has also proven to be potent in games coming off being shutout. The Jayhawks have not been blanked in consecutive matches since 2015 and are 10-1-4 in matches coming off being shut out in that span.

WEEK-BY-WEEK IN THE POLLS

	PS	1	2	3	4	5	6	7	8	9	10	11	FINAL
United Soccer Coaches	RV	18	11	18	14	17	21	RV	23	23	25		
Top Drawer Soccer	--	--	--	--	RV	RV	RV	--	--	RV	RV		
RPI	--	--	--	--	--	8	13	18	14	17	19		

BIG 12 PLAYER OF THE WEEK AWARDS

AUG. 27 Offensive . . . Katie McClure (KU) Defensive . . . Nikki Panas (OU) Freshman . . . Olyvia Dowell (OSU)	SEPT. 17 Offensive . . . Kirsten Davis (TTU) Defensive . . . Addisyn Merrick (KU) Freshman . . . Mira Emma (ISU)
SEPT. 3 Offensive . . . Kaylee Dao (OU) Defensive . . . Emily Alvarado (TCU) Freshman . . . Gracie Brian (TCU)	SEPT. 24 Offensive . . . Grace Yochum (OSU) Defensive . . . Jennifer Wandt (BU) Freshman . . . Madison White (TTU)
SEPT. 10 Offensive . . . Haley Berg (UT) Defensive . . . Kim Rodriguez (OSU) Freshman . . . Grace Collins (TCU)	OCT. 1 Offensive . . . Yazmeen Ryan (TCU) Defensive . . . Nicole Curry (UT) Freshman . . . Madison White (TTU)

OCT. 8 Offensive . . . Kaylee Dao (OU) Defensive . . . Madison White (TTU) Freshman . . . Elizabeth Kooiman (BU)	OCT. 29 Offensive . . . Charlotte Teeter (TTU) Defensive . . . Madison White (TTU) Freshman . . . Macy Schultz (TTU)
OCT. 15 Offensive . . . Brookelynn Entz (KSU) Defensive . . . Sarah Peters (KU) Defensive . . . Madison White (TTU) Freshman . . . Hannah Anderson (TTU)	NOV. 1 Offensive . . . Defensive . . . Freshman . . .
OCT. 22 Offensive . . . Grace Yochum (OSU) Defensive . . . Sarah Peters (KU)	

KATIE McCLUTCH

Senior Katie McClure has firmly positioned herself as one of the most clutch players in program history. This season, the Wichita product has tallied five game-winning goals, including the winner in the final seconds against No. 20 Memphis on Aug. 26. These late-match heroics are nothing new for McClure, who has proved time and time again throughout her career that she performs best when the match is in its final stages.

Her goal against Kennesaw State on Sept. 22 marked the 16th game-winner of her career and has her at No. 1 on the Kansas all-time list.

Of McClure's 34-career goals, 12 of them have come in the final 15 minutes of regulation or overtime, which includes four golden goals last season.

McCLURE MINUTES

Senior Katie McClure is putting an emphatic stamp on an already outstanding career at KU, having posted 12 goals (five game-winners) and seven assists through her first 18 outings this season. Last year saw her make headlines across the state, the region and the nation. She led the Jayhawks with 11 goals, seven game-winning goals, 28 shots on goal and 25 points, figures that ranked the Wichita product among the top-10 in the Big 12 in their respective categories.

Eighteen matches into her career finale, she has made big jumps on some impressive lists, creeping closer to inserting her name among the top offensive players in Jayhawk history. Her 34-career goals currently rank her second on Kansas' all-time goal scorer chart. McClure's 16 game-winning goals are the most ever for a Jayhawk.

among Big 12 players and were tied for the most by a Jayhawk in school history.

KU PICKED SIXTH IN BIG 12 PRESEASON COACHES' POLL

Kansas soccer was predicted to finish sixth in the 2019 league standings according to the Big 12 preseason coaches' poll which was released two weeks ago. The ranking marked the seventh time in the last eight years that KU has been picked sixth or higher in the conference's preseason poll.

Just three points separated the 2018 Big 12 Championship title-winning Mountaineers from the defending regular-season champion Bears at the top of the poll with 75 and 72 points, respectively. The Longhorns were slotted third with 65 total points ahead of TCU in fourth with 57 points. Texas Tech, Kansas and Oklahoma State were next at fifth, sixth and seventh, while Oklahoma, Iowa State and Kansas State rounded out the poll in the eighth, ninth and tenth spots.

PRESEASON BIG 12 COACHES POLL		
RNK	TEAM (1ST PLACE VOTES)	POINTS
1	West Virginia	75
2	Baylor	72
3	Texas	65
4	TCU	57
5	Texas Tech	52
6	Kansas	44
7	Oklahoma State	33
8	Oklahoma	26
9	Iowa State	17
10	Kansas State	9

FIRST TO SCORE, WINS GALORE

Dating back to the beginning of the 2012 season, now at 162 games, Kansas has developed an interesting trend when it comes to which team tallies the first goal of the match. During that 162-game span, the Jayhawks were on the losing end only four times in contests which they put in the match's first goal. Kansas has amassed a record of 74-4-9 in those games (90.6 winning %), which includes nine of KU's wins and one draw this season.

UP NEXT

The Jayhawks will begin postseason play on Sunday, Nov. 3 with the quarterfinals of the Big 12 Championship at Swope Soccer Village in Kansas City, Missouri. Kansas will learn their seeding and first round opponent following the conclusion of regular-season play Thursday night. If the Jayhawks advance past the quarterfinals, KU will play take the field for the tournament semifinals on Friday, Nov. 8.

KANSAS CAREER GOAL SCORING LEADERS

Rnk	Name (Yrs.)	Goals
1.	Caroline Smith (2002-05)	51
2.	Katie McClure (2016-Present)	34
3.	Liana Salazar (2011-15)	28
4.	Caroline Kastor (2010-13)	26
	Rachel Gilfillan (2001-04)	26

LATE MATCH MAGIC

The Jayhawks have been a clutch bunch so far this season, a trend which they have carried over from a year ago. Kansas has netted 12 goals in the final 15 minutes of regulation or overtime, four of which have been game-winners.

The Jayhawks were also clutch in crunch time during the 2018 campaign. Thirteen of the Jayhawks' 28 goals scored came in the 60th minute or later. That number included 10 goals Kansas tallied in the final 10 minutes of regulation or in overtime.

The Jayhawks came out on top in seven of those matches that saw Kansas score in the 80th minute or later. KU netted five golden goals in 2018, four off the boot of senior forward Katie McClure and one from senior forward Eva Eliasdottir in KU's 2-1 win over TCU (10/12). McClure scored seven game-winners last season. Those seven game-winning strikes ranked her first

NCAA / BIG 12 RANKINGS

BIG 12 Top-10 (10.24.19); NCAA Top-100 (10.24.19)



TEAM

W-L-T Percentage (.694, 11-4-3)	3	57
Points Per Game (5.3)	5	75
Goals Per Game (1.9)	4	67
Assists Per Game (1.6)	4	74
Shots Per Game (15.1)	6	65
Shots on Goal Per Game (6.3)	5	-
Corners Per Game (5.7)	5	63
Offsides Per Game (1.8)	6	-
Fouls Per Game (9.6)	5	-
Goals-Against Avg. (0.85)	3	56
Saves Per Game (3.2)	10	-
Save Percentage (.781)	3	-
Shutouts (8)	3	-

INDIVIDUAL (ALL GAMES)

TOTAL POINTS

Katie McClure (31)	2	16
--------------------	---	----

TOTAL GOALS

Katie McClure (12)	2	21
--------------------	---	----

GAME-WINNING GOALS

Katie McClure (5)	1	16
-------------------	---	----

SHOTS PER GAME

Katie McClure (4.3)	2	22
---------------------	---	----

SHUTOUTS

Sarah Peters (7)	1	41
------------------	---	----

GOALS-AGAINST AVERAGE

Sarah Peters (0.82)	3	51
---------------------	---	----

GAMES STARTED STREAKS

Player	Current	Career Long
Katie McClure	75	75
Ceri Holland	58	58
Sarah Peters	38	38
Kaela Hansen	38	38
Isabella Cavalcante	22	22
Addisyn Merrick	20	44
Sophie Maierhofer	17	17
Ellie Prybylski	11	11
Grace Wiltgen	6	6
Mandi Duggan	5	5
Samantha Barnett	3	3
Elise Reina	0	24
Eva Eliasdottir	0	20
Madison Meador	0	15
Kailey Lane	0	7
Kathryn Castro	0	6
Bri Amos	0	4
Ebba Costow	0	4
Italia Bradley	0	2

CARD ACCUMULATIONS

Player	Yellow	Red
Ceri Holland	3	0
Mandi Duggan	2	0
Isabella Cavalcante	1	0
Sophie Maierhofer	1	0
Katie McClure	1	0
Addisyn Merrick	1	0
Sarah Peters	1	0
Mya Sheridan	1	0

Yellow Accumulation Rule: Any player(s) or coach(es) who have received a total of five cautions in one season shall be suspended and shall not participate in the next regularly scheduled game, including postseason games.



HEAD COACH

MARK FRANCIS

21st SEASON AT KANSAS, 1999-PRESENT

Collegiate Record: 263-192-38 (.572)

At Kansas: 230-167-37 (.573) / **Big 12:** 89-88-17 (.502)

Alma Mater: SMU, 1987 / **Hometown:** London, England

KU IN THE FRANCIS ERA

15 seasons with 10 or more victories
First-Ever Big 12 Championship in **2004**
Eight NCAA Tournament Appearances
 KU's First-Ever **Sweet 16** Appearance
 Achieved First-Ever **Top-10** Ranking
Six All-Americans
Four Freshman All-Americans
74 All-Big 12 Selections
25 NSCAA All-Central Region Players
Four Academic All-Americans
177 Academic All-Big 12 Selections
15-Time NSCAA Team Academic Award

Continuity is an essential part of a successful athletic program, and in his first 20 seasons at the helm of Kansas soccer, head coach Mark Francis has brought just that.

After taking over a program just past its infancy, Francis effectively etched his signature on Kansas soccer by becoming not only the winningest coach in its history, but leading his team to eight NCAA Tournaments, 16 Big 12 Championship Tournaments and helping 74 student-athletes garner all-conference accolades, including six that went on to earn All-America status.

Since 1999, Francis has amassed a 219-163-34 record, with 14 seasons of at least 10 victories. He is ranked second among active Big 12 coaches in wins at a single school. He also leads the league among active coaches with his 86 career Big 12 victories.

Francis' résumé is extensive, as he has coached and played at nearly all levels of the game. Francis worked his way up through the head coaching ranks wearing a whistle at the high school, junior college, Division I and professional levels. As a player, Francis was a three-time All-American at SMU and spent 10 seasons playing professionally in the APSL, the NPSL and the USISL.

After moving into its new, state-of-the-art facility at Rock Chalk Park in 2014, Francis' program took another step forward, elevating itself as one of the top teams in the Big 12 and a perennial top-25 NCAA squad. Now as the tenants of one of the top soccer facilities in the U.S., Francis and his staff are attracting some of the top talent from across the globe to Lawrence and the results over the last five seasons can back up the progress being made. Francis saw his Jayhawk team take the program even further in 2018 as he coached Kansas to its eighth NCAA Tournament appearance and their fifth in the second round of the Big Dance.

Francis helped his squad to their highest Big 12 finish in over a decade in 2016 as the Jayhawks posted a second-place finish on the league table, only suffering one loss in the conference season.

It was a season to remember for Francis and the Jayhawks in 2014, as he led his squad to one of the best seasons in program history. He picked up his 200th career coaching victory in KU's 4-1 win over Wake Forest and proceed to see his team reel off eight-straight wins to start the season, the best start in program history. His team ended the year with 15 victories, the third-most ever by a Jayhawk squad and made the program's sixth NCAA tournament appearance. Junior Liana Salazar also had a breakout season in becoming Kansas' sixth All-America honoree after she was named to the Third Team.

Francis tallied his 150th KU coaching victory in 2012 and led his squad to its 10th 10-win season during his tenure in Lawrence. Senior Whitney Berry became KU's all-time assists leader (32) and the program's 11th player to be named to the All-Big 12 First Team.

The 2008 season was one for the record books as Kansas recorded 13 wins and returned to the NCAA Tournament. The Jayhawks knocked off four nationally-ranked teams en route to their tournament berth, including a pair of wins over long-time nemesis Texas A&M. KU became the first team in three years to defeat the Aggies twice in the same season.

The Jayhawks topped four other ranked teams during the season and capped their remarkable run with a 2-1 triumph over Denver in the first round of the NCAA Tournament. Several players received accolades throughout and following the season. Freshman Emily Cressy was

named a Freshman All-American by Soccer Buzz as well as Soccer America, while teammates Monica Dolinsky and Johnson joined her on the All-Central Region Team. Dolinsky was also named All-Big 12 First Team, while Cressy became KU's first Big 12 Rookie of the Year.

The 2004 season was a year filled with program firsts as numerous records were broken. The Jayhawks compiled a program-best record of 18-5 on their way to the Big 12 Championship. It was the first for the soccer team and second among KU women's sports, the first going to basketball in 1997. Francis earned Big 12 Coach of the Year as well as the Central Region Coach of the Year honors. He also won his 100th overall match with a victory against Texas Tech on Oct. 1.

In 2003, Kansas soccer reached new heights under Francis' leadership. The Jayhawks posted an 18-6-1 mark and advanced to the Sweet 16 round of the NCAA Tournament. With a 6-3-1 record in the Big 12, KU finished third. Along with the team accomplishments, several players were honored for their efforts during the 2003 campaign, including Caroline Smith being named to several All-America teams as well as Holly Gault being selected as a Freshman All-American by Soccer Buzz. With Francis' help, KU's players etched their names in the record book, as Smith became the program's all-time leader in goals, points and game-winning goals and Miller set the school mark in career shutouts and career GAA.

In 2002, Francis led Kansas to an overall record of 11-7-2, including a then-school record six-straight wins and a seven-game unbeaten streak during the first half of the season. The Jayhawks opened the season 6-1-1, marking their best start ever. Francis' team ranked in the Central Region's Top 10 for 10 consecutive weeks.

FRANCIS BY THE NUMBERS

Year	School	Record	Conf. Rec(Finish)	Conf. Tournament	NCAA
1996	South Alabama	2-17-0	--	--	--
1997	South Alabama	18-3-1	5-0-0 (1st)	Champion (2-0-0)	--
1998	South Alabama	13-5-0	5-0-0 (1st)	Semifinals (0-1-0)	--
1999	Kansas	8-10-1	3-6-1 (9th)	--	--
2000	Kansas	7-11-2	3-6-1 (18th)	Quarterfinals (0-1-0)	--
2001	Kansas	13-7-0	7-3-0 (4th)	Quarterfinals (0-1-0)	First Round (0-1-0)
2002	Kansas	11-7-2	4-5-1 (6th)	Quarterfinals (0-1-0)	--
2003	Kansas	18-6-1	6-3-1 (3rd)	Semifinals (1-1-0)	Sweet 16 (2-1-0)
2004	Kansas	18-5-0	8-2-0 (1st)	Semifinals (1-1-0)	Second Round (1-1-0)
2005	Kansas	11-7-2	6-3-1 (12nd)	Quarterfinals (0-1-0)	--
2006	Kansas	11-7-1	6-4-0 (4th)	Quarterfinals (0-0-1)	--
2007	Kansas	7-10-4	5-2-3 (13rd)	Quarterfinals (0-1-0)	--
2008	Kansas	13-8-2	4-5-1 (7th)	Semifinals (1-0-1)	Second Round (1-1-0)
2009	Kansas	12-8-2	4-6-0 (17th)	Quarterfinals (0-1-0)	--
2010	Kansas	6-13-0	1-9-0 (11th)	--	--
2011	Kansas	11-9-1	3-5-0 (16th)	Quarterfinals (0-0-1)	First Round (0-1-0)
2012	Kansas	10-8-2	3-5-0 (6th)	Quarterfinals (0-1-0)	--
2013	Kansas	7-11-2	2-5-1 (8th)	Quarterfinals (0-1-0)	--
2014	Kansas	15-6-0	5-3-0 (3rd)	Quarterfinals (0-1-0)	First Round (0-1-0)
2015	Kansas	10-9-2	3-4-1 (6th)	Final (2-1-0)	--
2016	Kansas	11-6-4	5-1-2 (2nd)	Quarterfinals (0-1-0)	Second Round (1-1-0)
2017	Kansas	8-9-3	3-5-1 (6th)	Quarterfinals (0-1-0)	--
2018	Kansas	12-6-3	5-4-0 (6th)	Quarterfinals (0-0-1)	Second Round (1-1-0)
2019	Kansas	11-4-3	3-2-3	--	--
At Kansas	21 seasons	230-167-37 (.573)	89-88-17 (.502)	5-14-4 (.212)	5-8-0 (.385)
OVERALL	24 seasons	263-192-38 (.572)	98-88-17 (.524)	7-15-4 (.346)	5-8-0 (.385)

CATEGORICAL RECORDS

	Big 12	Overall		Big 12	Overall
Overall	3-2-3	11-4-3	vs. RPI 1-25 opponents	0-1-1	0-2-1
Home	2-1-1	7-2-1	vs. RPI 26-50 opponents	1-1-1	3-1-1
Road	1-1-2	4-1-2	vs. RPI 51-100 opponents	1-0-1	5-1-1
Neutral Sites	0-0-0	0-1-0	vs. RPI 101-150 opponents	0-0-0	2-0-0
			vs. RPI 151+ opponents	1-0-0	1-0-0
On Thursdays	1-2-1	3-3-1	vs. UnitedSoccer ranked opponents	0-1-1	1-2-1
On Fridays	1-0-0	2-1-0	vs. UnitedSoccer Top-10 opponents	0-0-0	0-1-0
On Sundays	1-0-2	6-0-2	vs. UnitedSoccer unranked opponents	3-1-2	10-2-2
When Scoring First	3-0-1	9-0-1	vs. nonconference opponents	0-0-0	8-2-0
When Opponent Scores First	0-2-1	2-4-1			
When Leading at Half	2-0-1	6-0-1	In one-goal games	1-1-0	5-2-0
When Trailing at Half	0-1-1	2-1-1			
When Tied at Half	1-1-1	3-2-1	In 90+ degrees	0-0-0	0-0-0
In Regulation	2-2-0	10-4-0	In 80-89 degrees	1-0-1	2-1-1
In Overtime	1-0-3	1-0-3	In 70-79 degrees	0-1-1	5-2-1
In August	0-0-0	3-0-0	In 60-69 degrees	1-1-0	3-1-0
In September	1-1-0	6-3-0	In 50-59 degrees	1-0-0	1-0-0
In October	2-1-3	2-1-3	In sub-50 degrees	0-0-1	0-0-1
In November	0-0-0	0-0-0			
When scoring zero goals	0-1-1	0-3-1	Wearing white uniforms	1-1-0	3-2-0
When scoring one goal	1-0-1	3-0-1	Wearing blue uniforms	0-0-2	5-1-2
When scoring two goals	0-1-1	3-1-1	Wearing red uniforms	0-1-1	1-1-1
When scoring three goals	1-0-0	2-0-0	Wearing alternate uniforms	2-0-0	2-0-0
When scoring four goals or more	1-0-0	3-0-0			
When allowing zero goals	2-0-1	7-0-1	In televised games	3-2-3	10-3-3
When allowing one goal	1-1-1	4-2-1			
When allowing two goals	0-0-1	0-1-1			
When allowing three goals	0-0-0	0-0-0			
When allowing four goals or more	0-1-0	0-1-0			
When outshooting opponent	1-2-2	6-3-2			
When being outshot	2-0-1	5-1-1			
When tied in shots	0-0-0	0-0-0			

MISCELLANEOUS STATS

QUICKEST GOAL:
Ceri Holland (1:39) vs. Kansas State, 10/18/19

QUICKEST GOAL AGAINST:
Enzi Broussard (4:43) of West Virginia, 10/24/19

GAME-WINNING GOALS AFTER 75':
Katie McClure (88:54) vs. Memphis, 8/29/19
Kailey Lane (84:51) at Purdue, 9/8/19
Chais Wright (79:43) at W. Michigan, 9/15/19
Mandi Duggan (98:07) at Oklahoma, 10/10/19

GAME-TYING GOALS AFTER 75':
Ceri Holland (83:18) vs. West Virginia, 10/24/19

GAME-WINNING GOALS AGAINST AFTER 75':

GAME-TYING GOALS AGAINST AFTER 75':
Messiah Bright (89:47) of TCU (10.27.19)

MULTI-GOAL GAMES:
Katie McClure (3) vs. Nebraska, 8/22/19
Ceri Holland (2) vs. Loyola-Chicago, 8/25/19
Katie McClure (2) vs. Kennesaw State, 9/22/19
Mandi Duggan (2) vs. Baylor, 9/29/19
Katie McClure (2) vs. Kansas State, 10/18/19

MULTI-GOAL GAMES AGAINST:
Charme Margan (2) of Oklahoma State, 10/3/19

HAT TRICKS:
Katie McClure vs. Nebraska, 8/22/19

HAT TRICKS AGAINST:

OWN GOALS FOR:

OWN GOALS AGAINST:

RED CARDS:

OPPONENT RED CARDS:

STARTERS - BY MATCH

	GK	F	F	M	M	M	D	D	D	D	D
Nebraska (8/22)	Peters	McClure	Amos	Costow	Maierhofer	Holland	Prybylski	Hansen	Merrick	Cavalcante	Reina
Loyola-Chicago (8/25)	Peters	McClure	Amos	Costow	Maierhofer	Holland	Prybylski	Hansen	Merrick	Cavalcante	Reina
Memphis (8/29)	Peters	McClure	Amos	Costow	Maierhofer	Holland	Prybylski	Hansen	Merrick	Cavalcante	Reina
Florida Atlantic (9/1)	Peters	McClure	Amos	Costow	Maierhofer	Holland	Reina	Hansen	Merrick	Meador	Cavalcante
DePaul (9/6)	Peters	McClure	Amos	Costow	Maierhofer	Holland	Bradley	Hansen	Merrick	Meador	Cavalcante
Purdue (9/8)	Peters	McClure	Lane	Castro	Maierhofer	Holland	Bradley	Hansen	Merrick	Meador	Cavalcante
Northwestern (9/13)	Peters	McClure	Lane	Castro	Maierhofer	Holland	Prybylski	Hansen	Merrick	Meador	Cavalcante
Western Michigan (9/15)	Peters	McClure	Lane	Castro	Maierhofer	Holland	Prybylski	Hansen	Merrick	Meador	Cavalcante
BYU (9/19)	Peters	McClure	Lane	Castro	Maierhofer	Holland	Prybylski	Hansen	Merrick	Meador	Cavalcante
Kennesaw State (9/22)	Peters	McClure	Lane	Castro	Maierhofer	Holland	Prybylski	Hansen	Merrick	Meador	Cavalcante
Texas (9/26)	Peters	McClure	Lane	Castro	Maierhofer	Holland	Prybylski	Hansen	Merrick	Meador	Cavalcante
Baylor (9/29)	Peters	McClure	Lane	Costow	Maierhofer	Holland	Prybylski	Hansen	Merrick	Cavalcante	Wiltgen
Oklahoma State (10/3)	Peters	McClure	Lane	Costow	Maierhofer	Holland	Prybylski	Hansen	Merrick	Cavalcante	Wiltgen
Oklahoma (10/10)	Peters	McClure	Duggan	Costow	Maierhofer	Holland	Prybylski	Hansen	Merrick	Cavalcante	Wiltgen
Texas Tech (10/13)	Peters	McClure	Duggan	Costow	Maierhofer	Holland	Prybylski	Hansen	Merrick	Cavalcante	Wiltgen
Kansas State (10/18)	Peters	McClure	Duggan	Barnett	Maierhofer	Holland	Prybylski	Hansen	Merrick	Cavalcante	Wiltgen
West Virginia (10/24)	Peters	McClure	Duggan	Barnett	Maierhofer	Holland	Prybylski	Hansen	Merrick	Cavalcante	Wiltgen
TCU (10/27)	Peters	McClure	Duggan	Barnett	Maierhofer	Holland	Prybylski	Hansen	Merrick	Cavalcante	Wiltgen
Iowa State (10/31)											

THE LAST TIME...

TEAM

Home Win.....3-0 vs. Kansas State, Oct. 18, 2019
 Home Loss.....0-1 vs. Texas, Sept. 16, 2019
 Home Tie.....1-1 vs. West Virginia, Oct. 24, 2019

Away Win.....1-0 at Oklahoma, Oct. 10, 2019
 Away Loss.....2-5 at Oklahoma State, Oct. 3, 2019
 Away Tie.....2-2 (2 OT) at TCU, Oct. 27, 2019

Neutral Win.....3-0 vs. Oregon State, Aug. 24, 2018
 Neutral Loss.....0-1 vs. DePaul, Sept. 6, 2019
 Neutral Tie.....0-0 (2 OT) vs. Texas, Oct. 28, 2018

OT Win.....1-0 (OT) at Oklahoma, Oct. 10, 2019
 OT Loss.....1-2 (OT) vs. Texas Tech, Oct. 14, 2018
 Played 2 OTs.....2-2 (2 OT) at TCU, Oct. 27, 2019

Big 12 Win.....3-0 vs. Kansas State, Oct. 18, 2019
 Big 12 Loss.....2-5 vs. Oklahoma State, Oct. 3, 2019
 Big 12 Tie.....2-2 (2 OT) at TCU, Oct. 27, 2019

Win over Top-25 team.....2-1 vs. #20 Memphis, Aug. 29, 2019
 Win over Top-10 team.....2-1 vs. #9 Texas, Oct. 13, 2017

Scored 0 Goals.....vs. Texas Tech, Oct. 13, 2019
 Scored 1 Goal.....vs. West Virginia, Oct. 24, 2019
 Scored 2 Goals.....at TCU, Oct. 27, 2019
 Scored 3 Goals.....vs. Kansas State, Oct. 18, 2019
 Scored 4 Goals.....vs. Baylor, Sept. 29, 2019
 Score 5+ Goals.....6 vs. Loyola-Chicago, Aug. 25, 2019

Allowed 0 Goals.....vs. Kansas State, Oct. 18, 2019
 Allowed 1 Goal.....vs. West Virginia, Oct. 24, 2019
 Allowed 2 Goals.....at TCU, Oct. 27, 2019
 Allowed 3 Goals.....at Baylor, Oct. 21, 2018
 Allowed 4 Goals.....at North Carolina, Nov. 16, 2018
 Allowed 5+ Goals.....5 at Oklahoma State, Oct. 6, 2019

Amassed 20+ Shots.....26 vs. West Virginia, Oct. 24, 2019
 Amassed 30+ Shots.....31 at Western Michigan, Sept. 15, 2019

Allowed 20+ Shots.....(25) TCU, Oct. 17, 2019
 Allowed 30+ Shots.....(33) Texas, Nov. 5, 2004

Amassed 10+ Shots on Goal.....11 vs. West Virginia, Oct. 24, 2019
 Amassed 15+ Shots on Goal.....15 at Western Michigan, Sept. 15, 2019

Allowed 10+ Shots on Goal.....10 at Oklahoma State, Oct. 3, 2019
 Allowed 15+ Shots on Goal.....20 by Georgia, Aug. 29, 2010

Amassed 10+ Corner Kicks.....10 at Iowa State, Sept. 29, 2017
 Allowed 10+ Corner Kicks.....12 vs. TCU, Nov. 1, 2017

Called for 15+ Fouls.....17 at TCU, Oct. 27, 2019
 Called for 25+ Fouls.....25 vs. Oklahoma State, Oct. 9, 1998

Opponent Called for 15+ Fouls.....(17) Texas Tech, Sept. 24, 2017
 Opponent Called for 25+ Fouls.....(27) Oklahoma State, Oct. 9, 2016

Scored 1 Penalty Kick.....vs. TCU, Oct. 27, 2019
 Scored 2 Penalty Kicks.....vs. Texas Tech, Sept. 23, 2016

Allowed 1 Penalty Kick.....vs. Texas, Oct. 19, 2018
 Allowed 2 Penalty Kicks.....Oral Roberts, Sept. 27, 2009

INDIVIDUAL

Hat Trick.....Katie McClure vs. Nebraska (Aug. 22, 2019)
 Brace.....(2) Katie McClure vs. Kansas State (Oct. 18, 2019)

2 Assists.....Ebba Costow vs. Kansas State (Oct. 18, 2019)
 3 Assists.....Whitney Berry vs. Texas (Sept. 30, 2011)

3 Points (Goal+Assist).....Katie McClure vs. Purdue (Sept. 8, 2019)
 5+ Points.....(5) Katie McClure vs. Kansas State (Oct. 18, 2019)

8+ Shots.....(12) Katie McClure vs. West Virginia (Oct. 24, 2019)
 10+ Shots.....(12) Katie McClure vs. West Virginia (Oct. 24, 2019)

5+ Shots on Goal.....(6) Katie McClure vs. West Virginia (Oct. 24, 2019)

Scored Penalty Kick.....Ceri Holland vs. TCU (Oct. 27, 2019)
 Missed Penalty Kick.....Ceri Holland vs. Texas (Oct. 19, 2018)

10+ Saves.....(11) Kaitlyn Stroud vs. Oklahoma (Nov. 1, 2013)
 Shutout.....Sarah Peters vs. Kansas State (Oct. 18, 2019)

Red Card.....Hannah Lukinac at TCU (Sept. 22, 2017)

INDIVIDUAL OPPONENT

Hat Trick.....Anna Canniglia, Nebraska (Oct. 23, 2009)
 Brace.....Charme Morgan, Oklahoma State (Oct. 3, 2019)

2 Assists.....Jaci Jones, Oklahoma State (Oct. 3, 2019)
 3+ Assists.....(3) Julia Ashley, North Carolina (Nov. 16, 2018)

3 Points.....Julia Ashley & Rachael Dorwart, North Carolina (Nov. 16, 2018)
 5+ Points.....(5) Amanda Hill, West Virginia (Oct. 16, 2015)

8+ Shots.....(9) Messiah Bright, TCU (Oct. 27, 2019)
 10+ Shots.....(13) Courtney Saunders, Baylor (Oct. 2, 1998)

5+ Shots on Goal.....(6) Maddie Pokorny, Saint Louis (Nov. 9, 2017)

Scored Penalty Kick.....Kayra Dolas, Texas (Oct. 19, 2018)
 Missed Penalty Kick.....Paula Leblic, Oregon State (Aug. 27, 2017)

10+ Saves.....(13) Maggie Rogers, Western Michigan (Sept. 15, 2019)
 Shutout.....Madison White, Texas Tech (Oct. 13, 2019)

Red Card.....Kassidie Stade, Oklahoma (Nov. 1, 2013)

OVERALL STATISTICS



2019 Kansas Soccer
Kansas Overall Individual Statistics (as of Oct 27, 2019)
All games



Overall: 11-4-3 Conf: 3-2-3 Home: 7-2-1 Away: 4-1-2 Neut: 0-1-0

##	Player	gp-gs	min	g	a	pts	sh	sh%	sog	sog%	yc	rc	gwg	pk-att	fg	ot	hat	gtg	foul	cnr
12	McClure, Katie	18-18	1257	12	7	31	77	.156	31	.403	1	0	5	0-0	4	0	1	1	6	0
15	Holland, Ceri	18-18	1410	7	3	17	51	.137	21	.412	3	0	1	3-3	1	0	0	2	6	8
4	Lane, Kailey	18-8	810	4	1	9	15	.267	8	.533	0	0	3	0-0	1	0	0	0	3	0
22	Duggan, Mandi	18-5	717	4	0	8	22	.182	12	.545	1	0	1	0-0	2	1	0	0	2	1
28	Amos, Bri	18-5	587	1	4	6	9	.111	5	.556	0	0	0	0-0	0	0	0	0	5	4
8	Costow, Ebba	17-9	678	1	4	6	3	.333	2	.667	0	0	0	0-0	0	0	0	0	1	25
27	Maierhofer, Sophie	18-18	1462	2	0	4	15	.133	5	.333	1	0	0	0-0	1	0	0	0	5	3
2	Prybylski, Ellie	18-15	922	0	4	4	4	.000	1	.250	0	0	0	0-0	0	0	0	0	0	24
13	Castro, Kathryn	18-6	653	1	1	3	16	.062	8	.500	0	0	0	0-0	0	0	0	0	2	3
14	Barnett, Samantha	18-3	703	1	1	3	12	.083	6	.500	1	0	0	0-0	0	0	0	0	3	0
11	Wright, Chais	13-0	360	1	0	2	5	.200	3	.600	0	0	1	0-0	1	0	0	0	1	0
21	Cavalcante, Isabella	18-18	1482	0	2	2	13	.000	4	.308	1	0	0	0-0	0	0	0	0	5	0
26	Merrick, Addisyn	18-18	1630	0	1	1	2	.000	0	.000	1	0	0	0-0	0	0	0	0	0	0
16	Bradley, Italia	16-2	538	0	1	1	1	.000	0	.000	0	0	0	0-0	0	0	0	0	0	1
19	Eliasdottir, Eva	10-0	293	0	0	0	6	.000	2	.333	0	0	0	0-0	0	0	0	0	1	0
10	Briley, Gracely	6-0	122	0	0	0	6	.000	1	.167	0	0	0	0-0	0	0	0	0	0	2
6	Hansen, Kaela	18-18	1413	0	0	0	6	.000	0	.000	0	0	0	0-0	0	0	0	0	2	0
7	Hall, Avery	7-0	89	0	0	0	3	.000	2	.667	0	0	0	0-0	0	0	0	0	0	0
23	Wiltgen, Grace	17-7	699	0	0	0	2	.000	1	.500	0	0	0	0-0	0	0	0	0	0	0
9	Meador, Madison	13-8	660	0	0	0	2	.000	0	.000	0	0	0	0-0	0	0	0	0	0	0
24	Reina, Elise	4-4	236	0	0	0	1	.000	1	1.000	0	0	0	0-0	0	0	0	0	0	8
20	Giubilato, Margherit	3-0	38	0	0	0	0	.000	0	.000	0	0	0	0-0	0	0	0	0	0	0
18	Gavillet, Emilie	1-0	10	0	0	0	0	.000	0	.000	0	0	0	0-0	0	0	0	0	0	0
17	Beyer, Lia	3-0	63	0	0	0	0	.000	0	.000	0	0	0	0-0	0	0	0	0	0	0
3	Sheridan, Mya	7-0	73	0	0	0	0	.000	0	.000	1	0	0	0-0	0	0	0	0	0	0
1	Pasar, Melania	2-0	37	0	0	0	0	.000	0	.000	0	0	0	0-0	0	0	0	0	0	0
00	Peters, Sarah	18-18	1641	0	0	0	0	.000	0	.000	1	0	0	0-0	0	0	0	0	1	0
Total		18	-	34	29	97	271	.125	113	.417	11	0	11	3-3	10	1	1	3	172	-
Opponents		18	-	16	13	45	199	.080	73	.367	9	0	4	0-1	7	0	0	2	155	-

#	Goalie	gp-gs	Goal Average			Saves		Record				Shots faced
			min	ga	gaavg	saves	pct	w	l	t	sho/cbo	
18	Gavillet, Emilie	1-0	9:31	0	0.00	0	.000	0	0	0	0/1	0
00	Peters, Sarah	18-17	1641:50	15	0.82	55	.786	11	4	3	7/1	193
1	Pasar, Melania	2-0	36:46	1	2.45	0	.000	0	0	0	0/1	3
TM TEAM		-	0:00	0	0.00	2	1.000	0	0	0	1/0	0
Total		18	1688:07	16	0.85	57	.781	11	4	3	8	196
Opponents		18	1688:07	34	1.81	79	.699	4	11	3	4	267

Team saves: 2

Goals by Period	1st	2nd	OT	OT2	Total
Kansas	15	18	1	0	34
Opponents	6	10	0	0	16

Shots by Period	1st	2nd	OT	OT2	Total
Kansas	106	150	10	5	271
Opponents	90	99	8	2	199

Saves by Period	1st	2nd	OT	OT2	Total
Kansas	29	24	3	1	57
Opponents	31	42	4	2	79

Corners by Period	1st	2nd	OT	OT2	Total
Kansas	33	64	3	0	100
Opponents	31	37	0	3	71

Fouls by Period	1st	2nd	OT	OT2	Total
Kansas	77	88	2	5	172
Opponents	74	75	2	4	155

Attendance Summary	KU	Opponent
Total	7060	5561
Dates/Avg Per Date	10/706	7/794
Neutral Site #/Avg	1/137	

CONFERENCE STATISTICS



2019 Kansas Soccer
Kansas Overall Individual Statistics (as of Oct 27, 2019)
Conference games



Overall: 3-2-3 Conf: 3-2-3 Home: 2-1-1 Away: 1-1-2 Neut: 0-0-0

##	Player	gp-gs	min	g	a	pts	sh	sh%	sog	sog%	yc	rc	gwg	pk-att	fg	ot	hat	gtg	foul	cnr
12	McClure, Katie	8-8	668	3	4	10	43	.070	17	.395	1	0	0	0-0	1	0	0	0	1	0
15	Holland, Ceri	8-8	710	4	0	8	25	.160	12	.480	3	0	1	1-1	1	0	0	1	3	8
22	Duggan, Mandi	8-5	464	4	0	8	12	.333	6	.500	0	0	1	0-0	2	1	0	0	1	1
8	Costow, Ebba	7-4	256	1	2	4	2	.500	2	1.000	0	0	0	0-0	0	0	0	0	0	9
4	Lane, Kailey	8-3	354	1	0	2	7	.143	3	.429	0	0	1	0-0	0	0	0	0	0	0
28	Amos, Bri	8-0	172	0	2	2	0	.000	0	.000	0	0	0	0-0	0	0	0	0	1	2
2	Prybylski, Ellie	8-8	420	0	1	1	3	.000	1	.333	0	0	0	0-0	0	0	0	0	0	14
13	Castro, Kathryn	8-1	259	0	1	1	2	.000	1	.500	0	0	0	0-0	0	0	0	0	2	2
16	Bradley, Italia	8-0	283	0	1	1	0	.000	0	.000	0	0	0	0-0	0	0	0	0	0	0
27	Maierhofer, Sophie	8-8	748	0	0	0	5	.000	1	.200	1	0	0	0-0	0	0	0	0	2	1
21	Cavalcante, Isabella	8-8	788	0	0	0	5	.000	2	.400	0	0	0	0-0	0	0	0	0	3	0
19	Eliasdottir, Eva	7-0	210	0	0	0	5	.000	2	.400	0	0	0	0-0	0	0	0	0	1	0
14	Barnett, Samantha	8-3	425	0	0	0	3	.000	2	.667	1	0	0	0-0	0	0	0	0	2	0
6	Hansen, Kaela	8-8	674	0	0	0	3	.000	0	.000	0	0	0	0-0	0	0	0	0	0	0
23	Wiltgen, Grace	8-7	400	0	0	0	1	.000	0	.000	0	0	0	0-0	0	0	0	0	0	0
26	Merrick, Addisyn	8-8	782	0	0	0	0	.000	0	.000	0	0	0	0-0	0	0	0	0	0	0
11	Wright, Chais	6-0	207	0	0	0	0	.000	0	.000	0	0	0	0-0	0	0	0	0	1	0
9	Meador, Madison	3-1	48	0	0	0	0	.000	0	.000	0	0	0	0-0	0	0	0	0	0	0
7	Hall, Avery	1-0	2	0	0	0	0	.000	0	.000	0	0	0	0-0	0	0	0	0	0	0
3	Sheridan, Mya	1-0	10	0	0	0	0	.000	0	.000	1	0	0	0-0	0	0	0	0	0	0
Total		8	-	13	11	37	116	.112	49	.422	7	0	3	1-1	4	1	0	1	76	-
Opponents		8	-	10	10	30	111	.090	46	.414	7	0	2	0-1	3	0	0	2	73	-

#	Goalie	gp-gs	Goal Average			Saves		Record				Shots faced
			min	ga	gaavg	saves	pct	w	l	t	sho/cbo	
00	Peters, Sarah	8-7	788:07	10	1.14	35	.778	3	2	3	3/0	109
TM	TEAM	-	0:00	0	0.00	1	1.000	0	0	0	0/0	0
Total		8	788:07	10	1.14	36	.783	3	2	3	3	109
Opponents		8	788:07	13	1.48	36	.735	2	3	3	2	114

Team saves: 1

Goals by Period	1st	2nd	OT	OT2	Total
Kansas	3	9	1	0	13
Opponents	4	6	0	0	10

Shots by Period	1st	2nd	OT	OT2	Total
Kansas	36	65	10	5	116
Opponents	47	54	8	2	111

Saves by Period	1st	2nd	OT	OT2	Total
Kansas	15	17	3	1	36
Opponents	10	20	4	2	36

Corners by Period	1st	2nd	OT	OT2	Total
Kansas	12	25	3	0	40
Opponents	15	20	0	3	38

Fouls by Period	1st	2nd	OT	OT2	Total
Kansas	32	37	2	5	76
Opponents	31	36	2	4	73

Attendance Summary	KU	Opponent
Total	3928	4102
Dates/Avg Per Date	4/982	4/1026
Neutral Site #/Avg	0/0	

KANSAS TEAM STATS GAME-BY-GAME

Date	Opponent	Score	G	A	Pts	Sh	Sh%	Sog	Sog%	GW	GT	UA	OT	PK-Att	YC	RC	Min
Aug 22, 2019	NEBRASKA	4-0	4	3	11	15	.267	6	.400	1	0	2	0	0-0	0	0	991
Aug 25, 2019	LOYOLA-CHICAGO	6-0	6	6	18	23	.261	12	.522	1	0	2	0	1-1	0	0	991
Aug 29, 2019	MEMPHIS	2-1	2	1	5	10	.200	7	.700	1	1	1	0	1-1	1	0	991
Sep 01, 2019	FLORIDA ATLANTIC	1-0	1	2	4	4	.250	1	.250	1	0	0	0	0-0	0	0	990
Sep 06, 2019	vs DePaul	0-1	0	0	0	20	.000	3	.150	0	0	0	0	0-0	0	0	990
Sep 08, 2019	at Purdue	2-1	2	3	7	13	.154	5	.385	1	1	0	0	0-0	2	0	989
Sep 13, 2019	at Northwestern	1-0	1	1	3	8	.125	4	.500	1	0	0	0	0-0	1	0	991
Sep 15, 2019	at Western Michigan	2-0	2	1	5	31	.065	15	.484	1	0	1	0	0-0	0	0	990
Sep 19, 2019	BYU	0-2	0	0	0	12	.000	4	.333	0	0	0	0	0-0	0	0	1003
Sep 22, 2019	KENNESAW STATE	3-1	3	1	7	19	.158	7	.368	1	0	2	0	0-0	0	0	989
Sep 26, 2019	TEXAS	0-1	0	0	0	12	.000	1	.083	0	0	0	0	0-0	0	0	989
Sep 29, 2019	BAYLOR	4-1	4	4	12	10	.400	5	.500	1	0	1	0	0-0	1	0	989
Oct 03, 2019	at Oklahoma State	2-5	2	1	5	14	.143	7	.500	0	0	1	0	0-0	2	0	990
Oct 10, 2019	at Oklahoma	1-0	1	0	2	10	.100	4	.400	1	0	1	1	0-0	1	0	1079
Oct 13	at Texas Tech	0-0	0	0	0	11	.000	7	.636	0	0	0	0	0-0	0	0	1210
Oct 18, 2019	KANSAS STATE	3-0	3	3	9	18	.167	7	.389	1	0	0	0	0-0	0	0	990
Oct 24, 2019	WEST VIRGINIA	1-1	1	2	4	26	.038	11	.423	0	1	0	0	0-0	0	0	1211
Oct 27, 2019	at TCU	2-2	2	1	5	15	.133	7	.467	0	0	1	0	1-1	3	0	1210
Kansas			34-16	34	29	97	.125	113	.417	11	3	12	1	3-3	11	0	18583
				16	13	45	.080	73	.367	4	2	6	0	0-1	9	0	-

TEAM PER-GAME

Games played: 18

Shots per game: 15.06;Goals per game: 1.89

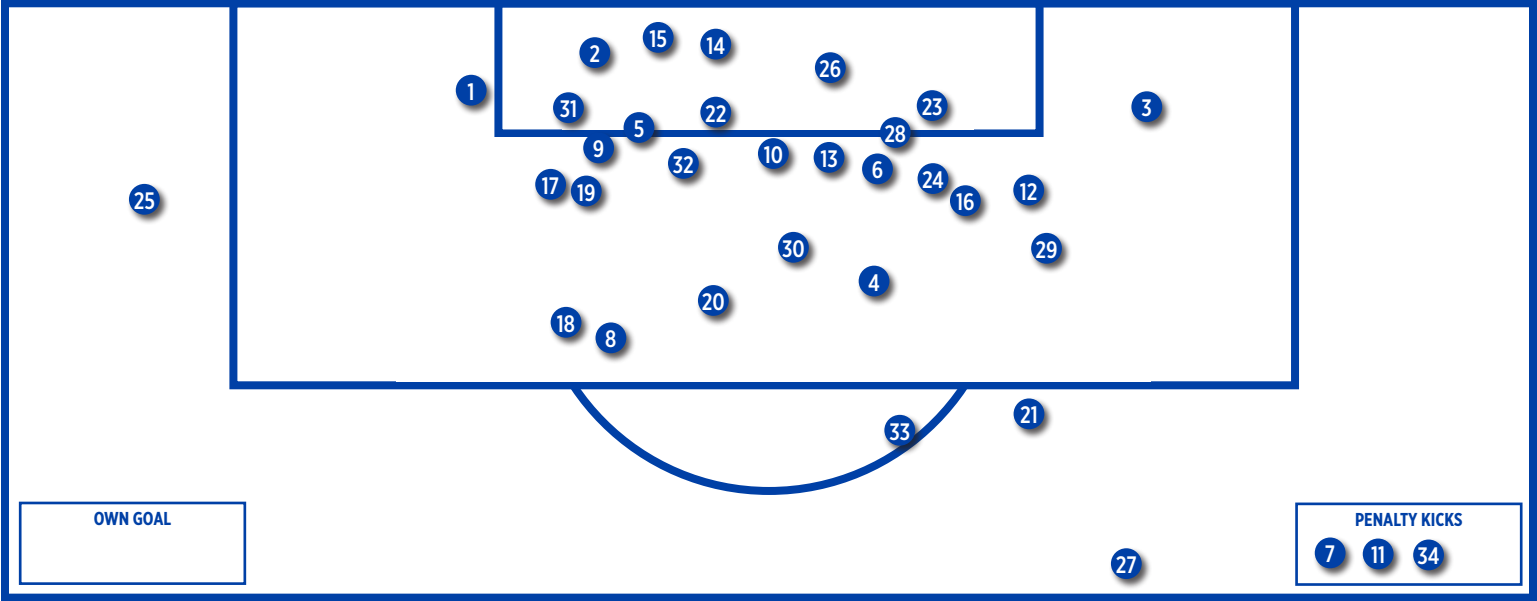
Assists per game: 1.61;Points per game: 5.39

KANSAS GAME-BY-GAME COMPARISON (KANSAS/OPPONENT)

Date	Opponent	Score	Goals	Assists	Shots	On Goal	Corners	CKgoals	Fouls	YC	RC	Offside
Aug 22	NEBRASKA	4-0	4/0	3/0	15/13	6/3	3/5	0/0	9/4	0/0	0/0	4/3
Aug 25	LOYOLA-CHICAGO	6-0	6/0	6/0	23/3	12/0	8/2	1/0	10/8	0/0	0/0	0/1
Aug 29	MEMPHIS	2-1	2/1	1/0	10/11	7/3	4/4	0/1	18/14	1/0	0/0	1/1
Sep 01	FLORIDA ATLANTIC	1-0	1/0	2/0	4/9	1/2	8/4	0/0	8/13	0/1	0/0	4/1
Sep 06	DePaul	0-1	0/1	0/0	20/5	3/1	9/2	0/0	6/6	0/0	0/0	1/0
Sep 08	Purdue	2-1	2/1	3/1	13/18	5/8	3/3	0/0	13/11	2/0	0/0	3/3
Sep 13	Northwestern	1-0	1/0	1/0	8/3	4/3	6/4	0/0	7/10	1/0	0/0	0/1
Sep 15	Western Michigan	2-0	2/0	1/0	31/5	15/1	6/2	0/0	13/7	0/0	0/0	2/0
Sep 19	BYU	0-2	0/2	0/1	12/16	4/4	6/5	0/0	6/5	0/1	0/0	4/3
Sep 22	KENNESAW STATE	3-1	3/1	1/1	19/5	7/2	7/2	0/0	6/4	0/0	0/0	4/0
Sep 26	TEXAS	0-1	0/1	0/2	12/9	1/5	9/3	0/0	5/8	0/1	0/0	2/1
Sep 29	BAYLOR	4-1	4/1	4/1	10/15	5/4	4/9	1/1	5/9	1/2	0/0	2/4
Oct 03	Oklahoma State	2-5	2/5	1/3	14/13	7/10	4/2	0/1	15/9	2/1	0/0	0/2
Oct 10	Oklahoma	1-0	1/0	0/0	10/16	4/6	4/4	0/0	15/10	1/0	0/0	3/0
Oct 13	Texas Tech	0-0	0/0	0/0	11/14	7/4	5/5	0/0	8/11	0/0	0/0	2/1
Oct 18	KANSAS STATE	3-0	3/0	3/0	18/14	7/7	3/4	1/0	7/10	0/1	0/0	1/1
Oct 24	WEST VIRGINIA	1-1	1/1	2/1	26/5	11/3	8/3	0/0	4/7	0/0	0/0	4/0
Oct 27	TCU	2-2	2/2	1/3	15/25	7/7	3/8	0/0	17/9	3/2	0/0	5/0
Totals		34-16	34/16	29/13	271/199	113/73	100/71	3/3	172/155	11/9	0/0	42/22

Note: Game totals are displayed in the format TEAM/OPPONENT for each category

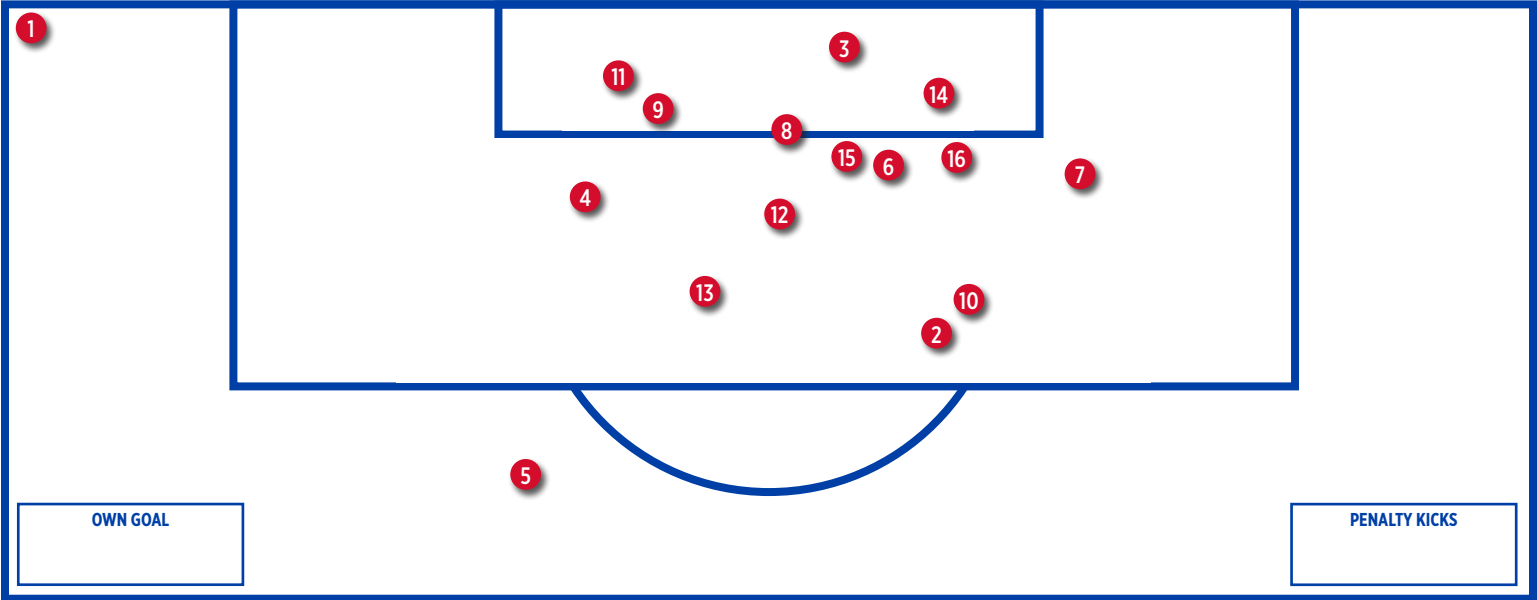
KANSAS GOAL CHART



KANSAS GOAL INFORMATION

1 - Katie McClure (Amos) vs. Nebraska, 2:54	13 - Katie McClure (Amos, Cavalcante) vs. Florida Atlantic, 12:21	25 - Ebba Costow (unassisted) vs. Baylor, 89:59 *
2 - Bri Amos (McClure, Holland) vs. Nebraska, 8:07	14 - Katie McClure (Barnett) vs. Purdue, 58:14	26 - Ceri Holland (McClure) vs. Oklahoma St., 52:38
3 - Katie McClure (unassisted) vs. Nebraska, 24:18	15 - Kailey Lane (Prybylski, McClure) vs. Purdue, 84:51	27 - Mandi Duggan (unassisted) vs. Oklahoma St., 61:22
4 - Katie McClure (unassisted) vs. Nebraska, 77:40	16 - Kailey Lane (Prybylski) vs. Northwestern, 24:06 *	28 - Mandi Duggan (unassisted) vs. Oklahoma, 98:07
5 - Katie McClure (Holland) vs. Loyola-Chicago, 3:27	17 - Chais Wright (unassisted) vs. Western Michigan, 79:43 *	29 - Ceri Holland (McClure) vs. Kansas State, 1:39
6 - Sophie Maierhofer (McClure, Prybylski) vs. Loyola-Chicago, 26:59	18 - Samantha Barnett (Costow) vs. Western Michigan, 80:29	30 - Katie McClure (Costow) vs. Kansas State, 79:14
7 - Ceri Holland (unassisted) vs. Loyola-Chicago, 27:22 <	19 - Sophie Maierhofer (Holland) vs. Kennesaw State, 7:47	31 - Katie McClure (Costow) vs. Kansas State, 80:01 *
8 - Kathryn Castro (Lane, Merrick) vs. Loyola-Chicago, 34:41	20 - Katie McClure (unassisted) vs. Kennesaw State, 17:00	32 - Ceri Holland (Castro, Amos) vs. West Virginia, 83:18
9 - Kailey Lane (unassisted) vs. Loyola-Chicago, 41:22	21 - Katie McClure (unassisted) vs. Kennesaw State, 55:38	33 - Katie McClure (Bradley) vs. TCU, 20:04
10 - Ceri Holland (Costrow) vs. Loyola-Chicago, 53:04*	22 - Mandi Duggan (Amos) vs. Baylor, 29:09	34 - Ceri Holland (unassisted) vs. TCU, 87:26 <
11 - Ceri Holland (penalty) vs. Memphis, 51:42 <	23 - Kailey Lane (McClure, Prybylski) vs. Baylor, 49:52	
12 - Katie McClure (Cavalcante) vs. Memphis, 88:54	24 - Mandi Duggan (McClure) vs. Baylor, 80:42	

OPPONENT GOAL CHART



OPPONENT GOAL INFORMATION

1 - Stasia Mallin (Memphis), 8:44 *	11 - Julia Lenhardt (Oklahoma St), 31:01 +
2 - Jade Eriksen-Russo (DePaul), 45:26	12 - Charme Morgan (Oklahoma St), 52:08
3 - Hannah Melchiorre (Purdue), 20:57 *	13 - Gabriella Coleman (Oklahoma St), 70:11
4 - Elise Flake (BYU), 45:33	14 - Enzi Broussard (West Virginia), 4:43
5 - Mikayla Colohan (BYU), 47:14	15 - Tara Smith (TCU), 48:11 *
6 - Camryn Simmons (Kennesaw State), 73:32	16 - Messiah Bright (TCU), 89:47
7 - Cyera Hintzen (Texas), 69:36 +	
8 - Michaela Gorman (Baylor), 85:38 *	
9 - Camy Huddleston (Oklahoma St), 9:52 *	
10 - Charme Morgan (Oklahoma St), 28:28	

Key: + Off free kick, < Penalty Kick, * Off Corner

SINGLE MATCH INDIVIDUAL RECORDS

POINTS

No.	Player	Points
1.	Katie McClure (vs. Nebraska, Aug. 22, 2019)	7
	Shannon McCabe (vs. Francis Marion, Oct. 19, 2008)	7
	Caroline Smith (vs. Northwestern, Aug. 29, 2003)	7
3.	Grace Hagan (vs. Saint Louis, Sept. 14, 2018)	6
	Monica Dolinsky (at Missouri, Oct. 15, 2006)	6
	Jessica Smith (vs. Oklahoma State, Oct. 7, 2005)	6
	Caroline Smith (vs. Florida State, Sept. 12, 2003)	6
	Monica Brothers (at Oklahoma State, Sept. 30, 2001)	6
	Natalie Hoogveld (at Colorado, Oct. 14, 2001)	6
	Brianna Valento (vs. St. Louis, Oct. 30, 2001)	6

GOALS

No.	Player	Goals
1.	Katie McClure (vs. Nebraska, Aug. 22, 2019)	3
	Grace Hagan (vs. Saint Louis, Sept. 14, 2018)	3
	Shannon McCabe (vs. Francis Marion, Oct. 19, 2008)	3
	Jessica Smith (vs. Oklahoma State, Oct. 7, 2005)	3
	Caroline Smith (vs. Florida State, Sept. 12, 2003)	3
	Caroline Smith (vs. Northwestern, Aug. 29, 2003)	3
	Brianna Valento (vs. St. Louis, Oct. 30, 2001)	3
	Natalie Hoogveld (at Colorado, Oct. 14, 2001)	3
	Monica Brothers (vs. Oklahoma State, Sept. 30, 2001)	3

ASSISTS

No.	Player	Goals
1.	Hilla Rantala (at Oklahoma State, Sept. 30, 2001)	4
2.	Whitney Berry (vs. Texas, Sept. 30, 2011)	3
	Monica Dolinsky (vs. Texas A&M, Nov. 5, 2008)	3
	Jessica Bush (vs. UAB, Sept. 5, 2008)	3
	Hilla Rantala (vs. St. Louis, Oct. 30, 2001)	3
	Melanie Schroeder (vs. UNLV, Sept. 7, 2001)	3

SHOTS

No.	Player	Shots
1.	Katie McClure (vs. West Virginia, Oct. 24, 2019)	12
	Caroline Smith (vs. Missouri, Oct. 28, 2005)	12
3.	Katie McClure (vs. Kansas State, Oct. 18, 2019)	10
	Caroline Smith (vs. Colorado, Sept. 27, 2002)	10
	Denise Cooke (vs. CMSU, Oct. 13, 1995)	10

SHOTS ON GOAL

No.	Player	SOG
1.	Caroline Smith (vs. Missouri, Oct. 28, 2005)	7
2.	Katie McClure (vs. West Virginia, Oct. 24, 2019)	6
	Caroline Smith (at Mississippi State, Sept. 8, 2002)	6
4.	Grace Hagan (vs. Saint Louis, Sept. 14, 2018)	5

	Ingrid Vidal (at Missouri, Oct. 21, 2011)	5
	Jessica Smith (vs. Oklahoma State, Oct. 7, 2005)	5
	Caroline Smith (vs. UC Irvine, Sept. 16, 2005)	5
	Caroline Smith (vs. Baylor, Oct. 3, 2004)	5
	Nicole Cauzillo (vs. Texas Tech, Oct. 1, 2004)	5
	Caroline Smith (vs. Colorado, Sept. 27, 2002)	5
	Monica Brothers (vs. North Texas, Aug. 31, 2001)	5

SAVES

No.	Player	Saves
1.	Betsy Pollard (at Texas Tech, Oct. 3, 1999)	16
2.	Kat Liebetrau (at Georgia, Aug. 29, 2010)	15
	Laura Rohde (at Mississippi, Oct. 29, 1999)	15
	Jen Fecke (vs. UTEP, Oct. 6, 1996)	15
5.	Betsy Pollard (at Georgia, Sept. 17, 1999)	14
	Betsy Pollard (at Utah, Sept. 3, 1999)	14
	Jen Fecke (at Baylor, Sept. 14, 1997)	14

INDIVIDUAL STREAKS

Consecutive Matches w/ a Point	9
(Hilla Rantala, Aug. 31-Oct. 5, 2001)	
Consecutive Matches w/ a Goal	.5 (twice)
(Liana Salazar, Aug. 22 - Sept. 5 2014)	
(Hilla Rantala, Sept. 1-Sept. 23, 2001)	
Consecutive Matches w/ an Assist	4
(Whitney Berry, Sept. 27-Oct. 9, 2009)	
Consecutive Matches w/ a GWG	4
(Katie McClure, Aug. 22-Sept. 1, 2019)	
Consecutive Shutouts	5
(Meghan Miller, Aug. 28-Sept. 9, 2004)	
OPPONENT HIGHS	
Points	7
(Anna Caniglia, Nebraska, Oct. 23, 2009)	
Goals	3 (nine times)
Last: (Anna Caniglia, Nebraska, Oct. 23, 2009)	
Assists	3
(Julia Ashley, North Carolina, Nov. 16, 2018)	
(Kristen Koop, Texas A&M, Sept. 13, 1996)	
(Sandy Smith, Nebraska, Sept. 22, 1995)	
Shots	13
(Courtney Saunders, Baylor, Oct. 2, 1998)	
Shots on Goal	6 (two times)
(Maddie Pokorny, Saint Louis, Nov. 9, 2018)	
(Becky Nelson, Oklahoma, Oct. 24, 2003)	

Single Match Team Records

Points	19
(vs. Francis Marion, Oct. 19, 2008)	
Goals	7
(vs. Francis Marion, Oct. 19, 2008)	
Assists	6 (five times)
(last vs. Loyola Chicago, Aug. 25, 2019)	
Shots	36
(vs. Michigan, Aug. 26, 2005)	
Shots on Goal	20
(vs. Wyoming, Aug. 29, 1999)	
Saves	16
(at Texas Tech, Oct. 3, 1999)	
Shots Allowed	45
(at Nebraska, Sept. 22, 1995)	
Shots on Goal Allowed	19
(at Nebraska, Oct. 15, 1999)	
Fewest Shots	0
(at Virginia, Sept. 19, 1997)	
Fewest Shots on Goal	0 (3 times)
(vs. Baylor, Oct. 15, 2017), (vs. West Virginia, Nov. 6, 2013), (at Virginia, Sept. 19, 1997)	
Corner Kicks	21
(vs. Baylor, Sept. 23, 2005)	
Fouls	25
(at Oklahoma State, Oct. 9, 1998)	
Goals (In Defeat)	4
(vs. Nebraska, Oct. 23, 2009 [L, 4-7])	
Goals (Both Teams)	11
(vs. Nebraska, Oct. 23, 2009 [L, 4-7])	
Goals Allowed	8 (twice)
(at Nebraska, Oct. 15, 1999), (at Nebraska, Sept. 22, 1995)	

Goals Allowed (In Victory)	3 (three times)
(vs. Duke, Sept. 10, 2006 [W, 4-3]) (at Oklahoma State, Sept. 30, 2001 [W, 5-3]) (vs. Colorado, Sept. 28, 1997 [W, 4-3])	
First Half Goals	5
(vs. Loyola-Chicago, Aug. 25, 2019)	
Second Half Goals	5
(vs. Francis Marion, Oct. 19, 2008)	
Margin of Victory	7
(vs. Francis Marion, Oct. 19, 2008 [W, 7-0])	
Margin of Defeat	7 (twice)
(at Nebraska, 10/15/1999 [1-8, L]), (at Nebraska, 9/22/1995 [1-8, L])	
Quickest Goal	0:18
(Caroline Kastor, at Colorado, Oct. 25, 2010)	
Quickest Goal Allowed	0:11
(Whitney Palmer, Oklahoma, Oct. 10, 2010)	
Quickest Goal (Second Half)	45:11
(Shayna Teutsch, at UTEP, Oct. 6, 1996)	
Quickest Goal Allowed (Second Half)	45:33
(Elise Flake, BYU, Sept. 19, 2019)	
Quickest Goal (Overtime)	91:55
(Kim Boyer, vs. Missouri State, Sept. 18, 2007)	
Quickest Goal Allowed (Overtime)	92:03
(Kasey Langdon, Oklahoma St., Oct. 10, 2008)	
Shortest Span Between Goals	0:15
(Lindsey Horner, Carmel Kaplinger vs. Iowa State, Sept. 29, 2000)	
Shortest Span Between Goals Allowed	0:14
(Katie Baruth and Carol Ditch, Texas, Sept. 15, 1996)	
Shortest Span Between Goals (Both Teams)	0:08
(KayAnne Gummertsall, Duke and Holly Gault, Kansas, Sept. 10, 2006)	
Attendance (Home)	2,514
(vs. Kansas State, Oct. 6, 2017)	
Attendance (Away)	5,205
(at Saint Louis, Sept. 8, 2017)	

SINGLE SEASON RECORDS

POINTS

No.	Player	Points
1.	.Caroline Smith (2003)	41 (19 goals, 3 assists)
2.	.Caroline Smith (2004)	32 (11 goals, 10 assists)
	.Hilla Rantala (2001)	32 (10 goals, 12 assists)
4.	Katie McClure (2019)	31 (12 goals, 7 assists)
5.	.Liana Salazar (2014)	30 (13 goals, 4 assists)
6.	.Whitney Berry (2011)	29 (8 goals, 13 assists)
7.	.Ingrid Vidal (2011)	28 (11 goals, 6 assists)
	.Monica Dolinsky (2008)	28 (9 goals, 10 assists)
9.	.Emily Cressy (2009)	27 (12 goals, 3 assists)
	.Caroline Smith (2002)	27 (12 goals, 3 assists)

GOALS

No.	Player	Goals
1.	.Caroline Smith (2003)	19
2.	.Liana Salazar (2014)	13
3.	.Emily Cressy (2009)	12
	.Caroline Smith (2002)	12
5.	Katie McClure (2019)	11
	.Katie McClure (2018)	11
	.Caroline Kastor (2012)	11
	.Ingrid Vidal (2011)	11
	.Caroline Smith (2004)	11
10.	.Hilla Rantala (2001)	10

GAME-WINNING GOALS

No.	Player	GWG
1.	.Katie McClure (2018)	7
	.Caroline Smith (2003)	7
3.	Katie McClure (2019)	5
	.Caroline Kastor (2012)	5
	.Emily Cressy (2009)	5
	.Rachel Gilfillan (2004)	5
7.	.Eight Times	4

ASSISTS

No.	Player	Assists
1.	.Whitney Berry (2011)	13
2.	.Hilla Rantala (2001)	12
3.	.Monica Dolinsky (2009)	10
	.Monica Dolinsky (2008)	10
	.Caroline Smith (2004)	10
6.	.Whitney Berry (2009)	9
7.	.Caroline Smith (2005)	8
	.Melanie Schroeder (2000)	8
	.Meghann Haven (1999)	8
10.	Katie McClure (2019)	7
	.Ali Kimura (2014)	7
	.Whitney Berry (2012)	7
	.Caroline Kastor (2011)	7
	.Jessica Bush (2008)	7
	.Holly Gault (2006)	7
	.Lauren Williams (2004)	7

SHOTS

No.	Player	Shots
1.	.Caroline Smith (2005)	98
2.	.Caroline Smith (2004)	92
3.	.Whitney Berry (2011)	85
	.Caroline Smith (2003)	85
5.	.Monica Dolinsky (2008)	79
6.	Katie McClure (2019)	77
7.	.Emily Cressy (2009)	73
	.Monica Dolinsky (2009)	71
9.	.Denise Cooke (1995)	68
10.	.Whitney Berry (2012)	66

SHOTS ON GOAL

No.	Player	SOG
1.	.Caroline Smith (2003)	46
2.	.Caroline Smith (2004)	45
3.	.Caroline Smith (2005)	43
4.	.Emily Cressy (2009)	42
5.	.Whitney Berry (2011)	41
6.	.Monica Dolinsky (2008)	37
7.	.Caroline Kastor (2012)	32
	.Caroline Smith (2002)	32
8.	.Katie McClure (2019)	31
10.	.Whitney Berry (2012)	30
	.Hilla Rantala (2001)	30

* - Individual shots on goal kept since 1999

MINUTES PLAYED (FIELD)

No.	Player	Minutes
1.	.Estelle Johnson (2008)	2,110
2.	.Shelby Williamson (2009)	2,012
3.	.Estelle Johnson (2009)	1,987
4.	.Kayla Morrison (2016)	1,985
5.	.Afton Sauer (2004)	1,981
6.	.Kayla Morrison (2015)	1,977
7.	.Morgan Williams (2015)	1,963
8.	.Geneva Magness (2009)	1,958
9.	.Lauren Jackson (2009)	1,916
10.	.Afton Sauer (2007)	1,911

* - Individual minutes kept since 2004

MINUTES PLAYED (KEEPERS)

No.	Player	Minutes
1.	.Meghan Miller (2003)	2,281
2.	.Maddie Dobyns (2015)	2,074
3.	.Meghan Miller (2004)	2,060
4.	.Sarah Peters (2018)	1,989
5.	.Colleen Quinn (2007)	1,952

SAVES

No.	Player	Saves
1.	.Jen Fecke (1996)	150
2.	.Jen Fecke (1997)	147
3.	.Betsy Pollard (1999)	125
4.	.Kat Liebetrau (2010)	113
5.	.Meghan Miller (2003)	111

GOALS AGAINST AVG. (MINIMUM 1,000 MIN.)

No.	Player	GAA
1.	.Meghan Miller (2004) (13 GA, 2,061 min.)	0.57
2.	.Kaitlyn Stroud (2014) (14 GA, 1,722 min.)	0.73
3.	.Meghan Miller (2003) (19 GA, 2,281 min.)	0.75
4.	.Maddie Dobyns (2016) (14 GA, 1,554 min.)	0.81
5.	Sarah Peters (2019) (15 GA, 1,642 min.)	0.82
6.	.Julie Hanley (2006) (19 GA, 1,738 min.)	0.98

SAVE PERCENTAGE (MINIMUM 1,000 MIN.)

No.	Player	Save Pct.
1.	.Meghan Miller (2004) (13 GA, 96 saves)	.881
2.	.Meghan Miller (2003) (19 GA, 111 saves)	.854
3.	.Kaitlyn Stroud (2014) (14 GA, 77 saves)	.846
4.	.Betsy Pollard (1999) (29 GA, 125 saves)	.812
5.	.Kaitlyn Stroud (2013) (25 GA, 107 saves)	.811

SHUTOUTS

No.	Player	Shutouts
1.	.Meghan Miller (2004)	11
2.	.Meghan Miller (2003)	10
3.	.Sarah Peters (2018)	9
4.	.Kaitlyn Stroud (2014)	8
5.	Sarah Peters (2019)	7
	.Julie Hanley (2006)	7

WINS

No.	Player	Wins
1.	.Meghan Miller (2004)	18
	.Meghan Miller (2003)	18
3.	.Kaitlyn Stroud (2014)	14
4.	.Julie Hanley (2008)	13
	.Meghan Miller (2001)	13
6.	.Sarah Peters (2018)	12
7.	Sarah Peters (2019)	11
	.Julie Hanley (2006)	11

CAREER RECORDS

POINTS

No.	Player	Pts.
1. . . .	Caroline Smith (2002-05)	126 (51 goals, 24 assists)
2. . . .	Katie McClure (2016-Present)	82 (34 goals, 14 assists)
3. . . .	Whitney Berry (2009-12)	78 (23 goals, 32 assists)
4. . . .	Monica Dolinsky (2006-09)	76 (23 goals, 30 assists)
5. . . .	Liana Salazar (2011-15)	68 (28 goals, 12 assists)
	Rachel Gilfillan (2001-04)	68 (26 goals, 16 assists)
7. . . .	Grace Hagan (2015-18)	67 (25 goals, 17 assists)
8. . . .	Caroline Kastor (2010-13)	66 (26 goals, 14 assists)
9. . . .	Ashley Williams (2012-15)	52 (21 goals, 10 assists)
	Emily Cressy (2008-10)	52 (23 goals, 6 assists)

GOALS

No.	Player	Goals
1. . . .	Caroline Smith (2002-05)	51
2. . . .	Katie McClure (2016-Present)	34
3. . . .	Liana Salazar (2011-15)	28
4. . . .	Caroline Kastor (2010-13)	26
	Rachel Gilfillan (2001-04)	26
6. . . .	Grace Hagan (2015-18)	25
7. . . .	Whitney Berry (2009-12)	23
	Emily Cressy (2008-10)	23
	Monica Dolinsky (2006-09)	23
10. . . .	Ashley Williams (2012-15)	21

GAME-WINNING GOALS

No.	Player	GWG
1. . . .	Katie McClure (2016-Present)	16
2. . . .	Caroline Smith (2002-05)	14
3. . . .	Emily Cressy (2008-10)	11
4. . . .	Ashley Williams (2012-15)	10
	Rachel Gilfillan (2001-04)	10
6. . . .	Monica Brothers (2001-04)	8
7. . . .	Liana Salazar (2011-15)	7
	Caroline Kastor (2010-13)	7
	Monica Dolinsky (2006-09)	7
	Jessica Bush (2005-08)	7
11. . . .	Jamie Fletcher (2011-14)	6
	Shannon McCabe (2006-09)	6

ASSISTS

No.	Player	Assists
1. . . .	Whitney Berry (2009-12)	32
2. . . .	Monica Dolinsky (2006-09)	30
3. . . .	Caroline Smith (2002-05)	24
4. . . .	Jessica Bush (2005-08)	21
5. . . .	Holly Gault (2003-06)	19
	Hilla Rantala (1999-2001)	19
7. . . .	Grace Hagan (2015-18)	17
	Amy Geha (2001-04)	17
	Melanie Schroeder (1998-2001)	17
10. . . .	Rachel Gilfillan (2001-04)	16

SHOTS

No.	Player	Shots
1. . . .	Caroline Smith (2002-05)	333
2. . . .	Whitney Berry (2009-12)	267
3. . . .	Katie McClure (2016-Present)	241
4. . . .	Monica Dolinsky (2006-09)	226
5. . . .	Jamie Fletcher (2011-14)	206
6. . . .	Liana Salazar (2011-15)	194
7. . . .	Grace Hagan (2015-Present)	179
8. . . .	Rachel Gilfillan (2001-04)	175
9. . . .	Caroline Kastor (2010-13)	159
10. . . .	Ashley Williams (2012-15)	154

SHOTS ON GOAL

No.	Player	SOG
1. . . .	Caroline Smith (2002-05)	166
2. . . .	Whitney Berry (2009-12)	113
3. . . .	Katie McClure (2016-Present)	110
4. . . .	Monica Dolinsky (2006-09)	96
5. . . .	Rachel Gilfillan (2001-04)	92
6. . . .	Liana Salazar (2011-15)	86
7. . . .	Grace Hagan (2015-18)	82
8. . . .	Jamie Fletcher (2011-14)	79
9. . . .	Emily Cressy (2008-10)	78
10. . . .	Caroline Kastor (2010-13)	77

GAMES PLAYED (FIELD)

No.	Player	Games
1. . . .	Amy Geha (2001-04)	88
2. . . .	Rachel Gilfillan (2001-04)	87
	Lauren Williams (2001-04)	87
4. . . .	Estelle Johnson (2006-09)	85
	Holly Gault (2003-06)	85
	Monica Brothers (2001-04)	85
7. . . .	Lacey Novak (2003-06)	84
	Stacy Leeper (2001-04)	84
9. . . .	Grace Hagan (2015-18)	83
	Kayla Morrison (2014-17)	83
	Liana Salazar (2011-15)	83
	Kim Boyer (2006-09)	83
	Monica Dolinsky (2006-09)	83
	Jessica Bush (2005-08)	83
	Afton Sauer (2004-07)	83
	Jessica Smith (2002-05)	83

GAMES STARTED (FIELD)

No.	Player	Games
1. . . .	Kayla Morrison (2014-17)	83
	Estelle Johnson (2006-09)	83
	Afton Sauer (2004-07)	83
4. . . .	Liana Salazar (2011-15)	82
	Whitney Berry (2009-12)	82
	Shelby Williamson (2009-12)	82
	Jessica Bush (2005-08)	82
	Holly Gault (2003-06)	82
9. . . .	Grace Hagan (2015-18)	80
	Taylor Estrada (2013-16)	80
11. . . .	Caroline Smith (2002-05)	79
12. . . .	Jamie Fletcher (2011-14)	76

MINUTES PLAYED (FIELD)*

No.	Player	Minutes
1. . . .	Estelle Johnson (2006-09)	7,470
2. . . .	Afton Sauer (2004-07)	7,459
3. . . .	Kayla Morrison (2014-17)	7,368
4. . . .	Shelby Williamson (2009-12)	7,232
5. . . .	Addisyn Merrick (2016-Present)	6,982
6. . . .	Liana Salazar (2011-15)	6,933
7. . . .	Whitney Berry (2009-12)	6,739
8. . . .	Taylor Estrada (2013-16)	6,578
9. . . .	Grace Hagan (2015-18)	6,454
10. . . .	Missy Geha (2005-08)	6,416

* Minutes played became an official stat in 2004

GAMES PLAYED (KEEPERS)

No.	Player	Games
1. . . .	Meghan Miller (2001-04)	88
2. . . .	Julie Hanley (2005-09)	65
3. . . .	Kaitlyn Stroud (2010-14)	63
4. . . .	Maddie Dobyns (2014-Present)	60
5. . . .	Kat Liebetrau (2009-12)	54

SAVES

No.	Player	Saves
1. . . .	Jen Fecke (1996-98)	375
2. . . .	Meghan Miller (2001-04)	362
3. . . .	Kaitlyn Stroud (2010-2014)	281
4. . . .	Kat Liebetrau (2009-12)	228
	Julie Hanley (2005-09)	228

GOALS AGAINST AVG. (MIN. 2,500 MIN.)

No.	Player	GAA
1. . . .	Sarah Peters (2018-Present)	0.94 (38 GA, 3,631 min.)
2. . . .	Meghan Miller (2001-04)	0.98 (85 GA, 7,836 min.)
3. . . .	Maddie Dobyns (2014-17)	1.06 (64 GA, 5,427 min.)
4. . . .	Kaitlyn Stroud (2010-14)	1.21 (75 GA, 5,582 min.)
5. . . .	Julie Hanley (2005-09)	1.32 (81 GA, 5,515 min.)

SAVE PERCENTAGE (MIN. 100 SHOTS FACED)

No.	Player	Save Pct.
1. . . .	Betsy Pollard (1996-99)814 (29 GA, 127 saves)
2. . . .	Meghan Miller (2001-04)810 (85 GA, 362 saves)
3. . . .	Kaitlyn Stroud (2010-14)789 (75 GA, 281 saves)
4. . . .	Colleen Quinn (2004-07)781 (44 GA, 157 saves)
5. . . .	Jen Fecke (1996-98)773 (110 GA, 375 saves)

SHUTOUTS

No.	Player	Shutouts
1. . . .	Meghan Miller (2001-04)	28
2. . . .	Sarah Peters (2018-Present)	16
	Julie Hanley (2005-09)	16
4. . . .	Maddie Dobyns (2014-17)	14
5. . . .	Kaitlyn Stroud (2010-14)	13
6. . . .	Kat Liebetrau (2009-12)	12

WINS

No.	Player	Wins
1. . . .	Meghan Miller (2001-04)	60
2. . . .	Julie Hanley (2005-09)	36
3. . . .	Kaitlyn Stroud (2010-14)	32
4. . . .	Maddie Dobyns (2014-17)	29
5. . . .	Sarah Peters (2018-Present)	23
	Kat Liebetrau (2009-12)	23

CAREER STATISTICS

Amos, Bri											
Season	GP-GS	Min.	G	A	Pts	Shot	Shot%	SOG	SOG%	GW	PK-Att
2018	10-1	228	0	1	1	3	.000	0	.000	0	0-0
2019	18-5	587	1	4	6	9	.111	5	.556	0	0-0
TOTAL	28-6	815	1	5	7	12	.083	5	.417	0	0-0

Barnett, Samantha											
Season	GP-GS	Min.	G	A	Pts	Shot	Shot%	SOG	SOG%	GW	PK-Att
2018	20-0	281	0	0	0	4	.000	1	.250	0	0-0
2019	18-3	703	1	1	3	12	.083	6	.500	0	0-0
TOTAL	38-3	984	1	1	3	16	.062	7	.438	0	0-0

Beyer, Lia											
Season	GP-GS	Min.	G	A	Pts	Shot	Shot%	SOG	SOG%	GW	PK-Att
2019	3-0	63	0	0	0	0	.000	0	.000	0	0-0
TOTAL	3-0	63	0	0	0	0	.000	0	.000	0	0-0

Bradley, Italia											
Season	GP-GS	Min.	G	A	Pts	Shot	Shot%	SOG	SOG%	GW	PK-Att
2018	13-0	170	0	0	0	0	.000	0	.000	0	0-0
2019	16-2	538	0	1	1	1	.000	0	.000	0	0-0
TOTAL	29-2	708	0	1	1	1	.000	0	.000	0	0-0

Briley, Gracely											
Season	GP-GS	Min.	G	A	Pts	Shot	Shot%	SOG	SOG%	GW	PK-Att
2019	6-0	122	0	0	0	6	.000	1	.167	0	0-0
TOTAL	6-0	122	0	0	0	6	.000	1	.167	0	0-0

Castro, Kathryn											
Season	GP-GS	Min.	G	A	Pts	Shot	Shot%	SOG	SOG%	GW	PK-Att
2017	18-4	550	0	0	0	7	.000	3	.429	0	0-0
2018	21-5	779	0	0	0	9	.000	2	.222	0	0-0
2019	18-6	653	1	1	3	16	.062	8	.500	0	0-0
TOTAL	57-15	1982	1	1	3	32	.031	13	.406	0	0-0

Cavalcante, Isabella											
Season	GP-GS	Min.	G	A	Pts	Shot	Shot%	SOG	SOG%	GW	PK-Att
2017	20-20	1663	1	1	3	10	.100	4	.400	1	0-0
2018	15-11	1006	0	1	1	4	.000	1	.250	0	0-0
2019	18-18	1482	0	2	2	13	.000	4	.308	0	0-0
TOTAL	53-49	4151	1	4	6	27	.037	9	.333	1	0-0

Costow, Ebba											
Season	GP-GS	Min.	G	A	Pts	Shot	Shot%	SOG	SOG%	GW	PK-Att
2019	17-9	678	1	4	6	3	.333	2	.667	0	0-0
TOTAL	17-9	678	1	4	6	3	.333	2	.667	0	0-0

Duggan, Mandi											
Season	GP-GS	Min.	G	A	Pts	Shot	Shot%	SOG	SOG%	GW	PK-Att
2016	20-4	504	3	0	6	10	.300	3	.300	3	0-0
2018	6-0	99	0	0	0	1	.000	0	.000	0	0-0
2019	18-5	717	4	0	8	22	.182	12	.545	1	0-0
TOTAL	44-9	1320	7	0	14	33	.212	15	.455	4	0-0

Eliasdottir, Eva											
Season	GP-GS	Min.	G	A	Pts	Shot	Shot%	SOG	SOG%	GW	PK-Att
2016	16-0	297	0	1	1	3	.000	2	.667	0	0-0
2017	20-20	1640	1	1	3	5	.200	1	.200	0	0-0
2018	15-11	754	1	2	4	5	.200	1	.200	1	0-0
2019	10-0	293	0	0	0	6	.000	2	.333	0	0-0
TOTAL	61-31	2984	2	4	8	19	.105	6	.316	1	0-0

Gavillet, Emilie											
Season	GP-GS	Min.	G	A	Pts	Shot	Shot%	SOG	SOG%	GW	PK-Att
2019	1-0	10	0	0	0	0	.000	0	.000	0	0-0
TOTAL	1-0	10	0	0	0	0	.000	0	.000	0	0-0

Giubilato, Margherit											
Season	GP-GS	Min.	G	A	Pts	Shot	Shot%	SOG	SOG%	GW	PK-Att
2019	3-0	38	0	0	0	0	.000	0	.000	0	0-0
TOTAL	3-0	38	0	0	0	0	.000	0	.000	0	0-0

Hall, Avery											
Season	GP-GS	Min.	G	A	Pts	Shot	Shot%	SOG	SOG%	GW	PK-Att
2017	1-0	13	0	0	0	0	.000	0	.000	0	0-0
2018	3-0	45	0	0	0	0	.000	0	.000	0	0-0
2019	7-0	89	0	0	0	3	.000	2	.667	0	0-0
TOTAL	11-0	147	0	0	0	3	.000	2	.667	0	0-0

Hansen, Kaela											
Season	GP-GS	Min.	G	A	Pts	Shot	Shot%	SOG	SOG%	GW	PK-Att
2018	21-21	1650	0	0	0	6	.000	1	.167	0	0-0
2019	18-18	1413	0	0	0	6	.000	0	.000	0	0-0
TOTAL	39-39	3063	0	0	0	12	.000	1	.083	0	0-0

Holland, Ceri											
Season	GP-GS	Min.	G	A	Pts	Shot	Shot%	SOG	SOG%	GW	PK-Att
2017	20-20	1564	1	1	3	34	.029	14	.412	0	0-0
2018	21-21	1690	1	4	6	38	.026	11	.289	1	0-1
2019	18-18	1410	7	3	17	51	.137	21	.412	1	3-3
TOTAL	59-59	4664	9	8	26	123	.073	46	.374	2	3-4

Lane, Kailey											
Season	GP-GS	Min.	G	A	Pts	Shot	Shot%	SOG	SOG%	GW	PK-Att
2018	4-0	30	0	0	0	0	.000	0	.000	0	0-0
2019	18-8	810	4	1	9	15	.267	8	.533	3	0-0
TOTAL	22-8	840	4	1	9	15	.267	8	.533	3	0-0

Maierhofer, Sophie											
Season	GP-GS	Min.	G	A	Pts	Shot	Shot%	SOG	SOG%	GW	PK-Att
2016	12-9	714	1	0	2	3	.333	2	.667	0	0-0
2017	18-16	1159	4	1	9	25	.160	12	.480	1	0-0
2018	6-1	123	0	0	0	2	.000	0	.000	0	0-0
2019	18-18	1462	2	0	4	15	.133	5	.333	0	0-0
TOTAL	54-44	3458	7	1	15	45	.156	19	.422	1	0-0

McClure, Katie											
Season	GP-GS	Min.	G	A	Pts	Shot	Shot%	SOG	SOG%	GW	PK-Att
2016	21-16	1405	5	2	12	54	.093	28	.519	3	0-0
2017	20-20	1412	6	2	14	52	.115	25	.481	1	0-0
2018	21-21	1462	11	3	25	58	.190	26	.448	7	0-0
2019	18-18	1257	12	7	31	77	.156	31	.403	5	0-0
TOTAL	80-75	5536	34	14	82	241	.141	110	.456	16	0-0

Meador, Madison											
Season	GP-GS	Min.	G	A	Pts	Shot	Shot%	SOG	SOG%	GW	PK-Att
2017	18-3	726	0	2	2	3	.000	1	.333	0	0-0
2018	20-20	1793	1	0	2	9	.111	2	.222	1	0-0
2019	13-8	660	0	0	0	2	.000	0	.000	0	0-0
TOTAL	51-31	3179	1	2	4	14	.071	3	.214	1	0-0

Merrick, Addisyn											
Season	GP-GS	Min.	G	A	Pts	Shot	Shot%	SOG	SOG%	GW	PK-Att
2016	21-14	1630	1	0	2	11	.091	5	.455	0	0-0
2017	20-20	1867	0	0	0	1	.000	1	1.000	0	0-0
2018	21-19	1855	0	0	0	4	.000	2	.500	0	0-0
2019	18-18	1630	0	1	1	2	.000	0	.000	0	0-0
TOTAL	80-71	6982	1	1	3	18	.056	8	.444	0	0-0

Pasar, Melania											
Season	GP-GS	Min.	G	A	Pts	Shot	Shot%	SOG	SOG%	GW	PK-Att
2019	2-0	37	0	0	0	0	.000	0	.000	0	0-0
TOTAL	2-0	37	0	0	0	0	.000	0	.000	0	0-0

Season	GP-GS	Minutes	GA	GAAvg	Saves	Save%	W	L	T	Shots
2019	2-0	36:46	1	2.45	0	.000	0	0	0	0.1
TOTAL	2-0	36:46	1	2.45	0	.000	0	0	0	0.1

Peters, Sarah											
Season	GP-GS	Min.	G	A	Pts	Shot	Shot%	SOG	SOG%	GW	PK-Att
2018	21-0	1989	0	0	0	0	.000	0	.000	0	0-0
2019	18-1	1641	0	0	0	0	.000	0	.000	0	0-0
TOTAL	39-1	3630	0	0	0	0	.000	0	.000	0	0-0

Season	GP-GS	Minutes	GA	GAAvg	Saves	Save%	W	L	T	Shots
2018	21-21	1989:12	23	1.04	57	.712	12	6	3	9
2019	18-17	1641:50	15	0.82	55	.786	11	4	3	7.1
TOTAL	39-38	3631:02	38	0.94	112	.747	23	10	6	16.1

Prybylski, Ellie											
Season	GP-GS	Min.	G	A	Pts	Shot	Shot%	SOG	SOG%	GW	PK-Att
2019	18-15	922	0	4	4	4	.000	1	.250	0	0-0
TOTAL	18-15	922	0	4	4	4	.000	1	.250	0	0-0

Reina, Elise											
Season	GP-GS	Min.	G	A	Pts	Shot	Shot%	SOG	SOG%	GW	PK-Att
2016	3-0	12	0	0	0	1	.000	0	.000	0	0-0
2017	18-2	566	0	1	1	5	.000	0	.000	0	0-0
2018	21-20	1816	2	6	10	20	.100	9	.450	1	0-0
2019	4-4	236	0	0	0	1	.000	1	1.000	0	0-0
TOTAL	46-26	2630	2	7	11	27	.074	10	.370	1	0-0

Sheridan, Mya											
Season	GP-GS	Min.	G	A	Pts	Shot	Shot%	SOG	SOG%	GW	PK-Att
2019	7-0	73	0	0	0	0	.000	0	.000	0	0-0
TOTAL	7-0	73	0	0	0	0	.000	0	.000	0	0-0

Wiltgen, Grace											
Season	GP-GS	Min.	G	A	Pts	Shot	Shot%	SOG	SOG%	GW	PK-Att
2018	15-2	617	0	0	0	3	.000	2	.667	0	0-0
2019	17-7	699	0	0	0	2	.000	1	.500	0	0-0
TOTAL	32-9	1316	0	0	0	5	.000	3	.600	0	0-0

Wright, Chais											
Season	GP-GS	Min.	G	A	Pts	Shot	Shot%	SOG	SOG%	GW	PK-Att
2019	13-0	360	1	0	2	5	.200	3	.600	1	0-0
TOTAL	13-0	360	1	0	2	5	.200	3	.600	1	0-0

TV/RADIO ROSTER



0 **GABBIE DAWE**
Fr. / GK / 5-10
Memphis, Tenn.



00 **SARAH PETERS**
So. / GK / 5-10
Lee's Summit, Mo.



1 **MELANIA PASAR**
Fr. / GK / 5-11
Potoroz, Slovenia



2 **ELLIE PRYBYLSKI**
Fr. / D / F / 5-5
Forsyth County, Ga.



3 **MYA SHERIDAN**
Fr. / F / 5-5
Schertz, Texas



4 **KAILEY LANE**
So. / F / 5-9
Omaha, Neb.



6 **KAELA HANSEN**
So. / D / 5-7
Burnaby, British Columbia



7 **AVERY HALL**
Jr. / M / 5-5
McKinney, Texas



8 **EBBA COSTOW**
Fr. / M / 5-5
Uppsala, Sweden



9 **MADISON MEADOR**
Sr. / D / 5-7
Ballwin, Mo.



10 **GRACELEY BRILEY**
Fr. / M / 5-9
Olathe, Kan.



11 **CHAIS WRIGHT**
RS-Fr. / D / 5-4
Kansas City, Mo.



12 **KATIE MCCLURE**
Fr. / F / 5-4
Wichita, Kan.



13 **KATHRYN CASTRO**
Jr. / M / 5-3
Plano, Texas



14 **SAMANTHA BARNETT**
So. / M / 5-8
Edmond, Okla.



15 **CERI HOLLAND**
Jr. / M / 5-6
West Yorkshire, England



16 **ITALIA BRADLEY**
So. / D / 5-7
Coppell, Texas



17 **LIA BEYER**
Fr. / D / 5-7
Parker, Colo.



18 **EMILIE GAVILLET**
RS-Fr. / GK / 5-9
Montreux, Switzerland



19 **EVA ELÍASDÓTTIR**
Sr. / F / 5-6
Thorlakhshofn, Iceland



20 **MARGHERITA GIUBILATO**
Fr. / F / M / 5-4
Martellago, Italy



21 **ISABELLA CAVALCANTE**
Jr. / D / 5-7
Glen Ellyn, Ill.



22 **MANDI DUGGAN**
Jr. / F / 5-2
Aurora, Colo.



23 **GRACE WILTGEN**
Fr. / D / 5-6
Denton, Texas



24 **ELISE REINA**
Fr. / D / 5-2
Fayetteville, Ark.



26 **ADDISYN MERRICK**
Sr. / D / 5-5
Lee's Summit, Mo.



27 **SOPHIE MAIERHOFER**
Sr. / M / 5-7



28 **BRI AMOS**
So. / M / 5-7
Tulsa, Okla.



MARK FRANCIS
Head Coach
21st Season