



KANSAS

#KUsoccer

f /KANSASSOCCER

t /KUWSOCCER

i /KANSASSOCCER

SEPT. 19, 2019 | BYU | MATCH NOTES

KANSAS COMMUNICATIONS

JAYHAWKS

7-1-0 OVERALL

United Soccer rank: 14

Head Coach: Mark Francis

0-0-0

TopDrawer rank: RV

Record: 226-164-34 (21st year)



-vs-



6-0-0 OVERALL

United Soccer rank: 7

Head Coach: Jennifer Rockwood

0-0-0

TopDrawer rank: 7

Record: 381-113-43 (25th year)

COUGARS

2019 SCHEDULE

Date	KU Rnk	OPP Rnk	Opponent	TV	Time/Result
AUGUST (3-0-0)					
22	rv/-	-/-	NEBRASKA	ESPN+	W, 4-0
25	rv/-	-/-	LOYOLA-CHICAGO	ESPN+	W, 6-0
29	18/-	20/18	MEMPHIS	ESPN+	W, 2-1
SEPTEMBER (4-1-0)					
1	18/-	-/-	FLORIDA ATLANTIC	ESPN+	W, 1-0
6	11/-	-/-	vs. DePaul*		L, 0-1
8	11/-	rv/-	at Purdue*	BTN+	W, 2-1
13	18/-	-/-	at Northwestern	BTN+	W, 1-0
15	18/-	-/-	at Western Michigan		W, 2-0
19	14/rv	7/7	BYU	ESPN+	7 p.m.
22	14/rv	-/-	KENNESAW STATE	ESPN+	12 p.m.
26	-/-	-/-	TEXAS*	FSI	7 p.m.
29	-/-	-/-	BAYLOR*	ESPN+	1 p.m.
OCTOBER					
3	-/-	-/-	at Oklahoma State*	ESPN+	7 p.m.
10	-/-	-/-	at Oklahoma*		7 p.m.
13	-/-	-/-	at Texas Tech*		1 p.m.
18	-/-	-/-	KANSAS STATE*	ESPN+	7 p.m.
24	-/-	-/-	WEST VIRGINIA*	ESPN+	7 p.m.
27	-/-	-/-	at TCU*	FSSW	1 p.m.
31	-/-	-/-	at Iowa State*		7 p.m.
NOVEMBER					
3-10	Big 12 Championship<		TBD		TBD

All times Central and subject to change; Home games **BOLD** and played at Rock Chalk Park; Rank: United Soccer Coaches Top 25 / TopDrawer Soccer Top 25; * Boilermaker Challenge Cup (West Lafayette, Ind.); * Big 12 Conference Game; < Big 12 Championship (Kansas City, Mo.)

BY THE NUMBERS

.39

Sophomore goalkeeper Sarah Peters boasts a goals-against average of 0.39. It's the lowest in the Big 12 and ranks fifth in the nation among keepers who have played 600 minutes or more this season.

2.8

The KU defense is allowing just 2.8 opponent shots on goal per game this season. That number includes four games that Jayhawk opponents managed two or fewer shots on frame.

9

Nine of KU's 18 goals this season have come in either the first 15 minutes or the final 15 minutes of regulation. Last season, the Jayhawks didn't score any goals in the first 15 minutes but netted nine of their 28 goals after the 74th minute.



GAME

9

#7 BYU at #14 KANSAS

Lawrence, Kan. • Rock Chalk Park (2,500)
Thursday, September 19, 2019 • 7 p.m. CT



BIG 12 NOW ON ESPN+

Play-by-Play: Josh Klingler
Analyst: Huw Williams
Producer: Curtis Lorenz



JAYHAWK RADIO NETWORK

Radio: IMG Jayhawk Radio Network
Webcast: KUathletics.leanplayer.com
Play-by-Play: Jack Nadeau

QUICK KICKS

- The No. 14 Kansas Jayhawks will host the first top-15 match-up in Lawrence when they welcome the No. 7 BYU Cougars to Rock Chalk Park. The match will mark the fifth all-time meeting between the two sides.
- Kansas is coming off a four-game road stint that saw the Jayhawks go 3-1-0. KU closed the trip with a 2-0 win at Western Michigan on Sept. 15.
- Thursday's match will mark the 500th game in program history. Kansas is 250-212-37 all-time, good for a 53.8 winning percentage.
- Kansas jumped four spots in the latest United Soccer Coaches' poll. At No. 14, the Jayhawks were slotted in the top-20 for the fourth-straight week and inside the top-15 for the second time this season.
- The Jayhawks will kick off a four-game homestand when they meet BYU Thursday. Kansas is 34-14-2 in regular-season home games since 2014, which includes a 12-2-0 mark since the start of 2018.
- KU is 6-17-1 against teams ranked in the top-10 since 2004, with the most recent victory coming in 2017 with a 2-1 victory over then-No. 9 Texas.
- The Jayhawks last played a top-10 squad while it was also ranked in the top-15 of the national polls in 2004. The No. 6 Jayhawks claimed a 1-0 win over then-No. 9 Texas A&M in College Station.
- The 2019 Jayhawks are the third Kansas squad to earn at least seven victories through the opening eight games of the season. KU is one of 17 teams this year to have tallied seven or more wins thus far.
- Eight different Jayhawks have scored a goal this season. Senior Katie McClure leads the team with seven goals, which ranks her 14th in the NCAA.
- KU's defense has conceded just three goals through its first eight matches and became just the second Jayhawk team to allow three or fewer goals through its first eight games of a season. The 2004 team, let only two goals in through its first eight contests.
- Senior Addisyn Merrick was named the Big 12 Defensive Player of the Week by the league office Tuesday. She played all 180 minutes in back-to-back Jayhawk shutouts last weekend, in which the KU backline allowed a combined eight shots in those two outings.

SERIES AT A GLANCE

OVERALL

in Lawrence

Last Meeting

BYU LEADS, 3-1-0

BYU leads, 1-0-0

L, 2-3, @BYU (9.18.17)



7-1-0

W-L-D >>

6-0-0

14

UNITED SOCCER RANK >>

7

2.25

GOALS PER GAME >>

2.50

15.5

SHOTS PER GAME >>

19.8

.145

<< SHOT PERCENTAGE

.126

.427

SHOT ON GOAL PERCENTAGE >>

.462

0.38

GOALS ALLOWED PER GAME >>

0.17

2.3

<< SAVES PER GAME

2.2

.857

SAVE PERCENTAGE >>

.929

2-2

<< PENALTIES

0-0

10.5

<< FOULS PER GAME

8.5

4-0

<< YELLOW - RED CARDS

3-1

LAST MATCH STARTERS



NUMERICAL ROSTER

NO.	NAME	POS.	HT.	YR.	HOMETOWN (PREVIOUS SCHOOL)
0	Gabbie Dawe	.GK	5-10	Fr.	Memphis, Tenn. (Houston HS)
00	Sarah Peters	.GK	5-10	So.	Lee's Summit, Mo. (Lee's Summit North HS)
1	Melania Pasar	.GK	5-11	Fr.	Portoroz, Slovenia (Ginnasio Antonio Sema Pirano)
2	Ellie Prybylski	.D/F	5-5	Fr.	Forsyth County, Ga. (Lambert HS)
3	Mya Sheridan	.F	5-5	Fr.	Schertz, Texas (Samuel Clemens HS)
4	Kailey Lane	.F	5-9	So.	Omaha, Neb. (Millard North HS)
6	Kaela Hansen	.D	5-7	So.	Burnaby, B.C. (Burnaby Central Secondary)
7	Avery Hall	.M	5-5	Jr.	McKinney, Texas (McKinney Boyd HS)
8	Ebba Costow	.M	5-5	Fr.	Uppsala, Sweden (Celsiusskolan)
9	Madison Meador	.D	5-7	Sr.	Ballwin, Mo. (Marquette HS/Ole Miss)
10	Gracely Briley	.M	5-9	Fr.	Olathe, Kan. (Blue Valley Southwest HS)
11	Chais Wright	.D	5-4	RS-Fr.	Kansas City, Mo. (Park Hill HS)
12	Katie McClure	.F	5-4	Sr.	Wichita, Kan. (Maize HS)
13	Kathryn Castro	.M	5-3	Sr.	Plano, Texas (Plano West Senior High)
14	Samantha Barnett	.M	5-8	So.	Edmond, Okla. (Edmond Memorial HS)
15	Ceri Holland	.M	5-5	Jr.	West Yorkshire, England (South Craven School)
16	Italia Bradley	.D	5-7	So.	Coppell, Texas (Coppell HS)
17	Lia Beyer	.D	5-7	Fr.	Parker, Colo. (Legend HS)
18	Emilie Gavillet	.GK	5-9	RS-Fr.	Montreux, Switzerland (Wilhelm Hausenstein Gymnasium)
19	Eva Eliasdóttir	.F	5-9	Sr.	Thorlakhofn, Iceland (Fjölbrotaskóli Suðurlands)
20	Margherita Giubilato	.F	5-4	Fr.	Martellago, Italy (Accademia Dante Alighieri)
21	Isabella Cavalcante	.D	5-7	Jr.	Glen Ellyn, Ill. (Glenbard West HS)
22	Mandi Duggan	.F	5-2	Jr.	Aurora, Colo. (Grandview HS)
23	Grace Wiltgen	.D	5-6	So.	Denton, Texas (Denton HS)
24	Elise Reina	.D	5-2	Sr.	Fayetteville, Ark. (Har-Ber HS)
26	Addisyn Merrick	.D	5-6	Sr.	Lee's Summit, Mo. (Lee's Summit North HS)
27	Sophie Maierhofer	.M	5-7	Sr.	Graz, Austria (University of Bremen)
28	Bri Amos	.F	5-7	So.	Tulsa, Okla. (Union HS)

STAFF

NAME	POSITION // YEAR AT KU	ALMA MATER // YEAR
Mark Francis	Head Coach // 21st	SMU // 1987
Kelly Miller	Assoc. Head Coach // 21st	Copper Union // 1996
Laura Jackson	Assistant Coach // 1st	Iona // 2012
Derek Shoare	Volunteer Asst. Coach // 5th	St. Mary's (London) // 1980
Shelby Larson	Dir. of Operations // 1st	Tampa // 2014

PRONUNCIATION GUIDE

Isabella CAVALCANTE	kav-uhl-KAHN-tay
Ebba COSTOW	COST-ov
Mandi DUGGAN	DEW-guhn
Eva ELIASDÓTTIR	ell-EYE-iss-daw-ter
Emilie GAVILLET	GAH-vee-ay
MARGHERITA GIUBILATO	marg-uh-REET-uh joo-bee-LAH-toe
CERI Holland	CARE-ee
Madison MEADOR	MEH-der
Sophie MAIERHOFER	MY-er-ha-fur
Ellie PRYBYLSKI	.prib-ILL-skee
Grace WILTGEN	WILL-chen
CHAIIS Wright	CHASE

RADIO/TV ROSTER



0 **GABBIE DAWE**
Fr. // GK // 5-10
Memphis, Tenn.



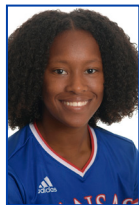
00 **SARAH PETERS**
So. // GK // 5-10
Lee's Summit, Mo.



1 **MILANIA PASAR**
Fr. // GK // 5-11
Portoroz, Slovenia



2 **ELLIE PRYBYLSKI**
Fr. // D/F // 5-5
Forsyth County, Ga.



3 **MYA SHERIDAN**
Fr. // F // 5-5
Schertz, Texas



4 **KAILEY LANE**
So. // F // 5-9
Omaha, Neb.



6 **KAELA HANSEN**
So. // D // 5-7
Burnaby, B.C.



7 **AVERY HALL**
So. // M // 5-5
McKinney, Texas



8 **EBBA COSTOW**
Fr. // M // 5-5
Uppsala, Sweden



9 **MADISON MEADOR**
Sr. // D // 5-7
Ballwin, Mo.



10 **GRACELEY BRILEY**
Fr. // M // 5-9
Olathe, Kan.



11 **CHAIIS WRIGHT**
R-Fr. // D // 5-4
Kansas City, Mo.



12 **KATIE MCCLURE**
Sr. // F // 5-4
Wichita, Kan.



13 **KATHRYN CASTRO**
Jr. // M // 5-3
Plano, Texas



14 **SAMANTHA BARNETT**
So. // M // 5-8
Edmond, Okla.



15 **CERI HOLLAND**
Jr. // M // 5-5
West Yorkshire, England



16 **ITALIA BRADLEY**
So. // D // 5-7
Coppell, Texas



17 **LIA BEYER**
Fr. // D // 5-7
Parker, Colo.



18 **EBILIE GAVILLET**
R-Fr. // GK // 5-9
Montreux, Switzerland



19 **EVA ELIASDÓTTIR**
Sr. // D // 5-9
Thorlakhofn, Iceland



20 **MARGHERITA GIUBILATO**
Fr. // F // 5-4
Martellago, Italy



21 **ISABELLA CAVALCANTE**
Jr. // D // 5-7
Glen Ellyn, Ill.



22 **MANDI DUGGAN**
Jr. // F // 5-2
Aurora, Colo.



23 **GRACE WILTGEN**
So. // D // 5-6
Denton, Texas



24 **ELISE REINA**
Sr. // D // 5-2
Fayetteville, Ark.



26 **ADDISYN MERRICK**
Sr. // D // 5-6
Lee's Summit, Mo.



27 **SOPHIE MAIERHOFER**
Sr. // M // 5-7
Graz, Austria



28 **BRI AMOS**
So. // F // 5-7
Tulsa, Okla.



HC **MARK FRANCIS**
Head Coach
21st season

SERIES VS. BYU

Thursday's contest will be the fifth time Kansas and BYU meet on a soccer pitch, with the Cougars leading the all-time series, 3-1-0. KU and BYU last met in 2017 in Provo, with the Cougars claiming a 3-2 victory at South Field.

KU is 11-10-1 in 22 outings against current members of the West Coast Conference, with nine of those contests coming in since 2013. The Jayhawks last met a WCC squad last season, a 1-0 win over Pepperdine in Lawrence.

SCOUTING THE COUGARS

BYU enters Thursday's contest coming off a win over Utah Valley on Sept. 16 in Provo. The Cougars have yet to lose a match this season and have conceded only one goal in their six contests. BYU is one of only eight teams in the nation to have not lost or drawn this season.

Offensively, eight different Cougars have scored at least one of BYU's 15 goals on the year, with Elise Flake having put in a team-leading sixth. The BYU offense averages 19.8 shots per game, the sixth most in the NCAA, and puts 46.8 percent of those shots on frame.

On defense, BYU has allowed one goal and picked up five shutouts. Cougar opponents have averaged only six shots per game. Sabrina Davis has started in goal for BYU in six matches. She boasts a goals-against average of 0.22 and has collected 13 saves on 36 shots faced.

The Cougars are led by Jennifer Rockwood, who is in her 25th season at the helm in Provo. Rockwood has an impressive 375-113-43 overall record for her career and has guided the Cougars to 12 regular season conference championships and eight conference tournament championships during her tenure.

TOP-10 TIDBITS

- BYU will be the sixth team ranked in the top-10 to play the Jayhawks at Rock Chalk Park since the stadium opened in 2014. The Jayhawks are 2-3-0 in those previous five contests.
- Kansas last played a top-10 squad when it was also ranked in the top-15 of the national polls in 2004, when the No. 6 Jayhawks claimed a 1-0 win over then-No. 9 Texas A&M in College Station.
- Kansas is 6-17-1 against top-10 teams since 2004 with the most recent victory coming in 2017 with a 2-1 victory over then-No. 9 Texas. The Jayhawks also claimed a win over then-No. 7 Southern California in Lawrence earlier that season.
- The 2017 match with No. 7 USC marked the highest-ranked nonconference opponent to play the Jayhawks in Lawrence. Thursday's match with BYU will match this mark.

HOT START HAWKS

The impressive early performance to the 2019 campaign puts this year's Jayhawk squad among just a handful of Kansas teams that have gotten their seasons off to a fast start. This bunch joins three other KU teams that were also able to tally seven or more victories in the first eight games of the season.

The Jayhawks' early success bodes well for the bunch, as all three of those past four KU teams went on to make the NCAA Tournament and posted 15 or more victories. In each of those seasons, Kansas logged top-three finishes in the final Big 12 standings.

KU SOCCER HOT STARTS

(7+ WINS AFTER FIRST 8 GAMES)

Year	After 8 gms	Final	NCAA Tourn.
2019	7-1-0	??	??
2014	8-0-0	15-6-0	Yes
2004	7-1-0	18-5-0	Yes
2003	7-1-0	18-6-1	Yes

MERRICK NAMED BIG 12 DEFENSIVE PLAYER OF THE WEEK

Kansas defender Addisyn Merrick was named the Big 12's Defensive Player of the Week by the league office on Sept. 17. The senior, who anchored the KU backline to a pair of the road shutouts last weekend, earned her first conference weekly award and became the second Jayhawk to claim the honor this season after Katie McClure was named the Offensive Player of the Week on Aug. 27.

Merrick, who hails from Lee's Summit, Missouri, anchored a KU defense that allowed just eight shots, four on target, in two road weekend matches. She played all 180 minutes in two shutout victories over Northwestern and Western Michigan. Kansas was the only Big 12 team that did not allow a goal over the weekend. The Jayhawks are tied for the Conference lead with just three goals allowed this season.

LET'S GET DEFENSIVE

In their first eight matches of 2019, the Jayhawks have once again proved to be a stout defensive team, carrying over the trend from their last several seasons. Kansas currently boasts a goals-against average of 0.38 this season, which encompasses five shutouts in those first eight outings. The Jayhawks are allowing less than three opponent shots on goal per match.

KU has already put together several impressive shutout streak to start this season. Kansas went 189-straight minutes without conceding a goal to start the year, and is currently in the midst of a 249-minute opponent scoreless stretch. KU has tallied four opponent scoreless streaks of 300 minutes or more in the last five seasons.

QUICK FACTS**GENERAL INFORMATION**

Location	Lawrence, Kan.
Enrollment	28,401
Founded	1866
Nickname	Jayhawks
School Colors	Crimson and Blue (PMS: Blue 293; Crimson 186)
Conference	Big 12
Chancellor	Douglas A. Giron
Athletics Director	Jeff Long
Associate Athletics Director/Soccer Administrator	Jane Fulton
Athletics Website	www.kuathletics.com
Ticket Office Phone	1.800.34.HAWKS (42957)

SOCCER FACILITY

Home Facility (Capacity)	Rock Chalk Park (2,500)
KU Record at Rock Chalk Park	30-15-2 (.660)
Opened	2014
Surface	Natural Grass (Bermuda and Rye)

COACHING STAFF/SUPPORT STAFF

Head Coach	Mark Francis (SMU, 1987)
Record at Kansas	226-164-34 (21st season)
Overall	259-189-35 (24th season)
Associate Head Coach	Kelly Miller (The Cooper Union, 1996)
Year at Kansas	21st
Assistant Coach	Laura Jackson (Iona, 2012)
Year at Kansas	First
Volunteer Assistant	Derek Shoare
Year at Kansas	Fifth

2018 IN REVIEW

Overall Record	12-6-3 (.643)
Big 12 Record	5-4-0 (.556)
Big 12 Finish	6th
Home	9-2-0 (.810)
Away	2-4-1 (.357)
Neutral	1-0-2 (.500)

PROGRAM HISTORY

First Year of Soccer at Kansas	1995 (25th season)
All-Time Record	250-212-37 (.538)
All-Time Big 12 Record	92-107-17 (.465)
Conference Titles	1 (2004)
NCAA Postseason Appearances	8
..... (2001, 2003, 2004, 2008, 2011, 2014, 2016, 2018)	
NCAA Postseason Record	6-8-0 (.429)

2019 TEAM INFORMATION

Letterwinners Returning/Lost	18/9
Starters Returning/Lost	9/3
Newcomers	8

BIG 12 STANDINGS**BIG 12**

	Record	%	Home	Away	Stk	Pts
Oklahoma State	0-0	.000	0-0	0-0	0-0	-
KANSAS	0-0	.000	0-0	0-0	0-0	-
Texas Tech	0-0	.000	0-0	0-0	0-0	-
TCU	0-0	.000	0-0	0-0	0-0	-
Oklahoma	0-0	.000	0-0	0-0	0-0	-
Texas	0-0	.000	0-0	0-0	0-0	-
Baylor	0-0	.000	0-0	0-0	0-0	-
West Virginia	0-0	.000	0-0	0-0	0-0	-
Iowa State	0-0	.000	0-0	0-0	0-0	-
Kansas State	0-0	.000	0-0	0-0	0-0	-

OVERALL

	Record	%	Home	Away	Neut	Stk
Oklahoma State	6-0-1	.929	4-0-0	2-0-1	0-0	W5
KANSAS	7-1-0	.875	4-0-0	3-0-0	0-1	W3
Texas Tech	7-1-0	.875	4-0-0	1-1-0	2-0	W6
TCU	6-2-0	.750	3-1-0	3-1-0	0-0	L1
Oklahoma	4-2-2	.625	1-0-1	3-2-1	0-0	L1
Texas	4-3-0	.571	3-1-0	1-2-0	0-0	L1
Baylor	3-2-2	.571	1-1-0	2-1-2	0-0	-
West Virginia	3-3-1	.500	3-0-1	0-2-0	0-1	L1
Iowa State	3-5-0	.375	1-1-0	2-4-0	0-0	W1
Kansas State	2-4-2	.375	2-2	0-2-2	0-0	W1

THIS WEEK IN THE BIG 12*All times central***Thursday, September 19**

BYU at Kansas [Big 12 Now on ESPN+], 7 p.m.
 SMU at Oklahoma [FSOK], 7 p.m.
 Kennesaw State at Oklahoma State, 7 p.m.
 Providence at Texas [Longhorn Network], 7 p.m.

Friday, September 20

Fairleigh Dickenson at West Virginia, 6 p.m.
 USC at Baylor [ESPN], 6 p.m.
 Iowa State at Memphis, 7 p.m.

UNITED SOCCER COACHES POLL
SEPT. 17, 2019

Rank	Team	Previous	Record
1.	Virginia (21)	832	8-0-0
2.	Southern California (10)	818	7-0-0
3.	Stanford (3)	771	6-1-0
4.	North Carolina	749	7-1-0
5.	UCLA	719	5-1-0
6.	Florida State	675	6-2-0
7.	BYU	646	6-0-0
8.	Duke	511	5-1-1
9.	South Carolina	499	6-1-0
10.	Clemson	480	6-0-1
11.	Memphis	461	7-1-0
12.	Georgetown	416	5-2-1
13.	Rutgers	389	6-0-1
14.	KANSAS	381	7-1-0
15.	Texas A&M	331	5-1-2
16.	Arkansas	320	6-1-1
17.	Vanderbilt	263	7-1-0
18.	Virginia Tech	241	8-0-0
19.	Iowa	210	8-0-0
20.	Louisville	197	7-0-0
21.	California	167	7-0-0
22.	South Florida	161	5-1-0
23.	Penn State	150	4-3-1
24.	Washington State	133	5-1-0
25.	Oklahoma State	126	6-0-1

Others receiving votes: Santa Clara (96), TCU (62), Colorado (60), Wisconsin (55), Boston College (36), SMU (35), Tennessee (34), West Virginia (9), Cal State Fullerton (4), Cal State Northridge (3), Central Florida (3), Oregon State (3), Texas Tech (2), VCU (1), Florida Atlantic (1)

Kansas 2019 opponents are in italics

TOP DRAWER SOCCER POLL
SEPT. 16, 2019

Rank	Team	Record	Conf.
1.	Virginia	8-0-0	0-0-0
2.	USC	7-0-0	0-0-0
3.	UCLA	5-1-0	0-0-0
4.	North Carolina	7-1-0	1-0-0
5.	Stanford	6-1-0	0-0-0
6.	Florida State	6-2-0	0-0-0
7.	BYU	5-0-0	0-0-0
8.	Rutgers	6-0-1	0-0-0
9.	Vanderbilt	7-1-0	0-0-0
10.	South Florida	5-1-0	0-0-0
11.	Washington State	5-1-0	0-0-0
12.	South Carolina	6-1-0	0-0-0
13.	Texas A&M	5-1-2	0-0-0
14.	Tennessee	5-1-1	0-0-0
15.	Duke	5-1-1	0-0-0
16.	Virginia Tech	8-0-0	0-0-0
17.	Penn State	4-3-1	0-0-0
18.	Georgetown	5-2-1	0-0-0
19.	Boston College	7-0-1	0-0-0
20.	Colorado	6-1-0	0-0-0
21.	Iowa	8-0-0	0-0-0
22.	Arkansas	6-1-1	0-0-0
23.	Clemson	6-0-1	0-0-0
24.	Memphis	7-1-0	0-0-0
25.	Louisville	7-0-0	0-0-0

Others receiving votes: California (7-0-0), Oklahoma State (6-0-1), KANSAS (7-1-0), SMU (6-1-0), Wake Forest (5-2-1)

Kansas 2019 opponents are in italics

TALKIN' TOP-25

Following the impressive start to the season, the voters for several national polls showed their appreciation for KU's work thus far in 2019, keeping them ranked inside the top-20 in each of the last four weeks.

The Jayhawks topped out at No. 11 in the second week United Soccer Coaches' poll, it program's highest ranking in the poll in five seasons. KU's highest all-time ranking in that poll (formerly the NSCAA Coaches' poll) was No. 6 during the 2004 season. The Jayhawks also peaked inside the top-10 during their 2014 campaign, climbing as high as No. 9. Last season, Kansas found itself among the top-25 during five weeks, topping out at 16 on Sept. 3. With a spot secured in the rankings the last two weeks, Kansas has made five appearance in six seasons in the Coaches' poll.

KU'S HIGHEST COACHES POLL RANKING (YEAR-BY-YEAR)			
Season	Ranking	Date	Final
2019	#11	Sept. 3	??
2018	#18	Aug. 21	NR
2017	#19	Sept. 5	NR
2016	#24	Oct. 30	NR
2015	NR	-	NR
2014	#9	Oct. 21	#23

FEEDING ON NONCON

This season, the Jayhawks have already made it 12-straight seasons with a .500 winning percentage or better against regular-season nonconference foes. Since the start of the 2012 season, Kansas has posted an impressive 50-20-9 mark in its 79 regular-season nonconference matches (69%), which includes a 38-13-6 mark since 2014. In that span, KU has outscored noncon opponents by a tally of 138-74. Mark Francis has now led KU to a winning record in noncon in 20 of his 21 seasons in Lawrence and is 130-52-13 in regular-season nonconference games.

KATIE MCCLURE

Senior Katie McClure has firmly positioned herself as one of the most clutch players in program history. Already this season, the Wichita product has tallied four game-winning goals, including the winner in the final seconds against No. 20 Memphis on Aug. 26. These late-match heroics are nothing new for McClure, who has proved time and time again throughout her career that she performs best when the match is in its final stages.

Her her goal against Florida Atlantic on Sept. 1 marked the 15th game-winner of her career and moved her passed Caroline Smith (2001-04) for the program record.

Of McClure's 29-career goals, 10 of them have come in the final 15 minutes of regulation or overtime, which includes four golden goals last season.

TOP-25 TAKEDOWNS

The Aug. 29 over No. 20 Memphis marked the fourth-consecutive season the Jayhawks have tallied at least one victory over a team ranked among the top-25 in the nation.

Kansas is 8-13-2 against ranked foes since 2016, with six of those losses coming against teams inside the top-10. Prior to this recent run, the Jayhawks managed just six victories over top-25 teams from 2010-15.

HOME SWEET HOME

Rock Chalk Park has been a welcome site for the Jayhawks in recent years as KU is enjoying a successful four-year stint playing on its home turf. After their win over FAU on Sept. 1, the Jayhawks are 34-14-2 in matches played at home during the regular season since the start of the 2014 campaign. From 2013-14, Kansas also enjoyed an 11-match home winning streak, the longest in program history.

Since moving into Rock Chalk Park, Kansas has built a goal differential of +37 and boasts a goals-against average of 0.88, a number that includes 19 shutouts.

AUGUST RUSH

With the final match of August in the rear view mirror, the Jayhawks once again continued their trend over the last decade of impressive performances in the eighth month of the year. The win over Memphis Thursday gave KU its 33rd win in the month of August since 2008.

Since that 2008 campaign, the Jayhawks have dropped no more than one result in August, amassing a record of 33-7-3 (.802 winning percentage) during the season's opening month. The hot start of those Jayhawk teams is made evident by more than just the win-loss column. Including this season, KU has averaged 2.00 goals per game and has amassed a goal differential of +52 in August. The Jayhawks have also posted 21 shutouts in those 43 August outings to go along with a 0.77 goals-against average.

KANSAS IN AUGUST (SINCE 2008)	
W-L-T	33-7-3
Winning %	.802
Goals per Game	2.00
Goal Differential	+52
Goals Against Avg.	0.77
Shutouts	21

MCCLURE MINUTES

Senior Katie McClure is already putting an emphatic stamp on an already outstanding career at KU, having already posted seven goals and three assists through her first seven outings of the season. Last year saw her make headlines across the state, the region and the nation. She led the Jayhawks with 11 goals, seven game-winning goals, 28 shots on goal and 25 points, figures that ranked the Wichita product among the top-10 in the Big 12 in their respective categories.

Just seven matches into her career finale, she has already made big jumps on some impressive lists, creeping closer to inserting her name among the top offensive players in Jayhawk history. Her 29 career goals currently rank her second on Kansas' all-time goal scorer chart. McClure's 15 game-winning goals are the most ever for a Jayhawk.

KANSAS CAREER GOAL SCORING LEADERS		
Rnk	Name (Yrs.)	Goals
1.	Caroline Smith (2002-05)	51
2.	Katie McClure (2016-Present)	29
3.	Liana Salazar (2011-15)	28
4.	Caroline Kastor (2010-13)	26
	Rachel Gilfillan (2001-04)	26

WEEK-BY-WEEK IN THE POLLS

	PS	1	2	3	4	5	6	7	8	9	10	FINAL
United Soccer Coaches	RV	18	11	18	14							
Top Drawer Soccer	--	--	--	--	RV							
RPI	--	--	--	--	--							

BIG 12 PLAYER OF THE WEEK AWARDS

AUG. 27

Offensive . . . **Katie McClure (KU)**
 Defensive . . . Nikki Panas (OU)
 Freshman . . . Olyvia Dowell (OSU)

SEPT. 3

Offensive . . . Kaylee Dao (OU)
 Defensive . . . Emily Alvarado (TCU)
 Freshman . . . Gracie Brian (TCU)

SEPT. 10

Offensive . . . Haley Berg (UT)
 Defensive . . . Kim Rodriguez (OSU)
 Freshman . . . Grace Collins (TCU)

SEPT. 17

Offensive . . . Kirsten Davis (TTU)
 Defensive . . . **Addisyn Merrick (KU)**
 Freshman . . . Mira Emma (ISU)

SEPT. 24

Offensive . . .
 Defensive . . .
 Freshman . . .

OCT. 1

Offensive . . .
 Defensive . . .
 Freshman . . .

OCT. 8

Offensive . . .
 Defensive . . .
 Freshman . . .

OCT. 15

Offensive . . .
 Defensive . . .
 Freshman . . .

OCT. 22

Offensive . . .
 Defensive . . .
 Freshman . . .

OCT. 29

Offensive . . .
 Defensive . . .
 Freshman . . .

NOV. 1

Offensive . . .
 Defensive . . .
 Freshman . . .

LATE MATCH MAGIC

The Jayhawks have been a clutch bunch so far this season, a trend which they have carried over from a year ago. Kansas has netted five goals in the final 15 minutes of regulation, three of which have been game-winners.

The Jayhawks were also clutch in crunch time during the 2018 campaign. Thirteen of the Jayhawks' 28 goals scored came in the 60th minute or later. That number included 10 goals Kansas tallied in the final 10 minutes of regulation or in overtime.

The Jayhawks came out on top in seven of those matches that saw Kansas score in the 80th minute or later. KU netted five golden goals in 2018, four off the boot of senior forward Katie McClure and one from senior forward Eva Eliasdottir in KU's 2-1 win over TCU (10/12). McClure scored seven game-winners last season. Those seven game-winning strikes ranked her first among Big 12 players and were tied for the most by a Jayhawk in school history.

A TIP OF THE HAT

Katie McClure began her senior year with a bang on Aug. 22 when she netted her first-career hat trick against Nebraska. The feat is not one that many Jayhawks can say they've achieved as only nine hat tricks have been posted by Jayhawks in the first 24 years of the program.

In adding an assist to her three-goal outing, McClure tied the program record for points in a game. She became just the third Jayhawk to score seven points in a match, joining Shannon McCabe (2008) and Caroline Smith (2003).

The hat trick was also just the second in a Kansas season-opener. In 2003, Smith scored three times in a 4-1 KU win over Northwestern in Lawrence. She went on to score a program-record 19 goals that season, which led all players in the Big.

KU PICKED SIXTH IN BIG 12 PRESEASON COACHES' POLL

Kansas soccer was predicted to finish sixth in the 2019 league standings according to the Big 12 preseason coaches' poll which was released two weeks ago. The ranking marked the seventh time in the last eight years that KU has been picked sixth or higher in the conference's preseason poll.

West Virginia was picked to finish at the top of the standings for the seventh consecutive year in the preseason poll. The five-time Big 12 regular-season champion received four of the nine first-place votes, while Baylor and Texas, picked second and third respectively, each received three first-place votes.

Just three points separated the 2018 Big 12 Championship title-winning Mountaineers from the defending regular-season champion Bears at the top of the poll with 75 and 72 points, respectively. The Longhorns were slotted third with 65 total points ahead of TCU in fourth with 57 points. Texas Tech, Kansas and Oklahoma State were next at fifth, sixth and seventh, while Oklahoma, Iowa State and Kansas State rounded out the poll in the eighth, ninth and tenth spots.

PRESEASON BIG 12 COACHES POLL

RNK	TEAM (1ST PLACE VOTES)	POINTS
1	West Virginia	75
2	Baylor	72
3	Texas	65
4	TCU	57
5	Texas Tech	52
6	Kansas	44
7	Oklahoma State	33
8	Oklahoma	26
9	Iowa State	17
10	Kansas State	9

FIRST TO SCORE, WINS GALORE

Dating back to the beginning of the 2012 season, now at 152 games, Kansas has developed an interesting trend when it comes to which team tallies the first goal of the match. During that 152-game span, the Jayhawks were on the losing end only four times in contests which they put in the match's first goal. Kansas has amassed a record of 70-4-8 in those games (90.4 winning %), which includes five of KU's wins this season.

UP NEXT

The Jayhawks close out the nonconference slate when they host the Kennesaw State Owls at Rock Chalk Park on Sunday, Sept. 22. The match will feature a celebration of 25 years of Kansas Soccer, with Jayhawk alumni from throughout the history of the program expected to attend. The contest is slated to begin at 12 p.m., and will be broadcast on Big 12 Now on ESPN+. Josh Klingler (play-by-play) and Huw Williams (analyst) will call the action.

NCAA / BIG 12 RANKINGS

Big 12 Top-10 (9.15.19); NCAA Top-100 (9.15.19)



TEAM

W-L-T Percentage (.857, 7-1-0)	2	16
Points Per Game (6.5)	4	49
Goals Per Game (2.3)	4	52
Assists Per Game (2.0)	4	44
Shots Per Game (15.5)	5	60
Shots on Goal Per Game (6.6)	4	93
Corners Per Game (5.9)	5	57
Offsides Per Game (1.8)	6	-
Fouls Per Game (10.5)	7	-
Goals-Against Avg. (0.38)	1	12
Saves Per Game (2.3)	9	-
Save Percentage (.857)	2	32
Shutouts (5)	1	12

INDIVIDUAL (ALL GAMES)

TOTAL POINTS

Katie McClure (17) 2 13

TOTAL GOALS

Katie McClure (7) 2 14

GAME-WINNING GOALS

Katie McClure (4) 1 1
 Kailey Lane (2) 4 31

SHUTOUTS

Sarah Peters (4) 1 41

GOALS-AGAINST AVERAGE

Sarah Peters (0.39) 1 19

SAVE PERCENTAGE

Sarah Peters (.850) 1 46

GAMES STARTED STREAKS

Player	Current	Career Long
Katie McClure	65	65
Ceri Holland	49	49
Sarah Peters	29	29
Kaela Hansen	29	29
Isabella Cavalcante	13	21
Addisyn Merrick	11	44
Sophie Maierhofer	8	8
Madison Meador	5	15
Kathryn Castro	3	5
Kailey Lane	3	3
Ellie Prybylski	2	3
Elise Reina	0	24
Eva Eliasdottir	0	20
Bri Amos	0	4
Ebba Costow	0	4
Mandi Duggan	0	4
Italia Bradley	0	2
Grace Wiltgen	0	1

CARD ACCUMULATIONS

Player	Yellow	Red
Isabella Cavalcante	1	0
Mandi Duggan	1	0
Addisyn Merrick	1	0
Sarah Peters	1	0

Yellow Accumulation Rule: Any player(s) or coach(es) who have received a total of five cautions in one season shall be suspended and shall not participate in the next regularly scheduled game, including postseason games.



HEAD COACH

MARK FRANCIS

21st SEASON AT KANSAS, 1999-PRESENT

Collegiate Record: 259-189-35 (.573)

At Kansas: 226-164-34 (.573) / **Big 12:** 86-86-14 (.500)

Alma Mater: SMU, 1987 / **Hometown:** London, England

KU IN THE FRANCIS ERA

14 seasons with 10 or more victories
First-Ever Big 12 Championship in **2004**
Eight NCAA Tournament Appearances
 KU's First-Ever **Sweet 16** Appearance
 Achieved First-Ever **Top-10** Ranking
Six All-Americans
Four Freshman All-Americans
74 All-Big 12 Selections
25 NSCAA All-Central Region Players
Four Academic All-Americans
177 Academic All-Big 12 Selections
14-Time NSCAA Team Academic Award

Continuity is an essential part of a successful athletic program, and in his first 20 seasons at the helm of Kansas soccer, head coach Mark Francis has brought just that.

After taking over a program just past its infancy, Francis effectively etched his signature on Kansas soccer by becoming not only the winningest coach in its history, but leading his team to eight NCAA Tournaments, 16 Big 12 Championship Tournaments and helping 74 student-athletes garner all-conference accolades, including six that went on to earn All-America status.

Since 1999, Francis has amassed a 219-163-34 record, with 14 seasons of at least 10 victories. He is ranked second among active Big 12 coaches in wins at a single school. He also leads the league among active coaches with his 86 career Big 12 victories.

Francis' résumé is extensive, as he has coached and played at nearly all levels of the game. Francis worked his way up through the head coaching ranks wearing a whistle at the high school, junior college, Division I and professional levels. As a player, Francis was a three-time All-American at SMU and spent 10 seasons playing professionally in the APSL, the NPSL and the USISL.

After moving into its new, state-of-the-art facility at Rock Chalk Park in 2014, Francis' program took another step forward, elevating itself as one of the top teams in the Big 12 and a perennial top-25 NCAA squad. Now as the tenants of one of the top soccer facilities in the U.S., Francis and his staff are attracting some of the top talent from across the globe to Lawrence and the results over the last five seasons can back up the progress being made. Francis saw his Jayhawk team take the program even further in 2018 as he coached Kansas to its eighth NCAA Tournament appearance and their fifth in the second round of the Big Dance.

Francis helped his squad to their highest Big 12 finish in over a decade in 2016 as the Jayhawks posted a second-place finish on the league table, only suffering one loss in the conference season.

It was a season to remember for Francis and the Jayhawks in 2014, as he led his squad to one of the best seasons in program history. He picked up his 200th career coaching victory in KU's 4-1 win over Wake Forest and proceed to see his team reel off eight-straight wins to start the season, the best start in program history. His team ended the year with 15 victories, the third-most ever by a Jayhawk squad and made the program's sixth NCAA tournament appearance. Junior Liana Salazar also had a breakout season in becoming Kansas' sixth All-America honoree after she was named to the Third Team.

Francis tallied his 150th KU coaching victory in 2012 and led his squad to its 10th 10-win season during his tenure in Lawrence. Senior Whitney Berry became KU's all-time assists leader (32) and the program's 11th player to be named to the All-Big 12 First Team.

The 2008 season was one for the record books as Kansas recorded 13 wins and returned to the NCAA Tournament. The Jayhawks knocked off four nationally-ranked teams en route to their tournament berth, including a pair of wins over long-time nemesis Texas A&M. KU became the first team in three years to defeat the Aggies twice in the same season.

The Jayhawks topped four other ranked teams during the season and capped their remarkable run with a 2-1 triumph over Denver in the first round of the NCAA Tournament. Several players received accolades throughout and following the season. Freshman Emily Cressy was

named a Freshman All-American by Soccer Buzz as well as Soccer America, while teammates Monica Dolinsky and Johnson joined her on the All-Central Region Team. Dolinsky was also named All-Big 12 First Team, while Cressy became KU's first Big 12 Rookie of the Year.

The 2004 season was a year filled with program firsts as numerous records were broken. The Jayhawks compiled a program-best record of 18-5 on their way to the Big 12 Championship. It was the first for the soccer team and second among KU women's sports, the first going to basketball in 1997. Francis earned Big 12 Coach of the Year as well as the Central Region Coach of the Year honors. He also won his 100th overall match with a victory against Texas Tech on Oct. 1.

In 2003, Kansas soccer reached new heights under Francis' leadership. The Jayhawks posted an 18-6-1 mark and advanced to the Sweet 16 round of the NCAA Tournament. With a 6-3-1 record in the Big 12, KU finished third. Along with the team accomplishments, several players were honored for their efforts during the 2003 campaign, including Caroline Smith being named to several All-America teams as well as Holly Gault being selected as a Freshman All-American by Soccer Buzz. With Francis' help, KU's players etched their names in the record book, as Smith became the program's all-time leader in goals, points and game-winning goals and Miller set the school mark in career shutouts and career GAA.

In 2002, Francis led Kansas to an overall record of 11-7-2, including a then-school record six-straight wins and a seven-game unbeaten streak during the first half of the season. The Jayhawks opened the season 6-1-1, marking their best start ever. Francis' team ranked in the Central Region's Top 10 for 10 consecutive weeks.

FRANCIS BY THE NUMBERS

Year	School	Record	Conf. Rec(Finish)	Conf. Tournament	NCAA
1996	South Alabama	2-17-0	--	--	--
1997	South Alabama	18-3-1	5-0-0 (1st)	Champion (2-0-0)	--
1998	South Alabama	13-5-0	5-0-0 (1st)	Semifinals (0-1-0)	--
1999	Kansas	8-10-1	3-6-1 (9th)	--	--
2000	Kansas	7-11-2	3-6-1 (18th)	Quarterfinals (0-1-0)	--
2001	Kansas	13-7-0	7-3-0 (4th)	Quarterfinals (0-1-0)	First Round (0-1-0)
2002	Kansas	11-7-2	4-5-1 (6th)	Quarterfinals (0-1-0)	--
2003	Kansas	18-6-1	6-3-1 (3rd)	Semifinals (1-1-0)	Sweet 16 (2-1-0)
2004	Kansas	18-5-0	8-2-0 (1st)	Semifinals (1-1-0)	Second Round (1-1-0)
2005	Kansas	11-7-2	6-3-1 (12nd)	Quarterfinals (0-1-0)	--
2006	Kansas	11-7-1	6-4-0 (4th)	Quarterfinals (0-0-1)	--
2007	Kansas	7-10-4	5-2-3 (13rd)	Quarterfinals (0-1-0)	--
2008	Kansas	13-8-2	4-5-1 (7th)	Semifinals (1-0-1)	Second Round (1-1-0)
2009	Kansas	12-8-2	4-6-0 (17th)	Quarterfinals (0-1-0)	--
2010	Kansas	6-13-0	1-9-0 (11th)	--	--
2011	Kansas	11-9-1	3-5-0 (16th)	Quarterfinals (0-0-1)	First Round (0-1-0)
2012	Kansas	10-8-2	3-5-0 (6th)	Quarterfinals (0-1-0)	--
2013	Kansas	7-11-2	2-5-1 (8th)	Quarterfinals (0-1-0)	--
2014	Kansas	15-6-0	5-3-0 (3rd)	Quarterfinals (0-1-0)	First Round (0-1-0)
2015	Kansas	10-9-2	3-4-1 (6th)	Final (2-1-0)	--
2016	Kansas	11-6-4	5-1-2 (2nd)	Quarterfinals (0-1-0)	Second Round (1-1-0)
2017	Kansas	8-9-3	3-5-1 (6th)	Quarterfinals (0-1-0)	--
2018	Kansas	12-6-3	5-4-0 (6th)	Quarterfinals (0-0-1)	Second Round (1-1-0)
2019	Kansas	7-1-0	0-0-0	--	--
At Kansas	21 seasons	226-164-34 (.573)	86-86-14 (.500)	5-14-4 (.212)	5-8-0 (.385)
OVERALL	24 seasons	259-189-35 (.573)	96-86-14 (.562)	7-15-4 (.346)	5-8-0 (.385)

CATEGORICAL RECORDS

	Big 12	Overall	Big 12	Overall
Overall	0-0-0	7-1-0	vs. RPI 1-25 opponents	0-0-0 0-0-0
Home	0-0-0	4-0-0	vs. RPI 26-50 opponents	0-0-0 0-0-0
Road	0-0-0	3-0-0	vs. RPI 51-100 opponents	0-0-0 0-0-0
Neutral Sites	0-0-0	0-1-0	vs. RPI 101-150 opponents	0-0-0 0-0-0
			vs. RPI 151+ opponents	0-0-0 0-0-0
On Thursdays	0-0-0	2-0-0		
On Fridays	0-0-0	1-1-0	vs. UnitedSoccer ranked opponents	0-0-0 1-0-0
On Sundays	0-0-0	4-0-0	vs. UnitedSoccer Top-10 opponents	0-0-0 0-0-0
			vs. UnitedSoccer unranked opponents	0-0-0 6-1-0
When Scoring First	0-0-0	5-0-0		
When Opponent Scores First	0-0-0	2-1-0	vs. nonconference opponents	0-0-0 7-1-0
When Leading at Half	0-0-0	4-0-0		
When Trailing at Half	0-0-0	2-0-0	In one-goal games	0-0-0 4-1-0
When Tied at Half	0-0-0	1-1-0		
In Regulation	0-0-0	7-1-0	In 90+ degrees	0-0-0 0-0-0
In Overtime	0-0-0	0-0-0	In 80-89 degrees	0-0-0 1-0-0
			In 70-79 degrees	0-0-0 4-1-0
In August	0-0-0	3-0-0	In 60-69 degrees	0-0-0 2-0-0
In September	0-0-0	4-1-0	In 50-59 degrees	0-0-0 0-0-0
In October	0-0-0	0-0-0	In sub-50 degrees	0-0-0 0-0-0
In November	0-0-0	0-0-0		
When scoring zero goals	0-0-0	0-1-0	Wearing white uniforms	0-0-0 2-1-0
When scoring one goal	0-0-0	2-0-0	Wearing blue uniforms	0-0-0 4-0-0
When scoring two goals	0-0-0	3-0-0	Wearing red uniforms	0-0-0 1-0-0
When scoring three goals	0-0-0	0-0-0	Wearing alternate uniforms	0-0-0 0-0-0
When scoring four goals or more	0-0-0	2-0-0		
			In televised games	0-0-0 6-0-0
When allowing zero goals	0-0-0	5-0-0		
When allowing one goal	0-0-0	2-1-0		
When allowing two goals	0-0-0	0-0-0		
When allowing three goals	0-0-0	0-0-0		
When allowing four goals or more	0-0-0	0-0-0		
When outshooting opponent	0-0-0	4-1-0		
When being outshot	0-0-0	3-0-0		
When tied in shots	0-0-0	0-0-0		

MISCELLANEOUS STATS

QUICKEST GOAL:
Katie McClure (2:54) vs. Nebraska, 8/22/19

QUICKEST GOAL AGAINST:
Stasia Mallin (8:44) of Memphis, 8/29/19

GAME-WINNING GOALS AFTER 75':
Katie McClure (88:54) vs. Memphis, 8/29/19
Kailey Lane (84:51) at Purdue, 9/8/19
Chais Wright (79:43) at W. Michigan, 9/15/19

GAME-TYING GOALS AFTER 75':

GAME-WINNING GOALS AGAINST AFTER 75':

GAME-TYING GOALS AGAINST AFTER 75':

MULTI-GOAL GAMES:
Ceri Holland (2) vs. Loyola-Chicago, 8/25/19
Katie McClure (3) vs. Nebraska, 8/22/19

MULTI-GOAL GAMES AGAINST:

HAT TRICKS:
Katie McClure vs. Nebraska, 8/22/19

HAT TRICKS AGAINST:

OWN GOALS FOR:

OWN GOALS AGAINST:

RED CARDS:

OPPONENT RED CARDS:

STARTERS - BY MATCH

	GK	F	F	M	M	M	D	D	D	D	D
Nebraska (8/22)	Peters	McClure	Amos	Costow	Maierhofer	Holland	Prybylski	Hansen	Merrick	Cavalcante	Reina
Loyola-Chicago (8/25)	Peters	McClure	Amos	Costow	Maierhofer	Holland	Prybylski	Hansen	Merrick	Cavalcante	Reina
Memphis (8/29)	Peters	McClure	Amos	Costow	Maierhofer	Holland	Prybylski	Hansen	Merrick	Cavalcante	Reina
Florida Atlantic (9/1)	Peters	McClure	Amos	Costow	Maierhofer	Holland	Reina	Hansen	Merrick	Meador	Cavalcante
DePaul (9/6)	Peters	McClure	Amos	Costow	Maierhofer	Holland	Bradley	Hansen	Merrick	Meador	Cavalcante
Purdue (9/8)	Peters	McClure	Lane	Castro	Maierhofer	Holland	Bradley	Hansen	Merrick	Meador	Cavalcante
Northwestern (9/13)	Peters	McClure	Lane	Castro	Maierhofer	Holland	Prybylski	Hansen	Merrick	Meador	Cavalcante
Western Michigan (9/15)	Peters	McClure	Lane	Castro	Maierhofer	Holland	Prybylski	Hansen	Merrick	Meador	Cavalcante
BYU (9/19)											
Kennesaw State (9/22)											
Texas (9/26)											
Baylor (9/29)											
Oklahoma State (10/3)											
Oklahoma (10/10)											
Texas Tech (10/13)											
Kansas State (10/18)											
West Virginia (10/24)											
TCU (10/27)											
Iowa State (10/31)											

THE LAST TIME...

TEAM

Home Win.....1-0 vs. Florida Atlantic, Sept. 1, 2019
 Home Loss.....1-2 (OT) vs. Texas Tech, Oct. 14, 2018
 Home Tie.....1-1 vs. Oklahoma State, Oct. 9, 2016

Away Win.....2-0 at Western Michigan, Sept. 15, 2019
 Away Loss.....1-4 at North Carolina, Nov. 16, 2018
 Away Tie.....0-0 (2 OT) at Cincinnati, Sept. 6, 2018

Neutral Win.....3-0 vs. Oregon State, Aug. 24, 2018
 Neutral Loss.....0-1 vs. DePaul, Sept. 6, 2019
 Neutral Tie.....0-0 (2 OT) vs. Texas, Oct. 28, 2018

OT Win.....2-1 (2OT) vs. Saint Louis, Nov. 9, 2018
 OT Loss.....1-2 (OT) vs. Texas Tech, Oct. 14, 2018
 Played 2 OTs.....2-1 (2OT) vs. Saint Louis, Nov. 9, 2018

Big 12 Win.....1-0 (OT) vs. West Virginia, Oct. 25, 2018
 Big 12 Loss.....1-3 at Baylor, Oct. 21, 2018
 Big 12 Tie.....1-1 at Texas Tech, Sept. 24, 2017

Win over Top-25 team.....2-1 vs. #20 Memphis, Aug. 29, 2019
 Win over Top-10 team.....2-1 vs. #9 Texas, Oct. 13, 2017

Scored 0 Goals.....vs. DePaul, Sept. 6, 2019
 Scored 1 Goal.....at Northwestern, Sept. 13, 2019
 Scored 2 Goals.....at Western Michigan, Sept. 15, 2019
 Scored 3 Goals.....vs. Saint Louis, Sept. 14, 2018
 Scored 4 Goals.....vs. Nebraska, Aug. 22, 2019
 Score 5+ Goals.....6 vs. Loyola-Chicago, Aug. 25, 2019

Allowed 0 Goals.....at Western Michigan, Sept. 15, 2019
 Allowed 1 Goal.....vs. Purdue, Sept. 8, 2019
 Allowed 2 Goals.....at Texas, Oct. 19, 2018
 Allowed 3 Goals.....at Baylor, Oct. 21, 2018
 Allowed 4 Goals.....at North Carolina, Nov. 16, 2018
 Allowed 5+ Goals.....5 vs. Texas A&M, Sept. 10, 2017

Amassed 20+ Shots.....31 at Western Michigan, Sept. 15, 2019
 Amassed 30+ Shots.....31 at Western Michigan, Sept. 15, 2019

Allowed 20+ Shots.....(20) DePaul, Sept. 6, 2019
 Allowed 30+ Shots.....(33) Texas, Nov. 5, 2004

Amassed 10+ Shots on Goal.....15 at Western Michigan, Sept. 15, 2019
 Amassed 15+ Shots on Goal.....15 at Western Michigan, Sept. 15, 2019

Allowed 10+ Shots on Goal.....11 by BYU, Sept. 18, 2017
 Allowed 15+ Shots on Goal.....20 by Georgia, Aug. 29, 2010

Amassed 10+ Corner Kicks.....10 at Iowa State, Sept. 29, 2017
 Allowed 10+ Corner Kicks.....12 vs. TCU, Nov. 1, 2017

Called for 15+ Fouls.....18 vs. Memphis, Aug. 29, 2018
 Called for 25+ Fouls.....25 vs. Oklahoma State, Oct. 9, 1998

Opponent Called for 15+ Fouls.....(17) Texas Tech, Sept. 24, 2017
 Opponent Called for 25+ Fouls.....(27) Oklahoma State, Oct. 9, 2016

Scored 1 Penalty Kick.....vs. Memphis, Aug. 29, 2019
 Scored 2 Penalty Kicks.....vs. Texas Tech, Sept. 23, 2016

Allowed 1 Penalty Kick.....vs. Texas, Oct. 19, 2018
 Allowed 2 Penalty Kicks.....Oral Roberts, Sept. 27, 2009

INDIVIDUAL

Hat Trick.....Katie McClure vs. Nebraska (Aug. 22, 2019)
 Brace.....(2) Ceri Holland vs. Loyola-Chicago (Aug. 25, 2019)

2 Assists.....Ceri Holland vs. Saint Louis (Sept. 14, 2018)
 3 Assists.....Whitney Berry vs. Texas (Sept. 30, 2011)

3 Points (Goal+Assist).....Katie McClure vs. Purdue (Sept. 8, 2019)
 5+ Points.....(5) Ceri Holland vs. Loyola-Chicago (Aug. 25, 2019)

8+ Shots.....(8) Grace Hagan at Cincinnati (Sept. 6, 2018)
 10+ Shots.....(12) Caroline Smith vs. Missouri (Oct. 28, 2005)

5+ Shots on Goal.....(5) Grace Hagan vs. Saint Louis (Sept. 14, 2018)

Scored Penalty Kick.....Ceri Holland vs. Memphis (Aug. 29, 2019)
 Missed Penalty Kick.....Ceri Holland vs. Texas (Oct. 19, 2018)

10+ Saves.....(11) Kaitlyn Stroud vs. Oklahoma (Nov. 1, 2013)
 Shutout.....Sarah Peters at Western Michigan (Sept. 15, 2019)

Red Card.....Hannah Lukinac at TCU (Sept. 22, 2017)

INDIVIDUAL OPPONENT

Hat Trick.....Anna Canniglia, Nebraska (Oct. 23, 2009)
 Multi-Goal Match.....(2) Rachael Dorwart, North Carolina (Nov. 16, 2018)

2 Assists.....Carla Portillo, West Virginia (Oct. 27, 2017)
 3+ Assists.....(3) Julia Ashley, North Carolina (Nov. 16, 2018)

3 Points.....Julia Ashley & Rachael Dorwart, North Carolina (Nov. 16, 2018)
 5+ Points.....(5) Amanda Hill, West Virginia (Oct. 16, 2015)

8+ Shots.....(8) Nadia Gomes, BYU (Sept. 18, 2017)
 10+ Shots.....(13) Courtney Saunders, Baylor (Oct. 2, 1998)

5+ Shots on Goal.....(6) Maddie Pokorny, Saint Louis (Nov. 9, 2017)

Scored Penalty Kick.....Kayra Dollas, Texas (Oct. 19, 2018)
 Missed Penalty Kick.....Paula Leblic, Oregon State (Aug. 27, 2017)

10+ Saves.....(13) Maggie Rogers, Western Michigan (Sept. 15, 2019)
 Shutout.....Mollie Eriksson, DePaul (Sept. 6, 2019)

Red Card.....Kassidie Stade, Oklahoma (Nov. 1, 2013)

OVERALL STATISTICS



2019 Kansas Soccer
Kansas Overall Individual Statistics (as of Sep 15, 2019)
All games



Overall: 7-1-0 Conf: 0-0-0 Home: 4-0-0 Away: 3-0-0 Neut: 0-1-0

##	Player	gp-gs	min	g	a	pts	sh	sh%	sog	sog%	yc	rc	gwg	pk-att	foul	cnr
12	McClure, Katie	8-8	475	7	3	17	23	.304	10	.435	0	0	4	0-0	5	0
15	Holland, Ceri	8-8	574	3	2	8	19	.158	6	.316	0	0	0	2-2	3	0
4	Lane, Kailey	8-3	369	3	1	7	7	.429	5	.714	0	0	2	0-0	3	0
28	Amos, Bri	8-5	347	1	2	4	7	.143	5	.714	0	0	0	0-0	4	1
14	Barnett, Samantha	8-0	214	1	1	3	8	.125	4	.500	0	0	0	0-0	1	0
2	Prybylski, Ellie	8-5	403	0	3	3	1	.000	0	.000	0	0	0	0-0	0	4
13	Castro, Kathryn	8-3	310	1	0	2	14	.071	7	.500	0	0	0	0-0	0	1
27	Maierhofer, Sophie	8-8	583	1	0	2	9	.111	3	.333	0	0	0	0-0	3	1
11	Wright, Chais	5-0	88	1	0	2	4	.250	2	.500	0	0	1	0-0	0	0
21	Cavalcante, Isabella	8-8	569	0	2	2	5	.000	1	.200	1	0	0	0-0	2	0
8	Costow, Ebba	8-5	356	0	2	2	1	.000	0	.000	0	0	0	0-0	1	12
26	Merrick, Addisyn	8-8	675	0	1	1	2	.000	0	.000	1	0	0	0-0	0	0
22	Duggan, Mandi	8-0	188	0	0	0	9	.000	5	.556	1	0	0	0-0	1	0
10	Briley, Gracely	5-0	97	0	0	0	6	.000	1	.167	0	0	0	0-0	0	2
6	Hansen, Kaela	8-8	610	0	0	0	3	.000	0	.000	0	0	0	0-0	2	0
7	Hall, Avery	5-0	62	0	0	0	2	.000	2	1.000	0	0	0	0-0	0	0
24	Reina, Elise	4-4	236	0	0	0	1	.000	1	1.000	0	0	0	0-0	0	8
23	Wiltgen, Grace	7-0	201	0	0	0	1	.000	1	1.000	0	0	0	0-0	0	0
19	Eliasdottir, Eva	1-0	22	0	0	0	1	.000	0	.000	0	0	0	0-0	0	0
9	Meador, Madison	8-5	514	0	0	0	1	.000	0	.000	0	0	0	0-0	0	0
20	Giubilato, Margherit	2-0	20	0	0	0	0	.000	0	.000	0	0	0	0-0	0	0
18	Gavillet, Emilie	1-0	10	0	0	0	0	.000	0	.000	0	0	0	0-0	0	0
17	Beyer, Lia	2-0	42	0	0	0	0	.000	0	.000	0	0	0	0-0	0	0
16	Bradley, Italia	6-2	204	0	0	0	0	.000	0	.000	0	0	0	0-0	0	0
3	Sheridan, Mya	4-0	44	0	0	0	0	.000	0	.000	0	0	0	0-0	0	0
1	Pasar, Melania	1-0	18	0	0	0	0	.000	0	.000	0	0	0	0-0	0	0
00	Peters, Sarah	8-8	692	0	0	0	0	.000	0	.000	1	0	0	0-0	1	0
Total		8	-	18	17	53	124	.145	53	.427	4	0	7	2-2	84	-
Opponents		8	-	3	1	7	67	.045	21	.313	1	0	1	0-0	73	-

#	Goalie	gp-gs	Goal Average			Saves		Record				Shots faced
			min	ga	gaavg	saves	pct	w	l	t	sho/cbo	
18	Gavillet, Emilie	1-0	9:31	0	0.00	0	.000	0	0	0	0/1	0
1	Pasar, Melania	1-0	17:50	0	0.00	0	.000	0	0	0	0/1	1
00	Peters, Sarah	8-7	692:39	3	0.39	17	.850	7	1	0	4/1	65
TM TEAM		-	0:00	0	0.00	1	1.000	0	0	0	1/0	0
Total		8	720:00	3	0.38	18	.857	7	1	0	5	66
Opponents		8	720:00	18	2.25	35	.660	1	7	0	1	122

Team saves: 1

Goals by Period	1st	2nd	Total
Kansas	10	8	18
Opponents	2	1	3

Shots by Period	1st	2nd	Total
Kansas	58	66	124
Opponents	32	35	67

Saves by Period	1st	2nd	Total
Kansas	12	6	18
Opponents	17	18	35

Corners by Period	1st	2nd	Total
Kansas	18	29	47
Opponents	11	15	26

Fouls by Period	1st	2nd	Total
Kansas	39	45	84
Opponents	36	37	73

Attendance Summary	KU	Opponent
Total	2004	1459
Dates/Avg Per Date	4/501	3/486
Neutral Site #/Avg	1/137	

KANSAS TEAM STATS GAME-BY-GAME

Date	Opponent	Score	G	A	Pts	Sh	Sh%	Sog	Sog%	GW	PK-Att	YC	RC	Min
Aug 22, 2019	NEBRASKA	4-0	4	3	11	15	.267	6	.400	1	0-0	0	0	991
Aug 25, 2019	LOYOLA-CHICAGO	6-0	6	6	18	23	.261	12	.522	1	1-1	0	0	991
Aug 29, 2019	MEMPHIS	2-1	2	1	5	10	.200	7	.700	1	1-1	1	0	991
Sep 01, 2019	FLORIDA ATLANTIC	1-0	1	2	4	4	.250	1	.250	1	0-0	0	0	990
Sep 06, 2019	vs DePaul	0-1	0	0	0	20	.000	3	.150	0	0-0	0	0	990
Sep 08, 2019	at Purdue	2-1	2	3	7	13	.154	5	.385	1	0-0	2	0	989
Sep 13, 2019	at Northwestern	1-0	1	1	3	8	.125	4	.500	1	0-0	1	0	991
Sep 15, 2019	at Western Michigan	2-0	2	1	5	31	.065	15	.484	1	0-0	0	0	990
Kansas		18-3	18	17	53	124	.145	53	.427	7	2-2	4	0	7923
			3	1	7	67	.045	21	.313	1	0-0	1	0	-

TEAM PER-GAME

Games played: 8

Shots per game: 15.50;Goals per game: 2.25

Assists per game: 2.12;Points per game: 6.62

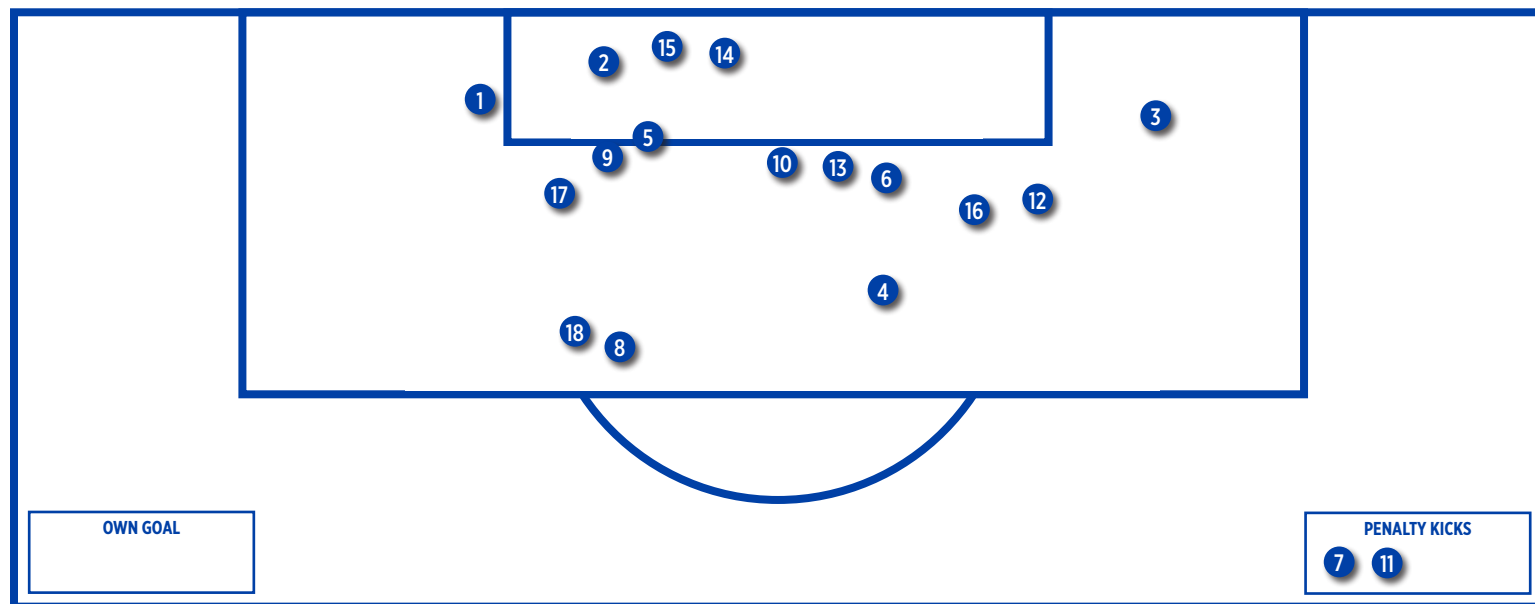
Date	Opponent	Score	Minutes	GA	GAAvg	Saves	Save%	W	L	T	Sho	Faced
Aug 22, 2019	NEBRASKA	4-0	90:00	0	0.00	3	1.000	1	0	0	1	12
Aug 25, 2019	LOYOLA-CHICAGO	6-0	90:00	0	0.00	0	.000	1	0	0	1/3	3
Aug 29, 2019	MEMPHIS	2-1	90:00	1	0.33	2	.667	1	0	0	-	11
Sep 01, 2019	FLORIDA ATLANTIC	1-0	90:00	0	0.25	2	1.000	1	0	0	1	9
Sep 06, 2019	vs DePaul	0-1	90:00	1	0.40	0	.000	0	1	0	-	5
Sep 08, 2019	at Purdue	2-1	90:00	1	0.50	7	.875	1	0	0	-	18
Sep 13, 2019	at Northwestern	1-0	90:00	0	0.43	3	1.000	1	0	0	1	3
Sep 15, 2019	at Western Michigan	2-0	90:00	0	0.38	1	1.000	1	0	0	1	5
Totals		18-3	720:00	3	0.38	18	.857	7	1	0	5	66
			720:00	18	0.38	35	.660	1	7	0	1	122

KANSAS GAME-BY-GAME COMPARISON (KANSAS/OPPONENT)

Date	Opponent	Score	Goals	Assists	Shots	On Goal	Corners	CKgoals	Fouls	YC	RC	Offside
Aug 22	NEBRASKA	4-0	4/0	3/0	15/13	6/3	3/5	0/0	9/4	0/0	0/0	4/3
Aug 25	LOYOLA-CHICAGO	6-0	6/0	6/0	23/3	12/0	8/2	1/0	10/8	0/0	0/0	0/1
Aug 29	MEMPHIS	2-1	2/1	1/0	10/11	7/3	4/4	0/1	18/14	1/0	0/0	1/1
Sep 01	FLORIDA ATLANTIC	1-0	1/0	2/0	4/9	1/2	8/4	0/0	8/13	0/1	0/0	4/1
Sep 06	DePaul	0-1	0/1	0/0	20/5	3/1	9/2	0/0	6/6	0/0	0/0	1/0
Sep 08	Purdue	2-1	2/1	3/1	13/18	5/8	3/3	0/0	13/11	2/0	0/0	3/3
Sep 13	Northwestern	1-0	1/0	1/0	8/3	4/3	6/4	0/0	7/10	1/0	0/0	0/1
Sep 15	Western Michigan	2-0	2/0	1/0	31/5	15/1	6/2	0/0	13/7	0/0	0/0	2/0
Totals		18-3	18/3	17/1	124/67	53/21	47/26	1/1	84/73	4/1	0/0	15/10

Note: Game totals are displayed in the format TEAM/OPPONENT for each category

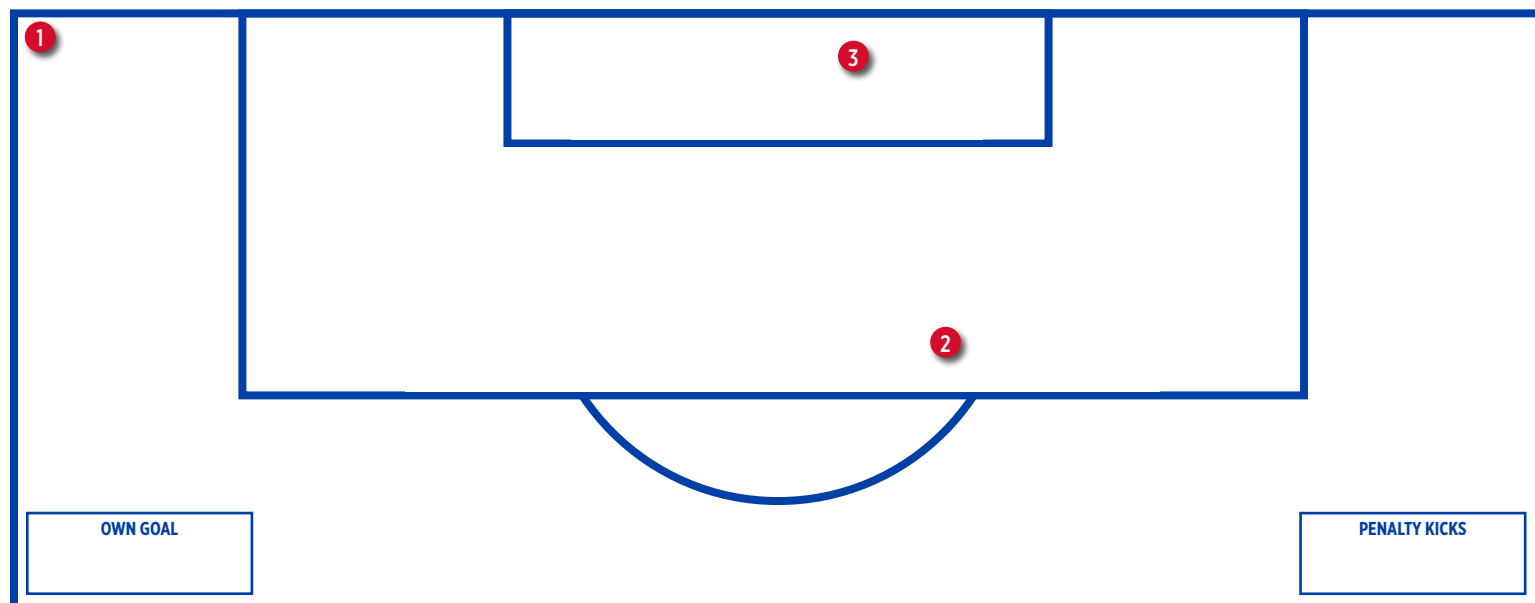
KANSAS GOAL CHART



KANSAS GOAL INFORMATION

- | | |
|--|---|
| 1 - Katie McClure (Amos) vs. Nebraska, 2:54 | 11 - Ceri Holland (penalty) vs. Memphis, 51:42 < |
| 2 - Bri Amos (McClure, Holland) vs. Nebraska, 8:07 | 12 - Katie McClure (Cavalcante) vs. Memphis, 88:54 |
| 3 - Katie McClure (unassisted) vs. Nebraska, 24:18 | 13 - Katie McClure (Amos, Cavalcante) vs. Florida Atlantic, 12:21 |
| 4 - Katie McClure (unassisted) vs. Nebraska, 77:40 | 14 - Katie McClure (Barnett) vs. Purdue, 58:14 |
| 5 - Katie McClure (Holland) vs. Loyola-Chicago, 3:27 | 15 - Kailey Lane (Prybylski, McClure) vs. Purdue, 84:51 |
| 6 - Sophie Maierhofer (McClure, Prybylski) vs. Loyola-Chicago, 26:59 | 16 - Kailey Lane (Prybylski) vs. Northwestern, 24:06 * |
| 7 - Ceri Holland (unassisted) vs. Loyola-Chicago, 27:22 < | 17 - Chais Wright (unassisted) vs. Western Michigan, 79:43 * |
| 8 - Kathryn Castro (Lane, Merrick) vs. Loyola-Chicago, 34:41 | 18 - Samantha Barnett (Costow) vs. Western Michigan, 80:29 |
| 9 - Kailey Lane (unassisted) vs. Loyola-Chicago, 41:22 | |
| 10 - Ceri Holland (Costow) vs. Loyola-Chicago, 53:04 * | |

OPPONENT GOAL CHART



OPPONENT GOAL INFORMATION

- 1 - Stasia Mallin (Memphis), 8:44 *
- 2 - Jade Eriksen-Russo (DePaul), 45:26
- 3 - Hannah Melchiorre (Purdue), 20:57 *

SINGLE MATCH INDIVIDUAL RECORDS

POINTS

No.	Player	Points
1.	Katie McClure (vs. Nebraska, Aug. 22, 2019)	7
	Shannon McCabe (vs. Francis Marion, Oct. 19, 2008)	7
	Caroline Smith (vs. Northwestern, Aug. 29, 2003)	7
3.	Grace Hagan (vs. Saint Louis, Sept. 14, 2018)	6
	Monica Dolinsky (at Missouri, Oct. 15, 2006)	6
	Jessica Smith (vs. Oklahoma State, Oct. 7, 2005)	6
	Caroline Smith (vs. Florida State, Sept. 12, 2003)	6
	Monica Brothers (at Oklahoma State, Sept. 30, 2001)	6
	Natalie Hoogveld (at Colorado, Oct. 14, 2001)	6
	Brianna Valento (vs. St. Louis, Oct. 30, 2001)	6

GOALS

No.	Player	Goals
1.	Katie McClure (vs. Nebraska, Aug. 22, 2019)	3
	Grace Hagan (vs. Saint Louis, Sept. 14, 2018)	3
	Shannon McCabe (vs. Francis Marion, Oct. 19, 2008)	3
	Jessica Smith (vs. Oklahoma State, Oct. 7, 2005)	3
	Caroline Smith (vs. Florida State, Sept. 12, 2003)	3
	Caroline Smith (vs. Northwestern, Aug. 29, 2003)	3
	Brianna Valento (vs. St. Louis, Oct. 30, 2001)	3
	Natalie Hoogveld (at Colorado, Oct. 14, 2001)	3
	Monica Brothers (vs. Oklahoma State, Sept. 30, 2001)	3

ASSISTS

No.	Player	Goals
1.	Hilla Rantala (at Oklahoma State, Sept. 30, 2001)	4
2.	Whitney Berry (vs. Texas, Sept. 30, 2011)	3
	Monica Dolinsky (vs. Texas A&M, Nov. 5, 2008)	3
	Jessica Bush (vs. UAB, Sept. 5, 2008)	3
	Hilla Rantala (vs. St. Louis, Oct. 30, 2001)	3
	Melanie Schroeder (vs. UNLV, Sept. 7, 2001)	3

SHOTS

No.	Player	Shots
1.	Caroline Smith (vs. Missouri, Oct. 28, 2005)	12
2.	Caroline Smith (vs. Colorado, Sept. 27, 2002)	10
	Denise Cooke (vs. CMSU, Oct. 13, 1995)	10

SHOTS ON GOAL

No.	Player	SOG
1.	Caroline Smith (vs. Missouri, Oct. 28, 2005)	7
2.	Caroline Smith (at Mississippi State, Sept. 8, 2002)	6
3.	Grace Hagan (vs. Saint Louis, Sept. 14, 2018)	5
	Ingrid Vidal (at Missouri, Oct. 21, 2011)	5
	Jessica Smith (vs. Oklahoma State, Oct. 7, 2005)	5
	Caroline Smith (vs. UC Irvine, Sept. 16, 2005)	5

	Caroline Smith (vs. Baylor, Oct. 3, 2004)	5
	Nicole Cauzillo (vs. Texas Tech, Oct. 1, 2004)	5
	Caroline Smith (vs. Colorado, Sept. 27, 2002)	5
	Monica Brothers (vs. North Texas, Aug. 31, 2001)	5

SAVES

No.	Player	Saves
1.	Betsy Pollard (at Texas Tech, Oct. 3, 1999)	16
2.	Kat Liebetrau (at Georgia, Aug. 29, 2010)	15
	Laura Rohde (at Mississippi, Oct. 29, 1999)	15
	Jen Fecke (vs. UTEP, Oct. 6, 1996)	15
5.	Betsy Pollard (at Georgia, Sept. 17, 1999)	14
	Betsy Pollard (at Utah, Sept. 3, 1999)	14
	Jen Fecke (at Baylor, Sept. 14, 1997)	14

INDIVIDUAL STREAKS

Consecutive Matches w/ a Point	9
(Hilla Rantala, Aug. 31-Oct. 5, 2001)	
Consecutive Matches w/ a Goal	.5 (twice)
(Liana Salazar, Aug. 22 - Sept. 5 2014)	
(Hilla Rantala, Sept. 1-Sept. 23, 2001)	
Consecutive Matches w/ an Assist	4
(Whitney Berry, Sept. 27-Oct. 9, 2009)	

Consecutive Matches w/ a GWG	4
(Katie McClure, Aug. 22-Sept. 1, 2019)	

Consecutive Shutouts	5
(Meghan Miller, Aug. 28-Sept. 9, 2004)	

OPPONENT HIGHS

Points	7
(Anna Caniglia, Nebraska, Oct. 23, 2009)	

Goals	.3 (nine times)
Last: (Anna Caniglia, Nebraska, Oct. 23, 2009)	

Assists	3
(Julia Ashley, North Carolina, Nov. 16, 2018)	
(Kristen Koop, Texas A&M, Sept. 13, 1996)	
(Sandy Smith, Nebraska, Sept. 22, 1995)	

Shots	.13
(Courtney Saunders, Baylor, Oct. 2, 1998)	

Shots on Goal	.6 (two times)
(Maddie Pokorny, Saint Louis, Nov. 9, 2018)	
(Becky Nelson, Oklahoma, Oct. 24, 2003)	

Saves	.16
(Amanda Vandervort, Wyoming, Aug. 29, 1999)	

Single Match Team Records

Points	.19
(vs. Francis Marion, Oct. 19, 2008)	

Goals	.7
(vs. Francis Marion, Oct. 19, 2008)	

Assists	6 (five times)
(last vs. Loyola Chicago, Aug. 25, 2019)	

Shots	.36
(vs. Michigan, Aug. 26, 2005)	

Shots on Goal	.20
(vs. Wyoming, Aug. 29, 1999)	

Saves	.16
(at Texas Tech, Oct. 3, 1999)	

Shots Allowed	.45
(at Nebraska, Sept. 22, 1995)	

Shots on Goal Allowed	.19
(at Nebraska, Oct. 15, 1999)	

Fewest Shots	0
(at Virginia, Sept. 19, 1997)	

Fewest Shots on Goal	.0 (3 times)
(vs. Baylor, Oct. 15, 2017), (vs. West Virginia, Nov. 6, 2013),	
(at Virginia, Sept. 19, 1997)	

Corner Kicks	.21
(vs. Baylor, Sept. 23, 2005)	

Fouls	.25
(at Oklahoma State, Oct. 9, 1998)	

Goals (In Defeat)	4
(vs. Nebraska, Oct. 23, 2009 [L, 4-7])	

Goals (Both Teams)	11
(vs. Nebraska, Oct. 23, 2009 [L, 4-7])	

Goals Allowed	.8 (twice)
(at Nebraska, Oct. 15, 1999), (at Nebraska, Sept. 22, 1995)	

Goals Allowed (In Victory)	.3 (three times)
(vs. Duke, Sept. 10, 2006 [W, 4-3])	
(at Oklahoma State, Sept. 30, 2001 [W, 5-3])	
(vs. Colorado, Sept. 28, 1997 [W, 4-3])	

First Half Goals	5
(vs. Loyola-Chicago, Aug. 25, 2019)	

Second Half Goals	5
(vs. Francis Marion, Oct. 19, 2008)	

Margin of Victory	.7
(vs. Francis Marion, Oct. 19, 2008 [W, 7-0])	

Margin of Defeat	.7 (twice)
(at Nebraska, 10/15/1999 [1-8, L]), (at Nebraska, 9/22/1995 [1-8, L])	

Quickest Goal	.0:18
(Caroline Kastor, at Colorado, Oct. 25, 2010)	

Quickest Goal Allowed	0:11
(Whitney Palmer, Oklahoma, Oct. 10, 2010)	

Quickest Goal (Second Half)	45:11
(Shayna Teutsch, at UTEP, Oct. 6, 1996)	

Quickest Goal Allowed (Second Half)	45:39
(Katy Lindenmuth, Wisconsin, Aug. 28, 2005)	

Quickest Goal (Overtime)	91:55
(Kim Boyer, vs. Missouri State, Sept. 18, 2007)	

Quickest Goal Allowed (Overtime)	92:03
(Kasey Langdon, Oklahoma St., Oct. 10, 2008)	

Shortest Span Between Goals	0:15
(Lindsey Horner, Carmel Kaplinger vs. Iowa State, Sept. 29, 2000)	

Shortest Span Between Goals Allowed	0:14
(Katie Baruth and Carol Ditch, Texas, Sept. 15, 1996)	

Shortest Span Between Goals (Both Teams)	0:08
(KayAnne Gummersall, Duke and Holly Gault, Kansas, Sept. 10, 2006)	

Attendance (Home)	2,514
(vs. Kansas State, Oct. 6, 2017)	

Attendance (Away)	5,205
(at Saint Louis, Sept. 8, 2017)	

SINGLE SEASON RECORDS

POINTS

No.	Player	Points
1.	.Caroline Smith (2003)	41 (19 goals, 3 assists)
2.	.Caroline Smith (2004)	32 (11 goals, 10 assists)
	.Hilla Rantala (2001)	32 (10 goals, 12 assists)
4.	.Liana Salazar (2014)	30 (13 goals, 4 assists)
5.	.Whitney Berry (2011)	29 (8 goals, 13 assists)
6.	.Ingrid Vidal (2011)	28 (11 goals, 6 assists)
	.Monica Dolinsky (2008)	28 (9 goals, 10 assists)
8.	.Emily Cressy (2009)	27 (12 goals, 3 assists)
	.Caroline Smith (2002)	27 (12 goals, 3 assists)
10.	.Caroline Smith (2005)	26 (9 goals, 8 assists)

GOALS

No.	Player	Goals
1.	.Caroline Smith (2003)	19
2.	.Liana Salazar (2014)	13
3.	.Emily Cressy (2009)	12
	.Caroline Smith (2002)	12
5.	.Katie McClure (2018)	11
	.Caroline Kastor (2012)	11
	.Ingrid Vidal (2011)	11
	.Caroline Smith (2004)	11
9.	.Hilla Rantala (2001)	10
10.	.Monica Dolinsky (2008)	9
	.Shannon McCabe (2008)	9
	.Caroline Smith (2005)	9
	.Monica Brothers (2001)	9

GAME-WINNING GOALS

No.	Player	GWG
1.	.Katie McClure (2018)	7
	.Caroline Smith (2003)	7
3.	.Caroline Kastor (2012)	5
	.Emily Cressy (2009)	5
	.Rachel Gilfillan (2004)	5
6.	.Nine Times	4
	last by Katie McClure (2019)	

ASSISTS

No.	Player	Assists
1.	.Whitney Berry (2011)	13
2.	.Hilla Rantala (2001)	12
3.	.Monica Dolinsky (2009)	10
	.Monica Dolinsky (2008)	10
	.Caroline Smith (2004)	10
6.	.Whitney Berry (2009)	9
7.	.Caroline Smith (2005)	8
	.Melanie Schroeder (2000)	8
	.Meghann Haven (1999)	8
10.	.Ali Kimura (2014)	7
	.Whitney Berry (2012)	7
	.Caroline Kastor (2011)	7
	.Jessica Bush (2008)	7
	.Holly Gault (2006)	7
	.Lauren Williams (2004)	7

SHOTS

No.	Player	Shots
1.	.Caroline Smith (2005)	98
2.	.Caroline Smith (2004)	92
3.	.Whitney Berry (2011)	85
	.Caroline Smith (2003)	85
5.	.Monica Dolinsky (2008)	79
6.	.Emily Cressy (2009)	73
7.	.Monica Dolinsky (2009)	71
8.	.Denise Cooke (1995)	68
9.	.Whitney Berry (2012)	66
10.	.Whitney Berry (2010)	65

SHOTS ON GOAL

No.	Player	SOG
1.	.Caroline Smith (2003)	46
2.	.Caroline Smith (2004)	45
3.	.Caroline Smith (2005)	43
4.	.Emily Cressy (2009)	42
5.	.Whitney Berry (2011)	41
6.	.Monica Dolinsky (2008)	37
7.	.Caroline Kastor (2012)	32
	.Caroline Smith (2002)	32
9.	.Whitney Berry (2012)	30
	.Hilla Rantala (2001)	30

* - Individual shots on goal kept since 1999

MINUTES PLAYED (FIELD)

No.	Player	Minutes
1.	.Estelle Johnson (2008)	2,110
2.	.Shelby Williamson (2009)	2,012
3.	.Estelle Johnson (2009)	1,987
4.	.Kayla Morrison (2016)	1,985
5.	.Afton Sauer (2004)	1,981
6.	.Kayla Morrison (2015)	1,977
7.	.Morgan Williams (2015)	1,963
8.	.Geneva Magness (2009)	1,958
9.	.Lauren Jackson (2009)	1,916
10.	.Afton Sauer (2007)	1,911

* - Individual minutes kept since 2004

MINUTES PLAYED (KEEPERS)

No.	Player	Minutes
1.	.Meghan Miller (2003)	2,281
2.	.Maddie Dobyns (2015)	2,074
3.	.Meghan Miller (2004)	2,060
4.	.Sarah Peters (2018)	1,989
5.	.Colleen Quinn (2007)	1,952

SAVES

No.	Player	Saves
1.	.Jen Fecke (1996)	150
2.	.Jen Fecke (1997)	147
3.	.Betsy Pollard (1999)	125
4.	.Kat Liebetrau (2010)	113
5.	.Meghan Miller (2003)	111

GOALS AGAINST AVG. (MINIMUM 1,000 MIN.)

No.	Player	GAA
1.	.Meghan Miller (2004) (13 GA, 2,061 min.)	0.57
2.	.Kaitlyn Stroud (2014) (14 GA, 1,722 min.)	0.73
3.	.Meghan Miller (2003) (19 GA, 2,281 min.)	0.75
4.	.Maddie Dobyns (2016) (14 GA, 1,554 min.)	0.81
5.	.Julie Hanley (2006) (19 GA, 1,738 min.)	0.98

SAVE PERCENTAGE (MINIMUM 1,000 MIN.)

No.	Player	Save Pct.
1.	.Meghan Miller (2004) (13 GA, 96 saves)	.881
2.	.Meghan Miller (2003) (19 GA, 111 saves)	.854
3.	.Kaitlyn Stroud (2014) (14 GA, 77 saves)	.846
4.	.Betsy Pollard (1999) (29 GA, 125 saves)	.812
5.	.Kaitlyn Stroud (2013) (25 GA, 107 saves)	.811

SHUTOUTS

No.	Player	Shutouts
1.	.Meghan Miller (2004)	11
2.	.Meghan Miller (2003)	10
3.	.Sarah Peters (2018)	9
4.	.Kaitlyn Stroud (2014)	8
5.	.Julie Hanley (2006)	7
6.	.Maddie Dobyns (2015)	6

WINS

No.	Player	Wins
1.	.Meghan Miller (2004)	18
	.Meghan Miller (2003)	18
3.	.Kaitlyn Stroud (2014)	14
4.	.Julie Hanley (2008)	13
	.Meghan Miller (2001)	13
6.	.Sarah Peters (2018)	12
7.	.Julie Hanley (2006)	11

CAREER RECORDS

POINTS

No.	Player	Pts.
1. . . .	Caroline Smith (2002-05)	126
2. . . .	Whitney Berry (2009-12)	78
3. . . .	Monica Dolinsky (2006-09)	76
4. . . .	Katie McClure (2016-Present)	68
. . . .	Liana Salazar (2011-15)	68
. . . .	Rachel Gilfillan (2001-04)	68
7. . . .	Grace Hagan (2015-18)	67
8. . . .	Caroline Kastor (2010-13)	66
9. . . .	Ashley Williams (2012-15)	52
. . . .	Emily Cressy (2008-10)	52
. . . .	Monica Dolinsky (2006-09)	52

GOALS

No.	Player	Goals
1. . . .	Caroline Smith (2002-05)	51
2. . . .	Katie McClure (2016-Present)	29
3. . . .	Liana Salazar (2011-15)	28
4. . . .	Caroline Kastor (2010-13)	26
. . . .	Rachel Gilfillan (2001-04)	26
6. . . .	Grace Hagan (2015-18)	25
7. . . .	Whitney Berry (2009-12)	23
. . . .	Emily Cressy (2008-10)	23
. . . .	Monica Dolinsky (2006-09)	23
10. . . .	Ashley Williams (2012-15)	21

GAME-WINNING GOALS

No.	Player	GWG
1. . . .	Katie McClure (2016-Present)	15
2. . . .	Caroline Smith (2002-05)	14
3. . . .	Emily Cressy (2008-10)	11
4. . . .	Ashley Williams (2012-15)	10
. . . .	Rachel Gilfillan (2001-04)	10
6. . . .	Monica Brothers (2001-04)	8
7. . . .	Liana Salazar (2011-15)	7
. . . .	Caroline Kastor (2010-13)	7
. . . .	Monica Dolinsky (2006-09)	7
. . . .	Jessica Bush (2005-08)	7
11. . . .	Jamie Fletcher (2011-14)	6
. . . .	Shannon McCabe (2006-09)	6

ASSISTS

No.	Player	Assists
1. . . .	Whitney Berry (2009-12)	32
2. . . .	Monica Dolinsky (2006-09)	30
3. . . .	Caroline Smith (2002-05)	24
4. . . .	Jessica Bush (2005-08)	21
5. . . .	Holly Gault (2003-06)	19
. . . .	Hilla Rantala (1999-2001)	19
7. . . .	Grace Hagan (2015-18)	17
. . . .	Amy Geha (2001-04)	17
. . . .	Melanie Schroeder (1998-2001)	17
10. . . .	Rachel Gilfillan (2001-04)	16

SHOTS

No.	Player	Shots
1. . . .	Caroline Smith (2002-05)	333
2. . . .	Whitney Berry (2009-12)	267
3. . . .	Monica Dolinsky (2006-09)	226
4. . . .	Jamie Fletcher (2011-14)	206
5. . . .	Liana Salazar (2011-15)	194
6. . . .	Katie McClure (2016-Present)	187
7. . . .	Grace Hagan (2015-Present)	179
8. . . .	Rachel Gilfillan (2001-04)	175
9. . . .	Caroline Kastor (2010-13)	159
10. . . .	Ashley Williams (2012-15)	154

SHOTS ON GOAL

No.	Player	SOG
1. . . .	Caroline Smith (2002-05)	166
2. . . .	Whitney Berry (2009-12)	113
3. . . .	Monica Dolinsky (2006-09)	96
4. . . .	Rachel Gilfillan (2001-04)	92
5. . . .	Katie McClure (2016-Present)	89
6. . . .	Liana Salazar (2011-15)	86
7. . . .	Grace Hagan (2015-18)	82
8. . . .	Jamie Fletcher (2011-14)	79
9. . . .	Emily Cressy (2008-10)	78
10. . . .	Caroline Kastor (2010-13)	77

GAMES PLAYED (FIELD)

No.	Player	Games
1. . . .	Amy Geha (2001-04)	88
2. . . .	Rachel Gilfillan (2001-04)	87
. . . .	Lauren Williams (2001-04)	87
4. . . .	Estelle Johnson (2006-09)	85
. . . .	Holly Gault (2003-06)	85
. . . .	Monica Brothers (2001-04)	85
7. . . .	Lacey Novak (2003-06)	84
. . . .	Stacy Leeper (2001-04)	84
9. . . .	Grace Hagan (2015-18)	83
. . . .	Kayla Morrison (2014-17)	83
. . . .	Liana Salazar (2011-15)	83
. . . .	Kim Boyer (2006-09)	83
. . . .	Monica Dolinsky (2006-09)	83
. . . .	Jessica Bush (2005-08)	83
. . . .	Afton Sauer (2004-07)	83
. . . .	Jessica Smith (2002-05)	83

GAMES STARTED (FIELD)

No.	Player	Games
1. . . .	Kayla Morrison (2014-17)	83
. . . .	Estelle Johnson (2006-09)	83
. . . .	Afton Sauer (2004-07)	83
4. . . .	Liana Salazar (2011-15)	82
. . . .	Whitney Berry (2009-12)	82
. . . .	Shelby Williamson (2009-12)	82
. . . .	Jessica Bush (2005-08)	82
. . . .	Holly Gault (2003-06)	82
9. . . .	Grace Hagan (2015-18)	80
. . . .	Taylor Estrada (2013-16)	80
11. . . .	Caroline Smith (2002-05)	79
12. . . .	Jamie Fletcher (2011-14)	76

MINUTES PLAYED (FIELD)*

No.	Player	Minutes
1. . . .	Estelle Johnson (2006-09)	7,470
2. . . .	Afton Sauer (2004-07)	7,459
3. . . .	Kayla Morrison (2014-17)	7,368
4. . . .	Shelby Williamson (2009-12)	7,232
5. . . .	Liana Salazar (2011-15)	6,933
6. . . .	Whitney Berry (2009-12)	6,739
7. . . .	Taylor Estrada (2013-16)	6,578
8. . . .	Grace Hagan (2015-18)	6,454
9. . . .	Missy Geha (2005-08)	6,416
10. . . .	Jamie Fletcher (2011-14)	6,337

* Minutes played became an official stat in 2004

GAMES PLAYED (KEEPERS)

No.	Player	Games
1. . . .	Meghan Miller (2001-04)	88
2. . . .	Julie Hanley (2005-09)	65
3. . . .	Kaitlyn Stroud (2010-14)	63
4. . . .	Maddie Dobyns (2014-Present)	60
5. . . .	Kat Liebetrau (2009-12)	54

SAVES

No.	Player	Saves
1. . . .	Jen Fecke (1996-98)	375
2. . . .	Meghan Miller (2001-04)	362
3. . . .	Kaitlyn Stroud (2010-2014)	281
4. . . .	Kat Liebetrau (2009-12)	228
. . . .	Julie Hanley (2005-09)	228

GOALS AGAINST AVG. (MIN. 2,500 MIN.)

No.	Player	GAA
1. . . .	Sarah Peters (2018-Present)	0.87
. . . .	(26 GA, 2,682 min.)	
2. . . .	Meghan Miller (2001-04)	0.98
. . . .	(85 GA, 7,836 min.)	
3. . . .	Maddie Dobyns (2014-17)	1.06
. . . .	(64 GA, 5,427 min.)	
4. . . .	Kaitlyn Stroud (2010-14)	1.21
. . . .	(75 GA, 5,582 min.)	
5. . . .	Julie Hanley (2005-09)	1.32
. . . .	(81 GA, 5,515 min.)	

SAVE PERCENTAGE (MIN. 100 SHOTS FACED)

No.	Player	Save Pct.
1. . . .	Betsy Pollard (1996-99)814
. . . .	(29 GA, 127 saves)	
2. . . .	Meghan Miller (2001-04)810
. . . .	(85 GA, 362 saves)	
3. . . .	Kaitlyn Stroud (2010-14)789
. . . .	(75 GA, 281 saves)	
4. . . .	Colleen Quinn (2004-07)781
. . . .	(44 GA, 157 saves)	
5. . . .	Jen Fecke (1996-98)773
. . . .	(110 GA, 375 saves)	

SHUTOUTS

No.	Player	Shutouts
1. . . .	Meghan Miller (2001-04)	28
2. . . .	Julie Hanley (2005-09)	16
3. . . .	Maddie Dobyns (2014-17)	14
4. . . .	Sarah Peters (2018-Present)	13
. . . .	Kaitlyn Stroud (2010-14)	13
6. . . .	Kat Liebetrau (2009-12)	12

WINS

No.	Player	Wins
1. . . .	Meghan Miller (2001-04)	60
2. . . .	Julie Hanley (2005-09)	36
3. . . .	Kaitlyn Stroud (2010-14)	32
4. . . .	Maddie Dobyns (2014-17)	29
5. . . .	Kat Liebetrau (2009-12)	23

CAREER STATISTICS

Amos, Bri

Season	GP-GS	Min.	G	A	Pts	Shot	Shot%	SOG	SOG%	GW	PK-Att
2018	10-1	228	0	1	1	3	.000	0	.000	0	0-0
2019	8-5	347	1	2	4	7	.143	5	.714	0	0-0
TOTAL	18-6	575	1	3	5	10	.100	5	.500	0	0-0

Barnett, Samantha

Season	GP-GS	Min.	G	A	Pts	Shot	Shot%	SOG	SOG%	GW	PK-Att
2018	20-0	281	0	0	0	4	.000	1	.250	0	0-0
2019	8-0	214	1	1	3	8	.125	4	.500	0	0-0
TOTAL	28-0	495	1	1	3	12	.083	5	.417	0	0-0

Beyer, Lia

Season	GP-GS	Min.	G	A	Pts	Shot	Shot%	SOG	SOG%	GW	PK-Att
2019	2-0	42	0	0	0	0	.000	0	.000	0	0-0
TOTAL	2-0	42	0	0	0	0	.000	0	.000	0	0-0

Bradley, Italia

Season	GP-GS	Min.	G	A	Pts	Shot	Shot%	SOG	SOG%	GW	PK-Att
2018	13-0	170	0	0	0	0	.000	0	.000	0	0-0
2019	6-2	204	0	0	0	0	.000	0	.000	0	0-0
TOTAL	19-2	374	0	0	0	0	.000	0	.000	0	0-0

Briley, Gracely

Season	GP-GS	Min.	G	A	Pts	Shot	Shot%	SOG	SOG%	GW	PK-Att
2019	5-0	97	0	0	0	6	.000	1	.167	0	0-0
TOTAL	5-0	97	0	0	0	6	.000	1	.167	0	0-0

Castro, Kathryn

Season	GP-GS	Min.	G	A	Pts	Shot	Shot%	SOG	SOG%	GW	PK-Att
2017	18-4	550	0	0	0	7	.000	3	.429	0	0-0
2018	21-5	779	0	0	0	9	.000	2	.222	0	0-0
2019	8-3	310	1	0	2	14	.071	7	.500	0	0-0
TOTAL	47-12	1639	1	0	2	30	.033	12	.400	0	0-0

Cavalcante, Isabella

Season	GP-GS	Min.	G	A	Pts	Shot	Shot%	SOG	SOG%	GW	PK-Att
2017	20-20	1663	1	1	3	10	.100	4	.400	1	0-0
2018	15-11	1006	0	1	1	4	.000	1	.250	0	0-0
2019	8-8	569	0	2	2	5	.000	1	.200	0	0-0
TOTAL	43-39	3238	1	4	6	19	.053	6	.316	1	0-0

Costow, Ebba

Season	GP-GS	Min.	G	A	Pts	Shot	Shot%	SOG	SOG%	GW	PK-Att
2019	8-5	356	0	2	2	1	.000	0	.000	0	0-0
TOTAL	8-5	356	0	2	2	1	.000	0	.000	0	0-0

Duggan, Mandi

Season	GP-GS	Min.	G	A	Pts	Shot	Shot%	SOG	SOG%	GW	PK-Att
2016	20-4	504	3	0	6	10	.300	3	.300	3	0-0
2018	6-0	99	0	0	0	1	.000	0	.000	0	0-0
2019	8-0	188	0	0	0	9	.000	5	.556	0	0-0
TOTAL	34-4	791	3	0	6	20	.150	8	.400	3	0-0

Eliasdottir, Eva

Season	GP-GS	Min.	G	A	Pts	Shot	Shot%	SOG	SOG%	GW	PK-Att
2016	16-0	297	0	1	1	3	.000	2	.667	0	0-0
2017	20-20	1640	1	1	3	5	.200	1	.200	0	0-0
2018	15-11	754	1	2	4	5	.200	1	.200	1	0-0
2019	1-0	22	0	0	0	1	.000	0	.000	0	0-0
TOTAL	52-31	2713	2	4	8	14	.143	4	.286	1	0-0

Gavillet, Emilie

Season	GP-GS	Min.	G	A	Pts	Shot	Shot%	SOG	SOG%	GW	PK-Att
2019	1-0	10	0	0	0	0	.000	0	.000	0	0-0
TOTAL	1-0	10	0	0	0	0	.000	0	.000	0	0-0

Season	GP-GS	Minutes	GA	GAAvg	Saves	Save%	W	L	T	Sho
2019	1-0	9:31	0	0.00	0	.000	0	0	0	0.1
TOTAL	1-0	9:31	0	0.00	0	.000	0	0	0	0.1

Giubilato, Margherit

Season	GP-GS	Min.	G	A	Pts	Shot	Shot%	SOG	SOG%	GW	PK-Att
2019	2-0	20	0	0	0	0	.000	0	.000	0	0-0
TOTAL	2-0	20	0	0	0	0	.000	0	.000	0	0-0

Hall, Avery

Season	GP-GS	Min.	G	A	Pts	Shot	Shot%	SOG	SOG%	GW	PK-Att
2017	1-0	13	0	0	0	0	.000	0	.000	0	0-0
2018	3-0	45	0	0	0	0	.000	0	.000	0	0-0
2019	5-0	62	0	0	0	2	.000	2	1.000	0	0-0
TOTAL	9-0	120	0	0	0	2	.000	2	1.000	0	0-0

Hansen, Kaela

Season	GP-GS	Min.	G	A	Pts	Shot	Shot%	SOG	SOG%	GW	PK-Att
2018	21-21	1650	0	0	0	6	.000	1	.167	0	0-0
2019	8-8	610	0	0	0	3	.000	0	.000	0	0-0
TOTAL	29-29	2260	0	0	0	9	.000	1	.111	0	0-0

Holland, Ceri

Season	GP-GS	Min.	G	A	Pts	Shot	Shot%	SOG	SOG%	GW	PK-Att
2017	20-20	1564	1	1	3	34	.029	14	.412	0	0-0
2018	21-21	1690	1	4	6	38	.026	11	.289	1	0-1
2019	8-8	574	3	2	8	19	.158	6	.316	0	2-2
TOTAL	49-49	3828	5	7	17	91	.055	31	.341	1	2-3

Lane, Kailey

Season	GP-GS	Min.	G	A	Pts	Shot	Shot%	SOG	SOG%	GW	PK-Att
2018	4-0	30	0	0	0	0	.000	0	.000	0	0-0
2019	8-3	369	3	1	7	7	.429	5	.714	2	0-0
TOTAL	12-3	399	3	1	7	7	.429	5	.714	2	0-0

Maierhofer, Sophie

Season	GP-GS	Min.	G	A	Pts	Shot	Shot%	SOG	SOG%	GW	PK-Att
2016	12-9	714	1	0	2	3	.333	2	.667	0	0-0
2017	18-16	1159	4	1	9	25	.160	12	.480	1	0-0
2018	6-1	123	0	0	0	2	.000	0	.000	0	0-0
2019	8-8	583	1	0	2	9	.111	3	.333	0	0-0
TOTAL	44-34	2579	6	1	13	39	.154	17	.436	1	0-0

McClure, Katie

Season	GP-GS	Min.	G	A	Pts	Shot	Shot%	SOG	SOG%	GW	PK-Att
2016	21-16	1405	5	2	12	54	.093	28	.519	3	0-0
2017	20-20	1412	6	2	14	52	.115	25	.481	1	0-0
2018	21-21	1462	11	3	25	58	.190	26	.448	7	0-0
2019	8-8	475	7	3	17	23	.304	10	.435	4	0-0
TOTAL	70-65	4754	29	10	68	187	.155	89	.476	15	0-0

Meador, Madison

Season	GP-GS	Min.	G	A	Pts	Shot	Shot%	SOG	SOG%	GW	PK-Att
2016*	20-18	-	0	0	0	13	.000	4	.308	0	0-0
2017	18-3	726	0	2	2	3	.000	1	.333	0	0-0
2018	20-20	1793	1	0	2	9	.111	2	.222	1	0-0
2019	8-5	514	0	0	0	1	.000	0	.000	0	0-0
TOTAL	46-28	3033	1	2	4	13	.077	3	.231	1	0-0
All*	66-46	3033	1	2	4	26	.038	7	.269	1	0-0

* Statistics from prior team/school

Merrick, Addisyn

Season	GP-GS	Min.	G	A	Pts	Shot	Shot%	SOG	SOG%	GW	PK-Att
2016	21-14	1630	1	0	2	11	.091	5	.455	0	0-0
2017	20-20	1867	0	0	0	1	.000	1	1.000	0	0-0
2018	21-19	1855	0	0	0	4	.000	2	.500	0	0-0
2019	8-8	675	0	1	1	2	.000	0	.000	0	0-0
TOTAL	70-61	6027	1	1	3	18	.056	8	.444	0	0-0

Pasar, Melania

Season	GP-GS	Min.	G	A	Pts	Shot	Shot%	SOG	SOG%	GW	PK-Att
2019	1-0	18	0	0	0	0	.000	0	.000	0	0-0
TOTAL	1-0	18	0	0	0	0	.000	0	.000	0	0-0

Season	GP-GS	Minutes	GA	GAAvg	Saves	Save%	W	L	T	Sho
2019	1-0	17:50	0	0.00	0	.000	0	0	0	0.1
TOTAL	1-0	17:50	0	0.00	0	.000	0	0	0	0.1

Peters, Sarah

Season	GP-GS	Min.	G	A	Pts	Shot	Shot%	SOG	SOG%	GW	PK-Att
2018	21-0	1989	0	0	0	0	.000	0	.000	0	0-0
2019	8-1	692	0	0	0	0	.000	0	.000	0	0-0
TOTAL	29-1	2681	0	0	0	0	.000	0	.000	0	0-0

Season	GP-GS	Minutes	GA	GAAvg	Saves	Save%	W	L	T	Sho
2018	21-21	1989:12	23	1.04	57	.712	12	6	3	9
2019	8-7	692:39	3	0.39	17	.850	7	1	0	4.1
TOTAL	29-28	2681:51	26	0.87	74	.740	19	7	3	13.1

Prybylski, Ellie

Season	GP-GS	Min.	G	A	Pts	Shot	Shot%	SOG	SOG%	GW	PK-Att
2019	8-5	403	0	3	3	1	.000	0	.000	0	0-0
TOTAL	8-5	403	0	3	3	1	.000	0	.000	0	0-0

Reina, Elise

Season	GP-GS	Min.	G	A	Pts	Shot	Shot%	SOG	SOG%	GW	PK-Att
2016	3-0	12	0	0	0	1	.000	0	.000	0	0-0
2017	18-2	566	0	1	1	5	.000	0	.000	0	0-0
2018	21-20	1816	2	6	10	20	.100	9	.450	1	0-0
2019	4-4	236	0	0	0	1	.000	1	1.000	0	0-0
TOTAL	46-26	2630	2	7	11	27	.074	10	.370	1	0-0

</

TV/RADIO ROSTER



0 **GABBIE DAWE**
Fr. / GK / 5-10
Memphis, Tenn.



00 **SARAH PETERS**
So. / GK / 5-10
Lee's Summit, Mo.



1 **MELANIA PASAR**
Fr. / GK / 5-11
Potoroz, Slovenia



2 **ELLIE PRYBYLSKI**
Fr. / D / F / 5-5
Forsyth County, Ga.



3 **MYA SHERIDAN**
Fr. / F / 5-5
Schertz, Texas



4 **KAILEY LANE**
So. / F / 5-9
Omaha, Neb.



6 **KAELA HANSEN**
So. / D / 5-7
Burnaby, British Columbia



7 **AVERY HALL**
Jr. / M / 5-5
McKinney, Texas



8 **EBBA COSTOW**
Fr. / M / 5-5
Uppsala, Sweden



9 **MADISON MEADOR**
Sr. / D / 5-7
Ballwin, Mo.



10 **GRACELEY BRILEY**
Fr. / M / 5-9
Olathe, Kan.



11 **CHAIS WRIGHT**
RS-Fr. / D / 5-4
Kansas City, Mo.



12 **KATIE MCCLURE**
Fr. / F / 5-4
Wichita, Kan.



13 **KATHRYN CASTRO**
Jr. / M / 5-3
Plano, Texas



14 **SAMANTHA BARNETT**
So. / M / 5-8
Edmond, Okla.



15 **CERI HOLLAND**
Jr. / M / 5-6
West Yorkshire, England



16 **ITALIA BRADLEY**
So. / D / 5-7
Coppell, Texas



17 **LIA BEYER**
Fr. / D / 5-7
Parker, Colo.



18 **EMILIE GAVILLET**
RS-Fr. / GK / 5-9
Montreux, Switzerland



19 **EVA ELÍASDÓTTIR**
Sr. / F / 5-6
Thorlakhshofn, Iceland



20 **MARGHERITA GIUBILATO**
Fr. / F / M / 5-4
Martellago, Italy



21 **ISABELLA CAVALCANTE**
Jr. / D / 5-7
Glen Ellyn, Ill.



22 **MANDI DUGGAN**
Jr. / F / 5-2
Aurora, Colo.



23 **GRACE WILTGEN**
Fr. / D / 5-6
Denton, Texas



24 **ELISE REINA**
Fr. / D / 5-2
Fayetteville, Ark.



26 **ADDISYN MERRICK**
Sr. / D / 5-5
Lee's Summit, Mo.



27 **SOPHIE MAIERHOFER**
Sr. / M / 5-7



28 **BRI AMOS**
So. / M / 5-7
Tulsa, Okla.



MARK FRANCIS
Head Coach
21st Season